



(HTTPS://UNH.EDU)

NEWSROOM

(//WWW.UNH.EDU/UNHTODAY/NEWS)

Q ☰
(/unhtoday/a

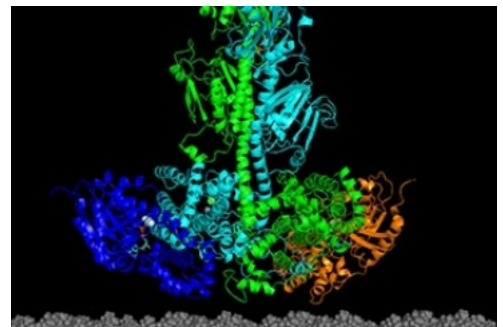
UNH Researchers Solve Protein Structure Associated with Inherited Retinal Diseases

Monday, December 23, 2019

(HTTPS://WWW.UNH.EDU/UNHTODAY/NEWS/2019/12/23/UNH-RESEARCHERS-SOLVE-PROTEIN-STRUCTURE-ASSOCIATED-WITH-INHERITED-RETINAL-DISEASES)
U=HTTPS://WWW.UNH.EDU/UNHTODAY/NEWS/2019/12/23/UNH-RESEARCHERS-SOLVE-PROTEIN-STRUCTURE-ASSOCIATED-WITH-INHERITED-RETINAL-DISEASES
RESEARCHERS-SOLVE-PROTEIN-STRUCTURE-ASSOCIATED-WITH-INHERITED-RETINAL-DISEASES
SOLVE-SOLVE-SOLVE-PROTEIN-STRUCTURE-ASSOCIATED-WITH-INHERITED-RETINAL-DISEASES
PROTEIN-STRUCTURE-ASSOCIATED-WITH-INHERITED-RETINAL-DISEASES
STRUCTURE-ASSOCIATED-WITH-INHERITED-RETINAL-DISEASES
ASSOCIATED-WITH-INHERITED-RETINAL-DISEASES
INHERITED-RETINAL-DISEASES
RETINAL-DISEASES

DURHAM, N.H. – Researchers at the University of New Hampshire have reported the first structural model for a key enzyme, and its activating protein, that can play a role in some genetically inherited eye diseases like retinitis pigmentosa and night blindness.

“There has been substantial research on the biochemical pathway involving this enzyme, known as PDE6, but defining atomic-level models is important for locating PDE6 mutations in order to understand why they cause disease and how we can develop new therapeutic interventions to manage retinal diseases,” said Rick Cote, director of Center of Integrated Biomedical and Bioengineering Research and principal investigator on the study.



MODEL BY UNH RESEARCHERS OF THE ACTIVATED COMPLEX OF THE PDE6 DIMER (GREEN AND CYAN) WITH TWO TRANSDUCIN SUBUNITS (BLUE AND ORANGE) ASSOCIATED WITH THE PHOTORECEPTOR MEMBRANE. PHOTO CREDIT: UNH

Vision starts in the photoreceptor cells of the retina which contains rods, responsible for low light vision, and cones, which are active in brighter light and capable of color vision. When light is absorbed by the rods and cones, it triggers a pathway which activates the enzyme phosphodiesterase 6, or PDE6. This generates a nerve impulse to the brain that ultimately results in visual perception. Some genetically inherited eye diseases are caused by mutations to PDE6, or its activating protein, transducin, that can lead to disruptions of normal vision or even total blindness.

In the study (<http://www.jbc.org/content/early/2019/11/05/jbc.RA119.011002.abstract>), recently published in the Journal of Biological Chemistry, researchers reported how they were able to use chemical cross-linking combined with mass spectrometric analysis to resolve the structure of PDE6 in its nonactivated and transducin-activated states. This approach permitted visualization of flexible regions of individual PDE6 catalytic and inhibitory subunits that were poorly resolved in previous work as well as the overall molecular architecture of the activated protein complex.

“Determining the structure of these visual signaling proteins has always been a challenge because of their complexity,” said Michael Irwin, doctoral student in biochemistry and lead author. “Having detailed structural information about how PDE6 is activated by transducin will help us understand the molecular causes of visual disorders and blinding diseases resulting from mutations in these proteins.”

Current medical treatment for such genetically inherited retina diseases may include gene therapy or drugs meant to inhibit the disease process. However, they are not always successful in restoring the balance of PDE6 and preventing blindness. Scientists believe that knowing the molecular structures of these visual signaling proteins and how they interact with each other can offer clues for the development of new drugs to both restore vision and prevent blindness.

The research was funded by the National Eye Institute, the National Institute of General Medical Sciences, the National Institute of Child Health and Human Development, the National Science Foundation, and the UNH Research Office.

The University of New Hampshire (<https://www.unh.edu>) inspires innovation and transforms lives in our state, nation and world. More than 16,000 students from all 50 states and 71 countries engage with an award-winning faculty in top-ranked programs in business, engineering, law, health and human services, liberal arts and the sciences across more than 200 programs of study. As one of the nation’s highest-performing research universities, UNH partners with NASA, NOAA, NSF and NIH, and receives more than \$110 million in competitive external funding every year to further explore and define the frontiers of land, sea and space.

IMAGE FOR DOWNLOAD

Link: http://unh.edu/sites/default/files/pde6_transducin_model_retina_.jpg (http://unh.edu/sites/default/files/pde6_transducin_model_retina_.jpg)

Caption: Model by UNH researchers of the activated complex of the PDE6 dimer (green and cyan) with two transducin subunits (blue and orange) associated with the photoreceptor membrane.

Photo Credit: UNH

Media Contact

Robbin Ray '82 (</unhtoday/contributor/robbin-ray-82>) | Communications and Public Affairs | robbin.ray@unh.edu (<mailto:robbin.ray@unh.edu>) | 603-862-4864

LATEST NEWS

University of New Hampshire Announces May 2021 Graduates (</unhtoday/news/release/2021/05/22/university-new-hampshire-announces-may-2021-graduates>)
May 22, 2021

UNH Works to Solve a Million Dollar Problem for Aquaculture Industry (</unhtoday/news/release/2021/05/20/unh-works-solve-million-dollar-problem-aquaculture-industry>)
May 20, 2021

UNH Finds Angel Investor Market on the Rise in 2020 (</unhtoday/news/release/2021/05/19/unh-finds-angel-investor-market-rise-2020>)
May 19, 2021

Media Advisory: University of New Hampshire 2020 and 2021 Commencements (</unhtoday/news/release/2021/05/18/media-advisory-university-new-hampshire-2020-and-2021-commencements>)
May 18, 2021

UNH Research Estimates 1.4 Million Children Have Yearly Violence-Related Medical Visits (</unhtoday/news/release/2021/05/12/unh-research-estimates-14-million-children-have-yearly-violence-related>)
May 12, 2021

[VIEW ALL >](#)

 [SUBSCRIBE TO UNH TODAY \(HTTPS://WWW.UNH.EDU/MAIN/UNH-TODAY-SUBSCRIPTION\)](https://www.unh.edu/main/unh-today-subscription)



[University of New Hampshire](https://www.unh.edu) (<https://www.unh.edu>)

UNH Today is produced for the UNH community and for friends of UNH.

The stories are written by the staff of UNH Communications and Public Affairs. (<https://www.unh.edu/cpa>)

Email us: unhtoday.editor@unh.edu (<mailto:unhtoday.editor@unh.edu>). (<mailto:unh.today@unh.edu>)

[MANAGE YOUR SUBSCRIPTION >](#) [CONTACT US >](#)



([https://www.linkedin.com/edu/university-](https://www.linkedin.com/edu/university-of-new-hampshire)

of-

new-

hampshire-



(<http://www.usnh.edu/legalservices/privacy/feeds>)

UNH Today • UNH Main Directory: 603-862-1234

Copyright © 2021 • TTY Users: 7-1-1 or 800-735-2964 (Relay NH)

USNH Privacy Policies (<http://www.usnh.edu/legal/privacy.shtml>) • USNH Terms of Use (<http://www.usnh.edu/legal/tou.shtml>) • ADA Acknowledgement

(<http://www.unh.edu/about/ada.html>)