

University of New Hampshire

University of New Hampshire Scholars' Repository

Faculty Publications

2023

IHPP 2023 Annual Report

Institute for Health Policy and Practice

Follow this and additional works at: https://scholars.unh.edu/faculty_pubs

Recommended Citation

Institute for Health Policy and Practice (IHPP), "IHPP 2023 Annual Report" (2023). Institute for Health Policy and Practice (IHPP)

This Article is brought to you for free and open access by University of New Hampshire Scholars' Repository. It has been accepted for inclusion in Faculty Publications by an authorized administrator of University of New Hampshire Scholars' Repository. For more information, please contact Scholarly.Communication@unh.edu.



2023 ANNUAL REPORT



Institute for Health
Policy and Practice



Table of Contents

UNH Land, Water, and Life Acknowledgement	3
Director’s Note	4
Race & Equity Work	6
IHPP Highlights	7
IHPP Funders	10
IHPP Focal Areas & Leadership Team	11
Delivery System & Payment Reform	13
Health Analytics & Informatics	18
Health Law & Policy.....	22
Long Term Care & Aging.....	26
Public Health & Health Promotion	30
Contact Us.....	33

UNH Land, Water, and Life Acknowledgement

Institute for Health Policy and Practice recognizes the use of a [Land, Water, and Life Acknowledgment](#) statement as a first step in remembering and honoring the Indigenous People who lived on and cared for the lands upon which UNH resides on and benefits from as a Land-Grant University.

Since its creation, IHPP has worked to integrate UNH's Land Acknowledgement into project reports and presentations as a standard practice. However, we also recognize that there is much more work to be done in learning about and fostering relationships with the Indigenous People who live and work within the communities that we serve, and we strive to continuously improve on those efforts.

UNH Land, Water, Life Acknowledgment: As we all journey on the trail of life, we wish to acknowledge the spiritual and physical connection the Pennacook, Abenaki, and Wabanaki Peoples have maintained to N'dakinna (homeland) and the aki (land), nebi (water), olakwika (flora), and awaasak (fauna) which the University of New Hampshire community is honored to steward today.

We also acknowledge the hardships they continue to endure after the loss of unceded homelands and champion the university's responsibility to foster relationships and opportunities that strengthen the well-being of the Indigenous People who carry forward the traditions of their ancestors.





Director's Note

After unwinding from the public health emergency of COVID and adjusting to many leadership and budget resets at the University, College and Institute, I thought our team might run out of gas! Not so. Our team has proven once again to be tenacious, nimble and passionate about the work. We could not have grown to a team of 26 staff if we weren't committed to making health policy and practice better for all who live here.

Together, we have built a \$3.7 million annual funding portfolio because we continue to be relevant to the State and the University; and our funders and partners have stayed by our side for over 22 years!

In 2024, we will continue to take care of our culture, which our team cherishes; we will continue to be curious about making health care systems better; and we are committed to listening and improving population health in NH.

Throughout the report, we have provided icons to indicate where our work is connected to the four strategic pillars of UNH:



Let us know if you would like to learn more about anything in the report. Our website is up to date, but we also enjoy meeting and thinking creatively with you about how to solve health and health care problems together.

Happy to have a coffee with you,
Laura Davie

CONNECT WITH US!



Home

<https://chhs.unh.edu/institute-health-policy-practice>



People

<https://chhs.unh.edu/institute-health-policy-practice/people>



Instagram

<https://www.instagram.com/unhihpp>



LinkedIn

<https://www.linkedin.com/company/institute-for-health-policy-and-practice>



Diversity, Equity, and Inclusion

Race & Equity Work

IHPP Race & Equity Committee

- **The IHPP Race & Equity Committee continues to meet on a monthly or bi-monthly basis.** This committee provides resources and helps facilitate initiatives around race and equity in our work and our efforts as members of the UNH community.
- **Deb Fournier represents IHPP at College of Health and Human Services Committee on Ethnicity & Race Equity (CERE).** Deb facilitated CERE’s November Lunch and Learn session, which was on the topic of Honoring Indigenous Peoples.
- **Laura Davie and Erica Plante regularly represent IHPP at UNH’s Inclusion Council, a monthly gathering of faculty and staff hosted by UNH’s Office of Community, Equity and Diversity.**

Becoming a Culturally Effective Organization

- IHPP is continually working on becoming a Culturally Effective Organization (CEO) and is doing so using NH Equity Collective’s CEO Framework tool. IHPP collaborated to identify high and mid priority items within the framework’s key areas of “Leadership,” “Institutional Policies & Procedures,” “Data Collection & Analysis,” “Community Engagement,” “Language & Communication Access,” “Staff Cultural Competence,” and “Workforce Diversity & Inclusion.”
- The 988 project was able to incorporate knowledge gained from the CEO Framework to develop relationships with community stakeholders.
- To learn more about Culturally Effective Organizations and the NH Equity Collective’s CEO Framework tool, please visit: <https://equitynh.org/culturally-effective-organizations/>.

Using the CEO Framework

IHPP has created a workplan and tasks in Microsoft planner. Examples:

Staff Cultural Competency

WE ARE PRIORITIZING

Engaging in race/equity conversations; Ongoing development of skills to listen, attune, reflect, and advocate for race/equity; Ongoing education of how race/equity interplays with our work/content areas/focus.

Workforce Diversity and Inclusion

WE ARE PRIORITIZING

Improving our hiring, job descriptions, and interviewing practices; Utilizing the Staff Hiring Diversity Framework as best practice; Evaluating innovative ideas to engage via “international exchange programs” or similar programs in research; Engaging with diverse community groups and organizations for professional networking.



IHPP events were planned incorporating several of our goals and intentions developed using the CEO Framework.

2023 Highlights

The Institute for Health Policy and Practice (IHPP) is an applied research institute located within the College of Health and Human Services at the University of New Hampshire.



IHPP conducts and disseminates high-quality, cutting-edge applied research and policy work that enables health system partners to implement evidence-based strategies to improve population health.

\$3,691,762

GRANTS & CONTRACTS

36

PROJECTS

22

FUNDING SOURCES

59

CONFERENCES & PRESENTATIONS

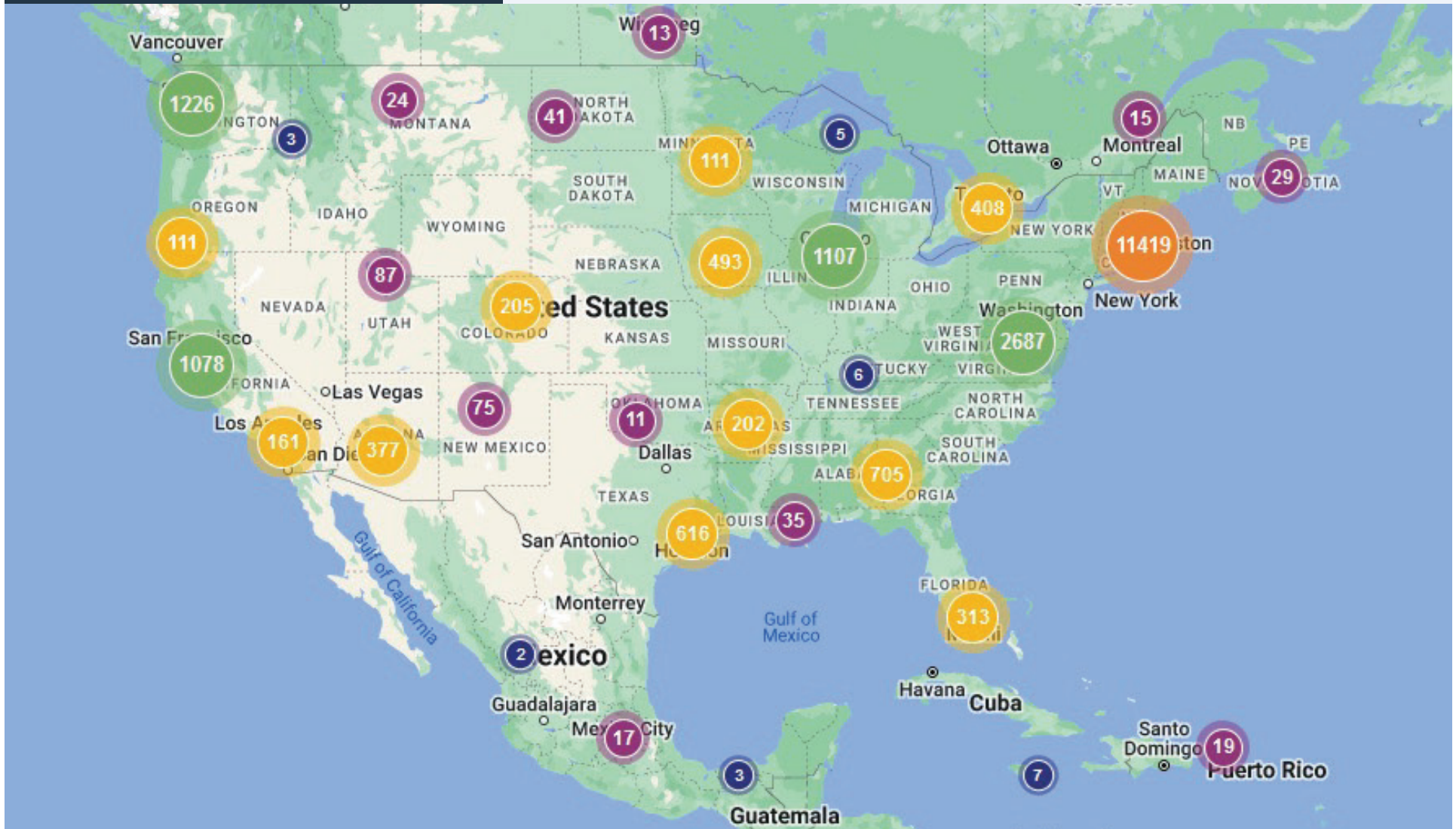
18

PUBLICATIONS

2023 Highlights

USA Readership Distribution

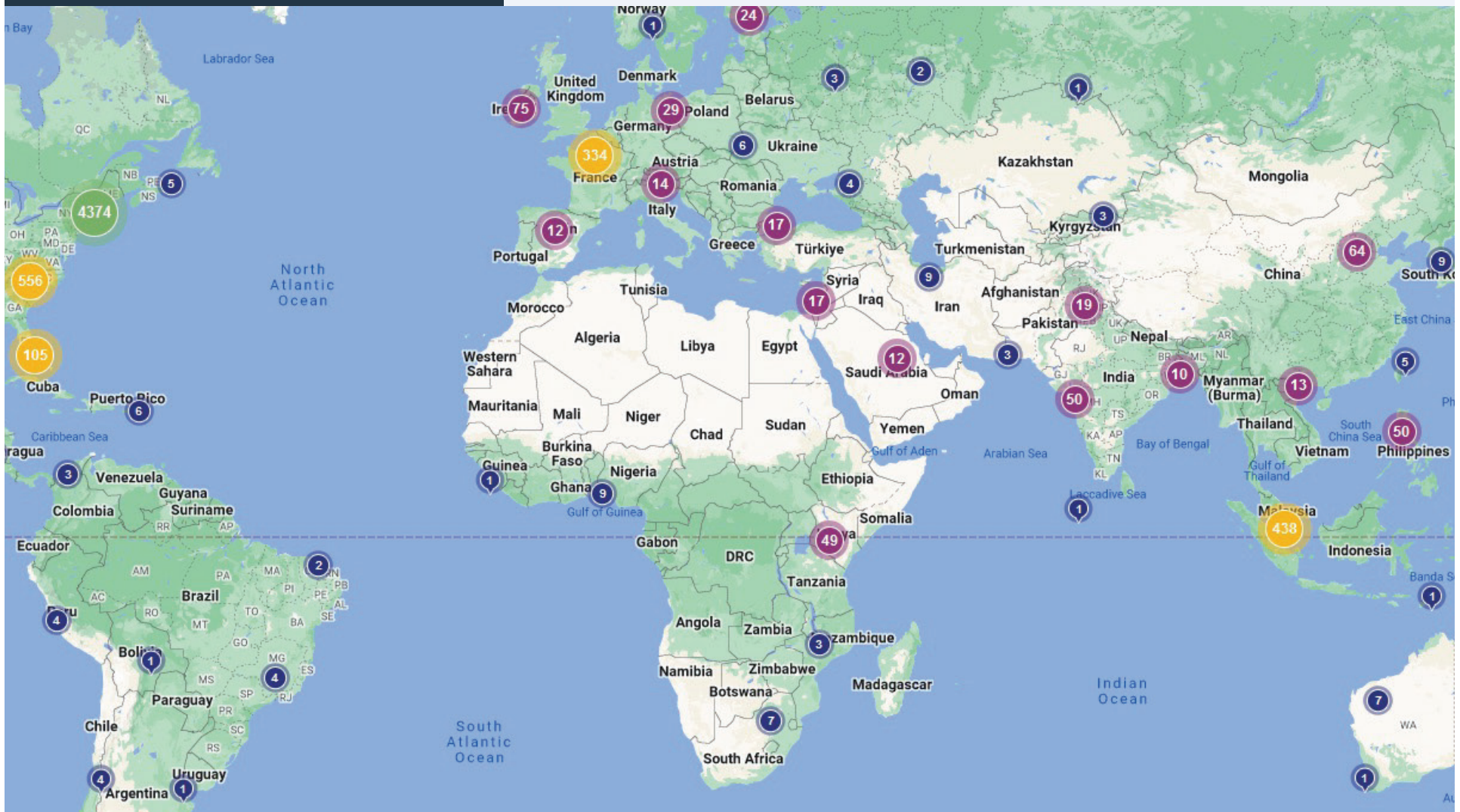
This map shows where IHPP publications have been downloaded across the US in 2023.



2023 Highlights

Worldwide Readership Distribution

This map shows where IHPP publications have been downloaded across the world in 2023.



IHPP Funders

Administration for Community Living

Centers for Medicare & Medicaid Service

Core Physicians, LLC

Dartmouth-Hitchcock Medical Center

Endowment for Health

Foundation for Seacoast Health

Headrest

Health Resources and Services Administration

Lamprey Health Care, Inc.

MCD Global Health

National Association of Health Data Organizations

New Hampshire Charitable Foundation

New Hampshire Children's Health Foundation

New Hampshire Department of Administrative Services

New Hampshire Department of Health and Human Services

New Futures

University of Massachusetts, Medical School

University of Maryland, Baltimore

University of Vermont



IHPP Focal Areas & Leadership Team

Leadership Team

Amy Costello, MPH

IHPP Focal Area Director

Health Analytics and Informatics

Laura Davie, MA

Interim Director

IHPP Focal Area Director,
Long Term Care and Aging

Deborah Fournier, JD

IHPP Focal Area Director

Health Law and Policy

Marcy Doyle, DNP, MHS, MS, RN, CNL

Research Assistant Professor

Clinical and Quality Improvement Director

Jeanne Ryer, MSc, EdD

IHPP Focal Area Director

Delivery System and Payment Reform

Focal Areas



**Delivery System &
Payment Reform**



**Health Analytics &
Informatics**



**Health Law
& Policy**



**Long Term Care
& Aging**



**Public Health &
Health Promotion**



Delivery System & Payment Reform

Project ECHO® Programs

The Collaborative for Advancing Rural Excellence & Equity (CARE2) is federally funded to provide Project ECHO® programs and asynchronous eLearning courses on the topics of aging and substance use for care teams in rural ME, NH, VT, and North Country NY.

- 84 participants noted satisfaction with curriculum or content
- 81 participants reported intention to apply/use information learned

SUBSTANCE USE DISORDER (SUD)

- 89% increased knowledge
- 100% increased confidence



48
ORGANIZATIONS

72
PARTICIPANTS

8
SUBJECT MATTER EXPERTS



PROJECT ECHO: AGING, COMMUNITY & EQUITY (PEACE)

- 89% increased knowledge
- 78% increased confidence

36
ORGANIZATIONS

78
PARTICIPANTS

10
SUBJECT MATTER EXPERTS

“The SUD and PEACE ECHO programs ‘all teach, all learn’ model is something which resonates deeply with me as a college educator and as a lifelong learner. This model enhances my clinical counseling work. I often bring the knowledge that I have gleaned from the ECHO programs into my sessions.”

– Lisa Lavoie, PhD, MAIS, LCPC, CADC, CRC, Asst. Professor of Behavioral Science, President, AFUM UMFK Chapter, University of Maine at Fort Kent

CARE² Collaborative for Advancing Rural Excellence + Equity

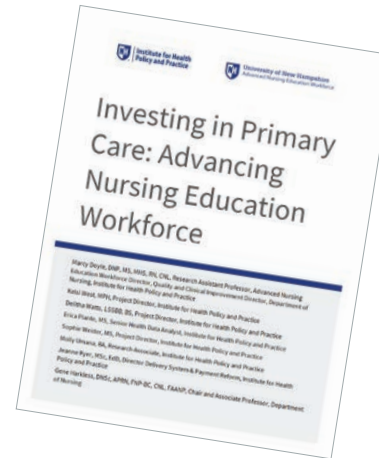


Advanced Nursing Education Workforce

PRIMARY CARE WORKFORCE REPORT

Primary health care faces significant workforce challenges, particularly in care for vulnerable populations and in underserved areas. The University of New Hampshire (UNH) Advanced Nursing Education Workforce (ANEW) program worked to increase the supply of primary care providers by developing innovative pathways to support registered nurses in becoming primary care nurse practitioners (NPs) with a participant commitment to serve a postgraduate period working in primary care in underserved areas.

The ANEW program also used data from the NH Comprehensive Health Information System (NHCHIS), NH's all-payer claims database, to examine primary care provision in the state and identify primary care provider types and settings.



ADVANCED NURSING EDUCATION WORKFORCE

The UNH Advanced Nursing Education Workforce (ANEW) program provides funding to Primary Care Family Nurse Practitioner (NP) and Psychiatric Mental Health Nurse Practitioner students training in rural and underserved settings. ANEW also supports professional development opportunities for preceptors, clinical sites and faculty.

ANEW STUDENTS (7/1/2019 - 6/30/2023)

\$1,077,500

43 graduates

143 awards to 56 students

**109 clinical rotations at
40 organizations**

**Students have been placed with
over 70 different preceptors**



“Thank you so much. **It’s such a huge help with grants like this and it has such a huge impact on individual students.** We’re trying to progress our careers but it’s financially, really hard to convince your families to keep going back to school, so things like this really make a big difference and I really appreciate it.

— ANEW Student

Advanced Nursing Education Workforce



CONFERENCES, HOSPITAL, AND RURAL PARTNER VISITS



Hosted a table and sent 3 ANEW students to Northern New England Nurse Practitioner Conference April 2023



Moultonborough Family Medicine, student clinical rotation site visit



Britney Waldrip (right), fall 2022 FNP graduate and ANEW recipient and preceptor Melissa Bourque, FNP-BC (left)



“It is with sincere gratitude that I write this email to thank you for connecting me with the ANEW team. **They were able to get me a preceptor for the fall and I am forever grateful.**”

— PEER Participant

PRECEPTOR ECHO TO ENHANCE ROTATIONS



3

COHORTS

130

COMMUNITY PROVIDERS & STAFF

66

PRACTICES

7

ACADEMIC INSTITUTIONS

6

WORKFORCE INSTITUTIONS

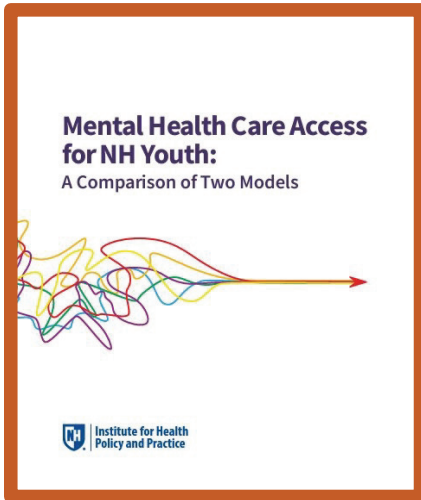
109

CLINICAL ROTATIONS AT 40 ORGANIZATIONS

STUDENTS HAVE BEEN PLACED WITH OVER 70 DIFFERENT PRECEPTORS

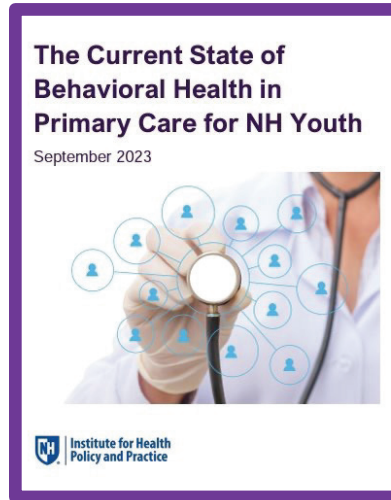
Mental Health Care Access in Pediatrics

NH MCAP published two reports to explore the current state of pediatric behavioral health care in the primary care environment and strategies to increase access to care.



Utilized semi-structured data, health care claims analysis, and a survey to assess adoption of core components of integrated care

The Current State of Behavioral Health in Primary Care for NH Youth, <https://scholars.unh.edu/ihpp/169/>



Compared the feasibility of the Collaborative Care Model for pediatrics to a Child Psychiatric Access Program in NH and proposed strategies for successful adoption

Mental Health Care Access for NH Youth: A Comparison of Two Models, <https://scholars.unh.edu/ihpp/168/>



NH MCAP strives to increase availability and accessibility of networks of pediatric mental health teams through telehealth consultation, training, technical assistance, and referral.



Health Analytics & Informatics

Impact of COVID-19 on Health Care Utilization & Cost



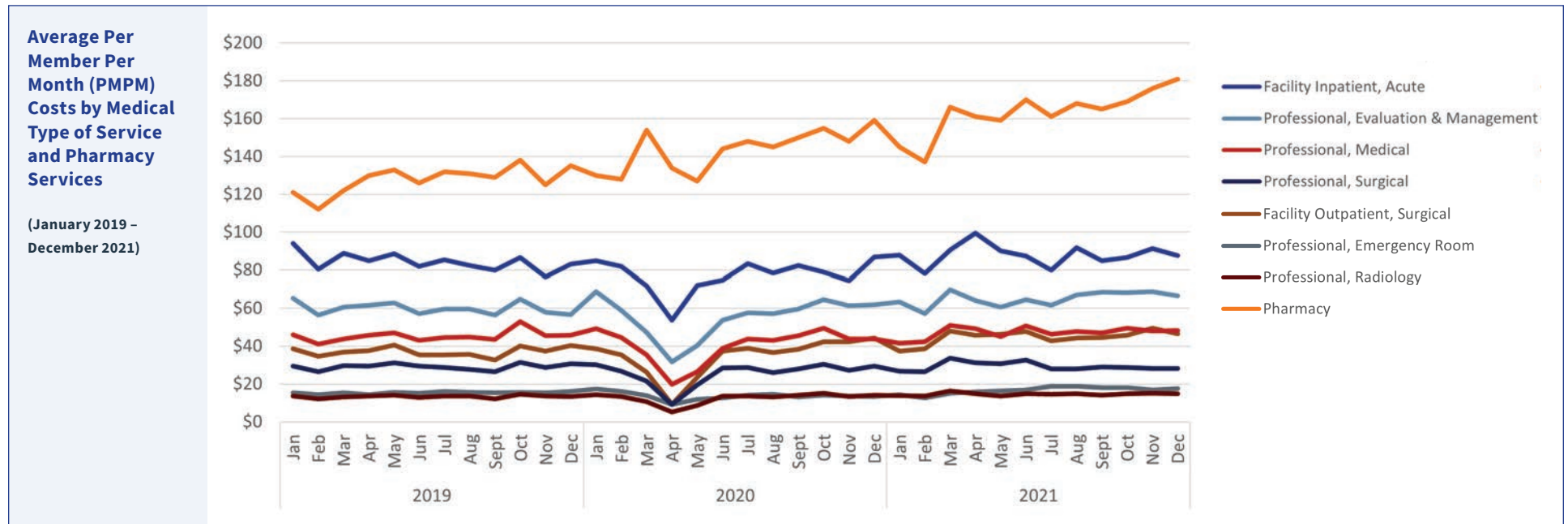
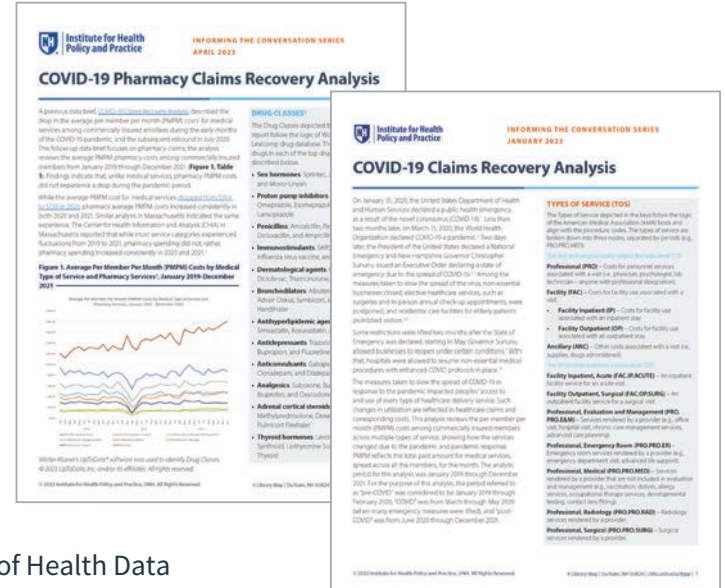
PUBLISHED TWO COVID-19 CLAIMS RECOVERY REPORTS AND PRESENTED AT NATIONAL ASSOCIATION OF HEALTH DATA ORGANIZATIONS (NAHDO) CONFERENCE

The Health Analytics and Informatics (HAI) team conducted retrospective health care claims analysis to better understand cost recovery for services rendered after the 2020 public health emergency lockdowns for COVID-19.

Two reports were published for IHPP's "Informing the Conversation - Covering the Care" series, based on NH commercially insured population. Specifically, medical and pharmacy health insurance claims data from January 2019 to December 2021 were analyzed to produce two briefs:

- COVID-19 Claims Recovery Analysis, published in January 2023
- COVID-19 Pharmacy Claims Recovery Analysis, published in April 2023

Members of the HAI team presented key findings from these briefs at the National Association of Health Data Organization's 38th Annual Conference in November of 2023. Attendees from this conference include health data specialists from state and federal agencies and private research entities.



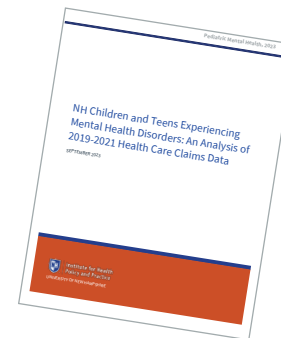
Mental and Behavioral Health Care in NH

MENTAL HEALTH CARE UTILIZATION AMONG NH'S TRANSGENDER AND NON-BINARY POPULATIONS

In partnership with Kristin Clark, a UNH Nursing faculty member (who is now at University of Stockholm), the Health Analytics and Informatics (HAI) team analyzed health insurance claims data to estimate rates of behavioral health conditions and treatment among adults in NH who have an indication of being transgender or non-binary. The analysis utilized administrative medical claims data for enrollees of commercial plans, NH Medicaid and NH Medicare for years 2017-2022.

COLLABORATION WITH NH PEDIATRIC IMPROVEMENT PROJECT TO UNDERSTAND MENTAL HEALTH CARE ACCESS IN NHS PEDIATRIC POPULATION

- The HAI team **co-presented initial Mental Health Care Access in Pediatrics (MCAP) findings to the Legislative Commission on the Interdisciplinary Primary Care Workforce** in February 2023.
- **The team published a report that leveraged health care claims to create descriptive analysis of the burden of mental health conditions among NH's insured pediatric population.** This work expanded upon prior research by exploring the role of primary care and integrated behavioral health care in caring for this population. The report, *NH Children and Teens Experiencing Mental Health Disorders: An Analysis of 2019-2021 Health Care Claims Data*, was published in September of 2023 and can be found here: <https://scholars.unh.edu/ihpp/164/>.



“Our partnership with the Health Analytics and Informatics team at IHPP has been very productive. **The team was very responsive, knowledgeable, and willing to engage in creative, out of the box problem solving to meet the goals of our research project.**”

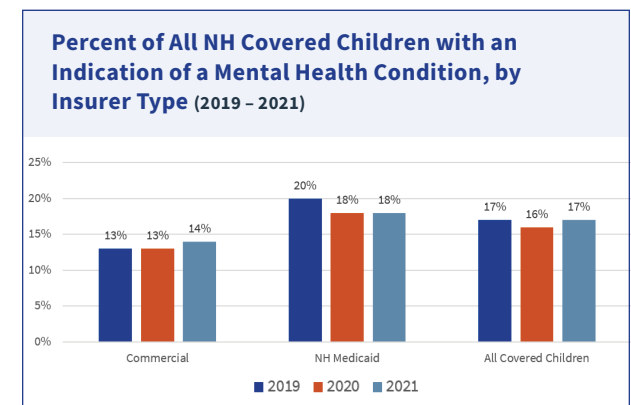
— Vidya Sundar, Associate Professor, UNH Department of Occupational Therapy

EXAMINING MENTAL AND BEHAVIORAL HEALTH CONDITIONS AND TREATMENTS PATTERNS WITH NH DHHS

The HAI team conducted analysis and visualizations on behalf of NH DHHS to understand mental and behavioral health conditions and treatments among two critical populations:

- **NH insured individuals with at least one visit to an emergency department for a mental health condition.** This analysis looked at mental health treatment 6 months prior to and following an ER event for a mental health condition.
- **NH Medicaid enrollees who died from drug overdose or suicide.** The analysis examined rates of treatment prior to death.

A preliminary report on rates of deaths by category was created for DHHS. For both projects, the HAI team aggregated the data into interactive Tableau dashboards that could be transferred and used internally by DHHS analysts and epidemiologists.



Updated Data Tools and Reports



IHPP DATA REPORTING WEBSITE, WWW.IHPPDATA.ORG, CURRENTLY HOUSES THE NH CLAIMS REPORT SUITE AND NH HEALTHWRQS

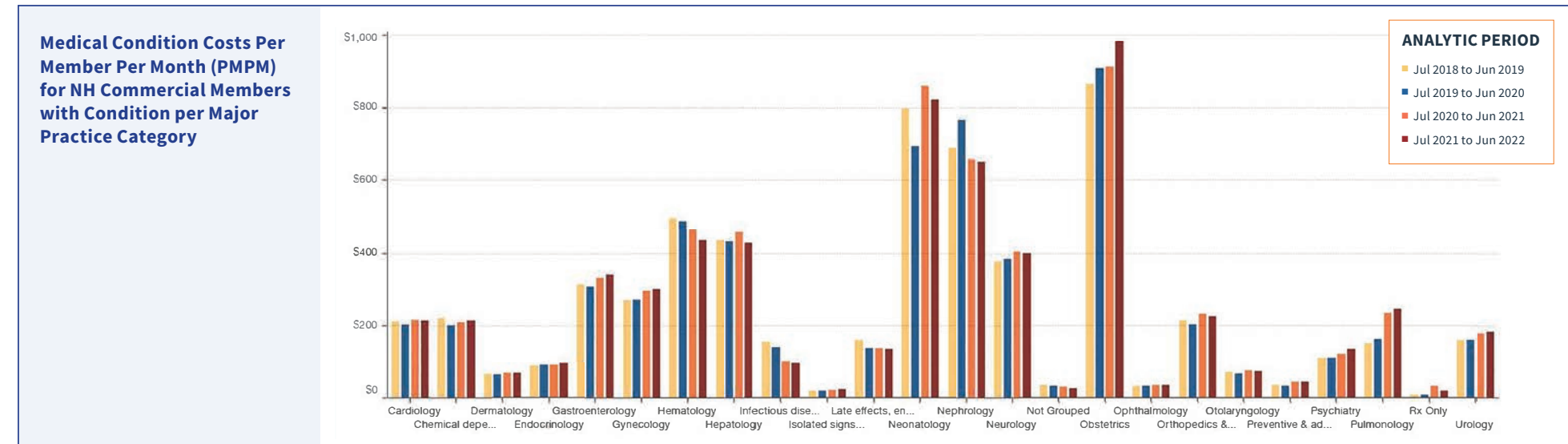
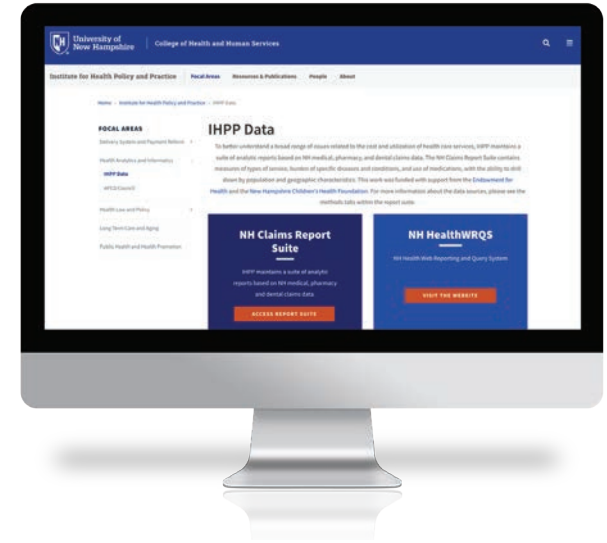
The NH Claims Report Suite allows users to run reports based on de-identified health insurance claims data to better understand cost and utilization of health care in public and privately insured population in the state of NH. The NH HealthWRQS site allows users to run reports on NH Behavioral Risk Factor Surveillance System (BRFSS) data to better understand health risk factors and behaviors in the NH population.

UPDATES TO THE NH CLAIMS REPORT SUITE

Throughout 2023, the Health Analytics team updated the NH Claims Report Suite to include the most currently available reports based on de-identified health insurance claims data from NH commercial payers, NH Medicaid and NH Medicare.

Additional updates to the Report Suite included:

- increasing the reporting time periods from 2 years to 4 years
- trend line visualizations
- a new data source for classifying drugs and supplies in the pharmacy claims data that aligns with NH Department of Health and Human Service's data
- restructuring reports to be more user-friendly for secondary analysis and visualizations





Health Law & Policy

NH 988 Suicide and Crisis Lifeline



TECHNICAL ASSISTANCE PROVIDED TO THE BUREAU OF MENTAL HEALTH SERVICES

Throughout 2023, Health Law and Policy partnered with The Department of Health and Human Services to improve 988's reach and effectiveness in New Hampshire.



New Hampshire, like other states, continues to grapple with deaths by suicide and how to effectively intervene and prevent them.

- Assessment of the alignment between NH's two 988 call centers and recommendations for ongoing quality improvement of the centers

- Convening community conversations with priority populations at higher risk for suicide to ensure NH 988 is responsive to the unique needs of diverse communities and developing aligned recommendations for producing equity-centered 988 services

In our work to engage priority populations in 988 improvement efforts, IHPP brought together more than 40 individuals from 20 NH-based organizations. Discussions focused on learning about 988 and NH's crisis response system from the DHHS suicide prevention coordinator; hearing feedback, questions, concerns, and needs from diverse community members; and, based on feedback received, developing next steps to ensure NH's 988 system is a safe, accessible, responsive service to those most at risk of suicide.

NH State Opioid Response Project

ADDRESSING ACCESS TO CARE

Health Law and Policy continued to support the NH State Opioid Response (SOR) Project by providing technical assistance to the nine Doorways, which are single points of entry for people seeking help with substance use disorder.



Activities included:

- Convened monthly meetings with staff of NH's nine Doorways
- Convened monthly Doorway Data meetings to improve data consistency and communication
- Created public-facing Face Sheets to highlight impacts of the Doorways

- Supported statewide consistency and sustainability planning
- Supported the State's Overdose Fatality Review Commission (OFRC)
- In addition to technical assistance, IHPP conducted research and reported recommendation on how to improve the NH SOR's program management data and continues to support the State with the "GPRA Improvement Plan"

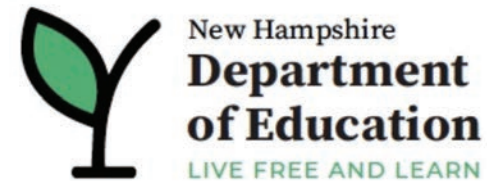
IHPP's contributions to NH SOR and NH 988 support the state's coordinated crisis response system, marketed through the recently released "Strong as Granite" campaign.



Medicaid to Schools

In 2023, Health Law & Policy continued to provide New Hampshire Medicaid with Technical Assistance regarding its Medicaid To Schools (MTS) program, which leverages federal funding available to schools for providing Medicaid covered services in schools to eligible students.

A critical component of this work is the public-private partnership among IHPP, Community Health Institute/John Snow Inc. (CHI/JSI), NH Department of Health and Human Services, and the NH Education Department that has emerged in the last 3 years. **This partnership has fostered cross-agency collaboration that sustains school resources and enables critical services, like mental health care, to continue to be provided in schools.**



NATIONAL ALLIANCE FOR MEDICAID IN EDUCATION CONFERENCE

Additionally, through our partners at CHI/JSI, the MTS team had the opportunity to travel to Dallas, Texas for the National Alliance for Medicaid in Education (NAME) conference. The conference was comprised of State Medicaid and Education Agency staff, Local Education Agency staff, various Medicaid-enrolled providers, consulting firms, and non-profits from all over the nation, all of whom share the common goal of supporting Medicaid-eligible children in school with their needed services.

Medicaid Continuous Enrollment Requirement Ended

The Health Law & Policy (HLP) team continued to support New Hampshire Medicaid and the Department of Health and Human Services with stakeholder engagement in preparation for the end of Medicaid's continuous enrollment requirement, which ended March 31, 2023.

The HLP team contributed to this effort by developing and supporting communications and stakeholder outreach, with a particular emphasis on children, senior citizens, members with behavioral health needs, and members who are long-term supports and services recipients.

Outreach included presentations, webinars, and material development and distribution; HLP supported the Department with ten different outreach activities for children alone in 2023, capping a multi-year effort that involved more than 250 stakeholder engagement events.

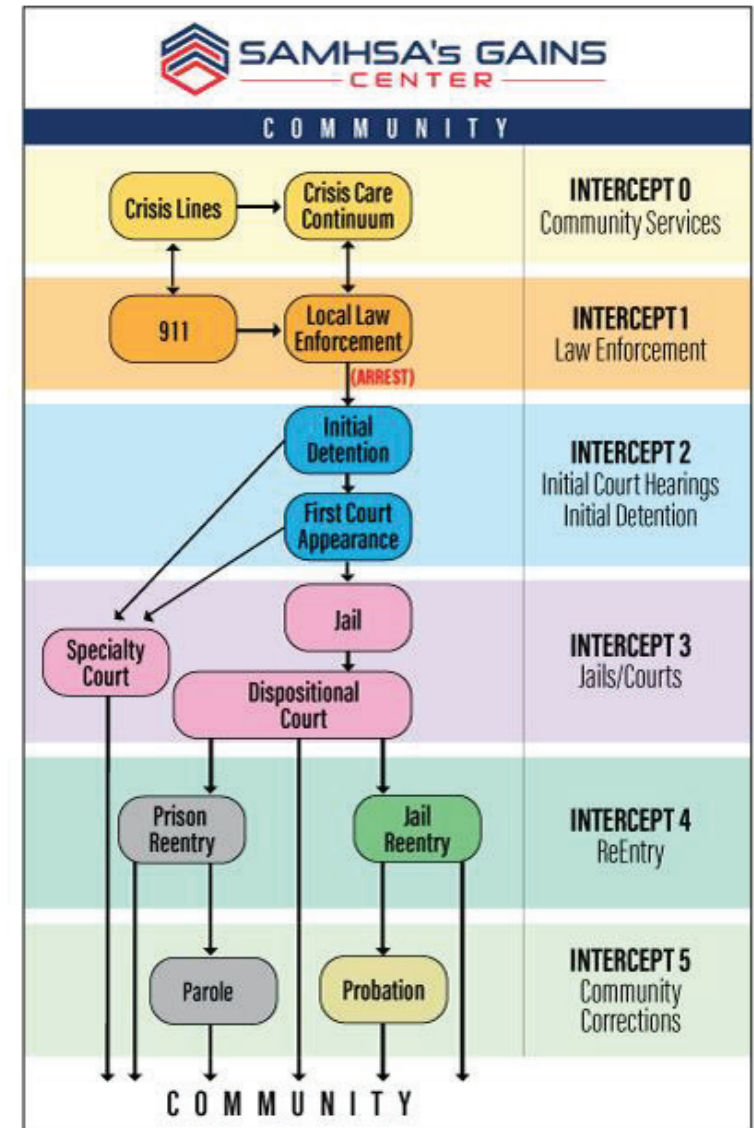
Sequential Intercept Mapping (SIM)

The Health Law & Policy Team was awarded funding to support New Hampshire's Judicial Branch in engaging in Sequential Intercept Mapping (SIM) Workshops for New Hampshire's counties to identify existing and needed mental health and substance use disorder resources for those involved in the NH correctional system.

SIM was developed as a conceptual model to inform, and create, community-based responses to the involvement of people with mental and substance use disorders in the correctional system.

SIM mapping work is utilized as a community strategic planning tool to assess available resources, determine gaps in services, and plan for community change. Stakeholders involved in the planning range across multiple fields including mental health, substance use, law enforcement, pretrial services, courts, jails, community corrections, housing, health, social services, and those with lived experiences.

Nine counties in New Hampshire will have an individual SIM Workshop in 2024, with support by the Health Law and Policy Team.





Long Term Care & Aging

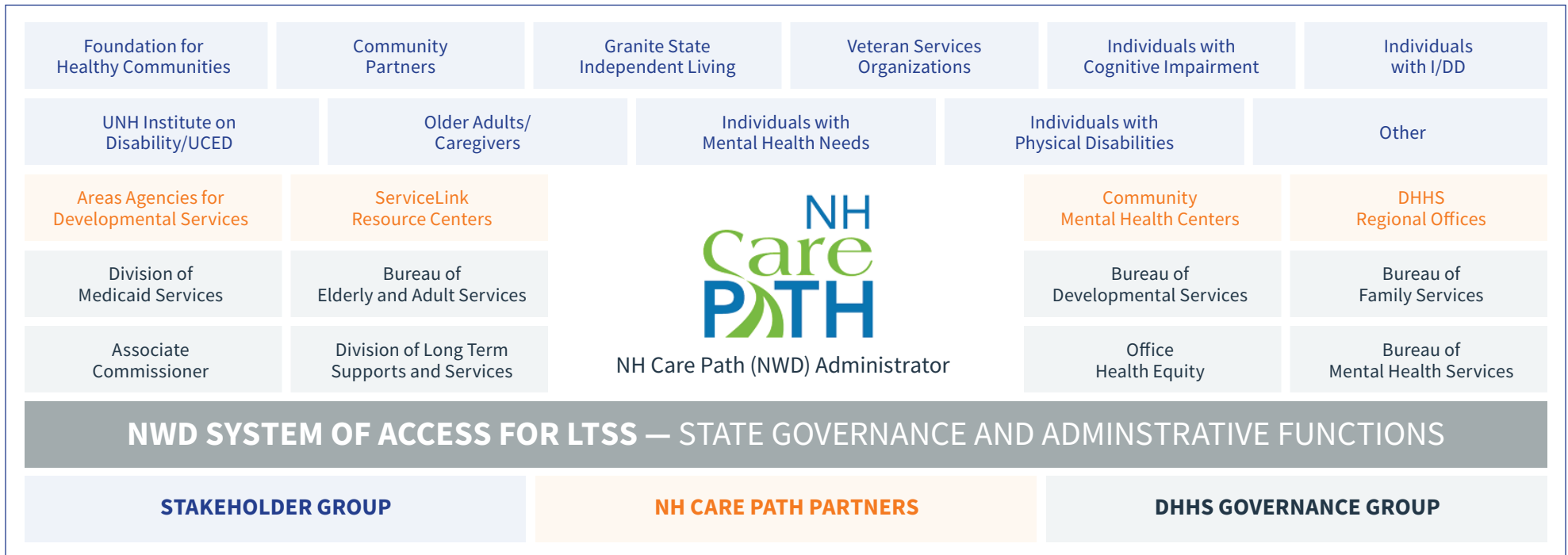
No Wrong Door System of Access to Long-Term Supports and Services

CELEBRATING TWO DECADES OF PARTNERSHIP TO IMPROVE ACCESS TO SERVICES AND SUPPORTS FOR OLDER ADULTS AND ADULTS WITH DISABILITIES

2023 marked a twenty-year partnership between IHPP and the Bureau of Elderly and Adult Services of piloting and enhancing the NH's Aging and Disability Resource Center Network and improving the No Wrong Door (NWD) System of Access to Long-term Supports and Services (LTSS).

Under funding from the Administration on Community Living, in 2023 we:

- Conducted an assessment of access to LTSS for individuals and family caregivers
- Established the governance structure for the NWD System of Access to LTSS



“The Belknap and Carroll County ServiceLink Aging and Disability Resource Centers have benefited from the technical assistance UNH has provided by supporting our staff in providing person-centered services and expanding our programing for older adults and adults with disabilities.”

— Carisa Elphick, Deputy Director, Partnership for Public Health

Advancing Person-Centered Dementia Care in Low Resource Contexts (ARCOM)

STAKEHOLDER PERSPECTIVES

Collaborating on a research project with University of Maryland, Baltimore to interview administrators, direct care staff, and residents and their caregivers to describe stakeholder perspectives regarding the collection and sharing of information and measurement of quality care for residents with dementia in low-resource long-term care settings.



The ARCOM team presented at the Gerontological Society of America Conference in November 2023.

“...do residents feel like they’re happy, that everything they need or want is provided for them. That they are able to make right choices for them to feel independent and in charge of their lives.”

— Direct Care Staff from a Facility in New Hampshire



Participant Sample Characteristics

14 interviews have been completed to date and were included in the study sample.

- 6 administrators/leaders
- 8 direct care staff

Characteristic	Frequency (%)
Participant Role	
Administrator/Leader	6 (42%)
Nursing assistant	5 (36%)
Occupational therapist	1 (8%)
Receptionist	1 (8%)
Social worker	1 (8%)
Race	
Black or African American	8 (57%)
White	6 (42%)
Gender	
Female	13 (93%)
Male	1 (8%)
Years in current position, mean (SD)	
	5.46 (7.4)

Center on Aging and Community Living Age of Champions Health and Wellness Fair

UNH STUDENTS, COMMUNITY MEMBERS, AND COMMUNITY PROVIDERS

As part of the annual Age of Champions Health & Wellness Fair, the Wildcat Inspirational Award recognizes individuals that exemplify what it means to age well. Richard Durette, Bob and Gayle Hylan, and Joanne Casino were honored for their inspiration to the people around them through their engagement in healthy, active aging.



CENTER ON AGING AND
COMMUNITY LIVING



35

STUDENT VENDORS

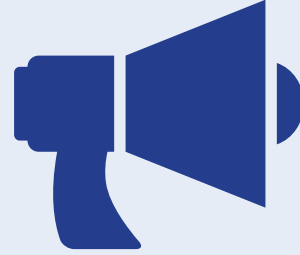
34

COMMUNITY VENDORS

317

ATTENDEES

The Age of Champions event is hosted by the UNH Center on Aging and Community Living (CACL). CACL is a collaboration between the Institute for Health Policy and Practice and the Institute on Disability.



Public Health & Health Promotion

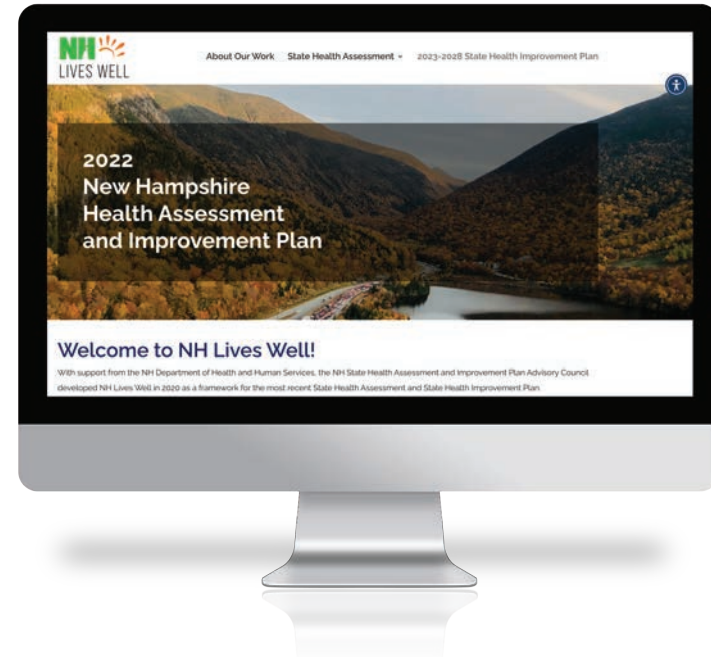
Community Health

NH LIVES WELL: NH'S STATE HEALTH ASSESSMENT AND IMPROVEMENT PLAN

In 2023, the NH State Health Assessment and State Health Improvement Plan (SHA-SHIP) website, www.NHLivesWell.org, was published. The SHA-SHIP provide a central vision for how we can all work together so that all people in NH experience optimal health and wellness.



NH Lives Well was a collaborative effort led by DHHS, facilitated by IHPP and Community Health Institute/John Snow Institute (CHI/JSI), and involving 40 appointed SHA-SHIP Advisory Council members from a wide range of state and local agencies.



COMMUNITY HEALTH ASSESSMENT REVIEW

The Foundation for Seacoast Health began a new phase of grant-making in 2023 and wanted to better understand the needs of the communities they serve.



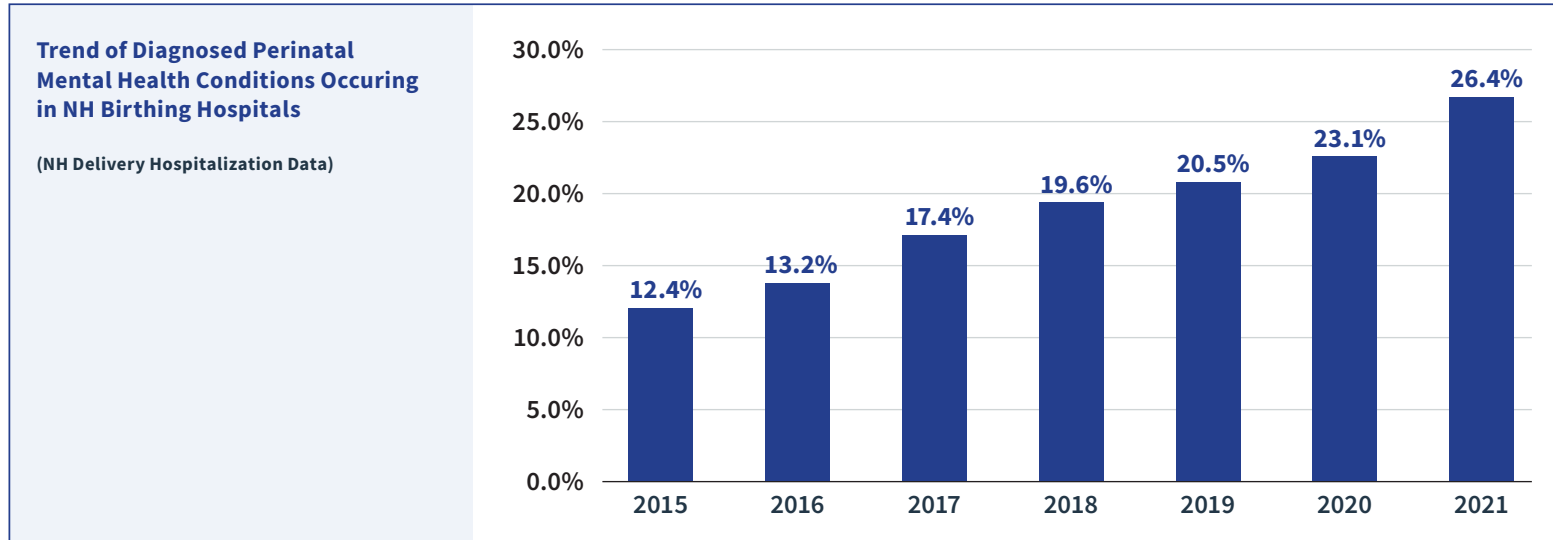
IHPP identified and summarized the findings of over 10 existing health assessments from the Seacoast-area to create a report of key findings to help identify priority areas. IHPP presented the final product to the Foundation's Board in April.

Building Maternal Child Health (MCH) Epidemiology Capacity



ALLIANCE FOR INNOVATION ON MATERNAL HEALTH (AIM) CAPACITY GRANT FROM HRSA

IHPP supports the State of NH DHHS Maternal and Child Health program through a joint-hire of the State MCH Epidemiologist. The MCH Epidemiologist worked with the DHHS MCH team to implement a Health Resource Services Administration (HRSA) AIM capacity grant. This grant allows NH to address a number of items included in the “Care for Pregnant and Postpartum People with Substance Use Disorder Patient Safety Bundle” for NH.

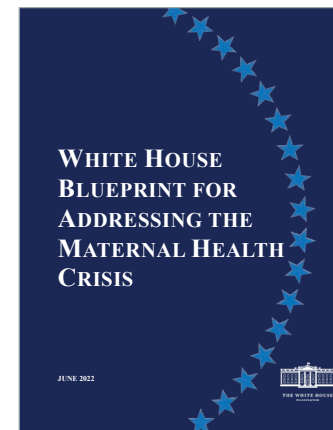


STATE OF MATERNAL HEALTH REPORT

The MCH Epidemiologist supports the development of “*The State of Maternal Health Report*.” This report summarizes outcomes and needs around maternal and child health, aligned with the five goals outlined in the “*White House Blueprint for Addressing Maternal Health Crisis*.”



[Read the Report](#)



[Read the Report](#)



Institute for Health Policy and Practice

Contact Us



ADDRESS

Institute for Health Policy and Practice
4 Library Way
Hewitt Hall, Suite 202
Durham, NH 03824



WEBSITE

chhs.unh.edu/ihpp



EMAIL

IHPP.UNH@unh.edu



INSTAGRAM

[@UNHIHPP](https://www.instagram.com/UNHIHPP)



LINKEDIN

Institute for Health Policy and Practice