

University of New Hampshire

University of New Hampshire Scholars' Repository

Center for Coastal and Ocean Mapping

Center for Coastal and Ocean Mapping

8-2003

Haptic-GeoZui3D: Exploring the Use of Haptics in AUV Path Planning

Rick Komerska

University of New Hampshire, Durham

Colin Ware

University of New Hampshire, Durham, colin.ware@unh.edu

Matthew D. Plumlee

University of New Hampshire, Durham, Matthew.Plumlee@unh.edu

Roland J. Arsenault

University of New Hampshire, Durham, Roland.Arsenault@unh.edu

Follow this and additional works at: <https://scholars.unh.edu/ccom>



Part of the [Computer Sciences Commons](#), and the [Oceanography and Atmospheric Sciences and Meteorology Commons](#)

Recommended Citation

Komerska, Rick; Ware, Colin; Plumlee, Matthew D.; and Arsenault, Roland J., "Haptic-GeoZui3D: Exploring the Use of Haptics in AUV Path Planning" (2003). *Unmanned Untethered Submersible Technology Symposium (UUST)*. 1157.

<https://scholars.unh.edu/ccom/1157>

This Poster is brought to you for free and open access by the Center for Coastal and Ocean Mapping at University of New Hampshire Scholars' Repository. It has been accepted for inclusion in Center for Coastal and Ocean Mapping by an authorized administrator of University of New Hampshire Scholars' Repository. For more information, please contact Scholarly.Communication@unh.edu.

Haptic-GeoZui3D: Exploring the Use of Haptics in AUV Path Planning

Rick Komerska, Colin Ware, Matthew Plumlee and Roland Arsenault

Our Goal

Our research goal is to utilize the sense of touch and force feedback to enhance our ability to interact with 3D data in real time and across multiple scales and frames of reference.

As AUV missions become more complex, the need to plan these missions in a safe and efficient manner will increase. We believe Virtual Reality (VR) and haptic technologies can support this requirement by providing an intuitive and compelling environment for interaction.

Haptic Design Principles Constraints and Visual Integration

- Haptically represent constraints rather than objects
- Display constraints both visually and haptically
- Visually emphasize potential for interaction
- On contact, visually reveal additional constraints
- Make state information visually and haptically available

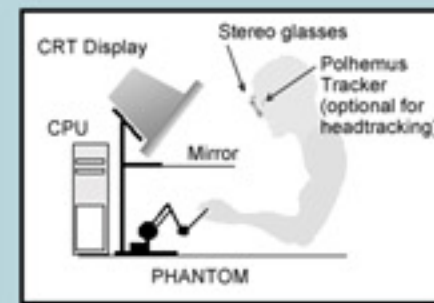
Center-of-Workspace Interaction Metaphor

This metaphor mimics a typical physical workspace, such as an office desk or technician's workbench. It employs a central fixed point in space, conceptually within arm's length of the user. Objects are brought to the center of the workspace and operated on by contextually appropriate tools.

An Integrated Workspace

Haptic widgets provide a mechanism for combining task-related constraints with a direct manipulation environment.

Our fish tank virtual reality combines force feedback, stereo vision and headtracking technologies with center-of-workspace interaction to provide a small yet high fidelity testbed for evaluating haptic widgets and interface concepts.



System Specifications

- PC-based
- OpenGL graphics, Stereo vision
- PHANTOM 1.0 haptic device
- Polhemus headtracking
- Modified GeoZui3D visualization software

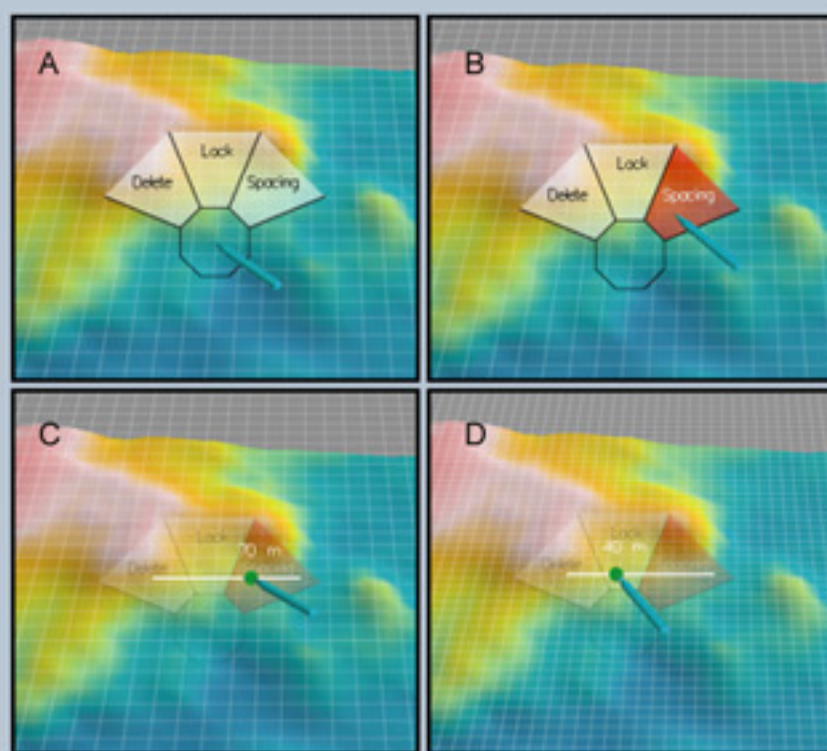


Haptic Elements to Support Path Planning

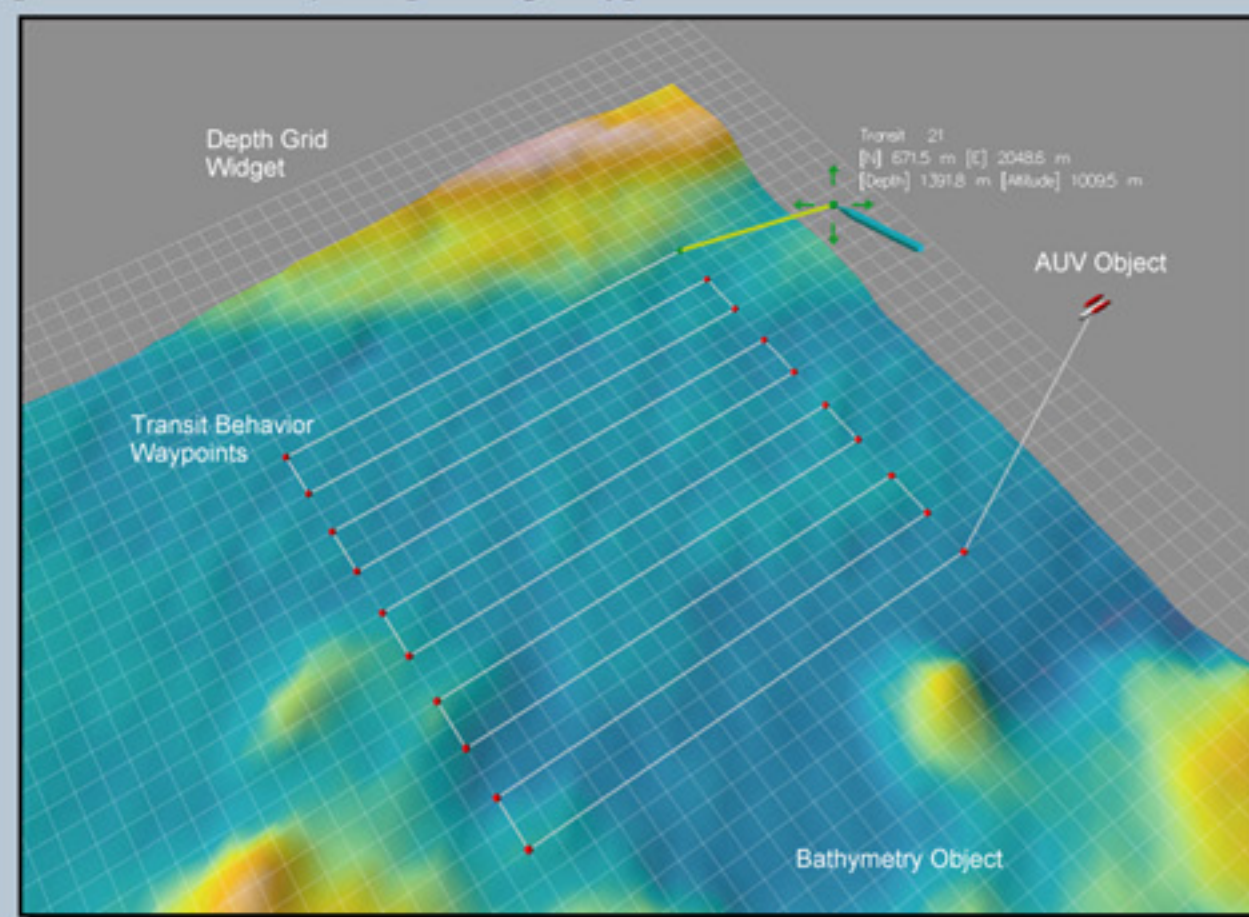
We have developed various interaction elements that rely upon haptic constraints to guide the user's actions in carrying out specific tasks. We divide these elements into four major categories:

- AUV and environment data objects
- Scene navigation widgets
- Object placement widgets
- Mode and parameter selection controls

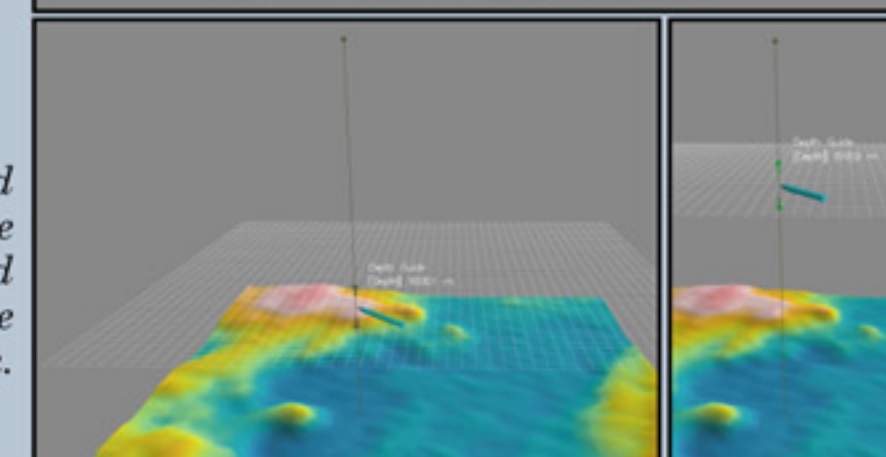
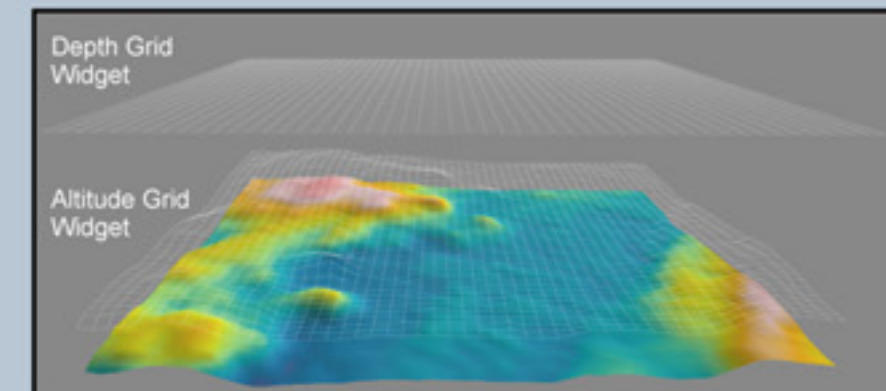
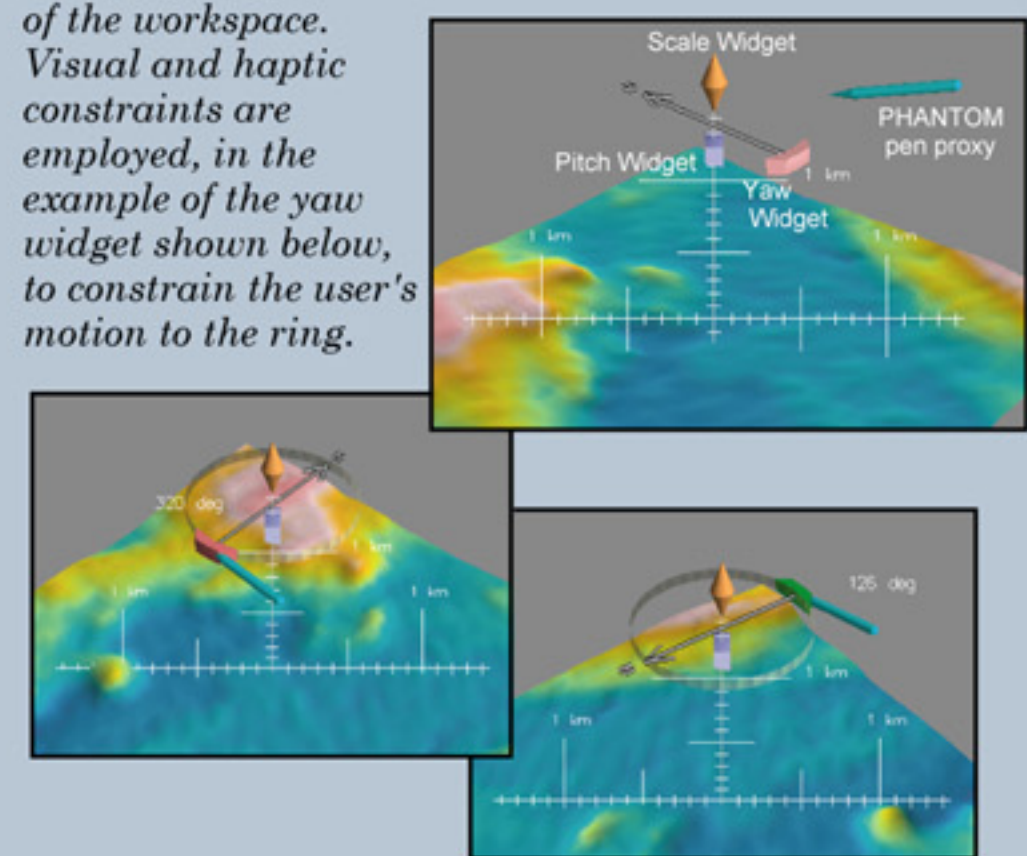
Data objects include AUVs, vehicle path segments and bathymetry. Path segments can be generated for waypoint transit and lawnmower survey behaviors. Snap forces permit easy selection of AUVs and their path segment control points. The bathymetry is haptically rendered as a constraint surface as a placement guide and safety surface to prevent the user from placing waypoints beneath the sea bottom.



In-situ contextual pie menus allow for quick mode selection. Slider controls permit modification of parameter values, such as adjusting the grid spacing shown above. Haptic forces support these operations.



Scene navigation widgets allow the user to quickly and intuitively translate, rotate and scale the virtual environment about the center of the workspace. Visual and haptic constraints are employed, in the example of the yaw widget shown below, to constrain the user's motion to the ring.



Widgets such as the constant depth and constant altitude snap grids support precise placement of AUVs and path segments. Grid height can be adjusted directly; haptic line constraint forces guide the user in this task.

Acknowledgements

- NOAA
- Center for Coastal and Ocean Mapping
- NSF (ITR/HCI Multi-Scale Interaction with 3D Data Environments, #0081292)