

August 27, 2024

VERMONTERS FEELING WORSE OFF ECONOMICALLY WITH LARGE PARTISAN DIVIDE

By: Sean P. McKinley, M.A.
Andrew E. Smith, Ph.D.

Zachary S. Azem, M.A.
Tracy Keirns, Ph.D.

andrew.smith@unh.edu
603-862-2226
cola.unh.edu/unh-survey-center

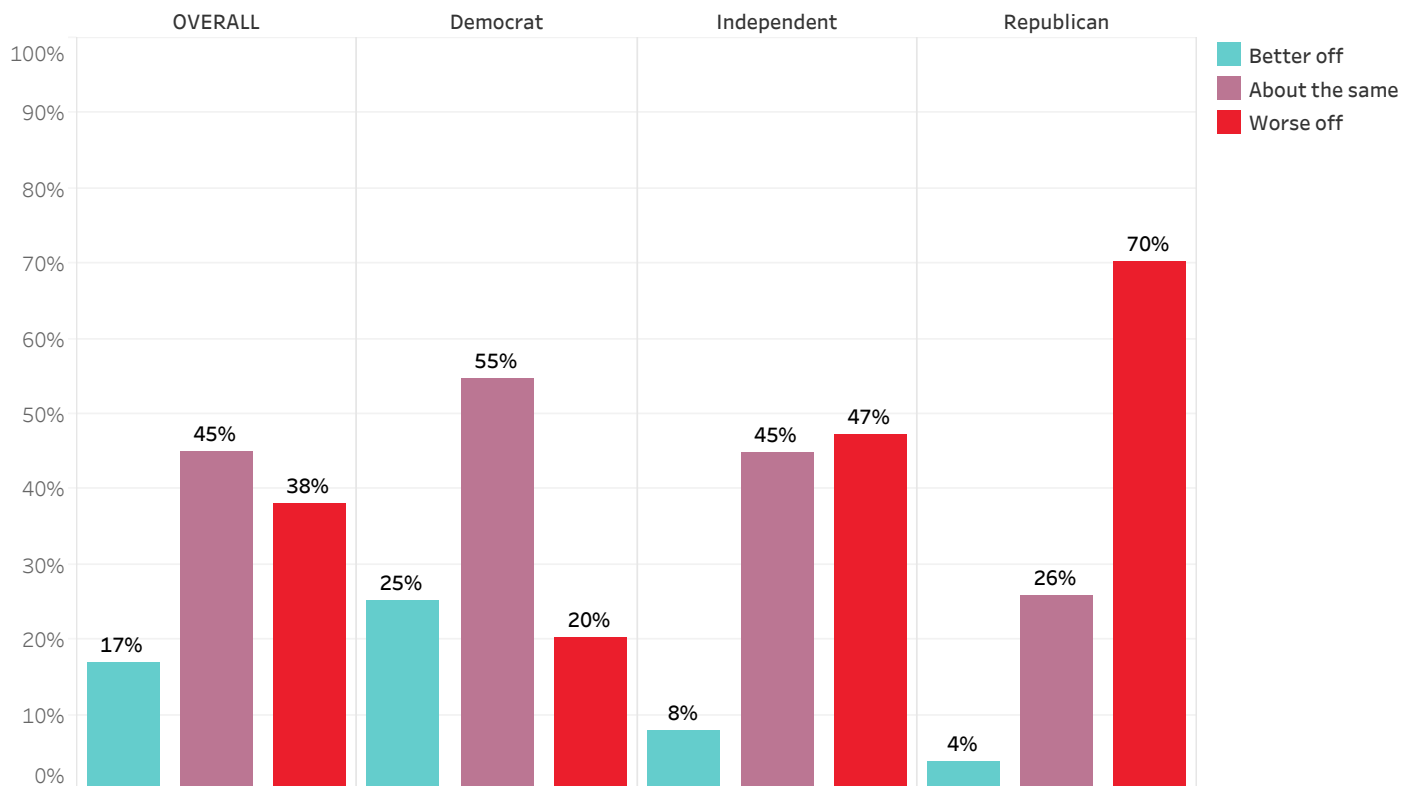
DURHAM, NH - Few Vermonters feel better off financially than one year ago and four in ten state residents report having had at least some difficulty affording basic necessities. However, Vermont residents have a more mixed response about future economic conditions in the state and nation. Democrats are considerably more likely than Republicans to report doing better financially and to expect good times for the economy, while Republicans are much more likely to report hardship buying necessities and to anticipate a recession in the near future.

Personal Financial Conditions

Vermonters are much more likely to be pessimistic than optimistic about their personal finances. More than one-third (38%) of Vermont adults think their household is worse off financially than it was a year ago, only 17% think they are better off, and 45% say their finances are about the same. These figures are largely unchanged since August 2023, when 38% felt worse off than a year before, 19% felt better off, and 43% thought they were doing about the same.

Lower income households are somewhat more pessimistic - 43% of households with incomes below \$75,000 think they are worse off financially than a year ago compared to only 28% of those with household incomes between \$75,000 and \$149,999 and 24% of those with household incomes of \$150,000 or more. These perceptions are heavily influenced by partisanship as 70% of Republicans and 47% of Independents say they are worse off than a year ago but only 20% of Democrats feel that way.

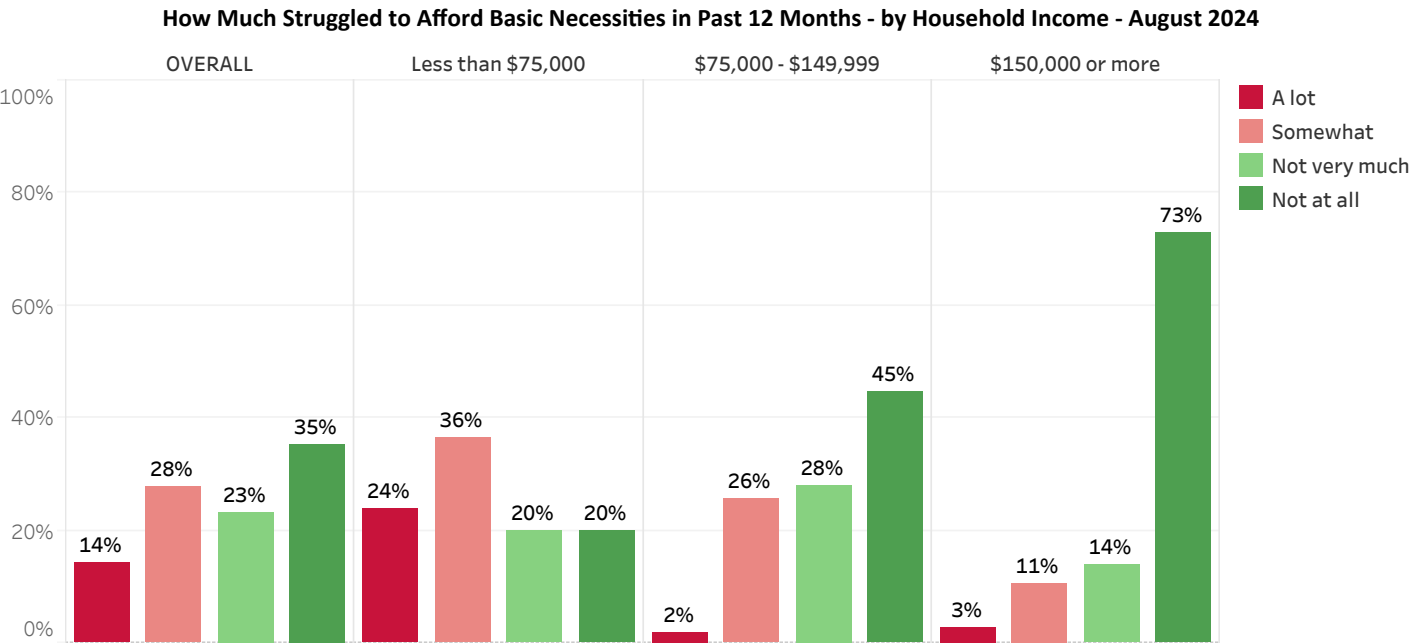
Household Financial Condition Compared to 12 Months Ago - by Party ID - August 2024



* We ask that this copyrighted information be referred to as *the Green Mountain State Poll*, a States of Opinion Project, conducted by the University of New Hampshire Survey Center.

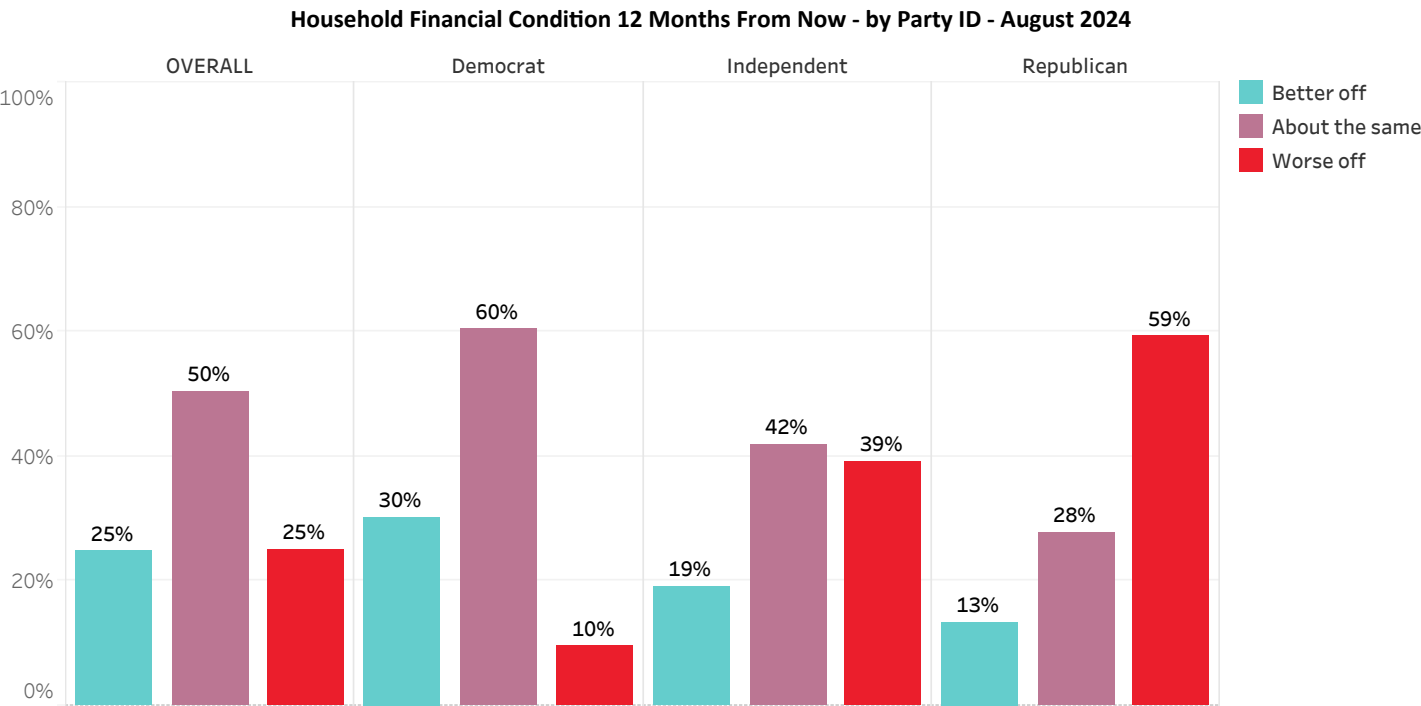
Four in ten Vermonters (42%) say they have struggled a lot (14%) or some (28%) to afford basic necessities in the past twelve months, 23% have not struggled very much, and 35% have not struggled to afford basic necessities at all in the past twelve months. A year ago, 39% of Vermont residents said they had struggled a lot or somewhat to afford basic necessities.

Among those with a household income below \$75,000, 60% say they have struggled a lot or somewhat while 28% of those with a household income between \$75,000 and \$149,999 and only 14% of those with a household income of \$150,000 or more have struggled a lot or somewhat.

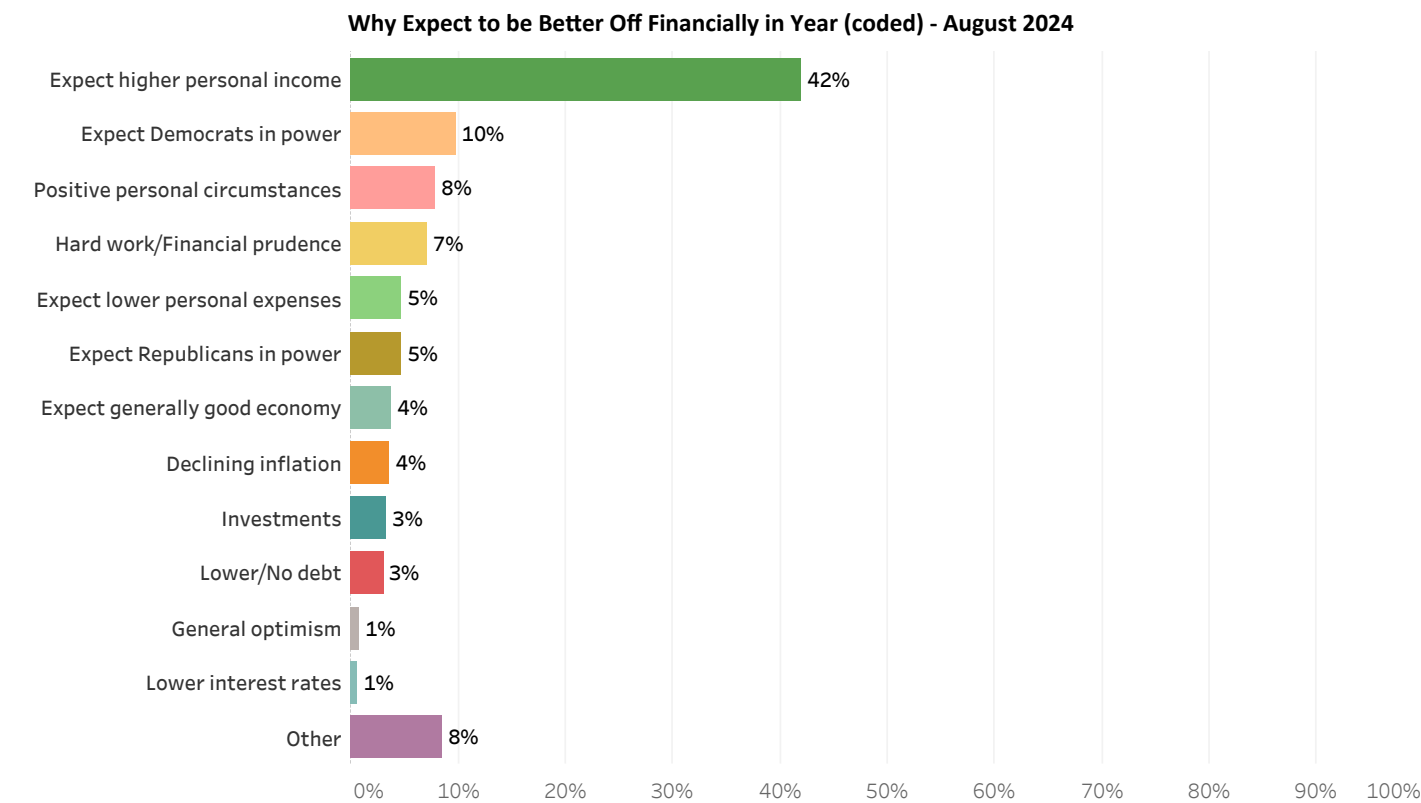


Looking ahead, 25% of Vermonters expect their personal finances will be better a year from now, 25% think they will be worse off, and 50% think their finances will be about the same. In August 2023, only 15% of Vermonters expected to be better off in a year while 33% expected to be worse off.

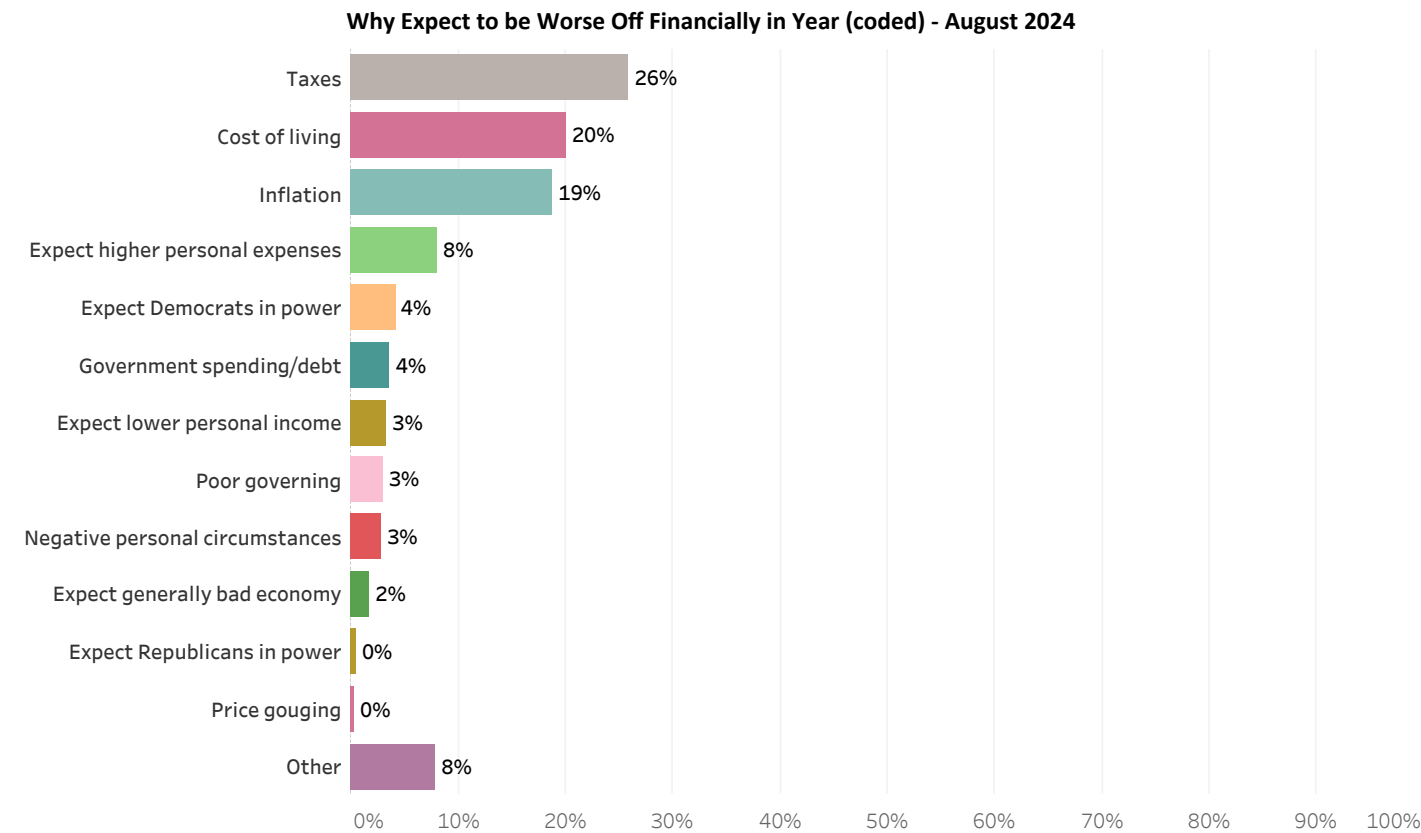
Six in ten Republicans (59%) and 39% of Independents expect that they will be worse off in a year but only 10% of Democrats feel that way.



Those who expect to be better off financially a year from now (N=181) most often say they feel that way because they expect higher personal income (42%). Far fewer say they expect to be better off in a year because they expect Democrats to be in power (10%), they anticipate positive personal circumstances (8%), or due to their hard work or financial prudence (7%).



Among those who expect to be worse off financially a year from now (N=200), 26% say that they feel that way because of taxes, 20% cite the cost of living, 19% mention inflation, and 8% expect higher personal expenses.

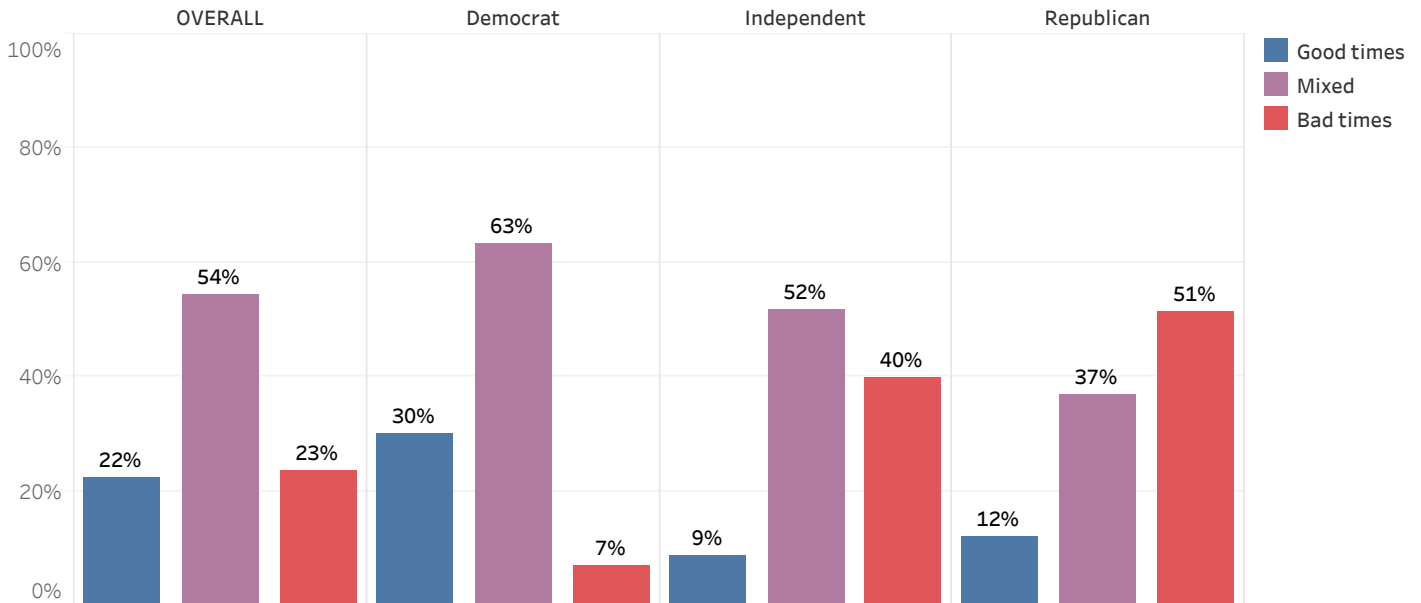


Vermont Business Conditions

When asked how they expect Vermont businesses to do in the upcoming year, 22% of Vermonters think state businesses will enjoy good times financially, 23% think they will experience bad times, and 54% anticipate mixed conditions. In February, 24% expected good times financially and 30% anticipated bad times.

Fifty-one percent of Republicans and 40% of Independents anticipate bad business conditions in Vermont during the next twelve months, but only 7% of Democrats feel that way.

Business Conditions in Vermont During Next 12 Months - by Party ID - August 2024

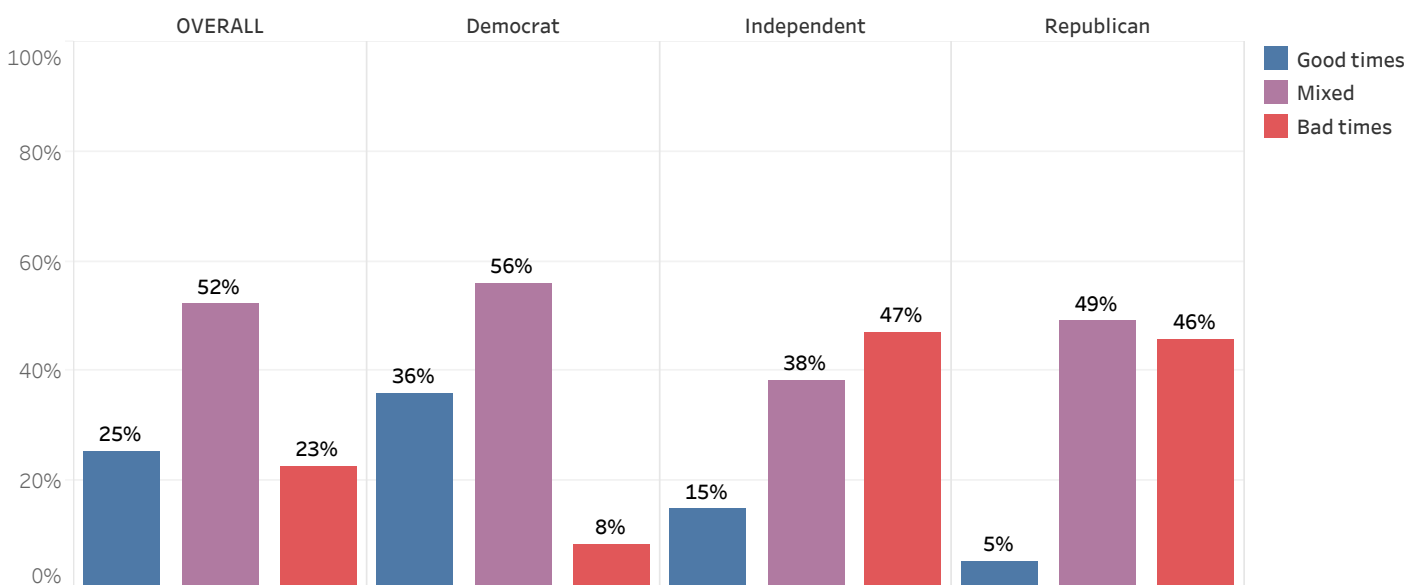


U.S. Business Conditions

Turning to the national economy, 25% of Vermont adults anticipate U.S. businesses will have good times over the coming year, 23% think they will experience good times, and 52% think conditions will be mixed. In August 2023, 24% expected good times nationally while 41% expected bad times.

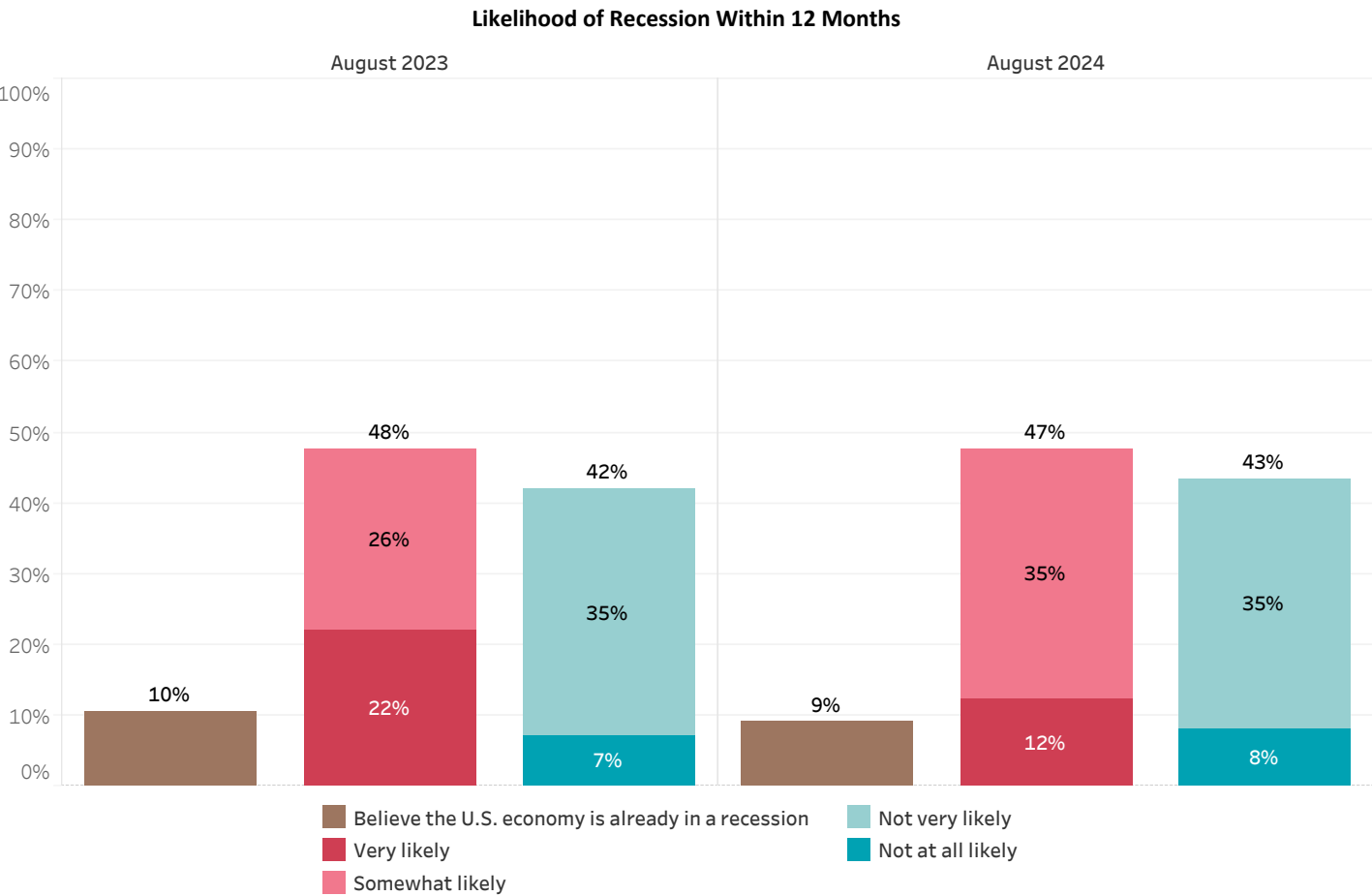
Forty-seven percent of Independents and 46% of Republicans anticipate bad business conditions nationally during the next twelve months, but only 8% of Democrats feel that way.

Business Conditions in U.S. During Next 12 Months - by Party ID - August 2024



Recession fears are prevalent in Vermont as 47% of residents think it is very (12%) or somewhat (35%) likely that the United States economy will enter into a recession within the next twelve months and 9% believe the U.S. economy is already in a recession. Forty-three percent believe a recession is not very likely (35%) or not at all likely (8%). A year ago, 58% of Vermonters thought that a recession was likely in the next year or that the economy was already in a recession.

Most Republicans (91%) and two-thirds of Independents (66%) believe that a recession is very or somewhat likely within the next year or that we are already in a recession compared to only 30% of Democrats who feel this way.



Green Mountain State Poll Methodology

These findings are based on the latest Green Mountain State Poll, conducted by the University of New Hampshire Survey Center. Eight hundred forty-one (841) Green Mountain State Panel members completed the survey online. The response rate for panel respondents to the August 2024 Green Mountain State Poll is 37%. In addition, 147 Vermont residents completed the survey after receiving an invitation via text message to complete the survey online. Overall, 988 individuals completed the survey between August 15 and August 19, 2024. The margin of sampling error for the survey is +/- 3.1 percent. In addition to potential sampling error, all surveys have other potential sources of non-sampling error including question order effects, question wording effects, and non-response. These MSE's have not been adjusted for design effect. The design effect for the survey is 2.2%.

The Green Mountain State Panel is a probability-based web panel of Vermont residents. Approximately 2,750 Vermont adults have been recruited from phone, text-to-web, or mail-to-web surveys sent to randomly-selected phone numbers or addresses. Panelists are then asked to participate in online surveys sponsored by the UNH Survey Center.

Data were weighted by respondent sex, age, education, and region of the state to targets from the most recent American Community Survey (ACS) conducted by the U.S. Census Bureau and to 2020 election results in Vermont. Surveys were taken in English, all respondent data included passes Qualtrics data quality checks, and single-use survey links were used to prevent multiple submissions by respondents.

The number of respondents in each demographic below may not equal the number reported in cross-tabulation tables as some respondents choose not to answer some questions. Due to rounding, percentages may not sum to 100%. All coding of open-ended responses is conducted by human coders.

For more information about the methodology used in this Green Mountain State Poll, contact Dr. Andrew Smith at (603) 862-2226 or by email at andrew.smith@unh.edu.

August 2024 Green Mountain State Poll Demographics

		%	N
Gender of Respondent	Men	48%	454
	Women	52%	489
Age of Respondent	18 to 34	25%	250
	35 to 49	22%	213
	50 to 64	27%	263
	65 and older	26%	254
Level of Education	High school or less	31%	308
	Tech school/Some college	27%	267
	College graduate	24%	239
	Postgraduate work	17%	168
Region of State	Central Vermont	18%	178
	Chittenden County	27%	266
	Northern Counties	23%	223
	Southern Vermont	32%	315
Party ID	Democrat	60%	584
	Independent	9%	91
	Republican	31%	301
Household Income	Less than \$45,000	25%	182
	\$45,000 - \$74,999	22%	160
	\$75,000 - \$99,999	17%	125
	\$100,000 - \$149,999	20%	147
	\$150,000 or more	16%	120

Household Financial Condition Compared to 12 Months Ago

Would you say that you and your family living there are better off or worse off financially than you were a year ago?

		<u>Better off</u>	<u>About the same</u>	<u>Worse off</u>	<u>N</u>
STATEWIDE	August 2024	17%	45%	38%	981
Party ID	Democrat	25%	55%	20%	584
	Independent	8%	45%	47%	91
	Republican	4%	26%	70%	301
Political Ideology	Socialist	16%	39%	45%	89
	Progressive	32%	50%	17%	147
	Liberal	29%	56%	15%	193
	Moderate	18%	55%	28%	210
	Conservative	1%	22%	77%	174
	Libertarian	4%	21%	76%	36
Age of Respondent	18 to 34	16%	53%	31%	250
	35 to 49	10%	36%	54%	208
	50 to 64	26%	34%	40%	263
	65 and older	15%	55%	30%	254
Gender of Respondent	Men	16%	42%	42%	454
	Women	19%	50%	31%	489
Level of Education	High school or less	13%	38%	50%	308
	Tech school/Some college	15%	43%	43%	267
	College graduate	21%	51%	28%	239
	Postgraduate work	23%	54%	24%	168
Region of State	Central Vermont	17%	50%	33%	178
	Chittenden County	17%	48%	35%	266
	Northern Counties	13%	48%	39%	223
	Southern Vermont	20%	38%	42%	310
Household Income	Less than \$45,000	3%	37%	61%	180
	\$45,000 - \$74,999	17%	59%	24%	160
	\$75,000 - \$99,999	26%	48%	26%	125
	\$100,000 - \$149,999	26%	44%	30%	147
	\$150,000 or more	29%	47%	24%	120
Media Usage	CNN viewer	21%	47%	33%	254
	Conservative radio listener	3%	8%	89%	60
	Fox News viewer	2%	20%	77%	127
	Joe Rogan listener	9%	47%	44%	46
	MSNBC viewer	24%	45%	31%	224
	Local VT news viewer	18%	44%	38%	520

How Much Struggled to Afford Basic Necessities in Past 12 Months

How much, if at all, would you say that you have struggled to afford basic necessities like food, clothing, and electricity over the past twelve months?

		<u>A lot</u>	<u>Somewhat</u>	<u>Not very much</u>	<u>Not at all</u>	<u>N</u>
STATEWIDE	August 2024	14%	28%	23%	35%	979
Party ID	Democrat	10%	20%	24%	46%	583
	Independent	21%	34%	24%	22%	91
	Republican	20%	40%	22%	18%	301
Political Ideology	Socialist	21%	31%	15%	33%	89
	Progressive	9%	10%	31%	49%	145
	Liberal	12%	18%	24%	46%	193
	Moderate	6%	20%	22%	52%	210
	Conservative	14%	47%	24%	16%	173
	Libertarian	7%	33%	42%	17%	36
Age of Respondent	18 to 34	9%	28%	37%	26%	250
	35 to 49	33%	22%	17%	28%	208
	50 to 64	11%	34%	15%	40%	262
	65 and older	7%	24%	24%	45%	254
Gender of Respondent	Men	15%	24%	26%	35%	454
	Women	14%	27%	22%	38%	487
Level of Education	High school or less	25%	35%	17%	23%	308
	Tech school/Some college	15%	35%	27%	23%	267
	College graduate	8%	23%	26%	44%	237
	Postgraduate work	3%	10%	25%	62%	168
Region of State	Central Vermont	10%	32%	21%	37%	178
	Chittenden County	9%	19%	30%	42%	266
	Northern Counties	22%	27%	21%	30%	222
	Southern Vermont	16%	32%	20%	32%	310
Household Income	Less than \$45,000	38%	37%	12%	12%	179
	\$45,000 - \$74,999	7%	35%	29%	28%	160
	\$75,000 - \$99,999	2%	41%	22%	35%	125
	\$100,000 - \$149,999	2%	13%	33%	53%	147
	\$150,000 or more	3%	11%	14%	73%	120
Media Usage	CNN viewer	15%	27%	16%	42%	254
	Conservative radio listener	10%	28%	33%	28%	60
	Fox News viewer	21%	43%	16%	20%	127
	Joe Rogan listener	10%	61%	17%	13%	46
	MSNBC viewer	15%	21%	17%	46%	224
	Local VT news viewer	13%	27%	22%	37%	519

Household Financial Condition 12 Months From Now

Now, looking ahead, do you think that a year from now you and your family will be better off financially, worse off, or just about the same?

		<u>Better off</u>	<u>About the same</u>	<u>Worse off</u>	<u>N</u>
STATEWIDE	August 2024	25%	50%	25%	799
Party ID	Democrat	30%	60%	10%	518
	Independent	19%	42%	39%	72
	Republican	13%	28%	59%	206
Political Ideology	Socialist	42%	42%	16%	71
	Progressive	19%	66%	15%	133
	Liberal	33%	62%	5%	174
	Moderate	18%	62%	20%	173
	Conservative	15%	26%	59%	130
	Libertarian	31%	28%	41%	22
Age of Respondent	18 to 34	22%	54%	23%	182
	35 to 49	33%	43%	25%	170
	50 to 64	25%	46%	29%	225
	65 and older	19%	58%	23%	216
Gender of Respondent	Men	28%	43%	29%	354
	Women	22%	56%	22%	425
Level of Education	High school or less	29%	36%	35%	236
	Tech school/Some college	24%	49%	27%	210
	College graduate	23%	57%	20%	200
	Postgraduate work	21%	65%	14%	153
Region of State	Central Vermont	20%	53%	28%	141
	Chittenden County	13%	62%	24%	240
	Northern Counties	42%	37%	21%	167
	Southern Vermont	27%	46%	27%	252
Household Income	Less than \$45,000	15%	60%	26%	136
	\$45,000 - \$74,999	21%	59%	20%	131
	\$75,000 - \$99,999	46%	32%	22%	106
	\$100,000 - \$149,999	16%	63%	21%	133
	\$150,000 or more	29%	57%	14%	98
Media Usage	CNN viewer	30%	55%	15%	228
	Conservative radio listener	1%	26%	72%	44
	Fox News viewer	6%	53%	40%	106
	Joe Rogan listener	55%	17%	28%	44
	MSNBC viewer	28%	58%	14%	209
	Local VT news viewer	26%	50%	23%	460

Why Expect to be Better Off Financially in Year (coded)

What is one reason that you think you and your family will be better off a year from now? (coded)

		<u>Declining inflation</u>	<u>Expect Democrats in power</u>	<u>Expect generally good economy</u>	<u>Expect higher personal income</u>	<u>Expect lower personal expenses</u>
STATEWIDE	August 2024	4%	10%	4%	42%	5%
Party ID	Democrat	4%	11%	5%	40%	6%
	Republican		3%		59%	
Political Ideology	Socialist	2%	6%		14%	17%
	Progressive	5%	1%	14%	29%	
	Liberal	1%	14%	6%	49%	6%
	Moderate	13%	19%	2%	33%	0%
Age of Respondent	18 to 34				62%	10%
	35 to 49	3%	1%	3%	56%	
	50 to 64		8%	5%	37%	8%
	65 and older	12%	33%	7%	14%	3%
Gender of Respondent	Men	6%	8%	4%	36%	5%
	Women	1%	11%	4%	51%	5%
Level of Education	High school or less	4%	12%		55%	
	Tech school/Some college		4%	2%	34%	6%
	College graduate	5%	10%	7%	32%	14%
	Postgraduate work	5%	13%	11%	36%	2%
Household Income	\$75,000 - \$99,999	1%	2%	2%	67%	7%
	\$100,000 - \$149,999	5%	22%	7%	27%	2%
	\$150,000 or more	4%	3%	6%	30%	2%
Media Usage	CNN viewer	1%	12%	3%	53%	6%
	Joe Rogan listener				87%	13%
	MSNBC viewer	7%	18%	4%	39%	1%

Why Expect to be Better Off Financially in Year (coded)

What is one reason that you think you and your family will be better off a year from now? (coded)

		<u>Expect Republicans in power</u>	<u>General optimism</u>	<u>Hard work/Financial prudence</u>	<u>Investments</u>
STATEWIDE	August 2024	5%	1%	7%	3%
Party ID	Democrat			9%	4%
	Republican	21%		1%	
Political Ideology	Socialist			1%	
	Progressive		7%	22%	2%
	Liberal			11%	5%
	Moderate	3%		7%	9%
Age of Respondent	18 to 34			15%	
	35 to 49	1%		3%	4%
	50 to 64	13%		2%	3%
	65 and older	2%	4%	14%	6%
Gender of Respondent	Men	3%		7%	1%
	Women	4%	2%	8%	6%
Level of Education	High school or less	4%		6%	
	Tech school/Some college	10%	3%		3%
	College graduate	4%		17%	4%
	Postgraduate work	1%		7%	10%
Household Income	\$75,000 - \$99,999	8%		10%	1%
	\$100,000 - \$149,999	1%		6%	9%
	\$150,000 or more	3%		22%	6%
Media Usage	CNN viewer	1%		2%	1%
	Joe Rogan listener				
	MSNBC viewer	1%		2%	3%

Why Expect to be Better Off Financially in Year (coded)

What is one reason that you think you and your family will be better off a year from now? (coded)

		<u>Lower interest rates</u>	<u>Lower/No debt</u>	<u>Positive personal circumstances</u>	<u>Other</u>	<u>N</u>
STATEWIDE	August 2024	1%	3%	8%	8%	181
Party ID	Democrat	1%	4%	7%	10%	146
	Republican		0%	15%	1%	27
Political Ideology	Socialist	2%	8%	10%	39%	29
	Progressive	2%	4%		14%	23
	Liberal		1%	5%		49
	Moderate		3%	9%	2%	31
Age of Respondent	18 to 34	2%		11%		31
	35 to 49		3%	1%	26%	55
	50 to 64		7%	18%	1%	54
	65 and older	1%	1%	2%	2%	40
Gender of Respondent	Men	1%	6%	8%	15%	95
	Women	1%		8%	1%	81
Level of Education	High school or less			2%	17%	69
	Tech school/Some college		6%	25%	6%	44
	College graduate		5%	2%		38
	Postgraduate work	3%	4%	4%	4%	31
Household Income	\$75,000 - \$99,999		1%	0%		48
	\$100,000 - \$149,999			8%	14%	22
	\$150,000 or more	3%	17%	4%	2%	27
Media Usage	CNN viewer	1%	1%	1%	18%	66
	Joe Rogan listener					24
	MSNBC viewer	2%	1%	4%	20%	58

Why Expect to be Worse Off Financially in Year (coded)

What is one reason that you think you and your family will be worse off a year from now? (coded)

		<u>Cost of living</u>	<u>Expect Democrats in power</u>	<u>Expect generally bad economy</u>	<u>Expect higher personal expenses</u>	<u>Expect lower personal income</u>
STATEWIDE	August 2024	20%	4%	2%	8%	3%
Party ID	Democrat	28%	1%		14%	9%
	Independent	23%	4%		32%	2%
	Republican	16%	5%	3%		1%
Political Ideology	Moderate	15%	6%			17%
	Conservative	8%	6%	5%		0%
Age of Respondent	18 to 34	20%			27%	
	35 to 49	13%	5%		6%	
	50 to 64	13%	5%	1%	2%	
	65 and older	37%	4%	6%	1%	13%
Gender of Respondent	Men	11%	5%	3%	9%	5%
	Women	32%	3%	1%	7%	2%
Level of Education	High school or less	22%		3%	11%	7%
	Tech school/Some college	11%	1%			0%
	College graduate	25%	15%	2%	7%	1%
	Postgraduate work	28%	10%		19%	2%
Region of State	Central Vermont	22%	3%	2%		
	Chittenden County	19%	3%		22%	11%
	Northern Counties	26%	9%		2%	1%
	Southern Vermont	16%	4%	4%	4%	0%
Household Income	Less than \$45,000	63%	4%		1%	
	\$45,000 - \$74,999	30%	1%		3%	1%
	\$75,000 - \$99,999	3%	7%			7%
	\$100,000 - \$149,999	6%	1%	10%	13%	15%
Media Usage	CNN viewer	7%	3%	8%		14%
	Conservative radio listener	12%	6%	11%		
	Fox News viewer	4%	8%	8%		1%
	MSNBC viewer	30%	2%	10%		16%
	Local VT news viewer	29%	4%	3%	13%	6%

Why Expect to be Worse Off Financially in Year (coded)

What is one reason that you think you and your family will be worse off a year from now? (coded)

		<u>Expect Republicans in power</u>	<u>Government spending/debt</u>	<u>Inflation</u>	<u>Negative personal circumstances</u>
STATEWIDE	August 2024	0%	4%	19%	3%
Party ID	Democrat	0%		12%	4%
	Independent	2%	0%	6%	
	Republican		6%	25%	3%
Political Ideology	Moderate			5%	12%
	Conservative		8%	21%	
Age of Respondent	18 to 34			23%	
	35 to 49	1%	1%	30%	8%
	50 to 64		3%	15%	3%
	65 and older	0%	10%	11%	1%
Gender of Respondent	Men	1%	3%	18%	1%
	Women	0%	5%	19%	5%
Level of Education	High school or less		5%	24%	
	Tech school/Some college		4%	12%	6%
	College graduate	1%	2%	23%	
	Postgraduate work	1%	0%	9%	11%
Region of State	Central Vermont	1%	2%	32%	1%
	Chittenden County		0%	5%	8%
	Northern Counties			15%	1%
	Southern Vermont	1%	9%	25%	0%
Household Income	Less than \$45,000		0%	12%	3%
	\$45,000 - \$74,999			36%	14%
	\$75,000 - \$99,999		3%	26%	1%
	\$100,000 - \$149,999	1%		11%	1%
Media Usage	CNN viewer	1%	13%	34%	2%
	Conservative radio listener		1%	15%	
	Fox News viewer		10%	33%	0%
	MSNBC viewer	1%	1%	21%	2%
	Local VT news viewer	1%	4%	9%	1%

Why Expect to be Worse Off Financially in Year (coded)

What is one reason that you think you and your family will be worse off a year from now? (coded)

		<u>Poor governing</u>	<u>Price gouging</u>	<u>Taxes</u>	<u>Other</u>	<u>N</u>
STATEWIDE	August 2024	3%	0%	26%	8%	200
Party ID	Democrat	10%		7%	13%	50
	Independent	0%		28%	1%	28
	Republican	1%	1%	33%	7%	122
Political Ideology	Moderate	9%		33%	2%	35
	Conservative	0%	1%	40%	10%	77
Age of Respondent	18 to 34			22%	9%	42
	35 to 49			28%	7%	42
	50 to 64	7%		43%	7%	65
	65 and older	2%	1%	5%	9%	49
Gender of Respondent	Men	3%	1%	35%	7%	102
	Women	3%		17%	5%	91
Level of Education	High school or less			18%	10%	82
	Tech school/Some college	10%	1%	44%	12%	56
	College graduate			23%	1%	40
	Postgraduate work	1%		13%	5%	22
Region of State	Central Vermont	1%	2%	32%	4%	39
	Chittenden County			27%	4%	58
	Northern Counties	7%		19%	20%	35
	Southern Vermont	5%		25%	7%	68
Household Income	Less than \$45,000	1%		15%	1%	35
	\$45,000 - \$74,999	9%		5%		27
	\$75,000 - \$99,999			39%	14%	23
	\$100,000 - \$149,999			40%	1%	28
Media Usage	CNN viewer	0%		17%	1%	34
	Conservative radio listener	0%		55%		32
	Fox News viewer	0%		34%	0%	43
	MSNBC viewer			17%	1%	28
	Local VT news viewer	3%		27%	0%	107

Business Conditions in Vermont During Next 12 Months

What about business conditions in New Hampshire as a whole, do you think that during the next twelve months we'll have good times financially, or bad times?

		<u>Good times</u>	<u>Mixed</u>	<u>Bad times</u>	<u>N</u>
STATEWIDE	August 2024	22%	54%	23%	906
Party ID	Democrat	30%	63%	7%	543
	Independent	9%	52%	40%	88
	Republican	12%	37%	51%	269
Political Ideology	Socialist	26%	58%	16%	84
	Progressive	19%	73%	8%	126
	Liberal	34%	59%	7%	186
	Moderate	24%	54%	22%	195
	Conservative	9%	34%	58%	147
	Libertarian	34%	18%	48%	35
Age of Respondent	18 to 34	16%	63%	21%	223
	35 to 49	27%	48%	25%	199
	50 to 64	24%	49%	27%	250
	65 and older	22%	57%	21%	227
Gender of Respondent	Men	25%	46%	29%	405
	Women	21%	61%	18%	462
Level of Education	High school or less	25%	53%	22%	292
	Tech school/Some college	18%	49%	33%	230
	College graduate	18%	59%	22%	224
	Postgraduate work	30%	58%	12%	157
Region of State	Central Vermont	25%	52%	23%	166
	Chittenden County	19%	62%	19%	246
	Northern Counties	36%	41%	22%	198
	Southern Vermont	15%	58%	28%	294
Household Income	Less than \$45,000	16%	61%	23%	174
	\$45,000 - \$74,999	9%	75%	16%	148
	\$75,000 - \$99,999	40%	49%	12%	120
	\$100,000 - \$149,999	27%	52%	21%	137
	\$150,000 or more	21%	52%	27%	111
Media Usage	CNN viewer	34%	52%	14%	236
	Conservative radio listener	2%	53%	45%	56
	Fox News viewer	19%	35%	46%	118
	Joe Rogan listener	38%	31%	32%	46
	MSNBC viewer	37%	49%	14%	208
	Local VT news viewer	28%	49%	22%	488

Business Conditions in U.S. During Next 12 Months

Now turning to business conditions in the country as a whole, do you think that during the next twelve months we'll have good times financially or bad times?

		<u>Good times</u>	<u>Mixed</u>	<u>Bad times</u>	<u>N</u>
STATEWIDE	August 2024	25%	52%	23%	828
Party ID	Democrat	36%	56%	8%	513
	Independent	15%	38%	47%	87
	Republican	5%	49%	46%	221
Political Ideology	Socialist	13%	71%	16%	76
	Progressive	25%	65%	10%	122
	Liberal	49%	45%	6%	161
	Moderate	28%	54%	18%	196
	Conservative	5%	39%	56%	119
	Libertarian	6%	48%	45%	22
Age of Respondent	18 to 34	12%	62%	27%	199
	35 to 49	21%	54%	26%	179
	50 to 64	32%	45%	23%	231
	65 and older	33%	51%	16%	211
Gender of Respondent	Men	24%	49%	27%	385
	Women	28%	54%	19%	409
Level of Education	High school or less	20%	61%	18%	259
	Tech school/Some college	26%	40%	34%	207
	College graduate	24%	50%	26%	209
	Postgraduate work	35%	57%	9%	152
Region of State	Central Vermont	31%	52%	17%	156
	Chittenden County	28%	48%	23%	213
	Northern Counties	31%	45%	23%	174
	Southern Vermont	16%	59%	25%	282
Household Income	Less than \$45,000	20%	49%	32%	164
	\$45,000 - \$74,999	20%	65%	15%	120
	\$75,000 - \$99,999	43%	45%	12%	118
	\$100,000 - \$149,999	30%	54%	16%	130
	\$150,000 or more	23%	53%	24%	108
Media Usage	CNN viewer	38%	49%	13%	227
	Conservative radio listener		48%	52%	52
	Fox News viewer	26%	32%	42%	97
	Joe Rogan listener	39%	35%	27%	44
	MSNBC viewer	42%	43%	15%	210
	Local VT news viewer	29%	48%	23%	477

Likelihood of Recession Within 12 Months

How likely do you think it is that the United States economy will enter into a recession within the next twelve months?

		<u>Very likely</u>	<u>Somewhat likely</u>	<u>Not very likely</u>	<u>Not at all likely</u>	<u>Believe the U.S. economy is already in a recession</u>	<u>N</u>
STATEWIDE	August 2024	12%	35%	35%	8%	9%	862
Party ID	Democrat	6%	24%	52%	13%	6%	495
	Independent	2%	42%	24%	10%	22%	83
	Republican	26%	53%	9%	0%	11%	280
Political Ideology	Socialist	6%	59%	22%	12%		62
	Progressive	6%	18%	65%	3%	8%	126
	Liberal	2%	11%	57%	18%	13%	164
	Moderate	5%	30%	45%	15%	5%	187
	Conservative	30%	55%	4%	0%	11%	163
	Libertarian	49%	28%	15%	2%	6%	34
Age of Respondent	18 to 34	6%	48%	25%	10%	10%	203
	35 to 49	23%	39%	25%	2%	11%	191
	50 to 64	10%	34%	40%	6%	11%	240
	65 and older	12%	21%	48%	14%	5%	222
Gender of Respondent	Men	12%	41%	32%	10%	6%	420
	Women	13%	30%	39%	7%	11%	425
Level of Education	High school or less	18%	47%	15%	7%	14%	267
	Tech school/Some college	11%	31%	43%	6%	8%	241
	College graduate	11%	32%	40%	9%	9%	203
	Postgraduate work	5%	25%	53%	13%	3%	151
Region of State	Central Vermont	3%	43%	31%	16%	6%	160
	Chittenden County	17%	28%	46%	8%	2%	239
	Northern Counties	11%	37%	29%	7%	16%	192
	Southern Vermont	14%	36%	33%	5%	11%	271
Household Income	Less than \$45,000	18%	19%	19%	15%	27%	145
	\$45,000 - \$74,999	3%	35%	45%	10%	7%	136
	\$75,000 - \$99,999	7%	44%	28%	8%	13%	112
	\$100,000 - \$149,999	7%	33%	48%	9%	4%	131
	\$150,000 or more	13%	30%	48%	8%	1%	110
Media Usage	CNN viewer	7%	30%	41%	17%	5%	231
	Conservative radio listener	25%	71%	1%		2%	55
	Fox News viewer	22%	37%	21%	10%	9%	119
	Joe Rogan listener	26%	56%	6%	7%	5%	45
	MSNBC viewer	8%	20%	47%	17%	9%	203
	Local VT news viewer	11%	37%	31%	12%	9%	467