

The Pine Tree State Poll

August 30, 2023

TWO-THIRDS OF MAINERS REPORT STRUGGLING TO AFFORD NECESSITIES, EXPECT RECESSION WITHIN TWELVE MONTHS

By: Sean P. McKinley, M.A.
Zachary S. Azem, M.A.
Andrew E. Smith, Ph.D.

andrew.smith@unh.edu
603-862-2226
cola.unh.edu/unh-survey-center

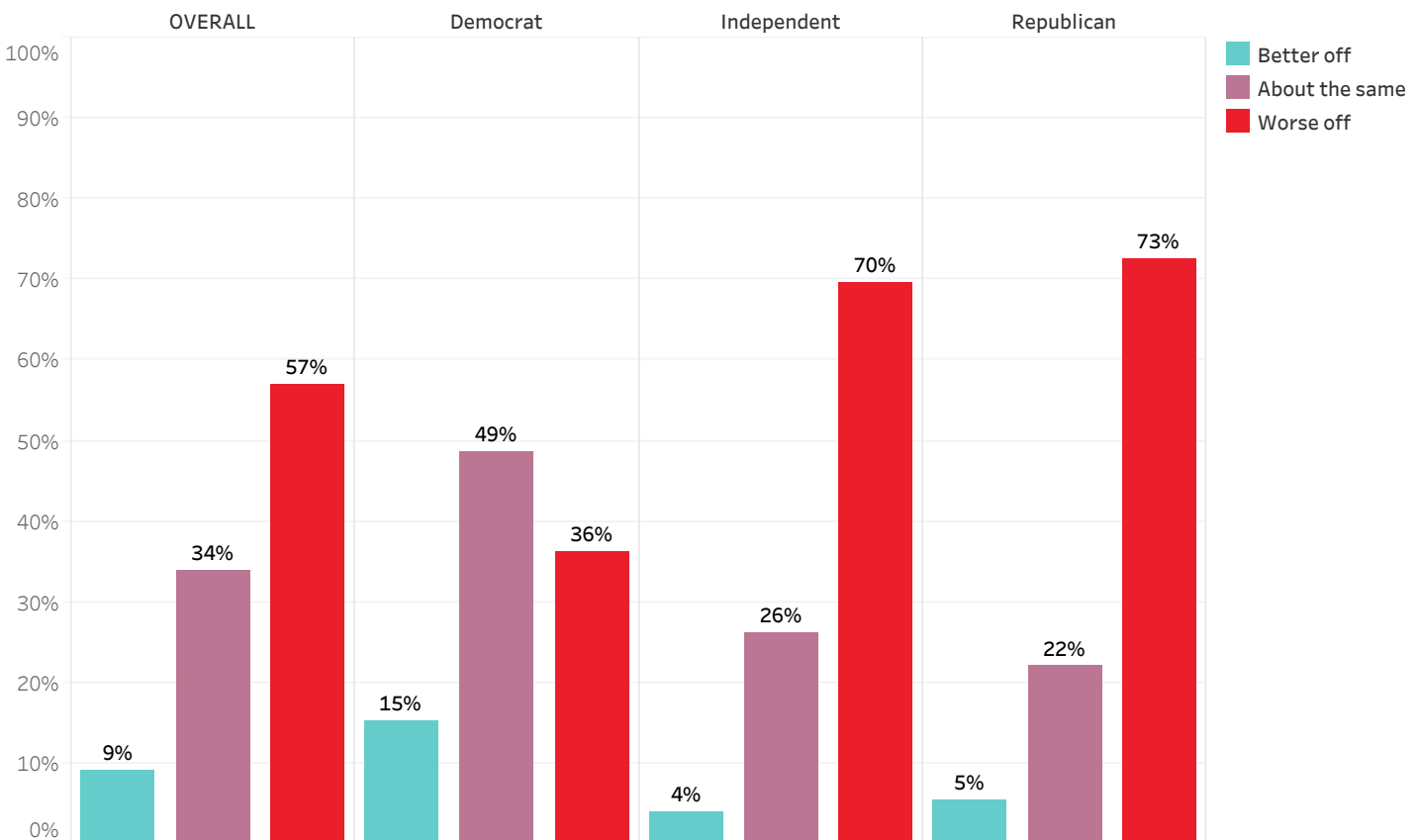
DURHAM, NH - A majority of Mainers say that they are worse off financially than a year ago and nearly two-thirds say they have struggled to afford basic necessities in the past year. Mainers are generally pessimistic about the state and national economies and nearly two-thirds expect that the country is already in a recession or will be in one within twelve months. Responses differ considerably based on household income, with those with low to middling incomes more pessimistic about the economy and more likely to report hardship in their personal finances.

Personal Financial Conditions

More than half (57%) of Mainers think that their household is worse off financially than a year ago, only 9% say they are better off, and 34% say their finances are about the same.

Most Republicans (73%) and Independents (70%) consider themselves worse off financially than a year ago, but only 36% of Democrats agree. Two-thirds (66%) of those with a household income between \$75,000 and \$149,999 and 57% of those with a household income below \$75,000 say that they are worse off than a year ago, but only 42% of those with a household income of \$150,000 or more say the same.

Household Financial Condition Compared to 12 Months Ago - by Party ID

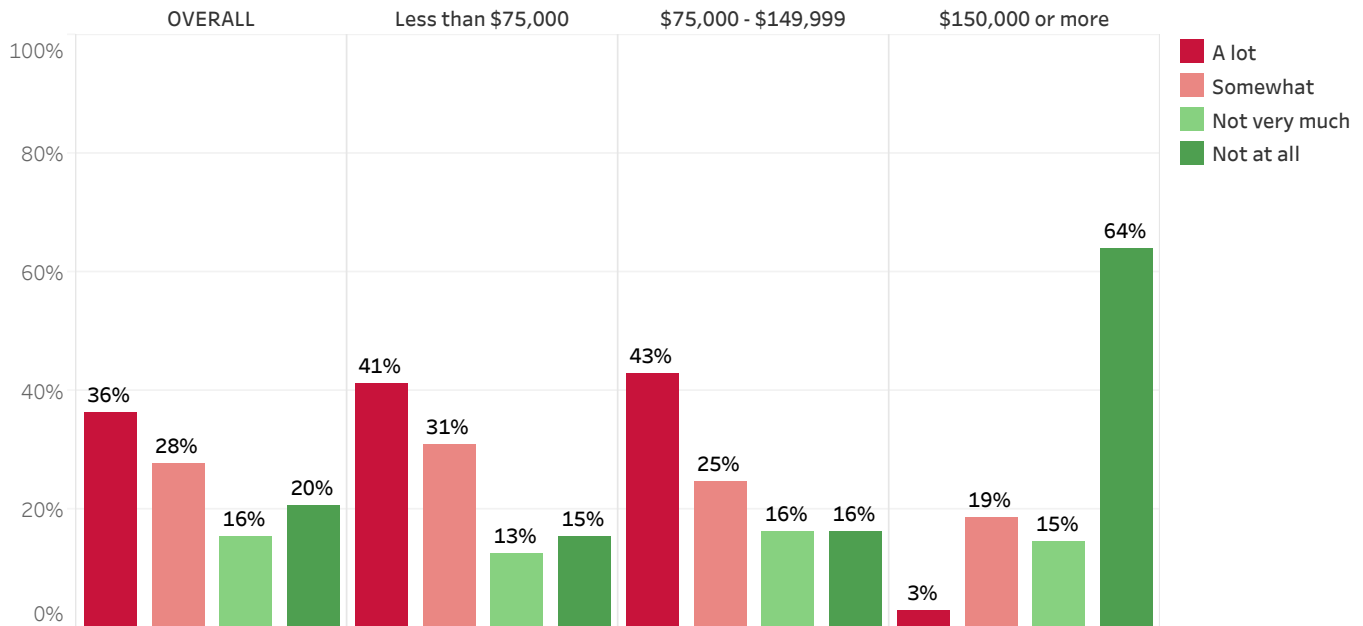


* We ask that this copyrighted information be referred to as *the Pine Tree State Poll*, a States of Opinion Project, conducted by the University of New Hampshire Survey Center.

Nearly two-thirds (64%) of Maine residents say that they have struggled a lot (36%) or somewhat (28%) in the past twelve months to afford basic necessities like food, clothing, and electricity. Sixteen percent say that they have not struggled very much to afford these things and 20% say they have not struggled at all.

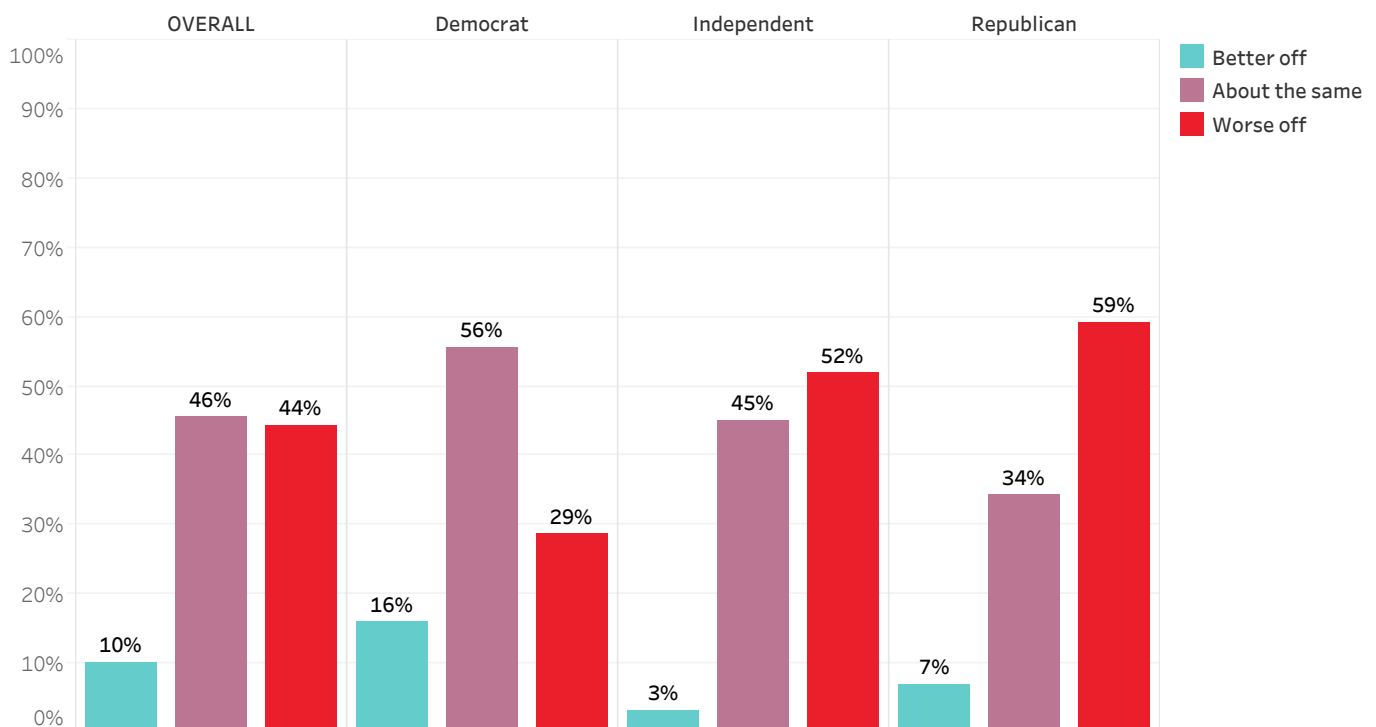
Most of those with a household income below \$150,000 say that they have struggled a lot or somewhat to pay for basic necessities in the past twelve months, while nearly two-thirds (64%) of those with a household income of \$150,000 or more say they have not struggled at all.

How Much Struggled to Afford Basic Necessities in Past 12 Months - by Household Income

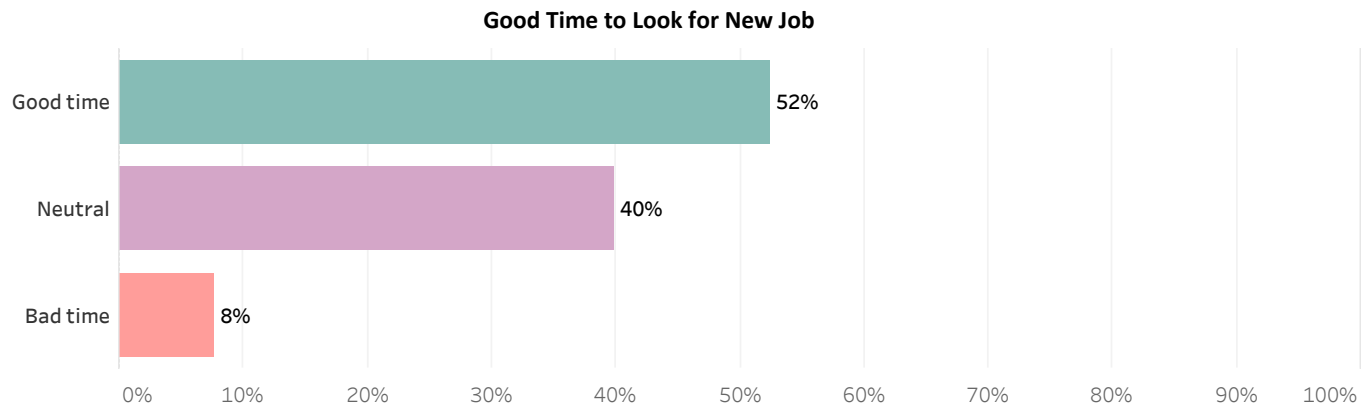


Looking ahead, only 10% of Mainers expect their personal finances will be better a year from now, 44% anticipate being worse off, and 46% think their finances will be about the same as they are now. Democrats (16%) are somewhat more likely than Republicans (7%) and Independents (3%) to expect to be better off.

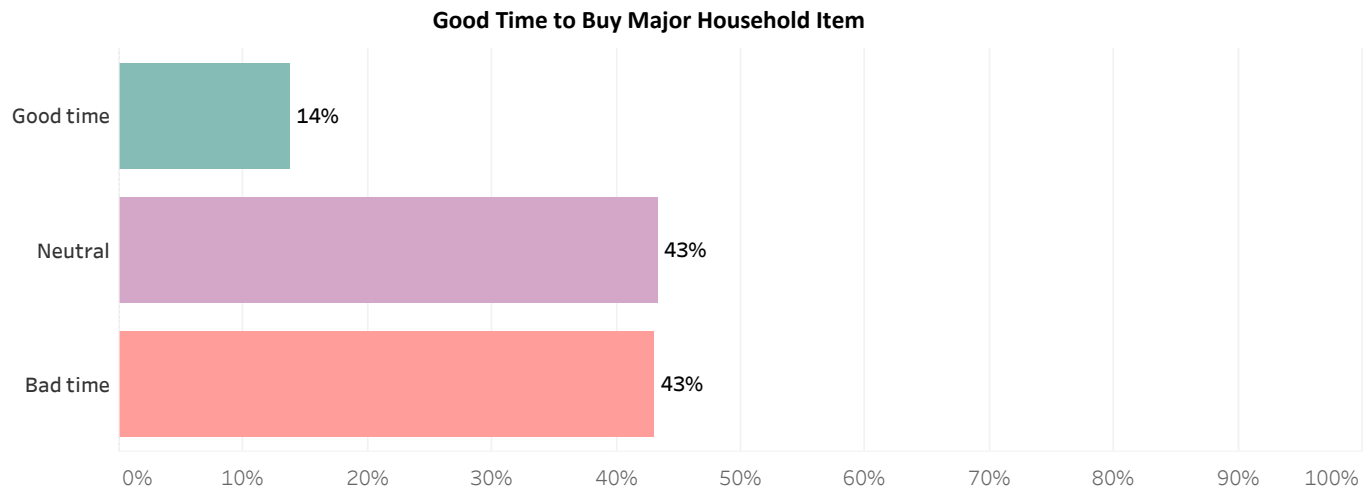
Household Financial Condition 12 Months From Now - by Party ID



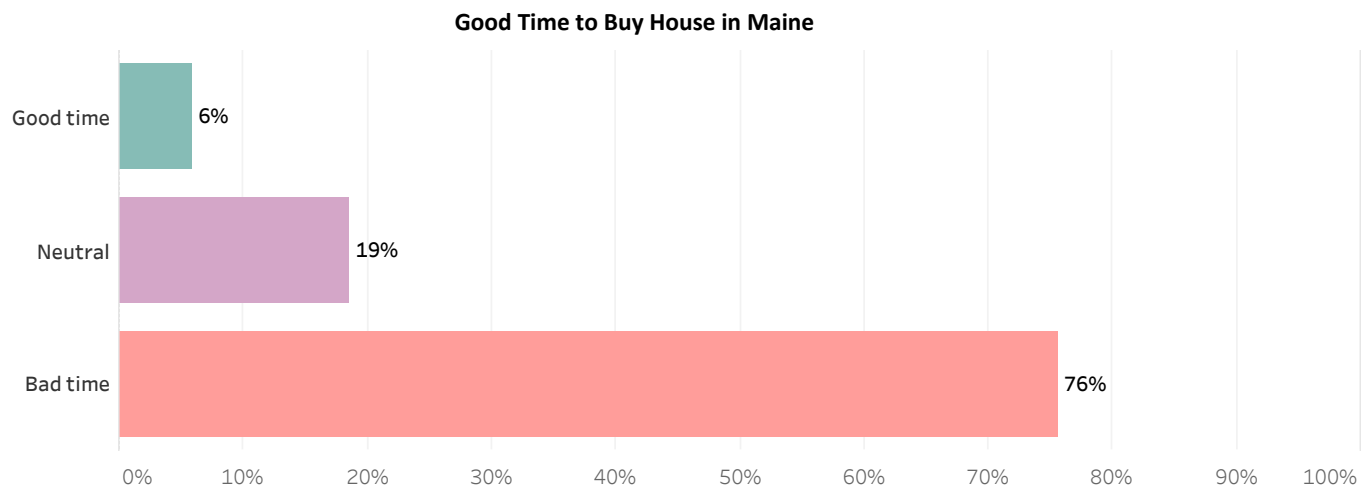
Fifty-two percent of Maine residents think that now is a good time to look for a new job in Maine, 8% think it is a bad time, and 40% are neutral. Respondents with a household income of \$150,000 or more are more likely to say it is a good time to look for a job.



Only 14% of Mainers think now is a good time to buy major items for their home, 43% are neutral or think it depends on the person's finances, and 43% think it is a bad time. Forty-nine percent of Independents, 44% of Republicans, and 36% of Democrats think now is a bad time to buy a major item.



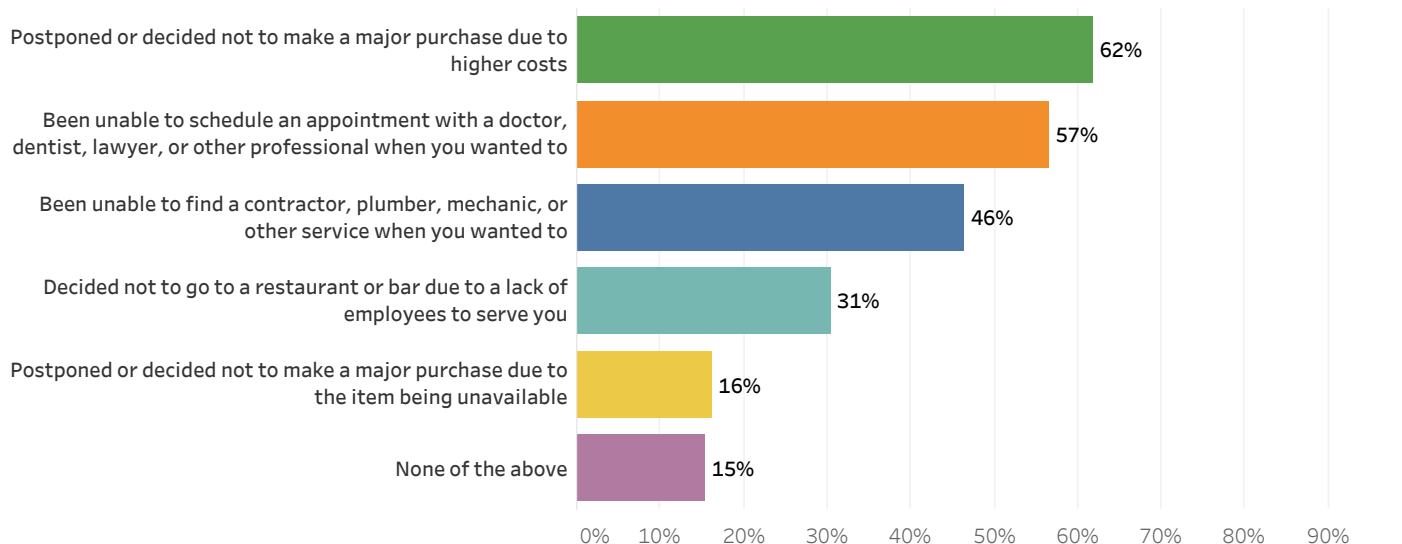
Most Mainers (76%) think now is a bad time to buy a house in Maine. Nineteen percent are neutral or think it depends while only 6% think it is a good time. Republicans and those with a household income between \$75,000 and \$149,999 are particularly likely to say that now is a bad time to buy a house in Maine.



Nearly two-thirds (62%) of Mainers say that in the past twelve months they have postponed or decided not to make a major purchase due to higher costs, 57% have been unable to schedule an appointment with a doctor, dentist, lawyer, or other professional and 46% have been unable to find a contractor, plumber, mechanic, or other service when they wanted to. Fewer Mainers say that in the past twelve months they decided not to go to a restaurant or bar due to a lack of employees to serve them (31%) or postponed or decided not to make a major purchase due to the item being unavailable (16%).

Respondents with a household income below \$75,000 are less likely to say that they have been unable to find a professional or service appointment or to not go to a restaurant or bar, while they are more likely to have postponed or decided not to make a major purchase due to higher costs.

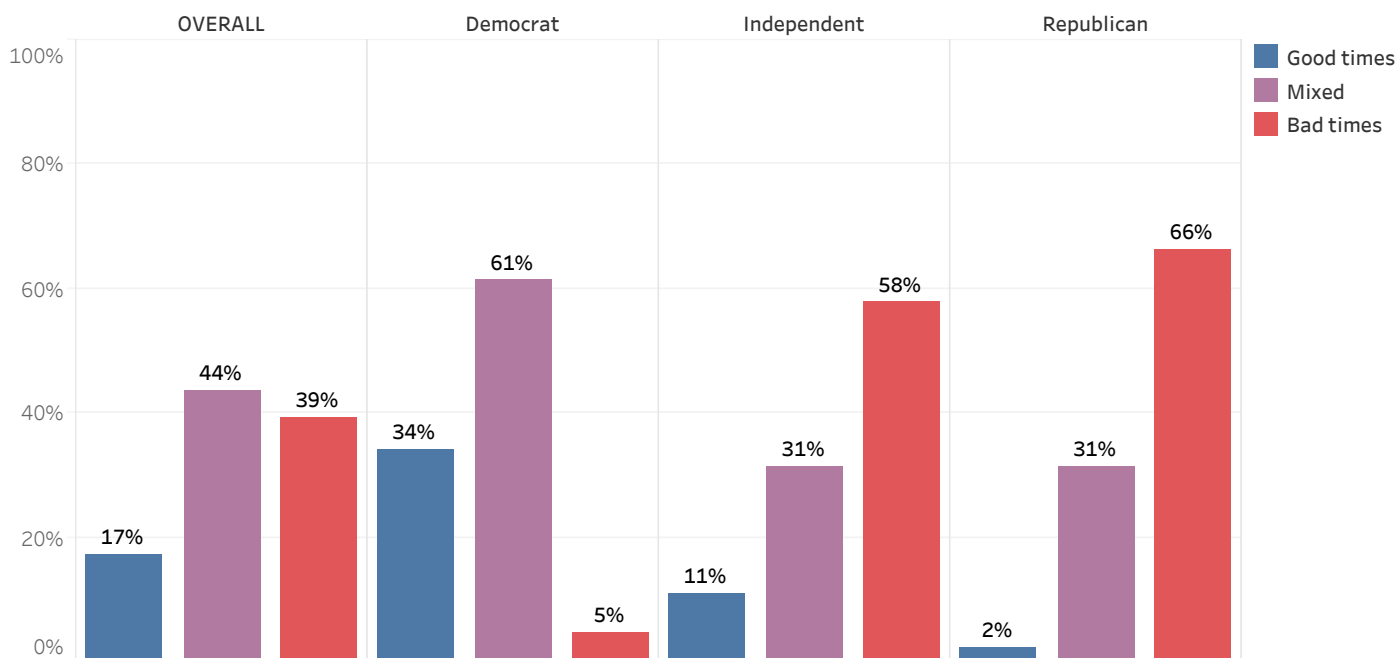
Economic Effects on Choices in Past 12 Months



Maine Business Conditions

When asked how they expect Maine businesses will do in the upcoming year, 17% of Mainers think state businesses will enjoy good times financially, 44% anticipate mixed conditions, and 39% think they will experience bad times. Thirty-four percent of Maine Democrats anticipate good business conditions in the state during the next twelve months, but only 11% of Independents and 2% of Republicans feel that way.

Business Conditions in Maine During Next 12 Months

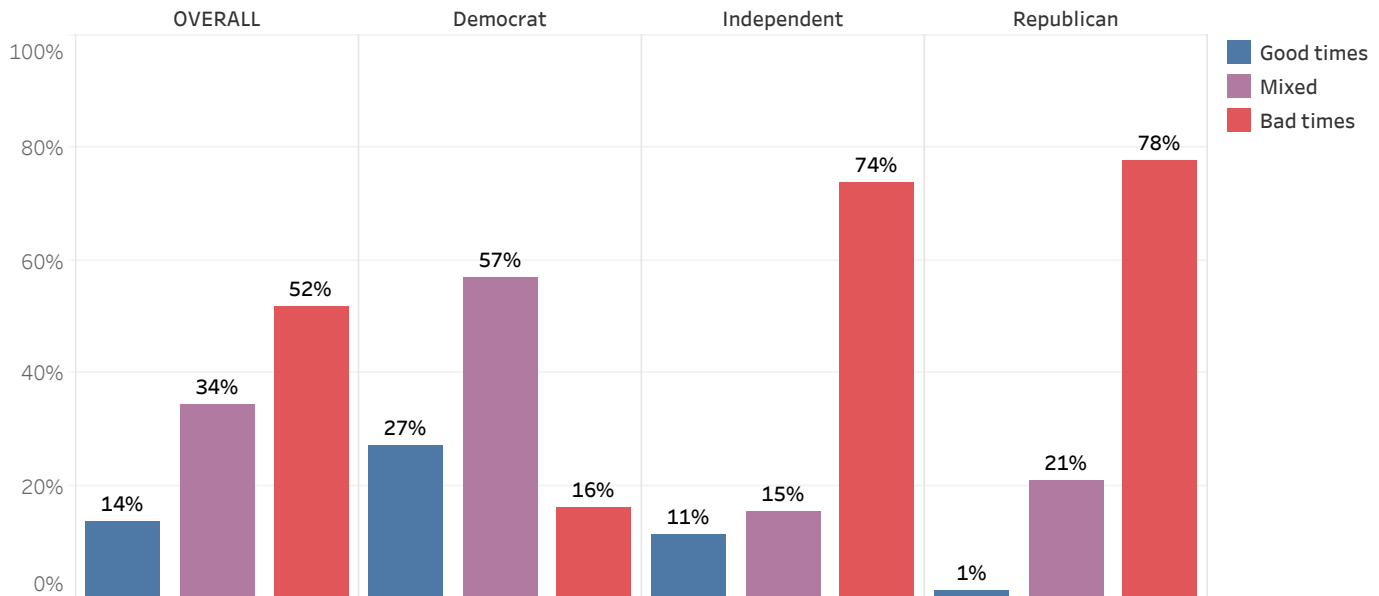


U.S. Business Conditions

Mainers are more pessimistic about the national economy than the state economy. Fourteen percent of Maine adults think businesses across the country will experience good times in the next twelve months, 34% think conditions will be mixed, and 52% anticipate businesses will have bad times.

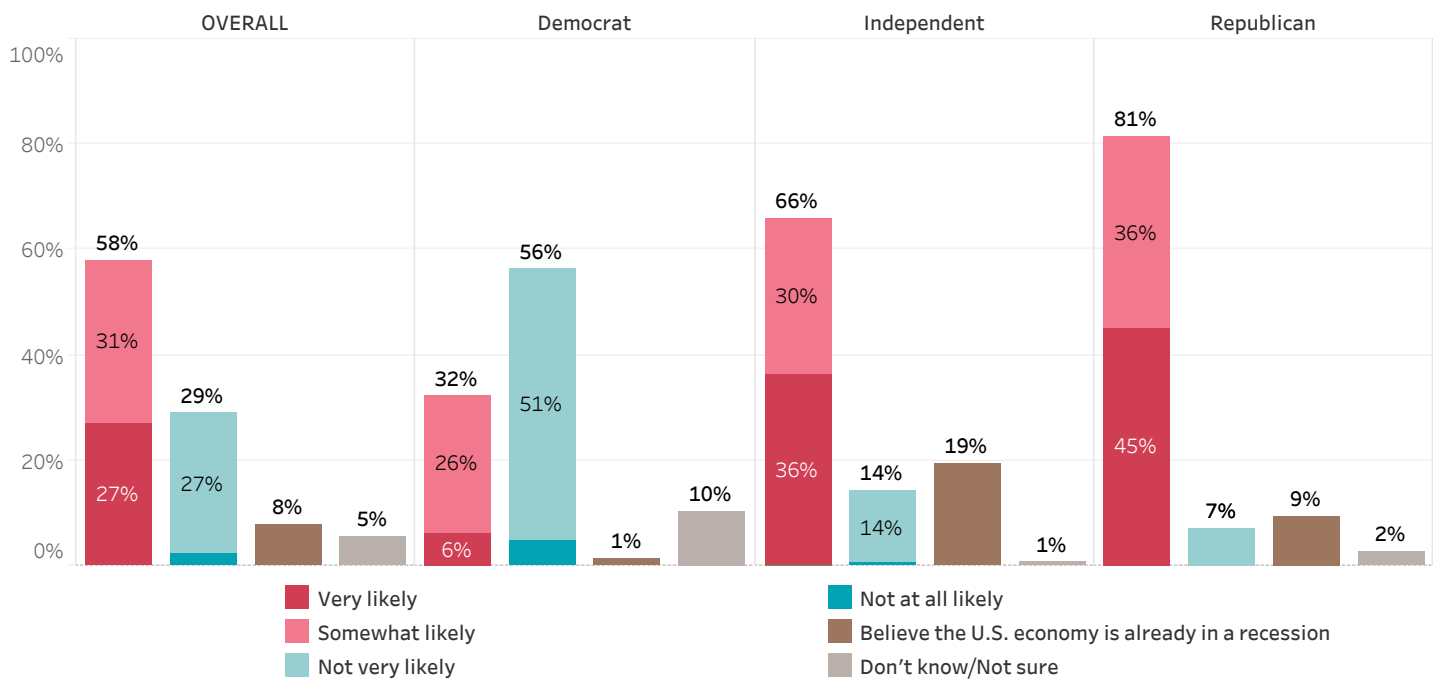
Seventy-eight percent of Republicans and 74% of Independents in Maine feel that U.S. businesses will experience bad times over the next twelve months but only 16% of Democrats expect bad times.

Business Conditions in U.S. During Next 12 Months - by Party ID



More than half (58%) of Mainers think it is very (27%) or somewhat (31%) likely that the U.S. economy will enter a recession within the next twelve months, 8% think the economy is already in a recession, 29% think a recession is not very likely (27%) or not at all likely (2%), and 5% are unsure. Most Republicans (90%) and two-thirds of Independents (85%) think it is likely that the country will enter a recession in the next twelve months or is already in one, but only 33% of Democrats feel that way. Those with lower incomes are more likely than those with the highest incomes to feel the country is likely to enter a recession in the next twelve months or is already in one.

Likelihood of Recession Within 12 Months - by Party ID



Pine Tree State Poll Methodology

These findings are based on the latest Pine Tree State Poll, conducted by the University of New Hampshire Survey Center. Five hundred fifty-five (555) Pine Tree State Panel members completed the survey online between August 17 and August 21, 2023. The margin of sampling error for the survey is +/- 4.2 percent. These MSE's have not been adjusted for design effect. The response rate for the August 2023 Pine Tree State Poll is 21%. The design effect for the survey is 2.5%.

Data were weighted by respondent sex, age, education, and region of the state to targets from the most recent American Community Survey (ACS) conducted by the U.S. Census Bureau, as well as party registration levels provided by the Maine Secretary of State and to 2020 election results in Maine.

The Pine Tree State Panel is part of an effort by the University of New Hampshire Survey Center to investigate new ways of gathering and understanding the opinion of Maine residents. Approximately 2,750 Maine adults have been recruited from randomly-selected landline and cell phone numbers to participate in the panel. Panelists are then asked to participate in online surveys sponsored by the UNH Survey Center.

The number of respondents in each demographic below may not equal the number reported in cross-tabulation tables as some respondents choose not to answer some questions. Due to rounding, percentages may not sum to 100%.

For more information about the methodology used in the Pine Tree State Panel, contact Dr. Andrew Smith at (603) 862-2226 or by email at andrew.smith@unh.edu.

Pine Tree State Poll, August 2023 Demographics

		%	N
Gender of Respondent	Men	49%	260
	Women	51%	273
Age of Respondent	18 to 34	24%	133
	35 to 49	19%	104
	50 to 64	30%	168
	65 and older	27%	149
Level of Education	High school or less	36%	201
	Tech school/Some college	30%	167
	College graduate	21%	116
	Postgraduate work	13%	70
Region of State	Central Maine	23%	128
	Downeast/Coastal Maine	18%	96
	Northern Maine	21%	116
	Southern Maine	38%	209
Party ID	Democrat	43%	235
	Independent	18%	100
	Republican	39%	217
Voting Registration	Registered Democrat	36%	190
	Registered Republican	28%	150
	Registered Green Party	4%	22
	Registered Unenrolled	32%	171
Household Income	Less than \$45,000	25%	126
	\$45,000 - \$74,999	21%	104
	\$75,000 - \$99,999	16%	77
	\$100,000 - \$149,999	31%	152
	\$150,000 or more	7%	37

Household Financial Condition Compared to 12 Months Ago

Would you say that you and your family living there are better off or worse off financially than you were a year ago?

		Better off	About the same	Worse off	N
STATEWIDE	August 2023	9%	34%	57%	551
Voting Registration	Registered Democrat	12%	48%	40%	187
	Registered Republican	6%	20%	75%	150
	Registered Green Party	3%		97%	22
	Registered Unenrolled	11%	34%	55%	171
Party ID	Democrat	15%	49%	36%	231
	Independent	4%	26%	70%	100
	Republican	5%	22%	73%	217
Political Ideology	Socialist	11%	12%	76%	47
	Progressive	16%	27%	57%	69
	Liberal	9%	53%	38%	66
	Moderate	10%	50%	40%	153
	Conservative	7%	24%	69%	151
	Libertarian	1%	4%	95%	43
Age of Respondent	18 to 34	6%	24%	70%	130
	35 to 49	7%	20%	73%	104
	50 to 64	15%	36%	49%	168
	65 and older	8%	50%	42%	149
Gender of Respondent	Men	15%	30%	55%	257
	Women	4%	36%	60%	273
Level of Education	High school or less	6%	26%	67%	201
	Tech school/Some college	6%	32%	62%	167
	College graduate	9%	42%	50%	113
	Postgraduate work	26%	47%	27%	70
Region of State	Central Maine	10%	33%	57%	127
	Downeast/Coastal Maine	11%	28%	61%	96
	Northern Maine	13%	34%	54%	116
	Southern Maine	6%	38%	56%	207
Household Income	Less than \$45,000	6%	42%	53%	126
	\$45,000 - \$74,999	15%	23%	62%	104
	\$75,000 - \$99,999	12%	27%	61%	77
	\$100,000 - \$149,999	8%	24%	68%	152
	\$150,000 or more	11%	47%	42%	37
Media Usage	CNN viewer	11%	52%	38%	109
	Conservative radio listener	7%	31%	62%	63
	Fox News viewer	8%	24%	68%	118
	Joe Rogan listener	6%	13%	81%	32
	MSNBC viewer	13%	58%	29%	76
	Local ME news viewer	10%	33%	57%	308
2020 Presidential Vote	Voted for Biden	14%	46%	41%	281
	Voted for Trump	5%	18%	77%	236
	Voted for other 2020 candidate	3%	5%	92%	16
	Did not vote in 2020	0%	87%	13%	17

How Much Struggled to Afford Basic Necessities in Past 12 Months

How much, if at all, would you say that you have struggled to afford basic necessities like food, clothing, and electricity over the past twelve months?

		<u>A lot</u>	<u>Somewhat</u>	<u>Not very much</u>	<u>Not at all</u>	<u>N</u>
STATEWIDE	August 2023	36%	28%	16%	20%	554
Voting Registration	Registered Democrat	33%	19%	17%	32%	190
	Registered Republican	45%	30%	12%	12%	150
	Registered Green Party	68%	4%	25%	3%	22
	Registered Unenrolled	31%	33%	16%	19%	171
Party ID	Democrat	22%	24%	19%	35%	234
	Independent	66%	19%	8%	8%	100
	Republican	38%	36%	15%	10%	217
Political Ideology	Socialist	70%	5%	13%	11%	47
	Progressive	31%	25%	17%	28%	69
	Liberal	28%	22%	14%	36%	69
	Moderate	38%	19%	14%	29%	153
	Conservative	31%	40%	19%	10%	151
	Libertarian	38%	50%	9%	3%	43
Age of Respondent	18 to 34	63%	26%	3%	7%	133
	35 to 49	62%	7%	15%	16%	104
	50 to 64	27%	34%	16%	24%	168
	65 and older	5%	36%	26%	32%	149
Gender of Respondent	Men	25%	32%	20%	24%	260
	Women	47%	24%	12%	18%	273
Level of Education	High school or less	57%	29%	3%	12%	201
	Tech school/Some college	35%	33%	22%	10%	167
	College graduate	17%	28%	26%	30%	116
	Postgraduate work	13%	13%	19%	55%	70
Region of State	Central Maine	32%	34%	21%	14%	127
	Downeast/Coastal Maine	46%	28%	13%	13%	96
	Northern Maine	42%	20%	11%	27%	116
	Southern Maine	31%	29%	17%	24%	209
Household Income	Less than \$45,000	50%	27%	14%	10%	126
	\$45,000 - \$74,999	31%	36%	11%	22%	104
	\$75,000 - \$99,999	19%	39%	27%	16%	77
	\$100,000 - \$149,999	55%	17%	11%	17%	152
	\$150,000 or more	3%	19%	15%	64%	37
Media Usage	CNN viewer	15%	23%	22%	40%	112
	Conservative radio listener	35%	42%	15%	9%	63
	Fox News viewer	25%	45%	20%	10%	118
	Joe Rogan listener	68%	14%	8%	9%	32
	MSNBC viewer	30%	11%	27%	32%	79
	Local ME news viewer	39%	27%	17%	16%	311
2020 Presidential Vote	Voted for Biden	34%	20%	16%	30%	284
	Voted for Trump	36%	37%	16%	11%	236
	Voted for other 2020 candidate	88%	2%	3%	7%	16
	Did not vote in 2020	46%	41%	11%	3%	17

Household Financial Condition 12 Months From Now

Now, looking ahead, do you think that a year from now you and your family will be better off financially, worse off, or just about the same?

		Better off	About the same	Worse off	N
STATEWIDE	August 2023	10%	46%	44%	480
Voting Registration	Registered Democrat	14%	54%	31%	169
	Registered Republican	5%	39%	57%	116
	Registered Green Party		16%	84%	22
	Registered Unenrolled	8%	49%	43%	153
Party ID	Democrat	16%	56%	29%	215
	Independent	3%	45%	52%	88
	Republican	7%	34%	59%	175
Political Ideology	Socialist	9%	21%	70%	46
	Progressive	20%	30%	50%	67
	Liberal	14%	65%	20%	52
	Moderate	6%	65%	30%	146
	Conservative	8%	39%	52%	122
	Libertarian	1%	11%	88%	29
Age of Respondent	18 to 34	12%	28%	60%	130
	35 to 49	18%	49%	33%	50
	50 to 64	7%	54%	39%	162
	65 and older	10%	51%	40%	139
Gender of Respondent	Men	15%	45%	40%	224
	Women	6%	46%	48%	237
Level of Education	High school or less	9%	32%	59%	155
	Tech school/Some college	6%	56%	37%	151
	College graduate	9%	46%	45%	107
	Postgraduate work	24%	52%	24%	67
Region of State	Central Maine	17%	47%	36%	106
	Downeast/Coastal Maine	11%	32%	57%	93
	Northern Maine	8%	59%	33%	92
	Southern Maine	7%	46%	47%	183
Household Income	Less than \$45,000	7%	48%	45%	111
	\$45,000 - \$74,999	8%	43%	48%	88
	\$75,000 - \$99,999	11%	42%	47%	65
	\$100,000 - \$149,999	7%	44%	49%	134
	\$150,000 or more	18%	45%	37%	36
Media Usage	CNN viewer	17%	53%	30%	104
	Conservative radio listener	5%	49%	46%	61
	Fox News viewer	4%	46%	50%	94
	Joe Rogan listener	4%	13%	82%	32
	MSNBC viewer	19%	60%	21%	72
	Local ME news viewer	10%	45%	45%	276
2020 Presidential Vote	Voted for Biden	14%	61%	26%	258
	Voted for Trump	3%	31%	67%	194
	Voted for other 2020 candidate	3%	10%	87%	15
	Did not vote in 2020	55%	16%	29%	13

Good Time to Buy Major Household Item

Generally speaking, do you think now is a good time or bad time for people to do the following things in Maine? Buy a major household item (i.e. furniture, a stove, a television, etc.)

		<u>Good time</u>	<u>Neutral</u>	<u>Bad time</u>	<u>N</u>
STATEWIDE	August 2023	14%	43%	43%	534
Voting Registration	Registered Democrat	23%	39%	38%	175
	Registered Republican	6%	42%	52%	149
	Registered Green Party	3%	35%	62%	22
	Registered Unenrolled	13%	49%	38%	167
Party ID	Democrat	23%	41%	36%	216
	Independent	11%	45%	44%	98
	Republican	5%	46%	49%	217
Political Ideology	Socialist	8%	19%	73%	46
	Progressive	10%	36%	54%	68
	Liberal	26%	47%	27%	55
	Moderate	20%	48%	31%	150
	Conservative	5%	46%	49%	149
	Libertarian	0%	50%	50%	43
Age of Respondent	18 to 34	2%	29%	70%	122
	35 to 49	16%	38%	46%	101
	50 to 64	18%	43%	39%	166
	65 and older	17%	59%	23%	144
Gender of Respondent	Men	19%	48%	33%	252
	Women	10%	39%	51%	261
Level of Education	High school or less	18%	30%	52%	199
	Tech school/Some college	10%	46%	44%	156
	College graduate	10%	53%	37%	109
	Postgraduate work	17%	61%	22%	69
Region of State	Central Maine	10%	42%	48%	126
	Downeast/Coastal Maine	9%	27%	64%	94
	Northern Maine	27%	45%	28%	114
	Southern Maine	11%	52%	38%	195
Household Income	Less than \$45,000	21%	33%	46%	115
	\$45,000 - \$74,999	19%	38%	43%	103
	\$75,000 - \$99,999	10%	46%	44%	76
	\$100,000 - \$149,999	6%	42%	51%	150
	\$150,000 or more	14%	52%	34%	36
Media Usage	CNN viewer	22%	45%	33%	106
	Conservative radio listener	10%	57%	33%	63
	Fox News viewer	8%	53%	38%	117
	Joe Rogan listener	7%	5%	88%	32
	MSNBC viewer	21%	58%	21%	74
	Local ME news viewer	9%	51%	40%	296
2020 Presidential Vote	Voted for Biden	22%	46%	32%	266
	Voted for Trump	6%	41%	53%	234
	Voted for other 2020 candidate	2%	4%	94%	15
	Did not vote in 2020	0%	70%	30%	17

Good Time to Buy House in Maine

Generally speaking, do you think now is a good time or bad time for people to do the following things in Maine? Buy a home

		Good time	Neutral	Bad time	N
STATEWIDE	August 2023	6%	19%	76%	524
Voting Registration	Registered Democrat	1%	19%	80%	165
	Registered Republican	1%	17%	82%	146
	Registered Green Party			100%	22
	Registered Unenrolled	16%	20%	64%	170
Party ID	Democrat	5%	24%	71%	209
	Independent	12%	14%	74%	98
	Republican	4%	16%	80%	214
Political Ideology	Socialist		7%	93%	46
	Progressive	2%	12%	87%	68
	Liberal	1%	45%	54%	55
	Moderate	14%	21%	65%	144
	Conservative	6%	8%	86%	146
	Libertarian	1%	34%	66%	43
Age of Respondent	18 to 34		12%	88%	122
	35 to 49	8%	22%	70%	104
	50 to 64	13%	9%	78%	155
	65 and older	1%	33%	66%	143
Gender of Respondent	Men	7%	22%	70%	252
	Women	5%	14%	81%	251
Level of Education	High school or less	10%	20%	70%	191
	Tech school/Some college	5%	14%	82%	154
	College graduate	3%	12%	85%	110
	Postgraduate work	1%	36%	63%	69
Region of State	Central Maine	2%	22%	76%	122
	Downeast/Coastal Maine	1%	14%	85%	92
	Northern Maine	25%	27%	48%	108
	Southern Maine	1%	15%	85%	197
Household Income	Less than \$45,000	11%	22%	68%	110
	\$45,000 - \$74,999	9%	29%	62%	99
	\$75,000 - \$99,999	9%	11%	80%	76
	\$100,000 - \$149,999	1%	5%	94%	150
	\$150,000 or more	2%	12%	86%	37
Media Usage	CNN viewer	1%	26%	73%	102
	Conservative radio listener	20%	7%	73%	63
	Fox News viewer	6%	15%	79%	115
	Joe Rogan listener		3%	97%	32
	MSNBC viewer	17%	27%	56%	75
	Local ME news viewer	5%	22%	74%	296
2020 Presidential Vote	Voted for Biden	9%	23%	68%	260
	Voted for Trump	4%	11%	85%	231
	Voted for other 2020 candidate	1%	0%	99%	15
	Did not vote in 2020	0%	67%	33%	17

Good Time to Look for New Job

Generally speaking, do you think now is a good time or bad time for people to do the following things in Maine? Look for a new job

		Good time	Neutral	Bad time	N
STATEWIDE	August 2023	52%	40%	8%	532
Voting Registration	Registered Democrat	62%	34%	4%	182
	Registered Republican	34%	60%	6%	144
	Registered Green Party	28%	58%	13%	22
	Registered Unenrolled	63%	25%	12%	164
Party ID	Democrat	64%	28%	8%	222
	Independent	53%	37%	11%	98
	Republican	39%	55%	6%	209
Political Ideology	Socialist	24%	72%	4%	47
	Progressive	43%	37%	20%	67
	Liberal	83%	15%	3%	63
	Moderate	67%	25%	8%	149
	Conservative	47%	47%	6%	143
	Libertarian	12%	80%	9%	41
Age of Respondent	18 to 34	45%	44%	11%	130
	35 to 49	48%	46%	7%	100
	50 to 64	52%	42%	7%	158
	65 and older	63%	30%	6%	143
Gender of Respondent	Men	55%	37%	7%	248
	Women	50%	41%	9%	264
Level of Education	High school or less	34%	62%	3%	199
	Tech school/Some college	58%	28%	14%	156
	College graduate	62%	30%	8%	108
	Postgraduate work	77%	17%	6%	68
Region of State	Central Maine	51%	45%	4%	121
	Downeast/Coastal Maine	43%	49%	8%	93
	Northern Maine	60%	35%	4%	114
	Southern Maine	54%	35%	10%	198
Household Income	Less than \$45,000	61%	32%	7%	123
	\$45,000 - \$74,999	43%	41%	16%	98
	\$75,000 - \$99,999	49%	43%	8%	74
	\$100,000 - \$149,999	42%	54%	4%	148
	\$150,000 or more	67%	26%	6%	37
Media Usage	CNN viewer	67%	32%	2%	105
	Conservative radio listener	52%	31%	17%	60
	Fox News viewer	40%	52%	8%	110
	Joe Rogan listener	38%	51%	11%	32
	MSNBC viewer	73%	25%	2%	75
	Local ME news viewer	54%	38%	9%	301
2020 Presidential Vote	Voted for Biden	68%	25%	7%	272
	Voted for Trump	35%	56%	8%	227
	Voted for other 2020 candidate	16%	84%	0%	16
	Did not vote in 2020	66%	23%	12%	17

Economic Effects on Choices in Past 12 Months

Which of the following, if any, have happened to you in the past twelve months? (Please select all that apply)

		<u>Been unable to find a contractor, plumber, mechanic, or other service when you wanted to</u>	<u>Been unable to schedule an appointment with a doctor, dentist, lawyer, or other professional when you wanted to</u>	<u>Decided not to go to a restaurant or bar due to a lack of employees to serve you</u>
STATEWIDE	August 2023	46%	57%	31%
Voting Registration	Registered Democrat	42%	57%	32%
	Registered Republican	53%	63%	34%
	Registered Green Party	16%	17%	13%
	Registered Unenrolled	54%	60%	26%
Party ID	Democrat	33%	52%	28%
	Independent	67%	61%	24%
	Republican	51%	59%	35%
Political Ideology	Socialist	4%	72%	68%
	Progressive	38%	33%	13%
	Liberal	40%	58%	11%
	Moderate	51%	55%	25%
	Conservative	54%	60%	37%
	Libertarian	73%	80%	49%
Age of Respondent	18 to 34	26%	59%	27%
	35 to 49	68%	72%	24%
	50 to 64	47%	54%	38%
	65 and older	49%	46%	29%
Gender of Respondent	Men	46%	50%	31%
	Women	46%	64%	29%
Level of Education	High school or less	44%	62%	36%
	Tech school/Some college	46%	54%	27%
	College graduate	52%	56%	30%
	Postgraduate work	47%	50%	24%
Region of State	Central Maine	44%	51%	26%
	Downeast/Coastal Maine	35%	72%	60%
	Northern Maine	53%	52%	23%
	Southern Maine	48%	55%	23%
Household Income	Less than \$45,000	32%	52%	19%
	\$45,000 - \$74,999	31%	45%	9%
	\$75,000 - \$99,999	56%	61%	51%
	\$100,000 - \$149,999	60%	73%	43%
	\$150,000 or more	77%	74%	51%
Media Usage	CNN viewer	52%	60%	37%
	Conservative radio listener	59%	64%	46%
	Fox News viewer	56%	61%	47%
	Joe Rogan listener	36%	27%	17%
	MSNBC viewer	53%	60%	11%
	Local ME news viewer	49%	65%	37%
2020 Presidential Vote	Voted for Biden	40%	57%	26%
	Voted for Trump	57%	61%	39%
	Voted for other 2020 candidate	8%	11%	9%
	Did not vote in 2020	31%	33%	1%

Economic Effects on Choices in Past 12 Months

Which of the following, if any, have happened to you in the past twelve months? (Please select all that apply)

		<u>Postponed or decided not to make a major purchase due to higher costs</u>	<u>Postponed or decided not to make a major purchase due to the item being unavailable</u>	<u>None of the above</u>	<u>N</u>
STATEWIDE	August 2023	62%	16%	15%	553
Voting Registration	Registered Democrat	58%	15%	18%	190
	Registered Republican	60%	22%	8%	150
	Registered Green Party	84%	4%	13%	22
	Registered Unenrolled	65%	15%	17%	171
Party ID	Democrat	52%	12%	21%	233
	Independent	83%	18%	6%	100
	Republican	62%	20%	14%	217
Political Ideology	Socialist	87%	1%	9%	47
	Progressive	66%	9%	15%	69
	Liberal	51%	9%	21%	69
	Moderate	58%	21%	21%	153
	Conservative	55%	21%	15%	151
	Libertarian	91%	27%	1%	43
Age of Respondent	18 to 34	87%	16%	9%	133
	35 to 49	55%	7%	7%	104
	50 to 64	63%	24%	16%	168
	65 and older	43%	14%	26%	149
Gender of Respondent	Men	55%	15%	23%	259
	Women	68%	17%	9%	273
Level of Education	High school or less	66%	13%	15%	201
	Tech school/Some college	72%	17%	15%	167
	College graduate	55%	22%	14%	115
	Postgraduate work	38%	14%	21%	70
Region of State	Central Maine	52%	15%	21%	127
	Downeast/Coastal Maine	73%	24%	5%	96
	Northern Maine	55%	10%	24%	116
	Southern Maine	66%	16%	13%	209
Household Income	Less than \$45,000	69%	12%	17%	126
	\$45,000 - \$74,999	68%	22%	20%	103
	\$75,000 - \$99,999	69%	26%	11%	77
	\$100,000 - \$149,999	64%	12%	6%	152
	\$150,000 or more	40%	16%	8%	37
Media Usage	CNN viewer	48%	18%	22%	112
	Conservative radio listener	80%	23%	1%	63
	Fox News viewer	69%	21%	13%	118
	Joe Rogan listener	86%	42%		32
	MSNBC viewer	50%	6%	20%	79
	Local ME news viewer	72%	18%	11%	311
2020 Presidential Vote	Voted for Biden	58%	11%	19%	284
	Voted for Trump	66%	23%	10%	236
	Voted for other 2020 candidate	96%	0%	3%	16
	Did not vote in 2020	45%	20%	42%	17

Business Conditions in Maine During Next 12 Months

What about business conditions in Maine as a whole, do you think that during the next twelve months we'll have good times financially, or bad times?

		<u>Good times</u>	<u>Mixed</u>	<u>Bad times</u>	<u>N</u>
STATEWIDE	August 2023	17%	44%	39%	541
Voting Registration	Registered Democrat	37%	56%	7%	181
	Registered Republican	1%	20%	79%	149
	Registered Green Party	3%	13%	84%	22
	Registered Unenrolled	14%	50%	36%	169
Party ID	Democrat	34%	61%	5%	224
	Independent	11%	31%	58%	100
	Republican	2%	31%	66%	214
Political Ideology	Socialist	11%	84%	5%	46
	Progressive	38%	43%	19%	69
	Liberal	40%	46%	15%	61
	Moderate	23%	42%	35%	152
	Conservative	0%	34%	66%	149
	Libertarian	2%	21%	77%	43
Age of Respondent	18 to 34	5%	63%	32%	125
	35 to 49	15%	37%	48%	104
	50 to 64	15%	38%	48%	165
	65 and older	32%	39%	30%	148
Gender of Respondent	Men	20%	38%	42%	259
	Women	15%	48%	37%	263
Level of Education	High school or less	10%	44%	47%	201
	Tech school/Some college	13%	49%	37%	159
	College graduate	20%	39%	41%	114
	Postgraduate work	44%	37%	19%	67
Region of State	Central Maine	15%	37%	48%	124
	Downeast/Coastal Maine	17%	56%	28%	96
	Northern Maine	14%	44%	42%	115
	Southern Maine	21%	42%	37%	200
Household Income	Less than \$45,000	24%	33%	43%	118
	\$45,000 - \$74,999	14%	42%	44%	103
	\$75,000 - \$99,999	15%	55%	30%	77
	\$100,000 - \$149,999	11%	45%	44%	149
	\$150,000 or more	35%	25%	40%	37
Media Usage	CNN viewer	36%	48%	16%	112
	Conservative radio listener	0%	38%	62%	61
	Fox News viewer	3%	39%	57%	115
	Joe Rogan listener	1%	24%	75%	32
	MSNBC viewer	39%	55%	6%	78
	Local ME news viewer	19%	50%	31%	302
2020 Presidential Vote	Voted for Biden	32%	57%	10%	275
	Voted for Trump	2%	26%	72%	233
	Voted for other 2020 candidate	3%	7%	90%	15
	Did not vote in 2020	0%	87%	13%	17

Business Conditions in U.S. During Next 12 Months

Now turning to business conditions in the country as a whole, do you think that during the next twelve months we'll have good times financially or bad times?

		<u>Good times</u>	<u>Mixed</u>	<u>Bad times</u>	<u>N</u>
STATEWIDE	August 2023	14%	34%	52%	535
Voting Registration	Registered Democrat	31%	54%	15%	174
	Registered Republican	2%	14%	85%	149
	Registered Green Party	3%		97%	22
	Registered Unenrolled	9%	35%	56%	169
Party ID	Democrat	27%	57%	16%	218
	Independent	11%	15%	74%	100
	Republican	1%	21%	78%	214
Political Ideology	Socialist	11%	82%	7%	46
	Progressive	32%	31%	38%	68
	Liberal	34%	45%	21%	61
	Moderate	12%	34%	54%	145
	Conservative	1%	22%	76%	149
	Libertarian	2%	7%	91%	43
Age of Respondent	18 to 34	5%	45%	50%	125
	35 to 49	13%	32%	55%	104
	50 to 64	11%	25%	64%	158
	65 and older	24%	38%	38%	147
Gender of Respondent	Men	19%	29%	52%	259
	Women	9%	40%	51%	257
Level of Education	High school or less	6%	34%	60%	195
	Tech school/Some college	9%	40%	52%	159
	College graduate	18%	28%	54%	114
	Postgraduate work	40%	33%	27%	66
Region of State	Central Maine	14%	29%	57%	123
	Downeast/Coastal Maine	8%	58%	34%	96
	Northern Maine	10%	29%	61%	109
	Southern Maine	18%	30%	52%	200
Household Income	Less than \$45,000	13%	23%	64%	112
	\$45,000 - \$74,999	13%	27%	60%	103
	\$75,000 - \$99,999	14%	38%	48%	76
	\$100,000 - \$149,999	9%	38%	53%	150
	\$150,000 or more	33%	25%	41%	37
Media Usage	CNN viewer	23%	45%	31%	105
	Conservative radio listener		16%	84%	61
	Fox News viewer	6%	26%	68%	115
	Joe Rogan listener	2%	3%	94%	32
	MSNBC viewer	30%	45%	26%	77
	Local ME news viewer	14%	37%	49%	302
2020 Presidential Vote	Voted for Biden	26%	49%	25%	268
	Voted for Trump	1%	17%	82%	233
	Voted for other 2020 candidate	3%	6%	91%	15
	Did not vote in 2020	0%	69%	31%	17

Likelihood of Recession Within 12 Months

How likely do you think it is that the United States economy will enter into a recession within the next twelve months?

		<u>Very likely</u>	<u>Somewhat likely</u>	<u>Not very likely</u>	<u>Not at all likely</u>	<u>Believe the U.S. economy is already in a recession</u>	<u>Don't know/Not sure</u>	<u>N</u>
STATEWIDE	August 2023	27%	31%	27%	2%	8%	5%	554
Voting Registration	Registered Democrat	8%	20%	52%	4%	3%	11%	190
	Registered Republican	54%	33%	5%		6%	2%	150
	Registered Green Party	75%	22%		3%			22
	Registered Unenrolled	20%	41%	24%	2%	12%	3%	171
Party ID	Democrat	6%	26%	51%	5%	1%	10%	234
	Independent	36%	30%	14%	1%	19%	1%	100
	Republican	45%	36%	7%		9%	2%	217
Political Ideology	Socialist	6%	12%	75%	3%	2%	2%	47
	Progressive	18%	37%	31%	9%	2%	2%	69
	Liberal	10%	14%	49%	3%	6%	18%	69
	Moderate	28%	23%	28%	1%	12%	8%	153
	Conservative	49%	36%	8%		5%	2%	151
	Libertarian	15%	63%			21%	1%	43
Age of Respondent	18 to 34	23%	23%	33%		12%	9%	133
	35 to 49	27%	37%	24%	1%	10%	1%	104
	50 to 64	40%	27%	19%	1%	7%	6%	168
	65 and older	16%	38%	32%	6%	3%	4%	149
Gender of Respondent	Men	28%	32%	28%	3%	7%	3%	260
	Women	28%	28%	27%	2%	7%	8%	273
Level of Education	High school or less	38%	28%	28%		3%	3%	201
	Tech school/Some college	24%	37%	16%	2%	13%	7%	167
	College graduate	19%	33%	26%	3%	11%	8%	116
	Postgraduate work	16%	19%	52%	6%	3%	4%	70
Region of State	Central Maine	40%	28%	16%	3%	10%	2%	127
	Downeast/Coastal Maine	20%	22%	50%	1%	6%	1%	96
	Northern Maine	29%	39%	21%	3%	1%	7%	116
	Southern Maine	20%	32%	27%	2%	11%	9%	209
Household Income	Less than \$45,000	50%	18%	17%	1%	1%	13%	126
	\$45,000 - \$74,999	27%	33%	28%	3%	6%	4%	104
	\$75,000 - \$99,999	10%	41%	25%	3%	15%	5%	77
	\$100,000 - \$149,999	28%	26%	32%	2%	12%	1%	152
	\$150,000 or more	7%	44%	38%	3%	4%	3%	37
Media Usage	CNN viewer	10%	39%	34%	6%	2%	9%	112
	Conservative radio listener	48%	38%	1%		10%	3%	63
	Fox News viewer	29%	49%	10%	1%	10%	2%	118
	Joe Rogan listener	68%	17%	5%		10%		32
	MSNBC viewer	18%	28%	37%	8%	2%	7%	79
	Local ME news viewer	19%	32%	32%	2%	10%	5%	311
2020 Presidential Vote	Voted for Biden	11%	24%	47%	4%	6%	8%	284
	Voted for Trump	45%	36%	7%		10%	2%	236
	Voted for other 2020 candidate	86%	3%	5%		2%	5%	16
	Did not vote in 2020		85%		0%	11%	3%	17