

The Green Mountain State Poll

August 30, 2023

FEW IN VERMONT EXPECT TO BE BETTER OFF NEXT YEAR, MAJORITY ANTICIPATE RECESSION IN THAT TIME

By: Sean P. McKinley, M.A.
Zachary S. Azem, M.A.
Andrew E. Smith, Ph.D.

andrew.smith@unh.edu
603-862-2226
cola.unh.edu/unh-survey-center

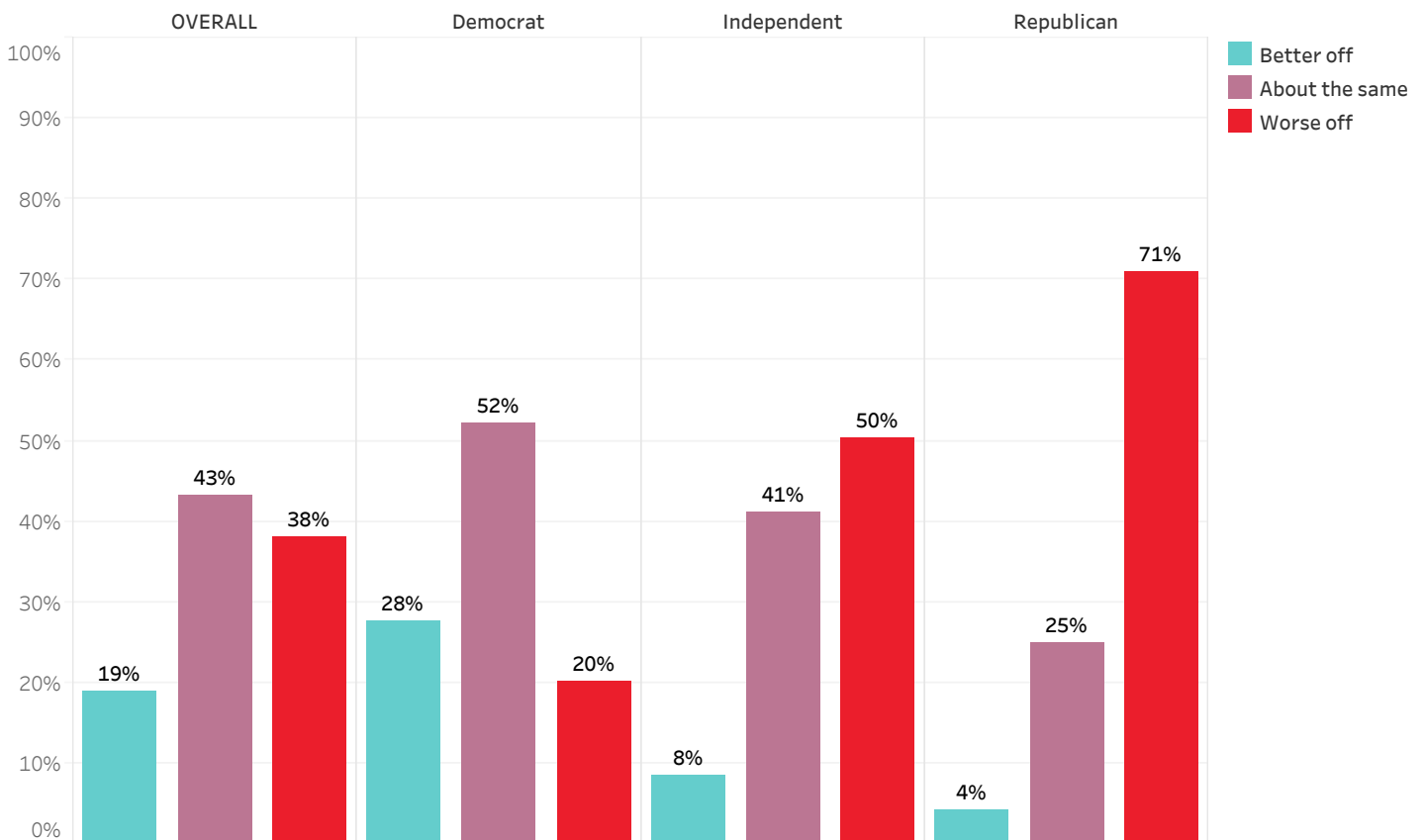
DURHAM, NH - Only one in five Vermonters say they are better off financially than a year ago and few expect to be better off a year from now. Four in ten say they struggled at least somewhat to afford necessities in the past year, and nearly half say they have put off a major purchase because of higher costs. A slim majority think it is likely that the national economy will enter a recession within the next year or is already in one. Perceptions of the economy vary by partisanship and household income - Republicans and those with lower incomes are far more pessimistic than Democrats and those with higher incomes about their personal finances and the wider economy.

Personal Financial Conditions

The personal finances of Vermont residents have been hurt by inflation over the past year. Only 19% of Vermonters say that they are better off financially than a year ago, 38% think that their household is worse off, and 43% say their finances are about the same.

Most Republicans (71%) and half of Independents (50%) consider themselves worse off financially than a year ago, but only 20% of Democrats agree. Half (50%) of those with a household income below \$75,000 say they are worse off financially than a year ago but only 16% of those with a household income of \$150,000 or more say the same.

Household Financial Condition Compared to 12 Months Ago - by Party ID

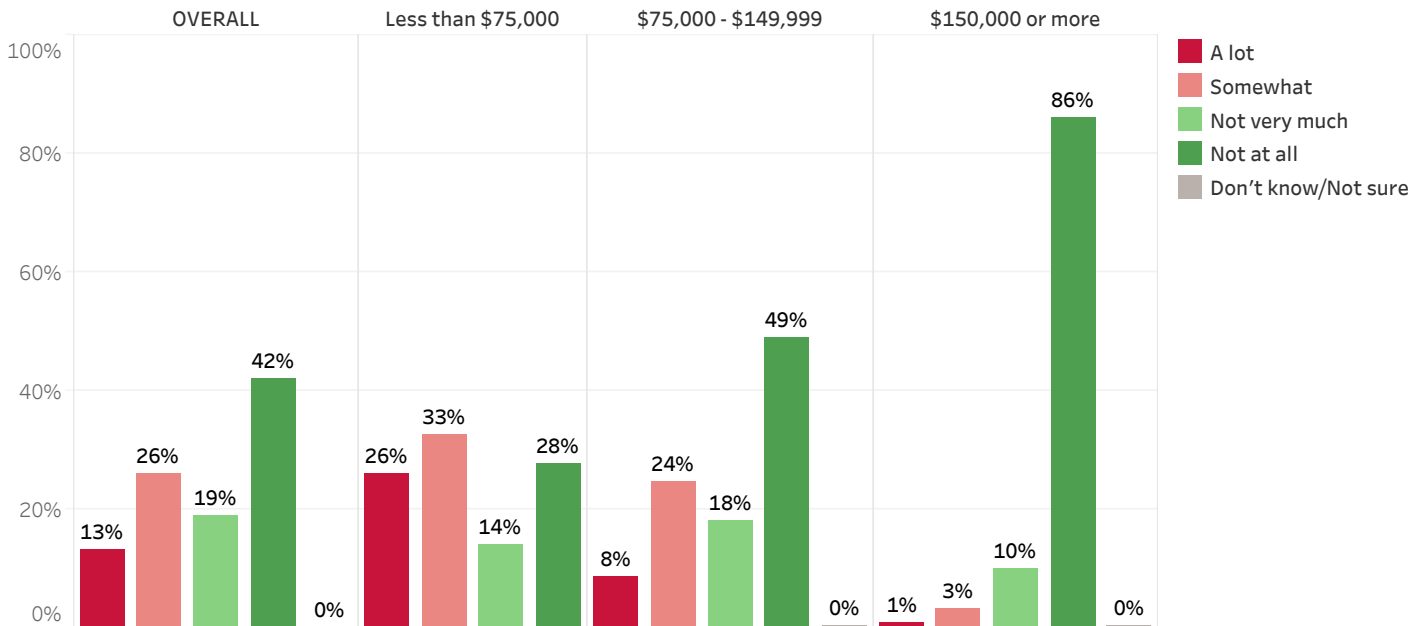


* We ask that this copyrighted information be referred to as *the Green Mountain State Poll*, a States of Opinion Project, conducted by the University of New Hampshire Survey Center.

Four in ten (39%) Vermont residents say that they have struggled a lot (13%) or somewhat (26%) in the past twelve months to afford basic necessities like food, clothing, and electricity. Nineteen percent say that they have not struggled very much to afford these things and 42% say they have not struggled at all.

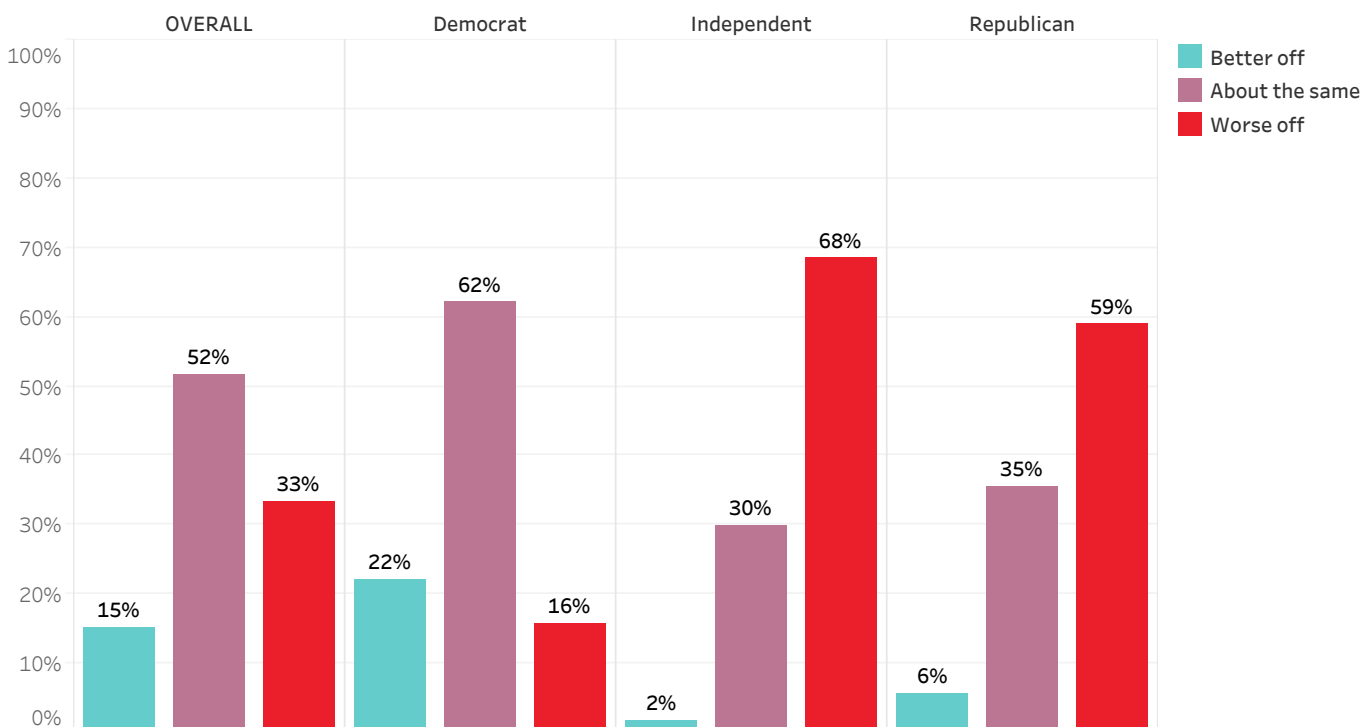
Among those with a household income below \$75,000, six in ten (59%) say that they have struggled a lot or somewhat to pay for basic necessities in the past twelve months, while the vast majority of those with a household income of \$150,000 or more (86%) say they have not struggled at all.

How Much Struggled to Afford Basic Necessities in Past 12 Months - by Household Income

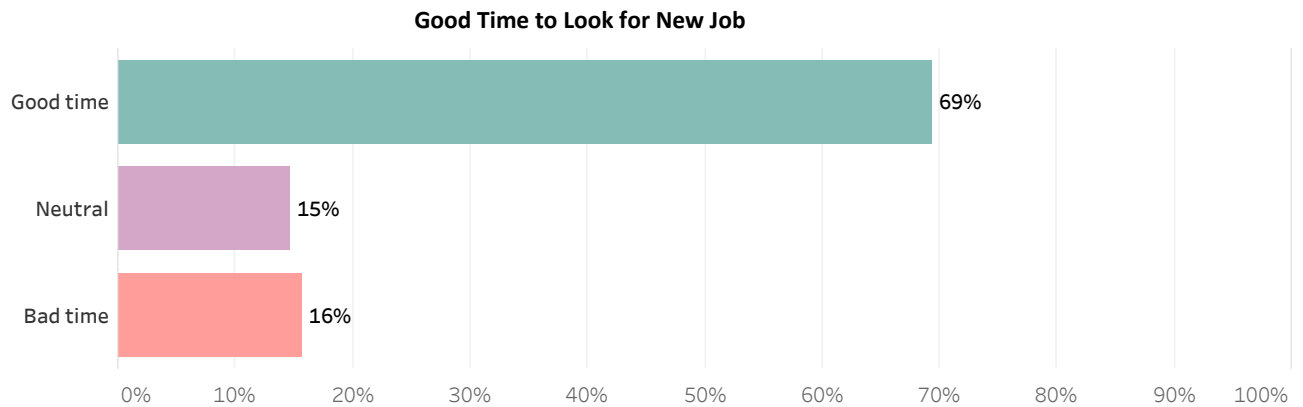


Looking ahead, only 15% of Vermonters expect their personal finances will be better a year from now, 33% anticipate being worse off, and 52% think their finances will be about the same as they are now. Independents (68%) and Republicans (59%) are far more likely than Democrats (16%) to expect to be worse off.

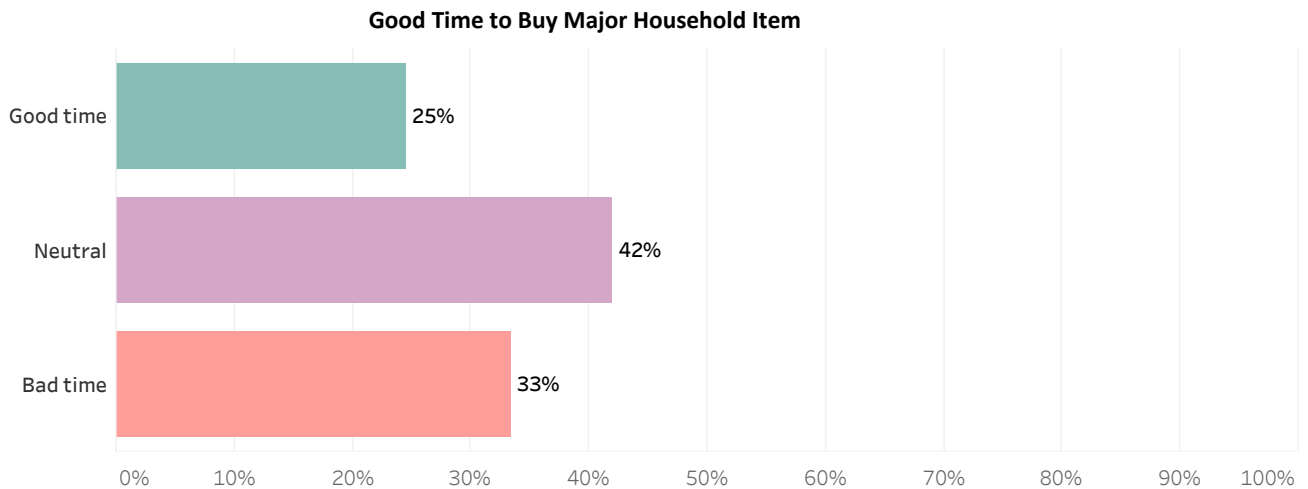
Household Financial Condition 12 Months From Now - by Party ID



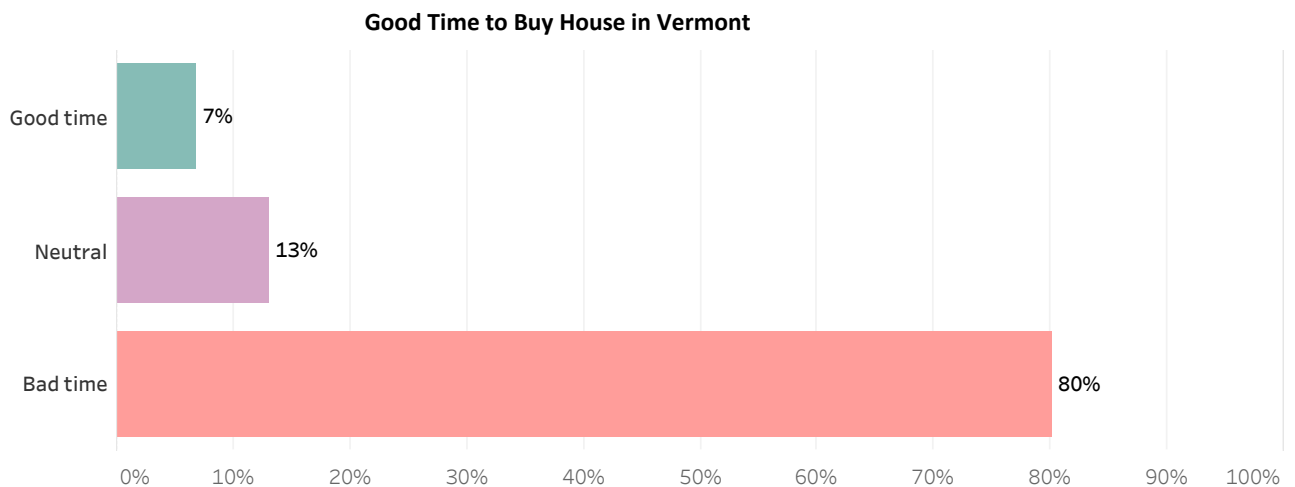
More than two-thirds (69%) of Vermont residents think that now is a good time to look for a new job in Vermont, 16% think it is a bad time, and 15% are neutral or are unsure. Respondents with a household income below \$75,000 are a good deal less likely to say it is a good time to look for a job.



Only 25% of Vermonters think now is a good time to buy major items for their home, 42% are neutral or think it depends on the person's finances, and 33% think it is a bad time. More than half (56%) of those with a household income below \$75,000 think now is a bad time to buy a major household item but only about one-fifth of those with larger household incomes feel that way.



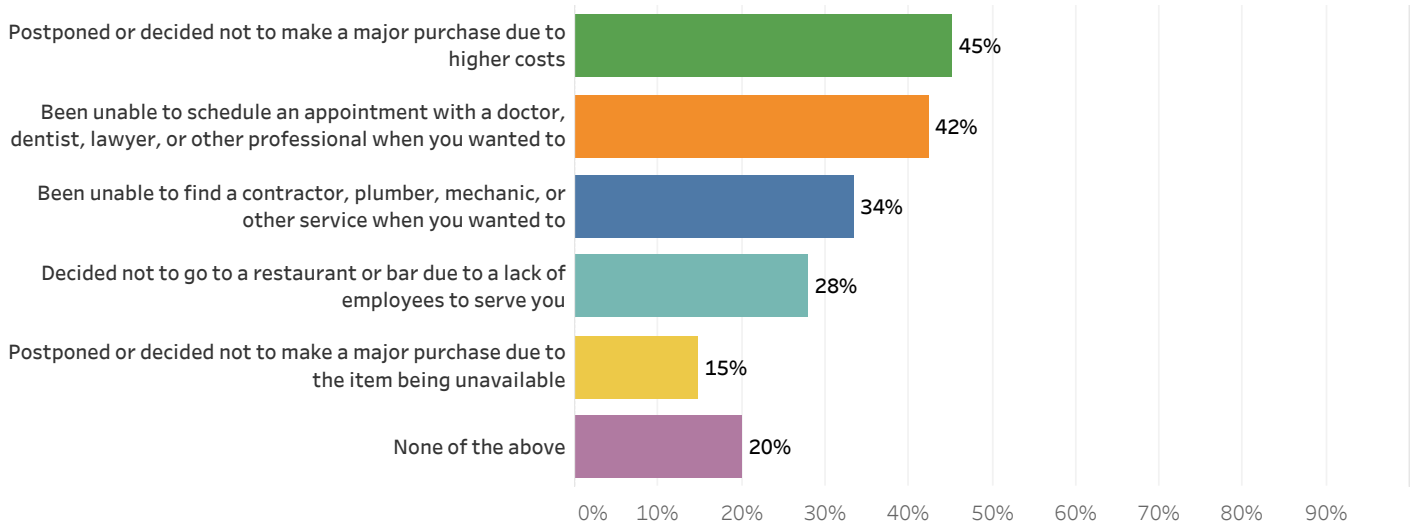
Four in five Vermonters (80%) think now is a bad time to buy a house in Vermont. Thirteen percent are neutral or think it depends while only 7% think it is a good time. Respondents with a household income between \$75,000 and \$149,999 and Democrats are less likely to say that now is a bad time to buy a house in Vermont.



Forty-five percent of Vermonters say that in the past twelve months they have postponed or decided not to make a major purchase due to higher costs and 42% have been unable to schedule an appointment with a doctor, dentist, lawyer or other professional when they wanted to. One-third (34%) have been unable to find a contractor, plumber, mechanic, or other service when they wanted to, 28% decided not to go to a restaurant or bar due to a lack of employees to serve them, and 15% postponed or decided not to make a major purchase due to the item being unavailable.

Respondents with household income below \$75,000 are more likely to say that they postponed or decided not to make a major purchase due to higher costs, while those with middling incomes are particularly likely to have decided not to go to a restaurant or bar due to a lack of employees. Majorities of those with household incomes of \$150,000 or more report having been unable to make a professional or service appointment.

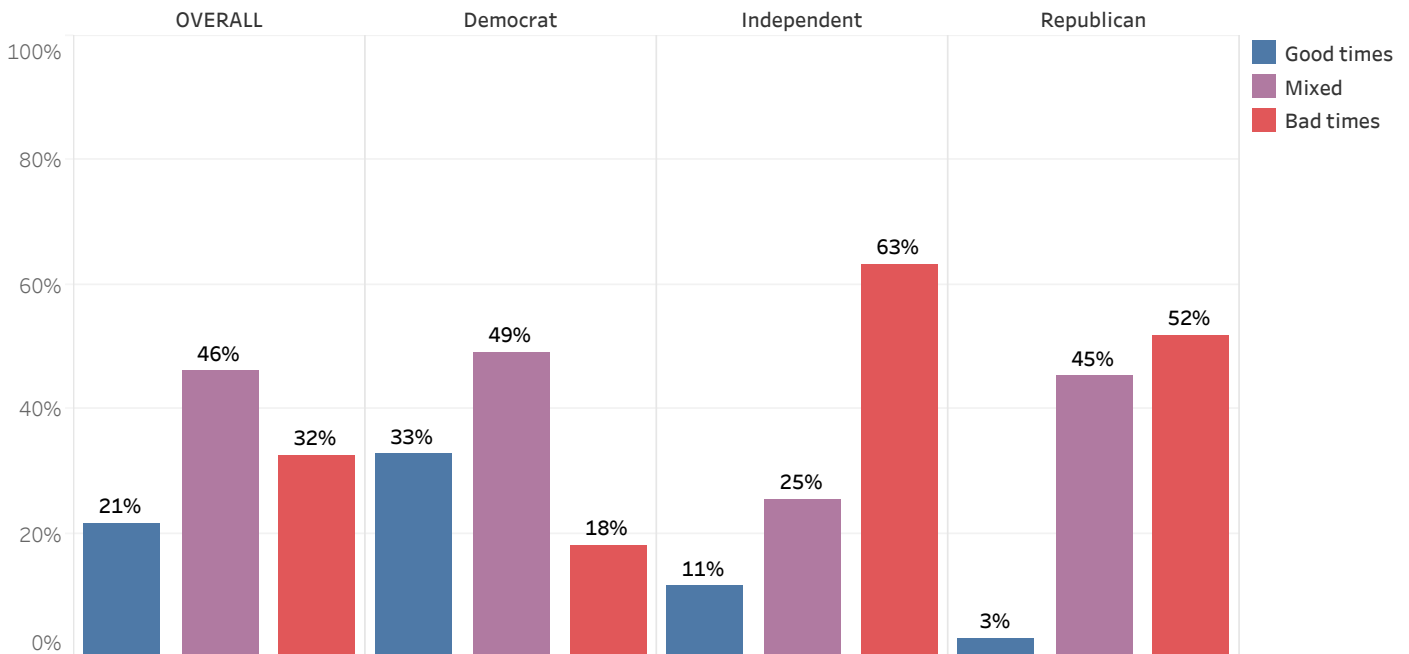
Economic Effects on Choices in Past 12 Months



VT Business Conditions

When asked how they expect Vermont businesses will do in the upcoming year, 21% of Vermonters think state businesses will enjoy good times financially, 46% anticipate mixed conditions, and 32% think they will experience bad times. Thirty-three percent of Vermont Democrats anticipate good business conditions in the state during the next twelve months, but majorities of Independents (63%) and Republicans (52%) expect bad times.

Business Conditions in Vermont During Next 12 Months - by Party ID

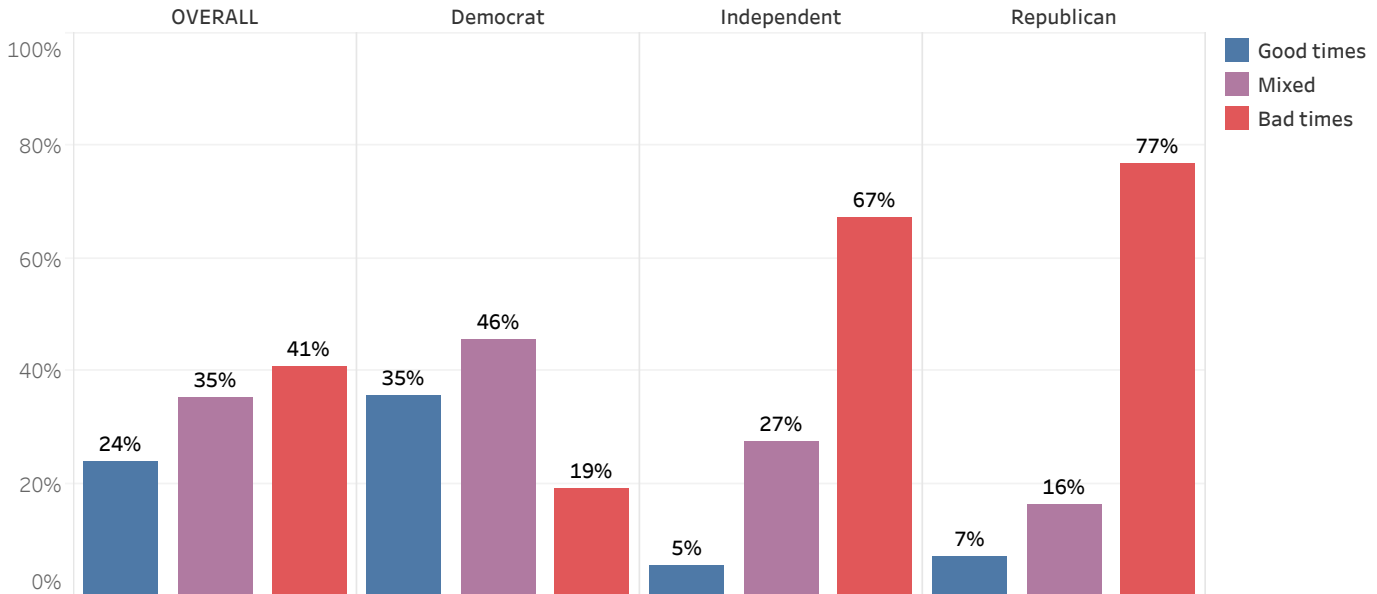


U.S. Business Conditions

Vermonters are slightly more pessimistic about the national economy than the state economy. Twenty-four percent of Vermont adults think businesses across the country will experience good times in the next twelve months, 35% think conditions will be mixed, and 41% anticipate businesses will have bad times.

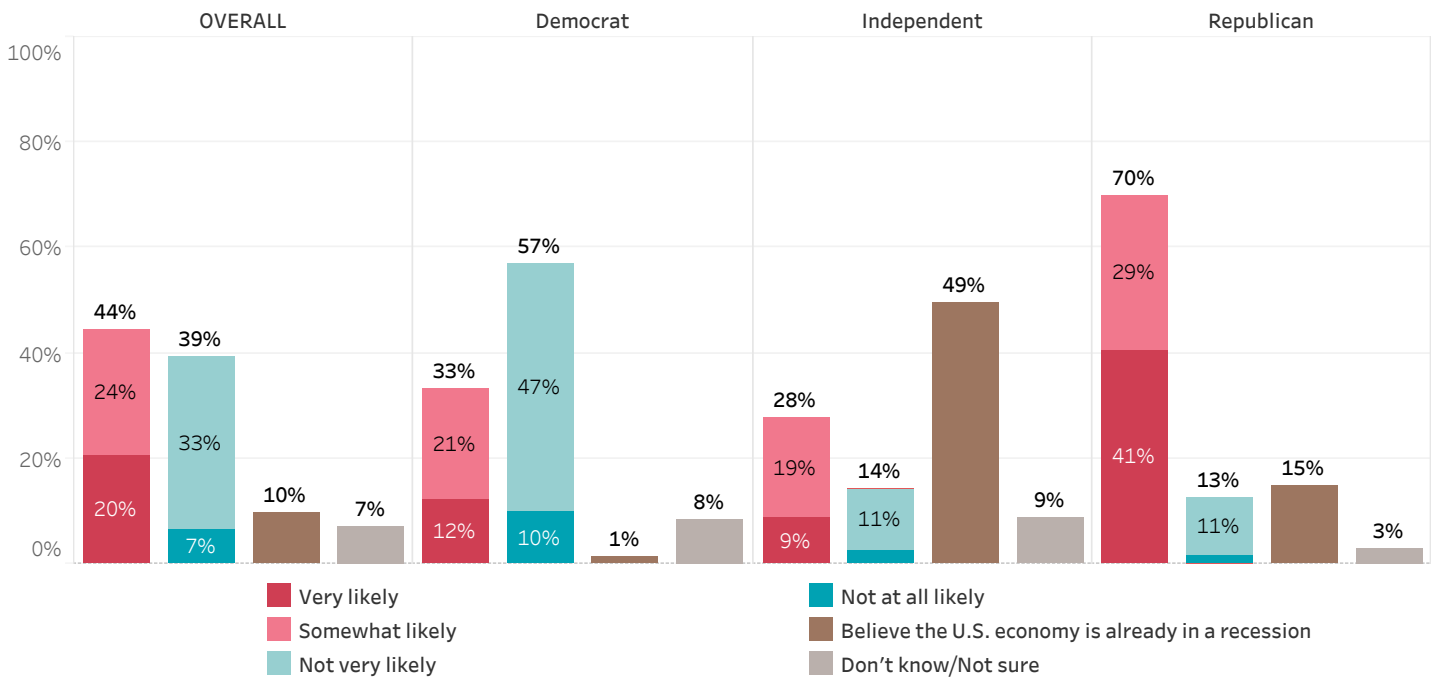
Seventy-seven percent of Republicans and 67% of Independents in Vermont feel that U.S. businesses will experience bad times over the next twelve months but only 19% of Democrats expect bad times.

Business Conditions in U.S. During Next 12 Months - by Party ID



A plurality of Vermonters (44%) think it is very (20%) or somewhat (24%) likely that the U.S. economy will enter a recession within the next twelve months, 10% think the economy is already in a recession, 39% think a recession is not very likely (33%) or not at all likely (7%), and 7% are unsure. Most Republicans (85%) and Independents (77%) think it is likely that the country will enter a recession in the next twelve months or is already in one, but only 34% of Democrats feel that way. Those with lower incomes are more than twice as likely than those with the highest incomes to feel the country is likely to enter a recession in the next twelve months or is already in one.

Likelihood of Recession Within 12 Months - by Party ID



Green Mountain State Poll Methodology

These findings are based on the latest Green Mountain State Poll, conducted by the University of New Hampshire Survey Center. Four hundred seventy-one (471) Green Mountain State Panel members completed the survey online between August 17 and August 21, 2023. The margin of sampling error for the survey is +/- 4.5 percent. These MSE's have not been adjusted for design effect. The response rate for the August 2023 Green Mountain State Poll is 17%. The design effect for the survey is 2.3%.

Data were weighted by respondent sex, age, education, and region of the state to targets from the most recent American Community Survey (ACS) conducted by the U.S. Census Bureau, as well as to 2020 election results in Vermont.

The Green Mountain State Panel is part of an effort by the University of New Hampshire Survey Center to investigate new ways of gathering and understanding the opinion of Vermont residents. Approximately 3,000 Vermont adults have been recruited from randomly-selected landline and cell phone numbers to participate in the panel. Panelists are then asked to participate in online surveys sponsored by the UNH Survey Center.

The number of respondents in each demographic below may not equal the number reported in cross-tabulation tables as some respondents choose not to answer some questions. Due to rounding, percentages may not sum to 100%.

For more information about the methodology used in the Green Mountain State Panel, contact Dr. Andrew Smith at (603) 862-2226 or by email at andrew.smith@unh.edu.

Green Mountain State Poll, August 2023 Demographics

		%	N
Gender of Respondent	Men	49%	219
	Women	51%	226
Age of Respondent	18 to 34	27%	126
	35 to 49	19%	88
	50 to 64	29%	136
	65 and older	26%	120
Level of Education	High school or less	33%	154
	Tech school/Some college	27%	126
	College graduate	24%	112
	Postgraduate work	17%	79
Region of State	Central Vermont	20%	92
	Chittenden County	27%	124
	Northern Counties	22%	104
	Southern Vermont	31%	147
Party ID	Democrat	60%	282
	Independent	9%	41
	Republican	31%	144
2020 Presidential Vote	Voted for Biden	67%	304
	Voted for Trump	31%	141
	Did not vote in 2020	3%	12
Household Income	Less than \$45,000	26%	104
	\$45,000 - \$74,999	19%	75
	\$75,000 - \$99,999	17%	69
	\$100,000 - \$149,999	19%	77
	\$150,000 or more	18%	72
Political Ideology	Socialist	17%	71
	Progressive	18%	76
	Liberal	19%	79
	Moderate	20%	84
	Conservative	24%	100
	Libertarian	3%	13

Household Financial Condition Compared to 12 Months Ago

Would you say that you and your family living there are better off or worse off financially than you were a year ago?

		Better off	About the same	Worse off	N
STATEWIDE	August 2023	19%	43%	38%	466
Party ID	Democrat	28%	52%	20%	282
	Independent	8%	41%	50%	41
	Republican	4%	25%	71%	140
Political Ideology	Socialist	31%	32%	38%	71
	Progressive	19%	73%	8%	76
	Liberal	35%	49%	17%	79
	Moderate	20%	57%	23%	84
	Conservative	3%	26%	71%	98
	Libertarian	4%	15%	81%	13
Age of Respondent	18 to 34	22%	41%	37%	126
	35 to 49	9%	33%	57%	85
	50 to 64	31%	44%	26%	136
	65 and older	9%	52%	39%	119
Gender of Respondent	Men	20%	34%	46%	219
	Women	19%	48%	33%	223
Level of Education	High school or less	20%	36%	44%	151
	Tech school/Some college	25%	35%	39%	124
	College graduate	9%	47%	44%	112
	Postgraduate work	20%	63%	16%	79
Region of State	Central Vermont	27%	46%	28%	92
	Chittenden County	10%	56%	34%	124
	Northern Counties	14%	30%	56%	104
	Southern Vermont	25%	39%	36%	142
Household Income	Less than \$45,000	10%	37%	53%	99
	\$45,000 - \$74,999	3%	52%	45%	75
	\$75,000 - \$99,999	56%	27%	17%	69
	\$100,000 - \$149,999	12%	47%	41%	77
	\$150,000 or more	31%	53%	16%	72
2020 Presidential Vote	Voted for Biden	27%	53%	20%	304
	Voted for Trump	3%	17%	80%	139
	Voted for other 2020 candidate	2%	83%	15%	12
	Did not vote in 2020	19%	68%	13%	9

How Much Struggled to Afford Basic Necessities in Past 12 Months

How much, if at all, would you say that you have struggled to afford basic necessities like food, clothing, and electricity over the past twelve months?

		<u>A lot</u>	<u>Somewhat</u>	<u>Not very much</u>	<u>Not at all</u>	<u>Don't know/Not sure</u>	<u>N</u>
STATEWIDE	August 2023	13%	26%	19%	42%	0%	470
Party ID	Democrat	9%	19%	16%	56%	0%	281
	Independent	30%	16%	14%	41%		41
	Republican	15%	43%	27%	15%		144
Political Ideology	Socialist	34%	21%	3%	42%		71
	Progressive	2%	5%	15%	78%		75
	Liberal	0%	20%	9%	71%	0%	79
	Moderate	4%	24%	31%	41%	0%	84
	Conservative	17%	46%	29%	8%		100
	Libertarian	8%	42%	38%	12%		13
Age of Respondent	18 to 34	10%	27%	7%	55%		126
	35 to 49	39%	18%	13%	30%		88
	50 to 64	7%	22%	32%	39%		136
	65 and older	5%	35%	21%	39%	0%	120
Gender of Respondent	Men	19%	27%	16%	38%	0%	218
	Women	9%	25%	23%	43%	0%	225
Level of Education	High school or less	20%	28%	28%	24%		154
	Tech school/Some college	17%	34%	12%	37%		126
	College graduate	5%	24%	13%	58%		112
	Postgraduate work	6%	12%	19%	63%	0%	79
Region of State	Central Vermont	5%	36%	22%	37%		92
	Chittenden County	14%	17%	21%	48%		124
	Northern Counties	27%	29%	9%	34%	0%	104
	Southern Vermont	8%	25%	22%	45%	0%	146
Household Income	Less than \$45,000	37%	35%	15%	13%		104
	\$45,000 - \$74,999	10%	29%	13%	48%		75
	\$75,000 - \$99,999	2%	33%	6%	59%		69
	\$100,000 - \$149,999	14%	17%	29%	40%	0%	77
	\$150,000 or more	1%	3%	10%	86%	0%	72
2020 Presidential Vote	Voted for Biden	8%	19%	17%	56%	0%	303
	Voted for Trump	23%	43%	25%	9%	0%	141
	Voted for other 2020 candidate	10%	9%	3%	77%		12
	Did not vote in 2020	33%	0%	30%	37%		12

Household Financial Condition 12 Months From Now

Now, looking ahead, do you think that a year from now you and your family will be better off financially, worse off, or just about the same?

		Better off	About the same	Worse off	N
STATEWIDE	August 2023	15%	52%	33%	452
Party ID	Democrat	22%	62%	16%	274
	Independent	2%	30%	68%	37
	Republican	6%	35%	59%	138
Political Ideology	Socialist	26%	46%	29%	67
	Progressive	23%	57%	19%	75
	Liberal	15%	71%	14%	76
	Moderate	26%	56%	18%	82
	Conservative	0%	40%	60%	98
	Libertarian	5%	33%	63%	13
Age of Respondent	18 to 34	23%	33%	44%	123
	35 to 49	13%	47%	40%	82
	50 to 64	19%	64%	17%	132
	65 and older	4%	60%	36%	113
Gender of Respondent	Men	19%	35%	47%	215
	Women	11%	67%	22%	214
Level of Education	High school or less	10%	45%	45%	151
	Tech school/Some college	17%	55%	28%	117
	College graduate	16%	48%	36%	108
	Postgraduate work	23%	64%	14%	76
Region of State	Central Vermont	6%	74%	21%	92
	Chittenden County	23%	55%	22%	122
	Northern Counties	14%	22%	64%	100
	Southern Vermont	16%	54%	30%	136
Household Income	Less than \$45,000	10%	30%	60%	96
	\$45,000 - \$74,999	19%	40%	41%	73
	\$75,000 - \$99,999	11%	84%	5%	67
	\$100,000 - \$149,999	6%	65%	30%	74
	\$150,000 or more	46%	43%	10%	69
2020 Presidential Vote	Voted for Biden	22%	62%	15%	295
	Voted for Trump	1%	31%	69%	136
	Voted for other 2020 candidate	1%	20%	79%	12
	Did not vote in 2020	28%	45%	27%	6

Good Time to Buy Major Household Item

Generally speaking, do you think now is a good time or bad time for people to do the following things in Vermont? Buy a major household item (i.e. furniture, a stove, a television, etc.)

		<u>Good time</u>	<u>Neutral</u>	<u>Bad time</u>	<u>N</u>
STATEWIDE	August 2023	25%	42%	33%	443
Party ID	Democrat	30%	46%	24%	266
	Independent	5%	32%	63%	41
	Republican	19%	37%	44%	132
Political Ideology	Socialist	21%	35%	44%	70
	Progressive	23%	49%	28%	72
	Liberal	36%	45%	20%	72
	Moderate	39%	47%	14%	80
	Conservative	21%	28%	51%	91
	Libertarian	2%	50%	48%	13
Age of Respondent	18 to 34	14%	42%	44%	121
	35 to 49	9%	29%	63%	82
	50 to 64	49%	37%	14%	125
	65 and older	20%	56%	23%	113
Gender of Respondent	Men	19%	45%	36%	212
	Women	32%	40%	28%	204
Level of Education	High school or less	41%	24%	35%	143
	Tech school/Some college	20%	49%	32%	121
	College graduate	7%	55%	37%	105
	Postgraduate work	25%	47%	28%	74
Region of State	Central Vermont	12%	64%	24%	92
	Chittenden County	17%	42%	41%	114
	Northern Counties	20%	39%	41%	103
	Southern Vermont	44%	29%	28%	132
Household Income	Less than \$45,000	21%	16%	63%	100
	\$45,000 - \$74,999	9%	47%	44%	68
	\$75,000 - \$99,999	33%	62%	6%	66
	\$100,000 - \$149,999	15%	51%	34%	76
	\$150,000 or more	36%	48%	17%	71
2020 Presidential Vote	Voted for Biden	31%	47%	22%	287
	Voted for Trump	12%	34%	53%	132
	Voted for other 2020 candidate	1%	10%	89%	12
	Did not vote in 2020	18%	48%	34%	9

Good Time to Buy House in Vermont

Generally speaking, do you think now is a good time or bad time for people to do the following things in Vermont? Buy a home

		Good time	Neutral	Bad time	N
STATEWIDE	August 2023	7%	13%	80%	467
Party ID	Democrat	8%	16%	76%	277
	Independent		2%	98%	41
	Republican	5%	11%	84%	144
Political Ideology	Socialist	0%	7%	93%	71
	Progressive	1%	16%	83%	75
	Liberal	24%	19%	57%	78
	Moderate	4%	27%	69%	83
	Conservative	5%	3%	92%	100
	Libertarian	2%	17%	81%	13
Age of Respondent	18 to 34	1%		99%	126
	35 to 49	4%	7%	89%	88
	50 to 64	14%	14%	72%	134
	65 and older	7%	30%	63%	118
Gender of Respondent	Men	4%	16%	80%	217
	Women	10%	8%	82%	223
Level of Education	High school or less	15%	12%	73%	154
	Tech school/Some college	2%	15%	83%	125
	College graduate	1%	12%	87%	111
	Postgraduate work	6%	14%	80%	77
Region of State	Central Vermont	6%	18%	75%	92
	Chittenden County	1%	12%	87%	124
	Northern Counties	2%	12%	86%	104
	Southern Vermont	15%	12%	73%	145
Household Income	Less than \$45,000	5%	15%	81%	103
	\$45,000 - \$74,999	3%	8%	89%	74
	\$75,000 - \$99,999	24%	20%	55%	69
	\$100,000 - \$149,999	1%	12%	87%	77
	\$150,000 or more	1%	18%	81%	72
2020 Presidential Vote	Voted for Biden	7%	18%	75%	300
	Voted for Trump	3%	5%	92%	141
	Voted for other 2020 candidate	1%	1%	99%	12
	Did not vote in 2020	38%	7%	55%	12

Good Time to Look for New Job

Generally speaking, do you think now is a good time or bad time for people to do the following things in Vermont? Look for a new job

		Good time	Neutral	Bad time	N
STATEWIDE	August 2023	69%	15%	16%	439
Party ID	Democrat	76%	12%	12%	274
	Independent	25%	45%	30%	41
	Republican	72%	8%	20%	120
Political Ideology	Socialist	54%	15%	31%	66
	Progressive	73%	22%	6%	74
	Liberal	78%	12%	10%	79
	Moderate	82%	15%	3%	83
	Conservative	72%	8%	20%	81
	Libertarian	24%	31%	45%	12
Age of Respondent	18 to 34	67%	13%	20%	116
	35 to 49	36%	24%	39%	79
	50 to 64	88%	9%	3%	134
	65 and older	72%	16%	11%	109
Gender of Respondent	Men	63%	16%	21%	199
	Women	74%	14%	12%	217
Level of Education	High school or less	66%	12%	22%	142
	Tech school/Some college	74%	20%	5%	108
	College graduate	69%	13%	18%	111
	Postgraduate work	70%	13%	17%	78
Region of State	Central Vermont	84%	8%	8%	92
	Chittenden County	72%	7%	21%	110
	Northern Counties	53%	27%	20%	92
	Southern Vermont	70%	16%	14%	141
Household Income	Less than \$45,000	44%	23%	32%	96
	\$45,000 - \$74,999	62%	16%	22%	74
	\$75,000 - \$99,999	81%	6%	12%	65
	\$100,000 - \$149,999	70%	20%	10%	60
	\$150,000 or more	82%	11%	7%	72
2020 Presidential Vote	Voted for Biden	76%	13%	12%	296
	Voted for Trump	62%	9%	29%	121
	Voted for other 2020 candidate	18%	81%	1%	12
	Did not vote in 2020	28%	72%		9

Economic Effects on Choices in Past 12 Months

Which of the following, if any, have happened to you in the past twelve months? (Please select all that apply)

		<u>Been unable to find a contractor, plumber, mechanic, or other service when you wanted to</u>	<u>Been unable to schedule an appointment with a doctor, dentist, lawyer, or other professional when you wanted to</u>	<u>Decided not to go to a restaurant or bar due to a lack of employees to serve you</u>
STATEWIDE	August 2023	34%	42%	28%
Party ID	Democrat	31%	45%	19%
	Independent	19%	25%	12%
	Republican	43%	43%	51%
Political Ideology	Socialist	13%	66%	2%
	Progressive	32%	49%	11%
	Liberal	29%	25%	20%
	Moderate	49%	35%	36%
	Conservative	46%	46%	63%
	Libertarian	46%	49%	18%
Age of Respondent	18 to 34	19%	50%	16%
	35 to 49	23%	49%	25%
	50 to 64	49%	34%	33%
	65 and older	39%	40%	38%
Gender of Respondent	Men	23%	39%	23%
	Women	45%	45%	36%
Level of Education	High school or less	29%	32%	33%
	Tech school/Some college	28%	33%	28%
	College graduate	45%	55%	26%
	Postgraduate work	34%	58%	22%
Region of State	Central Vermont	35%	38%	41%
	Chittenden County	33%	64%	20%
	Northern Counties	23%	29%	29%
	Southern Vermont	41%	37%	26%
Household Income	Less than \$45,000	29%	35%	22%
	\$45,000 - \$74,999	12%	48%	27%
	\$75,000 - \$99,999	14%	23%	17%
	\$100,000 - \$149,999	45%	38%	61%
	\$150,000 or more	57%	67%	14%
2020 Presidential Vote	Voted for Biden	32%	46%	19%
	Voted for Trump	40%	40%	48%
	Voted for other 2020 candidate	7%	10%	7%
	Did not vote in 2020	24%	24%	26%

Economic Effects on Choices in Past 12 Months

Which of the following, if any, have happened to you in the past twelve months? (Please select all that apply)

		<u>Postponed or decided not to make a major purchase due to higher costs</u>	<u>Postponed or decided not to make a major purchase due to the item being unavailable</u>	<u>None of the above</u>	<u>N</u>
STATEWIDE	August 2023	45%	15%	20%	471
Party ID	Democrat	38%	16%	25%	281
	Independent	47%	8%	36%	41
	Republican	59%	16%	5%	144
Political Ideology	Socialist	76%	25%	8%	71
	Progressive	16%	16%	35%	76
	Liberal	26%	12%	44%	79
	Moderate	27%	7%	22%	84
	Conservative	57%	15%	4%	100
	Libertarian	84%	53%	3%	13
Age of Respondent	18 to 34	61%	28%	16%	126
	35 to 49	68%	17%	13%	88
	50 to 64	30%	8%	29%	136
	65 and older	31%	8%	20%	120
Gender of Respondent	Men	54%	14%	16%	218
	Women	41%	17%	22%	226
Level of Education	High school or less	32%		28%	154
	Tech school/Some college	68%	20%	15%	126
	College graduate	43%	31%	18%	112
	Postgraduate work	38%	13%	16%	79
Region of State	Central Vermont	46%	12%	15%	92
	Chittenden County	35%	17%	17%	124
	Northern Counties	68%	24%	19%	104
	Southern Vermont	38%	8%	25%	147
Household Income	Less than \$45,000	62%	13%	25%	104
	\$45,000 - \$74,999	45%	4%	19%	75
	\$75,000 - \$99,999	31%	8%	41%	69
	\$100,000 - \$149,999	39%	14%	12%	77
	\$150,000 or more	42%	45%	12%	72
2020 Presidential Vote	Voted for Biden	36%	15%	25%	303
	Voted for Trump	68%	17%	4%	141
	Voted for other 2020 candidate	14%	3%	84%	12
	Did not vote in 2020	50%		24%	12

Business Conditions in Vermont During Next 12 Months

What about business conditions in Vermont as a whole, do you think that during the next twelve months we'll have good times financially, or bad times?

		<u>Good times</u>	<u>Mixed</u>	<u>Bad times</u>	<u>N</u>
STATEWIDE	August 2023	21%	46%	32%	464
Party ID	Democrat	33%	49%	18%	275
	Independent	11%	25%	63%	41
	Republican	3%	45%	52%	144
Political Ideology	Socialist	18%	55%	26%	71
	Progressive	18%	52%	30%	76
	Liberal	49%	27%	24%	79
	Moderate	32%	60%	8%	84
	Conservative	0%	48%	52%	99
	Libertarian	1%	31%	68%	13
Age of Respondent	18 to 34	4%	46%	50%	121
	35 to 49	24%	27%	49%	88
	50 to 64	32%	52%	16%	135
	65 and older	25%	54%	21%	119
Gender of Respondent	Men	16%	41%	43%	218
	Women	26%	49%	25%	220
Level of Education	High school or less	21%	40%	38%	154
	Tech school/Some college	22%	49%	28%	126
	College graduate	18%	37%	45%	111
	Postgraduate work	25%	66%	8%	73
Region of State	Central Vermont	27%	51%	21%	92
	Chittenden County	24%	40%	35%	119
	Northern Counties	5%	43%	52%	104
	Southern Vermont	27%	48%	24%	146
Household Income	Less than \$45,000	12%	33%	56%	104
	\$45,000 - \$74,999	11%	57%	32%	75
	\$75,000 - \$99,999	46%	47%	7%	69
	\$100,000 - \$149,999	29%	42%	29%	77
	\$150,000 or more	22%	51%	27%	72
2020 Presidential Vote	Voted for Biden	32%	51%	17%	297
	Voted for Trump	0%	38%	62%	141
	Voted for other 2020 candidate	2%	9%	89%	12
	Did not vote in 2020	38%	52%	10%	12

Business Conditions in U.S. During Next 12 Months

Now turning to business conditions in the country as a whole, do you think that during the next twelve months we'll have good times financially or bad times?

		<u>Good times</u>	<u>Mixed</u>	<u>Bad times</u>	<u>N</u>
STATEWIDE	August 2023	24%	35%	41%	465
Party ID	Democrat	35%	46%	19%	279
	Independent	5%	27%	67%	41
	Republican	7%	16%	77%	141
Political Ideology	Socialist	23%	36%	41%	71
	Progressive	21%	64%	14%	76
	Liberal	53%	27%	20%	78
	Moderate	38%	51%	11%	83
	Conservative	2%	14%	83%	100
	Libertarian	1%	12%	87%	13
Age of Respondent	18 to 34	18%	28%	54%	126
	35 to 49	9%	38%	53%	84
	50 to 64	33%	38%	29%	136
	65 and older	30%	39%	32%	118
Gender of Respondent	Men	26%	27%	46%	218
	Women	21%	40%	39%	221
Level of Education	High school or less	28%	19%	53%	151
	Tech school/Some college	18%	47%	35%	126
	College graduate	20%	35%	45%	110
	Postgraduate work	31%	48%	21%	78
Region of State	Central Vermont	31%	38%	31%	92
	Chittenden County	24%	45%	31%	124
	Northern Counties	19%	23%	58%	104
	Southern Vermont	23%	33%	43%	142
Household Income	Less than \$45,000	10%	27%	63%	101
	\$45,000 - \$74,999	19%	35%	46%	75
	\$75,000 - \$99,999	43%	44%	12%	69
	\$100,000 - \$149,999	26%	31%	42%	76
	\$150,000 or more	45%	43%	13%	72
2020 Presidential Vote	Voted for Biden	36%	45%	19%	301
	Voted for Trump	1%	13%	86%	140
	Voted for other 2020 candidate	2%	9%	89%	12
	Did not vote in 2020		89%	11%	9

Likelihood of Recession Within 12 Months

How likely do you think it is that the United States economy will enter into a recession within the next twelve months?

		<u>Very likely</u>	<u>Somewhat likely</u>	<u>Not very likely</u>	<u>Not at all likely</u>	<u>Believe the U.S. economy is already in a recession</u>	<u>Don't know/Not sure</u>	<u>N</u>
STATEWIDE	August 2023	20%	24%	33%	7%	10%	7%	471
Party ID	Democrat	12%	21%	47%	10%	1%	8%	282
	Independent	9%	19%	11%	3%	49%	9%	41
	Republican	41%	29%	11%	1%	15%	3%	144
Political Ideology	Socialist	29%	26%	23%	16%	4%	2%	71
	Progressive	1%	18%	54%	3%	12%	12%	76
	Liberal	13%	9%	67%	1%	1%	8%	79
	Moderate	8%	28%	37%	16%		11%	84
	Conservative	38%	30%	10%		21%	1%	100
	Libertarian	66%	32%	1%		1%		13
Age of Respondent	18 to 34	33%	17%	25%	9%	12%	5%	126
	35 to 49	32%	29%	15%	0%	14%	9%	88
	50 to 64	12%	22%	41%	9%	12%	3%	136
	65 and older	9%	28%	44%	6%	2%	11%	120
Gender of Respondent	Men	24%	19%	32%	8%	11%	5%	219
	Women	18%	28%	32%	6%	9%	7%	226
Level of Education	High school or less	19%	19%	27%	6%	23%	6%	154
	Tech school/Some college	26%	29%	28%	11%	2%	4%	126
	College graduate	26%	21%	39%	3%	6%	5%	112
	Postgraduate work	8%	29%	41%	6%	1%	16%	79
Region of State	Central Vermont	14%	26%	43%	13%	1%	4%	92
	Chittenden County	20%	27%	38%	3%	1%	12%	124
	Northern Counties	28%	14%	16%	12%	25%	7%	104
	Southern Vermont	20%	26%	34%	2%	13%	5%	147
Household Income	Less than \$45,000	34%	26%	8%	1%	20%	11%	104
	\$45,000 - \$74,999	16%	33%	33%	2%	5%	11%	75
	\$75,000 - \$99,999	3%	23%	65%	2%	1%	6%	69
	\$100,000 - \$149,999	26%	31%	22%	16%	1%	4%	77
	\$150,000 or more	12%	11%	54%	17%	4%	1%	72
2020 Presidential Vote	Voted for Biden	12%	22%	48%	10%	0%	9%	304
	Voted for Trump	42%	27%	5%	1%	23%	2%	141
	Voted for other 2020 candidate	9%	11%	3%		76%	2%	12
	Did not vote in 2020	7%	38%			23%	32%	12