

# The Pine Tree State Poll

August 28, 2023

## REFERENDA AHEAD: MOST MAINERS LACK UNDERSTANDING OF QUESTIONS BUT MOST STILL PLAN TO VOTE

By: Sean P. McKinley, M.A.  
Zachary S. Azem, M.A.  
Andrew E. Smith, Ph.D.

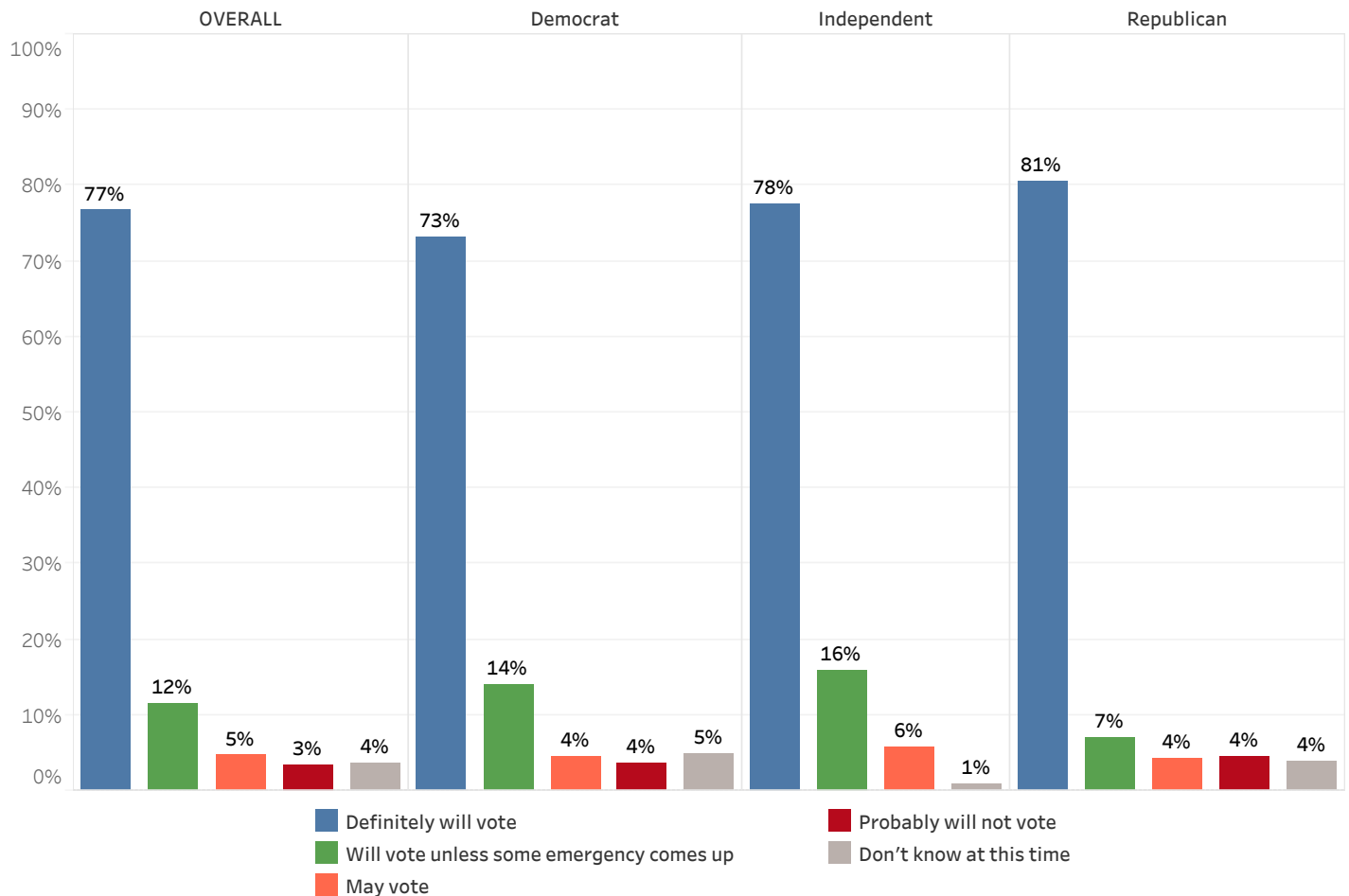
andrew.smith@unh.edu  
603-862-2226  
cola.unh.edu/unh-survey-center

DURHAM, NH - Most Mainers say that they plan to vote in the November Referendum election in Maine, but few Mainers say they have heard much about the questions on the ballot or understand them particularly well. Mainers say they have heard the most about and best understand Question 3 regarding the Pine Tree Power Company. Governor Janet Mills is still rated positively, but her approval ratings are down since the spring. The most important problems facing Maine are housing and the cost of living.

### 2023 Maine Referendum Election

More than three-quarters (77%) of Maine residents say that they will definitely vote in the 2023 Maine Referendum election. Twelve percent say they will vote unless some emergency comes up, 5% say they may vote, 3% say they probably will not vote, and 4% don't know at this time. Republicans (81%) and Independents (78%) are slightly more likely than Democrats (73%) to say that they will definitely vote.

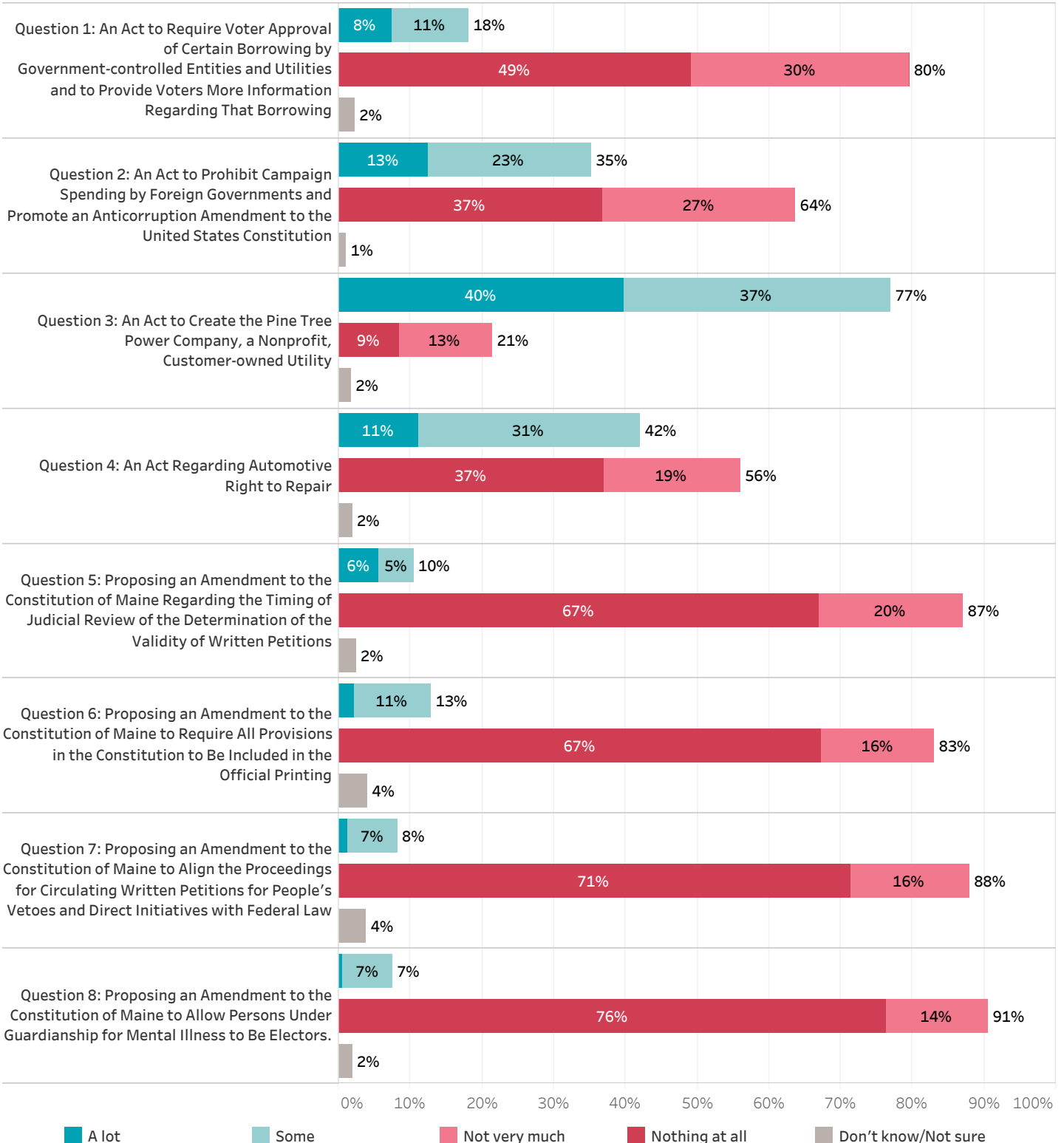
### Likelihood of Voting in 2023 Maine Referendum Election - by Party ID



\* We ask that this copyrighted information be referred to as *the Pine Tree State Poll*, a States of Opinion Project, conducted by the University of New Hampshire Survey Center.

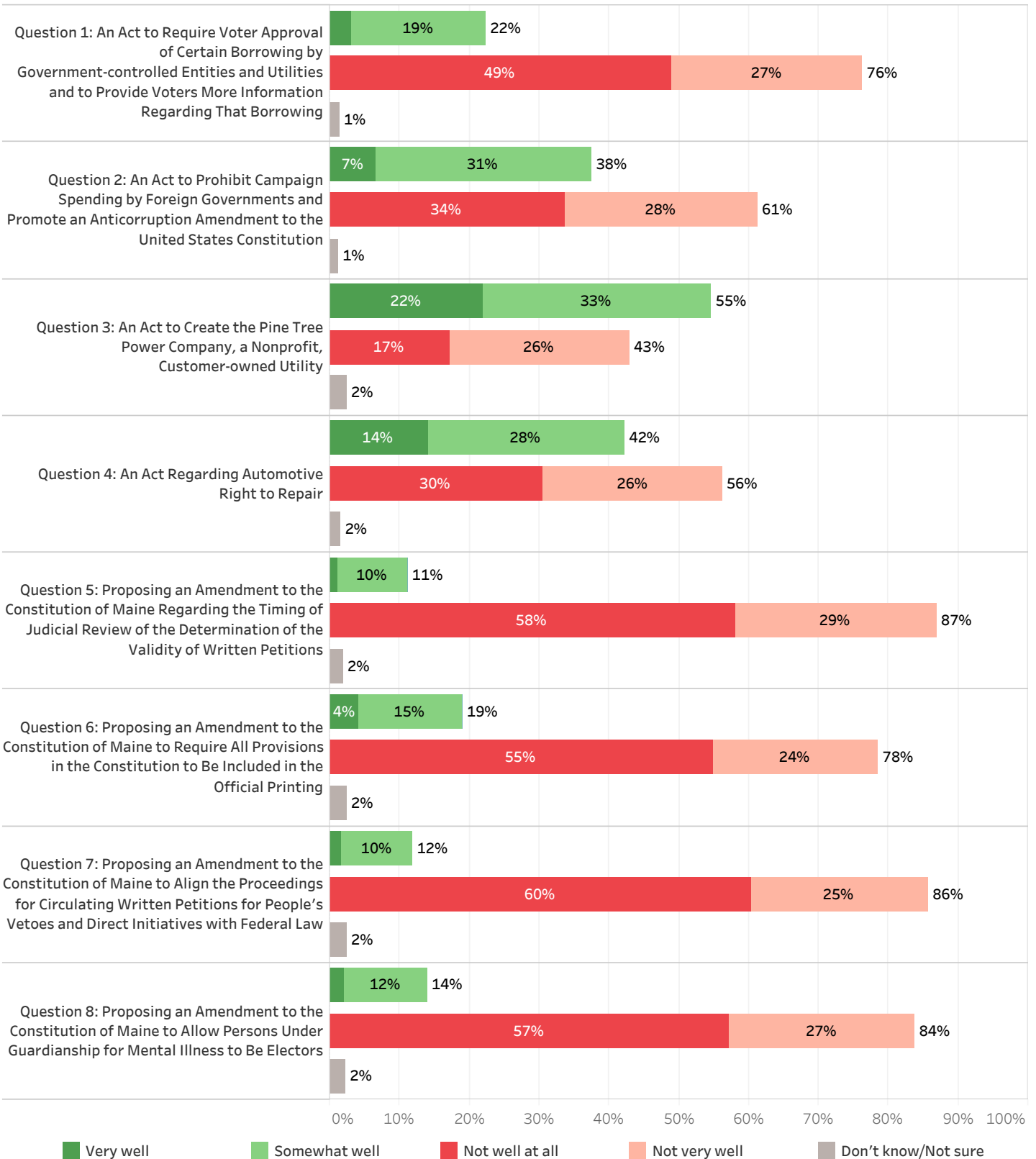
Despite most Maine residents saying that they plan to vote in the 2023 Referendum election in November, few Mainers say that they have heard much about most of the questions on the ballot. More than three-quarters (77%) say they have heard a lot (40%) or some (37%) about Question 3: An act to create the Pine Tree Power Company, a nonprofit, customer-owned utility, while 42% have heard a lot or some about Question 4: An act regarding automotive right to repair, and 35% have heard a lot or some about Question 2: An act to prohibit campaign spending by foreign governments and promote an anticorruption amendment to the United States Constitution. Less than one-fifth of respondents say that they have heard a lot or some about any of the other five questions which will appear on the ballot.

### How Much Heard or Seen About 2023 Referendum Questions



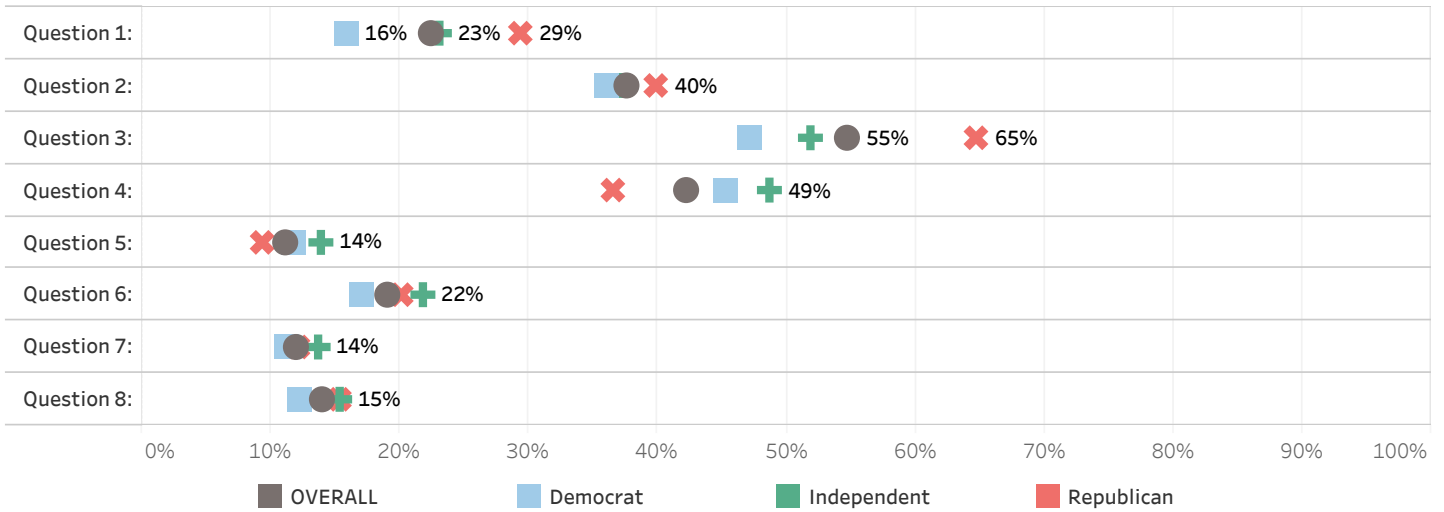
Many Mainers indicate that they do not have a thorough understanding of many of these questions. Despite more than three-quarters (77%) having heard a lot or some about Question 3, only 55% say that they understand the question very (22%) or somewhat (33%) well. Forty-two percent say they understand Question 4 very or somewhat well, and 38% say they understand Question 2 very or somewhat well. Less than a quarter say that they understand Question 1 (22%), Question 6 (19%), Question 8 (14%), Question 7 (12%), or Question 5 (11%) very or somewhat well.

### How Well Understand 2023 Referendum Questions



Republicans are more likely than Democrats to say they understand Question 3 and Question 1 very or somewhat well, while Democrats and Independents are slightly more likely to say that they understand Question 4 very or somewhat well.

**Understand 2023 Referendum Questions Very or Somewhat Well - by Party ID**

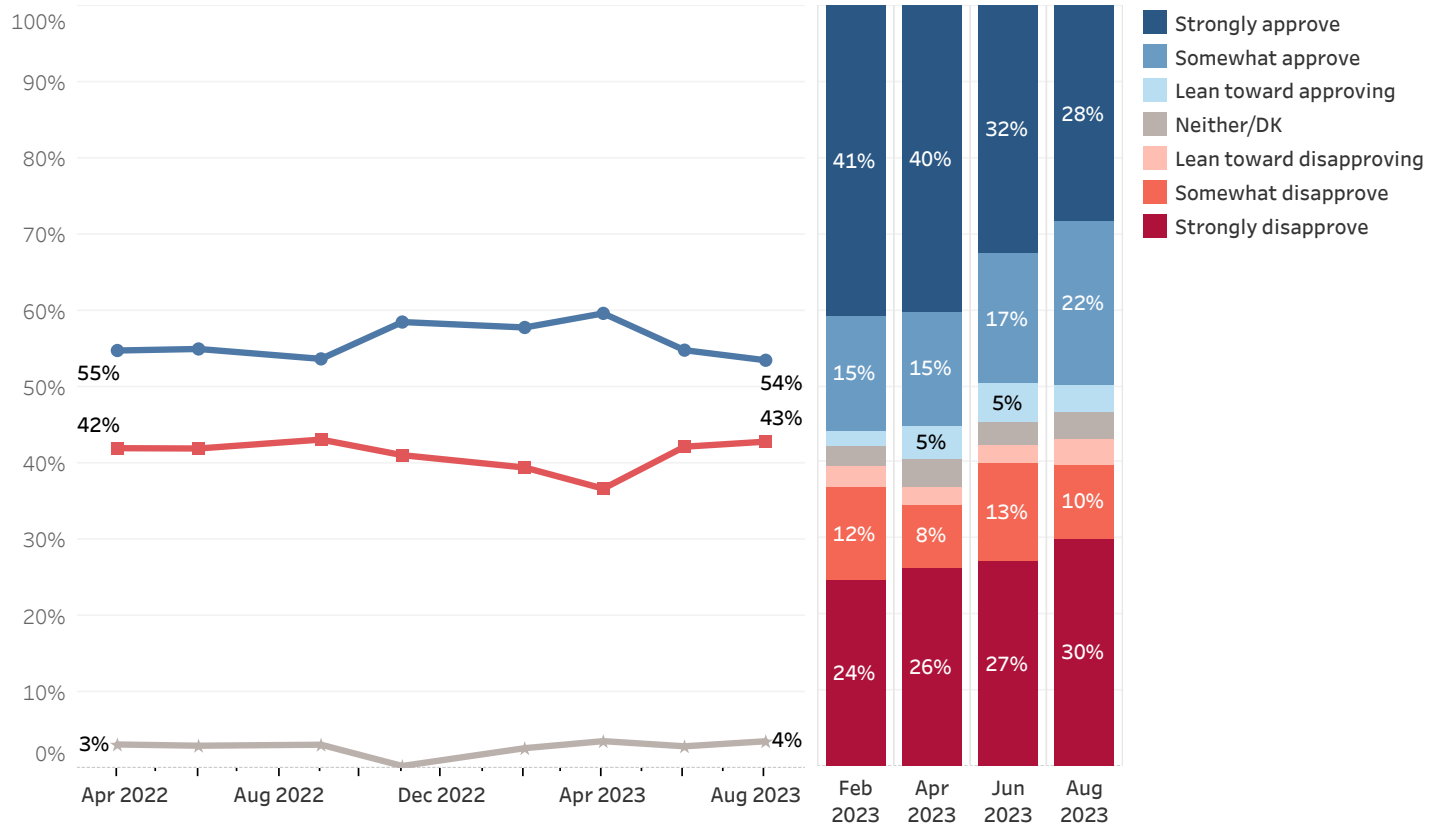


**Gubernatorial Approval**

Governor Janet Mills continues to be a popular governor among Maine residents. Currently, 54% of Maine residents approve of Governor Mills' job performance, 43% disapprove, and 4% neither approve nor disapprove or don't know. Mills' net approval rating (the percentage who approve minus the percentage who disapprove) is +11, largely unchanged since June (+13) but down significantly since April (+24).

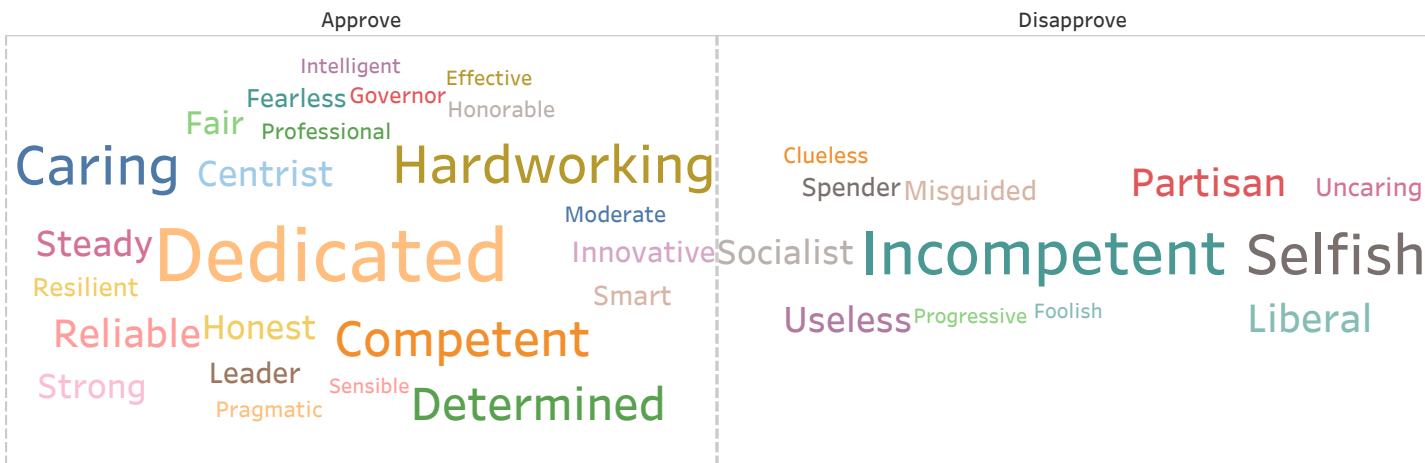
Ninety-five percent of Democrats and 53% of Independents approve of Mills' performance as governor, but only 9% of Republicans approve.

**Approval of Governor Mills' Job Performance**



Respondents were asked what one word they would use to describe Governor Mills. Those who approve of Mills' performance as governor most use often the words "dedicated," "caring," "hardworking," "competent," and "determined." Those who disapprove of Mills' performance most often mention the words "incompetent," "selfish," "liberal," "partisan," and "useless."

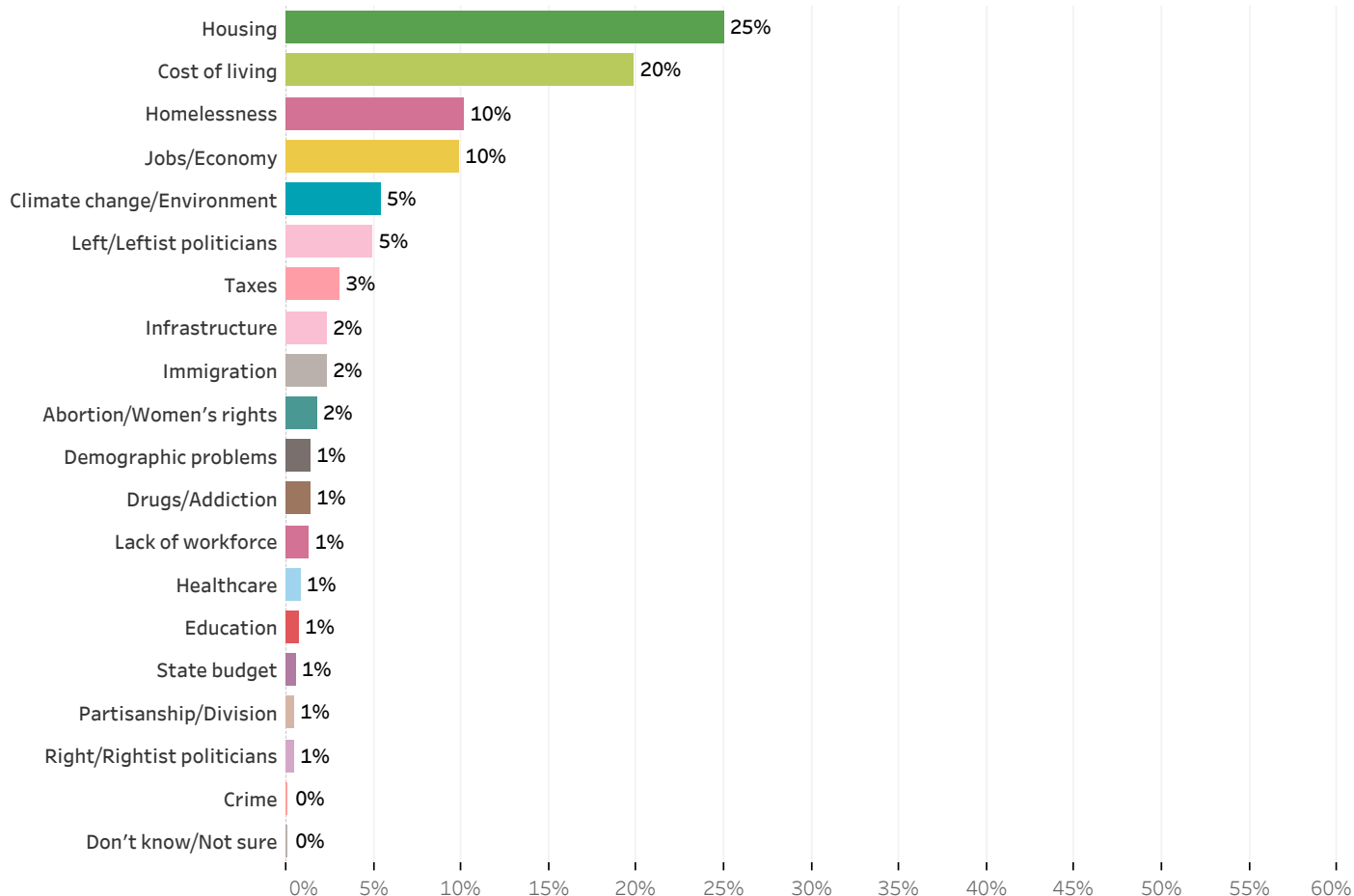
### One Word to Describe Mills



### Most Important Problem

When asked what they believe is the most important problem facing Maine, 25% of Mainers cite housing and 20% mention the cost of living. Other issues cited are homelessness (10%), jobs or the economy (10%), climate change or the environment (5%), and the political left or leftist politicians (5%). Democrats are more likely to mention housing while Republicans are more likely to mention the cost of living or the political left or leftist politicians. Independents are more likely to mention jobs or the economy.

### Most Important Problem Facing Maine - August 2023



## Pine Tree State Poll Methodology

These findings are based on the latest Pine Tree State Poll, conducted by the University of New Hampshire Survey Center. Five hundred fifty-five (555) Pine Tree State Panel members completed the survey online between August 17 and August 21, 2023. The margin of sampling error for the survey is +/- 4.2 percent. These MSE's have not been adjusted for design effect. The response rate for the August 2023 Pine Tree State Poll is 21%. The design effect for the survey is 2.5%.

Data were weighted by respondent sex, age, education, and region of the state to targets from the most recent American Community Survey (ACS) conducted by the U.S. Census Bureau, as well as party registration levels provided by the Maine Secretary of State and to 2020 election results in Maine.

The Pine Tree State Panel is part of an effort by the University of New Hampshire Survey Center to investigate new ways of gathering and understanding the opinion of Maine residents. Approximately 2,750 Maine adults have been recruited from randomly-selected landline and cell phone numbers to participate in the panel. Panelists are then asked to participate in online surveys sponsored by the UNH Survey Center.

The number of respondents in each demographic below may not equal the number reported in cross-tabulation tables as some respondents choose not to answer some questions. Due to rounding, percentages may not sum to 100%.

For more information about the methodology used in the Pine Tree State Panel, contact Dr. Andrew Smith at (603) 862-2226 or by email at [andrew.smith@unh.edu](mailto:andrew.smith@unh.edu).

### August 2023 Pine Tree State Poll Demographics

|                      |                                | %   | N   |
|----------------------|--------------------------------|-----|-----|
| Gender of Respondent | Men                            | 49% | 260 |
|                      | Women                          | 51% | 273 |
| Age of Respondent    | 18 to 34                       | 24% | 133 |
|                      | 35 to 49                       | 19% | 104 |
|                      | 50 to 64                       | 30% | 168 |
|                      | 65 and older                   | 27% | 149 |
| Level of Education   | High school or less            | 36% | 201 |
|                      | Tech school/Some college       | 30% | 167 |
|                      | College graduate               | 21% | 116 |
|                      | Postgraduate work              | 13% | 70  |
| Region of State      | Central Maine                  | 23% | 128 |
|                      | Downeast/Coastal Maine         | 18% | 96  |
|                      | Northern Maine                 | 21% | 116 |
|                      | Southern Maine                 | 38% | 209 |
| Party ID             | Democrat                       | 43% | 235 |
|                      | Independent                    | 18% | 100 |
|                      | Republican                     | 39% | 217 |
| Voting Registration  | Registered Democrat            | 36% | 190 |
|                      | Registered Republican          | 28% | 150 |
|                      | Registered Green Party         | 4%  | 22  |
|                      | Registered Unenrolled          | 32% | 171 |
| 2020 Pres Vote       | Voted for Trump                | 43% | 236 |
|                      | Voted for Biden                | 51% | 285 |
|                      | Voted for other 2020 candidate | 3%  | 16  |
|                      | Did not vote in 2020           | 3%  | 17  |

## Likelihood of Voting in 2023 Maine Referendum Election

Which of the following statements best describes your likelihood of voting in the 2023 Maine Referendum Election on November 7th, 2023?

|                                  |                                | <u>Definitely will</u><br><u>vote</u> | <u>Will vote unless</u><br><u>some</u><br><u>emergency</u><br><u>comes up</u> | <u>May vote</u> | <u>Probably will</u><br><u>not vote</u> | <u>Don't know at</u><br><u>this time</u> | <u>N</u> |
|----------------------------------|--------------------------------|---------------------------------------|---|-----------------|---|--|----------|
| <b>STATEWIDE</b>                 | <b>August 2023</b>             | 77%                                   | 12%   | 5%              | 3%                                      | 4%                                       | 555      |
| <b>Voting<br/>Registration</b>   | Registered Democrat            | 79%                                   | 15%   | 3%              | 0%                                      | 3%                                       | 190      |
|                                  | Registered Republican          | 91%                                   | 4%  | 3%              | 0%                                      | 2%                                       | 150      |
|                                  | Registered Green Party         | 87%                                   |   |                 |   | 13%                                      | 22       |
|                                  | Registered Unenrolled          | 69%                                   | 13%   | 8%              | 6%                                      | 4%                                       | 171      |
| <b>Party ID</b>                  | Democrat                       | 73%                                   | 14%   | 4%              | 4%                                      | 5%                                       | 235      |
|                                  | Independent                    | 78%                                   | 16%   | 6%              |   | 1%                                       | 100      |
|                                  | Republican                     | 81%                                   | 7%  | 4%              | 4%                                      | 4%                                       | 217      |
| <b>Political<br/>Ideology</b>    | Socialist                      | 98%                                   |   | 2%              |   |  | 47       |
|                                  | Progressive                    | 82%                                   | 14%   | 2%              | 0%                                      | 2%                                       | 69       |
|                                  | Liberal                        | 77%                                   | 9%  | 8%              | 1%                                      | 6%                                       | 70       |
|                                  | Moderate                       | 71%                                   | 12%   | 10%             | 5%                                      | 3%                                       | 153      |
|                                  | Conservative                   | 86%                                   | 6%  | 0%              | 6%                                      | 2%                                       | 151      |
|                                  | Libertarian                    | 55%                                   | 41%   | 5%              |   |  | 43       |
| <b>Age of<br/>Respondent</b>     | 18 to 34                       | 73%                                   | 12%   | 8%              | 6%                                      | 1%                                       | 133      |
|                                  | 35 to 49                       | 86%                                   | 6%  | 4%              | 0%                                      | 4%                                       | 104      |
|                                  | 50 to 64                       | 74%                                   | 14%   | 5%              | 6%                                      | 0%                                       | 168      |
|                                  | 65 and older                   | 77%                                   | 12%   | 2%              | 0%                                      | 9%                                       | 149      |
| <b>Gender of<br/>Respondent</b>  | Men                            | 78%                                   | 9%  | 3%              | 6%                                      | 5%                                       | 260      |
|                                  | Women                          | 76%                                   | 15%   | 6%              | 0%                                      | 3%                                       | 273      |
| <b>Level of<br/>Education</b>    | High school or less            | 74%                                   | 15%   | 2%              | 7%                                      | 2%                                       | 201      |
|                                  | Tech school/Some college       | 83%                                   | 8%  | 4%              | 0%                                      | 5%                                       | 167      |
|                                  | College graduate               | 77%                                   | 10%   | 8%              |   | 5%                                       | 116      |
|                                  | Postgraduate work              | 74%                                   | 11%   | 10%             | 5%                                      | 1%                                       | 70       |
| <b>Children in<br/>Household</b> | Children in household          | 85%                                   | 9%  | 4%              |   | 2%                                       | 165      |
|                                  | No children in household       | 73%                                   | 13%   | 5%              | 5%                                      | 4%                                       | 389      |
| <b>Region of<br/>State</b>       | Central Maine                  | 68%                                   | 14%   | 6%              | 7%                                      | 5%                                       | 128      |
|                                  | Downeast/Coastal Maine         | 80%                                   | 16%   | 4%              | 0%                                      | 0%                                       | 96       |
|                                  | Northern Maine                 | 75%                                   | 9%  | 2%              | 7%                                      | 6%                                       | 116      |
|                                  | Southern Maine                 | 83%                                   | 10%   | 4%              | 0%                                      | 3%                                       | 209      |
| <b>Media Usage</b>               | Conservative radio listener    | 89%                                   | 4%  |                 | 4%                                      | 3%                                       | 63       |
|                                  | CNN viewer                     | 65%                                   | 24%   | 3%              | 0%                                      | 7%                                       | 112      |
|                                  | Fox News viewer                | 67%                                   | 18%   | 3%              | 2%                                      | 10%                                      | 118      |
|                                  | Joe Rogan listener             | 74%                                   | 2%  | 23%             | 1%                                      |  | 32       |
|                                  | MSNBC viewer                   | 78%                                   | 14%   | 5%              | 0%                                      | 3%                                       | 79       |
|                                  | Local ME news viewer           | 76%                                   | 15%   | 6%              | 0%                                      | 3%                                       | 311      |
| <b>2020 Pres<br/>Vote</b>        | Voted for Trump                | 80%                                   | 11%   | 4%              | 1%                                      | 4%                                       | 236      |
|                                  | Voted for Biden                | 78%                                   | 12%   | 4%              | 3%                                      | 4%                                       | 285      |
|                                  | Voted for other 2020 candidate | 92%                                   | 2%  | 5%              | 2%                                      |  | 16       |
|                                  | Did not vote in 2020           | 1%                                    | 25%   | 30%             | 43%                                     | 2%                                       | 17       |

## How Much Heard or Seen About 2023 Referendum Question 1

How much have you heard or seen about the following ballot questions in the 2023 Maine Referendum Election? Question 1: An Act to Require Voter Approval of Certain Borrowing by Government-controlled Entities and Utilities and to Provide Voters More Information Regarding That Borrowing

|                              |                                | <u>A lot</u> | <u>Some</u> | <u>Not very much</u> | <u>Nothing at all</u> | <u>Don't know/Not sure</u> | <u>N</u> |
|------------------------------|--------------------------------|--------------|-------------|----------------------|-----------------------|----------------------------|----------|
| <b>STATEWIDE</b>             | <b>August 2023</b>             | 8%           | 11%         | 30%                  | 49%                   | 2%                         | 553      |
| <b>Voting Registration</b>   | Registered Democrat            | 6%           | 15%         | 26%                  | 48%                   | 5%                         | 189      |
|                              | Registered Republican          | 3%           | 8%          | 39%                  | 49%                   | 0%                         | 150      |
|                              | Registered Green Party         | 62%          | 13%         |                      | 25%                   |                            | 22       |
|                              | Registered Unenrolled          | 7%           | 6%          | 34%                  | 52%                   | 1%                         | 171      |
| <b>Party ID</b>              | Democrat                       | 4%           | 10%         | 23%                  | 59%                   | 4%                         | 233      |
|                              | Independent                    | 16%          | 11%         | 39%                  | 32%                   | 2%                         | 100      |
|                              | Republican                     | 7%           | 12%         | 35%                  | 46%                   | 0%                         | 217      |
| <b>Political Ideology</b>    | Socialist                      | 0%           | 2%          | 12%                  | 85%                   | 1%                         | 47       |
|                              | Progressive                    | 26%          | 7%          | 21%                  | 45%                   | 1%                         | 68       |
|                              | Liberal                        | 5%           | 21%         | 24%                  | 48%                   | 2%                         | 69       |
|                              | Moderate                       | 5%           | 10%         | 36%                  | 43%                   | 6%                         | 152      |
|                              | Conservative                   | 9%           | 8%          | 41%                  | 41%                   | 0%                         | 151      |
|                              | Libertarian                    | 0%           | 18%         | 1%                   | 81%                   |                            | 43       |
| <b>Age of Respondent</b>     | 18 to 34                       | 14%          | 6%          | 5%                   | 75%                   | 0%                         | 133      |
|                              | 35 to 49                       | 8%           | 12%         | 25%                  | 53%                   | 2%                         | 104      |
|                              | 50 to 64                       | 5%           | 8%          | 46%                  | 38%                   | 4%                         | 168      |
|                              | 65 and older                   | 5%           | 16%         | 40%                  | 37%                   | 2%                         | 149      |
| <b>Gender of Respondent</b>  | Men                            | 9%           | 16%         | 36%                  | 39%                   | 1%                         | 259      |
|                              | Women                          | 7%           | 6%          | 24%                  | 59%                   | 3%                         | 273      |
| <b>Level of Education</b>    | High school or less            | 6%           | 8%          | 30%                  | 53%                   | 3%                         | 201      |
|                              | Tech school/Some college       | 8%           | 8%          | 32%                  | 52%                   | 0%                         | 167      |
|                              | College graduate               | 7%           | 17%         | 32%                  | 41%                   | 3%                         | 116      |
|                              | Postgraduate work              | 11%          | 15%         | 25%                  | 45%                   | 3%                         | 69       |
| <b>Children in Household</b> | Children in household          | 12%          | 10%         | 19%                  | 57%                   | 1%                         | 165      |
|                              | No children in household       | 6%           | 11%         | 35%                  | 46%                   | 3%                         | 389      |
| <b>Region of State</b>       | Central Maine                  | 8%           | 14%         | 30%                  | 47%                   | 0%                         | 127      |
|                              | Downeast/Coastal Maine         | 3%           | 11%         | 19%                  | 67%                   | 1%                         | 96       |
|                              | Northern Maine                 | 18%          | 12%         | 29%                  | 34%                   | 7%                         | 115      |
|                              | Southern Maine                 | 4%           | 8%          | 35%                  | 52%                   | 2%                         | 209      |
| <b>Media Usage</b>           | Conservative radio listener    | 5%           | 11%         | 57%                  | 27%                   | 1%                         | 63       |
|                              | CNN viewer                     | 5%           | 8%          | 30%                  | 50%                   | 7%                         | 112      |
|                              | Fox News viewer                | 11%          | 15%         | 32%                  | 41%                   | 1%                         | 118      |
|                              | Joe Rogan listener             | 1%           | 6%          | 30%                  | 60%                   | 3%                         | 32       |
|                              | MSNBC viewer                   | 8%           | 12%         | 34%                  | 45%                   | 1%                         | 79       |
|                              | Local ME news viewer           | 5%           | 16%         | 31%                  | 48%                   | 1%                         | 311      |
| <b>2020 Pres Vote</b>        | Voted for Trump                | 7%           | 12%         | 37%                  | 44%                   | 0%                         | 236      |
|                              | Voted for Biden                | 4%           | 11%         | 27%                  | 55%                   | 4%                         | 283      |
|                              | Voted for other 2020 candidate | 86%          | 5%          | 2%                   | 7%                    |                            | 16       |
|                              | Did not vote in 2020           | 0%           | 1%          | 25%                  | 71%                   | 2%                         | 17       |



## How Much Heard or Seen About 2023 Referendum Question 2

How much have you heard or seen about the following ballot questions in the 2023 Maine Referendum Election? Question 2: An Act to Prohibit Campaign Spending by Foreign Governments and Promote an Anticorruption Amendment to the United States Constitution

|                              |                                | <u>A lot</u> | <u>Some</u> | <u>Not very much</u> | <u>Nothing at all</u> | <u>Don't know/Not sure</u> | <u>N</u> |
|------------------------------|--------------------------------|--------------|-------------|----------------------|-----------------------|----------------------------|----------|
| <b>STATEWIDE</b>             | <b>August 2023</b>             | 13%          | 23%         | 27%                  | 37%                   | 1%                         | 553      |
| <b>Voting Registration</b>   | Registered Democrat            | 11%          | 29%         | 21%                  | 38%                   | 1%                         | 189      |
|                              | Registered Republican          | 14%          | 13%         | 27%                  | 46%                   |                            | 150      |
|                              | Registered Green Party         | 58%          | 35%         | 7%                   |                       |                            | 22       |
|                              | Registered Unenrolled          | 6%           | 24%         | 39%                  | 29%                   | 3%                         | 171      |
| <b>Party ID</b>              | Democrat                       | 9%           | 30%         | 20%                  | 41%                   | 1%                         | 233      |
|                              | Independent                    | 17%          | 24%         | 48%                  | 10%                   | 1%                         | 100      |
|                              | Republican                     | 15%          | 15%         | 25%                  | 44%                   | 2%                         | 217      |
| <b>Political Ideology</b>    | Socialist                      | 1%           | 4%          | 18%                  | 76%                   |                            | 47       |
|                              | Progressive                    | 27%          | 21%         | 15%                  | 37%                   |                            | 68       |
|                              | Liberal                        | 10%          | 49%         | 29%                  | 12%                   | 1%                         | 69       |
|                              | Moderate                       | 10%          | 29%         | 29%                  | 29%                   | 3%                         | 152      |
|                              | Conservative                   | 5%           | 16%         | 30%                  | 49%                   |                            | 151      |
|                              | Libertarian                    | 46%          | 9%          | 28%                  | 16%                   |                            | 43       |
| <b>Age of Respondent</b>     | 18 to 34                       | 14%          | 27%         | 6%                   | 50%                   | 3%                         | 133      |
|                              | 35 to 49                       | 16%          | 20%         | 22%                  | 42%                   | 1%                         | 104      |
|                              | 50 to 64                       | 12%          | 14%         | 35%                  | 39%                   |                            | 168      |
|                              | 65 and older                   | 10%          | 30%         | 41%                  | 19%                   | 1%                         | 149      |
| <b>Gender of Respondent</b>  | Men                            | 17%          | 18%         | 32%                  | 33%                   | 0%                         | 259      |
|                              | Women                          | 9%           | 27%         | 23%                  | 40%                   | 0%                         | 273      |
| <b>Level of Education</b>    | High school or less            | 20%          | 4%          | 32%                  | 43%                   |                            | 201      |
|                              | Tech school/Some college       | 4%           | 30%         | 25%                  | 41%                   | 0%                         | 167      |
|                              | College graduate               | 10%          | 35%         | 24%                  | 27%                   | 4%                         | 116      |
|                              | Postgraduate work              | 15%          | 37%         | 21%                  | 26%                   | 1%                         | 69       |
| <b>Children in Household</b> | Children in household          | 9%           | 27%         | 13%                  | 49%                   | 3%                         | 165      |
|                              | No children in household       | 14%          | 21%         | 33%                  | 32%                   | 0%                         | 389      |
| <b>Region of State</b>       | Central Maine                  | 12%          | 24%         | 23%                  | 42%                   |                            | 127      |
|                              | Downeast/Coastal Maine         | 7%           | 15%         | 32%                  | 46%                   | 1%                         | 96       |
|                              | Northern Maine                 | 32%          | 13%         | 25%                  | 30%                   | 0%                         | 115      |
|                              | Southern Maine                 | 6%           | 31%         | 29%                  | 32%                   | 2%                         | 209      |
| <b>Media Usage</b>           | Conservative radio listener    | 11%          | 15%         | 36%                  | 37%                   |                            | 63       |
|                              | CNN viewer                     | 13%          | 31%         | 33%                  | 23%                   | 0%                         | 112      |
|                              | Fox News viewer                | 21%          | 17%         | 34%                  | 29%                   |                            | 118      |
|                              | Joe Rogan listener             | 5%           | 9%          | 28%                  | 44%                   | 14%                        | 32       |
|                              | MSNBC viewer                   | 10%          | 32%         | 33%                  | 25%                   |                            | 79       |
|                              | Local ME news viewer           | 13%          | 29%         | 28%                  | 29%                   | 0%                         | 311      |
| <b>2020 Pres Vote</b>        | Voted for Trump                | 14%          | 17%         | 28%                  | 41%                   |                            | 236      |
|                              | Voted for Biden                | 8%           | 30%         | 27%                  | 34%                   | 1%                         | 283      |
|                              | Voted for other 2020 candidate | 85%          | 7%          | 3%                   | 4%                    |                            | 16       |
|                              | Did not vote in 2020           | 0%           | 0%          | 34%                  | 44%                   | 21%                        | 17       |

### How Much Heard or Seen About 2023 Referendum Question 3

How much have you heard or seen about the following ballot questions in the 2023 Maine Referendum Election? Question 3: An Act to Create the Pine Tree Power Company, a Nonprofit, Customer-owned Utility

|                              |                                | <u>A lot</u> | <u>Some</u> | <u>Not very much</u> | <u>Nothing at all</u> | <u>Don't know/Not sure</u> | <u>N</u> |
|------------------------------|--------------------------------|--------------|-------------|----------------------|-----------------------|----------------------------|----------|
| <b>STATEWIDE</b>             | <b>August 2023</b>             | 40%          | 37%         | 13%                  | 9%                    | 2%                         | 553      |
| <b>Voting Registration</b>   | Registered Democrat            | 33%          | 44%         | 8%                   | 11%                   | 4%                         | 189      |
|                              | Registered Republican          | 54%          | 23%         | 8%                   | 16%                   |                            | 150      |
|                              | Registered Green Party         |              | 97%         | 3%                   |                       |                            | 22       |
|                              | Registered Unenrolled          | 44%          | 35%         | 20%                  | 0%                    | 1%                         | 171      |
| <b>Party ID</b>              | Democrat                       | 32%          | 41%         | 14%                  | 10%                   | 3%                         | 233      |
|                              | Independent                    | 36%          | 47%         | 15%                  | 1%                    | 1%                         | 100      |
|                              | Republican                     | 50%          | 29%         | 9%                   | 11%                   | 1%                         | 217      |
| <b>Political Ideology</b>    | Socialist                      | 14%          | 75%         | 7%                   | 5%                    |                            | 47       |
|                              | Progressive                    | 49%          | 36%         | 1%                   | 14%                   |                            | 68       |
|                              | Liberal                        | 45%          | 34%         | 9%                   | 12%                   | 0%                         | 69       |
|                              | Moderate                       | 34%          | 32%         | 27%                  | 2%                    | 5%                         | 152      |
|                              | Conservative                   | 41%          | 34%         | 11%                  | 14%                   | 1%                         | 151      |
|                              | Libertarian                    | 69%          | 25%         | 2%                   | 3%                    |                            | 43       |
| <b>Age of Respondent</b>     | 18 to 34                       | 15%          | 59%         | 11%                  | 15%                   | 0%                         | 133      |
|                              | 35 to 49                       | 49%          | 22%         | 7%                   | 20%                   | 1%                         | 104      |
|                              | 50 to 64                       | 45%          | 30%         | 19%                  | 2%                    | 4%                         | 168      |
|                              | 65 and older                   | 50%          | 36%         | 12%                  | 2%                    | 1%                         | 149      |
| <b>Gender of Respondent</b>  | Men                            | 56%          | 29%         | 13%                  | 2%                    | 1%                         | 259      |
|                              | Women                          | 24%          | 46%         | 13%                  | 15%                   | 3%                         | 273      |
| <b>Level of Education</b>    | High school or less            | 33%          | 36%         | 18%                  | 9%                    | 3%                         | 201      |
|                              | Tech school/Some college       | 38%          | 38%         | 11%                  | 12%                   | 1%                         | 167      |
|                              | College graduate               | 45%          | 40%         | 10%                  | 4%                    | 1%                         | 116      |
|                              | Postgraduate work              | 53%          | 34%         | 6%                   | 6%                    | 1%                         | 69       |
| <b>Children in Household</b> | Children in household          | 21%          | 59%         | 7%                   | 13%                   | 1%                         | 165      |
|                              | No children in household       | 48%          | 28%         | 15%                  | 7%                    | 2%                         | 389      |
| <b>Region of State</b>       | Central Maine                  | 34%          | 38%         | 13%                  | 15%                   |                            | 127      |
|                              | Downeast/Coastal Maine         | 29%          | 55%         | 13%                  | 1%                    | 2%                         | 96       |
|                              | Northern Maine                 | 35%          | 33%         | 23%                  | 3%                    | 6%                         | 115      |
|                              | Southern Maine                 | 52%          | 29%         | 7%                   | 11%                   | 0%                         | 209      |
| <b>Media Usage</b>           | Conservative radio listener    | 43%          | 29%         | 24%                  | 3%                    | 2%                         | 63       |
|                              | CNN viewer                     | 42%          | 27%         | 16%                  | 9%                    | 6%                         | 112      |
|                              | Fox News viewer                | 60%          | 33%         | 4%                   | 1%                    | 1%                         | 118      |
|                              | Joe Rogan listener             | 53%          | 29%         | 11%                  | 4%                    | 3%                         | 32       |
|                              | MSNBC viewer                   | 36%          | 23%         | 29%                  | 12%                   |                            | 79       |
|                              | Local ME news viewer           | 43%          | 41%         | 9%                   | 6%                    | 0%                         | 311      |
| <b>2020 Pres Vote</b>        | Voted for Trump                | 56%          | 28%         | 5%                   | 10%                   | 1%                         | 236      |
|                              | Voted for Biden                | 31%          | 42%         | 17%                  | 8%                    | 3%                         | 283      |
|                              | Voted for other 2020 candidate | 9%           | 88%         | 0%                   | 3%                    |                            | 16       |
|                              | Did not vote in 2020           | 2%           | 35%         | 60%                  | 2%                    | 2%                         | 17       |

### How Much Heard or Seen About 2023 Referendum Question 4

How much have you heard or seen about the following ballot questions in the 2023 Maine Referendum Election? Question 4: An Act Regarding Automotive Right to Repair

|                              |                                | <u>A lot</u> | <u>Some</u> | <u>Not very much</u> | <u>Nothing at all</u> | <u>Don't know/Not sure</u> | <u>N</u> |
|------------------------------|--------------------------------|--------------|-------------|----------------------|-----------------------|----------------------------|----------|
| <b>STATEWIDE</b>             | <b>August 2023</b>             | 11%          | 31%         | 19%                  | 37%                   | 2%                         | 553      |
| <b>Voting Registration</b>   | Registered Democrat            | 7%           | 29%         | 17%                  | 44%                   | 4%                         | 189      |
|                              | Registered Republican          | 7%           | 23%         | 19%                  | 50%                   | 0%                         | 150      |
|                              | Registered Green Party         |              | 80%         | 3%                   | 16%                   |                            | 22       |
|                              | Registered Unenrolled          | 19%          | 37%         | 20%                  | 22%                   | 2%                         | 171      |
| <b>Party ID</b>              | Democrat                       | 11%          | 38%         | 12%                  | 36%                   | 3%                         | 233      |
|                              | Independent                    | 18%          | 27%         | 31%                  | 23%                   | 2%                         | 100      |
|                              | Republican                     | 9%           | 25%         | 20%                  | 45%                   | 1%                         | 217      |
| <b>Political Ideology</b>    | Socialist                      | 1%           | 5%          | 14%                  | 80%                   |                            | 47       |
|                              | Progressive                    | 8%           | 63%         | 9%                   | 20%                   |                            | 68       |
|                              | Liberal                        | 7%           | 53%         | 18%                  | 21%                   | 1%                         | 69       |
|                              | Moderate                       | 23%          | 22%         | 28%                  | 22%                   | 5%                         | 152      |
|                              | Conservative                   | 5%           | 26%         | 20%                  | 48%                   | 1%                         | 151      |
|                              | Libertarian                    | 16%          | 13%         | 7%                   | 63%                   |                            | 43       |
| <b>Age of Respondent</b>     | 18 to 34                       | 11%          | 43%         | 5%                   | 40%                   | 0%                         | 133      |
|                              | 35 to 49                       | 4%           | 18%         | 28%                  | 50%                   | 1%                         | 104      |
|                              | 50 to 64                       | 14%          | 24%         | 27%                  | 32%                   | 4%                         | 168      |
|                              | 65 and older                   | 13%          | 38%         | 17%                  | 31%                   | 2%                         | 149      |
| <b>Gender of Respondent</b>  | Men                            | 13%          | 34%         | 25%                  | 26%                   | 1%                         | 259      |
|                              | Women                          | 10%          | 28%         | 13%                  | 47%                   | 3%                         | 273      |
| <b>Level of Education</b>    | High school or less            | 10%          | 15%         | 24%                  | 48%                   | 3%                         | 201      |
|                              | Tech school/Some college       | 13%          | 43%         | 11%                  | 32%                   | 1%                         | 167      |
|                              | College graduate               | 8%           | 36%         | 25%                  | 30%                   | 1%                         | 116      |
|                              | Postgraduate work              | 13%          | 40%         | 15%                  | 31%                   | 1%                         | 69       |
| <b>Children in Household</b> | Children in household          | 11%          | 27%         | 11%                  | 50%                   | 1%                         | 165      |
|                              | No children in household       | 11%          | 32%         | 23%                  | 32%                   | 2%                         | 389      |
| <b>Region of State</b>       | Central Maine                  | 11%          | 33%         | 19%                  | 37%                   | 0%                         | 127      |
|                              | Downeast/Coastal Maine         | 8%           | 23%         | 10%                  | 57%                   | 2%                         | 96       |
|                              | Northern Maine                 | 8%           | 30%         | 25%                  | 31%                   | 6%                         | 115      |
|                              | Southern Maine                 | 14%          | 34%         | 20%                  | 30%                   | 1%                         | 209      |
| <b>Media Usage</b>           | Conservative radio listener    | 6%           | 28%         | 43%                  | 21%                   | 2%                         | 63       |
|                              | CNN viewer                     | 12%          | 28%         | 10%                  | 45%                   | 6%                         | 112      |
|                              | Fox News viewer                | 12%          | 24%         | 14%                  | 48%                   | 1%                         | 118      |
|                              | Joe Rogan listener             | 5%           | 39%         | 46%                  | 5%                    | 4%                         | 32       |
|                              | MSNBC viewer                   | 15%          | 29%         | 26%                  | 30%                   |                            | 79       |
|                              | Local ME news viewer           | 15%          | 32%         | 17%                  | 36%                   | 1%                         | 311      |
| <b>2020 Pres Vote</b>        | Voted for Trump                | 9%           | 23%         | 19%                  | 49%                   | 1%                         | 236      |
|                              | Voted for Biden                | 14%          | 35%         | 17%                  | 31%                   | 3%                         | 283      |
|                              | Voted for other 2020 candidate | 3%           | 83%         | 3%                   | 10%                   |                            | 16       |
|                              | Did not vote in 2020           | 0%           | 30%         | 64%                  | 4%                    | 2%                         | 17       |

### How Much Heard or Seen About 2023 Referendum Question 5

How much have you heard or seen about the following ballot questions in the 2023 Maine Referendum Election? Question 5: Proposing an Amendment to the Constitution of Maine Regarding the Timing of Judicial Review of the Determination of the Validity of Written Petitions

|                              |                                | <u>A lot</u> | <u>Some</u> | <u>Not very much</u> | <u>Nothing at all</u> | <u>Don't know/Not sure</u> | <u>N</u> |
|------------------------------|--------------------------------|--------------|-------------|----------------------|-----------------------|----------------------------|----------|
| <b>STATEWIDE</b>             | <b>August 2023</b>             | 6%           | 5%          | 20%                  | 67%                   | 2%                         | 550      |
| <b>Voting Registration</b>   | Registered Democrat            | 6%           | 4%          | 21%                  | 66%                   | 2%                         | 189      |
|                              | Registered Republican          | 0%           | 6%          | 18%                  | 75%                   | 1%                         | 150      |
|                              | Registered Green Party         | 58%          | 17%         | 3%                   | 22%                   |                            | 22       |
|                              | Registered Unenrolled          | 3%           | 5%          | 24%                  | 63%                   | 5%                         | 169      |
| <b>Party ID</b>              | Democrat                       | 7%           | 4%          | 20%                  | 67%                   | 2%                         | 231      |
|                              | Independent                    | 13%          | 1%          | 25%                  | 53%                   | 7%                         | 99       |
|                              | Republican                     | 1%           | 8%          | 17%                  | 73%                   | 1%                         | 217      |
| <b>Political Ideology</b>    | Socialist                      |              | 0%          | 4%                   | 95%                   | 0%                         | 47       |
|                              | Progressive                    | 20%          | 4%          | 22%                  | 53%                   | 1%                         | 67       |
|                              | Liberal                        | 11%          | 7%          | 22%                  | 57%                   | 4%                         | 69       |
|                              | Moderate                       | 5%           | 7%          | 23%                  | 63%                   | 2%                         | 151      |
|                              | Conservative                   | 0%           | 6%          | 23%                  | 69%                   | 2%                         | 151      |
|                              | Libertarian                    | 0%           |             | 5%                   | 94%                   |                            | 43       |
| <b>Age of Respondent</b>     | 18 to 34                       | 15%          |             | 9%                   | 76%                   | 0%                         | 133      |
|                              | 35 to 49                       | 1%           | 2%          | 11%                  | 80%                   | 6%                         | 104      |
|                              | 50 to 64                       | 5%           | 6%          | 23%                  | 65%                   | 1%                         | 167      |
|                              | 65 and older                   | 1%           | 11%         | 33%                  | 53%                   | 3%                         | 146      |
| <b>Gender of Respondent</b>  | Men                            | 2%           | 6%          | 27%                  | 64%                   | 2%                         | 257      |
|                              | Women                          | 10%          | 4%          | 13%                  | 70%                   | 3%                         | 273      |
| <b>Level of Education</b>    | High school or less            | 9%           | 2%          | 14%                  | 72%                   | 2%                         | 201      |
|                              | Tech school/Some college       | 1%           | 5%          | 23%                  | 71%                   | 0%                         | 165      |
|                              | College graduate               | 1%           | 9%          | 24%                  | 62%                   | 4%                         | 116      |
|                              | Postgraduate work              | 13%          | 5%          | 22%                  | 53%                   | 6%                         | 69       |
| <b>Children in Household</b> | Children in household          | 8%           | 3%          | 13%                  | 73%                   | 4%                         | 165      |
|                              | No children in household       | 5%           | 6%          | 23%                  | 65%                   | 2%                         | 386      |
| <b>Region of State</b>       | Central Maine                  | 5%           | 2%          | 25%                  | 67%                   | 1%                         | 125      |
|                              | Downeast/Coastal Maine         |              | 6%          | 16%                  | 76%                   | 1%                         | 96       |
|                              | Northern Maine                 | 19%          | 9%          | 21%                  | 50%                   | 2%                         | 114      |
|                              | Southern Maine                 | 1%           | 4%          | 19%                  | 71%                   | 4%                         | 209      |
| <b>Media Usage</b>           | Conservative radio listener    | 0%           | 8%          | 41%                  | 48%                   | 3%                         | 63       |
|                              | CNN viewer                     | 7%           | 5%          | 23%                  | 64%                   | 2%                         | 109      |
|                              | Fox News viewer                | 0%           | 7%          | 26%                  | 66%                   | 0%                         | 117      |
|                              | Joe Rogan listener             | 1%           | 3%          | 27%                  | 66%                   | 4%                         | 32       |
|                              | MSNBC viewer                   | 1%           | 5%          | 37%                  | 54%                   | 3%                         | 76       |
|                              | Local ME news viewer           | 3%           | 6%          | 23%                  | 65%                   | 3%                         | 308      |
| <b>2020 Pres Vote</b>        | Voted for Trump                | 1%           | 7%          | 20%                  | 72%                   | 1%                         | 236      |
|                              | Voted for Biden                | 6%           | 4%          | 22%                  | 66%                   | 2%                         | 281      |
|                              | Voted for other 2020 candidate | 84%          | 1%          | 3%                   | 12%                   |                            | 16       |
|                              | Did not vote in 2020           |              |             | 1%                   | 73%                   | 26%                        | 17       |

## How Much Heard or Seen About 2023 Referendum Question 6

How much have you heard or seen about the following ballot questions in the 2023 Maine Referendum Election? Question 6: Proposing an Amendment to the Constitution of Maine to Require All Provisions in the Constitution to Be Included in the Official Printing

|                              |                                | <u>A lot</u> | <u>Some</u> | <u>Not very much</u> | <u>Nothing at all</u> | <u>Don't know/Not sure</u> | <u>N</u> |
|------------------------------|--------------------------------|--------------|-------------|----------------------|-----------------------|----------------------------|----------|
| <b>STATEWIDE</b>             | <b>August 2023</b>             | 2%           | 11%         | 16%                  | 67%                   | 4%                         | 553      |
| <b>Voting Registration</b>   | Registered Democrat            | 3%           | 11%         | 14%                  | 68%                   | 5%                         | 189      |
|                              | Registered Republican          | 1%           | 6%          | 14%                  | 78%                   | 0%                         | 150      |
|                              | Registered Green Party         | 0%           | 75%         |                      | 25%                   |                            | 22       |
|                              | Registered Unenrolled          | 4%           | 4%          | 22%                  | 63%                   | 7%                         | 171      |
| <b>Party ID</b>              | Democrat                       | 4%           | 6%          | 15%                  | 72%                   | 4%                         | 233      |
|                              | Independent                    | 0%           | 22%         | 22%                  | 48%                   | 7%                         | 100      |
|                              | Republican                     | 2%           | 11%         | 13%                  | 72%                   | 2%                         | 217      |
| <b>Political Ideology</b>    | Socialist                      |              | 2%          | 7%                   | 90%                   | 0%                         | 47       |
|                              | Progressive                    | 3%           | 26%         | 8%                   | 62%                   | 1%                         | 68       |
|                              | Liberal                        | 8%           | 19%         | 19%                  | 52%                   | 2%                         | 69       |
|                              | Moderate                       | 2%           | 7%          | 21%                  | 62%                   | 8%                         | 152      |
|                              | Conservative                   | 1%           | 6%          | 16%                  | 75%                   | 2%                         | 151      |
|                              | Libertarian                    | 0%           | 14%         | 5%                   | 81%                   |                            | 43       |
| <b>Age of Respondent</b>     | 18 to 34                       | 4%           | 13%         | 7%                   | 73%                   | 3%                         | 133      |
|                              | 35 to 49                       | 0%           | 8%          | 5%                   | 80%                   | 6%                         | 104      |
|                              | 50 to 64                       | 2%           | 11%         | 18%                  | 64%                   | 5%                         | 168      |
|                              | 65 and older                   | 3%           | 10%         | 28%                  | 57%                   | 3%                         | 149      |
| <b>Gender of Respondent</b>  | Men                            | 2%           | 14%         | 19%                  | 63%                   | 2%                         | 259      |
|                              | Women                          | 3%           | 8%          | 13%                  | 70%                   | 5%                         | 273      |
| <b>Level of Education</b>    | High school or less            |              | 15%         | 12%                  | 67%                   | 5%                         | 201      |
|                              | Tech school/Some college       | 1%           | 4%          | 19%                  | 74%                   | 1%                         | 167      |
|                              | College graduate               | 2%           | 9%          | 19%                  | 64%                   | 6%                         | 116      |
|                              | Postgraduate work              | 12%          | 15%         | 10%                  | 58%                   | 5%                         | 69       |
| <b>Children in Household</b> | Children in household          | 0%           | 11%         | 7%                   | 75%                   | 7%                         | 165      |
|                              | No children in household       | 3%           | 11%         | 19%                  | 64%                   | 3%                         | 389      |
| <b>Region of State</b>       | Central Maine                  | 6%           | 10%         | 21%                  | 62%                   | 2%                         | 127      |
|                              | Downeast/Coastal Maine         | 2%           | 8%          | 13%                  | 75%                   | 2%                         | 96       |
|                              | Northern Maine                 | 1%           | 22%         | 22%                  | 49%                   | 6%                         | 115      |
|                              | Southern Maine                 | 1%           | 7%          | 11%                  | 77%                   | 5%                         | 209      |
| <b>Media Usage</b>           | Conservative radio listener    | 3%           | 5%          | 43%                  | 47%                   | 2%                         | 63       |
|                              | CNN viewer                     | 0%           | 7%          | 20%                  | 66%                   | 7%                         | 112      |
|                              | Fox News viewer                | 2%           | 12%         | 19%                  | 67%                   |                            | 118      |
|                              | Joe Rogan listener             | 1%           | 1%          | 24%                  | 57%                   | 17%                        | 32       |
|                              | MSNBC viewer                   | 2%           | 7%          | 33%                  | 57%                   | 1%                         | 79       |
|                              | Local ME news viewer           | 3%           | 13%         | 16%                  | 66%                   | 2%                         | 311      |
| <b>2020 Pres Vote</b>        | Voted for Trump                | 2%           | 9%          | 15%                  | 73%                   | 1%                         | 236      |
|                              | Voted for Biden                | 3%           | 9%          | 18%                  | 66%                   | 4%                         | 283      |
|                              | Voted for other 2020 candidate | 4%           | 82%         | 3%                   | 11%                   |                            | 16       |
|                              | Did not vote in 2020           |              |             | 1%                   | 54%                   | 45%                        | 17       |

## How Much Heard or Seen About 2023 Referendum Question 7

How much have you heard or seen about the following ballot questions in the 2023 Maine Referendum Election? Question 7: Proposing an Amendment to the Constitution of Maine to Align the Proceedings for Circulating Written Petitions for People’s Vetoes and Direct Initiatives with Federal Law

|                              |                                | <u>A lot</u> | <u>Some</u> | <u>Not very much</u> | <u>Nothing at all</u> | <u>Don't know/Not sure</u> | <u>N</u> |
|------------------------------|--------------------------------|--------------|-------------|----------------------|-----------------------|----------------------------|----------|
| <b>STATEWIDE</b>             | <b>August 2023</b>             | 1%           | 7%          | 16%                  | 71%                   | 4%                         | 552      |
| <b>Voting Registration</b>   | Registered Democrat            | 1%           | 5%          | 18%                  | 71%                   | 5%                         | 189      |
|                              | Registered Republican          | 0%           | 4%          | 16%                  | 79%                   | 1%                         | 150      |
|                              | Registered Green Party         | 0%           | 71%         | 3%                   | 26%                   |                            | 22       |
|                              | Registered Unenrolled          | 2%           | 4%          | 19%                  | 68%                   | 6%                         | 171      |
| <b>Party ID</b>              | Democrat                       | 1%           | 6%          | 16%                  | 73%                   | 4%                         | 232      |
|                              | Independent                    | 1%           | 14%         | 25%                  | 54%                   | 7%                         | 100      |
|                              | Republican                     | 1%           | 5%          | 13%                  | 78%                   | 3%                         | 217      |
| <b>Political Ideology</b>    | Socialist                      |              | 2%          | 6%                   | 92%                   | 0%                         | 47       |
|                              | Progressive                    | 1%           | 22%         | 15%                  | 61%                   | 0%                         | 68       |
|                              | Liberal                        | 2%           | 14%         | 23%                  | 59%                   | 2%                         | 69       |
|                              | Moderate                       | 1%           | 4%          | 18%                  | 69%                   | 8%                         | 152      |
|                              | Conservative                   | 1%           | 4%          | 18%                  | 75%                   | 2%                         | 151      |
|                              | Libertarian                    | 0%           | 1%          | 3%                   | 95%                   |                            | 43       |
| <b>Age of Respondent</b>     | 18 to 34                       | 0%           | 15%         | 7%                   | 75%                   | 3%                         | 133      |
|                              | 35 to 49                       | 1%           | 2%          | 11%                  | 82%                   | 5%                         | 104      |
|                              | 50 to 64                       | 2%           | 4%          | 19%                  | 70%                   | 4%                         | 168      |
|                              | 65 and older                   | 2%           | 7%          | 26%                  | 62%                   | 3%                         | 148      |
| <b>Gender of Respondent</b>  | Men                            | 2%           | 5%          | 19%                  | 73%                   | 2%                         | 259      |
|                              | Women                          | 0%           | 10%         | 14%                  | 71%                   | 5%                         | 273      |
| <b>Level of Education</b>    | High school or less            |              | 7%          | 15%                  | 73%                   | 5%                         | 201      |
|                              | Tech school/Some college       | 2%           | 2%          | 15%                  | 80%                   | 1%                         | 167      |
|                              | College graduate               | 1%           | 7%          | 20%                  | 66%                   | 6%                         | 115      |
|                              | Postgraduate work              | 2%           | 17%         | 20%                  | 57%                   | 3%                         | 69       |
| <b>Children in Household</b> | Children in household          | 1%           | 11%         | 11%                  | 72%                   | 6%                         | 165      |
|                              | No children in household       | 1%           | 6%          | 19%                  | 71%                   | 3%                         | 388      |
| <b>Region of State</b>       | Central Maine                  | 1%           | 5%          | 21%                  | 72%                   | 1%                         | 127      |
|                              | Downeast/Coastal Maine         | 2%           | 3%          | 20%                  | 74%                   | 1%                         | 96       |
|                              | Northern Maine                 | 1%           | 19%         | 20%                  | 52%                   | 7%                         | 115      |
|                              | Southern Maine                 | 1%           | 4%          | 11%                  | 80%                   | 5%                         | 209      |
| <b>Media Usage</b>           | Conservative radio listener    | 2%           | 3%          | 44%                  | 48%                   | 3%                         | 63       |
|                              | CNN viewer                     | 0%           | 5%          | 14%                  | 73%                   | 7%                         | 112      |
|                              | Fox News viewer                | 2%           | 4%          | 18%                  | 75%                   | 1%                         | 117      |
|                              | Joe Rogan listener             | 3%           | 3%          | 23%                  | 57%                   | 14%                        | 32       |
|                              | MSNBC viewer                   | 1%           | 4%          | 31%                  | 63%                   | 1%                         | 78       |
|                              | Local ME news viewer           | 1%           | 7%          | 17%                  | 72%                   | 2%                         | 310      |
| <b>2020 Pres Vote</b>        | Voted for Trump                | 1%           | 4%          | 15%                  | 78%                   | 1%                         | 236      |
|                              | Voted for Biden                | 1%           | 6%          | 19%                  | 70%                   | 3%                         | 283      |
|                              | Voted for other 2020 candidate | 3%           | 81%         | 4%                   | 12%                   |                            | 16       |
|                              | Did not vote in 2020           |              |             | 0%                   | 54%                   | 46%                        | 17       |

### How Much Heard or Seen About 2023 Referendum Question 8

How much have you heard or seen about the following ballot questions in the 2023 Maine Referendum Election? Question 8: Proposing an Amendment to the Constitution of Maine to Allow Persons Under Guardianship for Mental Illness to Be Electors

|                              |                                | <u>A lot</u> | <u>Some</u> | <u>Not very much</u> | <u>Nothing at all</u> | <u>Don't know/Not sure</u> | <u>N</u> |
|------------------------------|--------------------------------|--------------|-------------|----------------------|-----------------------|----------------------------|----------|
| <b>STATEWIDE</b>             | <b>August 2023</b>             | 1%           | 7%          | 14%                  | 76%                   | 2%                         | 553      |
| <b>Voting Registration</b>   | Registered Democrat            | 1%           | 7%          | 12%                  | 79%                   | 1%                         | 189      |
|                              | Registered Republican          | 0%           | 3%          | 14%                  | 82%                   | 1%                         | 150      |
|                              | Registered Green Party         |              | 71%         | 3%                   | 26%                   |                            | 22       |
|                              | Registered Unenrolled          | 1%           | 2%          | 16%                  | 77%                   | 4%                         | 171      |
| <b>Party ID</b>              | Democrat                       | 0%           | 6%          | 11%                  | 82%                   | 1%                         | 233      |
|                              | Independent                    | 1%           | 14%         | 22%                  | 61%                   | 2%                         | 100      |
|                              | Republican                     | 1%           | 5%          | 14%                  | 78%                   | 3%                         | 217      |
| <b>Political Ideology</b>    | Socialist                      |              | 1%          | 2%                   | 96%                   | 1%                         | 47       |
|                              | Progressive                    | 0%           | 20%         | 12%                  | 68%                   | 0%                         | 68       |
|                              | Liberal                        | 1%           | 7%          | 8%                   | 83%                   | 2%                         | 69       |
|                              | Moderate                       | 1%           | 10%         | 17%                  | 69%                   | 3%                         | 152      |
|                              | Conservative                   | 0%           | 3%          | 15%                  | 80%                   | 2%                         | 151      |
|                              | Libertarian                    | 0%           |             | 18%                  | 82%                   |                            | 43       |
| <b>Age of Respondent</b>     | 18 to 34                       | 0%           | 11%         | 7%                   | 79%                   | 3%                         | 133      |
|                              | 35 to 49                       | 1%           | 1%          | 4%                   | 93%                   | 1%                         | 104      |
|                              | 50 to 64                       | 1%           | 7%          | 20%                  | 71%                   | 1%                         | 168      |
|                              | 65 and older                   |              | 7%          | 21%                  | 69%                   | 3%                         | 149      |
| <b>Gender of Respondent</b>  | Men                            | 0%           | 5%          | 16%                  | 77%                   | 2%                         | 259      |
|                              | Women                          | 1%           | 10%         | 13%                  | 76%                   | 1%                         | 273      |
| <b>Level of Education</b>    | High school or less            |              | 11%         | 14%                  | 75%                   |                            | 201      |
|                              | Tech school/Some college       | 0%           | 4%          | 14%                  | 80%                   | 2%                         | 167      |
|                              | College graduate               | 1%           | 4%          | 12%                  | 77%                   | 6%                         | 116      |
|                              | Postgraduate work              | 3%           | 8%          | 17%                  | 69%                   | 3%                         | 69       |
| <b>Children in Household</b> | Children in household          | 1%           | 10%         | 7%                   | 79%                   | 4%                         | 165      |
|                              | No children in household       | 1%           | 6%          | 17%                  | 75%                   | 1%                         | 389      |
| <b>Region of State</b>       | Central Maine                  | 1%           |             | 21%                  | 76%                   | 2%                         | 127      |
|                              | Downeast/Coastal Maine         | 1%           | 3%          | 17%                  | 77%                   | 2%                         | 96       |
|                              | Northern Maine                 |              | 27%         | 20%                  | 53%                   | 1%                         | 115      |
|                              | Southern Maine                 | 1%           | 2%          | 6%                   | 88%                   | 3%                         | 209      |
| <b>Media Usage</b>           | Conservative radio listener    |              | 2%          | 43%                  | 53%                   | 2%                         | 63       |
|                              | CNN viewer                     | 0%           | 10%         | 9%                   | 79%                   | 2%                         | 112      |
|                              | Fox News viewer                |              | 2%          | 25%                  | 72%                   | 0%                         | 118      |
|                              | Joe Rogan listener             | 3%           |             | 24%                  | 58%                   | 15%                        | 32       |
|                              | MSNBC viewer                   |              | 2%          | 27%                  | 69%                   | 1%                         | 79       |
|                              | Local ME news viewer           | 1%           | 5%          | 18%                  | 75%                   | 1%                         | 311      |
| <b>2020 Pres Vote</b>        | Voted for Trump                | 1%           | 4%          | 15%                  | 79%                   | 1%                         | 236      |
|                              | Voted for Biden                | 0%           | 6%          | 15%                  | 78%                   | 2%                         | 283      |
|                              | Voted for other 2020 candidate | 3%           | 82%         | 3%                   | 12%                   |                            | 16       |
|                              | Did not vote in 2020           |              |             |                      | 79%                   | 21%                        | 17       |

## How Well Understand 2023 Referendum Question 1

How well do you feel that you understand the following ballot questions in the 2023 Maine Referendum Election? Question 1: An Act to Require Voter Approval of Certain Borrowing by Government-controlled Entities and Utilities and to Provide Voters More Information Regarding That Borrowing

|                              |                                | <u>Very well</u> | <u>Somewhat well</u> | <u>Not very well</u> | <u>Not well at all</u> | <u>Don't know/Not sure</u> | <u>N</u> |
|------------------------------|--------------------------------|------------------|----------------------|----------------------|------------------------|----------------------------|----------|
| <b>STATEWIDE</b>             | <b>August 2023</b>             | 3%               | 19%                  | 27%                  | 49%                    | 1%                         | 551      |
| <b>Voting Registration</b>   | Registered Democrat            | 5%               | 12%                  | 29%                  | 53%                    | 1%                         | 188      |
|                              | Registered Republican          | 3%               | 26%                  | 27%                  | 43%                    | 1%                         | 150      |
|                              | Registered Green Party         | 9%               | 62%                  | 13%                  | 16%                    |                            | 22       |
|                              | Registered Unenrolled          | 0%               | 15%                  | 30%                  | 53%                    | 2%                         | 171      |
| <b>Party ID</b>              | Democrat                       | 4%               | 12%                  | 28%                  | 55%                    | 1%                         | 232      |
|                              | Independent                    | 3%               | 20%                  | 33%                  | 43%                    | 0%                         | 100      |
|                              | Republican                     | 2%               | 27%                  | 23%                  | 45%                    | 3%                         | 217      |
| <b>Political Ideology</b>    | Socialist                      | 0%               | 2%                   | 9%                   | 88%                    | 1%                         | 47       |
|                              | Progressive                    | 7%               | 34%                  | 26%                  | 32%                    | 0%                         | 67       |
|                              | Liberal                        | 4%               | 12%                  | 46%                  | 38%                    | 1%                         | 69       |
|                              | Moderate                       | 2%               | 14%                  | 29%                  | 53%                    | 3%                         | 152      |
|                              | Conservative                   | 3%               | 29%                  | 27%                  | 40%                    | 1%                         | 151      |
|                              | Libertarian                    | 5%               | 19%                  | 13%                  | 62%                    | 1%                         | 43       |
| <b>Age of Respondent</b>     | 18 to 34                       | 4%               | 21%                  | 8%                   | 65%                    | 3%                         | 133      |
|                              | 35 to 49                       | 4%               | 14%                  | 23%                  | 58%                    | 0%                         | 104      |
|                              | 50 to 64                       | 2%               | 25%                  | 37%                  | 35%                    | 1%                         | 168      |
|                              | 65 and older                   | 3%               | 15%                  | 37%                  | 44%                    | 1%                         | 147      |
| <b>Gender of Respondent</b>  | Men                            | 6%               | 19%                  | 35%                  | 40%                    | 0%                         | 259      |
|                              | Women                          | 1%               | 20%                  | 21%                  | 57%                    | 1%                         | 271      |
| <b>Level of Education</b>    | High school or less            |                  | 14%                  | 29%                  | 57%                    |                            | 201      |
|                              | Tech school/Some college       | 2%               | 27%                  | 18%                  | 52%                    | 1%                         | 167      |
|                              | College graduate               | 6%               | 21%                  | 33%                  | 35%                    | 5%                         | 115      |
|                              | Postgraduate work              | 11%              | 13%                  | 32%                  | 43%                    | 1%                         | 69       |
| <b>Children in Household</b> | Children in household          | 3%               | 18%                  | 15%                  | 62%                    | 2%                         | 164      |
|                              | No children in household       | 3%               | 20%                  | 32%                  | 43%                    | 1%                         | 387      |
| <b>Region of State</b>       | Central Maine                  | 4%               | 24%                  | 23%                  | 48%                    | 0%                         | 125      |
|                              | Downeast/Coastal Maine         | 0%               | 21%                  | 12%                  | 66%                    | 1%                         | 96       |
|                              | Northern Maine                 | 3%               | 19%                  | 38%                  | 40%                    | 0%                         | 115      |
|                              | Southern Maine                 | 4%               | 16%                  | 31%                  | 46%                    | 3%                         | 208      |
| <b>Media Usage</b>           | Conservative radio listener    | 5%               | 28%                  | 37%                  | 28%                    | 1%                         | 63       |
|                              | CNN viewer                     | 2%               | 26%                  | 33%                  | 39%                    | 1%                         | 111      |
|                              | Fox News viewer                | 2%               | 26%                  | 20%                  | 51%                    | 1%                         | 118      |
|                              | Joe Rogan listener             | 2%               | 31%                  | 16%                  | 40%                    | 11%                        | 32       |
|                              | MSNBC viewer                   | 3%               | 24%                  | 38%                  | 34%                    | 1%                         | 77       |
|                              | Local ME news viewer           | 4%               | 20%                  | 30%                  | 47%                    | 0%                         | 309      |
| <b>2020 Pres Vote</b>        | Voted for Trump                | 2%               | 26%                  | 23%                  | 48%                    | 1%                         | 235      |
|                              | Voted for Biden                | 4%               | 11%                  | 31%                  | 53%                    | 1%                         | 283      |
|                              | Voted for other 2020 candidate | 4%               | 87%                  | 8%                   | 1%                     | 0%                         | 15       |
|                              | Did not vote in 2020           | 0%               |                      | 36%                  | 43%                    | 21%                        | 17       |



## How Well Understand 2023 Referendum Question 2

How well do you feel that you understand the following ballot questions in the 2023 Maine Referendum Election? Question 2: An Act to Prohibit Campaign Spending by Foreign Governments and Promote an Anticorruption Amendment to the United States Constitution

|                              |                                | <u>Very well</u> | <u>Somewhat well</u> | <u>Not very well</u> | <u>Not well at all</u> | <u>Don't know/Not sure</u> | <u>N</u> |
|------------------------------|--------------------------------|------------------|----------------------|----------------------|------------------------|----------------------------|----------|
| <b>STATEWIDE</b>             | <b>August 2023</b>             | 7%               | 31%                  | 28%                  | 34%                    | 1%                         | 552      |
| <b>Voting Registration</b>   | Registered Democrat            | 11%              | 27%                  | 23%                  | 39%                    | 0%                         | 188      |
|                              | Registered Republican          | 3%               | 41%                  | 23%                  | 32%                    | 1%                         | 150      |
|                              | Registered Green Party         | 10%              | 71%                  | 16%                  | 3%                     |                            | 22       |
|                              | Registered Unenrolled          | 6%               | 22%                  | 41%                  | 29%                    | 2%                         | 171      |
| <b>Party ID</b>              | Democrat                       | 10%              | 26%                  | 23%                  | 40%                    | 0%                         | 232      |
|                              | Independent                    | 4%               | 33%                  | 44%                  | 19%                    | 0%                         | 100      |
|                              | Republican                     | 4%               | 36%                  | 24%                  | 33%                    | 3%                         | 217      |
| <b>Political Ideology</b>    | Socialist                      | 1%               | 14%                  | 4%                   | 81%                    |                            | 47       |
|                              | Progressive                    | 14%              | 44%                  | 17%                  | 25%                    |                            | 67       |
|                              | Liberal                        | 16%              | 21%                  | 41%                  | 22%                    | 0%                         | 69       |
|                              | Moderate                       | 5%               | 32%                  | 27%                  | 32%                    | 3%                         | 153      |
|                              | Conservative                   | 3%               | 32%                  | 30%                  | 34%                    | 1%                         | 151      |
|                              | Libertarian                    | 6%               | 47%                  | 40%                  | 6%                     | 1%                         | 43       |
| <b>Age of Respondent</b>     | 18 to 34                       | 4%               | 35%                  | 8%                   | 50%                    | 3%                         | 133      |
|                              | 35 to 49                       | 8%               | 28%                  | 25%                  | 39%                    | 0%                         | 104      |
|                              | 50 to 64                       | 5%               | 38%                  | 36%                  | 20%                    | 1%                         | 168      |
|                              | 65 and older                   | 10%              | 21%                  | 37%                  | 31%                    | 1%                         | 148      |
| <b>Gender of Respondent</b>  | Men                            | 10%              | 31%                  | 32%                  | 26%                    | 0%                         | 259      |
|                              | Women                          | 4%               | 31%                  | 22%                  | 42%                    | 1%                         | 271      |
| <b>Level of Education</b>    | High school or less            |                  | 27%                  | 33%                  | 40%                    |                            | 201      |
|                              | Tech school/Some college       | 7%               | 36%                  | 19%                  | 38%                    | 1%                         | 167      |
|                              | College graduate               | 10%              | 30%                  | 37%                  | 19%                    | 4%                         | 115      |
|                              | Postgraduate work              | 20%              | 33%                  | 18%                  | 29%                    | 1%                         | 69       |
| <b>Children in Household</b> | Children in household          | 4%               | 31%                  | 17%                  | 45%                    | 2%                         | 164      |
|                              | No children in household       | 8%               | 31%                  | 32%                  | 29%                    | 1%                         | 387      |
| <b>Region of State</b>       | Central Maine                  | 8%               | 34%                  | 23%                  | 34%                    |                            | 126      |
|                              | Downeast/Coastal Maine         | 4%               | 21%                  | 25%                  | 49%                    | 1%                         | 96       |
|                              | Northern Maine                 | 6%               | 46%                  | 27%                  | 21%                    | 0%                         | 116      |
|                              | Southern Maine                 | 8%               | 26%                  | 32%                  | 32%                    | 3%                         | 208      |
| <b>Media Usage</b>           | Conservative radio listener    | 7%               | 42%                  | 32%                  | 17%                    | 1%                         | 63       |
|                              | CNN viewer                     | 7%               | 36%                  | 37%                  | 20%                    | 1%                         | 111      |
|                              | Fox News viewer                | 1%               | 44%                  | 28%                  | 26%                    | 1%                         | 118      |
|                              | Joe Rogan listener             | 5%               | 28%                  | 15%                  | 41%                    | 11%                        | 32       |
|                              | MSNBC viewer                   | 7%               | 38%                  | 36%                  | 19%                    |                            | 77       |
|                              | Local ME news viewer           | 6%               | 34%                  | 29%                  | 31%                    | 0%                         | 310      |
| <b>2020 Pres Vote</b>        | Voted for Trump                | 4%               | 33%                  | 30%                  | 32%                    | 1%                         | 235      |
|                              | Voted for Biden                | 9%               | 28%                  | 26%                  | 36%                    | 0%                         | 283      |
|                              | Voted for other 2020 candidate | 5%               | 87%                  | 8%                   | 0%                     | 0%                         | 15       |
|                              | Did not vote in 2020           | 0%               |                      | 35%                  | 43%                    | 22%                        | 17       |

### How Well Understand 2023 Referendum Question 3

How well do you feel that you understand the following ballot questions in the 2023 Maine Referendum Election? Question 3: An Act to Create the Pine Tree Power Company, a Nonprofit, Customer-owned Utility

|                              |                                | <u>Very well</u> | <u>Somewhat well</u> | <u>Not very well</u> | <u>Not well at all</u> | <u>Don't know/Not sure</u> | <u>N</u> |
|------------------------------|--------------------------------|------------------|----------------------|----------------------|------------------------|----------------------------|----------|
| <b>STATEWIDE</b>             | <b>August 2023</b>             | 22%              | 33%                  | 26%                  | 17%                    | 2%                         | 551      |
| <b>Voting Registration</b>   | Registered Democrat            | 19%              | 35%                  | 28%                  | 15%                    | 4%                         | 188      |
|                              | Registered Republican          | 32%              | 32%                  | 16%                  | 18%                    | 2%                         | 150      |
|                              | Registered Green Party         | 9%               | 84%                  |                      | 7%                     |                            | 22       |
|                              | Registered Unenrolled          | 20%              | 25%                  | 38%                  | 16%                    | 2%                         | 171      |
| <b>Party ID</b>              | Democrat                       | 17%              | 30%                  | 34%                  | 16%                    | 3%                         | 231      |
|                              | Independent                    | 12%              | 40%                  | 38%                  | 10%                    |                            | 100      |
|                              | Republican                     | 32%              | 32%                  | 11%                  | 22%                    | 3%                         | 217      |
| <b>Political Ideology</b>    | Socialist                      | 12%              | 4%                   | 72%                  | 12%                    |                            | 47       |
|                              | Progressive                    | 20%              | 52%                  | 23%                  | 5%                     |                            | 67       |
|                              | Liberal                        | 22%              | 44%                  | 17%                  | 17%                    |                            | 68       |
|                              | Moderate                       | 23%              | 24%                  | 31%                  | 15%                    | 7%                         | 153      |
|                              | Conservative                   | 19%              | 36%                  | 15%                  | 28%                    | 1%                         | 151      |
|                              | Libertarian                    | 48%              | 43%                  | 4%                   | 4%                     | 1%                         | 43       |
| <b>Age of Respondent</b>     | 18 to 34                       | 5%               | 29%                  | 49%                  | 14%                    | 3%                         | 133      |
|                              | 35 to 49                       | 31%              | 23%                  | 8%                   | 37%                    |                            | 104      |
|                              | 50 to 64                       | 24%              | 37%                  | 21%                  | 14%                    | 5%                         | 167      |
|                              | 65 and older                   | 29%              | 38%                  | 23%                  | 10%                    | 1%                         | 147      |
| <b>Gender of Respondent</b>  | Men                            | 36%              | 34%                  | 14%                  | 16%                    | 0%                         | 259      |
|                              | Women                          | 7%               | 33%                  | 38%                  | 18%                    | 3%                         | 271      |
| <b>Level of Education</b>    | High school or less            | 14%              | 27%                  | 36%                  | 21%                    | 3%                         | 201      |
|                              | Tech school/Some college       | 19%              | 34%                  | 29%                  | 17%                    | 1%                         | 167      |
|                              | College graduate               | 35%              | 36%                  | 13%                  | 12%                    | 4%                         | 114      |
|                              | Postgraduate work              | 31%              | 41%                  | 10%                  | 17%                    | 1%                         | 69       |
| <b>Children in Household</b> | Children in household          | 14%              | 24%                  | 36%                  | 25%                    | 2%                         | 164      |
|                              | No children in household       | 26%              | 36%                  | 21%                  | 14%                    | 3%                         | 387      |
| <b>Region of State</b>       | Central Maine                  | 24%              | 37%                  | 12%                  | 27%                    |                            | 126      |
|                              | Downeast/Coastal Maine         | 10%              | 39%                  | 43%                  | 8%                     | 0%                         | 95       |
|                              | Northern Maine                 | 19%              | 35%                  | 21%                  | 19%                    | 6%                         | 116      |
|                              | Southern Maine                 | 28%              | 27%                  | 29%                  | 13%                    | 3%                         | 208      |
| <b>Media Usage</b>           | Conservative radio listener    | 23%              | 42%                  | 30%                  | 4%                     | 2%                         | 63       |
|                              | CNN viewer                     | 18%              | 45%                  | 22%                  | 9%                     | 6%                         | 111      |
|                              | Fox News viewer                | 37%              | 39%                  | 12%                  | 11%                    | 1%                         | 117      |
|                              | Joe Rogan listener             | 41%              | 36%                  | 6%                   | 6%                     | 11%                        | 32       |
|                              | MSNBC viewer                   | 19%              | 39%                  | 32%                  | 10%                    |                            | 76       |
|                              | Local ME news viewer           | 22%              | 37%                  | 32%                  | 10%                    | 0%                         | 309      |
| <b>2020 Pres Vote</b>        | Voted for Trump                | 33%              | 36%                  | 11%                  | 19%                    | 1%                         | 235      |
|                              | Voted for Biden                | 15%              | 28%                  | 39%                  | 15%                    | 2%                         | 282      |
|                              | Voted for other 2020 candidate | 8%               | 87%                  | 4%                   |                        |                            | 15       |
|                              | Did not vote in 2020           | 0%               | 1%                   | 34%                  | 43%                    | 21%                        | 17       |

### How Well Understand 2023 Referendum Question 4

How well do you feel that you understand the following ballot questions in the 2023 Maine Referendum Election? Question 4: An Act Regarding Automotive Right to Repair

|                              |                                | <u>Very well</u> | <u>Somewhat well</u> | <u>Not very well</u> | <u>Not well at all</u> | <u>Don't know/Not sure</u> | <u>N</u> |
|------------------------------|--------------------------------|------------------|----------------------|----------------------|------------------------|----------------------------|----------|
| <b>STATEWIDE</b>             | <b>August 2023</b>             | 14%              | 28%                  | 26%                  | 30%                    | 2%                         | 551      |
| <b>Voting Registration</b>   | Registered Democrat            | 13%              | 28%                  | 15%                  | 43%                    | 1%                         | 187      |
|                              | Registered Republican          | 12%              | 19%                  | 33%                  | 34%                    | 2%                         | 150      |
|                              | Registered Green Party         | 13%              | 68%                  |                      | 20%                    |                            | 22       |
|                              | Registered Unenrolled          | 18%              | 27%                  | 37%                  | 16%                    | 2%                         | 171      |
| <b>Party ID</b>              | Democrat                       | 14%              | 32%                  | 18%                  | 35%                    | 1%                         | 231      |
|                              | Independent                    | 17%              | 31%                  | 35%                  | 15%                    | 1%                         | 100      |
|                              | Republican                     | 13%              | 23%                  | 29%                  | 32%                    | 3%                         | 217      |
| <b>Political Ideology</b>    | Socialist                      | 1%               | 7%                   | 5%                   | 86%                    |                            | 47       |
|                              | Progressive                    | 17%              | 67%                  | 9%                   | 6%                     | 2%                         | 67       |
|                              | Liberal                        | 13%              | 33%                  | 21%                  | 32%                    | 0%                         | 68       |
|                              | Moderate                       | 19%              | 20%                  | 38%                  | 20%                    | 4%                         | 153      |
|                              | Conservative                   | 16%              | 23%                  | 25%                  | 34%                    | 1%                         | 151      |
|                              | Libertarian                    | 4%               | 27%                  | 36%                  | 32%                    | 1%                         | 43       |
| <b>Age of Respondent</b>     | 18 to 34                       | 15%              | 39%                  | 9%                   | 35%                    | 3%                         | 133      |
|                              | 35 to 49                       | 8%               | 21%                  | 15%                  | 54%                    | 1%                         | 104      |
|                              | 50 to 64                       | 14%              | 25%                  | 39%                  | 21%                    | 1%                         | 168      |
|                              | 65 and older                   | 18%              | 27%                  | 33%                  | 20%                    | 1%                         | 147      |
| <b>Gender of Respondent</b>  | Men                            | 17%              | 35%                  | 27%                  | 20%                    | 1%                         | 259      |
|                              | Women                          | 11%              | 23%                  | 25%                  | 39%                    | 1%                         | 271      |
| <b>Level of Education</b>    | High school or less            | 5%               | 26%                  | 30%                  | 39%                    |                            | 201      |
|                              | Tech school/Some college       | 18%              | 34%                  | 21%                  | 27%                    | 1%                         | 166      |
|                              | College graduate               | 21%              | 28%                  | 25%                  | 21%                    | 5%                         | 115      |
|                              | Postgraduate work              | 22%              | 21%                  | 26%                  | 29%                    | 2%                         | 69       |
| <b>Children in Household</b> | Children in household          | 16%              | 22%                  | 13%                  | 47%                    | 2%                         | 164      |
|                              | No children in household       | 13%              | 31%                  | 31%                  | 23%                    | 1%                         | 386      |
| <b>Region of State</b>       | Central Maine                  | 14%              | 30%                  | 26%                  | 28%                    | 1%                         | 125      |
|                              | Downeast/Coastal Maine         | 11%              | 21%                  | 21%                  | 46%                    | 1%                         | 96       |
|                              | Northern Maine                 | 7%               | 29%                  | 29%                  | 34%                    | 0%                         | 116      |
|                              | Southern Maine                 | 20%              | 29%                  | 27%                  | 21%                    | 3%                         | 208      |
| <b>Media Usage</b>           | Conservative radio listener    | 13%              | 22%                  | 49%                  | 15%                    | 1%                         | 63       |
|                              | CNN viewer                     | 15%              | 27%                  | 24%                  | 33%                    | 2%                         | 111      |
|                              | Fox News viewer                | 12%              | 24%                  | 29%                  | 33%                    | 1%                         | 118      |
|                              | Joe Rogan listener             | 7%               | 30%                  | 44%                  | 7%                     | 12%                        | 32       |
|                              | MSNBC viewer                   | 16%              | 34%                  | 26%                  | 23%                    | 2%                         | 77       |
|                              | Local ME news viewer           | 19%              | 28%                  | 23%                  | 30%                    | 0%                         | 310      |
| <b>2020 Pres Vote</b>        | Voted for Trump                | 13%              | 19%                  | 32%                  | 35%                    | 1%                         | 235      |
|                              | Voted for Biden                | 17%              | 31%                  | 21%                  | 30%                    | 1%                         | 282      |
|                              | Voted for other 2020 candidate | 5%               | 85%                  | 10%                  |                        |                            | 15       |
|                              | Did not vote in 2020           | 0%               | 51%                  | 24%                  | 3%                     | 22%                        | 17       |

### How Well Understand 2023 Referendum Question 5

How well do you feel that you understand the following ballot questions in the 2023 Maine Referendum Election? Question 5: Proposing an Amendment to the Constitution of Maine Regarding the Timing of Judicial Review of the Determination of the Validity of Written Petitions

|                              |                                | <u>Very well</u> | <u>Somewhat well</u> | <u>Not very well</u> | <u>Not well at all</u> | <u>Don't know/Not sure</u> | <u>N</u> |
|------------------------------|--------------------------------|------------------|----------------------|----------------------|------------------------|----------------------------|----------|
| <b>STATEWIDE</b>             | <b>August 2023</b>             | 1%               | 10%                  | 29%                  | 58%                    | 2%                         | 551      |
| <b>Voting Registration</b>   | Registered Democrat            | 1%               | 10%                  | 28%                  | 59%                    | 2%                         | 188      |
|                              | Registered Republican          | 2%               | 9%                   | 29%                  | 59%                    | 1%                         | 150      |
|                              | Registered Green Party         |                  | 58%                  | 22%                  | 20%                    |                            | 22       |
|                              | Registered Unenrolled          | 1%               | 6%                   | 30%                  | 61%                    | 2%                         | 171      |
| <b>Party ID</b>              | Democrat                       | 1%               | 11%                  | 25%                  | 61%                    | 2%                         | 232      |
|                              | Independent                    | 1%               | 13%                  | 31%                  | 54%                    | 1%                         | 100      |
|                              | Republican                     | 2%               | 7%                   | 31%                  | 57%                    | 3%                         | 217      |
| <b>Political Ideology</b>    | Socialist                      |                  | 2%                   | 6%                   | 92%                    |                            | 47       |
|                              | Progressive                    | 2%               | 36%                  | 16%                  | 44%                    | 2%                         | 67       |
|                              | Liberal                        | 0%               | 15%                  | 30%                  | 54%                    | 1%                         | 69       |
|                              | Moderate                       | 1%               | 5%                   | 30%                  | 60%                    | 4%                         | 152      |
|                              | Conservative                   | 2%               | 8%                   | 33%                  | 56%                    | 1%                         | 151      |
|                              | Libertarian                    |                  | 0%                   | 36%                  | 63%                    | 1%                         | 42       |
| <b>Age of Respondent</b>     | 18 to 34                       | 0%               | 28%                  | 8%                   | 61%                    | 3%                         | 133      |
|                              | 35 to 49                       | 2%               | 1%                   | 25%                  | 72%                    | 1%                         | 104      |
|                              | 50 to 64                       | 1%               | 7%                   | 42%                  | 48%                    | 2%                         | 167      |
|                              | 65 and older                   | 1%               | 4%                   | 35%                  | 57%                    | 2%                         | 147      |
| <b>Gender of Respondent</b>  | Men                            | 2%               | 6%                   | 37%                  | 54%                    | 1%                         | 259      |
|                              | Women                          | 0%               | 14%                  | 20%                  | 63%                    | 2%                         | 271      |
| <b>Level of Education</b>    | High school or less            |                  | 7%                   | 24%                  | 69%                    |                            | 201      |
|                              | Tech school/Some college       | 1%               | 15%                  | 22%                  | 61%                    | 1%                         | 167      |
|                              | College graduate               | 2%               | 3%                   | 49%                  | 40%                    | 6%                         | 115      |
|                              | Postgraduate work              | 3%               | 16%                  | 25%                  | 52%                    | 4%                         | 69       |
| <b>Children in Household</b> | Children in household          | 1%               | 12%                  | 23%                  | 62%                    | 2%                         | 164      |
|                              | No children in household       | 1%               | 9%                   | 32%                  | 56%                    | 2%                         | 387      |
| <b>Region of State</b>       | Central Maine                  | 2%               | 11%                  | 36%                  | 50%                    | 1%                         | 126      |
|                              | Downeast/Coastal Maine         | 1%               | 10%                  | 18%                  | 71%                    | 1%                         | 96       |
|                              | Northern Maine                 | 0%               | 15%                  | 33%                  | 51%                    | 1%                         | 116      |
|                              | Southern Maine                 | 1%               | 6%                   | 29%                  | 60%                    | 3%                         | 208      |
| <b>Media Usage</b>           | Conservative radio listener    | 4%               | 12%                  | 43%                  | 40%                    | 1%                         | 63       |
|                              | CNN viewer                     | 0%               | 12%                  | 23%                  | 63%                    | 2%                         | 111      |
|                              | Fox News viewer                | 1%               | 5%                   | 34%                  | 59%                    | 1%                         | 118      |
|                              | Joe Rogan listener             | 3%               | 20%                  | 18%                  | 48%                    | 12%                        | 32       |
|                              | MSNBC viewer                   | 1%               | 15%                  | 39%                  | 43%                    | 3%                         | 77       |
|                              | Local ME news viewer           | 1%               | 12%                  | 28%                  | 58%                    | 1%                         | 309      |
| <b>2020 Pres Vote</b>        | Voted for Trump                | 2%               | 6%                   | 32%                  | 59%                    | 1%                         | 235      |
|                              | Voted for Biden                | 0%               | 10%                  | 28%                  | 61%                    | 1%                         | 283      |
|                              | Voted for other 2020 candidate | 3%               | 86%                  | 5%                   | 5%                     | 1%                         | 15       |
|                              | Did not vote in 2020           |                  |                      | 34%                  | 44%                    | 22%                        | 17       |

### How Well Understand 2023 Referendum Question 6

How well do you feel that you understand the following ballot questions in the 2023 Maine Referendum Election? Question 6: Proposing an Amendment to the Constitution of Maine to Require All Provisions in the Constitution to Be Included in the Official Printing

|                              |                                | <u>Very well</u> | <u>Somewhat well</u> | <u>Not very well</u> | <u>Not well at all</u> | <u>Don't know/Not sure</u> | <u>N</u> |
|------------------------------|--------------------------------|------------------|----------------------|----------------------|------------------------|----------------------------|----------|
| <b>STATEWIDE</b>             | <b>August 2023</b>             | 4%               | 15%                  | 24%                  | 55%                    | 2%                         | 552      |
| <b>Voting Registration</b>   | Registered Democrat            | 7%               | 13%                  | 20%                  | 58%                    | 2%                         | 188      |
|                              | Registered Republican          | 2%               | 18%                  | 21%                  | 57%                    | 2%                         | 150      |
|                              | Registered Green Party         | 0%               | 58%                  | 26%                  | 16%                    |                            | 22       |
|                              | Registered Unenrolled          | 4%               | 7%                   | 33%                  | 53%                    | 4%                         | 171      |
| <b>Party ID</b>              | Democrat                       | 8%               | 9%                   | 24%                  | 56%                    | 2%                         | 232      |
|                              | Independent                    | 0%               | 21%                  | 29%                  | 48%                    | 1%                         | 100      |
|                              | Republican                     | 2%               | 18%                  | 20%                  | 57%                    | 4%                         | 217      |
| <b>Political Ideology</b>    | Socialist                      | 1%               | 4%                   | 4%                   | 91%                    |                            | 47       |
|                              | Progressive                    | 8%               | 39%                  | 29%                  | 22%                    | 2%                         | 67       |
|                              | Liberal                        | 16%              | 15%                  | 22%                  | 48%                    | 1%                         | 69       |
|                              | Moderate                       | 3%               | 6%                   | 27%                  | 59%                    | 5%                         | 152      |
|                              | Conservative                   | 1%               | 18%                  | 25%                  | 54%                    | 2%                         | 151      |
|                              | Libertarian                    | 0%               | 16%                  | 15%                  | 68%                    | 1%                         | 43       |
| <b>Age of Respondent</b>     | 18 to 34                       | 8%               | 21%                  | 17%                  | 51%                    | 3%                         | 133      |
|                              | 35 to 49                       | 4%               | 13%                  | 14%                  | 68%                    | 1%                         | 104      |
|                              | 50 to 64                       | 4%               | 17%                  | 29%                  | 49%                    | 2%                         | 167      |
|                              | 65 and older                   | 2%               | 8%                   | 30%                  | 56%                    | 4%                         | 147      |
| <b>Gender of Respondent</b>  | Men                            | 5%               | 16%                  | 25%                  | 52%                    | 2%                         | 259      |
|                              | Women                          | 4%               | 15%                  | 22%                  | 57%                    | 2%                         | 271      |
| <b>Level of Education</b>    | High school or less            |                  | 15%                  | 18%                  | 67%                    |                            | 201      |
|                              | Tech school/Some college       | 3%               | 23%                  | 23%                  | 49%                    | 2%                         | 167      |
|                              | College graduate               | 5%               | 7%                   | 38%                  | 44%                    | 7%                         | 114      |
|                              | Postgraduate work              | 20%              | 6%                   | 19%                  | 51%                    | 4%                         | 69       |
| <b>Children in Household</b> | Children in household          | 2%               | 15%                  | 15%                  | 65%                    | 2%                         | 164      |
|                              | No children in household       | 5%               | 15%                  | 27%                  | 50%                    | 3%                         | 387      |
| <b>Region of State</b>       | Central Maine                  | 10%              | 18%                  | 22%                  | 48%                    | 1%                         | 126      |
|                              | Downeast/Coastal Maine         | 1%               | 15%                  | 12%                  | 72%                    | 1%                         | 96       |
|                              | Northern Maine                 | 4%               | 14%                  | 29%                  | 52%                    | 1%                         | 116      |
|                              | Southern Maine                 | 3%               | 14%                  | 28%                  | 51%                    | 5%                         | 208      |
| <b>Media Usage</b>           | Conservative radio listener    | 3%               | 29%                  | 35%                  | 29%                    | 5%                         | 63       |
|                              | CNN viewer                     | 4%               | 15%                  | 19%                  | 60%                    | 3%                         | 111      |
|                              | Fox News viewer                | 2%               | 19%                  | 13%                  | 63%                    | 3%                         | 118      |
|                              | Joe Rogan listener             |                  | 23%                  | 15%                  | 50%                    | 12%                        | 32       |
|                              | MSNBC viewer                   | 5%               | 15%                  | 35%                  | 42%                    | 3%                         | 77       |
|                              | Local ME news viewer           | 6%               | 16%                  | 26%                  | 51%                    | 1%                         | 309      |
| <b>2020 Pres Vote</b>        | Voted for Trump                | 2%               | 16%                  | 20%                  | 60%                    | 2%                         | 235      |
|                              | Voted for Biden                | 6%               | 11%                  | 27%                  | 54%                    | 2%                         | 283      |
|                              | Voted for other 2020 candidate | 4%               | 87%                  | 5%                   | 3%                     | 1%                         | 15       |
|                              | Did not vote in 2020           |                  | 0%                   | 34%                  | 43%                    | 22%                        | 17       |

### How Well Understand 2023 Referendum Question 7

How well do you feel that you understand the following ballot questions in the 2023 Maine Referendum Election? Question 7: Proposing an Amendment to the Constitution of Maine to Align the Proceedings for Circulating Written Petitions for People’s Vetoes and Direct Initiatives with Federal Law

|                              |                                | <u>Very well</u> | <u>Somewhat well</u> | <u>Not very well</u> | <u>Not well at all</u> | <u>Don't know/Not sure</u> | <u>N</u> |
|------------------------------|--------------------------------|------------------|----------------------|----------------------|------------------------|----------------------------|----------|
| <b>STATEWIDE</b>             | <b>August 2023</b>             | 2%               | 10%                  | 25%                  | 60%                    | 2%                         | 550      |
| <b>Voting Registration</b>   | Registered Democrat            | 3%               | 10%                  | 23%                  | 62%                    | 2%                         | 187      |
|                              | Registered Republican          | 2%               | 12%                  | 24%                  | 61%                    | 2%                         | 149      |
|                              | Registered Green Party         |                  | 58%                  | 13%                  | 29%                    |                            | 22       |
|                              | Registered Unenrolled          | 0%               | 5%                   | 29%                  | 62%                    | 4%                         | 171      |
| <b>Party ID</b>              | Democrat                       | 2%               | 9%                   | 24%                  | 63%                    | 2%                         | 231      |
|                              | Independent                    | 0%               | 13%                  | 26%                  | 59%                    | 1%                         | 100      |
|                              | Republican                     | 2%               | 10%                  | 25%                  | 59%                    | 4%                         | 217      |
| <b>Political Ideology</b>    | Socialist                      |                  | 8%                   | 7%                   | 85%                    |                            | 47       |
|                              | Progressive                    | 2%               | 36%                  | 14%                  | 46%                    | 2%                         | 67       |
|                              | Liberal                        | 4%               | 6%                   | 28%                  | 61%                    | 1%                         | 68       |
|                              | Moderate                       | 1%               | 4%                   | 31%                  | 59%                    | 5%                         | 152      |
|                              | Conservative                   | 2%               | 12%                  | 26%                  | 58%                    | 2%                         | 151      |
|                              | Libertarian                    | 0%               | 1%                   | 24%                  | 73%                    | 1%                         | 43       |
| <b>Age of Respondent</b>     | 18 to 34                       | 2%               | 22%                  | 12%                  | 61%                    | 3%                         | 133      |
|                              | 35 to 49                       | 1%               | 2%                   | 20%                  | 76%                    | 1%                         | 104      |
|                              | 50 to 64                       | 2%               | 10%                  | 33%                  | 53%                    | 2%                         | 167      |
|                              | 65 and older                   | 2%               | 4%                   | 33%                  | 57%                    | 4%                         | 146      |
| <b>Gender of Respondent</b>  | Men                            | 2%               | 7%                   | 30%                  | 58%                    | 2%                         | 258      |
|                              | Women                          | 1%               | 14%                  | 20%                  | 63%                    | 2%                         | 271      |
| <b>Level of Education</b>    | High school or less            |                  | 9%                   | 21%                  | 71%                    |                            | 201      |
|                              | Tech school/Some college       | 2%               | 18%                  | 20%                  | 59%                    | 2%                         | 166      |
|                              | College graduate               | 2%               | 4%                   | 39%                  | 49%                    | 6%                         | 114      |
|                              | Postgraduate work              | 6%               | 6%                   | 29%                  | 54%                    | 5%                         | 69       |
| <b>Children in Household</b> | Children in household          | 1%               | 13%                  | 17%                  | 67%                    | 2%                         | 164      |
|                              | No children in household       | 2%               | 9%                   | 29%                  | 58%                    | 2%                         | 385      |
| <b>Region of State</b>       | Central Maine                  | 3%               | 9%                   | 36%                  | 50%                    | 2%                         | 124      |
|                              | Downeast/Coastal Maine         | 0%               | 12%                  | 12%                  | 74%                    | 1%                         | 96       |
|                              | Northern Maine                 | 3%               | 14%                  | 29%                  | 54%                    | 1%                         | 116      |
|                              | Southern Maine                 | 1%               | 8%                   | 24%                  | 63%                    | 4%                         | 208      |
| <b>Media Usage</b>           | Conservative radio listener    | 5%               | 21%                  | 42%                  | 28%                    | 5%                         | 63       |
|                              | CNN viewer                     | 1%               | 14%                  | 23%                  | 59%                    | 3%                         | 110      |
|                              | Fox News viewer                | 0%               | 11%                  | 20%                  | 66%                    | 3%                         | 118      |
|                              | Joe Rogan listener             |                  | 23%                  | 15%                  | 50%                    | 12%                        | 32       |
|                              | MSNBC viewer                   | 2%               | 16%                  | 36%                  | 43%                    | 3%                         | 76       |
|                              | Local ME news viewer           | 2%               | 11%                  | 29%                  | 58%                    | 1%                         | 308      |
| <b>2020 Pres Vote</b>        | Voted for Trump                | 2%               | 9%                   | 25%                  | 62%                    | 2%                         | 235      |
|                              | Voted for Biden                | 2%               | 8%                   | 26%                  | 63%                    | 2%                         | 282      |
|                              | Voted for other 2020 candidate | 3%               | 86%                  | 5%                   | 5%                     | 1%                         | 15       |
|                              | Did not vote in 2020           |                  |                      | 34%                  | 44%                    | 22%                        | 17       |

### How Well Understand 2023 Referendum Question 8

How well do you feel that you understand the following ballot questions in the 2023 Maine Referendum Election? Question 8: Proposing an Amendment to the Constitution of Maine to Allow Persons Under Guardianship for Mental Illness to Be Electors

|                              |                                | <u>Very well</u> | <u>Somewhat well</u> | <u>Not very well</u> | <u>Not well at all</u> | <u>Don't know/Not sure</u> | <u>N</u> |
|------------------------------|--------------------------------|------------------|----------------------|----------------------|------------------------|----------------------------|----------|
| <b>STATEWIDE</b>             | <b>August 2023</b>             | 2%               | 12%                  | 27%                  | 57%                    | 2%                         | 550      |
| <b>Voting Registration</b>   | Registered Democrat            | 3%               | 11%                  | 23%                  | 62%                    | 2%                         | 186      |
|                              | Registered Republican          | 3%               | 11%                  | 33%                  | 52%                    | 2%                         | 150      |
|                              | Registered Green Party         |                  | 58%                  | 22%                  | 20%                    |                            | 22       |
|                              | Registered Unenrolled          | 1%               | 6%                   | 29%                  | 61%                    | 4%                         | 171      |
| <b>Party ID</b>              | Democrat                       | 2%               | 10%                  | 23%                  | 63%                    | 2%                         | 230      |
|                              | Independent                    | 1%               | 14%                  | 29%                  | 55%                    | 1%                         | 100      |
|                              | Republican                     | 2%               | 13%                  | 29%                  | 52%                    | 4%                         | 217      |
| <b>Political Ideology</b>    | Socialist                      | 0%               | 4%                   | 4%                   | 92%                    |                            | 47       |
|                              | Progressive                    | 1%               | 37%                  | 15%                  | 45%                    | 2%                         | 67       |
|                              | Liberal                        | 4%               | 8%                   | 19%                  | 68%                    | 1%                         | 68       |
|                              | Moderate                       | 2%               | 6%                   | 33%                  | 55%                    | 4%                         | 152      |
|                              | Conservative                   | 3%               | 11%                  | 36%                  | 48%                    | 2%                         | 151      |
|                              | Libertarian                    | 0%               | 14%                  | 19%                  | 66%                    | 1%                         | 43       |
| <b>Age of Respondent</b>     | 18 to 34                       | 2%               | 18%                  | 13%                  | 65%                    | 3%                         | 133      |
|                              | 35 to 49                       | 3%               | 6%                   | 16%                  | 74%                    | 1%                         | 104      |
|                              | 50 to 64                       | 2%               | 16%                  | 41%                  | 40%                    | 2%                         | 167      |
|                              | 65 and older                   | 1%               | 6%                   | 30%                  | 59%                    | 3%                         | 146      |
| <b>Gender of Respondent</b>  | Men                            | 3%               | 12%                  | 30%                  | 53%                    | 2%                         | 258      |
|                              | Women                          | 1%               | 12%                  | 24%                  | 61%                    | 1%                         | 270      |
| <b>Level of Education</b>    | High school or less            |                  | 13%                  | 23%                  | 63%                    |                            | 201      |
|                              | Tech school/Some college       | 1%               | 13%                  | 27%                  | 57%                    | 2%                         | 166      |
|                              | College graduate               | 3%               | 7%                   | 37%                  | 47%                    | 6%                         | 115      |
|                              | Postgraduate work              | 7%               | 14%                  | 17%                  | 59%                    | 3%                         | 69       |
| <b>Children in Household</b> | Children in household          | 1%               | 11%                  | 24%                  | 61%                    | 3%                         | 164      |
|                              | No children in household       | 2%               | 12%                  | 28%                  | 56%                    | 2%                         | 386      |
| <b>Region of State</b>       | Central Maine                  | 3%               | 15%                  | 25%                  | 55%                    | 1%                         | 125      |
|                              | Downeast/Coastal Maine         | 1%               | 5%                   | 23%                  | 70%                    | 1%                         | 96       |
|                              | Northern Maine                 | 2%               | 20%                  | 34%                  | 43%                    | 1%                         | 114      |
|                              | Southern Maine                 | 2%               | 9%                   | 25%                  | 60%                    | 4%                         | 208      |
| <b>Media Usage</b>           | Conservative radio listener    | 5%               | 19%                  | 51%                  | 21%                    | 5%                         | 63       |
|                              | CNN viewer                     | 2%               | 13%                  | 27%                  | 56%                    | 2%                         | 109      |
|                              | Fox News viewer                | 0%               | 14%                  | 21%                  | 62%                    | 3%                         | 118      |
|                              | Joe Rogan listener             | 3%               | 3%                   | 31%                  | 51%                    | 12%                        | 32       |
|                              | MSNBC viewer                   | 2%               | 16%                  | 35%                  | 45%                    | 2%                         | 75       |
|                              | Local ME news viewer           | 2%               | 11%                  | 25%                  | 61%                    | 1%                         | 309      |
| <b>2020 Pres Vote</b>        | Voted for Trump                | 2%               | 11%                  | 29%                  | 55%                    | 2%                         | 235      |
|                              | Voted for Biden                | 2%               | 9%                   | 25%                  | 63%                    | 1%                         | 281      |
|                              | Voted for other 2020 candidate | 5%               | 84%                  | 6%                   | 3%                     | 1%                         | 15       |
|                              | Did not vote in 2020           | 0%               |                      | 34%                  | 44%                    | 22%                        | 17       |

## Approval of Governor Mills' Job Performance

Generally speaking, do you approve or disapprove of the way Janet Mills is handling his job as governor?

|                              |                                | <u>Approve</u> | <u>Disapprove</u> | <u>Neither/DK</u> | <u>N</u> |
|------------------------------|--------------------------------|----------------|-------------------|-------------------|----------|
| <b>STATEWIDE</b>             | <b>August 2023</b>             | 54%            | 43%               | 4%                | 555      |
| <b>Voting Registration</b>   | Registered Democrat            | 93%            | 6%                | 1%                | 190      |
|                              | Registered Republican          | 11%            | 87%               | 2%                | 150      |
|                              | Registered Green Party         | 3%             | 97%               | 0%                | 22       |
|                              | Registered Unenrolled          | 60%            | 37%               | 4%                | 171      |
| <b>Party ID</b>              | Democrat                       | 95%            | 3%                | 2%                | 235      |
|                              | Independent                    | 53%            | 47%               | 0%                | 100      |
|                              | Republican                     | 9%             | 83%               | 7%                | 217      |
| <b>Political Ideology</b>    | Socialist                      | 94%            | 3%                | 3%                | 47       |
|                              | Progressive                    | 78%            | 21%               | 1%                | 69       |
|                              | Liberal                        | 91%            | 8%                | 2%                | 70       |
|                              | Moderate                       | 73%            | 23%               | 4%                | 153      |
|                              | Conservative                   | 8%             | 85%               | 6%                | 151      |
|                              | Libertarian                    | 4%             | 96%               |                   | 43       |
| <b>Age of Respondent</b>     | 18 to 34                       | 74%            | 18%               | 8%                | 133      |
|                              | 35 to 49                       | 36%            | 63%               | 1%                | 104      |
|                              | 50 to 64                       | 45%            | 53%               | 3%                | 168      |
|                              | 65 and older                   | 58%            | 40%               | 2%                | 149      |
| <b>Gender of Respondent</b>  | Men                            | 38%            | 56%               | 5%                | 260      |
|                              | Women                          | 68%            | 31%               | 0%                | 273      |
| <b>Level of Education</b>    | High school or less            | 46%            | 49%               | 5%                | 201      |
|                              | Tech school/Some college       | 56%            | 42%               | 2%                | 167      |
|                              | College graduate               | 48%            | 49%               | 4%                | 116      |
|                              | Postgraduate work              | 78%            | 20%               | 1%                | 70       |
| <b>Children in Household</b> | Children in household          | 44%            | 53%               | 4%                | 165      |
|                              | No children in household       | 58%            | 39%               | 3%                | 389      |
| <b>Region of State</b>       | Central Maine                  | 37%            | 56%               | 8%                | 128      |
|                              | Downeast/Coastal Maine         | 65%            | 33%               | 3%                | 96       |
|                              | Northern Maine                 | 45%            | 52%               | 3%                | 116      |
|                              | Southern Maine                 | 63%            | 35%               | 2%                | 209      |
| <b>Media Usage</b>           | Conservative radio listener    | 25%            | 75%               |                   | 63       |
|                              | CNN viewer                     | 83%            | 17%               | 0%                | 112      |
|                              | Fox News viewer                | 15%            | 85%               | 0%                | 118      |
|                              | Joe Rogan listener             | 9%             | 81%               | 11%               | 32       |
|                              | MSNBC viewer                   | 90%            | 10%               | 1%                | 78       |
|                              | Local ME news viewer           | 67%            | 32%               | 1%                | 311      |
| <b>2020 Pres Vote</b>        | Voted for Trump                | 10%            | 88%               | 2%                | 236      |
|                              | Voted for Biden                | 96%            | 3%                | 1%                | 285      |
|                              | Voted for other 2020 candidate | 4%             | 96%               | 0%                | 16       |
|                              | Did not vote in 2020           | 0%             | 38%               | 62%               | 17       |



### Most Important Problem Facing Maine

What do you think is the most important problem facing the state of Maine today? (coded)

|                                  |                                | <u>Abortion/<br/>Women's<br/>rights</u> | <u>Climate<br/>change/<br/>Environment</u> | <u>Cost of living</u> | <u>Crime</u> | <u>Demographic<br/>problems</u> | <u>Drugs/<br/>Addiction</u> |
|----------------------------------|--------------------------------|---|--|-----------------------|--------------|---------------------------------|-----------------------------|
| <b>STATEWIDE</b>                 | <b>August 2023</b>             | 2%                                      | 5%   | 20%                   | 0%           | 1%                              | 1%                          |
| <b>Voting<br/>Registration</b>   | Registered Democrat            |   | 13%  | 8%                    |              | 3%                              | 1%                          |
|                                  | Registered Republican          | 4%                                      | 0%   | 45%                   |              | 1%                              | 1%                          |
|                                  | Registered Green Party         |   |  | 75%                   |              | 3%                              |                             |
|                                  | Registered Unenrolled          | 2%                                      | 3%   | 2%                    |              | 1%                              | 2%                          |
| <b>Party ID</b>                  | Democrat                       |   | 11%  | 6%                    | 0%           | 3%                              | 1%                          |
|                                  | Independent                    |   | 0%   | 20%                   |              | 1%                              |                             |
|                                  | Republican                     | 4%                                      | 2%   | 35%                   |              | 0%                              | 3%                          |
| <b>Political<br/>Ideology</b>    | Socialist                      |   | 5%   | 5%                    |              |                                 |                             |
|                                  | Progressive                    |   | 8%   | 32%                   |              | 5%                              |                             |
|                                  | Liberal                        |   | 21%  | 2%                    |              | 1%                              | 1%                          |
|                                  | Moderate                       | 2%                                      | 2%   | 7%                    |              | 2%                              | 3%                          |
|                                  | Conservative                   | 4%                                      | 2%   | 38%                   |              |                                 | 1%                          |
|                                  | Libertarian                    |   | 0%   | 36%                   |              |                                 | 0%                          |
| <b>Age of<br/>Respondent</b>     | 18 to 34                       | 2%                                      | 8%   | 26%                   | 0%           | 2%                              |                             |
|                                  | 35 to 49                       |   | 3%   | 36%                   |              |                                 | 2%                          |
|                                  | 50 to 64                       | 4%                                      | 3%   | 16%                   |              | 1%                              | 1%                          |
|                                  | 65 and older                   |   | 8%   | 8%                    |              | 3%                              | 2%                          |
| <b>Gender of<br/>Respondent</b>  | Men                            | 2%                                      | 4%   | 20%                   |              | 2%                              | 2%                          |
|                                  | Women                          |   | 6%   | 20%                   | 0%           | 0%                              | 1%                          |
| <b>Level of<br/>Education</b>    | High school or less            | 3%                                      |  | 36%                   |              |                                 |                             |
|                                  | Tech school/Some college       |   | 7%   | 14%                   |              | 0%                              | 2%                          |
|                                  | College graduate               | 3%                                      | 6%   | 10%                   |              | 1%                              | 3%                          |
|                                  | Postgraduate work              |   | 17%  | 5%                    | 1%           | 8%                              | 2%                          |
| <b>Children in<br/>Household</b> | Children in household          | 2%                                      | 2%   | 29%                   |              |                                 | 1%                          |
|                                  | No children in household       | 2%                                      | 7%   | 16%                   | 0%           | 2%                              | 2%                          |
| <b>Region of<br/>State</b>       | Central Maine                  |   | 3%   | 28%                   |              | 3%                              | 2%                          |
|                                  | Downeast/Coastal Maine         |   | 4%   | 18%                   |              | 0%                              |                             |
|                                  | Northern Maine                 | 5%                                      | 4%   | 29%                   | 0%           | 1%                              | 4%                          |
|                                  | Southern Maine                 | 2%                                      | 8%   | 11%                   |              | 1%                              | 1%                          |
| <b>Media Usage</b>               | Conservative radio listener    | 10%                                     |  | 20%                   |              |                                 |                             |
|                                  | CNN viewer                     |   | 4%   | 13%                   |              | 2%                              | 1%                          |
|                                  | Fox News viewer                |   | 2%   | 25%                   |              | 1%                              | 0%                          |
|                                  | Joe Rogan listener             | 11%                                     |  | 24%                   |              |                                 | 1%                          |
|                                  | MSNBC viewer                   |   | 5%   | 17%                   |              | 2%                              | 1%                          |
|                                  | Local ME news viewer           |   | 6%   | 15%                   |              | 2%                              | 2%                          |
| <b>2020 Pres<br/>Vote</b>        | Voted for Trump                | 3%                                      | 2%   | 29%                   |              | 0%                              | 3%                          |
|                                  | Voted for Biden                |   | 9%   | 7%                    |              | 2%                              | 1%                          |
|                                  | Voted for other 2020 candidate |   |  | 84%                   |              |                                 |                             |
|                                  | Did not vote in 2020           | 19%                                     |  | 42%                   | 2%           |                                 |                             |

### Most Important Problem Facing Maine

What do you think is the most important problem facing the state of Maine today? (coded)

|                              |                                | <u>Education</u> | <u>Healthcare</u> | <u>Homelessness</u> | <u>Housing</u> | <u>Immigration</u> | <u>Infrastructure</u> |
|------------------------------|--------------------------------|------------------|-------------------|---------------------|----------------|--------------------|-----------------------|
| <b>STATEWIDE</b>             | <b>August 2023</b>             | 1%               | 1%                | 10%                 | 25%            | 2%                 | 2%                    |
| <b>Voting Registration</b>   | Registered Democrat            | 0%               | 2%                | 12%                 | 42%            | 1%                 | 1%                    |
|                              | Registered Republican          | 0%               | 1%                | 15%                 | 5%             | 3%                 |                       |
|                              | Registered Green Party         |                  |                   |                     |                |                    |                       |
|                              | Registered Unenrolled          | 2%               | 0%                | 6%                  | 29%            | 4%                 | 6%                    |
| <b>Party ID</b>              | Democrat                       | 0%               | 2%                | 11%                 | 41%            | 1%                 | 4%                    |
|                              | Independent                    | 1%               | 1%                | 9%                  | 25%            | 6%                 | 3%                    |
|                              | Republican                     | 1%               |                   | 10%                 | 8%             | 2%                 |                       |
| <b>Political Ideology</b>    | Socialist                      |                  | 6%                | 1%                  | 77%            |                    | 0%                    |
|                              | Progressive                    | 1%               | 0%                | 3%                  | 33%            | 0%                 | 0%                    |
|                              | Liberal                        | 1%               | 0%                | 9%                  | 34%            | 1%                 | 1%                    |
|                              | Moderate                       | 0%               | 0%                | 16%                 | 27%            | 3%                 | 7%                    |
|                              | Conservative                   | 2%               | 0%                | 7%                  | 9%             | 3%                 | 1%                    |
|                              | Libertarian                    |                  |                   | 1%                  | 0%             | 4%                 |                       |
| <b>Age of Respondent</b>     | 18 to 34                       |                  |                   | 1%                  | 56%            |                    |                       |
|                              | 35 to 49                       |                  |                   | 10%                 | 24%            | 1%                 | 3%                    |
|                              | 50 to 64                       | 2%               | 2%                | 16%                 | 11%            | 3%                 | 6%                    |
|                              | 65 and older                   | 1%               | 1%                | 12%                 | 13%            | 5%                 | 0%                    |
| <b>Gender of Respondent</b>  | Men                            | 1%               | 1%                | 10%                 | 15%            | 3%                 | 4%                    |
|                              | Women                          | 0%               | 1%                | 11%                 | 36%            | 1%                 | 0%                    |
| <b>Level of Education</b>    | High school or less            |                  |                   | 19%                 | 20%            |                    | 4%                    |
|                              | Tech school/Some college       | 1%               | 2%                | 7%                  | 33%            | 4%                 | 0%                    |
|                              | College graduate               | 0%               | 1%                | 3%                  | 19%            | 2%                 | 4%                    |
|                              | Postgraduate work              | 4%               | 0%                | 3%                  | 31%            | 4%                 | 0%                    |
| <b>Children in Household</b> | Children in household          |                  | 0%                | 5%                  | 40%            | 2%                 | 2%                    |
|                              | No children in household       | 1%               | 1%                | 12%                 | 19%            | 2%                 | 3%                    |
| <b>Region of State</b>       | Central Maine                  | 2%               | 2%                | 6%                  | 18%            | 2%                 | 0%                    |
|                              | Downeast/Coastal Maine         | 1%               | 0%                | 0%                  | 43%            | 3%                 | 1%                    |
|                              | Northern Maine                 |                  | 0%                | 10%                 | 11%            |                    | 8%                    |
|                              | Southern Maine                 | 0%               | 1%                | 15%                 | 30%            | 3%                 | 1%                    |
| <b>Media Usage</b>           | Conservative radio listener    | 4%               |                   | 1%                  | 6%             | 6%                 |                       |
|                              | CNN viewer                     | 1%               | 3%                | 17%                 | 18%            | 1%                 | 2%                    |
|                              | Fox News viewer                | 2%               | 1%                | 6%                  | 9%             | 6%                 |                       |
|                              | Joe Rogan listener             |                  |                   | 34%                 | 8%             | 7%                 | 3%                    |
|                              | MSNBC viewer                   | 0%               | 5%                | 3%                  | 19%            | 2%                 | 0%                    |
|                              | Local ME news viewer           | 0%               | 0%                | 7%                  | 34%            | 1%                 | 1%                    |
| <b>2020 Pres Vote</b>        | Voted for Trump                | 1%               | 0%                | 11%                 | 7%             | 5%                 | 1%                    |
|                              | Voted for Biden                | 1%               | 1%                | 9%                  | 43%            | 1%                 | 4%                    |
|                              | Voted for other 2020 candidate |                  |                   | 6%                  | 4%             | 0%                 |                       |
|                              | Did not vote in 2020           |                  | 0%                | 24%                 |                |                    | 1%                    |

### Most Important Problem Facing Maine

What do you think is the most important problem facing the state of Maine today? (coded)

|                              |                                | <u>Jobs/Economy</u> | <u>Lack of workforce</u> | <u>Left/Leftist politicians</u> | <u>Partisanship/ Division</u> | <u>Right/Rightist politicians</u> |
|------------------------------|--------------------------------|---------------------|--------------------------|---------------------------------|-------------------------------|-----------------------------------|
| <b>STATEWIDE</b>             | <b>August 2023</b>             | 10%                 | 1%                       | 5%                              | 1%                            | 1%                                |
| <b>Voting Registration</b>   | Registered Democrat            | 9%                  | 1%                       | 1%                              | 0%                            | 1%                                |
|                              | Registered Republican          | 6%                  | 1%                       | 13%                             | 0%                            |                                   |
|                              | Registered Green Party         |                     |                          |                                 | 0%                            |                                   |
|                              | Registered Unenrolled          | 16%                 | 2%                       | 4%                              | 1%                            | 0%                                |
| <b>Party ID</b>              | Democrat                       | 9%                  | 2%                       | 1%                              | 0%                            | 1%                                |
|                              | Independent                    | 19%                 |                          | 0%                              | 1%                            |                                   |
|                              | Republican                     | 6%                  | 1%                       | 12%                             | 0%                            |                                   |
| <b>Political Ideology</b>    | Socialist                      | 2%                  |                          |                                 |                               | 0%                                |
|                              | Progressive                    | 6%                  | 3%                       | 1%                              | 1%                            | 1%                                |
|                              | Liberal                        | 21%                 | 2%                       | 1%                              |                               | 2%                                |
|                              | Moderate                       | 15%                 | 1%                       | 3%                              | 1%                            | 0%                                |
|                              | Conservative                   | 5%                  | 1%                       | 11%                             |                               |                                   |
|                              | Libertarian                    | 6%                  |                          | 6%                              |                               |                                   |
| <b>Age of Respondent</b>     | 18 to 34                       | 4%                  |                          | 2%                              |                               |                                   |
|                              | 35 to 49                       | 9%                  | 3%                       | 2%                              |                               |                                   |
|                              | 50 to 64                       | 16%                 | 2%                       | 5%                              | 0%                            | 0%                                |
|                              | 65 and older                   | 10%                 | 1%                       | 9%                              | 1%                            | 2%                                |
| <b>Gender of Respondent</b>  | Men                            | 9%                  | 2%                       | 6%                              | 1%                            | 1%                                |
|                              | Women                          | 10%                 | 1%                       | 4%                              | 0%                            | 0%                                |
| <b>Level of Education</b>    | High school or less            | 6%                  |                          | 2%                              |                               |                                   |
|                              | Tech school/Some college       | 10%                 | 2%                       | 7%                              | 1%                            | 0%                                |
|                              | College graduate               | 18%                 | 2%                       | 8%                              | 1%                            | 1%                                |
|                              | Postgraduate work              | 8%                  | 2%                       | 3%                              | 0%                            | 1%                                |
| <b>Children in Household</b> | Children in household          | 8%                  | 1%                       | 3%                              |                               | 0%                                |
|                              | No children in household       | 11%                 | 1%                       | 6%                              | 1%                            | 1%                                |
| <b>Region of State</b>       | Central Maine                  | 7%                  | 1%                       | 6%                              | 2%                            | 0%                                |
|                              | Downeast/Coastal Maine         | 3%                  | 0%                       | 4%                              | 0%                            | 0%                                |
|                              | Northern Maine                 | 17%                 | 1%                       | 3%                              |                               | 0%                                |
|                              | Southern Maine                 | 10%                 | 2%                       | 6%                              | 0%                            | 1%                                |
| <b>Media Usage</b>           | Conservative radio listener    | 20%                 | 2%                       | 17%                             |                               |                                   |
|                              | CNN viewer                     | 14%                 | 3%                       | 3%                              | 1%                            | 2%                                |
|                              | Fox News viewer                | 12%                 | 1%                       | 10%                             | 1%                            |                                   |
|                              | Joe Rogan listener             | 1%                  |                          | 9%                              |                               |                                   |
|                              | MSNBC viewer                   | 26%                 | 2%                       | 1%                              | 3%                            | 2%                                |
|                              | Local ME news viewer           | 9%                  | 1%                       | 5%                              | 0%                            | 1%                                |
| <b>2020 Pres Vote</b>        | Voted for Trump                | 9%                  | 1%                       | 10%                             | 0%                            |                                   |
|                              | Voted for Biden                | 12%                 | 2%                       | 1%                              | 1%                            | 1%                                |
|                              | Voted for other 2020 candidate | 2%                  | 0%                       | 0%                              | 0%                            |                                   |
|                              | Did not vote in 2020           | 1%                  |                          | 10%                             |                               |                                   |

## Most Important Problem Facing Maine

What do you think is the most important problem facing the state of Maine today? (coded)

|                              |                                | <u>State budget</u> | <u>Taxes</u> | <u>Other</u> | <u>Don't know/Not sure</u> | <u>N</u> |
|------------------------------|--------------------------------|---------------------|--------------|--------------|----------------------------|----------|
| <b>STATEWIDE</b>             | <b>August 2023</b>             | 1%                  | 3%           | 8%           | 0%                         | 546      |
| <b>Voting Registration</b>   | Registered Democrat            | 0%                  | 1%           | 4%           | 0%                         | 187      |
|                              | Registered Republican          | 2%                  | 3%           | 1%           |                            | 150      |
|                              | Registered Green Party         |                     | 13%          | 9%           |                            | 22       |
|                              | Registered Unenrolled          |                     | 5%           | 15%          |                            | 166      |
| <b>Party ID</b>              | Democrat                       | 0%                  | 1%           | 6%           | 0%                         | 231      |
|                              | Independent                    |                     | 2%           | 13%          |                            | 100      |
|                              | Republican                     | 1%                  | 6%           | 8%           |                            | 213      |
| <b>Political Ideology</b>    | Socialist                      |                     |              | 4%           |                            | 46       |
|                              | Progressive                    |                     | 0%           | 5%           |                            | 69       |
|                              | Liberal                        |                     |              | 3%           | 0%                         | 68       |
|                              | Moderate                       | 1%                  | 3%           | 5%           |                            | 152      |
|                              | Conservative                   | 0%                  | 8%           | 6%           |                            | 147      |
|                              | Libertarian                    | 3%                  | 0%           | 43%          |                            | 43       |
| <b>Age of Respondent</b>     | 18 to 34                       |                     |              | 0%           |                            | 133      |
|                              | 35 to 49                       | 2%                  | 1%           | 4%           |                            | 104      |
|                              | 50 to 64                       |                     | 3%           | 10%          |                            | 163      |
|                              | 65 and older                   | 1%                  | 8%           | 15%          | 0%                         | 145      |
| <b>Gender of Respondent</b>  | Men                            | 1%                  | 5%           | 10%          | 0%                         | 254      |
|                              | Women                          | 0%                  | 1%           | 6%           |                            | 269      |
| <b>Level of Education</b>    | High school or less            |                     |              | 11%          |                            | 199      |
|                              | Tech school/Some college       | 0%                  | 5%           | 4%           |                            | 162      |
|                              | College graduate               | 1%                  | 5%           | 10%          | 0%                         | 115      |
|                              | Postgraduate work              | 2%                  | 4%           | 3%           |                            | 69       |
| <b>Children in Household</b> | Children in household          | 1%                  | 2%           | 2%           |                            | 164      |
|                              | No children in household       | 0%                  | 4%           | 10%          | 0%                         | 381      |
| <b>Region of State</b>       | Central Maine                  | 2%                  | 1%           | 14%          |                            | 124      |
|                              | Downeast/Coastal Maine         | 0%                  | 0%           | 20%          |                            | 92       |
|                              | Northern Maine                 |                     | 4%           | 2%           |                            | 115      |
|                              | Southern Maine                 | 0%                  | 5%           | 3%           | 0%                         | 208      |
| <b>Media Usage</b>           | Conservative radio listener    |                     | 13%          | 1%           |                            | 62       |
|                              | CNN viewer                     |                     | 1%           | 14%          |                            | 111      |
|                              | Fox News viewer                | 1%                  | 6%           | 17%          |                            | 113      |
|                              | Joe Rogan listener             |                     | 3%           | 1%           |                            | 32       |
|                              | MSNBC viewer                   | 1%                  | 2%           | 8%           | 0%                         | 78       |
|                              | Local ME news viewer           | 1%                  | 3%           | 10%          | 0%                         | 306      |
| <b>2020 Pres Vote</b>        | Voted for Trump                | 1%                  | 6%           | 11%          |                            | 232      |
|                              | Voted for Biden                | 0%                  | 1%           | 6%           | 0%                         | 281      |
|                              | Voted for other 2020 candidate |                     | 1%           | 3%           |                            | 16       |
|                              | Did not vote in 2020           |                     | 0%           | 0%           |                            | 17       |