

January 24, 2023

BIDEN JOB APPROVAL REMAINS LOW IN NH; MOST THINK HE ACTED INAPPROPRIATELY HANDLING CLASSIFIED DOCUMENTS

By: Sean P. McKinley, M.A.
Zachary S. Azem, M.A.

J. Mitchell Scacchi, M.A.
Andrew E. Smith, Ph.D.

andrew.smith@unh.edu
603-862-2226
cola.unh.edu/unh-survey-center

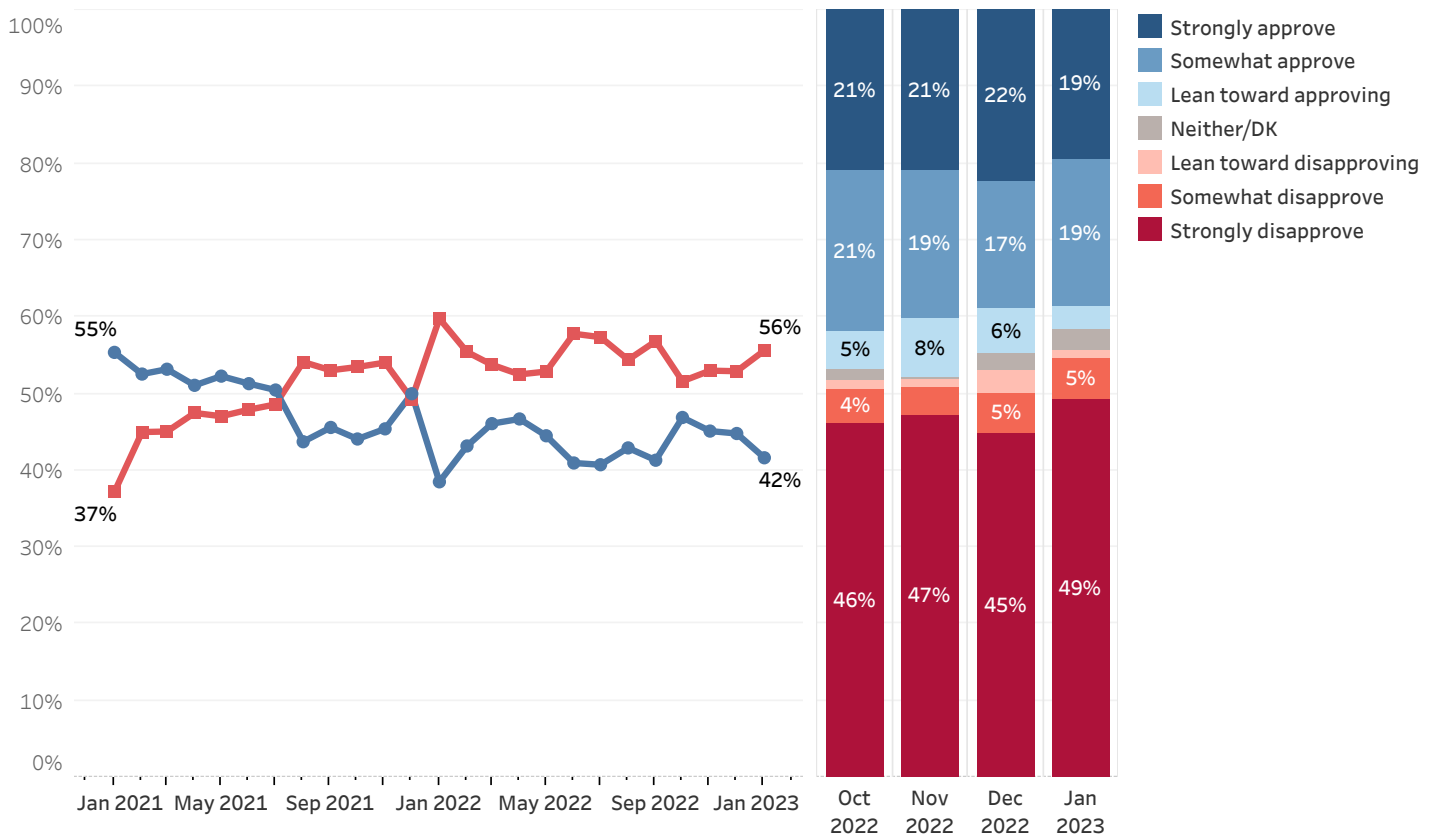
DURHAM, NH - President Joe Biden's performance ratings in New Hampshire remain low, lower than former President Trump's at this point in his presidency. Seven in ten Granite Staters think Biden handled classified documents from his time as Vice President inappropriately, but a plurality think that Trump's handling of classified documents was worse. Many New Hampshire residents watched at least some of Kevin McCarthy's election as Speaker of the U.S. House, but few Granite Staters are pleased by McCarthy's election or view him favorably.

Presidential Approval

Starting his third year in office, President Joe Biden is unpopular in New Hampshire. A majority of New Hampshire residents continue to disapprove of the job Biden is doing as President - only 42% of Granite Staters approve of Biden's performance as President, 56% disapprove, and 3% are unsure. Biden's net approval rating (the percentage who approve minus the percentage who disapprove) among Granite Staters is -14, slightly lower than in December (-8). Former President Donald Trump's net approval rating at about the same point in his presidency was -10.

Eighty-seven percent of Democrats approve of Biden's performance as President but only 20% of Independents approve, his lowest rating among this group since August 2021, and only 4% of Republicans approve.

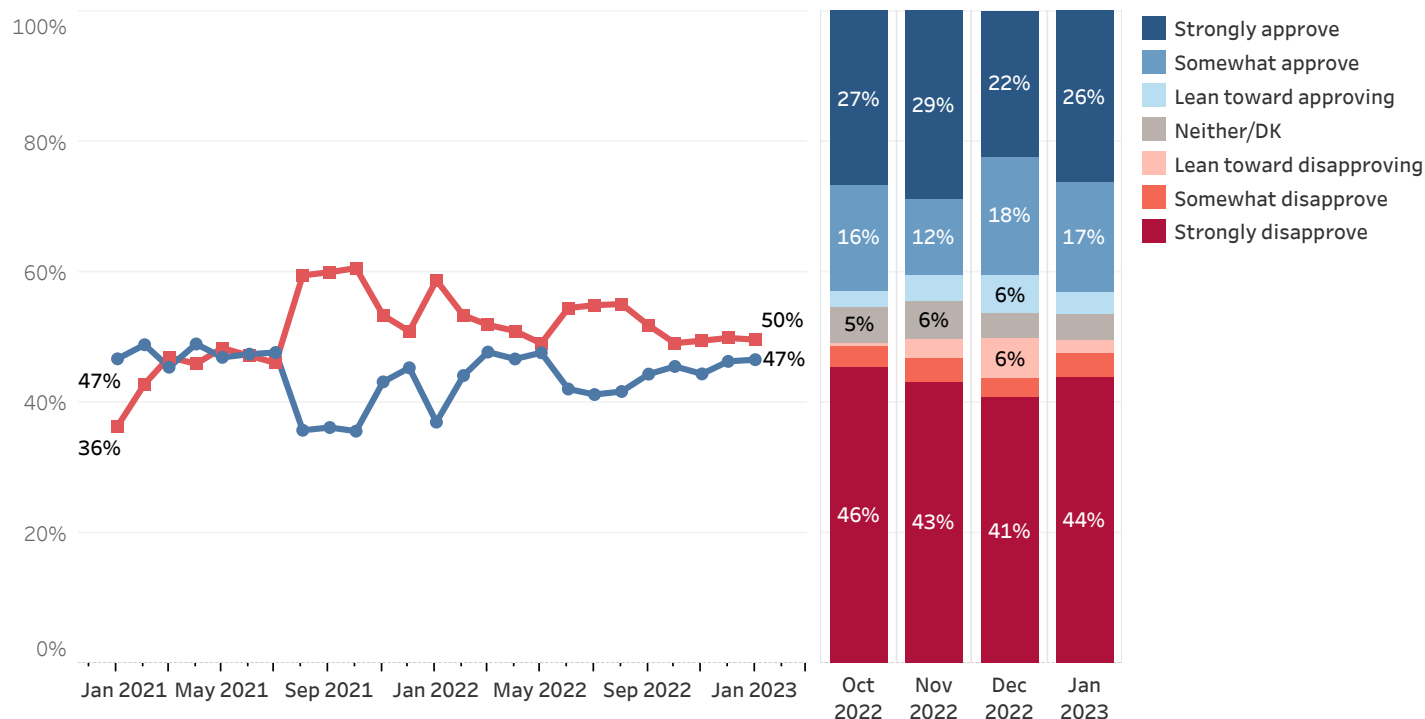
Approval of President Biden's Job Performance



* We ask that this copyrighted information be referred to as *the Granite State Poll*, a States of Opinion Project, conducted by the University of New Hampshire Survey Center.

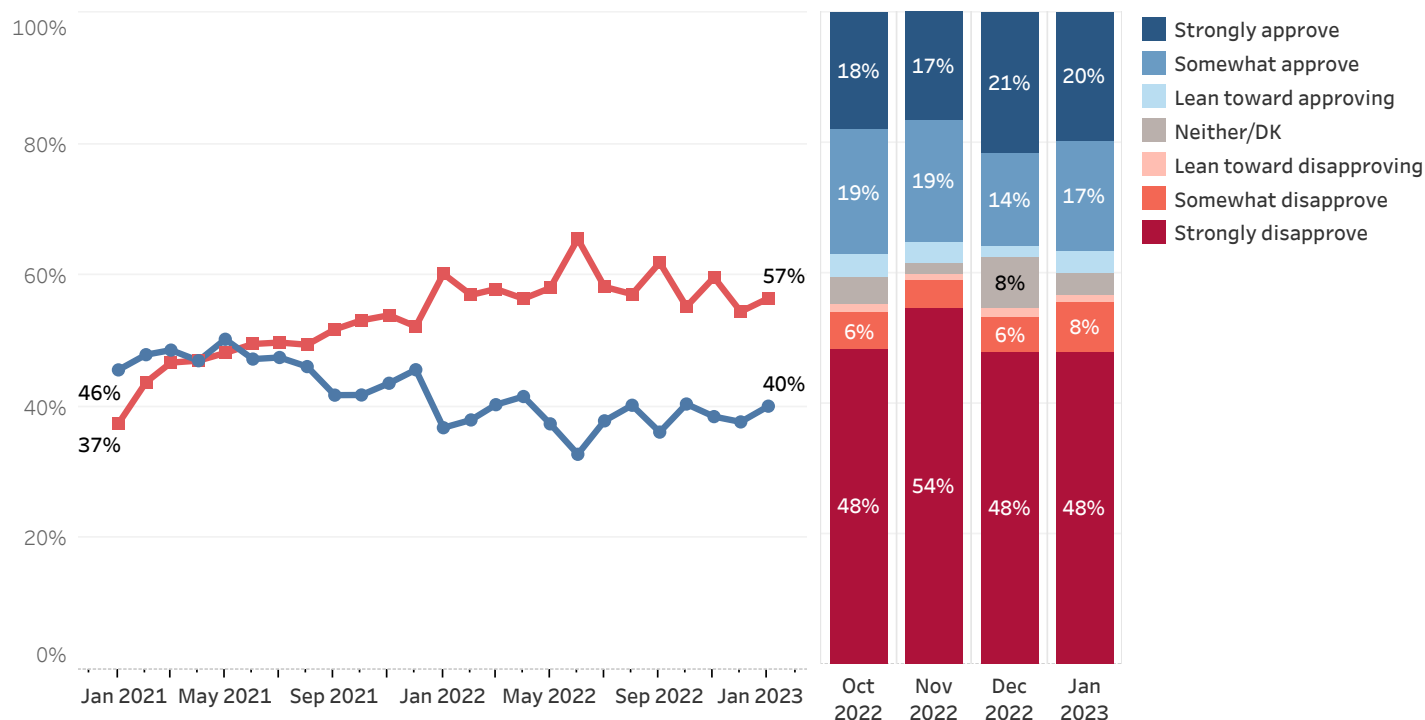
Granite Staters are slightly more positive in their assessment of Biden's handling of foreign affairs. Forty-seven percent approve of his handling of foreign affairs, 50% disapprove, and 4% are unsure. Net approval of Biden's handling of foreign affairs is -3, unchanged since December (-4). Ninety-five percent of Democrats approve of Biden's handling of foreign affairs, but only 23% of Independents and 5% of Republicans approve.

Approval of President Biden's Handling of Foreign Affairs



Ratings of Biden's handling of the economy remain low. Only 40% of New Hampshire residents approve of Biden's handling of the economy, 57% disapprove, and 3% are unsure. Net approval of Biden's handling of the economy (-16) is unchanged since December (-17). Eighty-five percent of Democrats approve of Biden's handling of the economy, but only 19% of Independents and 3% of Republicans approve.

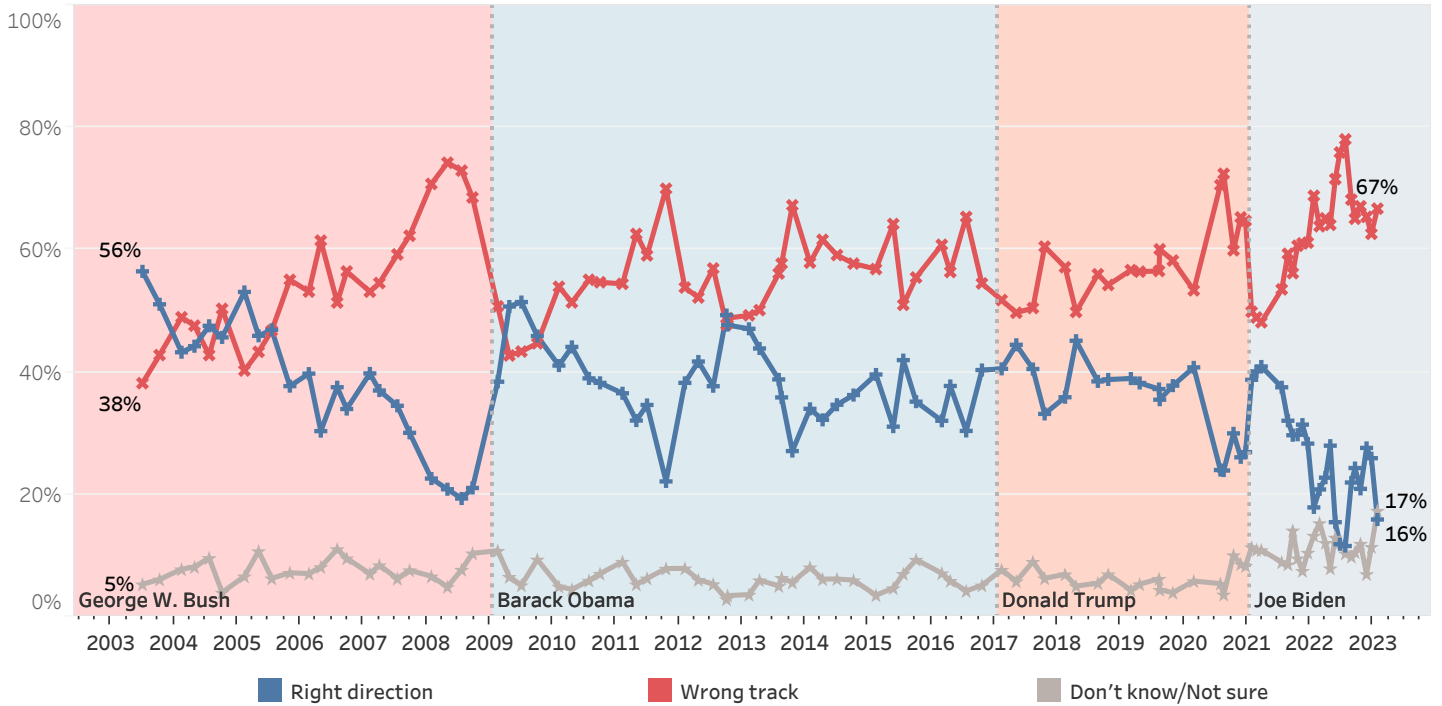
Approval of President Biden's Handling of the Economy



Direction of U.S.

Only 16% of Granite Staters believe that things in the United States are headed in the right direction, down from 26% who said so in December, 67% believe things are seriously off on the wrong track, and 17% are unsure. Thirty-two percent of Democrats say the country is headed in the right direction, down from 56% in December, while only 6% of Independents and 2% of Republicans feel the country is headed in the right direction.

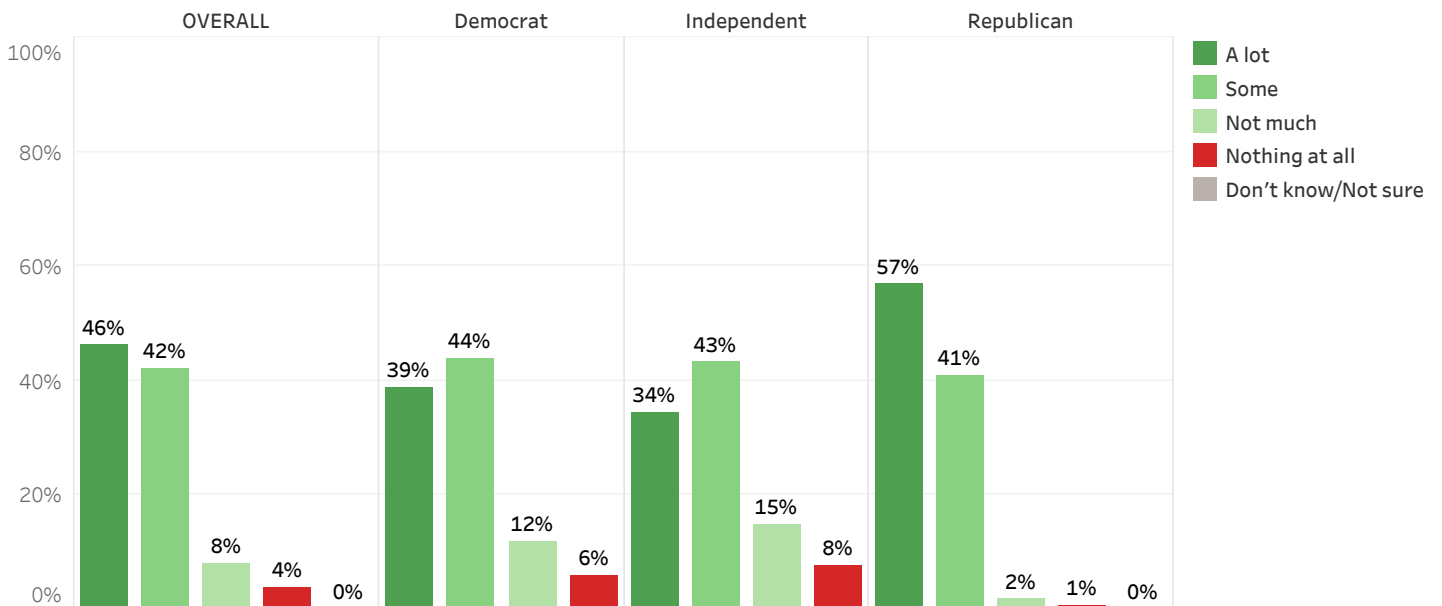
U.S. Heading in Right Direction or On Wrong Track



Biden Handling of Classified Documents

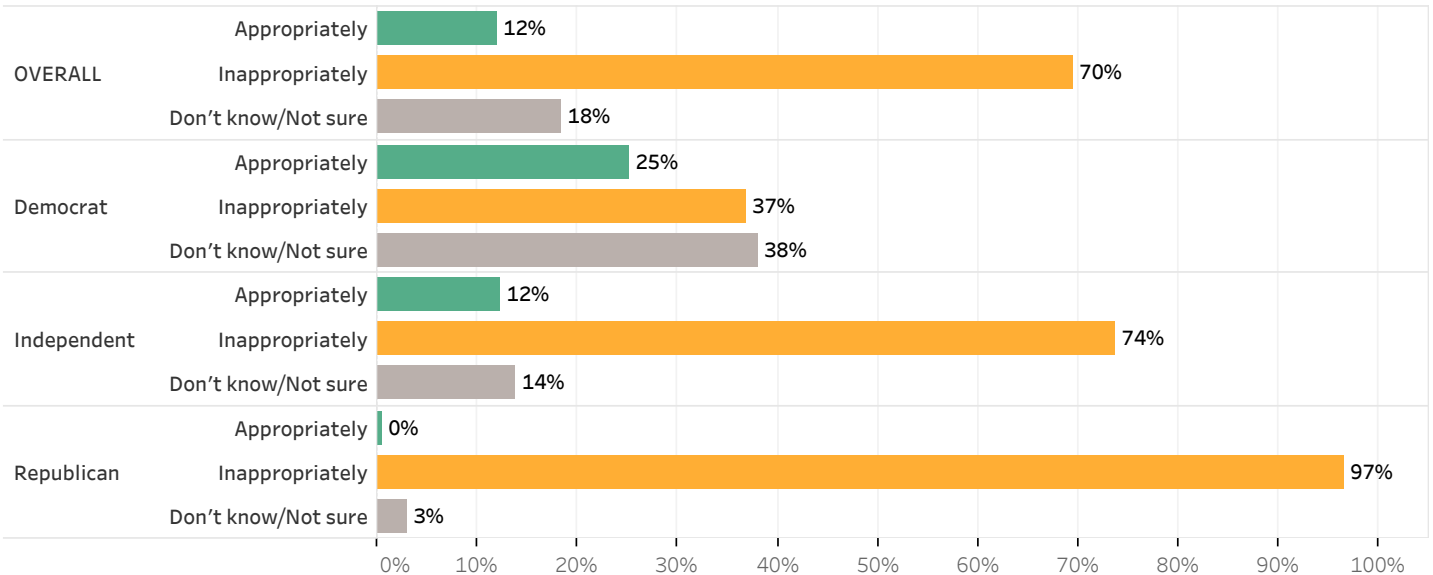
It has recently come to light that classified documents from his time as Vice President have been found at both the home and former office of President Biden. Most Granite Staters (88%) say they have heard a lot (46%) or some (42%) about this discovery, 8% have not heard much, and 4% have heard nothing at all about it. Republicans (57%) are more likely than Democrats (39%) or Independents (34%) to say they have heard a lot about it.

How Much Heard About Classified Documents Found in Biden's Home - By Party ID - January 2023



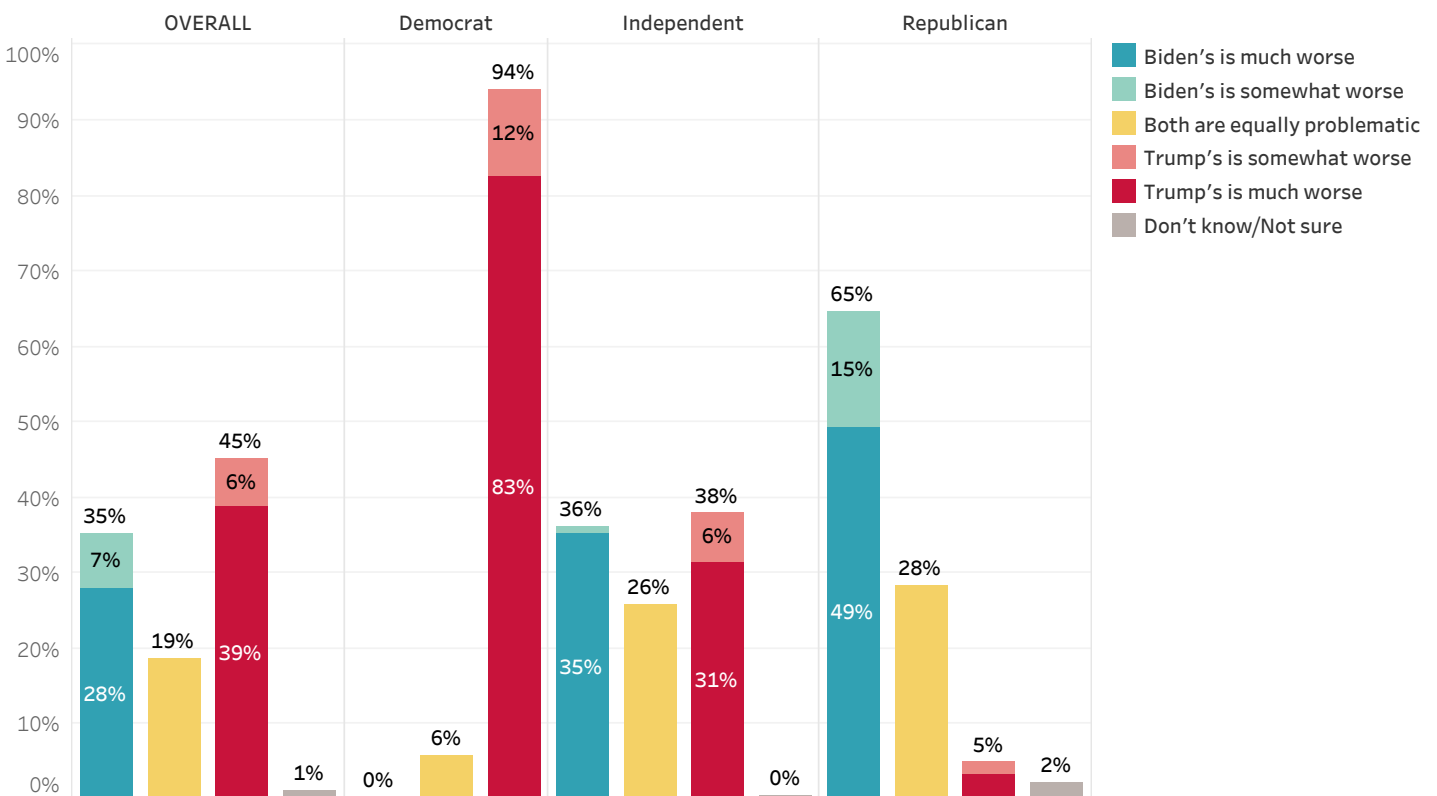
Among those who have heard at least something about the discovery of classified documents at Biden's home (N=785), 70% think that President Biden acted inappropriately in his handling of these documents, only 12% think he acted appropriately, and 18% are unsure. Nearly all (97%) Republicans and three-quarters (74%) of Independents think Biden acted inappropriately. Even Democrats are divided, as only 25% say that Biden acted appropriately, 37% think he acted inappropriately, and 38% are unsure.

Think Biden Acted Appropriately or Inappropriately in Handling Classified Documents - By Party ID - January 2023



Among those who have heard at least something about the discovery of these documents (N=785), 35% think that Biden's handling of classified documents is somewhat (7%) or much (28%) worse than former President Trump's handling of classified documents after he left office, 19% think the two cases are equally problematic, and 45% think that Trump's handling was somewhat (6%) or much (39%) worse. Nearly all Democrats (94%) think that Trump's handling of classified documents was worse than Biden's, while two-thirds (65%) of Republicans think Biden's handling was worse than Trump's. Independents are divided, with 36% saying that Biden's handling was worse and 38% saying Trump's was worse.

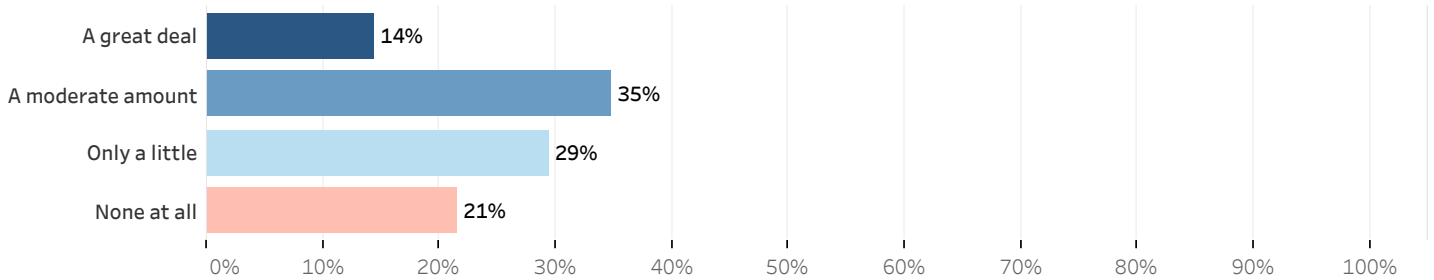
How Biden Handling of Classified Documents Compares to Trump's Handling of Classified Documents - By Party ID - January 2023



U.S. House of Representatives Speakership Election

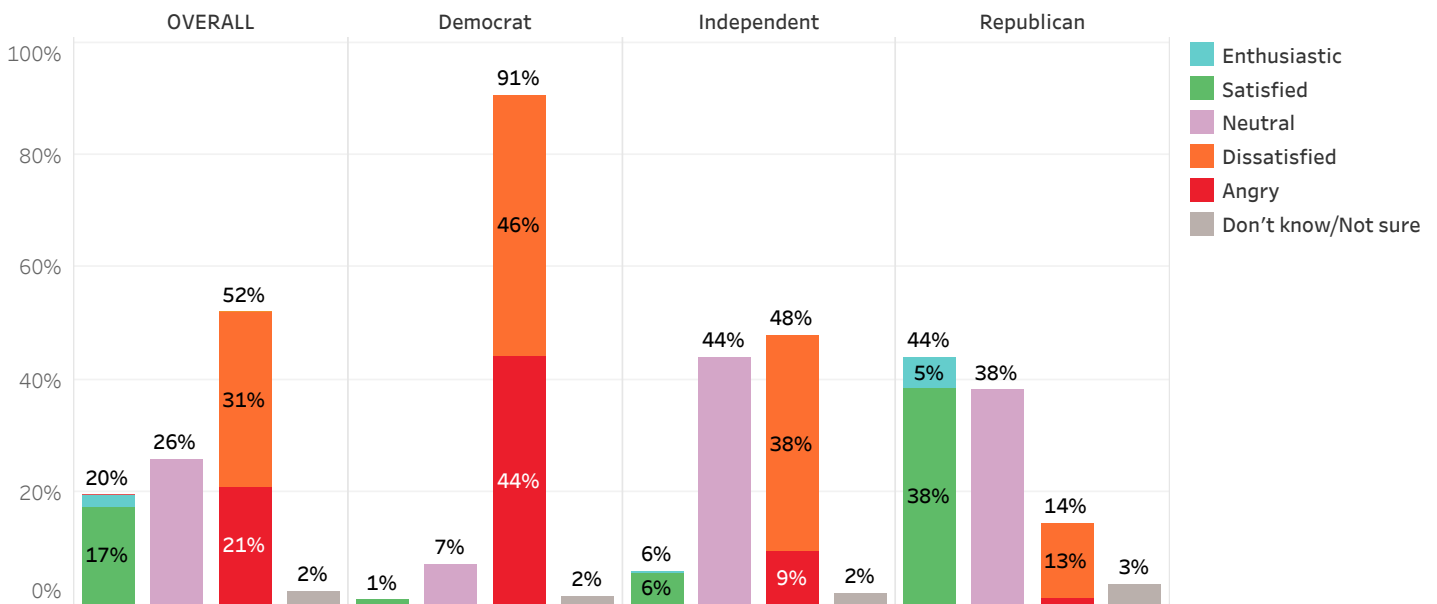
In early January, the U.S. House of Representatives elected Republican California Representative Kevin McCarthy as Speaker of the House after fifteen ballots. Fourteen percent of Granite Staters say they watched a great deal of these proceedings on television, 35% watched a moderate amount, 29% watched only a little, and 21% did not watch them at all. Republicans (52%) and Democrats (50%) are more likely than Independents (39%) to report having watched a great deal or moderate amount of these proceedings.

How Much of U.S. Speaker Vote Watched - January 2023



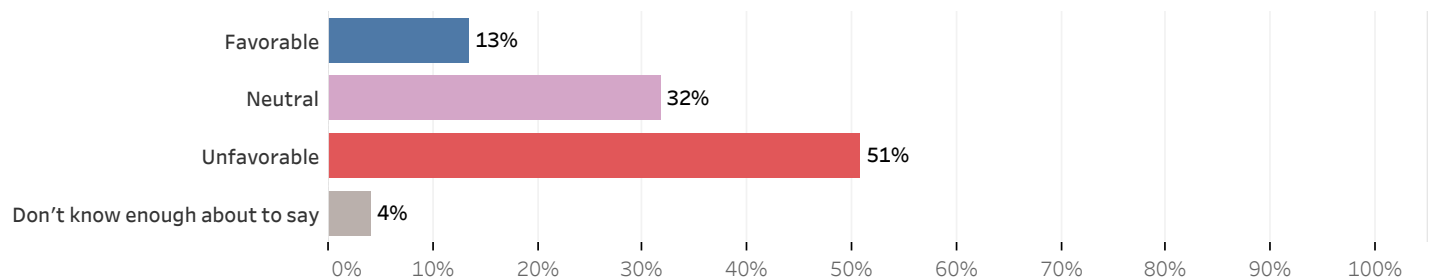
Granite Staters are negative or ambivalent about McCarthy's election. Only one in five (20%) say they feel enthusiastic (2%) or satisfied (17%) about McCarthy's election as Speaker, 26% are neutral about it, 52% say they are dissatisfied (31%) or angry (21%), and 2% are unsure how they feel. A plurality of Republicans are enthusiastic (5%) or satisfied (38%) with this development, but nearly all Democrats (91%) are dissatisfied (46%) or angry (44%).

Feelings About Kevin McCarthy Becoming Speaker of the House of Representatives - By Party ID - January 2023



Only 13% of Granite Staters have a favorable opinion of McCarthy, 32% have a neutral opinion of him, 51% have an unfavorable opinion of him, and 4% don't know enough about him to say. McCarthy's net favorability rating (the percentage who have a favorable opinion minus the percentage with an unfavorable opinion) is -37. McCarthy is very unpopular (-88) among Democrats and unpopular among Independents (-44), while he is only somewhat popular among Republicans (+16).

Favorability - Kevin McCarthy - January 2023



Granite State Poll Methodology

These findings are based on the latest Granite State Poll, conducted by the University of New Hampshire Survey Center. Eight hundred ninety-two (892) Granite State Panel members completed the survey online between January 19 and January 23, 2023. The margin of sampling error for the survey is +/- 3.3 percent. These MSE's have not been adjusted for design effect. The response rate for the January 2023 Granite State Poll is 26%. The design effect for the survey is 3.0%.

Data were weighted by respondent sex, age, education, and region of the state to targets from the most recent American Community Survey (ACS) conducted by the U.S. Census Bureau, as well as party registration levels provided by the NH Secretary of State and to 2020 election results in New Hampshire.

The Granite State Panel is part of an effort by the University of New Hampshire Survey Center to investigate new ways of gathering and understanding the opinion of New Hampshire residents. Approximately 7,500 New Hampshire adults have been recruited from randomly-selected landline and cell phone numbers to participate in the panel. Panelists are then asked to participate in online surveys sponsored by the UNH Survey Center.

The number of respondents in each demographic below may not equal the number reported in cross-tabulation tables as some respondents choose not to answer some questions. Due to rounding, percentages may not sum to 100%.

For more information about the methodology used in the Granite State Panel, contact Dr. Andrew Smith at (603) 862-2226 or by email at andrew.smith@unh.edu.

January 2023 Granite State Poll Demographics

		%	N
Gender of Respondent	Men	49%	418
	Women	51%	434
Age of Respondent	18 to 34	27%	230
	35 to 49	18%	152
	50 to 64	35%	302
	65 and older	21%	177
Level of Education	High school or less	36%	314
	Tech school/Some college	31%	269
	College graduate	21%	181
	Postgraduate work	13%	110
Region of State	Central/Lakes	18%	157
	Connecticut Valley	13%	115
	Manchester Area	15%	134
	Mass Border	29%	256
	North Country	10%	86
	Seacoast	16%	141
Party ID	Democrat	43%	378
	Independent	16%	141
	Republican	41%	362
Voting Registration	Registered Democrat	28%	244
	Registered Undeclared/Not Reg.	42%	368
	Registered Republican	29%	256
2020 Pres Vote	Voted for Trump	44%	387
	Voted for Biden	51%	450
	Voted for other 2020 candidate	2%	13
	Did not vote in 2020	3%	24

Approval of President Biden's Job Performance

Generally speaking, do you approve or disapprove of the way Joe Biden is handling his job as president?

		<u>Approve</u>	<u>Disapprove</u>	<u>Neither/DK</u>	<u>N</u>
STATEWIDE	January 2023	42%	56%	3%	892
Voting Registration	Registered Democrat	93%	6%	1%	244
	Registered Undeclared/Not Reg.	34%	65%	1%	368
	Registered Republican	8%	92%		256
Party ID	Democrat	87%	12%	1%	378
	Independent	20%	67%	13%	141
	Republican	4%	96%	0%	362
Political Ideology	Socialist	52%	48%		68
	Progressive	97%	3%		143
	Liberal	80%	18%	2%	106
	Moderate	41%	57%	1%	246
	Conservative	2%	97%	0%	213
	Libertarian	4%	96%		54
Age of Respondent	18 to 34	49%	43%	8%	230
	35 to 49	39%	60%	1%	152
	50 to 64	37%	62%	1%	302
	65 and older	40%	60%	0%	177
Gender of Respondent	Men	36%	64%	1%	418
	Women	50%	45%	5%	434
Level of Education	High school or less	29%	66%	5%	314
	Tech school/Some college	43%	56%	0%	269
	College graduate	48%	51%	1%	181
	Postgraduate work	65%	31%	4%	110
Region of State	Central/Lakes	34%	66%	0%	157
	Connecticut Valley	27%	73%	0%	115
	Manchester Area	24%	76%	0%	134
	Mass Border	56%	36%	9%	256
	North Country	24%	75%	0%	86
	Seacoast	63%	36%	1%	141
Household Income	Less than \$45,000	51%	48%	1%	111
	\$45,000 - \$74,999	31%	69%	0%	156
	\$75,000 - \$99,999	33%	54%	13%	131
	\$100,000 - \$149,999	36%	62%	2%	157
	\$150,000 or more	52%	47%	1%	166
Media Usage	Conservative radio listener	5%	95%		128
	CNN viewer	77%	15%	8%	235
	Fox News viewer	2%	91%	7%	253
	Joe Rogan listener	4%	96%		91
	Local NH news viewer	50%	45%	4%	520
	MSNBC viewer	91%	9%		140
	NHPR listener	66%	33%	1%	274
2020 Pres Vote	Voted for Trump	1%	99%	0%	387
	Voted for Biden	81%	18%	2%	450
	Voted for other 2020 candidate	2%	98%		13
	Did not vote in 2020	1%	27%	72%	24

Approval of President Biden's Handling of Foreign Affairs

Generally speaking, do you approve or disapprove of the way President Biden is handling foreign affairs?

		<u>Approve</u>	<u>Disapprove</u>	<u>Neither/DK</u>	<u>N</u>
STATEWIDE	January 2023	47%	50%	4%	882
Voting Registration	Registered Democrat	95%	4%	1%	243
	Registered Undeclared/Not Reg.	43%	54%	3%	359
	Registered Republican	9%	89%	1%	256
Party ID	Democrat	95%	4%	1%	377
	Independent	23%	64%	13%	141
	Republican	5%	92%	3%	353
Political Ideology	Socialist	94%	6%		68
	Progressive	91%	7%	2%	143
	Liberal	80%	20%	0%	105
	Moderate	46%	53%	2%	246
	Conservative	6%	90%	4%	205
	Libertarian	10%	90%		54
Age of Respondent	18 to 34	59%	32%	9%	230
	35 to 49	40%	60%	0%	152
	50 to 64	41%	58%	2%	293
	65 and older	46%	50%	4%	176
Gender of Respondent	Men	41%	59%	0%	409
	Women	49%	44%	7%	434
Level of Education	High school or less	44%	48%	8%	306
	Tech school/Some college	44%	56%	0%	269
	College graduate	44%	55%	1%	180
	Postgraduate work	70%	27%	3%	109
Region of State	Central/Lakes	38%	61%	0%	149
	Connecticut Valley	22%	78%	0%	115
	Manchester Area	31%	69%	0%	134
	Mass Border	59%	31%	10%	255
	North Country	57%	39%	3%	85
	Seacoast	62%	36%	2%	141
Household Income	Less than \$45,000	48%	45%	7%	111
	\$45,000 - \$74,999	56%	43%	0%	156
	\$75,000 - \$99,999	33%	54%	13%	131
	\$100,000 - \$149,999	39%	61%	0%	148
	\$150,000 or more	55%	45%	1%	165
Media Usage	Conservative radio listener	5%	95%		120
	CNN viewer	81%	10%	9%	235
	Fox News viewer	8%	82%	10%	245
	Joe Rogan listener	4%	96%		90
	Local NH news viewer	52%	41%	6%	510
	MSNBC viewer	88%	11%	0%	139
	NHPR listener	64%	34%	2%	274
	2020 Pres Vote	Voted for Trump	3%	95%	2%
Voted for Biden		88%	10%	2%	449
Voted for other 2020 candidate		6%	93%	1%	13
Did not vote in 2020		1%	27%	72%	24

Approval of President Biden's Handling of the Economy

Generally speaking, do you approve or disapprove of the way President Biden is handling the economy?

		<u>Approve</u>	<u>Disapprove</u>	<u>Neither/DK</u>	<u>N</u>
STATEWIDE	January 2023	40%	57%	3%	891
Voting Registration	Registered Democrat	90%	6%	4%	244
	Registered Undeclared/Not Reg.	33%	66%	1%	367
	Registered Republican	6%	94%	0%	256
Party ID	Democrat	85%	12%	3%	377
	Independent	19%	68%	13%	141
	Republican	3%	97%	0%	362
Political Ideology	Socialist	52%	48%		68
	Progressive	92%	1%	7%	142
	Liberal	80%	20%	0%	106
	Moderate	40%	59%	1%	246
	Conservative	2%	98%		213
	Libertarian	2%	98%		54
Age of Respondent	18 to 34	45%	44%	11%	230
	35 to 49	39%	61%		152
	50 to 64	36%	63%	1%	302
	65 and older	41%	59%	0%	176
Gender of Respondent	Men	34%	64%	2%	418
	Women	48%	47%	5%	434
Level of Education	High school or less	30%	65%	5%	314
	Tech school/Some college	43%	56%	0%	269
	College graduate	42%	54%	4%	181
	Postgraduate work	61%	35%	4%	110
Region of State	Central/Lakes	32%	67%	0%	157
	Connecticut Valley	27%	73%		115
	Manchester Area	23%	77%	0%	134
	Mass Border	56%	37%	7%	256
	North Country	25%	71%	4%	86
	Seacoast	55%	40%	5%	141
Household Income	Less than \$45,000	51%	49%	0%	111
	\$45,000 - \$74,999	32%	68%	0%	156
	\$75,000 - \$99,999	30%	57%	13%	131
	\$100,000 - \$149,999	32%	63%	4%	156
	\$150,000 or more	50%	49%	1%	166
Media Usage	Conservative radio listener	5%	95%		128
	CNN viewer	73%	15%	11%	235
	Fox News viewer	2%	91%	7%	253
	Joe Rogan listener	4%	96%		91
	Local NH news viewer	49%	47%	4%	520
	MSNBC viewer	91%	9%	0%	140
	NHPR listener	64%	35%	1%	274
	2020 Pres Vote	Voted for Trump	1%	99%	
Voted for Biden		78%	19%	3%	450
Voted for other 2020 candidate		2%	98%		13
Did not vote in 2020		1%	27%	72%	24

U.S. Heading in Right Direction or On Wrong Track

Do you think things in this country are generally going in the right direction or are they seriously off on the wrong track?

		<u>Right direction</u>	<u>Wrong track</u>	<u>Don't know/Not sure</u>	<u>N</u>
STATEWIDE	January 2023	16%	67%	17%	891
Voting Registration	Registered Democrat	29%	31%	41%	244
	Registered Undeclared/Not Reg.	17%	74%	9%	368
	Registered Republican	4%	95%	2%	255
Party ID	Democrat	32%	35%	32%	378
	Independent	7%	72%	21%	141
	Republican	2%	97%	1%	361
Political Ideology	Socialist	27%	50%	23%	68
	Progressive	18%	43%	38%	143
	Liberal	36%	37%	27%	106
	Moderate	22%	64%	14%	246
	Conservative	1%	99%	0%	212
	Libertarian	3%	96%	1%	54
Age of Respondent	18 to 34	8%	56%	36%	230
	35 to 49	8%	67%	25%	152
	50 to 64	19%	75%	6%	302
	65 and older	26%	68%	7%	175
Gender of Respondent	Men	16%	74%	10%	417
	Women	17%	58%	25%	434
Level of Education	High school or less	14%	72%	14%	314
	Tech school/Some college	11%	63%	26%	268
	College graduate	16%	72%	12%	181
	Postgraduate work	33%	50%	17%	110
Region of State	Central/Lakes	16%	75%	10%	157
	Connecticut Valley	14%	82%	5%	115
	Manchester Area	17%	78%	4%	134
	Mass Border	15%	47%	37%	255
	North Country	12%	84%	4%	86
	Seacoast	20%	59%	21%	141
Household Income	Less than \$45,000	12%	58%	29%	111
	\$45,000 - \$74,999	23%	72%	5%	155
	\$75,000 - \$99,999	20%	63%	17%	131
	\$100,000 - \$149,999	16%	77%	6%	157
	\$150,000 or more	13%	68%	18%	166
Media Usage	Conservative radio listener	5%	94%	1%	128
	CNN viewer	32%	38%	30%	235
	Fox News viewer	2%	90%	8%	252
	Joe Rogan listener	4%	96%		91
	Local NH news viewer	20%	56%	24%	519
	MSNBC viewer	41%	42%	17%	140
	NHPR listener	32%	56%	12%	274
2020 Pres Vote	Voted for Trump	0%	99%	1%	386
	Voted for Biden	31%	39%	30%	450
	Voted for other 2020 candidate	2%	96%	2%	13
	Did not vote in 2020	1%	27%	72%	24

How Much Heard About Classified Documents Found in Biden's Home

On another topic, how much have you heard about the classified documents found in Joe Biden’s home in Delaware from his time as Vice President in the Obama Administration?

		<u>A lot</u>	<u>Some</u>	<u>Not much</u>	<u>Nothing at all</u>	<u>Don't know/Not sure</u>	<u>N</u>
STATEWIDE	January 2023	46%	42%	8%	4%	0%	892
Voting Registration	Registered Democrat	38%	48%	6%	9%		244
	Registered Undeclared/Not Reg.	44%	44%	9%	3%	0%	367
	Registered Republican	61%	37%	1%	1%		256
Party ID	Democrat	39%	44%	12%	6%		378
	Independent	34%	43%	15%	8%		141
	Republican	57%	41%	2%	1%	0%	362
Political Ideology	Socialist	27%	26%	47%			68
	Progressive	27%	68%	5%			143
	Liberal	53%	13%	3%	31%		106
	Moderate	51%	47%	1%	1%	0%	246
	Conservative	56%	43%	1%			213
	Libertarian	43%	51%	6%			54
Age of Respondent	18 to 34	26%	36%	24%	14%		230
	35 to 49	42%	50%	8%			152
	50 to 64	47%	51%	1%	1%	0%	302
	65 and older	71%	28%	0%			177
Gender of Respondent	Men	58%	35%	3%	5%		418
	Women	37%	52%	7%	3%	0%	434
Level of Education	High school or less	43%	42%	16%			314
	Tech school/Some college	50%	40%	2%	8%		269
	College graduate	42%	49%	2%	7%	0%	181
	Postgraduate work	48%	41%	11%			110
Region of State	Central/Lakes	45%	48%	0%	7%		157
	Connecticut Valley	51%	49%	1%			115
	Manchester Area	68%	29%	3%		0%	134
	Mass Border	39%	52%	10%			256
	North Country	46%	14%	40%			86
	Seacoast	36%	42%	4%	17%		141
Household Income	Less than \$45,000	28%	59%	2%	11%		111
	\$45,000 - \$74,999	53%	28%	18%			156
	\$75,000 - \$99,999	54%	33%	13%		0%	131
	\$100,000 - \$149,999	63%	31%	7%			157
	\$150,000 or more	35%	62%	3%			166
Media Usage	Conservative radio listener	55%	45%				128
	CNN viewer	44%	46%	9%	0%		235
	Fox News viewer	66%	26%	8%			253
	Joe Rogan listener	54%	46%				91
	Local NH news viewer	50%	38%	7%	5%	0%	520
	MSNBC viewer	48%	49%	3%			140
	NHPR listener	44%	49%	3%	5%		274
2020 Pres Vote	Voted for Trump	56%	42%	1%		0%	387
	Voted for Biden	37%	45%	11%	8%		450
	Voted for other 2020 candidate	63%	33%	4%			13
	Did not vote in 2020	24%	3%	73%			24

Think Biden Acted Appropriately or Inappropriately in Handling Classified Documents

Do you think Joe Biden acted appropriately or inappropriately in the way he handled classified documents after he was Vice President?

		<u>Appropriately</u>	<u>Inappropriately</u>	<u>Don't know/Not sure</u>	<u>N</u>
STATEWIDE	January 2023	12%	70%	18%	784
Voting Registration	Registered Democrat	23%	41%	36%	209
	Registered Undeclared/Not Reg.	14%	69%	17%	321
	Registered Republican	1%	94%	6%	252
Party ID	Democrat	25%	37%	38%	311
	Independent	12%	74%	14%	109
	Republican	0%	97%	3%	353
Political Ideology	Socialist	39%	16%	45%	36
	Progressive	16%	43%	41%	136
	Liberal	26%	50%	24%	69
	Moderate	15%	67%	19%	241
	Conservative	2%	95%	3%	212
	Libertarian	1%	97%	1%	51
Age of Respondent	18 to 34	8%	61%	31%	143
	35 to 49	5%	64%	31%	139
	50 to 64	15%	74%	11%	295
	65 and older	13%	77%	11%	176
Gender of Respondent	Men	12%	77%	11%	385
	Women	12%	62%	26%	388
Level of Education	High school or less	11%	78%	11%	265
	Tech school/Some college	10%	73%	17%	242
	College graduate	11%	60%	28%	165
	Postgraduate work	23%	50%	27%	97
Region of State	Central/Lakes	10%	77%	13%	146
	Connecticut Valley	10%	79%	12%	114
	Manchester Area	12%	79%	9%	129
	Mass Border	15%	57%	27%	231
	North Country	12%	81%	7%	51
	Seacoast	10%	61%	29%	110
Household Income	Less than \$45,000	6%	54%	41%	98
	\$45,000 - \$74,999	25%	66%	9%	127
	\$75,000 - \$99,999	17%	64%	19%	113
	\$100,000 - \$149,999	10%	77%	13%	146
	\$150,000 or more	7%	81%	12%	161
Media Usage	Conservative radio listener	5%	90%	5%	128
	CNN viewer	25%	40%	35%	212
	Fox News viewer	2%	94%	4%	232
	Joe Rogan listener	0%	99%	1%	91
	Local NH news viewer	14%	60%	26%	458
	MSNBC viewer	31%	37%	31%	136
	NHPR listener	27%	50%	23%	254
2020 Pres Vote	Voted for Trump	1%	97%	2%	382
	Voted for Biden	24%	38%	37%	367
	Voted for other 2020 candidate	0%	99%	1%	13
	Did not vote in 2020	4%	95%	1%	6

How Biden Handling of Classified Documents Compares to Trump's Handling of Classified Documents

In your opinion, how does Joe Biden's handling of classified documents compare to Donald Trump's handling of classified documents?

		Biden's is much worse	Biden's is somewhat worse	Both are equally problematic	Trump's is somewhat worse	Trump's is much worse	Don't know/Not sure	N
STATEWIDE	January 2023	28%	7%	19%	6%	39%	1%	785
Voting Registration	Registered Democrat	0%	0%	4%	12%	83%	0%	209
	Registered Undeclared/Not Reg.	26%	5%	26%	6%	37%	0%	321
	Registered Republican	54%	16%	21%	2%	5%	3%	252
Party ID	Democrat	0%	0%	6%	12%	83%		311
	Independent	35%	1%	26%	6%	31%	0%	109
	Republican	49%	15%	28%	2%	3%	2%	353
Political Ideology	Socialist			2%	10%	87%		36
	Progressive	0%		1%	17%	82%		136
	Liberal	10%		3%	10%	77%		70
	Moderate	38%	5%	12%	4%	40%	1%	241
	Conservative	43%	10%	41%	0%	3%	3%	212
	Libertarian	32%	36%	16%	6%	10%		51
Age of Respondent	18 to 34	31%		1%	17%	51%		143
	35 to 49	27%	10%	15%	7%	35%	5%	139
	50 to 64	29%	6%	27%	4%	34%	0%	295
	65 and older	24%	13%	22%	1%	40%	1%	176
Gender of Respondent	Men	37%	6%	18%	4%	35%	0%	386
	Women	19%	8%	20%	9%	43%	2%	388
Level of Education	High school or less	32%	6%	26%		36%		265
	Tech school/Some college	33%	9%	15%	11%	29%	3%	242
	College graduate	21%	7%	16%	7%	49%	0%	165
	Postgraduate work	10%	4%	16%	11%	58%	0%	98
Region of State	Central/Lakes	29%	4%	27%	3%	36%	0%	146
	Connecticut Valley	40%	9%	25%	1%	25%		114
	Manchester Area	47%	7%	15%	4%	26%		129
	Mass Border	17%	3%	16%	10%	53%		231
	North Country	23%	23%	6%	19%	26%	2%	51
	Seacoast	18%	11%	17%	3%	45%	6%	111
Household Income	Less than \$45,000	18%	11%	15%	2%	55%		98
	\$45,000 - \$74,999	29%	2%	24%	3%	41%		127
	\$75,000 - \$99,999	25%	9%	23%	2%	35%	6%	114
	\$100,000 - \$149,999	34%	8%	17%	9%	31%	1%	146
	\$150,000 or more	30%	4%	11%	13%	43%	0%	161
Media Usage	Conservative radio listener	68%	5%	17%		5%	5%	128
	CNN viewer	1%	2%	11%	4%	82%		212
	Fox News viewer	47%	15%	31%	1%	4%	3%	232
	Joe Rogan listener	52%	10%	29%	4%	4%		91
	Local NH news viewer	15%	9%	20%	5%	49%	2%	458
	MSNBC viewer	1%	0%	8%	1%	91%		136
	NHPR listener	12%	2%	15%	7%	61%	3%	254
2020 Pres Vote	Voted for Trump	53%	14%	28%	1%	1%	2%	382
	Voted for Biden	0%		9%	12%	79%	0%	367
	Voted for other 2020 candidate	10%	4%	25%	1%	59%		13
	Did not vote in 2020	75%		19%	2%	4%		6

How Much of U.S. Speaker Vote Watched

How much of the proceedings in the U.S. House of Representatives did you watch regarding the vote for the Speaker of the House?

		<u>A great deal</u>	<u>A moderate amount</u>	<u>Only a little</u>	<u>None at all</u>	<u>N</u>
STATEWIDE	January 2023	14%	35%	29%	21%	866
Voting Registration	Registered Democrat	20%	31%	26%	23%	219
	Registered Undeclared/Not Reg.	14%	30%	32%	24%	368
	Registered Republican	11%	48%	31%	10%	256
Party ID	Democrat	21%	29%	30%	20%	352
	Independent	13%	26%	24%	37%	141
	Republican	9%	43%	31%	17%	362
Political Ideology	Socialist	2%	49%	48%	1%	68
	Progressive	29%	20%	14%	37%	117
	Liberal	14%	19%	56%	11%	106
	Moderate	15%	46%	18%	21%	246
	Conservative	13%	33%	37%	16%	213
	Libertarian	11%	36%	27%	26%	54
Age of Respondent	18 to 34	11%	30%	39%	20%	230
	35 to 49	11%	39%	31%	20%	126
	50 to 64	12%	33%	23%	32%	302
	65 and older	22%	40%	30%	8%	177
Gender of Respondent	Men	18%	34%	27%	21%	418
	Women	11%	38%	27%	24%	409
Level of Education	High school or less	8%	33%	28%	31%	288
	Tech school/Some college	11%	44%	30%	15%	269
	College graduate	23%	25%	36%	15%	181
	Postgraduate work	26%	28%	22%	24%	110
Region of State	Central/Lakes	9%	30%	37%	24%	157
	Connecticut Valley	18%	39%	15%	28%	115
	Manchester Area	8%	59%	26%	7%	134
	Mass Border	18%	28%	25%	30%	230
	North Country	10%	29%	48%	13%	86
	Seacoast	20%	29%	32%	19%	141
Household Income	Less than \$45,000	22%	24%	45%	9%	86
	\$45,000 - \$74,999	16%	27%	46%	11%	156
	\$75,000 - \$99,999	19%	25%	18%	37%	131
	\$100,000 - \$149,999	10%	50%	29%	11%	157
	\$150,000 or more	11%	26%	14%	49%	166
Media Usage	Conservative radio listener	10%	36%	30%	23%	128
	CNN viewer	26%	35%	13%	25%	209
	Fox News viewer	12%	47%	28%	13%	253
	Joe Rogan listener	9%	47%	12%	32%	91
	Local NH news viewer	17%	36%	32%	15%	494
	MSNBC viewer	38%	35%	8%	19%	140
	NHPR listener	19%	33%	24%	25%	274
2020 Pres Vote	Voted for Trump	10%	41%	28%	21%	387
	Voted for Biden	19%	29%	33%	19%	425
	Voted for other 2020 candidate	31%	42%	7%	21%	13
	Did not vote in 2020	2%	22%	0%	76%	24

Feelings About Kevin McCarthy Becoming Speaker of the House of Representatives

Which of the following best describes how you feel about Kevin McCarthy becoming Speaker of the House of Representatives?

		<u>Enthusiastic</u>	<u>Satisfied</u>	<u>Neutral</u>	<u>Dissatisfied</u>	<u>Angry</u>	<u>Don't know/Not sure</u>	<u>N</u>
STATEWIDE	January 2023	2%	17%	26%	31%	21%	2%	892
Voting Registration	Registered Democrat		0%	5%	45%	49%	1%	244
	Registered Undeclared/Not Reg.	4%	10%	30%	37%	16%	2%	368
	Registered Republican	2%	45%	34%	13%	3%	3%	256
Party ID	Democrat		1%	7%	46%	44%	2%	378
	Independent	0%	6%	44%	38%	9%	2%	141
	Republican	5%	38%	38%	13%	1%	3%	362
Political Ideology	Socialist				75%	25%		68
	Progressive			5%	34%	61%		143
	Liberal	1%	6%	10%	59%	20%	3%	106
	Moderate	1%	31%	23%	22%	20%	4%	246
	Conservative	8%	27%	42%	21%	2%	1%	213
	Libertarian	1%	21%	43%	19%	10%	4%	54
Age of Respondent	18 to 34		18%	11%	48%	22%	1%	230
	35 to 49	0%	15%	28%	26%	24%	6%	152
	50 to 64	3%	14%	36%	24%	20%	3%	302
	65 and older	6%	24%	23%	27%	19%	1%	177
Gender of Respondent	Men	4%	20%	28%	24%	21%	2%	418
	Women	0%	16%	25%	33%	22%	3%	434
Level of Education	High school or less	4%	15%	34%	22%	23%	1%	314
	Tech school/Some college	1%	24%	20%	35%	17%	2%	269
	College graduate	1%	15%	20%	39%	21%	4%	181
	Postgraduate work	1%	9%	24%	36%	26%	5%	110
Region of State	Central/Lakes	5%	11%	37%	34%	13%	0%	157
	Connecticut Valley	0%	14%	40%	29%	13%	5%	115
	Manchester Area	0%	45%	17%	25%	9%	4%	134
	Mass Border	1%	13%	23%	20%	42%	1%	256
	North Country	3%	16%	20%	51%	3%	6%	86
	Seacoast	5%	10%	20%	44%	19%	2%	141
Household Income	Less than \$45,000	1%	20%	13%	19%	46%	2%	111
	\$45,000 - \$74,999	2%	9%	21%	55%	12%	0%	156
	\$75,000 - \$99,999	5%	23%	36%	20%	16%	0%	131
	\$100,000 - \$149,999	5%	24%	22%	26%	16%	7%	157
	\$150,000 or more	0%	6%	35%	31%	25%	2%	166
Media Usage	Conservative radio listener	7%	17%	45%	25%	6%		128
	CNN viewer		1%	21%	29%	48%	1%	235
	Fox News viewer	8%	45%	32%	8%	6%	2%	253
	Joe Rogan listener	7%	15%	50%	27%			91
	Local NH news viewer	4%	13%	22%	32%	26%	3%	520
	MSNBC viewer		0%	4%	24%	72%	0%	140
	NHPR listener	0%	5%	26%	40%	27%	1%	274
2020 Pres Vote	Voted for Trump	5%	37%	42%	12%	1%	3%	387
	Voted for Biden		1%	8%	50%	39%	2%	450
	Voted for other 2020 candidate		1%	22%	41%	33%	3%	13
	Did not vote in 2020	0%	0%	95%	1%	3%	1%	24

Favorability - Kevin McCarthy

Below is a list of public figures in the United States. Please indicate whether you have a favorable or unfavorable opinion of each of them or if you don't know enough about them to say - Speaker of the House Kevin McCarthy

		<u>Favorable</u>	<u>Neutral</u>	<u>Unfavorable</u>	<u>Don't know enough about to say</u>	<u>N</u>
STATEWIDE	January 2023	13%	32%	51%	4%	892
Voting Registration	Registered Democrat	0%	12%	85%	3%	244
	Registered Undeclared/Not Reg.	9%	33%	55%	3%	368
	Registered Republican	34%	45%	16%	6%	256
Party ID	Democrat	0%	9%	88%	3%	378
	Independent	3%	48%	47%	1%	141
	Republican	31%	49%	14%	7%	362
Political Ideology	Socialist			100%		68
	Progressive		1%	97%	2%	143
	Liberal	7%	26%	63%	4%	106
	Moderate	23%	27%	46%	5%	246
	Conservative	24%	53%	21%	2%	213
	Libertarian	6%	59%	24%	11%	54
Age of Respondent	18 to 34	18%	17%	62%	2%	230
	35 to 49	7%	37%	51%	5%	152
	50 to 64	8%	39%	46%	6%	302
	65 and older	20%	34%	44%	1%	176
Gender of Respondent	Men	19%	39%	39%	2%	418
	Women	9%	27%	58%	6%	434
Level of Education	High school or less	12%	42%	45%	1%	314
	Tech school/Some college	18%	34%	43%	5%	269
	College graduate	12%	21%	62%	5%	181
	Postgraduate work	7%	13%	71%	8%	110
Region of State	Central/Lakes	14%	38%	46%	2%	157
	Connecticut Valley	3%	50%	44%	3%	115
	Manchester Area	31%	29%	34%	6%	134
	Mass Border	8%	27%	61%	4%	256
	North Country	17%	15%	59%	9%	86
	Seacoast	12%	32%	52%	3%	141
Household Income	Less than \$45,000	12%	21%	66%	2%	111
	\$45,000 - \$74,999	10%	20%	67%	2%	156
	\$75,000 - \$99,999	19%	41%	39%	1%	131
	\$100,000 - \$149,999	27%	24%	40%	9%	157
	\$150,000 or more	3%	36%	59%	3%	166
Media Usage	Conservative radio listener	16%	52%	32%		128
	CNN viewer	1%	15%	81%	3%	235
	Fox News viewer	39%	44%	14%	3%	253
	Joe Rogan listener	10%	62%	28%		91
	Local NH news viewer	11%	28%	55%	6%	520
	MSNBC viewer	0%	0%	98%	1%	140
	NHPR listener	4%	20%	73%	4%	274
2020 Pres Vote	Voted for Trump	29%	55%	12%	5%	387
	Voted for Biden	1%	9%	87%	3%	450
	Voted for other 2020 candidate	1%	16%	75%	8%	13
	Did not vote in 2020	0%	94%	3%	3%	24