

December 21, 2021

APPROVAL AMONG DEMOCRATS FUELS UPTICK IN BIDEN APPROVAL IN GRANITE STATE

By: Sean P. McKinley, M.A.
 Zachary S. Azem, M.A.
 Andrew E. Smith, Ph.D.

andrew.smith@unh.edu
 603-862-2226
 cola.unh.edu/unh-survey-center

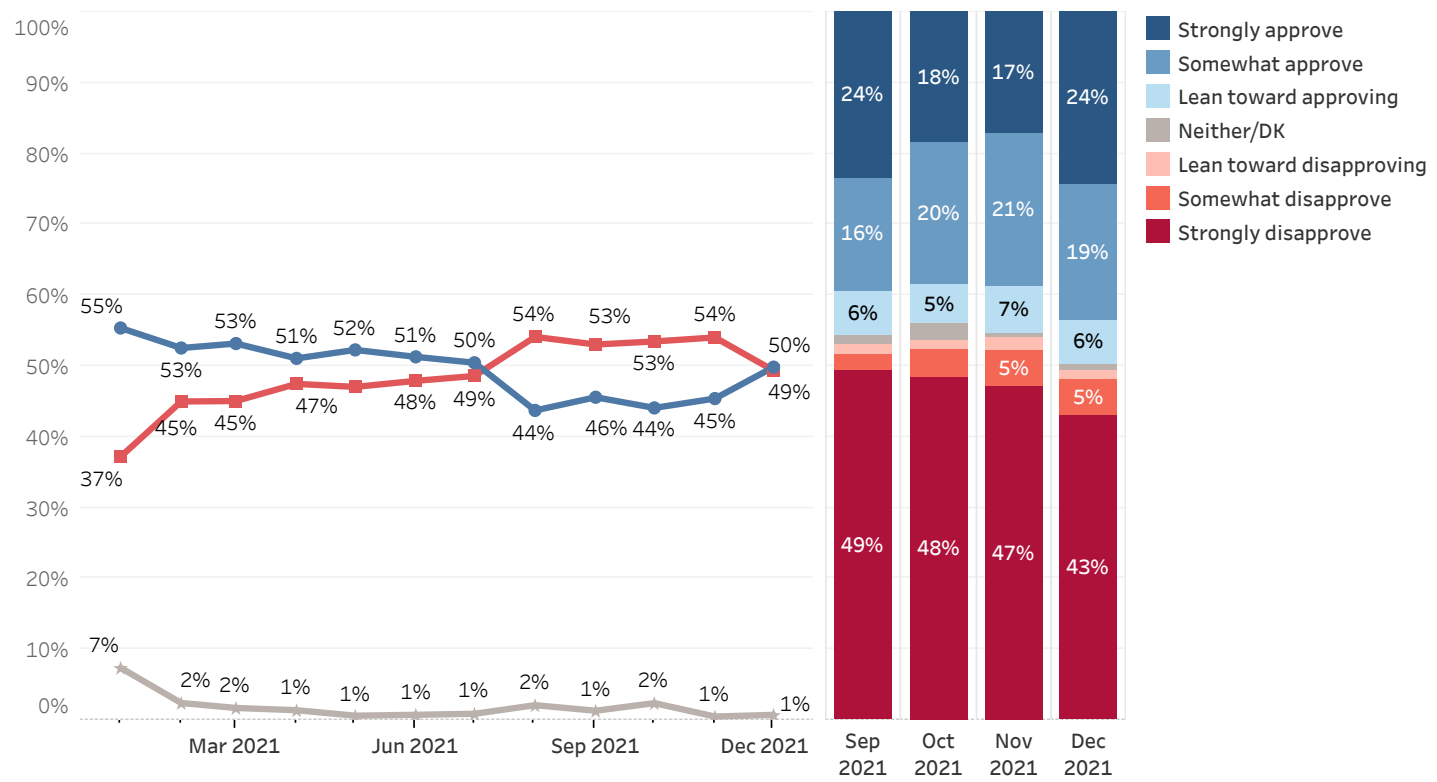
DURHAM, NH - President Joe Biden's approval rating has improved slightly, with state residents now evenly divided in their assessment of his job performance. Biden's approval among Democrats, which had declined for months, now matches marks from earlier in his presidency. Slim majorities disapprove of Biden's handling of foreign affairs and the economy, but a small majority approve of his handling of COVID-19. Only a quarter of Granite Staters feel the country is headed in the right direction.

These findings are based on the latest **Granite State Poll***, conducted by the University of New Hampshire Survey Center. Eight hundred fifty-three (853) Granite State Panel members completed the survey online between December 16 and December 20, 2021. The margin of sampling error for the survey is +/- 3.4 percent. Data were weighted by respondent sex, age, education, and region of the state to targets from the most recent American Community Survey (ACS) conducted by the U.S. Census Bureau, as well as party registration levels provided by the NH Secretary of State and 2020 election results in NH. Granite State Panel members are recruited from randomly-selected landline and cell phone numbers across New Hampshire and surveys are sent periodically to panel members.

Presidential Approval

President Joe Biden's approval rating in New Hampshire has rebounded in the past month and now matches his approval in July, prior to the U.S. pullout from Afghanistan. Fifty percent of Granite Staters currently approve of Biden's performance as President, 49% disapprove, and 1% are unsure. Biden's net approval rating (the percentage who approve minus the percentage who disapprove) among Granite Staters is +0, up from -9 in November.

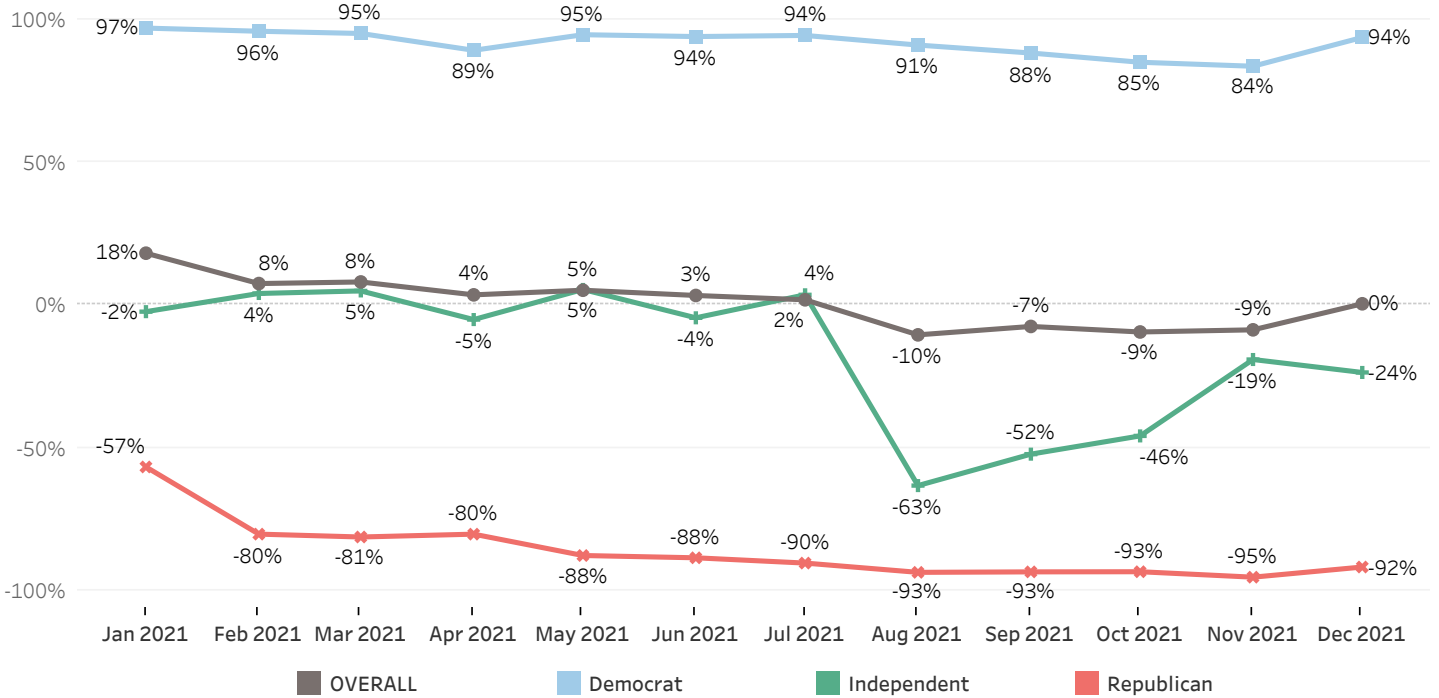
Approval of President Biden's Job Performance



* We ask that this copyrighted information be referred to as *the Granite State Poll*, conducted by the University of New Hampshire Survey Center.

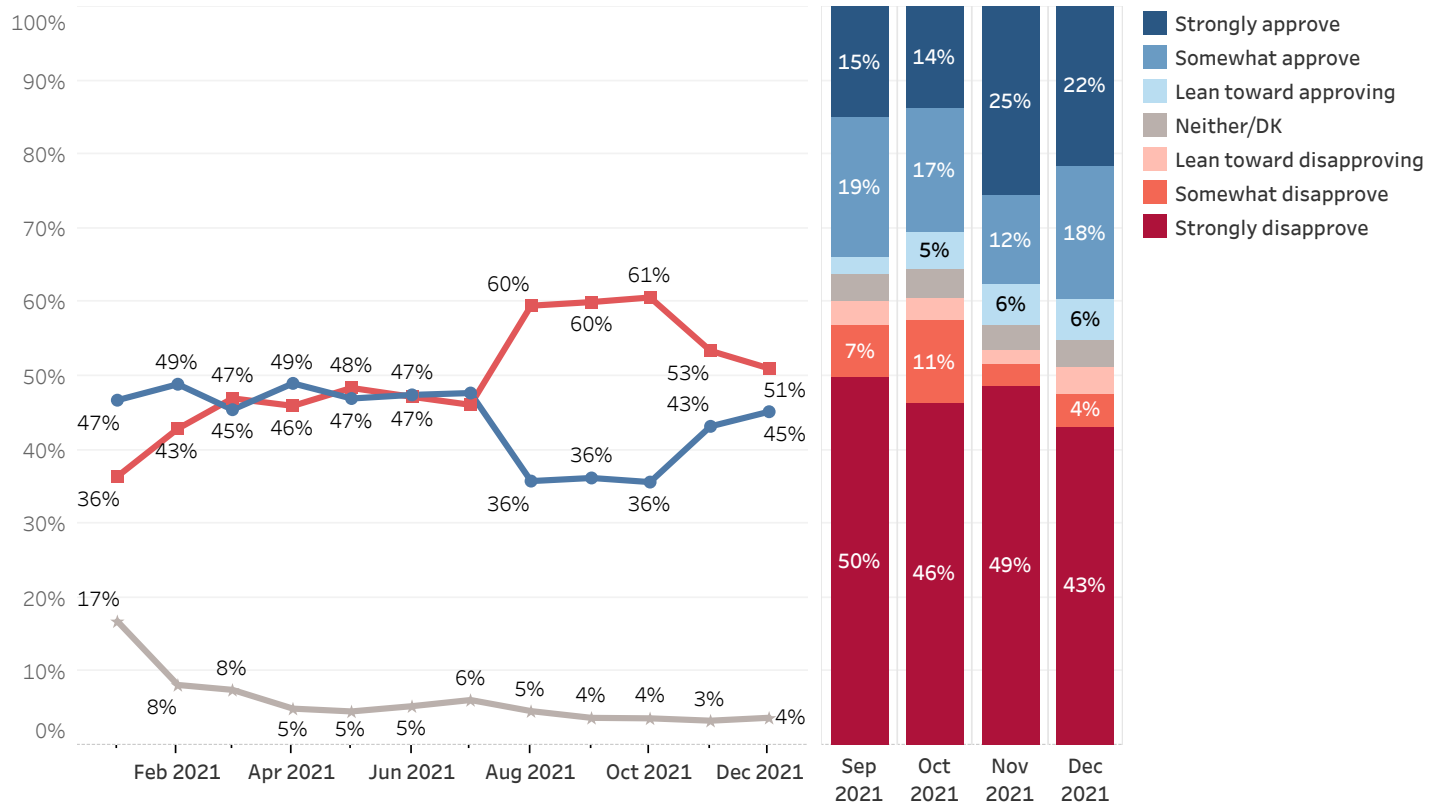
Biden's net approval rating is +94 among Democrats, -24 among Independents, and -92 among Republicans. Biden's net approval among Democrats (+94) has increased since November (+84) and is at about the same point as it was earlier in his presidency.

Net Approval of President Biden's Job Performance - By Party ID



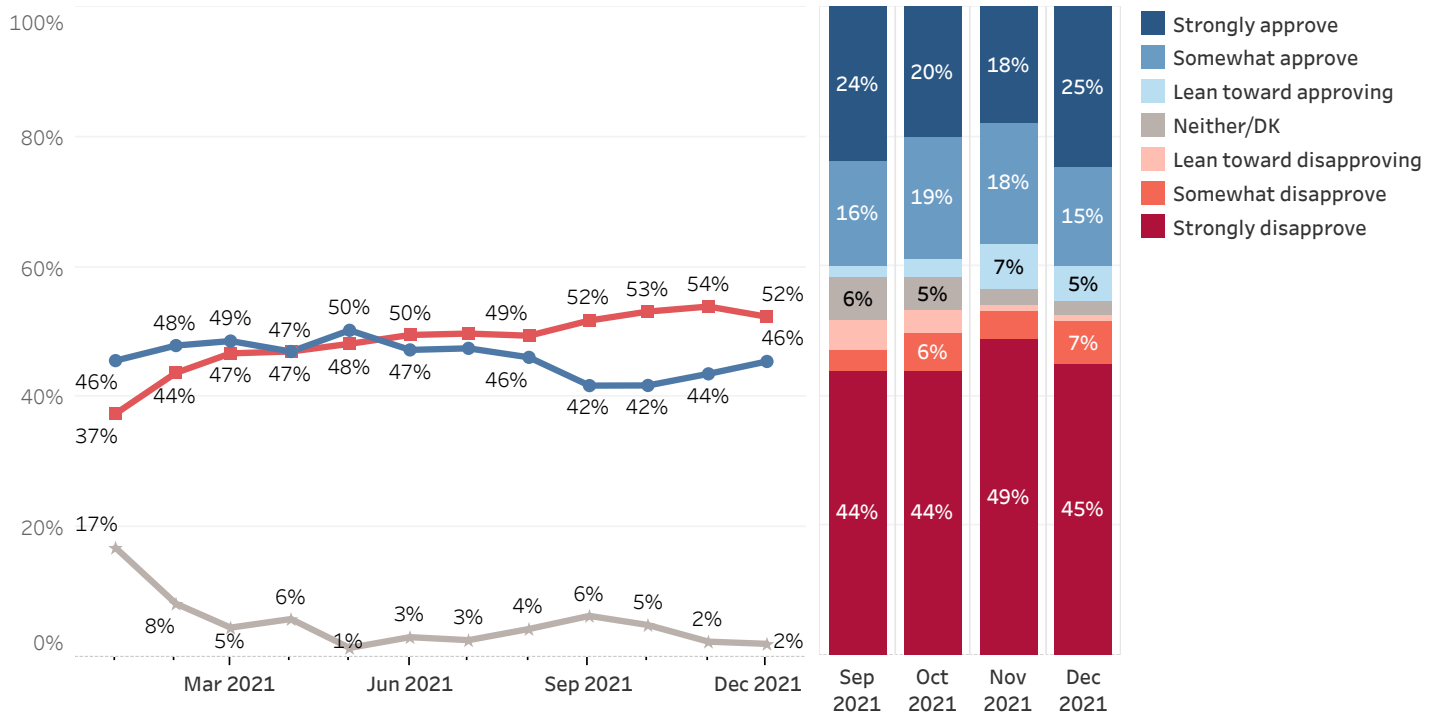
Forty-five percent of Granite Staters say that they approve of Biden's handling of foreign affairs, 51% disapprove, and 4% are unsure. Net approval of Biden's handling of foreign affairs (-6) has improved very slightly since November (-10). Ninety percent of Democrats approve of Biden's handling of foreign affairs but only 32% of Independents and 7% of Republicans approve.

Approval of President Biden's Handling of Foreign Affairs



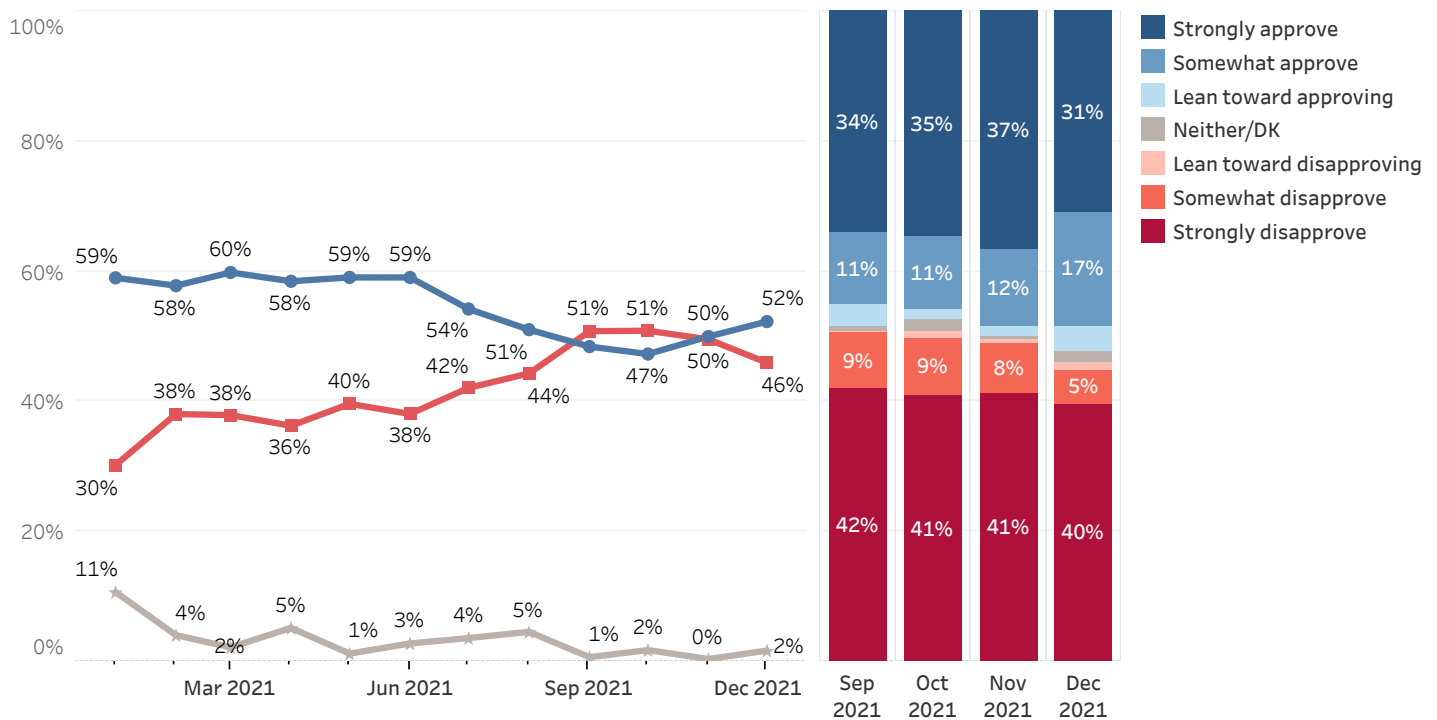
A slight majority also disapprove of President Biden's handling of the economy: 46% of Granite Staters currently approve of Biden's performance on the economy, 52% disapprove, and 2% are unsure. Net approval of Biden's handling of the economy (-7) has not changed significantly since November (-10). The large majority of Democrats (89%) approve of Biden's handling of the economy but only 34% of Independents and 3% of Republicans approve.

Approval of President Biden's Handling of the Economy



Granite Staters are increasingly positive about President Biden's handling of the COVID-19 pandemic: 52% currently approve of Biden's performance on the pandemic, 46% disapprove, and 2% are unsure. Net approval of Biden's handling of COVID-19 (+6) has increased slightly since November (+0). Nearly all Democrats (97%) and 49% of Independents approve of Biden's handling of COVID-19 but only 6% of Republicans approve.

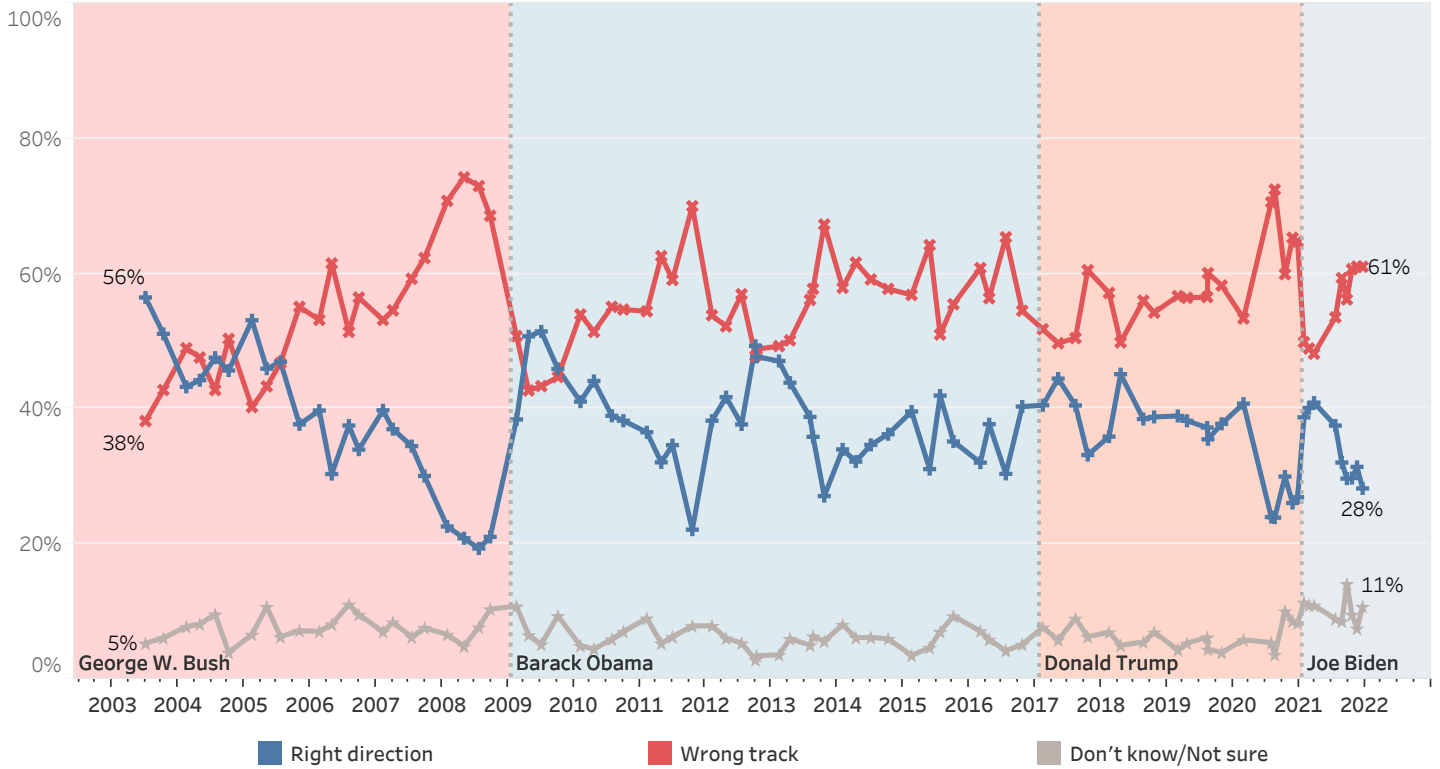
Approval of President Biden's Handling of COVID-19 Pandemic



Direction of U.S.

Only 28% of New Hampshire residents believe that things in the United States are headed in the right direction, 61% believe things are seriously off on the wrong track, and 11% are unsure. The percentage of Granite Staters who say the country is on the right track (28%) remains lower than earlier in the Biden administration but is largely unchanged since November (31%). Fifty-eight percent of Democrats say the country is headed in the right direction but only 19% of Independents and 3% of Republicans agree. The percentage of Democrats who feel the country is headed in the right direction matches its lowest point in Biden's presidency.

U.S. Heading in Right Direction or On Wrong Track



Granite State Poll Methodology

These findings are based on the latest Granite State Poll, conducted by the University of New Hampshire Survey Center. Eight hundred fifty-three (853) Granite State Panel members completed the survey online between December 16 and December 20, 2021. The margin of sampling error for the survey is +/- 3.4 percent. These MSE's have not been adjusted for design effect. The response rate for the December 2021 Granite State Poll is 30%. The design effect for the survey is 2.8%.

Data were weighted by respondent sex, age, education, and region of the state to targets from the most recent American Community Survey (ACS) conducted by the U.S. Census Bureau, as well as party registration levels provided by the NH Secretary of State and to 2020 election results in New Hampshire.

The Granite State Panel is part of an effort by the University of New Hampshire Survey Center to investigate new ways of gathering and understanding the opinion of New Hampshire residents. Approximately 7,500 New Hampshire adults have been recruited from randomly selected landline and cell phone numbers to participate in the panel. Panelists are then asked to participate in online surveys sponsored by the UNH Survey Center.

The number of respondents in each demographic below may not equal the number reported in cross-tabulation tables as some respondents choose not to answer some questions. Due to rounding, percentages may not sum to 100%.

For more information about the methodology used in the Granite State Panel, contact Dr. Andrew Smith at (603) 862-2226 or by email at andrew.smith@unh.edu.

December 2021 Granite State Poll Demographics

		%	N
Gender of Respondent	Men	49%	407
	Women	51%	421
Age of Respondent	18 to 34	27%	225
	35 to 49	21%	176
	50 to 64	32%	270
	65 and older	21%	173
Level of Education	High school or less	36%	305
	Tech school/Some college	31%	261
	College graduate	21%	176
	Postgraduate work	13%	107
Region of State	Connecticut Valley	12%	103
	Manchester Area	14%	117
	Mass Border	25%	215
	North Country	11%	97
	Seacoast	18%	153
	Central/Lakes	20%	167
Party ID	Democrat	42%	348
	Independent	17%	140
	Republican	41%	342
Ideology	Liberal	27%	225
	Moderate	43%	358
	Conservative	29%	242
Voting Registration	Registered Democrat	28%	232
	Registered Undeclared/Not Reg.	42%	349
	Registered Republican	30%	243
2020 Presidential Vote	Voted for Trump	44%	368
	Voted for Biden	51%	429
	Voted for other 2020 candidate	2%	13
	Did not vote in 2020	4%	31

Approval of President Biden's Job Performance

Generally speaking, do you approve or disapprove of the way Joe Biden is handling his job as president?

	<u>Approve</u>	<u>Disapprove</u>	<u>Neither/DK</u>	<u>N</u>
January 2021	55%	37%	7%	2,008
February 2021	53%	45%	2%	1,839
March 2021	53%	45%	2%	1,741
April 2021	51%	47%	1%	1,939
May 2021	52%	47%	1%	1,816
June 2021	51%	48%	1%	1,592
July 2021	50%	49%	1%	1,793
August 2021	44%	54%	2%	974
September 2021	46%	53%	1%	1,079
October 2021	44%	53%	2%	1,059
November 2021	45%	54%	1%	1,122
December 2021	50%	49%	1%	844

Approval of President Biden's Handling of Foreign Affairs

Generally speaking, do you approve or disapprove of the way President Biden is handling foreign affairs?

	<u>Approve</u>	<u>Disapprove</u>	<u>Neither/DK</u>	<u>N</u>
January 2021	47%	36%	17%	2,011
February 2021	49%	43%	8%	1,838
March 2021	45%	47%	8%	1,740
April 2021	49%	46%	5%	1,940
May 2021	47%	48%	5%	1,815
June 2021	47%	47%	5%	1,597
July 2021	48%	46%	6%	1,790
August 2021	36%	60%	5%	975
September 2021	36%	60%	4%	1,072
October 2021	36%	61%	4%	1,052
November 2021	43%	53%	3%	1,124
December 2021	45%	51%	4%	839

Approval of President Biden's Handling of the Economy

Generally speaking, do you approve or disapprove of the way President Biden is handling the economy?

	<u>Approve</u>	<u>Disapprove</u>	<u>Neither/DK</u>	<u>N</u>
January 2021	46%	37%	17%	2,012
February 2021	48%	44%	8%	1,833
March 2021	49%	47%	5%	1,738
April 2021	47%	47%	6%	1,939
May 2021	50%	48%	1%	1,822
June 2021	47%	50%	3%	1,598
July 2021	48%	50%	3%	1,793
August 2021	46%	49%	4%	974
September 2021	42%	52%	6%	1,078
October 2021	42%	53%	5%	1,060
November 2021	44%	54%	2%	1,124
December 2021	46%	52%	2%	851

Approval of President Biden's Handling of COVID-19 Pandemic

Generally speaking, do you approve or disapprove of the way President Biden is handling the coronavirus (COVID-19) situation?

	<u>Approve</u>	<u>Disapprove</u>	<u>Neither/DK</u>	<u>N</u>
January 2021	59%	30%	11%	2,010
February 2021	58%	38%	4%	1,833
March 2021	60%	38%	2%	1,741
April 2021	58%	36%	5%	1,936
May 2021	59%	40%	1%	1,822
June 2021	59%	38%	3%	1,600
July 2021	54%	42%	4%	1,793
August 2021	51%	44%	5%	974
September 2021	48%	51%	1%	1,080
October 2021	47%	51%	2%	1,058
November 2021	50%	50%	0%	1,122
December 2021	52%	46%	2%	851

U.S. Heading in Right Direction or On Wrong Track

Do you think things in this country are generally going in the right direction or are they seriously off on the wrong track?

	<u>Right direction</u>	<u>Wrong track</u>	<u>Don't know/Not sure</u>	<u>N</u>		<u>Right direction</u>	<u>Wrong track</u>	<u>Don't know/Not sure</u>	<u>N</u>
June 2003	56%	38%	5%	511	February 2013	47%	49%	4%	573
October 2003	51%	43%	6%	487	April 2013	44%	50%	6%	498
February 2004	43%	49%	8%	503	July 2013	39%	56%	5%	511
April 2004	44%	48%	8%	535	August 2013	36%	58%	6%	498
July 2004	48%	43%	10%	500	October 2013	27%	67%	6%	645
October 2004	46%	50%	4%	574	January 2014	34%	58%	8%	569
February 2005	53%	40%	7%	535	April 2014	32%	62%	6%	501
May 2005	46%	43%	11%	487	July 2014	35%	59%	6%	654
July 2005	47%	47%	6%	492	October 2014	36%	58%	6%	677
October 2005	38%	55%	7%	498	February 2015	40%	57%	4%	498
February 2006	40%	53%	7%	487	May 2015	31%	64%	5%	562
April 2006	30%	62%	8%	501	July 2015	42%	51%	7%	528
July 2006	38%	51%	11%	496	October 2015	35%	55%	9%	580
September 2006	34%	56%	10%	510	February 2016	32%	61%	7%	672
February 2007	40%	53%	7%	516	April 2016	38%	56%	6%	604
April 2007	37%	55%	8%	510	July 2016	30%	65%	4%	522
July 2007	34%	59%	6%	516	October 2016	40%	55%	5%	897
September 2007	30%	62%	8%	505	February 2017	41%	52%	8%	499
January 2008	23%	71%	7%	553	May 2017	44%	50%	6%	506
April 2008	21%	74%	5%	487	August 2017	41%	50%	9%	498
July 2008	19%	73%	8%	508	October 2017	33%	61%	6%	562
September 2008	21%	69%	10%	540	February 2018	36%	57%	7%	515
February 2009	38%	51%	11%	610	April 2018	45%	50%	5%	207
April 2009	51%	43%	7%	498	August 2018	38%	56%	6%	492
July 2009	51%	43%	5%	555	October 2018	39%	54%	7%	632
October 2009	46%	45%	9%	496	February 2019	39%	57%	4%	588
February 2010	41%	54%	5%	484	April 2019	38%	56%	5%	537
April 2010	44%	51%	4%	502	August 2019	37%	57%	6%	496
July 2010	39%	55%	6%	491	October 2019	38%	58%	4%	1,248
September 2010	38%	55%	7%	512	February 2020	41%	53%	6%	602
February 2011	37%	54%	9%	513	July 2020	24%	71%	5%	2,007
April 2011	32%	63%	5%	496	November 2020	26%	65%	9%	1,912
June 2011	35%	59%	6%	507	December 2020	27%	65%	8%	773
October 2011	22%	70%	8%	553	January 2021	39%	50%	11%	2,020
February 2012	38%	54%	8%	514	February 2021	40%	49%	11%	1,857
April 2012	42%	52%	6%	525	March 2021	41%	48%	11%	1,744
July 2012	38%	57%	5%	512	July 2021	38%	54%	9%	1,794
September 2012	49%	48%	3%	630	August 2021	32%	59%	9%	977
October 2012	48%	49%	3%	578	September 2021	30%	56%	14%	1,078
					October 2021	30%	61%	10%	1,060
					November 2021	31%	61%	8%	1,125
					December 2021	28%	61%	11%	852

Approval of President Biden's Job Performance

		Approve	Disapprove	Neither/DK	N
STATEWIDE	December 2021	50%	49%	1%	844
Voting Registration	Registered Democrat	94%	6%	1%	232
	Registered Undeclared/Not Reg.	49%	50%	1%	348
	Registered Republican	7%	93%		234
Party ID	Democrat	97%	3%	0%	347
	Independent	37%	60%	3%	140
	Republican	4%	96%		333
Ideology	Liberal	91%	8%	1%	225
	Moderate	54%	46%	0%	358
	Conservative	1%	99%		234
Media Usage	Boston Globe reader	56%	37%	7%	58
	NHPR listener	66%	33%	1%	455
	Union Leader reader	51%	47%	2%	87
	WMUR viewer	58%	41%	1%	585
	Fox News viewer	14%	86%	0%	185
	Conservative radio listener	7%	93%		201
	Local newspapers reader	56%	41%	3%	127
Age of Respondent	18 to 34	51%	49%	1%	225
	35 to 49	36%	63%	1%	176
	50 to 64	51%	49%	0%	261
	65 and older	63%	36%	1%	173
Gender of Respondent	Men	29%	71%	0%	398
	Women	70%	29%	1%	421
Level of Education	High school or less	36%	64%		296
	Tech school/Some college	55%	45%	1%	261
	College graduate	54%	45%	1%	175
	Postgraduate work	70%	28%	2%	107
Region of State	Connecticut Valley	47%	53%	0%	94
	Manchester Area	56%	41%	3%	117
	Mass Border	59%	41%		215
	North Country	18%	82%		97
	Seacoast	60%	40%		153
	Central/Lakes	45%	54%	1%	167
2020 Presidential Vote	Voted for Trump	1%	99%	1%	360
	Voted for Biden	92%	7%	1%	428
	Voted for other 2020 candidate	0%	100%		13
	Did not vote in 2020	54%	46%		31

Approval of President Biden's Handling of Foreign Affairs

		Approve	Disapprove	Neither/DK	N
STATEWIDE	December 2021	45%	51%	4%	839
Voting Registration	Registered Democrat	91%	6%	3%	222
	Registered Undeclared/Not Reg.	46%	48%	6%	348
	Registered Republican	6%	93%	1%	239
Party ID	Democrat	90%	8%	2%	338
	Independent	32%	58%	9%	136
	Republican	7%	93%	0%	342
Ideology	Liberal	84%	13%	3%	225
	Moderate	51%	44%	4%	345
	Conservative	1%	98%	1%	242
Media Usage	Boston Globe reader	53%	34%	12%	58
	NHPR listener	58%	36%	6%	456
	Union Leader reader	40%	45%	15%	82
	WMUR viewer	52%	43%	4%	580
	Fox News viewer	14%	85%	2%	186
	Conservative radio listener	7%	93%		209
	Local newspapers reader	52%	41%	6%	123
Age of Respondent	18 to 34	44%	56%	1%	221
	35 to 49	32%	65%	3%	176
	50 to 64	46%	47%	8%	264
	65 and older	61%	37%	2%	168
Gender of Respondent	Men	27%	73%	1%	397
	Women	63%	30%	7%	417
Level of Education	High school or less	27%	69%	3%	295
	Tech school/Some college	53%	44%	3%	261
	College graduate	50%	45%	5%	175
	Postgraduate work	69%	28%	3%	103
Region of State	Connecticut Valley	41%	58%	0%	102
	Manchester Area	46%	43%	11%	117
	Mass Border	55%	38%	7%	211
	North Country	18%	82%	0%	97
	Seacoast	57%	41%	1%	144
	Central/Lakes	40%	60%	0%	167
2020 Presidential Vote	Voted for Trump	3%	96%	1%	368
	Voted for Biden	86%	7%	7%	415
	Voted for other 2020 candidate	13%	87%		13
	Did not vote in 2020	3%	97%		31

Approval of President Biden's Handling of the Economy

		Approve	Disapprove	Neither/DK	N
STATEWIDE	December 2021	46%	52%	2%	851
Voting Registration	Registered Democrat	85%	7%	7%	231
	Registered Undeclared/Not Reg.	45%	55%	0%	348
	Registered Republican	7%	93%	0%	242
Party ID	Democrat	89%	6%	5%	348
	Independent	34%	66%	1%	139
	Republican	3%	97%	0%	341
Ideology	Liberal	85%	9%	7%	224
	Moderate	50%	49%	1%	358
	Conservative	2%	98%	0%	241
Media Usage	Boston Globe reader	57%	42%	1%	58
	NHPR listener	64%	36%	1%	455
	Union Leader reader	50%	48%	2%	86
	WMUR viewer	52%	45%	3%	592
	Fox News viewer	12%	88%	1%	184
	Conservative radio listener	7%	93%	0%	208
	Local newspapers reader	54%	45%	0%	127
Age of Respondent	18 to 34	41%	53%	6%	225
	35 to 49	33%	67%	0%	176
	50 to 64	48%	52%	1%	270
	65 and older	61%	38%	1%	171
Gender of Respondent	Men	25%	75%	0%	405
	Women	65%	31%	4%	421
Level of Education	High school or less	35%	65%	0%	305
	Tech school/Some college	48%	46%	5%	260
	College graduate	48%	51%	1%	175
	Postgraduate work	65%	34%	2%	106
Region of State	Connecticut Valley	40%	59%	1%	103
	Manchester Area	40%	47%	13%	116
	Mass Border	56%	43%	0%	215
	North Country	17%	83%	0%	96
	Seacoast	60%	40%	0%	153
	Central/Lakes	42%	57%	1%	167
2020 Presidential Vote	Voted for Trump	0%	100%	0%	368
	Voted for Biden	84%	12%	4%	428
	Voted for other 2020 candidate	0%	100%	0%	13
	Did not vote in 2020	54%	46%	0%	31

Approval of President Biden's Handling of COVID-19 Pandemic

		Approve	Disapprove	Neither/DK	N
STATEWIDE	December 2021	52%	46%	2%	851
Voting Registration	Registered Democrat	93%	7%	0%	231
	Registered Undeclared/Not Reg.	53%	46%	1%	348
	Registered Republican	10%	86%	4%	243
Party ID	Democrat	97%	3%	0%	347
	Independent	49%	49%	2%	140
	Republican	6%	91%	3%	341
Ideology	Liberal	95%	4%	1%	225
	Moderate	56%	41%	3%	357
	Conservative	5%	95%	0%	242
Media Usage	Boston Globe reader	64%	36%	0%	58
	NHPR listener	69%	31%	1%	455
	Union Leader reader	56%	32%	12%	87
	WMUR viewer	62%	36%	2%	593
	Fox News viewer	18%	80%	2%	186
	Conservative radio listener	13%	83%	5%	209
	Local newspapers reader	59%	38%	3%	127
Age of Respondent	18 to 34	54%	45%	1%	225
	35 to 49	37%	63%	0%	176
	50 to 64	51%	49%	1%	268
	65 and older	66%	28%	5%	173
Gender of Respondent	Men	33%	64%	3%	407
	Women	72%	28%	0%	420
Level of Education	High school or less	39%	58%	3%	305
	Tech school/Some college	55%	44%	1%	260
	College graduate	61%	38%	0%	175
	Postgraduate work	70%	29%	2%	106
Region of State	Connecticut Valley	42%	58%	1%	102
	Manchester Area	57%	35%	8%	117
	Mass Border	66%	33%	1%	215
	North Country	19%	81%	0%	97
	Seacoast	66%	34%	1%	152
	Central/Lakes	45%	55%	0%	167
2020 Presidential Vote	Voted for Trump	3%	94%	3%	368
	Voted for Biden	94%	6%	0%	428
	Voted for other 2020 candidate	38%	43%	19%	13
	Did not vote in 2020	54%	46%	0%	31

U.S. Heading in Right Direction or On Wrong Track

		Right direction	Wrong track	Don't know/Not sure	N
STATEWIDE	December 2021	28%	61%	11%	852
Voting Registration	Registered Democrat	57%	29%	14%	231
	Registered Undeclared/Not Reg.	28%	64%	9%	348
	Registered Republican	5%	90%	5%	243
Party ID	Democrat	58%	25%	17%	347
	Independent	19%	75%	6%	140
	Republican	3%	94%	3%	342
Ideology	Liberal	50%	29%	20%	224
	Moderate	32%	56%	12%	358
	Conservative	1%	99%		242
Media Usage	Boston Globe reader	34%	58%	8%	58
	NHPR listener	35%	52%	13%	455
	Union Leader reader	35%	54%	11%	87
	WMUR viewer	35%	51%	14%	592
	Fox News viewer	7%	88%	5%	186
	Conservative radio listener	3%	90%	6%	209
	Local newspapers reader	32%	54%	13%	127
Age of Respondent	18 to 34	15%	61%	24%	225
	35 to 49	21%	75%	4%	175
	50 to 64	31%	61%	8%	270
	65 and older	48%	46%	6%	173
Gender of Respondent	Men	14%	80%	6%	407
	Women	41%	43%	16%	421
Level of Education	High school or less	24%	68%	8%	305
	Tech school/Some college	26%	61%	13%	261
	College graduate	32%	58%	10%	175
	Postgraduate work	39%	46%	15%	106
Region of State	Connecticut Valley	23%	65%	12%	103
	Manchester Area	30%	53%	18%	117
	Mass Border	29%	60%	11%	214
	North Country	14%	84%	2%	97
	Seacoast	49%	41%	10%	153
	Central/Lakes	18%	71%	11%	167
2020 Presidential Vote	Voted for Trump	0%	97%	3%	368
	Voted for Biden	55%	31%	14%	428
	Voted for other 2020 candidate	0%	81%	19%	13
	Did not vote in 2020		46%	54%	31