

October 22, 2021

## SUNUNU APPROVAL CONTINUES TO DROP; RECORD LOW FEEL NH HEADED IN RIGHT DIRECTION

By: Sean P. McKinley, M.A.  
Zachary S. Azem, M.A.  
Andrew E. Smith, Ph.D.

andrew.smith@unh.edu  
603-862-2226  
cola.unh.edu/unh-survey-center

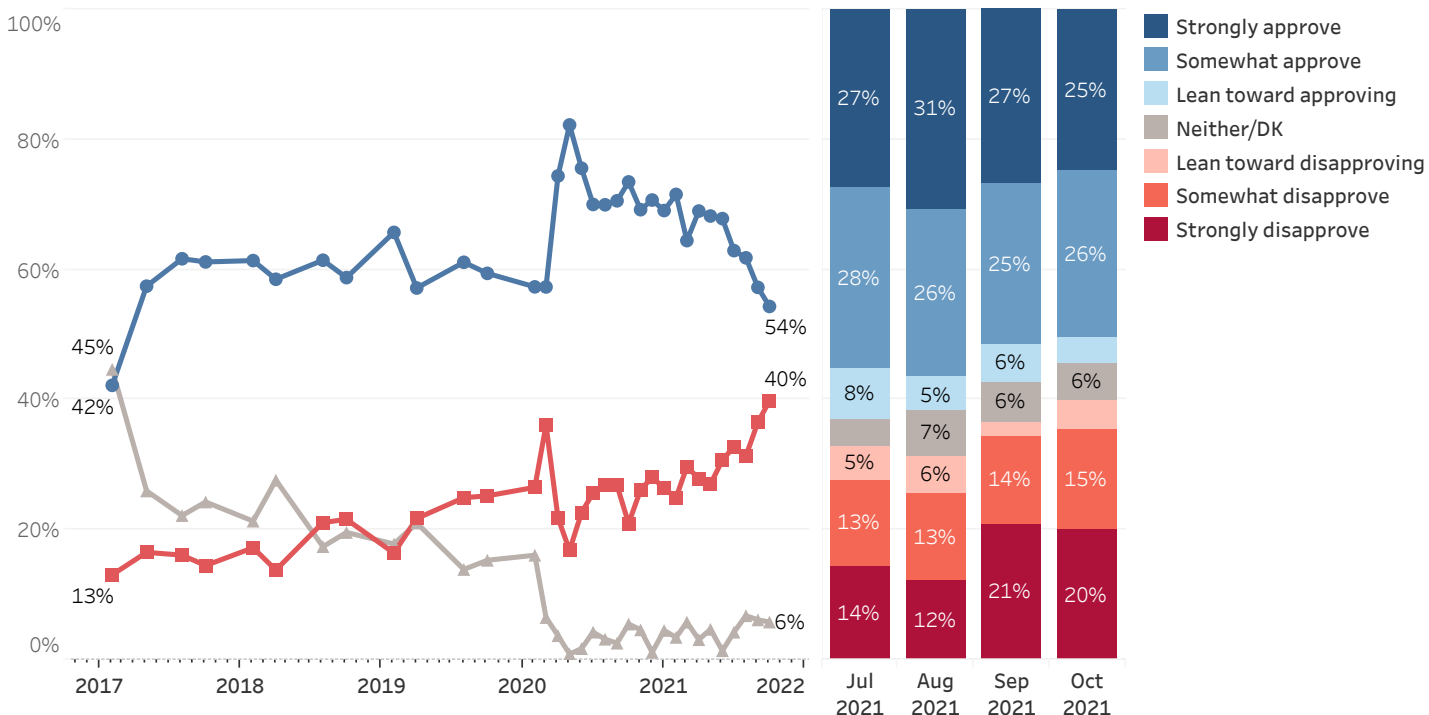
DURHAM, NH – Approval of Governor Chris Sununu's job performance continues to fall, nearing a new low point for his administration, although a slim majority continue to approve of his job as governor. Only four in ten New Hampshire residents feel the state is headed in the right direction, a record low, driven by steep declines among Independents and Democrats. Granite Staters most frequently mention the COVID-19 pandemic and jobs or the economy as the most important problem facing the state.

These findings are based on the latest **Granite State Poll\***, conducted by the University of New Hampshire Survey Center. One thousand and sixty-one (1,061) Granite State Panel members completed the survey online between October 14 and October 18, 2021. The margin of sampling error for the survey is +/- 3.0 percent. Data were weighted by respondent sex, age, education, and region of the state to targets from the most recent American Community Survey (ACS) conducted by the U.S. Census Bureau, as well as party registration levels provided by the NH Secretary of State and 2020 election results in NH. Granite State Panel members are recruited from randomly-selected landline and cell phone numbers across New Hampshire and surveys are sent periodically to panel members.

### Gubernatorial Approval

Granite Staters are becoming increasingly divided in their assessment of Governor Sununu's job performance: 54% of New Hampshire residents approve of Sununu's performance as governor, 40% disapprove, and 6% neither approve nor disapprove or don't know. Sununu's net approval rating (the percentage who approve minus the percentage who disapprove) among Granite Staters is +15, a record low, down from +21 in September and +30 in August. "The COVID bump appears over for Sununu, as it is for many governors," said Andrew Smith, Director of the University of New Hampshire Survey Center. "Entering an election year has heightened partisan feelings about his performance."

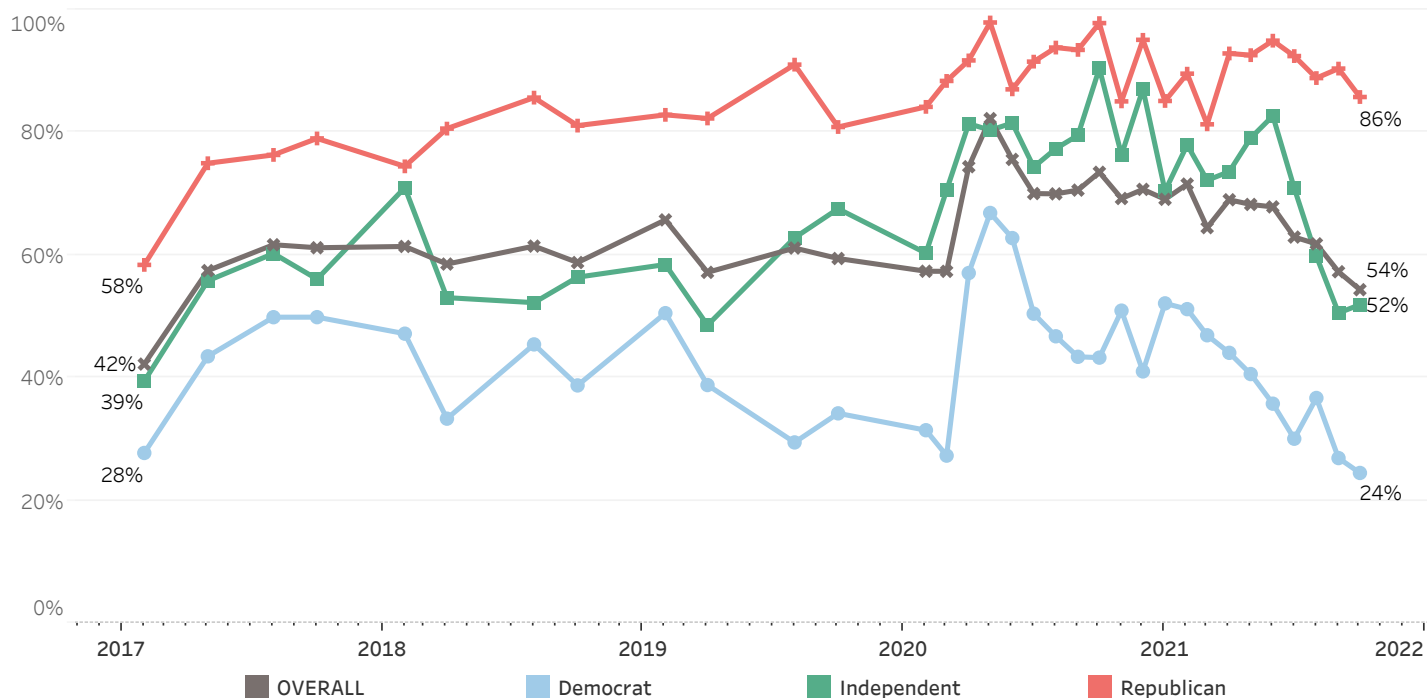
### Gubernatorial Approval - Chris Sununu



\* We ask that this copyrighted information be referred to as *the Granite State Poll*, conducted by the University of New Hampshire Survey Center.

Sununu remains highly regarded among Republicans as 86% approve of his job performance but only 52% of Independents and 24% of Democrats agree. As recently as February, a majority of Democrats (51%) approved of Sununu's performance, but his support among this group has halved since then while approval of his performance among Republicans is largely unchanged.

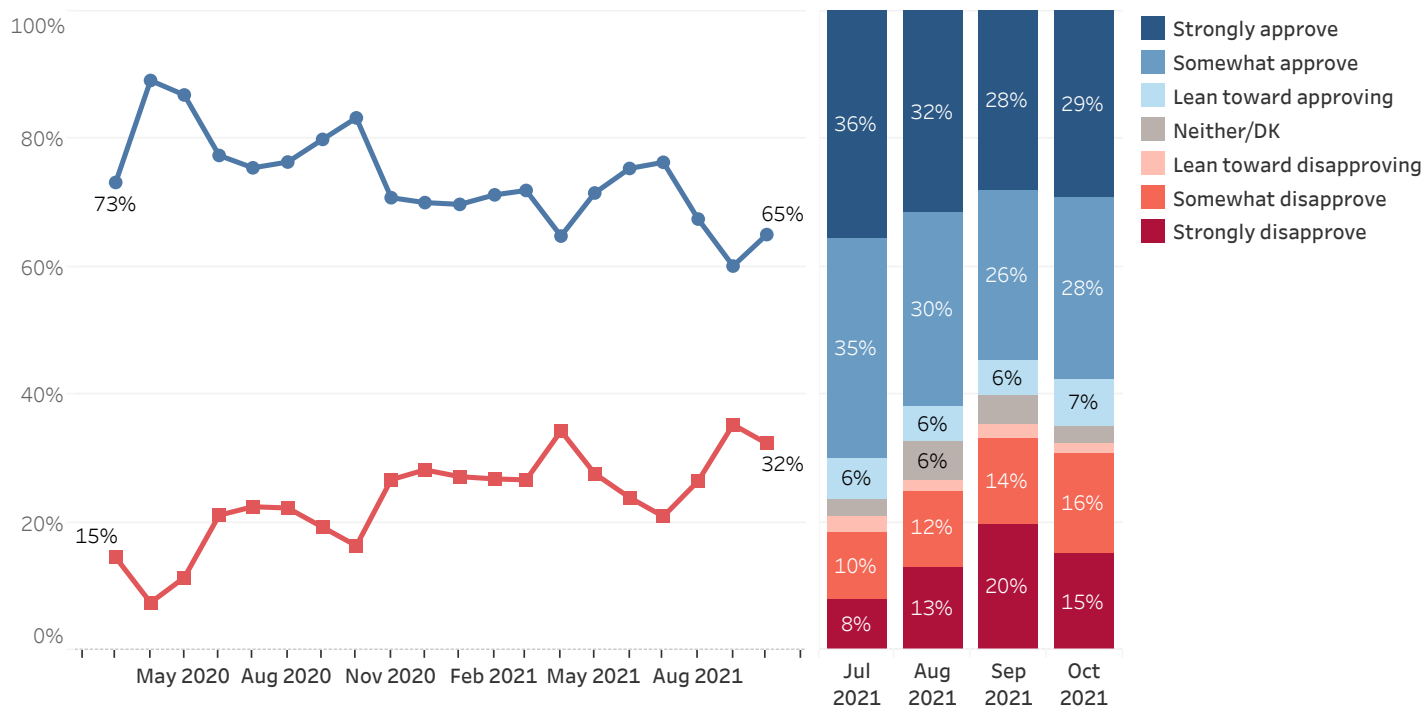
**Job Approval - Governor Chris Sununu - By Party Identification**



**COVID-19**

Despite the continued erosion of support for his overall job performance, two-thirds (65%) of Granite Staters approve of his handling of COVID-19, up from 60% in September, while only 32% disapprove. Eighty-seven percent of Republicans and 73% of Independents approve of Sununu's handling of the pandemic but only 40% of Democrats agree.

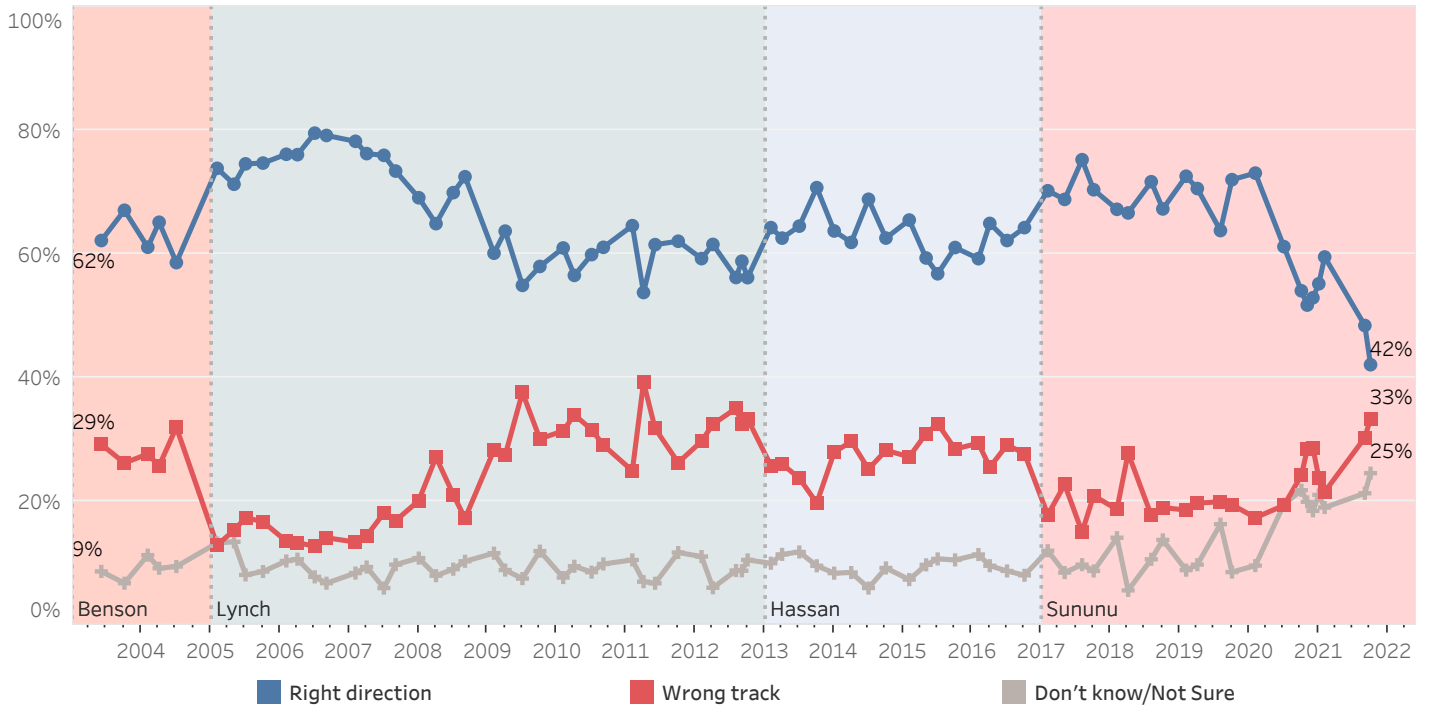
**Approval of Governor Sununu's Handling of Coronavirus (COVID-19) Situation**



## New Hampshire Heading in Right Direction or On Wrong Track

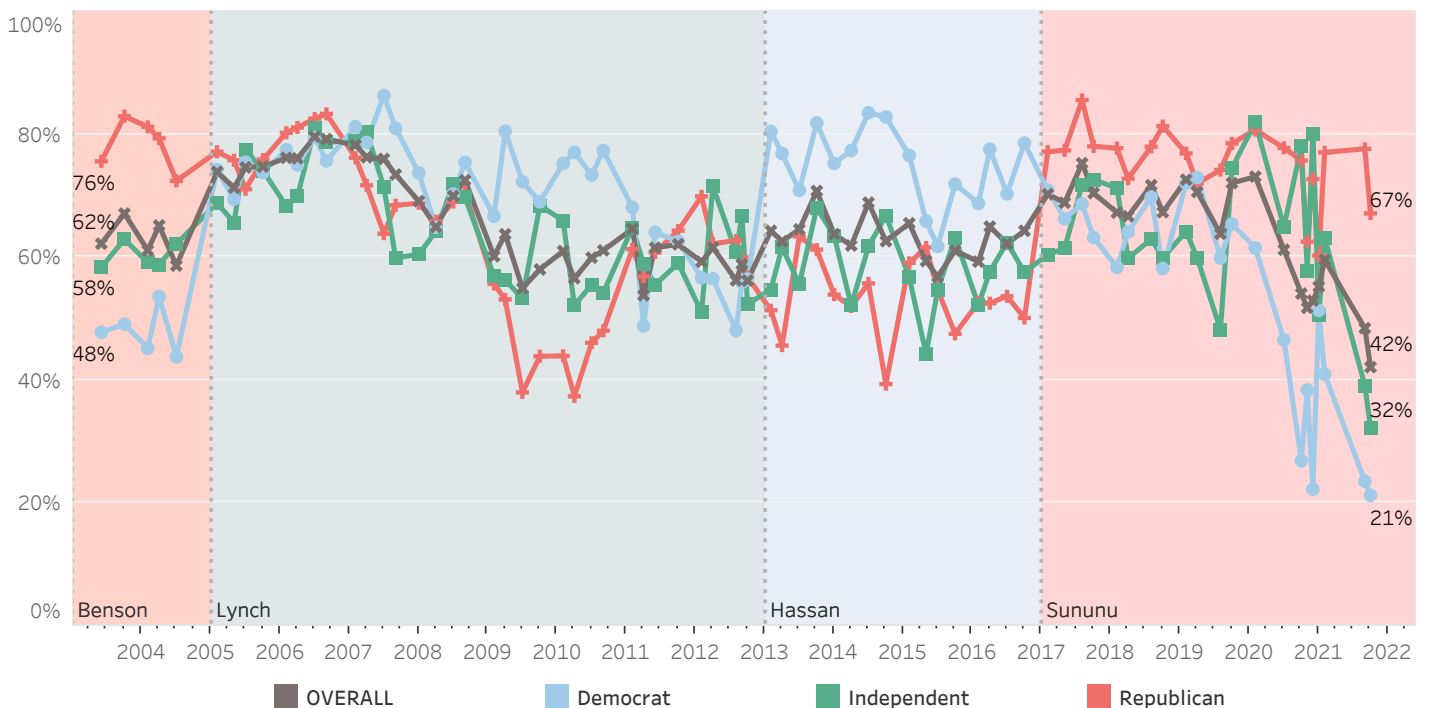
Only 42% of New Hampshire residents believe that things in the state are headed in the right direction, 33% believe things are seriously off on the wrong track, and 25% are unsure. The percentage of Granite Staters who say the state is on the right track (42%) has fallen since September (48%) to a new low.

### Right Direction or Wrong Track - NH



Two-thirds (67%) of Republicans believe the state is headed in the right direction but only 32% of Independents and 21% of Democrats agree, both setting new all-time lows.

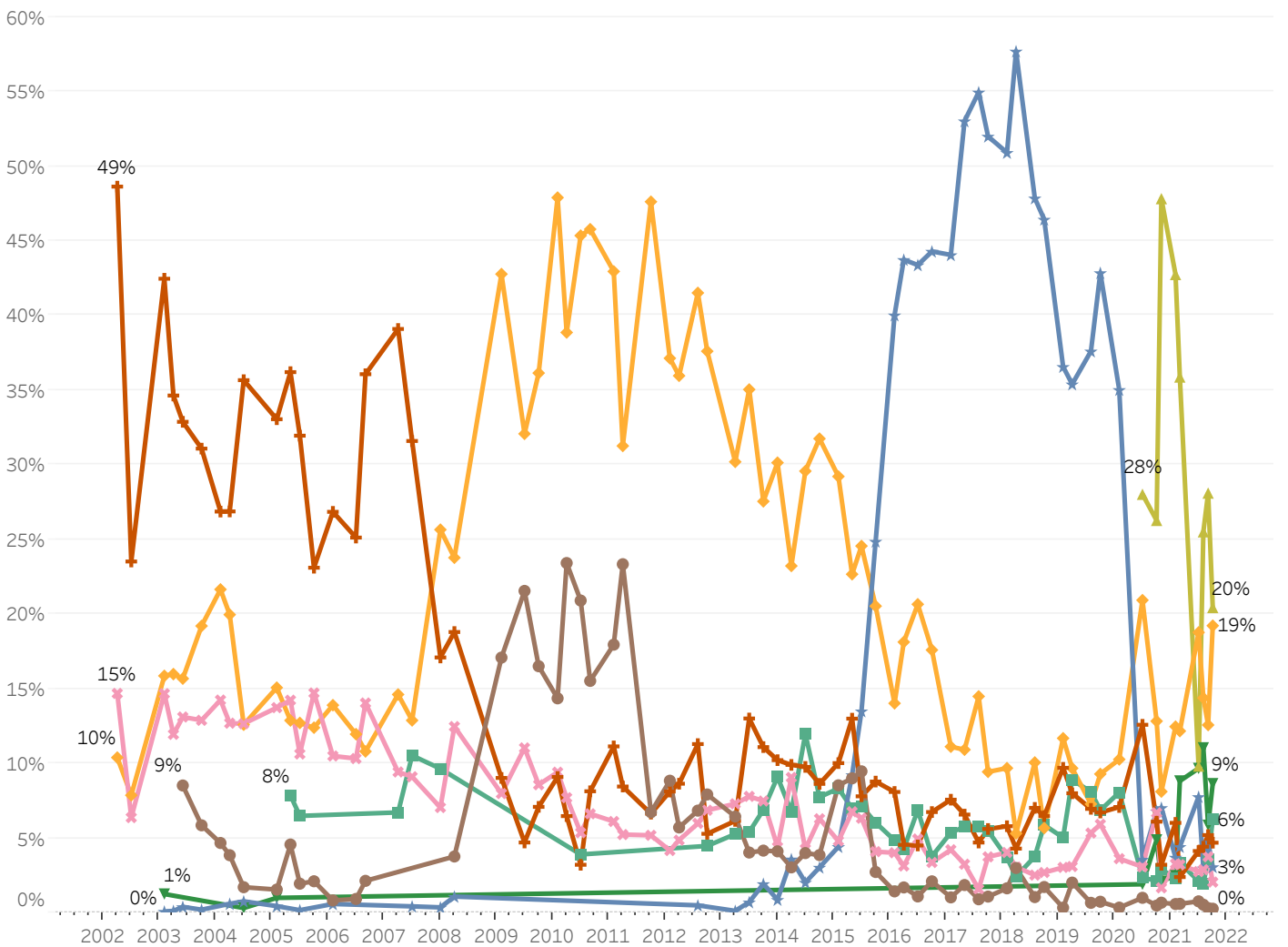
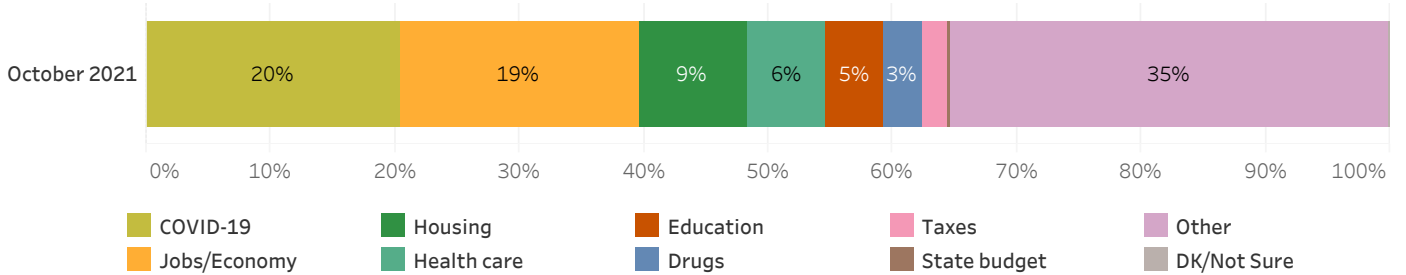
### Right Direction or Wrong Track - NH - By Party ID



### Most Important Problem Facing New Hampshire

Twenty percent of New Hampshire residents believe that the COVID-19 pandemic is the most important problem facing the state while 19% believe jobs or the economy is the most important problem. Nine percent cite housing as the most important problem facing the state, 6% believe it is health care, 5% believe it is education, 3% believe it is drugs, and less than 1% believe it is taxes, and less than 1% are unsure. Thirty-five percent mention another problem and less than 1% are unsure.

### Most Important Problem - Coded



## Granite State Poll Methodology

These findings are based on the latest Granite State Poll, conducted by the University of New Hampshire Survey Center. One thousand and sixty-one (1,061) Granite State Panel members completed the survey online between October 14 and October 18, 2021. The margin of sampling error for the survey is +/- 3.0 percent. The response rate for the October 2021 Granite State Poll is 29%. The design effect for the survey is 2.5%.

Data were weighted by respondent sex, age, education, and region of the state to targets from the most recent American Community Survey (ACS) conducted by the U.S. Census Bureau, as well as party registration levels provided by the NH Secretary of State and to 2020 election results in New Hampshire.

The Granite State Panel is part of an effort by the University of New Hampshire Survey Center to investigate new ways of gathering and understanding the opinion of New Hampshire residents. Approximately 6,250 New Hampshire adults were recruited from randomly selected landline and cell phone numbers to participate in the panel. Panelists are then asked to participate in online surveys sponsored by the UNH Survey Center.

The number of respondents in each demographic below may not equal the number reported in cross-tabulation tables as some respondents choose not to answer some questions. Due to rounding, percentages may not sum to 100%.

For more information about the methodology used in the Granite State Panel, contact Dr. Andrew Smith at (603) 862-2226 or by email at [andrew.smith@unh.edu](mailto:andrew.smith@unh.edu).

### October 2021 Granite State Poll Demographics

		%	N
Gender of Respondent	Men	49%	505
	Women	51%	524
Age of Respondent	18 to 34	27%	277
	35 to 49	21%	224
	50 to 64	31%	325
	65 and older	21%	215
Level of Education	High school or less	36%	377
	Tech school/Some college	31%	323
	College graduate	21%	218
	Postgraduate work	13%	132
Region of State	Central/Lakes	19%	201
	Connecticut Valley	13%	139
	Manchester Area	14%	150
	Mass Border	29%	304
	North Country	10%	109
	Seacoast	15%	154
Party ID	Democrat	42%	438
	Independent	18%	185
	Republican	40%	417
Voting Registration	Registered Democrat	28%	288
	Registered Undeclared/Not Reg.	42%	434
	Registered Republican	30%	302
2020 Presidential Vote	Voted for Trump	44%	459
	Voted for Biden	51%	535
	Voted for other 2020 candidate	2%	16
	Did not vote in 2020	3%	36

## Approval of Governor Sununu's Job Performance

Generally speaking, do you approve or disapprove of the way Chris Sununu is handling his job as governor?

	<u>Approve</u>	<u>Disapprove</u>	<u>Neither/DK</u>	<u>N</u>
February 2017	42%	13%	45%	476
May 2017	57%	17%	26%	502
August 2017	62%	16%	22%	484
October 2017	61%	15%	24%	540
February 2018	61%	17%	21%	500
April 2018	59%	14%	28%	189
August 2018	61%	21%	17%	486
October 2018	59%	22%	20%	622
February 2019	66%	16%	18%	592
April 2019	57%	22%	21%	529
August 2019	60%	23%	17%	483
October 2019	59%	25%	15%	1,231
February 2020	57%	27%	16%	582
March 2020	57%	36%	7%	646
April 2020	74%	22%	4%	1,150
May 2020	82%	17%	1%	818
June 2020	76%	23%	2%	993
July 2020	70%	26%	4%	1,978
August 2020	70%	27%	3%	1,940
September 2020	71%	27%	3%	1,027
October 2020	73%	21%	6%	931
November 2020	69%	26%	5%	1,908
December 2020	71%	28%	1%	758
January 2021	69%	26%	5%	2,023
February 2021	72%	25%	3%	1,834
March 2021	64%	30%	6%	1,743
April 2021	69%	28%	3%	1,939
May 2021	68%	27%	5%	1,823
June 2021	68%	31%	1%	1,601
July 2021	63%	33%	4%	1,790
August 2021	62%	31%	7%	972
September 2021	57%	37%	6%	1,080
October 2021	54%	40%	6%	1,057

## Approval of Governor Sununu's Handling of Coronavirus (COVID-19) Situation

Generally speaking, do you approve or disapprove of the way Chris Sununu is handling the coronavirus (COVID-19) situation?

	<u>Approve</u>	<u>Disapprove</u>	<u>Neither/DK</u>	<u>N</u>
March 2020	73%	15%	12%	643
April 2020	89%	7%	3%	1,154
May 2020	87%	11%	2%	815
June 2020	77%	21%	1%	970
July 2020	76%	22%	2%	1,973
August 2020	76%	22%	1%	1,929
September 2020	80%	19%	1%	1,027
October 2020	83%	16%	0%	930
November 2020	71%	27%	2%	1,908
December 2020	70%	28%	2%	763
January 2021	70%	27%	3%	2,019
February 2021	71%	27%	2%	1,856
March 2021	72%	27%	1%	1,739
April 2021	65%	34%	1%	1,937
May 2021	72%	28%	1%	1,823
June 2021	75%	24%	1%	1,597
July 2021	76%	21%	3%	1,791
August 2021	68%	26%	6%	966
September 2021	60%	35%	5%	1,077
October 2021	65%	32%	3%	1,058

## Right Direction or Wrong Track - New Hampshire

Do you think things in New Hampshire are generally going in the right direction or are they seriously off on the wrong track?

	<u>Right direction</u>	<u>Wrong track</u>	<u>Don't know/Not Sure</u>	<u>N</u>
June 2003	62%	29%	9%	510
October 2003	67%	26%	7%	485
February 2004	61%	28%	11%	500
April 2004	65%	26%	9%	530
July 2004	59%	32%	9%	503
February 2005	74%	13%	13%	535
May 2005	71%	15%	13%	488
July 2005	75%	17%	8%	494
October 2005	75%	17%	9%	502
February 2006	76%	14%	10%	495
April 2006	76%	13%	11%	501
July 2006	80%	13%	8%	497
September 2006	79%	14%	7%	509
February 2007	78%	13%	8%	524
April 2007	76%	14%	9%	506
July 2007	76%	18%	6%	500
September 2007	73%	17%	10%	507
January 2008	69%	20%	11%	547
April 2008	65%	27%	8%	491
July 2008	70%	21%	9%	514
September 2008	72%	17%	10%	535
February 2009	60%	28%	12%	605
April 2009	64%	27%	9%	497
July 2009	55%	38%	7%	557
October 2009	58%	30%	12%	496
February 2010	61%	31%	8%	490
April 2010	57%	34%	9%	503
July 2010	60%	32%	9%	496
September 2010	61%	29%	10%	511
February 2011	65%	25%	11%	517
April 2011	54%	39%	7%	491
June 2011	61%	32%	7%	503
October 2011	62%	26%	12%	544
February 2012	59%	30%	11%	517
April 2012	62%	32%	6%	532
August 2012	56%	35%	9%	577
September 2012	59%	32%	9%	622
October 2012	56%	33%	11%	576
February 2013	64%	26%	10%	573
April 2013	63%	26%	11%	497
July 2013	64%	24%	12%	509
October 2013	71%	20%	10%	645
January 2014	64%	28%	8%	570
April 2014	62%	30%	8%	505
July 2014	69%	25%	6%	656
October 2014	63%	28%	9%	666



## Right Direction or Wrong Track - New Hampshire

Do you think things in New Hampshire are generally going in the right direction or are they seriously off on the wrong track?

	<u>Right direction</u>	<u>Wrong track</u>	<u>Don't know/Not Sure</u>	<u>N</u>
February 2015	65%	27%	7%	501
May 2015	59%	31%	10%	562
July 2015	57%	33%	11%	522
October 2015	61%	28%	11%	581
February 2016	59%	29%	11%	669
April 2016	65%	25%	10%	593
July 2016	62%	29%	9%	517
October 2016	64%	28%	8%	890
February 2017	70%	18%	12%	496
May 2017	69%	23%	8%	510
August 2017	75%	15%	10%	500
October 2017	70%	21%	9%	559
February 2018	67%	19%	14%	516
April 2018	67%	28%	6%	206
August 2018	72%	18%	11%	493
October 2018	67%	19%	14%	640
February 2019	73%	19%	9%	594
April 2019	71%	20%	10%	547
August 2019	73%	15%	13%	490
October 2019	72%	19%	9%	1,250
February 2020	73%	17%	10%	604
July 2020	61%	19%	19%	1,984
October 2020	54%	24%	22%	922
November 2020	52%	28%	20%	1,910
December 2020	53%	29%	18%	773
January 2021	55%	24%	21%	2,022
February 2021	60%	22%	19%	1,857
September 2021	48%	30%	21%	1,081
October 2021	42%	33%	25%	1,059

### Most Important Problem - New Hampshire

Let's turn to the state of New Hampshire. What do you think is the most important problem facing the state of New Hampshire today?

	<u>COVID-19</u>	<u>Drugs</u>	<u>Education</u>	<u>Health care</u>	<u>Housing</u>	<u>Jobs/Economy</u>	<u>State budget</u>	<u>Taxes</u>	<u>Other</u>	<u>DK/Not Sure</u>	<u>N</u>
April 2002			49%			10%		15%	16%	11%	681
July 2002			24%			8%		6%	57%	5%	677
February 2003		0%	42%		1%	16%		15%	16%	9%	644
April 2003		0%	35%			16%		12%	26%	12%	499
June 2003		0%	33%			16%	9%	13%	22%	8%	513
October 2003		0%	31%			19%	6%	13%	22%	9%	490
February 2004			27%			22%	5%	14%	23%	10%	502
April 2004		1%	27%			20%	4%	13%	24%	12%	536
July 2004		1%	36%		0%	13%	2%	13%	25%	11%	505
February 2005		0%	33%		1%	15%	2%	14%	20%	15%	541
May 2005			36%	8%		13%	5%	14%	15%	9%	487
July 2005		0%	32%	6%		13%	2%	11%	24%	12%	496
October 2005			23%			12%	2%	15%	35%	13%	503
February 2006		1%	27%			14%	1%	11%	34%	13%	498
July 2006			25%			12%	1%	10%	38%	13%	490
September 2006			36%			11%	2%	14%	29%	8%	499
April 2007			39%	7%		15%		9%	23%	7%	501
July 2007		0%	32%	11%		13%		9%	29%	7%	488
January 2008		0%	17%	10%		26%		7%	33%	7%	542
April 2008		1%	19%			24%	4%	12%	35%	5%	496
February 2009			9%			43%	17%	8%	23%		607
July 2009			5%			32%	22%	11%	26%	5%	551
October 2009			7%			36%	17%	9%	26%	6%	494
February 2010			9%			48%	14%	9%	18%	2%	486
April 2010			6%			39%	23%	8%	21%	3%	504
July 2010			3%	4%		45%	21%	5%	17%	4%	498
September 2010			8%			46%	16%	7%	19%	5%	504
February 2011			11%			43%	18%	6%	18%	4%	508
April 2011			8%			31%	23%	5%	28%	4%	494
October 2011			7%			48%	7%	5%	28%	6%	548
February 2012			8%			37%	9%	4%	36%	6%	509
April 2012			9%			36%	6%	5%	37%	8%	518
August 2012		0%	11%			42%	7%	6%	29%	5%	541
October 2012			5%	4%		38%	8%	7%	33%	5%	575
April 2013		0%	6%	5%		30%	6%	7%	38%	6%	485
July 2013		1%	13%	5%		35%	4%	8%	26%	7%	458
October 2013		2%	11%	7%		28%	4%	7%	26%	15%	602
January 2014		1%	10%	9%		30%	4%	4%	30%	11%	545
April 2014		4%	10%	7%		23%	3%	9%	35%	10%	464
July 2014		2%	10%	12%		30%	4%	4%	29%	9%	614
October 2014		3%	9%	8%		32%	4%	6%	28%	11%	644
February 2015		4%	10%	8%		29%	9%	5%	26%	8%	467
May 2015		9%	13%	7%		23%	9%	7%	24%	8%	540
July 2015		14%	8%	7%		25%	9%	6%	27%	4%	509
October 2015		25%	9%	6%		21%	3%	4%	26%	7%	563

### Most Important Problem - New Hampshire

Let's turn to the state of New Hampshire. What do you think is the most important problem facing the state of New Hampshire today?

	<u>COVID-19</u>	<u>Drugs</u>	<u>Education</u>	<u>Health care</u>	<u>Housing</u>	<u>Jobs/Economy</u>	<u>State budget</u>	<u>Taxes</u>	<u>Other</u>	<u>DK/Not Sure</u>	<u>N</u>
February 2016		40%	8%	5%		14%	1%	4%	21%	7%	659
April 2016		44%	5%	4%		18%	2%	3%	19%	5%	591
July 2016		43%	5%	7%		21%	1%	5%	15%	3%	509
October 2016		44%	7%	4%		18%	2%	3%	16%	6%	868
February 2017		44%	8%	5%		11%	1%	4%	17%	9%	493
May 2017		53%	7%	6%		11%	2%	3%	14%	5%	508
August 2017		55%	5%	6%		14%	1%	2%	13%	5%	493
October 2017		52%	6%	5%		9%	1%	4%	17%	6%	563
February 2018		51%	6%	4%		10%	2%	4%	18%	6%	509
April 2018		58%	4%	2%		5%	3%	3%	19%	5%	200
August 2018		48%	7%	4%		10%	1%	3%	22%	6%	491
October 2018		46%	6%	6%		6%	2%	3%	24%	7%	632
February 2019		37%	10%	5%		12%	0%	3%	28%	6%	594
April 2019		35%	8%	9%		10%	2%	3%	28%	5%	531
August 2019		38%	7%	8%		7%	1%	5%	29%	5%	484
October 2019		43%	7%	7%		9%	1%	6%	19%	9%	1,228
February 2020		35%	7%	8%		10%	0%	4%	30%	6%	587
July 2020	28%	4%	13%	2%	2%	21%	1%	3%	25%	1%	1,839
October 2020	26%	7%	6%	2%	5%	13%	0%	7%	34%	0%	835
November 2020	48%	7%	3%	3%	2%	8%	1%	2%	26%	0%	1,763
February 2021	43%	4%	6%	2%	2%	12%	1%	3%	25%	1%	1,722
March 2021	36%	4%	2%	3%	9%	12%	1%	3%	28%	1%	1,607
July 2021	10%	8%	4%	2%	10%	19%	1%	3%	42%	2%	1,660
August 2021	26%	3%	4%	2%	11%	14%	1%	3%	36%	0%	890
September 2021	28%	5%	5%	4%	6%	13%	0%	4%	36%	0%	1,034
October 2021	20%	3%	5%	6%	9%	19%	0%	2%	35%	0%	1,013

### Approval of Governor Sununu's Job Performance

		Approve	Disapprove	Neither/DK	N
<b>STATEWIDE</b>	<b>October 2021</b>	54%	40%	6%	1,057
<b>Voting Registration</b>	Registered Democrat	20%	79%	1%	288
	Registered Undeclared/Not Reg.	61%	29%	11%	431
	Registered Republican	83%	15%	1%	302
<b>Party ID</b>	Democrat	24%	74%	1%	437
	Independent	52%	21%	27%	184
	Republican	86%	13%	1%	416
<b>Ideology</b>	Liberal	23%	76%	1%	283
	Moderate	51%	38%	11%	405
	Conservative	85%	14%	1%	303
<b>Media Usage</b>	Boston Globe reader	29%	68%	3%	61
	Conservative radio listener	81%	16%	3%	327
	Fox News viewer	78%	22%	1%	442
	Local newspapers reader	53%	45%	2%	194
	NHPR listener	48%	49%	2%	577
	Union Leader reader	67%	33%	1%	166
	WMUR viewer	56%	42%	2%	749
<b>Age of Respondent</b>	18 to 34	40%	45%	15%	277
	35 to 49	63%	36%	2%	224
	50 to 64	61%	36%	3%	324
	65 and older	56%	41%	3%	213
<b>Gender of Respondent</b>	Men	63%	28%	9%	504
	Women	46%	51%	3%	522
<b>Level of Education</b>	High school or less	54%	33%	12%	377
	Tech school/Some college	54%	43%	3%	322
	College graduate	57%	42%	1%	216
	Postgraduate work	49%	48%	3%	130
<b>Region of State</b>	Central/Lakes	61%	38%	1%	201
	Connecticut Valley	64%	34%	2%	139
	Manchester Area	56%	43%	1%	150
	Mass Border	43%	40%	18%	304
	North Country	49%	50%	1%	107
	Seacoast	62%	37%	0%	154
<b>2020 Presidential Vote</b>	Voted for Trump	87%	12%	1%	459
	Voted for Biden	29%	64%	8%	532
	Voted for other 2020 candidate	31%	20%	49%	16
	Did not vote in 2020	28%	50%	22%	36

### Approval of Governor Sununu's Handling of Coronavirus (COVID-19) Situation

		Approve	Disapprove	Neither/DK	N
<b>STATEWIDE</b>	<b>October 2021</b>	65%	32%	3%	1,058
<b>Voting Registration</b>	Registered Democrat	36%	63%	1%	288
	Registered Undeclared/Not Reg.	70%	28%	2%	431
	Registered Republican	89%	9%	1%	302
<b>Party ID</b>	Democrat	40%	57%	3%	438
	Independent	73%	21%	6%	184
	Republican	87%	12%	1%	416
<b>Ideology</b>	Liberal	38%	60%	2%	283
	Moderate	67%	32%	1%	407
	Conservative	88%	11%	1%	303
<b>Media Usage</b>	Boston Globe reader	49%	49%	2%	61
	Conservative radio listener	86%	13%	1%	327
	Fox News viewer	78%	20%	2%	443
	Local newspapers reader	64%	34%	2%	195
	NHPR listener	61%	38%	1%	578
	Union Leader reader	68%	31%	1%	167
	WMUR viewer	64%	34%	2%	749
<b>Age of Respondent</b>	18 to 34	56%	39%	5%	277
	35 to 49	67%	31%	2%	222
	50 to 64	66%	33%	1%	324
	65 and older	73%	24%	3%	215
<b>Gender of Respondent</b>	Men	76%	23%	2%	504
	Women	56%	41%	3%	522
<b>Level of Education</b>	High school or less	68%	30%	2%	377
	Tech school/Some college	62%	34%	5%	323
	College graduate	67%	31%	2%	216
	Postgraduate work	60%	40%	0%	130
<b>Region of State</b>	Central/Lakes	63%	37%	1%	199
	Connecticut Valley	77%	20%	3%	139
	Manchester Area	63%	37%	1%	150
	Mass Border	68%	27%	5%	304
	North Country	54%	45%	1%	108
	Seacoast	61%	35%	3%	154
<b>2020 Presidential Vote</b>	Voted for Trump	86%	13%	1%	457
	Voted for Biden	49%	49%	2%	534
	Voted for other 2020 candidate	72%	20%	8%	16
	Did not vote in 2020	39%	39%	22%	36

### Right Direction or Wrong Track - New Hampshire

		Right direction	Wrong track	Don't know/Not Sure	N
<b>STATEWIDE</b>	<b>October 2021</b>	42%	33%	25%	1,059
<b>Voting Registration</b>	Registered Democrat	17%	65%	18%	288
	Registered Undeclared/Not Reg.	50%	20%	30%	432
	Registered Republican	59%	18%	22%	302
<b>Party ID</b>	Democrat	21%	59%	19%	438
	Independent	32%	17%	51%	185
	Republican	67%	14%	19%	416
<b>Ideology</b>	Liberal	21%	63%	16%	283
	Moderate	40%	30%	30%	406
	Conservative	66%	14%	20%	303
<b>Media Usage</b>	Boston Globe reader	23%	59%	19%	61
	Conservative radio listener	60%	13%	27%	327
	Fox News viewer	62%	17%	21%	443
	Local newspapers reader	43%	42%	15%	195
	NHPR listener	34%	44%	22%	579
	Union Leader reader	61%	22%	17%	166
	WMUR viewer	45%	36%	19%	750
<b>Age of Respondent</b>	18 to 34	34%	35%	31%	277
	35 to 49	48%	32%	20%	224
	50 to 64	42%	34%	24%	324
	65 and older	47%	32%	21%	214
<b>Gender of Respondent</b>	Men	51%	27%	22%	504
	Women	34%	38%	28%	523
<b>Level of Education</b>	High school or less	39%	30%	30%	377
	Tech school/Some college	40%	33%	27%	322
	College graduate	50%	35%	14%	218
	Postgraduate work	37%	42%	21%	130
<b>Region of State</b>	Central/Lakes	49%	34%	17%	200
	Connecticut Valley	34%	22%	44%	139
	Manchester Area	42%	40%	18%	150
	Mass Border	40%	29%	30%	304
	North Country	27%	54%	19%	108
	Seacoast	54%	30%	17%	154
<b>2020 Presidential Vote</b>	Voted for Trump	67%	12%	21%	458
	Voted for Biden	23%	51%	25%	534
	Voted for other 2020 candidate	23%	26%	51%	16
	Did not vote in 2020	7%	55%	38%	36

### Most Important Problem - New Hampshire

		<u>COVID-19</u>	<u>Drugs</u>	<u>Education</u>	<u>Health care</u>	<u>Housing</u>
<b>STATEWIDE</b>	<b>October 2021</b>	20%	3%	5%	6%	9%
<b>Voting Registration</b>	Registered Democrat	26%	5%	3%	3%	14%
	Registered Undeclared/Not Reg.	21%	2%	3%	9%	10%
	Registered Republican	12%	3%	9%	6%	3%
<b>Party ID</b>	Democrat	23%	3%	3%	2%	17%
	Independent	25%	1%	2%	20%	4%
	Republican	16%	4%	7%	4%	3%
<b>Ideology</b>	Liberal	22%	2%	3%	3%	14%
	Moderate	24%	3%	3%	9%	10%
	Conservative	12%	5%	9%	1%	3%
<b>Media Usage</b>	Boston Globe reader	17%	1%	4%	1%	9%
	Conservative radio listener	20%	2%	10%	6%	2%
	Fox News viewer	20%	5%	8%	4%	2%
	Local newspapers reader	18%	2%	3%	5%	4%
	NHPR listener	18%	4%	4%	4%	13%
	Union Leader reader	22%	1%	13%	2%	5%
	WMUR viewer	21%	3%	6%	4%	8%
<b>Age of Respondent</b>	18 to 34	19%	3%	0%	16%	11%
	35 to 49	19%	9%	6%	2%	11%
	50 to 64	22%	1%	2%	6%	8%
	65 and older	22%	1%	13%	1%	5%
<b>Gender of Respondent</b>	Men	16%	5%	2%	8%	8%
	Women	25%	2%	8%	5%	8%
<b>Level of Education</b>	High school or less	27%		6%	14%	10%
	Tech school/Some college	16%	6%	2%	2%	8%
	College graduate	18%	4%	6%	4%	9%
	Postgraduate work	19%	2%	4%	1%	8%
<b>Region of State</b>	Central/Lakes	21%	2%	5%	1%	9%
	Connecticut Valley	24%	1%	4%	12%	6%
	Manchester Area	24%	2%	2%	5%	9%
	Mass Border	17%	5%	9%	11%	2%
	North Country	18%	0%	1%	2%	21%
	Seacoast	22%	5%	3%	2%	15%
<b>2020 Presidential Vote</b>	Voted for Trump	18%	4%	7%	0%	2%
	Voted for Biden	21%	2%	3%	12%	15%
	Voted for other 2020 candidate	6%	1%		9%	7%
	Did not vote in 2020	44%	1%			3%

### Most Important Problem - New Hampshire

		<u>Jobs/Economy</u>	<u>State budget</u>	<u>Taxes</u>	<u>Other</u>	<u>DK/Not Sure</u>	<u>N</u>
<b>STATEWIDE</b>	<b>October 2021</b>	19%	0%	2%	35%	0%	1,013
<b>Voting Registration</b>	Registered Democrat	8%	0%	1%	38%	0%	263
	Registered Undeclared/Not Reg.	16%	0%	3%	36%	0%	417
	Registered Republican	35%		1%	31%	0%	297
<b>Party ID</b>	Democrat	6%	0%	1%	44%	0%	404
	Independent	13%		1%	35%	0%	183
	Republican	35%	0%	3%	28%	0%	410
<b>Ideology</b>	Liberal	7%	0%	1%	46%		258
	Moderate	14%		2%	35%	0%	395
	Conservative	39%	1%	3%	28%	0%	299
<b>Media Usage</b>	Boston Globe reader	11%	0%	4%	52%	0%	61
	Conservative radio listener	27%	0%	2%	31%	0%	322
	Fox News viewer	24%	0%	3%	35%		429
	Local newspapers reader	8%	1%	2%	57%	0%	192
	NHPR listener	13%	0%	1%	42%	0%	546
	Union Leader reader	18%		2%	37%	0%	165
	WMUR viewer	18%	0%	2%	36%	0%	712
<b>Age of Respondent</b>	18 to 34	7%		1%	43%		256
	35 to 49	18%		1%	34%		216
	50 to 64	30%	0%	2%	29%	0%	315
	65 and older	21%	1%	3%	33%	0%	207
<b>Gender of Respondent</b>	Men	20%	0%	3%	40%	0%	473
	Women	20%	0%	1%	31%	0%	510
<b>Level of Education</b>	High school or less	25%			19%		351
	Tech school/Some college	16%	1%	2%	47%	0%	313
	College graduate	16%		5%	38%		209
	Postgraduate work	19%	0%	2%	44%	1%	128
<b>Region of State</b>	Central/Lakes	23%	0%	1%	38%		195
	Connecticut Valley	12%		2%	39%	0%	133
	Manchester Area	23%	0%	2%	32%	0%	148
	Mass Border	14%	0%	3%	38%	0%	300
	North Country	33%		1%	23%	1%	86
	Seacoast	19%	0%	1%	33%	0%	147
<b>2020 Presidential Vote</b>	Voted for Trump	34%	0%	3%	30%		452
	Voted for Biden	6%	0%	1%	39%	0%	499
	Voted for other 2020 candidate	15%			61%		16
	Did not vote in 2020	16%			35%	2%	36