

September 23, 2021

SUNUNU'S HANDLING OF COVID-19 & OVERALL JOB PERFORMANCE RATINGS CONTINUE TO SLIDE

By: Sean P. McKinley, M.A.
Zachary S. Azem, M.A.
Andrew E. Smith, Ph.D.

andrew.smith@unh.edu
603-862-2226
cola.unh.edu/unh-survey-center

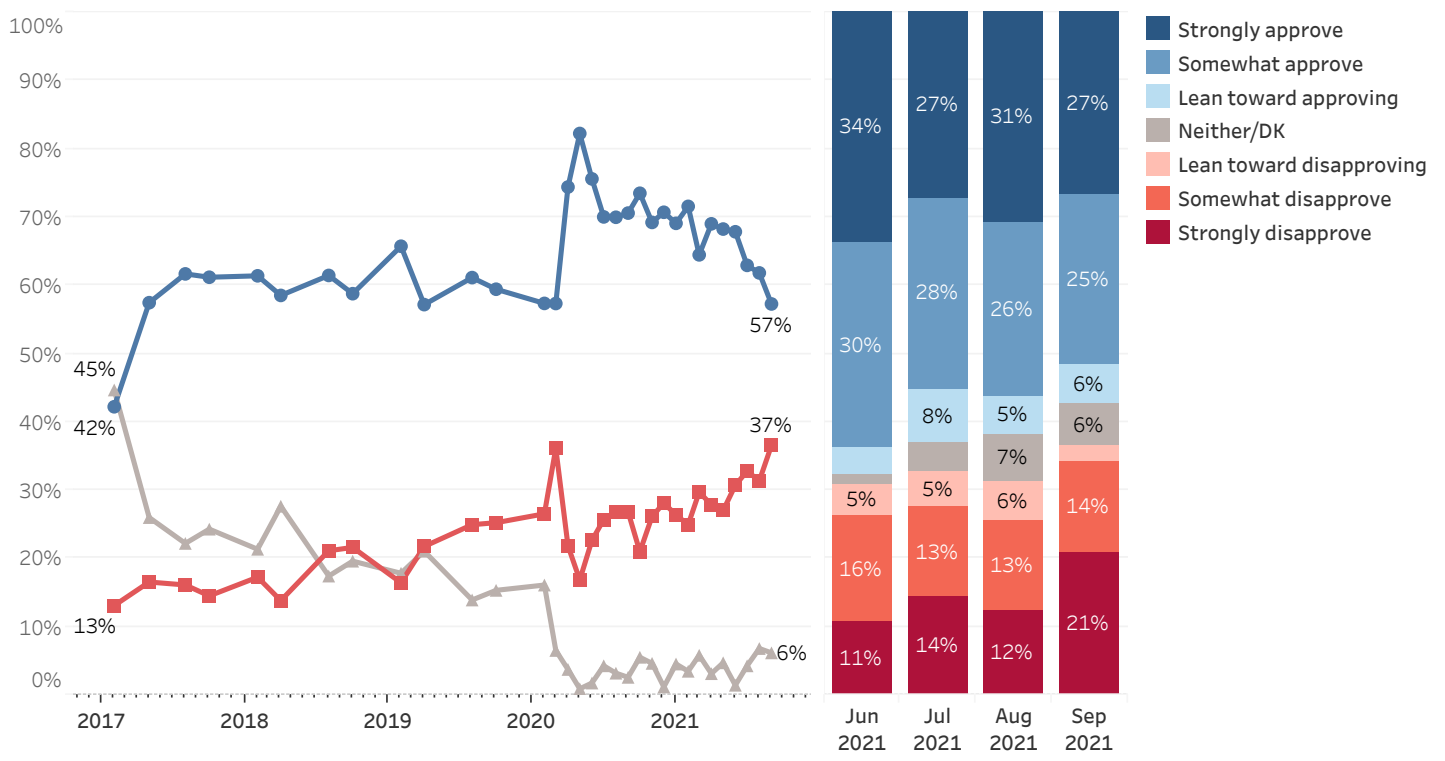
DURHAM, NH – Approval of Chris Sununu's overall performance as Governor, as well as his handling of the COVID-19 pandemic, have continued their summer slide. Sununu's personal favorability rating has also continued to decline. For the first time in nearly two decades of Granite State Polls, less than half of Granite Staters think the state is headed in the right direction. Residents most frequently cite COVID-19 as the most important problem facing the state, while others mention jobs, the economy, or housing.

These findings are based on the latest **Granite State Poll***, conducted by the University of New Hampshire Survey Center. One thousand and eighty-one (1,081) Granite State Panel members completed the survey online between September 16 and September 20, 2021. The margin of sampling error for the survey is +/- 3.0 percent. Data were weighted by respondent sex, age, education, and region of the state to targets from the most recent American Community Survey (ACS) conducted by the U.S. Census Bureau, as well as party registration levels provided by the NH Secretary of State and 2020 election results in NH. Granite State Panel members are recruited from randomly-selected landline and cell phone numbers across New Hampshire and surveys are sent periodically to panel members.

Gubernatorial Approval

A majority (57%) of New Hampshire residents approve of Governor Sununu's overall job performance, sliding from 62% in August and matching pre-COVID levels. Importantly, 37% disapprove of Sununu's job performance, the highest recorded during his tenure as Governor, while 6% neither approve nor disapprove or don't know. Sununu's net approval rating (the percentage who approve minus the percentage who disapprove) among Granite Staters is +21, down from +30 in August. At a similar point in his tenure as Governor, former Governor John Lynch had a net approval rating of +43.

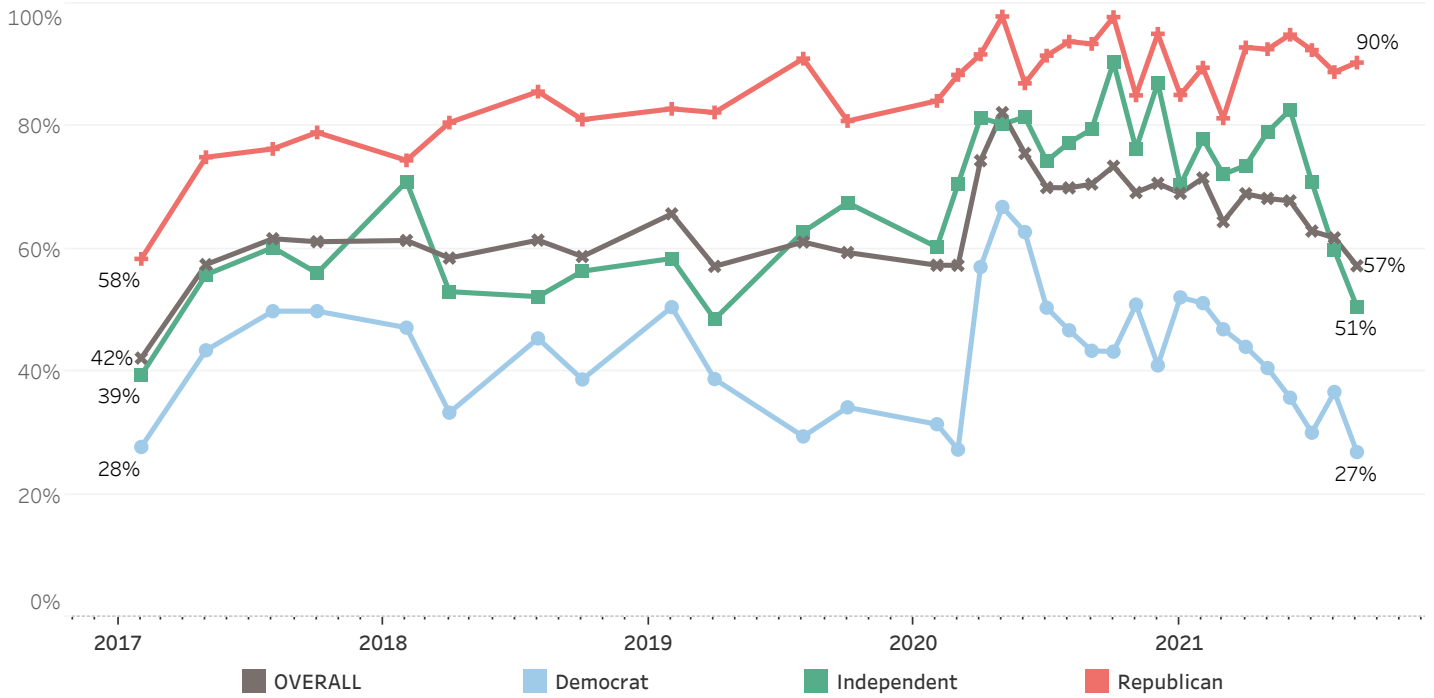
Gubernatorial Approval - Chris Sununu



* We ask that this copyrighted information be referred to as *the Granite State Poll*, conducted by the University of New Hampshire Survey Center.

Sununu remains very popular among Republicans as nine in ten (90%) approve of his job performance but only 51% of Independents and 27% of Democrats agree. The percentage of Independents who approve of Sununu's performance (51%) has declined for the third consecutive month while the percentage of Democrats who approve (27%) is at an all-time low.

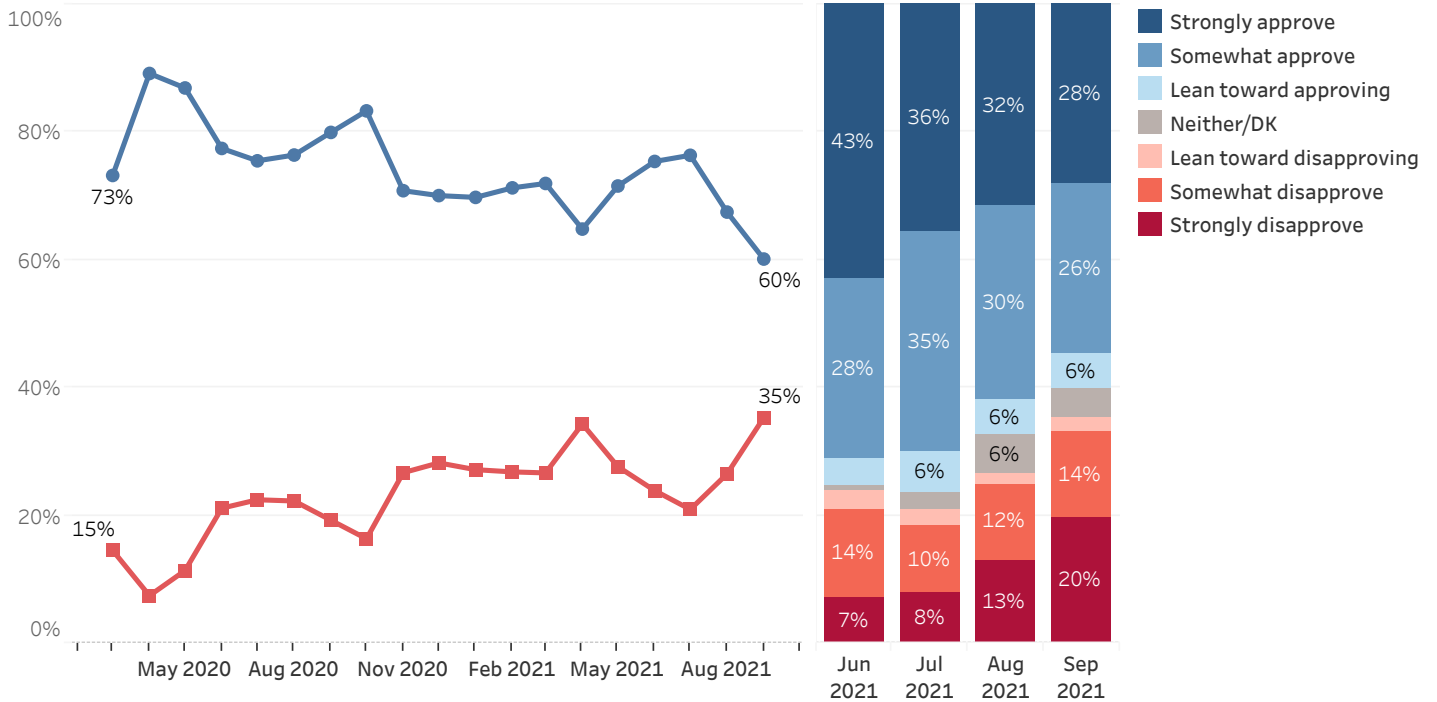
Job Approval - Governor Chris Sununu - By Party Identification



COVID-19

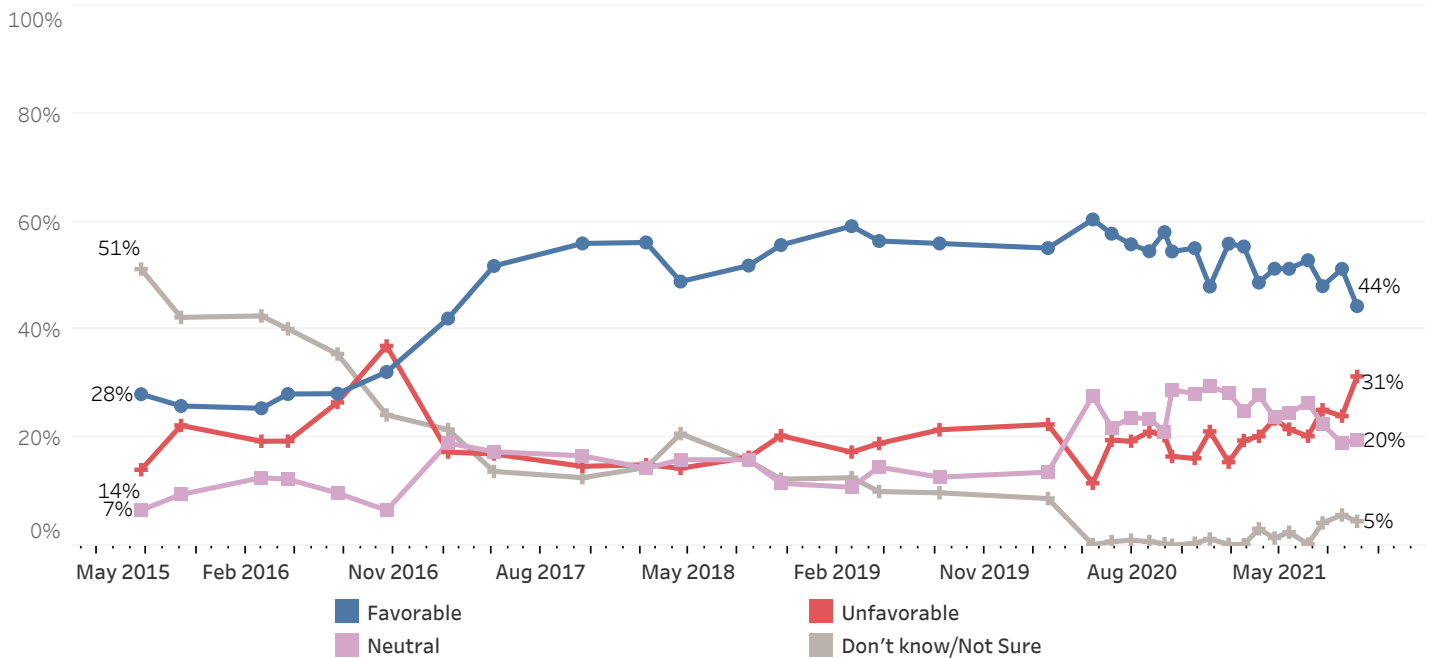
Approval of Sununu's handling of the COVID-19 pandemic has also declined: six in ten (60%) approve of his handling of COVID-19 while 35% disapprove. Approval of Sununu's handling of COVID-19 is at its lowest point since the pandemic began. Approval of Sununu's handling of the pandemic among Republicans (95%) matches highs among this group but among Independents (49%) and Democrats (31%) it has reached new lows.

Approval of Governor Sununu's Handling of Coronavirus (COVID-19) Situation



Sununu's personal popularity has also declined. Forty-four percent of New Hampshire residents have a favorable opinion of Sununu, 31% have an unfavorable opinion of him, 20% are neutral, and 5% don't know enough about him to say. Sununu's net favorability rating is +13, down from +27 in August and from a high of +49 in May 2020. Sununu remains very popular among Republicans (+79 net favorability rating) but has become only somewhat popular among Independents (+18) and has become quite unpopular among Democrats (-52).

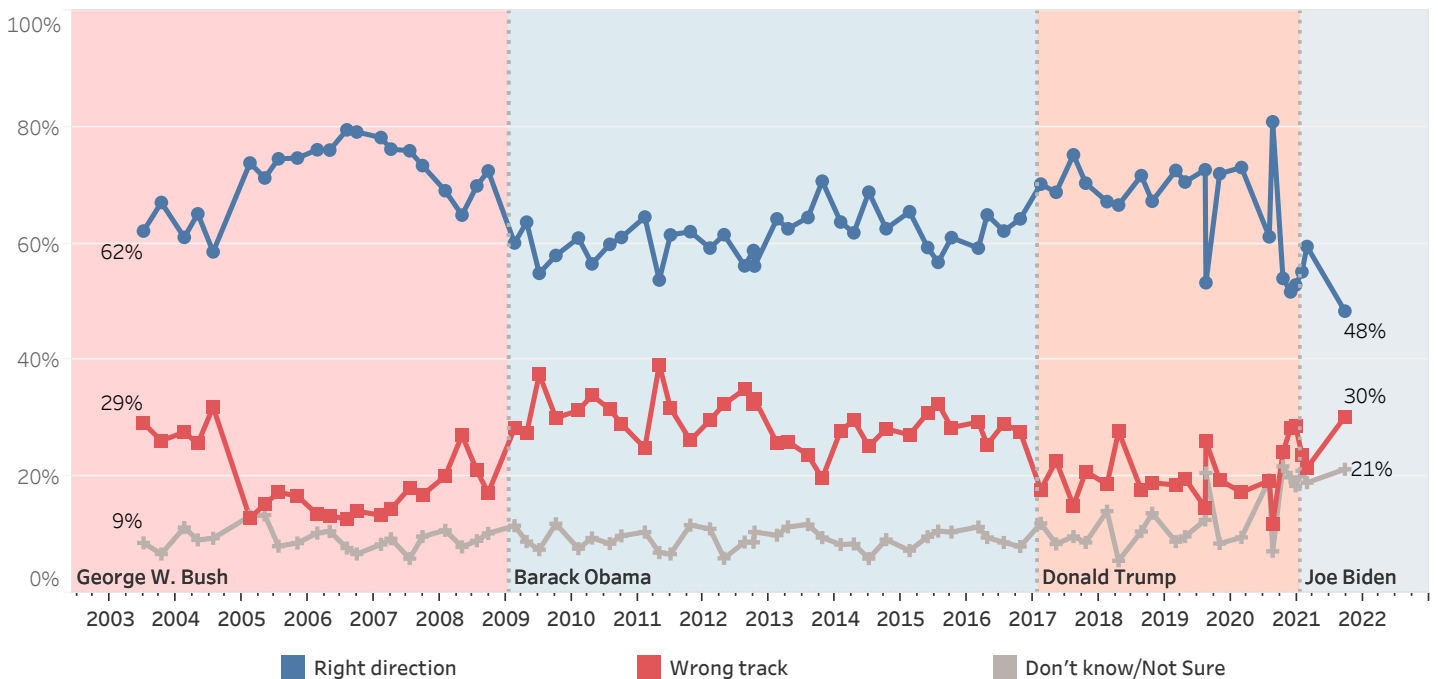
Sununu (R) Favorability



New Hampshire Heading in Right Direction or On Wrong Track

Less than half (48%) of New Hampshire residents believe that things in the state are headed in the right direction, 30% believe things are seriously off on the wrong track, and 21% are unsure. The percentage of Granite Staters who say the state is on the right track (48%) has fallen since February (60%) and is at an all-time low.

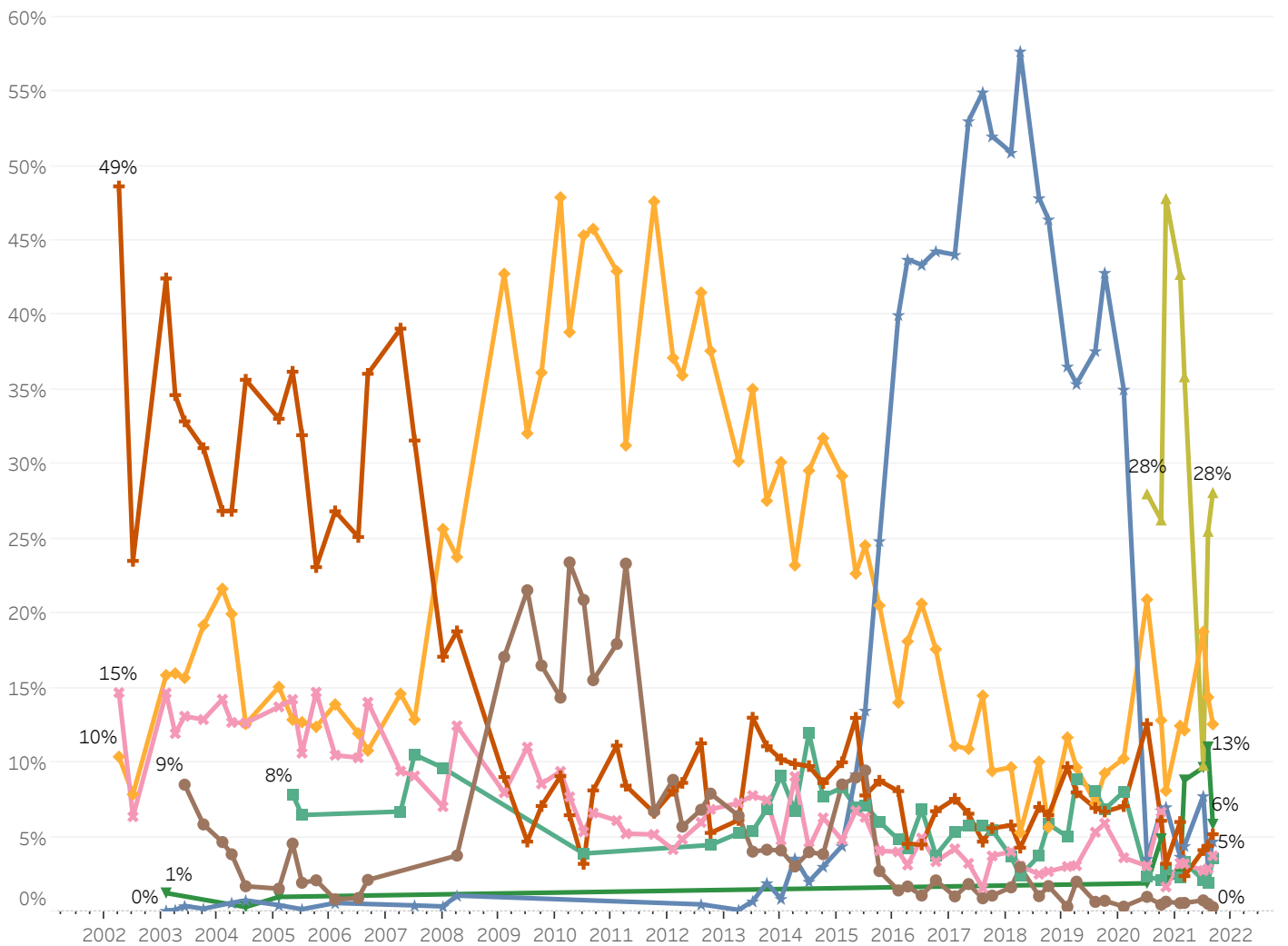
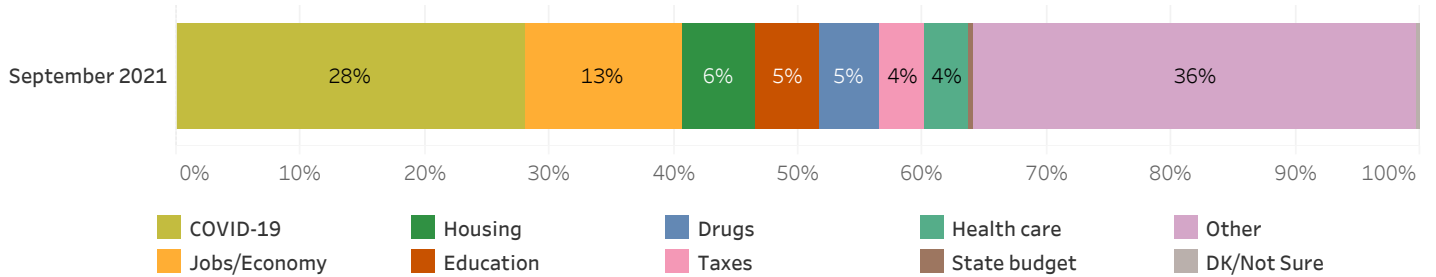
Right Direction or Wrong Track - NH



Most Important Problem Facing New Hampshire

Twenty-eight percent of New Hampshire residents believe that the COVID-19 pandemic is the most important problem facing the state. Thirteen percent believe that jobs or the economy is the most important problem facing the state, 6% believe housing is the most important problem, 5% each believe it is education or drugs, 4% each believe it is taxes or health care, and less than 1% believe the most important problem is the state budget. Thirty-six percent mention another problem and less than 1% are unsure.

Most Important Problem - Coded



Granite State Poll Methodology

These findings are based on the latest Granite State Poll, conducted by the University of New Hampshire Survey Center. One thousand and eighty-one (1,081) Granite State Panel members completed the survey online between September 16 and September 20, 2021. The margin of sampling error for the survey is +/- 3.0 percent. These MSE's have not been adjusted for design effect. The response rate for the September 2021 Granite State Poll is 30%. The design effect for the survey is 2.7%.

Data were weighted by respondent sex, age, education, and region of the state to targets from the most recent American Community Survey (ACS) conducted by the U.S. Census Bureau, as well as party registration levels provided by the NH Secretary of State and to 2020 election results in New Hampshire.

The Granite State Panel is part of an effort by the University of New Hampshire Survey Center to investigate new ways of gathering and understanding the opinion of New Hampshire residents. Approximately 7,500 New Hampshire adults have been recruited from randomly selected landline and cell phone numbers to participate in the panel. Panelists are then asked to participate in online surveys sponsored by the UNH Survey Center.

The number of respondents in each demographic below may not equal the number reported in cross-tabulation tables as some respondents choose not to answer some questions. Due to rounding, percentages may not sum to 100%.

For more information about the methodology used in the Granite State Panel, contact Dr. Andrew Smith at (603) 862-2226 or by email at andrew.smith@unh.edu.

September 2021 Granite State Poll Demographics

		%	N
Gender of Respondent	Men	49%	512
	Women	51%	531
Age of Respondent	18 to 34	27%	283
	35 to 49	19%	205
	50 to 64	33%	354
	65 and older	21%	219
Level of Education	High school or less	36%	384
	Tech school/Some college	31%	329
	College graduate	21%	222
	Postgraduate work	13%	134
Region of State	Central/Lakes	17%	180
	Connecticut Valley	13%	138
	Manchester Area	15%	157
	Mass Border	31%	335
	North Country	10%	107
	Seacoast	15%	157
Party ID	Democrat	43%	457
	Independent	15%	159
	Republican	42%	438
Voting Registration	Registered Democrat	28%	294
	Registered Undeclared/Not Reg.	42%	442
	Registered Republican	30%	308
2020 Presidential Vote	Voted for Trump	44%	469
	Voted for Biden	51%	546
	Voted for other 2020 candidate	2%	16
	Did not vote in 2020	3%	32

Approval of Governor Sununu's Job Performance

Generally speaking, do you approve or disapprove of the way Chris Sununu is handling his job as governor?

	<u>Approve</u>	<u>Disapprove</u>	<u>Neither/DK</u>	<u>N</u>
February 2017	42%	13%	45%	476
May 2017	57%	17%	26%	502
August 2017	62%	16%	22%	484
October 2017	61%	15%	24%	540
February 2018	61%	17%	21%	500
April 2018	59%	14%	28%	189
August 2018	61%	21%	17%	486
October 2018	59%	22%	20%	622
February 2019	66%	16%	18%	592
April 2019	57%	22%	21%	529
August 2019	60%	23%	17%	483
October 2019	59%	25%	15%	1,231
February 2020	57%	27%	16%	582
March 2020	57%	36%	7%	646
April 2020	74%	22%	4%	1,150
May 2020	82%	17%	1%	818
June 2020	76%	23%	2%	993
July 2020	70%	26%	4%	1,978
August 2020	70%	27%	3%	1,940
September 2020	71%	27%	3%	1,027
October 2020	73%	21%	6%	931
November 2020	69%	26%	5%	1,908
December 2020	71%	28%	1%	758
January 2021	69%	26%	5%	2,023
February 2021	72%	25%	3%	1,834
March 2021	64%	30%	6%	1,743
April 2021	69%	28%	3%	1,939
May 2021	68%	27%	5%	1,823
June 2021	68%	31%	1%	1,601
July 2021	63%	33%	4%	1,790
August 2021	62%	31%	7%	972
September 2021	57%	37%	6%	1,080

Approval of Governor Sununu's Handling of Coronavirus (COVID-19) Situation

Generally speaking, do you approve or disapprove of the way Chris Sununu is handling the coronavirus (COVID-19) situation?

	<u>Approve</u>	<u>Disapprove</u>	<u>Neither/DK</u>	<u>N</u>
March 2020	73%	15%	12%	643
April 2020	89%	7%	3%	1,154
May 2020	87%	11%	2%	815
June 2020	77%	21%	1%	970
July 2020	76%	22%	2%	1,973
August 2020	76%	22%	1%	1,929
September 2020	80%	19%	1%	1,027
October 2020	83%	16%	0%	930
November 2020	71%	27%	2%	1,908
December 2020	70%	28%	2%	763
January 2021	70%	27%	3%	2,019
February 2021	71%	27%	2%	1,856
March 2021	72%	27%	1%	1,739
April 2021	65%	34%	1%	1,937
May 2021	72%	28%	1%	1,823
June 2021	75%	24%	1%	1,597
July 2021	76%	21%	3%	1,791
August 2021	68%	26%	6%	966
September 2021	60%	35%	5%	1,077

Favorability - Chris Sununu

Below are a list of political figures in New Hampshire. Please indicate whether you have a favorable or unfavorable opinion of each of them or if you don't know enough about them to say - Governor Chris Sununu

	<u>Favorable</u>	<u>Neutral</u>	<u>Unfavorable</u>	<u>Don't know/Not sure</u>	<u>N</u>
July 2015	28%	7%	14%	51%	530
October 2015	26%	10%	22%	42%	581
February 2016	25%	13%	19%	43%	684
April 2016	28%	12%	19%	40%	618
July 2016	28%	10%	27%	36%	467
October 2016	32%	7%	37%	24%	767
February 2017	42%	19%	17%	22%	502
May 2017	52%	17%	17%	14%	514
October 2017	56%	17%	15%	13%	570
February 2018	56%	14%	15%	14%	519
April 2018	49%	16%	14%	21%	208
August 2018	52%	16%	16%	16%	500
October 2018	56%	12%	20%	12%	640
February 2019	59%	11%	17%	13%	603
April 2019	56%	15%	19%	10%	548
August 2019	56%	13%	21%	10%	496
February 2020	55%	14%	22%	9%	610
May 2020	60%	28%	12%	0%	838
June 2020	58%	22%	20%	1%	993
July 2020	56%	24%	19%	1%	1,884
August 2020	55%	24%	21%	1%	1,873
September 2020	58%	21%	20%	0%	1,017
October 2020	54%	29%	17%	0%	908
November 2020	55%	28%	16%	0%	1,897
December 2020	48%	30%	21%	1%	775
January 2021	56%	28%	15%	0%	2,021
February 2021	55%	25%	20%	0%	1,854
March 2021	49%	28%	20%	3%	1,740
April 2021	51%	24%	23%	1%	1,940
May 2021	51%	25%	22%	3%	1,823
June 2021	53%	27%	20%	0%	1,600
July 2021	48%	22%	25%	4%	1,790
August 2021	51%	19%	24%	6%	965
September 2021	44%	20%	31%	5%	1,059

Right Direction or Wrong Track - New Hampshire

Do you think things in New Hampshire are generally going in the right direction or are they seriously off on the wrong track?

	<u>Right direction</u>	<u>Wrong track</u>	<u>Don't know/Not Sure</u>	<u>N</u>
June 2003	62%	29%	9%	510
October 2003	67%	26%	7%	485
February 2004	61%	28%	11%	500
April 2004	65%	26%	9%	530
July 2004	59%	32%	9%	503
February 2005	74%	13%	13%	535
May 2005	71%	15%	13%	488
July 2005	75%	17%	8%	494
October 2005	75%	17%	9%	502
February 2006	76%	14%	10%	495
April 2006	76%	13%	11%	501
July 2006	80%	13%	8%	497
September 2006	79%	14%	7%	509
February 2007	78%	13%	8%	524
April 2007	76%	14%	9%	506
July 2007	76%	18%	6%	500
September 2007	73%	17%	10%	507
January 2008	69%	20%	11%	547
April 2008	65%	27%	8%	491
July 2008	70%	21%	9%	514
September 2008	72%	17%	10%	535
February 2009	60%	28%	12%	605
April 2009	64%	27%	9%	497
July 2009	55%	38%	7%	557
October 2009	58%	30%	12%	496
February 2010	61%	31%	8%	490
April 2010	57%	34%	9%	503
July 2010	60%	32%	9%	496
September 2010	61%	29%	10%	511
February 2011	65%	25%	11%	517
April 2011	54%	39%	7%	491
June 2011	61%	32%	7%	503
October 2011	62%	26%	12%	544
February 2012	59%	30%	11%	517
April 2012	62%	32%	6%	532
August 2012	56%	35%	9%	577
September 2012	59%	32%	9%	622
October 2012	56%	33%	11%	576
February 2013	64%	26%	10%	573
April 2013	63%	26%	11%	497
July 2013	64%	24%	12%	509
October 2013	71%	20%	10%	645
January 2014	64%	28%	8%	570
April 2014	62%	30%	8%	505
July 2014	69%	25%	6%	656
October 2014	63%	28%	9%	666

Right Direction or Wrong Track - New Hampshire

Do you think things in New Hampshire are generally going in the right direction or are they seriously off on the wrong track?

	<u>Right direction</u>	<u>Wrong track</u>	<u>Don't know/Not Sure</u>	<u>N</u>
February 2015	65%	27%	7%	501
May 2015	59%	31%	10%	562
July 2015	57%	33%	11%	522
October 2015	61%	28%	11%	581
February 2016	59%	29%	11%	669
April 2016	65%	25%	10%	593
July 2016	62%	29%	9%	517
October 2016	64%	28%	8%	890
February 2017	70%	18%	12%	496
May 2017	69%	23%	8%	510
August 2017	75%	15%	10%	500
October 2017	70%	21%	9%	559
February 2018	67%	19%	14%	516
April 2018	67%	28%	6%	206
August 2018	72%	18%	11%	493
October 2018	67%	19%	14%	640
February 2019	73%	19%	9%	594
April 2019	71%	20%	10%	547
August 2019	73%	15%	13%	490
October 2019	72%	19%	9%	1,250
February 2020	73%	17%	10%	604
July 2020	61%	19%	19%	1,984
October 2020	54%	24%	22%	922
November 2020	52%	28%	20%	1,910
December 2020	53%	29%	18%	773
January 2021	55%	24%	21%	2,022
February 2021	60%	22%	19%	1,857
September 2021	48%	30%	21%	1,081

Most Important Problem - New Hampshire

Let's turn to the state of New Hampshire. What do you think is the most important problem facing the state of New Hampshire today?

	<u>COVID-19</u>	<u>Drugs</u>	<u>Education</u>	<u>Health care</u>	<u>Housing</u>	<u>Jobs/ Economy</u>	<u>State budget</u>	<u>Taxes</u>	<u>Other</u>	<u>DK/Not Sure</u>	<u>N</u>
April 2002			49%			10%		15%	16%	11%	681
July 2002			24%			8%		6%	57%	5%	677
February 2003		0%	42%		1%	16%		15%	16%	9%	644
April 2003		0%	35%			16%		12%	26%	12%	499
June 2003		0%	33%			16%	9%	13%	22%	8%	513
October 2003		0%	31%			19%	6%	13%	22%	9%	490
February 2004			27%			22%	5%	14%	23%	10%	502
April 2004		1%	27%			20%	4%	13%	24%	12%	536
July 2004		1%	36%		0%	13%	2%	13%	25%	11%	505
February 2005		0%	33%		1%	15%	2%	14%	20%	15%	541
May 2005			36%	8%		13%	5%	14%	15%	9%	487
July 2005		0%	32%	6%		13%	2%	11%	24%	12%	496
October 2005			23%			12%	2%	15%	35%	13%	503
February 2006		1%	27%			14%	1%	11%	34%	13%	498
July 2006			25%			12%	1%	10%	38%	13%	490
September 2006			36%			11%	2%	14%	29%	8%	499
April 2007			39%	7%		15%		9%	23%	7%	501
July 2007		0%	32%	11%		13%		9%	29%	7%	488
January 2008		0%	17%	10%		26%		7%	33%	7%	542
April 2008		1%	19%			24%	4%	12%	35%	5%	496
February 2009			9%			43%	17%	8%	23%		607
July 2009			5%			32%	22%	11%	26%	5%	551
October 2009			7%			36%	17%	9%	26%	6%	494
February 2010			9%			48%	14%	9%	18%	2%	486
April 2010			6%			39%	23%	8%	21%	3%	504
July 2010			3%	4%		45%	21%	5%	17%	4%	498
September 2010			8%			46%	16%	7%	19%	5%	504
February 2011			11%			43%	18%	6%	18%	4%	508
April 2011			8%			31%	23%	5%	28%	4%	494
October 2011			7%			48%	7%	5%	28%	6%	548
February 2012			8%			37%	9%	4%	36%	6%	509
April 2012			9%			36%	6%	5%	37%	8%	518
August 2012		0%	11%			42%	7%	6%	29%	5%	541
October 2012			5%	4%		38%	8%	7%	33%	5%	575
April 2013		0%	6%	5%		30%	6%	7%	38%	6%	485
July 2013		1%	13%	5%		35%	4%	8%	26%	7%	458
October 2013		2%	11%	7%		28%	4%	7%	26%	15%	602
January 2014		1%	10%	9%		30%	4%	4%	30%	11%	545
April 2014		4%	10%	7%		23%	3%	9%	35%	10%	464
July 2014		2%	10%	12%		30%	4%	4%	29%	9%	614
October 2014		3%	9%	8%		32%	4%	6%	28%	11%	644
February 2015		4%	10%	8%		29%	9%	5%	26%	8%	467
May 2015		9%	13%	7%		23%	9%	7%	24%	8%	540
July 2015		14%	8%	7%		25%	9%	6%	27%	4%	509
October 2015		25%	9%	6%		21%	3%	4%	26%	7%	563

Most Important Problem - New Hampshire

Let's turn to the state of New Hampshire. What do you think is the most important problem facing the state of New Hampshire today?

	<u>COVID-19</u>	<u>Drugs</u>	<u>Education</u>	<u>Health care</u>	<u>Housing</u>	<u>Jobs/ Economy</u>	<u>State budget</u>	<u>Taxes</u>	<u>Other</u>	<u>DK/Not Sure</u>	<u>N</u>
February 2016		40%	8%	5%		14%	1%	4%	21%	7%	659
April 2016		44%	5%	4%		18%	2%	3%	19%	5%	591
July 2016		43%	5%	7%		21%	1%	5%	15%	3%	509
October 2016		44%	7%	4%		18%	2%	3%	16%	6%	868
February 2017		44%	8%	5%		11%	1%	4%	17%	9%	493
May 2017		53%	7%	6%		11%	2%	3%	14%	5%	508
August 2017		55%	5%	6%		14%	1%	2%	13%	5%	493
October 2017		52%	6%	5%		9%	1%	4%	17%	6%	563
February 2018		51%	6%	4%		10%	2%	4%	18%	6%	509
April 2018		58%	4%	2%		5%	3%	3%	19%	5%	200
August 2018		48%	7%	4%		10%	1%	3%	22%	6%	491
October 2018		46%	6%	6%		6%	2%	3%	24%	7%	632
February 2019		37%	10%	5%		12%	0%	3%	28%	6%	594
April 2019		35%	8%	9%		10%	2%	3%	28%	5%	531
August 2019		38%	7%	8%		7%	1%	5%	29%	5%	484
October 2019		43%	7%	7%		9%	1%	6%	19%	9%	1,228
February 2020		35%	7%	8%		10%	0%	4%	30%	6%	587
July 2020	28%	4%	13%	2%	2%	21%	1%	3%	25%	1%	1,839
October 2020	26%	7%	6%	2%	5%	13%	0%	7%	34%	0%	835
November 2020	48%	7%	3%	3%	2%	8%	1%	2%	26%	0%	1,763
February 2021	43%	4%	6%	2%	2%	12%	1%	3%	25%	1%	1,722
March 2021	36%	4%	2%	3%	9%	12%	1%	3%	28%	1%	1,607
July 2021	10%	8%	4%	2%	10%	19%	1%	3%	42%	2%	1,660
August 2021	26%	3%	4%	2%	11%	14%	1%	3%	36%	0%	890
September 2021	28%	5%	5%	4%	6%	13%	0%	4%	36%	0%	1,034

Approval of Governor Sununu's Job Performance

		Approve	Disapprove	Neither/DK	N
STATEWIDE	September 2021	57%	37%	6%	1,080
Voting Registration	Registered Democrat	24%	75%	1%	294
	Registered Undeclared/Not Reg.	60%	29%	12%	440
	Registered Republican	87%	9%	4%	308
Party ID	Democrat	27%	72%	1%	457
	Independent	51%	21%	28%	158
	Republican	90%	6%	4%	438
Ideology	Liberal	18%	81%	1%	280
	Moderate	59%	29%	12%	438
	Conservative	89%	8%	4%	307
Media Usage	Boston Globe reader	43%	57%	0%	72
	Conservative radio listener	92%	8%	0%	336
	Fox News viewer	91%	9%	1%	388
	Local newspapers reader	40%	60%	0%	164
	NHPR listener	53%	46%	1%	556
	Union Leader reader	51%	49%		162
	WMUR viewer	60%	40%	0%	787
Age of Respondent	18 to 34	36%	46%	17%	283
	35 to 49	70%	30%	0%	205
	50 to 64	71%	25%	4%	354
	65 and older	50%	48%	2%	217
Gender of Respondent	Men	68%	22%	10%	512
	Women	46%	51%	3%	529
Level of Education	High school or less	59%	26%	14%	384
	Tech school/Some college	61%	36%	3%	328
	College graduate	56%	43%	1%	221
	Postgraduate work	45%	55%	1%	134
Region of State	Central/Lakes	64%	36%	0%	180
	Connecticut Valley	61%	28%	11%	138
	Manchester Area	59%	37%	3%	157
	Mass Border	50%	37%	13%	334
	North Country	53%	46%	1%	106
	Seacoast	63%	36%	1%	157
2020 Presidential Vote	Voted for Trump	91%	6%	4%	469
	Voted for Biden	28%	63%	9%	544
	Voted for other 2020 candidate	84%	16%		16
	Did not vote in 2020	44%	54%	2%	32

Approval of Governor Sununu's Handling of Coronavirus (COVID-19) Situation

		Approve	Disapprove	Neither/DK	N
STATEWIDE	September 2021	60%	35%	5%	1,077
Voting Registration	Registered Democrat	27%	72%	1%	293
	Registered Undeclared/Not Reg.	60%	30%	10%	441
	Registered Republican	95%	5%	0%	305
Party ID	Democrat	31%	68%	1%	456
	Independent	49%	23%	28%	159
	Republican	95%	5%	0%	436
Ideology	Liberal	20%	79%	1%	280
	Moderate	63%	26%	11%	437
	Conservative	94%	6%	0%	304
Media Usage	Boston Globe reader	46%	51%	3%	72
	Conservative radio listener	91%	9%	0%	333
	Fox News viewer	93%	7%	0%	386
	Local newspapers reader	53%	46%	1%	163
	NHPR listener	55%	44%	1%	555
	Union Leader reader	62%	37%	1%	162
	WMUR viewer	62%	38%	1%	784
Age of Respondent	18 to 34	34%	50%	16%	283
	35 to 49	71%	29%	0%	205
	50 to 64	75%	25%	0%	351
	65 and older	60%	38%	2%	217
Gender of Respondent	Men	68%	23%	9%	509
	Women	52%	48%	1%	529
Level of Education	High school or less	64%	24%	11%	384
	Tech school/Some college	66%	33%	1%	325
	College graduate	53%	47%	0%	221
	Postgraduate work	47%	52%	2%	134
Region of State	Central/Lakes	67%	33%	0%	180
	Connecticut Valley	71%	28%	1%	138
	Manchester Area	61%	38%	1%	157
	Mass Border	52%	34%	14%	334
	North Country	56%	44%	1%	107
	Seacoast	64%	36%	0%	155
2020 Presidential Vote	Voted for Trump	95%	5%	0%	467
	Voted for Biden	31%	60%	9%	544
	Voted for other 2020 candidate	76%	24%	0%	16
	Did not vote in 2020	45%	55%	0%	32

Favorability - Chris Sununu

		<u>Favorable</u>	<u>Neutral</u>	<u>Unfavorable</u>	<u>Don't know/Not Sure</u>	<u>N</u>
STATEWIDE	September 2021	44%	20%	31%	5%	1,059
Voting Registration	Registered Democrat	10%	23%	67%		289
	Registered Undeclared/Not Reg.	44%	19%	26%	11%	431
	Registered Republican	78%	19%	2%		302
Party ID	Democrat	12%	23%	64%		456
	Independent	39%	11%	21%	29%	149
	Republican	80%	18%	1%	1%	432
Ideology	Liberal	8%	16%	76%		280
	Moderate	39%	26%	24%	11%	427
	Conservative	84%	15%	1%		301
Media Usage	Boston Globe reader	29%	20%	51%		72
	Conservative radio listener	77%	19%	4%		321
	Fox News viewer	82%	13%	4%		374
	Local newspapers reader	41%	16%	43%		161
	NHPR listener	39%	21%	40%		556
	Union Leader reader	58%	9%	34%		161
	WMUR viewer	47%	19%	34%		777
Age of Respondent	18 to 34	32%	5%	46%	17%	281
	35 to 49	57%	13%	30%		194
	50 to 64	47%	31%	22%	0%	348
	65 and older	47%	23%	30%		219
Gender of Respondent	Men	52%	18%	20%	10%	503
	Women	36%	20%	44%	0%	520
Level of Education	High school or less	47%	23%	19%	11%	379
	Tech school/Some college	47%	15%	37%	2%	314
	College graduate	43%	18%	39%	0%	221
	Postgraduate work	35%	21%	44%		134
Region of State	Central/Lakes	55%	16%	29%		179
	Connecticut Valley	35%	38%	26%		138
	Manchester Area	44%	19%	34%	3%	156
	Mass Border	41%	15%	31%	13%	323
	North Country	35%	25%	40%		102
	Seacoast	55%	13%	32%		155
2020 Presidential Vote	Voted for Trump	79%	19%	1%	1%	454
	Voted for Biden	15%	20%	56%	8%	544
	Voted for other 2020 candidate	61%	24%	15%		16
	Did not vote in 2020	39%	6%	54%		32

Right Direction or Wrong Track - New Hampshire

		Right direction	Wrong track	Don't know/Not Sure	N
STATEWIDE	September 2021	48%	30%	21%	1,081
Voting Registration	Registered Democrat	25%	58%	17%	293
	Registered Undeclared/Not Reg.	48%	26%	26%	442
	Registered Republican	75%	6%	19%	308
Party ID	Democrat	24%	59%	17%	457
	Independent	39%	19%	42%	159
	Republican	78%	6%	17%	438
Ideology	Liberal	15%	65%	20%	280
	Moderate	51%	26%	23%	439
	Conservative	74%	8%	18%	307
Media Usage	Boston Globe reader	40%	47%	13%	72
	Conservative radio listener	73%	11%	16%	336
	Fox News viewer	77%	8%	15%	389
	Local newspapers reader	59%	31%	10%	163
	NHPR listener	44%	36%	21%	557
	Union Leader reader	57%	33%	10%	162
	WMUR viewer	51%	34%	15%	788
Age of Respondent	18 to 34	30%	33%	38%	283
	35 to 49	53%	30%	17%	205
	50 to 64	58%	26%	16%	354
	65 and older	50%	35%	14%	219
Gender of Respondent	Men	53%	21%	25%	512
	Women	43%	40%	17%	531
Level of Education	High school or less	47%	27%	27%	384
	Tech school/Some college	53%	30%	17%	329
	College graduate	52%	31%	17%	222
	Postgraduate work	33%	42%	25%	134
Region of State	Central/Lakes	61%	30%	9%	180
	Connecticut Valley	45%	27%	28%	138
	Manchester Area	54%	34%	12%	157
	Mass Border	45%	26%	29%	334
	North Country	38%	38%	24%	107
	Seacoast	44%	34%	22%	157
2020 Presidential Vote	Voted for Trump	80%	7%	13%	469
	Voted for Biden	23%	49%	29%	546
	Voted for other 2020 candidate	83%	12%	5%	16
	Did not vote in 2020	2%	74%	24%	32

Most Important Problem - New Hampshire

		<u>COVID-19</u>	<u>Drugs</u>	<u>Education</u>	<u>Health care</u>	<u>Housing</u>
STATEWIDE	September 2021	28%	5%	5%	4%	6%
Voting Registration	Registered Democrat	41%	0%	3%	5%	8%
	Registered Undeclared/Not Reg.	29%	6%	5%	3%	5%
	Registered Republican	12%	8%	8%	4%	6%
Party ID	Democrat	40%	0%	4%	5%	8%
	Independent	21%	5%	8%	1%	2%
	Republican	17%	10%	6%	3%	5%
Ideology	Liberal	41%	0%	4%	4%	7%
	Moderate	29%	9%	4%	3%	5%
	Conservative	13%	3%	9%	5%	7%
Media Usage	Boston Globe reader	43%	1%	23%	2%	7%
	Conservative radio listener	12%	8%	12%	7%	2%
	Fox News viewer	18%	7%	10%	4%	3%
	Local newspapers reader	29%	4%	10%	3%	10%
	NHPR listener	29%	1%	7%	6%	7%
	Union Leader reader	35%	12%	10%	5%	4%
	WMUR viewer	30%	6%	7%	4%	5%
Age of Respondent	18 to 34	39%	1%	6%	1%	5%
	35 to 49	23%	3%	10%	3%	6%
	50 to 64	25%	12%	1%	6%	6%
	65 and older	25%	1%	5%	5%	6%
Gender of Respondent	Men	24%	3%	1%	1%	4%
	Women	32%	7%	9%	6%	8%
Level of Education	High school or less	22%	10%	2%	6%	3%
	Tech school/Some college	29%	1%	8%	2%	6%
	College graduate	39%	3%	5%	3%	9%
	Postgraduate work	28%	1%	8%	4%	9%
Region of State	Central/Lakes	24%	4%	16%	5%	2%
	Connecticut Valley	26%	1%	3%	9%	19%
	Manchester Area	39%	10%	2%	1%	7%
	Mass Border	31%	2%	5%	1%	2%
	North Country	17%	2%	1%	7%	10%
	Seacoast	26%	11%	2%	3%	3%
2020 Presidential Vote	Voted for Trump	14%	11%	8%	1%	5%
	Voted for Biden	39%	0%	3%	6%	7%
	Voted for other 2020 candidate	42%	11%	0%		19%
	Did not vote in 2020	36%				1%

Most Important Problem - New Hampshire

		<u>Jobs/Economy</u>	<u>State budget</u>	<u>Taxes</u>	<u>Other</u>	<u>DK/Not Sure</u>	<u>N</u>
STATEWIDE	September 2021	13%	0%	4%	36%	0%	1,034
Voting Registration	Registered Democrat	8%	0%	1%	33%	0%	291
	Registered Undeclared/Not Reg.	9%	0%	6%	37%	0%	425
	Registered Republican	24%	0%	1%	36%	0%	283
Party ID	Democrat	6%	0%	6%	30%	0%	450
	Independent	4%	1%	4%	55%		154
	Republican	23%	0%	1%	34%	0%	406
Ideology	Liberal	6%		3%	35%		272
	Moderate	9%	0%	5%	36%	0%	427
	Conservative	23%	1%	3%	37%	0%	281
Media Usage	Boston Globe reader	2%	0%	1%	20%	0%	70
	Conservative radio listener	21%	0%	1%	36%		308
	Fox News viewer	13%	1%	2%	43%	0%	356
	Local newspapers reader	8%	0%	2%	34%	0%	157
	NHPR listener	12%	0%	4%	32%	0%	544
	Union Leader reader	6%	0%	4%	25%	0%	157
	WMUR viewer	11%	0%	5%	32%	0%	773
Age of Respondent	18 to 34	6%		2%	40%		270
	35 to 49	21%	0%	2%	31%	0%	203
	50 to 64	13%	0%	6%	30%	0%	330
	65 and older	11%	1%	4%	42%	0%	212
Gender of Respondent	Men	18%	0%	6%	42%	0%	481
	Women	8%	0%	1%	29%	0%	517
Level of Education	High school or less	13%		8%	37%		366
	Tech school/Some college	12%	0%	1%	41%	0%	316
	College graduate	12%	0%	3%	25%	0%	210
	Postgraduate work	13%	1%	2%	34%	0%	131
Region of State	Central/Lakes	23%	0%	4%	22%		166
	Connecticut Valley	14%	1%	2%	26%		134
	Manchester Area	6%	0%	2%	33%		145
	Mass Border	13%		6%	39%	0%	326
	North Country	10%	1%	2%	49%	1%	101
	Seacoast	6%	0%	5%	44%	1%	154
2020 Presidential Vote	Voted for Trump	22%	0%	2%	37%	0%	432
	Voted for Biden	6%	0%	4%	34%	0%	539
	Voted for other 2020 candidate	14%			15%		15
	Did not vote in 2020	0%		20%	42%		31