

August 24, 2021

APPROVAL OF BIDEN DROPS IN NEW HAMPSHIRE AMID AFGHANISTAN WOES BUT MAJORITY AGREE WITH DECISION TO WITHDRAW

By: Sean P. McKinley, M.A.
Zachary S. Azem, M.A.
Andrew E. Smith, Ph.D.

andrew.smith@unh.edu
603-862-2226
cola.unh.edu/unh-survey-center

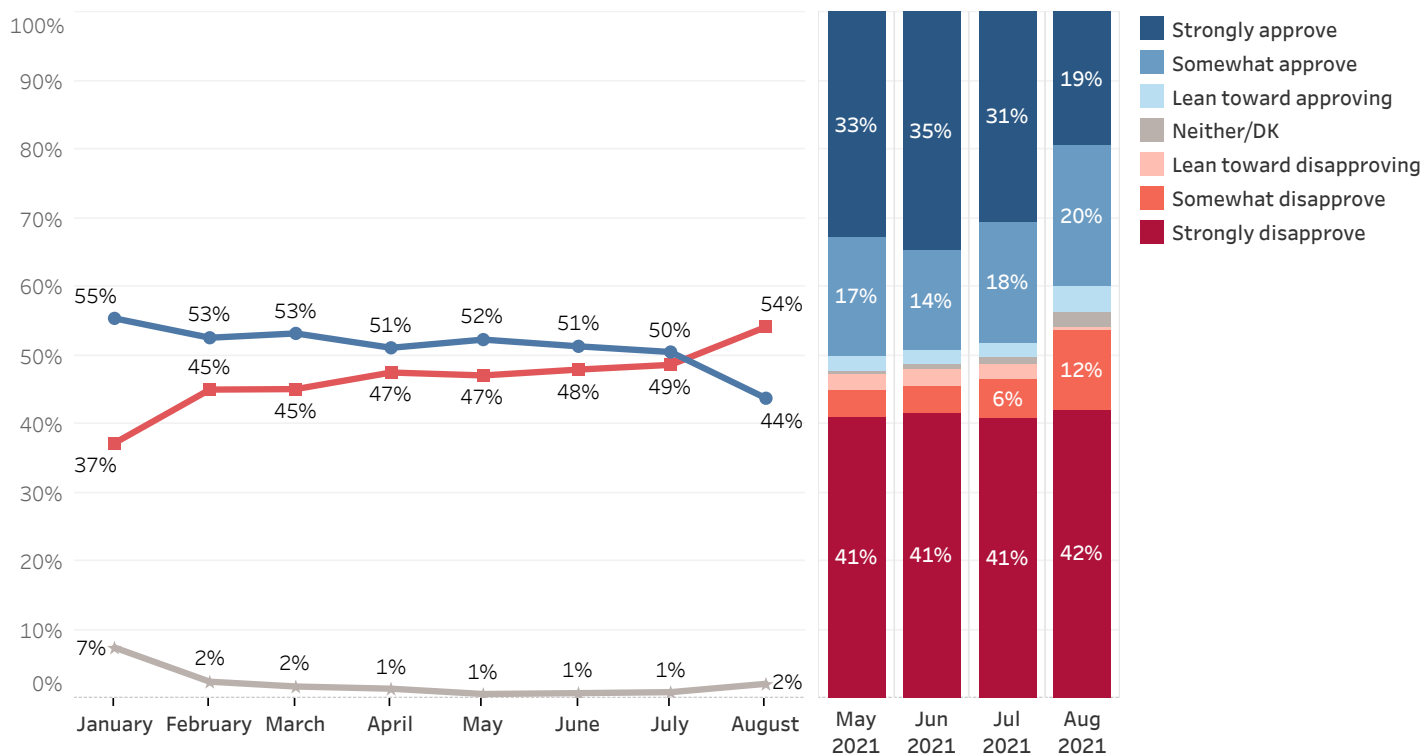
DURHAM, NH - Six in ten New Hampshire residents disapprove of President Biden's handling of foreign affairs and for the first time, a majority disapprove of his overall job performance. Most Granite Staters say he is at least somewhat to blame for the takeover of Afghanistan by the Taliban while others also blame the Afghan government and former U.S. presidents. Despite this, a majority support Biden's decision overall to withdraw from Afghanistan.

These findings are based on the latest **Granite State Poll***, conducted by the University of New Hampshire Survey Center. Nine hundred and seventy-seven (977) Granite State Panel members completed the survey online between August 19 and August 23, 2021. The margin of sampling error for the survey is +/- 2.7 percent. Data were weighted by respondent sex, age, education, and region of the state to targets from the most recent American Community Survey (ACS) conducted by the U.S. Census Bureau, as well as party registration levels provided by the NH Secretary of State and 2020 election results in NH. Granite State Panel members are recruited from randomly-selected landline and cell phone numbers across New Hampshire and surveys are sent periodically to panel members.

Presidential Approval

President Joe Biden's approval rating in New Hampshire has declined markedly since the takeover of Afghanistan by the Taliban: 44% of Granite Staters currently approve of Biden's performance as president, 54% disapprove, and 2% are unsure. Biden's net approval rating (the percentage who approve minus the percentage who disapprove) among Granite Staters is -10, down from +1 in July but higher than President Trump's net approval rating in August 2017 (-21). Biden's net approval rating is +91 among Democrats, -63 among Independents, and -93 among Republicans.

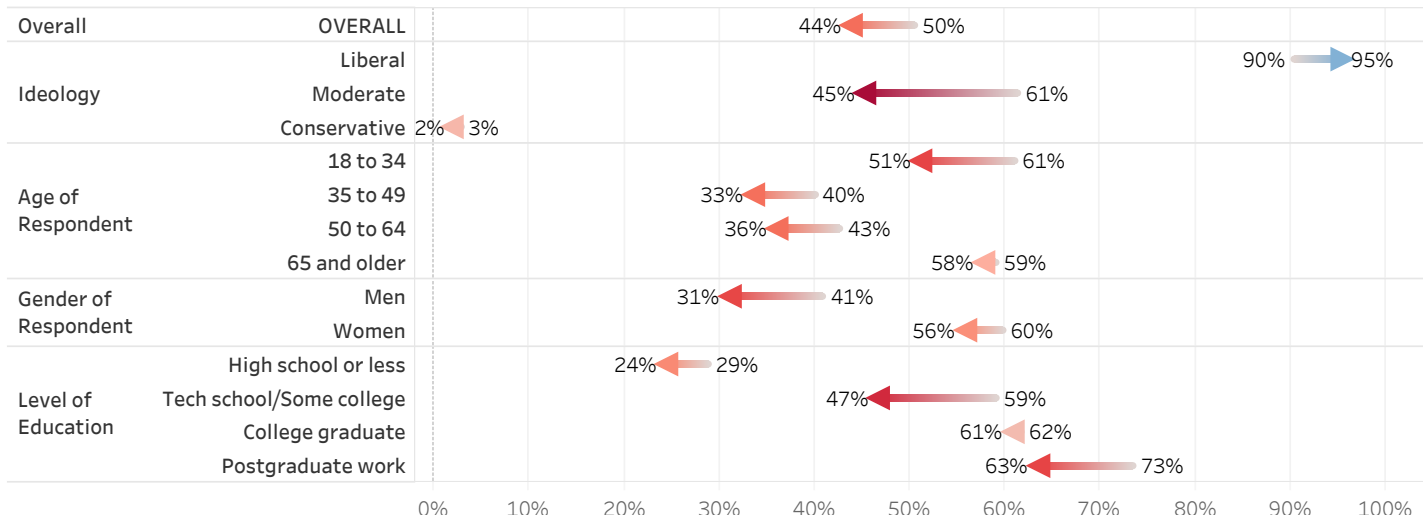
Approval of President Biden's Job Performance



* We ask that this copyrighted information be referred to as *the Granite State Poll*, conducted by the University of New Hampshire Survey Center.

- Self-described moderates are less likely than in July (-16 percentage points) to approve of Biden's handling of his job.
- Residents aged 18 to 34 (51%) and those aged 65 and older (58%) are more likely than those aged 35 to 49 (33%) and those aged 50 to 64 (36%) to approve of Biden's handling of his job.
- Fifty-six percent of women approve of Biden's job performance but only 31% of men approve.
- Only 24% of respondents with a high school degree or less and 47% of those who went to technical school or have some college education approve of Biden's handling of his job but majorities of those with higher levels of education approve.

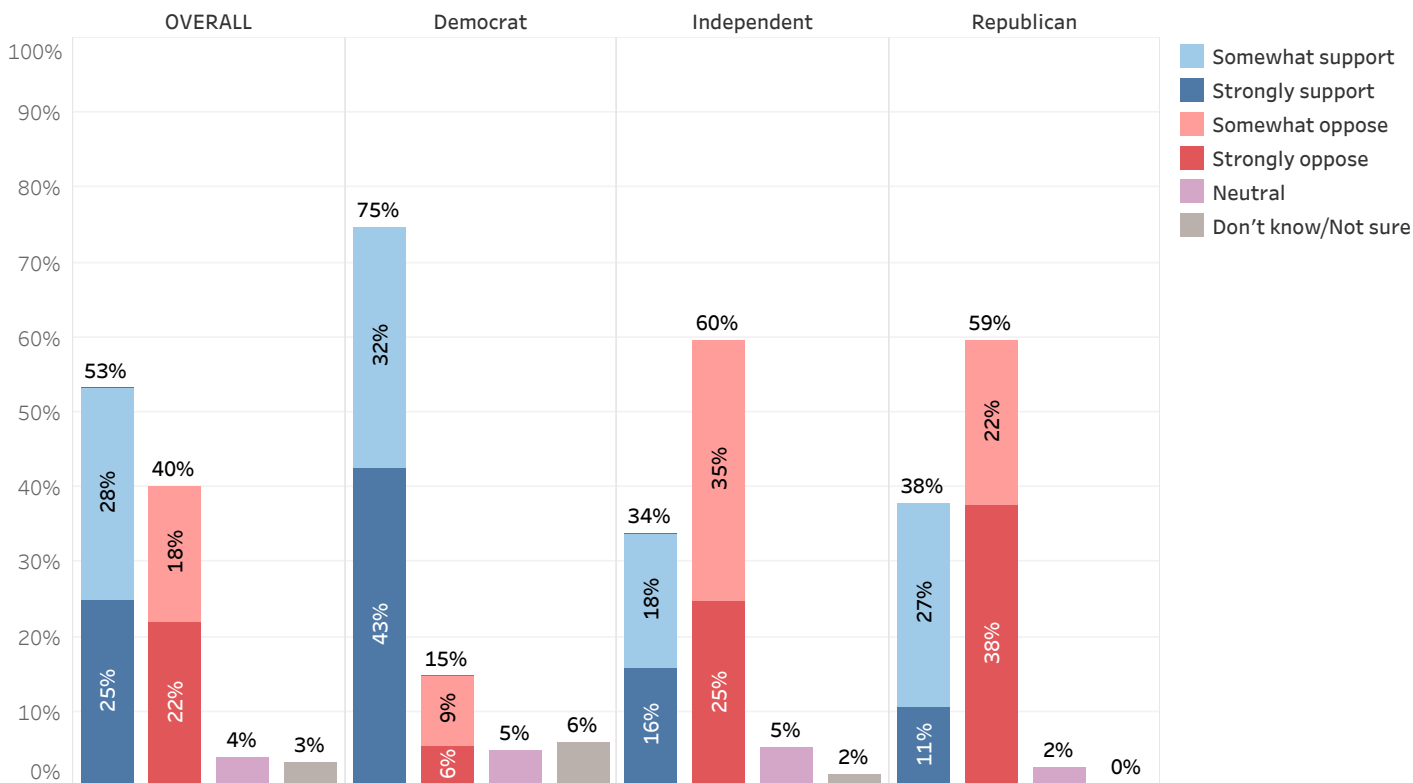
Approval of President Biden's Handling His Job as President - Change from July 2021 to August 2021



U.S. Withdrawal from Afghanistan

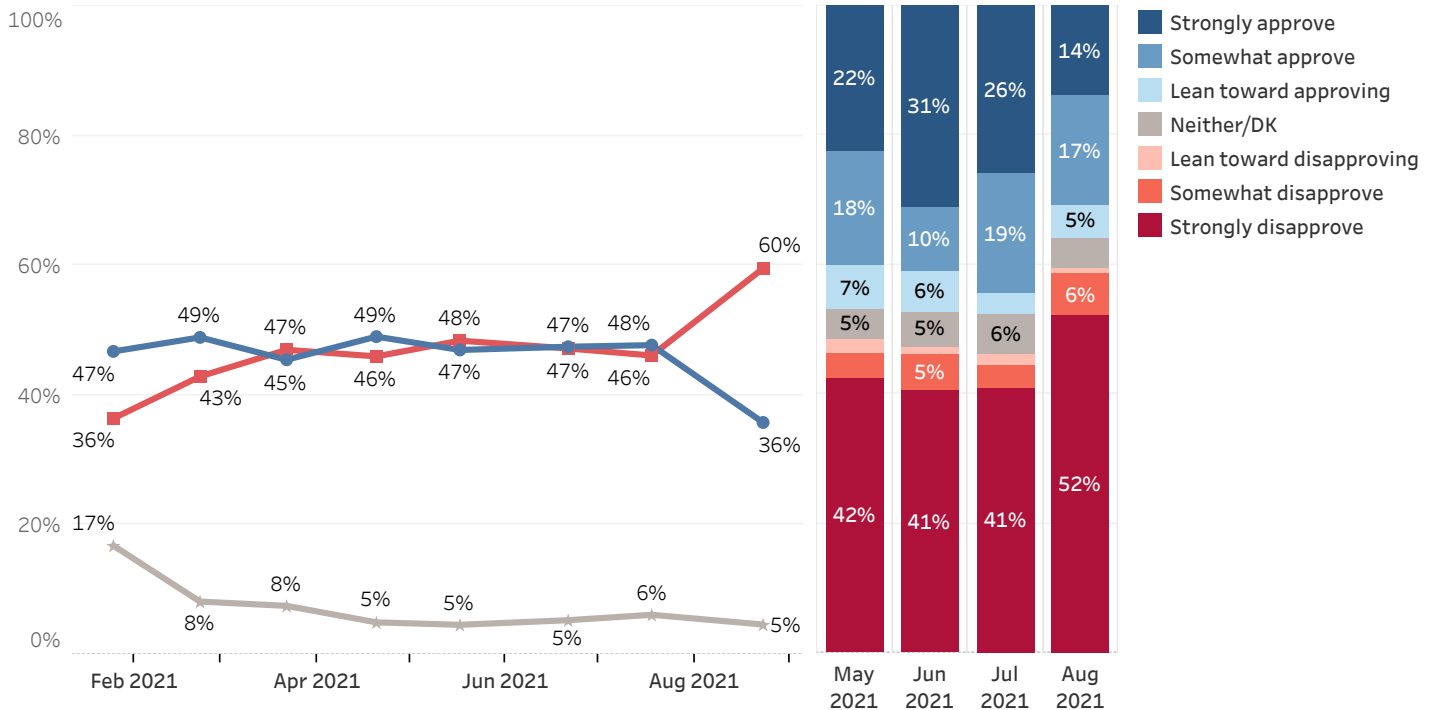
Despite the drop in approval of his overall job performance, more than half of Granite Staters (53%) strongly (25%) or somewhat (28%) support Biden's decision to withdraw all U.S. military forces from Afghanistan. Only four in ten (40%) are strongly (22%) or somewhat (18%) opposed to Biden's decision to withdraw, 4% are neutral, and 3% are unsure. Three-quarters (75%) of Democrats support Biden's decision to withdraw but only 38% of Republicans and 34% of Independents support his decision.

Support or Oppose Biden's Decision to Withdraw from Afghanistan - August 2021



Overall, only 36% of Granite Staters say that they approve of Biden's handling of foreign affairs, 60% disapprove, and 5% are unsure. Net approval of Biden's handling of foreign affairs (-24) has fallen dramatically since July (+2). Three-quarters (75%) of Democrats approve of Biden's handling of foreign affairs but only 16% of Independents approve, down from 51% in July, and only 2% of Republicans approve, an all-time low.

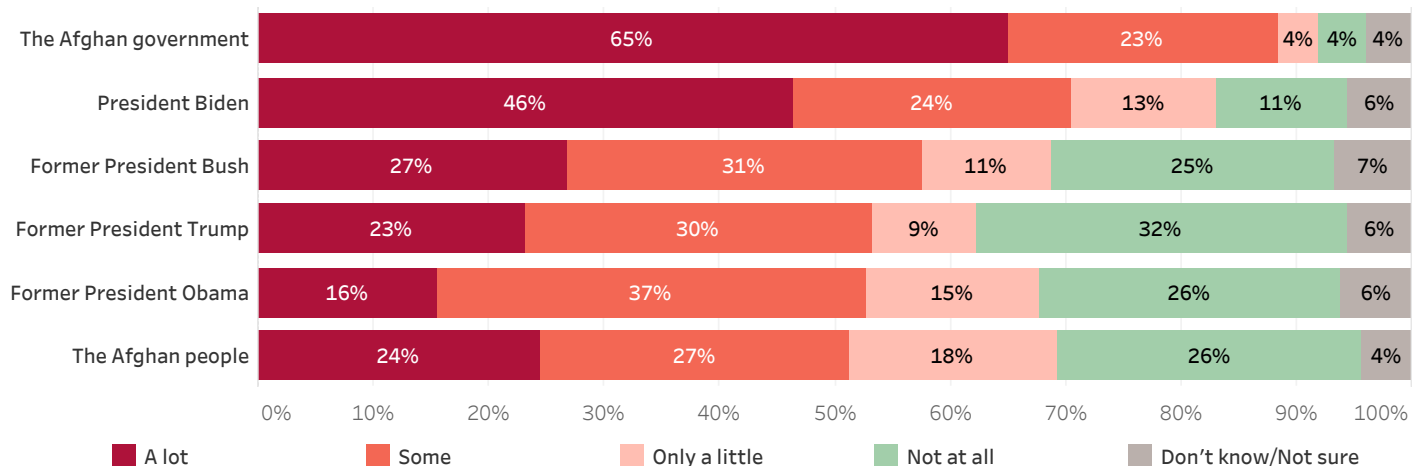
Approval of President Biden's Handling of Foreign Affairs



When asked whom they blame for the Taliban's takeover of Afghanistan, 88% of New Hampshire residents say that the Afghan government bears a lot or some of the blame for this occurrence, while 71% say that President Biden bears a lot or some of the blame. Among former Presidents during the Afghan War, just over half say that former President George W. Bush (58%), former President Donald Trump (53%), and former President Barack Obama (53%) bear a lot or some blame for the Taliban's takeover of the country, while 51% say that the Afghan people bear a lot (24%) or some (27%) blame. Others blame the Afghan military, Pakistan, former Vice President Dick Cheney, or former Secretary of State Mike Pompeo.

Democrats, Independents, and Republicans are about equally likely to blame the Afghan government and people, but responses differ by party when asked how much they blame President Biden and past presidents. The vast majority of Republicans (93%) and Independents (85%) blame President Biden a lot or some for the Taliban's takeover of Afghanistan, but only 45% of Democrats feel like this way. On the other hand, most Democrats and Independents blame former Presidents Trump and Bush a lot or some for this outcome, but only about one-third of Republicans blame them.

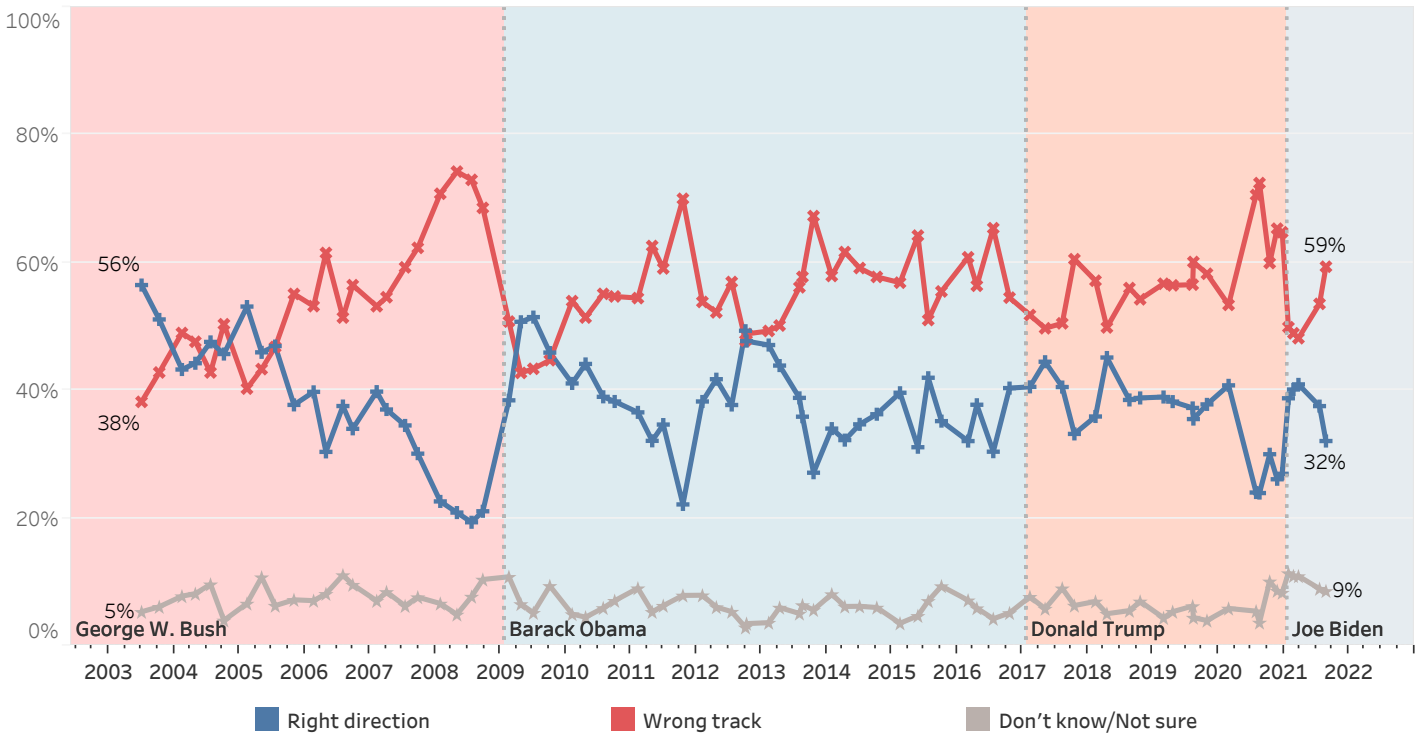
How Much Blame for Taliban's Takeover of Afghanistan - August 2021



U.S. Heading in Right Direction or On Wrong Track

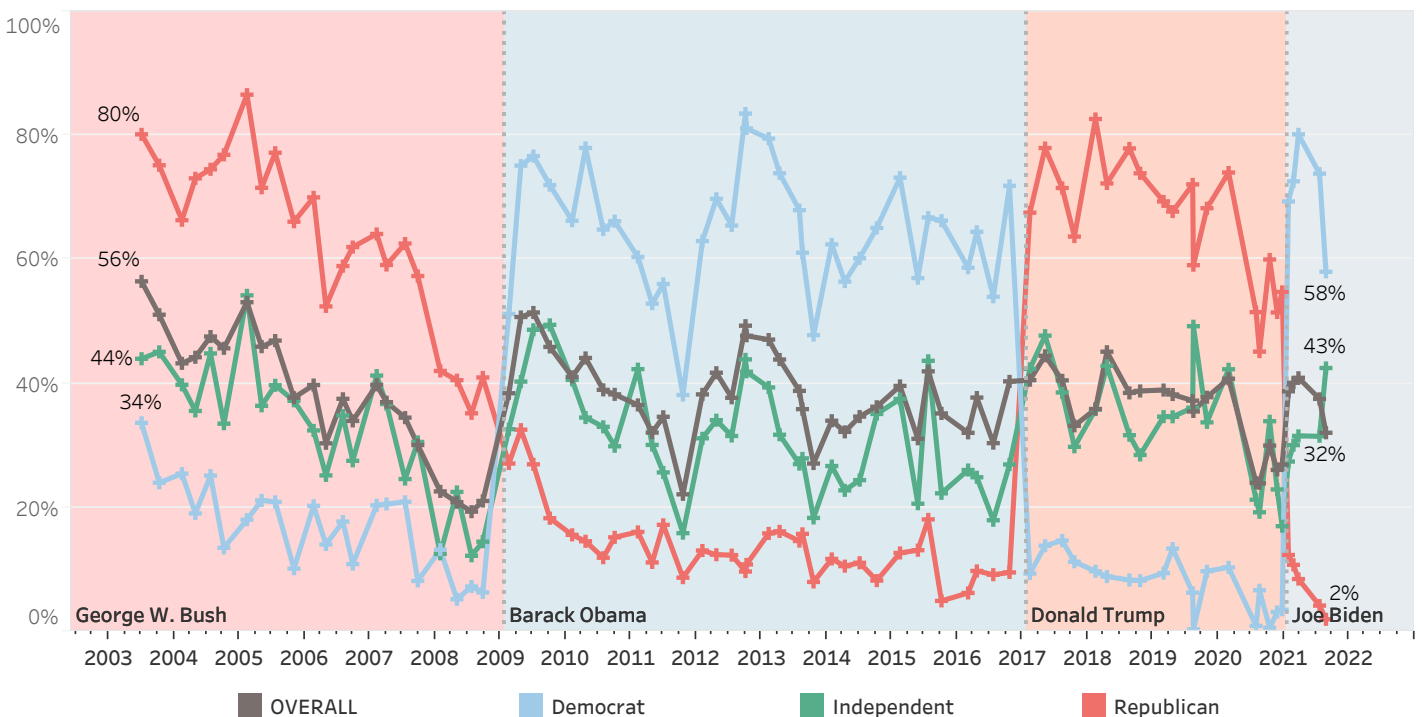
Only 32% of New Hampshire residents believe that things in the United States are headed in the right direction, 59% believe things are seriously off on the wrong track, and 9% are unsure. The percentage of Granite Staters who say the country is on the wrong track (59%) has increased slightly since July (54%).

Right Direction or Wrong Track



More than half (58%) of Democrats say the country is headed in the right direction, down from 80% in March. Forty-three percent of Independents and only 2% of Republicans feel the country is headed in the right direction.

Right Direction - by Party ID



Granite State Poll Methodology

These findings are based on the latest Granite State Poll, conducted by the University of New Hampshire Survey Center. Nine hundred and seventy-seven (977) Granite State Panel members completed the survey online between August 19 and August 23, 2021. The margin of sampling error for the survey is +/- 2.7 percent. These MSE's have not been adjusted for design effect. The response rate for the August 2021 Granite State Poll is 31%. The design effect for the survey is 2.7%.

Data were weighted by respondent sex, age, education, and region of the state to targets from the most recent American Community Survey (ACS) conducted by the U.S. Census Bureau, as well as party registration levels provided by the NH Secretary of State and to 2020 election results in New Hampshire.

The Granite State Panel is part of an effort by the University of New Hampshire Survey Center to investigate new ways of gathering and understanding the opinion of New Hampshire residents. Approximately 6,750 New Hampshire adults were recruited from randomly selected landline and cell phone numbers to participate in the panel. Panelists are then asked to participate in online surveys sponsored by the UNH Survey Center.

The number of respondents in each demographic below may not equal the number reported in cross-tabulation tables as some respondents choose not to answer some questions. Due to rounding, percentages may not sum to 100%.

For more information about the methodology used in the Granite State Panel, contact Dr. Andrew Smith at (603) 862-2226 or by email at andrew.smith@unh.edu.

August 2021 Granite State Poll Demographics

		%	N
Gender of Respondent	Men	49%	468
	Women	51%	485
Age of Respondent	18 to 34	27%	257
	35 to 49	21%	205
	50 to 64	32%	303
	65 and older	21%	197
Level of Education	High school or less	36%	348
	Tech school/Some college	31%	299
	College graduate	21%	200
	Postgraduate work	13%	122
Region of State	Connecticut Valley	14%	134
	Manchester Area	19%	185
	Mass Border	24%	236
	North Country	10%	94
	Seacoast	16%	156
	Central/Lakes	17%	163
Party ID	Democrat	43%	403
	Independent	14%	136
	Republican	43%	406
Ideology	Liberal	21%	194
	Moderate	51%	470
	Conservative	28%	256
Voting Registration	Registered Democrat	28%	264
	Registered Undeclared/Not Reg.	42%	395
	Registered Republican	29%	276
2020 Presidential Vote	Voted for Trump	45%	425
	Voted for Biden	52%	493
	Voted for other 2020 candidate	2%	15
	Did not vote in 2020	2%	19

Approval of President Biden's Job Performance

Generally speaking, do you approve or disapprove of the way Joe Biden is handling his job as president?

	<u>Approve</u>	<u>Disapprove</u>	<u>Neither/DK</u>	<u>N</u>
January 2021	55%	37%	7%	2,008
February 2021	53%	45%	2%	1,839
March 2021	53%	45%	2%	1,741
April 2021	51%	47%	1%	1,939
May 2021	52%	47%	1%	1,816
June 2021	51%	48%	1%	1,592
July 2021	50%	49%	1%	1,793
August 2021	44%	54%	2%	974

Support or Oppose Biden's Decision to Withdraw from Afghanistan

Do you support or oppose Biden's decision to withdraw all U.S. military forces from Afghanistan?

	<u>Strongly support</u>	<u>Somewhat support</u>	<u>Neutral</u>	<u>Somewhat oppose</u>	<u>Strongly oppose</u>	<u>Don't know/Not sure</u>	<u>N</u>
August 2021	25%	28%	4%	18%	22%	3%	975

Approval of President Biden's Handling of Foreign Affairs

Generally speaking, do you approve or disapprove of the way President Biden is handling foreign affairs?

	<u>Approve</u>	<u>Disapprove</u>	<u>Neither/DK</u>	<u>N</u>
January 2021	47%	36%	17%	2,011
February 2021	49%	43%	8%	1,838
March 2021	45%	47%	8%	1,740
April 2021	49%	46%	5%	1,940
May 2021	47%	48%	5%	1,815
June 2021	47%	47%	5%	1,597
July 2021	48%	46%	6%	1,790
August 2021	36%	60%	5%	975

How Much Blame for Taliban's Takeover of Afghanistan - President Biden

As you may know, in recent weeks the Taliban has taken over Afghanistan. How much, if at all, do you think each of the following people or groups should be blamed for this outcome? President Biden

	<u>A lot</u>	<u>Some</u>	<u>Only a little</u>	<u>Not at all</u>	<u>Don't know/Not sure</u>	<u>N</u>
August 2021	46%	24%	13%	11%	6%	971

How Much Blame for Taliban's Takeover of Afghanistan - Former President Trump

As you may know, in recent weeks the Taliban has taken over Afghanistan. How much, if at all, do you think each of the following people or groups should be blamed for this outcome? Former President Trump

	<u>A lot</u>	<u>Some</u>	<u>Only a little</u>	<u>Not at all</u>	<u>Don't know/Not sure</u>	<u>N</u>
August 2021	23%	30%	9%	32%	6%	969

How Much Blame for Taliban's Takeover of Afghanistan - Former President Obama

As you may know, in recent weeks the Taliban has taken over Afghanistan. How much, if at all, do you think each of the following people or groups should be blamed for this outcome? Former President Obama

	<u>A lot</u>	<u>Some</u>	<u>Only a little</u>	<u>Not at all</u>	<u>Don't know/Not sure</u>	<u>N</u>
August 2021	16%	37%	15%	26%	6%	968

How Much Blame for Taliban's Takeover of Afghanistan - Former President Bush

As you may know, in recent weeks the Taliban has taken over Afghanistan. How much, if at all, do you think each of the following people or groups should be blamed for this outcome? Former President Bush

	<u>A lot</u>	<u>Some</u>	<u>Only a little</u>	<u>Not at all</u>	<u>Don't know/Not sure</u>	<u>N</u>
August 2021	27%	31%	11%	25%	7%	967

How Much Blame for Taliban's Takeover of Afghanistan - The Afghan people

As you may know, in recent weeks the Taliban has taken over Afghanistan. How much, if at all, do you think each of the following people or groups should be blamed for this outcome? The Afghan people

	<u>A lot</u>	<u>Some</u>	<u>Only a little</u>	<u>Not at all</u>	<u>Don't know/Not sure</u>	<u>N</u>
August 2021	24%	27%	18%	26%	4%	961

How Much Blame for Taliban's Takeover of Afghanistan - The Afghan government

As you may know, in recent weeks the Taliban has taken over Afghanistan. How much, if at all, do you think each of the following people or groups should be blamed for this outcome? The Afghan government

	<u>A lot</u>	<u>Some</u>	<u>Only a little</u>	<u>Not at all</u>	<u>Don't know/Not sure</u>	<u>N</u>
August 2021	65%	23%	4%	4%	4%	970

U.S. Heading in Right Direction or On Wrong Track

Do you think things in this country are generally going in the right direction or are they seriously off on the wrong track?

	<u>Right direction</u>	<u>Wrong track</u>	<u>Don't know/Not sure</u>	<u>N</u>		<u>Right direction</u>	<u>Wrong track</u>	<u>Don't know/Not sure</u>	<u>N</u>
June 2003	56%	38%	5%	511	February 2013	47%	49%	4%	573
October 2003	51%	43%	6%	487	April 2013	44%	50%	6%	498
February 2004	43%	49%	8%	503	July 2013	39%	56%	5%	511
April 2004	44%	48%	8%	535	August 2013	36%	58%	6%	498
July 2004	48%	43%	10%	500	October 2013	27%	67%	6%	645
October 2004	46%	50%	4%	574	January 2014	34%	58%	8%	569
February 2005	53%	40%	7%	535	April 2014	32%	62%	6%	501
May 2005	46%	43%	11%	487	July 2014	35%	59%	6%	654
July 2005	47%	47%	6%	492	October 2014	36%	58%	6%	677
October 2005	38%	55%	7%	498	February 2015	40%	57%	4%	498
February 2006	40%	53%	7%	487	May 2015	31%	64%	5%	562
April 2006	30%	62%	8%	501	July 2015	42%	51%	7%	528
July 2006	38%	51%	11%	496	October 2015	35%	55%	9%	580
September 2006	34%	56%	10%	510	February 2016	32%	61%	7%	672
February 2007	40%	53%	7%	516	April 2016	38%	56%	6%	604
April 2007	37%	55%	8%	510	July 2016	30%	65%	4%	522
July 2007	34%	59%	6%	516	October 2016	40%	55%	5%	897
September 2007	30%	62%	8%	505	February 2017	41%	52%	8%	499
January 2008	23%	71%	7%	553	May 2017	44%	50%	6%	506
April 2008	21%	74%	5%	487	August 2017	41%	50%	9%	498
July 2008	19%	73%	8%	508	October 2017	33%	61%	6%	562
September 2008	21%	69%	10%	540	February 2018	36%	57%	7%	515
February 2009	38%	51%	11%	610	April 2018	45%	50%	5%	207
April 2009	51%	43%	7%	498	August 2018	38%	56%	6%	492
July 2009	51%	43%	5%	555	October 2018	39%	54%	7%	632
October 2009	46%	45%	9%	496	February 2019	39%	57%	4%	588
February 2010	41%	54%	5%	484	April 2019	38%	56%	5%	537
April 2010	44%	51%	4%	502	August 2019	37%	57%	6%	496
July 2010	39%	55%	6%	491	October 2019	38%	58%	4%	1,248
September 2010	38%	55%	7%	512	February 2020	41%	53%	6%	602
February 2011	37%	54%	9%	513	July 2020	24%	71%	5%	2,007
April 2011	32%	63%	5%	496	November 2020	26%	65%	9%	1,912
June 2011	35%	59%	6%	507	December 2020	27%	65%	8%	773
October 2011	22%	70%	8%	553	January 2021	39%	50%	11%	2,020
February 2012	38%	54%	8%	514	February 2021	40%	49%	11%	1,857
April 2012	42%	52%	6%	525	March 2021	41%	48%	11%	1,744
July 2012	38%	57%	5%	512	July 2021	38%	54%	9%	1,794
September 2012	49%	48%	3%	630	August 2021	32%	59%	9%	977
October 2012	48%	49%	3%	578					

Approval of President Biden's Job Performance

		Approve	Disapprove	Neither/DK	N
STATEWIDE	August 2021	44%	54%	2%	974
Voting Registration	Registered Democrat	90%	7%	3%	262
	Registered Undeclared/Not Reg.	39%	60%	1%	395
	Registered Republican	3%	94%	3%	275
Party ID	Democrat	95%	4%	1%	401
	Independent	18%	81%	1%	136
	Republican	2%	96%	2%	405
Ideology	Liberal	95%	4%	0%	194
	Moderate	45%	53%	2%	468
	Conservative	2%	95%	4%	256
Media Usage	Boston Globe reader	89%	11%		68
	NHPR listener	67%	32%	1%	453
	Union Leader reader	55%	45%	0%	163
	WMUR viewer	49%	50%	0%	694
	Fox News viewer	13%	86%	1%	351
	Conservative radio listener	15%	85%	0%	264
	Local newspapers reader	63%	37%	0%	189
Age of Respondent	18 to 34	51%	43%	6%	257
	35 to 49	33%	65%	1%	205
	50 to 64	36%	63%	1%	302
	65 and older	58%	42%	0%	196
Gender of Respondent	Men	31%	65%	4%	467
	Women	56%	44%	0%	483
Level of Education	High school or less	24%	76%		348
	Tech school/Some college	47%	48%	5%	297
	College graduate	61%	37%	2%	200
	Postgraduate work	63%	35%	1%	122
Region of State	Connecticut Valley	25%	75%	0%	133
	Manchester Area	64%	36%	0%	184
	Mass Border	40%	59%	0%	236
	North Country	30%	69%	1%	93
	Seacoast	44%	45%	11%	156
	Central/Lakes	50%	50%	0%	163
2020 Presidential Vote	Voted for Trump	0%	97%	3%	425
	Voted for Biden	84%	15%	1%	491
	Voted for other 2020 candidate	12%	88%		15
	Did not vote in 2020	4%	64%	32%	19

Support or Oppose Biden's Decision to Withdraw from Afghanistan

		<u>Strongly support</u>	<u>Somewhat support</u>	<u>Neutral</u>	<u>Somewhat oppose</u>	<u>Strongly oppose</u>	<u>Don't know/Not sure</u>	<u>N</u>
STATEWIDE	August 2021	25%	28%	4%	18%	22%	3%	975
Voting Registration	Registered Democrat	40%	34%	4%	11%	3%	8%	264
	Registered Undeclared/Not Reg.	26%	31%	5%	21%	16%	1%	393
	Registered Republican	11%	18%	2%	23%	46%		275
Party ID	Democrat	43%	32%	5%	9%	6%	6%	403
	Independent	16%	18%	5%	35%	25%	2%	134
	Republican	11%	27%	2%	22%	38%	0%	406
Ideology	Liberal	36%	35%	8%	9%	1%	12%	194
	Moderate	29%	32%	3%	20%	16%	0%	468
	Conservative	11%	14%	2%	24%	50%		256
Media Usage	Boston Globe reader	35%	27%	1%	9%	26%	2%	69
	NHPR listener	34%	30%	3%	16%	15%	2%	453
	Union Leader reader	18%	38%	4%	9%	18%	13%	163
	WMUR viewer	27%	29%	3%	13%	25%	3%	694
	Fox News viewer	9%	28%	4%	18%	41%		350
	Conservative radio listener	12%	25%	1%	19%	43%	0%	262
	Local newspapers reader	20%	37%	6%	18%	18%	2%	190
Age of Respondent	18 to 34	15%	33%	4%	28%	12%	8%	257
	35 to 49	22%	30%	5%	21%	21%	2%	205
	50 to 64	25%	25%	3%	16%	29%	2%	303
	65 and older	42%	26%	2%	5%	24%	1%	195
Gender of Respondent	Men	25%	25%	3%	21%	25%	1%	468
	Women	24%	32%	3%	16%	19%	6%	483
Level of Education	High school or less	16%	27%	1%	24%	31%		348
	Tech school/Some college	28%	26%	2%	17%	19%	8%	297
	College graduate	31%	29%	10%	13%	15%	1%	200
	Postgraduate work	31%	36%	6%	11%	14%	3%	122
Region of State	Connecticut Valley	10%	32%	2%	15%	40%	2%	134
	Manchester Area	34%	32%	4%	9%	10%	11%	185
	Mass Border	26%	26%	6%	30%	13%	0%	234
	North Country	20%	41%	2%	5%	32%	0%	94
	Seacoast	32%	30%	2%	12%	21%	3%	156
	Central/Lakes	23%	15%	5%	29%	28%	0%	163
2020 Presidential Vote	Voted for Trump	10%	24%	3%	21%	42%	0%	423
	Voted for Biden	37%	31%	5%	16%	4%	6%	493
	Voted for other 2020 candidate	41%	14%	0%	10%	34%		15
	Did not vote in 2020	7%	76%		13%	3%		19

Approval of President Biden's Handling of Foreign Affairs

		Approve	Disapprove	Neither/DK	N
STATEWIDE	August 2021	36%	60%	5%	975
Voting Registration	Registered Democrat	75%	15%	10%	263
	Registered Undeclared/Not Reg.	34%	64%	2%	394
	Registered Republican	4%	93%	3%	275
Party ID	Democrat	75%	17%	7%	402
	Independent	16%	81%	2%	136
	Republican	2%	95%	3%	405
Ideology	Liberal	73%	14%	14%	194
	Moderate	39%	60%	1%	468
	Conservative	1%	95%	4%	256
Media Usage	Boston Globe reader	54%	45%	0%	68
	NHPR listener	57%	42%	2%	453
	Union Leader reader	41%	46%	13%	164
	WMUR viewer	41%	55%	4%	696
	Fox News viewer	11%	89%	1%	351
	Conservative radio listener	9%	91%	0%	264
	Local newspapers reader	49%	50%	1%	188
Age of Respondent	18 to 34	33%	54%	13%	257
	35 to 49	28%	70%	3%	205
	50 to 64	32%	66%	2%	302
	65 and older	53%	46%	1%	196
Gender of Respondent	Men	29%	69%	3%	468
	Women	43%	50%	7%	483
Level of Education	High school or less	19%	81%		348
	Tech school/Some college	37%	52%	11%	298
	College graduate	47%	48%	5%	200
	Postgraduate work	59%	38%	3%	122
Region of State	Connecticut Valley	23%	75%	2%	134
	Manchester Area	49%	39%	12%	184
	Mass Border	36%	63%	1%	236
	North Country	33%	67%	0%	94
	Seacoast	44%	47%	9%	156
	Central/Lakes	26%	71%	3%	162
2020 Presidential Vote	Voted for Trump	1%	97%	3%	425
	Voted for Biden	66%	27%	7%	492
	Voted for other 2020 candidate	27%	71%	2%	15
	Did not vote in 2020	40%	60%		19

How Much Blame for Taliban's Takeover of Afghanistan - President Biden

		<u>A lot</u>	<u>Some</u>	<u>Only a little</u>	<u>Not at all</u>	<u>Don't know/Not sure</u>	<u>N</u>
STATEWIDE	August 2021	46%	24%	13%	11%	6%	971
Voting Registration	Registered Democrat	10%	29%	30%	21%	11%	259
	Registered Undeclared/Not Reg.	44%	32%	10%	9%	5%	394
	Registered Republican	81%	12%	1%	6%	0%	275
Party ID	Democrat	12%	33%	26%	21%	7%	398
	Independent	73%	12%	6%	4%	5%	136
	Republican	72%	21%	1%	4%	2%	405
Ideology	Liberal	8%	33%	36%	10%	13%	192
	Moderate	44%	28%	9%	16%	4%	466
	Conservative	85%	10%	1%	4%	0%	256
Media Usage	Boston Globe reader	29%	46%	20%	5%	1%	68
	NHPR listener	32%	30%	21%	14%	3%	448
	Union Leader reader	32%	30%	16%	7%	14%	162
	WMUR viewer	43%	26%	14%	12%	6%	690
	Fox News viewer	72%	22%	4%	1%	2%	351
	Conservative radio listener	81%	10%	2%	4%	3%	263
	Local newspapers reader	39%	29%	19%	12%	1%	187
Age of Respondent	18 to 34	47%	15%	16%	13%	10%	257
	35 to 49	42%	37%	12%	4%	4%	204
	50 to 64	55%	22%	8%	13%	2%	301
	65 and older	36%	27%	17%	13%	7%	193
Gender of Respondent	Men	60%	19%	11%	7%	3%	467
	Women	34%	29%	15%	15%	8%	479
Level of Education	High school or less	65%	21%	3%	8%	3%	348
	Tech school/Some college	44%	17%	16%	13%	10%	295
	College graduate	30%	34%	22%	9%	5%	199
	Postgraduate work	27%	35%	17%	18%	3%	121
Region of State	Connecticut Valley	69%	14%	6%	9%	3%	133
	Manchester Area	30%	10%	23%	23%	14%	185
	Mass Border	47%	31%	10%	6%	5%	235
	North Country	40%	45%	12%	3%	0%	91
	Seacoast	43%	25%	13%	12%	7%	155
	Central/Lakes	54%	26%	9%	11%	0%	161
2020 Presidential Vote	Voted for Trump	78%	16%	0%	3%	3%	424
	Voted for Biden	19%	32%	23%	18%	7%	488
	Voted for other 2020 candidate	43%	40%	17%			15
	Did not vote in 2020	56%	6%	6%		32%	19

How Much Blame for Taliban's Takeover of Afghanistan - Former President Trump

		A lot	Some	Only a little	Not at all	Don't know/Not sure	N
STATEWIDE	August 2021	23%	30%	9%	32%	6%	969
Voting Registration	Registered Democrat	37%	41%	9%	3%	11%	264
	Registered Undeclared/Not Reg.	28%	33%	9%	25%	5%	392
	Registered Republican	5%	16%	9%	68%	1%	271
Party ID	Democrat	39%	36%	9%	8%	8%	403
	Independent	40%	33%	9%	14%	4%	133
	Republican	3%	24%	9%	62%	1%	401
Ideology	Liberal	37%	39%	10%	1%	12%	194
	Moderate	28%	36%	8%	25%	3%	465
	Conservative	5%	14%	10%	72%	0%	253
Media Usage	Boston Globe reader	30%	37%	6%	26%	1%	69
	NHPR listener	29%	37%	10%	21%	3%	452
	Union Leader reader	42%	19%	10%	15%	14%	161
	WMUR viewer	23%	31%	10%	31%	5%	689
	Fox News viewer	9%	24%	13%	53%	1%	345
	Conservative radio listener	6%	21%	7%	65%	0%	257
	Local newspapers reader	32%	25%	8%	34%	1%	190
Age of Respondent	18 to 34	29%	28%	9%	22%	12%	257
	35 to 49	10%	44%	10%	30%	6%	205
	50 to 64	19%	30%	7%	43%	2%	300
	65 and older	37%	21%	9%	30%	4%	192
Gender of Respondent	Men	24%	31%	12%	32%	2%	465
	Women	23%	30%	6%	32%	9%	480
Level of Education	High school or less	22%	25%	3%	48%	2%	348
	Tech school/Some college	24%	26%	10%	30%	10%	294
	College graduate	22%	38%	17%	15%	8%	199
	Postgraduate work	26%	41%	10%	19%	3%	121
Region of State	Connecticut Valley	10%	41%	4%	43%	2%	134
	Manchester Area	29%	26%	6%	25%	15%	185
	Mass Border	39%	33%	5%	18%	5%	231
	North Country	19%	42%	13%	26%	0%	94
	Seacoast	20%	23%	13%	37%	7%	156
	Central/Lakes	11%	22%	16%	51%	1%	161
2020 Presidential Vote	Voted for Trump	2%	23%	10%	62%	2%	418
	Voted for Biden	42%	35%	8%	7%	8%	493
	Voted for other 2020 candidate	32%	29%	18%	21%		15
	Did not vote in 2020	0%	61%	2%	5%	32%	19

How Much Blame for Taliban's Takeover of Afghanistan - Former President Obama

		<u>A lot</u>	<u>Some</u>	<u>Only a little</u>	<u>Not at all</u>	<u>Don't know/Not sure</u>	<u>N</u>
STATEWIDE	August 2021	16%	37%	15%	26%	6%	968
Voting Registration	Registered Democrat	7%	30%	20%	33%	10%	259
	Registered Undeclared/Not Reg.	12%	56%	16%	12%	4%	393
	Registered Republican	29%	22%	10%	37%	3%	273
Party ID	Democrat	7%	35%	21%	28%	9%	398
	Independent	15%	62%	12%	6%	5%	135
	Republican	24%	32%	10%	31%	3%	403
Ideology	Liberal	7%	37%	20%	22%	14%	194
	Moderate	9%	45%	17%	26%	3%	463
	Conservative	34%	23%	8%	32%	3%	253
Media Usage	Boston Globe reader	6%	45%	14%	33%	2%	68
	NHPR listener	8%	40%	17%	29%	6%	449
	Union Leader reader	15%	35%	10%	27%	12%	163
	WMUR viewer	16%	36%	14%	27%	7%	687
	Fox News viewer	20%	38%	12%	25%	4%	349
	Conservative radio listener	20%	33%	14%	33%	1%	262
	Local newspapers reader	5%	29%	21%	41%	5%	186
Age of Respondent	18 to 34	7%	29%	20%	36%	8%	257
	35 to 49	7%	50%	12%	25%	6%	204
	50 to 64	24%	30%	13%	28%	5%	302
	65 and older	21%	46%	15%	13%	6%	190
Gender of Respondent	Men	17%	41%	17%	22%	3%	464
	Women	14%	34%	13%	30%	9%	479
Level of Education	High school or less	23%	38%	5%	31%	3%	348
	Tech school/Some college	11%	32%	19%	27%	11%	293
	College graduate	14%	41%	22%	18%	5%	199
	Postgraduate work	7%	41%	22%	24%	5%	120
Region of State	Connecticut Valley	28%	33%	16%	20%	3%	131
	Manchester Area	16%	20%	16%	35%	13%	184
	Mass Border	14%	60%	10%	12%	4%	234
	North Country	25%	47%	8%	15%	4%	93
	Seacoast	8%	33%	12%	39%	8%	155
	Central/Lakes	11%	25%	27%	35%	2%	161
2020 Presidential Vote	Voted for Trump	24%	33%	12%	28%	3%	422
	Voted for Biden	6%	42%	18%	25%	9%	487
	Voted for other 2020 candidate	20%	36%	29%	5%	10%	14
	Did not vote in 2020	47%	19%	2%	32%		19

How Much Blame for Taliban's Takeover of Afghanistan - Former President Bush

		A lot	Some	Only a little	Not at all	Don't know/Not sure	N
STATEWIDE	August 2021	27%	31%	11%	25%	7%	967
Voting Registration	Registered Democrat	55%	21%	6%	5%	13%	260
	Registered Undeclared/Not Reg.	20%	50%	11%	16%	3%	392
	Registered Republican	9%	16%	18%	52%	6%	273
Party ID	Democrat	46%	31%	7%	8%	8%	399
	Independent	18%	56%	8%	14%	5%	133
	Republican	10%	23%	16%	46%	5%	403
Ideology	Liberal	51%	27%	6%	3%	14%	194
	Moderate	26%	40%	11%	20%	3%	463
	Conservative	10%	17%	16%	51%	6%	254
Media Usage	Boston Globe reader	41%	25%	4%	28%	1%	69
	NHPR listener	35%	33%	12%	17%	3%	449
	Union Leader reader	30%	32%	6%	21%	12%	162
	WMUR viewer	29%	29%	9%	28%	5%	686
	Fox News viewer	14%	30%	14%	41%	2%	347
	Conservative radio listener	17%	27%	20%	35%	0%	261
	Local newspapers reader	29%	28%	12%	29%	2%	185
Age of Respondent	18 to 34	30%	28%	17%	15%	10%	257
	35 to 49	26%	30%	8%	29%	6%	202
	50 to 64	25%	29%	7%	32%	6%	300
	65 and older	25%	36%	12%	22%	5%	192
Gender of Respondent	Men	29%	29%	12%	27%	2%	463
	Women	25%	31%	10%	23%	11%	479
Level of Education	High school or less	17%	37%	4%	36%	5%	348
	Tech school/Some college	27%	23%	17%	22%	11%	292
	College graduate	41%	30%	11%	13%	5%	199
	Postgraduate work	31%	32%	17%	16%	4%	121
Region of State	Connecticut Valley	26%	31%	5%	26%	12%	133
	Manchester Area	37%	18%	14%	17%	14%	184
	Mass Border	34%	44%	8%	12%	3%	231
	North Country	24%	38%	6%	31%	1%	93
	Seacoast	19%	30%	6%	37%	7%	156
	Central/Lakes	17%	23%	24%	32%	3%	160
2020 Presidential Vote	Voted for Trump	10%	25%	15%	46%	4%	421
	Voted for Biden	40%	37%	7%	8%	8%	489
	Voted for other 2020 candidate	19%	20%	35%	15%	11%	12
	Did not vote in 2020	48%	19%		1%	32%	19

How Much Blame for Taliban's Takeover of Afghanistan - The Afghan people

		A lot	Some	Only a little	Not at all	Don't know/Not sure	N
STATEWIDE	August 2021	24%	27%	18%	26%	4%	961
Voting Registration	Registered Democrat	22%	21%	16%	32%	9%	254
	Registered Undeclared/Not Reg.	29%	32%	24%	13%	2%	394
	Registered Republican	16%	26%	11%	43%	3%	271
Party ID	Democrat	27%	25%	13%	28%	7%	393
	Independent	11%	38%	43%	8%	0%	135
	Republican	27%	25%	14%	32%	2%	401
Ideology	Liberal	15%	20%	19%	33%	13%	193
	Moderate	33%	29%	22%	16%	1%	459
	Conservative	20%	28%	7%	42%	3%	253
Media Usage	Boston Globe reader	42%	39%	5%	12%	2%	68
	NHPR listener	21%	33%	13%	31%	2%	451
	Union Leader reader	14%	40%	8%	26%	12%	163
	WMUR viewer	27%	29%	13%	27%	5%	681
	Fox News viewer	20%	32%	18%	27%	2%	346
	Conservative radio listener	24%	30%	17%	29%		253
	Local newspapers reader	29%	28%	10%	32%	1%	188
Age of Respondent	18 to 34	18%	11%	31%	31%	8%	257
	35 to 49	23%	35%	16%	23%	3%	205
	50 to 64	30%	32%	9%	24%	4%	293
	65 and older	26%	30%	15%	27%	2%	192
Gender of Respondent	Men	26%	25%	25%	23%	1%	459
	Women	24%	28%	11%	29%	8%	478
Level of Education	High school or less	35%	18%	16%	29%	2%	342
	Tech school/Some college	20%	24%	22%	25%	8%	294
	College graduate	14%	42%	17%	24%	3%	197
	Postgraduate work	23%	32%	16%	25%	3%	121
Region of State	Connecticut Valley	22%	46%	12%	19%	2%	133
	Manchester Area	13%	20%	16%	35%	16%	185
	Mass Border	19%	31%	31%	17%	2%	226
	North Country	48%	18%	3%	30%	0%	94
	Seacoast	26%	19%	13%	38%	4%	155
	Central/Lakes	32%	24%	21%	22%	1%	159
2020 Presidential Vote	Voted for Trump	26%	29%	12%	30%	2%	419
	Voted for Biden	23%	25%	21%	24%	6%	483
	Voted for other 2020 candidate	15%	36%	29%	20%		15
	Did not vote in 2020	36%	1%	49%	14%	0%	19

How Much Blame for Taliban's Takeover of Afghanistan - The Afghan government

		A lot	Some	Only a little	Not at all	Don't know/Not sure	N
STATEWIDE	August 2021	65%	23%	4%	4%	4%	970
Voting Registration	Registered Democrat	67%	20%	2%	1%	9%	262
	Registered Undeclared/Not Reg.	70%	21%	6%	3%	0%	391
	Registered Republican	53%	32%	2%	10%	3%	274
Party ID	Democrat	71%	20%	3%	1%	6%	402
	Independent	77%	15%	2%	6%		136
	Republican	55%	29%	5%	8%	3%	400
Ideology	Liberal	55%	31%	1%	0%	12%	194
	Moderate	77%	15%	5%	2%	1%	469
	Conservative	48%	33%	3%	12%	3%	250
Media Usage	Boston Globe reader	77%	22%			1%	69
	NHPR listener	71%	23%	2%	2%	3%	454
	Union Leader reader	73%	15%	1%		12%	160
	WMUR viewer	67%	22%	3%	4%	5%	690
	Fox News viewer	55%	32%	5%	4%	3%	346
	Conservative radio listener	66%	24%	6%	2%	3%	262
	Local newspapers reader	71%	23%	2%	3%	1%	190
Age of Respondent	18 to 34	65%	17%	7%	4%	8%	257
	35 to 49	65%	30%	2%	1%	3%	205
	50 to 64	63%	24%	2%	9%	2%	302
	65 and older	70%	23%	2%	0%	4%	191
Gender of Respondent	Men	70%	22%	4%	4%	0%	463
	Women	62%	23%	3%	4%	8%	483
Level of Education	High school or less	72%	18%	1%	7%	2%	344
	Tech school/Some college	57%	25%	5%	5%	8%	298
	College graduate	62%	30%	6%	1%	2%	199
	Postgraduate work	69%	25%	4%	1%	1%	121
Region of State	Connecticut Valley	73%	24%	0%	1%	1%	134
	Manchester Area	59%	21%	8%	0%	12%	184
	Mass Border	76%	19%	4%	1%	0%	235
	North Country	65%	12%	3%	21%		94
	Seacoast	62%	26%	2%	7%	3%	156
	Central/Lakes	52%	35%	3%	4%	5%	158
2020 Presidential Vote	Voted for Trump	55%	28%	5%	9%	2%	420
	Voted for Biden	74%	18%	2%	0%	6%	493
	Voted for other 2020 candidate	63%	33%	3%	1%		14
	Did not vote in 2020	86%	1%	13%			19

U.S. Heading in Right Direction or On Wrong Track

		Right direction	Wrong track	Don't know/Not sure	N
STATEWIDE	August 2021	32%	59%	9%	977
Voting Registration	Registered Democrat	60%	31%	10%	264
	Registered Undeclared/Not Reg.	36%	55%	8%	395
	Registered Republican	3%	96%	2%	276
Party ID	Democrat	58%	25%	17%	403
	Independent	43%	55%	3%	136
	Republican	2%	96%	2%	406
Ideology	Liberal	54%	31%	15%	194
	Moderate	39%	51%	10%	470
	Conservative	2%	97%	1%	256
Media Usage	Boston Globe reader	44%	22%	34%	69
	NHPR listener	44%	43%	13%	455
	Union Leader reader	38%	57%	5%	165
	WMUR viewer	31%	59%	10%	696
	Fox News viewer	10%	87%	2%	352
	Conservative radio listener	9%	83%	8%	264
	Local newspapers reader	42%	39%	19%	190
Age of Respondent	18 to 34	41%	44%	16%	257
	35 to 49	25%	68%	7%	205
	50 to 64	23%	72%	5%	303
	65 and older	43%	50%	7%	197
Gender of Respondent	Men	31%	64%	5%	468
	Women	34%	54%	11%	485
Level of Education	High school or less	22%	72%	6%	348
	Tech school/Some college	32%	62%	6%	299
	College graduate	42%	44%	14%	200
	Postgraduate work	44%	42%	14%	122
Region of State	Connecticut Valley	19%	74%	7%	134
	Manchester Area	33%	64%	3%	185
	Mass Border	46%	46%	8%	236
	North Country	17%	75%	8%	94
	Seacoast	40%	53%	7%	156
	Central/Lakes	24%	57%	19%	163
2020 Presidential Vote	Voted for Trump	1%	98%	1%	425
	Voted for Biden	60%	25%	15%	493
	Voted for other 2020 candidate	14%	86%		15
	Did not vote in 2020	33%	67%	0%	19