

July 20, 2021

## BIDEN'S JOB APPROVAL UNCHANGED, PERSONAL FAVORABILITY FALLS AMONG GRANITE STATERS

By: Sean P. McKinley, M.A.  
Zachary S. Azem, M.A.  
Andrew E. Smith, Ph.D.

andrew.smith@unh.edu  
603-862-2226  
cola.unh.edu/unh-survey-center

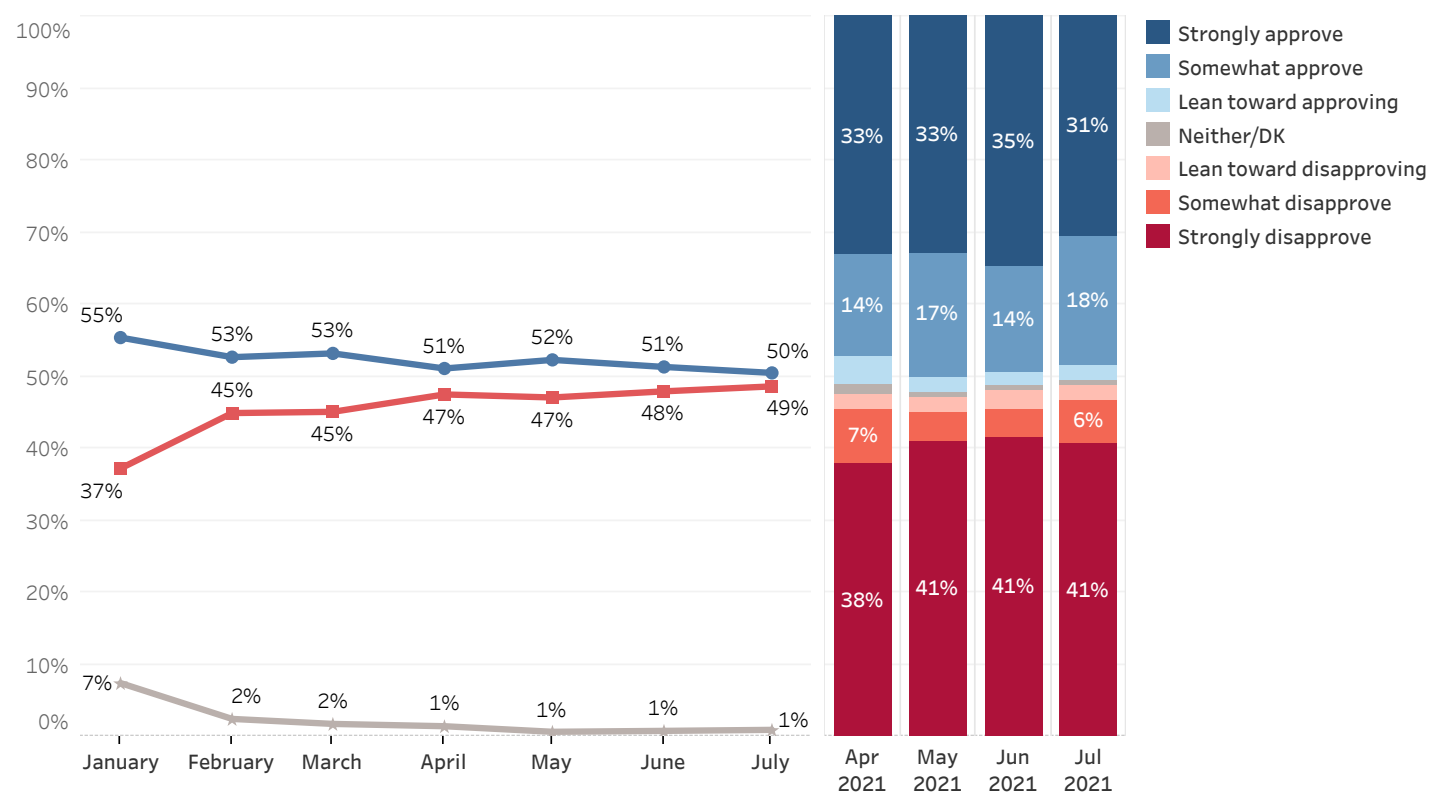
DURHAM, NH - New Hampshire residents are divided in their assessment of Joe Biden's handling of the economy, foreign affairs, and his overall job performance. Biden and Vice President Kamala Harris are less popular among Granite Staters than earlier in the year and a majority believe the country is on the wrong track.

These findings are based on the latest **Granite State Poll\***, conducted by the University of New Hampshire Survey Center. One thousand seven hundred and ninety-four (1,794) Granite State Panel members completed the survey online between July 15 and July 19, 2021. The margin of sampling error for the survey is +/- 2.3 percent. Data were weighted by respondent sex, age, education, and region of the state to targets from the most recent American Community Survey (ACS) conducted by the U.S. Census Bureau, as well as party registration levels provided by the NH Secretary of State and 2020 election results in NH. Granite State Panel members are recruited from randomly-selected landline and cell phone numbers across New Hampshire and surveys are sent periodically to panel members.

### Presidential Approval

President Joe Biden's approval rating in New Hampshire is largely unchanged since February, with half (50%) of Granite Staters approving of Biden's performance as president, 49% disapproving, and 1% unsure. Biden's net approval rating (the percentage who approve minus the percentage who disapprove) among Granite Staters is +1, largely unchanged since April (+4) but it is considerably higher than former President Trump's was in August 2017 (-21). Biden's net approval rating is +94 among Democrats, +4 among Independents, and -90 among Republicans.

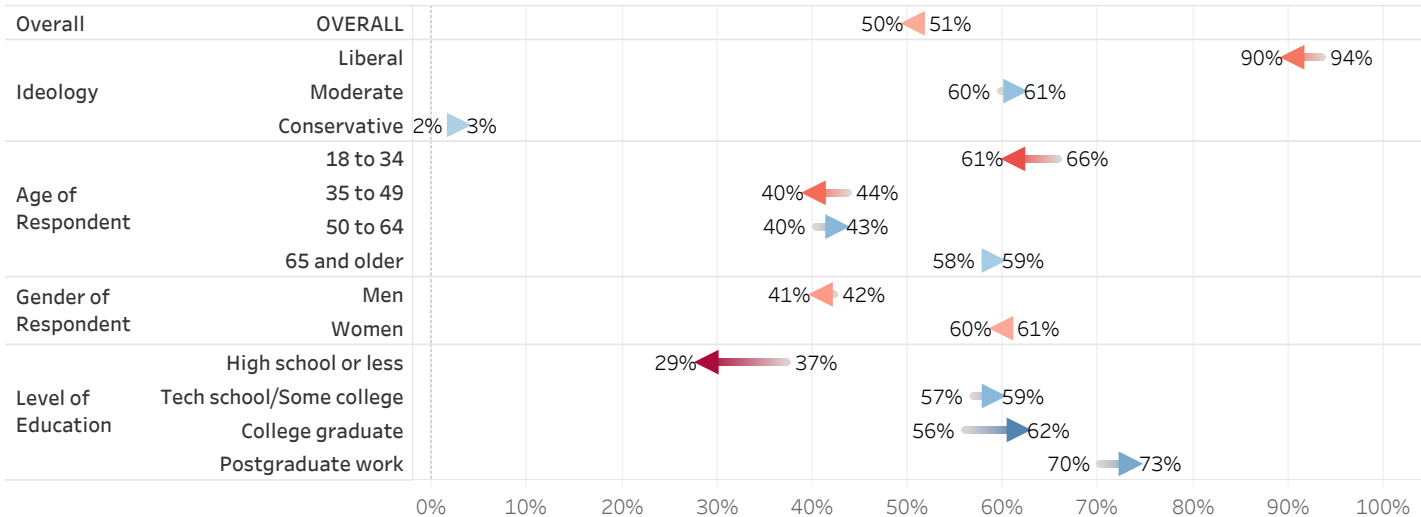
### Approval of President Biden's Job Performance



\* We ask that this copyrighted information be referred to as *the Granite State Poll*, conducted by the University of New Hampshire Survey Center.

- Nine in ten self-described liberals (90%) and a majority of moderates (61%) approve of Biden's handling of his job but only 3% of conservatives do.
- Residents aged 18 to 34 (61%) and those aged 65 and older (59%) are more likely than those aged 50 to 64 (43%) and those aged 35 to 49 (40%) to approve of Biden's handling of his job.
- Sixty percent of women approve of Biden's job performance but only 41% of men agree.
- Only 29% of respondents with a high school degree or less approve of Biden's handling of his job but majorities of those with higher levels of education approve.

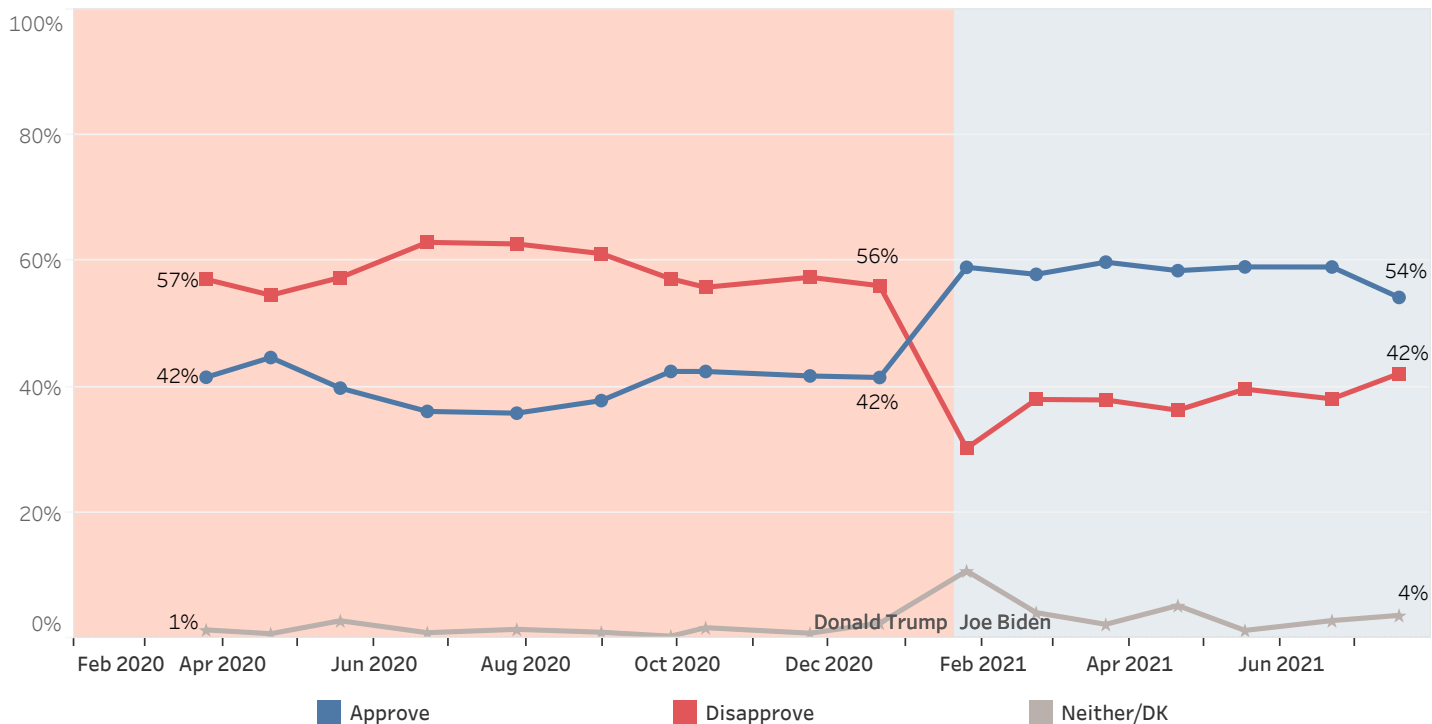
**Approval of President Biden's Handling His Job as President - Change from June 2021 to July 2021**



**Handling of Coronavirus (COVID-19) Situation**

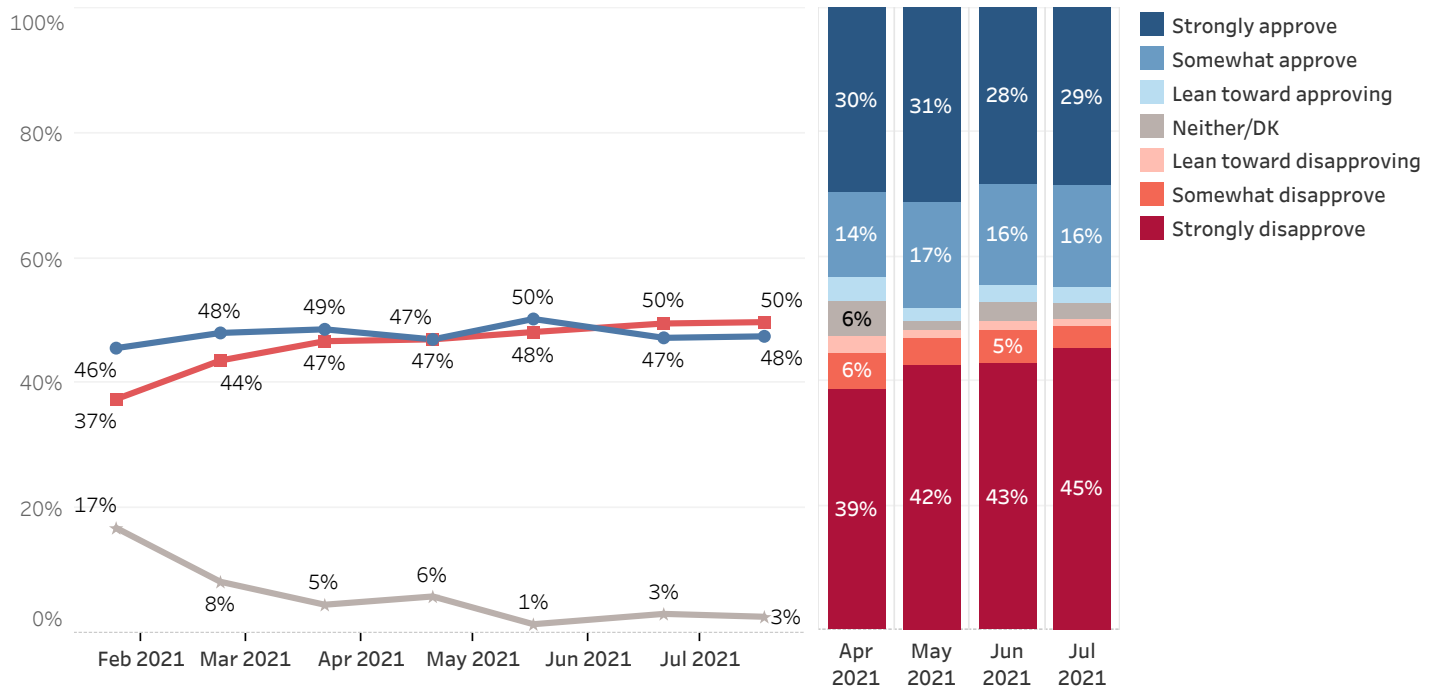
Approval of Biden's handling of the COVID-19 pandemic has fallen slightly among Granite Staters, though a majority continue to approve. Currently, 54% approve of Biden's handling of COVID-19 and 42% disapprove. Net approval for Biden's handling of COVID-19 is +12, down from +21 in June. Nearly all Democrats (98%) and a majority of Independents (58%) approve of Biden's handling of COVID-19 but only 12% of Republicans agree. Approval of Biden's handling of COVID-19 among New Hampshire Republicans is at its lowest point since he took office.

**Approval of President's Handling of Coronavirus (COVID-19) Situation**



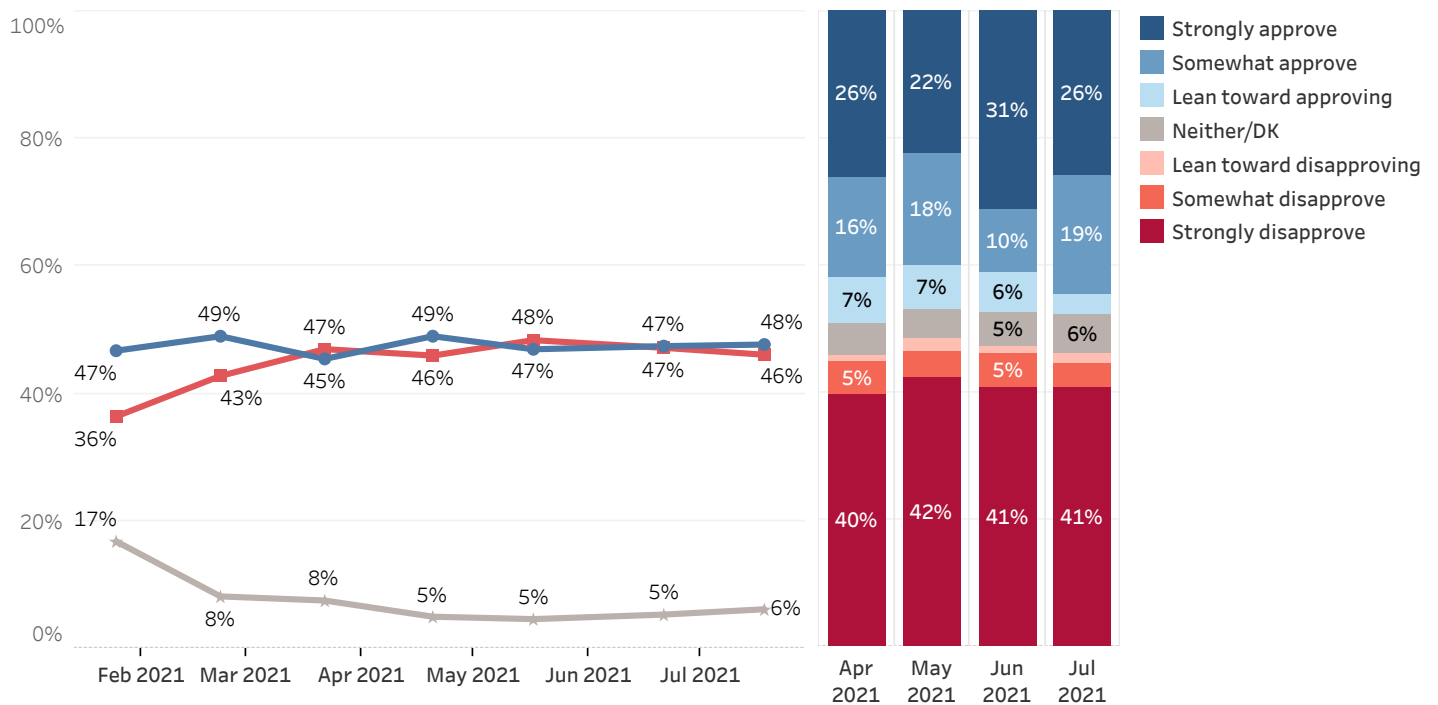
Turning to economics, New Hampshire residents remain divided about Biden's handling of the economy: 48% approve of Biden's handling of the economy, 50% disapprove, and 3% are unsure. Net approval of Biden's handling of the economy is -2, unchanged since June (-2). Ninety-five percent of Democrats and 46% of Independents approve of Biden's handling of the economy but only 3% of Republicans do.

**Approval of President Biden's Handling of the Economy**



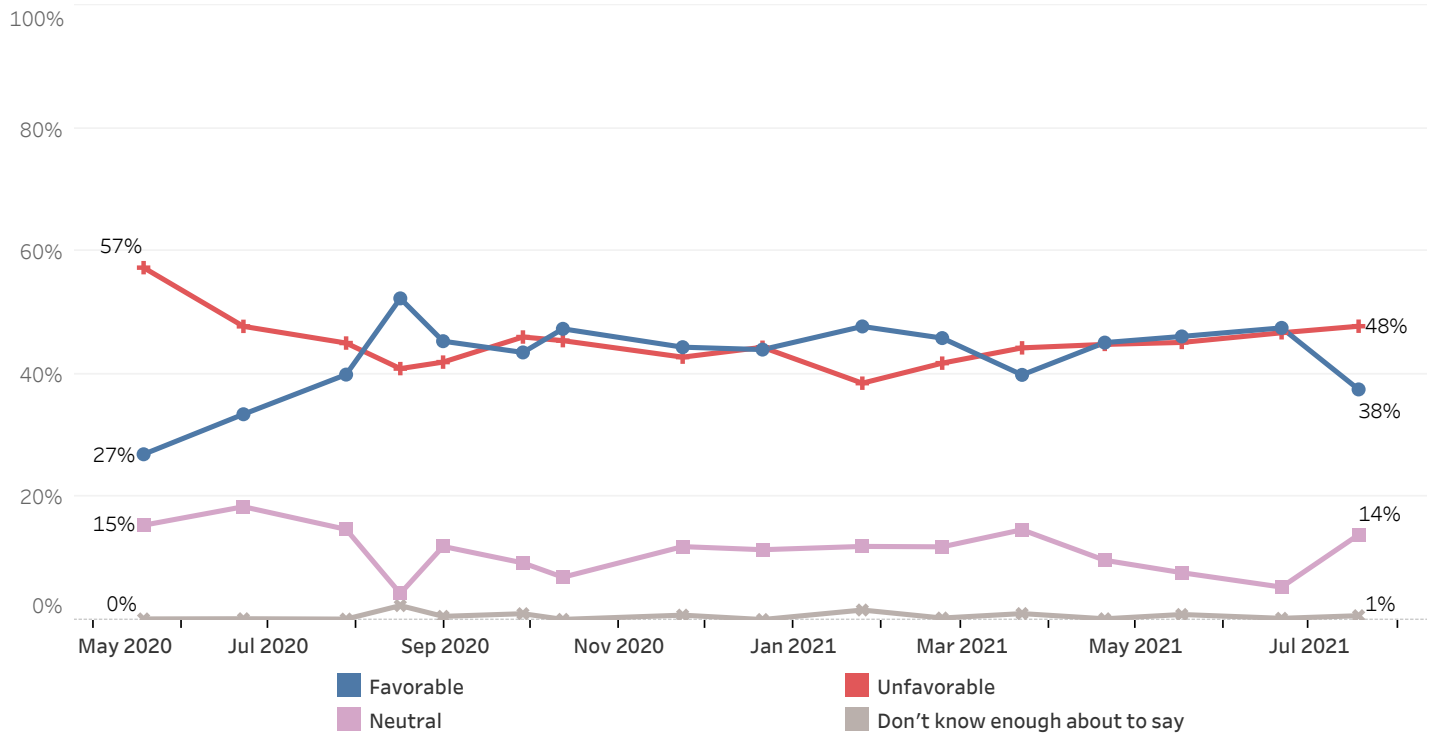
Granite Staters are also divided in their ratings of Biden's handling of foreign affairs: 48% approve of President Biden's handling of foreign affairs, 46% disapprove, and 6% are unsure. Net approval of Biden's handling of foreign affairs (+2) is largely unchanged since June (0). An all-time high of 93% of Democrats approve of Biden's handling of foreign affairs but among Republicans his approval on this measure is at an all-time low, only 3%. Half (51%) of Independents approve of Biden's handling of foreign affairs.

**Approval of President Biden's Handling of Foreign Affairs**



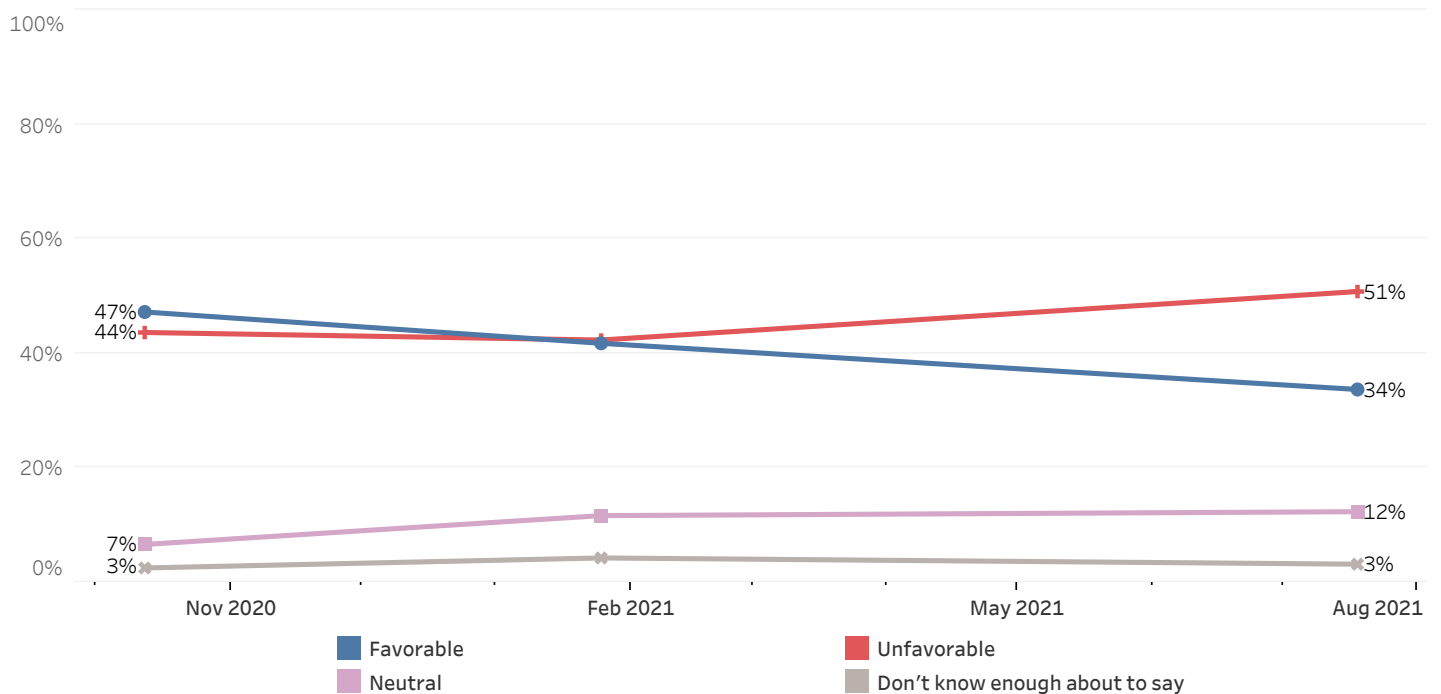
Thirty-eight percent of New Hampshire residents have a favorable opinion of Biden, 48% have an unfavorable opinion of him, 14% are neutral, and 1% are unsure. Biden's net favorability rating, the percentage who have a favorable opinion minus the percentage with an unfavorable opinion, is -10, down from +1 in June. Biden is very popular among Democrats (+76 net favorability rating), but is somewhat unpopular among Independents (-22) and very unpopular among Republicans (-91).

### Biden (D) Favorability



Only 34% of New Hampshire residents have a favorable opinion of Vice President Kamala Harris, 51% have an unfavorable opinion of her, 12% are neutral, and 3% are unsure. Harris's net favorability rating is -17, down from -1 in January. Harris is popular among Democrats (+67 net favorability rating) but is somewhat unpopular among Independents (-28) and very unpopular among Republicans (-96).

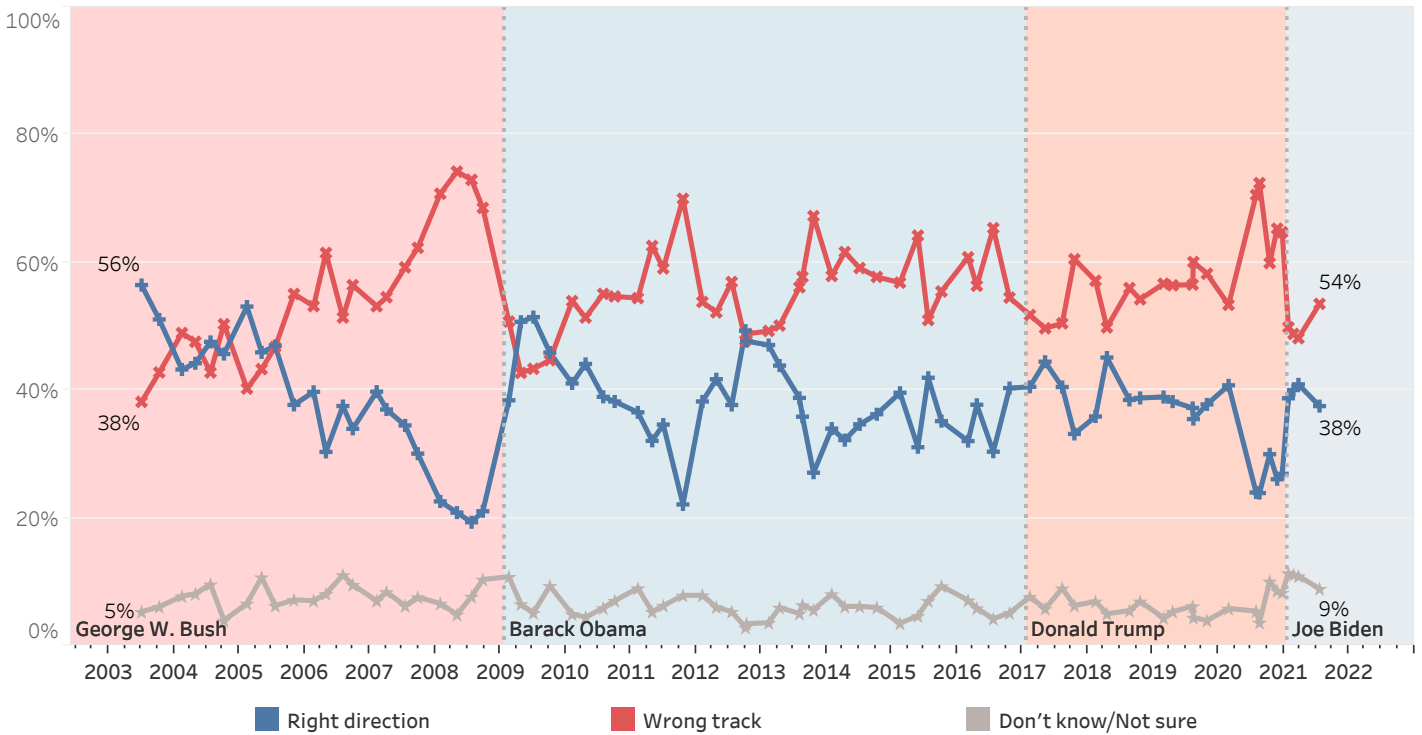
### Harris (D) Favorability



## U.S. Heading in Right Direction or On Wrong Track

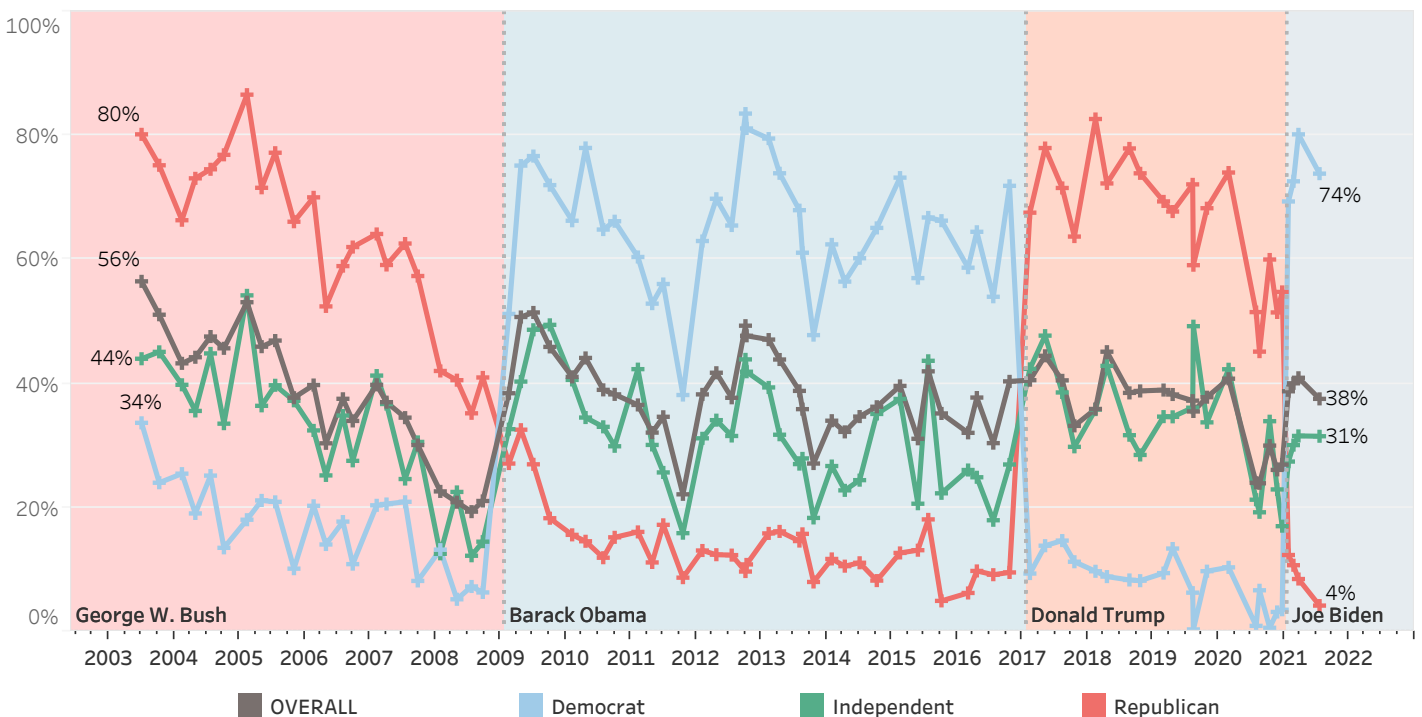
Only 38% of New Hampshire residents believe that things in the United States are headed in the right direction, 54% believe things are seriously off on the wrong track, and 9% are unsure. The percentage of Granite Staters who say the country is on the wrong track (54%) has increased since March (48%).

### Right Direction or Wrong Track



Three-quarters of Democrats (74%) say the country is headed in the right direction, down from 80% in March. Only one-third (31%) of Independents and 4% of Republicans feel the country is headed in the right direction.

### Right Direction - by Party ID



## Granite State Poll Methodology

These findings are based on the latest Granite State Poll, conducted by the University of New Hampshire Survey Center. One thousand seven hundred and ninety-four (1,794) Granite State Panel members completed the survey online between July 15 and July 19, 2021. The margin of sampling error for the survey is +/- 2.3 percent. These MSE's have not been adjusted for design effect. The response rate for the July 2021 Granite State Poll is 28%. The design effect for the survey is 2.9%.

Data were weighted by respondent sex, age, education, and region of the state to targets from the most recent American Community Survey (ACS) conducted by the U.S. Census Bureau, as well as party registration levels provided by the NH Secretary of State and to 2020 election results in New Hampshire.

The Granite State Panel is part of an effort by the University of New Hampshire Survey Center to investigate new ways of gathering and understanding the opinion of New Hampshire residents. Approximately 6,250 New Hampshire adults were recruited from randomly selected landline and cell phone numbers to participate in the panel. Panelists are then asked to participate in online surveys sponsored by the UNH Survey Center.

The number of respondents in each demographic below may not equal the number reported in cross-tabulation tables as some respondents choose not to answer some questions. Due to rounding, percentages may not sum to 100%.

For more information about the methodology used in the Granite State Panel, contact Dr. Andrew Smith at (603) 862-2226 or by email at [andrew.smith@unh.edu](mailto:andrew.smith@unh.edu).

### July 2021 Granite State Poll Demographics

		%	N
Gender of Respondent	Men	49%	861
	Women	51%	893
Age of Respondent	18 to 34	27%	475
	35 to 49	21%	376
	50 to 64	32%	566
	65 and older	21%	369
Level of Education	High school or less	36%	642
	Tech school/Some college	31%	551
	College graduate	21%	370
	Postgraduate work	13%	224
Region of State	Connecticut Valley	17%	309
	Manchester Area	17%	308
	Mass Border	26%	471
	North Country	6%	111
	Seacoast	16%	280
	Central/Lakes	17%	310
Party ID	Democrat	42%	730
	Independent	16%	276
	Republican	43%	748
Ideology	Liberal	28%	470
	Moderate	40%	682
	Conservative	32%	548
Voting Registration	Registered Democrat	28%	492
	Registered Undeclared/Not Reg.	42%	736
	Registered Republican	29%	513
2020 Presidential Vote	Voted for Trump	44%	784
	Voted for Biden	52%	911
	Voted for other 2020 candidate	2%	27
	Did not vote in 2020	2%	40

### Approval of President Biden's Job Performance

Generally speaking, do you approve or disapprove of the way Joe Biden is handling his job as president?

	<u>Approve</u>	<u>Disapprove</u>	<u>Neither/DK</u>	<u>N</u>
January 2021	55%	37%	7%	2,008
February 2021	53%	45%	2%	1,843
March 2021	53%	45%	2%	1,741
April 2021	51%	47%	1%	1,939
May 2021	52%	47%	1%	1,816
June 2021	51%	48%	1%	1,592
July 2021	50%	49%	1%	1,793

### Approval of President Biden's Handling of Coronavirus (COVID-19) Situation

Generally speaking, do you approve or disapprove of the way President Biden is handling the coronavirus (COVID-19) situation?

	<u>Approve</u>	<u>Disapprove</u>	<u>Neither/DK</u>	<u>N</u>
January 2021	59%	30%	11%	2,010
February 2021	58%	38%	4%	1,837
March 2021	60%	38%	2%	1,741
April 2021	58%	36%	5%	1,936
May 2021	59%	40%	1%	1,822
June 2021	59%	38%	3%	1,600
July 2021	54%	42%	4%	1,793

### Approval of President Biden's Handling of the Economy

Generally speaking, do you approve or disapprove of the way President Biden is handling the economy?

	<u>Approve</u>	<u>Disapprove</u>	<u>Neither/DK</u>	<u>N</u>
January 2021	46%	37%	17%	2,012
February 2021	48%	44%	8%	1,837
March 2021	49%	47%	5%	1,738
April 2021	47%	47%	6%	1,939
May 2021	50%	48%	1%	1,822
June 2021	47%	50%	3%	1,598
July 2021	48%	50%	3%	1,793

### Approval of President Biden's Handling of Foreign Affairs

Generally speaking, do you approve or disapprove of the way President Biden is handling foreign affairs?

	<u>Approve</u>	<u>Disapprove</u>	<u>Neither/DK</u>	<u>N</u>
January 2021	47%	36%	17%	2,011
February 2021	49%	43%	8%	1,842
March 2021	45%	47%	8%	1,740
April 2021	49%	46%	5%	1,940
May 2021	47%	48%	5%	1,815
June 2021	47%	47%	5%	1,597
July 2021	48%	46%	6%	1,790

### Favorability - Joe Biden

Below are a list of national public figures who could potentially run for President in 2024. Please indicate whether you have a favorable or unfavorable opinion of each of them or if you don't know enough about them to say - President (Former Vice President, Vice President) Joe Biden

	<u>Favorable</u>	<u>Neutral</u>	<u>Unfavorable</u>	<u>Don't know enough about to say</u>	<u>N</u>
September 2008	44%	9%	31%	16%	547
September 2012	49%	6%	38%	7%	636
May 2020	27%	15%	57%	0%	837
June 2020	33%	18%	48%	0%	994
July 2020	40%	15%	45%	0%	1,883
August 2020	45%	12%	42%	1%	1,876
September 2020	44%	9%	46%	1%	1,012
October 2020	47%	7%	45%	0%	915
November 2020	44%	12%	43%	1%	1,902
December 2020	44%	11%	44%	0%	775
January 2021	48%	12%	39%	2%	2,013
February 2021	46%	12%	42%	0%	1,858
March 2021	40%	15%	44%	1%	1,743
April 2021	45%	10%	45%	0%	1,937
May 2021	46%	8%	45%	1%	1,821
June 2021	48%	5%	47%	0%	1,596
July 2021	38%	14%	48%	1%	1,779

### Favorability - Kamala Harris

Below are a list of national public figures who could potentially run for President in 2024. Please indicate whether you have a favorable or unfavorable opinion of each of them or if you don't know enough about them to say - Vice President (Senator) Kamala Harris

	<u>Favorable</u>	<u>Neutral</u>	<u>Unfavorable</u>	<u>Don't know enough about to say</u>	<u>N</u>
October 2020	47%	7%	44%	3%	917
January 2021	42%	12%	42%	4%	2,015
July 2021	34%	12%	51%	3%	1,777



## U.S. Heading in Right Direction or On Wrong Track

Do you think things in this country are generally going in the right direction or are they seriously off on the wrong track?

	<u>Right direction</u>	<u>Wrong track</u>	<u>Don't know/Not sure</u>	<u>N</u>		<u>Right direction</u>	<u>Wrong track</u>	<u>Don't know/Not sure</u>	<u>N</u>
June 2003	56%	38%	5%	511	February 2013	47%	49%	4%	573
October 2003	51%	43%	6%	487	April 2013	44%	50%	6%	498
February 2004	43%	49%	8%	503	July 2013	39%	56%	5%	511
April 2004	44%	48%	8%	535	August 2013	36%	58%	6%	498
July 2004	48%	43%	10%	500	October 2013	27%	67%	6%	645
October 2004	46%	50%	4%	574	January 2014	34%	58%	8%	569
February 2005	53%	40%	7%	535	April 2014	32%	62%	6%	501
May 2005	46%	43%	11%	487	July 2014	35%	59%	6%	654
July 2005	47%	47%	6%	492	October 2014	36%	58%	6%	677
October 2005	38%	55%	7%	498	February 2015	40%	57%	4%	498
February 2006	40%	53%	7%	487	May 2015	31%	64%	5%	562
April 2006	30%	62%	8%	501	July 2015	42%	51%	7%	528
July 2006	38%	51%	11%	496	October 2015	35%	55%	9%	580
September 2006	34%	56%	10%	510	February 2016	32%	61%	7%	672
February 2007	40%	53%	7%	516	April 2016	38%	56%	6%	604
April 2007	37%	55%	8%	510	July 2016	30%	65%	4%	522
July 2007	34%	59%	6%	516	October 2016	40%	55%	5%	897
September 2007	30%	62%	8%	505	February 2017	41%	52%	8%	499
January 2008	23%	71%	7%	553	May 2017	44%	50%	6%	506
April 2008	21%	74%	5%	487	August 2017	41%	50%	9%	498
July 2008	19%	73%	8%	508	October 2017	33%	61%	6%	562
September 2008	21%	69%	10%	540	February 2018	36%	57%	7%	515
February 2009	38%	51%	11%	610	April 2018	45%	50%	5%	207
April 2009	51%	43%	7%	498	August 2018	38%	56%	6%	492
July 2009	51%	43%	5%	555	October 2018	39%	54%	7%	632
October 2009	46%	45%	9%	496	February 2019	39%	57%	4%	588
February 2010	41%	54%	5%	484	April 2019	38%	56%	5%	537
April 2010	44%	51%	4%	502	August 2019	37%	57%	6%	496
July 2010	39%	55%	6%	491	October 2019	38%	58%	4%	1,248
September 2010	38%	55%	7%	512	February 2020	41%	53%	6%	602
February 2011	37%	54%	9%	513	July 2020	24%	71%	5%	2,007
April 2011	32%	63%	5%	496	November 2020	26%	65%	9%	1,912
June 2011	35%	59%	6%	507	December 2020	27%	65%	8%	773
October 2011	22%	70%	8%	553	January 2021	39%	50%	11%	2,020
February 2012	38%	54%	8%	514	February 2021	40%	49%	11%	1,861
April 2012	42%	52%	6%	525	March 2021	41%	48%	11%	1,744
July 2012	38%	57%	5%	512	July 2021	38%	54%	9%	1,794
September 2012	49%	48%	3%	630					
October 2012	48%	49%	3%	578					

### Approval of President Biden's Job Performance

		Approve	Disapprove	Neither/DK	N
<b>STATEWIDE</b>	<b>July 2021</b>	50%	49%	1%	1,793
<b>Voting Registration</b>	Registered Democrat	95%	5%	0%	491
	Registered Undeclared/Not Reg.	52%	47%	0%	735
	Registered Republican	7%	91%	2%	513
<b>Party ID</b>	Democrat	97%	3%	0%	730
	Independent	52%	48%	0%	276
	Republican	4%	94%	2%	747
<b>Ideology</b>	Liberal	90%	9%	0%	470
	Moderate	61%	37%	2%	680
	Conservative	3%	97%	0%	548
<b>Media Usage</b>	Boston Globe reader	79%	21%	0%	108
	NHPR listener	66%	33%	0%	959
	Union Leader reader	59%	36%	5%	218
	WMUR viewer	56%	43%	1%	1,188
	Fox News viewer	16%	82%	2%	543
	Conservative radio listener	10%	89%	0%	441
	Local newspapers reader	71%	29%	1%	288
<b>Age of Respondent</b>	18 to 34	61%	39%	0%	475
	35 to 49	40%	60%	0%	376
	50 to 64	43%	57%	0%	565
	65 and older	59%	38%	3%	368
<b>Gender of Respondent</b>	Men	41%	58%	2%	861
	Women	60%	40%	0%	892
<b>Level of Education</b>	High school or less	29%	70%	2%	642
	Tech school/Some college	59%	41%	0%	550
	College graduate	62%	38%	1%	370
	Postgraduate work	73%	26%	1%	224
<b>Region of State</b>	Connecticut Valley	30%	69%	0%	309
	Manchester Area	51%	45%	4%	308
	Mass Border	66%	34%	0%	470
	North Country	46%	53%	1%	111
	Seacoast	63%	37%	0%	280
	Central/Lakes	38%	62%	0%	309
<b>2020 Presidential Vote</b>	Voted for Trump	0%	98%	2%	783
	Voted for Biden	95%	5%	0%	911
	Voted for other 2020 candidate	45%	55%		27
	Did not vote in 2020	27%	72%	1%	40

## Approval of President Biden's Handling of Coronavirus (COVID-19) Situation

		Approve	Disapprove	Neither/DK	N
<b>STATEWIDE</b>	<b>July 2021</b>	54%	42%	4%	1,793
<b>Voting Registration</b>	Registered Democrat	98%	2%	0%	491
	Registered Undeclared/Not Reg.	54%	43%	3%	735
	Registered Republican	15%	78%	8%	513
<b>Party ID</b>	Democrat	98%	2%	0%	730
	Independent	58%	40%	1%	276
	Republican	12%	82%	6%	748
<b>Ideology</b>	Liberal	91%	6%	3%	470
	Moderate	65%	34%	1%	682
	Conservative	9%	84%	6%	548
<b>Media Usage</b>	Boston Globe reader	79%	20%	0%	108
	NHPR listener	68%	29%	3%	958
	Union Leader reader	64%	29%	7%	218
	WMUR viewer	61%	36%	3%	1,188
	Fox News viewer	24%	72%	4%	544
	Conservative radio listener	17%	78%	5%	442
	Local newspapers reader	70%	26%	4%	288
<b>Age of Respondent</b>	18 to 34	60%	34%	6%	475
	35 to 49	42%	56%	2%	376
	50 to 64	49%	47%	4%	566
	65 and older	66%	33%	1%	368
<b>Gender of Respondent</b>	Men	48%	48%	4%	861
	Women	61%	36%	3%	892
<b>Level of Education</b>	High school or less	34%	63%	3%	642
	Tech school/Some college	60%	33%	7%	551
	College graduate	67%	31%	1%	369
	Postgraduate work	78%	21%	1%	224
<b>Region of State</b>	Connecticut Valley	36%	60%	4%	309
	Manchester Area	52%	41%	7%	308
	Mass Border	69%	28%	2%	470
	North Country	52%	44%	4%	111
	Seacoast	66%	30%	4%	280
	Central/Lakes	42%	58%	1%	309
<b>2020 Presidential Vote</b>	Voted for Trump	8%	87%	5%	784
	Voted for Biden	95%	3%	3%	910
	Voted for other 2020 candidate	67%	31%	2%	27
	Did not vote in 2020	26%	67%	7%	40

### Approval of President Biden's Handling of the Economy

		Approve	Disapprove	Neither/DK	N
<b>STATEWIDE</b>	<b>July 2021</b>	48%	50%	3%	1,793
<b>Voting Registration</b>	Registered Democrat	94%	6%	0%	491
	Registered Undeclared/Not Reg.	47%	49%	3%	735
	Registered Republican	5%	91%	4%	513
<b>Party ID</b>	Democrat	95%	5%	1%	730
	Independent	46%	53%	1%	276
	Republican	3%	93%	4%	747
<b>Ideology</b>	Liberal	85%	12%	3%	470
	Moderate	58%	39%	3%	682
	Conservative	2%	95%	3%	548
<b>Media Usage</b>	Boston Globe reader	76%	23%	2%	108
	NHPR listener	62%	36%	2%	959
	Union Leader reader	52%	37%	11%	218
	WMUR viewer	52%	45%	2%	1,188
	Fox News viewer	13%	85%	2%	543
	Conservative radio listener	9%	90%	1%	442
	Local newspapers reader	62%	33%	5%	288
<b>Age of Respondent</b>	18 to 34	56%	38%	6%	475
	35 to 49	39%	60%	1%	376
	50 to 64	40%	59%	0%	566
	65 and older	57%	39%	4%	368
<b>Gender of Respondent</b>	Men	39%	57%	3%	860
	Women	56%	42%	2%	893
<b>Level of Education</b>	High school or less	29%	70%	2%	642
	Tech school/Some college	52%	42%	6%	550
	College graduate	60%	39%	1%	369
	Postgraduate work	71%	28%	1%	224
<b>Region of State</b>	Connecticut Valley	29%	70%	1%	309
	Manchester Area	46%	45%	9%	308
	Mass Border	65%	35%	1%	470
	North Country	40%	59%	2%	111
	Seacoast	57%	39%	4%	280
	Central/Lakes	37%	63%	0%	309
<b>2020 Presidential Vote</b>	Voted for Trump	0%	96%	3%	783
	Voted for Biden	90%	8%	2%	911
	Voted for other 2020 candidate	44%	56%		27
	Did not vote in 2020	20%	77%	3%	40

### Approval of President Biden's Handling of Foreign Affairs

		Approve	Disapprove	Neither/DK	N
<b>STATEWIDE</b>	<b>July 2021</b>	48%	46%	6%	1,790
<b>Voting Registration</b>	Registered Democrat	92%	6%	2%	489
	Registered Undeclared/Not Reg.	48%	42%	10%	734
	Registered Republican	7%	89%	5%	513
<b>Party ID</b>	Democrat	93%	4%	3%	728
	Independent	51%	48%	1%	276
	Republican	3%	87%	10%	747
<b>Ideology</b>	Liberal	82%	12%	6%	469
	Moderate	60%	31%	8%	680
	Conservative	3%	95%	2%	548
<b>Media Usage</b>	Boston Globe reader	75%	25%	1%	108
	NHPR listener	62%	33%	5%	959
	Union Leader reader	53%	36%	11%	218
	WMUR viewer	53%	43%	5%	1,189
	Fox News viewer	13%	80%	7%	544
	Conservative radio listener	10%	87%	3%	442
	Local newspapers reader	62%	30%	8%	287
<b>Age of Respondent</b>	18 to 34	54%	30%	16%	475
	35 to 49	39%	60%	1%	373
	50 to 64	41%	55%	3%	566
	65 and older	58%	39%	3%	368
<b>Gender of Respondent</b>	Men	40%	53%	8%	861
	Women	56%	40%	4%	890
<b>Level of Education</b>	High school or less	29%	62%	10%	642
	Tech school/Some college	54%	40%	6%	551
	College graduate	57%	40%	3%	368
	Postgraduate work	70%	27%	3%	222
<b>Region of State</b>	Connecticut Valley	29%	67%	4%	309
	Manchester Area	46%	43%	11%	308
	Mass Border	65%	34%	1%	469
	North Country	43%	55%	2%	111
	Seacoast	57%	37%	5%	279
	Central/Lakes	36%	50%	14%	309
<b>2020 Presidential Vote</b>	Voted for Trump	0%	92%	8%	783
	Voted for Biden	90%	6%	5%	909
	Voted for other 2020 candidate	48%	48%	4%	27
	Did not vote in 2020	24%	70%	7%	40

### Favorability - Joe Biden

		Favorable	Neutral	Unfavorable	Don't know enough about to say	N
<b>STATEWIDE</b>	<b>July 2021</b>	38%	14%	48%	1%	1,779
<b>Voting Registration</b>	Registered Democrat	84%	11%	4%	0%	491
	Registered Undeclared/Not Reg.	30%	22%	46%	1%	733
	Registered Republican	4%	6%	90%	0%	501
<b>Party ID</b>	Democrat	79%	19%	2%	0%	728
	Independent	27%	25%	48%	0%	276
	Republican	2%	4%	93%	1%	736
<b>Ideology</b>	Liberal	75%	15%	10%	0%	468
	Moderate	42%	21%	37%	0%	681
	Conservative	1%	2%	95%	2%	537
<b>Media Usage</b>	Boston Globe reader	71%	7%	21%		108
	NHPR listener	50%	16%	34%	0%	956
	Union Leader reader	49%	19%	32%	1%	207
	WMUR viewer	44%	13%	41%	1%	1,175
	Fox News viewer	11%	7%	80%	2%	532
	Conservative radio listener	7%	4%	89%	0%	431
	Local newspapers reader	55%	16%	29%		288
<b>Age of Respondent</b>	18 to 34	33%	28%	39%		475
	35 to 49	33%	7%	59%	0%	374
	50 to 64	35%	7%	56%	2%	564
	65 and older	51%	14%	35%	1%	357
<b>Gender of Respondent</b>	Men	27%	16%	56%	1%	849
	Women	48%	11%	40%	0%	891
<b>Level of Education</b>	High school or less	16%	15%	68%	1%	632
	Tech school/Some college	41%	18%	41%	0%	548
	College graduate	53%	9%	38%	0%	368
	Postgraduate work	65%	10%	24%	1%	223
<b>Region of State</b>	Connecticut Valley	27%	3%	67%	3%	309
	Manchester Area	41%	15%	45%		296
	Mass Border	36%	31%	33%	0%	470
	North Country	34%	13%	53%	0%	110
	Seacoast	57%	7%	37%	0%	280
	Central/Lakes	32%	5%	62%	0%	309
<b>2020 Presidential Vote</b>	Voted for Trump	0%	2%	97%	1%	772
	Voted for Biden	72%	23%	5%	0%	909
	Voted for other 2020 candidate	3%	44%	53%		27
	Did not vote in 2020	10%	13%	77%		40

### Favorability - Kamala Harris

		Favorable	Neutral	Unfavorable	Don't know enough about to say	N
<b>STATEWIDE</b>	<b>July 2021</b>	34%	12%	51%	3%	1,777
<b>Voting Registration</b>	Registered Democrat	79%	16%	5%	0%	491
	Registered Undeclared/Not Reg.	26%	17%	50%	7%	735
	Registered Republican	2%	3%	94%	1%	498
<b>Party ID</b>	Democrat	71%	19%	4%	6%	730
	Independent	25%	19%	54%	2%	276
	Republican	1%	2%	97%	1%	733
<b>Ideology</b>	Liberal	71%	18%	11%	0%	470
	Moderate	34%	18%	42%	7%	681
	Conservative	0%	1%	98%	1%	533
<b>Media Usage</b>	Boston Globe reader	61%	14%	25%	1%	108
	NHPR listener	45%	19%	36%	1%	945
	Union Leader reader	39%	18%	43%	0%	217
	WMUR viewer	40%	14%	45%	1%	1,174
	Fox News viewer	8%	6%	85%	1%	529
	Conservative radio listener	5%	3%	91%	1%	427
	Local newspapers reader	48%	19%	33%	0%	287
<b>Age of Respondent</b>	18 to 34	31%	21%	40%	9%	475
	35 to 49	30%	8%	62%	0%	375
	50 to 64	33%	7%	58%	2%	553
	65 and older	43%	13%	43%	1%	367
<b>Gender of Respondent</b>	Men	21%	12%	62%	5%	859
	Women	47%	12%	40%	1%	879
<b>Level of Education</b>	High school or less	19%	2%	72%	7%	629
	Tech school/Some college	37%	19%	42%	1%	550
	College graduate	42%	17%	40%	1%	368
	Postgraduate work	53%	17%	29%	1%	222
<b>Region of State</b>	Connecticut Valley	23%	6%	70%	1%	309
	Manchester Area	35%	15%	49%	1%	295
	Mass Border	35%	19%	36%	10%	470
	North Country	24%	16%	59%	1%	110
	Seacoast	51%	10%	38%	0%	279
	Central/Lakes	29%	8%	63%	1%	309
<b>2020 Presidential Vote</b>	Voted for Trump		0%	99%	1%	769
	Voted for Biden	65%	23%	7%	5%	910
	Voted for other 2020 candidate	1%	5%	82%	13%	27
	Did not vote in 2020	6%	9%	85%	0%	40

## U.S. Heading in Right Direction or On Wrong Track

		Right direction	Wrong track	Don't know/Not sure	N
<b>STATEWIDE</b>	<b>July 2021</b>	38%	54%	9%	1,794
<b>Voting Registration</b>	Registered Democrat	68%	15%	17%	491
	Registered Undeclared/Not Reg.	39%	55%	6%	736
	Registered Republican	7%	87%	6%	513
<b>Party ID</b>	Democrat	74%	12%	14%	730
	Independent	31%	62%	6%	276
	Republican	4%	93%	3%	748
<b>Ideology</b>	Liberal	59%	20%	21%	470
	Moderate	50%	44%	6%	682
	Conservative	2%	97%	1%	548
<b>Media Usage</b>	Boston Globe reader	56%	38%	6%	108
	NHPR listener	48%	41%	11%	960
	Union Leader reader	40%	42%	19%	218
	WMUR viewer	42%	46%	12%	1,189
	Fox News viewer	15%	79%	6%	544
	Conservative radio listener	9%	88%	3%	442
	Local newspapers reader	50%	35%	15%	288
<b>Age of Respondent</b>	18 to 34	34%	47%	18%	475
	35 to 49	31%	62%	7%	376
	50 to 64	36%	59%	5%	566
	65 and older	51%	43%	6%	369
<b>Gender of Respondent</b>	Men	31%	64%	5%	861
	Women	44%	44%	12%	893
<b>Level of Education</b>	High school or less	30%	69%	2%	642
	Tech school/Some college	33%	49%	18%	551
	College graduate	48%	46%	6%	370
	Postgraduate work	55%	34%	12%	224
<b>Region of State</b>	Connecticut Valley	21%	71%	8%	309
	Manchester Area	36%	50%	14%	308
	Mass Border	48%	43%	9%	471
	North Country	33%	58%	9%	111
	Seacoast	51%	39%	10%	280
	Central/Lakes	30%	66%	4%	310
<b>2020 Presidential Vote</b>	Voted for Trump	2%	98%	0%	784
	Voted for Biden	69%	15%	16%	911
	Voted for other 2020 candidate	43%	53%	4%	27
	Did not vote in 2020	11%	79%	10%	40