

June 23, 2021

SUNUNU STILL POPULAR; GRANITE STATERS OPPOSE CRITICAL RACE THEORY BAN, DIVIDED ON 24-WEEK ABORTION BAN

By: Sean P. McKinley, M.A.
Zachary S. Azem, M.A.
Andrew E. Smith, Ph.D.

andrew.smith@unh.edu
603-862-2226
cola.unh.edu/unh-survey-center

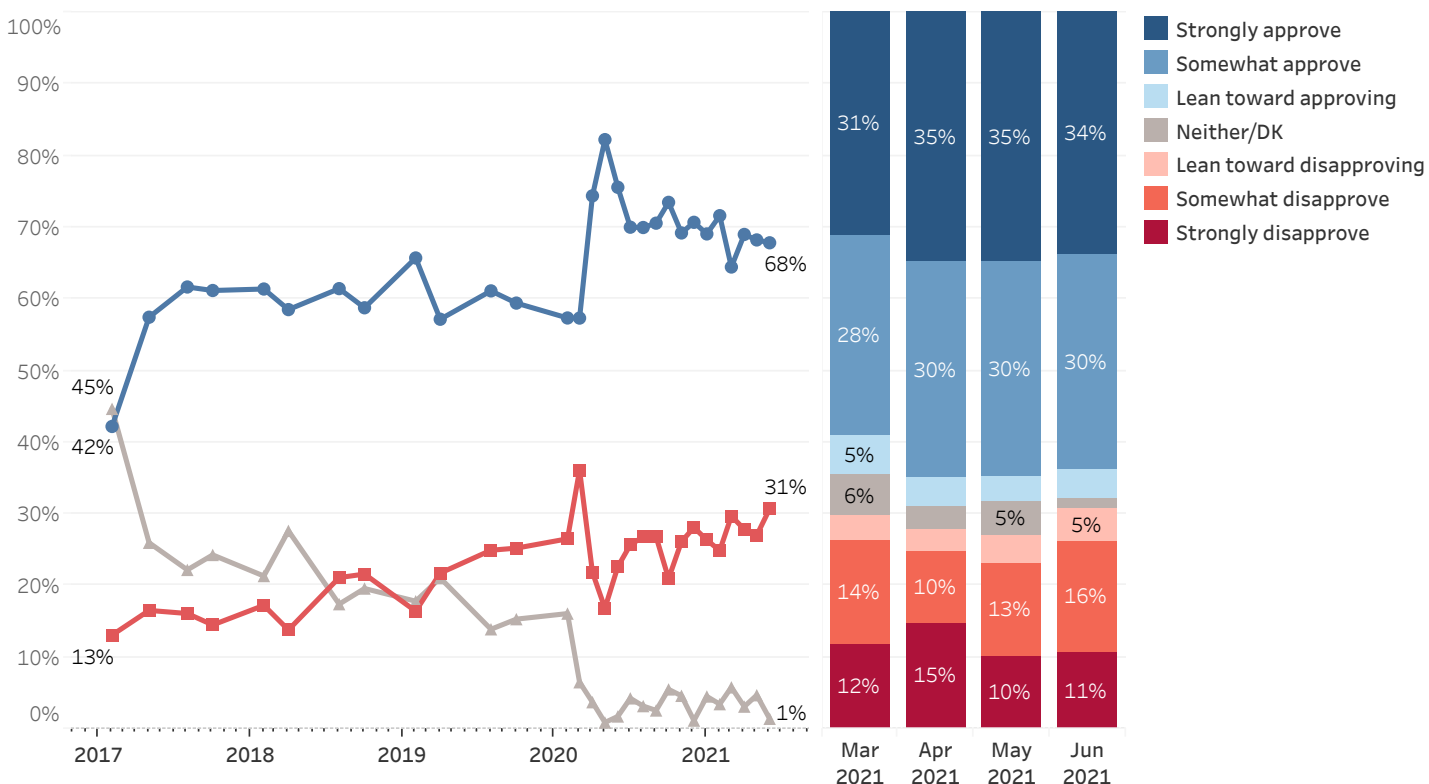
DURHAM, NH – Approval of Governor Chris Sununu's overall job performance and his handling of the COVID-19 pandemic remain high in New Hampshire. Half of Granite Staters oppose a ban on "critical race theory" in the state, with most Democrats adamantly opposed but a majority of Republicans and Independents supporting such a ban. State residents are about evenly divided in their opinion of a ban on abortion after twenty-four weeks.

These findings are based on the latest **Granite State Poll***, conducted by the University of New Hampshire Survey Center. One thousand six hundred and two (1,602) Granite State Panel members completed the survey online between June 17 and June 21, 2021. The margin of sampling error for the survey is +/- 2.4 percent. Data were weighted by respondent sex, age, education, and region of the state to targets from the most recent American Community Survey (ACS) conducted by the U.S. Census Bureau, as well as party registration levels provided by the NH Secretary of State and 2020 election results in NH. Granite State Panel members are recruited from randomly-selected landline and cell phone numbers across New Hampshire and surveys are sent periodically to panel members.

Gubernatorial Approval

More than two-thirds of Granite Staters approve of Chris Sununu's job performance as governor. Sixty-eight percent approve of his performance as governor, 31% disapprove, and 1% neither approve nor disapprove or don't know. Sununu's approval rating has been steady since July 2020. Sununu's net approval rating (the percentage who approve minus the percentage who disapprove) among Granite Staters is +37, slightly lower than in May (+41).

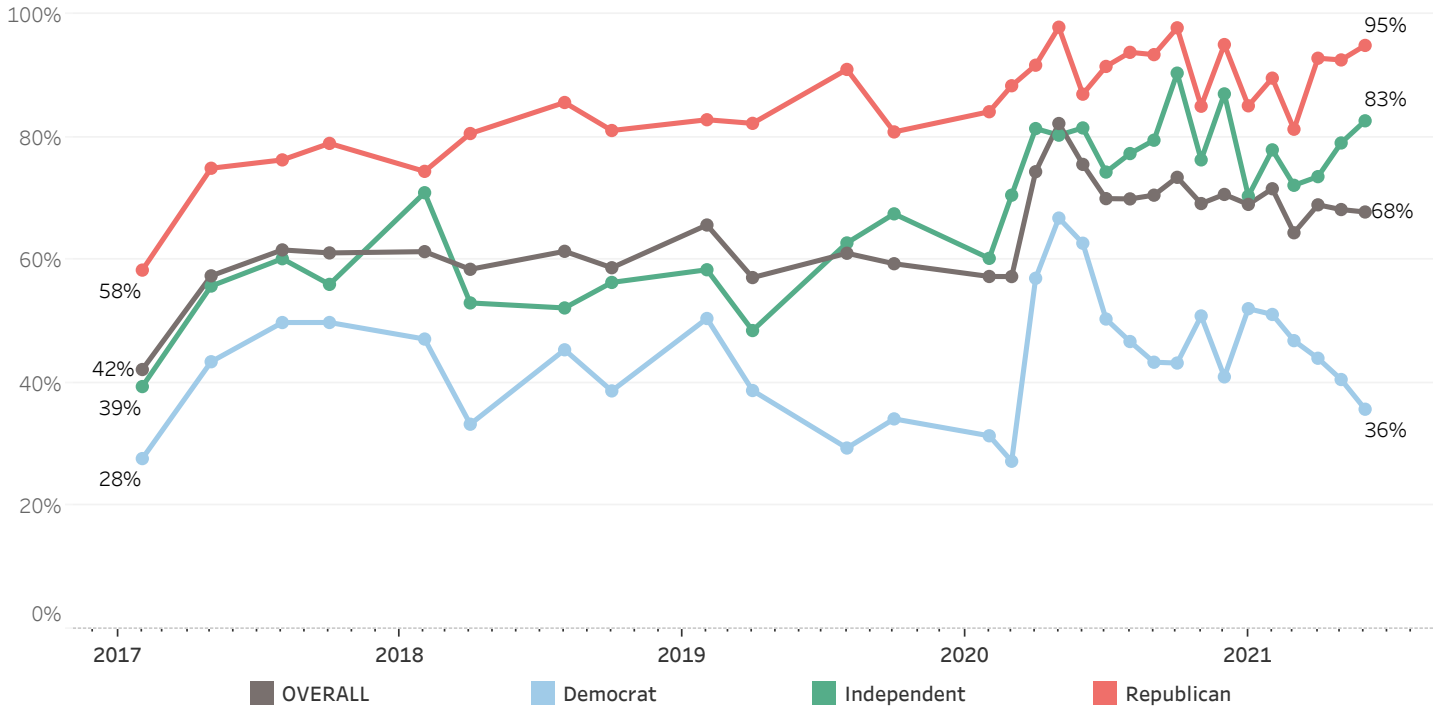
Gubernatorial Approval - Chris Sununu



* We ask that this copyrighted information be referred to as *the Granite State Poll*, conducted by the University of New Hampshire Survey Center.

Nearly all Republicans (95%) approve of Sununu's job performance and more than four in five Independents (83%) agree. However, only 36% of Democrats approve of Sununu's performance and his approval among Democrats has fallen for five consecutive months.

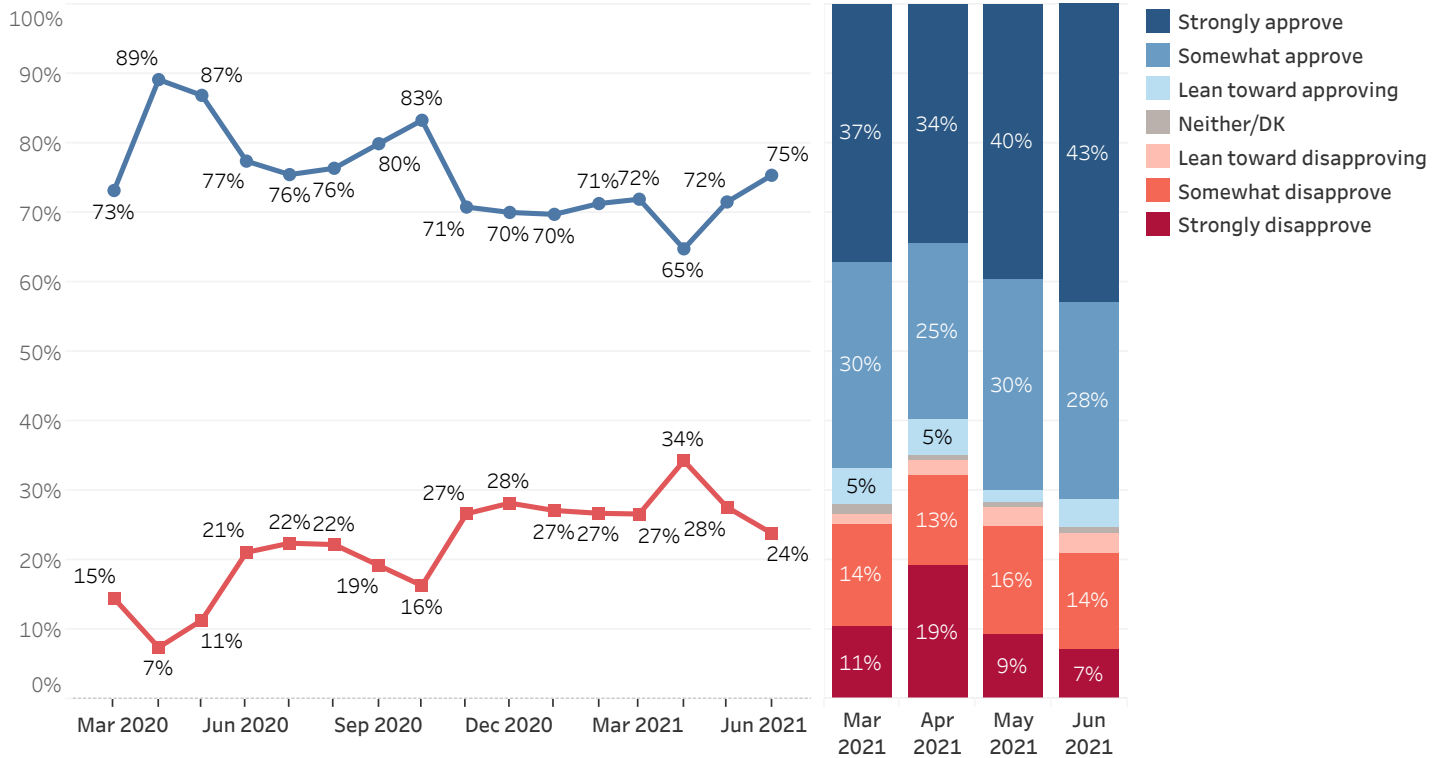
Job Approval - Governor Chris Sununu - By Party Identification



COVID-19

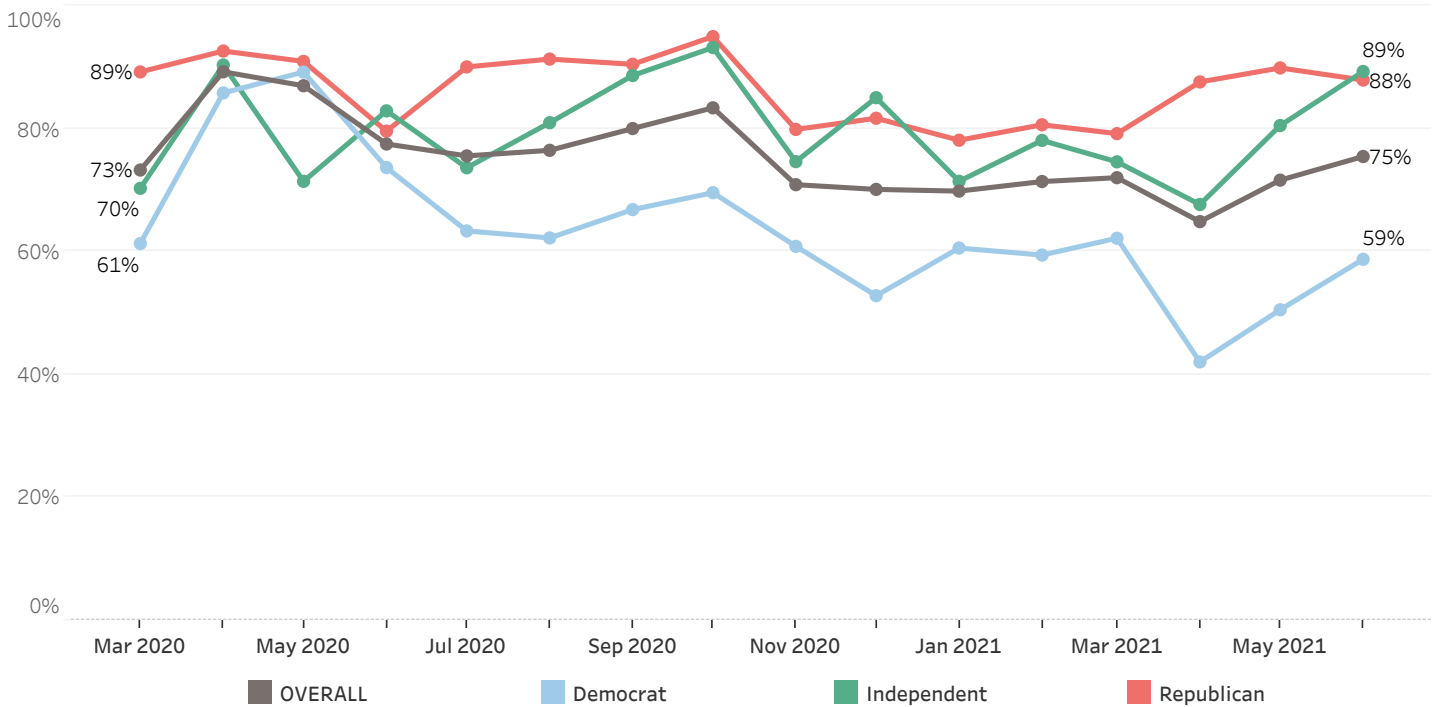
Meanwhile, three-quarters (75%) approve of Sununu's handling of the COVID-19 pandemic while 24% disapprove. Approval of Sununu's handling of COVID-19 is now at its highest point since October 2020 (83%).

Approval of Governor Sununu's Handling of Coronavirus (COVID-19) Situation



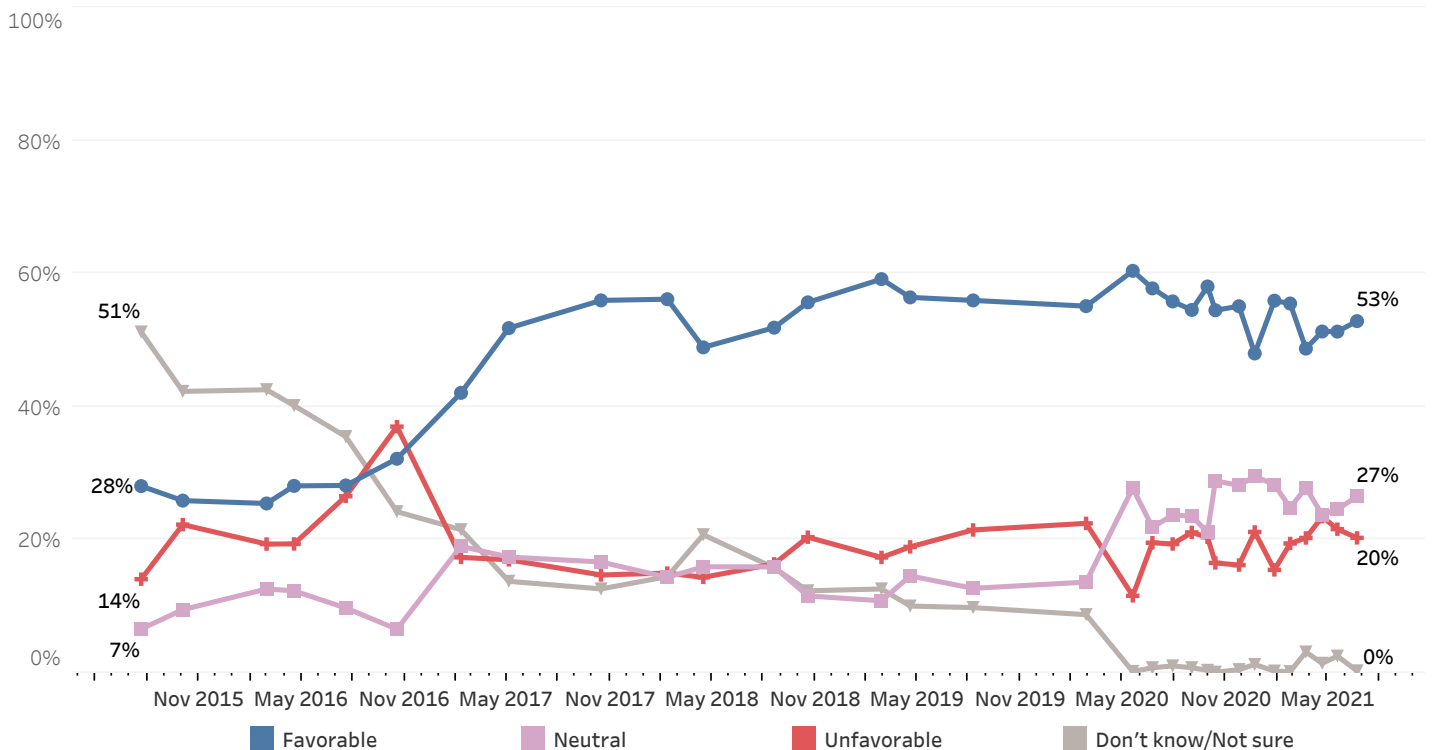
Approval of Sununu's handling of COVID-19 is bipartisan. Eighty-nine percent of Independents and 88% of Republicans approve of Sununu's handling of COVID-19 while 59% of Democrats agree. Approval has increased among Independents by 9 percentage points and among Democrats by 8 points since May.

Approval of Governor Sununu's Handling of Coronavirus (COVID-19) Situation - By Party ID



Just over half (53%) of New Hampshire residents have a favorable opinion of Sununu, 20% say they have an unfavorable opinion of him, 27% are neutral, and less than 1% are unsure. Sununu's net favorability rating is +33, largely unchanged since May (+30). Sununu is very popular among Republicans (+84 net favorability rating) and is popular among Independents (+49) but is somewhat unpopular among Democrats (-24).

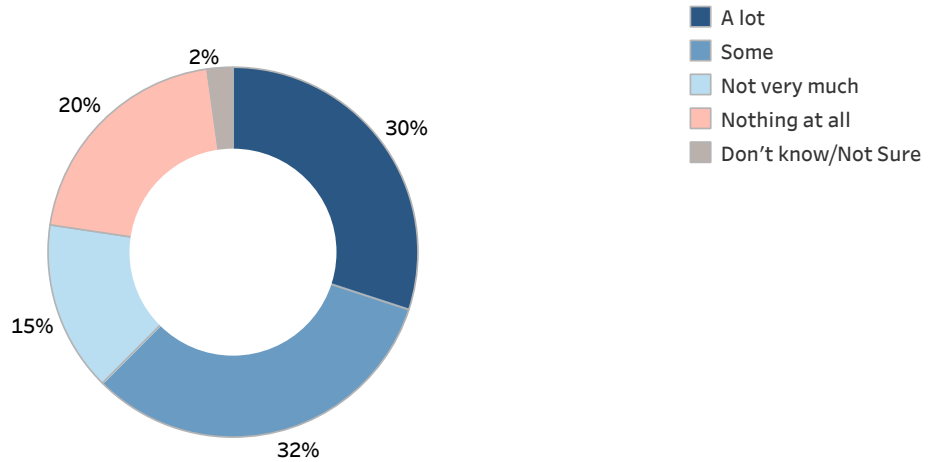
Sununu (R) Favorability



Critical Race Theory Ban

The New Hampshire Senate has passed HB2, the bill that accompanies HB1, the state budget bill. The New Hampshire House has not yet passed this bill, but Governor Sununu has said he will sign it in order to pass the state budget. HB2 includes several controversial policy changes for New Hampshire and it is facing opposition from both Democrats and conservative Republicans in the House. One area of controversy is a ban on teaching "critical race theory" among "divisive topics" on race and gender in the state. Thirty percent say they have heard a lot about this bill, 32% have heard some about it, 15% have heard not very much about it, 20% have heard nothing at all, and 2% don't know or are unsure.

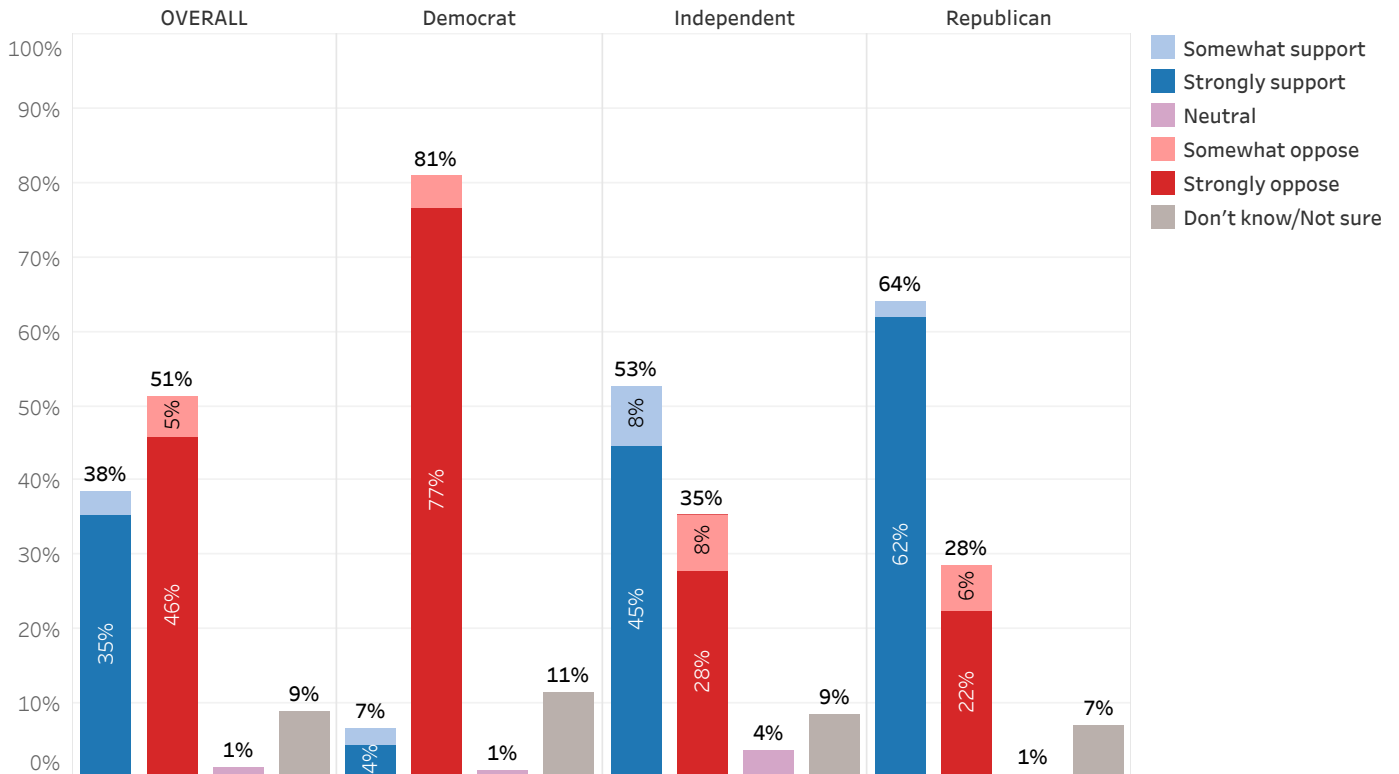
How Much Heard or Seen About Critical Race Theory Bill - June 2021



Among those who have heard at least something about this bill (N=1,239), a slim majority oppose the ban on critical race theory in the state. Only 38% of Granite Staters say they strongly (35%) or somewhat (3%) support such a ban, 51% say they strongly (46%) or somewhat (5%) oppose it, 1% are neutral, and 9% don't know or are unsure.

More than four in five Democrats (81%) are opposed to a ban on critical race theory while nearly two-thirds of Republicans (64%) and 53% of Independents support such a ban.

Support or Oppose Critical Race Theory Ban - By Party ID - June 2021

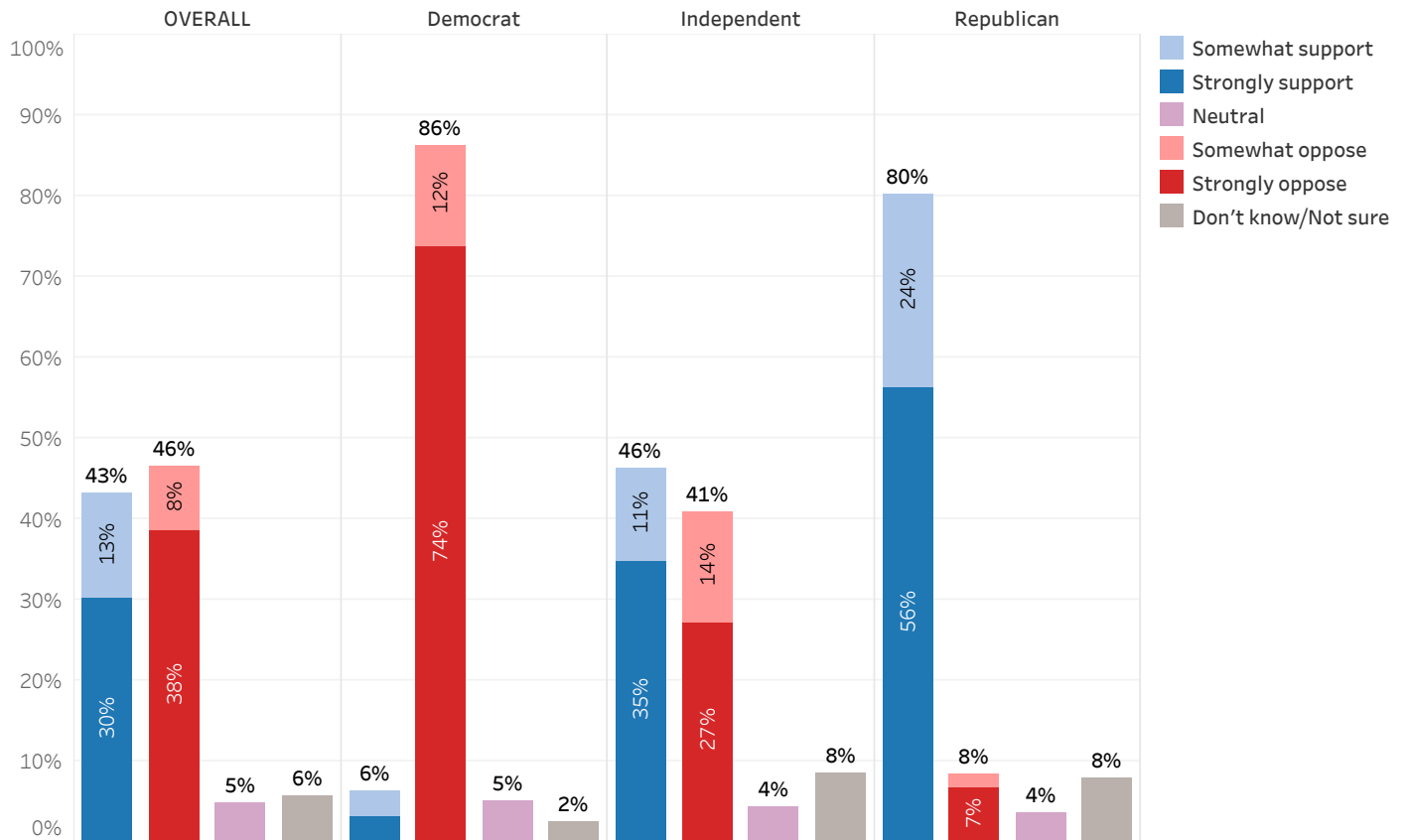


24 Week Abortion Ban

Another controversial topic in HB2 is a ban on abortions after 24 weeks, except in cases of a medical emergency. The bill would open doctors to felony charges if they perform a procedure after 24 weeks. Granite Staters are divided on this bill: 43% say they strongly (30%) or somewhat (13%) support banning abortion after 24 weeks, 46% are strongly (38%) or somewhat (8%) opposed to doing so, 5% are neutral, and 6% don't know or are unsure.

Nearly all Democrats are opposed to this bill (86%), while four in five Republicans (80%) support it. Independents are divided, with 46% in support and 41% opposed.

Support or Oppose 24 Week Abortion Ban - By Party ID - June 2021



Granite State Poll Methodology

These findings are based on the latest Granite State Poll, conducted by the University of New Hampshire Survey Center. One thousand six hundred and two (1,602) Granite State Panel members completed the survey online between June 17 and June 21, 2021. The margin of sampling error for the survey is +/- 2.4 percent. These MSE's have not been adjusted for design effect. The response rate for the June 2021 Granite State Poll is 27%. The design effect for the survey is 2.7%.

Data were weighted by respondent sex, age, education, and region of the state to targets from the most recent American Community Survey (ACS) conducted by the U.S. Census Bureau, as well as party registration levels provided by the NH Secretary of State and to 2020 election results in New Hampshire.

The Granite State Panel is part of an effort by the University of New Hampshire Survey Center to investigate new ways of gathering and understanding the opinion of New Hampshire residents. Approximately 6,000 New Hampshire adults were recruited from randomly selected landline and cell phone numbers to participate in the panel. Panelists are then asked to participate in online surveys sponsored by the UNH Survey Center.

The number of respondents in each demographic below may not equal the number reported in cross-tabulation tables as some respondents choose not to answer some questions. Due to rounding, percentages may not sum to 100%.

For more information about the methodology used in the Granite State Panel, contact Dr. Andrew Smith at (603) 862-2226 or by email at andrew.smith@unh.edu.

June 2021 Granite State Poll Demographics

		%	N
Gender of Respondent	Men	49%	771
	Women	51%	798
Age of Respondent	18 to 34	27%	425
	35 to 49	20%	323
	50 to 64	33%	518
	65 and older	21%	328
Level of Education	High school or less	36%	575
	Tech school/Some college	31%	493
	College graduate	21%	331
	Postgraduate work	13%	202
Region of State	Central/Lakes	18%	286
	Connecticut Valley	17%	279
	Manchester Area	14%	231
	Mass Border	27%	429
	North Country	6%	95
	Seacoast	18%	280
Party ID	Democrat	43%	675
	Independent	15%	243
	Republican	42%	664
Voting Registration	Registered Democrat	28%	442
	Registered Undeclared/Not Reg.	42%	663
	Registered Republican	30%	463
2020 Presidential Vote	Voted for Trump	45%	705
	Voted for Biden	52%	819
	Voted for other 2020 candidate	2%	24
	Did not vote in 2020	2%	30

Approval of Governor Sununu's Job Performance

Generally speaking, do you approve or disapprove of the way Chris Sununu is handling his job as governor?

	<u>Approve</u>	<u>Disapprove</u>	<u>Neither/DK</u>	<u>N</u>
February 2017	42%	13%	45%	476
May 2017	57%	17%	26%	502
August 2017	62%	16%	22%	484
October 2017	61%	15%	24%	540
February 2018	61%	17%	21%	500
April 2018	59%	14%	28%	189
August 2018	61%	21%	17%	486
October 2018	59%	22%	20%	622
February 2019	66%	16%	18%	592
April 2019	57%	22%	21%	529
August 2019	60%	23%	17%	483
October 2019	59%	25%	15%	1,231
February 2020	57%	27%	16%	582
March 2020	57%	36%	7%	646
April 2020	74%	22%	4%	1,150
May 2020	82%	17%	1%	818
June 2020	76%	23%	2%	993
July 2020	70%	26%	4%	1,978
August 2020	70%	27%	3%	1,940
September 2020	71%	27%	3%	1,027
October 2020	73%	21%	6%	931
November 2020	69%	26%	5%	1,908
December 2020	71%	28%	1%	758
January 2021	69%	26%	5%	2,023
February 2021	72%	25%	3%	1,838
March 2021	64%	30%	6%	1,743
April 2021	69%	28%	3%	1,939
May 2021	68%	27%	5%	1,823
June 2021	68%	31%	1%	1,601

Approval of Governor Sununu's Handling of Coronavirus (COVID-19) Situation

Generally speaking, do you approve or disapprove of the way Chris Sununu is handling the coronavirus (COVID-19) situation?

	<u>Approve</u>	<u>Disapprove</u>	<u>Neither/DK</u>	<u>N</u>
March 2020	73%	15%	12%	643
April 2020	89%	7%	3%	1,154
May 2020	87%	11%	2%	815
June 2020	77%	21%	1%	970
July 2020	76%	22%	2%	1,973
August 2020	76%	22%	1%	1,930
September 2020	80%	19%	1%	1,027
October 2020	83%	16%	0%	930
November 2020	71%	27%	2%	1,908
December 2020	70%	28%	2%	763
January 2021	70%	27%	3%	2,019
February 2021	71%	27%	2%	1,860
March 2021	72%	27%	1%	1,739
April 2021	65%	34%	1%	1,937
May 2021	72%	28%	1%	1,823
June 2021	75%	24%	1%	1,597

Favorability - Chris Sununu

Below are a list of political figures in the U.S. and New Hampshire. Please indicate whether you have a favorable or unfavorable opinion of each of them or if you don't know enough about them to say - Governor Chris Sununu

	<u>Favorable</u>	<u>Neutral</u>	<u>Unfavorable</u>	<u>Don't know/Not Sure</u>	<u>N</u>
July 2015	28%	7%	14%	51%	530
October 2015	26%	10%	22%	42%	581
February 2016	25%	13%	19%	43%	684
April 2016	28%	12%	19%	40%	618
July 2016	28%	10%	27%	36%	467
October 2016	32%	7%	37%	24%	767
February 2017	42%	19%	17%	22%	502
May 2017	52%	17%	17%	14%	514
October 2017	56%	17%	15%	13%	570
February 2018	56%	14%	15%	14%	519
April 2018	49%	16%	14%	21%	208
August 2018	52%	16%	16%	16%	500
October 2018	56%	12%	20%	12%	640
February 2019	59%	11%	17%	13%	603
April 2019	56%	15%	19%	10%	548
August 2019	56%	13%	21%	10%	496
February 2020	55%	14%	22%	9%	610
May 2020	60%	28%	12%	0%	838
June 2020	58%	22%	20%	1%	993
July 2020	56%	24%	19%	1%	1,884
August 2020	55%	24%	21%	1%	1,873
September 2020	58%	21%	20%	0%	1,017
October 2020	54%	29%	17%	0%	908
November 2020	55%	28%	16%	0%	1,897
December 2020	48%	30%	21%	1%	775
January 2021	56%	28%	15%	0%	2,021
February 2021	55%	25%	19%	0%	1,858
March 2021	49%	28%	20%	3%	1,740
April 2021	51%	24%	23%	1%	1,940
May 2021	51%	25%	22%	3%	1,823
June 2021	53%	27%	20%	0%	1,600

How Much Heard or Seen About Critical Race Theory Bill

How much have you seen or heard about a bill that that would ban the teaching of "critical race theory" in the state?

	<u>A lot</u>	<u>Some</u>	<u>Not very much</u>	<u>Nothing at all</u>	<u>Don't know/Not sure</u>	<u>N</u>
June 2021	30%	32%	15%	20%	2%	1,602

Support or Oppose Critical Race Theory Ban

And do you support or oppose a bill that would ban teaching "critical race theory" in New Hampshire or do you not know enough to say?

	<u>Strongly support</u>	<u>Somewhat support</u>	<u>Neutral</u>	<u>Somewhat oppose</u>	<u>Strongly oppose</u>	<u>Don't know/Not sure</u>	<u>N</u>
June 2021	35%	3%	1%	5%	46%	9%	1,239

Support or Oppose 24 Week Abortion Ban

The New Hampshire Legislature has approved a bill that would ban abortion after 24 weeks except in cases of medical emergency. The bill would open doctors to felony charges if they perform a procedure after 24 weeks. Do you support or oppose this bill or do you not know enough to say?

	<u>Strongly support</u>	<u>Somewhat support</u>	<u>Neutral</u>	<u>Somewhat oppose</u>	<u>Strongly oppose</u>	<u>Don't know/Not sure</u>	<u>N</u>
June 2021	30%	13%	5%	8%	38%	6%	### <input type="text"/>

Approval of Governor Sununu's Job Performance

		Approve	Disapprove	Neither/DK	N
STATEWIDE	June 2021	68%	31%	1%	1,601
Voting Registration	Registered Democrat	34%	63%	4%	441
	Registered Undeclared/Not Reg.	72%	27%	1%	663
	Registered Republican	93%	7%	0%	462
Party ID	Democrat	36%	61%	3%	675
	Independent	83%	16%	1%	242
	Republican	95%	5%	0%	664
Ideology	Liberal	28%	68%	3%	423
	Moderate	73%	25%	1%	613
	Conservative	91%	8%	0%	457
Media Usage	Boston Globe reader	51%	47%	2%	108
	Conservative radio listener	93%	7%	0%	441
	Fox News viewer	91%	9%	0%	533
	Local newspapers reader	67%	32%	1%	314
	NHPR listener	64%	35%	1%	911
	Union Leader reader	67%	33%	0%	210
	WMUR viewer	69%	29%	2%	1,074
Age of Respondent	18 to 34	48%	49%	3%	425
	35 to 49	71%	29%	0%	323
	50 to 64	79%	21%	0%	518
	65 and older	73%	25%	2%	327
Gender of Respondent	Men	75%	24%	1%	770
	Women	61%	37%	2%	798
Level of Education	High school or less	76%	24%		575
	Tech school/Some college	63%	34%	3%	493
	College graduate	67%	31%	1%	331
	Postgraduate work	57%	40%	3%	201
Region of State	Central/Lakes	79%	21%	1%	286
	Connecticut Valley	83%	16%	0%	279
	Manchester Area	66%	33%	2%	231
	Mass Border	55%	42%	2%	429
	North Country	68%	30%	3%	95
	Seacoast	62%	37%	1%	280
2020 Presidential Vote	Voted for Trump	94%	6%	0%	705
	Voted for Biden	43%	54%	3%	818
	Voted for other 2020 candidate	95%	5%		24
	Did not vote in 2020	95%	1%	5%	30

Approval of Governor Sununu's Handling of Coronavirus (COVID-19) Situation

		Approve	Disapprove	Neither/DK	N
STATEWIDE	June 2021	75%	24%	1%	1,597
Voting Registration	Registered Democrat	53%	45%	2%	440
	Registered Undeclared/Not Reg.	82%	18%	0%	659
	Registered Republican	87%	13%	0%	463
Party ID	Democrat	59%	40%	1%	673
	Independent	89%	10%	1%	240
	Republican	88%	12%	0%	664
Ideology	Liberal	52%	47%	1%	423
	Moderate	82%	17%	1%	610
	Conservative	84%	16%	0%	457
Media Usage	Boston Globe reader	64%	34%	2%	108
	Conservative radio listener	83%	17%	0%	441
	Fox News viewer	85%	15%	0%	534
	Local newspapers reader	76%	24%	0%	314
	NHPR listener	74%	26%	1%	906
	Union Leader reader	72%	27%	1%	207
	WMUR viewer	77%	22%	1%	1,071
Age of Respondent	18 to 34	63%	36%	1%	425
	35 to 49	75%	24%	1%	323
	50 to 64	80%	19%	0%	515
	65 and older	83%	16%	1%	326
Gender of Respondent	Men	84%	15%	0%	770
	Women	68%	31%	1%	793
Level of Education	High school or less	83%	17%		575
	Tech school/Some college	71%	28%	0%	488
	College graduate	72%	26%	1%	331
	Postgraduate work	70%	28%	2%	201
Region of State	Central/Lakes	89%	11%	0%	285
	Connecticut Valley	83%	16%	1%	279
	Manchester Area	64%	36%	0%	228
	Mass Border	73%	26%	1%	429
	North Country	70%	27%	3%	95
	Seacoast	70%	30%		280
2020 Presidential Vote	Voted for Trump	87%	13%	0%	705
	Voted for Biden	64%	35%	1%	813
	Voted for other 2020 candidate	94%	6%		24
	Did not vote in 2020	98%	2%	1%	30

Favorability - Chris Sununu

		<u>Favorable</u>	<u>Neutral</u>	<u>Unfavorable</u>	<u>Don't know/Not Sure</u>	<u>N</u>
STATEWIDE	June 2021	53%	27%	20%	0%	1,600
Voting Registration	Registered Democrat	16%	33%	51%	0%	441
	Registered Undeclared/Not Reg.	54%	32%	13%	1%	663
	Registered Republican	87%	10%	2%		461
Party ID	Democrat	20%	37%	43%	0%	675
	Independent	57%	34%	8%	2%	243
	Republican	85%	13%	1%		663
Ideology	Liberal	15%	31%	54%	0%	423
	Moderate	51%	36%	12%	1%	612
	Conservative	86%	11%	3%		457
Media Usage	Boston Globe reader	37%	37%	26%		108
	Conservative radio listener	75%	22%	3%	1%	441
	Fox News viewer	79%	16%	5%		532
	Local newspapers reader	51%	31%	19%		314
	NHPR listener	45%	28%	27%	1%	911
	Union Leader reader	57%	23%	20%		209
	WMUR viewer	55%	26%	20%		1,074
Age of Respondent	18 to 34	36%	38%	26%		425
	35 to 49	58%	18%	24%		323
	50 to 64	60%	25%	15%	1%	517
	65 and older	58%	23%	19%	0%	327
Gender of Respondent	Men	59%	28%	12%	1%	769
	Women	47%	26%	27%	0%	798
Level of Education	High school or less	57%	28%	14%	1%	575
	Tech school/Some college	53%	25%	22%	0%	493
	College graduate	52%	25%	24%		330
	Postgraduate work	42%	29%	29%	0%	201
Region of State	Central/Lakes	68%	17%	15%		286
	Connecticut Valley	48%	44%	8%	0%	279
	Manchester Area	58%	16%	26%		230
	Mass Border	46%	26%	27%	1%	428
	North Country	45%	43%	12%		95
	Seacoast	52%	22%	26%		280
2020 Presidential Vote	Voted for Trump	84%	14%	2%		704
	Voted for Biden	27%	36%	37%	0%	818
	Voted for other 2020 candidate	51%	26%	5%	18%	24
	Did not vote in 2020	35%	65%			30

How Much Heard or Seen About Critical Race Theory Bill

		<u>A lot</u>	<u>Some</u>	<u>Not very much</u>	<u>Nothing at all</u>	<u>Don't know/Not sure</u>	<u>N</u>
STATEWIDE	June 2021	30%	32%	15%	20%	2%	1,602
Voting Registration	Registered Democrat	33%	40%	12%	12%	3%	442
	Registered Undeclared/Not Reg.	25%	33%	14%	27%	1%	663
	Registered Republican	35%	22%	19%	20%	4%	463
Party ID	Democrat	26%	36%	13%	23%	2%	675
	Independent	25%	40%	12%	22%	1%	243
	Republican	37%	26%	17%	18%	2%	664
Ideology	Liberal	29%	42%	10%	16%	2%	423
	Moderate	22%	37%	16%	23%	1%	613
	Conservative	43%	21%	16%	20%	0%	457
Media Usage	Boston Globe reader	39%	28%	5%	28%	0%	108
	Conservative radio listener	47%	26%	16%	10%	0%	441
	Fox News viewer	52%	23%	12%	12%	1%	534
	Local newspapers reader	44%	26%	9%	20%	0%	314
	NHPR listener	32%	36%	11%	21%	1%	912
	Union Leader reader	40%	25%	8%	26%	1%	210
	WMUR viewer	33%	32%	16%	17%	2%	1,075
Age of Respondent	18 to 34	20%	38%	11%	27%	3%	425
	35 to 49	29%	38%	9%	25%		323
	50 to 64	33%	27%	20%	16%	4%	518
	65 and older	40%	28%	17%	15%	0%	327
Gender of Respondent	Men	29%	37%	15%	18%	1%	771
	Women	30%	28%	15%	23%	4%	798
Level of Education	High school or less	31%	23%	14%	29%	3%	575
	Tech school/Some college	32%	38%	12%	16%	2%	493
	College graduate	26%	35%	19%	19%	2%	331
	Postgraduate work	28%	43%	17%	12%	1%	202
Region of State	Central/Lakes	38%	35%	14%	10%	3%	286
	Connecticut Valley	28%	29%	15%	28%	0%	279
	Manchester Area	30%	42%	15%	11%	1%	231
	Mass Border	28%	31%	13%	26%	3%	429
	North Country	25%	30%	29%	15%	0%	95
	Seacoast	30%	29%	13%	25%	3%	280
2020 Presidential Vote	Voted for Trump	39%	26%	14%	19%	2%	705
	Voted for Biden	24%	36%	15%	23%	2%	819
	Voted for other 2020 candidate	6%	46%	39%	9%		24
	Did not vote in 2020	17%	59%	18%	6%		30

Support or Oppose Critical Race Theory Ban

		<u>Strongly support</u>	<u>Somewhat support</u>	<u>Neutral</u>	<u>Somewhat oppose</u>	<u>Strongly oppose</u>	<u>Don't know/Not sure</u>	<u>N</u>
STATEWIDE	June 2021	35%	3%	1%	5%	46%	9%	1,239
Voting Registration	Registered Democrat	6%	1%	1%	3%	78%	10%	378
	Registered Undeclared/Not Reg.	42%	5%	2%	6%	37%	8%	479
	Registered Republican	55%	2%	0%	6%	27%	9%	353
Party ID	Democrat	4%	2%	1%	4%	77%	11%	508
	Independent	45%	8%	4%	8%	28%	9%	187
	Republican	62%	2%	1%	6%	22%	7%	532
Ideology	Liberal	5%	3%	1%	2%	85%	5%	346
	Moderate	34%	5%	2%	9%	39%	12%	463
	Conservative	67%	1%	0%	5%	20%	5%	363
Media Usage	Boston Globe reader	8%	2%	1%	16%	71%	3%	78
	Conservative radio listener	55%	2%	0%	6%	29%	7%	396
	Fox News viewer	61%	2%	0%	5%	26%	5%	465
	Local newspapers reader	26%	3%	2%	9%	50%	9%	250
	NHPR listener	22%	3%	1%	8%	57%	9%	716
	Union Leader reader	26%	2%	1%	12%	50%	9%	153
	WMUR viewer	35%	3%	1%	6%	43%	11%	870
Age of Respondent	18 to 34	24%	3%	1%	8%	59%	3%	294
	35 to 49	35%	1%	2%	4%	53%	5%	243
	50 to 64	45%	3%	1%	4%	33%	13%	416
	65 and older	33%	4%	1%	6%	45%	11%	278
Gender of Respondent	Men	44%	4%	2%	7%	37%	7%	624
	Women	25%	2%	1%	5%	56%	11%	583
Level of Education	High school or less	47%	2%	0%	2%	38%	10%	394
	Tech school/Some college	31%	3%	1%	6%	50%	9%	405
	College graduate	32%	5%	2%	7%	47%	8%	263
	Postgraduate work	25%	4%	3%	8%	53%	7%	176
Region of State	Central/Lakes	43%	3%	2%	5%	40%	7%	249
	Connecticut Valley	41%	0%	0%	5%	36%	17%	200
	Manchester Area	32%	3%	1%	4%	49%	11%	202
	Mass Border	32%	5%	1%	5%	51%	6%	304
	North Country	45%	7%	1%	8%	25%	13%	80
	Seacoast	23%	1%	3%	7%	60%	5%	202
2020 Presidential Vote	Voted for Trump	70%	1%	0%	4%	21%	4%	561
	Voted for Biden	3%	3%	2%	7%	72%	14%	612
	Voted for other 2020 candidate	34%	28%	9%	9%	18%	3%	22
	Did not vote in 2020	56%	30%	1%	5%	3%	6%	28

Support or Oppose 24 Week Abortion Ban

		<u>Strongly support</u>	<u>Somewhat support</u>	<u>Neutral</u>	<u>Somewhat oppose</u>	<u>Strongly oppose</u>	<u>Don't know/Not sure</u>	<u>N</u>
STATEWIDE	June 2021	30%	13%	5%	8%	38%	6%	1,601
Voting Registration	Registered Democrat	6%	2%	5%	4%	81%	2%	441
	Registered Undeclared/Not Reg.	26%	15%	4%	15%	34%	6%	662
	Registered Republican	61%	20%	3%	1%	5%	10%	463
Party ID	Democrat	3%	3%	5%	12%	74%	2%	675
	Independent	35%	11%	4%	14%	27%	8%	243
	Republican	56%	24%	4%	2%	7%	8%	664
Ideology	Liberal	2%	1%	4%	3%	88%	2%	423
	Moderate	17%	14%	6%	17%	36%	10%	613
	Conservative	71%	21%	2%	1%	2%	4%	457
Media Usage	Boston Globe reader	15%	10%	11%	5%	58%	1%	108
	Conservative radio listener	63%	15%	2%	1%	10%	8%	441
	Fox News viewer	61%	16%	2%	4%	15%	3%	534
	Local newspapers reader	18%	16%	5%	7%	49%	5%	314
	NHPR listener	18%	13%	5%	8%	50%	8%	911
	Union Leader reader	18%	21%	8%	6%	40%	7%	210
	WMUR viewer	30%	12%	5%	6%	42%	3%	1,074
Age of Respondent	18 to 34	19%	7%	6%	13%	51%	4%	425
	35 to 49	26%	18%	3%	2%	36%	15%	323
	50 to 64	37%	15%	5%	9%	33%	2%	517
	65 and older	37%	14%	5%	5%	35%	4%	327
Gender of Respondent	Men	29%	14%	5%	10%	33%	9%	770
	Women	30%	12%	5%	6%	44%	3%	798
Level of Education	High school or less	34%	17%	5%	12%	24%	8%	575
	Tech school/Some college	34%	11%	5%	4%	41%	5%	492
	College graduate	27%	10%	3%	7%	50%	4%	331
	Postgraduate work	15%	14%	5%	8%	54%	4%	201
Region of State	Central/Lakes	34%	12%	5%	4%	33%	13%	286
	Connecticut Valley	36%	18%	6%	8%	29%	2%	279
	Manchester Area	33%	13%	3%	5%	42%	4%	230
	Mass Border	22%	16%	2%	14%	42%	4%	429
	North Country	31%	15%	9%	5%	35%	5%	95
	Seacoast	30%	5%	7%	6%	46%	5%	280
2020 Presidential Vote	Voted for Trump	60%	22%	2%	4%	5%	7%	705
	Voted for Biden	5%	6%	5%	12%	68%	4%	818
	Voted for other 2020 candidate	43%	4%	8%	9%	29%	8%	24
	Did not vote in 2020	6%	7%	45%	5%	18%	18%	30