

May 25, 2021

## APPROVAL OF SUNUNU'S COVID-19 HANDLING REBOUNDS IN NH; LARGE MAJORITY SUPPORT MARIJUANA LEGALIZATION

By: Sean P. McKinley, M.A.  
Zachary S. Azem, M.A.  
Andrew E. Smith, Ph.D.

andrew.smith@unh.edu  
603-862-2226  
cola.unh.edu/unh-survey-center

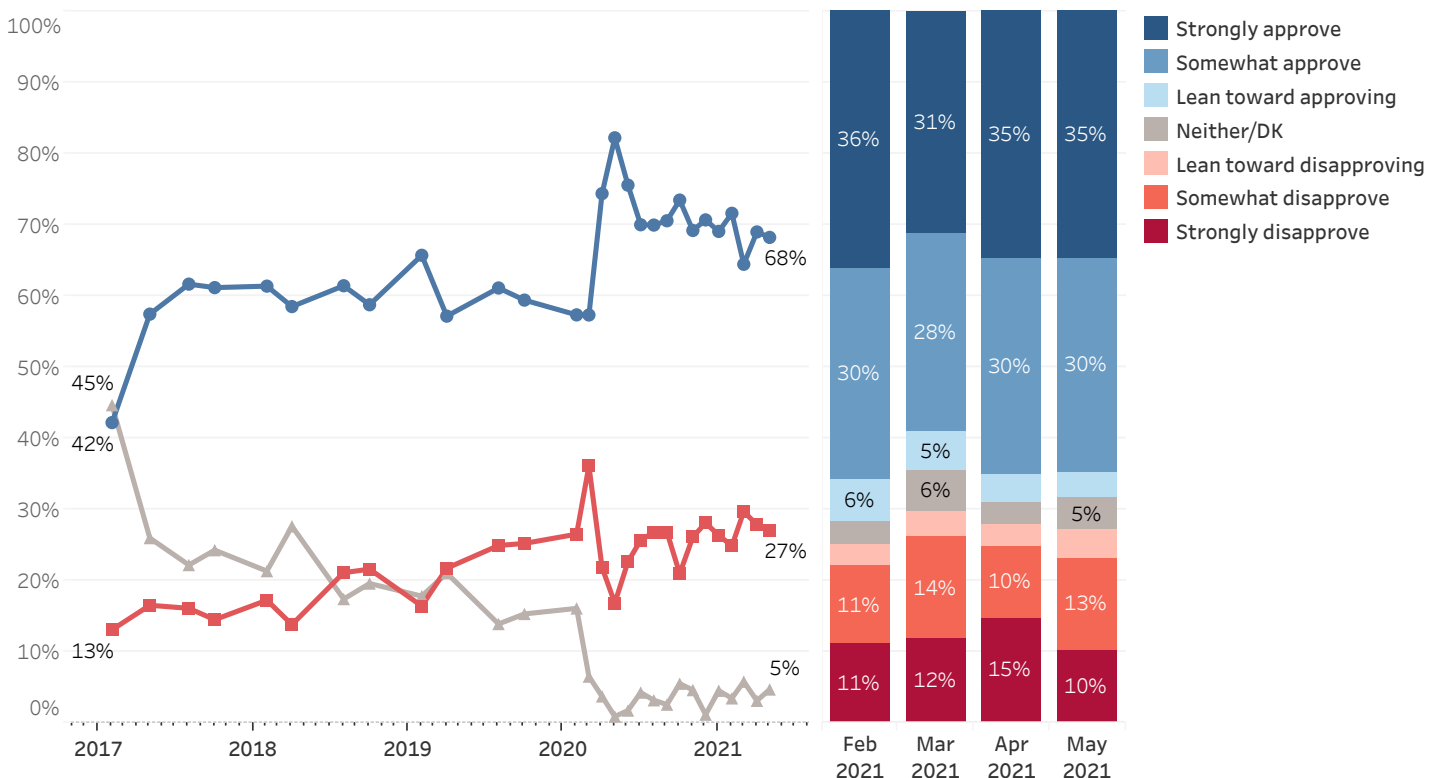
DURHAM, NH – Approval of Governor Chris Sununu's job performance remains high in New Hampshire and approval of his handling of the COVID-19 pandemic has rebounded since April. Majorities of Democrats, Independents, and Republicans support legalizing marijuana for recreational use and would approve of marijuana being sold at licensed retail outlets and taxed at levels similar to alcohol or tobacco.

These findings are based on the latest **Granite State Poll\***, conducted by the University of New Hampshire Survey Center. One thousand eight hundred and twenty-four (1,824) Granite State Panel members completed the survey online between May 13 and May 17, 2021. The margin of sampling error for the survey is +/- 2.3 percent. Data were weighted by respondent sex, age, education, and region of the state to targets from the most recent American Community Survey (ACS) conducted by the U.S. Census Bureau, as well as party registration levels provided by the NH Secretary of State and 2020 election results in NH. Granite State Panel members are recruited from randomly-selected landline and cell phone numbers across New Hampshire and surveys are sent periodically to panel members.

### Gubernatorial Approval

More than two-thirds of Granite Staters approve of Chris Sununu's job performance as governor. Sixty-eight percent approve of his performance as governor, 27% disapprove, and 5% neither approve nor disapprove or don't know. Sununu's approval rating has been steady since July 2020. Sununu's net approval rating (the percentage who approve minus the percentage who disapprove) among Granite Staters is +41, unchanged since April (+41).

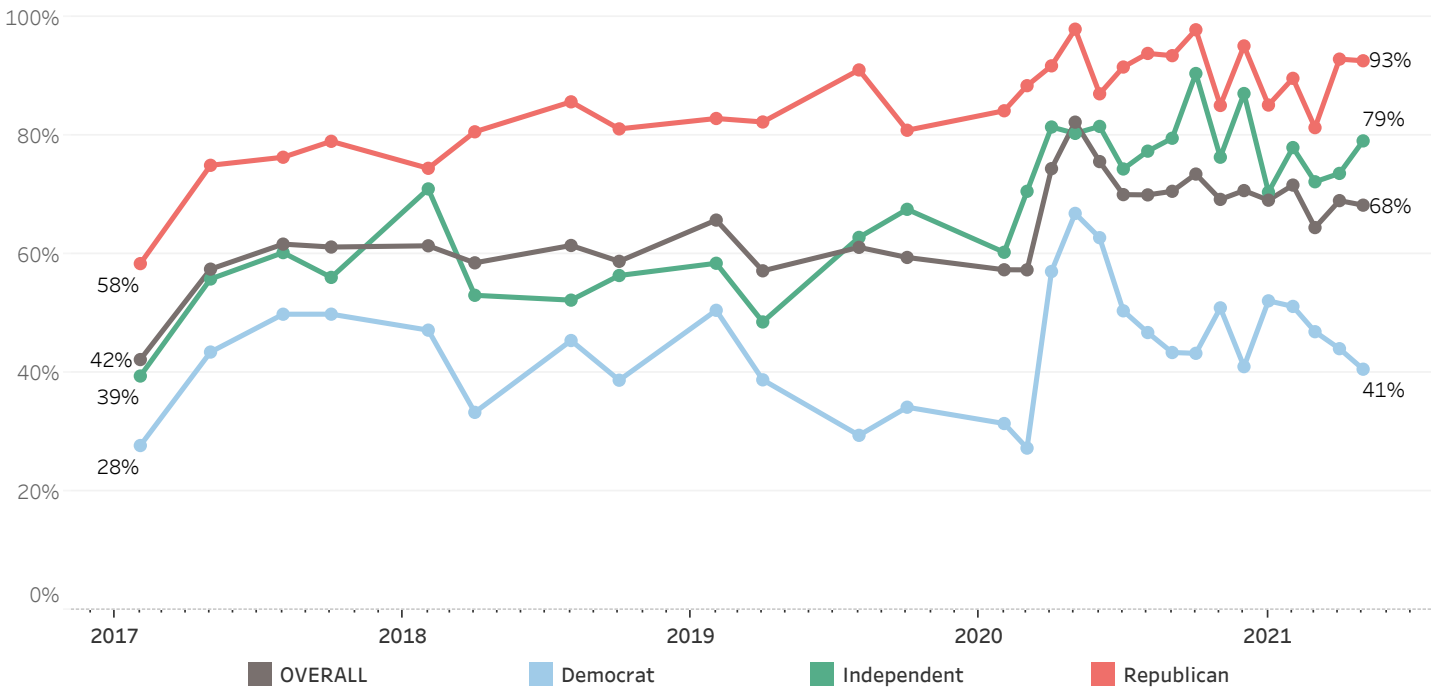
Gubernatorial Approval - Chris Sununu



\* We ask that this copyrighted information be referred to as *the Granite State Poll*, conducted by the University of New Hampshire Survey Center.

Approval of Sununu's job performance has increased among New Hampshire Independents (to 79% from 74% in April) and remained unchanged among Republicans (93%). However, less than half (41%) of Democrats approve of Sununu's performance, continuing a downward trend.

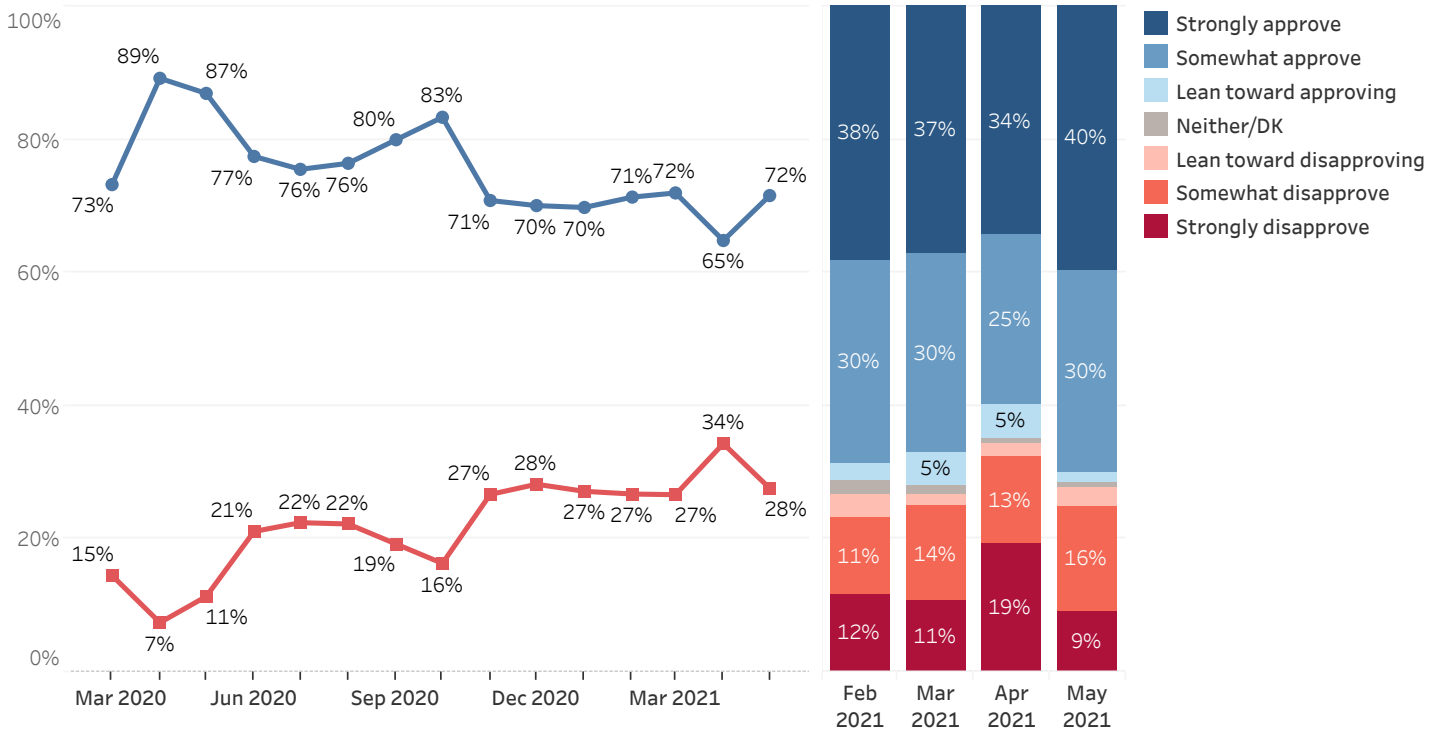
**Job Approval - Governor Chris Sununu - By Party Identification**



**COVID-19**

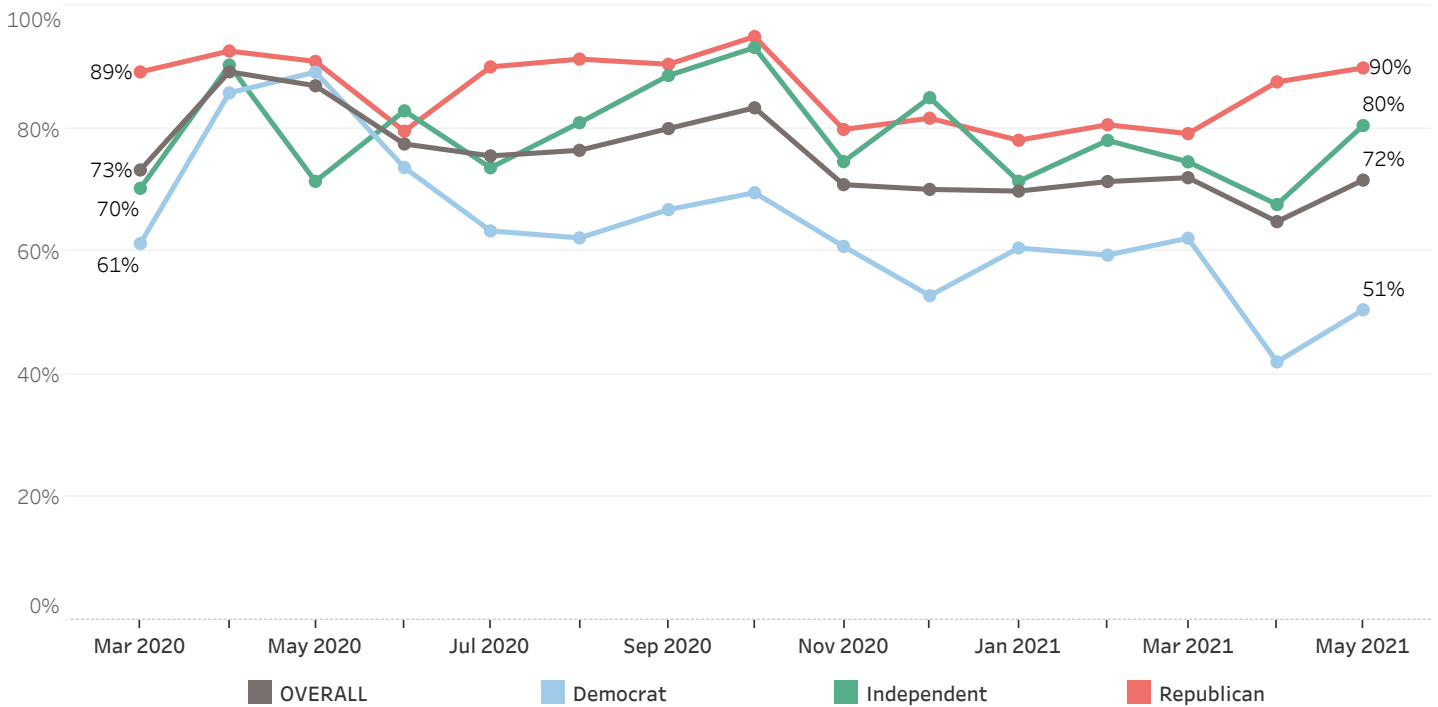
Approval of Sununu's handling of the COVID-19 pandemic has rebounded after dropping slightly in April, following his decision to end the statewide mask mandate. Seventy-two percent approve of Sununu's handling of the pandemic while 28% disapprove. Approval of Sununu's handling of COVID-19 has now returned to where it was from November 2020 through March.

**Approval of Governor Sununu's Handling of Coronavirus (COVID-19) Situation**



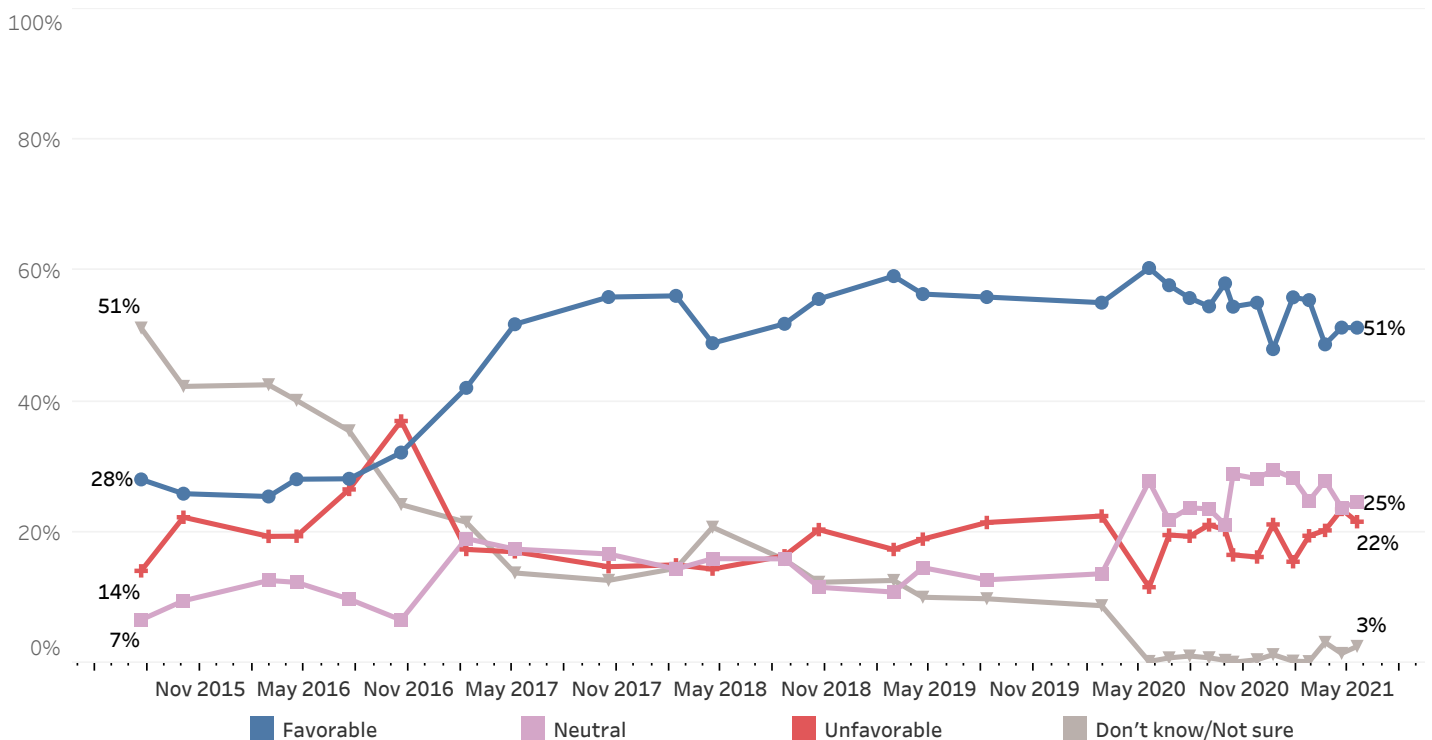
The increase in approval for Sununu's handling of COVID-19 is bipartisan. Ninety percent of Republicans and 80% of Independents approve of Sununu's handling of COVID-19 but only 51% of Democrats agree. Approval has increased among Independents by 13 percentage points and among Democrats by 8 points since April.

**Approval of Governor Sununu's Handling of Coronavirus (COVID-19) Situation - By Party ID**



Just over half (51%) of New Hampshire residents have a favorable opinion of Sununu, 25% say they have an unfavorable opinion of him, 25% are neutral, and 3% are unsure. Sununu's net favorability rating is +30, largely unchanged since April (+28). Sununu is very popular among Republicans (+75 net favorability rating) and is popular among Independents (+48) but is somewhat unpopular among Democrats (-22).

**Sununu (R) Favorability**

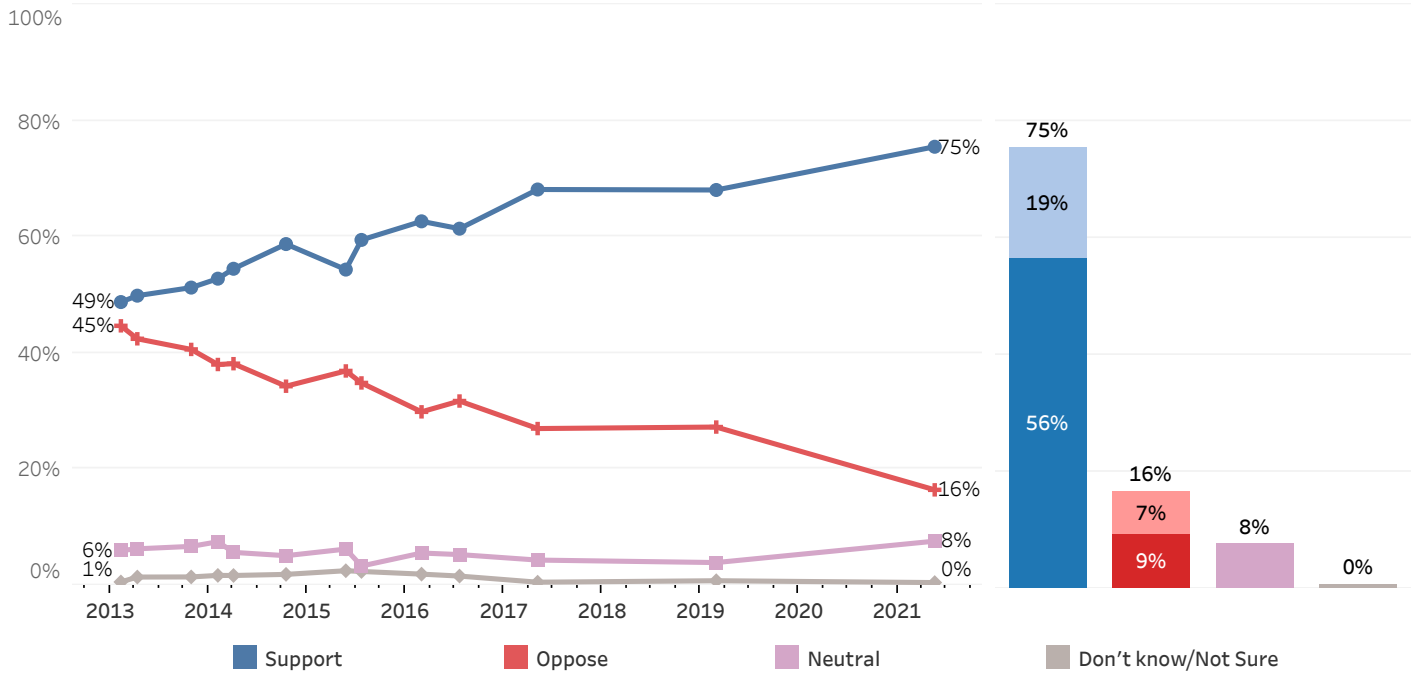


## Support for Marijuana Legalization

New Hampshire is the only New England state that has not legalized the sale of marijuana for recreational purposes. Three-quarters of New Hampshire residents (75%) strongly (56%) or somewhat (19%) support legalizing marijuana for recreational use, only 16% are strongly (9%) or somewhat (7%) opposed, 8% are neutral on the issue, and less than 1% don't know or are unsure. Support for marijuana legalization for recreational use has increased dramatically since 2013, when only 49% were in support and 45% were opposed.

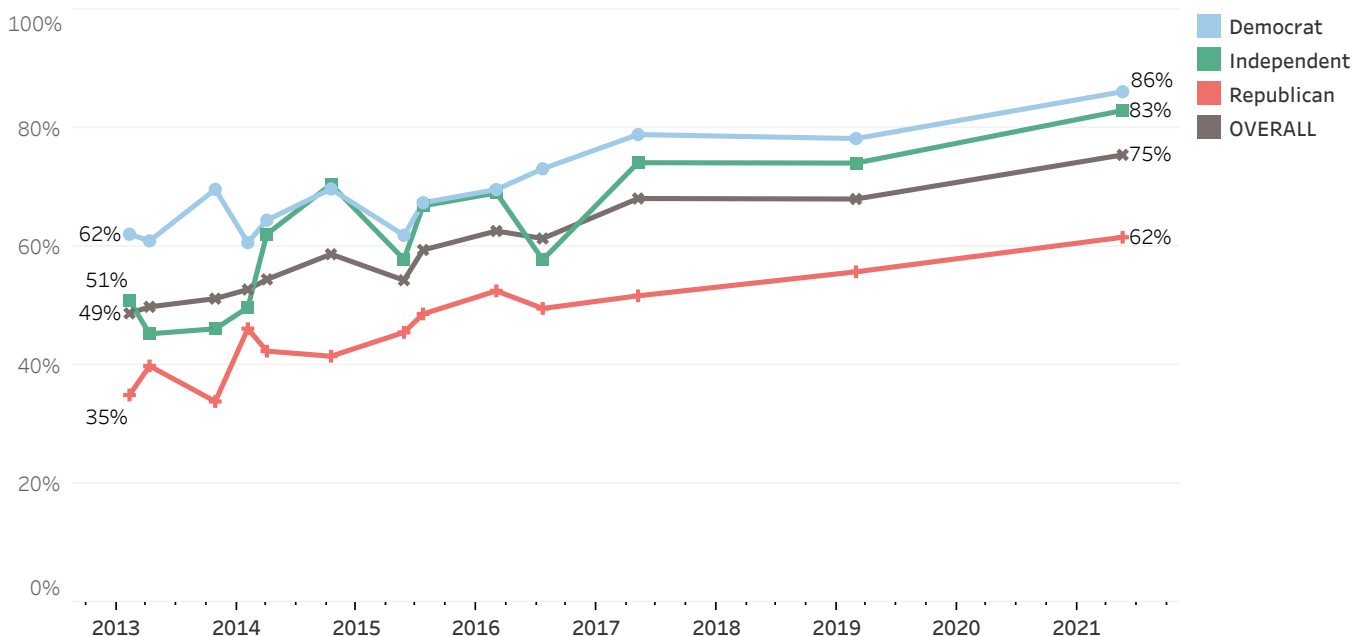
### Legalization for Recreational Use

May 2021



Majorities of Democrats (86%), Independents (83%), and Republicans (62%) support legalizing marijuana for recreational use. All three groups have become more supportive of legalizing marijuana for recreational use over time: in 2013, 62% of Democrats, 51% of Independents, and 35% of Republicans supported legalizing marijuana for recreational use.

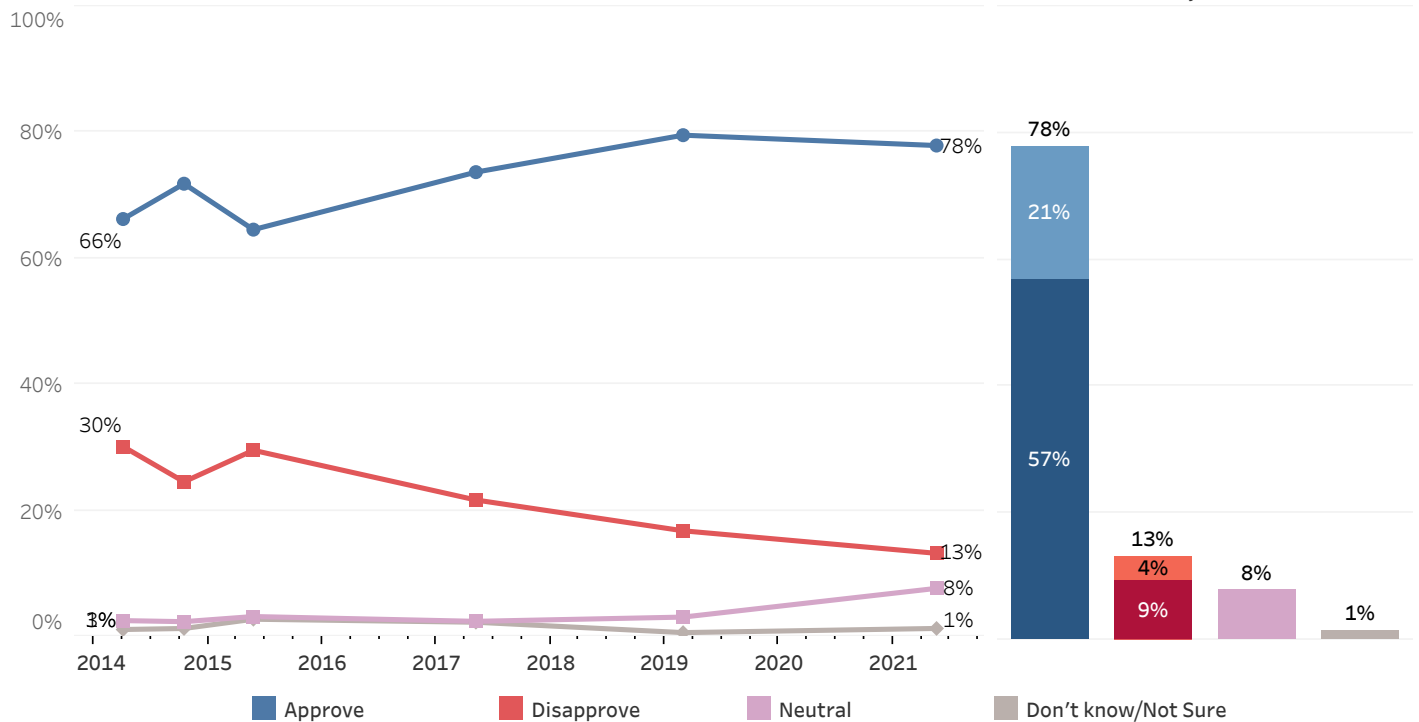
### Support Legalization for Recreational Use - By Party ID



A clear majority of New Hampshire residents (78%) also say that if marijuana were legalized for recreational use, they would strongly (57%) or somewhat (21%) approve of it being sold at licensed retail outlets and taxed at levels similar to alcohol or tobacco. Only 13% of residents would strongly (9%) or somewhat (4%) disapprove, 8% are neutral on the issue, and 1% don't know or are unsure. Support for this provision is largely unchanged since 2019 (80%) but remains higher than when the question was first asked in 2014 (66%).

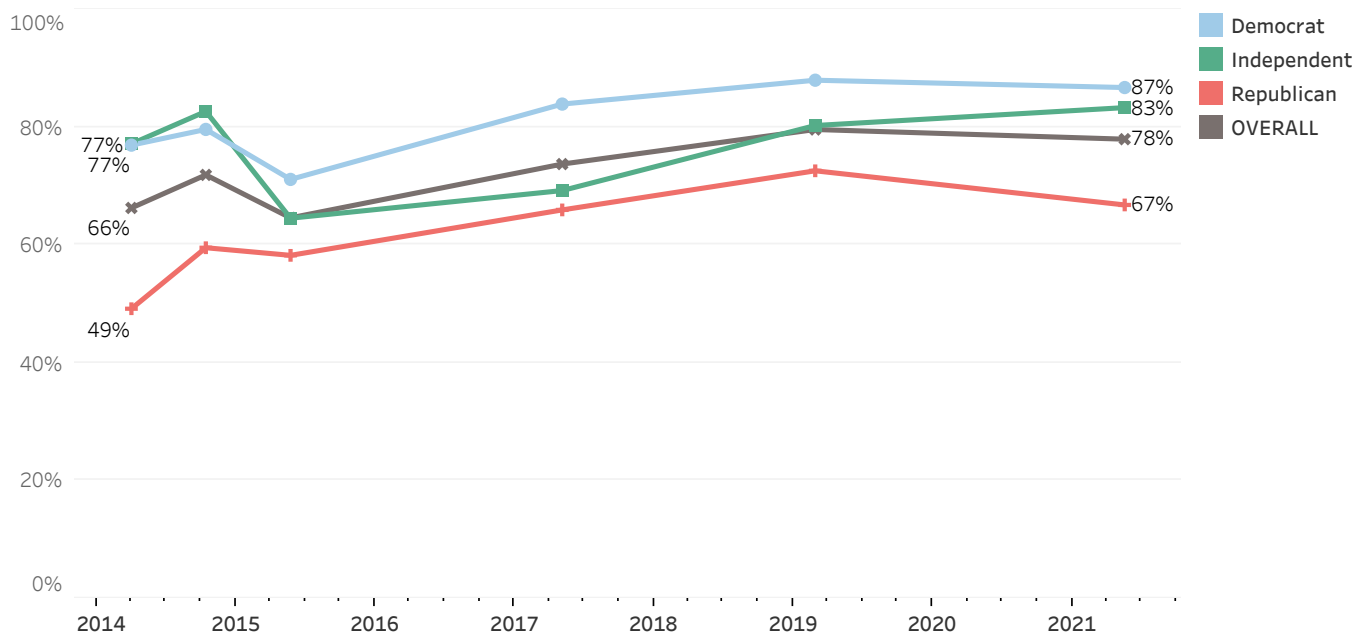
### Sale & Tax of Marijuana at Licensed Retail Outlets

May 2021



Majorities of Democrats (87%), Independents (83%), and Republicans (67%) say that if marijuana were legalized for recreational use, they would strongly or somewhat approve of marijuana being sold at licensed retail outlets and taxed at levels similar to alcohol or tobacco. All three groups have become more likely to approve of marijuana being sold at licensed retail outlets and taxed at levels similar to alcohol or tobacco if it were legalized for personal use over time: in 2013, 77% of Democrats, 77% of Independents, and 49% of Republicans approved of this provision.

### Approve of Sale & Tax of Marijuana at Licensed Retail Outlets - By Party ID



## Granite State Poll Methodology

These findings are based on the latest Granite State Poll, conducted by the University of New Hampshire Survey Center. One thousand eight hundred and twenty-four (1,824) Granite State Panel members completed the survey online between May 13 and May 17, 2021. The margin of sampling error for the survey is +/- 2.3 percent. These MSE's have not been adjusted for design effect. The response rate for the May 2021 Granite State Poll is 30%. The design effect for the survey is 2.6%.

Data were weighted by respondent sex, age, education, and region of the state to targets from the most recent American Community Survey (ACS) conducted by the U.S. Census Bureau, as well as party registration levels provided by the NH Secretary of State and to 2020 election results in New Hampshire.

The Granite State Panel is part of an effort by the University of New Hampshire Survey Center to investigate new ways of gathering and understanding the opinion of New Hampshire residents. Approximately 6,000 New Hampshire adults were recruited from randomly selected landline and cell phone numbers to participate in the panel. Panelists are then asked to participate in online surveys sponsored by the UNH Survey Center.

The number of respondents in each demographic below may not equal the number reported in cross-tabulation tables as some respondents choose not to answer some questions. Due to rounding, percentages may not sum to 100%.

For more information about the methodology used in the Granite State Panel, contact Dr. Andrew Smith at (603) 862-2226 or by email at [andrew.smith@unh.edu](mailto:andrew.smith@unh.edu).

### May 2021 Granite State Poll Demographics

		%	N
Gender of Respondent	Men	49%	877
	Women	51%	908
Age of Respondent	18 to 34	27%	483
	35 to 49	22%	393
	50 to 64	31%	564
	65 and older	21%	374
Level of Education	High school or less	36%	653
	Tech school/Some college	31%	560
	College graduate	21%	376
	Postgraduate work	13%	230
Region of State	Central/Lakes	18%	326
	Connecticut Valley	15%	277
	Manchester Area	16%	284
	Mass Border	26%	469
	North Country	9%	159
	Seacoast	17%	304
Party ID	Democrat	42%	763
	Independent	17%	315
	Republican	40%	729
Voting Registration	Registered Democrat	28%	500
	Registered Undeclared/Not Reg.	42%	751
	Registered Republican	29%	523
2020 Presidential Vote	Voted for Trump	44%	803
	Voted for Biden	52%	934
	Voted for other 2020 candidate	2%	27
	Did not vote in 2020	2%	45

## Approval of Governor Sununu's Job Performance

Generally speaking, do you approve or disapprove of the way Chris Sununu is handling his job as governor?

	<u>Approve</u>	<u>Disapprove</u>	<u>Neither/DK</u>	<u>N</u>
February 2017	42%	13%	45%	476
May 2017	57%	17%	26%	502
August 2017	62%	16%	22%	484
October 2017	61%	15%	24%	540
February 2018	61%	17%	21%	500
April 2018	59%	14%	28%	189
August 2018	61%	21%	17%	486
October 2018	59%	22%	20%	622
February 2019	66%	16%	18%	592
April 2019	57%	22%	21%	529
August 2019	60%	23%	17%	483
October 2019	59%	25%	15%	1,231
February 2020	57%	27%	16%	582
March 2020	57%	36%	7%	646
April 2020	74%	22%	4%	1,150
May 2020	82%	17%	1%	818
June 2020	76%	23%	2%	993
July 2020	70%	26%	4%	1,978
August 2020	70%	27%	3%	1,940
September 2020	71%	27%	3%	1,027
October 2020	73%	21%	6%	931
November 2020	69%	26%	5%	1,908
December 2020	71%	28%	1%	758
January 2021	69%	26%	5%	2,023
February 2021	72%	25%	3%	1,838
March 2021	64%	30%	6%	1,743
April 2021	69%	28%	3%	1,939
May 2021	68%	27%	5%	1,823

## Approval of Governor Sununu's Handling of Coronavirus (COVID-19) Situation

Generally speaking, do you approve or disapprove of the way Chris Sununu is handling the coronavirus (COVID-19) situation?

	<u>Approve</u>	<u>Disapprove</u>	<u>Neither/DK</u>	<u>N</u>
March 2020	73%	15%	12%	643
April 2020	89%	7%	3%	1,154
May 2020	87%	11%	2%	815
June 2020	77%	21%	1%	970
July 2020	76%	22%	2%	1,973
August 2020	76%	22%	1%	1,930
September 2020	80%	19%	1%	1,027
October 2020	83%	16%	0%	930
November 2020	71%	27%	2%	1,908
December 2020	70%	28%	2%	763
January 2021	70%	27%	3%	2,019
February 2021	71%	27%	2%	1,860
March 2021	72%	27%	1%	1,739
April 2021	65%	34%	1%	1,937
May 2021	72%	28%	1%	1,823



### Favorability - Chris Sununu

Below are a list of political figures in the U.S. and New Hampshire. Please indicate whether you have a favorable or unfavorable opinion of each of them or if you don't know enough about them to say - Governor Chris Sununu

	<u>Favorable</u>	<u>Neutral</u>	<u>Unfavorable</u>	<u>Don't know/Not Sure</u>	<u>N</u>
July 2015	28%	7%	14%	51%	530
October 2015	26%	10%	22%	42%	581
February 2016	25%	13%	19%	43%	684
April 2016	28%	12%	19%	40%	618
July 2016	28%	10%	27%	36%	467
October 2016	32%	7%	37%	24%	767
February 2017	42%	19%	17%	22%	502
May 2017	52%	17%	17%	14%	514
October 2017	56%	17%	15%	13%	570
February 2018	56%	14%	15%	14%	519
April 2018	49%	16%	14%	21%	208
August 2018	52%	16%	16%	16%	500
October 2018	56%	12%	20%	12%	640
February 2019	59%	11%	17%	13%	603
April 2019	56%	15%	19%	10%	548
August 2019	56%	13%	21%	10%	496
February 2020	55%	14%	22%	9%	610
May 2020	60%	28%	12%	0%	838
June 2020	58%	22%	20%	1%	993
July 2020	56%	24%	19%	1%	1,884
August 2020	55%	24%	21%	1%	1,873
September 2020	58%	21%	20%	0%	1,017
October 2020	54%	29%	17%	0%	908
November 2020	55%	28%	16%	0%	1,897
December 2020	48%	30%	21%	1%	775
January 2021	56%	28%	15%	0%	2,021
February 2021	55%	25%	19%	0%	1,858
March 2021	49%	28%	20%	3%	1,740
April 2021	51%	24%	23%	1%	1,940
May 2021	51%	25%	22%	3%	1,823

### Legalization for Recreational Use

Do you support or oppose legalizing the possession of small amounts of marijuana for personal recreational use in New Hampshire similar to what other states have done?

	<u>Strongly support</u>	<u>Somewhat support</u>	<u>Neutral</u>	<u>Somewhat oppose</u>	<u>Strongly oppose</u>	<u>Don't know/Not sure</u>	<u>N</u>
February 2013	31%	17%	6%	8%	37%	1%	580
April 2013	32%	18%	6%	7%	35%	1%	506
October 2013	36%	15%	7%	11%	30%	1%	602
February 2014	35%	18%	8%	14%	24%	2%	566
April 2014	39%	16%	6%	9%	29%	2%	510
October 2014	34%	25%	5%	10%	25%	2%	536
May 2015	37%	17%	6%	9%	27%	3%	566
July 2015	45%	15%	3%	11%	24%	2%	529
February 2016	41%	21%	6%	11%	19%	2%	686
July 2016	39%	22%	5%	10%	22%	2%	528
May 2017	49%	19%	4%	8%	19%	1%	517
February 2019	50%	18%	4%	9%	18%	1%	603
May 2021	56%	19%	8%	7%	9%	0%	1,824

### Sale & Tax of Marijuana at Licensed Retail Outlets

If small amounts of marijuana were legalized for personal use in New Hampshire, would you approve or disapprove of marijuana being sold at licensed retail outlets and taxed at levels similar to alcohol or tobacco?

	<u>Strongly approve</u>	<u>Somewhat approve</u>	<u>Neutral</u>	<u>Somewhat disapprove</u>	<u>Strongly disapprove</u>	<u>Don't know/Not sure</u>	<u>N</u>
April 2014	50%	17%	3%	6%	24%	1%	508
October 2014	48%	24%	2%	5%	19%	1%	540
May 2015	46%	18%	3%	7%	22%	3%	564
May 2017	53%	21%	2%	4%	17%	2%	518
February 2019	58%	22%	3%	3%	14%	1%	604
May 2021	57%	21%	8%	4%	9%	1%	1,824

### Approval of Governor Sununu's Job Performance

		Approve	Disapprove	Neither/DK	N
<b>STATEWIDE</b>	<b>May 2021</b>	68%	27%	5%	1,823
<b>Voting Registration</b>	Registered Democrat	39%	57%	4%	499
	Registered Undeclared/Not Reg.	73%	21%	6%	751
	Registered Republican	89%	7%	4%	523
<b>Party ID</b>	Democrat	41%	51%	8%	762
	Independent	79%	19%	2%	314
	Republican	93%	5%	2%	729
<b>Ideology</b>	Liberal	39%	57%	4%	465
	Moderate	67%	26%	7%	718
	Conservative	92%	6%	3%	543
<b>Media Usage</b>	Boston Globe reader	62%	36%	1%	113
	Conservative radio listener	92%	7%	1%	506
	Fox News viewer	87%	12%	1%	639
	Local newspapers reader	71%	28%	1%	332
	NHPR listener	63%	35%	2%	963
	Union Leader reader	75%	24%	1%	233
	WMUR viewer	73%	25%	2%	1,280
<b>Age of Respondent</b>	18 to 34	50%	38%	12%	483
	35 to 49	72%	28%	0%	393
	50 to 64	76%	21%	4%	563
	65 and older	77%	21%	2%	374
<b>Gender of Respondent</b>	Men	73%	22%	5%	877
	Women	65%	31%	5%	907
<b>Level of Education</b>	High school or less	75%	17%	8%	653
	Tech school/Some college	64%	33%	3%	560
	College graduate	67%	32%	1%	376
	Postgraduate work	62%	34%	3%	229
<b>Region of State</b>	Central/Lakes	79%	21%	0%	326
	Connecticut Valley	78%	16%	6%	277
	Manchester Area	65%	33%	2%	284
	Mass Border	58%	31%	11%	469
	North Country	71%	24%	5%	159
	Seacoast	66%	33%	1%	303
<b>Gender &amp; Education</b>	Men, no college degree	73%	20%	7%	602
	Men, college degree	73%	26%	1%	274
	Women, no college degree	68%	27%	5%	599
	Women, college degree	59%	38%	3%	308
<b>2020 Presidential Vote</b>	Voted for Trump	92%	6%	2%	803
	Voted for Biden	47%	45%	7%	933
	Voted for other 2020 candidate	74%	25%	0%	27
	Did not vote in 2020	74%	24%	2%	45

### Approval of Governor Sununu's Handling of Coronavirus (COVID-19) Situation

		Approve	Disapprove	Neither/DK	N
<b>STATEWIDE</b>	<b>May 2021</b>	72%	28%	1%	1,823
<b>Voting Registration</b>	Registered Democrat	49%	50%	1%	500
	Registered Undeclared/Not Reg.	77%	23%	0%	751
	Registered Republican	86%	13%	0%	523
<b>Party ID</b>	Democrat	51%	48%	1%	763
	Independent	80%	19%	1%	314
	Republican	90%	10%	0%	729
<b>Ideology</b>	Liberal	48%	50%	2%	465
	Moderate	72%	28%	1%	717
	Conservative	88%	12%	0%	543
<b>Media Usage</b>	Boston Globe reader	69%	30%	1%	113
	Conservative radio listener	91%	9%	0%	506
	Fox News viewer	87%	13%	0%	640
	Local newspapers reader	76%	24%	0%	332
	NHPR listener	71%	28%	1%	963
	Union Leader reader	76%	23%	1%	233
	WMUR viewer	76%	23%	1%	1,280
<b>Age of Respondent</b>	18 to 34	49%	50%	2%	483
	35 to 49	76%	24%	0%	393
	50 to 64	81%	19%	0%	563
	65 and older	83%	16%	1%	374
<b>Gender of Respondent</b>	Men	77%	22%	0%	877
	Women	67%	32%	1%	908
<b>Level of Education</b>	High school or less	80%	20%		653
	Tech school/Some college	68%	31%	1%	560
	College graduate	69%	30%	1%	376
	Postgraduate work	60%	38%	1%	230
<b>Region of State</b>	Central/Lakes	82%	18%	1%	326
	Connecticut Valley	81%	19%	0%	277
	Manchester Area	69%	30%	1%	284
	Mass Border	58%	41%	1%	469
	North Country	84%	14%	2%	159
	Seacoast	70%	30%		303
<b>Gender &amp; Education</b>	Men, no college degree	79%	21%	0%	602
	Men, college degree	73%	26%	1%	274
	Women, no college degree	71%	28%	1%	599
	Women, college degree	59%	40%	2%	309
<b>2020 Presidential Vote</b>	Voted for Trump	89%	11%	0%	803
	Voted for Biden	56%	43%	1%	933
	Voted for other 2020 candidate	87%	13%	0%	27
	Did not vote in 2020	75%	24%	0%	45

**Favorability - Chris Sununu**

		<u>Favorable</u>	<u>Neutral</u>	<u>Unfavorable</u>	<u>Don't know/Not Sure</u>	<u>N</u>
<b>STATEWIDE</b>	<b>May 2021</b>	51%	25%	22%	3%	1,823
<b>Voting Registration</b>	Registered Democrat	17%	33%	50%	0%	500
	Registered Undeclared/Not Reg.	56%	24%	15%	5%	751
	Registered Republican	76%	18%	6%	0%	522
<b>Party ID</b>	Democrat	20%	32%	42%	6%	763
	Independent	61%	26%	13%	0%	315
	Republican	79%	17%	4%	0%	728
<b>Ideology</b>	Liberal	17%	32%	50%	1%	466
	Moderate	48%	28%	18%	5%	718
	Conservative	79%	16%	4%	0%	542
<b>Media Usage</b>	Boston Globe reader	30%	40%	30%	0%	113
	Conservative radio listener	69%	26%	5%	0%	505
	Fox News viewer	79%	12%	9%	0%	638
	Local newspapers reader	49%	27%	24%	0%	332
	NHPR listener	44%	26%	30%	0%	964
	Union Leader reader	65%	14%	21%		232
	WMUR viewer	56%	24%	20%	0%	1,279
<b>Age of Respondent</b>	18 to 34	35%	25%	31%	9%	483
	35 to 49	56%	19%	24%	1%	393
	50 to 64	58%	25%	16%	0%	564
	65 and older	57%	28%	14%	0%	373
<b>Gender of Respondent</b>	Men	59%	21%	15%	5%	876
	Women	44%	28%	27%	1%	908
<b>Level of Education</b>	High school or less	58%	23%	13%	6%	653
	Tech school/Some college	47%	25%	27%	1%	559
	College graduate	52%	23%	25%	1%	376
	Postgraduate work	40%	32%	28%	0%	230
<b>Region of State</b>	Central/Lakes	59%	26%	15%	0%	326
	Connecticut Valley	52%	35%	12%	0%	277
	Manchester Area	49%	22%	27%	1%	284
	Mass Border	46%	21%	25%	8%	468
	North Country	49%	31%	20%		159
	Seacoast	53%	19%	28%	1%	304
<b>Gender &amp; Education</b>	Men, no college degree	59%	21%	14%	6%	601
	Men, college degree	61%	20%	18%	0%	275
	Women, no college degree	49%	26%	24%	1%	600
	Women, college degree	36%	31%	32%	1%	309
<b>2020 Presidential Vote</b>	Voted for Trump	78%	17%	5%		801
	Voted for Biden	27%	30%	37%	5%	934
	Voted for other 2020 candidate	51%	30%	18%	0%	27
	Did not vote in 2020	65%	34%	0%		45

### Legalization for Recreational Use

		<u>Strongly support</u>	<u>Somewhat support</u>	<u>Neutral</u>	<u>Somewhat oppose</u>	<u>Strongly oppose</u>	<u>Don't know/Not sure</u>	<u>N</u>
<b>STATEWIDE</b>	<b>May 2021</b>	56%	19%	8%	7%	9%	0%	1,824
<b>Voting Registration</b>	Registered Democrat	71%	14%	7%	5%	2%	1%	500
	Registered Undeclared/Not Reg.	59%	17%	7%	10%	7%	0%	751
	Registered Republican	36%	29%	9%	6%	20%	1%	523
<b>Party ID</b>	Democrat	72%	15%	7%	4%	3%	0%	763
	Independent	67%	16%	5%	6%	5%	0%	315
	Republican	36%	25%	9%	11%	17%	1%	729
<b>Ideology</b>	Liberal	78%	14%	5%	2%	1%	0%	466
	Moderate	60%	15%	9%	9%	7%	1%	718
	Conservative	33%	29%	9%	9%	20%	0%	543
<b>Media Usage</b>	Boston Globe reader	54%	30%	11%	2%	3%	0%	113
	Conservative radio listener	46%	20%	7%	8%	18%	0%	506
	Fox News viewer	39%	22%	12%	10%	17%	1%	640
	Local newspapers reader	58%	15%	8%	5%	13%	0%	332
	NHPR listener	60%	20%	7%	5%	7%	1%	964
	Union Leader reader	49%	26%	6%	11%	7%	1%	233
	WMUR viewer	53%	20%	9%	7%	10%	1%	1,280
<b>Age of Respondent</b>	18 to 34	79%	10%	5%	5%	1%		483
	35 to 49	53%	29%	6%	4%	7%	0%	393
	50 to 64	52%	17%	6%	9%	14%	1%	564
	65 and older	38%	23%	14%	10%	15%	1%	374
<b>Gender of Respondent</b>	Men	58%	14%	8%	9%	11%	0%	877
	Women	55%	25%	7%	5%	7%	1%	908
<b>Level of Education</b>	High school or less	54%	23%	7%	7%	9%		653
	Tech school/Some college	60%	15%	8%	7%	9%	1%	560
	College graduate	62%	14%	8%	7%	8%	1%	376
	Postgraduate work	45%	25%	8%	8%	14%	0%	230
<b>Region of State</b>	Central/Lakes	53%	24%	5%	7%	12%	0%	326
	Connecticut Valley	58%	27%	4%	6%	5%	1%	277
	Manchester Area	54%	14%	10%	11%	11%	0%	284
	Mass Border	60%	14%	10%	7%	8%	1%	469
	North Country	49%	36%	5%	4%	7%	0%	159
	Seacoast	59%	10%	10%	8%	13%	0%	304
<b>Gender &amp; Education</b>	Men, no college degree	60%	12%	7%	10%	12%		602
	Men, college degree	55%	18%	10%	8%	9%	0%	275
	Women, no college degree	54%	28%	8%	4%	5%	1%	600
	Women, college degree	58%	19%	6%	6%	10%	1%	309
<b>2020 Presidential Vote</b>	Voted for Trump	41%	23%	9%	11%	16%	0%	803
	Voted for Biden	68%	17%	7%	5%	4%	1%	934
	Voted for other 2020 candidate	73%	11%	7%	2%	8%		27
	Did not vote in 2020	93%	5%	0%	0%	2%		45

**Sale & Tax of Marijuana at Licensed Retail Outlets**

		<u>Strongly approve</u>	<u>Somewhat approve</u>	<u>Neutral</u>	<u>Somewhat disapprove</u>	<u>Strongly disapprove</u>	<u>Don't know/Not sure</u>	<u>N</u>
<b>STATEWIDE</b>	<b>May 2021</b>	57%	21%	8%	4%	9%	1%	1,824
<b>Voting Registration</b>	Registered Democrat	71%	16%	5%	2%	4%	3%	500
	Registered Undeclared/Not Reg.	60%	21%	7%	3%	8%	1%	751
	Registered Republican	36%	27%	11%	7%	18%	1%	523
<b>Party ID</b>	Democrat	72%	15%	5%	3%	4%	2%	763
	Independent	64%	19%	10%	2%	4%	0%	315
	Republican	38%	29%	10%	5%	18%	1%	729
<b>Ideology</b>	Liberal	75%	16%	4%	2%	2%	1%	466
	Moderate	62%	15%	9%	5%	6%	2%	718
	Conservative	33%	32%	9%	4%	21%	1%	543
<b>Media Usage</b>	Boston Globe reader	56%	29%	4%	8%	3%	0%	113
	Conservative radio listener	45%	23%	9%	4%	19%	0%	506
	Fox News viewer	41%	23%	11%	7%	18%	0%	639
	Local newspapers reader	49%	23%	6%	5%	13%	4%	332
	NHPR listener	60%	23%	6%	3%	7%	1%	963
	Union Leader reader	52%	29%	5%	5%	6%	3%	233
	WMUR viewer	53%	22%	9%	4%	11%	1%	1,280
<b>Age of Respondent</b>	18 to 34	77%	14%	5%	2%	1%	1%	483
	35 to 49	58%	26%	5%	4%	7%	1%	393
	50 to 64	50%	21%	11%	2%	15%	0%	564
	65 and older	41%	25%	9%	8%	14%	3%	374
<b>Gender of Respondent</b>	Men	61%	16%	7%	4%	11%	1%	877
	Women	53%	26%	8%	3%	8%	2%	908
<b>Level of Education</b>	High school or less	52%	25%	6%	4%	12%	1%	653
	Tech school/Some college	59%	22%	9%	2%	7%	1%	560
	College graduate	65%	13%	10%	4%	7%	2%	375
	Postgraduate work	53%	19%	7%	6%	13%	3%	230
<b>Region of State</b>	Central/Lakes	56%	24%	4%	3%	13%	1%	326
	Connecticut Valley	56%	25%	7%	2%	6%	3%	277
	Manchester Area	54%	13%	15%	4%	11%	3%	283
	Mass Border	65%	16%	7%	4%	7%	0%	469
	North Country	46%	40%	5%	3%	6%		159
	Seacoast	53%	19%	7%	7%	13%	1%	304
<b>Gender &amp; Education</b>	Men, no college degree	59%	18%	6%	4%	13%	0%	602
	Men, college degree	64%	13%	10%	5%	7%	2%	274
	Women, no college degree	51%	30%	8%	2%	7%	2%	600
	Women, college degree	57%	18%	7%	5%	10%	3%	309
<b>2020 Presidential Vote</b>	Voted for Trump	42%	27%	10%	5%	17%	1%	802
	Voted for Biden	68%	17%	6%	3%	3%	2%	934
	Voted for other 2020 candidate	73%	7%	1%	8%	11%	0%	27
	Did not vote in 2020	93%	5%	0%	0%	2%		45