

March 23, 2021

BIDEN APPROVAL HOLDS STEADY; NEARLY HALF OF GRANITE STATERS SUPPORT FILIBUSTER REFORM

By: Sean P. McKinley, M.A.
 Zachary S. Azem, M.A.
 Andrew E. Smith, Ph.D.

andrew.smith@unh.edu
 603-862-2226
 cola.unh.edu/unh-survey-center

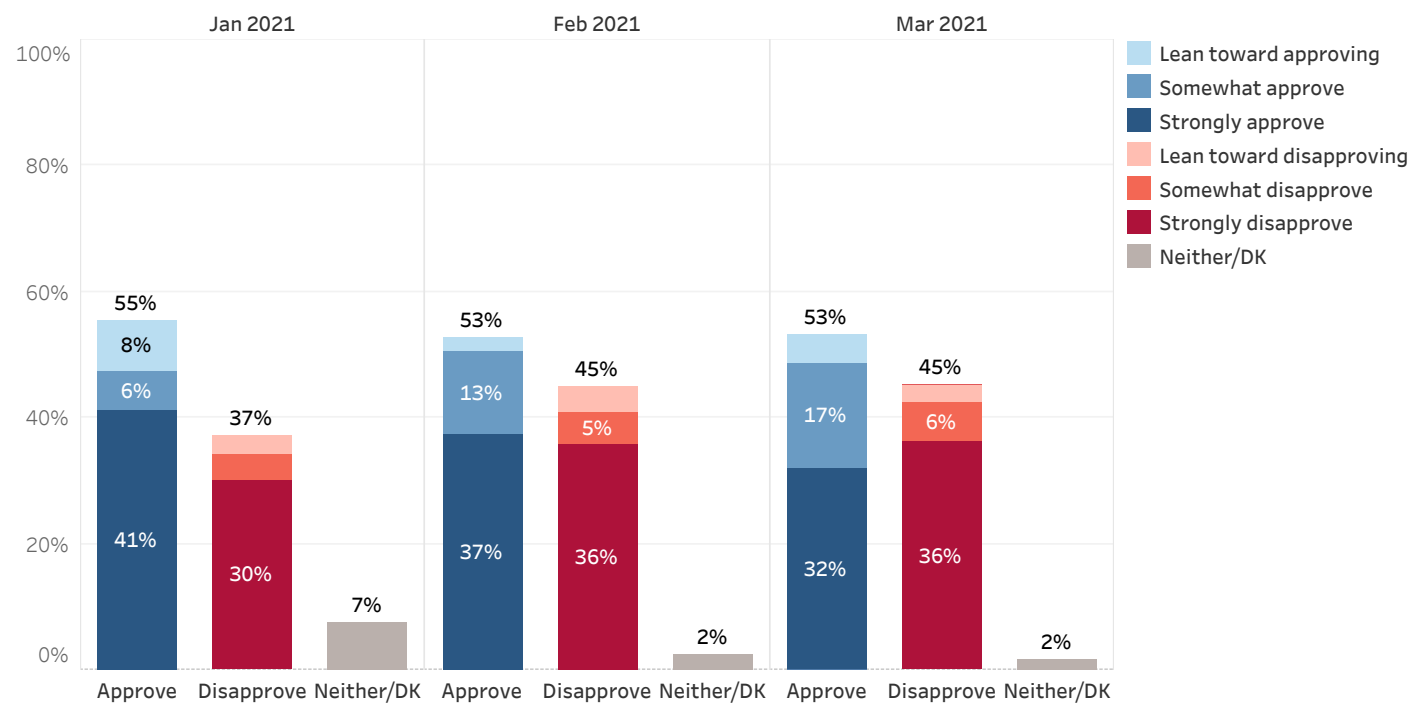
DURHAM, NH - President Joe Biden remains more popular in New Hampshire than former President Donald Trump and a majority approve of Biden's job performance. Perceptions of Trump among Republicans have rebounded somewhat since January and two-thirds of Republicans in the Granite State would like him to run for President again in 2024. Nearly half of Granite Staters want the Senate's filibuster rule to be eliminated entirely or changed to require senators to continue speaking in order to continue a filibuster.

These findings are based on the latest **Granite State Poll***, conducted by the University of New Hampshire Survey Center. One thousand seven hundred and forty-four (1,744) Granite State Panel members completed the survey online between March 18 and March 22, 2021. The margin of sampling error for the survey is +/- 2.3 percent. Data were weighted by respondent sex, age, education, and region of the state to targets from the most recent American Community Survey (ACS) conducted by the U.S. Census Bureau, as well as party registration levels provided by the NH Secretary of State and 2020 election results in NH. Granite State Panel members are recruited from randomly-selected landline and cell phone numbers across New Hampshire and surveys are sent periodically to panel members.

Presidential Approval

President Joe Biden's approval rating in New Hampshire is unchanged since February. More than half (53%) of Granite Staters approve of Biden's performance as president, 45% disapprove, and 2% neither approve nor disapprove or don't know. Biden's net approval rating (the percentage who approve minus the percentage who disapprove) among Granite Staters is +8, unchanged since February (+8) but lower than in January (+18). Biden's net approval rating remains significantly higher than former President Trump's was in February 2017 (-5). Although he is viewed as doing a better job than Trump at this point in his presidency, Biden has been unable to narrow the partisan gap in America. Biden's net approval rating is +95 among Democrats and +5 among Independents but -81 among Republicans.

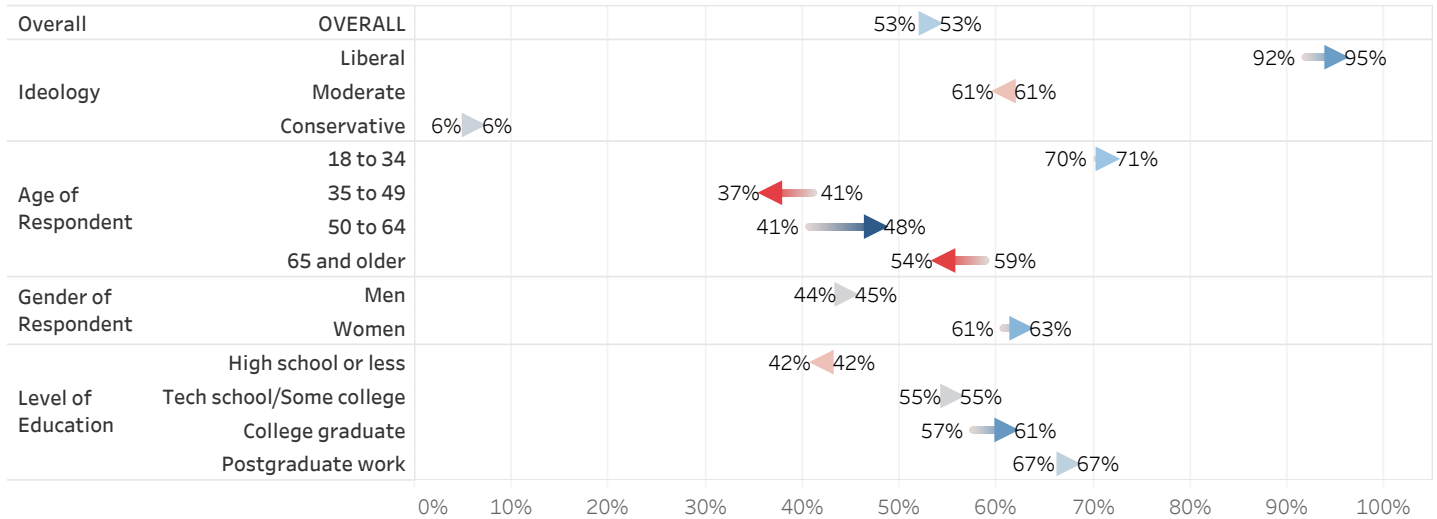
Approval of President Biden's Job Performance



* We ask that this copyrighted information be referred to as *the Granite State Panel*, conducted by the University of New Hampshire Survey Center.

- Nearly all self-described liberals (95%) and a majority of moderates (61%) approve of Biden's handling of his job but only 6% of conservatives agree. All three groups have not significantly changed their opinion of Biden's job performance since February.
- Residents aged 18 to 34 (71%) are more likely than residents of other age groups to approve of Biden's handling of his job while those aged 35 to 49 (37%) are less likely to feel this way.
- Sixty-three percent of women approve of Biden's job performance but only 45% of men agree.
- Respondents with higher levels of education remain more likely than those with lower levels of education to approve of Biden's job performance.

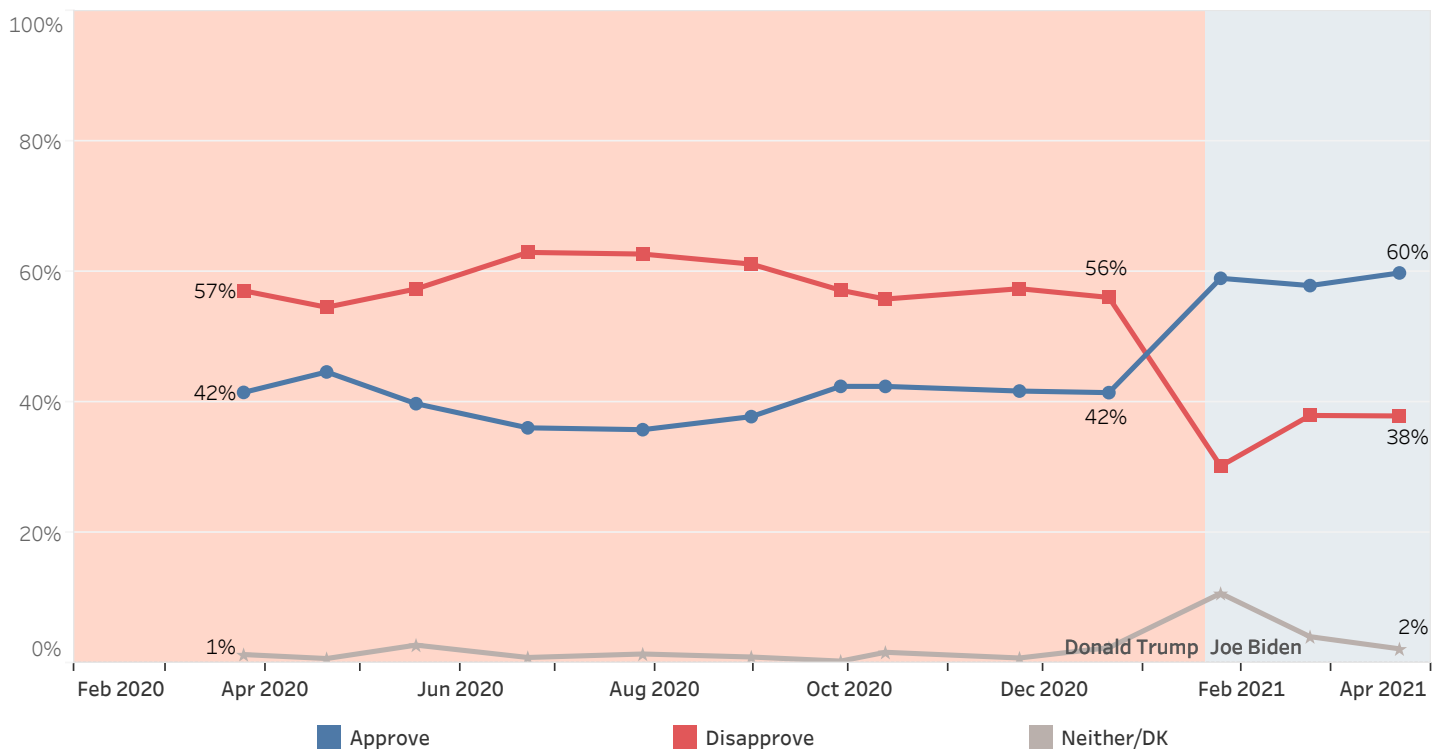
Approval of President Biden's Handling His Job as President - Change from February 2021 to March 2021



Handling of Coronavirus (COVID-19) Situation

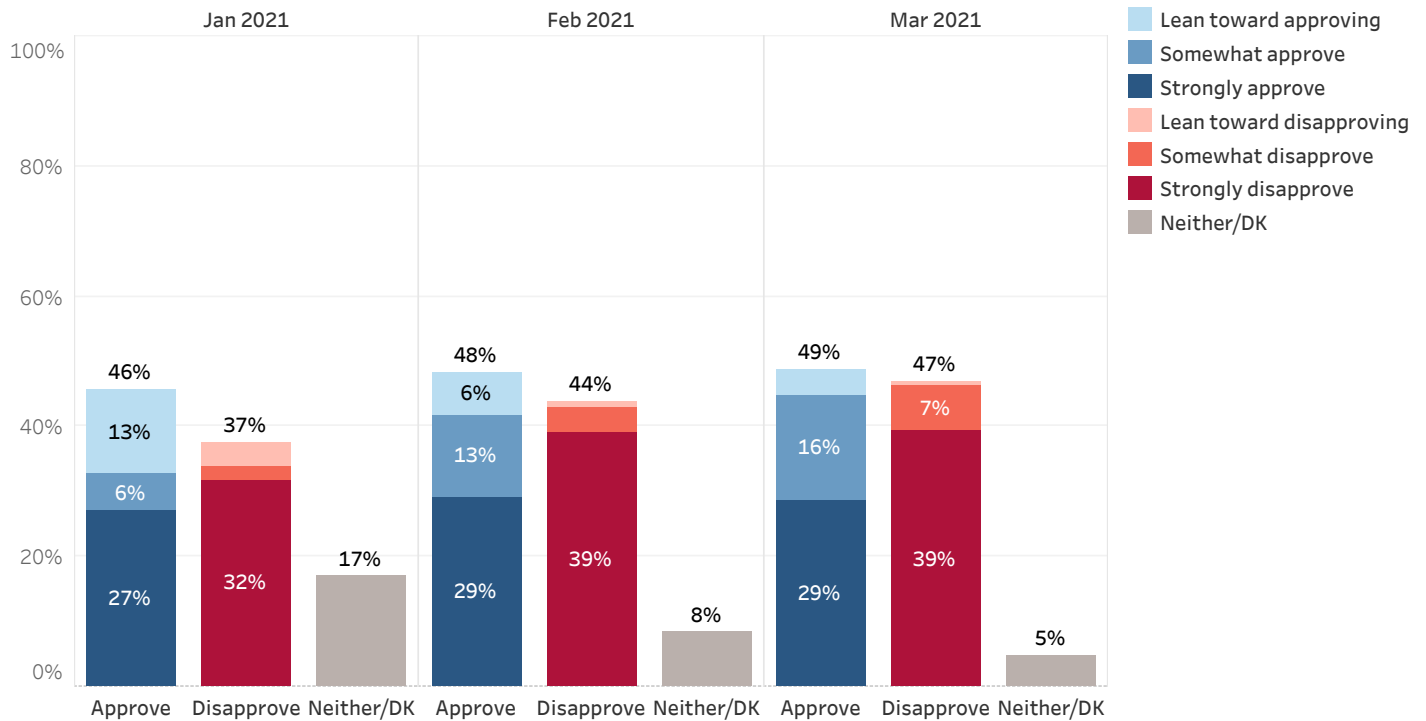
Granite Staters continue to approve of Biden's handling of the COVID-19 pandemic more than they did of Trump's. Currently, 60% approve of Biden's handling of COVID-19 and 38% disapprove. Net approval for Biden's handling of COVID-19 is +22, largely unchanged since February (+20). Nearly all (98%) Democrats and a slim majority of Independents (55%) approve of Biden's handling of COVID-19 but only 22% of Republicans agree.

Approval of President's Handling of Coronavirus (COVID-19) Situation



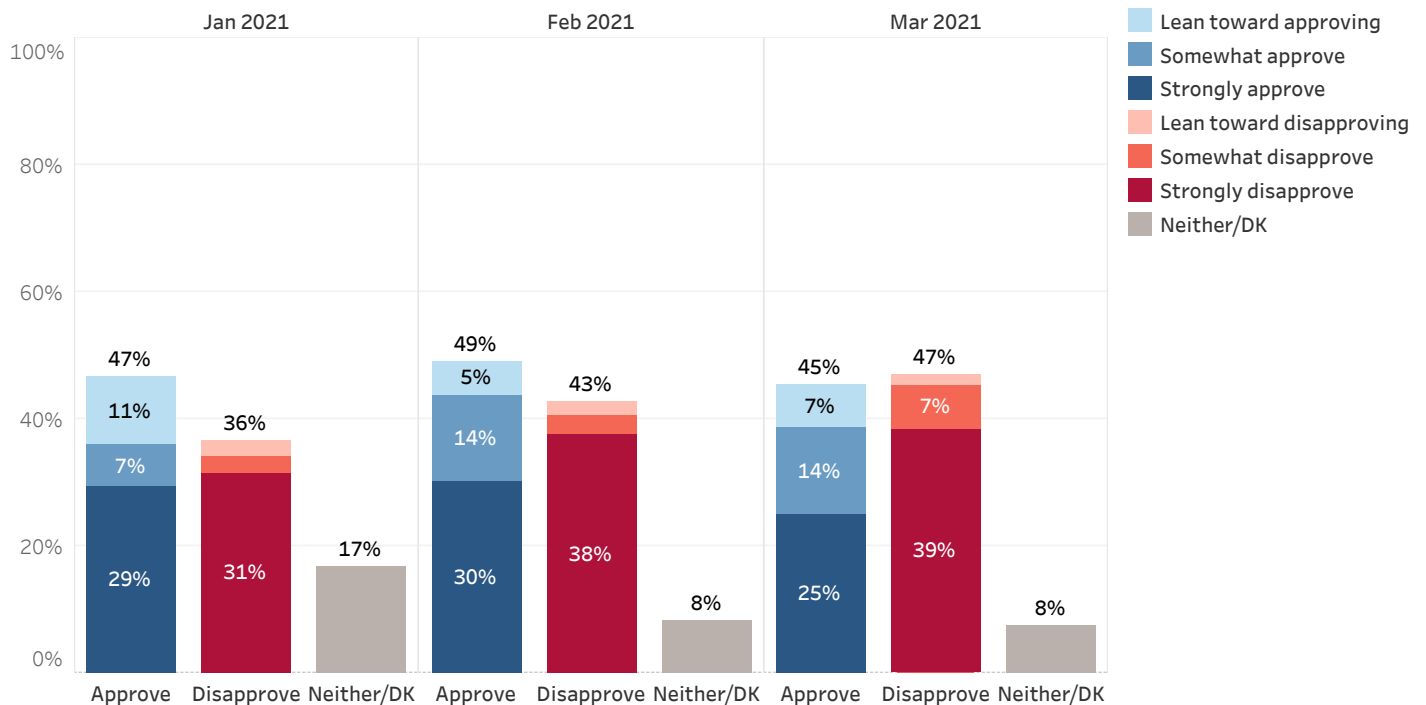
Forty-nine percent of New Hampshire residents approve of Biden's handling of the economy, 47% disapprove, and 5% are unsure. Net approval of Biden's handling of the economy (+2) is largely unchanged since February (+4). Ninety-five percent of Democrats approve of Biden's handling of the economy and 44% of Independents approve but only 7% of Republicans agree. Approval of Biden's handling of the economy has slightly increased since February among Democrats (+7 percentage points) but is largely unchanged among Independents (-2) and Republicans (-1).

Approval of President Biden's Handling of the Economy



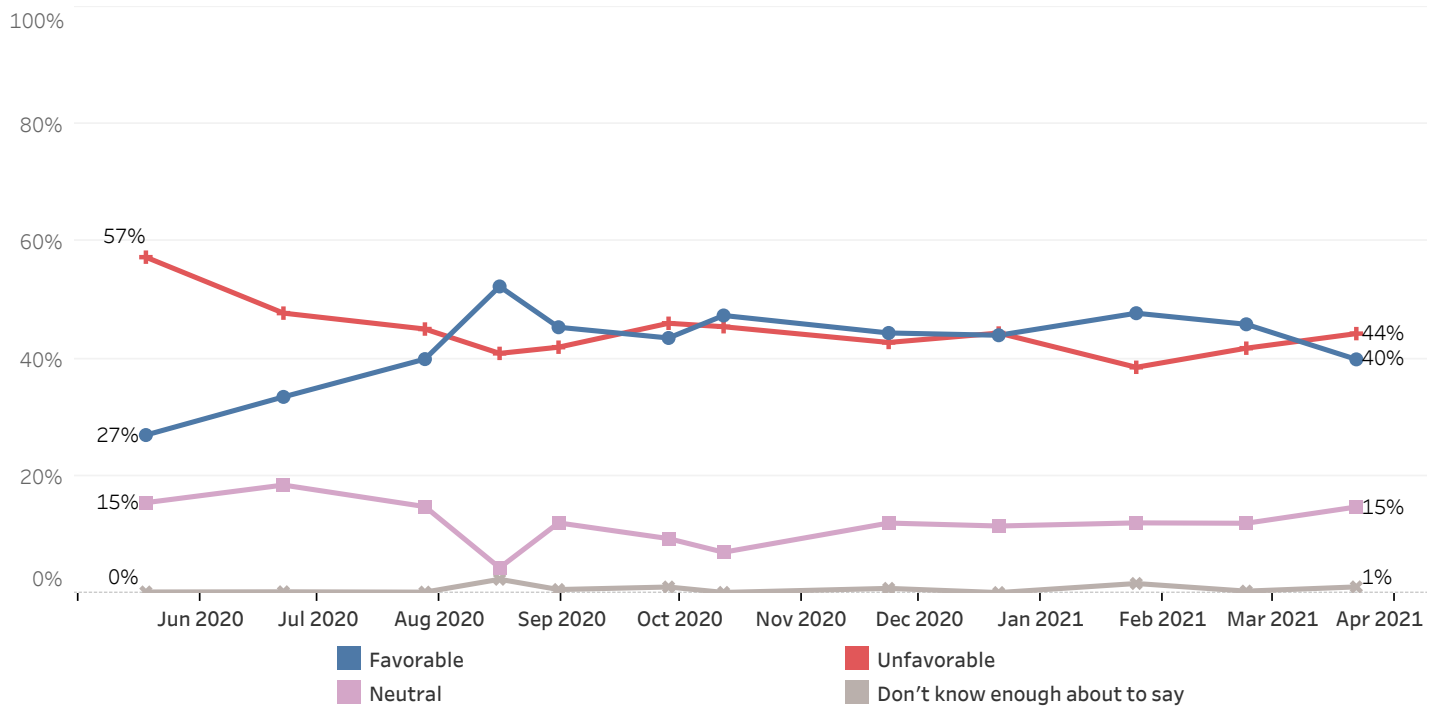
Forty-five percent of New Hampshire residents approve of President Biden's handling of foreign affairs, 47% disapprove, and 8% are unsure. Net approval of Biden's handling of foreign affairs (-2) has declined since February (+6). Eighty-five percent of Democrats approve of Biden's handling of foreign affairs but only 34% of Independents and 9% of Republicans agree. Approval of Biden's handling of foreign affairs has declined slightly since February among Democrats (-6 percentage points) and Independents (-7).

Approval of President Biden's Handling of Foreign Affairs



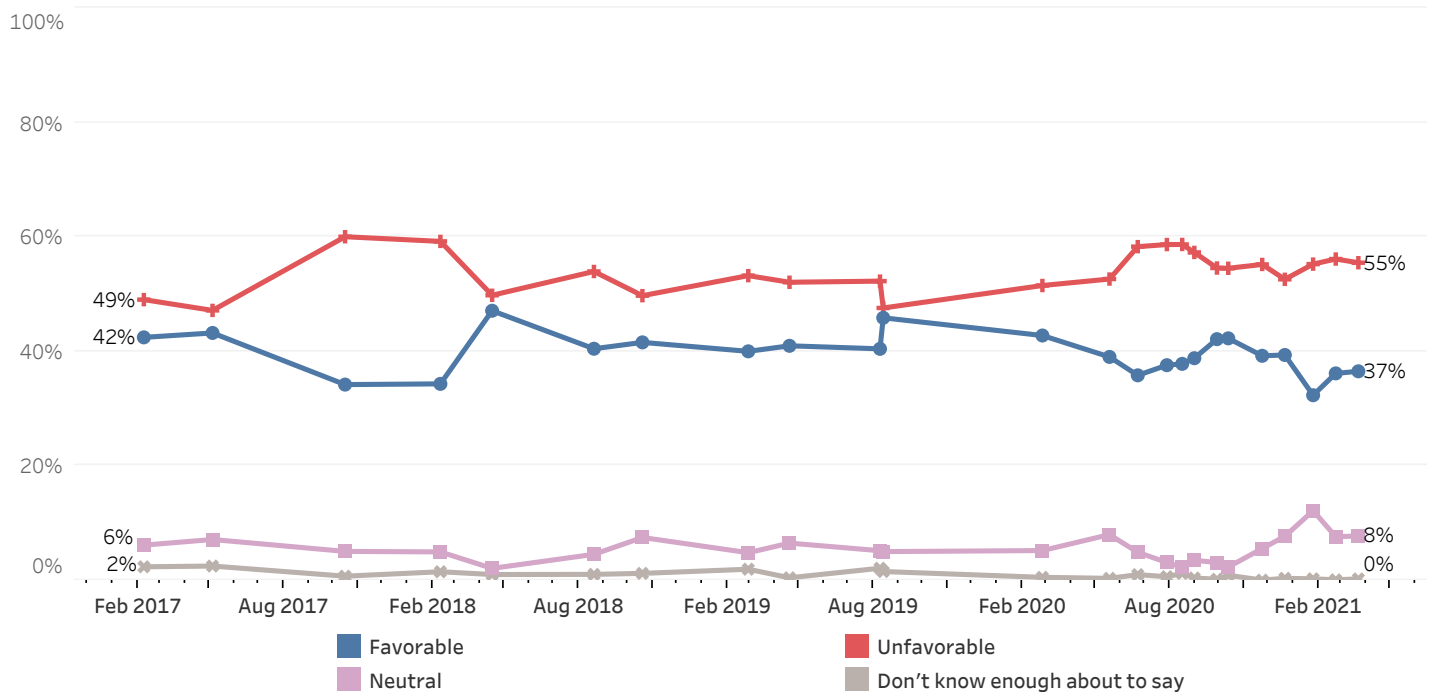
Forty percent of New Hampshire residents have a favorable opinion of Biden, 44% have an unfavorable opinion of him, 15% are neutral, and 1% are unsure. Biden's net favorability rating, the percentage who have a favorable opinion minus the percentage having an unfavorable opinion, is -4, down from +4 in February. Biden is very popular among Democrats (+80 net favorability rating), but is somewhat unpopular among Independents (-16) and very unpopular among Republicans (-84). Biden has become slightly less popular since February among all three groups.

Biden (D) Favorability



Thirty-seven percent of New Hampshire residents have a favorable opinion of former President Donald Trump, 55% have an unfavorable opinion of him, 8% are neutral, and less than 1% are unsure. Trump's net favorability rating is -19, largely unchanged since February (-20). Trump remains very popular among Republicans (+66 net favorability rating) but is somewhat unpopular among Independents (-24) and very unpopular among Democrats (-98).

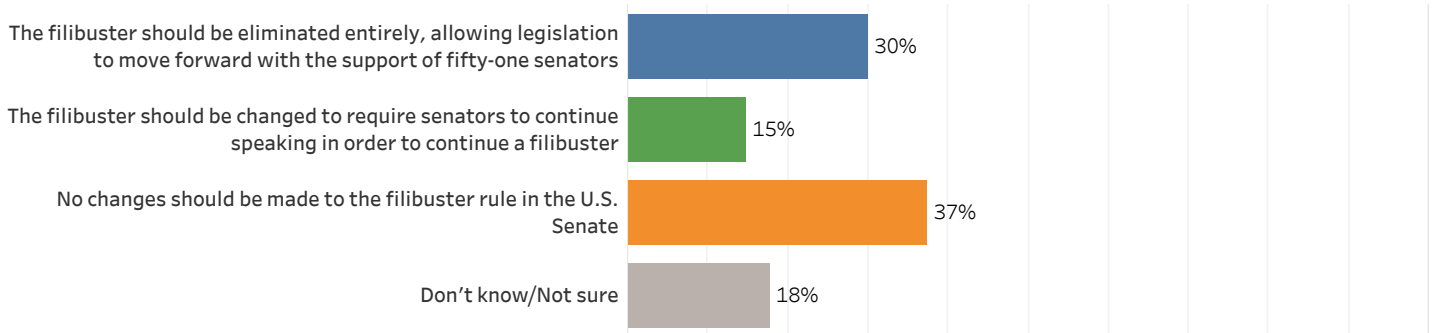
Trump (R) Favorability



Filibuster Rule

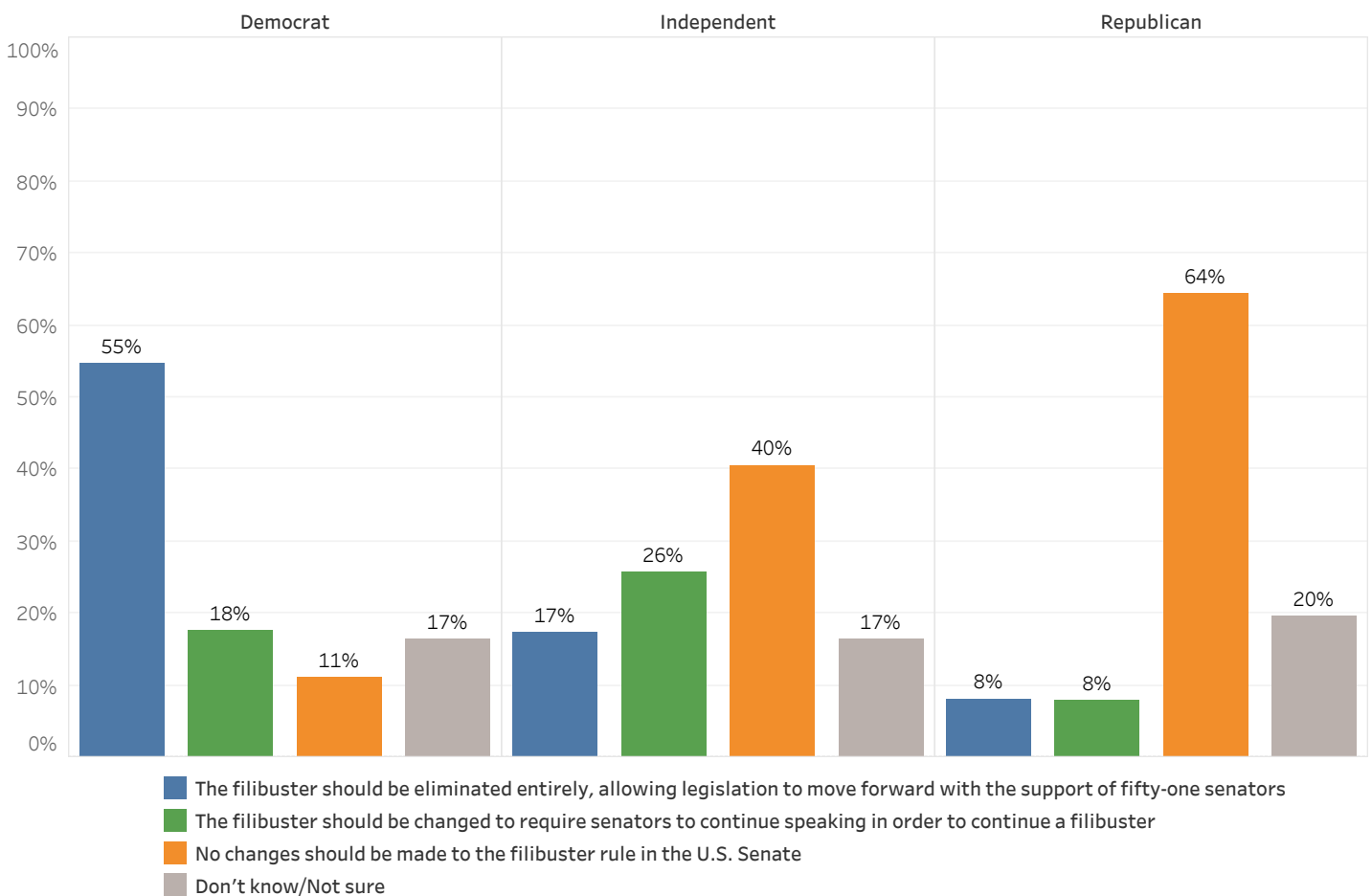
The filibuster rule in the U.S. Senate currently requires sixty senators to agree to end debate before a bill can be voted on. Some have proposed changing the filibuster rule to require senators to continue speaking in order to continue a filibuster, while others have proposed eliminating the filibuster entirely, allowing legislation to move forward with the support of fifty-one senators. Three in ten (30%) New Hampshire residents believe the filibuster should be eliminated entirely, 15% believe the filibuster should be changed to require senators to continue speaking in order to continue a filibuster, 37% believe no changes should be made to the filibuster rule, and 18% don't know or are unsure.

Opinion on Changes or Elimination of Filibuster Rule - March 2021



A majority (55%) of Democrats believe the filibuster should be eliminated entirely, 18% believe senators should be required to continue to speak to continue a filibuster, and only 11% believe no changes should be made. By contrast, nearly two-thirds (64%) of Republicans believe no changes should be made to the filibuster and only 8% each believe it should be eliminated or be changed to require senators to speak. Independents are divided: 17% believe the filibuster should be eliminated, 26% believe it should be changed to require senators to speak, and 40% believe no changes should be made.

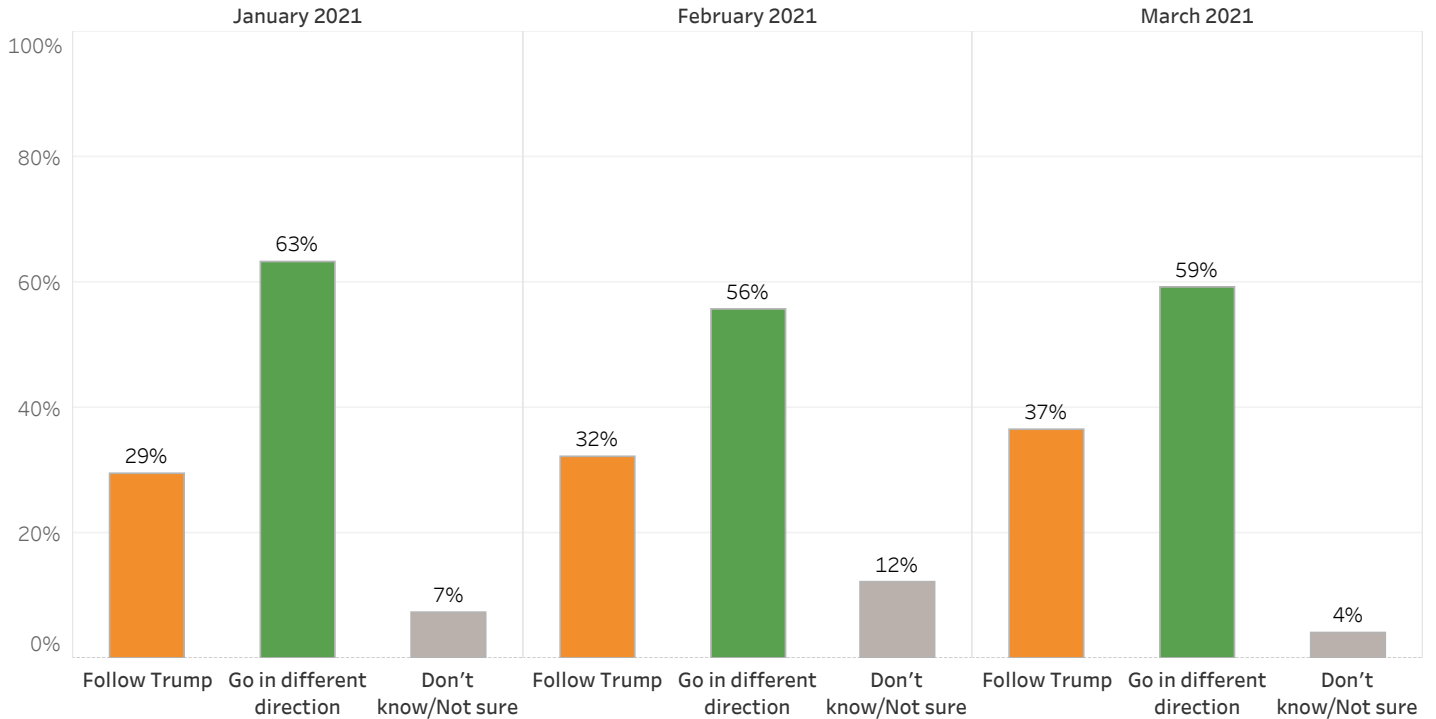
Opinion on Changes or Elimination of Filibuster Rule - By Party ID - March 2021



Former President Trump

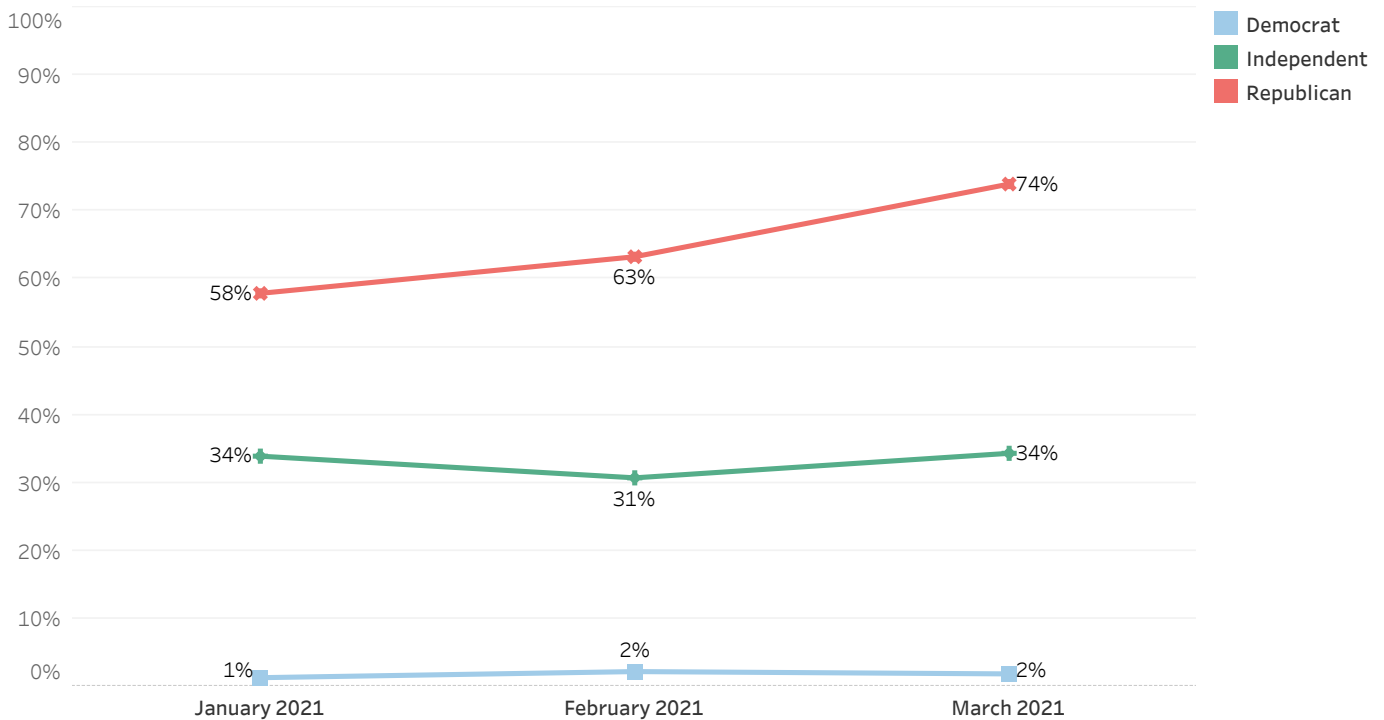
Overall, 59% of Granite Staters believe that the Republican Party should go in a different direction from Trump's leadership while only 37% think Republican leaders should follow Trump's leadership going forward and 4% are unsure.

Should Republican Leaders Follow Trump's Leadership or Should Party Go in Different Direction



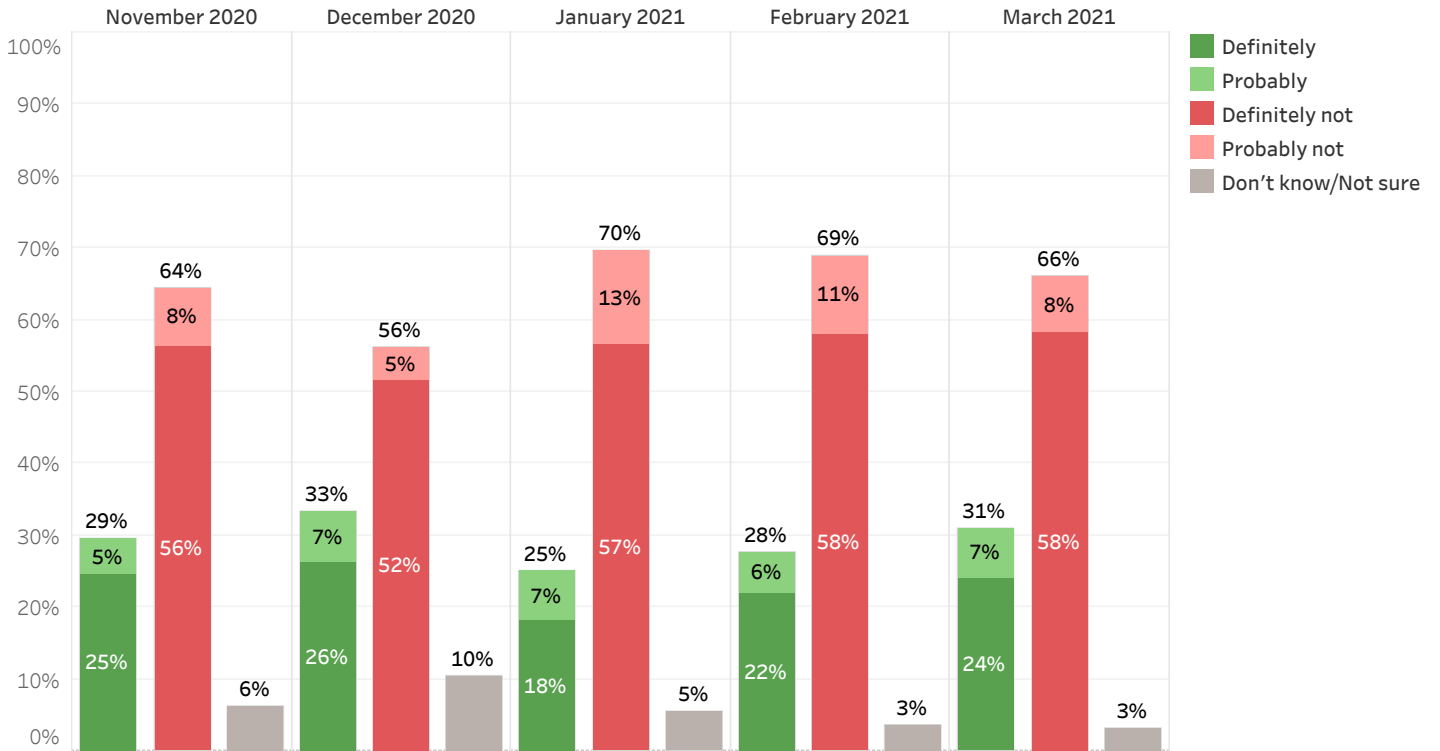
Almost all Democrats (95%) believe Republican leaders should go in a different direction and a majority of Independents (63%) agree. However, 74% of Granite State Republicans believe Republican leaders should follow Trump's leadership going forward, up from 63% in February, and only 20% think the party should go in a different direction. In January, only 58% of Republicans said the party should continue to follow Trump.

Republican Leaders Should Follow Trump's Leadership - By Party ID



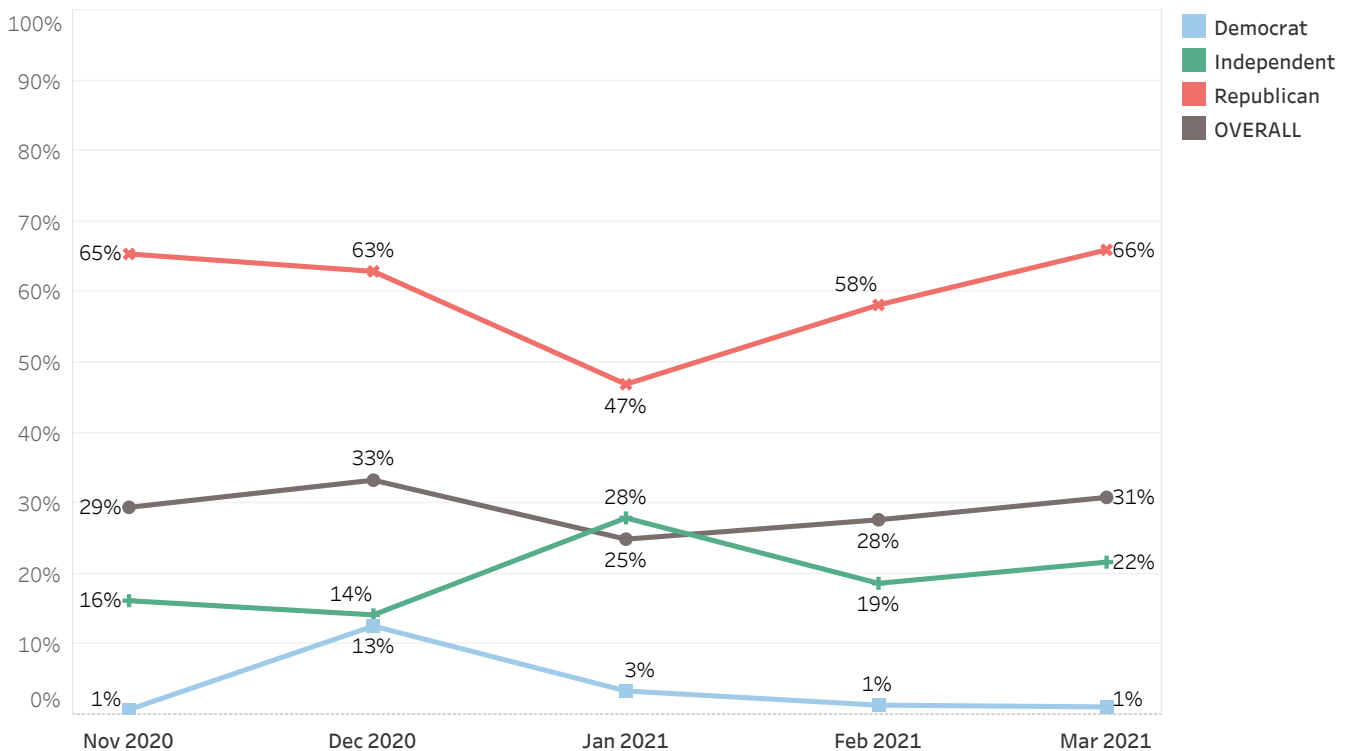
Just under one-third (31%) of Granite Staters say they definitely (24%) or probably (7%) want Trump to run for president in 2024 while two-thirds (66%) definitely (58%) or probably (8%) don't want him to run in 2024. The percentage who do not want Trump to run (66%) is largely unchanged since February (69%) but remains higher than in December, when 56% did not want Trump to run again.

Would Like Trump to Run for President in 2024



Only 1% of Democrats and 22% of Independents definitely or probably want Trump to run for president in 2024, but two-thirds (66%) of Republicans would like him to. The percentage of Republicans who want Trump to run in 2024 is at its highest point since the question was first asked in November 2020 and has increased substantially since January (47%).

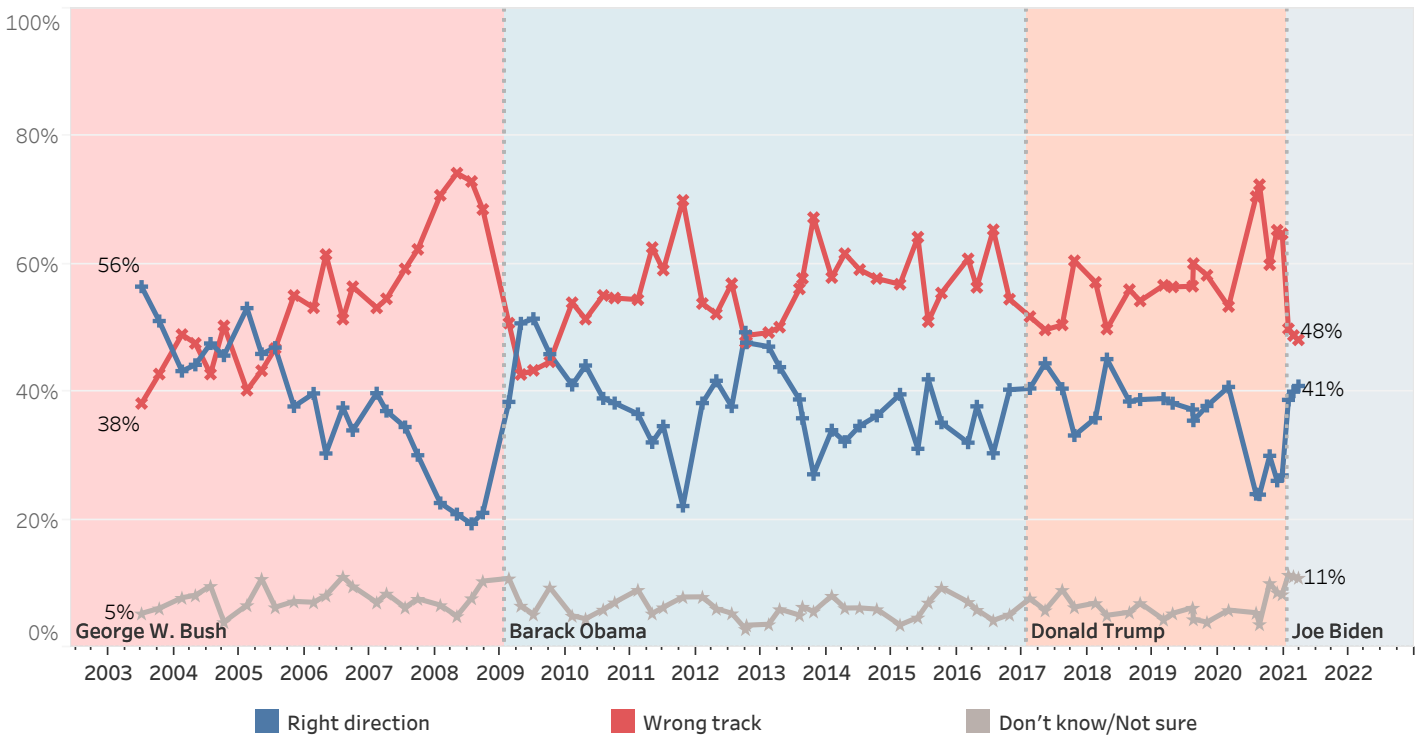
Definitely or Probably Want Trump to Run for President in 2024 - By Party ID



U.S. Heading in Right Direction or On Wrong Track

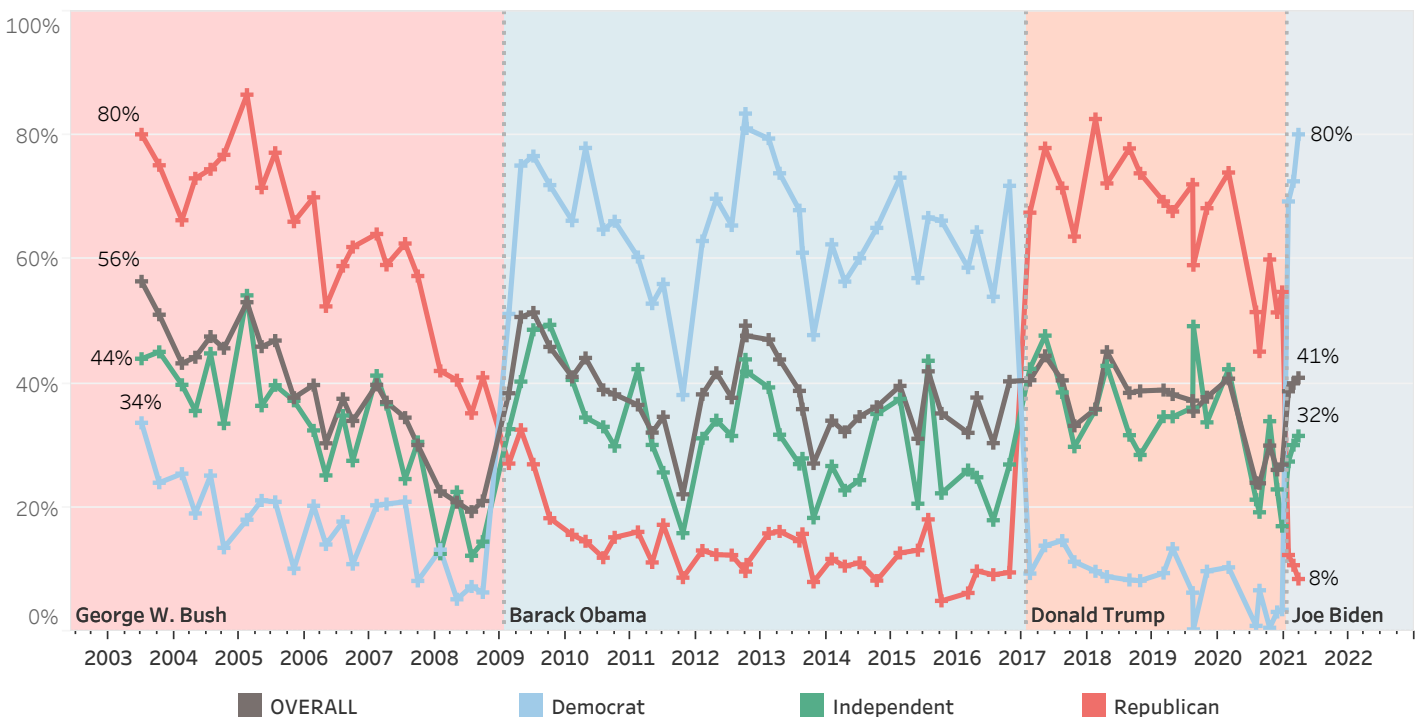
Forty-one percent of New Hampshire residents believe that things in the United States are going in the right direction, largely unchanged since February (40%); 48% of Granite Staters believe things are seriously off on the wrong track while 11% are unsure.

Right Direction or Wrong Track



Four-fifths of Democrats (80%) say the country is headed in the right direction, somewhat higher than in January (73%), but only one-third (32%) of Independents and 8% of Republicans agree. Perceptions of the direction of the country by party identification are mirror images of where they were under Trump.

Right Direction - by Party ID



Granite State Poll Methodology

These findings are based on the latest Granite State Poll, conducted by the University of New Hampshire Survey Center. One thousand seven hundred and forty-four (1,744) Granite State Panel members completed the survey online between March 18 and March 22, 2021. The margin of sampling error for the survey is +/- 2.3 percent. These MSE's have not been adjusted for design effect. The response rate for the March 2021 Granite State Poll is 30%. The design effect for the survey is 2.7%.

Data were weighted by respondent sex, age, education, and region of the state to targets from the most recent American Community Survey (ACS) conducted by the U.S. Census Bureau, as well as party registration levels provided by the NH Secretary of State and to 2020 election results in New Hampshire.

The Granite State Panel is part of an effort by the University of New Hampshire Survey Center to investigate new ways of gathering and understanding the opinion of New Hampshire residents. Approximately 5,750 New Hampshire adults were recruited from randomly selected landline and cell phone numbers to participate in the panel. Panelists are then asked to participate in online surveys sponsored by the UNH Survey Center.

The number of respondents in each demographic below may not equal the number reported in cross-tabulation tables as some respondents choose not to answer some questions. Due to rounding, percentages may not sum to 100%.

For more information about the methodology used in the Granite State Panel, contact Dr. Andrew Smith at (603) 862-2226 or by email at andrew.smith@unh.edu.

Granite State Panel, March 2021 Demographics

		%	N
Gender of Respondent	Men	49%	841
	Women	51%	872
Age of Respondent	18 to 34	27%	462
	35 to 49	20%	339
	50 to 64	33%	575
	65 and older	21%	357
Level of Education	High school or less	36%	624
	Tech school/Some college	31%	535
	College graduate	21%	361
	Postgraduate work	13%	220
Region of State	Connecticut Valley	16%	270
	Manchester Area	17%	298
	Mass Border	27%	460
	North Country	8%	138
	Seacoast	16%	270
	Central/Lakes	17%	301
Party ID	Democrat	41%	696
	Independent	18%	300
	Republican	41%	703
Voting Registration	Registered Democrat	28%	480
	Registered Undeclared/Not Reg.	42%	720
	Registered Republican	30%	502
2020 Presidential Vote	Voted for Trump	45%	773
	Voted for Biden	52%	898
	Voted for other 2020 candidate	2%	28
	Did not vote in 2020	2%	35
Gender & Education	Men, no college degree	35%	594
	Men, college degree	14%	247
	Women, no college degree	33%	561
	Women, college degree	18%	311

Approval of President Biden's Job Performance

Generally speaking, do you approve or disapprove of the way Joe Biden is handling his job as president?

	<u>Approve</u>	<u>Disapprove</u>	<u>Neither/DK</u>	<u>N</u>
January 2021	55%	37%	7%	2,008
February 2021	53%	45%	2%	1,843
March 2021	53%	45%	2%	1,741

Approval of President Biden's Handling of Coronavirus (COVID-19) Situation

Generally speaking, do you approve or disapprove of the way President Biden is handling the coronavirus (COVID-19) situation?

	<u>Approve</u>	<u>Disapprove</u>	<u>Neither/DK</u>	<u>N</u>
January 2021	59%	30%	11%	2,010
February 2021	58%	38%	4%	1,837
March 2021	60%	38%	2%	1,741

Approval of President Biden's Handling of the Economy

Generally speaking, do you approve or disapprove of the way President Biden is handling the economy?

	<u>Approve</u>	<u>Disapprove</u>	<u>Neither/DK</u>	<u>N</u>
January 2021	46%	37%	17%	2,012
February 2021	48%	44%	8%	1,837
March 2021	49%	47%	5%	1,738

Approval of President Biden's Handling of Foreign Affairs

Generally speaking, do you approve or disapprove of the way President Biden is handling foreign affairs?

	<u>Approve</u>	<u>Disapprove</u>	<u>Neither/DK</u>	<u>N</u>
January 2021	47%	36%	17%	2,011
February 2021	49%	43%	8%	1,842
March 2021	45%	47%	8%	1,740

Favorability - Joe Biden

Below are a list of political figures in the U.S. and New Hampshire. Please indicate whether you have a favorable or unfavorable opinion of each of them or if you don't know enough about them to say - President (Former Vice President, Vice President) Joe Biden

	<u>Favorable</u>	<u>Neutral</u>	<u>Unfavorable</u>	<u>Don't know enough about to say</u>	<u>N</u>
September 2008	44%	9%	31%	16%	547
September 2012	49%	6%	38%	7%	636
May 2020	27%	15%	57%	0%	837
June 2020	33%	18%	48%	0%	994
July 2020	40%	15%	45%	0%	1,883
August 2020	45%	12%	42%	1%	1,876
September 2020	44%	9%	46%	1%	1,012
October 2020	47%	7%	45%	0%	915
November 2020	44%	12%	43%	1%	1,902
December 2020	44%	11%	44%	0%	775
January 2021	48%	12%	39%	2%	2,013
February 2021	46%	12%	42%	0%	1,858
March 2021	40%	15%	44%	1%	1,743

Favorability - Donald Trump

Below are a list of political figures in the U.S. and New Hampshire. Please indicate whether you have a favorable or unfavorable opinion of each of them or if you don't know enough about them to say - Former President (President, Businessman) Donald Trump

	<u>Favorable</u>	<u>Neutral</u>	<u>Unfavorable</u>	<u>Don't know enough about to say</u>	<u>N</u>
April 2016	21%	4%	75%	0%	553
July 2016	30%	5%	64%	1%	529
October 2016	26%	4%	69%	1%	767
February 2017	42%	6%	49%	2%	503
May 2017	43%	7%	47%	3%	515
October 2017	34%	5%	60%	1%	571
February 2018	34%	5%	59%	2%	517
April 2018	47%	2%	50%	1%	208
August 2018	40%	5%	54%	1%	499
October 2018	42%	7%	50%	1%	637
February 2019	40%	5%	53%	2%	604
April 2019	41%	7%	52%	0%	546
August 2019	40%	5%	52%	2%	493
February 2020	43%	5%	51%	1%	611
May 2020	39%	8%	53%	0%	839
June 2020	36%	5%	58%	1%	994
July 2020	38%	3%	59%	1%	1,876
August 2020	39%	4%	57%	0%	1,876
September 2020	42%	3%	55%	0%	1,019
October 2020	42%	2%	55%	1%	917
November 2020	39%	6%	55%	0%	1,899
December 2020	39%	8%	53%	0%	775
January 2021	32%	12%	55%	0%	2,017
February 2021	36%	8%	56%	0%	1,856
March 2021	37%	8%	55%	0%	1,744

Opinion on Changes or Elimination of Filibuster Rule

The filibuster rule in the U.S. Senate currently requires sixty senators to agree to end debate before a bill can be voted on. Some have proposed changing the filibuster rule to require senators to continue speaking in order to continue a filibuster, while others have proposed eliminating the filibuster entirely, allowing legislation to move forward with the support of fifty-one senators. Which of the following comes closest to your view?

	<u>The filibuster should be eliminated entirely, allowing legislation to move forward with the support of fifty-one senators</u>	<u>The filibuster should be changed to require senators to continue speaking in order to continue a filibuster</u>	<u>No changes should be made to the filibuster rule in the U.S. Senate</u>	<u>Don't know/Not sure</u>	<u>N</u>
March 2021	30%	15%	37%	18%	1,741

Would Like to See Trump Run for President Again in 2024

Would you like to see Donald Trump run for President again in 2024?

	<u>Definitely</u>	<u>Probably</u>	<u>Probably not</u>	<u>Definitely not</u>	<u>Don't know/Not sure</u>	<u>N</u>
November 2020	25%	5%	8%	56%	6%	1,882
December 2020	26%	7%	5%	52%	10%	775
January 2021	18%	7%	13%	57%	5%	2,024
February 2021	22%	6%	11%	58%	3%	1,861
March 2021	24%	7%	8%	58%	3%	1,744

Should Republican Leaders Follow Trump's Leadership or Should Party Go in Different Direction

Going forward, do you think Republican leaders should follow Trump's leadership or should the party go in a different direction?

	<u>Follow Trump</u>	<u>Go in different direction</u>	<u>Don't know/Not sure</u>	<u>N</u>
January 2021	29%	63%	7%	2,022
February 2021	32%	56%	12%	1,861
March 2021	37%	59%	4%	1,744

U.S. Heading in the Right Direction or On Wrong Track

Do you think things in this country are generally going in the right direction or are they seriously off on the wrong track?

	<u>Right direction</u>	<u>Wrong track</u>	<u>Don't know/Not sure</u>	<u>N</u>		<u>Right direction</u>	<u>Wrong track</u>	<u>Don't know/Not sure</u>	<u>N</u>
June 2003	56%	38%	5%	511	February 2013	47%	49%	4%	573
October 2003	51%	43%	6%	487	April 2013	44%	50%	6%	498
February 2004	43%	49%	8%	503	July 2013	39%	56%	5%	511
April 2004	44%	48%	8%	535	August 2013	36%	58%	6%	498
July 2004	48%	43%	10%	500	October 2013	27%	67%	6%	645
October 2004	46%	50%	4%	574	January 2014	34%	58%	8%	569
February 2005	53%	40%	7%	535	April 2014	32%	62%	6%	501
May 2005	46%	43%	11%	487	July 2014	35%	59%	6%	654
July 2005	47%	47%	6%	492	October 2014	36%	58%	6%	677
October 2005	38%	55%	7%	498	February 2015	40%	57%	4%	498
February 2006	40%	53%	7%	487	May 2015	31%	64%	5%	562
April 2006	30%	62%	8%	501	July 2015	42%	51%	7%	528
July 2006	38%	51%	11%	496	October 2015	35%	55%	9%	580
September 2006	34%	56%	10%	510	February 2016	32%	61%	7%	672
February 2007	40%	53%	7%	516	April 2016	38%	56%	6%	604
April 2007	37%	55%	8%	510	July 2016	30%	65%	4%	522
July 2007	34%	59%	6%	516	October 2016	40%	55%	5%	897
September 2007	30%	62%	8%	505	February 2017	41%	52%	8%	499
January 2008	23%	71%	7%	553	May 2017	44%	50%	6%	506
April 2008	21%	74%	5%	487	August 2017	41%	50%	9%	498
July 2008	19%	73%	8%	508	October 2017	33%	61%	6%	562
September 2008	21%	69%	10%	540	February 2018	36%	57%	7%	515
February 2009	38%	51%	11%	610	April 2018	45%	50%	5%	207
April 2009	51%	43%	7%	498	August 2018	38%	56%	6%	492
July 2009	51%	43%	5%	555	October 2018	39%	54%	7%	632
October 2009	46%	45%	9%	496	February 2019	39%	57%	4%	588
February 2010	41%	54%	5%	484	April 2019	38%	56%	5%	537
April 2010	44%	51%	4%	502	August 2019	37%	57%	6%	496
July 2010	39%	55%	6%	491	October 2019	38%	58%	4%	1,248
September 2010	38%	55%	7%	512	February 2020	41%	53%	6%	602
February 2011	37%	54%	9%	513	July 2020	24%	71%	5%	2,007
April 2011	32%	63%	5%	496	November 2020	26%	65%	9%	1,912
June 2011	35%	59%	6%	507	December 2020	27%	65%	8%	773
October 2011	22%	70%	8%	553	January 2021	39%	50%	11%	2,020
February 2012	38%	54%	8%	514	February 2021	40%	49%	11%	1,861
April 2012	42%	52%	6%	525	March 2021	41%	48%	11%	1,744
July 2012	38%	57%	5%	512					
September 2012	49%	48%	3%	630					
October 2012	48%	49%	3%	578					

Approval of President Biden's Job Performance

		Approve	Disapprove	Neither/DK	N
STATEWIDE	March 2021	53%	45%	2%	1,741
Voting Registration	Registered Democrat	94%	4%	2%	479
	Registered Undeclared/Not Reg.	58%	40%	2%	720
	Registered Republican	7%	92%	1%	502
Party ID	Democrat	97%	2%	2%	695
	Independent	52%	47%	1%	299
	Republican	8%	90%	2%	702
Ideology	Liberal	95%	4%	1%	418
	Moderate	61%	37%	3%	754
	Conservative	6%	93%	1%	481
Media Usage	Boston Globe reader	95%	5%	0%	106
	NHPR listener	70%	28%	2%	1,020
	Union Leader reader	54%	43%	3%	291
	WMUR viewer	56%	42%	2%	1,208
	Fox News viewer	24%	74%	2%	664
	Conservative radio listener	9%	90%	1%	508
	Local newspapers reader	72%	26%	2%	278
Age of Respondent	18 to 34	71%	27%	1%	461
	35 to 49	37%	62%	1%	339
	50 to 64	48%	50%	3%	574
	65 and older	54%	44%	1%	356
Gender of Respondent	Men	45%	53%	2%	839
	Women	63%	36%	1%	871
Level of Education	High school or less	42%	57%	2%	624
	Tech school/Some college	55%	43%	1%	535
	College graduate	61%	36%	3%	360
	Postgraduate work	67%	31%	1%	219
Gender & Education	Men, no college degree	41%	57%	2%	594
	Men, college degree	53%	45%	2%	246
	Women, no college degree	56%	43%	1%	561
	Women, college degree	75%	24%	2%	310
Region of State	Connecticut Valley	46%	52%	2%	268
	Manchester Area	49%	49%	2%	297
	Mass Border	59%	39%	2%	460
	North Country	27%	70%	3%	138
	Seacoast	68%	31%	1%	270
	Central/Lakes	54%	45%	1%	301
2020 Presidential Vote	Voted for Trump	4%	94%	1%	772
	Voted for Biden	96%	2%	2%	897
	Voted for other 2020 candidate	48%	44%	8%	28
	Did not vote in 2020	52%	44%	5%	35

Approval of President Biden's Handling of Coronavirus (COVID-19) Situation

		Approve	Disapprove	Neither/DK	N
STATEWIDE	March 2021	60%	38%	2%	1,741
Voting Registration	Registered Democrat	96%	4%	1%	478
	Registered Undeclared/Not Reg.	65%	32%	2%	719
	Registered Republican	17%	79%	4%	502
Party ID	Democrat	98%	1%	1%	695
	Independent	55%	38%	7%	298
	Republican	22%	76%	2%	703
Ideology	Liberal	96%	3%	1%	417
	Moderate	68%	32%	1%	753
	Conservative	16%	81%	3%	482
Media Usage	Boston Globe reader	96%	4%		106
	NHPR listener	75%	23%	2%	1,020
	Union Leader reader	59%	38%	4%	291
	WMUR viewer	64%	33%	3%	1,207
	Fox News viewer	34%	61%	4%	664
	Conservative radio listener	18%	76%	6%	508
	Local newspapers reader	78%	22%	0%	279
Age of Respondent	18 to 34	76%	24%	0%	462
	35 to 49	44%	55%	2%	339
	50 to 64	54%	43%	3%	575
	65 and older	63%	33%	4%	355
Gender of Respondent	Men	55%	44%	2%	839
	Women	66%	32%	3%	870
Level of Education	High school or less	49%	48%	3%	624
	Tech school/Some college	62%	36%	1%	534
	College graduate	67%	31%	2%	360
	Postgraduate work	74%	24%	2%	219
Gender & Education	Men, no college degree	52%	47%	2%	592
	Men, college degree	62%	37%	2%	247
	Women, no college degree	59%	38%	3%	561
	Women, college degree	79%	19%	2%	309
Region of State	Connecticut Valley	48%	47%	5%	269
	Manchester Area	55%	45%	1%	298
	Mass Border	67%	32%	1%	459
	North Country	32%	66%	2%	138
	Seacoast	80%	19%	1%	269
	Central/Lakes	60%	37%	3%	301
2020 Presidential Vote	Voted for Trump	16%	81%	3%	773
	Voted for Biden	97%	1%	2%	896
	Voted for other 2020 candidate	62%	36%	2%	28
	Did not vote in 2020	61%	38%	0%	35

Approval of President Biden's Handling of the Economy

		Approve	Disapprove	Neither/DK	N
STATEWIDE	March 2021	49%	47%	5%	1,738
Voting Registration	Registered Democrat	92%	5%	3%	478
	Registered Undeclared/Not Reg.	49%	47%	4%	719
	Registered Republican	6%	87%	7%	499
Party ID	Democrat	95%	2%	2%	694
	Independent	44%	49%	7%	299
	Republican	7%	87%	6%	699
Ideology	Liberal	94%	5%	2%	418
	Moderate	53%	43%	4%	750
	Conservative	3%	94%	3%	480
Media Usage	Boston Globe reader	91%	7%	2%	106
	NHPR listener	66%	29%	6%	1,019
	Union Leader reader	52%	44%	4%	291
	WMUR viewer	53%	43%	5%	1,207
	Fox News viewer	23%	71%	6%	660
	Conservative radio listener	9%	84%	7%	508
	Local newspapers reader	70%	27%	2%	278
Age of Respondent	18 to 34	63%	33%	4%	462
	35 to 49	34%	64%	2%	339
	50 to 64	43%	51%	6%	575
	65 and older	53%	42%	5%	352
Gender of Respondent	Men	39%	55%	5%	839
	Women	59%	38%	3%	868
Level of Education	High school or less	33%	61%	6%	624
	Tech school/Some college	54%	41%	5%	531
	College graduate	58%	39%	3%	360
	Postgraduate work	64%	33%	3%	219
Gender & Education	Men, no college degree	34%	59%	7%	592
	Men, college degree	51%	47%	3%	246
	Women, no college degree	52%	44%	4%	558
	Women, college degree	71%	26%	3%	310
Region of State	Connecticut Valley	39%	55%	6%	268
	Manchester Area	48%	49%	4%	294
	Mass Border	49%	45%	6%	460
	North Country	26%	71%	3%	138
	Seacoast	67%	28%	5%	269
	Central/Lakes	53%	46%	1%	301
2020 Presidential Vote	Voted for Trump	2%	94%	4%	769
	Voted for Biden	90%	6%	4%	896
	Voted for other 2020 candidate	35%	51%	14%	28
	Did not vote in 2020	46%	41%	12%	35

Approval of President Biden's Handling of Foreign Affairs

		Approve	Disapprove	Neither/DK	N
STATEWIDE	March 2021	45%	47%	8%	1,740
Voting Registration	Registered Democrat	80%	16%	4%	478
	Registered Undeclared/Not Reg.	51%	38%	11%	719
	Registered Republican	6%	89%	5%	501
Party ID	Democrat	85%	10%	5%	695
	Independent	34%	53%	13%	299
	Republican	9%	84%	7%	701
Ideology	Liberal	80%	17%	3%	418
	Moderate	55%	36%	10%	753
	Conservative	3%	94%	3%	480
Media Usage	Boston Globe reader	87%	8%	5%	105
	NHPR listener	58%	33%	9%	1,020
	Union Leader reader	56%	42%	2%	291
	WMUR viewer	49%	41%	10%	1,208
	Fox News viewer	21%	73%	6%	662
	Conservative radio listener	10%	85%	5%	508
	Local newspapers reader	71%	25%	4%	277
Age of Respondent	18 to 34	56%	40%	4%	462
	35 to 49	32%	55%	13%	339
	50 to 64	41%	51%	9%	575
	65 and older	53%	43%	4%	353
Gender of Respondent	Men	43%	52%	5%	838
	Women	49%	41%	10%	871
Level of Education	High school or less	27%	63%	10%	624
	Tech school/Some college	53%	41%	5%	533
	College graduate	55%	37%	7%	360
	Postgraduate work	64%	31%	5%	219
Gender & Education	Men, no college degree	41%	56%	4%	591
	Men, college degree	48%	45%	7%	247
	Women, no college degree	37%	50%	13%	561
	Women, college degree	70%	25%	6%	309
Region of State	Connecticut Valley	36%	52%	12%	269
	Manchester Area	41%	51%	8%	297
	Mass Border	57%	39%	4%	459
	North Country	24%	52%	24%	138
	Seacoast	65%	29%	6%	269
	Central/Lakes	32%	64%	3%	301
2020 Presidential Vote	Voted for Trump	4%	90%	5%	771
	Voted for Biden	83%	8%	9%	896
	Voted for other 2020 candidate	39%	51%	10%	28
	Did not vote in 2020	10%	76%	14%	35

Favorability - Joe Biden

		Favorable	Neutral	Unfavorable	Don't know enough about to say	N
STATEWIDE	March 2021	40%	15%	44%	1%	1,743
Voting Registration	Registered Democrat	79%	16%	4%	0%	479
	Registered Undeclared/Not Reg.	40%	21%	39%	0%	720
	Registered Republican	5%	4%	90%	1%	502
Party ID	Democrat	82%	16%	2%	0%	696
	Independent	30%	20%	46%	4%	300
	Republican	5%	7%	88%	0%	702
Ideology	Liberal	76%	20%	4%	0%	418
	Moderate	44%	18%	36%	2%	754
	Conservative	1%	8%	92%		481
Media Usage	Boston Globe reader	88%	7%	4%	0%	107
	NHPR listener	55%	18%	27%	0%	1,021
	Union Leader reader	50%	8%	43%		291
	WMUR viewer	47%	11%	41%	1%	1,209
	Fox News viewer	18%	7%	73%	2%	664
	Conservative radio listener	6%	4%	89%	0%	508
	Local newspapers reader	69%	6%	25%		279
Age of Respondent	18 to 34	40%	30%	27%	3%	462
	35 to 49	30%	9%	61%	0%	339
	50 to 64	39%	12%	49%	1%	575
	65 and older	51%	5%	44%	1%	356
Gender of Respondent	Men	31%	17%	52%		839
	Women	50%	13%	36%	2%	872
Level of Education	High school or less	21%	21%	57%	2%	624
	Tech school/Some college	43%	14%	42%	1%	535
	College graduate	56%	8%	35%	1%	360
	Postgraduate work	61%	9%	30%	0%	219
Gender & Education	Men, no college degree	24%	20%	56%		594
	Men, college degree	48%	9%	43%		246
	Women, no college degree	38%	16%	43%	3%	561
	Women, college degree	70%	8%	22%	0%	310
Region of State	Connecticut Valley	32%	16%	52%	0%	269
	Manchester Area	47%	5%	47%	1%	298
	Mass Border	38%	25%	37%		460
	North Country	25%	3%	71%	1%	138
	Seacoast	61%	8%	31%	0%	270
	Central/Lakes	31%	20%	45%	4%	301
2020 Presidential Vote	Voted for Trump	1%	6%	93%	0%	772
	Voted for Biden	76%	21%	2%	0%	898
	Voted for other 2020 candidate	14%	40%	45%	2%	28
	Did not vote in 2020	6%	16%	44%	35%	35

Favorability - Donald Trump

		Favorable	Neutral	Unfavorable	Don't know enough about to say	N
STATEWIDE	March 2021	37%	8%	55%	0%	1,744
Voting Registration	Registered Democrat	2%	1%	96%	1%	479
	Registered Undeclared/Not Reg.	30%	11%	59%	0%	720
	Registered Republican	80%	8%	12%		502
Party ID	Democrat	1%	1%	98%	0%	696
	Independent	31%	14%	55%	1%	300
	Republican	77%	13%	11%		703
Ideology	Liberal	0%	1%	98%	1%	418
	Moderate	26%	10%	64%	0%	755
	Conservative	85%	10%	4%		482
Media Usage	Boston Globe reader	3%	1%	97%		107
	NHPR listener	23%	5%	72%	0%	1,021
	Union Leader reader	38%	5%	57%		291
	WMUR viewer	32%	10%	58%	0%	1,210
	Fox News viewer	64%	8%	28%	0%	665
	Conservative radio listener	84%	5%	12%		509
	Local newspapers reader	15%	9%	76%	1%	279
Age of Respondent	18 to 34	18%	6%	75%	1%	462
	35 to 49	46%	15%	39%		339
	50 to 64	43%	7%	49%	0%	575
	65 and older	39%	4%	56%		357
Gender of Respondent	Men	43%	9%	48%		841
	Women	29%	7%	63%	1%	872
Level of Education	High school or less	48%	10%	42%		624
	Tech school/Some college	36%	6%	58%		535
	College graduate	26%	8%	64%	1%	361
	Postgraduate work	22%	5%	73%		220
Gender & Education	Men, no college degree	48%	8%	43%		594
	Men, college degree	30%	9%	60%		247
	Women, no college degree	36%	8%	56%		561
	Women, college degree	18%	5%	76%	1%	310
Region of State	Connecticut Valley	43%	10%	47%	0%	270
	Manchester Area	43%	4%	53%		298
	Mass Border	33%	6%	61%		460
	North Country	43%	26%	31%		138
	Seacoast	22%	8%	69%	1%	270
	Central/Lakes	39%	4%	56%	1%	301
2020 Presidential Vote	Voted for Trump	82%	14%	4%		773
	Voted for Biden	0%	0%	99%	1%	898
	Voted for other 2020 candidate	1%	21%	79%		28
	Did not vote in 2020		35%	65%		35

Opinion on Changes or Elimination of Filibuster Rule

		<u>The filibuster should be eliminated entirely, allowing legislation to move forward with the support of fifty-one senators</u>	<u>The filibuster should be changed to require senators to continue speaking in order to continue a filibuster</u>	<u>No changes should be made to the filibuster rule in the U.S. Senate</u>	<u>Don't know/Not sure</u>	<u>N</u>
STATEWIDE	March 2021	30%	15%	37%	18%	1,741
Voting Registration	Registered Democrat	51%	17%	16%	16%	479
	Registered Undeclared/Not Reg.	33%	18%	36%	13%	718
	Registered Republican	8%	8%	59%	24%	502
Party ID	Democrat	55%	18%	11%	17%	696
	Independent	17%	26%	40%	17%	300
	Republican	8%	8%	64%	20%	700
Ideology	Liberal	55%	15%	15%	16%	418
	Moderate	32%	19%	38%	11%	754
	Conservative	9%	10%	57%	24%	479
Media Usage	Boston Globe reader	66%	21%	6%	7%	107
	NHPR listener	35%	19%	28%	18%	1,019
	Union Leader reader	32%	9%	39%	20%	289
	WMUR viewer	32%	15%	34%	19%	1,207
	Fox News viewer	12%	10%	58%	21%	663
	Conservative radio listener	6%	8%	72%	14%	506
	Local newspapers reader	45%	22%	22%	11%	279
Age of Respondent	18 to 34	36%	14%	30%	20%	462
	35 to 49	22%	13%	39%	27%	339
	50 to 64	29%	18%	40%	13%	575
	65 and older	33%	12%	41%	14%	354
Gender of Respondent	Men	29%	17%	44%	10%	841
	Women	32%	13%	30%	25%	869
Level of Education	High school or less	24%	8%	47%	20%	624
	Tech school/Some college	31%	17%	34%	18%	533
	College graduate	35%	19%	32%	13%	361
	Postgraduate work	35%	21%	25%	18%	219
Gender & Education	Men, no college degree	28%	14%	46%	11%	594
	Men, college degree	31%	23%	40%	6%	247
	Women, no college degree	27%	10%	36%	28%	559
	Women, college degree	40%	19%	20%	21%	310
Region of State	Connecticut Valley	22%	24%	28%	26%	269
	Manchester Area	28%	13%	38%	21%	298
	Mass Border	39%	14%	34%	12%	458
	North Country	12%	13%	35%	41%	138
	Seacoast	43%	13%	34%	9%	270
	Central/Lakes	22%	12%	53%	13%	301
2020 Presidential Vote	Voted for Trump	6%	9%	67%	17%	770
	Voted for Biden	52%	20%	12%	17%	898
	Voted for other 2020 candidate	38%	28%	19%	15%	28
	Did not vote in 2020	7%		30%	63%	35

Should Republican Leaders Follow Trump's Leadership or Should Party Go in Different Direction

		<u>Follow Trump</u>	<u>Go in different direction</u>	<u>Don't know/Not sure</u>	<u>N</u>
STATEWIDE	March 2021	37%	59%	4%	1,744
Voting Registration	Registered Democrat	4%	95%	1%	480
	Registered Undeclared/Not Reg.	32%	63%	6%	720
	Registered Republican	75%	19%	6%	502
Party ID	Democrat	2%	95%	3%	696
	Independent	34%	63%	3%	300
	Republican	74%	20%	6%	703
Ideology	Liberal	2%	94%	4%	418
	Moderate	28%	69%	4%	755
	Conservative	83%	13%	5%	482
Media Usage	Boston Globe reader	4%	96%	0%	107
	NHPR listener	20%	75%	4%	1,022
	Union Leader reader	32%	66%	3%	291
	WMUR viewer	32%	64%	4%	1,210
	Fox News viewer	58%	37%	5%	665
	Conservative radio listener	77%	19%	3%	509
	Local newspapers reader	21%	74%	5%	279
Age of Respondent	18 to 34	21%	76%	4%	462
	35 to 49	54%	43%	3%	339
	50 to 64	40%	55%	4%	575
	65 and older	34%	60%	6%	357
Gender of Respondent	Men	40%	56%	5%	841
	Women	32%	64%	4%	872
Level of Education	High school or less	48%	50%	2%	624
	Tech school/Some college	34%	59%	6%	535
	College graduate	29%	66%	5%	361
	Postgraduate work	21%	75%	4%	220
Gender & Education	Men, no college degree	43%	53%	4%	594
	Men, college degree	32%	61%	7%	247
	Women, no college degree	40%	55%	5%	561
	Women, college degree	19%	79%	2%	311
Region of State	Connecticut Valley	36%	63%	1%	270
	Manchester Area	42%	53%	5%	298
	Mass Border	30%	66%	3%	460
	North Country	61%	30%	9%	138
	Seacoast	25%	68%	7%	270
	Central/Lakes	40%	58%	2%	301
2020 Presidential Vote	Voted for Trump	80%	14%	6%	773
	Voted for Biden	1%	97%	2%	898
	Voted for other 2020 candidate	13%	81%	6%	28
	Did not vote in 2020	17%	76%	7%	35

Would Like to See Trump Run for President Again in 2024

		Definitely	Probably	Probably not	Definitely not	Don't know/Not sure	N
STATEWIDE	March 2021	24%	7%	8%	58%	3%	1,744
Voting Registration	Registered Democrat	3%	0%	2%	95%	0%	480
	Registered Undeclared/Not Reg.	17%	6%	9%	62%	6%	720
	Registered Republican	57%	14%	10%	17%	2%	502
Party ID	Democrat	1%	0%	1%	97%	0%	696
	Independent	18%	4%	8%	59%	11%	300
	Republican	51%	15%	14%	17%	3%	703
Ideology	Liberal	0%	0%	3%	97%	0%	418
	Moderate	14%	8%	10%	65%	3%	755
	Conservative	61%	11%	10%	13%	5%	482
Media Usage	Boston Globe reader	2%	1%	4%	91%	2%	107
	NHPR listener	14%	5%	4%	75%	2%	1,022
	Union Leader reader	20%	5%	7%	63%	5%	291
	WMUR viewer	23%	6%	6%	61%	4%	1,210
	Fox News viewer	42%	11%	10%	31%	6%	665
	Conservative radio listener	54%	14%	8%	18%	6%	509
	Local newspapers reader	7%	6%	7%	76%	4%	279
Age of Respondent	18 to 34	7%	1%	10%	79%	3%	462
	35 to 49	42%	13%	3%	40%	2%	339
	50 to 64	28%	6%	8%	55%	3%	575
	65 and older	23%	8%	10%	55%	5%	357
Gender of Respondent	Men	22%	10%	11%	53%	5%	841
	Women	26%	3%	5%	65%	2%	872
Level of Education	High school or less	38%	8%	6%	47%	2%	624
	Tech school/Some college	20%	6%	10%	61%	3%	535
	College graduate	15%	5%	10%	65%	5%	361
	Postgraduate work	10%	8%	5%	73%	4%	220
Gender & Education	Men, no college degree	25%	11%	11%	49%	4%	594
	Men, college degree	16%	7%	10%	61%	6%	247
	Women, no college degree	35%	3%	4%	58%	1%	561
	Women, college degree	9%	4%	8%	76%	3%	311
Region of State	Connecticut Valley	21%	1%	16%	60%	2%	270
	Manchester Area	27%	6%	13%	53%	1%	298
	Mass Border	22%	6%	6%	62%	4%	460
	North Country	56%	4%	3%	36%	1%	138
	Seacoast	12%	10%	5%	72%	2%	270
	Central/Lakes	23%	13%	3%	56%	5%	301
2020 Presidential Vote	Voted for Trump	54%	15%	14%	12%	5%	773
	Voted for Biden	0%	0%	1%	98%	0%	898
	Voted for other 2020 candidate	2%	1%	3%	91%	3%	28
	Did not vote in 2020		1%	29%	56%	14%	35

U.S. Heading in the Right Direction or On Wrong Track

		Right direction	Wrong track	Don't know/Not sure	N
STATEWIDE	March 2021	41%	48%	11%	1,744
Voting Registration	Registered Democrat	77%	12%	10%	480
	Registered Undeclared/Not Reg.	42%	44%	14%	720
	Registered Republican	6%	89%	5%	502
Party ID	Democrat	80%	9%	11%	696
	Independent	32%	54%	15%	300
	Republican	8%	87%	4%	703
Ideology	Liberal	76%	11%	13%	418
	Moderate	47%	38%	15%	755
	Conservative	3%	96%	1%	482
Media Usage	Boston Globe reader	80%	13%	6%	107
	NHPR listener	56%	33%	10%	1,022
	Union Leader reader	44%	48%	8%	291
	WMUR viewer	44%	46%	10%	1,210
	Fox News viewer	19%	73%	9%	665
	Conservative radio listener	9%	89%	2%	509
	Local newspapers reader	61%	30%	9%	279
Age of Respondent	18 to 34	48%	33%	20%	462
	35 to 49	30%	63%	7%	339
	50 to 64	37%	54%	9%	575
	65 and older	49%	45%	6%	357
Gender of Respondent	Men	35%	54%	11%	841
	Women	48%	42%	11%	872
Level of Education	High school or less	28%	58%	14%	624
	Tech school/Some college	45%	47%	8%	535
	College graduate	48%	40%	12%	361
	Postgraduate work	55%	37%	9%	220
Gender & Education	Men, no college degree	31%	56%	13%	594
	Men, college degree	44%	48%	8%	247
	Women, no college degree	41%	49%	10%	561
	Women, college degree	59%	29%	12%	311
Region of State	Connecticut Valley	34%	61%	5%	270
	Manchester Area	36%	51%	13%	298
	Mass Border	45%	41%	15%	460
	North Country	25%	72%	3%	138
	Seacoast	53%	32%	15%	270
	Central/Lakes	43%	49%	8%	301
2020 Presidential Vote	Voted for Trump	3%	94%	3%	773
	Voted for Biden	76%	8%	15%	898
	Voted for other 2020 candidate	15%	59%	26%	28
	Did not vote in 2020	9%	43%	48%	35