

February 24, 2021

NH POLITICAL ROUNDUP: SUNUNU JOB APPROVAL STAYS HIGH, ENTHUSIASM FOR FIRST IN THE NATION PRIMARY WANING

By: Sean P. McKinley, M.A.
Zachary S. Azem, M.A.
Andrew E. Smith, Ph.D.

andrew.smith@unh.edu
603-862-2226
cola.unh.edu/unh-survey-center

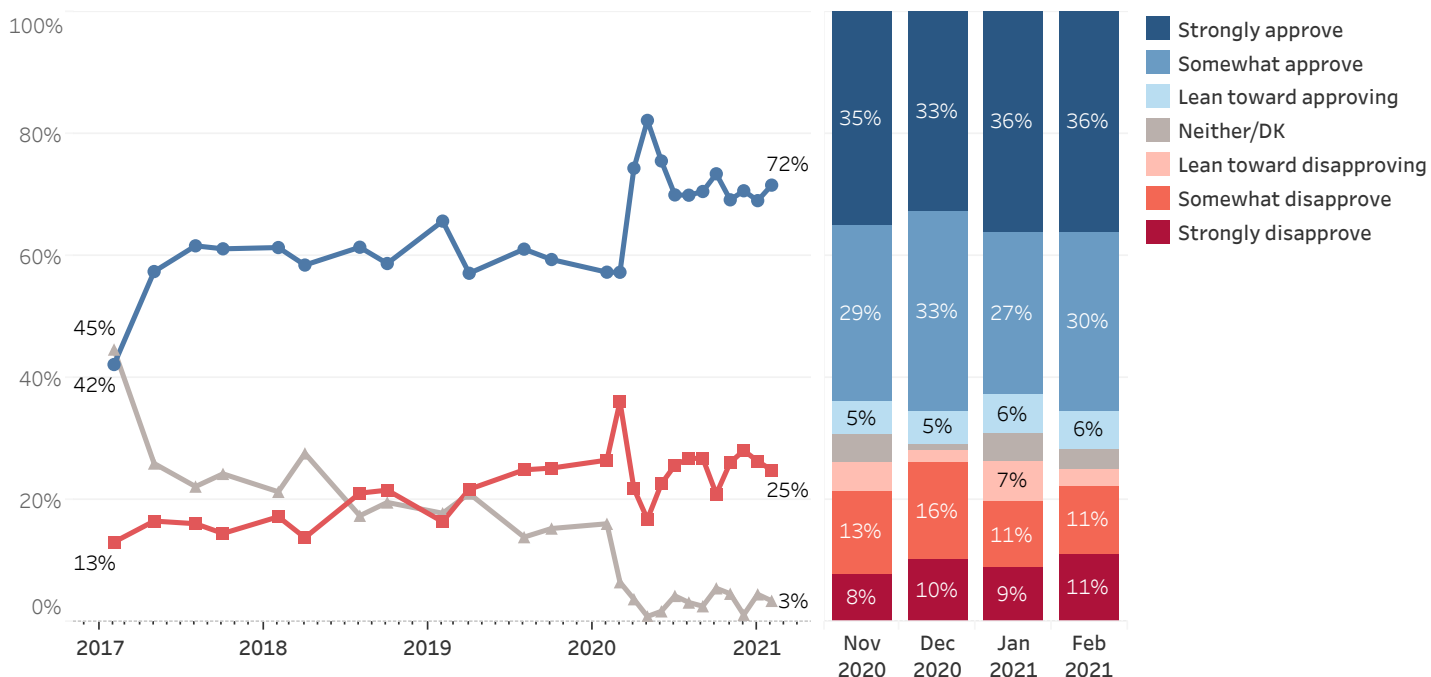
DURHAM, NH – Governor Chris Sununu remains extremely popular in New Hampshire with a job approval rating of 72%. His handling of the COVID-19 crisis in New Hampshire also remains high. While Nevada tries to replace New Hampshire as the first presidential primary, a majority of Granite Staters say New Hampshire's First in the Nation Presidential Primary is important. However, fewer Granite Staters than in 2008 consider it to be important. Residents are ambivalent about a proposal to move New Hampshire's state primary from September to earlier in the year. A plurality support establishing a redistricting commission to redraw legislative boundaries in the state. There is modest support for legal sports betting in the state and allowing for more betting locations, but few have strong opinions on the issue.

These findings are based on the latest **Granite State Poll***, conducted by the University of New Hampshire Survey Center. One thousand eight hundred and sixty-one (1,861) Granite State Panel members completed the survey online between February 18 and February 22, 2021. The margin of sampling error for the survey is +/- 2.3 percent. Data were weighted by respondent sex, age, education, and region of the state to targets from the most recent American Community Survey (ACS) conducted by the U.S. Census Bureau, as well as party registration levels provided by the NH Secretary of State and 2020 election results in NH. Granite State Panel members are recruited from randomly-selected landline and cell phone numbers across New Hampshire and surveys are sent periodically to panel members.

Gubernatorial Approval

As political observers turn their attention to the 2022 election, approval of Governor Sununu's job performance remains high among New Hampshire residents. Seventy-two percent approve of Sununu's performance as governor, 25% disapprove, and 3% neither approve nor disapprove or don't know. Sununu's net approval rating (the percentage who approve minus the percentage who disapprove) among Granite Staters is +47, unchanged since January (+43).

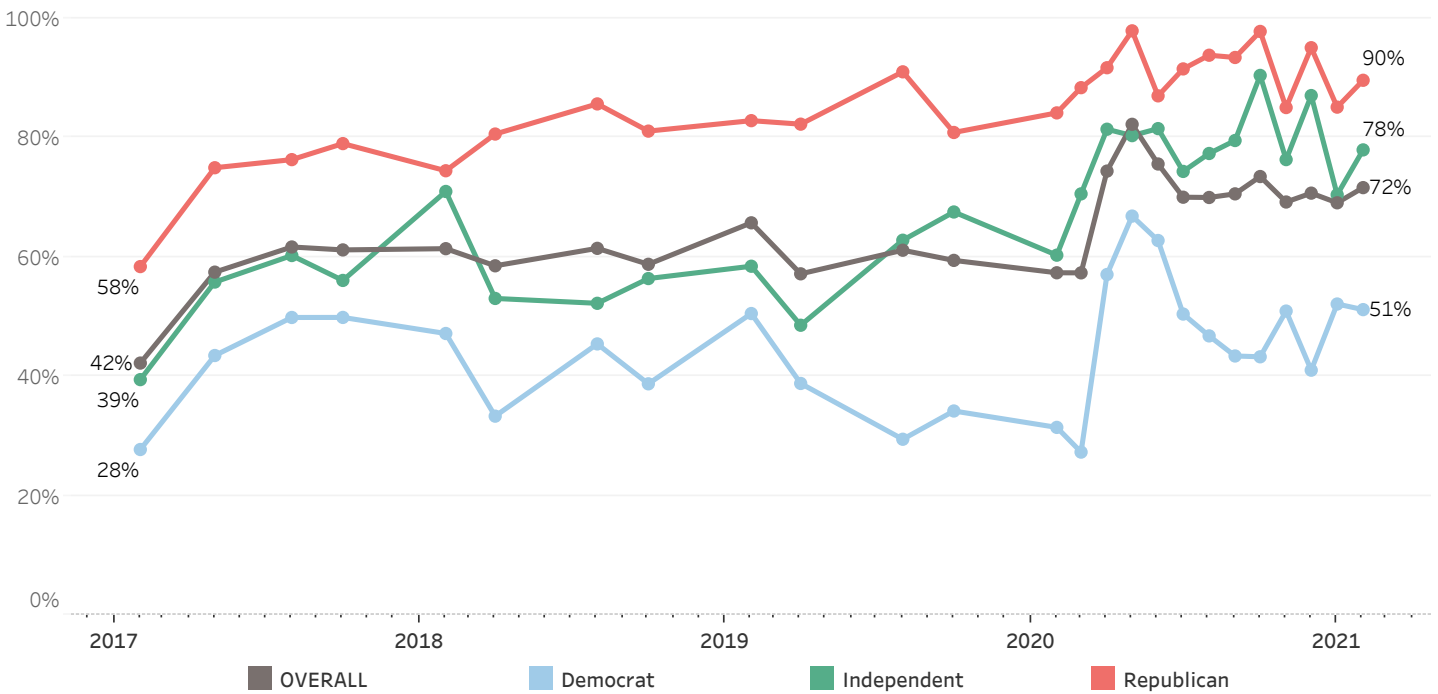
Gubernatorial Approval - Chris Sununu



* We ask that this copyrighted information be referred to as *the Granite State Poll*, conducted by the University of New Hampshire Survey Center.

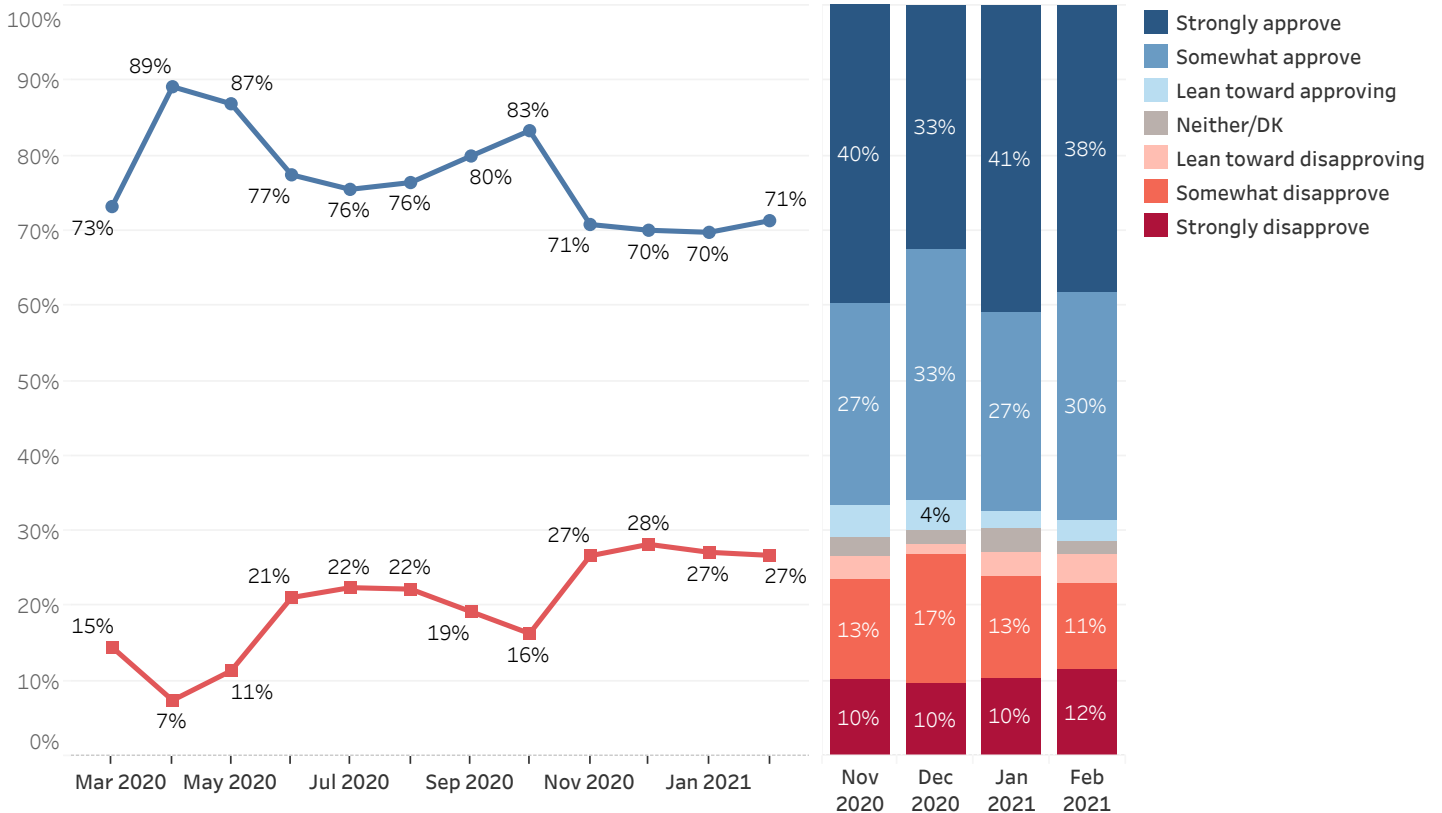
Approval of Sununu's job performance as governor remains bipartisan - 90% of Republicans and 78% of Independents approve of Sununu's job performance and even 51% of Democrats approve.

Job Approval - Governor Chris Sununu - By Party Identification



Granite Staters also continue to broadly approve of how Sununu has handled COVID-19 in New Hampshire: 71% approve of his handling of the pandemic while only 27% disapprove. Ratings of Sununu's handling of COVID-19 have remained stable since November 2020 but are slightly lower than in the summer of 2020.

Approval of Governor Sununu's Handling of Coronavirus (COVID-19) Situation

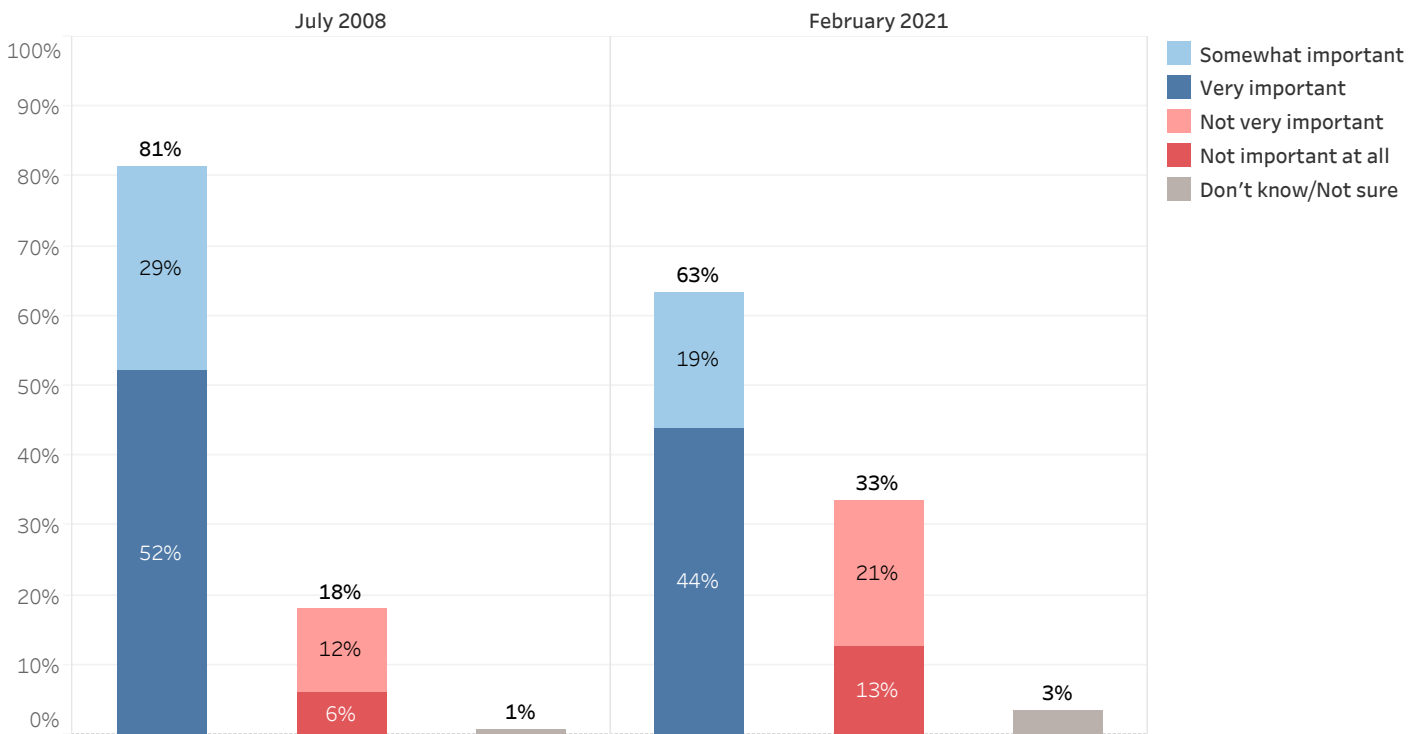


First in the Nation Presidential Primary

Since the 1960s, many states have tried to dislodge New Hampshire from holding the first presidential primary. Nevada has attempted this in the past and is currently considering moving up their state's presidential primary ahead of New Hampshire for the 2024 presidential election. New Hampshire state law currently requires the state to hold its primary at least seven days before any "similar election" in another state and in the past, it has moved the date of its primary earlier in the year in response to challenges from other states.

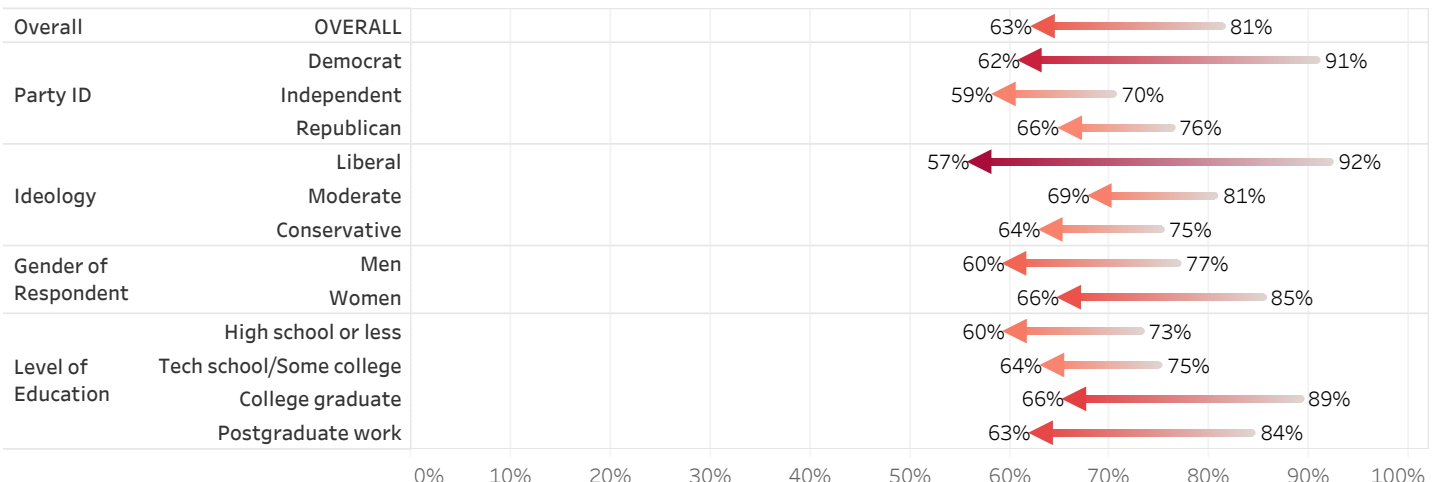
Nearly two-thirds (63%) of New Hampshire residents say it is very (44%) or somewhat (19%) important to them that New Hampshire hold the first presidential primary, one-third (33%) say it is not very (21%) or not at all (13%) important, and 3% are unsure.

Importance of New Hampshire Holding First Presidential Primary



While a majority of residents still consider it important that New Hampshire hold the first presidential primary, Granite Staters consider it to be less important than they did in July 2008, when four in five (81%) said it was important to them. Respondents of all parties and ideologies are less likely than in 2008 to say it is important to them but the decline has been most pronounced among Democrats (-29 percentage points) and liberals (-35), who in 2008 were more likely than Republicans and conservatives to consider it important that New Hampshire hold the first primary.

Very or Somewhat Important New Hampshire Hold First Presidential Primary - Change from July 2008 to January 2021

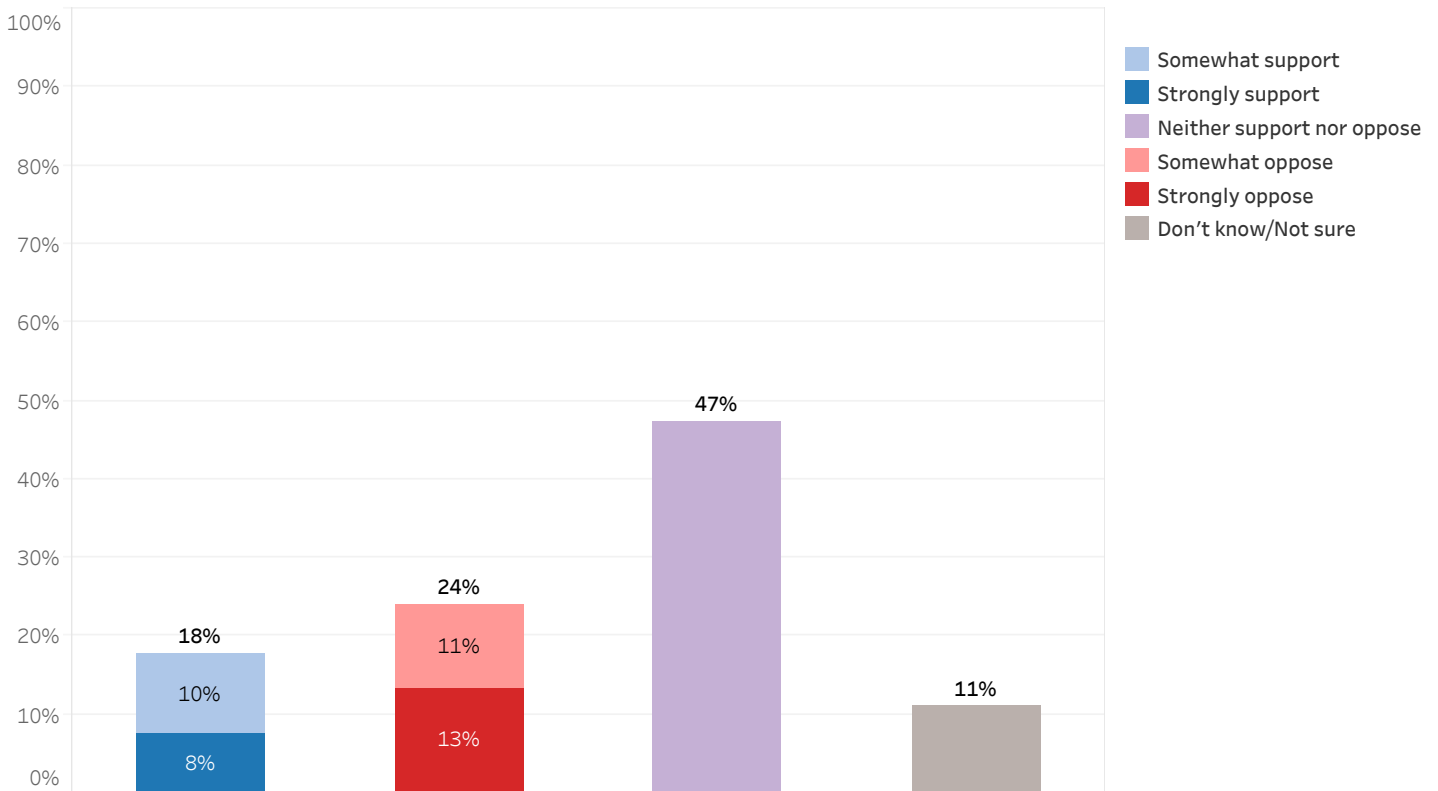


NH State Primary

New Hampshire's state primary to nominate candidates for Congress, Governor, and the state legislature is held on the second Tuesday in September, one of the latest dates in the electoral cycle of any state in the country. The New Hampshire Legislature is considering changing the date of the state primary from September to as early as June.

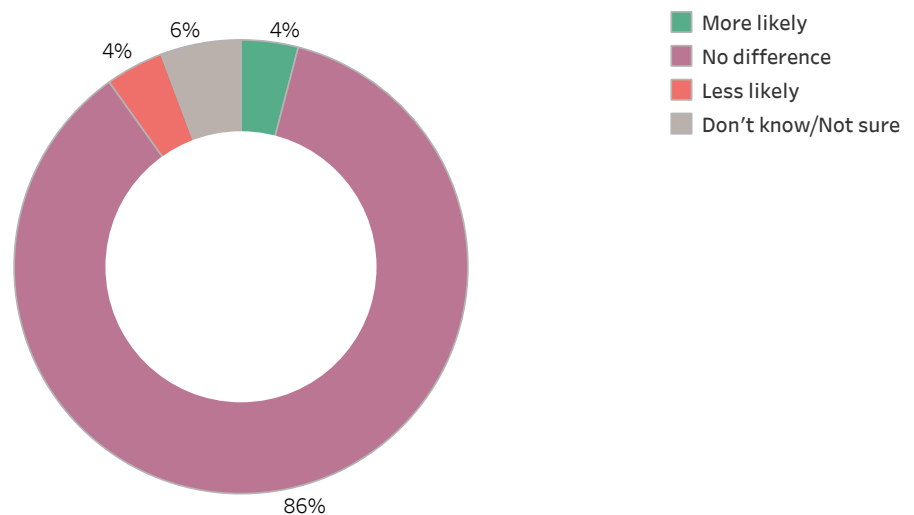
Granite Staters are ambivalent about this proposed change: 18% strongly (8%) or somewhat (10%) support it, 24% are somewhat (11%) or strongly (13%) opposed, nearly half (47%) neither support nor oppose it, and 11% are unsure. Republicans (24%) and Independents (22%) are only slightly more likely than Democrats (14%) to support this change.

Support or Oppose Changing State Primary Date to Earlier Than September



Changing the date of New Hampshire's state primary elections would likely have little effect on turnout in state primary elections. Only 4% say that they would be more likely to vote in state primary elections if the date were moved up, 4% say it would make them less likely to vote, 86% say it would make no difference, and 6% are unsure.

More or Less Likely to Vote in Earlier State Primary Elections

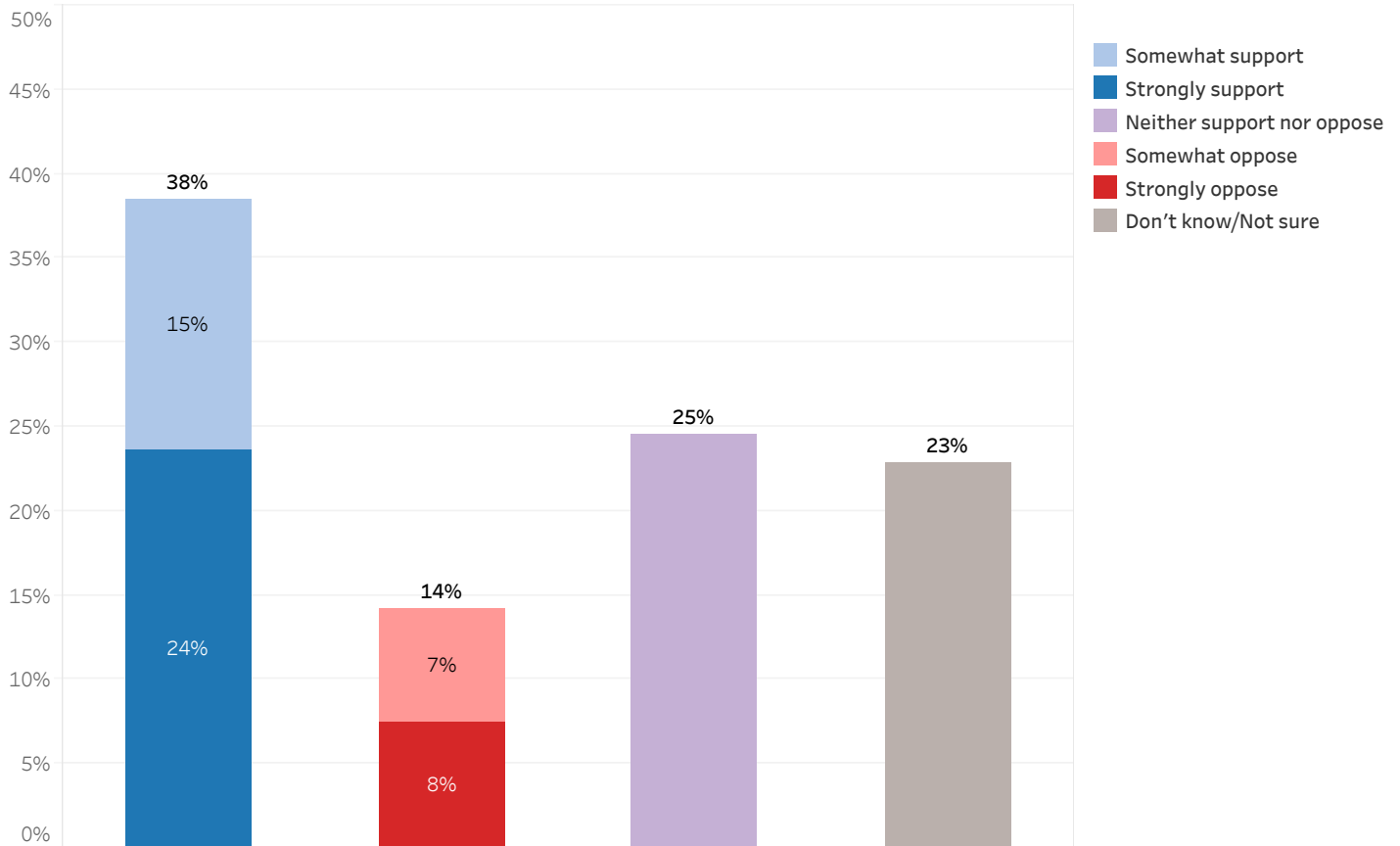


Redistricting

States are required by the U.S. Constitution and state constitutions to redraw electoral district boundaries after each decennial census. In most states, this is done by passing a law, which has often resulted in "gerrymandered" districts which favor a political party. Several states have created independent or bipartisan commissions to redraw districts in less partisan ways and the New Hampshire Legislature is considering a bill that would create an independent commission in New Hampshire to redraw the state's legislative districts.

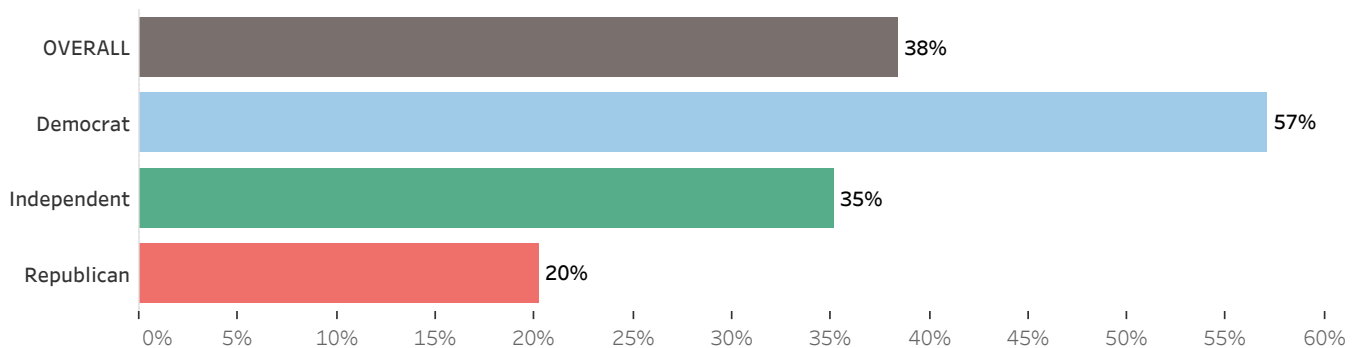
A plurality of Granite Staters support the creation of an independent commission: 38% strongly (24%) or somewhat (15%) support this change, 14% somewhat (7%) or strongly (8%) oppose it. However, 25% neither support nor oppose this proposal and 23% are unsure.

Support or Oppose an Independent Commission to Redraw the State's Legislative Districts



Democrats (57%) are more likely than Independents (35%) and Republicans (20%) to support creating an independent commission to redraw New Hampshire's state legislative districts.

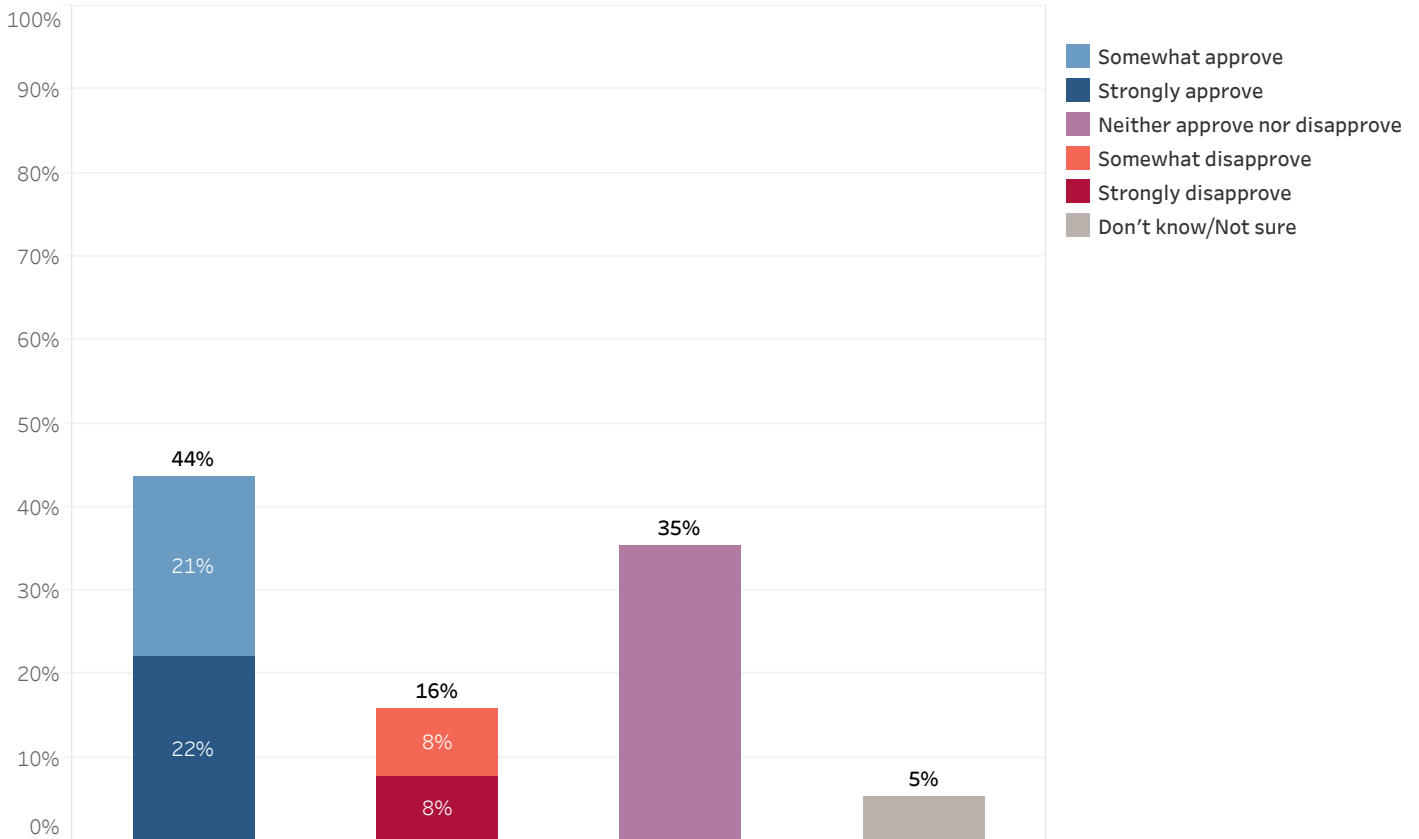
Support an Independent Commission to Redraw the State's Legislative Districts - By Party ID



Sports Betting

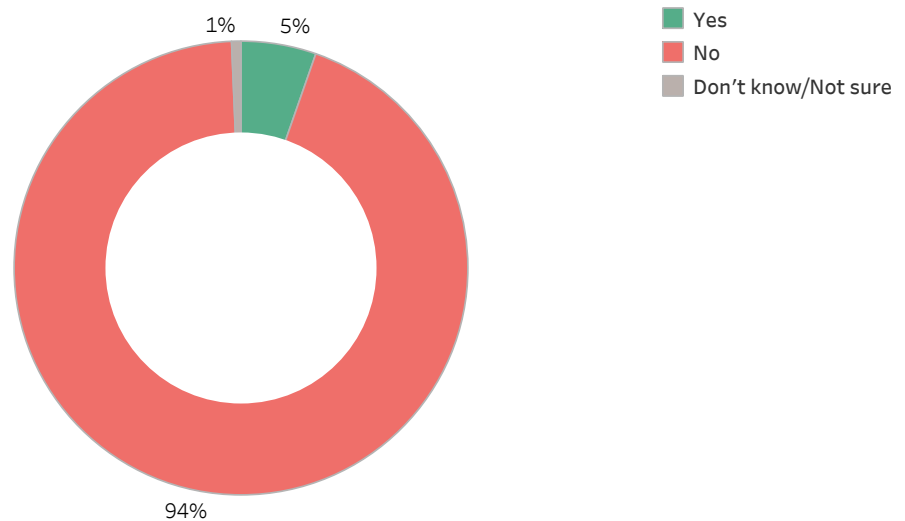
A plurality (44%) of Granite Staters say they strongly (22%) or somewhat (21%) approve of the decision in 2019 to legalize sports betting in New Hampshire. Only 16% say they somewhat (8%) or strongly (8%) disapprove of this decision, 35% neither approve nor disapprove, and 5% are unsure. Very slight majorities of Republicans (51%) and Independents (51%) support the decision to legalize sports betting in the state but only one-third (33%) of Democrats agree.

Approve or Disapprove of Legalization of Sports Betting



Despite the approval or ambivalent attitude held by most Granite Staters towards sports betting legalization in New Hampshire, only a small fraction have ever bet on sports themselves in the state: 5% report that they have bet on sports in New Hampshire, 94% say they have not, and 1% are unsure. Seacoast and Central/Lakes Region residents, those under the age of fifty, and men are slightly more likely than others to have utilized sports betting in New Hampshire.

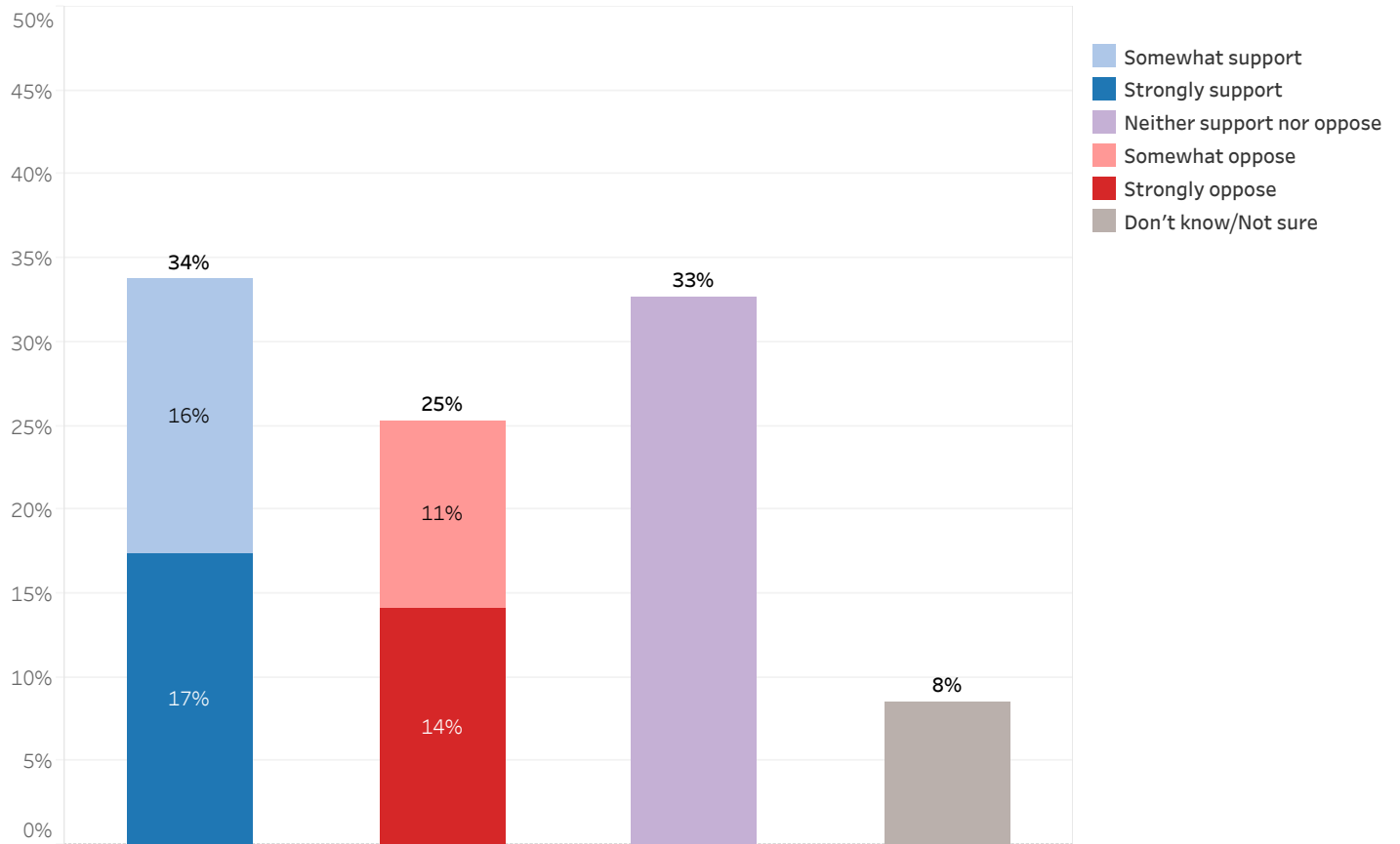
Ever Utilized Sports Betting in New Hampshire



Currently, New Hampshire law permits only ten physical locations for sports betting in the state. The legislature is considering a bill (HB330) that would remove this limit on the number of locations.

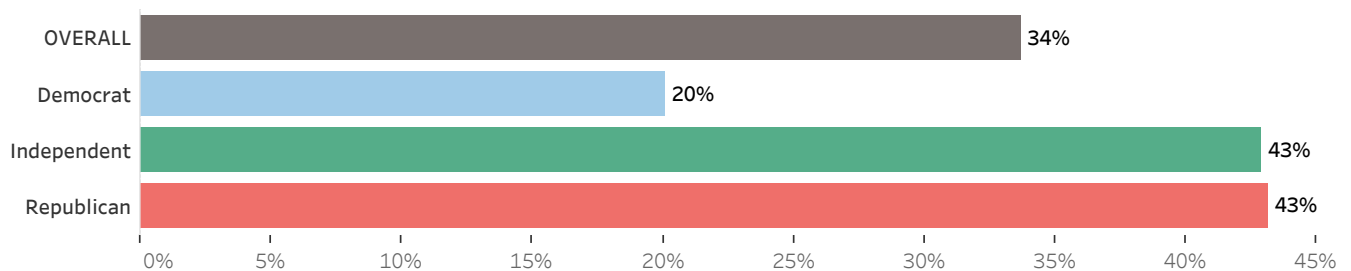
Granite Staters are divided on this proposal: 34% strongly (17%) or somewhat (16%) support this change, 25% somewhat (11%) or strongly (14%) oppose it, a third (33%) neither support nor oppose it, and 8% are unsure.

Support or Oppose Removing Limit on Number of Physical Sports Betting Locations in New Hampshire



Republicans (43%) and Independents (43%) are more than twice as likely as Democrats (20%) to support removing the limit on the number of physical sports betting locations in New Hampshire.

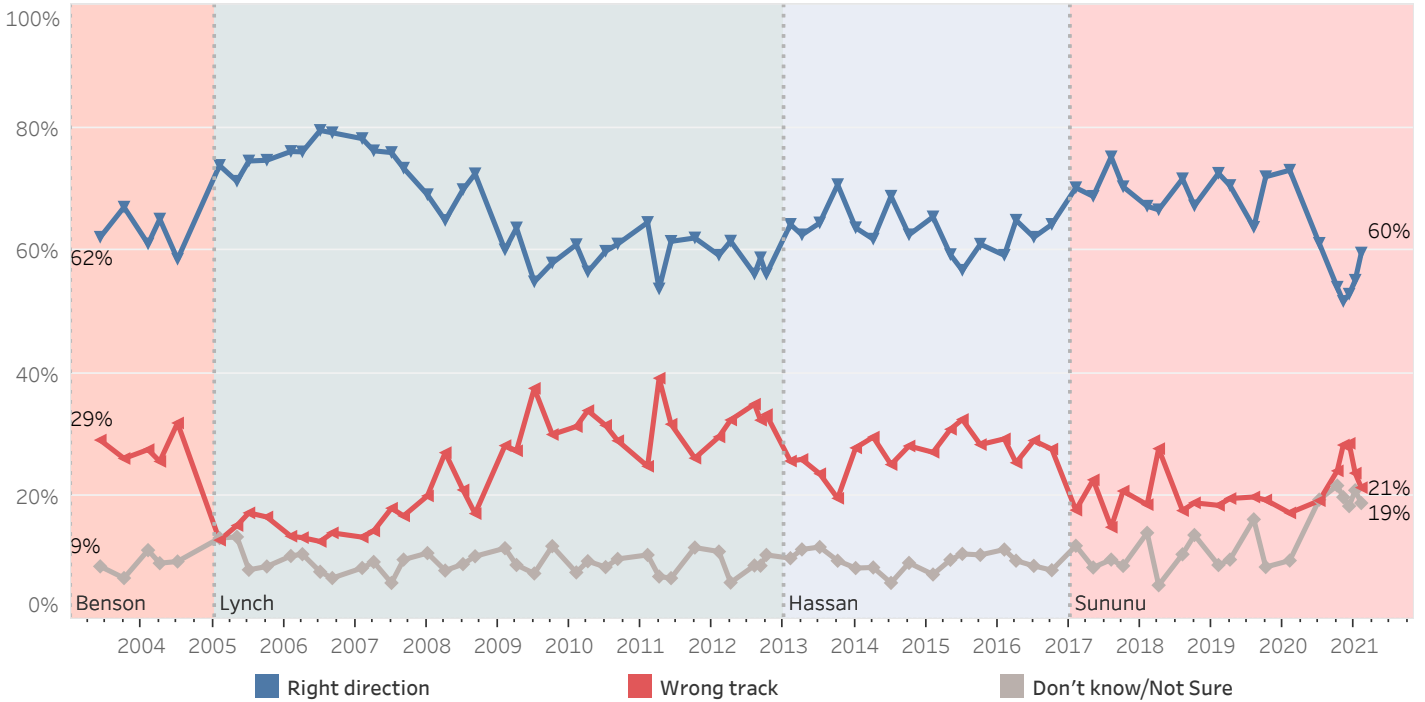
Support Removing Limit on Number of Physical Sports Betting Locations in New Hampshire - By Party ID



New Hampshire Heading in Right Direction or On Wrong Track

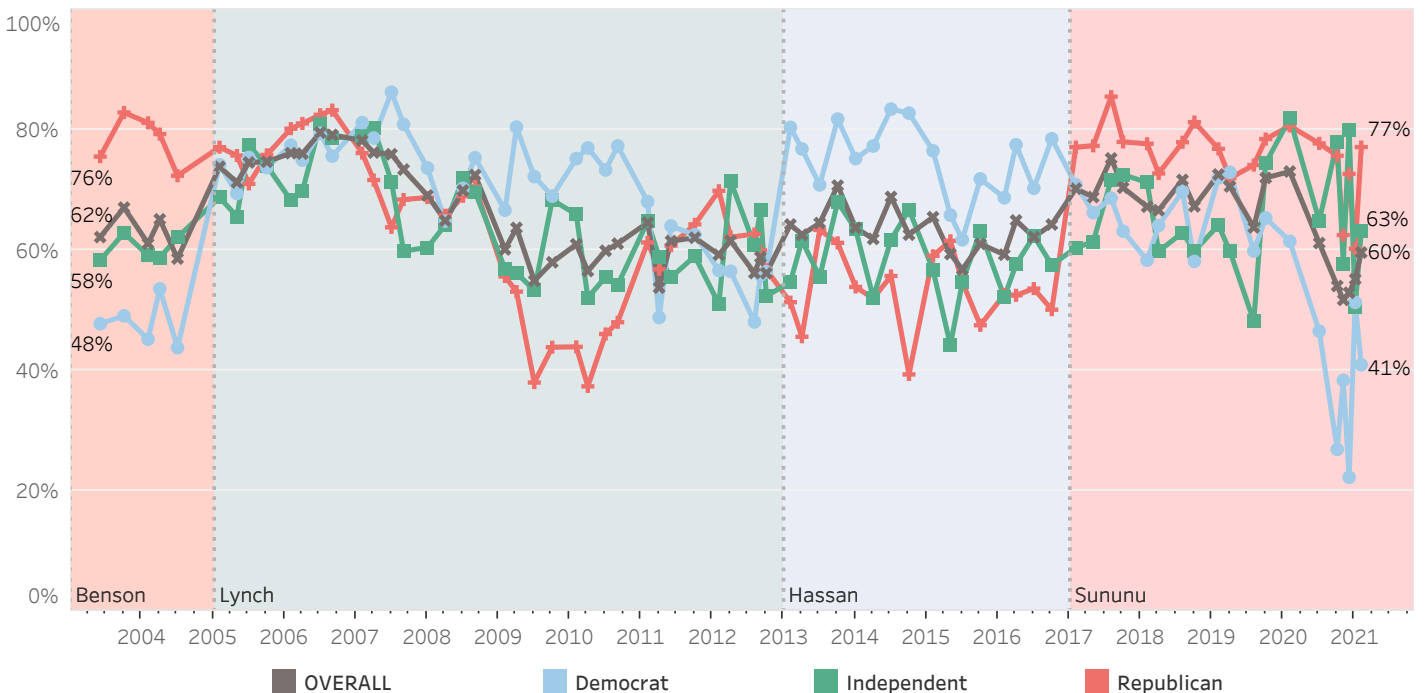
Sixty percent of New Hampshire residents believe that things in New Hampshire are going in the right direction while 21% think things are seriously off on the wrong track and 19% are unsure. Granite Staters remain less optimistic than in February 2020 before the COVID-19 pandemic began when 73% said things were going in the right direction but this positive feeling about the state's direction has increased for the third consecutive month.

NH - Right Direction or Wrong Track



More than three-quarters (77%) of Republicans believe the state is headed in the right direction, up from 60% in January. Sixty-three percent of Independents feel the state is headed in the right direction but only 41% of Democrats feel this way, down from 51% in January.

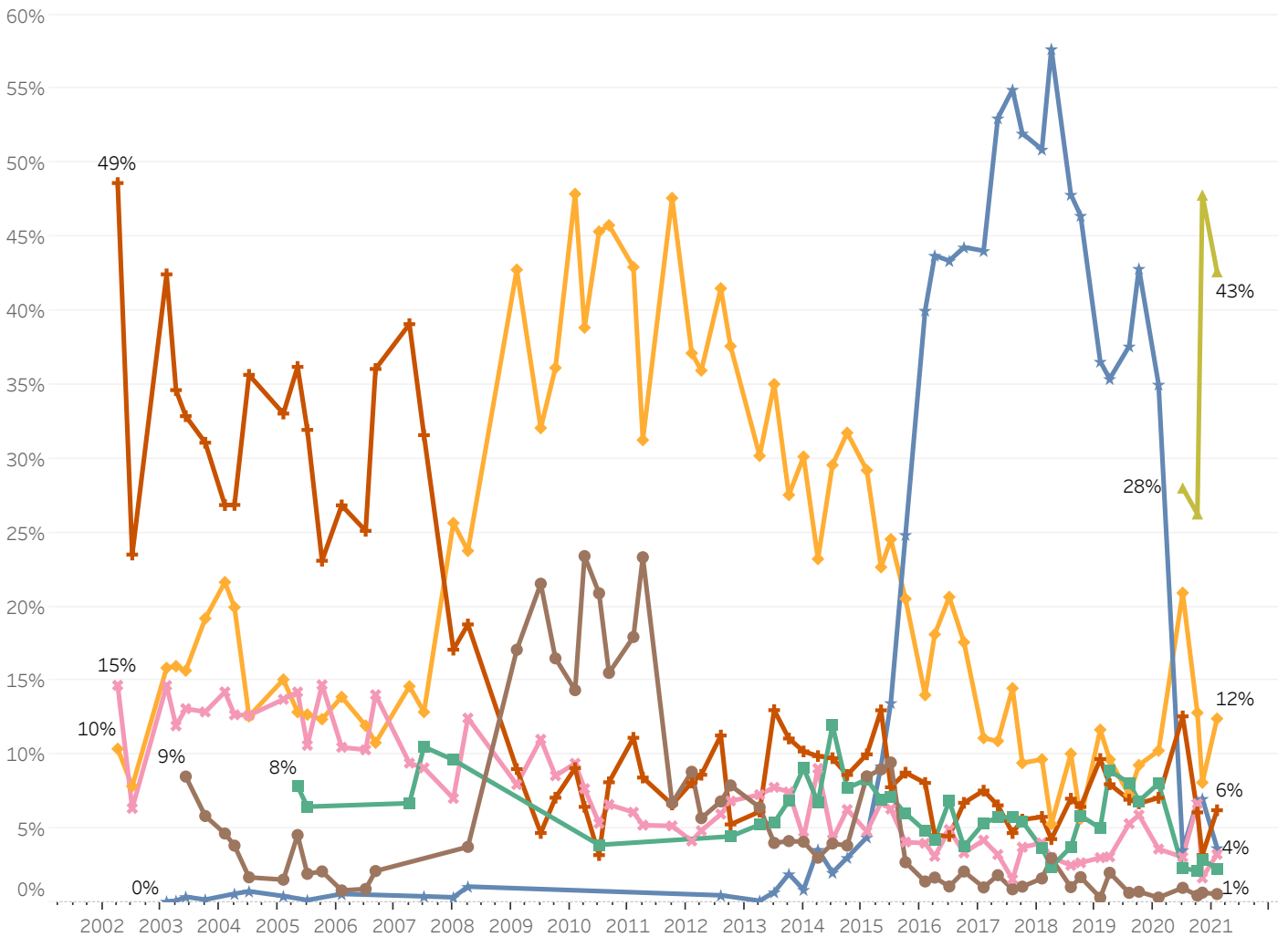
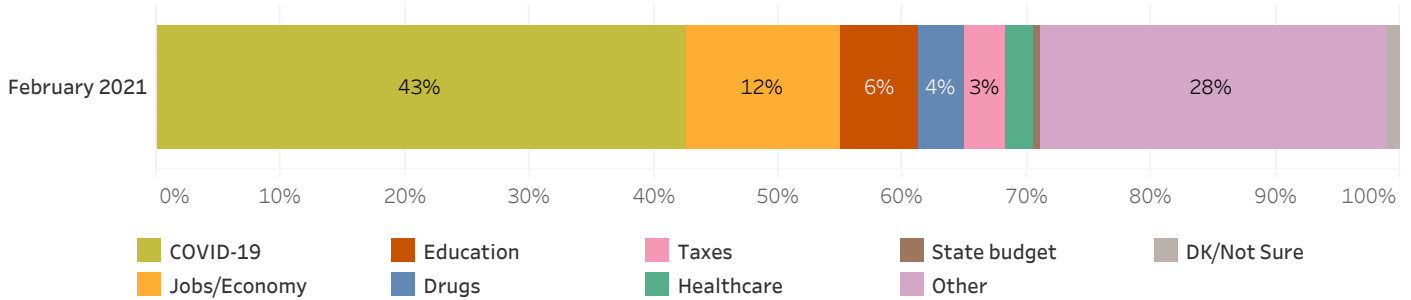
NH Heading in Right Direction - By Party ID



Most Important Problem Facing New Hampshire

Forty-three percent of New Hampshire residents believe that COVID-19 is the most important problem facing the state, slightly lower than the percentage who said so in November 2020 (48%). Twelve percent believe jobs or the economy is the most important problem facing the state and 6% say it is education, while less than 5% cite drugs (4%), taxes (3%), healthcare (2%), or the state budget (1%) as the most important problem. Twenty-eight percent mention another problem and 1% don't know or are unsure.

Most Important Problem - Coded



Granite State Poll Methodology

These findings are based on the latest Granite State Poll, conducted by the University of New Hampshire Survey Center. One thousand eight hundred and sixty-one (1,861) Granite State Panel members completed the survey online between February 18 and February 22, 2021. The margin of sampling error for the survey is +/- 2.3 percent. These MSE's have not been adjusted for design effect. The response rate for the February 2021 Granite State Poll is 33%. The design effect for the survey is 2.5%.

Data were weighted by respondent sex, age, education, and region of the state to targets from the most recent American Community Survey (ACS) conducted by the U.S. Census Bureau, as well as party registration levels provided by the NH Secretary of State and to 2020 election results in New Hampshire.

The Granite State Panel is part of an effort by the University of New Hampshire Survey Center to investigate new ways of gathering and understanding the opinion of New Hampshire residents. Approximately 5,750 New Hampshire adults were recruited from randomly selected landline and cell phone numbers to participate in the panel. Panelists are then asked to participate in online surveys sponsored by the UNH Survey Center.

The number of respondents in each demographic below may not equal the number reported in cross-tabulation tables as some respondents choose not to answer some questions. Due to rounding, percentages may not sum to 100%.

For more information about the methodology used in the Granite State Panel, contact Dr. Andrew Smith at (603) 862-2226 or by email at andrew.smith@unh.edu.

Granite State Panel, February 2021 Demographics

		%	N
Gender of Respondent	Men	49%	976
	Women	51%	1,010
Age of Respondent	18 to 34	27%	536
	35 to 49	21%	416
	50 to 64	32%	646
	65 and older	21%	414
Level of Education	High school or less	36%	725
	Tech school/Some college	31%	622
	College graduate	21%	419
	Postgraduate work	13%	255
Region of State	Central/Lakes	17%	334
	Connecticut Valley	14%	282
	Manchester Area	16%	325
	Mass Border	25%	501
	North Country	9%	179
	Seacoast	20%	396
Party ID	Democrat	42%	842
	Independent	17%	340
	Republican	40%	804
Voting Registration	Registered Democrat	28%	555
	Registered Undeclared/Not Reg.	42%	834
	Registered Republican	29%	581
2020 Presidential Vote	Voted for Trump	44%	890
	Voted for Biden	52%	1,034
	Voted for other 2020 candidate	2%	30
	Did not vote in 2020	2%	47

Approval of Governor Sununu's Job Performance

Generally speaking, do you approve or disapprove of the way Chris Sununu is handling his job as governor?

	<u>Approve</u>	<u>Disapprove</u>	<u>Neither/DK</u>	<u>N</u>
February 2017	42%	13%	45%	476
May 2017	57%	17%	26%	502
August 2017	62%	16%	22%	484
October 2017	61%	15%	24%	540
February 2018	61%	17%	21%	500
April 2018	59%	14%	28%	189
August 2018	61%	21%	17%	486
October 2018	59%	22%	20%	622
February 2019	66%	16%	18%	592
April 2019	57%	22%	21%	529
August 2019	60%	23%	17%	483
October 2019	59%	25%	15%	1,231
February 2020	57%	27%	16%	582
March 2020	57%	36%	7%	646
April 2020	74%	22%	4%	1,150
May 2020	82%	17%	1%	818
June 2020	76%	23%	2%	993
July 2020	70%	26%	4%	1,978
August 2020	70%	27%	3%	1,940
September 2020	71%	27%	3%	1,027
October 2020	73%	21%	6%	931
November 2020	69%	26%	5%	1,908
December 2020	71%	28%	1%	758
January 2021	69%	26%	5%	2,023
February 2021	72%	25%	3%	1,838

Approval of Governor Sununu's Handling of Coronavirus (COVID-19) Situation

Generally speaking, do you approve or disapprove of the way Chris Sununu is handling the coronavirus (COVID-19) situation?

	<u>Approve</u>	<u>Disapprove</u>	<u>Neither/DK</u>	<u>N</u>
March 2020	73%	15%	12%	643
April 2020	89%	7%	3%	1,154
May 2020	87%	11%	2%	815
June 2020	77%	21%	1%	970
July 2020	76%	22%	2%	1,973
August 2020	76%	22%	1%	1,930
September 2020	80%	19%	1%	1,027
October 2020	83%	16%	0%	930
November 2020	71%	27%	2%	1,908
December 2020	70%	28%	2%	763
January 2021	70%	27%	3%	2,019
February 2021	71%	27%	2%	1,860

Importance of New Hampshire Holding First Presidential Primary

Nevada is considering attempting to be the first state to hold a presidential primary in 2024 before New Hampshire. How important is it to you that New Hampshire hold the first presidential primary?

	<u>Very important</u>	<u>Somewhat important</u>	<u>Not very important</u>	<u>Not important at all</u>	<u>Don't know/Not sure</u>	<u>N</u>
July 2008	52%	29%	12%	6%	1%	513
February 2021	44%	19%	21%	13%	3%	1,861

Support or Oppose Changing State Primary Date to Earlier Than September

The New Hampshire Legislature is considering changing the date for New Hampshire state primary elections from September to as early as June. Do you support or oppose changing the state primary date to an earlier month of the year than September?

	<u>Strongly support</u>	<u>Somewhat support</u>	<u>Neither support nor oppose</u>	<u>Somewhat oppose</u>	<u>Strongly oppose</u>	<u>Don't know/Not sure</u>	<u>N</u>
February 2021	8%	10%	47%	11%	13%	11%	1,861

More or Less Likely to Vote in Earlier State Primary Elections

Would you be more or less likely to vote in New Hampshire state primary elections if they were in June rather than in September?

	<u>More likely</u>	<u>Less likely</u>	<u>No difference</u>	<u>Don't know/Not sure</u>	<u>N</u>
February 2021	4%	4%	86%	6%	1,859

Support or Oppose an Independent Commission to Redraw the State's Legislative Districts

The New Hampshire Legislature is currently responsible for drawing the state's legislative districts. New Hampshire legislators are considering a bill that would create an independent commission in New Hampshire to redraw the state's legislative districts. Do you support or oppose creating an independent commission for this purpose?

	<u>Strongly support</u>	<u>Somewhat support</u>	<u>Neither support nor oppose</u>	<u>Somewhat oppose</u>	<u>Strongly oppose</u>	<u>Don't know/Not sure</u>	<u>N</u>
February 2021	24%	15%	25%	7%	8%	23%	1,861

Approve or Disapprove of Legalization of Sports Betting

As you may know, in 2019 New Hampshire legalized sports betting in the state. Would you say you approve or disapprove of the state's decision to legalize sports betting?

	<u>Strongly approve</u>	<u>Somewhat approve</u>	<u>Neither approve nor disapprove</u>	<u>Somewhat disapprove</u>	<u>Strongly disapprove</u>	<u>Don't know/Not sure</u>	<u>N</u>
February 2021	22%	21%	35%	8%	8%	5%	1,861

Ever Utilized Sports Betting in New Hampshire

Have you ever utilized sports betting in New Hampshire?

	<u>Yes</u>	<u>No</u>	<u>Don't know/Not sure</u>	<u>N</u>
February 2021	5%	94%	1%	1,855

Support or Oppose Removing Limit on Number of Physical Sports Betting Locations in New Hampshire

Currently, under state law there can be only 10 locations for physical sports betting in the state. The legislature is considering a bill (HB330) that would remove this limit on the number of locations. Would you support or oppose this bill?

	<u>Strongly support</u>	<u>Somewhat support</u>	<u>Neither support nor oppose</u>	<u>Somewhat oppose</u>	<u>Strongly oppose</u>	<u>Don't know/Not sure</u>	<u>N</u>
February 2021	17%	16%	33%	11%	14%	8%	1,861

New Hampshire Heading in Right Direction or On Wrong Track

Do you think things in New Hampshire are generally going in the right direction or are they seriously off on the wrong track?

	<u>Right direction</u>	<u>Wrong track</u>	<u>Don't know/Not Sure</u>	<u>N</u>		<u>Right direction</u>	<u>Wrong track</u>	<u>Don't know/Not Sure</u>	<u>N</u>
June 2003	62%	29%	9%	510	February 2012	59%	30%	11%	517
October 2003	67%	26%	7%	485	April 2012	62%	32%	6%	532
February 2004	61%	28%	11%	500	August 2012	56%	35%	9%	577
April 2004	65%	26%	9%	530	September 2012	59%	32%	9%	622
July 2004	59%	32%	9%	503	February 2013	64%	26%	10%	573
February 2005	74%	13%	13%	535	April 2013	63%	26%	11%	497
May 2005	71%	15%	13%	488	July 2013	64%	24%	12%	509
July 2005	75%	17%	8%	494	October 2013	71%	20%	10%	645
October 2005	75%	17%	9%	502	January 2014	64%	28%	8%	570
February 2006	76%	14%	10%	495	April 2014	62%	30%	8%	505
April 2006	76%	13%	11%	501	July 2014	69%	25%	6%	656
July 2006	80%	13%	8%	497	October 2014	63%	28%	9%	666
September 2006	79%	14%	7%	509	February 2015	65%	27%	7%	501
February 2007	78%	13%	8%	524	May 2015	59%	31%	10%	562
April 2007	76%	14%	9%	506	July 2015	57%	33%	11%	522
July 2007	76%	18%	6%	500	October 2015	61%	28%	11%	581
September 2007	73%	17%	10%	507	February 2016	59%	29%	11%	669
January 2008	69%	20%	11%	547	April 2016	65%	25%	10%	593
April 2008	65%	27%	8%	491	July 2016	62%	29%	9%	517
July 2008	70%	21%	9%	514	October 2016	64%	28%	8%	890
September 2008	72%	17%	10%	535	February 2017	70%	18%	12%	496
February 2009	60%	28%	12%	605	May 2017	69%	23%	8%	510
April 2009	64%	27%	9%	497	August 2017	75%	15%	10%	500
July 2009	55%	38%	7%	557	October 2017	70%	21%	9%	559
October 2009	58%	30%	12%	496	February 2018	67%	19%	14%	516
February 2010	61%	31%	8%	490	April 2018	67%	28%	6%	206
April 2010	57%	34%	9%	503	August 2018	72%	18%	11%	493
July 2010	60%	32%	9%	496	October 2018	67%	19%	14%	640
September 2010	61%	29%	10%	511	February 2019	73%	19%	9%	594
February 2011	65%	25%	11%	517	April 2019	71%	20%	10%	547
April 2011	54%	39%	7%	491	August 2019	73%	15%	13%	490
June 2011	61%	32%	7%	503	October 2019	72%	19%	9%	1,250
October 2011	62%	26%	12%	544	February 2020	73%	17%	10%	604
					July 2020	61%	19%	19%	1,984
					October 2020	54%	24%	22%	922
					November 2020	52%	28%	20%	1,910
					December 2020	53%	29%	18%	773
					January 2021	55%	24%	21%	2,022
					February 2021	60%	21%	19%	1,861

Most Important Problem - New Hampshire

Let's turn to the state of New Hampshire. What do you think is the most important problem facing the state of New Hampshire today?

	<u>Drugs</u>	<u>Education</u>	<u>Healthcare</u>	<u>Jobs/ Economy</u>	<u>State budget</u>	<u>Taxes</u>	<u>Other</u>	<u>DK/Not Sure</u>	<u>N</u>
April 2002		49%		10%		15%	16%	11%	681
July 2002		24%		8%		6%	57%	5%	677
February 2003	0%	42%		16%		15%	18%	9%	644
April 2003	0%	35%		16%		12%	26%	12%	499
June 2003	0%	33%		16%	9%	13%	22%	8%	513
October 2003	0%	31%		19%	6%	13%	22%	9%	490
February 2004		27%		22%	5%	14%	23%	10%	502
April 2004	1%	27%		20%	4%	13%	24%	12%	536
July 2004	1%	36%		13%	2%	13%	26%	11%	505
February 2005	0%	33%		15%	2%	14%	21%	15%	541
May 2005		36%	8%	13%	5%	14%	15%	9%	487
July 2005	0%	32%	6%	13%	2%	11%	24%	12%	496
October 2005		23%		12%	2%	15%	35%	13%	503
February 2006	1%	27%		14%	1%	11%	34%	13%	498
July 2006		25%		12%	1%	10%	38%	13%	490
September 2006		36%		11%	2%	14%	29%	8%	499
April 2007		39%	7%	15%		9%	23%	7%	501
July 2007	0%	32%	11%	13%		9%	29%	7%	488
January 2008	0%	17%	10%	26%		7%	33%	7%	542
April 2008	1%	19%		24%	4%	12%	35%	5%	496
February 2009		9%		43%	17%	8%	23%		607
July 2009		5%		32%	22%	11%	26%	5%	551
October 2009		7%		36%	17%	9%	26%	6%	494
February 2010		9%		48%	14%	9%	18%	2%	486
April 2010		6%		39%	23%	8%	21%	3%	504
July 2010		3%	4%	45%	21%	5%	17%	4%	498
September 2010		8%		46%	16%	7%	19%	5%	504
February 2011		11%		43%	18%	6%	18%	4%	508
April 2011		8%		31%	23%	5%	28%	4%	494
October 2011		7%		48%	7%	5%	28%	6%	548
February 2012		8%		37%	9%	4%	36%	6%	509
April 2012		9%		36%	6%	5%	37%	8%	518
August 2012	0%	11%		42%	7%	6%	29%	5%	541
October 2012		5%	4%	38%	8%	7%	33%	5%	575
April 2013	0%	6%	5%	30%	6%	7%	38%	6%	485
July 2013	1%	13%	5%	35%	4%	8%	26%	7%	458
October 2013	2%	11%	7%	28%	4%	7%	26%	15%	602
January 2014	1%	10%	9%	30%	4%	4%	30%	11%	545
April 2014	4%	10%	7%	23%	3%	9%	35%	10%	464
July 2014	2%	10%	12%	30%	4%	4%	29%	9%	614
October 2014	3%	9%	8%	32%	4%	6%	28%	11%	644
February 2015	4%	10%	8%	29%	9%	5%	26%	8%	467
May 2015	9%	13%	7%	23%	9%	7%	24%	8%	540
July 2015	14%	8%	7%	25%	9%	6%	27%	4%	509
October 2015	25%	9%	6%	21%	3%	4%	26%	7%	563

Most Important Problem - New Hampshire

Let's turn to the state of New Hampshire. What do you think is the most important problem facing the state of New Hampshire today?

	<u>COVID-19</u>	<u>Drugs</u>	<u>Education</u>	<u>Healthcare</u>	<u>Jobs/ Economy</u>	<u>State budget</u>	<u>Taxes</u>	<u>Other</u>	<u>DK/Not Sure</u>	<u>N</u>
February 2016		40%	8%	5%	14%	1%	4%	21%	7%	659
April 2016		44%	5%	4%	18%	2%	3%	19%	5%	591
July 2016		43%	5%	7%	21%	1%	5%	15%	3%	509
October 2016		44%	7%	4%	18%	2%	3%	16%	6%	868
February 2017		44%	8%	5%	11%	1%	4%	17%	9%	493
May 2017		53%	7%	6%	11%	2%	3%	14%	5%	508
August 2017		55%	5%	6%	14%	1%	2%	13%	5%	493
October 2017		52%	6%	5%	9%	1%	4%	17%	6%	563
February 2018		51%	6%	4%	10%	2%	4%	18%	6%	509
April 2018		58%	4%	2%	5%	3%	3%	19%	5%	200
August 2018		48%	7%	4%	10%	1%	3%	22%	6%	491
October 2018		46%	6%	6%	6%	2%	3%	24%	7%	632
February 2019		37%	10%	5%	12%	0%	3%	28%	6%	594
April 2019		35%	8%	9%	10%	2%	3%	28%	5%	531
August 2019		38%	7%	8%	7%	1%	5%	29%	5%	484
October 2019		43%	7%	7%	9%	1%	6%	19%	9%	1,228
February 2020		35%	7%	8%	10%	0%	4%	30%	6%	587
July 2020	28%	4%	13%	2%	21%	1%	3%	27%	1%	1,839
October 2020	26%	7%	6%	2%	13%	0%	7%	38%	0%	835
November 2020	48%	7%	3%	3%	8%	1%	2%	28%	0%	1,763
February 2021	43%	4%	6%	2%	12%	1%	3%	28%	1%	1,726

Approval of Governor Sununu's Job Performance

		Approve	Disapprove	Neither/DK	N
STATEWIDE	February 2021	72%	25%	3%	1,838
Voting Registration	Registered Democrat	45%	51%	4%	496
	Registered Undeclared/Not Reg.	78%	19%	4%	760
	Registered Republican	87%	10%	3%	526
Party ID	Democrat	51%	45%	4%	763
	Independent	78%	19%	3%	307
	Republican	90%	7%	3%	755
Ideology	Liberal	41%	57%	3%	465
	Moderate	78%	19%	3%	699
	Conservative	88%	7%	5%	538
Media Usage	Boston Globe reader	60%	38%	2%	118
	Conservative radio listener	87%	9%	4%	492
	Fox News viewer	85%	13%	2%	822
	Local newspapers reader	66%	27%	6%	370
	NHPR listener	71%	25%	3%	1,050
	Union Leader reader	71%	23%	5%	287
	WMUR viewer	73%	23%	3%	1,464
Age of Respondent	18 to 34	52%	44%	4%	494
	35 to 49	77%	22%	1%	369
	50 to 64	80%	16%	4%	590
	65 and older	77%	18%	5%	371
Gender of Respondent	Men	75%	23%	2%	892
	Women	69%	26%	5%	908
Level of Education	High school or less	80%	16%	4%	648
	Tech school/Some college	66%	31%	3%	568
	College graduate	71%	26%	4%	383
	Postgraduate work	64%	33%	3%	234
Region of State	Central/Lakes	73%	23%	4%	301
	Connecticut Valley	70%	27%	3%	278
	Manchester Area	74%	25%	1%	313
	Mass Border	61%	35%	4%	480
	North Country	79%	11%	10%	141
	Seacoast	81%	17%	2%	317
Gender & Education	Men, no college degree	76%	21%	2%	599
	Men, college degree	73%	25%	2%	293
	Women, no college degree	72%	24%	5%	600
	Women, college degree	64%	31%	5%	308
2020 Presidential Vote	Voted for Trump	86%	12%	2%	814
	Voted for Biden	59%	37%	4%	943
	Voted for other 2020 candidate	52%	27%	21%	30
	Did not vote in 2020	96%	2%	2%	42

Approval of Governor Sununu's Handling of Coronavirus (COVID-19) Situation

		Approve	Disapprove	Neither/DK	N
STATEWIDE	February 2021	71%	27%	2%	1,860
Voting Registration	Registered Democrat	54%	43%	3%	509
	Registered Undeclared/Not Reg.	78%	20%	2%	763
	Registered Republican	76%	23%	1%	532
Party ID	Democrat	59%	38%	3%	776
	Independent	78%	19%	3%	307
	Republican	81%	19%	0%	764
Ideology	Liberal	50%	48%	2%	466
	Moderate	78%	18%	4%	702
	Conservative	79%	21%	0%	545
Media Usage	Boston Globe reader	61%	38%	1%	121
	Conservative radio listener	82%	15%	3%	501
	Fox News viewer	80%	19%	1%	831
	Local newspapers reader	73%	25%	2%	373
	NHPR listener	74%	24%	2%	1,064
	Union Leader reader	74%	23%	3%	287
	WMUR viewer	74%	24%	2%	1,483
Age of Respondent	18 to 34	53%	45%	2%	494
	35 to 49	70%	29%	1%	381
	50 to 64	79%	18%	3%	593
	65 and older	82%	16%	2%	378
Gender of Respondent	Men	75%	23%	2%	895
	Women	70%	29%	2%	928
Level of Education	High school or less	76%	22%	2%	666
	Tech school/Some college	67%	31%	1%	571
	College graduate	73%	25%	2%	383
	Postgraduate work	65%	33%	3%	234
Region of State	Central/Lakes	78%	22%	0%	309
	Connecticut Valley	65%	34%	1%	278
	Manchester Area	75%	25%	0%	312
	Mass Border	65%	31%	4%	480
	North Country	69%	29%	2%	153
	Seacoast	78%	19%	3%	320
Gender & Education	Men, no college degree	75%	23%	2%	602
	Men, college degree	74%	25%	1%	293
	Women, no college degree	70%	28%	1%	619
	Women, college degree	68%	29%	3%	308
2020 Presidential Vote	Voted for Trump	77%	22%	1%	824
	Voted for Biden	66%	32%	2%	957
	Voted for other 2020 candidate	60%	19%	21%	30
	Did not vote in 2020	91%	2%	7%	42

Importance of New Hampshire Holding First Presidential Primary

		<u>Very important</u>	<u>Somewhat important</u>	<u>Not very important</u>	<u>Not important at all</u>	<u>Don't know/Not sure</u>	<u>N</u>
STATEWIDE	February 2021	44%	19%	21%	13%	3%	1,861
Voting Registration	Registered Democrat	38%	19%	24%	16%	3%	510
	Registered Undeclared/Not Reg.	41%	25%	19%	10%	6%	763
	Registered Republican	54%	12%	22%	10%	1%	532
Party ID	Democrat	38%	24%	19%	14%	6%	777
	Independent	40%	19%	21%	19%	1%	307
	Republican	51%	15%	23%	9%	2%	764
Ideology	Liberal	39%	18%	23%	19%	2%	466
	Moderate	45%	24%	19%	10%	2%	702
	Conservative	50%	14%	23%	11%	2%	545
Media Usage	Boston Globe reader	42%	26%	19%	12%	1%	121
	Conservative radio listener	56%	15%	20%	8%	1%	501
	Fox News viewer	52%	15%	21%	11%	2%	831
	Local newspapers reader	42%	26%	23%	9%	0%	373
	NHPR listener	43%	21%	23%	12%	1%	1,065
	Union Leader reader	67%	19%	7%	6%		287
	WMUR viewer	46%	19%	20%	10%	4%	1,484
Age of Respondent	18 to 34	45%	20%	8%	18%	8%	494
	35 to 49	49%	11%	25%	13%	2%	381
	50 to 64	42%	21%	25%	10%	2%	593
	65 and older	41%	23%	26%	9%	1%	379
Gender of Respondent	Men	40%	21%	24%	15%	1%	895
	Women	48%	18%	18%	11%	5%	929
Level of Education	High school or less	46%	15%	28%	6%	6%	666
	Tech school/Some college	44%	20%	16%	18%	1%	571
	College graduate	43%	24%	18%	13%	3%	383
	Postgraduate work	42%	21%	16%	18%	2%	234
Region of State	Central/Lakes	30%	18%	31%	12%	10%	309
	Connecticut Valley	45%	24%	14%	17%	1%	278
	Manchester Area	56%	17%	14%	11%	1%	313
	Mass Border	38%	24%	21%	14%	2%	480
	North Country	49%	13%	23%	15%	0%	153
	Seacoast	52%	14%	23%	8%	3%	320
Gender & Education	Men, no college degree	37%	22%	26%	14%	1%	602
	Men, college degree	46%	18%	20%	16%	1%	293
	Women, no college degree	52%	13%	19%	9%	7%	619
	Women, college degree	39%	28%	15%	14%	3%	309
2020 Presidential Vote	Voted for Trump	48%	14%	25%	11%	2%	824
	Voted for Biden	41%	24%	18%	12%	5%	957
	Voted for other 2020 candidate	46%	5%	16%	33%	1%	30
	Did not vote in 2020	31%	20%	4%	44%		42

Support or Oppose Changing State Primary Date to Earlier Than September

		<u>Strongly support</u>	<u>Somewhat support</u>	<u>Neither support nor oppose</u>	<u>Somewhat oppose</u>	<u>Strongly oppose</u>	<u>Don't know/Not sure</u>	<u>N</u>
STATEWIDE	February 2021	8%	10%	47%	11%	13%	11%	1,861
Voting Registration	Registered Democrat	4%	12%	49%	14%	10%	11%	510
	Registered Undeclared/Not Reg.	4%	12%	49%	11%	12%	12%	763
	Registered Republican	13%	6%	46%	7%	19%	8%	532
Party ID	Democrat	4%	10%	46%	13%	11%	16%	777
	Independent	5%	18%	42%	13%	14%	8%	307
	Republican	13%	7%	50%	7%	16%	7%	764
Ideology	Liberal	4%	9%	51%	13%	12%	11%	466
	Moderate	5%	14%	49%	12%	12%	8%	702
	Conservative	16%	5%	45%	9%	19%	7%	545
Media Usage	Boston Globe reader	10%	14%	35%	15%	13%	14%	121
	Conservative radio listener	12%	9%	48%	10%	16%	5%	501
	Fox News viewer	10%	13%	46%	9%	17%	5%	831
	Local newspapers reader	8%	15%	40%	16%	17%	5%	373
	NHPR listener	5%	13%	48%	13%	15%	7%	1,064
	Union Leader reader	13%	13%	35%	14%	18%	6%	287
	WMUR viewer	8%	11%	47%	11%	13%	11%	1,484
Age of Respondent	18 to 34	10%	10%	40%	9%	8%	21%	494
	35 to 49	10%	9%	45%	12%	17%	8%	381
	50 to 64	4%	10%	52%	10%	16%	8%	593
	65 and older	8%	11%	50%	12%	13%	5%	379
Gender of Respondent	Men	8%	13%	45%	11%	14%	8%	895
	Women	8%	6%	49%	10%	13%	13%	928
Level of Education	High school or less	7%	7%	52%	7%	15%	11%	666
	Tech school/Some college	10%	11%	44%	12%	12%	12%	571
	College graduate	7%	13%	44%	12%	13%	11%	383
	Postgraduate work	4%	12%	46%	16%	13%	9%	234
Region of State	Central/Lakes	7%	13%	42%	6%	8%	24%	309
	Connecticut Valley	3%	13%	47%	7%	23%	7%	278
	Manchester Area	6%	6%	52%	11%	13%	11%	313
	Mass Border	5%	11%	51%	14%	13%	6%	480
	North Country	17%	11%	27%	15%	10%	19%	153
	Seacoast	13%	7%	52%	9%	12%	6%	320
Gender & Education	Men, no college degree	8%	12%	47%	10%	14%	10%	602
	Men, college degree	7%	16%	42%	13%	15%	6%	293
	Women, no college degree	9%	5%	51%	8%	14%	14%	619
	Women, college degree	5%	9%	47%	15%	11%	13%	308
2020 Presidential Vote	Voted for Trump	10%	10%	49%	7%	17%	7%	824
	Voted for Biden	5%	10%	48%	14%	10%	13%	957
	Voted for other 2020 candidate	13%	17%	28%	24%	4%	14%	30
	Did not vote in 2020	25%	12%	19%	1%	16%	27%	42

More or Less Likely to Vote in Earlier State Primary Elections

		<u>More likely</u>	<u>Less likely</u>	<u>No difference</u>	<u>Don't know/Not sure</u>	<u>N</u>
STATEWIDE	February 2021	4%	4%	86%	6%	1,859
Voting Registration	Registered Democrat	3%	5%	90%	3%	510
	Registered Undeclared/Not Reg.	3%	4%	86%	6%	762
	Registered Republican	6%	3%	85%	6%	532
Party ID	Democrat	3%	4%	86%	7%	777
	Independent	3%	5%	85%	6%	305
	Republican	5%	4%	87%	4%	764
Ideology	Liberal	3%	4%	89%	3%	466
	Moderate	4%	4%	87%	4%	702
	Conservative	6%	4%	84%	6%	545
Media Usage	Boston Globe reader	4%	5%	90%	1%	121
	Conservative radio listener	7%	5%	83%	5%	500
	Fox News viewer	5%	5%	84%	6%	830
	Local newspapers reader	4%	6%	83%	6%	372
	NHPR listener	3%	4%	87%	6%	1,063
	Union Leader reader	5%	5%	84%	7%	286
	WMUR viewer	5%	4%	84%	7%	1,482
Age of Respondent	18 to 34	2%	4%	85%	9%	494
	35 to 49	9%	5%	80%	6%	381
	50 to 64	4%	4%	88%	4%	592
	65 and older	3%	4%	89%	3%	379
Gender of Respondent	Men	3%	5%	88%	5%	895
	Women	5%	4%	84%	7%	927
Level of Education	High school or less	6%	3%	79%	11%	666
	Tech school/Some college	3%	3%	92%	2%	571
	College graduate	4%	7%	86%	4%	382
	Postgraduate work	1%	5%	92%	3%	234
Region of State	Central/Lakes	1%	3%	83%	13%	309
	Connecticut Valley	2%	3%	91%	4%	278
	Manchester Area	2%	2%	93%	3%	313
	Mass Border	3%	5%	86%	5%	479
	North Country	16%	6%	73%	5%	153
	Seacoast	6%	4%	85%	5%	320
Gender & Education	Men, no college degree	3%	3%	89%	5%	602
	Men, college degree	3%	7%	86%	4%	293
	Women, no college degree	7%	3%	81%	9%	619
	Women, college degree	2%	6%	90%	3%	307
2020 Presidential Vote	Voted for Trump	5%	4%	87%	4%	822
	Voted for Biden	3%	4%	86%	6%	957
	Voted for other 2020 candidate	0%	3%	92%	5%	30
	Did not vote in 2020		3%	68%	28%	42

Support or Oppose an Independent Commission to Redraw the State's Legislative Districts

		<u>Strongly support</u>	<u>Somewhat support</u>	<u>Neither support nor oppose</u>	<u>Somewhat oppose</u>	<u>Strongly oppose</u>	<u>Don't know/Not sure</u>	<u>N</u>
STATEWIDE	February 2021	24%	15%	25%	7%	8%	23%	1,861
Voting Registration	Registered Democrat	40%	14%	11%	5%	4%	26%	510
	Registered Undeclared/Not Reg.	26%	17%	20%	6%	7%	23%	763
	Registered Republican	6%	12%	42%	9%	10%	20%	532
Party ID	Democrat	43%	14%	11%	4%	3%	25%	777
	Independent	16%	19%	34%	7%	6%	18%	307
	Republican	7%	13%	35%	10%	13%	22%	764
Ideology	Liberal	43%	16%	13%	1%	2%	25%	466
	Moderate	25%	16%	25%	6%	10%	18%	702
	Conservative	7%	15%	36%	11%	10%	21%	545
Media Usage	Boston Globe reader	43%	16%	17%	2%	8%	14%	121
	Conservative radio listener	7%	16%	32%	13%	17%	15%	501
	Fox News viewer	14%	17%	32%	9%	9%	19%	831
	Local newspapers reader	31%	22%	22%	2%	5%	18%	373
	NHPR listener	30%	17%	22%	6%	7%	19%	1,065
	Union Leader reader	36%	20%	15%	7%	6%	15%	287
	WMUR viewer	24%	14%	25%	6%	8%	22%	1,484
Age of Respondent	18 to 34	28%	14%	20%	1%	8%	29%	494
	35 to 49	16%	10%	35%	8%	4%	27%	381
	50 to 64	21%	16%	22%	10%	9%	22%	593
	65 and older	30%	18%	24%	7%	9%	12%	379
Gender of Respondent	Men	29%	17%	23%	7%	10%	13%	895
	Women	18%	13%	25%	6%	5%	33%	929
Level of Education	High school or less	14%	9%	29%	10%	7%	30%	666
	Tech school/Some college	25%	19%	23%	5%	8%	20%	571
	College graduate	30%	16%	21%	5%	9%	19%	383
	Postgraduate work	37%	18%	21%	4%	6%	15%	234
Region of State	Central/Lakes	21%	15%	33%	6%	1%	23%	309
	Connecticut Valley	18%	16%	23%	3%	15%	25%	278
	Manchester Area	20%	18%	19%	12%	8%	23%	313
	Mass Border	31%	14%	19%	4%	9%	23%	480
	North Country	15%	7%	28%	15%	6%	29%	153
	Seacoast	29%	16%	29%	5%	4%	17%	320
Gender & Education	Men, no college degree	25%	19%	24%	8%	11%	14%	602
	Men, college degree	39%	15%	22%	5%	9%	10%	293
	Women, no college degree	14%	10%	27%	7%	5%	38%	619
	Women, college degree	28%	19%	20%	4%	6%	23%	309
2020 Presidential Vote	Voted for Trump	6%	12%	36%	10%	13%	24%	824
	Voted for Biden	39%	18%	14%	4%	3%	23%	957
	Voted for other 2020 candidate	43%	16%	18%	2%	7%	13%	30
	Did not vote in 2020	4%	8%	59%		16%	12%	42

Approve or Disapprove of Legalization of Sports Betting

		<u>Strongly approve</u>	<u>Somewhat approve</u>	<u>Neither approve nor disapprove</u>	<u>Somewhat disapprove</u>	<u>Strongly disapprove</u>	<u>Don't know/Not sure</u>	<u>N</u>
STATEWIDE	February 2021	22%	21%	35%	8%	8%	5%	1,861
Voting Registration	Registered Democrat	14%	14%	43%	14%	7%	8%	510
	Registered Undeclared/Not Reg.	23%	25%	27%	9%	9%	7%	763
	Registered Republican	25%	22%	42%	3%	7%	1%	532
Party ID	Democrat	15%	17%	36%	12%	9%	10%	777
	Independent	28%	23%	29%	12%	4%	4%	307
	Republican	26%	25%	37%	3%	8%	1%	764
Ideology	Liberal	15%	19%	38%	12%	8%	10%	466
	Moderate	26%	23%	31%	10%	8%	2%	702
	Conservative	21%	25%	41%	3%	8%	1%	545
Media Usage	Boston Globe reader	24%	11%	28%	17%	14%	5%	121
	Conservative radio listener	26%	22%	39%	5%	6%	2%	501
	Fox News viewer	29%	24%	33%	5%	8%	2%	831
	Local newspapers reader	23%	18%	32%	12%	12%	4%	373
	NHPR listener	18%	22%	36%	12%	6%	5%	1,065
	Union Leader reader	38%	20%	20%	12%	6%	5%	287
	WMUR viewer	25%	18%	36%	8%	8%	5%	1,484
Age of Respondent	18 to 34	29%	23%	24%	5%	5%	13%	494
	35 to 49	25%	19%	42%	5%	6%	2%	381
	50 to 64	21%	23%	37%	9%	7%	3%	593
	65 and older	12%	18%	41%	14%	13%	2%	379
Gender of Respondent	Men	32%	28%	23%	6%	9%	2%	895
	Women	12%	16%	48%	10%	6%	8%	929
Level of Education	High school or less	23%	20%	42%	3%	5%	6%	666
	Tech school/Some college	21%	25%	30%	8%	10%	6%	571
	College graduate	24%	21%	32%	12%	7%	4%	383
	Postgraduate work	19%	17%	32%	17%	10%	4%	234
Region of State	Central/Lakes	31%	25%	24%	6%	4%	10%	309
	Connecticut Valley	22%	24%	34%	7%	11%	2%	278
	Manchester Area	31%	19%	33%	6%	6%	4%	313
	Mass Border	15%	23%	39%	10%	7%	5%	480
	North Country	15%	17%	52%	9%	4%	2%	153
	Seacoast	19%	18%	36%	10%	10%	6%	320
Gender & Education	Men, no college degree	32%	32%	21%	4%	9%	2%	602
	Men, college degree	32%	20%	27%	10%	8%	3%	293
	Women, no college degree	12%	13%	53%	7%	6%	10%	619
	Women, college degree	13%	20%	37%	18%	8%	4%	309
2020 Presidential Vote	Voted for Trump	27%	23%	38%	3%	7%	2%	824
	Voted for Biden	15%	20%	34%	13%	9%	9%	957
	Voted for other 2020 candidate	36%	30%	21%	8%	5%		30
	Did not vote in 2020	60%	31%	8%	1%		0%	42

Ever Utilized Sports Betting in New Hampshire

		Yes	No	Don't know/Not sure	N
STATEWIDE	February 2021	5%	94%	1%	1,855
Voting Registration	Registered Democrat	4%	96%	0%	509
	Registered Undeclared/Not Reg.	7%	92%	1%	762
	Registered Republican	4%	96%	0%	529
Party ID	Democrat	6%	94%	0%	776
	Independent	4%	96%	0%	307
	Republican	5%	94%	1%	760
Ideology	Liberal	3%	97%	0%	466
	Moderate	6%	94%	0%	697
	Conservative	3%	97%	0%	544
Media Usage	Boston Globe reader	8%	92%	0%	121
	Conservative radio listener	5%	93%	2%	499
	Fox News viewer	5%	93%	1%	828
	Local newspapers reader	8%	92%	0%	372
	NHPR listener	4%	95%	1%	1,061
	Union Leader reader	12%	87%	0%	287
	WMUR viewer	6%	93%	1%	1,478
Age of Respondent	18 to 34	8%	92%		494
	35 to 49	9%	91%	0%	379
	50 to 64	4%	96%	0%	590
	65 and older	0%	97%	3%	377
Gender of Respondent	Men	9%	90%	1%	893
	Women	2%	98%	0%	925
Level of Education	High school or less	6%	93%	1%	666
	Tech school/Some college	4%	96%	0%	569
	College graduate	8%	92%	0%	381
	Postgraduate work	4%	96%		233
Region of State	Central/Lakes	9%	91%	0%	308
	Connecticut Valley	0%	100%	0%	278
	Manchester Area	6%	94%		312
	Mass Border	4%	94%	2%	476
	North Country	2%	98%	0%	153
	Seacoast	9%	91%	0%	320
Gender & Education	Men, no college degree	9%	90%	1%	601
	Men, college degree	9%	91%	0%	291
	Women, no college degree	1%	98%	0%	617
	Women, college degree	3%	97%	0%	307
2020 Presidential Vote	Voted for Trump	5%	93%	1%	819
	Voted for Biden	5%	95%	0%	956
	Voted for other 2020 candidate	7%	93%		30
	Did not vote in 2020	5%	95%		42

Support or Oppose Removing Limit on Number of Physical Sports Betting Locations in New Hampshire

		<u>Strongly support</u>	<u>Somewhat support</u>	<u>Neither support nor oppose</u>	<u>Somewhat oppose</u>	<u>Strongly oppose</u>	<u>Don't know/Not sure</u>	<u>N</u>
STATEWIDE	February 2021	17%	16%	33%	11%	14%	8%	1,861
Voting Registration	Registered Democrat	8%	11%	37%	17%	17%	11%	510
	Registered Undeclared/Not Reg.	17%	16%	30%	12%	15%	10%	763
	Registered Republican	24%	20%	35%	5%	12%	4%	532
Party ID	Democrat	10%	10%	35%	15%	17%	13%	776
	Independent	21%	22%	23%	16%	11%	8%	307
	Republican	23%	20%	34%	5%	13%	4%	764
Ideology	Liberal	11%	8%	37%	15%	17%	12%	466
	Moderate	20%	17%	27%	14%	15%	7%	702
	Conservative	19%	25%	34%	5%	14%	3%	545
Media Usage	Boston Globe reader	18%	9%	22%	16%	25%	10%	121
	Conservative radio listener	23%	27%	28%	3%	15%	4%	501
	Fox News viewer	21%	21%	33%	6%	15%	3%	831
	Local newspapers reader	12%	17%	24%	16%	22%	8%	373
	NHPR listener	13%	16%	33%	14%	16%	8%	1,064
	Union Leader reader	26%	15%	28%	9%	18%	5%	287
	WMUR viewer	18%	16%	32%	11%	16%	7%	1,484
Age of Respondent	18 to 34	21%	16%	33%	7%	6%	17%	494
	35 to 49	26%	23%	25%	10%	8%	7%	381
	50 to 64	16%	15%	35%	10%	19%	5%	593
	65 and older	7%	13%	36%	17%	22%	4%	379
Gender of Respondent	Men	27%	21%	26%	7%	13%	6%	895
	Women	8%	12%	40%	14%	15%	10%	928
Level of Education	High school or less	22%	16%	36%	6%	13%	6%	666
	Tech school/Some college	14%	20%	34%	8%	15%	9%	571
	College graduate	17%	15%	29%	16%	12%	11%	383
	Postgraduate work	13%	10%	26%	23%	19%	9%	234
Region of State	Central/Lakes	25%	26%	19%	9%	7%	13%	309
	Connecticut Valley	21%	10%	40%	8%	14%	6%	278
	Manchester Area	23%	10%	38%	9%	15%	5%	313
	Mass Border	11%	17%	32%	16%	15%	9%	480
	North Country	11%	25%	37%	4%	9%	14%	153
	Seacoast	14%	14%	33%	14%	19%	6%	320
Gender & Education	Men, no college degree	28%	23%	27%	4%	14%	4%	602
	Men, college degree	23%	17%	23%	15%	12%	10%	293
	Women, no college degree	7%	14%	43%	10%	14%	11%	619
	Women, college degree	9%	9%	33%	22%	18%	9%	308
2020 Presidential Vote	Voted for Trump	24%	20%	36%	4%	12%	4%	824
	Voted for Biden	10%	12%	32%	18%	17%	12%	957
	Voted for other 2020 candidate	15%	53%	10%	7%	13%	3%	30
	Did not vote in 2020	50%	31%	13%	1%	0%	6%	42

Right Direction or Wrong Track - New Hampshire

		<u>Right direction</u>	<u>Wrong track</u>	<u>Don't know/Not Sure</u>	<u>N</u>
STATEWIDE	February 2021	60%	21%	19%	1,861
Voting Registration	Registered Democrat	41%	29%	30%	510
	Registered Undeclared/Not Reg.	60%	19%	20%	763
	Registered Republican	75%	18%	7%	532
Party ID	Democrat	41%	28%	31%	777
	Independent	63%	22%	15%	307
	Republican	77%	15%	8%	764
Ideology	Liberal	35%	35%	30%	466
	Moderate	66%	16%	18%	702
	Conservative	75%	17%	8%	544
Media Usage	Boston Globe reader	56%	23%	21%	121
	Conservative radio listener	72%	19%	9%	501
	Fox News viewer	74%	17%	9%	831
	Local newspapers reader	55%	21%	24%	373
	NHPR listener	61%	22%	17%	1,064
	Union Leader reader	64%	18%	17%	287
	WMUR viewer	63%	19%	19%	1,484
Age of Respondent	18 to 34	42%	32%	26%	494
	35 to 49	67%	21%	13%	381
	50 to 64	65%	17%	18%	593
	65 and older	66%	16%	17%	379
Gender of Respondent	Men	61%	26%	13%	895
	Women	59%	16%	25%	929
Level of Education	High school or less	65%	15%	20%	666
	Tech school/Some college	52%	31%	17%	571
	College graduate	62%	19%	19%	383
	Postgraduate work	57%	22%	21%	234
Region of State	Central/Lakes	53%	28%	19%	309
	Connecticut Valley	63%	25%	12%	278
	Manchester Area	67%	18%	15%	313
	Mass Border	50%	20%	30%	480
	North Country	57%	29%	14%	153
	Seacoast	70%	15%	15%	320
Gender & Education	Men, no college degree	59%	30%	11%	602
	Men, college degree	65%	19%	16%	293
	Women, no college degree	60%	14%	26%	619
	Women, college degree	56%	21%	22%	309
2020 Presidential Vote	Voted for Trump	72%	18%	10%	824
	Voted for Biden	48%	24%	28%	957
	Voted for other 2020 candidate	59%	35%	6%	30
	Did not vote in 2020	71%	25%	4%	42

Most Important Problem - New Hampshire

		<u>COVID-19</u>	<u>Drugs</u>	<u>Education</u>	<u>Healthcare</u>	<u>Jobs/Economy</u>
STATEWIDE	February 2021	43%	4%	6%	2%	12%
Voting Registration	Registered Democrat	47%	5%	5%	3%	6%
	Registered Undeclared/Not Reg.	43%	3%	8%	1%	15%
	Registered Republican	38%	4%	5%	3%	15%
Party ID	Democrat	51%	3%	5%	2%	6%
	Independent	38%	4%	10%	4%	15%
	Republican	36%	4%	6%	2%	17%
Ideology	Liberal	46%	4%	4%	3%	6%
	Moderate	44%	3%	9%	2%	14%
	Conservative	38%	2%	4%	2%	17%
Media Usage	Boston Globe reader	49%	3%	7%	2%	6%
	Conservative radio listener	38%	2%	6%	0%	16%
	Fox News viewer	38%	3%	8%	2%	18%
	Local newspapers reader	41%	2%	11%	2%	14%
	NHPR listener	44%	3%	8%	2%	10%
	Union Leader reader	38%	1%	10%	1%	26%
	WMUR viewer	43%	3%	7%	2%	14%
Age of Respondent	18 to 34	44%	3%	4%	3%	8%
	35 to 49	32%	7%	6%	2%	15%
	50 to 64	41%	4%	4%	3%	15%
	65 and older	55%	1%	11%	1%	10%
Gender of Respondent	Men	38%	3%	7%	2%	12%
	Women	49%	3%	5%	3%	14%
Level of Education	High school or less	39%	5%	7%	2%	13%
	Tech school/Some college	43%	6%	2%	2%	12%
	College graduate	45%	1%	8%	4%	15%
	Postgraduate work	45%	1%	11%	3%	10%
Region of State	Central/Lakes	35%	2%	8%	2%	15%
	Connecticut Valley	24%	8%	5%	8%	8%
	Manchester Area	48%	5%	6%	0%	12%
	Mass Border	49%	1%	7%	1%	9%
	North Country	40%	10%	3%	3%	17%
	Seacoast	53%	1%	4%	1%	16%
Gender & Education	Men, no college degree	36%	4%	6%	0%	11%
	Men, college degree	41%	1%	8%	5%	14%
	Women, no college degree	48%	4%	2%	4%	14%
	Women, college degree	51%	1%	10%	2%	12%
2020 Presidential Vote	Voted for Trump	34%	5%	8%	2%	17%
	Voted for Biden	50%	3%	5%	3%	9%
	Voted for other 2020 candidate	60%		0%		4%
	Did not vote in 2020	43%				9%

Most Important Problem - New Hampshire

		<u>State budget</u>	<u>Taxes</u>	<u>Other</u>	<u>DK/Not Sure</u>	<u>N</u>
STATEWIDE	February 2021	1%	3%	28%	1%	1,726
Voting Registration	Registered Democrat	1%	5%	26%	3%	451
	Registered Undeclared/Not Reg.	1%	4%	26%	0%	734
	Registered Republican	0%	2%	31%	1%	488
Party ID	Democrat	1%	5%	25%	2%	707
	Independent	1%	3%	23%	0%	289
	Republican	0%	2%	33%	0%	718
Ideology	Liberal	0%	3%	31%	2%	405
	Moderate	1%	4%	22%	0%	682
	Conservative	1%	2%	33%	1%	503
Media Usage	Boston Globe reader	2%	3%	29%	1%	114
	Conservative radio listener	1%	2%	33%	1%	486
	Fox News viewer	1%	3%	27%	0%	797
	Local newspapers reader	1%	2%	29%		362
	NHPR listener	1%	4%	27%	2%	1,018
	Union Leader reader	1%	2%	19%	3%	278
	WMUR viewer	1%	3%	25%	1%	1,368
Age of Respondent	18 to 34		2%	34%	2%	432
	35 to 49	0%	4%	33%	0%	360
	50 to 64	0%	4%	27%	0%	555
	65 and older	2%	3%	15%	2%	366
Gender of Respondent	Men	1%	4%	33%	1%	861
	Women	0%	2%	22%	2%	829
Level of Education	High school or less		2%	32%	1%	573
	Tech school/Some college	1%	4%	29%	2%	554
	College graduate	1%	4%	21%	1%	364
	Postgraduate work	0%	5%	25%	0%	229
Region of State	Central/Lakes	0%	1%	36%	0%	295
	Connecticut Valley		2%	43%	2%	269
	Manchester Area	1%	4%	21%	3%	299
	Mass Border	1%	7%	23%	1%	413
	North Country	0%	2%	23%	1%	127
	Seacoast	1%	1%	22%		315
Gender & Education	Men, no college degree	1%	4%	37%	1%	572
	Men, college degree	1%	4%	25%	0%	289
	Women, no college degree	0%	1%	24%	2%	539
	Women, college degree	0%	5%	17%	1%	290
2020 Presidential Vote	Voted for Trump	0%	3%	31%	0%	774
	Voted for Biden	1%	4%	23%	2%	875
	Voted for other 2020 candidate	0%	2%	33%		30
	Did not vote in 2020			48%		41