

January 27, 2021

## BIPARTISAN APPROVAL OF SUNUNU; NH HEADED IN RIGHT DIRECTION

By: Sean P. McKinley, M.A.  
Zachary S. Azem, M.A.  
Andrew E. Smith, Ph.D.

andrew.smith@unh.edu  
603-862-2226  
cola.unh.edu/unh-survey-center

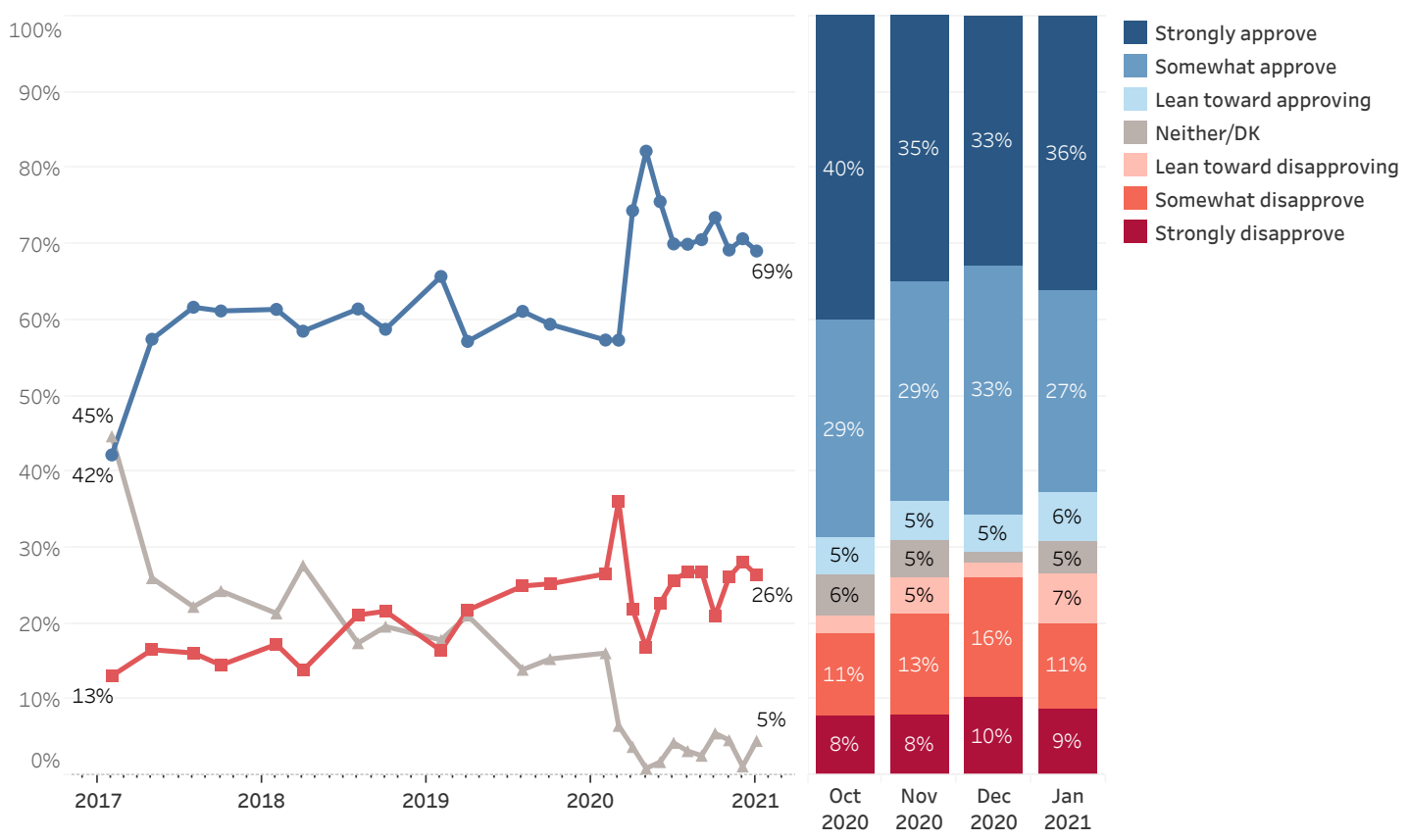
DURHAM, NH – Governor Chris Sununu continues to enjoy strong approval among state residents for his overall job performance as governor and his handling of the COVID-19 pandemic. Both Republicans and Democrats in New Hampshire believe the state is headed in the right direction.

These findings are based on the latest **Granite State Poll\***, conducted by the University of New Hampshire Survey Center. Two thousand and twenty-five (2,025) Granite State Panel members completed the survey online between January 21 and January 25, 2021. The margin of sampling error for the survey is +/- 2.2 percent. Data were weighted by respondent sex, age, education, and region of the state to targets from the most recent American Community Survey (ACS) conducted by the U.S. Census Bureau, as well as party registration levels provided by the NH Secretary of State and 2020 election results in NH. Granite State Panel members are recruited from randomly-selected landline and cell phone numbers across New Hampshire and surveys are sent periodically to panel members.

### Gubernatorial Approval

Governor Sununu continues to enjoy a high job approval rating after his reelection in November. Sixty-nine percent of New Hampshire residents approve of Sununu's performance as governor, 26% disapprove, and 5% neither approve nor disapprove or don't know. Approval of Sununu's performance has remained steady since July 2020.

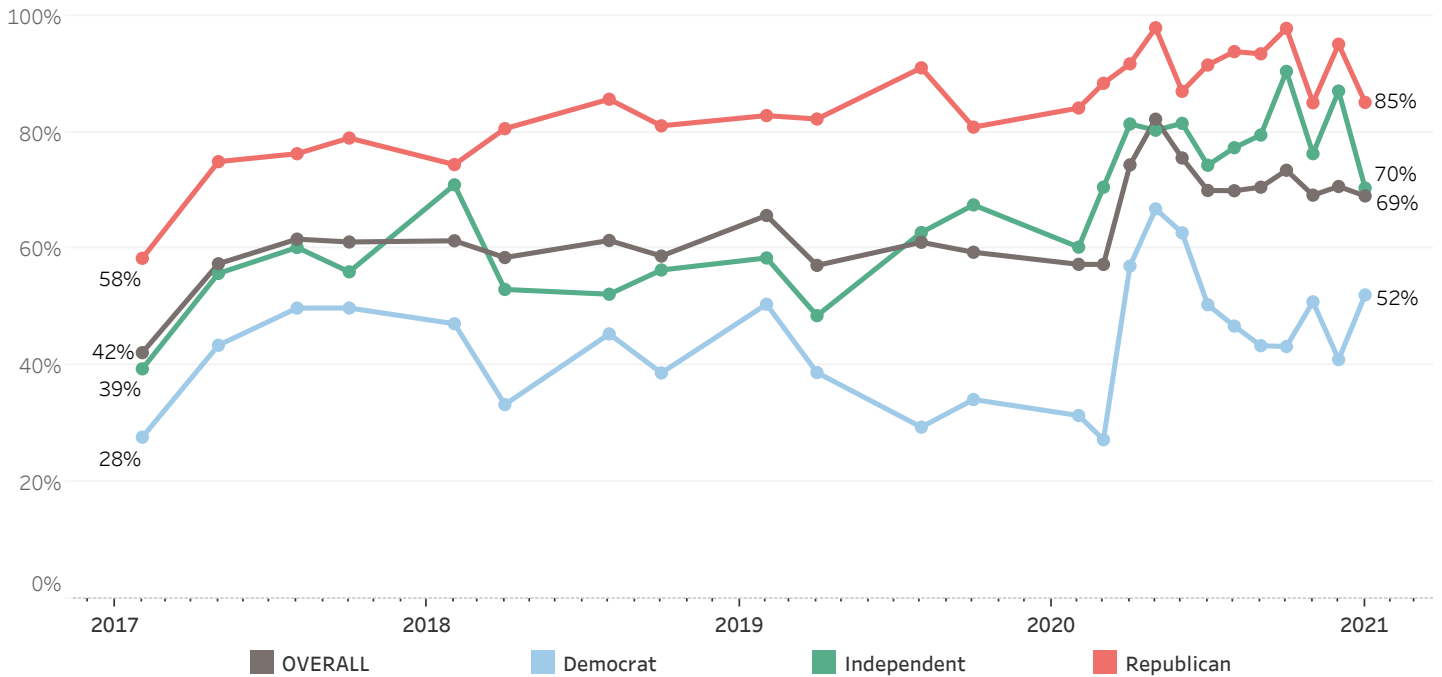
Gubernatorial Approval - Chris Sununu



\* We ask that this copyrighted information be referred to as *the Granite State Poll*, conducted by the University of New Hampshire Survey Center.

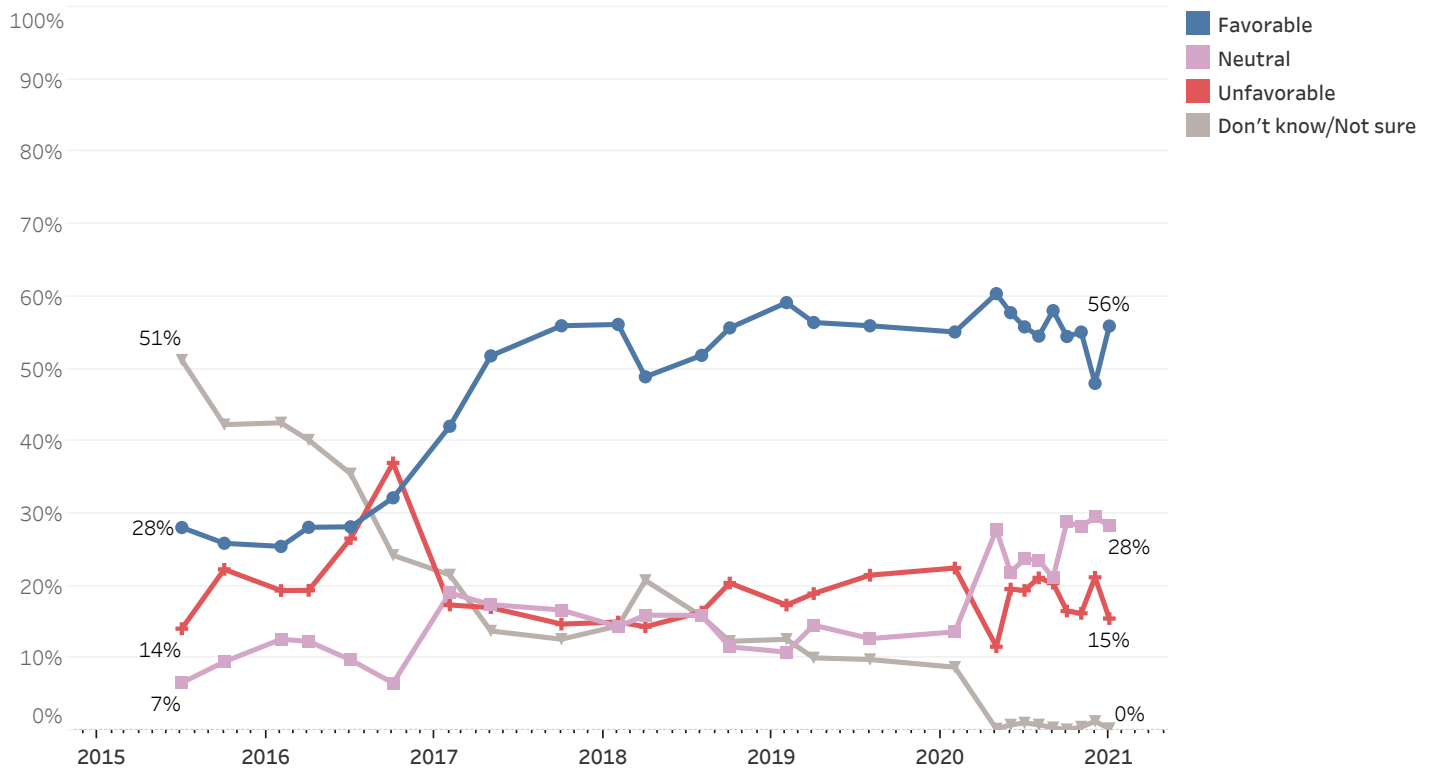
Approval of Sununu's job performance as governor is bipartisan - 85% of Republicans and 70% of Independents approve of Sununu's job performance while 52% of Democrats approve. Approval of Sununu's performance among Republicans and Independents has fallen since December while approval among Democrats has increased in that time.

**Job Approval - Governor Chris Sununu - By Party Identification**



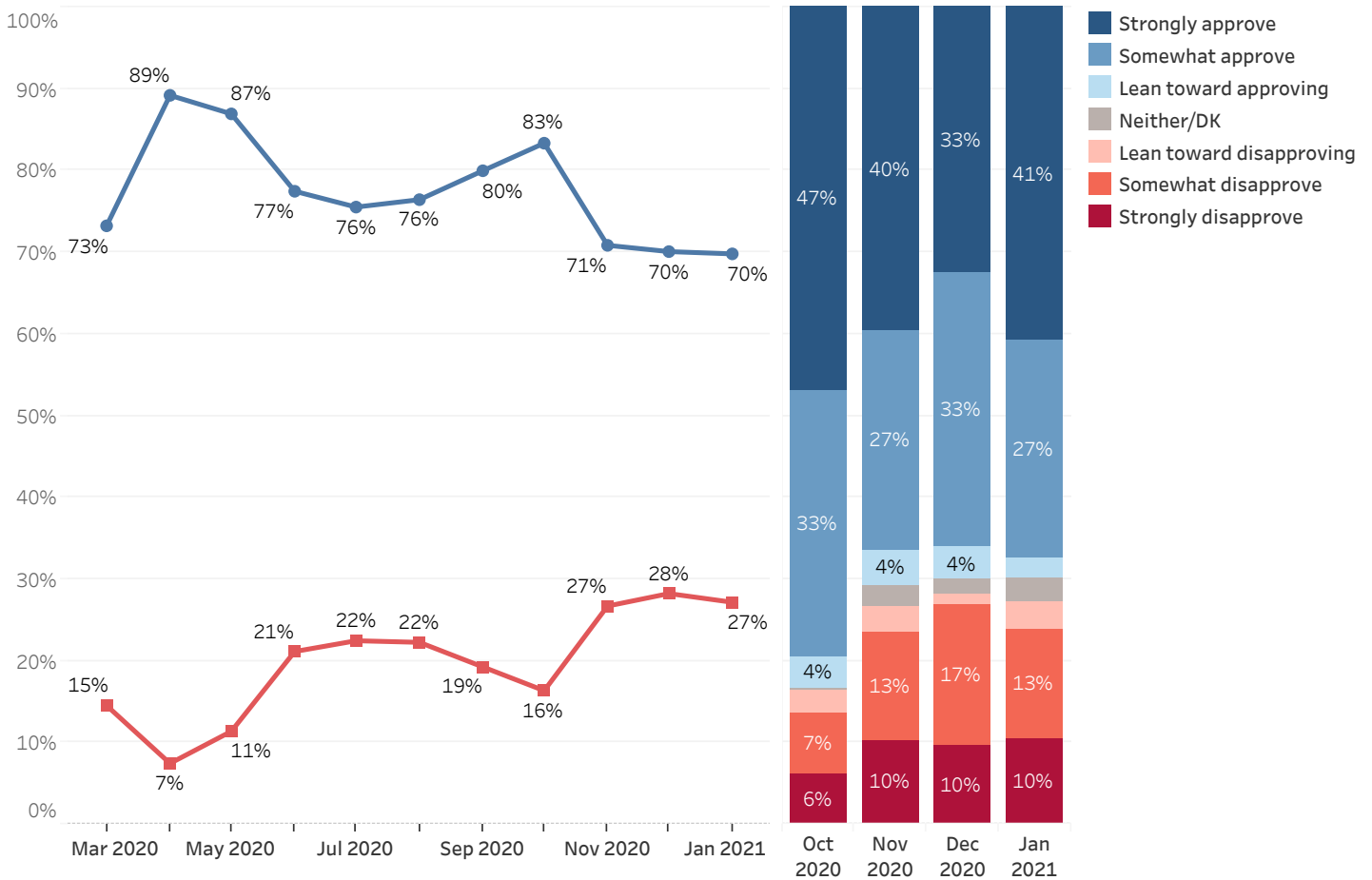
Fifty-six percent of New Hampshire residents say they have a favorable opinion of Chris Sununu, only 15% have an unfavorable opinion of him, 28% are neutral, and less than 1% are unsure. Sununu's net favorability rating (the percentage with a favorable opinion minus the percentage with an unfavorable opinion) is +40, higher than in December (+27) but consistent with results for most of 2020. For comparison, newly-inaugurated President Biden has a net favorability rating of +9.

**Sununu (R) Favorability**



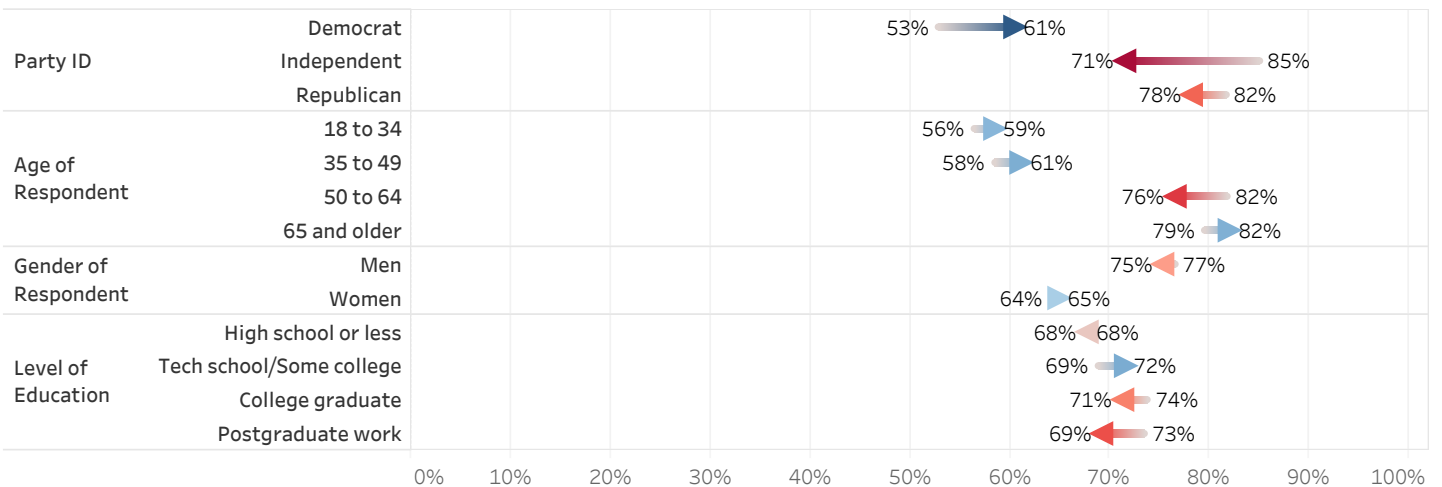
Granite Staters also broadly approve of how Sununu has handled COVID-19 in New Hampshire: 70% approve of his handling of the pandemic while 27% disapprove. Ratings of Sununu's handling of COVID-19 have remained stable since November 2020 but are slightly lower than in the summer of 2020.

**Approval of Governor Sununu's Handling of Coronavirus (COVID-19) Situation**



- Approval of Sununu's handling of COVID-19 has declined since December among Independents (-14 percentage points) but has increased among Democrats (+8). However, Democrats remain less likely than Republicans and Independents to approve.
- Respondents aged 50 and older remain more likely than those under 50 to approve of Sununu's handling of the COVID-19 situation.

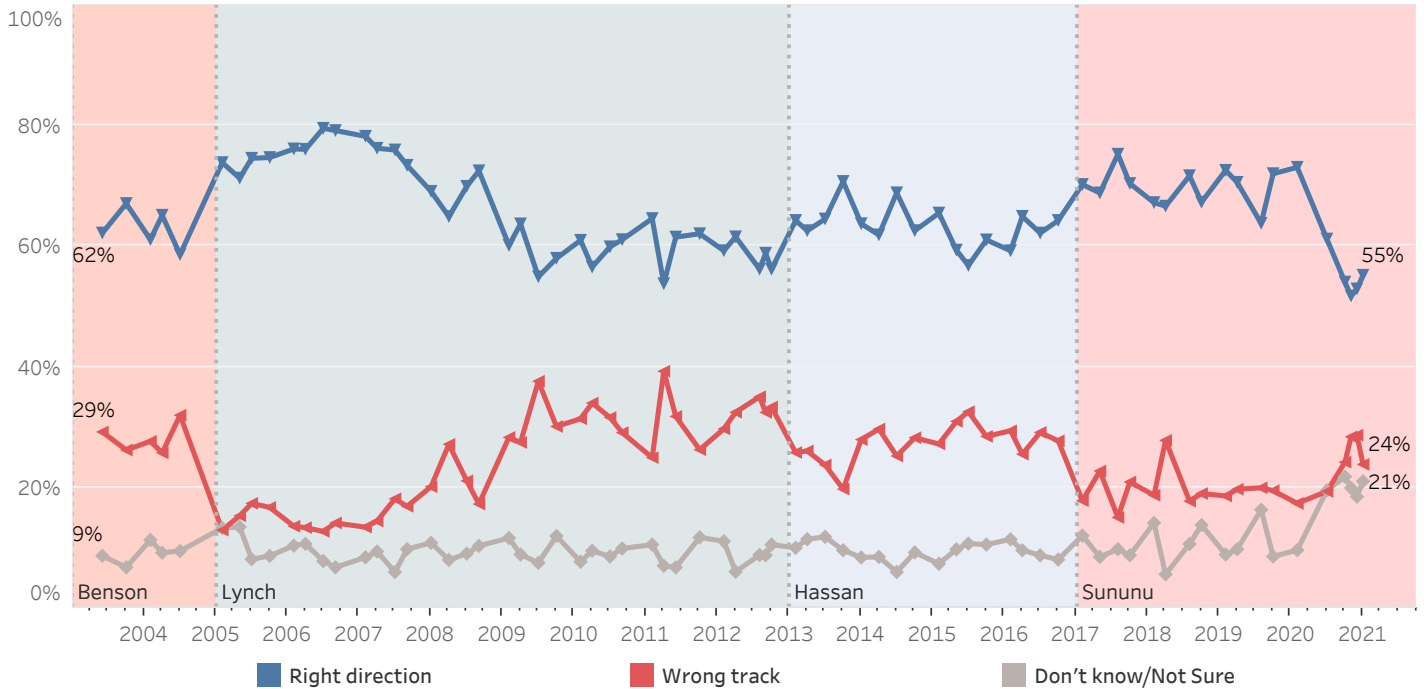
**Approve of Governor Sununu's Handling of Coronavirus (COVID-19) Situation - Change from December 2020 to January 2021**



## New Hampshire Heading in Right Direction or On Wrong Track

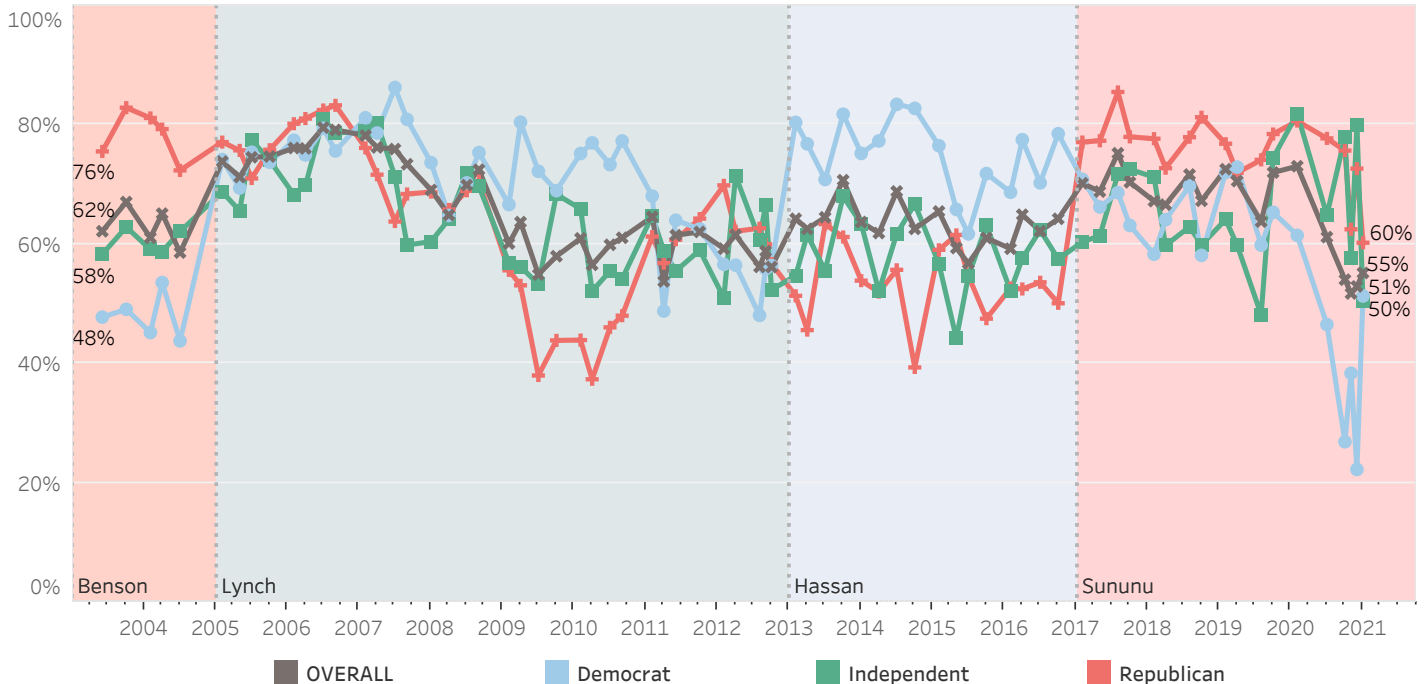
Fifty-five percent of New Hampshire residents believe that things in New Hampshire are going in the right direction while 24% think things are seriously off on the wrong track and 21% are unsure. Granite Staters remain far less optimistic than in February 2020 before the COVID-19 pandemic began when 73% said things were going in the right direction.

### Right Direction or Wrong Track



Despite Governor Sununu retaining the governorship and Republicans capturing the New Hampshire House of Representatives and Senate, a majority (51%) of Democrats believe the state is headed in the right direction, up from an all-time low of 22% in December. Despite their party's electoral success on the state level, only 60% of Republicans feel the state is headed in the right direction, down from 73% in December.

### Right Direction or Wrong Track - By Party ID



## Granite State Poll Methodology

These findings are based on the latest Granite State Poll, conducted by the University of New Hampshire Survey Center. Two thousand and twenty-five (2,025) Granite State Panel members completed the survey online between January 21 and January 25, 2021. The margin of sampling error for the survey is +/- 2.2 percent. These MSE's have not been adjusted for design effect. The response rate for the January 2021 Granite State Poll is 36%. The design effect for the survey is 2.5%.

Data were weighted by respondent sex, age, education, and region of the state to targets from the most recent American Community Survey (ACS) conducted by the U.S. Census Bureau, as well as party registration levels provided by the NH Secretary of State and to 2020 election results in New Hampshire.

The Granite State Panel is part of an effort by the University of New Hampshire Survey Center to investigate new ways of gathering and understanding the opinion of New Hampshire residents. Approximately 5,750 New Hampshire adults were recruited from randomly selected landline and cell phone numbers to participate in the panel. Panelists are then asked to participate in online surveys sponsored by the UNH Survey Center.

The number of respondents in each demographic below may not equal the number reported in cross-tabulation tables as some respondents choose not to answer some questions. Due to rounding, percentages may not sum to 100%.

For more information about the methodology used in the Granite State Panel, contact Dr. Andrew Smith at (603) 862-2226 or by email at [andrew.smith@unh.edu](mailto:andrew.smith@unh.edu).

### Granite State Panel, January 2021 Demographics

		%	N
Gender of Respondent	Men	49%	976
	Women	51%	1,010
Age of Respondent	18 to 34	27%	536
	35 to 49	21%	416
	50 to 64	32%	646
	65 and older	21%	414
Level of Education	High school or less	36%	725
	Tech school/Some college	31%	622
	College graduate	21%	419
	Postgraduate work	13%	255
Region of State	Central/Lakes	17%	334
	Connecticut Valley	14%	282
	Manchester Area	16%	325
	Mass Border	25%	501
	North Country	9%	179
	Seacoast	20%	396
Party ID	Democrat	42%	842
	Independent	17%	340
	Republican	40%	804
Voting Registration	Registered Democrat	28%	555
	Registered Undeclared/Not Reg.	42%	834
	Registered Republican	29%	581
2020 Presidential Vote	Voted for Trump	44%	890
	Voted for Biden	52%	1,034
	Voted for other 2020 candidate	2%	30
	Did not vote in 2020	2%	47

### Approval of Governor Sununu's Job Performance

Generally speaking, do you approve or disapprove of the way Chris Sununu is handling his job as governor?

	<u>Approve</u>	<u>Disapprove</u>	<u>Neither/DK</u>	<u>N</u>
February 2017	42%	13%	45%	476
May 2017	57%	17%	26%	502
August 2017	62%	16%	22%	484
October 2017	61%	15%	24%	540
February 2018	61%	17%	21%	500
April 2018	59%	14%	28%	189
August 2018	61%	21%	17%	486
October 2018	59%	22%	20%	622
February 2019	66%	16%	18%	592
April 2019	57%	22%	21%	529
August 2019	60%	23%	17%	483
October 2019	59%	25%	15%	1,231
February 2020	57%	27%	16%	582
March 2020	57%	36%	7%	646
April 2020	74%	22%	4%	1,150
May 2020	82%	17%	1%	818
June 2020	76%	23%	2%	993
July 2020	70%	26%	4%	1,978
August 2020	70%	27%	3%	1,940
September 2020	71%	27%	3%	1,027
October 2020	73%	21%	6%	931
November 2020	69%	26%	5%	1,908
December 2020	71%	28%	1%	758
January 2021	69%	26%	5%	2,023

### Approval of Governor Sununu's Handling of Coronavirus (COVID-19) Situation

Generally speaking, do you approve or disapprove of the way Chris Sununu is handling the coronavirus (COVID-19) situation?

	<u>Approve</u>	<u>Disapprove</u>	<u>Neither/DK</u>	<u>N</u>
March 2020	73%	15%	12%	643
April 2020	89%	7%	3%	1,154
May 2020	87%	11%	2%	815
June 2020	77%	21%	1%	970
July 2020	76%	22%	2%	1,973
August 2020	76%	22%	1%	1,930
September 2020	80%	19%	1%	1,027
October 2020	83%	16%	0%	930
November 2020	71%	27%	2%	1,908
December 2020	70%	28%	2%	763
January 2021	70%	27%	3%	2,019

### Favorability - Chris Sununu

Below are a list of political figures in the U.S. and New Hampshire. Please indicate whether you have a favorable or unfavorable opinion of each of them or if you don't know enough about them to say - Governor Chris Sununu

	<u>Favorable</u>	<u>Neutral</u>	<u>Unfavorable</u>	<u>Don't know/Not sure</u>	<u>N</u>
July 2015	28%	7%	14%	51%	530
October 2015	26%	10%	22%	42%	581
February 2016	25%	13%	19%	43%	684
April 2016	28%	12%	19%	40%	618
July 2016	28%	10%	27%	36%	467
October 2016	32%	7%	37%	24%	767
February 2017	42%	19%	17%	22%	502
May 2017	52%	17%	17%	14%	514
October 2017	56%	17%	15%	13%	570
February 2018	56%	14%	15%	14%	519
April 2018	49%	16%	14%	21%	208
August 2018	52%	16%	16%	16%	500
October 2018	56%	12%	20%	12%	640
February 2019	59%	11%	17%	13%	603
April 2019	56%	15%	19%	10%	548
August 2019	56%	13%	21%	10%	496
February 2020	55%	14%	22%	9%	610
May 2020	60%	28%	12%	0%	838
June 2020	58%	22%	20%	1%	993
July 2020	56%	24%	19%	1%	1,884
August 2020	55%	24%	21%	1%	1,873
September 2020	58%	21%	20%	0%	1,017
October 2020	54%	29%	17%	0%	908
November 2020	55%	28%	16%	0%	1,897
December 2020	48%	30%	21%	1%	775
January 2021	56%	28%	15%	0%	2,021

## New Hampshire Heading in Right Direction or On Wrong Track

Do you think things in New Hampshire are generally going in the right direction or are they seriously off on the wrong track?

	<u>Right direction</u>	<u>Wrong track</u>	<u>Don't know/Not Sure</u>	<u>N</u>		<u>Right direction</u>	<u>Wrong track</u>	<u>Don't know/Not Sure</u>	<u>N</u>
June 2003	62%	29%	9%	510	February 2012	59%	30%	11%	517
October 2003	67%	26%	7%	485	April 2012	62%	32%	6%	532
February 2004	61%	28%	11%	500	August 2012	56%	35%	9%	577
April 2004	65%	26%	9%	530	September 2012	59%	32%	9%	622
July 2004	59%	32%	9%	503	February 2013	64%	26%	10%	573
February 2005	74%	13%	13%	535	April 2013	63%	26%	11%	497
May 2005	71%	15%	13%	488	July 2013	64%	24%	12%	509
July 2005	75%	17%	8%	494	October 2013	71%	20%	10%	645
October 2005	75%	17%	9%	502	January 2014	64%	28%	8%	570
February 2006	76%	14%	10%	495	April 2014	62%	30%	8%	505
April 2006	76%	13%	11%	501	July 2014	69%	25%	6%	656
July 2006	80%	13%	8%	497	October 2014	63%	28%	9%	666
September 2006	79%	14%	7%	509	February 2015	65%	27%	7%	501
February 2007	78%	13%	8%	524	May 2015	59%	31%	10%	562
April 2007	76%	14%	9%	506	July 2015	57%	33%	11%	522
July 2007	76%	18%	6%	500	October 2015	61%	28%	11%	581
September 2007	73%	17%	10%	507	February 2016	59%	29%	11%	669
January 2008	69%	20%	11%	547	April 2016	65%	25%	10%	593
April 2008	65%	27%	8%	491	July 2016	62%	29%	9%	517
July 2008	70%	21%	9%	514	October 2016	64%	28%	8%	890
September 2008	72%	17%	10%	535	February 2017	70%	18%	12%	496
February 2009	60%	28%	12%	605	May 2017	69%	23%	8%	510
April 2009	64%	27%	9%	497	August 2017	75%	15%	10%	500
July 2009	55%	38%	7%	557	October 2017	70%	21%	9%	559
October 2009	58%	30%	12%	496	February 2018	67%	19%	14%	516
February 2010	61%	31%	8%	490	April 2018	67%	28%	6%	206
April 2010	57%	34%	9%	503	August 2018	72%	18%	11%	493
July 2010	60%	32%	9%	496	October 2018	67%	19%	14%	640
September 2010	61%	29%	10%	511	February 2019	73%	19%	9%	594
February 2011	65%	25%	11%	517	April 2019	71%	20%	10%	547
April 2011	54%	39%	7%	491	August 2019	73%	15%	13%	490
June 2011	61%	32%	7%	503	October 2019	72%	19%	9%	1,250
October 2011	62%	26%	12%	544	February 2020	73%	17%	10%	604
					July 2020	61%	19%	19%	1,984
					October 2020	54%	24%	22%	922
					November 2020	52%	28%	20%	1,910
					December 2020	53%	29%	18%	773
					January 2021	55%	24%	21%	2,022



### Approval of Governor Sununu's Job Performance

		Approve	Disapprove	Neither/DK	N
<b>STATEWIDE</b>	<b>January 2021</b>	69%	26%	5%	2,023
<b>Voting Registration</b>	Registered Democrat	47%	44%	9%	554
	Registered Undeclared/Not Reg.	69%	27%	4%	833
	Registered Republican	88%	10%	2%	581
<b>Party ID</b>	Democrat	52%	41%	7%	841
	Independent	70%	23%	6%	340
	Republican	85%	14%	1%	804
<b>Ideology</b>	Liberal	43%	47%	11%	523
	Moderate	77%	20%	3%	812
	Conservative	82%	17%	0%	558
<b>Media Usage</b>	Boston Globe reader	60%	27%	14%	166
	Conservative radio listener	78%	20%	2%	538
	Fox News viewer	85%	13%	2%	861
	Local newspapers reader	75%	22%	4%	435
	NHPR listener	70%	24%	6%	1,136
	Union Leader reader	81%	17%	2%	326
	WMUR viewer	72%	23%	5%	1,630
<b>Age of Respondent</b>	18 to 34	57%	38%	5%	536
	35 to 49	71%	26%	3%	416
	50 to 64	72%	21%	8%	646
	65 and older	78%	20%	1%	413
<b>Gender of Respondent</b>	Men	73%	22%	5%	976
	Women	66%	30%	4%	1,010
<b>Level of Education</b>	High school or less	64%	28%	8%	725
	Tech school/Some college	75%	23%	2%	622
	College graduate	71%	26%	3%	419
	Postgraduate work	66%	31%	3%	254
<b>Region of State</b>	Central/Lakes	75%	24%	1%	334
	Connecticut Valley	64%	31%	5%	282
	Manchester Area	70%	27%	3%	325
	Mass Border	68%	25%	8%	501
	North Country	52%	42%	7%	179
	Seacoast	78%	19%	3%	396
<b>Gender &amp; Education</b>	Men, no college degree	74%	20%	6%	665
	Men, college degree	71%	26%	3%	311
	Women, no college degree	64%	31%	4%	671
	Women, college degree	68%	28%	3%	339
<b>2020 Presidential Vote</b>	Voted for Trump	79%	19%	2%	890
	Voted for Biden	59%	34%	7%	1,033
	Voted for other 2020 candidate	77%	23%	0%	30
	Did not vote in 2020	92%	5%	2%	47

**Favorability - Chris Sununu**

		<u>Favorable</u>	<u>Neutral</u>	<u>Unfavorable</u>	<u>Don't know/Not sure</u>	<u>N</u>
<b>STATEWIDE</b>	<b>January 2021</b>	56%	28%	15%	0%	2,021
<b>Voting Registration</b>	Registered Democrat	31%	41%	29%	0%	555
	Registered Undeclared/Not Reg.	59%	28%	13%	0%	831
	Registered Republican	76%	16%	8%		581
<b>Party ID</b>	Democrat	32%	40%	27%	0%	841
	Independent	67%	20%	12%	1%	340
	Republican	75%	21%	5%		803
<b>Ideology</b>	Liberal	27%	36%	36%	1%	524
	Moderate	65%	27%	8%	0%	811
	Conservative	69%	22%	8%	0%	558
<b>Media Usage</b>	Boston Globe reader	53%	26%	21%	0%	166
	Conservative radio listener	71%	23%	5%	0%	537
	Fox News viewer	73%	18%	9%	0%	861
	Local newspapers reader	56%	28%	15%	1%	435
	NHPR listener	54%	31%	14%	0%	1,134
	Union Leader reader	64%	23%	13%	0%	325
	WMUR viewer	62%	25%	14%	0%	1,629
<b>Age of Respondent</b>	18 to 34	48%	28%	24%		536
	35 to 49	53%	34%	13%	0%	415
	50 to 64	61%	28%	11%	0%	646
	65 and older	61%	24%	14%	1%	413
<b>Gender of Respondent</b>	Men	63%	23%	13%	0%	974
	Women	49%	33%	18%	0%	1,010
<b>Level of Education</b>	High school or less	57%	32%	12%	0%	725
	Tech school/Some college	59%	25%	15%	0%	622
	College graduate	54%	26%	19%	0%	417
	Postgraduate work	48%	31%	21%	0%	255
<b>Region of State</b>	Central/Lakes	54%	29%	17%	1%	334
	Connecticut Valley	52%	30%	18%	1%	281
	Manchester Area	55%	28%	16%	0%	325
	Mass Border	59%	20%	21%	0%	501
	North Country	37%	55%	7%		179
	Seacoast	66%	25%	9%	0%	395
<b>Gender &amp; Education</b>	Men, no college degree	67%	22%	11%	1%	665
	Men, college degree	56%	28%	16%	0%	309
	Women, no college degree	49%	35%	16%		671
	Women, college degree	49%	29%	22%	0%	339
<b>2020 Presidential Vote</b>	Voted for Trump	72%	20%	7%	0%	889
	Voted for Biden	42%	34%	23%	0%	1,033
	Voted for other 2020 candidate	55%	32%	13%		30
	Did not vote in 2020	49%	43%	3%	5%	47

## Approval of Governor Sununu's Handling of Coronavirus (COVID-19) Situation

		Approve	Disapprove	Neither/DK	N
<b>STATEWIDE</b>	<b>January 2021</b>	70%	27%	3%	2,019
<b>Voting Registration</b>	Registered Democrat	58%	41%	1%	551
	Registered Undeclared/Not Reg.	70%	24%	6%	832
	Registered Republican	79%	21%	0%	581
<b>Party ID</b>	Democrat	61%	38%	2%	838
	Independent	71%	27%	2%	340
	Republican	78%	17%	5%	804
<b>Ideology</b>	Liberal	55%	44%	2%	521
	Moderate	78%	21%	1%	810
	Conservative	72%	21%	7%	558
<b>Media Usage</b>	Boston Globe reader	74%	25%	1%	164
	Conservative radio listener	71%	21%	8%	538
	Fox News viewer	82%	17%	0%	860
	Local newspapers reader	77%	22%	1%	433
	NHPR listener	73%	25%	1%	1,132
	Union Leader reader	78%	21%	0%	326
	WMUR viewer	75%	24%	1%	1,629
<b>Age of Respondent</b>	18 to 34	59%	34%	8%	536
	35 to 49	61%	37%	2%	415
	50 to 64	76%	22%	1%	646
	65 and older	82%	17%	1%	411
<b>Gender of Respondent</b>	Men	75%	24%	1%	974
	Women	65%	30%	5%	1,008
<b>Level of Education</b>	High school or less	68%	27%	5%	725
	Tech school/Some college	72%	27%	1%	619
	College graduate	71%	26%	2%	417
	Postgraduate work	69%	28%	3%	255
<b>Region of State</b>	Central/Lakes	73%	27%	0%	334
	Connecticut Valley	64%	34%	2%	281
	Manchester Area	73%	26%	0%	325
	Mass Border	70%	28%	1%	499
	North Country	48%	30%	22%	179
	Seacoast	78%	20%	1%	395
<b>Gender &amp; Education</b>	Men, no college degree	76%	24%	0%	664
	Men, college degree	74%	24%	2%	310
	Women, no college degree	63%	31%	6%	669
	Women, college degree	69%	28%	3%	339
<b>2020 Presidential Vote</b>	Voted for Trump	72%	23%	5%	890
	Voted for Biden	67%	32%	2%	1,030
	Voted for other 2020 candidate	82%	18%	0%	30
	Did not vote in 2020	94%	4%	2%	47

### Right Direction or Wrong Track - New Hampshire

		Right direction	Wrong track	Don't know/Not Sure	N
<b>STATEWIDE</b>	<b>January 2021</b>	55%	24%	21%	2,022
<b>Voting Registration</b>	Registered Democrat	49%	25%	26%	555
	Registered Undeclared/Not Reg.	56%	26%	18%	832
	Registered Republican	58%	22%	20%	580
<b>Party ID</b>	Democrat	51%	23%	26%	841
	Independent	50%	30%	20%	340
	Republican	60%	23%	17%	803
<b>Ideology</b>	Liberal	47%	30%	24%	524
	Moderate	63%	17%	19%	811
	Conservative	51%	31%	18%	558
<b>Media Usage</b>	Boston Globe reader	63%	20%	17%	165
	Conservative radio listener	53%	36%	11%	537
	Fox News viewer	63%	22%	15%	860
	Local newspapers reader	61%	20%	19%	435
	NHPR listener	57%	22%	21%	1,134
	Union Leader reader	71%	12%	17%	325
	WMUR viewer	61%	20%	19%	1,628
<b>Age of Respondent</b>	18 to 34	51%	24%	25%	536
	35 to 49	52%	25%	23%	416
	50 to 64	54%	27%	20%	645
	65 and older	66%	18%	15%	412
<b>Gender of Respondent</b>	Men	60%	23%	17%	975
	Women	51%	24%	25%	1,009
<b>Level of Education</b>	High school or less	54%	27%	20%	725
	Tech school/Some college	55%	22%	23%	622
	College graduate	57%	24%	19%	418
	Postgraduate work	56%	21%	23%	254
<b>Region of State</b>	Central/Lakes	54%	29%	17%	333
	Connecticut Valley	45%	35%	20%	282
	Manchester Area	52%	23%	25%	324
	Mass Border	62%	16%	22%	501
	North Country	46%	42%	12%	179
	Seacoast	62%	13%	25%	395
<b>Gender &amp; Education</b>	Men, no college degree	61%	24%	16%	665
	Men, college degree	58%	21%	20%	310
	Women, no college degree	49%	25%	26%	671
	Women, college degree	56%	23%	21%	339
<b>2020 Presidential Vote</b>	Voted for Trump	53%	30%	17%	889
	Voted for Biden	57%	19%	24%	1,033
	Voted for other 2020 candidate	45%	39%	16%	30
	Did not vote in 2020	62%	4%	34%	47