

December 2, 2020

SUNUNU'S NH JOB APPROVAL REMAINS HIGH; HANDLING OF COVID-19 FALLS

By: Sean P. McKinley, M.A.
 Zachary S. Azem, M.A.
 Andrew E. Smith, Ph.D.

andrew.smith@unh.edu
 603-862-2226
 cola.unh.edu/unh-survey-center

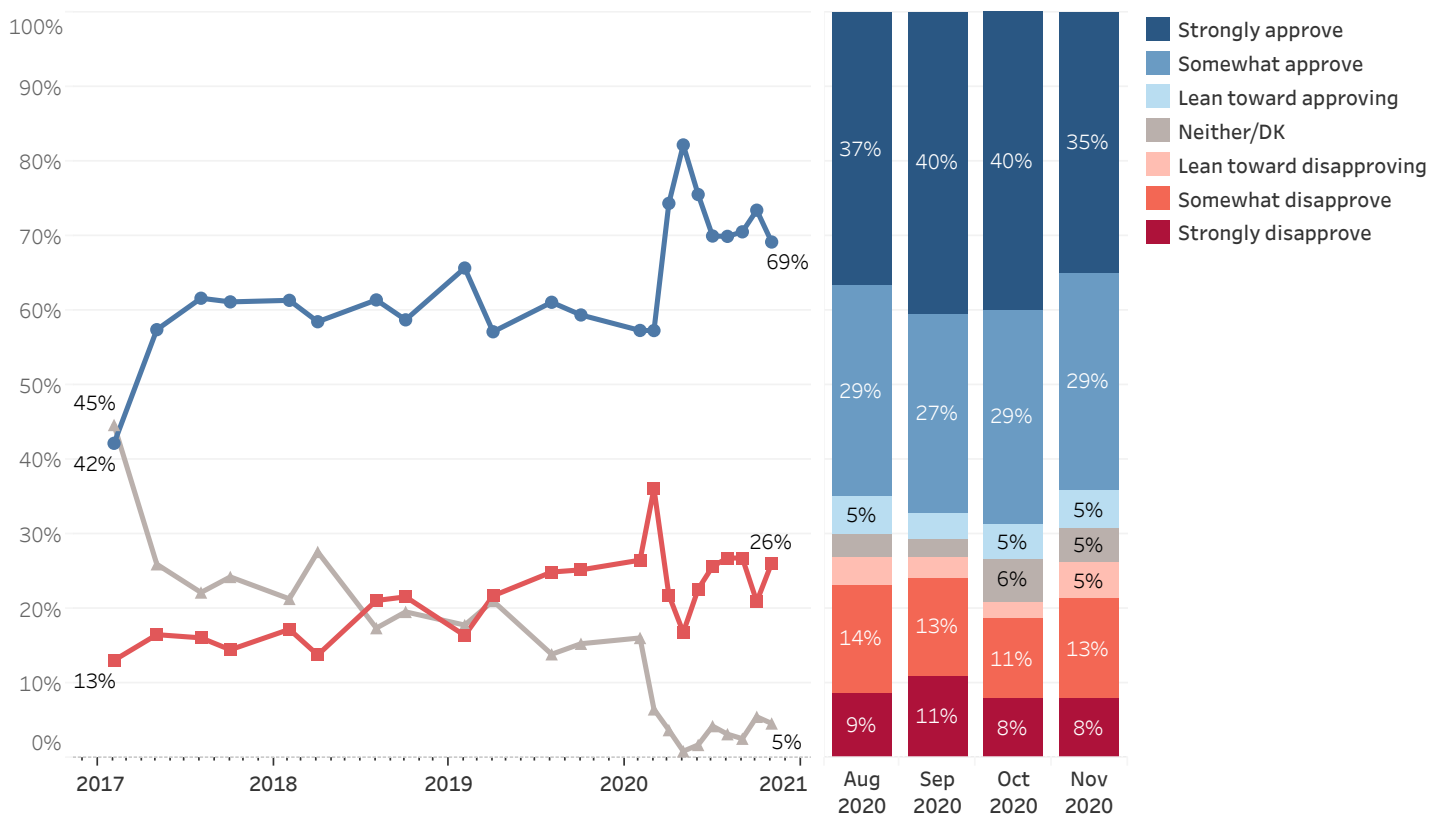
DURHAM, NH – Approval of newly re-elected governor Chris Sununu remains high in New Hampshire. However, approval of his handling of the COVID-19 pandemic has dropped, particularly among Republicans and Independents, though seven in ten Granite Staters continue to approve. Almost half of New Hampshire residents think that COVID-19 is the most important problem facing the state.

These findings are based on the latest **Granite State Poll***, conducted by the University of New Hampshire Survey Center. One thousand nine hundred and seventeen (1,917) Granite State Panel members completed the survey online between November 19 and November 23, 2020. The margin of sampling error for the survey is +/- 2.2 percent. Data were weighted by respondent sex, age, education, and region of the state to targets from the most recent American Community Survey (ACS) conducted by the U.S. Census Bureau, as well as party registration levels provided by the NH Secretary of State and 2020 election results in NH. Granite State Panel members are recruited from randomly-selected landline and cell phone numbers across New Hampshire and surveys are sent periodically to panel members.

Gubernatorial Approval

Following his convincing re-election win over Democrat Dan Feltes, New Hampshire governor Chris Sununu continues to enjoy widespread approval in New Hampshire: 69% of New Hampshire residents approve of his performance as governor, 26% disapprove, and 5% neither approve nor disapprove or don't know. Approval of Sununu's performance has remained steady since July.

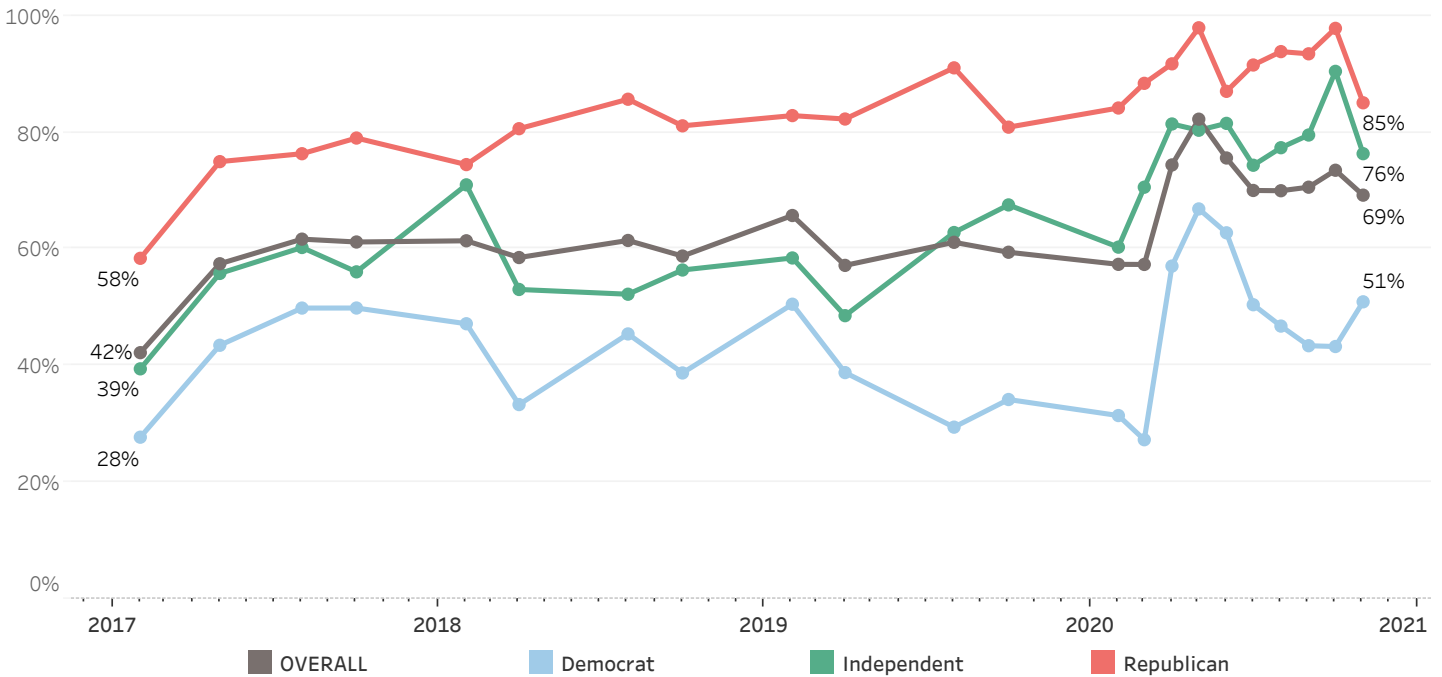
Gubernatorial Approval - Chris Sununu



* We ask that this copyrighted information be referred to as *the Granite State Poll*, conducted by the University of New Hampshire Survey Center.

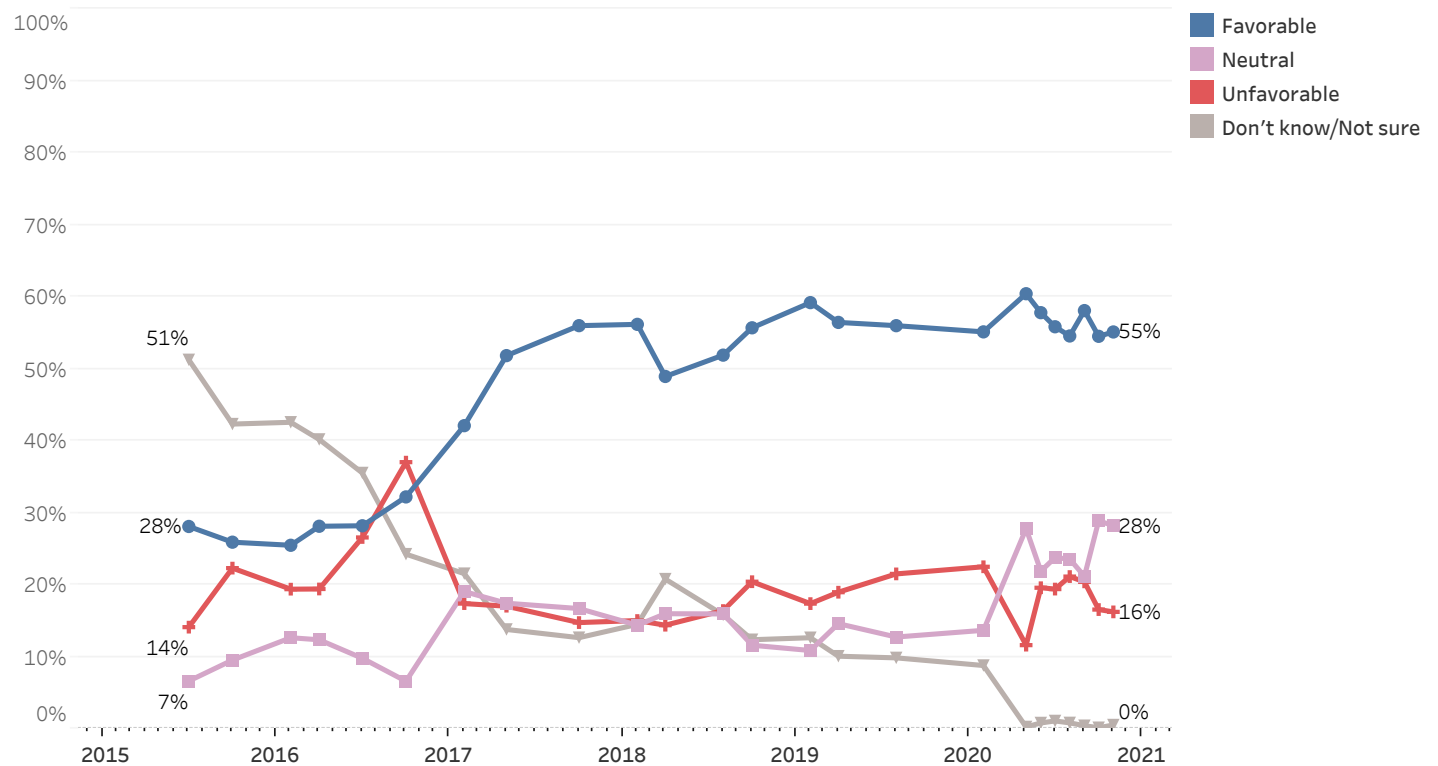
Approval of Sununu's job performance as governor is bipartisan - 85% of Republicans and 76% of Independents approve of Sununu's job performance while 51% of Democrats approve. Approval of Sununu's performance among Republicans and Independents has fallen since October while approval among Democrats has slightly increased in that time.

Job Approval - Governor Chris Sununu - By Party Identification



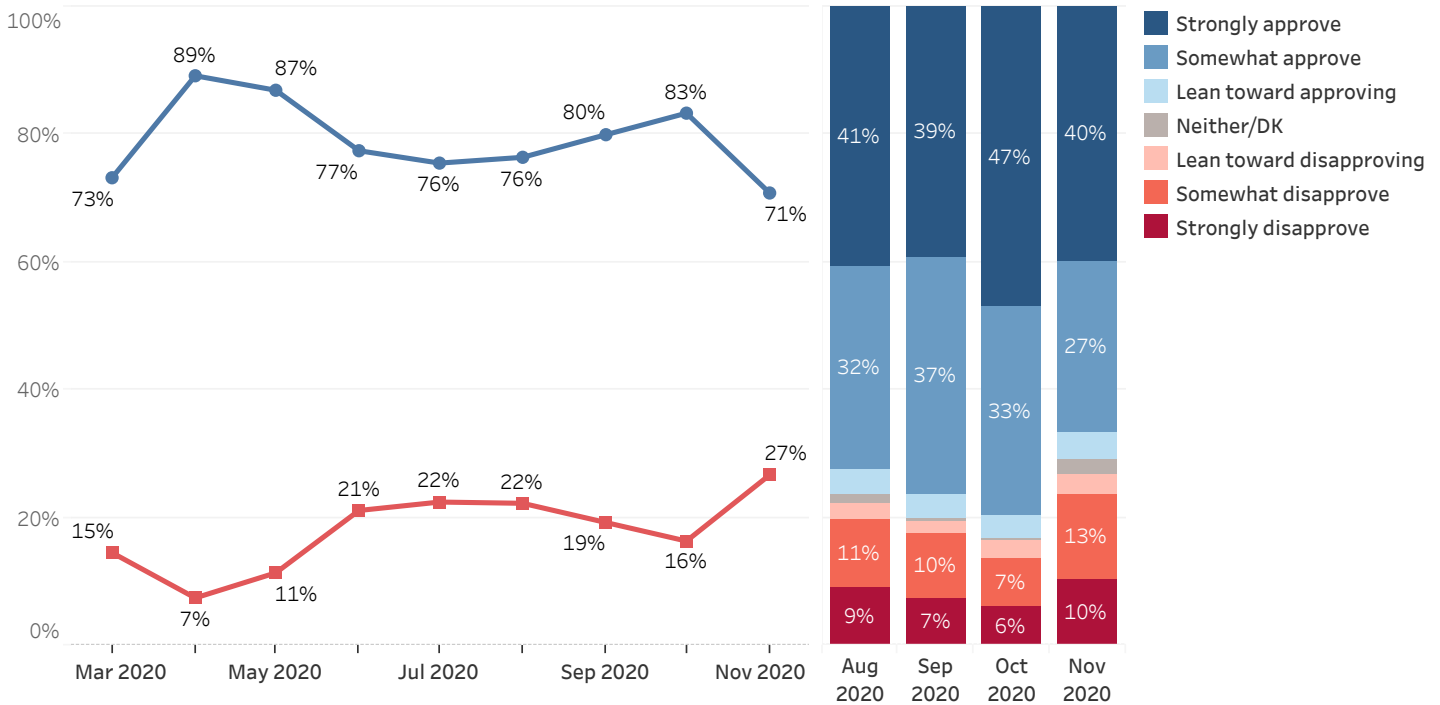
Turning to personal favorability, 55% of New Hampshire residents say they have a favorable opinion of Chris Sununu, 16% have an unfavorable opinion of him, 28% are neutral, and less than 1% are unsure. Sununu's net favorability rating (the percentage with a favorable opinion minus the percentage with an unfavorable opinion) is +39%, largely unchanged since September (+38) and October (+38). By contrast, President Trump's net favorability rating among Granite Staters is -16%.

Sununu (R) Favorability



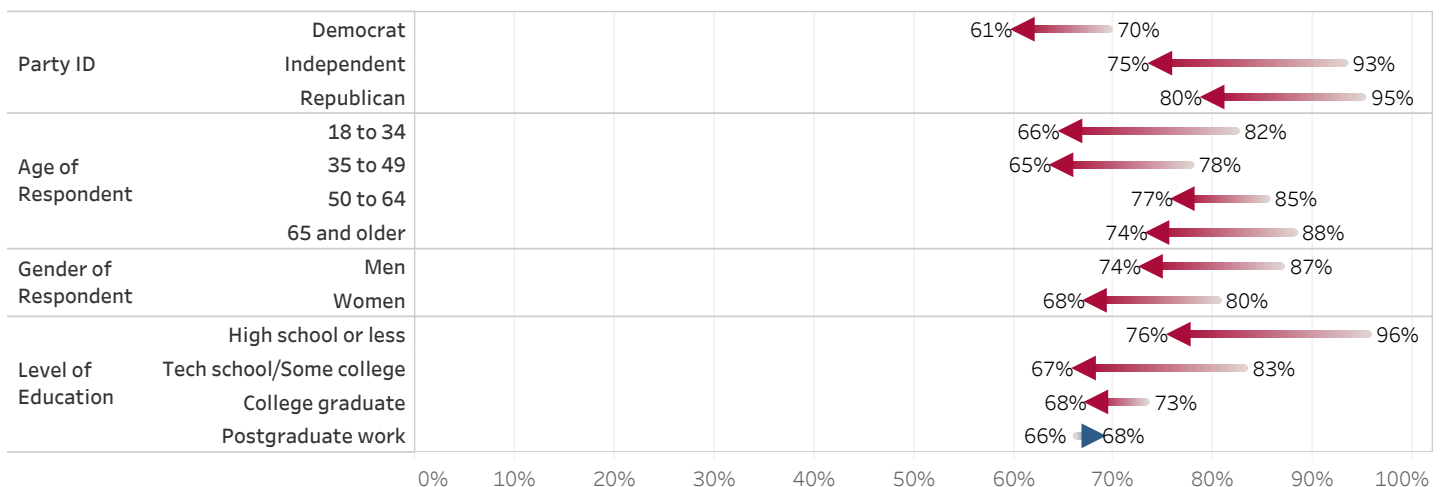
On November 19, 2020, Governor Chris Sununu issued a statewide order requiring masks to be worn indoors when social distancing is not possible. In the most recent Granite State Poll, approval of Sununu's overall handling of the COVID-19 situation among New Hampshire residents has declined markedly compared to results in October. Currently 71% approve of Sununu's handling of the COVID-19 situation while 27% disapprove. The drop in his approval rating since October was largest among Republicans and Independents. Approval of Sununu's handing of COVID-19 has consistently been slightly higher than Sununu's overall job approval since the onset of the pandemic but now it matches his overall job approval.

Approval of Governor Sununu's Handling of Coronavirus (COVID-19) Situation



- Approval of Sununu's handling of COVID-19 has fallen markedly since October among Republicans (-15 percentage points) and Independents (-18). Approval among Democrats (-9) has fallen by a smaller amount since October but Democrats remain less likely than Republicans and Independents to approve.
- Respondents of all ages are less likely to approve of Sununu's handling of the COVID-19 situation; those aged 18 to 34 (-16) are particularly less likely than in October to approve.
- Approval of Sununu's handling of the COVID-19 situation among men (-13) and women (-12) have declined by about the same amount since October.
- Respondents with a high school education or less (-20) and those who went to technical school or have some college education (-16) are particularly less likely than in October to approve of Sununu's handling of the COVID-19 situation. Approval is largely unchanged among those with a college degree or more education.

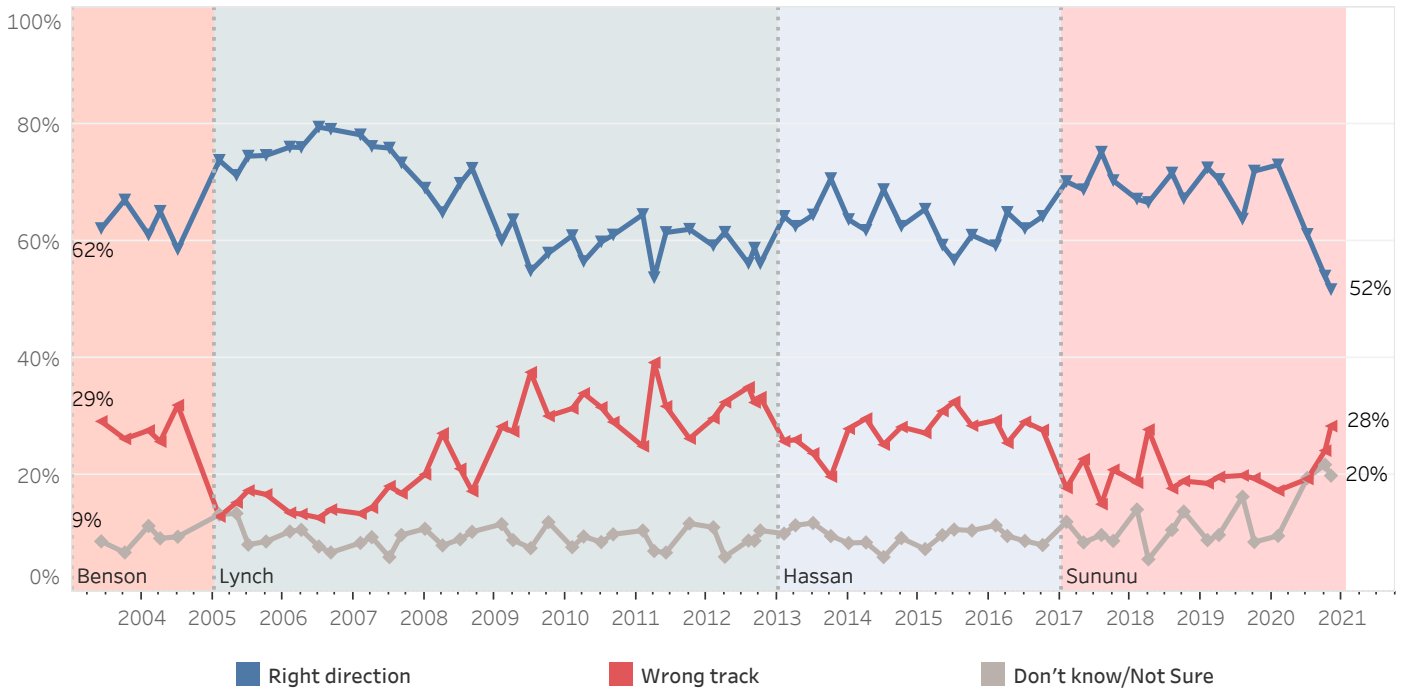
Approve of Governor Sununu's Handling of Coronavirus (COVID-19) Situation - Change from October 2020 to November 2020



New Hampshire Heading in Right Direction or On Wrong Track

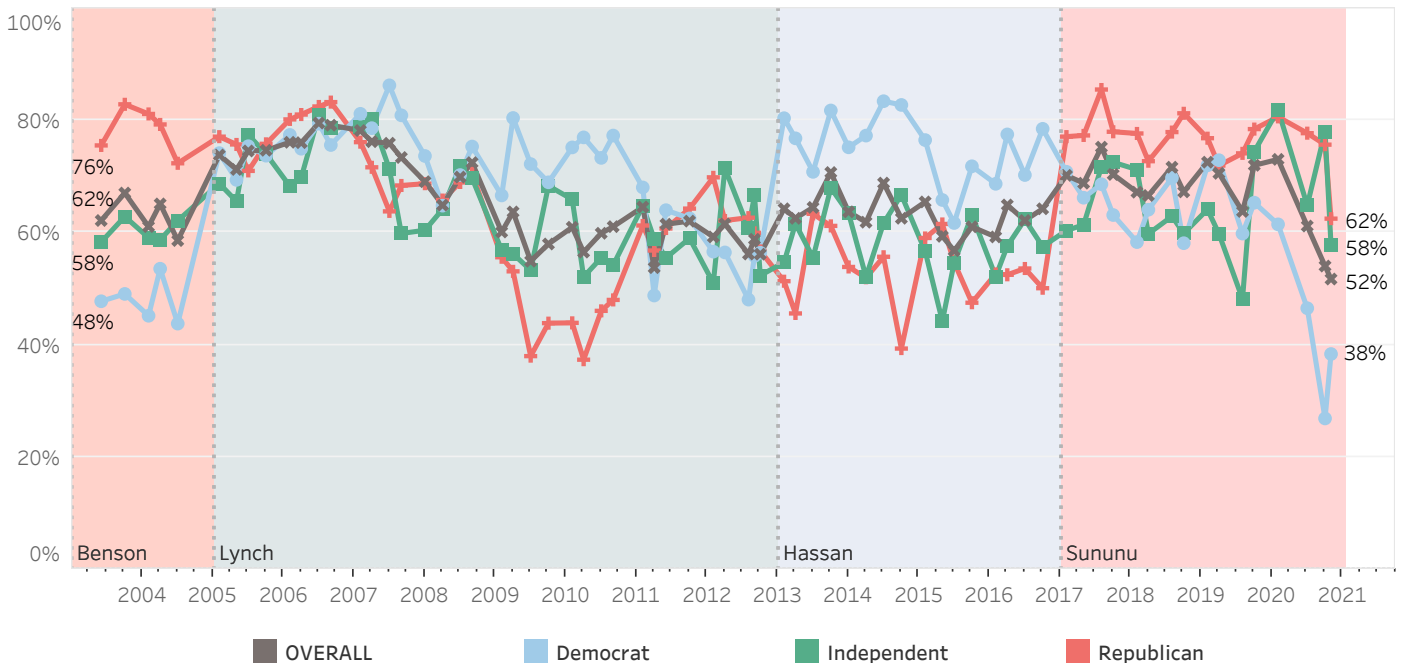
New Hampshire residents are significantly less optimistic about the direction New Hampshire is heading. Fifty-two percent of New Hampshire residents believe that things in New Hampshire are going in the right direction while 28% think things are seriously off on the wrong track and 20% are unsure. Granite Staters are far less optimistic than in February before the COVID-19 pandemic began when 73% said things were going in the right direction. The percentage who think that New Hampshire is headed in the right direction (52%) is at its lowest point since the question was first asked in 2003.

Right Direction or Wrong Track



Sixty-two percent of Republicans and 58% of Independents believe the state is headed in the right direction but only 38% of Democrats agree. Republicans and Independents are considerably less likely than in October to believe New Hampshire is headed in the right direction while Democrats are slightly more likely than in October to say so.

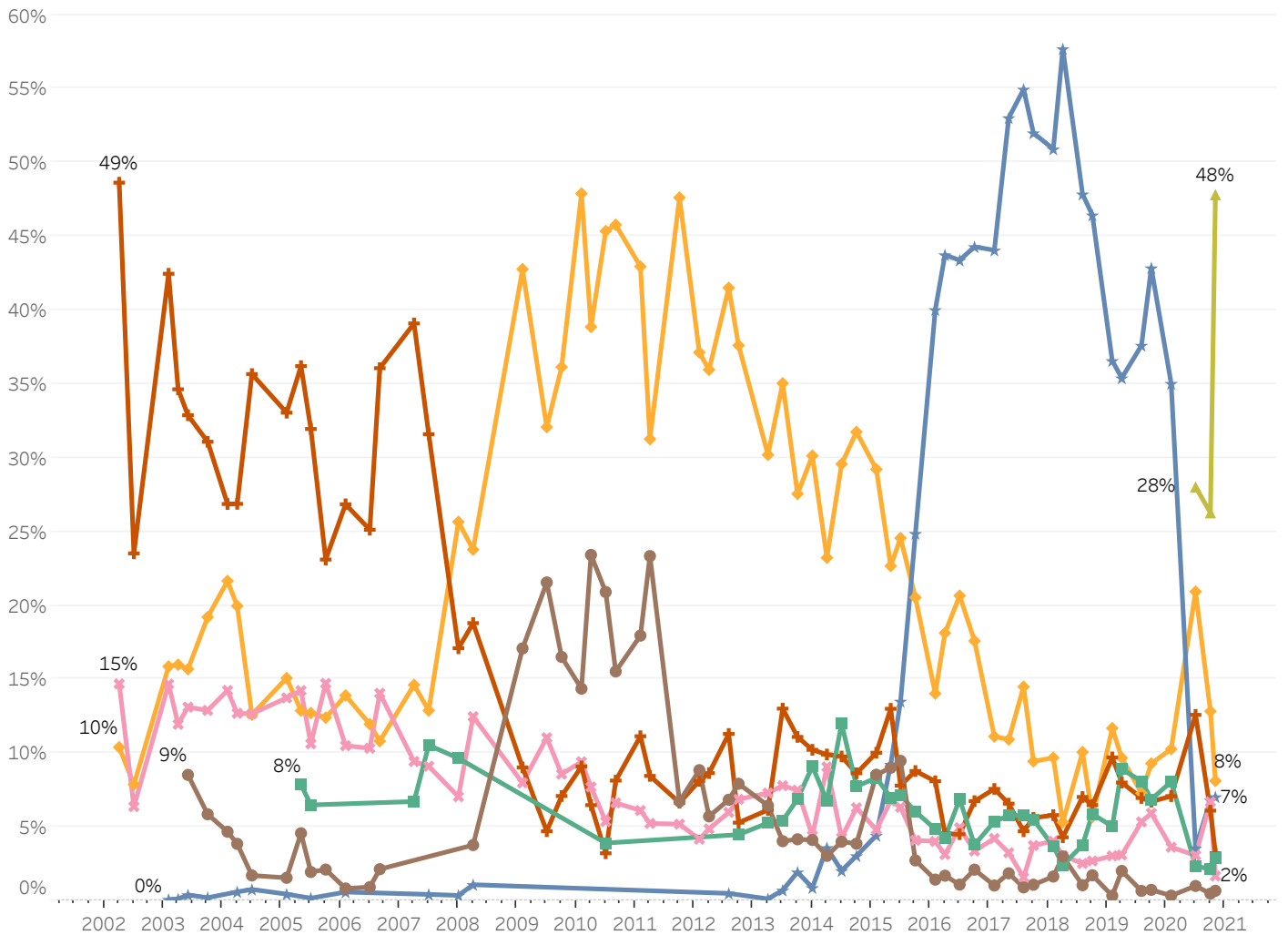
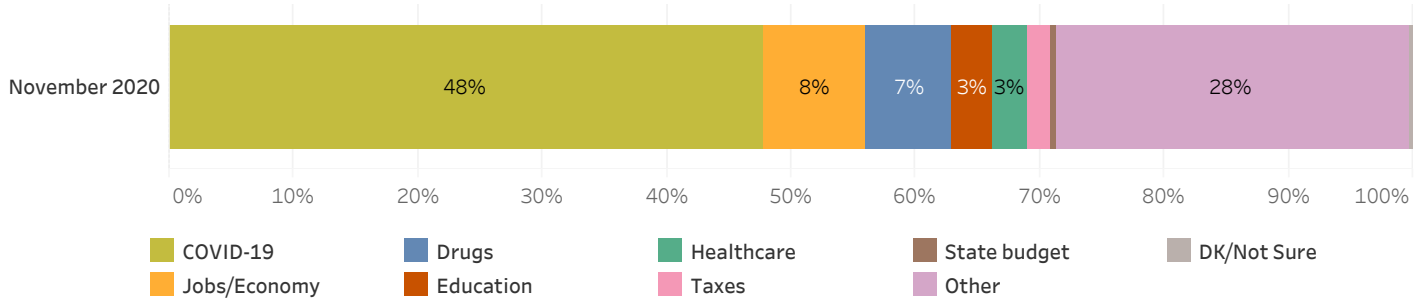
Right Direction or Wrong Track - By Party ID



Most Important Problem Facing New Hampshire

Nearly half (48%) of New Hampshire residents believe that COVID-19 is the most important problem facing the state, far higher than the percentage who said so in October (26%). Few respondents believe that jobs or the economy (8%), drugs (7%), education (3%), healthcare (3%), taxes (2%), or the state budget (1%) is most important. Twenty-eight percent mention another problem and less than 1% don't know or are unsure.

Most Important Problem - Coded



Granite State Poll Methodology

These findings are based on the latest Granite State Poll, conducted by the University of New Hampshire Survey Center. One thousand nine hundred and seventeen (1,917) Granite State Panel members completed the survey online between November 19 and November 23, 2020. The margin of sampling error for the survey is +/- 2.2 percent. These MSE's have not been adjusted for design effect. The response rate for the November 2020 Granite State Poll is 34%. The design effect for the survey is 2.5%.

Data were weighted by respondent sex, age, education, and region of the state to targets from the most recent American Community Survey (ACS) conducted by the U.S. Census Bureau, as well as party registration levels provided by the NH Secretary of State and to 2020 election results in New Hampshire.

The Granite State Panel is part of an effort by the University of New Hampshire Survey Center to investigate new ways of gathering and understanding the opinion of New Hampshire residents. Approximately 5,750 New Hampshire adults were recruited from randomly selected landline and cell phone numbers to participate in the panel. Panelists are then asked to participate in online surveys sponsored by the UNH Survey Center.

The number of respondents in each demographic below may not equal the number reported in cross-tabulation tables as some respondents choose not to answer some questions. Due to rounding, percentages may not sum to 100%.

For more information about the methodology used in the Granite State Panel, contact Dr. Andrew Smith at (603) 862-2226 or by email at andrew.smith@unh.edu.

Granite State Panel, November 2020 Demographics

		%	N
Gender of Respondent	Men	49%	476
	Women	51%	495
Age of Respondent	18 to 34	27%	264
	35 to 49	18%	179
	50 to 64	34%	332
	65 and older	21%	204
Level of Education	High school or less	36%	362
	Tech school/Some college	31%	309
	College graduate	21%	206
	Postgraduate work	12%	122
Region of State	Central/Lakes	16%	163
	Connecticut Valley	15%	155
	Manchester Area	21%	211
	Mass Border	22%	220
	North Country	8%	80
	Seacoast	19%	195
Party ID	Democrat	42%	417
	Independent	16%	164
	Republican	42%	419
Voting Registration	Registered Democrat	28%	284
	Registered Undeclared/Not Reg.	42%	417
	Registered Republican	30%	298

Approval of Governor Sununu's Job Performance

Generally speaking, do you approve or disapprove of the way Chris Sununu is handling his job as governor?

	<u>Approve</u>	<u>Disapprove</u>	<u>Neither/DK</u>	<u>N</u>
February 2017	42%	13%	45%	476
May 2017	57%	17%	26%	502
August 2017	62%	16%	22%	484
October 2017	61%	15%	24%	540
February 2018	61%	17%	21%	500
April 2018	59%	14%	28%	189
August 2018	61%	21%	17%	486
October 2018	59%	22%	20%	622
February 2019	66%	16%	18%	592
April 2019	57%	22%	21%	529
August 2019	60%	23%	17%	483
October 2019	59%	25%	15%	1,231
February 2020	57%	27%	16%	582
March 2020	57%	36%	7%	646
April 2020	74%	22%	4%	1,150
May 2020	82%	17%	1%	818
June 2020	76%	23%	2%	993
July 2020	70%	26%	4%	1,978
August 2020	70%	27%	3%	1,940
September 2020	71%	27%	3%	1,027
October 2020	73%	21%	6%	931
November 2020	69%	26%	5%	1,908

Approval of Governor Sununu's Handling of Coronavirus (COVID-19) Situation

Generally speaking, do you approve or disapprove of the way Chris Sununu is handling the coronavirus (COVID-19) situation?

	<u>Approve</u>	<u>Disapprove</u>	<u>Neither/DK</u>	<u>N</u>
March 2020	73%	15%	12%	643
April 2020	89%	7%	3%	1,154
May 2020	87%	11%	2%	815
June 2020	77%	21%	1%	970
July 2020	76%	22%	2%	1,973
August 2020	76%	22%	1%	1,930
September 2020	80%	19%	1%	1,027
October 2020	83%	16%	0%	930
November 2020	71%	27%	2%	1,908

Favorability - Chris Sununu

Below are a list of political figures in the U.S. and New Hampshire. Please indicate whether you have a favorable or unfavorable opinion of each of them or if you don't know enough about them to say - Governor Chris Sununu

	<u>Favorable</u>	<u>Neutral</u>	<u>Unfavorable</u>	<u>Don't know/Not sure</u>	<u>N</u>
July 2015	28%	7%	14%	51%	530
October 2015	26%	10%	22%	42%	581
February 2016	25%	13%	19%	43%	684
April 2016	28%	12%	19%	40%	618
July 2016	28%	10%	27%	36%	467
October 2016	32%	7%	37%	24%	767
February 2017	42%	19%	17%	22%	502
May 2017	52%	17%	17%	14%	514
October 2017	56%	17%	15%	13%	570
February 2018	56%	14%	15%	14%	519
April 2018	49%	16%	14%	21%	208
August 2018	52%	16%	16%	16%	500
October 2018	56%	12%	20%	12%	640
February 2019	59%	11%	17%	13%	603
April 2019	56%	15%	19%	10%	548
August 2019	56%	13%	21%	10%	496
February 2020	55%	14%	22%	9%	610
May 2020	60%	28%	12%	0%	838
June 2020	58%	22%	20%	1%	993
July 2020	56%	24%	19%	1%	1,884
August 2020	55%	24%	21%	1%	1,873
September 2020	58%	21%	20%	0%	1,017
October 2020	54%	29%	17%	0%	908
November 2020	55%	28%	16%	0%	1,897

New Hampshire Heading in Right Direction or On Wrong Track

Do you think things in New Hampshire are generally going in the right direction or are they seriously off on the wrong track?

	<u>Right direction</u>	<u>Wrong track</u>	<u>Don't know/Not Sure</u>	<u>N</u>		<u>Right direction</u>	<u>Wrong track</u>	<u>Don't know/Not Sure</u>	<u>N</u>
June 2003	62%	29%	9%	510	February 2012	59%	30%	11%	517
October 2003	67%	26%	7%	485	April 2012	62%	32%	6%	532
February 2004	61%	28%	11%	500	August 2012	56%	35%	9%	577
April 2004	65%	26%	9%	530	September 2012	59%	32%	9%	622
July 2004	59%	32%	9%	503	February 2013	64%	26%	10%	573
February 2005	74%	13%	13%	535	April 2013	63%	26%	11%	497
May 2005	71%	15%	13%	488	July 2013	64%	24%	12%	509
July 2005	75%	17%	8%	494	October 2013	71%	20%	10%	645
October 2005	75%	17%	9%	502	January 2014	64%	28%	8%	570
February 2006	76%	14%	10%	495	April 2014	62%	30%	8%	505
April 2006	76%	13%	11%	501	July 2014	69%	25%	6%	656
July 2006	80%	13%	8%	497	October 2014	63%	28%	9%	666
September 2006	79%	14%	7%	509	February 2015	65%	27%	7%	501
February 2007	78%	13%	8%	524	May 2015	59%	31%	10%	562
April 2007	76%	14%	9%	506	July 2015	57%	33%	11%	522
July 2007	76%	18%	6%	500	October 2015	61%	28%	11%	581
September 2007	73%	17%	10%	507	February 2016	59%	29%	11%	669
January 2008	69%	20%	11%	547	April 2016	65%	25%	10%	593
April 2008	65%	27%	8%	491	July 2016	62%	29%	9%	517
July 2008	70%	21%	9%	514	October 2016	64%	28%	8%	890
September 2008	72%	17%	10%	535	February 2017	70%	18%	12%	496
February 2009	60%	28%	12%	605	May 2017	69%	23%	8%	510
April 2009	64%	27%	9%	497	August 2017	75%	15%	10%	500
July 2009	55%	38%	7%	557	October 2017	70%	21%	9%	559
October 2009	58%	30%	12%	496	February 2018	67%	19%	14%	516
February 2010	61%	31%	8%	490	April 2018	67%	28%	6%	206
April 2010	57%	34%	9%	503	August 2018	72%	18%	11%	493
July 2010	60%	32%	9%	496	October 2018	67%	19%	14%	640
September 2010	61%	29%	10%	511	February 2019	73%	19%	9%	594
February 2011	65%	25%	11%	517	April 2019	71%	20%	10%	547
April 2011	54%	39%	7%	491	August 2019	73%	15%	13%	490
June 2011	61%	32%	7%	503	October 2019	72%	19%	9%	1,250
October 2011	62%	26%	12%	544	February 2020	73%	17%	10%	604
					July 2020	61%	19%	19%	1,984
					October 2020	54%	24%	22%	922
					November 2020	52%	28%	20%	1,910

Most Important Problem - New Hampshire

Let's turn to the state of New Hampshire. What do you think is the most important problem facing the state of New Hampshire today?

	<u>Drugs</u>	<u>Education</u>	<u>Healthcare</u>	<u>Jobs/ Economy</u>	<u>State budget</u>	<u>Taxes</u>	<u>Other</u>	<u>DK/Not Sure</u>	<u>N</u>
April 2002		49%		10%		15%	16%	11%	681
July 2002		24%		8%		6%	57%	5%	677
February 2003	0%	42%		16%		15%	18%	9%	644
April 2003	0%	35%		16%		12%	26%	12%	499
June 2003	0%	33%		16%	9%	13%	22%	8%	513
October 2003	0%	31%		19%	6%	13%	22%	9%	490
February 2004		27%		22%	5%	14%	23%	10%	502
April 2004	1%	27%		20%	4%	13%	24%	12%	536
July 2004	1%	36%		13%	2%	13%	26%	11%	505
February 2005	0%	33%		15%	2%	14%	21%	15%	541
May 2005		36%	8%	13%	5%	14%	15%	9%	487
July 2005	0%	32%	6%	13%	2%	11%	24%	12%	496
October 2005		23%		12%	2%	15%	35%	13%	503
February 2006	1%	27%		14%	1%	11%	34%	13%	498
July 2006		25%		12%	1%	10%	38%	13%	490
September 2006		36%		11%	2%	14%	29%	8%	499
April 2007		39%	7%	15%		9%	23%	7%	501
July 2007	0%	32%	11%	13%		9%	29%	7%	488
January 2008	0%	17%	10%	26%		7%	33%	7%	542
April 2008	1%	19%		24%	4%	12%	35%	5%	496
February 2009		9%		43%	17%	8%	23%		607
July 2009		5%		32%	22%	11%	26%	5%	551
October 2009		7%		36%	17%	9%	26%	6%	494
February 2010		9%		48%	14%	9%	18%	2%	486
April 2010		6%		39%	23%	8%	21%	3%	504
July 2010		3%	4%	45%	21%	5%	17%	4%	498
September 2010		8%		46%	16%	7%	19%	5%	504
February 2011		11%		43%	18%	6%	18%	4%	508
April 2011		8%		31%	23%	5%	28%	4%	494
October 2011		7%		48%	7%	5%	28%	6%	548
February 2012		8%		37%	9%	4%	36%	6%	509
April 2012		9%		36%	6%	5%	37%	8%	518
August 2012	0%	11%		42%	7%	6%	29%	5%	541
October 2012		5%	4%	38%	8%	7%	33%	5%	575
April 2013	0%	6%	5%	30%	6%	7%	38%	6%	485
July 2013	1%	13%	5%	35%	4%	8%	26%	7%	458
October 2013	2%	11%	7%	28%	4%	7%	26%	15%	602
January 2014	1%	10%	9%	30%	4%	4%	30%	11%	545
April 2014	4%	10%	7%	23%	3%	9%	35%	10%	464
July 2014	2%	10%	12%	30%	4%	4%	29%	9%	614
October 2014	3%	9%	8%	32%	4%	6%	28%	11%	644
February 2015	4%	10%	8%	29%	9%	5%	26%	8%	467
May 2015	9%	13%	7%	23%	9%	7%	24%	8%	540
July 2015	14%	8%	7%	25%	9%	6%	27%	4%	509
October 2015	25%	9%	6%	21%	3%	4%	26%	7%	563

Most Important Problem - New Hampshire

Let's turn to the state of New Hampshire. What do you think is the most important problem facing the state of New Hampshire today?

	<u>COVID-19</u>	<u>Drugs</u>	<u>Education</u>	<u>Healthcare</u>	<u>Jobs/ Economy</u>	<u>State budget</u>	<u>Taxes</u>	<u>Other</u>	<u>DK/Not Sure</u>	<u>N</u>
February 2016		40%	8%	5%	14%	1%	4%	21%	7%	659
April 2016		44%	5%	4%	18%	2%	3%	19%	5%	591
July 2016		43%	5%	7%	21%	1%	5%	15%	3%	509
October 2016		44%	7%	4%	18%	2%	3%	16%	6%	868
February 2017		44%	8%	5%	11%	1%	4%	17%	9%	493
May 2017		53%	7%	6%	11%	2%	3%	14%	5%	508
August 2017		55%	5%	6%	14%	1%	2%	13%	5%	493
October 2017		52%	6%	5%	9%	1%	4%	17%	6%	563
February 2018		51%	6%	4%	10%	2%	4%	18%	6%	509
April 2018		58%	4%	2%	5%	3%	3%	19%	5%	200
August 2018		48%	7%	4%	10%	1%	3%	22%	6%	491
October 2018		46%	6%	6%	6%	2%	3%	24%	7%	632
February 2019		37%	10%	5%	12%	0%	3%	28%	6%	594
April 2019		35%	8%	9%	10%	2%	3%	28%	5%	531
August 2019		38%	7%	8%	7%	1%	5%	29%	5%	484
October 2019		43%	7%	7%	9%	1%	6%	19%	9%	1,228
February 2020		35%	7%	8%	10%	0%	4%	30%	6%	587
July 2020	28%	4%	13%	2%	21%	1%	3%	27%	1%	1,839
October 2020	26%	7%	6%	2%	13%	0%	7%	38%	0%	835
November 2020	48%	7%	3%	3%	8%	1%	2%	28%	0%	1,763

Approval of Governor Sununu's Job Performance

		Approve	Disapprove	Neither/DK	N
STATEWIDE	November 2020	69%	26%	5%	1,908
Voting Registration	Registered Democrat	44%	53%	3%	529
	Registered Undeclared/Not Reg.	70%	22%	9%	774
	Registered Republican	92%	7%	1%	545
Party ID	Democrat	51%	47%	2%	801
	Independent	76%	15%	8%	303
	Republican	85%	9%	6%	773
Ideology	Liberal	38%	59%	3%	456
	Moderate	73%	19%	8%	824
	Conservative	88%	11%	1%	530
Media Usage	Boston Globe reader	53%	42%	5%	138
	Conservative radio listener	81%	5%	13%	494
	Fox News viewer	88%	11%	1%	807
	Local newspapers reader	67%	32%	1%	483
	NHPR listener	67%	29%	3%	1,141
	Union Leader reader	71%	28%	0%	283
	WMUR viewer	71%	27%	3%	1,447
Age of Respondent	18 to 34	64%	27%	9%	505
	35 to 49	70%	29%	2%	391
	50 to 64	72%	23%	5%	593
	65 and older	70%	28%	2%	386
Gender of Respondent	Men	76%	20%	4%	913
	Women	63%	31%	6%	954
Level of Education	High school or less	72%	19%	10%	677
	Tech school/Some college	70%	29%	1%	587
	College graduate	67%	30%	3%	391
	Postgraduate work	63%	36%	2%	237
Region of State	Central/Lakes	73%	24%	2%	310
	Connecticut Valley	63%	27%	10%	276
	Manchester Area	79%	20%	0%	339
	Mass Border	65%	33%	2%	461
	North Country	54%	22%	25%	166
	Seacoast	73%	26%	1%	344
Gender & Education	Men, no college degree	78%	18%	4%	652
	Men, college degree	71%	27%	1%	261
	Women, no college degree	64%	29%	7%	605
	Women, college degree	62%	35%	3%	347
2020 Presidential Vote	Voted for Trump	83%	9%	8%	843
	Voted for Biden	57%	41%	2%	993
	Voted for other 2020 candidate	46%	54%	0%	10
	Did not vote in 2020	81%	18%	1%	37

Favorability - Chris Sununu

		<u>Favorable</u>	<u>Neutral</u>	<u>Unfavorable</u>	<u>Don't know/Not sure</u>	<u>N</u>
STATEWIDE	November 2020	55%	28%	16%	0%	1,897
Voting Registration	Registered Democrat	26%	38%	36%	0%	523
	Registered Undeclared/Not Reg.	57%	29%	14%		772
	Registered Republican	80%	18%	2%	0%	553
Party ID	Democrat	30%	38%	31%	0%	796
	Independent	67%	19%	14%		303
	Republican	76%	22%	2%	1%	779
Ideology	Liberal	20%	38%	42%	0%	452
	Moderate	58%	30%	12%	0%	824
	Conservative	78%	19%	3%	0%	536
Media Usage	Boston Globe reader	44%	29%	27%		138
	Conservative radio listener	72%	21%	6%		499
	Fox News viewer	78%	18%	4%		811
	Local newspapers reader	48%	31%	20%	0%	482
	NHPR listener	53%	27%	19%	1%	1,137
	Union Leader reader	56%	25%	19%		282
	WMUR viewer	56%	27%	16%	0%	1,435
Age of Respondent	18 to 34	51%	29%	19%	2%	499
	35 to 49	57%	27%	16%	0%	394
	50 to 64	55%	29%	16%	0%	595
	65 and older	56%	30%	14%	0%	383
Gender of Respondent	Men	65%	20%	14%	1%	910
	Women	46%	36%	18%	0%	953
Level of Education	High school or less	57%	31%	11%	1%	675
	Tech school/Some college	60%	22%	18%	0%	585
	College graduate	51%	29%	19%	1%	391
	Postgraduate work	44%	32%	24%	0%	237
Region of State	Central/Lakes	60%	27%	13%		308
	Connecticut Valley	51%	29%	20%	0%	282
	Manchester Area	65%	19%	16%		337
	Mass Border	57%	23%	19%	1%	457
	North Country	25%	70%	6%		165
	Seacoast	55%	25%	17%	2%	339
Gender & Education	Men, no college degree	69%	18%	13%	1%	648
	Men, college degree	56%	26%	17%	0%	261
	Women, no college degree	48%	37%	15%		605
	Women, college degree	43%	34%	24%	0%	346
2020 Presidential Vote	Voted for Trump	74%	22%	5%	0%	850
	Voted for Biden	39%	34%	27%	0%	989
	Voted for other 2020 candidate	48%	25%	27%	0%	10
	Did not vote in 2020	50%	29%	3%	18%	37

Approval of Governor Sununu's Handling of Coronavirus (COVID-19) Situation

		Approve	Disapprove	Neither/DK	N
STATEWIDE	November 2020	71%	27%	2%	1,908
Voting Registration	Registered Democrat	57%	43%	0%	528
	Registered Undeclared/Not Reg.	74%	23%	4%	774
	Registered Republican	81%	18%	2%	547
Party ID	Democrat	61%	38%	1%	800
	Independent	75%	17%	8%	303
	Republican	80%	18%	2%	774
Ideology	Liberal	52%	46%	2%	455
	Moderate	77%	20%	3%	824
	Conservative	77%	21%	2%	530
Media Usage	Boston Globe reader	68%	32%	0%	138
	Conservative radio listener	75%	19%	6%	494
	Fox News viewer	81%	19%	1%	808
	Local newspapers reader	70%	30%	0%	483
	NHPR listener	70%	27%	3%	1,140
	Union Leader reader	67%	33%		283
	WMUR viewer	72%	26%	2%	1,448
Age of Respondent	18 to 34	66%	32%	3%	505
	35 to 49	65%	34%	2%	391
	50 to 64	77%	19%	4%	595
	65 and older	74%	25%	0%	385
Gender of Respondent	Men	74%	22%	5%	914
	Women	68%	32%	0%	954
Level of Education	High school or less	76%	20%	4%	677
	Tech school/Some college	67%	30%	3%	586
	College graduate	68%	31%	1%	392
	Postgraduate work	68%	31%	1%	237
Region of State	Central/Lakes	76%	23%	0%	309
	Connecticut Valley	67%	22%	11%	275
	Manchester Area	73%	27%		339
	Mass Border	69%	29%	2%	461
	North Country	68%	28%	4%	166
	Seacoast	70%	30%	0%	345
Gender & Education	Men, no college degree	74%	20%	6%	652
	Men, college degree	74%	26%	0%	261
	Women, no college degree	71%	29%	0%	604
	Women, college degree	63%	36%	0%	348
2020 Presidential Vote	Voted for Trump	76%	20%	4%	845
	Voted for Biden	66%	33%	1%	992
	Voted for other 2020 candidate	47%	31%	22%	10
	Did not vote in 2020	68%	19%	13%	37

Right Direction or Wrong Track - New Hampshire

		Right direction	Wrong track	Don't know/Not Sure	N
STATEWIDE	November 2020	52%	28%	20%	1,910
Voting Registration	Registered Democrat	33%	45%	22%	528
	Registered Undeclared/Not Reg.	55%	26%	19%	771
	Registered Republican	65%	16%	19%	551
Party ID	Democrat	38%	40%	22%	797
	Independent	58%	31%	11%	302
	Republican	62%	16%	21%	780
Ideology	Liberal	33%	44%	23%	455
	Moderate	52%	27%	20%	820
	Conservative	64%	18%	18%	536
Media Usage	Boston Globe reader	35%	39%	26%	137
	Conservative radio listener	59%	19%	21%	500
	Fox News viewer	63%	20%	17%	812
	Local newspapers reader	50%	34%	16%	483
	NHPR listener	52%	29%	19%	1,136
	Union Leader reader	53%	36%	11%	282
	WMUR viewer	52%	30%	18%	1,444
Age of Respondent	18 to 34	47%	27%	26%	505
	35 to 49	46%	36%	17%	397
	50 to 64	59%	23%	18%	592
	65 and older	51%	31%	18%	384
Gender of Respondent	Men	62%	25%	14%	920
	Women	43%	32%	26%	950
Level of Education	High school or less	57%	25%	18%	684
	Tech school/Some college	53%	28%	19%	583
	College graduate	45%	30%	25%	390
	Postgraduate work	44%	37%	19%	237
Region of State	Central/Lakes	53%	30%	17%	309
	Connecticut Valley	46%	32%	22%	283
	Manchester Area	55%	28%	18%	337
	Mass Border	56%	28%	16%	459
	North Country	32%	27%	41%	166
	Seacoast	56%	27%	17%	345
Gender & Education	Men, no college degree	65%	25%	10%	658
	Men, college degree	53%	25%	23%	261
	Women, no college degree	44%	27%	28%	602
	Women, college degree	39%	39%	22%	345
2020 Presidential Vote	Voted for Trump	61%	19%	19%	851
	Voted for Biden	44%	35%	21%	988
	Voted for other 2020 candidate	30%	46%	24%	10
	Did not vote in 2020	49%	42%	9%	37

Most Important Problem - New Hampshire

		<u>COVID-19</u>	<u>Drugs</u>	<u>Education</u>	<u>Healthcare</u>	<u>Jobs/Economy</u>
STATEWIDE	November 2020	48%	7%	3%	3%	8%
Voting Registration	Registered Democrat	63%	3%	2%	2%	10%
	Registered Undeclared/Not Reg.	48%	10%	5%	4%	6%
	Registered Republican	33%	6%	2%	3%	10%
Party ID	Democrat	60%	2%	5%	4%	8%
	Independent	54%	1%	1%	4%	6%
	Republican	31%	15%	2%	1%	9%
Ideology	Liberal	57%	2%	8%	6%	6%
	Moderate	52%	10%	3%	1%	9%
	Conservative	27%	8%	0%	3%	9%
Media Usage	Boston Globe reader	59%	2%	4%	2%	7%
	Conservative radio listener	27%	13%	0%	3%	10%
	Fox News viewer	39%	7%	2%	3%	10%
	Local newspapers reader	51%	0%	2%	5%	4%
	NHPR listener	52%	2%	3%	4%	6%
	Union Leader reader	57%	6%	5%	2%	8%
	WMUR viewer	52%	5%	4%	3%	9%
Age of Respondent	18 to 34	42%	11%	6%	3%	10%
	35 to 49	44%	3%	2%	1%	8%
	50 to 64	47%	10%	1%	5%	7%
	65 and older	61%	1%	3%	2%	8%
Gender of Respondent	Men	42%	4%	5%	2%	10%
	Women	54%	10%	2%	4%	7%
Level of Education	High school or less	37%	15%	5%	3%	7%
	Tech school/Some college	51%	3%	1%	2%	9%
	College graduate	54%	3%	2%	4%	9%
	Postgraduate work	61%	3%	5%	2%	8%
Region of State	Central/Lakes	50%	4%	10%	1%	8%
	Connecticut Valley	31%	2%	2%	5%	5%
	Manchester Area	48%	9%	4%	3%	8%
	Mass Border	53%	3%	0%	3%	8%
	North Country	34%	31%	1%	3%	7%
	Seacoast	57%	8%	1%	4%	12%
Gender & Education	Men, no college degree	38%	5%	6%	2%	9%
	Men, college degree	52%	2%	3%	1%	11%
	Women, no college degree	49%	14%	0%	4%	6%
	Women, college degree	61%	3%	4%	5%	7%
2020 Presidential Vote	Voted for Trump	27%	13%	1%	1%	10%
	Voted for Biden	64%	2%	5%	5%	7%
	Voted for other 2020 candidate	63%	1%	1%	0%	2%
	Did not vote in 2020	36%	19%		3%	7%

Most Important Problem - New Hampshire

		<u>State budget</u>	<u>Taxes</u>	<u>Other</u>	<u>DK/Not Sure</u>	<u>N</u>
STATEWIDE	November 2020	1%	2%	28%	0%	1,763
Voting Registration	Registered Democrat	0%	1%	18%	0%	504
	Registered Undeclared/Not Reg.	0%	3%	24%	0%	715
	Registered Republican	1%	1%	44%		490
Party ID	Democrat	0%	1%	18%	0%	765
	Independent		3%	30%	1%	277
	Republican	1%	2%	39%		692
Ideology	Liberal	0%	1%	21%	0%	435
	Moderate	0%	2%	23%	0%	789
	Conservative	2%	2%	49%		449
Media Usage	Boston Globe reader	1%	4%	21%		128
	Conservative radio listener	2%	1%	44%		473
	Fox News viewer	1%	2%	36%	0%	737
	Local newspapers reader	1%	2%	34%	0%	464
	NHPR listener	0%	2%	30%	0%	1,077
	Union Leader reader	1%	2%	19%		264
	WMUR viewer	1%	2%	25%	0%	1,336
Age of Respondent	18 to 34	0%	0%	27%	0%	485
	35 to 49	1%	2%	39%		353
	50 to 64	0%	3%	27%	0%	539
	65 and older	1%	2%	21%	1%	363
Gender of Respondent	Men	1%	2%	34%	0%	852
	Women	0%	1%	22%	0%	876
Level of Education	High school or less			34%		625
	Tech school/Some college	1%	3%	30%	1%	534
	College graduate	0%	2%	24%	1%	366
	Postgraduate work	1%	3%	17%		228
Region of State	Central/Lakes	1%	1%	24%	0%	298
	Connecticut Valley	1%	2%	52%	0%	256
	Manchester Area	2%	2%	24%	1%	318
	Mass Border	0%	1%	31%	0%	427
	North Country	0%	3%	20%		130
	Seacoast	0%	1%	17%	0%	323
Gender & Education	Men, no college degree	1%	1%	38%	0%	606
	Men, college degree	1%	4%	26%		245
	Women, no college degree		1%	25%	0%	546
	Women, college degree	1%	2%	17%	0%	330
2020 Presidential Vote	Voted for Trump	1%	2%	44%		750
	Voted for Biden	0%	1%	16%	1%	949
	Voted for other 2020 candidate		3%	29%		9
	Did not vote in 2020			35%	1%	34