

October 29, 2020

BIDEN CONTINUES TO LEAD TRUMP IN NH; SHAHEEN AND SUNUNU AHEAD IN REELECTION BIDS FOR SENATE AND GOVERNOR

By: Sean P. McKinley, M.A.
 Zachary S. Azem, M.A.
 Andrew E. Smith, Ph.D.

andrew.smith@unh.edu
 603-862-2226
 cola.unh.edu/unh-survey-center

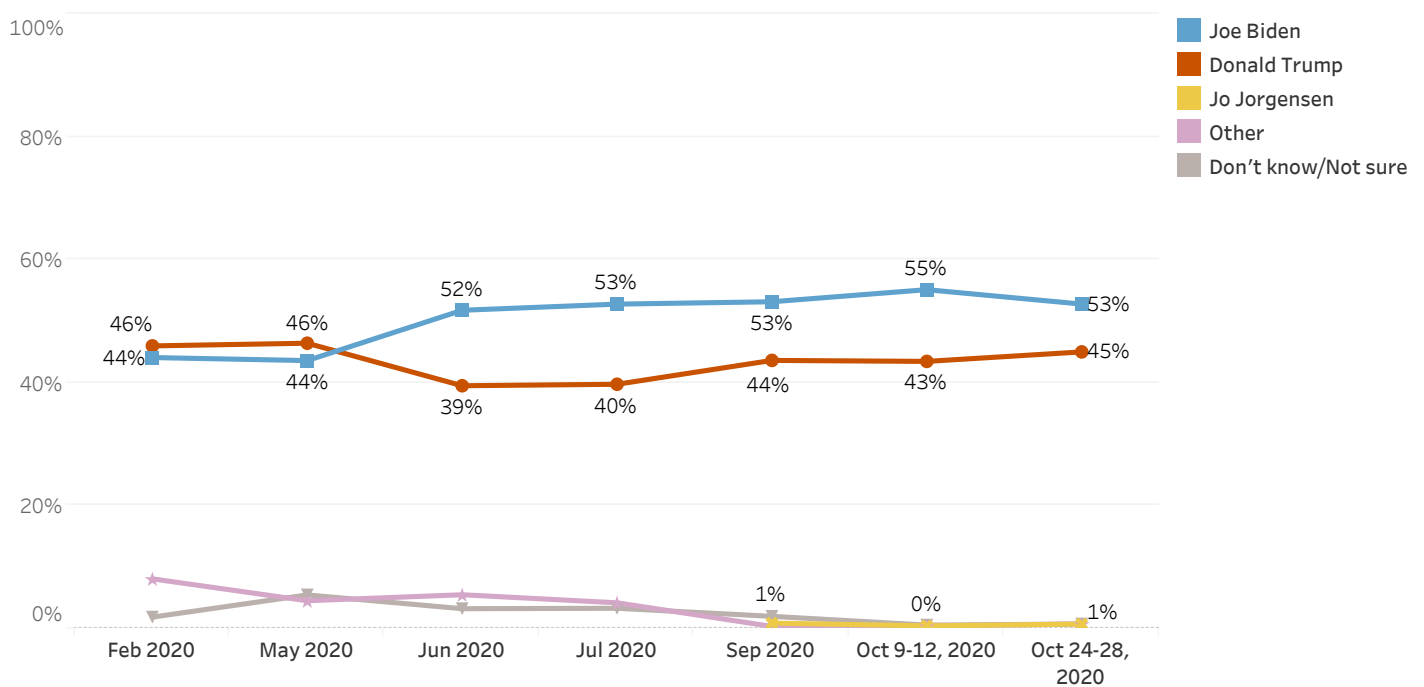
DURHAM, NH – Former Vice President Joe Biden leads President Donald Trump by 8 percentage points in New Hampshire. Chris Sununu maintains a wide lead over his Democratic opponent Dan Feltes in the race for governor. Senator Jeanne Shaheen holds a comfortable lead over Corky Messner in her campaign for a third term. The race for U.S. Congress in the First District is deadlocked, Congresswoman Ann Kuster remains ahead in the Second District, and the race for the state legislature remains very close.

These findings are based on the latest **Granite State Poll***, conducted by the University of New Hampshire Survey Center. Eight hundred sixty-four (864) Granite State Panel members who are likely 2020 voters completed the survey online between October 24 and October 28, 2020. The margin of sampling error for the survey is +/- 3.3 percent. 451 likely voters were residents of the 1st Congressional District (MSE = +/- 4.6%) and 412 were residents of the 2nd Congressional District (MSE = +/- 4.8%). Data were weighted by respondent sex, age, education, and region of the state to targets from the most recent American Community Survey (ACS) conducted by the U.S. Census Bureau, as well as party registration levels provided by the New Hampshire Secretary of State and 2016 election results in NH. Granite State Panel members are recruited from randomly-selected landline and cell phone numbers across New Hampshire and surveys are sent periodically to panel members.

Presidential Election

With only five days until the general election, the race for President between Joe Biden and Donald Trump in New Hampshire has tightened somewhat. When asked who they would vote for if the presidential election were held today, 53% of likely New Hampshire voters say they would vote for Joe Biden while 45% would vote for Donald Trump, 1% would vote for Libertarian Jo Jorgensen, 1% would vote for another candidate, and 1% are undecided. Biden's lead over Trump (+8 percentage points) is slightly lower than in early October (+12). Among those who have already voted by absentee ballot, 85% say they voted for Biden while 15% voted for Trump.

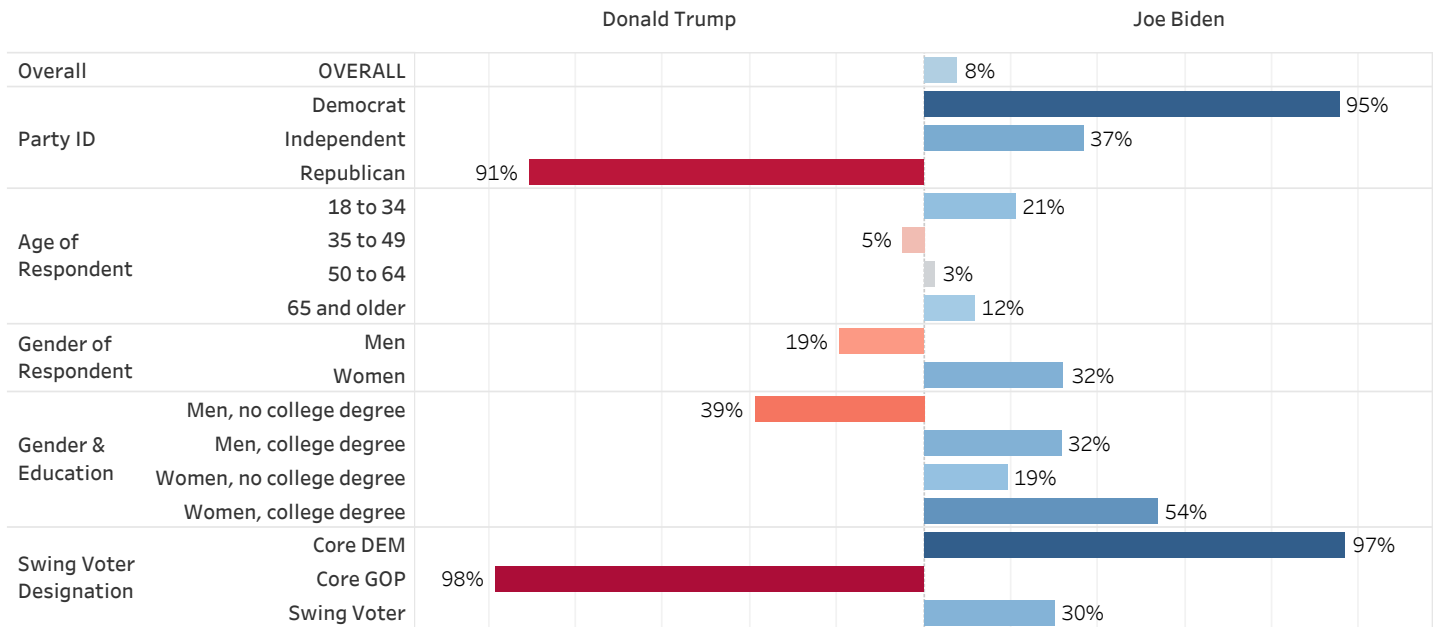
2020 Presidential General Election (With Leaners & Those Who Have Already Voted)



* We ask that this copyrighted information be referred to as *the Granite State Poll*, conducted by the University of New Hampshire Survey Center.

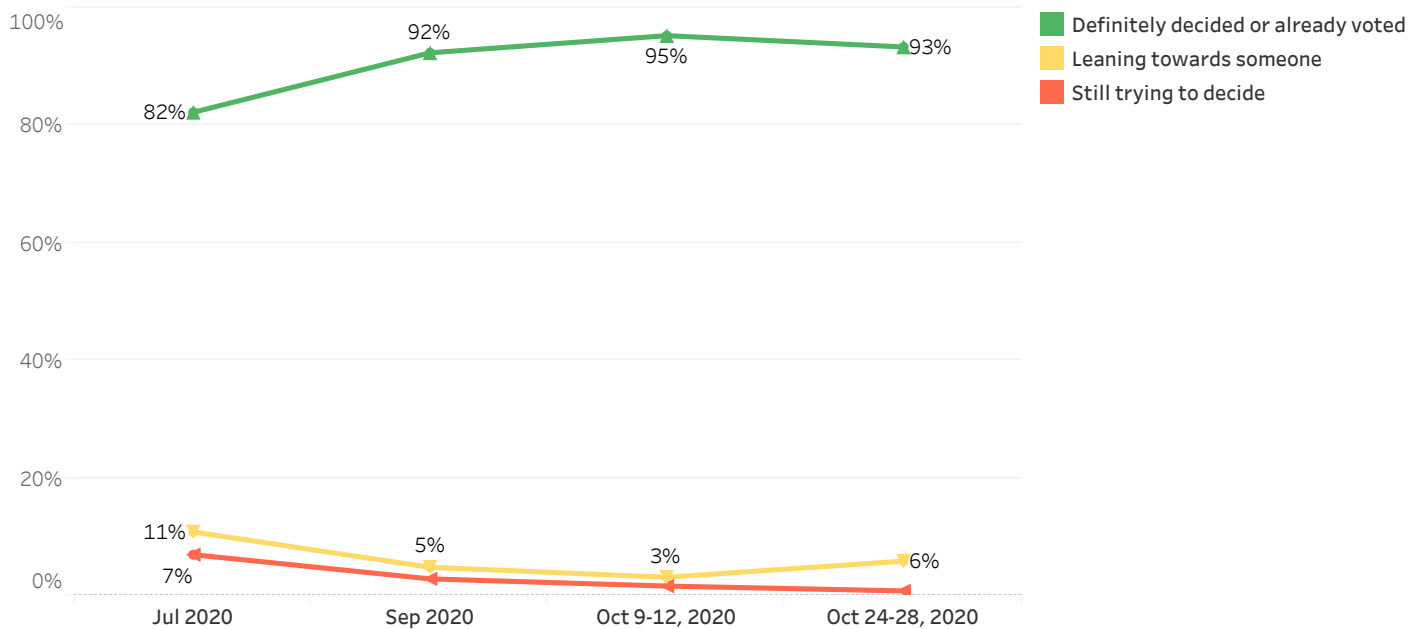
- Biden leads Trump by 95 percentage points among Democrats and by 37 points among Independents. Trump holds a 91 point lead among Republicans.
- Biden leads Trump among those aged 18 to 34 (+21 percentage points) and those aged 65 and older (+12) while Trump holds a small lead among those aged 35 to 49 (+5). Those aged 50 to 64 are about equally divided (Biden +3).
- Trump leads Biden among men by 19 percentage points but Biden leads Trump among women by 32 percentage points.
- Biden holds an even wider lead among women with a college degree (+54 percentage points) and smaller leads among men with a college degree (+32) and women without a college degree (+19). Trump holds a large lead among men without a college degree (+39).
- Biden leads Trump by 97 percentage points among "core" Democratic voters, those who consistently vote for Democrats, while Trump leads by 98 points among "core" Republican voters. Biden holds a 30 percentage point lead among "swing" voters, those who have voted for Republicans and Democrats in recent elections.

2020 Presidential General Election - Difference in Support - October 24-28, 2020



Ninety-three percent of likely voters in New Hampshire say they have definitely decided whom they will vote for or have already voted, largely unchanged compared to early October (95%). By contrast, in late October 2016 only 79% of likely voters had definitely decided who they would vote for.

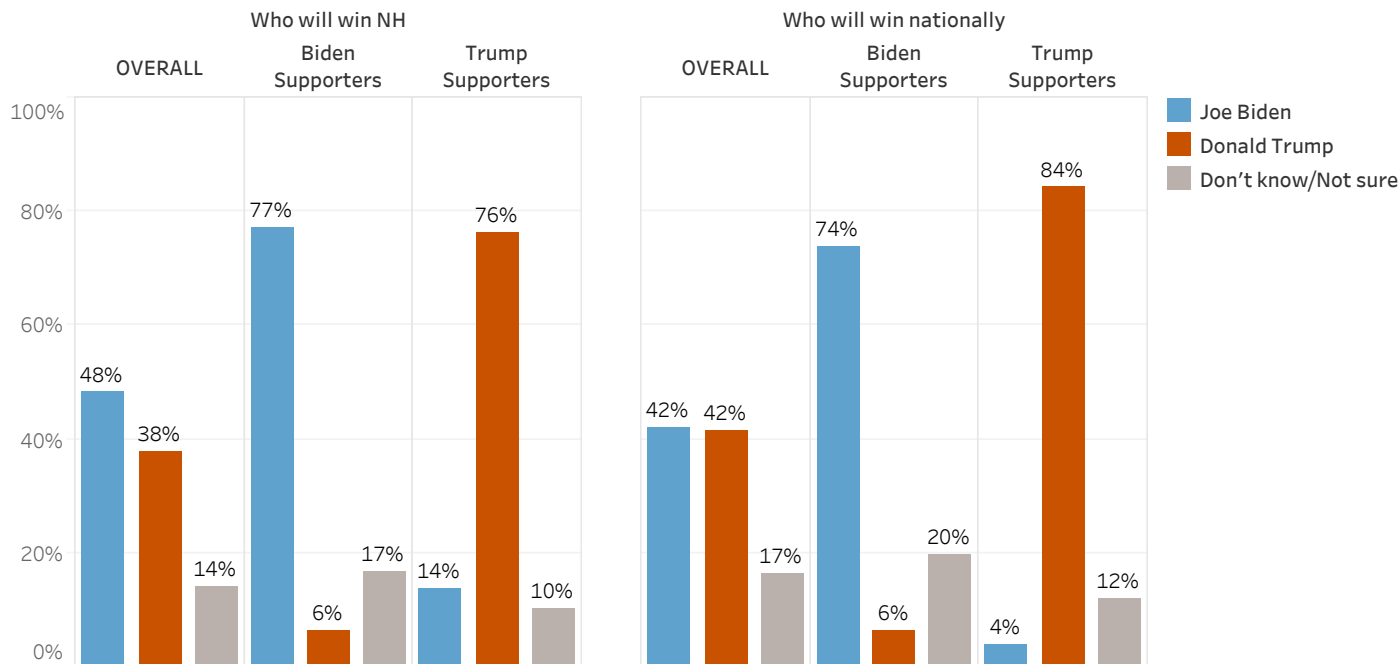
Decided on Choice for Presidential Election or Already Voted



When asked which candidate they think will win the presidential election in New Hampshire, regardless of who they plan to vote for, 48% of likely voters think Biden will win New Hampshire, 38% think Trump will win New Hampshire, and 14% are unsure. Biden and Trump supporters are equally confident that their preferred candidate will win New Hampshire - 77% of Biden supporters think he will win while 76% of Trump supporters think he will win.

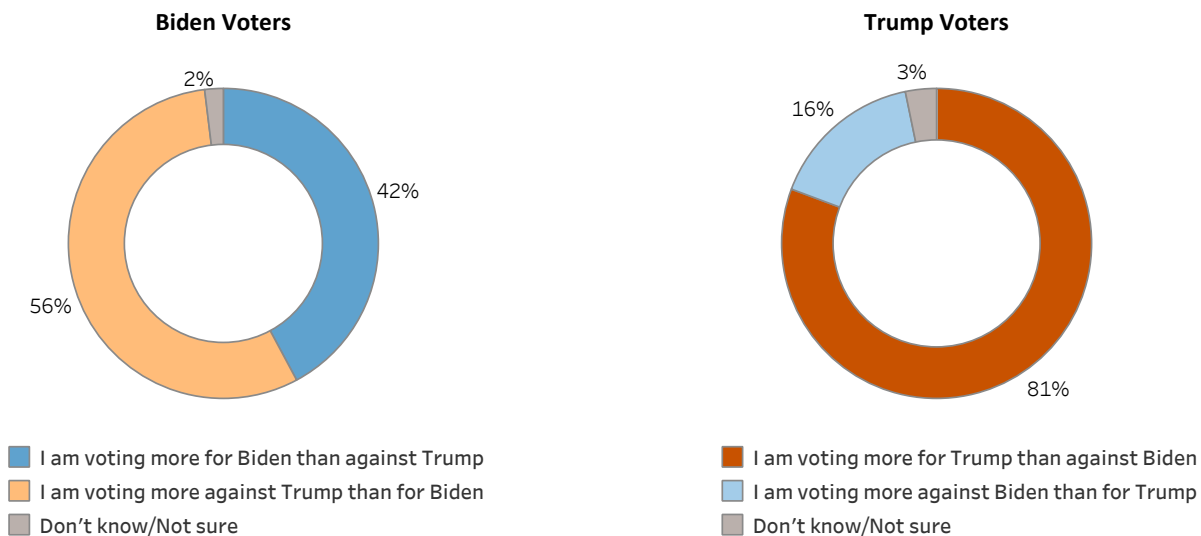
Respondents are divided on who they think will win the national presidential contest: 42% think that Biden will win, 42% believe Trump will win, and 17% are unsure. Seventy-four percent of Biden supporters believe that Biden will win nationally but Trump supporters are even more confident: 84% believe that Trump will win the national presidential contest.

Which Candidate Believe Will Win NH & National Presidential Election



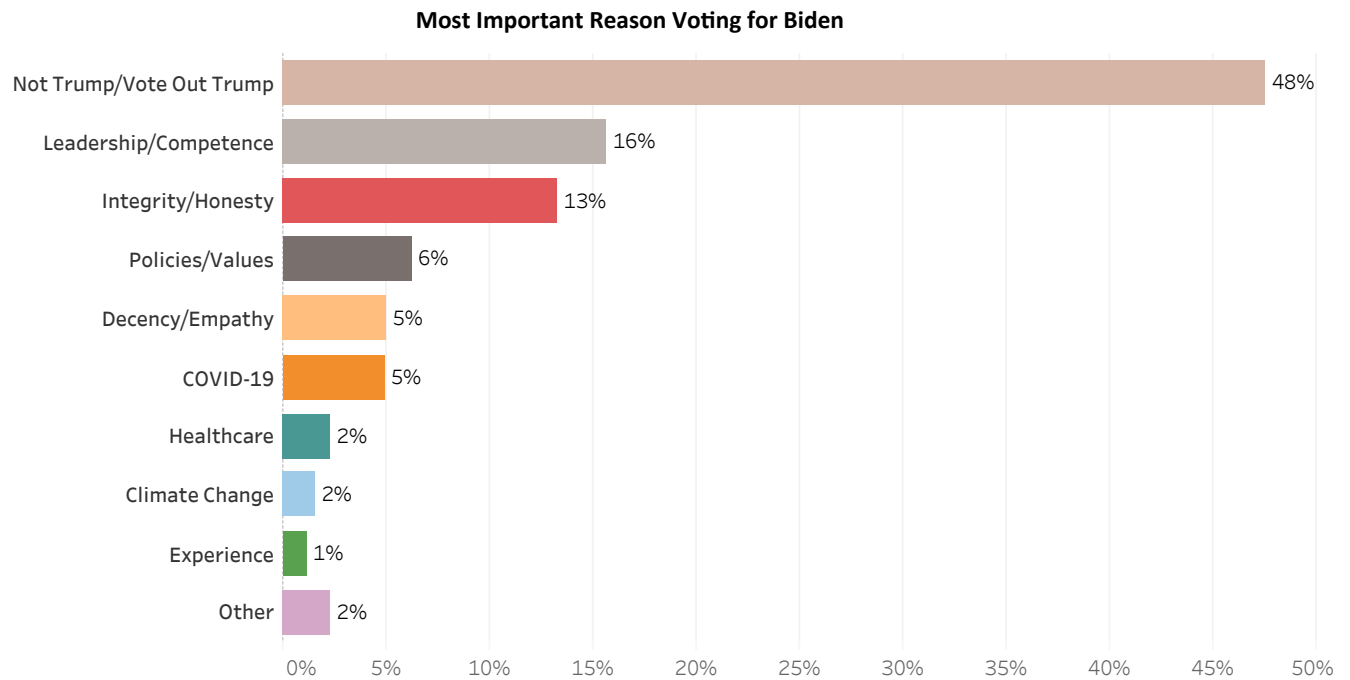
More than half (56%) of likely voters who support Joe Biden say they are voting more against Donald Trump than for Joe Biden while 42% say they are voting more for Biden than against Trump. Among Biden voters, those between 18 and 34 and self-identified Independents are more likely to say they are more voting against Trump while North Country residents, those aged 50 to 64, those with a high school degree or less education, and self-described moderates are more likely to say they are voting more for Biden.

By contrast, 81% of Trump supporters say they are voting more for Trump than against Biden and only 16% say they are voting more against Biden than for Trump. Among Trump voters, Connecticut Valley residents, those aged 65 and older, and women are more likely to say they are voting more for Trump while self-identified Independents, Manchester Area residents, self-described moderates, and those aged 18 to 34 are more likely to say they are voting more against Biden.

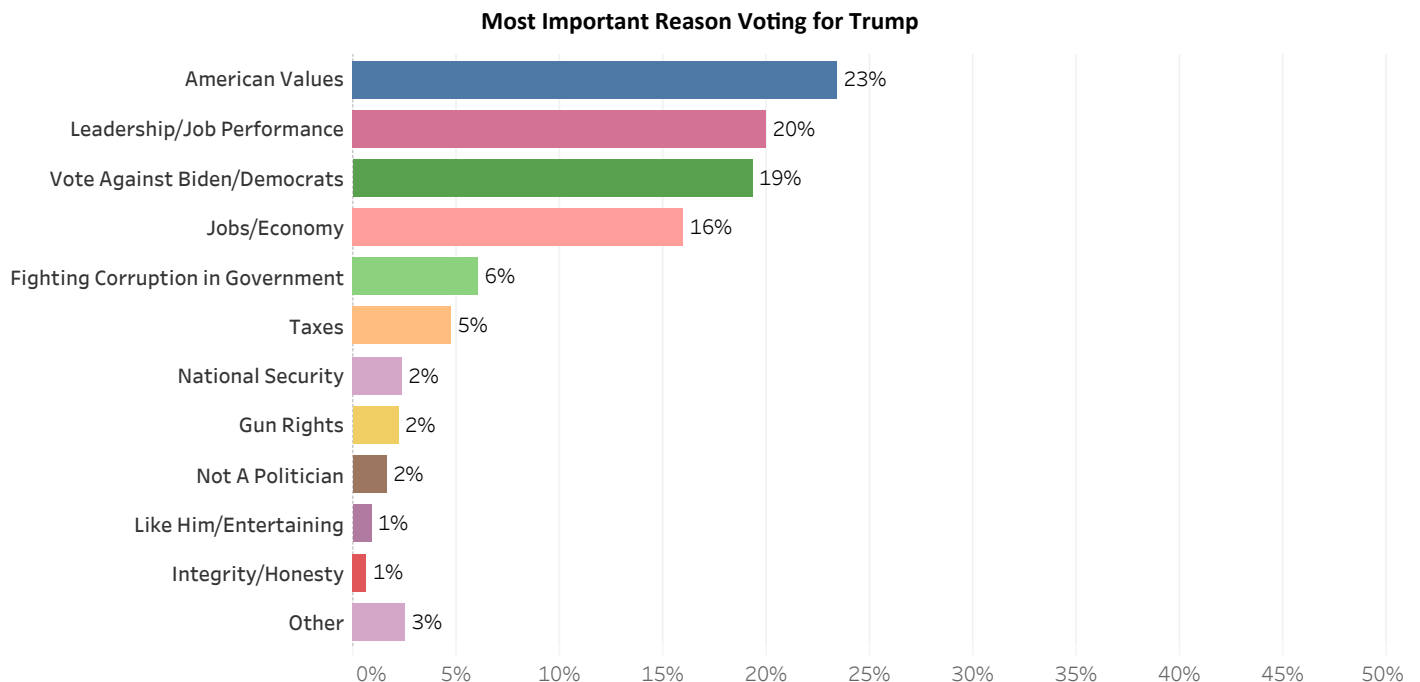


Respondents were asked about the most important reason they are voting for their preferred candidate. Supporters of the two major candidates mention quite different reasons for their choice.

Nearly half (48%) of those who support Biden say that Biden not being Trump or a desire to vote out Trump is the most important reason they are voting for Biden, 16% mention leadership or competence, and 13% mention integrity or honesty. Less than 10% cite policies or values (6%), decency or empathy (5%), COVID-19 (5%), healthcare (2%), climate change (2%), experience (1%), or something else (2%) as the most important reason they are voting for Biden.



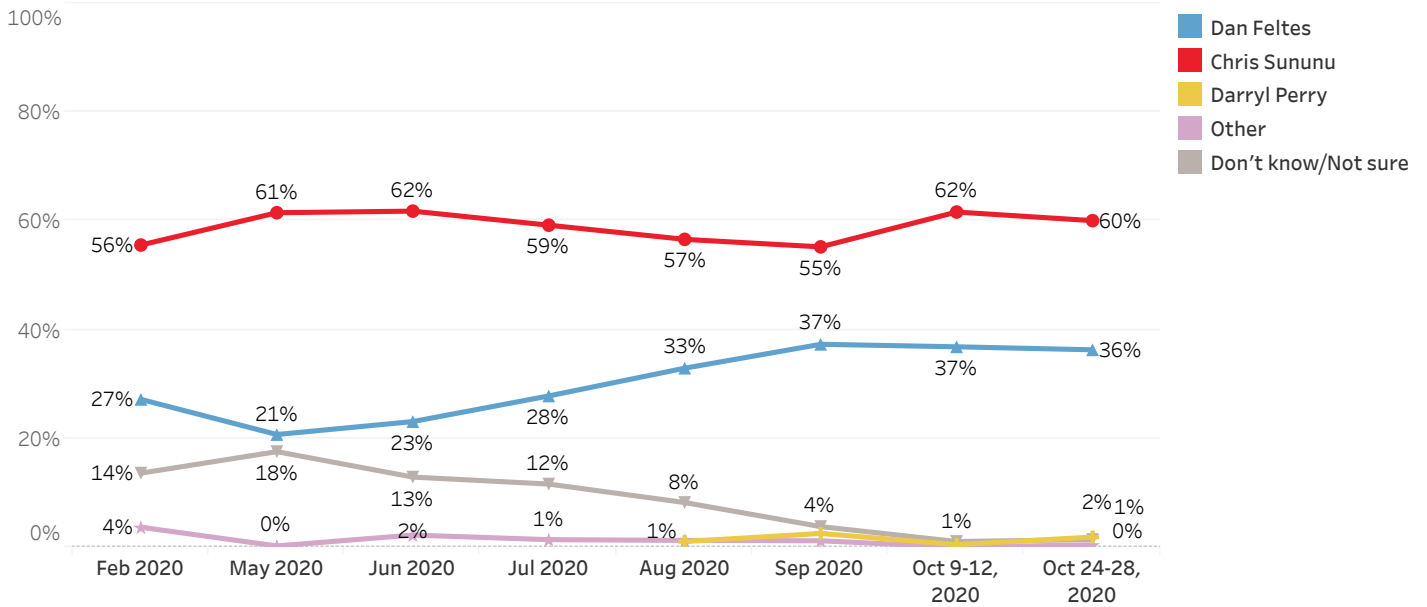
Trump supporters most frequently mention American values (23%), Trump's leadership or job performance (20%), a desire to vote against Biden or Democrats (19%), or jobs or the economy (16%) as the most important reason they are voting for Trump. Fewer Trump supporters mention fighting corruption in the government (6%), taxes (5%), national security (2%), gun rights (2%), Trump not being a politician (2%), liking Trump or finding him entertaining (1%), integrity or honesty (1%), or something else (3%) as the most important reason they are voting for Trump.



2020 New Hampshire Gubernatorial Election

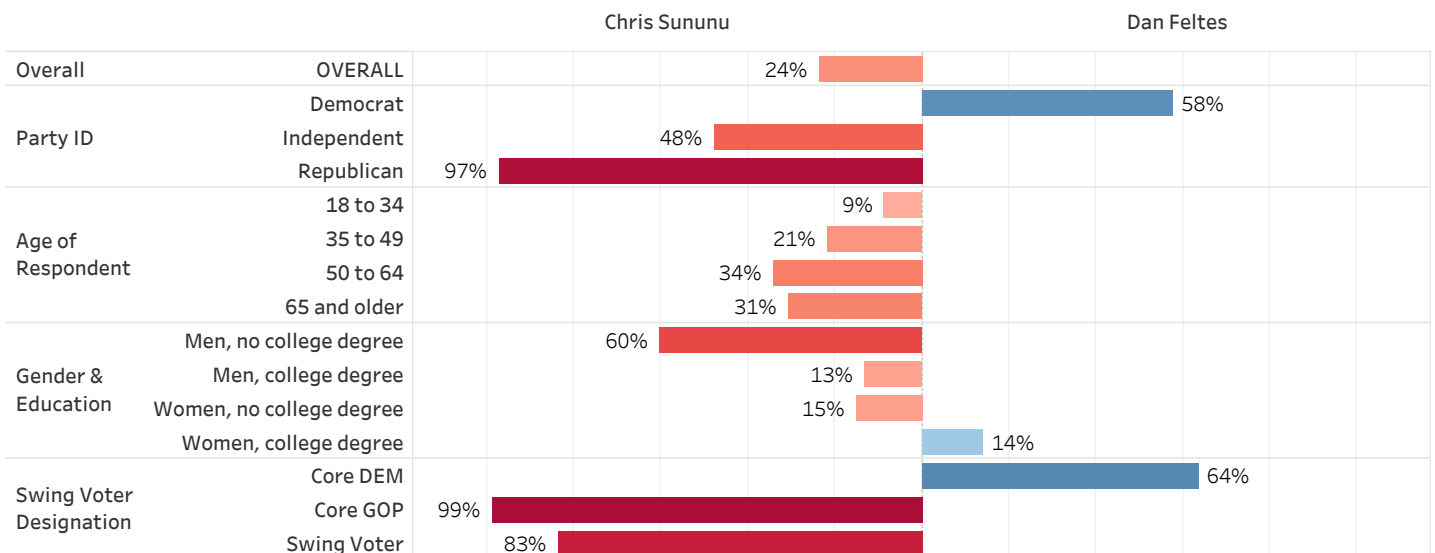
In the race for the New Hampshire governorship, incumbent Republican Chris Sununu continues to hold a wide lead over State Senate Majority Leader Dan Feltes. If the election were held today, 60% of likely New Hampshire voters say they would vote for Sununu while 36% would vote for Feltes, 2% would vote for Libertarian Darryl Perry, less than 1% would vote for another candidate, and 1% are undecided. Sununu's lead over Feltes (+24 percentage points) is largely unchanged since earlier in October (+25). Sununu held a far smaller lead over his 2018 challenger Molly Kelly in October 2018 (+11). Among those who have already voted by absentee ballot, 69% say they voted for Feltes while 30% voted for Sununu. Ninety-two percent of likely voters say they have definitely decided for whom they will vote for governor or have already voted, up from 84% earlier in October.

2020 Gubernatorial Election (With Leaners & Those Who Have Already Voted)



- Sununu leads Feltes by 97 percentage points among Republicans and by 48 points among Independents. Feltes leads Sununu by only 58 points among Democrats.
- Sununu holds sizeable leads over Feltes among those aged 65 and older (+31 percentage points) and 50 to 64 (+34) and holds slightly smaller leads among those aged 35 to 49 (+21) and those aged 18 to 34 (+9).
- Sununu holds a very wide lead among men without a college degree (+60) and smaller leads among men with a college degree (+13) and women without a college degree (+15). Feltes holds a 14 percentage point lead among women with a college degree.
- Sununu leads Feltes by 99 percentage points among "core" Republican voters, those who consistently vote for Republicans, while Feltes leads by 64 points among "core" Democratic voters. Sununu holds a very large 83 point lead among "swing" voters, those who have voted for Republicans and Democrats in recent elections.

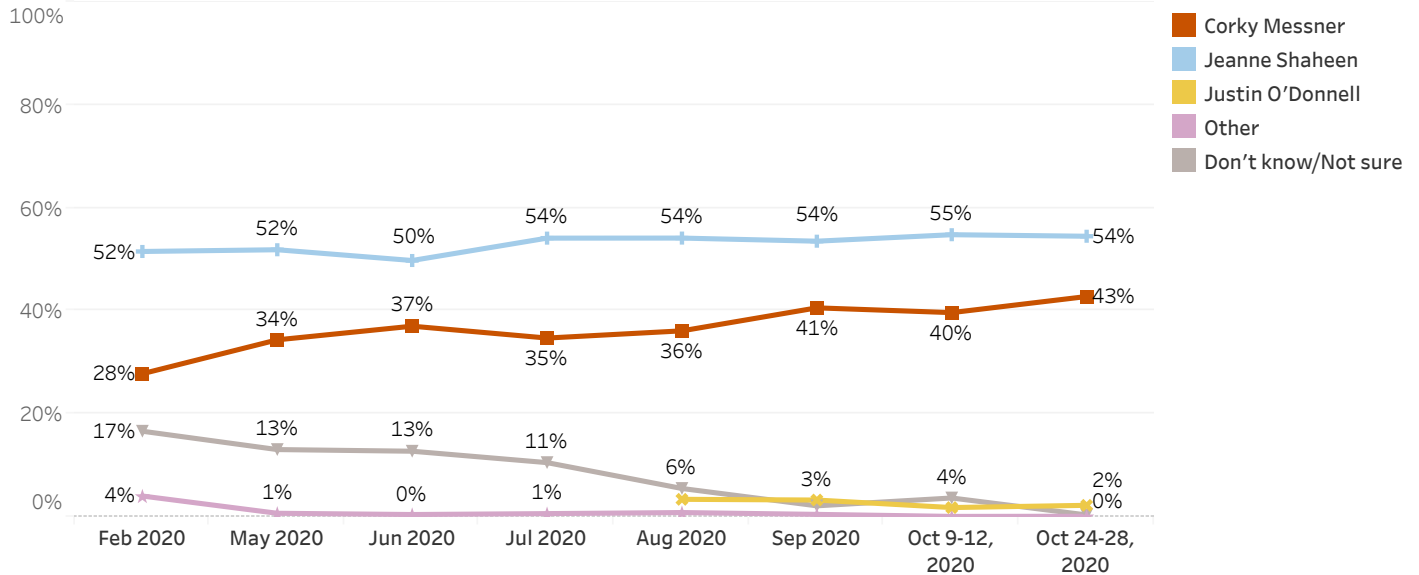
2020 Gubernatorial Election - Difference in Support - October 24-28, 2020



2020 U.S. Senate Election

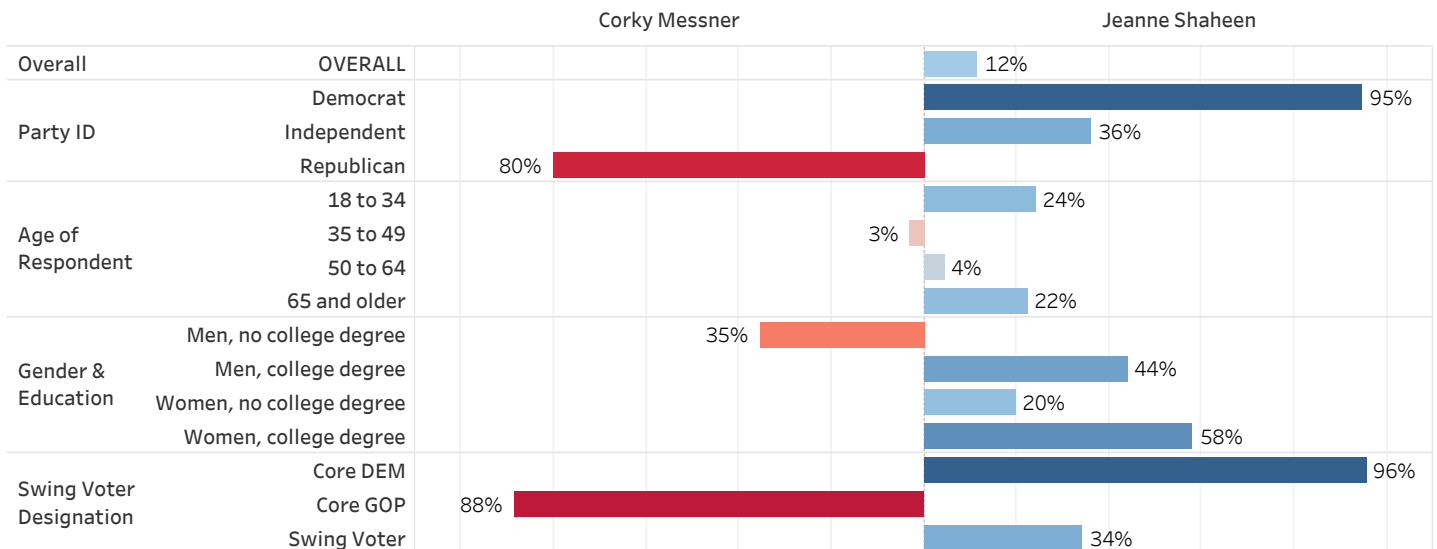
Incumbent Democrat Jeanne Shaheen continues to lead her Republican opponent, Attorney Corky Messner in the race for U.S. Senate in New Hampshire. If the election for U.S. Senate were held today, 54% of likely New Hampshire voters say they would vote for Shaheen, 43% would vote for Messner, 2% would vote for Libertarian Justin O'Donnell, less than 1% would vote for another candidate, and less than 1% are undecided. Shaheen's lead over Messner (+12 percentage points) is largely unchanged since early October (+15) and Shaheen is better positioned for re-election than at a similar point in her last race; in late October 2014, Shaheen led Republican challenger Scott Brown by only two percentage points. Among those who have already voted by absentee ballot, 88% say they voted for Shaheen while 11% voted for Messner. Ninety-six percent of likely voters say they have definitely decided for whom they will vote for the Senate or have already voted.

2020 U.S. Senate Election (With Leaners & Those Who Have Already Voted)



- Shaheen leads Messner by 95 percentage points among Democrats and by 36 points among Independents. Messner holds an 80 point lead among Republicans.
- Shaheen leads Messner comfortably among those aged 18 to 34 (+24 percentage points) and those aged 65 and older (+22). Those aged 35 to 49 (Messner +3) and those aged 50 to 64 (Shaheen +4) are about equally split between the two candidates.
- Shaheen holds wide leads over Messner among women with a college degree (+58) and men with a college degree (+44) and a smaller lead among women without a college degree (+20). Messner leads by 35 points among men without a college degree.
- Shaheen leads Messner by 96 percentage points among "core" Democratic voters, those who consistently vote for Democrats, while Messner leads by 88 points among "core" Republican voters. Shaheen holds a 34 percentage point lead among "swing" voters, those who have voted for Republicans and Democrats in recent elections.

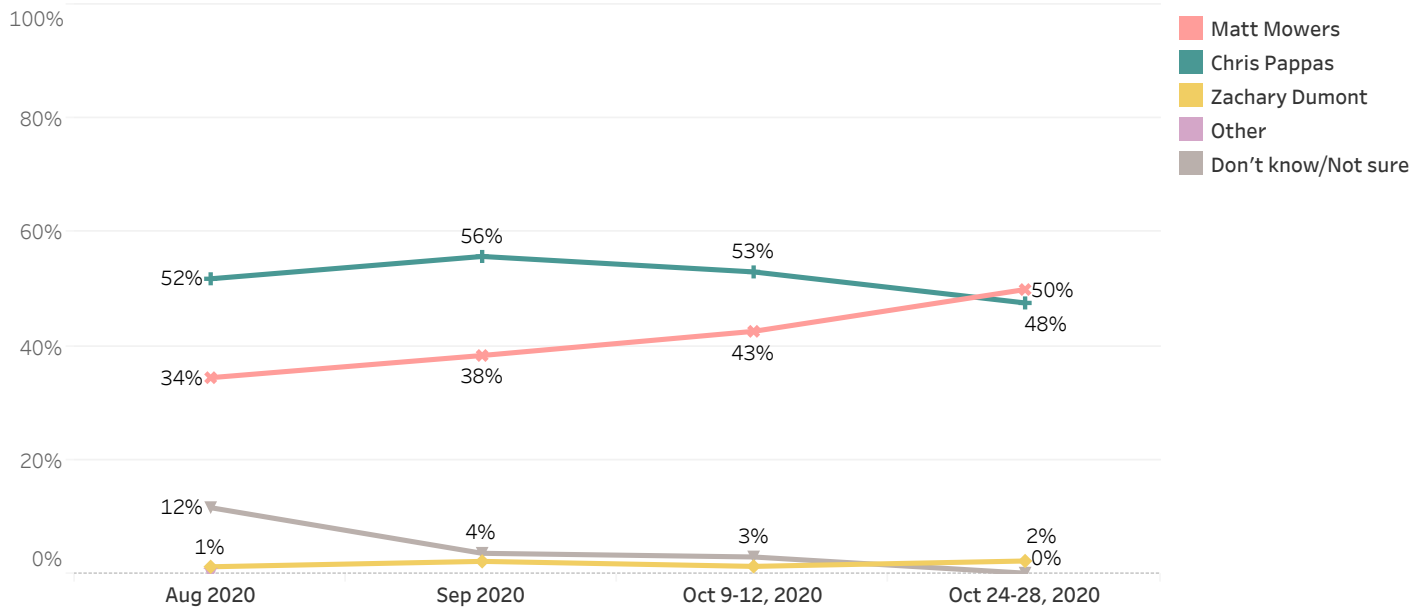
2020 U.S. Senate Election - Difference in Support - October 24-28, 2020



2020 First Congressional District Election

The race for U.S. Congress in New Hampshire's First District has narrowed in recent weeks. After holding a double-digit lead over the past few months, First District incumbent Congressman Chris Pappas and his Republican challenger, former State Department official Matt Mowers, are tied. When asked who they would vote for if the election were held today, 50% of likely voters in New Hampshire's First District say they would vote for Mowers, 48% would vote for Pappas, 2% would vote for Libertarian Zachary Dumont, and less than 1% are undecided. Among those who have already voted via absentee ballot, 79% say they voted for Pappas while 21% voted for Mowers. Ninety-seven percent of likely voters in the First District say they have definitely decided for whom they will vote for in the race for Congress or have already voted.

2020 First Congressional District Election (With Leaners & Those Who Have Already Voted)



- Pappas leads Mowers by 95 percentage points among Democrats while Mowers holds an 89 percentage point lead among Republicans. The two candidates are effectively tied among Independents (Mowers +1).
- Pappas holds a very small lead among those aged 35 to 49 (+8 percentage points) while Mowers holds a small lead among those aged 35 to 49 (+11). Those aged 18 to 34 (Mowers +1) and those aged 65 and older (Mowers +4) are about equally split.
- Pappas holds wide leads among women with a college degree (+37) and men with a college degree (+28) and a very small lead among women without a college degree (+5) while Mowers leads among men without a college degree by 39 percentage points.
- Pappas leads Mowers by 97 percentage points among "core" Democratic voters, those who consistently vote for Democrats, while Mowers leads by 99 points among "core" Republican voters. The two candidates are effectively tied (Pappas +1) among "swing" voters, those who have voted for Republicans and Democrats in recent elections.

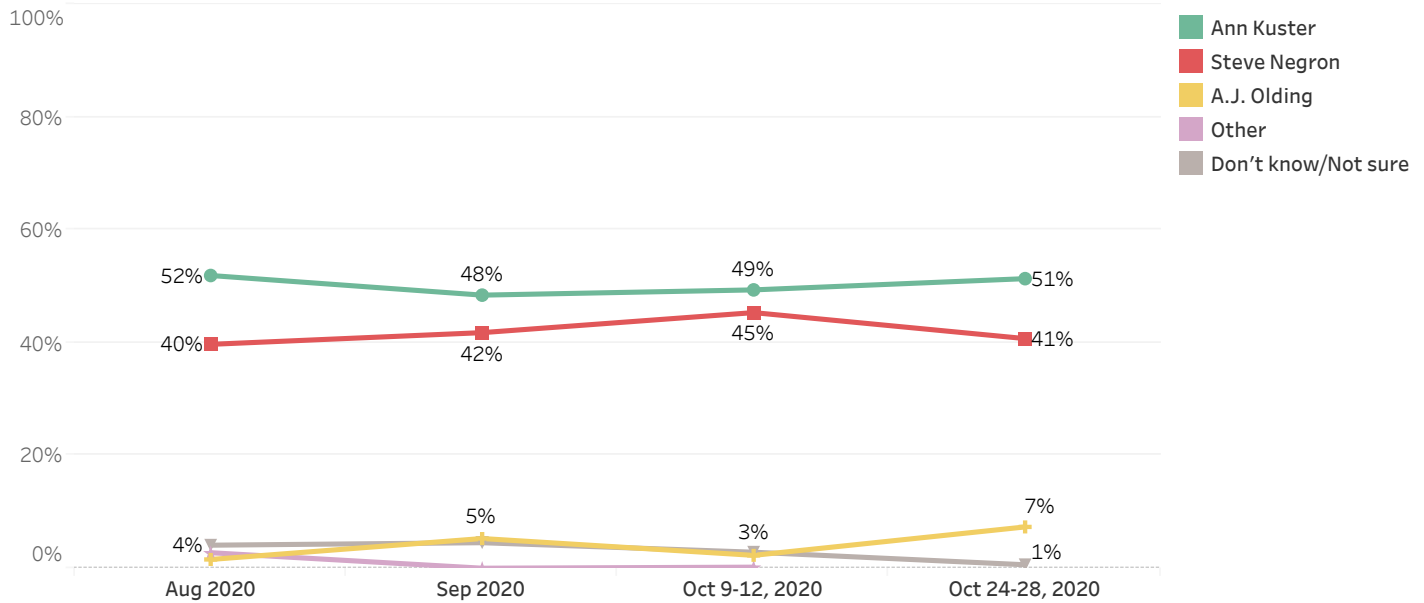
2020 First Congressional District Election - Difference in Support - October 24-28, 2020

		Matt Mowers	Chris Pappas
Overall	OVERALL	2%	95%
Party ID	Democrat		95%
	Independent	1%	
	Republican	89%	
Age of Respondent	18 to 34	1%	
	35 to 49		8%
	50 to 64	11%	
	65 and older	4%	
Gender & Education	Men, no college degree	39%	
	Men, college degree		28%
	Women, no college degree		5%
	Women, college degree		37%
Swing Voter Designation	Core DEM		97%
	Core GOP	99%	
	Swing Voter		1%

2020 Second Congressional District Election

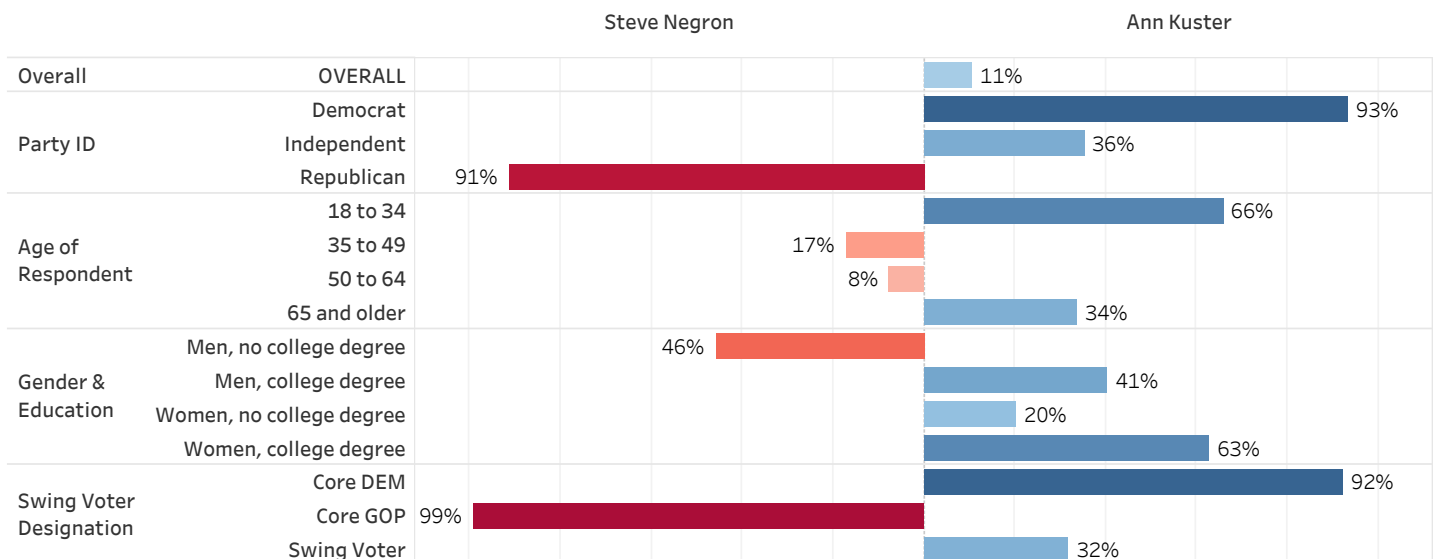
Incumbent Democrat Ann Kuster is seeking her fifth term representing New Hampshire's Second District in Congress and has opened a lead over her 2018 Republican opponent, former State Representative Steve Negron. When asked how they would vote if the election were held today, 51% of likely voters in the Second District say they would vote for Kuster, 41% would vote for Negron, 7% would vote for Libertarian A.J. Olding, and 1% are undecided. Kuster currently holds a lead of 11 percentage points after holding smaller leads in early October (+4) and September (+7). In October 2018, shortly before the election, Kuster held a 15 percentage point lead over Negron. Among those who have voted via absentee ballot, 92% say they voted for Kuster while 8% voted for Negron. Eighty-nine percent of likely voters in the Second District say they have definitely decided for whom they will vote for in the race for Congress or have already voted.

2020 Second Congressional District Election (With Leaners & Those Who Have Already Voted)



- Kuster leads Negron by 93 percentage points among Democrats and by 36 among Independents while Negron holds a 91 percentage point lead among Republicans.
- Kuster holds a very wide lead over Negron among those aged 18 to 34 (+66) and leads among those 65 and older by 34 percentage points. Negron leads among those aged 35 to 49 (+17) and those aged 50 to 64 (+8).
- Kuster holds large lead among women with a college degree (+63) and men with a college degree (+41) and leads among women without a college degree (+20). Negron leads by 46 percentage points among men without a college degree.
- Kuster leads Negron by 92 percentage points among "core" Democratic voters, those who consistently vote for Democrats, while Negron leads by 99 points among "core" Republican voters. Kuster leads Negron by 32 points among "swing" voters, those who report having voted for Republicans and Democrats in recent elections.

2020 Second Congressional District Election - Difference in Support - October 24-28, 2020

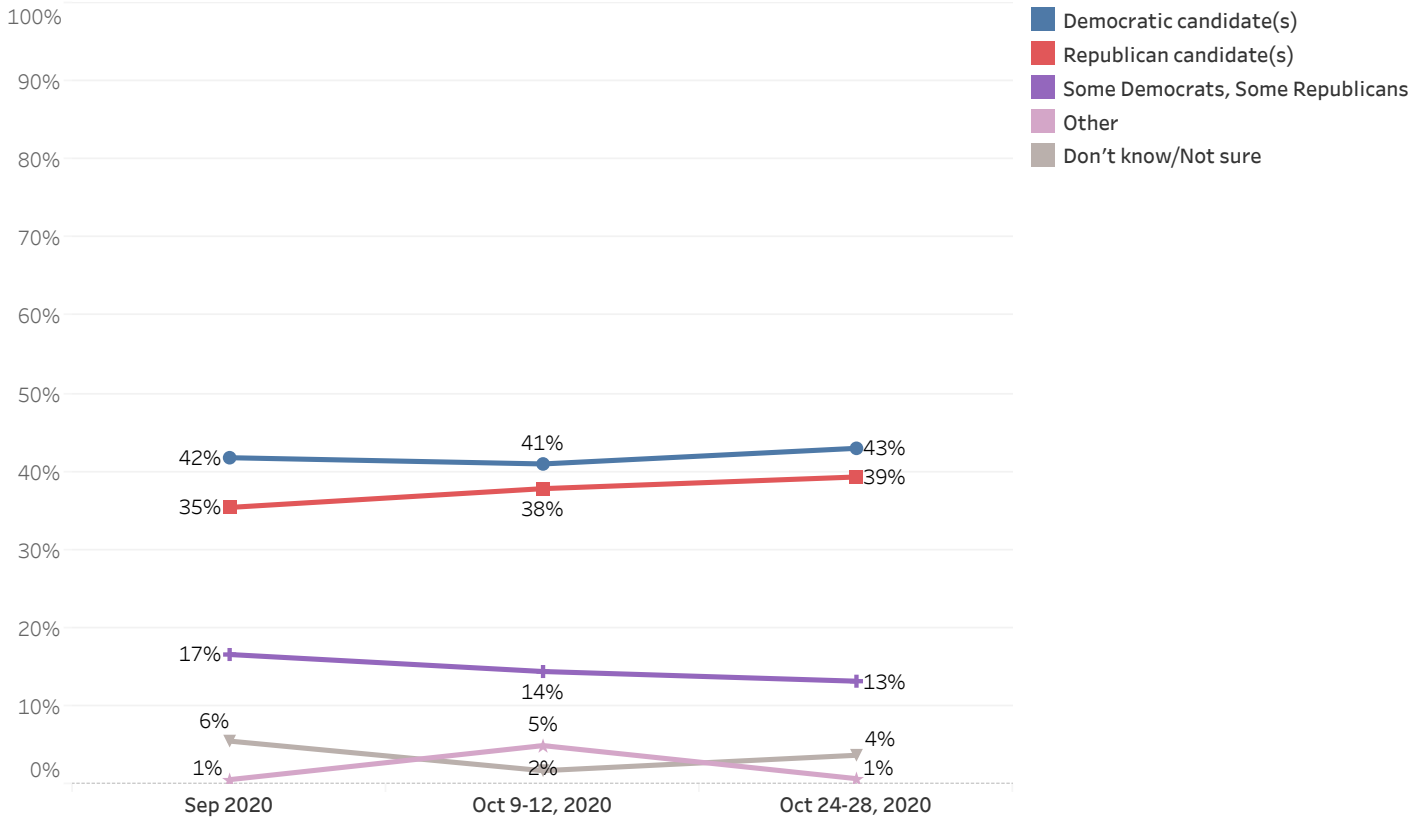


New Hampshire House of Representatives

The Democratic Party has held the majority of seats in the New Hampshire House of Representatives since 2018 and likely voters in New Hampshire show a slight preference for Democratic House candidates in 2020. If the election for the State House were held today, 43% of likely New Hampshire voters say they would vote for the Democratic candidate(s), 39% would vote for the Republican candidate(s), 13% would vote for some Democrats and some Republicans, 1% would vote for the other candidate(s), and 4% are unsure.

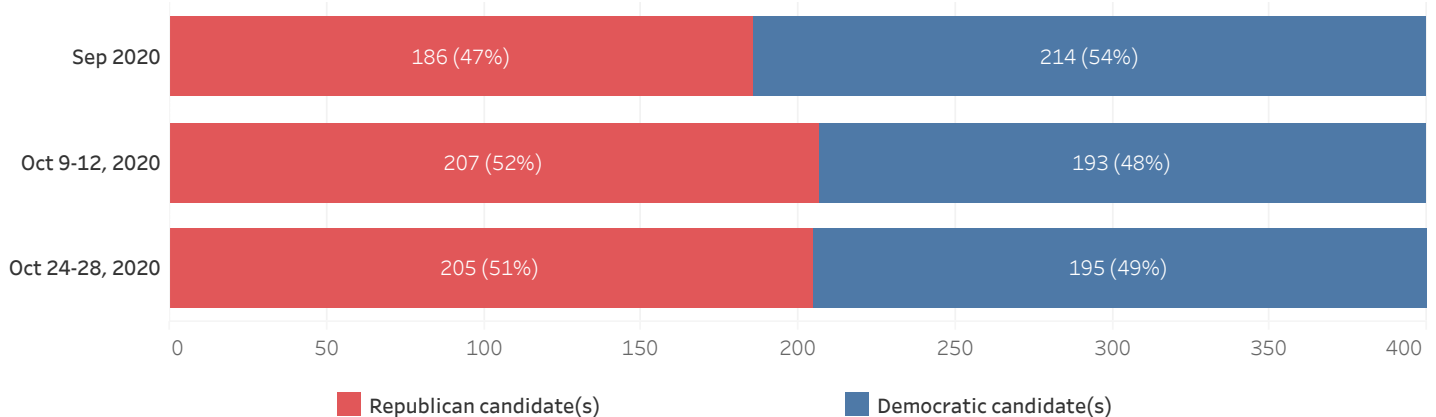
Among those respondents who have already voted by absentee ballot, 78% say they voted for the Democratic candidate(s), 15% voted for the Republican candidate(s), and 7% voted for some Democrats and some Republicans.

2020 NH House of Representatives Election (With Leaners & Those Who Have Already Voted)



Based on evaluations of past "generic ballot" polling for the New Hampshire State House of Representatives and actual election results, these findings translate into an estimated 205 seats for Republicans and 195 seats for Democrats, largely unchanged since early October. Democrats typically need approximately 53% of the popular vote to win a majority of seats in the State House.

2020 NH House of Representatives Election Estimate

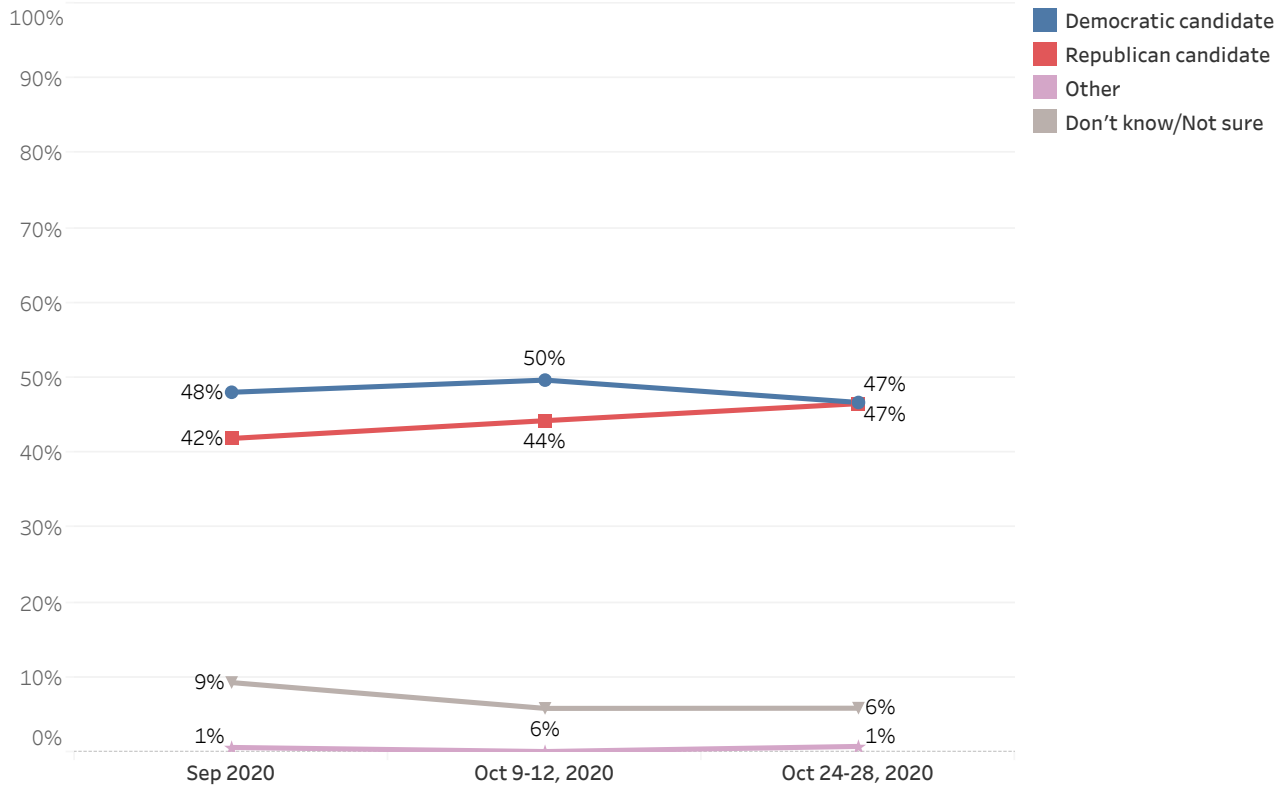


New Hampshire State Senate

Democrats have also held a majority of seats in the New Hampshire Senate since 2018 but likely voters in state are split in their preference for Democratic and Republican Senate candidates in 2020. If the election for the State Senate were held today, 47% of likely New Hampshire voters say they would vote for the Democratic candidate, 47% would vote for the Republican candidate, 1% would vote for another candidate, and 6% don't know or are unsure. Democrats held an advantage of 6 percentage points in September and 5 points in early October.

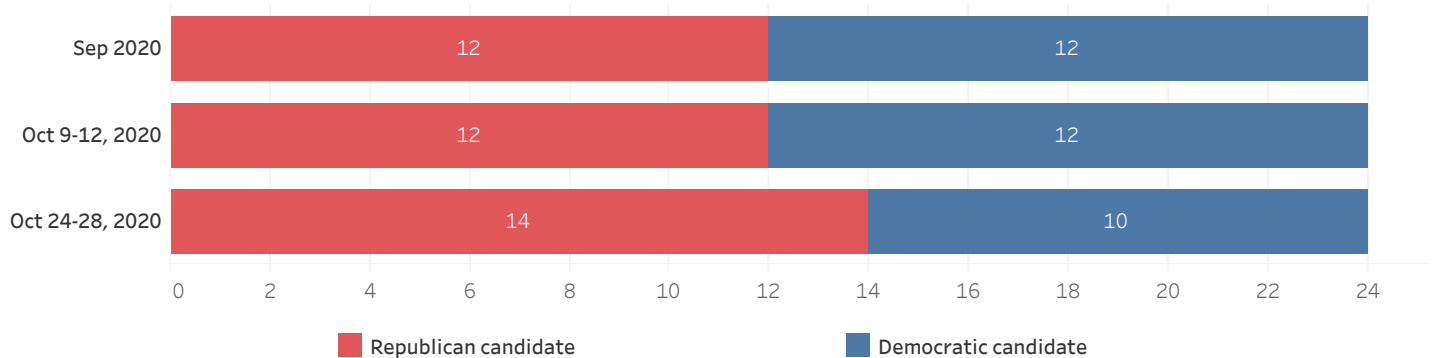
Among respondents who have already voted by absentee ballot, 82% say they voted for the Democratic candidate and 16% voted for the Republican candidate.

2020 NH State Senate Election (With Leaners & Those Who Have Already Voted)



Based on evaluations of past "generic ballot" polling for the New Hampshire State Senate and actual election results, these findings translate into 14 seats for Republicans and 10 seats for Democrats, an increase of 2 seats compared to early October. Democrats typically need approximately 53% of votes cast for State Senate candidates to win a majority of Senate seats.

2020 NH State Senate Election Estimate

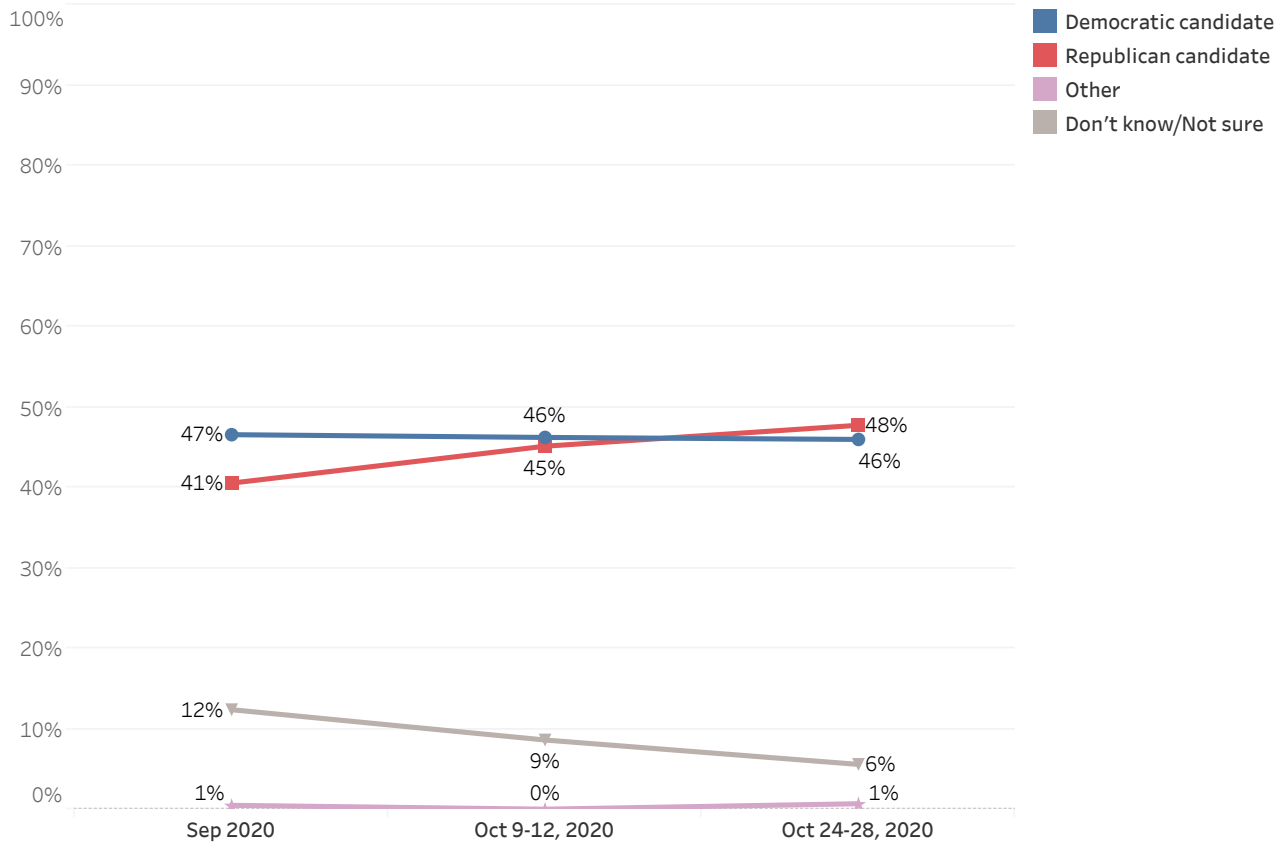


New Hampshire Executive Council

Democrats currently hold three of the five seats in the New Hampshire Executive Council but likely voters are split between voting for Republican and Democratic Executive Council candidates. If the election for Executive Council were held today, 48% of likely New Hampshire voters say they would vote for the Republican candidate, 46% would vote for the Democratic candidate, 1% would vote for another candidate, and 6% don't know or are unsure. The races for Executive Council have narrowed since September.

Among respondents who have already voted by absentee ballot, 82% say they voted for the Democratic candidate and 15% voted for the Republican candidate.

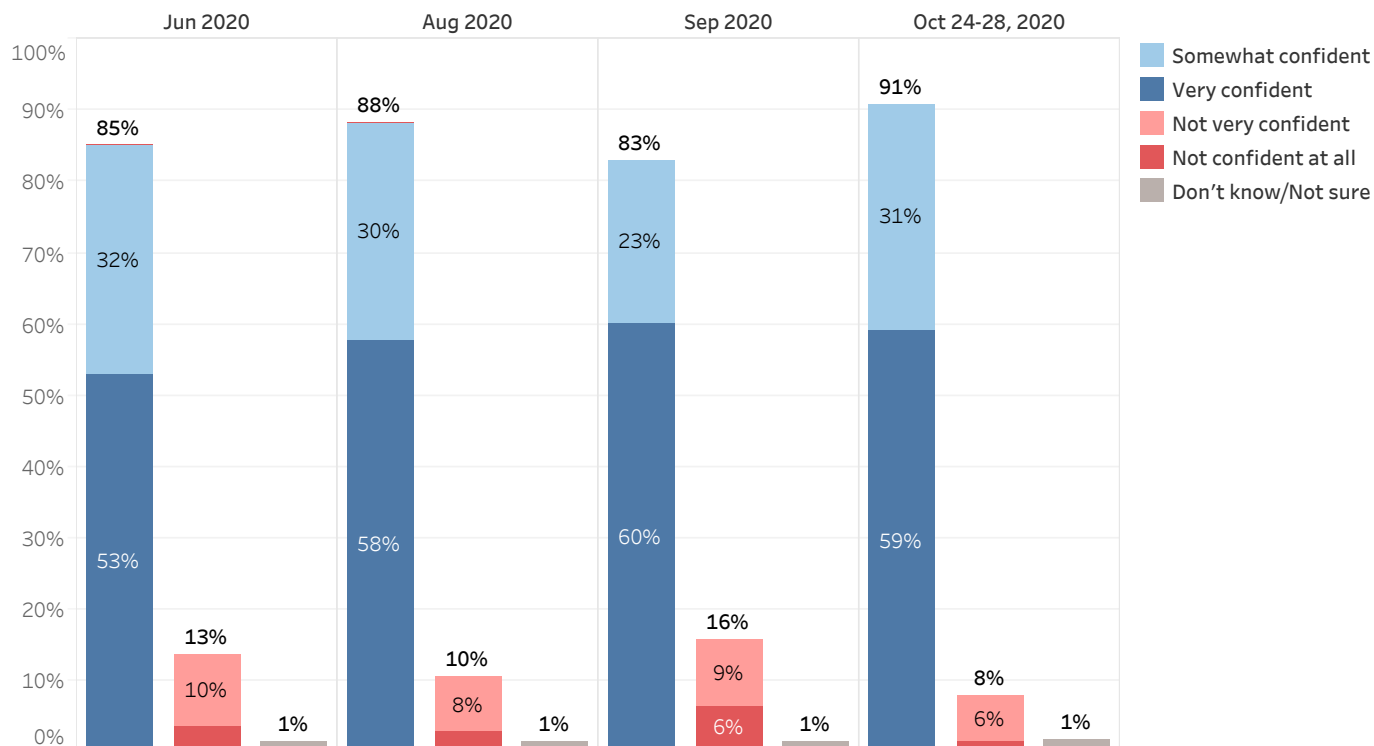
2020 NH Executive Council Election (With Leaners & Those Who Have Already Voted)



Election Integrity

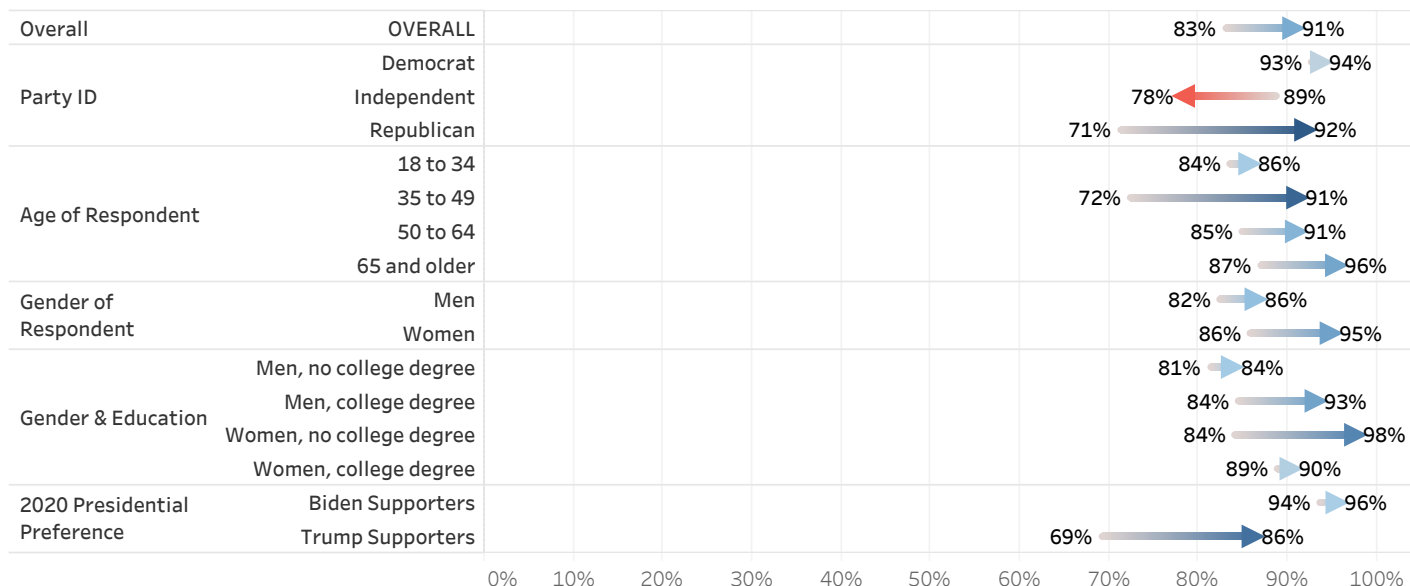
Most likely voters in New Hampshire are confident that their vote will be accurately counted: 91% say they are very (59%) or somewhat (31%) confident that their vote will be accurately counted, only 8% are not very (6%) or not at all (1%) confident, and 1% don't know or are unsure. Nearly all (98%) of those who have already voted via absentee ballot are very or somewhat confident their ballot will be accurately counted while 88% of those who plan to vote election day feel the same way.

Confidence in Accuracy of General Election Vote



Respondents are more likely to be very or somewhat confident (91%) that their vote will be accurately counted than they were in September (83%). Republicans (+21 percentage points), those aged 35 to 49 (+19), women without a college degree (+14), and Trump supporters (+17) have seen noticeable increases in the percentage who are very or somewhat confident that their vote will be accurately counted, while Independents (-10) are less likely to feel this way than they were in September.

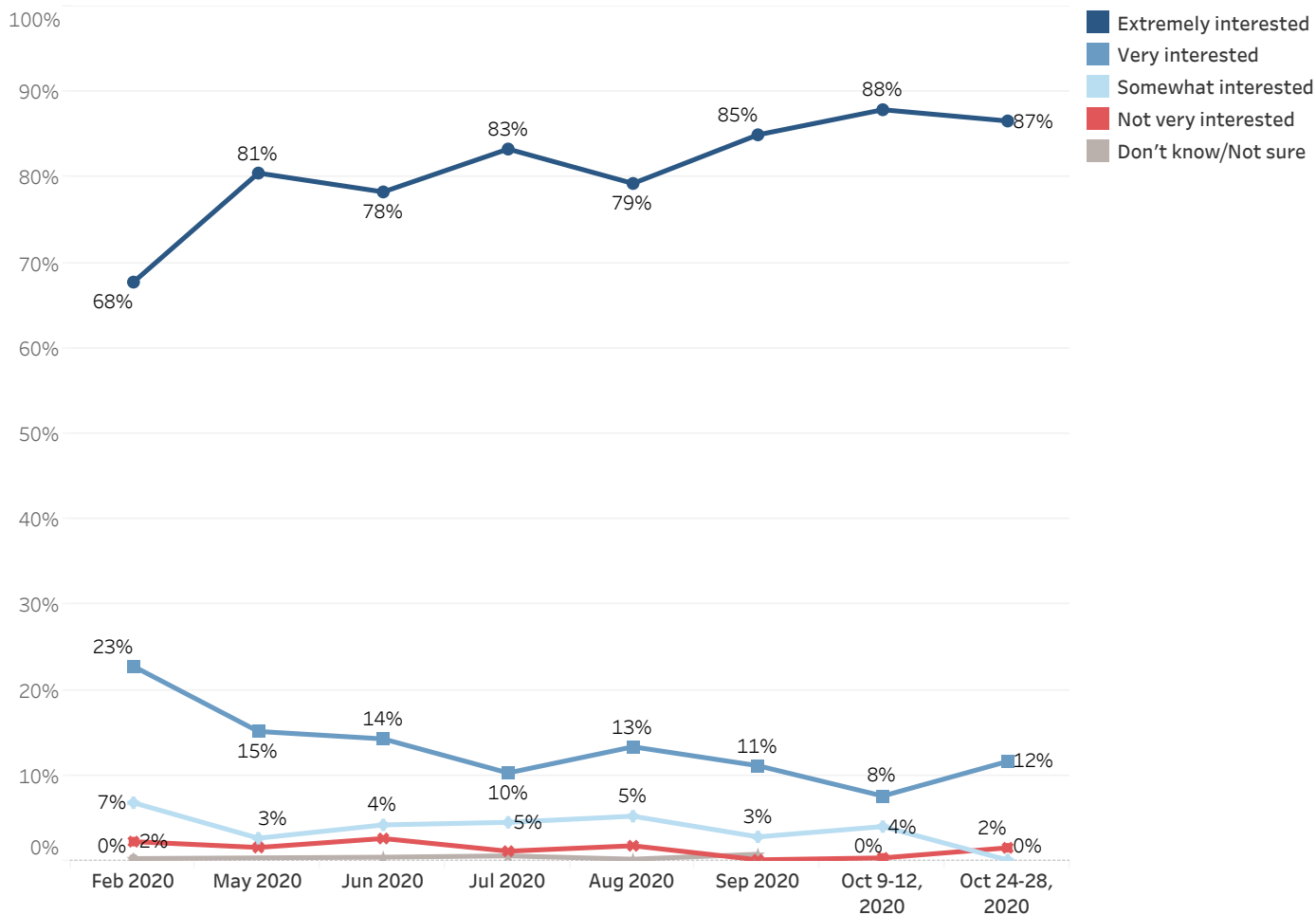
Very or Somewhat Confident Your General Election Vote Will Be Counted Accurately - Change from September 2020 to October 24-28, 2020



Political Engagement

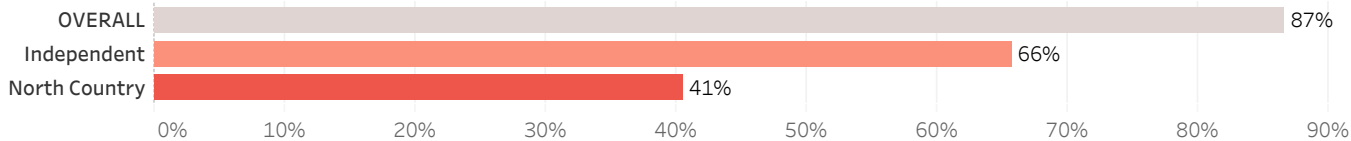
Eighty-seven percent of likely voters in New Hampshire say they are extremely interested in the general election; 12% say they are very interested, less than 1% are somewhat interested, and 2% are not very interested.

Interest in General Election



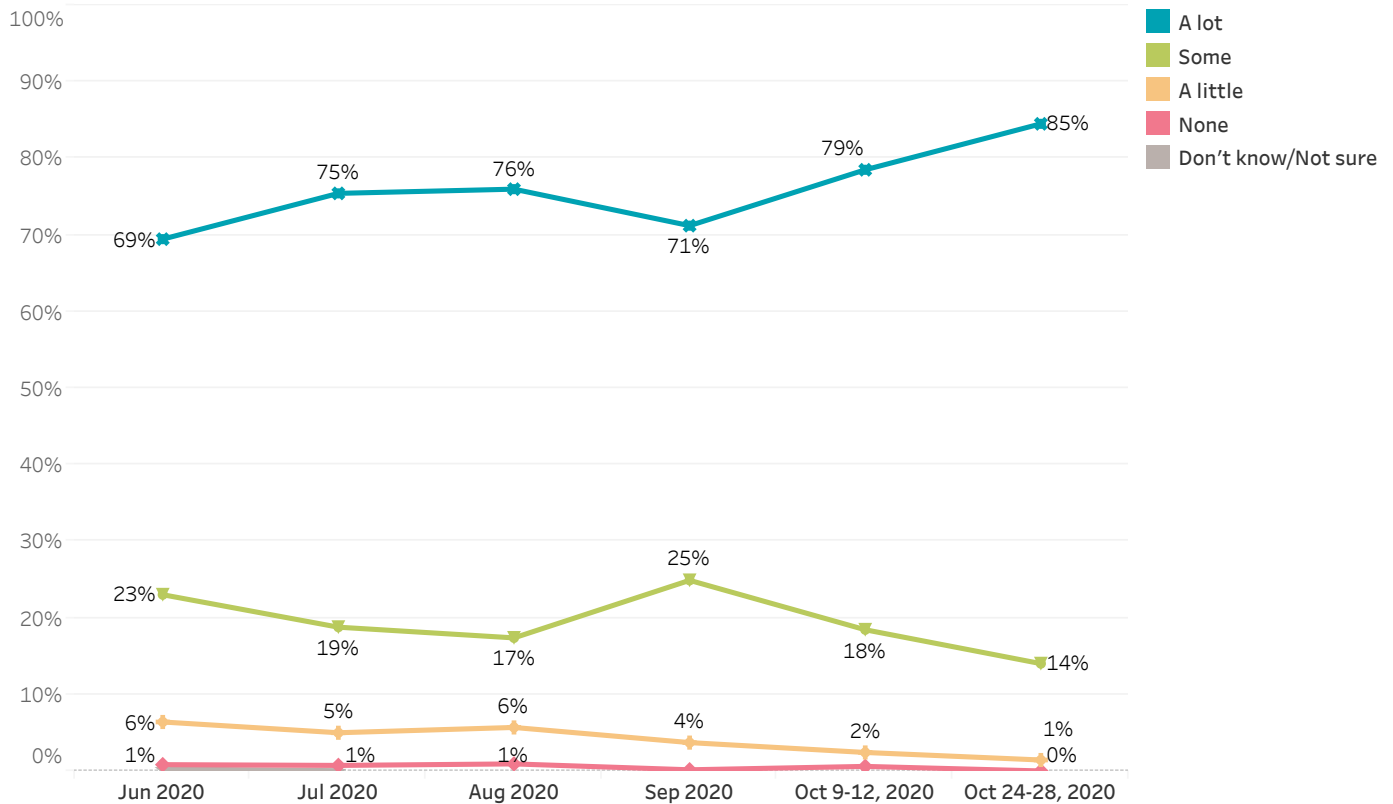
North Country residents and self-identified Independents are less likely than others to say they are extremely interested in the general election.

Extremely Interested in General Election - By Demographics - October 24-28, 2020



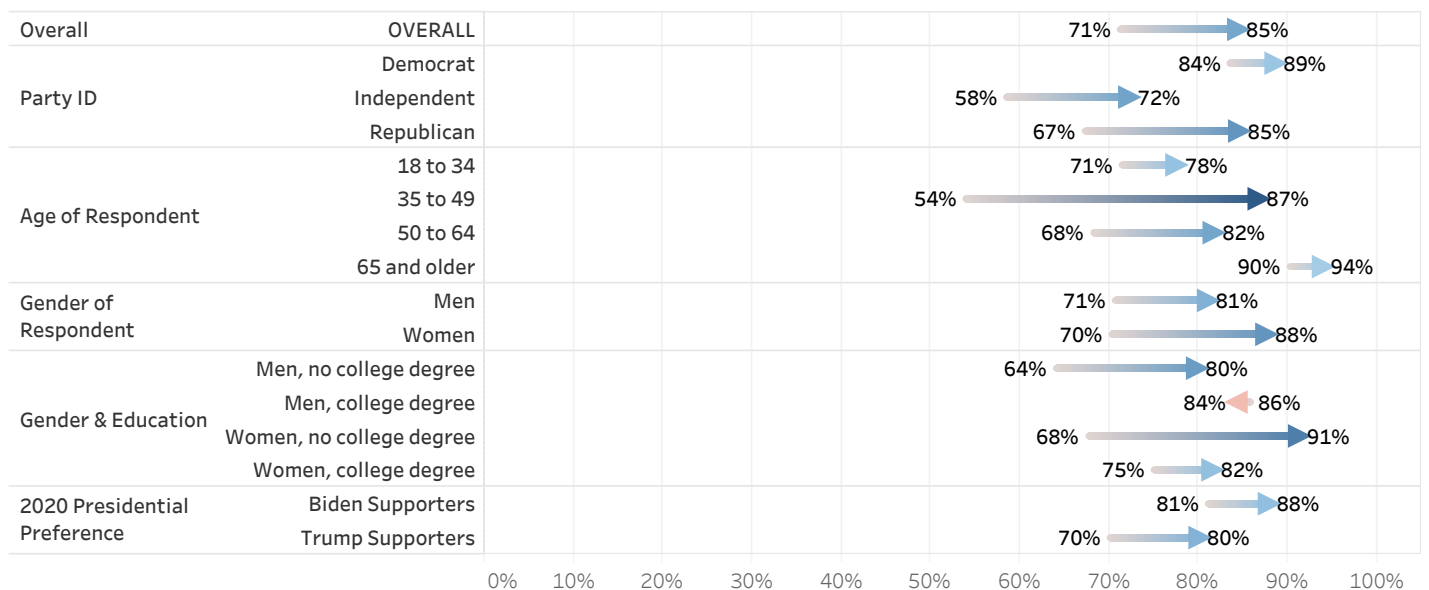
Eighty-five percent of likely voters in New Hampshire say they are paying a lot of attention to the 2020 election, 14% say they are paying some attention, 1% say they are paying a little attention, and less than 1% say they are not paying any attention. The percentage of respondents who say they are paying a lot of attention (85%) is higher than any point in this electoral cycle.

How Much Attention Paying to 2020 Election



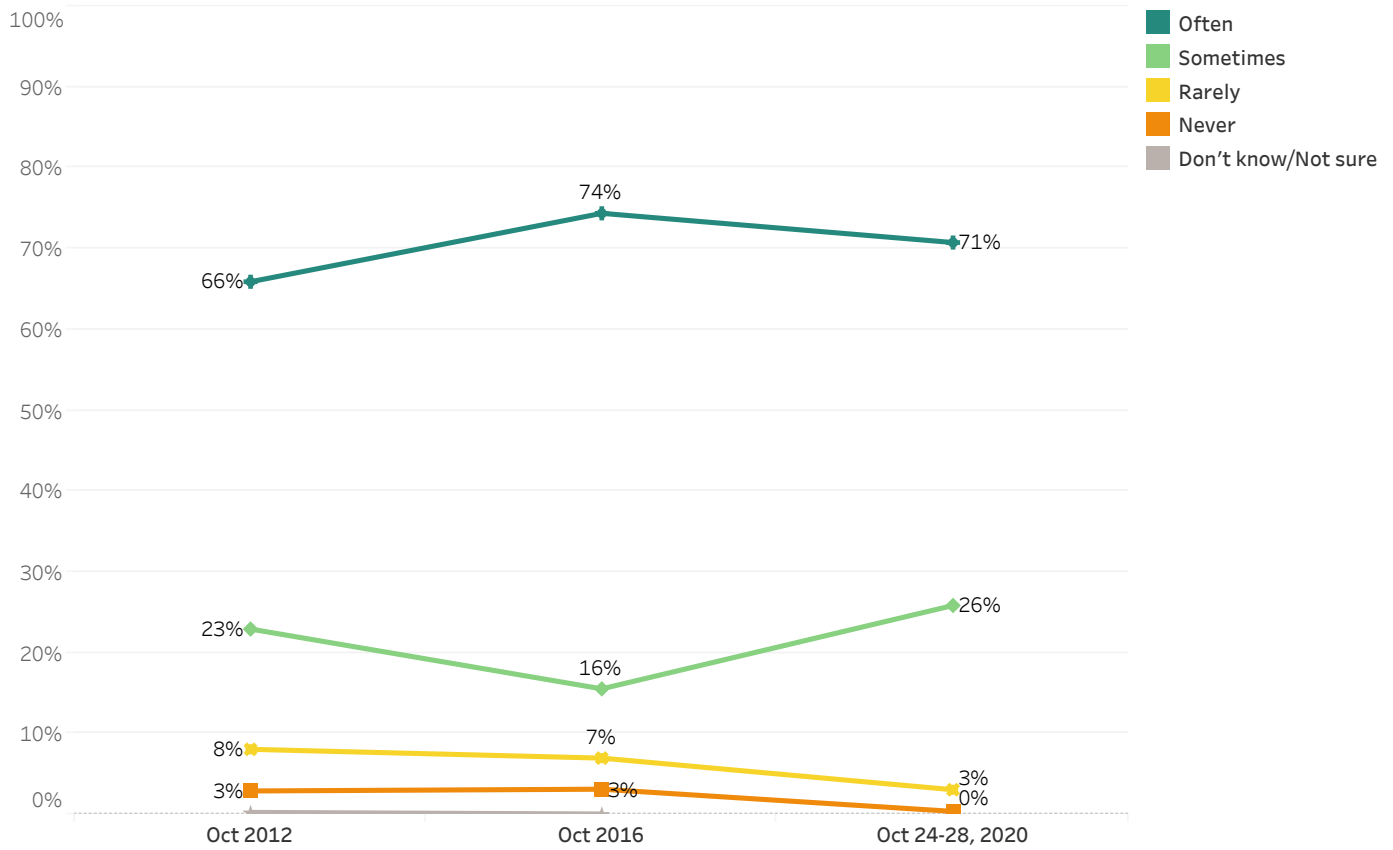
The percentage of respondents overall who say they are paying a lot of attention to the 2016 election has increased since September. The percentages of self-identified Independents (+14), Republicans (+17), those aged 35 to 49 (+33), women (+17), and Trump supporters (+10) paying a lot of attention have increased most notably in that time.

Paying a Lot of Attention 2020 Election - Change from September 2020 to October 24-28, 2020



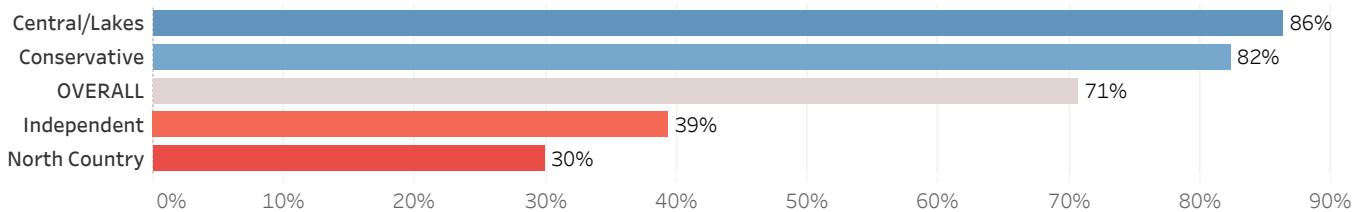
Seventy-one percent of likely voters in New Hampshire say they often discuss the election with their friends and families. Twenty-six percent say they sometimes discuss the election, 3% say they rarely do so, and less than 1% say they never do.

Frequency Discussing Election with Friends and Family



Central/Lakes Region residents and self-described conservatives are more likely than others to say they often discuss the election with friends and family. North Country residents and self-identified Independents are less likely to say so.

Often Discuss Election with Family and Friends - By Demographics - October 24-28, 2020



Granite State Poll Methodology

These findings are based on the latest Granite State Poll, conducted by the University of New Hampshire Survey Center. Eight hundred sixty-four (864) Granite State Panel members who are likely 2020 voters completed the survey online between October 24 and October 28, 2020. The margin of sampling error for the survey is +/- 3.3 percent. 451 likely voters were residents of the 1st Congressional District (MSE = +/- 4.6%) and 412 were residents of the 2nd Congressional District (MSE = +/- 4.8%). These MSE's have not been adjusted for design effect. The design effect for the survey is 2.4%. The response rate for this survey is 36%.

Data were weighted by respondent sex, age, education, and region of the state to targets from the most recent American Community Survey (ACS) conducted by the U.S. Census Bureau, as well as party registration levels provided by the New Hampshire Secretary of State and to 2016 election results in New Hampshire.

The Granite State Panel is part of an effort by the University of New Hampshire Survey Center to investigate new ways of gathering and understanding the opinion of New Hampshire residents. Approximately 5,750 New Hampshire adults were recruited from randomly selected landline and cell phone numbers to participate in the panel. Panelists are then asked to participate in online surveys sponsored by the UNH Survey Center.

The number of respondents in each demographic below may not equal the number reported in cross-tabulation tables as some respondents choose not to answer some questions. Due to rounding, percentages may not sum to 100%.

For more information about the methodology used in the Granite State Panel, contact Dr. Andrew Smith at (603) 862-2226 or by email at andrew.smith@unh.edu.

Granite State Poll, October 24-28 Demographics

		%	N
Gender of Respondent	Men	49%	418
	Women	51%	433
Age of Respondent	18 to 34	25%	218
	35 to 49	23%	198
	50 to 64	31%	264
	65 and older	21%	180
Level of Education	High school or less	37%	315
	Tech school/Some college	30%	263
	College graduate	20%	177
	Postgraduate work	13%	108
Region of State	Connecticut Valley	15%	131
	Manchester Area	23%	195
	Mass Border	21%	183
	North Country	8%	67
	Seacoast	17%	148
	Central/Lakes	16%	139
Party ID	Democrat	41%	354
	Independent	16%	136
	Republican	43%	364
Voting Registration	Registered Democrat	28%	240
	Registered Undeclared/Not Reg.	42%	364
	Registered Republican	30%	255
2020 Voting Intent	Already voted absentee	25%	214
	Will definitely vote	72%	620
	Will vote unless emergency	3%	30
Swing Voter Designation	Core DEM	44%	384
	Core GOP	40%	350
	Swing Voter	15%	130

2020 Presidential General Election (With Leaners & Those Who Have Already Voted)

In the presidential election, will you vote for....

	<u>Donald Trump</u>	<u>Joe Biden</u>	<u>Jo Jorgensen</u>	<u>Other</u>	<u>Don't know/Not sure</u>	<u>N</u>
Feb 2020	46%	44%		8%	2%	569
May 2020	46%	44%		5%	5%	790
Jun 2020	39%	52%		6%	3%	946
Jul 2020	40%	53%		4%	3%	1,887
Sep 2020	44%	53%	1%	0%	2%	972
Oct 9-12, 2020	43%	55%	0%	0%	1%	899
Oct 24-28, 2020	45%	53%	1%	1%	1%	863

2020 Presidential General Election Vote (Among Those Who Voted Already)

In the presidential election, did you vote for....

	<u>Donald Trump</u>	<u>Joe Biden</u>	<u>Jo Jorgensen</u>	<u>Other</u>	<u>Don't know/Don't remember</u>	<u>N</u>
Oct 9-12, 2020	11%	89%		0%		150
Oct 24-28, 2020	15%	85%	0%	0%	0%	214

Decided on Choice for Presidential Election

Have you definitely decided who you will vote for in the election for President, are you leaning toward someone, or have you considered some candidates but are still trying to decide?

	<u>Definitely decided or already voted</u>	<u>Leaning towards someone</u>	<u>Still trying to decide</u>	<u>N</u>
Jul 2020	82%	11%	7%	1,878
Sep 2020	92%	5%	3%	972
Oct 9-12, 2020	95%	3%	2%	900
Oct 24-28, 2020	93%	6%	1%	864

Which Candidate Will Win Presidential Election in New Hampshire

Regardless of who you are voting for, which candidate do you think is most likely to win New Hampshire?

	<u>Donald Trump</u>	<u>Joe Biden</u>	<u>Jo Jorgensen</u>	<u>Other</u>	<u>Don't know/Not sure</u>	<u>N</u>
Jul 2020	35%	51%		0%	13%	1,862
Sep 2020	37%	51%		0%	12%	972
Oct 24-28, 2020	38%	48%	0%		14%	864

Which Candidate Will Win Presidential Election in United States

Regardless of who you are voting for, which candidate do you think is most likely to win the 2020 presidential election nationwide?

	<u>Donald Trump</u>	<u>Joe Biden</u>	<u>Jo Jorgensen</u>	<u>Other</u>	<u>Don't know/Not sure</u>	<u>N</u>
Jul 2020	39%	44%		0%	17%	1,887
Sep 2020	43%	43%		0%	14%	971
Oct 24-28, 2020	42%	42%	0%		17%	863

Voting for Trump or Against Biden - Donald Trump Voters

Which of the following best describes why you plan to vote for Trump?

	<u>I am voting more for Trump than against Biden</u>	<u>I am voting more against Biden than for Trump</u>	<u>Don't know/Not sure</u>	<u>N</u>
Oct 24-28, 2020	81%	16%	3%	384

Voting for Biden or Against Trump - Joe Biden Voters

Which of the following best describes why you plan to vote for Biden?

	<u>I am voting more for Biden than against Trump</u>	<u>I am voting more against Trump than for Biden</u>	<u>Don't know/Not sure</u>	<u>N</u>
Oct 24-28, 2020	42%	56%	2%	449

Most Important Reason Voting for Trump - Donald Trump Voters

What is the most important reason you are voting for Trump? (coded)

Oct 24-28, 2020

<u>N</u>	
	331
American Values	23%
Fighting Corruption in Government	6%
Gun Rights	2%
Integrity/Honesty	1%
Jobs/Economy	16%
Leadership/Job Performance	20%
Like Him/Entertaining	1%
National Security	2%
Not A Politician	2%
Taxes	5%
Vote Against Biden/Democrats	19%
Other	3%

Most Important Reason Voting for Biden - Joe Biden Voters

What is the most important reason you are voting for Biden? (coded)

Oct 24-28, 2020

<u>N</u>	
	390
Climate Change	2%
COVID-19	5%
Decency/Empathy	5%
Experience	1%
Healthcare	2%
Integrity/Honesty	13%
Leadership/Competence	16%
Not Trump/Vote Out Trump	48%
Policies/Values	6%
Other	2%

2020 New Hampshire Gubernatorial Election (With Leaners & Those Who Have Already Voted)

In the election for Governor, will you vote for...

	<u>Dan Feltes</u>	<u>Chris Sununu</u>	<u>Darryl Perry</u>	<u>Other</u>	<u>Don't know/Not sure</u>	<u>N</u>
Feb 2020	27%	56%		4%	14%	545
May 2020	21%	61%		0%	18%	787
Jun 2020	23%	62%		2%	13%	952
Jul 2020	28%	59%		1%	12%	1,870
Aug 2020	33%	57%	1%	1%	8%	1,863
Sep 2020	37%	55%	3%	1%	4%	964
Oct 9-12, 2020	37%	62%	0%	0%	1%	889
Oct 24-28, 2020	36%	60%	2%	0%	1%	857

2020 New Hampshire Gubernatorial Election Vote (Among Those Who Voted Already)

In the election for Governor, did you vote for...

	<u>Dan Feltes</u>	<u>Chris Sununu</u>	<u>Darryl Perry</u>	<u>Other</u>	<u>Don't know/Don't remember</u>	<u>N</u>
Oct 9-12, 2020	65%	35%	0%	0%		148
Oct 24-28, 2020	69%	30%	0%		0%	214

Decided on Choice for Gubernatorial Election

Have you definitely decided who you will vote for in the election for Governor... are you leaning toward someone ... or have you considered some candidates but are still trying to decide?

	<u>Definitely decided or already voted</u>	<u>Leaning towards someone</u>	<u>Still trying to decide</u>	<u>N</u>
Sep 2020	79%	10%	11%	972
Oct 9-12, 2020	84%	8%	9%	899
Oct 24-28, 2020	92%	6%	2%	863

2020 U.S. Senate Election (With Leaners & Those Who Have Already Voted)

In the election for U.S. Senate, will you vote for....

	<u>Corky Messner</u>	<u>Jeanne Shaheen</u>	<u>Justin O'Donnell</u>	<u>Other</u>	<u>Don't know/Not sure</u>	<u>N</u>
Feb 2020	28%	52%		4%	17%	545
May 2020	34%	52%		1%	13%	788
Jun 2020	37%	50%		0%	13%	942
Jul 2020	35%	54%		1%	11%	1,880
Aug 2020	36%	54%	3%	1%	6%	1,855
Sep 2020	41%	54%	3%	0%	2%	972
Oct 9-12, 2020	40%	55%	2%	0%	4%	899
Oct 24-28, 2020	43%	54%	2%	0%	0%	860

2020 U.S. Senate Election Vote (Among Those Who Voted Already)

In the election for U.S. Senate, did you vote for....

	<u>Corky Messner</u>	<u>Jeanne Shaheen</u>	<u>Justin O'Donnell</u>	<u>Other</u>	<u>N</u>
Oct 9-12, 2020	12%	87%	1%	0%	150
Oct 24-28, 2020	11%	88%	0%	0%	212

Decided on Choice for U.S. Senate Election

Have you definitely decided who you will vote for in the election for U.S. Senate... are you leaning toward someone ... or have you considered some candidates but are still trying to decide?

	<u>Definitely decided or already voted</u>	<u>Leaning towards someone</u>	<u>Still trying to decide</u>	<u>N</u>
Sep 2020	86%	8%	6%	969
Oct 9-12, 2020	85%	4%	11%	898
Oct 24-28, 2020	96%	3%	1%	863

2020 First Congressional District Election (With Leaners & Those Who Have Already Voted)

In the election for U.S. Congress, will you vote for...

	<u>Matt Mowers</u>	<u>Chris Pappas</u>	<u>Zachary Dumont</u>	<u>Other</u>	<u>Don't know/Not sure</u>	<u>N</u>
Aug 2020	34%	52%	1%	1%	12%	925
Sep 2020	38%	56%	2%		4%	504
Oct 9-12, 2020	43%	53%	1%		3%	477
Oct 24-28, 2020	50%	48%	2%		0%	450

2020 First Congressional District Election Vote (Among Those Who Voted Already)

In the U.S. Congress election, did you vote for...

	<u>Matt Mowers</u>	<u>Chris Pappas</u>	<u>Zachary Dumont</u>	<u>N</u>
Oct 9-12, 2020	12%	88%		95
Oct 24-28, 2020	21%	79%	0%	122

Decided on Choice for 2020 First Congressional District Election

Have you definitely decided who you will vote for in the election for U.S. Congress... are you leaning toward someone ... or have you considered some candidates but are still trying to decide?

	<u>Definitely decided or already voted</u>	<u>Leaning towards someone</u>	<u>Still trying to decide</u>	<u>N</u>
Sep 2020	81%	13%	6%	504
Oct 9-12, 2020	82%	4%	14%	476
Oct 24-28, 2020	97%	2%	1%	447

2020 Second Congressional District Election (With Leaners & Those Who Have Already Voted)

In the election for U.S. Congress, will you vote for...

	<u>Ann Kuster</u>	<u>Steve Negron</u>	<u>A.J. Olding</u>	<u>Other</u>	<u>Don't know/Not sure</u>	<u>N</u>
Aug 2020	52%	40%	2%	3%	4%	918
Sep 2020	48%	42%	5%	0%	5%	463
Oct 9-12, 2020	49%	45%	2%	0%	3%	410
Oct 24-28, 2020	51%	41%	7%		1%	410

2020 Second Congressional District Election Vote (Among Those Who Voted Already)

In the U.S. Congress election, did you vote for....

	<u>Ann Kuster</u>	<u>Steve Negron</u>	<u>A.J. Olding</u>	<u>Other</u>	<u>N</u>
Oct 9-12, 2020	85%	13%	1%	0%	53
Oct 24-28, 2020	92%	8%	0%		92

Decided on Choice for 2020 Second Congressional District Election

Have you definitely decided who you will vote for in the election for U.S. Congress... are you leaning toward someone ... or have you considered some candidates but are still trying to decide?

	<u>Definitely decided or already voted</u>	<u>Leaning towards someone</u>	<u>Still trying to decide</u>	<u>N</u>
Sep 2020	82%	13%	5%	464
Oct 9-12, 2020	84%	10%	6%	406
Oct 24-28, 2020	89%	9%	2%	409

A historical analysis was done looking at the results of the "generic ballot" question and the actual number of seats won by Republicans in the New Hampshire House and Senate in the 2000 through 2018 elections. This was presented at the annual meeting of the American Association for Public Opinion Research (AAPOR) Annual Meeting, and is available from the UNH Survey Center.

The model developed in this paper used for estimating House seats from the generic ballot question is:

$$\text{HOUSE SEATS} = -269.923 + (\text{two party GOP estimate} * 993.803)$$

In this Granite State Poll, the two party estimate of House vote percentage with leaners for Republicans, 47.8% (39.3% GOP / (39.3% GOP + 43.0% DEM) = 47.8%) is calculated and inserted into the formula above. This results in an estimate of 195 Democratic House seats and 205 Republican House seats.

2020 NH House of Representatives Election (With Leaners & Those Who Have Already Voted)

Please think about the election for your representative(s) to the New Hampshire House of Representatives. How do you plan to vote for the New Hampshire House of Representatives?

	<u>Democratic candidate(s)</u>	<u>Republican candidate(s)</u>	<u>Some Democrats, Some Republicans</u>	<u>Other</u>	<u>Don't know/Not sure</u>	<u>N</u>
Sep 2020	42%	35%	17%	1%	6%	967
Oct 9-12, 2020	41%	38%	14%	5%	2%	882
Oct 24-28, 2020	43%	39%	13%	1%	4%	862

The model developed for estimating Senate seats from the generic ballot question is:

$$\text{SENATE SEATS} = -18.457 + (\text{two party GOP estimate} * 64.822)$$

In this Granite State Poll, the two party estimate of Senate vote percentage with leaners for Republicans, 49.9% (46.6% GOP / (46.6% GOP + 46.7% DEM) = 49.9%) is calculated and inserted into the formula above. This results in an estimate of 10 Democratic Senate seats and 14 Republican Senate seats.

2020 NH State Senate Election (With Leaners & Those Who Have Already Voted)

Do you plan to vote for the Republican candidate or Democratic candidate for the New Hampshire Senate?

	<u>Democratic candidate</u>	<u>Republican candidate</u>	<u>Other</u>	<u>Don't know/Not sure</u>	<u>N</u>
Sep 2020	48%	42%	1%	9%	969
Oct 9-12, 2020	50%	44%	0%	6%	896
Oct 24-28, 2020	47%	47%	1%	6%	857

2020 NH Executive Council Election (With Leaners & Those Who Have Already Voted)

Do you plan to vote for the Republican candidate or Democratic candidate for the New Hampshire Executive Council?

	<u>Democratic candidate</u>	<u>Republican candidate</u>	<u>Other</u>	<u>Don't know/Not sure</u>	<u>N</u>
Sep 2020	47%	41%	1%	12%	968
Oct 9-12, 2020	46%	45%	0%	9%	881
Oct 24-28, 2020	46%	48%	1%	6%	843

Confidence Your General Election Vote Will Be Counted Accurately

How confident are you that your vote in the November general election will be accurately counted?

	<u>Very confident</u>	<u>Somewhat confident</u>	<u>Not very confident</u>	<u>Not confident at all</u>	<u>Don't know/Not sure</u>	<u>N</u>
Jun 2020	53%	32%	10%	4%	1%	952
Aug 2020	58%	30%	8%	3%	1%	1,873
Sep 2020	60%	23%	9%	6%	1%	972
Oct 24-28, 2020	59%	31%	6%	1%	1%	864

General Voting Intent

Which of the following statements best describes you...

	<u>Already voted absentee in 2020 Election</u>	<u>Will definitely vote</u>	<u>Will vote unless emergency</u>	<u>May vote</u>	<u>Will probably not vote</u>	<u>Don't know at this time</u>	<u>N</u>
Feb 2020		89%	6%	2%	2%	2%	610
May 2020		84%	10%	4%	1%	2%	840
Jun 2020		86%	10%	3%	1%	1%	997
Jul 2020		88%	8%	2%	0%	1%	1,973
Aug 2020		87%	10%	2%	1%	0%	1,940
Sep 2020		86%	9%	1%	4%	0%	1,026
Oct 9-12, 2020	16%	79%	3%	0%	1%	0%	917
Oct 24-28, 2020	25%	72%	3%				864

Interest in General Election

Turning to the November General election, how interested would you say you are in the 2020 General Election for President, Governor, and U.S. Senate?

	<u>Extremely interested</u>	<u>Very interested</u>	<u>Somewhat interested</u>	<u>Not very interested</u>	<u>Don't know/Not sure</u>	<u>N</u>
May 2020	81%	15%	3%	2%		840
Jun 2020	78%	14%	4%	3%	0%	997
Jul 2020	83%	10%	5%	1%	1%	1,973
Sep 2020	85%	11%	3%	0%	1%	1,026
Oct 9-12, 2020	88%	8%	4%	0%		917
Oct 24-28, 2020	87%	12%	0%	2%		864

How Much Attention Paying to 2020 Election

How much attention would you say you are paying to the 2020 election?

	<u>A lot</u>	<u>Some</u>	<u>A little</u>	<u>None</u>	<u>Don't know/Not sure</u>	<u>N</u>
Jun 2020	69%	23%	6%	1%	0%	996
Jul 2020	75%	19%	5%	1%	0%	1,973
Aug 2020	79%	17%	5%	0%		1,941
Sep 2020	71%	25%	4%	0%		1,026
Oct 9-12, 2020	79%	18%	2%	1%		917
Oct 24-28, 2020	85%	14%	1%	0%		864

Frequency Discussing Election with Friends and Family

How often would you say you discuss the election with your friends and family members?

	<u>Often</u>	<u>Sometimes</u>	<u>Rarely</u>	<u>Never</u>	<u>Don't know/Not sure</u>	<u>N</u>
Oct 2012	66%	23%	8%	3%	0%	590
Oct 2016	74%	16%	7%	3%	0%	906
Nov 2018	53%	32%	10%	6%		630
Oct 24-28, 2020	71%	26%	3%	0%		863

2020 Presidential General Election (With Leaners & Those Who Have Already Voted)

		<u>Donald Trump</u>	<u>Joe Biden</u>	<u>Jo Jorgensen</u>	<u>Other</u>	<u>Don't know/Not sure</u>	<u>N</u>
STATEWIDE	Oct 24-28, 2020	45%	53%	1%	1%	1%	863
Voting Registration	Registered Democrat	5%	94%	0%	1%		239
	Registered Undeclared/Not Reg.	37%	59%	2%	1%	2%	364
	Registered Republican	93%	7%	0%		0%	255
Party ID	Democrat	2%	98%	0%	0%	0%	354
	Independent	26%	63%	4%	4%	3%	136
	Republican	95%	5%	0%	0%	0%	363
Ideology	Liberal	3%	96%		1%	1%	198
	Moderate	32%	65%	1%	0%	1%	343
	Conservative	95%	4%	0%	0%	1%	277
Media Usage	Boston Globe reader	10%	90%	0%			58
	Conservative radio listener	87%	12%	1%		0%	247
	Fox News viewer	76%	22%	1%		1%	432
	Local newspapers reader	30%	68%	0%	0%	2%	189
	NHPR listener	33%	66%	0%	0%	0%	515
	Union Leader reader	44%	55%	1%	0%	0%	167
	WMUR viewer	40%	58%	1%	0%	1%	644
Age of Respondent	18 to 34	38%	59%	0%	3%		218
	35 to 49	52%	47%	1%	0%	1%	198
	50 to 64	48%	50%	1%	0%	0%	264
	65 and older	43%	55%	0%	0%	2%	180
Gender of Respondent	Men	58%	39%	1%	2%	0%	418
	Women	33%	65%	0%	0%	1%	432
Level of Education	High school or less	59%	41%	1%			315
	Tech school/Some college	48%	48%	0%	2%	1%	263
	College graduate	28%	71%	0%	0%	0%	177
	Postgraduate work	26%	70%	2%	0%	2%	107
Gender & Education	Men, no college degree	68%	29%	1%	2%		301
	Men, college degree	33%	65%	1%	0%	0%	117
	Women, no college degree	40%	59%	0%	0%	1%	269
	Women, college degree	22%	76%	0%		1%	163
Region of State	Connecticut Valley	49%	47%	1%	4%	0%	131
	Manchester Area	58%	40%	2%	0%	0%	194
	Mass Border	32%	66%	0%	1%	1%	183
	North Country	37%	63%		0%		67
	Seacoast	39%	58%	1%	0%	2%	148
	Central/Lakes	52%	47%	0%	0%	0%	139
2016 Presidential Vote	Voted for Trump	94%	4%	0%		1%	396
	Voted for Hillary Clinton	1%	99%	0%			397
	Did not vote in 2016	31%	69%				26
2020 Voting Intent	Already voted absentee	15%	85%	0%	0%		213
	Will definitely vote	56%	42%	1%	0%	1%	620
	Will vote unless emergency	39%	45%	0%	16%	0%	30
Swing Voter Designation	Core DEM	1%	98%	0%	2%		384
	Core GOP	99%	1%	0%	0%	0%	349
	Swing Voter	30%	61%	4%	0%	5%	130

Decided on Choice for Presidential Election

		Definitely decided or already voted	Leaning towards someone	Still trying to decide	N
STATEWIDE	Oct 24-28, 2020	93%	6%	1%	864
Voting Registration	Registered Democrat	98%	1%	0%	240
	Registered Undeclared/Not Reg.	86%	13%	2%	364
	Registered Republican	99%	1%	0%	255
Party ID	Democrat	99%	1%	0%	354
	Independent	65%	33%	2%	136
	Republican	99%	1%	1%	364
Ideology	Liberal	99%		1%	198
	Moderate	85%	13%	2%	343
	Conservative	98%	2%	0%	277
Media Usage	Boston Globe reader	97%	3%	0%	58
	Conservative radio listener	91%	9%	0%	247
	Fox News viewer	93%	6%	1%	433
	Local newspapers reader	97%	2%	1%	190
	NHPR listener	94%	5%	1%	516
	Union Leader reader	87%	13%	0%	168
	WMUR viewer	94%	5%	1%	645
Age of Respondent	18 to 34	100%	0%		218
	35 to 49	96%	3%	1%	198
	50 to 64	84%	15%	1%	264
	65 and older	96%	2%	1%	180
Gender of Respondent	Men	93%	6%	1%	418
	Women	94%	5%	1%	433
Level of Education	High school or less	88%	12%		315
	Tech school/Some college	96%	3%	1%	263
	College graduate	98%	1%	1%	177
	Postgraduate work	95%	2%	3%	108
Gender & Education	Men, no college degree	92%	8%		301
	Men, college degree	96%	2%	2%	117
	Women, no college degree	91%	8%	1%	269
	Women, college degree	98%	0%	1%	164
Region of State	Connecticut Valley	100%		0%	131
	Manchester Area	88%	11%	1%	195
	Mass Border	96%	2%	2%	183
	North Country	68%	32%		67
	Seacoast	96%	3%	1%	148
	Central/Lakes	100%	0%	0%	139
2016 Presidential Vote	Voted for Trump	91%	7%	1%	397
	Voted for Hillary Clinton	95%	5%	0%	397
	Did not vote in 2016	100%			26
2020 Voting Intent	Already voted absentee	100%			214
	Will definitely vote	91%	8%	1%	620
	Will vote unless emergency	94%	6%	0%	30
Swing Voter Designation	Core DEM	99%	1%	0%	384
	Core GOP	99%	1%	1%	350
	Swing Voter	62%	35%	3%	130

Which Candidate Will Win Presidential Election in New Hampshire

		Donald Trump	Joe Biden	Jo Jorgensen	Don't know/Not sure	N
STATEWIDE	Oct 24-28, 2020	38%	48%	0%	14%	864
Voting Registration	Registered Democrat	11%	78%		12%	240
	Registered Undeclared/Not Reg.	29%	51%	1%	20%	364
	Registered Republican	76%	16%		8%	255
Party ID	Democrat	5%	80%		15%	354
	Independent	17%	48%	1%	34%	136
	Republican	78%	16%		6%	364
Ideology	Liberal	5%	76%		20%	198
	Moderate	25%	60%	0%	14%	343
	Conservative	80%	13%		7%	277
Media Usage	Boston Globe reader	15%	69%		17%	58
	Conservative radio listener	77%	19%	0%	3%	247
	Fox News viewer	66%	29%		6%	433
	Local newspapers reader	30%	65%		6%	190
	NHPR listener	33%	55%	0%	12%	515
	Union Leader reader	34%	58%	1%	7%	168
	WMUR viewer	36%	53%	0%	11%	644
Age of Respondent	18 to 34	35%	49%	0%	16%	218
	35 to 49	46%	40%	1%	14%	198
	50 to 64	40%	49%		12%	264
	65 and older	30%	54%		15%	180
Gender of Respondent	Men	42%	44%	0%	14%	418
	Women	34%	51%		14%	433
Level of Education	High school or less	45%	44%		11%	315
	Tech school/Some college	41%	43%		16%	263
	College graduate	28%	57%		15%	176
	Postgraduate work	23%	61%	2%	15%	108
Gender & Education	Men, no college degree	50%	35%		15%	301
	Men, college degree	20%	69%	1%	11%	117
	Women, no college degree	37%	51%		12%	269
	Women, college degree	31%	51%		18%	164
Region of State	Connecticut Valley	54%	38%		9%	131
	Manchester Area	42%	41%	0%	17%	194
	Mass Border	29%	49%		23%	183
	North Country	17%	58%		25%	67
	Seacoast	32%	60%	1%	6%	148
	Central/Lakes	45%	50%		5%	139
2016 Presidential Vote	Voted for Trump	71%	17%	0%	11%	397
	Voted for Hillary Clinton	7%	76%		17%	397
	Did not vote in 2016	32%	54%		14%	26
2020 Voting Intent	Already voted absentee	13%	67%		19%	214
	Will definitely vote	45%	42%	0%	12%	620
	Will vote unless emergency	57%	31%		12%	30
Swing Voter Designation	Core DEM	5%	78%		17%	384
	Core GOP	80%	14%		6%	350
	Swing Voter	20%	51%	1%	28%	130

Which Candidate Will Win Presidential Election in United States

		Donald Trump	Joe Biden	Jo Jorgensen	Don't know/Not sure	N
STATEWIDE	Oct 24-28, 2020	42%	42%	0%	17%	863
Voting Registration	Registered Democrat	8%	77%		15%	239
	Registered Undeclared/Not Reg.	35%	42%	0%	23%	364
	Registered Republican	83%	7%		9%	254
Party ID	Democrat	5%	77%		17%	354
	Independent	20%	47%	1%	32%	136
	Republican	86%	6%		8%	363
Ideology	Liberal	8%	68%		24%	198
	Moderate	29%	54%	0%	17%	343
	Conservative	85%	6%		10%	277
Media Usage	Boston Globe reader	12%	68%		20%	58
	Conservative radio listener	82%	14%		4%	246
	Fox News viewer	73%	21%		6%	432
	Local newspapers reader	28%	56%		15%	190
	NHPR listener	34%	51%		15%	515
	Union Leader reader	42%	46%		12%	167
	WMUR viewer	40%	45%	0%	15%	644
Age of Respondent	18 to 34	39%	42%	0%	18%	218
	35 to 49	50%	34%		16%	198
	50 to 64	41%	47%		13%	264
	65 and older	37%	42%		21%	179
Gender of Respondent	Men	48%	37%	0%	14%	418
	Women	34%	47%		19%	432
Level of Education	High school or less	51%	35%		15%	315
	Tech school/Some college	44%	38%		18%	262
	College graduate	33%	52%		16%	177
	Postgraduate work	23%	58%	1%	19%	108
Gender & Education	Men, no college degree	55%	28%		17%	301
	Men, college degree	30%	61%	1%	9%	117
	Women, no college degree	38%	46%		16%	268
	Women, college degree	27%	49%		24%	164
Region of State	Connecticut Valley	46%	34%		20%	131
	Manchester Area	45%	39%	0%	16%	195
	Mass Border	29%	44%		27%	182
	North Country	17%	54%		30%	67
	Seacoast	45%	47%		8%	148
	Central/Lakes	58%	39%		3%	139
2016 Presidential Vote	Voted for Trump	79%	8%		13%	396
	Voted for Hillary Clinton	8%	72%		20%	397
	Did not vote in 2016	32%	59%		8%	26
2020 Voting Intent	Already voted absentee	16%	63%		21%	213
	Will definitely vote	49%	35%	0%	15%	620
	Will vote unless emergency	60%	30%		10%	30
Swing Voter Designation	Core DEM	7%	73%		21%	384
	Core GOP	89%	4%		8%	349
	Swing Voter	18%	54%	1%	28%	130

Voting for Trump or Against Biden - Donald Trump Voters

		I am voting more for Trump than against Biden	I am voting more against Biden than for Trump	Don't know/Not sure	N
STATEWIDE	Oct 24-28, 2020	81%	16%	3%	384
Voting Registration	Registered Democrat	73%	24%	3%	13
	Registered Undeclared/Not Reg.	65%	35%		134
	Registered Republican	90%	5%	5%	233
Party ID	Democrat	55%	40%	5%	8
	Independent	43%	57%		35
	Republican	85%	11%	4%	341
Ideology	Liberal	96%	4%		6
	Moderate	67%	32%	1%	111
	Conservative	86%	10%	5%	260
Media Usage	Boston Globe reader	48%	52%		5
	Conservative radio listener	92%	8%	0%	211
	Fox News viewer	92%	8%	0%	325
	Local newspapers reader	87%	13%	1%	57
	NHPR listener	85%	15%	0%	166
	Union Leader reader	92%	8%	1%	74
	WMUR viewer	87%	13%	0%	254
Age of Respondent	18 to 34	58%	28%	14%	82
	35 to 49	90%	10%		102
	50 to 64	80%	20%	0%	124
	65 and older	95%	5%	1%	75
Gender of Respondent	Men	74%	21%	5%	242
	Women	93%	7%		141
Level of Education	High school or less	90%	10%		185
	Tech school/Some college	75%	15%	10%	122
	College graduate	78%	22%		49
	Postgraduate work	54%	45%	1%	28
Gender & Education	Men, no college degree	77%	17%	6%	202
	Men, college degree	60%	39%	1%	39
	Women, no college degree	98%	2%		104
	Women, college degree	79%	21%		36
Region of State	Connecticut Valley	99%	1%		64
	Manchester Area	65%	35%		112
	Mass Border	88%	11%	0%	57
	North Country	31%	19%	51%	23
	Seacoast	91%	9%		57
	Central/Lakes	92%	8%	1%	72
2016 Presidential Vote	Voted for Trump	81%	16%	3%	368
	Voted for Hillary Clinton	84%	16%		5
	Did not vote in 2016	100%			8
2020 Voting Intent	Already voted absentee	95%	5%		31
	Will definitely vote	80%	16%	4%	343
	Will vote unless emergency	50%	50%		10
Swing Voter Designation	Core DEM		100%		3
	Core GOP	86%	10%	3%	342
	Swing Voter	39%	60%	1%	40

Voting for Biden or Against Trump - Joe Biden Voters

		<u>I am voting more for Biden than against Trump</u>	<u>I am voting more against Trump than for Biden</u>	<u>Don't know/Not sure</u>	<u>N</u>
STATEWIDE	Oct 24-28, 2020	42%	56%	2%	449
Voting Registration	Registered Democrat	46%	52%	2%	219
	Registered Undeclared/Not Reg.	41%	58%	1%	213
	Registered Republican	12%	83%	5%	17
Party ID	Democrat	45%	53%	2%	339
	Independent	32%	67%	1%	85
	Republican	18%	74%	8%	16
Ideology	Liberal	32%	65%	2%	190
	Moderate	55%	44%	1%	217
	Conservative	65%	25%	9%	11
Media Usage	Boston Globe reader	51%	49%	0%	52
	Conservative radio listener	84%	15%	1%	30
	Fox News viewer	65%	35%	0%	93
	Local newspapers reader	47%	51%	2%	122
	NHPR listener	42%	56%	2%	340
	Union Leader reader	57%	43%	0%	92
	WMUR viewer	46%	52%	2%	367
Age of Respondent	18 to 34	18%	80%	2%	129
	35 to 49	48%	49%	3%	92
	50 to 64	56%	42%	1%	132
	65 and older	49%	51%	1%	93
Gender of Respondent	Men	39%	58%	3%	163
	Women	45%	54%	1%	276
Level of Education	High school or less	55%	45%		123
	Tech school/Some college	38%	60%	2%	125
	College graduate	36%	60%	3%	126
	Postgraduate work	37%	60%	3%	75
Gender & Education	Men, no college degree	45%	53%	1%	88
	Men, college degree	32%	63%	5%	76
	Women, no college degree	50%	49%	1%	153
	Women, college degree	39%	59%	2%	124
Region of State	Connecticut Valley	34%	64%	2%	62
	Manchester Area	39%	59%	2%	78
	Mass Border	40%	60%	1%	116
	North Country	78%	21%	1%	42
	Seacoast	33%	63%	4%	85
	Central/Lakes	47%	51%	2%	65
2016 Presidential Vote	Voted for Trump	23%	77%		17
	Voted for Hillary Clinton	47%	50%	2%	385
	Did not vote in 2016	11%	89%		18
2020 Voting Intent	Already voted absentee	39%	59%	2%	176
	Will definitely vote	46%	52%	1%	261
	Will vote unless emergency	3%	87%	10%	13
Swing Voter Designation	Core DEM	41%	57%	2%	369
	Core GOP		100%		2
	Swing Voter	47%	49%	3%	78

Most Important Reason Voting for Trump - Donald Trump Voters

		<u>American Values</u>	<u>Fighting Corruption in Government</u>	<u>Gun Rights</u>	<u>Integrity/Honesty</u>	<u>Jobs/Economy</u>
STATEWIDE	Oct 24-28, 2020	23%	6%	2%	1%	16%
Voting Registration	Registered Democrat	2%				8%
	Registered Undeclared/Not Reg.	21%		6%	1%	19%
	Registered Republican	27%	10%	0%	1%	13%
Party ID	Democrat	3%				13%
	Independent	14%		8%	4%	37%
	Republican	24%	7%	2%	0%	15%
Ideology	Liberal	4%				77%
	Moderate	31%	9%	1%	0%	18%
	Conservative	21%	6%	3%	1%	14%
Media Usage	Boston Globe reader	7%				8%
	Conservative radio listener	25%	10%	3%	1%	15%
	Fox News viewer	26%	7%	2%	1%	17%
	Local newspapers reader	5%	1%	12%	2%	27%
	NHPR listener	28%	8%	4%	1%	15%
	Union Leader reader	49%	0%	8%		9%
	WMUR viewer	20%	4%	3%	1%	21%
Age of Respondent	18 to 34		27%	8%		7%
	35 to 49	49%		1%		6%
	50 to 64	21%	2%	0%	1%	24%
	65 and older	19%		1%	1%	25%
Gender of Respondent	Men	25%	4%	1%	1%	15%
	Women	21%	9%	4%	1%	17%
Level of Education	High school or less	43%				16%
	Tech school/Some college	8%	18%	1%	1%	16%
	College graduate	5%	1%	15%		18%
	Postgraduate work	2%	2%		4%	14%
Gender & Education	Men, no college degree	29%	5%	0%	1%	14%
	Men, college degree	5%	0%	4%		19%
	Women, no college degree	28%	12%			19%
	Women, college degree	3%	3%	16%	3%	14%
Region of State	Connecticut Valley	0%			4%	7%
	Manchester Area	20%		9%		12%
	Mass Border	4%	16%	1%		19%
	North Country	17%	3%			8%
	Seacoast	47%	1%			18%
	Central/Lakes	40%	16%			25%
2016 Presidential Vote	Voted for Trump	25%	6%	2%	1%	15%
	Voted for Hillary Clinton	4%		8%		13%
	Did not vote in 2016					46%
2020 Voting Intent	Already voted absentee				1%	38%
	Will definitely vote	26%	7%	2%	1%	13%
	Will vote unless emergency	6%		9%		38%
Swing Voter Designation	Core DEM					
	Core GOP	25%	7%	2%	0%	15%
	Swing Voter	1%		6%	3%	41%

Most Important Reason Voting for Trump - Donald Trump Voters

		<u>Leadership/Job Performance</u>	<u>Like Him/Entertaining</u>	<u>National Security</u>	<u>Not A Politician</u>
STATEWIDE	Oct 24-28, 2020	20%	1%	2%	2%
Voting Registration	Registered Democrat	24%			1%
	Registered Undeclared/Not Reg.	31%	2%		3%
	Registered Republican	14%	0%	4%	1%
Party ID	Democrat	40%			2%
	Independent	3%	13%		4%
	Republican	20%	0%	3%	2%
Ideology	Liberal				
	Moderate	12%	1%	0%	5%
	Conservative	24%		3%	0%
Media Usage	Boston Globe reader	4%	7%		13%
	Conservative radio listener	18%	0%	3%	1%
	Fox News viewer	22%	0%	3%	2%
	Local newspapers reader	6%		11%	
	NHPR listener	19%	1%	1%	2%
	Union Leader reader	14%	1%		
	WMUR viewer	26%	0%	3%	2%
Age of Respondent	18 to 34	17%			1%
	35 to 49	5%		0%	3%
	50 to 64	25%	1%	7%	1%
	65 and older	32%	3%	1%	2%
Gender of Respondent	Men	19%	1%	4%	1%
	Women	22%	1%	0%	2%
Level of Education	High school or less	18%		4%	
	Tech school/Some college	30%	2%	1%	2%
	College graduate	7%	1%	1%	6%
	Postgraduate work	14%	2%	1%	4%
Gender & Education	Men, no college degree	21%	1%	4%	0%
	Men, college degree	12%		1%	6%
	Women, no college degree	27%			2%
	Women, college degree	8%	3%	2%	2%
Region of State	Connecticut Valley	40%	4%		
	Manchester Area	27%	1%	1%	0%
	Mass Border	26%		11%	4%
	North Country	10%			
	Seacoast	13%			2%
	Central/Lakes	2%		2%	3%
2016 Presidential Vote	Voted for Trump	20%	1%	3%	1%
	Voted for Hillary Clinton	56%			13%
	Did not vote in 2016				9%
2020 Voting Intent	Already voted absentee	31%			3%
	Will definitely vote	19%	1%	3%	2%
	Will vote unless emergency	17%			
Swing Voter Designation	Core DEM				
	Core GOP	20%	1%	3%	1%
	Swing Voter	20%			8%

Most Important Reason Voting for Trump - Donald Trump Voters

		<u>Taxes</u>	<u>Vote Against Biden/Democrats</u>	<u>Other</u>	<u>N</u>
STATEWIDE	Oct 24-28, 2020	5%	19%	3%	331
Voting Registration	Registered Democrat		65%		13
	Registered Undeclared/Not Reg.		13%	5%	111
	Registered Republican	8%	21%	1%	202
Party ID	Democrat		37%	5%	8
	Independent		3%	13%	15
	Republican	5%	20%	2%	308
Ideology	Liberal		18%	1%	6
	Moderate	0%	18%	4%	87
	Conservative	7%	20%	2%	230
Media Usage	Boston Globe reader		57%	4%	5
	Conservative radio listener	8%	15%	1%	198
	Fox News viewer	5%	13%	2%	294
	Local newspapers reader		33%	3%	50
	NHPR listener	0%	21%	2%	154
	Union Leader reader		16%	2%	69
	WMUR viewer	1%	18%	2%	245
Age of Respondent	18 to 34		37%	4%	67
	35 to 49	16%	17%	3%	84
	50 to 64	2%	13%	2%	104
	65 and older	0%	13%	2%	75
Gender of Respondent	Men	7%	20%	3%	204
	Women	2%	19%	2%	125
Level of Education	High school or less	9%	11%		153
	Tech school/Some college	2%	19%	1%	109
	College graduate		40%	5%	44
	Postgraduate work	1%	35%	22%	25
Gender & Education	Men, no college degree	8%	17%	0%	170
	Men, college degree		38%	16%	33
	Women, no college degree	2%	11%		91
	Women, college degree	1%	39%	7%	34
Region of State	Connecticut Valley	27%	16%	1%	50
	Manchester Area		25%	5%	80
	Mass Border	4%	11%	5%	51
	North Country		60%	2%	21
	Seacoast	0%	18%	1%	57
	Central/Lakes		11%	0%	71
2016 Presidential Vote	Voted for Trump	5%	19%	2%	314
	Voted for Hillary Clinton			7%	5
	Did not vote in 2016		45%		8
2020 Voting Intent	Already voted absentee		25%	2%	31
	Will definitely vote	5%	19%	2%	291
	Will vote unless emergency		4%	25%	9
Swing Voter Designation	Core DEM		100%		3
	Core GOP	5%	19%	2%	308
	Swing Voter		16%	4%	19

Most Important Reason Voting for Biden - Joe Biden Voters

		<u>Climate Change</u>	<u>COVID-19</u>	<u>Decency/Empathy</u>	<u>Experience</u>	<u>Healthcare</u>	<u>Integrity/Honesty</u>
STATEWIDE	Oct 24-28, 2020	2%	5%	5%	1%	2%	13%
Voting Registration	Registered Democrat	2%	8%	7%	2%	1%	9%
	Registered Undeclared/Not Reg.	1%	3%	3%	1%	4%	18%
	Registered Republican		4%				6%
Party ID	Democrat	2%	7%	6%	2%	1%	9%
	Independent			1%		9%	28%
	Republican		3%				15%
Ideology	Liberal	1%	8%	7%	1%	1%	2%
	Moderate	3%	1%	4%	1%	4%	22%
	Conservative		41%				21%
Media Usage	Boston Globe reader	3%	8%	5%	4%	3%	9%
	Conservative radio listener	0%	1%	1%		1%	73%
	Fox News viewer	1%	7%	3%	0%	10%	38%
	Local newspapers reader	2%	1%	6%	1%	0%	8%
	NHPR listener	1%	4%	5%	1%	3%	16%
	Union Leader reader	0%	7%	3%	0%	0%	33%
	WMUR viewer	2%	5%	4%	1%	3%	15%
Age of Respondent	18 to 34	3%	5%	4%		7%	
	35 to 49		11%	6%		0%	5%
	50 to 64	1%	4%	7%	2%	2%	25%
	65 and older	2%	1%	3%	3%	1%	15%
Gender of Respondent	Men	1%	3%	4%	1%	0%	7%
	Women	2%	6%	5%	1%	4%	18%
Level of Education	High school or less		3%	4%			27%
	Tech school/Some college	2%	13%	3%	3%	0%	10%
	College graduate	3%	1%	7%	0%	7%	6%
	Postgraduate work	0%	3%	7%	2%	2%	7%
Gender & Education	Men, no college degree	1%	5%	3%	2%		8%
	Men, college degree	1%	1%	6%	0%	1%	6%
	Women, no college degree	1%	9%	4%	1%	0%	28%
	Women, college degree	3%	2%	6%	1%	7%	7%
Region of State	Connecticut Valley	2%	3%	9%	3%		7%
	Manchester Area	1%	9%	3%	1%	1%	7%
	Mass Border	2%	10%	5%	1%	1%	7%
	North Country		0%	3%	1%		61%
	Seacoast	1%	1%	2%	1%	8%	10%
	Central/Lakes	1%	1%	8%	0%	2%	13%
2016 Presidential Vote	Voted for Trump		1%				7%
	Voted for Hillary Clinton	2%	4%	5%	1%	3%	15%
	Did not vote in 2016	4%	28%	6%			1%
2020 Voting Intent	Already voted absentee	1%	8%	2%	2%	0%	11%
	Will definitely vote	2%	2%	7%	1%	1%	16%
	Will vote unless emergency		7%			45%	
Swing Voter Designation	Core DEM	2%	6%	6%	1%	1%	9%
	Core GOP		22%				
	Swing Voter		0%	1%		9%	33%

Most Important Reason Voting for Biden - Joe Biden Voters

		<u>Leadership/ Competence</u>	<u>Not Trump/Vote Out Trump</u>	<u>Policies/Values</u>	<u>Other</u>	<u>N</u>
STATEWIDE	Oct 24-28, 2020	16%	48%	6%	2%	390
Voting Registration	Registered Democrat	13%	47%	8%	3%	178
	Registered Undeclared/Not Reg.	19%	45%	5%	2%	198
	Registered Republican	3%	83%	3%		14
Party ID	Democrat	14%	48%	8%	3%	285
	Independent	15%	44%	2%	1%	82
	Republican	2%	78%	2%		15
Ideology	Liberal	18%	51%	10%	2%	155
	Moderate	16%	42%	4%	3%	207
	Conservative	14%	20%	4%		10
Media Usage	Boston Globe reader	19%	36%	10%	4%	50
	Conservative radio listener	8%	11%	6%		29
	Fox News viewer	8%	25%	6%	1%	81
	Local newspapers reader	28%	44%	4%	5%	118
	NHPR listener	15%	45%	7%	3%	305
	Union Leader reader	16%	30%	9%	3%	78
	WMUR viewer	14%	47%	6%	3%	319
Age of Respondent	18 to 34	15%	55%	9%	1%	84
	35 to 49	19%	41%	10%	6%	83
	50 to 64	14%	41%	4%	1%	126
	65 and older	16%	56%	3%	1%	93
Gender of Respondent	Men	18%	56%	7%	2%	141
	Women	12%	45%	6%	3%	240
Level of Education	High school or less	18%	48%			112
	Tech school/Some college	21%	36%	7%	4%	96
	College graduate	12%	51%	10%	3%	112
	Postgraduate work	10%	58%	9%	2%	70
Gender & Education	Men, no college degree	25%	51%	5%		74
	Men, college degree	10%	61%	10%	4%	67
	Women, no college degree	11%	40%	2%	3%	126
	Women, college degree	13%	50%	10%	2%	113
Region of State	Connecticut Valley	20%	49%	7%	0%	52
	Manchester Area	22%	43%	10%	3%	67
	Mass Border	11%	56%	5%	1%	104
	North Country	6%	26%	3%		35
	Seacoast	7%	60%	5%	6%	70
	Central/Lakes	29%	36%	7%	3%	61
2016 Presidential Vote	Voted for Trump	9%	72%	11%		15
	Voted for Hillary Clinton	16%	46%	6%	2%	348
	Did not vote in 2016	15%	43%	4%		15
2020 Voting Intent	Already voted absentee	12%	57%	5%	2%	157
	Will definitely vote	19%	41%	8%	3%	220
	Will vote unless emergency		45%	3%		13
Swing Voter Designation	Core DEM	16%	50%	7%	3%	314
	Core GOP	13%	47%	18%		2
	Swing Voter	16%	38%	3%		75

2020 New Hampshire Gubernatorial Election (With Leaners & Those Who Have Already Voted)

		<u>Dan Feltes</u>	<u>Chris Sununu</u>	<u>Darryl Perry</u>	<u>Other</u>	<u>Don't know/Not sure</u>	<u>N</u>
STATEWIDE	Oct 24-28, 2020	36%	60%	2%	0%	1%	857
Voting Registration	Registered Democrat	82%	15%	1%	1%	0%	238
	Registered Undeclared/Not Reg.	31%	63%	4%	0%	3%	364
	Registered Republican	1%	98%			0%	249
Party ID	Democrat	77%	19%	1%	1%	3%	354
	Independent	21%	69%	9%	0%	0%	134
	Republican	1%	98%	0%		0%	358
Ideology	Liberal	85%	13%			1%	197
	Moderate	32%	61%	3%	1%	3%	343
	Conservative	2%	98%	0%		0%	271
Media Usage	Boston Globe reader	67%	33%				58
	Conservative radio listener	2%	95%	1%	1%	0%	241
	Fox News viewer	9%	88%	1%	1%	0%	427
	Local newspapers reader	56%	43%	0%		1%	184
	NHPR listener	48%	50%	0%	1%	1%	515
	Union Leader reader	33%	66%	1%	0%		167
	WMUR viewer	38%	59%	1%	0%	1%	638
Age of Respondent	18 to 34	44%	53%	3%		1%	216
	35 to 49	37%	59%	1%	2%	2%	198
	50 to 64	30%	64%	2%	0%	3%	258
	65 and older	34%	65%	1%			180
Gender of Respondent	Men	24%	71%	3%		2%	411
	Women	47%	51%	0%	1%	1%	432
Level of Education	High school or less	25%	71%	2%		2%	310
	Tech school/Some college	35%	60%	3%	1%	1%	262
	College graduate	47%	52%	0%		1%	176
	Postgraduate work	55%	41%	1%		2%	108
Gender & Education	Men, no college degree	16%	76%	4%		3%	294
	Men, college degree	43%	56%	1%		0%	117
	Women, no college degree	42%	57%	1%	1%		269
	Women, college degree	56%	42%			2%	163
Region of State	Connecticut Valley	33%	59%	6%		2%	131
	Manchester Area	26%	68%	2%	0%	4%	194
	Mass Border	48%	51%	1%		0%	177
	North Country	28%	69%	3%			67
	Seacoast	40%	56%	1%	2%	1%	147
	Central/Lakes	39%	61%	0%		0%	139
2016 Presidential Vote	Voted for Trump	2%	97%	1%		0%	391
	Voted for Hillary Clinton	69%	29%	0%	1%	2%	397
	Did not vote in 2016	49%	39%			12%	26
2020 Voting Intent	Already voted absentee	69%	30%	0%			214
	Will definitely vote	26%	70%	1%	1%	2%	613
	Will vote unless emergency	8%	63%	24%		5%	30
Swing Voter Designation	Core DEM	80%	16%	2%	0%	1%	383
	Core GOP	0%	99%	0%		0%	344
	Swing Voter	2%	86%	4%	2%	5%	130

Decided on Choice for Gubernatorial Election

		Definitely decided or already voted	Leaning towards someone	Still trying to decide	N
STATEWIDE	Oct 24-28, 2020	92%	6%	2%	863
Voting Registration	Registered Democrat	88%	11%	1%	239
	Registered Undeclared/Not Reg.	91%	6%	3%	363
	Registered Republican	95%	2%	3%	255
Party ID	Democrat	86%	10%	4%	354
	Independent	92%	8%	0%	135
	Republican	97%	1%	2%	364
Ideology	Liberal	94%	4%	2%	198
	Moderate	90%	7%	3%	343
	Conservative	98%	0%	2%	276
Media Usage	Boston Globe reader	92%	8%	0%	58
	Conservative radio listener	97%	1%	3%	247
	Fox News viewer	97%	1%	2%	433
	Local newspapers reader	89%	6%	5%	190
	NHPR listener	93%	5%	2%	514
	Union Leader reader	95%	4%	0%	168
	WMUR viewer	91%	6%	3%	644
Age of Respondent	18 to 34	87%	12%	1%	218
	35 to 49	92%	6%	2%	198
	50 to 64	90%	4%	6%	263
	65 and older	99%	1%		180
Gender of Respondent	Men	91%	5%	4%	417
	Women	92%	7%	1%	433
Level of Education	High school or less	91%	5%	4%	315
	Tech school/Some college	93%	6%	1%	262
	College graduate	94%	5%	1%	177
	Postgraduate work	85%	12%	3%	108
Gender & Education	Men, no college degree	91%	4%	5%	300
	Men, college degree	92%	7%	1%	117
	Women, no college degree	93%	7%		269
	Women, college degree	90%	7%	3%	164
Region of State	Connecticut Valley	87%	10%	3%	131
	Manchester Area	94%	2%	4%	195
	Mass Border	91%	6%	4%	183
	North Country	98%	2%		67
	Seacoast	85%	13%	2%	148
	Central/Lakes	96%	4%	0%	138
2016 Presidential Vote	Voted for Trump	97%	1%	2%	397
	Voted for Hillary Clinton	91%	6%	2%	396
	Did not vote in 2016	88%		12%	26
2020 Voting Intent	Already voted absentee	100%			214
	Will definitely vote	89%	8%	3%	619
	Will vote unless emergency	79%	17%	5%	30
Swing Voter Designation	Core DEM	87%	12%	2%	384
	Core GOP	98%	0%	2%	350
	Swing Voter	88%	6%	6%	129

2020 U.S. Senate Election (With Leaners & Those Who Have Already Voted)

		<u>Corky Messner</u>	<u>Jeanne Shaheen</u>	<u>Justin O'Donnell</u>	<u>Other</u>	<u>Don't know/Not sure</u>	<u>N</u>
STATEWIDE	Oct 24-28, 2020	43%	54%	2%	0%	0%	860
Voting Registration	Registered Democrat	5%	94%	1%			237
	Registered Undeclared/Not Reg.	35%	60%	5%	0%	1%	363
	Registered Republican	88%	11%	0%	0%	0%	255
Party ID	Democrat	2%	97%	1%		0%	353
	Independent	27%	63%	9%	0%	2%	134
	Republican	89%	9%	1%	0%	0%	362
Ideology	Liberal	3%	97%				196
	Moderate	29%	66%	4%	0%	1%	342
	Conservative	91%	8%	0%	0%	0%	277
Media Usage	Boston Globe reader	5%	95%				58
	Conservative radio listener	86%	13%	0%	0%	0%	247
	Fox News viewer	71%	26%	2%	0%	1%	433
	Local newspapers reader	27%	72%	0%			190
	NHPR listener	31%	69%	1%		0%	515
	Union Leader reader	38%	61%	1%	1%		166
	WMUR viewer	37%	61%	2%	0%	0%	643
Age of Respondent	18 to 34	36%	60%	4%			215
	35 to 49	51%	48%	1%		0%	198
	50 to 64	46%	50%	4%	0%	0%	263
	65 and older	38%	60%	0%	1%	1%	180
Gender of Respondent	Men	54%	41%	4%	0%		416
	Women	32%	67%	0%	0%	1%	431
Level of Education	High school or less	57%	42%	2%			315
	Tech school/Some college	47%	48%	4%	0%	1%	260
	College graduate	24%	74%	1%		1%	177
	Postgraduate work	22%	76%	2%	0%		108
Gender & Education	Men, no college degree	65%	30%	5%			298
	Men, college degree	27%	71%	3%	0%		117
	Women, no college degree	39%	59%		0%	1%	268
	Women, college degree	20%	78%	1%		1%	164
Region of State	Connecticut Valley	47%	45%	7%			131
	Manchester Area	53%	45%	2%			193
	Mass Border	28%	68%	1%	1%	1%	181
	North Country	35%	62%	3%			67
	Seacoast	40%	60%			0%	148
	Central/Lakes	50%	49%	1%	0%	0%	139
2016 Presidential Vote	Voted for Trump	89%	9%	1%	0%	1%	396
	Voted for Hillary Clinton	1%	99%				396
	Did not vote in 2016	31%	69%				26
2020 Voting Intent	Already voted absentee	11%	88%	0%	0%		212
	Will definitely vote	54%	44%	2%	0%	1%	619
	Will vote unless emergency	38%	41%	22%			30
Swing Voter Designation	Core DEM	1%	97%	3%		0%	382
	Core GOP	93%	5%	1%	0%	0%	350
	Swing Voter	30%	64%	4%		2%	129

Decided on Choice for U.S. Senate Election

		<u>Definitely decided or already voted</u>	<u>Leaning towards someone</u>	<u>Still trying to decide</u>	<u>N</u>
STATEWIDE	Oct 24-28, 2020	96%	3%	1%	863
Voting Registration	Registered Democrat	99%	1%	0%	240
	Registered Undeclared/Not Reg.	94%	4%	2%	363
	Registered Republican	95%	5%	1%	255
Party ID	Democrat	98%	2%	0%	354
	Independent	92%	6%	2%	134
	Republican	95%	4%	1%	364
Ideology	Liberal	95%	4%	1%	198
	Moderate	96%	2%	2%	343
	Conservative	95%	5%	1%	276
Media Usage	Boston Globe reader	96%	0%	4%	58
	Conservative radio listener	95%	4%	1%	247
	Fox News viewer	95%	3%	1%	433
	Local newspapers reader	90%	8%	2%	190
	NHPR listener	96%	3%	1%	514
	Union Leader reader	98%	0%	2%	168
	WMUR viewer	94%	4%	1%	644
Age of Respondent	18 to 34	94%	5%	1%	218
	35 to 49	98%	1%	1%	198
	50 to 64	94%	5%	1%	263
	65 and older	98%	0%	1%	180
Gender of Respondent	Men	95%	4%	1%	417
	Women	98%	1%	1%	433
Level of Education	High school or less	97%	3%		315
	Tech school/Some college	94%	5%	1%	262
	College graduate	95%	3%	2%	177
	Postgraduate work	95%	2%	3%	108
Gender & Education	Men, no college degree	96%	4%	0%	300
	Men, college degree	93%	5%	3%	117
	Women, no college degree	99%	0%	1%	269
	Women, college degree	97%	1%	2%	164
Region of State	Connecticut Valley	97%	3%		131
	Manchester Area	99%	0%	0%	195
	Mass Border	92%	6%	2%	183
	North Country	100%			67
	Seacoast	97%	1%	1%	148
	Central/Lakes	90%	8%	2%	138
2016 Presidential Vote	Voted for Trump	95%	4%	2%	397
	Voted for Hillary Clinton	98%	2%		396
	Did not vote in 2016	93%	4%	3%	26
2020 Voting Intent	Already voted absentee	100%			214
	Will definitely vote	94%	4%	1%	619
	Will vote unless emergency	95%	3%	2%	30
Swing Voter Designation	Core DEM	97%	3%	0%	384
	Core GOP	95%	4%	1%	350
	Swing Voter	94%	1%	5%	129

2020 First Congressional District Election (With Leaners & Those Who Have Already Voted)

		<u>Matt Mowers</u>	<u>Chris Pappas</u>	<u>Zachary Dumont</u>	<u>Don't know/Not sure</u>	<u>N</u>
1st District	Oct 24-28, 2020	50%	48%	2%	0%	450
Voting Registration	Registered Democrat	3%	95%	1%	0%	121
	Registered Undeclared/Not Reg.	45%	50%	5%	0%	187
	Registered Republican	96%	4%			137
Party ID	Democrat	2%	97%	0%	0%	179
	Independent	43%	42%	15%		67
	Republican	95%	5%	0%		201
Ideology	Liberal	7%	93%	0%		101
	Moderate	46%	49%	5%	0%	180
	Conservative	97%	3%	0%	0%	134
Media Usage	Boston Globe reader	3%	97%			29
	Conservative radio listener	94%	4%	1%	0%	131
	Fox News viewer	82%	16%	2%	0%	215
	Local newspapers reader	34%	62%	4%	1%	65
	NHPR listener	36%	62%	2%	0%	250
	Union Leader reader	62%	36%	2%	0%	97
	WMUR viewer	46%	51%	2%	0%	347
Age of Respondent	18 to 34	50%	49%	1%		143
	35 to 49	45%	53%	2%		78
	50 to 64	53%	42%	5%	0%	122
	65 and older	52%	48%		0%	103
Gender of Respondent	Men	59%	37%	4%	0%	218
	Women	42%	58%	1%	0%	229
Level of Education	High school or less	58%	39%	3%		157
	Tech school/Some college	58%	41%	1%	0%	154
	College graduate	33%	64%	2%	0%	90
	Postgraduate work	30%	68%	2%		49
Gender & Education	Men, no college degree	67%	28%	4%	0%	163
	Men, college degree	35%	63%	2%	0%	55
	Women, no college degree	48%	52%			148
	Women, college degree	31%	68%	2%	0%	82
Region of State	Manchester Area	60%	37%	2%		167
	Mass Border	38%	61%	1%		77
	North Country	52%	42%	6%		32
	Seacoast	41%	58%	1%	0%	147
	Central/Lakes	63%	27%	9%	1%	27
2016 Presidential Vote	Voted for Trump	95%	3%	1%	0%	220
	Voted for Hillary Clinton	3%	97%		0%	193
	Did not vote in 2016	70%	30%			11
2020 Voting Intent	Already voted absentee	21%	79%	0%		122
	Will definitely vote	63%	35%	2%	0%	313
	Will vote unless emergency	18%	64%	18%		14
Swing Voter Designation	Core DEM	0%	97%	2%	0%	186
	Core GOP	100%	0%	0%		193
	Swing Voter	45%	46%	9%	1%	71

Decided on Choice for 2020 First Congressional District Election

		<u>Definitely decided or already voted</u>	<u>Leaning towards someone</u>	<u>Still trying to decide</u>	<u>N</u>
1st District	Oct 24-28, 2020	97%	2%	1%	447
Voting Registration	Registered Democrat	97%	3%	0%	120
	Registered Undeclared/Not Reg.	96%	2%	2%	186
	Registered Republican	99%		1%	136
Party ID	Democrat	98%	2%	1%	179
	Independent	94%	1%	5%	65
	Republican	99%	1%	0%	200
Ideology	Liberal	96%	4%	0%	101
	Moderate	98%	1%	1%	179
	Conservative	97%	1%	2%	133
Media Usage	Boston Globe reader	97%	3%	0%	29
	Conservative radio listener	98%	1%	0%	131
	Fox News viewer	97%	2%	1%	214
	Local newspapers reader	94%	2%	4%	65
	NHPR listener	96%	3%	1%	248
	Union Leader reader	98%	1%	0%	97
	WMUR viewer	97%	2%	1%	345
Age of Respondent	18 to 34	98%	2%	0%	143
	35 to 49	95%	4%	1%	76
	50 to 64	97%	2%	1%	122
	65 and older	98%		2%	102
Gender of Respondent	Men	98%	1%	1%	217
	Women	96%	2%	1%	229
Level of Education	High school or less	100%			157
	Tech school/Some college	98%	1%	1%	153
	College graduate	93%	5%	2%	91
	Postgraduate work	96%	3%	1%	47
Gender & Education	Men, no college degree	99%	1%	0%	163
	Men, college degree	96%	2%	2%	54
	Women, no college degree	99%		1%	147
	Women, college degree	92%	6%	2%	82
Region of State	Manchester Area	99%	1%		166
	Mass Border	94%	4%	2%	77
	North Country	100%			32
	Seacoast	96%	2%	2%	146
	Central/Lakes	97%	1%	1%	27
2016 Presidential Vote	Voted for Trump	97%	1%	2%	219
	Voted for Hillary Clinton	97%	3%	0%	193
	Did not vote in 2016	100%			11
2020 Voting Intent	Already voted absentee	100%			123
	Will definitely vote	96%	2%	1%	311
	Will vote unless emergency	98%		2%	14
Swing Voter Designation	Core DEM	98%	2%	0%	185
	Core GOP	99%	1%	0%	193
	Swing Voter	92%	4%	5%	69

2020 Second Congressional District Election (With Leaners & Those Who Have Already Voted)

		<u>Ann Kuster</u>	<u>Steve Negron</u>	<u>A.J. Olding</u>	<u>Don't know/Not sure</u>	<u>N</u>
2nd District	Oct 24-28, 2020	51%	41%	7%	1%	410
Voting Registration	Registered Democrat	92%	8%			118
	Registered Undeclared/Not Reg.	53%	29%	17%	1%	174
	Registered Republican	9%	91%	0%		118
Party ID	Democrat	96%	2%	2%	0%	173
	Independent	46%	11%	40%	3%	68
	Republican	4%	95%	0%	0%	163
Ideology	Liberal	100%	0%			96
	Moderate	65%	19%	15%	2%	161
	Conservative	5%	94%	1%		143
Media Usage	Boston Globe reader	92%	8%			29
	Conservative radio listener	3%	79%	18%		115
	Fox News viewer	18%	71%	10%	1%	218
	Local newspapers reader	71%	28%	0%		122
	NHPR listener	61%	31%	8%	0%	264
	Union Leader reader	52%	18%	31%		68
	WMUR viewer	57%	34%	8%	1%	296
Age of Respondent	18 to 34	80%	14%	7%		72
	35 to 49	42%	58%			119
	50 to 64	37%	45%	18%	0%	141
	65 and older	65%	32%	0%	3%	78
Gender of Respondent	Men	38%	58%	4%	0%	197
	Women	63%	25%	10%	1%	203
Level of Education	High school or less	26%	59%	14%		159
	Tech school/Some college	56%	36%	6%	2%	108
	College graduate	76%	23%	1%	1%	85
	Postgraduate work	76%	24%	0%		57
Gender & Education	Men, no college degree	24%	70%	6%		137
	Men, college degree	70%	29%	0%	1%	59
	Women, no college degree	51%	30%	17%	2%	121
	Women, college degree	81%	18%	1%	0%	82
Region of State	Connecticut Valley	45%	49%	6%		131
	Manchester Area	60%	38%	2%		27
	Mass Border	69%	28%	0%	2%	105
	North Country	20%	22%	57%		36
	Central/Lakes	49%	50%	1%	0%	111
2016 Presidential Vote	Voted for Trump	6%	92%	0%	1%	175
	Voted for Hillary Clinton	88%	1%	11%		203
	Did not vote in 2016	99%	1%			14
2020 Voting Intent	Already voted absentee	92%	8%	0%		92
	Will definitely vote	41%	50%	8%	1%	303
	Will vote unless emergency	19%	48%	30%	3%	16
Swing Voter Designation	Core DEM	94%	2%	4%		195
	Core GOP	0%	99%	0%	0%	157
	Swing Voter	45%	13%	38%	4%	58

Decided on Choice for 2020 Second Congressional District Election

		<u>Definitely decided or already voted</u>	<u>Leaning towards someone</u>	<u>Still trying to decide</u>	<u>N</u>
2nd District	Oct 24-28, 2020	89%	9%	2%	409
Voting Registration	Registered Democrat	99%	1%		118
	Registered Undeclared/Not Reg.	77%	21%	3%	172
	Registered Republican	96%	1%	2%	118
Party ID	Democrat	96%	3%	0%	171
	Independent	53%	44%	3%	68
	Republican	95%	2%	3%	163
Ideology	Liberal	90%	10%		96
	Moderate	80%	17%	3%	161
	Conservative	97%	1%	2%	142
Media Usage	Boston Globe reader	93%	0%	6%	29
	Conservative radio listener	82%	18%		115
	Fox News viewer	87%	11%	2%	217
	Local newspapers reader	90%	9%	2%	122
	NHPR listener	86%	13%	1%	264
	Union Leader reader	66%	31%	3%	68
	WMUR viewer	85%	12%	2%	294
Age of Respondent	18 to 34	81%	12%	6%	72
	35 to 49	96%	4%		119
	50 to 64	82%	18%	0%	139
	65 and older	97%	1%	3%	78
Gender of Respondent	Men	93%	5%	3%	197
	Women	88%	11%	1%	202
Level of Education	High school or less	86%	14%		159
	Tech school/Some college	87%	11%	2%	107
	College graduate	93%	3%	4%	85
	Postgraduate work	94%	3%	3%	57
Gender & Education	Men, no college degree	96%	4%		137
	Men, college degree	86%	5%	8%	59
	Women, no college degree	81%	17%	2%	120
	Women, college degree	99%	1%	0%	82
Region of State	Connecticut Valley	95%	5%		131
	Manchester Area	98%	2%		26
	Mass Border	94%	1%	5%	105
	North Country	44%	56%		36
	Central/Lakes	89%	9%	2%	110
2016 Presidential Vote	Voted for Trump	94%	2%	4%	173
	Voted for Hillary Clinton	86%	14%		203
	Did not vote in 2016	78%	22%		14
2020 Voting Intent	Already voted absentee	100%			92
	Will definitely vote	85%	12%	2%	301
	Will vote unless emergency	91%	6%	3%	16
Swing Voter Designation	Core DEM	93%	7%		195
	Core GOP	96%	2%	2%	157
	Swing Voter	54%	39%	7%	57

2020 NH House of Representatives Election (With Leaners & Those Who Have Already Voted)

		<u>Democratic candidate(s)</u>	<u>Republican candidate(s)</u>	<u>Some Democrats, Some Republicans</u>	<u>Other</u>	<u>Don't know/Not sure</u>	<u>N</u>
STATEWIDE	Oct 24-28, 2020	43%	39%	13%	1%	4%	862
Voting Registration	Registered Democrat	91%	5%	3%	1%	0%	238
	Registered Undeclared/Not Reg.	40%	24%	27%	1%	9%	364
	Registered Republican	3%	93%	4%		0%	255
Party ID	Democrat	92%	2%	5%	0%	1%	353
	Independent	27%	11%	39%	3%	20%	134
	Republican	1%	87%	11%	0%	1%	364
Ideology	Liberal	92%	3%	4%	0%	1%	197
	Moderate	45%	24%	23%	2%	7%	343
	Conservative	2%	89%	9%		0%	277
Media Usage	Boston Globe reader	73%	5%	21%		0%	57
	Conservative radio listener	3%	79%	17%	1%	0%	247
	Fox News viewer	11%	70%	17%	1%	1%	433
	Local newspapers reader	58%	25%	15%		2%	189
	NHPR listener	54%	29%	17%	0%	1%	515
	Union Leader reader	36%	39%	24%		1%	167
	WMUR viewer	46%	36%	17%	1%	1%	644
Age of Respondent	18 to 34	52%	27%	18%	1%	2%	216
	35 to 49	40%	51%	6%		2%	198
	50 to 64	36%	40%	15%	1%	8%	264
	65 and older	44%	41%	12%	1%	2%	180
Gender of Respondent	Men	32%	49%	12%	1%	6%	416
	Women	53%	31%	14%	0%	1%	433
Level of Education	High school or less	31%	53%	10%	1%	6%	315
	Tech school/Some college	42%	43%	11%	1%	4%	262
	College graduate	56%	20%	23%		1%	177
	Postgraduate work	61%	23%	14%	0%	2%	107
Gender & Education	Men, no college degree	23%	58%	9%	1%	9%	299
	Men, college degree	54%	26%	19%	0%	0%	116
	Women, no college degree	49%	39%	11%	1%	1%	269
	Women, college degree	61%	18%	19%		2%	164
Region of State	Connecticut Valley	41%	49%	4%		5%	131
	Manchester Area	36%	37%	15%	1%	11%	194
	Mass Border	58%	29%	12%	1%	1%	181
	North Country	29%	36%	33%	3%		67
	Seacoast	49%	39%	12%	0%	1%	148
	Central/Lakes	37%	51%	12%		1%	139
2016 Presidential Vote	Voted for Trump	2%	81%	10%	0%	6%	396
	Voted for Hillary Clinton	82%	1%	16%		0%	397
	Did not vote in 2016	56%	31%	5%		8%	26
2020 Voting Intent	Already voted absentee	78%	15%	7%			213
	Will definitely vote	32%	48%	14%	1%	4%	619
	Will vote unless emergency	12%	30%	34%	7%	16%	30
Swing Voter Designation	Core DEM	91%	1%	5%	1%	2%	382
	Core GOP		91%	8%	0%	1%	350
	Swing Voter	16%	13%	52%	2%	17%	130

2020 NH State Senate Election (With Leaners & Those Who Have Already Voted)

		<u>Democratic candidate</u>	<u>Republican candidate</u>	<u>Other</u>	<u>Don't know/Not sure</u>	<u>N</u>
STATEWIDE	Oct 24-28, 2020	47%	47%	1%	6%	857
Voting Registration	Registered Democrat	93%	7%		1%	238
	Registered Undeclared/Not Reg.	46%	39%	2%	13%	359
	Registered Republican	5%	94%	0%	1%	255
Party ID	Democrat	95%	5%		1%	352
	Independent	39%	28%	5%	28%	130
	Republican	2%	95%	0%	3%	364
Ideology	Liberal	94%	6%		1%	197
	Moderate	53%	34%	1%	12%	338
	Conservative	3%	96%	0%	1%	276
Media Usage	Boston Globe reader	82%	9%		9%	56
	Conservative radio listener	3%	87%	0%	9%	247
	Fox News viewer	13%	76%	1%	9%	428
	Local newspapers reader	63%	33%		4%	188
	NHPR listener	58%	34%	1%	8%	514
	Union Leader reader	38%	47%	1%	15%	167
	WMUR viewer	51%	41%	1%	7%	638
Age of Respondent	18 to 34	54%	39%		8%	216
	35 to 49	44%	53%	1%	2%	198
	50 to 64	39%	50%	2%	10%	262
	65 and older	52%	45%	0%	2%	176
Gender of Respondent	Men	35%	60%	1%	3%	415
	Women	57%	34%	0%	9%	429
Level of Education	High school or less	33%	60%	1%	6%	315
	Tech school/Some college	46%	51%	1%	3%	258
	College graduate	61%	30%	1%	8%	175
	Postgraduate work	67%	24%	1%	7%	107
Gender & Education	Men, no college degree	26%	71%	1%	2%	298
	Men, college degree	59%	33%	1%	7%	116
	Women, no college degree	51%	40%		9%	267
	Women, college degree	67%	24%	0%	9%	162
Region of State	Connecticut Valley	44%	51%		5%	131
	Manchester Area	37%	58%	2%	3%	194
	Mass Border	63%	35%	1%	1%	177
	North Country	32%	37%	1%	30%	67
	Seacoast	50%	42%	1%	8%	147
	Central/Lakes	46%	52%	0%	2%	139
2016 Presidential Vote	Voted for Trump	3%	94%	1%	2%	392
	Voted for Hillary Clinton	88%	4%		8%	396
	Did not vote in 2016	52%	40%		8%	26
2020 Voting Intent	Already voted absentee	83%	17%			210
	Will definitely vote	35%	57%	1%	6%	617
	Will vote unless emergency	23%	34%	3%	41%	30
Swing Voter Designation	Core DEM	95%	3%		2%	382
	Core GOP	0%	99%	0%	1%	350
	Swing Voter	29%	33%	5%	33%	125

2020 NH Executive Council Election (With Leaners & Those Who Have Already Voted)

		<u>Democratic candidate</u>	<u>Republican candidate</u>	<u>Other</u>	<u>Don't know/Not sure</u>	<u>N</u>
STATEWIDE	Oct 24-28, 2020	46%	48%	1%	6%	843
Voting Registration	Registered Democrat	93%	5%		1%	237
	Registered Undeclared/Not Reg.	44%	43%	2%	11%	347
	Registered Republican	5%	93%		2%	253
Party ID	Democrat	93%	2%		5%	351
	Independent	38%	46%	5%	11%	125
	Republican	2%	94%		4%	357
Ideology	Liberal	93%	3%		3%	197
	Moderate	51%	39%	1%	9%	325
	Conservative	3%	95%		3%	275
Media Usage	Boston Globe reader	78%	8%		13%	57
	Conservative radio listener	3%	95%		1%	246
	Fox News viewer	12%	81%	1%	5%	422
	Local newspapers reader	64%	30%		6%	185
	NHPR listener	58%	37%	0%	5%	503
	Union Leader reader	39%	56%		5%	166
	WMUR viewer	50%	44%	1%	6%	629
Age of Respondent	18 to 34	55%	36%		8%	205
	35 to 49	43%	52%	1%	5%	198
	50 to 64	36%	57%	2%	6%	261
	65 and older	52%	44%	0%	3%	174
Gender of Respondent	Men	34%	58%	1%	7%	408
	Women	57%	39%	0%	4%	421
Level of Education	High school or less	32%	65%	1%	2%	315
	Tech school/Some college	45%	49%	1%	5%	259
	College graduate	63%	26%	1%	10%	163
	Postgraduate work	64%	26%	1%	10%	104
Gender & Education	Men, no college degree	24%	69%	1%	5%	297
	Men, college degree	60%	26%	1%	12%	111
	Women, no college degree	51%	47%		2%	269
	Women, college degree	67%	24%	0%	8%	153
Region of State	Connecticut Valley	43%	49%		8%	130
	Manchester Area	34%	58%	2%	6%	188
	Mass Border	61%	30%	1%	7%	179
	North Country	33%	66%	1%	0%	66
	Seacoast	54%	43%		3%	141
	Central/Lakes	44%	51%	0%	5%	137
2016 Presidential Vote	Voted for Trump	2%	93%	1%	4%	387
	Voted for Hillary Clinton	88%	7%		5%	387
	Did not vote in 2016	53%	30%		17%	25
2020 Voting Intent	Already voted absentee	84%	16%			206
	Will definitely vote	34%	59%	1%	6%	613
	Will vote unless emergency	28%	34%	3%	35%	23
Swing Voter Designation	Core DEM	95%	1%		4%	379
	Core GOP		98%		2%	344
	Swing Voter	23%	52%	5%	20%	120

Confidence Your General Election Vote Will Be Counted Accurately

		<u>Very confident</u>	<u>Somewhat confident</u>	<u>Not very confident</u>	<u>Not confident at all</u>	<u>Don't know/Not sure</u>	<u>N</u>
STATEWIDE	Oct 24-28, 2020	59%	31%	6%	1%	1%	864
Voting Registration	Registered Democrat	65%	29%	5%	2%		240
	Registered Undeclared/Not Reg.	65%	23%	10%	2%		364
	Registered Republican	45%	46%	3%	1%	5%	255
Party ID	Democrat	69%	24%	4%	2%		354
	Independent	53%	25%	20%	1%	1%	136
	Republican	53%	39%	4%	1%	3%	364
Ideology	Liberal	71%	24%	4%	1%		198
	Moderate	63%	27%	8%	2%	0%	343
	Conservative	49%	41%	5%	1%	4%	277
Media Usage	Boston Globe reader	64%	23%	10%	3%		58
	Conservative radio listener	44%	48%	6%	1%		247
	Fox News viewer	55%	39%	4%	2%		433
	Local newspapers reader	68%	24%	6%	2%		190
	NHPR listener	65%	29%	4%	2%	0%	516
	Union Leader reader	65%	25%	8%	2%	1%	168
	WMUR viewer	65%	30%	4%	2%		645
Age of Respondent	18 to 34	52%	34%	8%	1%	5%	218
	35 to 49	51%	40%	5%	3%	1%	198
	50 to 64	60%	31%	8%	1%		264
	65 and older	76%	20%	4%	0%		180
Gender of Respondent	Men	61%	25%	9%	1%	3%	418
	Women	57%	38%	4%	1%		433
Level of Education	High school or less	54%	38%	8%			315
	Tech school/Some college	62%	27%	5%	2%	5%	263
	College graduate	62%	28%	8%	2%	0%	177
	Postgraduate work	66%	28%	4%	3%		108
Gender & Education	Men, no college degree	57%	27%	11%	1%	4%	301
	Men, college degree	72%	22%	5%	2%	0%	117
	Women, no college degree	56%	41%	2%	1%		269
	Women, college degree	58%	33%	8%	2%		164
Region of State	Connecticut Valley	48%	43%	6%	2%		131
	Manchester Area	61%	22%	17%	1%		195
	Mass Border	64%	30%	4%	2%	0%	183
	North Country	39%	44%			17%	67
	Seacoast	69%	26%	3%	1%	0%	148
	Central/Lakes	61%	35%	3%	1%		139
2016 Presidential Vote	Voted for Trump	50%	37%	9%	2%	3%	397
	Voted for Hillary Clinton	72%	24%	3%	1%		397
	Did not vote in 2016	60%	39%	1%			26
2020 Voting Intent	Already voted absentee	75%	23%	2%	0%		214
	Will definitely vote	54%	35%	8%	2%	2%	620
	Will vote unless emergency	59%	21%	19%	2%		30
Swing Voter Designation	Core DEM	69%	25%	5%	2%	0%	384
	Core GOP	52%	40%	4%	0%	4%	350
	Swing Voter	52%	28%	18%	3%		130

General Voting Intent

		<u>Already voted absentee in 2020 Election</u>	<u>Will definitely vote</u>	<u>Will vote unless emergency</u>	<u>N</u>
STATEWIDE	Oct 24-28, 2020	25%	72%	3%	864
Voting Registration	Registered Democrat	44%	54%	2%	240
	Registered Undeclared/Not Reg.	23%	72%	5%	364
	Registered Republican	9%	89%	2%	255
Party ID	Democrat	44%	55%	1%	354
	Independent	18%	72%	10%	136
	Republican	10%	87%	3%	364
Ideology	Liberal	47%	52%	1%	198
	Moderate	23%	73%	4%	343
	Conservative	10%	87%	3%	277
Media Usage	Boston Globe reader	44%	56%		58
	Conservative radio listener	6%	92%	1%	247
	Fox News viewer	13%	83%	3%	433
	Local newspapers reader	23%	74%	2%	190
	NHPR listener	29%	67%	3%	516
	Union Leader reader	25%	74%	1%	168
	WMUR viewer	27%	70%	3%	645
Age of Respondent	18 to 34	22%	71%	8%	218
	35 to 49	19%	79%	2%	198
	50 to 64	17%	81%	2%	264
	65 and older	46%	53%	1%	180
Gender of Respondent	Men	15%	81%	4%	418
	Women	35%	62%	3%	433
Level of Education	High school or less	20%	80%		315
	Tech school/Some college	25%	70%	5%	263
	College graduate	31%	64%	5%	177
	Postgraduate work	31%	62%	7%	108
Gender & Education	Men, no college degree	12%	85%	3%	301
	Men, college degree	25%	68%	7%	117
	Women, no college degree	34%	64%	1%	269
	Women, college degree	35%	59%	6%	164
Region of State	Connecticut Valley	14%	81%	5%	131
	Manchester Area	27%	71%	2%	195
	Mass Border	36%	62%	2%	183
	North Country	17%	73%	9%	67
	Seacoast	29%	66%	5%	148
	Central/Lakes	16%	83%	0%	139
2016 Presidential Vote	Voted for Trump	9%	88%	3%	397
	Voted for Hillary Clinton	41%	57%	2%	397
	Did not vote in 2016	60%	35%	5%	26
Swing Voter Designation	Core DEM	44%	53%	3%	384
	Core GOP	9%	88%	3%	350
	Swing Voter	10%	83%	7%	130

Interest in General Election

		<u>Extremely interested</u>	<u>Very interested</u>	<u>Somewhat interested</u>	<u>Not very interested</u>	<u>N</u>
STATEWIDE	Oct 24-28, 2020	87%	12%	0%	2%	864
Voting Registration	Registered Democrat	91%	7%	0%	1%	240
	Registered Undeclared/Not Reg.	83%	14%	0%	3%	364
	Registered Republican	88%	12%			255
Party ID	Democrat	92%	8%	0%		354
	Independent	66%	26%	0%	8%	136
	Republican	89%	10%	0%	1%	364
Ideology	Liberal	88%	11%		1%	198
	Moderate	84%	14%	0%	2%	343
	Conservative	89%	11%			277
Media Usage	Boston Globe reader	91%	5%		3%	58
	Conservative radio listener	87%	13%	0%		247
	Fox News viewer	88%	12%	0%	0%	433
	Local newspapers reader	91%	6%	0%	2%	190
	NHPR listener	88%	11%	0%	1%	516
	Union Leader reader	82%	16%	0%	1%	168
	WMUR viewer	87%	12%	0%	1%	645
Age of Respondent	18 to 34	77%	18%		4%	218
	35 to 49	90%	8%	0%	2%	198
	50 to 64	86%	14%			264
	65 and older	96%	4%	0%	0%	180
Gender of Respondent	Men	86%	10%	0%	3%	418
	Women	87%	13%		0%	433
Level of Education	High school or less	92%	8%			315
	Tech school/Some college	81%	14%	0%	4%	263
	College graduate	89%	11%	0%		177
	Postgraduate work	80%	17%	0%	3%	108
Gender & Education	Men, no college degree	87%	9%	0%	3%	301
	Men, college degree	82%	15%	0%	3%	117
	Women, no college degree	86%	14%			269
	Women, college degree	88%	12%		0%	164
Region of State	Connecticut Valley	90%	4%	0%	6%	131
	Manchester Area	93%	6%		1%	195
	Mass Border	86%	13%	0%	1%	183
	North Country	41%	57%		3%	67
	Seacoast	90%	10%	0%		148
	Central/Lakes	93%	5%	1%	1%	139
2016 Presidential Vote	Voted for Trump	91%	8%	0%	1%	397
	Voted for Hillary Clinton	86%	14%	0%	1%	397
	Did not vote in 2016	77%	23%			26
2020 Voting Intent	Already voted absentee	91%	9%			214
	Will definitely vote	88%	11%	0%	1%	620
	Will vote unless emergency	26%	52%		22%	30
Swing Voter Designation	Core DEM	90%	8%	0%	2%	384
	Core GOP	90%	10%		0%	350
	Swing Voter	68%	28%	0%	4%	130

How Much Attention Paying to 2020 Election

		<u>A lot</u>	<u>Some</u>	<u>A little</u>	<u>None</u>	<u>N</u>
STATEWIDE	Oct 24-28, 2020	85%	14%	1%	0%	864
Voting Registration	Registered Democrat	89%	10%	0%		239
	Registered Undeclared/Not Reg.	84%	14%	2%	0%	364
	Registered Republican	81%	18%	1%		255
Party ID	Democrat	89%	11%	0%		354
	Independent	72%	24%	4%	0%	136
	Republican	85%	14%	2%		364
Ideology	Liberal	85%	14%	0%		198
	Moderate	85%	13%	2%	0%	343
	Conservative	83%	16%	1%		277
Media Usage	Boston Globe reader	92%	5%	3%		58
	Conservative radio listener	89%	10%	0%		247
	Fox News viewer	91%	9%	1%		433
	Local newspapers reader	85%	12%	2%		190
	NHPR listener	90%	9%	1%		515
	Union Leader reader	91%	8%	2%	0%	168
	WMUR viewer	87%	11%	2%	0%	644
Age of Respondent	18 to 34	78%	20%	3%		218
	35 to 49	87%	10%	3%		198
	50 to 64	82%	18%	0%		264
	65 and older	94%	6%		0%	180
Gender of Respondent	Men	81%	16%	3%		418
	Women	88%	12%	0%	0%	432
Level of Education	High school or less	90%	10%			315
	Tech school/Some college	81%	18%	1%		263
	College graduate	84%	13%	3%		176
	Postgraduate work	80%	16%	4%	0%	108
Gender & Education	Men, no college degree	80%	19%	1%		301
	Men, college degree	84%	9%	7%		117
	Women, no college degree	91%	9%			269
	Women, college degree	82%	18%	0%	0%	163
Region of State	Connecticut Valley	92%	6%	2%		131
	Manchester Area	80%	19%	1%	0%	195
	Mass Border	81%	17%	2%		183
	North Country	55%	45%			67
	Seacoast	93%	6%	1%		147
	Central/Lakes	94%	5%	1%		139
2016 Presidential Vote	Voted for Trump	80%	19%	2%		397
	Voted for Hillary Clinton	89%	10%	1%		397
	Did not vote in 2016	91%	8%	0%		26
2020 Voting Intent	Already voted absentee	90%	10%			214
	Will definitely vote	84%	14%	2%	0%	620
	Will vote unless emergency	62%	38%			30
Swing Voter Designation	Core DEM	90%	10%	0%		384
	Core GOP	85%	14%	1%		350
	Swing Voter	70%	24%	6%	0%	130

Frequency Discussing Election with Friends and Family

		Often	Sometimes	Rarely	Never	N
STATEWIDE	Oct 24-28, 2020	71%	26%	3%	0%	863
Voting Registration	Registered Democrat	70%	27%	2%	1%	239
	Registered Undeclared/Not Reg.	67%	27%	5%	0%	364
	Registered Republican	76%	23%	1%		254
Party ID	Democrat	75%	22%	3%	0%	354
	Independent	39%	53%	7%	0%	136
	Republican	78%	20%	1%	0%	363
Ideology	Liberal	79%	19%	2%		198
	Moderate	62%	33%	4%	1%	343
	Conservative	82%	16%	2%		277
Media Usage	Boston Globe reader	75%	19%	6%		58
	Conservative radio listener	80%	19%	1%		247
	Fox News viewer	78%	21%	1%	0%	433
	Local newspapers reader	76%	18%	6%		190
	NHPR listener	76%	20%	3%	1%	515
	Union Leader reader	68%	28%	4%		168
	WMUR viewer	71%	25%	3%	0%	645
Age of Respondent	18 to 34	62%	36%	2%	0%	218
	35 to 49	80%	14%	5%	1%	198
	50 to 64	65%	32%	3%	0%	264
	65 and older	79%	18%	2%	0%	179
Gender of Respondent	Men	69%	25%	4%	1%	418
	Women	72%	27%	2%	0%	433
Level of Education	High school or less	71%	28%	1%		315
	Tech school/Some college	74%	21%	5%	0%	262
	College graduate	63%	35%	2%		176
	Postgraduate work	74%	18%	6%	2%	108
Gender & Education	Men, no college degree	71%	25%	3%	0%	300
	Men, college degree	65%	26%	7%	2%	117
	Women, no college degree	73%	25%	2%	0%	269
	Women, college degree	69%	30%	1%		164
Region of State	Connecticut Valley	74%	20%	6%		131
	Manchester Area	75%	22%	2%	1%	194
	Mass Border	71%	26%	3%		183
	North Country	30%	66%	4%		67
	Seacoast	66%	32%	1%	1%	148
	Central/Lakes	86%	10%	3%	1%	139
2016 Presidential Vote	Voted for Trump	74%	24%	2%	0%	396
	Voted for Hillary Clinton	71%	27%	2%	0%	397
	Did not vote in 2016	63%	15%	22%		26
2020 Voting Intent	Already voted absentee	76%	21%	2%	0%	214
	Will definitely vote	70%	27%	3%	0%	619
	Will vote unless emergency	49%	41%	9%		30
Swing Voter Designation	Core DEM	75%	22%	3%	0%	384
	Core GOP	79%	19%	1%	0%	349
	Swing Voter	37%	55%	8%	0%	130