

October 14, 2020

SUNUNU EXTENDS COMFORTABLE LEAD OVER FELTES IN RACE FOR NH GOVERNOR

By: Sean P. McKinley, M.A.
 Zachary S. Azem, M.A.
 Andrew E. Smith, Ph.D.

andrew.smith@unh.edu
 603-862-2226
 cola.unh.edu/unh-survey-center

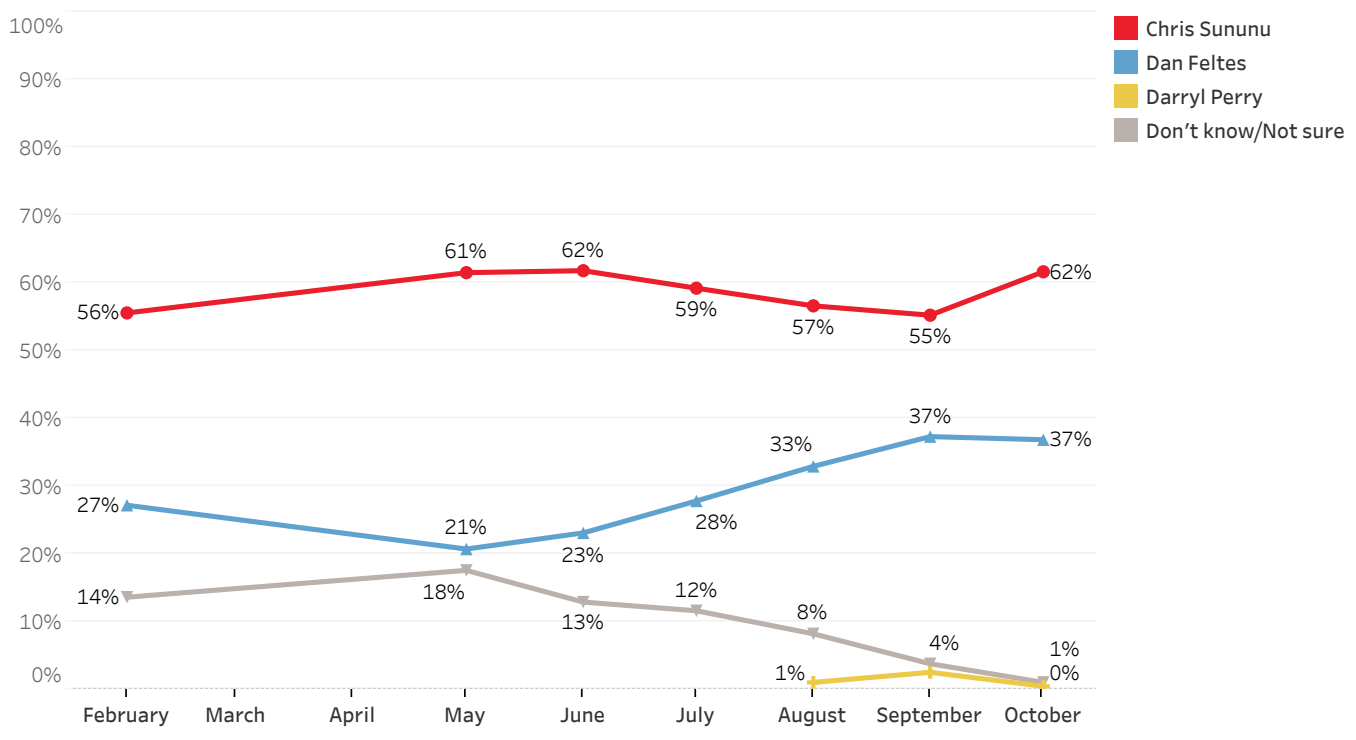
DURHAM, NH – Governor Chris Sununu is in a strong position to win re-election against his Democratic opponent Dan Feltes. Sununu's lead has increased since September and is now more than double the size of the lead he held over Molly Kelly in October 2018. Republicans and Independents overwhelmingly support Sununu while Feltes holds a smaller advantage among Democrats. These results appear unlikely to change as more than half of voters say they have definitely decided to vote for Sununu or have already voted for him.

These findings are based on the latest **Granite State Poll***, conducted by the University of New Hampshire Survey Center. Nine hundred thirty-three (933) Granite State Panel members completed the survey online between October 9 and October 12, 2020. The margin of sampling error for the survey is +/- 3.2 percent. Included were 899 likely 2020 general election voters (MSE = +/- 3.3%). Data were weighted by respondent sex, age, education, and region of the state to targets from the most recent American Community Survey (ACS) conducted by the U.S. Census Bureau, as well as party registration levels provided by the New Hampshire Secretary of State and 2016 election results in NH. Granite State Panel members are recruited from randomly-selected landline and cell phone numbers across New Hampshire and surveys are sent periodically to panel members.

2020 New Hampshire Gubernatorial Election

In the race for the New Hampshire governorship, incumbent Chris Sununu holds a wide lead over Democratic nominee and State Senate Majority Leader Dan Feltes with three weeks until election day. If the election were held today, 62% of likely New Hampshire voters say they would vote for Sununu while 37% would vote for Feltes, less than 1% would vote for Libertarian Darryl Perry, and 1% are undecided. Sununu's lead over Feltes (+25 percentage points) has slightly increased since September (+18). Sununu's lead over Feltes is more than twice as large as his lead over his 2018 challenger Molly Kelly in October 2018 (+11).

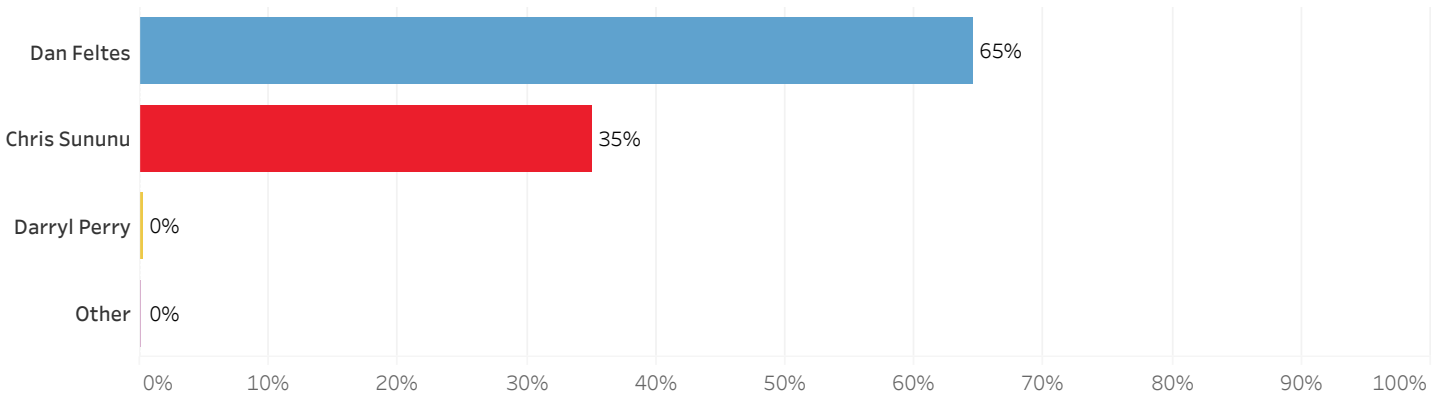
2020 Gubernatorial Election (With Leaners & Those Who Have Already Voted)



* We ask that this copyrighted information be referred to as *the Granite State Poll*, conducted by the University of New Hampshire Survey Center.

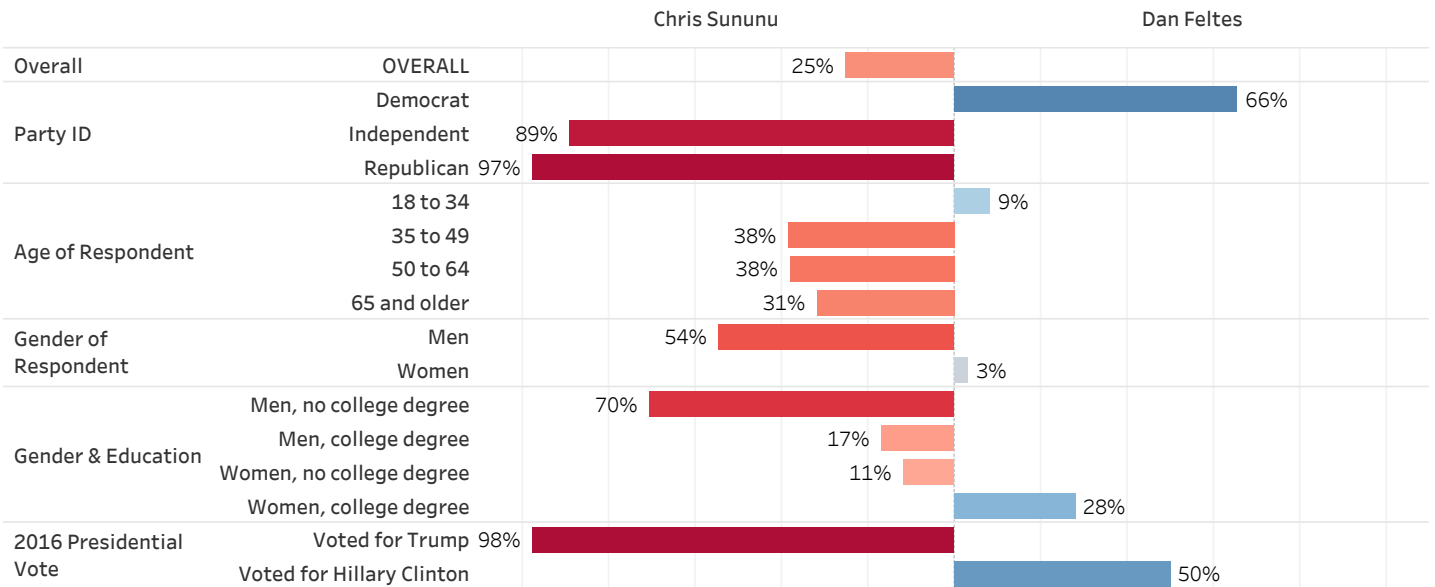
A record number of absentee ballots have already been cast for the upcoming election. Sixteen percent of residents say that they have already voted using an absentee ballot. So far, those who have voted via absentee ballot (N=149) largely favor Feltes: 65% say they voted for Feltes while 35% voted for Sununu, less than 1% voted for Perry, and less than 1% voted for another candidate.

2020 Gubernatorial Election Vote (Among Those Who Voted Already) - October 2020



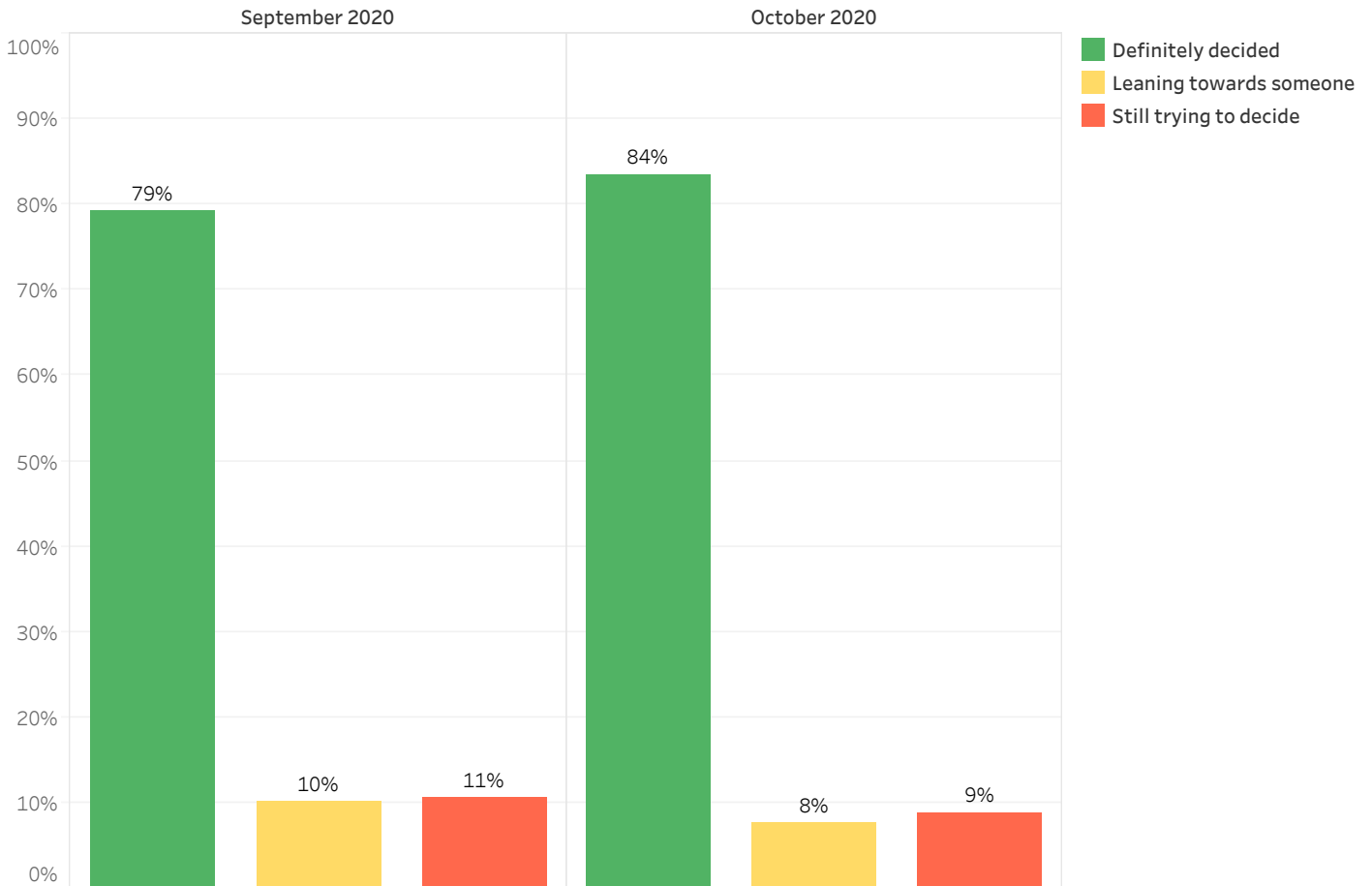
- Sununu leads Feltes by 97 percentage points among Republicans and by 89 points among Independents. Feltes holds a smaller, 66 point lead among Democrats.
- Sununu holds sizeable leads over Feltes among those aged 35 to 49 (+38 percentage points), 50 to 64 (+38), and 65 and older (+31), while Feltes holds a small lead among those aged 18 to 34 (+9).
- Feltes and Sununu are tied among women (Feltes +3) but Sununu holds a commanding lead among men (+54 percentage points).
- Sununu holds a wide lead among men without a college degree (+70 percentage points) and smaller leads among men with a college degree (+17) and women without a college degree (+11). Feltes leads among women with a college degree (+28).
- Sununu leads Feltes by 98 percentage points among those who supported Donald Trump in 2016 while Feltes holds a considerably smaller lead (+50) among those who voted for Hillary Clinton in 2016.

2020 Gubernatorial Election - Difference in Support - October 2020



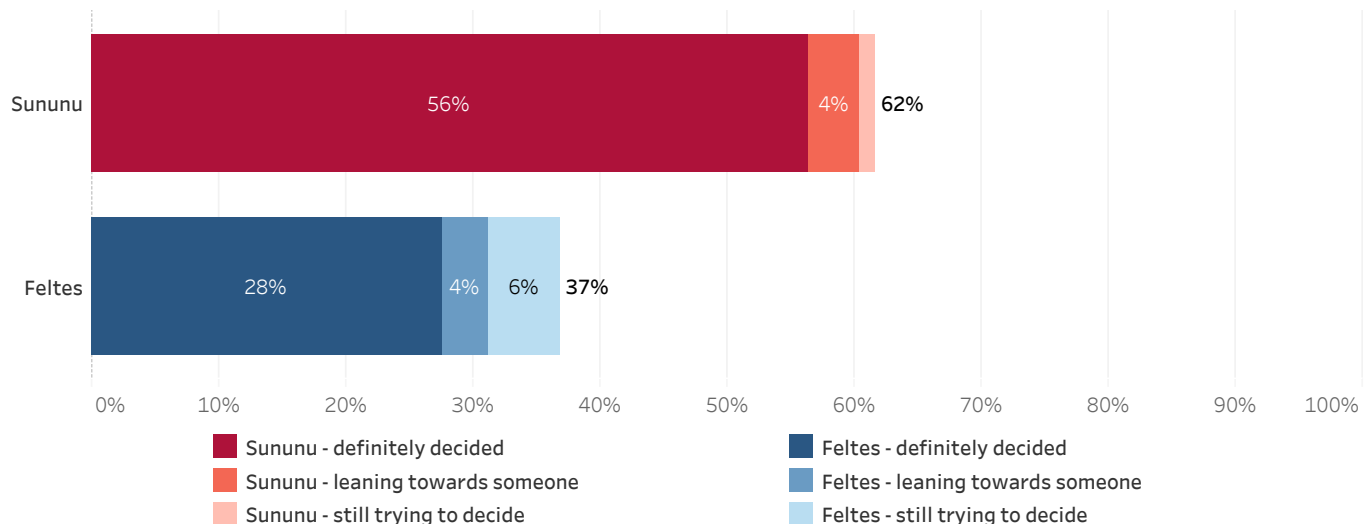
Eighty-four percent of likely voters in New Hampshire say they have definitely decided for whom they will vote for governor or have already voted, up slightly from 79% in September. By contrast, 95% of likely voters say they definitely decided how they will vote in the election for president or have already voted.

Decided on Choice for Gubernatorial Election or Already Voted



Sununu's lead will be difficult for Feltes to surmount as more than half of likely voters (56%) say they have definitely decided to vote for Sununu or have already voted for him, 4% lean toward Sununu, and 1% currently support Sununu but are still trying to decide. Only 28% of likely voters say they have definitely decided to vote for Feltes or have already voted for him, 4% lean toward Feltes, and 6% support Feltes but are still trying to decide.

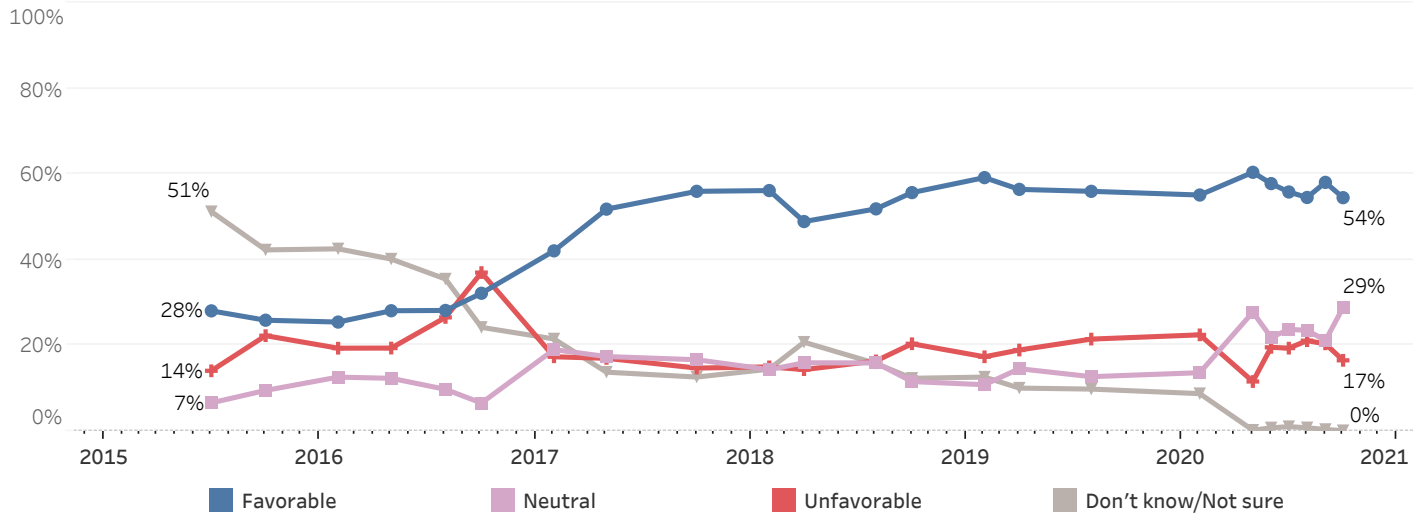
Decided on Choice for Gubernatorial Election or Already Voted - By Preferred Candidate - October 2020



Gubernatorial Candidates Favorability

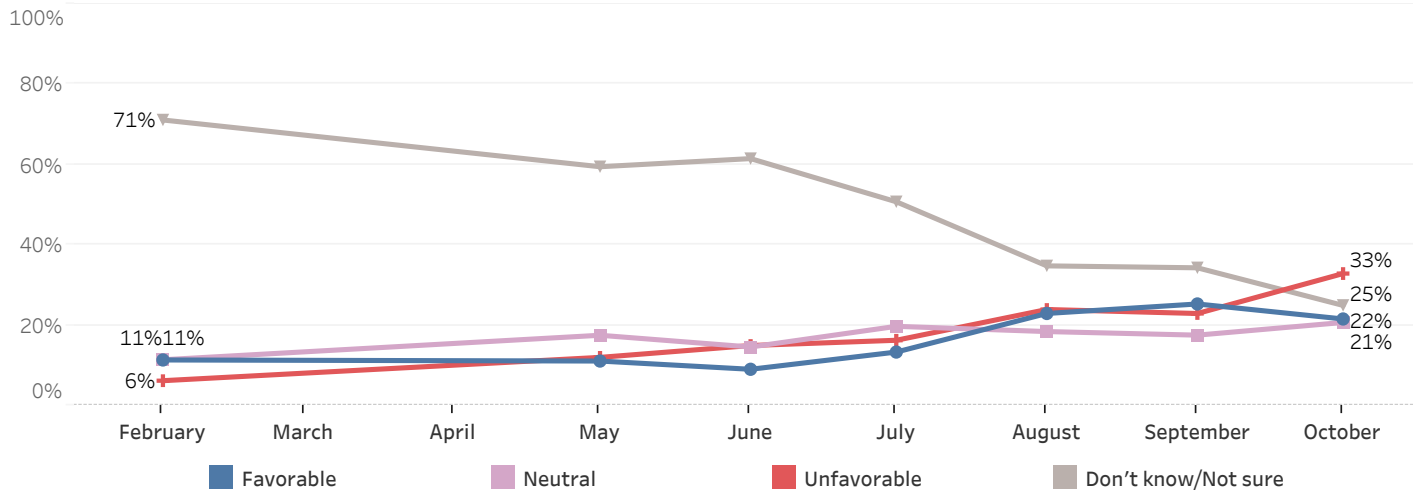
Sununu continues to be broadly popular in New Hampshire - 54% percent of Granite Staters say they have a favorable opinion of Sununu, 17% have an unfavorable opinion of him, 29% are neutral, and less than 1% don't know or are unsure. Sununu's net favorability rating (the percentage with a favorable opinion minus the percentage with an unfavorable opinion) is +38%, unchanged since September (+38). By contrast, President Trump's net favorability rating among Granite Staters is -12%.

Sununu (R) Favorability



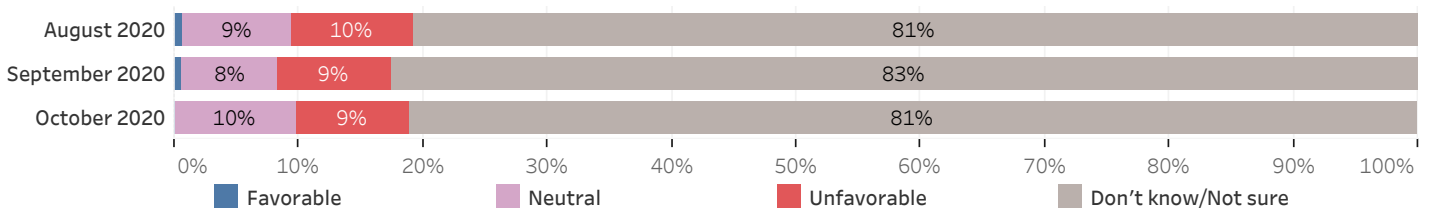
Dan Feltes is viewed far less favorably than Chris Sununu in New Hampshire: only 22% of Granite Staters say they have a favorable opinion of Feltes, 33% have an unfavorable opinion of him, 21% are neutral, and 25% don't know or are unsure. Feltes's net favorability rating is -11%, down from +2 in September.

Feltes (D) Favorability



Libertarian gubernatorial nominee Darryl Perry remains poorly-known in the state - less than 1% of respondents report having a favorable opinion of him, 9% have an unfavorable opinion of him, 10% are neutral, and 81% don't know or are unsure.

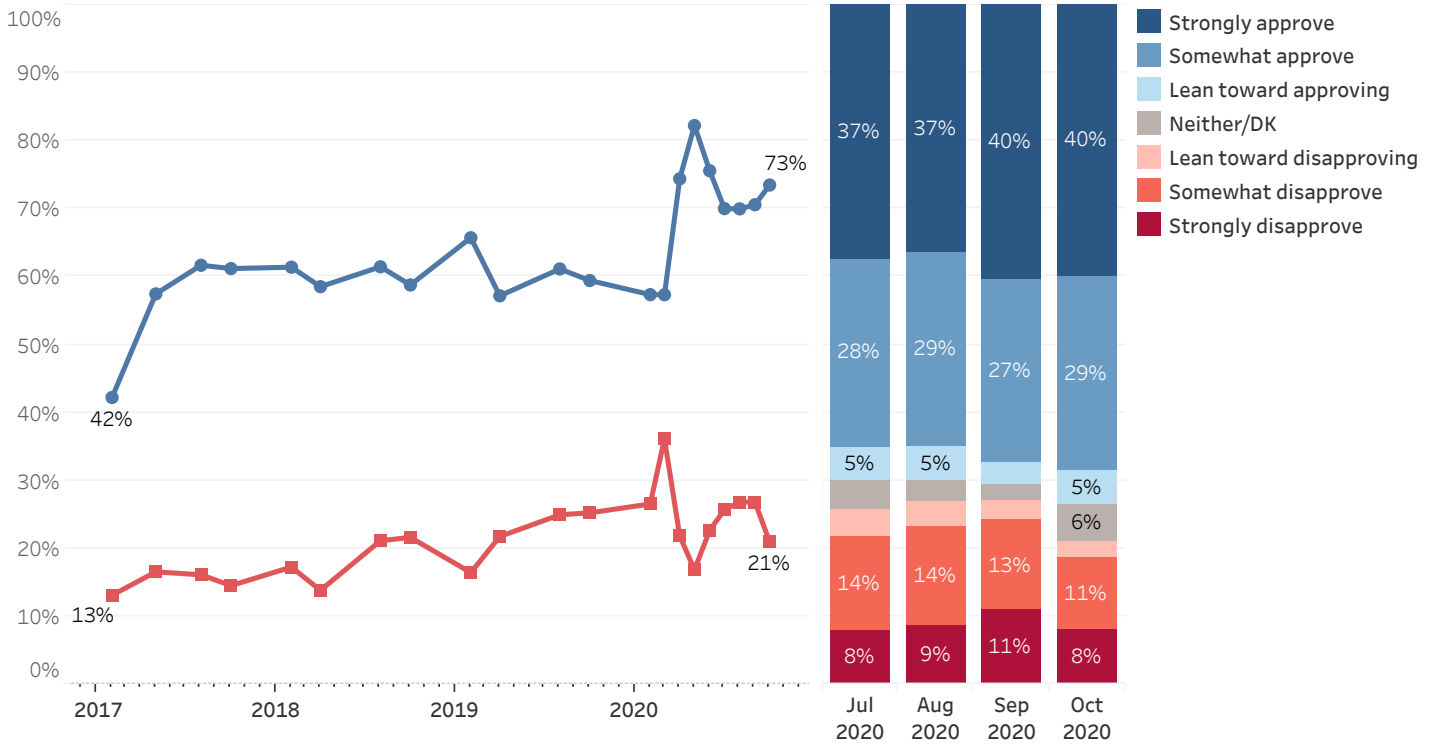
Perry (L) Favorability



Gubernatorial Approval

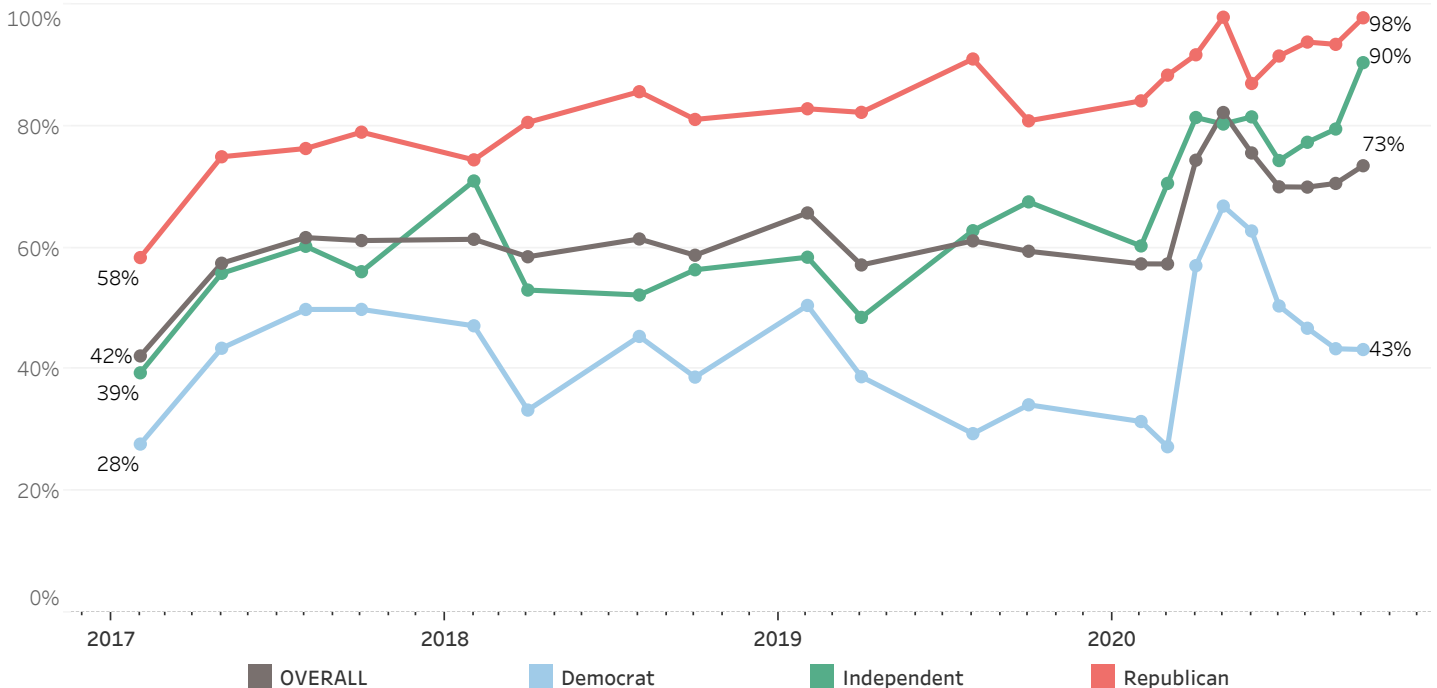
Sununu is in a strong position for re-election as most Granite Staters approve of the job he has done as governor - 73% approve of his performance as governor, 21% disapprove, and 6% neither approve nor disapprove or don't know. Approval of Sununu's performance is somewhat lower than in the late spring and early summer but remains higher than before the onset of the COVID-19 pandemic.

Gubernatorial Approval - Chris Sununu



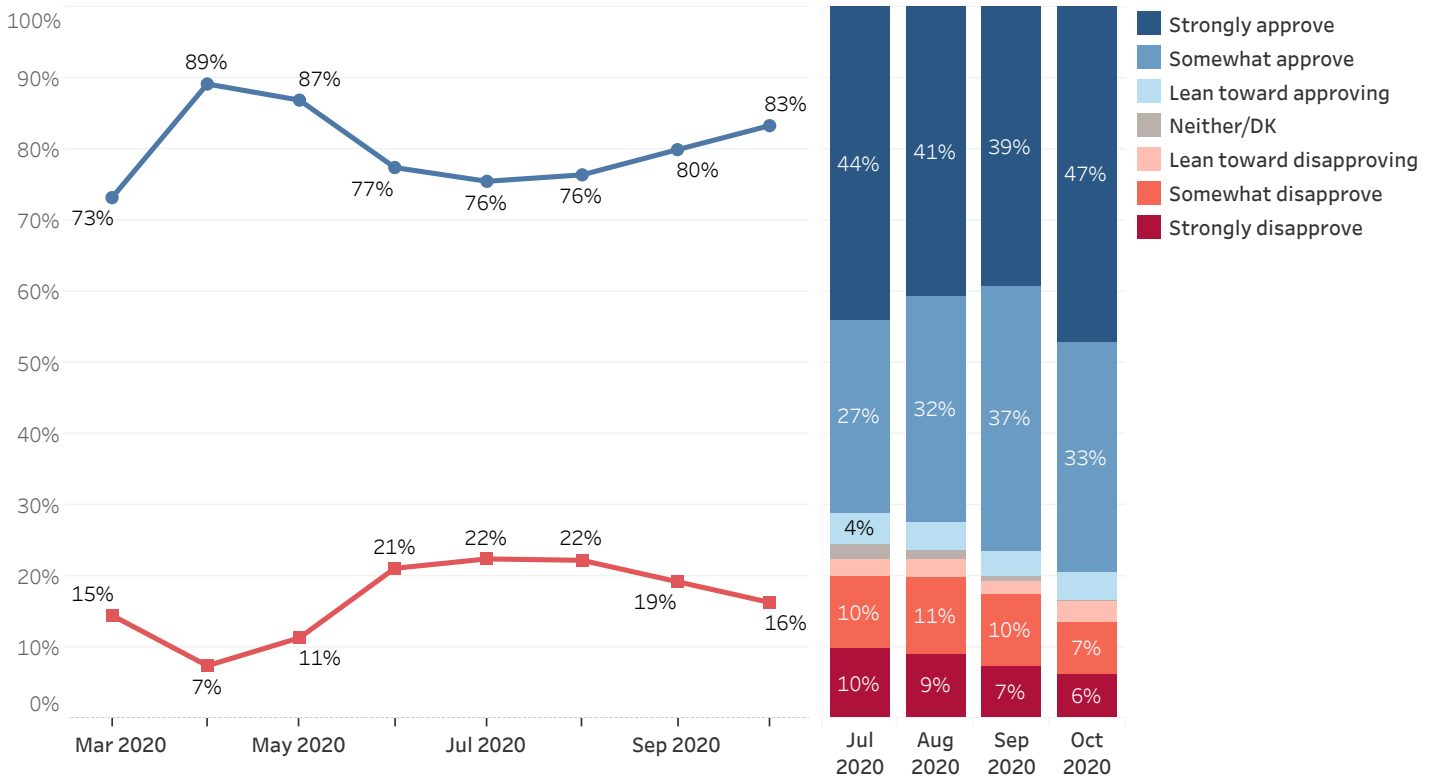
Approval of Sununu's job performance as governor is bipartisan - 98% of Republicans and 90% of Independents approve of Sununu's job performance while 43% of Democrats approve. Sununu's approval among Independents (90%) has increased since September (80%) and is now at an all-time high.

Job Approval - Governor Chris Sununu - By Party Identification



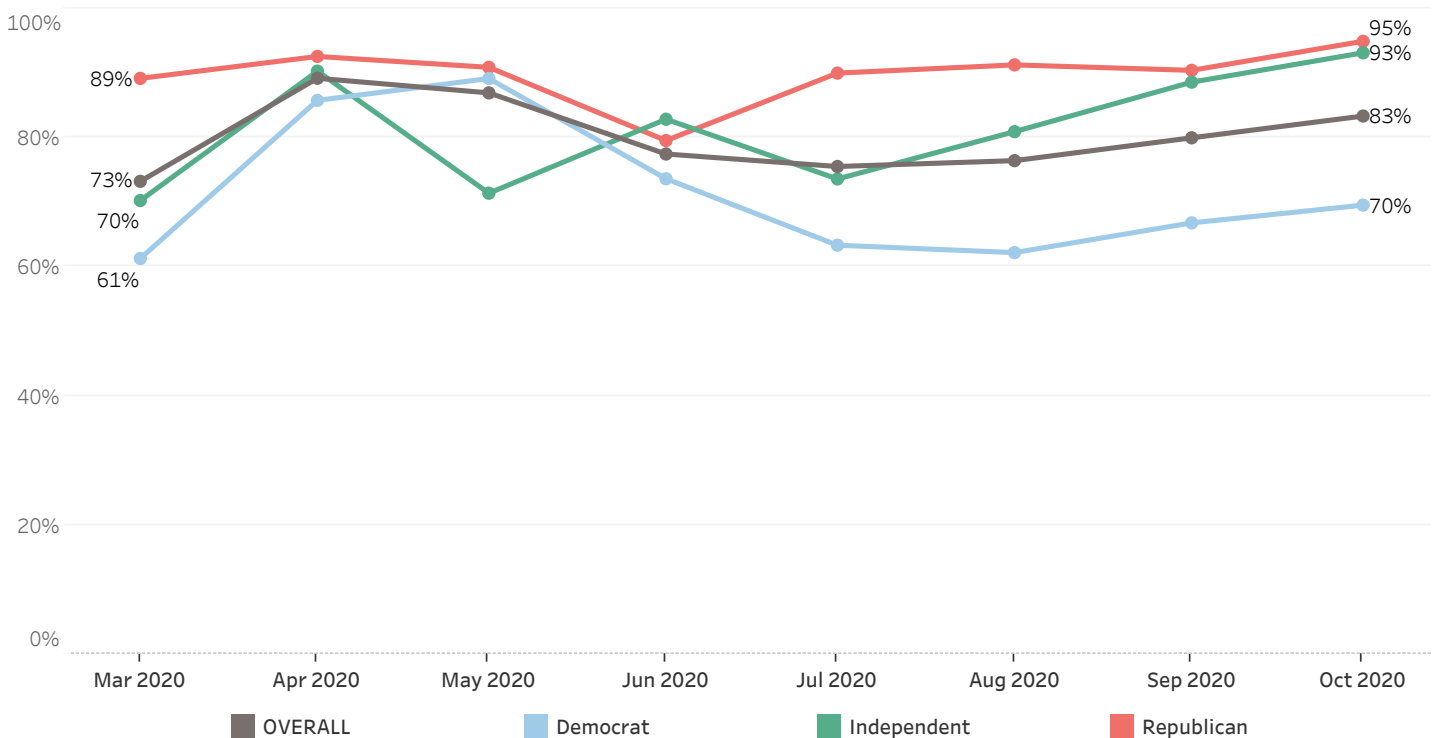
Eighty-three percent of New Hampshire residents approve of Governor Sununu's handling of the coronavirus (COVID-19) situation while 16% disapprove and 1% neither approve nor disapprove or don't know. Approval of Sununu's handling of the COVID-19 situation (83%) has ticked slightly upward since June and July (76%) and is approaching the highs it reached in April (89%) and May (87%).

Approval of Governor Sununu's Handling of Coronavirus (COVID-19) Situation



Approval of Sununu's handling of the coronavirus (COVID-19) situation is bipartisan: 95% of Republicans, 93% of Independents, and 70% of Democrats approve.

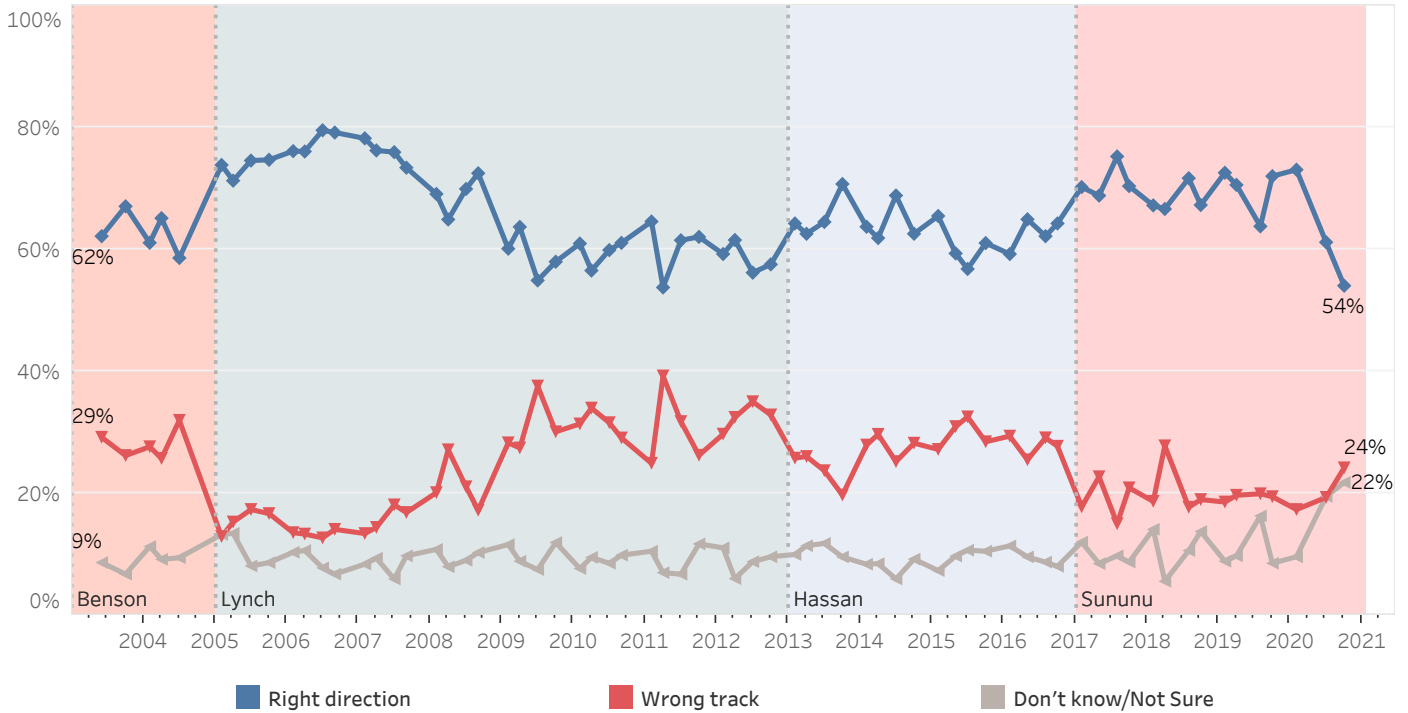
Approval of Governor Sununu's Handling of Coronavirus (COVID-19) Situation - By Party Identification



New Hampshire Heading in Right Direction or On Wrong Track

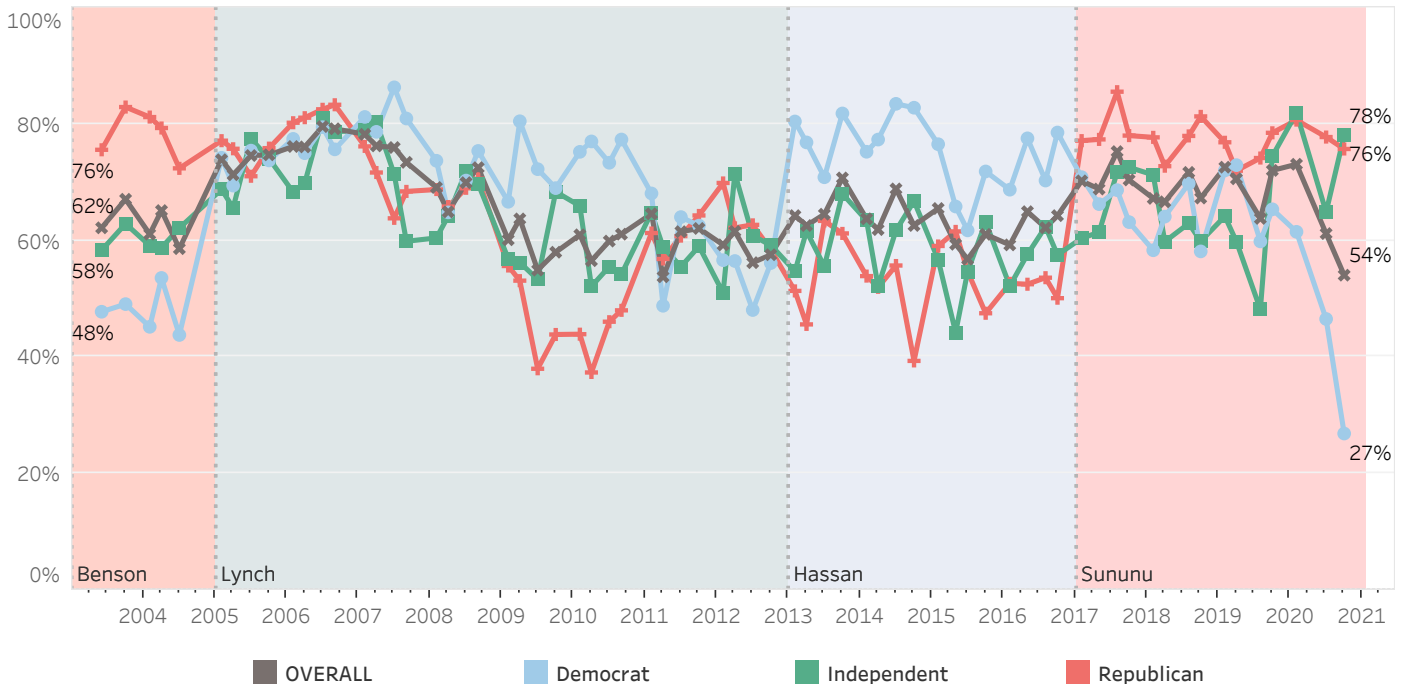
Fifty-four percent of New Hampshire residents believe that things in New Hampshire are going in the right direction while 24% think things are seriously off on the wrong track and 22% don't know or are unsure. Granite Staters have become far less optimistic than in February before the COVID-19 pandemic began when 73% said things were going in the right direction.

Right Direction or Wrong Track



Seventy-eight percent of Independents and 76% of Republicans believe the state is headed in the right direction but only 27% of Democrats agree. Democrats are far less likely to say the state is headed in the right direction than they were in February (61%) before COVID-19 became widespread.

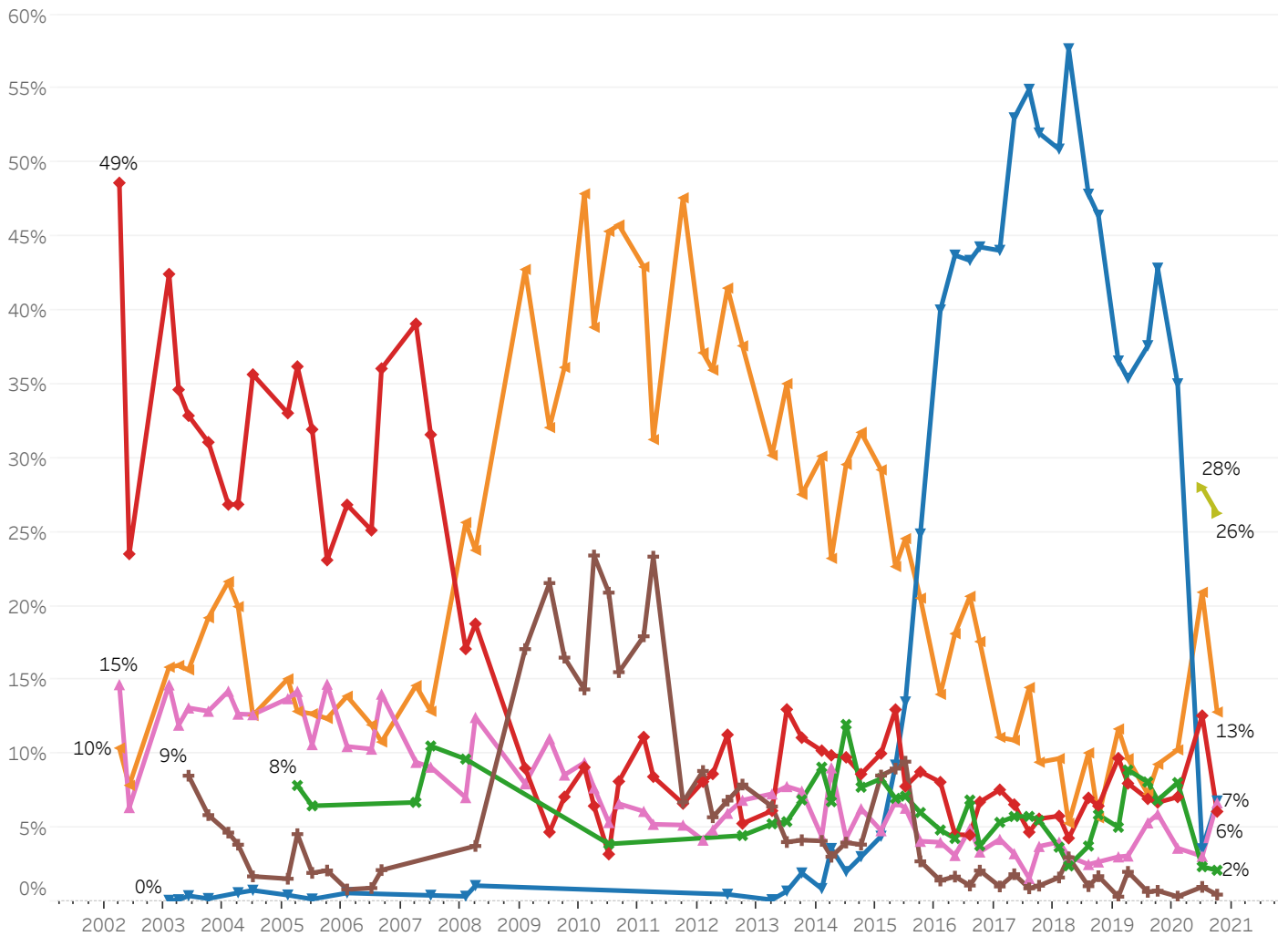
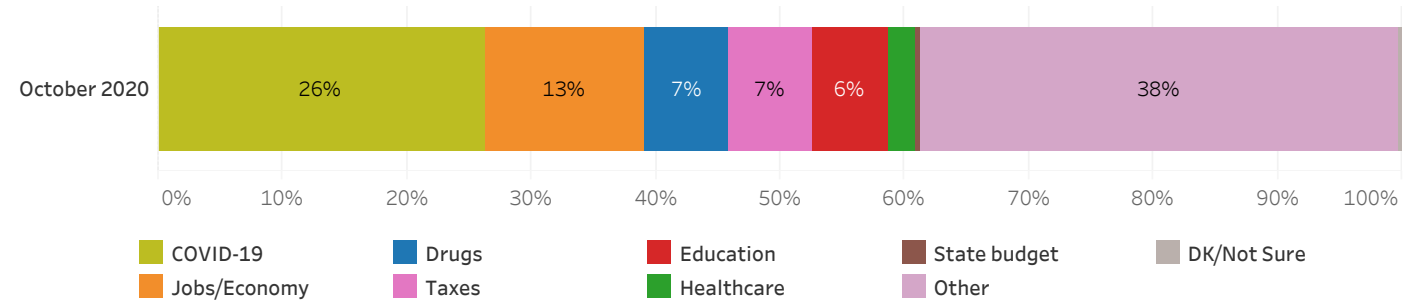
Right Direction or Wrong Track - By Party ID



Most Important Problem Facing New Hampshire

A quarter (26%) of New Hampshire residents believe that COVID-19 is the most important problem facing the state, while 13% believe jobs or the economy is most important. Fewer residents cite drugs (7%), taxes (7%), education (6%), healthcare (2%), or the state budget (<1%) as the most important problem facing New Hampshire while 38% mention another problem and less than 1% don't know or are unsure.

Most Important Problem - Coded



Granite State Poll Methodology

These findings are based on the latest Granite State Poll, conducted by the University of New Hampshire Survey Center. Nine hundred thirty-three (933) Granite State Panel members completed the survey online between October 9 and October 12, 2020. The margin of sampling error for the survey is +/- 3.2 percent. Included were 899 likely 2020 general election voters (MSE = +/- 3.3%). These MSE's have not been adjusted for design effect. The response rate for the October 2020 Granite State Poll is 35%. The design effect for the survey is 2.7%.

Data were weighted by respondent sex, age, education, and region of the state to targets from the most recent American Community Survey (ACS) conducted by the U.S. Census Bureau, as well as party registration levels provided by the New Hampshire Secretary of State and to 2016 election results in New Hampshire.

The Granite State Panel is part of an effort by the University of New Hampshire Survey Center to investigate new ways of gathering and understanding the opinion of New Hampshire residents. Approximately 5,750 New Hampshire adults were recruited from randomly selected landline and cell phone numbers to participate in the panel. Panelists are then asked to participate in online surveys sponsored by the UNH Survey Center.

The number of respondents in each demographic below may not equal the number reported in cross-tabulation tables as some respondents choose not to answer some questions. Due to rounding, percentages may not sum to 100%.

For more information about the methodology used in the Granite State Panel, contact Dr. Andrew Smith at (603) 862-2226 or by email at andrew.smith@unh.edu.

Granite State Poll, October 2020 Demographics

		%	N
Gender of Respondent	Men	49%	449
	Women	51%	466
Age of Respondent	18 to 34	27%	248
	35 to 49	22%	201
	50 to 64	31%	287
	65 and older	21%	190
Level of Education	High school or less	36%	334
	Tech school/Some college	31%	287
	College graduate	21%	193
	Postgraduate work	13%	117
Region of State	Connecticut Valley	15%	143
	Manchester Area	26%	245
	Mass Border	21%	197
	North Country	8%	70
	Seacoast	13%	120
	Central/Lakes	17%	156
Party ID	Democrat	43%	390
	Independent	15%	133
	Republican	42%	381
Voting Registration	Registered Democrat	28%	258
	Registered Undeclared/Not Reg.	42%	383
	Registered Republican	30%	271
2020 Voting Intent	Already voted absentee	17%	151
	Will definitely vote	81%	725
	Will vote unless emergency	3%	24

2020 New Hampshire Gubernatorial Election (With Those Who Have Already Voted)

If the election for Governor was being held today, would you vote for...

	<u>Dan Feltes</u>	<u>Chris Sununu</u>	<u>Darryl Perry</u>	<u>Other</u>	<u>Don't know/Not sure</u>	<u>N</u>
February 2020	27%	56%		4%	14%	545
May 2020	21%	61%		0%	18%	787
June 2020	23%	62%		2%	13%	952
July 2020	28%	59%		1%	12%	1,870
August 2020	33%	57%	1%	1%	8%	1,863
September 2020	35%	54%	1%	1%	9%	964
October 2020	36%	60%	0%	0%	3%	889

2020 New Hampshire Gubernatorial Election (With Leaners & Those Who Have Already Voted)

Who would you say you are leaning towards voting for....

	<u>Dan Feltes</u>	<u>Chris Sununu</u>	<u>Darryl Perry</u>	<u>Other</u>	<u>Don't know/Not sure</u>	<u>N</u>
October 2020	37%	62%	0%	0%	1%	889

2020 New Hampshire Gubernatorial Election Vote (Among Those Who Voted Already)

In the election for governor, did you vote for...

	<u>Dan Feltes</u>	<u>Chris Sununu</u>	<u>Darryl Perry</u>	<u>Other</u>	<u>Did not vote</u>	<u>N</u>
October 2020	64%	35%	0%	0%	0%	149

Decided on Choice for Gubernatorial Election

Have you definitely decided who you will vote for in the election for Governor... are you leaning toward someone ... or have you considered some candidates but are still trying to decide?

	<u>Definitely decided</u>	<u>Leaning towards someone</u>	<u>Still trying to decide</u>	<u>N</u>
September 2020	79%	10%	11%	972
October 2020	84%	8%	9%	899

Favorability - Chris Sununu

Below are a list of political figures in the U.S. and New Hampshire. Please indicate whether you have a favorable or unfavorable opinion of each of them or if you don't know enough about them to say - Governor Chris Sununu

	<u>Favorable</u>	<u>Neutral</u>	<u>Unfavorable</u>	<u>Don't know/Not sure</u>	<u>N</u>
July 2015	28%	7%	14%	51%	530
October 2015	26%	10%	22%	42%	581
February 2016	25%	13%	19%	43%	684
May 2016	28%	12%	19%	40%	618
August 2016	28%	10%	27%	36%	467
October 2016	32%	7%	37%	24%	767
February 2017	42%	19%	17%	22%	502
May 2017	52%	17%	17%	14%	514
October 2017	56%	17%	15%	13%	570
February 2018	56%	14%	15%	14%	519
April 2018	49%	16%	14%	21%	208
August 2018	52%	16%	16%	16%	500
October 2018	56%	12%	20%	12%	640
February 2019	59%	11%	17%	13%	603
April 2019	56%	15%	19%	10%	548
August 2019	56%	13%	21%	10%	496
February 2020	55%	14%	22%	9%	610
May 2020	60%	28%	12%	0%	838
June 2020	58%	22%	20%	1%	993
July 2020	56%	24%	19%	1%	1,884
August 2020	55%	24%	21%	1%	1,873
September 2020	58%	21%	20%	0%	1,017
October 2020	54%	29%	17%	0%	908

Favorability - Dan Feltes

Below are a list of political figures in the U.S. and New Hampshire. Please indicate whether you have a favorable or unfavorable opinion of each of them or if you don't know enough about them to say - State Senate Majority Leader Dan Feltes

	<u>Favorable</u>	<u>Neutral</u>	<u>Unfavorable</u>	<u>Don't know/Not sure</u>	<u>N</u>
February 2020	11%	11%	6%	71%	609
May 2020	11%	17%	12%	59%	838
June 2020	9%	15%	15%	61%	993
July 2020	13%	20%	16%	51%	1,834
August 2020	23%	18%	24%	35%	1,833
September 2020	25%	18%	23%	34%	1,007
October 2020	22%	21%	33%	25%	906

Favorability - Darryl Perry

Below are a list of political figures in the U.S. and New Hampshire. Please indicate whether you have a favorable or unfavorable opinion of each of them or if you don't know enough about them to say - Political Activist Darryl Perry

	<u>Favorable</u>	<u>Neutral</u>	<u>Unfavorable</u>	<u>Don't know/Not sure</u>	<u>N</u>
August 2020	1%	9%	10%	81%	1,825
September 2020	1%	8%	9%	83%	1,008
October 2020	0%	10%	9%	81%	905

Approval of Governor Sununu's Job Performance

Generally speaking, do you approve or disapprove of the way Chris Sununu is handling his job as governor?

	<u>Approve</u>	<u>Disapprove</u>	<u>Neither/DK</u>	<u>N</u>
February 2017	42%	13%	45%	476
May 2017	57%	17%	26%	502
August 2017	62%	16%	22%	484
October 2017	61%	15%	24%	540
February 2018	61%	17%	21%	500
April 2018	59%	14%	28%	189
August 2018	61%	21%	17%	486
October 2018	59%	22%	20%	622
February 2019	66%	16%	18%	592
April 2019	57%	22%	21%	529
August 2019	61%	25%	14%	902
October 2019	59%	25%	15%	1,231
February 2020	57%	27%	16%	582
March 2020	57%	36%	7%	646
April 2020	74%	22%	4%	1,150
May 2020	82%	17%	1%	818
June 2020	76%	23%	2%	993
July 2020	70%	26%	4%	1,978
August 2020	70%	27%	3%	1,940
September 2020	71%	27%	3%	1,027
October 2020	73%	21%	6%	931

Approval of Governor Sununu's Handling of Coronavirus (COVID-19) Situation

Generally speaking, do you approve or disapprove of the way Chris Sununu is handling the coronavirus (COVID-19) situation?

	<u>Approve</u>	<u>Disapprove</u>	<u>Neither/DK</u>	<u>N</u>
March 2020	73%	15%	12%	643
April 2020	89%	7%	3%	1,154
May 2020	87%	11%	2%	815
June 2020	77%	21%	1%	970
July 2020	76%	22%	2%	1,973
August 2020	76%	22%	1%	1,930
September 2020	80%	19%	1%	1,027
October 2020	83%	16%	0%	930

New Hampshire Heading in Right Direction or On Wrong Track

Do you think things in New Hampshire are generally going in the right direction or are they seriously off on the wrong track?

	<u>Right direction</u>	<u>Wrong track</u>	<u>Don't know/Not Sure</u>	<u>N</u>		<u>Right direction</u>	<u>Wrong track</u>	<u>Don't know/Not Sure</u>	<u>N</u>
June 2003	62%	29%	9%	510	February 2012	59%	30%	11%	517
October 2003	67%	26%	7%	485	April 2012	62%	32%	6%	532
February 2004	61%	28%	11%	500	July 2012	56%	35%	9%	577
April 2004	65%	26%	9%	530	October 2012	59%	32%	9%	1,198
July 2004	59%	32%	9%	503	February 2013	64%	26%	10%	573
February 2005	74%	13%	13%	535	April 2013	63%	26%	11%	497
April 2005	71%	15%	13%	488	July 2013	64%	24%	12%	509
July 2005	75%	17%	8%	494	October 2013	71%	20%	10%	645
October 2005	75%	17%	9%	502	February 2014	64%	28%	8%	570
February 2006	76%	14%	10%	495	April 2014	62%	30%	8%	505
April 2006	76%	13%	11%	501	July 2014	69%	25%	6%	656
July 2006	80%	13%	8%	497	October 2014	63%	28%	9%	666
September 2006	79%	14%	7%	509	February 2015	65%	27%	7%	501
February 2007	78%	13%	8%	524	May 2015	59%	31%	10%	562
April 2007	76%	14%	9%	506	July 2015	57%	33%	11%	522
July 2007	76%	18%	6%	500	October 2015	61%	28%	11%	581
September 2007	73%	17%	10%	507	February 2016	59%	29%	11%	669
February 2008	69%	20%	11%	547	May 2016	65%	25%	10%	593
April 2008	65%	27%	8%	491	August 2016	62%	29%	9%	517
July 2008	70%	21%	9%	514	October 2016	64%	28%	8%	890
September 2008	72%	17%	10%	535	February 2017	70%	18%	12%	496
February 2009	60%	28%	12%	605	May 2017	69%	23%	8%	510
April 2009	64%	27%	9%	497	August 2017	75%	15%	10%	500
July 2009	55%	38%	7%	557	October 2017	70%	21%	9%	559
October 2009	58%	30%	12%	496	February 2018	67%	19%	14%	516
February 2010	61%	31%	8%	490	April 2018	67%	28%	6%	206
April 2010	57%	34%	9%	503	August 2018	72%	18%	11%	493
July 2010	60%	32%	9%	496	October 2018	67%	19%	14%	640
September 2010	61%	29%	10%	511	February 2019	73%	19%	9%	594
February 2011	65%	25%	11%	517	April 2019	71%	20%	10%	547
April 2011	54%	39%	7%	491	August 2019	73%	15%	13%	907
July 2011	61%	32%	7%	503	October 2019	72%	19%	9%	1,250
October 2011	62%	26%	12%	544	February 2020	73%	17%	10%	604
					July 2020	61%	19%	19%	1,984
					October 2020	54%	24%	22%	922

Most Important Problem - New Hampshire

Let's turn to the state of New Hampshire. What do you think is the most important problem facing the state of New Hampshire today?

	<u>Drugs</u>	<u>Education</u>	<u>Healthcare</u>	<u>Jobs/ Economy</u>	<u>State budget</u>	<u>Taxes</u>	<u>Other</u>	<u>DK/Not Sure</u>	<u>N</u>
April 2002		49%		10%		15%	16%	11%	681
June 2002		24%		8%		6%	57%	5%	677
February 2003	0%	42%		16%		15%	18%	9%	644
April 2003	0%	35%		16%		12%	26%	12%	499
June 2003	0%	33%		16%	9%	13%	22%	8%	513
October 2003	0%	31%		19%	6%	13%	22%	9%	490
February 2004		27%		22%	5%	14%	23%	10%	502
April 2004	1%	27%		20%	4%	13%	24%	12%	536
July 2004	1%	36%		13%	2%	13%	26%	11%	505
February 2005	0%	33%		15%	2%	14%	21%	15%	541
April 2005		36%	8%	13%	5%	14%	15%	9%	487
July 2005	0%	32%	6%	13%	2%	11%	24%	12%	496
October 2005		23%		12%	2%	15%	35%	13%	503
February 2006	1%	27%		14%	1%	11%	34%	13%	498
July 2006		25%		12%	1%	10%	38%	13%	490
September 2006		36%		11%	2%	14%	29%	8%	499
April 2007		39%	7%	15%		9%	23%	7%	501
July 2007	0%	32%	11%	13%		9%	29%	7%	488
February 2008	0%	17%	10%	26%		7%	33%	7%	542
April 2008	1%	19%		24%	4%	12%	35%	5%	496
February 2009		9%		43%	17%	8%	23%		607
July 2009		5%		32%	22%	11%	26%	5%	551
October 2009		7%		36%	17%	9%	26%	6%	494
February 2010		9%		48%	14%	9%	18%	2%	486
April 2010		6%		39%	23%	8%	21%	3%	504
July 2010		3%	4%	45%	21%	5%	17%	4%	498
September 2010		8%		46%	16%	7%	19%	5%	504
February 2011		11%		43%	18%	6%	18%	4%	508
April 2011		8%		31%	23%	5%	28%	4%	494
October 2011		7%		48%	7%	5%	28%	6%	548
February 2012		8%		37%	9%	4%	36%	6%	509
April 2012		9%		36%	6%	5%	37%	8%	518
July 2012	0%	11%		42%	7%	6%	29%	5%	541
October 2012		5%	4%	38%	8%	7%	33%	5%	575
April 2013	0%	6%	5%	30%	6%	7%	38%	6%	485
July 2013	1%	13%	5%	35%	4%	8%	26%	7%	458
October 2013	2%	11%	7%	28%	4%	7%	26%	15%	602
February 2014	1%	10%	9%	30%	4%	4%	30%	11%	545
April 2014	4%	10%	7%	23%	3%	9%	35%	10%	464
July 2014	2%	10%	12%	30%	4%	4%	29%	9%	614
October 2014	3%	9%	8%	32%	4%	6%	28%	11%	644
February 2015	4%	10%	8%	29%	9%	5%	26%	8%	467
May 2015	9%	13%	7%	23%	9%	7%	24%	8%	540
July 2015	14%	8%	7%	25%	9%	6%	27%	4%	509
October 2015	25%	9%	6%	21%	3%	4%	26%	7%	563

Most Important Problem - New Hampshire

Let's turn to the state of New Hampshire. What do you think is the most important problem facing the state of New Hampshire today?

	<u>COVID-19</u>	<u>Drugs</u>	<u>Education</u>	<u>Healthcare</u>	<u>Jobs/ Economy</u>	<u>State budget</u>	<u>Taxes</u>	<u>Other</u>	<u>DK/Not Sure</u>	<u>N</u>
February 2016		40%	8%	5%	14%	1%	4%	21%	7%	659
May 2016		44%	5%	4%	18%	2%	3%	19%	5%	591
August 2016		43%	5%	7%	21%	1%	5%	15%	3%	509
October 2016		44%	7%	4%	18%	2%	3%	16%	6%	868
February 2017		44%	8%	5%	11%	1%	4%	17%	9%	493
May 2017		53%	7%	6%	11%	2%	3%	14%	5%	508
August 2017		55%	5%	6%	14%	1%	2%	13%	5%	493
October 2017		52%	6%	5%	9%	1%	4%	17%	6%	563
February 2018		51%	6%	4%	10%	2%	4%	18%	6%	509
April 2018		58%	4%	2%	5%	3%	3%	19%	5%	200
August 2018		48%	7%	4%	10%	1%	3%	22%	6%	491
October 2018		46%	6%	6%	6%	2%	3%	24%	7%	632
February 2019		37%	10%	5%	12%	0%	3%	28%	6%	594
April 2019		35%	8%	9%	10%	2%	3%	28%	5%	531
August 2019		38%	7%	8%	7%	1%	5%	29%	5%	484
October 2019		43%	7%	7%	9%	1%	6%	19%	9%	1,228
February 2020		35%	7%	8%	10%	0%	4%	30%	6%	587
July 2020	28%	4%	13%	2%	21%	1%	3%	27%	1%	1,839
October 2020	26%	7%	6%	2%	13%	0%	7%	38%	0%	835

2020 New Hampshire Gubernatorial Election (With Those Who Have Already Voted)

		<u>Dan Feltes</u>	<u>Chris Sununu</u>	<u>Darryl Perry</u>	<u>Other</u>	<u>Don't know/Not sure</u>	<u>N</u>
STATEWIDE	October 2020	36%	60%	0%	0%	3%	889
Voting Registration	Registered Democrat	86%	13%	0%		1%	255
	Registered Undeclared/Not Reg.	27%	68%	1%	0%	5%	375
	Registered Republican	1%	97%		0%	1%	249
Party ID	Democrat	81%	16%	0%		3%	387
	Independent	5%	86%	0%		9%	127
	Republican	1%	98%	1%	0%	0%	363
Ideology	Liberal	88%	10%			2%	227
	Moderate	36%	58%	0%		6%	329
	Conservative	0%	98%	1%	0%	0%	261
Media Usage	Boston Globe reader	65%	33%			2%	63
	Conservative radio listener	3%	95%	1%	0%	1%	262
	Fox News viewer	8%	90%	1%	0%	1%	412
	Local newspapers reader	52%	44%	0%	0%	3%	194
	NHPR listener	41%	56%	0%	0%	3%	567
	Union Leader reader	30%	64%	2%		3%	149
	WMUR viewer	34%	63%	0%	0%	3%	669
Age of Respondent	18 to 34	53%	43%	0%		3%	223
	35 to 49	27%	67%	2%		5%	197
	50 to 64	30%	67%	0%		3%	277
	65 and older	34%	66%	0%	0%	0%	186
Gender of Respondent	Men	22%	75%	1%	0%	2%	423
	Women	50%	46%	0%		4%	447
Level of Education	High school or less	32%	68%				304
	Tech school/Some college	24%	71%	1%		3%	281
	College graduate	52%	44%	0%		4%	188
	Postgraduate work	52%	40%	0%	0%	7%	113
Region of State	Connecticut Valley	53%	44%		0%	2%	133
	Manchester Area	41%	55%	1%		3%	241
	Mass Border	28%	69%	0%		2%	189
	North Country	25%	72%	1%		2%	55
	Seacoast	37%	58%			6%	117
	Central/Lakes	28%	70%			3%	153
Gender & Education	Men, no college degree	14%	84%	1%		1%	294
	Men, college degree	40%	55%	0%	0%	4%	128
	Women, no college degree	44%	54%			2%	279
	Women, college degree	61%	32%	0%		7%	168
2016 Presidential Vote	Voted for Trump	1%	98%	1%	0%	0%	406
	Voted for Hillary Clinton	73%	22%			5%	420
	Did not vote in 2016	22%	72%	3%		3%	15
2020 Voting Intent	Already voted absentee	65%	35%	0%	0%		148
	Will definitely vote	31%	65%	1%		3%	717
	Will vote unless emergency	15%	72%			12%	24

2020 New Hampshire Gubernatorial Election (With Leaners & Those Who Have Already Voted)

		<u>Dan Feltes</u>	<u>Chris Sununu</u>	<u>Darryl Perry</u>	<u>Other</u>	<u>Don't know/Not sure</u>	<u>N</u>
STATEWIDE	October 2020	37%	62%	0%	0%	1%	889
Voting Registration	Registered Democrat	86%	13%	0%		1%	255
	Registered Undeclared/Not Reg.	27%	70%	1%	0%	2%	375
	Registered Republican	2%	97%		0%		249
Party ID	Democrat	82%	16%	0%		2%	387
	Independent	5%	94%	0%		1%	127
	Republican	1%	98%	1%	0%	0%	363
Ideology	Liberal	88%	10%			2%	227
	Moderate	37%	61%	0%		1%	329
	Conservative	1%	98%	1%	0%	0%	261
Media Usage	Boston Globe reader	65%	34%			1%	63
	Conservative radio listener	3%	96%	1%	0%		262
	Fox News viewer	8%	91%	1%	0%	1%	412
	Local newspapers reader	53%	46%	0%	0%	1%	194
	NHPR listener	41%	58%	0%	0%	1%	567
	Union Leader reader	31%	67%	2%		1%	149
	WMUR viewer	34%	65%	0%	0%	1%	669
Age of Respondent	18 to 34	54%	46%	0%			223
	35 to 49	28%	67%	2%		3%	197
	50 to 64	31%	69%	0%		1%	277
	65 and older	34%	66%	0%	0%	0%	186
Gender of Respondent	Men	22%	76%	1%	0%	1%	423
	Women	51%	48%	0%		1%	447
Level of Education	High school or less	32%	68%				304
	Tech school/Some college	25%	73%	1%		1%	281
	College graduate	52%	45%	0%		2%	188
	Postgraduate work	55%	43%	0%	0%	2%	113
Region of State	Connecticut Valley	53%	44%		0%	2%	133
	Manchester Area	41%	57%	1%		0%	241
	Mass Border	30%	70%	0%		0%	189
	North Country	25%	73%	1%			55
	Seacoast	37%	58%			5%	117
	Central/Lakes	28%	72%			0%	153
Gender & Education	Men, no college degree	14%	84%	1%		1%	294
	Men, college degree	41%	58%	0%	0%	0%	128
	Women, no college degree	44%	56%				279
	Women, college degree	62%	34%	0%		3%	168
2016 Presidential Vote	Voted for Trump	1%	98%	1%	0%		406
	Voted for Hillary Clinton	74%	24%			2%	420
	Did not vote in 2016	22%	72%	3%		3%	15
2020 Voting Intent	Already voted absentee	65%	35%	0%	0%		148
	Will definitely vote	32%	66%	1%		1%	717
	Will vote unless emergency	17%	81%			2%	24

Decided on Choice for Gubernatorial Election

		Definitely decided	Leaning towards someone	Still trying to decide	N
STATEWIDE	October 2020	84%	8%	9%	899
Voting Registration	Registered Democrat	77%	4%	19%	256
	Registered Undeclared/Not Reg.	81%	14%	5%	376
	Registered Republican	94%	2%	4%	258
Party ID	Democrat	73%	11%	15%	389
	Independent	81%	13%	6%	128
	Republican	95%	2%	3%	371
Ideology	Liberal	62%	17%	22%	228
	Moderate	89%	7%	4%	329
	Conservative	95%	2%	4%	269
Media Usage	Boston Globe reader	94%	3%	3%	63
	Conservative radio listener	93%	3%	3%	271
	Fox News viewer	93%	3%	4%	422
	Local newspapers reader	88%	6%	6%	202
	NHPR listener	89%	8%	3%	569
	Union Leader reader	88%	7%	6%	150
	WMUR viewer	87%	9%	4%	680
Age of Respondent	18 to 34	62%	16%	22%	224
	35 to 49	88%	6%	5%	197
	50 to 64	87%	7%	6%	286
	65 and older	98%	1%	0%	186
Gender of Respondent	Men	89%	7%	4%	432
	Women	77%	9%	14%	449
Level of Education	High school or less	80%	4%	16%	312
	Tech school/Some college	91%	5%	4%	281
	College graduate	79%	16%	5%	189
	Postgraduate work	82%	12%	6%	115
Region of State	Connecticut Valley	84%	14%	2%	133
	Manchester Area	72%	6%	22%	242
	Mass Border	90%	4%	7%	197
	North Country	92%	6%	1%	54
	Seacoast	84%	9%	7%	118
	Central/Lakes	89%	10%	1%	154
Gender & Education	Men, no college degree	90%	5%	5%	302
	Men, college degree	87%	11%	2%	128
	Women, no college degree	79%	3%	18%	279
	Women, college degree	75%	18%	7%	170
2016 Presidential Vote	Voted for Trump	96%	2%	2%	415
	Voted for Hillary Clinton	74%	11%	15%	422
	Did not vote in 2016	71%	8%	21%	15
2020 Voting Intent	Already voted absentee	100%			151
	Will definitely vote	81%	9%	10%	725
	Will vote unless emergency	58%	27%	15%	24

Favorability - Chris Sununu

		<u>Favorable</u>	<u>Neutral</u>	<u>Unfavorable</u>	<u>Don't know/Not sure</u>	<u>N</u>
STATEWIDE	October 2020	54%	29%	17%	0%	908
Voting Registration	Registered Democrat	15%	46%	40%	0%	256
	Registered Undeclared/Not Reg.	62%	27%	11%	0%	374
	Registered Republican	84%	13%	3%		258
Party ID	Democrat	19%	44%	37%	0%	382
	Independent	68%	28%	3%	0%	133
	Republican	86%	13%	1%		381
Ideology	Liberal	12%	44%	44%	0%	221
	Moderate	56%	30%	14%	0%	339
	Conservative	85%	13%	2%		272
Media Usage	Boston Globe reader	36%	13%	50%	1%	63
	Conservative radio listener	83%	15%	2%		273
	Fox News viewer	86%	10%	4%	0%	426
	Local newspapers reader	43%	28%	28%	0%	204
	NHPR listener	52%	28%	20%	0%	567
	Union Leader reader	60%	19%	21%		150
	WMUR viewer	56%	27%	17%	0%	689
Age of Respondent	18 to 34	41%	41%	18%		228
	35 to 49	64%	18%	18%		199
	50 to 64	58%	27%	15%		287
	65 and older	56%	29%	15%	1%	189
Gender of Respondent	Men	70%	17%	12%	0%	447
	Women	38%	41%	20%	0%	443
Level of Education	High school or less	54%	39%	6%		320
	Tech school/Some college	68%	17%	15%	0%	287
	College graduate	44%	29%	26%		185
	Postgraduate work	39%	29%	32%	0%	115
Region of State	Connecticut Valley	44%	32%	24%	0%	135
	Manchester Area	55%	32%	13%	0%	244
	Mass Border	52%	30%	17%		197
	North Country	35%	54%	12%		56
	Seacoast	60%	21%	19%		120
	Central/Lakes	69%	17%	14%	0%	156
Gender & Education	Men, no college degree	77%	14%	9%		315
	Men, college degree	53%	25%	22%	0%	130
	Women, no college degree	41%	46%	13%	0%	280
	Women, college degree	34%	33%	34%		164
2016 Presidential Vote	Voted for Trump	89%	9%	1%		419
	Voted for Hillary Clinton	19%	48%	34%	0%	415
	Did not vote in 2016	39%	56%	3%	2%	27
2020 Voting Intent	Already voted absentee	24%	41%	35%		150
	Will definitely vote	61%	26%	13%	0%	717
	Will vote unless emergency	79%	18%	3%		24

Favorability - Dan Feltes

		<u>Favorable</u>	<u>Neutral</u>	<u>Unfavorable</u>	<u>Don't know/Not sure</u>	<u>N</u>
STATEWIDE	October 2020	22%	21%	33%	25%	906
Voting Registration	Registered Democrat	46%	36%	6%	12%	256
	Registered Undeclared/Not Reg.	17%	17%	43%	23%	372
	Registered Republican	4%	10%	45%	41%	257
Party ID	Democrat	44%	34%	5%	16%	382
	Independent	5%	15%	65%	15%	133
	Republican	5%	10%	49%	37%	378
Ideology	Liberal	43%	38%	3%	17%	222
	Moderate	25%	20%	32%	23%	339
	Conservative	5%	10%	55%	30%	270
Media Usage	Boston Globe reader	43%	13%	15%	28%	63
	Conservative radio listener	6%	11%	54%	30%	271
	Fox News viewer	10%	11%	48%	31%	423
	Local newspapers reader	34%	15%	37%	14%	204
	NHPR listener	27%	19%	27%	27%	567
	Union Leader reader	25%	21%	43%	12%	150
	WMUR viewer	23%	16%	37%	24%	686
Age of Respondent	18 to 34	16%	34%	24%	26%	228
	35 to 49	21%	17%	28%	33%	199
	50 to 64	19%	17%	41%	22%	287
	65 and older	31%	14%	35%	20%	186
Gender of Respondent	Men	17%	18%	44%	22%	445
	Women	27%	25%	20%	29%	442
Level of Education	High school or less	11%	30%	36%	22%	318
	Tech school/Some college	18%	13%	45%	25%	285
	College graduate	34%	16%	19%	31%	184
	Postgraduate work	40%	21%	17%	22%	116
Region of State	Connecticut Valley	25%	11%	23%	40%	135
	Manchester Area	17%	33%	27%	23%	245
	Mass Border	17%	10%	56%	17%	193
	North Country	9%	14%	33%	44%	56
	Seacoast	38%	16%	22%	24%	120
	Central/Lakes	23%	28%	31%	18%	156
Gender & Education	Men, no college degree	10%	16%	51%	22%	313
	Men, college degree	33%	21%	25%	21%	130
	Women, no college degree	20%	30%	25%	26%	278
	Women, college degree	38%	16%	13%	33%	164
2016 Presidential Vote	Voted for Trump	6%	8%	52%	34%	418
	Voted for Hillary Clinton	38%	32%	12%	17%	415
	Did not vote in 2016	13%	8%	55%	24%	25
2020 Voting Intent	Already voted absentee	42%	23%	20%	15%	151
	Will definitely vote	18%	20%	35%	27%	714
	Will vote unless emergency	7%	32%	30%	31%	24

Favorability - Darryl Perry

		<u>Favorable</u>	<u>Neutral</u>	<u>Unfavorable</u>	<u>Don't know/Not sure</u>	<u>N</u>
STATEWIDE	October 2020	0%	10%	9%	81%	905
Voting Registration	Registered Democrat	0%	19%	4%	77%	255
	Registered Undeclared/Not Reg.	0%	9%	8%	83%	373
	Registered Republican	1%	2%	16%	81%	257
Party ID	Democrat	0%	14%	5%	81%	380
	Independent	0%	16%	5%	80%	133
	Republican	0%	2%	15%	83%	379
Ideology	Liberal	0%	21%	4%	75%	220
	Moderate	0%	9%	7%	83%	338
	Conservative	0%	2%	17%	80%	271
Media Usage	Boston Globe reader	1%	4%	8%	87%	62
	Conservative radio listener	0%	4%	16%	80%	270
	Fox News viewer	0%	8%	13%	79%	424
	Local newspapers reader	0%	11%	4%	85%	202
	NHPR listener	0%	7%	6%	88%	564
	Union Leader reader	1%	5%	4%	90%	151
	WMUR viewer	0%	6%	9%	86%	685
Age of Respondent	18 to 34	0%	19%	7%	73%	228
	35 to 49	0%	5%	11%	84%	198
	50 to 64	0%	10%	10%	80%	286
	65 and older	0%	2%	7%	90%	187
Gender of Respondent	Men	0%	7%	11%	82%	445
	Women	0%	13%	7%	80%	441
Level of Education	High school or less		21%	8%	71%	320
	Tech school/Some college	0%	3%	10%	87%	285
	College graduate	0%	2%	11%	87%	183
	Postgraduate work	1%	8%	6%	86%	115
Region of State	Connecticut Valley	0%	2%	13%	84%	134
	Manchester Area	0%	20%	5%	75%	245
	Mass Border	0%	2%	19%	79%	195
	North Country	0%	12%	7%	81%	55
	Seacoast		5%	6%	90%	120
	Central/Lakes	0%	12%	3%	85%	156
Gender & Education	Men, no college degree	0%	7%	10%	83%	314
	Men, college degree	0%	8%	13%	80%	129
	Women, no college degree		19%	8%	73%	278
	Women, college degree	1%	2%	6%	91%	163
2016 Presidential Vote	Voted for Trump	0%	6%	14%	80%	417
	Voted for Hillary Clinton	0%	14%	5%	81%	413
	Did not vote in 2016		2%	5%	93%	27
2020 Voting Intent	Already voted absentee		2%	13%	85%	150
	Will definitely vote	0%	12%	9%	80%	713
	Will vote unless emergency		4%		96%	24

Approval of Governor Sununu's Job Performance

		Approve	Disapprove	Neither/DK	N
STATEWIDE	October 2020	73%	21%	6%	931
Voting Registration	Registered Democrat	32%	50%	18%	258
	Registered Undeclared/Not Reg.	85%	14%	1%	381
	Registered Republican	97%	3%		270
Party ID	Democrat	43%	45%	12%	390
	Independent	90%	6%	3%	133
	Republican	98%	2%		379
Ideology	Liberal	31%	49%	20%	229
	Moderate	78%	20%	2%	337
	Conservative	97%	3%		273
Media Usage	Boston Globe reader	40%	60%	1%	61
	Conservative radio listener	97%	3%	0%	273
	Fox News viewer	93%	6%	0%	426
	Local newspapers reader	65%	35%	0%	204
	NHPR listener	72%	27%	1%	577
	Union Leader reader	75%	25%	0%	151
	WMUR viewer	78%	21%	1%	711
Age of Respondent	18 to 34	62%	20%	18%	248
	35 to 49	76%	23%	1%	201
	50 to 64	79%	19%	2%	286
	65 and older	79%	21%	1%	188
Gender of Respondent	Men	84%	16%	0%	449
	Women	63%	26%	11%	464
Level of Education	High school or less	80%	7%	13%	334
	Tech school/Some college	78%	20%	1%	285
	College graduate	66%	33%	1%	193
	Postgraduate work	56%	42%	2%	117
Region of State	Connecticut Valley	74%	26%	0%	143
	Manchester Area	66%	15%	19%	245
	Mass Border	79%	21%	0%	197
	North Country	84%	16%		70
	Seacoast	69%	29%	2%	118
	Central/Lakes	77%	22%	1%	156
Gender & Education	Men, no college degree	90%	10%		317
	Men, college degree	69%	30%	1%	130
	Women, no college degree	67%	17%	16%	290
	Women, college degree	58%	40%	2%	174
2016 Presidential Vote	Voted for Trump	98%	2%		417
	Voted for Hillary Clinton	47%	41%	12%	423
	Did not vote in 2016	88%	9%	2%	27
2020 Voting Intent	Already voted absentee	57%	42%	0%	149
	Will definitely vote	76%	17%	7%	725
	Will vote unless emergency	90%	10%		24

Approval of Governor Sununu's Handling of Coronavirus (COVID-19) Situation

		Approve	Disapprove	Neither/DK	N
STATEWIDE	October 2020	83%	16%	0%	930
Voting Registration	Registered Democrat	68%	31%	1%	257
	Registered Undeclared/Not Reg.	86%	14%	0%	381
	Registered Republican	95%	5%		271
Party ID	Democrat	70%	30%	1%	388
	Independent	93%	6%	0%	133
	Republican	95%	5%		379
Ideology	Liberal	68%	32%	0%	229
	Moderate	84%	15%	1%	336
	Conservative	94%	6%		273
Media Usage	Boston Globe reader	50%	49%	1%	61
	Conservative radio listener	92%	8%	0%	273
	Fox News viewer	92%	8%	0%	426
	Local newspapers reader	68%	32%	0%	204
	NHPR listener	80%	19%	0%	576
	Union Leader reader	75%	25%		151
	WMUR viewer	84%	16%	0%	710
Age of Respondent	18 to 34	82%	18%		248
	35 to 49	78%	22%	0%	201
	50 to 64	85%	14%	0%	287
	65 and older	88%	11%	1%	186
Gender of Respondent	Men	87%	13%	0%	449
	Women	80%	19%	0%	462
Level of Education	High school or less	96%	4%		334
	Tech school/Some college	83%	16%	0%	283
	College graduate	73%	26%	1%	193
	Postgraduate work	66%	33%	0%	117
Region of State	Connecticut Valley	80%	20%	1%	142
	Manchester Area	90%	10%		245
	Mass Border	80%	20%	0%	197
	North Country	79%	21%		70
	Seacoast	77%	22%	1%	118
	Central/Lakes	87%	12%	0%	156
Gender & Education	Men, no college degree	91%	9%		317
	Men, college degree	76%	24%	1%	130
	Women, no college degree	89%	11%	0%	289
	Women, college degree	67%	33%	1%	174
2016 Presidential Vote	Voted for Trump	95%	5%		418
	Voted for Hillary Clinton	71%	28%	0%	422
	Did not vote in 2016	81%	16%	2%	27
2020 Voting Intent	Already voted absentee	68%	32%	0%	149
	Will definitely vote	86%	13%	0%	724
	Will vote unless emergency	92%	7%	2%	24

Right Direction or Wrong Track - New Hampshire

		Right direction	Wrong track	Don't know/Not Sure	N
STATEWIDE	October 2020	54%	24%	22%	922
Voting Registration	Registered Democrat	20%	51%	29%	258
	Registered Undeclared/Not Reg.	64%	18%	18%	374
	Registered Republican	71%	8%	21%	269
Party ID	Democrat	27%	45%	28%	382
	Independent	78%	13%	9%	133
	Republican	76%	7%	18%	379
Ideology	Liberal	22%	53%	25%	221
	Moderate	58%	22%	20%	339
	Conservative	75%	7%	17%	270
Media Usage	Boston Globe reader	34%	42%	24%	63
	Conservative radio listener	70%	10%	20%	271
	Fox News viewer	73%	11%	16%	424
	Local newspapers reader	52%	28%	20%	205
	NHPR listener	54%	23%	23%	571
	Union Leader reader	64%	28%	7%	150
	WMUR viewer	60%	20%	20%	705
Age of Respondent	18 to 34	37%	40%	23%	240
	35 to 49	53%	20%	27%	200
	50 to 64	64%	19%	17%	286
	65 and older	62%	16%	21%	189
Gender of Respondent	Men	65%	17%	17%	448
	Women	43%	31%	27%	455
Level of Education	High school or less	60%	17%	23%	334
	Tech school/Some college	58%	25%	17%	287
	College graduate	44%	32%	24%	183
	Postgraduate work	43%	30%	27%	117
Region of State	Connecticut Valley	56%	20%	24%	135
	Manchester Area	58%	33%	9%	245
	Mass Border	61%	24%	15%	195
	North Country	36%	21%	43%	70
	Seacoast	47%	27%	26%	120
	Central/Lakes	52%	12%	36%	155
Gender & Education	Men, no college degree	71%	13%	15%	317
	Men, college degree	50%	27%	23%	130
	Women, no college degree	45%	29%	26%	292
	Women, college degree	38%	34%	27%	164
2016 Presidential Vote	Voted for Trump	76%	6%	18%	417
	Voted for Hillary Clinton	32%	44%	23%	415
	Did not vote in 2016	56%	10%	34%	27
2020 Voting Intent	Already voted absentee	39%	36%	25%	150
	Will definitely vote	58%	22%	20%	715
	Will vote unless emergency	59%	16%	26%	24

Most Important Problem - New Hampshire

		<u>COVID-19</u>	<u>Drugs</u>	<u>Education</u>	<u>Healthcare</u>	<u>Jobs/Economy</u>
STATEWIDE	October 2020	26%	7%	6%	2%	13%
Voting Registration	Registered Democrat	33%	20%	4%	3%	15%
	Registered Undeclared/Not Reg.	25%	2%	7%	2%	11%
	Registered Republican	21%	1%	8%	1%	14%
Party ID	Democrat	30%	15%	6%	3%	13%
	Independent	35%	1%	9%	4%	15%
	Republican	20%	1%	5%	0%	12%
Ideology	Liberal	25%	24%	8%	3%	14%
	Moderate	32%	2%	5%	4%	15%
	Conservative	14%	1%	8%	0%	11%
Media Usage	Boston Globe reader	28%	1%	7%	2%	14%
	Conservative radio listener	18%	1%	4%	1%	15%
	Fox News viewer	19%	1%	7%	1%	13%
	Local newspapers reader	27%	2%	10%	2%	12%
	NHPR listener	29%	1%	5%	3%	12%
	Union Leader reader	29%	1%	14%	2%	24%
	WMUR viewer	31%	2%	8%	2%	14%
Age of Respondent	18 to 34	15%	22%	5%	2%	9%
	35 to 49	17%	3%	4%	1%	21%
	50 to 64	39%	1%	7%	1%	8%
	65 and older	30%	1%	9%	4%	15%
Gender of Respondent	Men	19%	3%	7%	1%	13%
	Women	35%	12%	5%	3%	11%
Level of Education	High school or less	26%	15%	7%		4%
	Tech school/Some college	24%	2%	6%	2%	14%
	College graduate	23%	4%	4%	3%	21%
	Postgraduate work	38%	2%	6%	6%	19%
Region of State	Connecticut Valley	21%	1%	6%	2%	9%
	Manchester Area	21%	21%	4%	1%	13%
	Mass Border	40%	3%	9%	3%	10%
	North Country	29%	2%	2%	8%	8%
	Seacoast	28%	4%	2%	2%	26%
	Central/Lakes	19%	1%	9%	1%	10%
Gender & Education	Men, no college degree	15%	1%	9%	0%	8%
	Men, college degree	27%	5%	4%	2%	23%
	Women, no college degree	38%	18%	5%	1%	7%
	Women, college degree	30%	2%	6%	6%	19%
2016 Presidential Vote	Voted for Trump	17%	1%	7%	1%	13%
	Voted for Hillary Clinton	35%	14%	3%	4%	13%
	Did not vote in 2016	45%	0%	3%	0%	
2020 Voting Intent	Already voted absentee	45%	1%	3%	1%	13%
	Will definitely vote	22%	9%	7%	3%	13%
	Will vote unless emergency	61%				5%

Most Important Problem - New Hampshire

		<u>State budget</u>	<u>Taxes</u>	<u>Other</u>	<u>DK/Not Sure</u>	<u>N</u>
STATEWIDE	October 2020	0%	7%	38%	0%	835
Voting Registration	Registered Democrat	1%	2%	23%	0%	241
	Registered Undeclared/Not Reg.	0%	6%	46%	0%	342
	Registered Republican	0%	14%	41%	0%	231
Party ID	Democrat	1%	3%	28%	0%	347
	Independent	0%	5%	32%		124
	Republican	0%	12%	50%	0%	348
Ideology	Liberal	0%	3%	22%	0%	201
	Moderate	1%	3%	39%	0%	317
	Conservative	0%	17%	49%	0%	243
Media Usage	Boston Globe reader	2%	15%	31%		56
	Conservative radio listener	0%	12%	50%	0%	246
	Fox News viewer	0%	10%	49%	0%	409
	Local newspapers reader	1%	8%	38%	0%	188
	NHPR listener	1%	3%	47%	0%	530
	Union Leader reader	1%	3%	25%	0%	133
	WMUR viewer	1%	6%	37%	0%	642
Age of Respondent	18 to 34	1%	1%	45%		207
	35 to 49		6%	46%	1%	186
	50 to 64	0%	10%	32%	0%	251
	65 and older	1%	10%	30%	0%	183
Gender of Respondent	Men	0%	11%	47%	0%	421
	Women	1%	3%	30%	0%	396
Level of Education	High school or less		9%	38%		292
	Tech school/Some college	0%	5%	47%		259
	College graduate	0%	7%	37%	1%	173
	Postgraduate work	2%	5%	20%	1%	110
Region of State	Connecticut Valley	0%	3%	57%	0%	116
	Manchester Area		2%	37%		218
	Mass Border	1%	8%	26%	0%	190
	North Country	1%	13%	39%		41
	Seacoast	0%	11%	26%	1%	117
	Central/Lakes	1%	8%	50%	0%	151
Gender & Education	Men, no college degree	0%	12%	54%		295
	Men, college degree	1%	8%	30%	1%	125
	Women, no college degree		2%	30%		244
	Women, college degree	1%	5%	30%	1%	152
2016 Presidential Vote	Voted for Trump	0%	11%	51%	0%	389
	Voted for Hillary Clinton	1%	3%	26%	0%	371
	Did not vote in 2016	1%	8%	43%		24
2020 Voting Intent	Already voted absentee	1%	3%	34%	1%	140
	Will definitely vote	0%	8%	39%	0%	656
	Will vote unless emergency		6%	28%		19