

August 5, 2020

**SUNUNU HAS HIGH MARKS IN JOB PERFORMANCE, HANDLING OF COVID-19**

By: Sean P. McKinley, M.A.  
Zachary S. Azem, M.A.  
Andrew E. Smith, Ph.D.

andrew.smith@unh.edu  
603-862-2226  
cola.unh.edu/unh-survey-center

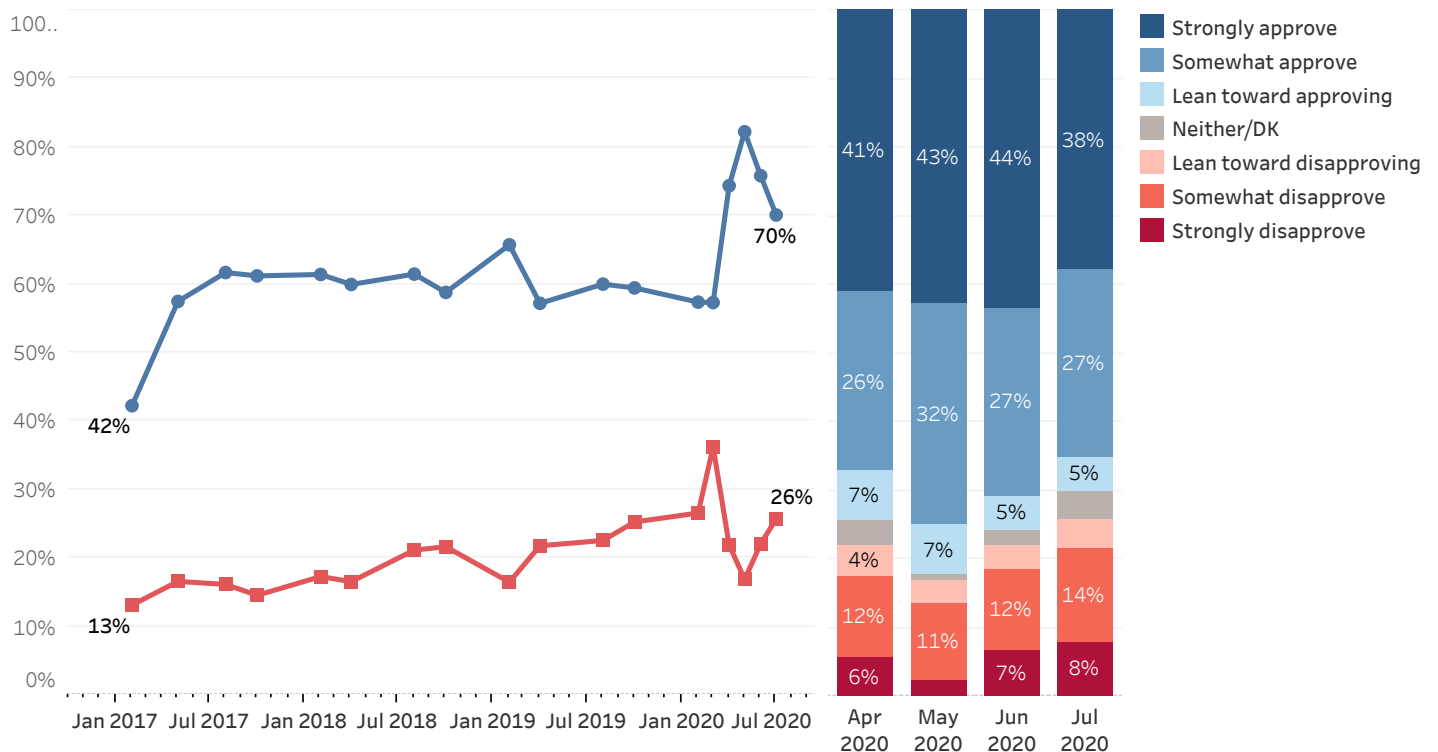
DURHAM, NH - With the gubernatorial election less than four months away, New Hampshire Governor Chris Sununu enjoys widespread popularity in the state. Approval of his overall job performance and handling of COVID-19 have fallen from their peaks in April and May but remain high. New Hampshire residents are less likely to believe the state is headed in the right direction than they were before the COVID-19 pandemic. COVID-19, jobs and the economy, and education are seen as the most important problems facing the state.

These findings are based on the latest **Granite State Panel\*** survey, conducted by the University of New Hampshire Survey Center. Two thousand twenty-two (2,022) Granite State Panel members completed the survey online between July 16 and July 28, 2020. The margin of sampling error for the survey is +/- 2.2 percent. Data were weighted by respondent sex, age, education, and region of the state to targets from the most recent American Community Survey (ACS) conducted by the U.S. Census Bureau, as well as party registration levels provided by the New Hampshire Secretary of State. The Granite State Panel is a probability-based web panel recruited from randomly-selected landline and cell phone numbers across New Hampshire. Individual surveys are completed by panel members by computer, tablet, or smart phone.

**Gubernatorial Approval**

New Hampshire Governor Chris Sununu enjoys widespread approval among state residents of his job performance: seven in ten (70%) Granite Staters approve of his performance, 26% disapprove, and 4% neither approve nor disapprove or don't know. Approval of Sununu's performance as governor has declined for the second consecutive month after reaching 82% in May, but nevertheless his approval remains noticeably higher than before the onset of the COVID-19 pandemic.

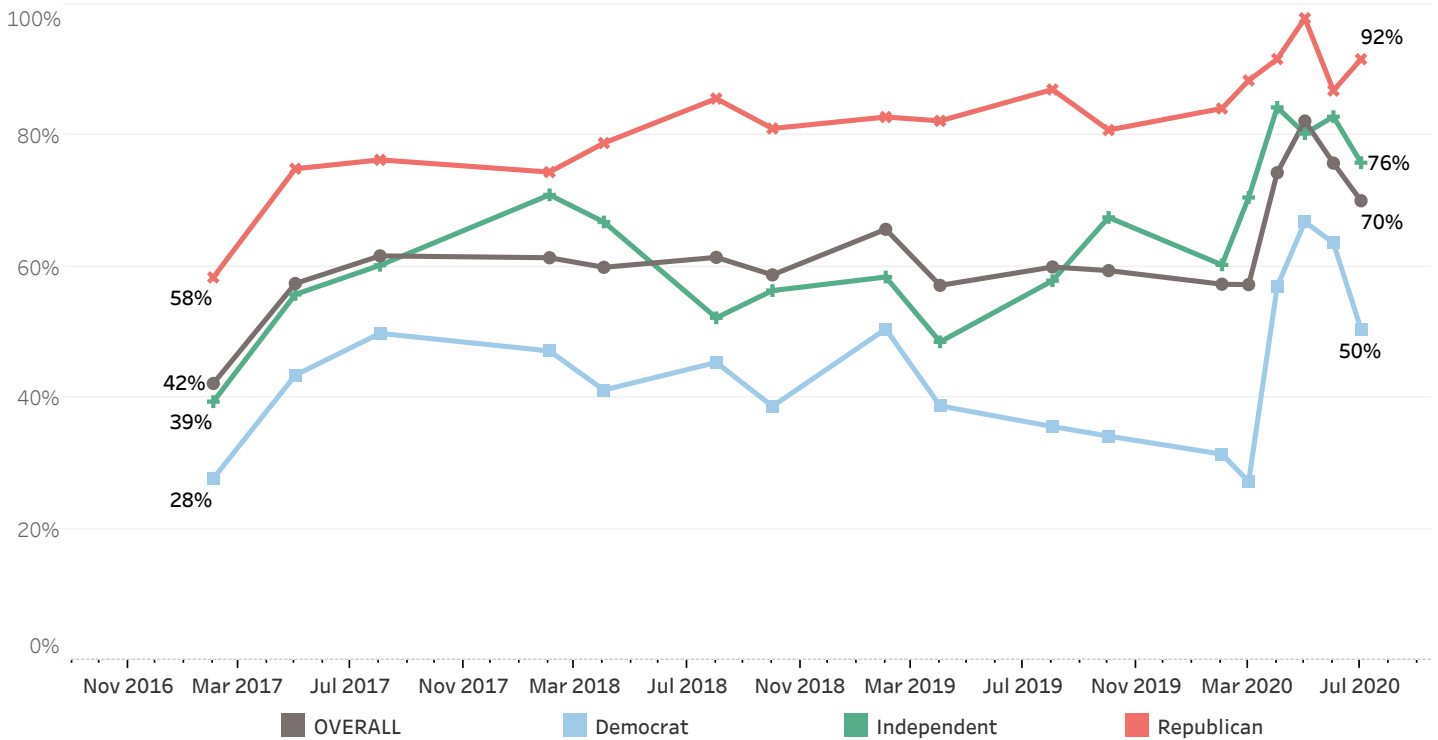
**Gubernatorial Approval - Chris Sununu**



\* We ask that this copyrighted information be referred to as *the Granite State Panel*, conducted by the University of New Hampshire Survey Center.

Ninety-two percent of Republicans and 76% of Independents approve of Sununu's job performance, while half (50%) of Democrats approve. Approval of Sununu among Republicans (92%) has slightly increased since June (87%), while approval among Independents (76%) has decreased slightly since then (83%) and approval among Democrats (50%) has decreased markedly since June (64%).

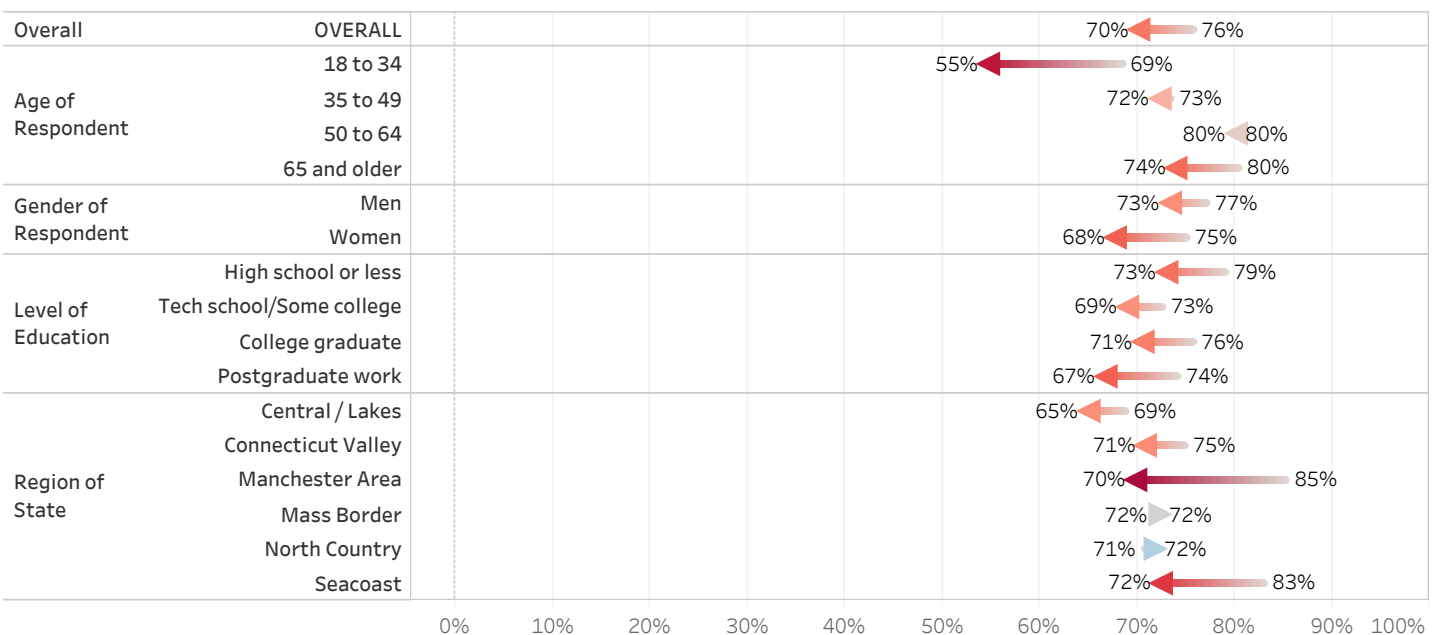
**Job Approval - Governor Chris Sununu - By Party Identification**



Since June, approval of Sununu's job performance has:

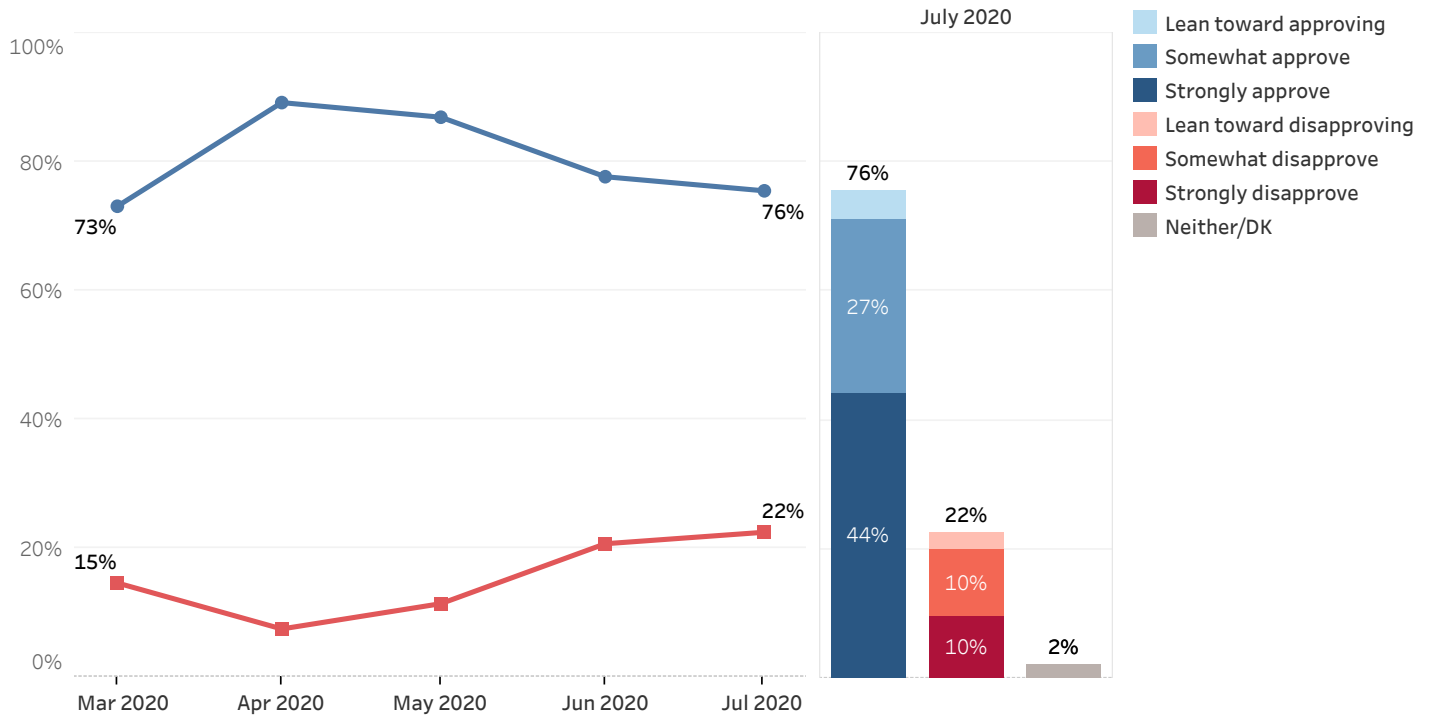
- declined among those aged 18 to 34 and slightly decreased among those aged 65 and older;
- fallen slightly among women but is largely unchanged among men;
- declined slightly among those with a high school degree or less education and those who have completed postgraduate work; and
- fallen among Manchester Area and Seacoast residents.

**Approval of Governor Sununu's Job Performance  
Change from June to July 2020 - By Demographics**



Three-quarters (76%) of New Hampshire residents approve of Governor Sununu's handling of the coronavirus (COVID-19) situation, while 22% disapprove and 2% neither approve nor disapprove or don't know. Approval of Sununu's handling of the COVID-19 situation (76%) is largely unchanged since June (78%) but remains lower than in April (89%) and May (87%). Approval among Granite Staters of Sununu's handling of the COVID-19 situation is far higher than approval of President Trump's handling of COVID-19: less than half (47%) of those who approve of Sununu's handling also approve of Trump's.

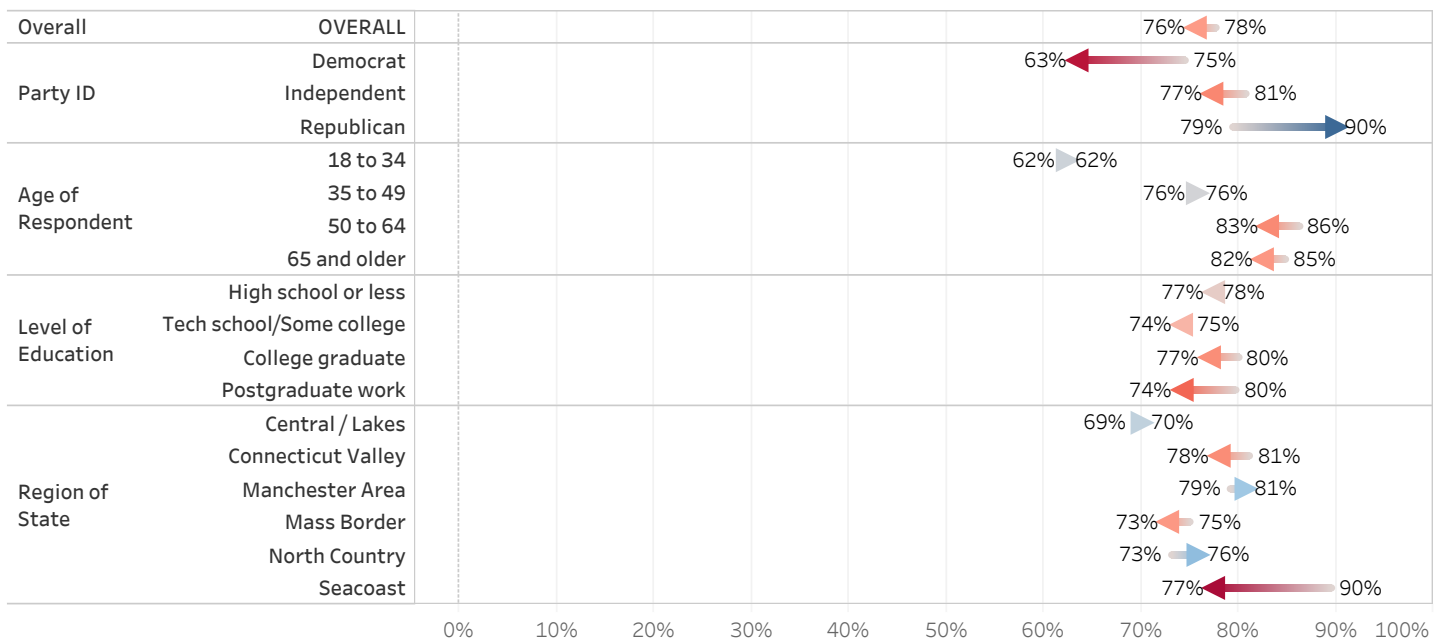
### Approval of Governor Sununu's Handling of Coronavirus (COVID-19) Situation



Since June, approval of Sununu's handling of the coronavirus (COVID-19) situation has:

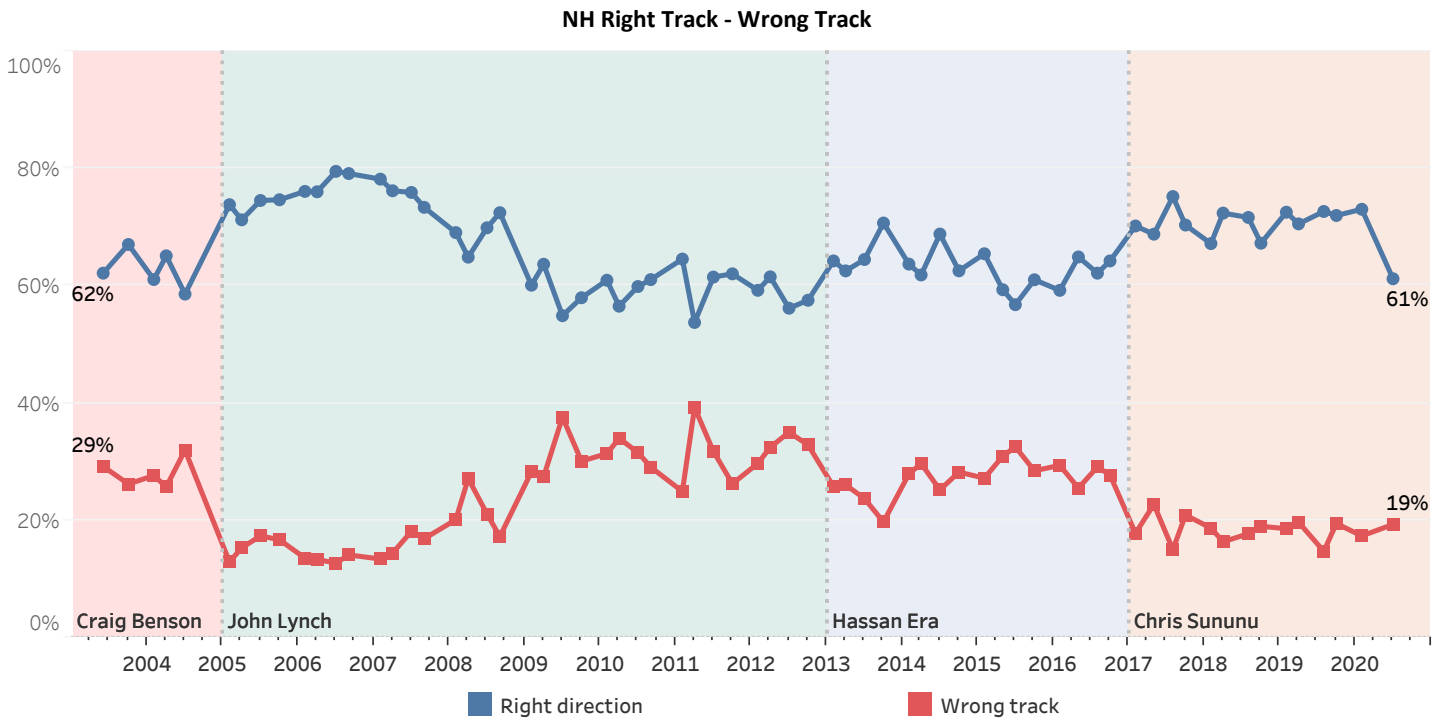
- declined among Democrats (-12 percentage points) but increased among Republicans (+11);
- fallen slightly among those who have completed postgraduate work; and
- declined among Seacoast residents.

### Approval of Governor Sununu's Handling of the Coronavirus (COVID-19) Situation Change from June to July 2020 - By Demographics

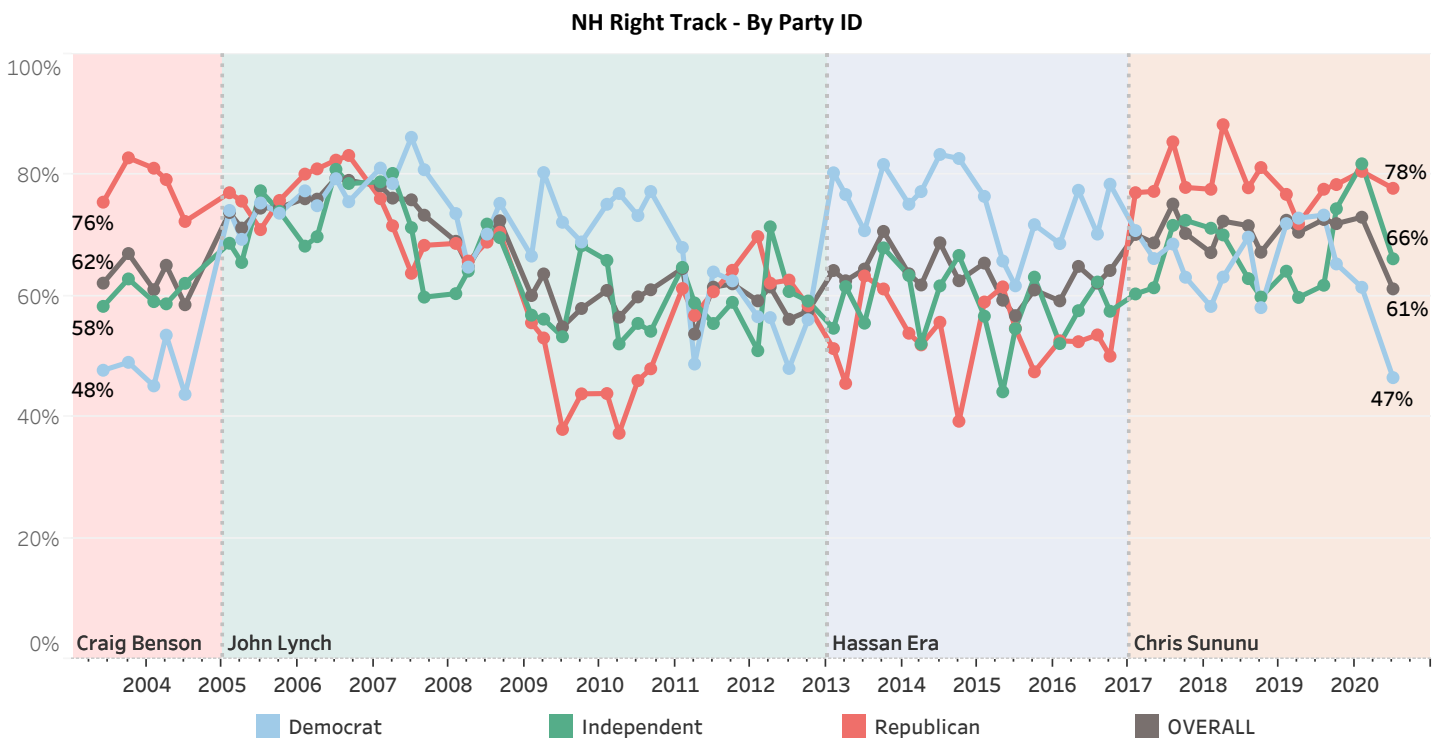


## NH Heading in the Right Direction or On Wrong Track

Despite the COVID-19 pandemic, a majority of New Hampshire residents continue to believe the state is headed in the right direction. Sixty-one percent of Granite Staters say things in NH are generally going in the right direction, while 19% say things are seriously off on the wrong track and 19% don't know or are unsure. The percentage who believe the state is headed in the right direction (61%) has declined since February (72%) before the onset of the pandemic but remains remarkably resilient in the face of the pandemic and its related effects on the state.

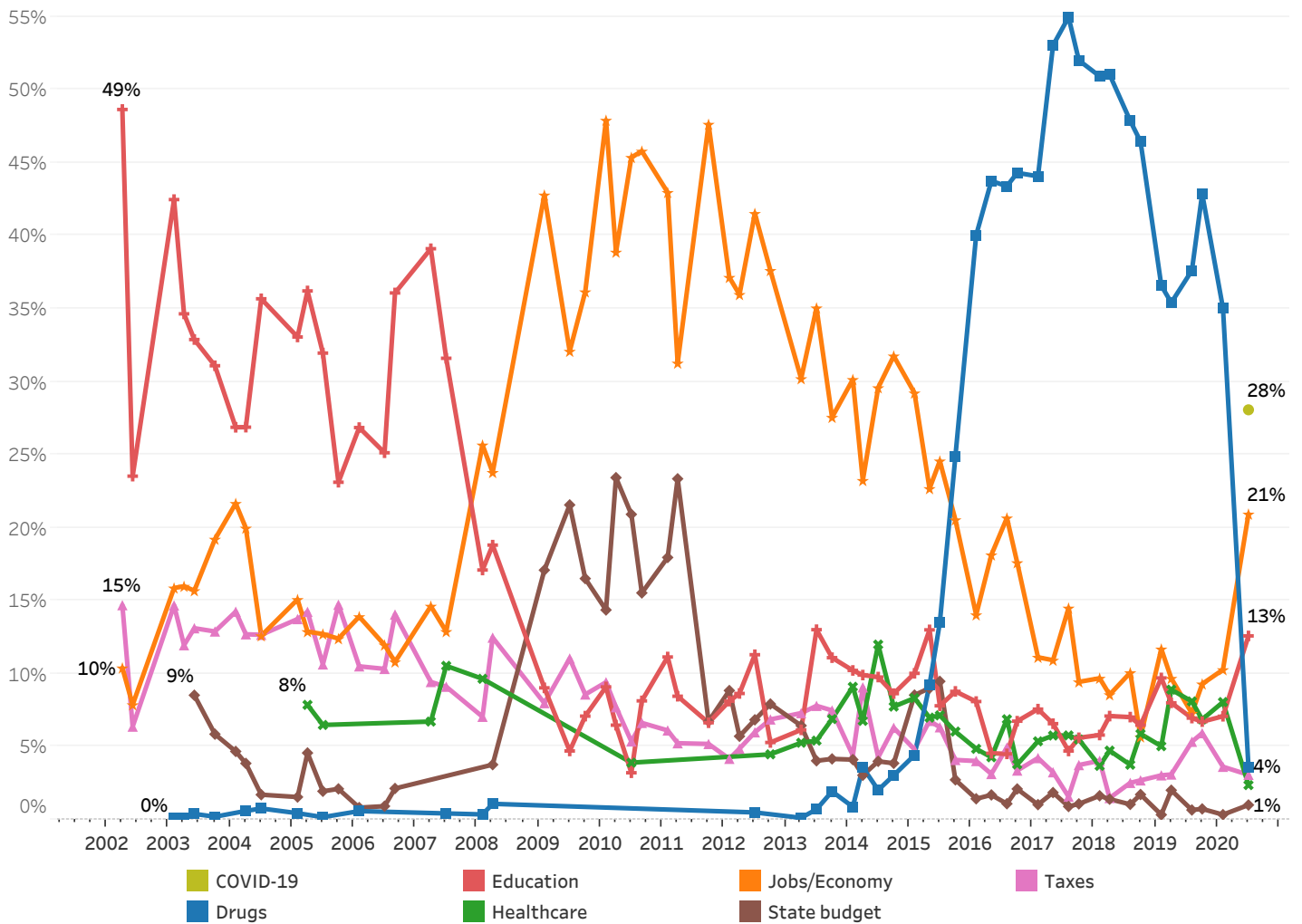
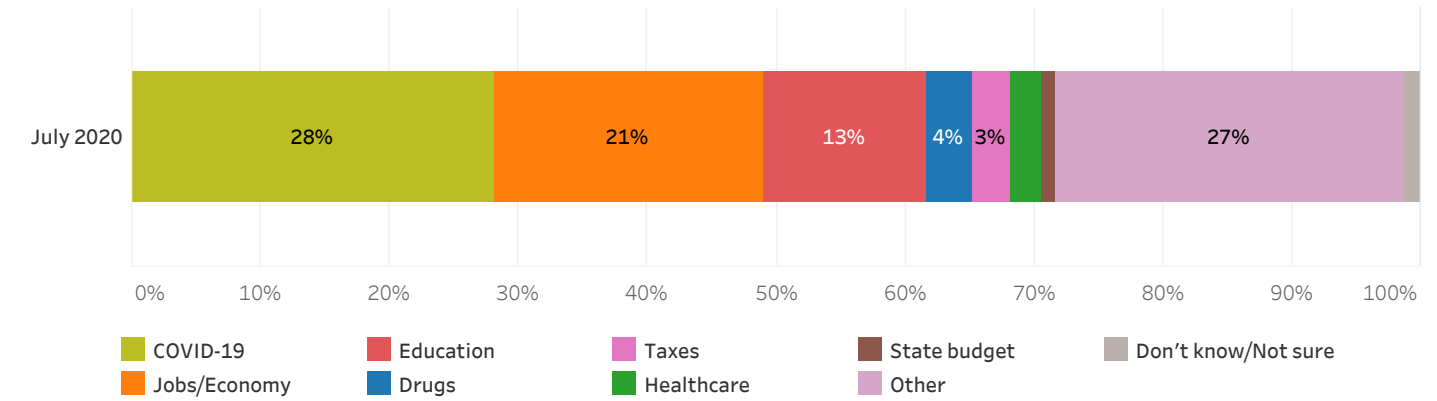


Before the onset of the COVID-19 pandemic, optimism about the state's future was largely bipartisan, as majorities of Republicans, Independents, and Democrats believed the state was on the right track throughout Sununu's governorship. However, currently 78% of Republicans and 66% of Independents feel the state is headed in the right direction but only 47% of Democrats agree.



### Most Important Problem Facing New Hampshire

More than a quarter (28%) of New Hampshire residents say that COVID-19 is the most serious problem facing the state, with many others citing problems associated with COVID-19's effect on the economy (21%) and education (13%). Only 4% of Granite Staters say that the drug crisis is the most important problem facing the state, dramatically lower than before the COVID-19 pandemic in February, when 35% cited drugs as the most important problem. Smaller percentage cite taxes (3%), healthcare (2%) or the state budget (1%) as the most important problem facing the state, while 27% mention another problem and 1% don't know or are unsure.



## Granite State Panel Methodology

These findings are based on the latest Granite State Panel survey, conducted by the University of New Hampshire Survey Center. Two thousand twenty-two (2,022) Granite State Panel members completed the survey online between July 16 and July 28, 2020. The margin of sampling error for the survey is +/- 2.2 percent. These MSE's have not been adjusted for design effect. The design effect for the survey is 2.3%.

Data were weighted by respondent sex, age, education, and region of the state to targets from the most recent American Community Survey (ACS) conducted by the U.S. Census Bureau, as well as party registration levels provided by the New Hampshire Secretary of State.

The Granite State Panel is part of an effort by the University of New Hampshire Survey Center to investigate new ways of gathering and understanding the opinion of New Hampshire residents. Approximately 5,500 New Hampshire adults were recruited from randomly selected landline and cell phone numbers to participate in the panel. Panelists are then asked to participate in online surveys sponsored by the UNH Survey Center. The response rate for the July 2020 Granite State Panel is 38%.

The number of respondents in each demographic below may not equal the number reported in cross-tabulation tables as some respondents choose not to answer some questions. Due to rounding, percentages may not sum to 100%.

For more information about the methodology used in the Granite State Panel, contact Dr. Andrew Smith at (603) 862-2226 or by email at [andrew.smith@unh.edu](mailto:andrew.smith@unh.edu).

### Granite State Panel, July 2020 Demographics

		N	%
Gender of Respondent	Men	925	49%
	Women	962	51%
Age of Respondent	18 to 34	515	27%
	35 to 49	426	22%
	50 to 64	567	30%
	65 and older	389	21%
Level of Education	High school or less	703	36%
	Tech school/Some college	600	31%
	College graduate	396	21%
	Postgraduate work	232	12%
Region of State	Central / Lakes	324	17%
	Connecticut Valley	239	12%
	Manchester Area	395	21%
	Mass Border	418	22%
	North Country	183	10%
	Seacoast	364	19%
Party ID	Democrat	902	47%
	Independent	184	10%
	Republican	821	43%
Voting Registration	Registered Democrat	526	28%
	Registered Undeclared/Not Reg.	812	43%
	Registered Republican	553	29%
Gender & Education	Men, college degree	278	15%
	Men, no college degree	647	34%
	Women, college degree	330	18%
	Women, no college degree	629	33%

### Approval of Governor Sununu's Job Performance

Generally speaking, do you approve or disapprove of the way Chris Sununu is handling his job as governor?

	<u>Approve</u>	<u>Disapprove</u>	<u>Neither/DK</u>	<u>N</u>
February 2017	42%	13%	45%	476
May 2017	57%	17%	26%	502
August 2017	62%	16%	22%	484
February 2018	61%	17%	21%	500
April 2018	60%	17%	24%	329
August 2018	61%	21%	17%	486
October 2018	59%	22%	20%	622
February 2019	66%	16%	18%	592
April 2019	57%	22%	21%	529
August 2019	60%	23%	17%	483
October 2019	59%	25%	15%	1,231
February 2020	57%	27%	16%	582
March 2020	57%	36%	7%	647
April 2020	74%	22%	4%	1,149
May 2020	82%	17%	1%	818
June 2020	76%	22%	2%	993
July 2020	70%	26%	4%	1,977

### Approval of Governor Sununu's Handling of Coronavirus (COVID-19) Situation

Generally speaking, do you approve or disapprove of the way Governor Sununu is handling the coronavirus (COVID-19) situation?

	<u>Approve</u>	<u>Disapprove</u>	<u>Neither/DK</u>	<u>N</u>
March 2020	73%	15%	12%	643
April 2020	89%	7%	3%	1,153
May 2020	87%	11%	2%	815
June 2020	78%	21%	2%	972
July 2020	76%	22%	2%	1,972

### NH Heading in the Right Direction or On Wrong Track

Do you think things in New Hampshire are generally going in the right direction or are they seriously off on the wrong track?

	<u>Right direction</u>	<u>Wrong track</u>	<u>Don't know/Not Sure</u>	<u>N</u>		<u>Right direction</u>	<u>Wrong track</u>	<u>Don't know/Not Sure</u>	<u>N</u>
June 2003	62%	29%	9%	510	February 2013	64%	26%	10%	573
October 2003	67%	26%	7%	485	April 2013	63%	26%	11%	497
February 2004	61%	28%	11%	500	July 2013	64%	24%	12%	509
April 2004	65%	26%	9%	530	October 2013	71%	20%	10%	645
July 2004	59%	32%	9%	503	February 2014	64%	28%	8%	570
February 2005	74%	13%	13%	535	April 2014	62%	30%	8%	505
April 2005	71%	15%	13%	488	July 2014	69%	25%	6%	656
July 2005	75%	17%	8%	494	October 2014	63%	28%	9%	666
October 2005	75%	17%	9%	502	February 2015	65%	27%	7%	501
February 2006	76%	14%	10%	495	May 2015	59%	31%	10%	562
April 2006	76%	13%	11%	501	July 2015	57%	33%	11%	522
July 2006	80%	13%	8%	497	October 2015	61%	28%	11%	581
September 2006	79%	14%	7%	509	February 2016	59%	29%	11%	669
February 2007	78%	13%	8%	524	May 2016	65%	25%	10%	593
April 2007	76%	14%	9%	506	August 2016	62%	29%	9%	517
July 2007	76%	18%	6%	500	October 2016	64%	28%	8%	890
September 2007	73%	17%	10%	507	February 2017	70%	18%	12%	496
February 2008	69%	20%	11%	547	May 2017	69%	23%	8%	510
April 2008	65%	27%	8%	491	August 2017	75%	15%	10%	500
July 2008	70%	21%	9%	514	October 2017	70%	21%	9%	559
September 2008	72%	17%	10%	535	February 2018	67%	19%	14%	516
February 2009	60%	28%	12%	605	April 2018	72%	16%	11%	336
April 2009	64%	27%	9%	497	August 2018	72%	18%	11%	493
July 2009	55%	38%	7%	557	October 2018	67%	19%	14%	640
October 2009	58%	30%	12%	496	February 2019	73%	19%	9%	594
February 2010	61%	31%	8%	490	April 2019	71%	20%	10%	547
April 2010	57%	34%	9%	503	August 2019	73%	15%	13%	490
July 2010	60%	32%	9%	496	October 2019	72%	19%	9%	1,250
September 2010	61%	29%	10%	511	February 2020	73%	17%	10%	604
February 2011	65%	25%	11%	517	July 2020	61%	19%	19%	1,983
April 2011	54%	39%	7%	491					
July 2011	61%	32%	7%	503					
October 2011	62%	26%	12%	544					
February 2012	59%	30%	11%	517					
April 2012	62%	32%	6%	532					
July 2012	56%	35%	9%	577					
October 2012	59%	32%	9%	622					
	56%	33%	11%	576					



### Most Important Problem Facing New Hampshire

Let's turn to the state of New Hampshire. What do you think is the most important problem facing the state of New Hampshire today?

	<u>Drugs</u>	<u>Education</u>	<u>Healthcare</u>	<u>Jobs/ Economy</u>	<u>State budget</u>	<u>Taxes</u>	<u>Other</u>	<u>DK/Not Sure</u>	<u>N</u>
April 2002		49%		10%		15%	16%	11%	681
June 2002		24%		8%		6%	57%	5%	677
February 2003	0%	42%		16%		15%	18%	9%	644
April 2003	0%	35%		16%		12%	26%	12%	499
June 2003	0%	33%		16%	9%	13%	22%	8%	513
October 2003	0%	31%		19%	6%	13%	22%	9%	490
February 2004		27%		22%	5%	14%	23%	10%	502
April 2004	1%	27%		20%	4%	13%	24%	12%	536
July 2004	1%	36%		13%	2%	13%	26%	11%	505
February 2005	0%	33%		15%	2%	14%	21%	15%	541
April 2005		36%	8%	13%	5%	14%	15%	9%	487
July 2005	0%	32%	6%	13%	2%	11%	24%	12%	496
October 2005		23%		12%	2%	15%	35%	13%	503
February 2006	1%	27%		14%	1%	11%	34%	13%	498
July 2006		25%		12%	1%	10%	38%	13%	490
September 2006		36%		11%	2%	14%	29%	8%	499
July 2007	0%	32%	11%	13%		9%	29%	7%	488
February 2008	0%	17%	10%	26%		7%	33%	7%	542
April 2008	1%	19%		24%	4%	12%	35%	5%	496
February 2009		9%		43%	17%	8%	23%		607
July 2009		5%		32%	22%	11%	26%	5%	551
October 2009		7%		36%	17%	9%	26%	6%	494
February 2010		9%		48%	14%	9%	18%	2%	486
April 2010		6%		39%	23%	8%	21%	3%	504
July 2010		3%	4%	45%	21%	5%	17%	4%	498
September 2010		8%		46%	16%	7%	19%	5%	504
February 2011		11%		43%	18%	6%	18%	4%	508
October 2011		7%		48%	7%	5%	28%	6%	548
February 2012		8%		37%	9%	4%	36%	6%	509
April 2012		9%		36%	6%	5%	37%	8%	518
July 2012	0%	11%		42%	7%	6%	29%	5%	541
October 2012		5%	4%	38%	8%	7%	33%	5%	575
April 2013	0%	6%	5%	30%	6%	7%	38%	6%	485
July 2013	1%	13%	5%	35%	4%	8%	26%	7%	458
October 2013	2%	11%	7%	28%	4%	7%	26%	15%	602
February 2014	1%	10%	9%	30%	4%	4%	30%	11%	545
April 2014	4%	10%	7%	23%	3%	9%	35%	10%	464
July 2014	2%	10%	12%	30%	4%	4%	29%	9%	614
October 2014	3%	9%	8%	32%	4%	6%	28%	11%	644
February 2015	4%	10%	8%	29%	9%	5%	26%	8%	467
May 2015	9%	13%	7%	23%	9%	7%	24%	8%	540
July 2015	14%	8%	7%	25%	9%	6%	27%	4%	509
October 2015	25%	9%	6%	21%	3%	4%	26%	7%	563

### Most Important Problem Facing New Hampshire

Let's turn to the state of New Hampshire. What do you think is the most important problem facing the state of New Hampshire today?

	<u>COVID-19</u>	<u>Drugs</u>	<u>Education</u>	<u>Healthcare</u>	<u>Jobs/ Economy</u>	<u>State budget</u>	<u>Taxes</u>	<u>Other</u>	<u>DK/Not Sure</u>	<u>N</u>
April 2007			39%	7%	15%		9%	23%	7%	501
April 2011			8%		31%	23%	5%	28%	4%	494
February 2016		40%	8%	5%	14%	1%	4%	21%	7%	659
May 2016		44%	5%	4%	18%	2%	3%	19%	5%	591
August 2016		43%	5%	7%	21%	1%	5%	15%	3%	509
October 2016		44%	7%	4%	18%	2%	3%	16%	6%	868
February 2017		44%	8%	5%	11%	1%	4%	17%	9%	493
May 2017		53%	7%	6%	11%	2%	3%	14%	5%	508
August 2017		55%	5%	6%	14%	1%	2%	13%	5%	493
October 2017		52%	6%	5%	9%	1%	4%	17%	6%	563
February 2018		51%	6%	4%	10%	2%	4%	18%	6%	509
April 2018		51%	7%	5%	9%	1%	1%	20%	6%	324
August 2018		48%	7%	4%	10%	1%	3%	22%	6%	491
October 2018		46%	6%	6%	6%	2%	3%	24%	7%	632
February 2019		37%	10%	5%	12%	0%	3%	28%	6%	594
April 2019		35%	8%	9%	10%	2%	3%	28%	5%	531
August 2019		38%	7%	8%	7%	1%	5%	29%	5%	484
October 2019		43%	7%	7%	9%	1%	6%	19%	9%	1,228
February 2020		35%	7%	8%	10%	0%	4%	30%	6%	587
July 2020	28%	4%	13%	2%	21%	1%	3%	27%	1%	1,841

### Approval of Governor Sununu's Job Performance

		Approve	Disapprove	Neither/DK	N
<b>STATEWIDE</b>	<b>July 2020</b>	70%	26%	4%	1,977
<b>Voting Registration</b>	Registered Democrat	43%	50%	6%	526
	Registered Undeclared/Not Reg.	76%	21%	3%	811
	Registered Republican	91%	7%	2%	545
<b>Party ID</b>	Democrat	50%	45%	4%	901
	Independent	76%	15%	9%	184
	Republican	92%	6%	2%	812
<b>Ideology</b>	Liberal	49%	46%	4%	879
	Moderate	78%	11%	11%	126
	Conservative	91%	6%	2%	818
<b>Media Usage</b>	Boston Globe reader	53%	47%	1%	125
	NHPR listener	72%	24%	4%	1,645
	Union Leader reader	81%	18%	1%	266
	WMUR viewer	69%	26%	5%	1,429
<b>Age of Respondent</b>	18 to 34	55%	37%	8%	515
	35 to 49	72%	25%	3%	426
	50 to 64	80%	18%	2%	567
	65 and older	74%	24%	2%	389
<b>Gender of Respondent</b>	Men	73%	24%	3%	925
	Women	68%	27%	6%	953
<b>Level of Education</b>	High school or less	73%	21%	6%	695
	Tech school/Some college	69%	28%	3%	600
	College graduate	71%	27%	2%	396
	Postgraduate work	67%	30%	3%	232
<b>Gender &amp; Education</b>	Men, college degree	69%	28%	3%	278
	Men, no college degree	75%	22%	2%	647
	Women, college degree	69%	28%	2%	330
	Women, no college degree	67%	26%	7%	621
<b>Region of State</b>	Central / Lakes	65%	29%	6%	324
	Connecticut Valley	71%	26%	3%	239
	Manchester Area	70%	21%	10%	395
	Mass Border	72%	27%	1%	418
	North Country	72%	27%	1%	175
	Seacoast	72%	26%	2%	363

### Approval of Governor Sununu's Handling of Coronavirus (COVID-19) Situation

		Approve	Disapprove	Neither/DK	N
<b>STATEWIDE</b>	July 2020	76%	22%	2%	1,972
<b>Voting Registration</b>	Registered Democrat	59%	40%	2%	524
	Registered Undeclared/Not Reg.	79%	20%	1%	810
	Registered Republican	90%	8%	2%	543
<b>Party ID</b>	Democrat	63%	36%	1%	900
	Independent	77%	16%	7%	184
	Republican	90%	9%	1%	810
<b>Ideology</b>	Liberal	63%	36%	1%	879
	Moderate	77%	13%	9%	126
	Conservative	90%	9%	1%	815
<b>Media Usage</b>	Boston Globe reader	67%	31%	2%	124
	NHPR listener	77%	22%	1%	1,642
	Union Leader reader	83%	16%	1%	266
	WMUR viewer	76%	22%	2%	1,428
<b>Age of Respondent</b>	18 to 34	62%	35%	2%	515
	35 to 49	76%	22%	2%	426
	50 to 64	83%	16%	1%	567
	65 and older	82%	16%	1%	387
<b>Gender of Respondent</b>	Men	79%	21%	1%	924
	Women	73%	24%	3%	951
<b>Level of Education</b>	High school or less	77%	21%	1%	695
	Tech school/Some college	74%	23%	2%	599
	College graduate	77%	22%	1%	395
	Postgraduate work	74%	24%	2%	231
<b>Gender &amp; Education</b>	Men, college degree	79%	20%	1%	278
	Men, no college degree	79%	21%	0%	646
	Women, college degree	74%	25%	1%	329
	Women, no college degree	73%	23%	4%	621
<b>Region of State</b>	Central / Lakes	70%	25%	4%	324
	Connecticut Valley	78%	21%	1%	239
	Manchester Area	81%	18%	2%	393
	Mass Border	73%	27%	1%	417
	North Country	76%	23%	1%	175
	Seacoast	77%	21%	1%	362

### NH Heading in the Right Direction or On Wrong Track

		Right direction	Wrong track	Don't know/Not Sure	N
<b>STATEWIDE</b>	<b>July 2020</b>	61%	19%	19%	1,983
<b>Voting Registration</b>	Registered Democrat	39%	37%	23%	526
	Registered Undeclared/Not Reg.	69%	15%	16%	812
	Registered Republican	74%	7%	19%	551
<b>Party ID</b>	Democrat	47%	31%	23%	901
	Independent	66%	12%	22%	184
	Republican	78%	8%	14%	819
<b>Ideology</b>	Liberal	45%	31%	24%	880
	Moderate	66%	9%	25%	126
	Conservative	78%	8%	14%	824
<b>Media Usage</b>	Boston Globe reader	49%	30%	21%	125
	NHPR listener	62%	20%	18%	1,652
	Union Leader reader	74%	15%	11%	266
	WMUR viewer	58%	20%	22%	1,437
<b>Age of Respondent</b>	18 to 34	46%	25%	29%	515
	35 to 49	66%	19%	15%	426
	50 to 64	70%	15%	15%	567
	65 and older	67%	18%	15%	389
<b>Gender of Respondent</b>	Men	69%	19%	12%	925
	Women	55%	19%	26%	960
<b>Level of Education</b>	High school or less	63%	19%	18%	703
	Tech school/Some college	58%	20%	22%	600
	College graduate	64%	19%	17%	396
	Postgraduate work	62%	18%	20%	232
<b>Gender &amp; Education</b>	Men, college degree	67%	20%	13%	278
	Men, no college degree	69%	19%	12%	647
	Women, college degree	61%	17%	22%	330
	Women, no college degree	52%	20%	28%	629
<b>Region of State</b>	Central / Lakes	70%	16%	13%	324
	Connecticut Valley	64%	17%	19%	239
	Manchester Area	61%	25%	15%	394
	Mass Border	56%	24%	20%	418
	North Country	48%	25%	26%	183
	Seacoast	67%	9%	24%	364

## Most Important Problem Facing New Hampshire

		<u>COVID-19</u>	<u>Drugs</u>	<u>Education</u>	<u>Healthcare</u>	<u>Jobs/Economy</u>
<b>STATEWIDE</b>	July 2020	28%	4%	13%	2%	21%
<b>Voting Registration</b>	Registered Democrat	34%	2%	20%	3%	17%
	Registered Undeclared/Not Reg.	29%	4%	10%	2%	22%
	Registered Republican	21%	2%	10%	2%	22%
<b>Party ID</b>	Democrat	34%	3%	17%	3%	23%
	Independent	20%	5%	11%	4%	23%
	Republican	23%	4%	9%	2%	19%
<b>Ideology</b>	Liberal	34%	3%	18%	3%	23%
	Moderate	18%	7%	9%	3%	16%
	Conservative	23%	4%	9%	2%	21%
<b>Media Usage</b>	Boston Globe reader	32%	3%	11%	4%	15%
	NHPR listener	28%	4%	12%	2%	21%
	Union Leader reader	26%	2%	14%	3%	23%
	WMUR viewer	29%	4%	11%	2%	21%
<b>Age of Respondent</b>	18 to 34	25%	4%	19%	1%	23%
	35 to 49	30%	3%	8%	1%	28%
	50 to 64	28%	6%	10%	3%	19%
	65 and older	31%	1%	13%	3%	14%
<b>Gender of Respondent</b>	Men	29%	4%	8%	1%	19%
	Women	28%	4%	17%	3%	22%
<b>Level of Education</b>	High school or less	24%	3%	17%	1%	26%
	Tech school/Some college	29%	4%	8%	2%	18%
	College graduate	30%	4%	10%	4%	19%
	Postgraduate work	35%	3%	17%	4%	15%
<b>Gender &amp; Education</b>	Men, college degree	30%	4%	8%	3%	18%
	Men, no college degree	29%	3%	9%	1%	19%
	Women, college degree	34%	2%	17%	5%	18%
	Women, no college degree	24%	4%	18%	3%	25%
<b>Region of State</b>	Central / Lakes	21%	1%	13%	1%	27%
	Connecticut Valley	23%	2%	9%	2%	17%
	Manchester Area	20%	7%	18%	4%	20%
	Mass Border	25%	2%	17%	2%	20%
	North Country	58%	2%	6%	1%	10%
	Seacoast	37%	5%	8%	3%	26%

### Most Important Problem Facing New Hampshire

		<u>State budget</u>	<u>Taxes</u>	<u>Other</u>	<u>DK/Not Sure</u>	<u>N</u>
<b>STATEWIDE</b>	<b>July 2020</b>	1%	3%	27%	1%	1,841
<b>Voting Registration</b>	Registered Democrat	1%	1%	21%	1%	479
	Registered Undeclared/Not Reg.	1%	4%	26%	1%	781
	Registered Republican	2%	4%	34%	2%	494
<b>Party ID</b>	Democrat	0%	1%	19%	0%	845
	Independent	3%	3%	31%		171
	Republican	1%	6%	35%	2%	754
<b>Ideology</b>	Liberal	1%	1%	19%	0%	825
	Moderate	2%	3%	41%	0%	121
	Conservative	1%	6%	33%	2%	756
<b>Media Usage</b>	Boston Globe reader	1%	0%	33%	0%	123
	NHPR listener	1%	3%	27%	1%	1,525
	Union Leader reader	2%	4%	26%	0%	253
	WMUR viewer	1%	3%	28%	1%	1,319
<b>Age of Respondent</b>	18 to 34	0%		27%	0%	445
	35 to 49	2%	5%	23%	0%	409
	50 to 64	1%	1%	29%	3%	522
	65 and older	1%	7%	29%	1%	383
<b>Gender of Respondent</b>	Men	2%	4%	32%	1%	865
	Women	1%	2%	22%	1%	883
<b>Level of Education</b>	High school or less	0%	6%	20%	2%	629
	Tech school/Some college	1%	1%	36%	0%	568
	College graduate	2%	3%	28%	1%	369
	Postgraduate work	1%	2%	23%	0%	226
<b>Gender &amp; Education</b>	Men, college degree	2%	3%	31%	1%	267
	Men, no college degree	1%	5%	32%	1%	598
	Women, college degree	1%	2%	21%	1%	309
	Women, no college degree	0%	2%	23%	1%	573
<b>Region of State</b>	Central / Lakes	1%	3%	30%	2%	317
	Connecticut Valley	2%	8%	38%		230
	Manchester Area	1%	2%	25%	2%	372
	Mass Border	1%	3%	29%	1%	395
	North Country	1%	1%	20%	1%	170
	Seacoast	0%	2%	20%	0%	299