

# THE CNN / WMUR GRANITE STATE POLL THE UNIVERSITY OF NEW HAMPSHIRE

April 9, 2007

## BUSH APPROVAL CONTINUES TO SLIDE

By: Andrew E. Smith, Ph.D.  
UNH Survey Center  
603/862-2226  
www.unh.edu/survey-center

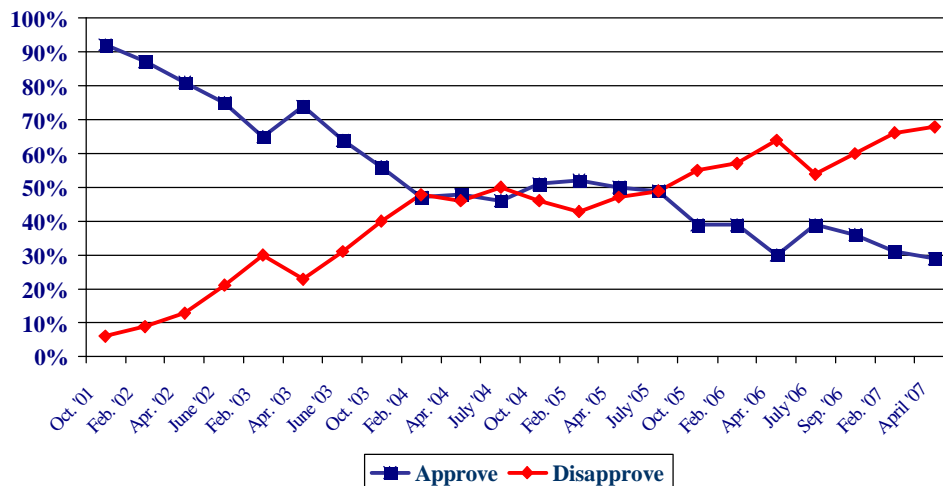
DURHAM, NH – President Bush’s job approval ratings in New Hampshire have continued to decline. Dissatisfaction with the situation in Iraq is driving Bush’s approval lower.

These findings are based on the latest **Granite State Poll**,<sup>?</sup> conducted by the University of New Hampshire Survey Center. The Granite State Poll is sponsored by CNN and WMUR-TV, Manchester. Five hundred fifteen (515) randomly selected New Hampshire adults were interviewed by telephone between March 27 and April 1, 2007. The margin of sampling error for the survey is +/-4.3 percent.

### Presidential Approval

President George W. Bush’s job approval ratings in New Hampshire have continued to drop even lower in recent months. In the most recent Granite State Poll, only 29 percent of New Hampshire adults say they approve of the job Bush is doing as president, 68 percent disapprove, and 3 percent are neutral. “Bush’s approval ratings are now in Nixon and Carter territory,” said Andrew Smith, Director of the UNH Survey Center. “Dissatisfaction with Bush led, in part, to the large GOP losses in New Hampshire in 2006 and if Bush continues to be the face of the GOP in New Hampshire, Republican candidates could face similar problems in 2008.”

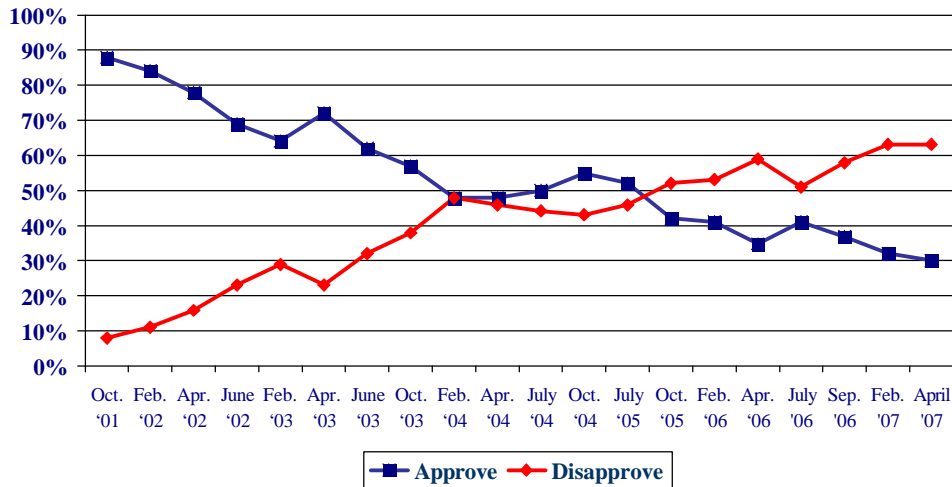
Presidential Approval – G.W. Bush



<sup>?</sup> We ask that this copyrighted information be referred to as *the Granite State Poll*, sponsored by CNN and WMUR-TV.

Bush's personal favorability ratings also continue to drop. Currently, only 30 percent of New Hampshire adults have a favorable opinion of Bush, 63 percent have an unfavorable opinion of him, and 7 percent are neutral or don't know. Bush's net favorability rating, the percentage having a favorable opinion minus the percentage having an unfavorable opinion, is an extremely low -33 percent. These are the lowest levels of his presidency.

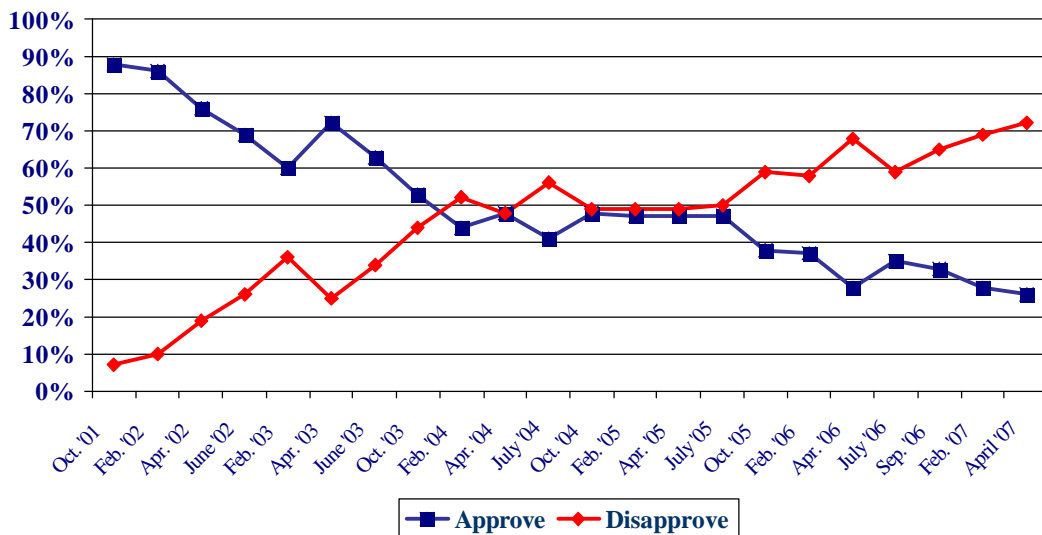
**Favorability Ratings – G.W. Bush**



**Foreign Affairs**

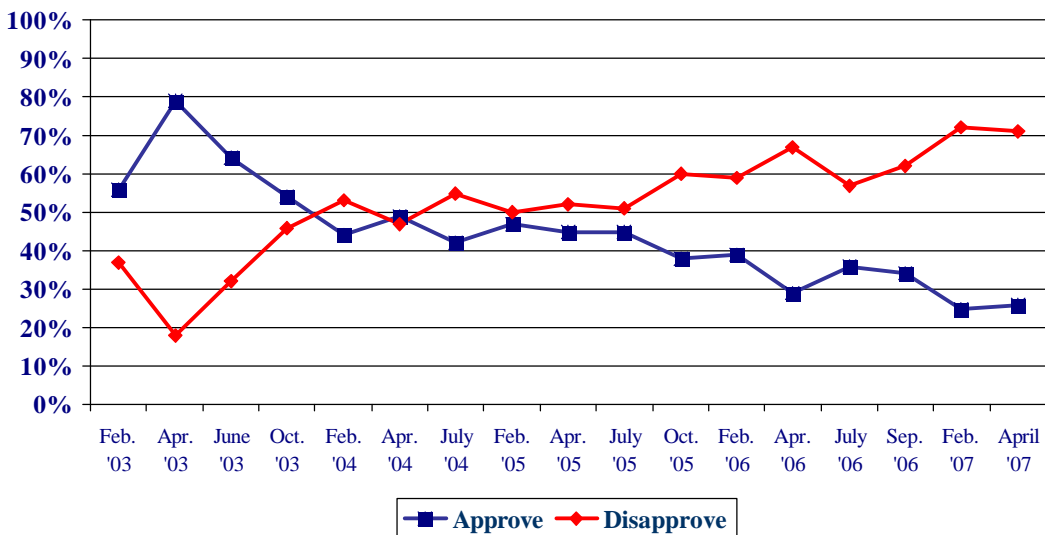
The war in Iraq continues to be the anchor on Bush's approval ratings. When asked about how the President is handling foreign affairs, only 26 percent of New Hampshire adults say they approve, 72 percent disapprove, and 2 percent are neutral. Only a slim majority of Republicans, 56 percent, approve of Bush's handling of foreign affairs while large majorities of Democrats (94%), and Independents (74%) disapprove.

**Bush Approval: Foreign Affairs**



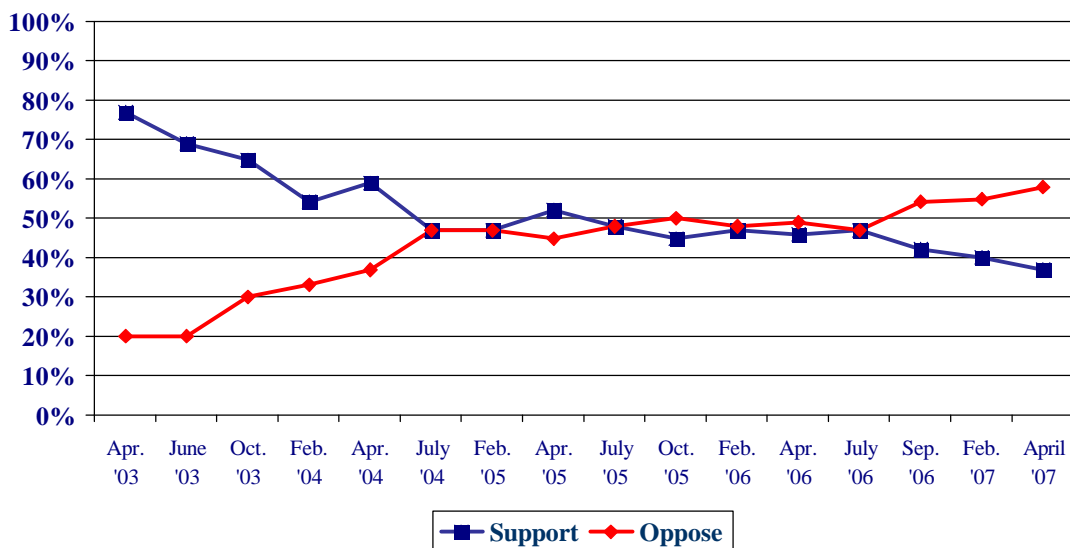
Looking specifically at continued involvement in Iraq, only 26 percent of Granite State adults approve of the way Bush has handled the situation there, 71 percent disapprove, and 3 percent are neutral. Again, only 54 percent of Republicans approve of Bush's handling of the situation in Iraq while 92 percent of Democrats and 73 percent of Independents disapprove.

**Bush Approval: Handling Situation in Iraq**

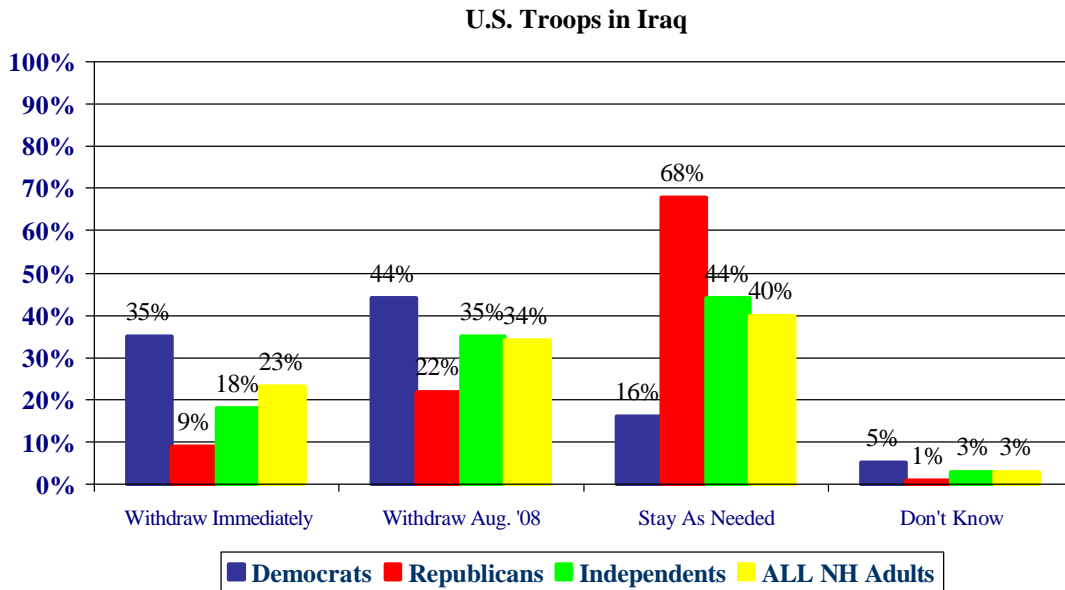


Support for going into Iraq in the first place has also declined in recent months. Currently, only 37 percent support the U.S. having gone to war in Iraq, 58 percent oppose the U.S. having gone to war, and 5 percent are neutral. Support for the U.S. having gone to war with Iraq is at its lowest level since the U.S. invasion. Only majorities of Republicans (68%) and conservatives (62%) continue to support the war in Iraq.

**Support for War In Iraq**

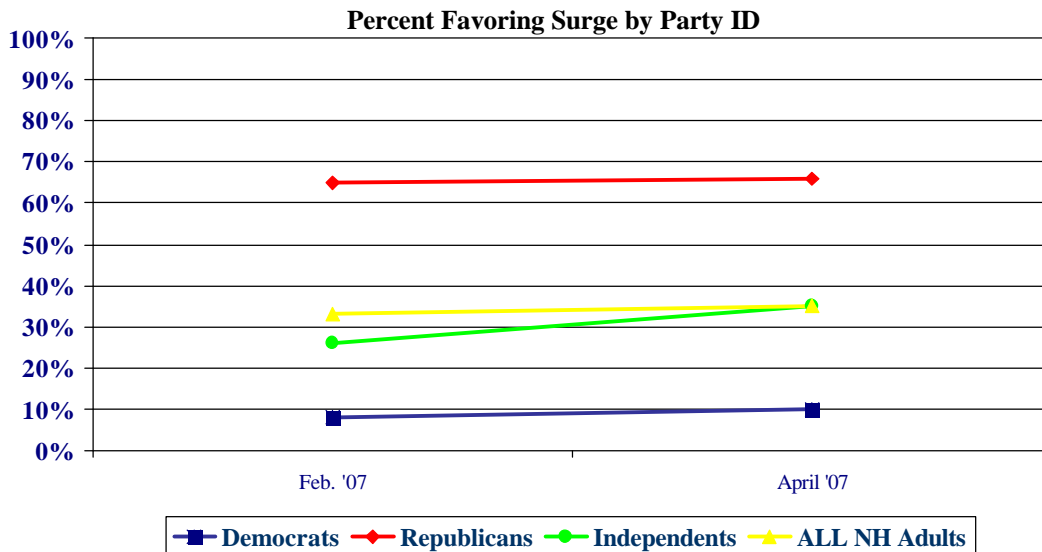


But opinion is divided about the future role of U.S. troops in Iraq -- 40 percent think they should stay as long as needed to turn control over to the Iraqi government, 34 percent think the troops should be brought home by August of 2008, 23 percent think the troops should be brought home immediately and 3 percent don't know.



### The Surge

When asked whether they favored or opposed the Bush Administration's recent decision to increase troop strength in Iraq, a solid majority indicate the oppose the surge – 61 percent oppose the surge, only 35 percent favor it, and 4 percent are neutral or don't know. Republicans generally favor the surge while Democrats are strongly opposed. There has been little change in this measure since February.

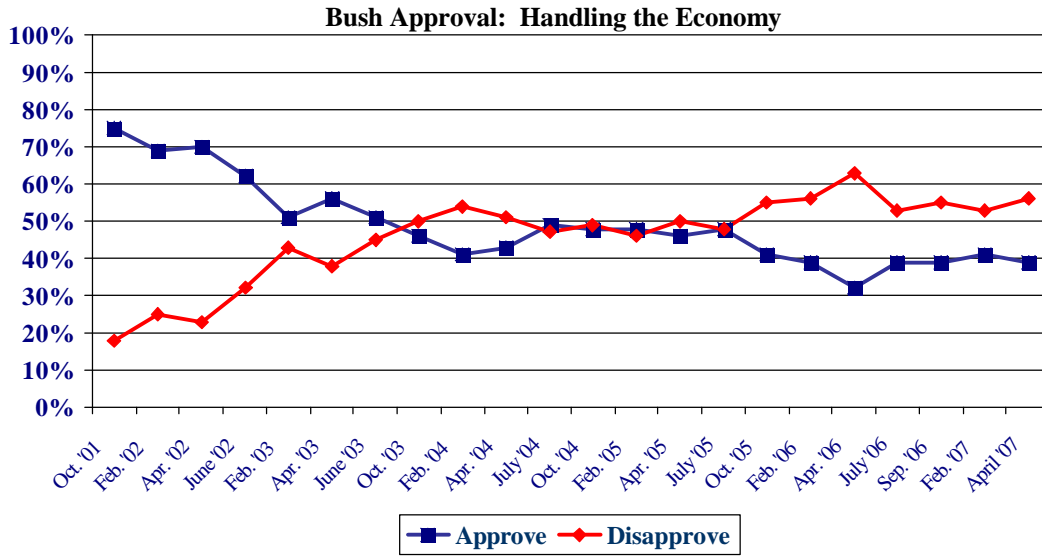


### Can the US Win?

In the most recent Granite State Poll, residents were asked whether they think the US can or cannot win the war in Iraq. Only 35 percent of the public believe the US can win the war in Iraq, 55 percent think the US cannot win the war, and 10 percent don't know. Only 16 percent of Democrats think the US can win the war in Iraq while 54 percent of Republicans think the US can win.

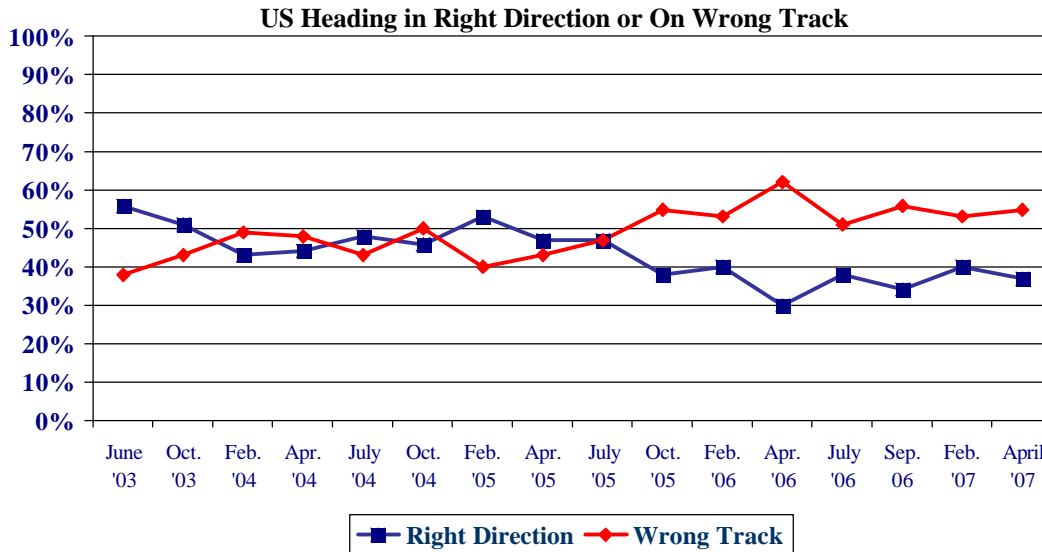
### Economic Approval Rating

New Hampshire residents continue to be pessimistic about Bush's handling of the economy despite continued economic growth in both New Hampshire and the U.S. Only 39 percent of New Hampshire residents say they approve of the job President Bush is doing handling the economy, 56 percent disapprove, and 5 percent are neutral.



### Right Track – Wrong Track

New Hampshire residents are pessimistic about the direction the country is heading. Only 37 percent of New Hampshire residents think that things in this country are generally going in the right direction, 55 percent think things are seriously off on the wrong track, and 8 percent don't know. Only Republicans and conservatives think that the U.S. is headed in the right direction.



### Granite State Poll Methodology

These findings are based on the latest **Granite State Poll** conducted by the University of New Hampshire Survey Center. The Granite State Poll is sponsored by WMUR-TV, Manchester. Five hundred fifteen (515) randomly selected New Hampshire adults were interviewed by telephone between March 27 and April 1, 2007. The margin of sampling error for the survey is +/-4.3 percent. Results reported for other subgroups have potential for somewhat larger variation than those for the entire population. The data have been weighted to adjust for numbers of adults and telephone lines within households, respondent sex, and region of the state. In addition to potential sampling error, all surveys have other potential sources of non-sampling error including question order effects, question wording effects, and non-response.

### Presidential Approval

“GENERALLY SPEAKING, do you approve or disapprove of the way President Bush is handling his job as president?”

	<u>Approve</u>	<u>Neutral</u>	<u>Disapprove</u>	<u>(N)</u>
Apr. '07	29%	3%	68%	(512)
Feb. '07	31	4	66	(529)
Sept. '06	36	3	60	(507)
July '06	39	7	54	(501)
Apr. '06	30	6	64	(496)
Feb. '06	39	3	57	(495)
Oct. '05	39	6	55	(505)
July '05	49	4	47	(498)
Apr. '05	50	3	47	(483)
Feb. '05	52	4	43	(533)
Oct. '04	51	3	46	(567)
July '04	46	4	50	(503)
Apr. '04	48	6	46	(536)
Feb. '04	47	5	48	(505)
Oct. '03	56	4	40	(502)
June '03	64	5	31	(511)
Apr. '03	71	6	23	(503)
Feb. '03	65	4	30	(646)
June '02	75	5	21	(658)
Apr. '02	81	6	13	(685)
Feb. '02	87	4	9	(724)
Oct. '01	92	2	6	(687)

### Presidential Approval – Economy

"GENERALLY SPEAKING, do you approve or disapprove of the way President Bush is handling THE ECONOMY?"

	<u>Approve</u>	<u>Neutral</u>	<u>Disapprove</u>	<u>(N)</u>
Apr. '07	39%	5%	56%	(512)
Feb. '07	41	5	53	(529)
Sept. '06	39	6	55	(508)
July '06	39	8	53	(497)
Apr. '06	32	5	63	(502)
Feb. '06	39	5	56	(495)
Oct. '05	41	4	55	(500)
July '05	48	4	48	(495)
Apr. '05	46	5	50	(490)
Feb. '05	48	5	46	(534)
Oct. '04	48	3	49	(568)
July '04	49	5	47	(499)
Apr. '04	43	6	51	(538)
Feb. '04	41	5	54	(506)
Oct. '03	46	4	50	(499)
June '03	51	3	45	(512)
Apr. '03	56	6	38	(502)
Feb. '03	51	6	43	(644)
June '02	62	6	32	(644)
Apr. '02	70	7	23	(688)
Feb. '02	69	6	25	(725)
Oct. '01	75	8	18	(684)

### Presidential Approval - Foreign Affairs

"GENERALLY SPEAKING, do you approve or disapprove of the way President Bush is handling FOREIGN AFFAIRS?"

	<u>Approve</u>	<u>Neutral</u>	<u>Disapprove</u>	<u>(N)</u>
<b>Apr. '07</b>	<b>26%</b>	<b>2%</b>	<b>72%</b>	<b>(510)</b>
Feb. '07	28	3	69	(529)
Sept. '06	33	2	65	(506)
July '06	35	6	59	(497)
Apr. '06	28	4	68	(500)
Feb. '06	37	5	58	(495)
Oct. '05	38	3	59	(502)
July '05	47	3	50	(497)
Apr. '05	47	4	49	(486)
Feb. '05	47	4	49	(533)
Oct. '04	48	3	49	(568)
July '04	41	3	56	(499)
Apr. '04	48	5	48	(539)
Feb. '04	44	4	52	(507)
Oct. '03	53	3	44	(501)
June '03	63	3	34	(512)
Apr. '03	72	3	25	(506)
Feb. '03	60	4	36	(646)
June '02	69	5	26	(644)
Apr. '02	76	5	19	(690)
Feb. '02	86	4	10	(722)
Oct. '01	88	4	7	(685)

### Presidential Approval - Handling of Situation in Iraq

"Do you approve or disapprove of the way George W. Bush is handling the situation with Iraq?"

	<u>Approve</u>	<u>Neutral</u>	<u>Disapprove</u>	<u>(N)</u>
<b>Apr. '07</b>	<b>26%</b>	<b>3%</b>	<b>71%</b>	<b>(512)</b>
Feb. '07	25	2	72	(527)
Sept. '06	34	3	62	(511)
July '06	36	6	57	(499)
Apr. '06	29	4	67	(501)
Feb. '06	39	3	59	(498)
Oct. '05	38	2	60	(506)
July '05	45	3	51	(499)
Apr. '05	45	3	52	(491)
Feb. '05	47	3	50	(535)
July '04	42	3	55	(501)
Apr. '04	49	4	47	(540)
Feb. '04	44	3	53	(509)
Oct. '03	54	3	42	(500)
June '03	64	4	32	(513)
Apr. '03	79	2	18	(503)
Feb. '03	56	7	37	(646)

### Support for War in Iraq

“Do you support or oppose the United States having gone to war with Iraq?”

	<u>Support</u>	<u>Neutral</u>	<u>Oppose</u>	<u>(N)</u>
Apr. '07	37%	5%	58%	(510)
Feb. '07	40	5	55	(525)
Sept. '06	42	4	54	(510)
July '06	47	6	47	(500)
Apr. '06	46	5	49	(496)
Feb. '06	47	5	48	(500)
Oct. '05	45	4	50	(502)
July '05	48	5	48	(493)
Apr. '05	52	3	45	(489)
Feb. '05	47	6	47	(537)
July '04	47	6	47	(498)
Apr. '04	59	4	37	(536)
Feb. '04	54	3	33	(509)
Oct. '03	65	5	30	(496)
June '03	69	4	20	(513)
Apr. '03	77	4	20	(506)

### Future of U.S. Troops in Iraq

“Which of the following comes closest to your view ... A. the U.S. should immediately begin to withdraw all its troops from Iraq ... B. the U.S. should withdraw all its troops from Iraq by August of next year ... or C. the U.S. should keep its troops in Iraq as long as is needed to turn control over to the Iraqi government?”

	<u>Withdraw Immediately</u>	<u>Withdraw by 8/08</u>	<u>Stay As Needed</u>	<u>Don't Know</u>	<u>(N=)</u>
Apr. '07	23%	34%	40%	3%	(512)

### Support / Oppose Surge in Iraq

“Recently, President Bush has ordered 21,000 more troops to Iraq to try to stabilize the situation there. Based on what you have heard or read, do favor or oppose this policy?”

	<u>Support</u>	<u>Neutral/ Don't Know</u>	<u>Oppose</u>	<u>(N)</u>
Apr. '07	35%	4%	61%	(512)
Feb. '07	33	4	64	(529)

### Can US Win in Iraq?

“Do you think the United States can win or cannot win the war in Iraq?”

	<u>Can Win</u>	<u>Cannot Win</u>	<u>Don't Know</u>	<u>(N)</u>
Apr. '07	35%	55%	10%	(512)



### Right Track - Wrong Track

“Do you think things in this country are generally going in the right direction or are they seriously off on the wrong track?”

	<u>Right Direction</u>	<u>Wrong Track</u>	<u>Don't Know</u>	<u>(N=)</u>
<b>Apr. '07</b>	<b>37%</b>	<b>55%</b>	<b>8%</b>	<b>(510)</b>
<b>Feb. '07</b>	40	53	7	(516)
<b>Sept. '06</b>	34	56	10	(510)
<b>July '06</b>	38	51	11	(496)
<b>Apr. '06</b>	30	62	8	(501)
<b>Feb. '06</b>	40	53	7	(487)
<b>Oct. '05</b>	38	55	7	(498)
<b>July '05</b>	47	47	6	(492)
<b>Apr. '05</b>	46	43	11	(487)
<b>Feb. '05</b>	53	40	7	(535)
<b>Oct. '04</b>	46	50	4	(574)
<b>July '04</b>	48	43	10	(500)
<b>Apr. '04</b>	44	48	8	(535)
<b>Feb. '04</b>	43	49	8	(503)
<b>Oct. '03</b>	51	43	6	(487)
<b>June '03</b>	56	38	5	(511)

### Favorability Rating - President George W. Bush

"Next, I'd like to get your overall opinion of some people in the news. As I read each name, please say if you have a favorable or unfavorable opinion of this person - or if you have never heard of him or her. President George W. Bush."

	<u>Favorable</u>	<u>Neutral</u>	<u>Unfavorable</u>	<u>NET</u>	<u>(N=)</u>
<b>Apr. '07</b>	<b>30%</b>	<b>7%</b>	<b>63%</b>	<b>-33%</b>	<b>(515)</b>
<b>Feb. '07</b>	32	5	63	-31%	(535)
<b>Sept. '06</b>	37	5	58	-21%	(513)
<b>July '06</b>	41	7	51	-10	(500)
<b>Apr. '06</b>	35	6	59	-24%	(505)
<b>Feb. '06</b>	41	6	53	-12%	(499)
<b>Oct. '05</b>	42	6	52	-10%	(510)
<b>July '05</b>	52	2	46	+6%	(497)
<b>Oct. '04</b>	55	2	43	+12%	(574)
<b>July '04</b>	50	6	44	+6%	(506)
<b>Apr. '04</b>	48	6	46	+2%	(540)
<b>Feb. '04</b>	48	4	48	0	(510)
<b>Oct. '03</b>	57	4	38	+19%	(503)
<b>June '03</b>	62	6	32	+30%	(514)
<b>Apr. '03</b>	72	5	23	+49%	(503)
<b>Feb. '03</b>	64	7	29	+35%	(651)
<b>June '02</b>	69	8	23	+46%	(641)
<b>Apr. '02</b>	78	6	16	+62%	(693)
<b>Feb. '02</b>	84	5	11	+73%	(726)
<b>Oct. '01</b>	88	4	8	+80%	(678)

**Presidential Approval Rating - Overall**

<b>STATEWIDE</b>	<b><u>Approve</u></b> <b>29%</b>	<b><u>Neutral</u></b> <b>3%</b>	<b><u>Disapprove</u></b> <b>68%</b>	<b><u>(N=)</u></b> <b>512</b>
Registered Democrat	3%	3%	94%	112
Undeclared	25%	3%	72%	203
Registered Republican	59%	2%	39%	141
Not registered	18%	6%	76%	51
Democrat	5%	2%	92%	233
Independent	26%	5%	68%	93
Republican	62%	3%	36%	175
Liberal	8%	2%	90%	100
Moderate	22%	3%	75%	247
Conservative	55%	3%	42%	137
Union household	20%	2%	78%	82
Non-union	30%	3%	66%	429
5 years or less in NH	25%	4%	71%	39
6 to 10 years	39%	3%	58%	57
11 to 20 years	23%	4%	73%	77
More than 20 years	28%	3%	69%	336
18 to 34	24%	5%	71%	69
35 to 49	34%	3%	63%	174
50 to 64	25%	2%	73%	166
65 and over	26%	5%	69%	89
Male	35%	3%	62%	247
Female	22%	4%	74%	265
High school or less	34%	3%	63%	117
Some college	31%	6%	63%	118
College graduate	28%	3%	69%	166
Post-graduate	22%	0%	78%	108
Less than \$30K	16%	3%	81%	41
\$30K to \$60K	27%	1%	72%	81
\$60K to \$75K	38%	7%	55%	46
\$75K to \$100K	22%	1%	76%	44
More than \$100K	30%	1%	69%	108
Married	30%	3%	67%	357
Divorced/separated	28%	4%	68%	82
Never married	23%	4%	73%	69
Protestant	38%	4%	57%	186
Catholic	29%	4%	68%	177
Other	17%	1%	81%	135
Attend services 1 or more/week	43%	2%	56%	133
1-2 times a month	30%	4%	66%	76
Less often	27%	5%	68%	148
Never	18%	2%	79%	147
North Country	35%	6%	59%	44
Central/Lakes	30%	5%	65%	89
Connecticut Valley	28%	0%	72%	70
Mass Border	27%	3%	70%	152
Seacoast	24%	3%	73%	85
Manchester Area	35%	2%	62%	71
1st Cong. District	30%	3%	68%	259
2nd Cong. District	28%	4%	69%	253

**Presidential Approval Rating - Economy**

<b>STATEWIDE</b>	<b><u>Approve</u></b> <b>39%</b>	<b><u>Neutral</u></b> <b>5%</b>	<b><u>Disapprove</u></b> <b>56%</b>	<b><u>(N=)</u></b> <b>512</b>
Registered Democrat	6%	2%	92%	112
Undeclared	37%	6%	57%	203
Registered Republican	69%	7%	24%	141
Not registered	38%	4%	58%	51
Democrat	12%	4%	84%	233
Independent	40%	6%	54%	93
Republican	76%	5%	18%	175
Liberal	13%	1%	86%	100
Moderate	33%	7%	60%	247
Conservative	67%	3%	30%	137
Union household	34%	2%	64%	82
Non-union	40%	6%	54%	429
5 years or less in NH	36%	1%	63%	39
6 to 10 years	39%	15%	46%	57
11 to 20 years	46%	6%	48%	77
More than 20 years	38%	4%	58%	336
18 to 34	35%	2%	63%	69
35 to 49	49%	4%	48%	174
50 to 64	32%	7%	61%	166
65 and over	36%	6%	58%	89
Male	45%	7%	48%	247
Female	33%	4%	63%	265
High school or less	44%	3%	53%	117
Some college	40%	5%	55%	118
College graduate	42%	7%	52%	166
Post-graduate	29%	4%	67%	108
Less than \$30K	31%	4%	66%	41
\$30K to \$60K	34%	2%	64%	81
\$60K to \$75K	44%	5%	51%	46
\$75K to \$100K	34%	3%	63%	44
More than \$100K	45%	6%	49%	108
Married	41%	6%	53%	357
Divorced/separated	41%	4%	55%	82
Never married	30%	2%	68%	69
Protestant	47%	5%	48%	186
Catholic	44%	4%	53%	177
Other	24%	8%	68%	135
Attend services 1 or more/week	52%	6%	42%	133
1-2 times a month	44%	7%	49%	76
Less often	38%	2%	59%	148
Never	27%	6%	67%	147
North Country	35%	5%	60%	44
Central/Lakes	44%	7%	49%	89
Connecticut Valley	34%	4%	62%	70
Mass Border	37%	6%	57%	152
Seacoast	37%	5%	58%	85
Manchester Area	49%	1%	50%	71
1st Cong. District	42%	4%	54%	259
2nd Cong. District	36%	6%	58%	253

**Presidential Approval Rating - Foreign Affairs**

<b>STATEWIDE</b>	<b><u>Approve</u></b> <b>26%</b>	<b><u>Neutral</u></b> <b>2%</b>	<b><u>Disapprove</u></b> <b>72%</b>	<b><u>(N=)</u></b> <b>510</b>
Registered Democrat	2%	0%	97%	111
Undeclared	22%	2%	76%	203
Registered Republican	54%	2%	44%	140
Not registered	12%	7%	81%	51
Democrat	5%	1%	94%	233
Independent	21%	5%	74%	92
Republican	56%	2%	42%	174
Liberal	8%	1%	91%	100
Moderate	17%	2%	80%	245
Conservative	52%	2%	46%	137
Union household	20%	1%	78%	82
Non-union	27%	3%	71%	427
5 years or less in NH	28%	4%	68%	39
6 to 10 years	32%	1%	67%	57
11 to 20 years	24%	2%	75%	77
More than 20 years	24%	3%	73%	334
18 to 34	22%	0%	78%	69
35 to 49	26%	5%	69%	174
50 to 64	23%	2%	76%	165
65 and over	30%	1%	69%	88
Male	29%	2%	69%	245
Female	22%	3%	75%	265
High school or less	26%	3%	70%	117
Some college	31%	2%	67%	117
College graduate	25%	4%	71%	165
Post-graduate	19%	0%	81%	108
Less than \$30K	18%	4%	78%	41
\$30K to \$60K	19%	1%	80%	80
\$60K to \$75K	32%	2%	65%	46
\$75K to \$100K	22%	7%	71%	44
More than \$100K	30%	0%	70%	108
Married	27%	2%	71%	356
Divorced/separated	27%	4%	69%	82
Never married	19%	2%	80%	69
Protestant	36%	5%	60%	184
Catholic	25%	2%	73%	177
Other	15%	0%	85%	135
Attend services 1 or more/week	39%	3%	58%	133
1-2 times a month	19%	6%	75%	76
Less often	27%	2%	72%	147
Never	17%	1%	82%	147
North Country	30%	3%	67%	44
Central/Lakes	30%	3%	68%	89
Connecticut Valley	24%	1%	74%	70
Mass Border	23%	3%	74%	152
Seacoast	24%	3%	74%	85
Manchester Area	28%	1%	71%	69
1st Cong. District	28%	2%	69%	258
2nd Cong. District	23%	2%	75%	252

**U.S. Right Direction / Wrong Track**

	<b><u>Right Direction</u></b> <b>37%</b>	<b><u>Wrong Track</u></b> <b>55%</b>	<b><u>Don't Know</u></b> <b>8%</b>	<b><u>(N=)</u></b> <b>510</b>
<b>STATEWIDE</b>				
Registered Democrat	18%	75%	7%	112
Undeclared	31%	59%	10%	204
Registered Republican	59%	34%	7%	139
Not registered	42%	49%	9%	50
Democrat	21%	74%	5%	233
Independent	37%	46%	17%	94
Republican	59%	33%	8%	173
Liberal	19%	76%	5%	100
Moderate	38%	55%	7%	247
Conservative	49%	40%	11%	136
Union household	39%	52%	9%	82
Non-union	37%	55%	8%	428
5 years or less in NH	18%	72%	10%	39
6 to 10 years	39%	45%	16%	56
11 to 20 years	47%	47%	6%	75
More than 20 years	37%	56%	8%	337
18 to 34	38%	48%	14%	67
35 to 49	40%	55%	5%	174
50 to 64	32%	57%	11%	167
65 and over	38%	54%	7%	88
Male	43%	50%	8%	245
Female	32%	59%	9%	266
High school or less	39%	54%	7%	117
Some college	32%	58%	10%	118
College graduate	39%	51%	10%	162
Post-graduate	37%	56%	6%	110
Less than \$30K	35%	61%	4%	42
\$30K to \$60K	28%	63%	9%	80
\$60K to \$75K	37%	48%	16%	46
\$75K to \$100K	34%	62%	4%	44
More than \$100K	42%	50%	8%	108
Married	38%	52%	9%	357
Divorced/separated	33%	61%	6%	83
Never married	37%	57%	7%	67
Protestant	39%	51%	10%	187
Catholic	39%	55%	7%	176
Other	31%	60%	8%	135
Attend services 1 or more/week	46%	48%	7%	131
1-2 times a month	38%	54%	8%	76
Less often	38%	52%	10%	148
Never	28%	62%	9%	147
North Country	38%	51%	11%	42
Central/Lakes	37%	53%	9%	89
Connecticut Valley	26%	65%	9%	72
Mass Border	35%	55%	10%	152
Seacoast	42%	49%	9%	84
Manchester Area	43%	55%	2%	71
1st Cong. District	41%	53%	6%	255
2nd Cong. District	33%	56%	10%	256

**Presidential Approval Rating - Iraq**

<b>STATEWIDE</b>	<b><u>Approve</u></b> <b>26%</b>	<b><u>Neutral</u></b> <b>3%</b>	<b><u>Disapprove</u></b> <b>71%</b>	<b><u>(N=)</u></b> <b>512</b>
Registered Democrat	4%	2%	94%	112
Undeclared	21%	3%	76%	203
Registered Republican	52%	5%	43%	141
Not registered	20%	1%	79%	51
Democrat	6%	2%	92%	233
Independent	24%	3%	73%	95
Republican	54%	4%	42%	174
Liberal	11%	1%	87%	100
Moderate	19%	2%	79%	249
Conservative	48%	5%	46%	136
Union household	18%	5%	76%	82
Non-union	28%	3%	70%	429
5 years or less in NH	22%	0%	78%	38
6 to 10 years	40%	3%	57%	57
11 to 20 years	19%	5%	76%	76
More than 20 years	25%	3%	71%	338
18 to 34	28%	3%	70%	69
35 to 49	27%	2%	71%	173
50 to 64	23%	3%	74%	168
65 and over	25%	7%	68%	87
Male	31%	3%	66%	247
Female	22%	3%	75%	265
High school or less	31%	2%	67%	115
Some college	33%	4%	64%	118
College graduate	22%	5%	73%	166
Post-graduate	18%	0%	81%	110
Less than \$30K	13%	6%	81%	41
\$30K to \$60K	22%	1%	77%	81
\$60K to \$75K	38%	0%	62%	46
\$75K to \$100K	16%	6%	78%	44
More than \$100K	25%	0%	75%	108
Married	26%	2%	72%	358
Divorced/separated	28%	7%	65%	82
Never married	24%	3%	72%	69
Protestant	34%	6%	60%	186
Catholic	26%	2%	72%	177
Other	17%	1%	82%	135
Attend services 1 or more/week	37%	4%	60%	131
1-2 times a month	29%	2%	70%	76
Less often	24%	5%	71%	148
Never	18%	2%	80%	149
North Country	33%	0%	67%	44
Central/Lakes	28%	4%	68%	89
Connecticut Valley	21%	1%	77%	72
Mass Border	25%	4%	71%	151
Seacoast	24%	4%	72%	85
Manchester Area	25%	3%	71%	70
1st Cong. District	27%	4%	68%	258
2nd Cong. District	25%	2%	73%	254

**Support / Oppose US War in Iraq**

<b>STATEWIDE</b>	<b><u>Support</u></b> <b>37%</b>	<b><u>Neutral</u></b> <b>5%</b>	<b><u>Oppose</u></b> <b>58%</b>	<b><u>(N=)</u></b> <b>510</b>
Registered Democrat	13%	2%	85%	111
Undeclared	34%	4%	62%	200
Registered Republican	65%	5%	30%	141
Not registered	25%	14%	61%	52
Democrat	16%	4%	80%	232
Independent	35%	5%	59%	93
Republican	68%	4%	28%	174
Liberal	17%	3%	80%	99
Moderate	31%	4%	65%	246
Conservative	62%	5%	33%	137
Union household	39%	4%	57%	82
Non-union	37%	5%	58%	427
5 years or less in NH	24%	7%	68%	38
6 to 10 years	53%	7%	40%	56
11 to 20 years	37%	1%	62%	76
More than 20 years	36%	5%	59%	337
18 to 34	39%	8%	53%	69
35 to 49	44%	4%	52%	173
50 to 64	35%	3%	62%	165
65 and over	28%	5%	67%	88
Male	44%	4%	52%	247
Female	31%	5%	64%	263
High school or less	46%	7%	47%	117
Some college	42%	4%	54%	118
College graduate	35%	4%	61%	164
Post-graduate	27%	4%	70%	108
Less than \$30K	22%	4%	75%	42
\$30K to \$60K	30%	5%	65%	81
\$60K to \$75K	46%	6%	48%	46
\$75K to \$100K	30%	1%	68%	44
More than \$100K	42%	5%	54%	107
Married	38%	4%	58%	354
Divorced/separated	42%	4%	54%	84
Never married	29%	8%	63%	69
Protestant	44%	4%	52%	184
Catholic	39%	6%	55%	177
Other	28%	3%	69%	134
Attend services 1 or more/week	47%	5%	48%	131
1-2 times a month	38%	5%	57%	76
Less often	38%	4%	59%	148
Never	29%	5%	66%	147
North Country	41%	7%	52%	44
Central/Lakes	36%	7%	57%	90
Connecticut Valley	26%	4%	70%	69
Mass Border	37%	1%	62%	152
Seacoast	41%	7%	52%	85
Manchester Area	47%	4%	49%	68
1st Cong. District	43%	6%	51%	258
2nd Cong. District	32%	3%	65%	252

**US Withdrawal from Iraq**

	<b><u>Immediate Withdrawal</u></b> 23%	<b><u>Withdraw Aug. '08</u></b> 34%	<b><u>Stay As Long As Needed</u></b> 40%	<b><u>Don't Know</u></b> 3%	<b><u>(N=)</u></b> 512
<b>STATEWIDE</b>					
Registered Democrat	45%	40%	13%	2%	112
Undeclared	20%	40%	35%	5%	202
Registered Republican	11%	19%	69%	1%	140
Not registered	19%	45%	31%	5%	52
Democrat	35%	44%	16%	5%	234
Independent	18%	35%	44%	3%	94
Republican	9%	22%	68%	1%	173
Liberal	38%	36%	23%	3%	100
Moderate	23%	39%	34%	4%	249
Conservative	13%	27%	60%	1%	136
Union household	24%	36%	37%	3%	82
Non-union	23%	34%	40%	3%	429
5 years or less in NH	30%	42%	25%	3%	38
6 to 10 years	25%	26%	46%	2%	57
11 to 20 years	24%	40%	34%	2%	76
More than 20 years	22%	34%	41%	3%	338
18 to 34	34%	36%	28%	1%	69
35 to 49	19%	35%	43%	3%	172
50 to 64	22%	36%	39%	3%	168
65 and over	25%	32%	39%	3%	88
Male	21%	28%	48%	2%	246
Female	24%	40%	31%	4%	266
High school or less	22%	39%	38%	1%	116
Some college	19%	34%	42%	4%	117
College graduate	21%	31%	44%	3%	166
Post-graduate	30%	35%	31%	4%	110
Less than \$30K	20%	48%	21%	12%	42
\$30K to \$60K	26%	29%	43%	2%	81
\$60K to \$75K	19%	25%	52%	4%	45
\$75K to \$100K	29%	36%	35%	1%	44
More than \$100K	19%	42%	37%	2%	108
Married	21%	36%	41%	2%	357
Divorced/separated	28%	28%	39%	5%	83
Never married	28%	36%	30%	5%	69
Protestant	16%	33%	48%	2%	184
Catholic	26%	34%	38%	3%	178
Other	26%	41%	29%	4%	135
Attend services 1 or more/week	22%	27%	49%	2%	130
1-2 times a month	20%	39%	38%	3%	76
Less often	22%	38%	38%	3%	148
Never	26%	36%	32%	5%	150
North Country	21%	31%	42%	6%	44
Central/Lakes	18%	35%	40%	8%	90
Connecticut Valley	26%	36%	37%	1%	71
Mass Border	30%	29%	39%	2%	151
Seacoast	20%	38%	39%	4%	85
Manchester Area	16%	40%	44%	0%	70
1st Cong. District	21%	36%	42%	2%	258
2nd Cong. District	25%	33%	37%	4%	254



**Favor / Oppose Iraq Surge**

<b>STATEWIDE</b>	<b>Strongly Favor</b> <u>Favor</u> <b>19%</b>	<b>Somewhat Favor</b> <u>Favor</u> <b>16%</b>	<b>Neutral</b> <u>Neutral</u> <b>3%</b>	<b>Somewhat Oppose</b> <u>Oppose</u> <b>11%</b>	<b>Strongly Oppose</b> <u>Oppose</u> <b>50%</b>	<b>Don't Know</b> <u>Know</u> <b>1%</b>	<b>(N=)</b> <b>512</b>
Registered Democrat	3%	8%	2%	10%	76%	1%	112
Undeclared	14%	13%	2%	12%	57%	1%	203
Registered Republican	38%	26%	6%	11%	20%	0%	141
Not registered	16%	14%	3%	13%	51%	3%	52
Democrat	4%	6%	3%	13%	74%	0%	234
Independent	16%	19%	2%	19%	41%	3%	95
Republican	39%	27%	4%	5%	23%	1%	173
Liberal	5%	9%	2%	12%	72%	0%	100
Moderate	15%	14%	3%	13%	53%	1%	249
Conservative	32%	22%	5%	7%	32%	2%	135
Union household	15%	17%	5%	12%	51%	0%	82
Non-union	19%	15%	3%	11%	50%	1%	429
5 years or less in NH	10%	9%	2%	11%	65%	4%	38
6 to 10 years	19%	26%	3%	6%	46%	0%	57
11 to 20 years	18%	15%	3%	17%	47%	0%	77
More than 20 years	19%	15%	4%	11%	50%	1%	337
18 to 34	5%	17%	3%	18%	57%	0%	69
35 to 49	18%	19%	4%	10%	49%	1%	173
50 to 64	20%	16%	3%	10%	50%	2%	168
65 and over	24%	10%	4%	13%	50%	0%	88
Male	24%	22%	2%	10%	41%	1%	247
Female	13%	10%	5%	13%	59%	1%	265
High school or less	20%	13%	4%	11%	51%	1%	117
Some college	22%	17%	5%	14%	43%	0%	117
College graduate	15%	20%	3%	11%	50%	1%	166
Post-graduate	17%	11%	2%	10%	58%	2%	110
Less than \$30K	14%	6%	4%	15%	62%	0%	42
\$30K to \$60K	16%	18%	4%	18%	45%	0%	81
\$60K to \$75K	30%	15%	0%	10%	45%	0%	46
\$75K to \$100K	16%	16%	1%	7%	58%	0%	44
More than \$100K	18%	15%	5%	13%	47%	1%	108
Married	21%	16%	4%	11%	47%	1%	357
Divorced/separated	20%	12%	5%	9%	54%	1%	83
Never married	5%	17%	2%	14%	62%	0%	69
Protestant	25%	20%	3%	10%	41%	1%	186
Catholic	17%	16%	5%	12%	48%	1%	177
Other	10%	10%	1%	12%	66%	1%	135
Attend services 1 or more/week	25%	17%	6%	9%	41%	2%	130
1-2 times a month	17%	23%	2%	9%	49%	0%	76
Less often	17%	16%	4%	13%	50%	0%	148
Never	13%	10%	2%	13%	61%	1%	150
North Country	15%	22%	9%	16%	39%	0%	44
Central/Lakes	15%	21%	4%	20%	41%	0%	89
Connecticut Valley	16%	11%	1%	13%	57%	3%	72
Mass Border	20%	13%	2%	9%	54%	1%	150
Seacoast	19%	15%	7%	4%	54%	1%	85
Manchester Area	26%	16%	0%	9%	48%	1%	70
1st Cong. District	21%	16%	5%	7%	52%	1%	258
2nd Cong. District	16%	16%	2%	16%	49%	1%	255

**Can US Win War in Iraq?**

<b>STATEWIDE</b>	<b><u>Can Win</u> 35%</b>	<b><u>Cannot Win</u> 55%</b>	<b><u>Don't Know</u> 10%</b>	<b><u>(N=)</u> 512</b>
Registered Democrat	13%	81%	7%	112
Undeclared	35%	59%	6%	203
Registered Republican	50%	34%	16%	141
Not registered	38%	47%	15%	52
Democrat	16%	78%	6%	234
Independent	48%	42%	10%	95
Republican	54%	32%	14%	173
Liberal	18%	75%	7%	100
Moderate	32%	60%	7%	249
Conservative	51%	35%	14%	135
Union household	27%	65%	7%	81
Non-union	36%	53%	10%	429
5 years or less in NH	33%	63%	4%	37
6 to 10 years	46%	40%	15%	57
11 to 20 years	41%	54%	5%	77
More than 20 years	31%	58%	11%	337
18 to 34	46%	41%	14%	69
35 to 49	42%	50%	8%	173
50 to 64	27%	64%	9%	168
65 and over	28%	60%	11%	88
Male	42%	48%	10%	247
Female	28%	62%	10%	264
High school or less	49%	46%	6%	117
Some college	36%	50%	14%	117
College graduate	34%	58%	8%	165
Post-graduate	20%	67%	13%	109
Less than \$30K	27%	62%	11%	42
\$30K to \$60K	36%	58%	6%	81
\$60K to \$75K	34%	56%	11%	46
\$75K to \$100K	38%	59%	3%	44
More than \$100K	32%	60%	8%	108
Married	35%	54%	10%	356
Divorced/separated	32%	61%	7%	84
Never married	36%	51%	12%	69
Protestant	38%	52%	10%	186
Catholic	36%	53%	11%	177
Other	30%	63%	7%	135
Attend services 1 or more/week	42%	47%	11%	131
1-2 times a month	39%	54%	7%	76
Less often	34%	53%	12%	147
Never	28%	65%	7%	150
North Country	28%	55%	17%	44
Central/Lakes	44%	48%	8%	90
Connecticut Valley	32%	57%	11%	72
Mass Border	28%	61%	11%	150
Seacoast	40%	51%	9%	85
Manchester Area	35%	56%	9%	70
1st Cong. District	41%	49%	9%	258
2nd Cong. District	28%	61%	11%	254

**Favorability Rating - George W. Bush**

<b>STATEWIDE</b>	<b><u>Favorable</u></b> <b>30%</b>	<b><u>Neutral</u></b> <b>6%</b>	<b><u>Unfavorable</u></b> <b>63%</b>	<b><u>DK</u></b> <b>1%</b>	<b><u>(N)</u></b> <b>515</b>
Registered Democrat	3%	3%	93%	0%	112
Undeclared	25%	5%	69%	2%	205
Registered Republican	61%	7%	31%	0%	141
Not registered	23%	14%	61%	2%	52
Democrat	6%	4%	91%	0%	234
Independent	27%	8%	61%	3%	95
Republican	64%	8%	27%	1%	175
Liberal	10%	2%	88%	0%	100
Moderate	21%	8%	69%	1%	249
Conservative	59%	5%	37%	0%	138
Union household	17%	6%	77%	1%	82
Non-union	33%	6%	61%	1%	432
5 years or less in NH	28%	2%	70%	0%	39
6 to 10 years	45%	6%	49%	0%	57
11 to 20 years	24%	5%	70%	2%	77
More than 20 years	29%	7%	64%	1%	339
18 to 34	27%	8%	66%	0%	69
35 to 49	37%	5%	58%	1%	174
50 to 64	25%	5%	68%	2%	168
65 and over	27%	10%	64%	0%	90
Male	36%	7%	55%	1%	247
Female	24%	4%	70%	1%	268
High school or less	37%	8%	54%	1%	118
Some college	35%	6%	60%	0%	118
College graduate	29%	5%	66%	1%	166
Post-graduate	19%	6%	74%	2%	110
Less than \$30K	16%	12%	72%	0%	42
\$30K to \$60K	29%	4%	67%	0%	81
\$60K to \$75K	38%	5%	56%	0%	46
\$75K to \$100K	23%	4%	70%	3%	44
More than \$100K	34%	2%	64%	0%	108
Married	31%	7%	61%	1%	359
Divorced/separated	33%	2%	64%	1%	84
Never married	24%	3%	72%	1%	69
Protestant	40%	8%	50%	2%	187
Catholic	33%	5%	62%	0%	178
Other	15%	4%	81%	0%	135
Attend services 1 or more/week	46%	5%	47%	2%	133
1-2 times a month	29%	9%	62%	1%	76
Less often	30%	5%	65%	0%	148
Never	18%	6%	75%	1%	150
North Country	33%	3%	62%	1%	44
Central/Lakes	27%	10%	63%	0%	90
Connecticut Valley	28%	6%	63%	3%	72
Mass Border	32%	5%	63%	1%	152
Seacoast	27%	4%	68%	1%	85
Manchester Area	35%	7%	59%	0%	71
1st Cong. District	32%	5%	63%	1%	259
2nd Cong. District	29%	7%	64%	1%	256