

THE CNN / WMUR GRANITE STATE POLL THE UNIVERSITY OF NEW HAMPSHIRE

SUNUNU FAVORABILITY SLIDES – FACES STRONG CHALLENGE IN '08

By: Andrew E. Smith, Ph.D. 603/862-2226
UNH Survey Center
www.unh.edu/survey-center

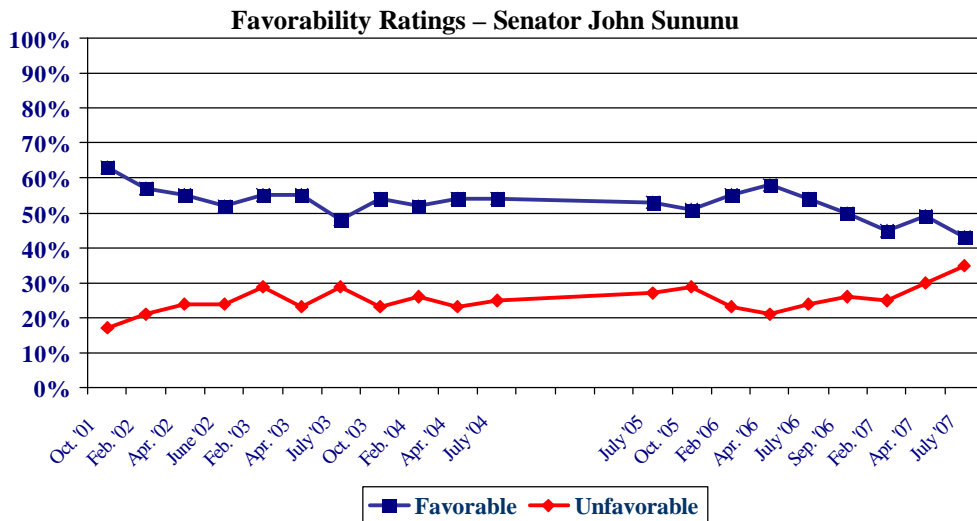
FOR RELEASE
July 19, 2007

DURHAM, NH – Republican Senator John Sununu has seen his popularity in the Granite State drop in the wake of the 2006 election. He now faces a strong challenge from three announced, and one potential Democratic challengers.

These findings are based on the latest **Granite State Poll**,[?] conducted by the University of New Hampshire Survey Center. The Granite State Poll is sponsored by CNN and WMUR-TV, Manchester. Five hundred twenty-four (524) randomly selected New Hampshire adults were interviewed by telephone between July 9 and July 17, 2007. The margin of sampling error for the survey is +/-4.3 percent. Two hundred fifty (260) respondents lived in New Hampshire's 1st Congressional District (margin of sampling error = +/-6.1%) and 264 lived in the 2nd District (margin of sampling error = +/-6.0%).

John Sununu

John Sununu, New Hampshire's junior Senator is up for re-election in 2008. He is being targeted by national and state Democrats, who see him as vulnerable because of his ties to the Bush administration and because of the big gains Democrats made in New Hampshire in 2006. Sununu's favorability ratings have dropped in recent months and he is now viewed favorably by only 43 percent of New Hampshire adults, 35 percent having an unfavorable opinion of him, 13 percent are neutral and 9 percent don't know enough to say. Sununu's net favorability rating is a low +8 percent, down from +30% one year ago. Sununu's favorability ratings are at the lowest since he was elected senator. "A twenty-two percentage point drop in favorability ratings in the past year should be a wake-up call for Sununu," said Andrew Smith, Director of the UNH Survey Center. "The 2006 election showed that Republican candidates must work harder to get their base to the polls in order to be successful. At the same time, perceived vulnerability from lower favorability ratings could attract strong Democratic opponent, such as former Governor Jeanne Shaheen."



There has been considerable speculation about whether Shaheen will challenge Sununu to a rematch of their 2002 race. Even though she has been out of office since 2002, Shaheen remains popular in New Hampshire. Currently, 60 percent of New Hampshire adults have a favorable opinion of Shaheen, 24 percent have an unfavorable opinion of her, 9 percent are neutral, and 8 percent don't know enough about her to say. Shaheen's net favorability rating is a very strong +36%.

[?] We ask that this copyrighted information be referred to as *the Granite State Poll*, sponsored by CNN and WMUR-TV.

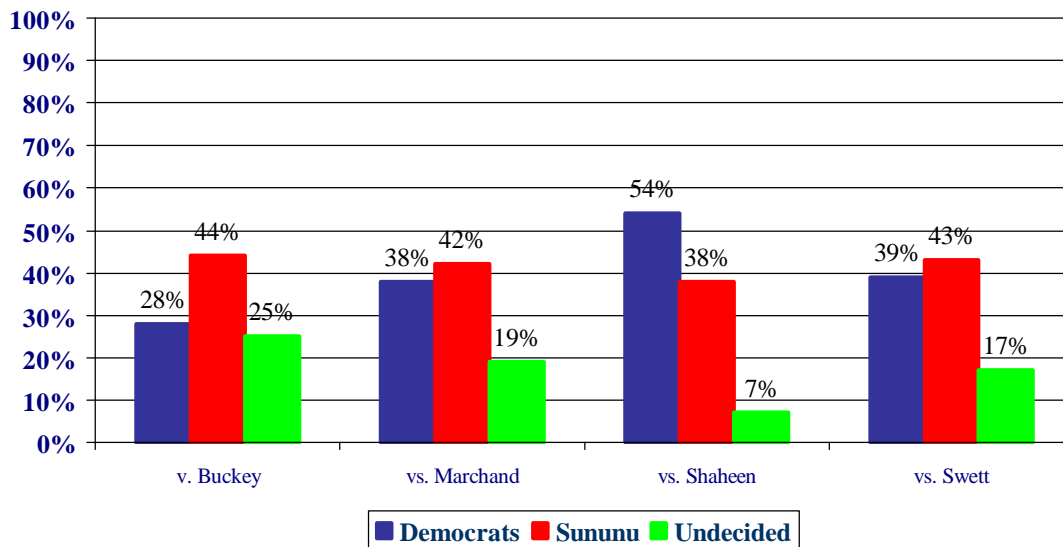
Possible NH Senate Trial Heats

In order to further test whether Sununu is vulnerable, Granite State poll respondents who are likely 2008 general election voters were asked who they would vote for among Shaheen and the three announced candidates for the Democratic nomination to challenge Sununu, former astronaut and Dartmouth Medical School professor Jay Buckey, Portsmouth Mayor Steve Marchand, and Katrina Swett, wife of former 2nd District Congressman Dick Swett and a challenger for that seat in 2002. Although he is the incumbent, Sununu would currently face unexpectedly strong challenges from all three announced Democrats and is currently losing to Shaheen.

In a trial heat between Sununu and Shaheen, the former New Hampshire governor is currently getting 54 percent of the vote with 38 percent going to Sununu, 1 percent for some other candidate and only 7 percent undecided. Shaheen runs strongest among women, Democrats, liberals, voters who disapprove of Bush, non-religious voters, and residents of Northern New Hampshire. Sununu runs strongest among Republicans, conservatives and voters who approve of Bush.

In a trial heat between Sununu and Swett, Sununu is currently getting 43 percent of the vote with 39 percent going to Swett, 1 percent for some other candidate and 17 percent undecided. In a match-up with Marchand, Sununu leads 42 percent to 38 percent with 1 percent favoring some other candidate and 19 percent are undecided. And in a match-up with Buckey, Sununu leads 44 percent to 28 percent with 2 percent favoring some other candidate and 25 percent are undecided. In all of these match-ups, Sununu does best among Republicans, conservatives, voters who approve of Bush, men, Catholics, regular church goers, and Manchester area residents. The Democratic candidates run strongest among Democrats, liberals, voters who disapprove of Bush, and voters with post-graduate educations.

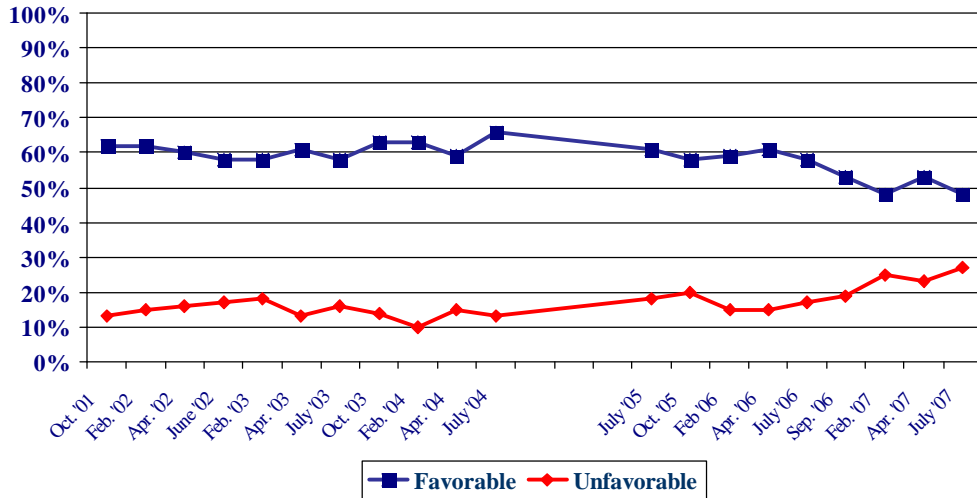
NH Senate Race – Sununu vs. Potential Democratic Challengers



Judd Gregg

Senator Judd Gregg remains more popular than Sununu -- 48 percent of New Hampshire adults have a favorable opinion of Gregg, 27 percent have an unfavorable opinion, 11 percent are neutral and 14 percent don't know enough to say. Gregg's net favorability rating stands at +21 percent -- a significant decline from +34 percent in September and is at the lowest point since the Granite State Poll began in 2001.

Favorability Ratings – Senator Judd Gregg

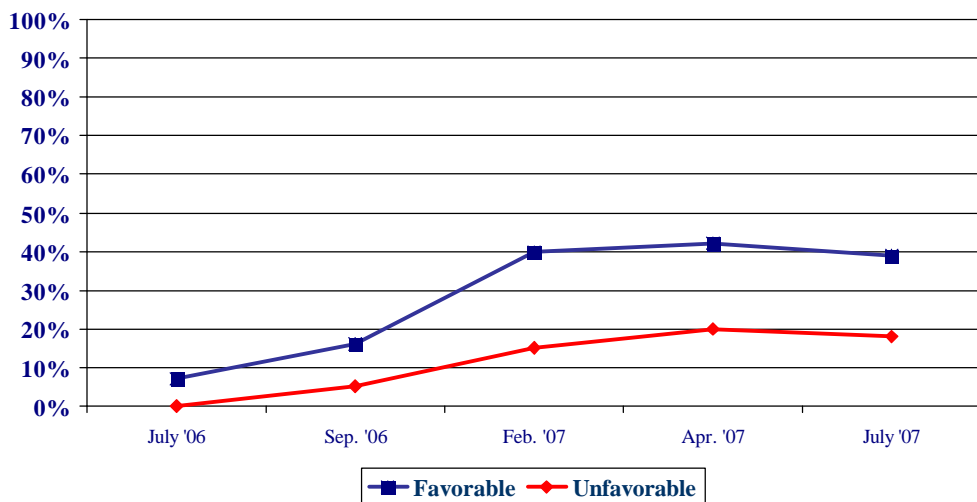


NH 1st District

In New Hampshire's 1st Congressional District, Democrat Carol Shea-Porter pulled off a stunning upset of incumbent Jeb Bradley in November. Shea-Porter was largely unknown to the 1st District during the election and benefited from a steep decline in Republican turnout. Since her election, her favorability ratings have increased steadily in the district. Currently, 39 percent of 1st District adults have a favorable opinion of Shea-Porter, 18 percent have an unfavorable opinion of her, 15 percent are neutral, and 28 percent say they don't know enough about her to say. Shea-Porter's net favorability rating is +21 percent.

Shea-Porter's approval ratings are similar to those of Jeb Bradley soon after he began his first term. In June, 2003, 41 percent of 1st District residents had a favorable opinion of Jeb Bradley, 14 percent had an unfavorable opinion of him, 23 percent were neutral, and 22 did not know enough about him to say.

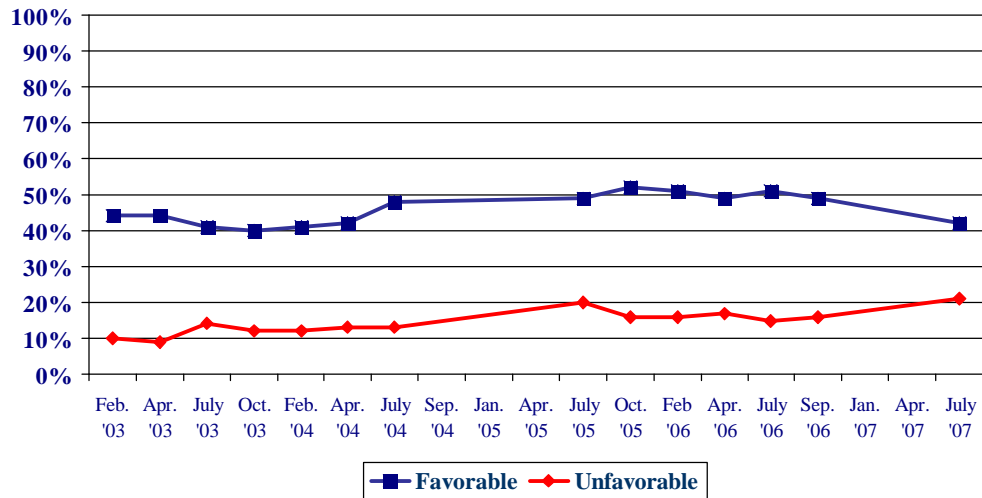
Favorability Ratings – Carol Shea-Porter NH 1st District



Bradley is planning a rematch with Shea-Porter in 2008. Currently, 42 percent of 1st District voters have a favorable opinion of Bradley, 21 percent have an unfavorable opinion of him, 14 percent are neutral and 23 percent don't know enough about him to say. Bradley's net favorability rating stands at +21 percent in the 1st District.

"The 1st District is the more Republican of New Hampshire's two Congressional districts and she will have to continue to improve her popularity over the coming year to win re-election," said Andrew Smith, Director of the UNH Survey Center.

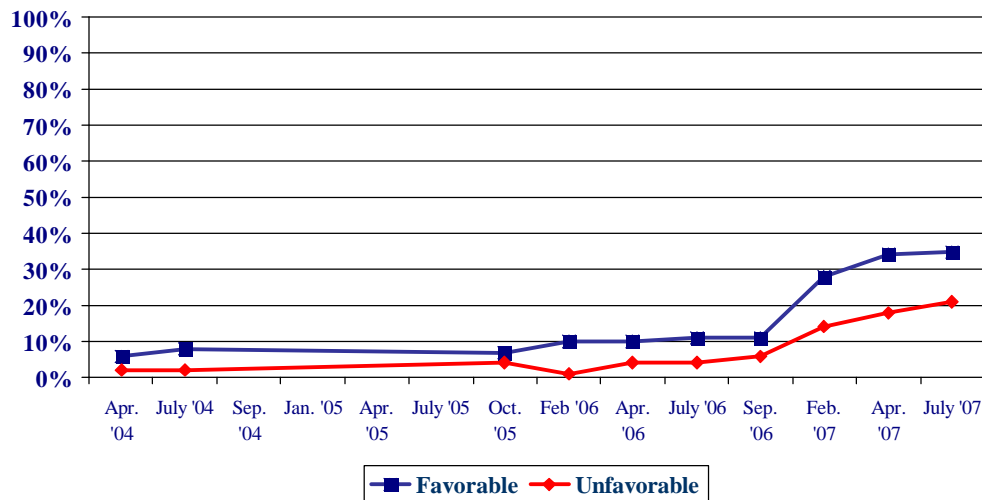
Favorability Ratings – Jeb Bradley NH 1st District



NH 2nd District

In the 2nd District, Democrat Paul Hodes upset 5 term Republican incumbent Charley Bass in a re-match of their 2004 race, benefiting from anti-Bush sentiment and low Republican turnout in the District. Hodes is considerably less well known in the 2nd District than Shea-Porter is in the 1st. Currently, 34 percent of 2nd District residents say they have a favorable opinion of Hodes, 21 percent have an unfavorable opinion of him, 8 percent are neutral, and 36 percent say they know too little about him to say. Hodes' net favorability rating is +13 percent.

Favorability Ratings – Paul Hodes NH 2nd District



Granite State Poll Methodology

These findings are based on the latest **Granite State Poll** conducted by the University of New Hampshire Survey Center. The Granite State Poll is sponsored by CNN and WMUR-TV, Manchester. Five hundred twenty-four (524) randomly selected New Hampshire adults were interviewed by telephone between July 9 and July 17, 2007. The margin of sampling error for the survey is +/-4.3 percent. Two hundred sixty (260) respondents lived in New Hampshire's 1st Congressional District (margin of sampling error = +/-6.1%) and 264 lived in the 2nd District (margin of sampling error = +/-6.0%). Results reported for other subgroups have potential for somewhat larger variation than those for the entire population.

The data have been weighted to adjust for numbers of adults and telephone lines within households, respondent sex, and region of the state. In addition to potential sampling error, all surveys have other potential sources of non-sampling error including question order effects, question wording effects, and non-response.

Favorability Rating –Carol Shea-Porter - NH 1st District

"Next, I'd like to get your overall opinion of some people in the news. As I read each name, please say if you have a favorable or unfavorable opinion of this person - or if you have never heard of him or her. Congresswoman Carol Shea-Porter"

<u>1st C.D.</u>	<u>Favorable</u>	<u>Neutral</u>	<u>Unfavorable</u>	<u>Don't Know</u>	<u>(N)</u>
July '07	39%	15%	18%	28%	(252)
Apr. '07	42	15	20	24	(251)
Feb. '07	40	17	15	28	(248)
Sept. '06	16	14	5	65	(266)
July '06	7	7	0	86	(256)

Favorability Rating - U.S. Representative Jeb Bradley - NH 1st District

"Next, I'd like to get your overall opinion of some people in the news. As I read each name, please say if you have a favorable or unfavorable opinion of this person - or if you have never heard of him or her. Former U.S. Representative Jeb Bradley." (Respondents were asked about U.S. REPRESENTATIVE Jeb Bradley from February 2003 to September 2006.)

<u>1st C.D.</u>	<u>Favorable</u>	<u>Neutral</u>	<u>Unfavorable</u>	<u>Don't Know</u>	<u>(N)</u>
July '07	42%	14%	20%	23%	(253)
Sept. '06	49	16	18	17	(265)
July '06	51	13	15	22	(256)
Apr. '06	49	14	17	20	(271)
Feb. '06	51	16	16	17	(269)
Oct. '05	52	14	16	18	(283)
July '05	49	10	20	21	(269)
July '04	48	14	13	25	(269)
Apr. '04	42	14	13	32	(266)
Feb. '04	41	14	12	33	(265)
Oct. '03	40	13	12	35	(239)
June '03	41	23	14	22	(273)
Apr. '03	44	11	9	37	(269)
Feb. '03	44	15	10	31	(331)

Favorability Rating – Paul Hodes - NH 2nd District

"Next, I'd like to get your overall opinion of some people in the news. As I read each name, please say if you have a favorable or unfavorable opinion of this person - or if you have never heard of him or her. Congressman Paul Hodes." (Respondents were asked about Concord Attorney Paul Hodes from April 2004 to September 2006.)

<u>2nd C.D.</u>	<u>Favorable</u>	<u>Neutral</u>	<u>Unfavorable</u>	<u>Don't Know</u>	<u>(N)</u>
July '07	34%	8%	21%	36%	(254)
Apr. '07	34	13	18	36	(264)
Feb. '07	28	18	14	39	(286)
Sept. '06	11	17	6	66	(248)
July '06	11	9	4	77	(246)
Apr. '06	10	6	4	81	(235)
Feb. '06	10	11	1	78	(232)
Oct. '05	7	7	4	83	(230)
July '04	8	8	2	81	(238)
Apr. '04	6	7	2	86	(271)

Favorability Rating – U.S. Senator John Sununu

"Next, I'd like to get your overall opinion of some people in the news. As I read each name, please say if you have a favorable or unfavorable opinion of this person - or if you have never heard of him or her. Senator John Sununu." (Respondents were asked about U.S. REPRESENTATIVE John Sununu from October 2001 to June 2002. He was elected Senator in November 2002.)

<u>Statewide</u>	<u>Favorable</u>	<u>Neutral</u>	<u>Unfavorable</u>	<u>Don't Know</u>	<u>(N)</u>
July '07	43%	13%	35%	9%	(521)
Apr. '07	49	14	30	8	(514)
Feb. '07	45	20	25	11	(533)
Sept. '06	50	15	26	9	(513)
July '06	54	11	24	11	(499)
Apr. '06	58	14	21	10	(503)
Feb. '06	55	13	23	8	(500)
Oct. '05	51	9	29	10	(509)
July '05	53	6	27	13	(499)
July '04	54	10	25	11	(507)
Apr. '04	54	11	23	11	(539)
Feb. '04	52	11	26	12	(510)
Oct. '03	54	10	23	13	(495)
June '03	48	11	29	11	(513)
Apr. '03	55	9	23	12	(507)
Feb. '03	55	9	29	8	(651)
June '02	52	10	24	14	(639)
Apr. '02	55	7	24	14	(693)
Feb. '02	57	9	21	13	(724)
Oct. '01	63	8	17	12	(681)

Favorability Rating – Former Governor Jeanne Shaheen

"Next, I'd like to get your overall opinion of some people in the news. As I read each name, please say if you have a favorable or unfavorable opinion of this person - or if you have never heard of him or her. Former Governor Jeanne Shaheen."

<u>Statewide</u>	<u>Favorable</u>	<u>Neutral</u>	<u>Unfavorable</u>	<u>Don't Know</u>	<u>(N)</u>
July '07	60%	9%	24%	8%	(520)

U.S. Senate Trial Heats

Likely 2008 General Election Voters

	<u>Buckey</u>	<u>Democratic Candidate</u>		<u>Swett</u>
		<u>Marchand</u>	<u>Shaheen</u>	
Sununu (Rep.)	44%	42%	38%	43%
Democratic Challenger	28	38	54	39
Other	2	1	1	1
Undecided	25	19	7	17
(N=)	(450)	(445)	(449)	(445)

Favorability Rating – U.S. Senator Judd Gregg

"Next, I'd like to get your overall opinion of some people in the news. As I read each name, please say if you have a favorable or unfavorable opinion of this person - or if you have never heard of him or her. Senator Judd Gregg."

<u>Statewide</u>	<u>Favorable</u>	<u>Neutral</u>	<u>Unfavorable</u>	<u>Don't Know</u>	<u>(N)</u>
July '07	48%	11%	27%	14%	(506)
Apr. '07	53	13	23	11	(515)
Feb. '07	48	15	25	12	(533)
Sept. '06	53	15	19	13	(513)
July '06	58	11	17	14	(503)
Apr. '06	61	12	15	13	(505)
Feb. '06	59	14	15	12	(501)
Oct. '05	58	10	20	12	(510)
July '05	61	8	18	13	(501)
July '04	66	8	13	12	(508)
Apr. '04	59	11	15	15	(541)
Feb. '04	63	12	10	15	(509)
Oct. '03	63	8	14	16	(496)
June '03	58	10	16	16	(514)
Apr. '03	61	8	13	18	(507)
Feb. '03	58	8	18	16	(652)
June '02	58	10	17	15	(638)
Apr. '02	60	6	16	18	(691)
Feb. '02	62	9	15	14	(724)
Oct. '01	62	9	13	16	(679)

Net Favorability Ratings

	<u>Shea-Porter (1st CD)</u>	<u>Hodes (2nd CD)</u>	<u>Gregg (State)</u>	<u>Sununu (State)</u>
July '07	+21%	+13%	+21	+8%
Apr. '07	+22	+16	+30	+19
Feb. '07	+25	+14	+23	+20
Sept. '06	+11	+5	+34	+24
July '06	+7	+7	+41	+30
Apr. '06	--	+6	+46	+34
Feb. '06	--	+9	+44	+32
Oct. '05	--	+3	+38	+22
July '05	--	--	+43	+26
July '04	--	--	+53	+29
Apr. '04	--	--	+44	+31
Feb. '04	--	--	+53	+26
Oct. '03	--	--	+49	+31
June '03	--	--	+42	+19
Apr. '03	--	--	+48	+32
Feb. '03	--	--	+40	+26
June '02	--	--	+40	+27
Apr. '02	--	--	+44	+31
Feb. '02	--	--	+47	+36
Oct. '01	--	--	+49	+46

Favorability Rating - Judd Gregg

STATEWIDE	<u>Favorable</u> 48%	<u>Neutral</u> 11%	<u>Unfavorable</u> 27%	<u>Don't Know</u> 14%	<u>(N)</u> 506
Registered Democrat	35%	12%	42%	10%	131
Undeclared	47%	13%	27%	14%	202
Registered Republican	74%	6%	15%	5%	105
Not registered	37%	10%	16%	37%	59
Democrat	36%	12%	38%	14%	230
Independent	47%	14%	20%	19%	107
Republican	70%	7%	15%	9%	157
Liberal	34%	12%	40%	15%	106
Moderate	48%	14%	26%	12%	216
Conservative	64%	5%	19%	12%	145
Approve Bush	70%	7%	15%	8%	122
Neutral	42%	22%	16%	20%	21
Disapprove	41%	12%	31%	16%	363
Union household	36%	10%	36%	19%	62
Non-union	50%	12%	26%	12%	438
5 years or less in NH	23%	14%	22%	40%	50
6 to 10 years	46%	13%	9%	32%	38
11 to 20 years	50%	10%	28%	12%	97
More than 20 years	53%	11%	29%	8%	292
18 to 34	48%	11%	17%	25%	66
35 to 49	52%	12%	22%	14%	159
50 to 64	49%	11%	31%	9%	170
65 and over	44%	8%	34%	15%	73
Male	46%	14%	29%	12%	247
Female	50%	9%	25%	16%	260
High school or less	49%	10%	22%	19%	113
Some college	49%	13%	22%	16%	118
College graduate	54%	11%	25%	10%	168
Post-graduate	38%	11%	41%	10%	81
Less than \$30K	50%	11%	21%	18%	34
\$30K to \$60K	48%	8%	32%	12%	86
\$60K to \$75K	48%	20%	25%	7%	43
\$75K to \$100K	71%	7%	13%	10%	57
More than \$100K	58%	9%	22%	11%	99
Married	50%	12%	26%	12%	349
Divorced/separated	45%	9%	33%	13%	71
Never married	48%	9%	22%	21%	62
Protestant	52%	9%	24%	15%	179
Catholic	55%	9%	25%	11%	157
Other	38%	15%	33%	15%	127
Attend 1 or more/week	57%	10%	23%	10%	113
1-2 times a month	55%	16%	23%	6%	54
Less often	53%	8%	23%	16%	157
Never	36%	14%	33%	17%	152
Northern NH	53%	9%	20%	19%	43
Central/Lakes	49%	12%	28%	10%	86
Connecticut Valley	43%	9%	33%	15%	73
Massachusetts Border	46%	13%	26%	14%	136
Seacoast	48%	14%	22%	16%	91
Greater Manchester	52%	8%	29%	11%	76
1st Cong. District	50%	12%	23%	15%	260
2nd Cong. District	47%	11%	30%	12%	246

Favorability Rating - John Sununu

STATEWIDE	<u>Favorable</u> 43%	<u>Neutral</u> 13%	<u>Unfavorable</u> 35%	<u>Don't Know</u> 9%	<u>(N)</u> 521
Registered Democrat	30%	12%	49%	9%	132
Undeclared	41%	14%	37%	9%	201
Registered Republican	69%	9%	16%	7%	105
Not registered	37%	15%	30%	18%	59
Democrat	27%	13%	51%	9%	239
Independent	47%	19%	21%	13%	111
Republican	63%	7%	22%	7%	160
Liberal	27%	14%	53%	7%	107
Moderate	38%	12%	39%	11%	228
Conservative	64%	9%	19%	7%	147
Approve Bush	70%	11%	14%	5%	124
Neutral	34%	14%	29%	23%	21
Disapprove	35%	13%	42%	10%	375
Union household	40%	11%	43%	6%	65
Non-union	44%	13%	34%	9%	451
5 years or less in NH	23%	21%	26%	30%	51
6 to 10 years	56%	5%	28%	11%	38
11 to 20 years	45%	5%	46%	4%	104
More than 20 years	43%	15%	34%	8%	301
18 to 34	34%	15%	31%	20%	67
35 to 49	49%	10%	31%	10%	161
50 to 64	42%	14%	42%	3%	179
65 and over	43%	11%	34%	13%	77
Male	47%	10%	34%	8%	250
Female	39%	15%	35%	11%	271
High school or less	40%	13%	34%	13%	118
Some college	45%	11%	34%	9%	121
College graduate	47%	14%	32%	8%	174
Post-graduate	36%	10%	45%	8%	83
Less than \$30K	27%	26%	38%	9%	36
\$30K to \$60K	39%	13%	36%	12%	86
\$60K to \$75K	64%	12%	19%	5%	45
\$75K to \$100K	53%	7%	31%	9%	59
More than \$100K	47%	10%	35%	8%	102
Married	46%	12%	34%	8%	359
Divorced/separated	36%	18%	37%	9%	75
Never married	31%	10%	41%	18%	63
Protestant	46%	14%	32%	8%	183
Catholic	50%	11%	30%	10%	165
Other	33%	11%	45%	10%	131
Attend 1 or more/week	49%	9%	32%	10%	116
1-2 times a month	41%	16%	38%	5%	60
Less often	47%	9%	34%	10%	159
Never	36%	17%	38%	9%	156
Northern NH	45%	17%	29%	10%	46
Central/Lakes	44%	14%	35%	8%	86
Connecticut Valley	39%	14%	33%	15%	76
Massachusetts Border	41%	13%	38%	9%	142
Seacoast	44%	15%	31%	10%	93
Greater Manchester	49%	6%	40%	5%	78
1st Cong. District	43%	11%	37%	8%	266
2nd Cong. District	43%	14%	32%	10%	255

Favorability Rating - Jeanne Shaheen

STATEWIDE	<u>Favorable</u> 60%	<u>Neutral</u> 9%	<u>Unfavorable</u> 24%	<u>Don't Know</u> 8%	<u>(N)</u> 520
Registered Democrat	79%	8%	11%	2%	132
Undeclared	59%	9%	25%	7%	200
Registered Republican	32%	12%	47%	10%	105
Not registered	64%	3%	15%	18%	59
Democrat	79%	7%	8%	6%	239
Independent	52%	10%	24%	14%	110
Republican	36%	10%	47%	7%	160
Liberal	77%	10%	9%	4%	107
Moderate	64%	7%	20%	9%	227
Conservative	40%	10%	42%	9%	147
Approve Bush	37%	10%	48%	5%	123
Neutral	29%	14%	41%	16%	21
Disapprove	69%	8%	14%	9%	375
Union household	76%	4%	18%	3%	65
Non-union	58%	9%	25%	8%	450
5 years or less in NH	25%	11%	21%	42%	50
6 to 10 years	66%	2%	21%	10%	38
11 to 20 years	73%	4%	20%	2%	104
More than 20 years	61%	9%	26%	4%	301
18 to 34	54%	6%	24%	16%	67
35 to 49	60%	9%	24%	6%	161
50 to 64	65%	7%	23%	5%	178
65 and over	55%	8%	26%	12%	77
Male	56%	9%	28%	7%	250
Female	63%	8%	19%	9%	270
High school or less	51%	8%	29%	12%	118
Some college	64%	6%	22%	8%	121
College graduate	58%	9%	26%	7%	174
Post-graduate	71%	10%	16%	3%	82
Less than \$30K	55%	5%	21%	19%	36
\$30K to \$60K	67%	5%	22%	6%	86
\$60K to \$75K	53%	7%	31%	8%	45
\$75K to \$100K	72%	2%	22%	3%	59
More than \$100K	61%	10%	23%	7%	101
Married	59%	9%	25%	7%	358
Divorced/separated	63%	5%	23%	9%	75
Never married	57%	11%	23%	9%	63
Protestant	54%	11%	29%	7%	182
Catholic	63%	6%	25%	6%	165
Other	64%	9%	16%	11%	131
Attend 1 or more/week	55%	9%	31%	5%	116
1-2 times a month	64%	3%	22%	10%	60
Less often	64%	6%	22%	7%	158
Never	58%	12%	21%	9%	156
Northern NH	61%	10%	18%	10%	46
Central/Lakes	59%	5%	27%	9%	86
Connecticut Valley	53%	11%	25%	11%	75
Massachusetts Border	57%	10%	26%	6%	142
Seacoast	64%	7%	21%	9%	93
Greater Manchester	67%	8%	21%	5%	78
1st Cong. District	61%	8%	23%	8%	266
2nd Cong. District	59%	10%	24%	8%	254

Favorability Rating - Paul Hodes
NH 2nd District

Second District	<u>Favorable</u> 34%	<u>Neutral</u> 8%	<u>Unfavorable</u> 21%	<u>Don't Know</u> 36%	<u>(N)</u> 254
Registered Democrat	52%	7%	5%	35%	61
Undeclared	40%	6%	17%	37%	106
Registered Republican	16%	10%	48%	26%	57
Not registered	12%	11%	18%	59%	25
Democrat	53%	8%	6%	32%	111
Independent	29%	11%	13%	48%	51
Republican	14%	7%	46%	33%	85
Liberal	53%	5%	10%	31%	52
Moderate	34%	12%	16%	38%	111
Conservative	20%	5%	40%	36%	70
Approve Bush	12%	9%	47%	32%	65
Neutral	20%	13%	24%	43%	11
Disapprove	44%	8%	11%	37%	177
Union household	36%	14%	15%	35%	32
Non-union	34%	8%	22%	36%	219
5 years or less in NH	21%	10%	13%	55%	17
6 to 10 years	22%	15%	8%	56%	20
11 to 20 years	45%	9%	20%	26%	47
More than 20 years	36%	7%	25%	33%	153
18 to 34	25%	12%	17%	45%	30
35 to 49	22%	12%	30%	36%	83
50 to 64	50%	6%	17%	27%	87
65 and over	39%	2%	18%	41%	35
Male	37%	6%	26%	31%	139
Female	32%	11%	15%	42%	115
High school or less	22%	10%	25%	42%	67
Some college	28%	10%	25%	37%	54
College graduate	38%	10%	16%	36%	83
Post-graduate	57%	0%	20%	23%	36
Less than \$30K	29%	9%	18%	45%	20
\$30K to \$60K	40%	8%	16%	36%	47
\$60K to \$75K	34%	6%	23%	37%	31
\$75K to \$100K	24%	9%	22%	44%	26
More than \$100K	33%	3%	34%	30%	43
Married	35%	10%	23%	31%	175
Divorced/separated	31%	3%	18%	47%	40
Never married	29%	3%	23%	45%	27
Protestant	31%	11%	27%	31%	92
Catholic	25%	6%	28%	40%	74
Other	49%	7%	7%	38%	64
Attend 1 or more/week	29%	5%	37%	30%	47
1-2 times a month	53%	5%	20%	22%	25
Less often	27%	8%	18%	48%	79
Never	39%	12%	17%	33%	86
Northern NH	29%	9%	9%	53%	24
Central/Lakes	41%	11%	26%	22%	57
Connecticut Valley	33%	5%	21%	41%	73
Massachusetts Border	32%	11%	19%	38%	85
Greater Manchester	37%	0%	37%	26%	15

Favorability Rating - Carol Shea-Porter
NH 1st District

First District	Favorable 39%	Neutral 15%	Unfavorable 18%	Don't Know 28%	(N) 252
Registered Democrat	68%	12%	5%	15%	71
Undeclared	34%	21%	13%	31%	95
Registered Republican	22%	14%	35%	29%	48
Not registered	18%	8%	33%	41%	34
Democrat	60%	14%	7%	19%	119
Independent	30%	20%	12%	38%	56
Republican	13%	14%	39%	35%	72
Liberal	74%	9%	2%	16%	55
Moderate	37%	14%	15%	34%	105
Conservative	23%	18%	34%	26%	75
Approve Bush	9%	12%	43%	35%	55
Neutral	17%	11%	41%	31%	10
Disapprove	49%	16%	9%	25%	186
Union household	40%	23%	10%	28%	30
Non-union	39%	14%	19%	28%	220
5 years or less in NH	53%	13%	10%	24%	33
6 to 10 years	29%	13%	23%	34%	18
11 to 20 years	32%	6%	23%	38%	50
More than 20 years	39%	19%	17%	25%	140
18 to 34	19%	8%	27%	46%	37
35 to 49	39%	30%	10%	21%	76
50 to 64	50%	4%	23%	23%	83
65 and over	34%	15%	17%	35%	38
Male	28%	17%	25%	30%	106
Female	47%	13%	13%	26%	146
High school or less	33%	9%	16%	42%	46
Some college	35%	18%	14%	33%	63
College graduate	38%	15%	27%	20%	86
Post-graduate	50%	19%	9%	22%	44
Less than \$30K	48%	12%	20%	21%	14
\$30K to \$60K	30%	20%	17%	33%	38
\$60K to \$75K	22%	25%	26%	27%	12
\$75K to \$100K	60%	15%	12%	13%	31
More than \$100K	51%	12%	18%	19%	56
Married	39%	17%	19%	24%	174
Divorced/separated	48%	13%	11%	28%	31
Never married	31%	4%	20%	45%	34
Protestant	37%	15%	16%	32%	88
Catholic	40%	10%	23%	27%	83
Other	40%	19%	16%	24%	63
Attend 1 or more/week	44%	11%	20%	25%	66
1-2 times a month	42%	9%	25%	24%	29
Less often	39%	18%	12%	32%	78
Never	32%	18%	20%	30%	66
Northern NH	31%	16%	28%	26%	20
Central/Lakes	30%	20%	20%	30%	28
Massachusetts Border	39%	12%	13%	35%	52
Seacoast	44%	15%	13%	28%	91
Greater Manchester	38%	15%	25%	22%	61

Favorability Rating - Jeb Bradley
NH 1st District

First District	Favorable 42%	Neutral 14%	Unfavorable 20%	Don't Know 23%	(N) 253
Registered Democrat	34%	16%	36%	14%	71
Undeclared	41%	12%	19%	29%	96
Registered Republican	67%	13%	8%	12%	48
Not registered	29%	18%	14%	39%	34
Democrat	31%	12%	32%	25%	119
Independent	44%	20%	7%	29%	56
Republican	63%	13%	9%	15%	72
Liberal	34%	12%	31%	23%	55
Moderate	43%	11%	21%	25%	105
Conservative	49%	18%	16%	17%	75
Approve Bush	61%	16%	8%	14%	56
Neutral	24%	11%	28%	37%	10
Disapprove	38%	13%	24%	26%	186
Union household	42%	19%	15%	24%	30
Non-union	42%	13%	21%	23%	220
5 years or less in NH	18%	17%	21%	44%	33
6 to 10 years	35%	27%	0%	39%	18
11 to 20 years	47%	14%	24%	14%	50
More than 20 years	47%	11%	21%	20%	140
18 to 34	32%	16%	17%	35%	37
35 to 49	47%	18%	14%	21%	76
50 to 64	44%	10%	25%	22%	83
65 and over	44%	15%	23%	18%	38
Male	41%	20%	18%	21%	107
Female	43%	9%	23%	25%	146
High school or less	31%	11%	19%	39%	46
Some college	49%	14%	18%	18%	63
College graduate	50%	11%	17%	22%	86
Post-graduate	27%	21%	33%	19%	44
Less than \$30K	16%	38%	25%	21%	14
\$30K to \$60K	41%	9%	16%	34%	38
\$60K to \$75K	65%	35%	0%	0%	12
\$75K to \$100K	64%	4%	24%	8%	31
More than \$100K	42%	15%	21%	22%	56
Married	45%	15%	18%	22%	174
Divorced/separated	38%	7%	35%	20%	31
Never married	37%	12%	18%	33%	34
Protestant	37%	18%	21%	24%	88
Catholic	57%	7%	17%	19%	83
Other	32%	14%	25%	29%	63
Attend 1 or more/week	44%	7%	28%	21%	66
1-2 times a month	53%	26%	11%	10%	29
Less often	46%	9%	21%	24%	78
Never	32%	22%	17%	29%	66
Northern NH	39%	17%	22%	22%	20
Central/Lakes	38%	15%	22%	25%	29
Massachusetts Border	38%	22%	17%	23%	52
Seacoast	35%	10%	25%	29%	91
Greater Manchester	59%	11%	15%	15%	61

NH Senate - Sununu vs. Buckey

STATEWIDE	<u>Sununu</u> 44%	<u>Buckey</u> 28%	<u>Other</u> 2%	<u>Undecided</u> 25%	<u>(N)</u> 450
Registered Democrat	19%	57%	1%	23%	123
Undeclared	41%	23%	3%	33%	184
Registered Republican	83%	6%	0%	10%	100
Not registered	35%	21%	4%	40%	37
Democrat	20%	48%	4%	28%	215
Independent	36%	18%	1%	44%	82
Republican	82%	6%	0%	11%	147
Liberal	14%	50%	3%	32%	100
Moderate	40%	30%	2%	27%	196
Conservative	75%	11%	1%	12%	125
Approve Bush	84%	1%	0%	15%	110
Neutral	52%	6%	0%	42%	16
Disapprove	30%	39%	3%	28%	322
Union household	33%	36%	2%	28%	55
Non-union	46%	28%	2%	25%	390
5 years or less in NH	22%	31%	4%	43%	41
6 to 10 years	42%	25%	0%	33%	38
11 to 20 years	47%	23%	1%	29%	88
More than 20 years	47%	30%	3%	21%	258
18 to 34	46%	26%	0%	28%	55
35 to 49	48%	25%	5%	23%	143
50 to 64	42%	27%	2%	29%	156
65 and over	44%	40%	1%	15%	62
Male	51%	24%	2%	23%	224
Female	37%	33%	2%	28%	226
High school or less	49%	34%	5%	12%	92
Some college	46%	31%	0%	23%	104
College graduate	48%	23%	3%	27%	153
Post-graduate	32%	30%	0%	39%	78
Less than \$30K	35%	39%	2%	25%	30
\$30K to \$60K	37%	34%	6%	23%	74
\$60K to \$75K	47%	19%	5%	29%	37
\$75K to \$100K	59%	25%	1%	15%	54
More than \$100K	47%	25%	0%	28%	92
Married	47%	29%	1%	24%	317
Divorced/separated	38%	30%	7%	26%	61
Never married	40%	29%	3%	27%	48
Protestant	48%	27%	3%	22%	167
Catholic	59%	26%	0%	16%	139
Other	24%	35%	2%	39%	106
Attend 1 or more/week	54%	28%	1%	17%	105
1-2 times a month	53%	25%	0%	21%	51
Less often	45%	29%	3%	23%	144
Never	34%	30%	3%	33%	124
Northern NH	29%	27%	6%	38%	41
Central/Lakes	48%	25%	2%	25%	77
Connecticut Valley	49%	30%	0%	22%	65
Massachusetts Border	42%	28%	3%	27%	121
Seacoast	40%	33%	2%	24%	76
Greater Manchester	52%	26%	0%	22%	70
1st Cong. District	45%	28%	1%	26%	227
2nd Cong. District	44%	29%	3%	25%	222

NH Senate - Sununu vs. Marchand

STATEWIDE	<u>Sununu</u> 42%	<u>Marchand</u> 38%	<u>Other</u> 1%	<u>Undecided</u> 19%	<u>(N)</u> 445
Registered Democrat	15%	73%	1%	12%	124
Undeclared	39%	32%	1%	28%	181
Registered Republican	83%	6%	0%	10%	99
Not registered	36%	40%	0%	23%	36
Democrat	15%	65%	1%	20%	214
Independent	44%	24%	1%	30%	82
Republican	80%	8%	1%	11%	145
Liberal	12%	70%	2%	16%	100
Moderate	37%	38%	1%	24%	194
Conservative	75%	15%	0%	10%	125
Approve Bush	82%	9%	0%	9%	107
Neutral	47%	6%	7%	40%	16
Disapprove	29%	50%	1%	21%	321
Union household	36%	40%	0%	23%	55
Non-union	43%	38%	1%	18%	387
5 years or less in NH	18%	50%	0%	32%	41
6 to 10 years	44%	31%	0%	25%	37
11 to 20 years	45%	34%	0%	22%	87
More than 20 years	46%	38%	2%	15%	257
18 to 34	40%	35%	0%	26%	55
35 to 49	47%	33%	2%	18%	143
50 to 64	39%	41%	0%	20%	154
65 and over	46%	42%	2%	9%	62
Male	51%	33%	0%	15%	221
Female	34%	43%	2%	22%	224
High school or less	48%	34%	1%	17%	90
Some college	43%	37%	0%	19%	102
College graduate	45%	35%	1%	20%	154
Post-graduate	33%	48%	0%	19%	77
Less than \$30K	39%	37%	0%	25%	30
\$30K to \$60K	36%	43%	1%	19%	74
\$60K to \$75K	53%	26%	0%	21%	37
\$75K to \$100K	53%	33%	0%	14%	54
More than \$100K	42%	35%	0%	23%	91
Married	46%	37%	1%	17%	314
Divorced/separated	36%	41%	1%	22%	62
Never married	36%	41%	1%	22%	49
Protestant	47%	35%	1%	17%	166
Catholic	52%	34%	0%	14%	138
Other	25%	45%	1%	29%	106
Attend 1 or more/week	50%	36%	0%	14%	102
1-2 times a month	49%	30%	0%	21%	50
Less often	43%	39%	0%	18%	144
Never	35%	42%	2%	22%	126
Northern NH	29%	44%	2%	24%	41
Central/Lakes	43%	33%	0%	24%	75
Connecticut Valley	49%	34%	1%	16%	64
Massachusetts Border	40%	40%	2%	18%	121
Seacoast	36%	47%	0%	17%	75
Greater Manchester	55%	30%	0%	14%	69
1st Cong. District	44%	38%	1%	17%	224
2nd Cong. District	41%	38%	1%	20%	221

NH Senate - Sununu vs. Shaheen

STATEWIDE	<u>Sununu</u> 38%	<u>Shaheen</u> 54%	<u>Other</u> 1%	<u>Undecided</u> 7%	<u>(N)</u> 449
Registered Democrat	10%	86%	1%	3%	123
Undeclared	35%	55%	1%	10%	184
Registered Republican	80%	15%	0%	5%	99
Not registered	31%	55%	4%	10%	37
Democrat	8%	85%	1%	6%	216
Independent	40%	45%	1%	14%	81
Republican	80%	17%	0%	4%	146
Liberal	8%	85%	1%	5%	99
Moderate	32%	60%	1%	7%	194
Conservative	72%	25%	0%	4%	128
Approve Bush	83%	10%	0%	7%	110
Neutral	58%	23%	0%	20%	15
Disapprove	21%	72%	1%	6%	322
Union household	30%	64%	0%	6%	55
Non-union	39%	53%	1%	7%	389
5 years or less in NH	21%	51%	0%	28%	41
6 to 10 years	41%	45%	0%	13%	38
11 to 20 years	39%	57%	0%	3%	89
More than 20 years	39%	56%	1%	3%	257
18 to 34	34%	59%	0%	7%	55
35 to 49	38%	50%	3%	9%	142
50 to 64	38%	58%	0%	4%	157
65 and over	39%	56%	0%	6%	63
Male	47%	47%	1%	6%	225
Female	29%	62%	1%	8%	224
High school or less	42%	51%	3%	4%	89
Some college	38%	57%	0%	5%	104
College graduate	39%	54%	0%	7%	154
Post-graduate	32%	58%	0%	10%	78
Less than \$30K	30%	60%	0%	10%	31
\$30K to \$60K	29%	65%	2%	4%	76
\$60K to \$75K	56%	40%	0%	4%	37
\$75K to \$100K	37%	58%	0%	5%	53
More than \$100K	39%	51%	0%	10%	92
Married	42%	52%	0%	6%	312
Divorced/separated	30%	62%	0%	8%	64
Never married	29%	58%	3%	10%	50
Protestant	46%	46%	1%	6%	165
Catholic	41%	56%	0%	3%	139
Other	22%	67%	0%	12%	107
Attend 1 or more/week	49%	49%	0%	3%	105
1-2 times a month	38%	57%	0%	5%	50
Less often	36%	55%	1%	8%	143
Never	32%	59%	1%	8%	126
Northern NH	27%	66%	2%	4%	41
Central/Lakes	44%	48%	0%	7%	77
Connecticut Valley	46%	48%	0%	6%	63
Massachusetts Border	31%	57%	2%	9%	119
Seacoast	32%	62%	0%	6%	77
Greater Manchester	47%	46%	0%	7%	72
1st Cong. District	38%	54%	0%	8%	229
2nd Cong. District	38%	55%	2%	6%	219

NH Senate - Sununu vs. Swett

STATEWIDE	<u>Sununu</u> 43%	<u>Swett</u> 39%	<u>Other</u> 1%	<u>Undecided</u> 17%	<u>(N)</u> 445
Registered Democrat	15%	74%	1%	10%	123
Undeclared	42%	33%	1%	25%	180
Registered Republican	82%	7%	0%	12%	99
Not registered	37%	42%	0%	21%	37
Democrat	18%	66%	1%	15%	213
Independent	40%	27%	1%	32%	81
Republican	80%	8%	0%	12%	147
Liberal	14%	70%	2%	14%	96
Moderate	41%	39%	1%	20%	196
Conservative	71%	16%	0%	13%	126
Approve Bush	80%	8%	0%	12%	109
Neutral	58%	16%	0%	27%	15
Disapprove	30%	51%	1%	18%	320
Union household	39%	44%	0%	18%	55
Non-union	44%	39%	1%	17%	387
5 years or less in NH	21%	43%	0%	35%	40
6 to 10 years	38%	28%	0%	34%	38
11 to 20 years	45%	37%	1%	16%	88
More than 20 years	47%	40%	1%	13%	255
18 to 34	45%	35%	0%	20%	55
35 to 49	45%	33%	2%	21%	144
50 to 64	44%	42%	0%	14%	151
65 and over	39%	47%	1%	14%	64
Male	52%	34%	0%	15%	222
Female	35%	45%	1%	20%	223
High school or less	46%	40%	1%	13%	91
Some college	45%	40%	0%	16%	104
College graduate	45%	31%	0%	23%	153
Post-graduate	35%	49%	0%	16%	76
Less than \$30K	37%	43%	2%	18%	30
\$30K to \$60K	38%	48%	0%	14%	75
\$60K to \$75K	53%	28%	0%	19%	37
\$75K to \$100K	53%	38%	0%	9%	53
More than \$100K	44%	30%	0%	26%	90
Married	45%	37%	0%	17%	312
Divorced/separated	36%	45%	1%	18%	63
Never married	43%	38%	0%	19%	49
Protestant	48%	33%	1%	18%	165
Catholic	53%	35%	0%	12%	140
Other	26%	50%	0%	24%	104
Attend 1 or more/week	53%	33%	1%	14%	105
1-2 times a month	46%	34%	0%	20%	50
Less often	45%	40%	0%	16%	144
Never	34%	45%	1%	20%	122
Northern NH	29%	46%	2%	23%	41
Central/Lakes	45%	33%	0%	22%	76
Connecticut Valley	47%	36%	0%	17%	64
Massachusetts Border	41%	44%	1%	14%	121
Seacoast	38%	42%	1%	19%	74
Greater Manchester	55%	32%	0%	13%	70
1st Cong. District	44%	40%	0%	16%	226
2nd Cong. District	42%	38%	1%	18%	220