

# THE CNN / WMUR GRANITE STATE POLL THE UNIVERSITY OF NEW HAMPSHIRE

## SHAHEEN MAINTAINS LEAD OVER SUNUNU IN NH SENATE RACE

By: Andrew E. Smith, Ph.D. 603/862-2226  
 Dante Scala, Ph.D. 603/862-1519  
 www.unh.edu/survey-center

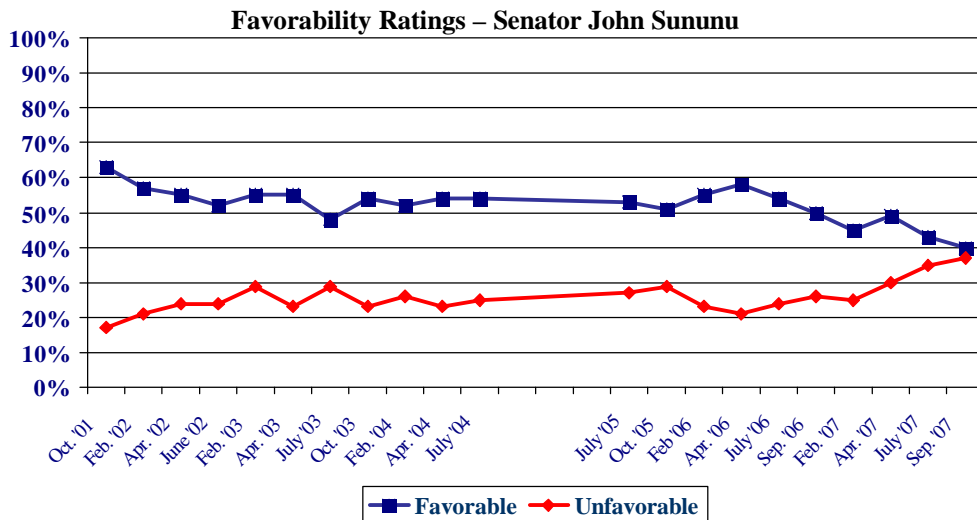
**FOR RELEASE**  
 October 3, 2007

DURHAM, NH – Republican Senator John Sununu’s popularity continues to slide in New Hampshire. Former Governor Jeanne Shaheen continues to hold a sizeable lead over Sununu.

These findings are based on the latest **Granite State Poll**,<sup>?</sup> conducted by the University of New Hampshire Survey Center. The Granite State Poll is sponsored by CNN and WMUR-TV, Manchester. Five hundred eight (508) randomly selected New Hampshire adults were interviewed by telephone between September 17 and September 24, 2007. The margin of sampling error for the survey is +/-4.4 percent. Two hundred thirty (230) respondents lived in New Hampshire’s 1st Congressional District (margin of sampling error = +/-6.5%) and 278 lived in the 2<sup>nd</sup> District (margin of sampling error = +/-5.9%).

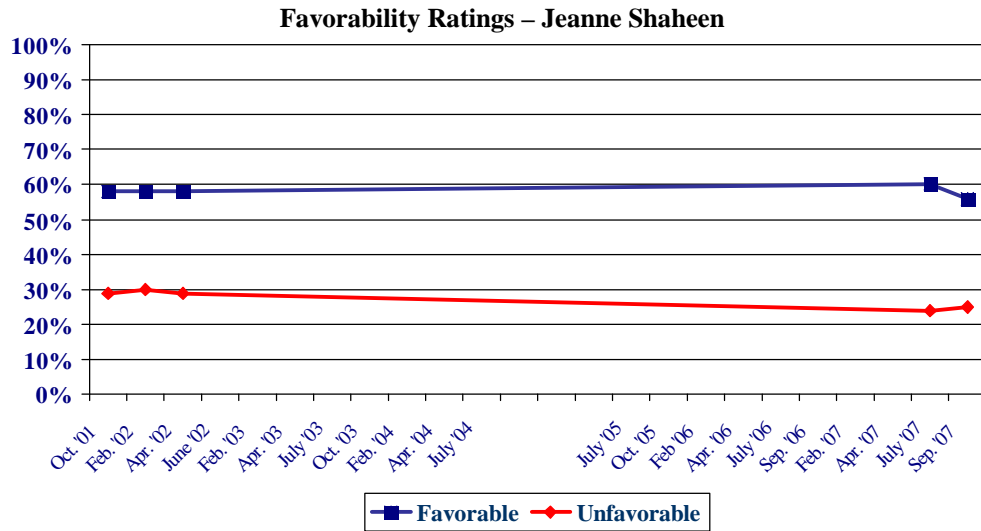
### John Sununu

John Sununu, New Hampshire’s junior Senator, is up for reelection in 2008 and faces a rematch of his 2002 race with former Governor Jeanne Shaheen, a Democrat from Madbury. Sununu defeated Shaheen 51% to 46% in 2002 in the midst of the run-up to the war in Iraq. But Sununu and other Republicans are now on the unpopular side of the war in Iraq and his chances for reelection are greatly diminished by his support for the war. Anti-war groups, such as MoveOn.org, have targeted Sununu and have already begun running negative ads against him, making him even more vulnerable. And it appears that their efforts are working -- Sununu’s favorability ratings have dropped steadily over the past year and he is now viewed favorably by only 40 percent of New Hampshire adults, 37 percent having an unfavorable opinion of him, 14 percent are neutral and 9 percent don’t know enough to say. Sununu’s net favorability rating is a very low +3 percent, down from +30% one year ago. Sununu’s favorability ratings are at the lowest since he was elected senator. “Sununu faces a much more challenging political environment in 2008 than he did in 2002,” said Andrew Smith, Director of the UNH Survey Center. “At this time, Shaheen has to be seen as the favorite to win the Senate race next year.”



<sup>?</sup> We ask that this copyrighted information be referred to as *the Granite State Poll*, sponsored by CNN and WMUR-TV.

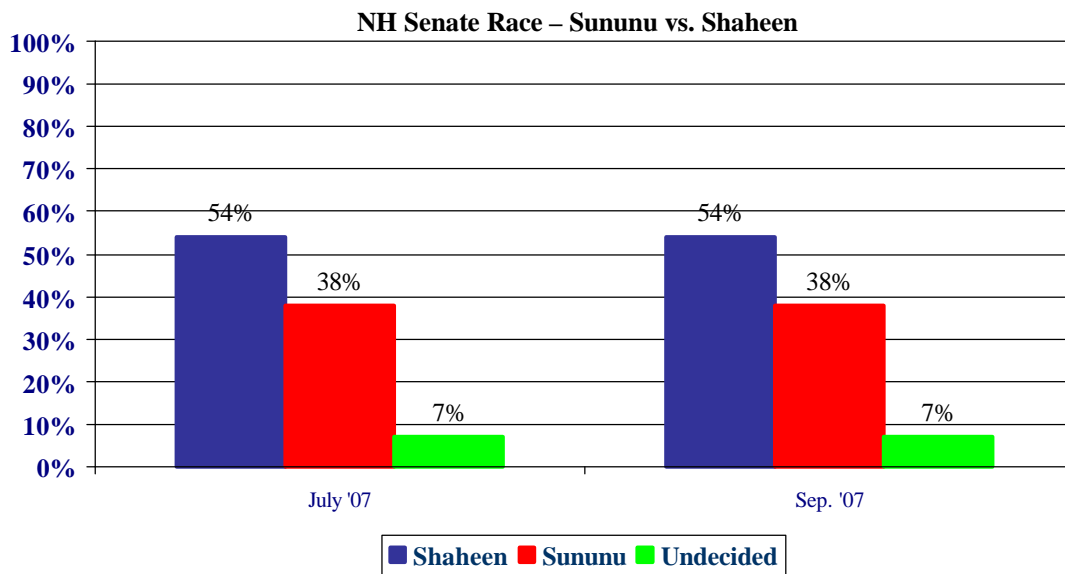
Sensing the difficulty facing Sununu, Shaheen recently announced that she plans to run against Sununu and all but one of the other Democratic candidates have dropped out to clear the way for Shaheen. Shaheen was quite popular during her years as Governor (1997-2003) and remains popular today. Currently, 56 percent of New Hampshire adults have a favorable opinion of Shaheen, 25 percent have an unfavorable opinion of her, 11 percent are neutral, and 8 percent don't know enough about her to say. Shaheen's net favorability rating is a solid +31%.



### NH Senate Trial Heat

In a trial heat between Sununu and Shaheen, the former New Hampshire governor continues to get 54 percent of the vote with 38 percent going to Sununu, 1 percent for some other candidate and only 7 percent undecided. These numbers are unchanged since July. Shaheen runs strongest among Democrats, liberals, voters who disapprove of Bush, and non-religious voters. Sununu runs strongest among Republicans, conservatives, voters who approve of Bush, and regular church goers.

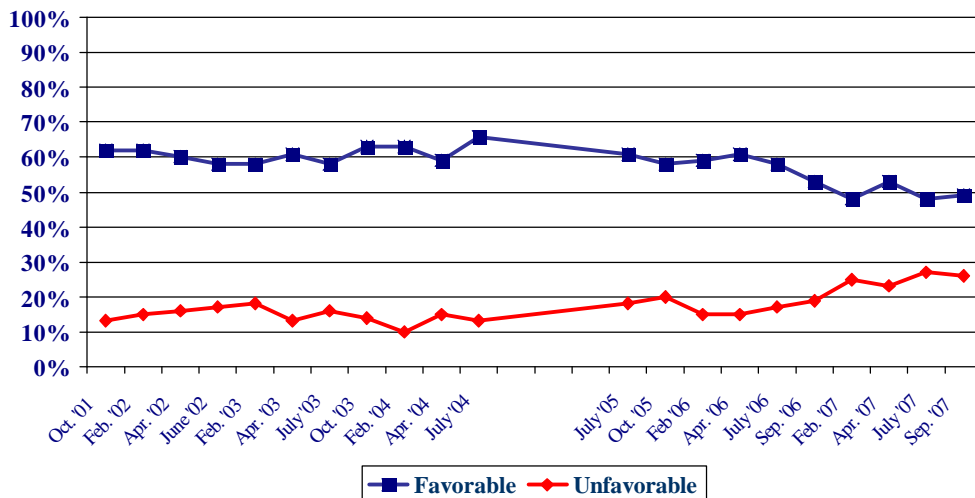
“Sununu faces significant discontent among New Hampshire voters, even within his own party,” said Dante Scala, associate professor of political science at the University of New Hampshire. “One of four conservatives say they support his opponent.”



## Judd Gregg

Senator Judd Gregg continues to be more popular than Sununu -- 49 percent of New Hampshire adults have a favorable opinion of Gregg, 26 percent have an unfavorable opinion, 12 percent are neutral and 13 percent don't know enough to say. Gregg's net favorability rating stands at +23 percent.

### Favorability Ratings – Senator Judd Gregg

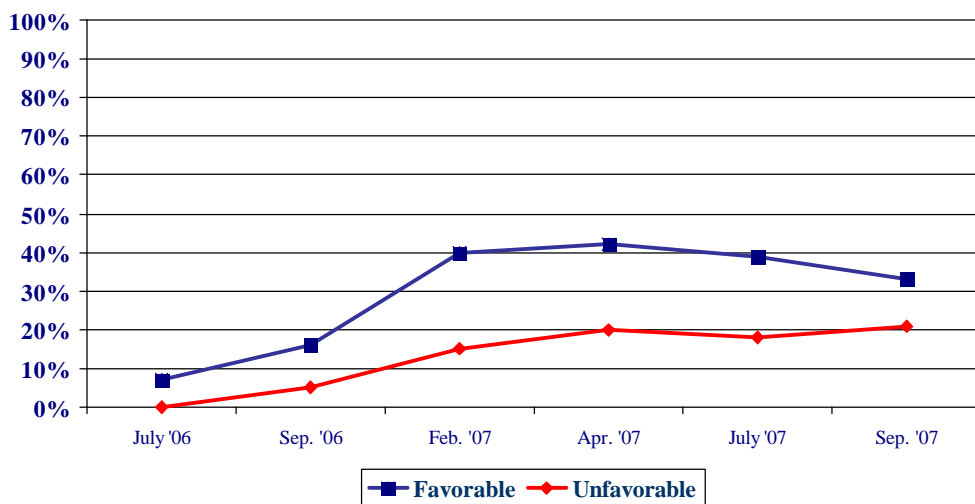


## NH 1<sup>st</sup> District

In New Hampshire's 1<sup>st</sup> Congressional District, Democrat Carol Shea-Porter's favorability ratings have dropped somewhat as Republicans ramp up their efforts to unseat her in 2008. Currently, 33 percent of 1<sup>st</sup> District adults have a favorable opinion of Shea-Porter, 21 percent have an unfavorable opinion of her, 17 percent are neutral, and 29 percent say they don't know enough about her to say. Shea-Porter's net favorability rating is +12 percent, down from +21 percent in July.

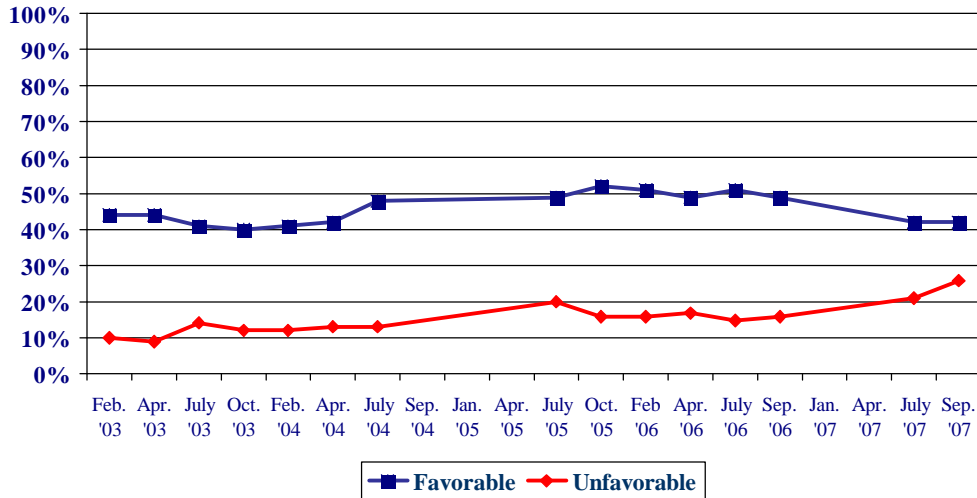
Shea-Porter's favorability ratings are now lower than those of Jeb Bradley at the same time in his first term. In October, 2003, Bradley's net favorability rating was +28 percent.

### Favorability Ratings – Carol Shea-Porter NH 1<sup>st</sup> District



Bradley is planning a rematch with Shea-Porter in 2008. Currently, 42 percent of 1<sup>st</sup> District voters have a favorable opinion of Bradley, 26 percent have an unfavorable opinion of him, 17 percent are neutral and 15 percent don't know enough about him to say. Bradley's net favorability rating stands at +16 percent in the 1<sup>st</sup> District.

### Favorability Ratings – Jeb Bradley NH 1<sup>st</sup> District

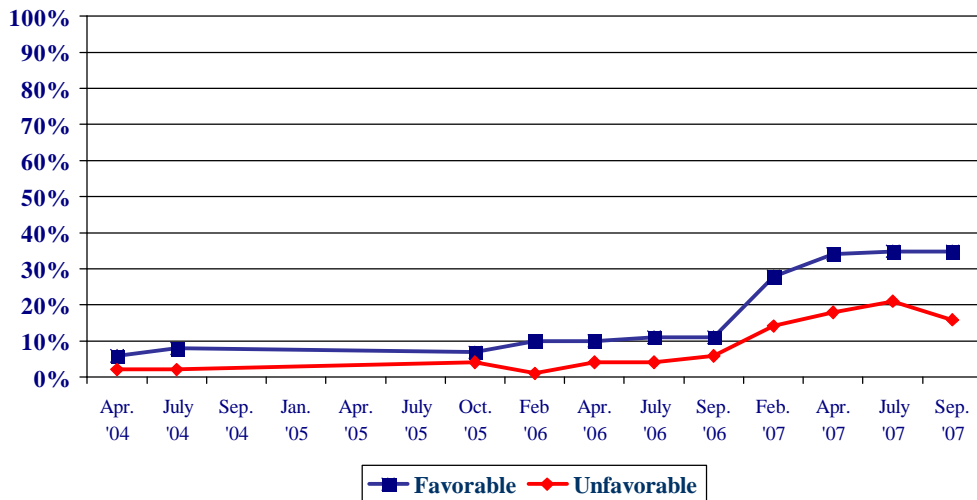


Former Health and Human Services Commission John Stephen has also indicated he is running for the 1<sup>st</sup> District seat and will challenge Bradley for the Republican nomination. Stephen is considerably less well known than Bradley – only 15 percent of 1<sup>st</sup> District residents have a favorable opinion of Stephen, 11 have an unfavorable opinion of him, 14 percent are neutral, and 61 percent don't know enough about him to say. His net approval rating is only +4 percent.

### NH 2<sup>nd</sup> District

In the 2<sup>nd</sup> District, Democrat Paul Hodes remains popular. Currently, 35 percent of 2<sup>nd</sup> District residents say they have a favorable opinion of Hodes, 16 percent have an unfavorable opinion of him, 15 percent are neutral, and 34 percent say they know too little about him to say. Hodes' net favorability rating is +19 percent.

### Favorability Ratings – Paul Hodes NH 2<sup>nd</sup> District



### **Granite State Poll Methodology**

These findings are based on the latest **Granite State Poll** conducted by the University of New Hampshire Survey Center. The Granite State Poll is sponsored by CNN and WMUR-TV, Manchester. Five hundred twenty-four (508) randomly selected New Hampshire adults were interviewed by telephone between September 17 and September 24, 2007. The margin of sampling error for the survey is +/-4.4 percent. Two hundred thirty (230) respondents lived in New Hampshire's 1st Congressional District (margin of sampling error = +/-6.1%) and 278 lived in the 2<sup>nd</sup> District (margin of sampling error = +/-6.0%). Results reported for other subgroups have potential for somewhat larger variation than those for the entire population.

The data have been weighted to adjust for numbers of adults and telephone lines within households, respondent sex, and region of the state. In addition to potential sampling error, all surveys have other potential sources of non-sampling error including question order effects, question wording effects, and non-response.

#### **Favorability Rating – U.S. Representative Carol Shea-Porter - NH 1<sup>st</sup> District**

"Next, I'd like to get your overall opinion of some people in the news. As I read each name, please say if you have a favorable or unfavorable opinion of this person - or if you have never heard of him or her. Congresswoman Carol Shea-Porter"

<u>1st C.D.</u>	<u>Favorable</u>	<u>Neutral</u>	<u>Unfavorable</u>	<u>Don't Know</u>	<u>(N)</u>
<b>Sept. '07</b>	<b>33%</b>	<b>17%</b>	<b>21%</b>	<b>29%</b>	<b>(228)</b>
<b>July '07</b>	39	15	18	28	(252)
<b>Apr. '07</b>	42	15	20	24	(251)
<b>Feb. '07</b>	40	17	15	28	(248)
<b>Sept. '06</b>	16	14	5	65	(266)
<b>July '06</b>	7	7	0	86	(256)

#### **Favorability Rating – Former U.S. Representative Jeb Bradley - NH 1<sup>st</sup> District**

"Next, I'd like to get your overall opinion of some people in the news. As I read each name, please say if you have a favorable or unfavorable opinion of this person - or if you have never heard of him or her. Former U.S. Representative Jeb Bradley."  
(Respondents were asked about U.S. REPRESENTATIVE Jeb Bradley from February 2003 to September 2006.)

<u>1<sup>st</sup> C.D.</u>	<u>Favorable</u>	<u>Neutral</u>	<u>Unfavorable</u>	<u>Don't Know</u>	<u>(N)</u>
<b>Sept. '07</b>	<b>42%</b>	<b>17%</b>	<b>26%</b>	<b>15%</b>	<b>(228)</b>
<b>July '07</b>	42	14	20	23	(253)
<b>Sept. '06</b>	49	16	18	17	(265)
<b>July '06</b>	51	13	15	22	(256)
<b>Apr. '06</b>	49	14	17	20	(271)
<b>Feb. '06</b>	51	16	16	17	(269)
<b>Oct. '05</b>	52	14	16	18	(283)
<b>July '05</b>	49	10	20	21	(269)
<b>July '04</b>	48	14	13	25	(269)
<b>Apr. '04</b>	42	14	13	32	(266)
<b>Feb. '04</b>	41	14	12	33	(265)
<b>Oct. '03</b>	40	13	12	35	(239)
<b>June '03</b>	41	23	14	22	(273)
<b>Apr. '03</b>	44	11	9	37	(269)
<b>Feb. '03</b>	44	15	10	31	(331)

**Favorability Rating – U.S. Representative Paul Hodes - NH 2<sup>nd</sup> District**

"Next, I'd like to get your overall opinion of some people in the news. As I read each name, please say if you have a favorable or unfavorable opinion of this person - or if you have never heard of him or her. Congressman Paul Hodes." (Respondents were asked about Concord Attorney Paul Hodes from April 2004 to September 2006.)

<u>2<sup>nd</sup> C.D.</u>	<u>Favorable</u>	<u>Neutral</u>	<u>Unfavorable</u>	<u>Don't Know</u>	<u>(N)</u>
<b>Sept. '07</b>	<b>35%</b>	<b>15%</b>	<b>16%</b>	<b>34%</b>	<b>(278)</b>
July '07	34	8	21	36	(254)
Apr. '07	34	13	18	36	(264)
Feb. '07	28	18	14	39	(286)
Sept. '06	11	17	6	66	(248)
July '06	11	9	4	77	(246)
Apr. '06	10	6	4	81	(235)
Feb. '06	10	11	1	78	(232)
Oct. '05	7	7	4	83	(230)
July '04	8	8	2	81	(238)
Apr. '04	6	7	2	86	(271)

**Favorability Rating – U.S. Senator John Sununu**

"Next, I'd like to get your overall opinion of some people in the news. As I read each name, please say if you have a favorable or unfavorable opinion of this person - or if you have never heard of him or her. Senator John Sununu." (Respondents were asked about U.S. REPRESENTATIVE John Sununu from October 2001 to June 2002. He was elected Senator in November 2002.)

<u>Statewide</u>	<u>Favorable</u>	<u>Neutral</u>	<u>Unfavorable</u>	<u>Don't Know</u>	<u>(N)</u>
<b>Sept. '07</b>	<b>40%</b>	<b>14%</b>	<b>37%</b>	<b>9%</b>	<b>(508)</b>
July '07	43	13	35	9	(521)
Apr. '07	49	14	30	8	(514)
Feb. '07	45	20	25	11	(533)
Sept. '06	50	15	26	9	(513)
July '06	54	11	24	11	(499)
Apr. '06	58	14	21	10	(503)
Feb. '06	55	13	23	8	(500)
Oct. '05	51	9	29	10	(509)
July '05	53	6	27	13	(499)
July '04	54	10	25	11	(507)
Apr. '04	54	11	23	11	(539)
Feb. '04	52	11	26	12	(510)
Oct. '03	54	10	23	13	(495)
June '03	48	11	29	11	(513)
Apr. '03	55	9	23	12	(507)
Feb. '03	55	9	29	8	(651)
June '02	52	10	24	14	(639)
Apr. '02	55	7	24	14	(693)
Feb. '02	57	9	21	13	(724)
Oct. '01	63	8	17	12	(681)

**Favorability Rating – Former Governor Jeanne Shaheen**

"Next, I'd like to get your overall opinion of some people in the news. As I read each name, please say if you have a favorable or unfavorable opinion of this person - or if you have never heard of him or her. Former Governor Jeanne Shaheen."

<u>Statewide</u>	<u>Favorable</u>	<u>Neutral</u>	<u>Unfavorable</u>	<u>Don't Know</u>	<u>(N)</u>
<b>Sept. '07</b>	<b>56%</b>	<b>11%</b>	<b>25%</b>	<b>8%</b>	<b>(506)</b>
July '07	60	9	24	8	(520)

**U.S. Senate Trial Heats**  
Likely 2008 General Election Voters

	<u>July '07</u>	<u>Sep. '07</u>
Sununu	38%	38%
Shaheen	54	54
Other	1	1
Undecided	7	7
(N=)	(449)	(464)

**Favorability Rating – U.S. Senator Judd Gregg**

"Next, I'd like to get your overall opinion of some people in the news. As I read each name, please say if you have a favorable or unfavorable opinion of this person - or if you have never heard of him or her. Senator Judd Gregg."

<u>Statewide</u>	<u>Favorable</u>	<u>Neutral</u>	<u>Unfavorable</u>	<u>Don't Know</u>	<u>(N)</u>
<b>Sept. '07</b>	<b>49%</b>	<b>12%</b>	<b>26%</b>	<b>13%</b>	<b>(508)</b>
<b>July '07</b>	48	11	27	14	(516)
<b>Apr. '07</b>	53	13	23	11	(515)
<b>Feb. '07</b>	48	15	25	12	(533)
<b>Sept. '06</b>	53	15	19	13	(513)
<b>July '06</b>	58	11	17	14	(503)
<b>Apr. '06</b>	61	12	15	13	(505)
<b>Feb. '06</b>	59	14	15	12	(501)
<b>Oct. '05</b>	58	10	20	12	(510)
<b>July '05</b>	61	8	18	13	(501)
<b>July '04</b>	66	8	13	12	(508)
<b>Apr. '04</b>	59	11	15	15	(541)
<b>Feb. '04</b>	63	12	10	15	(509)
<b>Oct. '03</b>	63	8	14	16	(496)
<b>June '03</b>	58	10	16	16	(514)
<b>Apr. '03</b>	61	8	13	18	(507)
<b>Feb. '03</b>	58	8	18	16	(652)
<b>June '02</b>	58	10	17	15	(638)
<b>Apr. '02</b>	60	6	16	18	(691)
<b>Feb. '02</b>	62	9	15	14	(724)
<b>Oct. '01</b>	62	9	13	16	(679)

### Net Favorability Ratings

	<b>Shea- Porter (1<sup>st</sup> CD)</b>	<b>Bradley (1<sup>st</sup> CD)</b>	<b>Stephen (1<sup>st</sup> CD)</b>	<b>Hodes (2<sup>nd</sup> CD)</b>	<b>Gregg (State)</b>	<b>Sununu (State)</b>	<b>Shaheen (State)</b>
<b>Sept. '07</b>	<b>+12%</b>	<b>+16%</b>	<b>+4%</b>	<b>+19%</b>	<b>+23%</b>	<b>+3%</b>	<b>+31%</b>
<b>July '07</b>	+21	+20		+13	+21	+8	+36
<b>Apr. '07</b>	+22			+16	+30	+19	
<b>Feb. '07</b>	+25			+14	+23	+20	
<b>Sept. '06</b>	+11			+5	+34	+24	
<b>July '06</b>	+7			+7	+41	+30	
<b>Apr. '06</b>	--			+6	+46	+34	
<b>Feb. '06</b>	--			+9	+44	+32	
<b>Oct. '05</b>	--			+3	+38	+22	
<b>July '05</b>	--			--	+43	+26	
<b>July '04</b>	--			--	+53	+29	
<b>Apr. '04</b>	--			--	+44	+31	
<b>Feb. '04</b>	--			--	+53	+26	
<b>Oct. '03</b>	--			--	+49	+31	
<b>June '03</b>	--			--	+42	+19	
<b>Apr. '03</b>	--			--	+48	+32	
<b>Feb. '03</b>	--			--	+40	+26	
<b>June '02</b>	--			--	+40	+27	
<b>Apr. '02</b>	--			--	+44	+31	
<b>Feb. '02</b>	--			--	+47	+36	
<b>Oct. '01</b>	--			--	+49	+46	



**Favorability Rating - Judd Gregg**

<b>STATEWIDE</b>	<b><u>Favorable</u></b> <b>49%</b>	<b><u>Neutral</u></b> <b>12%</b>	<b><u>Unfavorable</u></b> <b>26%</b>	<b><u>Don't Know</u></b> <b>13%</b>	<b><u>(N)</u></b> <b>508</b>
Registered Democrat	30%	16%	42%	12%	130
Undeclared	49%	13%	26%	12%	178
Registered Republican	79%	7%	12%	2%	114
Not registered	42%	14%	14%	30%	81
Democrat	30%	15%	38%	17%	236
Independent	56%	13%	21%	9%	79
Republican	74%	9%	10%	7%	178
Liberal	23%	16%	40%	21%	123
Moderate	55%	8%	28%	10%	196
Conservative	67%	12%	12%	9%	151
Approve Bush	73%	8%	10%	9%	149
Neutral	42%	25%	19%	14%	25
Disapprove	39%	13%	33%	14%	333
Union household	50%	9%	32%	9%	74
Non-union	49%	13%	24%	13%	432
5 years or less in NH	37%	14%	14%	36%	58
6 to 10 years	36%	26%	16%	23%	48
11 to 20 years	39%	20%	29%	12%	75
More than 20 years	56%	8%	29%	7%	313
18 to 34	43%	23%	11%	23%	71
35 to 49	58%	11%	18%	13%	133
50 to 64	45%	13%	32%	10%	191
65 and over	50%	4%	36%	10%	92
Male	52%	9%	27%	11%	246
Female	46%	15%	24%	14%	261
High school or less	48%	18%	21%	14%	120
Some college	59%	8%	22%	11%	125
College graduate	52%	14%	23%	12%	154
Post-graduate	35%	9%	40%	15%	102
Less than \$30K	49%	4%	34%	13%	45
\$30K to \$60K	53%	12%	22%	13%	74
\$60K to \$75K	43%	14%	26%	17%	49
\$75K to \$100K	50%	6%	27%	17%	76
More than \$100K	59%	14%	21%	6%	101
Married	53%	12%	24%	11%	358
Divorced/separated	47%	11%	31%	11%	90
Never married	30%	18%	24%	28%	55
Protestant	54%	9%	22%	15%	175
Catholic	58%	16%	16%	9%	164
Other	33%	13%	39%	14%	135
Attend 1 or more/week	57%	11%	20%	13%	136
1-2 times a month	49%	12%	15%	23%	54
Less often	58%	9%	23%	10%	115
Never	36%	16%	36%	13%	174
Northern NH	56%	21%	21%	2%	42
Central/Lakes	45%	11%	32%	12%	83
Connecticut Valley	43%	8%	34%	15%	79
Massachusetts Border	51%	12%	22%	15%	147
Seacoast	56%	11%	20%	13%	86
Greater Manchester	46%	17%	25%	13%	70
1st Cong. District	50%	15%	23%	12%	230
2nd Cong. District	49%	10%	28%	13%	277

**Favorability Rating - John Sununu**

<b>STATEWIDE</b>	<b><u>Favorable</u></b> <b>40%</b>	<b><u>Neutral</u></b> <b>14%</b>	<b><u>Unfavorable</u></b> <b>37%</b>	<b><u>Don't Know</u></b> <b>9%</b>	<b><u>(N)</u></b> <b>508</b>
Registered Democrat	21%	13%	62%	4%	130
Undeclared	38%	17%	37%	8%	178
Registered Republican	76%	6%	17%	2%	114
Not registered	29%	21%	22%	28%	81
Democrat	19%	15%	55%	11%	236
Independent	49%	11%	31%	9%	79
Republican	65%	13%	17%	5%	178
Liberal	19%	16%	52%	13%	123
Moderate	41%	12%	39%	8%	196
Conservative	59%	10%	25%	6%	151
Approve Bush	69%	9%	15%	6%	149
Neutral	42%	29%	23%	6%	25
Disapprove	27%	15%	48%	10%	333
Union household	36%	13%	46%	5%	74
Non-union	41%	14%	35%	10%	432
5 years or less in NH	26%	15%	33%	26%	58
6 to 10 years	30%	27%	32%	11%	48
11 to 20 years	42%	13%	36%	10%	75
More than 20 years	43%	12%	39%	6%	313
18 to 34	35%	25%	17%	23%	71
35 to 49	41%	16%	34%	9%	133
50 to 64	40%	10%	43%	7%	191
65 and over	41%	12%	43%	4%	92
Male	44%	12%	37%	7%	246
Female	36%	16%	37%	11%	261
High school or less	41%	14%	35%	10%	120
Some college	38%	23%	29%	10%	125
College graduate	47%	10%	33%	9%	154
Post-graduate	30%	9%	55%	6%	102
Less than \$30K	36%	17%	31%	16%	45
\$30K to \$60K	38%	19%	36%	7%	74
\$60K to \$75K	48%	15%	22%	15%	49
\$75K to \$100K	40%	17%	37%	6%	76
More than \$100K	43%	8%	43%	6%	101
Married	41%	12%	39%	8%	358
Divorced/separated	43%	14%	37%	6%	90
Never married	34%	24%	23%	18%	55
Protestant	44%	12%	34%	10%	175
Catholic	49%	13%	27%	11%	164
Other	28%	18%	48%	6%	135
Attend 1 or more/week	48%	10%	33%	9%	136
1-2 times a month	31%	15%	34%	20%	54
Less often	48%	9%	35%	7%	115
Never	31%	19%	42%	8%	174
Northern NH	45%	25%	22%	8%	42
Central/Lakes	42%	9%	43%	7%	83
Connecticut Valley	35%	6%	45%	14%	79
Massachusetts Border	43%	14%	36%	7%	147
Seacoast	41%	16%	33%	9%	86
Greater Manchester	36%	18%	37%	9%	70
1st Cong. District	40%	17%	34%	8%	230
2nd Cong. District	40%	11%	40%	9%	277

**Favorability Rating - Jeanne Shaheen**

<b>STATEWIDE</b>	<b><u>Favorable</u></b> <b>56%</b>	<b><u>Neutral</u></b> <b>11%</b>	<b><u>Unfavorable</u></b> <b>25%</b>	<b><u>Don't Know</u></b> <b>8%</b>	<b><u>(N)</u></b> <b>506</b>
Registered Democrat	72%	10%	13%	5%	130
Undeclared	59%	14%	20%	7%	177
Registered Republican	37%	5%	54%	3%	114
Not registered	47%	17%	16%	20%	81
Democrat	71%	11%	9%	9%	236
Independent	59%	16%	20%	5%	79
Republican	36%	11%	46%	7%	176
Liberal	71%	6%	8%	15%	123
Moderate	61%	16%	19%	5%	195
Conservative	37%	9%	50%	4%	151
Approve Bush	30%	8%	54%	8%	147
Neutral	40%	39%	18%	2%	25
Disapprove	68%	11%	13%	8%	333
Union household	72%	10%	17%	1%	73
Non-union	53%	12%	27%	9%	432
5 years or less in NH	32%	19%	10%	39%	58
6 to 10 years	52%	16%	19%	13%	48
11 to 20 years	59%	8%	30%	3%	75
More than 20 years	59%	11%	28%	3%	311
18 to 34	49%	18%	19%	15%	71
35 to 49	60%	10%	22%	8%	133
50 to 64	54%	12%	28%	6%	190
65 and over	55%	10%	29%	6%	92
Male	53%	12%	28%	7%	245
Female	58%	11%	22%	8%	261
High school or less	50%	12%	32%	7%	120
Some college	52%	15%	22%	10%	123
College graduate	57%	10%	25%	8%	154
Post-graduate	65%	9%	20%	6%	102
Less than \$30K	52%	7%	27%	14%	45
\$30K to \$60K	58%	18%	20%	3%	74
\$60K to \$75K	47%	20%	25%	7%	49
\$75K to \$100K	58%	5%	24%	13%	74
More than \$100K	65%	9%	22%	4%	101
Married	57%	12%	24%	6%	357
Divorced/separated	53%	8%	30%	10%	90
Never married	51%	11%	25%	13%	55
Protestant	46%	14%	33%	6%	175
Catholic	52%	9%	27%	11%	163
Other	69%	11%	13%	7%	135
Attend 1 or more/week	45%	9%	39%	7%	136
1-2 times a month	63%	18%	9%	10%	54
Less often	59%	11%	23%	7%	113
Never	61%	11%	19%	8%	174
Northern NH	50%	15%	34%	1%	42
Central/Lakes	65%	8%	19%	7%	83
Connecticut Valley	54%	12%	23%	10%	79
Massachusetts Border	54%	9%	28%	8%	146
Seacoast	57%	15%	21%	7%	86
Greater Manchester	51%	12%	29%	8%	70
1st Cong. District	54%	13%	27%	7%	230
2nd Cong. District	58%	10%	24%	8%	276

**Favorability Rating - Paul Hodes  
NH 2nd District**

<b>Second District</b>	<b><u>Favorable</u></b> <b>35%</b>	<b><u>Neutral</u></b> <b>15%</b>	<b><u>Unfavorable</u></b> <b>16%</b>	<b><u>Don't Know</u></b> <b>34%</b>	<b><u>(N)</u></b> <b>278</b>
Registered Democrat	60%	8%	7%	25%	75
Undeclared	37%	21%	12%	30%	87
Registered Republican	19%	14%	35%	32%	69
Not registered	13%	16%	8%	64%	44
Democrat	50%	11%	6%	33%	130
Independent	29%	25%	8%	38%	41
Republican	20%	17%	32%	31%	97
Liberal	53%	8%	5%	33%	68
Moderate	40%	21%	12%	27%	102
Conservative	20%	12%	29%	39%	85
Approve Bush	17%	17%	28%	39%	82
Neutral	20%	14%	26%	40%	12
Disapprove	45%	14%	9%	32%	184
Union household	38%	13%	22%	27%	46
Non-union	34%	15%	15%	36%	230
5 years or less in NH	18%	26%	12%	44%	35
6 to 10 years	46%	5%	10%	39%	25
11 to 20 years	44%	7%	11%	37%	39
More than 20 years	36%	16%	19%	29%	172
18 to 34	23%	22%	15%	40%	38
35 to 49	35%	17%	8%	41%	70
50 to 64	39%	13%	16%	32%	113
65 and over	32%	14%	31%	23%	43
Male	38%	12%	20%	30%	134
Female	33%	17%	12%	38%	144
High school or less	26%	7%	14%	53%	58
Some college	23%	20%	14%	43%	68
College graduate	32%	21%	19%	28%	87
Post-graduate	62%	8%	13%	16%	61
Less than \$30K	24%	8%	10%	58%	23
\$30K to \$60K	28%	25%	17%	30%	44
\$60K to \$75K	31%	20%	23%	27%	26
\$75K to \$100K	43%	13%	16%	27%	44
More than \$100K	45%	11%	17%	27%	61
Married	34%	14%	19%	33%	198
Divorced/separated	42%	12%	7%	38%	49
Never married	35%	22%	4%	38%	28
Protestant	32%	20%	21%	27%	99
Catholic	25%	13%	18%	44%	89
Other	50%	10%	8%	33%	73
Attend 1 or more/week	35%	17%	19%	28%	76
1-2 times a month	26%	33%	6%	35%	27
Less often	35%	9%	23%	32%	70
Never	39%	11%	12%	39%	89

**Favorability Rating - Carol Shea-Porter  
NH 1st District**

<b>First District</b>	<b><u>Favorable</u></b> <b>33%</b>	<b><u>Neutral</u></b> <b>17%</b>	<b><u>Unfavorable</u></b> <b>21%</b>	<b><u>Don't Know</u></b> <b>29%</b>	<b><u>(N)</u></b> <b>228</b>
Registered Democrat	43%	20%	12%	25%	53
Undeclared	39%	14%	17%	30%	91
Registered Republican	12%	17%	54%	17%	45
Not registered	25%	20%	7%	48%	37
Democrat	48%	17%	6%	29%	104
Independent	30%	14%	23%	33%	38
Republican	15%	19%	41%	26%	81
Liberal	40%	30%	4%	26%	53
Moderate	38%	15%	13%	34%	94
Conservative	23%	10%	50%	17%	66
Approve Bush	14%	14%	43%	29%	67
Neutral	12%	19%	12%	58%	13
Disapprove	43%	18%	13%	26%	148
Union household	21%	21%	31%	28%	26
Non-union	34%	16%	20%	29%	202
5 years or less in NH	36%	20%	7%	37%	23
6 to 10 years	23%	13%	2%	62%	23
11 to 20 years	31%	20%	22%	27%	37
More than 20 years	35%	15%	27%	23%	139
18 to 34	29%	11%	6%	54%	33
35 to 49	39%	7%	26%	28%	63
50 to 64	33%	20%	19%	28%	78
65 and over	29%	26%	30%	15%	48
Male	23%	20%	22%	35%	111
Female	43%	13%	21%	23%	117
High school or less	25%	16%	23%	37%	60
Some college	32%	14%	20%	35%	57
College graduate	38%	16%	25%	21%	67
Post-graduate	37%	19%	18%	26%	41
Less than \$30K	26%	10%	18%	46%	22
\$30K to \$60K	39%	8%	22%	31%	30
\$60K to \$75K	22%	30%	17%	32%	23
\$75K to \$100K	42%	15%	15%	28%	32
More than \$100K	28%	13%	32%	26%	39
Married	31%	15%	25%	29%	159
Divorced/separated	38%	25%	19%	18%	41
Never married	34%	14%	5%	47%	27
Protestant	22%	14%	39%	25%	76
Catholic	41%	16%	15%	28%	76
Other	37%	20%	10%	32%	61
Attend 1 or more/week	21%	12%	41%	25%	60
1-2 times a month	50%	16%	16%	17%	27
Less often	33%	15%	24%	27%	45
Never	40%	20%	8%	33%	83

**Favorability Rating - Jeb Bradley  
NH 1st District**

<b>First District</b>	<b><u>Favorable</u></b> <b>42%</b>	<b><u>Neutral</u></b> <b>17%</b>	<b><u>Unfavorable</u></b> <b>26%</b>	<b><u>Don't Know</u></b> <b>15%</b>	<b><u>(N)</u></b> <b>228</b>
Registered Democrat	36%	22%	35%	7%	53
Undeclared	41%	17%	22%	20%	91
Registered Republican	70%	13%	17%	0%	45
Not registered	21%	14%	30%	35%	37
Democrat	27%	17%	38%	17%	104
Independent	45%	10%	23%	21%	38
Republican	62%	20%	10%	9%	81
Liberal	28%	14%	38%	20%	53
Moderate	39%	21%	27%	14%	94
Conservative	63%	14%	15%	7%	66
Approve Bush	58%	16%	17%	9%	67
Neutral	50%	17%	5%	29%	13
Disapprove	34%	17%	32%	17%	148
Union household	44%	27%	18%	11%	26
Non-union	42%	15%	27%	16%	202
5 years or less in NH	23%	32%	20%	25%	23
6 to 10 years	40%	21%	4%	35%	23
11 to 20 years	39%	30%	28%	3%	37
More than 20 years	47%	11%	28%	14%	139
18 to 34	24%	24%	9%	42%	33
35 to 49	50%	20%	17%	13%	63
50 to 64	39%	17%	37%	7%	78
65 and over	52%	9%	25%	14%	48
Male	39%	13%	32%	16%	111
Female	45%	20%	20%	14%	117
High school or less	51%	11%	22%	16%	60
Some college	41%	13%	28%	18%	57
College graduate	42%	22%	21%	15%	67
Post-graduate	31%	23%	34%	12%	41
Less than \$30K	66%	3%	13%	18%	22
\$30K to \$60K	39%	9%	26%	25%	30
\$60K to \$75K	44%	28%	16%	12%	23
\$75K to \$100K	43%	13%	28%	16%	32
More than \$100K	47%	13%	30%	11%	39
Married	41%	19%	24%	16%	159
Divorced/separated	43%	12%	37%	7%	41
Never married	50%	7%	20%	24%	27
Protestant	58%	10%	18%	14%	76
Catholic	38%	22%	24%	16%	76
Other	31%	20%	33%	16%	61
Attend 1 or more/week	55%	13%	20%	12%	60
1-2 times a month	41%	10%	23%	26%	27
Less often	51%	12%	23%	14%	45
Never	29%	27%	30%	14%	83

**Favorability Rating - John Stephen  
NH 1st District**

<b>First District</b>	<b><u>Favorable</u> 15%</b>	<b><u>Neutral</u> 14%</b>	<b><u>Unfavorable</u> 11%</b>	<b><u>Don't Know</u> 60%</b>	<b><u>(N)</u> 228</b>
Registered Democrat	11%	19%	8%	61%	53
Undeclared	20%	13%	13%	54%	91
Registered Republican	18%	15%	7%	60%	45
Not registered	2%	11%	11%	76%	37
Democrat	9%	17%	13%	62%	104
Independent	21%	6%	5%	68%	38
Republican	20%	14%	9%	56%	81
Liberal	6%	23%	10%	60%	53
Moderate	13%	12%	12%	63%	94
Conservative	26%	11%	12%	51%	66
Approve Bush	25%	8%	7%	60%	67
Neutral	0%	0%	24%	76%	13
Disapprove	11%	18%	11%	59%	148
Union household	28%	12%	12%	48%	26
Non-union	13%	15%	11%	62%	202
5 years or less in NH	0%	38%	11%	51%	23
6 to 10 years	6%	4%	11%	78%	23
11 to 20 years	11%	24%	15%	50%	37
More than 20 years	20%	10%	9%	61%	139
18 to 34	7%	11%	10%	72%	33
35 to 49	14%	8%	12%	66%	63
50 to 64	15%	22%	10%	53%	78
65 and over	21%	13%	10%	55%	48
Male	12%	14%	10%	64%	111
Female	17%	14%	12%	57%	117
High school or less	13%	9%	15%	63%	60
Some college	17%	9%	3%	71%	57
College graduate	17%	12%	16%	55%	67
Post-graduate	10%	34%	7%	48%	41
Less than \$30K	16%	4%	18%	62%	22
\$30K to \$60K	20%	10%	6%	64%	30
\$60K to \$75K	16%	14%	5%	64%	23
\$75K to \$100K	18%	21%	4%	58%	32
More than \$100K	16%	16%	15%	53%	39
Married	15%	17%	10%	58%	159
Divorced/separated	15%	7%	17%	61%	41
Never married	10%	9%	7%	74%	27
Protestant	23%	11%	13%	53%	76
Catholic	14%	13%	13%	60%	76
Other	8%	22%	6%	64%	61
Attend 1 or more/week	11%	14%	12%	63%	60
1-2 times a month	22%	15%	8%	55%	27
Less often	19%	9%	16%	56%	45
Never	14%	19%	10%	57%	83

NH Senate - Sununu vs. Shaheen

STATEWIDE	<u>Sununu</u> 38%	<u>Shaheen</u> 54%	<u>Other</u> 1%	<u>Undecided</u> 7%	<u>(N)</u> 464
Registered Democrat	9%	87%	0%	4%	126
Undeclared	35%	52%	1%	12%	170
Registered Republican	82%	16%	2%	1%	111
Not registered	29%	59%	0%	13%	55
Democrat	9%	82%	1%	8%	223
Independent	26%	63%	0%	11%	63
Republican	79%	15%	1%	5%	172
Liberal	10%	80%	1%	9%	116
Moderate	33%	59%	1%	7%	183
Conservative	72%	24%	0%	4%	143
Approve Bush	78%	15%	1%	6%	140
Neutral	59%	21%	3%	17%	21
Disapprove	18%	74%	0%	7%	303
Union household	27%	66%	0%	7%	67
Non-union	40%	52%	1%	7%	398
5 years or less in NH	32%	52%	0%	15%	52
6 to 10 years	44%	47%	0%	10%	45
11 to 20 years	37%	55%	0%	8%	69
More than 20 years	39%	55%	1%	5%	291
18 to 34	33%	47%	2%	19%	59
35 to 49	43%	53%	0%	4%	121
50 to 64	35%	56%	0%	8%	183
65 and over	45%	52%	2%	1%	88
Male	42%	53%	1%	5%	221
Female	35%	55%	1%	10%	243
High school or less	38%	53%	1%	9%	101
Some college	44%	46%	0%	9%	115
College graduate	42%	53%	0%	6%	151
Post-graduate	24%	67%	2%	6%	94
Less than \$30K	37%	54%	3%	6%	39
\$30K to \$60K	37%	56%	0%	7%	64
\$60K to \$75K	47%	43%	0%	10%	47
\$75K to \$100K	37%	61%	0%	2%	71
More than \$100K	37%	54%	1%	9%	95
Married	39%	53%	0%	8%	331
Divorced/separated	42%	56%	1%	2%	80
Never married	30%	57%	2%	11%	52
Protestant	49%	43%	1%	7%	163
Catholic	41%	50%	0%	8%	148
Other	25%	69%	1%	5%	124
Attend 1 or more/week	52%	42%	1%	5%	128
1-2 times a month	33%	51%	0%	16%	50
Less often	40%	56%	0%	4%	109
Never	28%	64%	1%	7%	152
Northern NH	41%	50%	0%	9%	35
Central/Lakes	28%	61%	1%	9%	76
Connecticut Valley	28%	61%	0%	11%	73
Massachusetts Border	38%	53%	1%	8%	139
Seacoast	47%	48%	1%	4%	80
Greater Manchester	49%	49%	0%	3%	62
1st Cong. District	45%	49%	0%	6%	214
2nd Cong. District	33%	58%	1%	8%	251