

GRANITE STATE POLL

THE UNIVERSITY OF NEW HAMPSHIRE

SHAHEEN STILL LEADFS IN NH SENATE RACE

By: Andrew E. Smith, Ph.D. 603/862-2226
 Dante Scala, Ph.D. 603/862-1519
 www.unh.edu/survey-center

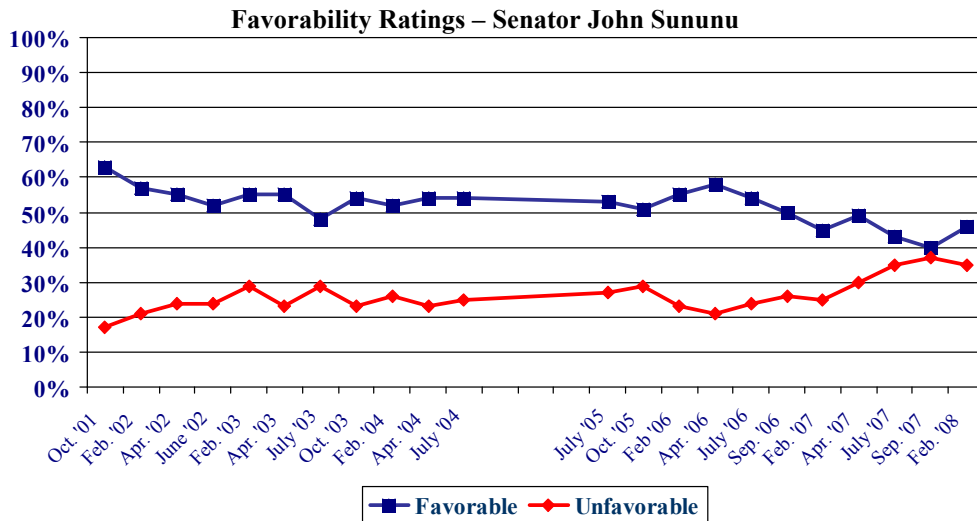
FOR RELEASE
 February 11, 2008

DURHAM, NH – Former Governor Jeanne Shaheen continues to hold a sizeable lead over incumbent Republican John Sununu in the race for the U.S. Senate in New Hampshire.

These findings are based on the latest **Granite State Poll**,* conducted by the University of New Hampshire Survey Center. Five hundred fifty-five (555) randomly selected New Hampshire adults were interviewed by telephone between January 18 and January 27, 2008. The margin of sampling error for the survey is +/-4.2 percent. Two hundred sixty-eight (268) respondents lived in New Hampshire’s 1st Congressional District (margin of sampling error = +/-6.0%) and 287 lived in the 2nd District (margin of sampling error = +/-5.8%).

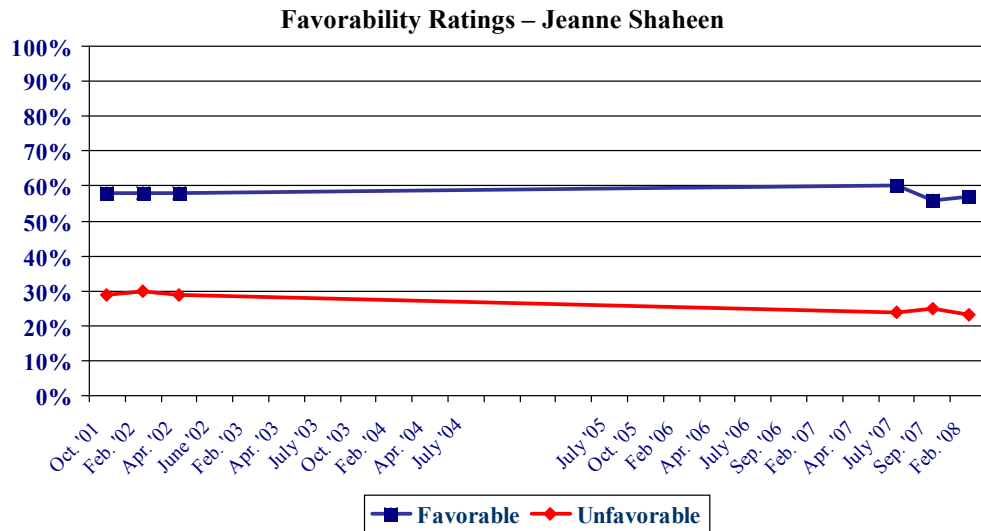
John Sununu

John Sununu, New Hampshire’s junior Senator, is up for reelection in 2008 in a rematch of his 2002 race with former Governor Jeanne Shaheen who he defeated by a 51% to 46% margin. But Sununu’s popularity in New Hampshire has dropped significantly since 2002 and his chances for reelection are currently doubtful. Currently, Sununu is viewed favorably by 46 percent of New Hampshire adults, 35 percent having an unfavorable opinion of him, 12 percent are neutral and 7 percent don’t know enough to say. Sununu’s net favorability rating is a only +11 percent, up from +3 percent in September. “Sununu seems to have stemmed his decline in favorability, but he still faces an uphill battle for reelection,” said Andrew Smith, Director of the UNH Survey Center.



* We ask that this copyrighted information be referred to as *the Granite State Poll*, conducted by the University of New Hampshire Survey Center.

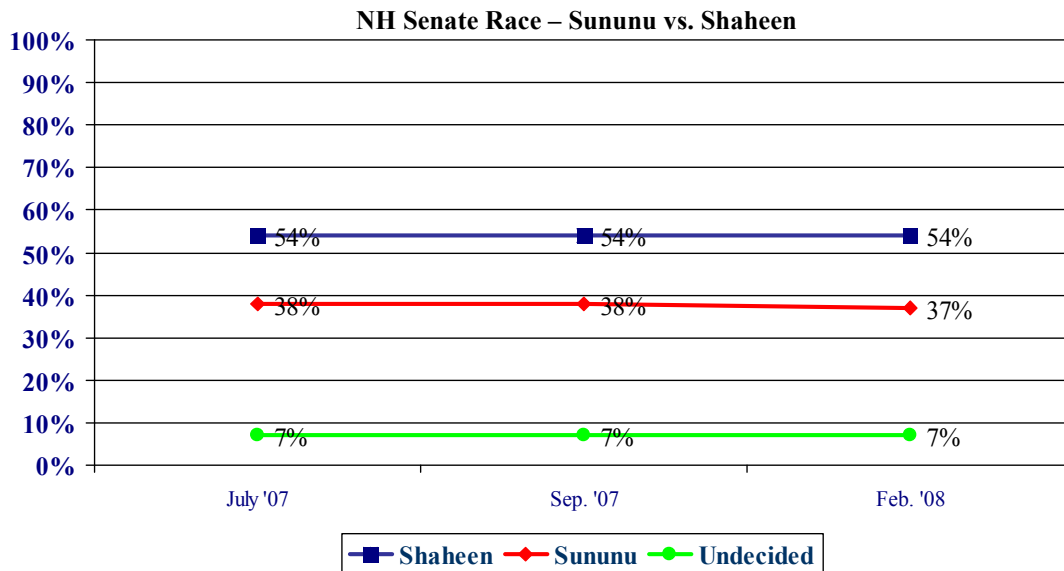
Shaheen was quite popular during her years as Governor (1997-2003) and remains popular today. Currently, 57 percent of New Hampshire adults have a favorable opinion of Shaheen, 23 percent have an unfavorable opinion of her, 13 percent are neutral, and 7 percent don't know enough about her to say. Shaheen's net favorability rating is a strong +34%.



NH Senate Trial Heat

In a trial heat between Sununu and Shaheen, the former New Hampshire governor continues to get 54 percent of the vote with 37 percent going to Sununu, 1 percent for some other candidate and only 7 percent are undecided. These numbers are unchanged since July. Shaheen runs strongest among Democrats, liberals, and non-religious voters. Sununu runs strongest among Republicans, conservatives, and regular church goers.

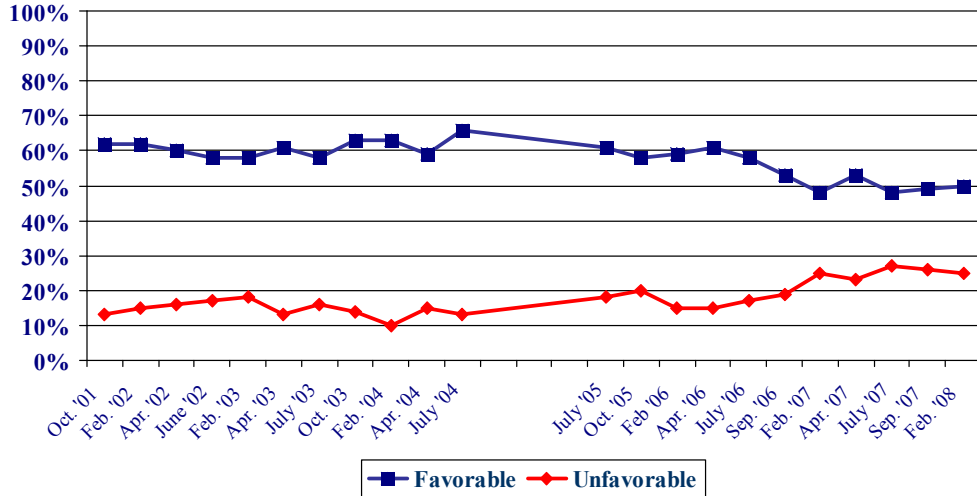
“Clearly New Hampshire’s political environment is much friendlier to Jeanne Shaheen in her second try for the U. S. Senate,” said UNH associate professor of political science Dante Scala. “The number of registered Democrats is almost even with the number of Republicans, and independents show no signs yet of moving back toward the Republican Party. This race may be frozen for much of the summer,” said Scala. “Especially if the fight for the Democratic presidential nomination goes to the convention in August.”



Judd Gregg

Senator Judd Gregg continues to be more popular than Sununu -- 50 percent of New Hampshire adults have a favorable opinion of Gregg, 25 percent have an unfavorable opinion, 13 percent are neutral and 12 percent don't know enough to say. Gregg's net favorability rating stands at +25 percent.

Favorability Ratings – Senator Judd Gregg

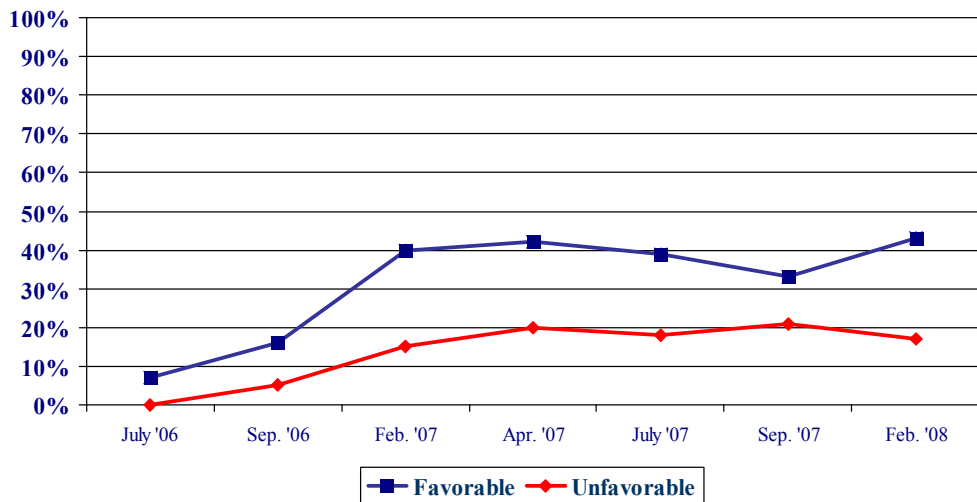


NH 1st District

In New Hampshire's 1st Congressional District, Democrat Carol Shea-Porter's favorability ratings have increased in recent months. Currently, 43 percent of 1st District adults have a favorable opinion of Shea-Porter, 17 percent have an unfavorable opinion of her, 13 percent are neutral, and 26 percent say they don't know enough about her to say. Shea-Porter's net favorability rating is +26 percent, up from +12 percent in September.

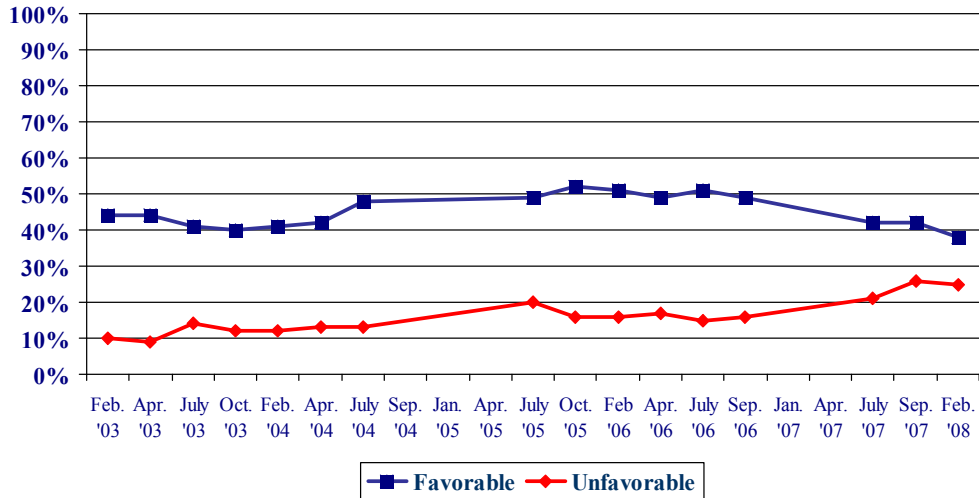
Shea-Porter's favorability ratings are about the same as those of Jeb Bradley at the same point in his first term. In February, 2004, Bradley's net favorability rating was +29 percent.

Favorability Ratings – Carol Shea-Porter NH 1st District



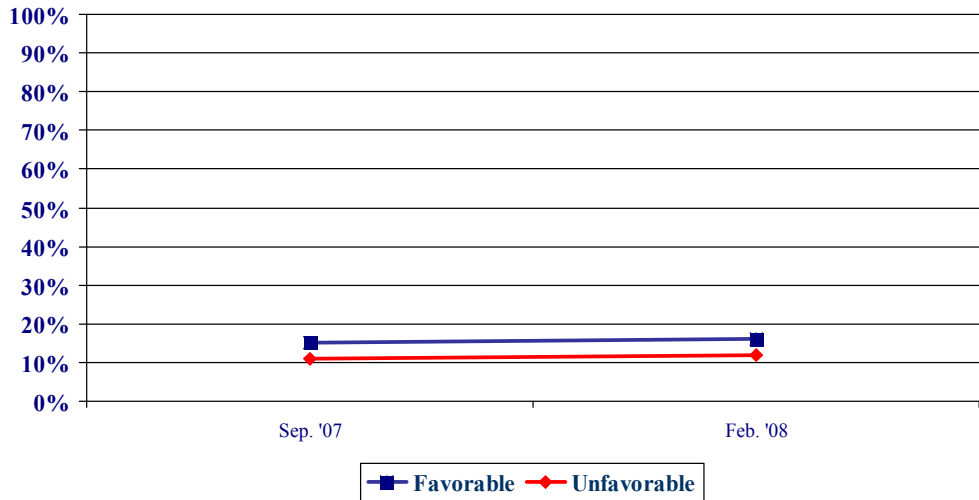
Bradley is running to regain his seat in 2008. Currently, 38 percent of 1st District voters have a favorable opinion of Bradley, 25 percent have an unfavorable opinion of him, 16 percent are neutral and 21 percent don't know enough about him to say. Bradley's net favorability rating stands at +13 percent in the 1st District.

Favorability Ratings – Jeb Bradley NH 1st District



Former Health and Human Services Commission John Stephen is also running for the 1st District seat and will challenge Bradley for the Republican nomination. Stephen remains considerably less well known than Bradley – only 16 percent of 1st District residents have a favorable opinion of Stephen, 12 have an unfavorable opinion of him, 17 percent are neutral, and 55 percent don't know enough about him to say. His net approval rating is only +4 percent.

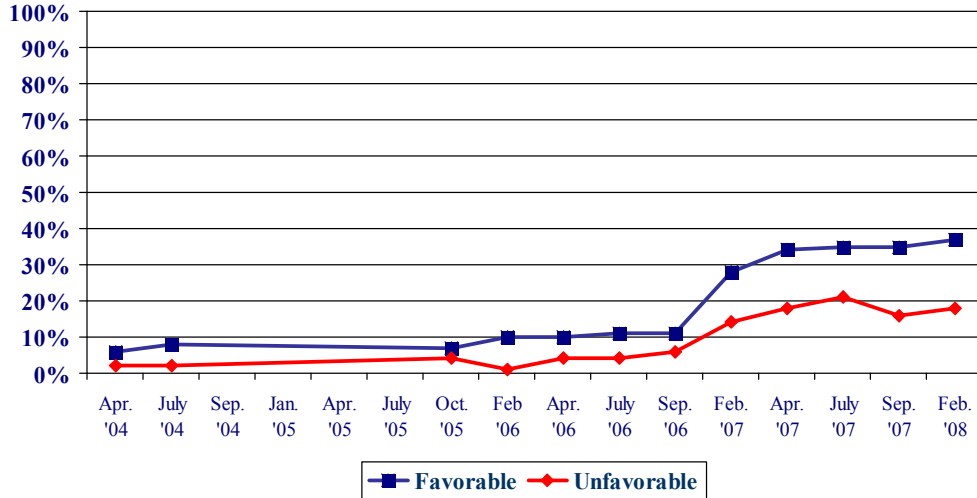
Favorability Ratings – John Stephen NH 1st District



NH 2nd District

In the 2nd District, Democrat Paul Hodes remains popular. Currently, 37 percent of 2nd District residents say they have a favorable opinion of Hodes, 18 percent have an unfavorable opinion of him, 18 percent are neutral, and 27 percent say they know too little about him to say. Hodes' net favorability rating is +19 percent.

Favorability Ratings – Paul Hodes NH 2nd District



Granite State Poll Methodology

These findings are based on the latest **Granite State Poll** conducted by the University of New Hampshire Survey Center. Five hundred fifty-five (555) randomly selected New Hampshire adults were interviewed by telephone between January 18 and January 27, 2008. The margin of sampling error for the survey is +/-4.2 percent. Two hundred sixty-eight (268) respondents lived in New Hampshire's 1st Congressional District (margin of sampling error = +/-6.0%) and 287 lived in the 2nd District (margin of sampling error = +/-5.8%). Results reported for other subgroups have potential for somewhat larger variation than those for the entire population.

The data have been weighted to adjust for numbers of adults and telephone lines within households, respondent sex, and region of the state. In addition to potential sampling error, all surveys have other potential sources of non-sampling error including question order effects, question wording effects, and non-response.

Favorability Rating – U.S. Representative Carol Shea-Porter - NH 1st District

"Next, I'd like to get your overall opinion of some people in the news. As I read each name, please say if you have a favorable or unfavorable opinion of this person - or if you have never heard of him or her. Congresswoman Carol Shea-Porter"

<u>1st C.D.</u>	<u>Favorable</u>	<u>Neutral</u>	<u>Unfavorable</u>	<u>Don't Know</u>	<u>(N)</u>
Feb. '08	43%	13%	17%	26%	(267)
Sept. '07	33%	17%	21%	29%	(228)
July '07	39%	15%	18%	28%	(252)
Apr. '07	42%	15%	20%	24%	(251)
Feb. '07	40%	17%	15%	28%	(248)
Sept. '06	16%	14%	5%	65%	(266)
July '06	7%	7%	0%	86%	(256)

Favorability Rating – Former U.S. Representative Jeb Bradley - NH 1st District

"Next, I'd like to get your overall opinion of some people in the news. As I read each name, please say if you have a favorable or unfavorable opinion of this person - or if you have never heard of him or her. Former U.S. Representative Jeb Bradley." (Respondents were asked about U.S. REPRESENTATIVE Jeb Bradley from February 2003 to September 2006.)

<u>1st C.D.</u>	<u>Favorable</u>	<u>Neutral</u>	<u>Unfavorable</u>	<u>Don't Know</u>	<u>(N)</u>
Feb. '08	38%	16%	25%	21%	(267)
Sept. '07	42%	17%	26%	15%	(228)
July '07	42%	14%	20%	23%	(253)
Sept. '06	49%	16%	18%	17%	(265)
July '06	51%	13%	15%	22%	(256)
Apr. '06	49%	14%	17%	20%	(271)
Feb. '06	51%	16%	16%	17%	(269)
Oct. '05	52%	14%	16%	18%	(283)
July '05	49%	10%	20%	21%	(269)
July '04	48%	14%	13%	25%	(269)
Apr. '04	42%	14%	13%	32%	(266)
Feb. '04	41%	14%	12%	33%	(265)
Oct. '03	40%	13%	12%	35%	(239)
June '03	41%	23%	14%	22%	(273)
Apr. '03	44%	11%	9%	37%	(269)
Feb. '03	44%	15%	10%	31%	(331)

Favorability Rating – Former Health and Human Services Commissioner John Stephen - NH 1st District

"Next, I'd like to get your overall opinion of some people in the news. As I read each name, please say if you have a favorable or unfavorable opinion of this person - or if you have never heard of him or her. Former Health and Human Services Commissioner John Stephen

<u>1st C.D.</u>	<u>Favorable</u>	<u>Neutral</u>	<u>Unfavorable</u>	<u>Don't Know</u>	<u>(N)</u>
Feb. '08	16%	17%	12%	55%	(267)
Sept. '07	15%	14%	11%	60%	(228)

Favorability Rating – U.S. Representative Paul Hodes - NH 2nd District

"Next, I'd like to get your overall opinion of some people in the news. As I read each name, please say if you have a favorable or unfavorable opinion of this person - or if you have never heard of him or her. Congressman Paul Hodes." (Respondents were asked about Concord Attorney Paul Hodes from April 2004 to September 2006.)

<u>2nd C.D.</u>	<u>Favorable</u>	<u>Neutral</u>	<u>Unfavorable</u>	<u>Don't Know</u>	<u>(N)</u>
Feb. '08	37%	18%	18%	27%	(287)
Sept. '07	35%	15%	16%	34%	(278)
July '07	34%	8%	21%	36%	(254)
Apr. '07	34%	13%	18%	36%	(264)
Feb. '07	28%	18%	14%	39%	(286)
Sept. '06	11%	17%	6%	66%	(248)
July '06	11%	9%	4%	77%	(246)
Apr. '06	10%	6%	4%	81%	(235)
Feb. '06	10%	11%	1%	78%	(232)
Oct. '05	7%	7%	4%	83%	(230)
July '04	8%	8%	2%	81%	(238)
Apr. '04	6%	7%	2%	86%	(271)

Favorability Rating – U.S. Senator John Sununu

"Next, I'd like to get your overall opinion of some people in the news. As I read each name, please say if you have a favorable or unfavorable opinion of this person - or if you have never heard of him or her. Senator John Sununu." (Respondents were asked about U.S. REPRESENTATIVE John Sununu from October 2001 to June 2002. He was elected Senator in November 2002.)

<u>Statewide</u>	<u>Favorable</u>	<u>Neutral</u>	<u>Unfavorable</u>	<u>Don't Know</u>	<u>(N)</u>
Feb. '08	46%	12%	35%	7%	(554)
Sept. '07	40%	14%	37%	9%	(508)
July '07	43%	13%	35%	9%	(521)
Apr. '07	49%	14%	30%	8%	(514)
Feb. '07	45%	20%	25%	11%	(533)
Sept. '06	50%	15%	26%	9%	(513)
July '06	54%	11%	24%	11%	(499)
Apr. '06	58%	14%	21%	10%	(503)
Feb. '06	55%	13%	23%	8%	(500)
Oct. '05	51%	9%	29%	10%	(509)
July '05	53%	6%	27%	13%	(499)
July '04	54%	10%	25%	11%	(507)
Apr. '04	54%	11%	23%	11%	(539)
Feb. '04	52%	11%	26%	12%	(510)
Oct. '03	54%	10%	23%	13%	(495)
June '03	48%	11%	29%	11%	(513)
Apr. '03	55%	9%	23%	12%	(507)
Feb. '03	55%	9%	29%	8%	(651)
June '02	52%	10%	24%	14%	(639)
Apr. '02	55%	7%	24%	14%	(693)
Feb. '02	57%	9%	21%	13%	(724)
Oct. '01	63%	8%	17%	12%	(681)

Favorability Rating – Former Governor Jeanne Shaheen

"Next, I'd like to get your overall opinion of some people in the news. As I read each name, please say if you have a favorable or unfavorable opinion of this person - or if you have never heard of him or her. Former Governor Jeanne Shaheen."

<u>Statewide</u>	<u>Favorable</u>	<u>Neutral</u>	<u>Unfavorable</u>	<u>Don't Know</u>	<u>(N)</u>
Feb. '08	57%	13%	23%	7%	(555)
Sept. '07	56%	11%	25%	8%	(506)
July '07	60%	9%	24%	8%	(520)

U.S. Senate Trial Heats

Likely 2008 General Election Voters

	<u>July '07</u>	<u>Sep. '07</u>	<u>Feb. '08</u>
Sununu	38%	38%	37%
Shaheen	54%	54%	55%
Other	1%	1%	1%
Undecided	7%	7%	7%
(N=)	(449)	(464)	(516)

Favorability Rating – U.S. Senator Judd Gregg

"Next, I'd like to get your overall opinion of some people in the news. As I read each name, please say if you have a favorable or unfavorable opinion of this person - or if you have never heard of him or her. Senator Judd Gregg."

<u>Statewide</u>	<u>Favorable</u>	<u>Neutral</u>	<u>Unfavorable</u>	<u>Don't Know</u>	<u>(N)</u>
Feb. '08	50%	13%	25%	12%	(555)
Sept. '07	49%	12%	26%	13%	(508)
July '07	48%	11%	27%	14%	(516)
Apr. '07	53%	13%	23%	11%	(515)
Feb. '07	48%	15%	25%	12%	(533)
Sept. '06	53%	15%	19%	13%	(513)
July '06	58%	11%	17%	14%	(503)
Apr. '06	61%	12%	15%	13%	(505)
Feb. '06	59%	14%	15%	12%	(501)
Oct. '05	58%	10%	20%	12%	(510)
July '05	61%	8%	18%	13%	(501)
July '04	66%	8%	13%	12%	(508)
Apr. '04	59%	11%	15%	15%	(541)
Feb. '04	63%	12%	10%	15%	(509)
Oct. '03	63%	8%	14%	16%	(496)
June '03	58%	10%	16%	16%	(514)
Apr. '03	61%	8%	13%	18%	(507)
Feb. '03	58%	8%	18%	16%	(652)
June '02	58%	10%	17%	15%	(638)
Apr. '02	60%	6%	16%	18%	(691)
Feb. '02	62%	9%	15%	14%	(724)
Oct. '01	62%	9%	13%	16%	(679)

Net Favorability Ratings

	<u>Shea-Porter (1st CD)</u>	<u>Bradley (1st CD)</u>	<u>Stephen (1st CD)</u>	<u>Hodes (2nd CD)</u>	<u>Gregg (State)</u>	<u>Sununu (State)</u>	<u>Shaheen (State)</u>
Feb. '08	+26%	+13%	+4%	+19%	+25%	+11%	+34%
Sept. '07	+12%	+16%	+4%	+19%	+23%	+3%	+31%
July '07	+21%	+20%	--	+13%	+21%	+8%	+36%
Apr. '07	+22%	--	--	+16%	+30%	+19%	--
Feb. '07	+25%	--	--	+14%	+23%	+20%	--
Sept. '06	+11%	--	--	+5%	+34%	+24%	--
July '06	+7%	--	--	+7%	+41%	+30%	--
Apr. '06	--	--	--	+6%	+46%	+34%	--
Feb. '06	--	--	--	+9%	+44%	+32%	--
Oct. '05	--	--	--	+3%	+38%	+22%	--
July '05	--	--	--	--	+43%	+26%	--
July '04	--	--	--	--	+53%	+29%	--
Apr. '04	--	--	--	--	+44%	+31%	--
Feb. '04	--	--	--	--	+53%	+26%	--
Oct. '03	--	--	--	--	+49%	+31%	--
June '03	--	--	--	--	+42%	+19%	--
Apr. '03	--	--	--	--	+48%	+32%	--
Feb. '03	--	--	--	--	+40%	+26%	--
June '02	--	--	--	--	+40%	+27%	--
Apr. '02	--	--	--	--	+44%	+31%	+29%
Feb. '02	--	--	--	--	+47%	+36%	+28%
Oct. '01	--	--	--	--	+49%	+46%	+29%

Favorability Rating - Judd Gregg

	<u>Favorable</u>	<u>Neutral</u>	<u>Unfavorable</u>	<u>Don't Know</u>	<u>(N)</u>
STATEWIDE	50%	13%	25%	12%	555
Registered Democrat	32%	15%	42%	11%	182
Undeclared	48%	14%	25%	13%	186
Registered Republican	81%	6%	9%	4%	142
Not registered	33%	24%	7%	37%	44
Democrat	31%	16%	41%	12%	265
Independent	56%	12%	19%	14%	99
Republican	77%	9%	6%	9%	179
Liberal	28%	17%	41%	14%	120
Moderate	53%	14%	26%	7%	241
Conservative	69%	6%	12%	13%	139
Union household	41%	15%	34%	10%	81
Non-union	52%	13%	24%	12%	464
5 years or less in NH	37%	24%	16%	23%	49
6 to 10 years	39%	15%	22%	23%	62
11 to 20 years	45%	18%	21%	16%	100
More than 20 years	55%	10%	28%	7%	327
18 to 34	42%	17%	7%	34%	69
35 to 49	55%	14%	19%	12%	153
50 to 64	43%	13%	36%	8%	190
65 and over	57%	11%	27%	5%	123
Male	50%	12%	27%	10%	270
Female	50%	14%	23%	13%	284
High school or less	59%	11%	11%	20%	134
Some college	54%	12%	22%	12%	126
College graduate	46%	12%	33%	9%	176
Post-graduate	43%	18%	34%	6%	111
Less than \$30K	49%	18%	22%	11%	51
\$30K to \$60K	52%	13%	15%	20%	95
\$60K to \$75K	47%	7%	38%	9%	59
\$75K to \$100K	48%	12%	30%	10%	54
More than \$100K	45%	11%	38%	6%	111
Married	50%	13%	27%	10%	369
Divorced/separated	60%	10%	24%	6%	101
Never married	37%	17%	17%	28%	77
Protestant	57%	12%	20%	11%	176
Catholic	61%	11%	17%	11%	205
Other	29%	17%	39%	14%	144
Attend services 1 or more/week	69%	7%	14%	10%	139
1-2 times a month	60%	15%	16%	9%	67
Less often	46%	12%	29%	12%	153
Never	35%	18%	32%	14%	174
North Country	60%	10%	18%	12%	45
Central/Lakes	40%	9%	47%	4%	82
Connecticut Valley	59%	14%	21%	6%	82
Mass Border	54%	17%	14%	15%	154
Seacoast	45%	13%	27%	15%	92
Manchester Area	45%	11%	29%	15%	100
1st Cong. District	47%	12%	25%	16%	267
2nd Cong. District	53%	14%	25%	8%	287

Favorability Rating - John Sununu

	<u>Favorable</u>	<u>Neutral</u>	<u>Unfavorable</u>	<u>Don't Know</u>	<u>(N)</u>
STATEWIDE	46%	12%	35%	7%	554
Registered Democrat	25%	10%	58%	7%	182
Undeclared	47%	14%	32%	7%	186
Registered Republican	76%	5%	16%	2%	142
Not registered	37%	28%	9%	26%	44
Democrat	29%	10%	53%	8%	264
Independent	43%	21%	30%	6%	99
Republican	75%	8%	11%	5%	179
Liberal	30%	15%	46%	9%	121
Moderate	49%	12%	35%	4%	241
Conservative	64%	7%	22%	7%	139
Union household	39%	11%	41%	9%	81
Non-union	47%	12%	34%	7%	463
5 years or less in NH	36%	24%	33%	7%	50
6 to 10 years	53%	9%	23%	14%	62
11 to 20 years	42%	12%	35%	11%	100
More than 20 years	49%	9%	37%	5%	326
18 to 34	40%	20%	16%	24%	69
35 to 49	56%	8%	31%	5%	153
50 to 64	38%	12%	45%	6%	189
65 and over	53%	10%	35%	3%	123
Male	50%	10%	35%	6%	270
Female	43%	14%	34%	9%	284
High school or less	48%	12%	30%	10%	134
Some college	46%	13%	32%	10%	126
College graduate	47%	11%	38%	4%	175
Post-graduate	43%	11%	40%	6%	111
Less than \$30K	35%	19%	42%	4%	51
\$30K to \$60K	50%	10%	25%	14%	95
\$60K to \$75K	55%	10%	35%	0%	59
\$75K to \$100K	39%	11%	44%	6%	54
More than \$100K	46%	10%	42%	3%	110
Married	46%	11%	37%	6%	369
Divorced/separated	50%	14%	33%	3%	101
Never married	41%	13%	27%	19%	77
Protestant	52%	10%	32%	5%	176
Catholic	59%	9%	27%	6%	205
Other	26%	16%	47%	12%	144
Attend services 1 or more/week	55%	11%	28%	5%	139
1-2 times a month	67%	4%	22%	7%	67
Less often	47%	7%	39%	6%	154
Never	32%	17%	41%	10%	173
North Country	58%	13%	27%	2%	45
Central/Lakes	34%	9%	52%	5%	82
Connecticut Valley	55%	9%	30%	6%	82
Mass Border	48%	13%	31%	9%	154
Seacoast	39%	16%	37%	8%	92
Manchester Area	49%	10%	31%	10%	100
1st Cong. District	47%	12%	32%	9%	267
2nd Cong. District	46%	11%	37%	6%	287

Favorability Rating - Jeanne Shaheen

	<u>Favorable</u>	<u>Neutral</u>	<u>Unfavorable</u>	<u>Don't Know</u>	<u>(N)</u>
STATEWIDE	57%	13%	23%	7%	555
Registered Democrat	77%	9%	7%	7%	182
Undeclared	60%	16%	19%	5%	186
Registered Republican	34%	9%	52%	5%	142
Not registered	40%	24%	16%	20%	44
Democrat	75%	12%	7%	6%	265
Independent	57%	20%	18%	5%	99
Republican	32%	9%	51%	8%	179
Liberal	82%	7%	4%	7%	120
Moderate	57%	12%	26%	6%	241
Conservative	42%	14%	37%	7%	139
Union household	53%	11%	25%	10%	81
Non-union	59%	13%	22%	6%	464
5 years or less in NH	29%	25%	21%	25%	49
6 to 10 years	55%	17%	17%	10%	62
11 to 20 years	62%	15%	14%	9%	100
More than 20 years	61%	9%	27%	3%	327
18 to 34	55%	18%	9%	17%	69
35 to 49	55%	14%	26%	6%	153
50 to 64	60%	12%	23%	5%	190
65 and over	59%	9%	26%	6%	123
Male	54%	15%	26%	5%	270
Female	60%	11%	20%	9%	284
High school or less	60%	13%	19%	7%	134
Some college	59%	9%	22%	10%	126
College graduate	57%	14%	23%	6%	176
Post-graduate	53%	12%	29%	5%	111
Less than \$30K	55%	17%	19%	10%	51
\$30K to \$60K	49%	15%	20%	16%	95
\$60K to \$75K	64%	6%	27%	3%	59
\$75K to \$100K	62%	10%	27%	1%	54
More than \$100K	60%	10%	26%	3%	111
Married	58%	12%	24%	6%	369
Divorced/separated	55%	12%	26%	7%	101
Never married	58%	17%	15%	10%	77
Protestant	50%	17%	26%	7%	176
Catholic	58%	8%	29%	5%	205
Other	63%	14%	12%	11%	144
Attend services 1 or more/week	55%	9%	29%	7%	139
1-2 times a month	54%	10%	30%	6%	67
Less often	63%	11%	19%	7%	153
Never	55%	17%	20%	8%	174
North Country	56%	17%	22%	4%	45
Central/Lakes	63%	11%	25%	1%	82
Connecticut Valley	54%	17%	19%	10%	82
Mass Border	52%	13%	26%	9%	154
Seacoast	63%	11%	18%	7%	92
Manchester Area	57%	9%	26%	7%	100
1st Cong. District	58%	9%	26%	7%	267
2nd Cong. District	57%	16%	20%	7%	287

**Favorability Rating - Paul Hodes
NH 2nd District**

Second CD	Favorable 37%	Neutral 18%	Unfavorable 18%	Don't Know 27%	(N) 287
Registered Democrat	54%	13%	13%	20%	84
Undeclared	39%	25%	13%	23%	111
Registered Republican	23%	10%	33%	34%	71
Not registered	3%	30%	20%	48%	22
Democrat	48%	15%	11%	25%	138
Independent	35%	33%	11%	21%	53
Republican	21%	13%	32%	34%	91
Liberal	51%	17%	9%	23%	67
Moderate	41%	20%	16%	22%	110
Conservative	20%	11%	29%	40%	79
Union household	40%	22%	5%	32%	37
Non-union	36%	18%	20%	26%	244
5 years or less in NH	28%	20%	22%	30%	22
6 to 10 years	41%	25%	8%	26%	24
11 to 20 years	43%	16%	13%	29%	67
More than 20 years	35%	18%	21%	26%	166
18 to 34	25%	28%	16%	30%	40
35 to 49	26%	25%	19%	30%	67
50 to 64	42%	16%	19%	22%	105
65 and over	44%	8%	17%	31%	67
Male	42%	15%	21%	22%	147
Female	31%	22%	16%	32%	141
High school or less	22%	22%	12%	44%	80
Some college	33%	25%	15%	28%	59
College graduate	42%	14%	25%	19%	88
Post-graduate	53%	13%	19%	15%	56
Less than \$30K	22%	23%	19%	36%	26
\$30K to \$60K	28%	16%	15%	40%	57
\$60K to \$75K	37%	15%	18%	30%	29
\$75K to \$100K	35%	19%	15%	30%	30
More than \$100K	51%	2%	33%	14%	49
Married	40%	16%	17%	26%	193
Divorced/separated	29%	24%	22%	25%	52
Never married	27%	21%	18%	34%	37
Protestant	32%	18%	18%	31%	104
Catholic	36%	18%	20%	27%	93
Other	46%	17%	15%	21%	75
Attend services 1 or more/week	40%	24%	15%	21%	78
1-2 times a month	38%	24%	17%	21%	31
Less often	41%	6%	21%	32%	73
Never	29%	19%	21%	31%	92
North Country	38%	24%	10%	27%	33
Central/Lakes	50%	15%	28%	7%	56
Connecticut Valley	35%	16%	21%	28%	82
Mass Border	31%	20%	13%	36%	100
Manchester Area	30%	22%	18%	29%	16

**Favorability Rating - Carol Shea-Porter
NH 1st District**

First CD	Favorable 43%	Neutral 13%	Unfavorable 17%	Don't Know 26%	(N) 267
Registered Democrat	61%	14%	2%	24%	99
Undeclared	43%	20%	10%	26%	75
Registered Republican	25%	5%	50%	19%	71
Not registered	23%	12%	5%	60%	22
Democrat	64%	12%	2%	22%	127
Independent	31%	20%	12%	36%	46
Republican	19%	11%	43%	27%	88
Liberal	61%	10%	2%	27%	53
Moderate	49%	14%	20%	17%	131
Conservative	16%	17%	30%	37%	61
Union household	47%	7%	19%	27%	45
Non-union	43%	14%	16%	26%	219
5 years or less in NH	40%	11%	17%	32%	27
6 to 10 years	35%	17%	13%	35%	38
11 to 20 years	52%	12%	14%	21%	34
More than 20 years	45%	13%	20%	22%	161
18 to 34	26%	20%	12%	41%	29
35 to 49	39%	13%	20%	28%	86
50 to 64	54%	12%	15%	19%	85
65 and over	47%	12%	19%	22%	56
Male	32%	15%	27%	27%	124
Female	53%	12%	9%	26%	144
High school or less	29%	19%	12%	41%	54
Some college	43%	19%	9%	29%	67
College graduate	54%	11%	14%	21%	88
Post-graduate	43%	5%	38%	14%	55
Less than \$30K	40%	24%	8%	28%	24
\$30K to \$60K	40%	10%	21%	29%	39
\$60K to \$75K	52%	7%	20%	21%	30
\$75K to \$100K	38%	15%	12%	35%	24
More than \$100K	48%	11%	24%	18%	62
Married	43%	11%	19%	27%	176
Divorced/separated	43%	19%	13%	25%	48
Never married	44%	17%	15%	24%	40
Protestant	43%	16%	18%	23%	72
Catholic	39%	10%	23%	28%	112
Other	52%	13%	8%	27%	69
Attend services 1 or more/week	42%	11%	26%	20%	62
1-2 times a month	54%	5%	20%	22%	37
Less often	45%	15%	13%	27%	81
Never	40%	16%	14%	30%	82
North Country	45%	22%	32%	0%	12
Central/Lakes	45%	4%	20%	31%	26
Mass Border	29%	16%	9%	46%	54
Seacoast	55%	16%	13%	17%	92
Manchester Area	39%	11%	24%	26%	84

**Favorability Rating - Jeb Bradley
NH 1st District**

First CD	Favorable 38%	Neutral 16%	Unfavorable 25%	Don't Know 21%	(N) 267
Registered Democrat	20%	17%	43%	21%	98
Undeclared	34%	21%	22%	23%	75
Registered Republican	73%	7%	10%	10%	71
Not registered	25%	15%	10%	50%	22
Democrat	22%	14%	43%	21%	126
Independent	37%	24%	17%	22%	46
Republican	64%	13%	6%	17%	88
Liberal	18%	5%	47%	29%	53
Moderate	41%	20%	24%	15%	131
Conservative	55%	14%	10%	22%	61
Union household	28%	12%	31%	30%	45
Non-union	40%	16%	25%	19%	219
5 years or less in NH	18%	27%	19%	36%	27
6 to 10 years	41%	5%	22%	32%	38
11 to 20 years	43%	9%	24%	24%	34
More than 20 years	40%	17%	28%	15%	160
18 to 34	42%	10%	15%	33%	29
35 to 49	41%	20%	20%	20%	86
50 to 64	35%	15%	29%	21%	84
65 and over	38%	11%	35%	16%	56
Male	44%	13%	25%	17%	124
Female	33%	17%	25%	24%	143
High school or less	42%	14%	19%	25%	54
Some college	29%	20%	26%	25%	67
College graduate	38%	18%	29%	15%	87
Post-graduate	46%	6%	28%	20%	55
Less than \$30K	32%	19%	26%	22%	24
\$30K to \$60K	39%	12%	22%	28%	39
\$60K to \$75K	52%	8%	29%	11%	30
\$75K to \$100K	32%	12%	33%	22%	24
More than \$100K	48%	15%	27%	10%	61
Married	40%	13%	26%	20%	175
Divorced/separated	35%	21%	25%	19%	48
Never married	34%	16%	23%	27%	40
Protestant	42%	17%	21%	19%	72
Catholic	47%	11%	21%	20%	112
Other	20%	20%	37%	24%	68
Attend services 1 or more/week	46%	12%	24%	17%	62
1-2 times a month	54%	14%	14%	18%	37
Less often	34%	16%	28%	22%	81
Never	30%	17%	29%	25%	81
North Country	64%	0%	36%	0%	12
Central/Lakes	42%	9%	24%	25%	25
Mass Border	34%	16%	18%	31%	54
Seacoast	33%	20%	32%	14%	92
Manchester Area	41%	14%	21%	23%	84

**Favorability Rating - John Stephen
NH 1st District**

First C.D.	Favorable 16%	Neutral 17%	Unfavorable 12%	Don't Know 55%	(N) 267
Registered Democrat	10%	19%	16%	55%	99
Undeclared	14%	21%	3%	61%	74
Registered Republican	29%	10%	18%	43%	71
Not registered	13%	13%	5%	69%	22
Democrat	12%	18%	14%	56%	127
Independent	13%	15%	13%	58%	46
Republican	25%	13%	9%	53%	88
Liberal	9%	11%	15%	65%	53
Moderate	19%	21%	16%	45%	131
Conservative	18%	14%	7%	61%	61
Union household	16%	9%	24%	51%	45
Non-union	17%	18%	9%	56%	219
5 years or less in NH	14%	14%	8%	64%	27
6 to 10 years	4%	9%	7%	80%	38
11 to 20 years	15%	17%	18%	50%	34
More than 20 years	19%	19%	13%	49%	161
18 to 34	13%	11%	8%	67%	29
35 to 49	20%	18%	11%	51%	86
50 to 64	12%	12%	16%	60%	84
65 and over	19%	23%	13%	46%	56
Male	21%	19%	10%	50%	123
Female	13%	15%	14%	59%	144
High school or less	17%	15%	4%	64%	54
Some college	17%	16%	17%	49%	67
College graduate	14%	24%	11%	51%	87
Post-graduate	19%	6%	16%	58%	55
Less than \$30K	11%	18%	18%	53%	24
\$30K to \$60K	13%	24%	11%	52%	39
\$60K to \$75K	18%	10%	19%	54%	30
\$75K to \$100K	5%	10%	9%	77%	24
More than \$100K	23%	17%	16%	44%	61
Married	17%	16%	14%	54%	176
Divorced/separated	16%	16%	9%	58%	48
Never married	14%	19%	9%	58%	40
Protestant	14%	15%	22%	50%	72
Catholic	20%	15%	11%	54%	112
Other	13%	16%	4%	67%	68
Attend services 1 or more/week	22%	11%	17%	50%	62
1-2 times a month	23%	7%	15%	55%	37
Less often	13%	22%	15%	50%	80
Never	14%	18%	5%	63%	82
North Country	0%	35%	18%	47%	12
Central/Lakes	6%	3%	15%	76%	25
Mass Border	13%	10%	7%	70%	54
Seacoast	12%	19%	14%	55%	92
Manchester Area	28%	20%	12%	39%	84

NH Senate - Sununu vs. Shaheen

	Sununu	Shaheen	Other	Undecided	(N)
STATEWIDE	37%	55%	1%	7%	516
Registered Democrat	5%	87%	1%	6%	179
Undeclared	33%	56%	1%	9%	179
Registered Republican	84%	13%	1%	2%	137
Not registered	34%	39%	0%	27%	21
Democrat	5%	85%	1%	8%	252
Independent	32%	54%	2%	12%	83
Republican	84%	11%	1%	4%	174
Liberal	11%	84%	0%	5%	116
Moderate	35%	55%	2%	8%	227
Conservative	66%	27%	1%	6%	135
Union household	31%	61%	1%	7%	77
Non-union	37%	54%	1%	7%	432
5 years or less in NH	34%	42%	2%	22%	45
6 to 10 years	39%	50%	2%	9%	60
11 to 20 years	32%	60%	2%	7%	92
More than 20 years	38%	57%	1%	5%	307
18 to 34	33%	51%	2%	14%	60
35 to 49	42%	51%	0%	7%	143
50 to 64	29%	64%	2%	5%	178
65 and over	43%	50%	1%	6%	118
Male	44%	50%	1%	4%	249
Female	30%	59%	1%	10%	267
High school or less	35%	55%	1%	8%	119
Some college	30%	59%	2%	8%	121
College graduate	39%	54%	1%	6%	164
Post-graduate	41%	52%	0%	8%	107
Less than \$30K	28%	67%	2%	3%	44
\$30K to \$60K	37%	50%	1%	13%	90
\$60K to \$75K	36%	57%	2%	5%	56
\$75K to \$100K	39%	58%	0%	3%	53
More than \$100K	37%	59%	0%	4%	108
Married	37%	56%	1%	6%	351
Divorced/separated	40%	53%	1%	6%	95
Never married	32%	55%	0%	13%	64
Protestant	48%	45%	1%	6%	169
Catholic	40%	53%	2%	5%	190
Other	18%	70%	1%	12%	131
Attend services 1 or more/week	51%	43%	1%	5%	131
1-2 times a month	43%	49%	0%	8%	66
Less often	34%	59%	1%	6%	141
Never	26%	62%	2%	9%	160
North Country	39%	58%	0%	3%	40
Central/Lakes	28%	70%	1%	1%	77
Connecticut Valley	44%	47%	2%	8%	80
Mass Border	43%	48%	0%	9%	141
Seacoast	28%	62%	1%	8%	83
Manchester Area	36%	52%	2%	9%	94
1st Cong. District	36%	55%	1%	8%	249
2nd Cong. District	38%	55%	1%	6%	267