

THE GRANITE STATE POLL

THE UNIVERSITY OF NEW HAMPSHIRE SURVEY CENTER

ECONOMY & JOBS MOST IMPORTANT PROBLEMS FACING NH

February 13, 2008

By: Andrew E. Smith, Ph.D.
 UNH Survey Center
www.unh.edu/survey-center
 603/862-2226

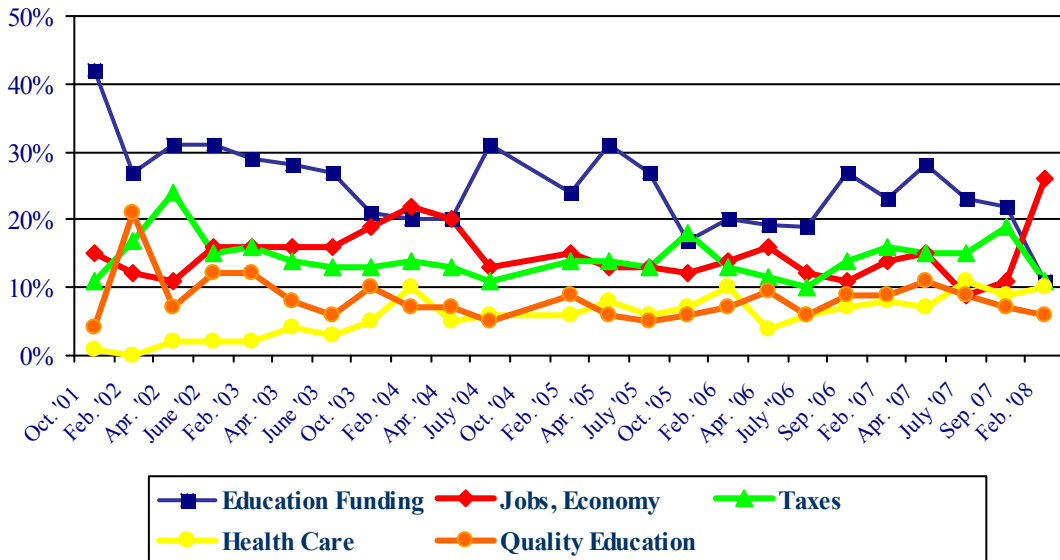
DURHAM, NH – The state of New Hampshire’s economy has surpassed how to fund primary and secondary education as the most important problem facing the state. Governor John Lynch still enjoys extremely high job approval.

These findings are based on the latest **Granite State Poll**,* conducted by the University of New Hampshire Survey Center. Five hundred fifty-five (555) randomly selected New Hampshire adults were interviewed by telephone between January 18 and January 27, 2008. The margin of sampling error for the survey is +/-4.2 percent.

Most Important Problem Facing New Hampshire

Recession fears are hitting New Hampshire and how to deal with jobs and the economy are now seen as the most important problem facing the state. In the latest Granite State Poll, 26 percent of New Hampshire adults said that jobs and the economy are the most important problem facing the state followed by how to fund primary and secondary education funding (11%), high taxes and desires to change the tax system (11%), health care issues (10%), and the quality of education (6%). Since 2001, New Hampshire residents have said the most important problem facing the state is how to deal with the NH Supreme Court’s “Claremont” decisions dealing with funding education in the state. In September, 22 percent said funding education was the most important problem facing the state. “The recent downturn in the economy nationwide, coupled with declines in the stock and housing markets, have caused Granite Staters to become more concerned about the economy,” said Andrew Smith, Director of the UNH Survey Center.

Most Important Problem Facing NH

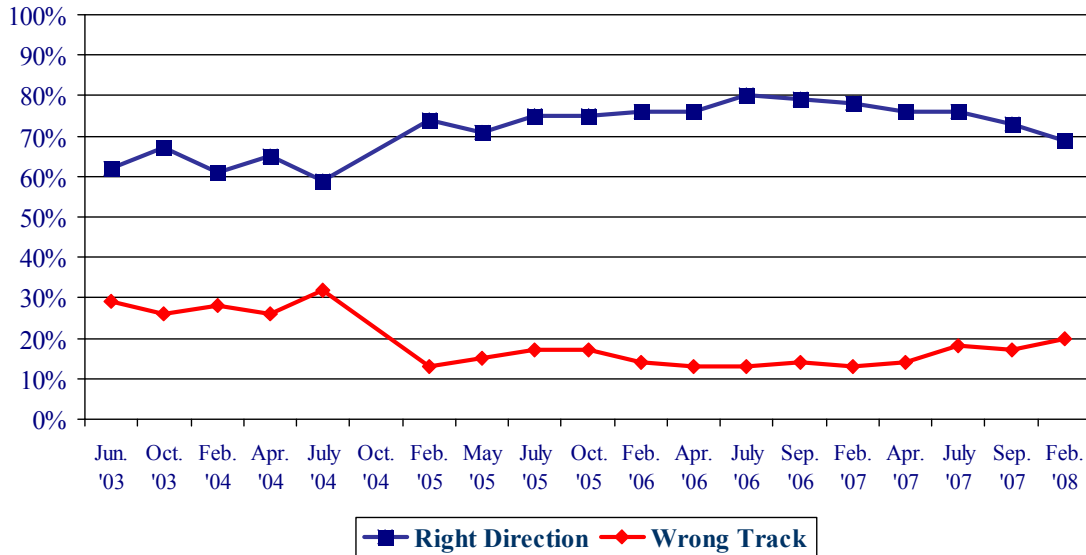


* We ask that this copyrighted information be referred to as *the Granite State Poll*, conducted by the University of New Hampshire Survey Center.

Right Direction or Wrong Track?

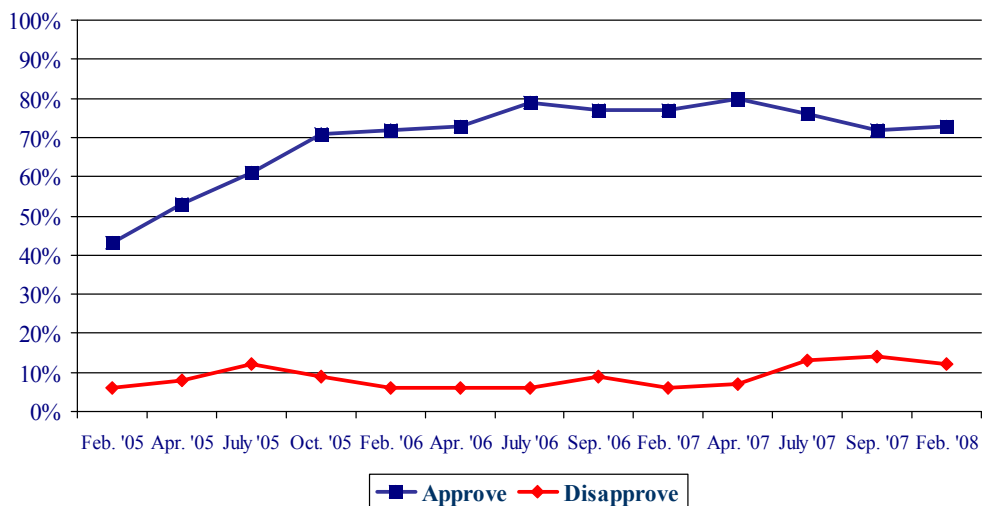
Despite the economic news, Granite Staters remain very optimistic about the future of New Hampshire. Sixty-nine percent think things in New Hampshire are generally going in the right direction, 20 percent think things are seriously off on the wrong track, and 11 percent say they don't know. This indicator of optimism about the state has remained at very high levels over the past two years. By comparison, only 23% of New Hampshire adults believe the United States is headed in the right direction.

NH Heading in Right Direction or On Wrong Track?

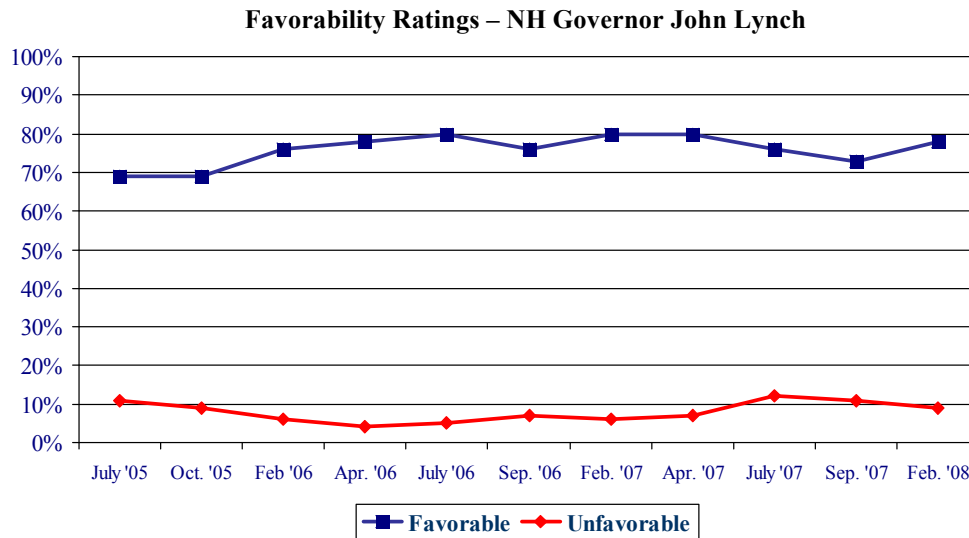


Gubernatorial Approval
 John Lynch's approval ratings as New Hampshire Governor have remained amazingly high during his first two terms in office. As he enters the 2008 election season, he continues to enjoy high job approval ratings -- 73 percent of New Hampshire adults say they approve of the job Lynch has done as governor, only 12 percent disapprove, and 14 percent are neutral. Even 63 percent of Republicans approve of the job Lynch is doing as governor. "Approval ratings this high, almost where they were in fall of 2006 when Lynch was reelected by a record margin, will make it very difficult for a Republican to defeat him this November," said Smith.

NH Gubernatorial Approval – John Lynch



Lynch’s personal favorability rating is also very high. In the latest Granite State Poll, 78 percent of New Hampshire residents say they have a favorable opinion of Lynch, only 9 percent have an unfavorable opinion, 11 percent are neutral, and 3 percent say they don’t know enough about him to say. Lynch’s net favorability rating, the percentage having a favorable opinion minus the percentage having an unfavorable opinion, is an incredibly high +69 percent.



Granite State Poll Methodology

These findings are based on the latest **Granite State Poll** conducted by the University of New Hampshire Survey Center. Five hundred fifty-five (555) randomly selected New Hampshire adults were interviewed by telephone between January 18 and January 27, 2008. The margin of sampling error for the survey is +/-4.2 percent

The data have been weighted to adjust for numbers of adults and telephone lines within households, respondent sex, and region of the state. In addition to potential sampling error, all surveys have other potential sources of non-sampling error including question order effects, question wording effects, and non-response.

Gubernatorial Approval

“GENERALLY SPEAKING, do you approve or disapprove of the way Governor Lynch is handling his job as governor?”

	<u>Approve</u>	<u>Neutral/DK</u>	<u>Disapprove</u>	<u>(N=)</u>
Feb. '08	73%	14%	12%	(547)
Sept. '07	72%	14%	14%	(501)
July '07	76%	11%	13%	(501)
Apr. '07	80%	12%	7%	(514)
Feb. '07	77%	16%	6%	(531)
Sept. '06	77%	14%	9%	(504)
July '06	79%	15%	6%	(498)
Apr. '06	73%	21%	6%	(489)
Feb. '06	72%	22%	6%	(491)
Oct. '05	71%	20%	9%	(495)
July '05	61%	26%	12%	(490)
Apr. '05	53%	39%	8%	(480)
Feb. '05	43%	51%	6%	(524)

Favorability Ratings – Governor John Lynch

"Next, I'd like to get your overall opinion of some people in the news. As I read each name, please say if you have a favorable or unfavorable opinion of this person - or if you have never heard of him or her. Governor (Hopkinton businessman) John Lynch."

	<u>Favorable</u>	<u>Neutral</u>	<u>Unfavorable</u>	<u>Don't Know</u>	<u>NET</u>	<u>(N=)</u>
Feb. '08	78%	11%	9%	3%	+69%	(554)
Sept. '07	73%	10%	11%	6%	+62%	(506)
July '07	76%	8%	12%	5%	+64%	(505)
Apr. '07	80%	9%	7%	4%	+73%	(515)
Feb. '07	80%	9%	6%	5%	+74%	(536)
Sept. '06	76%	11%	7%	5%	+69%	(511)
July '06	80%	8%	5%	7%	+75%	(505)
Apr. '06	78%	10%	4%	8%	+74%	(503)
Feb. '06	76%	12%	6%	6%	+70%	(499)
Oct. '05	69%	13%	9%	8%	+60%	(508)
July '05	69%	9%	11%	11%	+58%	(500)
Oct. '04	34%	13%	12%	40%	+22%	(573)
July '04	17%	8%	6%	69%	+11%	(508)
Feb. '04	7%	9%	6%	77%	+1%	(509)

Most Important Problem Facing New Hampshire

"Let's turn to the State of New Hampshire ... There are many problems facing the STATE OF NEW HAMPSHIRE today. In general, what do you think is the most IMPORTANT problem facing the STATE OF NEW HAMPSHIRE today?"

	<u>Jobs / Economy</u>	<u>Educ. Funding</u>	<u>Taxes</u>	<u>Health Care</u>	<u>Quality Educ.</u>	<u>Growth/ Sprawl</u>	<u>State Budget</u>	<u>Cost of Gas/Oil</u>	<u>Other/ DK</u>	<u>(N=)</u>
Feb. '08	26%	11%	11%	10%	6%	1%	6%	1%	28%	(542)
Sept. '07	11%	22%	19%	9%	7%	1%	2%	1%	28%	(499)
July '07	9%	23%	15%	11%	9%	2%	1%	2%	29%	(488)
Apr. '07	15%	28%	15%	7%	11%	2%	1%	1%	20%	(501)
Feb. '07	14%	23%	16%	8%	9%	2%	1%	1%	26%	(527)
Sept. '06	11%	27%	14%	7%	9%	3%	2%	2%	26%	(499)
July '06	12%	19%	10%	6%	6%	3%	1%	5%	38%	(490)
Apr. '06	16%	19%	11%	4%	10%	3%	2%	5%	30%	(501)
Feb. '06	14%	20%	13%	10%	7%	3%	1%	3%	29%	(498)
Oct. '05	12%	17%	18%	7%	6%	5%	2%	3%	30%	(503)
July '05	13%	27%	13%	6%	5%	4%	2%	*	28%	(496)
Apr. '05	13%	31%	14%	8%	6%	3%	5%	3%	18%	(487)
Feb. '05	15%	24%	14%	6%	9%	2%	2%	*	28%	(541)
July '04	13%	31%	11%	6%	5%	4%	2%	0	28%	(504)
Apr. '04	20%	20%	13%	5%	7%	3%	4%	0	29%	(536)
Feb. '04	22%	20%	14%	10%	7%	2%	5%	0	21%	(502)
Oct. '03	19%	21%	13%	5%	10%	3%	6%	0	23%	(490)
June '03	16%	27%	13%	3%	6%	1%	9%	0	25%	(513)
Apr. '03	16%	28%	14%	4%	8%	2%	6%	0	22%	(497)
Feb. '03	16%	29%	16%	2%	12%	2%	2%	0	21%	(644)
June '02	16%	31%	15%	2%	12%	1%	5%	0	18%	(424)
Apr. '02	11%	31%	24%	2%	7%	2%	1%	0	22%	(684)
Feb. '02	12%	27%	17%	0%	21%	1%	3%	0	19%	(312)
Oct. '01	15%	42%	11%	1%	45	2%	*	0	25%	(519)

* Less than 1%

NH - Right Direction or Wrong Track

“Do you think things in New Hampshire are generally going in the right direction or are they seriously off on the wrong track?”

	<u>Right Direction</u>	<u>Wrong Track</u>	<u>Don't Know</u>	<u>(N=)</u>
Feb. '08	69%	20%	11%	(547)
Sept. '07	73%	17%	10%	(507)
July '07	76%	18%	6%	(500)
Apr. '07	76%	14%	9%	(506)
Feb. '07	78%	13%	8%	(524)
Sept. '06	79%	14%	7%	(509)
July '06	80%	13%	8%	(497)
Apr. '06	76%	13%	11%	(501)
Feb. '06	76%	14%	10%	(495)
Oct. '05	75%	17%	9%	(502)
July '05	75%	17%	8%	(494)
May '05	71%	15%	13%	(488)
Feb. '05	74%	13%	13%	(535)
July '04	59%	32%	9%	(503)
Apr. '04	65%	26%	9%	(530)
Feb. '04	61%	28%	11%	(500)
Oct. '03	67%	26%	7%	(485)
Jun. '03	62%	29%	9%	(510)

Gubernatorial Approval

STATEWIDE	<u>Approve</u> 73%	<u>Neutral</u> 14%	<u>Disapprove</u> 12%	<u>(N)</u> 547
Registered Democrat	82%	10%	8%	179
Undeclared	75%	15%	11%	183
Registered Republican	67%	12%	20%	141
Not registered	49%	37%	14%	43
Democrat	83%	11%	6%	262
Independent	68%	20%	12%	97
Republican	63%	15%	22%	178
Liberal	82%	12%	7%	121
Moderate	78%	12%	9%	237
Conservative	59%	19%	22%	139
Union household	81%	13%	6%	80
Non-union	73%	14%	13%	457
5 years or less in NH	64%	24%	12%	48
6 to 10 years	67%	20%	13%	62
11 to 20 years	71%	16%	13%	98
More than 20 years	76%	12%	12%	324
18 to 34	63%	24%	13%	69
35 to 49	74%	15%	11%	151
50 to 64	77%	11%	12%	185
65 and over	75%	12%	13%	123
Male	70%	14%	16%	267
Female	76%	15%	9%	280
High school or less	70%	19%	10%	132
Some college	74%	17%	9%	123
College graduate	78%	10%	13%	175
Post-graduate	70%	13%	17%	109
Less than \$30K	73%	16%	11%	50
\$30K to \$60K	70%	17%	13%	94
\$60K to \$75K	75%	11%	14%	59
\$75K to \$100K	71%	21%	8%	53
More than \$100K	76%	9%	15%	110
Married	74%	13%	13%	364
Divorced/separated	80%	13%	7%	99
Never married	64%	22%	14%	77
Protestant	70%	19%	11%	174
Catholic	77%	9%	14%	201
Other	75%	17%	9%	142
Attend services 1 or more/week	78%	13%	9%	137
1-2 times a month	77%	12%	10%	67
Less often	74%	13%	13%	152
Never	67%	18%	15%	171
North Country	69%	12%	19%	45
Central/Lakes	78%	4%	18%	82
Connecticut Valley	61%	27%	12%	80
Mass Border	73%	15%	12%	152
Seacoast	80%	11%	9%	89
Manchester Area	75%	16%	8%	100
1st Cong. District	74%	15%	11%	263
2nd Cong. District	72%	14%	14%	284

Favorability Rating - John Lynch

	<u>Favorable</u>	<u>Neutral</u>	<u>Unfavorable</u>	<u>Don't Know</u>	<u>(N)</u>
STATEWIDE	78%	11%	9%	3%	554
Registered Democrat	90%	5%	3%	1%	182
Undeclared	81%	10%	7%	2%	185
Registered Republican	67%	16%	15%	2%	142
Not registered	53%	17%	17%	13%	44
Democrat	89%	7%	4%	1%	265
Independent	75%	11%	9%	4%	99
Republican	65%	16%	16%	3%	179
Liberal	93%	4%	3%	1%	120
Moderate	81%	11%	8%	0%	241
Conservative	62%	19%	15%	5%	139
Union household	82%	10%	5%	3%	81
Non-union	78%	11%	9%	3%	463
5 years or less in NH	74%	9%	13%	3%	49
6 to 10 years	73%	10%	12%	5%	62
11 to 20 years	73%	11%	11%	5%	100
More than 20 years	81%	11%	7%	1%	327
18 to 34	80%	5%	8%	8%	69
35 to 49	77%	9%	12%	2%	153
50 to 64	81%	10%	7%	2%	189
65 and over	73%	18%	6%	2%	123
Male	77%	11%	11%	2%	269
Female	80%	10%	7%	3%	284
High school or less	75%	12%	9%	4%	134
Some college	77%	12%	6%	4%	126
College graduate	82%	9%	9%	0%	175
Post-graduate	76%	12%	9%	3%	111
Less than \$30K	75%	12%	8%	4%	51
\$30K to \$60K	77%	9%	8%	5%	95
\$60K to \$75K	78%	11%	11%	0%	59
\$75K to \$100K	72%	21%	7%	0%	54
More than \$100K	82%	7%	10%	1%	110
Married	79%	11%	8%	2%	369
Divorced/separated	79%	11%	9%	2%	100
Never married	75%	8%	10%	7%	77
Protestant	73%	14%	9%	3%	176
Catholic	81%	10%	8%	1%	205
Other	79%	9%	9%	4%	144
Attend services 1 or more/week	79%	11%	6%	4%	139
1-2 times a month	80%	9%	11%	1%	67
Less often	81%	10%	8%	1%	153
Never	73%	13%	11%	3%	174
North Country	78%	9%	10%	2%	45
Central/Lakes	84%	4%	11%	1%	82
Connecticut Valley	77%	13%	8%	1%	82
Mass Border	72%	14%	11%	3%	154
Seacoast	83%	8%	4%	4%	92
Manchester Area	79%	12%	7%	3%	100
1st Cong. District	78%	11%	8%	3%	267
2nd Cong. District	78%	11%	9%	2%	287

Are Things in NH on Right/Wrong Track

	<u>Right</u> <u>Direction</u> 69%	<u>Wrong</u> <u>Track</u> 20%	<u>Don't</u> <u>Know</u> 11%	<u>(N)</u> 547
STATEWIDE				
Registered Democrat	69%	18%	13%	177
Undeclared	71%	18%	11%	185
Registered Republican	69%	25%	6%	140
Not registered	61%	19%	20%	44
Democrat	74%	16%	10%	260
Independent	60%	23%	17%	97
Republican	69%	24%	7%	179
Liberal	76%	15%	9%	120
Moderate	70%	18%	12%	238
Conservative	67%	25%	7%	138
Union household	74%	16%	10%	80
Non-union	69%	21%	11%	458
5 years or less in NH	79%	11%	10%	49
6 to 10 years	62%	25%	13%	62
11 to 20 years	67%	19%	13%	100
More than 20 years	70%	20%	9%	321
18 to 34	75%	13%	12%	67
35 to 49	64%	26%	9%	152
50 to 64	72%	19%	9%	188
65 and over	71%	16%	13%	121
Male	70%	20%	10%	266
Female	68%	20%	12%	281
High school or less	63%	22%	15%	131
Some college	67%	22%	11%	124
College graduate	72%	16%	12%	176
Post-graduate	76%	20%	4%	109
Less than \$30K	68%	16%	16%	51
\$30K to \$60K	68%	24%	8%	91
\$60K to \$75K	62%	24%	14%	59
\$75K to \$100K	63%	28%	10%	54
More than \$100K	80%	15%	5%	110
Married	70%	21%	8%	365
Divorced/separated	66%	19%	15%	99
Never married	70%	14%	15%	76
Protestant	69%	22%	8%	175
Catholic	67%	22%	11%	200
Other	74%	14%	12%	144
Attend services 1 or more/week	75%	16%	9%	139
1-2 times a month	67%	27%	6%	66
Less often	67%	23%	11%	151
Never	69%	19%	12%	171
North Country	53%	31%	16%	45
Central/Lakes	74%	20%	6%	82
Connecticut Valley	76%	16%	8%	81
Mass Border	66%	25%	8%	149
Seacoast	77%	12%	11%	90
Manchester Area	64%	18%	19%	100
1st Cong. District	65%	22%	13%	264
2nd Cong. District	73%	19%	9%	283

Most Important Problem Facing NH

	<u>Educ Funding</u> 11%	<u>Taxes</u> 11%	<u>Jobs/ Economy</u> 26%	<u>Quality Educ.</u> 6%	<u>Health Care</u> 10%	<u>Other</u> 29%	<u>Don't Know</u> 7%	<u>(N=)</u> 542
STATEWIDE								
Registered Democrat	8%	11%	34%	5%	14%	23%	5%	178
Undeclared	11%	12%	23%	6%	11%	31%	6%	180
Registered Republican	19%	13%	20%	5%	5%	33%	6%	139
Not registered	3%	3%	20%	8%	5%	32%	28%	44
Democrat	12%	11%	30%	5%	12%	25%	6%	260
Independent	5%	8%	23%	11%	12%	33%	9%	98
Republican	14%	15%	20%	5%	5%	33%	8%	172
Liberal	10%	14%	28%	8%	11%	24%	5%	121
Moderate	12%	9%	23%	6%	11%	31%	8%	232
Conservative	14%	16%	24%	3%	5%	30%	8%	136
Union household	18%	11%	24%	5%	10%	29%	2%	80
Non-union	10%	12%	26%	6%	10%	29%	8%	453
5 years or less in NH	6%	16%	21%	4%	14%	27%	13%	45
6 to 10 years	6%	16%	32%	4%	9%	26%	8%	61
11 to 20 years	13%	10%	28%	6%	6%	22%	16%	100
More than 20 years	13%	11%	25%	7%	10%	32%	4%	321
18 to 34	5%	10%	20%	7%	6%	30%	22%	69
35 to 49	7%	8%	32%	6%	11%	32%	6%	146
50 to 64	14%	13%	31%	3%	10%	25%	3%	190
65 and over	17%	14%	13%	10%	9%	29%	9%	118
Male	14%	14%	22%	6%	6%	33%	6%	261
Female	9%	9%	29%	6%	13%	26%	8%	282
High school or less	9%	6%	30%	3%	9%	30%	13%	132
Some college	5%	8%	26%	7%	12%	34%	8%	123
College graduate	13%	18%	23%	5%	9%	27%	5%	172
Post-graduate	19%	11%	24%	9%	9%	24%	4%	107
Less than \$30K	6%	3%	24%	8%	20%	33%	6%	50
\$30K to \$60K	15%	10%	23%	7%	9%	26%	9%	92
\$60K to \$75K	7%	17%	28%	2%	11%	27%	7%	57
\$75K to \$100K	18%	7%	27%	2%	8%	37%	1%	54
More than \$100K	15%	19%	23%	6%	7%	29%	2%	107
Married	12%	13%	27%	6%	7%	28%	6%	359
Divorced/separated	12%	4%	20%	8%	19%	30%	8%	98
Never married	5%	11%	25%	5%	9%	31%	14%	77
Protestant	12%	10%	21%	5%	9%	34%	9%	172
Catholic	11%	12%	30%	5%	9%	26%	8%	199
Other	11%	10%	25%	10%	11%	27%	6%	143
Attend services 1 or more/week	12%	11%	21%	6%	9%	33%	8%	138
1-2 times a month	12%	15%	25%	6%	12%	28%	1%	64
Less often	10%	8%	32%	4%	9%	30%	8%	148
Never	12%	13%	25%	8%	10%	23%	9%	173
North Country	4%	12%	47%	6%	0%	26%	6%	44
Central/Lakes	15%	10%	22%	4%	10%	32%	6%	81
Connecticut Valley	13%	14%	17%	8%	12%	26%	9%	80
Mass Border	14%	8%	30%	6%	10%	22%	10%	147
Seacoast	9%	10%	26%	6%	10%	34%	6%	91
Manchester Area	8%	15%	20%	5%	11%	36%	5%	99
1st Cong. District	9%	10%	26%	5%	10%	34%	6%	263
2nd Cong. District	13%	13%	25%	7%	9%	24%	9%	280