

# GRANITE STATE POLL

## THE UNIVERSITY OF NEW HAMPSHIRE

May 13, 2008

### BUSH APPROVAL STILL LOW IN NH

By: Andrew E. Smith, Ph.D.  
UNH Survey Center  
603/862-2226  
[www.unh.edu/survey-center](http://www.unh.edu/survey-center)

DURHAM, NH – President George W. Bush remains very unpopular in New Hampshire which will likely hurt Republican chances in November. Disapproval for his handling of the economy is at an all-time high.

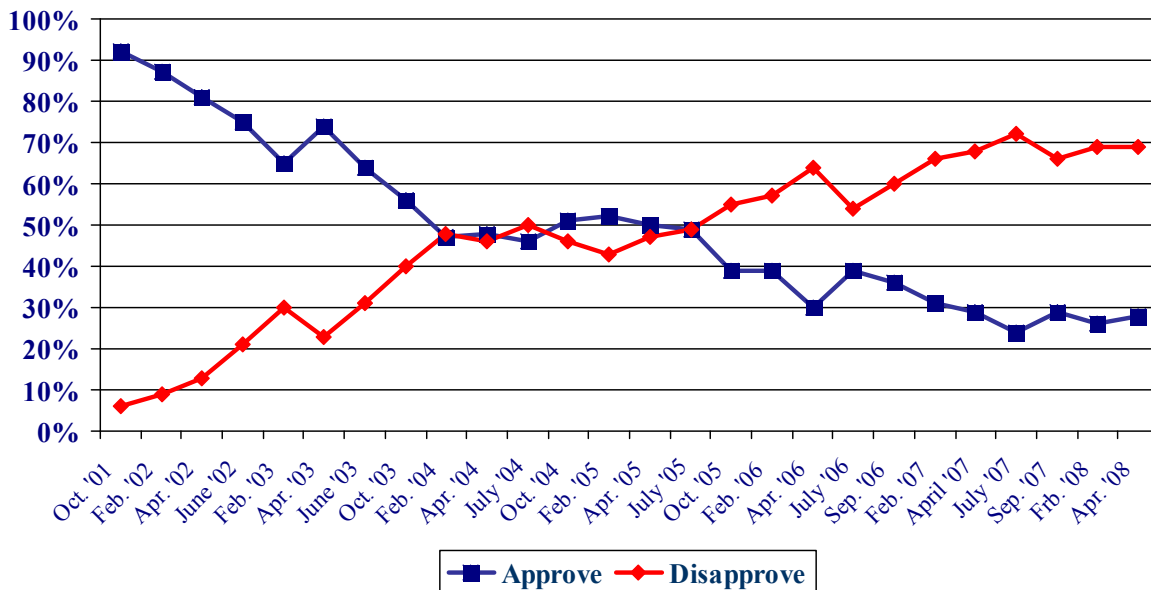
These findings are based on the latest **Granite State Poll**,\* conducted by the University of New Hampshire Survey Center. Five hundred (500) randomly selected New Hampshire adults were interviewed by telephone between April 25 and April 30, 2008. The margin of sampling error for the survey is +/-4.4 percent.

#### Presidential Approval

With less than one year left in his presidency, President George W. Bush's approval rating in New Hampshire remains mired in Nixonian territory. In the most recent Granite State Poll, only 28% of New Hampshire adults say they approve of the job Bush is doing as president, 69% disapprove, and 3% are neutral. Bush's approval rating has been below 30 percent for the past year. The drop in Bush's approval rating is mirrored in national polls – an ABC News-Washington Post poll released this week 31% of adults nationwide said they approved of the job Bush is doing as president and 66% disapproved.

Only majorities of Republicans and conservatives approve of Bush's performance as President while 95% of Democrats and 67% of political Independents disapprove.

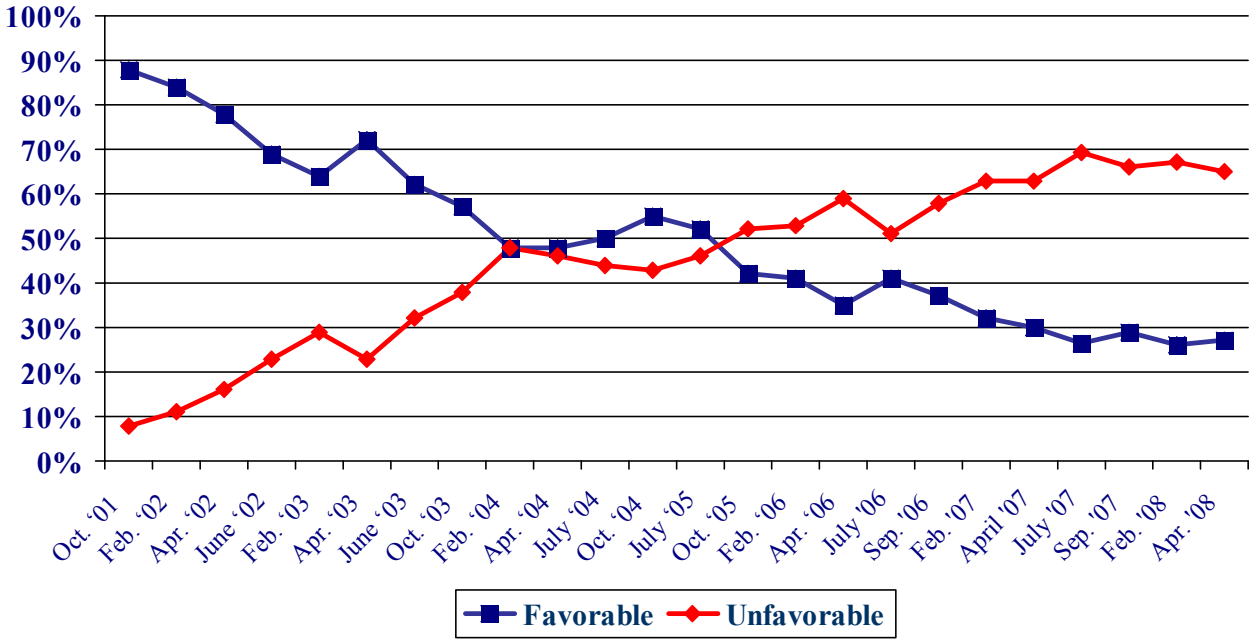
Presidential Approval – G.W. Bush



\* We ask that this copyrighted information be referred to as *the Granite State Poll*, conducted by the University of New Hampshire Survey Center.

Bush's personal favorability rating is also near record lows. Only 27% of New Hampshire adults have a favorable opinion of Bush, 65% have an unfavorable opinion of him, and 7% are neutral or don't know. Bush's net favorability rating, the percentage having a favorable opinion minus the percentage having an unfavorable opinion, is an extremely low -38%. Bush's favorability rating has dropped due to a drop in support among Republicans – only 59% of Republicans say they have a favorable opinion of Bush, down from 66% in September.

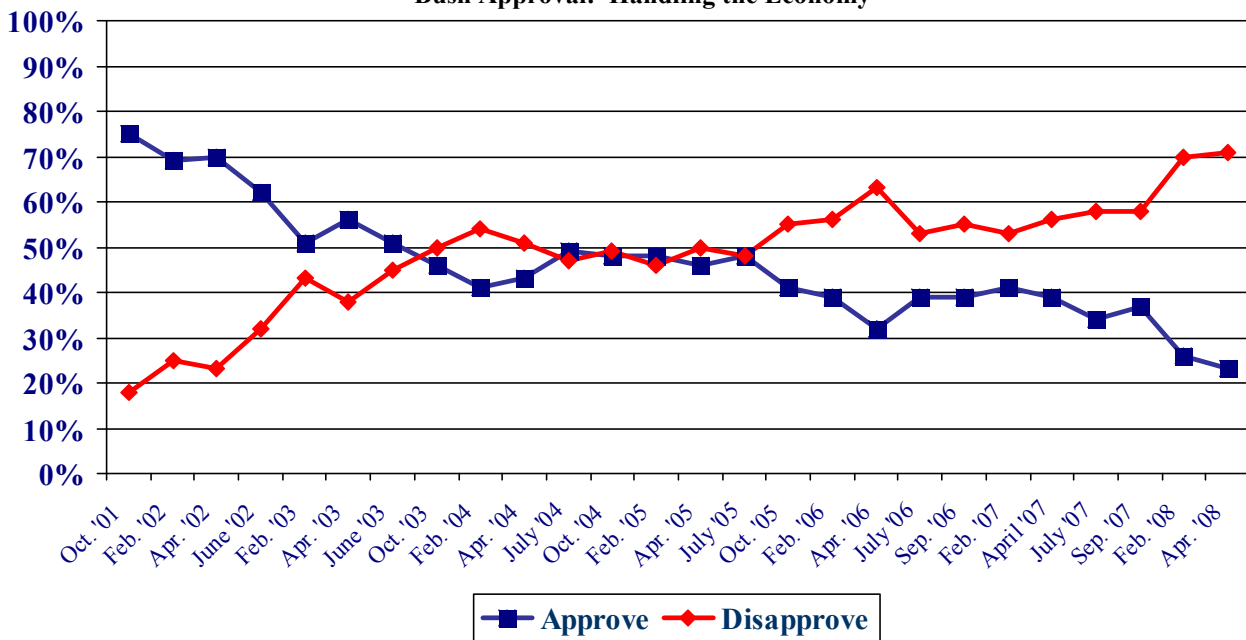
**Favorability Ratings – G.W. Bush**



**Economic Approval Rating**

The recent drop in Bush's approval rating can be tied to concerns about the economy. Only 23% of New Hampshire residents, a record low for his presidency, say they approve of the job President Bush is doing handling the economy, 71% disapprove, and 5% are neutral. The percentage of New Hampshire residents who approve of Bush's handling of the economy has dropped steadily over the past year. In particular, the percentages of Republicans who approve of Bush's handling of the economy has dropped from 78% in September to 55% in the most recent poll.

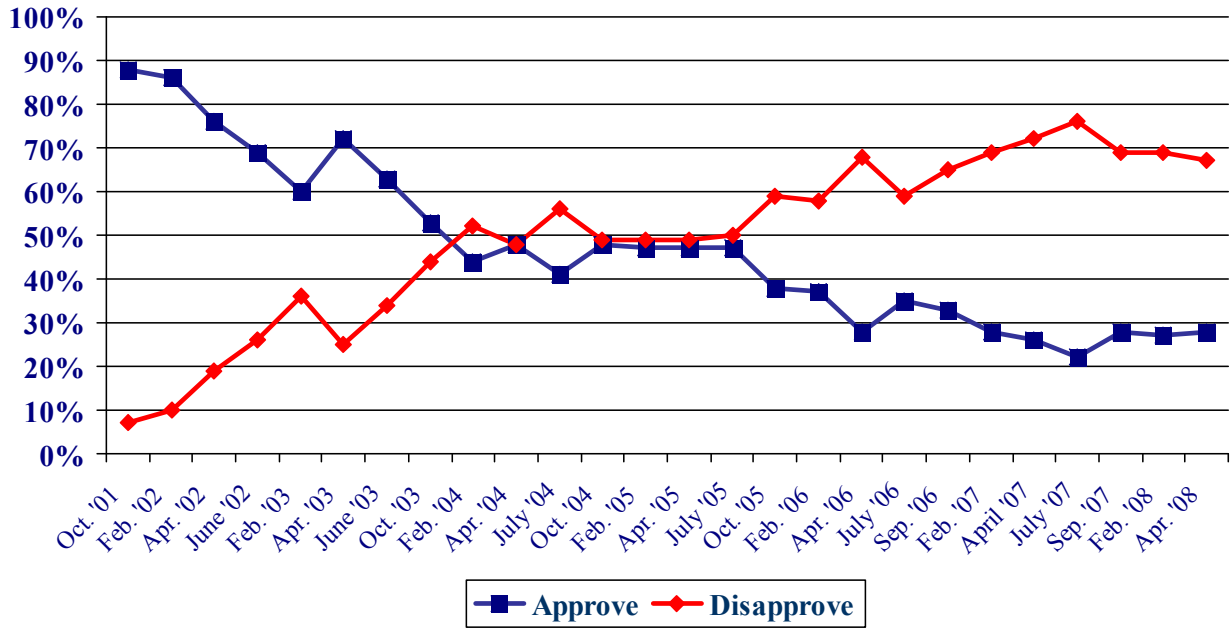
**Bush Approval: Handling the Economy**



## Foreign Affairs

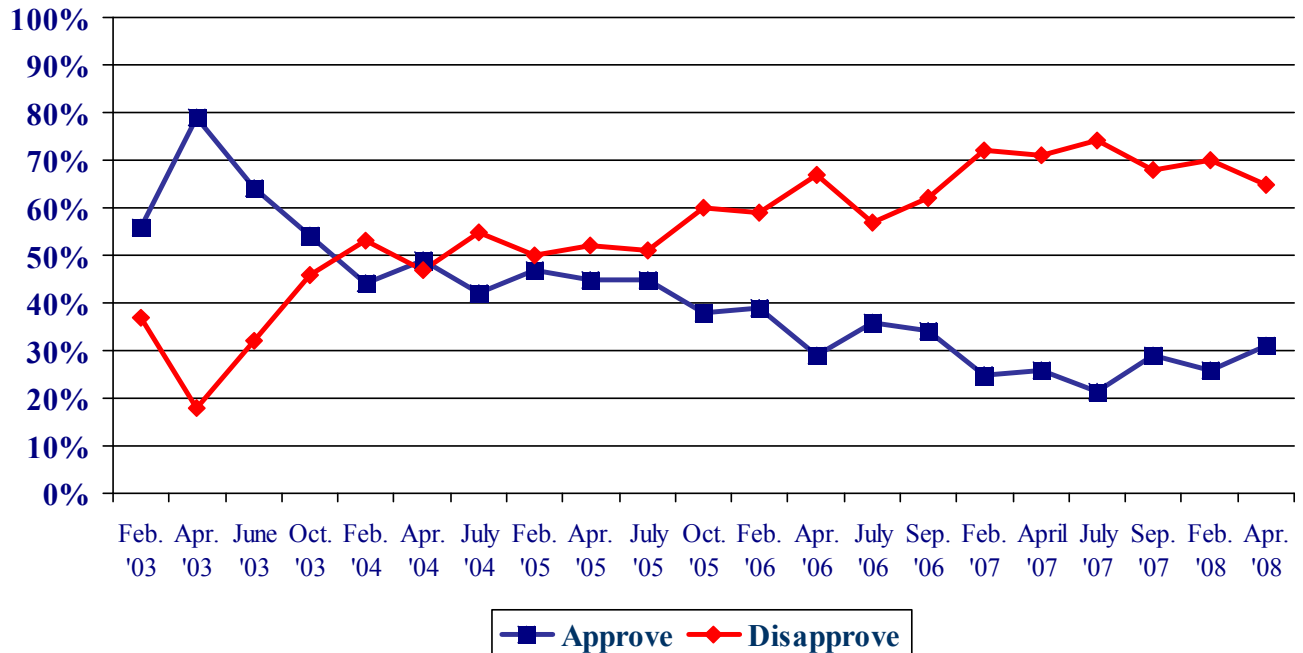
The Bush administration's foreign policy continues to be unpopular in New Hampshire. When asked about how the President is handling foreign affairs, only 28% of New Hampshire adults say they approve, 67% disapprove, and 5% are neutral.

### Bush Approval: Foreign Affairs



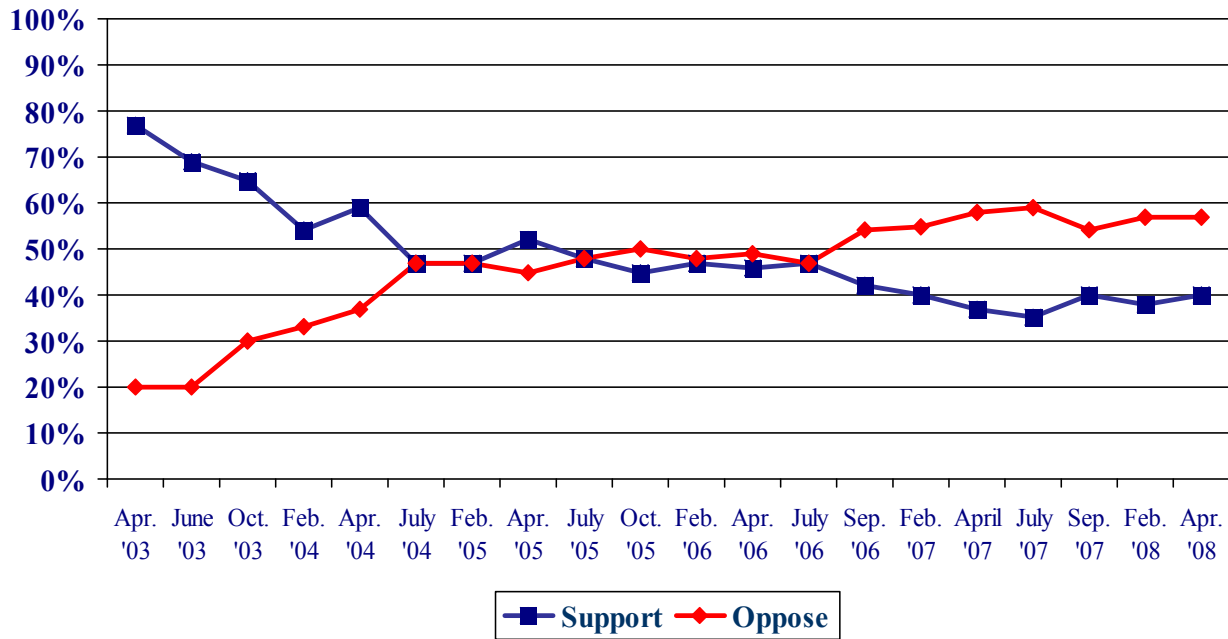
Regardless of whether the Iraq strategy of General David Petraeus is working or not Bush is not getting credit for any improvement. Only 31% of Granite State adults approve of the way Bush has handled the situation in Iraq, 65% disapprove, and 4% are neutral. And while these figures are very low, they represent a slight increase from February.

### Bush Approval: Handling Situation in Iraq



Support for the U.S. having gone into Iraq in the first place has also low. Currently, 40% of Granite Staters support the U.S. having gone to war in Iraq, 57% oppose the U.S. having gone to war, and 3% are neutral. But it is important to note that solid majorities of Republicans (69%) and conservatives (62%) continue to support the war in Iraq.

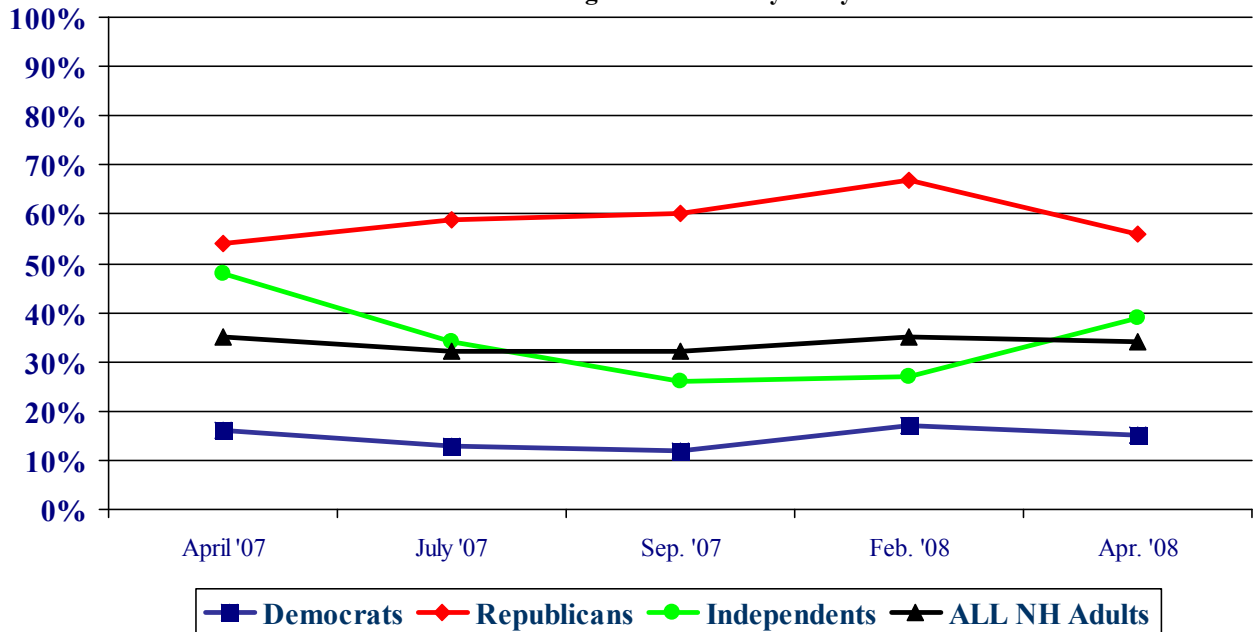
### Support for War In Iraq



### Can the US Win?

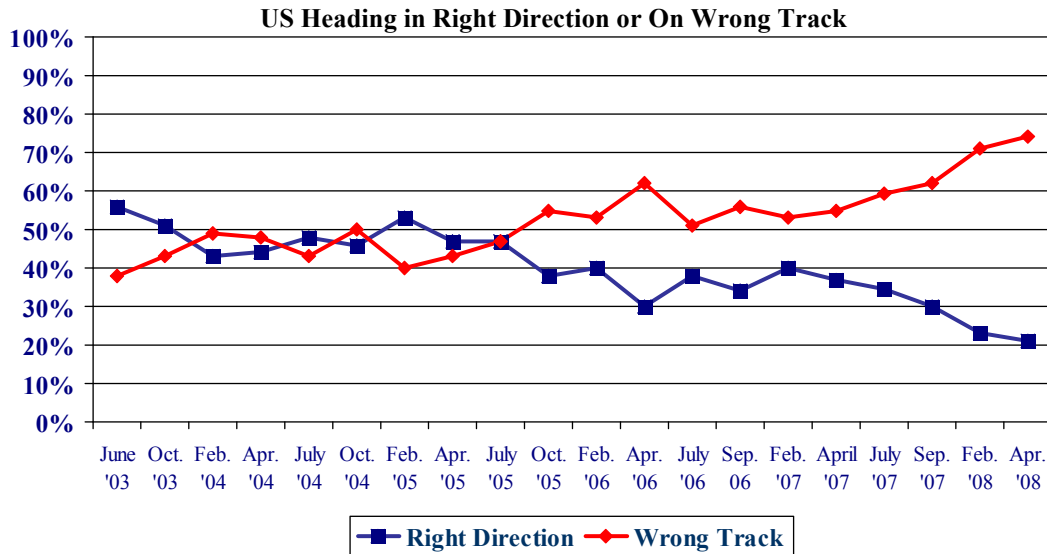
Most New Hampshire adults do not think the U.S. can win the war in Iraq. In the most recent Granite State Poll, only 34% believe the US can win the war in Iraq, 56% think the US cannot win the war, and 10% don't know. Just more than half of Republicans (56%) believe the US can win the war in Iraq while 39% of Independents and 15% of Democrats think the US can win in Iraq.

### Percent Believing US Can Win by Party ID



### Right Track – Wrong Track

Overall, New Hampshire residents are increasingly pessimistic about the direction the country is heading. Only 21%, a record low in New Hampshire, think things in this country are generally going in the right direction, 74% think things are seriously off on the wrong track, and 5% don't know. Even Republicans are pessimistic -- only 41% of Republicans think things are headed in the right direction while only 5% of Democrats and 23% of Independents think things are headed in the right direction.



### Granite State Poll Methodology

These findings are based on the latest **Granite State Poll** conducted by the University of New Hampshire Survey Center. Five hundred (500) randomly selected New Hampshire adults were interviewed by telephone between April 25 and April 30, 2008. The margin of sampling error for the survey is +/-4.4 percent.

The data have been weighted to adjust for numbers of adults and telephone lines within households, respondent sex, and region of the state. In addition to potential sampling error, all surveys have other potential sources of non-sampling error including question order effects, question wording effects, and non-response.

### Presidential Approval

“GENERALLY SPEAKING, do you approve or disapprove of the way President Bush is handling his job as president?”

	<u>Approve</u>	<u>Neutral</u>	<u>Disapprove</u>	<u>(N)</u>
<b>Apr. '08</b>	<b>28%</b>	<b>3%</b>	<b>69%</b>	<b>(500)</b>
<b>Feb. '08</b>	26%	5%	69%	(550)
<b>Sep. '07</b>	29%	5%	66%	(507)
<b>July '07</b>	24%	4%	72%	(523)
<b>Apr. '07</b>	29%	3%	68%	(512)
<b>Feb. '07</b>	31%	4%	66%	(529)
<b>Sept. '06</b>	36%	3%	60%	(507)
<b>July '06</b>	39%	7%	54%	(501)
<b>Apr. '06</b>	30%	6%	64%	(496)
<b>Feb. '06</b>	39%	3%	57%	(495)
<b>Oct. '05</b>	39%	6%	55%	(505)
<b>July '05</b>	49%	4%	47%	(498)
<b>Apr. '05</b>	50%	3%	47%	(483)
<b>Feb. '05</b>	52%	4%	43%	(533)
<b>Oct. '04</b>	51%	3%	46%	(567)
<b>July '04</b>	46%	4%	50%	(503)
<b>Apr. '04</b>	48%	6%	46%	(536)
<b>Feb. '04</b>	47%	5%	48%	(505)
<b>Oct. '03</b>	56%	4%	40%	(502)
<b>June '03</b>	64%	5%	31%	(511)
<b>Apr. '03</b>	71%	6%	23%	(503)
<b>Feb. '03</b>	65%	4%	30%	(646)
<b>June '02</b>	75%	5%	21%	(658)
<b>Apr. '02</b>	81%	6%	13%	(685)
<b>Feb. '02</b>	87%	4%	9%	(724)
<b>Oct. '01</b>	92%	2%	6%	(687)

**Presidential Approval – Economy**

"GENERALLY SPEAKING, do you approve or disapprove of the way President Bush is handling THE ECONOMY?"

	<u>Approve</u>	<u>Neutral</u>	<u>Disapprove</u>	<u>(N)</u>
<b>Apr. '08</b>	<b>23%</b>	<b>5%</b>	<b>71%</b>	<b>(499)</b>
<b>Feb. '08</b>	26%	4%%	70%	(548)
<b>Sep. '07</b>	37%	5%	58%	(502)
<b>July '07</b>	34%	8%	58%	(518)
<b>Apr. '07</b>	39%	5%	56%	(512)
<b>Feb. '07</b>	41%	5%	53%	(529)
<b>Sept. '06</b>	39%	6%	55%	(508)
<b>July '06</b>	39%	8%	53%	(497)
<b>Apr. '06</b>	32%	5%	63%	(502)
<b>Feb. '06</b>	39%	5%	56%	(495)
<b>Oct. '05</b>	41%	4%	55%	(500)
<b>July '05</b>	48%	4%	48%	(495)
<b>Apr. '05</b>	46%	5%	50%	(490)
<b>Feb. '05</b>	48%	5%	46%	(534)
<b>Oct. '04</b>	48%	3%	49%	(568)
<b>July '04</b>	49%	5%	47%	(499)
<b>Apr. '04</b>	43%	6%	51%	(538)
<b>Feb. '04</b>	41%	5%	54%	(506)
<b>Oct. '03</b>	46%	4%	50%	(499)
<b>June '03</b>	51%	3%	45%	(512)
<b>Apr. '03</b>	56%	6%	38%	(502)
<b>Feb. '03</b>	51%	6%	43%	(644)
<b>June '02</b>	62%	6%	32%	(644)
<b>Apr. '02</b>	70%	7%	23%	(688)
<b>Feb. '02</b>	69%	6%	25%	(725)
<b>Oct. '01</b>	75%	8%	18%	(684)

### Presidential Approval - Foreign Affairs

"GENERALLY SPEAKING, do you approve or disapprove of the way President Bush is handling FOREIGN AFFAIRS?"

	<u>Approve</u>	<u>Neutral</u>	<u>Disapprove</u>	<u>(N)</u>
<b>Apr. '08</b>	<b>28%</b>	<b>5%</b>	<b>67%</b>	<b>(498)</b>
<b>Feb. '08</b>	27%	4%	69%	(546)
<b>Sep. '07</b>	28%	3%	69%	(505)
<b>July '07</b>	22%	3%	74%	(519)
<b>Apr. '07</b>	26%	2%	72%	(510)
<b>Feb. '07</b>	28%	3%	69%	(529)
<b>Sept. '06</b>	33%	2%	65%	(506)
<b>July '06</b>	35%	6%	59%	(497)
<b>Apr. '06</b>	28%	4%	68%	(500)
<b>Feb. '06</b>	37%	5%	58%	(495)
<b>Oct. '05</b>	38%	3%	59%	(502)
<b>July '05</b>	47%	3%	50%	(497)
<b>Apr. '05</b>	47%	4%	49%	(486)
<b>Feb. '05</b>	47%	4%	49%	(533)
<b>Oct. '04</b>	48%	3%	49%	(568)
<b>July '04</b>	41%	3%	56%	(499)
<b>Apr. '04</b>	48%	5%	48%	(539)
<b>Feb. '04</b>	44%	4%	52%	(507)
<b>Oct. '03</b>	53%	3%	44%	(501)
<b>June '03</b>	63%	3%	34%	(512)
<b>Apr. '03</b>	72%	3%	25%	(506)
<b>Feb. '03</b>	60%	4%	36%	(646)
<b>June '02</b>	69%	5%	26%	(644)
<b>Apr. '02</b>	76%	5%	19%	(690)
<b>Feb. '02</b>	86%	4%	10%	(722)
<b>Oct. '01</b>	88%	4%	7%	(685)



### Presidential Approval - Handling of Situation in Iraq

"Do you approve or disapprove of the way George W. Bush is handling the situation with Iraq?"

	<u>Approve</u>	<u>Neutral</u>	<u>Disapprove</u>	<u>(N)</u>
<b>Apr. '08</b>	<b>31%</b>	<b>4%</b>	<b>65%</b>	<b>(497)</b>
<b>Feb. '08</b>	26%	3%	70%	(551)
<b>Sep. '07</b>	29%	3%	68%	(508)
<b>July '07</b>	21%	4%	74%	(521)
<b>Apr. '07</b>	26%	3%	71%	(512)
<b>Feb. '07</b>	25%	2%	72%	(527)
<b>Sept. '06</b>	34%	3%	62%	(511)
<b>July '06</b>	36%	6%	57%	(499)
<b>Apr. '06</b>	29%	4%	67%	(501)
<b>Feb. '06</b>	39%	3%	59%	(498)
<b>Oct. '05</b>	38%	2%	60%	(506)
<b>July '05</b>	45%	3%	51%	(499)
<b>Apr. '05</b>	45%	3%	52%	(491)
<b>Feb. '05</b>	47%	3%	50%	(535)
<b>July '04</b>	42%	3%	55%	(501)
<b>Apr. '04</b>	49%	4%	47%	(540)
<b>Feb. '04</b>	44%	3%	53%	(509)
<b>Oct. '03</b>	54%	3%	42%	(500)
<b>June '03</b>	64%	4%	32%	(513)
<b>Apr. '03</b>	79%	2%	18%	(503)
<b>Feb. '03</b>	56%	7%	37%	(646)

### Support for War in Iraq

“Do you support or oppose the United States having gone to war with Iraq?”

	<u>Support</u>	<u>Neutral</u>	<u>Oppose</u>	<u>(N)</u>
<b>Apr. '08</b>	<b>40%</b>	<b>3%</b>	<b>57%</b>	<b>(498)</b>
<b>Feb. '08</b>	38%	5%	57%	(548)
<b>Sep. '07</b>	40%	6%	54%	(506)
<b>July '07</b>	35%	6%	59%	(516)
<b>Apr. '07</b>	37%	5%	58%	(510)
<b>Feb. '07</b>	40%	5%	55%	(525)
<b>Sept. '06</b>	42%	4%	54%	(510)
<b>July '06</b>	47%	6%	47%	(500)
<b>Apr. '06</b>	46%	5%	49%	(496)
<b>Feb. '06</b>	47%	5%	48%	(500)
<b>Oct. '05</b>	45%	4%	50%	(502)
<b>July '05</b>	48%	5%	48%	(493)
<b>Apr. '05</b>	52%	3%	45%	(489)
<b>Feb. '05</b>	47%	6%	47%	(537)
<b>July '04</b>	47%	6%	47%	(498)
<b>Apr. '04</b>	59%	4%	37%	(536)
<b>Feb. '04</b>	54%	3%	33%	(509)
<b>Oct. '03</b>	65%	5%	30%	(496)
<b>June '03</b>	69%	4%	20%	(513)
<b>Apr. '03</b>	77%	4%	20%	(506)

### Can US Win in Iraq?

“Do you think the United States can win or cannot win the war in Iraq?”

	<u>Can Win</u>	<u>Cannot Win</u>	<u>Don't Know</u>	<u>(N)</u>
<b>Apr. '08</b>	<b>34%</b>	<b>56%</b>	<b>10%</b>	<b>(495)</b>
<b>Feb. '08</b>	35%	53%	12%	(544)
<b>Sep. '07</b>	32%	55%	13%	(503)
<b>July '07</b>	32%	57%	11%	(504)
<b>Apr. '07</b>	35%	55%	10%	(512)

**Right Track - Wrong Track**

“Do you think things in this country are generally going in the right direction or are they seriously off on the wrong track?”

	<u>Right Direction</u>	<u>Wrong Track</u>	<u>Don't Know</u>	<u>(N=)</u>
Apr. '08	21%	74%	5%	(487)
Feb. '08	23%	71%	7%	(553)
Sep. '07	30%	62%	8%	(505)
July '07	34%	59%	6%	(523)
Apr. '07	37%	55%	8%	(510)
Feb. '07	40%	53%	7%	(516)
Sept. '06	34%	56%	10%	(510)
July '06	38%	51%	11%	(496)
Apr. '06	30%	62%	8%	(501)
Feb. '06	40%	53%	7%	(487)
Oct. '05	38%	55%	7%	(498)
July '05	47%	47%	6%	(492)
Apr. '05	46%	43%	11%	(487)
Feb. '05	53%	40%	7%	(535)
Oct. '04	46%	50%	4%	(574)
July '04	48%	43%	10%	(500)
Apr. '04	44%	48%	8%	(535)
Feb. '04	43%	49%	8%	(503)
Oct. '03	51%	43%	6%	(487)
June '03	56%	38%	5%	(511)

**Favorability Rating - President George W. Bush**

"Next, I'd like to get your overall opinion of some people in the news. As I read each name, please say if you have a favorable or unfavorable opinion of this person - or if you have never heard of him or her. President George W. Bush."

	<u>Favorable</u>	<u>Neutral</u>	<u>Unfavorable</u>	<u>NET</u>	<u>(N=)</u>
Apr. '08	27%	7%	65%	-38%	(500)
Feb. '08	26%	4%	67%	-41%	(554)
Sep. '07	29%	5%	66%	-37%	(507)
July '07	27%	4%	69%	-42%	(523)
Apr. '07	30%	7%	63%	-33%	(515)
Feb. '07	32%	5%	63%	-31%	(535)
Sept. '06	37%	5%	58%	-21%	(513)
July '06	41%	7%	51%	-10%	(500)
Apr. '06	35%	6%	59%	-24%	(505)
Feb. '06	41%	6%	53%	-12%	(499)
Oct. '05	42%	6%	52%	-10%	(510)
July '05	52%	2%	46%	+6%	(497)
Oct. '04	55%	2%	43%	+12%	(574)
July '04	50%	6%	44%	+6%	(506)
Apr. '04	48%	6%	46%	+2%	(540)
Feb. '04	48%	4%	48%	0	(510)
Oct. '03	57%	4%	38%	+19%	(503)
June '03	62%	6%	32%	+30%	(514)
Apr. '03	72%	5%	23%	+49%	(503)
Feb. '03	64%	7%	29%	+35%	(651)
June '02	69%	8%	23%	+46%	(641)
Apr. '02	78%	6%	16%	+62%	(693)
Feb. '02	84%	5%	11%	+73%	(726)
Oct. '01	88%	4%	8%	+80%	(678)

**Presidential Approval Rating - Overall**

<b>STATEWIDE</b>	<b><u>Approve</u></b> <b>28%</b>	<b><u>Neutral</u></b> <b>3%</b>	<b><u>Disapprove</u></b> <b>69%</b>	<b><u>(N=)</u></b> <b>500</b>
Registered Democrat	5%	4%	91%	134
Undeclared	24%	3%	74%	211
Registered Republican	62%	3%	35%	120
Not registered	16%	8%	76%	30
Democrat	3%	2%	95%	223
Independent	24%	10%	67%	89
Republican	60%	3%	37%	182
Liberal	8%	1%	91%	77
Moderate	19%	3%	78%	240
Conservative	51%	5%	44%	158
Union household	24%	0%	76%	59
Non-union	28%	4%	68%	439
5 years or less in NH	18%	6%	76%	23
6 to 10 years	17%	1%	81%	44
11 to 20 years	21%	6%	73%	69
More than 20 years	30%	3%	66%	357
18 to 34	17%	2%	81%	33
35 to 49	33%	6%	61%	142
50 to 64	23%	0%	76%	200
65 and over	33%	7%	60%	106
Male	27%	4%	69%	242
Female	28%	3%	69%	258
High school or less	27%	5%	69%	128
Some college	33%	3%	64%	115
College graduate	32%	4%	64%	171
Post-graduate	13%	2%	85%	82
Less than \$30K	29%	5%	66%	59
\$30K to \$60K	21%	2%	77%	88
\$60K to \$75K	18%	6%	76%	43
\$75K to \$100K	33%	3%	64%	70
More than \$100K	25%	2%	73%	100
Married	30%	3%	67%	334
Divorced/separated	25%	6%	69%	104
Never married	12%	3%	85%	55
Protestant	38%	4%	59%	194
Catholic	25%	2%	73%	174
Other	14%	4%	82%	102
Attend services 1 or more/week	39%	4%	57%	130
1-2 times a month	22%	2%	76%	75
Less often	22%	4%	74%	156
Never	26%	4%	70%	121
North Country	23%	3%	74%	45
Central/Lakes	30%	4%	66%	88
Connecticut Valley	17%	3%	80%	79
Mass Border	22%	6%	73%	130
Seacoast	37%	1%	62%	80
Manchester Area	38%	3%	59%	79
1st Cong. District	33%	2%	66%	251
2nd Cong. District	23%	5%	72%	249

**Presidential Approval Rating - Economy**

	<u>Approve</u> 23%	<u>Neutral</u> 5%	<u>Disapprove</u> 71%	<u>(N=)</u> 499
<b>STATEWIDE</b>				
Registered Democrat	3%	5%	92%	134
Undeclared	20%	5%	75%	210
Registered Republican	57%	7%	37%	120
Not registered	5%	6%	88%	30
Democrat	3%	2%	95%	222
Independent	15%	9%	76%	89
Republican	53%	7%	39%	182
Liberal	5%	3%	92%	77
Moderate	16%	4%	79%	239
Conservative	45%	9%	46%	158
Union household	12%	0%	88%	59
Non-union	25%	6%	69%	438
5 years or less in NH	15%	7%	78%	23
6 to 10 years	17%	1%	82%	44
11 to 20 years	19%	7%	74%	68
More than 20 years	25%	5%	69%	357
18 to 34	11%	2%	87%	32
35 to 49	29%	8%	62%	142
50 to 64	20%	1%	79%	200
65 and over	27%	11%	62%	106
Male	24%	4%	72%	241
Female	23%	6%	71%	258
High school or less	21%	5%	74%	127
Some college	29%	6%	65%	115
College graduate	29%	6%	65%	171
Post-graduate	8%	4%	88%	82
Less than \$30K	20%	11%	68%	59
\$30K to \$60K	24%	2%	74%	88
\$60K to \$75K	23%	3%	74%	43
\$75K to \$100K	28%	4%	69%	70
More than \$100K	21%	3%	76%	99
Married	26%	6%	69%	334
Divorced/separated	23%	6%	71%	104
Never married	8%	1%	91%	54
Protestant	32%	7%	60%	193
Catholic	21%	4%	74%	174
Other	14%	2%	85%	102
Attend services 1 or more/week	33%	9%	58%	130
1-2 times a month	19%	4%	77%	75
Less often	21%	4%	74%	156
Never	20%	4%	76%	121
North Country	31%	4%	65%	45
Central/Lakes	24%	10%	66%	88
Connecticut Valley	7%	5%	88%	79
Mass Border	16%	7%	76%	129
Seacoast	33%	2%	65%	80
Manchester Area	36%	2%	62%	79
1st Cong. District	30%	3%	67%	250
2nd Cong. District	17%	8%	75%	249

**Presidential Approval Rating - Foreign Affairs**

<b>STATEWIDE</b>	<b><u>Approve</u></b> <b>28%</b>	<b><u>Neutral</u></b> <b>5%</b>	<b><u>Disapprove</u></b> <b>67%</b>	<b><u>(N=)</u></b> <b>498</b>
Registered Democrat	6%	5%	89%	134
Undeclared	23%	2%	74%	211
Registered Republican	61%	6%	33%	119
Not registered	23%	18%	59%	30
Democrat	3%	4%	93%	222
Independent	25%	6%	68%	89
Republican	60%	6%	35%	181
Liberal	8%	3%	89%	77
Moderate	20%	5%	75%	239
Conservative	51%	6%	44%	157
Union household	18%	2%	81%	59
Non-union	29%	5%	65%	437
5 years or less in NH	25%	11%	63%	23
6 to 10 years	23%	1%	76%	44
11 to 20 years	15%	4%	81%	69
More than 20 years	31%	6%	64%	355
18 to 34	14%	7%	79%	33
35 to 49	36%	3%	61%	142
50 to 64	24%	4%	72%	200
65 and over	29%	11%	60%	105
Male	29%	5%	66%	242
Female	27%	5%	69%	256
High school or less	23%	9%	68%	128
Some college	34%	4%	62%	115
College graduate	34%	4%	61%	169
Post-graduate	15%	2%	83%	82
Less than \$30K	24%	16%	59%	58
\$30K to \$60K	23%	4%	73%	88
\$60K to \$75K	28%	6%	65%	43
\$75K to \$100K	29%	0%	71%	70
More than \$100K	28%	3%	69%	100
Married	29%	4%	67%	334
Divorced/separated	25%	7%	68%	103
Never married	22%	9%	69%	55
Protestant	36%	7%	57%	193
Catholic	26%	4%	71%	174
Other	18%	5%	77%	101
Attend services 1 or more/week	36%	8%	56%	129
1-2 times a month	23%	0%	77%	75
Less often	22%	5%	72%	156
Never	32%	4%	64%	120
North Country	27%	6%	67%	44
Central/Lakes	35%	4%	61%	88
Connecticut Valley	15%	7%	79%	79
Mass Border	22%	7%	71%	130
Seacoast	37%	2%	61%	79
Manchester Area	33%	3%	64%	79
1st Cong. District	34%	3%	63%	249
2nd Cong. District	22%	7%	71%	249

**U.S. Right Direction / Wrong Track**

	<b><u>Right Direction</u></b> 21%	<b><u>Wrong Track</u></b> 74%	<b><u>Don't Know</u></b> 5%	<b><u>(N=)</u></b> 487
<b>STATEWIDE</b>				
Registered Democrat	8%	89%	3%	132
Undeclared	17%	79%	4%	206
Registered Republican	41%	52%	8%	114
Not registered	30%	60%	10%	30
Democrat	5%	93%	2%	219
Independent	23%	68%	10%	89
Republican	41%	53%	6%	173
Liberal	6%	92%	2%	77
Moderate	15%	79%	6%	236
Conservative	39%	56%	4%	149
Union household	17%	78%	5%	59
Non-union	21%	74%	5%	427
5 years or less in NH	29%	62%	9%	22
6 to 10 years	20%	77%	3%	44
11 to 20 years	27%	71%	2%	68
More than 20 years	19%	76%	5%	345
18 to 34	18%	80%	3%	33
35 to 49	28%	68%	4%	138
50 to 64	15%	80%	4%	195
65 and over	24%	68%	8%	102
Male	26%	71%	4%	234
Female	16%	78%	6%	253
High school or less	19%	78%	3%	123
Some college	26%	71%	3%	112
College graduate	25%	69%	6%	167
Post-graduate	9%	83%	8%	82
Less than \$30K	18%	78%	5%	59
\$30K to \$60K	22%	76%	3%	83
\$60K to \$75K	18%	80%	2%	42
\$75K to \$100K	27%	71%	2%	70
More than \$100K	22%	73%	6%	99
Married	22%	73%	5%	324
Divorced/separated	17%	78%	6%	101
Never married	21%	78%	1%	55
Protestant	25%	68%	6%	190
Catholic	21%	77%	2%	167
Other	15%	80%	5%	100
Attend services 1 or more/week	25%	68%	7%	125
1-2 times a month	15%	82%	4%	74
Less often	21%	78%	1%	151
Never	21%	72%	7%	120
North Country	16%	78%	6%	44
Central/Lakes	29%	66%	5%	84
Connecticut Valley	8%	88%	4%	79
Mass Border	17%	79%	4%	128
Seacoast	30%	67%	3%	77
Manchester Area	27%	66%	7%	76
1st Cong. District	24%	71%	5%	241
2nd Cong. District	18%	77%	5%	247

**Presidential Approval Rating - Iraq**

<b>STATEWIDE</b>	<b><u>Approve</u></b> <b>31%</b>	<b><u>Neutral</u></b> <b>4%</b>	<b><u>Disapprove</u></b> <b>65%</b>	<b><u>(N=)</u></b> <b>497</b>
Registered Democrat	6%	2%	91%	134
Undeclared	27%	4%	69%	209
Registered Republican	65%	4%	31%	119
Not registered	23%	18%	59%	30
Democrat	4%	2%	93%	223
Independent	30%	8%	61%	87
Republican	64%	5%	31%	181
Liberal	9%	3%	88%	77
Moderate	24%	3%	73%	238
Conservative	53%	7%	41%	156
Union household	19%	6%	75%	59
Non-union	32%	4%	63%	436
5 years or less in NH	18%	14%	67%	23
6 to 10 years	20%	7%	73%	44
11 to 20 years	22%	1%	77%	69
More than 20 years	34%	4%	62%	353
18 to 34	27%	2%	71%	33
35 to 49	36%	2%	61%	141
50 to 64	28%	4%	68%	198
65 and over	29%	9%	61%	105
Male	34%	5%	62%	240
Female	27%	4%	68%	257
High school or less	27%	8%	66%	128
Some college	38%	3%	59%	115
College graduate	37%	3%	61%	168
Post-graduate	13%	6%	81%	82
Less than \$30K	26%	13%	61%	58
\$30K to \$60K	23%	4%	73%	87
\$60K to \$75K	32%	0%	68%	43
\$75K to \$100K	32%	0%	68%	70
More than \$100K	30%	3%	67%	100
Married	33%	4%	64%	332
Divorced/separated	27%	5%	68%	103
Never married	25%	5%	71%	55
Protestant	43%	5%	52%	191
Catholic	23%	3%	74%	174
Other	19%	8%	73%	102
Attend services 1 or more/week	36%	7%	57%	129
1-2 times a month	19%	1%	80%	75
Less often	30%	3%	68%	155
Never	32%	7%	60%	120
North Country	25%	4%	71%	44
Central/Lakes	34%	10%	56%	88
Connecticut Valley	17%	7%	77%	77
Mass Border	30%	3%	67%	130
Seacoast	38%	2%	60%	80
Manchester Area	37%	0%	63%	79
1st Cong. District	36%	3%	61%	250
2nd Cong. District	25%	6%	69%	247



**Support / Oppose US War in Iraq**

<b>STATEWIDE</b>	<b><u>Support</u></b> <b>40%</b>	<b><u>Neutral</u></b> <b>3%</b>	<b><u>Oppose</u></b> <b>57%</b>	<b><u>(N=)</u></b> <b>498</b>
Registered Democrat	16%	2%	82%	132
Undeclared	37%	3%	60%	211
Registered Republican	70%	4%	26%	120
Not registered	38%	4%	58%	30
Democrat	12%	2%	86%	221
Independent	50%	1%	49%	89
Republican	69%	4%	27%	182
Liberal	14%	2%	84%	77
Moderate	34%	3%	63%	239
Conservative	62%	3%	34%	156
Union household	27%	2%	71%	57
Non-union	41%	3%	56%	439
5 years or less in NH	33%	0%	67%	23
6 to 10 years	22%	3%	75%	44
11 to 20 years	43%	3%	54%	69
More than 20 years	41%	3%	56%	354
18 to 34	32%	9%	58%	33
35 to 49	51%	1%	48%	142
50 to 64	34%	3%	62%	200
65 and over	38%	3%	60%	104
Male	43%	3%	54%	242
Female	36%	3%	61%	256
High school or less	43%	2%	54%	126
Some college	42%	3%	55%	115
College graduate	44%	4%	52%	170
Post-graduate	23%	0%	77%	82
Less than \$30K	39%	2%	59%	59
\$30K to \$60K	29%	3%	68%	88
\$60K to \$75K	39%	3%	59%	43
\$75K to \$100K	43%	4%	53%	70
More than \$100K	40%	4%	56%	100
Married	43%	3%	55%	332
Divorced/separated	35%	3%	63%	104
Never married	29%	4%	66%	55
Protestant	44%	3%	53%	194
Catholic	38%	3%	59%	172
Other	30%	3%	67%	101
Attend services 1 or more/week	47%	3%	50%	128
1-2 times a month	28%	5%	66%	75
Less often	37%	0%	63%	156
Never	40%	5%	55%	120
North Country	35%	6%	59%	45
Central/Lakes	52%	0%	48%	88
Connecticut Valley	31%	2%	67%	79
Mass Border	36%	4%	60%	128
Seacoast	43%	4%	54%	79
Manchester Area	42%	2%	56%	79
1st Cong. District	41%	2%	56%	251
2nd Cong. District	38%	3%	59%	247

**Can US Win War in Iraq?**

<b>STATEWIDE</b>	<b>Can Win 34%</b>	<b>Cannot Win 56%</b>	<b>Don't Know 10%</b>	<b>(N=) 495</b>
Registered Democrat	18%	73%	9%	134
Undeclared	33%	58%	9%	208
Registered Republican	53%	37%	10%	118
Not registered	42%	48%	10%	30
Democrat	15%	75%	10%	223
Independent	39%	52%	9%	88
Republican	56%	35%	9%	178
Liberal	12%	85%	3%	77
Moderate	28%	64%	7%	239
Conservative	54%	32%	13%	154
Union household	24%	72%	3%	59
Non-union	35%	54%	10%	434
5 years or less in NH	36%	54%	11%	23
6 to 10 years	14%	78%	8%	44
11 to 20 years	25%	67%	8%	69
More than 20 years	38%	52%	10%	353
18 to 34	28%	56%	16%	33
35 to 49	39%	51%	10%	141
50 to 64	31%	63%	6%	198
65 and over	38%	49%	13%	105
Male	37%	56%	7%	237
Female	32%	56%	12%	258
High school or less	38%	53%	9%	128
Some college	38%	50%	11%	113
College graduate	37%	52%	11%	169
Post-graduate	15%	79%	6%	82
Less than \$30K	37%	45%	17%	59
\$30K to \$60K	29%	60%	11%	87
\$60K to \$75K	36%	58%	6%	43
\$75K to \$100K	34%	52%	13%	69
More than \$100K	31%	65%	3%	99
Married	35%	56%	9%	331
Divorced/separated	31%	58%	11%	103
Never married	32%	56%	12%	55
Protestant	42%	47%	11%	192
Catholic	37%	60%	4%	174
Other	20%	64%	16%	101
Attend services 1 or more/week	45%	45%	10%	130
1-2 times a month	32%	60%	8%	73
Less often	29%	64%	7%	156
Never	31%	55%	14%	119
North Country	27%	56%	17%	45
Central/Lakes	43%	52%	5%	87
Connecticut Valley	24%	62%	13%	78
Mass Border	34%	57%	9%	130
Seacoast	33%	59%	9%	78
Manchester Area	42%	49%	9%	77
1st Cong. District	36%	55%	9%	247
2nd Cong. District	33%	57%	10%	248

**Favorability Rating - George W. Bush**

<b>STATEWIDE</b>	<b><u>Favorable</u></b> <b>27%</b>	<b><u>Neutral</u></b> <b>7%</b>	<b><u>Unfavorable</u></b> <b>65%</b>	<b><u>DK</u></b> <b>0%</b>	<b><u>(N)</u></b> <b>500</b>
Registered Democrat	5%	5%	90%	0%	134
Undeclared	24%	5%	71%	0%	211
Registered Republican	62%	10%	28%	0%	120
Not registered	12%	20%	68%	0%	30
Democrat	4%	2%	94%	0%	223
Independent	22%	16%	62%	0%	89
Republican	59%	9%	31%	0%	182
Liberal	9%	0%	91%	0%	77
Moderate	20%	6%	74%	0%	240
Conservative	50%	11%	38%	0%	158
Union household	20%	6%	74%	0%	59
Non-union	29%	7%	64%	0%	439
5 years or less in NH	27%	9%	64%	0%	23
6 to 10 years	19%	4%	76%	1%	44
11 to 20 years	24%	5%	71%	0%	69
More than 20 years	29%	8%	63%	0%	357
18 to 34	16%	4%	81%	0%	33
35 to 49	36%	5%	60%	0%	142
50 to 64	23%	6%	71%	0%	200
65 and over	30%	13%	57%	0%	106
Male	27%	9%	64%	0%	242
Female	28%	6%	66%	0%	258
High school or less	28%	8%	64%	0%	128
Some college	32%	10%	58%	0%	115
College graduate	31%	7%	62%	0%	171
Post-graduate	12%	4%	84%	0%	82
Less than \$30K	29%	8%	63%	1%	59
\$30K to \$60K	22%	5%	73%	0%	88
\$60K to \$75K	16%	12%	72%	0%	43
\$75K to \$100K	31%	5%	64%	0%	70
More than \$100K	28%	4%	68%	0%	100
Married	30%	8%	63%	0%	334
Divorced/separated	26%	8%	66%	0%	104
Never married	16%	2%	82%	0%	55
Protestant	37%	8%	55%	0%	194
Catholic	25%	7%	68%	0%	174
Other	13%	7%	80%	0%	102
Attend services 1 or more/week	42%	7%	51%	0%	130
1-2 times a month	20%	5%	75%	0%	75
Less often	23%	6%	71%	0%	156
Never	22%	10%	69%	0%	121
North Country	28%	8%	64%	0%	45
Central/Lakes	29%	8%	63%	0%	88
Connecticut Valley	13%	7%	79%	1%	79
Mass Border	26%	8%	66%	0%	130
Seacoast	37%	2%	60%	0%	80
Manchester Area	32%	9%	60%	0%	79
1st Cong. District	32%	6%	62%	0%	251
2nd Cong. District	22%	9%	69%	0%	249