

# THE GRANITE STATE POLL

## THE UNIVERSITY OF NEW HAMPSHIRE SURVEY CENTER

### SHAHEEN AND GREGG BOTH VIEWED FAVORABLY BY MOST OF NEW HAMPSHIRE

February 20, 2009

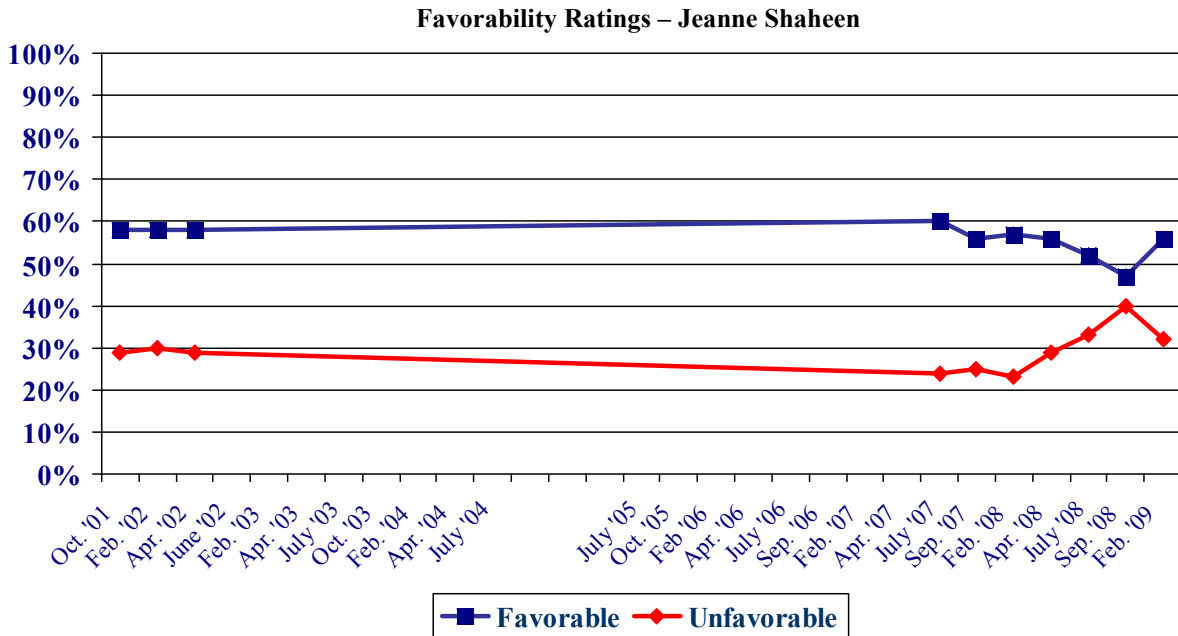
By: Andrew E. Smith, Ph.D.  
 UNH Survey Center  
 www.unh.edu/survey-center  
 603/862-2226

DURHAM, NH – Senators Jeanne Shaheen and Judd Gregg both have strong favorability ratings in New Hampshire. Congressman Paul Hodes and Congressperson Carol Shea-Porter have similar favorability ratings in their respective Congressional Districts, although they are less well known than either Senator.

These findings are based on the latest **Granite State Poll**,\* conducted by the University of New Hampshire Survey Center. Six hundred nineteen (619) randomly selected New Hampshire adults were interviewed by telephone between February 5 and February 9, 2009. The margin of sampling error for the survey is +/-3.9 percent. Included was a subsample of 311 adults in the NH First Congressional District (margin of sampling error +/- 5.6%) and a subsample of 308 adults in the NH Second Congressional District (margin of sampling error +/- 5.6%).

#### Favorability Ratings – Jeanne Shaheen

Senator Jeanne Shaheen has seen a rise in her favorability ratings since defeating former Senator John Sununu in November. Currently, 56% of New Hampshire adults view her favorably, 32% view her unfavorably, and 12% are neutral or don't know enough about her to say. Shaheen's net favorability rating, the percentage having a favorable opinion minus the percentage having an unfavorable opinion, is at +24%, up from +7% in September.



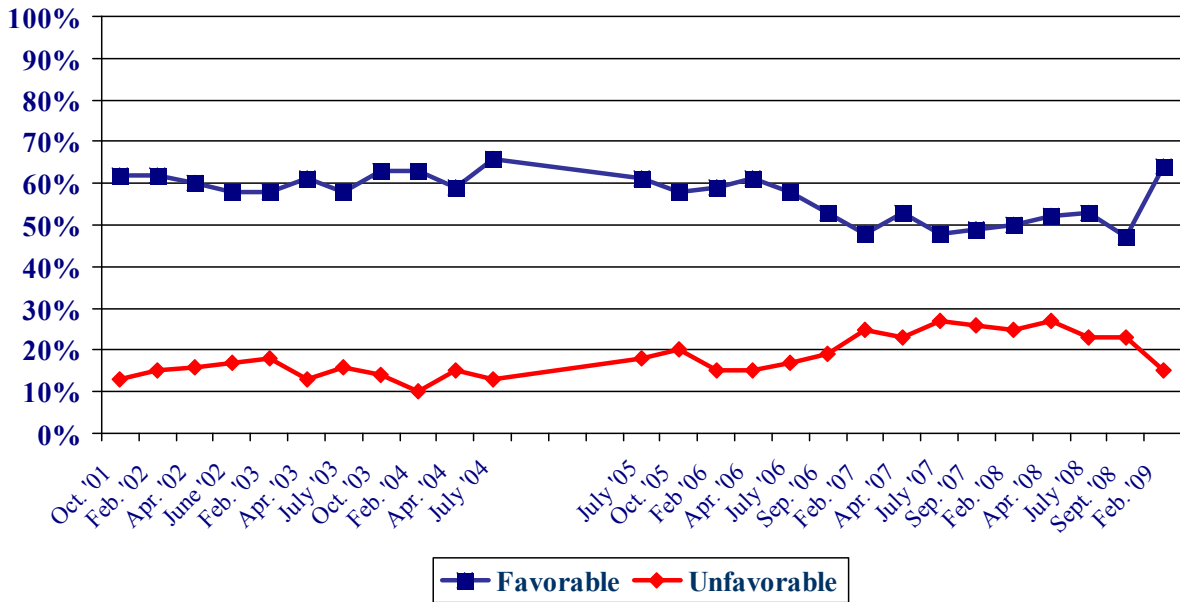
\* We ask that this copyrighted information be referred to as *the Granite State Poll*, conducted by the University of New Hampshire Survey Center.

### Favorability Ratings – Senator Judd Gregg

Republican Senator Judd Gregg continues to be the most popular member of New Hampshire’s congressional delegation. Currently, 64% of New Hampshire residents have a favorable opinion of Gregg, 15% have an unfavorable opinion of him, and 21% are neutral or don’t know enough to say. Gregg’s net favorability rating is at a very high +49%, up from +24% in September.

It should be noted that this poll was conducted after Gregg had been nominated by President Obama to be Secretary of Commerce and before he had withdrawn his nomination.

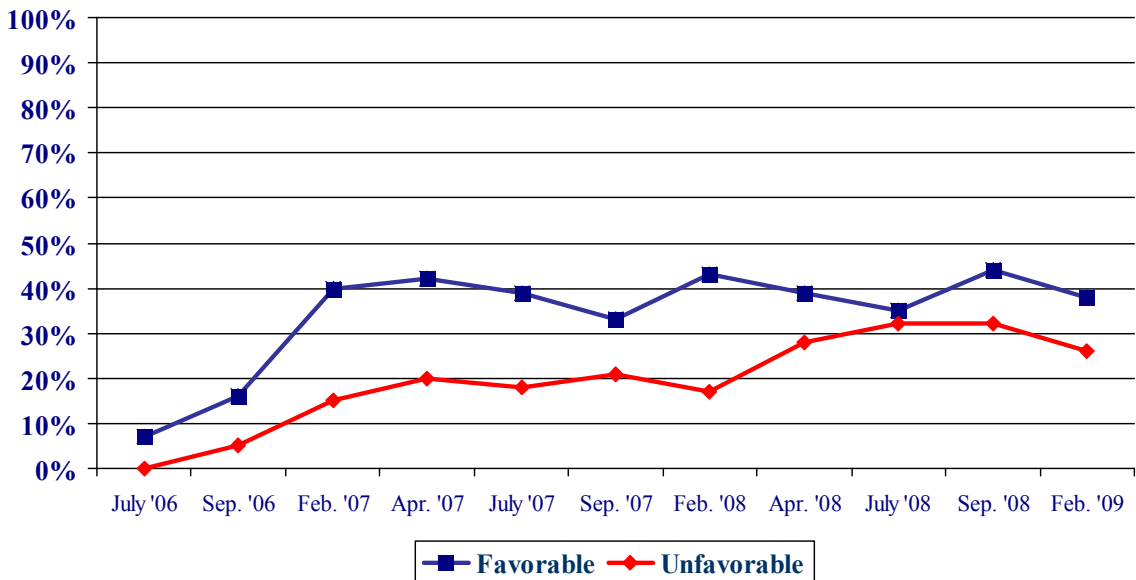
### Favorability Ratings – Senator Judd Gregg



### Favorability Ratings – Carol Shea-Porter NH 1<sup>st</sup> District

First District Congressperson Carol Shea-Porter’s favorability ratings have remained stable over the past year. Currently, 38% of adults in the NH First Congressional District have a favorable opinion of her, 26% have an unfavorable opinion of her, and 37% are neutral or don’t know enough to form an opinion of her. Shea-Porter’s net favorability rating stands at +12%, essentially unchanged from +13% in September.

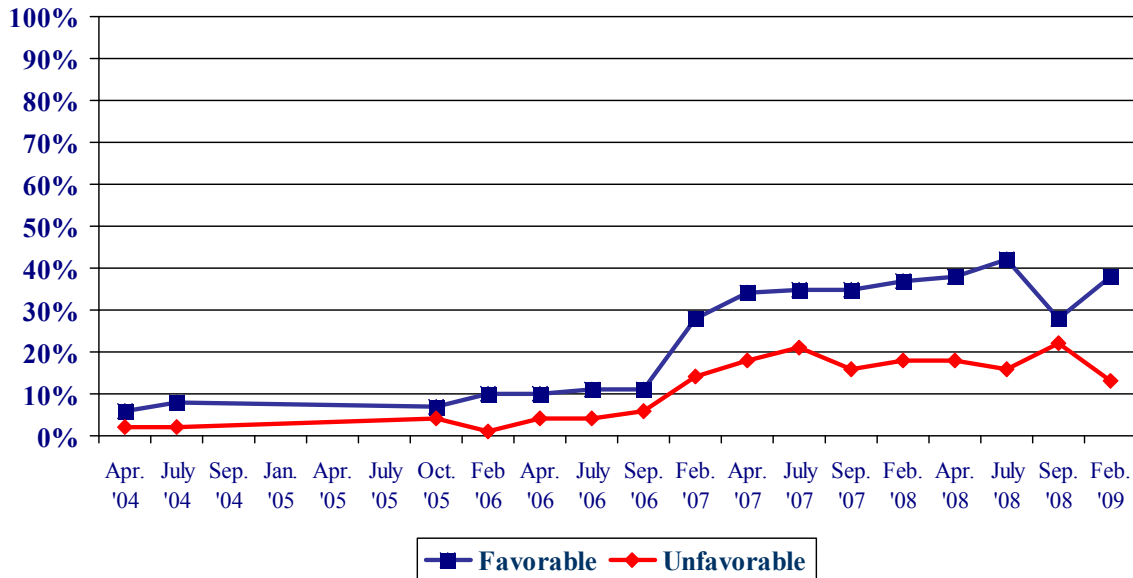
### Favorability Ratings – Carol Shea-Porter NH 1<sup>st</sup> District



### Favorability Rating – Paul Hodes NH 2<sup>nd</sup> District

Second District Congressman Paul Hodes has seen a sharp rise in favorability ratings since the election. In the latest Granite State Poll, 46% of adults in the NH Second Congressional District view him favorably, 13% have an unfavorable opinion of him, and 41% are neutral or don't know enough to say. Hodes' net favorability stands at +33%, up from +6% in September.

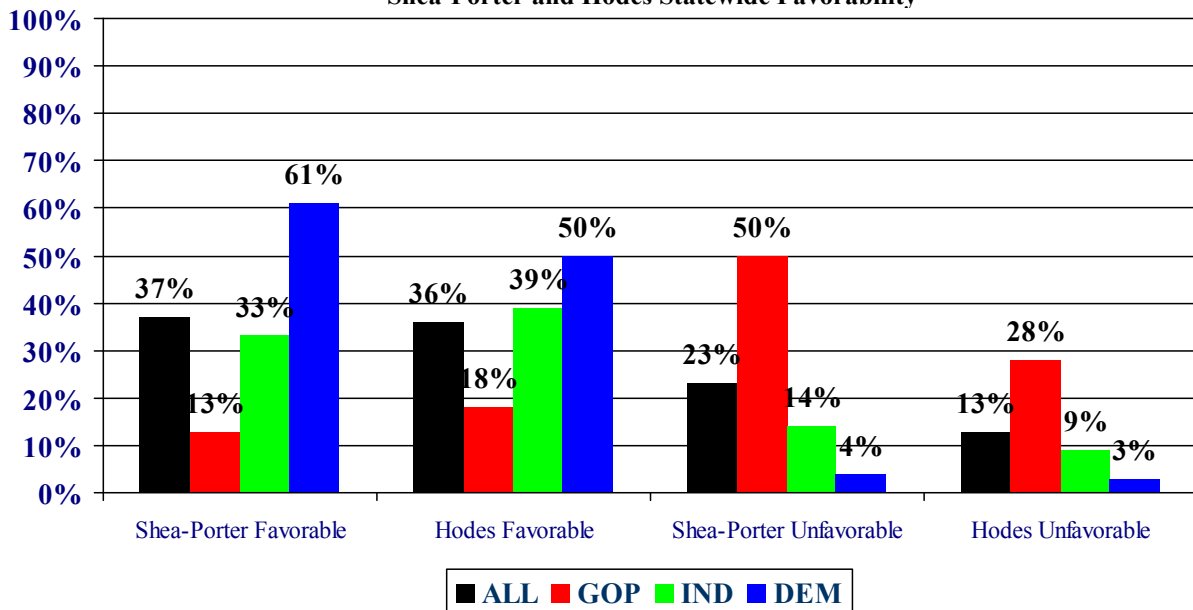
Favorability Ratings – Paul Hodes NH 2<sup>nd</sup> District



Congressman Hodes has announced that he will run for the U.S. Senate in 2010, and there are rumors that Shea-Porter will as well. Both Shea-Porter and Hodes have similar favorability ratings statewide, with 37% having a favorable opinion of her and 36% having a favorable opinion of Hodes. But Shea-Porter is viewed more unfavorably statewide than Hodes, 23% view Shea-Porter unfavorably and only 13% having an unfavorable opinion of Hodes.

Shea-Porter is well positioned in a primary battle with Hodes, as 61% of Democrats view Shea-Porter favorably compared to 50% for Hodes. However, Shea-Porter is viewed much more unfavorably by Republicans than Hodes is, with 50% of Republicans having an unfavorable opinion of Shea-Porter compared to 28% for Hodes. "Democrats have a difficult choice between Carol Shea-Porter and Paul Hodes," said Andrew Smith, Director of the UNH Survey Center. "Hodes looks to be better positioned for a general election, but Shea-Porter appeals more strongly to their party's liberal base."

Shea-Porter and Hodes Statewide Favorability



### Favorability Rating – Former Governor Jeanne Shaheen

"Next, I'd like to get your overall opinion of some people in the news. As I read each name, please say if you have a favorable or unfavorable opinion of this person - or if you have never heard of him or her. Former Governor Jeanne Shaheen."

<u>Statewide</u>	<u>Favorable</u>	<u>Neutral</u>	<u>Unfavorable</u>	<u>Don't Know</u>	<u>(N)</u>
<b>Feb. '09</b>	<b>56%</b>	<b>7%</b>	<b>32%</b>	<b>5%</b>	<b>(617)</b>
<b>Sep. '08</b>	47%	5%	40%	8%	(522)
<b>July '08</b>	53%	9%	31%	6%	(472)
<b>Apr. '08</b>	56%	10%	29%	5%	(500)
<b>Feb. '08</b>	57%	13%	23%	7%	(555)
<b>Sept. '07</b>	56%	11%	25%	8%	(506)
<b>July '07</b>	60%	9%	24%	8%	(520)

### Favorability Rating – U.S. Senator Judd Gregg

"Next, I'd like to get your overall opinion of some people in the news. As I read each name, please say if you have a favorable or unfavorable opinion of this person - or if you have never heard of him or her. Senator Judd Gregg."

<u>Statewide</u>	<u>Favorable</u>	<u>Neutral</u>	<u>Unfavorable</u>	<u>Don't Know</u>	<u>(N)</u>
<b>Feb. '09</b>	<b>64%</b>	<b>9%</b>	<b>15%</b>	<b>12%</b>	<b>(617)</b>
<b>Sept. '08</b>	47%	9%	23%	22%	(547)
<b>July '08</b>	53%	10%	23%	13%	(474)
<b>Apr. '08</b>	52%	11%	27%	10%	(497)
<b>Feb. '08</b>	50%	13%	25%	12%	(555)
<b>Sept. '07</b>	49%	12%	26%	13%	(508)
<b>July '07</b>	48%	11%	27%	14%	(516)
<b>Apr. '07</b>	53%	13%	23%	11%	(515)
<b>Feb. '07</b>	48%	15%	25%	12%	(533)
<b>Sept. '06</b>	53%	15%	19%	13%	(513)
<b>July '06</b>	58%	11%	17%	14%	(503)
<b>Apr. '06</b>	61%	12%	15%	13%	(505)
<b>Feb. '06</b>	59%	14%	15%	12%	(501)
<b>Oct. '05</b>	58%	10%	20%	12%	(510)
<b>July '05</b>	61%	8%	18%	13%	(501)
<b>July '04</b>	66%	8%	13%	12%	(508)
<b>Apr. '04</b>	59%	11%	15%	15%	(541)
<b>Feb. '04</b>	63%	12%	10%	15%	(509)
<b>Oct. '03</b>	63%	8%	14%	16%	(496)
<b>June '03</b>	58%	10%	16%	16%	(514)
<b>Apr. '03</b>	61%	8%	13%	18%	(507)
<b>Feb. '03</b>	58%	8%	18%	16%	(652)
<b>June '02</b>	58%	10%	17%	15%	(638)
<b>Apr. '02</b>	60%	6%	16%	18%	(691)
<b>Feb. '02</b>	62%	9%	15%	14%	(724)
<b>Oct. '01</b>	62%	9%	13%	16%	(679)

**Favorability Rating – U.S. Representative Carol Shea-Porter - NH 1<sup>st</sup> District**

"Next, I'd like to get your overall opinion of some people in the news. As I read each name, please say if you have a favorable or unfavorable opinion of this person - or if you have never heard of him or her. Congresswoman Carol Shea-Porter"

<u>1st C.D.</u>	<u>Favorable</u>	<u>Neutral</u>	<u>Unfavorable</u>	<u>Don't Know</u>	<u>(N)</u>
<b>Feb. '09</b>	<b>38%</b>	<b>10%</b>	<b>26%</b>	<b>27%</b>	<b>(311)</b>
<b>Sep. '08</b>	44%	5%	31%	20%	(251)
<b>July '08</b>	35%	9%	32%	24%	(235)
<b>Apr. '08</b>	39%	12%	28%	21%	(251)
<b>Feb. '08</b>	43%	13%	17%	26%	(267)
<b>Sept. '07</b>	33%	17%	21%	29%	(228)
<b>July '07</b>	39%	15%	18%	28%	(252)
<b>Apr. '07</b>	42%	15%	20%	24%	(251)
<b>Feb. '07</b>	40%	17%	15%	28%	(248)
<b>Sept. '06</b>	16%	14%	5%	65%	(266)
<b>July '06</b>	7%	7%	0%	86%	(256)

**Favorability Rating – U.S. Representative Carol Shea-Porter – Statewide**

"Next, I'd like to get your overall opinion of some people in the news. As I read each name, please say if you have a favorable or unfavorable opinion of this person - or if you have never heard of him or her. Congresswoman Carol Shea-Porter"

	<u>Feb. '09</u>
Favorable	37%
Neutral	10%
Unfavorable	23%
Don't know	30%
(N=)	(619)

**Favorability Rating – U.S. Representative Paul Hodes - NH 2<sup>nd</sup> District**

"Next, I'd like to get your overall opinion of some people in the news. As I read each name, please say if you have a favorable or unfavorable opinion of this person - or if you have never heard of him or her. Congressman Paul Hodes." (Respondents were asked about Concord Attorney Paul Hodes from April 2004 to September 2006.)

<u>2<sup>nd</sup> C.D.</u>	<u>Favorable</u>	<u>Neutral</u>	<u>Unfavorable</u>	<u>Don't Know</u>	<u>(N)</u>
<b>Feb. '09</b>	<b>46%</b>	<b>14%</b>	<b>13%</b>	<b>27%</b>	<b>(308)</b>
<b>Sep. '08</b>	28%	10%	22%	40%	(271)
<b>July '08</b>	42%	11%	16%	31%	(238)
<b>Apr. '08</b>	38%	16%	18%	27%	(247)
<b>Feb. '08</b>	37%	18%	18%	27%	(287)
<b>Sept. '07</b>	35%	15%	16%	34%	(278)
<b>July '07</b>	34%	8%	21%	36%	(254)
<b>Apr. '07</b>	34%	13%	18%	36%	(264)
<b>Feb. '07</b>	28%	18%	14%	39%	(286)
<b>Sept. '06</b>	11%	17%	6%	66%	(248)
<b>July '06</b>	11%	9%	4%	77%	(246)
<b>Apr. '06</b>	10%	6%	4%	81%	(235)
<b>Feb. '06</b>	10%	11%	1%	78%	(232)
<b>Oct. '05</b>	7%	7%	4%	83%	(230)
<b>July '04</b>	8%	8%	2%	81%	(238)
<b>Apr. '04</b>	6%	7%	2%	86%	(271)

**Favorability Rating – U.S. Representative Paul Hodes – Statewide**

“Next, I'd like to get your overall opinion of some people in the news. As I read each name, please say if you have a favorable or unfavorable opinion of this person - or if you have never heard of him or her. Congressman Paul Hodes”

	<b><u>Feb. '09</u></b>
Favorable	36%
Neutral	15%
Unfavorable	13%
Don't know	36%
(N=)	(619)

**Net Favorability Ratings**

	<b><u>Shea-Porter</u></b> <b><u>(1<sup>st</sup> CD)</u></b>	<b><u>Hodes</u></b> <b><u>(2<sup>nd</sup> CD)</u></b>	<b><u>Gregg</u></b> <b><u>(State)</u></b>	<b><u>Shaheen</u></b> <b><u>(State)</u></b>
<b>Feb. '09</b>	<b>+12%</b>	<b>+33%</b>	<b>+49%</b>	<b>+24%</b>
<b>Sept. '08</b>	<b>+13%</b>	<b>+6%</b>	<b>+24%</b>	<b>+7%</b>
<b>July '08</b>	<b>+3%</b>	<b>+26%</b>	<b>+30%</b>	<b>+22%</b>
<b>Apr. '08</b>	<b>+11%</b>	<b>+20%</b>	<b>+25%</b>	<b>+27%</b>
<b>Feb. '08</b>	<b>+26%</b>	<b>+19%</b>	<b>+25%</b>	<b>+34%</b>
<b>Sept. '07</b>	<b>+12%</b>	<b>+19%</b>	<b>+23%</b>	<b>+31%</b>
<b>July '07</b>	<b>+21%</b>	<b>+13%</b>	<b>+21%</b>	<b>+36%</b>
<b>Apr. '07</b>	<b>+22%</b>	<b>+16%</b>	<b>+30%</b>	<b>--</b>
<b>Feb. '07</b>	<b>+25%</b>	<b>+14%</b>	<b>+23%</b>	<b>--</b>
<b>Sept. '06</b>	<b>+11%</b>	<b>+5%</b>	<b>+34%</b>	<b>--</b>
<b>July '06</b>	<b>+7%</b>	<b>+7%</b>	<b>+41%</b>	<b>--</b>
<b>Apr. '06</b>	<b>--</b>	<b>+6%</b>	<b>+46%</b>	<b>--</b>
<b>Feb. '06</b>	<b>--</b>	<b>+9%</b>	<b>+44%</b>	<b>--</b>
<b>Oct. '05</b>	<b>--</b>	<b>+3%</b>	<b>+38%</b>	<b>--</b>
<b>July '05</b>	<b>--</b>	<b>--</b>	<b>+43%</b>	<b>--</b>
<b>July '04</b>	<b>--</b>	<b>--</b>	<b>+53%</b>	<b>--</b>
<b>Apr. '04</b>	<b>--</b>	<b>--</b>	<b>+44%</b>	<b>--</b>
<b>Feb. '04</b>	<b>--</b>	<b>--</b>	<b>+53%</b>	<b>--</b>
<b>Oct. '03</b>	<b>--</b>	<b>--</b>	<b>+49%</b>	<b>--</b>
<b>June '03</b>	<b>--</b>	<b>--</b>	<b>+42%</b>	<b>--</b>
<b>Apr. '03</b>	<b>--</b>	<b>--</b>	<b>+48%</b>	<b>--</b>
<b>Feb. '03</b>	<b>--</b>	<b>--</b>	<b>+40%</b>	<b>--</b>
<b>June '02</b>	<b>--</b>	<b>--</b>	<b>+40%</b>	<b>--</b>
<b>Apr. '02</b>	<b>--</b>	<b>--</b>	<b>+44%</b>	<b>+29%</b>
<b>Feb. '02</b>	<b>--</b>	<b>--</b>	<b>+47%</b>	<b>+28%</b>
<b>Oct. '01</b>	<b>--</b>	<b>--</b>	<b>+49%</b>	<b>+29%</b>

**Favorability Rating – Sen. Jeanne Shaheen**

	<u>Favorable</u> 56%	<u>Neutral</u> 7%	<u>Unfavorable</u> 32%	<u>DK</u> 5%	<u>(N)</u> 617
<b>STATEWIDE</b>					
Registered Democrat	86%	4%	7%	3%	183
Registered Undeclared	57%	7%	32%	5%	226
Registered Republican	25%	10%	62%	4%	166
Democrat	83%	5%	9%	3%	263
Independent	56%	10%	27%	7%	121
Republican	26%	8%	61%	6%	223
Liberal	84%	3%	9%	4%	118
Moderate	60%	10%	26%	4%	287
Conservative	30%	5%	61%	4%	170
McCain/Palin Voter	25%	7%	63%	5%	239
Obama/Biden Voter	82%	5%	9%	4%	299
Other	51%	26%	23%	0%	9
Did Not Vote in 2008	45%	13%	23%	19%	46
Union household	64%	6%	25%	5%	89
Non-union	55%	7%	33%	5%	521
10 yrs or less in NH	44%	8%	38%	10%	101
11 to 20 years	66%	3%	25%	5%	109
More than 20 years	57%	7%	32%	4%	402
18 to 34	51%	4%	33%	11%	71
35 to 49	53%	9%	30%	7%	172
50 to 64	59%	6%	31%	4%	219
65 and over	59%	5%	33%	3%	150
Male	50%	8%	38%	4%	304
Female	62%	6%	26%	6%	313
High school or less	52%	7%	32%	9%	140
Some college	54%	13%	28%	5%	140
College graduate	56%	3%	37%	4%	212
Post-graduate	63%	5%	28%	5%	123
Less than \$30K	60%	4%	29%	7%	60
\$30K to \$60K	52%	14%	26%	9%	95
\$60K to \$75K	48%	7%	42%	4%	57
\$75K to \$100K	51%	8%	36%	5%	63
\$100K or more	62%	3%	32%	3%	142
Married	55%	6%	33%	5%	421
Divorced/separated	59%	11%	27%	3%	117
Never married	54%	5%	31%	10%	75
Protestant	54%	6%	37%	3%	217
Catholic	56%	5%	34%	6%	205
Other	60%	10%	23%	8%	169
Attend services 1 or more/week	57%	6%	33%	3%	143
1-2 times a month	59%	4%	34%	2%	85
Less often	50%	8%	36%	6%	194
Never	59%	7%	26%	8%	181
North Country	38%	13%	47%	2%	56
Central / Lakes	61%	6%	25%	7%	106
Connecticut Valley	67%	7%	21%	4%	85
Mass Border	53%	5%	36%	6%	168
Seacoast	65%	3%	28%	4%	108
Manchester Area	47%	10%	37%	7%	94
First Cong. Dist	56%	7%	30%	7%	311
Second Cong. Dist	56%	7%	33%	4%	307

**Favorability Rating – Sen. Judd Gregg**

<b>STATEWIDE</b>	<b><u>Favorable</u></b> <b>64%</b>	<b><u>Neutral</u></b> <b>9%</b>	<b><u>Unfavorable</u></b> <b>15%</b>	<b><u>DK</u></b> <b>12%</b>	<b><u>(N)</u></b> <b>617</b>
Registered Democrat	52%	12%	24%	12%	183
Registered Undeclared	63%	10%	13%	13%	226
Registered Republican	85%	3%	6%	5%	166
Democrat	53%	12%	23%	12%	263
Independent	63%	10%	11%	17%	121
Republican	78%	5%	8%	9%	223
Liberal	50%	15%	19%	16%	118
Moderate	67%	9%	16%	8%	287
Conservative	73%	5%	12%	10%	170
McCain/Palin Voter	75%	6%	11%	8%	239
Obama/Biden Voter	58%	12%	17%	13%	299
Other	46%	0%	54%	0%	9
Did Not Vote in 2008	46%	10%	18%	26%	46
Union household	67%	13%	14%	6%	89
Non-union	64%	8%	15%	13%	521
10 yrs or less in NH	55%	8%	11%	25%	101
11 to 20 years	56%	7%	21%	16%	109
More than 20 years	68%	9%	14%	8%	402
18 to 34	47%	4%	20%	30%	71
35 to 49	56%	10%	16%	18%	172
50 to 64	68%	10%	16%	6%	219
65 and over	76%	8%	10%	6%	150
Male	65%	8%	18%	8%	304
Female	63%	9%	12%	16%	313
High school or less	61%	8%	16%	15%	140
Some college	69%	8%	10%	13%	140
College graduate	64%	11%	16%	10%	212
Post-graduate	63%	8%	18%	11%	123
Less than \$30K	54%	5%	18%	23%	60
\$30K to \$60K	65%	10%	12%	13%	95
\$60K to \$75K	74%	4%	9%	13%	57
\$75K to \$100K	68%	4%	20%	8%	63
\$100K or more	63%	10%	16%	11%	142
Married	66%	9%	15%	11%	421
Divorced/separated	70%	8%	11%	10%	117
Never married	48%	7%	21%	24%	75
Protestant	74%	7%	10%	8%	217
Catholic	67%	7%	10%	15%	205
Other	49%	12%	26%	14%	169
Attend services 1 or more/week	75%	5%	9%	11%	143
1-2 times a month	70%	11%	7%	12%	85
Less often	67%	7%	16%	10%	194
Never	50%	12%	23%	16%	181
North Country	68%	8%	12%	12%	56
Central / Lakes	65%	9%	16%	10%	106
Connecticut Valley	56%	11%	16%	16%	85
Mass Border	65%	10%	13%	13%	168
Seacoast	67%	5%	17%	11%	108
Manchester Area	63%	9%	16%	13%	94
First Cong. Dist	64%	8%	15%	13%	311
Second Cong. Dist	65%	9%	15%	11%	307



**Favorability Rating – Rep. Carol Shea-Porter**

<b>FIRST CONG. DIST.</b>	<b><u>Favorable</u></b> <b>38%</b>	<b><u>Neutral</u></b> <b>10%</b>	<b><u>Unfavorable</u></b> <b>26%</b>	<b><u>DK</u></b> <b>27%</b>	<b><u>(N)</u></b> <b>311</b>
Registered Democrat	72%	9%	2%	17%	85
Registered Undeclared	36%	10%	27%	27%	103
Registered Republican	16%	9%	51%	25%	89
Democrat	64%	10%	4%	22%	132
Independent	27%	20%	18%	36%	59
Republican	15%	4%	54%	26%	113
Liberal	72%	8%	4%	16%	65
Moderate	34%	11%	25%	30%	141
Conservative	20%	9%	47%	25%	83
McCain/Palin Voter	15%	10%	54%	21%	126
Obama/Biden Voter	64%	9%	5%	22%	143
Other	54%	0%	34%	12%	3
Did Not Vote in 2008	13%	7%	7%	74%	29
Union household	46%	6%	17%	31%	55
Non-union	36%	10%	28%	25%	250
10 yrs or less in NH	30%	11%	25%	34%	50
11 to 20 years	33%	0%	22%	45%	59
More than 20 years	42%	12%	27%	19%	198
18 to 34	34%	7%	20%	39%	48
35 to 49	31%	3%	33%	33%	85
50 to 64	41%	14%	24%	21%	100
65 and over	48%	12%	22%	18%	74
Male	28%	10%	32%	30%	158
Female	48%	9%	20%	23%	152
High school or less	35%	9%	15%	41%	72
Some college	35%	9%	26%	30%	79
College graduate	46%	11%	25%	17%	107
Post-graduate	30%	7%	42%	20%	53
Less than \$30K	29%	14%	16%	41%	31
\$30K to \$60K	56%	10%	13%	21%	44
\$60K to \$75K	28%	4%	47%	21%	26
\$75K to \$100K	27%	12%	34%	26%	34
\$100K or more	33%	5%	33%	29%	76
Married	40%	9%	29%	22%	208
Divorced/separated	33%	15%	24%	29%	54
Never married	38%	8%	13%	41%	47
Protestant	37%	11%	33%	19%	107
Catholic	38%	5%	25%	32%	97
Other	41%	11%	18%	30%	96
Attend services 1 or more/week	49%	11%	28%	12%	70
1-2 times a month	37%	10%	33%	20%	43
Less often	26%	8%	26%	40%	99
Never	43%	10%	21%	26%	95
North Country	27%	6%	54%	13%	26
Central / Lakes	40%	18%	23%	20%	36
Mass Border	33%	11%	19%	37%	64
Seacoast	51%	5%	18%	25%	108
Manchester Area	26%	12%	34%	28%	77

**Favorability Rating – Rep. Carol Shea-Porter (Statewide)**

<b>STATEWIDE</b>	<b><u>Favorable</u></b> <b>37%</b>	<b><u>Neutral</u></b> <b>10%</b>	<b><u>Unfavorable</u></b> <b>23%</b>	<b><u>DK</u></b> <b>30%</b>	<b><u>(N)</u></b> <b>619</b>
Registered Democrat	64%	9%	2%	25%	183
Registered Undeclared	37%	12%	20%	31%	227
Registered Republican	14%	9%	52%	25%	166
Democrat	61%	9%	4%	26%	263
Independent	33%	19%	14%	34%	123
Republican	13%	7%	50%	30%	223
Liberal	66%	8%	4%	22%	118
Moderate	35%	13%	19%	34%	287
Conservative	19%	9%	47%	25%	170
McCain/Palin Voter	12%	11%	50%	27%	239
Obama/Biden Voter	60%	10%	5%	26%	300
Other	42%	13%	13%	32%	9
Did Not Vote in 2008	20%	6%	9%	66%	46
Union household	42%	4%	25%	28%	90
Non-union	37%	11%	22%	30%	521
10 yrs or less in NH	28%	14%	18%	39%	101
11 to 20 years	34%	7%	21%	38%	110
More than 20 years	41%	10%	25%	25%	402
18 to 34	32%	5%	21%	42%	71
35 to 49	36%	8%	24%	32%	174
50 to 64	37%	14%	23%	26%	219
65 and over	44%	9%	22%	26%	150
Male	30%	11%	31%	28%	306
Female	45%	9%	15%	31%	313
High school or less	32%	10%	16%	41%	140
Some college	37%	9%	20%	35%	140
College graduate	42%	9%	28%	20%	212
Post-graduate	37%	12%	25%	26%	124
Less than \$30K	33%	12%	16%	40%	60
\$30K to \$60K	42%	10%	12%	36%	95
\$60K to \$75K	28%	9%	33%	29%	57
\$75K to \$100K	29%	10%	33%	28%	63
\$100K or more	39%	11%	28%	23%	142
Married	39%	9%	27%	25%	423
Divorced/separated	34%	13%	15%	38%	117
Never married	33%	10%	12%	45%	75
Protestant	38%	11%	26%	26%	218
Catholic	34%	9%	26%	32%	205
Other	43%	9%	15%	32%	169
Attend services 1 or more/week	40%	11%	25%	23%	143
1-2 times a month	40%	10%	30%	21%	86
Less often	32%	9%	25%	35%	194
Never	41%	10%	16%	33%	181
North Country	26%	7%	38%	29%	58
Central / Lakes	44%	9%	25%	22%	106
Connecticut Valley	43%	10%	9%	39%	85
Mass Border	31%	13%	22%	34%	168
Seacoast	51%	5%	18%	25%	108
Manchester Area	28%	13%	33%	26%	94
First Cong. Dist	38%	10%	26%	27%	311
Second Cong. Dist	37%	11%	20%	33%	308

**Favorability Rating – Rep. Paul Hodes**

<b>SECOND CONG. DIST.</b>	<b><u>Favorable</u></b> <b>46%</b>	<b><u>Neutral</u></b> <b>14%</b>	<b><u>Unfavorable</u></b> <b>13%</b>	<b><u>DK</u></b> <b>27%</b>	<b><u>(N)</u></b> <b>308</b>
Registered Democrat	59%	16%	2%	24%	98
Registered Undeclared	50%	11%	12%	28%	124
Registered Republican	27%	19%	31%	23%	77
Democrat	62%	12%	2%	24%	131
Independent	47%	15%	12%	26%	64
Republican	27%	17%	28%	28%	110
Liberal	70%	7%	3%	20%	53
Moderate	50%	17%	7%	26%	147
Conservative	27%	10%	33%	30%	87
McCain/Palin Voter	27%	15%	29%	29%	113
Obama/Biden Voter	61%	14%	3%	21%	157
Other	84%	11%	5%	0%	7
Did Not Vote in 2008	29%	11%	9%	51%	16
Union household	39%	12%	24%	25%	35
Non-union	47%	14%	12%	27%	271
10 yrs or less in NH	38%	14%	9%	39%	51
11 to 20 years	49%	17%	12%	22%	51
More than 20 years	48%	13%	15%	25%	204
18 to 34	42%	7%	6%	45%	23
35 to 49	44%	14%	11%	31%	89
50 to 64	46%	14%	17%	23%	118
65 and over	49%	16%	13%	22%	77
Male	44%	16%	18%	22%	148
Female	47%	12%	10%	31%	161
High school or less	39%	11%	18%	32%	68
Some college	45%	12%	12%	32%	61
College graduate	44%	15%	18%	24%	105
Post-graduate	58%	16%	5%	21%	71
Less than \$30K	44%	9%	9%	37%	29
\$30K to \$60K	39%	8%	12%	41%	51
\$60K to \$75K	48%	10%	14%	28%	32
\$75K to \$100K	59%	18%	17%	6%	29
\$100K or more	47%	20%	8%	25%	66
Married	48%	15%	14%	23%	214
Divorced/separated	41%	10%	11%	39%	64
Never married	44%	10%	16%	30%	28
Protestant	42%	19%	16%	23%	111
Catholic	44%	11%	12%	33%	108
Other	55%	11%	10%	24%	73
Attend services 1 or more/week	39%	12%	22%	26%	73
1-2 times a month	56%	9%	4%	31%	44
Less often	48%	18%	14%	20%	95
Never	46%	13%	8%	33%	86
North Country	36%	14%	19%	31%	32
Central / Lakes	55%	6%	19%	20%	70
Connecticut Valley	54%	17%	8%	20%	85
Mass Border	34%	18%	13%	35%	104
Manchester Area	56%	9%	5%	30%	17

**Favorability Rating – Rep. Paul Hodes (Statewide)**

<b>STATEWIDE</b>	<b><u>Favorable</u></b> <b>36%</b>	<b><u>Neutral</u></b> <b>15%</b>	<b><u>Unfavorable</u></b> <b>13%</b>	<b><u>DK</u></b> <b>36%</b>	<b><u>(N)</u></b> <b>619</b>
Registered Democrat	53%	14%	2%	31%	183
Registered Undeclared	39%	14%	11%	35%	227
Registered Republican	19%	16%	29%	36%	166
Democrat	50%	14%	3%	33%	263
Independent	39%	15%	9%	37%	123
Republican	18%	15%	28%	39%	223
Liberal	50%	12%	3%	35%	118
Moderate	41%	17%	8%	34%	287
Conservative	20%	12%	30%	38%	170
McCain/Palin Voter	22%	15%	27%	36%	239
Obama/Biden Voter	49%	16%	4%	32%	300
Other	60%	17%	4%	19%	9
Did Not Vote in 2008	15%	11%	3%	70%	46
Union household	33%	15%	15%	37%	90
Non-union	37%	15%	13%	36%	521
10 yrs or less in NH	28%	20%	8%	44%	101
11 to 20 years	31%	12%	14%	42%	110
More than 20 years	39%	14%	14%	33%	402
18 to 34	22%	11%	8%	59%	71
35 to 49	33%	14%	13%	39%	174
50 to 64	40%	16%	15%	28%	219
65 and over	39%	15%	12%	34%	150
Male	35%	17%	18%	30%	306
Female	36%	13%	9%	42%	313
High school or less	31%	10%	15%	43%	140
Some college	34%	15%	12%	39%	140
College graduate	37%	16%	13%	34%	212
Post-graduate	41%	18%	12%	29%	124
Less than \$30K	37%	7%	11%	46%	60
\$30K to \$60K	36%	10%	12%	42%	95
\$60K to \$75K	31%	15%	17%	37%	57
\$75K to \$100K	38%	20%	11%	30%	63
\$100K or more	36%	16%	13%	35%	142
Married	39%	15%	14%	32%	423
Divorced/separated	31%	15%	11%	42%	117
Never married	27%	12%	11%	50%	75
Protestant	34%	16%	16%	34%	218
Catholic	34%	14%	14%	38%	205
Other	41%	14%	9%	37%	169
Attend services 1 or more/week	35%	14%	18%	32%	143
1-2 times a month	37%	15%	11%	37%	86
Less often	35%	14%	15%	36%	194
Never	37%	16%	8%	40%	181
North Country	29%	13%	20%	37%	58
Central / Lakes	45%	10%	19%	26%	106
Connecticut Valley	54%	17%	8%	20%	85
Mass Border	31%	16%	12%	41%	168
Seacoast	25%	10%	12%	54%	108
Manchester Area	34%	22%	11%	34%	94
First Cong. Dist	26%	16%	13%	46%	311
Second Cong. Dist	46%	14%	13%	27%	308