

THE GRANITE STATE POLL

THE UNIVERSITY OF NEW HAMPSHIRE SURVEY CENTER

NEW HAMPSHIRE SUPPORTS OBAMA ON IRAQ, CONCERNED ABOUT AFGHANISTAN

February 24, 2009

By: Andrew E. Smith, Ph.D.
UNH Survey Center
www.unh.edu/survey-center
603/862-2226

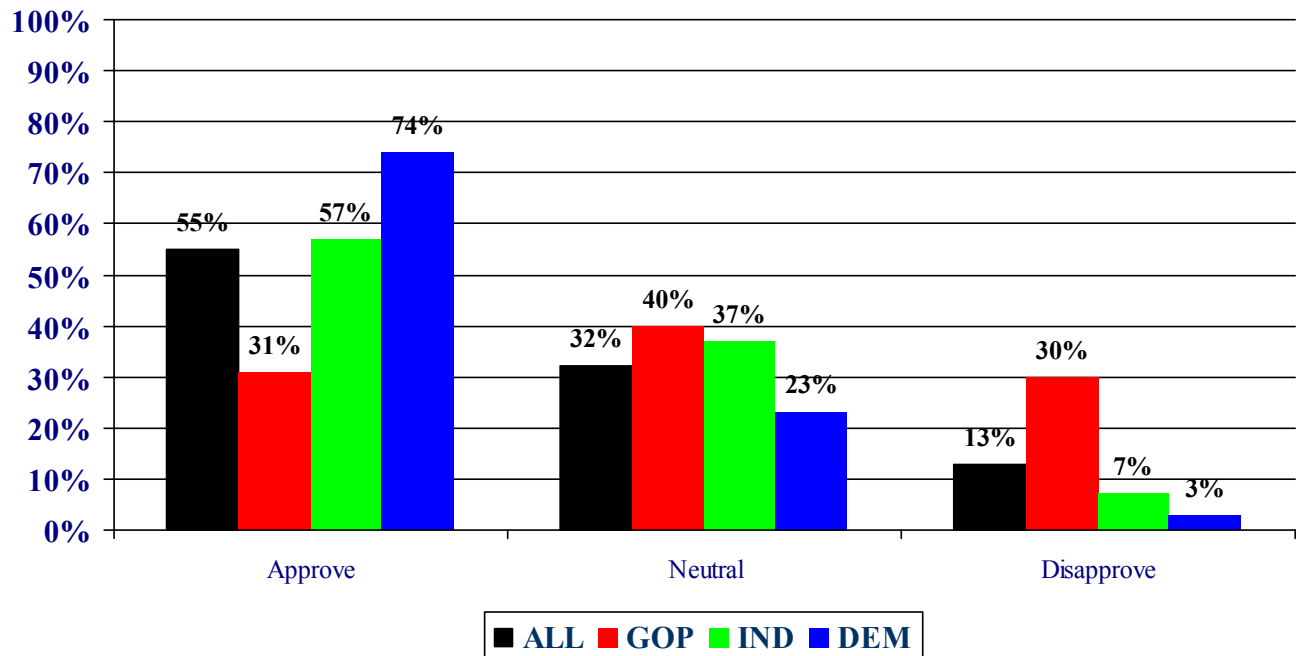
DURHAM, NH – New Hampshire residents approve of how President Obama is handling the war in Iraq and a plurality of Granite states believe the US can win the war there. However, the war in Afghanistan is perceived to be going badly for the United States and that additional troops should be committed to stabilize the situation there.

These findings are based on the latest **Granite State Poll**,* conducted by the University of New Hampshire Survey Center. Six hundred nineteen (619) randomly selected New Hampshire adults were interviewed by telephone between February 5 and February 9, 2009. The margin of sampling error for the survey is +/-3.9 percent.

Presidential Approval on Iraq

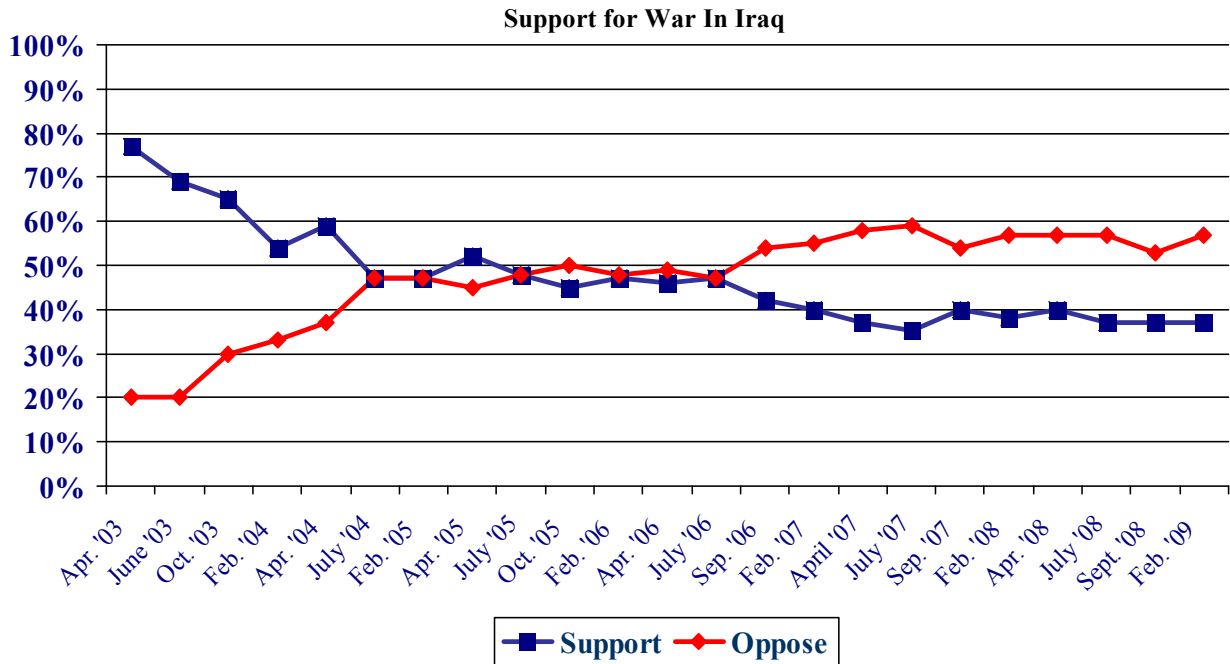
Although Barack Obama has been in office for only a few weeks, New Hampshire residents are supporting his administration's actions concerning Iraq. In the latest Granite State Poll, 55% of New Hampshire adults approve of the way President Obama has handled the situation in Iraq, 13% disapprove, and 32% are neutral. There is a large partisan gap in approval -- 74% of Democrats approve of Obama's handling of the situation in Iraq while only 31% of Republicans approve.

Obama Approval: Handling Situation in Iraq



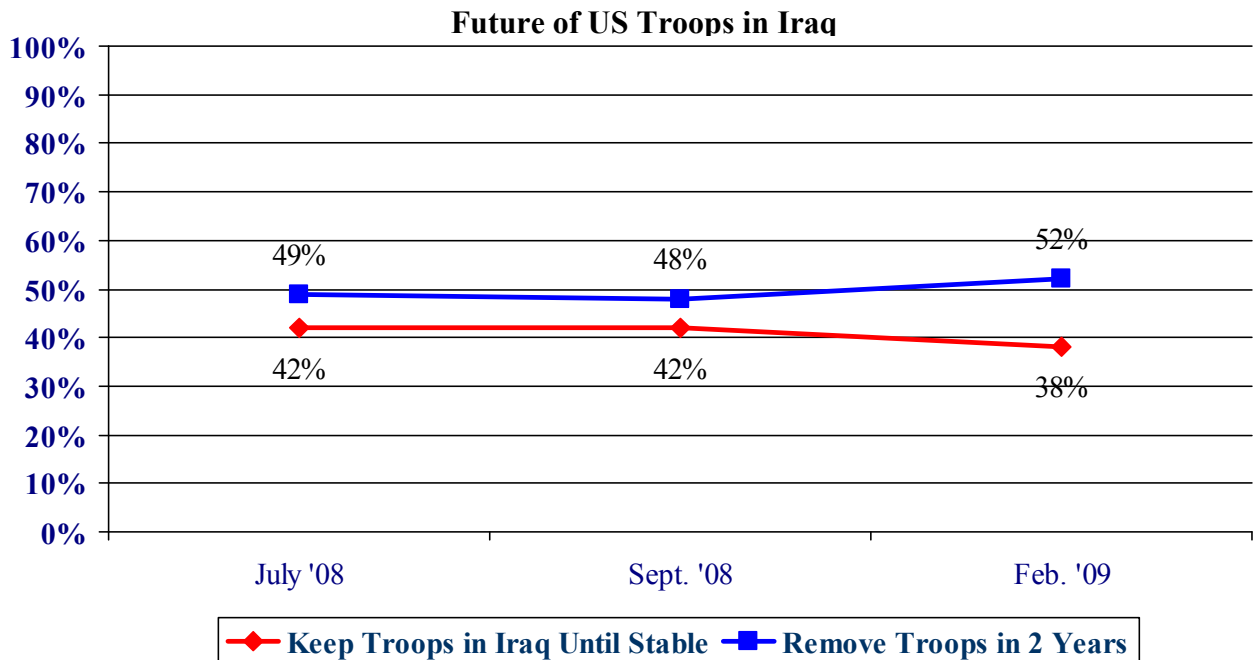
* We ask that this copyrighted information be referred to as *the Granite State Poll*, conducted by the University of New Hampshire Survey Center.

But most New Hampshire residents continue to think that going to war in Iraq was a bad idea. Currently, 37% of Granite staters support having gone to war with Iraq, 57% oppose it, and 5% are neutral. Support for the US having gone to war in Iraq have been largely unchanged for the past two years.

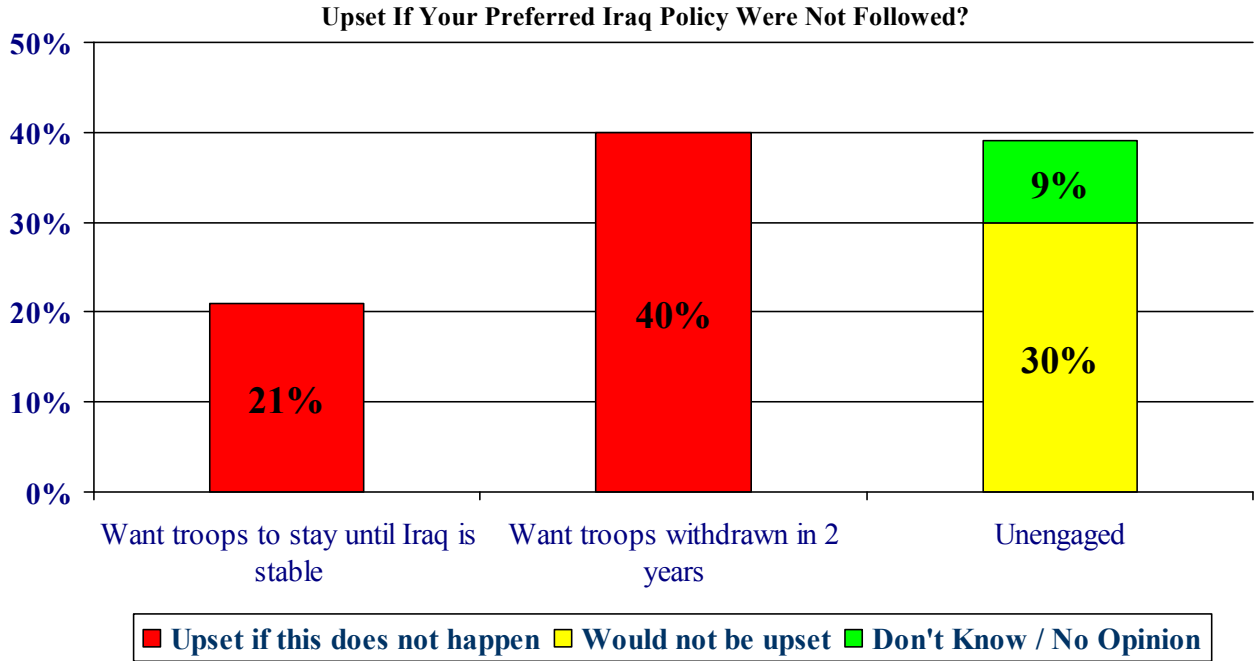


Troop Pullout From Iraq

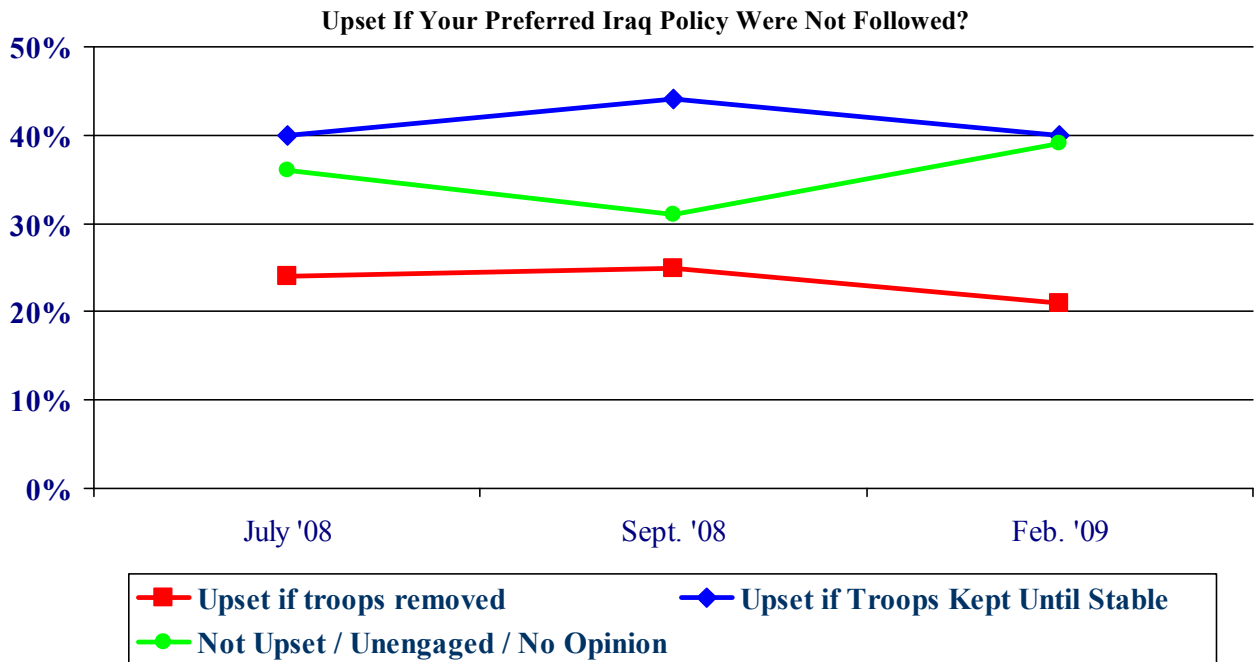
During the 2008 election campaign, there was considerable debate about when and how American troops should be removed from Iraq, with Obama pledging to remove troops within 16 months of taking office and John McCain saying he would keep troops in Iraq until it is stable. Now that he has taken office, President Obama has reiterated his desire to remove troops quickly from Iraq, but has pulled back from his 16 month timetable. New Hampshire residents generally support Obama's plan to remove troops -- 52% say troops should be withdrawn within two years, 38% saying troops should be kept in Iraq until the country is stable, and 10% saying they are unsure.



There is also considerable difference in the intensity which these positions are held. Most respondents who want U.S. troops withdrawn within two years say they would be upset if troops stay in Iraq until the country is stable while far fewer of those who support keeping the troops in Iraq until the country is stable say they would be upset if troops were withdrawn. Forty percent of all New Hampshire adults say they would be upset if troops were kept in Iraq until the country is stable while only 21% would be upset if troops were withdrawn in the next 2 years. A considerable portion of the electorate (39%) is unengaged on the issue with 9% have no opinion and another 30% saying they would not be upset if their desired position were not followed.

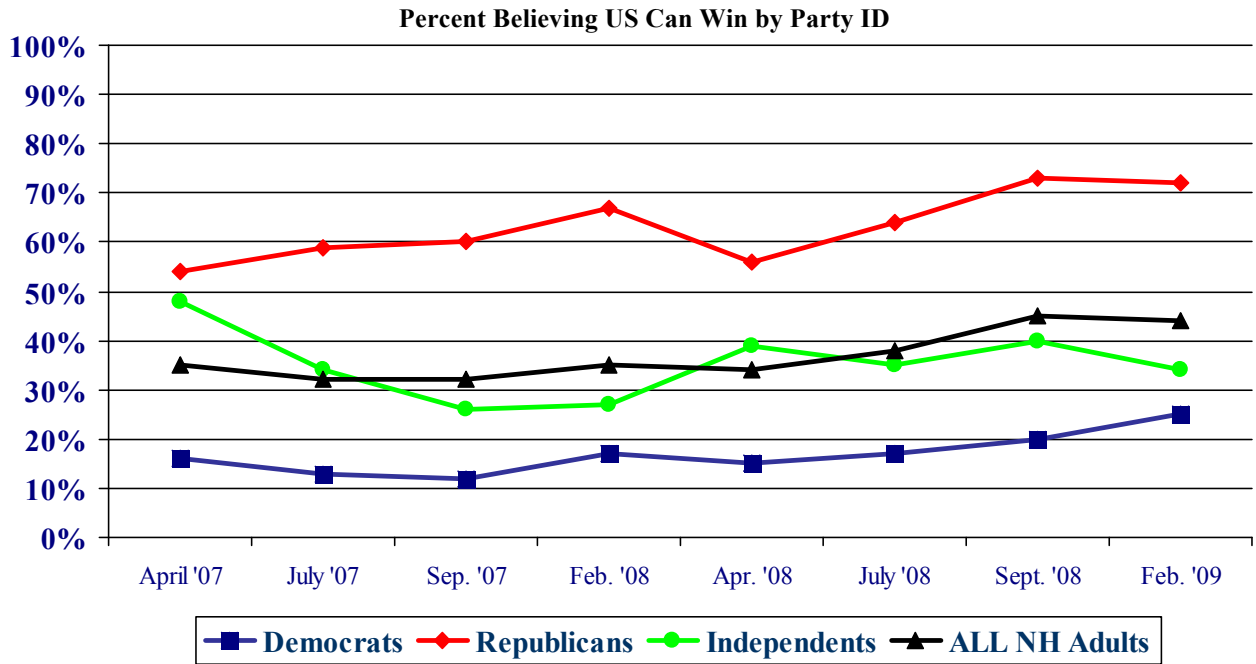


There has been little change in the intensity of how these positions are held – proponents of faster withdrawal from Iraq have consistently been more intense in their position than have proponents of keeping troops in Iraq until it is stable.



Can the US Win?

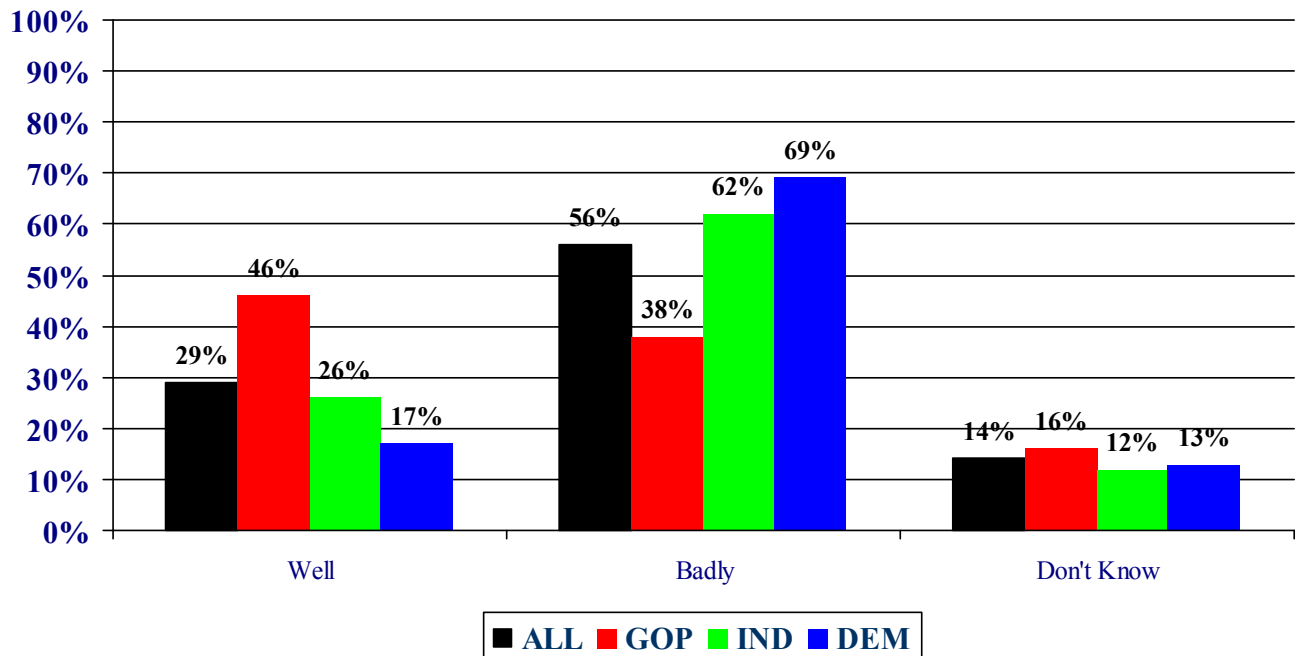
The percentage of New Hampshire adults who think the U.S. can win the war in Iraq has held steady after climbing throughout the second half of 2008. In the most recent Granite State Poll, 44% believe the US can win the war in Iraq, 41% think the US cannot win the war, and 15% don't know. Republicans continue to be the most likely to think the U.S. can win in Iraq -- 72% believe the US can win -- while only 34% of Independents and 25% of Democrats think the US can win.



The War in Afghanistan

President Obama has said his administration will put renewed focus on the War in Afghanistan and has recently called for the deployment of additional US troops to that country. New Hampshire residents tend to agree with the administration that the war in Afghanistan is not going well -- only 29% of NH residents think the war is going well, 56% think it is going badly, and 14% don't know. Republicans are most likely to be optimistic about Afghanistan -- 46% think it is going well -- while only 17% of Democrats and 26% of political independents think the war is going well.

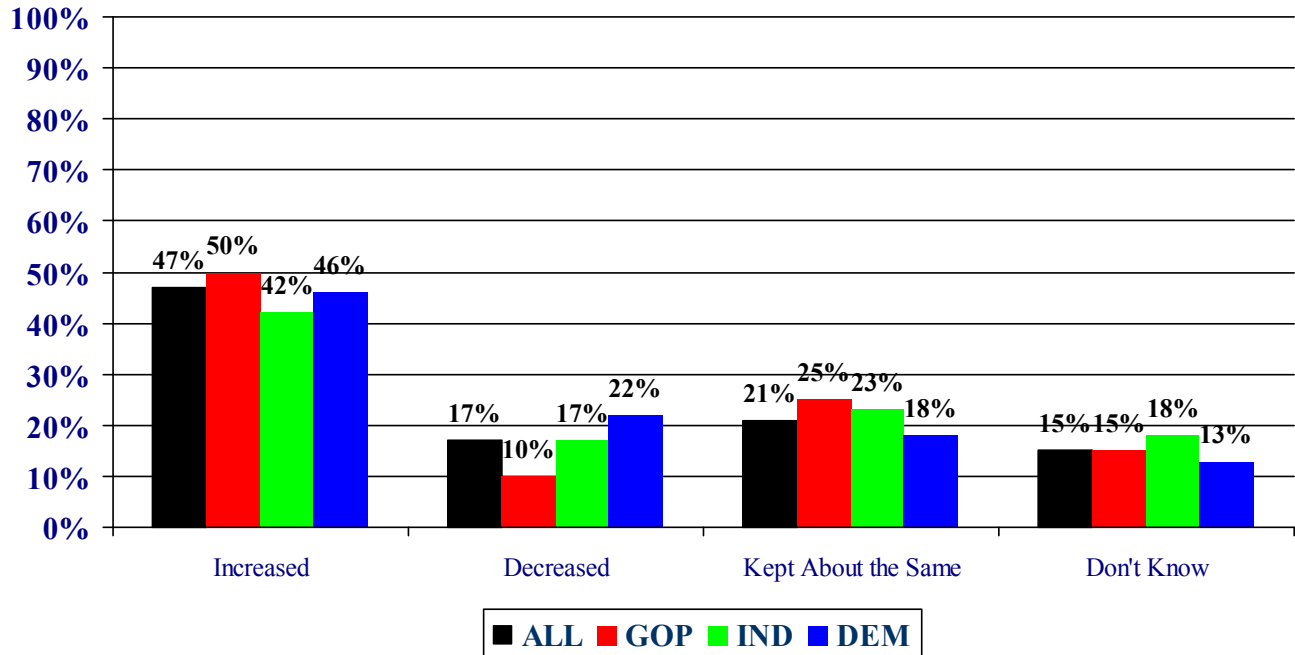
How is the War in Afghanistan going for the U.S.?



Increasing the Amount of Forces in Afghanistan

President Obama recently called for additional US troops to be deployed to Afghanistan and New Hampshire residents generally support this action. Currently, 47% of Granite staters support increasing troop presence in Afghanistan, 17% want force levels decreased, 21% think levels should be kept about the same as they are now, and 15% don't know. Support for increasing forces in Afghanistan is broad-based across party identification: 50% of Republicans, 46% of Democrats, and 42% of political independents support increasing troop levels.

Should Amount of U.S. Forces in Afghanistan be...



Granite State Poll Methodology

These findings are based on the latest **Granite State Poll** conducted by the University of New Hampshire Survey Center. Six hundred nineteen (619) randomly selected New Hampshire adults were interviewed by telephone between February 5 and February 9, 2009. The margin of sampling error for the survey is +/-3.9 percent.

The data have been weighted to adjust for numbers of adults and telephone lines within households, respondent sex, and region of the state. In addition to potential sampling error, all surveys have other potential sources of non-sampling error including question order effects, question wording effects, and non-response.

Presidential Approval - Handling of Situation in Iraq

“Do you approve or disapprove of the way President Obama is handling the situation with Iraq?”

	<u>Approve</u>	<u>Neutral</u>	<u>Disapprove</u>	<u>(N)</u>
Feb. '09	55%	32%	13%	(609)

Support for War in Iraq

“Do you support or oppose the United States having gone to war with Iraq?”

	<u>Support</u>	<u>Neutral</u>	<u>Oppose</u>	<u>(N)</u>
Feb. '09	37%	5%	57%	(616)
Sept. '09	37%	7%	53%	(544)
July '08	37%	6%	57%	(511)
Apr. '08	40%	3%	57%	(498)
Feb. '08	38%	5%	57%	(548)
Sep. '07	40%	6%	54%	(506)
July '07	35%	6%	59%	(516)
Apr. '07	37%	5%	58%	(510)
Feb. '07	40%	5%	55%	(525)
Sept. '06	42%	4%	54%	(510)
July '06	47%	6%	47%	(500)
Apr. '06	46%	5%	49%	(496)
Feb. '06	47%	5%	48%	(500)
Oct. '05	45%	4%	50%	(502)
July '05	48%	5%	48%	(493)
Apr. '05	52%	3%	45%	(489)
Feb. '05	47%	6%	47%	(537)
July '04	47%	6%	47%	(498)
Apr. '04	59%	4%	37%	(536)
Feb. '04	54%	3%	33%	(509)
Oct. '03	65%	5%	30%	(496)
June '03	69%	4%	20%	(513)
Apr. '03	77%	4%	20%	(506)

Position on Troops in Iraq

“Which would you like President Obama to do in Iraq: [ROTATE RESPONSES 1 & 2] Keep troops there until Iraq is relatively stable politically, even if it takes four years or more, or take steps to remove most U.S. troops from Iraq within two years of taking office, or don't you have an opinion on this?”

	<u>July '08</u>	<u>Sept. '08</u>	<u>Feb. '09</u>
Keep troops in Iraq until stable	42%	42%	38%
Remove troops within two years	49%	48%	52%
Don't know	9%	10%	10%
(N=)	(514)	(545)	(613)

Upset if Next President Does Not Take Your Position on Iraq?

“Suppose the next president decided to (take steps to remove most U.S. troops from Iraq within two years of taking office / keep troops in Iraq until the country is relatively stable politically, even if it takes four years or more), would you be very upset ... somewhat upset ... not too upset ... or not upset at all?”

	<u>July '08</u>	<u>Sept. '08</u>	<u>Feb. '09</u>
Upset if troops removed	24%	25%	21%
Not upset if troops removed	18%	16%	15%
Don't know	9%	7%	9%
Not upset if troops kept until stable	9%	8%	15%
Upset if troops kept until stable	40%	44%	40%
(N=)	(514)	(486)	(550)

Can US Win in Iraq?

“Do you think the United States can win or cannot win the war in Iraq?”

	<u>Can Win</u>	<u>Cannot Win</u>	<u>Don't Know</u>	<u>(N)</u>
Feb. '09	44%	41%	15%	(597)
Sept. '08	45%	41%	14%	(532)
July '08	38%	52%	10%	(511)
Apr. '08	34%	56%	10%	(495)
Feb. '08	35%	53%	12%	(544)
Sep. '07	32%	55%	13%	(503)
July '07	32%	57%	11%	(504)
Apr. '07	35%	55%	10%	(512)

How is the War in Afghanistan going for the U.S.?

“Now, let's talk about the war in Afghanistan. What is your impression of how the war in Afghanistan is going for the United States right now? Would you say it is going very well ... somewhat well ... somewhat badly ... or very badly?”

	<u>Feb. '09</u>
Going well	29%
Going badly	56%
Don't know	14%
(N=)	(619)

Should Amount of U.S. Forces in Afghanistan be Modified?

"Do you think the number of U.S. military forces in Afghanistan should be increased ... decreased ... or kept about the same?"

	<u>Feb. '09</u>
Increased	47%
Decreased	17%
Kept About the Same	21%
Don't know	15%
(N=)	(608)

Presidential Approval Rating - Iraq

STATEWIDE	<u>Approve</u> 55%	<u>Neutral</u> 32%	<u>Disapprove</u> 13%	<u>(N=)</u> 609
Registered Democrat	75%	22%	3%	181
Registered Undeclared	57%	32%	10%	221
Registered Republican	29%	40%	31%	163
Democrat	74%	23%	3%	260
Independent	57%	37%	7%	120
Republican	31%	40%	30%	218
Liberal	77%	20%	3%	117
Moderate	60%	32%	8%	283
Conservative	30%	38%	32%	166
McCain/Palin Voter	29%	42%	29%	233
Obama/Biden Voter	76%	22%	2%	298
Other	24%	52%	25%	9
Did Not Vote in 2008	47%	45%	8%	46
Union household	71%	16%	13%	90
Non-union	52%	35%	13%	511
10 yrs or less in NH	52%	31%	17%	100
11 to 20 years	56%	31%	13%	107
More than 20 years	55%	33%	12%	397
18 to 34	50%	29%	21%	71
35 to 49	59%	28%	14%	172
50 to 64	59%	34%	7%	214
65 and over	47%	37%	16%	147
Male	54%	33%	13%	301
Female	55%	31%	14%	308
High school or less	41%	42%	17%	136
Some college	49%	36%	15%	138
College graduate	59%	28%	13%	209
Post-graduate	68%	24%	8%	124
Less than \$30K	45%	40%	15%	58
\$30K to \$60K	55%	32%	12%	95
\$60K to \$75K	47%	32%	20%	58
\$75K to \$100K	61%	26%	13%	63
\$100K or more	59%	30%	10%	139
Married	56%	31%	13%	415
Divorced/separated	50%	37%	13%	116
Never married	55%	31%	14%	75
Protestant	49%	32%	19%	217
Catholic	53%	36%	11%	203
Other	65%	27%	8%	166
Attend services 1 or more/week	49%	33%	18%	141
1-2 times a month	56%	29%	15%	85
Less often	54%	33%	13%	193
Never	61%	31%	8%	176
North Country	50%	32%	19%	54
Central / Lakes	52%	35%	13%	103
Connecticut Valley	63%	31%	6%	84
Mass Border	58%	28%	14%	167
Seacoast	55%	33%	12%	108
Manchester Area	46%	36%	18%	93
First Cong. Dist	52%	32%	15%	309
Second Cong. Dist	57%	32%	11%	300

Support / Oppose US War in Iraq

STATEWIDE	<u>Support</u> 37%	<u>Neutral</u> 5%	<u>Oppose</u> 57%	<u>(N=)</u> 616
Registered Democrat	7%	5%	88%	182
Registered Undeclared	40%	4%	55%	227
Registered Republican	73%	5%	22%	166
Democrat	9%	5%	86%	262
Independent	37%	6%	57%	122
Republican	72%	5%	23%	223
Liberal	8%	4%	88%	118
Moderate	33%	4%	63%	286
Conservative	69%	8%	23%	170
McCain/Palin Voter	74%	7%	20%	239
Obama/Biden Voter	11%	4%	85%	297
Other	47%	0%	53%	9
Did Not Vote in 2008	25%	10%	64%	46
Union household	42%	0%	58%	89
Non-union	36%	7%	57%	519
10 yrs or less in NH	37%	5%	58%	100
11 to 20 years	39%	6%	55%	109
More than 20 years	37%	5%	58%	402
18 to 34	50%	7%	44%	70
35 to 49	42%	4%	55%	173
50 to 64	29%	6%	65%	219
65 and over	38%	6%	55%	150
Male	44%	5%	51%	304
Female	31%	6%	63%	312
High school or less	45%	8%	47%	140
Some college	45%	3%	52%	139
College graduate	32%	4%	64%	212
Post-graduate	30%	9%	61%	123
Less than \$30K	30%	6%	64%	60
\$30K to \$60K	37%	11%	52%	95
\$60K to \$75K	43%	5%	53%	58
\$75K to \$100K	53%	0%	47%	62
\$100K or more	37%	4%	59%	142
Married	38%	4%	58%	420
Divorced/separated	39%	6%	55%	117
Never married	36%	10%	53%	75
Protestant	45%	5%	50%	218
Catholic	38%	7%	55%	205
Other	27%	4%	69%	168
Attend services 1 or more/week	34%	7%	59%	143
1-2 times a month	43%	6%	51%	86
Less often	42%	3%	54%	192
Never	32%	7%	61%	180
North Country	59%	3%	38%	58
Central / Lakes	34%	6%	60%	106
Connecticut Valley	28%	6%	66%	85
Mass Border	44%	5%	52%	167
Seacoast	36%	7%	58%	108
Manchester Area	27%	5%	68%	93
First Cong. Dist	37%	7%	56%	310
Second Cong. Dist	38%	4%	58%	307

How Long Keep Troops in Iraq?

STATEWIDE	Stay Until <u>Stable</u> 38%	Withdraw w/in 2 Yrs 52%	Don't <u>Know</u> 10%	(N=) 613
Registered Democrat	22%	70%	7%	180
Registered Undeclared	36%	54%	11%	224
Registered Republican	65%	25%	10%	166
Democrat	22%	70%	8%	262
Independent	30%	59%	11%	118
Republican	63%	27%	10%	223
Liberal	22%	69%	9%	116
Moderate	33%	59%	8%	285
Conservative	63%	27%	9%	170
McCain/Palin Voter	66%	25%	9%	239
Obama/Biden Voter	21%	71%	8%	295
Other	42%	58%	0%	9
Did Not Vote in 2008	20%	63%	17%	46
Union household	38%	48%	13%	90
Non-union	38%	53%	9%	515
10 yrs or less in NH	48%	46%	6%	100
11 to 20 years	34%	57%	9%	109
More than 20 years	37%	52%	11%	399
18 to 34	48%	42%	10%	71
35 to 49	33%	60%	8%	174
50 to 64	34%	56%	9%	216
65 and over	45%	42%	13%	148
Male	46%	46%	8%	304
Female	31%	58%	11%	309
High school or less	40%	50%	10%	140
Some college	37%	53%	11%	139
College graduate	41%	52%	7%	209
Post-graduate	34%	53%	12%	123
Less than \$30K	26%	65%	8%	59
\$30K to \$60K	37%	52%	12%	95
\$60K to \$75K	33%	58%	8%	58
\$75K to \$100K	52%	41%	7%	63
\$100K or more	40%	55%	5%	142
Married	38%	52%	10%	418
Divorced/separated	38%	54%	8%	117
Never married	40%	48%	12%	75
Protestant	44%	43%	12%	217
Catholic	37%	54%	8%	204
Other	33%	60%	7%	167
Attend services 1 or more/week	42%	45%	13%	143
1-2 times a month	40%	56%	4%	85
Less often	37%	50%	13%	192
Never	37%	57%	6%	178
North Country	51%	41%	8%	57
Central / Lakes	38%	53%	9%	106
Connecticut Valley	28%	67%	5%	85
Mass Border	40%	47%	14%	164
Seacoast	40%	50%	10%	107
Manchester Area	36%	55%	9%	94
First Cong. Dist	42%	48%	10%	310
Second Cong. Dist	35%	56%	9%	303

Be Upset if Troops Removed from Iraq / Kept in Iraq More than 2 Years?

	<u>Upset if Removed</u> 21%	<u>Not Upset if Removed</u> 15%	<u>Don't Know</u> 9%	<u>Not Upset if Stay</u> 15%	<u>Upset if Stay</u> 40%	<u>(N=)</u> 550
STATEWIDE						
Registered Democrat	4%	17%	6%	17%	56%	167
Registered Undeclared	19%	13%	10%	14%	44%	199
Registered Republican	47%	15%	9%	14%	14%	147
Democrat	4%	18%	6%	17%	55%	241
Independent	14%	13%	11%	15%	47%	104
Republican	46%	12%	12%	12%	18%	198
Liberal	4%	17%	7%	13%	59%	106
Moderate	16%	14%	7%	19%	44%	260
Conservative	44%	15%	12%	10%	20%	151
McCain/Palin Voter	48%	14%	12%	14%	13%	214
Obama/Biden Voter	3%	17%	6%	15%	60%	269
Other	19%	11%	11%	9%	49%	9
Did Not Vote in 2008	7%	8%	20%	27%	39%	38
Union household	21%	17%	8%	13%	41%	78
Non-union	21%	14%	9%	15%	40%	464
10 yrs or less in NH	25%	14%	13%	13%	35%	92
11 to 20 years	12%	19%	9%	11%	49%	98
More than 20 years	22%	14%	8%	17%	39%	354
18 to 34	31%	16%	9%	8%	36%	63
35 to 49	15%	12%	8%	24%	41%	157
50 to 64	16%	16%	10%	13%	45%	197
65 and over	30%	16%	9%	10%	36%	128
Male	24%	18%	11%	18%	30%	276
Female	18%	12%	8%	12%	51%	274
High school or less	27%	9%	14%	12%	39%	125
Some college	18%	18%	6%	15%	43%	123
College graduate	21%	18%	8%	14%	40%	193
Post-graduate	18%	13%	9%	19%	41%	106
Less than \$30K	17%	10%	9%	6%	58%	54
\$30K to \$60K	21%	13%	10%	16%	39%	83
\$60K to \$75K	23%	10%	4%	18%	46%	53
\$75K to \$100K	26%	22%	8%	9%	35%	59
\$100K or more	18%	16%	8%	27%	31%	135
Married	20%	16%	8%	16%	40%	373
Divorced/separated	24%	10%	12%	9%	45%	108
Never married	23%	14%	12%	13%	38%	66
Protestant	26%	17%	7%	17%	33%	187
Catholic	22%	11%	12%	13%	42%	186
Other	14%	17%	8%	15%	45%	155
Attend services 1 or more/week	23%	20%	7%	10%	40%	121
1-2 times a month	20%	13%	9%	20%	38%	82
Less often	24%	12%	9%	16%	40%	166
Never	17%	15%	11%	15%	42%	168
North Country	33%	10%	10%	14%	33%	49
Central / Lakes	21%	16%	8%	9%	46%	96
Connecticut Valley	16%	10%	8%	22%	45%	81
Mass Border	19%	16%	11%	12%	42%	141
Seacoast	23%	17%	7%	17%	36%	97
Manchester Area	19%	16%	11%	16%	37%	84
First Cong. Dist	22%	17%	10%	13%	38%	276
Second Cong. Dist	20%	12%	9%	16%	42%	274

Can US Win War in Iraq?

	Can Win 44%	Cannot Win 41%	Don't Know 15%	(N=) 597
STATEWIDE				
Registered Democrat	21%	64%	15%	174
Registered Undeclared	45%	39%	16%	217
Registered Republican	70%	19%	11%	165
Democrat	25%	60%	15%	254
Independent	34%	38%	28%	112
Republican	72%	21%	7%	222
Liberal	25%	58%	17%	110
Moderate	37%	48%	14%	283
Conservative	71%	19%	10%	167
McCain/Palin Voter	73%	18%	9%	235
Obama/Biden Voter	22%	60%	17%	284
Other	50%	32%	18%	9
Did Not Vote in 2008	40%	45%	15%	43
Union household	41%	46%	13%	88
Non-union	45%	40%	16%	502
10 yrs or less in NH	57%	35%	8%	95
11 to 20 years	43%	40%	18%	106
More than 20 years	40%	43%	16%	391
18 to 34	61%	29%	10%	69
35 to 49	43%	44%	13%	168
50 to 64	37%	49%	14%	211
65 and over	47%	32%	21%	145
Male	53%	36%	11%	294
Female	35%	46%	19%	303
High school or less	50%	34%	16%	136
Some college	43%	43%	14%	137
College graduate	43%	43%	14%	201
Post-graduate	41%	44%	16%	121
Less than \$30K	41%	44%	15%	60
\$30K to \$60K	48%	32%	21%	89
\$60K to \$75K	44%	40%	16%	58
\$75K to \$100K	50%	45%	5%	62
\$100K or more	39%	52%	9%	135
Married	44%	42%	15%	405
Divorced/separated	45%	38%	17%	117
Never married	45%	41%	14%	73
Protestant	49%	39%	12%	211
Catholic	46%	38%	15%	199
Other	37%	47%	16%	164
Attend services 1 or more/week	49%	33%	18%	138
1-2 times a month	49%	32%	19%	82
Less often	45%	41%	14%	190
Never	38%	51%	11%	172
North Country	55%	30%	15%	56
Central / Lakes	38%	39%	23%	99
Connecticut Valley	26%	58%	16%	82
Mass Border	53%	36%	11%	161
Seacoast	43%	42%	16%	104
Manchester Area	47%	42%	11%	94
First Cong. Dist	48%	39%	13%	300
Second Cong. Dist	40%	43%	16%	297

How is the War in Afghanistan going for the US?

STATEWIDE	<u>Well</u> 29%	<u>Badly</u> 56%	<u>Don't Know</u> 14%	<u>(N=)</u> 619
Registered Democrat	16%	72%	13%	183
Registered Undeclared	31%	57%	13%	226
Registered Republican	45%	38%	16%	166
Democrat	17%	69%	13%	263
Independent	26%	62%	12%	122
Republican	46%	38%	16%	223
Liberal	14%	74%	12%	117
Moderate	28%	62%	10%	287
Conservative	48%	35%	17%	170
McCain/Palin Voter	43%	42%	15%	239
Obama/Biden Voter	18%	69%	13%	299
Other	52%	34%	14%	9
Did Not Vote in 2008	18%	65%	17%	46
Union household	28%	61%	10%	90
Non-union	30%	56%	15%	521
10 yrs or less in NH	34%	58%	9%	101
11 to 20 years	32%	51%	17%	110
More than 20 years	27%	58%	15%	402
18 to 34	28%	53%	18%	71
35 to 49	32%	51%	18%	174
50 to 64	29%	62%	10%	218
65 and over	27%	57%	16%	150
Male	36%	56%	8%	306
Female	22%	57%	21%	313
High school or less	32%	48%	20%	140
Some college	33%	53%	14%	140
College graduate	27%	60%	13%	212
Post-graduate	24%	64%	12%	124
Less than \$30K	28%	47%	25%	60
\$30K to \$60K	34%	51%	15%	95
\$60K to \$75K	39%	48%	14%	58
\$75K to \$100K	34%	56%	10%	63
\$100K or more	26%	66%	9%	142
Married	30%	56%	15%	422
Divorced/separated	30%	56%	14%	117
Never married	27%	60%	13%	75
Protestant	27%	59%	15%	218
Catholic	36%	52%	12%	205
Other	24%	60%	16%	169
Attend services 1 or more/week	30%	50%	19%	143
1-2 times a month	31%	58%	11%	86
Less often	33%	55%	12%	194
Never	25%	62%	14%	181
North Country	40%	49%	11%	58
Central / Lakes	24%	58%	18%	106
Connecticut Valley	26%	64%	10%	85
Mass Border	30%	55%	15%	168
Seacoast	28%	58%	13%	107
Manchester Area	30%	54%	16%	94
First Cong. Dist	28%	56%	16%	310
Second Cong. Dist	30%	57%	13%	308

Should Amount of U.S. forces in Afghanistan be modified?

	<u>Increased</u> 47%	<u>Decreased</u> 17%	<u>Kept About the Same</u> 21%	<u>Don't Know</u> 15%	<u>(N=)</u> 608
STATEWIDE					
Registered Democrat	47%	23%	20%	10%	181
Registered Undeclared	45%	16%	22%	17%	221
Registered Republican	52%	9%	24%	16%	165
Democrat	46%	22%	18%	13%	260
Independent	42%	17%	23%	18%	118
Republican	50%	10%	25%	15%	221
Liberal	52%	24%	13%	11%	116
Moderate	50%	15%	20%	14%	284
Conservative	44%	12%	28%	16%	167
McCain/Palin Voter	49%	7%	28%	16%	235
Obama/Biden Voter	48%	23%	17%	13%	292
Other	42%	43%	10%	6%	9
Did Not Vote in 2008	33%	29%	16%	22%	46
Union household	52%	9%	25%	13%	89
Non-union	46%	18%	20%	15%	511
10 yrs or less in NH	46%	18%	19%	17%	99
11 to 20 years	49%	14%	19%	18%	107
More than 20 years	47%	18%	22%	13%	395
18 to 34	35%	27%	24%	14%	69
35 to 49	42%	17%	23%	18%	170
50 to 64	47%	19%	22%	12%	216
65 and over	56%	11%	16%	17%	148
Male	57%	10%	20%	13%	302
Female	36%	24%	22%	18%	306
High school or less	39%	18%	26%	17%	137
Some college	44%	20%	22%	14%	137
College graduate	51%	17%	21%	12%	211
Post-graduate	50%	14%	15%	20%	121
Less than \$30K	40%	18%	22%	21%	59
\$30K to \$60K	43%	21%	22%	14%	93
\$60K to \$75K	40%	17%	29%	14%	57
\$75K to \$100K	49%	16%	25%	10%	63
\$100K or more	51%	8%	27%	13%	142
Married	51%	17%	19%	13%	411
Divorced/separated	41%	16%	21%	22%	117
Never married	34%	20%	31%	15%	75
Protestant	47%	21%	21%	12%	215
Catholic	50%	11%	23%	17%	201
Other	42%	21%	21%	15%	166
Attend services 1 or more/week	48%	13%	16%	22%	139
1-2 times a month	57%	14%	24%	5%	83
Less often	45%	19%	24%	11%	191
Never	42%	20%	21%	17%	180
North Country	49%	12%	25%	14%	54
Central / Lakes	40%	19%	20%	21%	104
Connecticut Valley	51%	22%	16%	11%	84
Mass Border	48%	17%	22%	13%	167
Seacoast	45%	13%	27%	15%	107
Manchester Area	48%	18%	16%	18%	93
First Cong. Dist	44%	18%	23%	15%	306
Second Cong. Dist	50%	16%	19%	15%	301