

THE GRANITE STATE POLL

THE UNIVERSITY OF NEW HAMPSHIRE SURVEY CENTER

April 27, 2009

NEW HAMPSHIRE THINKS U.S. IS ON THE RIGHT TRACK AFTER OBAMA'S FIRST 100 DAYS

By: Andrew E. Smith, Ph.D.
UNH Survey Center
603/862-2226
www.unh.edu/survey-center

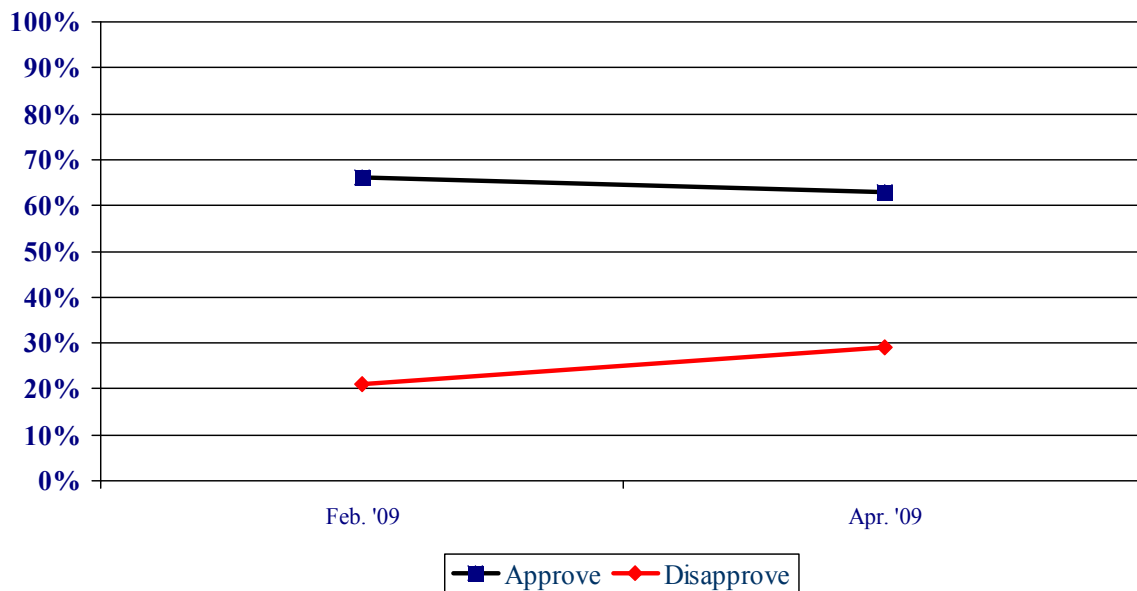
DURHAM, NH – After his first 100 days in office, New Hampshire adults give President Barack Obama high job approval ratings. And for the first time since 2005, a majority of New Hampshire adults think the United States is heading in the right direction.

These findings are based on the latest **Granite State Poll**,* conducted by the University of New Hampshire Survey Center. Five hundred and three (503) randomly selected New Hampshire adults were interviewed by telephone between April 13 and April 22, 2009. The margin of sampling error for the survey is +/-4.4 percent.

Presidential Approval

A majority of New Hampshire adults continue to approve of the job President Barack Obama is doing after his first 100 days in office. But there has been an increase in those that disapprove of his job performance, as many who were previously neutral have developed a more negative view. Currently, 63% of New Hampshire adults say they approve of the job Obama is doing as president, 29% disapprove, and 8% are neutral. A recent Gallup poll showed 65% of U.S. residents approve of the way Obama is doing as President.

Presidential Approval – Barack Obama

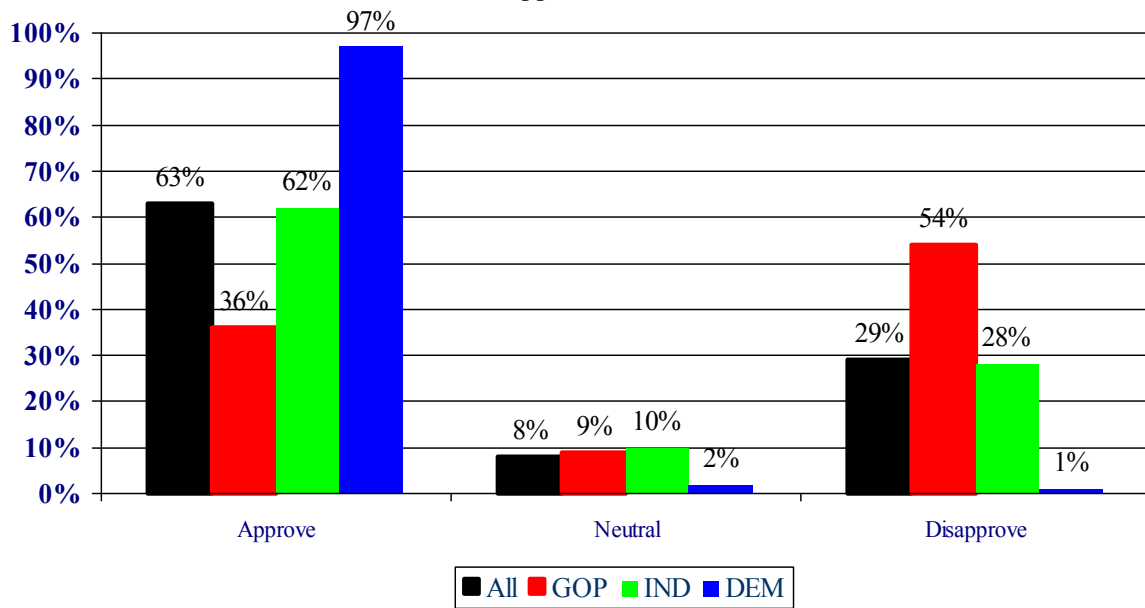


Obama maintains the approval of political independents and receives the approval of virtually all Democrats. Currently, 62% of political independents approve of his job performance, and 97% of Democrats approve. However, a majority of Republicans disapprove of Obama's performance as President – 54% disapprove while 36% approve – an indication that partisan divisions are returning.

“Obama's approval ratings in New Hampshire are similar to his national ratings,” said Andrew Smith, Director of the UNH Survey Center. “But the increasing polarization between Republicans and Democrats is an indication that bitter partisanship is likely to return.”

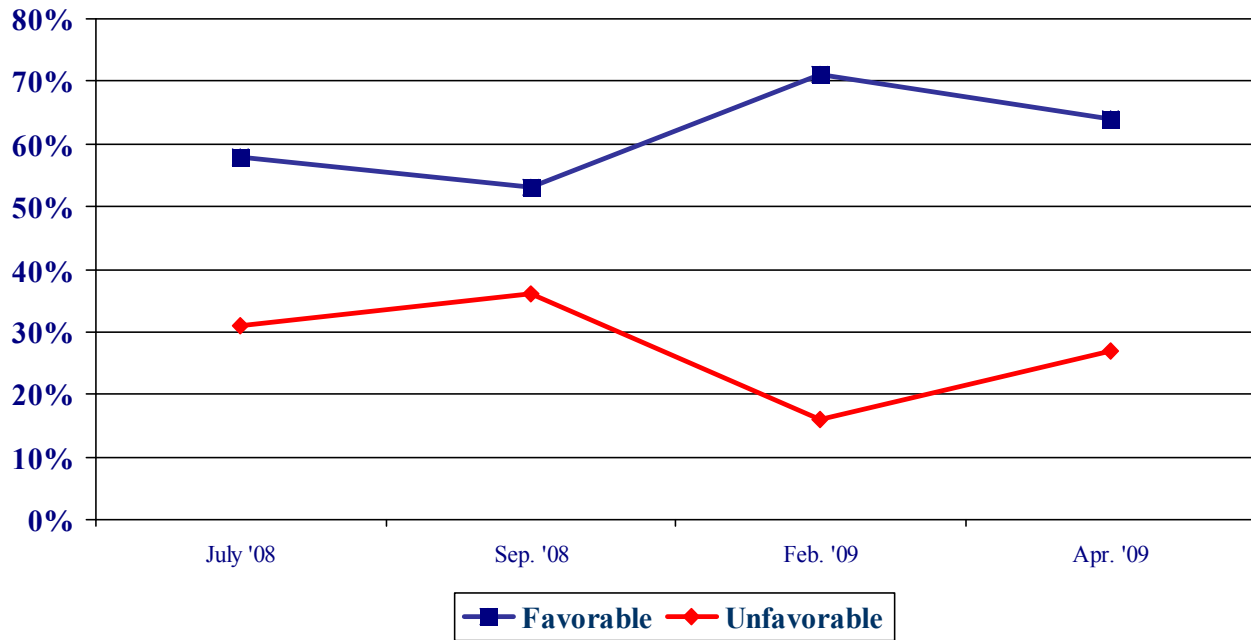
* We ask that this copyrighted information be referred to as *the Granite State Poll*, conducted by the University of New Hampshire Survey Center.

Presidential Approval – Barack Obama



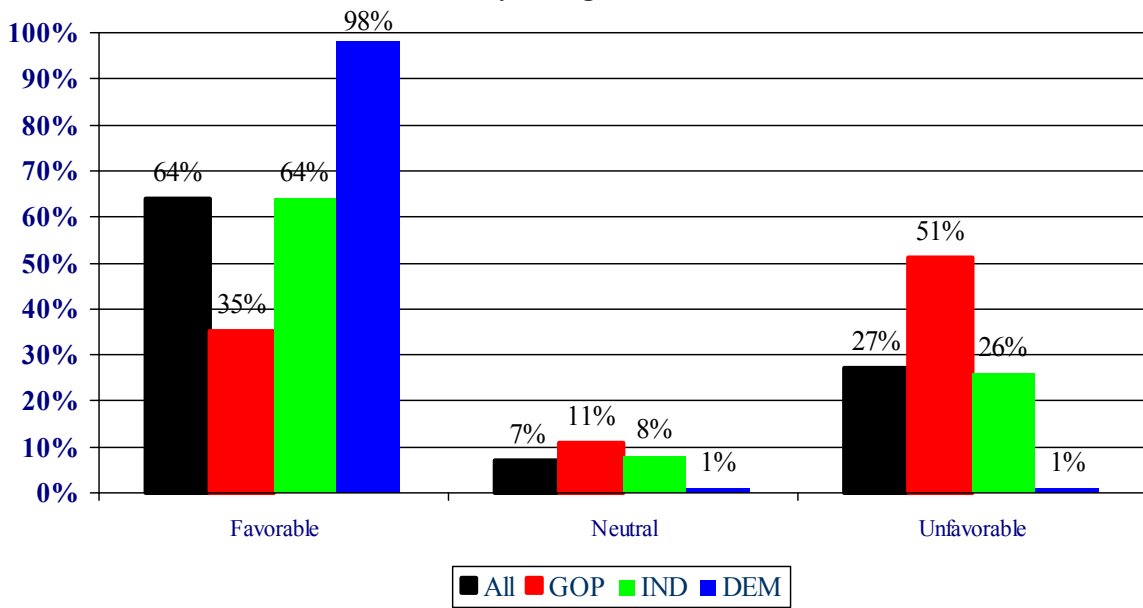
While Obama’s personal favorability rating remains at high levels, there has been an increase in his unfavorable ratings, similar to his job performance approval. Obama is currently viewed favorably by 64% of NH adults, 27% have an unfavorable opinion of him, and 7% are neutral. Obama’s net favorability rating, the percentage having a favorable opinion minus the percentage having an unfavorable opinion, is +37%, a substantial drop from +55% shortly after his inauguration.

Favorability Ratings – Barack Obama



Nearly all Democrats (98%) have a favorable opinion of Obama, 35% of Republicans have a favorable opinion, and 64% of political independents view him favorably.

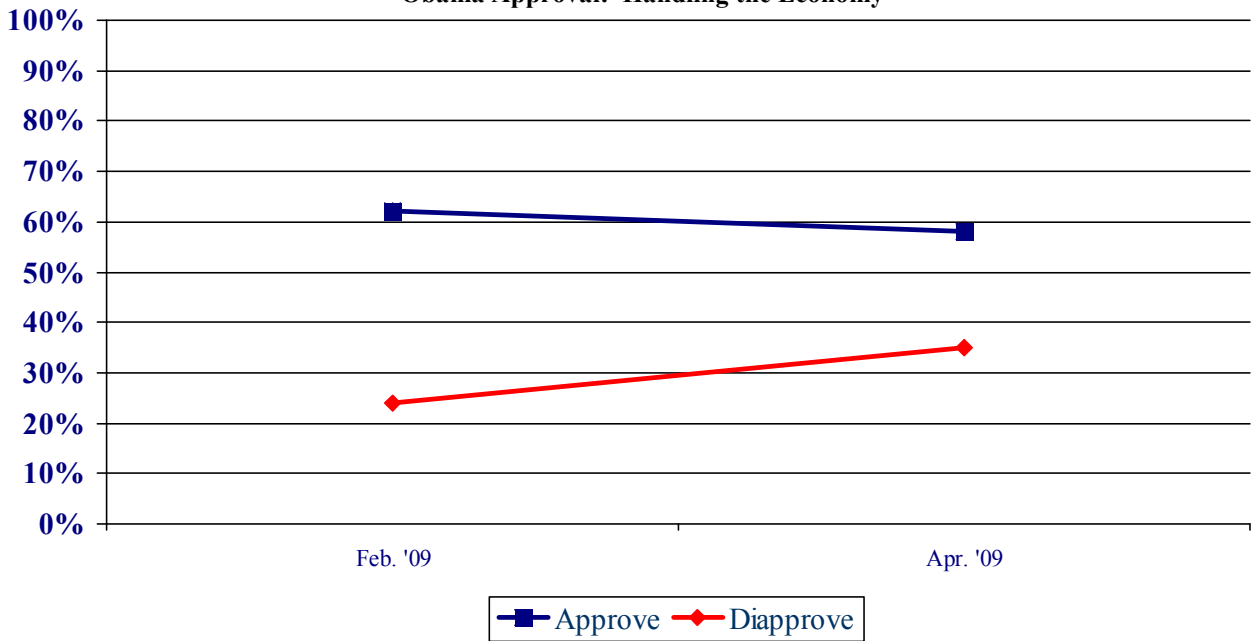
Favorability Rating – Barack Obama



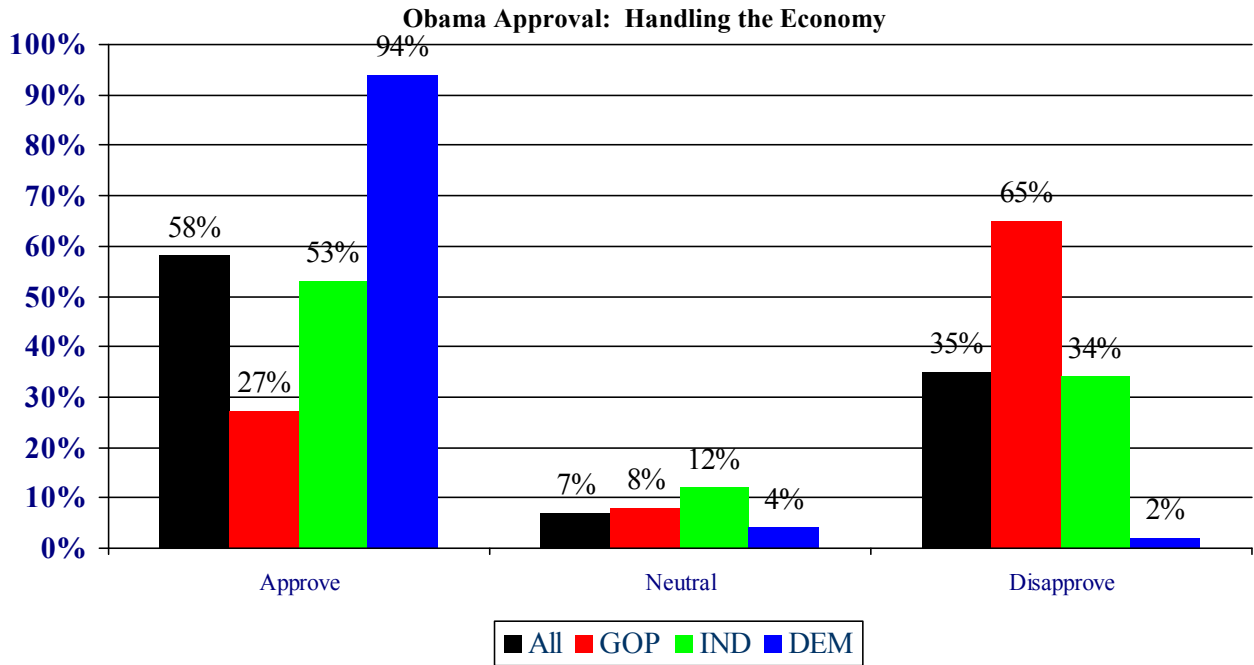
Economic Approval Rating

Despite the continued economic difficulties throughout the county, a majority of Granite stater approve of the actions Obama has taken so far to improve the market. Currently, 58% of New Hampshire adults approve of how Obama is handling the economy, 35% disapprove, and 7% are neutral.

Obama Approval: Handling the Economy

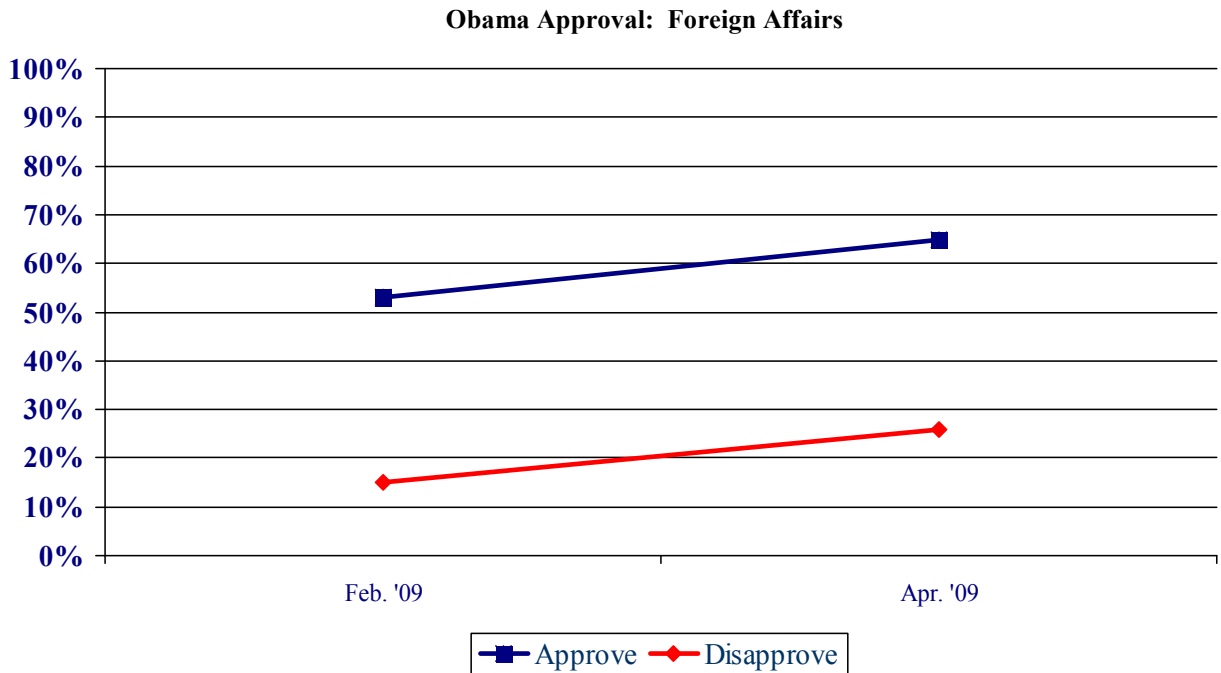


Similar to other measures, there is a significant partisan gap in approval of Obama's handling of the economy. Currently, 94% of Democrats, 27% of Republicans, and 53% of independents approve of Obama's job handling of the economy.



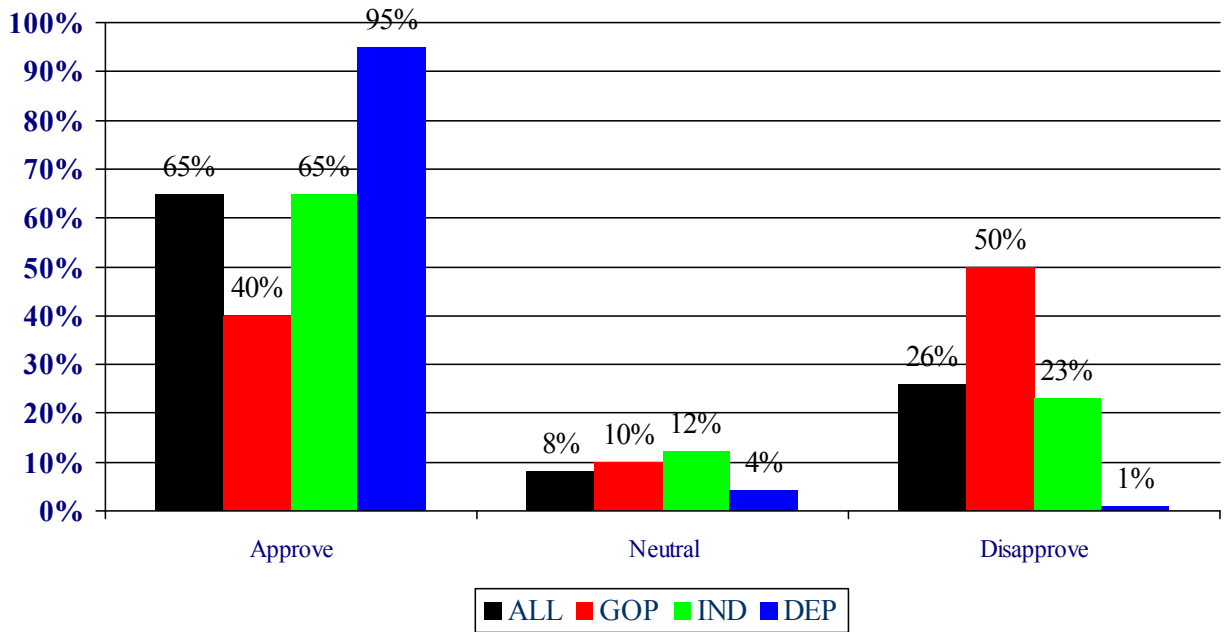
Foreign Affairs

Obama has seen a significant increase in the percentage of New Hampshire adults that support him on foreign affairs. Currently, 65% approve of how Obama is handling foreign affairs, 26% disapprove, and 8% are neutral.



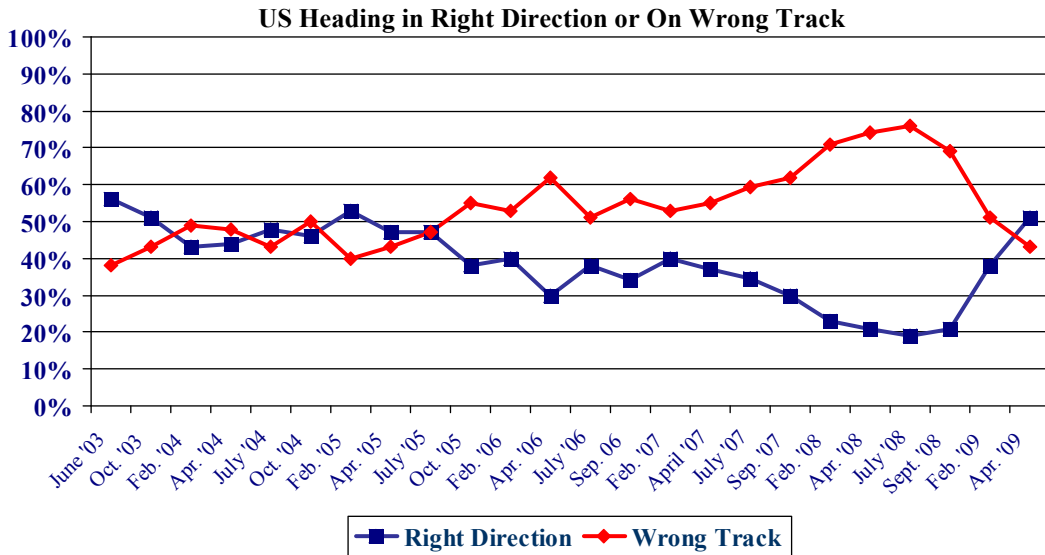
The partisan gap in approval of Obama's handling of foreign affairs, while significant, is less severe in comparison to his economic approval. Obama receives approval of his actions in regards to foreign affairs from 95% of Democrats, 40% of Republicans, and 65% of independents.

Obama Approval: Foreign Affairs



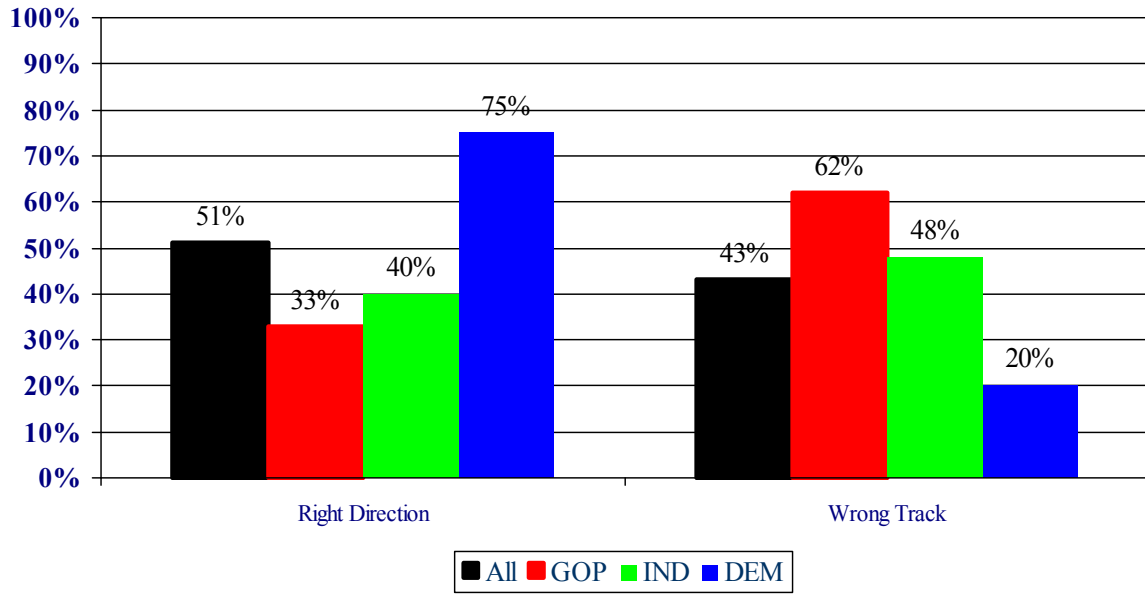
Right Direction – Wrong Track

For the first time since Spring of 2005, a majority of New Hampshire residents feel that the country is going in the right direction. Currently, 51% of New Hampshire adults think things in this country are generally going in the right direction, 43% think things are seriously off on the wrong track, and 7% don't know.



Democrats are most optimistic about the county's direction, with 75% thinking we are on the right track and 20% saying the country is on the wrong track, while only 33% of Republicans think the US is going in the right direction and 62% say things on the wrong track.

US Heading in Right Direction or On Wrong Track



Granite State Poll Methodology

These findings are based on the latest **Granite State Poll** conducted by the University of New Hampshire Survey Center. Five hundred and three (503) randomly selected New Hampshire adults were interviewed by telephone between April 13 and April 22, 2009. The margin of sampling error for the survey is +/-4.4 percent.

The data have been weighted to adjust for numbers of adults and telephone lines within households, respondent sex, and region of the state. In addition to potential sampling error, all surveys have other potential sources of non-sampling error including question order effects, question wording effects, and non-response.

Presidential Approval

“GENERALLY SPEAKING, do you approve or disapprove of the way Barack Obama is handling his job as president?”

	<u>Approve</u>	<u>Neutral</u>	<u>Disapprove</u>	<u>(N)</u>
Apr. '09	63%	8%	29%	(500)
Feb. '09	66%	14%	21%	(614)

Presidential Approval – Economy

“GENERALLY SPEAKING, do you approve or disapprove of the way President Obama is handling THE ECONOMY?”

	<u>Approve</u>	<u>Neutral</u>	<u>Disapprove</u>	<u>(N)</u>
Apr. '09	58%	7%	35%	(499)
Feb. '09	62%	14%	24%	(614)

Presidential Approval - Foreign Affairs

“GENERALLY SPEAKING, do you approve or disapprove of the way President Obama is handling FOREIGN AFFAIRS?”

	<u>Approve</u>	<u>Neutral</u>	<u>Disapprove</u>	<u>(N)</u>
Apr. '09	65%	8%	26%	(496)
Feb. '09	53%	32%	15%	(607)

Favorability Rating – President Barack Obama

"Next, I'd like to get your overall opinion of some people who have been in the news. As I read each name, please say if you have a favorable or unfavorable opinion of this person - or if you don't know enough about him or her to say. President Barack Obama?"

	<u>Favorable</u>	<u>Neutral</u>	<u>Unfavorable</u>	<u>NET</u>	<u>(N=)</u>
Apr. '09	64%	7%	27%	+37%	(503)
Feb. '09	71%	9%	16%	+55%	(619)
Sep. '08	53%	9%	36%	+17%	(522)
July '08	58%	10%	31%	+27%	(474)

Right Track - Wrong Track

“Do you think things in this country are generally going in the right direction or are they seriously off on the wrong track?”

	<u>Right Direction</u>	<u>Wrong Track</u>	<u>Don't Know</u>	<u>(N=)</u>
Apr. '09	51%	43%	7%	(498)
Feb. '09	38%	51%	11%	(610)
Sep. '08	21%	69%	10%	(540)
July '08	19%	73%	8%	(508)
Apr. '08	21%	74%	5%	(487)
Feb. '08	23%	71%	7%	(553)
Sep. '07	30%	62%	8%	(505)
July '07	34%	59%	6%	(523)
Apr. '07	37%	55%	8%	(510)
Feb. '07	40%	53%	7%	(516)
Sept. '06	34%	56%	10%	(510)
July '06	38%	51%	11%	(496)
Apr. '06	30%	62%	8%	(501)
Feb. '06	40%	53%	7%	(487)
Oct. '05	38%	55%	7%	(498)
July '05	47%	47%	6%	(492)
Apr. '05	46%	43%	11%	(487)
Feb. '05	53%	40%	7%	(535)
Oct. '04	46%	50%	4%	(574)
July '04	48%	43%	10%	(500)
Apr. '04	44%	48%	8%	(535)
Feb. '04	43%	49%	8%	(503)
Oct. '03	51%	43%	6%	(487)
June '03	56%	38%	5%	(511)

Presidential Approval Rating - Overall

STATEWIDE	<u>Approve</u> 63%	<u>Neutral</u> 8%	<u>Disapprove</u> 29%	<u>(N=)</u> 500
Registered Democrat	95%	3%	3%	122
Registered Undeclared	67%	4%	29%	197
Registered Republican	30%	13%	56%	145
Democrat	97%	2%	1%	179
Independent	62%	10%	28%	101
Republican	36%	9%	54%	204
Liberal	93%	3%	4%	112
Moderate	75%	7%	18%	188
Conservative	27%	9%	64%	154
McCain/Palin Voter	30%	10%	60%	208
Obama/Biden Voter	94%	3%	4%	225
Other	56%	24%	20%	18
Did Not Vote in 2008	70%	15%	16%	34
Union household	79%	4%	17%	71
Non-union	61%	8%	31%	424
10 yrs or less in NH	65%	7%	28%	92
11 to 20 years	72%	2%	26%	91
More than 20 years	61%	9%	30%	309
18 to 34	66%	6%	28%	55
35 to 49	67%	6%	27%	142
50 to 64	60%	9%	31%	180
65 and over	65%	8%	27%	104
Male	62%	8%	30%	241
Female	65%	7%	29%	259
High school or less	54%	14%	32%	129
Some college	64%	7%	28%	116
College graduate	65%	6%	29%	139
Post-graduate	71%	1%	28%	108
Less than \$30K	65%	8%	27%	44
\$30K to \$60K	70%	5%	24%	91
\$60K to \$75K	61%	5%	34%	48
\$75K to \$100K	67%	6%	28%	55
\$100K or more	64%	5%	31%	106
Married	60%	7%	33%	363
Divorced/separated	75%	6%	19%	84
Never married	71%	11%	19%	49
Protestant	61%	6%	34%	192
Catholic	54%	11%	35%	162
Other	80%	5%	14%	131
Attend services 1 or more/week	47%	8%	44%	142
1-2 times a month	74%	4%	22%	55
Less often	63%	9%	28%	145
Never	75%	6%	19%	145
North Country	60%	11%	30%	43
Central / Lakes	66%	10%	24%	82
Connecticut Valley	66%	13%	21%	66
Mass Border	66%	6%	28%	138
Seacoast	72%	2%	26%	81
Manchester Area	50%	7%	43%	90
First Cong. Dist	61%	6%	33%	260
Second Cong. Dist	67%	10%	24%	237

Presidential Approval Rating - Economy

STATEWIDE	<u>Approve</u> 58%	<u>Neutral</u> 7%	<u>Disapprove</u> 35%	<u>(N=)</u> 499
Registered Democrat	95%	2%	3%	122
Registered Undeclared	60%	6%	34%	196
Registered Republican	24%	10%	66%	145
Democrat	94%	4%	2%	179
Independent	53%	12%	34%	101
Republican	27%	8%	65%	203
Liberal	93%	2%	5%	112
Moderate	68%	8%	24%	187
Conservative	20%	9%	71%	156
McCain/Palin Voter	22%	7%	71%	209
Obama/Biden Voter	90%	5%	5%	223
Other	61%	19%	20%	18
Did Not Vote in 2008	57%	22%	21%	34
Union household	72%	4%	24%	71
Non-union	55%	8%	37%	423
10 yrs or less in NH	58%	9%	33%	90
11 to 20 years	65%	5%	30%	91
More than 20 years	56%	8%	37%	310
18 to 34	59%	4%	37%	55
35 to 49	62%	8%	30%	143
50 to 64	53%	8%	38%	177
65 and over	59%	9%	32%	104
Male	56%	6%	38%	240
Female	59%	9%	32%	259
High school or less	44%	15%	41%	127
Some college	59%	5%	36%	118
College graduate	58%	5%	37%	138
Post-graduate	70%	5%	24%	108
Less than \$30K	59%	11%	30%	44
\$30K to \$60K	61%	9%	30%	91
\$60K to \$75K	56%	5%	38%	48
\$75K to \$100K	56%	2%	42%	54
\$100K or more	57%	11%	32%	106
Married	53%	8%	39%	363
Divorced/separated	72%	6%	22%	84
Never married	65%	7%	28%	48
Protestant	51%	8%	40%	190
Catholic	52%	9%	39%	162
Other	76%	4%	20%	133
Attend services 1 or more/week	45%	8%	47%	142
1-2 times a month	59%	5%	36%	55
Less often	57%	12%	32%	142
Never	69%	5%	27%	146
North Country	62%	9%	30%	43
Central / Lakes	68%	6%	27%	82
Connecticut Valley	61%	12%	27%	65
Mass Border	57%	9%	34%	136
Seacoast	62%	4%	34%	83
Manchester Area	41%	6%	52%	90
First Cong. Dist	53%	6%	41%	261
Second Cong. Dist	63%	9%	27%	234

Presidential Approval Rating - Foreign Affairs

STATEWIDE	<u>Approve</u> 65%	<u>Neutral</u> 8%	<u>Disapprove</u> 26%	<u>(N=)</u> 496
Registered Democrat	93%	4%	3%	122
Registered Undeclared	67%	9%	24%	196
Registered Republican	39%	7%	54%	142
Democrat	95%	4%	1%	178
Independent	65%	12%	23%	101
Republican	40%	10%	50%	201
Liberal	92%	5%	4%	110
Moderate	76%	7%	16%	186
Conservative	34%	9%	57%	153
McCain/Palin Voter	35%	9%	56%	206
Obama/Biden Voter	92%	5%	3%	224
Other	77%	23%	0%	18
Did Not Vote in 2008	67%	18%	15%	33
Union household	78%	6%	16%	71
Non-union	63%	9%	28%	420
10 yrs or less in NH	65%	9%	26%	91
11 to 20 years	71%	6%	23%	91
More than 20 years	63%	9%	27%	306
18 to 34	67%	8%	25%	55
35 to 49	68%	8%	24%	143
50 to 64	61%	10%	29%	177
65 and over	68%	8%	24%	102
Male	65%	7%	28%	239
Female	65%	10%	25%	257
High school or less	54%	18%	27%	124
Some college	64%	8%	28%	118
College graduate	67%	6%	27%	139
Post-graduate	75%	1%	24%	107
Less than \$30K	69%	8%	22%	44
\$30K to \$60K	65%	11%	23%	91
\$60K to \$75K	57%	14%	28%	48
\$75K to \$100K	67%	7%	26%	56
\$100K or more	70%	4%	26%	106
Married	64%	8%	28%	359
Divorced/separated	70%	11%	20%	84
Never married	67%	8%	25%	49
Protestant	61%	9%	30%	191
Catholic	57%	10%	33%	160
Other	83%	6%	11%	131
Attend services 1 or more/week	52%	11%	37%	141
1-2 times a month	79%	0%	21%	53
Less often	63%	10%	26%	144
Never	74%	8%	18%	145
North Country	57%	13%	30%	43
Central / Lakes	66%	10%	24%	82
Connecticut Valley	73%	12%	14%	66
Mass Border	63%	8%	29%	136
Seacoast	72%	6%	22%	81
Manchester Area	60%	4%	36%	88
First Cong. Dist	66%	5%	29%	258
Second Cong. Dist	65%	12%	23%	235

U.S. Right Direction / Wrong Track

	<u>Right Direction</u> 51%	<u>Wrong Track</u> 43%	<u>Don't Know</u> 7%	<u>(N=)</u> 498
STATEWIDE				
Registered Democrat	78%	16%	6%	122
Registered Undeclared	49%	44%	7%	196
Registered Republican	32%	63%	5%	145
Democrat	75%	20%	5%	177
Independent	40%	48%	11%	103
Republican	33%	62%	6%	202
Liberal	76%	20%	3%	111
Moderate	57%	36%	7%	188
Conservative	23%	71%	6%	155
McCain/Palin Voter	30%	65%	5%	210
Obama/Biden Voter	74%	21%	5%	221
Other	27%	58%	14%	18
Did Not Vote in 2008	42%	46%	12%	34
Union household	68%	31%	1%	71
Non-union	48%	45%	7%	422
10 yrs or less in NH	54%	41%	5%	88
11 to 20 years	49%	44%	7%	91
More than 20 years	50%	44%	7%	311
18 to 34	42%	51%	7%	54
35 to 49	49%	46%	6%	142
50 to 64	52%	41%	7%	177
65 and over	54%	40%	6%	106
Male	50%	44%	6%	242
Female	52%	41%	7%	256
High school or less	44%	50%	6%	126
Some college	46%	44%	10%	118
College graduate	48%	46%	6%	137
Post-graduate	66%	31%	3%	108
Less than \$30K	48%	44%	8%	44
\$30K to \$60K	53%	42%	5%	91
\$60K to \$75K	51%	43%	6%	47
\$75K to \$100K	56%	38%	6%	54
\$100K or more	55%	40%	5%	105
Married	50%	44%	6%	363
Divorced/separated	56%	36%	7%	84
Never married	44%	48%	8%	47
Protestant	49%	47%	4%	190
Catholic	48%	41%	10%	160
Other	55%	40%	5%	133
Attend services 1 or more/week	45%	50%	5%	142
1-2 times a month	51%	43%	6%	55
Less often	53%	41%	6%	141
Never	51%	42%	8%	146
North Country	57%	43%	0%	43
Central / Lakes	57%	37%	6%	83
Connecticut Valley	47%	44%	9%	67
Mass Border	51%	45%	4%	134
Seacoast	47%	45%	8%	82
Manchester Area	48%	42%	10%	90
First Cong. Dist	48%	45%	8%	259
Second Cong. Dist	54%	41%	5%	236

Favorability Rating – Barack Obama

STATEWIDE	<u>Favorable</u> 64%	<u>Neutral</u> 7%	<u>Unfavorable</u> 27%	<u>DK</u> 2%	<u>(N)</u> 503
Registered Democrat	96%	3%	2%	0%	122
Registered Undeclared	66%	7%	26%	1%	200
Registered Republican	34%	10%	52%	4%	145
Democrat	98%	1%	1%	0%	179
Independent	64%	8%	26%	2%	103
Republican	35%	11%	51%	3%	205
Liberal	94%	1%	5%	0%	112
Moderate	77%	5%	16%	2%	189
Conservative	27%	11%	59%	3%	156
McCain/Palin Voter	32%	11%	55%	2%	211
Obama/Biden Voter	93%	3%	3%	1%	225
Other	67%	5%	15%	14%	18
Did Not Vote in 2008	65%	12%	20%	3%	34
Union household	83%	3%	14%	0%	71
Non-union	61%	8%	29%	2%	427
10 yrs or less in NH	63%	7%	28%	2%	92
11 to 20 years	70%	7%	23%	0%	91
More than 20 years	63%	7%	27%	2%	312
18 to 34	66%	5%	29%	0%	55
35 to 49	65%	5%	26%	4%	143
50 to 64	64%	9%	26%	1%	180
65 and over	63%	8%	27%	2%	106
Male	63%	8%	28%	2%	244
Female	66%	6%	26%	2%	259
High school or less	55%	13%	30%	2%	130
Some college	64%	5%	25%	5%	118
College graduate	66%	4%	29%	1%	139
Post-graduate	71%	6%	23%	0%	108
Less than \$30K	67%	8%	25%	0%	44
\$30K to \$60K	68%	5%	26%	2%	91
\$60K to \$75K	56%	10%	32%	3%	48
\$75K to \$100K	64%	10%	24%	2%	56
\$100K or more	66%	4%	28%	3%	106
Married	62%	6%	30%	2%	364
Divorced/separated	72%	10%	17%	1%	84
Never married	67%	10%	21%	3%	50
Protestant	60%	9%	29%	2%	192
Catholic	59%	7%	33%	1%	162
Other	77%	6%	14%	3%	134
Attend services 1 or more/week	51%	8%	38%	2%	142
1-2 times a month	72%	4%	24%	0%	55
Less often	63%	9%	25%	2%	145
Never	73%	5%	19%	2%	148
North Country	59%	6%	32%	3%	43
Central / Lakes	67%	4%	25%	4%	83
Connecticut Valley	68%	10%	19%	3%	67
Mass Border	68%	6%	25%	0%	138
Seacoast	69%	6%	24%	2%	83
Manchester Area	50%	11%	38%	2%	90
First Cong. Dist	62%	6%	30%	1%	261
Second Cong. Dist	67%	8%	23%	2%	238