

THE WMUR GRANITE STATE POLL

THE UNIVERSITY OF NEW HAMPSHIRE SURVEY CENTER

October 7, 2009

OBAMA STEADILY LOSING POPULARITY IN NEW HAMPSHIRE

By: Andrew E. Smith, Ph.D.
UNH Survey Center
603/862-2226
www.unh.edu/survey-center

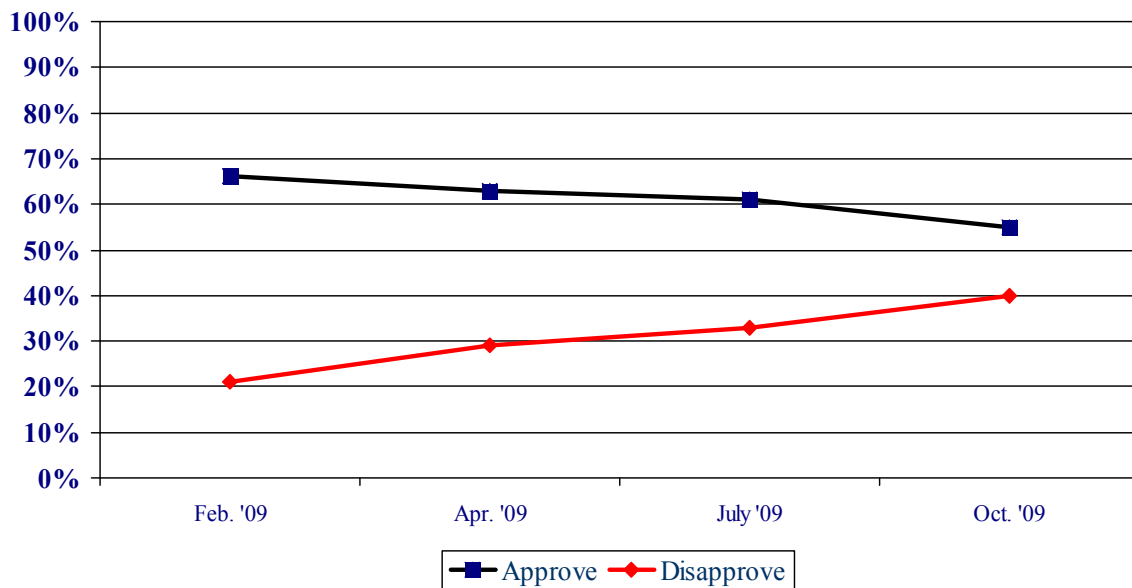
DURHAM, NH – President Barack Obama has been losing support in New Hampshire and his job approval ratings are currently at 55%. Granite Staters are most concerned about his handling of health care policy and the economy.

These findings are based on the latest **WMUR Granite State Poll**,* conducted by the University of New Hampshire Survey Center. Five hundred and three (503) randomly selected New Hampshire adults were interviewed by telephone between September 25 and October 2, 2009. The margin of sampling error for the survey is +/-4.4 percent.

Presidential Approval

As the economic difficulties in New Hampshire and the country continue, and in the wake of protracted Congressional debates about reforming America's health care system, President Obama's job approval rating in New Hampshire has slipped in recent months. In the most recent Granite State Poll, 55% of New Hampshire adults say they approve of the job Obama is doing as president, 40% disapprove, and 5% are neutral. These figures are similar to his national ratings, a recent Gallup poll showed 53% of U.S. residents approved of the way Obama is doing as President. In the Summer Granite State Poll, 63% of New Hampshire adults said they approved of the job Obama was doing as president.

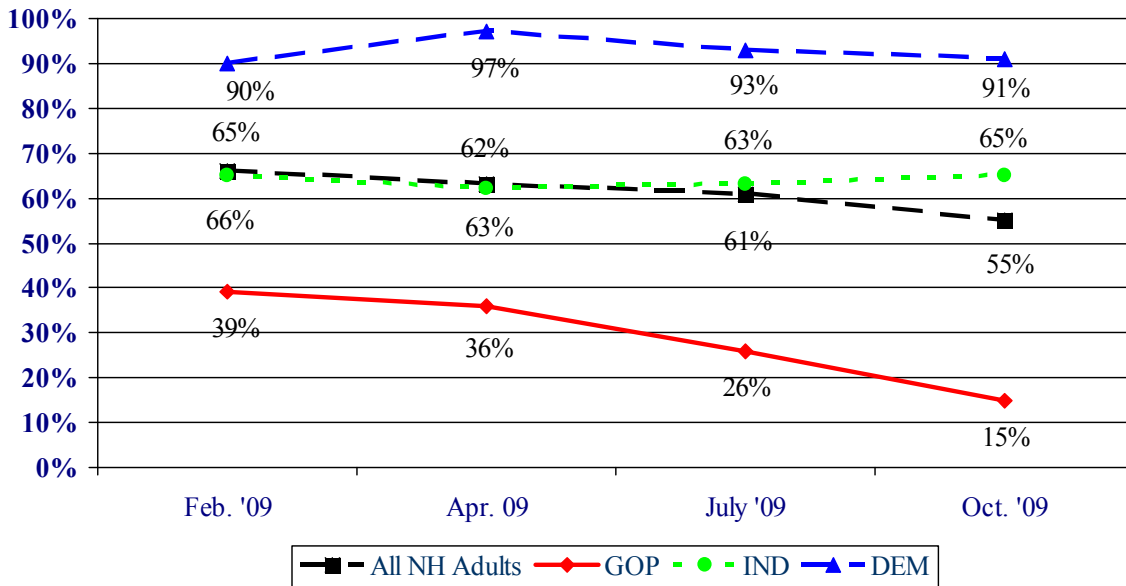
Presidential Approval – Barack Obama



The hopes of President Obama being a bipartisan president have disappeared as New Hampshire residents are firmly polarized along partisan lines in how they view his job performance. Currently, 91% of New Hampshire Democrats, and 65% of political independents approve of the job Obama is doing as President but 79% of Republicans disapprove.

* We ask that this copyrighted information be referred to as *the Granite State Poll*, sponsored by WMUR-TV, and conducted by the University of New Hampshire Survey Center.

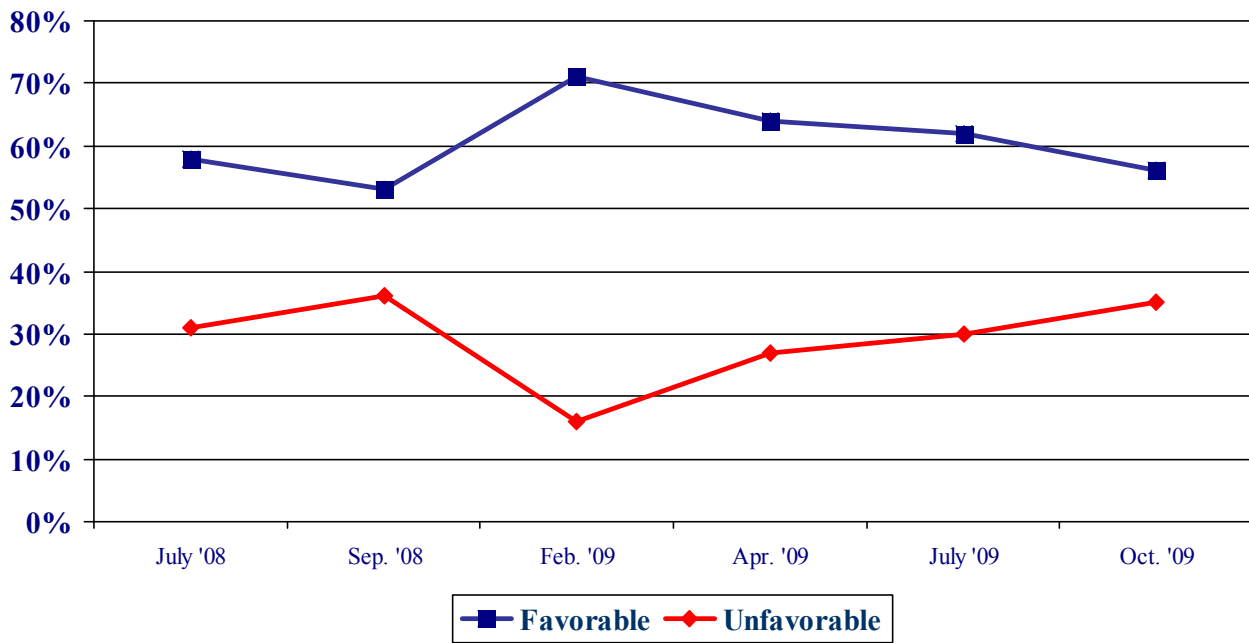
Presidential Approval in NH by Party Identification



Obama’s personal favorability rating mirrors his job approval numbers. Obama is currently viewed favorably by 56% of New Hampshire adults, 35% have an unfavorable opinion of him, and 8% are neutral. Obama’s net favorability rating, the percentage having a favorable opinion minus the percentage having an unfavorable opinion, is +21%, a significant drop from +32% in July and down substantially from +55% shortly after his inauguration.

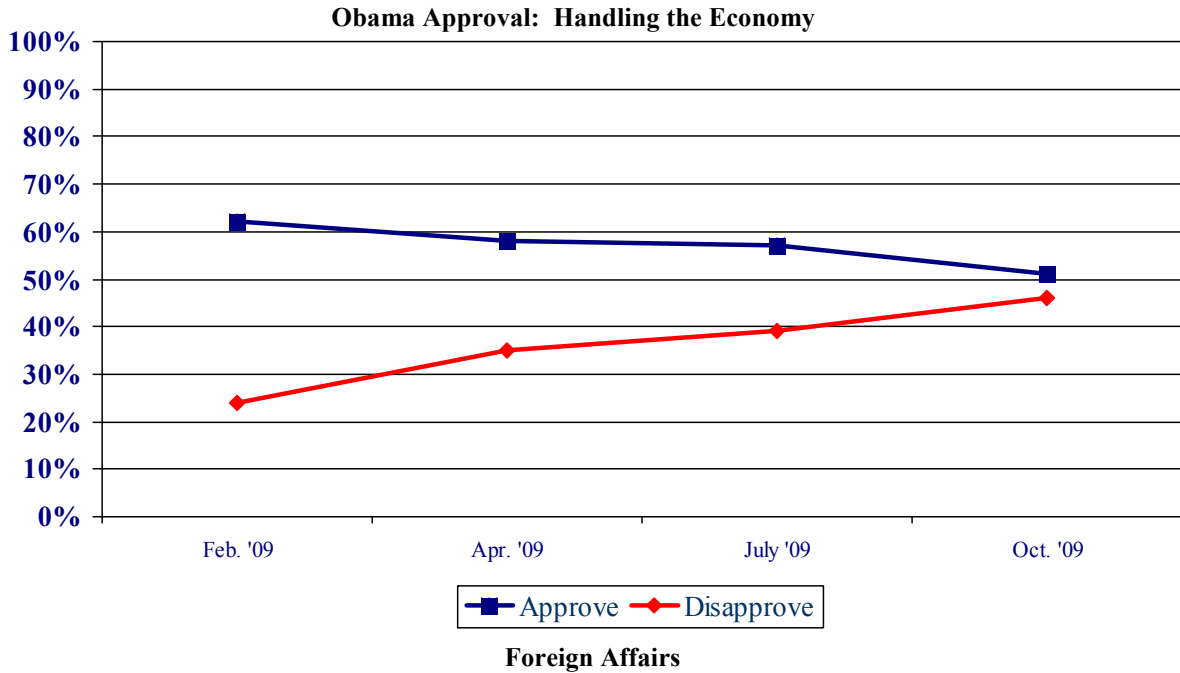
Democrat support remains at a high 92% and 64% of political independents view Obama favorably, but only 16% of Republicans have a favorable opinion.

Favorability Ratings – Barack Obama



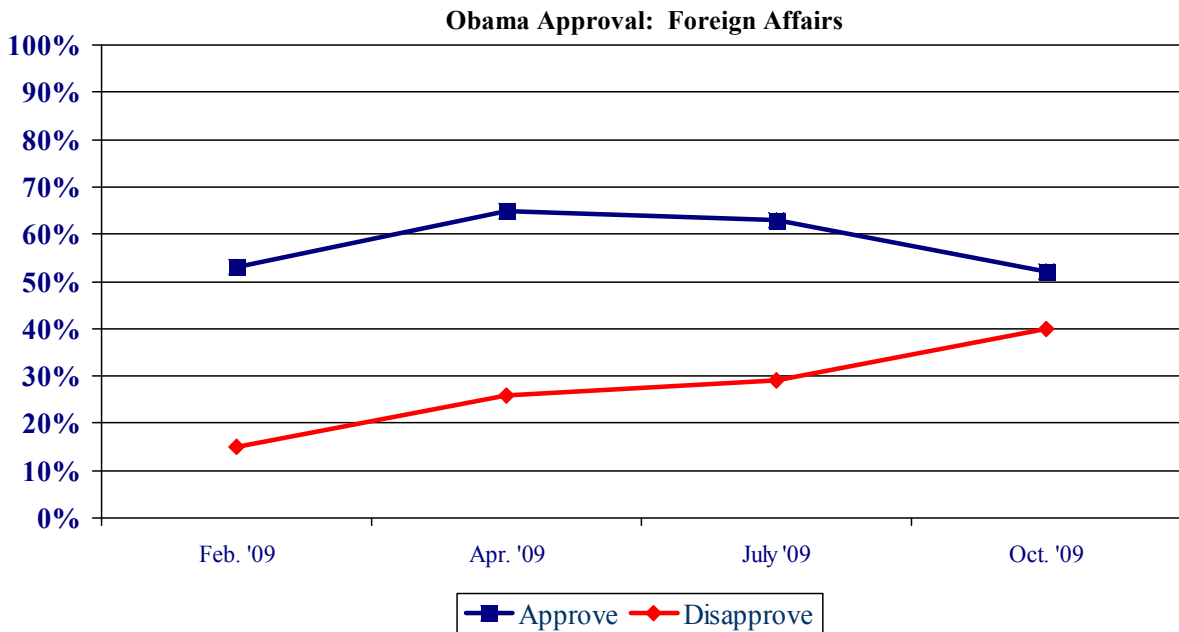
Economic Approval Rating

In light of the continued economic difficulties throughout the county, only a slim majority of New Hampshire residents approve of the actions the Obama administration has taken on the economy. Currently, 51% of New Hampshire adults approve of how Obama is handling the economy, 46% disapprove, and 3% are neutral. The percentage of New Hampshire residents who disapprove of the Obama administration's handling of the economy has been steadily increasing, from 24% in February to 46% today. As with other approval measures, there is a considerable partisan gap in approval of Obama's handling of the economy. Currently, Democrats (84%) and independents (59%) approve of Obama's job handling of the economy while only 15% of Republicans approve.



Obama has only marginal support from New Hampshire adults in how his administration is handling foreign affairs. Currently, 52% approve of how Obama is handling foreign affairs, 40% disapprove, and 8% are neutral.

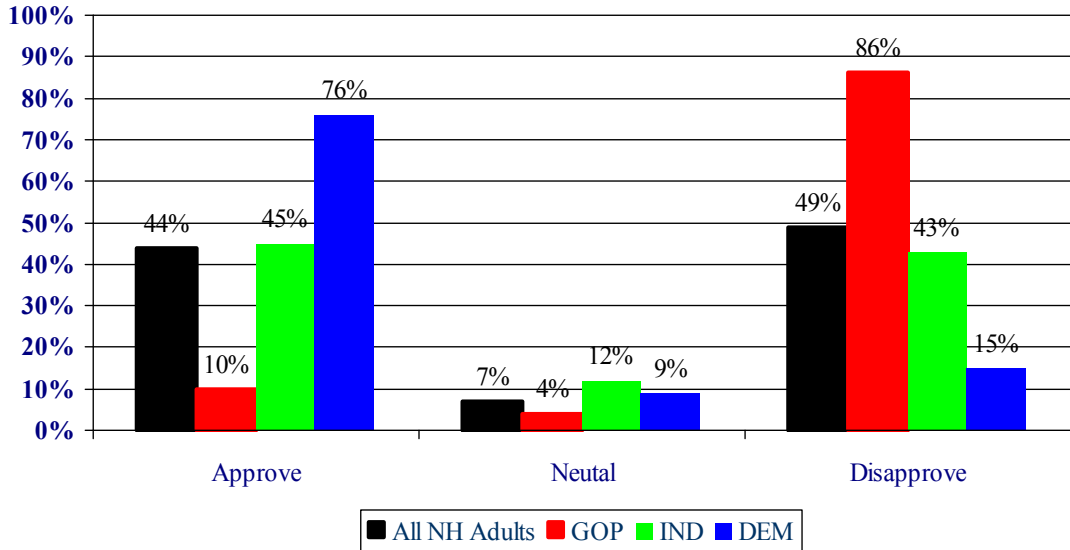
Previously, the partisan gap in approval of Obama's handling of foreign affairs, while significant, was smaller than that seen in his handling of the economy, this is no longer the case. Eighty-five percent of Democrats, 61% of Independents, but only 16% of Republicans approve of Obama's handling of foreign affairs.



Presidential Approval – Health Care Policy

President Obama and Congress are in the midst of drafting health care legislation that is causing partisan divisions and divisions within the Democratic Party. This process has led a plurality of New Hampshire adults to say they disapprove of Obama’s handling of health care policy. Currently, 44% of New Hampshire residents approve of Obama’s handling of health care policy, 49% disapprove, and 7% are neutral. Obama receives lower support from within his own party on health care policy compared to other issues, such as the economy and foreign affairs. Seventy-six percent of Democrats approve of his handling of health care policy, 45% of political independents approve, but only 10% of Republicans approve.

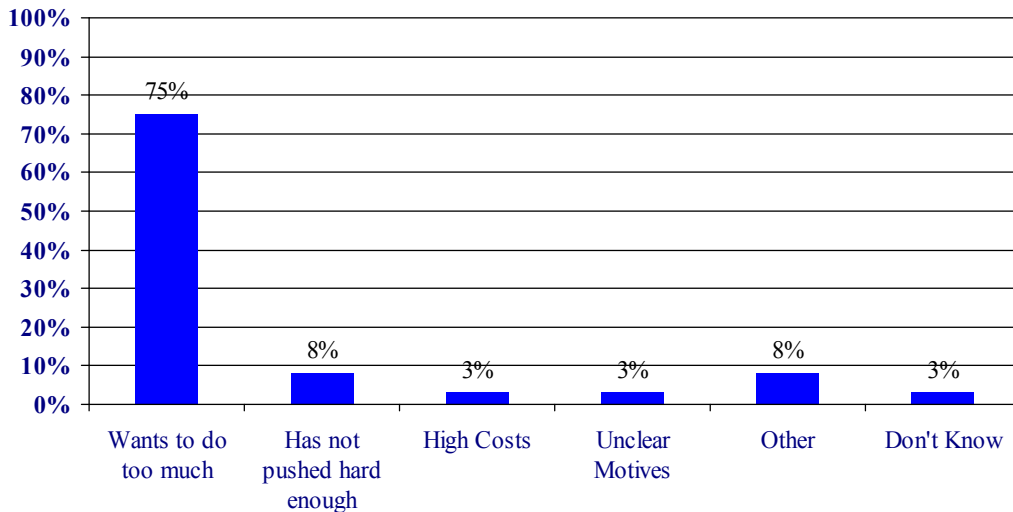
Presidential Approval in NH on Health Care by Party Identification



Reasons for Disapproving on Health Care

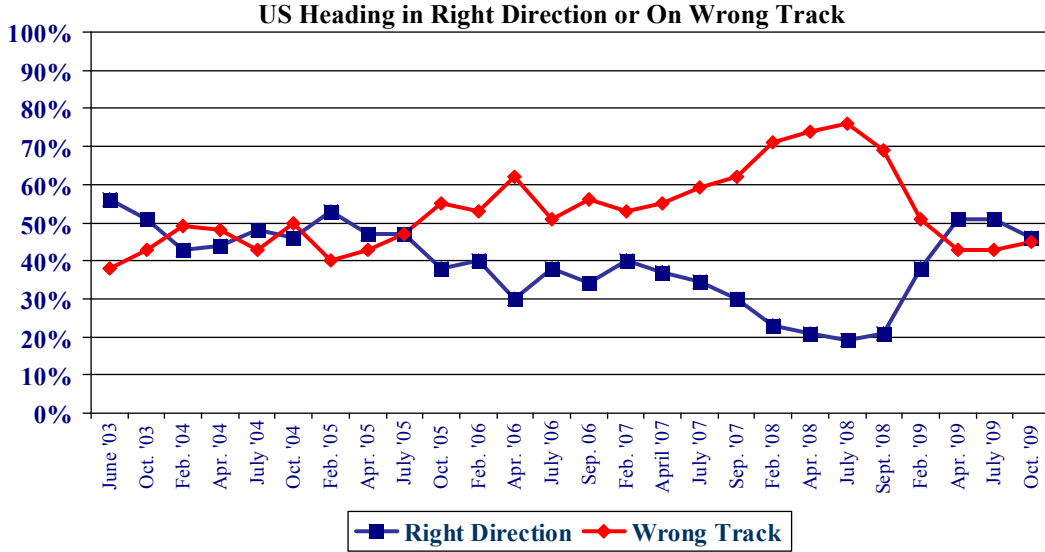
A significant political problem faced by the Obama administration in handling health care policy is that his own party is divided about what to do, with more liberal Democrats pushing for greater government involvement in health care, especially a “government option” for providing health insurance, and more conservative Democrats who are concerned that greater government involvement might cost them electorally in 2010. Granite State Poll respondents who said they disapproved of Obama’s handling of health care (N=243) were asked if the main reason for their disapproval was that Obama wants to do too much to change the health care system or if he has not pushed hard enough to get the changes he wants. Most of those who disapprove of Obama on health care policy, 75%, said they disapprove because Obama wants to do too much to change the health care system, only 8% said they did not think he pushed hard enough to get the changes he wants to the system, 3% said it was due to the high costs of the changes, 3% said they thought he had some different motive for pushing for the changes, 8% said some other reason, and 3% did not know.

Reasons for Disapproving on Health Care



Right Direction – Wrong Track

Granite Staters are evenly split on their view of the direction the country is going in. Currently, 46% of New Hampshire adults think things in this country are generally going in the right direction, 45% think things are seriously off on the wrong track, and 9% don't know. Democrats are the most optimistic about the county's direction with 72% thinking the US is headed in the right direction, while only 18% of Republicans think this is the case.



Granite State Poll Methodology

These findings are based on the latest **WMUR Granite State Poll**, conducted by the University of New Hampshire Survey Center. Five hundred and three (503) randomly selected New Hampshire adults were interviewed by telephone between September 25 and October 2, 2009. The margin of sampling error for the survey is +/-4.4 percent.

The data have been weighted to adjust for numbers of adults and telephone lines within households, respondent sex, and region of the state. In addition to potential sampling error, all surveys have other potential sources of non-sampling error including question order effects, question wording effects, and non-response.

Presidential Approval

“GENERALLY SPEAKING, do you approve or disapprove of the way Barack Obama is handling his job as president?”

	<u>Approve</u>	<u>Neutral</u>	<u>Disapprove</u>	<u>(N)</u>
Oct. '09	55%	5%	40%	(503)
July '09	61%	6%	33%	(556)
Apr. '09	63%	8%	29%	(500)
Feb. '09	66%	14%	21%	(614)

Favorability Rating – President Barack Obama

"Next, I'd like to get your overall opinion of some people who have been in the news. As I read each name, please say if you have a favorable or unfavorable opinion of this person - or if you don't know enough about him or her to say. President Barack Obama?"

	<u>Favorable</u>	<u>Neutral</u>	<u>Unfavorable</u>	<u>NET</u>	<u>(N=)</u>
Oct. '09	56%	8%	35%	+21%	(502)
July '09	62%	7%	30%	+32%	(557)
Apr. '09	64%	7%	27%	+37%	(503)
Feb. '09	71%	9%	16%	+55%	(619)
Sep. '08	53%	9%	36%	+17%	(522)
July '08	58%	10%	31%	+27%	(474)

Presidential Approval – Economy

“GENERALLY SPEAKING, do you approve or disapprove of the way President Obama is handling THE ECONOMY?”

	<u>Approve</u>	<u>Neutral</u>	<u>Disapprove</u>	<u>(N)</u>
Oct. '09	51%	3%	46%	(500)
July '09	57%	4%	39%	(556)
Apr. '09	58%	7%	35%	(499)
Feb. '09	62%	14%	24%	(614)

Presidential Approval - Foreign Affairs

“GENERALLY SPEAKING, do you approve or disapprove of the way President Obama is handling FOREIGN AFFAIRS?”

	<u>Approve</u>	<u>Neutral</u>	<u>Disapprove</u>	<u>(N)</u>
Oct. '09	52%	8%	40%	(499)
July '09	63%	9%	29%	(552)
Apr. '09	65%	8%	26%	(496)
Feb. '09	53%	32%	15%	(607)

Presidential Approval on Health Care

“Do you approve or disapprove of the way Barack Obama is handling health care policy?”

	<u>Oct. '09</u>
Approve	44%
Neutral	7%
Disapprove	49%
N=	(499)

Reasons for Disapproving on Health Care

“Which of the following is closer to why you disapprove of Obama’s handling of health care policy? Mostly because Obama wants to do too much to change the health care system, OR mostly because Obama has not pushed hard enough to get the changes he wants in the health care system?”

	<u>Oct. '09</u>
Do too much	75%
Not pushed hard enough	8%
High Costs	3%
Unclear motives	3%
Other	8%
Don't Know	3%
N=	(243)

Right Track - Wrong Track

“Do you think things in this country are generally going in the right direction or are they seriously off on the wrong track?”

	<u>Right</u> <u>Direction</u>	<u>Wrong</u> <u>Track</u>	<u>Don't</u> <u>Know</u>	<u>(N=)</u>
Oct. '09	46%	45%	9%	(496)
July '09	51%	43%	5%	(555)
Apr. '09	51%	43%	7%	(498)
Feb. '09	38%	51%	11%	(610)
Sep. '08	21%	69%	10%	(540)
July '08	19%	73%	8%	(508)
Apr. '08	21%	74%	5%	(487)
Feb. '08	23%	71%	7%	(553)
Sep. '07	30%	62%	8%	(505)
July '07	34%	59%	6%	(523)
Apr. '07	37%	55%	8%	(510)
Feb. '07	40%	53%	7%	(516)
Sept. '06	34%	56%	10%	(510)
July '06	38%	51%	11%	(496)
Apr. '06	30%	62%	8%	(501)
Feb. '06	40%	53%	7%	(487)
Oct. '05	38%	55%	7%	(498)
July '05	47%	47%	6%	(492)
Apr. '05	46%	43%	11%	(487)
Feb. '05	53%	40%	7%	(535)
Oct. '04	46%	50%	4%	(574)
July '04	48%	43%	10%	(500)
Apr. '04	44%	48%	8%	(535)
Feb. '04	43%	49%	8%	(503)
Oct. '03	51%	43%	6%	(487)
June '03	56%	38%	5%	(511)

Presidential Approval Rating - Overall

STATEWIDE	<u>Approve</u> 55%	<u>Neutral</u> 5%	<u>Disapprove</u> 40%	<u>(N=)</u> 503
Registered Democrat	91%	4%	5%	130
Registered Undeclared	57%	5%	38%	202
Registered Republican	18%	5%	77%	136
Democrat	91%	4%	5%	208
Independent	65%	7%	29%	78
Republican	15%	5%	79%	205
Liberal	91%	2%	7%	97
Moderate	64%	7%	29%	199
Conservative	23%	3%	74%	168
McCain/Palin Voter	17%	5%	79%	202
Obama/Biden Voter	92%	4%	4%	237
Other	28%	5%	67%	23
Did Not Vote in 2008	52%	10%	38%	24
Union household	75%	0%	25%	67
Non-union	52%	5%	43%	424
10 yrs or less in NH	61%	8%	31%	80
11 to 20 years	52%	5%	43%	94
More than 20 years	55%	4%	41%	317
18 to 34	61%	8%	31%	44
35 to 49	56%	3%	41%	138
50 to 64	55%	5%	39%	200
65 and over	51%	4%	44%	106
Male	45%	5%	50%	246
Female	65%	4%	30%	257
High school or less	45%	3%	52%	88
Some college	63%	5%	32%	107
College graduate	47%	7%	47%	201
Post-graduate	75%	2%	23%	98
Less than \$30K	56%	12%	32%	33
\$30K to \$60K	61%	1%	38%	71
\$60K to \$75K	73%	3%	24%	53
\$75K to \$100K	49%	5%	46%	63
\$100K or more	59%	2%	39%	122
Married	54%	4%	43%	365
Divorced/separated	59%	6%	35%	79
Never married	56%	12%	32%	49
Protestant	52%	6%	42%	177
Catholic	51%	4%	44%	196
Other	69%	2%	28%	104
Attend services 1 or more/week	48%	3%	49%	117
1-2 times a month	55%	5%	40%	70
Less often	52%	7%	41%	167
Never	67%	3%	29%	133
North Country	60%	1%	39%	52
Central / Lakes	55%	5%	40%	82
Connecticut Valley	62%	5%	33%	67
Mass Border	53%	3%	44%	156
Seacoast	61%	5%	34%	66
Manchester Area	46%	10%	44%	80
First Cong. Dist	54%	6%	40%	251
Second Cong. Dist	56%	4%	40%	252

Presidential Approval Rating - Economy

STATEWIDE	<u>Approve</u> 51%	<u>Neutral</u> 3%	<u>Disapprove</u> 46%	<u>(N=)</u> 500
Registered Democrat	88%	2%	10%	130
Registered Undeclared	48%	4%	47%	200
Registered Republican	17%	2%	81%	136
Democrat	84%	4%	12%	207
Independent	59%	5%	37%	78
Republican	15%	1%	83%	204
Liberal	80%	5%	16%	97
Moderate	61%	5%	35%	199
Conservative	20%	1%	79%	165
McCain/Palin Voter	13%	3%	83%	202
Obama/Biden Voter	86%	3%	11%	235
Other	19%	3%	78%	22
Did Not Vote in 2008	51%	4%	44%	24
Union household	72%	0%	28%	67
Non-union	46%	4%	50%	422
10 yrs or less in NH	52%	4%	44%	80
11 to 20 years	51%	1%	47%	94
More than 20 years	50%	4%	46%	315
18 to 34	55%	3%	42%	44
35 to 49	46%	4%	49%	136
50 to 64	52%	3%	44%	200
65 and over	51%	2%	47%	106
Male	43%	2%	55%	246
Female	58%	4%	38%	254
High school or less	42%	7%	51%	86
Some college	50%	6%	44%	107
College graduate	44%	2%	54%	201
Post-graduate	72%	0%	28%	98
Less than \$30K	52%	10%	39%	33
\$30K to \$60K	48%	8%	44%	70
\$60K to \$75K	63%	0%	37%	53
\$75K to \$100K	47%	0%	53%	63
\$100K or more	57%	2%	40%	122
Married	49%	2%	48%	363
Divorced/separated	53%	5%	42%	79
Never married	51%	7%	42%	49
Protestant	47%	4%	49%	177
Catholic	49%	2%	49%	194
Other	63%	2%	35%	103
Attend services 1 or more/week	47%	1%	51%	117
1-2 times a month	44%	6%	50%	70
Less often	47%	4%	49%	167
Never	62%	2%	36%	130
North Country	54%	4%	42%	52
Central / Lakes	54%	3%	42%	82
Connecticut Valley	52%	5%	43%	67
Mass Border	50%	3%	47%	154
Seacoast	49%	2%	48%	66
Manchester Area	46%	3%	52%	80
First Cong. Dist	50%	3%	47%	251
Second Cong. Dist	51%	4%	46%	250

Presidential Approval Rating - Foreign Affairs

STATEWIDE	<u>Approve</u> 52%	<u>Neutral</u> 8%	<u>Disapprove</u> 40%	<u>(N=)</u> 499
Registered Democrat	86%	7%	7%	130
Registered Undeclared	54%	7%	38%	202
Registered Republican	17%	6%	78%	134
Democrat	85%	8%	7%	208
Independent	61%	11%	28%	77
Republican	16%	7%	77%	203
Liberal	85%	4%	12%	97
Moderate	62%	10%	28%	197
Conservative	23%	5%	72%	168
McCain/Palin Voter	15%	8%	78%	200
Obama/Biden Voter	87%	6%	7%	236
Other	27%	13%	60%	23
Did Not Vote in 2008	50%	30%	20%	22
Union household	73%	7%	20%	67
Non-union	48%	9%	43%	420
10 yrs or less in NH	58%	10%	32%	80
11 to 20 years	57%	4%	39%	94
More than 20 years	50%	9%	42%	313
18 to 34	62%	9%	29%	43
35 to 49	57%	6%	38%	137
50 to 64	51%	7%	42%	198
65 and over	44%	14%	43%	106
Male	44%	7%	49%	246
Female	60%	9%	31%	253
High school or less	42%	15%	43%	88
Some college	53%	9%	38%	105
College graduate	47%	8%	46%	199
Post-graduate	71%	3%	26%	98
Less than \$30K	43%	22%	35%	33
\$30K to \$60K	53%	4%	43%	71
\$60K to \$75K	74%	6%	20%	52
\$75K to \$100K	47%	6%	47%	63
\$100K or more	60%	5%	35%	120
Married	53%	6%	42%	362
Divorced/separated	49%	17%	34%	79
Never married	53%	13%	35%	48
Protestant	45%	11%	44%	176
Catholic	50%	7%	43%	193
Other	71%	4%	24%	104
Attend services 1 or more/week	46%	3%	50%	114
1-2 times a month	51%	6%	43%	70
Less often	48%	15%	37%	166
Never	64%	5%	31%	133
North Country	60%	4%	35%	52
Central / Lakes	51%	10%	39%	82
Connecticut Valley	52%	8%	41%	67
Mass Border	52%	5%	42%	153
Seacoast	54%	7%	39%	66
Manchester Area	46%	17%	37%	79
First Cong. Dist	53%	9%	38%	248
Second Cong. Dist	52%	7%	41%	250

Presidential Approval Rating – Health Care Reform

STATEWIDE	<u>Approve</u> 44%	<u>Neutral</u> 7%	<u>Disapprove</u> 49%	<u>(N=)</u> 499
Registered Democrat	76%	4%	20%	130
Registered Undeclared	42%	11%	47%	199
Registered Republican	15%	2%	84%	136
Democrat	76%	9%	15%	207
Independent	45%	12%	43%	76
Republican	10%	4%	86%	204
Liberal	80%	7%	13%	97
Moderate	52%	7%	41%	197
Conservative	15%	3%	82%	165
McCain/Palin Voter	8%	3%	89%	202
Obama/Biden Voter	78%	8%	14%	233
Other	29%	5%	66%	22
Did Not Vote in 2008	34%	27%	39%	24
Union household	65%	7%	28%	67
Non-union	41%	7%	52%	420
10 yrs or less in NH	48%	6%	45%	79
11 to 20 years	43%	11%	46%	94
More than 20 years	43%	6%	51%	314
18 to 34	51%	5%	44%	44
35 to 49	44%	7%	49%	136
50 to 64	44%	6%	50%	199
65 and over	40%	12%	49%	104
Male	37%	7%	57%	246
Female	51%	7%	42%	253
High school or less	35%	9%	56%	85
Some college	47%	6%	47%	107
College graduate	37%	8%	55%	201
Post-graduate	62%	6%	33%	97
Less than \$30K	42%	19%	39%	33
\$30K to \$60K	51%	4%	44%	70
\$60K to \$75K	59%	10%	32%	53
\$75K to \$100K	34%	7%	59%	63
\$100K or more	50%	7%	43%	122
Married	42%	7%	51%	361
Divorced/separated	51%	8%	41%	79
Never married	46%	5%	49%	49
Protestant	39%	8%	53%	176
Catholic	40%	5%	54%	193
Other	57%	11%	32%	103
Attend services 1 or more/week	38%	5%	57%	117
1-2 times a month	43%	6%	52%	69
Less often	40%	7%	53%	166
Never	55%	10%	35%	131
North Country	44%	11%	45%	51
Central / Lakes	47%	9%	44%	82
Connecticut Valley	47%	2%	51%	65
Mass Border	45%	7%	48%	153
Seacoast	44%	7%	49%	66
Manchester Area	36%	7%	58%	80
First Cong. Dist	44%	6%	50%	250
Second Cong. Dist	44%	8%	48%	249

Reasoning for Health Care Disapproval

	<u>Do Too Much</u> 75%	<u>Not Pushed Hard Enough</u> 8%	<u>High Costs</u> 3%	<u>Unclear Motives</u> 3%	<u>Other</u> 8%	<u>Don't Know</u> 3%	<u>(N=)</u> 243
STATEWIDE							
Registered Democrat	77%	11%	0%	0%	12%	0%	25
Registered Undeclared	70%	11%	2%	4%	8%	5%	93
Registered Republican	79%	6%	2%	2%	8%	2%	114
Democrat	80%	13%	0%	0%	7%	0%	31
Independent	49%	11%	3%	8%	21%	8%	31
Republican	79%	7%	3%	3%	5%	2%	175
Liberal	75%	20%	0%	0%	0%	5%	13
Moderate	66%	14%	1%	8%	6%	5%	81
Conservative	83%	4%	2%	1%	9%	1%	135
McCain/Palin Voter	81%	5%	2%	4%	6%	3%	178
Obama/Biden Voter	59%	21%	0%	0%	16%	5%	33
Other	58%	21%	0%	7%	14%	0%	15
Did Not Vote in 2008	73%	6%	14%	0%	6%	0%	9
Union household	81%	3%	0%	7%	0%	8%	19
Non-union	74%	9%	3%	3%	9%	2%	220
10 yrs or less in NH	69%	9%	4%	0%	11%	7%	35
11 to 20 years	82%	6%	4%	2%	6%	0%	44
More than 20 years	75%	9%	1%	4%	8%	3%	159
18 to 34	73%	3%	0%	8%	16%	0%	19
35 to 49	84%	5%	3%	0%	4%	5%	66
50 to 64	68%	12%	3%	5%	9%	4%	99
65 and over	80%	9%	0%	2%	9%	0%	51
Male	75%	7%	0%	3%	12%	3%	138
Female	75%	10%	6%	3%	3%	2%	106
High school or less	78%	10%	0%	5%	7%	0%	48
Some college	72%	8%	4%	3%	9%	4%	49
College graduate	76%	7%	4%	3%	6%	3%	111
Post-graduate	75%	10%	0%	0%	13%	1%	31
Less than \$30K	57%	13%	0%	8%	5%	17%	13
\$30K to \$60K	81%	12%	0%	0%	7%	0%	31
\$60K to \$75K	82%	18%	0%	0%	0%	0%	17
\$75K to \$100K	69%	5%	8%	10%	4%	4%	37
\$100K or more	85%	6%	0%	2%	3%	4%	52
Married	76%	9%	3%	4%	6%	2%	184
Divorced/separated	73%	8%	3%	0%	15%	2%	33
Never married	67%	3%	0%	0%	21%	9%	24
Protestant	69%	9%	4%	5%	6%	6%	93
Catholic	86%	5%	1%	1%	6%	0%	105
Other	62%	12%	0%	4%	21%	2%	33
Attend services 1 or more/week	87%	6%	0%	2%	3%	1%	67
1-2 times a month	72%	11%	11%	3%	4%	0%	36
Less often	71%	7%	1%	4%	11%	6%	88
Never	73%	14%	0%	3%	8%	2%	44
North Country	60%	19%	0%	5%	12%	4%	23
Central / Lakes	67%	22%	0%	3%	2%	4%	36
Connecticut Valley	64%	4%	13%	4%	8%	6%	32
Mass Border	82%	5%	1%	2%	10%	0%	73
Seacoast	83%	5%	3%	3%	5%	2%	32
Manchester Area	80%	3%	0%	3%	10%	3%	46
First Cong. Dist	79%	8%	2%	2%	8%	2%	124
Second Cong. Dist	71%	9%	3%	4%	8%	4%	119

U.S. Right Direction / Wrong Track

	<u>Right Direction</u> 46%	<u>Wrong Track</u> 45%	<u>Don't Know</u> 9%	<u>(N=)</u> 496
STATEWIDE				
Registered Democrat	74%	16%	10%	129
Registered Undeclared	45%	46%	9%	200
Registered Republican	21%	71%	8%	136
Democrat	72%	16%	12%	206
Independent	49%	43%	7%	78
Republican	18%	74%	8%	204
Liberal	69%	18%	13%	95
Moderate	54%	35%	11%	198
Conservative	22%	72%	6%	168
McCain/Palin Voter	20%	72%	8%	202
Obama/Biden Voter	71%	18%	11%	235
Other	22%	75%	3%	23
Did Not Vote in 2008	43%	43%	14%	24
Union household	63%	27%	10%	66
Non-union	43%	48%	9%	422
10 yrs or less in NH	40%	50%	9%	79
11 to 20 years	50%	46%	4%	95
More than 20 years	46%	43%	11%	314
18 to 34	48%	43%	9%	43
35 to 49	49%	42%	9%	138
50 to 64	47%	45%	9%	198
65 and over	39%	48%	13%	106
Male	42%	50%	9%	242
Female	50%	40%	10%	254
High school or less	34%	58%	8%	88
Some college	44%	45%	11%	105
College graduate	39%	50%	10%	200
Post-graduate	71%	21%	7%	99
Less than \$30K	31%	60%	8%	33
\$30K to \$60K	50%	43%	7%	71
\$60K to \$75K	60%	32%	7%	53
\$75K to \$100K	42%	49%	9%	62
\$100K or more	52%	37%	11%	121
Married	43%	47%	10%	363
Divorced/separated	58%	35%	7%	80
Never married	46%	42%	12%	46
Protestant	48%	47%	4%	174
Catholic	40%	48%	12%	197
Other	54%	32%	14%	103
Attend services 1 or more/week	40%	49%	12%	115
1-2 times a month	41%	53%	6%	71
Less often	43%	45%	12%	166
Never	58%	37%	6%	131
North Country	45%	52%	3%	52
Central / Lakes	48%	44%	8%	82
Connecticut Valley	49%	42%	9%	63
Mass Border	50%	39%	10%	154
Seacoast	40%	52%	8%	65
Manchester Area	38%	48%	15%	80
First Cong. Dist	44%	47%	9%	248
Second Cong. Dist	48%	42%	10%	248

Favorability Rating – Barack Obama

STATEWIDE	<u>Favorable</u> 56%	<u>Neutral</u> 8%	<u>Unfavorable</u> 35%	<u>DK</u> 1%	<u>(N)</u> 502
Registered Democrat	89%	5%	4%	1%	130
Registered Undeclared	59%	7%	35%	0%	202
Registered Republican	20%	10%	68%	3%	136
Democrat	92%	3%	4%	1%	208
Independent	64%	9%	27%	0%	78
Republican	16%	12%	70%	2%	205
Liberal	93%	2%	5%	0%	97
Moderate	65%	10%	25%	1%	199
Conservative	25%	7%	67%	2%	168
McCain/Palin Voter	19%	10%	70%	1%	202
Obama/Biden Voter	92%	5%	2%	1%	237
Other	23%	11%	67%	0%	23
Did Not Vote in 2008	41%	19%	36%	4%	24
Union household	77%	4%	19%	0%	67
Non-union	52%	8%	39%	2%	424
10 yrs or less in NH	59%	12%	28%	1%	80
11 to 20 years	54%	9%	37%	0%	94
More than 20 years	56%	6%	36%	2%	317
18 to 34	61%	9%	29%	1%	44
35 to 49	57%	8%	35%	0%	138
50 to 64	58%	7%	34%	1%	200
65 and over	48%	8%	40%	5%	106
Male	45%	9%	44%	2%	246
Female	66%	7%	27%	1%	255
High school or less	44%	12%	39%	4%	88
Some college	61%	7%	32%	0%	107
College graduate	48%	9%	42%	1%	201
Post-graduate	77%	2%	21%	0%	98
Less than \$30K	51%	14%	32%	3%	33
\$30K to \$60K	61%	7%	30%	2%	71
\$60K to \$75K	75%	3%	19%	3%	53
\$75K to \$100K	48%	9%	44%	0%	63
\$100K or more	62%	4%	33%	0%	122
Married	54%	7%	38%	1%	365
Divorced/separated	58%	9%	32%	1%	79
Never married	60%	11%	29%	1%	49
Protestant	52%	11%	38%	0%	177
Catholic	52%	7%	37%	3%	196
Other	70%	4%	26%	0%	104
Attend services 1 or more/week	48%	5%	45%	2%	117
1-2 times a month	52%	16%	29%	4%	70
Less often	55%	7%	36%	1%	167
Never	66%	7%	28%	0%	133
North Country	65%	2%	33%	0%	52
Central / Lakes	56%	7%	35%	1%	82
Connecticut Valley	54%	18%	26%	2%	67
Mass Border	55%	5%	39%	1%	155
Seacoast	61%	8%	29%	2%	66
Manchester Area	48%	8%	43%	2%	80
First Cong. Dist	56%	6%	36%	2%	251
Second Cong. Dist	55%	9%	35%	1%	251