

THE WMUR GRANITE STATE POLL

THE UNIVERSITY OF NEW HAMPSHIRE SURVEY CENTER

May 3, 2010

DESPITE ECONOMIC CONCERNS, LYNCH STILL POPULAR AS GOVERNOR

By: Andrew E. Smith, Ph.D.
 UNH Survey Center
 603/862-2226
www.unh.edu/survey-center

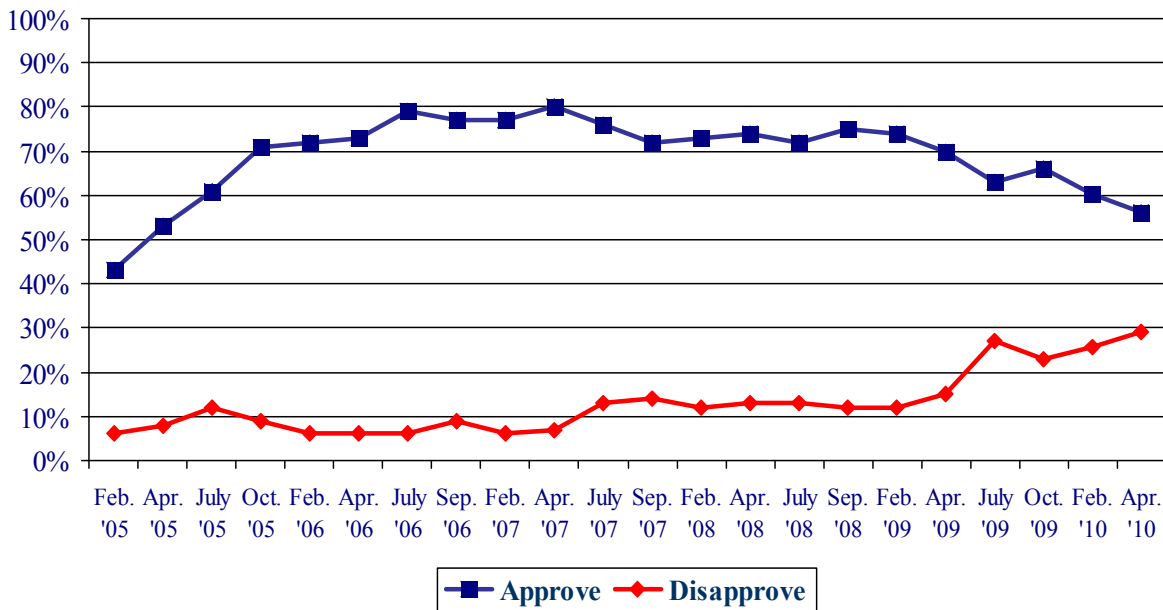
DURHAM, NH – Governor John Lynch’s job approval ratings in New Hampshire have dropped somewhat in recent months as economic concerns, and concerns about the state budget are the top problems on the minds of New Hampshire residents. Despite the drop, his job approval ratings are among the highest of any governor in the nation and he remains in a strong position to win reelection.

These findings are based on the latest **WMUR Granite State Poll**,* conducted by the University of New Hampshire Survey Center. Five hundred (512) randomly selected New Hampshire adults were interviewed by telephone between April 18 and April 28, 2010. The margin of sampling error for the survey is +/- 4.4 percent. Included was a subsample of 462 likely 2010 general election voters (margin of sampling error +/-4.6%).

Gubernatorial Approval

Despite ongoing concerns about the state economy and the state budget, Granite Staters generally approve of the job John Lynch is doing as governor. In the most recent Granite State Poll, 56% of NH adults say they approve of the way he is handling his job as governor, 29% disapprove, and 15% are neutral or don’t know. Lynch’s job approval ratings had been declining over the past year and are likely to decline further as Republicans gear up to challenge him when he runs for reelection in November. However, Lynch has maintained the support of Democrats (78% approve) and Independents (53%) approve but his support among Republicans continues to slide. Currently 35% of Republicans approve of the job he is doing as governor, down from 50% in October.

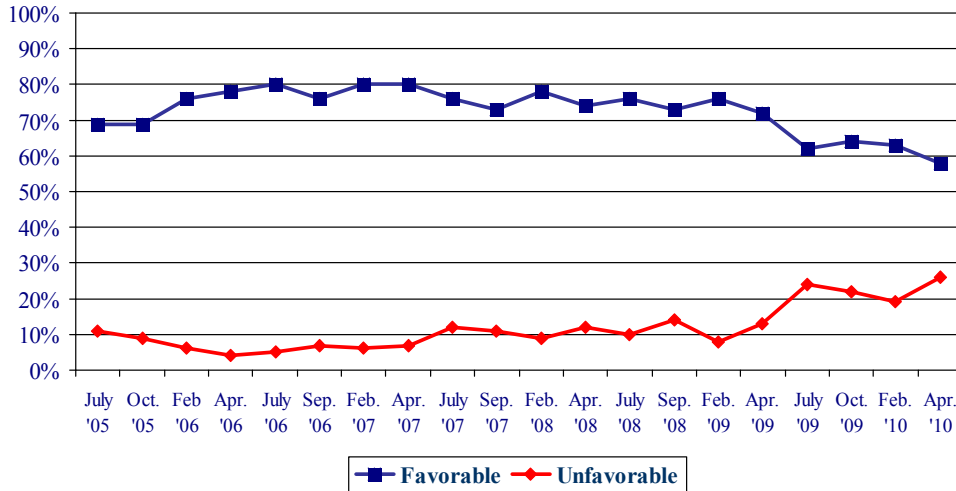
NH Gubernatorial Approval – John Lynch



* We ask that this copyrighted information be referred to as *the Granite State Poll*, sponsored by WMUR-TV, and conducted by the University of New Hampshire Survey Center.

Lynch's personal favorability rating have also slipped somewhat in the past year. In the latest Granite State Poll, 58% of New Hampshire adults say they have a favorable opinion of Lynch, 26% have an unfavorable opinion, 10% are neutral, and 6% say they don't know enough about him to say. Lynch's net favorability rating, the percentage having a favorable opinion minus the percentage having an unfavorable opinion, is a solid +32%. However, the percentage who have an unfavorable opinion of Lynch is at the highest point during his tenure and a plurality of Republicans (42%) now have an unfavorable opinion of Lynch.

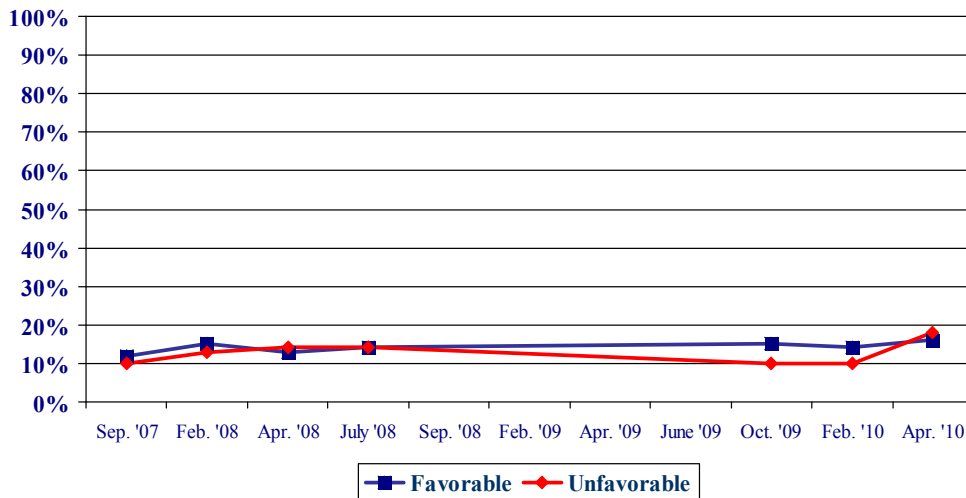
Favorability Ratings – NH Governor John Lynch



2010 NH Gubernatorial Race – John Stephen vs. John Lynch – Likely Voters

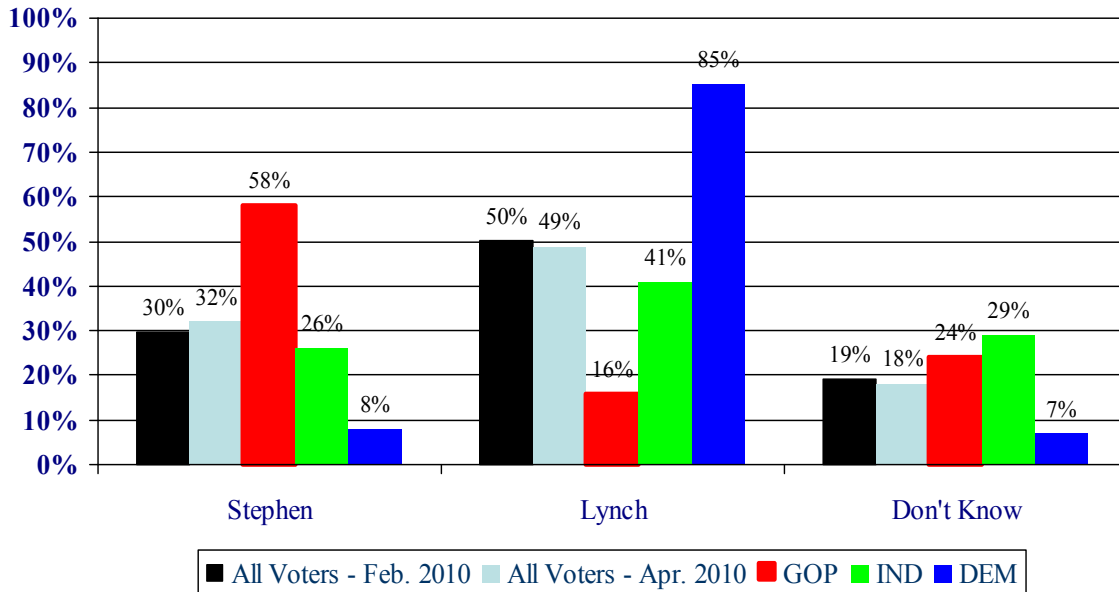
Lynch has faced easy reelection challenges in 2006 and 2008, and is attempting to become the first New Hampshire governor to win a fourth two-year term. Republicans who have declared their candidacy remain largely unknown to voters. Former Health and Human Services Commissioner John Stephen is the best known challenger, though he remains unfamiliar to most state residents. In the most recent Granite State Poll, 16% of New Hampshire adults have a favorable opinion of Stephen, 18% have an unfavorable opinion of him, 9% are neutral, and 57% don't know enough about him to say. Stephen's net favorability stands at -2%, down from +4% in February. Businessman Jack Kimball is running but is largely unknown – only 4% have a favorable opinion of Kimball, 3% have an unfavorable opinion, and 93% are either neutral or don't know enough about him to say.

Favorability Ratings – John Stephen



In a hypothetical matchup between John Lynch and John Stephen, 49% of likely 2010 voters say would vote Lynch, 32% would vote for Stephen, 1% would choose some other candidate, and 18% are undecided. “This race is largely unchanged since November, although Lynch has slipped below the psychologically important 50% line,” said Andrew Smith, Director of the UNH Survey Center. It is important to point out that only 17% of likely voters say they definitely decided who they would vote for, 14% are leaning towards someone but may still change their mind, and 70% are still trying to decide.

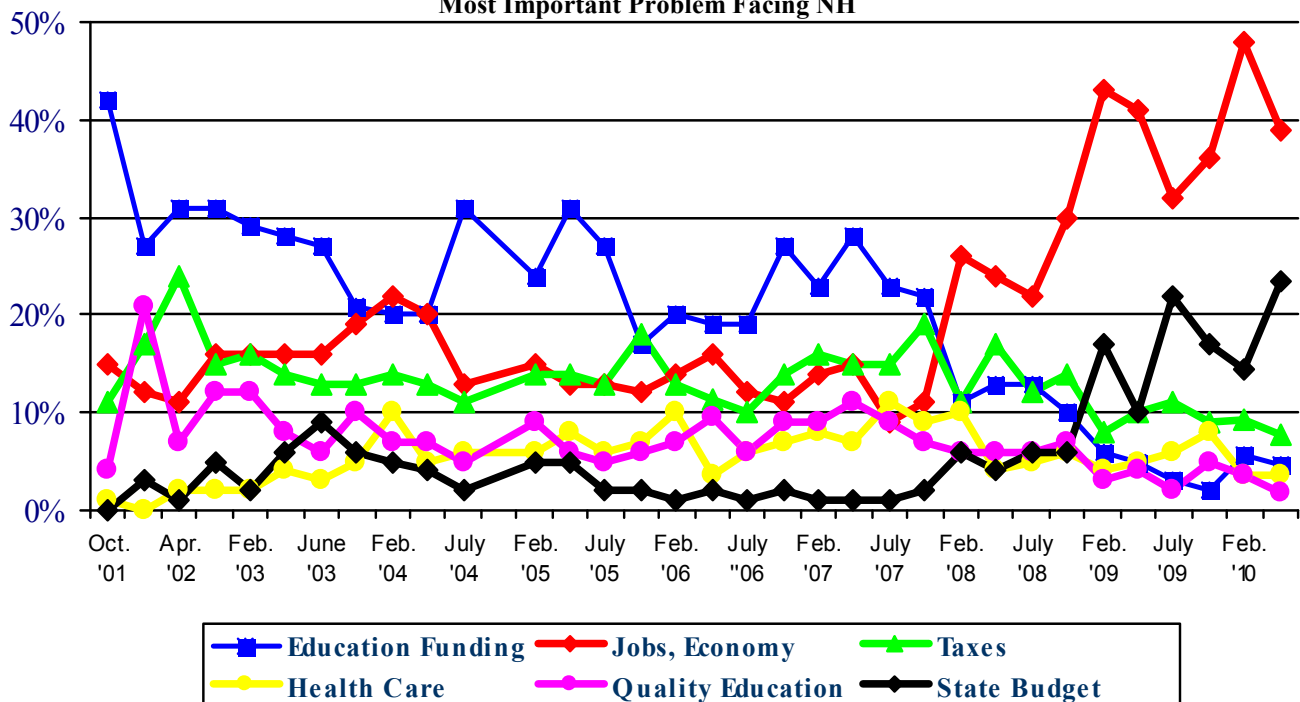
NH Governor: Lynch (D) vs. Stephen (R)



Most Important Problem Facing New Hampshire

New Hampshire residents remained concerned about the state’s economy and unemployment, and the state’s budget problems. In the latest Granite State Poll, 39% of New Hampshire adults say the economy and jobs is the most important issue facing the state, followed by the state budget (23%), high taxes (8%), education funding (5%), and health care (4%).

Most Important Problem Facing NH

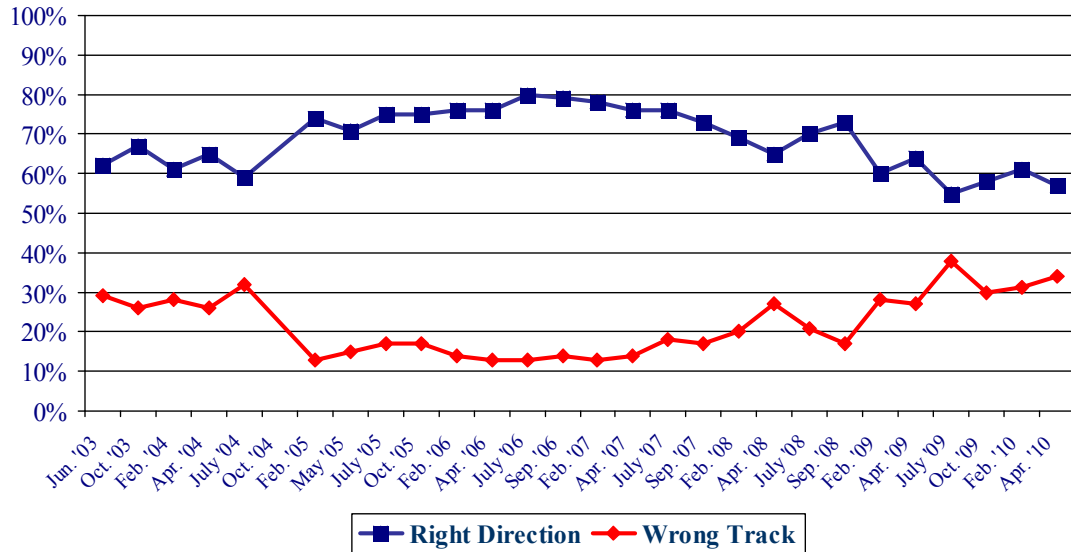


Right Direction or Wrong Track?

Although economic and budget problems persist, New Hampshire residents continue believe the state is headed in the right direction. Currently, 57% of New Hampshire adults feel the state is heading in the right direction, 34% think the state is seriously off on the wrong track, and 9% don't know.

Democrats, liberals, and upper income residents are most likely to think New Hampshire is headed in the right direction while Republicans, conservatives, and low income residents are most likely to say things are off on the wrong track.

NH Heading in Right Direction or On Wrong Track?



Granite State Poll Methodology

These findings are based on the latest WMUR Granite State Poll, conducted by the University of New Hampshire Survey Center. Five hundred (512) randomly selected New Hampshire adults were interviewed by telephone between April 18 and April 28, 2010. The margin of sampling error for the survey is +/- 4.4 percent. Included was a subsample of 462 likely 2010 general election voters (margin of sampling error +/-4.6%).

The data have been weighted to adjust for numbers of adults and telephone lines within households, respondent sex, and region of the state. In addition to potential sampling error, all surveys have other potential sources of non-sampling error including question order effects, question wording effects, and non-response.

Gubernatorial Approval

“GENERALLY SPEAKING, do you approve or disapprove of the way Governor Lynch is handling his job as governor?”

	<u>Approve</u>	<u>Neutral/DK</u>	<u>Disapprove</u>	<u>(N=)</u>
Apr. '10	56%	15%	29%	(507)
Feb. '10	60%	14%	26%	(489)
Oct. '09	66%	11%	23%	(495)
July '09	63%	11%	27%	(553)
Apr. '09	70%	15%	15%	(496)
Feb. '09	74%	14%	12%	(612)
Sep. '08	75%	13%	12%	(539)
July '08	72%	15%	13%	(512)
Apr. '08	74%	13%	13%	(496)
Feb. '08	73%	14%	12%	(547)
Sept. '07	72%	14%	14%	(501)
July '07	76%	11%	13%	(501)
Apr. '07	80%	12%	7%	(514)
Feb. '07	77%	16%	6%	(531)
Sept. '06	77%	14%	9%	(504)
July '06	79%	15%	6%	(498)
Apr. '06	73%	21%	6%	(489)
Feb. '06	72%	22%	6%	(491)
Oct. '05	71%	20%	9%	(495)
July '05	61%	26%	12%	(490)
Apr. '05	53%	39%	8%	(480)
Feb. '05	43%	51%	6%	(524)

Favorability Ratings – Governor John Lynch

"Next, I'd like to get your overall opinion of some people in the news. As I read each name, please say if you have a favorable or unfavorable opinion of this person - or if you have never heard of him or her. Governor John Lynch."

	<u>Favorable</u>	<u>Neutral</u>	<u>Unfavorable</u>	<u>Don't Know</u>	<u>NET</u>	<u>(N=)</u>
Apr. '10	58%	10%	26%	6%	+32%	(509)
Feb. '10	63%	9%	19%	9%	+44%	(496)
Oct. '09	64%	8%	22%	5%	+42%	(500)
July '09	62%	8%	24%	6%	+38%	(557)
Apr. '09	72%	7%	13%	8%	+59%	(500)
Feb. '09	76%	10%	8%	7%	+68%	(617)
Sept. '08	73%	6%	14%	8%	+59%	(522)
July '08	76%	8%	10%	6%	+66%	(517)
Apr. '08	74%	11%	12%	4%	+62%	(499)
Feb. '08	78%	11%	9%	3%	+69%	(554)
Sept. '07	73%	10%	11%	6%	+62%	(506)
July '07	76%	8%	12%	5%	+64%	(505)
Apr. '07	80%	9%	7%	4%	+73%	(515)
Feb. '07	80%	9%	6%	5%	+74%	(536)
Sept. '06	76%	11%	7%	5%	+69%	(511)
July '06	80%	8%	5%	7%	+75%	(505)
Apr. '06	78%	10%	4%	8%	+74%	(503)
Feb. '06	76%	12%	6%	6%	+70%	(499)
Oct. '05	69%	13%	9%	8%	+60%	(508)
July '05	69%	9%	11%	11%	+58%	(500)
Oct. '04	34%	13%	12%	40%	+22%	(573)
July '04	17%	8%	6%	69%	+11%	(508)
Feb. '04	7%	9%	6%	77%	+1%	(509)

Favorability Rating – John Stephen

"Next, I'd like to get your overall opinion of some people in the news. As I read each name, please say if you have a favorable or unfavorable opinion of this person - or if you have never heard of him or her. Former Health and Human Services Commissioner John Stephen."

	<u>Favorable</u>	<u>Neutral</u>	<u>Unfavorable</u>	<u>Don't Know</u>	<u>NET</u>	<u>(N=)</u>
Apr. '10	16%	9%	18%	57%	-2%	(510)
Feb. '10	14%	6%	10%	70%	+4%	(497)
Oct. '09	15%	6%	10%	69%	+5%	(501)
July '08	14%	8%	14%	64%	0%	(517)
Apr. '08	13%	16%	14%	57%	-1%	(500)
Feb. '08	15%	17%	13%	55%	+2%	(553)
Sept. '07	12%	17%	12%	59%	0%	(506)

Favorability Rating – Jack Kimball

"Next, I'd like to get your overall opinion of some people in the news. As I read each name, please say if you have a favorable or unfavorable opinion of this person - or if you have never heard of him or her. Businessman Jack Kimball."

	<u>Feb. '10</u>	<u>Apr. '10</u>
Favorable	2%	4%
Neutral	5%	8%
Unfavorable	2%	3%
Don't know	90%	85%
(N=)	(497)	(507)

NH Governor – John Stephen vs. John Lynch – Likely Voters

"If the 2010 Gubernatorial election was being held today and the candidates were John Stephen, the Republican and John Lynch, the Democrat, who would you vote for?" ROTATE CANDIDATES

	<u>Feb. '10</u>	<u>Apr. '10</u>
John Stephen	30%	32%
John Lynch	50%	49%
Other	1%	1%
Don't Know	19%	18%
(N=)	(444)	(460)

Firmness of NH Governor Vote

"I know that it is early, but have you definitely decided who you will vote for in the New Hampshire Gubernatorial election in 2010 ... are you leaning toward someone ... or have you considered some candidates but are still trying to decide?"

	<u>Oct. '09</u>	<u>Feb. '10</u>	<u>Apr. '10</u>
Definitely Decided	7%	9%	17%
Leaning Toward Someone	4%	6%	14%
Still Trying to Decide	89%	85%	70%
N=	(454)	(440)	(461)

NH - Right Direction or Wrong Track

“Do you think things in New Hampshire are generally going in the right direction or are they seriously off on the wrong track?”

	<u>Right Direction</u>	<u>Wrong Track</u>	<u>Don't Know</u>	<u>(N=)</u>
Apr. '10	57%	34%	9%	(503)
Feb. '10	61%	31%	8%	(490)
Oct. '09	58%	30%	12%	(496)
July '09	55%	38%	7%	(557)
Apr. '09	64%	27%	9%	(497)
Feb. '09	60%	28%	12%	(605)
Sept. '08	73%	17%	10%	(535)
July '08	70%	21%	9%	(514)
Apr. '08	65%	27%	8%	(491)
Feb. '08	69%	20%	11%	(547)
Sept. '07	73%	17%	10%	(507)
July '07	76%	18%	6%	(500)
Apr. '07	76%	14%	9%	(506)
Feb. '07	78%	13%	8%	(524)
Sept. '06	79%	14%	7%	(509)
July '06	80%	13%	8%	(497)
Apr. '06	76%	13%	11%	(501)
Feb. '06	76%	14%	10%	(495)
Oct. '05	75%	17%	9%	(502)
July '05	75%	17%	8%	(494)
May '05	71%	15%	13%	(488)
Feb. '05	74%	13%	13%	(535)
July '04	59%	32%	9%	(503)
Apr. '04	65%	26%	9%	(530)
Feb. '04	61%	28%	11%	(500)
Oct. '03	67%	26%	7%	(485)
Jun. '03	62%	29%	9%	(510)

Most Important Problem Facing New Hampshire

"Let's turn to the State of New Hampshire ... There are many problems facing the STATE OF NEW HAMPSHIRE today. In general, what do you think is the most IMPORTANT problem facing the STATE OF NEW HAMPSHIRE today?"

	<u>Jobs / Economy</u>	<u>Educ. Funding</u>	<u>Taxes</u>	<u>Health Care</u>	<u>Quality Educ.</u>	<u>Growth/ Sprawl</u>	<u>State Budget</u>	<u>Cost of Gas/Oil</u>	<u>Other/ DK</u>	<u>(N=)</u>
Apr. '10	39%	5%	8%	4%	2%	*	23%	*	19%	(504)
Feb. '10	48%	6%	9%	4%	4%	*	14%	*	15%	(486)
Oct. '09	36%	2%	9%	8%	5%	*	17%	0%	18%	(494)
July '09	32%	3%	11%	6%	2%	*	22%	1%	31%	(551)
Apr. '09	41%	5%	10%	5%	4%	*	10%	*	24%	(491)
Feb. '09	43%	6%	8%	4%	3%	0%	17%	*	19%	(607)
Sep. '08	30%	10%	14%	6%	7%	*	6%	7%	20%	(531)
July '08	22%	13%	12%	5%	6%	1%	6%	14%	22%	(504)
Apr. '08	24%	13%	17%	4%	6%	0%	4%	7%	25%	(496)
Feb. '08	26%	11%	11%	10%	6%	1%	6%	1%	28%	(542)
Sept. '07	11%	22%	19%	9%	7%	1%	2%	1%	28%	(499)
July '07	9%	23%	15%	11%	9%	2%	1%	2%	29%	(488)
Apr. '07	15%	28%	15%	7%	11%	2%	1%	1%	20%	(501)
Feb. '07	14%	23%	16%	8%	9%	2%	1%	1%	26%	(527)
Sept. '06	11%	27%	14%	7%	9%	3%	2%	2%	26%	(499)
July '06	12%	19%	10%	6%	6%	3%	1%	5%	38%	(490)
Apr. '06	16%	19%	11%	4%	10%	3%	2%	5%	30%	(501)
Feb. '06	14%	20%	13%	10%	7%	3%	1%	3%	29%	(498)
Oct. '05	12%	17%	18%	7%	6%	5%	2%	3%	30%	(503)
July '05	13%	27%	13%	6%	5%	4%	2%	*	28%	(496)
Apr. '05	13%	31%	14%	8%	6%	3%	5%	3%	18%	(487)
Feb. '05	15%	24%	14%	6%	9%	2%	2%	*	28%	(541)
July '04	13%	31%	11%	6%	5%	4%	2%	0%	28%	(504)
Apr. '04	20%	20%	13%	5%	7%	3%	4%	0%	29%	(536)
Feb. '04	22%	20%	14%	10%	7%	2%	5%	0%	21%	(502)
Oct. '03	19%	21%	13%	5%	10%	3%	6%	0%	23%	(490)
June '03	16%	27%	13%	3%	6%	1%	9%	0%	25%	(513)
Apr. '03	16%	28%	14%	4%	8%	2%	6%	0%	22%	(497)
Feb. '03	16%	29%	16%	2%	12%	2%	2%	0%	21%	(644)
June '02	16%	31%	15%	2%	12%	1%	5%	0%	18%	(424)
Apr. '02	11%	31%	24%	2%	7%	2%	1%	0%	22%	(684)
Feb. '02	12%	27%	17%	0%	21%	1%	3%	0%	19%	(312)
Oct. '01	15%	42%	11%	1%	45	2%	*	0%	25%	(519)

* Less than 1%

Gubernatorial Approval

STATEWIDE	<u>Approve</u> 56%	<u>Neutral</u> 15%	<u>Disapprove</u> 29%	<u>(N=)</u> 507
Registered Democrat	80%	8%	12%	124
Registered Undeclared	61%	13%	25%	206
Registered Republican	32%	17%	51%	134
Democrat	78%	10%	12%	208
Independent	53%	18%	28%	86
Republican	35%	17%	47%	205
Liberal	79%	12%	10%	106
Moderate	61%	16%	24%	199
Conservative	36%	16%	48%	179
Union household	44%	15%	41%	67
Non-union	58%	15%	27%	434
10 yrs or less in NH	50%	24%	26%	104
11 to 20 years	55%	15%	30%	69
More than 20 years	59%	12%	29%	318
18 to 34	43%	28%	29%	44
35 to 49	54%	18%	29%	125
50 to 64	58%	10%	33%	189
65 and over	60%	15%	25%	143
Male	49%	14%	37%	245
Female	63%	16%	21%	261
High school or less	43%	18%	39%	95
Some college	44%	14%	41%	109
College graduate	62%	16%	22%	184
Post-graduate	68%	12%	20%	114
Less than \$30K	53%	11%	36%	31
\$30K to \$60K	57%	15%	28%	71
\$60K to \$75K	60%	19%	21%	56
\$75K to \$100K	52%	11%	37%	68
\$100K or more	69%	10%	21%	125
Married	55%	14%	30%	370
Divorced/separated	62%	13%	25%	89
Never married	52%	23%	25%	42
Protestant	54%	17%	29%	190
Catholic	56%	13%	30%	171
Other	59%	13%	28%	127
Attend services 1 or more/week	47%	21%	32%	114
1-2 times a month	55%	13%	32%	56
Less often	67%	12%	21%	145
Never	54%	13%	33%	179
North Country	63%	4%	33%	31
Central / Lakes	51%	16%	34%	89
Connecticut Valley	56%	22%	22%	83
Mass Border	58%	16%	26%	140
Seacoast	54%	16%	31%	75
Manchester Area	58%	9%	33%	88
First Cong. Dist	55%	13%	32%	256
Second Cong. Dist	58%	17%	26%	249

Firmness of choice for New Hampshire Governor

	<u>Definitely Decided</u> 17%	<u>Leaning Toward Someone</u> 14%	<u>Still Trying To Decide</u> 70%	<u>(N=)</u> 461
STATEWIDE				
Registered Democrat	25%	15%	60%	116
Registered Undeclared	14%	12%	74%	190
Registered Republican	15%	14%	70%	130
Democrat	25%	15%	59%	187
Independent	17%	7%	76%	72
Republican	9%	14%	77%	195
Liberal	30%	14%	55%	94
Moderate	14%	12%	73%	185
Conservative	10%	16%	75%	163
Union household	14%	15%	70%	63
Non-union	17%	14%	69%	392
10 yrs or less in NH	12%	14%	74%	93
11 to 20 years	17%	6%	77%	61
More than 20 years	18%	15%	67%	292
18 to 34	8%	13%	79%	34
35 to 49	15%	6%	79%	113
50 to 64	16%	17%	67%	173
65 and over	21%	15%	64%	136
Male	18%	17%	65%	226
Female	16%	11%	74%	235
High school or less	13%	16%	71%	82
Some college	13%	10%	77%	93
College graduate	16%	15%	69%	173
Post-graduate	23%	14%	64%	107
Less than \$30K	22%	6%	72%	26
\$30K to \$60K	6%	19%	76%	62
\$60K to \$75K	16%	10%	74%	55
\$75K to \$100K	22%	6%	72%	62
\$100K or more	20%	17%	64%	118
Married	17%	13%	69%	344
Divorced/separated	13%	14%	73%	83
Never married	18%	18%	64%	29
Protestant	15%	12%	72%	170
Catholic	14%	12%	73%	156
Other	21%	20%	59%	119
Attend services 1 or more/week	13%	18%	69%	103
1-2 times a month	30%	4%	66%	52
Less often	16%	13%	71%	133
Never	15%	16%	69%	160
North Country	20%	18%	61%	31
Central / Lakes	17%	14%	69%	84
Connecticut Valley	11%	7%	83%	76
Mass Border	16%	17%	67%	129
Seacoast	22%	9%	70%	61
Manchester Area	18%	17%	65%	81
First Cong. Dist	18%	14%	68%	228
Second Cong. Dist	15%	13%	71%	231

NH Governor – John Stephen vs. John Lynch – Likely Voters

	<u>Stephen</u> 32%	<u>Lynch</u> 49%	<u>Other</u> 1%	<u>DK</u> 18%	<u>(N)</u> 460
STATEWIDE					
Definitely decided	22%	74%	2%	2%	74
Learning toward someone	38%	55%	5%	1%	63
Still trying to decide	33%	42%	0%	25%	316
Registered Democrat	12%	83%	0%	5%	118
Registered Undeclared	28%	51%	1%	20%	189
Registered Republican	58%	16%	3%	24%	130
Democrat	8%	85%	0%	7%	188
Independent	26%	41%	4%	29%	70
Republican	58%	16%	2%	24%	197
Liberal	6%	88%	2%	4%	95
Moderate	22%	55%	0%	23%	185
Conservative	60%	19%	2%	19%	162
Union household	41%	50%	4%	6%	63
Non-union	31%	49%	1%	19%	392
10 yrs or less in NH	30%	46%	2%	22%	95
11 to 20 years	28%	47%	2%	22%	62
More than 20 years	32%	51%	1%	16%	288
18 to 34	34%	40%	0%	26%	33
35 to 49	28%	50%	2%	21%	115
50 to 64	30%	51%	2%	17%	174
65 and over	38%	47%	0%	14%	133
Male	39%	42%	3%	16%	222
Female	26%	55%	0%	19%	238
High school or less	49%	36%	4%	12%	77
Some college	40%	36%	2%	23%	92
College graduate	26%	55%	1%	19%	176
Post-graduate	23%	59%	0%	18%	109
Less than \$30K	33%	44%	0%	23%	24
\$30K to \$60K	33%	44%	1%	21%	64
\$60K to \$75K	27%	60%	0%	13%	53
\$75K to \$100K	39%	47%	5%	10%	63
\$100K or more	23%	61%	2%	14%	119
Married	34%	47%	2%	17%	345
Divorced/separated	29%	49%	1%	21%	84
Never married	13%	68%	0%	19%	26
Protestant	37%	42%	2%	19%	172
Catholic	33%	44%	2%	21%	152
Other	24%	63%	0%	13%	119
Attend services 1 or more/week	39%	38%	2%	20%	108
1-2 times a month	26%	54%	0%	21%	50
Less often	28%	55%	2%	15%	132
Never	33%	49%	1%	18%	160
North Country	51%	49%	0%	0%	29
Central / Lakes	28%	57%	0%	15%	82
Connecticut Valley	30%	51%	1%	19%	79
Mass Border	33%	46%	1%	19%	131
Seacoast	21%	46%	3%	29%	60
Manchester Area	38%	44%	3%	15%	81
First Cong. Dist	32%	45%	2%	21%	225
Second Cong. Dist	32%	53%	0%	15%	233

Favorability Rating - John Lynch

	<u>Favorable</u> 58%	<u>Neutral</u> 10%	<u>Unfavorable</u> 26%	<u>Don't Know</u> 6%	<u>(N=)</u> 509
STATEWIDE					
Likely Voter	58%	9%	27%	5%	468
Non-Likely Voter	58%	11%	17%	14%	41
Registered Democrat	81%	4%	11%	4%	124
Registered Undeclared	61%	9%	24%	6%	211
Registered Republican	38%	13%	45%	3%	132
Democrat	78%	5%	11%	6%	209
Independent	54%	8%	30%	8%	87
Republican	39%	14%	42%	5%	205
Liberal	80%	8%	5%	7%	106
Moderate	65%	7%	22%	6%	199
Conservative	37%	14%	45%	4%	179
Union household	53%	6%	34%	7%	67
Non-union	59%	10%	25%	6%	437
10 yrs or less in NH	57%	9%	27%	7%	107
11 to 20 years	54%	7%	31%	9%	68
More than 20 years	60%	10%	24%	5%	320
18 to 34	47%	5%	32%	15%	45
35 to 49	58%	9%	27%	6%	126
50 to 64	58%	6%	31%	5%	189
65 and over	61%	15%	19%	5%	144
Male	50%	13%	33%	4%	248
Female	66%	7%	20%	8%	262
High school or less	45%	10%	37%	9%	95
Some college	46%	12%	34%	8%	111
College graduate	66%	8%	21%	5%	182
Post-graduate	68%	10%	17%	4%	116
Less than \$30K	54%	5%	29%	11%	31
\$30K to \$60K	53%	15%	22%	10%	74
\$60K to \$75K	59%	12%	20%	9%	57
\$75K to \$100K	56%	3%	38%	3%	68
\$100K or more	70%	6%	22%	3%	123
Married	57%	9%	29%	5%	371
Divorced/separated	65%	10%	18%	6%	91
Never married	56%	9%	20%	16%	42
Protestant	59%	10%	24%	8%	189
Catholic	55%	8%	32%	5%	172
Other	59%	11%	23%	6%	129
Attend services 1 or more/week	49%	12%	33%	6%	115
1-2 times a month	63%	13%	18%	6%	56
Less often	67%	5%	22%	7%	145
Never	54%	11%	29%	6%	181
North Country	66%	7%	25%	2%	31
Central / Lakes	58%	5%	31%	6%	90
Connecticut Valley	52%	13%	23%	11%	85
Mass Border	59%	8%	27%	6%	142
Seacoast	59%	11%	23%	6%	75
Manchester Area	59%	12%	26%	2%	87
First Cong. Dist	59%	10%	27%	4%	255
Second Cong. Dist	57%	9%	26%	8%	253

Favorability Rating – Businessman Jack Kimball

STATEWIDE	<u>Favorable</u> 4%	<u>Neutral</u> 8%	<u>Unfavorable</u> 3%	<u>Don't Know</u> 85%	<u>(N=)</u> 507
Likely Voter	4%	8%	2%	86%	467
Non-Likely Voter	8%	9%	6%	78%	40
Registered Democrat	1%	6%	4%	88%	124
Registered Undeclared	5%	6%	3%	86%	211
Registered Republican	5%	10%	1%	85%	131
Democrat	1%	10%	3%	86%	209
Independent	10%	6%	2%	82%	87
Republican	5%	8%	1%	87%	205
Liberal	3%	9%	5%	82%	105
Moderate	4%	8%	1%	87%	201
Conservative	6%	7%	2%	86%	178
Union household	2%	7%	1%	90%	67
Non-union	4%	8%	3%	85%	435
10 yrs or less in NH	5%	7%	1%	87%	106
11 to 20 years	7%	8%	2%	83%	67
More than 20 years	3%	8%	3%	85%	320
18 to 34	6%	4%	6%	84%	45
35 to 49	5%	10%	1%	83%	125
50 to 64	4%	8%	1%	87%	190
65 and over	2%	8%	5%	84%	142
Male	6%	9%	2%	83%	248
Female	2%	7%	3%	88%	260
High school or less	3%	11%	2%	84%	95
Some college	8%	4%	1%	87%	111
College graduate	4%	10%	4%	82%	181
Post-graduate	1%	7%	2%	90%	115
Less than \$30K	4%	6%	0%	89%	31
\$30K to \$60K	3%	8%	5%	84%	73
\$60K to \$75K	1%	8%	5%	86%	57
\$75K to \$100K	4%	2%	2%	91%	68
\$100K or more	2%	8%	2%	88%	123
Married	5%	8%	3%	85%	370
Divorced/separated	3%	9%	0%	88%	90
Never married	4%	10%	5%	82%	42
Protestant	3%	10%	3%	83%	191
Catholic	7%	6%	1%	85%	171
Other	2%	8%	3%	87%	129
Attend services 1 or more/week	4%	10%	1%	85%	112
1-2 times a month	7%	15%	3%	76%	56
Less often	3%	6%	3%	88%	146
Never	3%	6%	3%	87%	180
North Country	3%	14%	0%	84%	31
Central / Lakes	5%	10%	1%	83%	90
Connecticut Valley	1%	8%	3%	88%	83
Mass Border	6%	8%	5%	80%	141
Seacoast	5%	4%	2%	89%	75
Manchester Area	2%	7%	0%	91%	88
First Cong. Dist	4%	9%	1%	86%	256
Second Cong. Dist	4%	7%	4%	85%	250

Favorability Rating – Former Health and Human Services Commissioner John Stephen

	<u>Favorable</u> 16%	<u>Neutral</u> 9%	<u>Unfavorable</u> 18%	<u>Don't Know</u> 57%	<u>(N=)</u> 510
STATEWIDE					
Likely Voter	16%	9%	19%	56%	469
Non-Likely Voter	10%	8%	11%	71%	41
Registered Democrat	9%	12%	25%	55%	124
Registered Undeclared	16%	6%	23%	55%	211
Registered Republican	23%	12%	4%	61%	133
Democrat	12%	12%	23%	53%	209
Independent	19%	4%	16%	60%	86
Republican	18%	8%	15%	59%	206
Liberal	13%	7%	21%	59%	106
Moderate	13%	10%	20%	57%	200
Conservative	21%	9%	15%	54%	179
Union household	16%	8%	23%	52%	67
Non-union	16%	9%	18%	57%	437
10 yrs or less in NH	9%	7%	13%	72%	107
11 to 20 years	12%	13%	17%	57%	68
More than 20 years	19%	10%	19%	53%	321
18 to 34	9%	6%	8%	76%	45
35 to 49	13%	7%	21%	59%	126
50 to 64	15%	11%	21%	54%	190
65 and over	22%	10%	14%	54%	143
Male	19%	10%	19%	52%	248
Female	12%	9%	18%	61%	263
High school or less	19%	10%	12%	59%	95
Some college	16%	5%	15%	64%	111
College graduate	15%	11%	19%	55%	183
Post-graduate	14%	10%	24%	52%	115
Less than \$30K	21%	17%	12%	50%	31
\$30K to \$60K	10%	14%	19%	58%	74
\$60K to \$75K	16%	0%	23%	62%	56
\$75K to \$100K	9%	8%	13%	70%	68
\$100K or more	22%	6%	23%	49%	125
Married	17%	8%	17%	58%	372
Divorced/separated	12%	13%	20%	54%	90
Never married	13%	11%	22%	55%	42
Protestant	17%	9%	13%	61%	190
Catholic	19%	8%	19%	54%	172
Other	11%	9%	25%	55%	129
Attend services 1 or more/week	19%	9%	17%	56%	115
1-2 times a month	15%	15%	22%	48%	56
Less often	19%	11%	12%	59%	145
Never	11%	6%	23%	59%	181
North Country	27%	11%	18%	44%	31
Central / Lakes	14%	14%	28%	44%	89
Connecticut Valley	7%	12%	10%	71%	85
Mass Border	14%	8%	13%	64%	142
Seacoast	9%	8%	13%	70%	75
Manchester Area	30%	4%	28%	38%	88
First Cong. Dist	20%	10%	18%	52%	257
Second Cong. Dist	12%	9%	18%	62%	252

Are Things in NH headed in Right Direction or on Wrong Track?

	<u>Right Direction</u> 57%	<u>Wrong Track</u> 34%	<u>Don't Know</u> 9%	<u>(N=)</u> 503
STATEWIDE				
Likely Voter	56%	34%	10%	462
Non-Likely Voter	64%	30%	6%	39
Registered Democrat	80%	15%	5%	119
Registered Undeclared	57%	34%	9%	210
Registered Republican	33%	54%	13%	130
Democrat	77%	17%	6%	204
Independent	52%	39%	9%	87
Republican	37%	50%	13%	202
Liberal	74%	16%	10%	103
Moderate	63%	30%	8%	201
Conservative	38%	51%	11%	176
Union household	53%	41%	6%	65
Non-union	57%	33%	10%	432
10 yrs or less in NH	58%	32%	10%	106
11 to 20 years	51%	36%	13%	66
More than 20 years	58%	33%	9%	316
18 to 34	54%	37%	9%	44
35 to 49	58%	35%	7%	123
50 to 64	58%	35%	7%	186
65 and over	55%	32%	13%	143
Male	51%	39%	11%	243
Female	62%	30%	9%	259
High school or less	51%	41%	8%	94
Some college	54%	38%	8%	111
College graduate	57%	30%	12%	181
Post-graduate	64%	28%	8%	111
Less than \$30K	43%	51%	6%	31
\$30K to \$60K	53%	37%	9%	73
\$60K to \$75K	54%	30%	16%	57
\$75K to \$100K	57%	34%	10%	66
\$100K or more	70%	25%	4%	121
Married	58%	33%	8%	365
Divorced/separated	51%	36%	13%	90
Never married	58%	34%	9%	42
Protestant	54%	34%	12%	188
Catholic	58%	35%	6%	170
Other	61%	31%	8%	128
Attend services 1 or more/week	44%	44%	12%	114
1-2 times a month	65%	28%	7%	54
Less often	61%	26%	14%	144
Never	59%	36%	4%	178
North Country	60%	37%	3%	30
Central / Lakes	53%	34%	13%	87
Connecticut Valley	53%	32%	15%	83
Mass Border	56%	36%	8%	141
Seacoast	61%	31%	8%	74
Manchester Area	59%	35%	7%	88
First Cong. Dist	55%	35%	10%	255
Second Cong. Dist	58%	33%	9%	247

Most Important Problem Facing NH

STATEWIDE	<u>Educ Funding</u> 5%	<u>Jobs, Economy</u> 39%	<u>Taxes</u> 8%	<u>State Budget</u> 23%	<u>Quality Educ.</u> 2%	<u>Other</u> 21%	<u>Don't Know</u> 3%	<u>(N=)</u> 504
Likely Voter	4%	39%	8%	24%	2%	20%	3%	465
Non-Likely Voter	8%	33%	7%	15%	2%	30%	7%	38
Registered Democrat	7%	48%	3%	15%	1%	24%	2%	124
Registered Undeclared	4%	39%	6%	27%	2%	19%	2%	207
Registered Republican	4%	26%	15%	31%	1%	18%	4%	133
Democrat	8%	45%	4%	19%	3%	21%	2%	206
Independent	2%	37%	5%	22%	2%	30%	2%	87
Republican	3%	32%	13%	30%	1%	17%	5%	201
Liberal	10%	38%	3%	16%	2%	27%	3%	105
Moderate	4%	43%	7%	26%	2%	16%	2%	200
Conservative	2%	34%	10%	27%	1%	22%	4%	174
Union household	4%	33%	10%	31%	4%	18%	0%	67
Non-union	5%	40%	7%	22%	1%	21%	3%	431
10 yrs or less in NH	4%	44%	6%	15%	1%	24%	6%	104
11 to 20 years	11%	38%	3%	18%	6%	22%	2%	68
More than 20 years	4%	37%	9%	27%	1%	20%	2%	318
18 to 34	6%	60%	2%	8%	1%	17%	4%	43
35 to 49	8%	39%	7%	17%	4%	23%	3%	125
50 to 64	3%	41%	10%	25%	1%	18%	3%	191
65 and over	3%	29%	7%	32%	1%	24%	4%	140
Male	4%	32%	8%	32%	1%	22%	2%	242
Female	5%	45%	8%	16%	3%	19%	4%	261
High school or less	3%	35%	14%	27%	1%	19%	2%	92
Some college	2%	34%	9%	24%	2%	21%	7%	109
College graduate	5%	45%	3%	22%	2%	20%	3%	183
Post-graduate	8%	38%	8%	21%	2%	22%	1%	113
Less than \$30K	0%	43%	0%	17%	2%	33%	6%	31
\$30K to \$60K	1%	41%	7%	24%	0%	23%	3%	74
\$60K to \$75K	4%	40%	6%	26%	2%	20%	1%	56
\$75K to \$100K	4%	30%	9%	31%	1%	20%	4%	68
\$100K or more	8%	40%	9%	23%	4%	16%	0%	125
Married	5%	36%	9%	26%	2%	19%	3%	369
Divorced/separated	3%	48%	3%	20%	2%	19%	5%	90
Never married	4%	44%	0%	9%	1%	41%	1%	40
Protestant	5%	39%	5%	20%	2%	24%	6%	190
Catholic	4%	35%	11%	31%	3%	14%	2%	169
Other	6%	42%	6%	18%	1%	25%	1%	125
Attend services 1 or more/week	6%	32%	6%	25%	3%	20%	7%	112
1-2 times a month	5%	31%	6%	31%	3%	24%	0%	56
Less often	4%	45%	5%	24%	1%	18%	4%	145
Never	4%	40%	11%	20%	2%	23%	1%	177
North Country	3%	53%	0%	28%	2%	14%	0%	31
Central / Lakes	4%	34%	5%	26%	2%	30%	0%	89
Connecticut Valley	7%	37%	15%	17%	0%	22%	2%	85
Mass Border	4%	41%	8%	23%	1%	18%	5%	136
Seacoast	6%	32%	6%	28%	0%	23%	5%	74
Manchester Area	4%	43%	8%	22%	5%	14%	3%	88
First Cong. Dist	6%	38%	5%	26%	2%	22%	3%	251
Second Cong. Dist	4%	40%	10%	21%	2%	20%	3%	252