

# THE WMUR GRANITE STATE POLL

## THE UNIVERSITY OF NEW HAMPSHIRE SURVEY CENTER

### NH MORE OPTIMISTIC ABOUT WAR IN AFGHANISTAN

May 6, 2010

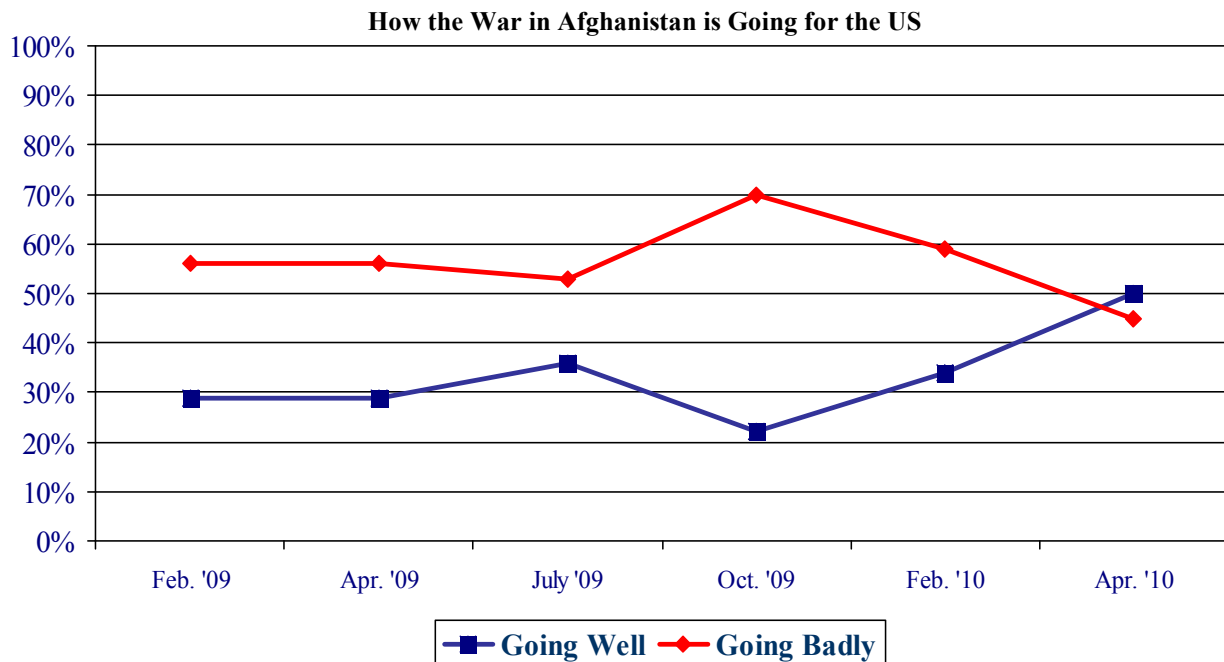
By: Andrew E. Smith, Ph.D.  
UNH Survey Center  
www.unh.edu/survey-center  
603/862-2226

DURHAM, NH – New Hampshire residents approve of the troop surge in Afghanistan and are more optimistic about US operations in Afghanistan. President Obama receives high marks for his handling of the situation in Iraq.

These findings are based on the latest **WMUR Granite State Poll**,\* conducted by the University of New Hampshire Survey Center. Five hundred (512) randomly selected New Hampshire adults were interviewed by telephone between April 18 and April 28, 2010. The margin of sampling error for the survey is +/- 4.4 percent.

#### The War in Afghanistan

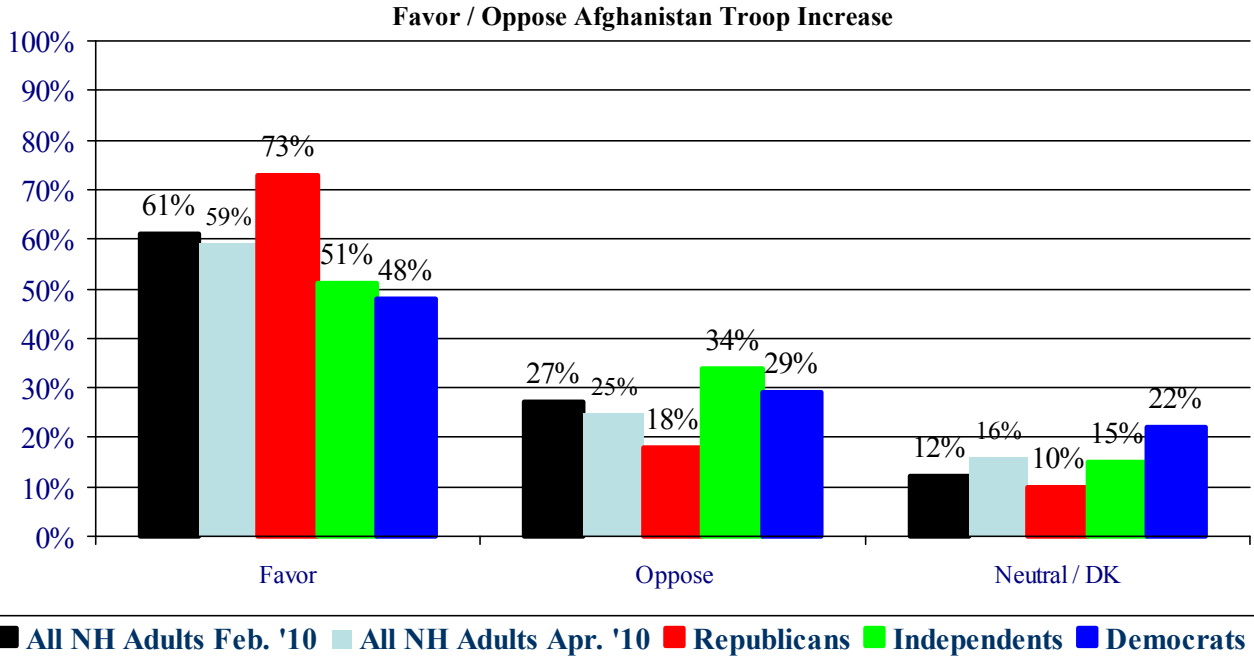
The Obama Administration has been ramping up the number of American troops in Afghanistan in response to deteriorating security conditions there and to shore up public support for the war in the US. And while US troops still face serious difficulties in Afghanistan, the troop surge has certainly reversed public opinion about the war. Currently, 50% of New Hampshire adults think the war in Afghanistan is going well for the US, 45% think it is going badly, and 6% don't know. The percentage who believe the war in Afghanistan is going well has increased 28 percentage points since the surge was announced last December.



\* We ask that this copyrighted information be referred to as *the Granite State Poll*, sponsored by WMUR-TV, and conducted by the University of New Hampshire Survey Center.

### Increase US Troops in Afghanistan

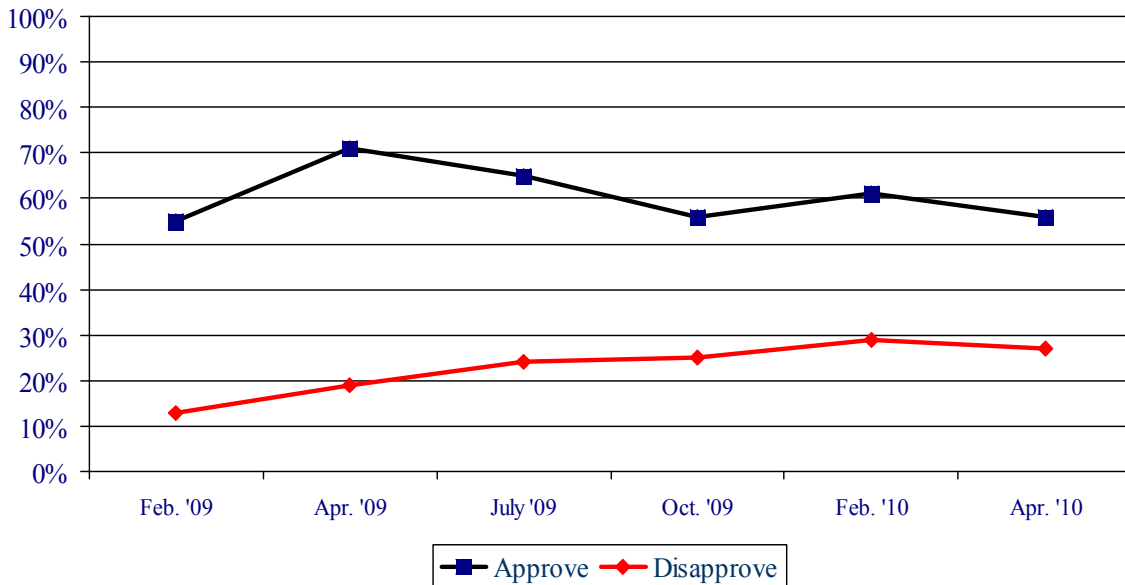
Support for the troop surge in Afghanistan remains high – 59% favor the troop increase, 25% oppose, and 16% are unsure. Support for the increase is largely unchanged since February. Republicans are most likely to support the increase (73% favor the increase) but Independents (51%) and a plurality of Democrats (48%) favor it as well.



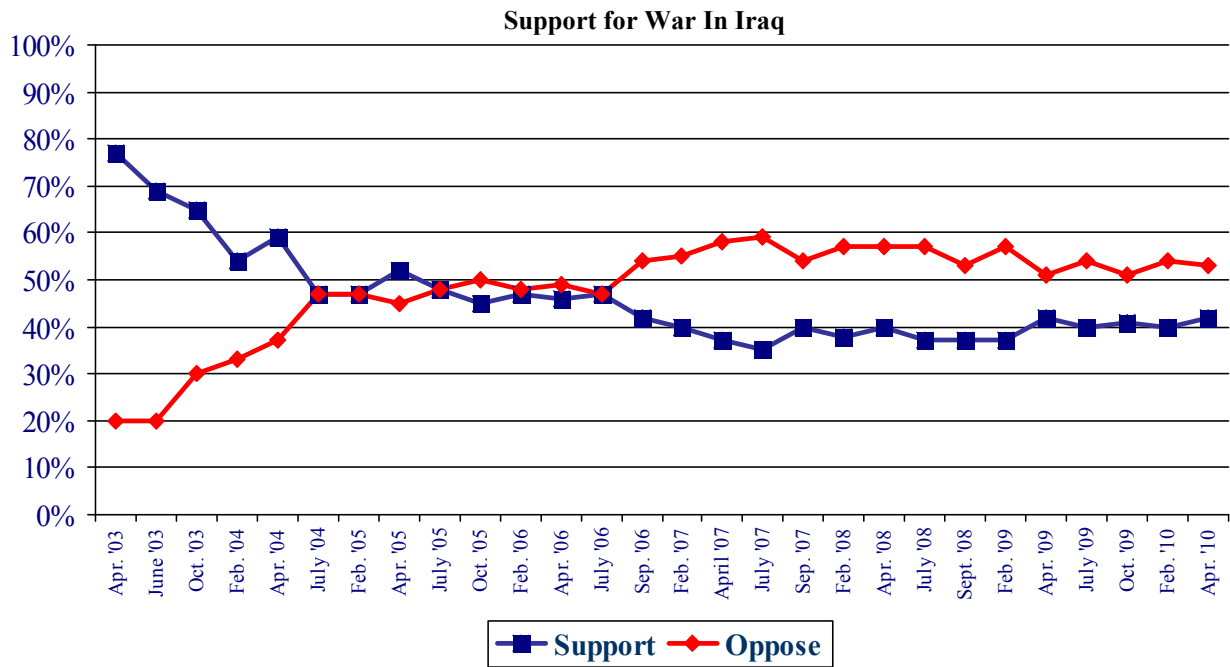
### Presidential Approval on Iraq

Approval of President Obama’s handling of the situation in Iraq has remained steady since fall of 2009. In the most recent Granite State Poll, 56% of New Hampshire adults approve of his handling of Iraq, 27% disapprove, and 17% are neutral. Obama continues hold onto majority support from Democrats and political independents – 75% and 52%, respectively – but Republicans are divided about the administration’s actions in Iraq, with 38% approving and 36% disapproving.

### Obama Approval: Handling Situation in Iraq

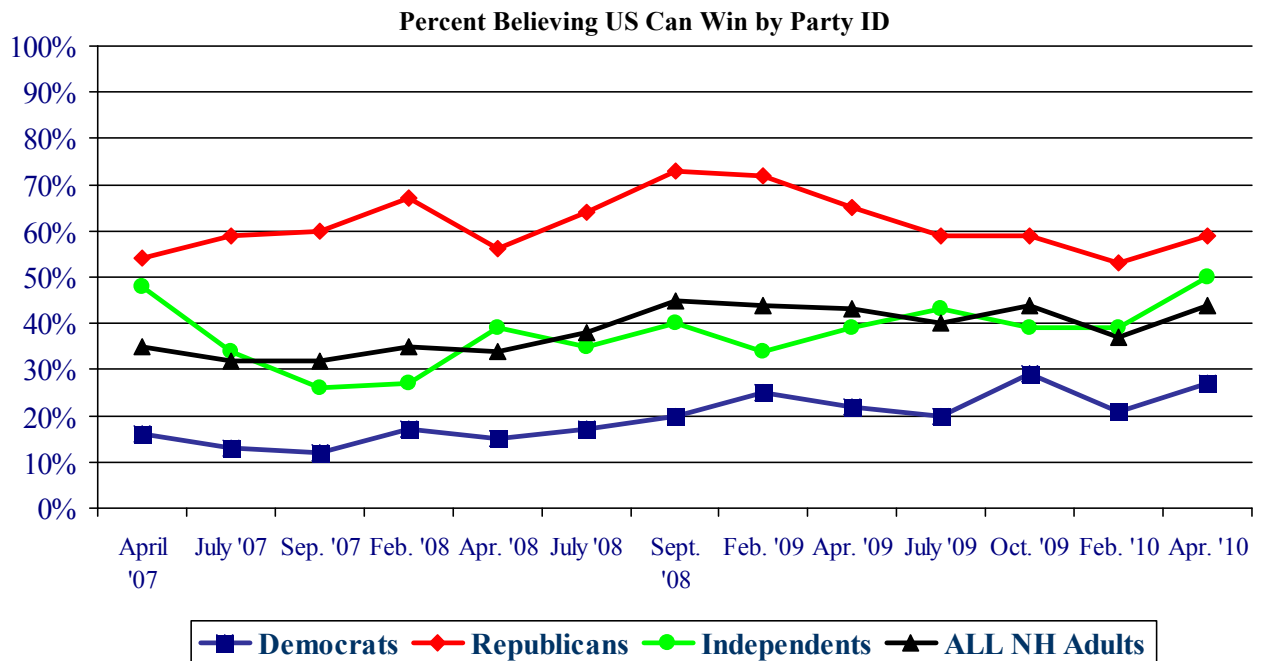


However, most New Hampshire residents continue to believe that going to war in Iraq was a bad idea. Currently, 42% of Granite Staters support the US having gone to war with Iraq, 53% oppose it, and 5% are neutral. The percentage of New Hampshire adults who support or oppose the US having gone to war in Iraq has remained relatively stable for the past 3 years.



### Can the US Win?

New Hampshire remains divided on whether the US can win the war in Iraq. Currently, 44% of New Hampshire adults think the US can win the Iraq War, 39% think we cannot win, and 16% don't know. Republicans continue to be the most optimistic about the US prospects of victory in Iraq, with 59% believing the US can win. Democrats continue to be the least optimistic with only 27% thinking winning the Iraq war is possible.



## Granite State Poll Methodology

These findings are based on the latest WMUR Granite State Poll, conducted by the University of New Hampshire Survey Center. Five hundred (512) randomly selected New Hampshire adults were interviewed by telephone between April 18 and April 28, 2010. The margin of sampling error for the survey is +/- 4.4 percent.

The data have been weighted to adjust for numbers of adults and telephone lines within households, respondent sex, and region of the state. In addition to potential sampling error, all surveys have other potential sources of non-sampling error including question order effects, question wording effects, and non-response.

### Presidential Approval - Handling of Situation in Iraq

“Do you approve or disapprove of the way President Obama is handling the situation with Iraq?”

	<u>Approve</u>	<u>Neutral</u>	<u>Disapprove</u>	<u>(N)</u>
<b>Apr. '10</b>	<b>56%</b>	<b>17%</b>	<b>27%</b>	<b>(504)</b>
<b>Feb. '10</b>	61%	9%	29%	(492)
<b>Oct. '09</b>	56%	19%	25%	(496)
<b>July '09</b>	65%	10%	24%	(554)
<b>Apr. '09</b>	71%	10%	19%	(498)
<b>Feb. '09</b>	55%	32%	13%	(609)

### Support for War in Iraq

“Do you support or oppose the United States having gone to war with Iraq?”

	<u>Support</u>	<u>Neutral</u>	<u>Oppose</u>	<u>(N)</u>
<b>Apr. '10</b>	<b>42%</b>	<b>5%</b>	<b>53%</b>	<b>(507)</b>
<b>Feb. '10</b>	40%	6%	54%	(491)
<b>Oct. '09</b>	41%	8%	51%	(499)
<b>July '09</b>	40%	6%	54%	(553)
<b>Apr. '09</b>	42%	7%	51%	(502)
<b>Feb. '09</b>	37%	5%	57%	(616)
<b>Sept. '09</b>	37%	7%	53%	(544)
<b>July '08</b>	37%	6%	57%	(511)
<b>Apr. '08</b>	40%	3%	57%	(498)
<b>Feb. '08</b>	38%	5%	57%	(548)
<b>Sep. '07</b>	40%	6%	54%	(506)
<b>July '07</b>	35%	6%	59%	(516)
<b>Apr. '07</b>	37%	5%	58%	(510)
<b>Feb. '07</b>	40%	5%	55%	(525)
<b>Sept. '06</b>	42%	4%	54%	(510)
<b>July '06</b>	47%	6%	47%	(500)
<b>Apr. '06</b>	46%	5%	49%	(496)
<b>Feb. '06</b>	47%	5%	48%	(500)
<b>Oct. '05</b>	45%	4%	50%	(502)
<b>July '05</b>	48%	5%	48%	(493)
<b>Apr. '05</b>	52%	3%	45%	(489)
<b>Feb. '05</b>	47%	6%	47%	(537)
<b>July '04</b>	47%	6%	47%	(498)
<b>Apr. '04</b>	59%	4%	37%	(536)
<b>Feb. '04</b>	54%	3%	33%	(509)
<b>Oct. '03</b>	65%	5%	30%	(496)
<b>June '03</b>	69%	4%	20%	(513)
<b>Apr. '03</b>	77%	4%	20%	(506)

### Can US Win in Iraq?

“Do you think the United States can win or cannot win the war in Iraq?”

	<u>Can Win</u>	<u>Cannot Win</u>	<u>Don't Know</u>	<u>(N)</u>
<b>Apr. '10</b>	<b>44%</b>	<b>39%</b>	<b>16%</b>	<b>(502)</b>
<b>Feb. '10</b>	37%	49%	14%	(489)
<b>Oct. '09</b>	44%	43%	13%	(491)
<b>July '09</b>	40%	46%	15%	(549)
<b>Apr. '09</b>	43%	45%	12%	(486)
<b>Feb. '09</b>	44%	41%	15%	(597)
<b>Sept. '08</b>	45%	41%	14%	(532)
<b>July '08</b>	38%	52%	10%	(511)
<b>Apr. '08</b>	34%	56%	10%	(495)
<b>Feb. '08</b>	35%	53%	12%	(544)
<b>Sep. '07</b>	32%	55%	13%	(503)
<b>July '07</b>	32%	57%	11%	(504)
<b>Apr. '07</b>	35%	55%	10%	(512)

### How is the War in Afghanistan Going for the U.S.?

“Now, let’s talk about the war in Afghanistan. What is your impression of how the war in Afghanistan is going for the United States right now? Would you say it is going very well ... somewhat well ... somewhat badly ... or very badly?”

	<u>Going Well</u>	<u>Going Badly</u>	<u>Don't Know</u>	<u>(N)</u>
<b>Apr. '10</b>	<b>50%</b>	<b>45%</b>	<b>6%</b>	<b>(511)</b>
<b>Feb. '10</b>	34%	59%	7%	(494)
<b>Oct. '09</b>	22%	70%	8%	(500)
<b>July '09</b>	36%	53%	12%	(556)
<b>Apr. '09</b>	29%	56%	15%	(498)
<b>Feb. '09</b>	29%	56%	14%	(619)

### Favor / Oppose Additional Troops to Afghanistan?

"Regardless of how you feel about the war in general, do you favor or oppose President Obama's plan to send about 30,000 more U.S. troops to Afghanistan in an attempt to stabilize the situation there, or don't you have an opinion?"

	<u>Favor</u>	<u>Oppose</u>	<u>Don't Know</u>	<u>(N)</u>
<b>Apr. '10</b>	<b>59%</b>	<b>25%</b>	<b>16%</b>	<b>(510)</b>
<b>Feb. '10</b>	61%	27%	12%	(494)

**Presidential Approval Rating - Iraq**

<b>STATEWIDE</b>	<b><u>Approve</u></b> <b>56%</b>	<b><u>Neutral</u></b> <b>17%</b>	<b><u>Disapprove</u></b> <b>27%</b>	<b><u>(N=)</u></b> <b>504</b>
Likely Voter	56%	17%	27%	466
Non-Likely Voter	52%	22%	26%	37
Registered Democrat	77%	10%	13%	123
Registered Undeclared	59%	9%	32%	208
Registered Republican	38%	31%	32%	133
Democrat	75%	12%	12%	206
Independent	52%	8%	40%	87
Republican	38%	26%	36%	203
Liberal	74%	12%	15%	104
Moderate	65%	16%	20%	199
Conservative	38%	20%	42%	177
McCain/Palin Voter	38%	22%	40%	202
Obama/Biden Voter	77%	11%	12%	236
Other	24%	15%	60%	25
Did Not Vote in 2008	41%	36%	24%	28
Union household	66%	19%	15%	67
Non-union	55%	17%	28%	431
10 yrs or less in NH	55%	21%	24%	107
11 to 20 years	55%	18%	27%	66
More than 20 years	57%	16%	27%	317
18 to 34	46%	16%	38%	42
35 to 49	59%	20%	21%	124
50 to 64	56%	17%	27%	189
65 and over	58%	15%	27%	144
Male	55%	17%	29%	244
Female	57%	18%	25%	260
High school or less	56%	18%	26%	93
Some college	45%	21%	34%	107
College graduate	59%	18%	23%	182
Post-graduate	62%	12%	25%	116
Less than \$30K	43%	7%	49%	30
\$30K to \$60K	52%	18%	30%	72
\$60K to \$75K	65%	20%	15%	56
\$75K to \$100K	62%	20%	18%	68
\$100K or more	63%	16%	21%	125
Married	57%	18%	24%	370
Divorced/separated	54%	16%	30%	88
Never married	51%	12%	37%	40
Protestant	52%	21%	27%	190
Catholic	57%	16%	27%	170
Other	62%	12%	26%	125
Attend services 1 or more/week	46%	21%	33%	114
1-2 times a month	52%	8%	41%	55
Less often	65%	19%	16%	145
Never	58%	16%	26%	177
North Country	65%	7%	28%	31
Central / Lakes	60%	12%	28%	87
Connecticut Valley	55%	27%	18%	84
Mass Border	56%	19%	26%	140
Seacoast	48%	13%	39%	74
Manchester Area	58%	18%	24%	88
First Cong. Dist	56%	16%	28%	253
Second Cong. Dist	56%	19%	25%	249

### Support / Oppose US War in Iraq

STATEWIDE	<u>Support</u> 42%	<u>Neutral</u> 5%	<u>Oppose</u> 53%	<u>(N=)</u> 507
Likely Voter	42%	4%	53%	466
Non-Likely Voter	39%	9%	52%	41
Registered Democrat	17%	2%	82%	124
Registered Undeclared	38%	5%	57%	209
Registered Republican	73%	6%	21%	133
Democrat	14%	4%	82%	209
Independent	42%	10%	49%	87
Republican	71%	3%	26%	204
Liberal	11%	3%	85%	105
Moderate	35%	5%	59%	201
Conservative	68%	5%	27%	177
McCain/Palin Voter	76%	4%	20%	203
Obama/Biden Voter	15%	4%	81%	237
Other	26%	16%	58%	24
Did Not Vote in 2008	45%	3%	52%	31
Union household	34%	5%	62%	67
Non-union	43%	5%	52%	435
10 yrs or less in NH	39%	3%	58%	104
11 to 20 years	53%	12%	36%	69
More than 20 years	40%	4%	57%	319
18 to 34	45%	1%	54%	45
35 to 49	37%	9%	54%	126
50 to 64	42%	5%	53%	189
65 and over	46%	1%	53%	141
Male	46%	4%	50%	245
Female	38%	6%	56%	262
High school or less	44%	6%	49%	95
Some college	51%	4%	45%	109
College graduate	41%	3%	55%	182
Post-graduate	32%	6%	62%	115
Less than \$30K	50%	9%	41%	31
\$30K to \$60K	37%	4%	59%	74
\$60K to \$75K	39%	2%	58%	56
\$75K to \$100K	47%	6%	47%	68
\$100K or more	36%	4%	60%	124
Married	45%	5%	50%	372
Divorced/separated	33%	4%	63%	88
Never married	32%	5%	63%	42
Protestant	46%	7%	46%	191
Catholic	48%	5%	47%	171
Other	26%	1%	73%	128
Attend services 1 or more/week	51%	8%	41%	113
1-2 times a month	32%	7%	61%	56
Less often	42%	4%	53%	145
Never	39%	2%	59%	180
North Country	51%	5%	44%	31
Central / Lakes	34%	4%	63%	90
Connecticut Valley	33%	3%	64%	83
Mass Border	44%	9%	47%	142
Seacoast	52%	2%	47%	74
Manchester Area	44%	4%	52%	88
First Cong. Dist	50%	3%	47%	255
Second Cong. Dist	34%	7%	59%	251

**Can US Win War in Iraq?**

<b>STATEWIDE</b>	<b>Can Win 44%</b>	<b>Cannot Win 39%</b>	<b>Don't Know 16%</b>	<b>(N=) 502</b>
Likely Voter	45%	39%	16%	461
Non-Likely Voter	33%	43%	24%	41
Registered Democrat	25%	51%	24%	124
Registered Undeclared	46%	41%	13%	204
Registered Republican	59%	28%	13%	132
Democrat	27%	54%	19%	209
Independent	50%	26%	25%	86
Republican	59%	31%	10%	200
Liberal	24%	55%	22%	104
Moderate	35%	46%	19%	197
Conservative	65%	25%	10%	177
McCain/Palin Voter	64%	26%	10%	198
Obama/Biden Voter	26%	53%	22%	236
Other	46%	50%	4%	24
Did Not Vote in 2008	53%	21%	26%	31
Union household	38%	50%	12%	66
Non-union	45%	38%	17%	432
10 yrs or less in NH	51%	34%	16%	106
11 to 20 years	52%	34%	14%	67
More than 20 years	40%	43%	16%	314
18 to 34	57%	31%	12%	45
35 to 49	46%	38%	16%	126
50 to 64	40%	42%	17%	184
65 and over	45%	38%	17%	142
Male	52%	36%	11%	244
Female	37%	42%	21%	258
High school or less	47%	40%	12%	93
Some college	49%	37%	15%	109
College graduate	44%	40%	16%	180
Post-graduate	37%	40%	22%	114
Less than \$30K	47%	36%	17%	31
\$30K to \$60K	44%	39%	17%	72
\$60K to \$75K	39%	44%	16%	56
\$75K to \$100K	56%	28%	16%	67
\$100K or more	39%	46%	15%	122
Married	47%	38%	15%	368
Divorced/separated	31%	49%	21%	88
Never married	47%	29%	23%	41
Protestant	46%	34%	20%	191
Catholic	52%	35%	14%	165
Other	35%	51%	15%	128
Attend services 1 or more/week	41%	41%	18%	110
1-2 times a month	45%	40%	16%	55
Less often	53%	32%	16%	144
Never	40%	44%	16%	179
North Country	51%	35%	15%	31
Central / Lakes	43%	43%	14%	89
Connecticut Valley	36%	47%	17%	82
Mass Border	38%	44%	18%	140
Seacoast	47%	30%	23%	72
Manchester Area	59%	30%	11%	87
First Cong. Dist	49%	34%	17%	252
Second Cong. Dist	39%	45%	16%	248



**How is the War in Afghanistan going for the US?**

<b>STATEWIDE</b>	<b><u>Well</u></b> <b>50%</b>	<b><u>Badly</u></b> <b>45%</b>	<b><u>Don't Know</u></b> <b>6%</b>	<b><u>(N=)</u></b> <b>511</b>
Likely Voter	52%	43%	5%	470
Non-Likely Voter	23%	63%	14%	41
Registered Democrat	44%	50%	6%	123
Registered Undeclared	48%	48%	4%	211
Registered Republican	59%	36%	5%	134
Democrat	42%	54%	4%	208
Independent	48%	39%	12%	87
Republican	57%	38%	5%	207
Liberal	36%	59%	4%	105
Moderate	45%	48%	7%	202
Conservative	61%	35%	4%	179
McCain/Palin Voter	61%	34%	5%	205
Obama/Biden Voter	41%	54%	5%	238
Other	51%	43%	6%	25
Did Not Vote in 2008	35%	46%	19%	31
Union household	52%	45%	4%	67
Non-union	49%	45%	6%	438
10 yrs or less in NH	39%	56%	5%	107
11 to 20 years	52%	41%	7%	68
More than 20 years	52%	42%	5%	320
18 to 34	45%	47%	8%	45
35 to 49	45%	50%	6%	125
50 to 64	49%	46%	4%	190
65 and over	57%	37%	6%	144
Male	57%	41%	2%	247
Female	43%	48%	9%	264
High school or less	60%	35%	5%	95
Some college	52%	44%	4%	110
College graduate	44%	49%	7%	184
Post-graduate	46%	48%	6%	116
Less than \$30K	55%	39%	6%	31
\$30K to \$60K	50%	40%	10%	74
\$60K to \$75K	53%	44%	4%	56
\$75K to \$100K	52%	44%	4%	68
\$100K or more	43%	53%	4%	125
Married	52%	42%	6%	373
Divorced/separated	40%	53%	7%	91
Never married	50%	50%	0%	42
Protestant	49%	44%	7%	192
Catholic	59%	37%	5%	172
Other	38%	57%	5%	128
Attend services 1 or more/week	54%	39%	7%	115
1-2 times a month	51%	46%	2%	56
Less often	52%	42%	7%	146
Never	46%	49%	5%	181
North Country	75%	25%	0%	31
Central / Lakes	55%	43%	2%	90
Connecticut Valley	46%	43%	11%	84
Mass Border	42%	53%	5%	142
Seacoast	45%	48%	7%	75
Manchester Area	55%	38%	7%	88
First Cong. Dist	51%	43%	5%	257
Second Cong. Dist	48%	46%	6%	253

**Should Amount of U.S. forces in Afghanistan be modified?**

<b>STATEWIDE</b>	<b><u>Favor</u></b> <b>59%</b>	<b><u>Oppose</u></b> <b>25%</b>	<b><u>Neutral /</u></b> <b><u>Don't Know</u></b> <b>16%</b>	<b><u>(N=)</u></b> <b>510</b>
Likely Voter	60%	24%	16%	468
Non-Likely Voter	44%	31%	25%	41
Registered Democrat	50%	26%	25%	124
Registered Undeclared	56%	31%	13%	211
Registered Republican	74%	14%	12%	132
Democrat	48%	29%	22%	209
Independent	51%	34%	15%	87
Republican	73%	18%	10%	205
Liberal	38%	39%	23%	105
Moderate	58%	28%	15%	202
Conservative	73%	16%	12%	178
McCain/Palin Voter	74%	15%	12%	203
Obama/Biden Voter	51%	29%	20%	237
Other	21%	60%	19%	25
Did Not Vote in 2008	50%	29%	20%	31
Union household	53%	28%	19%	67
Non-union	59%	25%	16%	437
10 yrs or less in NH	58%	29%	13%	106
11 to 20 years	65%	20%	14%	68
More than 20 years	57%	25%	18%	321
18 to 34	51%	34%	15%	45
35 to 49	56%	31%	13%	125
50 to 64	61%	23%	16%	191
65 and over	59%	20%	21%	143
Male	67%	22%	12%	247
Female	51%	28%	21%	262
High school or less	59%	26%	15%	95
Some college	56%	28%	16%	110
College graduate	62%	20%	18%	184
Post-graduate	55%	29%	16%	115
Less than \$30K	56%	28%	15%	31
\$30K to \$60K	51%	35%	14%	74
\$60K to \$75K	64%	28%	8%	57
\$75K to \$100K	68%	20%	12%	68
\$100K or more	56%	28%	16%	123
Married	63%	20%	17%	371
Divorced/separated	44%	37%	19%	91
Never married	51%	39%	11%	42
Protestant	60%	23%	18%	191
Catholic	63%	23%	15%	171
Other	55%	30%	16%	129
Attend services 1 or more/week	55%	25%	20%	113
1-2 times a month	68%	19%	13%	56
Less often	63%	24%	13%	146
Never	56%	27%	17%	181
North Country	67%	18%	14%	31
Central / Lakes	55%	29%	16%	90
Connecticut Valley	61%	23%	16%	84
Mass Border	60%	22%	19%	141
Seacoast	56%	35%	9%	75
Manchester Area	58%	22%	20%	88
First Cong. Dist	59%	25%	16%	257
Second Cong. Dist	58%	25%	17%	251