

# THE WMUR GRANITE STATE POLL

## THE UNIVERSITY OF NEW HAMPSHIRE SURVEY CENTER

August 2, 2010

### OBAMA HOLDS STEADY IN NEW HAMPSHIRE

By: Andrew E. Smith, Ph.D.  
UNH Survey Center  
603/862-2226  
[www.unh.edu/survey-center](http://www.unh.edu/survey-center)

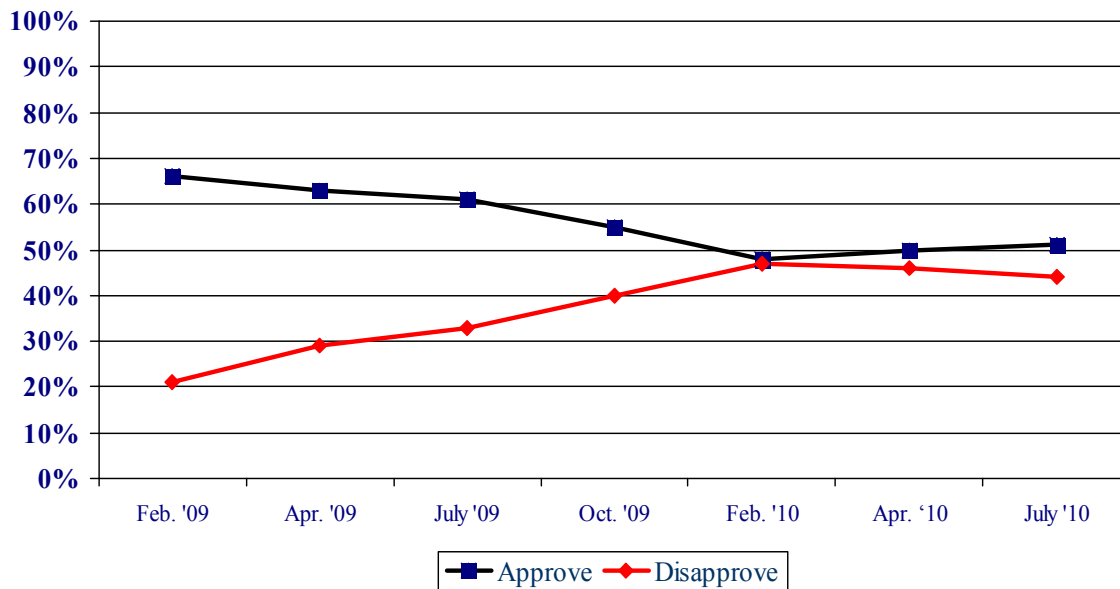
DURHAM, NH – President Barack Obama’s approval ratings in New Hampshire have held steady for the third straight quarter after dropping in the year after his inauguration. Opinions about the recently passed health care reform legislation have remained unchanged since April.

These findings are based on the latest **WMUR Granite State Poll**,\* conducted by the University of New Hampshire Survey Center. Five hundred four (504) randomly selected New Hampshire adults were interviewed by telephone between July 19 and July 27, 2010. The margin of sampling error for the survey is +/- 4.4 percent.

#### Presidential Approval

After declining in every Granite State Poll in 2009, President Obama’s approval ratings in New Hampshire have stabilized in 2010. In the most recent Granite State Poll, 51% of New Hampshire adults say they approve of the job Obama is doing as president, 44% disapprove, and 5% are neutral. These figures are higher than his national ratings, a recent Gallup poll showed 46% of U.S. residents approved of the job Obama is doing as President.

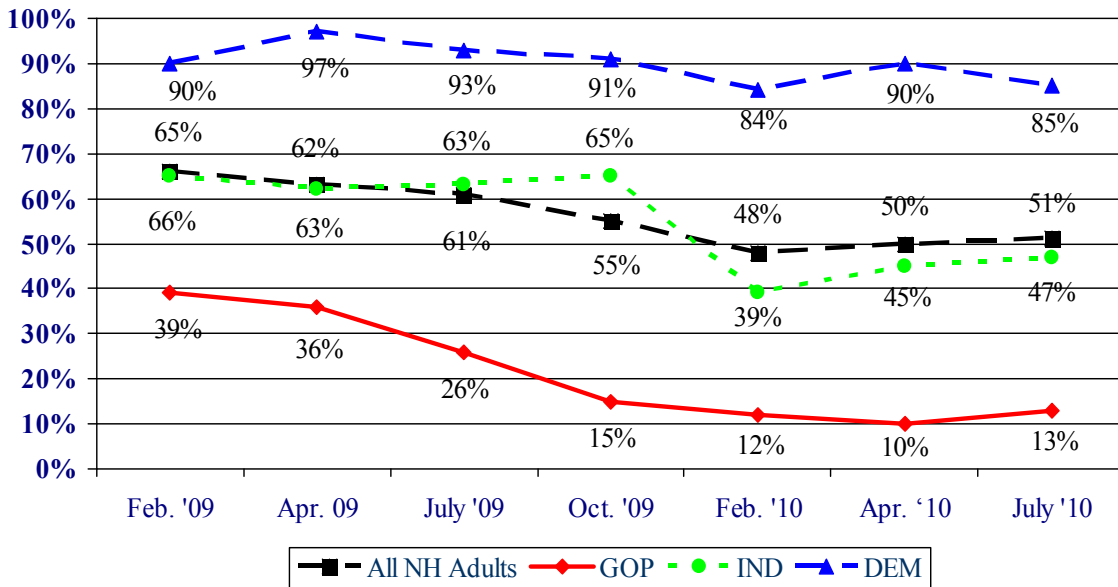
Presidential Approval – Barack Obama



\* We ask that this copyrighted information be referred to as *the Granite State Poll*, sponsored by WMUR-TV, and conducted by the University of New Hampshire Survey Center.

Obama's approval ratings have declined slightly among Democrats, while they have remained relatively unchanged among independents and Republicans. Currently, 47% of independents in New Hampshire say they approve of the job Obama is doing as President, up slightly from 45% in April, but down 20 percentage points since October 2009. Support among self-identified Democrats has declined slightly, from 90% in April to 85% in July, while only 13% of Republicans support Obama, up slightly from 10% in April.

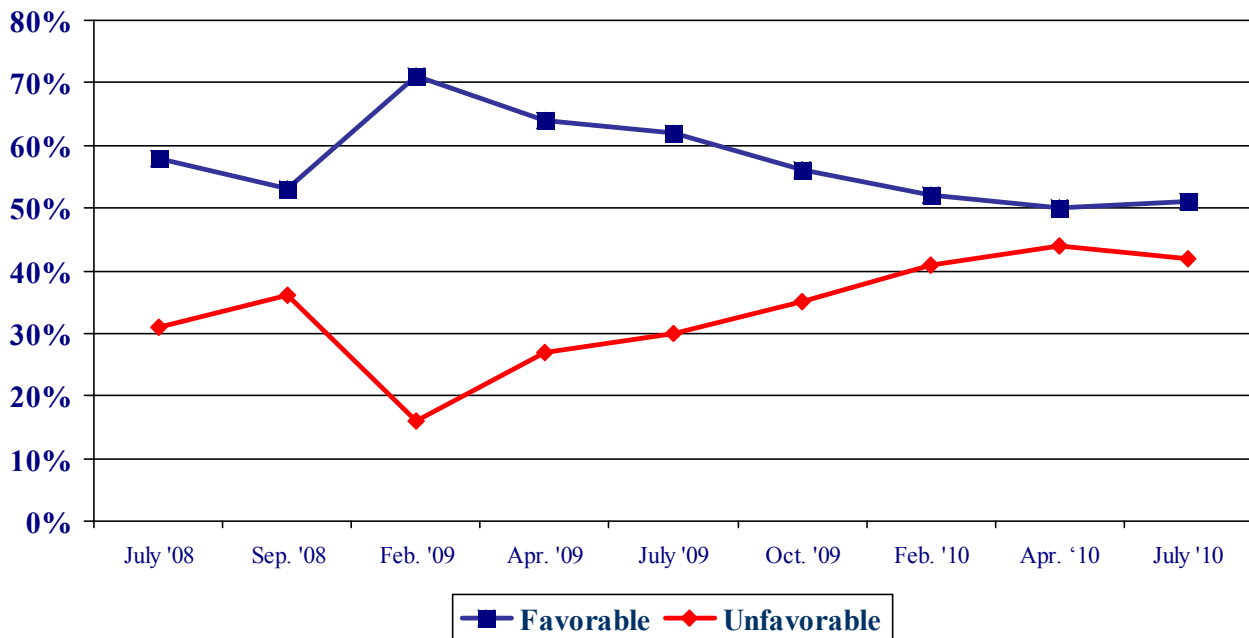
**Presidential Approval in NH by Party Identification**



Obama's personal favorability ratings have also stayed stable. Obama is currently viewed favorably by 51% of New Hampshire adults, 42% have an unfavorable opinion of him, and 5% are neutral. Obama's net favorability rating, the percentage having a favorable opinion minus the percentage having an unfavorable opinion, is +9%, slightly up from +6% in April.

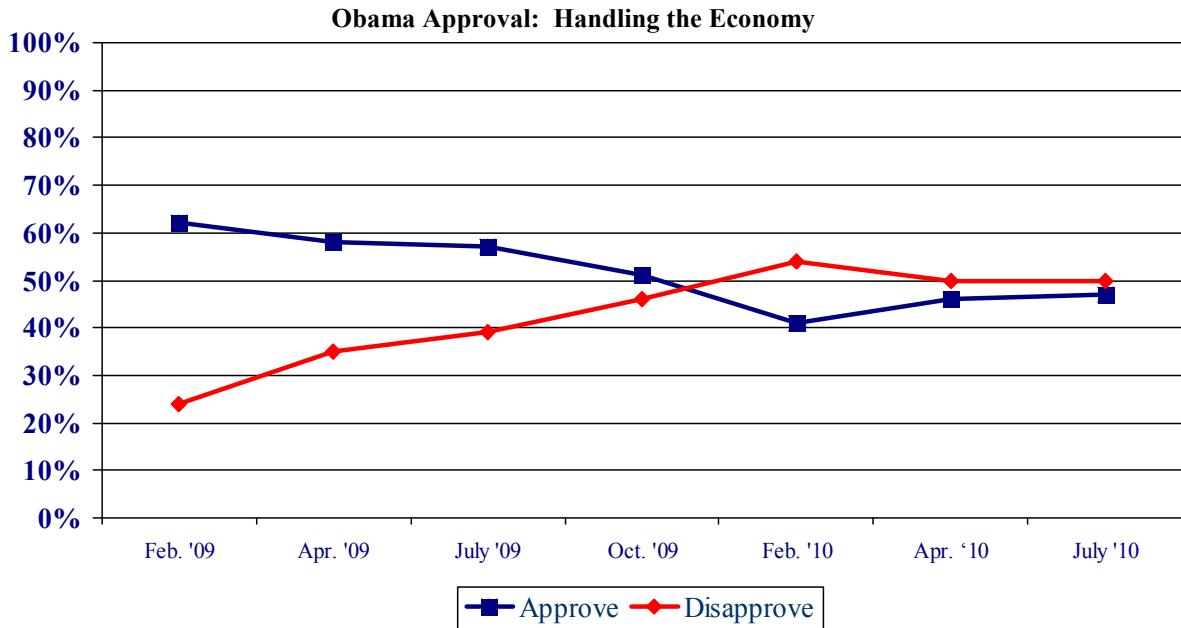
Democrats continue to like Obama with 85% saying they have a favorable opinion of him, but only 47% of political independents and 15% of Republicans have a favorable opinion of the President.

**Favorability Ratings – Barack Obama**



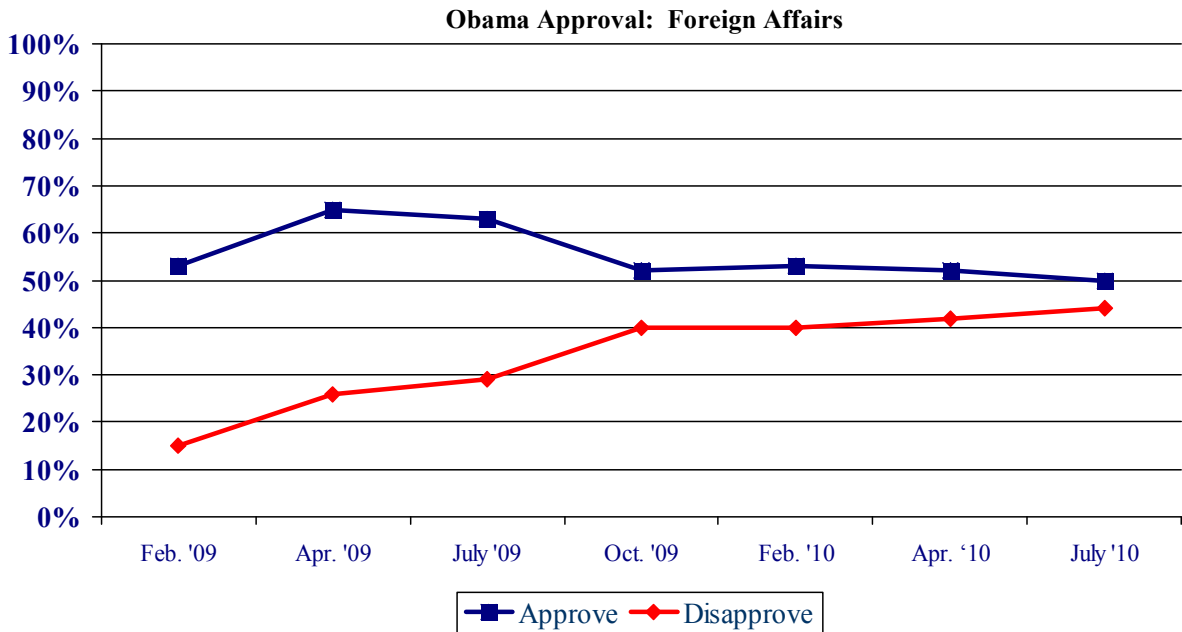
### Economic Approval Rating

New Hampshire residents are split on how the Obama Administration is handling the economy. Currently, 47% of New Hampshire adults approve of how Obama is handling the economy, 50% disapprove, and 3% are neutral. As with other approval measures, there is a considerable partisan gap in approval of Obama's handling of the economy. Democrats (85%) approve of Obama's job handling of the economy while only 41% of independents and 12% of Republicans approve.



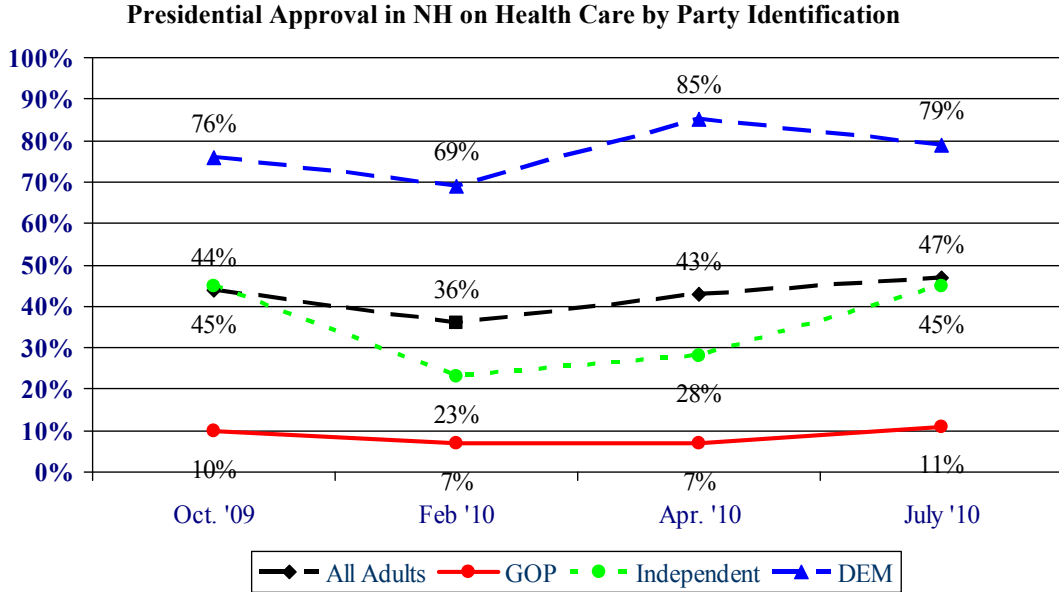
### Foreign Affairs

Support for Obama's handling of foreign affairs has remained steady since last fall. Currently, 50% approve of how Obama is handling foreign affairs, 44% disapprove, and 6% are neutral. There is also a partisan divide in approval of Obama's handling of foreign affairs with 79% of Democrats, but only 18% of Republicans approve, while approval among Independents remains unchanged at 48%.

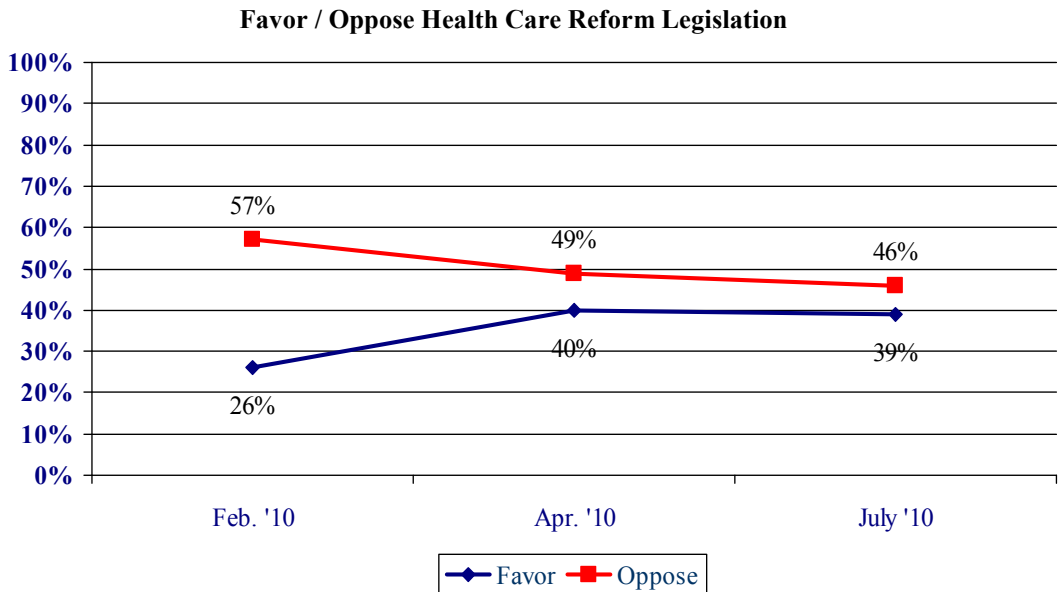


### Presidential Approval – Health Care Policy

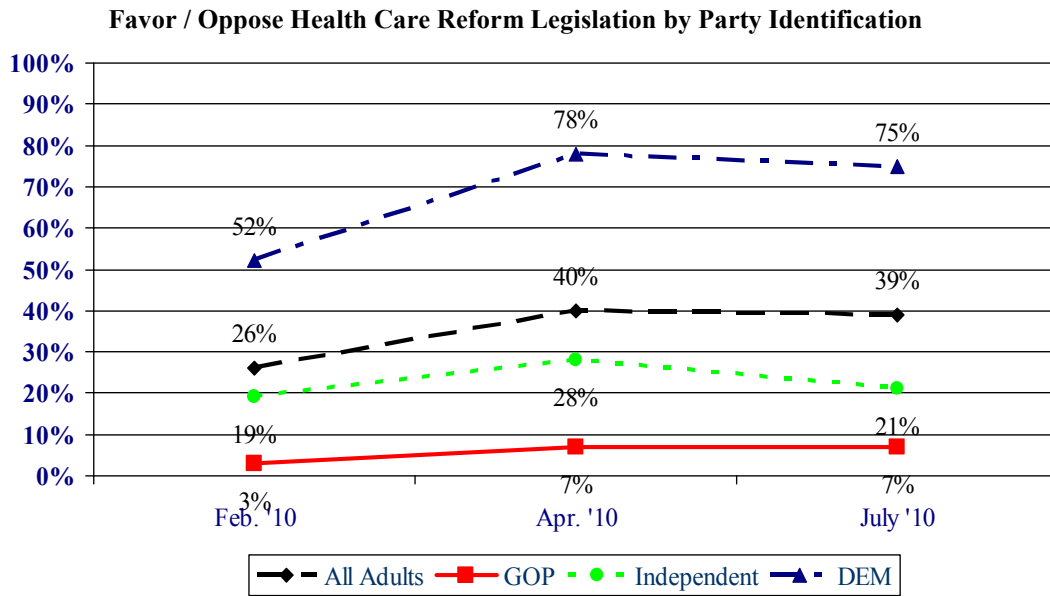
Approval of the administration’s handling of health care has continued to improve since the historic health care reform legislation passed in March, and New Hampshire residents are now nearly evenly split in their views. Currently, 47% of New Hampshire residents approve of Obama’s handling of health care policy, 50% disapprove, and 3% are neutral. Support among Independents has risen in recent months as 45% now approve of Obama’s handling of health care policy, up from 28% in April. Support among Democrats has fallen slightly, from 85% in February to 79% in April, while 11% of Republicans approve, up slightly from 7% in April.



The health care reform legislation that Congress passed in March is more popular in New Hampshire now than it was prior to passage, although most residents continue to oppose the legislation. In the most recent Granite State Poll, 39% of New Hampshire Adults favor the legislation, 46% oppose it, and 15% are neutral or don’t know enough about it to say.

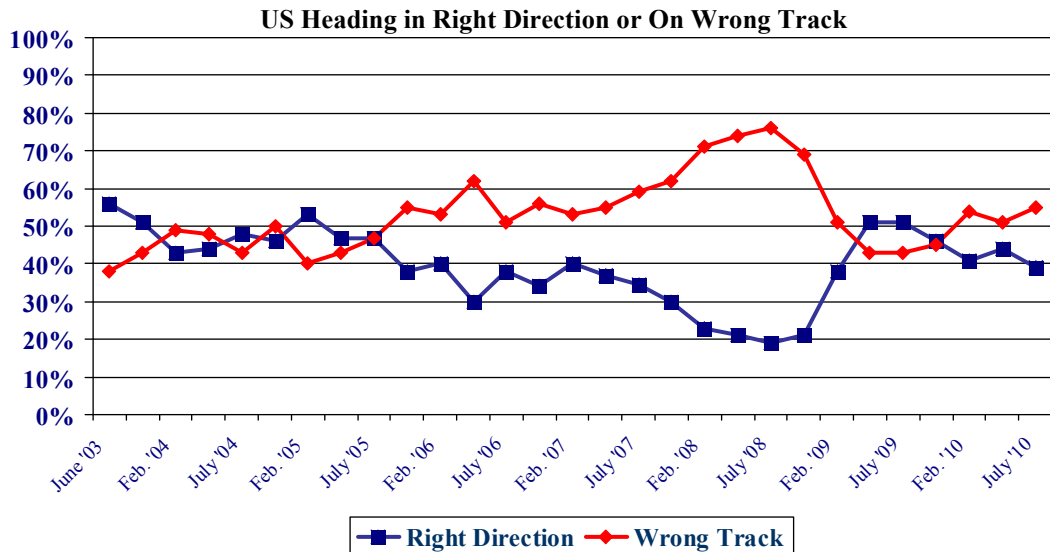


Support for the legislation among Democrats has declined slightly, from 78% in April to 75% in July. Support among independents has also declined somewhat, from 28% in April to 21% in July. Support among Republicans is unchanged at 7%.



### Right Direction – Wrong Track

Granite Staters are more pessimistic about the direction the country is heading. Currently, 39% of New Hampshire adults think things in this country are generally going in the right direction, 55% think things are seriously off on the wrong track, and 6% don't know. While Democrats are still the most optimistic about the country's direction, the percentage feeling that way has declined more than 10 percentage points, from 78% in April to 65% in July. Meanwhile, only 33% of independents and 12% of Republicans think the country is heading in the right direction.



### Granite State Poll Methodology

These findings are based on the latest **WMUR Granite State Poll**, conducted by the University of New Hampshire Survey Center. Five hundred four (504) randomly selected New Hampshire adults were interviewed by telephone between July 19 and July 27, 2010. The margin of sampling error for the survey is +/- 4.4 percent.

The data have been weighted to adjust for numbers of adults and telephone lines within households, respondent sex, and region of the state. In addition to potential sampling error, all surveys have other potential sources of non-sampling error including question order effects, question wording effects, and non-response.

### Presidential Approval

“GENERALLY SPEAKING, do you approve or disapprove of the way Barack Obama is handling his job as president?”

	<u>Approve</u>	<u>Neutral</u>	<u>Disapprove</u>	<u>(N)</u>
<b>July '10</b>	<b>51%</b>	<b>5%</b>	<b>44%</b>	<b>(502)</b>
<b>Apr. '10</b>	50%	4%	46%	(506)
<b>Feb. '10</b>	48%	5%	47%	(495)
<b>Oct. '09</b>	55%	5%	40%	(503)
<b>July '09</b>	61%	6%	33%	(556)
<b>Apr. '09</b>	63%	8%	29%	(500)
<b>Feb. '09</b>	66%	14%	21%	(614)

### Favorability Rating – President Barack Obama

"Next, I'd like to get your overall opinion of some people who have been in the news. As I read each name, please say if you have a favorable or unfavorable opinion of this person - or if you don't know enough about him or her to say. President Barack Obama?"

	<u>Favorable</u>	<u>Neutral</u>	<u>Unfavorable</u>	<u>NET</u>	<u>(N=)</u>
<b>July '10</b>	<b>51%</b>	<b>5%</b>	<b>42%</b>	<b>1%</b>	<b>(504)</b>
<b>Apr. '10</b>	50%	4%	44%	+6%	(510)
<b>Feb. '10</b>	52%	6%	41%	+11%	(496)
<b>Oct. '09</b>	56%	8%	35%	+21%	(502)
<b>July '09</b>	62%	7%	30%	+32%	(557)
<b>Apr. '09</b>	64%	7%	27%	+37%	(503)
<b>Feb. '09</b>	71%	9%	16%	+55%	(619)
<b>Sep. '08</b>	53%	9%	36%	+17%	(522)
<b>July '08</b>	58%	10%	31%	+27%	(474)

### Presidential Approval – Economy

“GENERALLY SPEAKING, do you approve or disapprove of the way President Obama is handling THE ECONOMY?”

	<u>Approve</u>	<u>Neutral</u>	<u>Disapprove</u>	<u>(N)</u>
<b>July '10</b>	<b>47%</b>	<b>3%</b>	<b>50%</b>	<b>(502)</b>
<b>Apr. '10</b>	46%	3%	50%	(507)
<b>Feb. '10</b>	41%	4%	54%	(493)
<b>Oct. '09</b>	51%	3%	46%	(500)
<b>July '09</b>	57%	4%	39%	(556)
<b>Apr. '09</b>	58%	7%	35%	(499)
<b>Feb. '09</b>	62%	14%	24%	(614)

### Presidential Approval - Foreign Affairs

“GENERALLY SPEAKING, do you approve or disapprove of the way President Obama is handling FOREIGN AFFAIRS?”

	<u>Approve</u>	<u>Neutral</u>	<u>Disapprove</u>	<u>(N)</u>
<b>July '10</b>	<b>50%</b>	<b>6%</b>	<b>44%</b>	<b>(503)</b>
<b>Apr. '10</b>	<b>52%</b>	<b>6%</b>	<b>42%</b>	<b>(504)</b>
<b>Feb. '10</b>	53%	7%	40%	(494)
<b>Oct. '09</b>	52%	8%	40%	(499)
<b>July '09</b>	63%	9%	29%	(552)
<b>Apr. '09</b>	65%	8%	26%	(496)
<b>Feb. '09</b>	53%	32%	15%	(607)

### Presidential Approval on Health Care

“Do you approve or disapprove of the way Barack Obama is handling health care policy?”

	<u>Approve</u>	<u>Neutral</u>	<u>Disapprove</u>	<u>(N)</u>
<b>July '10</b>	<b>47%</b>	<b>3%</b>	<b>50%</b>	<b>(503)</b>
<b>Apr. '10</b>	<b>43%</b>	<b>6%</b>	<b>52%</b>	<b>(506)</b>
<b>Feb. '10</b>	36%	5%	58%	(493)
<b>Oct. '09</b>	44%	7%	49%	(499)

### Favor / Oppose Health Care Reform Legislation Passed in Congress

“Let me ask you a question about healthcare. The U.S. House and Senate passed legislation in March that will overhaul the nation’s health care system. Based on what you have seen or heard, do you favor or oppose the health care legislation that was passed in Congress, or don’t you have an opinion?”

(ASKED IN FEB '10) “Let me ask you a question about healthcare. The U.S. House and Senate have just passed legislation that would overhaul the nation’s health care system. Based on what you have seen or heard, do you favor or oppose the health care legislation that is going through Congress, or don’t you have an opinion?”

	<u>Favor</u>	<u>Neutral</u>	<u>Oppose</u>	<u>(N)</u>
<b>July '10</b>	<b>39%</b>	<b>15%</b>	<b>46%</b>	<b>(502)</b>
<b>Apr. '10</b>	40%	10%	49%	(512)
<b>Feb. '10</b>	26%	16%	57%	(498)

## Right Track - Wrong Track

“Do you think things in this country are generally going in the right direction or are they seriously off on the wrong track?”

	<b><u>Right Direction</u></b>	<b><u>Wrong Track</u></b>	<b><u>Don't Know</u></b>	<b><u>(N=)</u></b>
<b>July '10</b>	<b>39%</b>	<b>55%</b>	<b>6%</b>	<b>(491)</b>
<b>Apr. '10</b>	44%	51%	4%	(502)
<b>Feb. '10</b>	41%	54%	5%	(484)
<b>Oct. '09</b>	46%	45%	9%	(496)
<b>July '09</b>	51%	43%	5%	(555)
<b>Apr. '09</b>	51%	43%	7%	(498)
<b>Feb. '09</b>	38%	51%	11%	(610)
<b>Sep. '08</b>	21%	69%	10%	(540)
<b>July '08</b>	19%	73%	8%	(508)
<b>Apr. '08</b>	21%	74%	5%	(487)
<b>Feb. '08</b>	23%	71%	7%	(553)
<b>Sep. '07</b>	30%	62%	8%	(505)
<b>July '07</b>	34%	59%	6%	(523)
<b>Apr. '07</b>	37%	55%	8%	(510)
<b>Feb. '07</b>	40%	53%	7%	(516)
<b>Sept. '06</b>	34%	56%	10%	(510)
<b>July '06</b>	38%	51%	11%	(496)
<b>Apr. '06</b>	30%	62%	8%	(501)
<b>Feb. '06</b>	40%	53%	7%	(487)
<b>Oct. '05</b>	38%	55%	7%	(498)
<b>July '05</b>	47%	47%	6%	(492)
<b>Apr. '05</b>	46%	43%	11%	(487)
<b>Feb. '05</b>	53%	40%	7%	(535)
<b>Oct. '04</b>	46%	50%	4%	(574)
<b>July '04</b>	48%	43%	10%	(500)
<b>Apr. '04</b>	44%	48%	8%	(535)
<b>Feb. '04</b>	43%	49%	8%	(503)
<b>Oct. '03</b>	51%	43%	6%	(487)
<b>June '03</b>	56%	38%	5%	(511)



**Presidential Approval Rating - Overall**

<b>STATEWIDE</b>	<b><u>Approve</u></b> <b>51%</b>	<b><u>Neutral</u></b> <b>5%</b>	<b><u>Disapprove</u></b> <b>44%</b>	<b><u>(N=)</u></b> <b>502</b>
Registered Democrat	80%	5%	15%	125
Registered Undeclared	55%	6%	39%	205
Registered Republican	15%	4%	81%	131
Democrat	85%	2%	13%	213
Independent	47%	12%	41%	95
Republican	13%	4%	83%	184
Liberal	86%	4%	9%	108
Moderate	59%	6%	34%	212
Conservative	13%	4%	83%	155
McCain/Palin Voter	7%	5%	88%	200
Obama/Biden Voter	86%	5%	9%	246
Other	44%	0%	56%	16
Did Not Vote in 2008	46%	8%	47%	32
Union household	55%	0%	45%	65
Non-union	50%	6%	45%	434
10 yrs or less in NH	44%	8%	49%	95
11 to 20 years	57%	1%	42%	89
More than 20 years	51%	5%	44%	315
18 to 34	62%	4%	33%	53
35 to 49	36%	8%	56%	108
50 to 64	56%	5%	39%	184
65 and over	51%	2%	47%	143
Male	44%	6%	50%	241
Female	57%	3%	40%	261
High school or less	42%	5%	53%	101
Some college	45%	6%	49%	117
College graduate	47%	4%	49%	161
Post-graduate	68%	5%	27%	119
Less than \$30K	52%	6%	43%	61
\$30K to \$60K	44%	8%	49%	90
\$60K to \$75K	63%	3%	34%	37
\$75K to \$100K	60%	4%	36%	56
\$100K or more	51%	4%	45%	129
Married	48%	6%	46%	348
Divorced/separated	54%	3%	44%	90
Never married	64%	3%	33%	57
Protestant	50%	5%	45%	182
Catholic	38%	5%	57%	165
Other	68%	5%	27%	144
Attend services 1 or more/week	37%	7%	56%	137
1-2 times a month	56%	2%	42%	71
Less often	47%	3%	50%	128
Never	64%	6%	30%	156
North Country	58%	6%	36%	50
Central / Lakes	62%	3%	34%	84
Connecticut Valley	53%	7%	41%	66
Mass Border	39%	4%	57%	137
Seacoast	54%	9%	36%	82
Manchester Area	49%	1%	50%	82
First Cong. Dist	49%	7%	44%	262
Second Cong. Dist	53%	2%	45%	240

**Presidential Approval Rating - Economy**

<b>STATEWIDE</b>	<b><u>Approve</u></b> <b>47%</b>	<b><u>Neutral</u></b> <b>3%</b>	<b><u>Disapprove</u></b> <b>50%</b>	<b><u>(N=)</u></b> <b>502</b>
Registered Democrat	76%	3%	21%	125
Registered Undeclared	49%	4%	47%	204
Registered Republican	16%	2%	82%	131
Democrat	80%	3%	17%	213
Independent	41%	5%	54%	96
Republican	12%	2%	86%	184
Liberal	85%	2%	14%	108
Moderate	55%	4%	41%	211
Conservative	10%	3%	87%	155
McCain/Palin Voter	7%	2%	91%	200
Obama/Biden Voter	81%	3%	16%	245
Other	35%	9%	55%	18
Did Not Vote in 2008	37%	3%	60%	32
Union household	52%	1%	47%	65
Non-union	46%	3%	51%	435
10 yrs or less in NH	43%	2%	55%	95
11 to 20 years	49%	1%	51%	89
More than 20 years	48%	4%	49%	315
18 to 34	63%	0%	37%	53
35 to 49	26%	3%	72%	108
50 to 64	53%	4%	44%	184
65 and over	50%	3%	47%	143
Male	42%	3%	54%	242
Female	51%	3%	46%	261
High school or less	36%	4%	60%	101
Some college	47%	2%	51%	117
College graduate	40%	1%	59%	161
Post-graduate	65%	6%	29%	119
Less than \$30K	44%	5%	52%	61
\$30K to \$60K	41%	4%	55%	90
\$60K to \$75K	68%	0%	32%	36
\$75K to \$100K	53%	5%	41%	56
\$100K or more	46%	2%	53%	129
Married	45%	2%	53%	349
Divorced/separated	49%	5%	45%	90
Never married	59%	3%	38%	57
Protestant	47%	3%	50%	181
Catholic	35%	3%	62%	165
Other	62%	4%	35%	144
Attend services 1 or more/week	35%	3%	62%	137
1-2 times a month	54%	3%	43%	71
Less often	46%	2%	52%	128
Never	55%	4%	41%	155
North Country	54%	1%	45%	50
Central / Lakes	58%	5%	36%	83
Connecticut Valley	46%	9%	44%	66
Mass Border	38%	0%	62%	137
Seacoast	53%	3%	45%	82
Manchester Area	42%	1%	57%	84
First Cong. Dist	47%	3%	51%	262
Second Cong. Dist	47%	4%	49%	240

**Presidential Approval Rating - Foreign Affairs**

<b>STATEWIDE</b>	<b><u>Approve</u></b> <b>50%</b>	<b><u>Neutral</u></b> <b>6%</b>	<b><u>Disapprove</u></b> <b>44%</b>	<b><u>(N=)</u></b> <b>503</b>
Registered Democrat	79%	2%	18%	125
Registered Undeclared	53%	6%	40%	204
Registered Republican	18%	6%	76%	131
Democrat	79%	5%	15%	214
Independent	48%	5%	47%	96
Republican	18%	6%	76%	184
Liberal	79%	4%	16%	108
Moderate	61%	7%	32%	213
Conservative	13%	5%	82%	155
McCain/Palin Voter	14%	6%	80%	199
Obama/Biden Voter	81%	4%	15%	246
Other	34%	9%	56%	18
Did Not Vote in 2008	38%	12%	50%	32
Union household	51%	2%	47%	65
Non-union	50%	6%	44%	435
10 yrs or less in NH	45%	2%	52%	95
11 to 20 years	51%	8%	41%	89
More than 20 years	51%	6%	43%	316
18 to 34	54%	3%	43%	53
35 to 49	40%	8%	51%	108
50 to 64	55%	5%	40%	185
65 and over	51%	5%	45%	143
Male	46%	6%	48%	243
Female	54%	6%	40%	260
High school or less	45%	6%	48%	100
Some college	44%	9%	47%	117
College graduate	44%	4%	52%	162
Post-graduate	67%	5%	29%	119
Less than \$30K	51%	7%	41%	61
\$30K to \$60K	42%	6%	52%	90
\$60K to \$75K	61%	3%	36%	37
\$75K to \$100K	53%	10%	37%	56
\$100K or more	53%	3%	44%	129
Married	48%	5%	47%	349
Divorced/separated	55%	6%	39%	90
Never married	58%	5%	37%	57
Protestant	49%	4%	47%	182
Catholic	39%	5%	56%	165
Other	64%	7%	29%	144
Attend services 1 or more/week	41%	3%	56%	137
1-2 times a month	50%	9%	41%	71
Less often	47%	3%	50%	128
Never	60%	7%	32%	155
North Country	61%	3%	36%	49
Central / Lakes	59%	8%	34%	84
Connecticut Valley	51%	7%	42%	66
Mass Border	40%	6%	54%	138
Seacoast	54%	2%	43%	82
Manchester Area	46%	7%	47%	84
First Cong. Dist	49%	5%	46%	264
Second Cong. Dist	51%	6%	43%	239

**Presidential Approval Rating - Health Care**

<b>STATEWIDE</b>	<b><u>Approve</u></b> <b>47%</b>	<b><u>Neutral</u></b> <b>3%</b>	<b><u>Disapprove</u></b> <b>50%</b>	<b><u>(N=)</u></b> <b>503</b>
Registered Democrat	75%	4%	22%	125
Registered Undeclared	49%	4%	47%	204
Registered Republican	14%	3%	82%	131
Democrat	79%	3%	18%	214
Independent	45%	7%	48%	96
Republican	11%	2%	86%	184
Liberal	86%	2%	12%	108
Moderate	52%	4%	44%	212
Conservative	14%	2%	84%	155
McCain/Palin Voter	5%	3%	91%	200
Obama/Biden Voter	81%	3%	16%	245
Other	48%	0%	52%	18
Did Not Vote in 2008	44%	4%	52%	32
Union household	46%	1%	53%	65
Non-union	47%	4%	49%	435
10 yrs or less in NH	40%	3%	56%	95
11 to 20 years	51%	1%	49%	89
More than 20 years	48%	4%	48%	316
18 to 34	49%	2%	49%	53
35 to 49	36%	3%	61%	108
50 to 64	52%	4%	44%	185
65 and over	50%	3%	47%	143
Male	45%	3%	52%	242
Female	49%	4%	47%	261
High school or less	41%	4%	55%	101
Some college	45%	2%	53%	117
College graduate	41%	4%	55%	161
Post-graduate	63%	3%	35%	119
Less than \$30K	52%	3%	45%	61
\$30K to \$60K	43%	2%	55%	91
\$60K to \$75K	56%	1%	42%	36
\$75K to \$100K	59%	2%	39%	56
\$100K or more	44%	4%	52%	129
Married	45%	3%	53%	349
Divorced/separated	50%	6%	44%	90
Never married	60%	2%	38%	57
Protestant	45%	4%	50%	181
Catholic	35%	2%	62%	166
Other	63%	3%	34%	144
Attend services 1 or more/week	37%	3%	60%	137
1-2 times a month	49%	2%	49%	71
Less often	42%	3%	55%	128
Never	60%	4%	36%	155
North Country	60%	1%	40%	50
Central / Lakes	59%	4%	37%	83
Connecticut Valley	50%	3%	47%	66
Mass Border	35%	1%	64%	138
Seacoast	51%	8%	42%	82
Manchester Area	42%	4%	55%	84
First Cong. Dist	46%	5%	50%	263
Second Cong. Dist	48%	2%	50%	240

**Favor / Oppose Health Care Legislation Passed in Congress**

<b>STATEWIDE</b>	<b><u>Favor</u> 39%</b>	<b><u>Neutral/DK</u> 15%</b>	<b><u>Oppose</u> 46%</b>	<b><u>(N=)</u> 502</b>
Registered Democrat	70%	13%	17%	125
Registered Undeclared	40%	15%	45%	205
Registered Republican	12%	7%	81%	129
Democrat	75%	12%	13%	214
Independent	21%	32%	47%	97
Republican	7%	8%	86%	182
Liberal	84%	7%	9%	108
Moderate	40%	16%	44%	213
Conservative	8%	13%	79%	152
McCain/Palin Voter	4%	7%	89%	198
Obama/Biden Voter	70%	14%	15%	246
Other	29%	36%	34%	18
Did Not Vote in 2008	21%	43%	36%	32
Union household	46%	7%	48%	64
Non-union	38%	16%	46%	435
10 yrs or less in NH	32%	16%	52%	94
11 to 20 years	37%	21%	43%	89
More than 20 years	42%	12%	45%	315
18 to 34	35%	33%	33%	53
35 to 49	23%	16%	61%	108
50 to 64	49%	11%	40%	185
65 and over	43%	11%	46%	143
Male	37%	14%	49%	241
Female	40%	15%	44%	260
High school or less	23%	29%	48%	101
Some college	38%	14%	48%	116
College graduate	36%	10%	54%	162
Post-graduate	58%	9%	34%	119
Less than \$30K	40%	23%	38%	61
\$30K to \$60K	37%	19%	45%	90
\$60K to \$75K	52%	9%	40%	37
\$75K to \$100K	51%	12%	37%	56
\$100K or more	35%	10%	55%	129
Married	38%	11%	50%	349
Divorced/separated	42%	18%	40%	89
Never married	40%	33%	27%	57
Protestant	40%	11%	49%	180
Catholic	24%	15%	61%	166
Other	55%	19%	26%	143
Attend services 1 or more/week	30%	11%	59%	137
1-2 times a month	49%	7%	45%	71
Less often	30%	15%	55%	127
Never	50%	21%	29%	155
North Country	61%	6%	33%	49
Central / Lakes	44%	22%	34%	84
Connecticut Valley	47%	10%	44%	66
Mass Border	26%	12%	62%	138
Seacoast	41%	21%	38%	82
Manchester Area	35%	14%	51%	83
First Cong. Dist	38%	16%	46%	261
Second Cong. Dist	41%	13%	47%	240

**U.S. Right Direction / Wrong Track**

	<b><u>Right Direction</u></b> 39%	<b><u>Wrong Track</u></b> 55%	<b><u>Don't Know</u></b> 6%	<b><u>(N=)</u></b> 491
<b>STATEWIDE</b>				
Registered Democrat	63%	30%	7%	122
Registered Undeclared	41%	53%	6%	202
Registered Republican	15%	83%	3%	126
Democrat	65%	29%	6%	211
Independent	33%	54%	13%	91
Republican	12%	86%	2%	181
Liberal	76%	22%	2%	105
Moderate	44%	46%	10%	209
Conservative	9%	89%	2%	152
McCain/Palin Voter	8%	88%	3%	195
Obama/Biden Voter	65%	27%	8%	240
Other	22%	62%	15%	17
Did Not Vote in 2008	37%	63%	0%	32
Union household	40%	55%	4%	62
Non-union	39%	55%	6%	426
10 yrs or less in NH	35%	62%	3%	90
11 to 20 years	39%	54%	7%	86
More than 20 years	40%	54%	7%	311
18 to 34	52%	41%	7%	51
35 to 49	28%	66%	6%	105
50 to 64	43%	54%	3%	180
65 and over	39%	52%	9%	142
Male	35%	59%	6%	235
Female	43%	51%	6%	256
High school or less	30%	63%	7%	100
Some college	36%	58%	6%	115
College graduate	36%	60%	5%	157
Post-graduate	54%	39%	7%	115
Less than \$30K	27%	63%	10%	59
\$30K to \$60K	37%	55%	7%	91
\$60K to \$75K	46%	53%	1%	35
\$75K to \$100K	54%	46%	0%	56
\$100K or more	43%	53%	4%	123
Married	39%	56%	5%	341
Divorced/separated	34%	60%	6%	90
Never married	46%	43%	11%	53
Protestant	41%	54%	5%	178
Catholic	29%	66%	5%	165
Other	50%	42%	8%	136
Attend services 1 or more/week	32%	63%	6%	136
1-2 times a month	46%	50%	4%	71
Less often	34%	60%	6%	122
Never	48%	45%	7%	152
North Country	59%	36%	5%	48
Central / Lakes	45%	43%	11%	82
Connecticut Valley	36%	61%	3%	65
Mass Border	32%	66%	3%	135
Seacoast	42%	46%	12%	78
Manchester Area	32%	64%	4%	84
First Cong. Dist	38%	54%	8%	257
Second Cong. Dist	40%	57%	3%	234

**Favorability Rating - Barack Obama**

<b>STATEWIDE</b>	<b><u>Favorable</u></b> <b>51%</b>	<b><u>Neutral</u></b> <b>5%</b>	<b><u>Unfavorable</u></b> <b>42%</b>	<b><u>DK</u></b> <b>1%</b>	<b><u>(N)</u></b> <b>504</b>
Registered Democrat	82%	2%	14%	3%	125
Registered Undeclared	56%	5%	38%	1%	205
Registered Republican	17%	4%	79%	0%	131
Democrat	85%	3%	11%	2%	214
Independent	47%	13%	40%	0%	97
Republican	15%	3%	81%	1%	184
Liberal	87%	3%	8%	2%	108
Moderate	61%	6%	32%	1%	213
Conservative	13%	4%	82%	0%	155
McCain/Palin Voter	8%	4%	87%	0%	200
Obama/Biden Voter	87%	4%	7%	2%	246
Other	43%	11%	46%	0%	18
Did Not Vote in 2008	45%	13%	41%	0%	32
Union household	55%	2%	42%	1%	65
Non-union	51%	6%	43%	1%	436
10 yrs or less in NH	42%	5%	52%	1%	95
11 to 20 years	52%	3%	45%	0%	89
More than 20 years	54%	6%	39%	1%	317
18 to 34	59%	5%	36%	0%	53
35 to 49	36%	9%	55%	0%	108
50 to 64	56%	6%	38%	0%	186
65 and over	52%	2%	42%	3%	143
Male	47%	6%	46%	1%	243
Female	56%	4%	39%	1%	261
High school or less	45%	8%	44%	3%	101
Some college	48%	4%	47%	0%	117
College graduate	45%	6%	49%	0%	162
Post-graduate	68%	3%	27%	1%	119
Less than \$30K	53%	4%	38%	4%	61
\$30K to \$60K	48%	7%	44%	1%	91
\$60K to \$75K	63%	2%	35%	0%	37
\$75K to \$100K	59%	6%	35%	0%	56
\$100K or more	50%	7%	43%	0%	129
Married	49%	6%	44%	1%	350
Divorced/separated	55%	4%	39%	2%	90
Never married	62%	4%	34%	0%	57
Protestant	52%	3%	43%	2%	182
Catholic	38%	6%	55%	1%	166
Other	67%	7%	27%	0%	144
Attend services 1 or more/week	42%	6%	50%	2%	137
1-2 times a month	58%	1%	41%	1%	71
Less often	46%	4%	49%	1%	128
Never	61%	8%	30%	0%	156
North Country	55%	12%	30%	3%	50
Central / Lakes	65%	3%	31%	1%	84
Connecticut Valley	54%	7%	37%	2%	66
Mass Border	38%	5%	57%	0%	138
Seacoast	59%	4%	36%	1%	82
Manchester Area	48%	3%	47%	1%	84
First Cong. Dist	51%	6%	42%	1%	264
Second Cong. Dist	52%	5%	43%	1%	240