

THE WMUR GRANITE STATE POLL

THE UNIVERSITY OF NEW HAMPSHIRE SURVEY CENTER

October 1, 2010

LYNCH REMAINS STRONG IN TOUGH YEAR FOR DEMOCRATS

By: Andrew E. Smith, Ph.D.
 UNH Survey Center
 603/862-2226
www.unh.edu/survey-center

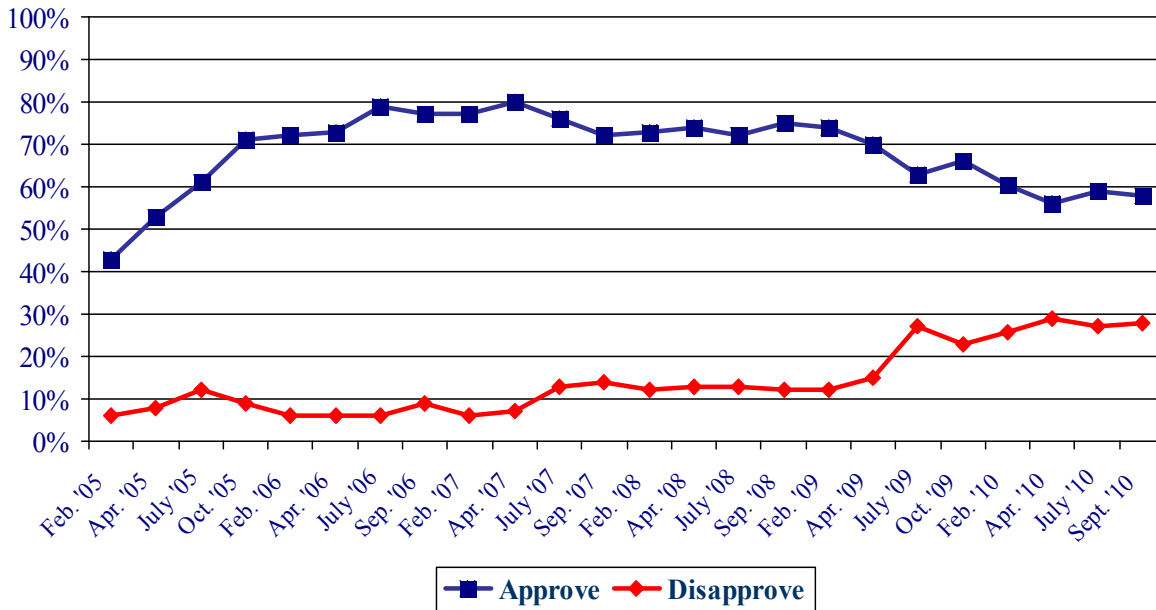
DURHAM, NH – Governor John Lynch continues to hold a solid lead over his Republican challenger John Stephen. Lynch’s job approval ratings continue to be high. Concerns about state’s economy and the state budget remain the top problems on the minds of New Hampshire residents.

These findings are based on the latest **WMUR Granite State Poll**,* conducted by the University of New Hampshire Survey Center. Five hundred fifteen (515) randomly selected New Hampshire adults were interviewed by telephone between September 23 and September 29, 2010. The margin of sampling error for the survey is +/- 4.3 percent. Included was a subsample of 472 likely 2010 general election voters (margin of sampling error +/-4.5%).

Gubernatorial Approval

Despite ongoing concerns about the state economy and the state budget, Granite Staters generally approve of the job John Lynch is doing as governor. In the most recent Granite State Poll, 58% of NH adults say they approve of the way he is handling his job as governor, 28% disapprove, and 14% are neutral or don’t know. Despite a much more vigorous campaign by his Republican challenger, Lynch’s job approval ratings have held steady for much of the past year. Lynch has maintained the support of Democrats (80% approve) and Independents (56%). His support from Republicans continues to be surprisingly high in an election year, currently 37% of Republicans approve of the job he is doing as governor.

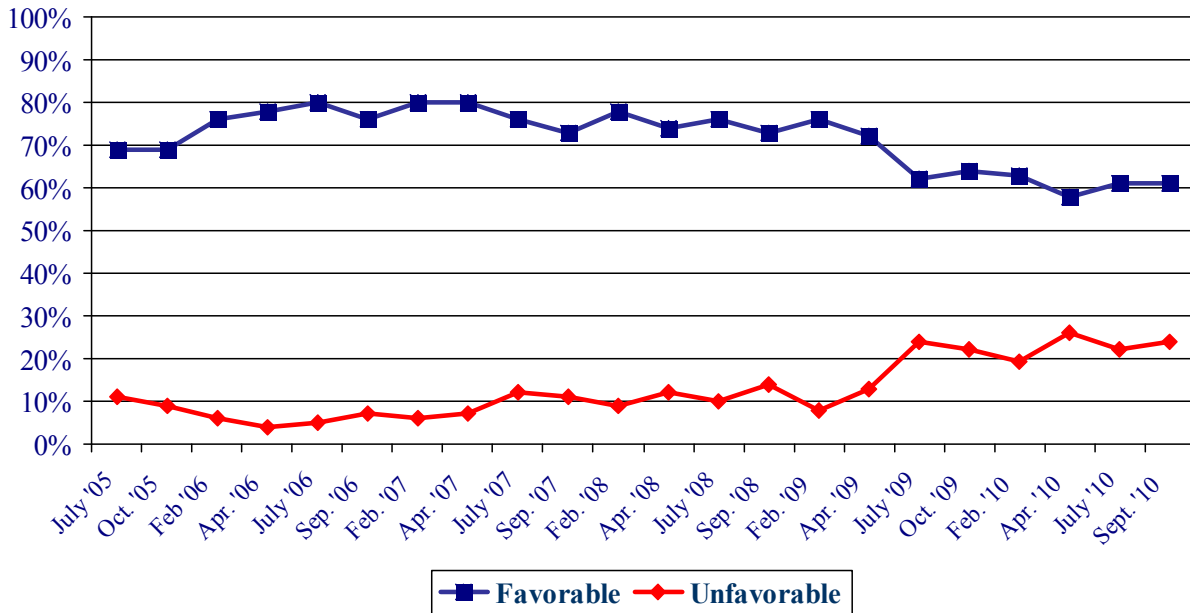
NH Gubernatorial Approval – John Lynch



* We ask that this copyrighted information be referred to as *the Granite State Poll*, sponsored by WMUR-TV, and conducted by the University of New Hampshire Survey Center.

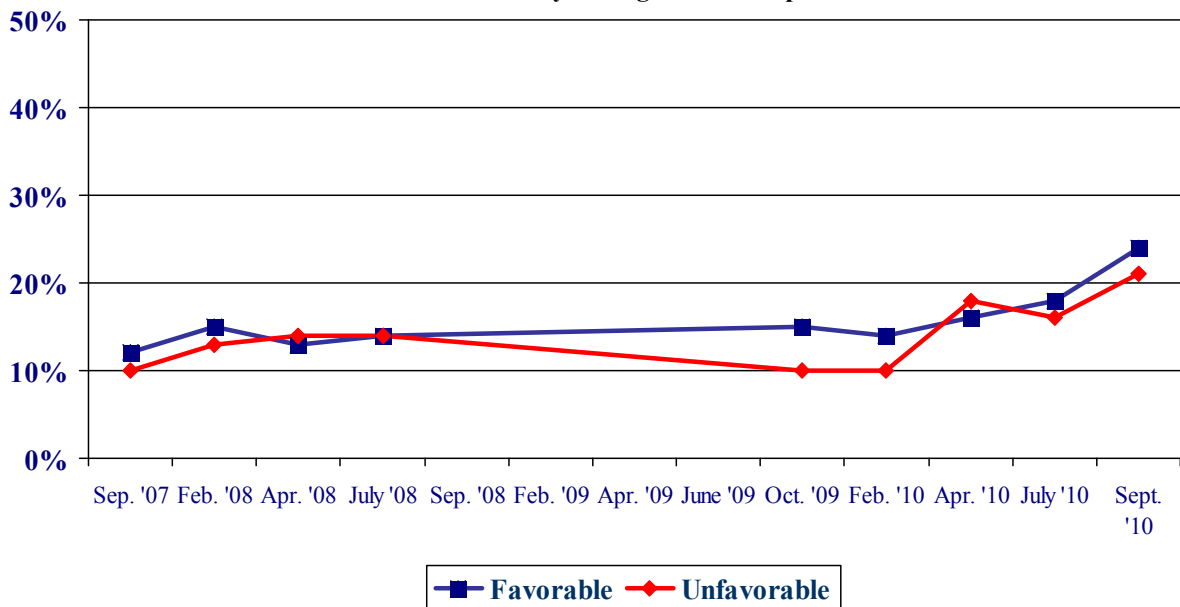
Lynch's personal favorability ratings have also remained steady for more than a year. In the latest Granite State Poll, 61% of New Hampshire adults say they have a favorable opinion of Lynch, 24% have an unfavorable opinion, 9% are neutral, and 7% say they don't know enough about him to say. Lynch's net favorability rating, the percentage having a favorable opinion minus the percentage having an unfavorable opinion, is a high +37%. Lynch receives a high net favorability from Democrats (+73%) as well as from Independents (+41%), and even receives positive net favorability ratings from Republicans (+1%).

Favorability Ratings – NH Governor John Lynch



On the other hand, Lynch's Republican challenger, former Health and Human Services Commissioner John Stephen remains largely unknown in the Granite State despite a primary battle for the Republican nomination. In the most recent Granite State Poll, 24% of New Hampshire adults have a favorable opinion of Stephen, 21% have an unfavorable opinion of him, 7% are neutral, and 47% don't know enough about him to say. Stephen's net favorability stands at +3%, unchanged since July.

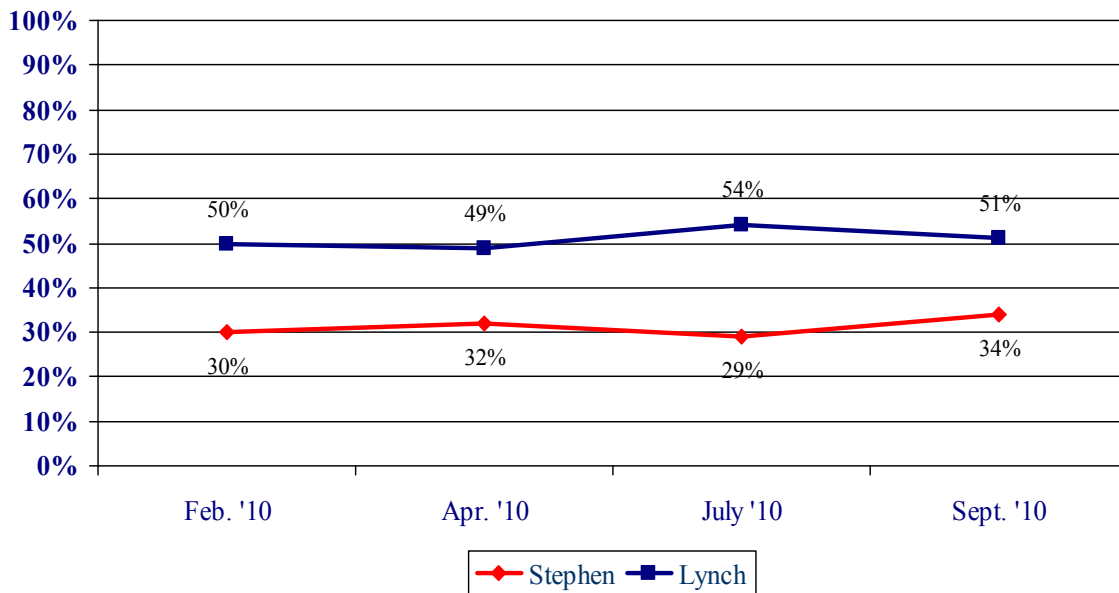
Favorability Ratings – John Stephen



Lynch's high job approval and favorability ratings, coupled with a relatively unknown challenger, put him in a good position to win reelection to a fourth term, despite Republican resurgence in other New Hampshire races. In a hypothetical matchup between John Lynch and John Stephen, 51% of likely 2010 voters say would vote Lynch, 34% would vote for Stephen, 2% would choose some other candidate, and 14% are undecided. Lynch receives strong support among Democrats (86%) and Independents (51%), but also 17% of Republicans.

Voters are beginning to solidify their positions on the governor's race. Currently, 40% of likely voters say they have definitely decided who they will vote for, 15% are leaning toward a candidate, and 45% have not yet finally decided. Among voters who say they have definitely decided who they will vote for, Lynch leads Stephen by 58% to 40%.

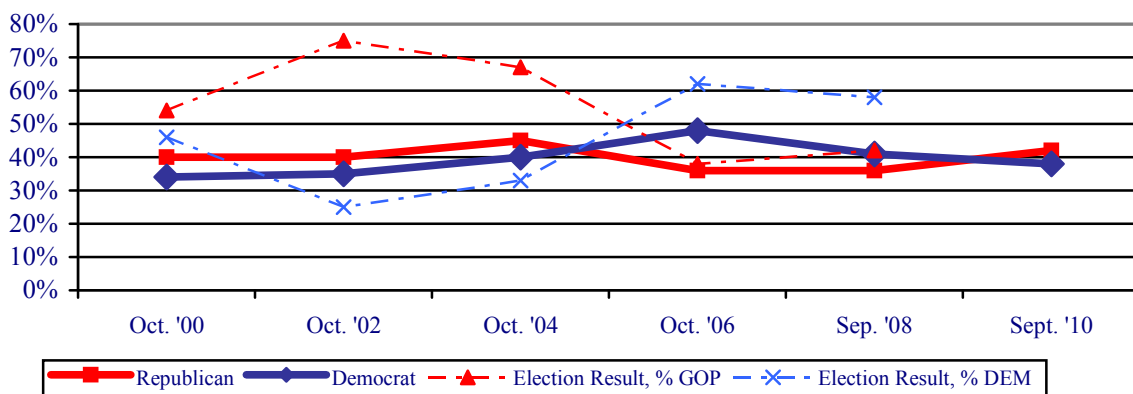
NH Governor: Lynch (D) vs. Stephen (R)



NH State Senate

Democrats took control of the New Hampshire State Senate in 2006 and have held it since, although the gap narrowed slightly after the 2008 elections. Republicans are hoping to gain control in 2010 and a generic ballot question included in the latest Granite State Poll shows that Republicans may indeed regain the Senate majority. When asked if they would vote for the Republican or Democratic candidate for State Senate from their district, 42% of New Hampshire likely voters said they would vote for the Republican, 38% for the Democrat, 5% for some other candidate, and 16% are undecided. In recent elections, this indicator has been accurate in predicting which party would gain the Senate majority, but less accurate in predicting the size of the majority.

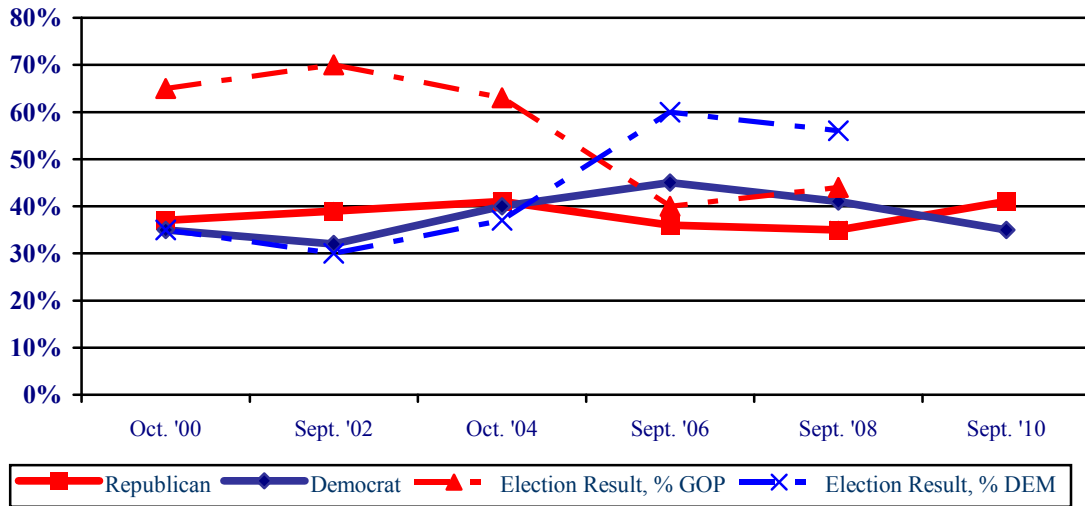
Vote in NH State Senate District and State Senate Composition



NH State House of Representatives

Democrats also took control of the New Hampshire House of Representatives in 2006 and retained the majority in 2008. In the most recent Granite State Poll, Republicans hold a narrow lead in a generic ballot question with 41% of likely New Hampshire voters saying they will vote for Republicans in their district, 35% support Democrats, 4% will cast a split ballot, 5% will vote for a third party candidate, and 15% are undecided. This indicator has accurately predicted which party will gain the majority in the state house, but is less accurate about the size of the majority. Multi-member House districts often result in greater swings than are seen in the state Senate.

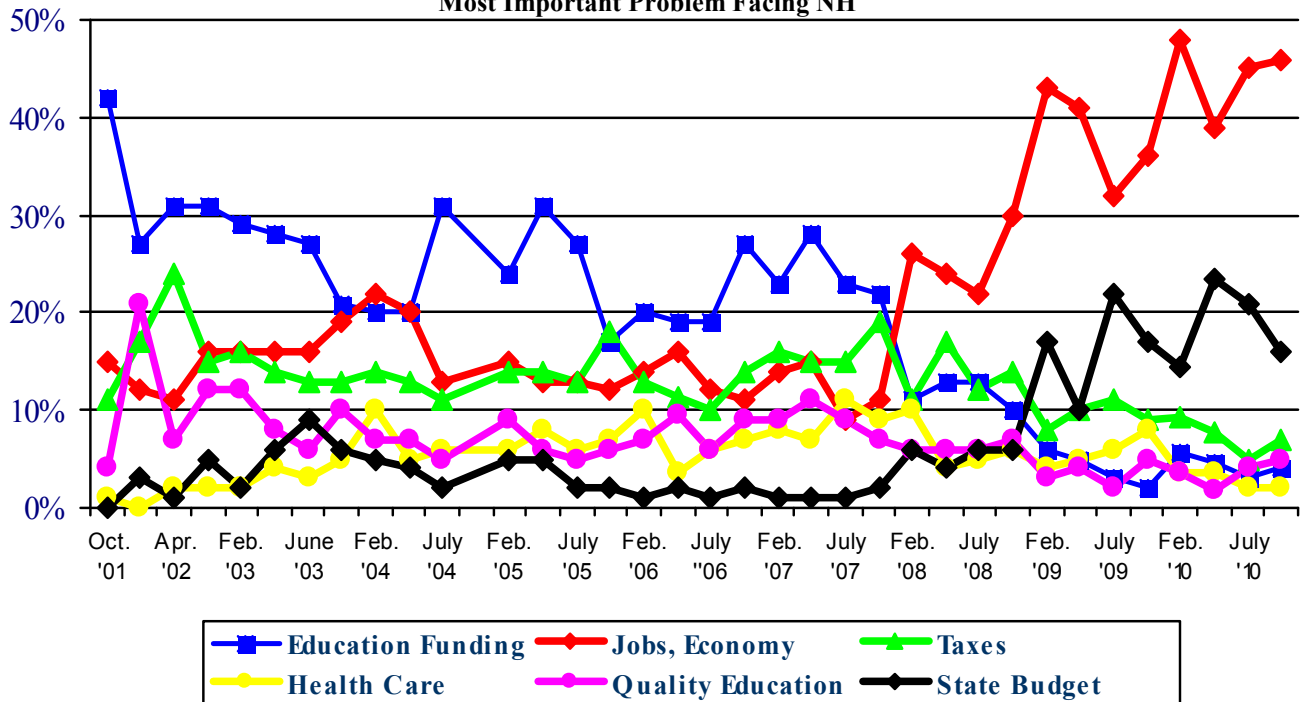
Vote in NH State House District and House Composition



Most Important Problem Facing New Hampshire

New Hampshire residents remained concerned about the state's economy and unemployment while concern about the state budget is dropping. Currently, 46% of New Hampshire adults say the economy and jobs is the most important issue facing the state, followed by the state budget (16%), high taxes (7%), the quality of education (5%), and education funding (4%).

Most Important Problem Facing NH

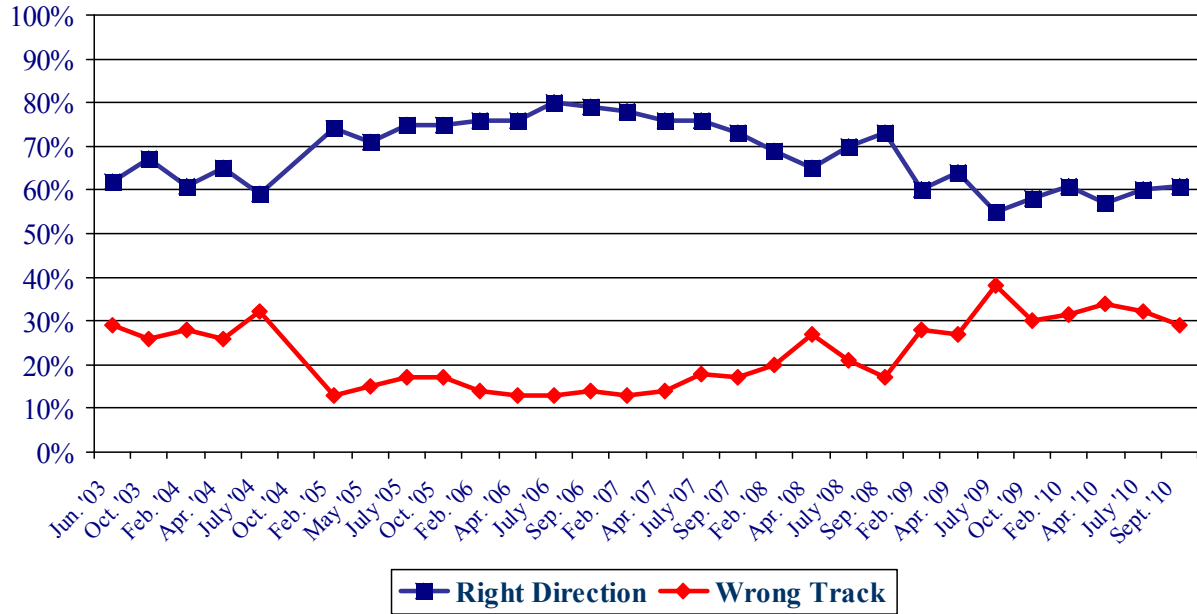


Right Direction or Wrong Track?

Although economic and budget problems persist, New Hampshire residents continue believe the state is headed in the right direction. Currently, 61% of New Hampshire adults feel the state is heading in the right direction, 29% think the state is seriously off on the wrong track, and 10% don't know.

Democrats, liberals, and upper income residents are most likely to think New Hampshire is headed in the right direction while Republicans, conservatives, and low income residents are most likely to say things are off on the wrong track.

NH Heading in Right Direction or On Wrong Track?



Granite State Poll Methodology

These findings are based on the latest **WMUR Granite State Poll**, conducted by the University of New Hampshire Survey Center. Five hundred fifteen (515) randomly selected New Hampshire adults were interviewed by telephone between September 23 and September 29, 2010. The margin of sampling error for the survey is +/- 4.3 percent. Included was a subsample of 472 likely 2010 general election voters (margin of sampling error +/-4.5%).

The data have been weighted to adjust for numbers of adults and telephone lines within households, respondent sex, and region of the state. In addition to potential sampling error, all surveys have other potential sources of non-sampling error including question order effects, question wording effects, and non-response.

Gubernatorial Approval

“GENERALLY SPEAKING, do you approve or disapprove of the way Governor Lynch is handling his job as governor?”

	<u>Approve</u>	<u>Neutral/DK</u>	<u>Disapprove</u>	<u>(N=)</u>
Sept. '10	58%	14%	28%	(512)
July '10	59%	15%	27%	(497)
Apr. '10	56%	15%	29%	(507)
Feb. '10	60%	14%	26%	(489)
Oct. '09	66%	11%	23%	(495)
July '09	63%	11%	27%	(553)
Apr. '09	70%	15%	15%	(496)
Feb. '09	74%	14%	12%	(612)
Sep. '08	75%	13%	12%	(539)
July '08	72%	15%	13%	(512)
Apr. '08	74%	13%	13%	(496)
Feb. '08	73%	14%	12%	(547)
Sept. '07	72%	14%	14%	(501)
July '07	76%	11%	13%	(501)
Apr. '07	80%	12%	7%	(514)
Feb. '07	77%	16%	6%	(531)
Sept. '06	77%	14%	9%	(504)
July '06	79%	15%	6%	(498)
Apr. '06	73%	21%	6%	(489)
Feb. '06	72%	22%	6%	(491)
Oct. '05	71%	20%	9%	(495)
July '05	61%	26%	12%	(490)
Apr. '05	53%	39%	8%	(480)
Feb. '05	43%	51%	6%	(524)

Favorability Ratings – Governor John Lynch

"Next, I'd like to get your overall opinion of some people in the news. As I read each name, please say if you have a favorable or unfavorable opinion of this person - or if you have never heard of him or her. Governor John Lynch."

	<u>Favorable</u>	<u>Neutral</u>	<u>Unfavorable</u>	<u>Don't Know</u>	<u>NET</u>	<u>(N=)</u>
Sept. '10	61%	9%	24%	7%	+37%	(513)
July '10	61%	9%	22%	8%	+39%	(504)
Apr. '10	58%	10%	26%	6%	+32%	(509)
Feb. '10	63%	9%	19%	9%	+44%	(496)
Oct. '09	64%	8%	22%	5%	+42%	(500)
July '09	62%	8%	24%	6%	+38%	(557)
Apr. '09	72%	7%	13%	8%	+59%	(500)
Feb. '09	76%	10%	8%	7%	+68%	(617)
Sept. '08	73%	6%	14%	8%	+59%	(522)
July '08	76%	8%	10%	6%	+66%	(517)
Apr. '08	74%	11%	12%	4%	+62%	(499)
Feb. '08	78%	11%	9%	3%	+69%	(554)
Sept. '07	73%	10%	11%	6%	+62%	(506)
July '07	76%	8%	12%	5%	+64%	(505)
Apr. '07	80%	9%	7%	4%	+73%	(515)
Feb. '07	80%	9%	6%	5%	+74%	(536)
Sept. '06	76%	11%	7%	5%	+69%	(511)
July '06	80%	8%	5%	7%	+75%	(505)
Apr. '06	78%	10%	4%	8%	+74%	(503)
Feb. '06	76%	12%	6%	6%	+70%	(499)
Oct. '05	69%	13%	9%	8%	+60%	(508)
July '05	69%	9%	11%	11%	+58%	(500)
Oct. '04	34%	13%	12%	40%	+22%	(573)
July '04	17%	8%	6%	69%	+11%	(508)
Feb. '04	7%	9%	6%	77%	+1%	(509)

Favorability Rating – John Stephen

"Next, I'd like to get your overall opinion of some people in the news. As I read each name, please say if you have a favorable or unfavorable opinion of this person - or if you have never heard of him or her. Former Health and Human Services Commissioner John Stephen."

	<u>Favorable</u>	<u>Neutral</u>	<u>Unfavorable</u>	<u>Don't Know</u>	<u>NET</u>	<u>(N=)</u>
Sept. '10	24%	7%	21%	47%	+3%	(514)
July '10	18%	5%	16%	61%	+2%	(502)
Apr. '10	16%	9%	18%	57%	-2%	(510)
Feb. '10	14%	6%	10%	70%	+4%	(497)
Oct. '09	15%	6%	10%	69%	+5%	(501)
July '08	14%	8%	14%	64%	0%	(517)
Apr. '08	13%	16%	14%	57%	-1%	(500)
Feb. '08	15%	17%	13%	55%	+2%	(553)
Sept. '07	12%	17%	12%	59%	0%	(506)

Firmness of NH Governor Vote

"I know that it is early, but have you definitely decided who you will vote for in the New Hampshire Gubernatorial election in 2010 ... are you leaning toward someone ... or have you considered some candidates but are still trying to decide?"

	<u>Oct. '09</u>	<u>Feb. '10</u>	<u>Apr. '10</u>	<u>July '10</u>	<u>Sept' 10</u>
Definitely Decided	7%	9%	17%	18%	40%
Leaning Toward Someone	4%	6%	14%	13%	15%
Still Trying to Decide	89%	85%	70%	69%	45%
(N=)	(454)	(440)	(461)	(450)	(473)

NH Governor – John Stephen vs. John Lynch – Likely Voters

"If the 2010 gubernatorial election was being held today and the candidates were John Stephen, the Republican and John Lynch, the Democrat, who would you vote for?" ROTATE CANDIDATES

	<u>Feb. '10</u>	<u>Apr. '10</u>	<u>July '10</u>	<u>Sept. '10</u>
John Stephen	30%	32%	29%	34%
John Lynch	50%	49%	54%	51%
Other	1%	1%	2%	2%
Don't Know	19%	18%	15%	14%
(N=)	(444)	(460)	(448)	(470)

NH - Right Direction or Wrong Track

"Do you think things in New Hampshire are generally going in the right direction or are they seriously off on the wrong track?"

	<u>Right Direction</u>	<u>Wrong Track</u>	<u>Don't Know</u>	<u>(N=)</u>
Sept. '10	61%	29%	10%	(511)
July '10	60%	32%	9%	(496)
Apr. '10	57%	34%	9%	(503)
Feb. '10	61%	31%	8%	(490)
Oct. '09	58%	30%	12%	(496)
July '09	55%	38%	7%	(557)
Apr. '09	64%	27%	9%	(497)
Feb. '09	60%	28%	12%	(605)
Sept. '08	73%	17%	10%	(535)
July '08	70%	21%	9%	(514)
Apr. '08	65%	27%	8%	(491)
Feb. '08	69%	20%	11%	(547)
Sept. '07	73%	17%	10%	(507)
July '07	76%	18%	6%	(500)
Apr. '07	76%	14%	9%	(506)
Feb. '07	78%	13%	8%	(524)
Sept. '06	79%	14%	7%	(509)
July '06	80%	13%	8%	(497)
Apr. '06	76%	13%	11%	(501)
Feb. '06	76%	14%	10%	(495)
Oct. '05	75%	17%	9%	(502)
July '05	75%	17%	8%	(494)
May '05	71%	15%	13%	(488)
Feb. '05	74%	13%	13%	(535)
July '04	59%	32%	9%	(503)
Apr. '04	65%	26%	9%	(530)
Feb. '04	61%	28%	11%	(500)
Oct. '03	67%	26%	7%	(485)
Jun. '03	62%	29%	9%	(510)

Most Important Problem Facing New Hampshire

"Let's turn to the State of New Hampshire ... There are many problems facing the STATE OF NEW HAMPSHIRE today. In general, what do you think is the most IMPORTANT problem facing the STATE OF NEW HAMPSHIRE today?"

	<u>Jobs / Economy</u>	<u>Educ. Funding</u>	<u>Taxes</u>	<u>Health Care</u>	<u>Quality Educ.</u>	<u>Growth/ Sprawl</u>	<u>State Budget</u>	<u>Cost of Gas/Oil</u>	<u>Other/ DK</u>	<u>(N=)</u>
Sept. '10	46%	4%	7%	2%	5%	0%	16%	0%	21%	(504)
July '10	45%	3%	5%	2%	4%	*	21%	*	17%	(498)
Apr. '10	39%	5%	8%	4%	2%	*	23%	*	19%	(504)
Feb. '10	48%	6%	9%	4%	4%	*	14%	*	15%	(486)
Oct. '09	36%	2%	9%	8%	5%	*	17%	0%	18%	(494)
July '09	32%	3%	11%	6%	2%	*	22%	1%	31%	(551)
Apr. '09	41%	5%	10%	5%	4%	*	10%	*	24%	(491)
Feb. '09	43%	6%	8%	4%	3%	0%	17%	*	19%	(607)
Sep. '08	30%	10%	14%	6%	7%	*	6%	7%	20%	(531)
July '08	22%	13%	12%	5%	6%	1%	6%	14%	22%	(504)
Apr. '08	24%	13%	17%	4%	6%	0%	4%	7%	25%	(496)
Feb. '08	26%	11%	11%	10%	6%	1%	6%	1%	28%	(542)
Sept. '07	11%	22%	19%	9%	7%	1%	2%	1%	28%	(499)
July '07	9%	23%	15%	11%	9%	2%	1%	2%	29%	(488)
Apr. '07	15%	28%	15%	7%	11%	2%	1%	1%	20%	(501)
Feb. '07	14%	23%	16%	8%	9%	2%	1%	1%	26%	(527)
Sept. '06	11%	27%	14%	7%	9%	3%	2%	2%	26%	(499)
July '06	12%	19%	10%	6%	6%	3%	1%	5%	38%	(490)
Apr. '06	16%	19%	11%	4%	10%	3%	2%	5%	30%	(501)
Feb. '06	14%	20%	13%	10%	7%	3%	1%	3%	29%	(498)
Oct. '05	12%	17%	18%	7%	6%	5%	2%	3%	30%	(503)
July '05	13%	27%	13%	6%	5%	4%	2%	*	28%	(496)
Apr. '05	13%	31%	14%	8%	6%	3%	5%	3%	18%	(487)
Feb. '05	15%	24%	14%	6%	9%	2%	2%	*	28%	(541)
July '04	13%	31%	11%	6%	5%	4%	2%	0%	28%	(504)
Apr. '04	20%	20%	13%	5%	7%	3%	4%	0%	29%	(536)
Feb. '04	22%	20%	14%	10%	7%	2%	5%	0%	21%	(502)
Oct. '03	19%	21%	13%	5%	10%	3%	6%	0%	23%	(490)
June '03	16%	27%	13%	3%	6%	1%	9%	0%	25%	(513)
Apr. '03	16%	28%	14%	4%	8%	2%	6%	0%	22%	(497)
Feb. '03	16%	29%	16%	2%	12%	2%	2%	0%	21%	(644)
June '02	16%	31%	15%	2%	12%	1%	5%	0%	18%	(424)
Apr. '02	11%	31%	24%	2%	7%	2%	1%	0%	22%	(684)
Feb. '02	12%	27%	17%	0%	21%	1%	3%	0%	19%	(312)
Oct. '01	15%	42%	11%	1%	45	2%	*	0%	25%	(519)

* Less than 1%

NH State House of Representatives – Republicans vs. Democrats – Likely Voters

"Please think about the November election for your representative to the New Hampshire House of Representatives. Do you plan to vote for the Democratic or Republican candidate for the New Hampshire House of Representatives ... or do you plan to skip the election for New Hampshire House of Representatives this time?" ROTATE PARTIES

	<u>Sept. '10</u>
Republican	41%
Democrat	35%
Other	5%
Some Rep/Some Dem	4%
Don't Know	15%
(N=)	(465)

NH State Senate – Republicans vs. Democrats – Likely Voters

"Please think about the November election for your representative to the New Hampshire Senate. Do you plan to vote for the Democratic or Republican candidate for the New Hampshire Senate ... or do you plan to skip the election for New Hampshire Senate this time?" ROTATE PARTIES

	<u>Sept. '10</u>
Republican	42%
Democrat	38%
Other	5%
Don't Know	16%
(N=)	(464)

Gubernatorial Approval

STATEWIDE	<u>Approve</u> 58%	<u>Neutral</u> 14%	<u>Disapprove</u> 28%	<u>(N=)</u> 512
Registered Democrat	81%	7%	11%	112
Registered Undeclared	64%	14%	22%	226
Registered Republican	31%	15%	54%	135
Democrat	80%	10%	10%	200
Independent	56%	22%	22%	103
Republican	37%	14%	49%	204
Liberal	84%	8%	9%	92
Moderate	64%	13%	22%	226
Conservative	38%	14%	48%	164
Extremely interested in election	53%	9%	38%	206
Very interested	63%	11%	26%	171
Somewhat/Not very interested	61%	25%	15%	133
Union household	62%	18%	20%	57
Non-union	58%	13%	29%	451
10 yrs or less in NH	64%	16%	20%	86
11 to 20 years	66%	13%	21%	75
More than 20 years	55%	13%	32%	345
18 to 34	55%	25%	20%	47
35 to 49	56%	15%	29%	137
50 to 64	60%	11%	29%	190
65 and over	59%	11%	30%	131
Male	56%	12%	32%	249
Female	60%	16%	24%	262
Get most news from Local TV news	61%	15%	24%	134
National TV news	57%	9%	33%	131
Radio	70%	11%	19%	55
Newspapers	62%	12%	26%	64
Internet	53%	21%	26%	95
Other	45%	9%	47%	24
Get most news from Local TV news	61%	15%	24%	134
National TV news	57%	9%	33%	131
Radio	70%	11%	19%	55
Newspapers	62%	12%	26%	64
Internet	53%	21%	26%	95
Other	45%	9%	47%	24
High school or less	42%	20%	37%	93
Some college	60%	10%	30%	123
College graduate	64%	11%	25%	188
Post-graduate	61%	17%	23%	106
Attend services 1 or more/week	51%	19%	30%	139
1-2 times a month	62%	14%	24%	69
Less often	58%	12%	30%	145
Never	64%	10%	26%	138
North Country	67%	11%	23%	41
Central / Lakes	48%	18%	34%	78
Connecticut Valley	66%	14%	20%	80
Mass Border	58%	15%	27%	140
Seacoast	65%	10%	25%	91
Manchester Area	50%	14%	37%	83
First Cong. Dist	58%	12%	30%	259
Second Cong. Dist	59%	16%	25%	253

Favorability Rating - John Lynch

STATEWIDE	<u>Favorable</u> 61%	<u>Neutral</u> 9%	<u>Unfavorable</u> 24%	<u>Don't Know</u> 7%	<u>(N=)</u> 513
Likely Voter	62%	8%	24%	6%	475
Non-Likely Voter	57%	9%	19%	14%	36
Registered Democrat	81%	3%	10%	6%	112
Registered Undeclared	68%	8%	18%	6%	227
Registered Republican	33%	15%	47%	4%	134
Democrat	81%	5%	8%	7%	200
Independent	63%	8%	22%	7%	105
Republican	41%	13%	40%	6%	205
Liberal	84%	4%	5%	7%	92
Moderate	68%	8%	19%	6%	228
Conservative	41%	13%	42%	4%	163
Extremely interested in election	56%	11%	29%	3%	206
Very interested	64%	8%	24%	5%	171
Somewhat/Not very interested	67%	5%	15%	13%	134
Union household	71%	6%	14%	9%	58
Non-union	60%	9%	25%	6%	451
10 yrs or less in NH	66%	7%	15%	12%	88
11 to 20 years	66%	5%	21%	8%	75
More than 20 years	59%	10%	27%	4%	344
18 to 34	65%	3%	17%	16%	48
35 to 49	56%	12%	25%	7%	137
50 to 64	65%	6%	25%	4%	190
65 and over	60%	10%	25%	5%	132
Male	59%	10%	26%	5%	250
Female	63%	8%	21%	8%	263
Get most news from Local TV news	65%	6%	21%	8%	133
National TV news	51%	12%	29%	8%	132
Radio	71%	8%	15%	6%	55
Newspapers	69%	1%	23%	8%	64
Internet	64%	13%	21%	2%	96
Other	53%	5%	38%	4%	24
High school or less	43%	8%	37%	11%	94
Some college	61%	7%	25%	7%	123
College graduate	69%	9%	19%	3%	190
Post-graduate	64%	9%	19%	8%	105
Attend services 1 or more/week	57%	10%	25%	7%	140
1-2 times a month	67%	8%	17%	8%	69
Less often	65%	6%	26%	4%	145
Never	60%	10%	23%	6%	139
North Country	64%	5%	26%	5%	40
Central / Lakes	52%	11%	30%	6%	78
Connecticut Valley	66%	7%	16%	11%	80
Mass Border	62%	8%	23%	7%	142
Seacoast	70%	7%	21%	1%	91
Manchester Area	53%	12%	27%	7%	83
First Cong. Dist	60%	9%	26%	5%	260
Second Cong. Dist	62%	8%	21%	9%	253

Favorability Rating – Former Health and Human Services Commissioner John Stephen

STATEWIDE	<u>Favorable</u> 24%	<u>Neutral</u> 7%	<u>Unfavorable</u> 21%	<u>Don't Know</u> 47%	<u>(N=)</u> 514
Likely Voter	26%	7%	21%	46%	476
Non-Likely Voter	10%	7%	20%	64%	36
Registered Democrat	15%	7%	39%	39%	112
Registered Undeclared	19%	7%	18%	55%	227
Registered Republican	44%	8%	11%	37%	135
Democrat	15%	6%	33%	46%	200
Independent	16%	6%	19%	60%	105
Republican	38%	9%	11%	43%	206
Liberal	12%	8%	34%	45%	92
Moderate	23%	7%	21%	49%	228
Conservative	35%	7%	14%	43%	164
Extremely interested in election	33%	6%	26%	35%	206
Very interested	20%	9%	22%	48%	173
Somewhat/Not very interested	17%	5%	12%	66%	134
Union household	27%	9%	21%	42%	58
Non-union	24%	7%	21%	48%	452
10 yrs or less in NH	10%	7%	11%	73%	88
11 to 20 years	30%	6%	18%	45%	75
More than 20 years	27%	7%	25%	41%	345
18 to 34	14%	6%	30%	50%	48
35 to 49	22%	8%	15%	55%	137
50 to 64	25%	6%	23%	45%	192
65 and over	31%	8%	22%	40%	131
Male	27%	7%	21%	45%	251
Female	22%	7%	22%	50%	263
Get most news from Local TV news	26%	10%	17%	47%	134
National TV news	27%	7%	17%	49%	132
Radio	21%	0%	37%	42%	55
Newspapers	23%	4%	29%	43%	64
Internet	20%	8%	18%	54%	96
Other	31%	2%	24%	43%	24
High school or less	20%	9%	16%	55%	94
Some college	25%	7%	21%	46%	122
College graduate	22%	6%	23%	49%	191
Post-graduate	31%	6%	22%	40%	105
Attend services 1 or more/week	33%	6%	16%	45%	140
1-2 times a month	24%	10%	21%	45%	69
Less often	26%	5%	19%	49%	147
Never	17%	8%	28%	47%	139
North Country	9%	5%	26%	60%	40
Central / Lakes	19%	8%	30%	43%	78
Connecticut Valley	21%	5%	20%	55%	80
Mass Border	27%	8%	14%	51%	142
Seacoast	20%	8%	24%	47%	91
Manchester Area	40%	7%	21%	33%	84
First Cong. Dist.	27%	9%	22%	42%	262
Second Cong. Dist.	21%	5%	20%	53%	253

Firmness of choice for New Hampshire Governor

	<u>Definitely Decided</u> 40%	<u>Leaning Toward Someone</u> 15%	<u>Still Trying To Decide</u> 45%	<u>(N=)</u> 473
STATEWIDE				
Registered Democrat	53%	7%	40%	105
Registered Undeclared	33%	16%	51%	210
Registered Republican	45%	20%	35%	134
Democrat	47%	11%	43%	184
Independent	26%	14%	60%	91
Republican	40%	18%	41%	196
Liberal	56%	7%	37%	83
Moderate	35%	15%	49%	212
Conservative	39%	18%	42%	153
Extremely interested in election	56%	13%	32%	203
Very interested	39%	19%	42%	166
Somewhat/Not very interested	10%	12%	79%	103
Union household	29%	11%	59%	56
Non-union	42%	15%	44%	413
10 yrs or less in NH	28%	10%	62%	76
11 to 20 years	40%	13%	48%	66
More than 20 years	43%	16%	42%	326
18 to 34	20%	6%	74%	38
35 to 49	28%	15%	57%	129
50 to 64	48%	16%	36%	177
65 and over	48%	14%	38%	122
Male	41%	17%	43%	235
Female	39%	13%	48%	238
Get most news from Local TV news	31%	15%	54%	119
National TV news	39%	16%	46%	122
Radio	48%	18%	34%	51
Newspapers	51%	15%	34%	61
Internet	34%	12%	55%	90
Other	72%	5%	23%	20
High school or less	34%	12%	54%	80
Some college	36%	19%	44%	114
College graduate	42%	11%	47%	177
Post-graduate	46%	17%	37%	100
Attend services 1 or more/week	32%	20%	48%	132
1-2 times a month	38%	15%	47%	66
Less often	48%	11%	41%	131
Never	42%	10%	49%	124
North Country	51%	16%	33%	40
Central / Lakes	34%	19%	47%	71
Connecticut Valley	35%	14%	51%	71
Mass Border	39%	10%	51%	133
Seacoast	41%	17%	42%	82
Manchester Area	44%	16%	40%	76
First Cong. Dist.	39%	15%	45%	239
Second Cong. Dist.	40%	14%	46%	234

NH Governor – John Stephen vs. John Lynch – Likely Voters

STATEWIDE	<u>Stephen</u> 34%	<u>Lynch</u> 51%	<u>Other</u> 2%	<u>DK</u> 14%	<u>(N)</u> 470
Definitely decided	40%	58%	0%	2%	188
Learning toward someone	42%	45%	1%	11%	70
Still trying to decide	26%	46%	3%	24%	211
Registered Democrat	7%	89%	0%	4%	106
Registered Undeclared	23%	54%	3%	20%	208
Registered Republican	75%	14%	1%	10%	134
Democrat	7%	86%	0%	7%	183
Independent	18%	51%	3%	28%	90
Republican	66%	17%	3%	14%	195
Liberal	8%	87%	2%	4%	83
Moderate	26%	58%	2%	14%	212
Conservative	62%	23%	2%	13%	150
Extremely interested in election	44%	47%	0%	8%	202
Very interested	29%	54%	3%	14%	167
Somewhat/Not very interested	21%	52%	2%	24%	100
Union household	29%	54%	2%	14%	56
Non-union	35%	50%	2%	13%	410
10 yrs or less in NH	34%	49%	3%	13%	74
11 to 20 years	33%	54%	0%	13%	66
More than 20 years	34%	50%	2%	14%	324
18 to 34	34%	50%	10%	6%	38
35 to 49	37%	45%	1%	17%	128
50 to 64	29%	55%	1%	14%	175
65 and over	38%	51%	1%	10%	122
Male	38%	47%	3%	12%	233
Female	30%	54%	1%	15%	237
Get most news from Local TV news	27%	52%	2%	18%	119
National TV news	39%	44%	2%	15%	122
Radio	26%	62%	0%	12%	50
Newspapers	40%	52%	0%	8%	61
Internet	33%	55%	4%	9%	90
Other	54%	35%	0%	10%	20
High school or less	40%	37%	4%	19%	78
Some college	34%	49%	2%	15%	114
College graduate	31%	55%	2%	12%	176
Post-graduate	35%	55%	0%	10%	100
Attend services 1 or more/week	43%	37%	2%	18%	130
1-2 times a month	32%	51%	2%	15%	66
Less often	35%	54%	2%	9%	132
Never	28%	59%	2%	11%	123
North Country	33%	54%	0%	13%	38
Central / Lakes	35%	49%	2%	14%	71
Connecticut Valley	17%	66%	0%	16%	69
Mass Border	38%	45%	3%	14%	133
Seacoast	27%	61%	1%	10%	83
Manchester Area	49%	35%	2%	15%	76
First Cong. Dist.	38%	48%	1%	12%	240
Second Cong. Dist.	30%	53%	2%	15%	230

Plan on Voting for Republican or Democrat for State House of Representatives – Likely Voters

	<u>Republican</u>	<u>Democrat</u>	<u>Other</u>	<u>Some Dem/ Some Rep</u>	<u>Don't Know</u>	<u>(N=)</u>
STATEWIDE	41%	35%	5%	4%	15%	465
Registered Democrat	2%	84%	3%	5%	6%	105
Registered Undeclared	31%	30%	9%	5%	24%	204
Registered Republican	85%	4%	2%	2%	8%	134
Democrat	3%	76%	5%	7%	8%	182
Independent	22%	26%	10%	5%	38%	88
Republican	84%	1%	4%	1%	10%	193
Liberal	2%	83%	0%	2%	12%	83
Moderate	28%	38%	8%	8%	19%	209
Conservative	81%	6%	4%	0%	9%	149
Extremely interested in election	45%	40%	5%	3%	7%	201
Very interested	37%	34%	7%	6%	18%	165
Somewhat/Not very interested	38%	30%	3%	4%	25%	98
Union household	35%	34%	6%	6%	19%	56
Non-union	41%	36%	5%	4%	14%	405
10 yrs or less in NH	41%	28%	11%	5%	14%	72
11 to 20 years	39%	44%	3%	5%	9%	66
More than 20 years	41%	35%	4%	4%	16%	321
18 to 34	44%	38%	4%	0%	14%	37
35 to 49	44%	34%	4%	5%	13%	126
50 to 64	37%	38%	4%	5%	16%	174
65 and over	42%	32%	8%	4%	14%	122
Male	48%	30%	8%	4%	11%	231
Female	34%	41%	2%	5%	18%	234
Get most news from Local TV news	31%	35%	11%	2%	21%	119
National TV news	50%	32%	7%	3%	9%	122
Radio	34%	39%	3%	8%	16%	50
Newspapers	35%	39%	1%	8%	17%	59
Internet	42%	41%	0%	6%	11%	87
Other	66%	12%	0%	0%	22%	20
High school or less	45%	24%	9%	4%	17%	76
Some college	38%	34%	4%	5%	19%	113
College graduate	44%	38%	4%	3%	12%	177
Post-graduate	33%	41%	7%	6%	13%	98
Attend services 1 or more/week	51%	23%	5%	6%	14%	131
1-2 times a month	52%	27%	4%	7%	9%	65
Less often	33%	37%	8%	2%	19%	129
Never	34%	49%	2%	3%	12%	120
North Country	25%	34%	13%	7%	22%	39
Central / Lakes	53%	33%	4%	1%	9%	69
Connecticut Valley	24%	45%	4%	5%	21%	67
Mass Border	49%	29%	2%	5%	15%	131
Seacoast	36%	38%	5%	4%	17%	83
Manchester Area	43%	38%	10%	3%	6%	76
First Cong. Dist.	40%	35%	6%	5%	14%	238
Second Cong. Dist.	41%	36%	4%	4%	16%	227

Plan on Voting for Republican or Democrat for State Senate – Likely Voters

STATEWIDE	<u>Republican</u> 42%	<u>Democrat</u> 38%	<u>Other</u> 5%	<u>Don't Know</u> 16%	<u>(N=)</u> 464
Registered Democrat	4%	87%	1%	8%	106
Registered Undeclared	33%	33%	8%	27%	202
Registered Republican	85%	5%	4%	6%	133
Democrat	4%	83%	3%	10%	181
Independent	26%	22%	8%	44%	88
Republican	85%	3%	5%	7%	194
Liberal	5%	83%	1%	11%	83
Moderate	31%	40%	6%	22%	209
Conservative	81%	9%	4%	6%	149
Extremely interested in election	47%	39%	5%	8%	200
Very interested	37%	37%	4%	22%	166
Somewhat/Not very interested	41%	36%	4%	19%	97
Union household	38%	33%	4%	24%	55
Non-union	43%	38%	5%	14%	406
10 yrs or less in NH	45%	31%	9%	15%	74
11 to 20 years	42%	44%	5%	9%	66
More than 20 years	42%	38%	4%	17%	319
18 to 34	46%	37%	4%	13%	37
35 to 49	46%	34%	5%	15%	125
50 to 64	37%	40%	4%	19%	174
65 and over	45%	38%	6%	11%	122
Male	48%	33%	6%	13%	231
Female	36%	42%	3%	18%	232
Get most news from Local TV news	32%	36%	11%	21%	118
National TV news	53%	35%	2%	10%	121
Radio	34%	47%	3%	15%	50
Newspapers	34%	40%	5%	21%	59
Internet	45%	41%	2%	12%	87
Other	63%	17%	0%	21%	21
High school or less	45%	31%	5%	20%	77
Some college	39%	37%	3%	21%	113
College graduate	46%	37%	5%	12%	176
Post-graduate	35%	45%	7%	13%	96
Attend services 1 or more/week	50%	29%	4%	16%	131
1-2 times a month	54%	29%	4%	13%	66
Less often	35%	37%	8%	20%	127
Never	38%	51%	1%	10%	122
North Country	29%	45%	7%	20%	39
Central / Lakes	52%	38%	4%	7%	69
Connecticut Valley	31%	43%	2%	23%	68
Mass Border	50%	31%	3%	15%	130
Seacoast	36%	37%	4%	23%	81
Manchester Area	43%	40%	10%	7%	76
First Cong. Dist.	40%	36%	7%	16%	237
Second Cong. Dist.	44%	39%	2%	15%	227

Are Things in NH on Right/Wrong Track

STATEWIDE	<u>Right Direction</u> 61%	<u>Wrong Track</u> 29%	<u>Don't Know</u> 10%	<u>(N=)</u> 511
Likely Voter	61%	29%	10%	472
Non-Likely Voter	68%	26%	6%	36
Registered Democrat	77%	18%	5%	112
Registered Undeclared	62%	27%	11%	224
Registered Republican	43%	47%	9%	135
Democrat	77%	15%	8%	200
Independent	54%	33%	13%	102
Republican	48%	42%	10%	204
Liberal	80%	13%	7%	92
Moderate	67%	23%	10%	226
Conservative	45%	44%	11%	163
Extremely interested in election	53%	37%	11%	205
Very interested	70%	23%	7%	170
Somewhat/Not very interested	63%	25%	12%	134
Union household	65%	25%	10%	58
Non-union	61%	30%	10%	449
10 yrs or less in NH	70%	21%	9%	85
11 to 20 years	68%	24%	7%	74
More than 20 years	57%	33%	10%	346
18 to 34	62%	27%	11%	47
35 to 49	57%	36%	8%	135
50 to 64	62%	29%	9%	192
65 and over	64%	25%	11%	131
Male	60%	30%	10%	249
Female	62%	28%	10%	261
Get most news from Local TV news	62%	29%	9%	134
National TV news	60%	31%	10%	132
Radio	72%	20%	8%	55
Newspapers	63%	28%	9%	64
Internet	59%	31%	10%	93
Other	49%	31%	20%	24
High school or less	48%	39%	13%	94
Some college	62%	31%	6%	122
College graduate	68%	24%	9%	187
Post-graduate	60%	28%	13%	106
Attend services 1 or more/week	59%	34%	7%	138
1-2 times a month	64%	26%	10%	69
Less often	63%	31%	6%	146
Never	60%	26%	14%	138
North Country	65%	27%	8%	41
Central / Lakes	51%	39%	10%	77
Connecticut Valley	68%	18%	14%	79
Mass Border	59%	32%	9%	139
Seacoast	70%	24%	7%	91
Manchester Area	56%	32%	12%	84
First Cong. Dist	62%	29%	8%	262
Second Cong. Dist	60%	29%	11%	249

Most Important Problem Facing NH

	<u>Educ Funding</u> 4%	<u>Jobs, Economy</u> 46%	<u>Taxes</u> 7%	<u>State Budget</u> 16%	<u>Quality Educ.</u> 5%	<u>Other</u> 19%	<u>Don't Know</u> 5%	<u>(N=)</u> 504
STATEWIDE								
Likely Voter	4%	44%	7%	16%	5%	19%	5%	469
Non-Likely Voter	0%	66%	0%	4%	4%	19%	8%	33
Registered Democrat	6%	38%	8%	11%	8%	26%	2%	107
Registered Undeclared	4%	52%	5%	12%	4%	19%	4%	222
Registered Republican	1%	39%	8%	28%	3%	13%	7%	136
Democrat	5%	39%	8%	10%	7%	27%	4%	195
Independent	6%	52%	3%	12%	5%	15%	7%	103
Republican	1%	48%	8%	23%	2%	13%	5%	202
Liberal	6%	38%	7%	11%	4%	28%	5%	90
Moderate	4%	47%	7%	15%	6%	16%	5%	225
Conservative	1%	46%	8%	19%	3%	19%	4%	162
Extremely interested in election	2%	44%	7%	20%	5%	20%	2%	205
Very interested	5%	41%	8%	20%	2%	16%	7%	167
Somewhat/Not very interested	4%	54%	4%	4%	7%	21%	6%	131
Union household	8%	37%	7%	16%	7%	20%	6%	56
Non-union	3%	46%	7%	16%	4%	19%	5%	445
10 yrs or less in NH	2%	42%	5%	9%	9%	24%	8%	84
11 to 20 years	3%	50%	10%	11%	4%	18%	4%	73
More than 20 years	4%	46%	6%	18%	4%	18%	4%	342
18 to 34	9%	44%	5%	7%	5%	17%	14%	45
35 to 49	3%	45%	10%	13%	7%	19%	3%	132
50 to 64	5%	47%	4%	18%	4%	21%	2%	191
65 and over	1%	45%	9%	18%	3%	16%	7%	129
Male	4%	43%	7%	20%	2%	19%	5%	246
Female	3%	48%	6%	11%	7%	20%	5%	258
Get most news from Local TV news	3%	56%	8%	9%	5%	13%	7%	130
National TV news	3%	46%	9%	15%	5%	16%	5%	130
Radio	7%	36%	5%	22%	0%	26%	4%	55
Newspapers	1%	47%	3%	17%	5%	24%	4%	63
Internet	7%	38%	6%	19%	5%	20%	5%	95
Other	0%	36%	2%	19%	8%	34%	0%	24
High school or less	1%	53%	5%	13%	3%	20%	5%	93
Some college	2%	41%	7%	17%	6%	21%	6%	117
College graduate	6%	52%	8%	12%	4%	15%	3%	188
Post-graduate	3%	32%	6%	24%	6%	24%	6%	104
Attend services 1 or more/week	1%	41%	8%	19%	8%	17%	5%	137
1-2 times a month	4%	52%	9%	16%	0%	14%	5%	69
Less often	7%	47%	6%	17%	4%	16%	3%	145
Never	3%	45%	5%	11%	4%	26%	6%	135
North Country	5%	38%	5%	7%	8%	24%	13%	40
Central / Lakes	2%	53%	6%	15%	3%	20%	1%	76
Connecticut Valley	4%	46%	6%	15%	3%	25%	1%	79
Mass Border	5%	48%	9%	13%	2%	15%	9%	136
Seacoast	5%	42%	6%	15%	5%	23%	4%	90
Manchester Area	0%	44%	5%	26%	9%	14%	3%	84
First Cong. Dist	4%	44%	7%	15%	5%	18%	6%	254
Second Cong. Dist	3%	47%	6%	16%	4%	20%	4%	250