

THE WMUR / UNH NEW HAMPSHIRE ELECTION POLL

THE UNIVERSITY OF NEW HAMPSHIRE SURVEY CENTER

November 1, 2010

LYNCH AND STEPHEN IN TIGHT RACE FOR NH GOVERNOR

By: Andrew E. Smith, Ph.D.
UNH Survey Center
603/862-2226
www.unh.edu/survey-center

DURHAM, NH – Governor John Lynch has seen his once formidable lead over Republican challenger John Stephen shrink in the final weeks of the campaign. Most voters have now made up their mind who to support.

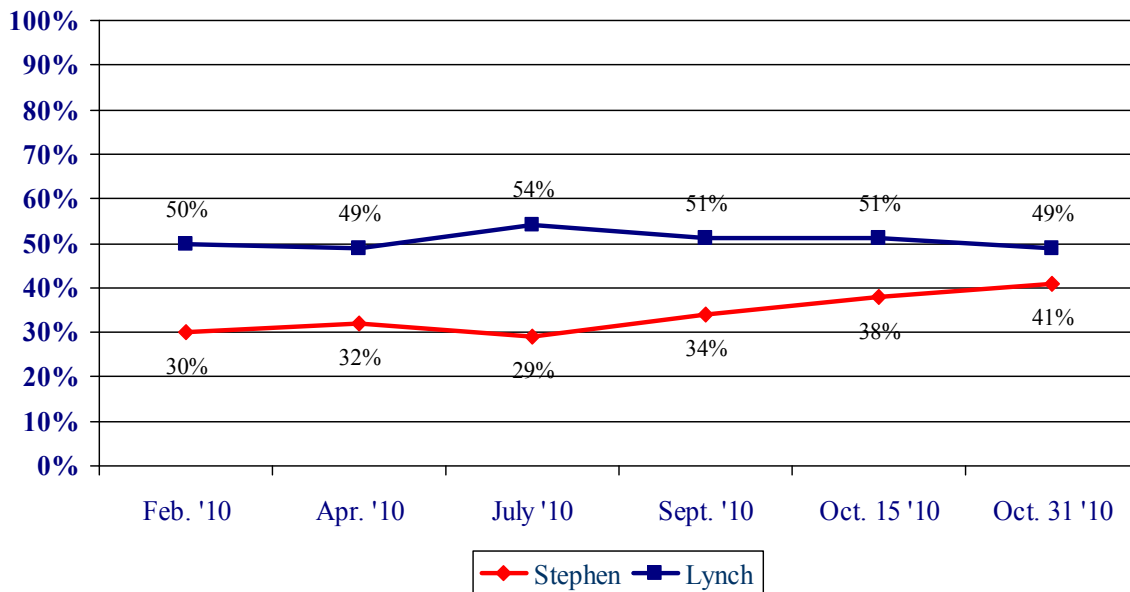
These findings are based on the latest **WMUR / UNH New Hampshire Election Poll**,* conducted by the University of New Hampshire Survey Center. Eight hundred and eighty-five (885) randomly selected New Hampshire likely voters were interviewed by telephone between October 27 and October 31, 2010. The margin of sampling error for the survey is +/- 3.3 percent.

Democrat John Lynch continues to lead former Health and Human Services Commissioner John Stephen in the election for New Hampshire governor, although the race has narrowed considerably in recent weeks. In the final WMUR / UNH election poll, 49% of likely voters say they will vote for Lynch, 41% prefer Stephen, 2% favor Libertarian John Babiarz, 1% prefer some other candidate, and 7% are undecided. Lynch had led Stephen by 13 percentage points in mid-October but has not been able to move beyond the 50% mark throughout the campaign.

When undecided voters are allocated to the candidate they are most likely to vote for, Lynch gets 52%, Stephen gets 45% and other candidates get 3%. “When an incumbent is up for reelection, undecided voters typically break to the challenger,” said Andrew E. Smith, Director of the UNH Survey Center. “Along with the anti-Democratic mood we are seeing in New Hampshire, Lynch will be fortunate to pull this one out.”

Among voters who say they will definitely vote Lynch holds an even smaller lead, 47% to 44%. Stephen does better among voters who say they are extremely interested in the election -- he leads Lynch by 6 percentage points, 50% to 44%, among this group.

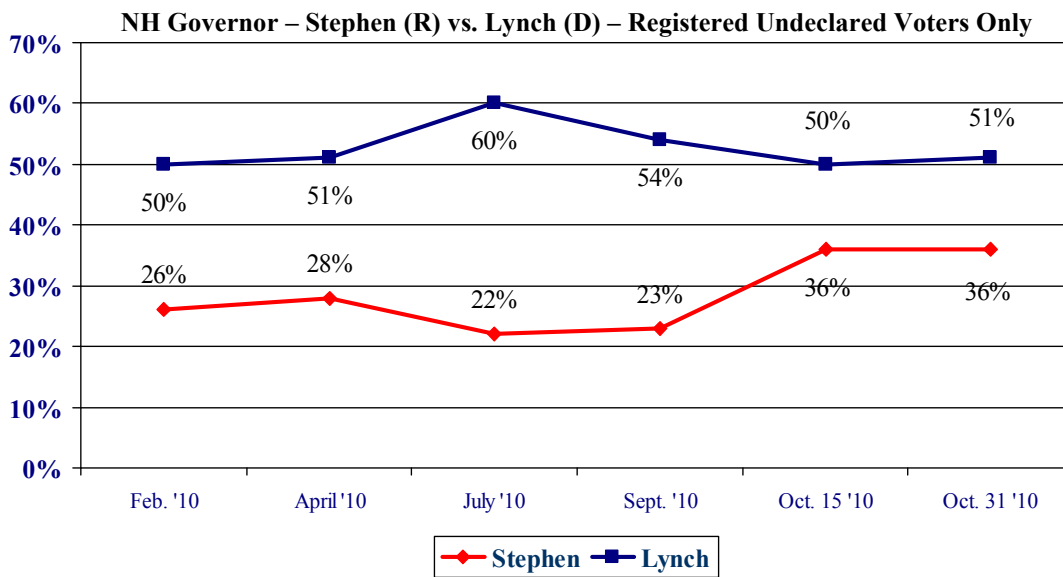
NH Governor: Lynch (D) vs. Stephen (R)



* We ask that this copyrighted information be referred to as *the WMUR / UNH New Hampshire Election Poll*, sponsored by WMUR-TV, and conducted by the University of New Hampshire Survey Center.

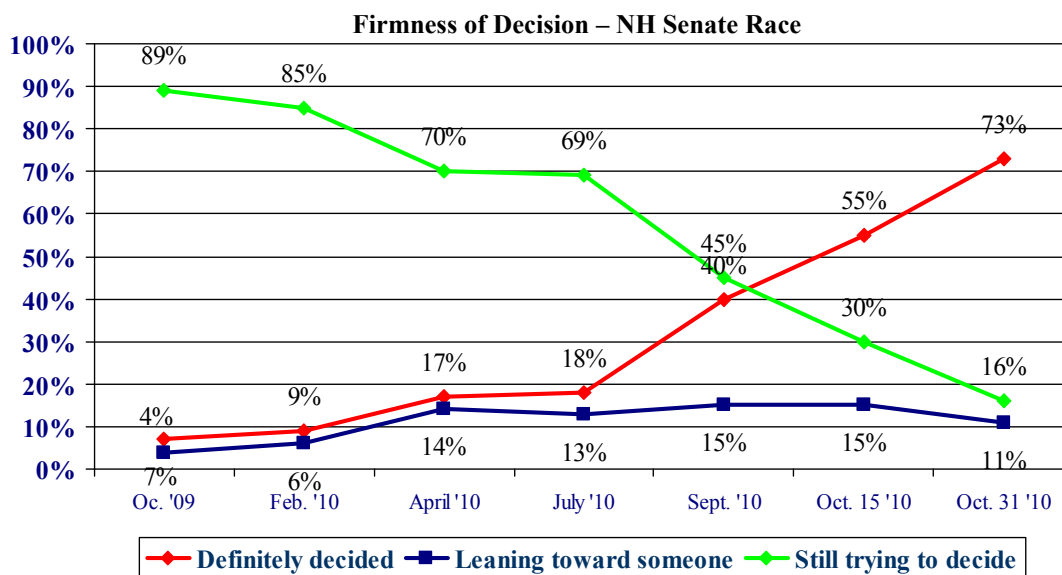
Lynch gets his strongest support from Democrats, voters with post-graduate educations, and voters in the greater Concord area and the Connecticut River valley. Stephen's strongest support comes from Republicans, older voters, men, voters who are excited about the outcome of the November elections, voters who are extremely interested in the election, and voters in towns on the Massachusetts border.

Stephen continues to have problems solidifying his Republican base. Only 74% of registered Republicans say they will vote for Stephen while 86% of registered Democrats say they will vote for Lynch. Among Undeclared voters, often called Independents, Lynch holds a 51% to 36% lead. However, Lynch's lead among undeclared voters has been cut in half in recent weeks – Lynch held a 31 percentage point lead over Stephen among undeclared voters in late September but only holds a 15 percentage point lead now.



Decisions Being Made

As the election approaches, a higher percentage of voters have definitely decided who they will vote for. Currently, 73% of likely voters say they have definitely decided who they will vote for in the race for Governor, 11% are leaning to a candidate, and 16% are still trying to decide. Lynch leads Stephen by 53% to 44% among voters who have definitely decided who they will support.



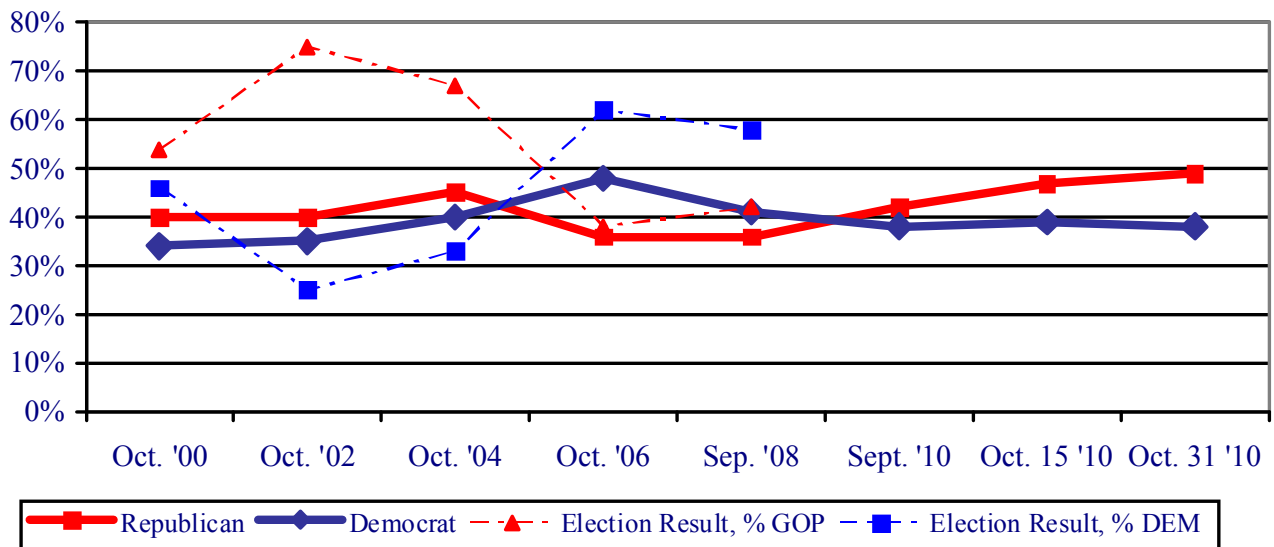
New Hampshire State Senate

Democrats took control of the New Hampshire State Senate in 2006 and currently hold 14 of the 24 seats in the Senate. But Republicans are in position to take control of the Senate in 2010 based on a generic ballot question. When asked if they would vote for the Republican or Democratic candidate for State Senate from their district, 49% of New Hampshire likely voters say they will vote for the Republican candidate, 38% say they will vote for the Democratic candidate, 2% prefer a candidate from another party, and 12% are undecided.

When undecided voters are allocated to the party they are most likely to vote for, support for Republicans increases to 55%, Democrats get 43% and other candidates get 2%.

Republicans have increased their lead on this measure since September when 42% of New Hampshire likely voters said they would vote for the Republican and 38% for the Democrat. In recent elections, this indicator has been accurate in predicting which party would gain the Senate majority, but less accurate in predicting the size of the majority. However, the current Republican advantage on this indicator is the largest in the 10 years it has been measured.

Vote in NH State Senate District and State Senate Composition

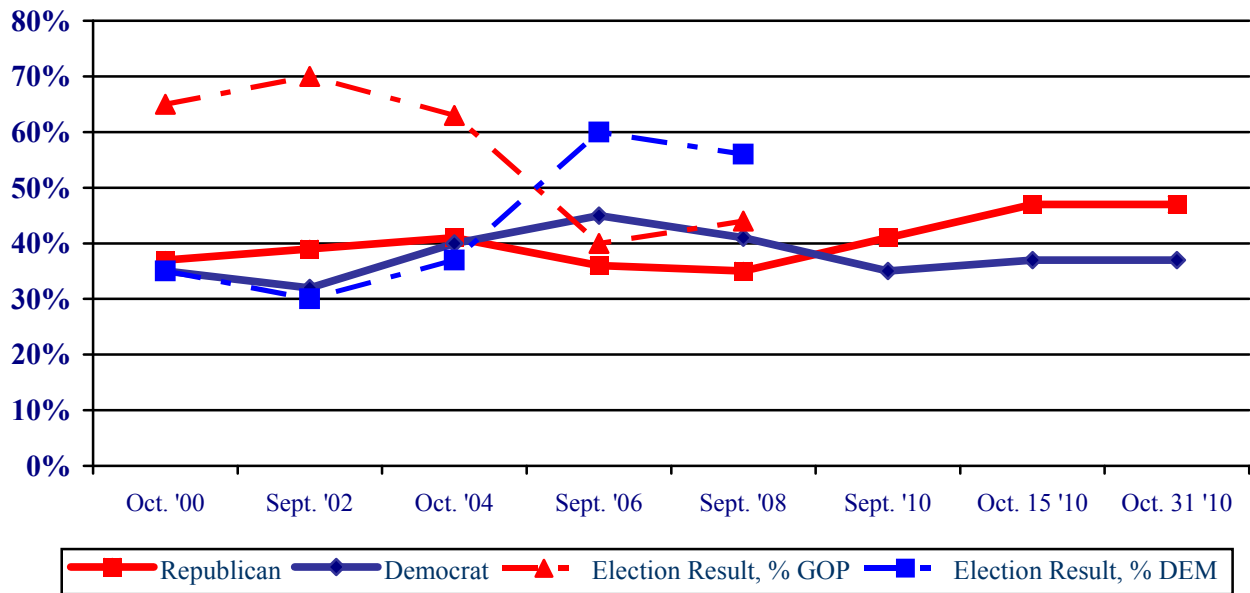


NH State House of Representatives

Democrats also took control of the New Hampshire House of Representatives in 2006 and retained the majority in 2008. But Republicans now hold a sizable lead in a generic ballot question with 47% of likely New Hampshire voters saying they will vote for Republicans in their district, 37% support Democrats, 6% will cast a split ballot, 1% will vote for a third party candidate, and 10% are undecided. Republicans have also widened the gap on this measure since September when they held a 41% to 35% lead. This indicator has accurately predicted which party will gain the majority in the state house, but is less accurate about the size of the majority. Multi-member House districts often result in greater swings than are seen in the state Senate. But the current 10 percentage point Republican advantage is the largest since the UNH Survey Center began asking this question in 2000.

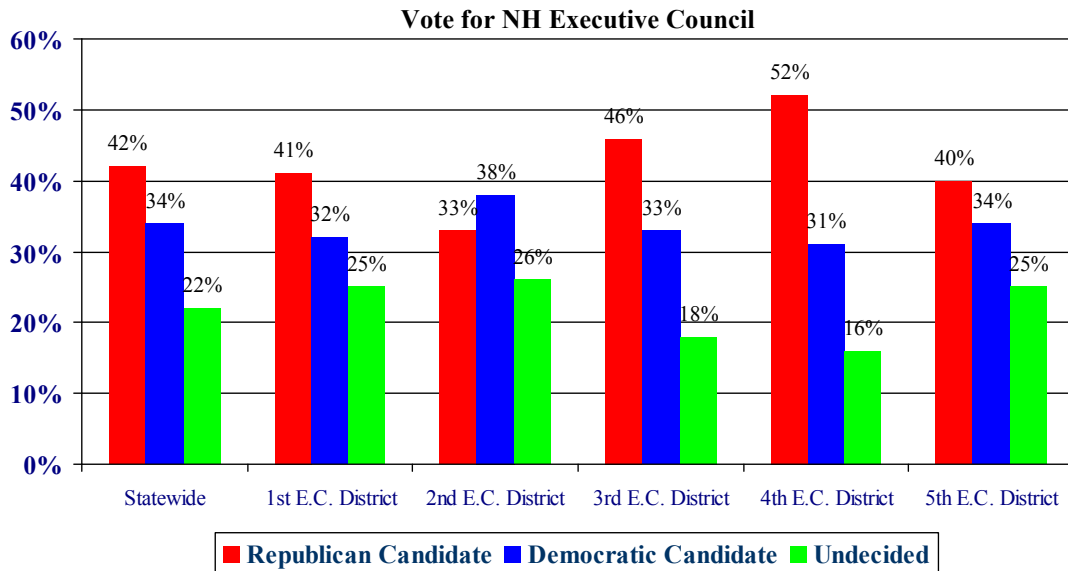
When undecided voters are allocated to the party they are most likely to vote for, support for Republicans increases to 52%, Democrats get 40% and split ballots or other parties get 8%.

Vote in NH State House District and House Composition



Executive Council

Likely voters were also asked a generic ballot question about which party's candidate they would support in the election for New Hampshire Executive Council. Similar to the pattern seen in generic ballots for State House and State Senate, Republicans are leading Democrats for Executive Council. In the final WMUR / UNH pre-election poll, 42% of likely voters say they will vote for the Republican candidate for Executive Council, 34% say they will vote for the Democrat, 2% will vote for a third party candidate, and 22% are undecided. Republicans lead in four of the five Executive Council districts, with Democrats leading only in the 2nd District.



Granite State Poll Methodology

These findings are based on the latest WMUR / UNH New Hampshire Election Poll, conducted by the University of New Hampshire Survey Center. Eight hundred and eighty-five (885) randomly selected New Hampshire likely voters were interviewed by telephone between October 27 and October 31, 2010. The margin of sampling error for the survey is +/- 3.3 percent.

The data have been weighted to adjust for numbers of adults and telephone lines within households, respondent sex, and region of the state. In addition to potential sampling error, all surveys have other potential sources of non-sampling error including question order effects, question wording effects, and non-response.

Firmness of NH Governor Vote

“I know that it is early, but have you definitely decided who you will vote for in the New Hampshire Gubernatorial election in 2010 ... are you leaning toward someone ... or have you considered some candidates but are still trying to decide?”

	<u>Oct. '09</u>	<u>Feb. '10</u>	<u>Apr. '10</u>	<u>July '10</u>	<u>Sept' 10</u>	<u>Oct. 15 '10</u>	<u>Oct. 31 '10</u>
Definitely Decided	7%	9%	17%	18%	40%	55%	73%
Leaning Toward Someone	4%	6%	14%	13%	15%	15%	11%
Still Trying to Decide	89%	85%	70%	69%	45%	30%	16%
(N=)	(454)	(440)	(461)	(450)	(473)	(709)	(884)

NH Governor – John Stephen vs. John Lynch – Likely Voters

"If the 2010 gubernatorial election was being held today and the candidates were John Stephen, the Republican and John Lynch, the Democrat, who would you vote for?" ROTATE CANDIDATES

	<u>Feb. '10</u>	<u>Apr. '10</u>	<u>July '10</u>	<u>Sept. '10</u>	<u>Oct. 15 '10</u>	<u>Oct. 31 '10</u>	<u>Final Prediction</u>
John Stephen	30%	32%	29%	34%	38%	41%	45%
John Lynch	50%	49%	54%	51%	51%	49%	52%
John Babiarz	--	--	--	--	2%	2%	2%
Other	1%	1%	2%	2%	1%	1%	1%
Don't Know	19%	18%	15%	14%	9%	7%	
(N=)	(444)	(460)	(448)	(470)	(705)	(863)	

NH State House of Representatives – Republicans vs. Democrats – Likely Voters

"Please think about the November election for your representative to the New Hampshire House of Representatives. Do you plan to vote for the Democratic or Republican candidate for the New Hampshire House of Representatives ... or do you plan to skip the election for New Hampshire House of Representatives this time?" ROTATE PARTIES

	GOP Candidate	DEM Candidate	Other Party / Mixed	Undecided	(N=)
Final Prediction	52%	40%	8%		
Oct. 31 '10	47%	37%	7%	10%	(856)
Oct. 15 '10	47%	37%	8%	8%	(686)
Sept. '10	41%	35%	9%	15%	(465)
Nov. '08	35%	44%	1%	21%	(801)
Sept. '08	35%	41%	8%	15%	(501)
July '08	33%	39%	6%	22%	(440)
Apr. '08	39%	41%	5%	15%	(424)
Nov. '06	36%	48%	--	16%	(633)
Oct. '04	43%	41%	2%	15%	(917)
Oct. '02	42%	37%	--	20%	(601)
Nov. '00	43%	35%	--	22%	(790)
Oct. '00	36%	35%	--	28%	(595)

NH State Senate – Republicans vs. Democrats – Likely Voters

"Please think about the November election for your representative to the New Hampshire Senate. Do you plan to vote for the Democratic or Republican candidate for the New Hampshire Senate ... or do you plan to skip the election for New Hampshire Senate this time?" ROTATE PARTIES

	GOP Candidate	DEM Candidate	Other Party	Undecided	(N=)
Final Prediction	55%	43%	2%		
Oct. 31 '10	49%	38%	2%	12%	(859)
Oct. 15 '10	47%	39%	2%	12%	(698)
Sept. '10	42%	38%	5%	16%	(464)
Nov. '08	35%	47%	1%	17%	(804)
Sept. '08	38%	41%	4%	19%	(503)
July '08	33%	41%	5%	22%	(450)
Apr. '08	36%	42%	6%	15%	(430)
Nov. '06	38%	48%	--	14%	(633)
Oct. '04	44%	42%	0%	14%	(920)
Oct. '02	43%	39%	--	19%	(628)
Nov. '00	42%	38%	--	20%	(791)
Oct. '00	38%	34%	--	28%	(606)

Executive Council

"And in the election for the Executive Council, do you plan to vote for the Democratic or Republican candidate for the New Hampshire Executive Council ... or do you plan to skip the election for Executive Council this time?" ROTATE PARTIES

	Oct. 31 '10
Republican Candidate	42%
Democratic Candidate	34%
Other	2%
DK / Undecided	22%
(N=)	(846)

Firmness of choice for New Hampshire Governor

	<u>Definitely Decided</u> 73%	<u>Leaning Toward Someone</u> 11%	<u>Still Trying To Decide</u> 16%	<u>(N=)</u> 884
STATEWIDE				
Registered Democrat	81%	7%	11%	256
Registered Undeclared	65%	12%	23%	323
Registered Republican	74%	14%	12%	299
Democrat	77%	9%	14%	371
Independent	63%	11%	27%	122
Republican	73%	13%	14%	380
Core Republican	76%	12%	13%	343
Swing Voter	58%	16%	26%	211
Core Democrat	79%	8%	13%	330
Excited about election outcome	73%	12%	15%	507
Depressed about election outcome	71%	12%	17%	229
Neutral/Don't Know	74%	7%	19%	144
Extremely interested in election	82%	10%	8%	425
Very interested	71%	12%	17%	340
Somewhat/Not very interested	44%	15%	41%	115
Definitely will vote	77%	10%	13%	738
Will vote unless emergency	53%	16%	31%	146
Male	75%	13%	11%	443
Female	70%	9%	21%	441
18 to 34	56%	10%	34%	70
35 to 49	69%	11%	20%	216
50 to 64	76%	12%	13%	357
65 and over	77%	12%	11%	230
High school or less	63%	13%	23%	150
Some college	69%	12%	19%	191
College graduate	73%	13%	14%	326
Post-graduate	83%	6%	10%	215
North Country	70%	8%	22%	81
Central / Lakes	75%	13%	12%	140
Connecticut Valley	68%	13%	19%	119
Mass Border	70%	12%	17%	254
Seacoast	77%	9%	14%	149
Manchester Area	77%	10%	13%	140
First Cong. Dist	74%	9%	17%	433
Second Cong. Dist	72%	13%	15%	451
1st E.C. District	70%	9%	21%	169
2nd E.C. District	72%	15%	13%	169
3rd E.C. District	73%	7%	20%	195
4th E.C. District	78%	8%	14%	149
5th E.C. District	73%	15%	12%	202

NH Governor – John Stephen vs. John Lynch – Likely Voters

	<u>Stephen</u> 41%	<u>Lynch</u> 49%	<u>Other</u> 3%	<u>DK</u> 7%	<u>(N)</u> 863
STATEWIDE					
Registered Democrat	9%	86%	1%	4%	249
Registered Undeclared	36%	51%	4%	9%	312
Registered Republican	74%	17%	3%	7%	297
Democrat	8%	85%	2%	5%	361
Independent	40%	40%	5%	15%	116
Republican	73%	18%	3%	6%	378
Core Republican	78%	13%	3%	6%	339
Swing Voter	38%	43%	5%	14%	200
Core Democrat	4%	91%	1%	4%	323
Definitely decided vote	44%	53%	2%	1%	629
Leaning toward someone	43%	47%	3%	8%	97
Still trying to decide	24%	36%	7%	32%	135
Excited about election outcome	57%	34%	3%	6%	497
Depressed about election outcome	13%	79%	3%	6%	224
Neutral/Don't Know	30%	57%	1%	12%	137
Extremely interested in election	50%	44%	3%	4%	419
Very interested	36%	54%	2%	8%	332
Somewhat/Not very interested	23%	56%	7%	15%	108
Definitely will vote	44%	47%	3%	6%	723
Will vote unless emergency	25%	58%	4%	12%	139
Male	48%	44%	3%	5%	428
Female	34%	54%	2%	9%	434
18 to 34	31%	51%	7%	10%	69
35 to 49	43%	48%	1%	8%	206
50 to 64	38%	53%	4%	5%	356
65 and over	48%	44%	0%	8%	222
High school or less	45%	39%	4%	13%	147
Some college	46%	44%	1%	9%	190
College graduate	41%	51%	3%	5%	316
Post-graduate	33%	59%	3%	5%	208
North Country	42%	38%	9%	11%	77
Central / Lakes	31%	63%	2%	4%	141
Connecticut Valley	25%	61%	4%	10%	118
Mass Border	51%	41%	2%	6%	243
Seacoast	41%	51%	2%	6%	145
Manchester Area	47%	44%	2%	7%	138
First Cong. Dist	46%	46%	1%	7%	421
Second Cong. Dist	37%	52%	4%	7%	442
1st E.C. District	40%	46%	6%	9%	165
2nd E.C. District	27%	62%	3%	7%	170
3rd E.C. District	48%	47%	1%	4%	188
4th E.C. District	50%	42%	2%	6%	143
5th E.C. District	41%	48%	2%	8%	197

Plan on Voting for Republican or Democrat for State House of Representatives – Likely Voters

	<u>Republican</u>	<u>Democrat</u>	<u>Other</u>	<u>Some Rep/ Some Dem</u>	<u>Don't Know</u>	<u>(N=)</u>
STATEWIDE	47%	37%	1%	6%	10%	856
Registered Democrat	7%	82%	1%	4%	7%	253
Registered Undeclared	39%	33%	1%	10%	17%	305
Registered Republican	88%	2%	0%	3%	6%	294
Democrat	8%	78%	1%	6%	8%	363
Independent	40%	17%	3%	16%	23%	117
Republican	87%	2%	0%	2%	9%	369
Core Republican	92%	0%	0%	2%	6%	336
Swing Voter	42%	16%	3%	15%	24%	197
Core Democrat	2%	87%	1%	4%	6%	324
Excited about election outcome	62%	24%	1%	4%	9%	497
Depressed about election outcome	19%	63%	1%	7%	9%	220
Neutral/Don't Know	35%	38%	1%	9%	18%	136
Extremely interested in election	54%	35%	0%	5%	5%	413
Very interested	43%	38%	1%	6%	12%	331
Somewhat/Not very interested	28%	39%	3%	4%	26%	108
Definitely will vote	49%	37%	1%	5%	8%	716
Will vote unless emergency	35%	36%	2%	7%	20%	140
Male	53%	30%	1%	7%	9%	427
Female	40%	43%	1%	4%	12%	429
18 to 34	42%	36%	3%	1%	18%	66
35 to 49	49%	34%	1%	5%	10%	207
50 to 64	43%	40%	0%	7%	9%	353
65 and over	51%	34%	1%	4%	11%	222
High school or less	51%	36%	0%	8%	6%	145
Some college	51%	31%	1%	4%	13%	186
College graduate	50%	34%	1%	5%	10%	313
Post-graduate	34%	47%	1%	7%	12%	209
North Country	51%	31%	2%	6%	10%	77
Central / Lakes	34%	47%	1%	6%	13%	137
Connecticut Valley	35%	49%	0%	5%	10%	116
Mass Border	54%	27%	1%	8%	10%	244
Seacoast	50%	36%	1%	6%	7%	145
Manchester Area	49%	37%	0%	1%	13%	137
First Cong. Dist	51%	36%	1%	3%	10%	417
Second Cong. Dist	43%	38%	1%	8%	11%	439
1st E.C. District	44%	37%	1%	6%	12%	161
2nd E.C. District	37%	46%	1%	4%	13%	166
3rd E.C. District	54%	32%	1%	6%	6%	188
4th E.C. District	51%	33%	2%	3%	12%	146
5th E.C. District	47%	35%	1%	8%	10%	195

Plan on Voting for Republican or Democrat for State Senate – Likely Voters

STATEWIDE	<u>Republican</u> 49%	<u>Democrat</u> 38%	<u>Other</u> 2%	<u>Don't Know</u> 12%	<u>(N=)</u> 859
Registered Democrat	9%	83%	1%	7%	252
Registered Undeclared	44%	33%	4%	19%	308
Registered Republican	88%	4%	0%	8%	297
Democrat	10%	79%	1%	10%	363
Independent	41%	21%	7%	31%	113
Republican	88%	3%	1%	8%	376
Core Republican	94%	2%	0%	4%	341
Swing Voter	44%	20%	5%	31%	196
Core Democrat	4%	87%	2%	8%	322
Excited about election outcome	65%	24%	2%	9%	498
Depressed about election outcome	19%	66%	2%	14%	220
Neutral/Don't Know	37%	43%	2%	18%	139
Extremely interested in election	56%	37%	1%	6%	415
Very interested	46%	37%	2%	15%	331
Somewhat/Not very interested	29%	45%	1%	24%	110
Definitely will vote	52%	38%	1%	9%	717
Will vote unless emergency	34%	38%	4%	23%	142
Male	55%	33%	3%	9%	431
Female	42%	42%	1%	15%	428
18 to 34	44%	32%	9%	15%	66
35 to 49	48%	36%	2%	13%	209
50 to 64	47%	41%	0%	11%	352
65 and over	53%	35%	2%	10%	224
High school or less	48%	36%	2%	14%	145
Some college	54%	32%	1%	14%	183
College graduate	54%	35%	2%	9%	318
Post-graduate	36%	49%	2%	12%	212
North Country	57%	31%	1%	11%	76
Central / Lakes	36%	51%	1%	12%	135
Connecticut Valley	36%	51%	0%	13%	116
Mass Border	56%	29%	3%	12%	245
Seacoast	49%	37%	2%	11%	148
Manchester Area	54%	34%	2%	11%	139
First Cong. Dist	52%	35%	2%	11%	423
Second Cong. Dist	45%	40%	1%	13%	436
1st E.C. District	49%	40%	0%	11%	159
2nd E.C. District	39%	47%	1%	13%	166
3rd E.C. District	54%	34%	3%	9%	193
4th E.C. District	56%	33%	2%	8%	147
5th E.C. District	46%	36%	2%	16%	195

Plan on Voting for Republican or Democrat for Executive Council – Likely Voters

STATEWIDE	<u>Republican</u> 42%	<u>Democrat</u> 34%	<u>Other</u> 2%	<u>Don't Know</u> 22%	<u>(N=)</u> 846
Registered Democrat	4%	75%	1%	20%	249
Registered Undeclared	35%	28%	4%	33%	301
Registered Republican	83%	4%	0%	13%	292
Democrat	8%	71%	1%	21%	359
Independent	33%	14%	6%	47%	114
Republican	79%	4%	1%	16%	367
Core Republican	83%	2%	1%	14%	334
Swing Voter	36%	19%	4%	42%	192
Core Democrat	3%	76%	1%	19%	319
Excited about election outcome	58%	22%	1%	19%	493
Depressed about election outcome	14%	60%	2%	23%	217
Neutral/Don't Know	30%	37%	2%	31%	134
Extremely interested in election	51%	32%	1%	15%	413
Very interested	36%	36%	2%	26%	323
Somewhat/Not very interested	29%	34%	1%	36%	107
Definitely will vote	45%	34%	2%	20%	713
Will vote unless emergency	27%	35%	2%	35%	133
Male	46%	30%	2%	22%	419
Female	39%	37%	2%	23%	427
18 to 34	42%	29%	6%	23%	62
35 to 49	38%	36%	1%	25%	204
50 to 64	41%	37%	2%	21%	347
65 and over	48%	29%	0%	22%	223
High school or less	43%	32%	3%	22%	146
Some college	44%	25%	1%	30%	181
College graduate	49%	32%	1%	18%	307
Post-graduate	30%	46%	2%	22%	210
North Country	51%	25%	1%	23%	77
Central / Lakes	33%	39%	2%	26%	134
Connecticut Valley	28%	43%	3%	27%	115
Mass Border	48%	26%	2%	24%	239
Seacoast	43%	39%	2%	16%	145
Manchester Area	48%	35%	0%	17%	136
First Cong. Dist	47%	34%	2%	17%	416
Second Cong. Dist	38%	34%	2%	27%	430
1st E.C. District	41%	32%	2%	25%	160
2nd E.C. District	33%	38%	2%	26%	166
3rd E.C. District	46%	33%	3%	18%	188
4th E.C. District	52%	31%	1%	16%	146
5th E.C. District	40%	34%	1%	25%	186