

# THE WMUR GRANITE STATE POLL

## THE UNIVERSITY OF NEW HAMPSHIRE SURVEY CENTER

February 9, 2011

### SOCIAL ISSUES IN NH: LITTLE SUPPORT FOR REPEAL OF GAY MARRIAGE, SUPPORT FOR PARENTAL NOTIFICATION

By: Andrew E. Smith, Ph.D.  
UNH Survey Center  
603/862-2226  
www.unh.edu/survey-center

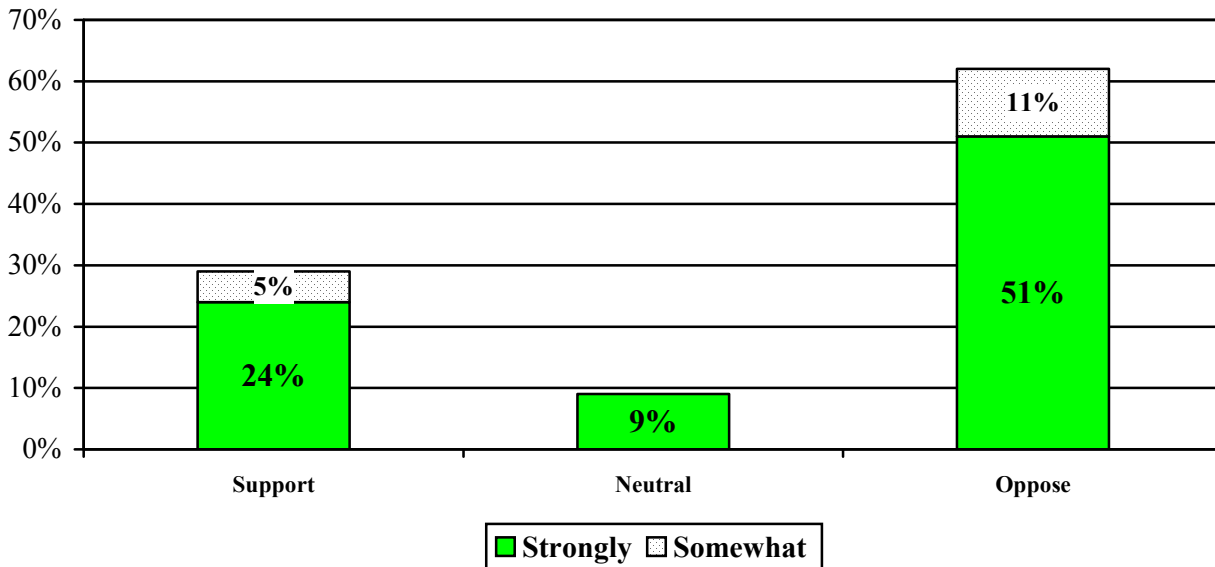
DURHAM, NH – New Hampshire adults favor passage of a bill that would require minors to notify their parents before they could get an abortion. New Hampshire, including Republicans, is largely pro-choice. There is little support for repealing the recently passed law that legalized same-sex marriage in New Hampshire.

These findings are based on the latest **WMUR Granite State Poll**,\* conducted by the University of New Hampshire Survey Center. Five hundred twenty (520) randomly selected New Hampshire adults were interviewed by telephone between January 27 and February 6, 2011. The margin of sampling error for the survey is +/- 4.3 percent.

With the Republican takeover in November, there has been considerable interest in whether the New Hampshire Legislature would tackle some controversial social issues which it had addressed in recent years. Two of the thorniest are a 2009 law that legalized gay marriage in New Hampshire and a 2007 law that overturned an earlier statute that required parental notification before a minor could get an abortion.

There is strong opposition to a bill that would repeal same-sex marriage in New Hampshire – only 29% of New Hampshire adults support the repeal of the 2009 law that legalized same-sex marriage in New Hampshire (24% strongly support and 5% support somewhat), 51% strongly oppose repeal, 11% somewhat oppose repeal, and 9% are neutral or don't know. "Strong opponents of repealing same-sex marriage outnumber strong proponents by a factor of 2 to 1," said Andrew Smith, Director of the UNH Survey Center. "Politically, this represents powerful resistance to changing the current law."

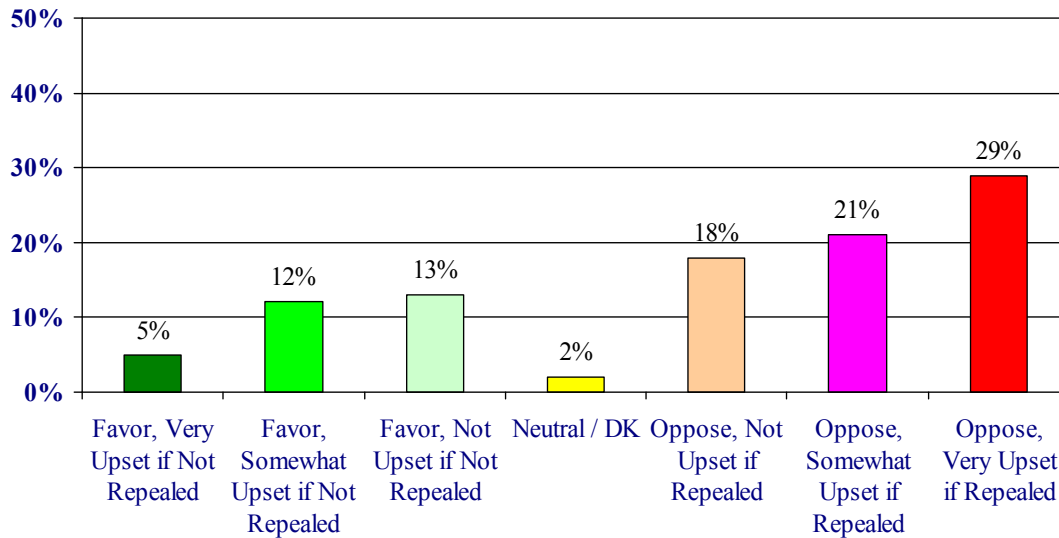
Support / Oppose Repeal of Gay Marriage in NH



\* We ask that this copyrighted information be referred to as *the Granite State Poll*, sponsored by WMUR-TV, and conducted by the University of New Hampshire Survey Center.

In order to better assess the strength of support or opposition to repeal of New Hampshire’s gay marriage law, supporters of repealing gay marriage were asked if they would be upset if it were not repealed and opponents of repeal were asked if they would be upset if it were repealed. Again, opponents of repeal are far more attached to their position than are supporters of repeal – nearly one third of all New Hampshire adults say they would be very upset if the gay marriage law were repealed and 21% would be somewhat upset if it were repealed. Conversely, only 5% of New Hampshire adults would be very upset if gay marriage is not repealed and another 12% would be somewhat upset.

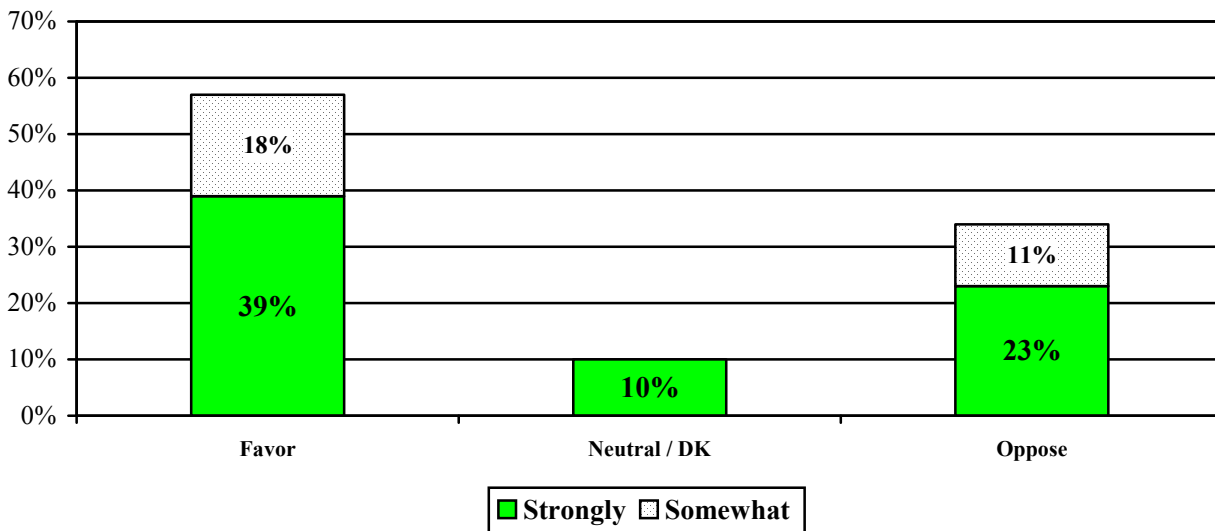
**Intensity of Support / Opposition to Repeal Gay Marriage Law**



**Parental Notification of Abortion**

In 2003, the then Republican controlled legislature passed a law that required minors to notify at least one parent 48 hours before they could get an abortion. Because the law was challenged in the courts, it was never enforced. After they gained control of the Legislature in 2006, Democrats passed a law that reversed the earlier law. Now Republicans are seeking to pass a similar bill that would once again require minors to notify a parent before they could get an abortion and they have public support for this effort. Almost three in five New Hampshire adults (57%) favor parental notification by minors seeking an abortion, 34% oppose this law, 6% are neutral and 4% are unsure. Strong supporters of the law outnumber strong opponents by almost 2 to 1 – 39% strongly favor parental notification while 23% strongly oppose

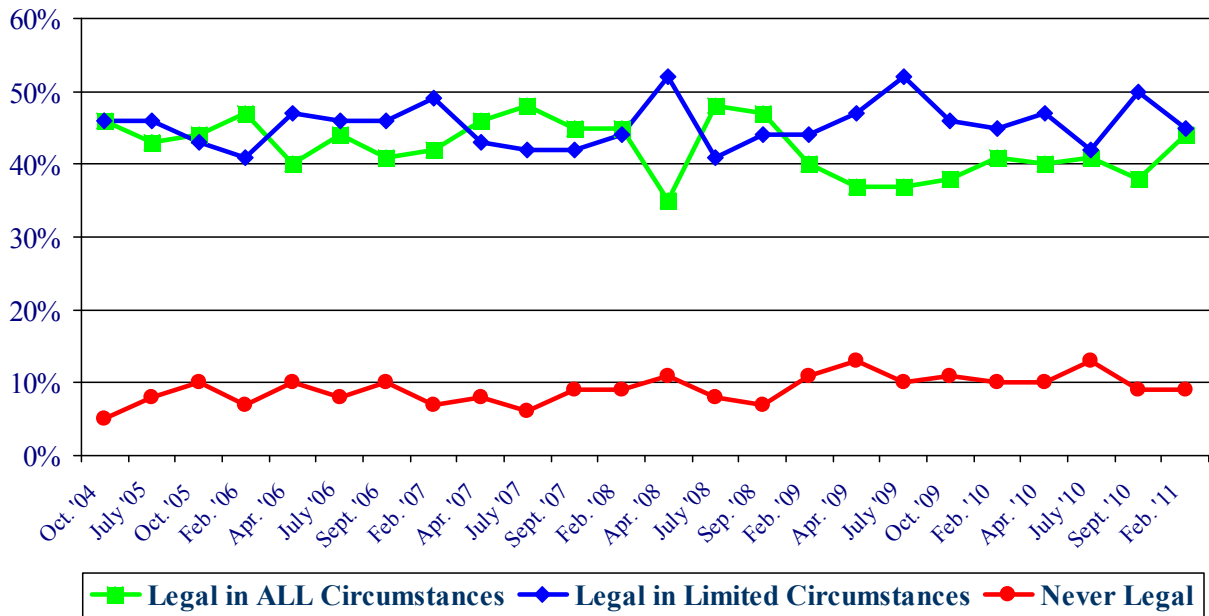
**Favor / Oppose Parental Consent Bill**



Support for the parental notification law breaks on party lines – 73% of Republicans favor parental notification compared with 54% of Independents and 36% of Democrats. However, parental consent is seen by many as not being a restriction on abortion with 31% of New Hampshire adults who believe abortion should be legal in all circumstances also support parental consent legislation.

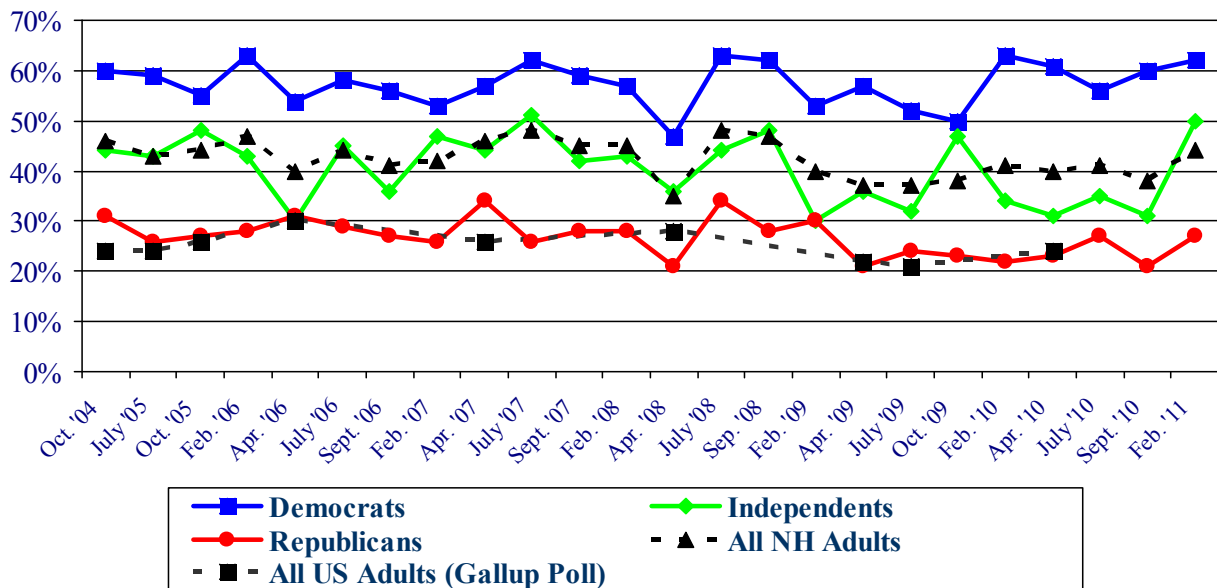
New Hampshire, as a whole, is a pro-choice state with 43% saying that abortion should be legal in all circumstances, 45% thinking it should be legal in limited circumstances, such as in cases of rape or incest or when a mother’s life is in danger, 9% do not think it should be legal in any circumstance and 3% are unsure. New Hampshire is significantly more pro-choice than the country as a whole, a Gallup poll last year found that 24% of all American believe abortion should be legal in any circumstance, 54% think it should be legal in limited circumstances, and 19% think it should be illegal in all circumstances.

**Support for Abortion**



Democrats, liberals, non-church goers, and residents of the Seacoast are most likely to think that abortion should be legal in any circumstance, Republicans, conservatives, older adults, lower income households, and regular church goers are most likely to think that abortion should be legal in limited circumstances.

**Abortion Legal in ALL Circumstances by Party Identification**



## Granite State Poll Methodology

These findings are based on the latest **WMUR Granite State Poll**, conducted by the University of New Hampshire Survey Center. Five hundred twenty (520) randomly selected New Hampshire adults were interviewed by telephone between January 27 and February 6, 2011. The margin of sampling error for the survey is +/- 4.3 percent.

The data have been weighted to adjust for numbers of adults and telephone lines within households, respondent sex, and region of the state. In addition to potential sampling error, all surveys have other potential sources of non-sampling error including question order effects, question wording effects, and non-response.

### Repeal of Gay Marriage in New Hampshire

“On another topic ... As you may know, New Hampshire legalized marriage between gay and lesbian couples in 2009. Recently, there has been an effort in the State Legislature to repeal this law. Would you say you support or oppose the effort to repeal legalized gay marriage in New Hampshire?”

IF SUPPORT: “Do you strongly support this or just somewhat?”

IF OPPOSE: “Do you strongly oppose this or just somewhat?”

STRONGLY SUPPORT	24%
SOMEWHAT SUPPORT	5%
NEUTRAL/DON'T KNOW	9%
SOMEWHAT OPPOSE	11%
STRONGLY OPPOSE	51%
(N=)	(517)

IF SUPPORT REPEAL:

“Suppose the current gay marriage legislation does not get repealed. Would you be very upset, somewhat upset, not too upset, or not upset at all?”

VERY UPSET	17%
SOMEWHAT UPSET	38%
NOT TOO UPSET	22%
NOT UPSET AT ALL	19%
DON'T KNOW / NO OPINION	3%
(N=)	(147)

IF OPPOSE REPEAL:

“Suppose the current gay marriage legislation gets repealed. Would you be very upset, somewhat upset, not too upset, or not upset at all?”

VERY UPSET	42%
SOMEWHAT UPSET	30%
NOT TOO UPSET	15%
NOT UPSET AT ALL	12%
DON'T KNOW / NO OPINION	2%
(N=)	(321)

### Parental Notification of Abortion

“Now on a different topic. Do you favor or oppose a law which would require that women under the age of 18 notify their parents before they could have an abortion?”

IF FAVOR: “Do you strongly favor this or only somewhat?”

IF OPPOSE: “Do you strongly oppose this or just somewhat?”

STRONGLY FAVOR	39%
SOMEWHAT FAVOR	18%
NEITHER, FAVOR NOR OPPOSE	6%
SOMEWHAT OPPOSE	11%
STRONGLY OPPOSE	23%
DON'T KNOW/NOT SURE	4%
(N=)	(514)

### Position on Abortion

“Which of the following statements BEST represents your position on abortion ... abortions should be legal in ALL circumstances ... abortion should be legal in limited circumstances, such as in cases of rape or incest or when the mother’s life is in danger ... or, abortion should not be legal in ANY circumstance?” (ROTATE ANSWER OPTIONS)

	<u>Legal in All Circumstances</u>	<u>Legal in Limited Circumstances</u>	<u>Not Legal in Any Circumstance</u>	<u>Don't Know</u>	<u>(N=)</u>
<b>Feb. '11</b>	<b>43%</b>	<b>45%</b>	<b>9%</b>	<b>3%</b>	(510)
<b>Sept. '10</b>	38%	50%	9%	3%	(503)
<b>July '10</b>	41%	42%	13%	3%	(489)
<b>Apr. '10</b>	40%	47%	10%	2%	(496)
<b>Feb. '10</b>	41%	45%	10%	3%	(485)
<b>Oct. '09</b>	38%	46%	11%	5%	(483)
<b>July '09</b>	37%	52%	10%	2%	(540)
<b>Apr. '09</b>	37%	47%	13%	3%	(479)
<b>Feb. '09</b>	40%	44%	11%	5%	(597)
<b>Sep. '08</b>	47%	44%	7%	2%	(526)
<b>July '08</b>	48%	41%	8%	3%	(471)
<b>Apr. '08</b>	35%	52%	11%	2%	(483)
<b>Feb. '08</b>	45%	44%	9%	2%	(538)
<b>Sept. '07</b>	45%	42%	9%	4%	(470)
<b>July '07</b>	48%	42%	6%	4%	(497)
<b>Apr. '07</b>	46%	43%	8%	3%	(494)
<b>Feb. '07</b>	42%	49%	7%	2%	(520)
<b>Sept. '06</b>	41%	46%	10%	4%	(463)
<b>July '06</b>	44%	46%	8%	2%	(494)
<b>Apr. '06</b>	40%	47%	10%	3%	(464)
<b>Feb. '06</b>	47%	41%	7%	4%	(467)
<b>Oct. '05</b>	44%	43%	10%	3%	(479)
<b>July '05</b>	43%	46%	8%	3%	(481)
<b>Oct. '04</b>	46%	46%	5%	3%	(479)

**Support/Oppose Repeal of NH Gay Marriage Law**

	<b><u>Strongly Support</u></b> 24%	<b><u>Somewhat Support</u></b> 5%	<b><u>Neutral</u></b> 8%	<b><u>Somewhat Oppose</u></b> 11%	<b><u>Strongly Oppose</u></b> 51%	<b><u>Don't Know</u></b> 1%	<b><u>(N=)</u></b> 517
<b>STATEWIDE</b>							
Registered Democrat	9%	2%	2%	6%	81%	0%	117
Registered Undeclared	21%	4%	9%	13%	52%	0%	212
Registered Republican	39%	7%	13%	12%	26%	2%	151
Democrat	7%	2%	2%	9%	80%	0%	191
Independent	26%	3%	7%	10%	54%	0%	81
Republican	37%	8%	13%	14%	27%	2%	237
Liberal	7%	4%	2%	8%	78%	1%	105
Moderate	13%	3%	10%	13%	61%	0%	213
Conservative	46%	7%	9%	12%	25%	1%	180
Union household	20%	4%	6%	19%	52%	0%	69
Non-union	25%	5%	8%	10%	51%	1%	444
10 yrs or less in NH	19%	5%	9%	12%	54%	2%	91
11 to 20 years	24%	6%	10%	11%	47%	2%	87
More than 20 years	25%	5%	8%	11%	51%	0%	338
18 to 34	16%	6%	7%	11%	57%	3%	49
35 to 49	30%	1%	7%	15%	48%	0%	126
50 to 64	16%	7%	9%	11%	55%	1%	204
65 and over	33%	4%	9%	7%	47%	0%	135
Male	28%	7%	7%	11%	45%	1%	252
Female	20%	3%	9%	11%	57%	0%	265
Get most news from Local TV news	26%	5%	10%	13%	44%	1%	152
National TV news	27%	6%	10%	12%	44%	1%	129
Radio	8%	7%	10%	3%	73%	0%	49
Newspapers	18%	3%	5%	8%	66%	0%	62
Internet	27%	4%	3%	12%	54%	0%	85
Other	30%	2%	5%	18%	45%	0%	31
High school or less	29%	8%	10%	10%	43%	0%	79
Some college	25%	3%	13%	7%	52%	0%	108
College graduate	19%	6%	7%	13%	54%	1%	202
Post-graduate	27%	3%	5%	12%	50%	2%	127
Less than \$30K	35%	4%	4%	8%	49%	0%	41
\$30K to \$60K	25%	7%	8%	10%	49%	0%	86
\$60K to \$75K	16%	3%	4%	5%	72%	0%	50
\$75K to \$100K	24%	5%	9%	16%	46%	0%	56
\$100K or more	18%	4%	7%	15%	55%	2%	141
Attend services 1 or more/week	45%	4%	9%	9%	32%	0%	127
1-2 times a month	24%	5%	5%	12%	54%	0%	53
Less often	19%	6%	9%	15%	50%	0%	153
Never	13%	3%	6%	10%	65%	2%	164
North Country	18%	2%	15%	6%	59%	0%	41
Central / Lakes	17%	3%	12%	10%	58%	0%	86
Connecticut Valley	23%	7%	5%	10%	55%	0%	79
Mass Border	25%	8%	8%	18%	39%	2%	146
Seacoast	22%	5%	9%	5%	59%	0%	87
Manchester Area	37%	2%	4%	8%	49%	0%	73
First Cong. Dist	27%	4%	9%	11%	49%	0%	234
Second Cong. Dist	22%	6%	8%	11%	53%	1%	278

**Upset if Gay Marriage Law was NOT Repealed  
(Supporters of Gay Marriage Repeal)**

	<u>Very Upset</u> 17%	<u>Somewhat Upset</u> 38%	<u>Not Too Upset</u> 22%	<u>Not Upset At All</u> 19%	<u>Don't Know</u> 3%	<u>(N=)</u> 147
<b>STATEWIDE</b>						
Registered Democrat	18%	45%	23%	15%	0%	13
Registered Undeclared	12%	35%	18%	25%	9%	52
Registered Republican	19%	42%	25%	14%	0%	70
Democrat	8%	35%	23%	21%	12%	18
Independent	12%	32%	14%	34%	8%	24
Republican	20%	40%	24%	15%	1%	103
Liberal	6%	12%	34%	29%	19%	11
Moderate	11%	44%	18%	27%	0%	34
Conservative	21%	41%	22%	13%	3%	95
Union household	23%	34%	26%	17%	0%	16
Non-union	16%	38%	22%	20%	4%	131
10 yrs or less in NH	6%	47%	11%	36%	0%	20
11 to 20 years	17%	48%	25%	9%	0%	26
More than 20 years	19%	33%	24%	19%	5%	101
18 to 34	6%	22%	45%	27%	0%	11
35 to 49	20%	43%	15%	22%	0%	39
50 to 64	14%	27%	33%	18%	9%	47
65 and over	21%	47%	12%	18%	1%	49
Male	19%	37%	24%	15%	5%	87
Female	15%	39%	21%	26%	0%	60
Get most news from Local TV news	11%	43%	19%	27%	0%	48
National TV news	21%	29%	25%	18%	7%	43
Radio	24%	36%	20%	20%	0%	6
Newspapers	15%	43%	20%	22%	0%	13
Internet	25%	36%	31%	8%	0%	26
Other	0%	45%	17%	18%	20%	10
High school or less	19%	41%	18%	15%	7%	29
Some college	18%	43%	22%	16%	0%	30
College graduate	18%	30%	24%	27%	1%	51
Post-graduate	14%	41%	25%	15%	5%	38
Less than \$30K	3%	51%	18%	23%	4%	16
\$30K to \$60K	17%	40%	25%	19%	0%	28
\$60K to \$75K	0%	74%	26%	0%	0%	9
\$75K to \$100K	7%	50%	24%	19%	0%	16
\$100K or more	9%	38%	32%	22%	0%	31
Attend services 1 or more/week	25%	47%	13%	10%	4%	64
1-2 times a month	15%	34%	33%	18%	0%	15
Less often	13%	32%	30%	25%	0%	39
Never	8%	25%	31%	37%	0%	26
North Country	28%	30%	8%	34%	0%	8
Central / Lakes	14%	43%	16%	16%	11%	18
Connecticut Valley	9%	50%	21%	20%	0%	23
Mass Border	21%	35%	30%	8%	6%	47
Seacoast	8%	44%	25%	23%	0%	23
Manchester Area	23%	26%	17%	33%	0%	28
First Cong. Dist	22%	31%	20%	23%	3%	72
Second Cong. Dist	12%	44%	24%	16%	3%	76

**Upset if Gay Marriage Law WAS Repealed  
(Opponents of Gay Marriage Repeal)**

	<u>Very Upset</u> 42%	<u>Somewhat Upset</u> 30%	<u>Not Too Upset</u> 15%	<u>Not Upset At All</u> 12%	<u>Don't Know</u> 2%	<u>(N=)</u> 321
<b>STATEWIDE</b>						
Registered Democrat	59%	23%	12%	5%	1%	102
Registered Undeclared	37%	32%	16%	13%	1%	138
Registered Republican	19%	43%	17%	20%	2%	58
Democrat	58%	23%	12%	4%	2%	169
Independent	32%	30%	18%	20%	0%	52
Republican	16%	42%	17%	22%	3%	97
Liberal	58%	23%	15%	5%	0%	90
Moderate	44%	33%	12%	10%	1%	156
Conservative	12%	35%	20%	28%	5%	65
Union household	44%	29%	13%	14%	0%	48
Non-union	41%	30%	15%	12%	2%	270
10 yrs or less in NH	39%	36%	10%	14%	1%	58
11 to 20 years	47%	28%	14%	12%	0%	50
More than 20 years	41%	29%	16%	12%	2%	211
18 to 34	34%	19%	24%	18%	5%	34
35 to 49	42%	34%	17%	7%	1%	78
50 to 64	45%	32%	10%	13%	1%	136
65 and over	39%	28%	17%	14%	2%	73
Male	37%	26%	17%	18%	2%	142
Female	46%	33%	13%	8%	1%	178
Get most news from Local TV news	30%	32%	17%	18%	3%	86
National TV news	41%	38%	13%	5%	4%	71
Radio	64%	29%	3%	3%	0%	37
Newspapers	52%	25%	11%	11%	1%	46
Internet	41%	26%	20%	13%	0%	56
Other	40%	13%	26%	21%	0%	19
High school or less	27%	30%	7%	33%	2%	42
Some college	35%	25%	17%	20%	2%	64
College graduate	44%	28%	20%	7%	1%	135
Post-graduate	51%	36%	8%	3%	2%	79
Less than \$30K	34%	21%	28%	15%	2%	23
\$30K to \$60K	46%	31%	11%	11%	2%	51
\$60K to \$75K	40%	29%	14%	15%	2%	39
\$75K to \$100K	44%	31%	12%	13%	0%	35
\$100K or more	39%	37%	16%	5%	3%	98
Attend services 1 or more/week	36%	37%	9%	15%	2%	53
1-2 times a month	41%	21%	22%	15%	0%	36
Less often	41%	32%	16%	10%	1%	99
Never	44%	28%	14%	11%	3%	122
North Country	42%	19%	21%	13%	5%	27
Central / Lakes	56%	21%	15%	5%	3%	58
Connecticut Valley	34%	41%	9%	16%	0%	52
Mass Border	28%	37%	16%	16%	2%	83
Seacoast	50%	25%	16%	8%	0%	55
Manchester Area	48%	27%	11%	14%	0%	41
First Cong. Dist	39%	30%	16%	13%	1%	140
Second Cong. Dist	44%	30%	13%	12%	2%	176



**Favor/Oppose NH Parental Notification Law**

	<b>Strongly Favor</b>	<b>Somewhat Favor</b>	<b>Neutral</b>	<b>Somewhat Oppose</b>	<b>Strongly Oppose</b>	<b>Don't Know</b>	<b>(N=)</b>
<b>STATEWIDE</b>	<b>39%</b>	<b>18%</b>	<b>6%</b>	<b>11%</b>	<b>23%</b>	<b>4%</b>	<b>514</b>
Registered Democrat	26%	11%	5%	16%	36%	6%	117
Registered Undeclared	36%	18%	6%	8%	28%	4%	211
Registered Republican	55%	20%	5%	10%	9%	2%	152
Democrat	22%	14%	6%	12%	41%	5%	190
Independent	35%	19%	3%	9%	28%	5%	82
Republican	53%	20%	6%	10%	8%	2%	236
Liberal	23%	11%	8%	11%	43%	4%	104
Moderate	27%	18%	7%	15%	30%	3%	211
Conservative	62%	19%	3%	6%	5%	4%	180
Abortion legal in all circumstances	16%	15%	7%	16%	41%	5%	220
Legal in limited circumstances	54%	23%	4%	6%	11%	2%	227
Not legal in any circumstances	79%	11%	0%	6%	4%	0%	43
Union household	33%	16%	4%	11%	32%	5%	69
Non-union	40%	17%	6%	11%	22%	4%	441
10 yrs or less in NH	39%	20%	4%	11%	21%	4%	90
11 to 20 years	25%	24%	7%	14%	28%	2%	86
More than 20 years	42%	15%	6%	10%	23%	4%	337
18 to 34	32%	24%	14%	7%	18%	6%	49
35 to 49	39%	17%	5%	13%	20%	6%	122
50 to 64	33%	15%	6%	13%	32%	1%	202
65 and over	50%	18%	4%	6%	16%	6%	138
Male	40%	20%	8%	8%	20%	4%	249
Female	38%	15%	3%	13%	27%	3%	265
Get most news from Local TV news	43%	20%	5%	13%	15%	4%	149
National TV news	47%	19%	5%	10%	19%	1%	131
Radio	18%	12%	8%	12%	45%	6%	48
Newspapers	35%	15%	6%	4%	31%	9%	62
Internet	36%	20%	8%	11%	22%	3%	84
Other	44%	10%	0%	13%	31%	2%	32
High school or less	48%	24%	6%	2%	15%	5%	81
Some college	37%	16%	11%	9%	23%	4%	108
College graduate	38%	16%	4%	11%	27%	3%	199
Post-graduate	37%	17%	4%	16%	24%	3%	126
Attend services 1 or more/week	61%	18%	4%	4%	10%	4%	128
1-2 times a month	31%	20%	5%	12%	22%	10%	51
Less often	34%	20%	7%	8%	26%	3%	153
Never	30%	15%	5%	16%	32%	3%	163
North Country	39%	12%	6%	6%	29%	8%	41
Central / Lakes	35%	16%	8%	9%	30%	3%	85
Connecticut Valley	36%	22%	3%	10%	22%	7%	79
Mass Border	45%	18%	5%	12%	17%	2%	146
Seacoast	26%	18%	9%	14%	30%	3%	86
Manchester Area	48%	17%	3%	9%	20%	3%	72
First Cong. Dist	40%	17%	7%	11%	21%	3%	230
Second Cong. Dist	37%	18%	5%	10%	25%	5%	279

**Position on Abortion**

	<u>Always Legal</u> 43%	<u>Legal in Limited Circumstances</u> 45%	<u>Never Legal</u> 9%	<u>Don't Know</u> 3%	<u>(N=)</u> 510
<b>STATEWIDE</b>					
Registered Democrat	58%	32%	8%	2%	114
Registered Undeclared	50%	41%	5%	4%	210
Registered Republican	23%	61%	13%	3%	151
Democrat	62%	33%	3%	1%	187
Independent	50%	42%	6%	2%	82
Republican	27%	55%	14%	4%	234
Liberal	68%	24%	6%	3%	103
Moderate	53%	41%	3%	4%	209
Conservative	20%	61%	17%	2%	180
Union household	58%	34%	6%	2%	67
Non-union	41%	47%	9%	3%	439
10 yrs or less in NH	52%	39%	7%	2%	89
11 to 20 years	50%	34%	14%	2%	84
More than 20 years	40%	49%	8%	3%	336
18 to 34	44%	42%	12%	1%	48
35 to 49	44%	43%	10%	3%	121
50 to 64	53%	37%	6%	4%	203
65 and over	28%	59%	10%	2%	137
Male	39%	49%	8%	4%	247
Female	47%	41%	9%	3%	263
Get most news from Local TV news	39%	45%	10%	6%	151
National TV news	40%	49%	7%	3%	130
Radio	72%	20%	5%	4%	48
Newspapers	49%	45%	6%	0%	61
Internet	38%	47%	13%	1%	83
Other	39%	58%	3%	0%	30
High school or less	28%	60%	7%	5%	80
Some college	42%	46%	11%	1%	105
College graduate	48%	41%	8%	2%	199
Post-graduate	47%	40%	8%	5%	126
Less than \$30K	31%	58%	11%	0%	41
\$30K to \$60K	37%	50%	11%	1%	85
\$60K to \$75K	59%	35%	6%	0%	50
\$75K to \$100K	43%	44%	13%	0%	53
\$100K or more	55%	40%	3%	2%	139
Attend services 1 or more/week	18%	59%	22%	1%	125
1-2 times a month	43%	44%	8%	5%	53
Less often	50%	43%	3%	4%	151
Never	58%	35%	5%	2%	162
North Country	39%	47%	12%	3%	40
Central / Lakes	50%	39%	8%	2%	86
Connecticut Valley	43%	47%	7%	3%	78
Mass Border	36%	49%	8%	6%	144
Seacoast	55%	39%	6%	0%	85
Manchester Area	38%	46%	14%	2%	72
First Cong. Dist	44%	43%	9%	4%	232
Second Cong. Dist	43%	46%	8%	3%	273