

# THE WMUR GRANITE STATE POLL

## THE UNIVERSITY OF NEW HAMPSHIRE

July 5, 2011

### **BACHMANN MOVES UP, BUT ROMNEY STILL LEADS IN 2012 NH PRESIDENTIAL PRIMARY, VOTERS UNDECIDED**

By: Andrew E. Smith, Ph.D.  
UNH Survey Center  
603-862-2226  
[www.unh.edu/survey-center](http://www.unh.edu/survey-center)

DURHAM, NH – Mitt Romney continues to lead a congested field for the 2012 Republican nomination for President among New Hampshire Republicans. Michele Bachmann has moved into a distant second place. However, the great majority of voters remain undecided about who they will eventually support.

These findings are based on the latest **WMUR Granite State Poll**,\* conducted by the University of New Hampshire Survey Center. Seven hundred seventy-three (773) randomly selected New Hampshire adults were interviewed by telephone between June 21 and July 1, 2011. The margin of sampling error for the survey is +/- 3.5%. Included in the sample were 357 likely 2012 Republican Primary voters (margin of sampling error +/- 5.2%), 263 likely 2012 Democratic Primary voters (margin of sampling error +/- 6.0%), and 729 likely 2012 General Election voters (margin of sampling error +/- 3.6%).

#### **Republican Primary**

The final field of Republicans contesting for the 2012 nomination is solidifying and the pace of campaigning in New Hampshire has increased. The first CNN / WMUR debate was held in June, several candidates have officially declared their campaigns, and both declared and not yet declared candidates have stepped up their visits to the Granite State. But it is summer and candidates will have a difficult time getting through to voters more interested in their vacations than in politics.

Among likely Republican Primary voters, former Massachusetts governor Mitt Romney, the 2008 New Hampshire runner-up, has led the field since 2009. In the most recent WMUR Granite State Poll, 35% of likely Republican Primary voters said they would vote for Romney. Minnesota congresswoman Michele Bachmann, fresh off a strong debate performance in June, has climbed into second place with 12%, followed by Texas congressman and 2008 candidate Ron Paul (7%), and former New York City mayor Rudy Giuliani (7%). Giuliani and Paul have been trading second place for the past year, but neither has been able to consistently crack 10%.

Several long-time candidates have been unable to gain traction in New Hampshire, former Minnesota governor Tim Pawlenty remains mired at 3%, 2008 Vice Presidential candidate Sarah Palin is also at 3%, former Speaker of the House Newt Gingrich has slipped to 1%, former New Mexico governor Gary Johnson and former Pennsylvania Senator Rick Santorum are both below 1%.

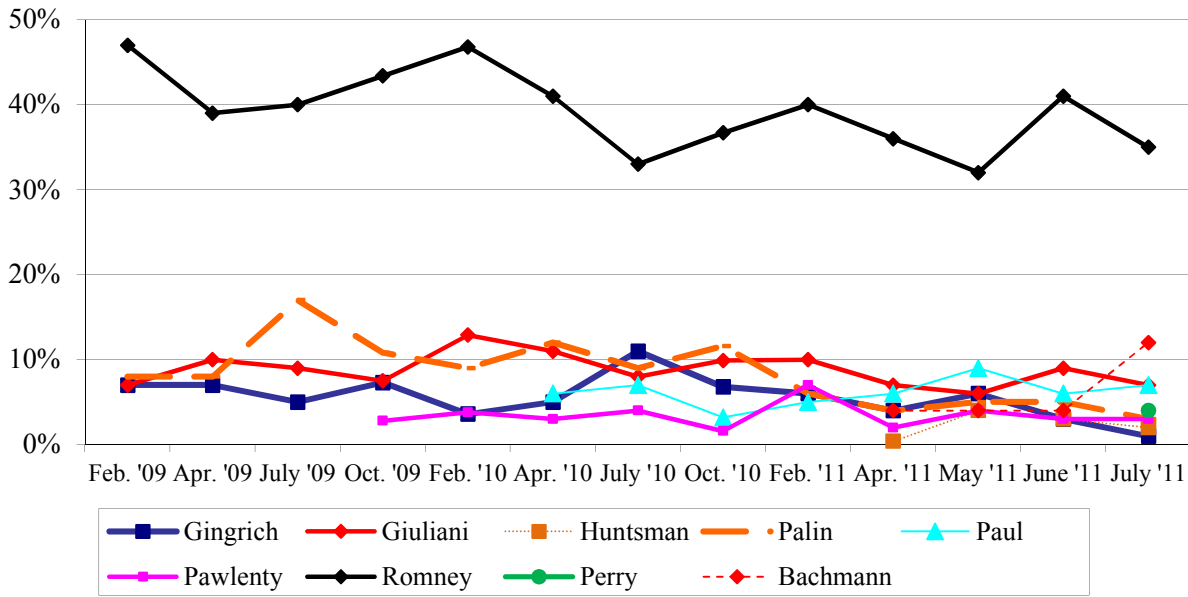
Among newcomers to the campaign, Texas governor Rick Perry is supported by 4% of likely primary voters, former Utah governor and Ambassador to China Jon Huntsman is at 2%, former Godfathers Pizza CEO Herman Cain is at 2%, and former Louisiana governor Buddy Roemer is named by less than 1%.

It is critical to point out that primary voters behave very differently than general election voters -- there are no party cues to rely on, and almost all primary voters will vote for their party's eventual presidential candidate, no matter who that might be. Most primary voters do not settle on a choice until the very end of the campaign, so early poll numbers are a better gauge of a candidate's popularity now than an indication of who voters will end up supporting. In the most recent poll, 75% of likely Republican primary voters say they are still trying to decide who they will eventually vote for in 2012, 17% are leaning toward a candidate, and only 8% say they have definitely decided who they will vote for.

---

\* We ask that this copyrighted information be referred to as *the Granite State Poll*, sponsored by WMUR-TV, and conducted by the University of New Hampshire Survey Center.

### NH 2012 GOP Presidential Primary – Likely Republican Primary Voters



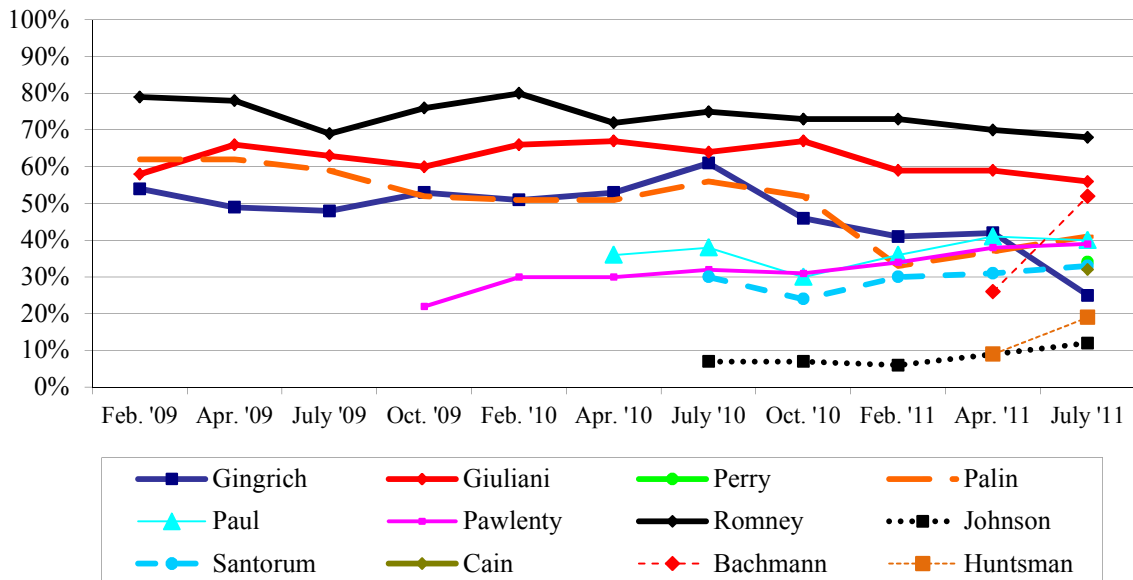
### Favorability Ratings

Support for Republican candidates is currently based primarily on name recognition and favorability. Mitt Romney has consistently had the highest favorability ratings among all likely Republican candidates. Currently, 68% of likely Republican primary voters say they have a favorable opinion of Romney. Romney’s net favorability rating, the percentage who have a favorable opinion of him minus the percentage who have an unfavorable opinion, is a very high +44%.

Michele Bachmann is now the second most popular Republican with a net favorability rating of +29% followed by Giuliani (+23%), Pawlenty (+19%), Perry (+19%), Cain (+19%), and Rick Santorum (+12%). The least popular Republicans are Newt Gingrich (-37%), Palin (-11%), Roemer (-9%), Johnson (-5), Paul (-5%), and John Huntsman (-4%).

Gingrich’s net popularity has plummeted from an already low -2% in April to -37, an indication of deep dissatisfaction with the former House Speaker among New Hampshire Republicans.

### NH 2012 GOP Presidential Primary – Candidate Favorability Ratings (% Favorable)

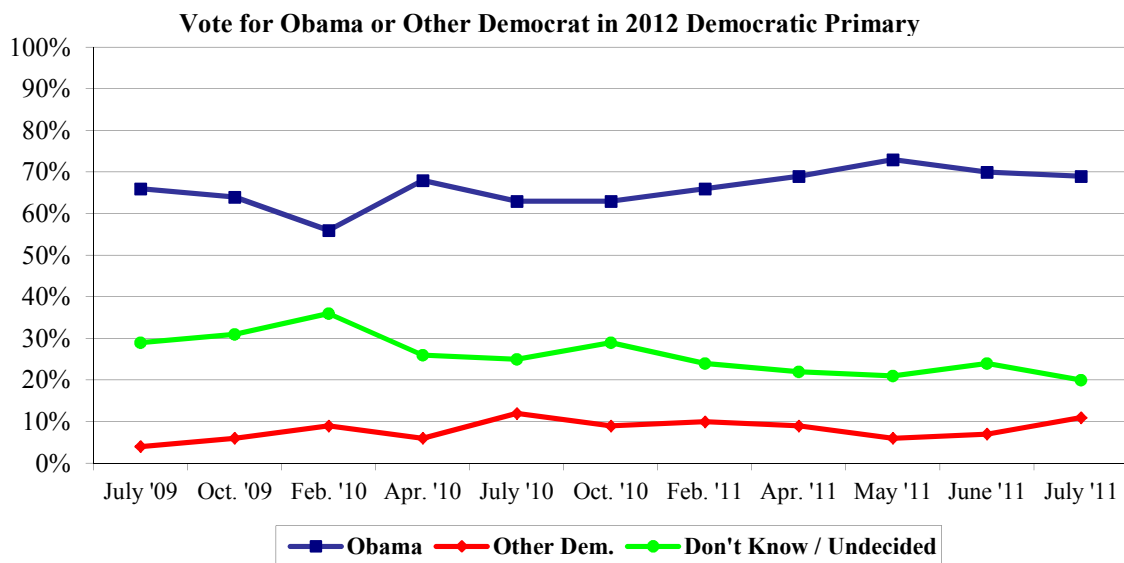


### Least Popular Republican

When asked which candidate they would not support under any circumstances, 23% of likely Republican primary voters say they would not vote for Palin, 16% would not vote for Gingrich, 12% would not vote for Paul, followed by Romney (7%), Bachmann (5%), Giuliani (4%), Huntsman (3%), and Pawlenty (2%). “Among the declared candidates, Newt Gingrich campaign is in dire straits,” said Andrew Smith, Director of the UNH Survey Center. “His staff has deserted him, his net favorability ratings have collapsed, and he is now the least popular candidate in New Hampshire.” And although she has not declared her candidacy, Palin’s net favorability ratings, as well as almost one-quarter of Republicans saying they would not vote for her, make a victory in New Hampshire extremely unlikely.

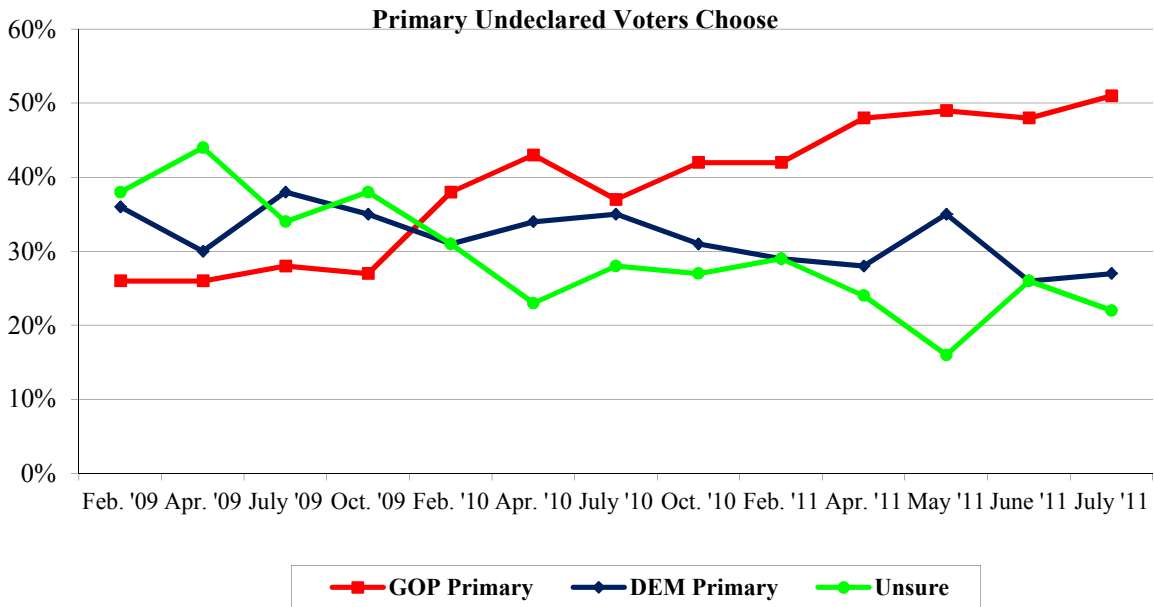
### A Democratic Primary?

Barack Obama does not appear to be in trouble for the Democratic nomination as no prominent Democrat has challenged the President. When asked if they plan to vote for Obama in the 2012 New Hampshire Democratic primary, 69% of likely New Hampshire Democratic Primary voters say they plan to vote for Obama, 11% say they plan to vote for some other candidate, and 20% are undecided about what they will do.



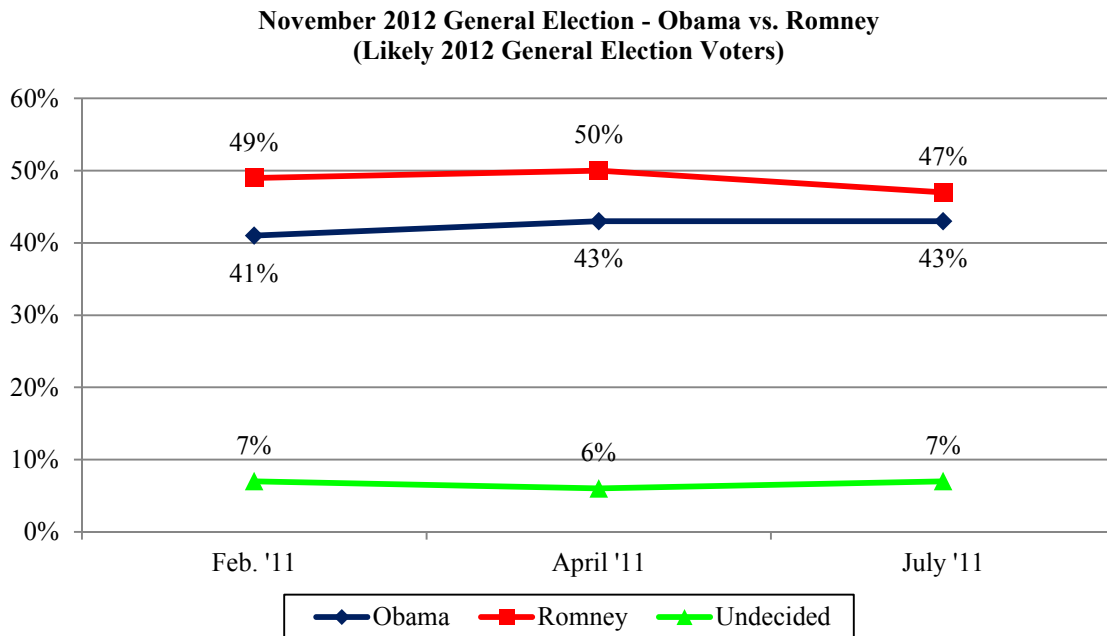
### Undeclared Voters

New Hampshire has a semi-closed primary in that Undeclared voters (often called independents) can choose to vote in either the Democratic or Republican primary at the polls. Because it does not appear that there will be a Democratic challenger to President Obama, it is not a surprise that most undeclared voters say they plan to vote in the Republican primary. Currently, 51% of undeclared voters say they will vote in the Republican primary, 27% say they will vote in the Democratic primary, and 22% are unsure.



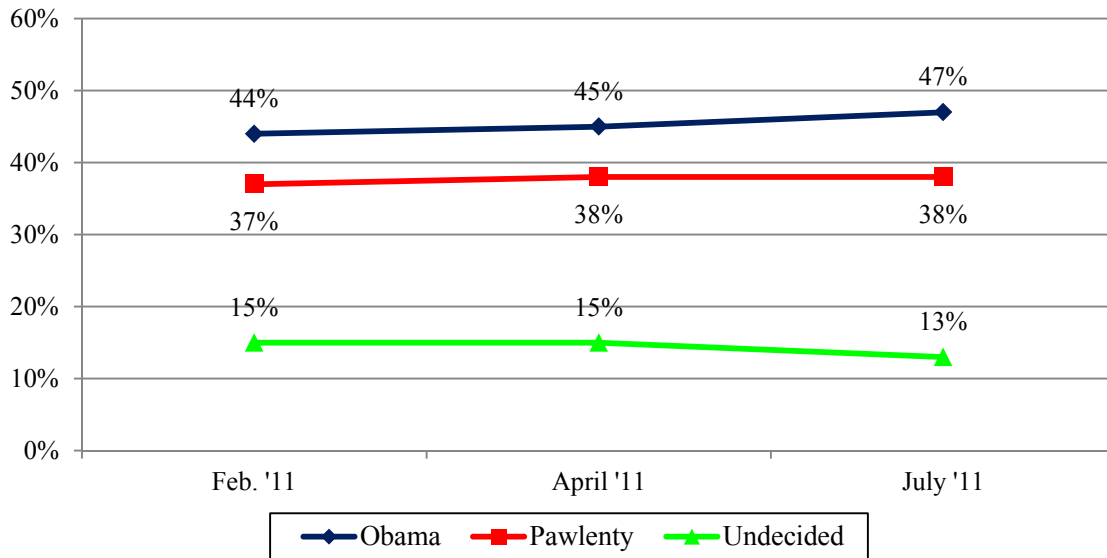
### 2012 Presidential Election

Looking ahead to the 2012 general election, the likelihood of President Obama winning again in New Hampshire depends heavily on the Republican candidate he would face. In a hypothetical race between Obama and Mitt Romney, the current GOP favorite in New Hampshire, Romney leads with 47% to 43% for Obama, 2% for some other candidate, and 7% are undecided. Romney's lead over Obama has remained largely unchanged since February. Romney holds a 42% to 32% lead among political independents, down slightly from 49% to 31% in April.



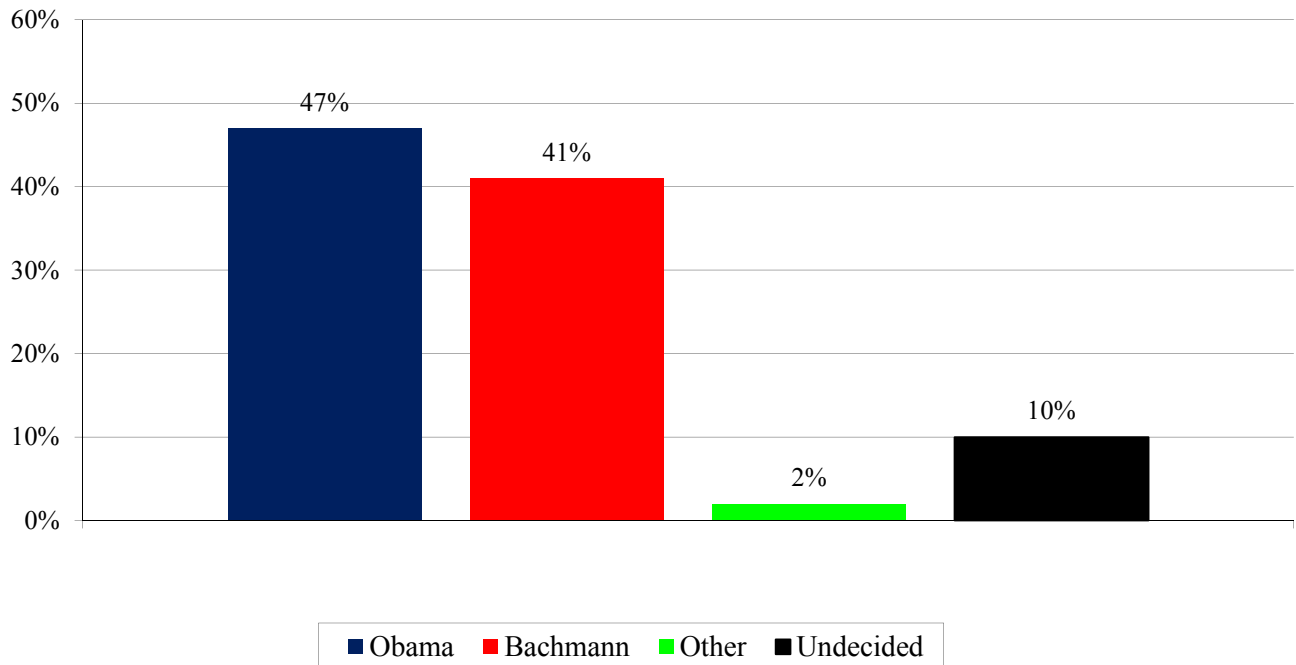
Obama does better against former Minnesota governor Tim Pawlenty. Pawlenty has been campaigning in New Hampshire for almost a year, but remains much less known than Romney. In this matchup, Obama holds a modest 47% to 38% lead with 2% favoring some other candidate and 13% undecided. This matchup has also remained unchanged since February.

**November 2012 General Election - Obama vs. Pawlenty  
(Likely 2012 General Election Voters)**



And when Obama is matched against Minnesota Congresswoman Michele Bachmann, Obama holds a 47% to 41% lead with 2% favoring some other candidate and 10% undecided. Independents favor Obama over Bachmann by 43% to 31%

**November 2012 General Election - Obama vs. Bachmann  
(Likely 2012 General Election Voters)**



## Granite State Poll Methodology

These findings are based on the latest WMUR Granite State Poll, conducted by the University of New Hampshire Survey Center. These findings are based on the latest **WMUR Granite State Poll**, conducted by the University of New Hampshire Survey Center. Seven hundred seventy-three (773) randomly selected New Hampshire adults were interviewed by telephone between June 21 and July 1, 2011. The margin of sampling error for the survey is +/- 3.5%. Included in the sample were 357 likely 2012 Republican Primary voters (margin of sampling error +/- 5.2%) and 263 likely 2012 Democratic Primary voters (margin of sampling error +/- 6.0%).

The data have been weighted to adjust for numbers of adults and telephone lines within households, respondent sex, and region of the state. In addition to potential sampling error, all surveys have other potential sources of non-sampling error including question order effects, question wording effects, and non-response.

### Interest in 2012 NH Primary (All NH Adults)

	<u>Extremely Interested</u>	<u>Very Interested</u>	<u>Somewhat Interested</u>	<u>Not Very Interested</u>	<u>(N=)</u>
<b>July '11</b>	<b>35%</b>	<b>35%</b>	<b>19%</b>	<b>10%</b>	<b>(772)</b>
<b>June '11</b>	37%	34%	19%	10%	(953)
<b>May '11</b>	32%	32%	26%	11%	(780)
<b>Apr. '11</b>	44%	33%	16%	6%	(896)
<b>Feb. '11</b>	40%	33%	18%	9%	(756)
<b>Oct. '10</b>	47%	33%	12%	8%	(513)
<b>July '10</b>	50%	27%	14%	9%	(504)
<b>Apr. '10</b>	48%	32%	12%	8%	(511)
<b>Feb. '10</b>	40%	34%	16%	10%	(497)
<b>Oct. '09</b>	40%	37%	13%	11%	(499)
<b>Jun. '09</b>	37%	31%	16%	16%	(557)
<b>Apr. '09</b>	35%	28%	18%	19%	(501)
<b>Feb. '09</b>	29%	28%	18%	25%	(614)

### Interest in 2012 NH Primary (Likely GOP Voters)

	<u>Extremely Interested</u>	<u>Very Interested</u>	<u>Somewhat Interested</u>	<u>Not Very Interested</u>	<u>(N=)</u>
<b>July '11</b>	<b>42%</b>	<b>40%</b>	<b>12%</b>	<b>6%</b>	<b>(357)</b>
<b>June '11</b>	49%	35%	13%	3%	(424)
<b>May '11</b>	42%	32%	23%	4%	(351)
<b>Apr. '11</b>	52%	34%	11%	4%	(418)
<b>Feb. '11</b>	45%	32%	17%	6%	(243)
<b>Oct. '10</b>	58%	30%	8%	4%	(227)
<b>July '10</b>	61%	24%	11%	4%	(211)
<b>Apr. '10</b>	56%	34%	8%	2%	(227)
<b>Feb. '10</b>	47%	37%	12%	3%	(201)
<b>Oct. '09</b>	52%	35%	10%	5%	(202)
<b>Jun. '09</b>	43%	34%	11%	11%	(236)
<b>Apr. '09</b>	42%	28%	17%	14%	(193)
<b>Feb. '09</b>	29%	34%	19%	19%	(218)

**Likelihood of Voting in 2012 NH Primary (All NH Adults)**

	<b>Definitely Vote</b>	<b>Vote Unless Emergency</b>	<b>May Vote</b>	<b>Won't Vote/ Unsure</b>	<b>(N=)</b>
July '11	75%	12%	3%	9%	(772)
June '11	71%	12%	6%	11%	(952)
May '11	65%	18%	6%	11%	(782)
Apr. '11	81%	9%	4%	7%	(895)
Feb. '11	82%	10%	4%	4%	(757)
Oct. '10	76%	13%	4%	7%	(512)
July '10	77%	12%	4%	7%	(504)
Apr. '10	83%	9%	3%	6%	(510)
Feb. '10	79%	10%	3%	8%	(496)
Oct. '09	84%	8%	2%	5%	(497)
Jun. '09	80%	12%	3%	5%	(557)
Apr. '09	79%	12%	3%	7%	(499)
Feb. '09	81%	10%	2%	7%	(615)

**Which Primary Will You Vote In – Registered Undeclared (Independent) Likely Voters**

	<b>GOP Primary</b>	<b>DEM Primary</b>	<b>Unsure</b>	<b>(N=)</b>
July '11	51%	27%	22%	(336)
June '11	48%	26%	26%	()
May '11	49%	35%	16%	()
Apr. '11	48%	28%	24%	(398)
Feb. '11	42%	29%	29%	(335)
Oct. '10	42%	31%	27%	(232)
July '10	37%	35%	28%	(222)
Apr. '10	43%	34%	23%	(232)
Feb. '10	38%	31%	31%	(213)
Oct. '09	27%	35%	38%	(208)
Jun. '09	28%	38%	34%	(244)
Apr. '09	26%	30%	44%	(186)
Feb. '09	26%	36%	38%	(206)

**Obama Reelection**

(Likely 2012 Democratic Primary Voters)

"Do you plan on voting for Barack Obama in the 2012 New Hampshire Democratic primary or do you plan to vote for another Democratic candidate?"

	<b>2009</b>			<b>2010</b>			<b>2011</b>				
	<b>July</b>	<b>Oct.</b>	<b>Feb.</b>	<b>Apr.</b>	<b>July</b>	<b>Oct.</b>	<b>Feb.</b>	<b>Apr.</b>	<b>May</b>	<b>June</b>	<b>July</b>
<b>Vote for Obama</b>	66%	64%	56%	68%	63%	63%	66%	69%	73%	70%	69%
<b>Vote for Other Candidate</b>	4%	6%	9%	6%	12%	9%	10%	9%	6%	7%	11%
<b>Don't Know / Undecided</b>	29%	31%	36%	26%	25%	29%	24%	22%	21%	24%	20%
<b>(N=)</b>	(215)	(202)	(182)	(193)	(195)	(175)	(255)	(303)	(289)	(303)	(257)

### **Decided Who to Vote for in 2012 GOP Primary?**

(Likely 2012 NH GOP Primary Voters)

“Have you definitely decided who you will vote for in the New Hampshire primary ... are you leaning toward someone ... or have you considered some candidates but are still trying to decide?”

	<b>Def. Decided <u>Vote</u></b>	<b>Leaning Toward <u>Someone</u></b>	<b>Still Trying <u>To Decide</u></b>	<b><u>(N=)</u></b>
<b>July '11</b>	<b>8%</b>	<b>17%</b>	<b>75%</b>	<b>(352)</b>
<b>June '11</b>	8%	16%	76%	(423)
<b>May '11</b>	4%	9%	87%	(350)
<b>Apr. '11</b>	5%	16%	79%	(416)
<b>Feb. '11</b>	7%	15%	78%	(345)
<b>Oct. '10</b>	15%	12%	73%	(224)
<b>July '10</b>	7%	15%	77%	(208)
<b>Apr. '10</b>	9%	7%	85%	(223)
<b>Feb. '10</b>	7%	9%	83%	(197)
<b>Oct. '09</b>	7%	9%	84%	(201)
<b>Jun. '09</b>	7%	7%	86%	(227)
<b>Apr. '09</b>	5%	7%	88%	(185)
<b>Feb. '09</b>	8%	11%	81%	(208)



**Republican Nomination in 2012 NH Primary**  
(Likely 2012 NH GOP Primary Voters)

"I'm going to read you the names of the candidates who are either running or considering running for the Republican nomination. If the Republican primary for president were held today, which of the following would you support for the Republican nomination ... Michele Bachmann ... Herman Cain ... Newt Gingrich ... Rudy Giuliani ... Jon Huntsman ... Gary Johnson ... Sarah Palin ... Ron Paul ... Tim Pawlenty ... Rick Perry ... Buddy Roemer ... Mitt Romney ... Rick Santorum ... or someone else?" RANDOMIZE CANDIDATES

	<u>2009</u>				<u>2010</u>				<u>2011</u>				
	<u>Feb.</u>	<u>Apr.</u>	<u>July</u>	<u>Oct.</u>	<u>Feb.</u>	<u>Apr.</u>	<u>July</u>	<u>Oct.</u>	<u>Feb.</u>	<u>Apr.</u>	<u>May<sup>1</sup></u>	<u>June<sup>2</sup></u>	<u>July</u>
<b>Romney</b>	<b>47%</b>	<b>39%</b>	<b>40%</b>	<b>43%</b>	<b>47%</b>	<b>41%</b>	<b>33%</b>	<b>36%</b>	<b>40%</b>	<b>36%</b>	<b>32%</b>	<b>41%</b>	<b>35%</b>
<b>Bachmann</b> ¢	--	--	--	--	--	--	--	--	--	4%	4%	4%	<b>12%</b>
<b>Paul</b> †	--	--	--	--	--	6%	7%	3%	5%	6%	9%	6%	<b>7%</b>
<b>Giuliani</b>	7%	10%	9%	8%	13%	11%	8%	10%	10%	7%	6%	9%	7%
<b>Perry</b> ^	--	--	--	--	--	--	--	--	--	--	--	--	4%
<b>Pawlenty</b> #	--	--	--	3%	4%	3%	4%	2%	7%	2%	4%	3%	3%
<b>Palin</b>	3%	8%	17%	11%	9%	12%	9%	11%	6%	4%	5%	5%	3%
<b>Cain</b> +	--	--	--	--	--	--	--	--	--	--	4%	4%	2%
<b>Huntsman</b> ¢	--	--	--	--	--	--	--	--	--	*	4%	3%	2%
<b>Gingrich</b>	7%	6%	5%	7%	4%	5%	11%	7%	6%	4%	6%	3%	1%
<b>Johnson</b> †	--	--	--	--	--	0%	0%	2%	0%	0%	*	*	1%
<b>Santorum</b> †	--	--	--	--	--	2%	2%	1%	1%	*	2%	3%	1%
<b>Roemer</b> +	--	--	--	--	--	--	--	--	--	--	0%	0%	*
<b>Karger</b> +	--	--	--	--	--	--	--	--	--	--	0%	--	--
<b>Martin</b> +	--	--	--	--	--	--	--	--	--	--	0%	--	--
<b>Daniels</b> \$	--	--	--	--	--	--	--	--	0%	2%	4%	--	--
<b>Huckabee</b>	9%	12%	11%	9%	7%	9%	7%	12%	7%	6%	--	--	--
<b>Trump</b> \$	--	--	--	--	--	--	--	--	3%	11%	--	--	--
<b>Barbour</b> @	--	--	--	--	--	--	--	1%	1%	1%	--	--	--
<b>Crist</b>	*	0%	2%	*	1%	--	--	--	--	--	--	--	--
<b>Jindal</b>	4%	4%	2%	4%	3%	--	--	--	--	--	--	--	--
<b>Thune</b>	--	--	--	--	0%	0%	*	*	*	--	--	--	--
<b>Someone</b>	5%	7%	4%	4%	3%	3%	3%	3%	4%	1%	3%	5%	2%
<b>Else</b>													
<b>Don't Know</b>	12%	13%	10%	11%	11%	9%	16%	11%	10%	14%	17%	13%	19%
<b>(N=)</b>	(218)	(189)	(233)	(201)	(201)	(228)	(210)	(227)	(355)	(415)	(347)	(419)	(351)

# Added October, 2009  
† Added April, 2010  
@ Added October, 2010  
\$ Added February, 2011

¢ Added April, 2011  
+ Added May, 2011  
^ Added July, 2011

\* = Less than 1%  
-- = Not asked

<sup>1</sup> CNN / WMUR Poll, conducted by UNH Survey Center

<sup>2</sup> *Boston Globe* New Hampshire Primary Poll, conducted by UNH Survey Center

**GOP Favorability Ratings**  
(Likely 2012 GOP Primary Voters)

"Next, I'd like to get your overall opinion of some REPUBLICANS who are running or may run for President in 2012. As I read each name, please say if you have a favorable or unfavorable opinion of this person - or if you have never heard of him."

"Minnesota Congresswoman Michele Bachmann?"

	<u>Favorable</u>	<u>Neutral</u>	<u>Unfavorable</u>	<u>Don't Know</u>	<u>Net</u>	<u>(N)</u>
<b>July '11</b>	<b>52%</b>	<b>6%</b>	<b>23%</b>	<b>20%</b>	<b>+29%</b>	<b>(354)</b>
<b>Apr. '11</b>	26%	8%	29%	37%	-3%	(419)

"Mississippi Governor Haley Barbour?"

	<u>Favorable</u>	<u>Neutral</u>	<u>Unfavorable</u>	<u>Don't Know</u>	<u>Net</u>	<u>(N)</u>
<b>Apr. '11</b>	<b>23%</b>	<b>11%</b>	<b>17%</b>	<b>49%</b>	<b>+6%</b>	<b>(414)</b>
<b>Feb. '11</b>	18%	11%	19%	52%	-1%	(356)
<b>Oct. '10</b>	17%	12%	19%	52%	-2%	(226)

"Businessman Herman Cain?"

	<u>Favorable</u>	<u>Neutral</u>	<u>Unfavorable</u>	<u>Don't Know</u>	<u>Net</u>	<u>(N)</u>
<b>July '11</b>	<b>32%</b>	<b>7%</b>	<b>13%</b>	<b>47%</b>	<b>+19%</b>	<b>(354)</b>

"Indiana Governor Mitch Daniels?"

	<u>Favorable</u>	<u>Neutral</u>	<u>Unfavorable</u>	<u>Don't Know</u>	<u>Net</u>	<u>(N)</u>
<b>Apr. '11</b>	<b>18%</b>	<b>10%</b>	<b>10%</b>	<b>62%</b>	<b>+8%</b>	<b>(418)</b>
<b>Feb. '11</b>	18%	11%	19%	52%	-1%	(356)

"Former Speaker of the House Newt Gingrich?"

	<u>Favorable</u>	<u>Neutral</u>	<u>Unfavorable</u>	<u>Don't Know</u>	<u>Net</u>	<u>(N)</u>
<b>July '11</b>	<b>25%</b>	<b>8%</b>	<b>62%</b>	<b>6%</b>	<b>-37%</b>	<b>(354)</b>
<b>Apr. '11</b>	42%	8%	44%	6%	-2%	(419)
<b>Feb. '11</b>	41%	12%	40%	7%	+1%	(357)
<b>Oct. '10</b>	46%	9%	39%	6%	+7%	(225)
<b>July '10</b>	61%	3%	32%	5%	+29%	(211)
<b>Apr. '10</b>	53%	8%	31%	8%	+22%	(227)
<b>Feb. '10</b>	51%	6%	35%	8%	+16%	(201)
<b>Oct. '09</b>	53%	6%	28%	13%	+25%	(202)
<b>Jun. '09</b>	48%	6%	39%	7%	+9%	(234)
<b>Apr. '09</b>	49%	5%	35%	11%	+14%	(192)
<b>Feb. '09</b>	54%	5%	33%	8%	+21%	(218)

"Former New York Mayor Rudy Giuliani?"

	<u>Favorable</u>	<u>Neutral</u>	<u>Unfavorable</u>	<u>Don't Know</u>	<u>Net</u>	<u>(N)</u>
<b>July '11</b>	<b>56%</b>	<b>8%</b>	<b>33%</b>	<b>4%</b>	<b>+23%</b>	<b>(354)</b>
<b>Apr. '11</b>	59%	8%	29%	4%	+30%	(419)
<b>Feb. '11</b>	59%	8%	29%	4%	+30%	(357)
<b>Oct. '10</b>	67%	8%	21%	4%	+46%	(226)
<b>July '10</b>	64%	4%	28%	3%	+36%	(211)
<b>Apr. '10</b>	67%	5%	23%	5%	+44%	(228)
<b>Feb. '10</b>	66%	7%	23%	3%	+43%	(201)
<b>Oct. '09</b>	60%	9%	27%	4%	+33%	(202)
<b>Jun. '09</b>	63%	6%	28%	3%	+35%	(234)
<b>Apr. '09</b>	66%	4%	27%	3%	+39%	(192)
<b>Feb. '09</b>	58%	7%	33%	2%	+25%	(218)

"Former Arkansas Governor Mike Huckabee?"

	<u>Favorable</u>	<u>Neutral</u>	<u>Unfavorable</u>	<u>Don't Know</u>	<u>Net</u>	<u>(N)</u>
<b>Apr. '11</b>	<b>48%</b>	<b>8%</b>	<b>35%</b>	<b>9%</b>	<b>+13%</b>	<b>(419)</b>
<b>Feb. '11</b>	50%	13%	28%	9%	+22%	(357)
<b>Oct. '10</b>	58%	8%	27%	7%	+31%	(226)
<b>July '10</b>	54%	7%	31%	8%	+23%	(211)
<b>Apr. '10</b>	54%	11%	27%	9%	+27%	(228)
<b>Feb. '10</b>	51%	9%	33%	6%	+18%	(201)
<b>Oct. '09</b>	54%	8%	30%	10%	+24%	(202)
<b>Jun. '09</b>	57%	6%	29%	8%	+28%	(234)
<b>Apr. '09</b>	60%	5%	24%	11%	+36%	(192)
<b>Feb. '09</b>	54%	7%	31%	7%	+23%	(218)

"Former U.S. Ambassador to China John Huntsman?"

	<u>Favorable</u>	<u>Neutral</u>	<u>Unfavorable</u>	<u>Don't Know</u>	<u>Net</u>	<u>(N)</u>
<b>July '11</b>	<b>19%</b>	<b>13%</b>	<b>23%</b>	<b>46%</b>	<b>-4%</b>	<b>(354)</b>
<b>Apr. '11</b>	9%	8%	12%	71%	-3%	(418)

"Former New Mexico Governor Gary Johnson?"

	<u>Favorable</u>	<u>Neutral</u>	<u>Unfavorable</u>	<u>Don't Know</u>	<u>Net</u>	<u>(N)</u>
<b>July '11</b>	<b>12%</b>	<b>6%</b>	<b>17%</b>	<b>64%</b>	<b>-5%</b>	<b>(354)</b>
<b>Apr. '11</b>	9%	12%	14%	66%	-5%	(417)
<b>Feb. '11</b>	6%	13%	11%	69%	-5%	(357)
<b>Oct. '10</b>	7%	8%	10%	75%	-3%	(227)
<b>July '10</b>	7%	6%	10%	77%	-3%	(211)
<b>Apr. '10</b>	12%	6%	5%	76%	+7%	(227)

"Former Alaska Governor Sarah Palin?"

	<u>Favorable</u>	<u>Neutral</u>	<u>Unfavorable</u>	<u>Don't Know</u>	<u>Net</u>	<u>(N)</u>
July '11	41%	4%	52%	2%	-11%	(354)
Apr. '11	37%	11%	50%	2%	-13%	(419)
Feb. '11	33%	13%	50%	4%	-17%	(356)
Oct. '10	52%	11%	34%	3%	+18%	(226)
July '10	56%	6%	35%	3%	+21%	(211)
Apr. '10	51%	9%	35%	4%	+16%	(228)
Feb. '10	51%	10%	34%	4%	+17%	(201)
Oct. '09	52%	8%	36%	5%	+16%	(201)
Jun. '09	59%	4%	35%	2%	+24%	(234)
Apr. '09	62%	7%	28%	4%	+34%	(192)
Feb. '09	62%	8%	28%	3%	+34%	(218)

"Texas Congressman Ron Paul?"

	<u>Favorable</u>	<u>Neutral</u>	<u>Unfavorable</u>	<u>Don't Know</u>	<u>Net</u>	<u>(N)</u>
July '11	40%	8%	45%	7%	-5%	(354)
Apr. '11	41%	7%	40%	12%	+1%	(419)
Feb. '11	36%	10%	35%	19%	+1%	(355)
Oct. '10	30%	12%	40%	17%	-10%	(225)
July '10	38%	7%	35%	20%	+3%	(211)
Apr. '10	36%	12%	39%	14%	-3%	(227)

"Former Minnesota Governor Tim Pawlenty?"

	<u>Favorable</u>	<u>Neutral</u>	<u>Unfavorable</u>	<u>Don't Know</u>	<u>Net</u>	<u>(N)</u>
July '11	39%	11%	20%	30%	+19%	(353)
Apr. '11	38%	9%	12%	41%	+26%	(417)
Feb. '11	34%	11%	9%	46%	+25%	(357)
Oct. '10	31%	11%	9%	50%	+22%	(225)
July '10	32%	7%	12%	49%	+20%	(211)
Apr. '10	30%	8%	6%	56%	+24%	(226)
Feb. '10	30%	8%	9%	54%	+21%	(200)
Oct. '09	22%	7%	12%	59%	+10%	(202)

"Texas Governor Rick Perry?"

	<u>Favorable</u>	<u>Neutral</u>	<u>Unfavorable</u>	<u>Don't Know</u>	<u>Net</u>	<u>(N)</u>
July '11	34%	9%	15%	42%	+19%	(354)

"Former Louisiana Governor Buddy Roemer?"

	<u>Favorable</u>	<u>Neutral</u>	<u>Unfavorable</u>	<u>Don't Know</u>	<u>Net</u>	<u>(N)</u>
July '11	8%	9%	17%	66%	-9%	(354)

"Former Massachusetts Governor Mitt Romney?"

	<u>Favorable</u>	<u>Neutral</u>	<u>Unfavorable</u>	<u>Don't Know</u>	<u>Net</u>	<u>(N)</u>
<b>July '11</b>	<b>68%</b>	<b>7%</b>	<b>24%</b>	<b>2%</b>	<b>+44%</b>	<b>(354)</b>
<b>Apr. '11</b>	70%	6%	21%	3%	+49%	(419)
<b>Feb. '11</b>	73%	8%	16%	4%	+57%	(357)
<b>Oct. '10</b>	73%	6%	19%	1%	+54%	(226)
<b>July '10</b>	75%	5%	16%	4%	+59%	(211)
<b>Apr. '10</b>	72%	6%	18%	4%	+54%	(228)
<b>Feb. '10</b>	80%	5%	14%	2%	+66%	(201)
<b>Oct. '09</b>	76%	4%	16%	5%	+60%	(202)
<b>Jun. '09</b>	69%	5%	22%	4%	+47%	(234)
<b>Apr. '09</b>	78%	2%	16%	4%	+62%	(192)
<b>Feb. '09</b>	79%	4%	16%	1%	+63%	(218)

"Former Pennsylvania Senator Rick Santorum?"

	<u>Favorable</u>	<u>Neutral</u>	<u>Unfavorable</u>	<u>Don't Know</u>	<u>Net</u>	<u>(N)</u>
<b>July '11</b>	<b>33%</b>	<b>10%</b>	<b>21%</b>	<b>36%</b>	<b>+12%</b>	<b>(353)</b>
<b>Apr. '11</b>	31%	9%	19%	40%	+12%	(419)
<b>Feb. '11</b>	30%	13%	12%	45%	+18%	(357)
<b>Oct. '10</b>	24%	13%	15%	48%	+9%	(225)
<b>July '10</b>	30%	9%	15%	46%	+15%	(211)
<b>Apr. '10</b>	30%	9%	11%	50%	+19%	(226)

"Businessman Donald Trump"

	<u>Favorable</u>	<u>Neutral</u>	<u>Unfavorable</u>	<u>Don't Know</u>	<u>Net</u>	<u>(N)</u>
<b>Apr. '11</b>	<b>35%</b>	<b>12%</b>	<b>49%</b>	<b>5%</b>	<b>-14%</b>	<b>(418)</b>
<b>Feb. '11</b>	21%	8%	64%	7%	-43%	(357)

**2012 Presidential Trial Heats  
(Likely 2012 Voters)**

**Obama v. Romney**

	<u>Feb. '11</u>	<u>April '11</u>	<u>July '11</u>
<b>Barack Obama</b>	41%	43%	43%
<b>Mitt Romney</b>	49%	50%	47%
<b>Other</b>	3%	2%	2%
<b>Undecided</b>	7%	6%	7%
<b>(N=)</b>	(712)	(471)	(729)

**Obama v. Pawlenty**

	<u>Feb. '11</u>	<u>April '11</u>	<u>July '11</u>
<b>Barack Obama</b>	44%	45%	47%
<b>Tim Pawlenty</b>	37%	38%	38%
<b>Other</b>	3%	2%	2%
<b>Undecided</b>	15%	15%	13%
<b>(N=)</b>	(707)	(473)	(715)

**Obama v. Bachmann**

	<u>July '11</u>
<b>Barack Obama</b>	47%
<b>Michele Bachmann</b>	41%
<b>Other</b>	2%
<b>Undecided</b>	10%
<b>(N=)</b>	(717)

**2012 Presidential Primary – Undeclared Voters Primary Choice**

<b>STATEWIDE</b>	<b><u>Vote in GOP Primary</u> 51%</b>	<b><u>Vote in DEM Primary</u> 27%</b>	<b><u>DK</u> 22%</b>	<b><u>(N)</u> 336</b>
Democrat	24%	62%	13%	112
Independent	38%	16%	46%	97
Republican	86%	2%	12%	122
Extremely interested	57%	29%	14%	110
Very interested	58%	20%	21%	125
Somewhat/Not very interested	35%	34%	31%	97
Liberal	22%	63%	15%	56
Moderate	52%	25%	23%	157
Conservative	69%	11%	20%	98
Support Tea Party	78%	10%	12%	93
Neutral	48%	24%	28%	145
Oppose Tea Party	29%	48%	24%	98
Read Union Leader	54%	15%	31%	107
Read Boston Globe	45%	38%	17%	56
Watch WMUR	52%	26%	22%	225
Listen to NHPR	47%	35%	18%	116
18 to 34	35%	35%	29%	45
35 to 49	54%	28%	19%	84
50 to 64	57%	30%	12%	112
65 and over	46%	16%	37%	86
Male	57%	24%	19%	171
Female	45%	30%	26%	165
High school or less	44%	30%	26%	68
Some college	55%	22%	24%	86
College graduate	61%	21%	19%	101
Post graduate	41%	37%	22%	80
Protestant	60%	18%	23%	114
Catholic	53%	26%	21%	100
Other	39%	39%	22%	95
Attend services 1 or more a week	50%	22%	28%	69
1 2 times a month	68%	22%	10%	37
Less often	49%	29%	22%	100
Never	46%	31%	24%	119
North Country	54%	32%	14%	34
Central / Lakes	40%	29%	31%	57
Connecticut Valley	40%	36%	24%	39
Mass Border	56%	28%	16%	98
Seacoast	55%	21%	24%	56
Manchester Area	53%	20%	26%	53
First Cong. Dist.	52%	27%	21%	169
Second Cong. Dist.	50%	27%	23%	166

**2012 Presidential Primary – Democratic Voters Primary Choice**

	<b><u>Vote for Obama</u></b> <b>69%</b>	<b><u>Vote for Someone Else</u></b> <b>11%</b>	<b><u>DK</u></b> <b>20%</b>	<b><u>(N)</u></b> <b>257</b>
<b>STATEWIDE</b>				
Registered Democrat	68%	10%	22%	168
Registered Undeclared	73%	9%	18%	71
Democrat	73%	8%	19%	219
Independent	47%	19%	34%	24
Republican	56%	40%	4%	10
Extremely interested	75%	9%	16%	90
Very interested	65%	12%	24%	85
Somewhat/Not very interested	67%	13%	20%	82
Liberal	75%	7%	18%	122
Moderate	67%	11%	22%	104
Conservative	49%	34%	17%	23
Support Tea Party	35%	38%	27%	18
Neutral	49%	19%	31%	72
Oppose Tea Party	81%	5%	14%	167
Read Union Leader	66%	8%	26%	44
Read Boston Globe	72%	13%	15%	63
Watch WMUR	65%	12%	23%	162
Listen to NHPR	75%	4%	21%	126
18 to 34	70%	11%	19%	26
35 to 49	49%	13%	38%	58
50 to 64	76%	11%	13%	101
65 and over	76%	7%	18%	67
Male	64%	15%	21%	104
Female	72%	8%	19%	153
High school or less	60%	17%	23%	51
Some college	54%	19%	28%	41
College graduate	74%	7%	19%	71
Post graduate	77%	7%	16%	92
Protestant	78%	6%	16%	69
Catholic	58%	14%	28%	77
Other	72%	9%	19%	96
Attend services 1 or more a week	67%	12%	22%	57
1 2 times a month	73%	6%	21%	27
Less often	69%	12%	19%	68
Never	73%	8%	19%	95
North Country	60%	15%	26%	24
Central / Lakes	69%	11%	19%	44
Connecticut Valley	61%	11%	28%	46
Mass Border	72%	16%	12%	63
Seacoast	73%	6%	21%	50
Manchester Area	76%	7%	18%	30
First Cong. Dist.	71%	10%	19%	121
Second Cong. Dist.	67%	13%	20%	134



**Favorability Rating – Former Massachusetts Governor Mitt Romney**

<b>STATEWIDE</b>	<b><u>Favorable</u></b> <b>68%</b>	<b><u>Neutral</u></b> <b>7%</b>	<b><u>Unfavorable</u></b> <b>24%</b>	<b><u>DK</u></b> <b>2%</b>	<b><u>(N)</u></b> <b>354</b>
Registered Undeclared	62%	5%	31%	2%	154
Registered Republican	75%	8%	16%	1%	185
Democrat	51%	13%	32%	4%	32
Independent	47%	8%	43%	1%	49
Republican	73%	6%	20%	2%	269
Extremely interested	68%	7%	24%	1%	150
Very interested	69%	7%	24%	1%	142
Somewhat/Not very interested	64%	6%	25%	5%	60
Liberal	58%	8%	30%	4%	19
Moderate	66%	7%	24%	2%	133
Conservative	71%	6%	22%	1%	187
Support Tea Party	68%	6%	26%	1%	169
Neutral	73%	5%	21%	2%	136
Oppose Tea Party	53%	16%	28%	3%	49
Read Union Leader	71%	7%	21%	2%	142
Read Boston Globe	68%	2%	27%	2%	51
Watch WMUR	71%	6%	22%	1%	241
Listen to NHPR	61%	9%	28%	3%	101
18 to 34	67%	4%	25%	3%	29
35 to 49	67%	6%	27%	0%	92
50 to 64	65%	7%	27%	1%	126
65 and over	68%	8%	20%	4%	92
Male	65%	4%	29%	1%	194
Female	71%	9%	17%	2%	159
High school or less	67%	3%	27%	3%	63
Some college	68%	10%	20%	1%	104
College graduate	66%	7%	26%	0%	113
Post graduate	68%	5%	24%	4%	69
Protestant	71%	7%	20%	1%	165
Catholic	72%	4%	23%	2%	108
Other	50%	10%	37%	3%	59
Attend services 1 or more a week	73%	7%	15%	5%	92
1 2 times a month	70%	2%	25%	3%	43
Less often	67%	7%	27%	0%	103
Never	60%	8%	32%	0%	98
North Country	68%	7%	24%	0%	35
Central / Lakes	65%	11%	24%	1%	62
Connecticut Valley	54%	11%	32%	3%	34
Mass Border	76%	4%	18%	2%	98
Seacoast	60%	9%	28%	3%	59
Manchester Area	72%	2%	24%	1%	66
First Cong. Dist.	69%	6%	23%	2%	185
Second Cong. Dist.	67%	7%	25%	2%	165

**Favorability Rating – Former Alaska Governor Sarah Palin**

<b>STATEWIDE</b>	<b><u>Favorable</u></b> <b>41%</b>	<b><u>Neutral</u></b> <b>4%</b>	<b><u>Unfavorable</u></b> <b>52%</b>	<b><u>DK</u></b> <b>2%</b>	<b><u>(N)</u></b> <b>354</b>
Registered Undeclared	38%	6%	54%	2%	154
Registered Republican	43%	3%	51%	3%	185
Democrat	5%	2%	93%	0%	32
Independent	30%	6%	61%	3%	49
Republican	47%	4%	47%	3%	269
Extremely interested	50%	5%	43%	2%	150
Very interested	39%	3%	55%	3%	142
Somewhat/Not very interested	24%	4%	72%	0%	60
Liberal	10%	2%	88%	0%	19
Moderate	31%	4%	64%	1%	133
Conservative	51%	5%	40%	4%	187
Support Tea Party	57%	6%	35%	3%	169
Neutral	34%	4%	61%	2%	136
Oppose Tea Party	8%	0%	90%	3%	49
Read Union Leader	43%	5%	48%	4%	142
Read Boston Globe	22%	3%	74%	1%	51
Watch WMUR	41%	4%	53%	2%	241
Listen to NHPR	33%	3%	64%	0%	101
18 to 34	37%	4%	54%	4%	29
35 to 49	34%	4%	60%	3%	92
50 to 64	49%	4%	46%	0%	126
65 and over	38%	3%	55%	4%	92
Male	42%	2%	54%	2%	194
Female	40%	6%	50%	3%	159
High school or less	53%	2%	44%	2%	63
Some college	45%	7%	42%	6%	104
College graduate	39%	4%	57%	1%	113
Post graduate	28%	2%	70%	0%	69
Protestant	48%	5%	44%	3%	165
Catholic	42%	4%	52%	2%	108
Other	23%	4%	70%	2%	59
Attend services 1 or more a week	48%	5%	46%	1%	92
1 2 times a month	47%	1%	50%	2%	43
Less often	36%	6%	55%	3%	103
Never	38%	2%	56%	3%	98
North Country	43%	6%	51%	0%	35
Central / Lakes	40%	4%	53%	3%	62
Connecticut Valley	40%	3%	51%	6%	34
Mass Border	45%	3%	50%	1%	98
Seacoast	32%	7%	59%	2%	59
Manchester Area	44%	3%	49%	3%	66
First Cong. Dist.	38%	3%	57%	2%	185
Second Cong. Dist.	45%	5%	47%	3%	165

**Favorability Rating – Texas Congressman Ron Paul**

<b>STATEWIDE</b>	<b><u>Favorable</u></b> <b>40%</b>	<b><u>Neutral</u></b> <b>8%</b>	<b><u>Unfavorable</u></b> <b>45%</b>	<b><u>DK</u></b> <b>7%</b>	<b><u>(N)</u></b> <b>354</b>
Registered Undeclared	41%	8%	46%	6%	154
Registered Republican	40%	7%	45%	8%	185
Democrat	38%	16%	46%	0%	32
Independent	32%	5%	58%	5%	49
Republican	42%	7%	43%	9%	269
Extremely interested	45%	6%	45%	4%	150
Very interested	34%	12%	43%	11%	142
Somewhat/Not very interested	43%	3%	47%	6%	60
Liberal	29%	8%	64%	0%	19
Moderate	44%	6%	42%	8%	133
Conservative	38%	8%	46%	8%	187
Support Tea Party	44%	8%	43%	4%	169
Neutral	38%	8%	42%	12%	136
Oppose Tea Party	32%	6%	56%	6%	49
Read Union Leader	38%	7%	51%	4%	142
Read Boston Globe	32%	3%	58%	7%	51
Watch WMUR	38%	6%	49%	7%	241
Listen to NHPR	44%	7%	42%	7%	101
18 to 34	65%	3%	19%	14%	29
35 to 49	57%	10%	27%	6%	92
50 to 64	27%	8%	61%	4%	126
65 and over	32%	4%	51%	13%	92
Male	48%	4%	44%	4%	194
Female	31%	12%	46%	11%	159
High school or less	35%	7%	48%	10%	63
Some college	41%	7%	43%	9%	104
College graduate	44%	7%	44%	6%	113
Post graduate	38%	10%	46%	6%	69
Protestant	41%	5%	44%	10%	165
Catholic	36%	7%	50%	7%	108
Other	43%	10%	45%	2%	59
Attend services 1 or more a week	38%	6%	47%	10%	92
1 2 times a month	27%	10%	57%	6%	43
Less often	38%	4%	49%	10%	103
Never	51%	8%	37%	5%	98
North Country	47%	3%	47%	4%	35
Central / Lakes	48%	4%	42%	7%	62
Connecticut Valley	30%	19%	37%	14%	34
Mass Border	41%	9%	41%	9%	98
Seacoast	36%	5%	51%	7%	59
Manchester Area	38%	8%	49%	4%	66
First Cong. Dist.	36%	8%	48%	8%	185
Second Cong. Dist.	45%	7%	41%	7%	165

**Favorability Rating – Former New Mexico Governor Gary Johnson**

<b>STATEWIDE</b>	<b><u>Favorable</u></b> <b>12%</b>	<b><u>Neutral</u></b> <b>6%</b>	<b><u>Unfavorable</u></b> <b>17%</b>	<b><u>DK</u></b> <b>64%</b>	<b><u>(N)</u></b> <b>354</b>
Registered Undeclared	13%	9%	17%	61%	154
Registered Republican	12%	5%	16%	68%	185
Democrat	11%	6%	20%	63%	32
Independent	13%	10%	19%	58%	49
Republican	12%	5%	17%	65%	269
Extremely interested	14%	5%	25%	57%	150
Very interested	11%	10%	11%	68%	142
Somewhat/Not very interested	12%	2%	14%	73%	60
Liberal	6%	3%	30%	61%	19
Moderate	17%	7%	10%	65%	133
Conservative	9%	6%	20%	66%	187
Support Tea Party	10%	7%	19%	63%	169
Neutral	14%	6%	13%	66%	136
Oppose Tea Party	13%	2%	22%	63%	49
Read Union Leader	16%	4%	19%	61%	142
Read Boston Globe	11%	7%	20%	62%	51
Watch WMUR	11%	4%	20%	64%	241
Listen to NHPR	18%	3%	18%	61%	101
18 to 34	8%	4%	5%	83%	29
35 to 49	17%	6%	18%	59%	92
50 to 64	11%	6%	20%	63%	126
65 and over	11%	6%	19%	65%	92
Male	14%	6%	18%	63%	194
Female	11%	7%	16%	66%	159
High school or less	7%	4%	20%	69%	63
Some college	11%	4%	16%	68%	104
College graduate	10%	8%	18%	65%	113
Post graduate	22%	9%	15%	54%	69
Protestant	14%	6%	15%	65%	165
Catholic	11%	6%	22%	61%	108
Other	13%	5%	17%	65%	59
Attend services 1 or more a week	12%	5%	16%	67%	92
1 2 times a month	13%	2%	18%	67%	43
Less often	9%	7%	20%	63%	103
Never	16%	7%	16%	61%	98
North Country	6%	8%	25%	61%	35
Central / Lakes	21%	0%	11%	68%	62
Connecticut Valley	12%	5%	9%	74%	34
Mass Border	10%	8%	13%	69%	98
Seacoast	13%	13%	18%	55%	59
Manchester Area	10%	3%	29%	58%	66
First Cong. Dist.	12%	7%	19%	62%	185
Second Cong. Dist.	13%	6%	15%	67%	165

**Favorability Rating – Former Speaker of the House Newt Gingrich**

<b>STATEWIDE</b>	<b><u>Favorable</u></b> <b>25%</b>	<b><u>Neutral</u></b> <b>8%</b>	<b><u>Unfavorable</u></b> <b>62%</b>	<b><u>DK</u></b> <b>6%</b>	<b><u>(N)</u></b> <b>354</b>
Registered Undeclared	16%	11%	69%	4%	154
Registered Republican	32%	5%	56%	7%	185
Democrat	5%	4%	85%	6%	32
Independent	13%	12%	65%	9%	49
Republican	29%	7%	59%	5%	269
Extremely interested	28%	7%	58%	7%	150
Very interested	25%	11%	59%	4%	142
Somewhat/Not very interested	17%	2%	75%	6%	60
Liberal	11%	0%	77%	13%	19
Moderate	19%	10%	68%	3%	133
Conservative	30%	6%	56%	7%	187
Support Tea Party	27%	8%	61%	3%	169
Neutral	28%	9%	54%	9%	136
Oppose Tea Party	6%	3%	85%	6%	49
Read Union Leader	30%	6%	61%	3%	142
Read Boston Globe	25%	0%	70%	5%	51
Watch WMUR	24%	7%	64%	5%	241
Listen to NHPR	23%	5%	68%	4%	101
18 to 34	27%	9%	28%	36%	29
35 to 49	28%	6%	62%	4%	92
50 to 64	24%	9%	63%	3%	126
65 and over	22%	6%	71%	2%	92
Male	25%	5%	64%	6%	194
Female	24%	11%	59%	6%	159
High school or less	27%	10%	52%	10%	63
Some college	20%	7%	62%	11%	104
College graduate	25%	9%	64%	2%	113
Post graduate	28%	4%	68%	0%	69
Protestant	26%	7%	63%	4%	165
Catholic	31%	7%	56%	6%	108
Other	11%	8%	69%	11%	59
Attend services 1 or more a week	23%	4%	68%	4%	92
1 2 times a month	31%	14%	53%	2%	43
Less often	28%	7%	58%	7%	103
Never	20%	9%	63%	8%	98
North Country	30%	10%	51%	8%	35
Central / Lakes	26%	10%	62%	3%	62
Connecticut Valley	21%	10%	66%	3%	34
Mass Border	24%	8%	61%	7%	98
Seacoast	19%	7%	64%	10%	59
Manchester Area	29%	4%	65%	2%	66
First Cong. Dist.	25%	7%	60%	8%	185
Second Cong. Dist.	24%	9%	63%	4%	165

**Favorability Rating – Former New York City Mayor Rudy Giuliani**

<b>STATEWIDE</b>	<b><u>Favorable</u></b> <b>56%</b>	<b><u>Neutral</u></b> <b>8%</b>	<b><u>Unfavorable</u></b> <b>33%</b>	<b><u>DK</u></b> <b>4%</b>	<b><u>(N)</u></b> <b>354</b>
Registered Undeclared	48%	7%	42%	3%	154
Registered Republican	62%	9%	25%	4%	185
Democrat	25%	10%	62%	3%	32
Independent	53%	13%	30%	4%	49
Republican	60%	7%	30%	4%	269
Extremely interested	60%	7%	28%	5%	150
Very interested	52%	10%	34%	4%	142
Somewhat/Not very interested	55%	6%	38%	2%	60
Liberal	47%	21%	32%	0%	19
Moderate	53%	8%	39%	0%	133
Conservative	60%	7%	27%	6%	187
Support Tea Party	55%	8%	33%	3%	169
Neutral	65%	8%	23%	4%	136
Oppose Tea Party	30%	9%	57%	4%	49
Read Union Leader	60%	7%	30%	3%	142
Read Boston Globe	67%	10%	20%	2%	51
Watch WMUR	56%	5%	35%	3%	241
Listen to NHPR	53%	6%	39%	1%	101
18 to 34	61%	4%	26%	10%	29
35 to 49	65%	8%	23%	4%	92
50 to 64	55%	8%	33%	4%	126
65 and over	49%	7%	42%	3%	92
Male	56%	6%	35%	3%	194
Female	54%	10%	30%	5%	159
High school or less	54%	7%	33%	7%	63
Some college	59%	6%	27%	8%	104
College graduate	54%	9%	37%	1%	113
Post graduate	57%	11%	32%	0%	69
Protestant	56%	6%	33%	5%	165
Catholic	65%	8%	24%	3%	108
Other	45%	13%	39%	3%	59
Attend services 1 or more a week	48%	6%	40%	6%	92
1 2 times a month	66%	7%	25%	2%	43
Less often	63%	7%	27%	3%	103
Never	53%	10%	33%	5%	98
North Country	62%	6%	32%	0%	35
Central / Lakes	49%	5%	40%	6%	62
Connecticut Valley	41%	16%	37%	6%	34
Mass Border	58%	7%	29%	6%	98
Seacoast	58%	12%	28%	2%	59
Manchester Area	59%	6%	35%	0%	66
First Cong. Dist.	56%	10%	30%	5%	185
Second Cong. Dist.	55%	6%	36%	3%	165

**Favorability Rating – Minnesota Governor Tim Pawlenty**

<b>STATEWIDE</b>	<b><u>Favorable</u> 39%</b>	<b><u>Neutral</u> 11%</b>	<b><u>Unfavorable</u> 20%</b>	<b><u>DK</u> 30%</b>	<b><u>(N)</u> 353</b>
Registered Undeclared	36%	11%	19%	35%	154
Registered Republican	44%	11%	21%	24%	185
Democrat	20%	19%	33%	27%	32
Independent	29%	11%	27%	33%	49
Republican	43%	10%	18%	30%	268
Extremely interested	47%	9%	22%	22%	150
Very interested	39%	8%	18%	35%	142
Somewhat/Not very interested	20%	23%	22%	35%	60
Liberal	8%	12%	40%	40%	19
Moderate	29%	15%	25%	32%	133
Conservative	49%	8%	15%	28%	187
Support Tea Party	54%	7%	17%	21%	169
Neutral	30%	13%	17%	40%	136
Oppose Tea Party	14%	14%	41%	32%	48
Read Union Leader	51%	7%	24%	18%	142
Read Boston Globe	48%	6%	26%	21%	51
Watch WMUR	39%	9%	18%	33%	241
Listen to NHPR	40%	11%	24%	25%	101
18 to 34	16%	0%	29%	55%	29
35 to 49	35%	7%	23%	35%	92
50 to 64	45%	14%	17%	24%	126
65 and over	43%	9%	19%	29%	92
Male	42%	8%	24%	27%	194
Female	36%	14%	16%	34%	159
High school or less	35%	4%	23%	38%	63
Some college	36%	8%	15%	41%	104
College graduate	40%	15%	21%	24%	112
Post graduate	45%	15%	22%	17%	69
Protestant	43%	9%	16%	32%	165
Catholic	41%	14%	16%	29%	107
Other	27%	10%	36%	27%	59
Attend services 1 or more a week	44%	9%	13%	33%	92
1 2 times a month	43%	11%	18%	29%	43
Less often	38%	16%	18%	28%	103
Never	33%	7%	29%	31%	98
North Country	33%	17%	15%	36%	35
Central / Lakes	44%	13%	16%	27%	62
Connecticut Valley	44%	4%	22%	30%	34
Mass Border	34%	13%	23%	30%	98
Seacoast	27%	15%	25%	33%	59
Manchester Area	55%	1%	17%	27%	66
First Cong. Dist.	39%	10%	21%	31%	185
Second Cong. Dist.	40%	11%	19%	29%	164

**Favorability Rating – Former Pennsylvania Senator Rick Santorum**

<b>STATEWIDE</b>	<b><u>Favorable</u></b> <b>33%</b>	<b><u>Neutral</u></b> <b>10%</b>	<b><u>Unfavorable</u></b> <b>21%</b>	<b><u>DK</u></b> <b>36%</b>	<b><u>(N)</u></b> <b>353</b>
Registered Undeclared	25%	12%	25%	37%	154
Registered Republican	42%	9%	17%	33%	185
Democrat	9%	2%	73%	17%	32
Independent	19%	14%	22%	45%	49
Republican	38%	11%	15%	36%	268
Extremely interested	42%	7%	23%	28%	150
Very interested	28%	12%	18%	42%	142
Somewhat/Not very interested	23%	15%	19%	43%	60
Liberal	14%	7%	47%	33%	19
Moderate	25%	17%	21%	37%	133
Conservative	42%	6%	16%	36%	187
Support Tea Party	47%	12%	17%	25%	169
Neutral	23%	10%	15%	52%	136
Oppose Tea Party	14%	5%	50%	31%	48
Read Union Leader	42%	7%	24%	27%	142
Read Boston Globe	23%	11%	39%	27%	51
Watch WMUR	33%	9%	18%	41%	241
Listen to NHPR	28%	8%	31%	33%	101
18 to 34	28%	0%	8%	63%	29
35 to 49	29%	13%	26%	32%	92
50 to 64	36%	12%	16%	35%	126
65 and over	34%	6%	27%	32%	92
Male	37%	9%	23%	30%	194
Female	28%	11%	18%	43%	159
High school or less	31%	11%	18%	40%	63
Some college	29%	7%	14%	51%	104
College graduate	40%	12%	21%	27%	112
Post graduate	30%	12%	32%	26%	69
Protestant	38%	6%	16%	40%	165
Catholic	34%	18%	17%	31%	107
Other	23%	8%	32%	37%	59
Attend services 1 or more a week	39%	8%	14%	38%	92
1 2 times a month	34%	10%	23%	34%	43
Less often	34%	11%	18%	36%	103
Never	26%	11%	27%	36%	98
North Country	34%	7%	19%	41%	35
Central / Lakes	33%	6%	22%	39%	62
Connecticut Valley	31%	21%	21%	27%	34
Mass Border	29%	12%	22%	38%	98
Seacoast	25%	10%	25%	40%	59
Manchester Area	48%	9%	14%	30%	66
First Cong. Dist.	30%	8%	22%	39%	185
Second Cong. Dist.	36%	13%	19%	32%	164



**Favorability Rating – Minnesota Congresswoman Michele Bachmann**

<b>STATEWIDE</b>	<b><u>Favorable</u></b> <b>52%</b>	<b><u>Neutral</u></b> <b>6%</b>	<b><u>Unfavorable</u></b> <b>23%</b>	<b><u>DK</u></b> <b>20%</b>	<b><u>(N)</u></b> <b>354</b>
Registered Undeclared	47%	5%	31%	16%	154
Registered Republican	56%	6%	17%	21%	185
Democrat	10%	4%	73%	12%	32
Independent	46%	3%	29%	21%	49
Republican	58%	6%	16%	20%	269
Extremely interested	62%	4%	17%	17%	150
Very interested	48%	6%	23%	23%	142
Somewhat/Not very interested	34%	10%	36%	21%	60
Liberal	20%	13%	42%	24%	19
Moderate	41%	7%	34%	18%	133
Conservative	62%	5%	13%	20%	187
Support Tea Party	70%	5%	12%	13%	169
Neutral	40%	6%	25%	29%	136
Oppose Tea Party	21%	5%	54%	20%	49
Read Union Leader	57%	5%	23%	15%	142
Read Boston Globe	43%	12%	35%	10%	51
Watch WMUR	51%	5%	21%	23%	241
Listen to NHPR	43%	3%	31%	22%	101
18 to 34	36%	2%	19%	43%	29
35 to 49	51%	3%	29%	17%	92
50 to 64	51%	9%	19%	22%	126
65 and over	59%	4%	25%	13%	92
Male	52%	5%	25%	18%	194
Female	52%	6%	19%	22%	159
High school or less	53%	2%	21%	23%	63
Some college	56%	4%	12%	28%	104
College graduate	50%	7%	29%	15%	113
Post graduate	46%	10%	31%	13%	69
Protestant	59%	4%	16%	20%	165
Catholic	53%	8%	24%	16%	108
Other	32%	7%	41%	21%	59
Attend services 1 or more a week	56%	7%	18%	19%	92
1 2 times a month	62%	6%	24%	9%	43
Less often	53%	2%	20%	25%	103
Never	42%	9%	31%	19%	98
North Country	46%	10%	16%	27%	35
Central / Lakes	53%	3%	23%	21%	62
Connecticut Valley	45%	3%	31%	21%	34
Mass Border	51%	5%	25%	19%	98
Seacoast	48%	13%	25%	14%	59
Manchester Area	61%	2%	15%	22%	66
First Cong. Dist.	50%	8%	24%	19%	185
Second Cong. Dist.	54%	3%	20%	22%	165

**Favorability Rating – Former U.S. Ambassador to China John Huntsman**

<b>STATEWIDE</b>	<b><u>Favorable</u></b> <b>19%</b>	<b><u>Neutral</u></b> <b>13%</b>	<b><u>Unfavorable</u></b> <b>23%</b>	<b><u>DK</u></b> <b>46%</b>	<b><u>(N)</u></b> <b>354</b>
Registered Undeclared	22%	14%	22%	42%	154
Registered Republican	17%	12%	21%	51%	185
Democrat	29%	9%	20%	43%	32
Independent	28%	15%	19%	38%	49
Republican	16%	13%	24%	48%	269
Extremely interested	26%	10%	30%	34%	150
Very interested	16%	14%	18%	51%	142
Somewhat/Not very interested	7%	17%	16%	61%	60
Liberal	19%	25%	18%	38%	19
Moderate	24%	15%	17%	44%	133
Conservative	14%	10%	27%	49%	187
Support Tea Party	18%	13%	29%	40%	169
Neutral	16%	13%	17%	54%	136
Oppose Tea Party	31%	10%	17%	43%	49
Read Union Leader	19%	14%	27%	40%	142
Read Boston Globe	30%	19%	25%	26%	51
Watch WMUR	16%	8%	24%	51%	241
Listen to NHPR	26%	9%	22%	42%	101
18 to 34	16%	7%	13%	63%	29
35 to 49	15%	15%	24%	45%	92
50 to 64	17%	15%	23%	45%	126
65 and over	27%	8%	22%	43%	92
Male	18%	15%	27%	41%	194
Female	19%	10%	18%	53%	159
High school or less	7%	10%	27%	56%	63
Some college	14%	10%	20%	55%	104
College graduate	23%	14%	27%	37%	113
Post graduate	30%	17%	14%	39%	69
Protestant	20%	12%	21%	47%	165
Catholic	20%	14%	22%	44%	108
Other	19%	11%	26%	44%	59
Attend services 1 or more a week	14%	12%	19%	55%	92
1 2 times a month	27%	21%	23%	30%	43
Less often	18%	9%	26%	46%	103
Never	22%	13%	23%	42%	98
North Country	28%	8%	28%	36%	35
Central / Lakes	16%	13%	26%	45%	62
Connecticut Valley	14%	14%	19%	53%	34
Mass Border	17%	11%	15%	57%	98
Seacoast	27%	16%	22%	34%	59
Manchester Area	13%	13%	32%	42%	66
First Cong. Dist.	18%	14%	24%	44%	185
Second Cong. Dist.	20%	11%	21%	48%	165

**Favorability Rating – Businessman Herman Cain**

<b>STATEWIDE</b>	<b><u>Favorable</u></b> <b>32%</b>	<b><u>Neutral</u></b> <b>7%</b>	<b><u>Unfavorable</u></b> <b>13%</b>	<b><u>DK</u></b> <b>47%</b>	<b><u>(N)</u></b> <b>354</b>
Registered Undeclared	32%	11%	12%	45%	154
Registered Republican	34%	5%	14%	47%	185
Democrat	23%	9%	26%	43%	32
Independent	27%	10%	21%	42%	49
Republican	34%	6%	11%	49%	269
Extremely interested	45%	4%	14%	37%	150
Very interested	25%	11%	14%	51%	142
Somewhat/Not very interested	18%	6%	13%	63%	60
Liberal	5%	13%	18%	63%	19
Moderate	24%	11%	18%	47%	133
Conservative	41%	4%	10%	45%	187
Support Tea Party	50%	4%	10%	36%	169
Neutral	18%	10%	10%	61%	136
Oppose Tea Party	9%	9%	36%	47%	49
Read Union Leader	39%	6%	18%	37%	142
Read Boston Globe	26%	11%	17%	47%	51
Watch WMUR	30%	6%	15%	48%	241
Listen to NHPR	27%	6%	21%	46%	101
18 to 34	21%	5%	14%	59%	29
35 to 49	34%	8%	9%	49%	92
50 to 64	38%	4%	16%	43%	126
65 and over	26%	8%	15%	51%	92
Male	33%	6%	15%	46%	194
Female	31%	9%	12%	49%	159
High school or less	21%	8%	17%	53%	63
Some college	31%	2%	14%	54%	104
College graduate	36%	10%	10%	44%	113
Post graduate	38%	8%	14%	40%	69
Protestant	35%	5%	10%	50%	165
Catholic	34%	6%	13%	46%	108
Other	24%	7%	23%	46%	59
Attend services 1 or more a week	30%	7%	16%	46%	92
1 2 times a month	39%	8%	6%	47%	43
Less often	33%	3%	15%	50%	103
Never	31%	9%	13%	46%	98
North Country	38%	2%	21%	39%	35
Central / Lakes	29%	5%	17%	48%	62
Connecticut Valley	29%	7%	19%	45%	34
Mass Border	33%	10%	10%	47%	98
Seacoast	22%	7%	14%	57%	59
Manchester Area	40%	7%	8%	44%	66
First Cong. Dist.	27%	8%	14%	50%	185
Second Cong. Dist.	38%	6%	12%	44%	165

**Favorability Rating – Texas Governor Rick Perry**

<b>STATEWIDE</b>	<b><u>Favorable</u></b> <b>34%</b>	<b><u>Neutral</u></b> <b>9%</b>	<b><u>Unfavorable</u></b> <b>15%</b>	<b><u>DK</u></b> <b>42%</b>	<b><u>(N)</u></b> <b>354</b>
Registered Undeclared	31%	9%	20%	40%	154
Registered Republican	38%	8%	10%	43%	185
Democrat	5%	6%	53%	36%	32
Independent	19%	5%	20%	56%	49
Republican	40%	10%	10%	41%	269
Extremely interested	46%	7%	17%	30%	150
Very interested	27%	9%	15%	50%	142
Somewhat/Not very interested	20%	13%	12%	55%	60
Liberal	6%	3%	26%	65%	19
Moderate	29%	9%	23%	39%	133
Conservative	40%	9%	9%	42%	187
Support Tea Party	53%	7%	8%	31%	169
Neutral	21%	13%	11%	55%	136
Oppose Tea Party	5%	2%	49%	45%	49
Read Union Leader	37%	9%	16%	37%	142
Read Boston Globe	22%	13%	34%	30%	51
Watch WMUR	32%	7%	14%	47%	241
Listen to NHPR	25%	7%	25%	44%	101
18 to 34	19%	4%	22%	55%	29
35 to 49	33%	6%	11%	50%	92
50 to 64	34%	11%	16%	38%	126
65 and over	40%	6%	18%	36%	92
Male	38%	8%	18%	36%	194
Female	29%	10%	11%	50%	159
High school or less	39%	4%	11%	45%	63
Some college	37%	7%	11%	45%	104
College graduate	35%	12%	18%	35%	113
Post graduate	24%	8%	23%	46%	69
Protestant	37%	8%	11%	44%	165
Catholic	36%	9%	14%	42%	108
Other	26%	6%	31%	37%	59
Attend services 1 or more a week	35%	12%	16%	37%	92
1 2 times a month	35%	9%	14%	42%	43
Less often	35%	5%	12%	49%	103
Never	33%	9%	21%	37%	98
North Country	40%	9%	17%	35%	35
Central / Lakes	42%	6%	8%	43%	62
Connecticut Valley	29%	16%	19%	36%	34
Mass Border	31%	13%	12%	45%	98
Seacoast	20%	5%	26%	50%	59
Manchester Area	43%	5%	14%	37%	66
First Cong. Dist.	29%	7%	18%	46%	185
Second Cong. Dist.	40%	10%	12%	38%	165

**Favorability Rating – Former Louisiana Governor Buddy Roemer**

<b>STATEWIDE</b>	<b><u>Favorable</u></b> <b>8%</b>	<b><u>Neutral</u></b> <b>9%</b>	<b><u>Unfavorable</u></b> <b>17%</b>	<b><u>DK</u></b> <b>66%</b>	<b><u>(N)</u></b> <b>354</b>
Registered Undeclared	10%	9%	17%	63%	154
Registered Republican	7%	8%	17%	68%	185
Democrat	2%	5%	21%	72%	32
Independent	0%	4%	26%	70%	49
Republican	11%	10%	16%	64%	269
Extremely interested	10%	7%	20%	64%	150
Very interested	7%	11%	15%	67%	142
Somewhat/Not very interested	8%	7%	17%	68%	60
Liberal	8%	3%	27%	63%	19
Moderate	11%	11%	16%	61%	133
Conservative	7%	8%	16%	69%	187
Support Tea Party	8%	11%	17%	64%	169
Neutral	8%	9%	13%	70%	136
Oppose Tea Party	8%	0%	31%	61%	49
Read Union Leader	11%	9%	21%	59%	142
Read Boston Globe	11%	7%	18%	64%	51
Watch WMUR	8%	7%	20%	66%	241
Listen to NHPR	9%	9%	19%	63%	101
18 to 34	6%	0%	0%	94%	29
35 to 49	11%	11%	10%	68%	92
50 to 64	8%	10%	20%	62%	126
65 and over	7%	7%	26%	60%	92
Male	10%	8%	20%	62%	194
Female	6%	10%	13%	71%	159
High school or less	8%	13%	18%	62%	63
Some college	8%	4%	17%	71%	104
College graduate	7%	9%	17%	67%	113
Post graduate	11%	14%	16%	59%	69
Protestant	9%	8%	15%	67%	165
Catholic	8%	11%	19%	62%	108
Other	5%	3%	19%	73%	59
Attend services 1 or more a week	6%	9%	15%	70%	92
1 2 times a month	7%	11%	20%	62%	43
Less often	12%	7%	18%	62%	103
Never	6%	11%	16%	67%	98
North Country	16%	8%	18%	59%	35
Central / Lakes	7%	6%	7%	79%	62
Connecticut Valley	9%	12%	16%	63%	34
Mass Border	7%	14%	15%	64%	98
Seacoast	3%	6%	25%	66%	59
Manchester Area	11%	4%	24%	60%	66
First Cong. Dist.	9%	6%	21%	65%	185
Second Cong. Dist.	8%	12%	13%	67%	165

**Support for GOP Candidate**

<b>STATEWIDE</b>	<b><u>Romney</u></b> <b>35%</b>	<b><u>Bachmann</u></b> <b>12%</b>	<b><u>Paul</u></b> <b>7%</b>	<b><u>Giuliani</u></b> <b>7%</b>	<b><u>Perry</u></b> <b>4%</b>	<b><u>Other</u></b> <b>15%</b>	<b><u>Don't Know</u></b> <b>19%</b>	<b>(N=)</b> <b>351</b>
Registered Undeclared	31%	15%	11%	5%	3%	14%	20%	154
Registered Republican	40%	10%	5%	8%	5%	14%	17%	182
Democrat	25%	2%	21%	10%	0%	20%	23%	32
Independent	33%	7%	4%	12%	3%	19%	22%	49
Republican	37%	15%	7%	6%	5%	13%	17%	266
Def. decided vote	69%	3%	18%	0%	0%	9%	2%	29
Leaning toward someone	50%	11%	13%	6%	3%	14%	3%	59
Still trying to decide	28%	14%	5%	8%	5%	16%	24%	260
Extremely interested	29%	13%	7%	5%	5%	20%	22%	149
Very interested	40%	14%	7%	7%	4%	14%	13%	141
Somewhat/Not very interested	42%	8%	10%	13%	0%	5%	22%	60
Liberal	32%	4%	13%	10%	2%	4%	36%	19
Moderate	36%	12%	11%	6%	2%	15%	17%	132
Conservative	37%	13%	3%	7%	6%	15%	18%	184
Support Tea Party	30%	20%	7%	5%	7%	15%	16%	167
Neutral	45%	7%	6%	8%	2%	13%	19%	136
Oppose Tea Party	27%	1%	13%	13%	0%	20%	26%	48
Read Union Leader	42%	12%	8%	5%	4%	11%	18%	141
Read Boston Globe	40%	6%	7%	14%	0%	15%	18%	50
Watch WMUR	39%	12%	5%	6%	4%	16%	18%	240
Listen to NHPR	33%	7%	12%	7%	4%	18%	19%	99
18 to 34	30%	3%	33%	9%	0%	5%	20%	29
35 to 49	45%	12%	7%	7%	1%	16%	12%	91
50 to 64	33%	10%	4%	8%	8%	15%	22%	126
65 and over	32%	18%	4%	6%	3%	18%	20%	91
Male	31%	14%	10%	7%	3%	15%	19%	194
Female	40%	10%	4%	8%	5%	14%	18%	157
High school or less	32%	17%	5%	6%	2%	15%	22%	63
Some college	35%	10%	6%	7%	6%	18%	17%	104
College graduate	40%	14%	9%	8%	4%	12%	14%	111
Post graduate	31%	9%	10%	7%	4%	13%	26%	68
Protestant	37%	14%	6%	5%	5%	16%	18%	163
Catholic	40%	13%	6%	11%	5%	13%	12%	108
Other	25%	7%	9%	8%	2%	19%	30%	58
Attend services 1 or more a week	37%	14%	7%	5%	3%	17%	18%	91
1 2 times a month	39%	17%	8%	11%	6%	9%	9%	43
Less often	41%	14%	5%	4%	5%	18%	12%	103
Never	26%	7%	10%	11%	4%	14%	28%	97
North Country	28%	5%	16%	3%	3%	24%	21%	35
Central / Lakes	33%	13%	6%	5%	7%	13%	23%	61
Connecticut Valley	27%	14%	3%	7%	1%	21%	27%	33
Mass Border	43%	10%	7%	8%	4%	9%	19%	98
Seacoast	43%	15%	9%	6%	4%	11%	12%	58
Manchester Area	28%	16%	5%	13%	2%	21%	14%	66
First Cong. Dist.	41%	12%	5%	9%	3%	14%	15%	183
Second Cong. Dist.	29%	13%	10%	5%	5%	16%	22%	164

**Support for GOP Candidate – Second Choice**

STATEWIDE	<u>Bachmann</u>	<u>Romney</u>	<u>Giuliani</u>	<u>Palin</u>	<u>Other</u>	No Second		(N=)
	14%	11%	9%	9%	28%	Choice	Don't Know	
						18%	12%	353
Registered Undeclared	13%	11%	11%	10%	24%	21%	11%	153
Registered Republican	14%	11%	8%	7%	32%	15%	13%	184
Democrat	2%	10%	3%	6%	43%	27%	10%	31
Independent	16%	3%	10%	8%	23%	26%	13%	49
Republican	15%	12%	10%	9%	27%	16%	12%	269
Def. decided vote	15%	3%	19%	16%	28%	18%	0%	28
Leaning toward someone	19%	6%	6%	9%	37%	19%	5%	59
Still trying to decide	12%	13%	9%	8%	25%	17%	15%	263
Extremely interested	10%	12%	9%	6%	35%	17%	11%	150
Very interested	19%	10%	11%	11%	22%	17%	10%	142
Somewhat/Not very interested	10%	8%	6%	11%	26%	23%	16%	60
Liberal	12%	22%	7%	12%	6%	17%	24%	19
Moderate	12%	12%	11%	7%	26%	23%	9%	132
Conservative	15%	9%	9%	10%	29%	14%	13%	187
Support Tea Party	15%	11%	9%	10%	33%	9%	14%	169
Neutral	13%	10%	11%	8%	23%	27%	8%	136
Oppose Tea Party	11%	11%	5%	7%	23%	26%	16%	48
Read Union Leader	11%	7%	11%	7%	34%	19%	11%	142
Read Boston Globe	17%	12%	4%	2%	30%	30%	6%	51
Watch WMUR	14%	10%	11%	10%	26%	15%	13%	240
Listen to NHPR	15%	10%	6%	7%	31%	19%	11%	101
18 to 34	7%	11%	13%	17%	22%	24%	6%	29
35 to 49	15%	12%	12%	10%	24%	17%	10%	91
50 to 64	15%	9%	10%	7%	30%	17%	13%	126
65 and over	11%	9%	7%	6%	32%	19%	16%	92
Male	15%	11%	7%	8%	30%	17%	12%	194
Female	12%	10%	12%	10%	24%	19%	11%	159
High school or less	7%	9%	12%	17%	29%	8%	16%	63
Some college	20%	10%	14%	9%	22%	13%	12%	104
College graduate	15%	11%	8%	6%	29%	22%	9%	112
Post graduate	8%	12%	2%	4%	33%	28%	13%	69
Protestant	16%	9%	7%	9%	31%	15%	12%	165
Catholic	17%	13%	14%	6%	27%	15%	8%	108
Other	5%	5%	10%	12%	20%	34%	15%	58
Attend services 1 or more a week	14%	13%	8%	10%	27%	16%	12%	92
1 2 times a month	19%	5%	8%	15%	35%	15%	3%	43
Less often	14%	13%	13%	7%	27%	15%	12%	103
Never	10%	7%	9%	6%	27%	26%	15%	97
North Country	12%	12%	11%	22%	21%	9%	14%	35
Central / Lakes	18%	10%	11%	3%	22%	16%	19%	62
Connecticut Valley	10%	8%	11%	1%	31%	17%	22%	34
Mass Border	13%	13%	8%	9%	24%	24%	10%	98
Seacoast	16%	10%	12%	11%	28%	18%	5%	58
Manchester Area	12%	9%	6%	10%	40%	16%	7%	66
First Cong. Dist.	16%	7%	10%	11%	29%	18%	8%	184
Second Cong. Dist.	11%	14%	8%	7%	27%	18%	15%	165

**Would Not Support GOP Candidate Under Any Circumstance**

<b>STATEWIDE</b>	<b><u>Palin</u> 23%</b>	<b><u>Gingrich</u> 16%</b>	<b><u>Paul</u> 12%</b>	<b><u>Romney</u> 6%</b>	<b><u>Bachmann</u> 5%</b>	<b><u>Other</u> 13%</b>	<b><u>Don't Know</u> 24%</b>	<b><u>(N=)</u> 346</b>
Registered Undeclared	26%	22%	8%	7%	7%	12%	18%	148
Registered Republican	23%	13%	14%	6%	3%	15%	27%	183
Democrat	46%	0%	7%	4%	19%	8%	17%	32
Independent	23%	27%	13%	6%	3%	10%	17%	46
Republican	21%	16%	13%	7%	4%	14%	25%	263
Def. decided vote	35%	10%	11%	8%	6%	8%	22%	29
Leaning toward someone	31%	19%	15%	4%	12%	11%	7%	57
Still trying to decide	20%	16%	11%	7%	4%	14%	28%	256
Extremely interested	22%	12%	14%	11%	2%	18%	21%	147
Very interested	24%	17%	12%	4%	8%	12%	24%	139
Somewhat/Not very interested	26%	25%	8%	0%	6%	5%	30%	59
Liberal	49%	10%	8%	3%	4%	8%	19%	19
Moderate	32%	19%	10%	6%	8%	7%	17%	130
Conservative	15%	16%	14%	7%	4%	17%	28%	181
Support Tea Party	16%	13%	17%	8%	3%	22%	21%	167
Neutral	27%	22%	9%	6%	6%	4%	26%	130
Oppose Tea Party	42%	9%	2%	1%	9%	8%	29%	49
Read Union Leader	22%	16%	14%	7%	4%	16%	20%	136
Read Boston Globe	35%	16%	22%	0%	6%	7%	14%	51
Watch WMUR	23%	16%	11%	7%	4%	12%	26%	236
Listen to NHPR	35%	10%	14%	3%	5%	16%	17%	98
18 to 34	36%	10%	8%	12%	6%	1%	26%	28
35 to 49	28%	19%	9%	7%	14%	5%	18%	87
50 to 64	18%	19%	19%	6%	1%	15%	22%	123
65 and over	23%	12%	7%	6%	1%	21%	29%	94
Male	25%	16%	13%	6%	5%	12%	22%	190
Female	21%	16%	10%	7%	5%	14%	26%	156
High school or less	9%	15%	13%	15%	5%	15%	28%	63
Some college	24%	16%	10%	6%	5%	13%	27%	102
College graduate	26%	22%	15%	5%	5%	10%	17%	111
Post graduate	33%	9%	8%	3%	7%	17%	24%	64
Protestant	20%	21%	11%	5%	1%	16%	24%	160
Catholic	23%	13%	17%	7%	6%	10%	25%	104
Other	35%	11%	3%	11%	13%	12%	14%	59
Attend services 1 or more a week	21%	16%	13%	5%	2%	11%	31%	91
1 2 times a month	18%	14%	19%	5%	12%	14%	17%	42
Less often	24%	19%	10%	8%	4%	14%	20%	98
Never	31%	16%	8%	8%	6%	12%	19%	97
North Country	26%	21%	5%	0%	3%	18%	26%	35
Central / Lakes	22%	18%	11%	7%	6%	14%	22%	62
Connecticut Valley	24%	18%	3%	11%	3%	19%	23%	34
Mass Border	23%	15%	15%	4%	7%	5%	29%	94
Seacoast	31%	17%	14%	7%	5%	4%	20%	56
Manchester Area	16%	10%	13%	10%	4%	26%	20%	66
First Cong. Dist.	25%	15%	14%	5%	5%	11%	25%	182
Second Cong. Dist.	22%	18%	10%	8%	5%	16%	21%	159



**2012 Presidential Election – Romney vs. Obama  
(2012 Likely General Election Voters)**

	<u>Romney</u>	<u>Obama</u>	<u>Other</u>	<u>Undecided</u>	<u>(N)</u>
<b>STATEWIDE</b>	<b>47%</b>	<b>43%</b>	<b>2%</b>	<b>7%</b>	<b>729</b>
Registered Democrat	9%	82%	2%	6%	180
Registered Undeclared	47%	41%	1%	11%	309
Registered Republican	84%	9%	4%	3%	192
Democrat	5%	89%	2%	4%	286
Independent	42%	32%	3%	23%	128
Republican	88%	6%	2%	4%	304
Def. decided vote	82%	15%	3%	0%	29
Leaning toward someone	80%	16%	2%	2%	59
Still trying to decide	80%	13%	2%	5%	260
Extremely interested	54%	38%	4%	4%	265
Very interested	52%	39%	1%	8%	265
Somewhat/Not very interested	30%	57%	2%	11%	195
Liberal	9%	85%	1%	4%	163
Moderate	40%	48%	2%	10%	291
Conservative	80%	11%	3%	6%	238
Support Tea Party	84%	8%	3%	4%	201
Neutral	57%	31%	1%	11%	268
Oppose Tea Party	8%	83%	2%	7%	261
Read Union Leader	65%	28%	3%	4%	225
Read Boston Globe	31%	60%	1%	8%	136
Watch WMUR	50%	39%	2%	9%	477
Listen to NHPR	29%	64%	0%	6%	262
18 to 34	39%	57%	1%	3%	71
35 to 49	53%	41%	1%	5%	178
50 to 64	45%	44%	3%	8%	256
65 and over	45%	43%	2%	10%	202
Male	50%	37%	3%	10%	352
Female	44%	49%	2%	5%	377
High school or less	51%	35%	4%	10%	145
Some college	62%	28%	2%	9%	173
College graduate	48%	43%	2%	6%	211
Post graduate	29%	64%	1%	6%	193
Protestant	58%	33%	2%	8%	273
Catholic	51%	36%	3%	9%	217
Other	27%	67%	2%	4%	189
Attend services 1 or more a week	54%	34%	4%	9%	180
1 2 times a month	51%	42%	2%	5%	77
Less often	45%	40%	2%	13%	203
Never	41%	54%	2%	3%	236
North Country	50%	41%	2%	8%	64
Central / Lakes	46%	48%	2%	4%	131
Connecticut Valley	41%	45%	5%	9%	101
Mass Border	48%	42%	2%	8%	191
Seacoast	41%	48%	1%	10%	132
Manchester Area	58%	33%	2%	7%	110
First Cong. Dist.	49%	42%	2%	7%	357
Second Cong. Dist.	45%	45%	2%	7%	364

**2012 Presidential Election – Bachmann vs. Obama  
(2012 Likely General Election Voters)**

<b>STATEWIDE</b>	<b><u>Bachmann</u></b> <b>41%</b>	<b><u>Obama</u></b> <b>47%</b>	<b><u>Other</u></b> <b>2%</b>	<b><u>Undecided</u></b> <b>10%</b>	<b><u>(N)</u></b> <b>717</b>
Registered Democrat	5%	87%	2%	7%	178
Registered Undeclared	38%	45%	2%	14%	302
Registered Republican	79%	11%	3%	7%	189
Democrat	4%	89%	1%	5%	285
Independent	31%	43%	5%	21%	122
Republican	80%	9%	1%	9%	298
Def. decided vote	66%	22%	0%	12%	29
Leaning toward someone	71%	22%	4%	3%	56
Still trying to decide	73%	16%	2%	9%	255
Extremely interested	52%	40%	4%	4%	257
Very interested	44%	43%	1%	12%	262
Somewhat/Not very interested	22%	62%	2%	14%	194
Liberal	6%	89%	1%	4%	162
Moderate	31%	54%	2%	13%	282
Conservative	77%	13%	2%	9%	235
Support Tea Party	84%	9%	2%	6%	202
Neutral	44%	37%	2%	17%	257
Oppose Tea Party	4%	87%	2%	6%	258
Read Union Leader	57%	31%	3%	9%	221
Read Boston Globe	27%	65%	0%	7%	134
Watch WMUR	44%	43%	2%	11%	467
Listen to NHPR	24%	66%	1%	9%	262
18 to 34	28%	59%	2%	11%	71
35 to 49	43%	46%	1%	10%	173
50 to 64	40%	49%	3%	9%	251
65 and over	43%	45%	2%	10%	199
Male	46%	41%	2%	11%	345
Female	36%	52%	2%	9%	372
High school or less	42%	41%	3%	14%	141
Some college	59%	28%	3%	10%	171
College graduate	39%	50%	2%	10%	210
Post graduate	26%	67%	1%	7%	188
Protestant	53%	36%	2%	9%	268
Catholic	44%	41%	2%	13%	212
Other	21%	70%	3%	7%	186
Attend services 1 or more a week	45%	36%	2%	16%	179
1 2 times a month	48%	50%	0%	2%	74
Less often	42%	45%	2%	11%	198
Never	34%	56%	3%	7%	234
North Country	45%	43%	2%	10%	62
Central / Lakes	36%	46%	4%	14%	129
Connecticut Valley	37%	51%	4%	8%	100
Mass Border	43%	46%	2%	9%	188
Seacoast	33%	56%	1%	11%	130
Manchester Area	53%	37%	1%	8%	107
First Cong. Dist.	39%	47%	2%	11%	351
Second Cong. Dist.	42%	47%	2%	9%	359

**2012 Presidential Election – Pawlenty vs. Obama  
(2012 Likely General Election Voters)**

	<u>Pawlenty</u> 38%	<u>Obama</u> 47%	<u>Other</u> 2%	<u>Undecided</u> 13%	<u>(N)</u> 715
<b>STATEWIDE</b>					
Registered Democrat	5%	86%	2%	8%	179
Registered Undeclared	35%	45%	1%	18%	301
Registered Republican	76%	12%	2%	10%	191
Democrat	4%	89%	1%	6%	285
Independent	27%	39%	3%	31%	122
Republican	76%	10%	1%	13%	297
Def. decided vote	74%	22%	0%	3%	29
Leaning toward someone	69%	26%	2%	3%	59
Still trying to decide	70%	15%	1%	14%	252
Extremely interested	50%	41%	2%	6%	261
Very interested	41%	43%	1%	15%	259
Somewhat/Not very interested	19%	59%	2%	20%	192
Liberal	5%	86%	1%	8%	162
Moderate	28%	54%	2%	17%	286
Conservative	73%	13%	1%	12%	232
Support Tea Party	82%	9%	2%	8%	197
Neutral	40%	36%	1%	23%	261
Oppose Tea Party	4%	86%	2%	8%	257
Read Union Leader	53%	32%	2%	12%	222
Read Boston Globe	26%	63%	0%	10%	134
Watch WMUR	41%	44%	1%	15%	469
Listen to NHPR	24%	64%	1%	11%	261
18 to 34	21%	61%	0%	18%	70
35 to 49	42%	44%	0%	14%	176
50 to 64	39%	48%	3%	10%	249
65 and over	37%	46%	1%	16%	199
Male	42%	41%	2%	14%	344
Female	35%	52%	1%	13%	372
High school or less	36%	40%	2%	22%	142
Some college	53%	29%	2%	17%	167
College graduate	40%	49%	2%	8%	210
Post graduate	24%	66%	0%	10%	189
Protestant	49%	38%	2%	12%	267
Catholic	42%	41%	1%	16%	210
Other	18%	66%	2%	13%	189
Attend services 1 or more a week	44%	38%	2%	17%	174
1 2 times a month	41%	43%	0%	16%	76
Less often	40%	46%	2%	12%	200
Never	30%	55%	2%	12%	232
North Country	47%	43%	1%	9%	63
Central / Lakes	33%	48%	2%	17%	128
Connecticut Valley	32%	53%	3%	12%	99
Mass Border	43%	44%	1%	12%	191
Seacoast	26%	55%	2%	17%	127
Manchester Area	50%	37%	1%	12%	108
First Cong. Dist.	38%	47%	2%	13%	350
Second Cong. Dist.	38%	47%	1%	13%	358