

# THE WMUR GRANITE STATE POLL

## THE UNIVERSITY OF NEW HAMPSHIRE SURVEY CENTER

October 3, 2012

### NH CONGRESSIONAL RACES REMAIN CLOSE

By: Andrew E. Smith, Ph.D.  
Chad S. Novak, M.A.  
UNH Survey Center  
www.unh.edu/survey-center  
603/862-2226

DURHAM, NH – Democrats Carol Shea-Porter and Ann McLane Kuster have pulled ahead of incumbent Republicans Frank Guinta and Charlie Bass in races for New Hampshire’s two Congressional seats but both races are within the poll’s margin of sampling error.

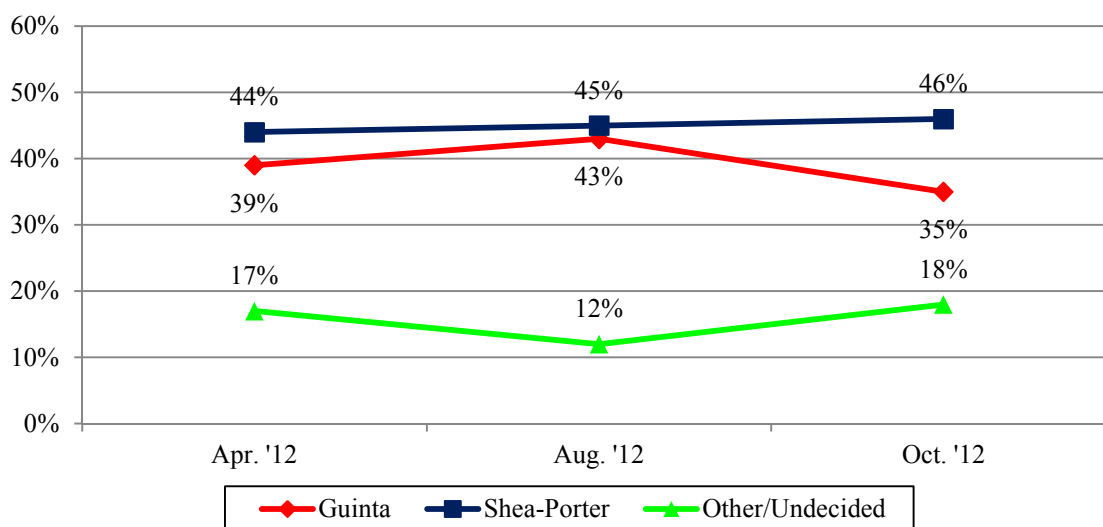
These findings are based on the latest **WMUR Granite State Poll**,\* conducted by the University of New Hampshire Survey Center. Six hundred and thirty-eight (638) randomly selected New Hampshire adults were interviewed by landline and cellular telephone between September 27 and September 30, 2012. The margin of sampling error for the survey is +/- 3.9 percent. Included was a subsample of 273 likely voters in the NH First Congressional District (margin of sampling error +/- 5.9%), and a subsample of 325 Second Congressional District likely voters (margin of sampling error +/-5.4%).

#### First Congressional District

The races for New Hampshire’s two Congressional districts are replays of the 2010 election, but in both cases, the 2010 losers are on track for winning the rematch. Frank Guinta won the 2010 election by 12 percentage points, but the 2012 election looks to be much better for Carol Shea-Porter, who was elected to this seat in 2006 and 2008. Currently, Shea-Porter is favored by 46% of likely voters, Guinta by 35%, and 18% are undecided. When undecided voters are asked which candidate they are most likely to support, Shea-Porter continues to lead Guinta by 47% to 38%, with 2% favoring some other candidate and 12% still undecided.

Guinta leads among Republicans by 81% to 6% while Shea-Porter holds a 85% to 5% lead among Democrats and a 41% to 30% lead among Independents. There is a gender gap in this race with women favoring Shea-Porter by 22 percentage points while men favor Guinta by 5 percentage points.

**NH 1st Congressional District - Guinta vs. Shea-Porter**  
(Likely 2012 General Election Voters)

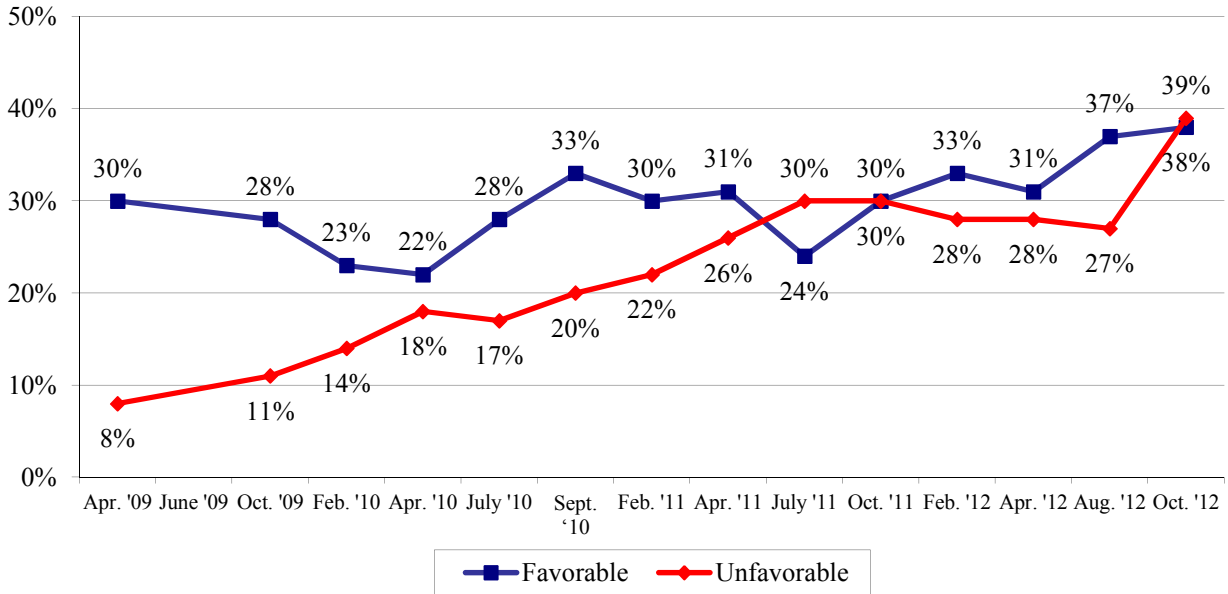


\* We ask that this copyrighted information be referred to as *the Granite State Poll*, sponsored by WMUR-TV, and conducted by the University of New Hampshire Survey Center.

### First Congressional District – Favorability Ratings

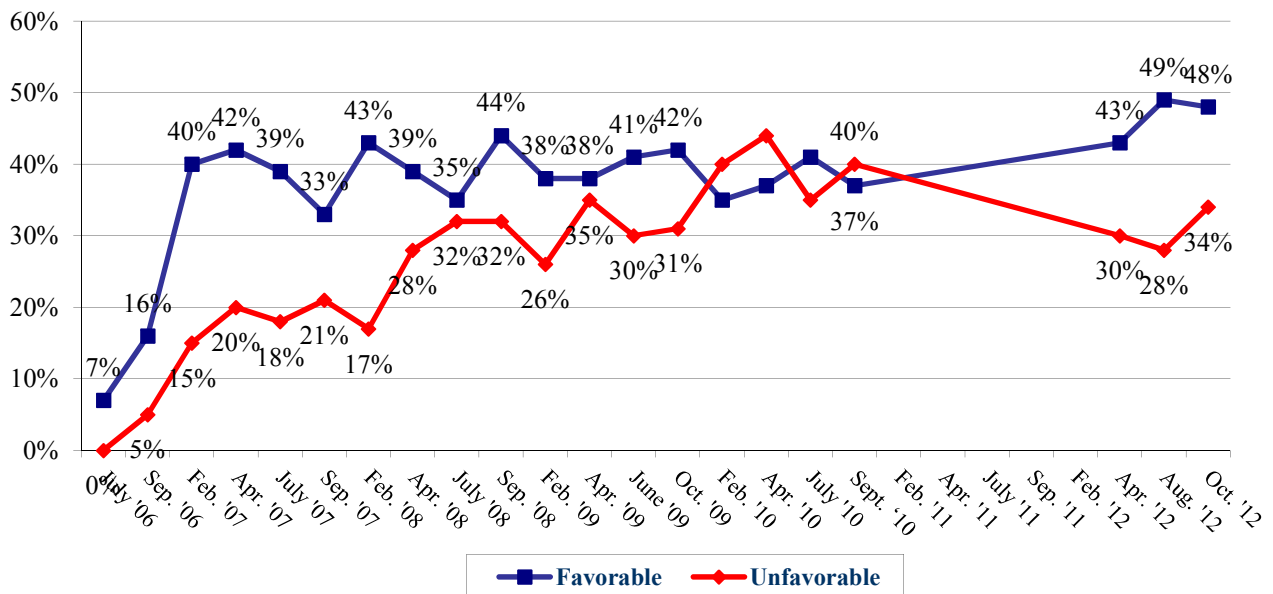
Guinta’s decline in vote share has come in part because he has seen a sharp rise in his unfavorable ratings in the past few months and is considerably less popular than Shea-Porter. Currently, 38% of 1<sup>st</sup> District likely voters have a favorable opinion of Guinta, 39% have an unfavorable opinion of him, 6% are neutral and 17% don’t know enough about him to say. Guinta’s net favorability rating, the percentage who have a favorable opinion of him minus those who have an unfavorable opinion, stands at -1%, down from +10% in August. Among Republicans, his net favorability rating is +57%, -6% among Independents, and a low -46% among Democrats.

#### Favorability Ratings – Frank Guinta, NH 1<sup>st</sup> Congressional District



While Guinta’s popularity has dropped, Shea-Porter’s favorability ratings have remained stable in recent months. Currently, 48% of 1<sup>st</sup> District likely voters say they have a favorable opinion of her, 34% have an unfavorable opinion, 4% are neutral, and 13% are unsure. Shea-Porter’s net favorability rating is +14% overall, down slightly from +21% in August. Shea-Porter’s net favorability rating stands at +71% among Democrats, 0% among Independents, and -47% among Republicans.

#### Favorability Ratings – Carol Shea-Porter NH 1<sup>st</sup> District



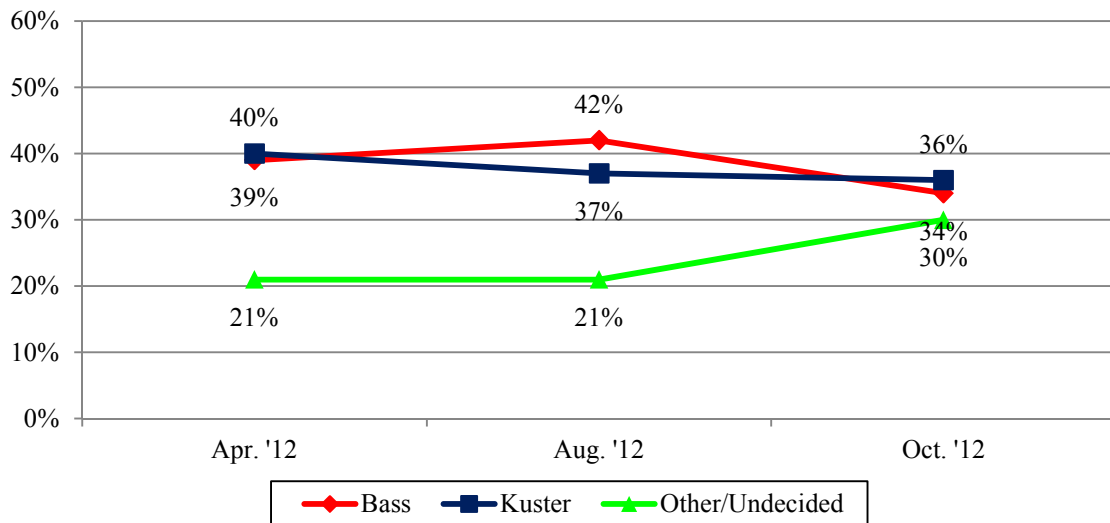
The Libertarian candidate, Seabrook Selectman Brendan Kelly, is unknown to most 1<sup>st</sup> District voters. Currently, 4% of likely voters in the 1<sup>st</sup> District have a favorable opinion of him, 4% have an unfavorable opinion of him, 6% are neutral, and 86% don't know enough about him to say. Kelly's net favorability is at 0%.

### Second Congressional District

In 2010, Charlie Bass defeated Ann McLane Kuster by a mere 3,550 votes and the 2012 rematch favors looks to be as close. Currently, 36% of likely voters say they plan to vote for Kuster, 34% support Bass, 2% prefer some other candidate, and 28% remain undecided. When undecided voters are asked which candidate they are leaning toward, Kuster gets the support of 42% of likely voters, Bass gets 41%, 2% prefer some other candidate, and 16% remain undecided. Bass had led by 5 percentage points in August.

Bass leads Kuster by 86% to 1% among Republicans while Kuster leads by 75% to 7% among Democrats. Independents are split – 28% for Kuster and 25% for Bass.

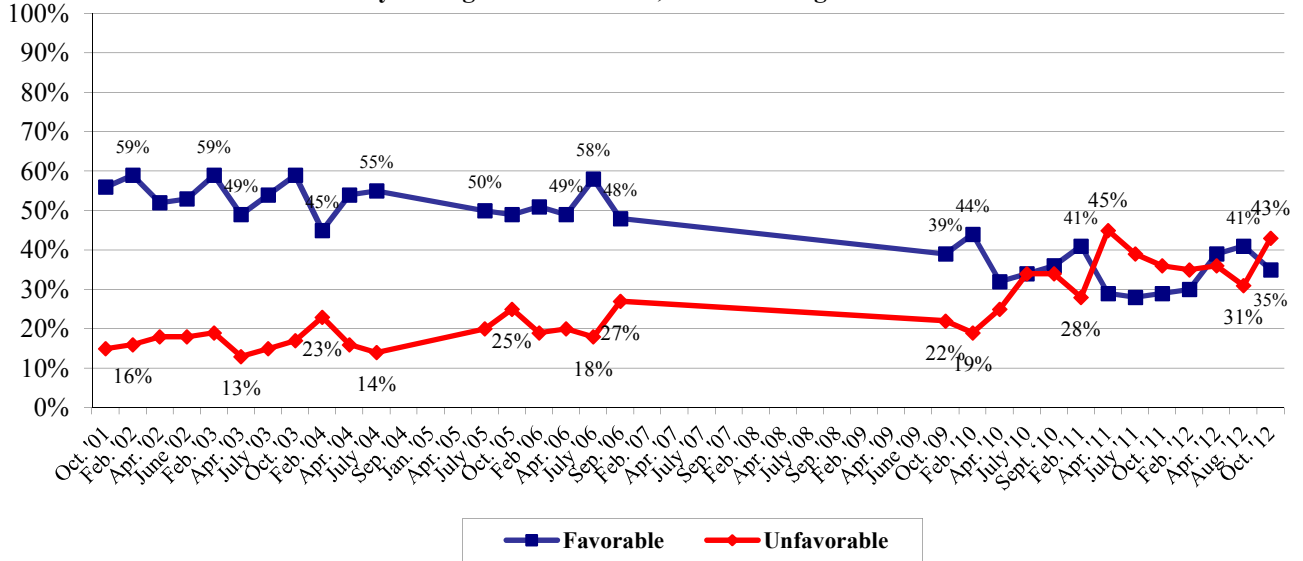
**NH 2nd Congressional District - Bass vs. Kuster  
(Likely 2012 General Election Voters)**



### Second Congressional District – Favorability Ratings

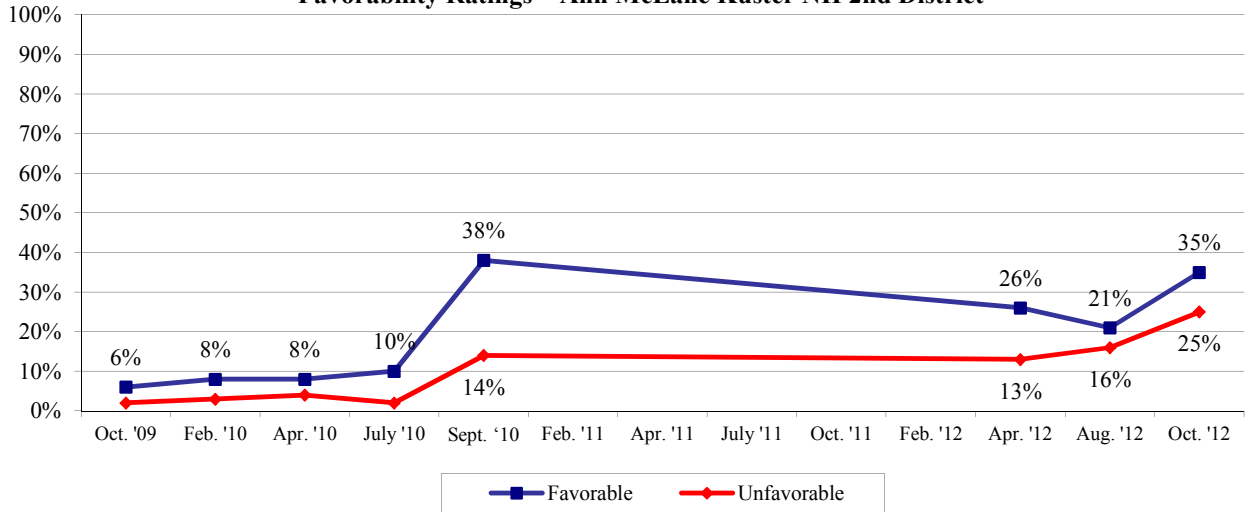
Bass' favorability ratings have dropped up in recent months. Currently, 35% of 2<sup>nd</sup> CD voters have a favorable opinion of Bass, 43% have an unfavorable of him, 7% are neutral and 14% don't know enough about him to say. Bass's net favorability rating is -8%, down from +3% in August. His net favorability rating among Republicans is +49%, -12% among Independents, and -52% among Democrats.

**Favorability Ratings – Charlie Bass, NH 2nd Congressional District**



Kuster is not as well-known as Bass. Currently, 35% of 2<sup>nd</sup> District likely voters have a favorable opinion of Kuster, 25% have an unfavorable opinion of her, 7% are neutral, and 33% don't know enough about her to say. Kuster's net favorability rating is +10%, up from +5% in August; +58% among Democrats, +2% among Independents, and -46% among Republicans.

**Favorability Ratings – Ann McLane Kuster NH 2nd District**



The Libertarian candidate in the Second Congressional District, businessman Hardy Macia, is unknown by to 2<sup>nd</sup> District voters. Currently, only 1% of likely 2<sup>nd</sup> District voters have a favorable opinion of Macia, 4% have an unfavorable opinion of him, 4% are neutral, and 90% don't know enough about him to say. Macia's net favorability stands at -3%.

## Granite State Poll Methodology

These findings are based on the latest WMUR Granite State Poll, conducted by the University of New Hampshire Survey Center. Six hundred and thirty-eight (638) randomly selected New Hampshire adults were interviewed by landline and cellular telephone between September 27 and September 30, 2012. The margin of sampling error for the survey is +/- 3.9 percent. Included was a subsample of 273 likely voters in the NH First Congressional District (margin of sampling error +/- 5.9%), and a subsample of 325 Second Congressional District likely voters (margin of sampling error +/-5.4%).

The data have been weighted to adjust for numbers of adults and telephone lines within households, respondent sex, and region of the state. In addition to potential sampling error, all surveys have other potential sources of non-sampling error including question order effects, question wording effects, and non-response. Due to rounding, percentages may sum to just above or below 100%. Respondent numbers in each demographic may not equal the total respondent number due to respondents choosing not to answer some demographic questions.

### NH 1<sup>st</sup> CD Guinta vs. Shea-Porter

“Next, thinking about the election for Congress in November, will you vote for Frank Guinta, the Republican ... Carol Shea-Porter, the Democrat ... someone else ... or haven’t you decided yet?” [ROTATE CANDIDATES]

	<u>Apr. '12</u>	<u>Aug. '12</u>	<u>Oct. '12</u>
<b>Carol Shea-Porter</b>	44%	45%	<b>46%</b>
<b>Frank Guinta</b>	39%	43%	<b>35%</b>
<b>Other</b>	1%	0%	<b>2%</b>
<b>Undecided</b>	16%	12%	<b>18%</b>
<b>(N=)</b>	(230)	(258)	<b>(270)</b>

### NH 1<sup>st</sup> CD Guinta vs. Shea-Porter, With Undecideds Probed

“Next, thinking about the election for Congress in November, will you vote for Frank Guinta, the Republican ... Carol Shea-Porter, the Democrat ... someone else ... or haven’t you decided yet?” [ROTATE CANDIDATES]

“Would you say you are leaning towards Frank Guinta, the Republican or Carol Shea-Porter, the Democrat?”

	<u>Oct. '12</u>
<b>Carol Shea-Porter</b>	<b>47%</b>
<b>Frank Guinta</b>	<b>38%</b>
<b>Other</b>	<b>2%</b>
<b>Undecided</b>	<b>12%</b>
<b>(N=)</b>	<b>(269)</b>

### Favorability Rating – Frank Guinta - NH 1<sup>st</sup> District

"Next, I'd like to get your overall opinion of some people in the news. As I read each name, please say if you have a favorable or unfavorable opinion of this person - or if you have never heard of him or her. Congressman (Former Manchester Mayor) Frank Guinta?"

<u>1st C.D.</u>	<u>Favorable</u>	<u>Neutral</u>	<u>Unfavorable</u>	<u>Don't Know</u>	<u>Net</u>	<u>(N)</u>
<b>Oct. '12 - LVs</b>	<b>38%</b>	<b>6%</b>	<b>39%</b>	<b>17%</b>	<b>-1%</b>	<b>(273)</b>
<b>Aug. '12</b>	37%	5%	27%	31%	+6%	(270)
<b>Apr. '12</b>	31%	9%	28%	33%	+3%	(253)
<b>Feb. '12</b>	33%	8%	28%	30%	+5%	(256)
<b>Oct. '11</b>	30%	12%	30%	28%	0%	(247)
<b>July '11</b>	24%	12%	30%	34%	-6%	(248)
<b>Apr. '11</b>	31%	10%	26%	33%	+5%	(243)
<b>Feb. '11</b>	30%	12%	22%	35%	+8%	(236)
<b>Sept. '10</b>	33%	4%	20%	42%	+13%	(262)
<b>July '10</b>	28%	9%	17%	46%	+11%	(264)
<b>Apr. '10</b>	22%	7%	18%	52%	+4%	(257)
<b>Feb. '10</b>	23%	7%	14%	55%	+9%	(251)
<b>Oct. '09</b>	28%	9%	11%	52%	+17%	(251)
<b>April '09</b>	30%	12%	8%	51%	+22%	(260)

**Favorability Rating – Former U.S. Representative Carol Shea-Porter - NH 1<sup>st</sup> District**

"Next, I'd like to get your overall opinion of some people in the news. As I read each name, please say if you have a favorable or unfavorable opinion of this person - or if you have never heard of him or her. Former Congresswoman Carol Shea-Porter?"

<u>1st C.D.</u>	<u>Favorable</u>	<u>Neutral</u>	<u>Unfavorable</u>	<u>Don't Know</u>	<u>Net</u>	<u>(N)</u>
<b>Oct. '12 - LVs</b>	<b>48%</b>	<b>4%</b>	<b>34%</b>	<b>13%</b>	<b>+14%</b>	<b>(273)</b>
<b>Aug. '12</b>	49%	5%	28%	18%	+21%	(270)
<b>Apr. '12</b>	43%	3%	30%	24%	+13%	(252)
<b>Sept. '10</b>	37%	8%	40%	14%	-3%	(262)
<b>July '10</b>	41%	7%	35%	17%	+6%	(270)
<b>Apr. '10</b>	37%	7%	44%	12%	-7%	(257)
<b>Feb. '10</b>	35%	7%	40%	19%	-5%	(251)
<b>Oct. '09</b>	42%	7%	31%	20%	+11%	(248)
<b>Jun. '09</b>	41%	8%	30%	21%	+11%	(287)
<b>Apr. '09</b>	38%	4%	35%	23%	+3%	(260)
<b>Feb. '09</b>	38%	10%	26%	27%	+12%	(311)
<b>Sept. '08</b>	44%	5%	31%	20%	+13%	(251)
<b>July '08</b>	35%	9%	32%	24%	+3%	(235)
<b>Apr. '08</b>	39%	12%	28%	21%	+11%	(251)
<b>Feb. '08</b>	43%	13%	17%	26%	+26%	(267)
<b>Sept. '07</b>	33%	17%	21%	29%	+12%	(228)
<b>July '07</b>	39%	15%	18%	28%	+21%	(252)
<b>Apr. '07</b>	42%	15%	20%	24%	+22%	(251)
<b>Feb. '07</b>	40%	17%	15%	28%	+25%	(248)
<b>Sept. '06</b>	16%	14%	5%	65%	+11%	(266)
<b>July '06</b>	7%	7%	0%	86%	+7%	(256)

**Favorability Rating – Seabrook Selectman Brendan Kelly - NH 1<sup>st</sup> District**

"Next, I'd like to get your overall opinion of some people in the news. As I read each name, please say if you have a favorable or unfavorable opinion of this person - or if you have never heard of him or her. Seabrook Selectman Brendan Kelly?"

<u>1st C.D.</u>	<u>Favorable</u>	<u>Neutral</u>	<u>Unfavorable</u>	<u>Don't Know</u>	<u>Net</u>	<u>(N)</u>
<b>Oct. '12 - LVs</b>	<b>4%</b>	<b>6%</b>	<b>4%</b>	<b>86%</b>	<b>0%</b>	<b>(273)</b>

**NH 2<sup>nd</sup> CD Bass vs. Kuster**

"Next, thinking about the election for Congress in November, will you vote for Charlie Bass, the Republican ... Ann McLane Kuster, the Democrat ... someone else ... or haven't you decided yet?" [ROTATE CANDIDATES]

	<u>Apr. '12</u>	<u>Aug. '12</u>	<u>Oct. '12</u>
<b>Ann McLane Kuster</b>	40%	37%	<b>36%</b>
<b>Charlie Bass</b>	39%	42%	<b>34%</b>
<b>Other</b>	1%	-	<b>2%</b>
<b>Undecided</b>	20%	21%	<b>28%</b>
<b>(N=)</b>	<b>(251)</b>	<b>(284)</b>	<b>(323)</b>

## NH 2<sup>nd</sup> CD Bass vs. Kuster, With Undecideds Probed

"Next, thinking about the election for Congress in November, will you vote for Charlie Bass, the Republican ... Ann McLane Kuster, the Democrat ... someone else ... or haven't you decided yet?" [ROTATE CANDIDATES]

"Would you say you are leaning towards Charlie Bass, the Republican or Ann McLane Kuster, the Democrat?"

	<u>Oct. '12</u>
<b>Ann McLane Kuster</b>	<b>42%</b>
<b>Charlie Bass</b>	<b>41%</b>
<b>Other</b>	<b>2%</b>
<b>Undecided</b>	<b>16%</b>
<b>(N=)</b>	<b>(322)</b>

### Favorability Rating –Charlie Bass – NH 2<sup>nd</sup> District

"Next, I'd like to get your overall opinion of some people in the news. As I read each name, please say if you have a favorable or unfavorable opinion of this person - or if you have never heard of him or her. Congressman (Former Congressman) Charlie Bass?"

<u>2<sup>nd</sup> C.D.</u>	<u>Favorable</u>	<u>Neutral</u>	<u>Unfavorable</u>	<u>Don't Know</u>	<u>Net</u>	<u>(N)</u>
<b>Oct. '12 - LVs</b>	<b>35%</b>	<b>7%</b>	<b>43%</b>	<b>14%</b>	<b>-8%</b>	<b>(325)</b>
<b>Aug. '12</b>	41%	6%	31%	23%	+10%	(308)
<b>Apr. '12</b>	39%	12%	36%	15%	+3%	(273)
<b>Feb. '12</b>	30%	13%	35%	22%	-5%	(271)
<b>Oct. '11</b>	29%	16%	36%	20%	-7%	(300)
<b>July '11</b>	28%	12%	39%	21%	-11%	(263)
<b>Apr. '11</b>	29%	10%	45%	16%	-16%	(257)
<b>Feb. '11</b>	41%	14%	28%	18%	+13%	(284)
<b>Sept. '10</b>	36%	10%	34%	20%	+2%	(244)
<b>July '10</b>	34%	6%	34%	27%	0%	(226)
<b>Apr. '10</b>	32%	9%	25%	33%	+7%	(251)
<b>Feb. '10</b>	44%	6%	19%	31%	+25%	(241)
<b>Oct. '09</b>	39%	10%	22%	28%	+17%	(250)
<b>Sept. '06</b>	48%	12%	27%	13%	+21%	(248)
<b>July '06</b>	58%	10%	18%	13%	+40%	(246)
<b>Apr. '06</b>	49%	12%	20%	19%	+29%	(233)
<b>Feb. '06</b>	51%	18%	19%	13%	+32%	(232)
<b>Oct. '05</b>	49%	12%	25%	14%	+24%	(226)
<b>July '05</b>	50%	13%	20%	17%	+30%	(232)
<b>July '04</b>	55%	12%	14%	19%	+41%	(238)
<b>Apr. '04</b>	54%	12%	16%	17%	+38%	(274)
<b>Feb. '04</b>	45%	12%	23%	20%	+22%	(265)
<b>Oct. '03</b>	59%	10%	17%	14%	+42%	(259)
<b>June '03</b>	54%	14%	15%	17%	+39%	(241)
<b>Apr. '03</b>	49%	11%	13%	27%	+36%	(238)
<b>Feb. '03</b>	59%	7%	19%	16%	+40%	(318)
<b>June '02</b>	53%	15%	18%	15%	+35%	(306)
<b>Apr. '02</b>	52%	11%	18%	29%	+34%	(333)
<b>Feb. '02</b>	59%	9%	16%	27%	+43%	(265)
<b>Oct. '01</b>	56%	13%	15%	27%	+41%	(353)

**Favorability Rating – Ann McLane Kuster - NH 2<sup>nd</sup> District**

"Next, I'd like to get your overall opinion of some people in the news. As I read each name, please say if you have a favorable or unfavorable opinion of this person - or if you have never heard of him or her. Attorney Ann McLane Kuster?"

<u>2<sup>nd</sup> C.D.</u>	<u>Favorable</u>	<u>Neutral</u>	<u>Unfavorable</u>	<u>Don't Know</u>	<u>Net</u>	<u>(N)</u>
Oct. '12 - LVs	35%	7%	25%	33%	+10%	(325)
Aug. '12	21%	1%	16%	61%	+5%	(311)
Apr. '12	26%	3%	13%	58%	+13%	(270)
Sept. '10	38%	6%	14%	42%	+24%	(243)
July '10	10%	3%	2%	85%	+8%	(226)
Apr. '10	8%	7%	4%	81%	+4%	(250)
Feb. '10	8%	2%	3%	87%	+5%	(240)
Oct. '09	6%	5%	2%	87%	+4%	(252)

**Favorability Rating – Hardy Macia - NH 2<sup>nd</sup> District**

"Next, I'd like to get your overall opinion of some people in the news. As I read each name, please say if you have a favorable or unfavorable opinion of this person - or if you have never heard of him or her. Businessman Hardy Macia?"

<u>2<sup>nd</sup> C.D.</u>	<u>Favorable</u>	<u>Neutral</u>	<u>Unfavorable</u>	<u>Don't Know</u>	<u>Net</u>	<u>(N)</u>
Oct. '12 - LVs	1%	4%	4%	90%	-3%	(325)



**Favorability Rating – Congressman Frank Guinta  
(2012 Likely General Election Voters)**

<b>FIRST CONG. DIST.</b>	<b><u>Favorable</u></b> <b>38%</b>	<b><u>Neutral</u></b> <b>6%</b>	<b><u>Unfavorable</u></b> <b>39%</b>	<b><u>DK</u></b> <b>17%</b>	<b><u>(N)</u></b> <b>273</b>
Registered Democrat	14%	7%	59%	20%	80
Registered Undeclared	38%	7%	43%	12%	103
Registered Republican	69%	3%	17%	11%	74
Democrat	15%	6%	61%	17%	122
Independent	35%	12%	41%	11%	39
Republican	68%	3%	11%	18%	104
Liberal	12%	1%	73%	14%	54
Moderate	35%	9%	42%	14%	110
Conservative	66%	7%	12%	16%	86
Support Tea Party	76%	5%	7%	13%	67
Neutral	42%	8%	30%	19%	65
Oppose Tea Party	18%	5%	63%	14%	127
McCain/Palin Voter	71%	2%	11%	15%	93
Obama/Biden Voter	18%	7%	57%	18%	150
Other	60%	23%	16%	0%	8
Did Not Vote in 2008	36%	12%	33%	19%	15
Union household	27%	10%	43%	20%	42
Non union	42%	5%	37%	16%	225
Read Union Leader	55%	5%	31%	9%	103
Read Boston Globe	31%	11%	48%	10%	48
Watch WMUR	39%	8%	39%	14%	166
Listen to NHPR	24%	5%	56%	15%	88
18 to 34	32%	2%	40%	26%	34
35 to 49	41%	8%	28%	23%	50
50 to 64	33%	10%	40%	17%	85
65 and over	46%	3%	43%	8%	94
Male	44%	9%	34%	13%	134
Female	33%	3%	44%	20%	139
High school or less	42%	5%	30%	23%	44
Some college	33%	9%	37%	21%	63
College graduate	38%	6%	42%	14%	95
Post graduate	40%	4%	43%	14%	67
Attend services 1 or more/week	51%	5%	33%	11%	70
1 2 times a month	36%	6%	47%	11%	25
Less often	40%	8%	36%	16%	85
Never	26%	6%	45%	23%	76
North Country	45%	10%	30%	15%	19
Central / Lakes	32%	2%	40%	26%	31
Mass Border	41%	8%	33%	18%	51
Seacoast	32%	8%	43%	17%	102
Manchester Area	47%	2%	40%	12%	70

**Favorability Rating – Congressman Charlie Bass  
(2012 Likely General Election Voters)**

<b>SECOND CONG. DIST.</b>	<b><u>Favorable</u></b> <b>35%</b>	<b><u>Neutral</u></b> <b>7%</b>	<b><u>Unfavorable</u></b> <b>43%</b>	<b><u>DK</u></b> <b>14%</b>	<b><u>(N)</u></b> <b>325</b>
Registered Democrat	11%	7%	66%	16%	85
Registered Undeclared	30%	9%	47%	14%	127
Registered Republican	71%	4%	21%	3%	87
Democrat	12%	9%	64%	15%	154
Independent	23%	5%	35%	38%	40
Republican	66%	6%	21%	6%	126
Liberal	3%	7%	76%	15%	73
Moderate	37%	9%	38%	16%	138
Conservative	59%	5%	28%	8%	96
Support Tea Party	68%	3%	22%	7%	85
Neutral	45%	5%	27%	23%	70
Oppose Tea Party	13%	10%	63%	13%	152
McCain/Palin Voter	65%	7%	24%	5%	123
Obama/Biden Voter	13%	9%	66%	13%	163
Other	46%	0%	42%	12%	7
Did Not Vote in 2008	32%	4%	6%	58%	25
Union household	38%	5%	52%	4%	42
Non union	35%	8%	42%	16%	281
Read Union Leader	47%	5%	38%	9%	88
Read Boston Globe	27%	3%	62%	8%	46
Watch WMUR	40%	7%	44%	9%	189
Listen to NHPR	28%	8%	50%	14%	119
18 to 34	29%	10%	13%	48%	29
35 to 49	31%	8%	45%	16%	53
50 to 64	29%	5%	54%	11%	127
65 and over	44%	8%	42%	6%	104
Male	39%	8%	38%	15%	160
Female	32%	6%	48%	14%	165
High school or less	38%	7%	36%	19%	80
Some college	39%	11%	34%	16%	61
College graduate	37%	8%	41%	14%	111
Post graduate	26%	4%	62%	9%	71
Attend services 1 or more/week	50%	8%	37%	5%	86
1 2 times a month	46%	3%	21%	30%	30
Less often	37%	6%	46%	11%	88
Never	15%	10%	57%	18%	102
North Country	39%	5%	55%	2%	29
Central / Lakes	42%	5%	44%	9%	80
Connecticut Valley	26%	8%	49%	17%	84
Mass Border	37%	10%	32%	21%	119
Manchester Area	25%	0%	75%	0%	13

**Favorability Rating – Carol Shea-Porter  
(2012 Likely General Election Voters)**

<b>FIRST CONG. DIST.</b>	<b><u>Favorable</u></b> <b>48%</b>	<b><u>Neutral</u></b> <b>4%</b>	<b><u>Unfavorable</u></b> <b>34%</b>	<b><u>DK</u></b> <b>13%</b>	<b><u>(N)</u></b> <b>273</b>
Registered Democrat	84%	2%	0%	14%	80
Registered Undeclared	45%	6%	40%	9%	103
Registered Republican	14%	5%	68%	14%	74
Democrat	77%	4%	6%	13%	122
Independent	42%	6%	42%	9%	39
Republican	17%	4%	64%	15%	104
Liberal	82%	0%	2%	16%	54
Moderate	50%	5%	37%	7%	110
Conservative	19%	7%	59%	16%	86
Support Tea Party	11%	5%	77%	8%	67
Neutral	36%	5%	38%	21%	65
Oppose Tea Party	73%	4%	12%	10%	127
McCain/Palin Voter	16%	4%	69%	11%	93
Obama/Biden Voter	70%	4%	11%	14%	150
Other	32%	18%	50%	0%	8
Did Not Vote in 2008	20%	2%	58%	20%	15
Union household	57%	10%	28%	5%	42
Non union	45%	3%	36%	15%	225
Read Union Leader	40%	3%	50%	7%	103
Read Boston Globe	63%	2%	24%	10%	48
Watch WMUR	47%	6%	36%	11%	166
Listen to NHPR	65%	4%	21%	10%	88
18 to 34	48%	0%	29%	23%	34
35 to 49	41%	2%	39%	19%	50
50 to 64	58%	10%	24%	9%	85
65 and over	42%	3%	45%	11%	94
Male	39%	6%	41%	14%	134
Female	57%	3%	28%	13%	139
High school or less	36%	4%	32%	27%	44
Some college	48%	4%	30%	17%	63
College graduate	45%	4%	43%	8%	95
Post graduate	61%	5%	26%	9%	67
Attend services 1 or more/week	36%	4%	51%	9%	70
1 2 times a month	54%	0%	32%	14%	25
Less often	52%	4%	31%	13%	85
Never	51%	7%	24%	18%	76
North Country	53%	0%	37%	9%	19
Central / Lakes	44%	3%	32%	20%	31
Mass Border	41%	6%	32%	21%	51
Seacoast	52%	6%	30%	11%	102
Manchester Area	47%	1%	42%	10%	70

**Favorability Rating – Seabrook Selectman Brendan Kelly  
(2012 Likely General Election Voters)**

<b>FIRST CONG. DIST.</b>	<b><u>Favorable</u></b> <b>4%</b>	<b><u>Neutral</u></b> <b>6%</b>	<b><u>Unfavorable</u></b> <b>4%</b>	<b><u>DK</u></b> <b>86%</b>	<b><u>(N)</u></b> <b>273</b>
Registered Democrat	2%	5%	1%	92%	80
Registered Undeclared	5%	3%	4%	87%	103
Registered Republican	5%	10%	7%	78%	74
Democrat	4%	6%	1%	90%	122
Independent	0%	3%	5%	92%	39
Republican	7%	7%	6%	80%	104
Liberal	3%	5%	1%	90%	54
Moderate	6%	4%	5%	86%	110
Conservative	3%	10%	4%	83%	86
Support Tea Party	9%	7%	4%	80%	67
Neutral	4%	9%	3%	84%	65
Oppose Tea Party	2%	4%	4%	91%	127
McCain/Palin Voter	7%	8%	4%	80%	93
Obama/Biden Voter	3%	5%	1%	91%	150
Other	0%	0%	18%	82%	8
Did Not Vote in 2008	5%	2%	19%	74%	15
Union household	9%	14%	3%	74%	42
Non union	4%	4%	4%	88%	225
Read Union Leader	7%	7%	6%	79%	103
Read Boston Globe	4%	7%	7%	82%	48
Watch WMUR	5%	5%	4%	86%	166
Listen to NHPR	3%	7%	5%	85%	88
18 to 34	2%	0%	6%	92%	34
35 to 49	2%	6%	3%	89%	50
50 to 64	3%	8%	1%	89%	85
65 and over	8%	6%	4%	82%	94
Male	6%	8%	5%	81%	134
Female	2%	3%	3%	92%	139
High school or less	8%	5%	6%	81%	44
Some college	8%	8%	7%	77%	63
College graduate	3%	3%	1%	92%	95
Post graduate	1%	7%	0%	93%	67
Attend services 1 or more/week	3%	3%	4%	90%	70
1 2 times a month	6%	3%	0%	91%	25
Less often	6%	6%	0%	88%	85
Never	5%	9%	4%	82%	76
North Country	0%	12%	0%	88%	19
Central / Lakes	5%	0%	7%	88%	31
Mass Border	0%	8%	2%	90%	51
Seacoast	6%	5%	4%	85%	102
Manchester Area	6%	5%	5%	84%	70

**Favorability Rating – Attorney Ann McLane Kuster  
(2012 Likely General Election Voters)**

<b>SECOND CONG. DIST.</b>	<b><u>Favorable</u> 35%</b>	<b><u>Neutral</u> 7%</b>	<b><u>Unfavorable</u> 25%</b>	<b><u>DK</u> 33%</b>	<b><u>(N)</u> 325</b>
Registered Democrat	68%	5%	2%	25%	85
Registered Undeclared	32%	8%	28%	33%	127
Registered Republican	8%	9%	52%	32%	87
Democrat	62%	6%	4%	28%	154
Independent	21%	14%	19%	47%	40
Republican	7%	7%	53%	33%	126
Liberal	70%	4%	1%	25%	73
Moderate	37%	9%	25%	29%	138
Conservative	8%	8%	45%	39%	96
Support Tea Party	4%	9%	58%	29%	85
Neutral	25%	3%	31%	41%	70
Oppose Tea Party	61%	8%	8%	23%	152
McCain/Palin Voter	7%	7%	54%	33%	123
Obama/Biden Voter	60%	9%	4%	27%	163
Other	35%	0%	46%	20%	7
Did Not Vote in 2008	21%	0%	26%	53%	25
Union household	56%	5%	22%	17%	42
Non union	32%	7%	26%	35%	281
Read Union Leader	31%	10%	31%	28%	88
Read Boston Globe	49%	5%	22%	25%	46
Watch WMUR	36%	6%	30%	29%	189
Listen to NHPR	54%	7%	14%	25%	119
18 to 34	30%	0%	14%	57%	29
35 to 49	26%	6%	30%	38%	53
50 to 64	42%	8%	24%	26%	127
65 and over	36%	9%	24%	31%	104
Male	32%	6%	30%	32%	160
Female	38%	8%	21%	33%	165
High school or less	27%	9%	20%	44%	80
Some college	30%	8%	34%	28%	61
College graduate	38%	5%	31%	25%	111
Post graduate	43%	6%	13%	37%	71
Attend services 1 or more/week	21%	12%	30%	37%	86
1 2 times a month	27%	0%	28%	45%	30
Less often	40%	6%	30%	24%	88
Never	50%	6%	12%	32%	102
North Country	45%	22%	20%	13%	29
Central / Lakes	43%	5%	31%	21%	80
Connecticut Valley	40%	7%	18%	35%	84
Mass Border	23%	5%	27%	45%	119
Manchester Area	47%	0%	37%	17%	13

**Favorability Rating – Businessman Hardy Macia  
(2012 Likely General Election Voters)**

<b>SECOND CONG. DIST.</b>	<b><u>Favorable</u></b> <b>1%</b>	<b><u>Neutral</u></b> <b>4%</b>	<b><u>Unfavorable</u></b> <b>4%</b>	<b><u>DK</u></b> <b>90%</b>	<b><u>(N)</u></b> <b>325</b>
Registered Democrat	1%	2%	3%	94%	85
Registered Undeclared	1%	8%	3%	88%	127
Registered Republican	3%	2%	6%	88%	87
Democrat	0%	3%	3%	93%	154
Independent	1%	6%	3%	90%	40
Republican	3%	5%	6%	86%	126
Liberal	1%	7%	0%	93%	73
Moderate	1%	6%	6%	87%	138
Conservative	3%	1%	4%	92%	96
Support Tea Party	3%	3%	6%	87%	85
Neutral	1%	4%	3%	92%	70
Oppose Tea Party	1%	6%	4%	89%	152
McCain/Palin Voter	3%	3%	4%	89%	123
Obama/Biden Voter	1%	5%	3%	91%	163
Other	0%	24%	0%	76%	7
Did Not Vote in 2008	0%	0%	11%	89%	25
Union household	1%	7%	1%	90%	42
Non union	2%	4%	5%	90%	281
Read Union Leader	1%	2%	6%	91%	88
Read Boston Globe	4%	2%	3%	92%	46
Watch WMUR	1%	3%	6%	90%	189
Listen to NHPR	2%	5%	2%	91%	119
18 to 34	3%	2%	3%	92%	29
35 to 49	3%	5%	2%	90%	53
50 to 64	2%	6%	4%	88%	127
65 and over	0%	3%	6%	91%	104
Male	2%	7%	7%	84%	160
Female	1%	2%	2%	96%	165
High school or less	3%	1%	3%	93%	80
Some college	0%	6%	7%	87%	61
College graduate	1%	5%	6%	88%	111
Post graduate	2%	6%	1%	91%	71
Attend services 1 or more/week	1%	5%	5%	90%	86
1 2 times a month	0%	0%	2%	98%	30
Less often	2%	4%	7%	87%	88
Never	2%	6%	3%	89%	102
North Country	0%	4%	4%	92%	29
Central / Lakes	1%	2%	8%	89%	80
Connecticut Valley	2%	7%	4%	87%	84
Mass Border	2%	4%	2%	91%	119
Manchester Area	0%	7%	0%	93%	13

**2012 First Congressional District Election – Guinta vs. Shea-Porter  
(2012 Likely General Election Voters)**

<b>FIRST CONG. DIST.</b>	<b><u>Guinta</u></b> <b>35%</b>	<b><u>Shea-Porter</u></b> <b>46%</b>	<b><u>Other</u></b> <b>2%</b>	<b><u>Undecided</u></b> <b>18%</b>	<b><u>(N)</u></b> <b>270</b>
Registered Democrat	2%	88%	1%	9%	80
Registered Undeclared	35%	44%	1%	20%	101
Registered Republican	73%	7%	4%	15%	74
Democrat	4%	84%	0%	12%	120
Independent	28%	35%	3%	34%	39
Republican	74%	6%	3%	17%	104
Liberal	3%	88%	0%	10%	54
Moderate	28%	49%	3%	20%	108
Conservative	71%	11%	2%	16%	85
Support Tea Party	84%	5%	2%	9%	67
Neutral	39%	29%	3%	30%	65
Oppose Tea Party	9%	75%	1%	15%	125
McCain/Palin Voter	78%	6%	2%	14%	90
Obama/Biden Voter	10%	73%	0%	16%	149
Other	36%	9%	0%	55%	8
Did Not Vote in 2008	35%	16%	18%	31%	15
Union household	25%	48%	0%	27%	42
Non union	38%	44%	2%	16%	222
Read Union Leader	50%	32%	0%	18%	103
Read Boston Globe	25%	58%	2%	15%	48
Watch WMUR	36%	44%	0%	19%	165
Listen to NHPR	23%	66%	2%	9%	85
18 to 34	12%	47%	8%	33%	33
35 to 49	39%	40%	3%	18%	50
50 to 64	28%	53%	1%	18%	83
65 and over	48%	38%	0%	13%	94
Male	41%	40%	4%	15%	133
Female	29%	52%	0%	20%	136
High school or less	42%	40%	1%	16%	44
Some college	26%	42%	5%	27%	63
College graduate	40%	46%	0%	14%	92
Post graduate	30%	54%	1%	15%	67
Attend services 1 or more/week	48%	33%	1%	17%	68
1 2 times a month	34%	54%	5%	7%	25
Less often	30%	44%	2%	25%	85
Never	28%	55%	2%	15%	74
North Country	39%	46%	0%	15%	18
Central / Lakes	30%	51%	5%	15%	31
Mass Border	32%	42%	2%	24%	50
Seacoast	31%	49%	1%	19%	101
Manchester Area	44%	42%	1%	13%	70

**2012 First Congressional District Election – Guinta vs. Shea-Porter – with leaners  
(2012 Likely General Election Voters)**

<b>FIRST CONG. DIST.</b>	<b><u>Guinta</u></b> <b>38%</b>	<b><u>Shea-Porter</u></b> <b>47%</b>	<b><u>Other</u></b> <b>2%</b>	<b><u>Undecided</u></b> <b>12%</b>	<b><u>(N)</u></b> <b>269</b>
Registered Democrat	3%	88%	1%	8%	80
Registered Undeclared	39%	48%	1%	12%	101
Registered Republican	78%	7%	4%	10%	74
Democrat	5%	85%	0%	9%	120
Independent	30%	41%	3%	26%	39
Republican	81%	6%	3%	10%	104
Liberal	4%	88%	0%	8%	54
Moderate	33%	51%	3%	13%	108
Conservative	73%	12%	2%	13%	85
Support Tea Party	89%	5%	2%	4%	67
Neutral	42%	32%	3%	23%	65
Oppose Tea Party	11%	77%	1%	11%	125
McCain/Palin Voter	83%	6%	2%	9%	90
Obama/Biden Voter	12%	75%	0%	12%	149
Other	36%	9%	0%	55%	8
Did Not Vote in 2008	42%	26%	18%	14%	14
Union household	30%	54%	0%	16%	42
Non union	41%	45%	2%	12%	221
Read Union Leader	53%	33%	0%	14%	103
Read Boston Globe	29%	61%	2%	8%	48
Watch WMUR	40%	45%	0%	14%	164
Listen to NHPR	26%	66%	2%	6%	85
18 to 34	17%	51%	8%	25%	33
35 to 49	46%	43%	3%	9%	50
50 to 64	30%	55%	1%	13%	83
65 and over	50%	39%	0%	11%	94
Male	46%	41%	4%	9%	133
Female	31%	53%	0%	15%	136
High school or less	44%	46%	1%	9%	44
Some college	34%	42%	5%	18%	63
College graduate	41%	47%	0%	12%	92
Post graduate	34%	55%	1%	10%	67
Attend services 1 or more/week	52%	35%	1%	12%	68
1 2 times a month	38%	54%	5%	4%	25
Less often	35%	45%	2%	19%	85
Never	29%	58%	2%	11%	73
North Country	39%	46%	0%	15%	18
Central / Lakes	34%	51%	5%	11%	31
Mass Border	33%	46%	2%	18%	50
Seacoast	36%	50%	1%	13%	100
Manchester Area	47%	44%	1%	8%	70



**2012 Second Congressional District Election – Bass vs. Kuster  
(2012 Likely General Election Voters)**

<b>SECOND CONG. DIST.</b>	<b><u>Bass</u> 34%</b>	<b><u>Kuster</u> 36%</b>	<b><u>Other</u> 2%</b>	<b><u>Undecided</u> 28%</b>	<b><u>(N)</u> 323</b>
Registered Democrat	5%	68%	2%	26%	84
Registered Undeclared	26%	33%	3%	38%	127
Registered Republican	83%	6%	0%	12%	87
Democrat	2%	65%	2%	30%	154
Independent	18%	26%	4%	51%	39
Republican	77%	4%	1%	19%	126
Liberal	3%	75%	4%	18%	72
Moderate	27%	34%	2%	38%	138
Conservative	72%	10%	0%	17%	95
Support Tea Party	75%	3%	1%	20%	85
Neutral	40%	21%	1%	38%	69
Oppose Tea Party	9%	64%	2%	24%	151
McCain/Palin Voter	75%	6%	1%	18%	123
Obama/Biden Voter	5%	61%	2%	32%	162
Other	10%	42%	0%	47%	7
Did Not Vote in 2008	29%	32%	4%	36%	23
Union household	20%	52%	0%	28%	41
Non union	36%	33%	2%	28%	280
Read Union Leader	46%	29%	1%	24%	87
Read Boston Globe	29%	42%	2%	27%	46
Watch WMUR	38%	33%	2%	28%	187
Listen to NHPR	19%	53%	1%	27%	117
18 to 34	15%	36%	3%	46%	29
35 to 49	44%	24%	0%	31%	52
50 to 64	28%	42%	1%	29%	127
65 and over	41%	37%	3%	19%	104
Male	37%	33%	1%	29%	158
Female	32%	39%	2%	27%	164
High school or less	40%	32%	2%	26%	79
Some college	40%	32%	3%	25%	61
College graduate	31%	33%	1%	35%	111
Post graduate	26%	49%	2%	23%	71
Attend services 1 or more/week	54%	21%	4%	21%	85
1 2 times a month	36%	23%	3%	38%	30
Less often	36%	39%	0%	25%	88
Never	14%	54%	1%	31%	102
North Country	38%	41%	0%	21%	29
Central / Lakes	34%	40%	0%	26%	79
Connecticut Valley	24%	42%	2%	32%	84
Mass Border	41%	25%	3%	30%	118
Manchester Area	30%	58%	0%	12%	13

**2012 Second Congressional District Election – Bass vs. Kuster – with leaners  
(2012 Likely General Election Voters)**

<b>SECOND CONG. DIST.</b>	<b><u>Bass</u></b> <b>41%</b>	<b><u>Kuster</u></b> <b>42%</b>	<b><u>Other</u></b> <b>2%</b>	<b><u>Undecided</u></b> <b>16%</b>	<b><u>(N)</u></b> <b>322</b>
Registered Democrat	8%	78%	2%	13%	84
Registered Undeclared	36%	37%	3%	24%	127
Registered Republican	86%	7%	0%	6%	87
Democrat	7%	75%	2%	16%	154
Independent	25%	28%	4%	43%	39
Republican	86%	5%	1%	8%	125
Liberal	4%	77%	4%	15%	72
Moderate	35%	45%	2%	18%	138
Conservative	79%	11%	0%	10%	94
Support Tea Party	85%	5%	1%	9%	84
Neutral	54%	25%	1%	20%	69
Oppose Tea Party	10%	72%	2%	15%	151
McCain/Palin Voter	82%	7%	1%	10%	123
Obama/Biden Voter	8%	71%	2%	19%	161
Other	58%	42%	0%	0%	7
Did Not Vote in 2008	45%	32%	4%	19%	23
Union household	32%	57%	0%	11%	41
Non union	42%	39%	2%	17%	279
Read Union Leader	54%	34%	1%	11%	87
Read Boston Globe	38%	46%	2%	14%	46
Watch WMUR	44%	39%	2%	15%	187
Listen to NHPR	20%	62%	1%	16%	117
18 to 34	27%	48%	3%	21%	29
35 to 49	56%	26%	0%	18%	51
50 to 64	32%	48%	1%	19%	127
65 and over	45%	43%	3%	10%	104
Male	44%	36%	1%	19%	158
Female	37%	46%	2%	14%	164
High school or less	46%	35%	2%	18%	79
Some college	50%	38%	3%	9%	61
College graduate	38%	43%	1%	19%	110
Post graduate	30%	51%	2%	17%	71
Attend services 1 or more/week	60%	23%	4%	12%	85
1 2 times a month	39%	33%	3%	26%	30
Less often	45%	44%	0%	11%	87
Never	18%	61%	1%	20%	102
North Country	38%	48%	0%	14%	29
Central / Lakes	44%	48%	0%	9%	79
Connecticut Valley	26%	50%	2%	22%	84
Mass Border	50%	28%	3%	19%	117
Manchester Area	35%	58%	0%	7%	13