

# THE WMUR GRANITE STATE POLL

## THE UNIVERSITY OF NEW HAMPSHIRE SURVEY CENTER

October 11, 2012

### GUBERNATORIAL RACE STAYS CLOSE IN NEW HAMPSHIRE

By: Andrew E. Smith, Ph.D.  
 Chad S. Novak, M.A.  
 UNH Survey Center  
 603/862-2226  
 www.unh.edu/survey-center

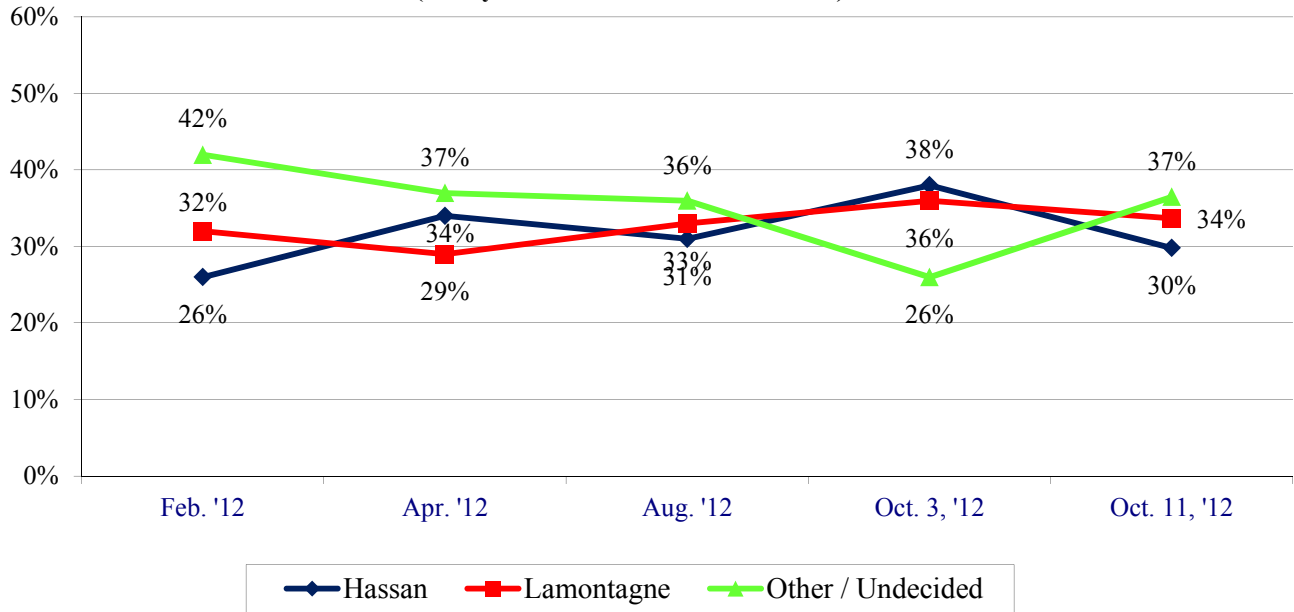
DURHAM, NH – The race to succeed New Hampshire Governor John Lynch in New Hampshire is very close between Republican Ovide Lamontagne and Democrat Maggie Hassan. Both the governor’s race and the two congressional races have a high percentage of undecided voters.

These findings are based on the latest **WMUR Granite State Poll**,\* conducted by the University of New Hampshire Survey Center. Five hundred and ninety (590) randomly selected New Hampshire adults were interviewed by landline and cellular telephone between September 30 and October 6, 2012. The margin of sampling error for the survey is +/- 4.0 percent. Included is a subsample of 419 likely general election voters who were asked about gubernatorial and congressional candidates between October 1 and October 6 (margin of sampling error +/- 4.8%). This sample included 200 likely voters in the NH First Congressional District (margin of sampling error +/- 6.9%), and 211 Second Congressional District likely voters (margin of sampling error +/-6.7%).

#### NH 2012 Gubernatorial Candidates

Republican Ovide Lamontagne and Democrat Maggie Hassan remain tied in the race for governor --34% of likely general election voters say they would currently vote for Lamontagne, 30% prefer Hassan, 3% favor Libertarian candidate John Babiarz, and 34% are undecided. This race is still up in the air as the percentage of voters who are undecided has risen in the past week, a strong indication that voters have not familiar with the candidates and have not yet focused on this race.

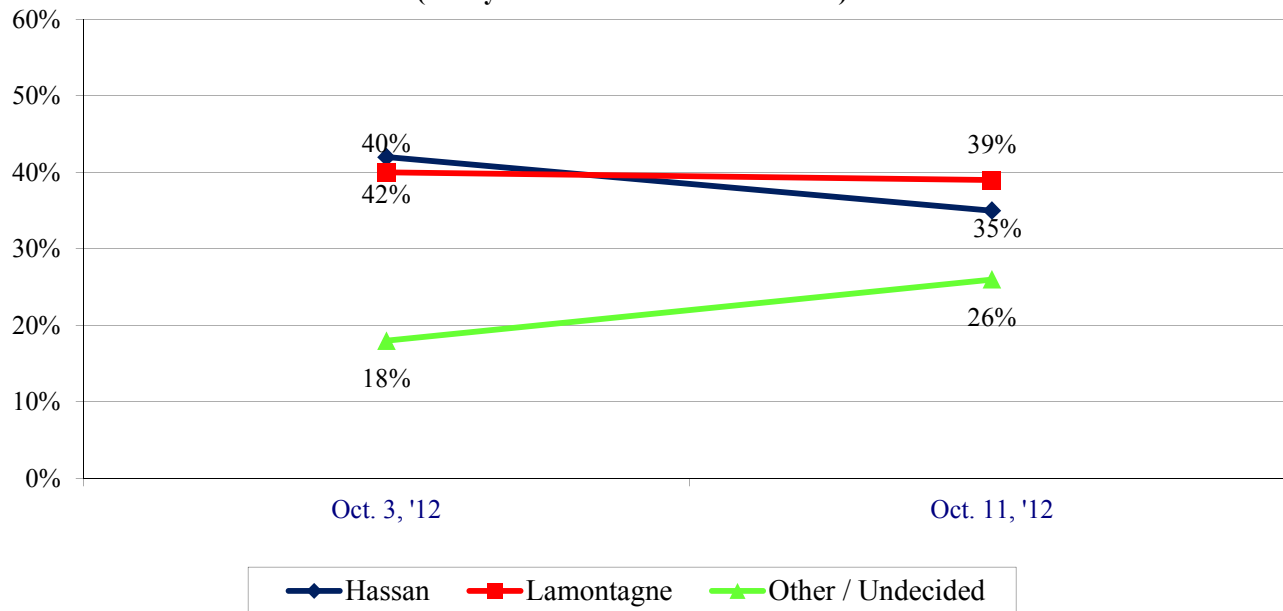
**NH Governor: Lamontagne vs. Hassan**  
**(Likely 2012 General Election Voters)**



\* We ask that this copyrighted information be referred to as *the Granite State Poll*, sponsored by WMUR-TV, and conducted by the University of New Hampshire Survey Center.

Even when undecided voters are asked which candidate they lean toward supporting there remains a very high percentage of likely voters who have not yet decided who they will support -- 39% say they will vote for Lamontagne, 35% for Hassan, 3% favor Babiarz and 23% remain undecided.

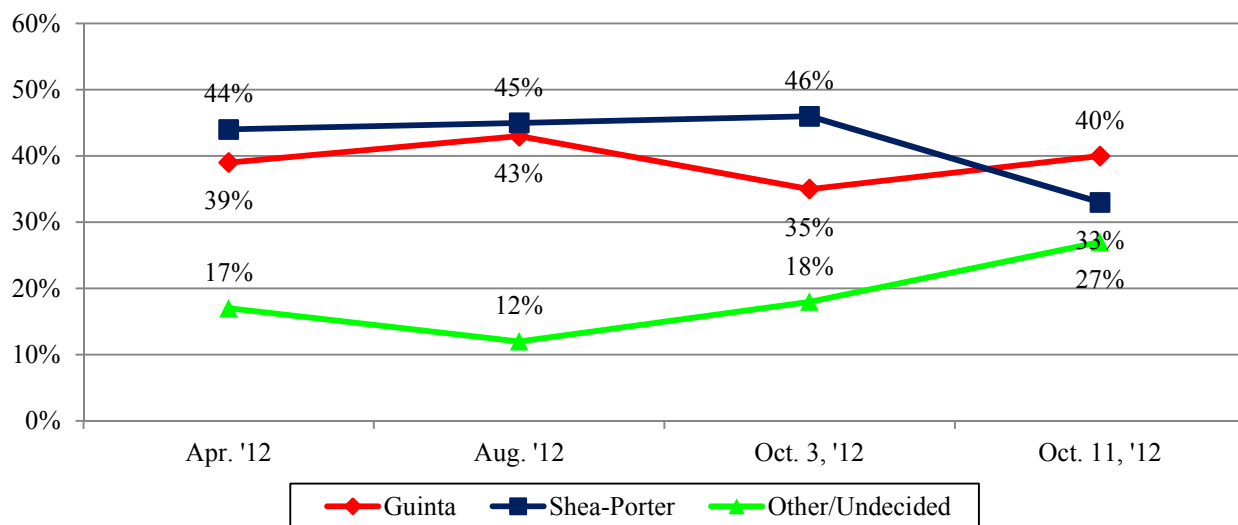
**NH Governor: Lamontagne vs. Hassan -- with undecided voters probed  
(Likely 2012 General Election Voters)**



**First Congressional District**

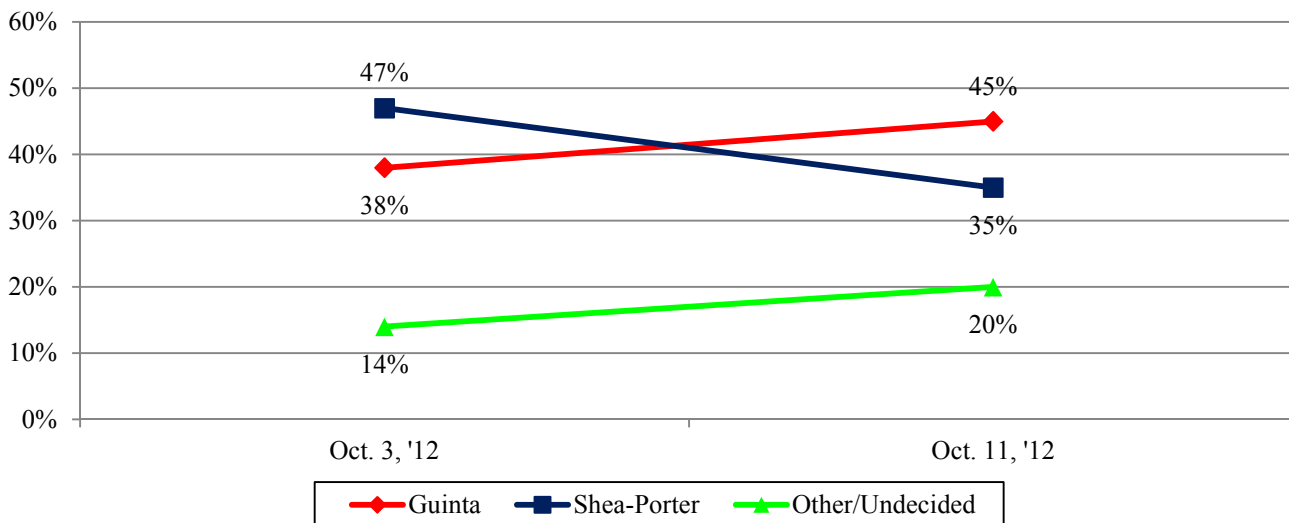
The races for New Hampshire's two Congressional districts are rematches of the 2010 election. Republican Frank Guinta won the 2010 election by 12 percentage points over Democrat Carol Shea-Porter, who was elected to this seat in 2006 and 2008. Currently, Guinta is favored by 40% of likely voters in the 1<sup>st</sup> District, Shea-Porter by 33%, Libertarian Brendan Kelly is preferred by 3%, and 24% are undecided. This is the first time that Guinta has led in 2012, but caution should be exercised in interpreting these results as the margin of sampling error is +/-6.9% and findings are less stable than if a larger sample had been interviewed.

**NH 1st Congressional District - Guinta vs. Shea-Porter  
(Likely 2012 General Election Voters)**



When undecided voters are asked which candidate they are most likely to support, Guinta leads Shea-Porter by 45% to 35%, with 3% favoring Kelly and 17% still undecided.

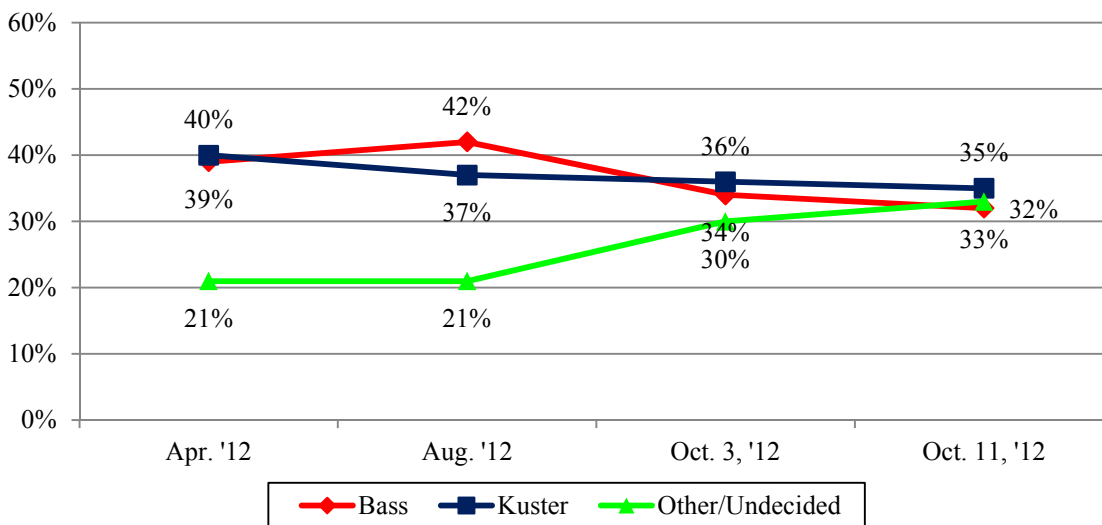
**NH 1st Congressional District - Guinta vs. Shea-Porter - with undecided voters probed  
(Likely 2012 General Election Voters)**



**Second Congressional District**

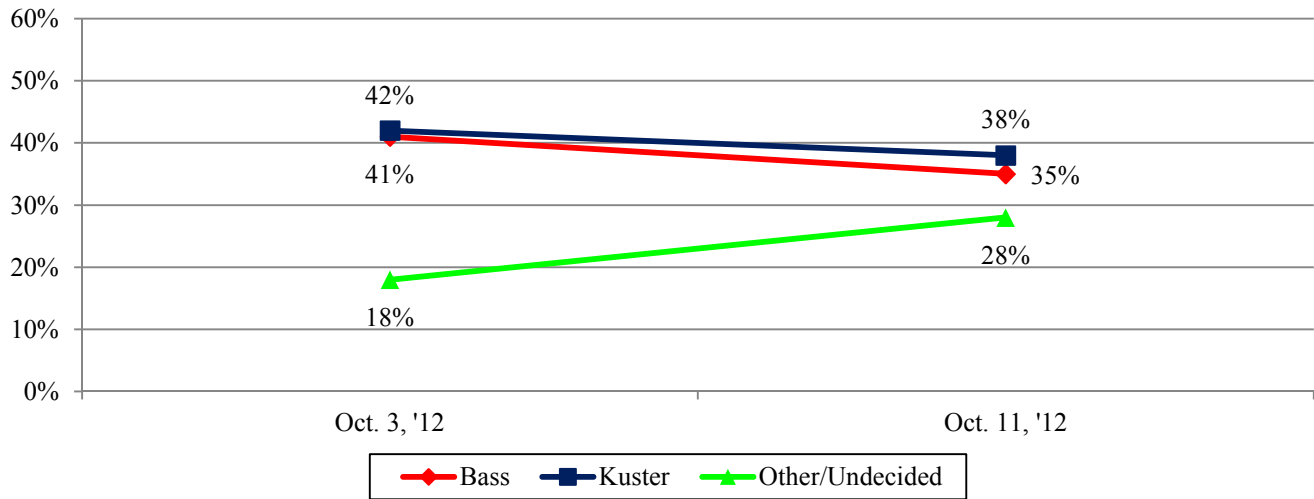
In 2010, Republican Charlie Bass defeated Democrat Ann McLane Kuster by a mere 3,550 votes in New Hampshire's 2<sup>nd</sup> Congressional District and the 2012 rematch favors looks to be as close. Currently, 35% of likely voters say they plan to vote for Kuster, 32% support Bass, 1% favor Libertarian candidate Hardy Macia, 2% prefer some other candidate, and 30% remain undecided. Again, caution should be exercised in interpreting these results as the margin of sampling error is +/-6.7% and findings are less stable than if a larger sample had been interviewed.

**NH 2nd Congressional District - Bass vs. Kuster  
(Likely 2012 General Election Voters)**



When undecided voters are asked which candidate they are leaning toward, Kuster gets the support of 38% of likely voters, Bass gets 35%, 1% favor Macia, 2% prefer some other candidate, and 25% remain undecided.

**NH 2nd Congressional District - Bass vs. Kuster - with undecided voters probed  
(Likely 2012 General Election Voters)**



### Granite State Poll Methodology

These findings are based on the latest WMUR Granite State Poll, conducted by the University of New Hampshire Survey Center. . Five hundred and ninety (590) randomly selected New Hampshire adults were interviewed by landline and cellular telephone between September 30 and October 6, 2012. The margin of sampling error for the survey is +/- 4.0 percent. Included is a subsample of 419 likely general election voters who were asked about gubernatorial and congressional candidates between October 1 and October 6 (margin of sampling error +/- 4.8%). This sample included 200 likely voters in the NH First Congressional District (margin of sampling error +/- 6.9%), and 211 Second Congressional District likely voters (margin of sampling error +/-6.7%).

The data have been weighted to adjust for numbers of adults and telephone lines within households, respondent sex, and region of the state. In addition to potential sampling error, all surveys have other potential sources of non-sampling error including question order effects, question wording effects, and non-response.

### Hassan v. Lamontagne

"And thinking about the gubernatorial election in November, will you vote for Ovide Lamontagne, the Republican ... Maggie Hassan, the Democrat ... John Babiarez, the Libertarian ... someone else ... or haven't you decided yet?" [ROTATE CANDIDATES]

	<u>Feb. '12</u>	<u>Apr. '12</u>	<u>Aug. '12</u>	<u>Oct. 3</u>	<u>Oct. 11</u>
<b>Maggie Hassan</b>	26%	34%	31%	38%	<b>30%</b>
<b>Ovide Lamontagne</b>	32%	29%	33%	36%	<b>34%</b>
<b>John Babiarez</b>	--	--	--	--	<b>3%</b>
<b>Other</b>	1%	1%	1%	2%	<b>0%</b>
<b>Undecided</b>	41%	36%	35%	25%	<b>34%</b>
<b>(N=)</b>	<b>(482)</b>	<b>(484)</b>	<b>(546)</b>	<b>(595)</b>	<b>(419)</b>

### Hassan v. Lamontagne – with Undecided Voters Probed

"And thinking about the gubernatorial election in November, will you vote for Ovide Lamontagne, the Republican ... Maggie Hassan, the Democrat ... John Babiarez, the Libertarian ... someone else ... or haven't you decided yet?" [ROTATE CANDIDATES]

"Would you say you are leaning towards Ovide Lamontagne, the Republican ... Maggie Hassan, the Democrat, or John Babiarez, the Libertarian?"

	<u>Oct. 3</u>	<u>Oct. 11</u>
<b>Maggie Hassan</b>	42%	<b>35%</b>
<b>Ovide Lamontagne</b>	40%	<b>39%</b>
<b>John Babiarez</b>	--	<b>3%</b>
<b>Other</b>	2%	<b>0%</b>
<b>Undecided</b>	16%	<b>23%</b>
<b>(N=)</b>	<b>(595)</b>	<b>(418)</b>

### NH 1<sup>st</sup> CD - Guinta vs. Shea-Porter

"Next, thinking about the election for Congress in November, will you vote for Frank Guinta, the Republican ... Carol Shea-Porter, the Democrat ... Brendan Kelly, the Libertarian ... someone else ... or haven't you decided yet?" [ROTATE CANDIDATES]

	<u>Apr. '12</u>	<u>Aug. '12</u>	<u>Oct. 3</u>	<u>Oct. 11</u>
<b>Carol Shea-Porter</b>	44%	45%	46%	<b>33%</b>
<b>Frank Guinta</b>	39%	43%	35%	<b>40%</b>
<b>Brendan Kelly</b>	--	--	--	<b>3%</b>
<b>Other</b>	1%	0%	2%	<b>0%</b>
<b>Undecided</b>	16%	12%	18%	<b>24%</b>
<b>(N=)</b>	<b>(230)</b>	<b>(258)</b>	<b>(270)</b>	<b>(200)</b>

**NH 1<sup>st</sup> CD - Guinta vs. Shea-Porter, With Undecideds Probed**

“Next, thinking about the election for Congress in November, will you vote for Frank Guinta, the Republican ... Carol Shea-Porter, the Democrat ... Brendan Kelly, the Libertarian ... someone else ... or haven’t you decided yet?” [ROTATE CANDIDATES]

“Would you say you are leaning towards Frank Guinta, the Republican ... Carol Shea-Porter, the Democrat ... or Brendan Kelly, the Libertarian?”

	<u>Oct. 3</u>	<u>Oct. 11</u>
<b>Carol Shea-Porter</b>	47%	<b>35%</b>
<b>Frank Guinta</b>	38%	<b>45%</b>
<b>Brendan Kelly</b>	--	<b>3%</b>
<b>Other</b>	2%	<b>0%</b>
<b>Undecided</b>	12%	<b>17%</b>
<b>(N=)</b>	<b>(269)</b>	<b>(200)</b>

**NH 2<sup>nd</sup> CD - Bass vs. Kuster**

“Next, thinking about the election for Congress in November, will you vote for Charlie Bass, the Republican ... Ann McLane Kuster, the Democrat ... Hardy Macia, the Libertarian ... someone else ... or haven’t you decided yet?” [ROTATE CANDIDATES]

	<u>Apr. ‘12</u>	<u>Aug. ‘12</u>	<u>Oct. 3</u>	<u>Oct. 11</u>
<b>Ann McLane Kuster</b>	40%	37%	36%	<b>35%</b>
<b>Charlie Bass</b>	39%	42%	34%	<b>32%</b>
<b>Hardy Macia</b>	--	--	--	<b>1%</b>
<b>Other</b>	1%	-	2%	<b>2%</b>
<b>Undecided</b>	20%	21%	28%	<b>30%</b>
<b>(N=)</b>	<b>(251)</b>	<b>(284)</b>	<b>(323)</b>	<b>(211)</b>

**NH 2<sup>nd</sup> CD - Bass vs. Kuster, With Undecideds Probed**

“Next, thinking about the election for Congress in November, will you vote for Charlie Bass, the Republican ... Ann McLane Kuster, the Democrat ... Hardy Macia, the Libertarian ... someone else ... or haven’t you decided yet?” [ROTATE CANDIDATES]

“Would you say you are leaning towards Charlie Bass, the Republican ... Ann McLane Kuster, the Democrat ... or Hardy Macia, the Libertarian?”

	<u>Oct. 3</u>	<u>Oct. 11</u>
<b>Ann McLane Kuster</b>	42%	<b>38%</b>
<b>Charlie Bass</b>	41%	<b>35%</b>
<b>Hardy Macia</b>	--	<b>1%</b>
<b>Other</b>	2%	<b>2%</b>
<b>Undecided</b>	16%	<b>25%</b>
<b>(N=)</b>	<b>(322)</b>	<b>(211)</b>

**2012 Gubernatorial Election – Lamontagne vs. Hassan  
(2012 Likely General Election Voters)**

	<u>Lamontagne</u> 34%	<u>Hassan</u> 30%	<u>Babiarz</u> 3%	<u>Undecided</u> 34%	<u>(N)</u> 419
<b>STATEWIDE</b>					
Registered Democrat	8%	69%	0%	23%	101
Registered Undeclared	27%	26%	5%	43%	183
Registered Republican	72%	4%	0%	24%	114
Democrat	7%	62%	2%	29%	177
Independent	27%	12%	7%	54%	66
Republican	66%	4%	0%	30%	167
Liberal	6%	61%	2%	31%	85
Moderate	24%	37%	4%	34%	164
Conservative	69%	3%	1%	27%	136
Support Tea Party	74%	3%	1%	21%	99
Neutral	45%	6%	3%	46%	108
Oppose Tea Party	6%	60%	3%	31%	188
Union household	21%	46%	3%	29%	72
Non union	36%	27%	2%	34%	343
Read Union Leader	51%	19%	1%	29%	113
Read Boston Globe	27%	45%	2%	25%	43
Watch WMUR	38%	31%	1%	30%	253
Listen to NHPR	19%	48%	3%	30%	148
18 to 34	10%	16%	10%	65%	46
35 to 49	46%	18%	4%	32%	81
50 to 64	31%	36%	0%	32%	141
65 and over	37%	36%	2%	25%	132
Male	31%	30%	5%	34%	202
Female	36%	29%	1%	34%	217
High school or less	38%	18%	5%	39%	69
Some college	30%	24%	5%	41%	102
College graduate	35%	28%	1%	35%	140
Post graduate	32%	48%	0%	19%	101
Attend services 1 or more/week	43%	23%	1%	32%	88
1 2 times a month	35%	36%	0%	29%	57
Less often	43%	23%	3%	31%	106
Never	22%	36%	4%	38%	144
North Country	37%	25%	0%	38%	40
Central / Lakes	35%	45%	0%	19%	62
Connecticut Valley	17%	50%	5%	28%	53
Mass Border	32%	21%	4%	43%	114
Seacoast	37%	25%	5%	33%	80
Manchester Area	41%	23%	0%	35%	70
First Cong. Dist	38%	27%	2%	33%	203
Second Cong. Dist	30%	33%	3%	35%	216

**2012 Gubernatorial Election – Lamontagne vs. Hassan – with leaners  
(2012 Likely General Election Voters)**

	<u>Lamontagne</u> 39%	<u>Hassan</u> 35%	<u>Babiarz</u> 3%	<u>Undecided</u> 23%	<u>(N)</u> 418
<b>STATEWIDE</b>					
Registered Democrat	8%	79%	1%	12%	101
Registered Undeclared	32%	30%	5%	33%	182
Registered Republican	80%	7%	0%	13%	114
Democrat	8%	70%	3%	19%	177
Independent	29%	20%	7%	44%	65
Republican	76%	5%	0%	20%	167
Liberal	6%	67%	4%	23%	85
Moderate	28%	46%	4%	21%	163
Conservative	77%	4%	1%	18%	136
Support Tea Party	82%	4%	1%	13%	98
Neutral	55%	11%	3%	31%	108
Oppose Tea Party	7%	68%	3%	21%	188
Union household	23%	53%	3%	21%	72
Non union	42%	32%	3%	23%	342
Read Union Leader	56%	23%	2%	19%	113
Read Boston Globe	32%	50%	2%	16%	43
Watch WMUR	43%	37%	2%	18%	253
Listen to NHPR	23%	55%	3%	20%	148
18 to 34	14%	19%	13%	54%	45
35 to 49	51%	24%	4%	21%	81
50 to 64	37%	40%	0%	23%	141
65 and over	41%	45%	2%	11%	132
Male	38%	34%	5%	24%	202
Female	39%	37%	1%	23%	216
High school or less	41%	22%	5%	32%	69
Some college	36%	29%	5%	30%	102
College graduate	40%	31%	2%	26%	140
Post graduate	36%	59%	0%	5%	101
Attend services 1 or more/week	51%	29%	1%	18%	88
1 2 times a month	38%	42%	0%	20%	56
Less often	49%	31%	3%	16%	106
Never	25%	41%	4%	30%	144
North Country	39%	38%	0%	23%	40
Central / Lakes	40%	48%	0%	12%	62
Connecticut Valley	21%	52%	5%	22%	53
Mass Border	40%	31%	5%	24%	113
Seacoast	40%	28%	5%	27%	80
Manchester Area	46%	26%	0%	27%	70
First Cong. Dist	43%	32%	2%	23%	203
Second Cong. Dist	34%	39%	3%	24%	215



**2012 First Congressional District Election – Guinta vs. Shea-Porter  
(2012 Likely General Election Voters)**

<b>FIRST CONG. DIST.</b>	<b><u>Guinta</u> 40%</b>	<b><u>Shea-Porter</u> 33%</b>	<b><u>Kelly</u> 3%</b>	<b><u>Undecided</u> 24%</b>	<b><u>(N)</u> 200</b>
Registered Democrat	2%	84%	0%	14%	35
Registered Undeclared	26%	33%	4%	37%	94
Registered Republican	87%	5%	3%	5%	59
Democrat	7%	69%	1%	23%	74
Independent	24%	33%	3%	40%	35
Republican	77%	1%	2%	20%	86
Liberal	10%	74%	3%	14%	38
Moderate	27%	37%	1%	35%	78
Conservative	77%	6%	5%	13%	69
Support Tea Party	85%	2%	7%	6%	48
Neutral	46%	15%	0%	40%	55
Oppose Tea Party	11%	64%	2%	23%	83
McCain/Palin Voter	77%	3%	3%	16%	87
Obama/Biden Voter	11%	62%	0%	28%	92
Other	39%	0%	39%	23%	3
Did Not Vote in 2008	8%	18%	10%	64%	10
Union household	34%	40%	6%	19%	37
Non union	42%	31%	2%	26%	159
Read Union Leader	58%	20%	3%	18%	61
Read Boston Globe	24%	52%	0%	24%	21
Watch WMUR	46%	32%	1%	21%	116
Listen to NHPR	22%	48%	0%	30%	57
18 to 34	18%	34%	4%	45%	25
35 to 49	36%	23%	7%	34%	43
50 to 64	42%	41%	0%	17%	62
65 and over	54%	28%	3%	15%	59
Male	46%	27%	3%	23%	97
Female	34%	38%	2%	26%	103
High school or less	56%	22%	4%	18%	26
Some college	36%	33%	4%	27%	46
College graduate	36%	28%	3%	33%	78
Post graduate	42%	47%	0%	11%	45
Attend services 1 or more/week	55%	25%	7%	13%	45
1 2 times a month	39%	36%	3%	23%	32
Less often	58%	19%	0%	23%	39
Never	23%	42%	1%	34%	69
North Country	44%	28%	0%	29%	15
Central / Lakes	45%	31%	0%	23%	20
Mass Border	30%	46%	6%	18%	38
Seacoast	39%	33%	3%	25%	79
Manchester Area	46%	24%	2%	27%	48

**2012 First Congressional District Election – Guinta vs. Shea-Porter – with leaners  
(2012 Likely General Election Voters)**

<b>FIRST CONG. DIST.</b>	<b><u>Guinta</u> 45%</b>	<b><u>Shea-Porter</u> 35%</b>	<b><u>Kelly</u> 3%</b>	<b><u>Undecided</u> 17%</b>	<b><u>(N)</u> 200</b>
Registered Democrat	3%	88%	0%	9%	35
Registered Undeclared	34%	36%	4%	26%	94
Registered Republican	89%	5%	3%	3%	59
Democrat	9%	72%	1%	18%	74
Independent	35%	39%	3%	24%	35
Republican	83%	1%	2%	14%	86
Liberal	10%	77%	3%	10%	38
Moderate	33%	40%	1%	26%	78
Conservative	82%	7%	5%	7%	69
Support Tea Party	88%	3%	7%	2%	48
Neutral	54%	15%	0%	31%	55
Oppose Tea Party	15%	68%	2%	16%	83
McCain/Palin Voter	83%	4%	3%	10%	87
Obama/Biden Voter	15%	65%	0%	20%	92
Other	39%	0%	39%	23%	3
Did Not Vote in 2008	14%	26%	10%	50%	10
Union household	43%	43%	6%	7%	37
Non union	46%	33%	2%	19%	159
Read Union Leader	66%	25%	3%	5%	61
Read Boston Globe	29%	61%	0%	10%	21
Watch WMUR	52%	34%	1%	13%	116
Listen to NHPR	31%	52%	0%	17%	57
18 to 34	22%	34%	4%	40%	25
35 to 49	43%	28%	7%	22%	43
50 to 64	44%	42%	0%	14%	62
65 and over	61%	32%	3%	4%	59
Male	50%	29%	3%	18%	97
Female	40%	41%	2%	16%	103
High school or less	58%	28%	4%	10%	26
Some college	44%	34%	4%	17%	46
College graduate	43%	30%	3%	24%	78
Post graduate	42%	50%	0%	9%	45
Attend services 1 or more/week	62%	27%	7%	4%	45
1 2 times a month	39%	36%	3%	23%	32
Less often	62%	19%	0%	19%	39
Never	30%	47%	1%	22%	69
North Country	49%	28%	0%	23%	15
Central / Lakes	48%	37%	0%	15%	20
Mass Border	36%	46%	6%	12%	38
Seacoast	44%	35%	3%	18%	79
Manchester Area	50%	28%	2%	20%	48

**2012 Second Congressional District Election – Bass vs. Kuster  
(2012 Likely General Election Voters)**

<b>SECOND CONG. DIST.</b>	<b><u>Bass</u> 32%</b>	<b><u>Kuster</u> 35%</b>	<b><u>Macia</u> 1%</b>	<b><u>Other</u> 2%</b>	<b><u>Undecided</u> 30%</b>	<b><u>(N)</u> 211</b>
Registered Democrat	7%	71%	0%	0%	22%	65
Registered Undeclared	24%	31%	3%	2%	39%	85
Registered Republican	80%	0%	0%	3%	17%	54
Democrat	1%	71%	0%	0%	28%	102
Independent	47%	4%	9%	3%	37%	29
Republican	70%	1%	0%	3%	26%	78
Liberal	0%	68%	0%	2%	30%	48
Moderate	21%	45%	3%	1%	30%	81
Conservative	72%	5%	0%	2%	20%	65
Support Tea Party	80%	3%	0%	0%	17%	48
Neutral	39%	6%	5%	0%	50%	51
Oppose Tea Party	8%	68%	0%	2%	23%	102
McCain/Palin Voter	82%	2%	0%	2%	14%	73
Obama/Biden Voter	4%	60%	0%	1%	35%	119
Other	0%	100%	0%	0%	0%	1
Did Not Vote in 2008	7%	0%	20%	0%	74%	14
Union household	18%	55%	0%	0%	27%	35
Non union	35%	31%	2%	2%	30%	176
Read Union Leader	52%	24%	0%	3%	21%	51
Read Boston Globe	27%	54%	0%	4%	15%	21
Watch WMUR	34%	37%	0%	2%	28%	132
Listen to NHPR	17%	60%	0%	2%	22%	86
18 to 34	7%	25%	13%	0%	55%	20
35 to 49	48%	26%	0%	0%	26%	38
50 to 64	30%	34%	0%	0%	36%	75
65 and over	33%	47%	0%	2%	17%	72
Male	34%	39%	3%	0%	25%	99
Female	31%	32%	0%	3%	34%	112
High school or less	37%	25%	0%	2%	36%	43
Some college	40%	23%	5%	0%	32%	55
College graduate	33%	37%	0%	1%	29%	58
Post graduate	20%	55%	0%	3%	22%	55
Attend services 1 or more/week	37%	32%	0%	2%	29%	42
1 2 times a month	38%	29%	0%	0%	33%	24
Less often	42%	25%	4%	0%	28%	65
Never	21%	48%	0%	3%	28%	72
North Country	31%	32%	0%	0%	37%	24
Central / Lakes	27%	47%	0%	2%	24%	43
Connecticut Valley	27%	49%	0%	0%	24%	52
Mass Border	37%	25%	4%	1%	33%	71
Manchester Area	41%	15%	0%	7%	36%	22

**2012 Second Congressional District Election – Bass vs. Kuster – with leaners  
(2012 Likely General Election Voters)**

<b>SECOND CONG. DIST.</b>	<b><u>Bass</u> 35%</b>	<b><u>Kuster</u> 38%</b>	<b><u>Macia</u> 1%</b>	<b><u>Other</u> 2%</b>	<b><u>Undecided</u> 25%</b>	<b><u>(N)</u> 211</b>
Registered Democrat	7%	76%	0%	0%	17%	65
Registered Undeclared	29%	33%	4%	2%	32%	85
Registered Republican	81%	0%	0%	3%	16%	54
Democrat	1%	76%	0%	0%	22%	102
Independent	54%	4%	11%	3%	29%	29
Republican	73%	1%	0%	3%	23%	78
Liberal	0%	71%	0%	2%	27%	48
Moderate	22%	49%	4%	1%	24%	81
Conservative	76%	5%	0%	2%	16%	65
Support Tea Party	80%	3%	0%	0%	17%	48
Neutral	48%	7%	6%	0%	39%	51
Oppose Tea Party	8%	72%	0%	2%	18%	102
McCain/Palin Voter	82%	2%	0%	2%	14%	73
Obama/Biden Voter	7%	65%	0%	1%	27%	119
Other	0%	100%	0%	0%	0%	1
Did Not Vote in 2008	18%	0%	20%	0%	63%	14
Union household	18%	57%	0%	0%	25%	35
Non union	38%	34%	2%	2%	25%	176
Read Union Leader	52%	27%	0%	3%	18%	51
Read Boston Globe	27%	54%	0%	4%	15%	21
Watch WMUR	37%	41%	0%	2%	20%	132
Listen to NHPR	19%	60%	0%	2%	19%	86
18 to 34	11%	25%	13%	0%	51%	20
35 to 49	50%	28%	1%	0%	21%	38
50 to 64	35%	35%	0%	0%	30%	75
65 and over	33%	52%	0%	2%	13%	72
Male	37%	40%	3%	0%	20%	99
Female	33%	35%	0%	3%	29%	112
High school or less	37%	25%	0%	2%	36%	43
Some college	43%	24%	6%	0%	28%	55
College graduate	36%	38%	0%	1%	25%	58
Post graduate	24%	61%	0%	3%	11%	55
Attend services 1 or more/week	40%	37%	1%	2%	20%	42
1 2 times a month	38%	29%	0%	0%	33%	24
Less often	45%	30%	4%	0%	21%	65
Never	24%	48%	0%	3%	24%	72
North Country	38%	35%	0%	0%	28%	24
Central / Lakes	31%	48%	1%	2%	18%	43
Connecticut Valley	28%	53%	0%	0%	20%	52
Mass Border	39%	28%	4%	1%	28%	71
Manchester Area	41%	15%	0%	7%	36%	22