

# THE GRANITE STATE POLL

## THE UNIVERSITY OF NEW HAMPSHIRE SURVEY CENTER

October 24, 2012

### CLOSE REMATCHES FOR NH CONGRESSIONAL SEATS

By: Andrew E. Smith, Ph.D.  
Chad S. Novak, M.A.  
UNH Survey Center  
603/862-2226  
www.unh.edu/survey-center

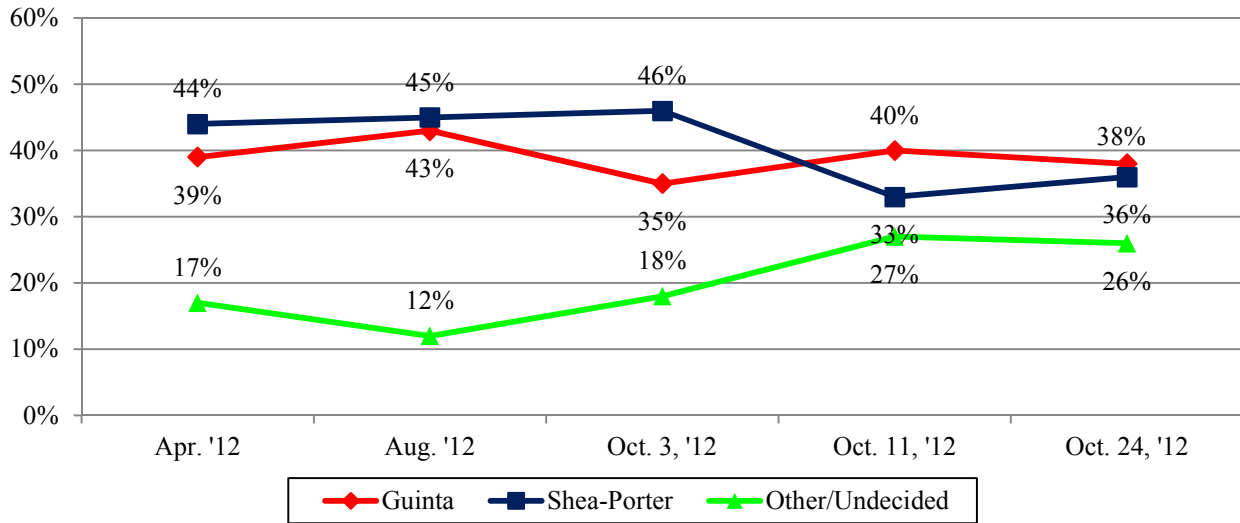
DURHAM, NH – The races for both of New Hampshire’s congressional seats remain very close as Democrats Carol Shea-Porter and Anne McLane Kuster attempt to unseat their 2010 opponents, Republicans Frank Guinta and Charlie Bass.

These findings are based on the latest **Granite State Poll**\* conducted by the University of New Hampshire Survey Center. Seven hundred and seventy-three (773) randomly selected New Hampshire likely voters were interviewed by landline and cellular telephone between October 17 and October 21, 2012. The margin of sampling error for the survey is +/- 3.5 percent. Included was a subsample of 364 likely voters in the NH First Congressional District (margin of sampling error +/- 5.1%), and a subsample of 408 Second Congressional District likely voters (margin of sampling error +/- 4.9%).

#### First Congressional District

The races for New Hampshire’s two Congressional districts are rematches of the 2010 election. Republican Frank Guinta won the 2010 election by 12 percentage points over Democrat Carol Shea-Porter, who was elected to this seat in 2006 and 2008. Currently, Guinta is favored by 38% of likely voters in the 1<sup>st</sup> District, Shea-Porter by 36%, Libertarian Brendan Kelly is preferred by 3%, 1% prefer some other candidate, and 22% are undecided. This race remains up for grabs, as a high percentage of 1<sup>st</sup> District voters remain undecided.

NH 1st Congressional District - Guinta vs. Shea-Porter  
(Likely 2012 General Election Voters)



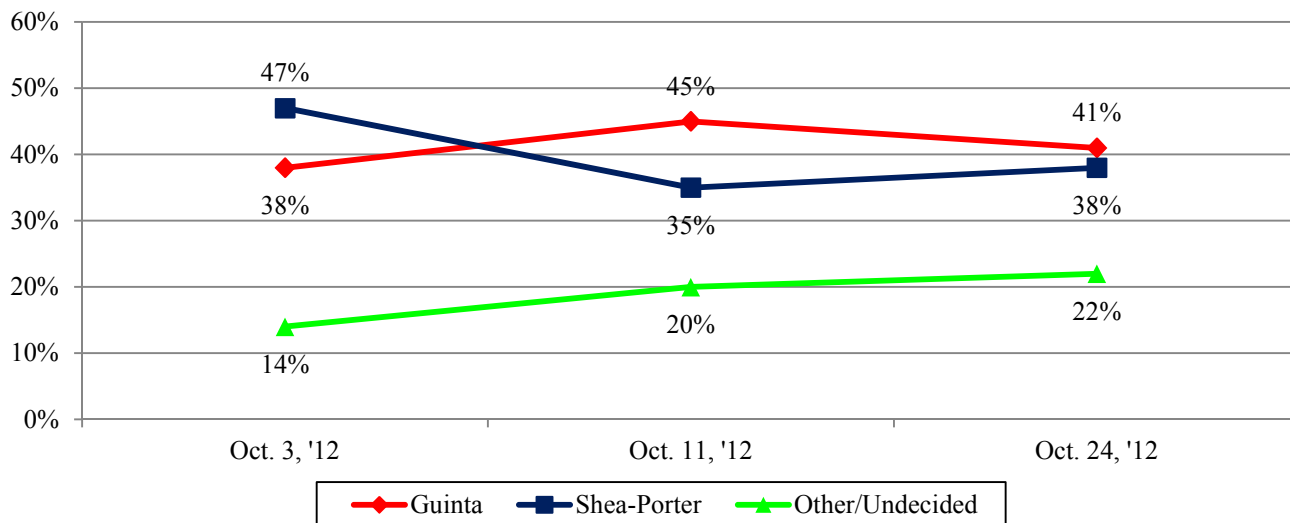
\* We ask that this copyrighted information be referred to as *the Granite State Poll* conducted by the University of New Hampshire Survey Center.

When undecided voters are asked which candidate they are most likely to support, Guinta continues to hold a very narrow advantage over Shea-Porter by 41% to 38%, with 4% favoring Kelly and 17% still saying they are undecided.

Shea-Porter gets support from 76% of self-identified Democrats and Guinta gets 79% of the Republican vote. Guinta holds a 36% to 21% advantage among independents.

There is also a gender gap with Shea-Porter holding a 44% to 33% lead among women and Guinta holding a similar 47% to 32% lead among men.

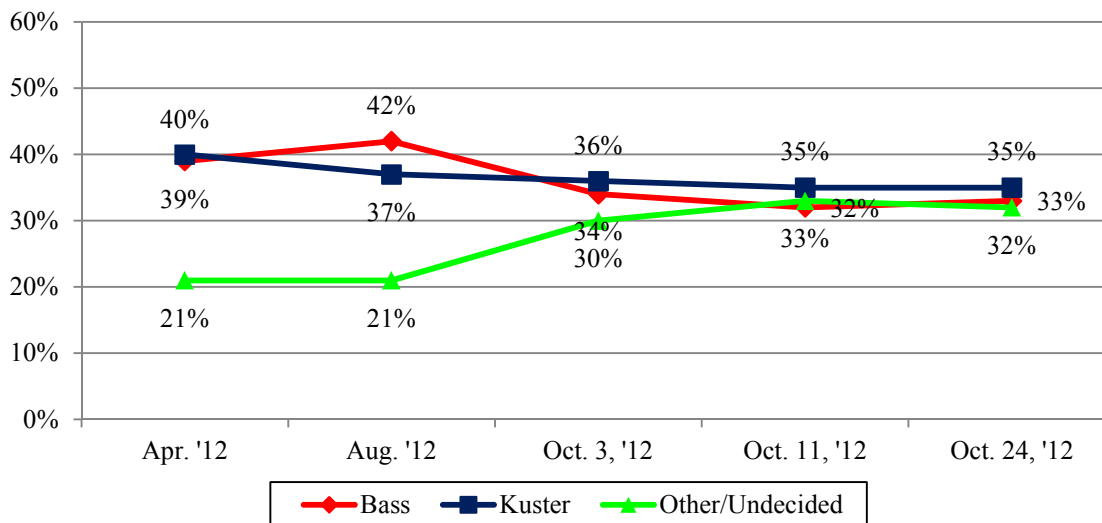
**NH 1st Congressional District - Guinta vs. Shea-Porter - with undecided voters probed  
(Likely 2012 General Election Voters)**



**Second Congressional District**

In 2010, Republican Charlie Bass defeated Democrat Ann McLane Kuster by a mere 3,550 votes in New Hampshire's 2<sup>nd</sup> Congressional District and the 2012 rematch favors looks to be as close. Currently, 35% of likely voters say they plan to vote for Kuster, 33% support Bass, 2% favor Libertarian candidate Hardy Macia, and 30% remain undecided. This race has remained stable throughout the month of October.

**NH 2nd Congressional District - Bass vs. Kuster  
(Likely 2012 General Election Voters)**

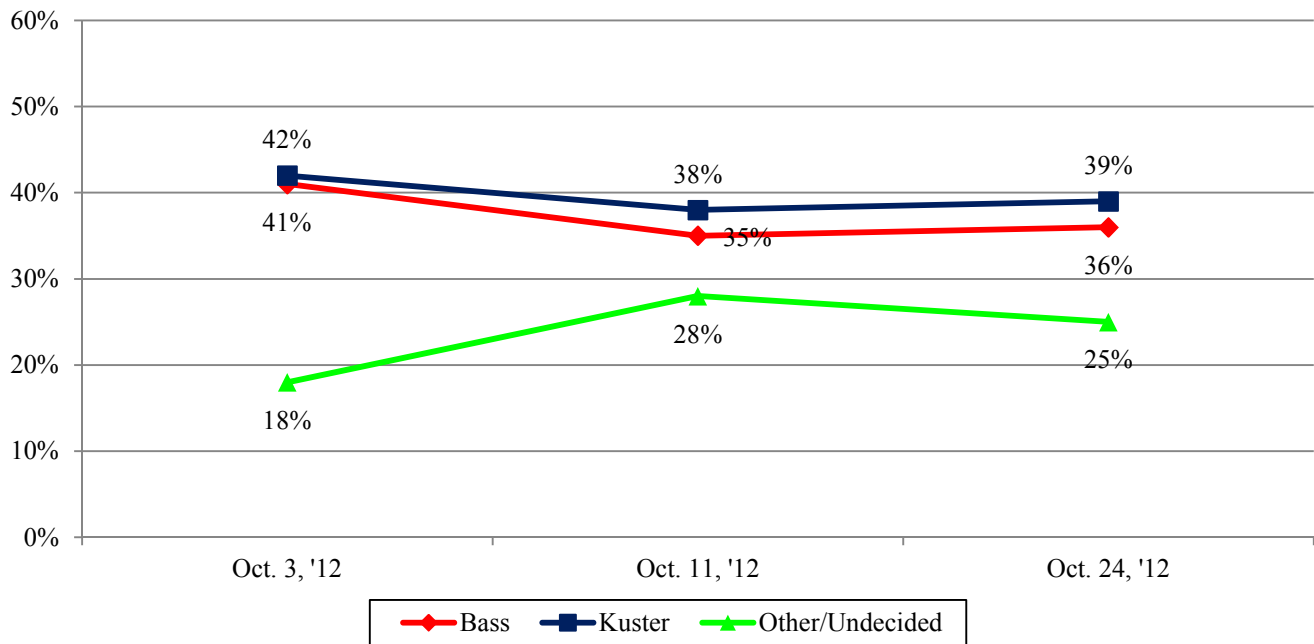


When undecided voters are asked which candidate they are leaning toward, Kuster gets the support of 39% of likely voters, Bass gets 36%, 3% favor Macia, and 22% remain undecided.

Bass is doing somewhat better among his partisans than is Kuster. Bass leads among Republicans by 76 percentage points while Kuster leads by 70 percentage points among Democrats. Independents are split with 31% favoring Bass and 28% favoring Kuster.

Like the 1<sup>st</sup> District, there is gender gap in the 2<sup>nd</sup> with Kuster holding a 42% to 31% lead among women and Bass holding a 42% to 34% lead among men.

**NH 2nd Congressional District - Bass vs. Kuster - with undecided voters probed  
(Likely 2012 General Election Voters)**



## Granite State Poll Methodology

The data have been weighted to adjust for numbers of adults and telephone lines within households, respondent sex, and region of the state. In addition to potential sampling error, all surveys have other potential sources of non-sampling error including question order effects, question wording effects, and non-response.

These findings are based on the latest Granite State Poll conducted by the University of New Hampshire Survey Center. Seven hundred and seventy-three (773) randomly selected New Hampshire likely voters were interviewed by landline and cellular telephone between October 17 and October 21, 2012. The margin of sampling error for the survey is +/- 3.5 percent. Included was a subsample of 364 likely voters in the NH First Congressional District (margin of sampling error +/- 5.1%), and a subsample of 408 Second Congressional District likely voters (margin of sampling error +/- 4.9%).

### NH 1<sup>st</sup> CD - Guinta vs. Shea-Porter

“Next, thinking about the election for Congress in November, will you vote for Frank Guinta, the Republican ... Carol Shea-Porter, the Democrat ... Brendan Kelly, the Libertarian ... someone else ... or haven’t you decided yet?” [ROTATE CANDIDATES]

	<u>Apr. ‘12</u>	<u>Aug. ‘12</u>	<u>Oct. 3</u>	<u>Oct. 11</u>	<u>Oct. 23</u>
<b>Carol Shea-Porter</b>	44%	45%	46%	33%	<b>36%</b>
<b>Frank Guinta</b>	39%	43%	35%	40%	<b>38%</b>
<b>Brendan Kelly</b>	--	--	--	3%	<b>3%</b>
<b>Other</b>	1%	0%	2%	0%	<b>1%</b>
<b>Undecided</b>	16%	12%	18%	24%	<b>22%</b>
<b>(N=)</b>	<b>(230)</b>	<b>(258)</b>	<b>(270)</b>	<b>(200)</b>	<b>(364)</b>

### NH 1<sup>st</sup> CD - Guinta vs. Shea-Porter, With Undecideds Probed

“Next, thinking about the election for Congress in November, will you vote for Frank Guinta, the Republican ... Carol Shea-Porter, the Democrat ... Brendan Kelly, the Libertarian ... someone else ... or haven’t you decided yet?” [ROTATE CANDIDATES]

“Would you say you are leaning towards Frank Guinta, the Republican ... Carol Shea-Porter, the Democrat ... or Brendan Kelly, the Libertarian?”

	<u>Oct. 3</u>	<u>Oct. 11</u>	<u>Oct. 23</u>
<b>Carol Shea-Porter</b>	47%	35%	<b>38%</b>
<b>Frank Guinta</b>	38%	45%	<b>41%</b>
<b>Brendan Kelly</b>	--	3%	<b>4%</b>
<b>Other</b>	2%	0%	<b>1%</b>
<b>Undecided</b>	12%	17%	<b>17%</b>
<b>(N=)</b>	<b>(269)</b>	<b>(200)</b>	<b>(364)</b>

### NH 2<sup>nd</sup> CD - Bass vs. Kuster

“Next, thinking about the election for Congress in November, will you vote for Charlie Bass, the Republican ... Ann McLane Kuster, the Democrat ... Hardy Macia, the Libertarian ... someone else ... or haven’t you decided yet?” [ROTATE CANDIDATES]

	<u>Apr. ‘12</u>	<u>Aug. ‘12</u>	<u>Oct. 3</u>	<u>Oct. 11</u>	<u>Oct. 24</u>
<b>Ann McLane Kuster</b>	40%	37%	36%	35%	<b>35%</b>
<b>Charlie Bass</b>	39%	42%	34%	32%	<b>33%</b>
<b>Hardy Macia</b>	--	--	--	1%	<b>2%</b>
<b>Other</b>	1%	--	2%	2%	<b>0%</b>
<b>Undecided</b>	20%	21%	28%	30%	<b>30%</b>
<b>(N=)</b>	<b>(251)</b>	<b>(284)</b>	<b>(323)</b>	<b>(211)</b>	<b>(408)</b>

**NH 2<sup>nd</sup> CD - Bass vs. Kuster, With Undecideds Probed**

“Next, thinking about the election for Congress in November, will you vote for Charlie Bass, the Republican ... Ann McLane Kuster, the Democrat ... Hardy Macia, the Libertarian ... someone else ... or haven't you decided yet?” [ROTATE CANDIDATES]

“Would you say you are leaning towards Charlie Bass, the Republican ... Ann McLane Kuster, the Democrat ... or Hardy Macia, the Libertarian?”

	<b><u>Oct. 3</u></b>	<b><u>Oct. 11</u></b>	<b><u>Oct. 23</u></b>
<b>Ann McLane Kuster</b>	42%	38%	<b>39%</b>
<b>Charlie Bass</b>	41%	35%	<b>36%</b>
<b>Hardy Macia</b>	--	1%	<b>3%</b>
<b>Other</b>	2%	2%	<b>0%</b>
<b>Undecided</b>	16%	25%	<b>22%</b>
<b>(N=)</b>	<b>(322)</b>	<b>(211)</b>	<b>(408)</b>

**2012 First Congressional District Election – Guinta vs. Shea-Porter  
(2012 Likely General Election Voters)**

<b>FIRST CONG. DIST.</b>	<b><u>Guinta</u> 38%</b>	<b><u>Shea-Porter</u> 36%</b>	<b><u>Kelly/ Other</u> 4%</b>	<b><u>Undecided</u> 22%</b>	<b><u>(N)</u> 364</b>
Registered Democrat	5%	80%	4%	11%	107
Registered Undeclared	35%	29%	8%	29%	131
Registered Republican	77%	2%	1%	20%	110
Democrat	6%	72%	3%	20%	159
Independent	33%	20%	17%	30%	54
Republican	75%	2%	2%	21%	148
Def. Will Vote	39%	37%	4%	21%	349
Vote unless emergency	32%	9%	9%	50%	15
McCain/Palin Voter	75%	2%	3%	21%	138
Obama/Biden Voter	15%	61%	4%	20%	183
Did Not Vote in 2008	16%	32%	3%	49%	21
18 to 34	26%	43%	2%	29%	51
35 to 49	29%	34%	9%	28%	85
50 to 64	47%	28%	3%	22%	118
65 and over	42%	43%	3%	12%	95
Working class men	44%	29%	6%	20%	76
College educ men	44%	31%	3%	22%	116
Working class women	33%	31%	7%	29%	67
College educ women	30%	48%	3%	19%	104
Male	44%	30%	4%	21%	192
Female	32%	41%	4%	23%	172
High school or less	38%	28%	4%	30%	68
Some college	40%	32%	9%	19%	75
College graduate	42%	30%	3%	25%	135
Post graduate	30%	54%	3%	13%	85
Attend services 1 or more/week	60%	30%	2%	7%	85
1 2 times a month	45%	25%	1%	29%	46
Less often	35%	34%	5%	26%	94
Never	24%	44%	6%	25%	131
North Country	49%	30%	0%	21%	24
Central / Lakes	42%	32%	5%	21%	53
Mass Border	48%	18%	6%	27%	61
Seacoast	34%	41%	5%	20%	141
Manchester Area	33%	42%	3%	22%	85

**2012 First Congressional District Election – Guinta vs. Shea-Porter – with leaners  
(2012 Likely General Election Voters)**

<b>FIRST CONG. DIST.</b>	<b><u>Guinta</u> 41%</b>	<b><u>Shea-Porter</u> 38%</b>	<b><u>Kelly/ Other</u> 5%</b>	<b><u>Undecided</u> 17%</b>	<b><u>(N)</u> 364</b>
Registered Democrat	5%	82%	4%	9%	107
Registered Undeclared	38%	31%	9%	22%	131
Registered Republican	81%	3%	1%	14%	110
Democrat	7%	76%	4%	14%	159
Independent	36%	21%	19%	24%	54
Republican	79%	3%	2%	16%	148
Def. Will Vote	41%	39%	4%	16%	349
Vote unless emergency	32%	15%	17%	37%	15
McCain/Palin Voter	80%	3%	3%	14%	138
Obama/Biden Voter	15%	65%	5%	15%	183
Did Not Vote in 2008	16%	32%	3%	49%	21
18 to 34	26%	45%	3%	26%	51
35 to 49	32%	36%	10%	22%	85
50 to 64	51%	32%	4%	14%	118
65 and over	42%	44%	3%	11%	95
Working class men	44%	29%	6%	20%	76
College educ men	49%	34%	5%	13%	116
Working class women	36%	35%	7%	22%	67
College educ women	31%	51%	3%	15%	104
Male	47%	32%	5%	16%	192
Female	33%	44%	5%	18%	172
High school or less	42%	30%	4%	25%	68
Some college	40%	34%	9%	18%	75
College graduate	46%	33%	4%	17%	135
Post graduate	32%	56%	4%	8%	85
Attend services 1 or more/week	60%	30%	2%	7%	85
1 2 times a month	48%	29%	4%	20%	46
Less often	39%	37%	6%	18%	94
Never	26%	47%	7%	20%	131
North Country	54%	30%	5%	12%	24
Central / Lakes	43%	34%	5%	18%	53
Mass Border	56%	21%	8%	16%	61
Seacoast	34%	45%	5%	16%	141
Manchester Area	35%	44%	3%	18%	85

**2012 Second Congressional District Election – Bass vs. Kuster  
(2012 Likely General Election Voters)**

<b>SECOND CONG. DIST.</b>	<b><u>Bass</u> 33%</b>	<b><u>Kuster</u> 35%</b>	<b><u>Macia</u> 2%</b>	<b><u>Undecided</u> 30%</b>	<b><u>(N)</u> 408</b>
Registered Democrat	3%	72%	1%	23%	127
Registered Undeclared	32%	26%	5%	37%	163
Registered Republican	75%	3%	1%	21%	97
Democrat	4%	63%	1%	32%	193
Independent	30%	23%	4%	42%	61
Republican	71%	3%	3%	23%	150
Def. Will Vote	32%	36%	2%	30%	385
Vote unless emergency	40%	14%	11%	36%	23
McCain/Palin Voter	72%	2%	1%	25%	143
Obama/Biden Voter	9%	58%	3%	31%	229
Did Not Vote in 2008	34%	22%	0%	43%	25
18 to 34	26%	20%	2%	52%	56
35 to 49	40%	16%	2%	41%	88
50 to 64	29%	51%	2%	18%	158
65 and over	35%	37%	4%	25%	95
Working class men	43%	20%	4%	33%	73
College educ men	35%	41%	5%	20%	113
Working class women	33%	32%	2%	33%	84
College educ women	26%	39%	0%	35%	135
Male	38%	33%	4%	25%	187
Female	29%	37%	1%	34%	221
High school or less	31%	32%	3%	35%	99
Some college	49%	18%	4%	29%	59
College graduate	37%	32%	2%	29%	158
Post graduate	18%	53%	3%	26%	90
Attend services 1 or more/week	37%	26%	4%	33%	90
1 2 times a month	45%	28%	0%	26%	54
Less often	35%	31%	2%	32%	114
Never	21%	48%	3%	28%	137
North Country	31%	41%	0%	28%	32
Central / Lakes	36%	37%	2%	26%	81
Connecticut Valley	27%	40%	2%	31%	127
Mass Border	38%	30%	3%	30%	143
Manchester Area	30%	21%	7%	42%	25



**2012 Second Congressional District Election – Bass vs. Kuster – with leaners  
(2012 Likely General Election Voters)**

<b>SECOND CONG. DIST.</b>	<b><u>Bass</u> 36%</b>	<b><u>Kuster</u> 39%</b>	<b><u>Macia</u> 3%</b>	<b><u>Undecided</u> 22%</b>	<b><u>(N)</u> 408</b>
Registered Democrat	5%	76%	1%	18%	127
Registered Undeclared	36%	32%	6%	26%	163
Registered Republican	81%	4%	3%	13%	97
Democrat	7%	70%	2%	21%	193
Independent	31%	28%	4%	37%	61
Republican	76%	3%	5%	16%	150
Def. Will Vote	35%	40%	3%	22%	385
Vote unless emergency	50%	21%	11%	19%	23
McCain/Palin Voter	76%	2%	3%	20%	143
Obama/Biden Voter	11%	65%	3%	21%	229
Did Not Vote in 2008	40%	22%	0%	38%	25
18 to 34	31%	22%	2%	45%	56
35 to 49	46%	21%	6%	28%	88
50 to 64	31%	55%	2%	11%	158
65 and over	37%	41%	4%	18%	95
Working class men	47%	22%	6%	25%	73
College educ men	38%	43%	5%	15%	113
Working class women	35%	38%	4%	23%	84
College educ women	30%	45%	0%	25%	135
Male	42%	34%	5%	19%	187
Female	31%	42%	2%	24%	221
High school or less	34%	36%	5%	25%	99
Some college	51%	21%	6%	22%	59
College graduate	40%	37%	2%	20%	158
Post graduate	22%	55%	3%	20%	90
Attend services 1 or more/week	40%	28%	5%	27%	90
1 2 times a month	46%	33%	3%	18%	54
Less often	39%	38%	2%	21%	114
Never	25%	50%	4%	20%	137
North Country	31%	45%	0%	24%	32
Central / Lakes	39%	39%	2%	20%	81
Connecticut Valley	31%	42%	4%	23%	127
Mass Border	40%	36%	3%	21%	143
Manchester Area	35%	26%	12%	26%	25