

# THE WMUR GRANITE STATE POLL

## THE UNIVERSITY OF NEW HAMPSHIRE SURVEY CENTER

February 6, 2013

### DESPITE WINNING REELECTION, OBAMA'S APPROVAL UNCHANGED IN NH

By: Andrew E. Smith, Ph.D.  
 Chad S. Novak, M.A.  
 UNH Survey Center  
 603/862-2226  
[www.unh.edu/survey-center](http://www.unh.edu/survey-center)

DURHAM, NH – President Barack Obama begins his second term with modest approval ratings in New Hampshire. His approval ratings are largely unchanged since his reelection in November.

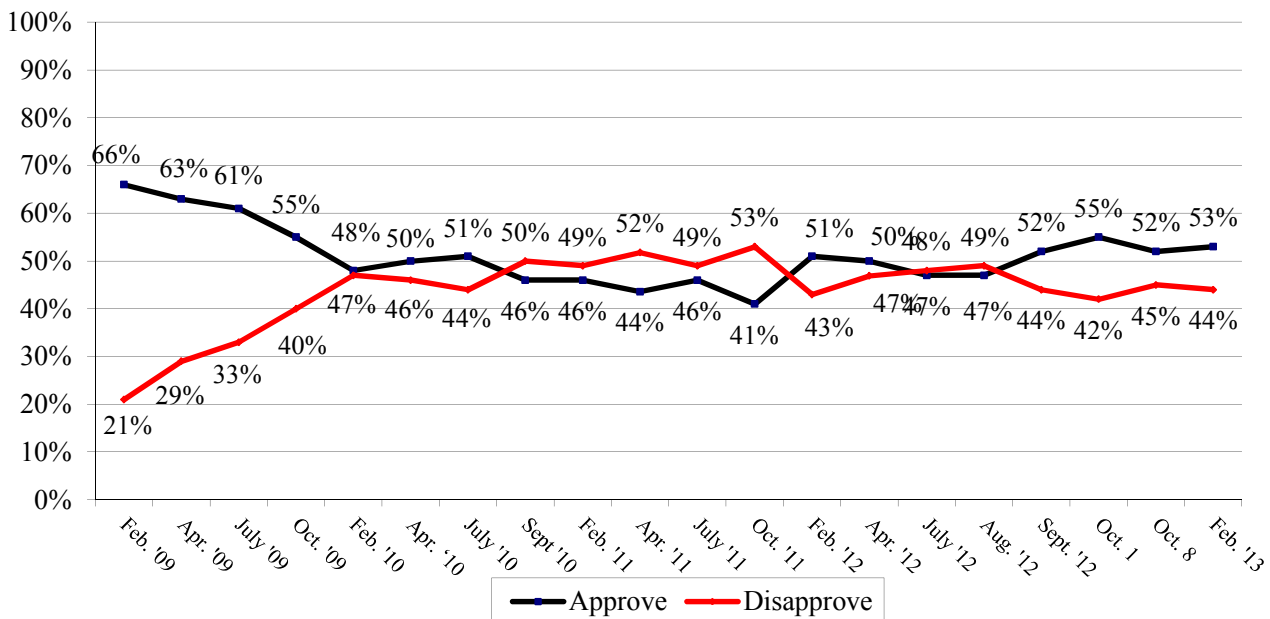
These findings are based on the latest **WMUR Granite State Poll**,\* conducted by the University of New Hampshire Survey Center. Five hundred and eighty-one (581) randomly selected New Hampshire adults were interviewed by landline and cellular telephone between January 30 and February 5, 2013. The margin of sampling error for the survey is +/- 4.1 percent.

#### Presidential Approval

Despite winning a convincing re-election battle in New Hampshire, President Obama begins his second term as president with modest approval ratings in the Granite State. Currently, 53% of New Hampshire adults say they approve of the job Obama is doing as president, 44% disapprove, and 2% are neutral. His job approval rating has stayed essentially flat since September, 2012.

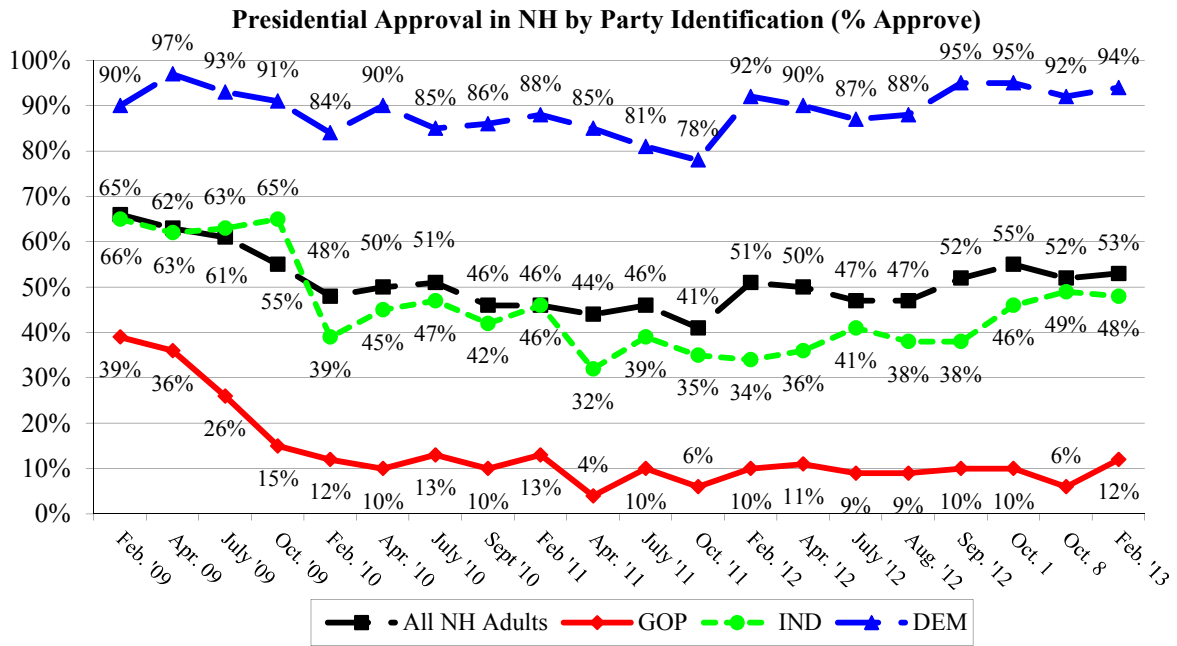
At the beginning of George W. Bush's second term in 2005, 52% of New Hampshire adults approved of the job he was doing as President, 43% disapproved, and 4% were neutral.

**Barack Obama Approval, All NH Adults**

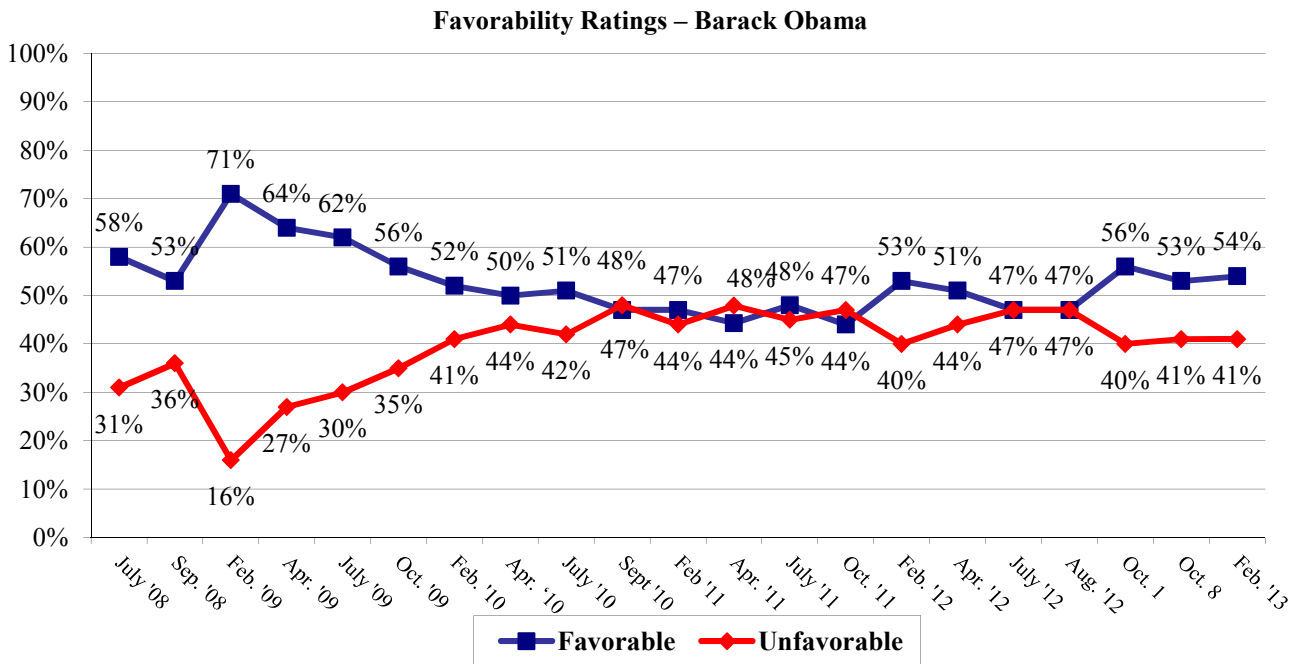


\* We ask that this copyrighted information be referred to as *the Granite State Poll*, sponsored by WMUR-TV, and conducted by the University of New Hampshire Survey Center.

President Obama's job approval ratings have remained steady among Democrats, Republicans, and Independents.

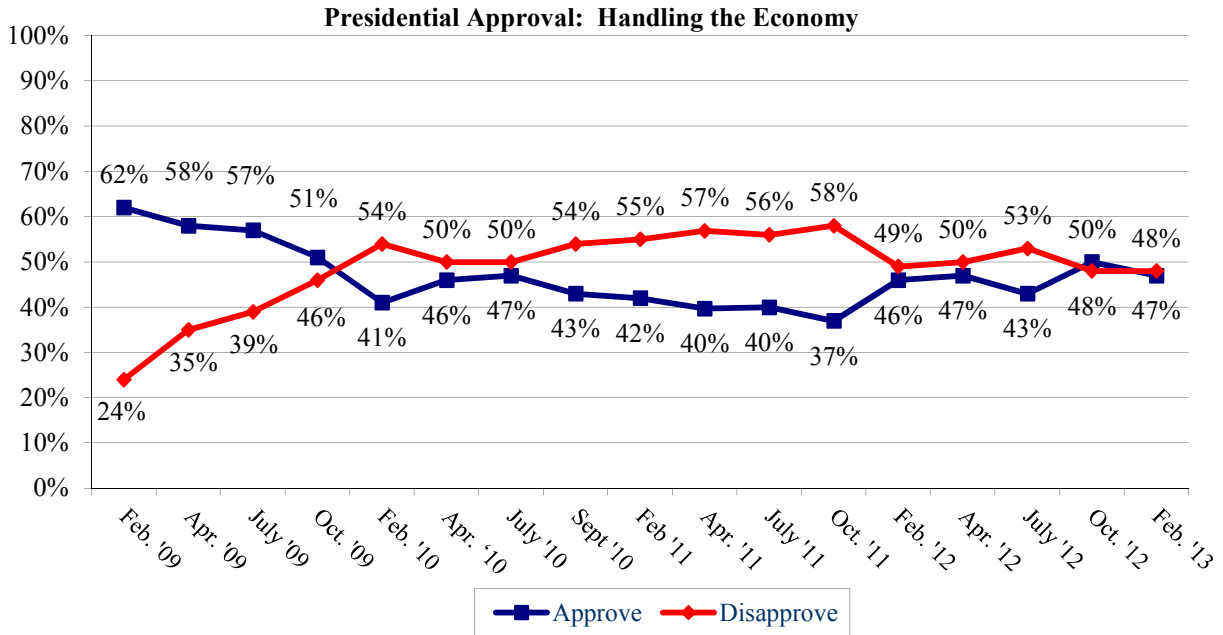


Obama's favorability ratings have also remained unchanged since before the election. Obama is currently viewed favorably by 54% of New Hampshire adults, 41% have an unfavorable opinion of him, and 5% are neutral or don't know enough about him to say. Obama's net favorability rating, the percentage having a favorable opinion minus the percentage having an unfavorable opinion, is a modest +13%, essentially unchanged from +12% in October. New Hampshire Democrats continue to like Obama (net favorability rating of +92%), political independents (+3% net) are divided, and Republicans (-68% net) have an unfavorable opinion of the President.



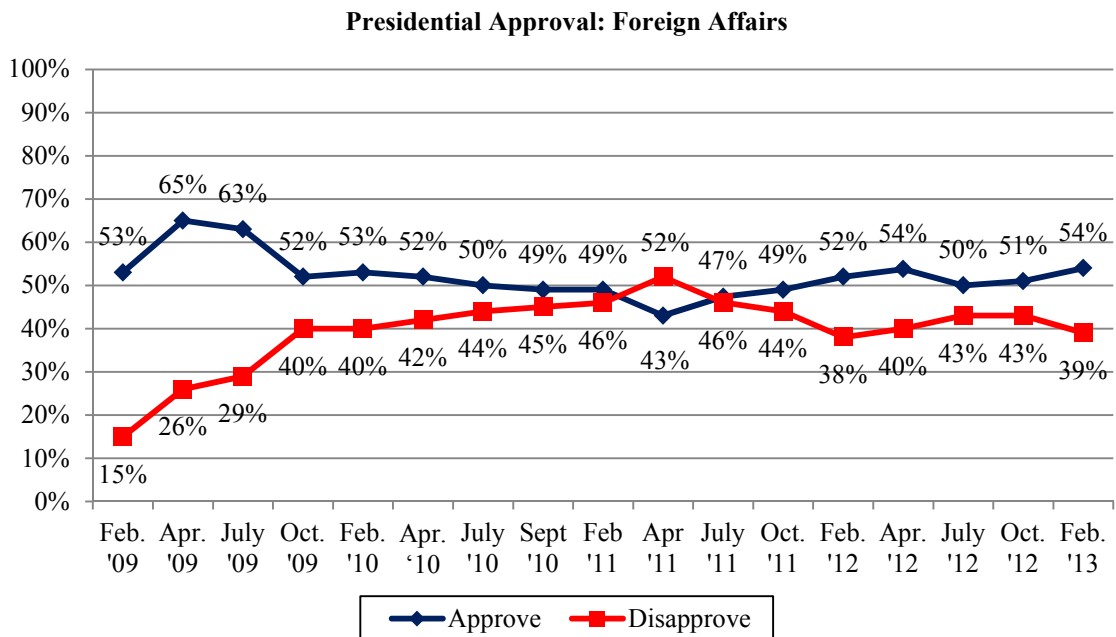
### Economic Approval Rating

The flat New Hampshire economy is not helping President Obama's economic approval rating. Currently, only 47% of New Hampshire adults approve of how Obama is handling the economy, 48% disapprove, and 5% are neutral. As with other approval measures, there is a considerable partisan gap -- most Democrats (88%) approve of Obama's handling of the economy, but only 38% of independents and 7% of Republicans approve.



### Foreign Affairs

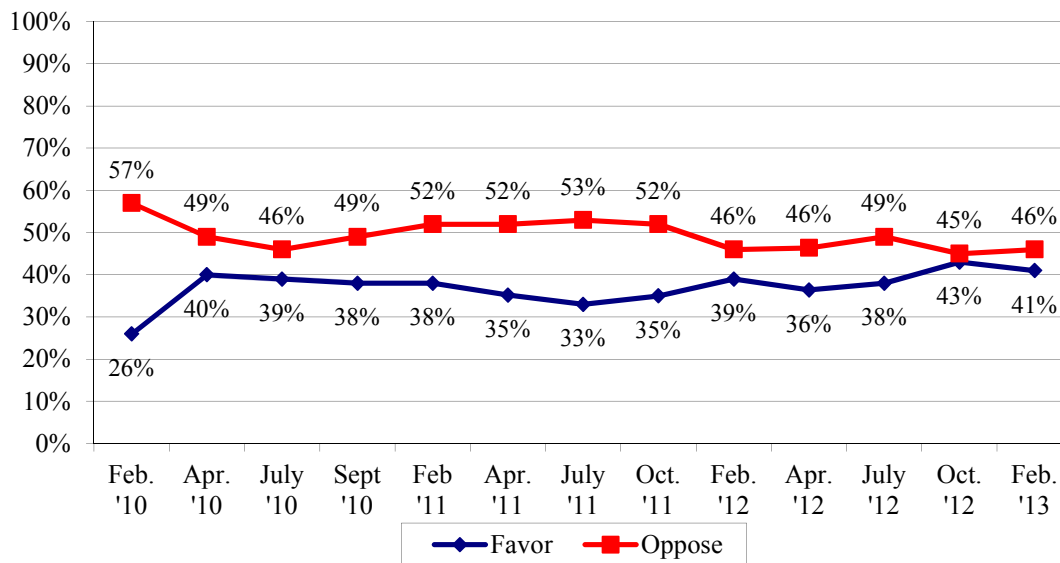
New Hampshire's views about the Obama Administration's handling of foreign policy have remained relatively flat over the past year. In the most recent Granite State Poll, 54% approve of how President Obama is handling foreign affairs, 39% disapprove, and 6% are neutral. The same partisan divisions that characterize other ratings of the administration exist in New Hampshire's evaluations of its handling of foreign affairs -- 88% of Democrats, but only 19% of Republicans approving of Obama's handling of foreign affairs. Independents are more divided, with 51% approving and 42% disapproving.



### Health Care Reform

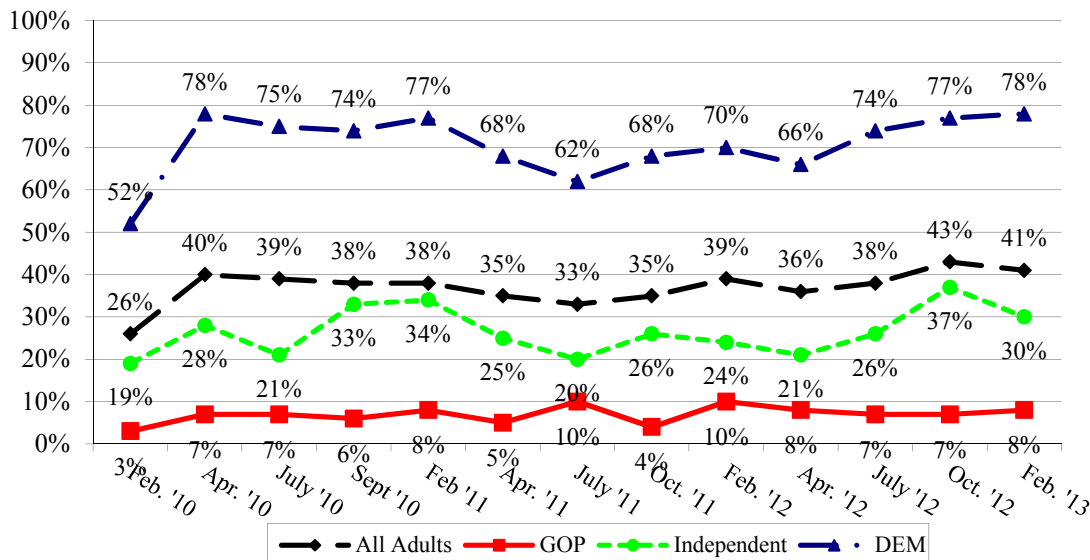
Granite Staters remain divided in their opinion of the health care law passed in 2010. In the most recent Granite State Poll, 41% of New Hampshire adults favor the legislation, 46% oppose it, and 13% are neutral or don't know enough about it to say.

**Favor / Oppose Health Care Reform Legislation**



Support for the health care reform law has stayed flat among different partisan groups. It remains popular with Democrats (78% favor) and unpopular among Republicans (8% favor). However, the law's popularity with Independents has dropped from 37% who favored it in October to 30% who favor it today.

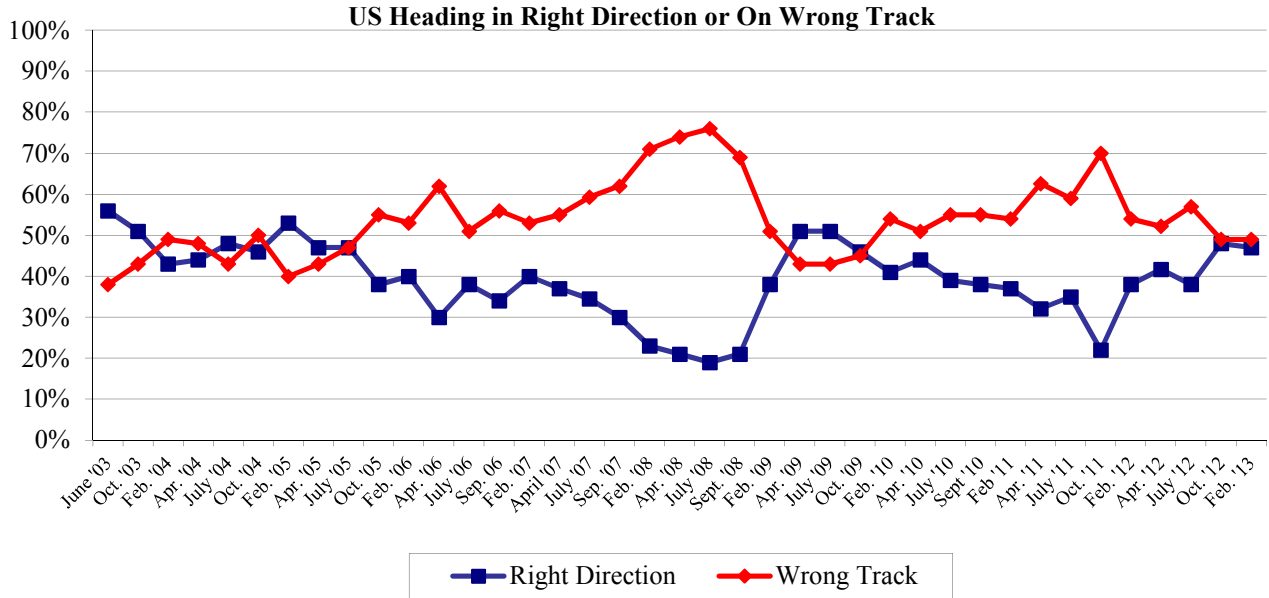
**Favor Health Care Reform Legislation by Party Identification (% Favor)**



### Right Direction – Wrong Track

Obama’s reelection has not improved expectations for the future of the country among Granite Staters. Currently, 47% of New Hampshire adults think things in this country are generally going in the right direction, 49% think things are seriously off on the wrong track, and 4% don’t know. This measure is unchanged since before the election.

Democrats remain the most optimistic about the country with 80% saying the U.S. is headed in the right direction, but only 16% of Republicans take this view. Independents are also pessimistic with only 39% thinking things are going in the right direction and 56% believing the U.S. is on the wrong track.



## Granite State Poll Methodology

These findings are based on the latest WMUR Granite State Poll, conducted by the University of New Hampshire Survey Center. Five hundred and eighty-one (581) randomly selected New Hampshire adults were interviewed by landline and cellular telephone between January 30 and February 5, 2013. The margin of sampling error for the survey is +/- 4.1 percent.

The data have been weighted to adjust for numbers of adults and telephone lines within households, respondent sex, and region of the state. In addition to potential sampling error, all surveys have other potential sources of non-sampling error including question order effects, question wording effects, and non-response.

### Presidential Approval – All Adults

“GENERALLY SPEAKING, do you approve or disapprove of the way Barack Obama is handling his job as president?”

	<u>Approve</u>	<u>Neutral</u>	<u>Disapprove</u>	<u>(N)</u>
<b>Feb. '13</b>	<b>53%</b>	<b>2%</b>	<b>44%</b>	<b>(572)</b>
<b>Oct. 8. '12</b>	52%	3%	45%	(589)
<b>Oct. 1, '12</b>	55%	3%	42%	(635)
<b>Sept. '12</b>	52%	4%	44%	(635)
<b>Aug. '12</b>	47%	4%	49%	(579)
<b>July '12</b>	47%	5%	48%	(517)
<b>Apr. '12</b>	50%	3%	47%	(535)
<b>Feb. '12</b>	51%	6%	43%	(524)
<b>Oct. '11</b>	41%	6%	53%	(551)
<b>July '11</b>	46%	6%	49%	(512)
<b>Apr. '11</b>	44%	5%	52%	(502)
<b>Feb. '11</b>	46%	4%	49%	(519)
<b>Sept. '10</b>	46%	4%	50%	(514)
<b>July '10</b>	51%	5%	44%	(502)
<b>Apr. '10</b>	50%	4%	46%	(506)
<b>Feb. '10</b>	48%	5%	47%	(495)
<b>Oct. '09</b>	55%	5%	40%	(503)
<b>July '09</b>	61%	6%	33%	(556)
<b>Apr. '09</b>	63%	8%	29%	(500)
<b>Feb. '09</b>	66%	14%	21%	(614)

### Favorability Rating – President Barack Obama

"Next, I'd like to get your overall opinion of some people who have been in the news. As I read each name, please say if you have a favorable or unfavorable opinion of this person - or if you don't know enough about him or her to say. President Barack Obama?"

	<u>Favorable</u>	<u>Neutral/DK</u>	<u>Unfavorable</u>	<u>NET</u>	<u>(N=)</u>
<b>Feb. '13</b>	<b>54%</b>	<b>5%</b>	<b>41%</b>	<b>+13%</b>	<b>(579)</b>
<b>Oct. 8 '12</b>	53%	5%	41%	+12%	(589)
<b>Oct. 1 '12</b>	56%	4%	40%	+16%	(637)
<b>Aug. '12</b>	47%	6%	47%	0%	(579)
<b>July '12</b>	47%	7%	47%	0%	(520)
<b>Apr. '12</b>	51%	5%	44%	+7%	(532)
<b>Feb. '12</b>	53%	7%	40%	+13%	(527)
<b>Oct. '11</b>	44%	9%	47%	-3%	(553)
<b>July '11</b>	48%	6%	45%	+3%	(514)
<b>Apr. '11</b>	44%	8%	48%	-4%	(503)
<b>Feb. '11</b>	47%	8%	44%	3%	(515)
<b>Sept. '10</b>	47%	4%	48%	-1%	(515)
<b>July '10</b>	51%	5%	42%	+9%	(504)
<b>Apr. '10</b>	50%	4%	44%	+6%	(510)
<b>Feb. '10</b>	52%	6%	41%	+11%	(496)
<b>Oct. '09</b>	56%	8%	35%	+21%	(502)
<b>July '09</b>	62%	7%	30%	+32%	(557)
<b>Apr. '09</b>	64%	7%	27%	+37%	(503)
<b>Feb. '09</b>	71%	9%	16%	+55%	(619)
<b>Sep. '08</b>	53%	9%	36%	+17%	(522)
<b>July '08</b>	58%	10%	31%	+27%	(474)

### Presidential Approval – Economy

“GENERALLY SPEAKING, do you approve or disapprove of the way President Obama is handling THE ECONOMY?”

	<u>Approve</u>	<u>Neutral</u>	<u>Disapprove</u>	<u>(N)</u>
<b>Feb. '13</b>	<b>47%</b>	<b>5%</b>	<b>48%</b>	<b>(574)</b>
<b>Oct. '12</b>	50%	3%	48%	(590)
<b>July '12</b>	43%	4%	53%	(517)
<b>Apr. '12</b>	47%	3%	50%	(536)
<b>Feb. '12</b>	46%	5%	49%	(525)
<b>Oct. '11</b>	37%	5%	58%	(551)
<b>July '11</b>	40%	4%	56%	(511)
<b>Apr. '11</b>	40%	3%	57%	(502)
<b>Feb. '11</b>	42%	3%	55%	(518)
<b>Sept. '10</b>	43%	2%	54%	(513)
<b>July '10</b>	47%	3%	50%	(502)
<b>Apr. '10</b>	46%	3%	50%	(507)
<b>Feb. '10</b>	41%	4%	54%	(493)
<b>Oct. '09</b>	51%	3%	46%	(500)
<b>July '09</b>	57%	4%	39%	(556)
<b>Apr. '09</b>	58%	7%	35%	(499)
<b>Feb. '09</b>	62%	14%	24%	(614)

**Presidential Approval - Foreign Affairs**

“GENERALLY SPEAKING, do you approve or disapprove of the way President Obama is handling FOREIGN AFFAIRS?”

	<u>Approve</u>	<u>Neutral</u>	<u>Disapprove</u>	<u>(N)</u>
<b>Feb. '13</b>	<b>54%</b>	<b>6%</b>	<b>39%</b>	<b>(571)</b>
<b>Oct. '12</b>	51%	5%	43%	(589)
<b>July '12</b>	50%	7%	43%	(510)
<b>Apr. '12</b>	54%	6%	40%	(532)
<b>Feb. '12</b>	52%	9%	38%	(524)
<b>Oct. '11</b>	49%	7%	44%	(552)
<b>July '11</b>	47%	7%	46%	(508)
<b>Apr. '11</b>	43%	5%	52%	(497)
<b>Feb. '11</b>	49%	5%	46%	(515)
<b>Sept. '10</b>	49%	7%	45%	(511)
<b>July '10</b>	50%	6%	44%	(503)
<b>Apr. '10</b>	52%	6%	42%	(504)
<b>Feb. '10</b>	53%	7%	40%	(494)
<b>Oct. '09</b>	52%	8%	40%	(499)
<b>July '09</b>	63%	9%	29%	(552)
<b>Apr. '09</b>	65%	8%	26%	(496)
<b>Feb. '09</b>	53%	32%	15%	(607)

**Favor / Oppose Health Care Reform Legislation Passed in Congress**

“Let me ask you a question about healthcare. The U.S. House and Senate passed legislation in March of 2010 that will overhaul the nation’s health care system. Based on what you have seen or heard, do you favor or oppose the health care legislation that was passed in Congress, or don’t you have an opinion?”

(ASKED IN FEB '10) “Let me ask you a question about healthcare. The U.S. House and Senate have just passed legislation that would overhaul the nation’s health care system. Based on what you have seen or heard, do you favor or oppose the health care legislation that is going through Congress, or don’t you have an opinion?”

	<u>Favor</u>	<u>Neutral/DK</u>	<u>Oppose</u>	<u>(N)</u>
<b>Feb. '13</b>	<b>41%</b>	<b>13%</b>	<b>46%</b>	<b>(581)</b>
<b>Oct. '12</b>	43%	12%	45%	(590)
<b>July '12</b>	38%	13%	49%	(518)
<b>Apr. '12</b>	36%	18%	46%	(534)
<b>Feb. '12</b>	39%	15%	46%	(524)
<b>Oct. '11</b>	35%	13%	52%	(554)
<b>July '11</b>	33%	14%	53%	(513)
<b>Apr. '11</b>	35%	12%	52%	(504)
<b>Feb. '11</b>	38%	10%	52%	(519)
<b>Sept. '10</b>	38%	13%	49%	(513)
<b>July '10</b>	39%	15%	46%	(502)
<b>Apr. '10</b>	40%	10%	49%	(512)
<b>Feb. '10</b>	26%	16%	57%	(498)



## Right Track - Wrong Track

“Do you think things in this country are generally going in the right direction or are they seriously off on the wrong track?”

	<b><u>Right Direction</u></b>	<b><u>Wrong Track</u></b>	<b><u>Don't Know</u></b>	<b><u>(N=)</u></b>
<b>Feb. '13</b>	<b>47%</b>	<b>49%</b>	<b>4%</b>	<b>(573)</b>
<b>Oct. '12</b>	48%	49%	3%	(578)
<b>July '12</b>	38%	57%	5%	(512)
<b>Apr. '12</b>	42%	52%	6%	(525)
<b>Feb. '12</b>	38%	54%	8%	(514)
<b>Oct. '11</b>	22%	70%	8%	(553)
<b>July '11</b>	35%	59%	6%	(507)
<b>Apr. '11</b>	32%	63%	5%	(496)
<b>Feb. '11</b>	37%	54%	9%	(513)
<b>Sept. '10</b>	38%	55%	7%	(512)
<b>July '10</b>	39%	55%	6%	(491)
<b>Apr. '10</b>	44%	51%	4%	(502)
<b>Feb. '10</b>	41%	54%	5%	(484)
<b>Oct. '09</b>	46%	45%	9%	(496)
<b>July '09</b>	51%	43%	5%	(555)
<b>Apr. '09</b>	51%	43%	7%	(498)
<b>Feb. '09</b>	38%	51%	11%	(610)
<b>Sept. '08</b>	21%	69%	10%	(540)
<b>July '08</b>	19%	73%	8%	(508)
<b>Apr. '08</b>	21%	74%	5%	(487)
<b>Feb. '08</b>	23%	71%	7%	(553)
<b>Sept. '07</b>	30%	62%	8%	(505)
<b>July '07</b>	34%	59%	6%	(523)
<b>Apr. '07</b>	37%	55%	8%	(510)
<b>Feb. '07</b>	40%	53%	7%	(516)
<b>Sept. '06</b>	34%	56%	10%	(510)
<b>July '06</b>	38%	51%	11%	(496)
<b>Apr. '06</b>	30%	62%	8%	(501)
<b>Feb. '06</b>	40%	53%	7%	(487)
<b>Oct. '05</b>	38%	55%	7%	(498)
<b>July '05</b>	47%	47%	6%	(492)
<b>Apr. '05</b>	46%	43%	11%	(487)
<b>Feb. '05</b>	53%	40%	7%	(535)
<b>Oct. '04</b>	46%	50%	4%	(574)
<b>July '04</b>	48%	43%	10%	(500)
<b>Apr. '04</b>	44%	48%	8%	(535)
<b>Feb. '04</b>	43%	49%	8%	(503)
<b>Oct. '03</b>	51%	43%	6%	(487)
<b>June '03</b>	56%	38%	5%	(511)

**Presidential Approval Rating - Overall**

	<u>Approve</u>	<u>Neutral</u>	<u>Disapprove</u>	<u>(N=)</u>
<b>STATEWIDE</b>	<b>53%</b>	<b>2%</b>	<b>44%</b>	<b>572</b>
Registered Democrat	89%	1%	10%	151
Registered Undeclared	53%	4%	43%	235
Registered Republican	13%	1%	87%	145
Democrat	94%	2%	4%	237
Independent	48%	4%	49%	108
Republican	12%	1%	87%	215
Liberal	90%	1%	10%	138
Moderate	58%	3%	39%	225
Conservative	19%	2%	79%	177
Support Tea Party	15%	1%	84%	113
Neutral	30%	3%	67%	169
Oppose Tea Party	85%	3%	12%	259
Romney/Ryan Voter	6%	2%	91%	234
Obama/Biden Voter	96%	2%	3%	270
Other	27%	7%	66%	25
Did Not Vote in 2012	63%	5%	31%	27
Union household	63%	1%	36%	63
Non union	52%	2%	46%	506
Read Union Leader	38%	2%	61%	166
Read Boston Globe	65%	0%	35%	77
Watch WMUR	51%	3%	46%	387
Listen to NHPR	76%	1%	23%	194
10 yrs or less in NH	64%	1%	35%	90
11 to 20 years	47%	3%	50%	111
More than 20 years	52%	2%	46%	365
18 to 34	52%	1%	48%	85
35 to 49	51%	3%	45%	132
50 to 64	58%	2%	40%	179
65 and over	52%	2%	45%	158
Male	47%	2%	50%	280
Female	59%	2%	39%	292
High school or less	47%	3%	50%	116
Some college	45%	2%	53%	115
College graduate	56%	3%	41%	218
Post graduate	63%	1%	36%	121
Attend services 1 or more/week	42%	3%	55%	137
1 2 times a month	50%	0%	50%	69
Less often	55%	2%	43%	155
Never	60%	3%	37%	200
North Country	62%	4%	34%	43
Central / Lakes	50%	2%	48%	105
Connecticut Valley	73%	1%	26%	87
Mass Border	48%	2%	50%	159
Seacoast	54%	3%	43%	87
Manchester Area	43%	3%	55%	91
First Cong. Dist	47%	3%	50%	250
Second Cong. Dist	58%	2%	40%	321

**Favorability Rating - Barack Obama**

	<u>Favorable</u>	<u>Neutral</u>	<u>Unfavorable</u>	<u>DK</u>	<u>(N)</u>
<b>STATEWIDE</b>	<b>54%</b>	<b>4%</b>	<b>41%</b>	<b>1%</b>	<b>579</b>
Registered Democrat	90%	2%	8%	0%	151
Registered Undeclared	56%	3%	39%	1%	236
Registered Republican	14%	5%	81%	1%	147
Democrat	95%	1%	3%	0%	238
Independent	45%	9%	42%	4%	114
Republican	14%	4%	82%	0%	215
Liberal	90%	1%	8%	1%	138
Moderate	60%	6%	33%	1%	230
Conservative	20%	2%	77%	0%	177
Support Tea Party	13%	4%	83%	1%	113
Neutral	35%	4%	59%	2%	173
Oppose Tea Party	86%	3%	11%	1%	261
Romney/Ryan Voter	9%	4%	86%	0%	236
Obama/Biden Voter	94%	3%	2%	1%	273
Other	47%	0%	53%	0%	25
Did Not Vote in 2012	60%	10%	27%	4%	28
Union household	62%	7%	32%	0%	65
Non union	53%	3%	42%	1%	511
Read Union Leader	40%	5%	55%	0%	167
Read Boston Globe	69%	4%	27%	0%	77
Watch WMUR	52%	4%	43%	1%	391
Listen to NHPR	77%	2%	21%	0%	195
10 yrs or less in NH	61%	4%	32%	2%	91
11 to 20 years	52%	1%	47%	1%	111
More than 20 years	53%	4%	42%	1%	370
18 to 34	53%	2%	43%	1%	87
35 to 49	52%	6%	41%	1%	133
50 to 64	60%	4%	36%	1%	181
65 and over	53%	2%	43%	1%	159
Male	49%	4%	45%	2%	283
Female	59%	4%	37%	0%	296
High school or less	46%	4%	48%	2%	119
Some college	52%	2%	45%	1%	116
College graduate	57%	5%	38%	1%	221
Post graduate	61%	2%	35%	1%	121
Attend services 1 or more/week	41%	6%	53%	1%	139
1 2 times a month	53%	0%	47%	0%	69
Less often	57%	1%	40%	2%	156
Never	62%	5%	32%	1%	204
North Country	54%	9%	36%	2%	43
Central / Lakes	52%	3%	45%	0%	105
Connecticut Valley	69%	4%	26%	1%	90
Mass Border	54%	2%	42%	1%	160
Seacoast	54%	7%	40%	0%	89
Manchester Area	44%	3%	51%	2%	92
First Cong. Dist	48%	4%	47%	1%	253
Second Cong. Dist	59%	4%	36%	1%	325

**Presidential Approval Rating - Economy**

<b>STATEWIDE</b>	<b><u>Approve</u></b> <b>47%</b>	<b><u>Neutral</u></b> <b>5%</b>	<b><u>Disapprove</u></b> <b>48%</b>	<b><u>(N=)</u></b> <b>574</b>
Registered Democrat	85%	3%	13%	151
Registered Undeclared	46%	5%	49%	235
Registered Republican	9%	6%	85%	145
Democrat	88%	4%	8%	238
Independent	38%	7%	55%	109
Republican	7%	4%	89%	215
Liberal	85%	3%	12%	138
Moderate	49%	7%	44%	226
Conservative	15%	1%	84%	176
Support Tea Party	11%	3%	86%	113
Neutral	23%	6%	70%	171
Oppose Tea Party	78%	5%	17%	259
Romney/Ryan Voter	4%	4%	93%	234
Obama/Biden Voter	90%	3%	8%	270
Other	5%	23%	72%	25
Did Not Vote in 2012	40%	17%	43%	28
Union household	60%	4%	36%	63
Non union	45%	5%	50%	508
Read Union Leader	34%	2%	64%	166
Read Boston Globe	59%	0%	41%	77
Watch WMUR	45%	5%	50%	388
Listen to NHPR	69%	4%	27%	195
10 yrs or less in NH	50%	4%	46%	91
11 to 20 years	40%	7%	54%	111
More than 20 years	48%	4%	48%	366
18 to 34	37%	13%	50%	87
35 to 49	44%	2%	53%	133
50 to 64	54%	5%	41%	177
65 and over	48%	3%	50%	159
Male	40%	6%	54%	280
Female	53%	4%	43%	294
High school or less	38%	9%	54%	117
Some college	38%	8%	55%	116
College graduate	49%	4%	47%	218
Post graduate	61%	1%	39%	121
Attend services 1 or more/week	39%	2%	59%	137
1 2 times a month	36%	5%	59%	69
Less often	48%	6%	45%	155
Never	55%	5%	40%	202
North Country	60%	5%	35%	43
Central / Lakes	40%	9%	51%	104
Connecticut Valley	64%	5%	31%	87
Mass Border	46%	2%	52%	160
Seacoast	48%	2%	50%	88
Manchester Area	33%	9%	58%	92
First Cong. Dist	42%	5%	53%	252
Second Cong. Dist	51%	5%	44%	322

**Favor / Oppose Health Care Legislation Passed in Congress**

<b>STATEWIDE</b>	<b><u>Favor</u></b> <b>41%</b>	<b><u>Neutral/DK</u></b> <b>13%</b>	<b><u>Oppose</u></b> <b>46%</b>	<b><u>(N=)</u></b> <b>581</b>
Registered Democrat	79%	11%	10%	151
Registered Undeclared	36%	17%	46%	238
Registered Republican	12%	7%	81%	147
Democrat	78%	14%	7%	239
Independent	30%	17%	54%	115
Republican	8%	9%	83%	215
Liberal	79%	10%	11%	138
Moderate	45%	15%	40%	232
Conservative	9%	10%	81%	177
Support Tea Party	8%	5%	87%	113
Neutral	16%	21%	63%	174
Oppose Tea Party	73%	11%	16%	262
Romney/Ryan Voter	6%	9%	85%	236
Obama/Biden Voter	75%	14%	11%	275
Other	18%	19%	63%	25
Did Not Vote in 2012	30%	33%	37%	28
Union household	47%	14%	39%	65
Non union	40%	13%	46%	513
Read Union Leader	32%	11%	57%	168
Read Boston Globe	59%	6%	35%	77
Watch WMUR	39%	16%	46%	393
Listen to NHPR	65%	7%	28%	196
10 yrs or less in NH	46%	16%	38%	92
11 to 20 years	38%	15%	48%	111
More than 20 years	40%	13%	47%	370
18 to 34	34%	20%	46%	87
35 to 49	37%	14%	49%	134
50 to 64	48%	10%	42%	181
65 and over	42%	13%	45%	160
Male	33%	14%	53%	285
Female	48%	13%	39%	296
High school or less	29%	23%	47%	119
Some college	34%	12%	54%	117
College graduate	45%	11%	44%	222
Post graduate	51%	9%	39%	121
Attend services 1 or more/week	33%	10%	57%	139
1 2 times a month	27%	20%	53%	69
Less often	43%	15%	43%	156
Never	49%	13%	38%	206
North Country	35%	23%	42%	44
Central / Lakes	36%	11%	53%	105
Connecticut Valley	50%	14%	36%	90
Mass Border	47%	13%	40%	161
Seacoast	42%	7%	52%	89
Manchester Area	28%	18%	53%	92
First Cong. Dist	38%	11%	51%	253
Second Cong. Dist	43%	16%	42%	327

**Presidential Approval Rating - Foreign Affairs**

	<u>Approve</u> 54%	<u>Neutral</u> 6%	<u>Disapprove</u> 39%	<u>(N=)</u> 571
<b>STATEWIDE</b>				
Registered Democrat	84%	6%	10%	151
Registered Undeclared	58%	7%	35%	233
Registered Republican	19%	5%	76%	144
Democrat	88%	7%	5%	236
Independent	51%	7%	42%	108
Republican	19%	5%	75%	215
Liberal	88%	3%	9%	136
Moderate	60%	8%	32%	227
Conservative	20%	7%	73%	175
Support Tea Party	18%	3%	79%	111
Neutral	38%	9%	53%	170
Oppose Tea Party	82%	6%	11%	259
Romney/Ryan Voter	17%	6%	77%	234
Obama/Biden Voter	89%	5%	6%	270
Other	30%	15%	55%	24
Did Not Vote in 2012	61%	9%	30%	27
Union household	63%	7%	30%	63
Non union	53%	6%	40%	504
Read Union Leader	41%	6%	53%	166
Read Boston Globe	70%	3%	27%	77
Watch WMUR	52%	6%	42%	387
Listen to NHPR	74%	3%	23%	194
10 yrs or less in NH	68%	5%	28%	91
11 to 20 years	39%	12%	49%	109
More than 20 years	55%	5%	40%	364
18 to 34	55%	7%	38%	84
35 to 49	54%	5%	40%	132
50 to 64	58%	7%	35%	178
65 and over	53%	6%	41%	158
Male	51%	8%	41%	278
Female	57%	5%	38%	292
High school or less	44%	9%	47%	114
Some college	46%	8%	46%	115
College graduate	57%	6%	37%	219
Post graduate	67%	3%	30%	121
Attend services 1 or more/week	40%	4%	56%	137
1 2 times a month	53%	4%	44%	69
Less often	59%	9%	32%	153
Never	62%	7%	32%	201
North Country	66%	4%	30%	43
Central / Lakes	50%	7%	43%	105
Connecticut Valley	69%	6%	25%	86
Mass Border	52%	8%	40%	159
Seacoast	56%	2%	43%	87
Manchester Area	42%	9%	49%	90
First Cong. Dist	50%	5%	44%	249
Second Cong. Dist	57%	7%	36%	321

**U.S. Right Direction / Wrong Track**

	<b><u>Right Direction</u></b> 47%	<b><u>Wrong Track</u></b> 49%	<b><u>Don't Know</u></b> 4%	<b><u>(N=)</u></b> 573
<b>STATEWIDE</b>				
Registered Democrat	73%	21%	5%	149
Registered Undeclared	47%	50%	3%	238
Registered Republican	17%	81%	2%	144
Democrat	80%	16%	4%	237
Independent	39%	56%	5%	113
Republican	16%	82%	2%	211
Liberal	77%	18%	5%	137
Moderate	53%	43%	4%	228
Conservative	18%	80%	2%	173
Support Tea Party	13%	85%	2%	111
Neutral	30%	67%	2%	174
Oppose Tea Party	74%	21%	5%	259
Romney/Ryan Voter	12%	86%	2%	232
Obama/Biden Voter	80%	14%	6%	271
Other	34%	64%	1%	25
Did Not Vote in 2012	42%	55%	3%	27
Union household	55%	39%	6%	64
Non union	46%	50%	3%	505
Read Union Leader	33%	65%	2%	166
Read Boston Globe	50%	44%	6%	77
Watch WMUR	46%	50%	4%	386
Listen to NHPR	66%	31%	3%	196
10 yrs or less in NH	58%	39%	4%	92
11 to 20 years	43%	56%	1%	111
More than 20 years	46%	49%	4%	363
18 to 34	48%	49%	3%	86
35 to 49	44%	53%	3%	132
50 to 64	51%	45%	3%	178
65 and over	48%	47%	5%	157
Male	42%	55%	3%	280
Female	52%	44%	4%	292
High school or less	40%	56%	4%	117
Some college	39%	58%	3%	115
College graduate	51%	45%	4%	219
Post graduate	56%	41%	4%	120
Attend services 1 or more/week	36%	59%	5%	138
1 2 times a month	44%	54%	2%	69
Less often	51%	46%	2%	154
Never	53%	42%	4%	200
North Country	43%	46%	11%	44
Central / Lakes	46%	49%	5%	103
Connecticut Valley	57%	39%	4%	85
Mass Border	47%	50%	2%	160
Seacoast	49%	47%	4%	89
Manchester Area	39%	61%	0%	92
First Cong. Dist	44%	53%	2%	252
Second Cong. Dist	49%	46%	5%	321