

352.0742B

P83

c.2

ANNUAL

REPORT



1965

PORTSMOUTH  
NEW HAMPSHIRE

NEW HAMPSHIRE  
STATE LIBRARY

# Table of Contents

City Manager's Message . . . . .	1
Municipal Organization Chart . . . . .	2
Portsmouth City Council and Executive Department . . . . .	3
Council Activities — 1965 . . . . .	4
Major Accomplishments . . . . .	9
Boards and Commissions . . . . .	10
Administrative Officers . . . . .	11

## ADMINISTRATIVE DEPARTMENTS

Records . . . . .	12
Assessments . . . . .	13
Tax Collection . . . . .	16
Treasurer . . . . .	17
Education . . . . .	18
Public Works . . . . .	21
Recreation . . . . .	22
Planning . . . . .	24
Library . . . . .	25
Fire . . . . .	26
Police . . . . .	26
Law . . . . .	28
Health & Welfare . . . . .	29

## INSPECTION AGENCIES

Building . . . . .	30
Plumbing . . . . .	30
Dog Officer . . . . .	31
Sealer of Weights and Measures . . . . .	31
Pease Air Base . . . . .	32
Civil Defense . . . . .	33
Economic Development . . . . .	34

## FINANCE

Division of Accounting . . . . .	35
Summary of State Tax Commission . . . . .	36
Exhibits and Statements . . . . .	38

GENERAL INFORMATION . . . . .	49
-------------------------------	----

DIRECTORY OF CITY OFFICES . . . . .	Inside Back Cover
-------------------------------------	-------------------

# City Manager's Report



## City of Portsmouth, New Hampshire

CITY HALL

126 DANIEL STREET  
July 1, 1966

Honorable Mayor, Members of City  
Council and Citizens of the City  
of Portsmouth, New Hampshire

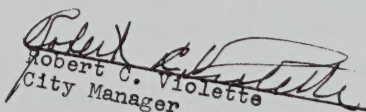
Gentlemen:

It is my pleasure and privilege to bring you a report of the activities that took place during the year 1965. We ended the year with a surplus and many people deserve credit for this financial success; the Members of the City Council, as advisers; the Department Heads and all City Employees. I am grateful to them for this accomplishment and what they have done is greatly appreciated by all the citizens of our fair city.

It has been a very busy year, as will the coming year of 1966. Many projects remain to be completed with many new ones to be initiated during the coming months.

My personal and sincere thanks to the Mayor and to the Members of the City Council, for their expert advice and guidance and to all City Employees for performing their duties so satisfactorily. I am also indebted and want to express my appreciation to the news media for keeping the citizenry so well informed; namely the Portsmouth Herald, our local newspaper and our two radio stations, WHEB & WEBX, also to the many Boards and Commissions for performing their work with satisfaction - my most sincere appreciation.

Respectfully,

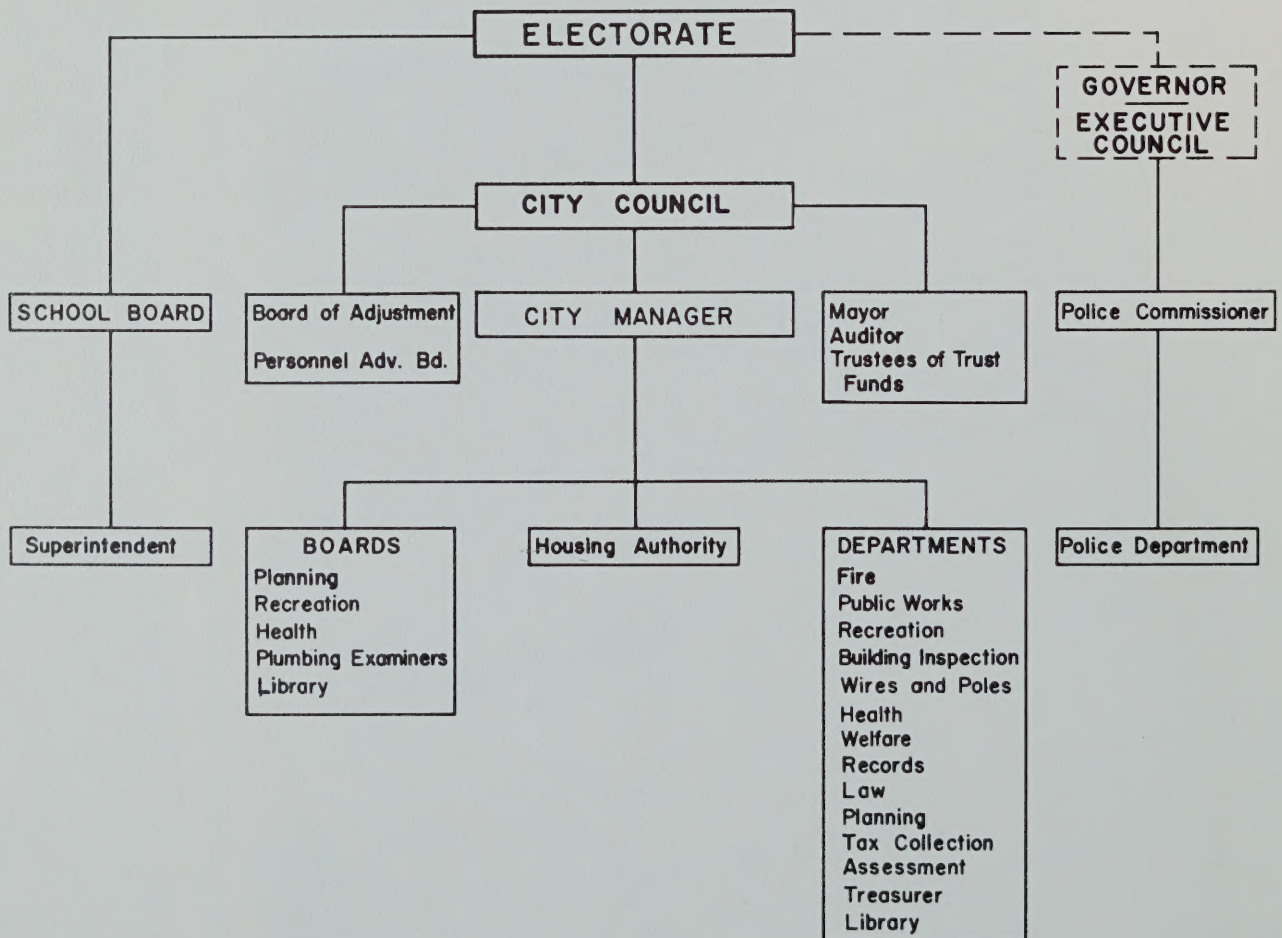
  
Robert C. Violette  
City Manager

RCV:lzs

"City of the Open Door"



# Municipal Organization Chart



# Portsmouth City Council



LEFT TO RIGHT: Councilmen: Raymond C. Dunphy; Edmund T. Scarponi; Frank Butterworth, Jr; Robert E. Whalen; City Manager Robert C. Violette; Mayor Timothy J. Connors; C. Richard Williams, Assistant Mayor; City Clerk, Peter E. O'Donnell; City Attorney, John C. Driscoll; Lucien O. Geoffrion, (replaced by Frank W. Fate 3.23.65); Samuel A. McMaster and Clayton E. Osborn.

## CITY COUNCIL ACTIVITIES: 1965

Held 12 regular meetings  
Held 15 Special meetings  
Held 10 sessions for public hearings  
Passed 13 Resolutions  
Adopted 21 Ordinances, Tabled 1.

## COUNCIL MEMBERS: 9

### EXECUTIVE DEPARTMENT:

Robert C. Violette, City Manager  
Mrs. Leda Z. Sombric, Clerk/Stenographer



Councilman Frank W. Fate

# Council Activities 1965

## JANUARY

2 Meetings  
1 Public Hearing

Adopted Resolution No. 1: Financial Assistance from State of N. H. for Sewage Disposal Facilities.

Adopted Resolution No. 2: Amending Resolution No. 2 adopted March 27, 1963 -- Urban Renewal Project.

Granted permission to City Treasurer to continue using the following banks as depositories: 1st National Bank and New Hampshire National Bank of Portsmouth, New Hampshire and The Merchants National Bank, The State St. Bank & Trust Co. and the National Shawmut Bank all of Boston, Massachusetts.

Held Public Hearing on Ordinance establishing Portsmouth Development Commission: Adopted.

Adopted New Zoning Ordinance as amended

## FEBRUARY

2 Meetings  
1 Public Hearing

Voted to pay M. J. Murphy Co. \$16,848.00 for repairs to Senior High School.

Voted permission to Mayor to appoint a Historical Commission.

Voted to purchase accident insurance for city's call fireman for annual premium of \$299.30.

Voted to pay \$50.00 to Granite State Demolition Co. to dispose of buildings at the Berry Farm in Madbury.

Adopted Resolution No. 3 Recertification Workable Program.

Voted ratification of Resolution No. 4 to appoint Citizen's Advisory Committee.

Held Public Hearing on 1965 Appropriation Bill.

Appropriation Bill for 1965 passed as amended.

Council went on record in favor of Re-Registration in 1966.

Adopted Resolution No. 5 as amended pertaining to accesses from the proposed high-level bridge into Portsmouth.

Awarded bids on 3 Police Cruisers to Grace's Auto for \$3,824.10.

Awarded bid for stairway on double-deck parking lot to Robinson Welding Co. for \$3,647.68.

## MARCH

3 Meetings

Appointed Councilmen Whalen, Scarponi, and Osborn to Site Committee for Low-Rent Housing requested by Portsmouth Housing Authority.

Voted to hold Open House for new Pierce Island Sewer Treatment Plant.

Appointed Councilman Scarponi to Armed Services Committee.

Voted the sum of \$3,750. for the Seacoast Regional Planning Project.

Voted \$500.00 for Drum & Bugle Competition in Armed Forces Day Parade.

Appointed Frank Fate as City Councilman to replace Lucien Geoffrion who resigned.

## APRIL

2 Meetings

Voted \$1,500.00 to help defray the cost of a promotional brochure.

Public Hearing on Salary Ordinance.

Voted to appropriate \$42,500. from Surplus Funds for relocation of sewer & water lines on Hancock Street.

Nominated Walter Beevers to fill the unexpired term of Glenn Graper on the Board of Adjustment.

Appointed Dr. Eames, Dr. Trudel, Robert Reynolds, Councilmen Osborn, Butterworth and Dunphy to a committee to study the Dog Ordinance.

Voted to accept the City Manager's recommendation to purchase 850 parking meters.

## MAY

2 Meetings  
1 Public Hearing

Voted to accept a deed from PHA conveying seven parcels of real estate to the City for Marcy-Washington St. Project.

Voted to accept a deed for a strip of land at Penhallow & Bow Streets from GSA.

Appointed Mayor Connors, City Manager Violette, City Auditor Young and Councilman Whalen to committee to meet with Selectmen from surrounding towns to discuss water rates.

Voted to adopt Resolution No. 6 — Pledging Cooperation with the Armed Service Committee.

Held Public Hearing on an Ordinance to allow parking on easterly side of Market St.: Adopted.

## JUNE

2 Meetings  
1 Public Hearing

Voted \$20,000.00 additional to develop play areas at Senior High School.

Adopted Resolution No. 7 allocating \$10,044.80 from Parking Meter Fund for Police Department raises.

Awarded contract to the lowest bidder — lafolla Construction Company — for reconstruction of Market St.

Voted to provide 2 buses to take Golden Age Club members to annual picnic at Canobie Lake Park.

Held Public Hearings on amendments to the Zoning Ordinance:

1. Junk Car Ordinance: Tabled
2. MGR Reality Petition to General Business District: Adopted
3. Amendment "C" Section 19-104E "Lodges & Clubs": adopted
4. Amendment to Zoning Ordinance "D" "Procedure": Adopted
5. "Signs" amendment: Tabled

## JULY

1 Meeting  
Public Hearing

Voted to appropriate \$200.00 from Contingent Fund towards jackets for the High School State Championship Baseball Team.

Voted to remove 5 parking meters on Penhallow St. & 3 on Daniel St.

Awarded contract to lowest bidder — Iafolla Construction Co. — for Spaulding interceptor sewer line.

Adopted Resolution No. 8 relieving the city of liability for grant of \$2,640.00 in 1947 for plans for Administration Building for Airport.

Voted authorization to Trustees of Trust Funds to combine 3 Trust Funds into 1.

Voted to appropriate \$3,000.00 from Contingent Fund for City's celebration of the 50th Anniversary of the Naval Reserve.

Held Public Hearing on ordinance to regulate Model Car Slot Racing Laws: Adopted

Appointed Committee of Councilmen McMaster, Osborn and Whalen to meet with County Delegation to discuss purchase of County Courthouse.

Adopted Resolution No. 10 expressing the Council's interest in locating the City Hall in the proposed North End Urban Renewal Area.

## AUGUST

3 Meetings  
1 Public Hearing

Accepted resignation of Peter Swanson from Board of Adjustment with regret.

Voted free use of lights at South Playgrounds on August 28 for "Miss Naval Reserve Beauty Pageant".

Voted permission for City Manager to attend City Manager's Institute to be held in Orono, Maine, August 22-25.

Voted to take \$2,500.00 from Contingent Fund for completion of Maple Haven Playground.

Voted to put parallel parking with meters back on lower end of Daniel St. near Power Plant.

Voted City Manager to investigate a Professional Parking & Traffic Survey in the central business district with federal assistance under Section 701 of the Housing Act.

Voted to have a Traffic Island and utility pole removed from Hancock St.

The Mayor announced that Sears & Roebuck Co. were to start construction of a new store in Spauldingshire Shopping Center immediately.

Accepted resignation of Sherman P. Newton, Jr. from Board of Adjustment.

Adopted Resolution No. 9 providing for discount of 1% on taxes paid before October 8 and a 6% interest on taxes unpaid on December 1.

Held Public Hearings on 6 ordinances:

1. An Ordinance pertaining to one-way traffic on Gates St.: Adopted.
2. An ordinance pertaining to rezoning land to Garden Apartment classification (Matosian): Adopted.
3. An ordinance pertaining to rezoning of land from Limited Industrial to General Business classification: Adopted.



4. An ordinance pertaining to extension of General Business District southerly side of Greenleaf Ave: Adopted.
5. An ordinance to establish speed limits in municipal parking lots and city parks: Adopted.
6. An ordinance regulating the use of alcoholic beverages: Adopted.

Appointed committee of City Manager, City Assessor, and City Auditor to investigate pros and cons of having an entire reassessment of city by outside firm.

## SEPTEMBER

3 Meetings  
1 Public Hearing

Held Public Hearing on Supplementary Appropriation

Passed Resolution No. 11, Amendment to Appropriation Bill of City of Portsmouth, N. H.

Voted to accept City Manager's recommendation of having the Water Department flush the entire water system.

Authorized the City Manager to sign Working Agreement with the Firefighters Union Local 1313.

Authorized City Manager submit specifications for bids for employee's insurance.

Authorized City Manager to seek out proper applicants for Civil Engineer for the city.

## OCTOBER

1 Meeting  
1 Public Hearing

Public Hearing on Ordinances:

1. To rezone land on the easterly side of the Interstate Highway: Adopted.
2. To limit parking on lower end of Daniel St.: Adopted.
3. To restrict truck & bus travel on Myrtle & Dennett St.: Adopted.
4. Amend Taxi-cab ordinance-Section 32-225: Adopted.
5. Making Court St. one-way: Tabled.

Voted to have the question "Shall Permission be granted to introduce fluorides into the Public Water System"? put on the ballot for the Nov. 2 Municipal Election.

Voted to accept Mirona Road subject to approval of deed by City Attorney.

Voted to install a traffic light at Woodbury & Granite St.

## NOVEMBER

4 Meetings  
2 Public Hearings

Voted to accept the votes in the November 2 Municipal Election.

Voted to appoint a 4 man committee to meet with the School Board to select an architect to determine cost of Dondero School addition and possible addition to New Franklin.

Voted to turn over to State 2 parcels of land in the Bellamy Dam area for nominal award of \$100 for widening of Mill Hill Road.

Voted to accept a deed for certain streets in Elwyn Park from Erminio Ricci.

## DECEMBER

2 Meetings  
1 Public Hearing

Held Public Hearing on:

1. Ordinance making Circuit Rd. Exit. one-way: Tabled.
2. Ordinance to amend Salary Ordinance: Adopted.

Appointed Committee of Councilmen Whalen, Dunphy, Osborn, Williams, City Manager Violette and Erminio Ricci to investigate some type of incinerator for City Dump.

City Manager Violette submitted his proposed budget for 1966.

Held Public Hearing on Ordinance rezoning land in Pleasant Point Drive Area: Adopted.

Voted to elect to the Board of Adjustment:

- Bruce Graves until May of 1968
- Louis Card until May of 1969
- Arthur MacDonald until April of 1970

Voted to adopt Resolution No. 12 authorizing City Treasurer to borrow money in anticipation of taxes for 1966.

Reappointed Miss Dorothy F. Lear to Trustee of Trust Funds, Introduced Robert McKenna, Supt. of Public Works and Frank Emery, Jr., Sanitary Engineer.

Executed a Water Agreement between city and Newington.

Held Public Hearing on ordinance to rezone land on easterly side of Lafayette Rd. adjacent to Radio Station WHEB: Adopted.

Voted to appropriate \$7.16 a month to each employee for a fringe benefit insurance plan.

Adopted Resoultion No. 13 in honor of Councilman Clayton E. Osborn.



Governor Ichabod Goodwin House 1811 – Strawbery Banke

# Major Accomplishments

We have strived to continue our program for orderly community improvement and a listing of our major accomplishments are as follows:

- Three (3) new Police Cruisers.
- Four (4) Portable Radio Units.
- Front-end Loader.
- Dump Truck.
- Four-Wheel drive pick-up with plow.
- Steel stairway for vertical parking area.
- Eight hundred and fifty (850) parking meters.
- Chain link fencing for Little League fields.
- Sensimatic accounting and billing machine.
- Lighting of Alumni Field.
- Widening of Market Street.
- Spaulding Turnpike interceptor sewer line.
- Seven hundred and fifty gallon Pumper.
- Establishment of Portsmouth Development Commission.
- Prescott Park Project.
- Maple Haven Playground Completion.
- Open house and initiation of Pierce Island Sewerage Treatment Plant facilities.
- Approved Application for Re-certification of Workable Program.
- Reorganizing of Public Works Department administrative staff and Engineering Department.
- Water system study.
- Penhallow Street Sewer.



Prescott Park, one of the finest city owned waterfront parks in the east, combines recreational beauty and historical heritage. Formal gardens with splashing fountains combine easily with a pier for fishing and acres of tree shaded lawns for rest and picnics. Sheafe Warehouse c1705, famous for use by John Paul Jones, houses a free museum of local folk art. The area has been built and is maintained by a trust fund left by the late Josie F. Prescott and adjoins the Strawberry Banke Historical Conservation Area.

# Boards and Commissions

## BOARD OF HEALTH

S. Gerard Griffin, M. D.  
Arthur J. Healey, Secretary  
William A. Ruel, D. M. D.

## PLANNING BOARD

Edward Burnham, Chairman  
Joseph J. Shanley, Vice Chairman  
Raymond C. Dunphy, Councilman  
Davin Sanderson  
Robert W. Simpson  
Henry Berousky  
Stanley C. Wyman  
Robert C. Violette, City Manager  
(ex-officio)  
Ernest Levasseur, Super. of Highways  
(ex-officio)  
Albert C. Wennberg, Secretary-Director

## ZONING BOARD OF ADJUSTMENT

Robert E. O'Leary, Chairman  
Peter V. Swanson, Vice Chairman  
Arthur MacDonald  
Alfonso Cabrera  
John Cullen  
Glen E. Graper  
Sherman Newton, Jr.  
Albert C. Wennberg, Secretary  
Mrs. Phyllis Mayo, Acting Secretary

## BUILDING COMMISSION

Dr. S. Gerard Griffin, Chairman  
Frederick Crompton, Fire Chief  
Lewis McNeil, Building Inspector  
Albert C. Wennberg, Planning Director

## LIBRARY TRUSTEES

Richard H. Jerauld  
Mrs. Natlie Fenwick  
Mrs. Nancy R. Beck  
Colonel Henry B. Margeson  
Philip Hodgdon  
Richard H. Hay

## ADULT EDUCATION STUDY COMMITTEE

Frank Butterworth, Jr.  
Miss Margaret M. Ballard  
Herbert R. Hagstrom, Supt. of Schools

## RECREATION COMMITTEE

Miss Keith Bickford  
John T. McDonough  
Harry F. Hallsey  
Samuel Kline  
Arthur Clough  
John J. Leary  
Teddy E. Lilakos  
Robert P. Hopley  
Forrest E. Hodgdon

## HOUSING AUTHORITY

Lawrence E. Mulloney, Chairman  
Orman R. Paul  
Saverio M. Giambalvo  
Robert Iafolla  
Alonzo W. Parks  
Edward J. Abbott, Executive Director  
Robert H. McCann, Assistant Director

## TRUSTEES OF THE TRUST FUND

Miss Dorothy F. Lear  
Robert McLaughlin  
James R. Kelly

## CIVIL DEFENSE

William T. Evans, Director

## BOARD OF EDUCATION

John W. Durgin, Jr.  
Raimond Bowles  
Wyman P. Boynton  
Mrs. Eileen D. Foley  
Philip F. Gray  
Charles J. Griffin  
Dr. Paul E. Harvey  
Philip W. Hodgdon  
William H. P. Hopley  
Dr. Rubin I. Jaffe  
Mrs. Alice M. Lee  
Warren Nickerson

## POLICE COMMISSION

John Loughlin, Chairman  
J. Paul Griffin  
Henry Gerfer

## CITIZENS ADVISORY COMMITTEE

Edward B. Furber, Chairman  
James R. Kelly  
Rabbi Aaron Goldin  
Edward T. Burnham  
Cicero A. Lewis  
Peter Collins  
Alvin Taylor  
Robert McCann  
Frank Butterworth, Jr.  
Wyman P. Boynton  
Miss Margaret Ballard  
Melvin R. Alexander  
Morris C. Foye  
William H. Henson  
W. Coleman Pearson  
Mrs. Richard Wallace  
Mrs. Allen Murdock  
Robert C. Violette, City Manager  
(ex-officio)  
Albert C. Wennberg, Planning Director  
(ex-officio)

## TRAFFIC AND PARKING COMMITTEE

Councilman Samuel A. McMaster, Chairman  
Councilman C. Richard Williams  
Councilman Clayton E. Osborn  
Morris C. Foye  
Henry W. Berousky  
Robert McCann  
Albert C. Wennberg (ex-officio)  
City Manager Robert C. Violette  
(ex-officio)  
Fire Chief Frederick Crompton  
(ex-officio)  
Police Marshal Stanton Remick  
(ex-officio)

## PORTSMOUTH DEVELOPMENT COMMISSION

Anthony R. Jarrett, Director  
Phillip P. Finn, Chairman  
Robert Iafolla  
Lars Sandberg  
Harry Winebaum  
Mayor Connors (ex-officio)  
Robert C. Violette (ex-officio)  
John J. Wholey



# Administrative Officers

CITY CLERK . . . . .	Peter E. O'Donnell
CITY AUDITOR . . . . .	Wilfred E. Young
CITY ASSESSOR . . . . .	Lucien O. Geoffrion (Hired 3.23.65)
TAX COLLECTOR . . . . .	James P. Healy
CITY TREASURER . . . . .	Mrs. Teresa B. Demarais
CITY ATTORNEY . . . . .	John C. Driscoll
BUILDING INSPECTOR . . . . .	Lewis M. McNeil, Sr.
SANITARY/CITY PHYSICIAN . . . . .	S. Gerard Griffin, M. D.
CITY MARSHAL . . . . .	Stanton G. Remick
FIRE CHIEF . . . . .	Frederick R. Crompton
DIRECTOR OF WELFARE . . . . .	Mrs. Hilda Hundley (Hired 2.11.65)
DIRECTOR OF PLANNING . . . . .	Albert C. Wennberg
SUPERINTENDENT PUBLIC WORKS/CITY ENGINEER . . . . .	Robert C. McKenna (Hired 11.25.65)
SUPERINTENDENT WATER DEPARTMENT . . . . .	Frank Emery (Hired 11.25.65)
SUPERINTENDENT OF SCHOOLS . . . . .	Herbert R. Hagstrom
ASSISTANT SUPERINTENDENT OF SCHOOLS . . . . .	Paul L. O'Neil
CLERK OF COURT . . . . .	Lois S. Van Bubar
MUNICIPAL JUDGE . . . . .	Thomas E. Flynn, Jr. Attorney-at-Law
ASSOCIATE JUDGE . . . . .	Samuel Levy Attorney-at-Law
LIBRARIAN, PUBLIC LIBRARY . . . . .	Dorothy M. Vaughan
SEALER WEIGHTS/MEASURES . . . . .	William Thomson
FIRE ALARM SUPERINTENDENT/WIRES & POLE INSPECTOR . . . . .	Arthur M. Patterson
PLUMBING INSPECTOR . . . . .	James Varotsis
PORTSMOUTH ECONOMIC DEVELOPMENT DIRECTOR . . . . .	Anthony R. Jarrett (Hired 7.65)
DIRECTOR OF RECREATION . . . . .	Frederick Watson, Resigned 7.4.65 Frank Fate Hired 7.6.65



## ARMED SERVICES COMMITTEE

Left to Right: City Manager Robert C. Violette, Councilman C. Richard Williams, Mayor Timothy Connors, Philip Gray, and Maurice Murphy.

# Department of Records

Peter E. O'Connell, City Clerk  
 Mrs. Kathleen W. Thomits, Clerk/Typist  
 Mrs. Evelyn Hanscom, Clerk/Typist

## VITAL STATISTICS

Births . . . . .	668
Marriages . . . . .	447
Deaths . . . . .	224
Stillbirths . . . . .	14

## ELECTIONS — 1

Eligible Voters . . . . .	12,988
Votes Cast . . . . .	5,320
% Voting . . . . .	40.9

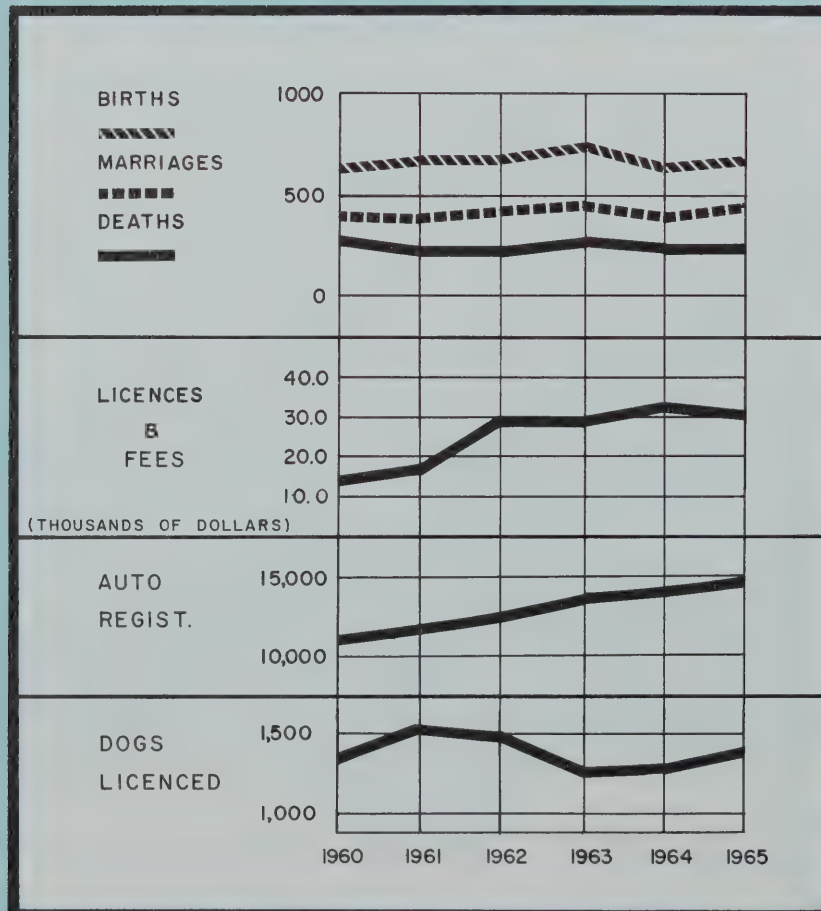
## JURY DRAWINGS — 2

Grand . . . . .	11
Petit . . . . .	24

## LICENSES AND PERMITS

Vital Statistics . . . . .	\$ 1,782.00
2,576 U. C. C. Filings . . . . .	5,152.00
67 Miscellaneous Filings . . . . .	46.00
474 Marriage Filings . . . . .	1,422.00
71 Sewer Entrance Permits . . . . .	4,459.54
189 Miscellaneous Items . . . . .	324.15
1,387 Dog Licenses . . . . .	3,318.25
1,228 Bike Licenses . . . . .	280.50
69 Taxi Operator Permits . . . . .	
33 Taxicab Permits . . . . .	468.00
2 Theatre Licenses . . . . .	200.00
27 Pinball Licenses . . . . .	1,350.00
112 Miscellaneous Licenses . . . . .	1,133.00
27 Political Filings . . . . .	135.00
5,607 Rolls of Parking Meter Tokens . . . . .	9,852.65
Plumbing Reports . . . . .	711.72
	<hr/>
	\$30,634.81

## "STATISTICS"



## Taxes Originating in Assessor's Department

1. Real Estate Taxes	5,912 Units
2. Stock in Trade Taxes	502 Units
3. Road Building Equipment Taxes	
4. Machinery Taxes	
5. "Goods in Process" Taxes	
6. Poll Taxes	7,476 Units
7. Head Taxes	9,603 Units
8. Trailer Taxes	
9. Boat Taxes	
10. Utility Plant Taxes	
11. Railroad Stock Taxes	
12. Bank Stock Taxes	
13. Severance (Timber) Taxes	
14. Livestock Taxes	

Even though the increase in the City's Tax Base amounted to \$575,905. the unusual combination of an increase of over \$389,000. in the City's net budget and severe demands on the city's revenue surplus funds, all combined to effect an increase of \$6.50 over the tax rate of the previous year. This increase was one of the largest in the history of our city under its present form of government and every possible avenue is being explored to prevent the re-occurrence of an increase of this proportion.

### Abatements

Of the Warrant calling for \$3,288,739.11 issued to the Tax Collector, sum of \$5,855.63 was abated — less than .02 of one percent of the total collected.

### Assessment Ratio Change

On assuming my duties as City Assessor on April 1, 1965 I

received a report from State Tax Commission that a study made in 1964 by the Commission of some 150 sales showed that the "ration of Assessment to Market Value" as represented by these sales averaged 42% of Full 100% FAIR MARKET VALUE and that therefore this percentage was now to be used in the determination of Veterans Exemptions, etc.

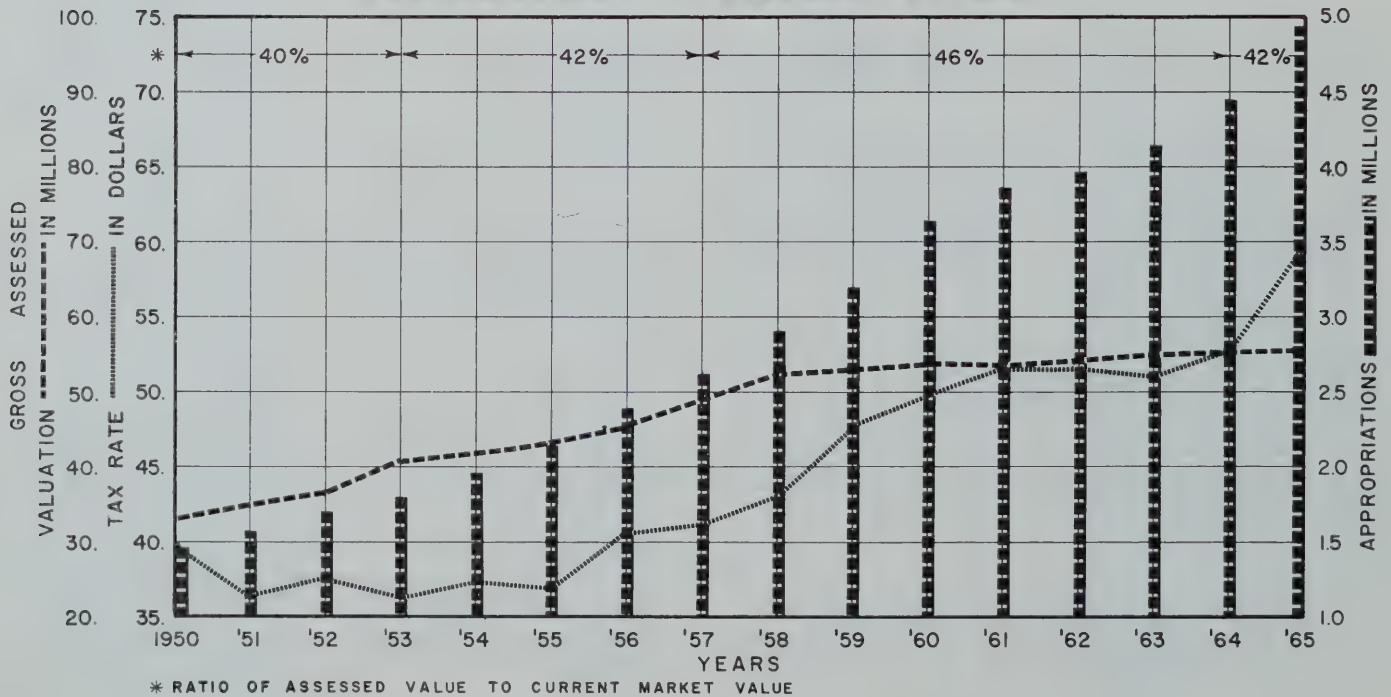
In addition, any investigation of any abatement request referred to the State Tax Commission indicating an assessment, in excess of this 42% level would be promptly ordered abated by the Commission.

Since the previous level of assessment had been at 46% for several years this resulted in an intensive study of certain areas of our City where, according to surveys made by Mr. Alexander Standish our previous assessor, properties were possibly over-assessed and others under-assessed in light of the new 42% level. The necessary adjustments were made following studies begun by Mr. Standish, certain areas were brought in line as a result the net gain to our city was some \$575,000 in assessed valuations.

## Typical Duties of Department Staff:

- Address and mail out some 5,000 Inventory of Taxable Property Forms
- Address and mail out some 1,500 Veteran Exemption Forms
- Measure and appraise all new property
- Measure and appraise all additions and alterations
- Check all Stock in Trade Inventories and assess same
- Find and assess all Boats and Trailers - approximately 500
- Confer with all owners of Machinery — Road Building Equipment on Values, Depreciation Schedules, Replacements, etc.
- Check all 1,500 veteran's exemption applications for status of equity, dates of service - mortgages - etc. . . , notify all veteran's losing this exemption.
- Prepare 9,603 Head Tax Bills in duplicate
- Prepare 7,500 Poll Tax Bills in duplicate
- Prepare Warrant Books — listing all taxpayers alphabetically, calculate Gross Valuations less Exemptions for Net Valuation.
- Tax Rate Determined
- Complete Warrant Books
- Calculate each individual tax (7,00 +) and enter in Warrant
- Prepare each Tax Bill in Cuplicate (7,000)
- Confer with all taxpayers seeking explanations of their assessments
- Process and investigate all applications for abatements
- Carry on all correspondence in connection with each abatement
- Determine assessments for all taxable property brought in after tax rate has been set
- Carry on continuous study of Sales - Assessment Ratio on each sale
- Process all property transfers and modifying the departments three - way records
- Keeping all Head and Poll tax records up to date (some 10,000) and changing stencils, etc. as required

## Taxation Trends-1965





	1964	1965	Difference
Gross Valuation (all taxable property)	56,032,670	56,569,025	+536,355.
Total Vet's Exemption	1,372,650	1,335,550	- 37,100.
Net Taxable Total	54,657,570	55,233,475	+575,905.
Tax Rate	\$53.00	\$59.50	+ \$6.50
Warrant Commitment	2,914,099.24	3,303,691.11	+389,591.87
Real Estate and Stock in Trade Inventories Distributed and Processed . . . . .			4,801
Veterans Exemptions Distributed . . . . .			1,410
Veterans Exemptions Processed . . . . .			1,379
Property Transfers Processed . . . . .			409



Central Business District and Navy Yard

# Office of the Tax Collector

James P. Healy, Tax Collector  
 Mrs. Genevieve Caldwell, Assistant  
 Mrs. Elizabeth Dalla Mura, Clerk/  
 Typist (Part time)

Amount of 1965 Real Estate Warrant . . . . .	\$3,286,391.76
Amount of Real Estate Collected by 12/31/65 . . . . .	\$3,032,936.88
1965 Real Estate Discount . . . . .	22,666.71
1964 Real Estate Collected in 1965 . . . . .	186,112.84
Misc. Property Collected up to 12/31/65 . . . . .	100.00
Amount of Head Tax Warrant. . . . .	48,015.00
Head Tax Collected for 1965, plus penalty. . . . .	32,046.00
Head Tax Collected for 1964 in '65, plus penalty. . . . .	12,891.50
Misc. Head Tax, Plus Penalty . . . . .	374.00
Amount of Poll Tax Warrant. . . . .	14,952.00
Poll Taxes Collected up to 12/31/65 . . . . .	9,786.00
1964 Poll Taxes Collected up to 12/31/65. . . . .	3,616.00
Misc. Poll Taxes Collected up to 12/31/65. . . . .	100.00

## AUTO REGISTRATIONS

1963
13,568
\$168,746.92
1964
13,768
\$176,372.14
1965
14,544
\$191,673.76



Pool at Seacrest Village

Balance (all accounts) December 31, 1964 . . . . .	\$ 280,755.66
Total Receipts for 1965 . . . . .	8,392,483.54
Total Disbursements for 1965 . . . . .	8,170,564.11
Balance (all accounts) December 31, 1965 . . . . .	502,675.09
Total Salaries and Wages for 1965 . . . . .	3,141,587.17
Total Witholding Tax Paid to District Director of Internal Revenue (1050 Employee) . . . . .	373,646.29
Total withheld for Social Security . . . . .	81,115.24
Other Deductions . . . . .	210,074.35
NH Teachers Retirement Board . . . . .	83,119.49
Employees Retirement System . . . . .	22,167.45
NH Police Retirement . . . . .	15,951.92
NH Firemen Retirement . . . . .	8,784.72
Health & Accident Insurance . . . . .	10,888.21
NH - VT Hospitalization . . . . .	33,979.46
Union Dues . . . . .	3,286.00
PNHMEF Credit Union . . . . .	31,897.10

## INVESTED TREASURY BILLS AND BANK CERTIFICATE OF DEPOSITS:

Sewer Bond Issue	
Accrued interest ending December 31, 1965	4,272.51
Note: The sum of \$67,498.93 has been realized from Investment in Treasury Bills to date from this Bond Issue	
Investments on 1965 Municipal Funds . . . . .	16,763.74

## POLICE DEPARTMENT RECEIPTS

Parking Meter Fines 1965 . . . . .	11,900.00
Court Fines . . . . .	10,491.92

## BORROWINGS

Tax Anticipation Loan for 1965 . . . . .	\$2,000,000.00
January 6 . . . . .	\$1,000,000.00 rate 2.17
March 9 . . . . .	1,000,000.00 rate 2.18
Sewer Bond Issue of 1965 . . . . .	500,000.00
Rate of Interest . . . . .	2.90
Plus . . . . .	100.519
Expense of Issue . . . . .	1,912.15

## RECEIPTS FROM STATE OF NEW HAMPSHIRE

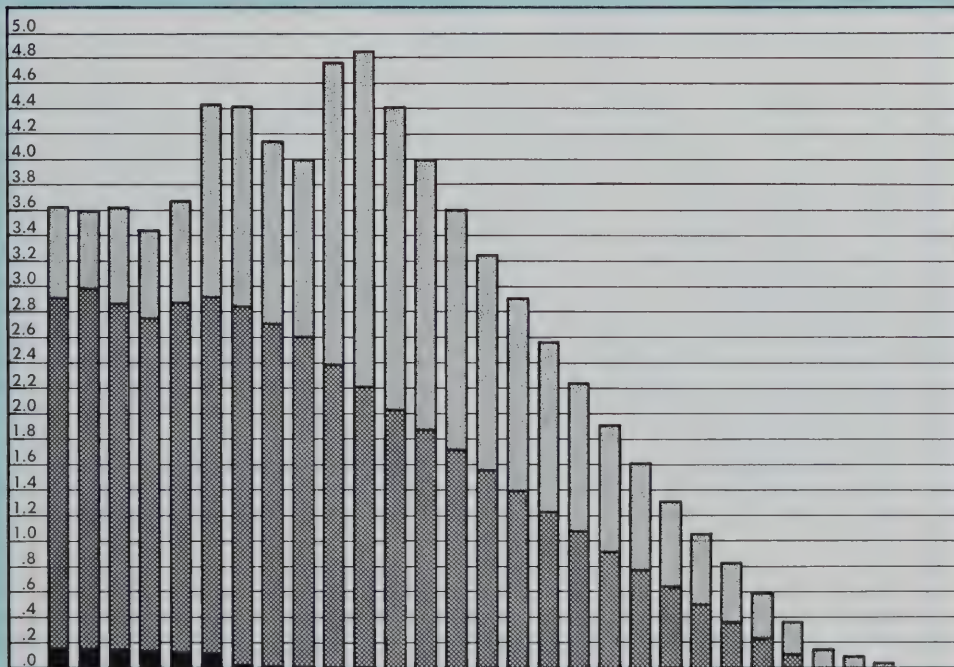
Interest and Dividend Tax . . . . .	32,842.43
Savings Bank Tax . . . . .	10,952.07
Railroad Tax . . . . .	3,826.31
State Aid-School Dept. . . . .	55,689.33
Sweepstakes . . . . .	116,053.30

MILLIONS OF DOLLARS

## SCHEDULE OF OUTSTANDING DEBT

(SHOWN AS OF JAN. 1 OF EACH YEAR)

GENERAL SCHOOL WATER



'55 '56 '57 '58 '59 '60 '61 '62 '63 '64 '65 '66 '67 '68 '69 '70 '71 '72 '73 '74 '75 '76 '77 '78 '79 '80 '81 '82 '83

## Portsmouth's Education Offerings in a Nutshell:

- Public School Kindergarten Classes
- Ten Neighborhood elementary schools including grades Kindergarten through 6
- Junior High School including grades 7 & 8
- Comprehensive Senior High School including grades 9 through 12
- Summer School Remedial and Enrichment program
- Evening adult education program
- Evening adult *basic* educational program (free for persons over 18 years of age with less than a grade 8 education)
- Special classes for slow learners (all levels)
- Elementary Classes for intellectually able students grades 4, 5, and 6.
- Specialty area supervisors in Music, Art, Physical Education, Reading and Language Arts.
- Full-time school psychologist
- Health and safety programs-all levels
- Driver education program
- Honors classes grades 7 through 12
- Curriculum committees at work
- Updated curriculum guides and courses of study
- Active Parent Teacher Associations
- Planned Testing Programs
- Speech Therapist
- System-wide physical examinations

## VITAL STATISTICS

YEAR	ENROLLMENT	TOTAL EXPENDITURES
1963	6391	\$2,133,345.79
1964	6439	2,305,701.90
1965	6483	2,514,442.71

(A sum of \$25,557.29 was returned to the City from the 1965 School Department Budget as unexpended.)

## COST PER PUPIL

1963	1964	1965
338.79	367.09	387.53

## AVERAGE MEMBERSHIP — 1964-65

Average Daily Membership	6393.0
Average Daily Attendance	6041.9
Average Daily Absence	351.1
Percent of Daily Attendance	94.5

## SCHOOL CENSUS

Under 5 years of age	2497
5 to 8 years of age	2282
9 to 14 years of age	2709
15 through 18 years of age	1383

(By Statute, the School Department is obliged to conduct an annual census)



## BOARD OF EDUCATION

Seated from left to right: Atty. Wyman P. Boynton, Philip F. Gray, Mrs. Alice M. Lee, John W. Durgin, Jr., Chairman, Mrs. Eileen D. Foley, Atty. Charles J. Griffin.

Standing from left to right: Herbert R. Hagstrom, Superintendent of Schools, Dr. Rubin I. Jaffe, Warren Nickerson, Dr. Paul E. Harvey, William H. P. Hopley, Philip W. Hodgdon, Raimond Bowles and Paul L. O'Neil, Assistant Superintendent of Schools.

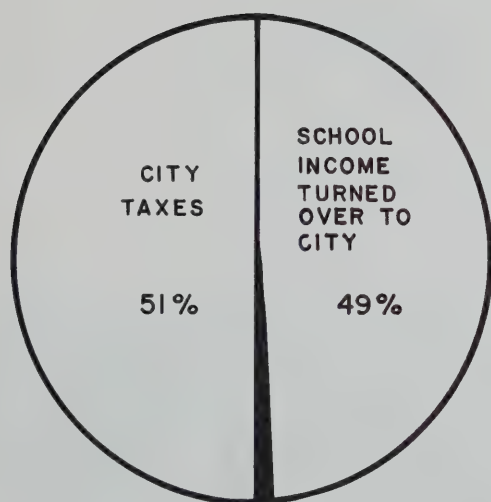
**TUITION CHARGES ( 1964-65 )**

Senior High	\$465.00
Junior High	406.50
Elementary	280.00
Kindergarten	165.00

**SCHOOL DEPARTMENT INCOME**

Rentals	\$ 1,457.00
Tuition	208,943.94
Federal Aid	900,792.00
Athletics	14,771.71
Sweepstakes	116,053.30

(Income from above sources represents approximately 49% of the School Department Budget for 1965)



<b>SCHOOL DEPT. DOLLAR</b>	
Taxes	.51
Revenue	.49

- 1965 Budget Requested: \$2,540,000.00
- Amount Returned 25,557.29
- Total Expenditures 2,514,442.71

**STAFF REPORT**

CATEGORY	NUMBER	CATEGORY	NUMBER
Administrators	18	Superintendent of Property	1
Classroom Teachers	245	Maintenance	1
Directors & Supervisors	12	Custodians	28
Nurses	5	Cafeteria Supervisor & Assistants	22
Secretaries & Clerks	18	Noon Monitors	44
Attendance Officer	1	Speech Therapists	2
Treasurer	1	Physician	1
Teachers - Summer School	10	Theme Correctors	12
Teachers - Adult Education	18	Guidance	8

Approximately 66% of the graduating class of 1965 have entered institutions of higher learning. Approximately 41% of these entered four-year colleges. It is interesting to note that these figures have remained quite constant for the past three years. A great deal of planning and initiative on the part of guidance counselors, teachers, and school administrators is necessary to keep these figures among the highest in the State of New Hampshire.

The Elementary and Secondary Education Act of 1965 made possible several noteworthy assistance programs available to the local schools both public and private. Our Senior High School will house some \$14,000 worth of additional books and reference materials available to teachers and students locally.

At this writing an adult basic education program is under way providing instruction to some 36 adults who never went beyond grade eight. This project is made possible through the Office of Economic Opportunity and is offered free of charge two evenings per week.

During the summer of 1966 a six week program entitled "Operation Headstart" will be conducted. This project will involve an estimated 90 pre-school children who ordinarily would enter school lacking many experiences which tend to make for an easier school adjustment. Annual Summer School Program of remedial and enrichment classes was conducted and proved most satisfactory.



Local Reading and Language Arts Curriculum Committee at work

Left to right: Margaret Buckley, Edith Kelley, Mazie Easson, Constance Rice, Priscilla A. Morrill, Lawrence Bernard, Paul O'Neil (Asst. Supt.), Marjorie Peacock, R. Cliff Wing, Mary Cassidy and Barbara Jones.

## STREET IMPROVEMENTS:

### Oiling of Streets and cover of pea stone (done by contract)

Seacrest Village: Circuit Road, Rockhill Ave., Profile Ave., Circuit Road, Ext. Granite St., Parking lot off Circuit Road, Mangrove St., Orange St., Thaxter Road., Sunset Road, Lawrence St., Kensington Road, Boss Ave., Aldrich Road, Fels Road, Fields Road, Elwyn Ave., Sherburne Ave., Kent St., McNabb's Court, Echo Avenue.

### Oiling of Streets by City Yard

Pierce Island Filter Plant Road — 2 coats covered with pea stone.

Borthwick Park, 2 coats covered with sand and pea stone  
 Venus St., Durgin Lane, 1 coat covered with pea stone

Elwyn Park; Dwight Ave., Fillmore Ave., Adams Ave., Harding Rd.,

Van Buren, from Adams Ave., to McKinley Rd., McKinley Road from Van Buren Ave., to Taylor Road., Cleveland Rd., Taylor Rd., Hampshire Rd., Sheffield Rd., Melbourne St.

### Streets paved with Hot Top Asphalt (done under contract)

Deer St., from Vaughan St. to Bridge St.

Vaughan St. from Deer St., to Railroad crossing

Chapel St., Chestnut St., from Congress St. to Porter St.

Summer St., from Austin St. to State St., Chatham St.

Elwyn Rd., Banfield Rd., (State Aid)

March St., from Gates St. to Court St.

### New Sidewalk Construction

High St. South side from Dolphin Hotel to Congress St.

Rockland St. east side from Broad St. to Richards Ave.

Pleasant St. in front of Housing for Elderly 150 ft. on South-Side

222 South St. East side about 75 ft. long

900 Middle Rd., 100 ft. new sidewalk on South Side

Sunset Rd., new sidewalk both sides of street

Summer St. from Austin St. to State St. both sides

### Streets paved with hot top plant mix asphalt — by City Yard

Rockland St. from Elwyn to Sherburne Ave.

Farm Lane, Meadow Rd., Maple Rd.

Denise St. South St. by Clough's Field 150 ft.

Sherburne Rd. from overpass down to traffic lights.

State St. from Middle to Cabot St.

Fairview Ave.

Central St.

## HIGHWAY MATERIALS USED

Dura Patch . . . . .	325	tons
Blue Rock . . . . .	2.5	tons
Crushed Gravel . . . . .	630	c. y.
Bituminous Concrete . . . . .	2883	tons
3/8" Stone . . . . .	1125	tons
1" Stone . . . . .	89.5	tons
2" Stone . . . . .	27	tons
MC-2 Asphalt . . . . .	30018	gal.
Top . . . . .	1013.7	tons
Stone Dust . . . . .	18.9	tons
Bank Run Gravel . . . . .	445	c. y.
Washed Sand . . . . .	120	c. y.
Gravel . . . . .	7516	c. y.
Sand-Screened . . . . .	1881	c. y.
Loam . . . . .	596	c. y.
Emulsion . . . . .	12	gals.
Regular Gasoline . . . . .	34963	gals.
High-Test Gasoline . . . . .	23677	gals.
Salt . . . . .	1071	tons

## WATER DEPARTMENT

New Water Mains	Size	Linear Feet
New Hancock Street	6" cast iron	500
Echo Avenue	6" cast iron	780
Fairview Drive	6" cast iron	200
Wentworth Hotel	8" cast iron	500

### Services

New	50
Renewed	32
Repaired	64

Meter Changes	532
New Meters	100-5/8"
	12-1"
	6-2"

### New Hydrants

Echo Avenue	
Hancock Street	Islington Street
Fairview Drive	Middle Street
Wentworth Hotel	Bow Street
	Noble Island
<b>Replaced Damaged Hydrants</b>	Washington Street
Granite Street	Pleasant Street
Circuit Road	Peverly Hill Road
Maplewood Avenue	Woodbury Avenue
Dennett Street	Middle Road

# Recreation Department

Joseph A. Fate, Recreation Director  
 Paul Desotelle, Assistant Director  
 Mrs. Constance D. Bean, Administrative Assistant

Recreation is all those activities engaged in voluntarily; by a person, or a group, to make leisure time more interesting, more enjoyable, more worthwhile and more personally satisfying.

The Portsmouth Recreation Department submits this annual report with our thanks and appreciation for your support and cooperation during the past fiscal year.

With the continual increasing amount of leisure time available to all our citizens and their interest in recreational pursuits I am sure every effort will be made to meet their increasing demands.

With the high standard of Recreation Facilities and Programs already processed it is felt that with improvements to Pierce Island and the John F. Kennedy Recreation Center, Portsmouth would have the best recreational facilities in New England.

We would like to take this opportunity to thank the many volunteers that we have had to make our recreation program a success. We feel confident that we have met any demands set forth by the citizenry and will continue to do so within our appropriations abilities.

## Special Events – 1965

Easter Egg Hunt	550
Big League Basketball Tournament	1000
California Cuties	1100
Easter Egg Hunt	550
Big League Basketball Tournament	1,000
California Cuties	1,100
4th of July - Fireworks	14,000
4th of July - free ice cream	1,500
Baseball Clinic - Joe Coleman	150
Municipal Pool	500
Municipal Pool	54,000
Talent night & concert	500
Arts & Crafts	1,150
Excursions (4)	1,500
Jr. Olympics	1,000
Softball Banquet	100
Golden Eagle Bazaar	800
Basketball dance	400
Football dance	400
Checker Exhibition	100
Halloween Dance	300

## Municipal Swimming Pool Water Safety Certificates Issued – 1965:

Beginners	130
Advanced beginners	12
Intermediate swimmers	62
Swimmers	29
Advanced swimmers	15
Junior Lifesaving	9
Senior Lifesaving	7
	<hr/>
	264

## Playground Attendance – 1965

Maple Haven	3,642
South	3,560
Atlantic Heights	2,708
Lafayette	2,524
Gosling Meadows	2,236
Sherburne	2,198
New Franklin	2,162
Elwyn Park	2,138
Seacrest	652
Baseball Program	5,251
Arts and Crafts	1,342
	<hr/>
	28,413



John F. Kennedy Adult Recreation



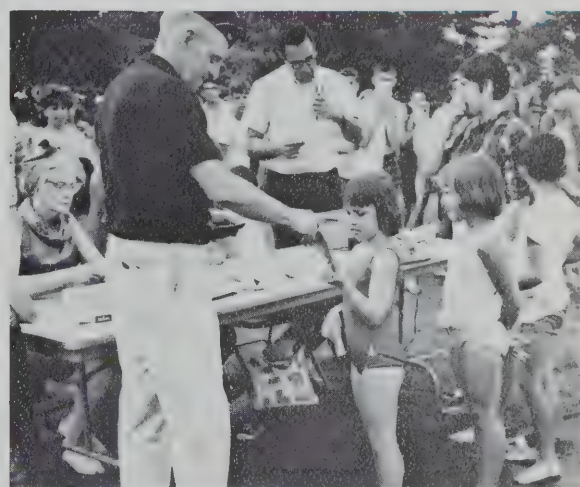
**ACTIVITIES – JOHN F. KENNEDY CENTER**

	Weekly Average	Yearly Average
Volleyball	65	2,535*
Ladies Night	25	975
Shuffleboard	15	585
Basketball	85	3,315
Duplicate Bridge	48	1,872
Weights & Exercise Equipment	30	1,170
Handball	120	4,680
Golden Age Club	15	585
Steam Room	150	5,850
Pool	50	1,950
Ping-Pong	60	2,340
Reading Room	15	585

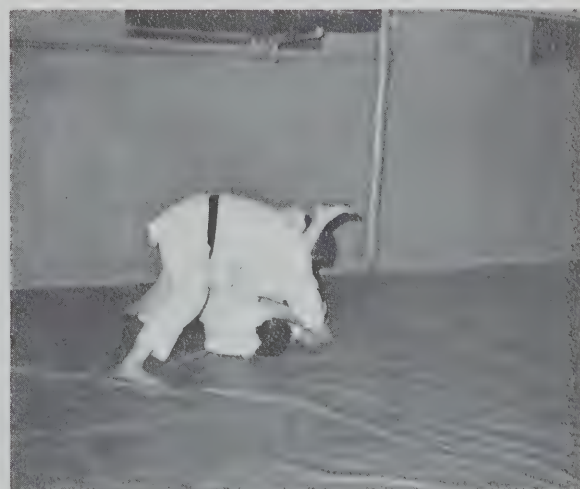
\*Winter months 39 week period

Volleyball	6	78
Shuffleboard	2	26
Ladies night	7	91
Basketball	20	260
Duplicate Bridge	32	416
Weights & Exercise Equipment	10	130
Handball	50	650
Golden Age Club	-	-
Steam Room	40	520
Pool	10	130
Ping-pong	12	156
Reading Room	5	65

\*Summer months 13 week period



V.F.W. Swim Meet



Judo Club



Halloween Dance

The Planning Department during the current year devoted a considerable portion of its time to the needs of the Development Commission. This work involved mapping, charting, research, land-use analysis and reporting, field surveys and consultation. Portsmouth is also contributing to the Regional Plan its Planning Department's services toward the development of existing land use and power transmission maps which will embrace the entire southeast portions of Maine and New Hampshire. Planning Board and Board of Adjustment activities coordinated throughout the year were as follows:

PLANNING BOARD		BOARD OF ADJUSTMENT	
Regular Meetings	11	Regular Meetings	12
Special Meetings	8	Special Meetings	2
Board of Adjustment Referrals	24	Special Exceptions	4
Planned Developments	5	Granted	3
Regional Matters	11	Denied	1
Zoning Text Amendments	4	Variances	21
Subdivisions: Final Approvals	8	Granted	16
Percolation Test Study	1	Denied	1
		Tabled	3
		Deferred	1

## MAJOR CONSIDERATIONS

- Land Use & Conservation

- Pierce Island Study
- Boston & Maine R. R. Area
- Four Tree Island Fill
- Pierce Island Improvement
- Historical Districting
- Brackett Land Area
- Vaughan Street Urban Renewal
- Coordinator of Seacoast Regional Plan

- Circulation

- New Industrial Road
- High-Level Bridge
- Boston & Maine R. R. right-of-way
- M. G. R. right-of-way
- Marcy Street

- Building Committee

- Large-family Low Cost Housing (PHA)
- State Office Building
- Old Custom House Re-use
- Capital Construction Analysis



Central Business District – Looking South

The Public Library was a busy place in 1965. Approximately 86,000 books were issued for home use and many thousands more were reserved for use in the library by High School students. There was a definite increase in the use of reference Books in the building and magazine articles were in great demand.

Ten or twelve classroom collections were sent out to the schools in the outskirts of the city so that children in distant areas could have the use of the library facilities.

There was an increased amount of research work done by the adult population on family histories and vital records. Many of our summer visitors were pleased with the records they found available at the library. We gave much assistance to the City Clerk, the Chamber of Commerce and the Portsmouth Herald reporters who were in search of historical facts. We also served many students from the University of New Hampshire, Exeter Academy and the United States Naval Academy.

The Library facilities were used by the University of New Hampshire Educational Group which produced the documentary film over WENH-TV called Strawberry Banke. Our Trustee, Mrs. Natalie Fenwick wrote the entire script for this film, doing much of the work in our library, using our maps, pictures, sketches, and histories.

The Portsmouth Public Library became an Affiliated Library, joining many other New Hampshire libraries in the State wide Library Program. By this act we were entitled to a gift of \$125.00 which was used for a 1965 edition of the World Book Encyclopedia for our young people. We received 50 books for children from the Kiwanis Club of Portsmouth in commemoration of the 50th anniversary of the Kiwanis Club.

During the year 1965 — 1,979 new titles were placed on our shelves, of this number 653 titles were for children or young readers. ALA (American Library Association) statistics indicate that 1/3 of books purchased by library should be for young readers. They also indicate that their circulation of books should be about 1/3 of the entire lot. Our figures for 1965 show the Juvenile circulation was 23,897; the Adult fiction, 33,274 and the Adult non-fiction, 28,557.

During the year we registered 858 adult readers and 436 children, a total of 1,294. These were new readers who had never used the library before.

Special displays of books were made during National Library Week and during Book Week. More than 100 new titles were available for young readers. There were loaned 69 books to other Libraries during the year with 38 books being borrowed from out of town libraries.

## GIFTS RECEIVED

Oil portrait of Mary Yeaton, daughter of Capt. Hopley Yeaton, founder of the United States Coast Guard; Oil painting by Susan Ricker Know, one of Portsmouth's native daughters. Early map of Louisburg published in Paris in 1764; A collection of Hale Papers; Collection of the Treadwell Shipping Papers from a descendant in Brooklyn, New York. Cellophane bags, Portsmouth Trust Co.; Bookmarks, Piscataqua Savings Bank; Card Protectors, First National Bank; Leather bound volumes (2) on the signers of the Declaration and the signers of the Constitution, N. H. National Bank; Memorial books, Graphic Club.

## NEW REFERENCE BOOKS

Dictionary of American Biography, in 11 volumes; revised edition-Savage's Genealogical Dictionary in 4 volumes; Concise Dictionary of American Biography, and Concise Dictionary of American History.

# Fire Department

Frederick Crompton, Fire Chief  
Ernest Weeks, First Deputy Chief  
Joseph Hudson, Second Deputy Chief  
Arthum M. Patterson, Superintendent  
Fire Alarm / Wires & Pole Inspector

## ACTIVITIES . . . . . 1965

Bell Alarms . . . . .	83 (30 False)
Still Alarms . . . . .	315 (10 out of town)
Miscellaneous calls . . . . .	117
Ambulance Calls . . . . .	700

### SUMMARY OF OUT-OF-TOWN CALLS

Newington . . . . .	2
Greenland . . . . .	2
New Castle . . . . .	2
Rye . . . . .	1
North Hampton . . . . .	1
Kittery . . . . .	1
Pease Air Force Base . . . . .	1

### TOTAL VALUE OF BUILDINGS AND CONTENTS ENDANGERED BY FIRE \$415,800.00

Insurance on Buildings and Contents . . . . .	\$309,200.00
Damage by fire . . . . .	123,726.07
Amount Covered by Insurance . . . . .	103,201.07
Uninsured Loss . . . . .	20,525.00

The new 750 Gallon Pumper ordered in 1964 was delivered and placed in service June 8, 1965.

All schools and Convalescent Homes were inspected during the year.

## WIRES AND POLES

- Rebuilt lines on Bartlett Street, Woodbury Avenue, Dennett Street and Marcy Street.
- Replaced four (4) obsolete type street boxes with new 3-fold type.
- Purchased and installed new batteries in speed transformer.
- Replaced two (2) old tappers in Central Station with new type gongs.
- Added two master street boxes to system.
- Trimmed trees and repaired lines where required.
- Issued 378 Electrical Permits.
- Inspected 362 permits completed.
- Investigated 4 defective wiring complaints, and inspected 3 fire damaged wiring in buildings damaged by fire.

# Police Department

Stanton G. Remick, City Marshal

April 19-21, 1965: Captain Paul F. Connors, Sergeants John J. Condon and Earl E. Rogers attended an instructors crowd-control training course, Concord, N. H. under the auspices of the New Hampshire State Police and New Hampshire National Guard.

April 14, 1965: The late Morris Silverman, Police Commissioner, passed away, having served as a Police Commissioner for 13 years.

April 30, 1965: Handie-Talkie Radios were introduced and are being used by the Portsmouth Police Department and have proved to be a tremendous step forward in the com-

munication progress of the department.

May 6, 1965: Officer John W. McCann and 22 members of the School Safety Patrol made a trip to Washington, D. C.

June 28, 1965: Police Commissioners John P. Loughlin and Henry Gerber were sworn in as new Commissioners for the Portsmouth, New Hampshire Police Department.

November 1, 1965: Captain E. Edward Scarponi completed 30 years of service as a member of the department. On November 22, 1965 Officer John W. McCann retired from the Police Force after 28 years of faithful service.

	NUMBER REPORTED	ARRESTS	CLEARED OFFENSES	JUVENILES
Aggravated Assault . . . . .	3	3	3	
Assaults (other) . . . . .	32	28	28	1
Arrested for Other Departments . . . . .	15	15		
Arson . . . . .	6	4	4	6
Auto Theft . . . . .	44	14	15	13
Automobile Offenses . . . . .		326		
Bastardy . . . . .		4		
Burglary (B.E.&L.) . . . . .	167	32	23	13
Disorderly Conduct . . . . .		123		33
Drunkenness . . . . .		200		1
D.W.I. . . . .		35		
Forgery . . . . .	13	8	9	5
Fraud - False Pretenses . . . . .	2	3	2	
Larceny by Check . . . . .	11	4	10	
Homicide . . . . .	1		1	
Interviews (Adults) . . . . .	470			360
Larceny (Grand) . . . . .	128	4	8	1
(Petty) . . . . .	259	60	41	41
Liquor Laws . . . . .	9	7	7	
(Minors in Possession)		8		
Lodgers . . . . .		180		
Malicious Damage . . . . .	170	48	33	41
Mental Patients . . . . .		5		
Non-Support . . . . .		8		
Rape (Forcible) . . . . .	1	1	1	
Receiving Stolen Property . . . . .		1		
Robbery-Armed . . . . .	9	4	5	
- From Person . . . . .	8	2	3	2
Safe Keeping . . . . .		5		
Vic. Probation . . . . .		6		7
Runaways . . . . .		22		22
Default . . . . .		6		
Refusing to stop for Officer . . . . .		3		
False Alarm . . . . .		4		
False Report of Crime . . . . .		2		
Failing to Disperse . . . . .		5		
Fish & Game . . . . .		10		
Trespassing . . . . .		6		
Weapon Offenses . . . . .		4		
Exposing Person . . . . .	9	2	2	2
Lewdness . . . . .	2	2	2	
Peeping Tom . . . . .	4	1	4	1
Lascivious Acts . . . . .	6	1	6	
Suspicion . . . . .		143		77
Violating City Ordinances . . . . .		95		10
	897	*1,300	220	278

\*(Does not include interviews and juveniles)

Accidents reported to Police Department . . . . .	278
Police Patrol Trips . . . . .	10,178
Store Doors and Windows Found Open . . . . .	1,146
Street Lights Reported Out . . . . .	223
Suicide, Attempted . . . . .	2
Beano Licenses . . . . .	\$ 600.00
Junk Licenses . . . . .	575.00
Amount Paid Parking Fines . . . . .	11,900.00
Amount Paid City Treasurer, Parking Receipts . . . . .	49,614.50
Amount Paid City Treasurer, Meter Tokens . . . . .	4,500.00

The Annual Report of the City Marshal of the City of Portsmouth, N. H. for the year ending December 31, 1965 is hereby accepted as the report of the Police Commissioners of said City.

s/ John P. Loughlin  
s/ J. Paul Griffin, Jr.  
s/ Henry Gerber

## OFFICE OF CITY ATTORNEY

John C. Driscoll, City Attorney

In the year of 1965 the City of Portsmouth continued its rate of growth in all areas of activities with the result that such growth and the city's many activities were reflected within this office of the City Attorney during the year.

The City Attorney is a part-time employee of the City and maintains his own office, dividing his time between the City and his private law practice. In accordance with the Administrative Code as adopted within the Municipal Ordinances the City Attorney acts as legal counsel and prosecuting attorney for the Government of the City of Portsmouth. It is neither his duty or responsibility to act as a source of free legal advise for the entire populous although and erroneously, many citizens believe this to be the case.

In 1965 it was his task to draft all ordinances for the City Council, draft all legal documents such as contracts, deeds and easements and render legal opinions to the City Council and the various City departments and boards. He represented the City in civil court actions such as the case of *McLees et al. v. The City of Portsmouth* wherein the validity of the 1965 zoning ordinance was questioned and in addition it was his duty to prosecute a sizable number of contested criminal cases in the Portsmouth District Court. A further responsibility of the City Attorney was to be present at each City Council meeting so as to be available to advise that Body as to any question of law which might be raised and to render all necessary reports.

## PORTSMOUTH DISTRICT COURT

Thomas E. Flynn Jr., Justice  
Samuel Levy, Associate Justice

Lois S. Vanbubar, Clerk  
Philip P. Caswell, Probation Officer

### CRIMINAL CASES

Complaints entered during the year . . . . .	1175
Cases disposed of during the year. . . . .	
Felonies. . . . .	24
Misdemeanors. . . . .	1151
	1175

### JUVENILE CASES

Cases of neglected children. . . . .	11
Cases of delinquent children . . . . .	19
Transferred to Superior Court . . . . .	1

### SMALL CLAIMS CASES

Cases pending at beginning of year. . . . .	7
Cases entered during the year. . . . .	156
Cases disposed of during the year. . . . .	157

### CIVIL CASES

Cases entered during the year. . . . .	38
Cases disposed of during the year. . . . .	36

# Departments of Health and Welfare

## WELFARE DEPARTMENT

Hilda Hundley, Welfare Director

### DIRECT RELIEF

Average Number of Cases (Monthly) . . . . .	26.5
Average Number of Persons (Monthly) . . . . .	81.1
Average Monthly Expenditures . . . . .	\$1,540.10

### BOARD AND CARE- CHILDREN

Average Number of Cases (Monthly) . . . . .	8
Average Number of Children (Monthly) . . . . .	14.5
Average Monthly Expenditures . . . . .	\$768.09

### BOARD AND CARE-ADULT

Average Number of Cases (Monthly) . . . . .	5.2
Average Number of Persons (Monthly) . . . . .	5.2
Average Monthly Expenditures . . . . .	\$568.63



## DEPARTMENT OF HEALTH

S. Gerard Griffin, M. D.  
Health Office / City Physician

### 1965 — 224 Deaths

Diseases of Circulatory System . . . . .	113
Cancer . . . . .	36
Pneumonia . . . . .	19
Uremia . . . . .	9
Hemorrhage . . . . .	9
Ruptured Aneurysm . . . . .	8
Prematurity . . . . .	6
Emphysema . . . . .	4
Toxemia . . . . .	3
Accident . . . . .	3
Peritonitis . . . . .	2
Cirrhosis . . . . .	2
Hepatitis . . . . .	2
Asthma . . . . .	2
Ruptured Esophogus . . . . .	1

Parkinsonism . . . . .	1
Asphxia . . . . .	1
Leukemia . . . . .	1
Brain Abscess . . . . .	1
Suicide . . . . .	1

Inspections were made on receipt of sanitary complaints and conditions corrected within the City. Grocery stores, markets, bakeries, restaurants, creameries and other food establishments were inspected.

Physical examinations given applicants for the Police Department. City Welfare patients cared for in hospitals, home and office and prisoners at Police Station were seen upon request of the Department.

# Inspection Departments

## Building Inspection

Lewis M. McNeil, Sr., Inspector

During the year 1965, two hundred and thirty-seven permits were issued for a total of \$1,418,098.00.

New Homes . . . . .	29	\$ 436,000.00
New Business . . . . .	5	67,500.00
New Garages . . . . .	21	36,700.00
New Apartments . . . . .	5	114,150.00
General Repairs . . . . .	117	192,248.00
Buildings Remodeled . . . . .	7	52,200.00
New Additions . . . . .	28	141,200.00
Buildings Razed . . . . .	6	4,700.00
Business Repairs . . . . .	2	2,000.00
Miscellaneous . . . . .	17	371,400.00
	<u>237</u>	<u>\$1,418,098.00</u>

Fees collected and turned over to the  
City Treasurer: . . . . \$2,962.00

A total of 829 Building Inspections were made of work being done for which Building Permits were issued.

27 Building Permits or use of buildings were denied.  
20 Appeals were granted by the Board of Adjustment.  
2 Appeals were denied by the Board of Adjustment.  
2 Appeals were tabled by the Board of Adjustment.  
2 Appeals were deferred by the Board of Adjustment.  
1 Appeal to the Board of Adjustment was withdrawn.

Attended 12 meetings of the Board of Adjustment.

39 Public Buildings were inspected.  
7 Violations were found.  
7 Violations were corrected.  
237 Building Permits were issued.  
4 Violations were found.  
4 Violations were corrected.

No stop orders issued.

With assistance of Mr. Joseph Barron, inspected structures for compliance with Housing Code.

Received and disposed of Surplus Food for Welfare Department.

By request of Mr. Violette, overseer of Comfort Station custodians and matrons.

## Plumbing Inspector

James Varotsis (Part Time)

### LICENSES & PERMITS ISSUED – 1965

Masters Licenses . . . . .	27
Journeyman Licenses . . . . .	49
Permits Issued . . . . .	326
Monies Received for Licenses . . . . .	\$ 38.00
Monies Received for Permits . . . . .	676.76
Income Received for 1965 . . . . .	<u>\$714.76</u>



## Dog Officer

Robert E. Reynolds, Dog Officer

The following is an outline of the activities of the Dog Officer which covers the period from January 1, 1965 through December 31, 1965.

Calls received. . . . .	1,168
Complaints (Investigated) . . . . .	692
Dog bites reported. . . . .	70
Loose Dogs Impounded . . . . .	266
Loose Dogs (Licensed) returned to Owners. . . . .	262
Loose Dogs (Unlicensed) returned to Owners . . . . .	139
<b>Total Dogs Handled</b>	<b>667</b>

Lost Dogs Reported. . . . .	169
Lost Dogs Found by Dog Officer. . . . .	119

According to the records in the City Clerk's Office the number of licensed dogs for the year 1965 was. . . . . 1,387

Replacement tags issued . . . . .	101
Type and number of other animals handled . . . . .	72

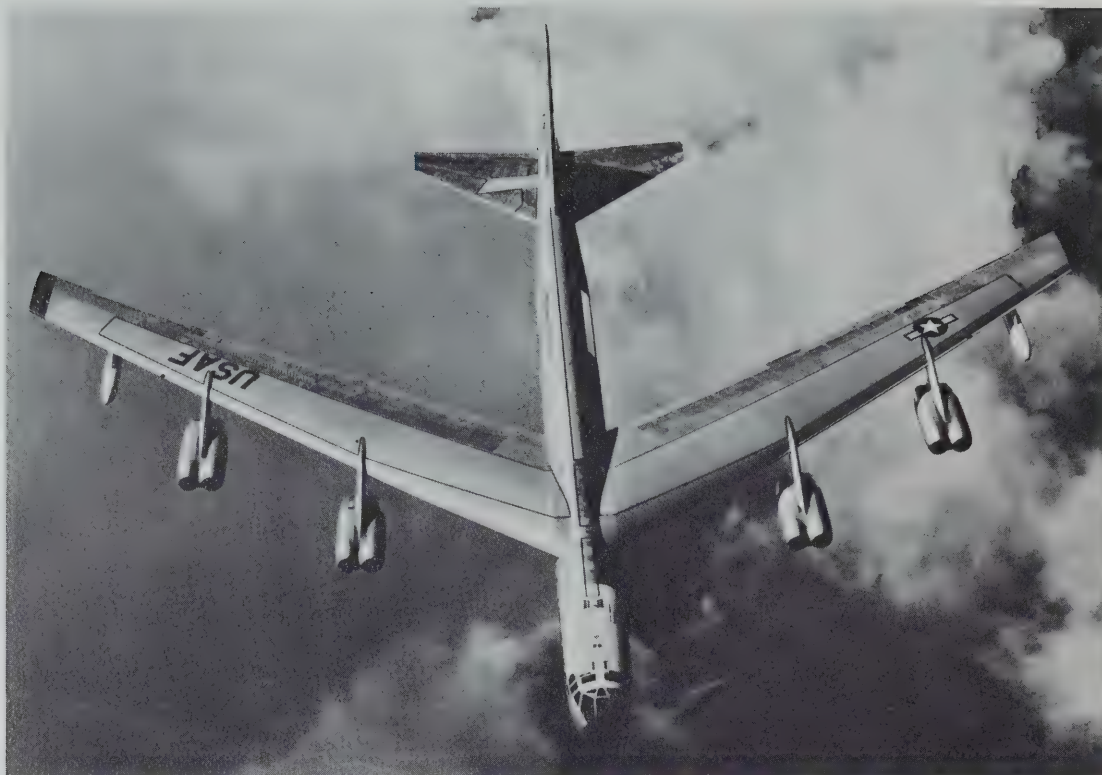
1 Bat, 12 rats, 7 raccoons, 5 skunks, 3 Sea Gulls, 1 Woodchuck, 9 Squirrels, 1 Monkey, 27 Cats, 2 Chipmunks, 4 Foxes.

## Sealer of Weights & Measures

William A. Thomson, Inspector (Part Time)

The New Hampshire Inspectors & Sealers Association did not hold a conference in 1965 — the State & City Inspectors were urged to attend a Technical Training School held at Concord, New Hampshire in March, 1966.

	<b>Tested and Sealed</b>
Computing & Counter Balance Scales	162
Gasoline Pumps	231
Tank Truck Meters	34
Line Meters	13
Grease Pumps	27
Heavy-Duty Platform Scales	9
Tank Trucks	5
Suspension & batching Scales (over 100 lbs.)	6
Track Scale	5



B-52 in Flight

**B-52 — Bomber**

**AIRCRAFT CHARACTERISTICS**

**KC-135 — Tanker**

Length — 156 Feet  
 Wing Span — 185 Feet  
 (this is one and one-half times longer than the Wright Brothers original flight)  
 Tail Height — 48 Feet  
 Weight — 480,000 Lbs. +  
 Load Capacity — 20,000 Lbs. +  
 8 Jet Engines  
 Thrust — 10,000 lbs. each engine  
 Speed — Over 600 miles per hour  
 Range — Over 6,000 miles  
 Carries crew of six (3 more than B-47)  
 Rear of plane is armored and carries four 50-caliber machine guns.

This plane which is essentially a converted Boeing 707 has a cruising speed of 550 miles per hour and an approximate range of 4,000 miles. It can deliver in one minute enough fuel to operate the average passenger car for one year and its total fuel load would satisfy the average driver's needs for 46 years. Its crew consists of 4 people and its fuel storage area is contained within the lower deck. Its upper deck is clear for use as a cargo or troop carrier and can carry 80 passengers or 25 tons of cargo.

Pease Air Force Base is located in Portsmouth and Newington, New Hampshire and is the headquarters of the 509th Bombardment Wing (SAC) U.S.A.F. The photographs and data shown were provided by the Directorate of Information, Pease Air Force Base.



KC-135 Tanker



B-52 Being Refueled by KC-135 Tanker

The Portsmouth Civil Defense Agency accomplished the following projects during the year ending June 30, 1966:

- 1) A total of 2,000 people completed and received certificates for training in "Medical Self Help". Of the above figure 1,800 were students at the High and Jr. High School.
- 2) Approximately \$3,000 worth of radio equipment was purchased for the Police Department on a 50/50 basis with the Federal Government.
- 3) An additional order was approved in May 1966 for further purchases of needed radio equipment for the Police Department on the same basis.
- 4) A training school was held and 9 auxiliary police officers were added to the roster, our present total of trained and qualified Auxiliary officers number 42.
- 5) Our program papers are filed and approved for the period ending June 30, 1967, this qualified our City for continued purchases of emergency equipment on a 50/50 basis with the Federal Government.
- 6) Continued progress is being made in evaluating marking and stocking of "Fall Out" shelter areas.
- 7) In order to follow our plan of operations and to complete the reorganization we are at present moving our "EOC" to the Police Station and relocating in a hardened area.
- 8) All Civil Defense emergency equipment and all Police, State Police and Sheriff's Department Radio equipment will be placed in this "Hardened Area" and remoted. It is our hope that all city Departments will soon move the Radio Emergency equipment to the hardened area.
- 9) At the present time the City Warning system is being rechecked and put in "tip-top" condition.
- 10) The federal government has approved our request for Federal aid covering salary, emergency telephone, etc. Effective July 1, 1966 the Director's Salary, Clerk's Salary (if necessary) cost of office supplies, etc., will be on a matching funds basis.
- 11) The Federal Government is at present installing a NAWAS Station at C.D. Headquarters. Further information will be available at a later date.

Our aims for the future are the continuation of training additional Auxiliary Police, Auxiliary Firemen, Medical Teams Communication and further the shelter program.

## Portsmouth Development Commission:

Chairman Philip P. Finn, Commissioners: John J. Wholey, Harry Winebaum, Lars J. Sandberg, Robert lafolla, Mayor Timothy J. Connors, ex-officio, City Manager Robert C. Violette, ex-officio (Anthony R. Jarrett, Director of Economic Development).

The Commission was appointed in late 1965 and was ready to function by January 1966. In July, 1965 a full time Director was employed to assist in the retention and expansion of existing industries and development of new industries.

## MAJOR ACCOMPLISHMENTS:

1. Complete visitation of existing industries to ensure continual support.
2. Marketing workshops for existing industries.
3. Complete cataloguing of available land sites.
4. Complete cataloguing of available existing buildings.
5. Survey of labor market.
6. Continuing negotiations with fourteen (14) interested companies.
7. Service and support program with University of New Hampshire.
8. Formulation of master plan setting out marketing plans, types of industry.
9. Major program to coordinate the activities of various organizations in the City toward maximum impact for total economic development.
10. The setting up of a short term promotional program, simultaneously with a five year plan to ensure continuity for the years ahead.
11. First small industry — Neslab Instrument Inc., — in November 1965.



Discharging Salt-Portsmouth Harbor



State Port Terminal Wharf

The total cost of operating the Finance Department for the year amounted to \$22,674.57 including the cost of the annual audit by the State Tax Commission which amounted to \$1,291.43.

Payrolls were processed for 1,050 employees of whom 770 were employed by the school department for a total expenditure of \$3,141,587.17 with deductions for income tax, social security, retirement, blue-cross insurance, union dues and credit union amounting to \$664,835.88 leaving a balance of \$2,476,751.29 as net "take home pay" or purchasing power which is reflected in our local economy.

The cost of municipal services continued its' upward trend as reflected in our annual budget of \$4,920,827.27 an increase of \$485,002.34 or 10.9% over the preceeding year.

Municipal revenue other than taxes amounted to \$1,684,769.44 representing an increase of \$50,152.23 over the preceding year, some of the larger items of revenue were \$900,792.00 for the Federal Grant for School maintenance, \$208,925.64 for school tuition, \$191,155.01 from Auto registration and \$116,053.30 as school revenue from NH Sweepstakes.

The total credit to revenue surplus for the year 1965 was again quite substantial amounting to \$175,088.11 representing an excess of actual over estimated revenue of \$40,113.09 and \$134,975.02 from unexpended appropriation balances.

Loans in anticipation of taxes amounted to \$2,000,000.00 at a total cost to the City of \$38,273.06 this reflected the continuing high rates for temporary loans which prevailed for the entire year.

January \$1,000,000.00 — Rate 2.17%  
 March 1,000,000.00 — Rate 2.18%

Additional sewer bonds were issued during 1965 in the amount of \$500,000.00 for a rate of 2.9% and a premium of 100.519.

The entire municipal operation for 1965 covering all funds showed receipts of \$8,392,483.54 and disbursements of \$8,170,564.11.

The municipal water department has an operating loss for 1965 amounting to \$62,517.89 and it appears that an increase in rates will have to be instituted to resolve the proper maintenance and support of the present departmental facilities. A direct effect of the lack of sufficient revenue is and will continue to be the steadily deteriorating cash position of the department.



## THE BUDGET DOLLAR

DIVISION OF MUNICIPAL ACCOUNTING  
STATE TAX COMMISSION  
Concord, New Hampshire

June 13, 1966

Robert C. Violette, City Manager  
Portsmouth, New Hampshire

Dear Sir:

Submitted herewith is the report of an examination and audit of the accounts of the City of Portsmouth for the fiscal year ended December 31, 1965, which was made by this Division in accordance with your request. Exhibits as hereafter listed are included as part of the report.

**SCOPE OF AUDIT**

The accounts and records of all city officials charged with the custody, receipt and disbursement of city funds were examined and audited. An examination was made of a sufficient number of vouchers, payrolls and cancelled checks to satisfy the requirements of accepted standards of audit procedure. Receipts were checked by source insofar as possible. Book

balances were verified by comparison with reconciled bank balances made from statements obtained from depository banks.

**Comparative Balance Sheets (General Fund Account)  
December 31, 1964 – December 31, 1965**  
(Exhibit A-1)

Comparative Balance Sheets (General Fund Account) for the fiscal years ended December 31, 1964 and December 31, 1965, are presented in Exhibit A-1. As indicated therein, the Surplus increased by \$15,746.89 in 1965.

**Analysis of Change in Current Financial Condition**  
(Exhibit A-3)

An analysis of the change in the current financial condition of the City during the year is made in Exhibit A-3, with the factors which caused the change indicated therein. These were as follows:

**INCREASE IN SURPLUS**

Net Budget Surplus	\$188,137.14
Adjustment — Accounts Payable	92.26
1963 Check Cancelled	15.00
Overpayment a/c Discount — Property Taxes	1.60
	<hr/>
	\$188,246.00

**DECREASE IN SURPLUS**

School Projects (Site Development, Bleachers, Etc.)	\$ 72,400.00
Hancock Street Project	42,500.00
Surplus Used to Reduce Tax Rate	38,673.69
Prior Years' Tax Abatements	14,442.95
Additional Charge a/c Insurance Rating Adjustment	2,099.00
Adjustment a/c Reserve for Uncollected Taxes	1,989.73
Adjustment a/c Accounts Receivable	225.50
Prior Year's Welfare Charges	97.00
Refund a/c Prior Year's Sewer Connection Fee	56.50
Tax Collector's Adjustments	12.00
Tax Collector's Excess Debtis	2.74
	<hr/>
	172,499.11

**Net Increase** \$ 15,746.89

**Increase in Bonded Indebtedness:**

The bonded indebtedness of the City (including Municipal, School and Water Debt) increased by \$89,000.00 in 1965, as shown herewith:

	Bonded Debt December 31, 1964	Bonds Issued in 1965	Bonds Retired in 1965	Bonded Debt December 31, 1965
Municipal	\$2,288,000.00	\$500,000.00	\$215,000.00	\$2,573,000.00
School	2,398,000.00	-0-	185,000.00	2,213,000.00
Water	80,000.00	-0-	11,000.00	69,000.00
	<hr/>	<hr/>	<hr/>	<hr/>
	\$4,766,000.00	\$500,000.00	\$411,000.00	\$4,855,000.00
	<hr/>	<hr/>	<hr/>	<hr/>

**Statement of Bonded Indebtedness**  
(Exhibit J)

A statement of outstanding bonded indebtedness as of December 31, 1965, showing annual debt service requirements, is contained in Exhibit J.

**Comparative Statements of Appropriations and Expenditures — Estimated and Actual Revenues**  
(Exhibits A-4 and A-5)

Comparative statements of appropriations and expendi-

tures, estimated and actual revenues for the fiscal year ended December 31, 1965, are presented in Exhibits A-4 and A-5. As indicated by the budget summary (Exhibit A-5), a revenue surplus of \$65,760.18, plus unexpended balances of appropriations of \$122,376.96, resulted in a net budget surplus of \$188,137.14.

**Analysis of Parking Meter Collections**  
(Exhibit H-4)

A statement showing the Parking Meter collections, as indicated by the records of the City Treasurer, by months and years over a ten year period, is presented in Exhibit H-4.

Tax Collections:

Tax collections (exclusive of State Head Taxes) of the current year's levy compared to taxes assessed, for the years 1964 and 1965, were as follows:

	Levy of 1964	Percent	Levy of 1965	Percent
Taxes Assessed - Current Year's Levy	\$2,916,259.88		\$3,329,131.44	
Taxes Collected - Current Year's Levy	\$2,693,390.02	92.4%	\$3,020,247.11	90.7%
Discounts Allowed - Current Year's Levy	21,037.10	.7%	22,665.11	.7%
Taxes Abated - Current Year's Levy	3,934.58	.1%	6,398.60	.2%
Uncollected Taxes - Current Year's Levy	197,898.18	6.8%	279,820.62	8.4%
	<u>\$2,916,259.88</u>	<u>100.0%</u>	<u>\$3,329,131.44</u>	<u>100.0%</u>

**Conclusion:**

The provisions of Chapter 184 of the Laws of 1955, require that this report or the summary of findings and recommendations (letter of transmittal) shall be published in the next annual report of the City.

We extend our thanks to the officials of the City of Portsmouth and their office staffs for the assistance rendered during the course of the audit.

Yours very truly,  
HAROLD G. FOWLER  
Director

**Division of Municipal Accounting**  
**State Tax Commission**

HGF:bjm

O. Maurice Oleson  
Lionel J. DeGrace  
Edgar O. Pesquera

Auditors

Laurence M. Bean  
Stephen D. Plodzick

Accountants





**EXHIBIT A-2**  
CITY OF PORTSMOUTH  
**BALANCE SHEET — BONDED INDEBTEDNESS**  
As of December 31, 1965

**ASSETS**

Bonded Indebtedness — Municipal	\$2,573,000.00
Bonded Indebtedness — School	2,213,000.00
Bonded Indebtedness — Water Department	69,000.00
<b>Total Assets</b>	<b>\$4,855,000.00</b>

**LIABILITIES**

<b>Municipal Bonds Outstanding:</b>	
Permanent Improvements — 1946	\$ 20,000.00
Permanent Improvements & Equipment — 1951	38,000.00
Permanent Improvements — 1957	40,000.00
Voting Machines — 1958	26,000.00
Sewer — 1960	750,000.00
Urban Renewal — 1961	160,000.00
Street Issue — 1963	40,000.00
Recreational Building Issue — 1963	15,000.00
Urban Renewal Issue — 1963	9,000.00
Parking Area — 1964	60,000.00
Sewer — 1964	850,000.00
Capital Improvements — 1964	65,000.00
Sewer — 1965	500,000.00
	<b>\$2,573,000.00</b>

**School Bonds Outstanding:**

Senior High School — 1955	\$1,650,000.00
Supplemental School Issue — 1956	113,000.00
Elementary School Issue — 1959	320,000.00
Senior High School Addition Issue — 1961	10,000.00
Junior High School Addition Issue — 1963	120,000.00
	<b>2,213,000.00</b>

**Water Bonds Outstanding:**

Water Bonds — 1951	\$ 60,000.00
Water Bonds — 1954	9,000.00
	<b>69,000.00</b>
<b>Total Liabilities</b>	<b>\$4,855,000.00</b>

**EXHIBIT A-3**  
CITY OF PORTSMOUTH  
**ANALYSIS OF REVENUE SURPLUS**  
Fiscal Year Ended December 31, 1965

Current Surplus — December 31, 1965	\$205,717.37
Current Surplus — December 31, 1964	189,970.48
Increase in Current Surplus	<b>\$15,746.89</b>

**ANALYSIS OF CHANGE**

<b>Increases:</b>	
Net Budget Surplus	\$188,137.14
Accounts Payable Adjustment	92.26
Overpayment a/c Discount —	
Property Taxes	1.60
1963 Check Cancelled	15.00
	<b>\$188,246.00</b>

**Decreases:**

Surplus Used to Reduce Tax Rate	\$ 38,673.69
New Hancock Street Project	42,500.00
School Projects (Site Development —	
Bleachers, Etc.)	72,400.00
To Adjust Reserve for Uncollected Taxes	1,989.73
Prior Years' Abatements	14,442.95
Tax Collector's Adjustments	12.00
Tax Collector's Excess Debits	2.74
Refund Prior Year's Sewer Connection Fee	56.50
Prior Year's Welfare Charges	97.00
Additional Charge Insurance	
Rating Adjustment	2,099.00
Accounts Receivable Adjustment	225.50
	<b>172,499.11</b>

**Net Increase**

**\$15,746.89**

# EXHIBIT A-4

CITY OF PORTSMOUTH

## COMPARATIVE STATEMENT OF APPROPRIATIONS AND EXPENDITURES

Fiscal Year Ended December 31, 1965

	FORWARDED FROM 1964	APPROPRIATIONS 1965	TRANSFERS	RECEIPTS AND REIMBURSEMENTS	TOTAL AMOUNT AVAILABLE	TOTAL EXPENDITURES & ENCUMBRANCES	UNEXPENDED BALANCE TO SURPLUS	BALANCES FORWARDED TO 1966
General Government:								
Assessors' Department	\$	20,268.70	+\$ 416.00	\$ 7.00	20,691.70	\$ 18,624.69	\$ 2,067.01	\$
Auditor's Department		22,147.60	+ 735.85	75.50	21,487.25	20,848.22	639.03	
City Clerk's Department		16,937.00	+ 231.32		17,168.32	15,626.64	1,541.68	
Election & Registration		3,500.00	+ 384.68	1.00	3,885.68	3,885.68		
City Manager's Department		19,658.70	+ 1,208.00	46.00	20,912.70	20,196.19	716.51	
Collector's Department		15,618.70	+ 416.00	274.22	16,308.92	15,687.42	621.50	
City Treasurer's Department		9,455.00	+ 208.00		9,663.00	9,175.84	487.16	
Public Buildings & Places		14,525.00	+ 208.00	15.00	14,748.00	13,405.07	1,342.93	
City Council Salaries		4,500.00	+ 150.00		4,650.00	4,650.00		
Protection of persons & property:								
Fire Department		205,170.14	+ 9,540.00	1,768.67	216,478.81	214,184.56	2,294.25	
Fire Alarm		9,019.72	+ 460.00	369.65	9,849.37	8,858.62	990.75	
Police Department		280,634.73	+ 14,212.80	25,711.07	320,558.60	316,309.20	4,249.40	
Civil Defense		5,000.00		1.00	5,001.00	4,593.46	407.54	
Dog Officer's Department		3,686.00	+ 208.11		3,894.11	3,894.11		
Health:								
Health Department		15,480.00	+ 416.00	19.00	15,915.00	14,280.16	1,634.84	
Comfort Station		28,302.58	+ 1,248.00	61.00	29,611.58	28,376.61	1,234.97	
Highways & Bridges:								
Town Road Aid		9,200.00	+ 6,000.00		3,200.00	2,909.05	290.95	
General Maintenance Expense		282,672.40	+ 15,670.04	7,094.78	305,437.22	276,122.19	29,315.03	
Dump & Refuse Removal		46,029.92	+ 13,372.00		59,401.92	60,389.12	( 987.20)	
Sewer Maintenance		26,831.97	+ 5,832.00		32,663.97	33,815.39	( 1,151.42)	
Treatment Plant & Pumping Station		50,500.00	+ 5,000.00		45,500.00	35,199.09	10,300.91	
Cemeteries		800.00			800.00	522.04	277.96	
Street Lights		59,000.00			59,000.00	58,200.08	799.92	
Christmas Lighting		1,000.00			1,000.00	980.00	20.00	
Libraries		35,180.70	+ 1,040.00	6.00	36,226.70	33,655.68	2,571.02	
Recreation:								
Parks — Maintenance		8,479.60			8,479.60	7,327.85	1,151.75	
Recreation		54,935.00		2,835.93	57,770.93	52,585.94	5,184.99	
Community Center		23,451.95	+ 624.00	32.00	24,107.95	24,040.36	67.59	
Playground Maintenance & Construction		7,000.00	+ 7,500.00		14,500.00	14,340.39	159.61	
Basketball Officials' Fund				1,232.00	1,629.50	1,262.00		
I-M-J Tournament Expense	397.50			1,500.00	1,500.00	1,500.00		367.50
Patriotic Purposes:								
Memorial Day		600.00			600.00	600.00		
Naval Reserve Salute		3,000.00			3,000.00	2,778.40	221.60	
Armed Forces Day		500.00		16.95	516.95	500.00	16.95	



# EXHIBIT A-5

CITY OF PORTSMOUTH

## STATEMENT OF ESTIMATED AND ACTUAL REVENUES AND BUDGET SUMMARY

Fiscal Year Ended December 31, 1965

Source	Revenues			Deficit
	Estimated	Actual	Excess	
Interest & Dividends Tax . . . . .	\$ 32,842.43	\$ 32,842.43		
Motor Vehicle Permit Fees . . . . .	175,000.00	191,155.01	16,155.01	
Dog Licenses . . . . .	2,300.00	2,474.25	174.25	
Business Licenses, Permits & Fees . . . . .	19,000.00	18,441.94		558.06
Fines & Forfeits — District Court & Parking . . . . .	18,000.00	23,277.21	5,277.21	
Rent of City Ambulance . . . . .	2,500.00	2,824.50	324.50	
Interest on Taxes . . . . .	8,000.00	7,087.99		912.01
Head Tax Revenue . . . . .	3,000.00	4,093.83	1,093.83	
Railroad Tax . . . . .	3,826.31	3,826.31		
Savings Bank Tax . . . . .	10,952.07	10,952.07		
Added Taxes . . . . .		25,647.09	25,647.09	
Schools:				
Federal Grant . . . . .	900,000.00	900,792.00	792.00	
Rental of Buildings, Etc. . . . .	2,500.00	1,457.00		1,043.00
Tuition . . . . .	217,500.00	223,697.35	6,197.35	
State Aid — Sweepstakes . . . . .	116,636.25	116,053.30		582.95
State Building Aid . . . . .	50,425.60	55,689.33	5,263.73	
Miscellaneous:				
Welfare Department . . . . .		3,384.62)		
Community Center . . . . .		1,404.35)		
Comfort Station . . . . .		890.36)		
Interest on Invested Funds . . . . .	30,000.00	21,036.25)	8,104.57	
Payment in Lieu of Taxes . . . . .		5,649.81)		
Head Taxes & Penalties After Settlement . . . . .		374.00)		
Miscellaneous . . . . .		5,365.18)		
Highway Department Revenue . . . . .	10,000.00	10,364.66	364.66	
Building Inspector . . . . .	3,500.00	2,962.00		538.00
Surplus Used to Reduce Tax Rate . . . . .	38,673.69	38,673.69		
	\$1,644,656.35	\$1,710,416.53	\$69,394.20	\$3,634.02

### Budget Summary

Actual Revenues . . . . .	\$1,710,416.53
Estimated Revenues . . . . .	1,644,656.35
Revenue Surplus . . . . .	\$ 65,760.18
Unexpended Balances of Appropriations . . . . .	122,376.96
Net Budget Surplus	\$188,137.14

**EXHIBIT D**

CITY OF PORTSMOUTH

**STATEMENT OF CITY CLERK'S ACCOUNTS**

Fiscal Year Ended December 31, 1965

— DR. —

## Licenses Issued:

Dog Licenses \$3,318.25  
 Bicycle Licenses 280.50  
 Taxi Licenses 468.00  
 Theatre Licenses 200.00  
 Pinball Licenses 1,350.00  
 Other Licenses 1,133.00

\_\_\_\_\_ \$ 6,749.75

## Other Fees:

Recording Vital Statistics \$1,782.00  
 Marriage Intentions 1,422.00  
 Sewer Connections 4,459.54  
 Plumbing Fees 711.72  
 Filing Fees 135.00  
 Miscellaneous 370.15  
 Uniform Commercial Code 5,152.00  
 Parking Meter Tokens 9,852.65

\_\_\_\_\_ 23,885.06  
 \_\_\_\_\_ \$30,634.81

— CR. —

## Remittances to Treasurer:

Dog Licenses \$ 3,318.25  
 Bicycle Licenses 280.50  
 Taxi Licenses 468.00  
 Miscellaneous Licenses 2,683.00  
 Fees 14,032.41  
 Parking Meter Tokens 9,852.65

\_\_\_\_\_ \$30,634.81  
 \_\_\_\_\_

**EXHIBIT E**

CITY OF PORTSMOUTH

**STATEMENT OF DISTRICT COURT ACCOUNTS  
AND PROOF OF BALANCE**

Fiscal Year Ended December 31, 1965

Receipts: Balance — January 1, 1965

Fines \$20,463.36  
 Small Claims 288.60  
 Writs, Executions, Etc. 121.49  
 Bail 19,640.00  
 Miscellaneous 84.85

\_\_\_\_\_ 40,598.30

\_\_\_\_\_ \$ 1,861.04

## Expenditures:

Department of Safety \$ 8,279.04  
 Fish & Game Department 216.00  
 City of Portsmouth 10,127.95  
 Witness Fees 897.80  
 Office Supplies & Expenses 399.94  
 Small Claims 193.75  
 Bail Returned 19,995.00  
 City of Portsmouth — a/c Small Claims 157.34  
 Department of Employment Security 176.00  
 Juvenile Court Expenses 100.00  
 Refunds & Miscellaneous 19.00  
 Dues & Associations 72.50  
 Non-Support Payments 155.00  
 Surety Bond 12.00  
 Judge's Robe 65.00

\_\_\_\_\_ 40,866.32

Balance — December 31, 1965

\_\_\_\_\_ \$1,593.02

## PROOF OF BALANCE

Balance in the First National Bank of

Portsmouth — Per Statement

December 30, 1965

\$ 716.43

Add: Deposit of December 31, 1965

240.00

\$ 956.43

Less: Outstanding Checks

896.43

\_\_\_\_\_ \$

60.00

40.00

Cash on Hand Per Count

Balance in the New Hampshire National Bank

of Portsmouth — Per Statement

December 30, 1965

\$ 1,879.11

Less: Outstanding Checks

386.09

\_\_\_\_\_ 1,493.02

Reconciled Balance — December 31, 1965

\_\_\_\_\_ \$1,593.02

**EXHIBIT F-1**  
CITY OF PORTSMOUTH  
**SUMMARY OF TRUST FUND PRINCIPAL AND INCOME**

Fiscal Year Ended December 31, 1965

FUNDS	PRINCIPAL			INCOME			Balance of Principal & Income December 31, 1965
	Balance January 1, 1965	Balance December 31, 1965	Balance January 1, 1965	Earned During Year	Expended During Year	Balance December 31, 1965	
Schools	\$ 15,800.00	\$ 15,800.00	\$ 6,141.84	\$ 635.61	\$ 3,627.60	\$ 3,149.85	\$ 18,949.85
Worthy Poor	14,435.16	14,435.16	941.39	588.91	300.00	1,230.30	15,665.46
Colored Population	500.00	500.00	7.78	14.04	14.00	7.82	507.82
Haven Park	6,523.56	6,523.56	3,488.34	385.58	339.00	3,534.02	10,058.48
Annie Fields Scholarship Fund	5,000.00	5,000.00	100.05	202.04	200.00	102.09	5,102.09
Memorial Fountain	500.00	500.00	374.89	35.32		410.21	910.21
Public Library	40,508.88	40,508.88	773.47	1,548.33	1,546.94	774.86	41,283.74
Prescott Park	1,360,781.92	1,360,781.92	254,795.62	68,426.31	207,246.07	115,975.86	1,476,757.78
Gray Scholarship	42,896.96	42,896.96	1,046.29	2,433.96	2,200.00	1,280.25	44,177.21
William J. Cater Playground	5,000.00	5,000.00	1,874.53	277.72		2,152.25	7,152.25
	\$1,491,946.48	\$1,491,946.48	\$269,544.20	\$74,547.82	\$215,473.61	\$128,618.41	\$1,620,564.89

**EXHIBIT I-1**  
**CITY OF PORTSMOUTH**  
**WATER DEPARTMENT BALANCE SHEET**  
 As of December 31, 1965

**ASSETS**

<b>Current Assets:</b>			
Cash in Bank	\$	14,033.08	
Petty Cash		100.00	
Materials & Supplies		44,843.24	
Accounts Receivable	\$	35,140.54	
Less: Reserve for Bad Debts		3,000.00	
		<u>32,140.54</u>	
<b>Buildings:</b>			
Water Supply Structures	\$	925,902.58	
Pumping Station Structures		78,347.31	
Water Storage Structures		85,000.00	
Purification System			
Structures		854,776.00	
<b>Equipment:</b>			
Water Supply Equipment	\$	102,567.50	
Pumping Station Equipment		138,150.24	
Purification Equipment		5,700.00	
Transmission Mains, Equip.		1,563,102.36	
Water Storage Equipment		74,405.04	
Distribution Mains Equip.		1,453,262.71	
Services		8,335.34	
Hydrants		49,552.52	
Meters		121,384.96	
Stables & Garage Equipment		5,807.00	
Other Equipment		31,505.76	
		<u>\$3,553,773.43</u>	
Total Buildings & Equipment		\$5,506,633.76	
Less: Reserve for Depreciation		597,449.98	
		<u>\$4,909,183.78</u>	
Depreciated Value			
Total Fixed Assets			\$5,070,563.78
<b>Total Assets</b>			<u>\$5,161,680.64</u>

**Fixed Assets:**

Land:		
Water Supply Land	\$	155,223.00
Pumping Station Land		1,835.00
Water Storage Land		1,400.00
Distribution System Land		750.00
Other Land		2,172.00
		<u>\$ 161,380.00</u>

**LIABILITIES, INVESTMENT & SURPLUS**

<b>Current Liabilities:</b>		
Accounts Payable	\$	21,956.62
Customers' Deposits		525.00
Accrued Taxes		1,493.66
		<u>\$ 23,975.28</u>
<b>Fixed Liabilities:</b>		
Funded Debt	\$	69,000.00
		<u>69,000.00</u>
<b>Total Current Liabilities</b>		<u>\$ 23,975.28</u>
<b>Total Fixed Liabilities</b>		<u>69,000.00</u>
<b>Total Liabilities</b>		<u>\$ 92,975.28</u>
<b>Investment &amp; Surplus:</b>		
Municipal Investment	\$	656,559.09
Federal Contribution for Plant Expansion		4,096,027.10
		<u>\$4,752,586.19</u>
<b>Surplus:</b>		
Balance — January 1, 1965	\$	378,616.80
<b>Increase in Surplus:</b>		
Net Adjustment to Accounts Receivable Accounts		20.26
		<u>\$ 378,637.06</u>
<b>Decrease in Surplus:</b>		
Net Loss for 1965		62,517.89
		<u>316,119.17</u>
Balance — December 31, 1965		
Total Investment & Surplus		<u>5,068,705.36</u>
<b>Total Liabilities, Investment &amp; Surplus</b>		<u>\$5,161,680.64</u>

# EXHIBIT I-2

CITY OF PORTSMOUTH

## WATER DEPARTMENT STATEMENT OF PROFIT AND LOSS

Fiscal Year Ended December 31, 1965

<b>Revenues:</b>			
Commercial Sales	\$ 217,211.21	Commercial Office Salaries	\$ 10,174.75
Industrial Sales	44,580.86	Meter Reading Salaries	10,103.04
Other Municipal Sales	4,273.89		
Merchandise Sales & Job Work	18,196.92		
		Total Operating & Distribution Expenses	\$ 20,277.79
<b>Less:</b>		Net Operating Profit	\$ 54,375.94
Operating Expenses:		<b>Less: Non-Operating Expenses:</b>	
Operation:	\$ 9,154.91	General Expenses:	
Superintendence	71,275.20	Office Rent & Expense	\$ 1,180.06
Pumping Station — Labor		Other General Expense	606.29
Pumping Station — Supplies & Expenses	4,848.70		
Purification System	19,207.94	<b>Miscellaneous Undistributed Expenses:</b>	
Fuel	2,840.50	Insurance	\$ 5,133.04
Power Purchased	23,813.18	Stationery & Printing	206.12
		Stores Department & Shop Expense	7,190.54
	\$ 131,130.43	Garage Expense	4,053.47
<b>Maintenance:</b>			
Repairs to Water Supply — Structures & Equipment	\$ 3,435.08	<b>Other Expenses:</b>	
Repairs to Pumping Station — Structures & Equipment	760.45	Depreciation Expense	16,583.17
Repairs to Purification Structures & Equipment	2,198.62		85,767.82
		Total Non-Operating Expenses	104,137.34
		Net Loss After Non-Operating Expenses	( \$ 49,761.40 )
<b>Distribution Expenses:</b>		<b>Other Revenue:</b>	
Operation:	6,394.15	Penalties	\$ 1,472.40
Superintendence	\$ 13,345.44		
Customers' Premises Expense	564.82	<b>Other Expenses:</b>	
Other Distribution Supplies & Expenses	537.79	Interest	\$ 1,295.00
		Employees' Retirement & Social Security	12,933.89
<b>Maintenance:</b>			
Repairs to Mains	14,448.05		
Repairs to Services	\$ 13,457.69		
Repairs to Hydrants	30,189.40		
Repairs to Meters	4,263.89		
	9,725.54		
		Net Other Expenses	14,228.89
	57,636.52		
		Net Loss	( \$ 62,517.89 )



**EXHIBIT I-3**  
 CITY OF PORTSMOUTH  
 WATER DEPARTMENT  
**SUMMARY OF RECEIPTS, EXPENDITURES AND PROOF OF BALANCE**  
 Fiscal year ending December 31, 1965

Balance — January 1, 1965	\$ 7,152.26	
Receipts During the Year	291,298.55	
	\$298,450.81	
Expenditures During Year	284,417.73	
	\$14,033.08	\$14,033.08

**PROOF OF BALANCE**

Balance in the First National Bank, Portsmouth, N. H. — Per Statement December 31, 1965	\$ 13,343.88	
Add: Deposit of January 3, 1966	715.94	
	\$ 14,059.82	
Less: Outstanding Checks	26.74	
Reconciled Balance — December 31, 1965	\$14,033.08	\$14,033.08

# General Information

## AREA — TOPOGRAPHY

Elevations . . . . .	0 to 85 feet
Terrain . . . . .	Flat/Rolling
Market Square . . . . .	Approximately 28.0 ft. above mean sea level
Land Area . . . . .	15.2 square miles
Water Area . . . . .	0.4 square miles

## CLIMATE

Average annual temperature . . . . .	46° F
Average January temperature . . . . .	23° F
Average July temperature . . . . .	70° F
Prevailing wind . . . . .	Westerly

POPULATION		& Change	Density (Persons Per Sq. Mile)
1930	14,495	+ 6.7	954
1940	14,821	+ 2.3	988
1950	18,320	+ 23.6	1221
1960	26,900	+ 46.8	1793

(1960 Count includes all military residents)

## VOTING PLACES

### WARD

- I — New Franklin School, Stark Street-Myrtle Ave.
- II — Junior High School, Parrott Avenue
- III — Sherburne School, Sherburne Road
- IV — Senior High School, Summit Ave., - Alumni Drive
- V — Community Center, Daniel Street
- VI — Wentworth School, Granite Street

## STATE REPRESENTATIVES (General Court)

### House of Representatives

- WARD I — William F. Keefe  
Raymond J. McEachern
- II — Christopher M. Conlon  
Jeremiah Quirk  
Ann Sadler
- III — C. Cecil Dame  
Clayton E. Osborn
- IV — Robert T. Call  
Julia H. White
- V — Hector Coussoule  
Edward J. Ingraham
- VI — Eileen G. Rossley  
Reginald F. Smith

## STATE SENATORS

Douglass E. Hunter (R) . . . . .	23rd District
Eileen Foley (D) . . . . .	24th District

## REPRESENTATIVES

James C. Cleveland (R) . . . . .	2nd District
J. Oliva Huot (D) . . . . .	1st District

## SENATORS

Thomas J. McIntyre (D)
Norris Cotton (R)

## ADMINISTRATIVE BUILDINGS

City Hall . . . . .	Daniel Street
Fire Station . . . . .	Court Street
Police Station . . . . .	Penhallow Street
Library . . . . .	Congress/Islington
Highway Department . . . . .	Islington Street
School Department . . . . .	Islington Street
Health Center . . . . .	Porter/Church Streets

## PARKS AND PLAYGROUNDS

Pierce Island . . . . .	Picnic-municipal pool-small boat ramps
Prescott Park . . . . .	Recreational-walk-through-playground
Elwyn Park . . . . .	Walk-through
Haven Park . . . . .	Walk-through
Goodwin Park . . . . .	Walk-through
South Playground . . . . .	Lighted tennis courts, basketball, baseball, football-public events
Alumni Field . . . . .	Recreation, baseball, public events
Clough Field . . . . .	Playground and Little League
Lafayette Playground . . . . .	Playground and Skating
Maple Haven . . . . .	Playground
Dondero School . . . . .	Playground and Skating
Sherburne . . . . .	Playground
Pine Street . . . . .	Playground
New Franklin . . . . .	Playground
Wentworth . . . . .	Playground
Atlantic Heights . . . . .	Playground and Skating
Atlantic Heights . . . . .	Little League Baseball
Plains . . . . .	Little League Baseball
Greenland Road . . . . .	Skating Rink
Mariette Drive . . . . .	Skating Rink
Elwyn Road . . . . .	Skating Rink

## RECREATIONAL BUILDINGS

Community Center . . . . .	Daniel Street
Kennedy Adult Recreation Center . . . . .	Parrott Avenue
Union Wharf Building . . . . .	Prescott Park
Bath House . . . . .	Pierce Island

# Directory of City Offices and Services

## FIRE 436-1127

## POLICE 436-2145

Administration, General. . . . .	436-4125
Ambulance . . . . .	436-1127
Assessments . . . . .	436-1117
Auto Permits . . . . .	436-1124
Beano Licenses. . . . .	436-2145
Bicycle Licenses . . . . .	436-0013
Bills and Accounts. . . . .	436-8222
Birth Certificates. . . . .	436-0013
Building Permits. . . . .	436-5867
Cemetery . . . . .	436-0176
City Council . . . . .	436-4125
Dance Licenses. . . . .	436-0013
Death Certificates. . . . .	436-0013
Sewers. . . . .	436-0176
Dog Licenses . . . . .	436-0013
Dog Officer . . . . .	436-9067
Elections. . . . .	436-0013
Engineering, City . . . . .	436-0176
Garbage Collection. . . . .	436-0176
Health, Public . . . . .	436-3224
House, Low-Rent, Public. . . . .	436-4310
Industrial Commission . . . . .	436-9411
Library. . . . .	436-5724
Marriage Certificates. . . . .	436-0013
Milk, Licenses and Inspections . . .	436-4125
Mortgages and Conditional Sales .	436-0013
Nursing, Public Health. . . . .	436-0815

Oil Burner Inspection. . . . .	436-1127
Ordinances and Resolutions . . . .	436-0013
Parks . . . . .	436-0176
Payments by the City. . . . .	436-8222
Personnel, City . . . . .	436-4125
Planning, City . . . . .	436-5869
Plumbing Permits – Licenses . . . .	436-6128
Purchasing . . . . .	436-4125
Recreation . . . . .	436-4256
Refuse Collection . . . . .	436-0176
Red Cross . . . . .	436-2600
Sanitation. . . . .	436-0176
Schools . . . . .	436-2434
School Nurse. . . . .	436-2601
Selective Service Registration . . .	436-0013
Snow Plowing and Sanding . . . . .	436-0176
Street Lights Burned Out. . . . .	436-4125
Street Maintenance. . . . .	426-0176
Tax Collection . . . . .	436-1124
Taxicab Permits . . . . .	436-0013
Treasury Information. . . . .	436-5800
Urban Renewal & Redevelopment. .	436-3217
Water . . . . .	436-0176
Water Bills . . . . .	436-2346
Welfare . . . . .	436-1925
Weights and Measures. . . . .	436-3902
Zoning. . . . .	436-5867





AERIAL  
PHOTO  
NEW  
ENGLAND



New Hampshire State Library



3 4677 0029293 8