

352.0742b

P83

C.2



# *Annual Report*

## *1964*



*Portsmouth*  
*New Hampshire*

NEW HAMPSHIRE  
STATE LIBRARY



## NEW HAMPSHIRE

### TRI-STATE SEACOAST AREA

This unusual photograph as supplied by the Portsmouth Industrial Commission encompasses a land area which extends from the edge of York, Maine (in the lower section of the photo) to the new Prudential building in Boston (slightly right-of-center) at the top of the photograph. The Piscataqua and Merrimac Rivers may be easily seen as are U. S. Routes 1 and 95. (Exclusive high-altitude infrared photo by Aerial Photos of New England).

#### BACK COVER

Norwegian Cadet Training Ship, Stratsraad Lehmkuhl, out of Bergen, Norway approaching its berth at the Portsmouth Naval Shipyard. Its visit was made at the request of Strawberry Banke, acting in behalf of the City of Portsmouth.

Type: 3-Masted Bark—Two square rigged and one mizzen aft.

Length: 258 feet.

Gross Tonnage: 1700.

Draw: 17 feet.

Complement: 8 Officers, 18 Crew, 165 Cadets.

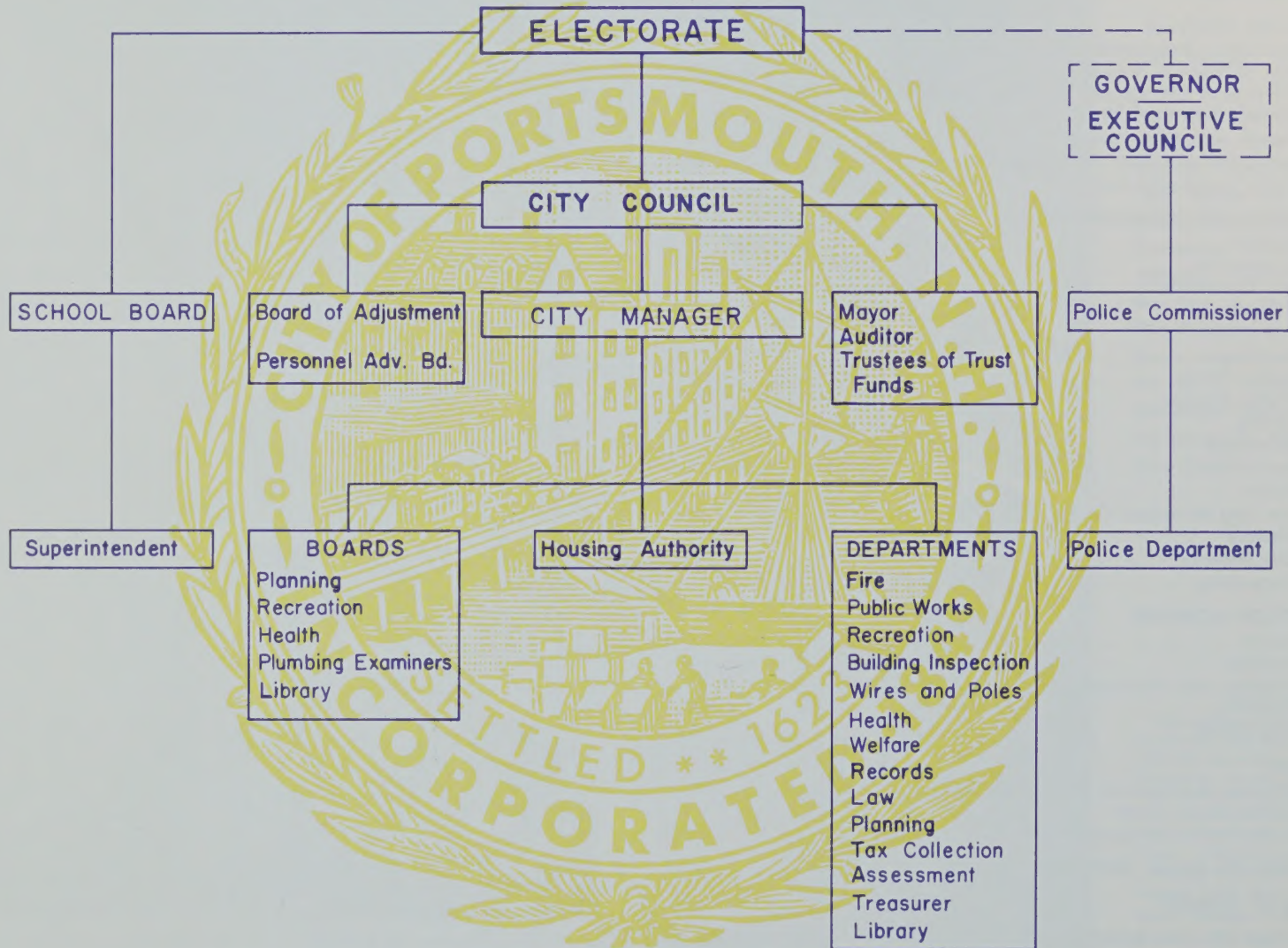
# Table of Contents

	PAGE
Municipal Organization Chart .....	2
City Manager's Message .....	3
Portsmouth City Council and Executive Department .....	4
Council Activities - 1964 .....	5
Boards and Commissions .....	10
Public Improvements and Future Planning .....	12
Major Accomplishments .....	14
<b>ADMINISTRATIVE DEPARTMENTS</b>	
Records .....	19
Assessments .....	20
Tax Collection .....	22
Treasury .....	23
Education .....	24
Planning .....	26
Public Works .....	28
Water Division .....	29
Library .....	30
Recreation .....	31
Fire .....	34
Police .....	35
Law and Municipal Court .....	36
Weifare .....	37
Civil Defense .....	40
Accounting .....	41
<b>INSPECTION AGENCIES</b>	
Health .....	38
Building .....	38
Weights and Measures .....	39
Plumbing .....	39
Dog Officer .....	39
<b>FINANCE</b>	
Division of Municipal Accounting-State Tax Commission .....	41
Certificate of Audit .....	41
Exhibits and Statements .....	42
<b>PORTSMOUTH NAVAL SHIPYARD</b> .....	51
<b>NOTES OF INTEREST</b> .....	56
<b>DIRECTORY OF CITY OFFICES</b> .....	Inside Back Cover



A peaceful moment — Portsmouth Public Library.

# Municipal Organization Chart



# City Manager's Report



City Manager Robert C. Violette



City of Portsmouth, New Hampshire  
CITY HALL 120 DANIEL STREET

Honorable Mayor, City Council  
and Citizens of the City of  
Portsmouth, New Hampshire

March 11, 1965

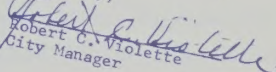
Gentlemen:

The year 1964 has ended and now is the time to take inventory and review our many accomplishments. I am proud to report that we have had a successful year. The Council played an important part in getting things done, first by appropriation and second, by supervision, valuable advice and cooperation. The Council has constantly tried this last year to solve our problems by attending numerous and lengthy meetings and they have attained a certain degree of success. Satisfaction is that Portsmouth is a better place in which to live and work because of their many efforts.

I have enjoyed working with you and for you, and have acquired a great amount of satisfaction in getting things done. We have ended the year with an unexpended balance of \$74,121.96 in our appropriations and with a greater income than was anticipated. The major part of this balance will be used to reduce the 1965 tax rate.

My personal and sincere thanks to you, Mr. Mayor, and to the Members of the City Council, and to all City Employees for your untiring efforts beyond the call of duty and for performing your work with utmost satisfaction. The Portsmouth Herald, our local newspaper, and our two radio stations, WHEB and WBBX, deserve a special mention and a vote of thanks for keeping our citizenry well informed. I am appreciative and very grateful to the many Boards and Commissions, for the work that they have contributed,

RCV:lzs

Sincerely,  
  
Robert C. Violette  
City Manager

"City of the Open Door"



# Portsmouth City Council



PORTSMOUTH CITY COUNCIL

LEFT TO RIGHT: Councilmen: Raymond C. Dunphy; Edmund T. Scarponi; Frank Butterworth, Jr.; Robert E. Whalen; City Manager Robert C. Violette; Mayor Timothy J. Connors; C. Richard Williams, Assistant Mayor; City Clerk, Peter E. O'Donnell; City Attorney, John C. Driscoll; Lucien O. Geoffrion; Samuel A. McMaster and Clayton E. Osborn.

## **City Council Activities: 1964**

Held 27 Meetings (includes regular and special meetings)  
Held 14 Sessions for Public Hearings  
Passed 9 Resolutions  
Adopted 15 Ordinances

## **Council Members: 9**

### **Executive Department:**

Robert C. Violette, City Manager  
Mrs. Leda Z. Sombric, Clerk/Stenographer



# Activities of the City Council in the Year of 1964

## JANUARY

2 Meetings

Elected Timothy J. Connors as Mayor.

Elected C. Richard Williams as Assistant Mayor.

Appointed Mr. Robert E. McLaughlin to Board of Trustees of Trust Funds for a 3 year term.

Accepted resignation of James Varotsis from Board of Adjustment.

Granted permission to City Treasurer to continue using following banks as depositories: 1st National Bank and New Hampshire National Bank, Portsmouth, New Hampshire; New England Merchants National Bank, State Street Bank & Trust, and National Shawmut Bank, all of Boston Massachusetts.

Also granted permission to City Treasurer to invest a portion of any unused funds.

### APPOINTMENTS TO COMMITTEES:

**TRAFFIC AND PARKING:** Councilmen, McMaster, Osborn and Geoffrion; Morris Foye, Henry Berounsky, Robert McCann, and as ex-officio members, Planning Director Wennberg, Supt. of Public Works, Stevens, Fire Chief Crompton, Marshal Betz and City Manager Violette.

**PLANNING BOARD:** Councilman Dunphy.

**MILITARY AFFAIRS COMMITTEE:** Councilman Williams.

**CITY HALL COMMITTEE:** Councilman Whalen.

**PORT AUTHORITY:** Councilman Butterworth.

**AUDIT COMMITTEE:** Councilman Geoffrion.

**INDUSTRIAL DEVELOPMENT COMMISSION:** Thomas S. Prentiss; Councilmen: Whalen, Butterworth, Dunphy and Scarponi.

**AIRPORT STUDY COMMITTEE:** Councilman Whalen.

**RECREATION COMMITTEE:** Councilman Dunphy.

Appointed Glen E. Graper to Board of Adjustment.

## FEBRUARY

2 Meetings

1 Public Hearing

Accepted Edward L. Butler's letter of resignation as local Civil Defense Director.

Adopted Rules and Orders of the Portsmouth City Council.

Awarded Station Wagon bid to Coleman Rambler Co., Inc. \$1,671.71 (Police Department)

Awarded bid for two 4-door Sedans to Seybolt Motors for \$2,282.60 (Police Department)

Waived the Building Permit fee for the proposed marine terminal on Noble's Island. — N. H. Port Authority — due to lack of funds on their part.

Waived Sewer Entrance Fee for firm of Chadwick & Trefethen, Inc. \$247.50.

Set hours for polls to be open on Primary Election Day, March 10, 1964, 8:00 a.m. to 6:00 p.m.

Held Public Hearing on 1964 Appropriation Bill.

Adopted Resolution #1: 1964 Appropriation Bill, as amended.

# Council Activities

## MARCH

2 Meetings  
2 Public Hearings

Appointed as local Civil Defense Director: William T. Evans, 304 Leslie Drive.  
Held Public Hearing on Ordinance to limit parking; Holly Lane.  
Adopted Ordinance to limit parking; Holly Lane.  
Held Public Hearing on 1964 Salary Ordinance — adopted salary ordinance.  
Voted to loan voting machines to Town of Hampton, N. H. for March 1965 Town Meeting free of charge on condition that City Manager and City Clerk be compensated for any work they performed.  
Granted Portsmouth Lodge of Elks #97 Free use of Community Center 4/18/64 for Charity Ball.  
Granted Kiwanis Club of Portsmouth Free use of facilities of Community Center on June 25, 26 and 27 for charity auction.  
Voted to have full time dog officer with a maximum salary of \$3,500.00.

## APRIL

3 Meetings  
1 Public Hearing

Awarded Contract 1964-1 (sewers, drains, appurtenant work) to Elm Construction Company, of Dedham, Massachusetts.  
Instituted 2 hour parking on Summer Street, between Islington and State Streets.  
Instituted no parking on Richards Avenue from Middle Street to Parrott Avenue.  
Adopted Salary Schedule Ordinance for City of Portsmouth, New Hampshire for 1964.  
Adopted Resolution showing approval of the overall River Improvement Project.  
Held Public Hearing on an Ordinance Creating Apartment House District No. 4.  
Adopted Ordinance Creating Apartment House District No. 4.  
Held Public Hearing on an Ordinance creating Commercial District No. 21.  
Ordinance creating Commercial District No. 21 — tabled.  
Met with Portsmouth Housing Authority to discuss the site of the High-Rise Project.

## MAY

2 Meetings  
1 Public Hearing

Approved Trustee of Trust Funds request to engage landscape architect for the Prescott Park Area.  
Voted to hire Structural Concrete Corp. to draw up specifications and designs for double decking the High/Hanover Street Parking lot at a maximum cost of \$500.00.  
Voted to install traffic lights at the intersection of Cabot and Islington Streets.  
Voted to install parking meters in the lot directly in back of the Fire Station — 20¢ for 8 hours.  
Voted to appoint a Committee of 5 members (possibly to be called Portsmouth Development Commission) to work with other groups on regional development.  
Held Public Hearings on:  

1. Ordinance prohibiting cross traffic across State Street at Church Street and at Chestnut Street.  
Adopted above Ordinance.
2. Ordinance creating Industrial District No. 7.  
Adopted above ordinance.



# Council Activities

## MAY

Continued

3. Ordinance for licensing and regulation of dogs.  
Adopted above ordinance.
4. Proposed new Zoning Ordinance.  
Voted 6-3 to table above Ordinance.

Appointed Mr. Robert E. O'Leary to Zoning Board of Adjustment for a five year term, retroactive to April 1, 1964.

Appointed Mr. Sherman P. Newton, Jr. to Zoning Board of Adjustment for a five year term, retroactive to May 1, 1964.

Voted to make a \$500 contribution available towards the expense of having the vessel "Statsraad Lehmkuhl" to visit Portsmouth July 29 thru 31, 1964; the \$500 to be taken from the Contingent Fund.

Voted to send a letter to the Teachers Convention Group, welcoming it to the City, and to go on record as being in favor of the Association holding its convention in Portsmouth.

Voted to sell the Penhallow Street Parking Lot to the Federal Government for \$185,000.

Voted to accept a proposal presented by Metcalf & Eddy relative to the revision of the Master Sewerage plan; and that the City Manager be authorized to execute any necessary documents in relation to the same; contract price not to exceed \$5,000.

## JUNE

2 Meetings

1 Public Hearing

Voted to join New England Council at invitation of Mr. Frederick F. Jursek, Director; also voted to take the \$60 membership fee from Contingent Fund.

Voted to appropriate an extra \$500 from Contingent Fund for fireworks, making the total \$1,500.00

Voted to authorize City Manager to execute any and all papers necessary to settle Parcel #2 in Civil Action #2425, the Penhallow Street Parking Lot so-called. This motion to clarify and supplement a previous motion made by the City Council May 15, 1964.

Voted to accept the City Manager's recommendation to hire a full time dog officer.

Adopted Ordinance amending the no parking ban on Richards Avenue.

Adopted ordinance to limit parking on Summer Street.

Voted to purchase a 12-page advertisement in the Manchester Union-Leader State Progress Edition.

## JULY

1 Meeting

1 Public Hearing

Adopted Resolution #5, A Resolution pertaining to the sale of Wentworth Acres by FNMA.

Appointed an Industrial Commission: Thomas Prentiss, Chairman; Messrs. Philip P. Finn; John J. Wholey; Lars J. Sandberg; and Harry Winebaum, as members of the Commission.

Voted to take \$1,000 from Contingent Fund and donate the money to the Golden Eagles for their trip to the World's Fair.

# Council Activities

## JULY

### Continued

Voted to authorize City Manager purchase 500 feet firehose from Hewitt & Robinson at \$1.02 a foot and 500 feet from James H. Butler at \$1.10 a foot.

Voted to appropriate \$90 from Contingent fund for the purpose of hiring two buses to take the Senior Citizens to Alton Bay for a 1-day outing.

Voted to take \$450 from Contingent Fund for the purpose of hiring playground supervision at Gosling Meadows.

Adopted Resolution #6. — A resolution authorizing City Manager to apply, negotiate and obtain Federal Financial Assistance for sewage disposal facilities.

Held public hearing on Resolution #3 Authorizing the borrowing of \$75,000 for Capital Improvements.

Adopted above resolution.

Authorized City Manager to attend 50th Annual IMA Conference in Chicago on 9/27 to 10/1.

## AUGUST

### 3 Meetings

### 1 Public Hearing

Voted to donate use of South Playground to U. S. Army Field Band of Washington, D. C. on August 30, for a concert.

Granted permission to the Piscataqua Fish and Game Club to use the Community Center Oct. 24, 1964 for the purpose of holding a Hunter's Ball.

Granted permission to the Portsmouth City Team Inc. to use South Playgrounds on Aug. 15 at 8 p.m. for the purpose of staging a wrestling exposition.

Voted to keep Polls open on Election Day, Sept. 8 from 8 a.m. to 8 p.m.

Voted to appropriate \$1,000 from Contingent Fund and allocate to Civil Defense to cover their deficit and future expenses.

Granted use of South Playground and facilities for a baseball game between UNH/Dartmouth College on May 20, 1965.

Held public hearing on Ordinance Prohibiting Left Hand Turns by buses from Market Square into Church Street; from Congress Street into Fleet Street, and from Congress Street into Chestnut Street.

Adopted above Ordinance.

## SEPTEMBER

### 3 Meetings

### 3 Public Hearings

Held Public Hearing on Resolution #7 Authorizing the Borrowing of \$80,000 for the purpose of building a double-deck Parking Lot on High/Hanover Streets.

Adopted above resolution.

Voted to contribute \$8.71 to any employee (city) enrolled in a health accident plan, and also voted that the City Manager be empowered to appropriate the amount of \$5,500 from the Contingent Fund to cover this — for a 3-month period.

Voted to authorize City Manager to purchase a truck from the Howe Fire Apparatus Company.

# Council Activities

## SEPTEMBER

Continued

Held Public Hearings on:

An Ordinance to Permit Parking on Northerly side of Lower State Street.

An Ordinance Creating General Resident District No. 11. Ordinances Creating Local Business Districts Numbers: 18, 19, 20, 21, and 22.

Adopted all the above ordinances.

## OCTOBER

2 Meetings

1 Public Hearing

Held public hearing on Ordinance Creating Industrial District No. 8.

Adopted above ordinance.

Voted to abate 1 month rent (\$100.00) on Pace Enterprises, honoring October 4th as "National Employ the Handicapped Week."

Voted to appropriate \$18,377. for repairs to the High School.

Voted to change parking meters in Vaughan Street — Parking Lot-Coral Diner area — from 4-hour to 2-hour parking.

Instructed City Manager to include \$4,500 in next budget towards the City's share for the "Man in Washington."

## NOVEMBER

3 Meetings

1 Public Hearing

Granted contract for installing lights in the double deck Parking Lot to Arthur Weeks, low bidder, for \$5,570. Held special meeting on the crisis of the possibility that the Navy Yard would close so as to outline methods of averting financial catastrophe for employees and their families.

Held Public Hearing Resolution #8 — A Resolution authorizing the borrowing of Five Hundred Thousand (\$500,000.00) Dollars for Sewer Extensions.

Adopted above Resolution.

Voted to donate \$50. to Senior High School for Team Jackets for Football Team.

Voted to rescind sewer entrance fee for Christ Church and Parish.

## DECEMBER

3 Meetings

2 Public Hearings

Voted to accept an insurance plan submitted by Blake Insurance Agency, Inc. against vandalism at the Treatment Plant on Pierce Island, also the various pumping stations located in the City at a cost of \$500. for the first year and \$165. per year thereafter.

Adopted Resolution #9 — A Resolution authorizing temporary loan in Anticipation of Taxes.

Granted half-holiday December 24th, to all City Employees.

Adopted Amendment to Fire Prevention Ordinance.

Granted a petition from Portsmouth Development Commission for use of former School Department Office in City Hall.

Granted free use of Kennedy Memorial Center for annual Cotillion Dance.

Held joint public hearing on Amendments to new Zoning Ordinance, with the Planning Board.

Held informal joint meeting with Portsmouth Housing Authority and Planning Board to discuss proposed amendment to the Vaughan Street U/R Project.



# Boards and Commissions

## BOARD OF HEALTH

S. Gerard Griffin, M.D.  
Arthur J. Healey, Secretary  
William A. Ruel, D.M.D.

## PLANNING BOARD

Edward Burnham, Chairman  
Joseph J. Shanley, Vice Chairman  
Raymond C. Dunphy, Councilman  
David Sanderson  
Robert W. Simpson  
Henry Berounsky  
Stanley C. Wyman  
Robert C. Violette, City Manager  
(ex-officio)  
Nat S. Stevens, Supr. of Highways  
(ex-officio) (Retired-Replaced by:  
Ernest Levasseur, Super. of Highways  
(ex-officio)  
Albert C. Wennberg, Secretary-Director

## ZONING BOARD OF ADJUSTMENT

Robert E. O'Leary, Chairman  
Peter V. Swanson, Vice Chairman  
Arthur MacDonald  
Alfonso Cabrera  
John Cullen  
Glen E. Graper  
Sherman Newton, Jr.  
Albert C. Wennberg, Secretary  
Mrs. Phyllis Mayo, Acting Secretary

## BUILDING COMMISSION

Dr. S. Gerard Griffin, Chairman  
Frederick Crompton, Fire Chief  
Lewis McNeil, Building Inspector  
Albert C. Wennberg, Planning Director

## LIBRARY TRUSTEES

Richard H. Jerauld  
Mrs. Nattie Fenwick  
Mrs. Nancy R. Beck  
Colonel Henry B. Margeson  
Philip Hodgdon  
Richard H. Hay

## TRAFFIC AND PARKING COMMITTEE

Councilman Samuel A. McMaster,  
Chairman  
Councilman C. Richard Williams  
Councilman Clayton E. Osborn  
Morris C. Foye  
Henry W. Berounsky  
Robert H. McCann  
Albert C. Wennberg (ex-officio)  
City Manager Robert C. Violette  
(ex-officio)  
Fire Chief Frederick Crompton  
(ex-officio)  
Police Marshal Stanton Remick  
(ex-officio) (Replaced Marshal  
Betz)

## RECREATION COMMITTEE

Miss Keith Bickford  
John T. McDonough  
Harry F. Hallsey  
Samuel Kline  
Arthur Clough  
John J. Leary  
Teddy E. Lilakos  
Robert P. Hopley  
Forrest E. Hodgdon

## HOUSING AUTHORITY

Lawrence E. Mulloney, Chairman  
Orman R. Paul  
Saverio M. Giambalvo  
Robert Iafolla  
(Replaced Frank Patterson)  
Alonzo W. Parks  
Edward J. Abbott, Executive Director  
Robert H. McCann, Assistant Director

## BOARD OF EDUCATION

John W. Durgin, Jr.  
Raimond Bowles  
Wyman P. Boynton  
Mrs. Eileen D. Foley  
Philip F. Gray  
Charles J. Griffin  
Dr. Paul E. Harvey  
Philip W. Hodgdon  
William H. P. Hopley  
Dr. Rubin I. Jaffe  
Mrs. Alice M. Lee  
Warren Nickerson

## ADULT EDUCATION STUDY COMMITTEE

Frank Butterworth, Jr.  
Miss Margaret M. Ballard  
Herbert R. Hagstrom, Supt. of Schools

## TRUSTEES OF THE TRUST FUND

Miss Dorothy F. Lear  
Robert E. McLaughlin  
James R. Kelly

## POLICE COMMISSION

J. Paul Griffin, Chairman  
Morris Silverman  
George B. Ward

## CIVIL DEFENSE

William T. Evans, Director

## CITIZENS' ADVISORY COMMITTEE AND ITS SUB COMMITTEES

### ADVISORY COMMITTEE

Aaron Goldin  
Edward Burnham  
Peter Collins  
Wyman Boynton  
Lucien O. Geoffrion

### MINORITY GROUP HOUSING

Frank Butterworth, Jr.  
Cicero A. Lewis

### CODES AND ORDINANCES

Robert McCann  
Miss Margaret M. Ballard  
Alvin Taylor  
James R. Kelly

# Administrative Officers

CITY CLERK .....	Thomas J. McDonough (resigned) Peter E. O'Donnell (app't 8/3/64)	DIRECTOR OF PUBLIC WORKS .....	Nat S. Stevens (retired 6/1/64) Ernest Levasseur (App't. Acting Superintendent)
CITY AUDITOR .....	Wilfred E. Young	SUPERINTENDENT OF SCHOOLS	Herbert R. Hagstrom
CITY ASSESSOR	Alexander Standish, (resigned 12/31/64)	ASSISTANT SUPERINTENDENT OF SCHOOLS	Paul L. O'Neil
TAX COLLECTOR	James P. Healy	CLERK OF COURT	Lois S. Van Bubar
CITY TREASURER	Mrs. Teresa B. Demarais	MUNICIPAL JUDGE	Thomas E. Flynn, Jr., Attorney-at-Law
CITY ATTORNEY	John C. Driscoll	ASSOCIATE JUDGE	Samuel Levy, Attorney-at-law
BUILDING INSPECTOR	Lewis M. McNeil, Sr.	DIRECTOR OF RECREATION	Frederick Watson
SANITARY INSPECTOR/CITY PHYSICIAN	S. Gerard Griffin, M.D.	LIBRARIAN, PUBLIC LIBRARY	Miss Dorothy M. Vaughan
CITY MARSHALL	Stanton G. Remick	SEALER OF WEIGHTS AND MEASURES	William A. Thomson
FIRE CHIEF	Frederick R. Crompton	FIRE ALARM SUPERINTENDENT/WIRE AND POLE INSPECTOR	Arthur M. Patterson
DIRECTOR OF WELFARE	Mrs. Mildred Riese, (resigned 12/31/64)	PLUMBING INSPECTOR	James Varotsis
DIRECTOR OF PLANNING	Albert C. Wennberg		

# Portsmouth Board of Education



Seated, left to right: Attorney Charles J. Griffin, Mrs. Alice M. Lee, Mr. John W. Durgin, Jr., Chairman, Mrs. Eileen D. Foley, Attorney Wyman P. Boynton, Mr. Philip F. Gray.

Standing, left to right: Mr. Herbert R. Hagstrom, Superintendent of Schools, Mr. Raimond Bowles, Dr. Rubin I. Jaffe, Mr. Warren C. Nickerson, Mr. William H. P. Hopley, Dr. Paul E. Harvey, Mr. Philip W. Hodgdon, Mr. Paul L. O'Neil, Assistant Superintendent of Schools.

# Major Public Improvements

- South Mill Pond Committee completed the work that could be done with funds available. A job well done by this hard working Committee.
- Pierce Island Bridge painted under contract by F. A. Gray, Inc. — \$2,645.00.
- Trustee Trust Funds purchased C. E. Walker & Co. property located on the water front. They have great plans for this area during the coming years.
- Double-Deck Parking Lot, High-Hanover Street Area, was completed in time to be used by Christmas shoppers. Outstanding work done by Contractors Landers & Griffin, Inc. — Lights and wiring by Arthur Weeks — all this construction under the best of supervision by Civil Engineer Keiven E. Gillis.
- Renovated lighting system South Playground by contract — \$7,779.00.
- Painted Library exterior and Police Cell block and booking office by contract, \$110.00 and \$498.00 respectively.
- Installed six overhead doors by contract, at the Fire Station — \$2,100.00.
- Traffic Light installed intersection Cabot - Islington Streets, by contract — \$4,360.00.
- Perma-line (white traffic line) by contract — \$1,200.00
- The City was awarded first place in Class VI for the year 1964 in recognition of the excellence of its 1963 Annual City Report.
- The Sewage Treatment Plant, Pierce Island, will be put into service shortly. Pumping stations on Deer and Market Streets, and on Gates and Mechanic Streets, have been completed.
- Middle Street widened — Federal, State and Municipal funds: Total cost \$209,421.80.
- Again, Mrs. LeRoy Harmon has done an outstanding job in beautifying our parks.

## Future Planning

I hope in 1965 to complete a new set of Water Department Rules, Regulations and Rates, which will be submitted to the Council for its consideration and approval.

**Sidewalk Construction** — More work needs to be done. Three main arteries coming into town need sidewalks:

1. Lafayette Highway
2. Woodbury Avenue
3. Maplewood Avenue

**Sewer Line Extensions** — Interceptor — east of Spaulding Turnpike, between Rockingham Avenue and proposed Shopping Center; Lateral along Woodlawn Circle and Longmeadow Road.

**Surface Treatment** will be applied to city streets.

# Portsmouth Sewage Treatment Plant

The new Pierce Island Sewage Treatment Plant represents another positive step in Portsmouth's long-range capital improvement program. It has been designed to provide adequate treatment by modern methods for the entire city and presently will treat sewage from 12,000 people, or an average flow of 1.5 million gallons per day and a maximum flow of 3.6 million gallons per day. Its step-construction design is such that the future addition of one grit chamber and two primary settling tanks will allow an increased treatment capacity for 24,000 people.

Total cost of the new plant and two pumping stations is approximately \$1,148,600 with Federal and State grants reducing Portsmouth's share of the entire project cost to approximately \$566,600.



Sludge Pumps — Lower Level

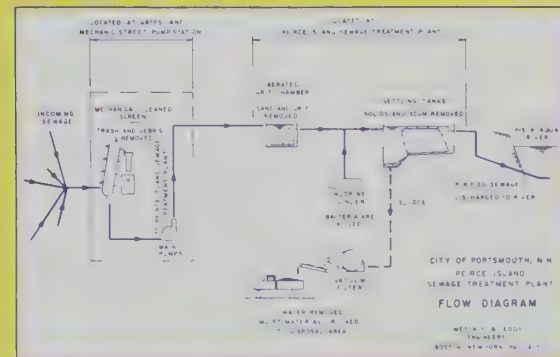


Pierce Island  
Sewerage Treatment  
Plant. Harvey Con-  
struction Company,  
Inc., Contractors.  
Metcalf & Eddy,  
Engineers.

Vacuum Coil Filters



Laboratory



# Major Accomplishments

## WATER LINE EXTENSIONS

(10,492 linear feet)

Greenland Fire Station  
Central Avenue  
Woodbury Avenue Trailer Park  
Greenland — Vernita Drive  
Marcy Street  
Woodbury Avenue  
Peverly Hill Road  
Harding Road and Hayes Place  
Taylor Lane  
Foyes Corner Development  
Ocean Road Development  
Wentworth Road Development  
Middle Street  
Greenland Post Road

## NEW HYDRANTS

Greenland, Vernita Drive  
Sunset Road  
Wentworth Road

*Page Fourteen*

Ocean Road Development  
Union Street

## SEWER LINE EXTENSIONS

(17,166 linear feet)

Elwyn and Edgewood Roads  
U. S. No. 1 (Lafayette Road)  
Harvard and Princeton Streets  
Meadow Road and Clover Lane  
Rockingham Avenue Interceptor  
Taft and Wilson Roads  
Coolidge and Cleveland Drives  
Van Buren and Grant Avenues  
Verdun Street and Marne Avenue  
Maple Haven (Storm Drain)

## MISCELLANEOUS

### Sidewalk Construction Completed:

Bridge Street — Islington to Hanover Streets  
Deer Street — Vaughan to Market Street  
Market Street — 250 feet to Deer Street

### Other Projects:

New Culvert; Banfield Road  
New Gravel Road to Filter Plant on Pierce Island  
New Tar Paper Roof—Water Shop, Sewer Shop  
and Garage Highway Department — Islington Street  
Cleaned two lagoons at Madbury Filter Plant

### Highway Equipment Purchased:

One — One-half ton International  
pickup truck ..... \$1,517.00 w/t  
One — Ford Pick-up truck  
(one ton) ..... 1,701.00 w/t  
Two — Three ton G.M.C.  
Dump Trucks ..... 7,283.24 w/t  
Two — Frink Snowplows for  
G.M.C.'s ..... 2,970.00  
One — Briggs & Stratton Sewer  
Rod Machine ..... 395.00  
Two — One ton Fords for  
Water Department ..... 4,197.00 w/t

### Fire Department Equipment Purchased:

Howe Apparatus Fire Engine: \$23,495.00

### Police Department:

Two — Plymouth Patroller ..... 2,282.60 w/t  
One — Station Wagon  
(Rambler) ..... 1,671.71 w/t



# *Vertical Parking Lot Construction*



**High/Hanover Two-Level Parking Lot Section.**



**High/Hanover Parking Lot Before Top Decking Construction.**



**High/Hanover Parking Lot Top Decking  
Construction at Fleet and Hanover Streets.**

The 57,000 square foot decking of the High-Hanover Municipal Parking Lot as was completed in 1964 represents another "first" within the New Hampshire area. Although initiated as a measure to replace a 109 space lot taken by General Services Administration for construction of a new Federal Building it has proved to be one of the practical means by which the ever present downtown parking problem may be solved and has excited the interest of other New Hampshire communities.

The decking is composed of pre-stressed concrete "Giant-T" cross beams laid upon pre-stressed concrete simple beams, which in turn are supported by seventy-two (72) 36 inch circular columns. The location of the columns and design of the structure is such that further vertical expansion is possible as may be required. These columns were positioned so as to offer minimum interference with ground floor layout.

Top deck car access and egress is by a single ramp located on Hanover Street whose grade was comparable to that of the top deck. Stairways have been provided at each end of the decking's 400 foot length.



Above — U.S. Post Office and Federal Office Building — Daniel and Penhalow Streets. General Services Administration, Washington, D.C. Architects: Koehler & Isaaks and Andrew Isaaks, Manchester, N. H.



At Right — State of New Hampshire Vocational School — Greenleaf Ave. —Route 1 By-Pass. Maurice E. Witmer, Architect.



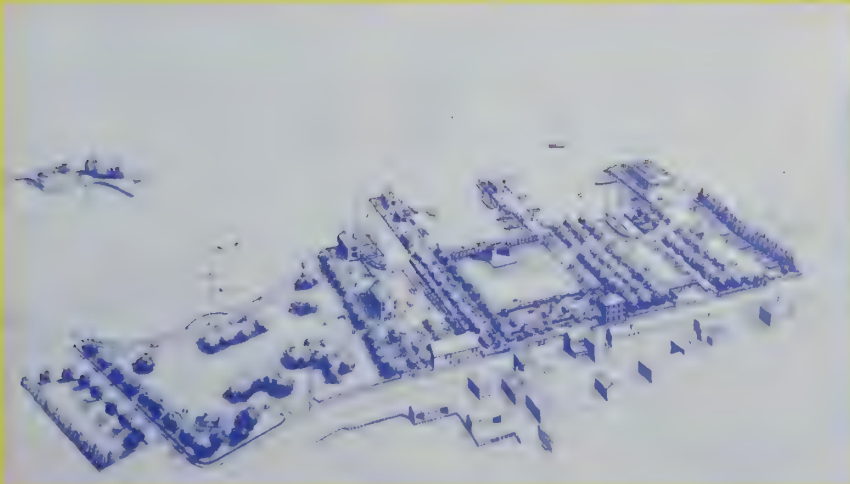
**Industrial Development — Borthwick Industrial Park**



**Strawbery Banke Project Area**  
**Governor Ischobod Goodwin House - 1811**  
**Stoodley's Tavern - 1761**  
**Proposed New Hancock Street**

## *Major Construction*

**Proposed Prescott Park Improvement — Trustees of Trust Funds  
 City of Portsmouth, New Hampshire**



**New Industrial Development — Lafayette Industrial Park  
 Peverly Hill Road**



# Portsmouth Harbor



State Port & Marine Terminal — New Hampshire Port Authority.

This first stage of work was completed in 1964 and includes a concrete wharf superstructure section and 277,000 sq. yds. of reception and storage area. The second phase of the Marine Terminal will include two additional berths, enlarged staging and storage area, and complete storage and administrative facilities.

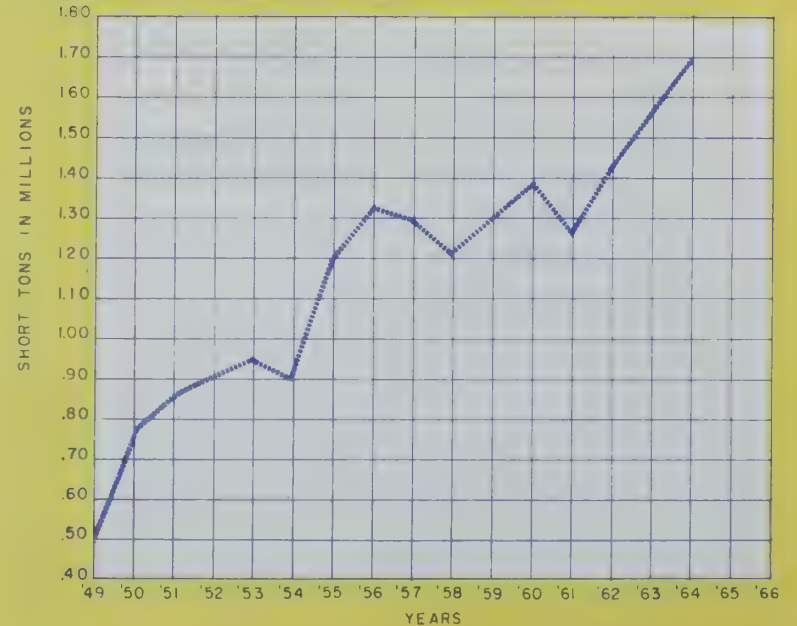


OLYMPIC CLOUD going down the Piscataqua River, Newington, N. H.



3.26 million dollar Federal Project for the improvement of the Piscataqua River as undertaken by the U.S. Corps of Engineers.

## CARGO COMMERCE - PORT OF PORTSMOUTH, N. H.



## VITAL STATISTICS

Births	642
Marriages	394
Deaths	236
Stillbirths	7
Marriage Filings	407

## ELECTIONS — 3

Eligible Voters	12,628
Votes Cast	8,391
% Voting	66.4

## JURY DRAWINGS

Grand Jurors Drawn	19
Petit Jurors Drawn	30

## LICENSES AND PERMITS

Vital Statistics	\$ 1,037.00
2,302 UCC Filings	4,607.00
94 Miscellaneous Filings	99.50
407 Marriage Filings	1,221.00
109 Sewer Entrance Permits	7,347.80
136 Miscellaneous Items	237.93
1,350 Dog Licenses	3,110.00
1,003 Bike Licenses	250.75
69 Taxi operator permits	
26 Taxicab Permits	398.00
2 Theatre Licenses	200.00
26 Pinball Licenses	1,300.00
125 Misc. Licenses	1,365.00
71 Political filings	98.00
6,890 Parking Meter Tokens (rolls)	10,336.05
1 Plumbing Reports	515.38
	<hr/>
	\$ 32,123.41



First National Bank — Branch Office, Lafayette Road — Completed 1964.

# Assessment Department

ALEXANDER STANDISH, Assessor  
 MRS. BARBARA LEROUX, Clerk/Stenographer  
 MRS. LEE ROSEN, Clerk/Typist

Innovations introduced by Mr. Standish during 1963 for maintaining and developing equality of assessments was continued this year. Corrective steps were taken on revealed inequities of particular neighborhoods. These were entered on the April 1, 1964 real estate list.

A sales/assessment ratio study was made of 14 Assessor Plans. The analysis pointed to a wide variance of assessment ratios. As part of the assessment review and revision program, based upon the sales/assessment study, plans for the equilization of other taxable areas are under way and should be followed up.

The review of Stock in Trade accounts of Commercial and Industrial firms was continued this year. An assessment increase of \$474,964 resulted in additional taxes amounting to \$25,169.

Veteran Exemptions increased a total of \$57,550 over 1963 due to a change in the laws voted by the 1962 legislature. Persons over 65 are now eligible regardless of their equity and widows of men killed in service are now entitled to an exemption of \$8,000 on their taxable real estate.

In December of this year, Mr. Alexander Standish, CAE, City Assessor since April 1, 1963 resigned to become Assistant Assessor for the City of Hartford, Connecticut. Mr. Standish did an excellent job of developing necessary improvements and improving the equality of assessments.

It is my hope that recognition be given for the continuance of the sales/assessment ratio study and other innovations that were made during the years 1963 and 1964.

	1963	1964	difference
Gross Valuation	\$55,141,650	\$56,032,670	\$891,020 +
Total Veteran's Exemptions	1,317,550	1,372,650	57,550 +
Net Taxable Total	53,824,100	54,657,570	833,470 +
Tax Rate	51.00 per M	53.00 per M	2.00 +
Real Estate and Stock in Trade Inventories distributed and processed .....			3,861
Veteran's Exemptions distributed and processed .....			1,383
Property transfers processed .....			476
Mortgage records processed .....			371

# Your Budget Dollar

## WHERE IT COMES FROM

Percent

64.8	General Property Tax
18.1	Federal Grant re Schools
4.3	Licenses, Permits, Fees
4.3	Tuition
2.	Revenue Surplus
5.	State Credits
1.5	Miscellaneous Revenue

100.0



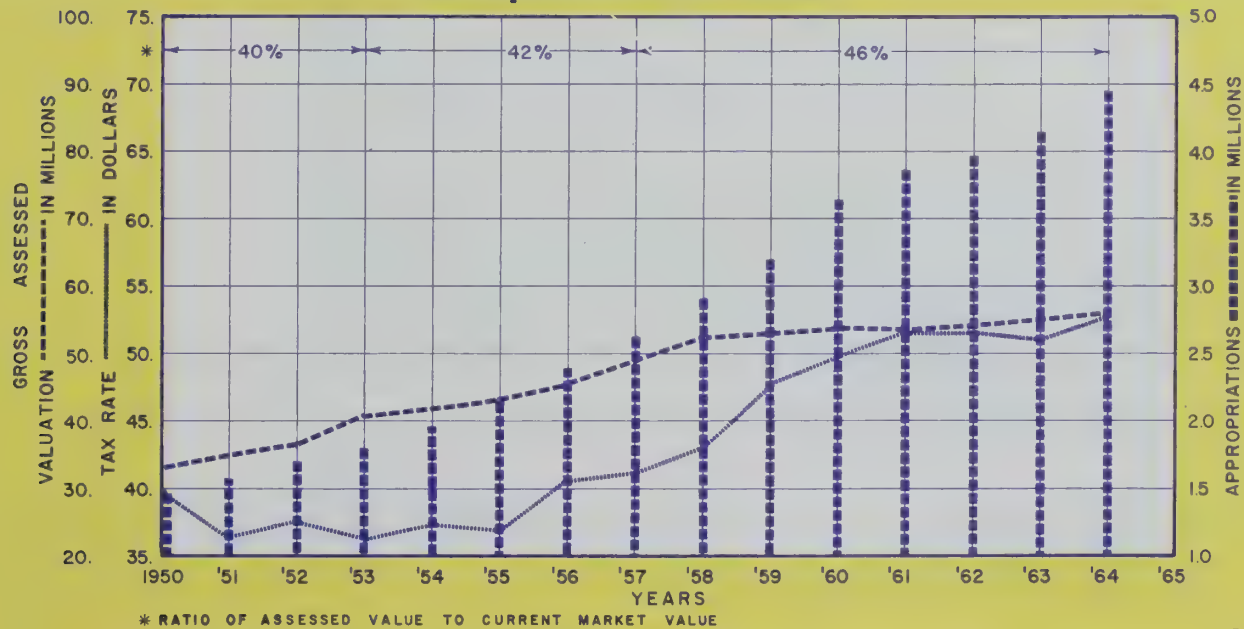
## WHERE IT GOES

Percent

52.8	Education
11.2	Debt Service
12.	Police and Fire
9.7	Public Works
3.8	General Government
2.8	Health and Welfare
3.5	County Tax
1.5	Recreation
1.3	Street Lighting
.6	Pensions and Retirement
.8	Public Library

100.0

## Comparative Trends



# Office of the Tax Collector

JAMES P. HEALY, Tax Collector  
 MRS. GENEVIEVE CALDWELL, Assistant  
 MRS. ELIZABETH DALLA MURA, Clerk/Typist (Part Time)

Amount of Real Estate Warrant . . . . .	\$2,899,183.26
Amount of Real Estate Collected by December 31, 1964	2,704,598.12
1964 Real Estate Discount . . . . .	21,037.10
1963 Real Estate Collected in 1964	253,100.24
Miscellaneous Property Collected up to December 31, 1964	1,137.51
Amount of Head Tax Warrant . . . . .	48,050.00
Head Tax Collected for 1964, plus penalty	32,295.50
Head Tax Collected for 1963 in 1964, plus penalty	12,942.00
Miscellaneous Head Tax plus penalty	209.00
Amount of Poll Tax Warrant	14,916.00
Poll Taxes Collected up to December 31, 1964	9,838.00
1963 Poll Tax Collected up to December 31, 1964	3,576.00
Miscellaneous Poll Tax Collected up to December 31, 1964	52.00

Main gate — Pease Air Force Base.



<b>AUTO REGISTRATIONS</b>
<b>1962</b>
12,270
\$148,601.19
<b>1963</b>
13,568
\$168,746.92
<b>1964</b>
13,927
\$176,372.14



# Office of the City Treasurer

MRS. TERESA DEMARAIS, Treasurer

Balance (all accounts) December 31, 1963	\$ 361,012.29
Total Receipts for 1964	8,459,247.94
Total Disbursements for 1964	8,539,504.57
Balance (all accounts) December 31, 1964	280,755.66
Total Salaries and Wages for 1964	2,935,053.33
Total withholding tax paid to District Director of Internal Revenue (950 Employees)	356,032.08
Total withheld for Social Security	77,284.36
Other Deductions	184,722.35
N. H. Teachers Retirement Board	71,678.72
Employees Retirement System	20,906.46
N. H. Police Retirement Board	15,951.39
N. H. Fireman's Retirement	8,847.60
Health and Accident Insurance	11,639.25
N. H. - VT. Hospital Service	30,037.50
Union Dues	2,985.00
Municipal Credit Union	22,521.55
Miscellaneous deductions	154.87

## BORROWINGS

Tax Anticipation Loan for 1964	\$1,900,000.00
January	\$1,500,000.00 rate 2.14%
August	\$ 400,000.00 rate 1.75%
Sewer Bond Issue of 1964	900,000.00
Rate of Interest	3.00%
Expense of Issue	3,520.46
Capital Improvements	75,000.00
Rate of Interest	3.00%
Expense of Issue	541.25
Parking Area Bond	80,000.00
Rate of Interest	2.70%
Expense of Issue	512.90

## INVESTED TREASURY BILLS

Accrued Interest ending December 31, 1964:

Sewer Bond Issue \$ 6,191.45

Note: The sum of \$63,226.42 has been realized from investment in Treasury Bills to date from this Bond Issue.

Bond Issue:

Investments on 1964 Municipal Funds: 17,110.67

## POLICE DEPARTMENT RECEIPTS

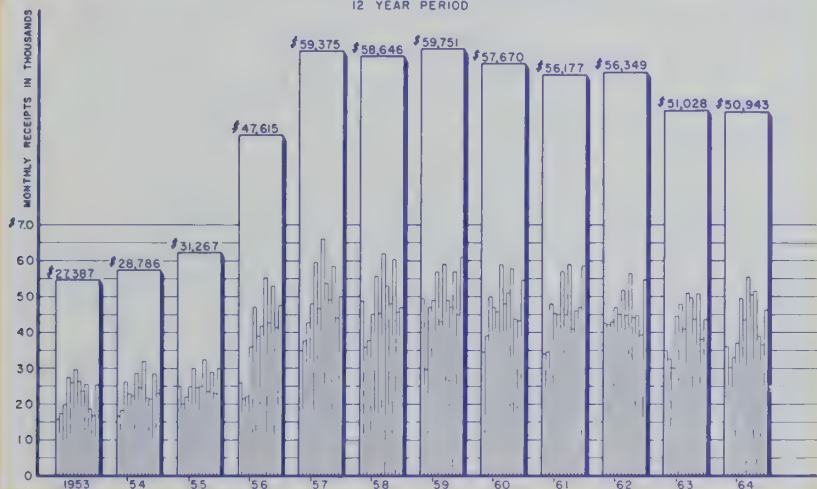
Parking Meter Fines for 1964	7,600.00
Court Fines	9,814.25

## RECEIPTS FROM STATE OF NEW HAMPSHIRE

Interest and Dividend Tax	\$ 34,255.19
Savings Bank Tax	10,396.83
Railroad Tax	3,844.19
State Aid-School Debt	46,361.87
Sweepstakes	133,478.17

## PARKING METER COLLECTIONS

12 YEAR PERIOD



# Department of Education

HERBERT R. HAGSTROM, Superintendent of Schools  
PAUL L. O'NEIL, Assistant Superintendent

The Portsmouth Schools offer a variety of programs designed to meet student and community needs at all levels. These programs include: special education classes for the different levels of ability; summer school; adult education sessions; use of educational television; extensive use of audio-visual aids; modern mathematics—all levels; locally tailored curriculum guides; lay correctors of themes; manpower development and training program; carefully planned in-service work for teachers.

The quality of a school system is measured by offerings of this nature. In order to continue to raise the educational standards of our community the administration must keep abreast of trends and improvements. While educational demands strengthen and expand, our costs continue to surge upward. Chief among the items which tend to make education expensive is the teacher's salary. Beginning in September, 1965, our minimum salary for teachers with a bachelor's degree will be \$4700. Surely this will be an important factor in teacher recruitment as we seem to find the best teachers.

Once again our pupil cost for 1964 is lower than many communities in the State.

Year	Enrollment	Total Expenditure
1962	6366	\$1,965,001.14
1963	6391	2,133,345.79
1964	6439	2,305,701.90

## COST PER PUPIL

1962	1963	1964
\$320.35	\$338.79	\$367.09

## AVERAGE MEMBERSHIP — 1963-1964

Average Daily Membership .....	6241.7
Average Daily Attendance .....	5868.1
Average Daily Absence .....	373.6
Percent of Daily Attendance .....	94.0

## SCHOOL CENSUS — 1964

Under 5 years of age .....	2139
5 to 8 years of age .....	2488
9 to 14 years of age .....	2838
15 through 18 .....	1550

(By State Statute, the School Department is obliged to conduct a school census each year.)

## TUITION CHARGES — 1963-1964

Senior High .....	\$451.00
Junior High .....	380.00
Elementary .....	270.00
Kindergarten .....	165.00

(Tuition rate including rental charges is fixed annually by vote of the Board of Education.)

## SCHOOL DEPARTMENT INCOME — 1964

Rentals .....	\$ 2,500.00
Tuition .....	184,987.00
Federal Aid .....	779,429.00
Athletics .....	12,000.00
Sweepstakes .....	133,478.00

## STAFF REPORT

CATEGORY	NUMBER	CATEGORY	NUMBER
Administrators .....	16	Superintendent of Property .....	1
Classroom Teachers .....	245	Maintenance .....	1
Directors and Supervisors .....	10	Custodians .....	28
Nurses .....	4	Cafeteria Director and Assistants .....	18
Secretaries and Clerks .....	18	Noon Monitors .....	44
Attendance Officer .....	1	Speech Therapists .....	2
Treasurer .....	1	Physician .....	1
		Theme Correctors .....	12

Approximately 70% of the graduating Class of 1964 have entered institutions of higher learning. Approximately 40% of these entered four-year colleges. This record is a fine one indeed and reflects the importance placed upon a sound educational system.

As this report is being prepared, plans are nearing completion for a new 17-room lower elementary school for Pease Air Force Base. This project is approved and financed by the Federal Government.

Our 1964 Summer School Program conducted at the Senior High School was termed a success. This program will be offered again in 1965.

Curriculum improvement programs are continuing to function in Portsmouth as we strive to keep our educational offerings in step with the changing times.

## DIRECTORY OF PORTSMOUTH PUBLIC SCHOOLS

Name	Location	Principal	Grades
Farragut	Islington Street	Donald P. Carle	(2 Special Classes) Kindergarten-VI
Whipple	State Street	Muriel Morrow	Kindergarten-VI
Haven	South Street	Percy D. Blaisdell	Kindergarten-VI
Lafayette	Lafayette Road	Pauline S. Gilman	Kindergarten-VI
New Franklin	Dennett Street	John L. McDaniel	Kindergarten-VI
Atlantic Heights	Kearsarge Way	Robert C. Wing	Kindergarten-VI
Sherburne	Sherburne Road	Joseph M. Mulkern	Kindergarten-VI
Wentworth	Woodbury Avenue	Donald M. Hooper	Kindergarten-VI
Mary C. Dondero	VanBuren Avenue	Rosmerld D. Boyan	Kindergarten-VI
Pease Air Base	Rye Street	Lawrence C. Bernard	Kindergarten-VI
Pease Annex	Rockingham Drive	Marialice Stratton	Kindergarten- I
Junior High	Parrott Avenue	Joseph H. Grilli	VII-VIII
Senior High	Alumni Drive	E. Harry Boothby	IX-XII



Architect's drawing of the newly proposed 17-Room lower elementary school to be built on Pease Air Force Base in Portsmouth. This building will house some 475 pupils residing on base.

# Planning Department

ALBERT C. WENNBERG, Director  
MRS. PHYLLIS R. MAYO, Clerk/Stenographer  
JOHN F. MURREY, Student Draftsman

The primary concern of the Planning Department lies in the methods and procedures considered necessary in the establishment and attainment of those goals which are necessary as guideposts for community improvement. It attempts, therefore, with the aid of the Planning Board and the cooperation of all municipal agencies, to provide such data and plans within the community's comprehensive planning program and to assist in the extension of such approved regional programs which may be devised for the broadening of the community's economic base.

The Department is directly responsible and concerned in the costs, recording, and coordinating of all Planning Board and Board of Adjustment activities.

## Planning Board Meetings

Regular Meetings	12
Special Meetings	2
Joint Meetings	2
Public Hearings	10
Committee Meetings	4
Regional Planning	12
Subdivision Reviews	9

## Board of Adjustment Meetings

Regular Meetings	12
Special Meetings	2
Public Hearings	20
Re-Hearings	2

## MAJOR CONSIDERATIONS

Workable Program for Community Improvement  
Area-by-Area Housing Code Improvement Program  
Regional Planning Program  
Passage of New Zoning Ordinance  
Adequate Access and Egress to Central Business District  
New Industrial Way  
Central Business District Traffic and Parking Survey  
U. S. Route 1 By-Pass Ramps  
Signalization of Greenleaf Avenue, Coakley Road and Cottage Street  
Federal Building Location  
Prescott Park Area Improvement  
Pierce Island Land Extensions  
Central Business District Improvement  
Public Building Program and Tax Exempt Areas  
Proposed Adoption of N. H. 1960 Fire Prevention Code  
Back Channel Improvements

## City of Homes and Industry.



Start of new Post Office and Federal Office Building  
Construction — Daniel and Penhallow Streets.



# *Pace Industrial Corporation*

Pace Industrial Corporation is a unique organization which employs only the physically handicapped, and is dedicated to the premise that they, if given the opportunity, can compete in a free competitive market.



Miss Dorothy Pace, President of Pace Industrial Corporation, discussing quality control.



Old Bow Street (Circa 1870)



A busy section at Pace Industrial Corporation. (Herald Photo)

# Public Works Department

NAT S. STEVENS, Superintendent (6/30/64 Retired)  
 ERNEST LEVASSEUR, Acting Superintendent  
 JOHN MARCELLO, Highway Foreman  
 MISS CATHERINE HURLEY, Clerk/Typist  
 MRS. EVADEL HAMEL, Clerk/Stenographer

## MAJOR ACCOMPLISHMENTS — 1964

### STREET IMPROVEMENTS

#### New Construction

Middle Street — Haymarket Square to Lincoln Avenue

#### Bituminous Concrete Resurfacing

Deer Street  
 Banfield Road to old Stimpson Homestead  
 Banfield Road — 2500 feet easterly from Ocean Road  
 Richards Avenue — South Street to Parrott Avenue  
 Greenleaf Avenue  
 Lincoln Avenue — Miller Avenue to Middle Street

#### Streets Resurfaced with liquid asphalt and sand cover

Cate Street  
 Cottage Street  
 Boyd Road  
 Dennett Street — Maplewood Avenue to Myrtle Avenue  
 Atlantic Heights — all streets  
 Junkins Avenue  
 Parrott Avenue  
 McKinley Road  
 Coolidge Drive  
 Grant Avenue  
 Harrison Avenue  
 Taft Road  
 Garfield Road  
 Adams Street  
 Fillmore Road  
 Dwight Avenue  
 Van Buren Avenue  
 Mariette Drive — approximately 2000 feet

Bituminous Concrete .....	2,744.45 tons
Sand-Screen .....	641 cu. yds.
Sand-Wash .....	13.8 tons
Earth Fill .....	5,112.3 tons
Loam .....	182 cu. yds.
Gravel-Bank Run .....	5,462.2 tons
Gravel-Crushed .....	618 yards
Stone Dust .....	15.65 tons
3/8" Stone .....	131.5 tons
1" Stone .....	22.7 tons
2" Stone .....	35.5 tons
Rip-Rap Stone .....	6 tons
Salt .....	1,224 tons
Gasoline-Regular .....	40,681 gallons
Gasoline-High Test .....	15,145 gallons

### MATERIALS USED

Blue Rock Mix .....	345.7 tons
Dura Patch .....	106 tons
Mc2 Emulsion .....	10,947 gallons



Improved Middle Street Section

ARTHUR SOUTHARD, Foreman  
 FREDERICK KEEN, Assistant Foreman  
 MISS MARVIS ROSE, Cashier  
 MRS. PATRICIA RAESIDE, Clerk/Typist

# Water Division

## WATER MAIN EXTENSIONS

Hayes Place	400 ft. 2" Galv. Pipe
Central Avenue	400 ft. 4" Cast Iron Pipe
Woodbury Avenue Trailer Park	1,000 ft. 4" Cast Iron Pipe
Marcy Street	160 ft. 6" Cast Iron Pipe
Woodbury Avenue	300 ft. 6" Cast Iron Pipe
Peverly Hill Road	600 ft. 6" Cast Iron Pipe
Harding Road	700 ft. 6" Cast Iron Pipe
Tyler Road	700 ft. 6" Cast Iron Pipe
Foyes Corner Development	600 ft. 6" Cast Iron Pipe
Wentworth Road Development	1,800 ft. 8" Cast Iron Pipe
Middle Street	200 ft. 8" Cast Iron Pipe
Ocean Manor Development	1,400 ft. 8" Cast Iron Pipe
Greenland Post Road	1,032 ft. 12" Cast Iron Pipe
Greenland Fire Station	100 ft. 4" Cast Iron Pipe
Greenland-Vernita Drive	700 ft. 6" Cast Iron Pipe

## WATER PUMPED

	TOTAL GALLONS	AV. PUMPED DAILY	REVENUE
1962	1,534,069,600	4,202,930	\$294,536.11
1963	1,537,612,500	4,212,637	266,883.12
1964	1,186,198,900	3,249,860	268,789.96



Portsmouth Water Supply — Bellamy River Dam, Madbury, New Hampshire.  
 695 Acre Reservoir

# Portsmouth Public Library

MISS DOROTHY VAUGHAN, Librarian  
 MISS FRANCIS M. ANDERSON, Assistant  
 MRS. MARY E. RASH, Assistant  
 MRS. PRISCILLA BARNETT, Assistant  
 MISS BETTE C. HUGHES, Assistant

Circulation during the year 1964 consisted of nearly 90,000 books, an increase of 2500. This increase can be attributed to young reader circulation and there was a notable increase of library use by students with assignments in current events. To aid in this demand a relocating of the most used magazines to the main floor became necessary. Additional reading room facilities have been provided including a water cooler.

The Library subscribes to 85 magazines, is presented with 44 more and provides five daily newspapers for its reading room tables. Books are borrowed and loaned to the State Library and other New Hampshire Libraries when the occasion arises. Many visitors use the Library for research purposes.

We participated in National Library Week, 1964, and had displays for Book Week in the fall. The Librarian and Trustees attended the New Hampshire Library Association meetings and the meeting of the New England Association also held in the fall when all New England Libraries and Librarians met for their yearly conference at Wentworth-by-The-Sea.



Farragut School class visits Public Library.

## GIFTS RECEIVED

Estate of Judge Harry Torrey, Portland, Maine	\$1,000
Newcomen Society	Verifax Copier
Warner House Association	Penhallow Papers
Richard Merrill, Meredith, N. H.	Portsmouth families genealogies and records
Portsmouth Trust Company	Cellophane Bags
Piscataqua Savings Bank	Bookmarks
First National Bank	Card Protectors





Governor Langdon House — Drawing Room — Pleasant Street



Governor Langdon House — Entrance Hall — Pleasant Street.



Warner House — Dining Room — Daniel Street



Unique view of Elliptical Stairway built in 1810 for Thomas Wibird Penhallow, Merchant in the West Indian trade. This is now a part of Portsmouth's Public Library.

Warner House — Parlor — Daniel Street



# Recreation Department

FREDERICK WATSON, Recreation Director  
 RICHARD WADMAN, Assistant Director  
 MRS. CONSTANCE BEAN, Administrative Assistant

*"Recreation Should Be Deliberately Sought . . .  
 But Not Excessively Planned."*

Therefore, with the ever increasing knowledge and educational background of our people, we find the creative, intellectual, and social aspects surpassing the old concepts of games, parties, and outings in our after-work recreational activities.

The Portsmouth Recreation Department has recognized this important part of present day leisure and has strived to meet the challenge. The addition of three playground areas, the JOHN F. KENNEDY Adult Center, the improvement of Community Center facilities, and the improvement of many outdoor facilities has met this need of an ever-expanding city. Also, many new programs have been initiated to meet the likes of individuals in their search for leisure time activities; model airplane club, camera club, duplicate and contract bridge groups, shuffle board, handball, camping groups, square dancing, volleyball league and many others.

Although we have attained this high standard of recreation we feel that future facilities could include indoor swimming pool, artificial skating rink arena, improved recreation facilities on Pierce Island, more outdoor tennis courts.

In a time when living is easy, Americans still face hard choices. We at the Portsmouth Recreation Department will continue to give our best towards the fulfilment of the recreational needs of the citizenry of Portsmouth, New Hampshire.

## PLAYGROUNDS — 1964

	Attendance
Acres .....	2,859
Maple Haven .....	3,554
Elwyn Park .....	2,237
New Franklin .....	2,436
South .....	3,587
Atlantic Heights .....	2,057
Sherburne .....	2,827
Lafayette .....	2,075
Gosling Meadows .....	3,615
Baseball Program .....	5,331
	30,578

## RED CROSS SWIMMING LESSONS CERTIFICATES ISSUED

Senior Life	6
Junior Life	10
Advance Swimmer	11
Swimmer	50
Intermediate	64
Advance Beginner	10
Beginner	115
	266
Total passed	266
Total registered	751

Pancake Breakfast after overnight camping at Pierce Island.





Easter Egg Hunt



Little League Baseball

## TEEN CANTEN ACTIVITIES — 1964

Purpose — to promote a recreation program for the teenage youth, to promote the social welfare of the youth of the community, to give community service, and to help support and maintain the Community Center.

Dances (25)

Special Dances

- Nite club (big time entertainment)
- Basketball (honor team and coaches)
- Harvest and Halloween
- Football (honor team and coaches)
- Brandywine Singers (2)
- The Portsmouth Beatles
- Dino and the X-Teens
- Entertained Xmas Tourney teams

Ski trip to Moose Mountain

Annual Banquet

Services:

- Repair and maintain T. V. and P. A. systems
- Silver mittens boxing program
- Repair of center chairs
- Installing glass doors at Community Center
- New Records collection
- Sponsor of a 7th and 8th basketball team

Charitable Organizations:

- March of Dimes
- Heart Fund
- Mental Health (supply of clothes)
- Gary Dozier Fund
- Sent (1) underprivileged Girl Scout to Camp
- P. H. S. football jackets
- N. H. Tuberculosis Association

## SPECIAL EVENTS — 1964

	Attendance
Easter Egg Roll	800
Big League Basketball Tournament	1,100
The King and His Court	1,200
4th of July — Fireworks and entertainment	12,000
4th of July — Free ice cream	1,500
10-mile road race	1,000
Baseball Clinics — Joe Coleman	100
Municipal Swimming Pool	40,000
Talent night and concert	800
Arts and Crafts	2,377
Excursion trips (4)	1,000
Jr. Olympics	1,000
Judo Tournament	750
Softball banquet	100
Golden Eagle Bazaar	600
Girl Scout covered dish supper	100

---

64,427



Scene from "Theatre by the Sea's" production of "Twelfth Night." Portsmouth is unique in its support of this year-round professional resident and true theatre.

# Fire Department

FREDERICK CRONPTON, Fire Chief  
 ERNEST WEEKS, First Deputy Chief  
 JOSEPH HUDSON, Second Deputy Chief  
 ARTHUR M. PATTERSON, Superintendent of Fire Alarms

## WIRE AND POLES

Added 2 new master boxes.  
 Rebuilt Middle Street lines  
 Extended No. 5 circuit on Lafayette Road from shopping plaza to Peverly Hill Road  
 Installed protective panel for underground feed line to central station.  
 Purchased and installed new automatic control switch.  
 Rerouted no. 1 circuit to bypass High Level Parking Lot.  
 Performed general maintenance work to keep system in good operating condition.  
 Issued 321 Electrical Permits.  
 Inspected 297 Permits completed.  
 Investigated 12 complaints in regard to wiring, etc.

- A new 750 gallon pumper was ordered in 1964 and should be delivered in 1965.
- Six new overhead doors installed.
- Purchased new stretcher for ambulance
- All schools and convalescent homes inspected.



Elevated Stretcher — Ambulance Service — Portsmouth Fire Department

## ACTIVITIES — 1964

Bell Alarms .....	(21 False) .....	74
Still Alarms .....	(18 out of town) .....	305
Miscellaneous Calls .....		100
Ambulance Calls .....		696

## SUMMARY OF OUT OF TOWN CALLS

Rye .....	4
Greenland .....	3
Newcastle .....	3
Pease Air Force Base .....	3
Newington .....	2
Amesbury, Massachusetts .....	1
Hampton Beach .....	1
U. S. Naval Base .....	1

## TOTAL VALUE OF BUILDINGS AND CONTENTS ENDANGERED BY FIRE: \$993,020.00

Insurance on Buildings and Contents .....	\$807,250.00
Damaged by Fire .....	259,357.87
Amount covered by Insurance .....	213,438.62
Uninsured Loss .....	55,919.25



# Police Department

STANTON G. REMICK, City Marshal

May 18 - 29, 1964: Officers William E. Copeland and George F. Krook attended Police Training Course in Concord, New Hampshire, under the auspices of the New Hampshire State Police.

October 19 - 30, 1964: Officer Raymond W. LaBrie attended Police training course in Concord, New Hampshire, under the auspices of the New Hampshire State Police.

October 28 - 29, 1964: The entire Police Department participated in a two day outdoor shoot, held at the range at Rye, New Hampshire.

Officer John W. McCann and 22 members of the School Safety Patrol made a trip to Washington, D.C.

City Marshal Stanton G. Remick appointed by Senator McIntyre to attend, as an official guard, the Inauguration of President Johnson.

Portsmouth Police Department cooperated with the Hampton, New Hampshire, Police Department during the Labor Day Riot.

Assault .....	25
Auto Offenses .....	336
A.W.O.L. ....	3
Breaking and Entering, Larceny .....	6
Carrying Concealed Weapons .....	3
City Ordinance Violations .....	235
Disorderly Conduct .....	36
Discrimination .....	1
Discharging Firearms .....	2
Disturbing the Peace .....	1
Drunks .....	165
Escaped Prisoner .....	1
Fish and Game Violation .....	1
Forgery .....	1
Fugitive from Justice .....	1
Larceny .....	13
Larceny by Check .....	6
Liquor Laws Violations .....	10
Lodgers .....	168
Malicious Mischief to Property .....	6
Non-support .....	3
Operating Under the Influence .....	44
Probation Violations .....	2
Robbery .....	2
Robbery, Armed .....	1
Robbery, Armed-Accessory .....	1

Safekeeping .....	3
Sex Offense Violations .....	8
Suicide, Attempted .....	4
Suicide .....	3
Street Lights reported out .....	196
Patrol and escort trips made .....	10,227
Store Doors and Windows found open .....	942
Accidents reported to Police Department .....	923
Value of lost and stolen property recovered and returned to owners .....	\$46,225.79
Beano Licenses .....	590.00
Junk Dealer Licenses .....	125.00
Parking Meter Fines .....	7,600.00
Parking Meter Receipts .....	50,881.60
Collected Photo copies .....	373.00
Investigations .....	476



Mobile Radio Units — Portsmouth Police Department.

# Department of Law

THOMAS E. FLYNN, JR., Judge  
 SAMUEL LEVY, Special Judge  
 MRS. LOIS S. VAN BUBAR, Clerk  
 PHILIP P. CASWELL, Probation Officer

Effective July 1, 1964 the Portsmouth District Court supplanted the Portsmouth Municipal Court. The new Court currently encompasses the towns of Greenland, Newington, and the City of Portsmouth.

The report for January through June carries the case load of the now replaced Municipal Court. The report for July through December lists the case load of the District Court.

## MUNICIPAL COURT

JANUARY - JUNE, 1964

### CRIMINAL CASES:

Complaints entered through June .....	750
Cases disposed of during six months .....	750
Felonies .....	17
Misdemeanors .....	733

### JUVENILE CASES:

Cases of neglected children .....	16
Cases of delinquent children .....	13
Transferred to Superior Court .....	0

### SMALL CLAIMS CASES:

Cases pending at beginning of year .....	3
Cases entered during the six months .....	91
Cases disposed of during six months .....	90

### CIVIL CASES:

Cases pending at beginning of year .....	0
Cases entered during six months .....	19
Cases disposed of during six months .....	19

## DISTRICT COURT

JULY - DECEMBER, 1964

### CRIMINAL CASES:

Complaints entered from June through December .....	619
---	-----

Complaints disposed of during six months .....	619
Felonies .....	23
Misdemeanors .....	596

### JUVENILE CASES:

Cases of neglected children .....	1
Cases of delinquent children .....	19
Transferred to Superior Court .....	1

### SMALL CLAIMS CASES:

Cases pending at beginning of six months .....	4
Cases entered during six months .....	124
Cases disposed of during six months .....	121

### CIVIL CASES:

Cases pending July 1 .....	0
Cases entered during six months .....	33
Cases disposed of during six months .....	33



# Welfare Department

MRS. MILDRED RIESE, Director

## DIRECT RELIEF EXPENDITURES

Budget .....	\$111,100.00
Salary of Director .....	\$ 6,150.00
Longevity .....	120.00
Office Expense .....	350.00
Office Supplies .....	150.00
Insurance .....	30.00
Food .....	13,000.00
Shelter .....	3,500.00
Clothing .....	1,000.00
Fuel .....	1,500.00
Medical .....	1,500.00
Hospital .....	2,500.00
Cash Allowance .....	1,000.00
Board and Care .....	23,000.00
Gas and Light .....	300.00
Other Expenses .....	2,000.00
Old Age Assistance .....	55,000.00

## AVERAGE NUMBER OF CASES AND EXPENDITURES FOR:

### DIRECT RELIEF

Average Number of Cases (Monthly) .....	30.2
Average Number of Persons (Monthly) .....	90.7
Average Monthly Expenditures .....	\$1,702.34

### BOARD AND CARE

#### Children:

Average Number of Cases (Monthly) .....	8.
Average Number of Children (Monthly) .....	11.5
Average Monthly Expenditures .....	\$617.35

#### Adults:

Average Number of Cases (Monthly) .....	7.9
Average Number of Persons (Monthly) .....	7.9
Average Monthly Expenditures .....	\$1,061.90

# Department of Health

S. GERARD GRIFFIN, M.D., Chairman

## 1964 — 236 DEATHS

Diseases of Circulatory System	141	Pyelonephritis	1
Cancer	41	Sepsis	1
Accidents	15	Laennec's Cirrhosis of Liver	1
Pneumonia	12	Convulsive Seizures	1
Uremia	7		
Prematurity	5		
Toxemia	4		
Suicide	4		
Viral Hepatitis	2		
Leukemia	1		

City Welfare patients were cared for in the hospitals, home and office and prisoners in Police Station were seen at the request of the Department. Physical examinations given applicants for the Police and Fire Departments.

Sanitary inspections were made of grocery stores, markets, bakeries, restaurants, creameries and other food establishments. Inspections were made on receipt of sanitary complaints and conditions corrected within the City.

# Building Inspection

LEWIS M. McNEIL, SR., Inspector

During the year 1964, Two Hundred and Eighty permits were issued for a total of \$2,366,153.00.

New Homes	40	555,000.00
New Business	5	685,000.00
New Garages	17	22,900.00
New Apartments	8	22,400.00
General Repair	116	163,203.00
Buildings Remodeled	19	39,050.00
New Additions	31	119,600.00
Buildings Razed	11	13,650.00
Business Repairs	4	9,250.00
Miscellaneous	29	736,100.00
	<u>280</u>	

Fees collected and turned over to the City Treasurer .. \$4,860.00

A total of 807 inspections were made of work being done, for which building permits were issued.

- 19—Building Permits or use of buildings were denied.
- 19—Appeals of Building Inspector decision were taken to the Board of Adjustment.
- 12—Appeals were granted by the Board of Adjustment.
- 4—Appeals were denied by the Board Adjustment.
- 2—Appeals to the Board of Adjustment were withdrawn.
- 1—Appeal sent to the Board of Adjustment to be heard in 1965.
- 43—Public buildings were checked and inspected by the Building Inspector.
- 5—Violations were found.
- 5—Violations were corrected.
- Attended 10 meetings of the Board of Adjustment.
- Assisted Assessor's office.



## SEALER OF WEIGHTS AND MEASURES

WILLIAM A. THOMSON, Inspector (Part Time)

The New Hampshire Inspectors and Sealers Association held their 14th Annual Conference at the Sherwood Motel Hotel, Dover, New Hampshire on April 9-10, 1964. I attended both meetings.

### FOLLOWING PERFORMED DURING 1964

Computing and Counter Balance Scales		Tested and Sealed	— 171
Gasoline Pumps		Tested and Sealed	— 251
Tank Truck Meters		Tested and Sealed	— 34
Line Meters		Tested and Sealed	— 13
Grease Pumps		Tested and Sealed	— 32
Heavy-duty platform scales		Tested and Sealed	— 9
Measuring cans		Tested and Sealed	— 2
Tank Trucks		Tested and Sealed	— 3
Suspension and batching Scales (over 100 lbs.)		Tested and Sealed	— 6
Truck Scale		Tested and Sealed	— 7

## PLUMBING INSPECTOR

JAMES VAROTSIS, Plumbing Inspector (Part Time)

	Permits		Licenses	
January	25	\$45.00	24	\$12.00
February	37	64.95	6	3.00
March	25	34.80		
April	27	68.08	4	2.00
May	18	35.10		
June	13	23.55		
July	26	59.85		
August	17	44.55		
September	14	22.50		
October	37	67.80		
November	26	58.26		
December	25	80.10		
	290	\$604.54	34	\$17.00

## DOG OFFICER

ROBERT E. REYNOLDS, Dog Officer

This report is an outline of the activities of the Dog Officer which covers the period from July 1, through December 31, 1964.

Dog Bites Reported and investigated	34
Complaints of Barking Dogs	
Information given on Procedure	36
Licensed Dogs Picked up and returned to owners	140
Unlicensed Dogs Picked up and returned to owners	127
Dogs taken to Pound	99
Complaints Investigated	
(Excluding barking dogs complaints)	194
Dogs placed in good homes	13
According to records, number of licensed dogs—1964:	1295
Replacement Tags Issued	40

# Civil Defense

WILLIAM T. EVANS, Director

As requested by your office, I submit a brief resume of Civil Defense activities for the period April 1, 1964 through December 31, 1964.

The following steps were taken to reactivate the Civil Defense units within the city:

1. A Civil Defense staff was set up including the following:

A. DeGross ..... Deputy Director  
Stanton A. Remick ..... City Marshal  
Representative of Frederick Crompton ..... Fire Chief  
William Meehan ..... Radio Officer, Civil Defense RACES network  
Christopher O'Day ..... Fall-out Shelter, Chief Manager  
Representative from C. B. Rescue Unit

2. Regular staff meetings were held and a headquarters was set up at the comfort station.

3. Extensive work on the "Federal Civil Defense Fall-out Shelter Program" was started with the results as follows:

Shelter spaces, licensed, stocked and marked — 3,000 spaces completed as of December 31, 1964. Transportation of supplies furnished by Pease Air Force Base.

4. A rescue unit was activated consisting of 30 members and training classes, etc., were immediately started.

5. Plans were made and courses arranged to start in January, 1965 for the training of additional Auxiliary Policemen.

6. A Civil Defense Council was in session for two nights at the Junior High School.

7. A city plan was filed with the "State Civil Defense Agency."

8. Numerous items were received from the State Distribution Center.

9. The Auxiliary Police units were on duty at the 'air crashes' on Greenland Road, on Sunday traffic control at the various churches, on weekly duty training patrols, etc., and any duty that is requested by the City Marshal.

10. The following program is outlined for the year 1965:

Advance training of all Civil Defense units.

Train a minimum of 20 additional Auxiliary Policemen to augment present force of 20 men.

Develop if possible, an Auxiliary Fire Unit.

Increase shelter coverage to 20,000 spaces.

Setup extensive courses with the University of New Hampshire to train a minimum of 50 people for work in radiation detection.

The above mentioned plans are only a few and other activities will follow.

It should be noted that a total of approximately 4,500 hours were spent on Civil Defense activities during the year 1964, the units making the total were Auxiliary Police, Rescue Unit, Communications Group, and staff members.

Now that we have an active staff, a complete report will be submitted to your office on a monthly basis, complete with total hours and breakdown of individual activities.

# Division of Accounting

The total cost of operating the Finance Department for the year amounted to \$21,512.29 including the cost of the annual audit by the State Tax Commission which amounted to \$1,192.38.

Payrolls were processed for 950 employees of whom 608 were employed by the school department for a total expenditure of \$2,935,053.33 with deductions for income tax, social security, retirement, blue cross, insurance, union dues and credit union, amounting to \$618,038.78 leaving a balance of \$2,317,014.55 as "take home pay" which makes a rather substantial impact on our local economy.

The cost of municipal services continued their upward trend with an annual budget of \$4,435,824.94 representing an increase of \$294,763.59 or 7.1% over the preceding year.

Municipal revenue other than taxes reached a new high of \$1,634,617.21 an increase of \$189,175.93 over the preceding year. Some of the larger items of revenue were \$825,646.00 representing the Federal Grant for School Maintenance, \$194,818.89 for school tuition, \$133,478.17 as school revenue from the N. H. Sweepstakes, \$175,845.31 from Auto Registration and a \$90,000.00 credit from Revenue Surplus.

The total credit to Revenue Surplus for the year was quite substantial amounting to \$152,307.07 representing an excess of actual over estimated revenue of \$78,185.11 and \$74,121.96 from unexpended appropriation balances.

Loans in anticipation of taxes amounted to \$1,900,000.00 for the year at a total cost to the city of \$33,561.12 reflecting the high rates which prevailed in the money market during 1964.

January	\$1,500,000.00 — Rate 2.17%
August	400,000.00 — Rate 2.18%

Bonds were issued during 1964 for the following purposes and for the rates and premiums as shown.

Sewers	\$900,000.00 — Rate 3 % — Prem. 100.650
Capital	
Improvement	75,000.00 — Rate 3 % — Prem. 100.118
Parking Area	80,000.00 — Rate 2.7% — Prem. 100.025

The total municipal operation for 1964 produced a record high with receipts of \$8,459,247.94 and disbursements of \$8,539,504.57.

The municipal Water department showed an operating loss of \$57,093.84 based on the first full year of operation since the acquisition of all the facilities constructed by the Federal government making it quite apparent that a substantial increase in water revenue will be necessary to properly support and maintain these newly acquired assets which now total \$5,745,490.87.

## DIVISION OF MUNICIPAL ACCOUNTING

STATE TAX COMMISSION

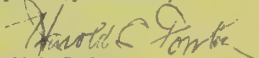
Concord, New Hampshire

May 19, 1965

### Certificate of Audit

This is to certify that we have examined and audited the accounts and records of the City of Portsmouth for the fiscal year ended December 31, 1964. In our opinion, the Exhibits included herewith reflect the true financial condition of the City on December 31, 1964, together with the results of operations for the fiscal year ended on that date.

Respectfully submitted,

  
Harold G. Fowler  
Director  
DIVISION OF MUNICIPAL ACCOUNTING  
STATE TAX COMMISSION

O. Maurice Oleson )  
Lionel J. DeGrace ) Auditors  
Frederick E. Laplante )

Laurence M. Bean, Accountant

# Finance

## DIVISION OF MUNICIPAL ACCOUNTING

### STATE TAX COMMISSION

Concord, New Hampshire

May 19, 1965

Robert C. Violette, City Manager

Portsmouth, New Hampshire

Dear Sir:

Submitted herewith is the report of an examination and audit of the accounts of the City of Portsmouth for the fiscal year ended December 31, 1964, which was made by this Division in accordance with your request. Exhibits as hereafter listed are included as part of the report.

### SCOPE OF AUDIT

The accounts and records of all city officials charged with the custody, receipt and disbursement of city funds were examined and audited. An examination was made of a sufficient number of vouchers, payrolls and cancelled checks to satisfy the requirements of accepted standards of audit procedure. Receipts were checked by source insofar as possible. Book balances were verified by comparison with reconciled bank balances made from statements obtained from depository banks.

Comparative Balance Sheets (General Fund Account) — December 31, 1963 — December 31, 1964: (Exhibit A-1)

Comparative Balance Sheets (General Fund Account) for the fiscal years ended December 31, 1963 and December 31, 1964, are presented in Exhibit A-1. As indicated therein, the Surplus increased by \$6,033.58 in 1964.

Analysis of Change in Current Financial Condition: (Exhibit A-3)

An analysis of the change in the current financial condition of the City during the year is made in Exhibit A-3, with the factors which caused the change indicated therein. These were as follows:

Increase In Surplus	
Net Budget Surplus	\$155,819.19
1960 Property Tax Collected	14.91
Portsmouth Housing Authority —	
Reimbursement for 1962	744.05
1963 Railroad Tax	1.33
1957 Property Tax Collected	369.00
Excess Credits — Tax Collector a/c 1964 Polls	2.00
Excess Credits—Tax Collector a/c 1964 Property	1.80
1964 Accounts Receivable Adjustments	137.95
	<u>\$157,090.23</u>

### Decrease In Surplus

Surplus Used to Reduce Tax Rate	\$ 90,000.00
1962 Accounts Payable Adjustment	45.83
Decrease in 1962 Accounts	
Receivable — T.R.A.	5,900.02
Tax Reserve Adjustments	486.91
Excess Debits — Tax Collector a/c 1962 Polls	6.00
Excess Debits — Tax Collector a/c 1963 Polls	14.00
1963 Accounts Receivable Adjustment	14.34
Prior Years' Abatements	589.55
	<u>\$ 97,056.65</u>
<b>NET INCREASE</b>	<b>\$ 60,033.58</b>

### Increase In Bonded Indebtedness:

The bonded indebtedness of the City (including Municipal, School and Water Debt) increased by \$697,500.00 in 1964, as shown herewith:

	Bonded Debt December 31, 1963	Bonds Issued in 1964	Bonds Retired in 1964	Bonded Debt December 31, 1964
Municipal	\$1,390,500.00	\$1,055,000.00	\$157,500.00	\$2,288,000.00
School	2,587,000.00		189,000.00	2,398,000.00
Water	91,000.00		11,000.00	80,000.00
	<u>\$4,068,500.00</u>	<u>\$1,055,000.00</u>	<u>\$357,500.00</u>	<u>\$4,766,000.00</u>

### Statement of Bonded Indebtedness: (Exhibit J)

A statement of outstanding bonded indebtedness as of December 31, 1964, showing annual debt service requirements, is contained in Exhibit J.

### Comparative Statements of Appropriations and Expenditures — Estimated and Actual Revenues: (Exhibits A-4 & A-5)

Comparative statements of appropriations and expenditures, estimated and actual revenues for the fiscal year ended December 31, 1964, are presented in Exhibits A-4 and A-5. As indicated by the budget summary (Exhibit A-5), a revenue surplus of \$81,697.23, plus unexpended balances of appropriations of \$74,121.96, resulted in a net budget surplus of \$155,819.19.

### Analysis of Parking Meter Collections: (Exhibit H-4)

A statement showing the Parking Meter collections, as indicated by the records of the City Treasurer, by months and years over a ten year period, is presented in Exhibit H-4.

### Tax Collections:

Tax collections (exclusive of State Head Taxes) of the current year's levy compared to taxes assessed, for the years 1963 and 1964, were as follows:

	Levy of 1963	Percent	Levy of 1964	Percent
<b>Taxes Assessed</b>				
— Current				
Year's Levy	<u>\$2,767,206.58</u>		<u>\$2,916,259.88</u>	
<b>Taxes Collected</b>				
— Current				
Year's Levy	\$2,485,334.01	89.8%	\$2,693,390.02	92.4%
<b>Discounts Allowed</b>				
— Current				
Year's Levy	19,112.92	.7%	21,037.10	.7%
<b>Taxes Abated</b>				
— Current				
Year's Levy	4,503.73	.2%	3,934.58	.1%
<b>Uncollected Taxes</b>				
— Current				
Year's Levy	258,255.92	9.3%	197,898.18	6.8%
	<u>\$2,767,206.58</u>	<u>100.0%</u>	<u>\$2,916,259.88</u>	<u>100.0%</u>

### Conclusion:

The provisions of Chapter 184 of the Laws of 1955, require that this report or the summary of findings and recommendations (letter of transmittal) shall be published in the next annual report of the City.

We extend our thanks to the officials of the City of Portsmouth and their office staffs for the assistance rendered during the course of the audit.

Yours very truly,

HAROLD G. FOWLER

Director

Division of Municipal Accounting

State Tax Commission

O. Maurice Oleson )  
Lionel J. DeGrace ) Auditors  
Frederick E. Laplante )

Laurence M. Bean, Accountant

**Exhibit A-1**  
**CITY OF PORTSMOUTH**  
**COMPARATIVE BALANCE SHEETS — GENERAL FUND**

As of December 31, 1963 and December 31, 1964

Assets	December 31, 1963	December 31, 1964	Liabilities	December 31, 1963	December 31, 1964
<b>Cash:</b>			<b>Unexpended Balances of Special Appropriations:</b>		
General Fund	\$136,216.53	\$142,407.30	(Detail Per Exhibit A-4)	\$ 24,211.90	\$ 21,499.48
Petty Cash	255.00	255.00	Accounts Payable - General	250,473.90	175,135.91
Fiscal Agent Bonds & Coupons	8,090.50	1,470.50	Employees' Deductions Payable	386.40	515.37
Unexpended Bond Funds (Exhibit G-1)	<u>194,636.21</u>	<u>87,955.99</u>	Social Security & Retirement Payable	115.97	30,225.72
	\$339,198.24	\$232,128.79	Public Library - Book Fund		623.12
			Unexpended Balances of Bond Funds (Exhibit G-1)	194,636.21	87,995.99
			Matured Bonds & Coupons Payable	8,090.50	1,470.50
<b>Accounts Receivable:</b>					
General Fund			<b>Due to State of New Hampshire:</b>		
Receivables	\$ 1,522.26	\$ 3,596.15	Head Taxes - Uncollected	\$15,605.00	\$15,820.00
Parking Meters	1,799.66	6,408.88	Head Taxes - Collected - Not Remitted	8,710.00	20,451.50
Advances - Sewer Bond Fund	<u>1,015.05</u>	<u>48,672.48</u>	Yield Taxes - Uncollected	<u>37.58</u>	
	4,336.97	58,677.51		24,352.58	36,271.50
<b>Due from State of New Hampshire (TRA)</b>	5,900.02		<b>Municipal Escrow Account</b>	415.00	565.00
<b>Prepaid Interest on Bonded Debt</b>	1,785.00	1,270.00			
<b>Deeded Property</b>	3,707.50	1,343.62			
<b>Unredeemed Taxes:</b>			<b>Reserves:</b>		
Levy of 1963	\$	\$ 44,120.36	Uncollected Taxes	\$ 2,386.65	\$ 2,130.46
Levy of 1962	3,124.03	766.62	State of New Hampshire TRA		
Levy of 1961	<u>700.90</u>	<u>112.68</u>	"B" Fund		<u>7,870.00</u>
	3,824.93	44,999.66		<u>2,386.65</u>	<u>10,000.46</u>
<b>Uncollected Taxes:</b>			<b>Total Liabilities</b>	\$505,069.11	\$364,303.54
Levy of 1964	\$	\$197,901.98	<b>Current Surplus</b>	<u>129,936.90</u>	<u>189,970.48</u>
Levy of 1963	258,259.92	1,269.23	<b>Total Liabilities &amp; Current Surplus</b>	<u>\$635,006.01</u>	<u>\$554,274.02</u>
Levy of 1962	1,617.88	863.23			
Levy of 1961	<u>770.55</u>				
	260,648.35	200,034.44			
<b>Uncollected Head Taxes:</b>					
Current Year	<u>15,605.00</u>	<u>15,820.00</u>			
<b>Total Assets</b>	<u>\$635,006.01</u>	<u>\$554,274.02</u>			

**Exhibit A-2**  
**CITY OF PORTSMOUTH**  
**BALANCE SHEET — BONDED INDEBTEDNESS**

As of December 31, 1964

<u>Assets</u>	
Bonded Indebtedness - Municipal	\$2,288,000.00
Bonded Indebtedness - School	2,398,000.00
Bonded Indebtedness - Water Dept.	<u>80,000.00</u>
<b>Total Assets</b>	<b><u>\$4,766,000.00</u></b>
<u>Liabilities</u>	
<u>Municipal Bonds Outstanding:</u>	
Permanent Improvements - 1946	\$ 40,000.00
Permanent Improvements & Equipment - 1951	48,000.00
Permanent Improvements - 1957	60,000.00
Voting Machines - 1958	28,000.00
Sewer - 1960	800,000.00
Urban Renewal - 1961	170,000.00
Street Issue - 1963	55,000.00
Recreational Building Issue - 1963	20,000.00
Urban Renewal Issue - 1963	12,000.00
Parking Area - 1964	80,000.00
Sewer - 1964	900,000.00
Capital Improvements - 1964	<u>75,000.00</u>
	2,288,000.00
<u>School Bonds Outstanding:</u>	
Senior High School - 1955	\$1,760,000.00
Supplement School Issue - 1956	123,000.00
Elementary School Issue - 1959	345,000.00
Senior High School Addition Issue - 1961	20,000.00
Junior High School Boiler - 1962	15,000.00
Junior High School Addition Issue - 1963	<u>135,000.00</u>
	2,398,000.00
<u>Water Bonds Outstanding:</u>	
Water Bonds - 1951	\$ 70,000.00
Water Bonds - 1954	<u>10,000.00</u>
	80,000.00
<b>Total Liabilities</b>	<b><u>\$4,766,000.00</u></b>

**Exhibit A-3**  
**CITY OF PORTSMOUTH**  
**ANALYSIS OF REVENUE SURPLUS**

Fiscal Year Ended December 31, 1964

Current Surplus - Dec. 31, 1964	\$189,970.48
Current Surplus - Dec. 31, 1963	129,936.90
<b>Increase in Current Surplus</b>	<b><u>\$ 60,033.58</u></b>
<u>Analysis of Change</u>	
<u>Increases:</u>	
Net Budget Surplus	\$155,819.19
1960 Property Tax Collected	14.91
Portsmouth Housing Authority - Reimbursement for 1962	744.05
1963 Railroad Tax	1.33
1957 Property Tax Collected	369.00
Excess Credits Tax Collector a/c 1964 Polls	2.00
Excess Credits Tax Collector a/c 1964 Property	1.80
1964 Accounts Receivable Adjustments	<u>137.95</u>
	\$157,090.23
<u>Decreases:</u>	
Surplus Used to Reduce Tax Rate	\$ 90,000.00
1962 Accounts Payable Adjustment	45.83
Decrease 1962 Accounts Receivable TRA	5,900.02
Tax Reserve Adjustments	486.91
Excess Debit Tax Collector a/c 1962 Polls	6.00
Excess Debit Tax Collector a/c 1963 Polls	14.00
1963 Accounts Receivable Adjustment	14.34
Prior Years Abatements	<u>589.55</u>
	<u>97,056.65</u>
<b>Net Increase</b>	<b><u>\$ 60,033.58</u></b>

Exhibit A-4

CITY OF PORTSMOUTH

COMPARATIVE STATEMENT OF APPROPRIATIONS AND EXPENDITURES

Fiscal Year Ended December 31, 1964

	Forwarded From 1963	Appropriations 1964	Transfers	Receipts and Reimbursements	Total Amount Available	Total Expenditures & Encumbrances	Unexpended Balance Forwarded To 1965
<b>General Government:</b>							
Assessors' Department	\$	19,503.70	+ \$ 40.93	\$ 264.15	\$ 19,808.78	\$ 19,808.78	\$
Auditor's Department		21,910.71		4.44	21,915.15	16,516.73	3,98.42
City Clerk's Department		17,155.00	- 410.49	4.64	16,749.15	16,462.80	286.35
Election & Registration		9,700.00	+ 2,410.49	272.61	12,383.10	12,383.10	
City Manager's Department		19,758.70		8.43	19,767.13	19,453.53	313.60
Collector's Department		15,093.70		1.83	15,095.53	14,445.51	650.02
City Treasurer's Department		9,455.00		3.68	9,458.68	8,758.07	699.61
Public Buildings & Places		14,325.00		38.46	14,363.46	11,988.62	2,374.84
City Council Salaries		4,500.00			4,500.00	4,500.00	
<b>Protection of Persons &amp; Property:</b>							
Fire Department		203,331.01		1,784.02	205,115.03	202,241.63	2,873.40
Fire Alarm		3,516.72		29.20	3,545.92	9,158.19	3,990.73
Police Department		272,636.45		19,546.14	292,176.59	284,781.53	7,395.06
City Defense		1,000.00		2,024.82	2,024.82	2,024.53	
Dog Officer's Department		1,241.00	+ 1,023.71	.55	3,061.55	2,215.81	845.74
<b>Health:</b>							
Health Department		15,680.00		34.26	15,714.26	15,504.26	21.00
Comfort Station		26,202.58	- 2,500.00	59.49	28,762.07	28,045.59	716.48
<b>Highways &amp; Bridges:</b>							
Town Road Aid		9,200.00	- 7,866.83		1,333.17	1,333.17	
General Maintenance Expense		294,572.43	+ 9,866.83	7,022.00	311,461.26	287,588.71	23,872.55
Dump & Refuse Removal		52,116.24	- 1,500.00		50,616.24	53,356.56	( 2,740.32)
Sewer Maintenance		32,288.96	+ 1,500.00		33,788.96	38,167.01	( 4,378.05)
Gemetries		800.00			800.00	398.12	401.88
Street Lights		59,000.00			59,000.00	57,259.49	1,740.51
Christmas Lighting		1,000.00			1,000.00	1,000.00	
Libraries		35,180.70		7.83	35,188.53	33,202.02	1,986.51
<b>Recreation:</b>							
Parks - Maintenance		9,795.40	- 2,000.00		7,795.40	3,688.85	4,107.55
Recreation Center		42,537.88	+ 950.00	660.35	44,148.23	42,490.14	1,658.09
Commonwealth Playground Maintenance		23,251.95		235.83	23,487.78	22,844.00	643.78
Basketball Officials' Fund	124.50	7,101.40		764.00	7,865.90	8,120.48	( 254.58)
<b>Patriotic Purposes:</b>							
Memorial Day		600.00			600.00	600.00	
<b>Public Service Enterprises:</b>							
Planning Board		14,988.70		27.43	15,016.13	14,873.33	142.80
Building Inspector Department		8,135.00		4.68	8,139.68	8,101.04	38.64
Division of Weights & Measures		1,240.00		.23	1,240.23	1,136.54	103.69
<b>Unclassified:</b>							
Damages & Legal Department		20,895.00		158.00	21,053.00	20,913.75	139.25
Contingency Fund		20,000.00			11,104.24	8,338.02	2,766.22
City Pension Funds - Including Police		3,342.60			3,342.60	3,342.60	
Advertising & Regional Associations		1,500.00			1,500.00	1,500.00	
City Report		2,000.00			2,000.00	2,000.00	
Employees' Retirement		28,000.00			28,000.00	24,562.52	3,437.48
Expenses - Trustees of Trust Funds		5,400.00	.75		5,400.75	4,869.68	531.07
Parade Expense - Municipal Association		300.00			300.00	100.00	200.00
New Hampshire Municipal Association		753.99			753.99	753.99	
Advertising		1,500.00			1,500.00	1,028.95	471.05
Market Advisory Committee		600.00			600.00	250.00	350.00
Mental Health Clinic		5,000.00			5,000.00	5,000.00	
<b>Public Welfare:</b>							
Old Age Assistance		55,000.00		2.33	55,000.00	47,151.89	7,848.01
City Relief		56,100.00			56,102.33	47,597.01	8,505.32
<b>Indebtedness:</b>							
Temporary Loans		33,675.00			34,236.12	34,181.92	54.20
Bonded Debt		114,973.75		561.12	114,973.75	114,973.75	
<b>Bonded Debt:</b>							
Bonded Debt		346,500.00			346,500.00	346,500.00	
Overplay - Automobile (Current Year)		34,706.42			34,706.42	24,970.48	9,735.94
Overplay - Automobile (Prior Year)	6,386.55				6,386.55	2,308.46	4,072.09
<b>Payments to Other Governmental Agencies:</b>							
County Tax		155,557.87		9,009.55	155,557.87	155,557.87	
School Tax		2,308,685.50			2,317,695.05	2,314,693.85	3,001.20
<b>New Construction &amp; Permanent Improvements:</b>							
South Mill Pond Gates		8,000.00			25,173.71	19,118.15	6,055.56
City Library		533.14			14,572.04	13,980.64	591.40
New Equipment - Highway		14,575.00			1,000.00	80.00	13,795.00
Building Construction		1,000.00			1,000.00	1,000.00	
Library - Torrey Request for Special System					1,000.00	294.25	705.75
<b>TOTAL</b>	\$24,211.40	\$4,470,531.36		\$40,945.70	\$4,535,688.96	\$4,440,067.02	\$74,121.96
							\$21,499.98

**EXHIBIT A-5**

CITY OF PORTSMOUTH

**STATEMENT OF ESTIMATED AND ACTUAL REVENUES AND BUDGET SUMMARY**

Fiscal Year Ended December 31, 1964

Source	Revenues		Excess	Deficit
	Estimated	Actual		
Interest & Dividends Tax .....	\$ 34,255.19	\$ 34,255.19	\$	\$
Motor Vehicle Permit Fees .....	165,000.00	175,865.31	10,865.31	
Dog Licenses.....	2,700.00	2,268.00		432.00
Business Licenses, Permits & Fees .....	15,500.00	19,576.56	4,076.56	
Fines & Forfeits - Municipal & District Courts & Parking.....	17,000.00	17,414.25	414.25	
Rent of City Ambulance.....	2,000.00	2,397.40	397.40	
Interest on Taxes.....	5,500.00	7,300.21	1,800.21	
Head Tax Revenue.....	3,300.00	3,628.18	328.18	
Railroad Tax.....	3,844.19	3,844.19		
Savings Bank Tax.....	10,396.83	10,396.83		
Added Taxes.....		3,492.12	3,492.12	
<u>Schools</u>				
Federal Grant.....	819,429.00	825,646.00	6,217.00	
Rental of Buildings, Etc.....	2,500.00	2,205.45		294.55
Tuition.....	184,987.00	194,818.89	9,831.89	
Physical Education.....	-12,500.00	11,351.83		1,148.17
State Aid - Sweepstakes.....	96,418.23	133,478.17	37,059.94	
State Building Aid.....	46,101.66	46,361.87	260.21	
<u>Miscellaneous:</u>				
Welfare Department.....		5,009.55)		
Community Center.....		1,372.18)		
Comfort Station.....		923.70)		
Sale of Deeded Property.....	32,500.00	413.36)	6,314.86	
Interest on Invested Funds.....		23,302.12)		
Payment in Lieu of Taxes.....		4,827.16)		
Head Taxes & Penalties, After Settlement.....		236.50)		
Miscellaneous.....		2,730.29)		
Highway Department Revenue.....	9,000.00	10,140.02	1,140.02	
Building Inspector.....	3,500.00	4,874.00	1,374.00	
Surplus Used to Reduce Tax Rate.....	90,000.00	90,000.00		
	<u>\$1,556,432.10</u>	<u>\$1,638,129.33</u>	<u>\$83,571.95</u>	<u>\$1,874.72</u>

Budget Summary

Actual Revenues .....	\$1,638,129.33	
Estimated Revenues.....	<u>1,556,432.10</u>	
Revenue Surplus .....		\$81,697.23
Unexpended Balances of Appropriations .....		<u>74,121.96</u>
Net Budget Surplus .....		<u>\$155,819.19</u>



### Exhibit D

#### CITY OF PORTSMOUTH

### STATEMENT OF CITY CLERK'S ACCOUNTS

Fiscal Year Ended December 31, 1964

Balance - January 1, 1964		\$ 1,385.82
<b>Receipts:</b>		
Fines	\$13,063.00	
Small Claims	168.35	
Writs, Executions, Etc.	32.63	
Miscellaneous	33.39	
Bail	<u>12,652.00</u>	
		<u>25,949.37</u>
		\$27,335.19
<b>Expenditures:</b>		
Department of Safety	\$ 5,916.12	
Bail Returned	12,701.10	
Witness Fees	648.96	
Small Claims	113.75	
City of Portsmouth	6,514.25	
Office Supplies & Expenses	333.98	
Refunds	<u>25.00</u>	
		<u>26,253.16</u>
Balance - June 30, 1964		<u>\$1,082.03</u>
<u>Proof of Balance</u>		
Balance in the First National Bank of Portsmouth - Per Statement June 30, 1964	\$ 2,753.61	
Less: Outstanding Checks	<u>2,753.61</u>	
		\$ - 0 -
Balance in the New Hampshire National Bank of Portsmouth - Per Statement June 30, 1964	\$ 1,852.03	
Less: Outstanding Checks	<u>770.00</u>	
		<u>1,082.03</u>
Reconciled Balance - June 30, 1964		<u>\$1,082.03</u>

### Exhibit E-1

#### CITY OF PORTSMOUTH

### STATEMENT OF MUNICIPAL COURT ACCOUNTS AND PROOF OF BALANCE

Period From January 1, 1964 to June 30, 1964

		- DR. -
<b>Licenses Issued:</b>		
Dog Licenses	\$ 3,110.00	
Bicycle Licenses	250.75	
Taxi Licenses	398.00	
Theatre Licenses	200.00	
Pinball Licenses	1,300.00	
Other Licenses	<u>1,365.00</u>	
		<u>5,623.75</u>
<b>Other Fees:</b>		
Recording Vital Statistics	\$ 1,037.00	
Marriage Intentions	1,221.00	
Sewer Connections	7,347.40	
Plumbing Fees	515.38	
Filing Fees	98.00	
Miscellaneous	255.43	
Uniform Commercial Code	4,689.00	
Parking Meter Tokens	<u>10,336.05</u>	
		<u>25,499.66</u>
		<u>\$32,123.41</u>
		- CR. -
<b>Remittances to Treasurer:</b>		
Dog Licenses	\$ 3,110.00	
Bicycle Licenses	250.75	
Taxi Licenses	398.00	
Miscellaneous Licenses	2,865.00	
Fees	15,163.61	
Parking Meter Tokens	<u>10,336.05</u>	
		<u>\$32,123.41</u>

### Exhibit E-2

#### CITY OF PORTSMOUTH

### STATEMENT OF DISTRICT COURT ACCOUNTS AND PROOF OF BALANCE

Period From July 1, 1964 to December 31, 1964

Balance - July 1, 1964 (Bail Account)		\$ 1,082.03
<b>Receipts:</b>		
Fines	\$ 9,901.00	
Refund	8.00	
Small Claims	229.40	
Writs, Executions, Etc.	110.92	
Miscellaneous	88.96	
Bail	<u>12,367.00</u>	
		<u>22,507.28</u>
		\$23,589.31
<b>Expenditures:</b>		
Department of Safety	\$ 4,387.52	
Fish & Game Dept.	156.00	
City of Portsmouth	4,250.00	
Witness Fees	478.64	
Office Supplies & Expenses	485.42	
Small Claims	238.41	
Bail Refund	11,712.00	
City of Portsmouth - a/c Small Claims	141.92	
Bank Service Charges	6.36	
Refunds	20.00	
Juvenile Court Expenses	<u>50.00</u>	
		<u>21,926.27</u>
Balance - December 31, 1964		<u>\$1,861.04</u>
<u>Proof of Balance</u>		
Balance in the First National Bank of Portsmouth - Per Statement Dec. 31, 1964	\$ 1,404.01	
Less: Outstanding Checks	<u>1,362.59</u>	
		\$ 41.42
Cash on Hand		41.45
Balance in the New Hampshire National Bank of Portsmouth - Per Statement December 31, 1964	\$ 2,881.34	
Less: Outstanding Checks	<u>1,103.17</u>	
		<u>1,778.17</u>
Reconciled Balance - Dec. 31, 1964		<u>\$1,861.04</u>

## Exhibit I-1

### CITY OF PORTSMOUTH Water Department

### BALANCE SHEET

As of December 31, 1964

<u>Assets</u>		<u>Liabilities, Investments &amp; Surplus</u>	
<u>Current Assets:</u>		<u>Current Liabilities:</u>	
Cash in Bank	\$ 7,152.26	Accounts Payable	\$ 14,215.72
Petty Cash	100.00	Customers' Deposits	670.00
Materials & Supplies	43,279.46	Accrued Taxes	<u>1,650.00</u>
Accounts Receivable	\$ 39,290.04	Total Current Liabilities	\$ 16,535.72
Less: Reserve for Bad Debts	<u>3,000.00</u>		
	<u>36,290.04</u>		
Total Current Assets	\$ 86,821.76	<u>Fixed Liabilities:</u>	
		Funded Debt	\$ 80,000.00
<u>Fixed Assets:</u>		Total Fixed Liabilities	<u>80,000.00</u>
<u>Land</u>		Total Liabilities	\$ 96,535.72
Water Supply Land	155,223.00		
Pumping Station Land	1,835.00	<u>Investment &amp; Surplus:</u>	
Water Storage Land	1,400.00	Municipal Investment	656,559.09
Distribution System Land	750.00	Federal Contribution for Plant Expansion	4,096,027.10
Other Land	<u>2,172.00</u>	Surplus - January 1, 1964	\$429,603.08
	161,380.00		
<u>Buildings:</u>		<u>Increases in Surplus:</u>	
Water Supply Structures	\$ 925,902.58	Adjustments - Consumer Deposits	\$ 10.00
Pumping Station Structures	78,347.31	Adjustments - Prior Years	<u>123,512.53</u>
Water Storage Structures	85,000.00	Depreciation	<u>123,522.53</u>
Stores Department Structures	3,834.44		\$553,125.01
Stables & Garage Structures	2,500.00		
Other Structures	2,500.00	<u>Decreases in Surplus:</u>	
Purification System Structures	<u>854,776.00</u>	Net Loss for 1964	\$ 57,093.84
	\$1,952,860.33	Removal of Assets Acquired or Eliminated by Federal Government for Pease Air Force Base	<u>117,414.97</u>
			<u>174,508.81</u>
<u>Equipment:</u>		Surplus - December 31, 1964	<u>378,616.80</u>
Water Supply Equipment	\$ 102,567.50	Total Liabilities, Investment & Surplus	<u>\$5,227,738.71</u>
Pumping Station Equipment	138,150.24		
Purification Equipment	5,700.00		
Transmission Mains Equipment	1,563,102.36		
Water Storage Equipment	74,405.04		
Distribution Mains Equipment	1,447,272.40		
Services	8,335.34		
Hydrants	48,362.22		
Meters	116,426.92		
Stables & Garage Equipment	8,877.00		
Other Equipment	<u>28,229.76</u>		
	\$3,541,428.78		
Total Buildings & Equipment	\$5,494,289.11		
Less: Reserve for Depreciation	<u>514,752.16</u>		
Depreciated Value	\$4,979,536.95		
Total Fixed Assets	\$5,140,916.95		
Total Assets	<u>\$5,227,738.71</u>		

## Exhibit I-2

### CITY OF PORTSMOUTH Water Department

## STATEMENT OF PROFIT AND LOSS

Fiscal Year Ended December 31, 1964

<u>Revenues:</u>		
Commercial Sales	\$ 224,715.02	
Industrial Sales	39,967.61	
Other Municipal Sales	4,107.33	
Merchandise Sales & Job Work	19,002.78	\$287,792.74
<u>Less: Expenses:</u>		
<u>Operating Expenses:</u>		
<u>Operation:</u>		
Superintendence	\$ 9,558.80	
Pumping Station - Labor	66,608.52	
Pumping Station - Supplies & Expenses	4,036.85	
Purification System	17,192.09	
Fuel	3,133.07	
Power Purchase	23,251.16	\$123,780.49
<u>Maintenance:</u>		
Repairs to Water Supply Structures & Equipment	\$ 925.06	
Repairs to Pumping Station Structures & Equipment	127.47	
Repairs to Purification Structures & Equipment	440.88	1,493.41
<u>Distribution Expenses:</u>		
<u>Operation:</u>		
Superintendence	\$ 14,282.64	
Other Distribution Supplies & Expenses	356.71	14,639.35
<u>Maintenance:</u>		
Repairs to Mains	\$ 18,699.00	
Repairs to Services	37,652.57	
Repairs to Hydrants	7,062.49	
Repairs to Meters	6,487.87	69,881.93
<u>Commercial:</u>		
Commercial Office Salaries	\$ 9,650.00	
Meter Reading Salaries	9,685.48	19,335.48
<u>General:</u>		
General Office Rent & Expenses	\$ 1,989.07	
General Expenses	43.98	2,033.05
<u>Miscellaneous Undistributed:</u>		
Insurance	\$ 3,663.83	
Stationery & Printing	269.22	
Stores Department & Shop Expenses	7,293.39	
Garage Expense	1,347.07	12,573.51
Taxes	1,665.70	
Depreciation	84,810.07	\$330,212.99
<u>Total Operating Distribution Expense</u>		(\$ 42,420.25)
<u>Net Operating Loss</u>		1,417.33
<u>Add: Other Income:</u>		
Penalties	(\$ 41,002.92)	
<u>Less: Deductions From Income:</u>		
Interest	\$ 1,472.50	
Employees' Retirement	9,502.68	
Legal Services	5,115.74	16,090.92
<u>Net Loss</u>		(\$ 57,093.84)

**Exhibit I-3**

CITY OF PORTSMOUTH  
Water Department

**SUMMARY OF RECEIPTS, EXPENDITURES  
AND PROOF OF BALANCE**

Fiscal Year Ended December 31, 1964

Balance - January 1, 1964	\$ 13,257.64	
Receipts During Year	<u>283,826.95</u>	
		\$ 297,084.59
Expenditures During Year		<u>289,932.33</u>
Balance - December 31, 1964		<u>\$ 7,152.26</u>

Proof of Balance

Balance in the First National Bank of Portsmouth - Per Statement December 31, 1964	\$ 6,536.37	
Add: Deposit of January 4, 1965	<u>673.36</u>	
		\$ 7,209.73
Less: Outstanding Checks	<u>57.47</u>	
Reconciled Balance - December 31, 1964		<u>\$ 7,152.26</u>

# Portsmouth Naval Shipyard

Portsmouth Naval Shipyard is one of the largest industries north of Boston. Of its 7000 employees, more than 1200 live in the City of Portsmouth, and their combined income is over \$10,000,000 a year. Another 2,000 earning \$16,000,000 a year, live within "shopping distance" of Portsmouth.

## PORTSMOUTH NAVAL SHIPYARD ECONOMIC IMPACT ON COMMUNITY DISBURSEMENTS — CALENDAR YEAR 1964

	NEW HAMPSHIRE	MAINE	MASSACHUSETTS	TOTAL
CIVILIAN PAYROLL	\$30,155,872 (3692 PEOPLE)	\$23,811,310 (2916 PEOPLE)	\$5,059,783 (620 PEOPLE)	\$59,026,965 (7220 PEOPLE)
MATERIALS & SERVICES PURCHASED LOCALLY	442,065	165,301	250,493	857,859
MILITARY PAYROLL	374,819 (87 PEOPLE)	295,991 (69 PEOPLE)	—————	670,810 (156 PEOPLE)
TOTAL	\$30,972,756 (3779 PEOPLE)	\$24,272,602 (2985 PEOPLE)	\$5,310,276 (620 PEOPLE)	\$60,555,634 (7384 PEOPLE)

The Shipyard's capability is in two major parts: design and production. The Design Division is the Navy's most complete, "in-house," submarine design capability; it employs about 700 people, mostly engineers and technicians. Another 185 planners and estimators translate designs into material requirements and cost estimates. The Production Department, employing more than 4500 people, mostly in the mechanical trades, draws heavily upon the area's supply of skilled workmen.

Support of the two major capabilities requires about 500 people each in supply and public work activities; and another 800 in medical, finance, industrial relations, data processing, administration, and management.

### DESIGN CAPABILITY

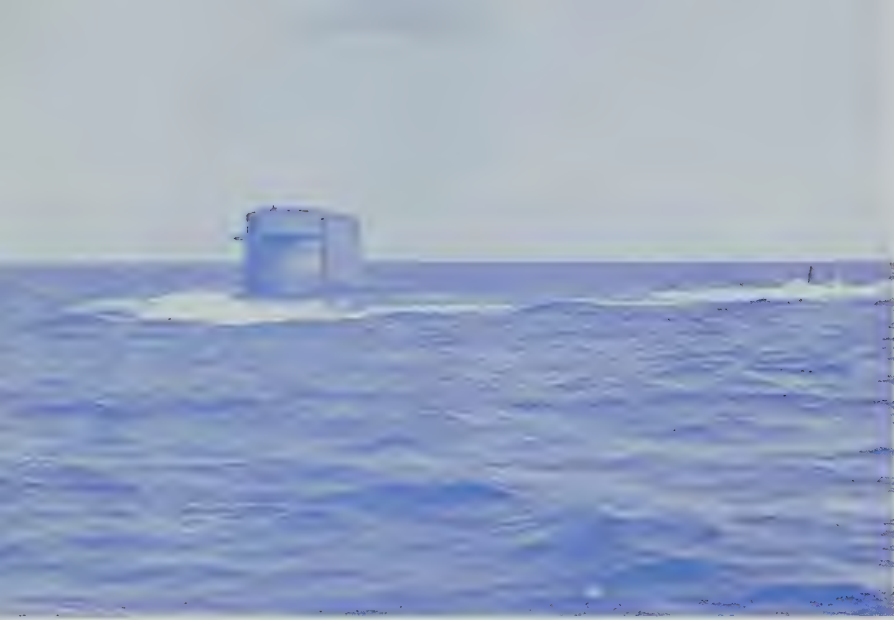
Portsmouth has always taken the lead in designing submarine hulls for deeper diving. It still leads, and expects to continue to lead, in this field. Design and construction of the new experimental submarine



Bird's-eye view of the Portsmouth Naval Shipyard.



TINOSA (SS(N)606), a Portsmouth designed nuclear-powered attack and killer submarine, was completed here in November 1964. It combines advanced sonar, deeper diving, newer weapons, and quiet operation.



NATHANAEL GREENE (SSB(N)636), newest of the Portsmouth-built fleet ballistic missile submarines, was completed in December 1964.



Design Division's ANALOG COMPUTER solves many intricate design problems quickly and efficiently.

DOLPHIN is now well advanced. This submarine is being developed to explore operating depths far greater than any previous ship and to accomplish oceanographic and acoustic research.

The DOLPHIN, which is expected to be the forerunner of the combatant submarines of the future, represents the third step in achieving greater submarine operating depths made since World War II. In each of these three steps, the design was accomplished and the first submarine of the class was built at Portsmouth.

Among the more recent design projects at Portsmouth is the development of a new submarine radio communications antenna. The new antenna is expected to solve a serious communications problem of long standing. The portable bridge navigation and communication system developed at Portsmouth provides a reliable and simplified means for navigating a submarine on the surface. Due to its success on the submarine USS NAUTILUS, this system is being installed on virtually all active submarines.

Along with greater depth comes the problem of submarine safety; and in this field Portsmouth has also been assigned the lead role in cooperation with the Bureau of Ships and the Submarine Safety Center at New London. This assignment involves every area of submarine design, including emergency systems, radiographic testing and castings, provision of better material, more detailed certification of design of sea water valves, better access to vital equipment, and reduction of hull penetrations.

In order to study structural fatigue of submarine hull structures, the Shipyard designed and built a major fatigue test facility. The fatigue program consists of designing, constructing, and testing large-scale submarine models, simplified small-scale, full-thickness models, and basic material and weldment specimens. Three 8/10 scale models have been designed, built, and tested. **This is the only facility in the United States, and perhaps in the world, which is capable of cycling such large-scale models at such high pressures.**

The USS ALBACORE (AGSS569) is an experimental submarine for studying submerged performance. Originally designed and built at Portsmouth, it has undergone a planned series of alterations and changes, each followed by extensive testing. The original hull design was so successful, it has become the pattern for all modern submarines. Tests are just beginning on the fourth major change made at Portsmouth, consisting principally of a high capacity battery and a new propulsion train.

Inherent in the POLARIS overhaul capability is the technical support which is available in the Planning Department. This technical experience is available from the FBM building program. The Shipyard has excellent facilities for Fleet Ballistic Missile Navigation and Fire Control overhaul, which are available together with technical support for this type of work.

## PRODUCTION CAPABILITY

The Portsmouth Naval Shipyard's Production Department is completely capable of building, overhauling, and repairing all types of submarines. With the rebuilding of Dry Dock No. 3, and completion of the new POLARIS overhaul facility, it has all the resources needed for overhaul of the big FBM submarines.

The Shipyard has pioneered fabrication of heavy metals, erection of submarine hulls, and large forgings, particularly involving K-Monel. Its foundry excels in casting both ferrous and non-ferrous metals; and with its modern induction furnaces, the high temperatures needed are no problem.

Hull frames were traditionally made by rolling the flange to the correct curvature, cutting the web to fit, and welding the two together. The Shipyard, working with industry, developed the system, now used industry-wide, of cold-rolling tee-bar extrusions. This process saves over \$800,000 a year at Portsmouth alone, and has been adopted by other shipbuilding activities.

While others have been working with high frequency induction brazing, the local Shipyard has been developing its induction brazing technique with low frequencies. This process allows brazing of pipe joints in restricted spaces without removal of electrical cables and other equipment sensitive to heat, since the heat produced by induction is localized.

With an eye to the future, the Shipyard's machine shop has begun a program of automation. Its first venture into this field is a numerically controlled turret drill. From a punched tape, this machine automatically adjusts the work along any of the three axes, selects the correct tool, and does the required machining. Tapes are stored and can be used at any future time to duplicate the process.

Plasma arc cutting of non-ferrous metals is a major advance in metal-working. An earlier method was burning with iron oxide powders, which left a rough residue of slag and a major job of machining. The plasma arc torch, developed by a New Hampshire company, does the same job in a fraction of the time and leaves a neat cut that requires no further machining for many applications. Where machining is required, the amount is greatly reduced. This process saves the Shipyard over \$500,000 a year now, and has a million-dollar a year potential as further uses develop.

The possibilities for innovation are infinite in the ship outfitting trades. The marine machinist trade requires working to extremely close tolerances with portable tools, and Portsmouth's mechanics are excellent. Perhaps the most significant advance in the outfitting trades, though, is the prefabrication of piping, a process developed by our engineers and the Pipe Shop. This eliminates the custom fitting of each piece



A computer controller (right) feeds instructions to the "brain" of Portsmouth Naval Shipyard's Avey Turret-dex Drill (left). Tops in cost reduction, this numerically controlled automatic machine operates on three axes, and selects the proper tool for drilling, tapping, boring, counter-sinking, or counter-boring.



Plasma-arc flame-cutting is dramatically illustrated in this picture showing two rings cut from 1½" nickel-copper plate—the one on the left cut by plasma-arc, the right hand one by powder burning.



Portsmouth Naval Shipyard ingenuity to the tune of a \$100,000 annual savings is demonstrated by a pipefitter who silver-brazes a difficult shipboard pipe joint employing a "home invented" induction heat coil. Featuring small size and portability, the induction coil eliminates rip-out and removal of pipe joints and can be operated as much as 100 feet from the power source.



This VACUVEYOR is typical of the modern industrial equipment in use at the Shipyard. It literally "vacuum cleans" sandblasts grit from submarine tanks, saving over ¼ million dollars a year in hand work and "patching" access holes.

aboard ship, and allows the pipefitters to do much of their work outside the hull.

Portsmouth's engineers have been increasingly interested in titanium as a shipbuilding material. Recently, the Shipyard had an opportunity to work with a production-size piece, sent here from the New York Naval Shipyard Material Laboratory for forming and machining. The piece was successfully rolled and machined by regular production methods, and well within the capacity of the equipment.

The Acoustical Radiation Measurement Basin is the only complete sound survey facility within a Naval Shipyard. With underwater sound detection so advanced, building quieter submarines is a major effort. This facility includes Clark's Island, a connecting causeway, and the "Sound Pier," a location remote from the industrial activity of the Yard.

The Shipyard has recognized the problems connected with quality ships and of vendor-supplied materials in the nuclear age. The advent of the deepdiving submarines multiplied the problem. Portsmouth has moved rapidly to increase its quality assurance efforts and now devotes a larger percentage of its assets to this vital function than any other shipbuilder.

## ECONOMY OF OPERATION

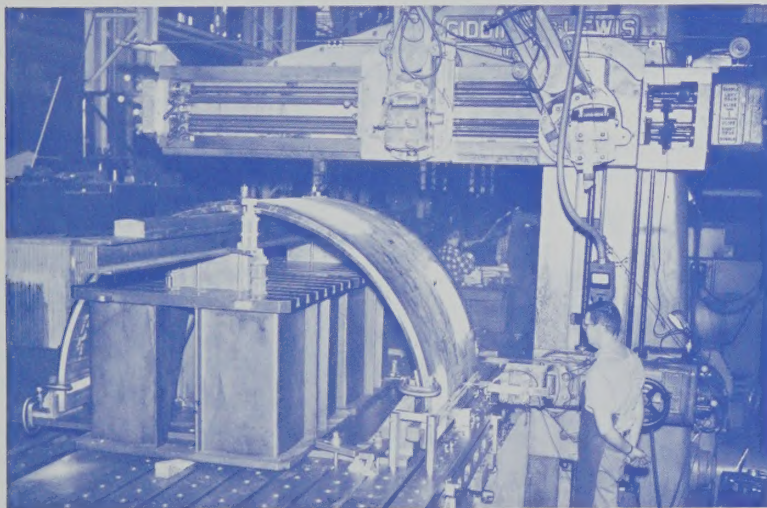
Cost reduction is a major effort and a way of life at the Shipyard. With every employee well aware that the Cost Reduction Program is a mighty tool in improving performance, and in telling the story effectively, the effort has improved sharply and Portsmouth is within grasping distance of the top of the ladder.



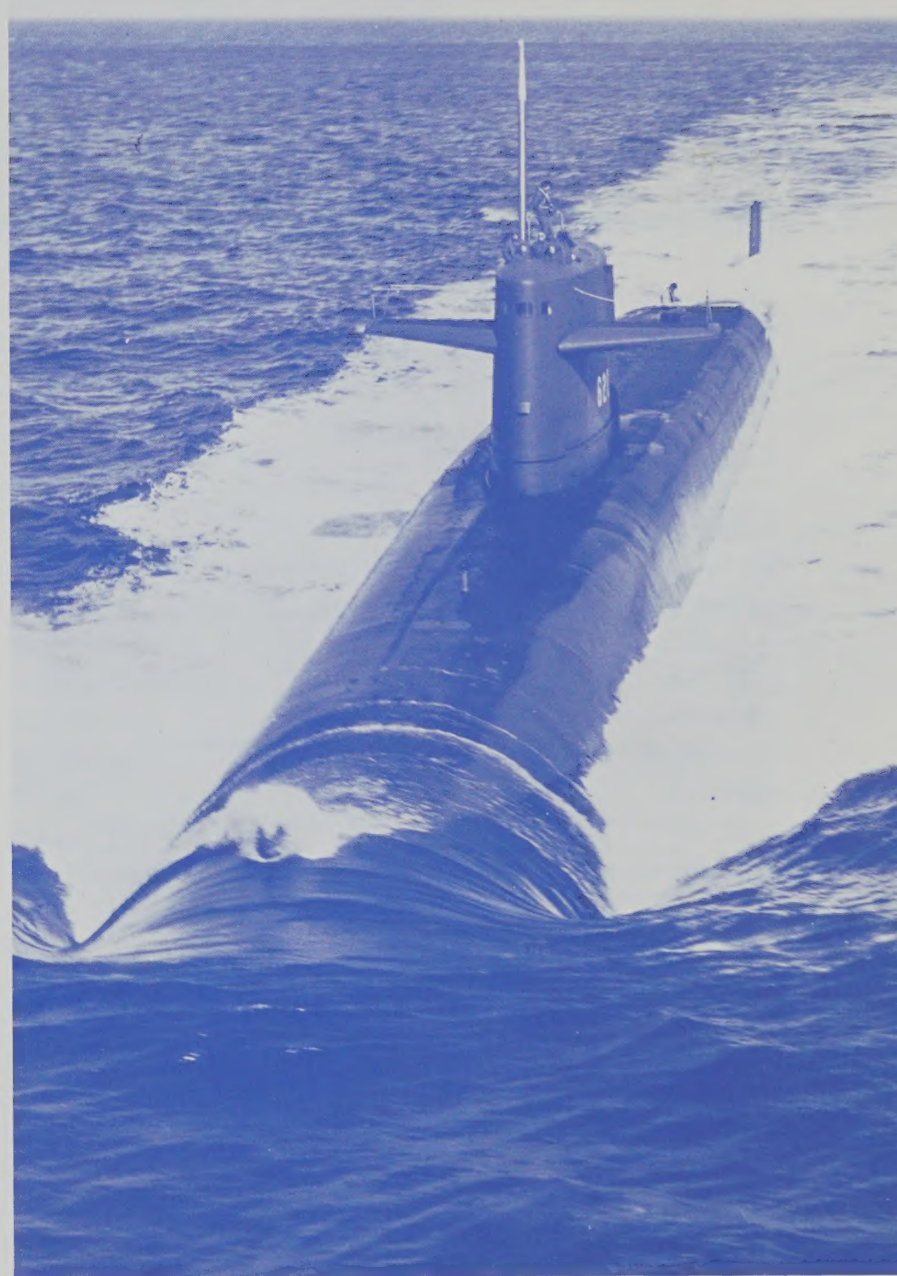




In the construction of four submarines at the Portsmouth Naval Shipyard, \$900,000 have been saved through this frame fabrication method.



Titanium, a non-corrosive metal stronger by weight unit than a comparable piece of steel, makes its workbench debut at the Portsmouth Naval Shipyard where a test plate is machined on an open side planer. This is the first time this grade of titanium has been machined in the U. S. outside of private or Government operated laboratories.



JOHN ADAMS (SSB(N)620), known affectionately among Shipyarders as "Big John," was completed in May 1964.

# General Information

## AREA-TOPOGRAPHY

Elevations .....	0 to 85 feet
Terrain .....	Gently undulating
Market Square .....	Approximately 28.0 ft. above mean sea level
Land Area .....	15.2 square miles
Water Area .....	0.4 square miles

## CLIMATE

Average annual temperature .....	46°F
Average January temperature .....	23°F
Average July temperature .....	70°F
Prevailing Wind .....	Westerly

POPULATION		% Change	Density (Persons Per Sq. Mile)
1930	14,495	+ 6.7	954
1940	14,821	+ 2.3	988
1950	18,320	+ 23.6	1221
1960	26,900	+ 46.8	1793

(1960 count includes all military residents)

## VOTING PLACES

WARD	WARD
I — New Franklin School Stark Street - Myrtle Ave.	IV — Senior High School Summit Ave. - Alumni Dr.
II — Junior High School Parrott Avenue	V — Community Center Daniel Street
III — Sherburne School Sherburne Road	VI — Wentworth School Granite Street

## STATE REPRESENTATIVES

General Court  
House of Representatives

WARD	WARD
I William F. Keefe Raymond J. McEachern	IV Robert T. Call Julia H. White
II Christopher M. Conlon Jeremiah Quirk Ann Sadler	V Hector Coussoule Edward J. Ingraham
III C. Cecil Dame Clayton E. Osborn	VI Eileen G. Rossley Reginald F. Smith

## STATE SENATORS

Douglass E. Hunter .....	Twenty-third District
Eileen Foley .....	Twenty-fourth District

## REPRESENTATIVES

James C. Cleveland .....	Second District
J. Oliva Huot .....	First District

## SENATORS

Thomas J. McIntyre — Norris Cotton

## ADMINISTRATIVE BUILDINGS

City Hall .....	Daniel Street
Fire Station .....	Court Street
Police Station .....	Penhallow Street
Library .....	Congress and Islington
Highway Department .....	Islington Street
School Department .....	Islington Street
Health Center .....	Porter and Church Streets

## RECREATIONAL BUILDINGS

Community Center .....	Daniel Street
Kennedy Adult Recreation Center .....	Parrott Avenue
Union Wharf Building .....	Prescott Park
Bath House .....	Pierce Island

## PARKS AND PLAYGROUNDS

Pierce Island .....	Picnic-municipal-park-small boat ramps
Prescott Park .....	Recreational-walk-through-playground
Elwyn Park .....	Walk-through
Haven Park .....	Walk-through
Goodwin Park .....	Walk-through
South Playground .....	Lighted tennis courts - basketball, baseball, football - public events
Alumni Field .....	Recreation - baseball - public events
Clough Field .....	Playground and Little League
Lafayette Playground .....	Playground and Skating
Maple Haven .....	Playground
Dondero School .....	Playground and Skating
Sherburne .....	Playground
Pine Street .....	Playground
New Franklin .....	Playground
Wentworth .....	Playground
Atlantic Heights .....	Playground and Skating
Atlantic Heights .....	Little League Baseball
Plains .....	Little League Baseball
Greenland Road .....	Skating Rink
Mariette Drive .....	Skating Rink
Elwyn Road .....	Skating Rink

# Directory of City Offices

## FIRE 436-1127

Administration, General .....	436-4125
Ambulance .....	436-1127
Assessments .....	436-1117
Auto Permits .....	436-1124
Beano Licenses .....	436-2145
Bicycle Licenses .....	436-0013
Bills and Accounts .....	436-8222
Birth Certificates .....	436-0013
Building Permits .....	436-5867
Cemetery .....	436-0176
City Council .....	436-4125
Dance Licenses .....	436-0013
Death Certificates .....	436-0013
Sewers .....	436-0176
Dog Licenses .....	436-0013
Dog Officer .....	436-9067
Elections .....	436-0013
Engineering, City .....	436-0176
Garbage Collection .....	436-0176
Health, Public .....	436-3224
Housing, Low-rent, Public .....	436-4310
Industrial Commission .....	436-9411
Library .....	436-5724
Marriage Certificates .....	436-0013
Milk, Licenses and Inspections .....	436-4125
Mortgages and Conditional Sales .....	436-0013
Nursing, Public Health .....	436-0815

## POLICE 436-2145

Oil Burner, Inspection .....	436-1127
Ordinances and Resolutions .....	436-0013
Parks .....	436-0176
Payments by the City .....	436-8222
Personnel, City .....	436-4125
Planning, City .....	436-5869
Plumbing Permits-Licenses .....	436-6128
Purchasing .....	436-4125
Recreation .....	436-4256
Refuse Collection .....	436-0176
Red Cross .....	436-2600
Sanitation .....	436-0176
Schools .....	436-2434
School Nurse .....	436-2601
Selective Service Registration .....	436-0013
Snow Plowing and Sanding .....	436-0176
Street Lights burned out .....	436-4125
Street Maintenance .....	436-0176
Tax Collection .....	436-1124
Taxicab Permits .....	436-0013
Treasury Information .....	436-8121
Urban Renewal and Redevelopment .....	436-3217
Water .....	436-0176
Water Bills .....	436-2436
Welfare .....	436-1925
Weights and Measures .....	436-3902
Zoning .....	436-5867

New Hampshire State Library



3 4677 00297292 0



SEP 13 65