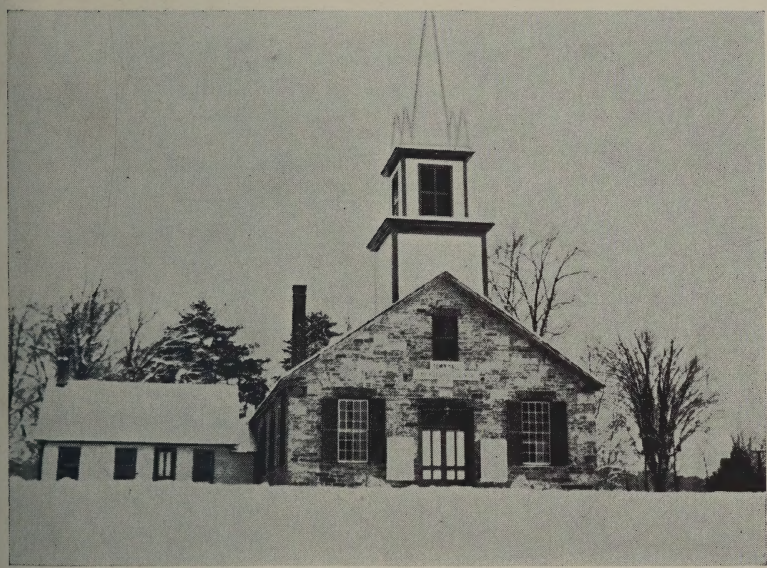




002.01722
C 42
R

Citizens of
CHESTERFIELD, N. H.



YOUR TOWN FINANCIALLY

FEBRUARY 1, 1938 to FEBRUARY 1, 1939

NEW HAMPSHIRE

ANNUAL REPORTS

OF THE

TOWN OFFICERS

AND

Inventory of Polls and Ratable Property

OF

CHESTERFIELD, N. H.

FOR THE YEAR ENDING

JANUARY 31, 1939

SENTINEL PRINTING COMPANY
KEENE, N. H.
1939

TOWN OFFICERS

Moderator

E. JAMES WINSLOW

Clerk

IMOGENE L. CHICKERING

Collector of Taxes

HARRY E. WINN

Treasurer

ADA W. ALLEN

Selectmen

JOHN MANSLEY

CHESTER M. BURNHAM

ALBERT D. BERRY

Highway Agents

WALTER J. POST

ROGER C. SPAULDING

LYLE B. CHICKERING

Supervisors of Checklist

MAURICE L. AMIDON

FLOYD M. FULLER

HENRY C. CHICKERING

Auditors

HAROLD E. RANDALL

DANIEL P. SCHLICHTING

Constables

WILLIAM D. PIERCE

HAROLD E. RANDALL

HENRY C. CHICKERING

Trustees of Trust Funds

WILLIAM E. NURSE

CHESTER M. BURNHAM

VIOLA V. TUTTLE

Firewards

HAROLD W. INGALLS

ARVID W. PEARSON

JAMES J. ATEMA

Sextons

WALTER L. DESELLE

PAUL E. WELCOME

PERCY ROWE

FRANK WHORFE

THE STATE OF NEW HAMPSHIRE

TOWN WARRANT

To the inhabitants of the Town of Chesterfield in the County of Cheshire in said State, qualified to vote in Town Affairs:

You are hereby notified to meet at the Town Hall in said Chesterfield on Tuesday, the fourteenth day of March, next, at nine of the clock in the forenoon, to act upon the following subjects:

Article 1. To vote by Australian ballot for all necessary Town officers for the ensuing year.

Article 2. To see what action the Town wishes to take in regard to Assessors.

Article 3. To determine the method of collecting taxes for the ensuing year.

Article 4. To see if the Town will vote to authorize the Selectmen to borrow money in anticipation of taxes for the ensuing year.

Article 5. To hear the report of the Budget Committee and act thereon.

Article 6. To see if the Town will vote to accept the budget committee's budget as a whole or vote on each article separately.

Article 7. To see what sum of money the Town will vote to raise for Town charges.

Article 8. To see what sum of money the Town will vote to raise for the support of the Fire Departments.

Article 9. To see what sum of money the Town will vote to raise to fight forest fires.

Article 10. To see what sum of money the Town will vote to raise for forest fire fighting equipment.

Article 11. To see what sum of money the Town will vote to raise for snow removal.

Article 12. To see what sum of money the Town will vote to raise for highway maintenance.

Article 13. To see if the Town will vote to accept State Aid or Town road aid (T. R. A.) for the ensuing year and raise the sum of \$2,079.00 for State Aid or \$744.02 for T. R. A.

Article 14. To see what sum of money the Town will vote to raise for the support of the poor.

Article 15. To see what sum of money the Town will vote to raise for old age assistance.

Article 16. To see if the Town will vote to straighten and grade the lower end of the Welcome road and to raise a sum sufficient for this purpose not to exceed \$600.00.

Article 17. To see if the Town will vote to relocate and build approximately 300 feet of road starting at the John Bellevieu house going past the two bridges thereby eliminating the two bridges and two bad curves and raise \$600.00 for the same.

Article 18. To see what sum of money the Town will vote to raise for repairs to the New Boston bridge.

Article 19. To see what sum of money the Town will vote to raise for Town Hall reconditioning, the same to include a Selectmen's room if possible.

Article 20. To see what sum of money the Town will vote to raise for the support of the Police Department.

Article 21. To see what sum of money the Town will vote to raise for street lighting.

Article 22. To see if the Town will vote to raise the sum of \$100.00 for the purpose of spraying trees for forest tent caterpillars, the same to be expended in the proportion of two to one with private citizens.

Article 23. To see if the Town will vote to observe Old Home Day and raise money for the same.

Article 24. To see what sum of money the Town will vote to raise for the support of the Town Beach.

Article 25. To see what sum of money the Town will vote to raise for the support of the Town libraries.

Article 26. To see if the Town will vote to raise the sum of \$100.00 for the support of the new library.

Article 27. To see if the Town will vote to fight pine blister rust and raise money for the same.

Article 28. To see if the Town will vote to rescind its vote of January 13th, 1939, raising \$1,000.00 for timber salvage and raise instead thereof the sum of \$300.00.

Article 29. To see if the Town will vote to accept the additional gift of Morris M. Friedsam of \$500.00 making a total of \$5,000.00.

Article 30. To see if the Town will vote to raise the sum of \$140.00 as the Town's share in participating, along with the 37 other towns, in the Mondanock Region.

Article 31. To see what action the Town wishes to take in regard to the care of transients or tramps.

Article 32. To see if the Town will vote to accept the offer of Mr. Morris Friedsam of a gift of \$1,000.00 to the Town, the same to be used for the purchase of furniture and furnishings for the new library building, and for the purchase of books, magazines and other supplies, upon the agreement on

the part of the Town to have the new library building and the Town library under the control and management of a board of Trustees named and elected in accordance with Mr. Friedsam's offer on file with the Town Clerk.

Article 33. To see if the Town will vote to accept the sum of \$200.00 under the will of Eliza M. Estey the use and income thereof to be expended as needed in the perpetual care and maintenance of the Sidney S. Wright burial lot in Spofford Cemetery in said Town.

Article 34. To see if the Town will vote to accept the sum of \$400.00 under the will of Ellen M. Shumway, the income from the same to be paid to the Chesterfield West Cemetery Association for the care of the Ellen M. Shumway lot located in said cemetery.

Article 35. To see if the Town will vote to accept the sum of \$100.00 from the estate of Addison M. Brown and Lenna S. Brown, the income from the same to be paid to the Chesterfield West Cemetery Association for the care of the Addison M. Brown burial lot in said Cemetery.

Article 36. To transact any other business that may legally come before said meeting.

Given under our hands and seal, this 24th day of February, in the year of our Lord nineteen hundred and thirty-nine.

JOHN MANSLEY,
ALBERT D. BERRY,
CHESTER M. BURNHAM,
Selectmen of Chesterfield.

A true copy of Warrant—Attest:

JOHN MANSLEY,
ALBERT D. BERRY,
CHESTER M. BURNHAM,
Selectmen of Chesterfield.

TOWN MEETING, MARCH, 1938

Proceedings of the annual meeting of the voters of the town of Chesterfield called at the Town Hall in said town on Tuesday, March 8, 1938.

The meeting was called to order at 9 o'clock by the Moderator, E. James Winslow, who declared the polls open for voting by Australian Ballot for all necessary town officers for the ensuing year under Article 1.

At ten o'clock the meeting was called to order for business and the Warrant was read by the Clerk and the Articles were disposed of as follows:

Article 2. Voted that the Selectmen act as Assessors for the ensuing year.

Article 3. Voted that the same method of collecting taxes as in the past year be used for the ensuing year.

Article 4. Voted to authorize the Selectmen to borrow money in anticipation of taxes for the ensuing year.

Article 5. The report of the Budget Committee was given by Chairman Arthur H. Post who recommended that the Town adopt the Articles up to and including Article 17 and then to vote on each of the other articles having in mind the advisability of keeping the tax rate down.

Article 6. Voted to consider each article of the warrant separately.

Article 7. Voted to raise the sum of \$4,115.00 to defray Town Charges.

Article 8. Voted to raise the sum of \$500.00 for the support of the fire departments.

Article 9. Voted to raise the sum of \$250.00 to fight forest fires.

Article 10. Voted to raise the sum of \$2,000.00 for snow removal.

Article 11. Voted to raise the sum of \$6,000.00 for highway maintenance.

Article 12. Voted to raise the sum of \$1,500.00 for the support of the poor.

Article 13. Voted to raise the sum of \$500.00 for old age assistance.

Article 14. Voted to raise the sum of \$600.00 for the support of the police department.

Article 15. Voted to raise the sum of \$1,700.00 for street lighting.

Article 16. Voted to raise the sum of \$135.00 for the support of the public libraries.

Article 17. Voted to observe Old Home Day, and to raise the sum of \$130.00 for the same. The appointment of a committee was left to the Selectmen.

Article 18. Voted to continue State Aid on the Bear Hill Road and to raise the sum of \$2,000.00 for the same.

Article 19. Voted to raise the sum of \$2,553.48 to cover the deficit of past years.

Article 20. Voted to pass over the article.

Article 21. Vote to raise and appropriate the sum of \$140.00 to the Monadnock Region Association of Scenic New Hampshire for issuance and distribution of printed matter,

newspaper and magazine advertising calling attention to the resources and natural advantages of the Town, in cooperation with the other 37 Towns in the Monadnock Region.

Article 22. Voted to pass over the article.

Article 23. Voted to pass over the article.

Article 24. Voted to raise the sum of \$500.00 for Town Hall Reconditioning, the same to include a Selectmen's room if possible.

Article 25. Voted to raise the sum of \$250.00 for repairs to the New Boston Bridge.

Article 26. Voted to raise the sum of \$200.00 for Town Beach maintenance.

Article 27. Voted to straighten and grade the lower end of the Welcome road and to raise the sum of \$600.00 for this purpose.

Article 28. Voted to pass over the article.

Article 29. Voted to pass over the article.

Article 30. A motion made and supported to raise the sum of \$500.00 to dig a water hole in Chesterfield near the Town Hall pump provided that money for labor on the project will be furnished by W. P. A. the Town to pay for materials and foreman only did not carry.

Article 31. A motion made and supported to pass over the article did not carry. The Moderator called for a show of hands in the vote on a motion made and supported to relocate and build approximately 300 feet of road starting at John Bellevieu house going past the two bridges hereby eliminating the two bridges and two bad curves and raise \$600.00 which resulted in thirty-eight for the motion and three opposed. The motion was declared by the Moderator as passed in the affirmative.

Article 32. Voted to accept the sum of \$200.00 to be known as the Fred E. and William Atherton Trust Fund. The income to be used for the perpetual care and improvement of their lot in Spofford Cemetery.

Article 33. Voted to accept the sum of \$100.00 from Mrs. Laura A. Cheever, the income to be paid to Chesterfield Center Cemetery for perpetual care and improvement of the Stephen Rice burial lot in that cemetery. Fund to be known as the Laura A. Cheever Trust Fund.

Article 34. Voted to accept the sum of \$100.00 given by Mrs. Alice E. Hurford. The fund to be known as the Walter C. Hurford Trust Fund and the income to be used for the perpetual care and improvement of the Walter C. Hurford burial lot in Spofford Cemetery.

Article 35. Announcement was made that under the New Hampshire Primary and Election Laws of 1937 nominations for City and Town Elections shall be filed with the Town Clerk seven days before the election. The seven days given shall include Sunday and shall end on the day before election at six o'clock in the afternoon.

After a discussion as to saving money in printing Town Reports by having them less in detail and not printing the inventory every year it was voted to continue with the Town Reports as they now are.

Voted that the Selectmen be empowered to make rules and regulations in regard to shooting on Lake Spofford.

Voted that the following State Resolution be adopted:

Resolved: That the town of Chesterfield, in town meeting assembled on March 8, 1938, approves the plan of the State to increase in Spofford Lake the supply of such game fish as are found suitable for its waters by scientific study, and in pursuance of this plan to close to smelt fishing for the season of 1938 the waters of Spofford Lake and its tributaries.

Voted that the last street light installed on Cross Street be removed as an unnecessary expense to the Town.

Voted to adjourn keeping the polls open for balloting until three o'clock p. m.

At three o'clock the polls were declared closed the count of ballots cast resulted as follows:

Whole number of names on check list,	455
Number of ballots cast,	266

For Town Clerk. Imogene L. Chickering had 221 votes, and George W. Goodridge had 1 vote. Imogene L. Chickering was declared elected.

For Selectman. Albert D. Berry had 121 votes, Henry C. Chickering had 105 votes and Fred C. Humphrey had 35 votes. Albert D. Berry was declared elected.

For Town Treasurer. Ada W. Allen had 144 votes, Wallace W. Record had 103 votes and M. E. Amidon had 1 vote. Ada W. Allen was declared elected.

For Tax Collector. Harry E. Winn had 235 votes, John Nurse had 2 votes, and Paul Welcome, Merle W. Cobleigh and E. E. Hoyt each had 1 vote. Harry E. Winn was declared elected.

For Spofford Road Agent. Walter J. Post had 218 votes, Curtis H. Chickering had 2 votes, George W. Goodridge had 2 votes, Lyle Pierce had 2 votes and Don Wellington had 1 vote. Walter J. Post was declared elected.

For Center Road Agent. William E. Nurse had 101 votes, Roger C. Spaulding had 137 votes and Dexter A. Thomas had 19 votes. Roger C. Spaulding was declared elected.

For West Chesterfield Road Agent. Lyle B. Chickering had 232 votes and Henry LaPlant had 1 vote. Lyle B. Chickering was declared elected.

For Fireward. James J. Atema had 204 votes, Kenneth Fales had 3 votes and William E. Nurse had 1 vote. James J. Atema was declared elected.

For Trustee of Town Library. Floyd M. Fuller had 226 votes, Charles Furlone had 1 vote, George Joslin had 1 vote, and Ada W. Allen had 1 vote. Floyd M. Fuller was declared elected.

For Auditors. Eleanor J. Pearson had 174 votes, Harold E. Randall had 215 votes, John P. Redding had 4 votes, A. B. Chickering had 1 vote, Harry Winn had 1 vote and Clifford E. Chickering had 1 vote. Eleanor J. Pearson and Harold E. Randall were declared elected.

For Budget Committee. Richard G. Chickering had 209 votes, Clarence K. Lewis had 180 votes, George S. White had 1 vote, Agnes Chickering had 1 vote, Walter Dunbar had 1 vote and John Nurse had 1 vote. Richard G. Chickering and Clarence K. Lewis were declared elected.

For Trustee of Trust Funds. Viola V. Tuttle had 213 votes and Laura E. Atherton had 1 vote. Viola V. Tuttle was declared elected.

For Sexton Spofford Village Cemetery. Walter L. Deselle had 208 votes, Byron Davis had 1 vote. Walter L. Deselle was declared elected.

For Sexton Center Cemeteries. Percy Rowe had 187 votes, John Nurse had 1 vote, Ray Slack had 1 vote and Fred Holman had 1 vote. Percy Rowe was declared elected.

For Sexton New Boston Cemetery. Paul E. Welcome had 25 votes, Frank Whorfe had 4 votes, Percy Rowe had 2 votes, and Newton Darling, Kenneth Streeter, Richard G. Chickering, John Nurse, Frank Merrifield, William E. Fuller, Louis D. Herrick, Chester Burnham, and Clarence Shippee each had 1 vote. Paul E. Welcome was declared elected.

For Sexton Pattridge and Atherton Hill Cemeteries. William E. Fuller had 69 votes, Arthur C. Hewitt had 62 votes, and Frank Whorfe had 79 votes. Frank Whorfe was declared elected.

For Spofford Constable. William D. Pierce had 232 votes, Lyle Pierce had 1 vote and Donald Wellington had 1 vote. William D. Pierce was declared elected.

For Center Constable. Bernest E. Aldrich had 69 votes, Henry C. Chickering had 73 votes, John A. Furlone had 53 votes, George F. LaPlante had 45 votes, George S. White had 1 vote, Fred C. Humphhey had 1 vote, E. L. Hoyt had 1 vote, and Watson French had 1 vote. Henry C. Chickering was declared elected.

West Chesterfield Constable. Harold E. Randall had 207 votes and Ora J. Underwood had 22 votes. Harold E. Randall was declared elected.

For Surveyors of Wood and Lumber. William E. Fuller had 137 votes, George W. Goodridge had 176 votes, George L. Fuller had 5 votes, Henry LaPlante had 3 votes, George E. Joslin had 3 votes, John Castle had 2 votes, Arthur H. Post had 2 votes, Frank Whorfe had 2 votes, James Atema had 2 votes, Walter J. Post had 2 votes, E. E. Hoyt had 2 votes, and Henry C. Chickering, Carl Castle, Chester M. Burnham, Paul Penning, Richard Chickering, Arthur Hewitt, Wallace Shippee, Herbert L. Jordan, Louis W. Chickering, Lyle W. Pierce and Walter Deselle each had 1 vote. William E. Fuller, George W. Goodridge, and George L. Fuller were declared elected.

For Fence Viewers. John L. Castle had 189 votes, Richard G. Chickering had 171 votes, Carl Castle had 4 votes, Roger Spaulding had 3 votes, George White had 2 votes, Shirley Bevis had 2 votes, George L. Fuller had 2 votes, Ralph Mulligan had 2 votes, E. E. Hoyt had 2 votes, and Harold Randall, John Nurse, Arvid W. Pearson, Lionel Cashmore, Paul E. Welcome,

Paul M. Penning, Floyd M. Fuller, William E. Nurse, Henry Chickering, George F. LaPlante, William R. Gallagher, Lyle B. Chickering, James J. Atema, George Goodridge, Walter Dunbar, Edwin Wilson, Richard Cady, Watson French, and Frank Hubner each had one vote. John L. Castle, Richard G. Chickering, and Carl Castle were declared elected.

For Delegate to the Constitutional Convention. Whole number of votes cast 256. E. James Winslow had 198, Walter J. Post had 1 vote, John Mansley had 1 vote, Moses H. Chickering had 1 vote, James A. Wilson had 1 vote, M. H. Chickering had 1 vote, 1 ballot was spoiled and there were 52 blank ballots.

Respectfully submitted,
 IMOGENE L. CHICKERING,
 Town Clerk.

WARRANT FOR SPECIAL MEETING

THE STATE OF NEW HAMPSHIRE

To the inhabitants of the Town of Chesterfield in the County of Cheshire in said State, qualified to vote at town affairs:

By virtue of a decree of the Superior Court permitting the town to hold a special meeting, you are hereby notified to meet at the Town Hall in said Chesterfield on the twenty-sixth day of September, 1938, at eight o'clock in the afternoon, to act upon the following subjects:

Article 1. To see whether the town will vote to accept the gift of the sum of Three Thousand Dollars (\$3,000.00) from Morris Friedsam to be used toward the construction of a public library in said town.

Article 2. To see whether the Town will vote to authorize the Board of Selectmen to make application to the Federal

Works Progress Administration, or any other agency of the United States, for a grant in such sum as may be obtained therefrom to aid in financing the cost of the construction of said public library to be located in said town and all other expenses necessary and incidental thereto.

Article 3. To see whether the town will vote to authorize the Selectmen to accept any and all offers made by the Federal Works Progress Administration, or any other agency of the United States, to execute and deliver in the name of and on behalf of the Town any and all contracts, agreements or documents necessary, proper or advisable for the purpose of obtaining a grant from the Federal Works Progress Administration, or any other agency of the United States, for the construction of said public library in said Town.

Article 4. To transact any other business that may legally come before the meeting.

Article 5. This meeting is held by authorization from the Superior Court of Cheshire County, New Hampshire, said court having found that an emergency exists in said Town for the construction of said library.

Given under our hands and seals this 10th day of September, A. D. 1938.

ALBERT D. BERRY,
CHESTER M. BURNHAM,
JOHN MANSLEY,
Selectmen of Chesterfield.

A true copy of Warrant—Attest:

ALBERT D. BERRY,
CHESTER M. BURNHAM,
JOHN MANSLEY,
Selectmen of Chesterfield.

Sept. 26. . .

This is to certify that on Sept. 10, 1938 we posted copies of the above warrant at the store of Paul M. Penning, the store of Clifford Tuttle and the store of C. K. Lewis, the same all being United States Post Offices and public places within the Town of Chesterfield, and also the Town Hall of the Town of Chesterfield, the same being place of meeting.

JOHN MANSLEY,
ALBERT D. BERRY,
CHESTER M. BURNHAM,
Selectmen of Chesterfield.

SPECIAL MEETING NO. 1
September 26, 1938

Proceedings of the Special Meeting of the voters of the Town of Chesterfield, held in the Town Hall in Chesterfield on September 26, 1938.

The meeting was called to order by the Moderator E. James Winslow, at eight o'clock p. m. on the 26th of September at the Town Hall in the Town Hall in the Town of Chesterfield and the Warrant was read by the Clerk.

The Articles of the Warrant were then disposed of as follows:

Article 1. Voted on motion of Sue Morris, supported by Paul Penning, to accept the gift of the sum of Three Thousand Dollars, (\$3,000.00) from Morris Friedsam to be used toward the construction of a public library in said town. This motion was carried by unanimous vote.

Article 2. Voted on motion of Paul Penning, supported by Henry Chickering, to authorize the Board of Selectmen to make application to the P. W. A., or any other agency of the United States, for a grant in such sum as may be obtained therefrom to aid in financing the cost of the construction of

said public library to be located in said town and all other expenses necessary and incidental thereto. This motion was carried by unanimous vote.

Article 3. Voted on motion of Arthur H. Post, supported by Floyd Fuller, to authorize the Selectmen to accept any and all offers made by the Federal Works Progress Administration, or any other agency of the United States, to execute and deliver in the name of and on behalf of the Town any and all contracts, agreements or documents necessary, proper or advisable for the purpose of obtaining a grant from the Federal Works Progress Administration, or any other agency of the United States, for the construction of said Public Library in said Town. This motion was carried by a unanimous vote.

Article 4. Voted on motion of Paul Penning supported by Arthur H. Post, to accept the additional gift of the sum of fifteen hundred dollars, (\$1,500.00) from Morris Friedsam to be used toward the construction of a public library in said Town. This motion was carried by a unanimous vote.

Because of the emergency caused by the recent hurricane and the fact that there is a shortage of funds for Police Patrol this year, Selectman Albert D. Berry called for an expression of feeling from the voters in informal discussion concerning the continuance of Police Patrol around Spofford Lake. The Moderator called for a show of hands for and against, which showed the approval of the voters present for the continuance of Police Patrol Protection around Spofford Lake.

Voted to adjourn at 8.28 o'clock p. m.

Respectfully submitted,

IMOGENE L. CHICKERING,
Town Clerk.

A true copy of record, Attest:

IMOGENE L. CHICKERING,
Town Clerk.

FROM THE WARRANT FOR NOVEMBER ELECTION,
NOV. 8, 1938

SPECIAL MEETING NO. 2

Special Article (By Petition)

To be voted on at 2 p. m. sharp.

To see whether the Town will vote to accept the additional sum of Fifteen Hundred Dollars towards the construction of a library as offered by Morris Friedsam, making the total amount accepted Forty-Five Hundred Dollars.

Proceedings of the Special Meeting called at two o'clock at the Town Hall on November 8, 1938.

At two o'clock p. m., on Nov. 8, 1938 at the Town Hall, the meeting was called to order by the Moderator E. James Winslow for the consideration of the Special Article (by Petition) in the Warrant.

After discussion on the article, a motion made by Albert D. Berry, which was supported, to pass over the article, was carried in the affirmative.

After further discussion, a motion made by Arthur H. Post, which was supported, to reconsider the vote by which the Article was passed over, was carried in the affirmative.

A motion made by Agnes B. Chickering and supported by John Mansley, to accept the article, thereby voting to accept the additional sum of Fifteen Hundred Dollars towards the construction of a library as offered by Morris Friedsam, making the total amount accepted Forty-five Hundred Dollars, was carried in the affirmative.

Voted to adjourn the Special Meeting at 2.34 o'clock.

Respectfully submitted,

IMOGENE L. CHICKERING,

Town Clerk.

A true record—Attest:

IMOGENE L. CHICKERING,

Town Clerk.

Warrant for Special Town Meeting No. 3 STATE OF NEW HAMPSHIRE

To the inhabitants of the Town of Chesterfield in the County of Cheshire in said State, qualified to vote in Town affairs: By virtue of a decree of the Superior Court permitting the Town to hold a special meeting, you are hereby notified to meet at the Town Hall in said Town on Friday, the thirteenth day of January, 1939, at eight o'clock in the afternoon, to act upon the following subjects:

1. To see whether the town will vote to authorize the Selectmen to rent land in the Town of Chesterfield to be used for sawing and storing lumber from timber blown down in the storm of September 21, 1938 upon land in the town of Chesterfield and to execute a lease of land if so rented.

2. To see what, if any, sum the town will vote to raise for the payment of such rental and to provide in what manner any sum voted shall be raised.

3. To see whether the town will vote to authorize the Selectmen to assign any lease which may be made to the Northeast Timber Salvage Administration, a facility organized by the Federal Government.

Given under our hands and seal, this 29th day of December, in the year of our Lord nineteen hundred and thirty-eight.

JOHN MANSLEY,
CHESTER M. BURNHAM,
ALBERT D. BERRY,
Selectmen of Chesterfield.

A true copy of Warrant—Attest:

JOHN MANSLEY,
CHESTER M. BURNHAM,
ALBERT D. BERRY,
Selectmen of Chesterfield.

Jan. 13, 1939.

We hereby certify that we gave notice to the inhabitants within named, to meet at the time and place and for the purpose within mentioned, by posting up an attested copy of the within Warrant at the place of meeting within named, and a like attested copy at Penning's Store, it being a public place in said Town, on the 29th day of Dec., 1938.

JOHN MANSLEY,
CHESTER M. BURNHAM,
ALBERT D. BERRY,
Selectmen of Chesterfield.

A true copy of Warrant—Attest:

IMOGENE L. CHICKERING,
Town Clerk.

Proceedings of the Special Meeting of the voters of the Town of Chesterfield in the State of New Hampshire, called, by virtue of a decree of the Superior Court permitting the Town to hold a special meeting, at the Town Hall in said Chesterfield on Friday the thirteenth day of January, 1939, at 8 o'clock in the afternoon.

The meeting was called to order at 8 o'clock p. m. on January 13, 1939, by Maurice L. Amidon, Chairman of the Board of Supervisors of the Check list, in the absence of Moderator E. James Winslow. The Warrant for the meeting was read by the Clerk.

The first order of business was the election of a Moderator, Pro tem. Arthur H. Post, School Moderator, was unanimously elected to serve as Moderator pro tem., and took the oath of office before the Clerk.

The Articles of the Warrant were then disposed of as follows:

Article 1. A motion made by Chester M. Burnham and supported by George E. Joslin to adopt Article 1, authorizing the Selectmen to rent land in the Town of Chesterfield to be used for sawing and storing lumber from timber blown down in the storm of September 21, 1938 upon land in the town of Chesterfield and to execute a lease of land if so rented was unanimously carried in the affirmative and so declared by the Moderator, pro tem.

Article 2. On motion made by Morris Friedsam and supported by George Joslin it was voted to raise the sum of one thousand dollars earmarked to be spent \$200 each year for five years half of which to be used for rental of property for the storage of logs, the other half to be used at the discretion of the Selectmen for other incidental expenses. This motion was declared by the Moderator pro tem to be carried in the affirmative.

Article 3. Voted to adopt the article as read, authorizing the Selectmen to assign any lease which may be made to the Northeast Timber Salvage Administration, a facility organized by the Federal Government. This vote was declared by the Moderator pro tem to be carried in the affirmative.

All of the Articles of the warrant having been acted upon, the meeting was declared by the Moderator pro tem as adjourned at 9.00 p. m.

Respectfully submitted,
 IMOGENE L. CHICKERING,
 Town Clerk.

A true copy of record, attest:

IMOGENE L. CHICKERING,
 Town Clerk.

RESIDENT INVOICE AND TAXES FOR THE YEAR 1938

Name and Description	Valuation	Total Tax	Name and Description	Valuation	Total Tax
Alden, Charles			Armstrong, Willis		
Poll		\$2.00	Colburn farm 500		
Parks, place and camp \$100	\$100	4.90	(Exempt)		
Alden, Dorothy			Armstrong, Alice		
Poll		2.00	Poll		2.00
Aldrich, Bernest			Atema, Doeke		
Poll		2.00	Poll		
Aldrich, Emma M.			Cottage and land		
Poll		2.00	700		
Aldrich, Gaylord			41 fowl 41	741	23.49
Poll		2.00	Atema, James		
Aldrich, Eddy			Poll		2.00
Poll		2.00	Atema, Martha		
Allen, Ada W.			Poll		2.00
Poll			Atherton, Laura S.		
Homestead 2250	2250	69.73	Poll		
Allen, Chester			Chamberlain Place		
Poll		2.00	1550		
Amidon, Richard			Land by school-		
Poll			house 300		
Cottage at lake 150	150	6.52	1-3 int. Chamber-		
Amidon, C. B.			lain land 200		
Poll		2.00	1-3 int. Thompson		
Amidon, Lina			land 8	2058	63.72
Poll			Atherton, Fred Est.		
Homestead 2000	2000	60.00	Homestead	2300	69.23
Amidon, Maurice L.			Avery, William		
Poll			Poll		2.00
Davis farm 1200			Avery, Eliza		
Kelly land 40			Poll		2.00
Presho land 400			Ball, Fred		
Richardson pasture			Poll		
600			Homestead	800	26.08
2 oxen 150			Ball, John N.		
2 cows 85	2475	73.78	Poll		
Amidon, Elvira			Store Bldg. 2000		
Poll		2.00	Cottage 700		
Amidon, Lorenzo, Est.			Garage, storehouse		
Homestead 700	700	20.30	and land 750		
Amidon, Vivian K.,			Stock in trade 600	4050	123.91
Est.			Ball, Barbara		
Homeplace 1800	1800	52.20	Poll		
Anger, Henri			Homestead 1250		
Poll			Campbell land 50	1300	41.13
Fisk homestead 1800	1800	54.20	Ball, Nelson		
Anger, Vivian A.			Poll		
Poll		2.00	Wellington pasture		
			150		

Name and Description	Valuation	Total Tax	Name and Description	Valuation	Total Tax
2 horses 50	200	8.02	Bothwell, James G. Poll		2.00
Ball, John & Nelson Part of Dinnigan land and barn 425	425	12.80	Bothwell, Alice Poll		2.00
Berry, Albert D. Poll Platts Place 1000	1000	31.00	Brown, Frank Poll Homeplace 600	600	19.40
Berry, Ruth L. Poll		2.00	Brown, Ethel Poll		2.00
Beal, Curtis Homestead and millyard 1150			Brown, Mable Est. Homestead 350	350	10.15
Whittaker Sprout land 75			Brown, Emma Poll Homestead 700		
Stearns-Fletcher land 200	1425	42.90	Butterfield land 50	750	24.58
Bellassi, Joseph Poll		2.00	Burnham, Chester M. Poll Homestead 1800		
Belleview, John Poll		2.00	Icehouse and cottage 1200		
Bennett, Donald Poll		2.00	Stock in trade 400	3400	102.36
Bevis, Esther Poll		2.00	Burnham, Myrtie E. Poll		2.00
Bevis, Shirley Poll		2.00	Butler, Olin Poll Homestead 2250		
Bills, Inez Poll Humphrey cottage 1000	1000	32.10	Harvey woodlot 150 2 cows 75	2475	73.78
Blake, James Poll		2.00	Bova, Albert Poll		2.00
Blake, Lyle Poll		2.00	Boivert, Gerard Poll		2.00
Blodgett, Hyland Poll Homestead 2000			Boivert, Cora Poll		2.00
J. Scott land 225			Callahan, Mr. and Mrs. C. J. Homeplace 1400		
C. Scott land 100			Dudley & Phillips land 200		
Butterfield land 180			1 horse 25		
1 mule 25			5 cows 175	1800	52.20
6 cows 225	2755	81.90	Campanello, Antonio Poll Shepardson Place 1000		
Boocock, Laurence Poll Cottage on lake 7500	7500	227.75	Hildreth land 100 2 cows 75	1175	36.08
Boocock, Lila Poll		2.00	Campanello, Camelia Poll		2.00
Boomhower, Leonard Poll		2.00	Campanello, John Poll		
Boomhower, Dilbert Poll		2.00			

Name and Description	Valuation	Total Tax	Name and Description	Valuation	Total Tax
Barraby land	25		3 neat stock	75	2855
Thatcher land	300	325	11.43		
Campanello, Nancy			Chickering, Imogene		
Poll		2.00	Poll		2.00
Capin, Henry			Chickering, Bernard		
Poll		2.00	1-3 int. Streeter		
Carey, Emory G.			land	35	
Poll			1-2 int. Davis		
Webb land	25		woodlot	125	
Bowker land	500		2 oxen	150	
Homeplace	500	1025	1 cow	35	
		31.73	2 neat stock	50	395
Carey, Esther			11.46		
Poll		2.00	Chickering, Lyle B.		
Carlson, Carl			Poll		
Poll			Homestead	1900	
Homestead	950		O. R. Farr land	100	
Machinery	700	1650	2-3 int. Streeter		
		49.85	land	70	
Carlson, Jennie			1-2 int. Davis		
Poll		2.00	woodlot	125	
Castle, John & Carl			4 cows	140	
Homeplace	1000		8 neat stock	190	2525
2-3 Amidon land			75.23		
	667		Chickering, Beatrice		
1 horse	75		Poll		2.00
1 cow	35		Chickering, Curtis		
Wood & lumber	300		Wheeler pasture	200	
(exempt)		77	Clark land	400	600
		2.23	17.40		
Castle, Bessie			Chickering, Agnes		
Poll		2.00	Poll		
Cashmore, Lionel			Lots 20 and 26		
Camps & land	600		(Shadow land)	50	50
(exempt)		.66	3.51		
Cashmore, Genevieve			Chickering, Clifford E.		
Poll			Poll		
Homestead	1500	1500	Smith farm	2000	
		47.15	Snow land	500	
Chase, Carrol T.			Henry Chickering		
Poll			farm	400	
Davenport Place			8 cows	300	
	1000		3 neat stock	75	3275
Meadow	300		96.98		
5 sheep	25	1325	Chickering, Fannie		
		40.43	Poll		2.00
Chase, Madeline			Chickering, Moses H.		
Poll		2.00	Homeplace	5750	
Cherrie, Stella M.			Sargent land	600	
Poll		2.00	Hubbard land	250	
Chickering, Henry			1 horse	25	
Poll			10 cows	400	
Homestead	2000		2 neat stock	50	7075
Barrett pasture	400		205.18		
Thatcher land	200		Chickering, Rich. G.		
5 cows	180		Poll		
			1-3 int. Amidon		
			land	333	333
					11.66

Name and Description	Valuation	Total Tax	Name and Description	Valuation	Total Tax
Chickering, Mary V. Poll		2.00	Poll		2.00
Chickering, Donald Poll		2.00	Cray, Winston Poll		2.00
Chickering, Lewis Poll		2.00	Crowell, Laurence Poll		2.00
Chickering, Anne L. Poll		2.00	Crowell, Mildred Poll		2.00
Chickering, Ray. B. Poll		2.00	Darling, Newton H Poll		2.00
Chickering Ralph C. Poll		2.00	Darling, Newton E. Poll		2.00
Clancy, Ned Poll		2.00	Davenport, Fred R. Poll		2.00
Clancy, Edna Poll		2.00	Davis, Alice M. Poll		2.00
Clawson, Vanetta Poll		2.00	Davis, Dora Poll		2.00
Cobleigh, Merle Ford Place 1200	1200	36.80	Wheeler Place 800	800	25.20
Cobleigh, Geo. O. Poll			Davis, Clinton Wm. Davis Home- stead 1100		
Homestead 5750			Lily pond lot 50		
Warner land 100			Starkey woodlot 25		
Davis & Spaulding land 500			Chickering woodlot 100		
2 horses 75			Springer Dish land 25		
7 cows 350			Clegg land and Smith 100		
5 neat stock 100	6875	201.38	Burnham lot 100	1500	45.50
Cobleigh, Minnie Poll		2.00	Davis, Katherine Poll		2.00
Colburn, Alice M. Homestead 900	900	26.10	Davis, Adeline Poll		
Colburn, Norman J. Homeplace 750			Homestead 800		
Davis land 500	1250	36.25	Fisher land 400		
Cook, Gertrude Poll			Thompson land 300	1500	47.15
Homestead 1500	1500	45.50	Davis, Byron Poll		
Cox, Vina Poll			6 cows 270		
Ford Place 1800	1800	54.20	1 neat stock 25		
Cox, Zerah Poll		2.00	50 fowl 50	345	12.39
Cray, Homer D. Poll			Davis, Benj. L. Poll		
1 horse 40			Pearson farm, 3-4 acre land opp. farm, meadow land, Fletcher land 2000	2000	62.20
4 cows 170			Delill, Earl J. Geo. Plante place		
2 neat stock 60	270	9.83			
Cray, Martha					

Name and Description	Valuation	Total Tax	Name and Description	Valuation	Total Tax	
(exempt)	1250	250	8.63	Homeplace	700	
Delill, Mrs. Earl J.				Beers land	300	
Poll			2.00	2 horses	100	
Deselle, Minnie				1 cow	38	
Poll				130 fowl	130	1268
Lincoln place	225			Farr, Alba		
Hamilton land	75	300	11.03	Poll		2.00
Deselle, Walter				Farr, Elva		
Poll			2.00	Poll		2.00
Delamater, Ethel				Faunce, Minnie		
Poll				Poll		
Birchmere cottage				Safford place	1000	1000
	9000	9000	27.90	Faunce, Olin J.		
Delamater, Rea				Poll		2.00
Poll			2.00	Fern, Emil		
Drew, Austin				Poll		
Poll			2.00	Otis Wilson place		
Drew, Arline					800	
Poll			2.00	2 horses	200	
Dunbar, Walter				1 cow	40	
Poll				Wood and lumber		
Homestead	2800				50	1090
1 cow	45	2845	84.51	Fern, Mrs. Emil		
Dunbar, Sarah				Poll		2.00
Poll			2.00	Fisher, James T. B.		
Dunham, Bertha				Poll		
Poll			2.00	Whittemore place		
Eager, Geo.					2000	2000
Poll				Fisher, Marion		
Geo. Butler place				Poll		2.00
	500	500	16.50	Fossey, Jeanne		
Eager, Mary				Poll		2.00
Poll			2.00	Fossey, C. J.		
Eager, Forrest				Poll		
Poll			2.00	Pinnacle Springs		
Eaton, Viola				farm	4000	
Poll				2 horses	90	
Winslow Bldg. lot				15 cows	750	
	200	200	7.80	5 neat stock	150	4990
Eager, Cora				Feinberg, Mrs. H. C.		146.71
Poll			2.00	Poll		
Estler, Dr. L. E. Est.				Cottage on river		
Homeplace	3250		94.25		1500	1500
Estler, Minnie				Feinberg, Dr. Soloman		
Poll			2.00	Poll		2.00
Fales, Kenneth				Foley, Clarence E.		
Poll				Poll		
Garage	1000			Lewis lot	300	
Stock in trade	300	1300	39.70	Homeplace	350	650
Farr, Marshall				Foley, Ronald W.		
Poll				Poll		2.00

Name and Description	Valuation	Total Tax	Name and Description	Valuation	Total Tax
Foster, Elsie			Cressy place and		
Poll			Harvey land	4500	
Hotel pasture	500		Hampshire House		
Worthington land			and land	3800	
	100		Prospect Hill land		
Wyman land	100			3000	
Fullam land	75		Lake shore lots		
White place, Lake			(west)	1000	
property	10,800		Wetherby Hill		
Henry place	800	12375	land	1500	
		373.64	Land S. of Stone-		
Foster, Maude Est.			house	400	
Dorothy Fuller,			Porter pasture	300	
Admx.			Wheeler pasture	400	
Homestead	2400	2400	Thatcher land	400	
		72.24	Faulkner land	300	
Foster, Julia Estate			O. R. Farr land	200	
Cottage at lake	2000	2000	Lydia Joslin land		
		60.20		250	
Foster, Rubin, Est.			Slade land	275	
Homestead	1300		Brown land	250	
Howe land	300		Whitney land	200	
Cook land	300	1900	2 boats	500	35225
		57.19			1052.74
Fowke, Frank B.			Friedsam, Sally		
Riverside cabins			Poll		
(exempt)	1900		Woodside cottage		
1 cow	40	940		3000	
		27.26	Edgewater cottage		
Fowke, Ada				12500	
Poll		2.00	2 Wells lots	3000	18500
Frazer, Oscar					558.85
Poll		2.00	Fuller, Elisha		
Frazer, Ethel			Poll		
Poll		2.00	Homestead and		
French, Watson			Slade land	550	
Allard place	1000		Cottage	100	650
Pinehill place	200				21.57
1 cow	35	1235	Fuller, Wm. H.		
		35.82	Poll		
French, Wilfred			Cottage and Puffer		
Poll		2.00	land	200	
Friedsam, Morris			Lot on State road	50	250
Poll					9.53
Ghee cottage	800		Fuller, George E.		
Bliss lots	3000		Poll		
Darling place	1100		Lot on State road	50	50
Franklin millsite	25				3.51
Woodlot So. woods			Fuller, Haskell		
	25		Poll		2.00
Stonehouse and			Fuller, Mildred		
land w. of road			Poll		2.00
	8000		Fuller, Wm. E.		
Benj. Pierce place			Poll		2.00
	3500		Fuller, Floyd M.		
Camp Chesterfield			Poll		2.00
	1500				

Name and Description	Valuation	Total Tax	Name and Description	Valuation	Total Tax
Fuller, Dorothy			Homestead	900	28.10
Poll		2.00	Goodrich, Robert C.		
Fuller, Eleanor			Poll		
Poll		2.00	Woodlot	100	4.90
Fuller, George H.			Goodrich, Florence S.		
Poll		2.00	Poll		2.00
Fuller, Merle			Goodridge, George		
Poll		2.00	Poll		
Fuller, Mrs. Merle			Homeplace	700	
Poll		2.00	Taylor lot	25	
Furlone, Alphonse			McClennin land	25	24.52
Poll			Goodridge, Annie B.		
Barrett land	25		Poll		2.00
1 cow	35		Guyette, Frank		
Wood and lumber	75	135	Thompson place	800	
Furlone, John			Land so. of Beals		
Poll			(exempt)	100	900
Cook woodlot	200	200	Guyette, Hazel		
Furlone, Charles			Poll		2.00
Poll			Harbridge, A. J.		
Goodridge place	1500	1500	Cottage at lake	1700	
Furlone, Vida			(exempt)	700	22.17
Poll			Harbridge, Germaine		2.00
Goodwin place	1000		Hamilton, Frank		
New cottage	250	1250	Homestead	1650	
Furlone, Elizabeth			Chamberlain farm	2000	
Poll		2.00	Goodrich land	125	
Gallagher, Wm. R.			Flora Hamilton		
Poll			place	1200	4975
Homestead	1200		Haskell, Wilder		147 56
1 cow	40		Poll		
1 neat stock	25	1265	1 cow	40	40
Gallagher, Blanche			Haskell, Ardelle		
Poll		2.00	Poll		2.00
Gallagher, Rose E.			Haynie, Laurence A.		
Poll		2.00	Poll		2.00
Gauthier, Louis			Haynie, Mrs. L. A.		
Poll			Poll		2.00
Carey place	1100	1100	Heath, Lester		
Gauthier, Mildred			Poll		2.00
Poll		2.00	Heath, Louise		
Grimes, Earl			Poll		2.00
Poll			Hebert, Walter		
2 cows	75	75	Poll		2.00
Grimes, Rose			Hebert, Laura		
Poll		2.00	Poll		2.00
Gibson, Edith			Henkel, Carl		
Gibson farm	2000	2000	Cottage at lake	1000	
Gilfeather, Henry			(Exempt)		1.10
Poll			Henkel, Grace		

Name and Description	Valuation	Total Tax	Name and Description	Valuation	Total Tax
Poll		2.00	Homestead	2000	
Herrick, Avis			Richardson woodlot		
Poll		2.00		25	
Herrick, Maverette			1 horse	25	2050
Poll		2.00	Hubner, Frank A.		
Herrick, Louis			Poll		
Poll			Butler place	2250	
6 cows	225		1 horse	25	
5 neat stock	130	355	8 cows	325	
Hills, Clifford			3 sheep	10	2610
Poll			Hubner, Anna C.		
Chickering land			Poll		2.00
and bldgs.	650		Humphrey, Fred C.		
1 cow	35	685	Poll		
Hills, Mary L.			Homeplace	4000	
Poll		2.00	Harvey land	200	
Holman, Nellie Est.			Hill pasture	100	
Homestead	1500	1500	Frank Burnham		
Holman, Fred			place	800	
1 cow	35	35	2 horses	100	
Holman, Alice			15 cows	750	
Poll		2.00	6 neat stock	200	6150
Hidden, Elizabeth			Humphrey, Agnes		
Poll		2.00	Poll		2.00
Hildreth, Oscar			Hutchins, Emma		
Poll		2.00	Poll		2.00
Hildreth, Mabel			Hutchins, John		
Poll		2.00	Poll		
Hilliard, Marion			Homestead	2250	
Poll		2.00	Pierce land	700	
Hitchcock, R. A.			2 horses	50	
Poll		2.00	6 cows	175	
Houghton, Fred V.			3 neat stock	60	3235
Poll		2.00	Hudson, Marshall		
Howell, Myrtle			Poll		2.00
Poll		2.00	Hudson, Mrs. M.		
Chamberlain place			Poll		2.00
	800	800	Ingalls, Harold		
Howell, Richard			Poll		2.00
Poll		2.00	Ingalls, Charlotte		
Hoyt, E. E.			Poll		2.00
Poll			Isherwood, Ruth		
Spaulding farm	4000		Poll		2.00
2 horses	125		Jacobson, Walter		
12 cows	475	4600	Poll		2.00
Hoyt, E. L.			Jacobson, Mildred E.		
Poll		2.00	Poll		2.00
Hoyt, Bertha			Jefts, Lorenzo		
Poll		2.00	Poll		
Hubbard, Leland			Homestead	350	
Poll			Franklin land	200	

Name and Description	Valuation	Total Tax	Name and Description	Valuation	Total Tax
Haskett land	100		Joslin, Marie E.		
1 horse	50	700	Poll		2.00
Jefts, Rose			Joslyn, Clinton E.		
Poll		2.00	Poll		
Johnson, Burton			Homestead and		
Cottage and lots			bldgs.	1600	
14 & 15			Pest land and		
(Shadowland)	800		camp	50	1650
Davenport place			Joslyn, Olive		
	1350		Poll		2.00
1 horse	35		Joslyn, Herbert		
1 cow	35	2220	Poll		2.00
Johnson, Lillian			Joslyn, Everett		
Poll		2.00	Poll		2.00
Jordon, Elizabeth			Joslyn, Mrs. Everett		
Poll			Poll		2.00
Homestead	2200	2200	Kent, Clara		
Jordon, Herbert			Poll		
Poll		2.00	Bellevue place	800	
Jordon, Cecil			Corbert land and		
Poll		2.00	barn	250	
Jordon, Mrs. Cecil			2 cows	80	1130
Poll		2.00	Kent, James		
Joslin, Charles			Poll		2.00
Homestead	2000	2000	Kilburn, Amy		
Joslin, Lydia			Poll		2.00
Beals land and			Knight, Henry		
barn	1000		Robbins place	1000	
Tuttle land	300		Robbins land	25	
Hildreth land	100	1400	Holman woodlot	650	
Joslin, Jessie M. B.			(Exempt)		675
Poll			Koskela, Esther		
Homestead	1600		Poll		2.00
Butler sprout land			LaPlante, Melvina		
	300		Ryans place	900	
Carpenter house			2 cows	70	970
	1500	3400	LaPlante, Geo.		
Joslin, Geo. E.			Poll		2.00
Poll			Langmaid, Norman J.		
Grist mill land			Poll		2.00
and water right	50		Langmaid, Mrs. N. J.		
Warren land and			Poll		2.00
water right	100		Lawton, Paul		
Part of Dinnigan			Poll		2.00
land	175		Lawton, Esther		
Shed and land	25		Poll		2.00
Blacksmith shop			LeBlanc, Oliver		
site	25		Poll		2.00
6 cows	250		Larkin, Wm.		
Wood and lumber			Poll		2.00
	225	850	Lilly, Nellie May		
		27.59			

Name and Description	Valuation	Total Tax	Name and Description	Valuation	Total Tax
Poll			Poll		2.00
Homeplace	1400	1400	44.14	Merrifield, Francis	
Lewis, C. K.				Poll	2.00
Store Bldgs.	2250			Mitchell, Robert E.	
Stock in trade	1500			Poll	
(Exempt)		2750	79.75	Randall farm	4000
Lynch, C. J.				2 horses	160
Poll				14 cows	750
Upper Wager				3 neat stock	60
place	400	400	13.60	4970	146.13
Lane, Florence N.				Mitchell, Ann E.	
Poll			2.00	Poll	2.00
Lane, Geo. F.				Morris, Ruth	
Poll			2.00	Poll	
Mansley, John				Hudson lot at	
Poll				lake	500
Spofford House	4500			Barrett place	900
Part Burnham lot	200	4700	143.47	Part of Webb	
				land	100
Mansley, Irene M.				1500	46.05
Poll			2.00	Morris, Susie	
Marchant, Freeman				Poll	2.00
Poll				Mulligan, Ralph	
Royce place	650	650	21.57	Poll	
Marchant, Ella R.				Cottage and land	
Poll			2.00		6700
Maynard, Charles				Mead land and	
Poll				cottage	750
Charles Davis				7450	226.25
farm	1500			Morrison, Frank E.	
Stoddard farm	1500			and Rachel M.	
1 horse	25			Brown homestead	
12 cows	425				2450
5 neat stock	115	3565	105.39	Farr land	50
Maynard, Emma				2 cows	60
Poll				2560	74.24
Martin, Barney				Murphy, Thomas	
Poll			2.00	Poll	2.00
Martin, Victoria				Mutter, Mabelle	
Poll			2.00	Poll	2.00
McGowen, James				Morrison, Frank J.	
Land and bldgs.	450			Poll	2.00
100 fowls	100			Nelson, Henry	
(Exempt)				Poll	2.00
Merrifield, C. J.				Neilson, Clarence	
Poll				Poll	2.00
Harris farm	2800			Neilson, Mildred	
1 horse	100			Poll	2.00
2 oxen	150			Neilson, Harold	
8 cows	325	3375	99.88	Poll	2.00
Merrifield, Eva C.				Nurse, John	
				Poll	
				Uncompleted cot-	
				tage	600
				600	19.40
				Nurse, Wm.	

Name and Description	Valuation	Total Tax	Name and Description	Valuation	Total Tax
Poll			Poll		
Homeplace	950		Old Engine house		
Mead woodlot	350			400	
Fletcher woodlot	100		Bonney Homestead	2000	
2 cows	80	1480	Starkey place	700	
Nurse, Marion		44.92	Storehouse	100	3200
Poll		2.00	Pearson, Eleanor J.		98.40
Nurse, Elizabeth		2.00	Poll		2.00
Poll		2.00	Pearson, Everett		2.00
Nurse, Philip		2.00	Poll		2.00
Poll		2.00	Pearson, May L.		2.00
Nurse, Lucy		2.00	Poll		2.00
Poll		2.00	Penning, Pau M.		
Orr, James Est.			Poll		
Hotel, farm house and land	4250	4250	Stone store	2000	
Orr, Florence		127.93	Stock in trade	1000	3000
Poll		2.00	Pikula, Michal		89.00
Orr, Dorothy		2.00	Poll		
Poll		2.00	Cottage on Gulf Rd.	100	
O'Donnell, Mrs.			Winslow bldg. lot	200	300
Poll		2.00			10.70
Ogilvie, Edward			Perry, Wm. I.		
Poll			Poll		2.00
1 cow	35	35	Perry, Ruth E.		
Ogilvie, Jessie		3.02	Poll		2.00
Poll		2.00	Perkins, Cyrus		
Ogilvie, Mrs. Jessie		2.00	Poll		2.00
Poll		2.00	Pickering, Stanley		
Paine, Amy L.			Poll		2.00
Poll		2.00	Cottage and land	350	350
Paine, Hazel			Pickering, Marion		12.54
Poll		2.00	Poll		2.00
Patridge, Georgiana, Est.			Phettiplace, Geo.		
Patridge Homestead	1500	1500	Homestead	900	900
Patridge, Fred		45.15	Pierce, Frank Est.		27.09
Poll		2.00	Homestead	600	
Patridge, Lyra			Stowell land	175	
Poll		2.00	Wheeler land	25	
Patridge, Grace			Bennett land	100	
Poll			Pond land	50	
Davis land and bldgs.	25	25	Thompson land	25	975
Parker, Elmer		2.73	Pierce, Guy		28.28
Poll		2.00	Poll		
Parker, Eleanor			250 fowl	200	7.80
Poll		2.00	Pierce, Naham		
Pearson, Arvid W.			Poll		
			Fred Farr home- stead	500	

Name and Description	Valuation	Total Tax	Name and Description	Valuation	Total Tax
Holman sproutland			Post, Ella		
100			Poll		
Part of Beals			Slade place	4000	
mowing	150		Butler land and		
2 horses	100		cottage	700	4700 141.47
2 cows	80		Post, Walter J.		
4 neat stock	100	1030 33.00	Poll		
Pierce, Alberta			Cottage and lot		
Poll		2.00	at lake	1000	1000 32.10
Pierce, Wm. D.			Post, Katherine		
Poll			Poll		2.00
Homestead	1000		Post, Arthur H.		
Atherton Hill			Poll		
farm	1400		Spofford garage		
Corbett land	225			6000	
Garage	300		J. F. Butler place		
1 cow	45	2970 89.86		2500	
Pierce, Rose H.			Stowell land	100	
Poll		2.00	Field pasture	100	
Pierce, Lyle W.			Sawmill and		
Poll		2.00	water rights	100	
Pierce, Rea			Foster shop and		
Poll		2.00	machinery	800	
Plante, Bessie			Fowler land and		
Poll			water rights	50	
Bertha Brown			Stock in trade	200	9850 298.49
place	750	750 23.75	Post, Harold P.		
Plante, Henry			Poll		
Poll			Uncompleted cot-		
Sawmill and			tage and lot	350	
land	1000		Mead woodlot,		
Store bldg.	1000		wood and lumber		
Blacksmith shop				800	1300 40.58
	100		Post, Lucy		
Farr mill site	150		Poll		2.00
2 Stearns wood-			Post, Wilhelmina		
lots	300		Poll		
Brown lot	300		Randall place	1250	
Harvey woodlot	250		Hammond lot	50	1300 39.70
Spring lot	50		Prouty, Iva		
Wood and lumber			Poll		
	1600	4750 139.75	Carey cottage	250	250 9.25
Plante, Perley			Prouty, Geo. W.		
Poll		2.00	Poll		2.00
Plante, Cornelia			Puffer, Nathan Est.		
Poll		2.00	Homestead	1000	1000 30.10
Porter, Rose			Putnam, Henry		
Homestead	800		Poll		
Amidon land and			C. Chickering		
barn	400		farm	2000	
Clark land	100	1300 37.70	Chamberlain pas-		

Name and Description	Valuation	Total Tax	Name and Description	Valuation	Total Tax
ture	1000		1 horse	75	4.27
Ford millsite	50		Rice, Margaret		
Waldo pasture	50		Poll		
2 horses	100		Homestead	1400	44.14
15 cows	550		Rice, Sherman, Est.		
3 neat stock	75	3825	Homestead	2800	81.20
Putnam, Olive			Richardson, Wilford		
Poll		2.00	Poll		
Putnam, Richard			Poultry houses	300	
Poll		2.00	1 cow	40	
Putnam, Dorothy			Fowl	125	465
Poll		2.00	Richardson, Beatrice		
Randall, Harold E.			Poll		2.00
Poll			Richter, Fritz		
Smith land			Poll		
(Timber exempt)			Snowling place	1000	
	125	5.63	Hewitt land	150	
Randall, Rose E.			3 cows	100	
Poll			2 neat stock	50	1300
Homestead	1350		Richter, Martha		
Woodward woodlot			Poll		2.00
	60		Robbins, Jack		
1 cow	45	1455	Poll		
Rawson, Rena			George Robbins		
Poll			place	150	150
Part Darling			Robbins, Nellie		
land	75		Poll		2.00
Darling land and			Rogers, Byron L.		
bldg.	250		Poll		
Fletcher land	25		Campanello land		
1 horse	25		and bldg.	400	400
1 cow	35	410	Rogers, Lenora G.		
Rawson, Pearl			Poll		2.00
Poll		2.00	Rowe, Alice		
Record, Wallace			Poll		
Poll		2.00	Crowningshield		
Record, Pauline			farm	750	
Poll		2.00	Royce land	125	
Redding, John			2 horses	50	
Poll			2 cows	70	995
Homestead	1300		Rowe, Percy		
Lincoln place	600		Poll		2.00
Parks place	500		Rowe, Chester		
Leach lot	100		Poll		2.00
Forbes lot	40		Rowe, Raymond		
2 horses	75		Poll		2.00
14 cows	650	3465	Royce, Dennis		
Redding Edna			Home place	700	
Poll		2.00	1 cow	30	730
Reed, Edward			Robbins, Arthur F.		
Poll			Poll		2.00

Name and Description	Valuation	Total Tax	Name and Description	Valuation	Total Tax
Riley, Robert Poll		2.00	Shippee, Clarence L. Poll		
Riley, Agnes Poll		2.00	Harris garm 1250 2 cows 90	1340	40.86
Rolfe, Bertha Poll		2.00	Shippee, Dorothy Poll		2.00
Ryder, Thomas Poll		2.00	Smith, David J. Spring land and bldg. 1000		
Ryder, Helen Poll		2.00	(Exempt)		
Sanderspree, Eva L. Poll			Smith, Anne L. Poll		2.00
Cless Davis farm 3500			Smith, Robert D. Poll		
Hobbard farm 100 1 horse 35	3635	107.42	Land and cottage 400	400	13.60
Sanderspree, Jennette M. Poll		2.00	Slack, Raymond S. Poll		2.00
Schiewe, August Poll			Snow, Clarence, Est. Gilson land 50	50	1.45
Homestead 1000 1 cow 40	1040	33.30	Snow, Harry C. Poll		
Schiewe, Mrs. A. S. Poll		2.00	Sugar Hill orchard 100	100	4.90
Schlichting, Jessie Poll			Spaulding, Roger C. Poll		
Homestead 500	500	17.05	Home place 2000 Newman place 25		
Schlichting, Otto S. Poll			Bldg. lot So. woods 10		
Homestead 1400	1400	44.14	Cornell pasture 600 Part Cressy farm 75		
Schlichting, Otto W. Poll		2.00	Fisk homestead pasture 400		
Schlichting, Margeret Poll		2.00	Part Currier farm 50		
Schlichting, Paul J. Homestead 1000		1.10	1 horse 125 5 cows 250	3535	104.52
(Exempt)			Spaulding, Alice L. Poll		2.00
Schlichting, Katherine Poll		2.00	Smith, Leon Poll		2.00
Schlichting, John C. Poll		2.00	Spofford Garage, Inc. Stock in trade 500	500	15.05
Schlichting, Muriel E. Poll		2.00	Springer, Clarence F. Poll		
Schairi, Julian Poll		2.00	Homestead 1500 Presho land 200		
Shippee, Wallace Poll			Presho lily pond lot 200		
Building lot 200	200	7.80	Streeter lot 100		
Shippee, Beulah Poll		2.00			

Name and Description	Valuation	Total Tax	Name and Description	Valuation	Total Tax
2 horses	125		1 horse	50	
5 cows	200		4 cows	175	
Machinery	100	2425	1 neat stock	25	
Springer, Edna E.			Fowl	125	1575
Poll		2.00	Thomas, Bertha E.		
Stevens, Edythe			Poll		2.00
Poll			Thomas, Dexter A.		
Sally Lunn Tea			Poll		
house	3500	3500	2 horses	75	
Stevens, Ralph C. &			6 cows	200	275
Edythe A.			Thomas, Genevieve		
Field place	1400	1400	Poll		2.00
Stevens, Edythe &			Thomas, George C.		
Woods, Ruth			Poll		
Todd place	3000	3000	Near Lake Inn	5000	
Stoddard, Erwin J.			Boyce land	400	5400
Poll			Thomas, Mrs. George		
Winn place	800		Poll		2.00
2 horses	100		Tarbox, Allen P.		
10 cows	350		Poll		
3 neat stock	50	1300	2 horses	125	
Stoddard, Marian E.			1 cow	40	
Poll		2.00	Portable mill	500	665
Stoddard, Fred J.			Tarbox, Ethel		
Poll			Poll		2.00
Garage	400		Thompson, Alzada		
Grange house and			Poll		
lot	100	500	Davis land and		
Stoddard, Margaret			bdgs.	500	500
Poll		2.00	Turner, Gerald		
Stoddard, Emma			Poll		
Poll			2 cows	75	75
Homstead	700	700	Turner, Minerva		
Streeter, Louis J.			Poll		2.00
Poll			Tuttle, Clifford W.		
Hildreth place	1200		Poll		
Goodrich land	300		Store building	2500	
1 cow	40	1540	Beckley house	1400	
Streeter, Doris			Warren land	100	
Poll		2.00	Stock in trade	2500	6500
Stoddard, Leon F.			Tuttle, Viola V.		
Poll		2.00	Poll		2.00
St. Laurence, Edith			Tuttle, Charles A.		
Poll		2.00	Poll		
Streeter, Harlan L.			J. Beals land	500	500
Poll		2.00	Tuttle, Geo., Est.		
Streeter, Gertrude M.			Hopkins place	1500	
Poll		2.00	Pierce pasture	350	1850
Thomas, Albert M.			Trafton, Miles		
Poll			Poll		2.00
Homstead	1200		Trafton, Mayme		

Name and Description	Valuation	Total Tax	Name and Description	Valuation	Total Tax
Poll		2.00	Fowl	675	113.80
Trafton, Miles & Mamye			Welcome, Clara S. Poll		2.00
Stratton homestead	1000		Welcome, Grace Poll		
5 cows	175		2 oxen	150	
3 hogs	25		16 cows	600	
Fowl	125	1325	1 neat stock	25	
Underwood, Bertha		41.86	2 hogs	25	800
Poll			Welcome, Paul E. Poll		2.00
Homestead	1200		Welcome, Roger S. Poll		2.00
1 horse	25		Wellington, Clara Poll		
1 cow	35		Cottage	650	650
3 neat stock	65	1325	Wellington, Donald A. 1 cow	40	40
Underwood, Raymond		40.43	White, George S. Poll		2.00
Poll			White, Marjorie L. Poll		2.00
2 horses	80		White, George F. Poll		
3 cows	100		Scott farm	2300	
1 neat stock	15		Fowl	600	2900
Fowl	100	295	White, Mrs. Geo. Poll		2.00
Underwood, Corrine A.		10.56	Wilde, Lila M. Poll		
Poll		2.00	Edgar homestead	1800	1800
Watts, Frank			Williams, Etta M. Poll		
Poll			Wm. Smith place	1800	1800
Wheeler farm	2000		Williams, Dan Poll		
1 horse	25		Patridge place	2000	
2 cows	80		1 horse	50	
2 hogs	20	2125	8 cows	400	2450
Watts, Margaret B.		63.63	Williams, Flossie M. Poll		2.00
Poll		2.00	Whorfe, Frank Poll		2.00
Watts, John			Whorfe, Mary Poll		2.00
Poll		2.00	Wilson, Arthur L. Jr. Poll		2.00
Ware, Sidney			Wilson, James A. Poll		2.00
Poll		2.00			
Ware, Mary					
Poll		2.00			
Washburn, Lester					
Poll		2.00			
Washburn, Viola					
Poll		2.00			
Webb, Elizabeth, Est.					
Homestead	3800				
Royce pasture	400	4200			
Webb, Ruth Mary		121.80			
Poll					
Puffer place	700	700			
Welcome, Edward L.		22.30			
Poll					
Homestead	3000				
Colburn farm	100				
2 horses	80				

Name and Description	Valuation	Total Tax	Name and Description	Valuation	Total Tax
Wilson, Jessie C. Poll		2.00	Land and cabin 200 (Exempt)		
Wilson, Edwin H. Poll		2.00	Winchester, Cherry Poll		2.00
Winn, Harry Poll			Winslow, E. James Poll		
Smith farm 2750			Skyline farm 2300		
1 horse 25			1 cow 40	2340	69.86
6 cows 240			Winslow, Emma A. Poll		2.00
3 neat stock 75	3090	91.16	Wood, Flora M. Poll		
Winn, Evelyn L. Poll		2.00	Tenny place 900	900	29.09
Winn, Lucy W. Poll			Woodward, Fred Poll		
Rugg place 900			2 horses 75	75	4.18
1 horse 25	925	28.83	York, C. D. & Daisy Allen Homestead 2500		
Winn, Celia Poll			Eddy land 100	2350	70.74
Homestead 900	900	28.10			
Williams, Miller					

NON-RESIDENT INVOICE AND TAXES FOR THE YEAR 1938

Name and Description	Valuation	Total Tax	Name and Description	Valuation	Total Tax
Adams, Ernest W. Lot No. 21 Shadowland \$100	\$100	\$3.01	Hersh lands 200	200	5.80
Albee, Emily M. Albee cottage 5000	5000	150.50	Amsden, Madeline Cook farm 3000		
Aldrich, Mrs. R. W. Pearson cottage 5000	5000	150.50	Turner Falls lot 500	3500	101.50
Allen, Raymond Amidon land 25			Arms, Jane B. Cottage & Webb land 75	75	2.18
Stone land 400			Austin, Mary R. Staten cottage 1750	1750	52.68
Stone farm 1650	2075	60.18	Averill, Richard, Est. Wheeler farm 300		
Allen, Warren B. Ferry site 50			Amidon farm 1700		
Ware place 600			Home cottage 5000		
Davis woodlot 200	850	24.65	Land back of Silverdale 250		
Alexander, Percy C. & Hetta B. Pishon land 750	750	22.58	Island 4000		
Allen, Louis I. 4 pumps 340	340	10.25	2 Silverdale cottages 6000		
American Steel & Wire Co. Leonard, Clark &			Icehouses and land 500	17750	532.08
			Ashuelot Reel Co. care J. H. Proctor Chamberlain lot 100		

Name and Description	Valuation	Total Tax	Name and Description	Valuation	Total Tax
Lewis & Taylor lot	450		½ int. Muckel hill pasture	750	2750 79.75
Carter lot	100		Bernier, Nelson		
No. 2 Carter lot	375	1025 29.73	Presho land and bldgs.	250	250 7.25
Barber, Frank P.			Berry, Geo. W.		
Telfer camp	350	350 10.15	Westview house	2500	2500 72.50
Barber, Geo. E.			Burt, John, Est.		
Pasture	1500		Buffum land	150	150 4.35
Goodrich land	300	1800 52.20	Beverstock, Blanche		
Barden, James W.			Cottage at lake	2500	2500 75.25
Lot No. 3			Black, Adella M., Est.		
Shadowland	75	75 2.27	Bungalow and garage	1500	1500 43.50
Barker, E. C., C. F. & C. L.			Blake, H. M.		
Lots No. 1 & 10			Cottage at lake	1400	1400 42.14
Shadowland	550		Bliss, Laura E.		
Albee and French land	500	1050 31.61	Lot No. 25		
Barrett, Clifton H.			Shadowland	75	75 2.27
Snow homestead	1800		Boisvert, E.		
Streeter hill sproutland	500	2300 66.70	Madden woodlot	60	60 1.74
Barrows, E. B.			Bothwell, Ada		
Wood and lumber	1200	1200 34.80	Homestead	1000	
Barrows, F. K.			Land opposite	100	1100 31.90
Land and cottage at lake	8000		Bowker, Arthur		
Land and cottage at river	350	8350 251.06	Patridge land	1200	1200 34.80
Beacon Oil Co.			Boyden, Charles		
4 pumps	180	180 5.22	Cottage at lake	4500	4500 135.45
Becker, Eva			Bowne, Lloyd		
Cottage and garage	1200	1200 36.12	Gage land	200	200 5.80
Beers, Charles			Brattleboro Retreat		
Part of Bunnel Farm	1000	1000 29.00	Mountain land	3500	
Beers, Ida			Spaulding land	600	
Land and stand	350	350 10.15	Safford land	600	
Bell, John			Mountain land	300	5000 145.00
Lot No. 34			Brattleboro Trust Co.		
Shadowland	25	25 .76	Davidson cottage at lake	1750	1750 52.68
Bennett, Frank			Brown, Lenna, Est.		
Cottage at lake	2000	2000 60.20	Randall land	125	
Bennett, Florence			Chamberlain land	50	175 5.08
½ int. Robertson homestead	1200		Brown, Zilla M.		
½ int. Streeter lot	800		Cottage at lake	2250	2250 67.73
			Brown, Dr. H. L.		
			Cottage and sproutland	1750	
			Day pasture	400	2150 62.35
			Buffum, E. C.		
			½ int. C. Buffum place	400	400 11.60

Name and Description	Valuation	Total Tax	Name and Description	Valuation	Total Tax
Buffum, Oliver ½ int. Buffum place (Exempt)	400	400	Blodgett land	25	25 .73
Burbank, Mary Farr land	200	200 5.80	Carlton, Frank P. Sprout land	100	100 2.90
Butler, Bessie Wheeler pasture	400	400 11.60	Chambers, John Lot No. 2 and cot- tage Shadow- land	900	900 27.09
Butler, Thomas Withington lot	200		Chamberlain, Elmer B. Charles Chamber- lain place	1500	
Davis lot	100	300 8.70	Wm. Chamberlain land	300	
Butler, Alice Kelly land	100		(Exempt)		800 23.20
Butler pasture	1000		Chapman, Laurence Fullam mill site	150	150 4.35
Merritt land	150	1250 36.25	Chandler & Kingsley Lot No. 11 Shadowland	200	200 6.02
Butler, Richard Lyman Royce land	125	125 3.63	Chamberlain, Helen K. Gruber cottage	1500	1500 45.15
Butler, Sideny Cottage at lake	2500	2500 75.25	Chandler, Eleanor S. Cottage at lake	1500	1500 45.15
Burnette, Virginia Fieldstone lodge	10000	10000 301.00	Chatfield, Thomas Homeplace	2000	2000 58.00
Calef, Robert Naylor place	2000		Cheshire, Oil Co. 4 pumps	340	340 9.86
Truel land and timber	2000	4000 116.00	Cheshire County Barber woodlot	350	350 10.15
Callahan, Richard Lot No. 7, Shadowland	500	500 15.05	Chesterfield Lumber Co. %Mrs. John Mc- Cormick Hubbard farm	1000	1000 29.00
Campanello, Joseph E. Carey place	700	700 20.30	Chickering, Fannie Amidon cottage	1750	1750 52.68
Camp Marquette care J. T. B. Fisher Lakeside prop- erty	12000		Christman, Henry Cottage at lake	3300	
Boats	200	12200 367.22	½ int. Merchant place	50	3350 100.84
Camp Notre Dame Land and bldgs.	25000		Chickering, H. E., Est. %Herman C. Chickering Chamberlain pas- ture	200	
Boats	200	25200 758.52	Stone land	150	
Capron, Ida Worcester hill lot	50	50 1.45	Chickering home- stead	1200	1550 44.95
Carey, Forrest Cole lot	200		Clapp, Emily R. Clapp cottage	3100	
Timber on Pierce lot	350	550 15.95			
Carmick, Prudence Smith farm	1500				
Randall cottage	700	2200 63.80			
Carlton, Paul & Eva					

Name and Description	Valuation	Total Tax	Name and Description	Valuation	Total Tax	
Lindstrom cottage	2750	5850	176.09	Transmission lines	4500	
Clapp, Geo. W. Land at lake	20	20	.60	Vernon flowage rights	4500	9000 261.00
Clark, Dr. W. K. Cottage at lake	5000	5000	150.50	Coughlin, Junie G. Fisk cottage and land	3500	3500 105.35
Clark, Walter I & Annie B. Adams cottage on river	500	500	14.50	Crandall, Mrs. I. H. Joslin land and cottage	5000	
Clawson, Neil D. (Guardian) Geo. Hamilton place	2500	2500	75 25	Joslin lot at lake	500	5500 165 55
Cobb, Bernice Bodner camp	100	100	2.90	Cushman, Charles McGowan farm	1100	1100 31.90
Cobb, John Wood and lumber	100	100	2.90	Damon, Belle E. (Agent for C. P. Bliss) Pierce homestead	2750	
Cobb, Paul D. Cottage at lake	1500	1500	45.15	Part of Burnham land	150	2900 87.29
Cole, Fred Land near C. Scott farm	100	100	2.90	Davidson, Dr. R. W. Stearns cottage	9000	
Coffin, Eaton L. Part Crowning-shield farm	750	750	21.75	Stearns land and garage	1000	
Colony, John & Charles Bennett lot	150			Pump	85	
Joslin lot	450	600	17.40	Boats	300	10385 312.60
Colony, Laurence D. Ben Wheeler lot	60	60	1.74	Davis, Cadman Amidon woodlot	75	75 2.18
Colony, Horatio, Est. Stowell place	58000			Davis, Bertha Butler land	100	100 2.90
Derr cottage	2500			Dearborn, Jessie Cottage and land at lake	1500	1500 45.15
Woodbury lot	2800			Deering, Ernest Frank Robbins place	250	250 .28
Woodward So. pasture	500			Denault, Laurence Lot No. 22 Shadowland	75	75 2.27
Sherman lot	800			Desjordins, Rene Lot 30 Shadowland	25	25 .76
Scripture lot	5000			DeWitt, Armon L. Lot No. 48, Shadowland	25	25 .76
Joslin lot	5500			DeWitt, Geo. A. Jennings lot	100	100 2.90
Hill and Russell lots	1200			Dickinson, LaFell Land and timber	7000	7000 203 00
Fairbanks & Chamberlain lots	300	76600	2287.95	So. woods		
Colton, Ruth Lot 31 Shadowland	25	25	.76			
Conn. River Power Co.						

Name and Description	Valuation	Total Tax	Name and Description	Valuation	Total Tax
Dickinson, Josie			Ellery, Laurence V.		
%E. T. Dickinson			Whittaker place 150	150	4.52
Lot 7, Range 2 500	500	14.50	Estey, Allethaire		
Dickinson, Milan			2 cottages at lake		
(Estate)			5000	5000	150.50
%E. T. Dickinson			Estey, Thomas C.		
Isaac Stratton lot			Cottage and land		
7000			at lake 5000	5000	150.50
Schlichting lot 800			Emerson, Harry		
Wilbur lot 1000			Cottage and land		
Barker pasture 1100			at lake 6000	6000	180.60
Bear hill lot 800			Emery, Bert, Estate		
Field pasture 100			%Forest Emery		
Carter lot 250	11050	320.45	Geo. Robbins'		
Dodds, Mary R.			place 75	75	2.18
½ int. in Streeter			Edgar, Ida		
lot 800	800	23.20	Woodlot 200	200	6.02
Dort, Mrs. Kate C.			Fairfield, Ethel R.		
Cottage at lake 3000	3000	90.30	Cottage at lake 5000	5000	150.50
Douglas, Dr. Charles			Fair, Winfield		
Case cottage 5500			Part Ford farm 25	25	.73
Land and boat			Farr, F. O. C., Estate		
house 1000	6500	195.65	%Dwight Stone		
Dodge, Merrill			Harvey land 500		
Home place 500			Fletcher land 225	725	21.03
Spaulding land 375			Fisher, Mabel		
Yeager land 25	900	26.10	Hunt place 150	150	4.35
Duane, Mrs. John			Feather, Arthur		
Howe land 150	150	4.35	Cottage and land		
Dunbar, Charles and			900	900	26.10
Robbins, Wallace			Fisher, Samuel		
Frank Holman			Cottage at lake 1750	1750	52.68
farm 1000			Fisher, Fred L.		
3 cows 100	1100	31.90	Brown cottage 1600	1600	48.16
Dunham, John L.			Fisher, Arthur		
Norwood cottage			Norcross pasture 500		
3000	3000	90.30	Beals land 100	600	17.40
Dunham, Mary			Forbes, Mrs. Roxie A.		
Homestead 400			Bowker land 90	90	2.61
Paro land 25	425	12.33	Ford, Geo. R.		
Dutcher, Alphaena			Clark cottage 8000	8000	240.80
Sunny Hill farm			Fordrung, Dr. W. J.		
1900	1900	55.10	Cottage and land		
Eames, Robert			3500		
Lot No. 29 Shad-			Charles A. Tuttle		
owland 25	25	.76	homestead 1500	5000	150.50
Ebbinghausen, Chas.			Freeman, Ralph,		
Indian Pond land			Estate		
10			%R. L. Freeman,		
Streeter home-			Admin.		
stead 1600	1610	46.69	Pasture land 100	100	2.90

Name and Description	Valuation	Total Tax	Name and Description	Valuation	Total Tax
Fredette, Fred			Harris, Charles A.		
Wallace pasture 400	400	11.60	2 cottages and land 9500		
Furgerson, Clarence			Barker land 500	10000	301.00
Cobb cottage 3000	3000	90.30	Hatch, Walter		
Gabree, Amy W.			Cottage at lake 2250	2250	67.73
Cottage and land at lake 1600	1600	48.16	Harvey, Elsie		
Galletti, Louis A.			Part of Marsh land 750	750	21.75
Truell land and buildings 2000	2000	58.00	Harvey, Melvin G.		
Gaston, William G.			Woodlot So. woods 250	250	7.25
E. Ball place 2250	2250	67.73	Haus, E. J. & B. H.		
Geham, Winfield			No. 4 Silverdale 4000	4000	120.40
Dunham farm 1000	1000	30.10	Hawkins, Dean		
Goodell, Clifford			Old hotel property 1200	1200	34.80
Newman lot 500			Heighton, Henry F.		
Butler pasture 250	750	21.75	Homeplace 850	850	25.59
Groenwold, Phillip			Hildreth, Lena		
Torrey place 1500	1500	43.50	%C. Hall		
Goldstein, Nathan			Pierce lot 100		
Cottage at lake 6500			Stockwell land 100		
Part of Wells lot 1000	7500	225.75	Hill pasture 500	700	20.30
Gulf Oil Corporation			Hill, Lyle W.	150	4.35
2 gas pumps (1 Lewis) (1 Plante) 60	60	1.74	Hinds, Winfield		
Hadlock, Leslie			Hinds homestead 2500		
Houghton cottage at river 900	900	26.10	Hopkin's and Butler land 150		
Hall, Blanche C.			Eben Brown place 300		
Idlewilde cottage 4000	4000	120.40	Sarah Draper 200		
Hamilton, Fred M.			Taylor land 350		
Cottage and land 600	600	18.06	Carter land 125		
Hannum, William			Hinds lot 45		
Jeffrey lot 50	50	1.45	Wilcox land 30	3700	107.30
Hardy, George M.			Hinds, Calvin, Estate		
Cottage and land at lake 1000	1000	30.10	Mill site 50	50	1.45
Hart, Mrs. E. E.			Hoagland, Ogden M.		
%Clarence Furgerson			Jackson Hill farm 10000		
Furgerson cottage 7000	7000	210.70	Sanderson pasture 800		
Hartt, Leroy F.			Hawes lot 250	11050	320.45
Burbank place 8000			Holbrook, Clara, Estate		
1 horse 75			Harris farm 2000	2000	58.00
3 cows 110			Holden and Martin		
Fowl 25	8210	238.09	Liscom lot 200		

Name and Description	Valuation	Total Tax	Name and Description	Valuation	Total Tax
Wood and lumber			Mabel		
Holton, R G. & R. C.	250	13.05	Cottage at lake	2250	67.73
Kelly woodlot	800	23.20	Johnson, John P.		
Holland, Mrs. Henry			Lot No, 43 Shad-		
Cottage at lake	1500	45.15	owland	25	.76
Holmes, Dr. R. W.			Joslin, Mrs. Charles		
Cottage at lake	5500	165.55	Cottage at lake	4500	135.45
Holroyd, Jack			Jacobson, Abe H.		
Building lot	300	8.70	Pine Grove Springs		
Hopkins, Harry D.			Hotel	60000	
Land and timber			Shop and water		
So. woods	5000		rights	500	
Buffum sprout-			Ware land	600	
land	450		Pearson land	500	
Buxton lot	200		Boats	200	61800
Albee lot	25				1860.18
Franklin lot	100		Kaiser, Joseph, Jr.		
Fletcher pasture	300	6075	Cottage at lake	5000	5000
Hopkins, Maude		176.43	Keene Chair Co.		
Harris cottage	3500		Davis lot	700	
Lumber yard			Snow lot	100	800
(Spofford)	200		Keene Savings Bank		
Wetherby pasture			La Fountain land		
	1000			100	100
Benj. Pierce pas-			Keene Nat'l Bank		
ture	200	4900	Ossego cottage	3500	3500
Hopkins, Benj.		146.17	Kingsbury, Margaret		
Slade slash land	600	600	Cottage and land		
Horton, Sarah			at lake	600	600
Fred Holman			Kingsbury, Lillian		
place	1400	1400	Huntress cottage	6000	6000
Horton, E. A. C.		42.14			180.60
Lot at lake	400	400	Kingsbury, Lottie		
Hosley, Ralph			Wilcox cottage	4500	4500
Lot No. 3 Shadow-			Kingsbury, Charles		
land	500	500	Carpenter lot	1500	1500
Hulme, Geo.		15.05	Kingsbury, Harry J.		
Dutcher land and			2 cottages at lake		
cottage	1000	1000		6800	6800
Huntley, Clark		30.10	Kingsbury, Thayer		
Lot No. 26 Shad-			Porter boathouse,		
owland	25	25	land and build-		
Jacobs, Arthur &		.76	ings	3300	3300
Minnie			Kingsbury, Fredrick		
Lot No. 26A			N.		
Shadowland	50	50	Porter cottage	6000	6000
Jacobs, Cecil		1.51	Kuhlke, Florence,		
Lot No 27 Shad-			Eleanor & George		
owland	25	25	Cottage at lake		
Johnson, Charles &		.76		16000	
			LaPoint farm	4000	20000
			Kirkwood, Samuel		602.00

Name and Description	Valuation	Total Tax	Name and Description	Valuation	Total Tax
Hastings lot	50	1.45	Mansley, Herbert		
Lackey, Eunice			Truel land and		
Lot No. 32 Shad-			cottage	900	26.10
owland	25	.76	Marshall, Mrs. Flor-		
Lambert, Mrs. Corne-			ence		
lia P.			Chas. Chamberlain		
Cottage and land			place	1500	43.50
at Conn. river	3000	87.00	Marshall, Carl		
3000			Cut-over land	75	2.18
Lathrop, Royden H.			Marsente, Theodore		
Stoddard place	2300	66.70	Herrick farm	1800	52.20
Langley, Margaret			Martin, Frank H.		
½ int. Muckel hill			Cottage at river	250	7.25
	750	21.75	Martell, G. C. & B. J.		
Leach, Dr. C. S., Est.			Lot No. 33 Shad-		
%Lillian M.			owland	25	.76
Leach, Exec.			May, Ethel R.		
Cottage at lake	2000	60.20	Cottage at lake	2250	67.73
LeVine, Louise			McCoy, Alice		
Davenport			Madden place	2000	
Pierce cottage	2000	60.20	Hubbard land	200	63.80
Licari, Marie			McDonold, E. J.		
Part Marsh farm			Puffer place	1200	36.12
	750	21.75	McGillicuddy, Lucre-		
Little, Emma K.			tia E.		
No. 6 Silverdale			Cottage at lake	2000	60.20
cottage	4000	120.40	McLeon, George		
Lloyd, Fred H.			Lot No. 19 and		
Camp and lot	200	5.80	unfinished cot-		
Longfelder, Jane B.			tage	500	15.05
Jefferey hill land			Mehren, Grace		
	500	14.50	Faulkner land	3500	
Lyle, Mrs. Cornelius B.			Puffer place	2500	177.85
McDonold cottage			Merwin, Stuart C.		
	8000	240.80	No. 7 Silverdale		
Livingston, Dr. H.			cottage	3500	105.35
Colburn farm	1600	46.40	Mitchell, Jessie V.		
Lombard, Valory &			Kaiser garage		
Leveritt			and lot	1300	39.13
Carroll cottage at			Morse, Mrs. Sewall		
lake	1250	37.63	Cottage at river	200	5.80
Malonev, James			Miller, Frank		
Geo. Tuttle place			Rhinesmith place		
(2 tracts)	800	23.20		300	8.70
Manch. Wm. R.			Mosher, D. A.		
Ware's Grove	15000		Camp on river	200	5.80
7 boats	100		Murray, Ethel M.		
Stock in trade	300	463.54	Smith cottage	1500	45.15
Manley, John			Murray, Pauline &		
French lot	300	8.70	Henrietta		
Manley, Warren			Cottage and land	750	22.58
Pierce cottage	10000	301.00			

Name and Description	Valuation	Total Tax	Name and Description	Valuation	Total Tax
New England Box Co.			Slade land	100	
Capron lot	100		Bump land	200	
Buffum lot	25	125	Blodgett land	600	
N. E. Woodenware Co.			Upper part of Scott farm	45	
Tenny lot	150		Amidon cottage & boat house	1750	
Hewitt lot	1000	1150	Barn and land both sides of road	500	
Nichols, Hazel S.			Fintell lot	25	
Sheldon Ramble cottage	10000	10000	Jessie Hinds place	400	
Nims, Arthur			Amidon land S. woods	1500	
Cottage and land at lake	3000	3000	Shore front next to Amidon cottage	250	
Norwood, Leon C.			Atherton land	200	
Land and shack	150	150	2 horses	250	
Nosek, Harry			1 neat stock	15	
Tea room and camps	8500		10 hogs	100	
Boats	500	9000	Wood and lumber	17500	25935
Oakman, Frank B.					759.77
Crouch spring land	800	800	Pishon, Melvin J.		
O'Connor, P. L.			Bagshaw property	7,250	7250
Fales pasture	200	200			218.23
O'Neil, Lena			Place, Lenora		
Green cottage	2200	2200	Pierce cottage	2500	2500
Osborn, H. B.			Porter, Walter R.		
Nurse place	450	450	Land opposite cottage	750	750
Patnode, Norbert					22.58
Cottage at Fuller pond	75	75	Porter, Eva		
Parker, C. A.			Darling land	600	600
Eddy cottage	350	350	Prague, Edward L.		
Pearson, William			Cottage at lake	1000	1000
Parker cottage	8500		Prentiss, John		
White pasture	600		Cottage at lake	3500	3500
Slade lot	50		Proctor, Ralph		
Fay lot	150	9300	Colburn lot	700	
Pierce, Cora			Currier lot	500	1200
Marsh land	200	200			34.80
Penn, Dewette N.			Proctor, Annie & Mildred		
Sanford land	50	50	Rockwell cottage	2250	2250
Pierce, Harry A.					67.73
Joe and Geo. Pierce farm	800		Protestant Episcopal church		
Babbitt land	200		% Joseph Mathews		
Stone land	100		Old schoolhouse lot	200	200
Buffum land	50				6.02
Land near Roundy Cottage	100		Public Service Co.		
Cottage on No. shore	1250				

Name and Description	Valuation	Total Tax	Name and Description	Valuation	Total Tax
N. H. Transmission & distrib. lines			W., Estate		
29875			2 cottages at lake	5000	5000 150.50
Meters and transformers	7930	37805 1121.65	Robinson, Helen Keyes		
Puffer, Clara			Camp Nitawa	5000	
Puffer pasture			Indian Acres	800	5800 173.70
3600			Rothe, Emil & Clara		
Andrews & Gilson land (timber exempt)	500	4100 118.90	Rawson place	500	500 14.50
Putney, Maude R.			Russell, George T.		
Cottage at lake	2000		Prouty hill lot	1500	
Roundy garage	300	2300 69.23	Fox hill lot	1000	
Quigley, Mary C.			Windham lot	800	
Sargent cottage	2200	2200 66.22	2 Whitcomb lots	150	
Randall, Harry			Oakman lot	150	3600 104.40
Lot No. 6 Shadowland and cottage	1250	1250 37.63	Russell, Whitman		
Rawson, Minor			Cottage at lake	1500	1500 45.15
Upper part Fletcher pasture	100	100 2.90	Ryan, Henry		
Reynolds, John			Beers cottage and land	400	400 11.60
Lot No. 35 Shadowland	25	25 .76	Ryan, Mary		
Rive, Herman C.			Lower meadow		
Land and cottage	5000	5000 150.50	Ryan place	100	100 2.90
Rice, Wayne H.			Ryder, Nellie		
Cray land	100	100 2.90	Brookside	800	
Richardson, Walter J.			Convalescent home	3000	
Land and buildings	200	200 5.80	Stock in trade	50	3850 115.89
Riley, Daniel F.			Sanderson, Mrs. E. B.		
Cottage at lake	2250	2250 67.73	Pasture land	300	300 8.70
Ringland, Elmer L.			Schmidt, John P.		
La Point place	1250	1250 37.63	Walter Thomas place	3000	
Robertson, Byron			Cottage	600	3600 104.40
Estate			Scott, Lucy		
Presho farm	500	500 14.50	O Scott house	lot	50 50 1.51
Robertson, Ellis			Seaver, Lloyd S.		
½ int. Robertson homestead	1200	1200 34.80	Cottage at lake	1250	250 8.63
Robertson, Myrtle E.			(Exempt)		
Cottage at lake	2500	2500 75.25	Seaverns, Florence W. and Houghton		
Robertson Co.			Cottage at lake	4000	4000 120.40
Fullam water right	200	200 5.80	Sennning, Helen B.		
Robertson, Edwina			Brainard farm	1000	1000 30.10
			Shaw, Ira, Estate		
			Shaw homestead		
			500	500 14.50	
			Shell Union Oil Corp.		
			2 pumps and tanks	320	320 9.28

Name and Description	Valuation	Total Tax	Name and Description	Valuation	Total Tax		
land	8	208	6.03	Millsite on Gulf Rd.	25	25	.73
Taft, Violet				Watson, H. C.			
Cottage near Field place	700	700	21.07	Day farm	2250		
Taft, Lilla G.				Cottage	500		
Glebe lot	150			Garage	900		
Smith land	50	200	5.80	2 cows	75	3725	108.03
Taggart, Everett J.				Watson, Harry W.			
Lot 3 12 Shadowland	200	200	6.02	Cottage at lake	3000		
Tasker Brothers				Land across road	100	3100	93.31
Cottage on river	600	600	17.40	Walston, Earl			
Taylor, H. W.				Sawmill and cottage	500	500	15.05
Wright pasture	400	400	11.60	Wheeler, Warren H.			
Taylor, Minnie				Huldeyanna cottage	2000	2000	60.20
Cottage and boat-house	2750	2750	82.78	Williams, Don J.			
Telfer, R. Bligh				Leonard land	400		
Land and camp	300	300	8.70	Robinson land	250	650	18.85
Thomas, Walter				Whitcomb, F. H. & J. F.			
Sargent land	50	50	1.45	Holbrook lot	100	100	2.90
Thomas, Ethel A.				Whitcomb, Fred J.			
Hubbard farm	2500	2500	72.50	H. D. Pierce lot	100		
Thomas, Fred, Estate				Trask meadow	100	200	5.80
Cook land	100	100	2.90	Whitcomb, J. H. & H. C.			
Tinkham, Wayne C.				Stoddard Cottage	1750	1750	52.68
Lot No. 4 Shadowland and cottage	700	700	21.07	Wilcox, Perley			
Toof, J. F., Estate				Camp on river	200	200	5.80
%Philip Faulkner				Williams, Helen			
Patrick Hare lot	200	200	5.80	Lovejoy			
Turato, Josephine				Belmont farm	4000	4000	116.00
Yeager farm	600	600	17.40	Williams, Malcomb D.			
Turner, Olive				Amidon cottage and boathouse	3250	3250	97.83
(Estate)				White, H. P.			
%Mabel Murchough				%Ed. Ogilvie			
1-3 int. Chamberlain place	200			Barns place	1400	1400	40.60
1-3 int. Thompson land	8	208	6.03	Wade, Louise			
Turner, Cecil C.				Part Hadlock land at river and cottage	150	150	4.35
Cottage at lake	2250	2250	67.73	Wilcox, Allen C.			
Tuttle, Sidney				Snow farm	1200	1200	34.80
Pratt woodlot	300	300	8.70	Whitcomb, Cecil J.			
Tuttle, Jessie				Jess Brown lot	50	50	1.45
Part of Cressy farm	450	450	13.05	Whitney, Esther L.			
Wager, Bidwell							

Name and Description	Valu- ation	Total Tax	Name and Description	Valu- ation	Total Tax
Annie Foster place 1300	1300	39.13	Wirth, E. H. Butterfield place 300 ½ int. Merchant place 50	350	10.54
Whitney, Roy V. Cottage and gar- age at lake 3000	3000	90.30	Wright, A. M. Lot at lake 2000	2000	60.20
Whittemore, Willie E. Lots No. 16, 17, 18, Shadowland 275	275	8.29	Wright, Ernest Cottage and land on river 300	300	8.70
Woods, Richard D. Holman homestead 2000	2000	60.20	Worcester, Alice L. Rixford pasture 25	25	.73
Woodbury, Flora Sprout land 400	400	11.60	Wright, Priscilla M. Stearns place 600	600	17.40
Whitney, Adelle Naylor place 700	700	21.07	Weissenback, Robert Corliss farm 2000	2000	58.00
Woods, Carroll Cottage on river 350	350	10.15	Yeaw, Ralph Cottage and land 700	700	20.30
Woodward, Roby Cottage at lake 4000	4000	120.40			

BUDGET OF THE TOWN OF CHESTERFIELD

ESTIMATES OF REVENUE AND EXPENDITURES FOR
THE ENSUING YEAR FEB. 1, 1939 TO JAN. 31, 1940
COMPARED WITH
ACTUAL REVENUE AND EXPENDITURES OF THE PRE-
VIOUS YEAR FEB. 1, 1938 TO JAN. 31, 1939

SOURCES OF REVENUE

	Actual Revenue Previous Year 1938	Estimated Revenue Ensuing Year 1939
From state:		
Interest and dividends tax,	\$1,706 95	\$1,600 00
Savings bank tax,	128 04	100 00
For fighting forest fires,	69 08	125 00
Abatement state tax,	2 97	3 00
Rent of tractor,	82 00	
Bounties,	11 60	
Pauper account,	158 04	
From local sources except taxes:		
Business licenses and permits,	54 50	50 00
Rent of town hall and other buildings,	17 00	25 00
Interest received on taxes and deposits,	126 28	125 00
Income of departments:		
(b) Dog tax,	326 00	
County poor,	539 71	
County soldiers aid,	253 66	
Refunds,	428 63	

	Actual Revenue Previous Year 1938	Estimated Revenue Ensuing Year 1939
Income from municipally owned utilities:		
(a) Temporary loans,	10,000 00	
(b) Gifts,	5,000 00	
Trust funds,	800 00	
Motor vehicle permit fees, 1938,	908 26	900 00
1939,	54 08	
From local taxes other than property taxes:		
Shumway lot,	100 00	
(a) Poll taxes,	568 00	550 00
Cash on hand (surplus),	1,262 72	1,262 72
Total revenues from all sources except property taxes,	\$22,597 52	\$4,740 72
*Amount to be raised by property taxes,		29,740 30
Total revenues,		\$34,481 02

*Total estimated "Revenues from all sources except property taxes" deducted from total estimated "expenditures" should give estimated "amount to be raised by property taxes."

PURPOSES OF EXPENDITURES

	Actual Expenditures Previous Year 1938	Estimated Expenditures Ensuing Year 1939
Current maintenance expenses:		
General government:		
Town officers' salaries,	\$1,605 00	\$1,605 00
Town officers' expenses,	1,107 61	1,100 00
Election and registration expenses,	258 40	100 00
Forest fire,	149 63	250 00
Expenses town hall,	142 07	
Protection of persons and property:		
Police department,	1,009 30	600 00
Fire department,	515 73	450 00
Bounty,	21 80	
Dog damage,	41 80	
Health:		
Health department, including hospitals,	241 35	200 00
Vital statistics,	50	
Beach,	167 31	150 00
Highways and bridges:		
Town maintenance,	6,278 51	4,500 00
Street lighting,	1,725 81	1,917 00
Snow,	1,815 44	1,500 00
Libraries:		
Libraries,	135 00	100 00
Public welfare:		
Town poor,	1,394 88	1,400 00
Old age assistance,	371 55	500 00
County poor,	433 33	

	Actual Expenditures Previous Year 1938	Estimated Expenditures Ensuing Year 1939
Patriotic purposes:		
Memorial Day and other celebrations,	7 68	10 00
Aid to soldiers and their families,	292 51	
Recreation:		
Region,	140 00	
Parks and playgrounds, incl. band concerts,	5 50	50 00
Old Home Day,	166 51	
Public service enterprises:		
Cemeteries,	79 42	100 00
Legal expenses,	52 55	75 00
Interest:		
On temporary loans,	313 73	250 00
Auto permits,	85 25	80 00
Outlay for new construction and permanent improvements:		
Highways and bridges:		
State aid construction—Town's share,	2,020 07	744 02
W. P. A. supervision,	534 93	
Timber salvage,	100 00	300 00
Refunds,	9 37	
New lands and buildings, library spec.,	5,048 20	
Indebtedness:		
Taxes bought,	1,353 12	
Payment on principal of debt:		
(b) Short term notes,	14,000 00	

	Actual Expenditures Previous Year 1938	Estimated Expenditures Ensuing Year 1939
Payments to other governmental divisions:		
State taxes,	2,460 00	2,500 00
County taxes,	4,235 07	4,500 00
Trust funds,	900 00	
Payments to school districts,	10,666 00	11,500 00
Total expenditures,	\$59,884 93	\$34,481 02

MAURICE L. AMIDON,
ALICE L. SPAULDING,
CLARENCE K. LEWIS,
FRED C. HUMPHREY,
RICHARD G. CHICKERING,
CLIFFORD W. TUTTLE,
JOHN MANSLEY,
Budget Committee.

Chesterfield, Feb. 22, 1939.

SUMMARY OF INVENTORY APRIL 1, 1938

Land and buildings,	\$1,299,269 00
Electric plants, lands, etc.,	46,805 00
Horses 64,	3,220 00
Mules 1,	25 00
Oxen 8,	600 00
Cows, 321,	13,108 00
Other neat stock 76,	1,860 00
Sheep 8,	35 00
Hogs 17,	170 00
Fowl,	2,788 00
Boats and launches,	2,100 00
Wood and lumber,	21,980 00

Gas pumps and tanks,	1,580 00
Stock in trade,	6,850 00
Mills and machinery,	1,800 00
	<hr/>
Total valuation,	\$1,402,190 00
Total exclusive of soldiers exemptions,	1,386,790 00
445 poll taxes,	890 00
National bank stock tax,	8 00
Soldiers exemptions,	15,400 00
Taxes authorized:	
Town officers' salaries,	1,605 00
Town officers' expenses,	1,200 00
Election and registration expenses,	250 00
Forest fires,	250 00
Town hall,	150 00
Police department,	600 00
Fire department,	500 00
Health department,	250 00
State aid construction,	2,000 00
Town road construction,	1,450 00
Town road maintenance,	6,000 00
Snow removal,	2,000 00
Old Home Day,	130 00
Monadnock Region,	140 00
Street lighting,	1,700 00
General highway expenses,	100 00
Beach expense,	200 00
Town hall special,	500 00
Libraries,	135 00
Old age assistance,	500 00
Town poor,	1,500 00
Memorial Day,	10 00
Parks and playgrounds,	100 00
Cemeteries,	100 00

Damage and legal expenses,	100 00
Interest,	250 00
Payments on principal of debt,	2,553 48
State tax,	2,460 00
County tax,	4,235 07
School tax,	11,993 57

Total town and school appropriations, \$42,962 12

Less estimated revenue and credits:

Interest and dividend tax,	1,644 77
Forest fire,	125 00
Interest and fees,	217 95
Savings bank tax,	100 00
Motor vehicle permits,	1,000 00
Relief fund,	260 00

Total, \$3,347 72
 Plus overlay, 1,480 51

Net amount to be raised by taxation, \$41,094 91
 Less poll taxes 445, 890 00
 Less National bank stock tax, 8 00

\$40,216 91

Taxes to be committed to collector:

Property taxes,	\$40,217 09
Poll taxes,	890 00
National bank stock tax,	8 00
Precinct taxes,	996 61

Collector's total, \$42,111 70

Comparative Statement of Appropriations and Expenditures
FISCAL YEAR ENDING JANUARY 31, 1939

	Amount Raised	Amount Spent	Unexpended bal. of appro.	Over-run
Town charges,	\$4,115 00	\$3,813 31	\$301 69	
Fire department,	500 00	515 73		\$15 73
Forest fires,	250 00	149 63	100 37	
Snow removal,	2,000 00	1,815 44	184 56	
Road maintenance,	6,000 00	6,278 51		278 51
Town poor,	1,500 00	1,394 88	105 12	
Old age assistance,	500 00	371 55	128 45	
Police department,	600 00	1,009 30		409 30
Street lights,	1,700 00	1,725 81		25 81
Libraries,	135 00	120 34	14 66	
Old Home Day,	130 00	132 25		2 25
State aid,	2,000 00	2,020 07		20 07
Indebtedness,	2,553 48	2,553 48		
Monadnock Region,	140 00	140 00		
Town hall special,	500 00		500 00	

New Boston bridge,	250 00		250 00
Town Beach,	200 00	167 31	32 69
Welcome Hill, special,	600 00		600 00
Atherton Hill, special,	600 00		600 00
	<u>\$24,273 48</u>	<u>\$22,207 61</u>	<u>\$751 67</u>
Net balance of appropriations,			\$2,065 87
			<u>\$2,817 54</u>
			\$2,817 54

FINANCIAL REPORT
OF THE TOWN OF CHESTERFIELD
 IN CHESHIRE COUNTY
 For the Fiscal Year Ended January 31, 1939

Certificate

This is to certify that the information contained in this report was taken from official records and is complete to the best of our knowledge and belief.

Feb. 10, 1939.

JOHN MANSLEY,
 ALBERT D. BERRY,
 CHESTER M. BURNHAM,
 Selectmen.

ADA W. ALLEN,
 Treasurer.

ASSETS

Cash:

In hands of treasurer (Do not include sinking funds),	\$1,262 72
--	------------

Sinking funds:

Special library fund,	4,919 30
-----------------------	----------

Accounts due to the town:

Due from state:

(c) Bounties,	21 80
---------------	-------

Due from county:

(a) Pauper refund,	18 96
(b) Soldiers' aid,	25 16

Other bills due town:

(a) Walter Dunbar, rent of plow,	151 04
Special timber salvage fund,	1,000 00

Unredeemed taxes (from tax sale on account of),

(b) Levy of 1937,	1,057 97
(c) Levy of 1936,	58 99

Uncollected taxes:

(a) Levy of 1938,	5,553 39
-------------------	----------

Total assets,

\$14,069 33

Grand total,

\$14,069 33

Net debt, January 31, 1938,

\$2,553 48

Surplus, January 31, 1939,

1,772 24

LIABILITIES

Accounts owed by the town:

Outstanding, special timber fund,	\$900 00
Bills outstanding, special library fund,	4,919 30
Due to state, old age assistance, January,	25 00
Due to county, Alice Holman case,	25 00

Due to school districts:

(a) Dog licenses,	284 20
(b) Balance of appropriation,	6,143 59

Total liabilities,

\$12,297 09

Excess of assets over liabilities (surplus),

1,772 24

Grand total,

\$14,069 33

RECEIPTS

Current revenue:

From local taxes:

Total taxes committed to collector, 1938,	\$41,131 93	
Less discounts and abatements,	1,282 26	
Less uncollected, 1938,	5,553 39	
1. Property taxes, current year, actually collected,	\$33,728 28	
2. Poll taxes, current year, actually collected,	568 00	
		<hr/>
Total of current year's collections,		\$34,296 28
4. Property and poll taxes previous years, actually collected,		4,337 80
5. Tax sales redeemed,		996 34

From state:

7. Reimbursement for town poor— old age asst.—soldiers' aid,	\$158 04
8. Interest and dividend tax,	1,706 95
10. Abatement of state tax,	2 97
11. Savings bank tax,	128 04
12. Rent of tractor,	82 00
13. Fighting forest fires,	69 08
14. Bounties,	11 60

From county:

15. For support of poor,	539 71
16. For aid furnished soldiers,	253 66

From local sources, except taxes:

Auto permits 1939,	54 68
17. Dog licenses,	326 00

18. Business licenses and permits,	54 50
19. Auto permits 1938,	908 26
20. Rent of town property,	17 00
21. Interest received on taxes,	144 73
	<hr/>
Total current revenue receipts,	\$44,087 64
Receipts other than current revenue:	
29. Temporary loans in anticipation of taxes during year,	\$10,000 00
34. Refunds,	428 63
35. Gifts,	5,000 00
36. Trust funds, Rebuilding Ellen M. Shumway burial lot,	800 00 100 00
	<hr/>
Total receipts other than current revenue,	\$16,328 63
	<hr/>
Total receipts from all sources,	\$60,416 27
Cash on hand February 1, 1938,	872 50
	<hr/>
Grand total,	\$61,288 77

PAYMENTS

Current maintenance expenses:

General government:

1. Town officers' salaries,	\$1,605 00
2. Town officers' expenses,	1,107 61
3. Election and registration expenses,	258 40
5. Expenses town hall,	142 07

Protection of persons and property:

6. Police department, including care of tramps,	1,009 30
7. Fire department,	515 73

8.	Forest fires,	149 63
9.	Bounties,	21 80
10.	Damage by dogs,	41 80

Health :

11.	Health department, including hospitals,	241 35
12.	Vital statistics,	50
13.	Old Home Day,	166 51

Highways and bridges :

14.	W. P. A.,	534 93
16.	Town maintenance,	6,419 63
17.	Street lighting and sprinkling,	1,725 81
18.	Snow removal,	1,815 44

Libraries :

19.	Libraries,	135 00
-----	------------	--------

Charities :

20.	Old age assistance,	371 55
21.	Town poor,	1,394 88
22.	County poor,	433 33

Patriotic purposes :

23.	Aid to G. A. R. Memorial Day exercises,	7 68
24.	Aid to soldiers and their families,	292 51

Recreation :

	Monadnock Region,	140 00
25.	Parks and playgrounds, including band concerts,	5 50

Public service enterprises :

	Town Beach,	167 31
28.	Cemeteries, including hearse hire,	79 42

Unclassified:

	Auto permits,	85 25
29.	Damages and legal expenses,	52 55
30.	Taxes bought by town,	1,353 12

Total current maintenance expenses, \$20,273 61

Interest:

32.	Paid on temporary loans in anticipation of taxes,	\$313 73
-----	---	----------

Total interest payments, \$313 73

Outlay for new construction and permanent improvements:

36.	Highways and bridges—state aid construction,	\$2,020 07
42.	Timber salvage,	100 00
43.	Lands and buildings, library,	5,048 20

Total outlay payments, \$7,168 27

Indebtedness:

45.	Payments on temporary loans in anticipation of taxes,	\$14,000 00
48.	C. W. C. A. Shumway fund,	100 00
49.	Payments to trustees, trust funds,	800 00
50.	Refunds,	9 37

Total indebtedness payments, \$14,909 37

Payments to other governmental divisions:

51.	Taxes paid to state,	\$2,460 00
52.	Taxes paid to county,	4,235 07

54. Payments to school districts,	10,666 00
<hr/>	
Total payments to other governmental divisions,	\$17,361 07
<hr/>	
Total payments for all purposes,	\$60,026 05
Cash on hand January 31, 1939,	1,262 72
<hr/>	
Grand total,	\$61,288 77

SCHEDULE OF TOWN PROPERTY

DESCRIPTION	VALUE
Town hall, lands and buildings,	\$10,000 00
Furniture and equipment,	1,000 00
Libraries, lands and buildings,	1,000 00
Fire department, land and buildings,	3,500 00
Equipment,	2,500 00
Highway department equipment,	10,000 00
Beach and beach house,	2,000 00
Schools, lands and buildings,	6,000 00
Equipment,	2,000 00
All land and buildings acquired through tax collectors' deeds:	
Reed and Pressler woodlots,	500 00
Giffin Coal Co. woodlot,	200 00
Alba Farr homestead,	1,000 00
3 Sam Winn lots,	250 00
Lot in Spofford cemetery,	25 00
Other properties,	3,000 00
<hr/>	
Total,	\$42,975 00

WHERE THE AVERAGE TOWN AND CITY DOLLAR CAME FORM DURING THE FISCAL YEAR ENDED JANUARY 31, 1938, IN COMPARISON WITH THE TOWN OF CHESTERFIELD DOLLAR

	Entire State		Town of Chesterfield	
	Total Receipts	Proportion of Average Dollar	Total Receipts	Proportion of average Dollar
Current revenue:				
From local taxes inc. property and poll taxes, taxes on National bank stock,	\$19,554,567 37	\$0.765	\$36,033 07	\$.909
From state:				
Interest and dividends tax,	672,335 05	.026	1,694 06	.043
Insurance tax,	33,036 61	.001		
Railroad tax,	227,290 69	.009		
Savings bank and Building and Loan Ass'n taxes,	455,286 27	.018	119 64	.003
From local sources except taxes:				
Dog licenses,	68,251 60	.003	319 00	.008
Business licenses and permits,	52,426 90	.002	62 00	.001
Fines and forfeits, Municipal court,	51,101 10	.002		
Rent of town property,	64,960 81	.003	92 00	.002

Interest on deposits and overdue taxes,	158,873 69	.006	63 95	.002
Income from trust funds,	86,535 68	.003		
Income from departments,	371,902 74	.015	193 85	.005
Appropriations from municipally owned utilities,	616,240 82	.024		
Motor vehicle permits,	522,941 91	.020	1,011 59	.025
Misc. inc. national forest reserve,	9,787 60	.000		
Receipts other than current revenue:				
Bonds and long term notes,	1,906,517 49	.075		
Withdrawals from sinking funds to apply on principal of debt,	47,788 81	.002		
Insurance adjustments, refunds, and gifts,	395,678 71	.016	63 94	.002
Sale of town property acquired by tax deeds,	61,593 51	.002		
Grants from U. S. government,	200,370 90	.008		
Totals,	<u>\$25,557,488 26</u>	<u>\$1.000</u>	<u>\$39,653 10</u>	<u>\$1.000</u>

HOW THE AVERAGE TOWN AND CITY DOLLAR WAS SPENT DURING THE FISCAL YEAR ENDED JANUARY 31, 1938, IN COMPARISON WITH THE TOWN OF CHESTERFIELD DOLLAR

	Entire State		Town of Chesterfield	
	Total Expenditures	Proportion of Average Dollar	Total Expenditures	Proportion of average Dollar
General government, inc. town officers' salaries and expenses, election and registration expenses, municipal court expenses, expenses of town buildings,	\$1,111,675 48	\$0.044	\$3,205 72	\$.076
Protection of persons and property:				
Including police and fire depts. inc. forest fires, moth extermination and white pine blister rust, damage by dogs,	1,595,311 29	.063	1,458 28	.035
Health, inc. health dept., hospitals, vital statistics:				
Sewer maintenance,	601,182 38	.024	333 14	.008
Highways:	4,199,574 32	.167	11,685 83	.279
Construction			(2,000 00)	
Maintenance, in street lighting,			(9,685 83)	

Libraries,	237,850 73	.009	135 00	.003
Public welfare,	1,468,761 87	.058	1,488 09	.035
Patriotic purposes,	89,810 05	.004	7 19	.000
Recreation inc. parks and playgrounds, band concerts,	185,109 42	.007	274 45	.007
Public service enterprises:				
Inc. water and electric utilities, markets, scales, cemeteries,	647,403 39	.026	71 80	.002
Taxes bought by town,	641,357 44	.026	1,453 45	.035
Unclassified:				
Inc. Damages, legal exp., discounts and abate- ments, and miscellaneous,	247,231 65	.010	113 72	.003
Interest,	479,019 49	.019	256 44	.006
Indebtedness,	1,506,233 24	.060		
New buildings, new equipment, lands, sewers, etc.,	968,289 45	.039	2,718 72	.065
States taxes,	1,599,875 02	.064	3,280 00	.078
County taxes,	2,873,959 12	.114	3,598 44	.086
Precinct taxes,	236,901 67	.009		
School taxes,	6,471,912 24	.257	11,817 20	.282
Totals,	\$25,161,458 25	\$1.000	\$41,897 47	\$1.000

REPORT OF TOWN CLERK

Receipts:

Dog licenses,

116 males @ \$2.00,	\$232 00
10 females @ \$5.00,	50 00
Woodside Kennels,	20 00
Twin Pine Kennels,	12 00
Hillside Kennels,	12 00

\$326 00

Automobile permits:

Year of 1938, 331 permits,	\$908 26
Year of 1939-40, 10 permits,	54 68

\$962 94

Filing fees:

For March Town Meeting,	\$22 50
September primaries,	3 00

\$25 50

\$1,314 44

Payments to treasurer:

For dog licenses,	\$326 00
For automobile permits,	962 94
For filing fees,	25 50

\$1,314 44

Vital statistics:

Number of births registered in 1938,	6
Number of marriages registered in 1938,	5
Number of deaths registered in 1938,	12
Number of deaths registered, brought here for burial,	7

Respectfully submitted,
 IMOGENE L. CHICKERING,
 Town Clerk.

GRAVE FOREST SITUATION FOLLOWS SEPTEMBER HURRICANE

Woodland problems of timber salvage and fire control created in many towns by the September hurricane are of the greatest importance. GOOD CITIZENSHIP CALLS FOR PERSONAL AND WIDESPREAD ACTION!

The salvage of every thousand feet of logs which can be sold means money for landowners, wages for workers, employment for trucks, teams and machinery, as well as reduced forest fire hazard for all. If owners of windthrown timber have not yet acted, they should communicate with those who can help. TOWN CHAIRMEN are fully informed; STATE ADVISORY AGENTS can help to start logging by suggesting names of operators and giving other useful advice; FEDERAL AGENCIES are increasing the number of log storage places as rapidly as possible. INDIVIDUALS MUST NOW COOPERATE!

Forest fire danger for several years will be greater than usual. So much work must be done by public agencies to reduce hazard along roadsides, near improved and other exposed areas that many places will remain hazardous for some time to come. INDIVIDUAL LANDOWNERS MUST TAKE A PERSONAL INTEREST! Aid in clean-up work through the Agricultural

Conservation Program is available to any woodland owner at \$4.00 per acre on areas up to 15 acres. The County Agent should be consulted.

Support your local Forest Fire Wardens and Deputies. They are planning, with State and Federal agencies, an intensive campaign to control fires. Help them by strict observance of the fire laws. Kindle no open fires without a permit from the Warden except when the ground is covered with snow. Cooperate by reporting fires you may see and in other ways. Fire fighting tool supplies are inadequate and should be reasonably increased by many towns. **YOU CAN HELP, AND IT WILL PAY, TO PREVENT FOREST FIRES!**

UNEXPENDED APPROPRIATIONS

Welcome Hill road,	\$600 00
Atherton Hill road,	600 00
New Boston Bridge,	250 00
Town Hall repairs,	500 00
	\$1,950 00

As it is customary for your Town officials to carry out the wishes made known and passed by vote at regular Town meeting we feel this to be the proper place for an explanation with reference to the above appropriations.

On checking the work to be done following the last March meeting we tried to spread jobs that there might be as few idle periods as possible. As soon as the ground became workable State Aid began on the Bear Hill road along with routine town road work followed by regular summer work. On the 28th of July we went to Manchester to see if this town was not entitled to W. P. A. funds and if so what requirements we should have to meet. As a result of that meeting a project was drawn up and sent to us to be signed. The project called for the spending of \$6,060.00 on Town roads and bridges, and the Town's share to be the amount of our three appropriations for roads and

bridges (\$1,450.00). We signed this project and returned it following it through the government departments. These matters take time and after a number of communications we received on the 19th of September a letter dated the 17th of September stating that the quota of men for the State of New Hampshire was full at that date but that our project would proceed as soon as possible.

The selectmen met on the 21st and were of one accord that we did not feel we could wait further for our project if we were to get this work done before winter. The hurricane took place while our meeting was in progress and of course all thought of routine work was soon forgotten in an effort to create order out of chaos. An emergency had arisen which called for man power and funds. Town road funds were soon used up but work could not stop. As soon as roads were opened up a trip was made to Concord to consult with the State tax commission the result of which it was considered advisable to carry on with funds at hand. Through the papers we were informed that W. P. A. was to take a hand in rehabilitation work. We were in Manchester in short time and from there to Newport on Oct. 2 and 3rd and on the 7th we started using W. P. A. labor with the Town signed up for supervision and materials.

W. P. A. lasted until Thanksgiving at a cash expenditure by the town listed elsewhere in this report. We are proud to say that in spite of the amount of work accomplished since the hurricane our special road appropriations are still intact. The hurricane damage to our town hall has been taken care of and that fund has taken care of the bulk of our W. P. A. expenditures.

It did not seem advisable to begin our road jobs in December in view of the fact that labor was at a premium for clean up work, and weather conditions anything but desirable.

W. P. A. informs us that our Project calling for a town's share of \$1,450.00 is still on the calendar for a total of \$6,060.00. This is a topic for your consideration at Town meeting.

Under the Budget act we understand that unexpended funds go into general funds at the end of each year. Our balance shows these road funds to be there and for that reason we are inserting in the town's warrant these same articles that you might put them back as though they had been ear-marked last year.

Rightly or otherwise we have acted for what we consider to be the town's best interest.

Signed,
 JOHN MANSLEY,
 CHESTER M. BURNHAM,
 ALBERT D. BERRY,
 Selectmen of Chesterfield.

STATEMENT OF HARRY E. WINN, COLLECTOR

Amount due January 31, 1938, on 1937 book,		\$4,200 60
Interest,		184 14
Unlisted taxes,		2 88
		<hr/>
		\$4,387 62
Amount paid treasurer,	\$4,337 80	
Abatements,	49 82	
	<hr/>	
		\$4,387 62
Amount committed, 1938,		\$41,115 09
Interest,		18 45
Unlisted taxes,		16 84
		<hr/>
		\$41,150 38
Amount paid treasurer,	\$34,314 73	
Abatements,	60 17	
Discounts,	1,222 09	

Balance on book,	5,550 47	
Cash on hand,	2 92	
		\$41,150 38

Respectfully submitted,
 HARRY E. WINN,
 Collector.

UNCOLLECTED TAXES, JANUARY 31, 1939

Charles Alden,	\$4 90
Dorothy Alden,	2 00
Bernest Aldrich,	2 00
Emma N. Aldrich,	2 00
Gaylord Aldrich,	2 00
Eddy Aldrich,	2 00
C. B. Amidon,	14 27
Henri M. Anger,	54 20
Vivian A. Anger,	2 00
Fred Ball,	25 20
John N. Ball,	119 45
John and Nelson Ball,	12 33
Donald Bennet,	2 00
James Blake,	2 00
Hyland Blodgett,	20 90
Leonard Boomhower,	2 00
Mabel Brown Est.,	10 15
Emory Carey,	31 73
Esther Carey,	2 00
Ned Clancy,	2 00
Merle Cobleigh,	36 80
Mildred Crowell,	2 00
Clinton Davis,	45 50
Katherine Davis,	2 00
Benjamin L. Davis,	60 00
Bertha Dunham,	2 00

Forrest Eager,	2 00
Cora Eager,	2 00
Kenneth Fales,	39 70
Alba Farr,	2 00
Elva Farr,	2 00
Minnie Faunce,	11 00
Emil Fern,	31 61
Mrs. Emil Fern,	2 00
Haskell Fuller,	2 00
Mildred Fuller,	2 00
Wilder Haskell,	3 16
Ardelle Haskell,	2 00
Lester Heath,	2 00
Louise Heath,	2 00
Avis Herrick,	2 00
Maverette Herrick,	2 00
Louis Herrick,	12 30
R. A. Hitchcock,	2 00
Myrtle Howell,	25 20
Richard Howell,	2 00
E. E. Hoyt,	135 40
E. L. Hoyt,	2 00
Bertha Hoyt,	2 00
Leland Hubbard,	61 45
Marshall Hudson,	2 00
Mrs. M. Hudson,	2 00
Walter Jacobson,	2 00
Mildred C. Jacobson,	2 00
Lorenzo Jefts,	22 30
Rose Jefts,	2 00
Burton Johnson,	64 38
James W. Barden,	2 18
Ida Beers,	10 15
Blanche Beverstock,	72 50
Richard Butler,	3 63

Camp Marquette,	353 80
Forrest Carey,	15 95
Chesterfield Lumber Co.,	29 00
H. E. Chickering Est.,	44 95
LaFell Dickinson,	203 00
Merrill Dodge,	26 10
Charles Dunbar and Wallace Robbins,	31 90
Mary Dunham,	12 33
Alphena Dutcher,	55 10
Robert Eames,	73
Amy W. Gabree,	46 40
Winfield Geham,	29 00
Elsie Harvey,	21 75
Deane Hawkins,	34 80
Ogden M. Hoagland,	320 45
Jack Holroyd,	8 70
John P. Johnson,	73
Joseph Kaiser, Jr.,	145 00
Samuel Kirkwood,	1 45
Warren F. Manley,	290 00
Mrs. Florence Marshall,	43 50
G. C. and B. J. Martell,	73
Stuart C. Merwin,	101 50
Arthur Nims,	87 00
Harry Nosek,	261 00
Frank B. Oakman,	23 20
C. A. Parker,	10 15
Eva Porter,	17 40
Minor Rawson,	2 90
John Reynolds,	73
Byron Robertson Est.,	14 50
Nellie Ryder,	111 65
Antonette Sherri,	268 98
Dwight Smith,	50 03
James Starkey Est.,	14 50

Ralph Stevens,	14 50
Lilla G. Taft,	5 80
Bidwell Wager,	73
H. P. White,	40 60
Louise Wade,	4 35
Esther L. Whitney,	37 70
Adelle Whitney,	20 30
Robert Weissenback,	58 00
Elizabeth Jordan,	65 80
Herbert Jordan,	2 00
Clinton E. Joslyn,	49 85
Olive Joslyn,	2 00
Herbert Joslyn,	2 00
Melvina La Plante,	28 13
George La Plante,	2 00
William Larkin,	2 00
C. J. Lynch,	13 60
Freeman Marchant,	20 85
Ella R. Marchant,	2 00
Charles Maynard,	105 39
Ema Maynard,	2 00
Francis Merrifield,	2 00
Robert E. Mitchell,	146 13
Ann E. Mitchell,	2 00
Thomas Murphy,	2 00
Mabelle Mutter,	2 00
Harold Neilson,	2 00
Philip Nurse,	2 00
Mrs. O'Donnell,	2 00
Edward Ogilvie,	3 02
Mrs. Jessie Ogilvie,	2 00
Jessie Ogilvie,	2 00
Amy L. Paine,	2 00
Georgianna Pattridge Est.,	43 50
Fred Pattridge,	2 00

Grace Pattridge,	2 73
Everett Pearson,	2 00
May L. Pearson,	2 00
Cyrus Perkins,	2 00
Stanley Pickering,	12 15
Marion Pickering,	2 00
George Phettiplace,	26 10
Frank Pierce Est.,	28 28
Guy L. Pierce,	7 80
Nahum Pierce,	31 87
Alberta Pierce,	2 00
Bessie Plante,	23 75
Perley Plante,	2 00
Harold P. Post,	39 70
Lucy Post,	2 00
Henry Putnam,	112 93
Olive Putnam,	2 00
Richard Putnam,	2 00
Dorothy Putnam,	2 00
Wilford Richardson,	15 49
Beatrice Richardson,	2 00
Jack Robbins,	6 35
Nellie Robbins,	2 00
Byron L. Rogers,	13 60
Lenora G. Rogers,	2 00
Robert Riley,	2 00
Agnes Riley,	2 00
Bertha Rolfe,	2 00
Thomas Ryder,	2 00
Helen Ryder,	2 00
Wallace Shippee,	5 80
Clarence L. Shippee,	40 86
Dorothy Shippee,	2 00
Raymond S. Slack,	2 00
Clarence F. Springer,	72 33

Edna E. Springer,	2 00
Edythe Stevens,	103 50
Ralph C. and Edythe Stevens,	40 60
Edythe Stevens and Ruth Woods,	87 00
Harlan L. Streeter,	2 00
Gertrude M. Streeter,	2 00
George C. Thomas,	158 60
Mrs. George Thomas,	2 00
Allen P. Tarbox,	21 29
Ethel Tarbox,	2 00
Alzada Thompson.	16 50
Raymond Underwood,	10 56
Corrine Underwood,	2 00
Frank Watts,	63 63
Margaret B. Watts,	2 00
John Watts,	2 00
Grace Welcome,	25 20
Paul E. Welcome,	2 00
Roger S. Welcome,	2 00
George F. White,	86 10
Mrs. G. F. White,	2 00
Etta M. Williams,	54 20
Frank Whorfe,	2 00
Mary Whorfe,	2 00
James A. Wilson,	2 00
Hazel Guyette,	2 00

TOWN TREASURER'S REPORT

Balance in Keene National Bank, Jan. 31st, 1938, \$872 50

RECEIPTS

Harry E. Winn, collector:

1937 taxes,	\$4,337 80
1938 taxes,	34,314 73
Redeemed taxes,	996 34
Interest on redeemed taxes,	126 28

State of New Hampshire:

Bounties,	11 60
Forest fires,	69 08
Savings bank tax,	128 04
Dis. of int. and div. tax,	1,706 95
Abatement of state tax,	2 97
Refund on relief,	15 50
Use of tractor,	18 00
Use of equipment,	48 00
Use of equipment,	16 00
Relief,	142 54

Morris Friedsam:

Library donation,	3,000 00
Library donation,	1,500 00
Library donation,	500 00

Imogene L. Chickering:

1938 auto permits,	908 26
1939 auto permits,	54 68
1938 dog licenses,	326 00
Filing fees,	25 50

County commissioners:

Pauper account,	539 71
Dependent soldiers,	253 66

Keene National Bank:

Selectmen's notes,	10,000 00
--------------------	-----------

Trust Funds:

Laura A. Cheever,	100 00
Ellen W. Shumway, (lot repairs C. W. C. A.),	100 00
Ellen W. Shumway,	400 00
Addison Brown,	100 00
Sidney S. Wright,	200 00

Refunds:

Blinker light,	67 00
Walter J. Post,	91
Harry E. Winn,	1 00
Harry E. Winn,	99
Keene National Bank,	13 00
Solvay Sales Corporation,	235 20
G. H. Tilden,	7 68
Alice Spaulding, (Old Home Day),	34 26
John Mansley, (unexpended balance library fund),	14 66
General account, (from library fund),	48 20
Joseph D'Ambrosio, (refund on phone calls),	5 73

Dance licenses:

Harry E. Winn,	1 00
John Mansley,	13 00
C. M. Burnham,	1 00

John Mansley:

Milk licenses,	14 00
Hall rental,	4 00

Forest Fire:

Arthur H. Post,		13 00
Total receipts:		<u>\$61,288 77</u>
Selectmen's orders paid, Feb. 1st, 1938 to Jan. 31st, 1939,		60,026 05
Balance,		<u>\$1,262 72</u>
Keene National Bank,	\$323 94	
Cash on hand,	938 78	
	<u>\$1,262 72</u>	

Respectfully submitted,
 ADA W. ALLEN,
 Treasurer.

SPECIAL ACCOUNT, LIBRARY PROJECT

Receipts:

Morris Friedsam,		\$3,000 00
Morris Friedsam,		1,500 00
Morris Friedsam,		500 00
		<u>\$5,000 00</u>

Disbursements:

Refund general account,	\$48 20	
Orville E. Cain,	32 50	
	<u>80 70</u>	
Balance January 31st, 1939,		<u>\$4,919 30</u>

Respectfully submitted,
 ADA W. ALLEN,
 Treasurer.

DETAILED STATEMENT OF EXPENSES**TOWN OFFICERS' SALARIES**

John Mansley, assessing and keeping books,	\$150 00
Chester M. Burnham, assessing,	125 00
Albert D. Berry, assessing,	125 00
John Mansley, overseer of poor and keeping books,	50 00
Chester M. Burnham, overseer of poor,	15 00
Albert D. Berry, overseer of poor,	15 00
John Mansley, chairman board of selectmen and books,	250 00
Chester M. Burnham, selectman,	125 00
Albert D. Berry, selectman,	125 00
Ada W. Allen, town treasurer,	250 00
Harry E. Winn, town tax collector,	300 00
Imogene L. Chickering, town clerk,	75 00

\$1,605 00

TOWN OFFICERS' EXPENSES

P. M. Penning, supplies,	\$18 26
Eleanor J. Pearson, auditor,	30 00
Harold E. Randall, auditor,	30 00
William E. Nurse, trustee of trust funds,	8 48
Sentinel Printing Co., town reports and other printing,	306 01
John Mansley, making up 1937 town report,	50 00
Shirley Bevis, distributing town reports,	5 00
Albert D. Berry, officers' bonds,	107 50
Chester M. Burnham, tax meeting,	4 00
C. W. Tuttle, budget committee,	10 00
N. H. Assessors' dues,	2 00
Winfield Chaplin, transfer cards,	21 60
Esther Bennett, deceased list,	60
A. H. Post, budget committee,	10 00
Sentinel Printing Co., March ballots,	12 00
John Mansley, tax meeting,	4 00
John Mansley, selectmen's expenses at tax meeting,	3 05

C. K. Lewis, budget committee,	10 00
Maurice L. Amidon, budget committee,	10 00
W. M. Chaplin, mortgage list,	17 00
C. W. Tuttle, registered letters,	2 55
C. K. Lewis, tax collector's postage,	32 96
Fred C. Humphrey, budget committee,	10 00
Ashuelot Bank, trustees' deposit box,	5 50
John Mansley, use of car assessing,	50 00
Wheeler & Clark, inventory sheets,	8 85
Imogene L. Chickering, clerk's expenses,	5 75
John Mansley, trip to Concord and expenses, selectmen,	10 80
John Mansley, Manchester officers' expenses,	6 10
Elise Foster, budget committee,	10 00
Chester M. Burnham, budget committee,	10 00
Chase Book Store, officers' supplies,	65 46
N. E. Tel. & Tel. Co., toll calls,	19 63
Ada W. Allen, postage and toll calls,	13 48
Albert D. Berry, use of car, tel. and post.,	50 70
Viola V. Tuttle, trustees expenses,	17 13
Chase Book Store, officers' supplies,	3 91
John Mansley, use of car, tel. and post.,	50 00
Imogene L. Chickering, clerk's expenses,	3 00
Harry E. Winn, Manchester, Keene and expenses,	22 56
C. M. Burnham, use of car, tel. and post.,	32 00
Ada W. Allen, tel. and post.,	2 73
John Mansley, precinct tax book 1938,	15 00

\$1,107 61

ELECTION AND REGISTRATION

Harold E. Randall, constable,	\$10 00
Paul M. Penning, ballot clerk,	4 00
Pauline Record, ballot clerk,	10 00
W. R. Gallagher, ballot clerk,	10 00
Shirley Bevis, ballot clerk,	10 00
Newton Darling, ballot clerk,	4 00

Richard Chickering, ballot clerk,	4 00
Alice Spaulding, ballot clerk,	6 00
E. James Winslow, moderator,	25 00
A. H. Post, moderator,	5 00
Ladies' Aid, meals,	13 85
John Dennis, constable,	5 00
Sentinel Printing Co., ballots,	22 55
Maurice Amidon, supervisor,	45 00
Floyd M. Fuller, supervisor,	45 00
Henry C. Chickering, supervisor,	39 00

\$258 40

TOWN HALL

Public Service Co., lights,	\$15 92
John Castle, wood,	24 00
A. H. Post, supplies,	1 10
C. W. Tuttle, supplies,	1 90
Paul M. Penning, supplies,	2 91
Donald Bennett, janitor,	50 00
Eugene Smith, piano tuning,	5 00
Massasoit Asbestos Co., caulking,	35 00
School Board, chemical,	6 00
P. M. Penning, supplies,	24

\$142 07

HEALTH DEPARTMENT

Harold E. Randall, health officer,	\$113 75
Frank Whorfe, cleaning dump,	55 25
Walter Post, trucking,	13 00
Dr. Prevost, medical,	29 00
E. J. Stoddard, dump rent,	25 00
John Mansley, burying dog,	2 00
James A. Wilson, dump sign,	2 00
A. H. Post, dump sign,	1 35

\$241 35

POLICE

William D. Pierce, constable 1937,	\$12 50
James A. Wilson, police duty,	9 40
G. Goodridge, police duty,	4 40
G. Chamberlin, police duty,	4 00
Spencer Hardware, badges,	2 00
Shirley Bevis, police duty,	4 00
Bertha Underwood, boarding tramps,	359 00
Wakefield Dort, police duty,	24 70
Lyle P. Blake, police duty,	113 51
C. W. Tuttle, food for tramps,	1 30
C. K. Lewis, food for tramps,	1 44
Harold E. Randall, constable duty,	113 35
Henry C. Chickering, constable duty,	98 90
James Atema, police duty,	84 00
Bertha Underwood, boarding tramps,	39 00
Henry C. Chickering, constable duty,	61 90
Harold E. Randall, constable duty,	33 80
Albert D. Berry, police work,	18 10
James Atema, police duty,	24 00
	<hr/>
	\$1,009 30

FIRE DEPARTMENT

Floyd L. Lewis, copying fire minutes,	\$2 00
C. A. E. Goodwin, electric supplies,	5 60
James Atema, labor,	2 80
Betterley and Avery, battery rental,	1 50
Lyons Hardware Co., supplies,	2 69
Paul M. Penning, supplies,	4 88
C. W. Tuttle, supplies,	97
Spofford Garage, Inc., supplies,	3 40
Chesterfield Garage, supplies,	8 28
A. H. Blanchard Co., supplies and repairs,	86 07
C. K. Lewis, supplies,	8 89
Harold Ingalls, labor,	20 47

Cheshire Oil Co., oil for Center part,	73 05
James Austin, oil for West part,	34 10
Public Service Co., lights,	18 00
Firemen's pay, West part, 22 men,	79 71
Firemen's pay, Center part, 36 men,	99 12
C. K. Lewis, supplies,	70
P. M. Penning, Richardson fire,	4 40
A. H. Blanchard Co., truck repairs,	59 10
	<hr/>
	\$515 73

HIGHWAYS AND BRIDGES

Walter J. Post, Spofford agent,	\$2,109 67
Roger C. Spaulding, Chesterfield agent,	2,112 88
Lyle B. Chickering, West Chesterfield agent,	2,055 96
	<hr/>
	\$6,278 51

STREET LIGHTING

Public Service Co. of N. H., street lights and bulbs,	\$1,719 81
Henry Chickering, care of traffic lights,	6 00
	<hr/>
	\$1,725 81

GENERAL HIGHWAY EXPENSES

None

LIBRARIES

John Mansley, trustee,	\$135 00
	<hr/>
	\$135 00

OLD AGE ASSISTANCE

Cheshire County,	\$189 30
State of N. H.,	182 25
	<hr/>
	\$371 55

MEMORIAL DAY CELEBRATION

G. H. Tilden Co., G. A. R. flags,	\$7 68
-----------------------------------	--------

\$7 68

REGION

Monadnock Region Association,	\$140 00
-------------------------------	----------

\$140 00

TOWN POOR

Cheshire County, William Larkin case,	\$5 00
Cheshire County, Rawson case,	53 75
James Robertson, Anderson case,	5 81
Harry E. Winn, Howell milk,	4 48
City of Keene, Stratton case,	5 00
City of Keene, Nourse case,	44 98
Mrs. Mary Hills, Amidon children,	30 00
C. W. Tuttle, Marchant case,	2 92
C. K. Lewis, Howell case,	20 07
C. K. Lewis, Alba Farr case,	8 12
Fred Holman, Alice Holman case,	6 00
Cheshire County, Rawson case,	22 14
Kenneth Streeter, Farr case,	5 20
Henry Chickering, Larkin case,	4 40
C. M. Burnham, Farr case,	1 00
Fred Holman, Alice Holman case,	8 00
C. W. Tuttle, Clancy case,	8 00
Mrs. Hills, Amidon children,	30 00
C. K. Lewis, Howell case,	24 94
C. K. Lewis, Farr case,	12 00
P. M. Penning, Murphy case,	3 00
H. E. Winn, Howell, milk,	4 96
City of Keene, Nourse case,	37 66
City of Keene, Stratton case,	1 50
H. E. Winn, Howell, milk,	4 80
Mrs. Hills, Amidon children,	30 00

Fred Holman, Alice Holman case,	8 00
C. K. Lewis, Howell case,	20 07
C. K. Lewis, Farr case,	12 00
City of Keene, Nourse case	40 82
City of Keene Stratton case,	4 50
Mrs. Hills, Amidon children,	30 00
H. E. Winn, Howell, milk,	4 96
C. K. Lewis, Farr case,	15 00
C. K. Lewis, Howell case,	15 02
Elmer Greer, Farr case,	15 80
City of Keene, Stratton case,	3 00
City of Keene, Nourse case,	119 49
Elmer Greer, Farr case,	9 00
C. K. Lewis, Farr case,	5 31
Mrs. Hills, Amidon children,	30 00
Henry Plante, Farr case,	6 00
Mrs. Hills, Amidon children,	30 00
C. K. Lewis, Farr case,	9 58
C. K. Lewis, Kenneth Streeter case,	20 00
P. M. Penning, Dennis Royce case,	11 97
Mrs. Hills, Amidon children,	30 00
C. K. Lewis, Farr case,	15 00
C. K. Lewis, Streeter case,	16 02
P. M. Penning, Royce case,	14 88
Dr. Buggee, Amidon case,	4 00
Henry Plante, Farr case,	6 00
Mrs. Hills, Amidon children,	30 00
City of Keene, Stratton case,	89 77
C. K. Lewis, Farr case,	12 00
C. K. Lewis, Streeter case,	19 97
County of Cheshire, Alice Holman case,	17 84
Mrs. Hills, Amidon children,	30 00
C. K. Lewis, Farr case,	12 02
C. K. Lewis, Streeter case,	16 00
Henry Plante, Farr case,	6 00

Cheshire County, Alice Holman case,	22 14
City of Keene, Stratton case,	39 75
C. K. Lewis, Farr case,	6 89
C. K. Lewis, Streeter case,	15 99
Mrs. Hills, Amidon children,	30 00
Cheshire County, Alice Holman case,	13 57
Henry Plante, Farr case,	16 00
Mrs. Hills, Amidon children,	30 00
Cheshire County, Alice Holman case,	12 85
C. K. Lewis, Farr case,	8 96
C. K. Lewis, Streeter case,	19 99
P. M. Penning, Avery case,	12 00
Mrs. Mary Hills, Amidon children,	30 00
C. K. Lewis, Farr case,	6 99
C. K. Lewis, K. Streeter case,	16 00
	<hr/>
	\$1,394 88

COUNTY POOR

Henry Plante, Crowell case,	\$1 50
John Ball, Wheeler case,	24 45
C. K. Lewis, Patnode case,	14 09
C. K. Lewis, Hershey case,	3 61
Emroy Carey, Crowell case,	1 50
Henry Chickering, Wheeler case,	11 80
Henry Chickering, Wheeler case,	6 20
C. K. Lewis, Patnode case,	14 01
C. K. Lewis, Hershey case,	1 41
John Ball, Wheeler case,	30 74
P. M. Penning, Hershey case,	4 00
P. M. Penning, Crowell case,	28 90
P. M. Penning, Percy Rowe case,	15 00
John Ball, Wheeler case,	12 17
P. M. Penning, Rowe case,	9 00
P. M. Penning, Crowell case,	13 00
P. M. Penning, Everett Joslin case,	4 00

John Mansley, Heath and Rowe cases,	7 00
John Ball, Grover case,	4 99
Bullard & Shedd, Rowe case,	75
C. K. Lewis, Patnode case,	13 99
Henry Chickering, Wheeler case,	3 00
Henry Chickering, Rowe case,	85
A. H. Post, Patnode case,	11 94
C. K. Lewis, Patnode case,	17 52
Bullard & Shedd, Rowe case,	1 50
C. K. Lewis, Patnode case,	9 99
Bullard & Shedd, Rowe case,	1 50
P. M. Penning, Rowe case,	27 22
H. E. Winn, Howell case,	9 76
C. K. Lewis, Patnode case,	10 02
Bullard & Shedd, Rowe case,	67
P. M. Penning, Rowe case,	10 98
Henry Chickering, Patnode case,	1 25
C. K. Lewis, Patnode case,	12 50
H. E. Winn, Howell case,	4 96
P. M. Penning, Rowe case,	8 04
Bullard & Shedd, Rowe case,	75
C. K. Lewis, Patnode case,	10 00
H. E. Winn, Howell case,	4 80
Bullard & Shedd, Rowe case,	1 50
C. K. Lewis, Patnode case,	10 00
H. E. Winn, Howell case,	4 96
Bullard & Shedd, Rowe case,	1 50
C. K. Lewis, Patnode case,	10 00
Bullard & Shedd, Rowe case,	65
H. E. Winn, Howell case,	6 40
C. K. Lewis, Patnode case,	10 00
Bullard & Shedd, Rowe case,	1 50
H. E. Winn, Howell case,	4 96
C. K. Lewis, Patnode case,	12 50

 \$433 33

SOLDIERS AID

Henry Plante, wood,	\$38 00
B. A. Davis, milk,	26 08
Emroy Carey, trucking,	4 00
C. W. Tuttle, groceries,	191 59
C. W. Tuttle, groceries,	16 68
B. A. Davis, milk,	2 48
Henry Plante, wood,	6 00
	<hr/>
	\$284 83

W. P. A. PROJECT NO. 1934 AND 2010

Expended on hurricane damage of September 21, 1938	
Labor by W. P. A.,	\$5,901 55

SUPERVISION PAID BY TOWN

Lyle B. Chickering, sub foreman,	\$72 00
Roger C. Spaulding, sub foreman,	72 00
Walter J. Post, sub foreman,	72 00
John Mansley, supervisor,	72 00
C. K. Lewis, supplies,	86
C. W. Tuttle, supplies,	13 77
Chase Book Store, supplies,	1 60
John Mansley, 1200 miles at .04,	48 00
John Mansley, supervision,	61 00
John Mansley, 460 miles at .04,	18 40
John Mansley, selectmen to Concord and Manchester, July 28,	12 00
John Mansley, selectmen to Concord and Manchester, Sept. 29,	12 00
Joe C. Merrifield, labor,	46 80
John Mansley, supervision,	22 50
John Mansley, 250 miles at .04,	10 00
	<hr/>
	\$534 93

SNOW REMOVAL

Clyde A Coombs, ice caulks and supplies, W. P.,	\$135 62
Walter J. Post, agent,	857 44
Roger C. Spaulding, agent,	198 55
Lyle B. Chickering, agent,	601 73
James Austin, oil, West part,	22 10
	<hr/>
	\$1,815 44

PARKS AND PLAYGROUNDS

E. L. Hoyt, mowing common,	\$4 00
Percy Rowe, work on common,	1 50
	<hr/>
	\$5 50

TOWN BEACH

A. H. Post, plumbing and repairs,	\$18 47
Walter Dunbar, caretaker,	132 00
Public Service Co., lights,	12 84
James A. Wilson, lettering sign,	2 50
John Mansley, putting up sign post and sign,	1 50
	<hr/>
	\$167 31

TRUST FUNDS

Trustees, Laura A. Cheever fund,	\$100 00
Trustees, Ellen M. Shumway fund,	400 00
Trustees, Addison M. Brown fund,	100 00
Trustees, Sidney S. Wright fund,	200 00
	<hr/>
	\$800 00
Chesterfield West Cemetery Association:	
For repairs to the Ellen M. Shumway lot,	\$100 00

CEMETERIES

Walter Deselle, sexton,	\$13 60
Frank Whorfe, sexton,	6 00

Frank Whorfe, sexton,	3 40
Walter Deselle, sexton,	11 60
Louis Chickering, sexton,	5 20
Percy Rowe, sexton,	22 75
Percy Rowe, sexton,	10 00
A. H. Post, supplies,	6 87

\$79 42

TAXES BOUGHT BY TOWN

H. E. Winn, collector, sale of 1937 taxes,	\$1,255 27
H. E. Winn, collector, sale of 1937 taxes,	97 85

\$1,353 12

TEMPORARY LOANS

Keene National Bank, notes,	\$14,000 00
-----------------------------	-------------

SCHOOL DISTRICT

Evelyn L. Winn, school treasurer,	\$10,666 00
-----------------------------------	-------------

AUTO PERMITS

Imogene L. Chickering,	\$85 25
------------------------	---------

DAMAGE AND LEGAL EXPENSES

Orville E. Cain, services and expenses,	\$52 55
---	---------

DAMAGE BY DOGS

Harold E. Randall, dog constable,	\$25 00
Chase Book Store, tags and book,	16 80

\$41 80

FOREST FIRES

A. H. Post, fire warden,	\$149 63
--------------------------	----------

BOUNTIES

Paul M. Penning,	\$8 40
John Mansley,	6 80

Albert D. Berry,	5 40
C. M. Burnham,	1 20
	<hr/>
	\$21 80

VITAL STATISTICS

A. W. Hopkins, death certificate,	\$ 50
-----------------------------------	-------

INTEREST ON NOTES

Keene National Bank,	\$277 31
Ada W. Allen, for Keene National Bank,	36 42
	<hr/>
	\$313 73

STATE AID ACCOUNT

State Highway Department,	\$2,000 00
State Highway Department, balance 1937 account,	20 07
	<hr/>
	\$2,020 07
Expended by state,	\$7,574 84

OLD HOME DAY EXERCISES

Alice L. Spaulding, chairman,	\$130 00
A. H. Post, grandstand and back stops,	36 51
	<hr/>
	\$166 51

REFUNDS

David Smith, tax refund,	\$9 37
	<hr/>
	\$9 37

STATE TAX

State of N. H., 1938 tax,	\$2,460 00
---------------------------	------------

COUNTY TAX

Cheshire county,	\$4,235 07
------------------	------------

P. W. A. PROJECT. LIBRARY

Gift of Morris Friedsam accepted by the town,	\$3,000 00
Gift of Morris Friedsam accepted by the town,	1,500 00
Further gift of Morris Friedsam,	500 00

 \$5,000 00

Entered into special account K. N. B.,	\$5,000 00
--	------------

Paid out:

Advertising bids,	\$48 20
Legal fees,	32 50

 \$80 70

Balance of library fund,	\$4,919 30
--------------------------	------------

TIMBER SALVAGE

Minnie Estler, land lease,	\$100 00
----------------------------	----------

ROAD AGENT'S REPORT

Schedule of Prices Paid on Maintenance

2 yard trucks with driver, per hour,	\$1 20
Foremen, per hour,	45
Labor, per hour,	40
Gravel, per yard,	10
Tractor storage, per month,	5 00
Tractor drivers, per hour,	50
Mechanics, per hour,	50
Teams, per hour,	80

Walter J. Post, Agent

East part.

Walter J. Post, truck, (driver omitted),	\$288 40
Walter J. Post, tractor,	76 75

Walter J. Post, foreman,	140 85
A. H. Post, gravel,	69 12
A. H. Post, truck,	36 60
George L. Fuller, tractor,	8 00
Spofford Garage, supplies,	148 35
A. P. Tarbox, team,	20 80
Fred Huntley,	27 60
State Garage, culverts,	74 56
C. W. Tuttle, supplies,	7 99
Nils Hansson, repairs,	2 55
Nahum Pierce, team,	24 00
Nahum Pierce, labor,	28 80
Solvay Sales, calcium,	144 00
M. S. Perkins, repairs,	7 55
Casselini Venable, culvert,	6 95
William E. Fuller, labor,	113 40
William H. Fuller, labor,	102 60
James Wilson, labor,	13 20
Cecil Jordan, labor,	11 00
Frank Whorfe, labor,	268 40
R. F. Cady, labor,	41 80
E. H. Wilson, labor,	4 40
Otto S. Schlichting, labor,	61 00
Lyle Blake, labor,	12 80
Daniel Schlichting, labor,	11 60
Richard Putnam, labor,	3 20
C. H. Lane, labor,	3 20
H. J. Hill, Jr., labor,	3 20
M. D. Williams, labor,	3 20
Harry Pierce, labor,	32 00
R. N. Rowe, labor,	19 60
Ed. Clancy, labor,	3 60
W. R. Gallagher, labor,	2 00
F. Marchant, labor,	72 60
S. Pickering, labor,	47 60

A. L. Wilson, Jr., labor,	3 60
James Blake, labor,	4 00
John Redding, labor,	2 80
Newton Darling, labor,	3 20
John Mansley, labor,	7 20
George Goodridge, labor,	9 60
Paul Schlichting, labor,	12 80
Merwin Foley, labor,	31 20
Frank Guyette, labor,	26 40
Ronald Guyette, labor,	10 40
Walter Deselle, labor,	29 20
Joseph Newton, labor,	22 80
F. L. Lewis, labor,	3 20
Total expended under maintenance and blow-down,	<u>\$2,109 67</u>

Distribution of Money by Roads

East Part.

Namaschaug road,	\$286 15
Atherton Hill road,	165 63
Village road,	72 50
Cross road,	11 70
Prospect Hill road,	8 85
Furlone road,	5 85
Westmoreland road,	166 46
Stratton road,	91 00
Fern road,	57 80
Mead road,	25 40
West Swanzey road,	114 45
Calef road,	43 65
C. Tuttle road,	59 85
Glebe road,	13 38
Schewie road,	7 70
Dan Williams road,	3 24
All roads,	976 06
	<u>\$2,109 67</u>

Roger C. Spaulding, Agent, Center Part

Roger C. Spaulding, truck,	\$512 21
Roger C. Spaulding, tractor,	80 51
Roger C. Spaulding, gravel,	69 10
Roger C. Spaulding, team,	12 81
George White, tractor,	42 51
George White, labor,	204 60
Frank Hubner, tractor,	32 60
Shirley Bevis, mechanic,	7 00
Henry Plante, lumber,	2 10
M. S. Perkins, repairs,	10 85
Spofford Garage, supplies,	37 19
Erwin Stoddard, team,	17 60
John Castle, lumber,	45 00
R. H. Brown, supplies,	18 59
Paul Penning, supplies,	154 83
Chesterfield Garage, supplies,	11 65
Cassellini Venable, supplies,	15 42
D. H. Smith, tractor,	75
Lorenzo Jefts, team,	6 40
Solvay Sales, calcium,	96 00
Rose Porter, storage,	5 00
Bancroft & Martin, supplies,	21 42
Henry Chickering, truck,	51 85
Watson Garage, supplies,	3 00
Fred Stoddard, repairs,	14 25
Joe Bellassie, labor,	79 80
Bernest Aldrich, labor,	1 60
Ed. Aldrich, labor,	2 80
Raymond Slack, labor,	33 60
Morris Merrifield, labor,	1 60
Duke Atema, labor,	2 40
C. J. Fossey, labor,	1 60
Joe LeBlanc, labor,	53 20
Richard Amidon, labor,	24 40

Marshall Hudson, labor,	37 20
Lester Heath, labor,	16 00
Everett Joslin, labor,	21 60
Miller Williams, labor,	17 00
Raymond Rowe, labor,	50 60
William Avery, labor,	3 20
Lawrence Crowell, labor,	50 40
Olin Butler, labor,	66 20
Arthur Cradwick, labor,	2 40
Glen Chadwick, labor,	2 40
Winston Cray, labor,	8 00
Harold Post, labor,	3 80
John Nurse, labor,	10 20
Pearl Rawson, labor,	80
Percy Rowe, labor,	3 20
James Atema, labor,	25 20
Fred Wilkins, labor,	6 40

Total expended under maintenance and blow-down, \$2,018 80

Distribution of Money by Roads. Center Part.

All roads,	\$627 60
Winchester road,	162 80
Brattleboro road,	192 85
Haskell road,	100 20
Spofford road,	113 90
Gulf road,	26 80
Hinsdale road,	21 40
Dump road,	150 30
Horseshoe road,	276 00
Armstrong road,	97 40
Fossey road,	29 25
Jones road,	39 75
Day road,	26 10
North Hinsdale road,	52 05

Jackson Hill road,	92 00
Crowningshield road,	10 40
	<hr/>
	\$2,018 80

Lyle B. Chickering, Agent, West Part

Lyle B. Chickering, truck,	\$396 00
Lyle B. Chickering, foreman,	210 63
Lyle B. Chickering, gravel,	16 10
Lyle B. Chickering, storage,	60 00
Lyle B. Chickering, lumber,	43 50
Bernard Chickering, labor,	11 60
Clifford Chickering, labor,	58 00
Clifford Chickering, tractor,	162 15
Clifford Chickering, truck,	70 20
Shirley Bevis, mechanic,	23 00
Shirley Bevis, labor,	15 20
C. K. Lewis, supplies,	54 86
Superior Spreader Co., supplies,	8 13
Roger Welcome, team,	12 80
Roger Welcome, labor,	2 40
Henry Plante, supplies,	1 25
Spofford Garage, supplies,	33 39
Moses Chickering, supplies,	130 65
Chesterfield Garage, supplies,	3 20
Erwin Stoddard, team,	7 20
Casselini Venable, supplies,	15 35
C. M. Burnham, truck,	15 60
C. M. Burnham, gravel,	22 80
C. M. Burnham, labor,	2 00
Frank Whitecomb, compressor,	53 00
Henry Chickering, truck,	11 57
Robert Wiesenback, gravel,	4 00
Frank Fowke, gravel,	3 80
Henry Putnam, stone,	2 60

R. H. Brown, supplies,	3 30
Solvay Sales, calcium	120 00
Leland Hubbard, gravel,	2 80
Leland Hubbard, labor,	9 60
Mary Dunham, gravel,	2 00
A. H. Post, gravel,	2 40
R. D. Smith, parts,	8 78
Fred Davenport, labor,	154 20
Raymond Slack, labor,	1 50
Newton Darling, labor,	4 80
Winston Cray, labor,	57 80
Glen Bothwell, labor,	12 80
Frank Morrison, labor,	56 00
Edward Ogilvie, Jr., labor,	27 20
R. B. Chickering, labor,	1 60
Walter Parker, labor,	9 80
Chester Davis, labor,	2 00
Louis Chickering, labor,	16 00
Maurice Amidon, labor,	15 40
Charles Lynch, labor,	5 60
Marshall Farr, labor,	80
Henry Black, labor,	5 20
Norris Lane, labor,	6 40
Harold Neilson, labor,	37 20
Winifred Chickering, labor,	8 80
Dexter Thomas, labor,	10 40
Cecil Merrifield, labor,	12 20
K. M. Merrifield, labor,	3 00
Clarence Springer, labor,	1 80
Clifford Hills, labor,	4 80
Robert Mitchell, labor,	80

Total expended under maintenance and blow-down, \$2,055 96

Distribution of Money by Roads, West Part

Streeter Hill road,	\$140 70
Poor street,	55 55
Welcome road,	59 22
Cross road,	46 93
Lincoln Hill road,	44 50
Curt Chickering road,	255 35
Sargent road,	3 60
Poocham road,	110 65
Woodbury road,	9 30
Herrick road,	29 80
Houghton road,	19 33
Harris road,	10 25
Mt. road,	57 00
Gulf road,	212 15
River road,	36 40
Marshall Farr road,	16 45
Lasky road,	21 80
Hutchins road,	93 55
Staples road,	7 45
All roads,	825 98
	<hr/>
	\$2,055 96

Snow Removal

Wage Scale Same as Maintenance

Expended Under Walter J. Post, Foreman

Walter J. Post, truck,	\$72 60
Walter J. Post, foreman,	32 40
Walter J. Post, tractor,	9 50
A. H. Post, truck,	26 40
A. H. Post, sand,	27 50
Arthur Hewitt, labor,	1 60
W. E. Fuller, labor,	24 00
D. Schlichting, labor,	40

E. H. Wilson, labor,	9 00
A. L. Wilson, Jr., labor,	17 80
E. F. Fuller, labor,	4 80
Richard Putnam, labor,	12 00
Richard Cady, labor,	5 00
George Joslin, truck,	8 40
Everett Pearson, labor,	7 60
W. H. Fuller, labor,	2 80
Gale E. Hill, repairs,	5 75
Otto Schlichting, labor,	5 60
Clyde A. Coombs, supplies,	244 78
Spofford Garage, supplies,	77 11
Spofford Garage, storage,	20 00
W. R. Gallagher, labor,	5 80
Emil Fern, labor,	12 80
P. M. Penning, supplies,	3 00
W. E. Fuller, tractor,	24 50
G. L. Fuller, tractor,	12 50
John Nurse, labor,	2 80
M. S. Perkins, machine,	1 00
G. L. Fuller, labor,	2 00
Frank Whorfe, labor,	17 20
Steve Henchy, labor,	8 80
L. B. Chickering, truck,	15 60
H. C. Chickering, truck,	27 60
C. E. Chickering, truck,	15 60
W. E. Nurse, truck,	15 60
R. C. Spaulding, truck,	15 60
Arthur Whitcomb, shovel,	43 75
Frank Morrison, labor,	5 20
Ed. Ogilvie, labor,	5 20
R. C. Spaulding, foreman,	5 85
Frank Guyette, labor,	2 00

\$857 44

Snow Removal
Expended Under Roger C. Spaulding, Foreman

Roger C. Spaulding truck,	\$50 40
Roger C. Spaulding, foreman,	1 35
George White, labor,	18 00
Bernest Aldrich, labor,	6 80
Donald Bennett, labor,	1 20
Joe Bellassie, labor,	9 60
Edward Aldrich, labor,	3 20
Henry Chickering, truck,	20 40
C. J. Fossey, labor,	1 20
A. H. Post, sand,	1 60
Marshall Hudson, labor,	2 00
Walter Hebert, labor,	3 20
Miller Williams, labor,	3 20
Lawrence Crowell, labor,	4 80
Richard Amidon, labor,	1 60
Rose Porter, storage,	5 00
James Atema, labor,	3 60
Winston Cray, labor,	3 20
John Nurse, labor,	2 40
Farm Service Co., salt,	55 80
	\$198 55

Snow Removal
Expended Under Lyle B. Chickering, Foreman

Lyle B. Chickering, tractor,	\$3 00
Lyle B. Chickering foreman,	28 68
Lyle B. Chickering, truck,	124 80
Lyle B. Chickering, supplies,	60
C. E. Chickering, truck,	12 00
C. E. Chickering, labor,	22 40
B. A. Chickering, tractor,	23 00
B. A. Chickering labor,	41 60

M. H. Chickering, supplies,	31 41
H. C. Chickering, supplies,	4 56
Frank Morrison, labor,	24 20
Shirley Bevis, tractor,	59 50
Shirley Bevis, supplies,	2 27
C. K. Lewis, supplies,	53 28
Louis Chickering, labor,	80
Maurice Amidon, labor,	6 80
Ed. Ogilvie, Jr., labor,	12 60
Paul Welcome, truck,	4 80
Roger Welcome, labor,	3 00
Winston Cray, labor,	1 00
Fred Davenport, labor,	2 80
Newton Darling, labor,	2 80
James H. Austin, oil,	44 93
Carl Carlson, supplies,	3 00
Clyde Coombs, tractor parts,	146 42
Superior Spreader Co., parts,	65 00
Harry Black, labor,	2 20
Chesterfield Garage, supplies,	50
Gage's Garage, tractor repairs,	31 50
	<hr/>
	\$759 45

OLD HOME DAY ACCOUNT

Committee: Alice L. Spaulding, Floyd M. Fuller, Agnes B. Chickering, Norman Langmaid, Wilder Haskell.

Report by Chairman, Alice L. Spaulding.

Received from town appropriation,	\$130 00
Received from dance,	103 75
	<hr/>
Total receipts,	\$233 75

Expenditures:

Musical Bargerons Orchestra,	\$85 00
Prizes, ham, rolling pins, decorations, etc.,	42 21
Sentinel Printing Co.,	9 25
Gurnsey & Co.,	7 20
North End Bakery,	2 20
Paul M. Penning,	2 49
Kazooka Band costumes,	1 00
Mr. Langmaid, expenses,	2 89
Wilder Haskell, expenses,	4 00
Floyd Fuller, expenses,	2 00
Agnes Chickering, expenses,	10 00
Alice Spaulding, expenses,	10 00
Homer Cray, cream,	1 00
Moses Chickering, milk,	1 00
William D. Pierce, constable,	2 00
Henry C. Chickering, constable,	2 00
Stanley Spaulding, labor,	5 00
Basil Aldrich, labor,	2 00
Henry Chickering, Jr., labor,	75
Ladies' Aid Society,	6 50
Harold Ingalls, selling tickets,	1 00
	<hr/>
	\$199 49
Receipts,	\$233 75
Expenditures,	199 49
	<hr/>
Balance refunded to town,	\$34 26

Respectfully submitted,

ALICE L. SPAULDING,

Chairman.

REPORT OF TRUSTEES OF TRUST FUNDS

RECEIPTS

Cash on hand Feb. 1, 1938,	\$193 45	
Checks from Town of Chesterfield,	800 00	
Dividends received, April, July, Oct., Jan.,	689 44	
		\$1,682 89

EXPENDITURES

C. W. C. A income from funds,	\$319 81	
C. W. C. A. care of lots,	57 00	
C. W. C. A. markers,	1 50	
Trustees of library, Beckley fund,	15 11	
Treasurer Spofford church, Bonney fund,	6 05	
New Trust Funds created,	800 00	
Walter L. Deselle, town sexton,	160 67	
William E. Nurse, town sexton,	52 40	
Fertilizer,	9 75	
		\$1,422 29
Balance on hand Feb. 1, 1939,		260 60
		\$1,682 89

CHESTER M. BURNHAM,
 VIOLA V. TUTTLE,
 Trustees.

REPORT OF THE TRUST FUNDS OF THE TOWN OF CHESTERFIELD, N. H., ON JANUARY 31, 1939

Trust Funds	Purpose of Creation	How Invested	Principal	Rate of Per Cent Interest	Balance of Income on Hand at Beginning of Year	Income During Year	Expended During Year	Balance of Income on Hand at End of Year
Amidon-Stanley—Income paid to C. W. C. A.		Walpole Savings Bank—Book 7543	\$100.00	3%	\$3.02	\$3.02		
Bevis-Richardson—Income paid to C. W. C. A.		Cheshire County Savings Bank—Book 17762	100.00	3%	3.02	3.02		
Helen Farr Burnham—Income paid to C. W. C. A.		Cheshire County Savings Bank—Book 22150	100.00	3%	2.87	2.87		
Charles W. Chamberlain—Income paid to C. W. C. A.		Cheshire County Savings Bank—Book 25992	100.00	3%	3.02	3.02		
George Chamberlain—Income paid to C. W. C. A.		Keene Savings Bank—Book 2095	2,141.94	3%	64.73	64.73		
Albert Chickering—Income paid to C. W. C. A.		Keene Savings Bank—Book 18323	100.00	3%	3.02	3.02		
Henry Chickering—Income paid to C. W. C. A.		Keene Savings Bank—Book 12763	100.00	3%	3.02	3.02		
Jonathan Cobleigh—Income paid to C. W. C. A.		Keene Savings Bank—Book 11557	200.00	3%	6.05	6.05		
John W. Davis—Income paid to C. W. C. A.		Walpole Savings Bank—Book 7541	100.00	3%	3.02	3.02		
Louise E. Davis—Income paid to C. W. C. A.		Walpole Savings Bank—Book 6627	100.00	3%	3.02	3.02		
Davis-Wells—Income paid to C. W. C. A.		Walpole Savings Bank—Book 7539	100.00	3%	3.02	3.02		
Farr-Caswell—Income paid to C. W. C. A.		New Hampshire Savings Bank—Book 91436	100.00	2½%	5.52	5.52		
Dennie W. Farr—Income paid to C. W. C. A.		Walpole Savings Bank—Book 7555	100.00	3%	3.02	3.02		
Olin R. Farr—Income paid to C. W. C. A.		Cheshire County Savings Bank—Book 15165	100.00	3%	3.02	3.02		
Farr-Kingsley—Income paid to C. W. C. A.		Cheshire County Savings Bank—Book 18019	200.00	3%	6.05	6.05		
Ransom C. Farr—Income paid to C. W. C. A.		Walpole Savings Bank—Book 7582	100.00	3%	3.02	3.02		
Hannum-Amidon—Income paid to C. W. C. A.		Keene Savings Bank—Book 18178	100.00	3%	3.02	3.02		
Laura Smith Houghton—Income paid to C. W. C. A.		Walpole Savings Bank—Book 7528	100.00	3%	3.02	3.02		
George A. Hubbard—Income paid to C. W. C. A.		Keene Savings Bank—Book 10983	100.00	3%	3.02	3.02		
Walden L. Laskey—Income paid to C. W. C. A.		New Hampshire Savings Bank—Book 91434	100.00	2½%	2.50	2.50		
Henry C. Marsh—Income paid to C. W. C. A.		Keene Savings Bank—Book 18250	100.00	3%	3.02	3.02		
Elizabeth D. Smith—Income paid to C. W. C. A.		Manchester Savings Bank—Book 150746	500.00	3%	15.00	15.00		
Ellen A. Smith—Income paid to C. W. C. A.		Cheshire County Savings Bank—Book 21762	100.00	3%	3.02	3.02		
Melvin M. Smith—Income paid to C. W. C. A.		Cheshire County Savings Bank—Book 19050	100.00	3%	3.02	3.02		
		Walpole Savings Bank—Book 6143	500.00	3%	15.11	15.11		
		Cheshire County Savings Bank—Book 21037	500.00	3%	15.11	15.11		
		Manchester Savings Bank—Book 149443	500.00	3%	15.00	15.00		
		Keene Savings Bank—Book 14336	500.00	3%	15.11	15.11		
		New Hampshire Savings Bank—Book 90419	2,000.00	2½%	50.00	50.00		
		Amoskeag Savings Bank—Book 170928	1,119.02	3%	33.58	33.58		
Gordis R. Stearns—Income paid to C. W. C. A.		Walpole Savings Bank—Book 7540	200.00	3%	6.05	6.05		

Harriet Dailey Streeter—Income paid to C. W. C. A.	100.00	2½%	100.00	2½%	2.50	2.50
George F. Amidon—Income paid to C. W. C. A.	100.00	3%	100.00	3%	3.02	3.02
Squire Amidon—Income paid to C. W. C. A.	100.00	3%	100.00	3%	3.02	3.02
Jennie Hubbard Burroughs—Income paid to C. W. C. A.	100.00	3%	100.00	3%	3.02	3.02
*Ellen M. Shumway—Income paid to C. W. C. A.	400.00	3%	400.00	3%	6.00	6.00
†Addison M. Brown—Income paid to C. W. C. A.	100.00	3%	100.00	3%	1.25	1.25
Barrett-Jackson—Care of lot	100.00	3%	100.00	3%	3.02	3.02
Bullock-Clark—Care of lot	100.00	3%	100.00	3%	3.02	3.02
Butler-Marsh—Care of lot	200.00	3%	200.00	3%	6.05	6.05
Anna Chamberlain—Care of lot	100.00	3%	100.00	3%	3.02	3.02
Byard-Chickering—Care of lot	100.00	3%	100.00	3%	4.66	4.66
Solon Chickering—Care of lot	100.00	3%	100.00	3%	2.89	2.89
George O. & Merie W. Cobleigh—Care of lot	100.00	3%	100.00	3%	3.02	3.02
Arthur M. Davis—Care of lot	100.00	3%	100.00	3%	2.31	2.31
Leroy N. Colburn—Care of lot	50.00	3%	50.00	3%	1.11	1.11
Gertrude B. Cook—Care of lot	100.00	3%	100.00	3%	3.02	3.02
Martha L. & Bertha L. Davis—Care of lot	100.00	3%	100.00	3%	3.11	3.11
Fred J. Harris—Care of lot	100.00	3%	100.00	3%	1.14	1.14
Etta Hubbard-Hildreth—Care of lot	100.00	3%	100.00	3%	3.02	3.02
Clara J. Puffer—Care of lot	100.00	3%	100.00	3%	5.56	5.56
Eleazer Randall—Care of lot	100.00	3%	100.00	3%	2.14	2.14
George W. Sargent—Care of lot	100.00	3%	100.00	3%	1.89	1.89
Sam L. Stowell—Care of lot	150.00	3%	150.00	3%	23.43	23.43
George Ware—Care of lot	100.00	3%	100.00	3%	3.02	3.02
George W. Webb—Care of lot	50.00	3%	50.00	3%	1.38	1.38
Emma V. Winn—Care of lot	100.00	3%	100.00	3%	2.88	2.88
Onesime Peltier—To accumulate at interest as long as Mrs. Peltier lives	100.00	3%	100.00	3%	3.93	3.93
Amie A. Amidon—Care of 3 burial lots	166.57	3%	166.57	3%	4.88	4.88
Warren H. Butler—Care of burial lot	500.00	3%	500.00	3%	15.11	15.11
Louise E. Davis—Care of burial lot	100.00	3%	100.00	3%	3.02	3.02
John W. Africa Hildreth—Care of burial lot	100.00	3%	100.00	3%	1.05	1.05
Ida A. Hosford—Care of burial lot	100.00	3%	100.00	3%	2.75	2.75
Emily Merriam—Care of burial lot	150.00	3%	150.00	3%	4.00	4.00
Mary C. Smith—Care of burial lot	65.36	3%	65.36	3%	1.97	1.97
John Stanford—Care of burial lot	100.00	3%	100.00	3%	1.94	1.94
Wallace K. Ware—Care of burial lot	100.00	3%	100.00	3%	3.02	3.02
†Laura A. Cheever—Care of burial lot	200.00	3%	200.00	3%	6.05	6.05
Emoretta T. Robertson—Care of burial lot	100.00	3%	100.00	3%	1.50	1.50
Henry O. Coolidge—Care of Coolidge Cemetery	100.00	3%	100.00	3%	3.02	3.02
Nellie Cresser Ware—Care of burial lot	100.00	2½%	100.00	2½%	23.10	23.10
Mead—Care Converse-Mead cemetery	150.00	3%	150.00	3%	3.66	3.66
*April 4, 1938. †April 7, 1938. ‡April, 1938.					1.80	1.80

*April 4, 1938. †April 7, 1938. ‡April, 1938.

REPORT OF THE TRUST FUNDS OF THE TOWN OF CHESTERFIELD, N. H., ON JANUARY 31, 1939

Trust Funds	Purpose of Creation	How Invested	Amount of Principal	Rate of Per Cent Interest	Balance of Income on Hand at Beginning of Year	Income During Year	Expended During Year	Balance of Income on Hand at End of Year
New Boston Cemetery—Care of cemetery		Cheshire County Savings Bank—Book 8795 Walpole Savings Bank—Book 6091	50.00 50.00					
Kate Cressley—Care lot in New Boston cemetery		Walpole Savings Bank—Book 7542	50.00	3%	—32	4.50		4.18
Robertson—Care Robertson cemetery		Cheshire County Savings Bank—Book 14848	25.00	3%	3.96	.76		4.72
Lucinda Hunt—Care Wheeler cemetery		Keene Savings Bank—Book 9661	150.00	3%	1.08	4.53	2.00	3.61
Ellen M. Ball—Care burial lot		New Hampshire Savings Bank—Book 91431	200.00	2½%	1.84	5.00	4.80	2.04
Nelson H. Ball—Care burial lot		Cheshire County Savings Bank—Book 15743	100.00	3%	2.76	3.02	4.00	1.78
Beckley Library Fund—Purchase books Town Library		Cheshire County Savings Bank—Book 25926	100.00	3%		3.00		.02
Elizabeth E. Bonney—Evangelical preaching in Spofford Church		Keene Savings Bank—Book 18430	500.00	3%		15.11	15.11	
Elizabeth E. Bonney—Abel & Joseph Holt burial lots		Walpole Savings Bank—Book 6865	200.00	3%		6.05	6.05	
John F. Butler—Care of burial lot		Walpole Savings Bank—Book 6864	200.00	3%	.94	6.05	6.00	.99
Ira P. Buxton—Care of burial lot		Cheshire County Savings Bank—Book 14847	200.00	3%	20.04	6.05	3.50	22.59
Merrick E. Chandler—Care of burial lot		New Hampshire Savings Bank—Book 91435	100.00	2½%	.50	2.50	3.00	
Richard T. Cobb—Care of burial lot		Cheshire County Savings Bank—Book 11405	100.00	3%	1.24	3.02	3.10	1.16
Anna Campbell Clark—Care of burial lot		Keene Savings Bank—Book 11639	100.00	3%		6.04	3.20	13.67
George B. Corbett—Care Samuel Burt & George Corbett lots		Walpole Savings Bank—Book 7307	100.00	3%	10.83	3.02	3.10	.40
Estabrook-Hopkins—Care burial lots		Cheshire County Savings Bank—Book 15734	100.00	3%	.48	6.05	6.00	.92
Elsie M. Albee Fasset—Care burial lot		Keene Savings Bank—Book 14958	200.00	3%	.87	3.02	3.65	1.80
Henry O. Field—Care burial lot		Cheshire County Savings Bank—Book 15744	100.00	3%	2.43			
George S. Fletcher—Care of burial lot		Cheshire County Savings Bank—Book 15496	100.00	3%	3.38	4.52	3.95	3.95
Reuben B. Foster—Care of burial lot		Keene Savings Bank—Book 18322	50.00	3%	26.39	15.11	3.60	37.90
Herschel J. Fowler—Care Carpenter-Fowler lots		Keene Savings Bank—Book 10007	500.00	2½%	.10	2.50	2.60	
Frank & Henry Lyman Gilson—Care of burial lots		New Hampshire Savings Bank—Book 91438	100.00	3%	.50	3.02	3.00	.52
Phineas Gline—Care of burial lots		Walpole Savings Bank—Book 7151	100.00	3%	.88	3.02	3.00	.90
Brown-Willard Gline—Care of burial lot		Cheshire County Savings Bank—Book 22144	100.00	3%	2.64	3.02	3.00	2.66
Goodrich-Hill—Care of burial lot		Cheshire County Savings Bank—Book 11248	100.00	3%	.37	3.02	3.00	.39
George L. Hamilton—Care of burial lot		Walpole Savings Bank—Book 6856	100.00	3%	.25	3.02	3.00	.27
		Cheshire County Savings Bank—Book 11247	100.00	3%	.09	3.02	3.00	.11
		Cheshire County Savings Bank—Book 14266	100.00	3%	1.40	3.02	3.00	1.42

John H. Henry—Care of burial lot	Cheshire County Savings Bank—Book 16079	100.00	3%	1.09	3.02	3.00
Erving A. Hildreth—Care of burial lot	Cheshire County Savings Bank—Book 15786	100.00	3%	.59	3.10	3.10
Fred W. Hopkins—Care of burial lot	Cheshire County Savings Bank—Book 16730	100.00	3%	.87	3.02	3.00
Henry O. Howe—Care of burial lot	Keene Savings Bank—Book 18231	150.00	3%	2.47	4.53	4.20
George H. Joslin—Care of burial lot	Cheshire County Savings Bank—Book 25927	100.00	3%		3.02	3.00
John A. Joslin—Care of 2 burial lots	Cheshire County Savings Bank—Book 17733	200.00	3%	.30	6.05	6.00
Horace S. Lincoln—Care of burial lot	Cheshire County Savings Bank—Book 16496	200.00	3%	5.32	6.05	3.30
James C. Naylor—Care of burial lot	Cheshire County Savings Bank—Book 19051	100.00	3%	.78	3.02	3.00
H. D. Pierce—Care of burial lot	Cheshire County Savings Bank—Book 20435	100.00	3%	.04	3.02	3.00
Jennie M. Phillips—Care of burial lots	Walpole Savings Bank—Book 6468	100.00	3%	1.70	3.02	3.00
Abial Miles Post—Care of burial lot	Cheshire County Savings Bank—Book 16740	100.00	3%	2.12	3.02	3.00
Arthur H. Post—Care of burial lot	Walpole Savings Bank—Book 7234	100.00	3%	.02	3.02	3.00
Charles L. Puffer—Care of burial lot	Keene Savings Bank—Book 9285	100.00	3%	.52	3.10	3.00
Henry Puffer—Care of burial lot	Cheshire County Savings Bank—Book 17780	100.00	3%	.83	3.02	3.00
Fabey Puffer—Care of burial lot	Keene Savings Bank—Book 9286	100.00	3%		3.02	3.00
Moses Puffer—Care of burial lot	Cheshire County Savings Bank—Book 22911	100.00	3%	1.62	3.02	3.00
Nathan Puffer—Care of burial lot	Walpole Savings Bank—Book 7532	100.00	3%	4.99	3.03	2.70
James W. Scott—Care of burial lot	Keene Savings Bank—Book 14959	100.00	3%	.02	3.02	3.00
Slade-Arnold—Care of 2 burial lots	Walpole Savings Bank—Book 7297	100.00	3%	2.87	3.02	3.10
	Keene Savings Bank—Book 18252	100.00	3%	.02	6.04	6.00
M. H. Spaulding—Care of Holman lot	Keene Savings Bank—Book 14961	100.00	3%			
	Walpole Savings Bank—Book 7308	100.00	3%	7.81	6.04	3.00
Spaulding-Higgins—Care of burial lot	Cheshire County Savings Bank—Book 14021	100.00	3%	1.81	3.02	3.00
Thaddeus Streeter—Care of burial lot	New Hampshire Savings Bank—Book 91432	100.00	2 1/2%	3.22	2.50	2.70
Maryann Thompson—Care of burial lot	Walpole Savings Bank—Book 7282	100.00	3%	1.53	3.02	4.50
David S. Walton—Care of burial lot	New Hampshire Savings Bank—Book 91437	100.00	2 1/2%	.52	2.50	3.00
J. Foster Wheeler—Care of burial lot	Walpole Savings Bank—Book 6514	100.00	3%	.70	2.77	2.90
Walter C. Hurford—Care of burial lot	Keene Savings Bank—Book 19414	100.00	3%		3.02	2.77
Fred E. Atherton & Wm. Atherton—Care of burial lot	Cheshire County Savings Bank—Book 27732	200.00	3%		7.58	3.75
Eliza M. Estey—Care of Sidney S. Wright lot	Keene Savings Bank—Book 19629	200.00	3%		2.50	1.60

CERTIFICATE

This is to certify that the information contained in this report is complete and correct, to the best of our knowledge and belief.

WILLIAM E. NURSE,
CHESTER M. BURNHAM,
VIOLA V. TUTTLE,
Trustees.

January 31 1939.

REPORT OF THE BOARD OF HEALTH

Report of the child health work which has been done by the State Board of health in cooperation with the local health agencies and other organizations as represented on the child health committee.

Child health clinics held,	1
Attendance,	16
Defects found,	12
Defects corrected,	4
Dyphtheria immunization clinics held,	1
Children receiving treatment,	2

The canal at the outlet of Spofford Lake was cleaned and some improvements made. A new and up to date sewage system was installed at camp Notre Dame, formerly camp Namaschaug. The public beach had the same supervision as last year also some improvements.

A few cases of venereal diseases have been cleaned up, there still exist dwellings that are over crowded, also camps that need improving if they are to be used.

Samples of water taken from the well at the Town Hall and analyzed showed the water to be unfit to use in its present condition probably due to not being used enough. A few septic tanks damaged by the flood and hurricane have been repaired and more will have to be in the spring.

Regulations were posted in all hotels and eating places relating to the cleaning and disinfecting of eating and drinking utensils. Twenty-eight milk licenses were issued, seven of which were issued to buy and sell milk and cream, these being: C. J. Fossey, George LaPlante, Samuel Winn, William Manch, Harry Nosek, Henry Chickering and Byron Davis.

Several signs were posted to prevent dumping rubbish in places other than the public dump. Several samples were taken from public and private water systems and sent to Concord, N. H., for analysis.

Respectfully submitted,
 HAROLD E. RANDALL,
 Health Officer.

REPORT OF AUDITORS

February, 1939.

Board of Selectmen,
 Chesterfield, N. H.

Gentlemen:

We, the undersigned, hereby certify that we have examined the accounts of the Selectmen, Town Clerk, Town Treasurer, Road Agents, Library Trustees, Tax Collector, Precinct Treasurer and Trustees of Trust Funds.

We believe them well kept, properly vouched and correct to the best of our knowledge and belief with the exceptions of the following items:

Owed to Earl DeLill by the town .20 (twenty cents), for overcharge on redeemed taxes.

Owed to the town by George S. White .40 (forty cents), overpaid through Road Agent's account.

The Tax Collector, in his town report, shows a balance of \$2.92 of cash on hand. This amount should have been in the records of the Town Treasurer as receipts.

The Tax Collector, in his Precinct report, shows a balance of .42 (forty-two cents), of cash on hand. This amount should have been in the records of the Precinct Treasurer as receipts.

We find the Town Treasurer received and deposited on December 21, 1938, \$500.00 which, as its source of income, has been credited as a gift from Morris Friedsam. We find that the

Town has not voted to accept this amount of money from Mr. Friedsam.

We also wish to report an error in the accounts of the Trustees of Trust Funds. The error, which has been carried on their books since January 31, 1937, caused us to spend a considerable amount of time tracing the error to that date. Since this proves the adjustment of January, 1937, was not correct, we suggest that this matter be considered by the voters of the Town, and the proper adjustment be allowed to be made during the coming year. The amount of the deficit is \$49.28. The accounts of the trustees for the year ended January 31, 1939, and the accounts for the year previous are correct in all respects.

We wish to report an error in the accounts of the Trustees of Trust funds which has been carried on the books since 1936.

At that time the town voted that the trustees and selectmen be authorized to adjust the records. Such an adjustment was made.

All known facts were taken into consideration at the time but there later developed an outstanding bill of \$49.28 payable to Chesterfield West Cemetery Association. This bill was, of course, paid, leaving the bank balance that amount short. It has been carried each year since and should be cleared to balance the accounts.

We submit this explanation for your consideration.

Signed,

HAROLD E. RANDALL,
DANIEL P. SCHLICHTING,
Town Auditors.

REPORT OF TRUSTEES OF TOWN LIBRARIES

RECEIPTS

Cash on hand Feb. 1, 1938,	\$90 52	
Received from town treasurer,	135 00	
Received from Trustees of Trust Funds,	15 11	
		\$240 63

EXPENDITURES

John N. Ball, librarian,	\$28 00	
Paul M. Penning, assistant librarian,	22 00	
Lina Amidon, assistant librarian,	22 00	
G. H. Tilden Co., books, (Feb. 1938),	65 00	
G. H. Tilden Co., books, (Jan. 1939),	58 10	
Chase Book Store, books, (Jan. 1939),	30 87	
		\$225 97
Balance on hand Jan. 31, 1939,	\$14 66	
Paid to Town of Chesterfield, Jan. 31, 1939,		
unexpended balance,	\$14 66	
New books added, 1938 appropriation,	121	
Books in libraries,	6,292	
Books loaned in Spofford,	2,153	
Books loaned in Chesterfield,	1,504	
Books loaned in West Chesterfield,		

Respectfully submitted,
JOHN MANSLEY,
 Trustee.

REPORT OF THE FIREWARDS

We have had a very good year with very small fire loss.

We formed two paid companies in March and have had good results with attendance at meetings and drills.

Calls in Center part of Town :

Chimney fires,	9
House fires,	2
Forest fires,	1
Dump fires,	1
	13
Total,	13

Calls in West part of Town :

Chimney fires,	5
Barn fires,	1
Forest fires,	2
Dump fires,	1
	9
Total,	9

We recommend new tires on the trucks as the ones on the trucks are eight years old and we also need some new hose.

Respectfully submitted,
HAROLD INGALLS,
ARVID PEARSON,
JAMES ATEMA,
 Firewards.

FINANCIAL REPORT

OF THE SPOFFORD FIRE PRECINCT IN THE TOWN OF
CHESTERFIELD IN THE COUNTY OF CHESHIRE

For the Fiscal Year Ending January 31, 1939

CERTIFICATE

This is to certify that the information contained in this report was taken from official records and is complete and correct to the best of my knowledge and belief.

JOHN MANSLEY,

Clerk and Treasurer.

Feb. 7, 1939.

BALANCE SHEET

ASSETS

Cash on hand,	\$701 05	
Amount due to precinct:		
From town,	99 88	
Total assets,		\$800 93
Grand total,		\$800 93

LIABILITIES

Bills owed by precinct:		
A. H. Blanchard Co.,	\$109 10	
Total liabilities,	\$109 10	
Excess of assets over liabilities (surplus),	691 83	
Grand total,		\$800 93

SCHEDULE OF PRECINCT PROPERTY

Description	Value
Lands and buildings:	
Including plumbing and heating plants,	\$9,000 00
Furniture and apparatus:	
Triple combination pump,	\$1,200 00
Fire hose,	1,000 00
Fire alarm system,	500 00
Waterous pumper,	350 00
Hose reel,	25 00
Hats, coats, gas masks, etc.,	100 00
Inhalator outfit,	250 00
Furniture,	300 00
	<hr/>
Total valuation,	\$12,725 00

RECEIPTS

Current revenue:	
From taxes,	\$970 65
From other sources:	
Hall rent,	29 00
	<hr/>
Total receipts form all sources,	\$999 65
Cash on hand at beginning of year,	861 94
	<hr/>
Grand total,	\$1,861 59

PAYMENTS

Current maintenance expenses:	
Supplies,	\$22 06
Fuel,	120 36
Lights,	26 24
Insurance,	243 22
Repairs,	145 20
Janitor,	120 00

Water holes,	116 85	
Fire alarm,	10 15	
Firemen's pay,	106 84	
Clerical expense,	30 00	
	<hr/>	
Total current maintenance expenses,		\$940 92
Outlay, new construction and equipment:		
(a) Equipment,	\$219 62	
	<hr/>	
Total outlay payments,		\$219 62
		<hr/>
Total payments for all purposes,		\$1,160 54
Cash on hand at end of year,		701 05
		<hr/>
Grand total,		\$1,861 59

REPORT OF THE
TREASURER OF SPOFFORD FIRE
DISTRICT

DETAILED RECEIPTS AND EXPENDITURES

RECEIPTS

1938-9

Feb. 28	Ada W. Allen, hall rent,	\$5 00
April 11	Walter J. Post, hall rent,	5 00
April 22	Otto Schlichting, hall rent,	2 50
May 16	Harry E. Winn, taxes,	18 74
June 1	Harry E. Winn, taxes,	56 28
July 21	Harry E. Winn, taxes,	82 56
Aug. 3	Harry E. Winn, taxes,	33 98
Sept. 1	Harry E. Winn, taxes,	83 71
Sept. 19	Harry E. Winn, taxes,	39 01

Sept. 27	Harry E. Winn, taxes,	220 59
Sept. 30	Harry E. Winn, taxes,	90 11
Oct. 1	Harry E. Winn, taxes,	86 18
Oct. 5	Harry E. Winn, taxes,	97 34
Oct. 19	Harry E. Winn, taxes,	35 20
Nov. 14	Otto Schlichting, hall rent,	10 50
Nov. 15	Harry E. Winn, taxes,	21 17
Nov. 30	Harry E. Winn, taxes,	42 96
Dec. 14	Harry E. Winn, taxes,	24 64
Jan. 12	Harry E. Winn, taxes,	25 30
Jan. 28	Otto Schlichting, hall rent,	6 00
		<hr/>
		\$986 77
Plus added receipt Jan. 31, H. E. Winn,		12 88
		<hr/>
		\$999 65
Balance in Keene National Bank, Feb. 1, 1938,		861 94
		<hr/>
Total receipts,		\$1,861 59

EXPENDITURES

1938-9

Feb. 14	Spofford Garage, Inc., supplies,	\$5 56
Feb. 25	Spencer Hardware Co., fuel,	39 00
Mar. 7	P. S. Co. of N. H., lights,	7 04
Mar. 16	Ashuelot Insurance Co., policies,	93 22
April 11	P. S. Co. of N. H., lights,	2 24
April 11	Sargent & Co., supplies,	91
April 12	C. W. Tuttle, supplies,	1 65
April 12	Mason Insurance Co., policies,	87 88
May 10	Ashuelot Insurance Co., policies,	52 12
May 10	P. S. Co. of N. H., lights,	2 56
June 14	P. S. Co. of N. H., lights,	1 00
June 14	A. H. Post, repairs,	10 50
July 8	Otto Schlichting, janitor,	50 00
July 10	P. S. Co. of N. H., lights,	1 00

July 11	Franklin Ingalls, repairs,	3 00
July 11	A. H. Post, repairs,	4 00
Aug. 8	A. H. Blanchard Co., equipment,	50 53
Aug. 8	P. S. Co. of N. H., lights,	1 00
Aug. 8	Spofford Garage, Inc., equipment,	84 34
Aug. 8	A. H. Post, water holes,	37 63
Aug. 12	Ira Huntley, alarm repairs,	3 80
Sept. 12	A. H. Post, water holes,	79 22
Sept. 12	P. S. Co. of N. H., lights,	1 00
Nov. 14	P. S. Co. of N. H., lights,	1 28
Nov. 14	A. H. Post, storm repairs,	41 55
Dec. 6	Spencer Hardware Co., fuel,	42 36
Dec. 12	A. H. Post, repairs,	48 32
Dec. 12	A. H. Blanchard Co., equipment,	11 77
Jan. 9	A. H. Post, repairs,	29 78
Jan. 9	Ira A. Huntley, alarm repairs,	6 35
Jan. 9	C. W. Tuttle, supplies,	7 03
Jan. 9	Mason Insurance Co., policy,	10 00
Jan. 9	A. H. Blanchard Co., equipment,	19 18
Jan. 18	P. S. Co. of N. H., lights,	4 80
Jan. 18	John Schlichting, supplies,	1 25
Jan. 18	Spencer Hardware Co., fuel,	39 00
Jan. 18	A. H. Blanchard Co., equipment,	53 80
Jan. 18	P. S. Co. of N. H., lights,	4 32
Jan. 28	Spofford Garage, Inc., supplies,	5 66
Jan. 28	John Mansley, labor on truck,	4 00
Jan. 28	John Mansley, clerical and expenses,	30 00
Jan. 28	Firemen's pay 1938,	106 84
Jan. 28	Otto Schlichting, janitor,	70 00
Jan. 28	A. H. Post, repairs,	4 05

 \$1,160 54

Balance in Keene National Bank, Feb. 1, 1939,

688 17

 \$1,848 71

Plus added receipt, Jan. 31, H. E. Winn, 12 88

\$1,861 59

Respectfully submitted,
 JOHN MANSLEY,
 Precinct Treasurer.

**SPOFFORD FIRE PRECINCT
 STATEMENT OF HARRY E. WINN, COLLECTOR**

Amount due January 31, 1938, on 1937 book, \$75 02
 Paid precinct treasurer, 75 02

Amount committed, 1938, \$996 61
 Amount paid precinct treasurer, \$895 63
 Abatements, 1 10
 Balance on book, 99 46
 Cash on hand, 42

\$996 61

Respectfully submitted,
 HARRY E. WINN,
 Collector.

**PRECINCT BOOK
 UNCOLLECTED TAXES, JANUARY 31, 1939**

Fred Ball,	\$ 88
John N. Ball,	4 46
John and Nelson Ball,	47
Benjamin L. Davis,	2 20
Minnie Faunce,	1 10
Hazel Guyette,	99
Burton Johnson,	88
Elizabeth Jordan,	2 42
Clinton E. Joslyn,	1 82
Freeman Marchant,	72

Georgianna Pattridge Est.,	1 65
Stanley Pickering,	39
George Phettiplace,	99
Nahum Pierce,	1 13
Harold P. Post,	88
Edythe Stevens,	3 85
Ralph C. and Edythe Stevens,	1 54
Edythe Stevens and Ruth Woods,	3 30
George C. Thomas,	5 94
George F. White,	3 19
Etta M. Williams,	1 98
James W. Barden,	09
Blanche Beverstock,	2 75
Camp Marquette,	13 42
Robert Eames,	03
Amy W. Gabree,	1 76
John P. Johnson,	03
Joseph Kaiser, Jr.,	5 50
Warren F. Manley,	11 00
G. C. and B. J. Martell,	03
Stuart C. Merwin,	3 85
Arthur Nims,	3 30
Harry Nosek,	9 90
John Reynolds,	03
Nellie Ryder,	4 24
Ralph Stevens,	55
Esther L. Whitney,	1 43
Adelle Whitney,	77

REPORT OF SUPERINTENDENT OF SCHOOLS

To the School Board and Citizens of Chesterfield:

I herein submit my sixth annual report as superintendent of schools.

ORGANIZATION FOR YEAR 1937-1938

School	Teacher	Enrollment
Spofford Grammar,	Oscar Frazer,	30
Spofford Primary,	Vanetta Clawson,	31
Chesterfield Grammar,	Esther Koskela,	22
Chesterfield Primary,	Marion E. Hilliard,	29
West Grammar,	Elizabeth M. Hidden,	24
West Primary,	Ruth A. Isherwood,	27
Total,		163

PROMOTIONS

The following numbers of promotions in respective grades were made in June:

Grades	I	II	III	IV	V	VI	VII	VIII
Spofford Primary,	1	7	2	4				
Spofford Grammar,					6	3	3	9
Chesterfield Primary,	3	3	9	5				
Chesterfield Grammar,					7	2	8	2
West Primary,	6	5	6	4				
West Grammar,					9	3	9	3
Totals,	10	15	17	13	22	8	20	14

These promotions were made on the following points: regularity of attendance, term rank, standard tests, examinations given by teachers.

Metropolitan Achievement tests were given; one at mid-year and one in June.

The Otis Standard Graduation examination for elementary schools was given to the eighth grade.

These tests are very helpful in the graduation and placement of our pupils. By their use much of the personal equation of the individual teacher is eliminated. They show up not only the strong features but also the weak of our education system.

GRADUATION

Three grammar schools of the town united in a union graduation at the Town Hall, Chesterfield Village, on the evening of June 15.

The exercises were modern, consisting of songs, plays, class parts and solos. All the features of the program were well rendered and gave evidence of intensive work on part of the teachers and an attentive cooperation of the pupils.

The following is the program:

Class Colors
Blue and Gold

Class Flower
Yellow Rose

Class Motto
All the World Lies Before Us

Class Marshall
Barbara Cobleigh

Graduating Class of 1938

Spofford—Allen Bills, Elizabeth Clancy, Harold Foster, Raymond Paine, Judith Pearson, Terrence Perry, Priscilla Post, Nora Seaver, Millicent Williams.

Chesterfield—Clyde Murphy, Donald Murphy.

West Chesterfield—Marjorie Cobleigh, Dorothy Plante, Glennis Underwood.

Graduating with highest honors—Priscilla Post, Raymond Paine, Millicent Williams.

PROGRAM

Invocation,	Rev. N. J. Langmaid
Welcome Song,	Graduates
Play, "Commencement Confusion,"	Graduates
Welcome Speech,	Glennis Underwood
Class Prophecy,	Millicent Williams, Judith Pearson
Class Doctor,	Allen Bills
Violin Solo, Intermezzo (Cavaleria Rusticana),	
Millicent Williams accompanied by Priscilla Post	
Class Will,	Marjorie Cobleigh
Play, "Snow White,"	Primary Grades
Class Gifts,	Raymond Paine
Farewell Speech,	Priscilla Post
Closing Song,	Graduates
Presentation of books from the Chesterfield Community Club,	
Daniel Schlichting, President	
Presentation of Diplomas,	Superintendent Johnson

ORGANIZATION FOR SCHOOL YEAR 1938-1939

School	Teacher	Enrollment Jan. 10
Spofford Grammar,	W. Oscar Frazer,	14
Spofford Primary,	Josephine Kerwacki,	15
Chesterfield Grammar,	Esther Koskela,	28
Chesterfield Primary,	Jean Dudley,	27
West Grammar,	Elizabeth Hidden,	34
West Primary,	Ruth Isherwood,	27
Total,		145

At the time of writing, all the schools are well organized, attendance is good, progress is normal and the attitude of the pupils toward their school, their interest in their work and the effective work of their teachers give evidence for a successful year.

HEALTH ACTIVITIES

The program of hot lunches, milk and cod liver oil has been carried on by use of funds raised under special activities.

For further details of health activities, consult Miss Edgett's report.

MINOR REPAIRS AND NEW EQUIPMENT

A new furnace has been installed at the West school building and is giving excellent satisfaction. New circulating heaters have been installed at the Village and Spofford schools. All are giving satisfaction except the one in the Spofford Grammar room.

These new heating plants continue a constructive policy adopted about four years ago. This plan followed through these years has resulted in the following improvements: slate blackboards, electric lights, electric clocks, new ceilings, screens for windows and doors, new visitors' chairs and the above mentioned heating appliances. The usual painting and repair work has been done. All of these things have modernized our school buildings and made them more attractive and livable.

In conclusion, I wish to thank the school board, teachers and parents for their cooperation and support.

Respectfully submitted,
 FREDERICK T. JOHNSON,
 Superintendent of Schools.

Marlborough, N. H., Feb. 10, 1939.

STATISTICS FOR SCHOOL YEAR 1937-1938

Total length of school year in weeks,	37
Number of pupils registered,	163
Number of half days schools were in session,	352
Number of half days schools were closed,	18
Average membership in the schools,	131.72
Average attendance,	124.34
Percent of attendance for Chesterfield,	94.39

Percent of attendance for district,	95.12
Number of tardinesses,	224
Number of pupils not absent or tardy,	18
Number of visits made by school board members,	14
Number of visits made by superintendent,	107
Number of visits made by citizens,	154
Number of visits made by district nurse,	60
Number of pupils transported by district,	38

HONOR ROLL

Pupils neither absent nor tardy for entire year:

Ralph Amidon	Betty Gauthier
Thelma Amidon	Gladys Ingalls
Stephen Bevis	Harold Lane
Dorothea Bevis	Marguerite Murphy
Dorothy Chickering	Charles Turner
Henry Chickering, Jr.	Robert Whitney
	Beverly Whitney

REPORT OF SCHOOL NURSE

Mr. F. T. Johnson,
Supt. of Schools.

Dear Sir:

I herewith submit my annual report as School Nurse:

136 pupils were inspected.

4 pupils showed defective hearing.

9 pupils showed defective vision—uncorrected.

12 pupils showed poor posture.

9 pupils were underweight.

86 pupils were in need of dental care.

11 pupils were recommended to have throat and nose examination by a physician.

Dental clinics were held in West Chesterfield, October 24 and 25, 1938, Chesterfield, October 26 and 27, 1938, Spofford, October 28, 1938, with work done as follows:

Number of pupils treated,	48
Total number of cleanings,	29
Total number of extractions,	18
Total number of amalgam fillings,	40
Total number of porcelain fillings,	19

The bill for this work was Fifty-three dollars (\$53.00) paid for by parents of the pupils having work done.

7 pupils had their teeth cared for by their own dentist.

2 pupils had special eye examination and defects corrected.

1 tonsil case was treated at the Keene hospital.

Much time is spent each year on home and business calls.

I wish to express the appreciation of the district to the Local Red Cross Chapters for assistance given in carrying on the work.

I also wish to express my appreciation to the School Board, Superintendent, Teachers, parents and pupils for their help and cooperation.

Respectfully submitted,

FRANCES F. EDGETT, R. N.,
School Nurse.

SCHOOL BOARD'S FINANCIAL REPORT

From July 1, 1937 to June 30, 1938

EXPENDITURES

Salaries of school board:

Elsie E. Foster,	\$100 00
Alice L. Spaulding,	50 00
Agnes B. Chickering,	50 00

\$200 00

Salaries of district officers:

Evelyn L. Winn, treasurer,	\$50 00
Harold E. Randall, auditor,	5 00
A. H. Post, moderator,	3 00
Norman J. Langmaid, clerk,	5 00

 \$63 00

Superintendent's excess salary:

State treasurer,	\$204 88
------------------	----------

 \$204 88

School census:

Agnes B. Chickering,	\$3 50
Elsie E. Foster,	3 50
Alice L. Spaulding,	3 50

 \$10 50

Expenses of administration:

R. E. Lane,	\$1 60
Evelyn L. Winn,	8 36
Roger Spaulding,	80
Elsie E. Foster,	3 14
H. E. Taylor & Son,	5 50
Agnes B. Chickering,	8 60
F. T. Johnson,	6 05
Alice L. Spaulding,	1 20

 \$35 25

Teachers' salaries:

Oscar Frazer,	\$1,000 00
Vanetta Clawson,	900 00
Esther Koskela,	1,000 00
Marion Hilliard,	1,000 00

Elizabeth Hidden,	1,000 00	
Ruth Isherwood,	1,000 00	
	<hr/>	\$5,900 00

Textbooks:

Allyn & Bacon Co.,	\$8 10	
Ginn & Co.,	10 78	
D. C. Heath & Co.,	1 28	
Hall & McCreary Co.,	1 20	
Iroquois Pub. Co.,	7 25	
J. B. Lippincott,	7 80	
Lyons & Carnahan Co.,	4 21	
Macmillan Co.,	21 42	
Rowe, Peterson Co.,	9 86	
Rand, McNally Co.,	7 84	
L. W. Singer Co.,	21 02	
O. H. Thoothaker,	3 67	
	<hr/>	\$104 43

Scholars' supplies:

Allyn & Bacon Co.,	\$10 60	
American Book Co.,	35 22	
American Express Co.,	75	
Edward E. Babb Co.,	85 05	
Milton Bradley Co.,	21 45	
Lyle B. Chickering,	2 50	
Gledhill Co.,	19 73	
J. L. Hammett Co.,	17 00	
Philip H. James,	34 30	
F. T. Johnson,	4 43	
Macmillian Co.,	12 98	
Newson & Co.,	4 93	
Rowe, Peterson Co.,	3 14	
Benj. H. Sanborn Co.,	9 90	
Webster Pub. Co.,	20 50	
	<hr/>	\$282 48

Flags and appurtenances:

Edward E. Babb & Co.,	\$4 31
Milton Bradley Co.,	5 01

 \$9 32

Other expenses of instruction:

Edward E. Babb & Co.,	\$7 14
Howard & Brown,	3 70
Harter Pub. Co.,	1 98
Esther Koskela,	1 10
E. J. Plantier,	4 20
University Pub. Co.,	6 11
Webster Pub. Co.,	1 20
World Book Co.,	34 97

 \$60 40

Janitor service:

Fred Partridge,	\$111 00
Raymond Rowe,	111 25
Fred J. Stoddard,	116 00

 \$338 25

Light and janitors' supplies:

Edward E. Babb & Co.,	\$52 93
Cheshire Chemical Co.,	30 50
Carl F. Carlson,	5 00
C. K. Lewis,	25
Public Service Co. of N. H.,	49 92
Paul M. Penning,	1 20
A. H. Post,	14 68
Robert F. Riley,	8 00
C. W. Tuttle,	54
Alice L. Spaulding,	98

 \$164 00

Fuel:

Clifford E. Chickering,	\$240 00
Arthur H. Post,	2 00

\$242 00

Minor repairs:

Lyle B. Chickering,	\$1 00
Bernard A. Chickering,	31 60
Agnes B. Chickering,	6 50
Richard Chickering,	5 00
Holden, Martin Lumber Co.,	10 79
Keene Chimney Cleaning Co.,	8 00
R. C. Goodrich,	56 35
C. K. Lewis,	1 35
A. H. Post,	259 25
Fred Partridge,	8 00
Raymond Paine,	1 00
Robert F. Riley,	30 00
A. F. Roberts,	21 38
Raymond Rowe,	1 50
R. C. Spaulding,	11 00
Stanley L. Spaulding,	4 80
Alice L. Spaulding,	5 10
Mrs. Fred Stoddard,	2 63
C. W. Tuttle,	1 02
Lucy Winn,	5 00

\$471 27

Medical inspection:

Frances Edgett,	\$340 00
Alice L. Spaulding,	2 45

\$342 45

Transportation of pupils:

Clifford Chickering,	\$259 00
Henry Chickering,	360 75
Clinton Davis,	510 00
Mrs. Minnie Deselle,	16 00
Wallace Foster,	64 00
Earl Grimes,	222 00
Nahum Pierce,	280 00
John Redding,	111 00
Alice Rowe,	185 00

\$2,007 75

Other special activities:

Clifford E. Chickering,	\$7 71
Agnes B. Chickering,	1 25
Elsie E. Foster,	1 33
George Joslin,	9 90
C. K. Lewis,	11 67
Esther Koskela,	6 97
Paul M. Penning,	22 43
Roger C. Spaulding,	6 64
The News Shop,	1 60
C. W. Tuttle,	12 78

\$82 28

High school tuition:

Union School District, Keene,	\$507 08
Brattleboro School District,	1,268 00

\$1,775 08

New equipment:

Beckley-Cardy Co.,	\$78 39
G. H. Tilden Co.,	13 35
F. T. Johnson,	5 57

\$97 31

Per capita tax:

State treasurer,	\$304 00
	<hr/>
	\$304 00
	<hr/>
Total expenditure,	\$12,694 65

RECEIPTS

Cash on hand July 1, 1937,	\$985 70
Oct. 2, received from town treasurer,	2,000 00
Nov. 3, received from town treasurer,	2,000 00
Jan. 3, received from state treasurer, state aid,	1,158 32
Jan. 19, received from town, chemicals sold,	6 00
Jan. 31, received from town treasurer,	1,500 00
Mar. 3, received from town treasurer,	1,000 00
April 6, received from town treasurer,	1,000 00
May 5, received from town treasurer,	1,000 00
June 1, received from town treasurer,	1,534 00
June 23, received from selectmen, advance payment on 1938-39 appropriation,	200 00
June 30, received from selectmen advance payment on 1938-39 appropriation,	50 00
June 1, received from selectmen, dog tax,	282 00
	<hr/>
Total receipts,	\$12,716 02
Total expenditure,	12,694 65
	<hr/>
Balance on hand, June 30, 1938,	\$21 37

Audited and found correctly cast and properly vouched,
July 15, 1938.

HAROLD E. RANDALL,
Auditor.

BALANCE SHEET**ASSETS JUNE 30, 1938**

Balance June 30, 1938,	\$21 37
Total assets,	<u>\$21 37</u>

LIABILITIES, JUNE 30, 1938

Accounts owed by district:	
Unpaid bills,	\$0 00
Total liabilities,	<u>\$0 00</u>

ALICE L. SPAULDING,
AGNES B. CHICKERING,
ELSIE E. FOSTER,
School Board.

SCHOOL BOARD'S ESTIMATE FOR 1939-1940

School Board's statement of amounts required to support public schools and meet other statutory obligations of the district for the fiscal year beginning July 1, 1939.

DETAILED STATEMENT OF EXPENDITURES

Support of schools:

Teachers' salaries,	\$5,900 00
Text books,	100 00
Scholars' supplies,	300 00
Flags and appurtenances,	15 00
Other expenses of instruction,	60 00
Janitor service,	333 00
Fuel,	250 00
Water, light and janitors' supplies,	200 00
Minor repairs and expenses,	300 00
Health supervision, (medical inspection),	345 00
Transportation of pupils,	2,200 00
Other special activities,	85 00

Other statutory requirements:

Salaries of district officers,	263 00
Truant officer and school census,	20 00
Expenses of administration,	35 00
Payments of tuitions in high schools, (estimated),	3,000 00
Superintendent's excess salary, (fixed by supervisory union),	205 00
Per capita tax, (reported by state treasurer),	342 00
New equipment,	100 00

Total amount required to meet school board's budget,	\$14,053 00
---	-------------

Estimated income of district:

Balance June 30, 1939, (estimated),	\$100 00
State aid,	439 23
Dog tax, (estimated),	250 00

Deduct total estimated income,	789 23
--------------------------------	--------

Assessment required to balance school board's budget,	\$13,263 77
--	-------------

ALICE L. SPAULDING,
AGNES B. CHICKERING,
ELSIE E. FOSTER,
School Board.

REPORT OF SCHOOL TREASURER

July 1, 1937 to June 30, 1938

SUMMARY OF THE ACCOUNT

Receipts:	
Cash on hand June 30, 1937,	\$985 70
Received from selectmen, appropriations for current year,	10,034 00
Received from selectmen, advance payment on 1938-39 town appropriation,	250 00
Received from selectmen, dog tax, (1937),	282 00
Received from state treasurer, (state aid),	1,158 32
Received from supplies sold,	6 00
<hr/>	
Total amount available for fiscal year,	\$12,716 02
Less school board orders paid,	12,694 65
<hr/>	
Balance on hand as of June 30, 1938, (treasurer's bank balance),	\$21 37

Respectfully submitted,
EVELYN L. WINN,
Treasurer.

June 30, 1938.

AUDITOR'S CERTIFICATE

This is to certify that I have examined the books, vouchers, bank statements and other financial records of the treasurer of the school district of Chesterfield, N. H., of which the above is a true summary for the fiscal year ending June 30, 1938 and find them correct in all respects.

HAROLD E. RANDALL,
Auditor.

July 15, 1938.

THE STATE OF NEW HAMPSHIRE

SCHOOL WARRANT

To the inhabitants of the School district in the town of Chesterfield, qualified to vote in district affairs:

You are hereby notified to meet at the Town Hall in said district on the 14th day of March, 1939, at two o'clock in the afternoon, to act upon the following subjects:

1. To choose a Moderator for the coming year.
2. To choose a Clerk for the ensuing year.
3. To choose a Member of the School Board for the ensuing three years.
4. To choose a Treasurer for the ensuing year.
5. To determine and appoint the salaries of the School Board and Truant Officer, and fix the compensation of any other officers or agent of the district.
6. To hear the reports of Agents, Auditors, Committees, or Officers chosen, and pass any vote relating thereto.
7. To choose Agents, Auditors and Committees in relation to any subject embraced in this warrant.
8. To see if the district will vote to make any alteration in the amount of money required to be assessed for the ensuing year for the support of public schools and the payment of the statutory obligations of the district, as determined by the school board in its annual report.

9. To see if the Chesterfield School District will instruct the School Board to approve the schedule adopted by the Union School District for tuition to Keene High School as follows:

1939 to 1940	\$80.00
1940 to 1941	\$90.00
1941 to 1942	\$100.00 and thereafter

10 To see if the Chesterfield School District will authorize the School Board to purchase water rights for the West Chesterfield school and raise money for same.

Given under our hands at said Town this 24th day of February, 1939.

ALICE L. SPAULDING,
 AGNES B. CHICKERING,
 ELSIE E. FOSTER,
 School Board.

A true copy of Warrant—Attest:

ALICE L. SPAULDING,
 AGNES B. CHICKERING,
 ELSIE E. FOSTER,
 School Board.

**SCHOOL DISTRICT MEETING OF THE TOWN OF
CHESTERFIELD, N. H.**

Town Hall, March 8, 1938

The meeting was called to order by the Moderator, A. H. Post, at 2.15 p. m. and the warrant read.

The Articles of the Warrant were disposed of as follows :

Article 1. To choose a Moderator for the coming year. Moved and carried that the Clerk cast one ballot for A. H. Post for Moderator for the ensuing year. The oath of office was administered by the Clerk.

Article 2. To choose a Clerk for the ensuing year. Motion made and carried that the present incumbant be elected and Rev. N. J. Langmaid was elected Clerk for the coming year and the oath was given by A. H. Post.

Article 3. To choose a member of the School Board for the ensuing three years. Moved that the Clerk cast one ballot for Mrs. Elsie Foster. This motion was not seconded. An objection being raised, ballots were prepared for the election, the results of which were: Total number of votes cast; 91, necessary for choice 46. Of these Ada Allen received 2 and 2 were blank; Elise Foster had 87; was elected and took the oath of office.

Article 4. To choose a Treasurer for the ensuing year. Moved and carried that the Moderator cast one vote for Mrs. Evelyn Winn for School Treasurer. This was done; Mrs. Winn was duly elected and sworn in.

Article 5. To determine and appoint the salaries of School Board and Truant Officer, and fix the compensation of any other officers or agents of the District. Motion made and supported that this article be passed over. Motion carried.

Article 6. To hear the reports of Agents, Auditors, Committees or officers chosen, and pass any vote relating thereto. Motion made and carried that this article be passed over.

Article 7. To choose Agents, Auditors and Committees in relation to any subject embraced in this warrant. Motion made and supported that Harold Randall serve as Auditor for the ensuing year. Mr. Randall was elected by voice vote and took the oath of office by Moderator.

Article 8. To see if the District will make any alteration in the amount of money required to be assessed for the ensuing year for the support of Public Schools and the payment of the statutory obligations of the District, as determined by the School Board in its Annual Report. Moved and carried that the sum of \$11,393.59 as required by the School Board's Budget be raised by the town for the support of schools for the ensuing year. This article was passed by voice vote.

Article 9. To see if the Town will raise the sum of \$600.00 for the purchase of heating equipment for the Schools at Spofford, Chesterfield and West Chesterfield. Inquiry was made as to what type of heating equipment was needed. West Chesterfield contemplated the purchase of a hot air furnace while the other schools were to be equipped with Heatrolas. A discussion followed. Motion made and supported that a committee be appointed to look into the matter of school heating and bring back a report. Mr. Wilson withdrew his support of the above motion as read. Moved and supported that \$600.00 be raised to be used by the Board as best they can to supply adequate heat. This article was passed by a voice vote.

There being no other business to come before the District, the meeting was declared adjourned by the Moderator at 3.53 p. m.

REV. NORMAN J. LANGMAID,
District Clerk.

VITAL STATISTICS

To the Selectmen:

In compliance with an act of the legislature, passed June session, 1887, amended by the legislature of 1889, requiring "clerks of towns and cities to furnish a transcript of the record of births, marriages and deaths to the municipal officers for publication in the Annual Report," I hereby submit the following:

BIRTHS REGISTERED IN THE TOWN OF CHESTERFIELD, N. H., FOR THE YEAR ENDING DECEMBER 31, 1938

Date of Birth.	Name of Child (if any.)	Sex and Condition.		Name of Father.	Maiden Name of Mother.	Occupation of Father.	Birthplace of Father.	Birthplace of Mother.	Age of Father.	Age of Mother.
		Male or Female.	Living or Stillborn.							
Jan. 11	Carol Ann	F	L	1 Forrest I. Eager	Cora A. Fowle	Carpenter	Jamaica, Vt.	Newburyport, Ms.	23	25
Apr. 11	Edward Ernest	M	L	2 Stanley T. Pickering	Marion L. Bennett	Farmer	New Hampton	Westmoreland	29	26
Aug. 22	Evelyn May	F	L	3 George L. Fuller	Eleanor M. Clark	Truck driver	Spoofford	Alstead	33	29
Oct. 23	Doris Wilda	F	L	4 Austin F. Drew	Arlene R. Whitten	Garage mechanic	Ossipee	So. Berwick, Me.	28	26
Dec. 6	Alfred Henry	M	L	1 August Schiewe	Elizabeth Purk	Laborer	Germany	Germany	30	30
" 22	Ramona Hope	F	L	6 Byron L. Rogers	Leona M. Bean	Carpenter	Byfield, Mass.	Wolfeboro	34	31

MARRIAGES REGISTERED IN THE TOWN OF CHESTERFIELD, N. H., FOR THE YEAR ENDING DECEMBER, 31, 1938

Date of Marriage	Place of Marriage.	Name and Surname of Groom and Bride.	Residence of each at time of Marriage	Age in Years.	Occupation of Groom and Bride.	Place of Birth of each.	Names of Parents.	Birthplace of Parents.	Condition	Name, Residence and Official Station of person by whom married.
June 29	Brattleboro, Vt.	Francis H. Merrifield	Chesterfield	25	Farming	Guilford, Vt.	Cyrus Merrifield Eva Cook	Rhode Island Massachusetts	1st	Rv V G Higgs
		Velma Davidson	Brattleboro, Vt.	17		Wardsboro, Vt.	Lyman Davidson Elsie Jerome	Wilmington, Orange, Ms.	1st	Brattleboro, Vt.
Oct. 8	Keene	Clarence G. Foley	Spoftord	50	Carpenter	Moira, N. Y.	Frank Foley Lucy Rivers		2d	Rv J E M Cooley
		Elizabeth M. Hickey	Keene	46	Textile wkr.	Keene	Michael J. Hickey Nora Collins	Ireland Ireland	1st	Keene
Oct. 9	Brattleboro, Vt.	Everett Pearson	Spoftord	28	Plumb's hlpr.	Westmoreland	Frank A. Pearson Axie Johnson	Sweden	2d	Rv J H Blackb'n
		Pearl G. Fuller	Spoftord	31	Waitress	Troy	Harry N. Hale Clara Marrott	Royalston, Ms. Canada	2d	Brattleboro, Vt.
Oct. 15	Chesterfield	Robert G. Thomas	Brattleboro, Vt.	29	Farmer	Brattleboro, Vt.	George E. Thomas Kate York	Brattleboro, Vt. Royalton, Vt.	1st	Rv N J Langm'd
		Madeline Tibbetts	Brookline, Ms.	25	Housework	Belgrade, Me.	John R. Tibbetts Inez F. Tibbetts	Belgrade, Me. Orr's Island, Me.	1st	Chesterfield
Dec. 31	Keene	William E. Fuller	Spoftord	30	Truck driver	Swanzy	Elisha F. Fuller Gertrude Carpent'r	Sagamore, Ms. Sury	2d	Rv R E Ralph
		Lila E. Wilder	Keene	29	Single	Sullivan	Charles C. Wilder Grace S. Nims	Sullivan Sullivan	1st	Keene

*What marriage—whether 1st, 2d, etc.

DEATHS REGISTERED IN THE TOWN OF CHESTERFIELD, N. H., FOR THE YEAR ENDING DECEMBER 31, 1938

Date of Death.	Name and Surname of the Deceased.	Age			Place of Birth.		Sex and Cond'n	Place of Birth.		Name of Father.	Maiden Name of Mother.
		Years.	Months.	Days.	Father.	Mother.					
Jan. 14	Evelena M. Foster	65	0	30	Grass Valley, Cal.	F	W	California	Winslow Partridge	Georgiana Woodfield	
" 30	Ella M. Lewis	52	0	7	Chester, Vt.	F	M	Chester, Vt.	Coolidge L. Clark	Helen Tenny	
Feb. 17	Annie L. Morris	63	4	21	Chesterfield	F	D	Chesterfield	Frank A. Pierce	Persis Prentice	
Mar. 23	Lena Patnode Rowe	70	8	17	Claremont	F	M	Canada	John Thibodeau	Julia _____	
June 20	Louie Louise Rowe	19	8	19	Chesterfield	F	S	England	Percy Rowe	Alice M. Dobson	
" 23	Chester A. Rowe	21	9	19	Chesterfield	M	S	England	Percy Rowe	Alice M. Dobson	
" 30	Etta M. Williams	69	1	15	Lawrenceville, N. Y.	F	W	Lawrenceville, N. Y.	Ruppee B. Hawkins	Mary J. Woodruff	
July 31	Worthy H. Worden	22	2	11	Dummerston, Vt.	M	S	Gaulford, Vt.	Leslie W. Worden	Eisie Hazelton	
Aug. 28	Arthur B. Whiteley	67	4	19	Seamore, Conn.	M	M	Seamore, Conn.	Joseph Whiteley	Emengine Newey	
Sept. 2	Fred'k W. Holman	81	11	3	Chesterfield	M	W	Chesterfield	William Holman	Mary H. Higgins	
Dec. 6	Emma Farwell	71	3	6	Winchester	F	W	Winchester	Frederick Pickering	Marcia A. Fosgate	
" 24	John F. Lewis	71	3	16	Poultney, Vt.	M	M	Poultney, Vt.	Hiram Lewis	Charlotte Farwell	

*Single, married or widowed.

BROUGHT TO CHESTERFIELD FOR BURIAL FOR THE YEAR
ENDING DECEMBER 31, 1938

Date of Death	Name and Surname of the Deceased	Age			Sex and Cond'n		Place of Death	Name of Father	Maiden Name Mother
		Years	Months	Days	Male or Female	S, M., W.*			
Jan. 10	Gordon Chickering	37	7		M	S	Greenf'd, Ms	Albert Chickering	Ida M. Aldrich
Mar. 19	Creighton Barden		4	22	M	S	Keene	Wm. J. Barden	Wilhelmina Rus
Apr. 18	Cora F. Andrews	74	11	24	F	S	Springf'd, Ms		
May 4	Beatrice Chickering	0	0	0	F	S	Keene	Merton Chickering	Ruth B. Carey
Aug. 4	Fred Goodrich	72	11	14	M	W	Westmoreland	Lorenzo Goodrich	Clissty Eastman
Dec. 3	Elizabeth Bradish	71	6	12	F	W	Keene	Clifton Mulligan	
" 14	Hazel Withinsaw	43					N. Y. City		

*Single, married or widowed.

I hereby certify that the foregoing transcript of births, marriages and deaths is correct according to the best of my knowledge and belief.

IMOGENE L. CHICKERING,
Town Clerk.

INDEX

List of town officers,	Page 2
List of school officers,	Page 3
Copy of current town warrant,	Page 4
Minutes followed by specials,	Page 8
Tax invoice,	Page 23
Copy of budget,	Page 52
Copy of summary inventory,	Page 56
Statement of appropriations and taxes assessed,	Page 56
Comparative statement of appropriations and expenditures,	Page 59
Financial statement,	Page 61
Statement of assets,	Page 61
Statement of liabilities,	Page 62
Schedule of town property (includes property taken by town through tax deeds),	Page 67
Dollar break down,	Page 68
Town clerk's report, including motor vehicle permits and dog licenses,	Page 72
Letters to voters,	Page 73
Tax collector's report,	Page 76
Treasurer's report,	Page 83
Detail statement of payments, following order in which they appear in summary,	Page 86
P. W.A., timber,	Page 99
Report of highway agents,	Page 99
Snow removal,	Page 106
Old Home Day,	Page 109
Report of trustees of trust funds, same as report to tax commission,	Page 111

Report of board of health,	Page 116
Report of auditors,	Page 117
Report of Library trustees,	Page 119
Report of fire wards,	Page 120
Report of precinct,	Page 121
Report of school districts,	Page 128
Vital statistics,	Page 147

B

SEP 30 1944

New Hampshire State Library



3 4677 00347575 8