

# ANNUAL REPORTS OF THE TOWN OFFICERS



## TOWN OF STODDARD NEW HAMPSHIRE 2022

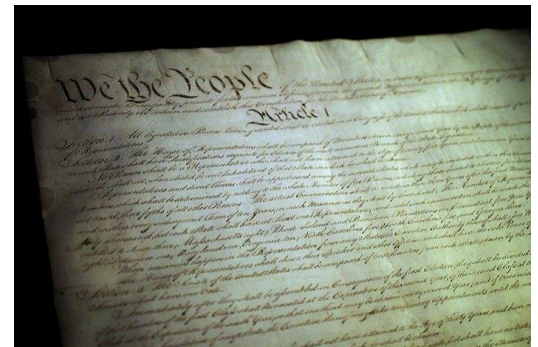
Fiscal Year Ending 2021

**THE 2022 ANNUAL REPORT IS DEDICATED TO THE UNIQUE PEOPLE AND PLACES THAT MAKE UP THE FABRIC OF THIS AMAZING STATE WE CALL HOME.**

## **DID YOU KNOW.....**

### **New Hampshire was the first state to have its own constitution.**

New Hampshire's first constitution was ratified in 1776, as soon as New Hampshire became a state. This was later replaced by the constitution of 1784, which is still active today. The constitution has a bill of rights and guarantees the right to revolution, which was especially important to residents coming off the Revolutionary War. The spirit of the constitution is embodied in the state's motto: Live Free or Die.



### **Mount Washington is one the windiest places on earth.**



The Mount Washington Observatory, at the top of the 6,289 foot peak, recorded a wind speed of 231 miles per hour on April 12, 1934. For 62 years this was the highest wind speed ever recorded, until a speed of 253 miles per hour was recorded in Australia during a typhoon. However, the Mount Washington reading is still the fastest wind ever observed by man.



**MUNICIPAL SERVICES DIRECTORY**

DEPARTMENT	PHONE	EMAIL	HOURS
<b>Town Office</b>	446-3326		Mon. 1 – 6 Wed. & Thu. 10:30 – 4
Town Clerk/Tax Collector	446-3326 ext. 106	ClerkTax@Stoddard.org	Tues. & Thu. 11 – 6
Town Administrator	446-3326 ext. 103	TownAdministrator@StoddardNH.org	Mon. 11 – 6 Wed. & Thu. 10:30 – 4
Treasurer/ Administrative Assistant	446-3326 ext. 100	Treasurer@StoddardNH.org	Mon. 11 – 6 Wed. & Thu. 10:30 – 4
Compliance Officer	446-7778	Compliance@StoddardNH.org	By Appointment
<b>Selectmen</b>			
Christopher Madden	446-7814	<a href="mailto:CMadden@StoddardNH.org">CMadden@StoddardNH.org</a>	Meetings: Every 2 <sup>nd</sup> , 4 <sup>th</sup> and 5 <sup>th</sup> Monday 7pm – end of business
Bob Fee	446-3642	<a href="mailto:RFee@StoddardNH.org">RFee@StoddardNH.org</a>	
Steven McGerty	446-3848	<a href="mailto:SMcGerty@StoddardNH.org">SMcGerty@StoddardNH.org</a>	
Transfer Station	446-3583	Valid Permit Required Household waste only No Hazardous Waste	Sat & Sun 9-4 June - week after Columbus Day Wednesdays 12 - 4
<b>Safety</b>			
Police	Emergency 911 Non-emergency 446-3597	<a href="mailto:PoliceChief@StoddardNH.org">PoliceChief@StoddardNH.org</a>	Dispatch on 24 hours 603-355-2000
Fire and Rescue	Emergency 911 Chief – 446-0116	FireChief@StoddardNH.org	Dispatch on 24 hours 603-355-2000
Fire Warden (Burn Permits Required)	446-0116 446-7051 446-7896	FireWarden@StoddardNH.org	By Appointment
Animal Control	Dispatch 355-2000 Mutual Aid 352-1291	AnimalControl@StoddardNH.org	Call Dispatch 24 hours 603-355-2000
Davis Public Library	446-3439	davispubliclibrary@gmail.com	Mon., Wed. & Fri. 3-7 (till 8 in summer) Tue. & Sat. 10 - 2
James Faulkner Elementary School	446-3345	<a href="https://jfes.us">https://jfes.us</a>	
<b>Board &amp; Commissions</b>			
Conservation Commission	Geoffrey Jones 446-3439	Conservation@StoddardNH.org	4 <sup>th</sup> Wednesday 7:30 pm
Planning Board	Vickie Williams 446-7767	<a href="mailto:Planning@StoddardNH.org">Planning@StoddardNH.org</a> <a href="mailto:PlanningSecretary@StoddardNH.org">PlanningSecretary@StoddardNH.org</a>	1 <sup>st</sup> Tuesday 7 pm
Zoning Bd of Adjustment	Kathy Ellis 446-6273	<a href="mailto:ZBA@StoddardNH.org">ZBA@StoddardNH.org</a> <a href="mailto:ZBASecretary@StoddardNH.org">ZBASecretary@StoddardNH.org</a>	3 <sup>rd</sup> Tuesday 7:30 pm

## TOWN OFFICERS

### **Moderator (2 yr. term)**

Daniel A. Eaton – Term Expires 2023  
Geoffrey Jones – Deputy

### **Selectmen (3 yr. term)**

Robert Fee – Term Expires 2022  
Christopher Madden – Term Expires 2024  
Steven McGerty – Term Expires 2023

**Town Administrator** – Michelle L. Pong

**Administrative Assistant** – Patricia Putnam

### **Town Clerk/Tax Collector (Elected 3 yr. term)**

Karen Bell – Term Expires 2023

### **Town Treasurer (Elected 3 yr. term)**

Patricia Putnam – Term Expires 2024

### **Compliance Officer (Appointed)**

Harry Power

### **Trustee of Trust Funds (Elected 3 yr. term)**

David Lesser – Term Expires 2024  
James Elliott – Term Expires 2022  
Richard Nicoletti – Unexpired Term 2023

### **Trustee of Public Library (Elected 3 yr. term)**

Don Healy – Term Expires 2024  
Jan McGonagle – Term Expires 2023  
Christine Haase – Term Expires 2022  
Angel Nicoletti (Alt) – 1 yr. term  
Deborah Kingsbury (Alt) - 1 yr. term

### **Librarian (Appointed)**

Ingrid Dellea – Library Director  
Martha DeTore-Woods      Kathy Stiles  
Tristan Bridges              Katherine Winslow

### **Police Chief (Appointed)**

David Vaillancourt  
Officer Andrew Wood

### **Animal Control Officer (Appointed)**

Margo Santoro              David Santoro, Deputy

### **Fire Chief (Elected 2 yr. term)**

Randy Weaver

### **Fire Warden (Elected 3 yr. term)**

Randy Weaver – Term Expires 2023  
Wally Weaver - Deputy  
Jenn Merrill - Deputy

### **Commissioner to SWRPC (Appointed)**

Vacant

**Overseer of Public Welfare** – Michelle Pong

### **Supervisors of the Checklist (Elected 6 yr. term)**

Joyce Healy – Term Expires 2024 (Appointed)  
Kaitlyn Hayes – Term Expires 2022 (Appointed)  
Beatrice Record – Term Expires 2026

### **Planning Board (Elected 3 yr. term)**

Jane McOsker – Chair – Term Expires 2022  
Vickie Williams – V. Chair & Sec. Term Expires 2023  
VACANT – Term Expires 2024  
Jason Russel – Term Expires 2022  
Christopher Madden – Sel. Rep Term Expires 2024  
Harry Power, Alternate – 1 yr. appt.  
VACANT – Term Expires 2023

### **Cemetery Commission (3 yr. term)**

Karen Bell – Term Expires 2022  
VACANT – Term Expires 2022  
Bruce Bell – Unexpired Term 2023  
**ALL VACANT AS OF JULY 1, 2022**

### **Zoning Board of Adjustment (Appointed)**

Jason Kovarik – Term Expires 2023  
Franz Haase – Term Expires 2023  
Clement (Bud) Record – Term Expires 2022  
Herb Healy, Chairman – Term Expires 2024  
Douglas Summerton – Term Expires 2023  
Milosh Bukovcan – Alt. – Term Expires 2022  
Kathleen Ellis – Secretary

### **Emergency Management (Appointed)**

Daniel A. Eaton (Director) – Term Expires 2022  
Geoff Jones, Deputy – Term Expires 2022  
Richard Englund, MD – Health Officer

### **Conservation Commission (Appointed 3 yr. term)**

R. Scott Semmens – Term Expires 2024  
Paul Crosby – Term Expires 2022  
Geoffrey Jones, Chairman – Term Expires 2023  
Helen Tam-Semmens – Term Expires 2023  
Bob Fee – Term Expires 2023

### **State Senator – District 8**

Ruth Ward – Ruth.Ward@leg.state.nh.us

### **Contoocook & N. Branch River Local Advisory Committee**

Ruth Ward, Stoddard Representative

### **Representative to General Court – District 3**

Daniel A. Eaton – Term Expires 2023  
Daniel.Eton@leg.state.nh.us

# Boards, Commissions, Departments and Volunteers



## A CALL TO SERVICE

Local government relies on the willingness of residents to give their time, energy and expertise to their community. Your Selectmen ask that you consider participating in local government by volunteering for a board, commission or committee that piques your interest. Most groups do not require more than one meeting a month, and no prior experience is necessary, just a desire to give back, and to be part of the process that makes Stoddard the place where you want to live, work, play, raise a family. To be part of making Stoddard the place you are proud to call home.

There are spots available on the following Boards and Commissions. If you are interested, please contact the Town Administrator at [TownAdministrator@StoddardNH.org](mailto:TownAdministrator@StoddardNH.org)

PLANNING BOARD

GARDENERS/LANDSCAPERS

CONSERVATION COMMISSION

COMMISSIONER TO SOUTHWEST REGIONAL  
PLANNING COMMISSION

CEMETERY COMMISSION (This commission will be entirely vacant as of July 1, 2022)

TOWN WEBSITE MAINTENANCE HELP

CAPITAL IMPROVEMENT PLAN COMMITTEE

GENERAL OFFICE HELP IS ALWAYS WELCOME

## **A MESSAGE FROM YOUR SELECTMEN**

As per usual, the municipal offices were busy this year running day to day government. In addition, we moved forward on the purchase of a new Brush Truck for the Fire Department, who has been working hard on the specifications and is looking forward to it being built despite some of the delays caused by COVID. We hope that project is further underway by the time we have our yearly business meeting.

Thankfully, we were able to finish the bridge project on King's Highway, with paying of the bridge completed last summer. This was a huge undertaking and the Selectmen are grateful for the patience and cooperation of the residents of Hidden Lake Association.

Fibercast has completed their town wide project and is working with individuals that still want to purchase access to their services. This is a huge improvement over past internet speed options.

Plans are underway to improve North Shore Road in the immediate and long-term future while taking care to protect Granite Lake from undue environmental damage. Keep a look out for developments on that front.

Our Police Department is actively seeking part-time officers to fill their ranks. If you have questions about qualifications or are interested in working a few hours a week, please contact Chief David Vallaincourt.

We completed some minor renovations to the Town Hall in order to facilitate work in the Town Clerk and Tax Collectors office. Since the departments have combined, the new window and built-in desk are making work in that office run more smoothly. We also completed some much-needed repairs on the ramp at the Town Hall, and hope to upgrade our handicap access in all public buildings over the next few years.

An emergency expense this past year was the boiler at the Town Hall. Luckily, Bob Curnutte, our maintenance guru, discovered the malfunction before any permanent damage could occur and he, along with the help of the Selectmen, quickly found the most economical and reliable replacement possible. It was a cooperative effort to get the equipment replaced as quickly, and the Stoddard team did a fantastic job.

We had some exciting moments this past year. When we almost lost our post office the Selectmen began making fast plans to save it. Luckily, thanks to the folks at Mill Village, the alternative contingency was not needed and the Post Office remained unchanged to the public eye.

Some increases to our budget this year include the addition of new accounting programs that will facilitate financial reporting in a manner that is easy to understand and fulfill audit reporting standards and allow for direct deposit of employee checks, greatly reducing uncashed checks that

need to be accounted for each month. We have also allowed for some bookkeeping services that will aid further in our accounting efforts.

We have been advised by Eversource that we can expect electric costs to rise by 30 – 100% this year, so our budget reflects increases in our utility expenses.

The highway budget has increased a bit to accommodate rising costs for fuel and gravel. There will be concerted effort to improve North Shore Road this year to avoid the problems brought on by mud season this year. You will also see that expenses for the purchase of the new Fire Department vehicle are now included in the regular town budget. Our ambulance budget has also increased a great deal in preparation for increases in fees in the event the service is taken over by the county.

Lastly, the Selectmen would like to apologize for the delay in getting out the tax bills this winter. Our new auditors got a later start than usual on our state reporting and an antiquated accounting system all aided in the delay. It is our hope that the oversight by a professional bookkeeper, coupled with up-to-date accounting software will prevent this delay from happening again.

We are proud to serve as your elected officials and encourage your participation at any public meeting hosted by the Selectmen or any of our boards and commissions. We also encourage you to consider volunteering for a municipal position.

Robert Fee, Chair  
Christopher Madden  
Stephen McGerty

## **TOWN ADMINISTRATOR REPORT**

I very much enjoy learning new things about this town. Stoddard has a rich history and its residents are proud to share it.

We had some challenges this year, but we pulled together to make sure that town services were never interrupted. When the dust cleared, we evaluated our practices and have begun implementing new strategies in order to avoid the same problems.

I want to take this opportunity to thank everyone who volunteers their time and energy to keep the wheels of local government turning. I also want to urge everyone to consider volunteering yourself. Many vacant positions still exist in our municipality, and we would be grateful for your talents and experience. Responsible progress can only occur when responsible residents work toward common goals. I encourage everyone to consider offering their service toward that end.

Thank you for letting me serve your community this past year. It is an honor to be part of this wonderful community.

Michelle L. Pong



## HIGHLAND LAKE AND ISLAND POND LAKE HOST PROGRAM

In partnership with the New Hampshire Lakes Association, the 3 Stoddard lakes once again participated in the Lake Host program. All 3 programs operated using both paid hosts and volunteers with the purpose of checking boats/trailers coming in and out of the lakes for invasive species of plants or animals. Both boater and nonboater awareness and education about the purpose of the program was stressed. For 2021 we continued to abide by COVID safety practices including social distancing by hosts.

The program coordinator was David Lesser and his assistant was Candia Campbell. There were 6 paid lake hosts and a number of Island Pond volunteers at the ramps (we need lake host volunteers for Highland Lake for 2022!). From Memorial Day weekend until the middle of September we covered weekends, holidays, and fishing derby days with hosts at all 3 ramps. Between the 3 ramps over 1,000 boats/trailers were inspected this season, a decrease from 2020. The gray, inclement weather over July 4<sup>th</sup> and Labor Day holidays, and record rainfall throughout July-October kept many boats out of the water this year. Most boats that entered and left both lakes were registered in New Hampshire but there were boats from many other states. We remained invasive plant and animal species free as of the end of this season.

Many thanks to Candia Campbell for making the new combined program such a success! And we could not do this work without the help of our many paid and volunteer hosts, so thanks to you all so much. Thanks to both lake associations for joining NH Lakes Association and supporting the program. And of course, thanks to our big financial supporters—the NH Lakes Association grant and funding from the town of Stoddard. Homeowners, this was a good use of your tax money and we look forward to this support in the future.

Island Pond was very fortunate to have an active Weed Watcher program, a strong companion part of the Lake Host program. These 12 participants, all volunteers, regularly inspected Island Pond for any signs of invasive plants or animals that weren't caught by hosts at the ramp. To date Highland Lake does not have a Weed Watcher program and if anyone is interested in starting that program please contact NH Lakes or Charlotte Lesser, the head of the Island Pond watchers ([cblesser@gmail.com](mailto:cblesser@gmail.com)), you can also use this email to ask David about any Lake Host issues/concerns).

Keep our lakes clean and healthy, thanks to all!  
Respectfully submitted, David Lesser, program coordinator

## GRANITE LAKE HOST PROGRAM

The Granite Lake Association completed its 20<sup>th</sup> year of participation in the Lake Host Program coordinated by the New Hampshire Lakes Association. We are proud to be one of the original lakes that initiated a Lake Host Program in 2002, the first year of the program. The program has now grown to include 78 lakes and 101 boat ramps. During the life of the program there have been 1,650 “saves” at 61 water bodies, including several at Granite Lake in previous years, but thankfully no scares this year.

In 2021 our boat ramp was staffed by 5 paid lake hosts and 18 volunteers who are trained in how to inspect arriving and departing boats to make sure they are not carrying any invasive species. The volunteers, many of whom have done this for the past 20 year, are greatly appreciated. They donate at least two hours of their time every week. Our paid lake hosts logged 442 hours and our volunteers logged an impressive 414.5 hours, inspecting 720 arriving and departing boats. The inspections decreased dramatically from the hectic 2020 COVID summer where we logged a record-high 1,327 inspections. This year's total was slightly below our usual level due to the abnormally wet July.

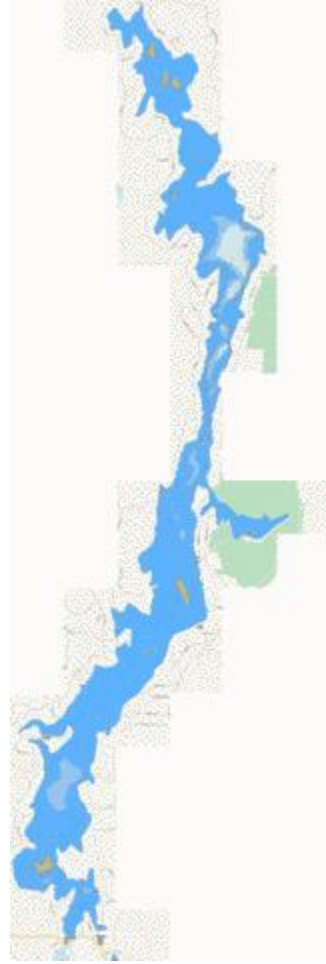
Across the state, Lake Hosts conducted over 90,590 courtesy boat inspections and removed more than 116 suspicious specimens from boats, trailers, and recreational gear. Fifteen of those suspicious specimens were verified “saves”. Five of the “saves” were at water bodies with no current invasive species infestation; one of them was at nearby Lek Nubanusait.

Our ability to maintain this program over the past 20 years has been made possible by the continued monetary support from the towns of Nelson and Stoddard. The Granite Lake Association thanks you for helping us to keep our lake free of invasive species.

We also give all of our hosts, both volunteers and employees, a big thank you. This lake is very special and we want to keep it that way. We are grateful that our lake is so pristine, that we have such a wonderful community, and for the ongoing support by our towns.

Sharon O'Brien-Iagulli and Patricia Maden

Coordinators of the Lake Host Program at Granite Lake





## PLANNING BOARD

Reflecting on the past year we like many towns in New Hampshire have seen a building boom. As new residents move into town we encourage them and all residents to participate in our town's government. The Planning Board is always looking for new members.

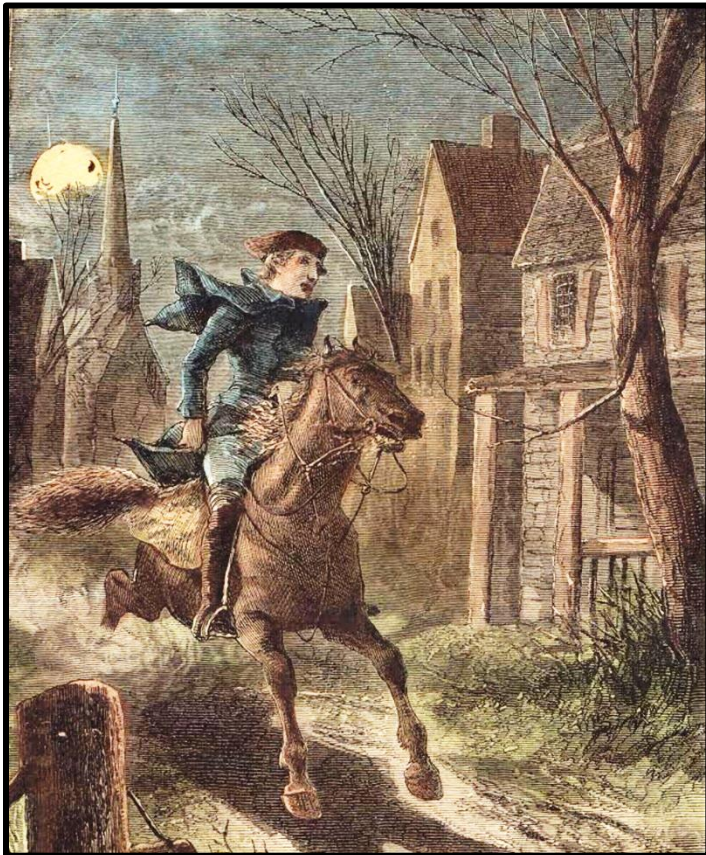
The Planning Board has worked on lot line adjustments and site plan reviews. We are also working to update the CPO and Master plan. The Mill Village Store and the Highland Lake Marina are under new ownership, the citizens welcome their continued service and support to our community.

A special thank you to our Vice Chair Paul Crosby who moved away this year. Thank You for your time and contributions on the board and we wish you well.

As we plan for the future we want to keep Stoddard the unique town that it is. With the right planning we can continue to protect Stoddard's amazing wildlife and water resources and to provide the public with access to recreational opportunities including snowmobiling, hunting, fishing, hiking and boating for years to come.

Respectfully submitted

Jane McOsker-Chair Paul Crosby-Vice Chair Vickie Williams-Member, Secretary Jason Russell-Member Chris Madden-Selectmen Rep Harry Power-Alternate



## COMPLIANCE OFFICER REPORT

The past year property sold almost as quickly as it was listed. With a heavy demand for land and rural property, prices skyrocketed with many seasonal and year-round properties transferring.

There were 57 approved Building Permits for 2021 including new homes, garages, sheds, additions, and solar panels etc. The assessed values of the 57 permits per the owner's declaration on the permits totaled. \$3,180,400.

When the Assessor determines value on the improvements, I'm sure the assessed value will be higher than the declared value.

The \$3,180,400 based on the new tax rate, equates to \$52,699 in new tax revenue.

Calculating the permit fees for the physical year 2020 to 2021, the fees totaled \$12,025.

The Compliance Officer's job is very time consuming, not with just verifying completed permits, but follow ups on violations; along with answering the many, many calls to and from brokers, septic designers, contractors, Shoreland Officials, bankers and town boards.

If you are planning a building project this year, please obtain a permit as the permit price **DOUBLES** if the project is started **before** an Approved Permit. As always, if you have any question about a permit, or if a permit is needed, regarding septic, Shoreland Permit, additions, setbacks, PUC permits, etc ....please call me and I can always meet you at the site if you wish.

Here's looking forward to a safe and healthy rest of 2022.

Harry R Power  
Stoddard Compliance Officer  
[compliance@stoddardnh.org](mailto:compliance@stoddardnh.org)

## DID YOU KNOW...

Paul Revere rode here first.

Four months before his more famous ride to Lexington and Concord, Paul Revere made an even longer ride from Boston to Portsmouth, to warn of an attack on Fort William and Mary. Colonists prevented the attack from happening, and saved the fort from the British.

## STODDARD FIRE AND RESCUE



The Stoddard Fire & Rescue Department call volume for the period beginning January 1st through December 31st 2021 was 75 EMS calls, 14 MVA's, 16 Lift Assists and 26 Fire Calls which include 2 flooded basements 3 calls for trees wires down, 2 brush fires and 4 mutual aid calls for a total of 137 calls. The Stoddard Fire & Rescue Department responded to our neighboring towns when needed. This past year we were lucky enough to purchase a new Zoll machine for our rescue. This piece of equipment is rather expensive but you the great citizens of Stoddard approved us to purchase it as you all are so very generous to the fire department.

The Stoddard Fire & Rescue Department is always looking for new members to join, if you or someone you know is interested please call the firehouse, go on our Facebook page or simply stop by, we would love to have you and show you around. The Knox box program continues to all residents of Stoddard and if anyone is interested in getting a Knox box please contact the firehouse and we will be sure to get back to you. If you are not familiar with a Knox box is a lock box that holds a key to your home so that if there is an emergency the Fire Department can gain access to your home without forcing entry, there is a one time fee of 75 dollars paid by the homeowner and the town will pick up the rest of the bill. Please make sure your house and or mailbox is clearly labeled with a house number as it is crucial for us getting to the proper address to assist you. As a reminder if you have an emergency please dial 9-1-1 and not your friends or relatives first!! Day or night The Stoddard Fire & Rescue Department will always be there to answer a call for help.

On behalf of the officers and the employees of the Stoddard Fire & Rescue Department we continue to thank you all for your support over the years, please remember we are here to serve you the residents of our great little Town Of Stoddard, I would like to take one last minute and say a very heartfelt thank you to Deputy Chief Brian Michaud for his 30 years of service to both the Stoddard Fire & Rescue and Hinsdale Fire Department as he has decided to retire, Brian is was a honor to work with you all these years, Thank you for your service.

Respectfully Submitted  
Chief Randy A. Weaver

## POLICE

Our top priority this year had been on making our streets safer by focusing on the speed and operation of vehicles in our community. Our intent is to change

driver's behavior through active patrols and enforcement of motor vehicle laws. The objective is to reduce crashes and ensure that our citizens, our domestic animals, and livestock are safe. We have conducted directed patrols on many of our roads with a focus on Route 123 North from Island Pond to School Street, Kings Highway to the Association, and on Route 9. These areas have been identified as the most prevalent enforcement areas to reduce speed making our roads safer.

We have invested in a mobile speed display sign to be able to continue to identify problem areas and gather statistical information to ensure that our efforts and resources are being utilized efficiently.

We have had 757 Calls for Service to include, but not limited to 297 Traffic Stops, 27 Motor Vehicle Crashes, 14 Suspicious Vehicles, 23 Burglar Alarms, 2 Burglaries, 5 thefts, 5 Neighbor Disputes, 4 Noise Disturbances, 31 Animal Complaints as well as a multitude of other items.

We will continue our community policing efforts by being visible at the school and other events around town. We continue to utilize our Facebook page to get important messaging out to our citizens. If you have an emergency, please call 911. If you need to speak with an officer, you can contact the Cheshire County Dispatch Center or leave us a message at the police station.

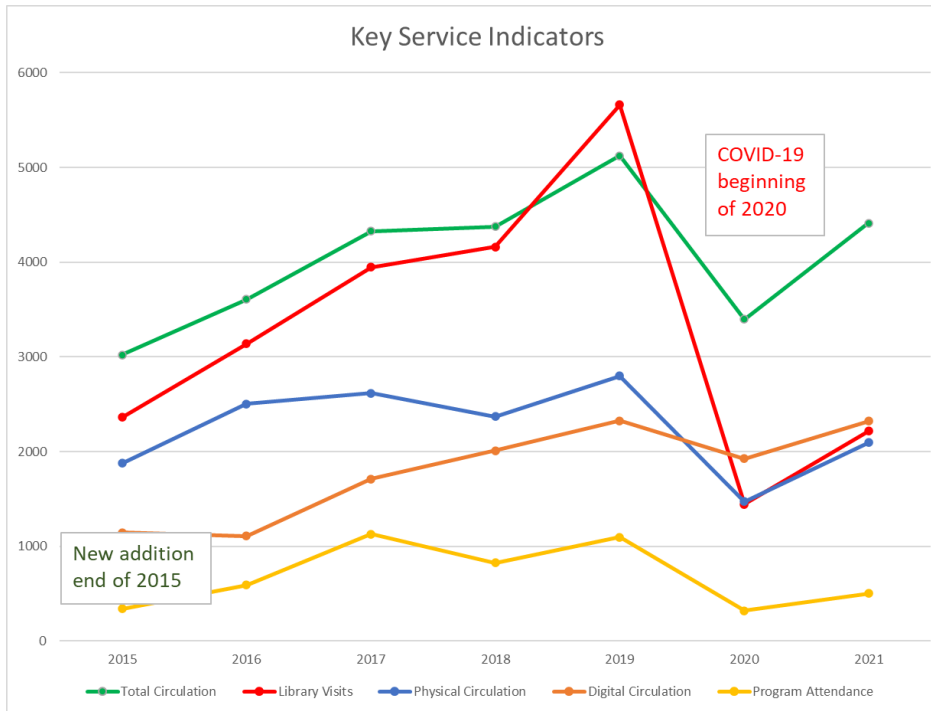
Chief David Vaillancourt

## Weird New Hampshire Laws

- You may not tap your feet, nod your head, or in any way keep time to the music in a tavern, restaurant, or cafe.
- You cannot sell the clothes you are wearing to pay off a gambling debt.
- It is illegal to pick seaweed up off of the beach.

# DAVIS PUBLIC LIBRARY of STODDARD NH

Bringing back community, civic engagement, and lifelong learning in the wake of COVID-19.



In the year of 2021, the Davis library started a slow but steady recovery from COVID-19, acting on guidance and

feedback from community members like you.

One highlight of the year was the 3,000 ALA Grant that started community conversations that will guide decisions for many years to come. Thank you to all who participated! We now have a brand new website (professionally built this time) to communicate new programs and services, and we ran a stellar summer reading program that involved storytelling, creativity-based summer camp activities for the school kids, and more. We are also pursuing more technology, training and partnerships that were suggested. Read on to learn more about how the library hopes to revive our sense of community and thirst for lifelong learning using not only town funds but grants and some recent extremely generous donations.

In the year to come, the library has a few major focus points:

## 1. Good Old Books.

Beyond the usual additions we make every month to our collection, we intend

to increase our science and graphic novel collections for adults, and to make it friendlier to a

wider audience in general. Be on the

lookout for more visual, down-to-earth and easy-to-digest reading in our cozy non-fiction corner. This is made possible largely by the generosity of David and Charlotte Lesser.

In the Children's room, we are on a major undertaking to bring book kits to our library! We hope that you will soon be able to check out backpacks full of books, props, toys, suggested activities and more on a wide variety of the best-loved themes like dinosaurs, space, numbers, the ABC's, and more.

## 2. Making this place YOUR space!

The library has heard lots of community feedback that there aren't enough social gathering places here in town, especially for children. For that reason, we are looking into many different options for toys, activities, equipment, and more to revamp our physical space and make it ideal for early learning and family fun. And for adults, did you know that you can use our space for your group meetings? Check it out on our new website in the services tab.

## 3. Programs

With feedback from the community, the library is working on implementing many hands-on programs and activities related to arts, skills, interests and more. We look forward to branching out beyond lectures and passive absorption of information to group-based collaboration and active sharing of interests and activity. This is best accomplished through our continued commitment to networking with outside groups like the Historical Society, the Conservation Commission, schools, technology experts and more.

## 4. Technology

Speaking of technology, did you know you have access to hundreds of online classes and courses on a huge variety of



interests? All you have to do is scroll down on the Home screen in the popular Libby App! The Great Courses have online video classes in history, science, mathematics, philosophy, wellness, and so much more. And Craftsy (New!) can teach you any craft you want to learn about, be it sewing, or cooking, or so many others. We are hoping the services won't stop there, though! Look out for access to film documentaries, shows, animated picture books, and more.

While you may not see all of this happen overnight, I hope you will like the direction our community center of lifelong learning is going. Have other ideas? *Please* let me know. This library lives off feedback! Email [davispubliclibrary@gmail.com](mailto:davispubliclibrary@gmail.com) or call 603-446-6251.

Best Regards,  
Inga Dellea  
Librarian for Stoddard

### Davis Public Library - Budget FY 2022/23\*

\*Subject to approval at Town Meeting 5/17/22

Acct. #	FY2019/20	FY2020/21	%change	FY2021/22	%change	FY2022/23	%change
01-4550.10-115 Electric	\$1,200	\$1,300	8.33%	\$1,600	23.08%	\$ 1,600	0.00%
01-4550.10-145 Heat	\$1,500	\$1,500	0.00%	\$1,500	0.00%	\$ 2,250	50.00%
01-4550.10-253 Payroll	\$23,632	\$29,200	23.56%	\$29,200	0.00%	\$ 31,536	8.00%
01-4550.10-074 Security Monitoring	\$260	\$260	0.00%	\$260	0.00%	\$ 260	0.00%
01-4550.10-125 Books & Magazines	\$2,500	\$2,500	0.00%	\$3,500	40.00%	\$ 3,500	0.00%
01-4550.10-126 Collection Maintenance	\$600	\$600	0.00%	\$200	-66.67%	\$ 200	0.00%
01-4550.10-127 NonBook Resources	\$300	\$300	0.00%	\$600	100.00%	\$ -	-100.00%
01-4550.10-137 Maintenance	\$450	\$450	0.00%	\$450	0.00%	\$ 850	88.89%
01-4550.10-167 Internet	\$750	\$785	4.67%	\$785	0.00%	\$ 720	-8.28%
01-4550.10-174 Tech Svcs	\$1,350	\$1,350	0.00%	\$1,050	-22.22%	\$ -	-100.00%
01-4550.10-190 Legal	\$100	\$100	0.00%	\$100	0.00%	\$ 100	0.00%
01-4550.10-226 Mileage	\$150	\$150	0.00%	\$150	0.00%	\$ 150	0.00%
01-4550.10-229 Cataloging	\$1,100	\$1,100	0.00%	\$1,100	0.00%	\$ 800	-27.27%
01-4550.10-234 Software	\$200	\$200	0.00%	\$250	25.00%	\$ 250	0.00%
01-4550.10-241 Office Supplies	\$610	\$610	0.00%	\$1,000	63.93%	\$ 1,000	0.00%
01-4550.10-271 Postage	\$75	\$75	0.00%	\$75	0.00%	\$ 75	0.00%
01-4550.10-286 Printing	\$0	\$0	0.00%	\$0	0.00%	\$ -	0.00%
01-4550.10-292 Dues	\$400	\$350	-12.50%	\$350	0.00%	\$ 350	0.00%
01-4550.10-370 Telephone	\$770	\$920	19.48%	\$920	0.00%	\$ 620	-32.61%
01-4550.10-391 Training	\$350	\$350	0.00%	\$350	0.00%	\$ 350	0.00%
01-4550.10-555 Summer Read Program	\$750	\$750	0.00%	\$750	0.00%	\$ -	-100.00%
01-4550.10-556 Programming	\$500	\$900	80.00%	\$900	0.00%	\$ -	-100.00%
Nonbook & Digital Resources						\$ 2,000	
Website						\$ 150	
Tech Equipment & Maintenance						\$ 300	
	<b>\$37,547</b>	<b>\$43,750</b>	<b>16.52%</b>	<b>\$45,090</b>	<b>3.06%</b>	<b>\$ 47,061</b>	<b>4.37%</b>



**DID YOU KNOW.....**

**New Hampshire is home to the oldest state library in the nation**, and this year, it's marking its 300<sup>th</sup> anniversary. It was founded in 1717 with just two books and a proclamation by the New Hampshire general assembly.

## **ANNOUNCING EFFORT TO PROTECT AN ICONIC FOREST ON HIGHLAND LAKE by Stoddard Conservation Commission:**



### **Protecting this Forest Has Broad Community Support**

- **BOS September 27, 2021:** “The Selectmen applaud your efforts and offer our support in any capacity within our scope”;
- **Island Pond Assn November 23, 2021:** “It is with great enthusiasm that our board supports your intended purchase of the 40 acres of land off Walker Road”;
- **Highland Lake Unified Assn November 29, 2021:** “It is in the HLUA opinion that this parcel of land and its associated waterfront would be very beneficial to remain as open space for the health of the surrounding environment and watershed”;
- **Eva Lane Assn January 6, 2022:** “Protecting this property represents an extraordinary natural, recreational, and educational resource for the current and future residents of Stoddard....a treasure that is literally on our doorstep”;
- **Davis Library January 7, 2022:** “This forest will provide a wonderful extension of the library’s facilities, enabling it to offer outdoor programs such as animal tracking, identification of trees and mushrooms, photography and astronomy while increasing environmental awareness and responsibility”;
- **JFES School Board February 22, 2022:** “JFES has had a long-standing commitment to outdoor education.... the Board is very excited at the prospect of adding this forest to the list of local resources that can support the educational mission and values of JFES”;
- **Stoddard Historical Society February 28, 2022:** “This property, as one of the few large undeveloped and not formally conserved pieces of land on the Highland Lake, could be used educationally to illustrate important elements of Stoddard history”.
- **UNH Cooperative Extension January 6, 2022:** “This forest—right in the heart of town, would serve as a wonderful resource to demonstrate natural systems uninterrupted by agricultural clearing or extensive timber harvesting. Our Forestry & Wildlife Program, at the University of NH Cooperative Extension, is excited to work with the Town to provide educational opportunities... this forest is truly a hidden gem.

### **Please send your generous tax-deductible donations to:**

Town of Stoddard  
Attn: Conservation Commission~Treasurer  
1450 Route 123 North  
Stoddard, NH 03464-4153

## The Conservation Commission 2023 Annual Budget

<u>2022 Expense</u>	<u>Amount</u>	<u>Notes</u>
DES Dam Fee	\$ 400	Annual fee required by NH DES
NHACC	\$ 300	Annual dues to NH Assn. of Conservation Commission
NHACC	\$ 240	Registration fee to NHACC annual meeting and workshops. Approximately \$60/person
Sign	\$ 300	Trail head sign for Stoddard Rocks Parking Lot
Contingency Fund: Wilson Project	\$ 8,000	Contingency fund for start-up costs for Wilson Point Land Protection Project: Highland Lake***
ESRI License	\$ 200	To collect data and make maps
<b>Total 2021 Expense</b>	<b>\$ 9,440</b>	

**\*\*\* See projected budget for Wilson Start-up Costs (\$\$ to come from the money market account)**

<b>2021-22 Proposed Budget: Wilson Lands</b>		<b>Comments</b>
<b><u>Revenue</u></b>	\$ 16,200	Amount accrued in Conservation Fund (10/21)
Donations to date (through 10/29/2021)	\$ 1,500	Dean Coogan & Ernest Getty
<b>Total Revenue (10/29/21)</b>	<b>\$ 17,700</b>	<b>Balance 10/29/2021</b>
<b><u>Expenditures</u></b>		
Promo Video	\$ 3,000	Upper range for a "Bells & Whistle" high impact video (use of stills, subtitles, voice over)
Appraisal for Wilson Land	\$ 5,000	Full cost varies, depending on grants we are applying for. The amount could exceed \$10,000
Land Survey	\$ 5,000	Estimate from surveyor Steve Perron: to be conducted next spring
Legal fee for Option Agreement	\$ 1,000	Attorney Tom Masland has agreed to facilitate
Deposit for Option Agreement	\$ 1,000	Full deposit not known, but Tom M. said \$1K should do it. Conditions outlined in OA
<b>Total Expenditures</b>	<b>\$ 8,000</b>	
<b>Balance</b>	<b>\$ 9,700</b>	

## STODDARD VITAL STATISTICS REPORT

January 1 through December 31, 2021

### RESIDENT BIRTH REPORT

Date of Birth	Child's Name	Mother's & Father's Names	Birth Place
02/28/21	Augustus Emile Cadorette	Alexandria Corliss & Dylan Cadorette	Stoddard
04/23/21	Liam Douglas McAllister	Sarah & Aidan McAllister	Keene
06/13/21	Lorelei Jordyn Ascani	Ashley Shultz & Justin Ascani	Nashua
06/16/21	Aurora Kelsey Hardwick	Khara & Christopher Hardwick	Concord
07/23/21	Maxwell Shawn Mendonsa	Stephanie & David Mandonsa	Keene
12/18/21	Theodore George Courchesne	Sarah & Benjamin Courchesne	Peterborough

### RESIDENT MARRIAGE REPORT

Person A's Name & Residence	Person B's Name & Residence	Town of Issuance	Place of Marriage	Date of Marriage
Brian K. Warner, Jr. Stoddard, NH	Samantha L. Landry Fitzwilliam, NH	Stoddard	Fitzwilliam, NH	05/29/21
Richard D Holland Stoddard, NH	Lisa Marie Constine Stoddard, NH	Stoddard	Keene, NH	07/24/21
Patrick D. Zorn Stoddard, NH	Marin E. Owens Stoddard, NH	Stoddard	Keene, NH	09/05/21
Jeremy A. Spiegel Stoddard, NH	Tammy L. McCartney Stoddard, NH	Stoddard	Keene, NH	09/06/21
Kenneth L. Goodell Stoddard, NH	Shanon Sterrett	Stoddard	Walpole, NH	10/10/21
Benjamin Courchesne Stoddard, NH	Sarah C. Maiori Stoddard, NH	Stoddard	Keene, NH	10/12/21

### RESIDENT DEATH REPORT

Decedent's Name	Death Date	Death Place	Parent's Name	Parent's Name	Military
Karen May Ridel	02/10/2021	Keene	John Tumas, Jr.	Helen Skolianik	No
Michael Francis Meyer	05/06/2021	Stoddard	Milton Meyer	Frances Bestler	Yes
Jean Rose Green	05/28/2021	Stoddard	George Holmes	Anita Billiel	Yes
George Andrew Corrette	06/08/2021	Stoddard	George Corret	Shirley Solari	No
Philip Aaron Hamilton	06/25/2021	Stoddard	Byrd Hamilton	Alice Jackson	No
Debby Lynn Weaver	08/14/2021	Keene	Charles Champne	Loretta St. Laurence	No
Daniel W. Snow	08/20/2021	Keene	Walter Snow	Jean Sibley	No
Richard Lloyd Guay	08/22/2021	Concord	Raymond Guay	Beatrice Bennett	Yes
Donna Lee Charron	10/16/2021	Concord	Donald Van Vleck	Barbara Remson	No
Doris Cecile Phaneuf	11/08/2021	Merrimack	George Cassidy	Catherine Gelinis	No
Janice G. Dwyer	12/07/2021	Stoddard	John Graham	Marian Shriner	No



# TREASURER'S REPORT

Fiscal Year 07/01/2020 – 06/30/2021

<b>BEGINNING BALANCE</b>	<b>\$1,097,919.21</b>
<b>RECEIPTS:</b>	
Town Clerk to Treasurer	\$352,344.01
Tax Collector to Treasurer	\$4,750,982.95
Selectmen's Office Receipts	\$284,402.16
Rooms & Meals Tax	\$64,619.66
Highway Grant	\$35,480.41
Interest Earned	\$2,340.64
<b>TOTAL RECEIPTS:</b>	<b>\$5,490,169.83</b>
<b>EXPENSES:</b>	
Accounts Payable Expended	\$5,348,754.77
Payroll Expended	\$226,499.29
Move to Conservation Commission Account	\$866.00
<b>TOTAL EXPENSES:</b>	<b>\$5,576,120.06</b>
<b>ENDING BALANCE:</b>	<b>\$1011,968.98</b>
<b>MONEY MARKET FUND</b>	
<b>BEGINNING BALANCE</b>	<b>\$16,160.34</b>
<b>RECEIPTS:</b>	
Balance left FY 2020 Appropriation	\$866.00
Interest Earned	\$27.10
<b>TOTAL RECEIPTS</b>	<b>\$893.10</b>
<b>ENDING BALANCE</b>	<b>\$17,053.44</b>

# ***SCHEDULE OF TOWN PROPERTY***

*After 2019 property revaluation*

<b>Tax Map #</b>	<b>Description</b>	<b>Building Value</b>	<b>Land Value</b>	<b>Total Value</b>
104-11 & 404-02	Dodge Farm Road - Stoddard Rocks		\$28,560.00	\$28,560.00
105-09	Shedd Hill Road @ Marina		\$125,200.00	\$125,200.00
118-014	Bridge Hill Road		\$10,090.00	\$182,590.00
126-15	Old Fire Station	\$172,500.00	\$25,330.00	\$49,950.00
126-22	Route 123 Island Pond		\$132,260.00	\$623,431.00
126-23	Route 123 Fire Station	\$491,171.00	\$45,500.00	\$45,750.00
127-05	Route 123 Transfer Station	\$250.00	\$48,900.00	\$48,900.00
127-53	Route 123 Public Boat Launch		\$67,580.00	\$67,580.00
132-10	Old Antrim Road		\$2,500.00	\$2,500.00
128-09	Route 123 Gould House	\$291,815.00	\$30,600.00	\$322,415.00
128-09.1	Town Hall Parking Lot		\$30,780.00	\$30,780.00
128-10	Route 123 Town Hall	\$413,956.00	\$31,800.00	\$445,756.00
129-04	Route 123 Gazebo	\$2,650.00	\$30,150.00	\$32,800.00
129-07	Mountain Stoddard Road		\$22,200.00	\$22,200.00
129-08	Route 123 Stoddard Memorial Garden		\$19,300.00	\$19,300.00
129-09	Route 123 1834 Lot		\$18,400.00	\$18,400.00
129-13	Route 123 Davis Public library	\$188,900.00	\$46,200.00	\$235,100.00
130-06	Old Forest Road Police Station	\$43,800.00	\$38,400.00	\$82,200.00
135-26	Route 123 Island Pond Beach		\$161,800.00	\$161,800.00
410-08	Route 123 Cahill Lot		\$32,160.00	\$32,160.00
125-15	Highland Lake @ Walker Road		\$64,000.00	\$64,000.00
102-99 to 102	East Shore Drive		\$20,180.00	\$20,180.00
131-25.1	Murdough Road		\$42,300.00	\$42,300.00
403-03	Highland Lake		\$10,370.00	\$10,370.00
418-010	Aten Road - Off		\$930.00	\$930.00
418-011	Aten Road - Off		\$820.00	\$820.00
	<b>Total</b>	\$1,605,042.00	\$1,086,310.00	\$2,691,352.00

## TRUSTEES OF THE TRUST FUND

### Members:

David Lesser, chairperson (cblesser@gmail.com)

Jim Elliott (elliottjride@gmail.com)

Nick Nicoletti ([richardnicoletti@gmail.com](mailto:richardnicoletti@gmail.com))

The purpose of this committee is to manage the trust funds allocated for investment and future use by Stoddard constituents including the town, school, road associations, and village districts. We meet as needed to deposit and disburse funds, and to monitor investments. All meetings, zoom or in person, are posted and open to the public. We are also happy to receive mail related to any trustee questions or queries at PO Box 845, Stoddard, NH 03464.

All fourteen accounts are monitored regularly by the trustees. Thirteen of the accounts are invested in the New Hampshire Public Deposit Investment Pool (NHPDIP). The Ruth and Emerson McCourt Cemetery Fund is invested at LPL Financial, and we are allowed to use interest only to maintain headstones at the Mt. Stoddard Cemetery. All transfers both into and out of NHPDIP are done through a checking account at TD Bank. All transfers both into and out of the McCourt Fund are done through a checking account at Savings Bank of Walpole.

For any more detailed information regarding any of the fourteen funds listed below, please feel free to contact any of the members of the group. Note that a new fund was created based on the approval of an Emergency Capital Reserve Fund at the June, 2021 town meeting. As required by the New Hampshire Department of Justice we complete annually an MS-9 and MS-10 as part of the town annual audit.

## Trustees of the Trust Fund Balances as of November 15, 2021

(last report prior to submission to meet the annual town report publication deadline)

**Stoddard Bridges and Roads:** \$25,326

**Stoddard Building Fund:** \$66,693

**Stoddard Emergency Capital Reserve Fund:** \$10,000

**Stoddard Fire and Rescue Vehicle:** \$75,117

**Stoddard Town Parks and Recreation:** \$11,568

**School Building Design:** \$52,624

**School Buildings and Grounds:** \$73,924

**School Extraordinary Tuition:** \$103,037

**Cemetery Perpetual Care:** \$55,303

**Aten Road Village District:** \$3,077

**Granite Lake District CRF:** \$105,445

**Stoddard Rocks:** \$10,548

**Sweetwater Trust:** \$54,476

**Ruth and Emerson McCourt Fund:** \$63,829



## Stoddard will celebrate its 250<sup>th</sup> anniversary in 2024.

An exploratory committee has begun work to prepare a birthday celebration that will span several days in July 2024. The committee is searching for additional members to help to plan and carry out this important event. If you wish to be involved, please contact Alan at 603-446-7447 or [arumrill@hscnh.org](mailto:arumrill@hscnh.org).

## **THE TOWN CLERK/TAX COLLECTOR'S OFFICE**

We have had a very busy, productive and educational year!

The Town Clerk's office has seen a significant increase in births, marriages and new automobile purchases. In addition, we have seen an increase in new residents. Our office continues to work very hard at updating and maintaining a census database. We have recently created a "Resident Information Form" which we will begin asking all, willing, new and not-so-new, residents to complete. It is our goal to have, and maintain, the most updated town resident information, in case of an emergency.

We have been busy reorganizing our office, cleaning files and digitizing records, as well.

I attended the New Hampshire Town Clerk's convention this past fall, where I was able to network with other town clerks and learn the most updated information regarding motor vehicle, vital record management and elections. Election procedure changes very frequently. These conferences are crucial and very beneficial to attend. I am grateful for the opportunity.

I have learned a great deal more this past year, in my role as Tax Collector. Tax collection trainings continue to be very limited, due to the pandemic and State/Regional staff shortages. Nevertheless, I have attended all available trainings offered by the State and the New Hampshire Tax Collectors Association (NHTCA). I attended the NHTCA conference in North Conway this past fall, where I was able to network with tax collectors from other New Hampshire towns. I am pre-registered to begin tax collection certification classes this fall (2022). This is a three-year certification program.

Although I am a fairly new tax collector, when a question arises, we are very fortunate to have the assistance of the New Hampshire Tax Collector's Association and, specifically, three individuals: James MacDonnell (Hinsdale Tax Collector, NHTCA Regional Representative), Mary Alther (Keene Tax Collector for 29 years) and Robert Paquin-Varnum, (Keene Deputy Tax Collector). I would like to take this opportunity to thank all three for their generosity of time and expertise.

This office is responsible for managing a hugely diverse list of responsibilities, with rules and regulations changing every day. We may, from time to time, make a mistake or need to call for the correct answer to a question. Our telephones ring constantly. We regularly

have residents at our windows and this makes it difficult to answer calls, at times. We retrieve messages regularly and will return your call.

Deborah McGerty, Deputy Town Clerk/Tax Collector, Patricia Marotta, Assistant Town Clerk and, myself, Karen Bell, Town Clerk/Tax Collector, have been working very hard to ensure that all requests and transactions which are presented in our office, or by telephone or email, are handled efficiently and proficiently. Our office is extremely busy! We have much more "foot traffic" now. One reason being that people are beginning to feel safe to come out into the public, once again. Another reason is because the Tax Collector's office is now open two days per week. People prefer coming in to our office to pay their taxes or request tax information because we are available to complete transactions in person. Whatever the reason is, it is nice to see all the faces again!

Lastly, real estate is being sold/transferred very frequently. Our phones are consistently ringing with calls from title and mortgage companies requesting tax and assessment information. We thank you for your understanding and patience.

I am grateful for the opportunity to serve the residents of the Town of Stoddard. I hope everyone has a happy summer!

Karen Bell, Town Clerk/Tax Collector



**DID YOU KNOW.....**

**Newport resident Sarah Josepha Hale wrote "Mary Had a Little Lamb."**

The poem was published in 1830 (although there is some scholarly argument about that). Hale was also key in campaigning to make Thanksgiving a holiday.

# TAX COLLECTORS REPORT

## YEAR ENDING JUNE 30, 2021

	Levy for Year of this Report	2020	2019	2018
<b>Uncollected Taxes – Beginning of Year:</b>				
Property Taxes		\$1,549,389.52	(\$8,489.75)	(\$131.23)
<b>Taxes Committed This Year:</b>				
Property Taxes	\$2,422,145.85	\$2,642,236.44		
Land Use Change Taxes		\$610.00		
Yield Taxes				\$1,694.78
Other Charges		\$42.88		
<b>Overpayment Refunds:</b>				
Property Taxes		\$1,109.89		
<b>Interest, Penalties &amp; Costs:</b>				
Interest & Penalties – on Delinquent Taxes		\$2,682.36		
<b>TOTAL DEBITS</b>	<b>\$2,422,145.85</b>	<b>\$4,196,071.09</b>	<b>(\$8,489.75)</b>	<b>\$1,563.55</b>
<b>Remitted to Treasurer:</b>				
Property Taxes	\$424,101.78	\$4,137,941.66	(\$8,489.75)	(\$1,633.32)
Land Use Change Taxes		\$610.00		
Interest (Include Lien Conversion)		\$2,682.36		
Other		\$25.04		
Cost Not Liened				
<b>Abatements Made:</b>				
Property Taxes		\$3,549.78		
<b>Uncollected Taxes End of Year:</b>				
Property Taxes	\$2,008,215.46	\$51,268.84		\$1,502.09
Yield Taxes				\$1,694.78
Property Tax Credit Balance	(\$10,171.39)	(\$6.59)		
<b>TOTAL CREDITS</b>	<b>\$2,422,145.85</b>	<b>\$4,196,071.09</b>	<b>(\$8,489.75)</b>	<b>(\$1,563.55)</b>

## SUMMARY OF TAX LIEN ACCOUNTS

DEBITS	Last Year's Levy	2019	2018	2017
Unredeemed Liens Balance at Beginning of Fiscal Year			\$40,093.96	\$54,578.34
Liens Executed During Fiscal Year				
Interest & Costs Collected (After Lien Execution)			\$1,586.91	\$9,100.19
<b>TOTAL DEBITS</b>			<b>\$41,680.87</b>	<b>\$63,678.53</b>
<b>CREDITS</b>				
Redemptions			\$21,050.23	\$16,161.14
Interest & Costs Collected (After Lien Execution)			\$1,586.91	\$9,100.19
Liens Deeded to Municipality			\$19,043.73	\$38,417.20
<b>TOTAL CREDITS</b>	<b>\$0.00</b>	<b>\$0.00</b>	<b>\$41,680.87</b>	<b>\$63,678.53</b>

Karen C. Bell  
Stoddard Tax Collector

(603) 446-3326, Ext. 1



**New Hampshire**  
 Department of  
 Revenue  
 Administration


<b>2021</b> <b>\$16.57</b>
-------------------------------

## Tax Rate Breakdown Stoddard

Municipal Tax Rate Calculation			
Jurisdiction	Tax Effort	Valuation	Tax Rate
Municipal	\$1,139,230	\$297,225,550	<b>\$3.83</b>
County	\$1,060,489	\$297,225,550	<b>\$3.57</b>
Local Education	\$2,169,652	\$297,225,550	<b>\$7.30</b>
State Education	\$539,234	\$288,443,150	<b>\$1.87</b>
<b>Total</b>	<b>\$4,908,605</b>		<b>\$16.57</b>

Village Tax Rate Calculation			
Jurisdiction	Tax Effort	Valuation	Tax Rate
Aten Road Village	\$20,534	\$8,021,090	<b>\$2.56</b>
Granite Lake Village	\$16,446	\$39,157,030	<b>\$0.42</b>
<b>Total</b>	<b>\$36,980</b>		<b>\$2.98</b>

Tax Commitment Calculation	
Total Municipal Tax Effort	\$4,908,605
War Service Credits	(\$14,600)
Village District Tax Effort	\$36,980
<b>Total Property Tax Commitment</b>	<b>\$4,930,985</b>

 James P. Gerry Director of Municipal and Property Division New Hampshire Department of Revenue Administration	2/10/2022
---	-----------

## Appropriations and Revenues

Municipal Accounting Overview		
Description	Appropriation	Revenue
Total Appropriation	\$1,681,289	
Net Revenues (Not Including Fund Balance)		(\$588,536)
Fund Balance Voted Surplus		\$0
Fund Balance to Reduce Taxes		\$0
War Service Credits	\$14,600	
Special Adjustment	\$0	
Actual Overlay Used	\$31,877	
<b>Net Required Local Tax Effort</b>	<b>\$1,139,230</b>	

County Apportionment		
Description	Appropriation	Revenue
Net County Apportionment	\$1,060,489	
<b>Net Required County Tax Effort</b>	<b>\$1,060,489</b>	

Education		
Description	Appropriation	Revenue
Net Local School Appropriations	\$2,932,204	
Net Cooperative School Appropriations	\$0	
Net Education Grant		(\$223,318)
Locally Retained State Education Tax		(\$539,234)
<b>Net Required Local Education Tax Effort</b>	<b>\$2,169,652</b>	
State Education Tax	\$539,234	
State Education Tax Not Retained	\$0	
<b>Net Required State Education Tax Effort</b>	<b>\$539,234</b>	

## Valuation

Municipal (MS-1)		
Description	Current Year	Prior Year
Total Assessment Valuation with Utilities	\$297,225,550	\$294,311,810
Total Assessment Valuation without Utilities	\$288,443,150	\$285,642,810
Commercial/Industrial Construction Exemption	\$0	\$0
Total Assessment Valuation with Utilities, Less Commercial/Industrial Construction Exemption	\$297,225,550	\$294,311,810

### Village (MS-1V)

Description	Current Year	
Aten Road Village	\$8,021,090	
Granite Lake Village	\$39,157,030	



# Stoddard

## Tax Commitment Verification

### 2021 Tax Commitment Verification - RSA 76:10 II

Description	Amount
Total Property Tax Commitment	\$4,930,985
1/2% Amount	\$24,655
Acceptable High	\$4,955,640
Acceptable Low	\$4,906,330

If the amount of your total warrant varies by more than 1/2%, the MS-1 form used to calculate the tax rate might not be correct. The tax rate will need to be recalculated. Contact your assessors immediately and call us at 603.230.5090 before you issue the bills. See RSA 76:10, II

<b>Commitment Amount</b>	
Less amount for any applicable Tax Increment Financing Districts (TIF)	
<b>Net amount after TIF adjustment</b>	

**Under penalties of perjury, I verify the amount above was the 2021 commitment amount on the property tax warrant.**

<b>Tax Collector/Deputy Signature:</b>	<b>Date:</b>
--	--------------

*Submit this signed verification form with a copy of the completed and signed warrant total page and an actual tax bill to your DRA municipal auditor.*

## Requirements for Semi-Annual Billing

### Pursuant to RSA 76:15-a

76:15-a Semi-Annual Collection of Taxes in Certain Towns and Cities - I. Taxes shall be collected in the following manner in towns and cities which adopt the provisions of this section in the manner set out in RSA 76:15-b. A partial payment of the taxes assessed on April 1 in any tax year shall be computed by taking the prior year's assessed valuation times 1/2 of the previous year's tax rate; provided, however, that whenever it shall appear to the selectmen or assessors that certain individual properties have physically changed in valuation, they may use the current year's appraisal times 1/2 the previous year's tax rate to compute the partial payment.

Stoddard	Total Tax Rate	Semi-Annual Tax Rate
Total 2021 Tax Rate	\$16.57	\$8.29
Associated Villages		
Aten Road Village	\$2.56	\$1.28
Granite Lake Village	\$0.42	\$0.21

## Fund Balance Retention

<b>Enterprise Funds and Current Year Bonds</b>	<b>\$180,000</b>
<b>General Fund Operating Expenses</b>	<b>\$5,270,664</b>
<b>Final Overlay</b>	<b>\$31,877</b>

DRA has provided a reference range of fund balance retention amounts below. Please utilize these ranges in the determination of the adequacy of your municipality's unrestricted fund balance, as currently defined in GASB Statement 54. Retention amounts, as part of the municipality's stabilization fund policy [1], should be assessed dependent upon your governments own long-term forecasts and special circumstances. Please note that current best practices published by GFOA recommend, at a minimum, that "...general purpose governments, regardless of size, maintain unrestricted fund balance in their general fund of no less than two months of regular general fund operating revenues or regular general fund operating expenditures." [2],[3]

[1] The National Advisory Council on State and Local Budgeting (NACSLB), (1998), *Framework for Improved State and Local Government Budgeting: Recommended Budget Practices (4.1)*, pg. 17.

[2] Government Finance Officers Association (GFOA), (2015), *Best Practice: Fund Balance Guidelines for the General Fund..*

[3] Government Finance Officers Association (GFOA), (2011), *Best Practice: Replenishing General Fund Balance.*

### 2021 Fund Balance Retention Guidelines: Stoddard

Description	Amount
<b>Current Amount Retained (6.49%)</b>	<b>\$342,081</b>
17% Retained ( <i>Maximum Recommended</i> )	\$896,013
10% Retained	\$527,066
8% Retained	\$421,653
5% Retained ( <i>Minimum Recommended</i> )	\$263,533

*SUMMARY INVENTORY OF TOWN VALUATION/MS-1*  
*2021*

<b>Land</b>	<b>Number of Acres</b>	<b>Assessed Value</b>
Current Use	25,799.53	\$1,138,580
Residential	4,192.88	\$124,180,830
Commercial/Industrial	10.48	\$640,000
<b>Total Taxable Land</b>	<b>30,002.89</b>	<b>\$125,959,410</b>
Tax Exempt & Non-Taxable Land	846.07	\$1,754,540
<b>Buildings</b>		
Residential		\$159,123,080
Manufactured Housing		\$1,205,230
Commercial/Industrial		\$2,595,630
<b>Total Taxable Buildings</b>		<b>\$162,923,940</b>
Tax Exempt & Non-Taxable Buildings		\$2,109,730
<b>Utilities</b>		<b>\$8,782,400*</b>
<b>*Valuation Before Exemptions</b>		<b>\$297,665,750</b>
Total Exemptions Allowed		(\$440,200)
<b>Net Valuation on which Tax Rate for Municipal, County &amp; Local Tax is Computed</b>		<b>\$297,225,550</b>
Less Utilities		(\$8,782,400)
<b>Net Valuation Without Utilities on which Tax Rate for State Education Tax is Computed</b>		<b>\$288,443,150</b>



**New Hampshire**  
Department of  
Revenue Administration

**2022**  
**MS-636**

**Proposed Budget**

Account	Purpose	Article	Expenditures for period ending 6/30/2021	Appropriations for period ending 6/30/2022	Proposed Appropriations for period ending 6/30/2023	
					(Recommended)	(Not Recommended)
<b>General Government</b>						
0000-0000	Collective Bargaining		\$0	\$0	\$0	\$0
4130-4139	Executive	02	\$120,220	\$207,616	\$223,435	\$0
4140-4149	Election, Registration, and Vital Statistics	02	\$61,193	\$18,300	\$22,300	\$0
4150-4151	Financial Administration	02	\$35,037	\$12,500	\$27,914	\$0
4152	Revaluation of Property	02	\$38,523	\$56,850	\$63,990	\$0
4153	Legal Expense	02	\$20,295	\$25,000	\$25,000	\$0
4155-4159	Personnel Administration	02	\$22,275	\$30,396	\$35,500	\$0
4191-4193	Planning and Zoning	11,12	\$4,095	\$15,410	\$20,161	\$0
4194	General Government Buildings	02	\$64,633	\$106,300	\$93,470	\$0
4195	Cemeteries	09	\$6,731	\$17,325	\$14,345	\$0
4196	Insurance	02	\$13,549	\$14,601	\$16,000	\$0
4197	Advertising and Regional Association	02	\$3,154	\$3,275	\$3,275	\$0
4199	Other General Government		\$0	\$0	\$0	\$0
<b>General Government Subtotal</b>			<b>\$389,705</b>	<b>\$507,573</b>	<b>\$545,390</b>	<b>\$0</b>
<b>Public Safety</b>						
4210-4214	Police	06	\$52,262	\$70,325	\$111,781	\$0
4215-4219	Ambulance	10	\$11,000	\$12,000	\$36,001	\$0
4220-4229	Fire	05	\$98,649	\$116,600	\$124,301	\$0
4240-4249	Building Inspection		\$0	\$0	\$0	\$0
4290-4298	Emergency Management	14	\$476	\$3,900	\$6,400	\$0
4299	Other (Including Communications)	02	\$23,220	\$26,000	\$26,000	\$0
<b>Public Safety Subtotal</b>			<b>\$185,607</b>	<b>\$228,825</b>	<b>\$304,483</b>	<b>\$0</b>
<b>Airport/Aviation Center</b>						
4301-4309	Airport Operations		\$0	\$0	\$0	\$0
<b>Airport/Aviation Center Subtotal</b>			<b>\$0</b>	<b>\$0</b>	<b>\$0</b>	<b>\$0</b>
<b>Highways and Streets</b>						
4311	Administration		\$0	\$0	\$0	\$0
4312	Highways and Streets	03	\$322,778	\$265,600	\$286,300	\$0
4313	Bridges		\$0	\$0	\$0	\$0
4316	Street Lighting		\$0	\$0	\$0	\$0
4319	Other		\$0	\$0	\$0	\$0
<b>Highways and Streets Subtotal</b>			<b>\$322,778</b>	<b>\$265,600</b>	<b>\$286,300</b>	<b>\$0</b>

**Sanitation**

4321	Administration		\$0	\$0	\$0	\$0
4323	Solid Waste Collection		\$0	\$0	\$0	\$0
4324	Solid Waste Disposal	04	\$184,833	\$225,703	\$226,750	\$0
4325	Solid Waste Cleanup		\$0	\$0	\$0	\$0
4326-4328	Sewage Collection and Disposal		\$0	\$0	\$0	\$0
4329	Other Sanitation		\$0	\$0	\$0	\$0
<b>Sanitation Subtotal</b>			<b>\$184,833</b>	<b>\$225,703</b>	<b>\$226,750</b>	<b>\$0</b>

**Water Distribution and Treatment**

4331	Administration		\$0	\$0	\$0	\$0
4332	Water Services		\$0	\$0	\$0	\$0
4335	Water Treatment		\$0	\$0	\$0	\$0
4338-4339	Water Conservation and Other		\$0	\$0	\$0	\$0
<b>Water Distribution and Treatment Subtotal</b>			<b>\$0</b>	<b>\$0</b>	<b>\$0</b>	<b>\$0</b>

**Electric**

4351-4352	Administration and Generation		\$0	\$0	\$0	\$0
4353	Purchase Costs		\$0	\$0	\$0	\$0
4354	Electric Equipment Maintenance		\$0	\$0	\$0	\$0
4359	Other Electric Costs		\$0	\$0	\$0	\$0
<b>Electric Subtotal</b>			<b>\$0</b>	<b>\$0</b>	<b>\$0</b>	<b>\$0</b>

**Health**

4411	Administration		\$0	\$0	\$0	\$0
4414	Pest Control		\$0	\$0	\$0	\$0
4415-4419	Health Agencies, Hospitals, and Other	02	\$8,880	\$9,516	\$2,401	\$0
<b>Health Subtotal</b>			<b>\$8,880</b>	<b>\$9,516</b>	<b>\$2,401</b>	<b>\$0</b>

**Welfare**

4441-4442	Administration and Direct Assistance	02	\$2,243	\$7,575	\$7,675	\$0
4444	Intergovernmental Welfare Payments		\$0	\$0	\$0	\$0
4445-4449	Vendor Payments and Other		\$0	\$0	\$0	\$0
<b>Welfare Subtotal</b>			<b>\$2,243</b>	<b>\$7,575</b>	<b>\$7,675</b>	<b>\$0</b>

**Culture and Recreation**

4520-4529	Parks and Recreation	02	\$77	\$100	\$100	\$0
4550-4559	Library	07	\$44,151	\$45,090	\$47,061	\$0
4583	Patriotic Purposes	02	\$0	\$600	\$400	\$0
4589	Other Culture and Recreation		\$0	\$0	\$0	\$0
<b>Culture and Recreation Subtotal</b>			<b>\$44,228</b>	<b>\$45,790</b>	<b>\$47,561</b>	<b>\$0</b>

**Conservation and Development**

4611-4612	Administration and Purchasing of Natural Resources		\$0	\$0	\$0	\$0
4619	Other Conservation	08,13	\$17,852	\$18,706	\$18,690	\$0

4631-4632	Redevelopment and Housing		\$0	\$0	\$0	\$0
4651-4659	Economic Development		\$0	\$0	\$0	\$0
<b>Conservation and Development Subtotal</b>			<b>\$17,852</b>	<b>\$18,706</b>	<b>\$18,690</b>	<b>\$0</b>

**Debt Service**

4711	Long Term Bonds and Notes - Principal	02	\$0	\$65,000	\$60,055	\$0
4721	Long Term Bonds and Notes - Interest	02	\$0	\$12,000	\$12,200	\$0
4723	Tax Anticipation Notes - Interest	02	\$0	\$1	\$1	\$0
4790-4799	Other Debt Service		\$0	\$0	\$0	\$0
<b>Debt Service Subtotal</b>			<b>\$0</b>	<b>\$77,001</b>	<b>\$72,256</b>	<b>\$0</b>

**Capital Outlay**

4901	Land		\$0	\$0	\$0	\$0
4902	Machinery, Vehicles, and Equipment		\$14,785	\$230,000	\$0	\$0
4903	Buildings		\$0	\$0	\$0	\$0
4909	Improvements Other than Buildings		\$0	\$0	\$0	\$0
<b>Capital Outlay Subtotal</b>			<b>\$14,785</b>	<b>\$230,000</b>	<b>\$0</b>	<b>\$0</b>

**Operating Transfers Out**

4912	To Special Revenue Fund		\$0	\$0	\$0	\$0
4913	To Capital Projects Fund		\$0	\$0	\$0	\$0
4914A	To Proprietary Fund - Airport		\$0	\$0	\$0	\$0
4914E	To Proprietary Fund - Electric		\$0	\$0	\$0	\$0
4914O	To Proprietary Fund - Other		\$0	\$0	\$0	\$0
4914S	To Proprietary Fund - Sewer		\$0	\$0	\$0	\$0
4914W	To Proprietary Fund - Water		\$0	\$0	\$0	\$0
4918	To Non-Expendable Trust Funds		\$0	\$0	\$0	\$0
4919	To Fiduciary Funds		\$0	\$0	\$0	\$0
<b>Operating Transfers Out Subtotal</b>			<b>\$0</b>	<b>\$0</b>	<b>\$0</b>	<b>\$0</b>

<b>Total Operating Budget Appropriations</b>					<b>\$1,511,506</b>	<b>\$0</b>
--	--	--	--	--	--------------------	------------

Account	Purpose	Article	Proposed Appropriations for period ending 6/30/2023	
			(Recommended)	(Not Recommended)
4915	To Capital Reserve Fund	15	\$25,000	\$0
<i>Purpose: FIRE DEPARTMENT VEHICLE CAPITAL RESERVE FUND.</i>				
4915	To Capital Reserve Fund	23	\$20,000	\$0
<i>Purpose: Roads and Bridges CRF</i>				
4915	To Capital Reserve Fund	25	\$10,000	\$0
<i>Purpose: Emergency Capital Reserve Fund</i>				
4916	To Expendable Trusts/Fiduciary Funds	22	\$10,000	\$0
<i>Purpose: Building CRF</i>				

<b>Total Proposed Special Articles</b>					<b>\$65,000</b>	<b>\$0</b>
--	--	--	--	--	-----------------	------------

Account	Purpose	Article	Proposed Appropriations for period ending 6/30/2023	
			(Recommended)	(Not Recommended)
4415-4419	Health Agencies, Hospitals, and Other	27	\$500	\$0
	<i>Purpose: CVTC - Transportation</i>			
4415-4419	Health Agencies, Hospitals, and Other	17	\$1,717	\$0
	<i>Purpose: Monadnock Family Services</i>			
4415-4419	Health Agencies, Hospitals, and Other	16	\$800	\$0
	<i>Purpose: Home Healthcare</i>			
4415-4419	Health Agencies, Hospitals, and Other	19	\$1,000	\$0
	<i>Purpose: Red Cross</i>			
4415-4419	Health Agencies, Hospitals, and Other	18	\$600	\$0
	<i>Purpose: Community Kitchen</i>			
4415-4419	Health Agencies, Hospitals, and Other	20	\$1,173	\$0
	<i>Purpose: Southwestern Community Services</i>			
4415-4419	Health Agencies, Hospitals, and Other	21	\$1,000	\$0
	<i>Purpose: 100 Hundred Nights Shelter</i>			
4611-4612	Administration and Purchasing of Natural Resources	28	\$0	\$8,000
	<i>Purpose: Con Com Land Purchase</i>			
<b>Total Proposed Individual Articles</b>			<b>\$6,790</b>	<b>\$8,000</b>



Source	Article	Actual Revenues for period ending 6/30/2021	Estimated Revenues for period ending 6/30/2022	Estimated Revenues for period ending 6/30/2023	
<b>Taxes</b>					
3120	Land Use Change Tax - General Fund	\$0	\$0	\$0	
3180	Resident Tax	\$0	\$0	\$0	
3185	Yield Tax	02	\$0	\$3,500	\$1,000
3186	Payment in Lieu of Taxes	\$0	\$0	\$0	
3187	Excavation Tax	\$0	\$0	\$0	
3189	Other Taxes	\$0	\$0	\$0	
3190	Interest and Penalties on Delinquent Taxes	\$0	\$6,000	\$0	
9991	Inventory Penalties	\$0	\$0	\$0	
<b>Taxes Subtotal</b>		<b>\$0</b>	<b>\$9,500</b>	<b>\$1,000</b>	
<b>Licenses, Permits, and Fees</b>					
3210	Business Licenses and Permits	\$0	\$0	\$0	
3220	Motor Vehicle Permit Fees	02	\$0	\$200,000	\$150,000
3230	Building Permits	02	\$0	\$7,000	\$6,000
3290	Other Licenses, Permits, and Fees	02	\$0	\$9,865	\$5,000
3311-3319	From Federal Government	\$0	\$0	\$0	
<b>Licenses, Permits, and Fees Subtotal</b>		<b>\$0</b>	<b>\$216,865</b>	<b>\$161,000</b>	
<b>State Sources</b>					
3351	Municipal Aid/Shared Revenues	\$0	\$19,279	\$0	
3352	Meals and Rooms Tax Distribution	02	\$0	\$64,620	\$40,000
3353	Highway Block Grant	02	\$0	\$35,489	\$20,000
3354	Water Pollution Grant	\$0	\$0	\$0	
3355	Housing and Community Development	\$0	\$0	\$0	
3356	State and Federal Forest Land Reimbursement	02	\$0	\$461	\$250
3357	Flood Control Reimbursement	\$0	\$0	\$0	
3359	Other (Including Railroad Tax)	\$0	\$0	\$0	
3379	From Other Governments	\$0	\$0	\$0	
<b>State Sources Subtotal</b>		<b>\$0</b>	<b>\$119,849</b>	<b>\$60,250</b>	
<b>Charges for Services</b>					
3401-3406	Income from Departments	\$0	\$2,500	\$0	
3409	Other Charges	\$0	\$0	\$0	
<b>Charges for Services Subtotal</b>		<b>\$0</b>	<b>\$2,500</b>	<b>\$0</b>	
<b>Miscellaneous Revenues</b>					
3501	Sale of Municipal Property	\$0	\$0	\$0	
3502	Interest on Investments	\$0	\$12,000	\$0	
3503-3509	Other	\$0	\$0	\$0	
<b>Miscellaneous Revenues Subtotal</b>		<b>\$0</b>	<b>\$12,000</b>	<b>\$0</b>	

**Interfund Operating Transfers In**

3912	From Special Revenue Funds	\$0	\$0	\$0
3913	From Capital Projects Funds	\$0	\$0	\$0
3914A	From Enterprise Funds: Airport (Offset)	\$0	\$0	\$0
3914E	From Enterprise Funds: Electric (Offset)	\$0	\$0	\$0
3914O	From Enterprise Funds: Other (Offset)	\$0	\$0	\$0
3914S	From Enterprise Funds: Sewer (Offset)	\$0	\$0	\$0
3914W	From Enterprise Funds: Water (Offset)	\$0	\$0	\$0
3915	From Capital Reserve Funds	\$0	\$0	\$0
3916	From Trust and Fiduciary Funds	\$0	\$30,000	\$0
3917	From Conservation Funds	\$0	\$0	\$0
<b>Interfund Operating Transfers In Subtotal</b>		<b>\$0</b>	<b>\$30,000</b>	<b>\$0</b>

**Other Financing Sources**

3934	Proceeds from Long Term Bonds and Notes	\$0	\$150,000	\$0
9998	Amount Voted from Fund Balance	\$0	\$0	\$0
9999	Fund Balance to Reduce Taxes	\$0	\$0	\$0
<b>Other Financing Sources Subtotal</b>		<b>\$0</b>	<b>\$150,000</b>	<b>\$0</b>

<b>Total Estimated Revenues and Credits</b>		<b>\$0</b>	<b>\$540,714</b>	<b>\$222,250</b>
---	--	------------	------------------	------------------

<b>Item</b>	<b>Period ending 6/30/2023</b>
Operating Budget Appropriations	\$1,511,506
Special Warrant Articles	\$65,000
Individual Warrant Articles	\$6,790
Total Appropriations	\$1,583,296
Less Amount of Estimated Revenues & Credits	\$222,250
<b>Estimated Amount of Taxes to be Raised</b>	<b>\$1,361,046</b>

**DID YOU KNOW...****The potato has a long history in New Hampshire.**

Scottish settlers in the Londonderry area (then known as Nutfield), planted the first potato crops in America in New Hampshire in 1719. The potato is still New Hampshire's state vegetable.



**STODDARD, NEW HAMPSHIRE  
ANNUAL TOWN ELECTION & MEETING**

On May 11, 2021, the TOWN ELECTION took place at the Town Hall. ORDER OF BUSINESS: To the inhabitants of the Town of Stoddard in the County of Cheshire in the State of New Hampshire, qualified to vote in Town affairs: You are hereby notified to meet at the Stoddard Town Hall, 1450 Rt. 123 North in said Stoddard on Tuesday, the eleventh (11th) day of May 2021 next, at eleven of the clock in the forenoon (11:00 AM) to act upon the following article:

Article 1: To choose, by ballot all necessary Town Officers for the ensuing year.

**TOWN MEETING MINUTES  
MAY 18, 2021**

Pledge of Allegiance

Power Point presentation given by Michelle Pong, Town Administrator, which provided a specific breakdown and explanation of this year's budget.

Article 2: To see if the Town will vote to appropriate a \$50,000.00 down payment from the Fire/Rescue Vehicle Capital Reserve Fund toward the gross sum of \$230,000.00 (gross budget) for the purchase of a new Fire Vehicle, and to authorize issuance of not more than \$180,000.00 of bonds or notes in accordance with the provisions of the Municipal Finance Act (RSA 33) and to authorize municipal officials to issue and negotiate such bonds or notes and to determine the rate of interest thereon; and raise and appropriate an additional \$40,000.00 for the first year bond or note payment to come from general taxation with \$40,000.00 raised from general taxation to fund payment over the following four years. Recommended by the Selectmen. 3/5 vote required. Discussion followed. Ballot vote commenced; vote results 61 – 21. Article was adopted.

Article 3: To see if the Town will vote to raise and appropriate the sum of \$548,514.00 for general municipal operations. This article does not include special or individual articles addressed. Majority vote required. Recommended by Selectmen. A motion to pass this article by Robert Fee; seconded by Stephen McGerty. Various questions were asked. Discussion followed. Motion was passed.

Article 4: To see if the Town will vote to raise and appropriate the sum of \$265,600.00 for winter and summer maintenance, emergencies, and planned repairs of Town roads and bridges. Majority vote required. Recommended by Selectmen. A motion to pass this article was made by David Vaillancourt; seconded by JoAnn Vaillancourt. Motion was passed.

Article 5: To see if the Town will vote to raise and appropriate \$225,703.00 for all recycling, solid waste and related expenses for the ensuing year for the Stoddard Transfer Station, use of the Washington Transfer Station by certain residents and for hazardous waste disposal services

provided by the City of Keene. Majority vote required. Recommended by Selectmen. A motion to pass this article was made by Christopher Madden; seconded by Robert Fee. Questions were raised about the length of the current contract with Waste Management and whether the Town was considering other companies. Residents voiced concern over other town residents using the Town's transfer station. The selectmen answered the questions and acknowledged the concerns. It was explained that the Town is currently in a contract with Waste Management and that when this contract is over, other options will be considered. Discussion followed. Motion was passed.

Article 6: To see if the Town will vote to raise and appropriate \$116,600.00 for the operating budget of the Stoddard Fire & Rescue Department. Majority vote required. Recommended by Selectmen. A motion to pass this article was made by Steven Rockwell; seconded by Brian Michaud. Motion was passed.

Article 7: To see if the Town will vote to raise and appropriate the Selectmen's recommended amount of \$70,325.00 for the operating budget of the Stoddard Police Department. Majority vote required. Recommended by Selectmen. A motion to pass this article was made by David Vaillancourt; seconded by JoAnn Vaillancourt. A question was asked and answered. Motion was passed.

Article 8: To see if the Town will vote to raise and appropriate \$45,090.00 for the operation of the Davis Public Library. [Per RSA202-A:11, the funds raised and appropriated, other than payroll and utilities, shall be paid over to the Library Trustees pursuant to a payment schedule as agreed upon by the Library Trustees and the Selectmen.] Majority vote required. Recommended by Selectmen. A motion to pass this article was made by Don Healy; seconded by Sheila Healy. Motion was passed.

Article 9: To see if the Town will vote to raise and appropriate the sum of \$17,000.00 for the Lay Monitoring, Lake Host Programs and water testing. Majority vote required. Recommended by Selectmen. A motion to pass this article was made by Terri Shepard Laroche; seconded by David Laroche. Motion was passed.

Article 10: To see if the Town will vote to raise and appropriate \$17,325.00 for the operating budget of the cemeteries. Majority vote required. Recommended by Selectmen. A motion to pass this article was made by Karen Bell; seconded by Deborah McGerty. A question was raised about specific budget expenses. TA Michelle Pong explained. Motion was passed.

Article 11: To see if the Town will vote to raise and appropriate \$12,000.00 for providing ambulance services and other related services. Majority vote required. Recommended by Selectmen. A motion to pass this article was made by Jen Merrill; seconded by Stacy Merolla. Motion was passed.

Article 12: To see if the Town will vote to raise and appropriate \$8,060.00 for the operating budget of the Stoddard Zoning Board of Adjustments. Majority vote required. Recommended by Selectmen. A motion to pass this article was made by Jason Kovarik; seconded by Dawn Kovarik. Motion was passed.

Article 13: To see if the Town will vote to raise and appropriate \$7,350.00 for the operating budget of the Stoddard Planning Board. Majority vote required. Recommended by Selectmen. A motion to pass this article was made by Jane McOsker; seconded by Patricia Putnam. Motion was passed.

Article 14: To see if the Town will vote to raise and appropriate \$1,706.00 for the operating budget of the Conservation Commission. Majority vote required. Not recommended by Selectmen. A motion to pass this article was made by Geoff Jones; seconded by Margo Santoro. Discussion followed. Motion was passed.

Article 15: To see if the Town will vote to raise and appropriate the sum of \$3,900.00 for the operating budget of Emergency Management. Majority vote required. Recommended by Selectmen. A motion to pass this article was made by Daniel Eaton; seconded by Jason Kovarik. Motion was passed.

Article 16: To see if the Town shall vote pursuant to RSA 154:1 to organize the Stoddard Fire and Rescue Department so that the Fire and Rescue members annually elect by ballot vote at the May meeting the Fire Chief and the Board of Officers; Fire and Rescue members shall also vote on admittance of new firefighter members of the department which may occur as needed during the year. Applicants for the position of Fire Chief and Board of Officers must already be members of the department. Qualifications and the procedure for considering new members, Board of Officers, or the Fire Chief shall be as described in the department's duly enacted bylaws. Majority vote required. Recommended by Selectmen. A motion to pass this article was made by Donald Holland; seconded by Steven Rockwell. Questions were asked. Discussion followed. Motion was passed.

Article 17: To see if the Town will vote to raise and appropriate the sum of \$25,000.00 to be added to the Fire/Rescue Vehicle Capital Reserve fund previously established. Majority vote required. Recommended by Selectmen. A motion to pass this article was made by Brian Michaud; seconded by Steven Rockwell. Discussion followed. Motion was passed.

Article 18: To see if the Town will vote to raise and appropriate the sum of \$800.00, to Home Healthcare, Hospice and Community Services to support the continuance of visiting nurse and home health services being provided to the residents of Stoddard. Majority vote required. Recommended by Selectmen. A motion to pass this article

was made by Fred Ward; seconded by Patricia Putnam. Motion was passed.

Article 19: To see if the Town will vote to raise and appropriate the sum of \$1,540.00 for Monadnock Family Services, a non-profit agency which provides quality mental health services to residents of Stoddard, which is requesting said amount to help underwrite the cost of services provided to residents. Majority vote required. Recommended by Selectmen. A motion to pass this article was made by Ruth Ward; seconded by Patricia Putnam. Motion was passed.

Article 20: To see if the Town will vote to raise and appropriate the sum of \$900.00, for support of The Community Kitchen, Inc., located in Keene, New Hampshire. Majority vote required. Recommended by Selectmen. A motion to pass this article was made by Dawn Kovarik; seconded by Daniel Eaton. Questions were raised and answered. Motion was passed.

Article 21: To see if the Town will vote to raise and appropriate the sum of \$1,000.00, for support of the New Hampshire Region of the American Red Cross. Majority vote required. Recommended by Selectmen. A motion to pass this article was made by Patricia Putnam; seconded by Clement (Bud) Record. Motion was passed.

Article 22: To see if the Town will vote to raise and appropriate the sum of \$876.00 for support of Southwestern Community Services. [Explanation: A non-profit agency which facilitates fuel assistance, weatherization and other related services to residents of Stoddard.] Majority vote required. Recommended by Selectmen. A motion to pass this article was made by Christopher Madden; seconded by Robert Fee. Motion was passed.

Article 23: To see if the Town will raise and appropriate the sum of \$2,000.00, for the support of Hundred Nights, Inc. located in Keene, New Hampshire for services provided to Stoddard residents. Majority vote required. Recommended by Selectmen. A motion to pass this article was made by Stephen McGerty; seconded by Christopher Madden. Discussion followed. Motion was passed.

Article 24: To see if the Town will vote to raise and appropriate the sum of \$10,000.00, to be placed in the Building Capital Reserve Fund, established in 2013. Majority vote required. Recommended by Selectmen. A motion to pass this article was made by Stephen McGerty; seconded by Robert Fee. Motion was passed.

Article 25: To see if the Town will vote to raise and appropriate the sum of \$20,000.00, to be placed into the Bridge and Roadway Capital Reserve Fund, previously established. Majority vote required. Recommended by Selectmen. A motion to pass this article was made by David Vaillancourt; seconded by Robert Fee. A question was asked and answered. Motion was passed.

Article 26: To see if the Town will vote to encourage the Stoddard Planning Board to study the feasibility of creating commercial and/or industrial areas along the Route 9 corridor and to include any proposed areas that may result from the study to be part of the 2022 Town Meeting Warrant. Non-binding. Majority vote required. Recommended by Selectmen. A motion to pass this article was made by Christopher Madden; seconded by Jane McOsker. Discussion followed. A Standing vote commenced; vote results 33 – 30. Motion was passed.

Article 27: To see if the Town will modify the optional adjusted elderly exemptions (per RSA 72:39-a) from property tax to the following:

To qualify for the elderly exemption, the person must have been a New Hampshire resident for at least three consecutive years as of April 1 of the tax year in which application is made; own the real estate individually or jointly, or if the real estate is owned by his or her spouse, they must have been married for at least five consecutive years. In addition, the taxpayer must have a net income of less than \$35,000 or, if married, a combined net income of less than \$45,000; and own net assets not in excess of \$95,000, excluding the value of the person's residence.

The optional exemptions, based on assessed value, for qualified taxpayers shall be as follows:

For a person 65 years of age up to 75 years: \$50,000.

For a person 75 years of age up to 80 years: \$70,000.

For a person 80 years of age or older: \$80,000.

Majority vote required. Recommended by Selectmen. A motion to pass this article was made by June Congdon; seconded by Patricia Putnam. Discussion followed.

A motion to grant a tax credit of \$250 to residents who are 65 years or older, which is not based on income or assets, was made by Ray Durand. No second motion was made. Motion was not passed. Discussion continued.

A motion to table this article was made by Terri LaRoche; seconded by Fred Ward. This is non-negotiable motion. A voice vote commenced. Motion was passed.

Article 28: To see if the Town shall approve the following Resolution to Take Action on Climate Pollution: We the town of Stoddard, NH hereby call upon our State and Federal elected representatives to

enact carbon-pricing legislation to protect New Hampshire from the costs and environmental risks of continued climate inaction. To protect household, we support a Carbon Fee and Dividend approach that charges fossil fuel producers for their carbon pollution and rebates the money collected to all

residents on an equal basis. Enacting a Carbon Cash-Back program decreases long-term fossil-fuel dependence, aids in the economic transition for energy consumers, and keeps local energy dollars in New Hampshire's economy. Carbon Cash-Back has been championed by US economists (Jan 17, 2019 WSJ) as the most effective and fair way to deliver rapid reductions in harmful carbon emissions at the scale required for our safety.

We expect our representatives to lead in this critical moment for the health and well-being of our citizens and for the protection of New Hampshire's natural resources upon which we all rely.

The record of the vote approving this article shall be transmitted by written notice to Stoddard's State Legislators, to the Governor of New Hampshire, to Stoddard's Congressional Delegation, and to the President of the United States, informing them of the instruction from their constituents, by Stoddard's Select Board, within 30 days of this vote. Submitted by petition. Majority vote required. Not recommended by Selectmen. A motion to pass this article was made by Geoff Jones; seconded by Helen Tamm Semmens. Considerable discussion followed. A motion to indefinitely postpone this article was made by George Davenport; seconded by Fred Ward. Motion was defeated. Discussion continued. A voice vote commenced. Motion was passed.

Article 29: To see if the Town will vote to establish an Emergency Capital Reserve Fund under the provisions of RSA 35:1 for the purpose of funding unexpected losses or repairs to town buildings or equipment that require immediate attention and cost over \$5,000.00; and to raise and appropriate the sum of \$10,000.00 to be placed in this fund. Further, to name the Selectmen as agents to expend from said fund. Majority vote required. Recommended by Selectmen. A motion to pass this article was made by Christopher Madden; seconded by Robert Fee. Motion was passed.

Article 30: To see if the Town will be amenable to instituting a fee structure for disposal of refuse at the Town of Stoddard Transfer Station. Non-binding. Recommended by Selectmen. Discussion followed. A motion to pass this article was made by Stephen McGerty; seconded by Robert Fee. Motion was defeated.

Motion was made to adjourn the meeting by Kaitlyn Hayes; seconded by Anita Shaw.

Meeting adjourned at 9:58 PM.

Respectfully submitted,

Karen C. Bell, Town Clerk

**STODDARD, NH  
ANNUAL TOWN MEETING  
POLLS OPEN 11AM – 7PM  
MAY 10, 2022**

**To the inhabitants of the Town of Stoddard in the County of Cheshire in the State of New Hampshire, qualified to vote in Town affairs: You are hereby notified to meet at the Stoddard Town Hall, 1450 Rt. 123 North in said Stoddard on Tuesday, the tenth (10<sup>th</sup>) day of May 2022 next, at eleven of the clock in the forenoon (11:00 AM) to act upon the following article:**

**Article 1:** To choose by ballot all necessary Town Officers for the ensuing year.

**BUSINESS MEETING  
MAY 17, 2021**

**FUTHER; you are hereby notified to meet at the James Faulkner Elementary School, Lucy B. Hill Community Room, in said Stoddard on Tuesday, the seventeenth (17<sup>th</sup>) day of May 2021 next, at seven of the clock in the evening (7:00 PM) to act upon articles 2 through 30.**

**TOWN MEETING WARRANT  
*Polls open 11 AM – 7 PM on May 10, 2022***

To the inhabitants of the Town of Stoddard in the County of Cheshire in the State of New Hampshire, qualified to vote in Town affairs: You are hereby notified to meet at the Stoddard Town Hall, 1450 Route 123 North in said Stoddard on Tuesday, the eleventh (11<sup>th</sup>) day of May 2022 next, at eleven of the clock in the forenoon (11:00 AM) to act upon the following article:

**Article 1:** To choose by ballot all necessary Town Officers for the ensuing year.

***BUSINESS MEETING  
MAY 17, 2022***

**FURTHER;** you are hereby notified to meet at the James Faulkner Elementary School, Lucy B. Hill Community Room, in said Stoddard on Tuesday, the eighteenth (18<sup>th</sup>) day of May 2022, next at seven of the clock in the evening (7:00 PM) to act upon articles 2 through 30.

**Article 2:** To see if the Town will vote to raise and appropriate the sum of \$619,716.00 for general municipal operations. This article does not include special or individual articles addressed. **Majority vote required. Recommended by the Board of Selectmen.**

**Article 3:** To see if the town will vote to raise and appropriate the sum of \$286,300.00 for winter and summer maintenance, emergencies, and planned repairs of Town roads and bridges. **Majority vote required. Recommended by the Board of Selectmen.**

**Article 4:** To see if the town will vote to raise and appropriate \$226,750.00 for all recycling, solid waste and related expenses for the ensuing year for the Stoddard Transfer Station, use of the Washington Transfer Station by certain residents and for hazardous waste disposal services provided by the City of Keene. **Majority vote required. Recommended by Board of Selectmen.**

**Article 5:** To see if the town will vote to raise and appropriate \$124,301.00 for the operating budget of the Stoddard Fire & Rescue Department. **Majority vote required. Recommended by the Board of Selectmen.**

**Article 6:** To see if the town will vote to raise and appropriate \$111,781.00 for the operating budget of the Stoddard Police Department. **Majority vote required. Recommended by Selectmen.**

**Article 7:** To see if the town will vote to raise and appropriate \$47,061.00 for the operation of the Davis Public Library. [Per RSA202-A:11, the funds raised and appropriated, other than payroll and utilities, shall be paid over to the Library

Trustees pursuant to a payment schedule as agreed upon by the Library Trustees and the Selectmen.] **Majority vote required. Recommended by the Board of Selectmen.**

**Article 8:** To see if the town will vote to raise and appropriate \$17,250.00 for the Lay Monitoring, Lake Host Programs and water testing. **Majority vote required. Recommended by the Board of Selectmen.**

**Article 9:** To see if the town will vote to raise and appropriate \$14,345.00 for the operating budget of the cemeteries. **Majority vote required. Recommended by the Board of Selectmen.**

**Article 10:** To see if the town will vote to raise and appropriate \$36,001.00 for providing ambulance services and other related services. **Majority vote required. Recommended by the Board of Selectmen.**

**Article 11:** To see if the town will vote to raise and appropriate \$8,550.00 for the operating budget of the Stoddard Zoning Board of Adjustments. **Majority vote required. Recommended by the Board of Selectmen.**

**Article 12:** To see if the town will vote to raise and appropriate \$11,611.00 for the operating budget of the Stoddard Planning Board. **Majority vote required. Recommended by the Board of Selectmen.**

**Article 13:** To see if the town will vote to raise and appropriate \$1,440.00 for the operating budget of the Conservation Commission. **Majority vote required. Recommended by the Board of Selectmen.**

**Article 14:** To see if the town will vote to raise and appropriate \$6,400.00 for the operating budget of Emergency Management. **Majority vote required. Recommended by the Board of Selectmen.**

**Article 15:** To see if the Town will vote to raise and appropriate the sum of \$25,000 to be added to the Fire/Rescue Vehicle Capital Reserve fund previously established. **Majority vote required. Recommended by the Board of Selectmen.**

**Article 16:** To see if the Town will vote to raise and appropriate the sum of \$800.00 to Home Healthcare, Hospice and Community Services to support the continuance of visiting nurse and home health services being provided to the residents of Stoddard. **Majority vote required. Recommended by the Board of Selectmen.**

**Article 17:** To see if the Town will vote to raise and appropriate the sum of \$1,717.00, for Monadnock Family Services, a non-profit agency which provides quality mental health services to residents of Stoddard, which is requesting said amount to help underwrite the cost of services provided to residents. **Majority vote required. Recommended by the Board of Selectmen.**

**Article 18:** To see if the Town will vote to raise and appropriate the sum of \$600.00, for support of The Community Kitchen, Inc., located in Keene, New Hampshire. **Majority vote required. Recommended by the Board of Selectmen.**

**Article 19:** To see if the Town will vote to raise and appropriate the sum of \$1,000.00, for support of the New Hampshire Region of the American Red Cross. **Majority vote required. Recommended by the Board of Selectmen.**

**Article 20:** To see if the Town will vote to raise and appropriate the sum of \$1,173.00, for support of Southwestern Community Services. [Explanation: A non-profit agency which facilitates fuel assistance, weatherization and other related services to residents of Stoddard.] **Majority vote required. Recommended by the Board of Selectmen.**

**Article 21:** To raise and appropriate the sum of \$1,000.00, for the support of Hundred Nights, Inc. located in Keene, New Hampshire for services provided to Stoddard residents. **Majority vote required. Recommended by the Board of Selectmen.**

**Article 22:** To see if the Town will vote to raise and appropriate the sum of \$10,000.00, to be placed in the Building Expendable Trust, established in 2013. **Majority vote required. Recommended by the Board of Selectmen.**

**Article 23:** To see if the Town will vote to raise and appropriate the sum of \$20,000.00, to be placed into the Bridge and Roadway Capital Reserve Fund, previously established. **Majority vote required. Recommended by a majority of the Board of Selectmen.**

**Article 24:** To see if the Town will amend the optional adjusted elderly exemptions (per RSA 72:39-a) from property tax to the following:

To qualify for the elderly exemption, the person must have been a New Hampshire resident for at least three consecutive years as of April 1 of the tax year in which application is made; own the real estate individually or jointly, or if the real estate is owned by his or her spouse, they must have been married for at least five consecutive years. In addition, the taxpayer must have a net income of less than \$45,000 or, if married, a combined net income of less than \$67,000; and own net assets not in excess of \$95,000, excluding the value of the person's residence.

The optional exemptions, based on assessed value, for qualified taxpayers shall be as follows:

For a person 65 years of age up to 75 years:	\$50,000.
For a person 75 years of age up to 80 years:	\$70,000.
For a person 80 years of age or older:	\$80,000.

**Article 25:** To see if the Town will raise and appropriate the sum of \$10,000.00 to fund the Emergency Capital Reserve Fund for the purposes of funding unexpected, emergency expenses for repairs or other items as determined by the Selectmen, costing over \$5,000.00. **Majority vote required. Recommended by the Board of Selectmen.**

**Article 26:** To see if the Town will vote to authorize the appointment by the Selectmen, rather than the election of a Town Treasurer per RSA 41:26E. The current Treasurer will fill out her elected term. **Majority vote required. Recommended by the Board of Selectmen.**

**Article 27:** To see if the Town of Stoddard will vote to raise and appropriate the sum of \$500.00 for the purpose of funding CVTC services. This amount represents the Town of Stoddard's portion of the funds needed to support CVTC, a nonprofit service organization; or take any other action relating thereto. **By petition. Majority vote required. Recommended by the Board of Selectmen.**

**Article 28:** Shall the Town vote to raise and appropriate \$8,000.00 in support of the purchase of 40 acres, more or less, of land located on the shore of Highland Lake, referred to as the "Wilson Project:." **Majority Vote Required.**

**Article 29:** The Town of Stoddard shall increase the Veterans and All Veterans tax credit from \$250.00 to \$500.00. **Majority vote required. Recommended by the Board of Selectmen.**

**Article 30:** Pursuant to RSA 72:28-c The Town of Stoddard shall adopt the Optional Tax Credit for Combat Service in the amount of \$500.00 which shall be subtracted each year from the property tax on the qualifying service members' residential real estate as defined in RSA 72:29, II.

To qualify for the tax credit for combat service, a person shall be a resident of this state engaged at any point during the taxable period in combat service as a member of the New Hampshire national guard or a reserve component of the United States armed forces, called to active duty. For purposes of this section, and in accordance with Internal Revenue Service Publication 3, Armed Forces Tax Guide, "combat service" shall mean military service in one of the following areas:

(a) An active combat area as designated by the President in an Executive Order, for which the service member receives special pay for duty subject to hostile fire or imminent danger as certified by the Department of Defense.

(b) A support area as designated by the Department of Defense in direct sustainment of military operations in the combat zone, for which the service member receives special pay for duty subject to hostile fire or imminent danger as certified by the Department of Defense.

(c) Service in a contingency operation as designated by the Department of Defense, for which the service member receives special pay for duty subject to hostile fire or imminent danger as certified by the Department of Defense.

IV. The application for the tax credit under this section shall be accompanied by the service member's military orders, and shall include such information as may be required for the assessor's office to verify the dates of combat service.

V. A tax credit for combat service shall be in lieu of, and not in addition to, the optional veteran's tax credit under RSA 72:28 or the all veterans' tax credit under RSA 72:28-b. The service member shall be eligible for the credit in each tax year in which the combat service occurs, but the credit may be prorated in the second tax year based on the duration of combat service. **Majority vote required. Recommended by the Board of Selectmen.**



# TOWN OF STODDARD PROPERTY VALUATIONS AS OF MARCH 2022

OWNER	LAND	ACRES	TOTAL	OWNER	LAND	ACRES	TOTAL
1216 SHEDD HILL RD LLC	\$2,000	0.01	\$2,000	AUSTON, C & B	\$185,800	0.54	\$269,600
1216 SHEDD HILL RD LLC	\$50,600	1.50	\$181,330	AVERA, B & D	\$163,800	0.38	\$381,290
34 OLD ANTRIM RD., LLC	\$130,580	1.90	\$245,570	AYERS, J & DURRETT, K	\$94,640	0.78	\$243,150
AADALEN, R & S	\$180,400	0.77	\$455,590	BABAYAN, Y & I	\$148,750	0.20	\$337,070
AADALEN, R & S CU	\$10,860	227.20	\$10,860	BABCOCK, A	\$53,420	3.85	\$187,190
ABBOTT, M	\$133,380	0.77	\$176,120	BABINEAU, S & B	\$38,880	0.47	\$206,010
ABERT, T	\$64,450	14.50	\$708,980	BAILEY, M & G	\$186,030	1.25	\$319,250
ABERT, T & S	\$42,750	20.00	\$46,830	BAKER, D	\$55,850	18.70	\$150,660
ADAMS, D. H. & K	\$155,420	0.31	\$304,010	BAKER, D & J CU	\$50	1.30	\$50
AGATI, G & M	\$98,560	0.27	\$189,930	BAKER, D & J CU	\$39,250	41.22	\$97,310
AHNTOLZ, R & M	\$181,750	0.37	\$282,780	BAKUN, D & P	\$172,000	0.14	\$232,860
AHO-RICE, M & D	\$19,400	0.44	\$19,400	BALLINGER, H & M	\$53,700	4.20	\$229,310
AHO-RICE, M & D	\$224,900	0.99	\$352,990	BALLOU, G & J	\$114,670	0.83	\$142,490
ALBERT FAM REV TR	\$55,860	0.56	\$89,350	BALSIS, R & D	\$174,990	0.71	\$262,080
ALEXANDER, G & J	\$19,200	2.00	\$19,700	BALSIS, R & D	\$31,200	0.27	\$93,250
ALEXANDER, G & J	\$19,320	2.10	\$19,320	BARDEN, J	\$17,320	2.10	\$17,320
ALLEN LVG TR	\$166,680	0.51	\$227,950	BARNARD, D	\$77,330	10.25	\$254,230
ALLEN, G & G	\$52,600	3.40	\$135,790	BARNHURST, K TRSTE	\$36,720	0.47	\$132,220
ALLEN, J	\$50,000	1.00	\$90,430	BARNHURST, K TRSTE	\$10,570	0.45	\$10,570
ALLEN, S & T	\$180,500	0.24	\$248,940	BARRELL, M TRSTE	\$36,000	0.35	\$127,810
ALLEN, S & T	\$22,870	1.10	\$22,870	BARRETT, J REV TR	\$41,600	2.33	\$292,320
AMES, A	\$15,010	0.81	\$15,010	BARTOLOTA, G	\$232,180	0.36	\$410,170
ANDERSON, B & J	\$190,480	1.40	\$493,010	BARTOLOTTA, G & J	\$244,340	0.68	\$728,850
ANDERSON, D	\$195,480	1.40	\$406,730	BATES, P & A	\$58,380	0.67	\$215,940
ANDERSON & EWELS	\$20,120	1.10	\$20,120	BAULIS, E	\$42,600	0.46	\$202,510
ANDERSON & EWELS	\$190,250	1.21	\$331,150	BEALL, M & D	\$48,130	3.61	\$50,130
ANDERSON, T	\$53,840	4.20	\$234,780	BEAM, JR, R	\$50,480	1.40	\$205,180
ANDORRA FOREST	\$36,000	0.35	\$36,000	BEAN, B	\$39,750	0.28	\$125,340
ANDORRA FOREST	\$75,000	1.00	\$75,000	BEAUDIN, M & A	\$49,800	0.98	\$248,610
ANDORRA FOREST CU	\$440	10.50	\$440	BEAULIEU, B ETAL	\$52,980	3.48	\$287,480
ANDORRA FOREST CU	\$1,070	40.00	\$1,070	BECKWITH, H TRSTE	\$151,160	0.59	\$219,660
ANDORRA FOREST CU	\$264,290	4,770.80	\$471,500	BECKWITH, T & J	\$180,750	1.21	\$270,130
ANDORRA FOREST LP	\$320	8.10	\$320	BEHLING, S & S	\$146,200	2.00	\$335,270
ANDORRA FOREST LP	\$250	10.40	\$250	BEHM, J & M	\$56,840	6.70	\$240,240
ANDORRA FOREST LP	\$3,700	93.00	\$3,700	BELANGER, M & HEIN L	\$13,320	0.48	\$13,320
ANDORRA FOREST LP	\$400	10.20	\$400	BELANGER, M & HEIN, L	\$16,920	1.77	\$16,920
ANDORRA FOREST LP	\$630	16.00	\$630	BELANGER, M & HEIN L	\$185,800	0.79	\$309,600
ANDORRA FOREST LP	\$3,790	114.00	\$3,790	BELL, B & K	\$59,710	2.84	\$253,180
ANDORRA FOREST LP	\$3,920	138.00	\$3,920	BELL, B & K	\$188,220	1.10	\$242,290
ANDORRA FOREST LP	\$102,220	2.85	\$414,920	BELL, T & R	\$45,320	0.77	\$232,490
ANDORRA FOREST LP	\$76,440	2.20	\$351,810	BELLAND, M & D	\$2,400	2.00	\$2,400
ANDORRA FOREST LP	\$0	0.00	\$324,980	BELLAND, M & D	\$48,900	0.89	\$133,800
ANDORRA FOREST LP	\$61,500	2.25	\$61,500	BELLAND, M & D	\$16,720	0.76	\$36,100
ANDORRA FOREST LP	\$53,120	3.60	\$53,120	BELTZ, W & F TRTES	\$45,300	0.53	\$141,380
ANDORRA FOREST LP	\$58,650	3.00	\$58,650	BELTZ, W & F TRTES	\$32,500	0.04	\$32,500
ANDORRA FOREST LP CU	\$410	7.60	\$410	BENNET, S & CHNHA, J	\$50,720	1.60	\$192,530
ANDORRA FOREST LP	\$182,240	4,114.15	\$242,620	BENNETT FAM TR	\$153,900	0.27	\$238,280
ANGELL, M & M	\$46,720	4.52	\$273,100	BENOIT, L & B	\$135,660	0.77	\$207,630
ANTONELLI, J & J TRTES	\$31,800	0.28	\$112,500	BERGERON, K	\$104,000	0.05	\$184,160
APK EXCAVATION, LLC	\$21,440	2.20	\$21,440	BERGERON, K	\$27,000	0.07	\$27,000
APRILE, A TR	\$840	0.14	\$840	BERNIER, D ETAL	\$47,300	0.73	\$116,710
ARKWOOD BEACH, LLC	\$5,930	1.20	\$5,930	BERNIER, D TRSTE	\$63,220	1.60	\$215,510
ARPINO, C & D	\$46,500	0.65	\$157,540	BERNIER, G TRTE	\$52,640	5.28	\$217,190
ARTHUR, C & S	\$40,740	1.20	\$76,400	BERTHIAUME, M, M & M	\$21,680	2.40	\$21,680
ASCANI, J	\$46,620	2.35	\$247,820	BEVERSTOCK, C	\$16,980	1.50	\$16,980
ASCANI, S	\$20,960	1.80	\$20,960	BEYER, A & N	\$50,600	1.50	\$190,570
ASH, H	\$191,510	1.22	\$435,710	BEZIO, P	\$45,600	0.56	\$184,760
ASHWORTH, S	\$21,370	2.14	\$21,370	BILODEAU, J TRSTE	\$177,650	1.00	\$351,930
ATHEARN, REV TR, P	\$40,550	2.30	\$121,380	BIRCH POINT OWNERS	\$0	0.21	\$0
ATHEARN, R, C & C	\$7,200	50.70	\$7,200	BISHOP, P	\$73,440	0.54	\$100,450
ATKINSON & VIVOAMORE	\$192,810	7.30	\$277,390	BISSELL, J & L	\$50,980	1.82	\$415,640
AUDUBON SOCIETY NH	\$55,950	45.00	\$55,950	BLAIR, R & E	\$50,120	1.10	\$138,830
AUGER, T & OATLEY, A	\$32,070	16.00	\$32,070	BLAKE, A & MCHALE, R	\$55,140	1.12	\$265,620
AUSTIN, S & D TRSTES	\$171,000	0.45	\$282,230	BLOCK, J & C	\$16,020	0.78	\$16,020
AUSTON, C & B	\$18,200	0.32	\$18,200				

OWNER	LAND	ACRES	TOTAL	OWNER	LAND	ACRES	TOTAL
BOBEK, L	\$14,630	0.45	\$14,630	CANTO, J	\$167,200	0.22	\$297,110
BODGE, F & E	\$14,670	0.82	\$14,670	CAPELLE FAM TR	\$314,100	2.70	\$823,800
BODIAN, J	\$50,880	1.73	\$116,790	CARBONE, S & A	\$60,480	0.38	\$167,670
BOHLEN, L	\$94,910	2.90	\$241,260	CARDILLO, P & M	\$48,540	1.87	\$204,000
BOHLEN, L	\$11,880	0.05	\$11,880	CARDOZA, J & B	\$39,060	2.30	\$61,520
BOHLEN, L	\$174,090	0.43	\$303,870	CARLISLE FLOORS, INC	\$221,000	61.50	\$1,013,910
BOHLEN, L	\$52,450	3.04	\$127,490	CARLISLE, C TRSTE	\$64,350	9.23	\$351,220
BOLDUC, W & B	\$50,960	1.80	\$281,170	CARLISLE, A TRSTE	\$46,900	0.69	\$163,090
BOOTH, R & C	\$26,330	0.14	\$85,590	CARLISLE, D & F	\$25,120	1.10	\$26,240
BORLAN REV TR 2008	\$186,600	0.58	\$394,840	CARLISLE, D TRSTE	\$252,800	1.98	\$326,890
BORLONGAN, P & K	\$176,600	0.58	\$322,240	CARLISLE, F	\$52,220	5.43	\$212,730
BOTSKO, T	\$50,600	1.50	\$82,140	CARLISLE, F	\$25,940	4.61	\$25,940
BOUCHER, J & B	\$44,400	0.49	\$128,320	CARLOTTO REALTY TR	\$196,260	0.64	\$283,120
BOUDREAU, D	\$51,300	6.25	\$186,320	CARLSON, K & T	CU \$450	11.00	\$450
BOURASSA, P & M	\$152,120	1.10	\$245,510	CARLSON, K & T	\$54,920	5.10	\$236,920
BOURN FAM TR	\$49,200	0.92	\$118,570	CARLSON, K & T	CU \$1,780	41.50	\$1,780
BOWKER, J	\$60,440	9.70	\$238,250	CARMICHAEL TRTES	\$161,980	5.98	\$345,390
BOWMAN, R & S	\$171,430	1.36	\$273,210	CARPENTER, J & B	\$185,340	1.11	\$267,170
BOWRING, M	\$42,400	0.07	\$42,400	CARRAS, P & D	\$134,610	0.74	\$264,370
BOWRING-PRICE, M	\$14,960	0.37	\$14,960	CARROL, C	\$39,020	0.59	\$121,200
BRAGG, K & D TRSTES	\$146,820	0.19	\$192,440	CARROLL, C	\$36,600	0.36	\$140,550
BRAILEY & PATNODE	\$96,440	2.20	\$299,610	CARROLL, R	\$56,670	9.54	\$203,010
BRANON, B & D TRSTES	\$180,500	0.75	\$335,970	CARTER, H & E TR	\$176,830	1.90	\$284,850
BRANON, B	\$20,550	0.78	\$20,550	CARUSO, J & M	\$174,330	0.44	\$332,380
BRAUSCH, D & M	\$182,720	1.10	\$182,720	CASHMAN, M & A	\$48,270	1.80	\$248,550
BRAY, P & TRINKLE, G	\$41,400	0.44	\$147,380	CASS, S TRSTE	\$51,200	2.00	\$244,350
BRESSETT, G & K	\$108,000	0.65	\$235,950	CASSETTA, J & K	\$109,480	0.49	\$109,480
BRIDGES, A & T	\$52,280	2.90	\$178,800	CAVALLERO, L	\$158,290	0.25	\$248,560
BROOKS, K & B	\$54,400	10.00	\$231,760	CAVALLERO, R & L	\$22,000	0.01	\$22,000
BROTHERHOOD HOPE	\$0	5.38	\$30,610	CAVALLERO, R & L	\$157,480	1.61	\$685,410
BROWN, R & K	\$30,000	0.25	\$123,470	CAVALLERO, R ETAL	\$17,100	0.07	\$17,100
BRUDER, P & B	\$46,520	2.27	\$325,690	CECE, E	\$176,950	2.00	\$535,000
BRYER, B TRSSTE	\$92,140	21.77	\$318,200	CERBONE, M & R	CU \$47,590	28.00	\$231,660
BRYER, A	\$19,510	1.90	\$19,510	CHAFFEE, R TRSTE	\$144,650	6.28	\$145,040
BRYER, C	\$52,340	5.03	\$184,050	CHAFFEE, R & J	\$187,920	0.17	\$256,160
BUCKOVITCH, M & L	\$46,500	0.37	\$94,700	CHAMBERLAIN, C	\$93,000	53.00	\$289,890
BUKOVCAN, M & S	\$195,750	0.40	\$446,700	CHAMBERLAIN, M	\$43,740	3.70	\$177,690
BUNKER, B	\$30,000	0.25	\$162,490	CHAMPNEY, R & S	\$34,560	0.47	\$92,600
BUNKER, D	\$51,320	2.10	\$322,720	CHAMPNEY, R & A	\$53,490	3.91	\$244,400
BUNKER, G EST	\$62,760	5.30	\$106,500	CHAMPNEY, K & M	\$51,820	2.52	\$178,510
BUNN, R & P TRSTES	\$225,460	1.90	\$473,910	CHAPMAN TRTES	\$85,280	11.40	\$107,500
BURG, C	\$55,550	1.46	\$179,520	CHAPPELL, J	\$59,500	0.76	\$220,160
BURGE, M	\$49,800	0.98	\$87,910	CHARRON, E & D	\$50,120	1.10	\$213,090
BURKE, C & D	\$18,700	0.37	\$37,100	CHASE, A & M	\$50,600	1.50	\$226,290
BURKE, C & D	\$167,000	0.32	\$239,310	CHERRY, M	\$50,960	1.80	\$205,930
BURKE, S & M	\$50,480	1.40	\$131,840	CHESSIE HOLDINGS LLC	\$46,200	2.00	\$142,060
BURKE, T & J	\$119,930	2.50	\$284,070	CHESSIE HOLDINGS, LLC	\$47,180	12.44	\$47,180
BURR, H & M TRSTES	\$155,930	0.40	\$265,620	CHESSIE HOLDINGS, LLC	\$84,850	5.04	\$273,740
BURR, H & M TRSTES	\$17,550	0.22	\$17,550	CHEVERIER, J	\$45,400	0.54	\$82,100
BURR, T & J	\$13,600	0.36	\$36,310	CHICONE, G	\$167,400	0.55	\$224,630
BURR, T & J	\$35,100	0.40	\$251,180	CHIDESTER, J	\$55,400	5.50	\$235,670
BURT, C TRSTE	\$63,460	1.80	\$192,840	CHISHOLM, R & K	\$174,800	0.46	\$273,900
BURTON, C	\$150,850	2.05	\$200,800	CHRISTIE, B	\$140,110	0.35	\$161,350
BUSH, J & A	\$53,960	4.30	\$212,310	CHRISTOPHER, C & D	\$14,570	0.17	\$14,570
BUSH, W & L	\$166,250	0.40	\$247,090	CHRISTOPHER, C & D	\$17,240	0.78	\$17,240
CADDIGAN, A	\$52,040	2.70	\$184,650	CHRISTOPHER, C & D	\$123,910	0.31	\$253,590
CADORETTE, D	\$51,510	2.40	\$192,940	CLAFONE, J	\$226,010	1.84	\$581,380
CAHILL, E & P	\$145,780	1.65	\$241,190	CLARK, D & C	CU \$20	0.39	\$20
CAIN, I TRSTE	\$77,610	0.23	\$77,910	CLARK, D	\$63,050	14.50	\$206,250
CAIN, I TRSTE	\$8,800	0.09	\$8,800	CLARK, D	\$27,760	2.01	\$27,760
CALDER, S	\$45,740	1.62	\$239,510	CLARK, D	\$4,020	5.70	\$4,020
CALDERARA ETAL	\$42,600	0.46	\$59,630	CLARK, D & C	CU \$54,080	44.00	\$203,240
CAMPBELL, B	\$15,300	0.19	\$15,430	CLARK, J & P	\$55,200	16.00	\$73,510
CAMPBELL, C ETAL	\$142,470	2.40	\$189,470	CLARK, L TRSTE	\$50,360	1.30	\$280,580
CAMPBELL TRTES	CU \$61,400	10.20	\$352,360	CLARK, L	\$20,010	0.51	\$20,510
CAMPBELL TRTES	CU \$110	2.15	\$110	CLARK, L	\$14,140	3.30	\$14,140
CANN, J	\$51,080	1.90	\$223,730	CLARK, L	\$28,500	10.40	\$28,500
CANTLIN, C	\$233,000	0.18	\$298,570	CLARK, L	\$51,680	2.40	\$196,080
CANTO, J	\$17,130	0.24	\$25,330				

OWNER	LAND	ACRES	TOTAL	OWNER	LAND	ACRES	TOTAL
CLARK, V TRSTE	\$22,600	1.50	\$22,600	DARDANI, N	\$220,300	0.98	\$319,090
CLARK, V TRSTE	\$41,340	1.70	\$47,530	DAUPHIN, P & C	\$173,500	0.37	\$451,420
CLARK, V TRSTE	\$14,840	1.70	\$14,840	DAVENPORT, G & L	\$62,720	3.27	\$225,910
CLARK, V TRSTE	\$15,200	0.52	\$15,200	DAVID, M & J	\$51,200	2.00	\$235,510
CLENNEY EST & P	\$130	0.11	\$130	DAVIS REV TR	\$159,600	0.33	\$291,670
CLEVELAND REV TR B	\$46,900	0.69	\$123,260	DAVIS, J & S	\$171,430	1.36	\$270,020
CLIFFORD, T	\$890	0.16	\$890	DAVIS, J & D	\$231,000	0.16	\$348,680
CLINE, J	\$54,210	2.43	\$290,270	DAVIS, J & D	\$15,050	0.57	\$18,720
CLINE, M TRSTES	\$60,700	33.76	\$227,490	DAVIS, K	\$51,680	2.40	\$189,210
CLOGSTON, R & D	\$20,020	0.52	\$20,020	DAVIS, T	\$37,800	0.45	\$199,250
CLOGSTON, R & D	\$19,130	0.17	\$38,780	DAVISON, T & C	\$121,800	0.62	\$121,800
CLUNE, A	\$47,000	0.70	\$112,000	DAVISON, T & C	\$175,930	1.15	\$305,270
CODMAN, E	\$71,160	12.71	\$163,150	DEANGELIS, E & V TR	\$220,680	0.38	\$335,530
CODY, A & L	\$25,320	3.14	\$25,320	DELOREY, D & T	\$52,280	2.90	\$339,190
COFFE, T	\$70,920	5.10	\$302,230	DELOS LAKESIDE LLC	\$160,200	0.26	\$362,260
COHEN, S & T	\$57,510	0.38	\$57,510	DELUDE, R	\$2,410	33.00	\$2,410
COHN, B	\$35,450	0.52	\$35,450	DELUDE, R	\$6,320	77.00	\$6,320
COHN, B	\$127,540	0.48	\$177,470	DEMASI, A & G	\$56,920	6.77	\$602,250
COHN, B TRSTE	\$183,800	0.69	\$273,200	DEMASI, A & G	\$770	0.11	\$770
COHN, B TRSTE	\$95,840	1.70	\$211,440	DEMASI, A & G	\$770	0.11	\$770
COLBERT, K & L TRSTES	\$111,250	0.12	\$187,580	DEMASI, A & G	\$930	0.18	\$930
COLBURN, E & PARROTT R	\$57,160	3.80	\$232,680	DEMASI, A & G	\$820	0.13	\$820
COLD RIVER BRIDGES	\$158,400	0.42	\$297,490	DEMASI, A & G	\$890	0.16	\$890
COLD RIVER BRIDGES	\$11,750	0.20	\$11,750	DEMASI, A & G	\$23,480	5.40	\$23,480
COLE, E & J	\$173,000	0.36	\$244,290	DEMASI, A & G	\$18,450	2.16	\$18,450
COLLIER, S	\$13,500	0.16	\$37,170	DEMEOLA, W & P	\$47,600	0.76	\$200,570
COLLINSWORTH, R & K	\$14,930	0.18	\$22,010	DEMERS, D & M	\$760	27.00	\$760
COLLINSWORTH, R & K	\$173,000	0.16	\$261,700	DEMINICO, K	\$218,520	0.32	\$426,810
COTLEY, K & DENNO T	\$52,640	3.20	\$216,910	DER MANOUELIAN, G	\$132,200	120.00	\$283,730
CONGDON TRTES	\$203,690	1.99	\$390,450	DERBY, T	\$51,440	2.20	\$184,620
CONGREVE, W ETAL	\$36,650	0.64	\$36,650	DETURRIS, C & M	\$43,340	1.70	\$225,090
CONGREVE, W & J ETAL	\$180,050	3.00	\$323,230	DEWITT LATIMER TRTES	\$58,200	9.00	\$87,560
CONKLIN, D	\$84,000	0.26	\$183,360	DEY, A & A	\$116,010	0.41	\$141,380
CORMIER, K, B & G	\$26,420	2.16	\$26,420	DICORCIA REV TR	\$57,740	1.20	\$259,300
CORMIER, K & L	\$225,460	1.38	\$628,520	DILLON, T & K	\$46,700	0.67	\$269,500
CORRIEVEAU, W	\$91,140	0.32	\$91,140	DIONNE, N & S	\$19,720	1.60	\$19,720
COSTA, A	\$50,240	1.20	\$198,980	DIONNE, N & S	\$52,840	3.37	\$225,670
COSTIGAN & DRURY	\$20,840	1.70	\$20,840	DIONNE, P & P	\$52,500	3.20	\$190,550
COSTIN, C	\$244,050	3.10	\$628,720	DISCALA, M & K TRSTES	\$151,830	2.30	\$208,560
COTTER, T & C	\$22,040	2.70	\$22,040	DOBSON, T & J TRSTES	\$97,100	0.22	\$202,930
COURCHESNE, B	\$50,720	1.60	\$192,580	DOHERTY, R TRSTE	\$16,200	1.00	\$16,200
COURTNEY, J & M	\$180,800	0.54	\$219,160	DOMPIERRE, G & V	\$71,700	22.00	\$188,590
COYNE, J & S	\$116,000	0.34	\$148,880	DOREMUS, N	\$158,840	0.42	\$218,970
CRAIG, N ETAL	\$144,400	0.08	\$221,300	DORMAN & ETAL REV TR	\$175,820	1.06	\$501,760
CREWSON, W & A	\$98,000	0.25	\$330,290	DORMAN & ETAL REV TR	\$25,670	0.12	\$102,480
CRICHTON, D TRSTE	\$51,010	1.84	\$248,740	DOSTALER, R	\$51,380	2.15	\$178,160
CRICHTON, D TRSTE	\$10,700	0.19	\$10,700	DOUGAL, M TRSTE	\$207,500	4.50	\$355,370
CRISMAN, E & J	\$53,720	4.10	\$283,730	DOUGENECK, B TRSTE	\$171,220	1.18	\$357,640
CROAN, P	\$160,550	0.34	\$239,350	DOUGENECK, B TRSTE	\$25,500	0.70	\$25,500
CROSS, M	\$1,360	18.70	\$1,360	DOUGLAS, C & J	\$134,930	0.87	\$157,050
CROSS, T	\$38,500	0.15	\$38,500	DOWNNEY, P	\$51,560	2.30	\$246,500
CROWELL, J & J	\$166,550	0.99	\$423,670	DOWNING, S & J TRSTES	\$8,200	0.22	\$8,200
CURNUTTE HOLLAND TR	\$67,780	5.40	\$277,190	DOWNING, S & J TRSTES	\$100,050	22.20	\$396,180
CURRAN TRTES	\$127,020	0.84	\$354,380	DOWNS, H	\$198,550	1.00	\$303,730
CURRAN, J	\$34,800	0.33	\$115,790	DOWSETT, P & A	\$52,030	2.69	\$252,230
CURRAN, J & N	\$16,030	0.21	\$39,810	DOYLE & APPLETON	\$45,250	1.10	\$238,770
CURRAN, J & N	\$151,000	0.19	\$335,480	DOYON, M & T	\$51,320	2.10	\$205,890
CURRAN-THOMPSON, J	\$135,850	0.14	\$203,280	DRESCHER, P	\$12,570	7.90	\$12,570
CURRIE, A TRSTE	\$48,700	2.00	\$270,330	DRINKWATER, J & E	\$45,720	1.60	\$250,750
CURTIS, L & R	\$50,480	1.40	\$153,820	DUBE, R & J	\$49,000	0.90	\$265,040
CUSHING, K TRSTE	\$57,450	3.04	\$192,020	DUBE, R & J	\$34,450	46.00	\$147,710
CUSHNA, B & E ETAL	\$54,810	38.70	\$54,810	DUBE, R & J	\$0	0.47	\$0
CUSHNA, B & E ETAL	\$21,060	3.38	\$21,060	DUBREVIL, S	\$46,900	0.69	\$181,500
CUSHNA, B & E ETAL	\$51,160	1.97	\$144,240	DUFF, J & M	\$172,520	0.58	\$270,550
CUSHNA, B & E ETAL	\$19,310	3.34	\$19,310	DUFF, J & M	\$21,920	2.58	\$21,920
D'ARCY, J & S	\$47,310	0.98	\$113,620	DUMOULIN, P & C	\$31,200	0.27	\$110,760
DABROWSKI, R & M	\$238,000	0.23	\$343,430	DURAL, B & LEBLANC, J	\$25,520	5.60	\$25,520
DAHLBERG, D & C	\$75,780	12.45	\$569,430	DURAND FAM REV TR	\$27,330	0.17	\$102,580
DAMATO, M	\$37,980	1.40	\$81,600	DURAND FAM REV TR	\$37,200	0.37	\$51,620
				DURAND FAM REV TR	\$25,120	1.10	\$25,120

OWNER	LAND	ACRES	TOTAL	OWNER	LAND	ACRES	TOTAL
DURAND, R & N	\$42,000	0.45	\$196,890	FERNER, D & B	\$17,320	2.10	\$17,320
DURAND, R & N	\$15,630	0.03	\$15,630	FERNWOOD RD PROP	\$0	0.05	\$0
DURGIN, R, E & S	\$48,720	4.10	\$226,620	FERNWOOD RD PROP	\$0	0.05	\$0
DURWARD, K & K	\$58,740	5.12	\$244,350	FERNWOOD RD PROP	\$0	1.00	\$0
DWYER, D & A	\$64,420	2.60	\$227,630	FERRIS, B	\$45,960	1.80	\$210,130
DWYER, D & A ETAL	\$5,690	1.00	\$5,690	FIBERCAST CORP	\$46,320	2.10	\$70,320
DWYER, M & J	\$39,780	0.68	\$176,950	FIFIELD, H	\$57,320	7.10	\$275,330
EATON, D TRSTE	\$86,050	3.82	\$93,830	FINCH/CRAFTS EST TR	\$140,640	0.54	\$241,460
EATON, D TRSTE	\$5,180	1.07	\$5,180	FIONDELLA, P	\$134,100	0.78	\$199,460
EDGEComb, H & J	\$58,980	3.96	\$117,680	FIONDELLA, P	CU \$12,480	30.00	\$12,480
EDSON, P & L	\$2,690	0.79	\$2,690	FISH, J	CU \$52,580	38.20	\$179,330
EDSON, P & L	\$3,130	1.71	\$3,130	FISHER, F ETAL	\$53,720	4.10	\$181,980
EDSON, P & L	\$48,100	0.81	\$95,080	FISKE, R & J TRSTES	\$169,100	0.46	\$371,910
EDSON, P & L	\$8,130	1.10	\$8,130	FITCH, L & B	\$52,840	3.37	\$175,780
ELLIOTT, J & C	\$26,240	7.70	\$26,240	FLANAGAN, H & A	\$20,020	0.52	\$20,020
ELLIOTT, J & C	\$49,850	5.10	\$315,360	FLANAGAN, H & A	\$0	0.02	\$0
ELLIOTT, J & C	\$51,260	2.05	\$79,290	FLANAGAN, R & P	\$146,200	2.00	\$325,800
ELLIOTT, R	\$52,300	5.00	\$166,200	FLANAGAN, J & L	\$19,300	0.43	\$20,110
ELLIS, W	\$50,120	1.10	\$133,810	FLEMING, M	\$50,360	1.30	\$162,950
ELLIS, D & K	\$50,000	1.00	\$229,240	FLEMING, M	\$20,000	1.00	\$44,110
EMBREY 2008 TR, E	\$99,120	0.29	\$247,170	FLEMING, M	\$18,800	2.60	\$18,800
EMERALD PROPERTY	\$167,100	1.50	\$462,480	FLEMMING, D TRSTE	\$166,250	0.50	\$215,210
EMERSON TRTES	\$166,730	0.41	\$376,340	FLEMMING, D TRSTE	\$171,400	0.44	\$398,110
ENGLISH, M	\$45,360	1.30	\$215,420	FLETCHER, A & A	\$49,200	0.92	\$170,340
ENGLUND, R & A TRSTES	\$235,500	1.60	\$728,540	FLETCHER, L	\$37,040	2.70	\$188,970
ENZLER, J	\$60,200	9.50	\$384,850	FLEURY, R & D	\$211,170	1.53	\$310,590
ENZLER, J	\$56,360	6.30	\$259,240	FORCIER, T & L	\$43,950	2.00	\$233,430
ENZLER, J	\$27,670	5.10	\$27,670	FORD, B & D	\$51,840	2.53	\$225,830
ENZLER, J	\$25,000	0.01	\$25,000	FORREST, J	\$95,120	1.10	\$194,700
ENZLER, J	\$71,640	3.20	\$415,020	FORSYTH, K & M	\$172,000	0.45	\$269,650
ENZLER, J	\$93,280	20.30	\$104,930	FOSBERRY, C & L	\$40,860	0.54	\$234,990
EVANS, J & B	\$75,840	0.74	\$228,040	FOSTER, K & S TRSTES	\$65,700	15.60	\$283,000
EVANS, K	\$45,130	1.11	\$142,900	FOSTER, K & S TRSTES	\$2,840	5.64	\$2,840
EWELS, C TRSTE	\$181,800	0.59	\$485,750	FOSTER, K & S TRSTES	\$10,100	0.70	\$10,100
EXLEY, B	\$34,800	0.33	\$186,430	FOX RUN ASSOC	\$0	2.91	\$0
FABRIZIO, D & K	\$51,260	0.42	\$271,450	FOX RUN ASSOC	\$0	2.10	\$0
FADDEN, R TRSTE	CU \$54,560	12.60	\$323,610	FRANCIS, T	\$36,720	0.43	\$170,480
FAFARD, M & F	\$20,480	1.40	\$20,480	FRAULINI & SCHULTZ	\$119,990	0.73	\$204,040
FAIRPOINT COMM INC	\$0	0.00	\$4,300	FRECHETTE, D & S	\$333,830	11.65	\$1,016,580
FAIRPOINT COMM INC	\$0	0.00	\$415,200	FRECHETTE, H JR	\$314,600	0.64	\$485,760
FAIRPOINT COMM INC	\$0	0.00	\$13,000	FRECHETTE, H JR	\$27,260	4.76	\$34,890
FALCONE, C & M	\$50,360	1.30	\$174,940	FRECHETTE, J & J	\$254,800	0.62	\$594,960
FALCONE, C & M	\$24,920	5.10	\$24,920	FRECHETTE, J & T	\$3,780	0.06	\$3,780
FALCONE, C & M	\$97,400	136.00	\$97,400	FRECHETTE, J & T	\$48,500	0.85	\$308,430
FALLON, J & A	\$157,950	0.21	\$210,290	FREEDOM POP LLC	\$157,600	1.16	\$226,640
FARRELL, S & M	\$21,150	0.84	\$21,150	FREEMAN, J & M	\$21,260	4.50	\$21,260
FARRELL, S & M	\$35,400	0.34	\$68,440	FRENCH, C & C	\$20,400	17.00	\$20,400
FARRELL, S	\$13,830	0.15	\$13,830	FRIQULIETTI, L	\$50,120	1.10	\$222,690
FARRELL, S & M	\$20,030	0.53	\$20,030	GAGNON, G & L	\$50,860	3.80	\$222,490
FASCI, R	\$18,200	0.32	\$18,200	GALBREATH FAM TR	\$14,330	0.41	\$15,180
FASCI, R	\$17,600	0.26	\$17,600	GALBREATH FAM TR	\$72,470	0.26	\$118,530
FASCI, R	\$137,180	0.25	\$169,380	GALEY, H	CU \$75,760	96.10	\$199,110
FAULKNER, C & C	\$0	0.00	\$212,650	GALLANT, P ETAL	\$159,600	0.33	\$283,040
FAULKNER, C II TR	\$51,200	2.00	\$270,140	GALLO, M & K	\$50,360	1.30	\$135,440
FAULKNER, REV TRS	CU \$4,360	101.00	\$4,360	GALLO, M & K	CU \$45,090	147.60	\$45,090
FAULKNER REV TRS	\$18,660	0.92	\$18,660	GALLO, M & K	CU \$98,270	156.00	\$502,240
FAULKNER REV TRS	\$22,940	4.00	\$22,940	GALLUP & HALL	\$59,750	76.10	\$59,750
FAULKNER, R	\$0	0.00	\$181,490	GALLUP, P	\$20,220	0.72	\$20,220
FAULKNER, A & KING, R	CU \$620	13.00	\$620	GALLUP, P	\$22,750	1.00	\$22,750
FAULKNER, A & KING, R	CU \$250	5.30	\$250	GALLUP, P	\$50,000	1.00	\$101,280
FAULKNER, A & KING, R	CU \$83,250	414.00	\$527,760	GALLUP, P	\$20,250	0.75	\$20,250
FAULKNER, C II TRSTE	\$92,000	0.42	\$92,000	GALLUP, P & MINARD, R	\$44,400	0.49	\$358,300
FAULKNER, H	\$0	0.00	\$93,740	GALLUP, P & MINARD, R	\$50,360	1.30	\$159,800
FAULKNER, N	\$0	0.00	\$276,870	GALLUP, P & MINARD, R	\$22,870	1.10	\$22,870
FAULKNER, N	\$91,330	0.56	\$107,340	GARNETT, G	CU \$27,960	76.71	\$27,960
FEE, R	\$51,320	2.10	\$166,010	GARNETT & ORKINS	\$51,560	2.30	\$297,610
FELPO, F	\$20,240	1.20	\$20,240	GARNETT & STAPLES	\$100,000	0.05	\$174,880
FELPO, F	\$20,480	1.40	\$20,480	GARVIN, A & J	\$167,040	0.53	\$234,850
FENTON, T	\$53,180	6.30	\$257,480	GAUDREAU, D	\$15,300	0.19	\$15,890
FERNER, D & B	\$41,320	2.10	\$228,830	GAUDREAU, D	\$40,800	0.43	\$187,260
				GELARDI, M	\$50,720	1.60	\$213,770

OWNER		LAND	ACRES	TOTAL	OWNER		LAND	ACRES	TOTAL
GENDRON, S		\$18,840	1.70	\$18,840	HALL, T	CU	\$62,180	307.00	\$135,090
GENDRON, S		\$20,840	1.70	\$20,840	HALL, T	CU	\$1,560	25.00	\$1,560
GESICK, R		\$53,960	4.30	\$284,240	HALL, T	CU	\$1,730	43.00	\$1,730
GESICK, R & M		\$26,600	6.50	\$26,600	HALL, T	CU	\$900	22.00	\$900
GETTY, E & C		\$168,270	0.29	\$236,900	HALL, T	CU	\$3,130	64.00	\$3,130
GIANFERRARI ETAL		\$121,750	0.23	\$242,690	HALL, T	CU	\$1,750	36.00	\$1,750
GIBBS, K		\$14,570	0.17	\$14,570	HALL, T	CU	\$8,040	150.00	\$8,040
GIBBS, T		\$14,570	0.17	\$14,570	HALL, T	CU	\$580	9.20	\$580
GIBSON, A TRSTE		\$18,840	1.70	\$18,840	HALL, T		\$8,630	2.50	\$8,630
GILCHREST, P JR		\$2,760	1.40	\$3,800	HALL, T		\$79,250	6.00	\$632,730
GILMAN, L & S		\$14,800	0.48	\$14,800	HALL, T	CU	\$11,960	166.00	\$11,960
GILMAN, L & S		\$53,980	6.40	\$201,390	HALL, W & K		\$53,480	3.90	\$194,140
GIRARD, P TR		\$140,600	0.19	\$224,770	HALTER, J & D		\$108,400	0.67	\$275,900
GIROUX, G & A		\$18,400	0.34	\$18,400	HAMBLET, J ETAL		\$236,360	0.47	\$366,800
GIROUX, G & A		\$14,570	0.17	\$27,770	HAMILTON, J		\$56,070	6.06	\$230,670
GIROUX, G & A		\$108,850	0.22	\$242,720	HAMILTON, P & D		\$39,980	28.70	\$39,980
GLAVIN, E & P		\$27,310	4.80	\$27,310	HAMILTON, P & D		\$237,960	0.86	\$523,740
GLAVIN, E & P		\$26,550	0.34	\$78,220	HAMILTON, P & D		\$450	0.05	\$450
GLEAVY, P & HANLEY, W		\$144,000	0.25	\$322,400	HAMILTON, P & D		\$5,120	0.57	\$5,120
GLOBAL MONTELLO GR		\$216,320	5.10	\$636,030	HAMILTON, S		\$55,400	5.50	\$227,370
GLOERSEN, T & L		\$56,560	4.30	\$208,660	HAMMANN, F & M		\$6,630	12.50	\$6,630
GOODELL, K		\$57,150	8.30	\$225,160	HAMMETT, J & S		\$51,440	2.20	\$221,950
GOODINE, R & M		\$181,500	0.36	\$228,290	HAMMOND, K & B		\$26,000	6.00	\$26,000
GORDON, J & R		\$177,080	0.57	\$231,870	HAMPOIAN, A & J		\$20,010	0.51	\$20,010
GRABARZ, R		\$21,400	3.20	\$21,400	HAMPOIAN, A & J		\$184,000	0.49	\$298,260
GRABARZ, R		\$215,360	6.30	\$415,400	HAMPOIAN, A TRSTE		\$136,280	0.19	\$217,970
GRADY, L & P		\$58,400	0.18	\$117,140	HAMPTON, W JR		\$34,830	1.90	\$79,160
GRADY, L & P		\$13,880	0.35	\$13,880	HANKINSON, S & J		\$180,500	0.32	\$368,750
GRADY, V & C		\$232,320	1.89	\$342,610	HANNAFORD, F & J		\$58,000	0.64	\$102,000
GRANITE LK VILL DIST		\$104,000	1.40	\$104,000	HANSON FAM TR	CU	\$1,990	48.00	\$1,990
GRANITE STATE TEL		\$0	0.00	\$14,300	HANSON, S		\$42,600	0.46	\$101,930
GRAY, D & J		\$150,210	5.34	\$419,680	HARBERT, S SR & L		\$50,190	1.16	\$279,060
GREEN, S TRSTE		\$20,240	0.74	\$20,240	HARBERT, S SR & L		\$7,650	0.19	\$7,650
GREEN, S TRSTE		\$169,020	0.64	\$629,550	HARDWICK, C		\$19,300	0.43	\$20,160
GRIFFON, R		\$20,060	0.56	\$20,060	HARDWICK, C		\$45,600	1.50	\$208,740
GRIFFON, R		\$151,000	0.19	\$254,530	HARDY, M & C		\$50,840	1.70	\$262,820
GROEZINGER, P REV TR		\$160,200	0.46	\$307,080	HARMON-MORSE TSTE		\$111,200	0.81	\$259,590
GROVENSTEIN, R		\$45,100	0.51	\$131,570	HARRINGTON, W TRSTE		\$164,710	0.40	\$336,980
GRUBE, D & K		\$63,300	0.36	\$63,650	HARRINGTON, W TRSTE		\$19,000	0.40	\$19,000
GRUBE, D & K		\$31,800	0.28	\$176,350	HARRIS CNTR CONSERV	CU	\$66,900	1,385.05	\$66,900
GRUBE, D & K		\$36,480	0.56	\$60,830	HARRIS CNTR CONSERV	CU	\$620	15.00	\$620
GRYBKO, B		\$46,300	0.63	\$100,830	HARRIS CNTR CONSERV	CU*	\$7,400	257.00	\$7,400
GRYBKO, G		\$43,200	0.47	\$178,590	HARRIS CNTR CONSERV	CU	\$830	17.00	\$830
GUARINO ENTERPRISES		\$99,800	0.67	\$219,310	HARRIS CNTR CONSERV	CU	\$2,080	47.00	\$2,080
GUAY, M & K		\$68,800	5.26	\$192,120	HARRIS CNTR CONSERV	CU	\$5,830	124.00	\$5,830
GUHNE ETAL REV TR		\$51,680	2.40	\$372,980	HARRIS CNTR CONSERV	CU	\$960	13.10	\$960
GUIDA, A III	CU	\$1,740	40.00	\$1,740	HARRIS CNTR CONSERV	CU	\$1,460	31.00	\$1,460
GUIDA, P		\$97,200	0.14	\$97,200	HARRIS CNTR CONSERV	CU	\$16,610	483.00	\$16,610
GUIRE PROP TR		\$91,000	0.13	\$136,470	HARRIS CNTR CONSERV	CU	\$230	5.00	\$230
GWYNN, J & T		\$15,960	1.80	\$15,960	HARRIS CNTR CONSERV	CU*	\$850	22.30	\$850
HAAS, F III		\$171,720	1.60	\$231,550	HARRIS CNTR CONSERV	CU	\$5,660	71.90	\$5,660
HAASE, F & C		\$120,000	1.70	\$308,110	HARRIS CNTR CONSERV	CU	\$1,690	17.00	\$1,690
HACKETT, R & L ETAL		\$29,330	0.23	\$120,430	HARRIS, C III & H		\$185,740	0.81	\$503,420
HACKETT, T & R		\$57,800	41.00	\$57,800	HART, E		\$22,800	0.11	\$153,200
HAEFNER, J & T		\$55,050	13.00	\$202,030	HASTINGS, J & J		\$15,200	0.52	\$15,200
HAGEDORN, C & R		\$199,050	7.50	\$325,120	HASTINGS, J & J		\$42,980	1.40	\$230,100
HAHN, C & C		\$179,500	0.29	\$258,100	HAYES, A		\$52,160	2.80	\$156,750
HAHN, C & J		\$99,110	1.30	\$149,000	HAYES, B & K		\$50,600	1.50	\$175,740
HAHN, J & D		\$174,000	0.18	\$255,710	HAYES, C SR		\$63,200	1.58	\$222,400
HALEY & MARENIS		\$62,980	5.48	\$169,740	HAYES, C SR		\$29,830	5.00	\$29,830
HALL TR, D		\$169,000	0.34	\$304,730	HAYES, M & S	CU	\$18,770	35.26	\$18,770
HALL, TR, D		\$18,700	0.37	\$18,700	HAYES, M & S		\$22,150	5.24	\$22,150
HALL, B & V TRSTES		\$195,900	0.92	\$337,340	HAYES, M & S		\$245,500	1.25	\$421,950
HALL, H TRSTE		\$171,500	0.13	\$216,570	HAYES, M & S		\$230,510	0.99	\$401,680
HALL, T	CU	\$4,660	101.00	\$4,660	HAYES, M & S	CU	\$2,260	39.10	\$2,260
HALL, T	CU	\$980	30.00	\$980	HAYES, M & S		\$77,160	6.30	\$482,080
HALL, T	CU	\$860	30.00	\$860	HAYES, M & S		\$50,600	1.50	\$75,640
HALL, T	CU	\$3,920	97.00	\$3,920	HAYES, M & S		\$253,840	0.93	\$406,740
HALL, T	CU	\$10,940	195.00	\$10,940	HEALY HOLDINGS LLC	CU	\$940	22.29	\$940
HALL, T	CU	\$600	10.00	\$600	HEALY HOLDINGS LLC	CU	\$2,360	35.47	\$2,360
HALL, T	CU	\$46,650	25.00	\$283,000	HEALY HOLDINGS LLC	CU	\$1,530	15.82	\$1,530

OWNER		LAND	ACRES	TOTAL	OWNER	LAND	ACRES	TOTAL
HEALY HOLDINGS LLC	CU	\$3,090	42.32	\$3,090	HOLMES, D	\$1,070		0.89
HEALY HOLDINGS LLC	CU	\$2,010	32.90	\$2,010	HOLMES, K TRSTE	\$42,210		0.69
HEALY, D		\$42,540	1.03	\$219,870	HOLMES, R & D	\$130,620		1.10
HEALY, D		\$13,870	19.00	\$13,870	HOMEYER, E & W	\$47,500		1.00
HEALY, D	CU	\$109,310	235.90	\$805,790	HOMFELD LIV TR	\$177,400		0.62
HEALY, D & J		\$400	0.17	\$400	HORN, W	\$175,790		1.31
HEALY, D & J		\$430	0.16	\$430	HORSFALL, L	\$71,400		0.76
HEALY, D & J		\$390	0.13	\$390	HOWARD, E	\$56,810		0.55
HEALY, D & J		\$770	0.16	\$5,590	HOWARD, E ETAL	CU	\$3,660	99.00
HEALY, D & J		\$400	0.17	\$400	HOWARD, E ETAL	CU	\$470	11.30
HEALY, D & J		\$390	0.16	\$390	HOWARD, J & ALLEN, J	CU	\$52,400	46.50
HEALY, D & J		\$190	0.16	\$190	HOWARD, L & B	\$50,600		1.50
HEALY, D & M		\$410	0.30	\$410	HOWARD, L II	\$51,440		2.20
HEALY, D & J		\$890	0.16	\$890	HUBER, D & R	\$55,400		5.50
HEALY, D & J		\$890	0.16	\$890	HUDON, L JR & C	\$142,630		0.38
HEALY, D & J		\$980	0.20	\$980	HUDSON HIGHLAND LLC	\$15,500		0.20
HEALY, D & J		\$400	0.17	\$400	HUDSON HIGHLAND LLC	\$178,000		1.29
HEALY, D & J		\$770	0.11	\$770	HUDSON, D	\$800		0.12
HEALY, D & J		\$800	0.12	\$800	HUDSON, D	\$840		0.14
HEALY, D & J		\$890	0.16	\$890	HUDZIEC, J	\$51,200		2.00
HEALY, D & J		\$890	0.16	\$890	HUGHGILL, P	\$58,150		5.50
HEALY, D & J		\$420	0.15	\$420	HUSSEY, C	\$161,120		0.41
HEALY, H & S		\$186,800	0.59	\$641,140	HYATT, J & A	\$56,840		6.70
HEALY, J	CU	\$4,830	120.00	\$4,830	IAGULLI, S	\$100,240		0.33
HEALY, J	CU	\$88,420	41.50	\$891,530	IBARRA, J & C	\$51,920		2.60
HEALY, J		\$45,020	19.56	\$45,020	IMHOOF, J JR & C	\$33,480		0.37
HEALY, M		\$49,450	26.40	\$49,450	INDUST TWR/WIRELESS	\$70,000		0.23
HEALY, N III & M		\$111,000	0.80	\$256,950	IRVING, S	\$195,480		1.40
HEALY, N III & M	CU	\$24,340	41.90	\$25,340	IRVING, S	\$20,180		0.68
HEALY, N	CU	\$280	10.20	\$280	ISAACSON, K	\$2,280		1.90
HEALY, T & J		\$180,620	1.52	\$393,150	ISAACSON, K	\$17,000		0.70
HEALY, T & J		\$4,680	0.37	\$4,680	ISAACSON, K	\$22,640		3.20
HEALY, T & J		\$214,230	1.40	\$352,710	ISAACSON, K	\$20,290		1.24
HEBERT, M & RILEY, B		\$47,500	1.00	\$218,130	J&S CORDWOOD, LLC	\$53,960		4.30
HEBERT, V JR		\$45,220	1.18	\$121,720	JACOBS, S & E	\$180,800		0.79
HECK, L II & L TRSTES		\$66,300	0.28	\$66,300	JACOBSEN, A	\$63,170		1.56
HECK, L II & L TRSTES		\$61,440	4.20	\$335,550	JAMES, R & J	\$225,700		1.58
HENRY, C & FRENCH, C		\$119,240	0.67	\$436,120	JAMES, R & J	\$23,000		1.21
HICKS, J		\$20,480	1.40	\$35,980	JAMPOL-AUERBACH, L	\$55,050		5.21
HIDDEN LK ASSOC		\$0	3.30	\$0	JARDIM, C	\$161,640		0.73
HIDDEN LK CIV ASSOC		\$0	17.00	\$0	JARVIS, B	\$166,500		0.23
HIDDEN LK CIV ASSOC		\$0	9.06	\$0	JARVIS, S III & D	\$175,500		0.41
HIDDEN LK CIV ASSOC		\$3,350	0.34	\$3,350	JEANNOTTE, R & M	\$20,010		0.51
HIDDEN LK CIV ASSOC		\$13,860	0.63	\$13,860	JEFTS CEMETERY	\$530		0.44
HIDDEN LK CIV ASSOC		\$60	0.05	\$60	JENNESS, J & M	\$50,240		1.20
HIDDEN LK CIV ASSOC		\$11,460	0.34	\$11,460	JENNISON, A	\$12,460		1.90
HIDDEN LK CIV ASSOC		\$2,490	0.11	\$2,490	JENNISON, G	\$34,750		10.70
HIDDEN LK CIV ASSOC		\$2,790	0.16	\$2,790	JENSEN, L JR	\$115,500		13.50
HIDDEN LK CIV ASSOC		\$190	0.16	\$190	JENSEN, L JR	\$35,050		16.50
HIGGINS, E & K		\$88,730	0.84	\$123,460	JOHANSSON, B & S	\$210,600		0.19
HIGGINS, E & K		\$47,500	0.75	\$101,780	JOHNSON, D ETAL	\$105,450		0.17
HIGHLAND LK ASSOC		\$26,400	0.45	\$34,470	JOHNSON, D ETAL	\$183,350		0.90
HIGHLAND REALTY TR		\$186,800	0.84	\$458,760	JOHNSON, M & D TSTES	\$149,500		0.18
HIGLEY, K & SCARPA, T		\$48,800	0.88	\$176,540	JOHNSON, P TRSTE	\$172,190		0.35
HILL, R		\$140,000	0.12	\$214,720	JOHNSON, W & S TRSTES	\$203,500		1.83
HILL, R		\$25,000	0.01	\$25,000	JONES & DURAN TSTES	\$73,120		7.60
HILL, R		\$25,000	0.01	\$25,000	JONES & DURAN TSTES	\$15,080		0.27
HILLS, L & B		\$20,200	0.70	\$29,240	JONES, R & E	\$161,780		0.97
HILTZ, R		\$910	0.17	\$910	JORDAN & BRAVO TSTES	\$98,000		0.22
HILTZ, R		\$910	0.17	\$910	JOSLYN, L	\$30,240		0.47
HODGE, E & K		\$9,900	0.48	\$9,900	JUBERT, M & K	\$24,250		0.06
HODGE, E & K		\$163,800	0.47	\$233,990	JUBERT, W & T	\$45,200		0.52
HODGSON REVOC TR		\$181,830	0.82	\$330,250	KACZKA TSTES	\$171,360		1.30
HOEFER, C, R & P		\$112,040	5.30	\$390,950	KACZKA TSTES	\$126,990		1.00
HOFFMAN, J JR & J	CU	\$2,440	56.80	\$2,440	KAHN, J & C	\$166,740		1.20
HOGG, F & G		\$52,860	5.70	\$232,770	KAJKA, M	\$180,800		0.54
HOLDA, F & K	CU	\$51,900	13.30	\$268,400	KARCZ, J	\$61,500		0.95
HOLLAND, D SR TR		\$56,000	6.00	\$266,460	KARSKI, C & C	\$169,100		0.43
HOLLAND, D JR		\$59,750	10.70	\$257,770	KAVALAUSKAS TSTE	\$17,900		0.29
HOLLAND, R		\$60,100	10.00	\$227,740	KAVALAUSKAS TSTE	\$191,560		2.30
HOLLOWAY, W & J		\$19,500	0.45	\$19,500	KAVANAGH, T & N	\$117,580		2.32

OWNER		LAND	ACRES	TOTAL	OWNER		LAND	ACRES	TOTAL
KEARNEY, K & K		\$181,000	0.46	\$307,200	LAROCHELLE, R JR	CU	\$170	2.12	\$170
KEATING, T		\$55,760	5.80	\$267,000	LAROCHELLE, R JR	CU	\$1,930	44.86	\$1,930
KEEFE, M ETAL		\$118,590	0.18	\$174,840	LASKY, S		\$25,000	0.01	\$25,000
KEENE CONCORD LLC	CU	\$48,270	19.81	\$246,050	LASKY, S		\$4,220	0.03	\$4,220
KELLY, M & T		\$177,800	0.64	\$275,970	LATHAM, T & S TRSTES		\$169,580	0.27	\$224,670
KELLY, M & S		\$162,000	0.09	\$235,020	LAVOIE, A & R		\$50,700	2.00	\$309,950
KELLY, M & J		\$194,850	0.36	\$295,310	LAVOIE, A & R		\$17,700	0.27	\$20,720
KENNEDY, P		\$214,350	1.50	\$466,680	LAVOIE, A & R		\$26,000	0.13	\$94,000
KENYON, L		\$37,980	1.40	\$45,100	LAVOIE, R & A TRSTES		\$29,640	2.00	\$29,640
KENYON, L		\$9,050	0.60	\$16,480	LAWSON, E ETAL		\$176,230	1.26	\$235,810
KERCEWICH, J JR		\$46,000	0.60	\$96,880	LAZZARO, S & R	CU	\$54,480	15.44	\$263,530
KHAN, A & A		\$52,740	3.28	\$197,650	LEARY, P		\$140,600	0.19	\$192,190
KIMBALL S & M TR		\$222,900	0.79	\$321,330	LEBO, M		\$153,550	1.10	\$308,560
KIMBALL, S & C		\$26,000	0.13	\$90,480	LEDWITH IRREVOC TR, D		\$153,900	0.27	\$220,440
KING, A ETAL		\$29,670	0.24	\$85,060	LEFEBVRE TRSTES		\$51,080	1.90	\$217,750
KING, S & CARLSON, T		\$47,560	1.05	\$249,560	LEFRANCOIS, J		\$220,400	1.44	\$281,340
KINGSBURY, A		\$98,280	0.26	\$339,080	LEFRANCOIS & GARTRELL		\$182,520	0.57	\$245,870
KINGSBURY, E JR	CU	\$58,370	12.50	\$76,390	LEHRMAN, H III		\$61,990	43.20	\$142,360
KINGSBURY, R		\$267,500	2.10	\$392,600	LEMANSKI, J & B		\$138,040	0.94	\$250,800
KLOTZBIER, O & DAVIS, S		\$52,280	2.90	\$238,890	LENTOCHA, T & C		\$21,320	2.10	\$21,320
KNIGHT, J		\$38,420	0.52	\$133,890	LEONARD, G		\$40,200	0.42	\$123,470
KNOWLTON, R & C		\$151,000	0.19	\$278,190	LEONARD, G		\$5,330	0.04	\$6,210
KNOWLTON, S & K		\$185,600	0.53	\$308,630	LEONARD, L		\$150,040	0.40	\$208,580
KOELLER LVG TR		\$45,100	0.51	\$143,930	LEONARD, M		\$21,200	2.00	\$21,200
KOVARIK, J & D	CU	\$47,390	10.70	\$349,820	LEONARD, M		\$21,200	2.00	\$21,200
KRASINSKI, G ETAL		\$171,000	0.32	\$241,120	LEOTTA, M		\$48,400	0.84	\$212,790
KRASINSKI, G ETAL		\$116,280	0.43	\$116,280	LEOTTA, N		\$74,250	0.37	\$75,560
KRAUS, K & E		\$71,520	6.27	\$223,800	LEOTTA, N		\$42,000	0.45	\$239,590
KRESS, E & J		\$157,700	0.31	\$206,370	LESSER, C & D TRSTES		\$105,300	0.23	\$243,630
KRUTT, R TRSTE		\$62,460	0.99	\$200,200	LESSER, C & D TRSTES		\$6,230	0.28	\$6,230
KSR PARTNERSHIP		\$25,150	3.00	\$25,150	LEYDEN-PIPER, B	CU	\$440	46.70	\$440
KSR PARTNERSHIP		\$19,820	3.30	\$19,820	LEYDEN, R & PIPER, B		\$38,360	5.80	\$38,360
KSR PARTNERSHIP		\$192,580	2.90	\$429,200	LEYDEN, R	CU	\$2,560	62.20	\$2,560
KSR PARTNERSHIP		\$5,690	1.00	\$5,690	LEYDEN, R	CU	\$10	0.21	\$10
KUCHYT, R		\$30,240	0.80	\$80,990	LEYDEN, R		\$68,500	0.65	\$68,500
KUEHL, J JR & B		\$43,940	2.20	\$88,140	LEYDEN, R		\$28,500	0.25	\$73,180
KUEHN, S		\$7,250	0.45	\$7,250	LIBERATORE, D		\$55,400	5.50	\$322,430
KUMPU, D & J		\$20,170	0.67	\$20,170	LIGHTBODY, F		\$70,030	5.05	\$104,590
KUMPU, D & J		\$166,000	0.31	\$201,970	LIGHTBODY TRSTES		\$22,700	5.70	\$22,700
KUMPU, D		\$151,000	0.19	\$185,810	LIGHTBODY TRSTES	CU	\$5,800	88.00	\$5,800
KUMPU, D		\$145,400	0.76	\$145,400	LIGHTBODY TRSTES		\$28,160	12.00	\$28,160
LABBE, S & A		\$244,300	1.13	\$653,650	LIGHTBODY TRSTES		\$58,900	13.20	\$218,800
LABROSSE, J	CU	\$31,430	94.00	\$168,930	LIS, T & R		\$50,420	1.35	\$208,090
LABUKAS, J & J TRSTES		\$214,350	1.50	\$478,010	LLOYD, S		\$167,200	0.41	\$242,280
LACH, S TRSTE		\$209,100	0.51	\$327,290	LOMBARD, R & B		\$51,440	2.20	\$133,010
LACLAIR, T		\$41,400	0.44	\$131,020	LOOBY, J & G		\$50,360	1.30	\$197,490
LACOURCIERE, K & N		\$147,730	0.48	\$241,840	LOPEZ, L & D TRSTES		\$200	0.47	\$200
LACROIX, S & M		\$51,560	2.30	\$173,870	LOPROTO, A & L		\$51,560	2.30	\$244,880
LAFFERTY, K & T		\$287,640	3.20	\$595,180	LORENZI, J		\$51,420	2.00	\$282,600
LAKE, D & M		\$92,140	20.07	\$333,330	LOUCHART, R & D		\$126,260	0.61	\$186,880
LAKE, J		\$20,050	2.54	\$179,600	LOUGHREY, C & D ETAL		\$162,450	0.31	\$277,710
LAKE, S & C		\$51,690	4.89	\$215,410	LOUNSBURY, B & L		\$163,780	2.90	\$249,350
LAKEFALLS ASSOCS	CU	\$63,720	580.86	\$63,720	LOWE, M		\$55,280	5.40	\$230,030
LAKESIDE LD TR LLC		\$116,250	0.14	\$202,990	LOWELL, D		\$5,290	0.84	\$5,290
LAMAN, S		\$50,360	1.30	\$134,910	LOZINAK, D & K		\$40,190	23.00	\$67,020
LAMBERT, T		\$45,700	0.57	\$123,970	LOZINAK, D & K		\$13,770	1.10	\$13,770
LAMONTAGNE, S ETAL		\$55,000	0.03	\$66,770	LUBRANO, C		\$49,980	22.26	\$49,980
LAMOTHE, P		\$81,920	8.60	\$321,470	LUCAS, R & R		\$53,000	3.50	\$186,150
LAMOUREUX, S & M		\$54,920	5.10	\$219,800	LYLE, C & K		\$96,500	0.20	\$198,680
LAMPHIER, L		\$157,130	0.34	\$262,760	LYMAN, R & C		\$87,400	0.54	\$241,670
LAMPHIER, S & L		\$54,450	5.41	\$342,540	LYNCH, C & M		\$20,460	1.38	\$24,300
LANDRY, R & C		\$160,000	0.25	\$276,140	MACALLISTER, J & J		\$250,800	0.52	\$450,500
LANDRY, C & S	CU	\$62,410	13.50	\$268,720	MADDEN, C		\$50,960	1.80	\$246,150
LANGILLE, G		\$41,400	0.44	\$79,450	MADEN, R & P		\$270,000	1.00	\$614,950
LARABEE, M ETAL		\$48,520	1.85	\$112,070	MADORE, J		\$16,400	0.22	\$28,860
LARABEE, M ETAL		\$4,020	0.34	\$4,020	MADORE, J		\$40,200	0.42	\$154,780
LARABEE, M ETAL		\$18,400	0.84	\$18,400	MAGOON, B		\$40,720	1.60	\$186,790
LARIVIERE, C		\$167,630	0.45	\$234,580	MAILLET FAM RLTY TR		\$50,840	1.70	\$140,660
LAROCHE, D & T		\$27,160	1.12	\$27,160	MAILLET, D & A		\$51,010	1.84	\$79,170
LAROCHE, D		\$101,080	0.25	\$153,660	MAINE CRAIGEN FAM TR	CU	\$5,920	118.00	\$5,920
LAROCHE, T & D ETAL		\$184,680	0.97	\$537,870					

OWNER	LAND	ACRES	TOTAL	OWNER	LAND	ACRES	TOTAL
MAJORS, D & E	\$171,000	0.32	\$228,540	MERRILL, A JR ETAL	\$53,720	4.10	\$225,940
MALYNOWSKI, J & S	\$142,030	0.18	\$205,040	MERRILL, D	\$52,520	3.10	\$244,730
MAMMONE, V ETAL	\$910	0.17	\$910	MERRILL, J & S	\$47,100	0.71	\$184,830
MAMMONE, V ETAL	\$960	0.19	\$960	MERRILL, K ETAL	\$7,630	115.50	\$7,630
MANN, M & N	\$47,740	1.20	\$149,810	MESSENGER, J & B	\$173,140	0.39	\$287,920
MANNING, E & S	\$49,300	2.50	\$107,420	MEYER, D & M	\$46,320	2.10	\$201,080
MANUEL, B	\$29,000	0.22	\$146,030	MEYER, M & M TRSTES	\$201,880	0.29	\$370,350
MARA, P & M	\$17,080	1.90	\$17,080	MICHAUD, B & D	\$51,320	2.10	\$328,400
MARAZOFF REV TR 2006	\$57,310	8.62	\$247,190	MILLER FAM TR	\$86,120	3.20	\$109,740
MARAZOFF REV TR 2006	\$23,970	2.02	\$23,970	MILLER FAM TR	\$6,330	0.15	\$6,330
MARCOS, T & FEYH, H	\$62,000	12.40	\$278,380	MILLER, C & D	\$48,700	2.00	\$253,010
MARINELLO, J II	\$158,500	0.24	\$219,490	MITCHELL-BOUDREAU	\$13,050	0.45	\$13,050
MARKIEWICZ, S TRSTE	\$207,100	0.13	\$287,680	MITCHELL-BOUDREAU	\$45,000	0.50	\$279,020
MARKIEWICZ, S TRSTE	\$25,000	0.01	\$25,000	MOE, D ETAL	\$131,770	0.18	\$210,570
MARKIEWICZ, S TRSTE	\$53,400	0.12	\$92,110	MOLINA REV TR	\$171,950	0.80	\$237,060
MARKS, A & M TRSTES	\$175,720	1.60	\$175,720	MONADANOCK HAB HUM	\$20,320	2.10	\$20,320
MARKS, A & M TRSTES	\$225,660	1.55	\$503,900	MONKTON, D	\$57,630	0.52	\$160,510
MARQUIS, M & N TRSTES	\$130,260	0.44	\$192,290	MONTANA, L	\$47,310	17.80	\$249,650
MARROTTE, G	\$50,840	1.70	\$191,750	MONTY, K & K	\$58,400	8.00	\$218,970
MARSHALL, D & D	\$55,350	47.50	\$227,100	MOODY, R & J	\$172,080	1.90	\$489,990
MARSHALL, J & D	\$171,760	0.54	\$302,360	MOONEY, D ETAL	\$51,220	2.02	\$68,160
MARTELL, F TRSTE	\$7,630	115.50	\$7,630	MOORE, F	\$181,250	0.35	\$336,020
MARTIN, L & L	\$227,550	2.46	\$557,440	MOORE, M	\$80,840	7.70	\$207,530
MARTINEZ, R	\$50,960	1.80	\$171,520	MOORE, M	\$15,630	0.03	\$15,630
MATHISON, G & P	\$27,380	8.90	\$27,380	MOORE, M	\$19,100	0.41	\$19,100
MATUSKIEWICZ, T & L	\$167,110	2.13	\$210,990	MOREL, A & C	\$45,900	0.59	\$92,030
MAURER, C & R	\$185,200	0.76	\$400,270	MORITZ, K	\$45,720	1.60	\$276,930
MAURO, P & D	\$14,570	0.17	\$14,570	MORRISON, R & L	\$23,200	4.50	\$23,200
MAURO, P & D	\$159,970	0.66	\$311,420	MORRISON, R & S	\$143,000	0.14	\$253,650
MAXWELL, J	\$36,320	0.54	\$39,420	MORRISON, R & S	\$134,550	0.18	\$230,420
MAYBURY, W & M ETAL	\$183,000	0.65	\$324,960	MORTON-FARRIS FM TR	\$162,000	0.27	\$237,780
MAYBURY, W & M ETAL	\$105,750	0.50	\$105,750	MOWAT, REV TR, J	\$214,650	1.75	\$302,470
MCADAM, H III	\$53,290	3.74	\$222,110	MOXLEY, D	\$46,440	2.20	\$193,300
MCALLISTER, A & S	\$54,200	4.50	\$335,270	MULTIPLE OWNERS	\$0	0.36	\$0
MCCARRA, E	\$147,600	0.29	\$222,200	MULTIPLE OWNERS	\$0	1.78	\$0
MCCLURE, J	\$49,580	6.90	\$58,160	MULTIPLE OWNERS	\$0	0.02	\$0
MCCOLL, B & VARIN, V	\$165,610	0.37	\$207,680	MURDOUGH, N	\$52,280	2.90	\$131,580
MCCORMICK, K TRSTE	\$198,560	8.13	\$386,970	MURPHY, K & S	\$164,260	0.47	\$224,180
MCDERMOTT, J	\$94,000	0.21	\$163,470	MURPHY, K & S	\$20,030	0.53	\$20,030
MCGERTY, S & D	\$46,320	2.10	\$286,410	MURPHY, M	\$47,800	0.78	\$118,860
MCGINNIS, G	\$215,500	0.32	\$398,060	MURPHY, M	\$13,830	0.15	\$13,830
MCGUIRE, K & C	\$146,700	0.30	\$218,060	MURPHY, M	\$14,200	0.16	\$14,200
MCKELVEY, H	\$44,380	0.02	\$77,750	MURPHY, P & T	\$218,520	0.32	\$332,120
MCKEON, J & L ETAL	\$88,200	0.25	\$125,410	MURPHY, P & T	\$31,150	8.00	\$31,150
MCKEON, L	\$810	16.00	\$810	MURPHY, W & L TRSTES	\$152,480	0.78	\$299,010
MCKEON, L	\$2,800	55.00	\$2,800	MURPHY, W & L TRSTES	\$25,580	0.34	\$27,660
MCLAUGHLIN TRSTES	\$184,600	0.98	\$360,180	MURPHY REV FAM TR	\$184,380	3.98	\$406,940
MCLAUGHLIN, R & K	\$22,810	12.90	\$22,810	MURRAY, J & L	\$50,240	1.20	\$205,010
MCLAUGHLIN, R & K	\$52,800	8.20	\$344,700	NELLIGAN, B & M	\$45,040	5.20	\$105,260
MCLEAN, N TRSTE	\$234,080	0.63	\$373,900	NELSON, K	\$76,960	0.81	\$176,780
MCLELLAN & MCMAHON	\$114,000	0.14	\$122,500	NELSON, L & S	\$209,020	1.02	\$309,290
MCLELLAN & MCMAHON	\$413,000	2.30	\$413,000	NELSON, M, E & M	\$46,200	0.62	\$162,750
MCMAHON, T & P	\$51,560	2.30	\$243,120	NELSON, S & P	\$50,260	1.22	\$138,740
MCNEAL, C & N TRSTES	\$47,980	1.40	\$247,400	NEWBY, J & R	\$82,100	20.00	\$499,550
MCPADDEN REV TR	\$22,400	3.00	\$22,400	NEWELL, J	\$52,520	3.10	\$106,820
MCPADDEN REV TR	\$200,830	2.90	\$301,910	NICHOLS, C & C TR	\$209,360	1.30	\$338,370
MCRAE, L	\$160,000	0.25	\$237,900	NICHOLS, C & C TR	\$15,730	0.35	\$15,730
MEADE, A	\$27,000	0.16	\$109,100	NICOLETTI, R & A	\$243,000	1.01	\$510,460
MEADOWSEND TMBLDS	\$2,390	73.00	\$2,390	NOGA, T	\$185,200	0.76	\$325,570
MEDLOCK, J & R	\$52,240	34.40	\$433,780	NOHRDEN, T & K	\$50,260	5.38	\$50,260
MEGENS, D & H TRSTES	\$28,670	0.21	\$219,160	NOLAN, A	\$27,330	0.17	\$90,500
MELIUS, J & K TRSTES	\$131,400	0.07	\$186,840	NOLAN, A	\$180	0.15	\$180
MELIUS, J & K TRSTES	\$81,270	0.13	\$81,270	NORCROSS LIV TR ETAL	\$13,950	0.36	\$17,090
MELTON, B & M	\$57,320	7.10	\$337,460	NORMANDIN, M & S	\$19,000	0.90	\$19,000
MELZMUF, R	\$155,250	0.35	\$441,070	NORMANDIN, M & S	\$20,720	1.60	\$20,720
MELZMUF, R	\$131,970	0.33	\$161,570	NORMANDIN, S	\$92,550	0.16	\$137,130
MENDONSA, D & S	\$47,610	5.05	\$186,430	NORTHBOUND VENTURES	\$22,480	1.40	\$22,480
MERCADANTE, L TRSTE	\$58,180	9.90	\$626,180	NORTHBOUND VENTURES	\$37,860	1.30	\$89,020
MERRIWOODE VIL INC	\$622,200	34.00	\$2,194,660	NORTON, S & HANSON, E	\$51,080	1.90	\$294,580
MERRIWOODE VIL INC	\$127,260	0.51	\$127,900	NOVOTNY, S	\$57,110	2.76	\$171,970



OWNER		LAND	ACRES	TOTAL	OWNER		LAND	ACRES	TOTAL
O'BRIEN REV TR		\$150,100	0.24	\$293,250	PFUNDSTEIN, G		\$156,150	0.37	\$201,820
O'BRIEN REV TR		\$15,300	0.19	\$15,300	PHANEUF, R		\$23,180	4.20	\$23,180
O'BRIEN, M JR		\$890	0.16	\$890	PHELPS, T & N	CU	\$48,570	108.00	\$420,450
O'BRIEN, T		\$50,840	1.70	\$205,980	PHILBRICK, S	CU	\$63,020	15.09	\$152,110
O'MALLEY, D ETAL		\$81,000	0.08	\$189,510	PHILLIPS, F		\$160,210	4.51	\$240,290
O'MALLEY, H & A		\$31,800	0.28	\$105,450	PHILLIPS, D		\$134,000	0.12	\$193,760
O'NEILL, P		\$47,400	0.74	\$226,690	PHILLIPS, D		\$19,000	0.15	\$19,000
OKE, G & R		\$20,480	1.40	\$20,480	PHILLIPS, L		\$171,460	1.38	\$245,880
OKE, G & R		\$49,100	0.91	\$139,740	PHILLIPS, P		\$54,060	3.30	\$154,220
OKE, G & R		\$19,400	0.94	\$19,400	PHIPPARD, A & C TRSTES		\$85,000	0.10	\$154,510
OKE, G & R		\$21,010	1.84	\$21,010	PHIPPARD, C & L TRSTES		\$228,380	0.26	\$411,290
OLDERSHAW TRSTES	CU	\$51,420	9.06	\$318,300	PICARD, A & C		\$172,000	0.37	\$293,180
OLDERSHAW TRSTES	CU	\$680	10.99	\$680	PICARD, J & J		\$209,240	1.20	\$334,180
OLDERSHAW, M JR & C		\$57,080	6.90	\$276,060	PICCIRILLI, J & T		\$185,860	1.57	\$373,740
OLDS, C & L	CU	\$100	2.00	\$100	PIEHL, G & THORPE, J	CU	\$54,080	32.00	\$94,520
OLDS, C & L	CU	\$48,160	14.15	\$147,650	PIEKARSKI & PRUNIER		\$37,800	0.38	\$195,430
OLSON, B & K		\$133,280	0.42	\$133,280	PIERSON, B & D		\$46,920	2.60	\$211,180
OLSON, B & K		\$29,330	0.23	\$106,950	PIKE, R SR TR		\$40,950	0.55	\$104,770
OPIDEE, M		\$42,520	3.10	\$186,320	PINCIARO, T & D		\$20,130	0.63	\$20,130
ORMON, M & M		\$184,000	0.49	\$426,450	PINCIARO, T & D		\$150,230	0.94	\$285,800
ORZECOWSKI, E & S		\$168,530	0.49	\$308,790	PIPER, B	CU	\$20	0.40	\$20
OSBORNE, D & J	CU	\$52,780	13.00	\$237,140	PISANI, J		\$55,240	1.20	\$190,880
OSTERHOUT, W		\$16,680	2.40	\$16,680	PISANI, J & G		\$15,480	1.40	\$15,480
OSTERHOUT, W		\$47,040	2.70	\$181,770	PLANTE, H		\$46,080	1.90	\$242,620
OSTROWSKI, P		\$167,960	0.59	\$224,120	PLOURDE, J		\$3,640	0.17	\$3,640
OUELLETTE, L & J		\$53,460	1.80	\$266,990	PLOURDE, J		\$37,670	1.14	\$125,610
OUR, C & J		\$193,400	0.92	\$699,530	POCOCK, G		\$148,000	0.17	\$290,750
OZMUN, A & S		\$100,320	0.16	\$100,320	PODOLSKA, J TRSTE		\$45,480	1.40	\$95,950
OZMUN, A & S		\$75,200	0.70	\$259,020	PODOLSKA, J TRSTE		\$5,690	1.00	\$5,690
PAGNIUCCI, D & C		\$257,200	0.68	\$423,450	POLLARD, K		\$76,020	2.20	\$167,610
PAINE, R		\$21,490	0.41	\$21,990	POLLOCK, G & B		\$56,150	1.96	\$424,540
PALARDY, K		\$62,300	13.00	\$187,470	POLLOCK, G & B		\$26,100	1.89	\$26,100
PALAZA, J & M		\$51,940	4.70	\$147,420	POLLOCK, G & B		\$25,280	1.21	\$25,280
PALMER, S & K	CU	\$50,350	12.95	\$239,230	POLLOCK, J		\$50,180	1.15	\$121,700
PANTINA, R & P		\$165,960	0.72	\$233,330	POLLOCK, J		\$51,080	1.90	\$214,390
PAQUIN, M & M		\$49,600	0.96	\$143,640	POLLOCK, K		\$51,680	2.40	\$185,560
PARADIS, S & R		\$44,460	4.30	\$160,830	POODIACK, L & J		\$190,920	1.90	\$553,910
PARCELL, P & L TRSTES		\$159,020	0.56	\$233,550	POODIACK, L & J		\$151,930	3.11	\$151,930
PARENTEAU, A & Z		\$48,580	1.90	\$251,120	POOLE, S & J		\$139,000	0.60	\$139,000
PARKER REVOC TR, C		\$47,000	0.70	\$123,750	POOLE, S & J		\$20,180	0.68	\$20,180
PARKER REVOC TR, C		\$8,750	0.25	\$8,750	POST, G TRSTE		\$20,160	2.80	\$34,230
PARKER, R		\$49,060	2.30	\$214,930	POWER, H & B		\$52,350	2.96	\$315,360
PARKS, A		\$51,440	2.20	\$134,630	PRATT, B JR & D		\$148,190	3.66	\$427,790
PARROT LIV TRS		\$176,250	1.42	\$297,500	PRATT, B & J		\$4,350	0.45	\$4,350
PARROTT, K SR		\$47,300	0.73	\$175,830	PRATT, B & J		\$46,800	2.50	\$138,690
PASLER, F & S		\$50,770	1.80	\$271,270	PRATT, B & J		\$46,560	2.30	\$81,150
PATNODE TR, D		\$200,000	0.10	\$293,980	PRENTICE, D		\$18,720	1.60	\$18,720
PATNOE, D & S		\$58,120	3.60	\$228,240	PRESCOTT, G & G		\$29,710	2.06	\$29,710
PATTERSON, M & M		\$45,000	0.50	\$108,880	PRESCOTT, G & G		\$182,870	1.52	\$385,310
PATTERSON, R & P		\$165,380	0.43	\$288,540	PRESTON, G	CU	\$72,860	39.70	\$373,340
PATTERSON, R & P		\$25,140	0.61	\$25,140	PRESTON, G	CU	\$110	3.70	\$110
PEDRO, J JR & A		\$50,480	1.40	\$116,160	PRESTON, G	CU	\$33,170	10.10	\$35,450
PEDRO, J JR & A		\$205,200	0.34	\$310,610	PRICE TR, B		\$0	0.01	\$6,250
PEDRO, J JR & A		\$5,690	1.00	\$5,690	PRICE TR, B	CU	\$20	0.33	\$20
PEETS, K & D		\$76,710	0.10	\$125,890	PRICE TR, B		\$0	0.06	\$25,750
PELLEGRINO, S TR		\$15,420	1.10	\$15,420	PRICE TR, B	CU	\$160	9.80	\$160
PENDLETON & MORENO	CU	\$5,860	92.65	\$5,860	PRICE TR, B		\$0	0.05	\$25,000
PERKIN, N		\$46,900	5.10	\$231,160	PRICE TR, B		\$0	0.23	\$36,330
PEROVIC, J		\$48,000	0.80	\$125,950	PRICE TR, B		\$0	0.09	\$28,000
PERRIN, R & R	CU	\$2,480	45.00	\$2,480	PRICE TR, B		\$0	0.09	\$28,000
PERRON, R & S	\	\$154,000	0.21	\$212,770	PRICE TR, B		\$0	0.03	\$15,630
PERROTTI, D & M		\$18,700	0.37	\$18,700	PRICE TR, B	CU	\$120	6.70	\$120
PERROTTI, D & M		\$18,400	0.34	\$49,460	PRICE TR, B	CU	\$330	11.10	\$330
PERROTTI, D & M TRSTES		\$144,880	0.20	\$227,250	PRICE, T		\$143,140	0.92	\$143,140
PERROTTI, D & K		\$158,500	0.24	\$317,370	PRICE, T		\$14,080	0.26	\$14,080
PERRY, E	CU	\$1,990	48.00	\$1,990	PRICE, T	CU	\$5,070	52.00	\$5,070
PERSSON, C & K		\$45,200	3.60	\$298,430	PRICE, T	CU	\$750	15.50	\$750
PESCHEL, W & P		\$55,520	5.60	\$257,740	PRICE, T	CU	\$1,440	39.00	\$1,440
PETERS, G & S		\$113,170	1.56	\$299,550	PRICE, T	CU	\$22,230	261.50	\$22,230
PETERSON, A & P TR		\$115,000	71.00	\$203,210	PRIEST NOM TR, D		\$214,680	3.30	\$269,940

OWNER	LAND	ACRES	TOTAL	OWNER	LAND	ACRES	TOTAL
PROHASKA LIV TR	\$204,660	2.80	\$562,170	ROCKWELL LIV TR, S	\$52,520	3.10	\$226,560
PROVENCAL, T & A	\$81,500	0.07	\$139,280	ROCKWELL, C	\$19,100	0.91	\$19,100
PRUNIER, D	\$181,000	0.46	\$493,350	ROCKWELL, C	\$19,100	0.91	\$19,100
PSNH	\$0	0.00	\$3,892,300	ROCKWELL, C	\$19,100	0.91	\$19,100
PSNH	\$0	0.00	\$187,600	ROCKWELL, T & M	\$141,470	0.30	\$245,380
PSNH	\$0	0.00	\$609,600	RODANAS, R	\$60,160	6.30	\$337,550
PSNH	\$0	0.00	\$532,100	ROENTSCH, M	\$162,900	0.32	\$349,860
PSNH	\$0	0.00	\$163,700	ROENTSCH, M	\$19,300	0.43	\$19,300
PSNH	\$0	0.00	\$3,397,100	ROHAN, D & J	\$145,350	0.12	\$201,600
PUTNAM, C	\$51,200	2.00	\$198,440	ROHAN, D & J	\$4,890	0.08	\$4,890
PUTNAM, N & B	\$56,140	6.28	\$109,090	ROKES, S & D	\$54,200	4.50	\$321,640
PUTNAM, P	CU \$51,630	35.10	\$130,980	ROKES, S & D	\$9,940	0.16	\$9,940
QUACKENBUSH, R	\$163,170	0.54	\$238,160	ROMASCO, C	\$54,920	5.10	\$152,330
QUATTLEBAUM TRSTES	\$178,500	0.27	\$321,230	RONCAIOLI, A & LINH, B	\$149,040	0.70	\$293,590
RADER, R & N	\$36,230	0.83	\$44,710	ROPIECKI, A & B	\$97,400	0.23	\$225,640
RADER, R & N	\$35,960	3.80	\$35,960	ROSEN, R, W & T	\$146,300	0.22	\$279,290
RAFTER, R	\$256,500	1.00	\$355,100	ROSLEY, T & S	\$50,310	1.26	\$150,400
RAMIREZ, R	\$55,680	1.57	\$229,070	ROSS, S, J & K ETAL	\$185,040	1.03	\$277,490
RAND, D	\$49,180	2.40	\$151,270	ROTHMAN, D & S	\$123,900	0.29	\$185,870
RAND, M ETAL	\$133,570	0.17	\$152,460	ROTHMAN, S & D	\$1,000	0.02	\$1,000
RAND, M ETAL	\$18,800	0.38	\$27,910	ROUSSEAU, E	\$11,600	0.45	\$11,600
RANDALL, D	\$20,900	0.59	\$20,900	ROUSSEAU, E	\$41,400	0.44	\$171,000
RECORD, C JR & B	\$45,200	0.52	\$234,190	ROUSSEAU, E	\$32,160	0.42	\$64,800
RECORD, C JR & B	\$16,030	0.21	\$17,420	ROWAN EST M & A	\$800	0.12	\$800
REEKSTIN, R & L	\$211,500	0.20	\$366,870	ROWE, A	\$52,400	3.00	\$293,400
REESE, D	\$55,950	5.96	\$391,620	ROWEHL, T & G TRSTES	\$175,280	0.39	\$228,780
REESE, D	\$165,600	0.38	\$241,100	RUBINO, K & R	\$50,840	1.70	\$82,890
REILLY, S	\$32,950	10.20	\$32,950	RUEHR, T & K	\$99,680	0.31	\$353,680
REILLY, S	\$13,000	0.13	\$66,230	RUMRILL, R	CU \$3,670	72.00	\$3,670
REILLY, S	\$820	0.13	\$820	RUMRILL, R	CU \$910	18.00	\$910
RENAUD, J SR & P	\$39,000	0.40	\$142,250	RUMRILL, A & K	\$63,600	6.00	\$320,550
REYNELLI, A	\$46,000	0.60	\$150,400	RUMRILL, R	\$10,850	14.70	\$10,850
REYNOLDS, E JR	\$22,840	0.21	\$22,840	RUSSELL, E & L	\$26,000	0.13	\$58,260
REYNOLDS, E JR	\$67,400	0.73	\$101,890	RUSSELL, H & J	\$50,480	1.40	\$177,100
REYNOLDS, R	\$4,550	0.32	\$4,550	RUSSELL, R II & R	\$111,250	0.12	\$157,920
REYNOLDS, R	\$176,700	0.44	\$483,750	RUYLE, W & PRINCE, E	\$177,600	0.63	\$256,430
REYNOLDS, R & M	\$178,800	0.69	\$329,930	RYE, R & A	\$95,600	0.17	\$201,010
RHOADES, J	\$50,000	1.00	\$188,160	RYLANDER, S	\$137,630	0.20	\$215,270
RHODES, J	\$183,500	0.44	\$542,950	SACCO, P TRSTE	\$54,800	5.00	\$177,750
RHOMBERG, L & M	\$165,600	0.76	\$165,600	SANDERS, C	\$10,970	0.20	\$10,970
RIBACK CLDRN TR	\$160,060	0.61	\$467,060	SANDERS, C	\$29,670	0.24	\$113,320
RICCI, J & M	\$160,190	0.25	\$296,880	SANDERS, J ETAL	\$181,000	0.55	\$255,230
RICE, S	\$8,750	0.25	\$8,750	SANDY BEACH ASSOC	\$0	0.56	\$0
RICE, S	\$31,200	0.27	\$154,680	SANGAPORE, J TRSTE	\$22,100	0.71	\$22,100
RICE, S	\$16,310	0.90	\$16,310	SANTORO, D & M	\$83,460	1.38	\$83,460
RICE, Z & T	\$67,050	16.90	\$308,090	SANTORO, D & M	\$7,560	0.39	\$7,560
RICHARDSON, J	\$20,480	1.40	\$20,480	SANTORO, D & M	\$24,560	0.17	\$24,560
RICHMOND, C & N TRSTES	\$49,810	5.01	\$332,300	SANTORO, D & M	\$128,550	1.25	\$291,060
RICHMOND, C & N TRSTES	\$29,840	5.01	\$29,840	SATURATION PT LLC	\$24,190	2.20	\$62,060
RICK, M & C	\$193,300	1.77	\$521,890	SATURATION PT LLC	\$79,700	0.83	\$311,950
RIDEL, V & C	\$221,000	0.60	\$398,500	SATURATION PT LLC	\$222,200	0.72	\$467,750
RIDEL, V & C	\$20,070	0.57	\$39,810	SAUNDERS, J & C	\$95,900	0.18	\$286,130
RIESENBERG, J & C	CU \$51,760	12.12	\$389,710	SAWYER, B	\$51,320	2.10	\$164,540
RILEY, G & C	\$110,550	1.04	\$110,550	SCHAFFER, J & S	\$51,080	1.90	\$230,600
RINEHIMER, W & L	CU \$130,740	380.80	\$130,740	SCHAFFER, J & S	\$54,860	5.05	\$233,810
RIORDAN, K TRSTE	\$159,600	0.33	\$167,950	SCHILLER, J & K	\$110,200	0.76	\$330,740
RIOS, A & M	\$181,400	0.57	\$336,290	SCHIMENZ, R	\$173,880	3.40	\$341,320
RIPLEY, S	\$274,600	1.46	\$411,860	SCHIMENZ, R	\$142,380	0.87	\$142,380
RITCHIE, K & C	\$119,000	0.91	\$119,000	SCHINLER, J	CU \$63,480	29.17	\$340,690
RITCHIE, K & B	\$175,940	1.16	\$244,800	SCHINLER, J	CU \$120	0.93	\$120
RITCHIE, K & B	\$26,600	2.53	\$26,600	SCHLEY, F	\$125,300	0.44	\$294,780
RIVARD, A	\$51,200	2.00	\$162,330	SCHLEY, F	\$130,200	0.55	\$236,490
RIVERS, T & M	\$50,120	1.10	\$172,720	SCHLEY, F	\$163,400	0.34	\$337,830
ROBBINS, K & D	\$98,000	0.25	\$224,030	SCHRECK, D & A	\$47,850	5.25	\$284,620
ROBBINS, K & D	\$45,800	0.58	\$45,800	SCHREIBER, L TRSTE	\$23,000	0.34	\$23,000
ROBERTSON, D & K	\$16,840	1.70	\$16,840	SCHREIBER, L TRSTE	\$167,630	0.45	\$274,030
ROBERTSON, D & K	\$48,000	1.60	\$389,750	SCIBELLI, K & D	\$111,460	0.10	\$162,720
ROBICHAUD, K & AHO J	\$38,200	2.40	\$266,400	SCOFIELD, R & F	\$50,840	1.70	\$213,590
ROBINSON, D & J	\$50,860	1.72	\$185,430	SCOTT, P	\$23,600	4.00	\$23,600
ROBINSON, J & N	\$65,010	3.09	\$360,130	SCOTT, S & A	\$242,770	0.57	\$584,950

OWNER	LAND	ACRES	TOTAL
SCOTT, S & J	\$166,790	1.07	\$385,780
SCRIBNER, G & C	\$55,260	5.38	\$316,620
SEARS, R & C	\$63,270	1.64	\$343,300
SEMMENS, H ETAL	\$139,520	0.49	\$282,890
SEMSEL, M ETAL	\$166,320	0.74	\$291,220
SHAND, H	\$46,240	2.03	\$90,460
SHAW, K & A	\$64,200	5.01	\$66,110
SHAW, R & A	\$100,470	5.03	\$279,610
SHAWVER, D & K	\$66,600	16.00	\$378,960
SHEEHAN, M & S	\$31,200	0.27	\$171,170
SHEPPARD, S	\$206,060	0.89	\$241,920
SIEGEL, J & E	\$46,080	1.90	\$60,200
SIMBOLI, A	\$174,000	1.01	\$278,810
SKIDMORE, M & P	\$94,690	0.82	\$263,100
SKIDMORE, M & P	\$108,000	0.65	\$240,520
SKINNER, C & E	\$15,840	2.20	\$15,840
SLEPIAN, J	\$53,010	4.40	\$161,670
SMALLELY, J & G TRSTES	\$171,000	0.32	\$295,180
SMELTER, W & D	\$18,900	0.39	\$18,900
SMELTER, W & D	\$297,910	5.50	\$615,660
SMITH, D & D	\$53,240	3.70	\$180,710
SMITH, D & D	\$3,120	2.60	\$3,120
SMITH, D & D	\$19,560	2.30	\$19,560
SMITH, D & D	\$16,200	2.50	\$16,200
SMITH, D & J	\$50,720	1.60	\$251,270
SMITH, K	\$43,200	0.47	\$166,980
SMITH, W	CU \$1,540	48.00	\$1,540
SNOW, D & LANE, M	\$25,330	0.11	\$113,110
SOCIETY NH FORESTS	CU \$2,410	67.00	\$3,850
SOCIETY NH FORESTS	CU \$4,510	125.00	\$4,510
SOCIETY NH FORESTS	CU \$40	0.85	\$40
SOCIETY NH FORESTS	CU \$16,730	379.00	\$16,730
SOCIETY NH FORESTS	CU \$130,320	3,338.00	\$130,320
SOCIETY NH FORESTS	CU \$30	0.80	\$30
SOCIETY NH FORESTS	CU \$190	5.30	\$190
SOCIETY NH FORESTS	CU \$2,270	63.00	\$2,270
SOCIETY NH FORESTS	CU \$3,970	94.00	\$3,970
SOCIETY NH FORESTS	CU \$100	2.40	\$100
SOCIETY NH FORESTS	\$0	0.18	\$0
SOCIETY NH FORESTS	CU \$2,050	28.00	\$2,050
SOCIETY NH FORESTS	CU \$17,180	114.59	\$17,180
SOCIETY NH FORESTS	CU \$2,470	77.00	\$2,470
SOFIELD, D & L	\$177,230	0.41	\$313,840
SOLOMONIDES, J & A	\$45,200	0.52	\$84,700
SOLOMONIDES, J & A	\$40,000	0.05	\$40,000
SORROW, F	\$23,000	3.50	\$23,000
SOSNICKI, J	\$28,120	0.64	\$36,810
SPIEGEL, J	\$51,440	2.20	\$233,780
SPOONY, M	\$167,800	0.38	\$287,520
SPRENKLE, D & M	\$24,080	2.11	\$24,080
SPRENKLE, D & M	\$58,880	8.40	\$272,840
SPRUCELAND LBTY CO	\$112,200	0.86	\$291,890
SPRUCELAND ASSOC INC	\$27,950	2.80	\$27,950
SPYROPOULOS, L	\$51,640	2.37	\$267,270
SYPROPOULOS, L	\$7,820	0.08	\$7,820
ST. LIFER, D, B & U	\$27,920	7.60	\$27,920
ST.PETER, J & ALLAIN, A	\$51,080	1.90	\$153,460
STAN, G	\$48,600	0.86	\$121,910
STASIOWSKI, J	\$580	0.48	\$580
STATCHEN, R JR & P	\$159,840	0.63	\$392,740
STATE OF NH, DNCR	\$42,300	5.00	\$79,100
STEBBINS, T & M	\$216,500	0.36	\$363,850
STEEVES, P	\$41,840	5.20	\$125,730
STEINIGER, W TRSTE	\$98,840	0.28	\$228,830
STENSTROM, D & M	\$41,700	2.10	\$41,700
STEPHENSON, J	\$160,200	0.43	\$368,400
STEVENSON, L TRSTE	\$162,950	1.42	\$292,700
STEWART, M	\$58,560	3.97	\$195,460
STEWART, M	\$42,600	0.46	\$92,430
STOCKFISCH, W	\$166,500	0.75	\$276,890

OWNER	LAND	ACRES	TOTAL
STODDARD WOODLND	\$38,600	4.00	\$83,500
STODDARD WOODLND	\$12,390	0.79	\$12,390
STONE BARN SPG, LLC	\$129,200	0.06	\$170,280
STONE, E	\$157,940	0.40	\$206,330
STONE, J	\$238,640	0.53	\$382,040
STORY, B & E	\$27,980	16.00	\$27,980
STORY, B & E	\$69,440	7.70	\$323,380
STORY, B & E	\$13,660	0.10	\$13,660
STRICKLAND, J & P TSTES	\$114,180	0.64	\$129,410
STRICKLAND, S & M	\$191,020	3.00	\$246,280
STRICKLAND, S & M	\$62,370	0.46	\$66,170
STRIMBECK, E & B	\$46,550	0.90	\$197,880
STRONG, J	\$156,600	0.39	\$206,510
STUCKEY, C & A	\$17,920	2.60	\$17,920
STUCKEY, F III & L	\$51,560	2.30	\$234,880
STUCKEY, F III & L	\$21,680	2.40	\$21,680
STUCKEY, F III & L	\$20,960	1.80	\$20,960
STURGIS, J	\$22,600	3.40	\$22,600
SULKOWSKI, D & S	\$178,980	0.67	\$349,040
SULLIVAN, C TR	\$48,900	0.89	\$108,250
SULLIVAN, H & A	\$45,500	0.55	\$127,450
SULLIVAN, J & E	\$190,120	1.10	\$331,590
SULLIVAN, M TRSTE	\$28,670	0.21	\$97,750
SULLIVAN, S	\$48,340	1.70	\$183,400
SUMMERTON, D & J	CU \$52,250	15.99	\$232,300
SUPPLE, S	\$59,840	9.20	\$217,370
SWAMP ISLAND LLC	\$5,300	0.07	\$5,300
SWAMP ISLAND, LLC	\$95,300	0.55	\$123,910
SWAN, D	\$134,400	0.71	\$381,190
SWAN & MCKIRRYHER	\$1,560	0.02	\$1,560
SWEENEY, L TRSTE	\$105,300	0.45	\$121,580
SWEENEY, S & B	\$26,330	0.14	\$44,240
SWINGLE, P & B	\$45,560	7.30	\$332,020
SWINGLE, R	\$51,200	2.00	\$221,000
SYLVESTER, D TRSTE	\$129,600	0.17	\$175,440
SZYMASZEK, M	\$134,950	6.22	\$270,870
TABOR, R & K TRSTES	\$173,100	0.84	\$285,600
TAYLOR, B TRSTE	CU \$2,380	25.50	\$2,380
TAYLOR, B TRSTE	CU \$19,140	256.50	\$19,140
TAYLOR, D	\$38,760	0.43	\$73,920
TAYLOR, M & C TRSTES	\$180,000	0.30	\$267,320
TAYLOR, T & E	\$1,000	0.21	\$1,000
TERRAZZINO, K	\$43,340	1.70	\$264,150
NATURE CONSERVANCY	CU \$1,750	104.00	\$1,750
NATURE CONSERVANCY	CU \$1,140	68.00	\$1,140
NATURE CONSERVANCY	CU \$1,680	100.00	\$1,680
NATURE CONSERVANCY	CU \$1,150	28.00	\$1,150
NATURE CONSERVANCY	CU \$830	20.00	\$830
NATURE CONSERVANCY	CU \$560	16.00	\$560
NATURE CONSERVANCY	CU \$1,380	40.00	\$1,380
NATURE CONSERVANCY	CU \$2,130	62.00	\$2,130
NATURE CONSERVANCY	CU' \$3,030	100.00	\$3,030
NATURE CONSERVANCY	CU \$1,100	32.00	\$1,100
THIBEDAU, C & S TRSTS	\$191,920	2.60	\$346,890
THIELEN, S & K	\$51,080	1.90	\$217,540
THOMSON, K	\$45,200	0.52	\$173,140
THURROTT, I & N	\$192,200	0.86	\$231,600
TILLSON, M & B	\$55,260	5.38	\$211,520
TISDALE, D	\$80,750	0.10	\$157,520
TOWNSEND TR, P	\$187,800	0.89	\$315,360
TOWNSEND, J & C	\$57,090	6.91	\$208,890
TRAHAN, G	\$54,900	3.00	\$133,470
TRANIELLO, J & S	\$50,840	1.70	\$232,320
TREAT, R	\$83,000	0.33	\$83,000
TREAT, R	\$116,850	0.38	\$173,650
TREMBINSKI, T & M	\$160,000	0.25	\$225,720
TREMBLY, E	\$3,920	0.20	\$3,920
TREVBEA PRICE TR #1	\$0	0.15	\$0
TREVBEA PRICE TR #1	\$161,690	0.42	\$214,290
TREXLER, L & R	\$34,110	1.30	\$88,710

OWNER		LAND	ACRES	TOTAL	OWNER		LAND	ACRES	TOTAL
TRINCERI, R & D TRSTES		\$180,300	5.00	\$482,400	WARD, I & HAYES, J		\$56,500	2.25	\$235,270
TRUDEAU, A & K		\$72,800	0.05	\$124,050	WARNER, E		\$53,000	3.50	\$217,560
TUCKER, J & A		\$145,300	0.26	\$208,920	WARNER, R & B		\$52,280	2.90	\$194,800
TUCKER, J & S		\$213,300	0.22	\$283,960	WARREN, D		\$46,760	7.80	\$97,790
TUCKER, M & B		\$44,850	5.04	\$227,080	WASHUTA FAM TR		\$166,460	1.38	\$176,950
TUCKER, S & T		\$178,080	5.29	\$455,130	WASHUTA, J & D		\$64,240	14.08	\$218,700
TUKIANEN, D & G TRSTES		\$21,950	0.92	\$21,950	WATSON REVOC TR		\$209,880	0.79	\$248,760
TUKIANEN, D & G TRSTES		\$180,500	0.75	\$369,500	WATSON, J		\$47,300	0.73	\$154,300
TULLER, H		\$221,900	0.69	\$502,900	WATSON, J		\$18,200	0.32	\$18,200
TURCOTTE, T		\$55,750	5.79	\$268,300	WATSON, J		\$17,800	0.28	\$17,800
TURGEON, S & S		\$51,450	2.21	\$267,420	WATSON, L & G		\$173,000	0.38	\$237,520
TURINO, M		\$47,720	1.18	\$129,960	WATSON, L & G		\$18,600	0.36	\$18,600
TURK, J & K		\$50,240	1.20	\$266,130	WEAVER, D & D		\$49,000	0.90	\$161,640
TURNBULL, D & S		\$225,600	1.50	\$588,500	WEAVER, R & ELLIOTT, D		\$45,300	0.53	\$220,840
TURNER-HERZOG, M		\$51,680	2.40	\$181,160	WEAVER, W		\$49,200	0.92	\$131,270
TUTHILL PROPS, LLC	CU	\$209,090	74.00	\$277,640	WEAVER, W & P SR		\$22,350	0.96	\$22,350
TUTHILL, E & J	CU	\$49,720	27.00	\$458,080	WEAVER, W & P SR		\$42,600	0.46	\$189,080
TUTHILL, J TRSTE	CU	\$36,550	672.00	\$36,550	WEAVER, W SR & P		\$14,240	0.28	\$16,240
TUTTLE, D		\$41,040	0.80	\$109,470	WEBBER, G & T		\$18,020	0.52	\$18,020
TUTTLE, D		\$16,280	0.76	\$16,280	WEBBER, G & T		\$64,920	5.10	\$298,440
TUTTLE, D		\$30,880	0.04	\$30,880	WEBBER, G & T		\$32,270	5.14	\$32,270
TUTTLE, D		\$30,880	0.04	\$30,880	WEEKS, C TUSTE		\$158,000	0.24	\$243,210
TUTTLE, E & C		\$71,200	6.00	\$228,560	WEGIEL FAM R.E. TR		\$184,920	5.10	\$341,410
TUTTLE, R & D		\$45,480	1.40	\$225,340	WELCH, E & W		\$38,720	1.60	\$75,340
TYBURSKI, W & C		\$37,200	0.37	\$104,020	WELCH, E & W	CU	\$1,310	25.00	\$1,310
UNDERWOOD, T & P	CU	\$49,280	44.00	\$296,140	WELCH, E & W	CU	\$3,000	63.80	\$3,000
URBANO, B		\$20,000	1.00	\$20,000	WELCH, E & W	CU	\$970	18.00	\$970
VACHON, C		\$48,000	0.80	\$261,400	WELCH, E & W	CU	\$5,500	117.00	\$5,500
VAILLANCOURT, D		\$3,960	3.30	\$3,960	WELCH, E & W	CU	\$1,650	35.00	\$1,650
VAILLANCOURT, D		\$184,000	0.70	\$261,280	WELCH, E & W	CU	\$760	14.00	\$760
VAILLANCOURT, D		\$23,680	11.40	\$23,680	WELCH, E & W	CU	\$690	12.76	\$690
VAILLANCOURT, D		\$80,760	10.80	\$299,440	WELCH, T		\$54,850	5.04	\$182,990
VAILLANCOURT, D		\$43,830	0.87	\$189,850	WELDON, L TRSTE		\$112,000	0.21	\$112,000
VAN OLDEN, N		\$190,000	1.10	\$190,000	WELDON, L		\$217,500	1.15	\$569,390
VAN OLDEN, N		\$162,740	5.20	\$162,740	WENTWORTH, D		\$16,400	0.22	\$28,640
VAN SCHAIJK, J & K		\$46,380	36.00	\$46,380	WENTWORTH, D		\$4,830	0.05	\$4,830
VAN SCHAIJK, K		\$64,450	14.50	\$402,820	WENTWORTH, D		\$121,350	2.10	\$194,930
VAN WICKLER, R ETAL		\$45,520	1.43	\$245,440	WERNINGER IRRVOC TR		\$17,600	0.26	\$17,600
VAUGHN COTTAGE, LLC		\$59,400	0.03	\$59,400	WESTON, W & C	CU	\$190	19.00	\$190
VAUGHN COTTAGE, LLC		\$150,300	0.24	\$189,160	WESTON, W & C		\$10,380	5.10	\$10,380
VAUGHN COTTAGE, LLC		\$137,520	0.78	\$137,520	WHELIHAN LIV TR, R		\$23,270	1.43	\$23,270
VAYENS, L		\$50,120	1.10	\$100,880	WHIPPY, M		\$31,800	0.28	\$140,370
VICK, J & L		\$16,720	1.60	\$16,720	WHITCOMB, W & S		\$91,800	0.68	\$136,900
VITALE, C, M & J		\$166,360	1.30	\$166,360	WHITE, R JR & EMBRE, P		\$171,920	0.70	\$209,070
VITALE, C, M & J		\$171,000	0.32	\$226,120	WHITLEY, S		\$58,330	0.05	\$58,860
VOLK, F III & J		\$49,780	2.90	\$199,050	WHITLEY, S		\$68,040	0.92	\$198,920
VOLPE, S TRSTE		\$78,240	0.89	\$264,730	WHITNEY & SHERMAN	CU	\$49,820	81.00	\$141,500
VOSS, K & RAFALA, R		\$50,600	1.50	\$258,510	WHITTEN, J		\$50,050	1.04	\$195,040
WADDELL, S TRSTE		\$131,620	0.30	\$176,790	WICHLAND, D TRSTE		\$45,000	0.02	\$91,040
WADSWORTH, S & M		\$40,200	0.42	\$160,120	WICHLAND, D TRSTE		\$25,000	0.01	\$25,000
WAKEMAN, M & B		\$47,980	1.40	\$183,600	WILD LAKE ASSOC INC.	CU	\$13,310	139.80	\$13,310
WALKER, C & M		\$183,000	0.36	\$252,800	WILDER, B		\$770	0.11	\$1,870
WALLACE, E & R		\$172,160	3.00	\$220,680	WILDER, B		\$24,710	2.63	\$24,710
WALLACE, E & R		\$89,570	0.21	\$89,570	WILDER, B		\$51,320	2.10	\$214,430
WALLACE, M		\$50,240	1.20	\$117,150	WILDER, J		\$50,770	1.64	\$142,160
WALLACE, R & J		\$6,920	0.15	\$6,920	WILES, C		\$2,040	1.70	\$2,040
WALLACE, R & RISNEY, J		\$128,520	0.26	\$197,100	WILES, C		\$70,000	20.00	\$314,720
WALLACE, R & V		\$198,000	0.50	\$532,090	WILLEY, B & T		\$720	0.60	\$720
WALLACE, W		\$166,730	0.41	\$300,880	WILLEY, B & T		\$20,140	6.10	\$20,140
WALLACE, W		\$0	1.40	\$0	WILLEY, B & T	CU	\$1,690	6.80	\$1,690
WALTHER, R & M		\$96,750	0.63	\$96,750	WILLEY, B & T	CU	\$440	20.90	\$440
WALTHER, R & M		\$68,400	0.56	\$123,180	WILLIAMS, L ETAL		\$47,410	3.01	\$294,480
WALTON LVG TR JUDITH		\$299,500	5.30	\$608,370	WILLIAMS, M & N		\$1,940	0.44	\$1,940
WALTON LVG TR JUDITH		\$49,350	1.50	\$49,350	WILLIAMS, M & N TRSTES	CU	\$91,880	91.09	\$379,950
WARD REVOC TRTS	CU	\$1,240	24.30	\$1,240	WILLIAMS, M & N TRSTES		\$33,330	0.02	\$33,330
WARD REVOC TRTS	CU	\$660	23.70	\$660	WILLIAMS, M & N TRSTES		\$33,330	0.02	\$33,330
WARD REVOC TRTS	CU	\$1,540	26.40	\$1,540	WILLIAMS, R & V		\$50,240	1.20	\$168,780
WARD REVOC TRTS	CU	\$59,540	90.20	\$436,620	WILLIAMS, S L		\$56,000	0.19	\$128,260
WARD REVOC TRTS	CU	\$1,480	44.00	\$1,480	WILLISTON, E ETAL		\$15,360	1.30	\$15,360

<u>OWNER</u>		<u>LAND</u>	<u>ACRES</u>	<u>TOTAL</u>
WILLISTON, E ETAL		\$92,400	0.20	\$115,130
WILLISTON, E ETAL		\$211,160	2.80	\$294,320
WILSON, C & S TRSTES		\$180,300	5.00	\$394,370
WILSON, S		\$267,700	15.00	\$267,700
WILSON, S	CU	\$177,840	13.70	\$194,740
WILSON, S		\$75,300	12.50	\$75,300
WINSHIP, K	CU	\$43,870	66.00	\$50,470
WINSLOW, G & K		\$139,570	0.32	\$469,560
WINTERBOTTOM, R		\$176,500	0.23	\$370,240
WINTERBOTTOM, R		\$20,200	0.70	\$35,830
WOISLAW, W & L		\$37,800	0.38	\$117,500
WOISLAW, W & L		\$18,600	0.36	\$18,600
WOLFCREEK INVEST LLC	CU	\$210	5.20	\$210
WOLFCREEK INVEST LLC	CU	\$4,990	97.40	\$4,990
WOLFCREEK INVEST LLC	CU	\$8,250	198.00	\$8,250
WOLFSON, J & L		\$140,600	0.19	\$230,440
WOLLAEGER, J, W & M		\$272,400	1.24	\$1,082,720
WOLLAEGER, J, W & M		\$270,000	1.00	\$422,500
WOLLAEGER, J, W & M		\$33,110	3.30	\$33,110
WOLLAEGER, J, W & M		\$33,110	3.30	\$33,110
WOLLAEGER, J, W & M		\$2,530	0.75	\$2,530
WOOD REALTY TR		\$100,320	28.40	\$437,530
WOOD, A & K		\$127,300	0.12	\$207,530
WOOD, P JR		\$35,310	2.30	\$169,020
WOODS, D ETAL		\$2,520	2.10	\$2,520
WOODS, M & M		\$63,720	0.34	\$216,560
WOODS, R		\$222,480	0.43	\$299,540
WOODS, R		\$25,000	0.01	\$25,000
WORTH, J TRSTE		\$10,000	0.01	\$10,000
WORTH, J TRSTE		\$29,000	0.22	\$104,900
WORTH, E & S TRSTES		\$231,750	1.42	\$353,400
WORTH, J TRSTE		\$4,220	0.03	\$4,220
WRIGHT, C		\$50,320	1.27	\$125,270
WRIGHT, M & OLSON, B		\$45,400	0.54	\$273,200
WRIGHT, R ETAL		\$119,880	0.18	\$188,090
YAGLOU FAM TR		\$204,060	1.47	\$297,630
YAGLOU FAM TR		\$153,710	0.28	\$317,920
YLITALO, T & S		\$53,310	3.76	\$250,830
YOCONO REV TR		\$220,680	0.38	\$379,500
YOCONO REV TR	CU	\$22,350	31.60	\$22,350
YOUNG, A		\$51,200	2.00	\$150,420
YOUNG, C		\$51,260	0.42	\$106,810
YOUNG, K & J		\$7,520	0.38	\$7,520
YOUNG, K & NEWTON, J		\$53,120	3.60	\$175,710
YOUNG, T		\$52,280	2.90	\$206,120
YOUNGMAN, K & M		\$52,640	3.20	\$258,270
YOXEN, E	CU	\$89,030	47.80	\$338,420
YOXEN, E		\$45,900	0.18	\$46,610
YOXEN, E		\$12,500	0.03	\$12,500
YROGERG LLC		\$27,440	0.92	\$27,440
YROGERG, LLC		\$140,200	5.60	\$276,300
ZAGAMI, S & L		\$222,800	0.78	\$364,610
ZAJAC, R		\$57,510	0.46	\$119,920
ZAMARIPAS, M & J		\$121,380	0.22	\$180,610
ZIMMERMANN, E & C		\$46,100	0.61	\$190,840
ZINN, G TRSTE		\$198,650	1.80	\$473,070
ZORN, P & OWENS, M		\$50,000	1.00	\$195,680
ZSCHAU, D		\$157,500	0.40	\$269,600

## **Town of Stoddard**

### **Transfer Station Policies**

1. The Stoddard Transfer Station is available for use to property tax payers and renters of the Town of Stoddard only.
2. A current Transfer Station sticker must be displayed at all times for use. Renters must obtain a current sticker from their landlord.  
Only two (2) stickers will be issued for each household. Transfer station stickers are available at the town offices.
3. All materials must be deposited in the appropriate containers only. Any questions should be directed to the on-site attendant.  
The attendant has been placed in control of the facility by the Town of Stoddard and your full cooperation is expected.
4. Hazardous materials cannot be accepted at the Stoddard Transfer Station and must be deposited at facilities authorized to receive such materials, the closest location is in Keene, NH at the Keene Transfer Station on Route 12 North. Materials accepted and specific dates and times are available by calling the Keene Transfer @ 352-5739.
5. Construction & Demolition debris will be accepted at the Stoddard Transfer Station, however it is limited to one 1/2 Ton Pickup truck per week.  
Residents who have larger needs are encouraged to use a commercial hauler service of your choice and arrange for this service privately.
6. Car and small truck tires are limited to not more than two (2) per week and must be off the rim.
7. For safety reasons, all persons must exit the Transfer Station immediately after depositing materials. At no time will there be anyone, other than the attendant, in any of the general areas or buildings.
8. Commercially generated waste is not accepted in any form.

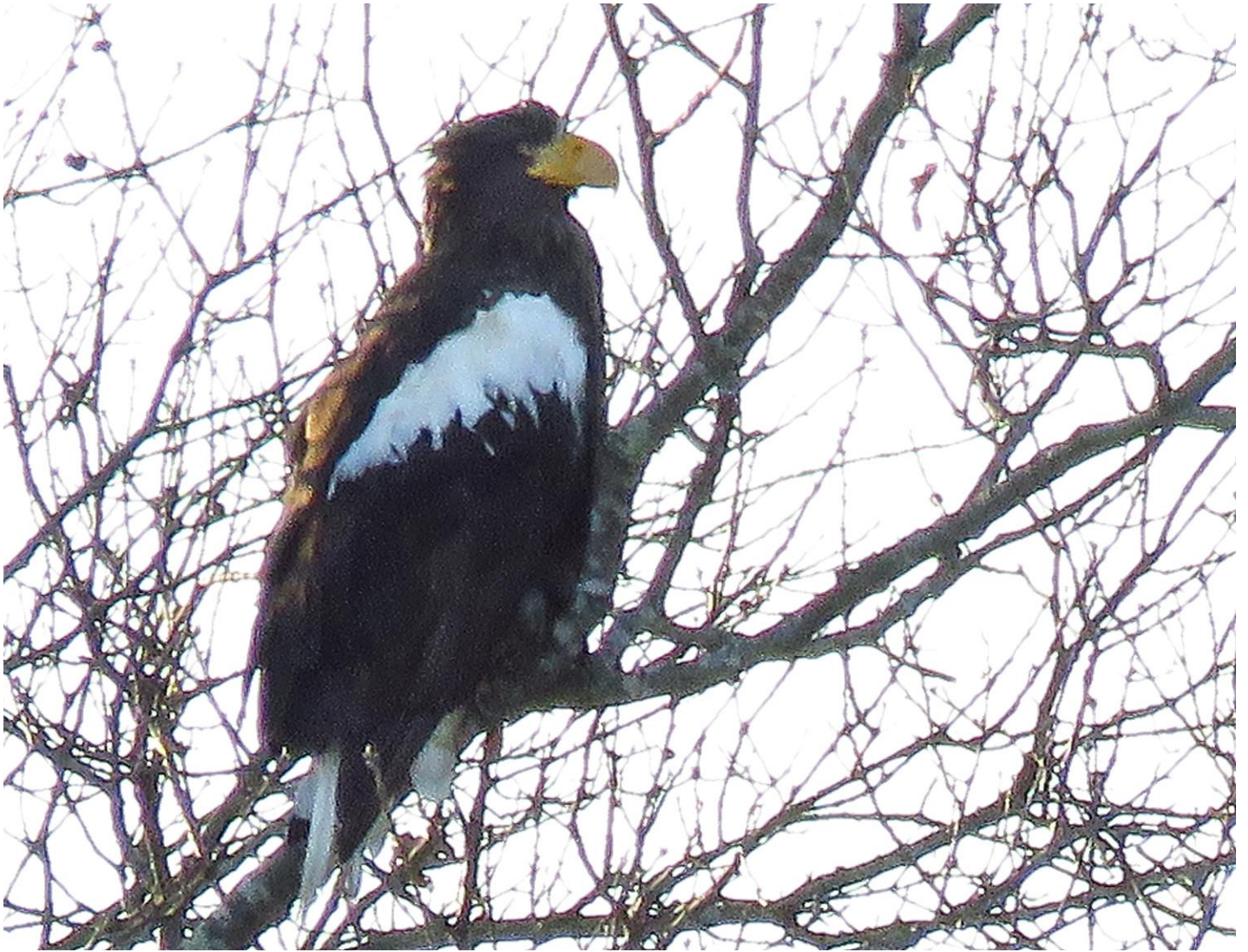
#### **2021 AUDIT**

The 2021 Audit will be available on the website and at the town office as soon as it is completed.



The flower boxes at the Town Offices were lovingly cared for by the late Mary Lou Stymest. If anyone enjoys working with flowers and would like to maintain some beauty at the Gould House, give Pat a call at 603-446-3326 ext 0.





Picture courtesy of Bob Fee