

352.0742b

L23

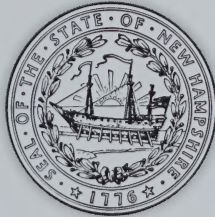
2007

c.2

Annual Report

FOR THE TOWN OF

Landaff, N.H.



Year Ending December 31, 2007

352-07423
L23
2007

Town of Landaff, New Hampshire

ANNUAL REPORT

of the Town Officers

Year Ended December 31, 2007

N. H. STATE LIBRARY

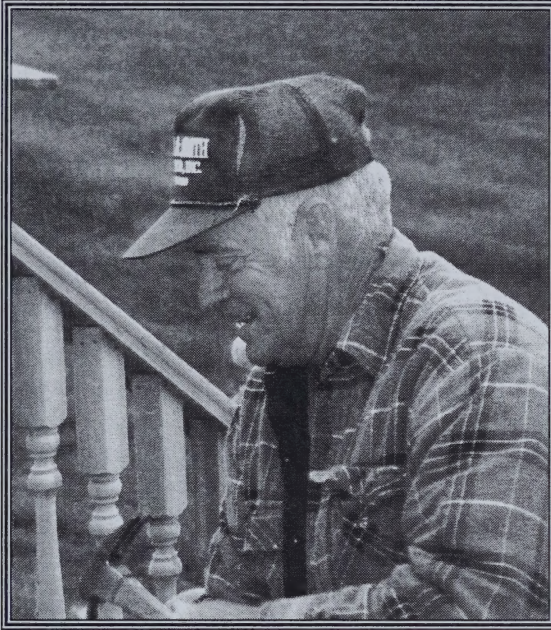
MAY 1 2 2008

TABLE OF CONTENTS

CONCORD, NH

Town Officers.....	4
2007 Town Meeting Minutes.....	5
Auditor's Report.....	10
Town Meeting Warrant	11
Brief Description of Requesting Agencies	14
Budget - Revenue	16
Budget - Expenditures	17
Schedule of Town Property	19
Summary Inventory of Assessed Valuation.....	19
Statement of Appropriations and Taxes Assessed	19
Comparative Statement.....	20
Balance Sheet	21
Town Clerk's Report	23
Tax Collector	24
Summary of Tax Lien Accounts.....	25
Treasurer's Report	26
Summary of Receipts.....	28
Detailed Statement of Payments	30
Summary of Payments	36
Cemetery Trustees	38
Trust Funds.....	39
Fire Department Treasurer's Report	40
Landaff Volunteer Fire Department - 2007 Activity Report.....	42
Constable's Report	43
Conservation Commission.....	44
Vital Statistics.....	45
Emergency Management Director's Report.....	47
Annual School Report	49

IN DEDICATION



Special Recognition to
Ronald J. Howard
For his years of service to
The Town of Landaff

We dedicate the 2007 Town Report to Ronald J. Howard. Ron and his wife Maybelle have made the Town of Landaff their home for the last 35 years. The Howards have one daughter, Robin. Ron has been a carpenter for 44 years (new construction and remodeling) and has worked on the Landaff Town Hall, the Blue School, and many private homes throughout Landaff.

Ron served on the Board of Adjustment for 32 years. His favorite pastime is playing his mandolin, guitar and bass. He first played with his father, Chet Howard and the Rodeo Wranglers, and has played with many other bands in the area throughout the years.

The Citizens of the Town of Landaff are grateful to you Ron, for your many years of service to the Town.

TOWN OFFICERS

Board of Selectmen

Michael M. Ransmeier (2008)
C. Bruce Ulricson (2009)
Douglas F. Erb (2010)

Town Clerk

Donna J. Bronson (2010)

Treasurer

Heidi Sagar (2008)

Constable

Edward Peterson (2010)

Overseer of Public Welfare

Board of Selectmen

Moderator

Joseph Wiggett (2008)

Tax Collector

Donna J. Bronson (Appointed)

Administrative Assistant

Debbie A. Geoffroy

Road Agent

Wayne Mardin

Fire Chief

Harold McGovern

Trustees of Trust Funds

Francis Felton (2008)
Florence Webb (2009)
Wendell Jesseman (2010)

Supervisors of the Checklist

Donna J. Presby (2008)
Richard Bronson (2010)
Brenda Dodge (2012)

Planning Board

Brenda Dodge (2008)
Philip Finkle, Chariman (2009)
Michael M. Ransmeier, Ex-officio
Patrick Webb (2009)
Deborah Erb (2010)
Errol S. Peters – Alternate
Marilyn Booth – Alternate

Cemetery Trustees

Thomas Clement (2008)
Mary Dodge (2009)
Joyce Snelling (2010)

Planning Board Secretary

Debbie Geoffroy

Board of Adjustment

James LaGrassa (2008)
Francis Felton (2009)
Heidi Sagar (2009)
Paul Amey (2010)
James Lapeirre (2010)

Conservation Committee

Richard Bronson (2008)
Susan O'Hearn (2008)
David Clement (2009)
Thomas Smith (2009)
Marilyn Booth (2010)
Richard Sagar - Alternate
Donald Wharton - Alternate

Sexton

E. Daniel Dodge

Health Officers

Board of Selectmen

Surveyors of Wood, Bark & Timber

Gene Fitchett
Frederick Erb
Richard Santy

Fence Viewers

Lewis Mardin, Jr.
E. Daniel Dodge
David Clement

Pound Keepers

Douglas Erb, Damiano Cavicchio, Richard Bronson

TOWN OF LANDAFF
2007 Town Meeting Minutes

To the inhabitants of the Town of Landaff, in the County of Grafton, and the State of New Hampshire, qualified to vote in the Town affairs:

You are hereby notified to meet at the Town Hall in said Landaff on Tuesday, the 13th day of March 2007 the polls to be open from 4:00 pm to 8:00 pm and at 7:00 o'clock in the evening, to act upon the following Articles:

ARTICLE 1. To choose all necessary Town Officers for the ensuing year.

ARTICLE 2. To raise such sums of money as may be necessary to defray Town charges for the ensuing year and make appropriations of the same:

Recommended motion: to see if the Town will vote to raise and appropriate the sum of \$288,644.98 which represents the operating budget. Said sum does not include special or individual articles addressed herein, which, if all passed, total \$110,474.42. The Selectmen recommend this appropriation.

A motion was made by Michael Ransmeier and 2nd by Doug Erb. A motion was made by Errol Peters to amend Article 2 to read: To see if the Town will vote to raise and appropriate the sum of \$285,644.98 which represents the operating budget. Said sum does not include special or individual articles addressed herein, which passed total \$94,289.42. David Clement 2nd the motion to amend. The motion to AMEND Article PASSED. **ARTICLE 2 PASSED AS AMENDED.**

ARTICLE 3. To see if the Town will vote to raise and appropriate the sum of \$1,375.00 for North Country Home Health & Hospice Agency. (By Request)

A motion was made by Jim O'Hearn and 2nd by Shirley Peterson. Gail Jurasek, Director of Home Health informed the Town that North Country Home Health and Hospice of the Littleton Area had merged into one. That is the reason for the \$450.00 increase from last year. She recommends that if we vote yes on Article 3, not to vote on Article 7.

ARTICLE 3 PASSED.

ARTICLE 4. To see if the Town will vote to raise and appropriate the sum of \$472.00 for White Mountain Mental Health Agency. (By Request)

A motion was made by Shirley Peterson and 2nd by Don Wharton. **ARTICLE 4 PASSED.**

ARTICLE 5. To see if the Town will vote to raise and appropriate the sum of \$650.00 for the Tri-County Community Action Program. (By Request)

A motion was made by Gail Jurasek and 2nd by Carol Wharton. **ARTICLE 5 PASSED.**

ARTICLE 6. To see if the Town will vote to raise and appropriate the sum of \$1,690.00 for the Ross Ambulance Service. (By Request)

A motion was made by Deb Erb and 2nd by Harry McGovern. **ARTICLE 6 PASSED.**

ARTICLE 7. To see if the Town will vote to raise and appropriate the sum of \$435.00 for the Hospice of the Littleton Area. (By Request)

Errol Peters made a motion to pass over Article 7. Betsy Babcock 2nd the motion.

Article 7 was passed over.

ARTICLE 8. To see if the Town will vote to raise and appropriate the sum of \$550.00 for the Grafton County Senior Citizens Agency. (By Request)

A motion was made by Shirley Peterson and 2nd by Gail Jurasek. **ARTICLE 8 PASSED.**

ARTICLE 9. To see if the Town will vote to raise and appropriate the sum of \$428.02 for North Country Council dues. (By Request)

A motion was made by Errol Peters and 2nd by Patrick Webb. **ARTICLE 9 PASSED.**

ARTICLE 10. To see if the Town will vote to raise and appropriate the sum of \$1,000.00 for the Lisbon Lions Club. (By Request)

A motion was made by Betsy Babcock and 2nd by Don Beaudin. Wendell Jesseman said this should say the Lisbon Lions Club Youth Program. Errol Peters made a motion to amend Article 10 to read: To see if the Town will vote to raise and appropriate the sum of \$1,000.00 for the Lisbon Lions Club Youth Program. This was 2nd by Deb Erb. The amendment to change this to the Lisbon Lions Club Youth Program **PASSED.**

AMENDED ARTICLE 10. To see if the Town will vote to raise and appropriate the sum of \$1,000.00 for the Lisbon Lions Club Youth Program. **ARTICLE 10 PASSED AS AMENDED.**

ARTICLE 11. To see if the Town will vote to raise and appropriate the sum of \$1,000.00 for the Lisbon Public Library. (By Request)

A motion was made by Heidi Sagar and 2nd by Florence Webb. **ARTICLE 11 PASSED.**

ARTICLE 12. To see if the Town will vote to raise and appropriate the sum of \$4,582.00 for the Lisbon Fast Squad. (By Request)

A motion was made by Deb Erb and 2nd by Harry McGovern. **ARTICLE 12 PASSED.**

ARTICLE 13. To see if the Town will vote to raise and appropriate the sum of \$142.40 for the American Red Cross. (By Request)

A motion was made by Cheryl Wiggett and 2nd by Jim O'Hearn. **ARTICLE 13 PASSED.**

ARTICLE 14. To see if the Town will vote to raise and appropriate the sum of \$100.00 for (ACORN) - A Community Resource Network. (By Request)

A motion was made by Shirley Peterson and 2nd by Sue O'Hearn. **ARTICLE 14 PASSED.**

ARTICLE 16. To see if the Town will vote to raise and appropriate the sum of \$500.00 for CASA (Court Appointed Special Advocates). (By Request)

A motion was made by Shirley Peterson and 2nd by Florence Webb. There was a standing count. NO-28 YES-16 **ARTICLE 16 WAS DEFEATED.**

ARTICLE 17. To see if the Town will vote to raise and appropriate the sum of \$20,000.00 for a new roof for the Town Hall. (Recommended by the Selectmen)

A motion was made by Deb Erb and 2nd by Betsy Babcock. After much discussion, Errol Peters made a motion to amend the amount to \$18,000.00. This was 2nd by Matthew Michaelis. **AMENDED ARTICLE 17 - To see if the Town will vote to raise and appropriate the sum of \$18,000.00 for a new roof for the Town Hall. AMENDED**

ARTICLE 17 WAS DEFEATED. ARTICLE 17 PASSED AS WRITTEN.

ARTICLE 18. To see if the Town will vote to raise and appropriate the sum of \$10,000.00 for new double-hung insulated windows for the Town Hall. (Recommended by the Selectmen)

A motion was made by Pat Webb and 2nd by Jim O'Hearn. **ARTICLE 18 WAS DEFEATED.**

ARTICLE 19. To see if the Town will vote to raise and appropriate the sum of \$300.00 to maintain the Town of Landaff web site. (Recommended by the Selectmen)

A motion was made by Pat Webb and 2nd by Jason Cartwright. **ARTICLE 19 PASSED.**

ARTICLE 20. To see if the Town will vote to raise and appropriate the sum of \$40,000.00 to purchase a used backhoe for the Highway Department. Of the foregoing amount, \$8,000.00 would be provided by trading-in the current backhoe, \$28,400.00 would be provided from the Highway Department Capital Reserve Fund, and \$3,600.00 would be raised from taxes, leaving a balance of \$108.80 in the Highway Department Capital Reserve Fund to keep the account open. (Recommended by the Selectmen)

A motion was made by Sue O'Hearn and 2nd by Harry McGovern. Selectman Doug Erb told the voters the current backhoe is a 1986 and the Town bought it used in 1992. Doug Erb also mentioned that Tom Simth has about \$4,000.00 in his maintenance budget for the old backhoe and we can cut that by \$3,000.00 if we pass Article 20. The Selectmen also recommended that if ARTICLE 20 passes, not to pass ARTICLE 22, which would put \$10,000.00 in the Highway Department Capital Reserve Fund. **ARTICLE 20 PASSED.**

ARTICLE 21. To see if the Town will vote to allow the Selectmen to develop a permit fee list and/or charges for Town required services. This list to include but not be limited to: permit fees (driveway, building, occupancy permit fees, etc.), inspection fees and costs. Said fees to be placed in the Town General Fund. (Recommended by the Selectmen)

A motion was made by Deb Erb and 2nd by Michael Michaelis. Errol Peters made a motion to amend Article 21 to read: To see if the Town will vote to allow the Selectmen to develop a permit fee list and/or charges to Town required services. This list to include by not be limited to: permit fees (driveway, building, occupancy permit fees, etc.), inspection fees and costs. Said fees to be placed in the Town General Fund and that the Selectmen will hold a public meeting before the adoption of any new fees or charges. This Amendment was 2nd by Lewis Mardin. The motion to amend ARTICLE 21 PASSED. **ARTICLE 21 PASSED AMENDED.**

ARTICLE 22. (If Article 20 does not pass) To see if the Town will vote to raise and appropriate the sum of \$10,000.00 to be added to the Highway Department Capital Reserve Fund. (Recommend by the Selectmen)

Errol Peters made a motion to Table Article 22. This was 2nd by Deb Erb. **ARTICLE 22 WAS TABLED.**

ARTICLE 23. To see if the Town will vote to raise and appropriate the sum of \$5,000.00 to be added to the Fire Department Capital Reserve Fund. (Recommended by the Selectmen)

A motion was made by Sue O'Hearn and 2nd by Lewis Mardin. **ARTICLE 23 PASSED.**

ARTICLE 24. To see if the Town will vote to raise and appropriate the sum of \$12,000.00 to cover cost of the first stage of a three stage plan to re-write the Town of Landaff Master Plan, and further to accept and spend any grant monies that may be forthcoming to cover the expense of re-writing the Plan. (Recommended by the Selectmen)

A motion was made by Deb Erb and 2nd by Jim O'Hearn. Errol Peters made a motion to amend Article 24 to read: To see if the Town will vote to raise and appropriate the sum of \$8,000.00 to cover cost of the first stage of a three stage plan to re-write the Town of Landaff Master Plan, and further to accept and spend any grant monies that may be forthcoming to cover the expense of re-writing the Plan. Deb Erb 2nd the motion. The amendment was DEFEATED. **ARTICLE 24 PASSED AS WRITTEN.**

ARTICLE 25. PETITION TO DEDICATE CURRENT USE TAX FOR CONSERVATION FUNDING

The following citizens of Landaff approve of the Landaff Conservation Commission's request to dedicate 100 per cent of the Current Use Tax acquired as per RSA 79-A to a separate fund that will be used solely for the purpose of acquiring conservation easements within the boundaries of Landaff. These conservation easements will be entered into voluntarily with a property owner and will help to preserve the rural character of Landaff. The total Current Use Tax collected in Landaff from 1995 through 2006 was \$10,200.00. SUBMITTED BY PETITION. *(Recommended by the Landaff Conservation Commission) (Recommended by the Selectmen)*

Moderator, Joe Wiggett, asked David Clement to preside over Article 25 so he could participate in the discussion. A motion was made by Bill Adam and 2nd by Shirley Peterson. Marilyn Booth spoke on behalf of the Conservation Commission for this Article. Joe Wiggett made a motion to Amend Article 25 to change the 100 percent of the Current Use Tax to be dedicated for conservation easements to an amount not to exceed \$3,000.00 a year. This motion failed to get a 2nd. Deb Erb asked if it is the Current Use Change Tax not the Current Use Tax does it need to be amended. Doug Erb said before we get done it should read Current Use Change Tax so there will be no confusion. There was discussion on the legality of the Article because of the wording. It was noted by Errol Peters that approximately 1/3 of the Town is already preserved (approximately 4600 acres of National Forrest, 400-500 acres in Conservation Easements). Errol Peters made a motion to table Article 25 because it was not properly written. Lewis Mardin 2nd the motion. Doug Erb said, "I think that if you want to go ahead and vote on this motion to get a sense of the Town and if it is illegal it becomes null and void." There is a motion and a 2nd on the floor to table Article 25. The motion to TABLE ARTICLE 25 FAILED. Vote: YES-19 NO-26. After much discussion, Wendell Jesseman made a motion to AMEND ARTICLE 25 TO READ: The following citizens of Landaff approve of the Landaff Conservation Commission's request to dedicate NOT TO EXCEED \$5,000.00 FOR THE YEAR 2007 ONLY OF THE CURRENT USE CHANGE TAX acquired as RSA 79-A to a separate fund that will be used solely for the purpose of acquiring conservation easements within the boundaries of Landaff. These conservation easements will be entered into voluntarily with a property owner and will help to preserve the rural character of Landaff. The total Current Use

Change Tax collected from 1995 through 2006 was \$10,200.00. (SUBMITTED BY PETITION) The AMENDMENT WAS 2nd by Jason Cartwright. THE MOTION TO AMEND ARTICLE 25 PASSED. **ARTICLE 25 PASSED AS AMENDED.**

Cheryl Wiggett made a motion to move that the voting hours for the Town Meeting, starting in 2009, be changed from the current hours of 4:00 PM to 8:00 PM to 3:00 PM to 7:00 PM and that this Article be placed on the 2008 Town Warrant. The new voting time will coincide with the start of Town Meeting, 7:00 PM and will eliminate any possible disruption of the Town Meeting proceedings between 7:00 PM and 8:00 PM. This was 2nd by Cliff Boivin. This Article PASSED AS WRITTEN.

Doug Erb wanted to take a minute for everyone to recognize Town Clerk - Donna Bronson; Administrative Assistant - Debbie Geoffroy, Road Agent - Tom Smith, all the firemen and everybody that puts in so much time to make this Town run. There was a round of applause for everyone.

Errol Peters made a motion to nominate:

Surveyors of Wood, Bark and Timber Fence Viewers

Gene Fitchett, Frederick Erb & Richard Santy Lewis Mardin, Jr., David Clement & Danny Dodge

Pound Keepers

Douglas Erb, Dan Cavicchio & Richard Bronson

This motion PASSED. The Town Clerk cast one ballot for the Pound Keepers, Surveyors of Wood, Bark & Timber and Fence Viewers.

ARTICLE 26. To transact any other business that may legally come before the meeting. Fire Chief, Harry McGovern, said when he receives letters commending the Landaff Fire Department he generally takes them to the meetings and shows them to the Fire Department. Harry received a letter from Tim Leavitt of Ross Ambulance, thanking the Department for their services. On January 2, 2007, Ross Ambulance had a medical call for aid and transport. Ross had a call to the Fire Department for assistance to plow the driveway. Six firemen went to the scene and plowed and sanded the driveway and even offered to follow them to the hospital. Ross Ambulance said the dedication and service by the Landaff Fire Department is second to none. The Town gave a round of applause for our Fire Department.

A motion was made by David Clement to adjourn the meeting - 2nd by Joe Wiggett. The meeting was adjourned at 9:10 PM.

Respectfully submitted,
Donna J. Bronson - Town Clerk

**TOWN OF LANDAFF
OFFICE OF THE BOARD OF SELECTMEN**

**12 Centerhill Road
P.O. Box 125
Landaff, New Hampshire 03585
Phone: 603-838-6220 - Fax: 603-838-5225
Email: townoflandaff@aol.com**

February 27, 2008

Dear Landaff Property Owners:

There have been some major changes in the Statements on Auditing Standards (SAS), effective for audits ending December 15, 2006. Our audit fieldwork for the 2007 audit was substantially completed as of February 21, 2008. Nevertheless, due to the SAS changes, we will not be receiving our opinion letter and audit report until after the Selectmen have reviewed the draft financial statements and approved them.

We expect to receive our audit report sometime in the spring of 2008. The opinion letter and audit report, in its entirety, will be available at the town hall business office for your review at that time.

Sincerely,
**Town of Landaff
Board of Selectmen**

TOWN OF LANDAFF
2008 Town Meeting Warrant

To the inhabitants of the Town of Landaff, in the County of Grafton, and the State of New Hampshire, qualified to vote in the Town affairs:

You are hereby notified to meet at the Town Hall in said Landaff on Tuesday, the 11th day of March 2008, the polls to be open from 4:00 pm to 8:00 pm, and at 7:00 o'clock in the evening, to act upon the following Articles:

ARTICLE 1. To choose all necessary Town Officers for the ensuing year.

ARTICLE 2. To raise such sums of money as may be necessary to defray Town charges for the ensuing year and make appropriations of the same:

Recommended motion: to see if the Town will vote to raise and appropriate the sum of \$336,101.05 which represents the operating budget. Said sum does not include special or individual articles addressed herein, which, if all passed, total \$74,287.80. The Selectmen recommend this appropriation.

ARTICLE 3. To see if the Town will vote to raise and appropriate the sum of \$1,375.00 for North Country Home Health & Hospice Agency. (By Request)

ARTICLE 4. To see if the Town will vote to raise and appropriate the sum of \$472.00 for White Mountain Mental Health Agency. (By Request)

ARTICLE 5. To see if the Town will vote to raise and appropriate the sum of \$700.00 for the Tri-County Community Action Program. (By Request)

ARTICLE 6 - Presented as alternative parts:

PART A. To see if the Town will vote to raise and appropriate the sum of \$1,715.00 for the Ross Ambulance Service. (By Request)

OR

PART B. To see if the Town will vote to raise and appropriate the sum of \$3,720.00 for the Woodsville Ambulance Service. (By Request)

ARTICLE 7. To see if the Town will vote to raise and appropriate the sum of \$550.00 for the Grafton County Senior Citizens Agency. (By Request)

ARTICLE 8. To see if the Town will vote to raise and appropriate the sum of \$419.80 for North Country Council dues. (By Request)

ARTICLE 9. To see if the Town will vote to raise and appropriate the sum of \$1,000.00 for the Lisbon Lions Club. (By Request)

ARTICLE 10. To see if the Town will vote to raise and appropriate the sum of \$1,000.00 for the Lisbon Public Library. (By Request)

ARTICLE 11. To see if the Town will vote to raise and appropriate the sum of \$4,485.00 for the Lisbon Fast Squad. (By Request)

ARTICLE 12. To see if the Town will vote to raise and appropriate the sum of \$179.00 for the American Red Cross. (By Request)

ARTICLE 13. To see if the Town will vote to raise and appropriate the sum of \$262.00 for the Littleton Regional Hospital. (By Request)

ARTICLE 14. To see if the Town will vote to raise and appropriate the sum of \$500.00 for CASA (Court Appointed Special Advocates). (By Request)

ARTICLE 15. To see if the Town will vote to raise and appropriate the sum of \$13,500.00 for new double-hung insulated windows for the Town Hall. (Recommended by the Selectmen)

ARTICLE 16. To see if the Town will vote to raise and appropriate the sum of \$12,000.00 to purchase a 20 Ton flat bed trailer for use by the Highway Department. (Recommended by the Selectmen)

ARTICLE 17. To see if the Town will vote to raise and appropriate the sum of \$5,000.00 to be added to the Highway Department Capital Reserve Fund. (Recommend by the Selectmen)

ARTICLE 18. To see if the Town will vote to raise and appropriate the sum of \$5,000.00 to be added to the Fire Department Capital Reserve Fund. (Recommended by the Selectmen)

ARTICLE 19. To see if the Town will vote to raise and appropriate the sum of \$1,374.00 to cover the remaining costs of the first stage of the Master Plan (said monies to be taken from the town's surplus funds). (Recommended by the Selectmen)

ARTICLE 20. To see if the Town will vote to raise and appropriate the sum of \$4,125.00 to cover further work to be completed on the second stage of the Town of Landaff Master Plan, and further to accept and spend any grant monies that may be forthcoming to cover the expense of re-writing the plan. (Recommended by the Selectmen)

ARTICLE 21. To see if the municipality will vote to authorize up to \$5,000 of the Land Use Change Tax collected pursuant to RSA 79-A:25 to be deposited into the existing Conservation Fund in accordance with RSA 36-A:5, III, as authorized by RSA 79-A:25, II. If adopted this article shall take effect April 1, 2008, and shall remain in effect until altered or rescinded by a future vote of the town meeting. (Majority vote required). (Submitted by Petition) *(Recommended by the Landaff Conservation Commission)* *(Recommended by the Selectmen)*

ARTICLE 22. To see if the Town will vote to raise and appropriate the sum of \$15,000.00 to solicit bids from qualified firms for a preliminary architectural and engineering study on the newly acquired Town property at the northwest corner of Jockey Hill and Center Hill Roads in Landaff, as a future site for a new fire station/public safety building. Should any grant monies be received in connection with this effort, this article will serve to accept and spend those monies forthcoming to defray further expenses.

This study will include: evaluation of physical features of the land; identification of any drainage issues and possible wetlands; determine water sources; identify access and traffic routes; suggest potential site lay-outs; provide possible cost estimates; and submit preliminary drawings of proposed building styles to the citizens so that a future course of action can be determined. *(Recommended by the Selectmen)*

BALLOTTED ARTICLES:

ARTICLE 23. - Are you in favor of changing the polling hours on Town Meeting Day from 4:00 pm to 8:00 pm to 3:00 pm to 7:00 pm. SUBMITTED BY THE LANDAFF SELECTMEN. *(Recommended by the Landaff Selectmen)*
VOTE - ALL IN FAVOR. (BY BALLOT)

ARTICLE 24. - Are you in favor of imposing an Interim Growth Management Ordinance (IGMO), pursuant to authority granted in RSA 674:23, for a period of one year, to disallow major subdivisions in the town of Landaff, and allow time for completion of updating the town's 1987 Master Plan to reflect correct and current local and regional data, under RSA 674:2, II. SUBMITTED BY THE LANDAFF SELECTMEN. *(Recommended by the Planning Board)* *VOTE - 3-1 IN FAVOR (BY BALLOT)*

ARTICLE 25. - Are you in favor of changing the position of Town Constable from an elected position to an appointed position - to become effective in 2009. SUBMITTED BY THE LANDAFF SELECTMEN. *(Recommended by the Landaff Selectmen)* *VOTE - ALL IN FAVOR (BY BALLOT)*

ARTICLE 26. To transact any other business that may legally come before the meeting.

Given under our hands and seal, this 12th day of February, in the year of Our Lord, Two Thousand and Eight by the Selectmen of the Town of Landaff.

Michael M. Ransmeier
C. Bruce Ulricson
Douglas F. Erb

This is a True Copy Attest of the Town of Landaff 2008 Budget and Town Warrant as Signed and Posted.

REQUESTING AGENCIES

GRAFTON COUNTY SENIOR CITIZENS COUNCIL, INC.

Grafton County Senior Citizens Council, Inc. is a private, nonprofit organization that provides programs and services to support the health and well being of our older citizens. The programs enable elderly individuals to remain independent in their own homes and communities for as long as possible.

During 2007, 29 older residents of Landaff were served by either the Littleton or the Haverhill area senior services.

- 126 balanced meals at one or both of the facilities.
- 1444 hot, nourishing meals were delivered to their homes.
- Landaff residents were transported to health care providers, grocery stores, etc., on 84 occasions.
- 53.5 hours of visits by a social worker assisting with problems.
- Landaff volunteers put their talent to work giving volunteer time amounting to 92.00 hours.

The cost to provide services to Landaff residents in 200 was \$19,362.00

Request for 2008: \$550.00.

TRI-COUNTY COMMUNITY ACTION

This agency is a private, nonprofit organization that provides assistance with fuel, housing needs, homeless programs, FEMA, and USDA surplus food.

In 2007, 157 Landaff residents received services. People receiving fuel assistance were 32; weatherization program assistance were 3; food pantry recipients totaled 57; state electrical assistance 22 households; and Referrals (i.e., Legal Aid, clothing, health, budgeting, etc.): 43. **Request for 2008: \$700.00.**

NORTH COUNTRY HOME HEALTH & HOSPICE AGENCY, INC.

North Country Home Health and Hospice is well aware of the fiscal concerns facing most North Country towns. We have worked very hard and successfully in the last year to improve efficiencies and remain cost effective. Severe shortages in nurses, home care aides and other professionals continue to plague the home care field. Faced with severe staffing shortages, agencies have gone out of business and more than one million patients a year are going without essential home care services. In 2007, the North Country Home Health & Hospice Agency, Inc. merged with the Hospice of the Littleton Area.

Home care is critical to the growing health care needs of this country. It provides care for the sick, disabled and dying in their own home where they can be provided the highest quality of life, the greatest amount of freedom possible and the highest degree of human dignity. We assist people recuperating from surgery, individuals coping with chronic illnesses, and families and community members caring for loved ones and friends. Services provided to the residents of Landaff during 2006 were:

- 321 nursing visits
- 137 physical therapy/occupational therapy/speech therapy
- 27 medical social service
- 625 visits for home health aide/homemaker/companion

TOTAL 2,010

Request for 2008: \$1,375.00.

WHITE MOUNTAIN MENTAL HEALTH

The agency offers assistance to individuals with debilitating mental illnesses or situational crises. Our services allow individuals with disabilities to function as productive citizens. Assistance is given to the mentally ill through housing, jobs and all the functions of daily living. During 2007, White Mountain Mental Health provided services to 8 residents of Landaff.

Request for 2008: \$472.00.

NORTH COUNTRY COUNCIL, INC.

North Country Council dues vary each year and are based on the latest population numbers from the office of State Planning and on the latest valuation numbers received from the Dept. of Revenue Administration. If your town would like the formula used please call our office.

Dues from 2007 were used in the following areas: community planning assistance, transportation planning, scenic byways program, grant writing/administrative projects, EDA planning activities, hazardous mitigation planning program, wetlands banking project, and national flood insurance program.

Request for 2008: \$419.80.

LITTLETON REGIONAL HOSPITAL.

Littleton Regional Hospital stands ready to care for all patients from the Town of Landaff, regardless of their ability to pay for often lifesaving medical care. During 2007, Littleton Regional Hospital provided \$5,069.00 in charity care to patients residing in the Town of Landaff.

Request for 2008: \$262.00.

CASA – COURT APPOINTED SPECIAL ADVOCATES.

CASA of NH is a statewide, private non-profit organization created to provide advocacy for the state's abused and neglected children. The organization recruits, trains and supervises volunteers from communities throughout the state who are, then, appointed to cases by New Hampshire's District and family Court Judges.

Request for 2008: \$500.00.

BUDGET OF THE TOWN OF LANDAFF – REVENUE

Acct No	Source of Revenue	Estimated Revenue Prior Year	Actual Revenue Prior Year	Estimated Revenue For Ensuing Year
Taxes:				
3120	Land Use Change Taxes	\$ 9,000.00	\$ 5,111.71	\$9,000.00
3185	Timber Taxes	8,000.00	16,081.88	12,000.00
3186	Payment in Lieu of Taxes	6,000.00	6,346.00	6,000.00
3190	Interest & Penalties on Delinquent Taxes	6,000.00	12,082.81	6,000.00
Licenses, Permits and Fees:				
3210	Business Licenses & Fees	700.00	1,310.00	800.00
3220	Motor Vehicle Permits	77,000.00	75,386.00	76,000.00
3230	Building Permits	300.00	.00	300.00
3290	Other Licenses, Permits	1,800.00	867.64	800.00
From State:				
3351	Shared Revenue	4,000.00	8,247.56	5,000.00
3352	Rooms & Meals Tax	13,000.00	16,756.55	15,000.00
3353	Highway Block Grant	32,280.96	36,407.80	36,267.86
3379	HAVA	.00	.00	.00
Charges for Services				
3401	Income from Departments	500.00	.00	500.00
3409	Other Charges	500.00	52.60	100.00
Miscellaneous Revenues:				
3501	Sale of Town Property	8,200.00	2,263.25	2,000.00
3502	Interest of Investments	3,000.00	1,602.10	1,500.00
3503	Other	13,000.00	12,491.13	13,728.62
Interfund Transfers:				
3915	From Capital Reserve Funds	28,400.00	28,400.00	.00
3916	Trust Funds & Agency Funds	2,000.00	.00	7,207.96
3934	Proc. From Long Term Bonds & Notes	.00	.00	.00
	Amount VOTED from Surplus		.00	1,374.00
	Fund Balance – to Reduce Taxes	<u> </u>	<u> </u>	<u>40,000.00</u>
Total Estimated Revenue		\$213,680.96	\$223,407.03	\$233,578.44

**BUDGET OF THE TOWN OF LANDAFF – EXPENDITURES
(Inclusive of Operating Budget & Appropriations)**

Acct No.	Purpose Of Appropriation	Appropriations		Appropriations
		Prior Year as Approved by DRA	Actual Expenditures Prior Year	Ensuing Fiscal Year Recommended
General Government:				
4130-4139	Executive	\$ 30,000.00	\$ 32,374.85	\$ 34,000.00
4140-4149	Election, Regs. & Vital Statistics	9,500.00	11,351.28	15,000.00
4150-4151	Financial Administration	12,000.00	16,191.11	15,000.00
4152	Revaluation of Property	6,000.00	7,192.15	3,500.00
4153	Legal Expenses	12,000.00	17,013.39	10,000.00
4155-4159	Personnel Administration	8,800.00	4,896.10	7,000.00
4191-4193	Planning & Zoning	15,500.00	7,785.70	7,125.00
4194	General Government Buildings	30,000.00	23,621.88	26,500.00
4195	Cemeteries	2,000.00	2,000.00	5,000.00
4196	Insurance	25,400.00	18,214.56	22,850.00
4197	Advertising & Regional Associations	3,000.00	2,541.21	3,419.80
4199	Other General Government	5,000.00	6,969.42	12,000.00
Public Safety:				
4210-4214	Police	4,500.00	4,793.90	5,000.00
4215-4219	Ambulance	6,272.00	6,272.00	8,205.00
4220-4229	Fire	13,000.00	13,000.00	28,000.00
4299	Other (Storm Cleanup)	.00	640.00	.00
Highways & Streets:				
4311-4311	Highway Administration	33,254.00	31,750.00	36,000.00
4312	Highway & Streets	106,000.00	103,103.73	97,310.00
4316	Street Lighting	500.00	527.99	500.00
Sanitation:				
4324	Solid Waste Disposal	27,414.00	28,216.86	29,348.55
Health:				
4414	Pest Control	300.00	140.00	300.00
4415-4419	Health Agencies	2,639.40	2,639.40	3,338.00
Welfare:				
4441-4442	Administration & Direct Assist	30.00	30.00	30.00
4445-4449	Vendor Payments & Dues	5,000.00	1,935.57	4,700.00

Recreation:				
4520-4529	Parks & Recreation	2,500.00	2,250.00	2,500.00
4550	Library	1,000.00	1,000.00	1,000.00
4583	Patriotic Purposes	125.00	108.00	125.00
Conservation:				
4619	Other Conservation	5,700.00	5,185.00	5,700.00
Debt Service:				
4711	Princ.-Long Term Bond/Note	.00	.00	10,000.00
4721	Interest-Long Term Bond/Note	.00	.00	1,937.50
4723	Interest-Tax Anticip. Notes	.00	.00	.00
Capital Outlay:				
4901	Land	.00	.00	.00
4905	Refunds for Reg. 7	7,500.00	4,232.20	5,000.00
Operating Transfers Out:				
4915	To Capital Reserve Fund	<u>5,000.00</u>	<u>5,000.00</u>	<u>10,000.00</u>
Total Gross Expenditures		\$379,934.40	\$360,976.30*	\$410,388.85
Gross Expenditures for Ensuing Year:			\$410,388.85**	
Gross Revenue for Ensuing Year:			<u>\$233,578.44</u>	
To be Raised by Taxes for the Ensuing Year (2006):			\$176,810.41	

- Actual Expenditures as Audited by Plodzik & Sanderson

** Includes Operating Budget of \$336,101.05 and Appropriations of \$74,287.80.

SCHEDULE OF TOWN PROPERTY

Town Hall / Lands and Buildings	\$500,250.00
Furniture & Equipment	50,000.00
Fire Department, Land & Buildings	75,320.00
Equipment	55,000.00
Highway Department, Land and Buildings	78,970.00
Equipment	140,000.00
Sewer Plant and Facilities	17,640.00
Schools, Lands and Buildings	87,260.00
Equipment	45,000.00
Recreation Area	<u>63,790.00</u>
Total	<u>\$1,113,230.00</u>

SUMMARY OF INVENTORY OF ASSESSED VALUATION

Land	\$ 15,997,537.00
Buildings	23,924,087.00
Utilities	<u>511,290.00</u>
Total Gross Before Exemptions	40,432,914.00
Total Elderly & Blind Exemptions	<u>-25,000.00</u>
Net Valuation	<u>\$40,407,914.00</u>

STATEMENTS OF APPROPRIATIONS AND TAXES ASSESSED PER \$1,000.00

Town, School and County	\$40,407,914.00 @ \$14.10/M	<u>\$569,751.59</u>
Town	\$ 4.47	
School	8.32	
County	<u>1.31</u>	
	\$14.10	
State Ed. Tax	<u>\$ 2.39</u>	<u>\$95,352.93</u>
Total Tax Rate	\$16.49	
Yield Taxes		17,778.90
Land Use Change Tax		11,913.00
Late Inventory Penalties		0.00
Total Taxes Assessed in 2007		665,143.85
Less Veterans' Exemptions		<u>- 1,450.00</u>
Net Taxes Assessed		<u>\$693,385.75</u>

**COMPARATIVE STATEMENT
OF APPROPRIATIONS AND EXPENDITURES
Fiscal Year Ending December 31, 2007**

	Appropriated	Expenditures	Unexpended	Overdraft
4130 Executive	\$ 30,000.00	\$ 32,374.85	\$.00	\$ 2,374.85
4140 Election, Registrations	9,500.00	11,351.28	.00	1,851.28
4150 Financial Administration	12,000.00	16,191.11	.00	4,191.11
4152 Revaluation of Property	6,000.00	7,192.15	.00	1,192.15
4153 Legal	12,000.00	17,013.39	.00	5,013.39
4155 Personnel Administration	8,800.00	4,896.10	3,903.90	.00
4191 Planning & Zoning	15,500.00	7,785.70	7,714.30	.00
4194 General Government				
Building	30,000.00	23,621.88	6,378.12	.00
4195 Cemeteries	2,000.00	2,000.00	.00	.00
4196 Insurance	25,400.00	18,214.56	7,185.44	.00
4197 Advertising & Regional				
Associations	3,000.00	2,541.21	458.79	.00
4199 Other General Government	5,000.00	6,969.42	.00	1,969.42
4210 Police	4,500.00	4,793.90	.00	293.90
4215 Ambulance	6,272.00	6,272.00	.00	.00
4220 Fire Department	13,000.00	13,000.00	.00	.00
4299 Other (Storm Cleanup.)	.00	640.00	.00	640.00
4311 Administration	33,254.00	31,750.00	1,504.00	.00
4312 Highways	106,000.00	103,103.73	2,896.27	.00
4316 Street Lighting	500.00	527.99	.00	27.99
4324 Solid Waste Disposal	27,414.00	28,216.86	.00	802.86
4414 Pest Control	300.00	140.00	160.00	.00
4415 Health Agencies	2,639.40	2,639.40	.00	.00
4441 Welfare Admin/Direct Asst.	30.00	30.00	.00	.00
4445 Vendor Payments & Dues	5,000.00	1,935.57	3,064.43	.00
4520 Community Field	2,500.00	2,250.00	250.00	.00
4550 Library	1,000.00	1,000.00	.00	.00
4583 Patriotic	125.00	108.00	17.00	.00
4619 Other Conservation	5,700.00	5,185.00	515.00	.00
4711 Princ./Long Term Notes	.00	.00	.00	.00
4721 Int./Long Term Notes	.00	.00	.00	.00
4723 Interest on TAN	.00	.00	.00	.00
4901 Capital Outlay – Land	.00	.00	.00	.00
4905 Refunds (Overpayments)	7,500.00	4,232.20	3,267.80	.00
4915 Capital Reserves	5,000.00	5,000.00	.00	.00
** Totals	\$379,934.40	\$360,976.30	\$37,315.05	\$18,356.95

** Actual Expenditures as Audited by Plodzick & Sanderson

**TOWN OF LANDAFF
BALANCE SHEET
As of December 31, 2007**

ASSETS

Cash	\$214,712.88	
Town Histories	1,524.98	
Conservation Commission	<u>5,000.00</u>	
Total Cash		\$221,237.86
Receivables:		
Taxes		
Uncollected Taxes as of 12/31/2007:		
Levy of	263,985.60	
Land Use Change Tax	6,312.57	
Yield	1,421.51	
]Unredeemed Taxes as of 12/31/2007:		
Tax Lien of 2006	4,888.16	
Tax Lien of 2005	2,740.45	
Reserved for Doubtful Accounts	(4,000.00)	
Intergovernmental	13,728.62	
Interfund	<u>367.50</u>	
Total Receivables		\$289,444.41
Total Assets		\$510,682.27

LIABILITIES AND FUND BALANCE

Liabilities:		
Payables:		
Accounts Payable	\$ 3,772.27	
Accrued Payroll	836.98	
Due to Landaff School District	323,606.00	
Interfund	<u>60.00</u>	
Total Payables		\$328,275.25
Deferred Revenue		\$ 14.58
Fund Balances:		
Unreserved		\$170,236.02
Reserved for Encumbrances		\$ 5,631.44

Designated		
Town Histories	\$1,524.98	
Conservation Commission	<u>5,000.00</u>	
Total Designated		\$ <u>6,524.98</u>
Total Fund Balance		\$182,392.44
Total Liabilities and Fund Balance		\$510,682.27

TOWN CLERK'S REPORT
January 1, 2007 to December 31, 2007

DEBITS

Monies Received:

Automobile Registrations	\$75,386.00
Title Applications	202.00
Uniform Commercial Code Fees	135.00
Vital Statistics Fees	114.00
Dog License Fees: Town	453.50
Dog License Fees: State	49.50
Dog License Fees: Neutering Fund	198.00
Filing Fees	8.00
Dump Stickers	12.00
Miscellaneous	5.00

Total Debits \$76,563.00

CREDITS

Remittance to Treasurer:

Automobile Registrations	\$75,386.00
Title Applications	202.00
Uniform Commercial Code Fees	135.00
Vital Statistics Fees	114.00
Dog License Fees: Town	453.50
Dog License Fees: State	49.50
Dog License Fees: Neutering Fund	198.00
Filing Fees	8.00
Dump Stickers	12.00
Miscellaneous	5.00

Total Credits \$76,563.00

Respectfully submitted,
Donna J. Bronson
Town Clerk

Town Clerk Hours – Tuesday 9-11am, 5-7pm

TAX COLLECTOR'S REPORT
For January 1, 2007 to December 31, 2007

DEBITS

	2007	2006
Uncollected Taxes Beginning of Year:		
Property Taxes	\$ 0.00	\$191,366.39
Taxes Committed This Year:		
Property Taxes	665,143.85	0.00
Land Use Change Tax	11,913.00	0.00
Yield Taxes	17,778.90	0.00
Bounced Check Fee	50.00	0.00
Cost Before Lien	0.00	69.00
Overpayments:		
Property Taxes	1,687.83	2,143.59
2008 Prepays	14.58	0.00
Interest Collected on Delinquent Tax	494.00	1,332.07
 Total Debits	 <u>\$697,082.16</u>	 <u>\$194,911.05</u>

CREDITS

Remittances to Treasurer:		
Property Taxes	\$402,910.66	\$186,748.30
Land Use Change	5,111.71	0.00
Yield Taxes	16,081.88	0.00
Interest	494.00	1,332.07
Conversion to Lien	0.00	6,424.28
Cost Before Lien	0.00	69.00
Abatements Made:		
Property Taxes	1,421.51	337.40
Land Use Change	488.72	0.00
Yield Taxes	275.51	0.00
Uncollected Taxes as of December 31, 2007:		
Property Taxes	263,935.60	0.00
Land Use Change Tax	6,312.57	0.00
Bounced Check Fee	50.00	0.00
 Total Credits	 <u>\$697,082.16</u>	 <u>\$194,911.05</u>

Respectfully submitted,
Donna J. Bronson, Tax Collector

SUMMARY OF TAX LIEN ACCOUNTS
For January 1, 2007 to December 31, 2007

	DEBITS		
	2006	2005	2004
Unredeemed Liens			
Beginning of Year	\$.00	\$6,088.01	\$2,615.31
Liens Executed During Fiscal Year	7,149.28	.00	.00
Interest & Cost Collected (After Lien Execution)	<u>258.45</u>	<u>530.27</u>	<u>949.03</u>
TOTAL DEBITS	\$7,407.73	\$6,618.28	\$3,564.34
	CREDITS		
Remitted to Treasurer:			
Redemptions	\$2,261.12	\$3,347.56	\$2,615.31
Interest & Cost After Lien	198.45	530.27	949.03
Unredeemed Liens as of December 31, 2007	<u>4,948.16</u>	<u>2,740.45</u>	<u>.00</u>
TOTAL CREDITS	\$7,407.73	\$6,618.28	\$3,564.34

Respectfully submitted,
Donna J. Bronson, Tax Collector

TREASURER'S REPORT
January 1, 2007 – December 31, 2007

Balance January 1, 2007:		
Checking Account	\$222,213.99	
Town History Account	1,498.41	
Laconia Savings Bank	<u>63,795.71</u>	\$ 287,508.11
Donna Bronson, Town Clerk:		
Dog Licenses - Retained	453.50	
Dog Licenses - State	49.50	
Neutering Fund	198.00	
Dump Stickers	12.00	
Photocopies	5.00	
Filing Fees	23.00	
Motor Vehicle Permits	75,386.00	
Title Applications	202.00	
Uniform Commercial Code	120.00	
Vital Statistics	<u>114.00</u>	
Total Town Clerk		76,563.00
Donna Bronson, Tax Collector:		
2007 Property Tax	402,910.66	
2007 Property Tax Interest	463.24	
2007 Yield Tax	16,081.88	
2007 Yield Tax Interest	30.76	
2007 Land Use Change Tax	5,111.71	
2006 Property Tax	193,172.58	
2006 Property Tax Interest	1,332.07	
2006 Cost Before Lien	17.25	
2006 Tax Liens Redeemed	2,335.12	
2006 Cost of Lien	286.00	
2006 Interest & Costs After Lien	202.35	
2005 Tax Lien Redeemed	3,273.56	
2005 Interest & Costs After Lien	526.37	
2004 Cost Before Lien	51.75	
2004 Tax Lien Redeemed	2,615.31	
2004 Interest & Cost After Lien	<u>949.03</u>	
Total Tax Collector		629,359.64
Planning & Zoning:		
Sub-division Fees:		
Wayne Mardin	205.01	
Brian Laleme	112.56	
Springvale Farms, Inc.	261.77	
William Kelley	<u>188.30</u>	
Total Planning & Zoning		767.64

Trustees of Trust Funds:	
Town Hall Future Needs Capital Reserve Fund	4,500.00
Land & Buildings Capital Reserve Fund	43,042.23
Highway Equipment Capital Reserve Fund	<u>28,400.00</u>
Total Trustees of Trust Funds	75,942.23
State of New Hampshire:	
Highway Block Grant	36,407.80
Revenue Sharing	8,247.56
Rooms & Meals	<u>16,756.55</u>
Total State of New Hampshire	61,411.91
U.S. Government:	
In Lieu of Taxes	<u>6,346.00</u>
Total U.S. Government	6,346.00
Refunds:	
Land Use Change Recording Fees	48.00
Landaff School District - Town Report	<u>500.00</u>
Total Refunds	548.00
Rental of Town Property:	
Mount Hope Grange	150.00
Lisbon Stump Jumpers	100.00
Jane McKown	100.00
Gge Gould/Bronson/Clement	25.00
Joe Wiggett	<u>50.00</u>
Total Rental of Town Property	425.00
Sale of Town Property:	
Town Histories	17.50
Zoning Regulations & Photocopies	<u>328.05</u>
Total Sale of Town Property	345.55
Miscellaneous Revenue:	
Woodsville Guaranty - NOW A/C Interest	274.76
Laconia Savings Bank - Interest	1,331.27
Town of Lisbon - Recycling Revenue	12,491.13
Pistol Permits	<u>90.00</u>
Total Miscellaneous Revenue	14,187.16
Non-Revenue Receipts:	
Woodsville Guaranty - Town History Interest	9.07
Voided Check & Checks Not Cashed	29.50
H.P. Fairfield LLC – Refund of Credit Balance	120.56
H.G. Wood – for Wood from Blow-Down	981.30
Stockley Trucking – Salvage	159.00

Conservation Fund	5,000.00	
Woodsville Guaranty – Loan Proceeds	<u>50,000.00</u>	
Total Non-Revenue Receipts		<u>56,299.43</u>
Total Receipts		<u>922,195.56</u>
Total Receipts (Includes Cash Balance January 1, 2007)		1,209,703.67
Less Selectmen’s Orders:		<u>988,465.81</u>
Balance as of December 31, 2007		\$221,237.86

Reconciliation of the Treasurer’s Report

Checking Account	\$169,585.90
Town History Account	1,524.98
Laconia Savings Account	45,126.98
Conservation Fund	<u>5,000.00</u>
	<u>\$221,237.86</u>

Respectfully submitted,
Heidi B. Sagar, Treasurer

SUMMARY OF RECEIPTS

From Local Taxes:		
2007 Property Tax	\$402,910.66	
2007 Property Tax Interest	463.24	
2007 Yield Tax	16,081.88	
2007 Yield Tax Interest	30.76	
2007 Land Use Change Tax	5,111.71	
Previous Years Property Tax	193,172.58	
Previous Years Property Tax Interest	1,332.07	
Previous Years Cost Before Lien	69.00	
Previous Years Tax Liens Redeemed	8,223.99	
Previous Years Interest & Costs After Lien	<u>1,963.75</u>	
Total Taxes Collected and Remitted		\$629,359.64
Licenses and Permits:		
Motor Vehicle Permits	75,386.00	
Dog Licenses	503.00	
Neutering Fund	198.00	
Business Licenses, Permits, Filing Fees	35.00	
All Others, including Sub-Divisions, Copies	<u>441.00</u>	
Total Licenses and Permits		76,563.00
From Trustees of Trust Funds:		
Town Hall Future Needs Capital Reserve Fund	4,500.00	

Land & Buildings Capital Reserve Fund	43,042.23	
Highway Equipment Capital Reserve Fund (Art. 20)	<u>28,400.00</u>	
Total From Trustees of Trust Funds		75,942.23
Planning & Zoning:		
Subdivision Fees	<u>767.64</u>	
Total Planning & Zoning		767.64
From State of New Hampshire:		
Highway Block Grant	36,407.80	
Revenue Sharing	8,247.56	
Rooms & Meals	<u>16,756.55</u>	
Total From State of New Hampshire		61,411.91
U.S. Government:		
In Lieu of Taxes	<u>6,346.00</u>	
Total U.S. Government		6,346.00
Refunds:		
Land Use Change Recording Fees	48.00	
Landaff School District – Town Report	<u>500.00</u>	
Total Refunds		548.00
Charges for Services:		
Rental of Town Property	<u>425.00</u>	
Total Charges for Services		425.00
Miscellaneous Revenue:		
Sale of Town Property	345.55	
Woodsville Guaranty - NOW Account Interest	274.76	
Laconia Savings Bank - Interest	1,331.27	
Town of Lisbon - Recycling Revenue	12,491.13	
Pistol Permits	90.00	
Checks not Cashed	<u>29.50</u>	
Total Miscellaneous Revenue		14,562.21
Non-Revenue Receipts:		
Woodsville Guaranty - Town History Interest	9.07	
H.P. Fairfield LLC – Refund of Credit Balance	120.56	
Sale of Wood from Blow-Down	981.30	
Sale of Salvage	159.00	
Conservation Fund	5,000.00	
Woodsville Guaranty – Loan Proceeds	<u>50,000.00</u>	
Total Non-Revenue Receipts		<u>56,269.93</u>
Total Receipts from all Sources		922,195.56
Cash on Hand January 1, 2007		<u>287,508.11</u>
Total Available Cash		\$1,209,703.67

DETAILED STATEMENT OF PAYMENTS

General Government

4130 Executive:

Debbie A. Geoffroy, Admin. Assist.	\$ 24,124.53	
Debbie A. Geoffroy – Expenses	41.00	
White Mountain Shopper	52.50	
Plodzik & Sanderson	4,950.00	
VISA	106.82	
Bruce McKay Family Fund	100.00	
Douglas F. Erb, Selectman	1,000.00	
Michael Ransmeier, Selectman	1,000.00	
Charles B. Ullricson, Selectman	<u>1,000.00</u>	
	32,374.85	32,374.85

4140 Election, Registration and Vital Statistics:

IDS	215.97	
Donna Bronson, Town Clerk	8,192.51	
Donna Bronson – Expenses	27.27	
Littleton Office Supply	58.35	
Staples Credit Plan	825.60	
VISA	200.82	
Real Data Corp	20.00	
Postmaster	563.60	
Treasurer, State of NH	314.50	
Joseph Wiggett, Moderator	50.00	
Richard Bronson, Ballot Clerk	25.00	
Jane Smalley, Ballot Clerk	25.00	
Gayle Clement, Ballot Clerk	25.00	
Angie Bronson, Ballot Clerk	25.00	
David Clement, Ballot Clerk	25.00	
Francis Felton, Ballot Clerk	25.00	
Brenda Dodge	25.00	
NH Electric Cooperative, Inc.	529.06	
The Bridge Weekly Sho-Case	63.60	
NH City & Town Clerks Assoc.	40.00	
Donna Presby	<u>75.00</u>	
	11,351.28	43,726.13

4150 Financial Administration:

Grafton County Register of Deeds	97.31	
Carol Elliott	120.00	
Donna Bronson, Tax Collector	8,147.51	
Donna Bronson – Expenses	190.33	
Heidi B. Sagar, Treasurer	2,983.44	
Heidi B. Sagar, Expenses	8.99	
Lisa M. Roberson	2,807.12	
VISA	296.12	
White Mountain Shopper	37.50	
NH Tax Collector's Association	50.00	

Staples Credit Plan	226.48	
Basic Bookkeeping	587.86	
White Mountain Regional Spring	35.00	
PrintGraphics of Maine	405.45	
Yvonne Rice	180.00	
Bank Fees	<u>18.00</u>	
	16,191.11	59,917.24
4152 Revaluation of Property:		
NH Assoc. of Assessing	20.00	
NH Dept. of Revenue Administration	20.00	
Thomas Walker	7,103.20	
Debbie Geoffroy	33.95	
White Mountain Shopper	<u>15.00</u>	
	7,192.15	67,109.39
4153 Legal:		
Daschbach, Cooper, Hotchkiss	16,011.85	
Gregory M. Sorg	152.00	
Law Office of Michael M. Ransmeier	763.54	
Downs, Rachlin, Martin PLLC	<u>86.00</u>	
	17,013.39	84,122.78
4155 Personnel Administration:		
PRIMEX	23.00	
Internal Revenue Service	<u>46.81</u>	
	69.81	84,192.59
4156 Employee Benefits:		
457 Plan	<u>922.44</u>	
	922.44	85,115.03
4156 Payroll Taxes:		
Incurred in current year	6,154.25	
Paid for prior year	73.85	
Payable in January 2008	<u>-2,324.25</u>	
	3,903.85	89,018.88
4191 Planning & Zoning:		
Debbie Geoffroy	112.50	
Far North Designs	100.00	
Salmon Press	300.00	
White Mountain Shopper	125.75	
Dawn Schoff	340.64	
NH Office of Energy & Planning	42.00	
Grafton County Register of Deeds	26.00	
VISA	16.25	
Watershed to Wildlife, Inc.	4,285.00	
Cartographic Assoc., Inc.	104.00	
Richard Lewis – Art. 24	2,083.56	
John Rice, Officer	<u>250.00</u>	
	7,785.70	96,804.58
4194 General Government Buildings:		
Debbie Geoffroy	272.27	

Gene's Locksmith	142.00	
Verizon	1,519.08	
Bradford-Pratt's Co.	2,392.86	
PSNH	751.29	
Irving Oil	4,988.70	
Brad Gooden Plumbing	449.00	
VISA	98.64	
Charles Hochmuth – Art. 17	11,200.00	
Tristate Fire Protection, LLC	276.95	
Richard Bronson	261.99	
Thomas Blowey	775.00	
Postmaster	205.00	
Staples Credit Plan	<u>289.10</u>	
	23,621.88	120,426.46
4195 Cemetery:	<u>2,000.00</u>	
	2,000.00	122,426.46
4196 Insurance:		
Local Government Center	<u>18,214.56</u>	
	18,214.56	140,641.02
4197 Advertising & Regional:		
NHMA	563.19	
North Country Council – Art. 9	428.02	
Harrison Publishing House	<u>1,550.00</u>	
	2,541.21	143,182.23
4199 Other General Government:		
Debbie Geoffroy	92.00	
Staples Credit Plan	2,381.99	
Littleton Office Supply	370.00	
VISA	425.10	
Aaron & Eileen, LLC	500.00	
Aaron Parkening	80.00	
Wildworks Woodland Management	1,237.00	
Business Management Systems	1,482.95	
Postmaster	188.00	
Patrick Webb	<u>212.38</u>	
	6,969.42	150,151.65
4210 Police:		
Grafton County Sheriff Dept.	1,834.00	
NH Assoc. of Chief's of Police	100.00	
TAC-2 Communications, Inc.	60.00	
Edward Peterson, Constable	2,000.00	
Village Gun Store	<u>799.90</u>	
	4,793.90	154,945.55
4215 Ambulance:		
Ross Ambulance Service - Art. 6	1,690.00	
Lisbon Fast Squad - Art. 12	4,582.00	
American Red Cross – Art. 13	<u>142.40</u>	
	6,414.40	161,359.95

4220 Fire Dept.:	<u>13,000.00</u>	
	13,000.00	174,359.95
4311 Highway Dept - Administration:		
Thomas D. Smith – Road Agent	19,840.00	
Russell Smith	390.00	
Wayne A. Mardin, Road Agent	<u>11,520.00</u>	
	31,750.00	206,109.95
4312 Highway Dept. Highways & Streets:		
Ammonoosuc Asphalt	524.09	
B-B Chain, Inc.	332.95	
Blaktop, Inc.	766.70	
Bradford-Pratt's Co.	2,095.60	
Chick's Sand & Gravel	4,346.82	
Clinton Clough	3,437.00	
E-Z Steel Fabrication	7.00	
Ferguson Waterworks	8,452.50	
Fogg's Hardware	47.21	
Howard P. Fairfield, Inc.	1,742.70	
Irving Oil	8,265.57	
Jordan Equipment Co.	367.00	
Kelley-Mackenzie Auto Parts	2,582.75	
Lawson Products, Inc.	48.75	
Littleton Gravel Co.	12,391.56	
Lobdell Associates, Inc.	750.00	
Merriam-Graves Corp.	82.00	
New England Truck Tire	531.90	
NH Correctional Industries	121.12	
NH Good Roads Assoc.	35.00	
NH Wetlands Bureau	100.00	
Ossipee Auto Parts	731.13	
Owens Leasing Co., LLC	1,900.00	
P & S. Equipment	64.59	
Presby Construction	4,047.50	
PSNH	541.32	
TAC-2 Communications, Inc.	53.00	
Texas Refinery Corp.	226.50	
Thomas Smith	178.96	
Townline Equipment Sales	34,039.94	
Tristate Fire Protection, LLC	192.96	
UNH Technology Transfer Ctr.	60.00	
Varney & Smith Lumber	296.89	
Verizon	787.37	
VISA	4,059.83	
We Fix Trucks Assoc.	897.52	
White Mountain Shopper	60.00	
William Presby	<u>7,938.00</u>	
	103,103.73	309,213.68
4316 Street Lighting:		

PSNH	<u>527.99</u>	
	527.99	309,741.67
4324 Sanitation:		
Town of Lisbon	27,414.00	
Schofield's Septic Service	<u>802.86</u>	
	28,216.86	337,958.53
4319 Other:		
Alan A. McPherson/April Storm Cleanup	<u>640.00</u>	
	640.00	338,598.53
4414 Pest Control:		
Littleton Pet Center	<u>140.00</u>	
	140.00	338,738.53
4415 Health Agencies:		
North Country Home Health – Art. 3	1,375.00	
White Mountain. Mental Health - Art. 4	472.00	
Grafton County Senior Citizens - Art. 8	550.00	
ACORN – Art. 14	<u>100.00</u>	
	2,497.00	341,235.53
4441 Welfare - Dues:		
NHLWAA	<u>30.00</u>	
	30.00	341,265.53
4445 Welfare - Vendor Payments:		
Bradford-Pratt's Co.	537.67	
Tri-County Community Action – Art. 5	650.00	
Irving Oil	350.00	
Northrop's Market	50.00	
Stiles Fuel Co.	<u>347.90</u>	
	1,935.57	343,201.10
4520 Culture & Recreation:		
Lisbon Lions Club - Art. 10	1,000.00	
Tom Blowey	<u>1,250.00</u>	
	2,250.00	345,451.10
4550 Lisbon Library:		
Art. 11	<u>1,000.00</u>	
	1,000.00	346,451.10
4583 Patriotic:		
Town of Lisbon	<u>108.00</u>	
	108.00	346,559.10
4611 Conservation Administration:		
Grafton County Conservation Admin.	115.00	
Marilyn Booth	35.00	
Susan O'Hearn	<u>35.00</u>	
	185.00	346,744.10
4619 Conservation:		
Landaff Conservation Commission – Art. 25	<u>5,000.00</u>	
	5,000.00	351,744.10
4905 Refunds :		
Antonio V. Bonilla	196.91	

Arcia A. Amey	30.00	
C. David & Patricia Towle	10.94	
Carl Eric & Margareta Flander	445.28	
Carl Eric Flander	3.35	
Conrad Schofield	49.62	
Dennis S. & Selena M. Cate	61.75	
Donald L. Fitzgerald	140.53	
Donald & Ann Dodge	168.72	
Errol S. Peters	1,051.59	
Faye Richardson	1.60	
Gene & Gayla Krupa	205.78	
Jockey Hill Farms, Inc.	30.69	
Karl & Carol L. Herzig	9.30	
Margareta Flander	320.65	
Martin Noble	26.25	
Nancy Cooper	51.10	
Riverside SSP, Inc.	163.23	
Robert A. Ingerson, Jr.	37.25	
Ronald A. Chase	7.13	
Stephen & Carolyn J. Morin	130.46	
Dalia Kazenas	292.77	
Alan A. McPherson	50.00	
Kerri J. Secher	8.19	
Howard S. Brower	23.00	
David & Eva Clough	5.12	
Faye H. & Wendy S. Richardson	17.00	
Kenneth Bullard	4.00	
Richard J. Dallon	348.97	
Ronald & Patricia Spaulding	34.00	
Ronald & Joanne Fullerton	240.22	
William Blodgett	50.00	
Roy P. Norton	<u>16.80</u>	
	4,232.20	355,976.30
4915 Capital Reserve Funds:		
Trustees of the Fire Dept. (Art. 23)	<u>5,000.00</u>	
	5,000.00	<u>360,976.30</u>
Purchase of Real Estate:		
Mich. M. Ransmeier – Trust A	2,000.00	
Law Office M. Ransmeier-Hatch Prop.	91,042.23	
WGSB-Loan Orig. Fee	<u>250.00</u>	
	93,292.23	<u>454,268.53</u>
TOTAL BEFORE PAYMENTS TO OTHER GOVTS.		\$454,268.53
4931 Grafton County Taxes	56,310.00	
4933 Landaff School District	470,738.00	
6000 Taxes Bought by Town	<u>7,149.28</u>	<u>534,197.28</u>
GRAND TOTAL		<u>\$988,465.81</u>

SUMMARY OF PAYMENTS

General Government:

Executive	\$ 32,374.85
Election, Registration & Vital Statistics	11,351.28
Financial Administration	16,191.11
Revaluation of Property	7,192.15
Legal Expenses	17,013.39
Personnel Administration	4,896.10
Planning & Zoning	7,785.70
General Government Buildings	23,621.88
Cemetery	2,000.00
Insurance	18,214.56
Advertising & Regional Associations	2,541.21
Other General Government	<u>6,969.42</u>

Total General Government	<u>150,151.65</u>	\$ 150,151.65
--------------------------	-------------------	---------------

Public Safety:

Police Department	4,793.90
Ambulance	6,414.40
Fire Department	<u>13,000.00</u>

Total Public Safety	<u>24,208.30</u>	174,359.95
---------------------	------------------	------------

Highways:

Administration	31,750.00
Highways & Streets	103,103.73
Street Lighting	<u>527.99</u>

Total Highways	<u>135,381.72</u>	309,741.67
----------------	-------------------	------------

Sanitation:

Septic Service	802.86
Pest Control	140.00
Town of Lisbon Landfill	<u>27,414.00</u>

Total Sanitation	<u>28,356.86</u>	338,098.53
------------------	------------------	------------

Health:

Health Agencies	<u>2,497.00</u>
-----------------	-----------------

Total Health	<u>2,497.00</u>	340,595.53
--------------	-----------------	------------

Welfare:

NH Welfare Association Dues	30.00
Vendor Payments	<u>1,935.57</u>

Total Welfare	<u>1,965.57</u>	342,561.10
---------------	-----------------	------------

Culture & Recreation:

Parks & Recreation	2,250.00
Library	1,000.00
Patriotic Purposes	<u>108.00</u>

Total Culture & Recreation	<u>3,358.00</u>	345,919.10
----------------------------	-----------------	------------

Conservation:

Conservation Administration	185.00
-----------------------------	--------

Conservation	<u>5,000.00</u>	
Total Conservation	5,185.00	351,104.10
Refunds/Reg. 7 & Overpayments of Taxes	<u>4,232.20</u>	
	4,232.20	355,336.30
Other:		
Purchase of Real Estate	93,292.23	
Storm Cleanup	<u>640.00</u>	
Total Other	93,932.23	449,268.53
Capital Reserve Funds	<u>5,000.00</u>	
	5,000.00	454,268.53
Payments to Other Governments (School/County Taxes)	<u>527,048.00</u>	
	527,048.00	981,316.53
Taxes Bought By Town	<u>7,149.28</u>	
	7,149.28	<u>\$988,465.81</u>

CEMETERY TRUSTEES REPORT

January 1, 2007 – December 31, 2007

CHECKING ACCOUNT:

Cash on Hand - January 1, 2007	\$ 81.90 (200.00)
--------------------------------	----------------------

RECEIPTS:

2007 Interest	0.97	
From Savings Account	3,400.00	
Robert Fenoff Memorial Fund	<u>500.00</u>	<u>3,900.97</u>

Total Beginning Balance & Receipts	3,782.87
------------------------------------	----------

PAYMENTS:

Anthony Kretowicz - mowing	<u>3,089.50</u>
----------------------------	-----------------

Total Payments	<u>3,089.50</u>
----------------	-----------------

CHECKING CASH BALANCE, December 31, 2007	<u><u>\$693.37</u></u>
---	-------------------------------

SAVINGS ACCOUNT:

Cash on Hand - January 1, 2007	12,829.26
--------------------------------	-----------

2007 Appropriation	2,000.00	
Perpetual Care	15.00	
2007 Interest	34.35	
Transfers to Checking Account	<u>(3,400.00)</u>	

Savings Account Balance – December 31, 2007	\$11,478.61
---	-------------

REPORT OF THE TRUST FUNDS of the TOWN OF LANDAFF, NH on December 31, 2007

Date of Creation	Name of Trust Fund and Purpose of Creation	How Invested	Beginning Balance	New Funds	Transfers In	Transfers Out	Withdrawals	Income Earned	Income Expended	Balance End of Year
1997	School District Funds									
	Local School Fund	Northway	\$ 2,349.52	\$ 0.00	\$ 0.00	\$ 0.00	\$ 0.00	\$ 82.23	\$ 0.00	\$ 2,431.75
	Total School Funds		2,349.52	0.00	0.00	0.00	0.00	82.23	0.00	2,431.75
	Cemetery Funds									
Bef. 1985	Perpetual Care - Various	Laconia S.B.	8,593.09			8,593.09				0.00
1997	Perpetual Care - Various	Northway	10,467.51			10,467.51				0.00
2004	Perpetual Care - Various	Northway	3,039.84	303.44		2,839.84				503.44
	Perpetual Care - Various	Passumpsic/Cap.	0.00		8,363.52	8,680.90		317.38		0.00
	Perpetual Care - Various	Passumpsic/Int.	0.00		8,910.47	4.66		4.66		8,915.13
	Perpetual Care - Various	WGSB	0.00		3,120.44	17.27		455.90		3,137.71
	Perpetual Care - Various	WGSB	0.00		10,186.91			10,642.81		10,642.81
	Total Cemetery Funds		22,100.44	303.44	30,581.34	30,581.34	0.00	795.21	0.00	23,199.09
	Town Funds									
1957	Gale-Chandler	Laconia S.B.	15,411.71			15,411.71		679.32		0.00
	Gale-Chandler Pric.	Laconia S.B.	0.00		15,000.00			1,326.67		15,679.32
	Gale-Chandler Int.	Laconia S.B.	0.00		1,323.05			3.62		1,326.67
1997	Gale-Chandler	Northway	62,100.23			2,100.23		2,101.58		62,101.58
	G-C 2 Interest	Northway	0.00		12,871.52			38.48		2,442.49
2005	Gale-Chandler	WGSB CDARS	53,290.89			1,215.12		1,215.12		53,290.89
	Total Gale-Chandler		130,802.83	0.00	29,194.57	29,194.57	0.00	4,038.12	0.00	134,840.95
	Blake Memorial									
1989	Blake Memorial	Laconia S.B.	5,529.80			5,529.80		204.24		0.00
	Blake Memorial	Passumpsic	0.00		5,382.09			7.42		0.00
	Blake Memorial	Passumpsic	0.00		5,734.04			211.66		5,741.46
	Total Blake Memorial		5,529.80	0.00	11,116.13	11,116.13	0.00	211.66	0.00	5,741.46
	Capital Reserve Funds									
2003	Fire Dept. Equipment	Conn. River	11,040.82			40,310.70		4,249.78		140,582.41
2005	Highway Dept. Equipment	NHPDIP	28,508.80	5,000.00				182.69		16,223.51
2005	Special Education	TD Bank North	95,163.90				28,400.00	756.23 *		865.03
2005	Special Education	NHPDIP	10,480.89					4,287.56		99,451.46
2005	Land & Buildings	NHPDIP	46,527.43				43,042.23	580.34 *		11,061.23
2005	School Bldg. Maint.	NHPDIP	15,443.71					870.25 *		4,355.45
2006	Town Hall Future Needs	NHPDIP	5,163.92				4,500.00	854.88 *		16,298.59
	Total Capital Reserves		212,329.47	5,000.00	0.00	0.00	75,942.23	7,606.98	0.00	148,994.22
	Grand Total		\$ 373,112.06	\$ 5,303.44	\$ 70,892.04	\$ 70,892.04	\$ 75,942.23	\$ 12,734.20	\$ 0.00	\$ 315,207.47

*) Includes Dec. 2006 Interest

LANDAFF VOLUNTEER FIRE DEPARTMENT

2007 Treasurer's Report

Receipts:

Donations made by:

Alan & Judy Boulet	Jim Peters	
Francis Felton	Schofield's Septic Service, Inc.	
June Geneen	Norma Titus	
Ruby Gray	Prudential Found. Comm. Match (Memory of Bill Ross)	
New England Wire Technologies		
Total Donations		\$10,410.00

Old Home Day	Auction Proceeds	\$6,169.00
	Concession Stand	565.00
	Raffle Proceeds	1,009.00
	Supper	907.90
	Gifts	125.00
Total Income, Old Home Day		\$8,775.90
	Expenses	838.38
	Dinner Share to Blue School Foundation	453.95

Final Amount to LVFD **\$7,483.57**

Refunds, Credits	\$ 148.38
Misc Income (Hatch House Scrap Metal Sales)	261.00
Interest, Woodsville Guaranty Bank (Checking)	8.05
Town of Landaff Appropriation	13,000.00
Total Receipts for 2007	\$31,311.01

Checking Account, Cash on Hand, December 30, 2007 (WGSB) **\$10,019.20**

Savings Account (WGSB)	
Savings Account Balance, December 30, 2007	4,291.47
Includes Interest earned in 2007 of \$17.61	

Long Term CD Savings Account (Passumpsic Savings Bank)	
Long Term Savings Account Balance, December 30, 2007	29,076.41
Includes Interest earned in 2007 of \$1,436.24	

Total Funds Available as of December 30, 2007 **43,387.08**

Expenditures for 2007 26,327.17

Payments:		
	Aubuchon Hardware (hardware)	\$ 20.98
	Automatic Battery (charge, lens)	75.99
	Batterywarehouse Direct (radio battery)	18.99
	Betsy Babcock (Old Home Day supplies)	24.20
	Blue School Foundation (Old Home Day Share)	453.95
	Boston Industrial (traffic cones)	92.75
	Bridge Weekly (Old Home Day Ad)	35.00
	Conney Safety (batteries)	55.73
	CopsPlus Inc. (flashlights)	272.74
	Denise Cartwright (Halloween party supplies)	66.90
	DeSorcie Emergency Products (Engine-1 pump repair and certification)	327.44

Direct Safety (latex gloves, AED signs)	109.68
Discount Two-Way (radio battery)	41.49
Emedco (safety signs)	58.33
E-Z Steel (door plate)	15.00
Fire Safety USA (new exhaust fan)	599.00
Frontline Fire & Equipment (Hose, scene lights, SCBA certification, gloves)	2,631.00
Gall's (LED vehicle lights)	495.90
HalfPriceBanners (firewood banner)	118.75
Identi-Tape (duct tape)	44.73
Irving Oil (Propane)	1,897.00
Jan's Bloom Room (funeral flowers)	75.00
Kelley-MacKenzie Auto Parts	643.56
Lynn Card Co. (Thank-You cards)	87.95
Maverick Labels (property labels)	149.70
McDevitt Trucks (repair tanker coolant leak, install OnSpot chains on tanker)	10,637.03
New Pig Technologies (spill kits)	146.99
Paging & Wireless Service (pager repair)	64.25
Parker Hill Road Band (Old Home Day Music)	350.00
Passumpsic Savings (check printing)	13.10
Patrick J Webb (supplies)	265.05
Professional Equipment (charger)	73.95
Public Service of NH	304.90
RapidFire Design (truck lettering)	320.00
Riverview Market (Old Home Day Supplies)	119.61
Sam's Club (Old Home Day Supplies)	84.29
Shaw's (Old Home Day Supplies)	142.95
Sports Imports (dashboard light)	27.97
StampsOnSale (rubber stamps)	13.98
Stanley Garage Door Openers (openers)	56.95
Staples (office supplies, copying)	261.97
Station House Supply (turnout pants, license plate, placards)	784.40
Stockley Trucking (state insps.)	90.00
Tac-2 Communications (Radio repairs, parts, new pagers)	1,093.91
Town of Landaff (fuel reimbursement)	190.94
T-P Toilets (Old Home Day Supplies)	75.00
Tri-State Fire Protection (Fire Ext., Cert.)	557.75
Twin State Mutual Aid Association (dues)	280.00
U.S. Postal Service (stamps)	41.00
Verizon (Telephone)	600.07
Wal-Mart (Old Home Day Supplies)	59.08
Whitings Rubbish Removal Service (Hatch House dumpsters and removal)	1,102.00
Win Tron Technologies (LED warn. lights)	158.27
	\$26,327.17

Respectfully submitted,
Patrick J. Webb, Secretary/Treasurer

LANDAFF VOLUNTEER FIRE DEPARTMENT

2007 Activity Report

This was a somewhat quiet year for your Fire Department, as only 29 calls for service were logged, including four Medical Assist calls. We are often asked by our colleagues at the Lisbon Life Squad to carry people to the waiting ambulance.

There were no significant fires at all in Landaff, and many calls were for cover assignments at the Lisbon Fire Station while they worked an incident in their town or nearby. We always have a great response from our volunteers, and this year's average was 4.6 Landaff volunteers who responded to each alarm. For a town of our size, this is always indicative of the dedication of a small group of people committed to helping their community.

Training for all volunteers continued on a regular schedule, and members of the Department participated in the preparation of a Hazard Mitigation and Wildland Fire Plan for the town. The tanker truck was outfitted with automatic tire chains which will give greater gripping and stopping power on icy winter roads.

After the Town bought the abandoned house next to the Fire Station, the Fire Department took on the responsibility for making the site clean and manageable. Last June, with help from the Grafton County Corrections work crew, over 60 yards of trash were removed from the premises, this included 44 tires, 18 bicycles, 2 washers, 2 dryers, 2 stoves, 2 furnaces, 2 woodstoves, 1 freezer, 1 car body, 2 engine blocks and 1 large cargo van, which totaled about 6 tons of assorted metal, which was sold for scrap. The house is being used for training scenarios, and eventually will be burned down in a large-scale training exercise which will involve the local supporting fire departments.

We are always looking for new volunteers, and are prepared to give them thorough training and then equip them with the proper equipment so they can safely help us in any situation. Contact any LVFD member for information, our training drills are the first and third Monday of each month, and its a great way to know and serve your town.

Landaff Volunteer Fire Department Members:

Harry McGovern, Chief
Doug Erb, Asst. Chief
Don Beaudin, Captain
Paul Amey
Jason Cartwright
Bill Clark
Bill Fiske

Doug Heath
Jim LaPierre
Ben Peters
Tom Smith
Pat Webb
Don Wharton

CONSTABLE'S REPORT

To the Residents of Landaff:

During the year 2007 there were 12 calls for service handled by this department. Several other calls were handled by the New Hampshire State Police.

There were 2 stray dogs taken to The Pet Center in Littleton. These strays did not have tags and the owners were unknown. No other dog complaints were called in to the department. Landaff uses the State of NH Animal control Law – RSA 466:31. Copies of this RSA can be obtained on line or from the Landaff Police Department. There is no leash law in Landaff, however, owners are to be able to control their dogs at all times.

All mandated police training and certifications were completed for the year 2007. Annual reports for the NH Police Standards and Training Council were submitted as required.

Any calls for service should be made to:

Ed Peterson, Chief	838-2894
Grafton County Dispatch	787-6911
State Police (Twin Mountain)	846-3333
EMERGENCY ONLY	911

The following calls were made for service in 2007:

Criminal Threatening	1
Disorderly Conduct	1
Animal Complaints	2
Medical/Domestic Violence	1
Accidents MV	1
VIN Verifications	1
Mission Persons	2
Other Services	<u>3</u>
TOTAL CALLS	12
TOTAL PATROL HOURS	110

Have a Safe 2008!

Ed Peterson, Chief

CONSERVATION COMMISSION

During 2007, the Members of the Conservation Commission, Bill Adam, Richard Bronson, David Clement, Sue O'Hearn, Tom Smith and Marilyn Booth, Chairperson, and alternate member Don Wharton met monthly to discuss various conservation related issues. The resignation of Frances Felton was accepted and his valuable contribution to the Conservation Commission was recognized.

Members made our annual physical inspection of the two LCIP easement properties for compliance with the easement restrictions. We maintained the hiking trail on the Tellman LCIP property opposite the Blue School. The trail is open to the public for hiking and is where the Blue School teachers take their students on field trips. Members also participated in the maintenance of the trail system at the Scotland Brook Audubon Sanctuary and trash pickups along the Town's roads. We reviewed construction project applications and wetland permit applications to determine if there would be any impact on the Town from the Conservation Commission's standpoint.

We continued to study and educate ourselves regarding environmental issues and attended the NH Association of Conservation Commissions annual meeting / seminar, and meetings on environmental planning at the Rock's Estate. The Natural Resource Inventory portion of the Master Plan update was awarded to Watershed to Wildlife. Their contract will be paid by the funds received from the Mooseplate Grant and matching funds from the Town.

A conservation fund was established to receive the land use change tax funds that were approved by Warrant Article 25 during the 2007 Town Meeting. We obtained signatures to add a warrant article for the 2008 town meeting. The article would propose the continuation of the allocation of up to \$5,000 from the land use change tax into the conservation fund.

Marilyn Booth
Chairperson

The Conservation Commission meets the 1st Thursday of each month at 7:00 p.m. at the Town Hall.

REPORT OF THE LANDAFF CONSERVATION COMMISSION

Cash on Hand – January 1, 2007	.00
From Town of Landaff – Warrant Article 25	<u>5,000.00</u>
Cash on Hand – December 31, 2007	\$5,000.00

BIRTHS REGISTERED IN THE TOWN OF LANDAFF, NH

For the Year Ending December 31, 2007

DATE & PLACE OF BIRTH	NAME OF CHILD	NAME & SURNAME OF FATHER	NAME OF MOTHER
Feb. 22, 2007 Littleton, NH	Haley Elizabeth Cavanaugh	Michael Cavanaugh	Janelle Cavanaugh
July 26, 2007 Littleton, NH	Troy Boissonneault	Ryan Boissonneault	Meredith Boissonneault
July 26, 2007 Littleton, NH	Dino Boissonneault	Ryan Boissonneault	Meredith Boissonneault

MARRIAGES REGISTERED IN THE TOWN OF LANDAFF, NH

For the Year Ending December 31, 2007

DATE & PLACE OF MARRIAGE	NAME AND SURNAME OF GROOM & BRIDE	RESIDENCE AT TIME OF MARRIAGE
February 14, 2007 No. Haverhill, NH	Roland J. Lafond Diane M. Aldrich	Landaff, NH Landaff, NH
June 6, 2007 Landaff, NH	Andrew S. Campbell Sara K. McGovern	Landaff, NH Landaff, NH
August 25, 2007 Lisbon, NH	Lance E. Hamlett Melissa K. Blodgett	Landaff, NH Landaff, NH
December 22, 2007 Woodsville, NH	Gregory Lietsch Niki Dion	Landaff, NH Landaff, NH

DEATHS REGISTERED IN THE TOWN OF LANDAFF, NH
For the Year Ending December 31, 2007

DATE & PLACE OF DEATH	NAME OF THE DECEASED	NAME OF FATHER NAME OF MOTHER
January 17, 2007 Landaff, NH	Viola Patch	David Adams Bertha Davis
March 26, 2007 St. Johnsbury, VT	Pauline M. Eaton	Amos Allbee Carrie Jesseman
March 30, 2007 Lebanon, NH	Robert Fenoff	Winfield Fenoff Wyllian Chase
May 11, 2007 Littleton, NH	Norman McKay, III	Norman McKay Catherine Hoffman
September 2, 2007 Littleton, NH	Katie Goodwin	William Jewell Celia Page
October 10, 2007 Woodsville, NH	Maureen Coon	Michael Burke Sarah Logue
December 10, 2007 Littleton, NH	Patricia Lang	Frank Clark, Jr. Lauraette Hastings

EMERGENCY MANAGEMENT DIRECTOR'S REPORT

We had a number of interesting activities and developments in town this year.

A. After the huge snow, wind and ice storm last Tax Day (April 15th) the State and Federal Government issued a disaster declaration which made all towns eligible for reimbursement for expenses of storm clean-up.

Landaff had unanticipated cost and labor expenses related to the removal of downed trees, mainly along Pearl lake Road, which was closed for a week. There was also considerable damage to roads and culverts throughout town. Because our Road Agent (at the time), Tom Smith, kept good records and took immediate photos of the damaged areas, we were able to submit all of the paperwork quickly.

With the help of the New Hampshire Homeland Security and Emergency Management Agency (HSEM) and a FEMA Disaster Field Representative who surveyed our area in July 2007, we were issued a check in the amount of \$3,823.56.

B. The North Country Council, the Regional Planning Agency, received a HSEM and FEMA grant to offer Hazard Mitigation Planning services to ten North Country towns, and Landaff was included in the initial group. A project Director was assigned to the task, and the work was expanded to include a Hazard Mitigation, Wildfire Mitigation, and Water Resource Plan, all of which will aid the town in preparing for future emergencies. A large group of interested citizens participated in the process including ten meetings that started last summer and a draft report with suggestions for improvements was finished in December. It will be submitted for federal approval, and will serve us for many years to come.

C. I have continued to participate in planning and readiness exercises to respond to a community medical “surge” event, such as a flu pandemic or other major medical crisis. The North Country Health Consortium is leading this effort, and Landaff’s needs and unique location are now being folded into planning documents.

D. While researching information for the Hazard Mitigation Plan, I learned that Landaff had never been mapped for the State E-911 System. The NH Department of Safety Bureau of Emergency Communications agreed to collect all road and addressing information to provide exact location information to dispatch agencies should an emergency arise. This was done at no cost to the town, and in October each address was physically surveyed by field crews and GPS coordinates taken at each location.

The Bureau of Emergency Communications is now compiling a final corrected version of all of the maps and locations, and copies will be furnished to the town, the Fire Department, and the Grafton County Sheriff’s Dispatch. In addition, the State will assist us in streamlining the reporting method when new addresses are assigned.

Patrick J. Webb
Emergency Management Director
Town of Landaff

ANNUAL REPORT

of the

LANDAFF SCHOOL DISTRICT

2006-2007

SCHOOL BOARD

Mrs. Mary Beaudin	Term Expires 2010
Jason Cartwright	Term Expires 2009
Mrs. Betsy Babcock	Term Expires 2008

DISTRICT OFFICERS

Mr. Michael Ransmeier, Esq.	Moderator
Mrs. Tammy Heath	Treasurer
Mrs. J. Denise Cartwright	Clerk
Ms. Donna Presby	Auditor
Mr. Francis Felton	Census Taker

SCHOOL ADMINISTRATIVE UNIT #35

Mr. Patrick C. Low, Ed.S.	Superintendent
Mrs. Sally Waterhouse	Business Administrator

BLUE SCHOOL STAFF

Mrs. Claire Cochrane	Head Teacher
Mrs. Denise Cartwright	School Nurse
Mrs. Patricia Davis	One-One Aide
Mrs. Maria McIntyre	PE/Health
Mrs. Joanne Meachen	Librarian
Mrs. Sigrid Salmela	Title I Teacher
Mr. Joseph Shea	Guidance Counselor

**STATE OF NEW HAMPSHIRE
SCHOOL WARRANT**

To the inhabitants of the Landaff School District, in the Town of Landaff, qualified to vote in District affairs:

You are hereby notified to meet at the Town Hall in Landaff on Monday, March 10, 2008 at 7:00 o'clock in the evening to act upon the following subjects:

ARTICLE 1: To hear the reports of Agents, Committees, or Officers heretofore chosen and pass any vote relating thereto.

Recommended by the Landaff School Board

ARTICLE 2: To see if the District will vote to raise and appropriate the sum of Six Hundred Sixty Three Thousand, Three Hundred Thirty-Nine Dollars (\$663,339.00) for the support of schools, for the payment of salaries for School District Officials and Agents, and for the payment of statutory obligations of the District. This article does not include appropriations voted in other warrant articles.

Recommended by the Landaff School Board

ARTICLE 3: To see if the Landaff School District will vote to establish a planning committee in accordance with RSA 194-C:2, to study the advisability of reorganizing SAU #35, including the possible withdrawal of the District from SAU #35; and to request the study committee, if formed, to report its findings to the District within 180 days of formation; and further, to raise and appropriate the sum of Twenty Five Hundred Dollars (\$2,500.00) to fund the work of the committee, including administrative support expenses and consultants' fees.

Recommended by the Landaff School Board

ARTICLE 4: To see if the District will vote to raise and appropriate the sum of Fifteen Thousand Dollars (\$15,000.00) to be added to the School Building Maintenance Expendable Trust Fund established March 7, 2005, such sum to be funded from the June 30, 2008 undesignated fund balance available for transfer on July 1.

Recommended by the Landaff School Board

ARTICLE 5: To see if the District will vote to change the purpose of an existing School Building Maintenance Expendable Trust Fund to the School Facility Expendable Trust Fund.

2/3 Vote Required

Recommended by the Landaff School Board

ARTICLE 6: To see if the District will vote to raise and appropriate the sum of Ten Thousand Dollars (\$10,000.00) and to transfer said sum to its capital reserve fund, established March 14, 1986, to meet the expenses of educating educationally handicapped children, under the provisions of RSA 35:1-b, such sum to be funded from the June 30, 2008 undesignated fund balance available for transfer on July 1.

Recommended by the Landaff School Board

ARTICLE 7: To see if the District will vote to create an expendable trust fund under the provisions of RSA 198:20-c, to be known as the Playground Equipment Expendable Trust Fund, for the purpose of repairing and replacing playground equipment. Furthermore, to raise and appropriate the sum of Five Thousand Dollars (\$5,000.00) toward this purpose, such sum to be funded from the June 30, 2008 undesignated fund balance available for transfer on July 1, and to name the School Board as agents to expend from this fund.

Recommended by the Landaff School Board

ARTICLE 8: To transact any other business that may legally come before this meeting.

LANDAFF SCHOOL BOARD

Mary Beaudin, Chairperson
Betsy Babcock
Jason Cartwright

**LANDAFF SCHOOL DISTRICT WARRANT
STATE OF NEW HAMPSHIRE**

ELECTION OF OFFICIALS

To the inhabitants of the Landaff School District, in the Town of Landaff, qualified to vote in District affairs:

You are hereby notified to meet at the Town Hall in Landaff on Tuesday, March 11, 2008 at 4:00 P.M. TO 8:00 P.M. o'clock in the evening to vote for District Officials:

ARTICLE 1: To choose all necessary Officers for the School District for the ensuing year.

LANDAFF SCHOOL BOARD

Mary Beaudin, Chairperson
Betsy Babcock
Jason Cartwright

**LANDAFF SCHOOL DISTRICT
PROPOSED BUDGET: 2008-2009**

	Expenditures 2006-2007	Adopted Budget 2007-2008	Proposed Budget 2008-2009
1100. REGULAR EDUCATION			
1100.110 Salaries & Benefits	\$ 72,081.74	\$ 82,361.00	\$ 81,153.44
.430 Repairs to Equipment	50.00	500.00	500.00
.433 Contracted Services	1,261.00	1,000.00	1,000.00
.561 Tuition	326,335.79	412,676.50	381,753.00
.610 Teaching Supplies	2,792.44	3,300.00	3,450.00
.640 Textbooks	323.59	500.00	500.00
.641 Library/Audio-Visual	382.21	400.00	400.00
.730 New Equipment	122.46	300.00	300.00
.739 Replacement of Equipment	<u>39.99</u>	<u>300.00</u>	<u>300.00</u>
TOTAL REGULAR EDUCATION	403,389.22	501,337.50	469,356.44
1200. SPECIAL EDUCATION			
1200.110 Salaries & Benefits	10,982.75	6,837.00	13,938.00
.311 Purchased Services	0.00	500.00	500.00
.560 Tuition	41,242.18	73,056.50	50,382.00
.610 Teaching Supplies	0.00	200.00	200.00
.640 Textbooks	<u>50.00</u>	<u>200.00</u>	<u>200.00</u>
TOTAL SPECIAL EDUCATION	52,274.93	80,793.50	65,220.00
1400. STUDENT ACTIVITIES			
1440.690 Student Activities	<u>0.00</u>	<u>400.00</u>	<u>400.00</u>
TOTAL STUDENT ACTIVITIES	0.00	400.00	400.00

2100. ATTENDANCE SERVICES			
2110.110 Truant Officer	10.00	10.00	10.00
TOTAL ATTENDANCE SERVICES	<u>0.00</u>	<u>10.00</u>	<u>10.00</u>
2120. GUIDANCE DEPARTMENT			
2120.110 Salaries & Benefits	1,668.58	1,719.00	1,805.00
309 Student Assistance Program	250.00	250.00	250.00
TOTAL GUIDANCE DEPARTMENT	<u>1,918.58</u>	<u>1,969.00</u>	<u>2,055.00</u>
2130. HEALTH SERVICES			
2130.310 Contracted Services - Nurse	779.00	1,339.00	1,339.00
.610 Health Supplies	37.75	200.00	200.00
TOTAL HEALTH SERVICES	<u>816.75</u>	<u>1,539.00</u>	<u>1,539.00</u>
2140. PSYCHOLOGICAL SERVICES			
2140.309 Psychological Services	1,200.00	1,550.00	1,550.00
TOTAL PSYCHOLOGICAL SERVICES	<u>1,200.00</u>	<u>1,550.00</u>	<u>1,550.00</u>
2150. SPEECH SERVICES			
2150.308 Speech Services	5,536.83	7,000.00	8,000.00
TOTAL SPEECH SERVICES	<u>5,536.83</u>	<u>7,000.00</u>	<u>8,000.00</u>
2160. OCCUPATIONAL THERAPY SERVICES			
2160.314 Occupational Therapist	1,915.18	2,000.00	2,000.00
TOTAL OCCUPATIONAL THERAPY SERVICES	<u>1,915.18</u>	<u>2,000.00</u>	<u>2,000.00</u>
2210. IMPROVEMENT OF INSTRUCTION			
2210.320 Staff Development	180.00	1,125.00	1,125.00
TOTAL IMPROVEMENT OF INSTRUCTION	<u>180.00</u>	<u>1,125.00</u>	<u>1,125.00</u>

2310. SCHOOL BOARD SERVICES			
2310.380 Stipends	750.00	750.00	750.00
2312.380 School Board Clerk	500.00	600.00	600.00
2313.380 Treasurer	94.00	125.00	125.00
2314.380 Moderator	25.00	25.00	25.00
2315.390 Legal Expenses	0.00	100.00	100.00
2317.390 Audit	50.00	50.00	50.00
2319.370 Census	0.00	0.00	0.00
.390 Other Expenses	2,465.65	3,000.00	3,000.00
.521 Insurances	3,489.00	3,670.00	3,480.00
TOTAL SCHOOL BOARD SERVICES	<u>7,373.65</u>	<u>8,320.00</u>	<u>8,130.00</u>
2320. SAU #35 SERVICES			
2320.351 SAU #35 Services	16,469.93	19,635.00	20,484.00
TOTAL SAU #35 SERVICES	<u>16,469.93</u>	<u>19,635.00</u>	<u>20,484.00</u>
2540. OPERATION/MAINTENANCE OF PLANT			
2540.310 Salary - Custodian	1,320.00	1,442.00	1,493.00
.433 Contracted Services	2,955.35	3,750.00	4,000.00
.490 Repair Building	4,636.07	3,000.00	4,000.00
.610 Supplies	733.16	600.00	800.00
.622 Utilities	4,297.67	6,000.00	6,000.00
.624 Fuel	2,559.00	4,500.00	4,725.00
.733 New Equipment	0.00	100.00	100.00
TOTAL OPERATION/MAINTENANCE OF PLANT	<u>16,501.25</u>	<u>19,392.00</u>	<u>21,118.00</u>
2721. TRANSPORTATION SERVICES			
2721.515 Contracted Transportation	26,028.50	26,029.00	31,029.00
.515 Transportation	2,338.64	3,600.00	3,600.00
.519 Other Transportation	2,160.00	2,500.00	2,700.00
TOTAL TRANSPORTATION SERVICES	<u>30,527.14</u>	<u>32,129.00</u>	<u>37,329.00</u>

5251. EXPENDABLE TRUST FUND
 .880 Transfer
 TOTAL EXPENDABLE TRUST FUND

10,000.00	0.00	0.00
<u>10,000.00</u>	<u>0.00</u>	<u>0.00</u>

5200. CAPITAL RESERVE

5250.880 Transfer
 TOTAL CAPITAL RESERVE

0.00	10,000.00	0.00
<u>0.00</u>	<u>10,000.00</u>	<u>0.00</u>

GENERAL FUND TOTALS

548,103.46	687,200.00	638,316.44
------------	------------	------------

FEDERAL FUND TOTALS

<u>15,842.12</u>	<u>25,196.00</u>	<u>25,023.00</u>
------------------	------------------	------------------

GRAND TOTALS

\$563,945.58	\$712,396.00	\$663,339.44
--------------	--------------	--------------

**SCHOOL ADMINISTRATIVE UNIT #35
2006-2007 SALARIES: DISTRICT SHARES**

Bethlehem	8.22%
Lafayette	10.65%
Landaff.....	1.62%
Lisbon	14.49%
Littleton.....	44.87%
Profile.....	20.15%
	100.00%

	Superintendent	Assistant Superintendent	Business Administrator
Bethlehem	\$ 9,206.40	\$ 6,618.68	\$ 6,041.70
Lafayette	11,928.00	8,575.29	7,827.75
Landaff	1,814.40	1,304.41	1,190.70
Lisbon	16,228.80	11,667.23	10,650.15
Littleton	50,254.40	36,128.97	32,979.45
Profile	<u>22,568.00</u>	<u>16,224.62</u>	<u>14,810.25</u>
	\$112,000.00	\$80,519.20	\$73,500.00

**LANDAFF SCHOOL DISTRICT
ANNUAL REPORT OF DISTRICT TREASURER**

Cash on Hand July 1, 2006	\$ 159,455.35
Received from Selectmen:	
Current Appropriation	372,000.00
Revenue from State Sources:	
State Education Grant	55,726.00
Revenue from Federal Sources:	
Medicaid	453.65
National Forest Reserve	4,755.22
Title V	500.00
Title IIA	2,200.00
Rural Achievement Grant	12,719.01
Received from Other Sources:	
Tuition Lisbon Regional	3,929.00
Interest	143.54
94:142 Distribution	1,373.52
Other	120.00
Refunds	<u>6,369.95</u>
TOTAL RECEIPTS	<u>\$ 460,289.89</u>
TOTAL AMOUNT AVAILABLE FOR FISCAL YEAR	619,745.24
LESS SCHOOL BOARD ORDERS PAID	577,396.61
CASH ON HAND, JUNE 30, 2007	\$ 42,348.63
ACCOUNTS RECEIVABLE	66,271.70
ENCUMBRANCE RESERVES	(1,008.90)
ACCRUED BALANCE JUNE 30, 2007	\$ 107,611.43

AUDITORS CERTIFICATE

This is to certify that I have examined the books, vouchers, bank statements and other financial records of the Treasurer of the School District of Landaff of which the above is a true summary for the fiscal year ending June 30, 2007 and find them correct in all respects.

Donna Presby
Auditor

**LANDAFF SCHOOL DISTRICT
SCHOOL BOARD ESTIMATE
2007-2009**

School Board's statement of amounts required to support public schools and meet other statutory obligations of the District for the fiscal year beginning July 1, 2007.

	School Board 2007-2008 <u>Approved Budget</u>	School Board 2008-2009 <u>Proposed Budget</u>
Unencumbered Balance, June 30	107,611.	100,000.
Revenue from State Sources:		
State Education Grant	143,168.	143,168.
Revenue from Federal Sources:		
Medicaid	0.	0.
National Forest Reserve	4,695.	4,695.
Revenue from Local Sources		
Interest/Other Revenue	120.	120.
TOTAL REVENUE AND CREDITS	<u>255,594.</u>	<u>247,983.</u>
ASSESSMENT TO BE RAISED	<u>431,606.</u>	<u>390,333.</u>
TOTAL APPROPRIATION	687,200.	638,316.
GROSS BUDGET (Federal Grants)	25,196.	25,023.
TOTAL BUDGET	712,396.	663,339

**LANDAFF SCHOOL DISTRICT
SPECIAL EDUCATION PROGRAMS
TWO YEAR ACCOUNTING PER RSA 32:11-a**

	Expenditures 2005-2006	Expenditures 2006-2007
SPECIAL EDUCATION		
Salaries & Benefits	\$22,558.44	\$10,982.75
Speech Services	3,337.17	5,536.83
Psychological Services	801.57	1,200.00
Contracted Services	1,504.00	0.00
Occupational Therapist	1,005.97	1,915.18
Transportation	1,292.63	2,338.64
Tuition	33,995.46	41,242.18
Teaching Supplies	0.00	0.00
Textbooks	129.07	50.00
Library/Audio Visual	0.00	0.00
Trust Fund Transfer	<u>0.00</u>	<u>0.00</u>
TOTAL EXPENDITURES	64,624.31	63,265.58
	Revenue	Revenue
	2005-2006	2006-2007
SPECIAL EDUCATION		
Catastrophic Aid	0.00	0.00
IDEA Entitlement	1,723.20	6,499.79
Medicaid	0.00	453.65
Trust Fund Transfer	<u>0.00</u>	<u>0.00</u>
TOTAL REVENUES	<u>\$ 1,723.20</u>	<u>\$ 6,953.44</u>
ACTUAL DISTRICT COST	\$62,901.11	\$56,312.14

**LANDAFF SCHOOL DISTRICT
CAPITAL RESERVE FUND**

Beginning Balance July 1, 2006	\$103,159.75
Interest Earned	<u>5,606.33</u>
Balance June 30, 2007	\$108,766.08

**LANDAFF SCHOOL DISTRICT
EXPENDABLE TRUST FUND**

Beginning Balance July 1, 2006	\$ 5,181.01
Contribution	10,000.00
Interest Earned	<u>715.36</u>
Balance June 30, 2007	\$15,896.37

**LANDAFF SCHOOL DISTRICT
ANALYSIS OF
EXPENDITURES 2005-2006**

01-1100-110 Regular Education		
110	Salaries	
	Teacher	\$ 46,350.00
	Teacher Aide	7,112.59
	Art	777.76
	Health Program/Physical Education	2,041.67
	Library	1,658.33
	Music	<u>0.00</u>
		\$ 57,940.35
01-1100-120 Substitutes		
	Substitutes	<u>600.00</u>
		600.00
01-1100-200 Employee Benefits		
	FICA	4,350.76
	Life Insurance	81.60
	Health Insurance	6,676.68
	Dental Insurance	405.00
	Professional Retirement	1,714.96
	Workers Compensation	<u>312.39</u>
		13,541.39
01-1100-430 Repair Equipment		
	Ross Business Center	<u>50.00</u>
		50.00
01-1100-433 Contracted Services		
	USA Karate	<u>1,261.00</u>
		1,261.00
01-1100-561 Tuition		
	Blue Mountain Supervisory Union	7,600.00
	Haverhill Cooperative School District	8,197.90
	Lisbon Regional School District	<u>310,537.89</u>
		326,335.79
01-1100-610 Teaching Supplies		
	Claire Cochrane	292.64
	Demco	77.93
	Littleton Office Supply	302.20
	NASCO	672.17
	Really Good Stuff	108.92
	School Specialty	1,147.80
	The Library Store	<u>190.78</u>
		2,792.44
01-1100-640 Textbooks		
	Continental Press	22.90
	McGraw-Hill	254.01

Village Book Store	<u>46.68</u>	323.59
01-1100-641 Library/Audio Visual		
J.D. Bona	144.81	
Knowbody Resources	<u>237.40</u>	382.21
01-1100-730 New Equipment		
Central Restaurant Products	42.22	
Claire Cochrane	<u>80.24</u>	122.46
01-1100-739 Replace Equipment		
Claire Cochrane	<u>39.99</u>	39.99
01-1200-114 Special Education Aide		
Salary	<u>10,137.07</u>	10,137.07
01-1200-200 Employee Benefits		
FICA	775.52	
Workers Compensation	<u>70.16</u>	845.68
01-1200-561 Tuition		
Haverhill Cooperative School District	1,402.75	
Lisbon Children's Center	2,630.00	
Lisbon Regional School District	25,278.43	
Profile School District	<u>11,931.00</u>	41,242.18
01-1200-640 Textbooks		
State of New Hampshire	<u>50.00</u>	50.00
01-2120-110 Guidance		
Counselor	<u>1,550.00</u>	1,550.00
01-2120-230 Employee Benefits		
FICA	<u>118.58</u>	118.58
01-2120-309 Student Assistant Program		
School Administrative Unit #35	<u>250.00</u>	250.00
01-2130-310 Health Services Nurse		
Cottage Hospital, Inc.	<u>779.00</u>	779.00
01-2130-610 Health Services Supplies/Exams		
Medco School First Aid	<u>37.75</u>	37.75
01-2140.309 Psychologist Services		
Leslie M. Burton	<u>1,200.00</u>	1,200.00

01-2150-308 Speech Services		
School Administrative Unit #35	<u>5,536.83</u>	5,536.83
01-2160-314 Occupational Therapy		
School Administrative Unit #35	<u>1,915.18</u>	1,915.18
01-2213-320 Staff Development		
Claire Cochrane	100.00	
Lisbon Life Squad	<u>80.00</u>	180.00
01-2310-380 School Board Services		
Betsy Babcock	250.00	
Mary Beaudin	250.00	
Denise Cartwright	125.00	
Tammy Heath	<u>125.00</u>	750.00
01-2312-380 Clerk		
Denise Cartwright	230.00	
Kim Lavoie	<u>270.00</u>	500.00
01-2313-380 Treasurer		
Tammy Heath	<u>94.00</u>	94.00
01-2314-380 Moderator		
Michael Ransmeier	<u>25.00</u>	25.00
01-2317-390 Auditor		
Donna Presby	<u>50.00</u>	50.00
01-2319-390 Other Expenses		
Caledonian-Record Publishing Company	593.00	
NH School Boards Association	917.40	
Salmon Press	455.25	
Town of Landaff	<u>500.00</u>	2,465.65
01-2319-521 Insurances		
Primex	<u>3,489.00</u>	3,489.00
01-2320-351 SAU #35 Services		
School Administrative Unit #35	<u>16,469.93</u>	16,469.93
01-2600-310 Custodial Services		
Patricia Davis	<u>1,320.00</u>	1,320.00
01-2600-433 Contracted Services		
Thomas Blowey	1,195.00	
French's Snow Plowing	275.00	
Lyndonville Office Supply	64.35	

Scott Lawson Group, LTD	75.00	
Timberwolf Rubbish Removal	784.00	
Top of the Notch	540.00	
Vermont Fire Extinguisher	<u>22.00</u>	2,955.35
01-2600-490 Repairs to Building		
Harry Andross, Inc.	259.00	
Integrated Water Systems	1,323.00	
Littleton Electric Solutions	1,630.23	
R.C. Abbott Plumbing & Heating	274.00	
Ronald Howard	1,057.34	
Schofield Septic Service	<u>92.50</u>	4,636.07
01-2600-610 Custodial Supplies		
Claire Cochrane	74.84	
Kenco	55.85	
Lyndonville Office Supply	<u>602.47</u>	733.16
01-2600-622 Utilities		
InfoHighway	497.04	
Public Service	3,356.08	
Jason Cartwright – Internet	<u>444.55</u>	4,297.67
01-2540-653 Fuel		
Stiles Fuel	<u>2,559.00</u>	2,559.00
01-2721-515 Transportation		
Berry Transportation	<u>26,028.50</u>	26,028.50
01-2722-515 Special Education Trans.		
Profile School District	678.64	
Theresa Woodward	<u>1,660.00</u>	2,338.64
01-2750-519 Transportation – Other		
Esther Heath-Lunch Transportation	<u>2,160.00</u>	2,160.00
01-5252-880 Transfer to Expendable Trust		
NH Public Investment Pool	<u>10,000.00</u>	10,000.00
02-1003-220 Title V Salary		
Salary	<u>279.48</u>	279.48
02-1003+220 Title V Employee Benefits		
FICA	<u>167.35</u>	167.35
02-1003-610 Title V Supplies		
Paul Williams	<u>58.03</u>	58.03

02-1003-734 Title V Equipment		
Paul Williams	<u>161.71</u>	161.71
02-1102-730 Title IIA Salary		
Salary	<u>1,908.02</u>	1,908.02
02-1102-730 Title IIA Equipment		
Paul Williams	<u>334.57</u>	334.57
02-1102-340 Rural Grant Contracted Services		
Capital Center for the Arts	114.00	
Catamount Arts	80.00	
Christa McAuliffe Planetarium	72.00	
Premier Coach	1,828.00	
See Science Center	128.00	
The Rocks Estate	51.00	
USA Karate	1,045.00	
Vermont Institute of Natural Science	420.00	
W.W. Berry Transportation	<u>357.50</u>	4,095.50
02-1102-610 Rural Grant Supplies		
Childcraft Education Corporation	372.50	
Claire Cochrane	116.76	
Music in Motion	423.94	
NASCO	228.87	
Northern Lights Music	20.85	
School Specialty	<u>2,380.01</u>	3,542.93
02-1102-640 Rural Grant Books		
Academic & Collegiate Software	213.95	
Crabtree Publishing Company	918.54	
Harcourt Achievement	975.25	
Houghton Mifflin	524.70	
McGraw Hill Companies	<u>653.70</u>	3,286.14
02-1102-734 Rural Achievement Grant – Equip		
Musician’s Friend	1,618.42	
Northern Lights Music, Inc.	<u>389.97</u>	2,008.39
GRAND TOTALS		\$563,945.58

LANDAFF SCHOOL BOARD REPORT

Citizens will be pleased to note a decrease in the Landaff school budget. This is mainly due to a reduction in the number of tuition students. Tuition remains the biggest factor in fluctuating budget totals.

The board continues to focus on quality education at the Blue School. Head teacher, Claire Cochrane, brings creativity and focus for her young students. We hope you have been able to see one of the Blue School's programs at the town hall during the past year. Beyond the Blue School, the biggest concern of the board is school attendance in the upper grades. If a student is not in school, he cannot learn. The board is in regular communication with Lisbon to review attendance records for our students.

Landaff students have done well in Lisbon. Most are on the honor roll. Many are on the sports teams, participate in clubs and represent their school and town well.

The Blue School is technologically advanced, especially for a one-room schoolhouse. The equipment was obtained through donations and grant money. Grant money supports many of the field trips and supplemental activities provided for the children.

This year in warrant articles we are looking to study withdrawal from SAU 35. We are asking this as a precaution for the future. Withdrawal, if it occurs, must be a two-year process. Lisbon has already begun its study. If they withdraw, as did Littleton last year, the cost of supporting the SAU office would be borne by the remaining districts. In that case, Landaff would bear an even larger burden. The price of the Littleton withdrawal was much greater than what their school board reported it would be for all the districts.

Another article asks for transfer of funds to a building fund and another for playground improvements. These articles use surplus funds from the current year for support.

Lastly, we would like to express our appreciation to Betsy Babcock for her years of service to the town as she has decided to step down this year. Thank you Betsy!

Respectfully submitted,

Landaff School Board

Mary Beaudin, Chairperson
Betsy Babcock
J. Denise Cartwright

REPORT OF THE SUPERINTENDENT OF SCHOOLS

Thank you for your continued support of our SAU35 schools. Striving to provide a warm, welcoming and safe environment is key to all we do. I am pleased to share with you, on behalf of our school boards and staff, that all of our schools made A.Y.P. (Adequate Yearly Progress) as measured by N.C.L.B. (No Child Left Behind). Our school staffs are committed to continuous school improvement and interpret achievement data to enhance student achievement. Feedback from grant funded Student Aspiration surveys is providing very useful information regarding what our students think of their schools. Several of our schools are having good success implementing PBIS (Positive Behavior Intervention System) as encouraged by our D.O.E.

Sound basic core curriculums are in place (Language Arts, Social Studies, Math and Science) in our schools. We also address whole person student needs through Art, Music, Band and numerous other specials and electives. Extra curricular offerings encourage students to extend their learning and growth after the regular school day. Our special thanks to staff members that are willing to coach or sponsor clubs or other extra services after school. There is much information contained on each of our schools' web-sites, accessible through our SAU35 web-site (www.sau35.org).

You may recall that during our 2006/07 school year Lisbon claimed the Boy's Basketball State title. Profile H.S. was recognized by the NHIAA (New Hampshire Interscholastic Athletic Association) as the best Sportsmanship Class S school in the state for 2006/07. The Profile Boys Alpine Ski Team won the State Championship in 2006/07 while the Girls were Runner's Up. The Profile Nordic Boys Team earned State Runner's Up honors. All of our students participating in athletics and/or other extra-curriculars, elementary through high school, enhance their overall skills for life, especially team working skills and goal setting. Our congratulations to all of them.

In November I shared an extremely in-depth job tasking study with our SAU35 Board and Executive Board. My thanks to our office team members and Business Administrator for their months of work and patient review of what we do at central office to stay compliant with a myriad of regulations, laws, audits and mandates. We believe this is the most in-depth study ever undertaken regarding how work is addressed at central office, inclusive of Superintendent duties. The Board accepted the Report and based central office staffing levels for 2008/09 upon it.

Budget cuts implemented for 2007/08 include: not replacing the Special Education Director (Superintendent working with talented school building teams), not filling one central office clerical position, moving to a half time Technology support position and changing the Health Insurance Plan co-pays for central office staff. The total savings amounted to approximately \$178,000.00.

All of our school facilities meet State requirements for school operations. Our thanks to our Maintenance Teams for maintaining our schools very well from day to day (and to our students who generally give them gentle use).

Lisbon will be addressing repairs to their elementary roof in 2008/09, with planning underway. Profile continues to make fine progress on their new high school, while renovations to the middle school were completed for the opening of school this year. The Profile High School building project is among the first three High Energy Efficient school projects underway in N.H. The first phase of the new Profile H.S. will become occupied between the end of February and end of March this year, with total project completion slated for August of 2009. The project is on time and within budget. Any constituent desiring a tour of the new Profile facility may contact the Superintendent or Profile Principal.

Our Landaff Blue School (One Room School House) will celebrate their 150th Anniversary this year! Well done Landaff Board, students, staff and constituents!

We are reviewing office needs for SAU35 in an effort to be additionally cost conscious as we work through our present five year lease (presently in year two).

Two of our schools are reviewing their Mission Statements, Bethlehem Elementary and Profile Middle High School. School Boards and Administrative Teams strive to design and fund their school budgets to support the stated mission of the schools. The process is guided via a matrix from NESDEC (New England School Development Council). Both studies have goals to complete their initial reviews by year end and to report outcomes to their school boards.

Health and Wellness remain integral to our core curriculums. Students need to be healthy and well in order to surpass themselves in personal achievement. Our school staffs have implemented the required D.O.E. Health and Wellness curriculum and work to model healthy choices at school for our students. When we are mentally and physically fit and alert, we can all achieve more and enhance our abilities as life long learners.

Special Education continues to be a key focus of our efforts. Programs within our schools are highly respected. We are working with our Special Education Team to address Action Steps from a November, 2006 audit by the D.O.E for the end of April, 2008 to make our services even better. We are also gradually studying and implementing a new approach to identifying learning disabled students (R.T.I.- Response to Intervention) mandated by the federal government. As many other SAU's and districts in our state, we will be re-writing/updating our Special Education Plan this year and next. At Profile Middle High School we are also reviewing and implementing most recommendations from a Board requested audit of their Special Education services, completed by NESDEC last spring.

As of this writing, delivery of Special Education services through the Superintendent and building level teams is proceeding well. We continue to implement the NHSEIS (NH Special Education Information System) software reporting program mandated by the D.O.E, which the D.O.E. continues to try to make fully operational. Our thanks to our outstanding Special Education staff members at building level for helping make this service delivery method successful to date. We also have five talented special education service providers housed at our central office who provide services to our schools, paid in full by billing of services back to the districts for whom they provide student services.

Sharing of these staff saves individual schools from trying to secure scarce professional resources to work with our students, making them additionally cost effective.

Grant funds currently being used on behalf of our students include: IDEA, CIDER, Adult Basic Education, ABE-HHS, Title I, Title ID, Title IIA, Title IID, Title V, REAP (Rural Education), Competency and Follow the Child. Other smaller grants and grants of any size that may benefit our students are sought after, often with the help of NCES (North Country Education Services) with whom we participate in an effort to share regional resources.

Special Honors have been awarded to Profile High School in December of 2007 as they were awarded Silver Medal honors by U.S. News and World Report for being one of the best high schools in the nation. You can obtain additional information from either the U.S. News and World Report web-site (www.usnews.com/highschools) or by contacting the high school or our office directly. Our congratulations to the administration, students, staff, school board and constituents for this outstanding achievement. We are also receiving significant numbers of phone calls regarding students from other school districts interested in attending Profile, especially with the new building project underway. (You may recall that in 2005/06 Lafayette Regional School (K-6) was named Outstanding Elementary School in N.H.)

Mrs. Kim Knighton, Profile graduate and now staff member/Math teacher was recognized as the Best Math teacher in the state of N.H. for 2007 and is under consideration for best Math teacher in the U.S. Our Assistant H.S. Principal, Mr. Mike Kelly, was awarded an Excellence in Education Award by the N.H. School Administrators Association for his services as Profile's Assistant Principal. Mr. Chris LaVoie, Profile A.D., was named the best new Athletic Director (Class S school) in N.H. in the spring of 2007. Mr. Rich Larcom, Profile Principal, announced he will complete this his eleventh year serving Profile and will then choose to transition to private life. He was key in the school receiving a Silver Award from U.S. News and World Report as one of the best high schools in the nation and in visioning and helping bring to fulfillment, the new Profile HS facility. A national search is underway to secure a new Profile Principal for 2008/09. Our thanks and congratulations to each of these staff members for their service and recognition!

Budget development for our individual school districts and SAU have been completed under Cost of Living rates. Key drivers to the budget, as with family budgets, are utilities, transportation and health insurance. We have strived to maintain adequate staffing levels to insure sound learning by our students while recognizing and controlling costs. Our staffs are either fully HQT (Highly Qualified teachers) or have a certified program in place to become so, approved by the D.O.E.

The N.H. Legislature is using the definition of an Adequate Education developed last year (at the direction of the courts) to determine what monies are needed to support an adequate public education for N.H. students. We will continue to monitor this process and communicate with policy makers via our representatives in the NHSBA (N.H. School Boards Association) and our Superintendent and Administrator Associations in the state.

Enrollments are also key factors for our school budgeting.

The November, 2007 NESDEC (New England School Development Education Council) Enrollment Projection Report, covering the next six years, predicts up to a 5% gain in students for Bethlehem, Profile and Lafayette Schools and up to a 5% loss of student population for the Lisbon and Landaff Schools (or approximately 45 students less). Birth rates are monitored as well as new home starts, modular/mobile home starts and major remodels. Economic indicators, employers moving in or out, are also reviewed and forecast as they impact area populations.

Professional Development is a key activity within our schools for staff in all capacities. We are formally reviewing our present SAU wide plan with a new five year plan being prepared for implementation through the D.O.E. starting in 08/09. We review gaps in student achievement via test scores and other data indicators and then prioritize staff training areas that will strengthen our staff's ability to impart skills necessary for our students to be proficient in all areas of their learning. Our thanks to staff and/or community members for serving on this committee.

Our D.O.E. (Dept. of Education) and/or U. S. Dept. of Education have been very busy the past four years rolling out the following new mandated curriculums or programs:

- New Minimum Standards for School Approval
- New Language Arts curriculum
- New Social studies curriculum
- New Science curriculum
- New Math curriculum
- New state testing model (NECAP)
- Digital Portfolio mandate for all 8th Graders 07/08
- Continued roll out of the new Student Reporting data software, i4see
- Continued roll out of the new Special Education reporting software, NHSEIS (still being tweaked by the D.O.E. with input from those of us in the field/schools)
- Competency Based Learning/Graduation mandate for 08/09
- New Special Education learning disabled identification model/process from federal level
- Roll over of present NCLB (No Child Left Behind) requirements with extensive new legislation waiting to be reviewed and possibly enacted after a new U.S. President is voted in 2008.
- Reviews of our Emergency Response models/Crisis Response models this year and next.

We have been extremely busy striving to participate in the development of these initiatives, responding to them, training our staffs, and implementing them as directed. Your Superintendent makes sure to represent you at monthly Commissioner of Education meetings in Concord as well as at North Country Superintendent cohort meetings each month. I have also brought back resource information for our Principals and school teams to use from Special Education conferences, Best Practices conferences and the New England Superintendents Conference. We are committed to building upon the numerous positives we have in place and to make our schools even better for our students and communities, within fiscally conservative budgets.

We continue to be proud to affiliate and support our one of a kind partnership with North Country Charter Schools, housed in Littleton and Lancaster. Other SAU's in our immediate area also participate with this Charter School (Alternative High School). Each site can accommodate approximately 23 students who study primarily via on-line computer based curriculum materials. Students apply to attend and require a recommendation from their local high school. They may study for one semester or all four years, dependent upon their situation. Your Superintendent provides services to these schools through participation on the Board with on-going visits to the schools. The Commissioner of Education and Governor have praised our partnership and outcomes on behalf of students.

Lisbon Regional School began offering Adult Education opportunities last winter (through grant funds) to additionally provide services to their students and community members. Several students recently received certificates of completion from this program.

Our central office has also provided the Lisbon Board with copious amounts of information as they progress through another Withdrawal Study (the second in several years).

SAU35 is one of the most efficient SAU's in N.H. and will continually seek ways to remain highly efficient or to become even more so.

Our thanks to Mrs. Sally Waterhouse, Business Administrator, who shared her resignation at our January, 2008 Executive Board meeting. It was accepted with regrets. Mrs. Waterhouse has provided services during some very complex years for the SAU. She will be missed.

Please feel free to contact me as you may find helpful. I encourage you to visit each school web-site as this writing could not address all of the very numerous positive opportunities in place for our students, but has rather focused upon highlighting key areas. You are always welcome to visit our schools as well. Volunteers are also welcome and very much appreciated. Thank you for your continued support of our schools—where teachers want to teach and students want to learn!

Respectfully shared,

Patrick Christopher-Low, Ed. S.
Superintendent/SAU35

STUDENT ASSISTANCE PROGRAM REPORT

The Student Assistance Program had a year full of changes in 2007. Two of the most significant changes were the split of SAU#35 and the loss of a full time SAP Counselor at Lisbon Regional School (due to funding). With these changes came some challenges, but with support from both SAU#35 & SAU#84 the program was able to overcome some of those barriers and continue to provide services to both SAU'S. We currently have two counselors in SAU #35. Through grant and local funding, Bethlehem, Lisbon, Lafayette and the Blue School receive part time services from Arlene Soule, our education and prevention specialist, and Cynthia McLaren, the director of the program is available for services on an as needed basis. Our hopes for 2007-2008 are to regain funding for a full time counselor for Lisbon Regional School.

The services provided by the Student Assistance staff are wide-spread and varied. The administration and faculty at each school, and the unique needs and issues of each student body, determine what services are provided. However, at all levels, services consist of a combination of individual and group counseling, crisis intervention, drug and alcohol education, special events promoting Wellness and an Anti-Drug message, staff or family workshops, and facilitation and encouragement of positive social and academic involvement. Each S.A.P. provider brings their own special "flavor" to the programs they initiate and consummate. As always, we strive to ensure that the curricula and methods we use are research-based—that they have been proven to be effective.

In summary, the purpose of the Student Assistance Program is to work with administration, faculty, parents, and students to address the particular needs of each school in regard to the prevention of substance abuse, aggression and violence, eating disorders, and other self-destructive behaviors. Moreover, we aim to nurture self-esteem, effective communication, empathy for others, problem solving and emotion management. We encourage students to seek healthy alternatives and to realize their full potential. In short, whatever the needs are, the Student Assistance Program is ready and willing to lend a hand in order to ensure that each student in the SAU can learn, grow, and achieve in a supportive and safe environment. It is our privilege and pleasure to provide Student Assistance services within SAU 35!

Respectfully Submitted,

Cynthia McLaren, MSW
Student Assistance Program Coordinator

**LANDAFF SCHOOL DISTRICT
STUDENT ENROLLMENT
2006-2007**

Kindergarten

Natalie Cartwright
Tyler Kathan

(3 students)
Gary Secher

Grade 1

Elijah Blondin
Nathaniel Bronson
Trevor Fenoff
Madison Lavoie

(7 students)
Reilly McGuire
Shawna Schofield
Shane Tillotson

Grade 2

Hannah Cartwright
Shayne Hudson

(4 students)
Tyra Laflamme
Ayla Maria Presley

Grade 3

Nathan Arsenault
Brandon Blowey
Sierra Dauphin

(6 students)
Jordyn Judkins
Rebecca Peters
Kari Tillotson

Grade 4

Abigail Bronson

(2 students)
Lindsey Heath

Grade 5

Dylan Blowey
Tristan Champagne
Sydney Clement
Kayla Fifield

(8 students)
Norman Judkins
Destiny Presley
Jackson Smith
Jamie Wells

Grade 6

Nichol Arsenault
Kylie Chase
Michael Heath
Maria Ianno

(8students)
Holly Lemear
Jocelyn Stout
Kristi Talatinian
Samantha Tillotson

Grade 7

Mandy Basnar
Forrest Champagne
Jillian Fifield
Tyler Gooden

(7 students)
Francis Penn
Jesse Raymond
Marshall Smith

Grade 8

Dylan Chase
Jameson Clement

(5 students)
Angela Lemear
Erickson Smith

Courtney Heath

Grade 9

Matthew Cavicchio
Brandon Chase
Justin Miller

(5 students)
Clinton Ness
Katie Tillotson

Grade 10

Christina Basnar
Kyle Fifield

(4 students)
Joelee Stout
Jessica Penn

Grade 11

Jake Blanchette

(2 students)
Samantha Guilmette

Grade 12

Krystle Cummings

(2 students)
Ashley Fifield

**PUBLIC NOTICE
REFERRAL OF CHILDREN
WITH EDUCATIONAL DISABILITIES
TO SCHOOL DISTRICTS IN SAU #35**

The Individuals with Disabilities Education Act (IDEA) provides for the free and appropriate public education of all students with educational disabilities from ages 3 to 21 and the identification of all children with educational disabilities from birth through 21. Children in private schools, public schools or currently not enrolled in school are equally eligible for these services.

It is our intent to identify, evaluate and successfully educate all eligible children with disabilities in our districts. We encourage parents, neighbors, and agencies to refer to us any child whom you feel may have an educational disability. You may contact your local building principal or the SAU #35 Superintendent, 262 Cottage Street ~ Suite 230, Littleton, NH 03561 (603) 444-3925 to initiate the process.

COMPLIANCE STATEMENT

It is the policy of Landaff School District not to discriminate on the basis of race, sex, color, religion, handicap or national origin in the educational programs and activities which it operates in accordance with Title VI of the Civil Rights Act of 1964, Title IX of the Educational Amendments of 1972 and section 504 of the Rehabilitation Act of 1973. Any inquiries concerning these statutes should be directed to the Office of the Superintendent of Schools, White Mountains School Administrative Unit #35, 262 Cottage Street ~ Suite 230, Littleton, NH 03561, (603) 444-3925.

Sexual harassment of any employee or student by any other employee or student, or by anyone a student or employee may interact with in order to fulfill job or school responsibilities, is not only illegal as a form of sex discrimination as defined by Title VII of the 1964 Civil Rights Act, and Title IX of the Educational Amendments of 1972 but also is a violation of this School Administrative Unit's policy and will not be tolerated.

**LANDAFF SCHOOL DISTRICT
PROPOSED SCHOOL CALENDAR
2008-2009**

**August 26, 2008
SCHOOL OPENS**

September 1, 2008
Labor Day

October 10, 2008
North Country Staff Development Day

November 11, 2008
Veterans' Day

November 27-28 2008
Thanksgiving Recess

December 22, 2008-January 5, 2009
Christmas Recess

February 23-February 27, 2009
Winter Recess

March 23-24, 2009
Staff Development Days

April 20-24, 2009
Spring Recess

May 25, 2009
Memorial Day

**June 11, 2009
SCHOOL CLOSES**

THIS CALENDAR IS SUBJECT TO CHANGE.

**PLEASE NOTE: SCHOOL STARTS PRIOR TO LABOR DAY ON AUGUST 26TH
AND CLOSES ON JUNE 11TH**

New Hampshire State Library



3 4677 00105374 8