

# THE WMUR GRANITE STATE POLL

## THE UNIVERSITY OF NEW HAMPSHIRE SURVEY CENTER

October 29, 2014

### HASSAN WIDENS LEAD OVER HAVENSTEIN IN NH GOVERNOR'S RACE, GOP LIKELY TO WIN BOTH HOUSES IN LEGISLATURE

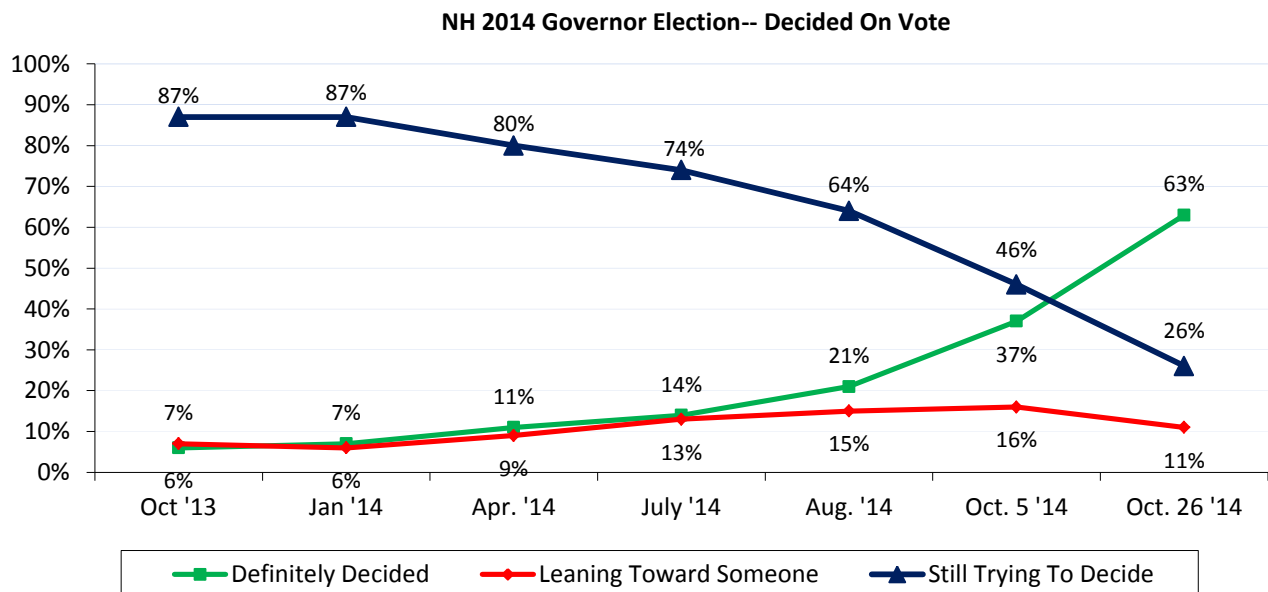
By: Andrew E. Smith, Ph.D.  
 Zachary S. Azem, M.A.  
 UNH Survey Center  
 603/862-2226  
[www.unh.edu/survey-center](http://www.unh.edu/survey-center)

DURHAM, NH – Incumbent Maggie Hassan has widened her lead over Republican challenger Walt Havenstein in the race for New Hampshire governor.

These findings are based on the latest **WMUR Granite State Poll**,\* conducted by the University of New Hampshire Survey Center. Six hundred and seventy-seven (677) randomly selected New Hampshire adults were interviewed by landline and cellular telephone between October 22 and October 26, 2014. The margin of sampling error for the survey is +/- 3.8 percent. The sample included 555 likely voters (with a +/- 4.2 percent margin of sampling error).

#### 2014 NH Gubernatorial Election

New Hampshire residents are settling in on their choice in the gubernatorial election -- 63% say they have definitely decided on who they will support, 11% are leaning toward a candidate, and 26% are still trying to decide. The percentage of likely voters who say they have definitely decided who they will vote for has jumped 26 points over the last three weeks.

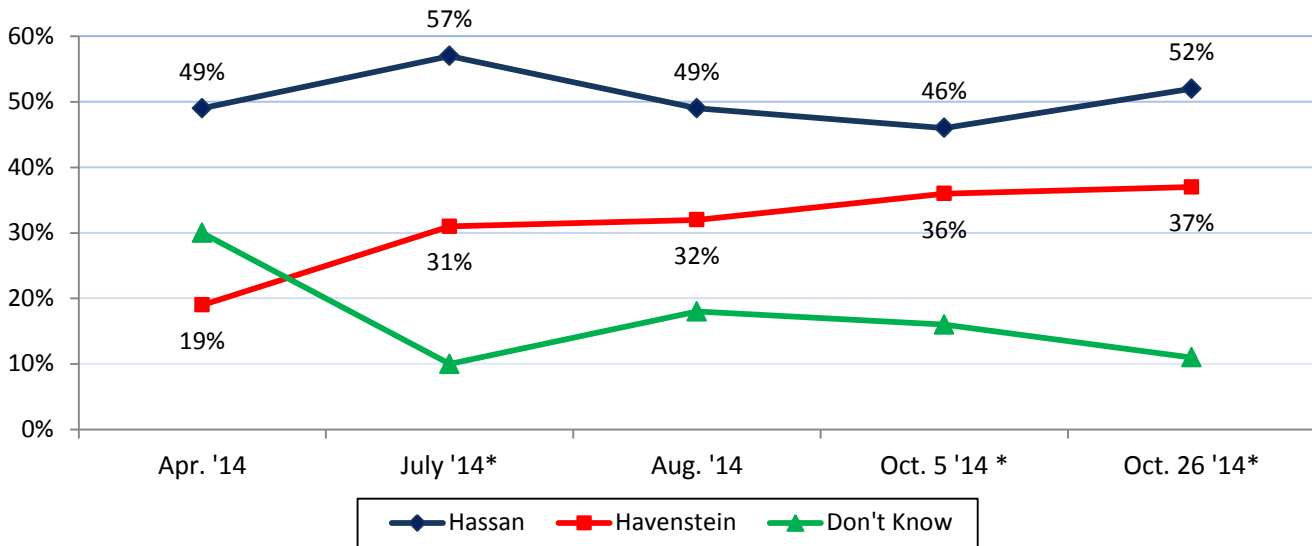


\* We ask that this copyrighted information be referred to as *the Granite State Poll*, sponsored by WMUR-TV, and conducted by the University of New Hampshire Survey Center.

### Gubernatorial Trial Heat

If the 2014 gubernatorial election were held today, 45% of likely voters would vote for Governor Hassan, 31% would vote for Republican Walt Havenstein, 1% would vote for someone else and 23% are undecided. When undecided voters are asked which candidate they lean toward supporting, the race stands at 52% for Hassan, 37% for Havenstein, 1% for some other candidate and 11% remain undecided. Both Havenstein and Hassan hold significant leads among their parties' voters (by 74%-17% and 88%-5% respectively), but Hassan had a double digit lead among Independents (51%-24%).

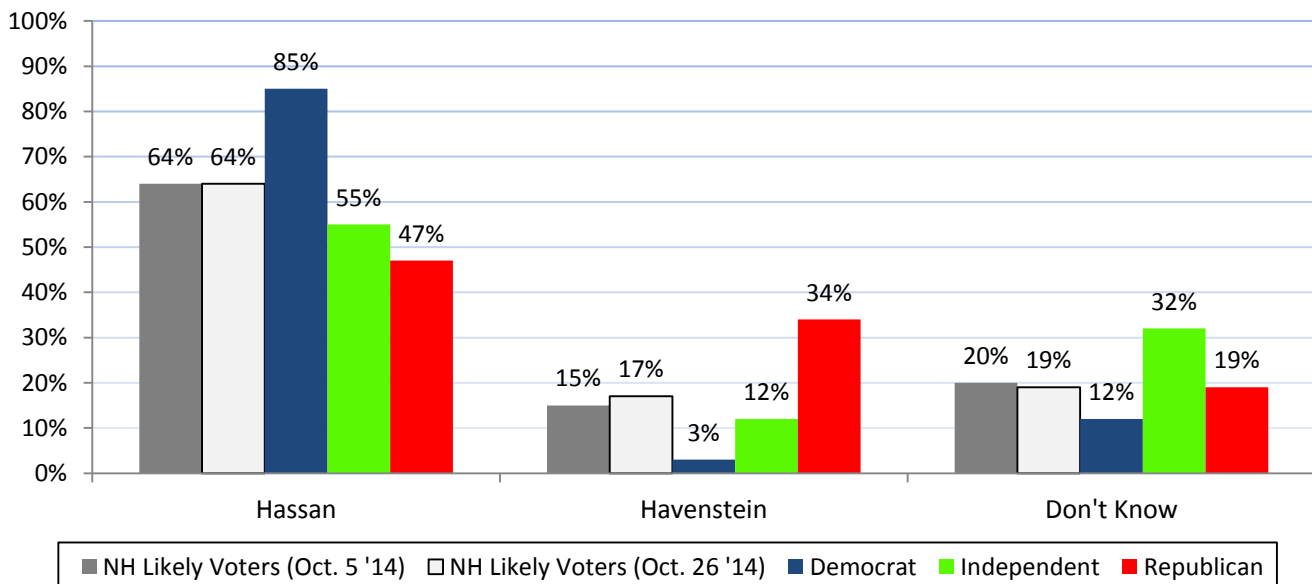
**NH Governor - Hassan vs. Havenstein - Likely Voters**  
\* Including undecided, but leaning voters



### Who Will Win 2014 Gubernatorial Election?

When asked which candidate they think will win the 2014 gubernatorial election, 64% of likely voters think Hassan will be re-elected, only 17% think Havenstein will win, and 19% are unsure. Almost all Democrats (85%), a majority of Independents (55%) and a plurality of Republicans (47%) think Hassan will win. Nearly all voters who support Hassan (85%) believe she will win. Havenstein voters are divided -- 44% think that Havenstein will win and 37% think that Hassan will win. Of those who chose another candidate or are undecided, 50% think Hassan will win while just 11% think Havenstein will win.

**Governor - Who Will Win? - Likely Voters**

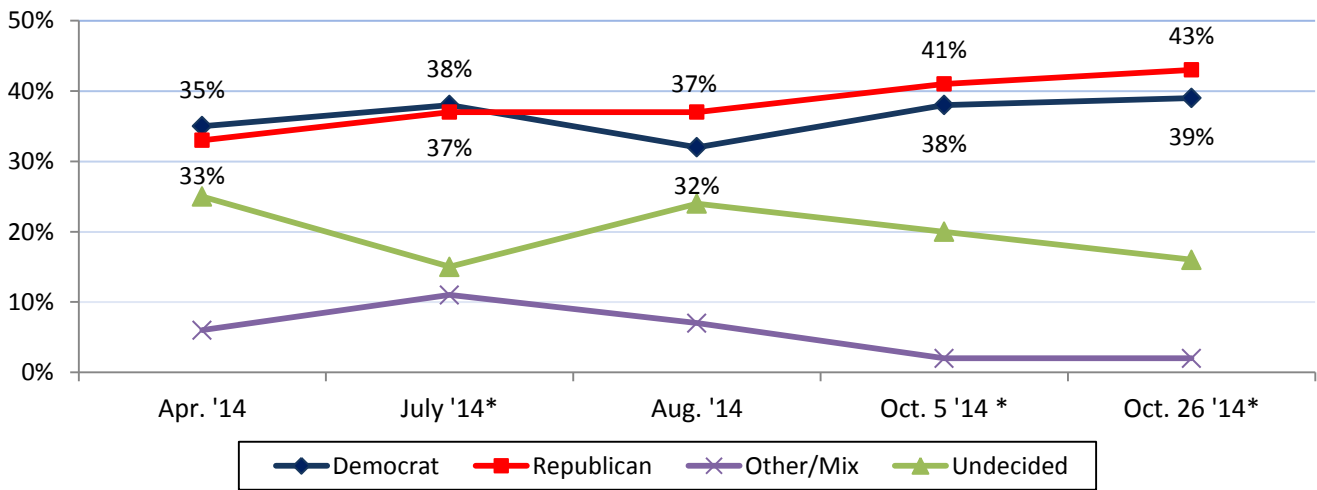


### Election for New Hampshire Legislature

Likely 2014 New Hampshire voters were asked which party's candidate they plan to support in the upcoming election for the New Hampshire House of Representatives. Currently, 39% plan on voting for Republican candidates, 36% plan on voting Democratic candidates, 2% will vote for another party or a mix of Republicans and Democrats, and 23% are undecided. When undecided voters are asked which candidate they lean toward supporting, 43% will vote for Republican candidates, 39% for Democratic candidates, 2% for another party or a mix of Republican and Democrats, and 16% remain undecided.

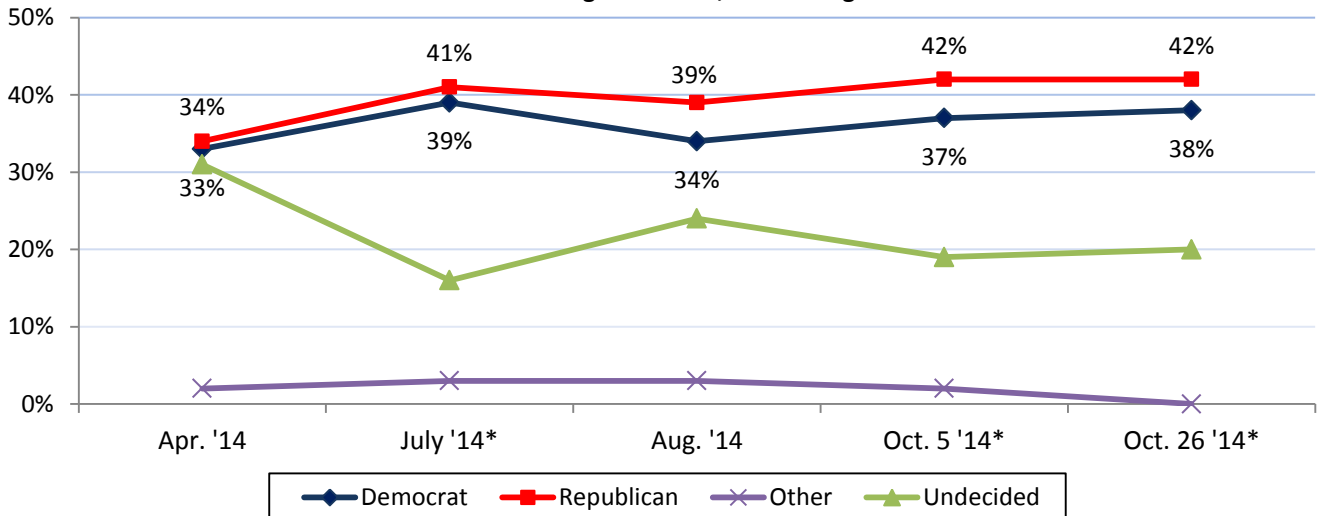
Based on an evaluation of past "generic ballot" polling in New Hampshire and actual election results, these findings translate into 252 seats for Republicans and 148 seats for Democrats. But this estimate, as well as the estimate for New Hampshire Senate seats, is highly dependent on actual turnout in November.

**New Hampshire House of Representatives Generic Ballot**  
\* Including undecided, but leaning voters

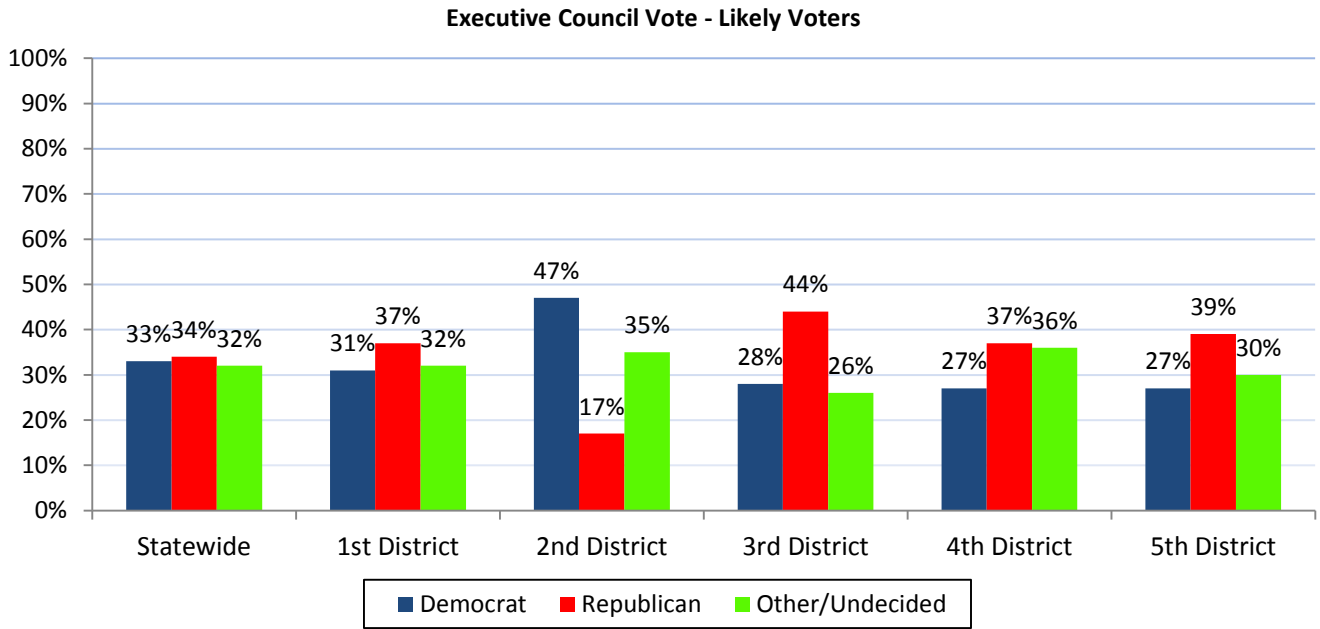


Likely 2014 New Hampshire voters were also asked which party's candidate they planned on supporting for State Senate -- 40% say they will vote for the Republican candidate in their district, 37% for the Democratic candidate, and 22% are undecided. When undecided voters are asked which party they lean toward supporting, the Republican share of the vote increases to 42%, 38% say they will vote for the Democratic candidate, and 20% remain undecided. Based on an evaluation of past "generic ballot" polling in New Hampshire and actual election results, these results would translate into 16 seats for Republicans and 8 seats for Democrats.

**New Hampshire Senate Generic Ballot**  
\* Including undecided, but leaning voters



Likely 2014 New Hampshire voters were also asked which party's candidate they planned on supporting for Executive Council-- 34% say they will vote for the Republican candidate in their district, 33% for the Democratic candidate, and 32% are undecided.



## Granite State Poll Methodology

These findings are based on the latest WMUR Granite State Poll, conducted by the University of New Hampshire Survey Center. Six hundred and seventy-seven (677) randomly selected New Hampshire adults were interviewed by landline and cellular telephone between October 22 and October 26, 2014. The margin of sampling error for the survey is +/- 3.8 percent. The sample included 555 likely voters (with a +/- 4.2 percent margin of sampling error).

The data have been weighted to adjust for numbers of adults and telephone lines within households, respondent sex, age, and region of the state. In addition to potential sampling error, all surveys have other potential sources of non-sampling error including question order effects, question wording effects, and non-response. Due to rounding, percentages may sum to just above or below 100%. Respondent numbers in each demographic may not equal the total respondent number due to respondents choosing not to answer some demographic questions.

### Granite State Poll, Fall 2014 Demographics

<b>Sex</b>	<b>N</b>	<b>%</b>	<b>Region</b>	<b>N</b>	<b>%</b>
Male	334	49%	North Country	57	8%
Female	343	51%	Central/Lakes	112	17%
			Connecticut Valley	92	14%
			Mass Border	199	30%
			Seacoast	117	17%
			Manchester Area	98	15%
<b>Age</b>	<b>N</b>	<b>%</b>	<b>Party Registration</b>	<b>N</b>	<b>%</b>
18 to 34	160	25%	Democrat	163	26%
35 to 49	193	30%	Undeclared	298	48%
50 to 64	179	28%	Republican	165	26%
65 and Over	113	18%			
<b>Highest Level of Education</b>	<b>N</b>	<b>%</b>	<b>Party Identification</b>	<b>N</b>	<b>%</b>
High School or Less	118	18%	Democrat	254	40%
Some College	190	28%	Independent	144	22%
College Graduate	239	36%	Republican	249	38%
Post-Graduate	124	19%			

**Firmness of Choice For New Hampshire Governor – Likely Voters**

“Have you definitely decided who you will vote for in the New Hampshire Governor election in 2014 ... are you leaning toward someone ... or have you considered some candidates but are still trying to decide?”

	<u>Def. Decided</u>	<u>Leaning</u>	<u>Trying to Decide</u>	<u>(N=)</u>
<b>Oct. 26 '14</b>	<b>63%</b>	<b>11%</b>	<b>26%</b>	<b>(552)</b>
<b>Oct. 5 '14</b>	37%	16%	46%	(524)
<b>Aug. '14</b>	21%	15%	64%	(609)
<b>July '14</b>	14%	13%	74%	(493)
<b>Apr. '14</b>	11%	9%	80%	(374)
<b>Jan. '14</b>	7%	6%	87%	(459)
<b>Oct. '13</b>	6%	7%	87%	(507)

**NH Governor – Havenstein vs. Hassan – Likely Voters**

“Thinking about the gubernatorial election in November, will you vote for Walt Havenstein, the Republican ... Maggie Hassan, the Democrat... or haven't you decided yet?” ROTATE CANDIDATES

	<u>Apr. '14</u>	<u>July '14</u>	<u>Aug. '14</u>	<u>Oct. 5 '14</u>	<u>Oct. 26 '14</u>
Havenstein	19%	29%	32%	30%	<b>31%</b>
Hassan	49%	55%	49%	40%	<b>45%</b>
Other	2%	1%	1%	2%	<b>1%</b>
Don't know / undecided	30%	15%	18%	28%	<b>23%</b>
(N=)	(383)	(500)	(601)	(527)	<b>(545)</b>

**With Leaners**

“Would you say you are leaning towards Walt Havenstein, the Republican or Maggie Hassan, the Democrat?” ROTATE CANDIDATES

	<u>July '14</u>	<u>Oct. 5 '14</u>	<u>Oct. 26 '14</u>
Havenstein	31%	36%	<b>37%</b>
Hassan	57%	46%	<b>52%</b>
Other	2%	2%	<b>1%</b>
Don't know / undecided	10%	16%	<b>11%</b>
(N=)	(496)	(525)	<b>(544)</b>

### NH Governor – Havenstein vs. Hassan – Who Will Win

“Regardless of who you are voting for, which candidate do you think is most likely to win the 2014 gubernatorial election, Walt Havenstein or Maggie Hassan?” ROTATE CANDIDATES

	<u>Oct. 5 '14</u>	<u>Oct. 26 '14</u>
Havenstein	15%	<b>17%</b>
Hassan	64%	<b>64%</b>
Other	1%	<b>0%</b>
Don't know / undecided	20%	<b>19%</b>
(N=)	(530)	<b>(554)</b>

### Generic NH House Ballot

"Please think about the November election for your representative to the New Hampshire House of Representatives. Do you plan to vote for the Republican or Democratic candidate for the New Hampshire House of Representatives ... or do you plan to skip the election for New Hampshire House of Representatives this time?" ROTATE PARTIES

	<u>Apr. '14</u>	<u>July '14</u>	<u>Aug. '14</u>	<u>Oct. 5 '14</u>	<u>Oct. 26 '14</u>
<b>Republican</b>	33%	34%	37%	36%	<b>39%</b>
<b>Democrat</b>	35%	36%	32%	36%	<b>36%</b>
<b>Other</b>	1%	1%	1%	0%	<b>1%</b>
<b>Some DEM, Some GOP</b>	5%	9%	6%	1%	<b>1%</b>
<b>DK/Undecided</b>	25%	19%	24%	26%	<b>23%</b>
<b>(N=)</b>	<b>(383)</b>	<b>(493)</b>	<b>(598)</b>	<b>(519)</b>	<b>(540)</b>

### With Leaners

“Are you leaning toward voting for the Republican candidate to the New Hampshire House or for the Democratic candidate?” ROTATE PARTIES

	<u>July '14</u>	<u>Oct. 5 '14</u>	<u>Oct. 26 '14</u>
<b>Republican</b>	37%	41%	<b>43%</b>
<b>Democrat</b>	38%	38%	<b>39%</b>
<b>Other</b>	1%	1%	<b>1%</b>
<b>Some DEM, Some GOP</b>	10%	1%	<b>1%</b>
<b>DK/Undecided</b>	15%	20%	<b>16%</b>
<b>(N=)</b>	<b>(493)</b>	<b>(519)</b>	<b>(540)</b>

### Generic NH Senate Ballot

"Please think about the November election for your representative to the New Hampshire Senate. Do you plan to vote for the Republican or Democratic candidate for the New Hampshire Senate ... or do you plan to skip the election for New Hampshire Senate this time?" ROTATE PARTIES

	<u>Apr. '14</u>	<u>July '14</u>	<u>Aug. '14</u>	<u>Oct. 5 '14</u>	<u>Oct. 26 '14</u>
<b>Republican</b>	34%	39%	39%	41%	<b>40%</b>
<b>Democrat</b>	33%	37%	34%	36%	<b>37%</b>
<b>Other</b>	2%	3%	3%	2%	<b>0%</b>
<b>DK/Undecided</b>	31%	21%	24%	21%	<b>22%</b>
<b>(N=)</b>	<b>(369)</b>	<b>(488)</b>	<b>(593)</b>	<b>(521)</b>	<b>(545)</b>

### With Leaners

"Are you leaning toward voting for the Republican candidate to the New Hampshire Senate or for the Democratic candidate?"  
ROTATE PARTIES

	<u>July '14</u>	<u>Oct. 5 '14</u>	<u>Oct. 26 '14</u>
<b>Republican</b>	41%	42%	<b>42%</b>
<b>Democrat</b>	39%	37%	<b>38%</b>
<b>Other</b>	3%	2%	<b>0%</b>
<b>DK/Undecided</b>	16%	19%	<b>20%</b>
<b>(N=)</b>	(487)	(521)	<b>(545)</b>

A historical analysis was done looking at the results of the "generic ballot" question and the actual number of seats won by Republicans in the New Hampshire House and Senate in the 2000 through 2012 elections was presented at the annual meeting of the American Association for Public Opinion Research Annual (AAPOR), and is available from the UNH Survey Center.

The model developed in this paper used for estimating House seats from the generic ballot question is:  
 $\text{HOUSE SEATS} = -264.711 + (2\text{-party GOP estimate} * 986.291)$

In this Granite State Poll, the two party estimate of House vote percentage with leaners for Republicans, 52.4% (43% GOP / (43% GOP + 39% DEM) = 52.4%) is calculated and inserted into the formula above. This results in an estimate of 252 Republican House seats and 148 Democratic House seats.

The model developed for estimating Senate seats from the generic ballot question is:  
 $\text{SENATE SEATS} = -20.355 + (2\text{-party GOP estimate} * 68.817)$

In this Granite State Poll, the two party estimate of Senate vote percentage with leaners for Republicans, 52.5% (42% GOP / (42% GOP + 38% DEM) = 52.5%) is calculated and inserted into the formula above. This results in an estimate of 16 Republican Senate seats and 8 Democratic Senate seats.



Firmness of choice for New Hampshire Governor

	<u>Definitely Decided</u>	<u>Leaning Toward Someone</u>	<u>Still Trying To Decide</u>	<u>(N=)</u>
<b>STATEWIDE</b>	<b>63%</b>	<b>11%</b>	<b>26%</b>	<b>552</b>
Registered Democrat	80%	6%	14%	143
Registered Undeclared	56%	14%	29%	246
Registered Republican	58%	10%	31%	152
Democrat	72%	8%	19%	219
Independent	53%	11%	37%	108
Republican	58%	13%	28%	215
Definitely Will Vote	67%	11%	23%	466
Will Vote Unless Emergency	41%	14%	45%	86
Excited About Election Outcome	66%	12%	22%	299
Depressed About Election Outcome	61%	9%	30%	127
Neutral/Don't Know	58%	12%	30%	124
Approve of Obama	77%	7%	16%	226
Neutral	44%	26%	30%	16
Disapprove of Obama	54%	13%	33%	307
18 to 34	53%	15%	32%	105
35 to 49	52%	9%	38%	148
50 to 64	72%	9%	19%	164
65 and over	73%	10%	17%	104
Male	65%	10%	25%	275
Female	60%	12%	27%	277
Married Male	69%	10%	22%	168
Unmarried Male	59%	11%	30%	105
Married Female	63%	12%	25%	178
Unmarried Female	56%	12%	32%	94
High school or less	60%	9%	30%	88
Some college	54%	15%	31%	136
College graduate	65%	9%	25%	209
Post-graduate	69%	11%	20%	114
Attend services 1 or more a week	67%	13%	20%	115
1-2 times a month	66%	9%	25%	76
Less often	56%	14%	29%	170
Never	66%	8%	26%	160
North Country	69%	3%	28%	46
Central / Lakes	70%	10%	21%	89
Connecticut Valley	70%	3%	27%	86
Mass Border	57%	16%	27%	157
Seacoast	70%	14%	17%	98
Manchester Area	46%	13%	41%	75
First Cong. Dist	60%	15%	25%	257
Second Cong. Dist	66%	8%	27%	294

**Governor – Walt Havenstein vs. Maggie Hassan – Likely Voters**

	<u>Havenstein</u>	<u>Hassan</u>	<u>Other</u>	<u>DK</u>	<u>(N)</u>
<b>STATEWIDE</b>	<b>31%</b>	<b>45%</b>	<b>1%</b>	<b>23%</b>	<b>545</b>
Registered Democrat	6%	82%	1%	11%	143
Registered Undeclared	28%	42%	0%	30%	242
Registered Republican	62%	14%	0%	23%	152
Democrat	5%	78%	1%	17%	222
Independent	21%	47%	1%	31%	99
Republican	64%	10%	0%	26%	214
Definitely Decided	35%	59%	1%	5%	340
Leaning Toward Someone	39%	29%	0%	32%	61
Still Trying To Decide	19%	18%	1%	62%	141
Definitely Will Vote	34%	45%	1%	21%	463
Will Vote Unless Emergency	18%	44%	0%	38%	82
Excited About Election Outcome	39%	37%	1%	23%	298
Depressed About Election Outcome	23%	50%	1%	26%	122
Neutral/Don't Know	22%	57%	0%	21%	123
Approve of Obama	3%	80%	0%	16%	228
Neutral	10%	70%	7%	13%	16
Disapprove of Obama	54%	16%	1%	30%	299
18 to 34	24%	45%	0%	30%	107
35 to 49	35%	35%	1%	29%	142
50 to 64	34%	49%	1%	16%	163
65 and over	29%	55%	0%	16%	102
Male	35%	41%	0%	23%	270
Female	27%	48%	1%	24%	275
Married Male	39%	36%	1%	25%	167
Unmarried Male	30%	50%	0%	20%	101
Married Female	29%	49%	1%	22%	174
Unmarried Female	24%	49%	1%	26%	95
High school or less	30%	49%	2%	20%	88
Some college	39%	34%	1%	27%	132
College graduate	33%	41%	0%	26%	208
Post-graduate	19%	64%	0%	17%	112
Attend services 1 or more a week	47%	28%	1%	25%	114
1-2 times a month	36%	44%	0%	20%	76
Less often	28%	43%	1%	28%	170
Never	21%	60%	0%	19%	159
North Country	43%	39%	0%	17%	46
Central / Lakes	30%	47%	0%	23%	82
Connecticut Valley	18%	62%	0%	20%	85
Mass Border	39%	36%	1%	24%	158
Seacoast	24%	50%	0%	26%	99
Manchester Area	34%	37%	2%	27%	75
First Cong. Dist	32%	42%	1%	25%	255
Second Cong. Dist	31%	47%	1%	21%	289

**Governor – Walt Havenstein vs. Maggie Hassan – Likely Voters – With Leaners**

<b>STATEWIDE</b>	<b><u>Havenstein</u></b> <b>37%</b>	<b><u>Hassan</u></b> <b>52%</b>	<b><u>Other</u></b> <b>1%</b>	<b><u>DK</u></b> <b>11%</b>	<b><u>(N)</u></b> <b>544</b>
Registered Democrat	6%	88%	1%	5%	143
Registered Undeclared	33%	52%	0%	14%	242
Registered Republican	71%	18%	0%	11%	151
Democrat	5%	88%	1%	6%	222
Independent	24%	51%	1%	24%	99
Republican	74%	17%	0%	10%	213
Definitely Decided	37%	60%	1%	2%	340
Leaning Toward Someone	53%	38%	0%	9%	61
Still Trying To Decide	29%	37%	1%	33%	140
Definitely Will Vote	39%	51%	1%	10%	462
Will Vote Unless Emergency	26%	59%	0%	16%	82
Excited About Election Outcome	43%	46%	1%	10%	298
Depressed About Election Outcome	27%	61%	1%	11%	121
Neutral/Don't Know	29%	59%	0%	12%	123
Approve of Obama	5%	89%	0%	6%	228
Neutral	10%	81%	7%	2%	16
Disapprove of Obama	62%	22%	1%	15%	298
18 to 34	32%	53%	0%	15%	107
35 to 49	40%	49%	1%	10%	142
50 to 64	40%	51%	1%	9%	163
65 and over	32%	59%	0%	8%	102
Male	40%	48%	0%	11%	269
Female	33%	56%	1%	10%	275
Married Male	46%	44%	1%	10%	167
Unmarried Male	31%	56%	0%	14%	101
Married Female	35%	53%	1%	11%	174
Unmarried Female	28%	62%	1%	9%	95
High school or less	32%	55%	2%	11%	87
Some college	44%	46%	1%	9%	132
College graduate	40%	45%	0%	14%	208
Post-graduate	22%	71%	0%	6%	112
Attend services 1 or more a week	54%	31%	1%	14%	114
1-2 times a month	42%	48%	0%	9%	76
Less often	33%	51%	1%	15%	170
Never	24%	72%	0%	4%	159
North Country	46%	49%	0%	6%	46
Central / Lakes	41%	49%	0%	9%	82
Connecticut Valley	19%	76%	0%	6%	85
Mass Border	44%	42%	1%	13%	158
Seacoast	27%	57%	0%	15%	99
Manchester Area	43%	43%	2%	12%	74
First Cong. Dist	40%	47%	1%	13%	254
Second Cong. Dist	34%	56%	1%	9%	289

**Governor – Walt Havenstein vs. Maggie Hassan – Likely Voters – Who Will Win**

<b>STATEWIDE</b>	<b><u>Havenstein</u></b> <b>17%</b>	<b><u>Hassan</u></b> <b>64%</b>	<b><u>Other</u></b> <b>0%</b>	<b><u>DK</u></b> <b>19%</b>	<b><u>(N)</u></b> <b>554</b>
Registered Democrat	7%	83%	0%	11%	146
Registered Undeclared	15%	61%	1%	23%	246
Registered Republican	32%	50%	0%	17%	152
Democrat	3%	85%	0%	12%	222
Independent	12%	55%	1%	32%	108
Republican	34%	47%	1%	19%	215
Definitely Will Vote	19%	64%	1%	17%	468
Will Vote Unless Emergency	8%	61%	0%	31%	86
Excited About Election Outcome	23%	61%	0%	16%	301
Depressed About Election Outcome	11%	72%	1%	16%	127
Neutral/Don't Know	10%	61%	0%	29%	125
Havenstein Supporter	44%	37%	0%	19%	199
Hassan Supporter	0%	85%	0%	15%	283
Other/Undecided	11%	50%	3%	37%	62
Approve of Obama	1%	84%	0%	14%	229
Neutral	10%	66%	0%	24%	16
Disapprove of Obama	30%	49%	1%	21%	307
18 to 34	22%	54%	0%	24%	107
35 to 49	15%	68%	0%	17%	148
50 to 64	18%	66%	0%	15%	163
65 and over	11%	69%	2%	17%	104
Male	19%	65%	0%	15%	275
Female	15%	62%	1%	22%	279
Married Male	19%	66%	1%	14%	168
Unmarried Male	19%	65%	0%	16%	105
Married Female	16%	65%	0%	19%	177
Unmarried Female	14%	59%	1%	26%	96
High school or less	13%	67%	0%	19%	88
Some college	25%	58%	1%	16%	136
College graduate	17%	62%	0%	21%	211
Post-graduate	9%	72%	0%	18%	114
Attend services 1 or more a week	26%	57%	1%	16%	115
1-2 times a month	19%	60%	0%	21%	76
Less often	15%	63%	0%	21%	170
Never	12%	71%	0%	17%	163
North Country	23%	59%	2%	16%	46
Central / Lakes	15%	67%	1%	18%	89
Connecticut Valley	7%	79%	0%	14%	85
Mass Border	21%	55%	0%	24%	158
Seacoast	17%	64%	0%	19%	100
Manchester Area	19%	63%	1%	17%	75
First Cong. Dist	18%	63%	1%	19%	260
Second Cong. Dist	16%	64%	0%	19%	293

### Generic Vote for NH Senate

	<u>Republican</u> 40%	<u>Democrat</u> 37%	<u>Other</u> 0%	<u>Undecided</u> 22%	<u>(N=)</u> 545
<b>STATEWIDE</b>					
Registered Democrat	7%	81%	0%	12%	146
Registered Undeclared	33%	33%	1%	33%	238
Registered Republican	86%	3%	0%	11%	151
Democrat	6%	79%	0%	15%	220
Independent	28%	21%	2%	50%	104
Republican	81%	3%	0%	16%	212
Definitely Will Vote	43%	38%	0%	18%	459
Will Vote Unless Emergency	24%	32%	0%	44%	85
Excited About Election Outcome	51%	36%	0%	14%	297
Depressed About Election Outcome	31%	42%	1%	26%	122
Neutral/Don't Know	24%	36%	0%	40%	124
Approve of Obama	5%	74%	0%	20%	223
Neutral	11%	34%	0%	55%	16
Disapprove of Obama	67%	10%	0%	22%	304
18 to 34	36%	36%	0%	28%	104
35 to 49	45%	36%	0%	19%	148
50 to 64	42%	37%	0%	20%	163
65 and over	32%	46%	1%	21%	99
Male	44%	37%	0%	19%	271
Female	36%	38%	0%	26%	273
Married Male	49%	35%	0%	16%	166
Unmarried Male	39%	39%	0%	22%	103
Married Female	35%	37%	0%	28%	172
Unmarried Female	35%	41%	1%	23%	95
High school or less	33%	38%	0%	29%	86
Some college	42%	40%	0%	17%	133
College graduate	46%	29%	0%	24%	207
Post-graduate	32%	49%	0%	19%	112
Attend services 1 or more a week	57%	22%	0%	21%	113
1-2 times a month	45%	34%	0%	21%	76
Less often	41%	36%	0%	23%	169
Never	24%	52%	0%	24%	157
North Country	49%	42%	1%	9%	46
Central / Lakes	41%	33%	1%	25%	88
Connecticut Valley	20%	54%	0%	27%	85
Mass Border	51%	31%	0%	18%	156
Seacoast	31%	37%	0%	32%	96
Manchester Area	47%	33%	0%	20%	74
First Cong. Dist	43%	31%	0%	26%	253
Second Cong. Dist	38%	42%	0%	19%	291

**Generic Vote for NH Senate – With Leaners**

	<u>Republican</u>	<u>Democrat</u>	<u>Other</u>	<u>Undecided</u>	<u>(N=)</u>
<b>STATEWIDE</b>	<b>42%</b>	<b>38%</b>	<b>0%</b>	<b>20%</b>	<b>545</b>
Registered Democrat	7%	81%	0%	12%	146
Registered Undeclared	35%	35%	1%	30%	238
Registered Republican	89%	4%	0%	8%	151
Democrat	6%	80%	0%	14%	220
Independent	30%	21%	2%	48%	104
Republican	85%	4%	0%	11%	212
Definitely Will Vote	45%	39%	0%	16%	459
Will Vote Unless Emergency	24%	33%	0%	42%	85
Excited About Election Outcome	51%	36%	0%	13%	297
Depressed About Election Outcome	32%	42%	1%	25%	122
Neutral/Don't Know	30%	39%	0%	31%	124
Approve of Obama	5%	75%	0%	19%	223
Neutral	11%	39%	0%	50%	16
Disapprove of Obama	70%	11%	0%	18%	304
18 to 34	38%	37%	0%	25%	104
35 to 49	47%	37%	0%	16%	148
50 to 64	43%	38%	0%	18%	163
65 and over	34%	46%	1%	19%	99
Male	46%	37%	0%	16%	271
Female	38%	38%	0%	23%	273
Married Male	50%	36%	0%	13%	166
Unmarried Male	40%	39%	0%	21%	103
Married Female	38%	38%	0%	24%	172
Unmarried Female	36%	41%	1%	22%	95
High school or less	33%	39%	0%	28%	86
Some college	42%	41%	0%	17%	133
College graduate	50%	30%	0%	20%	207
Post-graduate	33%	50%	0%	17%	112
Attend services 1 or more a week	58%	23%	0%	20%	113
1-2 times a month	51%	36%	0%	13%	76
Less often	43%	37%	0%	21%	169
Never	25%	53%	0%	22%	157
North Country	49%	42%	1%	8%	46
Central / Lakes	44%	33%	1%	21%	88
Connecticut Valley	20%	55%	0%	25%	85
Mass Border	52%	32%	0%	16%	156
Seacoast	35%	37%	0%	28%	96
Manchester Area	47%	35%	0%	18%	74
First Cong. Dist	45%	32%	0%	22%	253
Second Cong. Dist	39%	43%	0%	18%	291

**Generic Vote for NH House**

	<u>Republican</u>	<u>Democrat</u>	<u>Other</u>	<u>Some DEM, Some GOP</u>	<u>Don't Know/ Undecided</u>	<u>(N=)</u>
<b>STATEWIDE</b>	<b>39%</b>	<b>36%</b>	<b>1%</b>	<b>1%</b>	<b>23%</b>	<b>540</b>
Registered Democrat	6%	80%	0%	1%	13%	143
Registered Undeclared	32%	31%	1%	2%	34%	237
Registered Republican	85%	2%	0%	1%	11%	151
Democrat	5%	78%	0%	1%	16%	219
Independent	29%	20%	2%	2%	47%	98
Republican	79%	1%	0%	1%	19%	213
Definitely Will Vote	42%	36%	1%	1%	20%	458
Will Vote Unless Emergency	24%	30%	0%	1%	44%	82
Excited About Election Outcome	50%	31%	0%	0%	19%	297
Depressed About Election Outcome	30%	42%	1%	1%	25%	119
Neutral/Don't Know	24%	40%	1%	4%	32%	121
Approve of Obama	5%	71%	0%	1%	23%	221
Neutral	11%	55%	0%	0%	34%	16
Disapprove of Obama	66%	9%	1%	2%	23%	301
18 to 34	39%	38%	0%	0%	23%	104
35 to 49	44%	32%	0%	1%	23%	144
50 to 64	42%	36%	1%	1%	21%	161
65 and over	27%	44%	2%	3%	24%	100
Male	45%	36%	1%	2%	16%	267
Female	33%	35%	1%	1%	30%	273
Married Male	49%	32%	0%	2%	17%	164
Unmarried Male	41%	42%	1%	1%	14%	101
Married Female	34%	35%	0%	1%	30%	172
Unmarried Female	30%	38%	1%	1%	30%	95
High school or less	31%	33%	1%	4%	31%	86
Some college	41%	35%	0%	1%	23%	130
College graduate	47%	31%	0%	0%	22%	207
Post-graduate	29%	49%	0%	1%	20%	111
Attend services 1 or more a week	55%	21%	0%	1%	24%	113
1-2 times a month	42%	32%	0%	1%	25%	75
Less often	39%	36%	1%	0%	24%	169
Never	25%	49%	1%	3%	22%	153
North Country	56%	40%	0%	2%	1%	45
Central / Lakes	40%	34%	2%	2%	23%	84
Connecticut Valley	20%	44%	0%	0%	35%	84
Mass Border	48%	30%	1%	2%	20%	156
Seacoast	32%	42%	0%	1%	25%	96
Manchester Area	42%	29%	0%	1%	28%	75
First Cong. Dist	42%	31%	0%	1%	25%	252
Second Cong. Dist	37%	39%	1%	1%	21%	287

**Generic Vote for NH House – With Leaners**

	<u>Republican</u>	<u>Democrat</u>	<u>Other</u>	<u>Some DEM, Some GOP</u>	<u>Don't Know/ Undecided</u>	<u>(N=)</u>
<b>STATEWIDE</b>	<b>43%</b>	<b>39%</b>	<b>1%</b>	<b>1%</b>	<b>16%</b>	<b>540</b>
Registered Democrat	6%	83%	0%	1%	9%	143
Registered Undeclared	38%	38%	1%	2%	22%	237
Registered Republican	88%	3%	0%	1%	8%	151
Democrat	6%	84%	0%	1%	9%	219
Independent	33%	21%	2%	2%	42%	98
Republican	86%	3%	0%	1%	10%	213
Definitely Will Vote	45%	40%	1%	1%	12%	458
Will Vote Unless Emergency	30%	34%	0%	1%	35%	82
Excited About Election Outcome	53%	36%	0%	0%	11%	297
Depressed About Election Outcome	31%	44%	1%	1%	22%	119
Neutral/Don't Know	31%	42%	1%	4%	23%	121
Approve of Obama	7%	76%	0%	1%	15%	221
Neutral	11%	55%	0%	0%	34%	16
Disapprove of Obama	72%	11%	1%	2%	15%	301
18 to 34	42%	44%	0%	0%	14%	104
35 to 49	49%	38%	0%	1%	12%	144
50 to 64	44%	39%	1%	1%	16%	161
65 and over	32%	44%	2%	3%	19%	100
Male	49%	38%	1%	2%	10%	267
Female	37%	40%	1%	1%	21%	273
Married Male	52%	35%	0%	2%	11%	164
Unmarried Male	44%	44%	1%	1%	9%	101
Married Female	38%	40%	0%	1%	20%	172
Unmarried Female	34%	42%	1%	1%	23%	95
High school or less	35%	36%	1%	4%	24%	86
Some college	45%	41%	0%	1%	14%	130
College graduate	52%	33%	0%	0%	15%	207
Post-graduate	30%	54%	0%	1%	14%	111
Attend services 1 or more a week	59%	21%	0%	1%	19%	113
1-2 times a month	48%	34%	0%	1%	17%	75
Less often	45%	42%	1%	0%	13%	169
Never	26%	56%	1%	3%	16%	153
North Country	56%	40%	0%	2%	1%	45
Central / Lakes	48%	35%	2%	2%	13%	84
Connecticut Valley	22%	55%	0%	0%	22%	84
Mass Border	50%	34%	1%	2%	14%	156
Seacoast	38%	44%	0%	1%	17%	96
Manchester Area	45%	32%	0%	1%	22%	75
First Cong. Dist	46%	33%	0%	1%	19%	252
Second Cong. Dist	40%	44%	1%	1%	13%	287



### Generic Vote for Executive Council

	<u>Republican</u>	<u>Democrat</u>	<u>Other</u>	<u>Undecided</u>	<u>(N=)</u>
<b>STATEWIDE</b>	<b>34%</b>	<b>33%</b>	<b>1%</b>	<b>32%</b>	<b>531</b>
Registered Democrat	5%	82%	0%	13%	143
Registered Undeclared	29%	22%	2%	47%	235
Registered Republican	73%	3%	2%	22%	145
Democrat	5%	73%	1%	21%	217
Independent	24%	10%	2%	63%	100
Republican	70%	2%	1%	27%	206
Definitely Will Vote	36%	33%	1%	29%	454
Will Vote Unless Emergency	22%	31%	0%	47%	77
Excited About Election Outcome	42%	32%	1%	25%	291
Depressed About Election Outcome	26%	39%	2%	33%	116
Neutral/Don't Know	24%	29%	0%	47%	122
Approve of Obama	4%	65%	1%	29%	220
Neutral	0%	61%	0%	39%	15
Disapprove of Obama	59%	7%	1%	33%	294
18 to 34	38%	33%	0%	29%	102
35 to 49	32%	28%	2%	38%	144
50 to 64	38%	34%	0%	27%	159
65 and over	27%	41%	3%	29%	95
Male	38%	30%	1%	32%	261
Female	31%	35%	2%	32%	270
Married Male	37%	28%	1%	35%	162
Unmarried Male	40%	33%	1%	26%	97
Married Female	32%	36%	2%	31%	172
Unmarried Female	28%	37%	1%	34%	93
High school or less	34%	34%	0%	32%	85
Some college	36%	34%	0%	29%	126
College graduate	40%	25%	2%	34%	208
Post-graduate	20%	47%	1%	32%	106
Attend services 1 or more a week	53%	20%	3%	25%	109
1-2 times a month	42%	26%	0%	32%	74
Less often	32%	33%	0%	35%	167
Never	19%	46%	1%	34%	153
North Country	45%	33%	0%	22%	43
Central / Lakes	39%	35%	1%	26%	84
Connecticut Valley	13%	48%	0%	39%	81
Mass Border	43%	26%	3%	27%	154
Seacoast	24%	34%	1%	41%	96
Manchester Area	41%	25%	0%	34%	72
First EC District	37%	31%	0%	32%	104
Second EC District	17%	47%	1%	35%	120
Third EC District	44%	28%	2%	26%	101
Fourth EC District	37%	27%	0%	36%	103
Fifth EC District	39%	27%	3%	30%	104
First Cong. Dist	38%	28%	0%	33%	251
Second Cong. Dist	31%	37%	2%	30%	280