



University of
New Hampshire

THE WMUR GRANITE STATE POLL



February 5, 2014

NH PRIMARY VOTERS NOT ENGAGED, GOP FIELD REMAINS UNCLEAR

By: Andrew E. Smith, Ph.D.
Zachary S. Azem, M.A.
UNH Survey Center
603-862-2226
www.unh.edu/survey-center

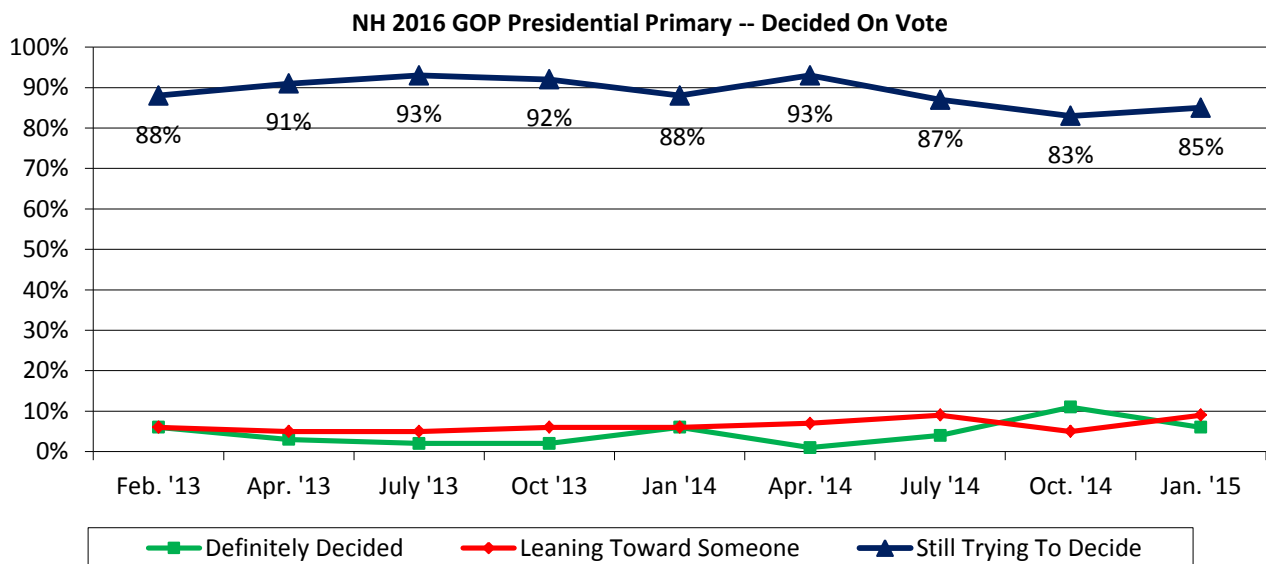
DURHAM, NH – One year before the historic 100th anniversary of the New Hampshire Primary, the Republican field is wide open. Not surprisingly, most voters are not yet engaged in the election.

These findings are based on the latest **WMUR Granite State Poll**,* conducted by the University of New Hampshire Survey Center. Three hundred and forty-eight (348) randomly selected likely 2016 Republican Primary voters were interviewed by landline and cellular telephone between January 22 and February 3, 2015. The margin of sampling error is +/- 5.3 percent.

NH Voters Not Engaged

New Hampshire held its first presidential primary in 1916. The 2016 primary is the 100th anniversary of this institution, but voters are not yet that interested. And certainly have not decided who they will vote for. One year before the First in the Nation New Hampshire Presidential Primary, many prospective Republican candidates have been testing the waters here for presidential runs in 2016. While many of the candidates discussed in this poll will decide not to run, and others may enter who were not discussed, candidates who are the early identified frontrunners have typically won past New Hampshire primaries.

New Hampshire primary voters usually decide who they will vote for in the last weeks, or days of the campaign and it is no surprise that very few likely Republican primary voters currently have made up their minds about who they will support in 2016. Currently, only 6% of likely Republican Primary voters say they have definitely decided who they will support, 9% are leaning toward a candidate, and 85% are still trying to decide.



* We ask that this copyrighted information be referred to as *the Granite State Poll*, sponsored by WMUR-TV, and conducted by the University of New Hampshire Survey Center.

The Republican electorate is somewhat more interested in the 2016 primary as they were at a similar point in 2007. Currently, 42% of likely Republican primary voters say they are extremely interested in the election, 34% are very interested, 18% are somewhat interested and 5% are not very interested. By comparison, in 2007, 37% of likely Republican primary voters said they were extremely interested in the 2008 primary, 30% were very interested, 28% were only somewhat interested, and 5% were not very interested.

Another indication of increased interest in the 2016 primary among Republicans is that undeclared voters, often erroneously referred to as “independents”, are more likely to say they plan to vote in the Republican primary than they were in 2008. Currently, 37% of undeclared voters say they plan to vote in the Republican primary, only 26% plan to vote in the Democratic primary, and 37% say they will not vote in either primary. At this time in 2007, 44% of undeclared voters said they would vote in the Democratic primary, only 22% said they planned to vote in the Republican primary, and 34% said they would not vote in either primary.

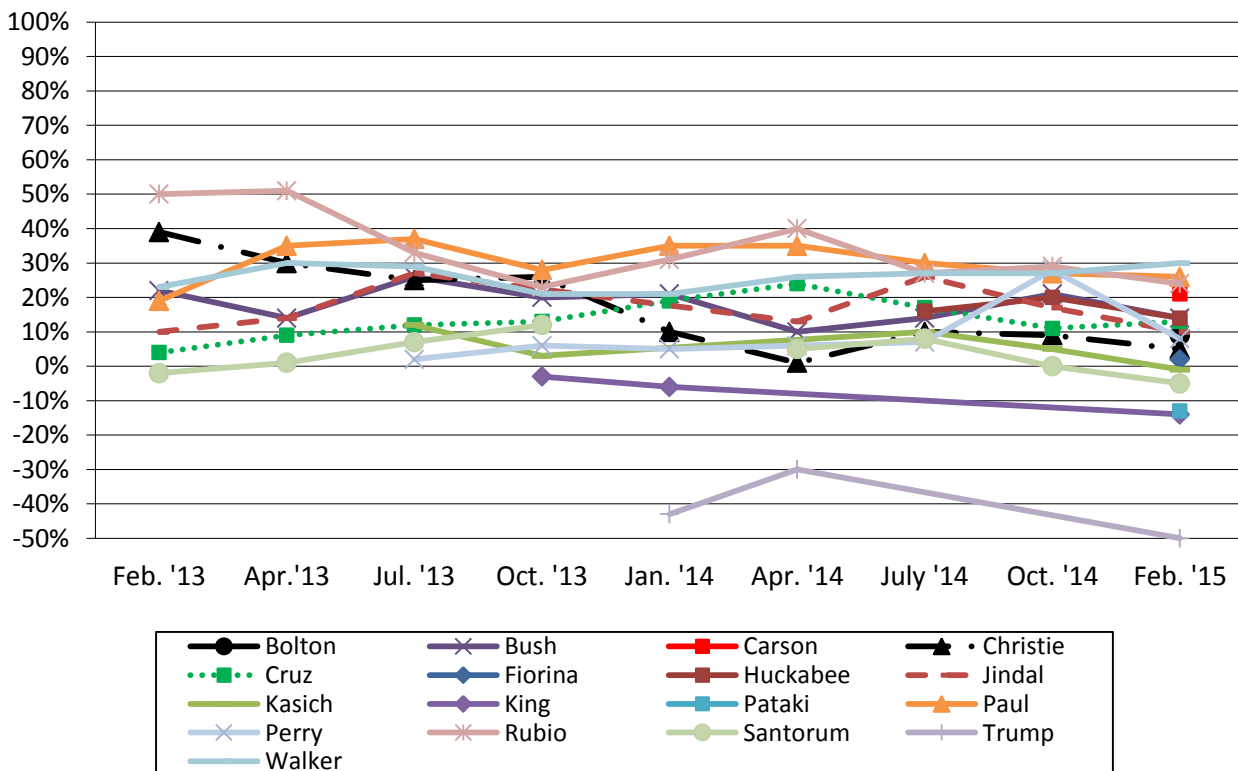
GOP Favorability Ratings

Wisconsin Governor Scott Walker currently leads the field in net favorability (the percentage who have a favorable opinion of him minus the percentage who have an unfavorable opinion), although he is still relatively unknown among Republican primary voters. Walker is viewed favorably by 39% of likely Republican Primary voters, only 9% have an unfavorable opinion of him, 6% are neutral and 46% don't know. Walker's net favorability rating is +30%.

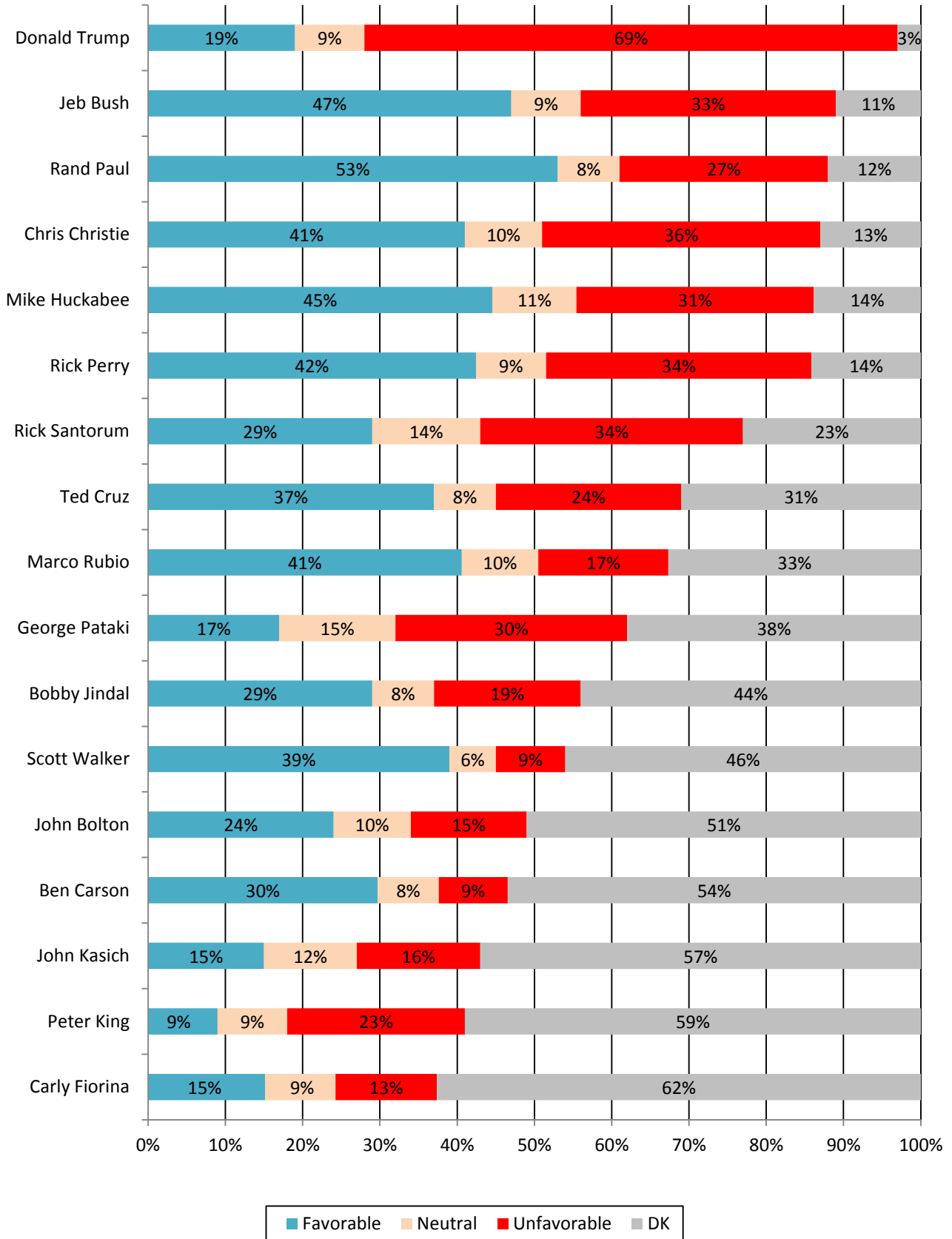
Other GOP candidates with moderate net favorability ratings include Kentucky Senator Rand Paul (+26%), Florida Senator Marco Rubio (+24%), and neurosurgeon Ben Carson (+21%).

Former Arkansas Governor Mike Huckabee (+14%), Former Florida Governor Jeb Bush (+14%), Texas Senator Ted Cruz (+13%), former Texas Governor Rick Perry (+8%), New Jersey Governor Chris Christie (+5%), former Pennsylvania Senator Rick Santorum (-5%), former New York Governor George Pataki (-13%) and businessman Donald Trump (-50%) have low net favorability ratings, despite most Republican Primary voters knowing them. Louisiana Governor Bobby Jindal (+10%), former Ambassador to the UN John Bolton (+9%), businesswoman Carly Fiorina (+2%), Ohio Governor John Kasich (-1%), New York Congressman Peter King (-14%) have low net favorability ratings, but they also are not well known. The best known, but least popular potential candidate is Donald Trump who has a net favorability rating of -50%.

NH 2016 GOP Presidential Primary -- Net Favorability Ratings

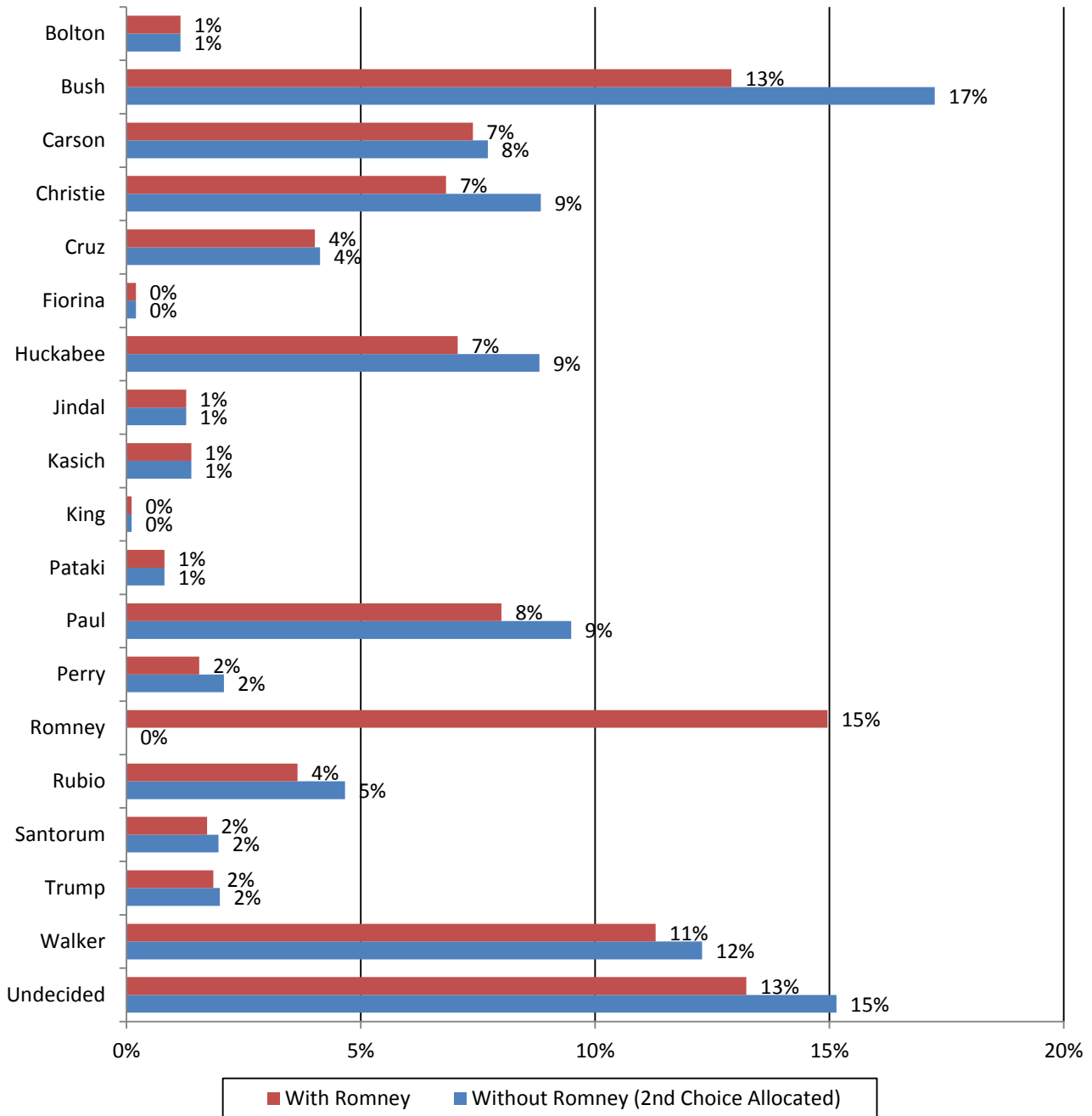


Favorability Ratings - Potential NH GOP Presidential Candidates - February 2015

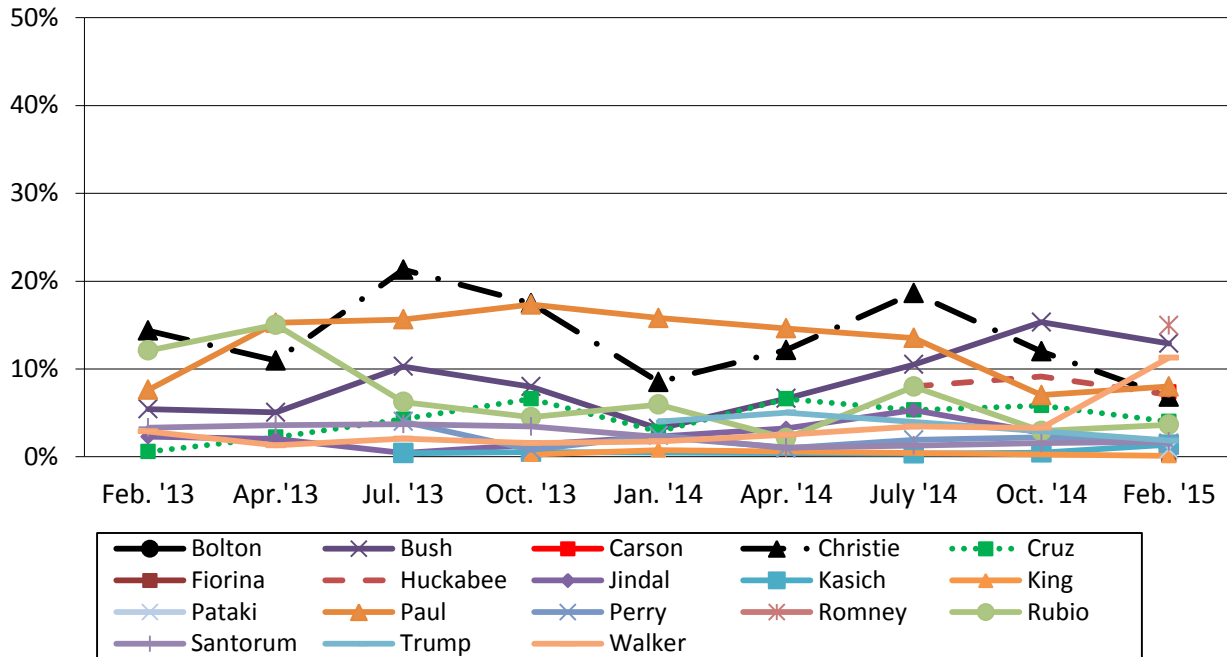


2016 NH Republican Primary

While this poll was being conducted, Mitt Romney, who was leading the field at the time, decided that he would not run. Romney was removed from the poll immediately after his announcement. In order to understand what kind of support potential candidates have without Romney in the race, we took the second choice of those respondents who said Romney was their first choice, and allocated these second choice votes to the appropriate candidates. After this allocation, there is no clear frontrunner in the Republican race -- 17% of likely Republican primary voters support Jeb Bush, 12% for Walker, 9% for Paul, 9% for Christie, 9% for Huckabee, 8% for Carson, 5% for Rubio, 4% for Cruz, 2% for Perry, 2% for Trump, 2% for Santorum, 1% for Kasich, 1% for Jindal, 1% for Bolton, and 1% for Pataki. All other potential candidates receive less than 1% support, and 15% say they are undecided.



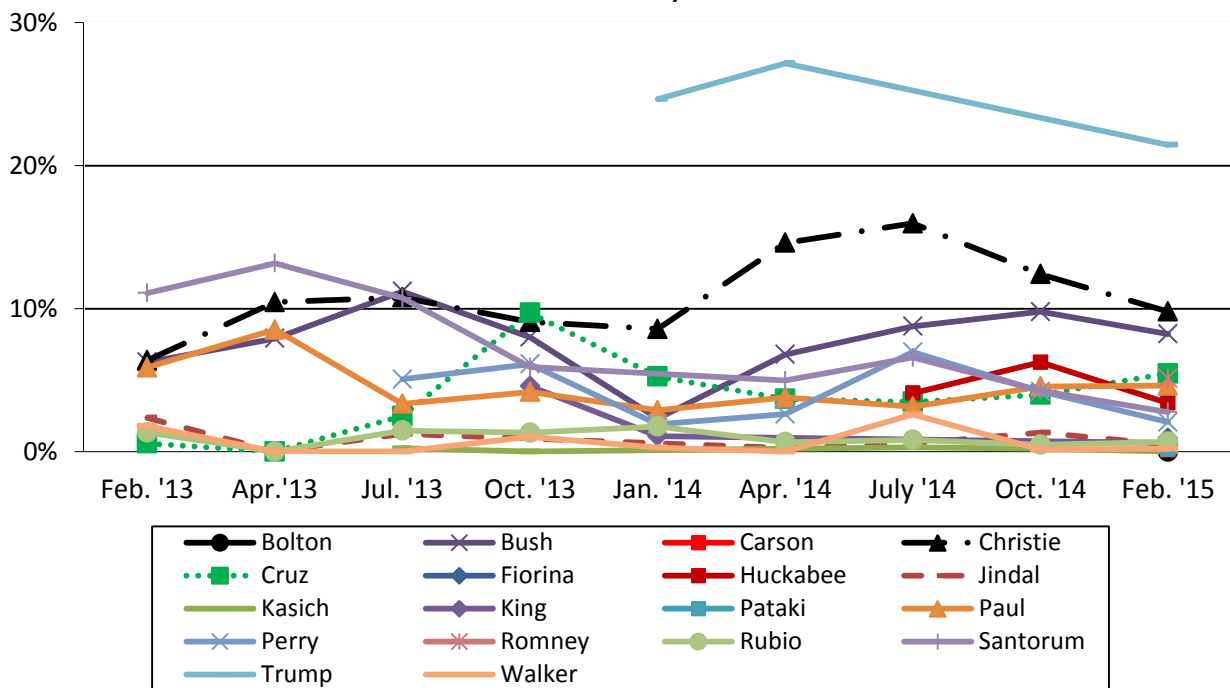
NH 2016 GOP Presidential Primary -- Support If Vote Held Today



Most Unpopular Republican Candidate

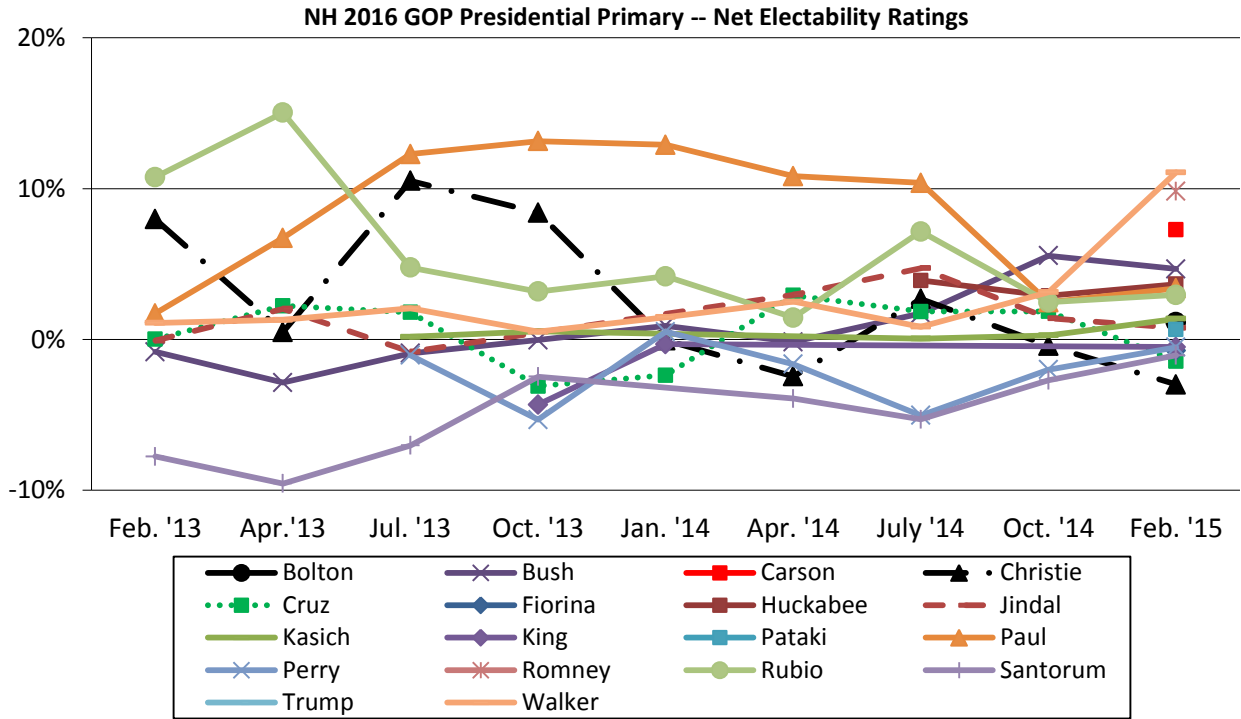
When asked which candidate they would NOT vote for under any circumstance, 21% of likely Republican Primary voters say they would not vote for Trump, 10% would not vote for Christie, 8% would not vote for Jeb Bush, 5% would not vote for Cruz, 5% would not vote for Romney, 5% would not vote for Paul, 3% would not vote for Huckabee, 3% would not vote for Santorum, 2% would not vote for Perry, 1% would not vote for Fiorina, 1% would not vote for Rubio, 1% would not vote for Jindal, 1% would not vote for King, 11% think all the prospective candidates are acceptable, and 22% are unsure.

NH 2016 GOP Presidential Primary -- Would Not Vote For



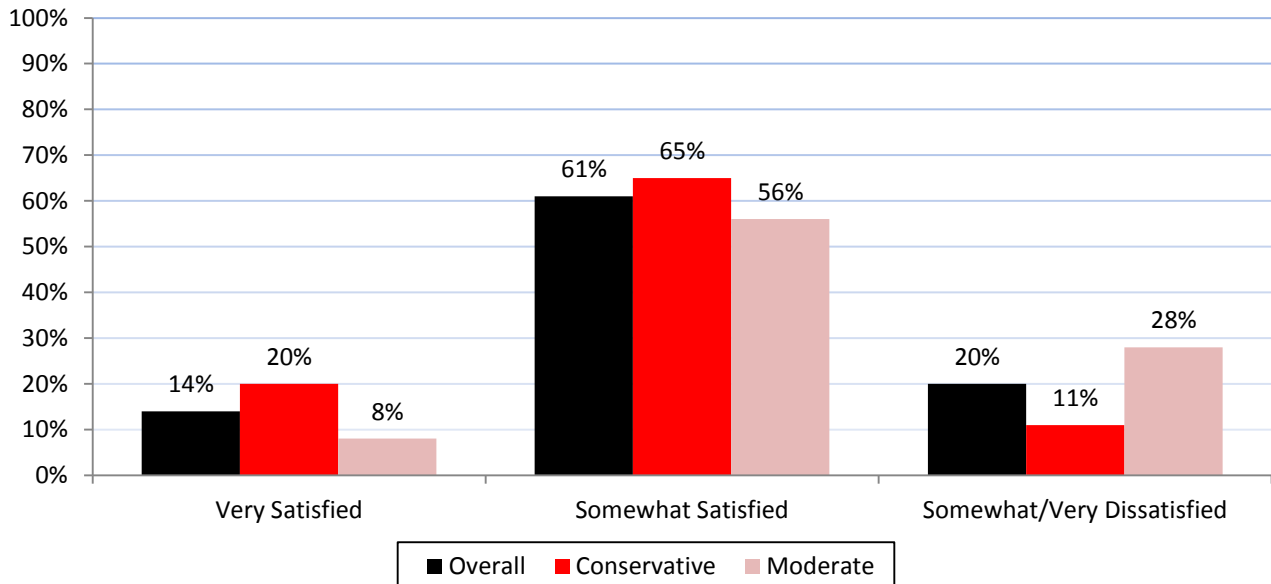
Republican Net Electability

When looking at electability scores (the percentage who support a candidate minus the percent who would not vote for that candidate), there is no clear leader – Walker (+11%), Romney (+10%), Carson (+7%), Bush (+5%), Huckabee (+4%), Paul (+3%), Rubio (+3%), Kasich (+1%), Bolton (+1%), Jindal (+1%) and Pataki (+1%) all have positive net electability scores. King (-1%), Perry (-1%), Fiorina (-1%), Santorum (-1%), Cruz (-1%), Christie (-3%) and Trump (-20%) have negative net electability scores.



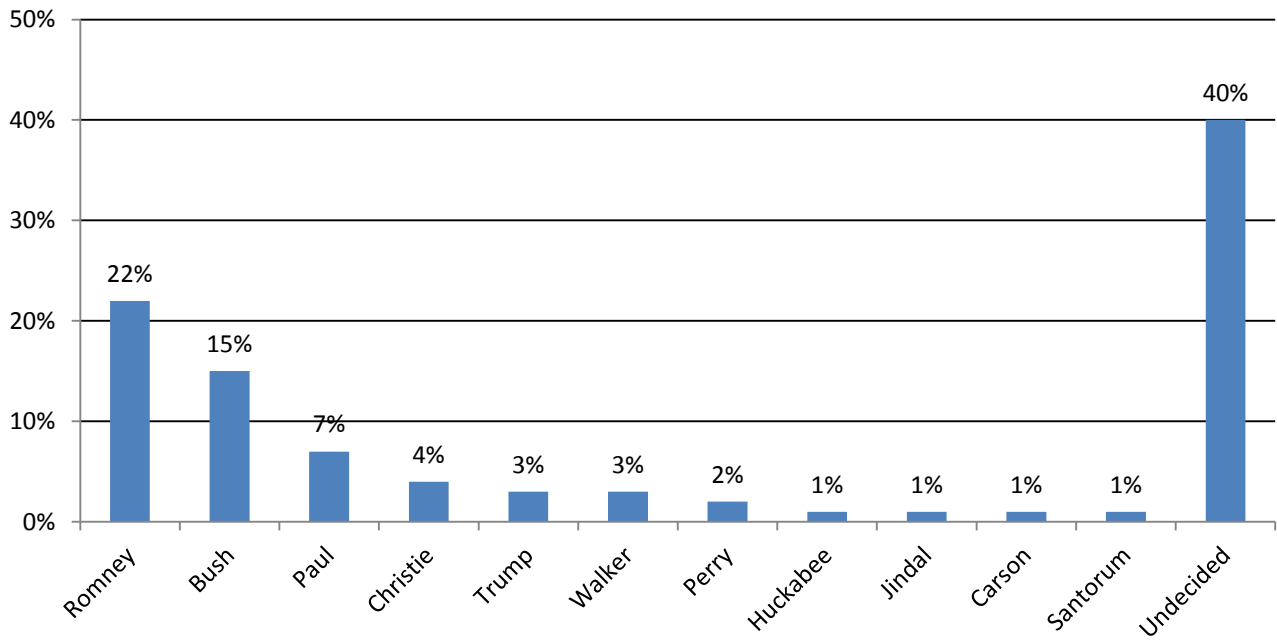
Satisfaction with the Current Primary Field?

Despite so many candidates who appear to be running, most Republican Primary voters (61%) are only somewhat satisfied with the current list of candidates, 14% are very satisfied and 20% are unsatisfied. Moderate voters are more likely to be dissatisfied with the current field than conservatives.



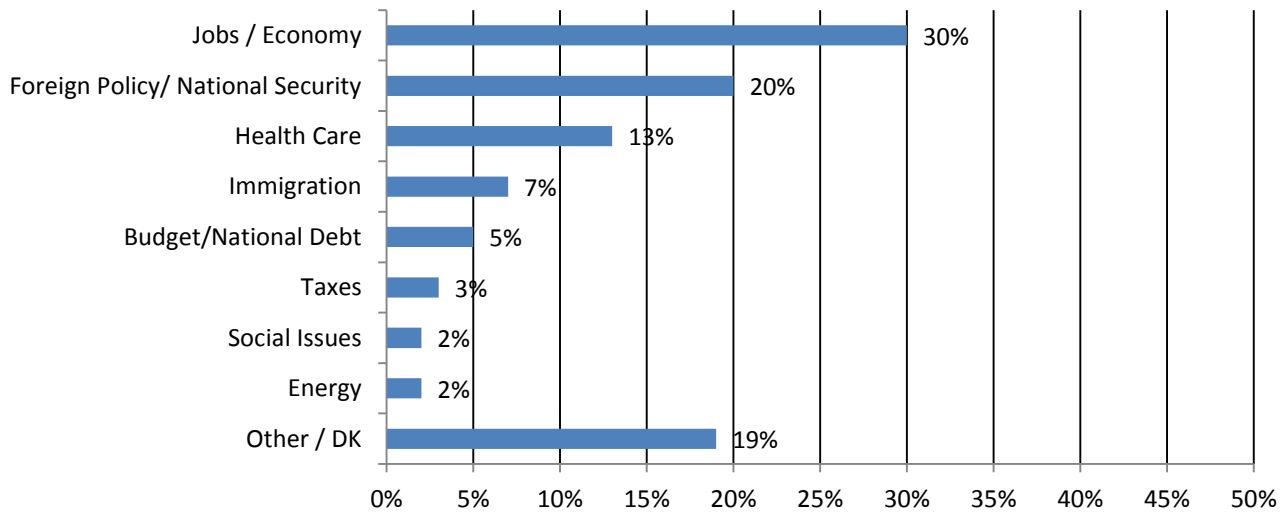
Who Will Win NH Republican Primary?

Republican Primary voters are very undecided about who will win the New Hampshire Republican Primary next year – 40% are unsure and 22% chose Mitt Romney, who has since decided not to run. Fifteen percent think Bush will win the primary, 7% think Paul will win and 4% think Christie will win.



Most Important Issue To Primary Vote

When asked what issue is the most important in deciding to vote in the presidential primary, 30% of Likely Republican Primary voters cite jobs or the economy, 20% cite foreign policy or national security, 13% cite health care, 7% cite immigration, 5% cite the budget or national debt, 3% cite taxes, 2% cite social issues and 2% cite energy.



Candidate Qualities

While questions about the qualities of Republican candidates were asked (which were reported about Democratic candidates), we have decided not to release them because of Mitt Romney's exit from the GOP field.

Granite State Poll Methodology

These findings are based on the latest WMUR Granite State Poll, conducted by the University of New Hampshire Survey Center. Three hundred and forty-eight (348) randomly selected likely 2016 Republican Primary voters were interviewed by landline and cellular telephone between January 22 and February 3, 2015. The margin of sampling error is +/- 5.3 percent.

The data have been weighted to adjust for numbers of adults and telephone lines within households, respondent sex, age, and region of the state. In addition to potential sampling error, all surveys have other potential sources of non-sampling error including question order effects, question wording effects, and non-response.

Granite State Poll, Winter 2015 GOP Primary Voter Demographics

Sex	N	%	Region	N	%
Male	202	58%	North Country	29	8%
Female	146	42%	Central/Lakes	67	19%
			Connecticut Valley	57	17%
			Mass Border	90	26%
			Seacoast	49	14%
			Manchester Area	55	16%
Age	N	%	Party Registration	N	%
18 to 34	77	23%	Democrat	0	0%
35 to 49	86	26%	Undeclared	145	44%
50 to 64	93	28%	Republican	182	56%
65 and Over	72	22%	Party Identification	N	%
			Democrat	15	4%
			Independent	59	17%
			Republican	267	78%
Highest Level of Education	N	%			
High School or Less	60	18%			
Some College	69	20%			
College Graduate	139	41%			
Post-Graduate	72	21%			

Decided Who to Vote for in 2016 GOP Primary?

(Likely NH GOP Primary Voters)

"Have you definitely decided who you will vote for in the New Hampshire primary ... are you leaning toward someone ... or have you considered some candidates but are still trying to decide?"

	<u>Definitely Decided</u>	<u>Leaning Toward Someone</u>	<u>Still Trying To Decide</u>	<u>(N)</u>
Feb. '15	6%	9%	85%	(346)
Oct. '14	11%	5%	83%	(271)
July '14	4%	9%	87%	(247)
Apr. '14	1%	7%	83%	(182)
Jan. '14	6%	6%	88%	(245)
Oct. '13	2%	6%	92%	(220)
July '13	2%	5%	93%	(197)
Apr. '13	3%	5%	91%	(164)
Feb. '13	6%	6%	88%	(205)

Republican Nomination in 2016 NH Primary

(Likely NH GOP Primary Voters)

"I'm going to read you the names of the candidates who are either running or considering running for the Republican nomination. If the Republican primary for president were held today, which of the following would you support for the Republican nomination John Bolton ... Jeb Bush ... Ben Carson ... Chris Christie ... Ted Cruz ... Carly Fiorina ... Mike Huckabee ... Bobby Jindal ... John Kasich ... Peter King ... George Pataki ... Rand Paul ... Rick Perry ... *Mitt Romney* ... Marco Rubio ... Rick Santorum ... Donald Trump ... Scott Walker ... or someone else?" ROTATE CANDIDATES

	<u>Feb. '13</u>	<u>Apr. '13</u>	<u>July '13</u>	<u>Oct. '13</u>	<u>Jan. '14</u>	<u>Apr. '14</u>	<u>July '14</u>	<u>Oct. '14</u>	<u>Feb. '15**</u>
Jeb Bush	5%	5%	10%	8%	3%	7%	11%	15%	17%
Scott Walker	3%	1%	2%	2%	2%	3%	3%	3%	12%
Rand Paul	8%	15%	16%	17%	16%	15%	14%	7%	9%
Chris Christie	14%	11%	21%	16%	9%	12%	19%	12%	9%
Mike Huckabee	---	---	---	---	---	---	8%	9%	9%
Ben Carson	---	---	---	---	---	---	---	---	8%
Marco Rubio	12%	15%	6%	4%	6%	2%	8%	3%	5%
Ted Cruz	1%	2%	4%	6%	3%	7%	5%	6%	4%
Donald Trump	---	---	---	---	4%	5%	---	---	2%
Rick Perry	---	---	4%	1%	2%	1%	2%	2%	2%
Rick Santorum	3%	4%	4%	4%	---	1%	1%	2%	2%
John Kasich	---	---	*	*	---	---	*	*	1%
George Pataki	---	---	---	---	---	---	---	---	1%
Bobby Jindal	2%	2%	*	---	---	3%	5%	3%	1%
John Bolton	---	---	---	---	---	---	---	---	1%
Carly Fiorina	---	---	---	---	---	---	---	---	*
Peter King	---	---	---	*	*	---	---	---	*
Paul Ryan	11%	11%	8%	9%	6%	13%	5%	6%	---
Kelly Ayotte	10%	5%	---	---	13%	13%	---	---	---
Scott Brown	---	---	---	7%	11%	---	---	---	---
Rob Portman	0%	1%	*	*	*	*	1%	*	---
John Huntsman	8%	5%	---	---	---	---	---	---	---
John Thune	1%	*	---	---	---	---	---	---	---
Someone Else	2%	0%	3%	3%	6%	3%	3%	3%	1%
Don't Know Yet	20%	23%	20%	21%	18%	15%	15%	28%	15%
(N)	(209)	(167)	(199)	(233)	(244)	(186)	(245)	(274)	(348)

* = Less than 1% --- = Not Included ** - Romney Voters Second Choice Allocated

Second Choice in 2016 NH Primary
(Likely NH GOP Primary Voters)

“If _____ was not running, who would be your second choice?”

	<u>Apr. '14</u>	<u>July '14</u>	<u>Oct. '14</u>	<u>Feb. '15</u>
Mitt Romney	---	---	---	12%
Jeb Bush	8%	8%	10%	11%
Rand Paul	12%	9%	8%	10%
Chris Christie	4%	10%	7%	8%
Mike Huckabee	---	7%	7%	6%
Donald Trump	4%	---	---	6%
Ben Carson	---	---	---	6%
Scott Walker	4%	4%	5%	5%
Ted Cruz	5%	5%	3%	5%
Marco Rubio	11%	8%	5%	3%
Rick Perry	1%	3%	5%	3%
Bobby Jindal	3%	4%	2%	2%
John Kasich	---	1%	*	2%
George Pataki	---	---	---	2%
Rick Santorum	3%	2%	3%	1%
Peter King	---	---	---	1%
Carly Fiorina	---	---	---	1%
John Bolton	---	---	---	1%
Paul Ryan	8%	7%	5%	---
Kelly Ayotte	11%	---	---	---
Rob Portman	1%	1%	*	---
Someone Else	*	1%	*	1%
No Second Choice	9%	14%	34%	6%
Don't Know	17%	16%	5%	8%
(N)	(187)	(246)	(274)	(301)

* = Less than 1% --- = Not Included

Candidate You Wouldn't Vote For In 2016 NH Republican Primary
(Likely NH GOP Primary Voters)

“Which of the candidates who are either running or considering running for the Republican nomination would you NOT vote for under any circumstance?”

	<u>Feb. '13</u>	<u>Apr. '13</u>	<u>July '13</u>	<u>Oct. '13</u>	<u>Jan. '14</u>	<u>Apr. '14</u>	<u>July '14</u>	<u>Oct. '14</u>	<u>Feb. '15</u>
Donald Trump	---	---	---	---	25%	27%	---	---	21%
Chris Christie	6%	11%	11%	7%	9%	15%	16%	12%	10%
Jeb Bush	6%	8%	11%	8%	2%	7%	9%	10%	8%
Rand Paul	6%	9%	3%	5%	3%	4%	3%	5%	5%
Ted Cruz	1%	*	3%	8%	5%	4%	3%	4%	5%
<i>Mitt Romney</i>	---	---	---	---	---	---	---	---	5%
Mike Huckabee	---	---	---	---	---	---	4%	6%	3%
Rick Santorum	11%	13%	11%	6%	---	5%	7%	4%	3%
Rick Perry	---	---	5%	6%	2%	3%	7%	4%	2%
Bobby Jindal	2%	*	1%	---	---	*	1%	1%	1%
Marco Rubio	1%	*	2%	2%	2%	1%	1%	*	1%
Peter King	---	---	---	5%	1%	---	---	---	1%
Carly Fiorina	---	---	---	---	---	---	---	---	1%
Scott Walker	2%	*	0%	*	*	0%	3%	*	*
George Pataki	---	---	---	---	---	---	---	---	*
Ben Carson	---	---	---	---	---	---	---	---	*
John Bolton	---	---	---	---	---	---	---	---	0%
John Kasich	---	---	*	0%	---	---	*	*	0%
Paul Ryan	2%	*	*	1%	*	0%	1%	0%	---
Rob Portman	3%	1%	1%	*	*	0%	*	1%	---
Kelly Ayotte	6%	6%	---	---	5%	4%	---	---	---
Scott Brown	---	---	---	2%	5%	---	---	---	---
John Huntsman	4%	6%	---	---	---	---	---	---	---
John Thune	1%	*	---	---	---	---	---	---	---
Someone Else	2%	*	*	1%	*	2%	*	*	1%
All OK	15%	24%	25%	20%	21%	16%	23%	17%	11%
Don't Know	32%	21%	25%	28%	19%	14%	21%	34%	22%
(N)	(208)	(168)	(197)	(232)	(243)	(185)	(243)	(271)	(347)

* = Less than 1% --- = Not Included

Satisfaction with 2016 NH Republican Primary Field?
(Likely NH GOP Primary Voters)

“Overall, how satisfied or dissatisfied are you with the choice of candidates for the Republican nomination for President next year? Are you very satisfied, somewhat satisfied, somewhat dissatisfied, or very dissatisfied?”

	<u>Feb. '15</u>
Very Satisfied	14%
Somewhat Satisfied	61%
Somewhat Dissatisfied	14%
Very Dissatisfied	6%
Don't Know	6%
(N)	(347)

Who Will Win 2016 NH Republican Primary?

(Likely NH GOP Primary Voters)

“Regardless of who you are voting for, which candidate do you think is most likely to win the New Hampshire Republican primary?”

	<u>Feb. '15</u>
Mitt Romney	22%
Jeb Bush	15%
Rand Paul	7%
Chris Christie	4%
Donald Trump	3%
Scott Walker	3%
Rick Perry	2%
Mike Huckabee	1%
Bobby Jindal	1%
Ben Carson	1%
Rick Santorum	1%
Marco Rubio	*
John Bolton	*
Ted Cruz	*
George Pataki	0%
Peter King	0%
Carly Fiorina	0%
John Kasich	0%
Someone Else	*
Don't Know	40%
(N)	(347)

* = Less than 1% --- = Not Included

Most Important Issue To Primary Vote

(Likely NH GOP Primary Voters)

“There are many issues facing the candidates in the election for president. In your opinion, which one issue is MOST IMPORTANT to YOUR VOTE in the presidential primary?”

	<u>Feb. '15</u>
Jobs/Economy	29%
Foreign Policy/National Security	20%
Health Care	13%
Immigration	7%
Budget/National Debt	5%
Taxes	3%
Energy	2%
Social Issues	2%
Other/Don't Know	19%
(N)	(285)

GOP Favorability Ratings
(Likely GOP Primary Voters)

"Next, I'd like to get your overall opinion of some REPUBLICANS who are running or may run for President in 2016. As I read each name, please say if you have a favorable or unfavorable opinion of this person - or if you have never heard of him or her."

"Former Ambassador to the UN John Bolton?"

	<u>Favorable</u>	<u>Neutral</u>	<u>Unfavorable</u>	<u>Don't Know</u>	<u>Net</u>	<u>(N)</u>
Feb. '15	24%	10%	15%	51%	+9%	(348)

"Former Florida Governor Jeb Bush?"

	<u>Favorable</u>	<u>Neutral</u>	<u>Unfavorable</u>	<u>Don't Know</u>	<u>Net</u>	<u>(N)</u>
Feb. '15	47%	9%	33%	11%	+14%	(349)
Oct. '14	49%	3%	28%	20%	+21%	(274)
July '14	45%	7%	31%	18%	+14%	(251)
Apr. '14	45%	9%	35%	11%	+10%	(187)
Jan. '14	46%	8%	25%	21%	+21%	(246)
Oct. '13	47%	8%	27%	18%	+20%	(236)
July '13	53%	5%	27%	15%	+26%	(200)
Apr. '13	48%	10%	34%	8%	+14%	(171)
Feb. '13	53%	5%	31%	11%	+22%	(212)

"Neurosurgeon Ben Carson?"

	<u>Favorable</u>	<u>Neutral</u>	<u>Unfavorable</u>	<u>Don't Know</u>	<u>Net</u>	<u>(N)</u>
Feb. '15	30%	8%	9%	54%	+21%	(348)

"New Jersey Governor Chris Christie?"

	<u>Favorable</u>	<u>Neutral</u>	<u>Unfavorable</u>	<u>Don't Know</u>	<u>Net</u>	<u>(N)</u>
Feb. '15	41%	10%	36%	13%	+5%	(349)
Oct. '14	44%	4%	35%	17%	+9%	(274)
July '14	46%	6%	36%	13%	+10%	(251)
Apr. '14	43%	10%	42%	5%	+1%	(187)
Jan. '14	43%	9%	33%	15%	+10%	(246)
Oct. '13	49%	6%	23%	23%	+26%	(236)
July '13	59%	5%	24%	12%	+25%	(200)
Apr. '13	56%	8%	26%	9%	+30%	(171)
Feb. '13	60%	7%	21%	12%	+39%	(212)

"Texas Senator Ted Cruz?"

	<u>Favorable</u>	<u>Neutral</u>	<u>Unfavorable</u>	<u>Don't Know</u>	<u>Net</u>	<u>(N)</u>
Feb. '15	37%	8%	24%	31%	+13%	(349)
Oct. '14	33%	6%	22%	39%	+11%	(275)
July '14	39%	4%	22%	35%	+17%	(250)
Apr. '14	42%	9%	18%	31%	+24%	(187)
Jan. '14	37%	8%	18%	37%	+19%	(246)
Oct. '13	32%	5%	19%	43%	+13%	(236)
July '13	29%	6%	17%	48%	+12%	(200)
Apr. '13	21%	8%	12%	59%	+9%	(171)
Feb. '13	18%	6%	14%	62%	+4%	(212)

"Businesswoman Carly Fiorina?"

	<u>Favorable</u>	<u>Neutral</u>	<u>Unfavorable</u>	<u>Don't Know</u>	<u>Net</u>	<u>(N)</u>
Feb. '15	15%	9%	13%	62%	+2%	(349)

"Former Arkansas Governor Mike Huckabee?"

	<u>Favorable</u>	<u>Neutral</u>	<u>Unfavorable</u>	<u>Don't Know</u>	<u>Net</u>	<u>(N)</u>
Feb. '15	45%	11%	31%	14%	+14%	(349)
Oct. '14	48%	6%	28%	17%	+20%	(275)
July '14	46%	7%	30%	16%	+16%	(251)

"Louisiana Governor Bobby Jindal?"

	<u>Favorable</u>	<u>Neutral</u>	<u>Unfavorable</u>	<u>Don't Know</u>	<u>Net</u>	<u>(N)</u>
Feb. '15	29%	8%	19%	44%	+10%	(348)
Oct. '14	31%	7%	14%	49%	+17%	(274)
July '14	39%	3%	13%	45%	+26%	(250)
Apr. '14	30%	9%	17%	44%	+13%	(187)
July '13	39%	4%	12%	45%	+27%	(200)
Apr. '13	30%	9%	16%	45%	+14%	(171)
Feb. '13	31%	8%	21%	41%	+10%	(212)

"Ohio Governor John Kasich?"

	<u>Favorable</u>	<u>Neutral</u>	<u>Unfavorable</u>	<u>Don't Know</u>	<u>Net</u>	<u>(N)</u>
Feb. '15	15%	12%	16%	57%	-1%	(349)
Oct. '14	17%	5%	12%	66%	+5%	(274)
July '14	22%	5%	12%	61%	+10%	(250)
Oct. '13	12%	5%	16%	74%	+3%	(236)
July '13	28%	5%	16%	52%	+12%	(200)

"New York Congressman Peter King?"

	<u>Favorable</u>	<u>Neutral</u>	<u>Unfavorable</u>	<u>Don't Know</u>	<u>Net</u>	<u>(N)</u>
Feb. '15	9%	9%	23%	59%	-14%	(349)
Jan. '14	14%	8%	20%	59%	-6%	(246)
Oct. '13	15%	7%	18%	60%	-3%	(236)

"Former New York Governor George Pataki?"

	<u>Favorable</u>	<u>Neutral</u>	<u>Unfavorable</u>	<u>Don't Know</u>	<u>Net</u>	<u>(N)</u>
Feb. '15	17%	15%	30%	38%	-13%	(349)

"Kentucky Senator Rand Paul?"

	<u>Favorable</u>	<u>Neutral</u>	<u>Unfavorable</u>	<u>Don't Know</u>	<u>Net</u>	<u>(N)</u>
Feb. '15	53%	8%	27%	12%	+26%	(349)
Oct. '14	50%	6%	23%	21%	+27%	(274)
July '14	53%	8%	23%	16%	+30%	(251)
Apr. '14	56%	8%	21%	15%	+35%	(187)
Jan. '14	49%	8%	14%	28%	+35%	(246)
Oct. '13	52%	4%	24%	20%	+28%	(236)
July '13	57%	3%	20%	20%	+37%	(200)
Apr. '13	54%	7%	19%	20%	+35%	(171)
Feb. '13	45%	6%	26%	23%	+19%	(212)

"Texas Governor Rick Perry?"

	<u>Favorable</u>	<u>Neutral</u>	<u>Unfavorable</u>	<u>Don't Know</u>	<u>Net</u>	<u>(N)</u>
Feb. '15	42%	9%	34%	14%	+8%	(349)
Oct. '14	49%	6%	21%	24%	+28%	(274)
July '14	39%	7%	32%	23%	+7%	(251)
Apr. '14	36%	11%	30%	23%	+6%	(187)
Jan. '14	32%	11%	27%	30%	+5%	(245)
Oct. '13	36%	9%	30%	24%	+6%	(236)
July '13	39%	9%	37%	15%	+2%	(200)

"Florida Senator Marco Rubio?"

	<u>Favorable</u>	<u>Neutral</u>	<u>Unfavorable</u>	<u>Don't Know</u>	<u>Net</u>	<u>(N)</u>
Feb. '15	41%	10%	17%	33%	+24%	(348)
Oct. '14	43%	6%	14%	37%	+29%	(274)
July '14	46%	4%	19%	31%	+27%	(250)
Apr. '14	52%	9%	12%	27%	+40%	(187)
Jan. '14	42%	7%	11%	40%	+31%	(246)
Oct. '13	41%	7%	18%	34%	+23%	(236)
July '13	47%	6%	14%	33%	+33%	(200)
Apr. '13	59%	8%	8%	25%	+51%	(171)
Feb. '13	56%	6%	6%	31%	+50%	(212)

"Former Pennsylvania Senator Rick Santorum?"

	<u>Favorable</u>	<u>Neutral</u>	<u>Unfavorable</u>	<u>Don't Know</u>	<u>Net</u>	<u>(N)</u>
Feb. '15	29%	14%	34%	23%	-5%	(349)
Oct. '14	31%	10%	31%	29%	0%	(274)
July '14	38%	7%	30%	25%	+8%	(250)
Apr. '14	36%	9%	31%	25%	+5%	(187)
Oct. '13	39%	9%	27%	25%	+12%	(236)
July '13	44%	6%	37%	13%	+7%	(200)
Apr. '13	39%	11%	38%	12%	+1%	(171)
Feb. '13	40%	8%	42%	10%	-2%	(212)

“Businessman Donald Trump?”

	<u>Favorable</u>	<u>Neutral</u>	<u>Unfavorable</u>	<u>Don't Know</u>	<u>Net</u>	<u>(N)</u>
Feb. '15	19%	9%	69%	3%	-50%	(349)
Apr. '14	23%	6%	66%	5%	-43%	(187)
Jan. '14	29%	8%	59%	5%	-30%	(246)

“Wisconsin Governor Scott Walker?”

	<u>Favorable</u>	<u>Neutral</u>	<u>Unfavorable</u>	<u>Don't Know</u>	<u>Net</u>	<u>(N)</u>
Feb. '15	39%	6%	9%	46%	+30%	(349)
Oct. '14	33%	9%	6%	52%	+27%	(274)
July. '14	37%	4%	10%	49%	+27%	(250)
Apr. '14	38%	7%	12%	43%	+26%	(187)
Jan. '14	30%	5%	9%	56%	+21%	(246)
Oct. '13	29%	5%	8%	57%	+21%	(236)
July '13	42%	6%	13%	39%	+29%	(200)
Apr. '13	38%	9%	8%	45%	+30%	(171)
Feb. '13	37%	7%	14%	42%	+23%	(212)

**Favorability Rating – John Bolton
(Likely 2016 GOP Primary Voters)**

LIKELY NH GOP PRIMARY VOTERS	<u>Favorable</u> 24%	<u>Neutral</u> 10%	<u>Unfavorable</u> 15%	<u>Don't Know</u> 51%	<u>(N)</u> 348
Registered Undeclared	24%	7%	16%	52%	145
Registered Republican	22%	10%	16%	52%	182
Democrat	3%	0%	35%	62%	15
Independent	16%	14%	23%	47%	59
Republican	26%	9%	13%	52%	267
Liberal	10%	0%	15%	75%	11
Moderate	24%	7%	17%	52%	153
Conservative	25%	12%	15%	49%	170
Support Tea Party	30%	16%	13%	41%	115
Neutral	17%	6%	14%	63%	143
Oppose Tea Party	30%	8%	21%	41%	74
Voted in 2008 GOP Primary	28%	10%	15%	46%	227
Voted in 2008 DEM Primary	14%	10%	29%	47%	31
Voted in 2012 GOP Primary	24%	9%	16%	52%	274
Voted in 2012 DEM Primary	15%	0%	19%	66%	19
Union household	21%	12%	16%	51%	34
Non-union	24%	9%	16%	51%	308
Read Union Leader	29%	12%	22%	37%	103
Read Boston Globe	46%	21%	7%	26%	37
Read Local Newspapers	31%	13%	13%	43%	109
Watch WMUR	18%	10%	18%	54%	219
Listen to NHPR	31%	14%	17%	37%	95
18 to 34	22%	10%	0%	67%	77
35 to 49	21%	4%	22%	53%	86
50 to 64	22%	16%	19%	43%	93
65 and over	21%	9%	23%	46%	72
Male	29%	11%	17%	44%	202
Female	17%	8%	14%	62%	146
High school or less	10%	11%	20%	58%	60
Some college	14%	10%	12%	64%	69
College graduate	31%	7%	13%	49%	139
Post-graduate	26%	13%	20%	40%	72
Attend services 1 or more/week	20%	11%	15%	54%	97
1-2 times a month	30%	2%	23%	46%	28
Less often	26%	10%	13%	52%	95
Never	21%	10%	17%	52%	118
North Country	12%	24%	35%	29%	29
Central / Lakes	22%	14%	6%	58%	67
Connecticut Valley	31%	8%	18%	43%	57
Mass Border	27%	8%	19%	46%	90
Seacoast	16%	5%	9%	70%	49
Manchester Area	24%	6%	14%	56%	55
First Cong. Dist	19%	11%	14%	56%	154
Second Cong. Dist	27%	9%	17%	48%	183

**Favorability Rating – Jeb Bush
(Likely 2016 GOP Primary Voters)**

LIKELY NH GOP PRIMARY VOTERS	<u>Favorable</u> 47%	<u>Neutral</u> 9%	<u>Unfavorable</u> 33%	<u>Don't Know</u> 11%	<u>(N)</u> 349
Registered Undeclared	39%	11%	35%	15%	145
Registered Republican	54%	8%	31%	7%	182
Democrat	48%	6%	34%	12%	15
Independent	30%	12%	31%	28%	59
Republican	50%	9%	33%	8%	267
Liberal	28%	0%	27%	45%	11
Moderate	50%	12%	29%	9%	153
Conservative	45%	9%	36%	10%	170
Support Tea Party	35%	6%	51%	8%	115
Neutral	50%	12%	22%	15%	143
Oppose Tea Party	58%	11%	26%	4%	74
Voted in 2008 GOP Primary	49%	9%	35%	7%	227
Voted in 2008 DEM Primary	57%	10%	32%	1%	31
Voted in 2012 GOP Primary	48%	9%	35%	8%	274
Voted in 2012 DEM Primary	35%	12%	30%	23%	19
Union household	62%	11%	26%	0%	34
Non-union	45%	9%	33%	13%	308
Read Union Leader	44%	10%	34%	12%	103
Read Boston Globe	41%	3%	47%	9%	37
Read Local Newspapers	57%	9%	24%	11%	109
Watch WMUR	54%	6%	30%	10%	220
Listen to NHPR	53%	6%	26%	15%	95
18 to 34	41%	9%	22%	27%	77
35 to 49	38%	8%	45%	8%	86
50 to 64	52%	11%	32%	5%	93
65 and over	54%	9%	30%	7%	72
Male	44%	12%	38%	6%	203
Female	51%	6%	26%	17%	146
High school or less	36%	16%	33%	15%	60
Some college	45%	6%	32%	17%	69
College graduate	44%	10%	34%	12%	140
Post-graduate	64%	8%	28%	0%	72
Attend services 1 or more/week	52%	10%	29%	8%	98
1-2 times a month	61%	4%	30%	6%	28
Less often	55%	12%	23%	10%	95
Never	32%	8%	44%	16%	118
North Country	60%	15%	20%	5%	29
Central / Lakes	57%	5%	35%	3%	67
Connecticut Valley	38%	10%	29%	22%	57
Mass Border	42%	9%	38%	11%	90
Seacoast	50%	12%	25%	14%	50
Manchester Area	40%	11%	40%	10%	55
First Cong. Dist	47%	11%	32%	10%	155
Second Cong. Dist	48%	9%	31%	12%	183

**Favorability Rating – Ben Carson
(Likely 2016 GOP Primary Voters)**

LIKELY NH GOP PRIMARY VOTERS	<u>Favorable</u> 30%	<u>Neutral</u> 8%	<u>Unfavorable</u> 9%	<u>Don't Know</u> 54%	<u>(N)</u> 348
Registered Undeclared	32%	9%	12%	47%	145
Registered Republican	28%	8%	7%	58%	182
Democrat	32%	5%	27%	37%	15
Independent	20%	5%	19%	56%	59
Republican	31%	8%	6%	55%	267
Liberal	4%	0%	6%	89%	11
Moderate	22%	7%	11%	59%	153
Conservative	39%	7%	8%	46%	170
Support Tea Party	47%	8%	6%	38%	115
Neutral	29%	7%	6%	58%	143
Oppose Tea Party	5%	8%	19%	67%	74
Voted in 2008 GOP Primary	35%	7%	7%	51%	227
Voted in 2008 DEM Primary	17%	12%	24%	46%	31
Voted in 2012 GOP Primary	32%	8%	8%	52%	274
Voted in 2012 DEM Primary	7%	4%	15%	74%	19
Union household	24%	12%	4%	59%	34
Non-union	30%	7%	10%	53%	308
Read Union Leader	31%	9%	14%	47%	103
Read Boston Globe	44%	3%	3%	51%	37
Read Local Newspapers	30%	9%	8%	53%	109
Watch WMUR	26%	6%	10%	58%	219
Listen to NHPR	20%	7%	13%	60%	95
18 to 34	19%	8%	1%	72%	77
35 to 49	34%	2%	12%	52%	86
50 to 64	26%	14%	9%	51%	93
65 and over	36%	5%	16%	42%	72
Male	33%	9%	11%	47%	202
Female	25%	6%	7%	62%	146
High school or less	26%	6%	6%	63%	60
Some college	40%	7%	5%	48%	69
College graduate	26%	10%	9%	55%	139
Post-graduate	27%	5%	17%	51%	72
Attend services 1 or more/week	43%	6%	6%	46%	97
1-2 times a month	19%	0%	14%	66%	28
Less often	25%	9%	4%	61%	95
Never	25%	8%	14%	52%	118
North Country	22%	16%	21%	41%	29
Central / Lakes	35%	5%	8%	53%	67
Connecticut Valley	35%	9%	3%	54%	57
Mass Border	32%	7%	8%	53%	90
Seacoast	25%	10%	5%	61%	49
Manchester Area	23%	5%	15%	57%	55
First Cong. Dist	25%	9%	11%	54%	154
Second Cong. Dist	33%	7%	7%	53%	183

**Favorability Rating – Chris Christie
(Likely 2016 GOP Primary Voters)**

LIKELY NH GOP PRIMARY VOTERS	<u>Favorable</u>	<u>Neutral</u>	<u>Unfavorable</u>	<u>Don't Know</u>	<u>(N)</u>
	41%	10%	36%	13%	349
Registered Undeclared	42%	11%	36%	11%	145
Registered Republican	43%	8%	37%	12%	182
Democrat	19%	18%	57%	6%	15
Independent	39%	9%	39%	14%	59
Republican	43%	10%	34%	13%	267
Liberal	12%	0%	40%	48%	11
Moderate	45%	9%	33%	13%	153
Conservative	39%	12%	38%	10%	170
Support Tea Party	31%	11%	46%	12%	115
Neutral	46%	10%	28%	16%	143
Oppose Tea Party	44%	13%	35%	7%	74
Voted in 2008 GOP Primary	41%	12%	37%	10%	227
Voted in 2008 DEM Primary	51%	8%	38%	2%	31
Voted in 2012 GOP Primary	43%	11%	36%	10%	274
Voted in 2012 DEM Primary	36%	4%	44%	16%	19
Union household	30%	12%	43%	15%	34
Non-union	42%	10%	35%	13%	308
Read Union Leader	33%	11%	43%	14%	103
Read Boston Globe	23%	21%	46%	9%	37
Read Local Newspapers	44%	13%	30%	12%	109
Watch WMUR	45%	10%	35%	9%	220
Listen to NHPR	42%	15%	23%	20%	95
18 to 34	39%	5%	24%	31%	77
35 to 49	34%	13%	43%	9%	86
50 to 64	46%	11%	37%	7%	93
65 and over	47%	12%	34%	7%	72
Male	46%	13%	34%	8%	203
Female	35%	7%	38%	19%	146
High school or less	38%	6%	27%	29%	60
Some college	45%	13%	30%	12%	69
College graduate	44%	14%	33%	9%	140
Post-graduate	36%	3%	53%	8%	72
Attend services 1 or more/week	43%	6%	39%	11%	98
1-2 times a month	46%	4%	38%	12%	28
Less often	39%	16%	34%	11%	95
Never	40%	9%	35%	16%	118
North Country	64%	9%	24%	3%	29
Central / Lakes	53%	6%	35%	6%	67
Connecticut Valley	42%	0%	35%	23%	57
Mass Border	32%	13%	40%	15%	90
Seacoast	37%	11%	38%	14%	50
Manchester Area	34%	22%	34%	10%	55
First Cong. Dist	39%	11%	39%	11%	155
Second Cong. Dist	44%	8%	33%	14%	183

**Favorability Rating – Ted Cruz
(Likely 2016 GOP Primary Voters)**

LIKELY NH GOP PRIMARY VOTERS	<u>Favorable</u> 37%	<u>Neutral</u> 8%	<u>Unfavorable</u> 24%	<u>Don't Know</u> 31%	<u>(N)</u> 349
Registered Undeclared	41%	7%	25%	28%	145
Registered Republican	35%	9%	22%	33%	182
Democrat	45%	0%	46%	9%	15
Independent	23%	7%	34%	36%	59
Republican	39%	9%	20%	32%	267
Liberal	4%	0%	33%	63%	11
Moderate	29%	10%	31%	31%	153
Conservative	48%	7%	16%	29%	170
Support Tea Party	53%	8%	13%	25%	115
Neutral	36%	12%	14%	39%	143
Oppose Tea Party	12%	3%	60%	26%	74
Voted in 2008 GOP Primary	39%	9%	24%	27%	227
Voted in 2008 DEM Primary	50%	7%	28%	15%	31
Voted in 2012 GOP Primary	38%	9%	22%	32%	274
Voted in 2012 DEM Primary	26%	0%	46%	28%	19
Union household	25%	5%	34%	35%	34
Non-union	38%	9%	22%	31%	308
Read Union Leader	36%	10%	29%	25%	103
Read Boston Globe	32%	9%	21%	38%	37
Read Local Newspapers	33%	13%	26%	27%	109
Watch WMUR	30%	7%	27%	36%	220
Listen to NHPR	30%	9%	38%	24%	95
18 to 34	38%	6%	14%	43%	77
35 to 49	42%	4%	18%	35%	86
50 to 64	27%	17%	29%	27%	93
65 and over	37%	5%	35%	23%	72
Male	45%	8%	28%	19%	203
Female	26%	9%	17%	49%	146
High school or less	30%	12%	15%	44%	60
Some college	48%	4%	10%	39%	69
College graduate	34%	9%	28%	30%	140
Post-graduate	36%	8%	36%	20%	72
Attend services 1 or more/week	48%	8%	16%	29%	98
1-2 times a month	47%	5%	26%	22%	28
Less often	27%	12%	28%	33%	95
Never	33%	6%	25%	36%	118
North Country	42%	19%	16%	22%	29
Central / Lakes	41%	4%	29%	26%	67
Connecticut Valley	34%	14%	21%	31%	57
Mass Border	39%	6%	26%	29%	90
Seacoast	40%	4%	21%	34%	50
Manchester Area	26%	8%	22%	43%	55
First Cong. Dist	33%	7%	24%	36%	155
Second Cong. Dist	40%	9%	24%	27%	183

**Favorability Rating – Carly Fiorina
(Likely 2016 GOP Primary Voters)**

LIKELY NH GOP PRIMARY VOTERS	<u>Favorable</u> 15%	<u>Neutral</u> 9%	<u>Unfavorable</u> 13%	<u>Don't Know</u> 62%	<u>(N)</u> 349
Registered Undeclared	14%	9%	16%	60%	145
Registered Republican	17%	8%	12%	62%	182
Democrat	6%	5%	29%	59%	15
Independent	15%	4%	18%	63%	59
Republican	16%	9%	12%	63%	267
Liberal	4%	6%	0%	89%	11
Moderate	20%	8%	16%	56%	153
Conservative	12%	8%	12%	68%	170
Support Tea Party	22%	13%	12%	54%	115
Neutral	11%	6%	13%	70%	143
Oppose Tea Party	16%	6%	19%	59%	74
Voted in 2008 GOP Primary	18%	10%	12%	60%	227
Voted in 2008 DEM Primary	16%	13%	25%	46%	31
Voted in 2012 GOP Primary	17%	10%	13%	61%	274
Voted in 2012 DEM Primary	0%	2%	18%	80%	19
Union household	18%	3%	13%	66%	34
Non-union	15%	9%	14%	63%	308
Read Union Leader	19%	10%	18%	54%	103
Read Boston Globe	21%	8%	13%	58%	37
Read Local Newspapers	19%	8%	12%	60%	109
Watch WMUR	13%	8%	13%	67%	220
Listen to NHPR	23%	10%	16%	51%	95
18 to 34	11%	3%	9%	77%	77
35 to 49	20%	8%	8%	65%	86
50 to 64	14%	14%	14%	57%	93
65 and over	16%	6%	27%	51%	72
Male	19%	9%	18%	54%	203
Female	10%	9%	7%	74%	146
High school or less	4%	13%	12%	72%	60
Some college	12%	7%	17%	64%	69
College graduate	20%	8%	9%	63%	140
Post-graduate	19%	6%	20%	54%	72
Attend services 1 or more/week	18%	5%	19%	57%	98
1-2 times a month	12%	6%	19%	62%	28
Less often	9%	13%	11%	67%	95
Never	19%	6%	10%	65%	118
North Country	7%	19%	26%	47%	29
Central / Lakes	16%	5%	19%	60%	67
Connecticut Valley	24%	12%	8%	57%	57
Mass Border	18%	10%	12%	60%	90
Seacoast	13%	4%	3%	81%	50
Manchester Area	8%	8%	18%	67%	55
First Cong. Dist	11%	7%	11%	70%	155
Second Cong. Dist	19%	11%	15%	56%	183

**Favorability Rating – Mike Huckabee
(Likely 2016 GOP Primary Voters)**

LIKELY NH GOP PRIMARY VOTERS	<u>Favorable</u>	<u>Neutral</u>	<u>Unfavorable</u>	<u>Don't Know</u>	<u>(N)</u>
	45%	11%	31%	14%	349
Registered Undeclared	47%	5%	32%	16%	145
Registered Republican	44%	16%	32%	8%	182
Democrat	37%	4%	56%	4%	15
Independent	26%	0%	44%	30%	59
Republican	49%	14%	26%	11%	267
Liberal	28%	0%	51%	22%	11
Moderate	41%	11%	34%	15%	153
Conservative	49%	13%	27%	11%	170
Support Tea Party	52%	8%	28%	12%	115
Neutral	49%	15%	24%	13%	143
Oppose Tea Party	28%	10%	48%	14%	74
Voted in 2008 GOP Primary	44%	14%	33%	9%	227
Voted in 2008 DEM Primary	45%	8%	44%	4%	31
Voted in 2012 GOP Primary	45%	12%	33%	10%	274
Voted in 2012 DEM Primary	48%	9%	25%	17%	19
Union household	29%	20%	43%	7%	34
Non-union	46%	10%	29%	14%	308
Read Union Leader	42%	9%	36%	13%	103
Read Boston Globe	48%	18%	23%	11%	37
Read Local Newspapers	48%	11%	24%	17%	109
Watch WMUR	44%	11%	28%	16%	220
Listen to NHPR	36%	12%	36%	16%	95
18 to 34	52%	1%	23%	24%	77
35 to 49	39%	16%	30%	14%	86
50 to 64	33%	14%	43%	10%	93
65 and over	54%	12%	26%	8%	72
Male	43%	11%	35%	11%	203
Female	46%	11%	25%	18%	146
High school or less	39%	13%	23%	24%	60
Some college	56%	7%	16%	21%	69
College graduate	44%	12%	36%	8%	140
Post-graduate	40%	14%	39%	8%	72
Attend services 1 or more/week	62%	11%	20%	7%	98
1-2 times a month	41%	19%	28%	13%	28
Less often	50%	12%	24%	14%	95
Never	27%	9%	44%	19%	118
North Country	53%	17%	27%	3%	29
Central / Lakes	50%	11%	22%	17%	67
Connecticut Valley	43%	4%	34%	20%	57
Mass Border	47%	10%	37%	6%	90
Seacoast	35%	15%	28%	23%	50
Manchester Area	40%	14%	33%	13%	55
First Cong. Dist	41%	13%	28%	17%	155
Second Cong. Dist	48%	7%	33%	11%	183

**Favorability Rating – Bobby Jindal
(Likely 2016 GOP Primary Voters)**

LIKELY NH GOP PRIMARY VOTERS	<u>Favorable</u> 29%	<u>Neutral</u> 8%	<u>Unfavorable</u> 19%	<u>Don't Know</u> 44%	<u>(N)</u> 348
Registered Undeclared	26%	7%	24%	43%	145
Registered Republican	34%	10%	16%	40%	182
Democrat	0%	0%	67%	33%	15
Independent	20%	7%	28%	46%	59
Republican	32%	9%	15%	44%	266
Liberal	0%	0%	23%	77%	11
Moderate	24%	10%	23%	43%	153
Conservative	36%	7%	15%	43%	170
Support Tea Party	39%	6%	18%	37%	115
Neutral	24%	8%	15%	54%	143
Oppose Tea Party	25%	12%	31%	32%	74
Voted in 2008 GOP Primary	31%	9%	21%	39%	226
Voted in 2008 DEM Primary	18%	6%	26%	50%	31
Voted in 2012 GOP Primary	34%	9%	17%	40%	274
Voted in 2012 DEM Primary	8%	3%	24%	65%	19
Union household	34%	13%	21%	32%	34
Non-union	28%	7%	19%	46%	307
Read Union Leader	34%	6%	21%	39%	103
Read Boston Globe	30%	3%	25%	42%	37
Read Local Newspapers	29%	11%	19%	41%	109
Watch WMUR	27%	6%	20%	47%	219
Listen to NHPR	25%	12%	22%	41%	95
18 to 34	24%	8%	0%	69%	77
35 to 49	20%	4%	31%	46%	86
50 to 64	33%	11%	15%	42%	93
65 and over	35%	10%	32%	23%	72
Male	32%	11%	23%	34%	202
Female	26%	5%	12%	57%	146
High school or less	19%	5%	20%	56%	60
Some college	34%	4%	8%	53%	69
College graduate	32%	9%	16%	43%	139
Post-graduate	25%	13%	35%	28%	72
Attend services 1 or more/week	36%	9%	20%	36%	97
1-2 times a month	34%	2%	16%	48%	28
Less often	25%	10%	14%	52%	95
Never	25%	8%	23%	44%	118
North Country	25%	10%	26%	40%	29
Central / Lakes	36%	6%	20%	37%	67
Connecticut Valley	30%	11%	9%	50%	57
Mass Border	29%	7%	19%	44%	90
Seacoast	22%	7%	16%	54%	49
Manchester Area	29%	11%	25%	36%	55
First Cong. Dist	28%	8%	19%	45%	154
Second Cong. Dist	31%	9%	17%	43%	183

**Favorability Rating – John Kasich
(Likely 2016 GOP Primary Voters)**

LIKELY NH GOP PRIMARY VOTERS	<u>Favorable</u> 15%	<u>Neutral</u> 12%	<u>Unfavorable</u> 16%	<u>Don't Know</u> 57%	<u>(N)</u> 349
Registered Undeclared	16%	10%	16%	58%	145
Registered Republican	16%	14%	14%	56%	182
Democrat	3%	5%	54%	38%	15
Independent	8%	10%	13%	70%	59
Republican	18%	12%	14%	56%	267
Liberal	4%	0%	14%	81%	11
Moderate	13%	15%	12%	60%	153
Conservative	19%	8%	19%	54%	170
Support Tea Party	23%	13%	15%	50%	115
Neutral	11%	11%	10%	68%	143
Oppose Tea Party	14%	11%	26%	49%	74
Voted in 2008 GOP Primary	19%	13%	18%	50%	227
Voted in 2008 DEM Primary	18%	17%	16%	50%	31
Voted in 2012 GOP Primary	18%	12%	14%	57%	274
Voted in 2012 DEM Primary	2%	13%	18%	67%	19
Union household	25%	9%	6%	59%	34
Non-union	14%	12%	17%	57%	308
Read Union Leader	25%	9%	16%	50%	103
Read Boston Globe	18%	11%	23%	47%	37
Read Local Newspapers	19%	15%	20%	47%	109
Watch WMUR	17%	10%	14%	59%	220
Listen to NHPR	19%	14%	18%	49%	95
18 to 34	4%	10%	10%	76%	77
35 to 49	7%	15%	20%	58%	86
50 to 64	24%	12%	11%	53%	93
65 and over	24%	9%	23%	43%	72
Male	20%	13%	21%	46%	203
Female	8%	11%	8%	72%	146
High school or less	15%	8%	19%	58%	60
Some college	10%	15%	10%	65%	69
College graduate	16%	12%	16%	57%	140
Post-graduate	20%	11%	17%	52%	72
Attend services 1 or more/week	17%	10%	11%	62%	98
1-2 times a month	20%	4%	14%	62%	28
Less often	13%	19%	17%	51%	95
Never	14%	8%	19%	59%	118
North Country	21%	26%	19%	35%	29
Central / Lakes	14%	12%	14%	59%	67
Connecticut Valley	15%	19%	7%	59%	57
Mass Border	18%	7%	21%	54%	90
Seacoast	8%	9%	14%	70%	50
Manchester Area	15%	9%	19%	58%	55
First Cong. Dist	14%	9%	18%	59%	155
Second Cong. Dist	17%	14%	13%	55%	183

**Favorability Rating – Peter King
(Likely 2016 GOP Primary Voters)**

LIKELY NH GOP PRIMARY VOTERS	<u>Favorable</u> 9%	<u>Neutral</u> 9%	<u>Unfavorable</u> 23%	<u>Don't Know</u> 59%	<u>(N)</u> 349
Registered Undeclared	9%	8%	24%	59%	145
Registered Republican	9%	10%	23%	57%	182
Democrat	18%	0%	35%	48%	15
Independent	1%	5%	24%	71%	59
Republican	11%	9%	22%	58%	267
Liberal	6%	4%	11%	79%	11
Moderate	10%	7%	22%	60%	153
Conservative	9%	9%	25%	57%	170
Support Tea Party	7%	8%	36%	49%	115
Neutral	11%	10%	13%	66%	143
Oppose Tea Party	8%	6%	23%	63%	74
Voted in 2008 GOP Primary	8%	8%	28%	56%	227
Voted in 2008 DEM Primary	24%	7%	19%	50%	31
Voted in 2012 GOP Primary	10%	9%	23%	58%	274
Voted in 2012 DEM Primary	11%	7%	19%	62%	19
Union household	14%	2%	16%	68%	34
Non-union	9%	9%	24%	59%	308
Read Union Leader	9%	14%	27%	50%	103
Read Boston Globe	7%	9%	31%	53%	37
Read Local Newspapers	9%	12%	22%	57%	109
Watch WMUR	9%	6%	21%	64%	220
Listen to NHPR	11%	8%	22%	60%	95
18 to 34	10%	3%	8%	79%	77
35 to 49	6%	4%	31%	59%	86
50 to 64	14%	13%	23%	51%	93
65 and over	9%	10%	31%	50%	72
Male	10%	8%	28%	54%	203
Female	9%	10%	15%	67%	146
High school or less	9%	8%	21%	62%	60
Some college	12%	5%	17%	65%	69
College graduate	6%	9%	24%	62%	140
Post-graduate	13%	8%	28%	50%	72
Attend services 1 or more/week	6%	12%	24%	58%	98
1-2 times a month	8%	0%	29%	62%	28
Less often	15%	12%	15%	59%	95
Never	8%	3%	26%	63%	118
North Country	7%	8%	22%	62%	29
Central / Lakes	8%	7%	22%	63%	67
Connecticut Valley	14%	9%	24%	53%	57
Mass Border	8%	12%	24%	55%	90
Seacoast	14%	8%	15%	63%	50
Manchester Area	6%	6%	26%	62%	55
First Cong. Dist	10%	9%	20%	61%	155
Second Cong. Dist	10%	8%	25%	58%	183

**Favorability Rating – George Pataki
(Likely 2016 GOP Primary Voters)**

LIKELY NH GOP PRIMARY VOTERS	<u>Favorable</u> 17%	<u>Neutral</u> 15%	<u>Unfavorable</u> 30%	<u>Don't Know</u> 38%	<u>(N)</u> 349
Registered Undeclared	21%	10%	28%	41%	145
Registered Republican	16%	18%	33%	33%	182
Democrat	16%	11%	39%	34%	15
Independent	11%	14%	31%	44%	59
Republican	18%	16%	29%	38%	267
Liberal	21%	6%	13%	60%	11
Moderate	25%	14%	24%	37%	153
Conservative	9%	17%	36%	37%	170
Support Tea Party	12%	19%	36%	33%	115
Neutral	15%	17%	23%	45%	143
Oppose Tea Party	27%	7%	32%	33%	74
Voted in 2008 GOP Primary	16%	15%	33%	35%	227
Voted in 2008 DEM Primary	34%	24%	31%	12%	31
Voted in 2012 GOP Primary	14%	15%	32%	39%	274
Voted in 2012 DEM Primary	46%	4%	19%	32%	19
Union household	15%	21%	18%	46%	34
Non-union	17%	14%	31%	38%	308
Read Union Leader	20%	16%	37%	27%	103
Read Boston Globe	35%	17%	31%	17%	37
Read Local Newspapers	18%	16%	33%	34%	109
Watch WMUR	17%	12%	32%	40%	220
Listen to NHPR	15%	18%	32%	35%	95
18 to 34	14%	9%	8%	69%	77
35 to 49	22%	17%	33%	28%	86
50 to 64	16%	23%	35%	27%	93
65 and over	14%	12%	42%	32%	72
Male	16%	17%	35%	33%	203
Female	19%	13%	23%	45%	146
High school or less	8%	10%	38%	44%	60
Some college	11%	17%	22%	50%	69
College graduate	19%	15%	25%	41%	140
Post-graduate	26%	17%	38%	19%	72
Attend services 1 or more/week	14%	13%	26%	46%	98
1-2 times a month	15%	20%	35%	30%	28
Less often	25%	15%	26%	34%	95
Never	14%	14%	33%	39%	118
North Country	9%	38%	23%	31%	29
Central / Lakes	21%	15%	20%	44%	67
Connecticut Valley	19%	13%	34%	34%	57
Mass Border	15%	14%	35%	37%	90
Seacoast	10%	17%	32%	41%	50
Manchester Area	23%	8%	29%	39%	55
First Cong. Dist	16%	16%	32%	37%	155
Second Cong. Dist	19%	14%	28%	39%	183

**Favorability Rating – Rand Paul
(Likely 2016 GOP Primary Voters)**

LIKELY NH GOP PRIMARY VOTERS	<u>Favorable</u>	<u>Neutral</u>	<u>Unfavorable</u>	<u>Don't Know</u>	<u>(N)</u>
	53%	8%	27%	12%	349
Registered Undeclared	55%	6%	23%	15%	145
Registered Republican	52%	7%	33%	8%	182
Democrat	43%	0%	51%	6%	15
Independent	39%	16%	21%	24%	59
Republican	57%	6%	28%	10%	267
Liberal	63%	4%	24%	9%	11
Moderate	55%	8%	25%	12%	153
Conservative	53%	8%	29%	11%	170
Support Tea Party	66%	6%	18%	10%	115
Neutral	54%	8%	23%	15%	143
Oppose Tea Party	34%	10%	50%	6%	74
Voted in 2008 GOP Primary	56%	7%	29%	8%	227
Voted in 2008 DEM Primary	60%	1%	31%	8%	31
Voted in 2012 GOP Primary	57%	7%	27%	9%	274
Voted in 2012 DEM Primary	43%	2%	37%	18%	19
Union household	69%	7%	24%	0%	34
Non-union	51%	8%	28%	14%	308
Read Union Leader	48%	7%	31%	14%	103
Read Boston Globe	47%	13%	34%	6%	37
Read Local Newspapers	49%	10%	27%	14%	109
Watch WMUR	48%	6%	31%	15%	220
Listen to NHPR	51%	6%	28%	15%	95
18 to 34	57%	9%	14%	20%	77
35 to 49	57%	4%	22%	17%	86
50 to 64	48%	8%	37%	7%	93
65 and over	46%	9%	38%	7%	72
Male	62%	7%	25%	6%	203
Female	41%	8%	30%	21%	146
High school or less	42%	7%	31%	20%	60
Some college	55%	10%	15%	19%	69
College graduate	56%	9%	25%	10%	140
Post-graduate	51%	4%	42%	3%	72
Attend services 1 or more/week	53%	9%	29%	9%	98
1-2 times a month	44%	3%	35%	18%	28
Less often	60%	6%	27%	8%	95
Never	50%	10%	23%	18%	118
North Country	67%	4%	19%	9%	29
Central / Lakes	62%	10%	26%	3%	67
Connecticut Valley	40%	12%	27%	22%	57
Mass Border	57%	6%	25%	11%	90
Seacoast	44%	6%	34%	17%	50
Manchester Area	51%	7%	31%	11%	55
First Cong. Dist	48%	8%	31%	13%	155
Second Cong. Dist	55%	8%	26%	12%	183

**Favorability Rating – Rick Perry
(Likely 2016 GOP Primary Voters)**

LIKELY NH GOP PRIMARY VOTERS	<u>Favorable</u>	<u>Neutral</u>	<u>Unfavorable</u>	<u>Don't Know</u>	<u>(N)</u>
	42%	9%	34%	14%	349
Registered Undeclared	38%	10%	43%	9%	145
Registered Republican	45%	8%	30%	17%	182
Democrat	46%	0%	47%	7%	15
Independent	36%	11%	41%	12%	59
Republican	44%	8%	32%	16%	267
Liberal	19%	4%	31%	45%	11
Moderate	31%	9%	50%	9%	153
Conservative	55%	8%	21%	16%	170
Support Tea Party	65%	7%	24%	3%	115
Neutral	35%	9%	31%	25%	143
Oppose Tea Party	22%	10%	59%	9%	74
Voted in 2008 GOP Primary	44%	9%	33%	14%	227
Voted in 2008 DEM Primary	41%	10%	44%	5%	31
Voted in 2012 GOP Primary	43%	10%	33%	14%	274
Voted in 2012 DEM Primary	33%	6%	44%	17%	19
Union household	22%	13%	55%	10%	34
Non-union	44%	8%	32%	15%	308
Read Union Leader	48%	12%	34%	7%	103
Read Boston Globe	47%	4%	37%	12%	37
Read Local Newspapers	46%	6%	35%	13%	109
Watch WMUR	46%	8%	31%	14%	220
Listen to NHPR	43%	6%	44%	7%	95
18 to 34	55%	0%	22%	23%	77
35 to 49	25%	15%	44%	17%	86
50 to 64	43%	9%	38%	11%	93
65 and over	48%	8%	34%	9%	72
Male	42%	7%	44%	8%	203
Female	44%	12%	21%	24%	146
High school or less	60%	9%	21%	10%	60
Some college	44%	9%	25%	22%	69
College graduate	37%	9%	35%	18%	140
Post-graduate	34%	7%	54%	5%	72
Attend services 1 or more/week	40%	8%	33%	20%	98
1-2 times a month	38%	8%	31%	23%	28
Less often	50%	12%	25%	13%	95
Never	39%	7%	44%	10%	118
North Country	60%	4%	28%	8%	29
Central / Lakes	32%	7%	53%	8%	67
Connecticut Valley	39%	14%	28%	19%	57
Mass Border	39%	11%	34%	16%	90
Seacoast	52%	3%	18%	27%	50
Manchester Area	46%	11%	37%	7%	55
First Cong. Dist	46%	6%	33%	15%	155
Second Cong. Dist	38%	11%	36%	14%	183

**Favorability Rating – Marco Rubio
(Likely 2016 GOP Primary Voters)**

LIKELY NH GOP PRIMARY VOTERS	<u>Favorable</u>	<u>Neutral</u>	<u>Unfavorable</u>	<u>Don't Know</u>	<u>(N)</u>
	41%	10%	17%	33%	348
Registered Undeclared	33%	11%	20%	36%	145
Registered Republican	48%	10%	14%	28%	182
Democrat	28%	0%	60%	12%	15
Independent	14%	13%	36%	37%	59
Republican	48%	9%	9%	34%	267
Liberal	0%	8%	23%	68%	11
Moderate	32%	12%	19%	37%	153
Conservative	54%	7%	13%	26%	170
Support Tea Party	53%	9%	12%	26%	115
Neutral	37%	12%	11%	41%	143
Oppose Tea Party	32%	7%	35%	25%	74
Voted in 2008 GOP Primary	46%	10%	16%	28%	227
Voted in 2008 DEM Primary	39%	16%	18%	28%	31
Voted in 2012 GOP Primary	45%	9%	15%	30%	274
Voted in 2012 DEM Primary	31%	11%	15%	43%	19
Union household	44%	14%	22%	19%	34
Non-union	41%	9%	16%	35%	308
Read Union Leader	48%	9%	19%	23%	103
Read Boston Globe	37%	7%	32%	24%	37
Read Local Newspapers	47%	12%	16%	26%	109
Watch WMUR	44%	9%	17%	30%	220
Listen to NHPR	42%	12%	21%	26%	95
18 to 34	28%	6%	11%	55%	77
35 to 49	32%	16%	12%	40%	86
50 to 64	42%	8%	22%	27%	93
65 and over	59%	7%	20%	14%	72
Male	40%	11%	22%	27%	202
Female	43%	8%	8%	41%	146
High school or less	34%	6%	11%	49%	60
Some college	40%	8%	10%	42%	69
College graduate	42%	11%	19%	28%	140
Post-graduate	44%	12%	22%	22%	72
Attend services 1 or more/week	48%	9%	9%	34%	98
1-2 times a month	40%	8%	26%	26%	28
Less often	45%	11%	14%	30%	95
Never	32%	8%	21%	38%	118
North Country	40%	20%	10%	30%	29
Central / Lakes	39%	11%	15%	36%	67
Connecticut Valley	45%	12%	12%	30%	57
Mass Border	42%	5%	20%	33%	90
Seacoast	45%	5%	14%	36%	50
Manchester Area	35%	12%	23%	30%	55
First Cong. Dist	43%	9%	18%	30%	155
Second Cong. Dist	40%	10%	15%	35%	183

**Favorability Rating – Rick Santorum
(Likely 2016 GOP Primary Voters)**

LIKELY NH GOP PRIMARY VOTERS	<u>Favorable</u> 29%	<u>Neutral</u> 14%	<u>Unfavorable</u> 34%	<u>Don't Know</u> 23%	<u>(N)</u> 349
Registered Undeclared	27%	8%	45%	20%	145
Registered Republican	33%	14%	29%	24%	182
Democrat	9%	5%	51%	35%	15
Independent	17%	6%	47%	30%	59
Republican	32%	15%	32%	21%	267
Liberal	34%	7%	11%	48%	11
Moderate	21%	10%	41%	28%	153
Conservative	36%	17%	31%	17%	170
Support Tea Party	33%	12%	33%	22%	115
Neutral	26%	19%	26%	30%	143
Oppose Tea Party	25%	10%	55%	10%	74
Voted in 2008 GOP Primary	29%	13%	35%	22%	227
Voted in 2008 DEM Primary	40%	0%	39%	21%	31
Voted in 2012 GOP Primary	29%	14%	35%	22%	274
Voted in 2012 DEM Primary	56%	5%	27%	12%	19
Union household	17%	4%	50%	29%	34
Non-union	29%	14%	33%	23%	308
Read Union Leader	26%	18%	38%	18%	103
Read Boston Globe	31%	11%	33%	25%	37
Read Local Newspapers	32%	15%	28%	25%	109
Watch WMUR	27%	12%	32%	29%	220
Listen to NHPR	25%	16%	43%	16%	95
18 to 34	30%	22%	22%	25%	77
35 to 49	23%	9%	44%	24%	86
50 to 64	23%	13%	38%	26%	93
65 and over	34%	10%	38%	18%	72
Male	27%	14%	45%	14%	203
Female	31%	13%	20%	36%	146
High school or less	19%	11%	35%	36%	60
Some college	23%	11%	30%	36%	69
College graduate	34%	17%	31%	18%	140
Post-graduate	29%	11%	47%	13%	72
Attend services 1 or more/week	42%	14%	24%	19%	98
1-2 times a month	23%	6%	50%	21%	28
Less often	20%	21%	33%	26%	95
Never	24%	8%	41%	27%	118
North Country	35%	11%	32%	22%	29
Central / Lakes	23%	9%	41%	26%	67
Connecticut Valley	36%	13%	22%	30%	57
Mass Border	29%	16%	34%	21%	90
Seacoast	29%	25%	25%	21%	50
Manchester Area	26%	7%	49%	18%	55
First Cong. Dist	30%	14%	34%	22%	155
Second Cong. Dist	28%	13%	35%	24%	183

**Favorability Rating – Donald Trump
(Likely 2016 GOP Primary Voters)**

LIKELY NH GOP PRIMARY VOTERS	<u>Favorable</u> 19%	<u>Neutral</u> 9%	<u>Unfavorable</u> 69%	<u>Don't Know</u> 3%	<u>(N)</u> 349
Registered Undeclared	21%	7%	70%	3%	145
Registered Republican	19%	6%	73%	2%	182
Democrat	6%	0%	94%	0%	15
Independent	26%	5%	68%	0%	59
Republican	19%	9%	68%	4%	267
Liberal	33%	0%	67%	0%	11
Moderate	19%	7%	73%	2%	153
Conservative	19%	10%	66%	4%	170
Support Tea Party	29%	4%	65%	1%	115
Neutral	17%	14%	65%	5%	143
Oppose Tea Party	10%	7%	83%	0%	74
Voted in 2008 GOP Primary	18%	9%	71%	2%	227
Voted in 2008 DEM Primary	18%	1%	80%	0%	31
Voted in 2012 GOP Primary	18%	9%	70%	3%	274
Voted in 2012 DEM Primary	12%	0%	88%	0%	19
Union household	10%	4%	80%	6%	34
Non-union	21%	9%	68%	3%	308
Read Union Leader	30%	3%	66%	1%	103
Read Boston Globe	33%	7%	60%	0%	37
Read Local Newspapers	25%	12%	60%	4%	109
Watch WMUR	21%	9%	66%	4%	220
Listen to NHPR	20%	13%	66%	1%	95
18 to 34	37%	10%	49%	4%	77
35 to 49	13%	9%	75%	2%	86
50 to 64	16%	10%	73%	1%	93
65 and over	14%	5%	77%	4%	72
Male	20%	9%	67%	3%	203
Female	18%	8%	71%	3%	146
High school or less	29%	15%	51%	5%	60
Some college	21%	8%	67%	4%	69
College graduate	20%	9%	70%	1%	140
Post-graduate	10%	2%	83%	4%	72
Attend services 1 or more/week	14%	4%	78%	4%	98
1-2 times a month	15%	7%	69%	8%	28
Less often	24%	11%	61%	4%	95
Never	22%	10%	67%	0%	118
North Country	30%	15%	50%	5%	29
Central / Lakes	18%	6%	76%	0%	67
Connecticut Valley	32%	3%	60%	4%	57
Mass Border	12%	11%	74%	3%	90
Seacoast	7%	14%	71%	7%	50
Manchester Area	26%	5%	69%	1%	55
First Cong. Dist	18%	7%	71%	4%	155
Second Cong. Dist	20%	9%	68%	2%	183

**Favorability Rating – Scott Walker
(Likely 2016 GOP Primary Voters)**

LIKELY NH GOP PRIMARY VOTERS	<u>Favorable</u> 39%	<u>Neutral</u> 6%	<u>Unfavorable</u> 9%	<u>Don't Know</u> 46%	<u>(N)</u> 349
Registered Undeclared	42%	6%	12%	40%	145
Registered Republican	39%	7%	8%	46%	182
Democrat	24%	7%	36%	33%	15
Independent	42%	4%	16%	38%	59
Republican	38%	6%	6%	49%	267
Liberal	3%	0%	15%	83%	11
Moderate	37%	9%	12%	42%	153
Conservative	43%	3%	6%	48%	170
Support Tea Party	65%	4%	5%	26%	115
Neutral	24%	8%	7%	62%	143
Oppose Tea Party	28%	7%	20%	46%	74
Voted in 2008 GOP Primary	42%	8%	9%	41%	227
Voted in 2008 DEM Primary	36%	5%	20%	38%	31
Voted in 2012 GOP Primary	39%	7%	8%	46%	274
Voted in 2012 DEM Primary	12%	7%	16%	65%	19
Union household	28%	5%	18%	49%	34
Non-union	40%	6%	8%	46%	308
Read Union Leader	52%	4%	12%	33%	103
Read Boston Globe	42%	3%	11%	44%	37
Read Local Newspapers	44%	10%	6%	40%	109
Watch WMUR	37%	4%	10%	49%	220
Listen to NHPR	44%	4%	16%	36%	95
18 to 34	30%	3%	6%	61%	77
35 to 49	30%	6%	7%	56%	86
50 to 64	44%	11%	9%	36%	93
65 and over	46%	4%	17%	34%	72
Male	45%	6%	11%	38%	203
Female	30%	6%	6%	57%	146
High school or less	37%	7%	6%	50%	60
Some college	27%	4%	6%	62%	69
College graduate	42%	6%	9%	44%	140
Post-graduate	42%	7%	15%	35%	72
Attend services 1 or more/week	36%	6%	9%	48%	98
1-2 times a month	41%	2%	6%	51%	28
Less often	34%	10%	7%	49%	95
Never	43%	5%	10%	42%	118
North Country	35%	8%	23%	34%	29
Central / Lakes	36%	5%	7%	51%	67
Connecticut Valley	47%	11%	7%	36%	57
Mass Border	42%	5%	6%	47%	90
Seacoast	40%	5%	3%	53%	50
Manchester Area	30%	5%	18%	47%	55
First Cong. Dist	36%	5%	11%	48%	155
Second Cong. Dist	41%	7%	8%	43%	183

**Decided 2016 GOP Primary Vote
(Likely 2016 GOP Primary Voters)**

	Def. <u>Decided</u>	Leaning <u>Towards Someone</u>	Still Trying <u>To Decide</u>	(N)
LIKELY NH GOP PRIMARY VOTERS	6%	9%	85%	346
Registered Undeclared	3%	8%	89%	142
Registered Republican	9%	9%	82%	183
Democrat	20%	2%	78%	15
Independent	0%	6%	94%	59
Republican	7%	9%	84%	263
Liberal	5%	5%	90%	10
Moderate	3%	7%	90%	152
Conservative	9%	10%	81%	170
Support Tea Party	6%	10%	84%	114
Neutral	4%	9%	87%	143
Oppose Tea Party	8%	7%	85%	73
Voted in 2008 GOP Primary	7%	8%	85%	225
Voted in 2008 DEM Primary	6%	3%	91%	31
Voted in 2012 GOP Primary	7%	10%	83%	275
Voted in 2012 DEM Primary	6%	2%	92%	17
Union household	7%	9%	85%	34
Non-union	6%	8%	86%	305
Read Union Leader	6%	8%	86%	103
Read Boston Globe	5%	8%	86%	37
Read Local Newspapers	4%	7%	89%	110
Watch WMUR	6%	6%	88%	219
Listen to NHPR	5%	6%	88%	94
18 to 34	0%	10%	90%	75
35 to 49	7%	2%	91%	85
50 to 64	9%	13%	78%	93
65 and over	6%	8%	86%	73
Male	6%	8%	86%	203
Female	7%	9%	84%	142
High school or less	6%	7%	87%	61
Some college	3%	17%	80%	69
College graduate	6%	5%	89%	138
Post-graduate	7%	8%	84%	70
Attend services 1 or more/week	6%	13%	81%	98
1-2 times a month	14%	4%	82%	28
Less often	4%	8%	88%	93
Never	6%	6%	88%	116
North Country	0%	5%	95%	29
Central / Lakes	4%	15%	81%	68
Connecticut Valley	4%	1%	94%	57
Mass Border	9%	8%	83%	90
Seacoast	6%	12%	82%	47
Manchester Area	9%	8%	83%	55
First Cong. Dist	6%	10%	84%	152
Second Cong. Dist	6%	7%	87%	183

**GOP 2016 Primary Support
(Likely 2016 GOP Primary Voters)**

	<u>Mitt Romney</u>	<u>Jeb Bush</u>	<u>Scott Walker</u>	<u>Rand Paul</u>	<u>Ben Carson</u>	<u>Mike Huckabee</u>	<u>Someone Else</u>	<u>Undecided</u>	<u>(N=)</u>
LIKELY NH GOP PRIMARY VOTERS	15%	13%	11%	8%	7%	7%	25%	13%	348
Registered Undeclared	12%	14%	13%	8%	11%	9%	24%	10%	144
Registered Republican	16%	13%	11%	9%	6%	6%	26%	13%	182
Democrat	23%	27%	21%	3%	5%	0%	2%	17%	15
Independent	9%	9%	27%	10%	1%	6%	25%	13%	59
Republican	16%	13%	7%	8%	9%	8%	26%	13%	266
Liberal	13%	13%	0%	45%	6%	12%	11%	0%	11
Moderate	14%	17%	11%	9%	6%	6%	20%	15%	152
Conservative	15%	9%	12%	5%	9%	9%	31%	11%	170
Support Tea Party	9%	6%	20%	10%	8%	5%	30%	10%	115
Neutral	19%	14%	5%	6%	11%	10%	22%	12%	142
Oppose Tea Party	14%	22%	9%	8%	1%	4%	23%	19%	74
Voted in 2008 GOP Primary	19%	12%	11%	9%	8%	6%	23%	12%	226
Voted in 2008 DEM Primary	16%	34%	6%	7%	2%	4%	17%	14%	31
Voted in 2012 GOP Primary	16%	11%	11%	10%	8%	6%	25%	13%	273
Voted in 2012 DEM Primary	23%	11%	4%	2%	0%	26%	19%	15%	19
Union household	19%	14%	0%	8%	3%	0%	37%	19%	34
Non-union	14%	13%	12%	8%	8%	8%	24%	13%	307
Read Union Leader	11%	16%	18%	6%	7%	6%	20%	16%	103
Read Boston Globe	6%	21%	7%	2%	4%	14%	35%	11%	36
Read Local Newspapers	20%	14%	18%	5%	5%	4%	21%	13%	108
Watch WMUR	20%	13%	12%	5%	4%	8%	24%	12%	219
Listen to NHPR	14%	14%	16%	9%	5%	6%	16%	20%	94
18 to 34	10%	7%	12%	15%	8%	3%	32%	13%	77
35 to 49	13%	15%	6%	7%	14%	12%	25%	9%	85
50 to 64	22%	12%	14%	6%	1%	5%	24%	15%	93
65 and over	14%	18%	14%	4%	7%	8%	22%	12%	72
Male	12%	15%	13%	9%	10%	4%	27%	11%	203
Female	19%	11%	10%	7%	3%	12%	23%	17%	145
High school or less	18%	5%	16%	9%	9%	8%	24%	10%	60
Some college	19%	11%	6%	3%	14%	6%	28%	12%	69
College graduate	14%	14%	11%	10%	7%	7%	23%	14%	140
Post-graduate	8%	19%	12%	7%	1%	9%	27%	18%	71
Attend services 1 or more/week	12%	17%	9%	5%	11%	12%	26%	8%	98
1-2 times a month	10%	11%	17%	0%	9%	8%	24%	21%	28
Less often	21%	16%	10%	10%	5%	1%	26%	11%	94
Never	12%	8%	12%	11%	6%	9%	24%	17%	118
North Country	15%	25%	4%	6%	1%	8%	24%	16%	29
Central / Lakes	22%	26%	8%	4%	10%	3%	12%	16%	66
Connecticut Valley	7%	8%	27%	4%	3%	13%	24%	14%	57
Mass Border	18%	5%	11%	16%	10%	9%	24%	7%	90
Seacoast	12%	13%	7%	3%	5%	4%	36%	19%	50
Manchester Area	13%	8%	7%	10%	9%	6%	33%	13%	55
First Cong. Dist	15%	14%	7%	7%	7%	8%	26%	16%	154
Second Cong. Dist	15%	12%	15%	9%	8%	7%	22%	12%	183

**GOP 2016 Primary Support – With Romney Votes Allocated
(Likely 2016 GOP Primary Voters)**

	Jeb <u>Bush</u>	Scott <u>Walker</u>	Rand <u>Paul</u>	Chris <u>Christie</u>	Mike <u>Huckabee</u>	Ben <u>Carson</u>	Someone <u>Else</u>	<u>Undecided</u>	<u>(N=)</u>
LIKELY NH GOP PRIMARY VOTERS	17%	12%	9%	9%	9%	8%	20%	15%	348
Registered Undeclared	17%	13%	9%	4%	10%	11%	25%	12%	144
Registered Republican	16%	13%	11%	13%	9%	6%	17%	15%	182
Democrat	31%	21%	5%	0%	0%	5%	16%	21%	15
Independent	13%	27%	10%	2%	7%	1%	23%	18%	59
Republican	17%	8%	10%	11%	10%	9%	20%	15%	266
Liberal	13%	0%	45%	0%	12%	6%	15%	9%	11
Moderate	21%	12%	9%	12%	8%	6%	14%	16%	152
Conservative	13%	13%	8%	7%	10%	9%	27%	13%	170
Support Tea Party	7%	22%	11%	2%	5%	8%	32%	11%	115
Neutral	19%	5%	8%	13%	14%	11%	16%	15%	142
Oppose Tea Party	30%	11%	8%	12%	6%	1%	11%	20%	74
Voted in 2008 GOP Primary	18%	12%	11%	9%	9%	9%	19%	14%	226
Voted in 2008 DEM Primary	37%	6%	7%	2%	6%	2%	24%	16%	31
Voted in 2012 GOP Primary	16%	12%	11%	8%	8%	9%	21%	15%	273
Voted in 2012 DEM Primary	14%	4%	3%	19%	26%	0%	19%	15%	19
Union household	21%	0%	8%	2%	5%	3%	37%	23%	34
Non-union	17%	14%	10%	10%	9%	8%	18%	15%	307
Read Union Leader	17%	20%	7%	5%	8%	7%	18%	18%	103
Read Boston Globe	25%	7%	2%	5%	14%	4%	30%	12%	36
Read Local Newspapers	23%	19%	9%	12%	6%	5%	13%	13%	108
Watch WMUR	19%	14%	7%	9%	11%	4%	20%	15%	219
Listen to NHPR	20%	18%	11%	4%	7%	5%	14%	21%	94
18 to 34	13%	12%	17%	8%	3%	8%	26%	13%	77
35 to 49	18%	8%	7%	8%	14%	14%	21%	10%	85
50 to 64	17%	16%	8%	12%	8%	1%	18%	20%	93
65 and over	21%	14%	7%	9%	11%	7%	17%	14%	72
Male	19%	13%	10%	9%	4%	11%	22%	11%	203
Female	14%	11%	9%	9%	15%	3%	18%	20%	145
High school or less	12%	18%	14%	9%	9%	9%	16%	12%	60
Some college	13%	6%	6%	5%	10%	14%	29%	14%	69
College graduate	20%	13%	10%	10%	8%	7%	16%	15%	140
Post-graduate	19%	12%	7%	10%	9%	1%	22%	20%	71
Attend services 1 or more/week	18%	9%	6%	12%	16%	11%	18%	11%	98
1-2 times a month	15%	17%	0%	4%	8%	9%	24%	24%	28
Less often	23%	12%	13%	9%	2%	5%	22%	14%	94
Never	12%	14%	13%	8%	9%	6%	20%	18%	118
North Country	25%	4%	12%	13%	13%	1%	13%	18%	29
Central / Lakes	35%	9%	5%	8%	5%	10%	12%	17%	66
Connecticut Valley	8%	27%	7%	7%	13%	5%	19%	14%	57
Mass Border	12%	14%	16%	7%	11%	10%	20%	10%	90
Seacoast	16%	7%	3%	15%	4%	5%	28%	22%	50
Manchester Area	12%	7%	11%	6%	9%	9%	31%	15%	55
First Cong. Dist	17%	8%	8%	10%	9%	7%	22%	18%	154
Second Cong. Dist	17%	16%	11%	8%	9%	9%	17%	13%	183

**GOP 2016 Primary – Second Choice
(Likely 2016 GOP Primary Voters)**

	<u>Mitt Romney</u>	<u>Jeb Bush</u>	<u>Rand Paul</u>	<u>Chris Christie</u>	<u>Donald Trump</u>	<u>Someone Else</u>	<u>No Second Choice</u>	<u>Don't Know</u>	<u>(N=)</u>
LIKELY NH GOP PRIMARY VOTERS	12%	10%	11%	5%	5%	43%	6%	8%	301
Registered Undeclared	10%	9%	9%	4%	7%	46%	6%	9%	130
Registered Republican	15%	12%	11%	6%	4%	39%	7%	8%	157
Democrat	0%	2%	5%	0%	0%	52%	31%	10%	12
Independent	9%	8%	12%	1%	0%	59%	3%	8%	51
Republican	13%	12%	11%	6%	7%	38%	5%	8%	230
Liberal	34%	17%	0%	0%	0%	35%	7%	6%	11
Moderate	11%	12%	10%	3%	4%	46%	8%	6%	129
Conservative	11%	9%	12%	8%	7%	40%	4%	10%	150
Support Tea Party	11%	8%	5%	11%	10%	47%	0%	7%	104
Neutral	11%	14%	11%	2%	2%	42%	8%	10%	124
Oppose Tea Party	14%	7%	21%	2%	1%	37%	10%	7%	60
Voted in 2008 GOP Primary	13%	7%	12%	6%	6%	41%	5%	9%	199
Voted in 2008 DEM Primary	9%	1%	6%	9%	5%	60%	10%	0%	27
Voted in 2012 GOP Primary	11%	10%	13%	6%	4%	41%	5%	9%	237
Voted in 2012 DEM Primary	18%	26%	10%	0%	0%	40%	6%	0%	16
Union household	3%	2%	29%	16%	5%	32%	11%	3%	27
Non-union	13%	11%	9%	4%	5%	43%	6%	9%	266
Read Union Leader	7%	7%	6%	7%	9%	53%	3%	7%	85
Read Boston Globe	10%	8%	5%	0%	18%	46%	10%	3%	32
Read Local Newspapers	8%	6%	17%	3%	6%	51%	5%	3%	94
Watch WMUR	8%	9%	14%	5%	3%	45%	7%	9%	191
Listen to NHPR	10%	10%	14%	7%	3%	44%	5%	7%	75
18 to 34	16%	20%	15%	0%	0%	38%	1%	9%	67
35 to 49	13%	9%	4%	5%	10%	45%	9%	5%	78
50 to 64	5%	9%	17%	10%	3%	43%	7%	7%	79
65 and over	15%	6%	9%	4%	5%	39%	8%	14%	62
Male	12%	11%	10%	5%	7%	42%	4%	9%	180
Female	12%	9%	13%	5%	3%	44%	8%	6%	120
High school or less	4%	14%	9%	5%	2%	44%	0%	22%	54
Some college	9%	19%	12%	5%	6%	36%	9%	5%	61
College graduate	18%	6%	12%	6%	4%	44%	7%	3%	120
Post-graduate	8%	9%	10%	3%	9%	43%	8%	10%	58
Attend services 1 or more/week	13%	13%	9%	2%	8%	42%	8%	6%	89
1-2 times a month	15%	2%	9%	3%	0%	50%	9%	12%	23
Less often	14%	6%	17%	8%	4%	37%	7%	8%	83
Never	9%	15%	7%	6%	5%	45%	3%	10%	97
North Country	16%	19%	0%	2%	3%	44%	6%	10%	24
Central / Lakes	6%	14%	14%	4%	11%	43%	4%	4%	56
Connecticut Valley	3%	16%	3%	5%	3%	63%	3%	4%	49
Mass Border	18%	5%	12%	9%	4%	30%	11%	12%	84
Seacoast	5%	5%	20%	4%	8%	40%	7%	11%	40
Manchester Area	21%	9%	12%	2%	3%	44%	3%	6%	48
First Cong. Dist	12%	8%	13%	6%	5%	39%	7%	8%	128
Second Cong. Dist	12%	13%	9%	4%	5%	44%	4%	9%	161

**GOP 2016 Primary – Would NOT Support
(Likely 2016 GOP Primary Voters)**

	<u>Donald Trump</u>	<u>Chris Christie</u>	<u>Jeb Bush</u>	<u>Ted Cruz</u>	<u>Mitt Romney</u>	<u>Someone Else</u>	<u>All Acceptable</u>	<u>Don't Know</u>	<u>(N=)</u>
LIKELY NH GOP PRIMARY VOTERS	21%	10%	8%	5%	5%	17%	11%	22%	347
Registered Undeclared	20%	12%	8%	7%	6%	16%	8%	22%	144
Registered Republican	22%	9%	8%	4%	3%	19%	15%	19%	181
Democrat	15%	30%	16%	6%	12%	21%	0%	0%	13
Independent	20%	4%	9%	17%	5%	9%	2%	34%	59
Republican	22%	10%	7%	3%	4%	19%	14%	20%	266
Liberal	10%	17%	0%	0%	7%	6%	42%	18%	11
Moderate	19%	10%	5%	10%	7%	19%	11%	18%	153
Conservative	25%	10%	11%	2%	2%	16%	10%	23%	170
Support Tea Party	18%	12%	15%	1%	3%	14%	15%	23%	115
Neutral	26%	10%	7%	4%	5%	18%	13%	18%	143
Oppose Tea Party	18%	6%	2%	16%	7%	22%	5%	25%	73
Voted in 2008 GOP Primary	21%	9%	9%	5%	3%	20%	12%	20%	225
Voted in 2008 DEM Primary	7%	19%	7%	8%	22%	21%	7%	10%	31
Voted in 2012 GOP Primary	21%	10%	9%	5%	4%	18%	13%	20%	273
Voted in 2012 DEM Primary	14%	20%	9%	5%	6%	21%	4%	20%	19
Union household	24%	14%	12%	15%	0%	20%	11%	5%	33
Non-union	21%	10%	8%	5%	5%	17%	12%	23%	306
Read Union Leader	19%	10%	15%	7%	1%	19%	7%	23%	103
Read Boston Globe	25%	7%	10%	8%	10%	12%	3%	25%	36
Read Local Newspapers	27%	7%	6%	4%	5%	14%	8%	28%	109
Watch WMUR	21%	11%	6%	7%	3%	17%	9%	25%	219
Listen to NHPR	16%	5%	8%	13%	4%	19%	5%	31%	94
18 to 34	24%	2%	3%	0%	15%	13%	17%	25%	77
35 to 49	24%	18%	10%	8%	2%	12%	6%	20%	86
50 to 64	21%	9%	12%	7%	2%	23%	9%	16%	93
65 and over	18%	5%	5%	6%	2%	22%	15%	27%	71
Male	21%	6%	8%	8%	6%	23%	10%	18%	201
Female	22%	14%	8%	2%	4%	9%	13%	26%	146
High school or less	17%	2%	9%	0%	1%	27%	8%	36%	60
Some college	21%	11%	4%	1%	7%	15%	22%	19%	69
College graduate	22%	12%	10%	5%	6%	12%	10%	23%	139
Post-graduate	24%	13%	5%	15%	4%	20%	9%	10%	71
Attend services 1 or more/week	28%	10%	4%	3%	3%	12%	21%	19%	97
1-2 times a month	30%	5%	13%	10%	8%	13%	3%	19%	28
Less often	17%	10%	9%	6%	7%	20%	12%	19%	95
Never	18%	11%	9%	6%	4%	20%	5%	27%	116
North Country	25%	9%	0%	11%	0%	28%	6%	22%	29
Central / Lakes	23%	9%	5%	7%	14%	13%	16%	13%	66
Connecticut Valley	23%	6%	9%	6%	3%	15%	10%	27%	57
Mass Border	12%	12%	13%	6%	3%	18%	14%	22%	90
Seacoast	30%	17%	8%	2%	6%	11%	11%	15%	49
Manchester Area	22%	6%	8%	3%	1%	20%	7%	32%	55
First Cong. Dist	24%	11%	8%	4%	5%	19%	8%	22%	154
Second Cong. Dist	20%	9%	7%	7%	6%	16%	14%	21%	182

**GOP 2016 Primary Who Will Win
(Likely 2016 GOP Primary Voters)**

	<u>Mitt Romney</u>	<u>Jeb Bush</u>	<u>Rand Paul</u>	<u>Chris Christie</u>	<u>Donald Trump</u>	<u>Scott Walker</u>	<u>Someone Else</u>	<u>Don't Know</u>	<u>(N=)</u>
LIKELY NH GOP PRIMARY VOTERS	22%	15%	7%	4%	3%	3%	6%	40%	347
Registered Undeclared	16%	19%	7%	4%	5%	1%	9%	39%	144
Registered Republican	30%	13%	6%	3%	1%	4%	3%	39%	182
Democrat	34%	19%	3%	0%	0%	2%	0%	41%	15
Independent	11%	27%	0%	9%	12%	1%	7%	33%	59
Republican	24%	13%	9%	3%	1%	3%	7%	41%	265
Liberal	19%	7%	39%	0%	0%	0%	0%	35%	11
Moderate	24%	21%	7%	3%	6%	1%	5%	33%	152
Conservative	21%	12%	6%	4%	0%	4%	9%	44%	169
Support Tea Party	27%	13%	2%	1%	7%	7%	10%	34%	115
Neutral	21%	12%	13%	3%	1%	1%	5%	44%	141
Oppose Tea Party	17%	27%	7%	11%	0%	0%	3%	35%	74
Voted in 2008 GOP Primary	25%	12%	5%	3%	1%	3%	6%	44%	225
Voted in 2008 DEM Primary	29%	42%	9%	2%	0%	4%	1%	12%	31
Voted in 2012 GOP Primary	23%	17%	7%	3%	1%	3%	4%	42%	273
Voted in 2012 DEM Primary	50%	11%	22%	0%	0%	6%	4%	7%	19
Union household	30%	35%	3%	7%	0%	0%	0%	25%	34
Non-union	21%	13%	7%	3%	3%	3%	7%	41%	307
Read Union Leader	18%	16%	5%	3%	7%	5%	12%	35%	103
Read Boston Globe	18%	12%	12%	3%	0%	2%	24%	29%	36
Read Local Newspapers	26%	7%	7%	2%	7%	4%	13%	35%	108
Watch WMUR	24%	14%	4%	2%	4%	2%	7%	43%	218
Listen to NHPR	18%	20%	10%	2%	8%	2%	7%	34%	94
18 to 34	18%	8%	23%	5%	12%	0%	9%	26%	77
35 to 49	25%	16%	5%	1%	0%	3%	7%	43%	85
50 to 64	26%	17%	2%	5%	0%	3%	3%	44%	93
65 and over	21%	19%	2%	3%	1%	5%	8%	41%	72
Male	26%	19%	7%	5%	0%	1%	9%	33%	203
Female	18%	11%	8%	2%	6%	4%	3%	49%	144
High school or less	23%	5%	0%	0%	12%	3%	14%	44%	60
Some college	24%	9%	11%	3%	2%	2%	6%	43%	69
College graduate	23%	16%	10%	5%	0%	2%	4%	40%	139
Post-graduate	19%	31%	4%	4%	1%	5%	6%	31%	71
Attend services 1 or more/week	21%	13%	6%	7%	2%	4%	7%	40%	97
1-2 times a month	25%	17%	1%	0%	0%	5%	4%	48%	28
Less often	24%	14%	13%	4%	0%	2%	8%	35%	94
Never	21%	18%	5%	2%	6%	2%	6%	41%	118
North Country	30%	26%	0%	0%	0%	1%	1%	43%	28
Central / Lakes	26%	20%	11%	2%	2%	3%	14%	22%	67
Connecticut Valley	19%	12%	4%	4%	13%	6%	4%	38%	57
Mass Border	20%	16%	13%	1%	0%	4%	6%	40%	90
Seacoast	22%	8%	6%	6%	0%	0%	1%	56%	50
Manchester Area	21%	14%	2%	9%	1%	0%	9%	45%	55
First Cong. Dist	23%	15%	3%	6%	0%	1%	7%	45%	153
Second Cong. Dist	21%	17%	11%	2%	5%	4%	6%	34%	183

**Satisfaction with 2016 GOP Field
(Likely 2016 GOP Primary Voters)**

	<u>Very Satisfied</u>	<u>Somewhat Satisfied</u>	<u>Somewhat Dissatisfied</u>	<u>Very Dissatisfied</u>	<u>Don't Know</u>	<u>(N)</u>
LIKELY NH GOP PRIMARY VOTERS	14%	61%	14%	6%	6%	347
Registered Undeclared	10%	66%	12%	5%	7%	145
Registered Republican	18%	54%	16%	6%	5%	182
Democrat	5%	43%	28%	24%	0%	15
Independent	3%	54%	19%	12%	12%	59
Republican	17%	63%	12%	3%	4%	267
Liberal	6%	79%	7%	8%	0%	11
Moderate	8%	56%	21%	7%	8%	153
Conservative	20%	65%	7%	4%	3%	170
Support Tea Party	26%	56%	8%	4%	6%	115
Neutral	10%	73%	14%	1%	2%	141
Oppose Tea Party	4%	42%	27%	17%	10%	74
Voted in 2008 GOP Primary	17%	60%	13%	5%	4%	227
Voted in 2008 DEM Primary	10%	57%	17%	4%	11%	31
Voted in 2012 GOP Primary	15%	62%	13%	4%	5%	274
Voted in 2012 DEM Primary	9%	44%	31%	12%	3%	19
Union household	12%	64%	11%	8%	5%	34
Non-union	14%	60%	15%	5%	6%	308
Read Union Leader	16%	62%	12%	3%	6%	102
Read Boston Globe	16%	55%	9%	5%	15%	36
Read Local Newspapers	22%	56%	15%	4%	3%	108
Watch WMUR	15%	57%	18%	4%	6%	220
Listen to NHPR	11%	59%	18%	6%	6%	94
18 to 34	5%	91%	1%	2%	0%	77
35 to 49	14%	44%	21%	8%	12%	86
50 to 64	13%	60%	17%	7%	3%	93
65 and over	24%	48%	18%	6%	4%	72
Male	12%	59%	15%	8%	6%	203
Female	16%	64%	13%	3%	5%	144
High school or less	11%	68%	14%	8%	0%	60
Some college	14%	72%	8%	1%	4%	69
College graduate	13%	62%	11%	6%	8%	140
Post-graduate	19%	40%	27%	7%	7%	72
Attend services 1 or more/week	27%	57%	11%	2%	4%	98
1-2 times a month	20%	48%	20%	6%	6%	28
Less often	6%	71%	16%	5%	1%	95
Never	8%	58%	14%	9%	10%	118
North Country	16%	64%	10%	1%	8%	29
Central / Lakes	11%	74%	8%	7%	0%	67
Connecticut Valley	19%	53%	21%	0%	7%	57
Mass Border	15%	60%	14%	8%	2%	90
Seacoast	13%	62%	11%	10%	4%	48
Manchester Area	8%	51%	18%	6%	17%	55
First Cong. Dist	13%	60%	16%	7%	5%	155
Second Cong. Dist	16%	62%	13%	5%	4%	183

**Most Important To Your Vote In Presidential Primary?
(Likely 2016 GOP Primary Voters)**

	<u>Jobs/ Economy</u>	<u>Foreign Policy</u>	<u>Health Care</u>	<u>Immi- gration</u>	<u>Budget/ Debt</u>	<u>Taxes</u>	<u>Social Issues</u>	<u>Energy</u>	<u>Other/ DK</u>	<u>(N=)</u>
LIKELY NH GOP PRIMARY VOTERS	29%	13%	20%	7%	3%	5%	2%	2%	19%	329
Registered Undeclared	37%	16%	15%	6%	0%	5%	3%	2%	15%	133
Registered Republican	24%	11%	24%	7%	4%	5%	2%	2%	20%	179
Democrat	25%	17%	17%	14%	10%	0%	0%	2%	13%	14
Independent	30%	19%	12%	3%	0%	5%	6%	0%	25%	52
Republican	29%	10%	22%	7%	3%	5%	1%	3%	19%	255
Liberal	17%	17%	10%	8%	0%	0%	0%	0%	48%	11
Moderate	34%	13%	21%	2%	5%	5%	5%	2%	14%	142
Conservative	27%	11%	21%	12%	2%	4%	0%	3%	21%	161
Support Tea Party	24%	8%	23%	11%	1%	8%	3%	2%	20%	104
Neutral	35%	12%	21%	5%	7%	4%	0%	2%	15%	137
Oppose Tea Party	28%	17%	16%	4%	0%	3%	4%	3%	24%	73
Voted in 2008 GOP Primary	27%	10%	20%	9%	3%	5%	2%	3%	20%	222
Voted in 2008 DEM Primary	34%	12%	27%	0%	0%	6%	0%	0%	21%	31
Voted in 2012 GOP Primary	28%	12%	21%	8%	3%	5%	1%	2%	21%	263
Voted in 2012 DEM Primary	45%	21%	18%	0%	0%	5%	0%	0%	11%	19
Union household	47%	12%	18%	1%	7%	0%	0%	6%	10%	30
Non-union	27%	12%	20%	8%	3%	5%	2%	2%	21%	292
Read Union Leader	30%	15%	21%	11%	3%	2%	4%	2%	12%	94
Read Boston Globe	30%	2%	21%	11%	0%	14%	10%	2%	11%	37
Read Local Newspapers	26%	9%	21%	9%	5%	5%	3%	1%	20%	101
Watch WMUR	27%	16%	22%	7%	2%	5%	2%	2%	18%	206
Listen to NHPR	35%	11%	22%	7%	0%	1%	4%	2%	17%	82
18 to 34	35%	5%	8%	2%	6%	0%	0%	3%	40%	63
35 to 49	26%	19%	21%	7%	4%	7%	8%	2%	7%	85
50 to 64	30%	12%	26%	8%	2%	5%	0%	2%	15%	92
65 and over	29%	12%	20%	8%	1%	6%	0%	2%	22%	69
Male	37%	8%	16%	9%	3%	6%	3%	0%	18%	196
Female	18%	20%	26%	4%	4%	3%	0%	5%	22%	132
High school or less	30%	18%	17%	10%	4%	0%	0%	0%	20%	52
Some college	32%	7%	16%	10%	3%	4%	0%	4%	25%	61
College graduate	28%	13%	23%	7%	2%	7%	0%	1%	19%	137
Post-graduate	28%	9%	22%	2%	5%	5%	9%	4%	15%	71
Attend services 1 or more/week	28%	18%	20%	5%	5%	4%	4%	4%	12%	95
1-2 times a month	26%	0%	31%	9%	12%	7%	0%	3%	11%	28
Less often	35%	5%	20%	4%	1%	3%	0%	2%	30%	90
Never	26%	16%	17%	10%	1%	6%	3%	0%	20%	105
North Country	54%	6%	14%	9%	0%	1%	0%	1%	15%	27
Central / Lakes	27%	12%	19%	2%	2%	2%	5%	1%	29%	67
Connecticut Valley	32%	9%	24%	2%	9%	1%	7%	0%	16%	48
Mass Border	23%	15%	19%	7%	3%	6%	0%	3%	24%	89
Seacoast	18%	15%	24%	10%	0%	6%	0%	8%	19%	46
Manchester Area	38%	14%	19%	13%	1%	9%	0%	0%	6%	51
First Cong. Dist	28%	18%	20%	9%	1%	3%	0%	4%	17%	146
Second Cong. Dist	31%	9%	20%	5%	4%	4%	4%	0%	22%	172